



20¢

## WEATHER

Feb. 8. 55.18  
Feb. 9. 45.20  
Feb. 10. 56.20

Moisture received Feb. 6.  
.15, bringing total mois-  
ture to 1.11 for 1979.

# BAILEY COUNTY JOURNAL

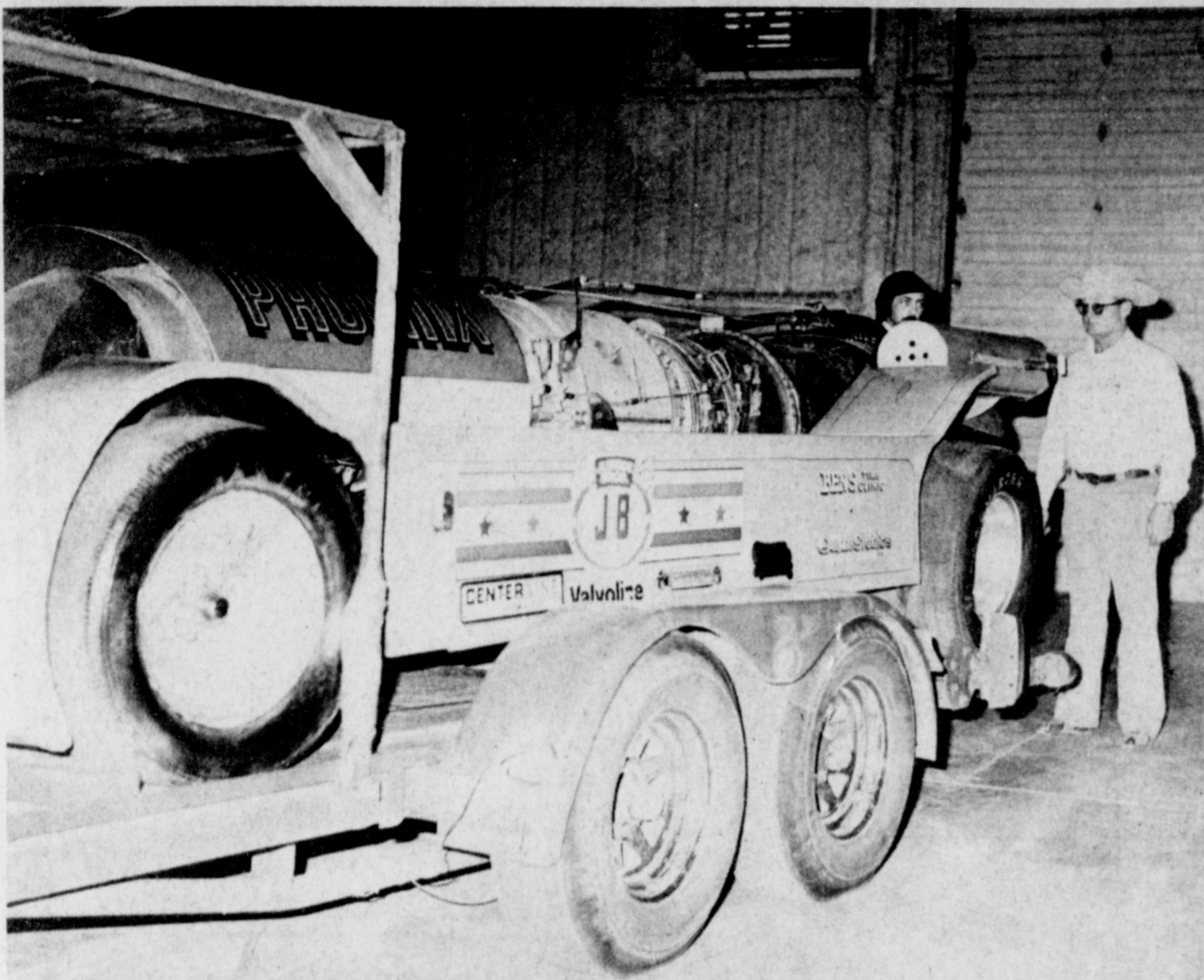
'The Community of Opportunity-Where Water Makes the Difference'

Volume 17, No. 6

12 Pages

Published Every Sunday at Muleshoe, Bailey County, Texas 79347

Sunday February 11, 1979



ON DISPLAY IN MULESHOE....Saturday and Sunday, rear-wheel standers, AA fuel dragsters and this jet powered turboprop are on display in Muleshoe at the Bailey County Exhibition Center and Coliseum. The jet powered cars arrived Friday at noon, and Tommy Black, executive director of the Muleshoe Chamber of Commerce and Agriculture and Deputy Sheriff Bobby Henderson checked out the powerful auto. Deputy Henderson's opinion was that the jet-powered car 'would probably outrun his patrol vehicle.'

## Burglars Invade Home; Reported Losses 'Heavy'

\*\*\*

### New Utility Bill Will Give Relief

Senator Bob Price of Pampa, has joined Senator Bill Patman of Ganado, on SB 318 proposing a constitutional amendment for the relief of certain consumers of residential gas and electricity.

The Texas Department of Human Resources may establish a program providing grants or other forms of payment to or on behalf of the aged, disabled, or blind persons who are Supplemental Social Security Income recipients who are not residing in nursing homes or state institutions for the purpose of providing relief from the cost of residential use of natural gas, liquefied petroleum gas and electricity.

The amendment would be primarily for persons sixty-five years and older and solely for gas and electri-

city utility bills. The bill provides for the deduction of one cent of the seven and one half cent per dollar natural gas wellhead tax, which last year would have generated close to \$70 million toward utility bill relief. The natural gas wellhead tax then brought in \$517.8 million.

Statistics show that one out of every three older Texans lives in poverty. A Supplemental Security Income recipient will have an income of less than \$3,500 per year. A Supplemental Security Income recipient living alone will have an income of less than \$2,300. The average Supplemental Security Income benefit was \$99 as of August, 1978. The average Supplemental Security Income benefit has increased by only \$16.61 in the last five years, a gain of less than \$3.50 per year.

Of Supplemental Security Income recipients in Texas, one in every seven have no indoor toilets; one in nine have no drinkable water piped into their homes; one in five have no hot water from an indoor faucet; one in six have no bath or shower; two in three use open windows or open windows with an electric fan as the only ventilation in the house. Elderly Texans use less energy than any other age income group but will spend a larger portion of their budget on fuel cost than any other group.

"Realistic utility bill relief like this can help the people who need it most," Senator Price said. "The elderly suffer the most from the escalating cost of utilities."

The proposed amendment calls for Texas voters to give their approval or disapproval in November of 1979 and, if approved, their vote again in 1984. Texas voters will have the opportunity to review the program and decide after five years experience whether to continue it. The two referendum approach is something no other constitutional amendment in Texas has had before.

The Senator said he feels that the "nothing can be done" attitude of the past is unacceptable. Something must be done, he

Cont. page 6, Col. 5

Burglars invaded Muleshoe again Wednesday with another daytime home burglary in west Muleshoe.

Ernestine Little locked all her doors and went to work Wednesday morning. On her return, she found a

Police Busy

In January

Says Report

Muleshoe City Police drove the patrol vehicles 8,156 miles during the month of January, compared to 6,637 miles on city streets during the first month of 1978.

Accidents checked during the month were the same as January, 1978, with 11 accidents being checked.

Traffic citations took a big leap, with eight traffic citations being issued in January, 1978, compared to the 63 citations issued in January of this year.

Also showing a big increase were the 50 criminal cases of different types investigated by the Muleshoe City Police, compared to 19 criminal cases in January, 1978.

Breaking and entering, burglary cases were down for January, with only one case being reported and four reported during the first month of last year.

Thefts were down by one with seven being reported to police, compared to the eight reported in January last year.

Officers had 38 officer-orientated calls, and handled 31 instances of issuance of bad checks.

Also during January, the animal vehicle was driven 207 miles, and answered 17 complaints, compared to 44 at the same time last year.

Fifty six animals were impounded during January last year, and 26 in January this year.

Two officers will complete basic certification training next Friday, following several weeks of training. Other officers attended one meeting with local merchants and two narcotics seminars.

A total of 35 instances of theft were checked by police during January, including seven reports of theft of \$50 to \$200 and 28 under \$50.

One was a theft from a motor vehicle, involving approximately \$0; four instances of motor vehicle parts and accessories, at \$326; two from buildings, \$70; and 28 miscellaneous incidents for a total of \$738.

door had been forced and several items removed from her home. Her reported losses were nearly \$1,000 with the loss of a television, clock radio, watch, stereo, lamp and cassettes.

She found her burglary just after 5:30 p.m. Wednesday afternoon.

Ironically, Mrs. Little had a very large burglary occur at her home last year in June. Muleshoe City Police Chief Johnny Richards said the burglary occurred in much the same manner as the burglary of the Tommy Merritt home, which occurred on Monday.

In the Merritt burglary, a large amount of home merchandise was taken, including a television, microwave oven, five cameras, watches and jewelry, tape recorders and tape players, C.B. radio, guitar and numerous other items, including radios, stereo, clock and miscellaneous items.

Chief Richards said investigation into the two burglaries is continuing. Also reported to the police was the loss of an air compressor. It was reported as stolen by Aubry Heathington. During the week, also in the same area, Jimmy Pitcock reported the loss of more than \$770 in tools from his pickup.

Valley Motel reported to police that one room at the motel had been stripped, and that they were missing a lamp, pillows, blankets and linens, glasses and ashtrays, along with sheets, towels and wash cloths. Value of the missing merchandise was set at \$60.

Early Saturday morning, City Patrolman Forrest Williams found a broken window at Dary Delite on the North First Street. However, drive-in operator Bertie Purcell said nothing appeared to have been taken from the drive-in.

Officer Williams found the broken window around 5:30 a.m. while on routine patrol.

Chief Richards said they investigated a theft of over \$200 and less than \$10,000. The incident was investigated this week, and a man was apprehended around 6 p.m. on Monday. He was released on a \$3,000 bond on Tuesday. After appearing before Justice of the Peace K.B. Martin.

The chief said the incident involved missing merchandise from Poyner's White Store in Muleshoe.

Cont. page 6, Col. 3

## Mixed Drink Taxes Returned To County

State Comptroller Bob Bullock said late last week that more than half a billion dollars was spent in Texas last year to buy mixed drinks.

Mixed drink sales for 1978 totaled more than \$653 million, with mixed drink sales for October, November and December of 1978 totaling more than \$166.8 million.

Bullock said his office has mailed checks totaling \$4.8 million to 205 Texas Counties and 343 Cities as their share of the 10 percent gross receipts tax on mixed drinks for the taxes collected in the last quarter of 1978.

Bailey County received a check in the amount of \$350.65 for their portion of tax rebate on collected reported taxes of \$2,337.68. At the end of the first quarter of 1979, the City of Muleshoe will begin receiving a check from the Comptroller's office for taxes on sale of mixed drinks at the Country Club, since that portion of land containing the Country Club and golf course were annexed to the city late in 1978.

Cochran County received a check for \$100.36 on taxes reported at \$669.07.

In Lamb County, the tax remittance was \$1,125.69 on taxes of \$7,504.58 and Parmer County's check was \$2.16 on reported taxes of \$14.40.

sale of mixed drinks seven years ago. The state retains the remainder in the General Revenue Fund.

Bullock said mixed drink taxes generated \$65.3 million in revenue for state, county and local governments last year. This is \$11.2 million more than was collected in 1977.

Mixed drink sales in Texas in 1977 amounted to about \$540.5 million.

Houston will receive the largest tax rebate, \$647,315.80, for the last quarter of 1978. Parmer County's \$2.16 check was the smallest found in the report.

The mixed drink tax is collected by the Alcoholic Beverage Commission and the city-county share is rebated on a quarterly basis by the Comptroller's office.

### School Board Will Consider

### New Contracts

A lengthy agenda, with several major items, will face the members of the Muleshoe Independent School District board of trustees when they meet in regular session Monday.

Included will be the consideration of re-employment of the music director, counselors, curriculum director, head coaches, principals, supervisors and director of special programs.

Also, discussing the time and schedule for selection of a new superintendent of schools.

Members will review all the financial condition, including current tax collections and discuss problems in estimating 1979-80 budget expenditures.

They will hear a request by Cindy Purdy to rent the high school auditorium to present a recital and discuss information available on liability insurance for board members and school employees.

Reviewed will be the calendar dates for the upcoming school board election and appoint the election judge and deputy.

Numerous items are also included on the agenda for consideration during the meeting.

## Nutrition Survey Conducted In Area

A team of U.S. Public Health Service personnel are visiting Bovina conducting a Health and Nutrition Survey, designed to gather statistical information on the health of the American people. The survey, a program of the National Center for Health Statistics, is part of a continuing national program first authorized by Congress in 1956.

Over a three year period, 28,000 individuals, ages six months through 74 years, will be asked to participate in the study. Bovina is one of the 65 areas scientifically selected to produce a representative sample of the total population of the United States.

Approximately 532 residents of Parmer County, who fall into a statistically representative sample of the area, will be offered a free physical examination.

On January 8, the interviewers from the Bureau of the Census and the U.S. Public Health Service began calling on persons selected in this area to solicit their participation and arrange an appointment. They will be in the Bovina area through March 1.

Examinations will be given in the survey's mobile Health Examination Center, which will be located on the parking lot of Bell and Kettle Restaurant, Route 60, (adjacent to the Sands Motel.)

Transportation to and from the Center will be provided to participants at no cost. In addition to a general examination and laboratory work-up, participants will be tested for heart and lung conditions, hearing, nutrition, diabetes, hypertension, arthritis and kidney disease. The tests will be administered by the U.S. Public Health Service staff con-

sisting of physicians, nurses, technicians and nutritionists.

The first survey in this program was undertaken 15 years ago, more than 40,000 Americans of all ages have participated voluntarily. The information obtained through their cooperation has provided national statistics on the extent and conditions such as heart disease, diabetes and arthritis in the United States and on many facets of human growth and development, according to Jay Anderson, field operations manager.

He said data used in medical research and education as well as in planning national health programs.

### Heart Drive Gets Underway Here Monday

The business campaign of the annual American Heart Association Drive gets underway in Muleshoe tomorrow, Monday, Feb. 12 with Hugh Young as campaign chairman. He will be assisted by Joe Harbin.

Young explained that volunteers will call on local businesses and ask for contributions to the American Heart Association, and ask for merchants to display an American Heart Association sticker on their cash registers.

It was explained that money contributed will be used for research projects sponsored by the American Heart Association and for educational material and films used throughout the area to educate the public to warning signs of heart attack, stroke and for CPR training programs.

The annual door-to-door Heart Drive will be conducted countywide later during the month.

### Around Muleshoe

Muleshoe Youth Activities Committee will meet in special session at 7:30 p.m. on Monday, February 12 in the Tri-County Savings and Loan Association Meeting room.

All members of the committee are urged to attend this special session, as a major item of business will be discussed, said President Keith Pate.

Terry Hill of the USDA office in Muleshoe, has announced that "SBA Loans for Farmers" will be the subject of a special seminar to be conducted on Wednesday, Feb. 14, 2-5 p.m. in the district courtroom of the Bailey County Courthouse.

Representatives from the Small Business Administration will conduct the seminar.

Bailey County Commissioners will meet in regular session Monday, Feb. 12 from 10 a.m. to 5 p.m. at the courthouse.

Items on the agenda are to open county depository bids at 10 a.m.; appoint election officials; and payment of routine county bills.

Friday afternoon, incumbent Don Harmon filed as a candidate for a position on the school board of the Muleshoe Independent School District. At press-time, incumbent H.D. Hunter Jr., had not filed. Harmon's candidacy joins that of Marshall 'Catfish' Williams of Progress, who is seeking one of the two slots on the school board.

Filing deadline is March 7 for the April 7 school election.

### Dimmitt Wins District Game Against Mules

Behind a solid 46 point gain by Mark Summers for the Dimmitt Bobcats, the Muleshoe Mules fell 78-49 to the Bobcats in the 'Cat' gymnasium at Dimmitt Friday night.

Summers, who is six feet, five inches, also had 18 rebounds to leave the Mules behind during the game.

The Bobcats maintained a 36-20 lead at halftime, stretching that to a 56-33 three-quarter score.

For the Mules, Charles Briscoe led with 13; Jeep Shanks, 11; Mike Northcutt, 10; Sam Whalin, six; Terry Shafer, five; and Dickie Sudduth, four points.

The Mulettes also fell to the Bobbies by a score of 44-34. That stretched the Bobbies season wins to 26-3 while the Mulettes went to 15-8.

Shelly Dunham paced the Mulettes with 12 points. Also scoring were JoRonda Rhodes, six; Karen Stovall, six; Cindy Hamblen, eight; Kathleen Patterson, two.

The Mules and Mulettes end the current season Tuesday night in action at Littlefield.



GOING, GOING..... Soon, the old First National Bank building will be just a memory. A bulldozer has piled this portion of the bank into just a pile of concrete, brick and steel. All that remains is the small portion in the background. Large trucks are moving parts of the debris of the old bank. Shown in the background is a portion of the new First National Bank building. The former bank location will become a parking lot in the near future.



STORE HOURS:  
OPEN 8:00 - 9:00  
MONDAY - SATURDAY  
SUNDAY - 9:00-8:00



HEAVY GRAIN FED BEEF

**Round Steak**  
**\$1.99**  
LB.

WE RESERVE THE RIGHT TO LIMIT PRICES EFFECTIVE FEBRUARY 11-17, 1979

WE GIVE DOUBLE GUNN BROS. STAMPS EVERY WED. & SAT

**A SWEETHEART OF A FOOD SALE**

A BARGAIN DOWN EVERY AISLE!!

**SUPER VALENTINE FOOD SAVINGS**

**BETTY CROCKER SUPER MOIST Cake Mixes**  
ASSTD. 18 OZ. BOX **69¢**

**SHURFINE CHERRY Pie Filling**  
21 OZ. CAN **\$1.29**

ALL VEGETABLE **Pure Crisco** With Filled Double Barreled Booklet **\$1.79**  
129 3 LB. CAN

HUNT'S **Tomato Ketchup** With Filled Double Barreled Booklet **59¢**  
9¢ 24 OZ. BTL.

STARKIST **Chunk Tuna** With Filled Double Barreled Booklet **69¢**  
19¢ 6 1/2 OZ. CAN

25¢ OFF LABEL **King Cheer** BOX **\$2.19**

**Dairy And Frozen Food**

KRAFT **Squeeze Parkay** 1 LB. BTL. With Filled Barreled Booklet **69¢**  
19¢

JOHNSTON APPLE OR DUTCH **Apple Pie** 38 OZ. PKG. **\$1.29**  
KRAFT MIDGET HORN **Cheddar Cheese** 1 LB. PKG. **\$1.79**  
PHILADELPHIA **Cream Cheese** 8 OZ. PKG. **79¢**  
SHURFRESH SM/BM **Biscuits** 6 8 OZ. CANS **89¢**

**Health And Beauty Aids**

EXTRA LARGE **Gleem Toothpaste** 5 OZ. TUBE **69¢**  
PUSH BUTTON LILT **Home Perm** EACH **\$2.19**  
DEODORANT **Sure Spray** 2 1/2 OZ. CAN **\$1.09**

- HEAVY GRAIN FED BEEF TENDERIZED **Cutlets** LB. **\$2.39**
- HEAVY GRAIN FED BEEF **Sirloin Steak** LB. **\$1.99**
- HEAVY GRAIN FED BEEF **T-Bone Steak** LB. **\$2.49**
- HEAVY GRAIN FED BEEF BONELESS OR ROAST **Sirloin Tip Steak** LB. **\$2.19**
- SELECT SLICED YOUNG **Beef Liver** LB. **79¢**
- TASTEWRIGHT FRESH **Pork Sausage** 2 LB. BAG **\$2.19**

RANCH STYLE **Chili** 19 OZ. CAN **99¢**

**Grocery Specials**

- BUSH SHOWBOAT **Pork & Beans** 4 14 OZ. CANS **89¢**
- DOUBLE LUCK MIXED CUT **Green Beans** 4 16 OZ. CANS **\$1**
- DEL MONTE **Fruit Cocktail** 17 OZ. CAN **53¢**
- GOLDEN GRIDDLE **Pancake Syrup** 24 OZ. BTL. **\$1.19**
- FOLGER'S FLAKED **Coffee** 26 OZ. CAN **\$4.19**
- FOLGER'S FLAKED **Coffee** 39 OZ. CAN **\$5.99**

**Shelf Specials**

- CARNATION ASSTD. **Slender** 2 10 OZ. CANS **79¢**
- FRISKIES CANNED **Dog Food** 4 CANS **89¢**
- SUNSHINE HYDROX **Cookies** 19 OZ. PKG. **89¢**
- KLEENEX EXTRA ABSORBENT **Diapers** 24 CT. BOX **\$2.79**
- KOTEX **Maxi Pads** 30 CT. BOX **\$1.99**
- KOTEX **Mini Pads** 30 CT. BOX **\$1.49**

CALIFORNIA LARGE

**Avocados**  
**5 FOR \$1**

- RED DELICIOUS **Apples** LB. **39¢**
- RUSSET ALL PURPOSE **Potatoes** 10 LB. BAG **89¢**
- CALIFORNIA **Carrots** 4 1 LB. BAGS **\$1**
- YELLOW SWEET **Onions** LB. **22¢**

DEODORANT **Sure Roll-On** 1 1/2 OZ. BTL. **\$1.09**

**FINAL WEEK!**

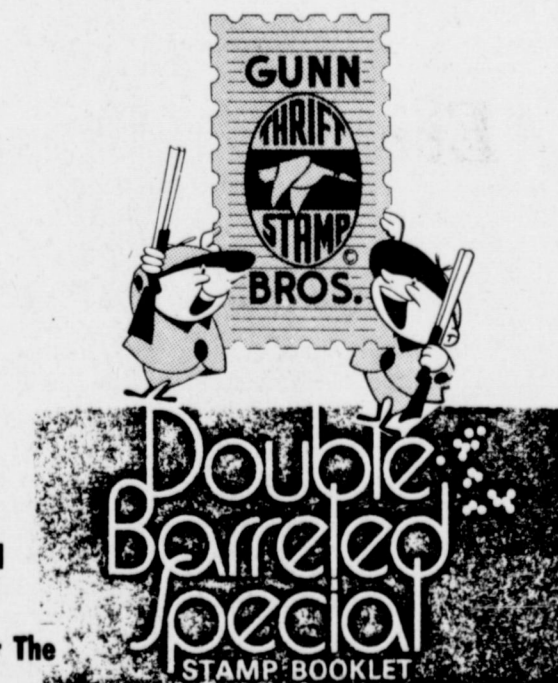
SPRING COLLECTION STONWARE  
ALL FEATURE ITEMS AT SALE PRICES!!  
COMPLETE YOUR SET TODAY!

Fill This Double Barreled Special Stamp Booklet and Redeem Them For The Doubled Barreled Specials

Crisco, Ketchup Tuna And Parkay as Listed in This Ad.

Only One "Double Barreled Special" Booklet may be used for each "Double Barreled Special" item advertised by Pay-N-Save Store

COME TO PAY 'N' SAVE FOR YOUR W I C CARD PURCHASES



WORTH 1/4 BOOK WHEN FILLED WITH 30 "BIG 10" Gunn Bros. Stamps

REDEEM FOR DOUBLE BARRELED SPECIALS AT PARTICIPATING FIRMS OR FOR MERCHANDISE AT GUNN BROS. REDEMPTION CENTERS.





STORE HOURS:  
OPEN 8:00 - 9:00  
MONDAY - SATURDAY  
SUNDAY - 9:00-8:00



HEAVY GRAIN FED BEEF

**Round Steak**  
**\$1.99**  
LB.

WE RESERVE THE RIGHT TO LIMIT PRICES EFFECTIVE FEBRUARY 11-17, 1979

BONELESS CENTER CUT Round Steak LB. \$2.19  
WRIGHT'S HICKORY SMOKED SLICED Bacon LB. \$1.29

WE GIVE DOUBLE GUNN BROS. STAMPS EVERY WED. & SAT

**A SWEETHEART OF A FOOD SALE**

A BARGAIN DOWN EVERY AISLE!!

**SUPER VALENTINE FOOD SAVINGS**

BETTY CROCKER SUPER MOIST **Cake Mixes** ASSTD. 18 OZ. BOX **69¢**

SHURFINE CHERRY **Pie Filling** 21 OZ. CAN **\$1.29**

ALL VEGETABLE With Filled Double Barreled Booklet **Pure Crisco** \$1.29 3 LB. CAN **\$1.79**

HUNT'S With Filled Double Barreled Booklet **Tomato Ketchup** 9¢ 24 OZ. BTL. **59¢**

STARKIST With Filled Double Barreled Booklet **Chunk Tuna** 19¢ 6 1/2 OZ. CAN **69¢**

25% OFF LABEL **King Cheer** BOX **\$2.19**

**Dairy And Frozen Food**

KRAFT With Filled Barreled Booklet **Squeeze Parkay** 1 LB. BTL. **69¢**

JOHNSTON APPLE OR DUTCH **Apple Pie** 38 OZ. PKG. **\$1.29**

PHILADELPHIA **Cream Cheese** 8 OZ. PKG. **79¢**

KRAFT MIDGET HORN **Cheddar Cheese** 1 LB. PKG. **\$1.79**

SHURFRESH SM/BM **Biscuits** 6 8 OZ. CANS **89¢**

**Health And Beauty Aids**

EXTRA LARGE **Gleem Toothpaste** 5 OZ. TUBE **69¢**

PUSH BUTTON LILT **Home Perm** EACH **\$2.19**

DEODORANT **Sure Spray** 2 1/2 OZ. CAN **\$1.09**

HEAVY GRAIN FED BEEF TENDERIZED **Cutlets** LB. **\$2.39**

HEAVY GRAIN FED BEEF **Sirloin Steak** LB. **\$1.99**

HEAVY GRAIN FED BEEF **T-Bone Steak** LB. **\$2.49**

HEAVY GRAIN FED BEEF BONELESS OR ROAST **Sirloin Tip Steak** LB. **\$2.19**

SELECT SLICED YOUNG **Beef Liver** LB. **79¢**

TASTEWRIGHT FRESH **Pork Sausage** 2 LB. BAG **\$2.19**

RANCH STYLE **Chili** 19 OZ. CAN **99¢**

**Grocery Specials**

BUSH SHOWBOAT **Pork & Beans** 4 14 1/2 OZ. CANS **89¢**

DOUBLE LUCK MIXED CUT **Green Beans** 4 16 OZ. CANS **\$1**

DEL MONTE **Fruit Cocktail** 17 OZ. CAN **53¢**

GOLDEN GRIDDLE **Pancake Syrup** 24 OZ. BTL. **\$1.19**

FOLGER'S FLAKED **Coffee** 26 OZ. CAN **\$4.19**

FOLGER'S FLAKED **Coffee** 39 OZ. CAN **\$5.99**

**Shell Specials**

CARNATION ASSTD. **Slender** 2 10 OZ. CANS **79¢**

FRISKIES CANNED **Dog Food** 4 CANS **89¢**

SUNSHINE HYDROX **Cookies** 19 OZ. PKG. **89¢**

KLEENEX EXTRA ABSORBENT **Diapers** 24 CT. BOX **\$2.79**

KOTEX **Maxi Pads** 30 CT. BOX **\$1.99**

KOTEX **Mini Pads** 30 CT. BOX **\$1.49**

GUNN BROS. **Double Barreled Special** STAMP BOOKLET

CALIFORNIA LARGE **Avocados** 5 FOR **\$1**

RED DELICIOUS **Apples** LB. **39¢**

RUSSET ALL PURPOSE **Potatoes** 10 LB. BAG **89¢**

CALIFORNIA **Carrots** 4 1 LB. BAGS **\$1**

YELLOW SWEET **Onions** LB. **22¢**

DEODORANT **Sure Roll-On** 1 1/2 OZ. BTL. **\$1.09**

**FINAL WEEK!**

SPRING COLLECTION STONEWARE

ALL FEATURE ITEMS AT SALE PRICES!!

COMPLETE YOUR SET TODAY!

Fill This Double Barreled Special Stamp Booklet and Redeem Them For The Doubled Barreled Specials

Crisco, Ketchup Tuna And Parkay as Listed in This Ad.

Only One "Double Barreled Special" Booklet may be used for each "Double Barreled Special" item advertised by Pay-N-Save Store

COME TO PAY 'N' SAVE FOR YOUR W I C CARD PURCHASES

WORTH 1/4 BOOK WHEN FILLED WITH 30 "BIG 10" Gunn Bros. Stamps

REDEEM FOR DOUBLE BARRELED SPECIALS AT PARTICIPATING FIRMS OR FOR MERCHANDISE AT GUNN BROS. REDEMPTION CENTERS.

We Welcome USDA FOOD STAMP COUPONS





**Mary Smith Gave Delta Kappa Gamma Program**

The Epsilon Delta Chapter of The Delta Kappa Gamma Society International met Saturday, Feb. 3, at 2:30 p.m. in Earth. The Springlake - Earth members hosted a tea in the dining area of the First Baptist Church.

Mrs. Kenneth Largent, president, Littlefield, presided during the business meeting and reminded members concerning the Golden Gift Fund. The Delta Kappa Gamma is celebrating the fiftieth anniversary of its founding on May 11, in Austin, Texas.

Mary Smith, program chairman, presented the program 'Celebrate! Celebrate! Dance to the Music!' The Professional Affairs Committee expanded on purpose IV of the organization which is... To sponsor and support desirable educational legislation and initiate legislation in the interest of women educators. Oneta Gary gave a comprehensive study about the educational concerns of all members. She reviewed state and national legislation which is being proposed. The Personal Growth and Services committee composed of Georgia Bahlman, Betty Jennings, Betty Herrin, Jane Spain, Mary Tollett and Georgeann Rasco presented a skit concerning how our society has changed in the past fifty years.

Frances Watkins, Area IX Coordinator of Levelland, visited the chapter and brought greeting from Alpha State and encouraged each member to remember the purposes of the organization and to continue in a genuine spiritual fellowship. She announced the recent death of Miss Ray King, the last of the twelve founders. Muleshoe members attending were: Virginia Bowers, Mrs. Joe Costen, Kathleen Francis, Dorine Harbin, Mrs. James Jennings, Mrs. E.W. Johnson, Mrs. Oscar Rudd, Mrs. Eric Smith and Mrs. John Watson.

**TOPS Has Weekly Meeting**

Mrs. Nan Gatlin, Mrs. Mae Provence and Mrs. Walter Sain received material for three weeks consecutive weight loss at the TOPS Club meeting on February 8 at 6 p.m. Mrs. Billy Wayne Murphy earned a charm.

The weekly queen was Mrs. Billy Wayne Murphy with a tie between Mrs. J.C. Murphy and Mrs. Dan Vinson for first runner up. Mrs. Walter Said was second runner up.

The meeting was called to order by the vice leader, Mrs. Raleigh Mason. Roll call was given by the weight recorder, Mrs. Wayland Harris with 27 members attending. The Club sang the TOPS Song and recited the club pledge.

The meeting was dismissed with the Goodnight Song. Our advice to you this week is to take care of your heart, and live awhile.

**Epsilon Delta Collecting New Eyes For Needy**

Epsilon Delta chapter of Epsilon Sigma Alpha is sponsoring the project, "New Eyes for the Needy." The project from Short Hills, N.J. provides eyeglasses for people who can't afford to buy them. Epsilon Delta members will be collecting old eyeglasses, broken watches, discarded jewelry and silverware for this project.

If you have any of these items, Epsilon Delta asks that you drop them in the boxes provided at KMUL, Chubby's Beauty Shop, Muleshoe State Bank, or First National Bank. You may also contact Rita Lane at 272-4701 or Cynthia Noble at 272-3813 or any sorority member. The deadline for this project is March 6.

**Calendar Of Events**

**MONDAY...**

The Parents - Teachers Association will have their executive committee meeting at 3:30 p.m. in the Mary DeShazo Cafeteria followed by refreshments and slides at 4 p.m. A nursery will be provided. The Jaycess will meet at 12 noon in the Bailey County Civic Center.

At 7:30 p.m., the Rainbow Girls will meet in the Masonic Hall. GRIP will hold their weekly meeting at 4 p.m. in the Tri County Savings and Loan Reception Room.

**TUESDAY...**

The Muleshoe Young Homemakers will meet at 7 p.m. in the home of Cindy Magby for a birthday - anniversary social. The Gymnastics Booster Club will hold a monthly meeting at 8 p.m. in the 16th and Ave. D Church of Christ.

The Muleshoe Art Association will meet at 2 p.m. in the Muleshoe State Bank Community Room. The weekly meeting of the Rebekahs will be at 7:30 p.m. in the Odd Fellows Hall.

The Kiwanis Club will have a breakfast meeting at 6:30 a.m. in the Corral Restaurant.

**WEDNESDAY...**

The Muleshoe Nursing Home will hold a Rock 'N Roll Jamboree from 9 to 11 a.m. and 2 to 5 p.m. in the Nursing Home. Proceeds will go to the American Heart Association. A bake sale will also be held. The noon luncheon of the Lion's Club will be at 12 p.m. in the Bailey County Civic Center.

The Optimists Club will meet at noon in the Bailey County Civic Center. The TOPS Club's weekly meeting will be at 6 p.m. in the Bailey County Electric Reception Room. Odd Fellow will have their weekly meeting at 7:30 p.m. in the Odd Fellows Hall.

**THURSDAY...**

The Muleshoe Singing Group will hold their weekly get-together at 7 p.m. in the Nazarene Church at 814 W. Ave. C.

**FRIDAY...**

The Muleshoe Singing Group will hold their weekly get-together at 7 p.m. in the Nazarene Church at 814 W. Ave. C.

**SATURDAY...**

The Muleshoe Singing Group will hold their weekly get-together at 7 p.m. in the Nazarene Church at 814 W. Ave. C.

The Progress 4-H Club will meet at 7:30 p.m. in the West Camp Community Center for a weekly meeting. At 4 p.m., the Christian Woman's Fellowship will meet in the First Christian Church.

The noon meeting of the Rotary Club will be held at the Bailey County Civic Center. WEDNESDAY... The Muleshoe Nursing Home will hold a Rock 'N Roll Jamboree from 9 to 11 a.m. and 2 to 5 p.m. in the Nursing Home. Proceeds will go to the American Heart Association. A bake sale will also be held.

The noon luncheon of the Lion's Club will be at 12 p.m. in the Bailey County Civic Center. The Optimists Club will meet at noon in the Bailey County Civic Center. The TOPS Club's weekly meeting will be at 6 p.m. in the Bailey County Electric Reception Room.

Odd Fellow will have their weekly meeting at 7:30 p.m. in the Odd Fellows Hall. The Kiwanis Club will have a breakfast meeting at 6:30 a.m. in the Corral Restaurant.

**FRIDAY...**

The Muleshoe Singing Group will hold their weekly get-together at 7 p.m. in the Nazarene Church at 814 W. Ave. C.

The Muleshoe Singing Group will hold their weekly get-together at 7 p.m. in the Nazarene Church at 814 W. Ave. C.

The Muleshoe Singing Group will hold their weekly get-together at 7 p.m. in the Nazarene Church at 814 W. Ave. C.

**SATURDAY...**

The Muleshoe Singing Group will hold their weekly get-together at 7 p.m. in the Nazarene Church at 814 W. Ave. C.

**LATEST ARRIVALS**

Kimberly Dianna Burkhardt

Mr. and Mrs. Larry Burkhardt of Round Mountain, Nevada are the proud parents of a new baby girl born Feb. 7 at 5:27 a.m. in Tonaph, Nevada. She was named Kimberly Dianna and weighed six pounds and eleven ounces. She has two brothers, Stephen and Matthew, one.

Grandparents are Mr. and Mrs. Winston Burkhardt of Fort Sumner, N.M. and Mr. and Mrs. Jay Frazier of Muleshoe. Great-grandparents are Mrs. Mattie Heard and Mrs. O.H. Loran, both of Muleshoe and John Burkhardt of Kennedy, Tx.

**Virginia Bowers Presented Survey To AAUW**

The Muleshoe Branch of the American Association of University Women met Monday, Feb. 5, at 7:30 p.m. in the Harold Allison home on the Plainview Highway. Co-hostesses were Mrs. Neal Dillman and Mrs. Roy Winkle. Mrs. Robert Hooten, president, presided during the business section. Plans and assignments relative to the State Convention which will be April 27-28 in Amarillo were discussed. The Branch voted to sponsor the AAUW Girls of the Month in the July 4th Muleshoe Parade.

Christine Vela, daughter of Mr. and Mrs. Joe Vela, was named AAUW Girl of the Month.

Mrs. Carole McGilvary, district coordinator, Hereford will meet with the Muleshoe Branch at the April meeting. Miss Virginia Bowers, program development chairman, presented a slide and cassette program which summarized a survey made of 175 Muleshoe women. Miss Bowers

compiled interesting information concerning women of all ages, occupations, educational backgrounds, leisure time activities and other pertinent information. This presentation portrayed a cross section of the women in the Muleshoe area and showed their versatility, concern for others, civic interest, home and family, and church related activities. Members attending were Mrs. Gerald Allison, Mrs. R.D. Angeley, Miss Virginia Bowers, Mrs. Ken Box, Mrs. Charles Brewer, Mrs. Joe Costen, Miss Mary Helen Gutierrez, Mrs. Robert Hooten, Mrs. E.W. Johnson, Mrs. Ed Kramer, Mrs. Oscar Rudd, Mrs. Eric Smith, Mrs. John Watson, Mrs. Lyn Farley, Dr. Martha Sayago and Mrs. Peggy Burnett. Guests attending were Mrs. Frank Ellis III, Mrs. J.E. McVickers and Mrs. Barney Fozzard.

Members attending were Mrs. Gerald Allison, Mrs. R.D. Angeley, Miss Virginia Bowers, Mrs. Ken Box, Mrs. Charles Brewer, Mrs. Joe Costen, Miss Mary Helen Gutierrez, Mrs. Robert Hooten, Mrs. E.W. Johnson, Mrs. Ed Kramer, Mrs. Oscar Rudd, Mrs. Eric Smith, Mrs. John Watson, Mrs. Lyn Farley, Dr. Martha Sayago and Mrs. Peggy Burnett. Guests attending were Mrs. Frank Ellis III, Mrs. J.E. McVickers and Mrs. Barney Fozzard.

**Fashion**

Plan your wardrobe carefully when going on a warm climate vacation. A cool two piece suit needs a blouse or T-shirt. For formal wear, consider one of the multicolored chiffons.

**JUNE WEDDING PLANNED...** Mr. and Mrs. Corkey Biggerstaff wish to announce the engagement and approaching marriage of their daughter, Beverly to Larry Parker, son of Mr. and Mr. W.H. Parker. The couple will repeat wedding vows June 8 at the First Baptist Church in Muleshoe. Miss Biggerstaff is a summer graduate of Lubbock Christian High and is now attending West Texas State where she will receive her Secretarial Business Certificate in May. Parker is a 1976 graduate of Muleshoe High School and is now employed with Poyner's Whites Store.

**March Art Show Will Be Held In Plainview**

The Plains Art Association will sponsor a school art show on March 4 to 16 in the harral Galleries at Harral Auditorium on the campus of Wayland Baptist College, Plainview.

The categories in the senior division, grades nine thru twelve, will be painting, sculpture, graphic and textile, drawings and photography. In the junior division, grades six thru eight, the categories will be painting, sculpture, graphic and textile and drawings.

All work must be the original work of the students done within the last school year. No kits will be considered. All work, except sculpture, must be matted and/or framed and wired for hanging. The standard entry form must be completed and attached to the back lower right hand corner of each entry. The forms and more information may be received by calling Helen Adrian at 806-296-9286. There will be no entry fee nor any limit on entries per student.

All entries must be delivered to Harral Auditorium between 3:30 and 6 p.m., Friday, March 2. Entries must be picked up March 16 or 17 between 4:30 and 6 p.m. All persons entering work are responsible for its pickup.

First, second, third and fourth places will be awarded in categories where merit of the work warrants all four places be given. Trophies for Best of Show in both the junior and senior divisions will be awarded. A People's Choice trophy will be given to the single work most popular with the public.

Store bacon and other salt cured products no longer than one to two months in the freezer, a foods and nutrition specialist recommends. Salt hastens the rancidity of fat, explains Marilyn Haggard with the Texas Agricultural Extension Service, The Texas A&M University System.

**RECIPE**

**By Sarah Ann Sheridan**  
Ham is such an excellent combiner that it is a toss up whether it is better served plain or in one of the many delicious ways the imaginative cook can create.

**Ham Puff**

1/4 c butter  
5 T flour  
1 1/2 C milk  
4 egg yolks slightly beaten  
2 c ground cooked ham  
1 egg whites beaten stiff  
Salt to taste  
Melt butter, add flour and blend. Add milk gradually, stirring constantly. Gradually add to egg yolks. Stir in ham. Fold in egg whites. Pour into a greased 2 quart casserole. Bake in an oven (350 degrees) for 50 minutes.

**Ham and Potatoes**

1 slice ham 2 inches thick  
1 1/2 c potatoes sliced thin  
2 c milk  
Cut off outside edges of fat. Put ham in a casserole. Cover with potatoes. Add milk. Cover and bake in an oven (350 degrees) for 1 1/2 hours.

**Limas on Ham**

1 inch slice of ham, center cut  
2 c canned or frozen baby limas  
2 c grated cheese  
Broil ham, 3 inches from moderate heat for 10 minutes, turn and broil 10 minutes. Heat canned limas or cook frozen limas. Drain and pile on slice of ham. Sprinkle with cheese. Return to broiler 4 inches from heat. Reduce heat and broil until cheese melts and is lightly browned.

**Jon Birdsong of Canyon Watercolor Workshop**  
Feb. 19, 20, & 21  
Day Classes 9 A.M.-12; 1-4 P.M. \$40.00  
Night Classes 6:30-9 P.M. \$25.00  
Register by Feb. 14 Supplies Available  
**Dood's Frame & Gallery**  
204 Main Sudan 227-2068

**3 Day Valentine Specials**  
Feb. 12, 13, & 14 Only  
**10% Off**  
On All New Merchandise  
**EXTRA 10% Off**  
Sale Merchandise  
NO Layaway or Charge On Sale Merchandise  
New Spring & Summer Merchandise Arriving Daily  
Girls-Boys-Preteen - Juniors - Infants  
**LATRELL'S FASHIONS**  
PHONE 806 272-3499  
1519 WEST AMERICAN BLVD  
MULESHOE, TEXAS 79847

A Public Service of This Newspaper & The Advertising Council  
**Mike Douglas learned that lifesaving is just one reason to keep Red Cross ready.**



"A surprising fact I learned just about every life guard you've ever seen has had Red Cross safety training. To date, Red Cross has issued over 65 million swimming and lifesaving certificates. There's just no telling how many lives saved those hard-earned water safety certificates represent. It's just one way Red Cross serves our town. In towns and cities across the nation, Red Cross performs scores of different services. In some places, Red Cross provides home health care for senior citizens. In many places they teach preparation for parenthood. Red Cross helps people relocate after fires. Teaches health, safety, first aid. Helps veterans. In fact, if it needs to be done, chances are Red Cross is doing it right now. And Red Cross could sure use your help in getting it done. Call your Red Cross chapter today - if you're ready to help. Thanks!"



**Final Reduction Sale!**

Ladies - Juniors Dresses	
Reg. \$18-\$66.....	\$9.99
Reg. \$36-\$48.....	\$19.99
Reg. \$48-\$90.....	\$24.99

Group 1 Ladies Sportswear Values to \$30 <b>\$1.00</b>		Group 2 Ladies Sportswear Values To \$13 <b>\$2.99</b>
--	--	--

Group 3 Ladies Sportswear Values To \$14 <b>\$4.99</b>		Group 4 Ladies Sportswear Values To \$20 <b>\$7.99</b>
--	--	--

Group 5 Ladies Sportswear Values To \$30 <b>\$9.99</b>		Group 6 Ladies Sportswear Values To \$45 <b>\$12.99</b>
--	--	---

110 Main **St. Clair's** 272-4453

# Land Title Problems As Old As History Of Land Trading

Even Abe Lincoln had land title problems.

Not everyone knows the story of how Abe's family lost title to three Kentucky farms while Abe was growing up. The property was lost through no fault of their own, rather, because of land title problems so serious that the family was finally forced to move from the state.

This legend warns 1979 home buyers that unresolved land title problems can still bring financial disaster.

The Lincoln's title problems began when Abe's father, Thomas Lincoln, tried to sell the family farm and found it 39 acres short. Then past indebtedness on their second farm was discovered to be much larger than the seller had told the Lincolns it was, and, worse, the title holder demanded cash payment instead of settling for payment in merchandise. The Lincolns lost their third farm in Kentucky through a suit of ejectment to remove them from the property.

By this time Thomas Lincoln understandable felt very brow beaten, so, with "his back against the wall," he relocated his family in nearby Indiana where land title problems occurred less frequently. The state of Kentucky thus forever lost its chance to be known as the home of the future president.

Years later Abe Lincoln wrote of the move to Indiana, "This removal was partly on account of slavery, but chiefly on account of the difficulty in land titles."

Protection for the home buyer is crucial in 1979, according to Diana Dietert, President of the Texas Land Title Association. She explained that land title problems arise from the enduring nature of land and claims against the land which may be filed by different parties.

Advance precautions to

protect the buyer before purchase should always include a proper title search of public records to disclose any title problems. Dietert advised the buyer to purchase title insurance to protect against all title hazards including those a title search cannot reveal.

Dietert, who is President of Guaranty Title Company of Boerne and Bandera County Title Company, says home ownership is an excellent hedge against inflation as long as real estate transactions are properly conducted.

Texas Land Title Association recommends that all prospective home buyers review the following checklist:

\*\*Study the particular advantages and disadvantages of a single family dwelling, town house, condominium or other type of residence before deciding what to purchase.

\*\*Consider the neighborhood where the residence is located. What is its condition, and, more important, what are the future plans for the neighborhood?

\*\*Carefully inspect the house's structural condition. You may want to get a structural expert's appraisal.

\*\*Check on the amount of insulation. How much fuel is required to heat the house?

\*\*Shop for the best deal you can find in mortgage financing. Ask about the interest rate, late payment penalty, amount of insurance required, refinancing requirements, and possible prepayment penalty. Will interest, taxes and insurance be included in the monthly payment?

\*\*Before you close the real estate transaction, arrange for owner's title insurance protection, available at minimal cost. The required lender's title insurance policy protects only the mortgage lender.

Warning of a definite

need for buyer protection. TLTA President Diane Dietert tells the story of what happened to an unfortunate home buyer in Illinois. The buyer thought he received clear title, but, after moving in, received notice that a past year's property taxes were still unpaid. The discrepancy was not found by title search of public records because the county tax rolls had been posted incorrectly at the courthouse. Fortunately, the owner's title policy provided coverage which paid the tax claim, saving the owner financial loss and possible loss of his real estate.

Another time, a Georgia property owner charged that a neighbor's house extended onto his land. After a new survey proved the claim to be correct, the title company insuring the encroaching neighbor arranged the purchase of a strip of land - including that occupied by part of the house - to solve the problem.

Burglary...

The chief also said merchants continue to bring bad checks in to the police department. He said that any merchant who has questions about the bad check problem in Muleshoe may contact him or Lt. Jerry Hicks at the Muleshoe Police Department at the Bailey County Law Enforcement Center.

Officers are also continuing to work on the abandoned and junked cars in and around the city, with removal being conducted as soon as the necessary papers are processed. Several cars and other vehicles have been removed and removal is expected to continue until all cars that qualify as 'junked or abandoned' vehicles are removed.

Cont. from Page 1

Can you imagine the total embarrassment that must come from wearing a \$50 neck tie for six months with a famous, exclusive designer's name on it, only to find out it was counterfeited in Hong Kong at a cost of \$1.98? How could you possible show up in public again?

There are some things I find hard to believe. I can believe there are some Congressmen worth \$57,000 a year plus \$943,000 in office expense and general upkeep, among those who must have been counterfeited in Hong Kong, but I don't believe there is such a thing as a \$50 tie. You can pay that much for one, but unless you work it into the conversation somebody sitting across the table won't be able to tell it from a \$5 one, and I doubt it will hide soup stains any better.

Yours faithfully, J.A.

## The Sandhills Philosopher

Editor's note: The Sandhills Philosopher on his Johnson grass farm on Sandy Creek takes an irreverent view of a new form of skulduggery this week.

Dear editor: Regardless of the enterprise, whether it is law, medicine, banking, plumbing, construction, religion or whatever, somebody in it always figures out a way to skin somebody else.

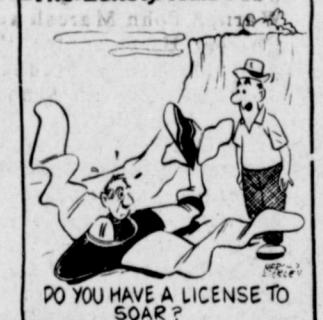
It is possible it has happened even in the newspaper business, although most likely this is a rumor started by a disgruntled subscriber whose name was misspelled if he did something praiseworthy or spelled right if he did something he didn't want known.

Generally there is nothing funny in this, but I read an article in the paper about one form of skulduggery that it is hard to keep a straight face about.

Somebody in Hong Kong is making and selling counterfeit Gucci shoes and Dior handbags and other fashionable things. In case you did not know, as I didn't, Gucci and Dior are famous designers whose names on something allows it to be sold at an outlandish price and bought with whatever satisfaction a person gets from wearing something his neighbors don't have.

Senator Price said he would welcome letters of inquiries on the subject of the constitutional amendment from any interested person. His capitol address is Box 12068, Capitol Station, Austin, Texas 78711.

### The Lonely Heart



## The Scientists Tell Me... Grain Sorghum Yields Boosted By Wide-Bed, Narrow-Row System

By Robert L. Haney  
TAES Science Writer

Grain sorghum production on the Blackland Prairie was boosted an average of 22.67%, over a 3-year period, by use of wide-bed, narrow-row system rather than conventional 40-inch rows.

The production system, which may have implications for some other areas, has been tested for several seasons by scientists with the Texas Agricultural Experiment Station, Texas A&M University in cooperation with USDA, SEA-Agricultural Research.

In addition to increased production, they noted these advantages: 1) tractor wheel traffic is confined to specific furrows (fixed traffic pattern) to reduce soil compaction in the root zone, thereby reducing both primary tillage and energy requirements, 2) the wide beds provide a method for precision cultivation of narrow rows, and 3) early establishment of a dense leaf canopy aids weed control.

The fast, more complete ground cover reduced water evaporation from the soil, cut soil temperatures, lessened soil compaction from raindrops, and shaded out most weeds.

The primary equipment requirements are a precision bed shaper, a 20-foot tool bar, plus planters and cultivators for working 9 to 12 rows at a time," says Dr. Earl Burnett, soil scientist, USDA-SEA-AR, who cooperated in the research with Arkin and Roger Monk, TAES research associate.

The tractor sway blocks are removed to allow the tool bar free lateral movement. Two cone guide wheels attached to the tool bar ride along the furrow sides, guiding the lateral movement of the tool bar.

This procedure is followed when planting and again when cultivating, ensuring that the cultivator gangs are precisely aligned on the bed. Potential weed problems are usually overcome by this precision cultivation and the earlier more complete ground cover afforded by the narrow rows.

Tests at Temple were started in 1975. Initial field preparation consisted of chiseling and fertilizing with 350 pounds per acre of 25-10-0 NPK. The fertilizer was incorporated prior to bedding.

Each season, about 70,000 plants per acre were planted with a commercial hybrid in one row per conventional 40-inch center bed, and the same number for two, three, and four rows per 80-inch center bed. This corresponds to 40-, 40-, 20-, and 15-inch row spacing, respectively.

The plots were cultivated, and insecticide was applied as needed throughout the season.

Yields averaged: 5,790 pounds for 4-row, 80-inch bed; 5,434 pounds for 3 rows, 80-inch bed; 4,454 pounds for 2 rows, 80-inch bed; and 4,720 pounds for conventional 40-inch rows.

Services are scheduled for 7 p.m. and the membership said they would like to extend a cordial welcome to anyone to attend the "informal and interesting service."

Rev. McCroskey attended Grace Bible Institute and received his AB degree in Bible. Prior to being appointed to the Philippines, he served as a minister in Nebraska.

Since going into the mission field in 1956, he has served as an evangelist, field superintendent and council chairman.

Utility... Cont. from Page 1 stressed, and this is an effort that can succeed. By 1980, population projections indicate that a major portion of Panhandle counties will exceed the anticipated state percentages in growth of those sixty-five and older.

Senator Price said he would welcome letters of inquiries on the subject of the constitutional amendment from any interested person. His capitol address is Box 12068, Capitol Station, Austin, Texas 78711.

Can you imagine the total embarrassment that must come from wearing a \$50 neck tie for six months with a famous, exclusive designer's name on it, only to find out it was counterfeited in Hong Kong at a cost of \$1.98? How could you possible show up in public again?

There are some things I find hard to believe. I can believe there are some Congressmen worth \$57,000 a year plus \$943,000 in office expense and general upkeep, among those who must have been counterfeited in Hong Kong, but I don't believe there is such a thing as a \$50 tie. You can pay that much for one, but unless you work it into the conversation somebody sitting across the table won't be able to tell it from a \$5 one, and I doubt it will hide soup stains any better.

Yours faithfully, J.A.

## Kiwanis View Cancer Film During Meet

By Robert L. Haney  
TAES Science Writer

Howard Watson, publicity chairman for the American Cancer Society, Bailey County branch, presented a film on research to the members of the Kiwanis Club Friday morning.

The film explained cancer and a spokesman commented, "It is the dream to know that one day in our lifetime, we can find out enough to wipe out cancer."

"The best thing you and I can do today is have regular checkups so that if we might have cancer, we might detect it in its early stages and start the proper medication, and the chance to cure cancer is good."

The meeting was conducted by Secretary Melvin Griffin, as both President Terry Bouchelle and Vice - President Robert Montgomery were ill.

Guest at the meeting was Jerald Pretree, a prospective member.

Utility... Cont. from Page 1 stressed, and this is an effort that can succeed. By 1980, population projections indicate that a major portion of Panhandle counties will exceed the anticipated state percentages in growth of those sixty-five and older.

Senator Price said he would welcome letters of inquiries on the subject of the constitutional amendment from any interested person. His capitol address is Box 12068, Capitol Station, Austin, Texas 78711.

Can you imagine the total embarrassment that must come from wearing a \$50 neck tie for six months with a famous, exclusive designer's name on it, only to find out it was counterfeited in Hong Kong at a cost of \$1.98? How could you possible show up in public again?

There are some things I find hard to believe. I can believe there are some Congressmen worth \$57,000 a year plus \$943,000 in office expense and general upkeep, among those who must have been counterfeited in Hong Kong, but I don't believe there is such a thing as a \$50 tie. You can pay that much for one, but unless you work it into the conversation somebody sitting across the table won't be able to tell it from a \$5 one, and I doubt it will hide soup stains any better.

Yours faithfully, J.A.

## Missionary Plans Visit To Muleshoe

By Robert L. Haney  
TAES Science Writer

Howard Watson, publicity chairman for the American Cancer Society, Bailey County branch, presented a film on research to the members of the Kiwanis Club Friday morning.

The film explained cancer and a spokesman commented, "It is the dream to know that one day in our lifetime, we can find out enough to wipe out cancer."

"The best thing you and I can do today is have regular checkups so that if we might have cancer, we might detect it in its early stages and start the proper medication, and the chance to cure cancer is good."

The meeting was conducted by Secretary Melvin Griffin, as both President Terry Bouchelle and Vice - President Robert Montgomery were ill.

Guest at the meeting was Jerald Pretree, a prospective member.

Utility... Cont. from Page 1 stressed, and this is an effort that can succeed. By 1980, population projections indicate that a major portion of Panhandle counties will exceed the anticipated state percentages in growth of those sixty-five and older.

Senator Price said he would welcome letters of inquiries on the subject of the constitutional amendment from any interested person. His capitol address is Box 12068, Capitol Station, Austin, Texas 78711.

Can you imagine the total embarrassment that must come from wearing a \$50 neck tie for six months with a famous, exclusive designer's name on it, only to find out it was counterfeited in Hong Kong at a cost of \$1.98? How could you possible show up in public again?

There are some things I find hard to believe. I can believe there are some Congressmen worth \$57,000 a year plus \$943,000 in office expense and general upkeep, among those who must have been counterfeited in Hong Kong, but I don't believe there is such a thing as a \$50 tie. You can pay that much for one, but unless you work it into the conversation somebody sitting across the table won't be able to tell it from a \$5 one, and I doubt it will hide soup stains any better.

Yours faithfully, J.A.

## SAVE With This Ad \$50.00 off On Our New Behind The Ear Model WESTERN DRUG

114 Main Muleshoe, Tex 9:00-11:30 Call 272-3106

Wednesday Feb. 14th

Do You Want Improved Hearing? Our Improved Evaluation Technique Will Help You To Hear Better!

LIVINGSTON HEARING AID CENTER, INC. 1913 A 19th St. Lubbock, Tx. 79401

Richard R. Davila Certified Hearing Aid Audiologist

AGRA PRE-ENGINEERED STEEL BUILDING SYSTEMS GRAIN STORAGE SYSTEMS MOLYMASTER MOTOR OIL PRODUCTS Don Seales Ph: 925-6781

The Lonely Heart DO YOU HAVE A LICENSE TO SOAR?

take a good look inside An Energy Efficient Home may look like other houses on the outside. But when you take a really good look inside — inside the walls, under the floors, in the ceilings — you'll discover why the Energy Efficient Home saves energy and money. TAKE A GOOD LOOK inside your house. Discover how energy improvements like insulation, weatherstripping and caulking will make your home more energy efficient and get you more for your energy dollar. Call your Southwestern Public Service Manager today. SPS SOUTHWESTERN PUBLIC SERVICE

GIBSON'S DISCOUNT CENTER AJAX Pine Forest Cleanser 99¢ Reg. \$1.19 Close-up TOOTH PASTE 99¢ Reg. \$1.19 Suave Balm & Protein SHAMPOO OR CONDITIONER 79¢ Reg. \$1.09 Palmolive Dish SOAP 79¢ Reg. 97¢ Vaseline Intensive Care LOTION \$1.66 Reg. \$1.79 LIPTON TEA \$1.79 Reg. \$2.19 ADORN Hair Spray \$1.46 Reg. \$1.63 EVERY DAY LOW PRICES GAL. HOMO MILK 2.09 1/2 GAL. HOMO MILK 1.05 GAL. LOWFAT MILK 1.89 1/2 GAL. LOWFAT 95¢ 1/2 GAL. BUTTERMILK 97¢ 1 LB. COTTAGE CHEESE 87¢ 2 LB. COTTAGE CHEESE 1.63 WHIPPING CREAM 49¢ Valentine Specials Loma Sit-On HAMPER \$4.66 Reg. \$5.77 Men's Blue Nylon JOGGER SHOES \$9.99 Reg. \$13.77 Men's Western SHIRTS \$5.66 Reg. \$6.77 ZEST SOAP Bath 2/89 3/\$1 Auto LITTER BASKETS 88¢ Reg. \$1.19 STORE HOURS: MON-SAT. 9-7 SUN. 1-6 PRICES EFFECTIVE Feb. 11-14



# MULE'S TALE

Karen Stovall And JoRonda Rhodes

Official Publication of Muleshoe High School Written and Edited by Students of the Muleshoe Schools



Volume 14, Number 5

Sunday, February 11, 1979

## Stock Shows Keeping FFA 'On The Move'

### Mullettes Soring In Wins

The Mule's Tale Staff would like to bring you an update on girls' basketball at Muleshoe High. The Varsity girls stand an excellent chance of winning the second half of district and making the district playoff. We feel the community is interested in the girls progress and would like to give the fans an in-depth look at the overall record and how the girls have done as individuals in helping to shape up the season.

The girls played Dimmitt, Feb. 9, at Dimmitt, the result was not known at press time, and they play Littlefield, Feb. 13. If they win both of these games they will have won the second half of district and will meet Dimmitt in the playoffs. Last time the Mullettes met Dimmitt, they lost by only one point, 38-37. The Mullettes down-

ed Littlefield 48-35. The Mullettes season record at press time is 15 wins and 7 losses. Their district record is 5 wins and 3 losses.

Shelly Dunham is leading scorer for the Mullettes in District play with 88 pts. Karen Stovall has 62 pts., JoRonda Rhodes 54 pts., and Cindy Hamblin 52 pts. Also accumulating pts. in district play are Kathleen Patterson, 37 pts., Becky Turner, 24 pts., Lupe Pacheco, 12 pts., and Debra Washington, 10 pts.

Leading rebounder is Cindy Hamblin who brought down a big 46 rebounds. Kathleen, a five foot 11 inch sophomore, had 33 rebounds. Shelly Dunham had 29, Karen Stovall, 20, Becky Turner, 14, and JoRonda Rhodes, 11.

The biggest thief in dis-

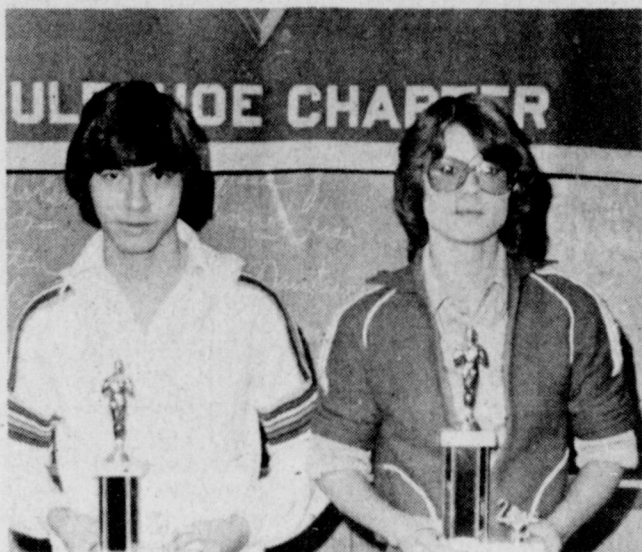
trict play is JoRonda Rhodes, who has 7 steals. Shelly Dunham is also in on the crime. She has 5 steals. Becky Turner and Cindy Hamblen each have 3 steals. Karen Stovall, the innocent one, has 2 steals for the district competition.

Shelly Dunham, JoRonda Rhodes, Karen Stovall, Debra Washington, Becky Turner, Lauri Burgess, Brenna Dodd, Lupe Pacheco, Kathleen Patterson and Cindy Hamblen make up the successful Mulette team. These girls are coached by Robert Brandon. They would like to say thank you to the fans who have supported them throughout the year.

The Junior Varsity girls have been victorious the last two games with two big wins over Olton and Morton. High scorer in the Olton ballgame was Mona Price with 10 pts. followed by Shelly Splawn with 4. Sandi Dunbar, Lorenza Martinez and Shelli Hawkins each had 2. The final score in that ballgame was 21-10.

The final score against the Morton team was 40-28. Janie Richards led the team with 13 pts. followed by Shelli Hawkins with 8 pts. Lorenza Martinez had three pts. then each with 2 pts. were Sharon Carpenter, Shelly Splawn, Keva Roming and Michelle Agee.

This ball club has continued to improve all year, and great effort out of each team member has credited the team.



DECA WINNERS...Jerry Puente, left placed third for apparel and accessories in the DECA Area VI Career Development Conference in Amarillo. Debbie Hall, right placed third in food marketing.

### DECA Returns To Muleshoe With Winners

The Muleshoe High School chapter of DECA returned from the Area VI Career Development Conference, February 2-3, in Amarillo with two winners. Winning third in Food Marketing was Debbie Hall. Debbie, the 17 year old daughter of Mr. and Mrs. T.R. Hall, is a senior at M.H.S. and is employed by White's Cashway Grocery.

Also receiving a third place trophy was Jerry Puente, 16 year old son of

Mr. and Mrs. Roque Puente. Jerry won in apparel and accessories and is employed at C.R. Anthony and Company.

Other DECA students attending and competing in the conference were Ray Castorena in Petroleum; Jimmy Ellis in General Merchandising; Steve Shepard in Advertising Services; Yolanda Hernandez in Food Services and Sandra Hughes in Credit and Finance.

DECA students from throughout the Panhandle competed in the Conference. Area VI includes schools from Big Springs north and as far east as Wichita Falls.

Congratulations to each of these DECA students for representing our school and community so well.

### Little Mules Trounce Team From Dimmitt

Last Monday, Feb. 5, the Freshmen Mules soundly defeated the Dimmitt Bobcats. The Mules jumped out to a first quarter lead of 12-10. By half time they had stretched their lead to six with a score of 28-22. The third quarter was the big period for the Mules as they pulled away from the Bobcats by a 41-29 count, and the final score was Muleshoe 55, Dimmitt 48. The leading scorer for the Mules was Trent Kirven with 21 pts. Jeff Meeks had 13, Ronnie Angeley had 8, Monty Hysinger had 7 and George Vela ended up with 6 pts. The Little Mules next game will be Monday night, here, against the Morton Indians.

### Auto Mechanics Special Session Conducted Here

A training clinic on Automotive Emission controls was conducted by Brog Warner, John Maresh and Charles Harrison for the Auto Mechanics Students of Muleshoe High School, Wednesday, Feb. 7.

The film that was shown covered ignition controls, carburetor controls, both electric and vacuum, ventilation control for fuel tanks and crank cases, and many other units which are on modern vehicles to help meet the clean air regulations. It was pointed out that the controls must be removed and must be maintained in good condition for maximum vehicle life and minimum operation cost. Also discussed were new items which will make vehicles operate better and last longer.

Thanks to Charles Bratcher of Bratcher Motor Supply for arranging and sponsoring the program.

### Student Council Planning Movie For Students

The Student Council met Tuesday, February 6, to discuss upcoming events. A committee was chosen to select a movie to be shown to the school, sponsored by Student Council. The committee chosen was Shelly Dunham, Michelle Agee and Linda Shafer. Also discussed was the selling of popcorn to the student body as a money-making project.

The next Student Council meeting will be Tuesday March 6.

### Calendar For The Week

Feb. 12 -- Mon. -- 9th Basketball against Morton Boys - here - Girls - there. Orientation - senior class - sophomore class. Jr. - Sr. Banquet Committee.

Feb. 13 -- Tues. -- J.V. and Varsity basketball - Littlefield - there.

Feb. 16 -- Friday -- Solo and Ensemble Contest. WTSU Speech Tournament.

### Happy Birthday

February is the month in which famous Presidents celebrated their birthdays. The Mule's Tale Staff would like to wish these Muleshoe High people a Happy Birthday too.

Monday, Feb. 12 -- Jose Ibarra, Jenny Ziegenfuss  
Tuesday, Feb. 13 -- Beatrice, Edmundson, George Vela, Delores Flores.  
Wednesday, Feb. 14 -- Mrs. Pat Black  
Saturday, Feb. 17 -- Cindy Hamblin, Ray Castorena, Tim McIntosh  
Sunday, Feb. 18 -- Ricky Carlson.

### Speech Team In Competition At Amarillo

MHS speech team traveled to Amarillo February 2-3 for the Golden Spread Forensics Tournament. Fran Berryhill won 2nd in Persuasive speaking; Vivian Briscoe 3rd in Prose; Ernie Vela, Humorous Interpretation, third and Scott Baker and Debra Stevens, third in debate. Overall, Muleshoe won 4th in the tournament with 115 points. The next tournament will be at Texas Tech February 9-10.

### Coaches Comments

The Mules turned in a clutch performance Tuesday night by defeating the Morton Indians for the second time in district play 64-48. Balanced scoring and overall team effort led to a surprisingly easy victory. Charles Briscoe and Jeep Shanks scored thirteen points each, Mike Northcutt had 12 pts., and Dickey Sudduth had 10 pts. All of the Mules scored at least 2 pts. in the game, where the reserves really played well. This left the Mules with a 9-8 season record, and a 3-0 second half district record. The Mules travel to Dimmitt Friday to play the state-ranked Bobcats, who are also 3-0 in second half district action.

### FTA Students Making Plans For Convention

Monday Mr. Kerry Moore and Mr. Stephen Johnson, advisors for the Blackburn - Moore FTA chapter met with the students planning to attend the TFTA State Convention, February 23-25, in Fort Worth. Those from Muleshoe who will be attending the convention are Dave Poyner, 1978-79 District XVII president; Brent Burrows, 1978-79 District XVII Parliamentarian; Karen Stovall, 1978-79 District XVII Corresponding Secretary; Mike Northcutt, 1979-80 District XVII President; Becky Turner, 1979-80 District XVII Vice-President; Sam Whalin, 1979-80 District XVII Parliamentarian; Leslie Waggoner, 1979-80 District XVII historian; Glenda Rasco, 1978-79 Muleshoe Chapter Reporter; Shelly Dunham 1978-79 Muleshoe chapter historian; Mark Harmon, 1978-79 District XVII Mr. FTA; Zeke Pecina and Gina Burden.

While in Fort Worth these students will vote on candidates for state offices, and will also attend various scheduled meetings.

Also going will be Kerry Moore and Stephen Johnson.

### Best of MHS

Shelly Dunham has been selected this week's Best of M.H.S. Shelly has been doing a great job in basketball this year. She has a 10 point average per game this season.

Shelly is 17, a junior, and the daughter of Mr. and Mrs. Jack Dunham. She is F.T.A. Historian, Art Club Vice President, and Mule Mascot. She is active in all sports and Student Council.

When asked to comment she said, "We have had a good year in basketball. Everyone has put out a Super effort. We got a slow start in the first half of District, but we have come back the second half of District and started playing ball. If we can win our next two games, we will be in the playoffs for the District Championship!!!!"



SHELLY DUNHAM

### HERO Hoopla

Monday night, Feb. 5, the HERO members held their monthly meeting at the Pizza Hut. About twenty students were present. After the meal, the meeting was called to order by President Christene Vela. The first order of business was to announce the outstanding HERO member. Mrs. Mary Furguson, the sponsor, announced that Christene Vela was the recipient of this award for her leadership, loyalty and dedication to the organization.

Also discussed was the upcoming HERO area meeting in Lubbock scheduled for March 9-10. The meeting was then adjourned.

All members enjoyed getting together for the food and the meeting.

### FFA Week Discussed By Members

The Muleshoe FFA held their monthly meeting on Feb. 5 in the ag building during orientation. The minutes of the previous meeting were read and received chapter approval. Things to do during FFA week were discussed. Committees were set up for the annual parent-member banquet. Keith Hawkins was appointed chairman of decorations; Brenda Dodd was appointed as chairman of the invitation committee; Ben Harmon - meal; Thurman Myers, entertainment and Green hands - clean up.

The chapter voted to let advisors select chapter award winners. Members were reminded to have record books caught up by May 1, 1979.

Members then discussed the San Antonio and Houston Livestock shows. The San Antonio Livestock show will be held Feb. 11-17. The Houston Livestock show will be Feb. 25 through March 3.

The FFA made \$650.00 from the concession stand during the Bailey County Livestock show, held in the Civic Center. The FFA members express their appreciation to those who helped with the concession stand.

- ONE MINUTE SPORTS QUIZ**
- Name the winner of the Gator Bowl.
  - Who was named NASCAR Driver of the Year?
  - Who won the Penn State, Alabama clash?
  - Name the first team to upset the Duke Blue Devils this season.
- Answers to Sports Quiz**
- Clemson 17, Ohio State 15.
  - Cale Yarborough.
  - Alabama 14, Penn State 7.
  - Ohio State.

Mrs. Duane Stevens. He is a junior and will be showing Yorkshire and Hampshire pigs at Houston and San Antonio. He commented, "I am going to the stock shows to have fun and win Grand Champion."

Brenda Dodd is the 17 year old daughter of Mr. and Mrs. Bob Dodd. She is a junior and is showing pigs in the Houston Show. She commented, "I'm going to Houston to win the show for some money and have fun."

Wes Rasco is the 17 year old son of Mr. and Mrs. Odell Rasco. He is a sophomore and will be showing lambs at the Houston Stock Show. He commented, "I might go to Houston, but I'm going to Lubbock for sure."

Ben Harmon is the 17 year old son of Mr. and Mrs. Bill Harmon. He is a junior and he exhibits lambs. Ben commented, "I am going to Houston for the following reasons, rodeo, judging contest, girls, maybe win and to get money, money."

Steve Shepard is the 17 year old son of Mr. and Mrs. James Shepard. He is a Sophomore and will show swine at the San Antonio and Houston shows. He commented, "I am going to show pigs and have fun."

Clifford Watson is the 16 year old son of Mr. and Mrs. W.T. Watson. He is a sophomore and will be showing pigs at San Antonio. He had this comment, "I plan to go down, have a blast, and make myself some money with my animals."

Derek Prater, son of Mr. and Mrs. Arnold Prater, is a sophomore and will exhibit swine at the Houston Show. He commented, "I am going to show my pig, and learn how a big show is run."

Larry Nowell, son of Mr. and Mrs. Darrell Nowell, is 15 and a sophomore. He will be showing pigs at Houston. He commented, "I am going to have a lot of fun and try to win some kind of place."

Bryce Holmes is the 15 year old son of Mr. and Mrs. A.W. Holmes. He is a sophomore and will exhibit swine. His comments were, "I am going to have fun and try to win."

Benton Glaze is the 15 year old son of Mr. and Mrs. James Glaze. He is a sophomore and will be showing pigs at Houston. He said, "I am going to have fun missing school."

Curtis Hunt is the 15 year old son of Mr. and Mrs. Robert Hunt. He is a sophomore and will show pigs at Houston. He commented, "To get out of school, to show my stock and to have a good time is why I am going. I will learn a little bit."

Jacki Burriss is the son of Mr. and Mrs. J.D. Burriss. He will exhibit swine and he commented, "I am going to have fun and learn something."

Greg Harrison is the 16 year old son of Mr. and Mrs. Donald Harrison. He is a sophomore and will show steers and pigs at the Houston and San Antonio shows. He said, "I am going to do the best I can with my animals. In the meantime, I am going to chase the girls and meet some old friends. I am going to have a big time."

Starla Black, the daughter of Mr. and Mrs. Ronnie Black will be exhibiting lambs. Her comments were, "I am going to miss school and to chase boys. I am also going to win Grand Champ."

Best wishes to these FFA members, who are exhibiting stock in Houston and San Antonio.

**What World**

The mystery is why they can't settle a strike as easily before losing millions as they do after taking the loss.

-Times, Richmond.

## STATE CAPITAL HIGHLIGHTS

By Lyndell Williams  
TEXAS PRESS ASSOCIATION

AUSTIN—Texas' economy is in good shape, but is not recession proof, the comptroller's revenue forecaster told the House Ways and Means Committee last week.

Bill Allaway said the state's economic growth rate will likely decline from four per cent to three per cent in 1980, in line with a national drop.

Comptroller Bob Bullock's estimate that revenue for the next fiscal period (1980-81) will exceed \$21.2 billion—or \$2.8 billion more than the current budget—is based on these factors, Allaway indicated.

—A declining inflation rate, which would slow the growth of sales tax revenue.

—A possible recession this year or next.

—A good chance that the federal revenue sharing program will be reduced or cancelled. The program will expire in September 1980 unless extended. About \$111.2 million a year is now received from revenue sharing.

—“We are not recession proof, as popularly believed,” Allaway told the committee, “and probably less so as Texas becomes a more mature economy and a more-diversified economy.”

Bullock's estimate is based further on assumptions that there will be a gradual recovery from the feared recession, and that federal policies will bring inflation under control by the middle of 1981.

### Exports Soar

Texas has become the sixth largest exporter of manufactured goods among the states.

Department of Commerce statistics show the value of Texas exports jumped to \$5.2 billion in 1976 (last year available)—a 160 per cent increase over 1972. Exported goods were then valued at \$1.9 billion.

An estimated 96,200 jobs in Texas were dependent on exports of manufactured goods, and nearly 60,000 of those were related directly to making goods for overseas shipment.

Texas is the top exporter

of chemical products, but the industry provided only 6,300 jobs. Two-thirds of the machinery shipped for foreign sale from the state was construction equipment.

### Early Primary Urged

Lt. Gov. Bill Hobby said he will back legislation calling for revival of a Texas presidential preference primary on the second Tuesday in March next year.

The lieutenant governor indicated the bill would be introduced this week.

House Speaker Bill Clayton said he probably will go along.

The legislation also would move party primaries for selection of Democratic and Republican nominees from May to July and runoff primaries from June to August. Hobby said March is the earliest date the Texas presidential primary could be held under Democratic party rules.

The lieutenant governor's proposal is for a March vote that would not be binding on either party.

He acknowledged the issue will be a hot one in the current legislature.

### Courts Speak

The Court of Criminal Appeals affirmed the death penalty conviction of a Dallas man for shooting a policeman to death.

The court also upheld death penalty convictions of two Mount Pleasant men in a robbery-killing of a service station employee at Hooks.

The State Supreme Court turned down the appeal of an Austin psychologist (who had his license revoked last month when two women patients accused him of having sex relations with them) from an order to reveal names of others he had been involved with romantically.

Duval County's usury suit against First State Bank of San Diego in an excessive interest case must be tried again, the State Supreme Court concluded.

In still another case, the high court said a woman who had no written employment contract cannot recover damages resulting from her being fired by an

insurance concern.

### Repeal Backed

College presidents backed repeal of the 10 cent state property tax at legislative committee hearings.

Four proposals were sent to sub-committee of the Senate education committee which will try to come up with an acceptable repeal measure in two weeks.

A constitutional amendment is necessary to wipe out the tax which goes for college buildings.

Seventeen institutions now get money from the tax. From \$48 million to \$59 million a year is expected from the source during the next several years.

Sponsors of repeal said this is far more than is actually needed.

An assistance fund of about \$25 million a year is proposed as a replacement for the special tax.

### Short Snorts

The Senate passed bills to increase the state's time for trying non-jail-sentence misdemeanors from 30 to 60 days from date of charge, and to require posting of county and municipal bond election notices at the courthouse and three other prominent locations rather than in all precincts.

A Senate committee recommended passage of legislation to discourage frivolous lawsuits by requiring those who bring them to compensate defendants for their expenses, including witness and attorneys fees.

Brig. General Willard D. Hill Jr. of New Braunfels was named by Gov. Bill Clements to be assistant adjutant general for the Texas Army National Guard.

Clements appointed Edward N. Smith Jr. of Marshall judge of the 71st judicial district and Brock R. Smith of Bridgeport to be 235th district attorney.

Polly Sowell, formerly of McAllen, will head the Texas Center for Volunteer Action.

The average state tax burden in Texas, \$370 per person, is still one of the lowest in the nation, according to the University of Texas Bureau of Business Research.

Major amendments to the Consumer Protection Act have been filed in the Senate and House.

We are not satisfied to be right unless we can prove others to be quite wrong.

—William Hazlitt.



## The Consumer Alert

by Mark White  
Attorney General

AUSTIN—Even though housing costs and interest rates are shockingly high, to many folks' way of thinking, the demand for single-family residences is still great in Texas.

And, while a home is the largest investment you will likely make during your lifetime, it remains the best one, too, for most of us.

But there's more than the initial high price to consider before you buy. Unless you are aware of some of the hidden costs of home-owning, you might get in over your head, attorneys in my Consumer Protection and Antitrust Division note.

Upkeep and taxes on houses have skyrocketed in many sections of the State. For most homeowners, heating and cooling bills, home insurance, water, taxes—all have gone up significantly in the past few years.

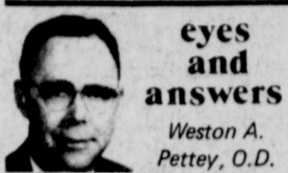
So, before deciding on how big a house payment you can take on, don't forget to make allowance for all of the bills that being a homeowner can mean.

Many real estate experts suggest that you list all the things you will require in a house, such as number of bedrooms and baths, location, and so on. Then list features you would like to have, but which aren't mandatory. And, finally, list those that would be nice to have but which are strictly optional. Take the list with you when you house-hunt.

When you select a location, remember that gasoline costs are likely to continue to rise. You might want to check on whether bus service is handy, and whether schools, parks, shopping centers, libraries, and other services are nearby. Check on how the neighborhood is zoned, and read newspaper ads to learn prices of homes in the same area. All of these will help you determine property values. There's a knack to

new home, you might ask neighbors for an idea of what costs to expect.

If you house-hunt wisely, you may avoid later disappointments and possible consumer problems. If problems do arise, contact the Attorney General's Consumer Protection and Antitrust Division in Austin, Houston, Dallas, San Antonio, El Paso, Lubbock, or McAllen.



## eyes and answers

Weston A. Pettey, O.D.

Dear Dr. Pettey: Is glaucoma another one of those things that happens to old people? I've been told that the pressure is more in one of my eyes than in the other. What does that mean?

You've asked a most important question. Glaucoma can be congenital, or it can "happen" at most any age. The likelihood of it occurring increases after 35. Glaucoma is a serious eye condition that can lead to blindness. Like the body's blood, the fluid in the eye must be maintained at a certain pressure. If too much fluid is produced or normal drainage of that fluid does not occur, disabling and damaging pressure will occur. If detected and treated early, the condition can usually be controlled. Glaucoma occurs in many forms. Its symptoms are often not easy to recognize. By the time an individual may detect a problem in his or her vision, serious and permanent glaucoma damage may already have occurred.

As for more pressure in one eye than the other, this may or may not have serious significance. The eye doctor tends to be suspicious of right-eye vs. left-eye differences that may result from markedly differing outflow facilities in the two eyes. Ask your eye doctor to tell you about your difference.

## A GIFT FOR ALL SEASONS



## PORTRAITS In Living Color

8 x 10 99c

1 PER SUBJECT

Plus 60¢ Film Charge

2 PER FAMILY

Feb. 14, 1979

10:00 A M

6:00 P M



# Congratulations



## To The Winners Of The Three-Way Livestock Show

From The Following Firms:

Central Compress & Warehouse, Sudan ★ Muleshoe Publishing Co.

Bailey County Farm Bureau Ins., Ray Davis Mgr.

Farmers Coop Elevator ★★ Farmers Coop Gin-Enochs

Claunch Gin ★★ Bula Gin Co. ★★ Maple Coop Gin

Production Credit Association ★★ John's Custom Mills

Turney Pumps Service, Enochs ★★ Star Route Coop Gin

Dupler Service & Supply, Maple ★★ First National Bank, Muleshoe

★ Bailey County Electric Cooperative Association ★

## WHY A SPIDER?

Don't be surprised to find a spider in your morning newspaper. The spider is merely looking to see which of the town's merchants is not advertising. He will then go to that store, spin his web across the door and lead a life of undisturbed peace!



NEWSPAPER ADVERTISING DOES MAKE THE DIFFERENCE

# Muleshoe & Bailey County Journals



## Maintain Quality Of Stored Grains

Good management of grain crops in storage will minimize quality deterioration after harvesting, says an agricultural engineer for the Texas Agricultural Extension Service. "When grain is harvested at a moisture content higher than that recommended for safe storage, mechanical drying must be done," noted Richard Withers. "The higher the grain temperature and moisture content, the quicker the grain must be dried mechanically to prevent mold. "For example, when grain is at 90 degrees F.

and has a moisture content of 18 percent, moisture content must be reduced to 15 percent within about six to eight days," explains the Texas A&M University System specialist. "If temperature is reduced to 70 degrees F., the allowable time to reduce moisture is about 30 days. Of course, we are assuming that grain is being aerated during this period." Moisture contents for safe storage vary with crops. Withers suggests these moisture percentages for safe storage: corn, 13; rice, 12.5; sorghum, 12-14; soybeans, 11-12 and wheat 12-14.

He points out that an aeration system for grain cooling and moisture migration control is needed if grain is stored more than two to three months, even if safe storage moisture requirements are met.

### Lazbuddie School Menu

- MONDAY...**  
**BREAKFAST**  
 CEREAL  
 JUICE  
 MILK  
**LUNCH**  
 CORN DOGS  
 NEW POTATOES  
 BAKED BEANS  
 PINEAPPLE PUDDING  
 CORNBREAD  
 BUTTER  
 MILK
- TUESDAY...**  
**BREAKFAST**  
 DOUGHNUTS  
 JUICE  
 MILK  
**LUNCH**  
 BARB Q TURKEY  
 POTATO SALAD  
 GREEN BEANS  
 HOT ROLLS  
 BUTTER  
 FRUIT  
 MILK
- WEDNESDAY...**  
**BREAKFAST**  
 EGGS  
 TOAST  
 JELLY  
 JUICE  
 MILK  
**LUNCH**  
 SKILLET DINNER  
 RANCHSTYLE BEANS  
 SPINACH  
 PNTUT BTRR SURPRISE  
 CORNBREAD  
 BUTTER  
 MILK
- THURSDAY...**  
**BREAKFAST**  
 WAFFLES  
 SYRUP  
 JUICE  
 MILK  
**LUNCH**  
 HAMBURGERS OR SLOPPY JOES  
 TATER TOTS  
 PICKLES  
 LETTUCE  
 ONIONS  
 PINEAPPLE COOKIE  
 MILK
- FRIDAY...**  
**BREAKFAST**  
 STEAMED RICE  
 JUICE  
 MILK  
**LUNCH**  
 BEANS AND CHILI  
 MACARONI CHEESE  
 GREEN SALAD  
 CORNBREAD  
 FRUIT  
 MILK

### Lazbuddie News Angie Jesko

Many of the Bovina Catholic youth attended a district free throw contest at Nazareth. Attending were Becky Schacher, Andrew Ortiz, David Schacher, Clara Koelzer, Launa Brockman, Danny Schacher and Terry Jesko. Danny Schacher will represent the district in Lubbock in March.

Mr. and Mrs. R.L. Barber are the proud grandparents of a baby girl. The child is the daughter of Mr. and Mrs. Billy Hill.

Monty and Delayne Barnes are the new parents of a new baby boy. Grandparents are Mr. and Mrs. Sam Barnes of Lazbuddie.

The Lazbuddie FHA will hold their annual sweetheart banquet on Sat., Feb. 10. The meal is to be held at K - Bobs Steak House in Clovis.

### Bookmobile News By Lorene Sooter

Wednesday, Feb. 14 --  
 Whiteface #1 -- 9:30 - 11  
 Lehman -- 11:05 - 11:30  
 Bledsoe -- 12 - 1:30  
 Maple -- 2:15 - 3:15

Thursday, Feb. 15 --  
 West Camp -- 9:15 - 10:15  
 Lariat -- 10:30 - 11:30  
 Bovina -- 12 - 3:30

Friday, Feb. 16 --  
 Lums Chapel -- 10 - 10:45  
 Spade -- 12 - 1:30  
 Hart Camp -- 1:45 - 2:30  
 Fieldton -- 2:45 - 3:30

Saturday, Feb. 17 --  
 Olton -- 9:30 - 11:45  
 Amherst -- 1:15 - 3:30

According to Withers, aeration systems for cooling grain and controlling moisture migration within grain should supply about one-tenth cubic foot per minute of air flow per bushel.

"Fans must be designed to provide this flow rate against pressures developed in pushing air through grain. Higher air flow rates are required if the storage bin is also used for drying," points out the engineer.

Withers also suggests some simple precautionary measures before storing crops.

Check potential sources of water leaks into bins and seal them with a good non-drying caulking compound. Also make sure air vents are protected from blowing rain.

Where rust spots exist on galvanized bin surfaces, clean the surface with a wire brush and apply a good quality zinc or rust inhibiting paint.

Finally, plan for alternatives in your harvest and storage operation in case emergency drying or protection against insects is needed.

#### No Rain

An Indian had attended services one Sunday morning. The sermon had been very loud in spots and the Indian, though a good Christian, was not greatly impressed.

Later, when asked how he had liked the sermon, he said: "High wind. Big thunder. No rain!"

## Senator Asks Support For Defense Spending

Senator John Tower today told his colleagues on the Senate Armed Services Committee that the Administration has delayed too long in reaching a decision on what to do in response to the growing vulnerability of this nation's Minuteman ICBM force to a Soviet first strike threat.

"While we have been examining our options, the Soviets have used the time to build what will soon be a land based ICBM force superior to ours," Tower declared.

"This nation is being driven, not by choice but by the Soviets, to a point where our ICBM force will no longer be able to absorb a first strike and retaliate as we can today," Tower continued.

"While some may belittle the significance of the strophy of a part of our strategic TRIAD, I do not. If the ICBM leg is in jeopardy today, the potential increase in threat tomorrow to our SLBM's and bombers is obvious."

Tower said the quick fixes to fill the gap created by the delayed decision may be too few and still too late. He criticized the new defense budget as offering no ready solution for the problem.

"This Committee will not only consider this budget in the months ahead but also the SALT II Treaty. The Department of Defense has made it clear that the treaty that has

been negotiated will not redress the vulnerability of our ICBM's. But the need for a survivable land based ICBM must, and will, be

**BLOCKS TELlico DAM**  
 WASHINGTON - A Cabinet-level committee has barred the Tennessee Valley Authority from completing the \$119 million Tellico Dam in Tennessee, ruling that possible benefits from the project did not justify killing off the snail darter.

### Comptroller Gives Figures On Oil

State Comptroller Bob Bullock Friday said the value of crude oil produced in Texas increased last year to an average of \$8.93 per barrel, a 7.2 percent increase over the previous year.

Bullock said a study of oil production, prices and tax revenue was featured in the January issue of "Fiscal Notes", a monthly financial report published by the Comptroller's Office.

The Comptroller reported that production of crude oil during fiscal 1978 totaled 1,059.8 million barrels, compared to 1,112.2 million barrels in 1977.

This represents a decline of 4.7 percent, the largest decrease in the last five years.

An examination of quarterly price increases show that the price per barrel for

an important consideration for the Senate during the SALT II debate. For this reason, it is imperative that we have this Administration's decision on the M-X missile and basing systems before we take up the SALT II Treaty," Tower stated.

The senior Texas senator reminded his colleagues that the Armed Services Committee had been trying since fiscal year 1977 to get a comprehensive review of the future of our ICBM force, with a presi-

dential certification that the review represented national policy.

"Despite renewed efforts each year, the review is still not before us as we begin consideration of the FY 1980 budget. Now we are asked by DOD to approve requests for almost \$1 billion for a future ICBM system before we are told how such a system

will be deployed or whether the President wishes to deploy it at all."

Tower concluded his remarks before the Committee by saying the Congress will be faced with some hard choices, and he hoped the Administration was prepared to assist in making those choices, otherwise the Congress, "must be prepared to make them alone."

### West Plains Medical Center Report

**ADMISSIONS...**  
 Feb. 5 -- Bobbie Pierson, Maxine Donaldson, Orpha Bartley, Lillian Street.  
 Feb. 6 -- Bob Palmer, Tina Villalobos.  
 Feb. 7 -- A.L. James, Mia Rowton, Bulah A. Harper, Deborah Rials, Ysidro Castillo, Romelo Toscano.  
 Feb. 8 -- Melissa Garcia, William Dean Rudd, Jess Wood.

**DISMISSALS...**  
 Feb. 5 -- Jose Mendez, Gilde Flores, Eloise Gray, Elevelina Espinoza, Bulah Harper, Lewis Thorp.  
 Feb. 6 -- Victor Isaac, James Carrasco, Santiago Pena and baby girl. Jonnie Ivy, Tablina Johnson, Joan Johnson.  
 Feb. 7 -- Odessa Linville, Maxine Donaldson, Terri Durbin, Lillian Street.  
 Feb. 8 -- Willie Shields, Bobby Kay Pierson.

**A MEMORIAL GIFT** honors the memory of a loved one and provides hope for the living.

American Heart Association



**Fertilizer Chemicals**

**Insecticide**

**Asgrow Seed**

**Tide Products Clays Corner**

# ASGROW RX 100

## FOR A GROWING ADVANTAGE.

- Approved for Food Processing
- It Really Yields
- Upright Leaves
- Short, Space-saving Plants



**IN 40 OUT OF 44 COMPETITIVE COMPARISONS RX100 OUTYIELDED THE COMPETITION BY AN AVERAGE OF 24.3 BU/A.**

RX 100 is a proven profit-maker for farmers with super yields at high populations for farmers in the Southern Corn Belt, and the High Plains of Texas and Kansas.

The medium height RX 100 plants, with their almost totally upright leaves, respond well to above-average populations, favorable growing conditions and modern management practices. Under these condi-

tions, yields can exceed 200 bushels. RX 100 also performs well under less than ideal conditions.

Sturdy stalks and strong, short shanks support medium-size ears filled with bright yellow, high test weight kernels. The excellent standability of RX 100 plants insures easy picking or combining, even into late season.

**SEE YOUR ASGROW SEED DEALER FOR YOUR GROWING NEEDS THIS SPRING**

**TASTEFUL ELEGANCE FOR '79 ...**

**BY CADILLAC.**

See the wide selection of models, colors, interiors, options.

12 in stock...Sevilles, Eldorados, Sedans, Deville Coupe DeVille  
 Also Diesel Eldorados & Sevilles  
 See The New Phaeton Coupe De Ville

**Bender** 3400 HARRY DRIVE CLOVIS, N.M. 76745-1111  
 OLDSMOBILE CADILLAC DATSUN

**Mr. Goodwrench**

## Merit System Council Promoting Efficiency

"Effective Management of State agencies has been impeded by a pattern of institutional incest," Hal Monk of the U.S. Office of Personnel Management told the advisory council for the Texas Management Intern Program (TMIP), as a new activity of the Texas Merit System Council.

"The problem started with a 'good-old-boy' criterion for promotions and has been exacerbated by federal pressures to adopt upward mobility plans emphasizing promotional opportunities for employees. Administrative and supervisory positions are almost exclusively filled by persons who, career-wise, grew up in the same agency."

"As a result, there has been very little infusion of talent or new ideas above entry level positions," Monk added in describing the needs for the program.

To remedy that situation, TMIP was created. "TMIP will attract people with the talent, knowledge, skills and abilities to benefit

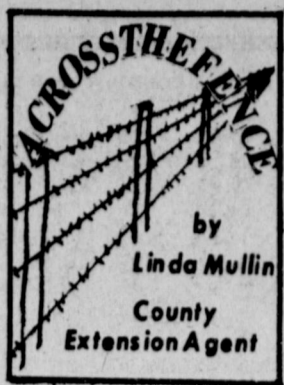
state government. The program goals will be improved efficiency, economy, and accountability in handling the public's business."

TMIP permits deans of colleges and universities to nominate outstanding graduate students who have or will soon have a master's degree in public affairs or public administration, or other graduate degrees directly focused on managing the state's business. Candidates chosen will be eligible to serve a one-year internship in state agencies.

"The one year trial period is expected to provide the intern an opportunity to try himself in a challenging position and to also allow agencies to observe and evaluate highly skilled personnel with the expectation of retaining the best interns as permanent administrators and managers," Monk stated.

Monk emphasized that these agencies have spent vast sums to attract and develop exceptional personnel in their specialized program functions such as social work, public health fields and employment placement, but very little has been done to attract or train people to manage those specialized functions in the most efficient and economical manner. "At present, there is a scarcity of well-trained broad-based managerial talent," according to Monk.

"TMIP will provide a small nucleus for encouraging new ideas and achieving excellence in our institutions. It will facilitate bringing the innovative managerial concepts from the academic community to an operational base in these agencies promptly," Monk concluded.



Shoplifters cost not only a store but all of its customers as well.

### CRIME TAX

From three to fifteen percent of the cost of goods supports shoplifters.

This "crime tax" is the cost passed on to consumers by stores for money lost directly due to shoplifters and indirectly due to expensive security measures used to combat shoplifters.

### ARREST RATE

About one out of ten customers is a shoplifter. Unfortunately, only one out of thirty five shoplifters is arrested.

### WHO SHOPLIFTS?

Who are these shoplifters? Some stores report that juveniles make up about half of their shoplifters. Others say the median age is around twenty. Equal

numbers of males and females steal. All occupations and income groups are represented in shoplifting numbers.

### COMBAT

Retailers use various techniques to combat shoplifting. Many stores station uniformed guards at exits and other strategic points, and most large department stores employ plain-clothed security officers.

Two way mirrors, closed circuit television and surveillance posts built into the decor are effective in detecting shoplifters.

Some stores use sensitized tags on merchandise that sound alarms if not properly removed by sales clerks.

### REPORT SHOPLIFTING

Customers who observe persons shoplifting should report them to store personnel, and remember, any unreported cases may only encourage the shoplifter to continue stealing.

## Senator Introduces Drunk Driving Bill

Senator Bob Price, Republican of Pampa, introduced legislation in the Senate which will significantly strengthen the driving while intoxicated laws currently on the books.

The bill (SB 381) would make the offense of driving while intoxicated aggravated assault in cases where an intoxicated driver causes serious bodily injury. An offense under this section of the penal code (22.02) would be a third degree felony.

"The bill would put more teeth into the current statutes," Senator Price said. "It will enable prosecutors to do more about the drunk driver who is a menace to all of us and each year causes great suffering, pain and misery on the state's highways and roads."

Legislation enabling County Commissioners Courts to pay the cost of transporting a body to have an autopsy performed has also been introduced in the Texas Senate by Senator Bob Price.

The bill (SB 391) amends the present law under which commissioners courts had no authority to pay such transportation

costs. "The bill is necessary because many of our rural counties do not have trained, qualified physicians to perform autopsies," Senator Price said. "Those counties must transport a body to a county where a pathologist resides and currently, the commissioners have no authority to pay for the transportation cost."

Senator Price added that the bill has the full support of the County Judges and Commissioners Association of Texas, the Justices of the Peace and Constables Association of Texas and the West Texas Justices of the Peace Association.

Price also added that several pieces of legislation of interest to rural counties have passed with his active support through the Senate Human Resources Committee on which he is presently serving. "Senate Bill 44 relating to compensation of teaching hospitals for resident physicians will bring health professionals into our region through the Regional Academic Health Center of the Texas Tech University School of Medicine," Price said.

## Three Way News

By Mrs. H.W. Garvin

Mr. and Mrs. S.G. Long returned home Thursday after two weeks in East Texas and Louisiana visiting relatives.

Mr. and Mrs. Rayford Masten spend Monday in Lubbock visiting their daughter, Mrs. Lamar Pollard who is a patient in St. Mary's Hospital.

John Tyson was released Friday from Littlefield Hospital.

Mr. and Mrs. Mark Corkery from Canyon and Mrs. Jim Green and children from Lubbock spent the weekend with their parents, the Jack Furgeasons.

Mrs. Darrell Robertson from Haskell spent the weekend with her father, John Tyson.

Mrs. Rayford Masten from Maple and her father, Clarence Benton from Littlefield were in Lubbock Thursday to visit Mrs. Lamar Pollard in St. Mary's hospital.

Three Way High School basketball teams played Whitharrell on their home court Friday night with the Three Way boys losing and the girls winning.

Mrs. Bobby Kindle and girls spent the weekend in Roswell visiting her mother.

W.B. Latimer was a medical patient in Cochran Memorial Hospital in Morton the past week.

Mr. and Mrs. S.G. Long spent the weekend in canyon and Amarillo visiting their children.

Several of the area farmers are in Washington, D.C. with other farmers.

**Hardest!**  
"My hardest job always comes before breakfast."  
"What's that?"  
"Getting up."

**Singleton-Ellis Funeral Home**  
24 Hour Ambulance Service  
Ph. 272-4574 Muleshoe

## Muleshoe School Lunch

FEBRUARY 12-16 MONDAY...

- BREAKFAST**  
MILK  
CEREAL  
FRUIT
- LUNCH**  
MILK  
STEAK  
GRAVY  
CREAMED POTATOES  
GREEN BEANS  
HOT ROLLS  
FRUIT

TUESDAY...

- BREAKFAST**  
MILK  
TOAST  
JELLY  
JUICE
- LUNCH**  
MILK  
JUICY BURGERS  
LETTUCE  
TOMATOES  
PICKLES  
ONION  
TATER TOTS  
COBBLER

WEDNESDAY...

- BREAKFAST**  
MILK  
HONEY BUNS  
FRUIT
- LUNCH**  
MILK  
SKILLET DINNER  
CHEESE STICKS  
COLE SLAW  
BEANS  
CORN BREAD  
JELLO

THURSDAY...

- BREAKFAST**  
MILK  
CEREAL  
FRUIT
- LUNCH**  
MILK  
CORN DOGS  
VEG. BEEF SOUP  
CRACKERS  
CINNAMON ROLLS  
FRUIT

FRIDAY...

- BREAKFAST**  
MILK  
OATS  
TOAST  
JUICE
- LUNCH**  
MILK  
TURKEY  
DRESSING  
SWEET POTATOES  
GREEN BEANS  
HOT ROLLS  
CAKE



In The Classifieds

**True Value**  
BARGAIN OF THE MONTH



COVERED WASTEBASKET  
Lid locks open — leaves both hands free. Sturdy dent-proof plastic. 14 1/2 x 21 1/4 in. 2833-61  
Quantities Limited

**Epy**  
**GOX**  
401 S. 1st  
MULESHOE, TEX.

## ATTEND THE CHURCH OF YOUR CHOICE



**CHURCH OF THE NAZARENE**  
Ninth and Ave. C  
Pat Ridley Pastor

**FIRST CHRISTIAN CHURCH**  
130 W. Ave. G.  
Rev. Walter Bartholf  
Sunday School 10:00 a.m.  
Worship 11:00 a.m.

**LATIN AMERICAN METHODIST MISSION**  
Ave. D and Fifth Street  
R.O. Chavez, Pastor

**THE COMMUNITY CHURCH**  
H.D. Hunter, Pastor  
Morton Highway

**CALVARY BAPTIST CHURCH**  
James Williams, Pastor  
1733 W. Ave. C

**PROGRESS SECOND BAPTIST CHURCH**  
Clifford Slay, Pastor  
1st and 3rd Sundays

**FIRST UNITED METHODIST CHURCH**  
Rev. David Hamblin  
507 West Second, Muleshoe

**ST. JOHN LUTHERAN**  
Lariat, Texas  
Herman J. Schelter-Pastor  
Sunday School Classes  
9:30 a.m.  
Worship Services  
10:30 a.m.

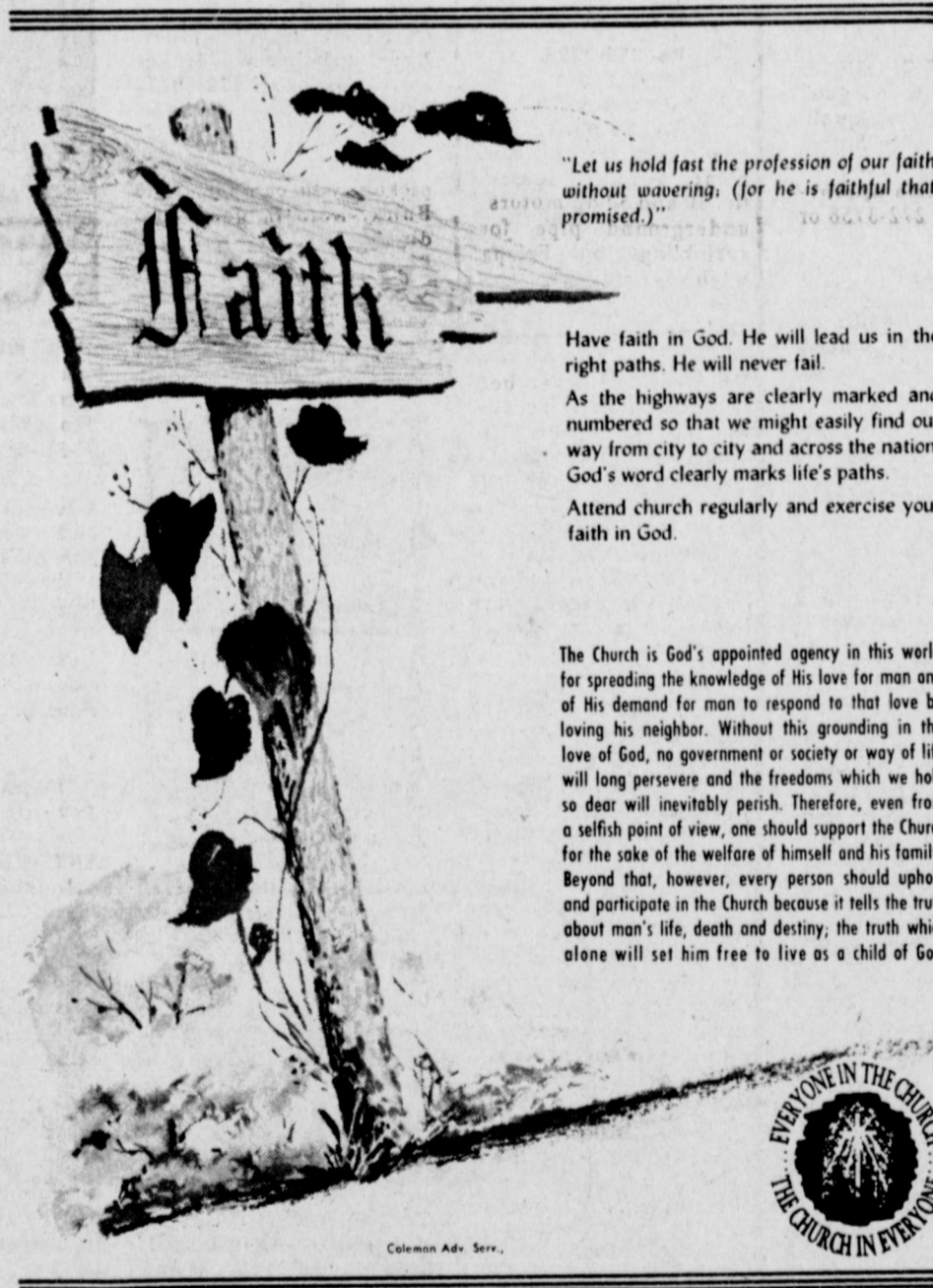
**PRIMITIVE BAPTIST CHURCH**  
621 South First  
Elder Bernard Gowens

**MULESHOE CHURCH OF CHRIST**  
David Cox, minister  
Clovis Highway

**JEHOVAH WITNESS**  
Friona Highway  
Boyd Lowery, Minister

**IMMACULATE CONCEPTION CATHOLIC CHURCH**  
Father Timothy Schwertner  
Northeast of City in Morrison Edition

**MULESHOE ASSEMBLY OF GOD**  
517 S. First  
Rev. Joe Stone



"Let us hold fast the profession of our faith without wavering; (for he is faithful that promised.)"

Have faith in God. He will lead us in the right paths. He will never fail.

As the highways are clearly marked and numbered so that we might easily find our way from city to city and across the nation, God's word clearly marks life's paths.

Attend church regularly and exercise your faith in God.

The Church is God's appointed agency in this world for spreading the knowledge of His love for man and of His demand for man to respond to that love by loving his neighbor. Without this grounding in the love of God, no government or society or way of life will long persevere and the freedoms which we hold so dear will inevitably perish. Therefore, even from a selfish point of view, one should support the Church for the sake of the welfare of himself and his family. Beyond that, however, every person should uphold and participate in the Church because it tells the truth about man's life, death and destiny; the truth which alone will set him free to live as a child of God.



You've got it soft when you've got a **LINDSAY**

Everything you wash gets cleaner, and with less soap. There's no annoying soap scum, and your appliances stay free of rust and scale. Call us... we'll show you how Lindsay can make your life a little softer.

**Wilson Drilling Co.**  
W. Hwy. 84  
Ph. 272-5521

<b>BEAVERS FLOWERLAND</b> "Flowers For All Occasions" 272-3024 Or 272-3116	<b>ROBERT GREEN INC.</b> Your Oldsmobile, GMC, Pontiac, Buick Dealer W. Hwy. 84 272-4588	<b>ATTEND THE CHURCH OF YOUR CHOICE</b>	<b>WESTERN DRUG</b> 114 Main
<b>WATSON ALFALFA</b> 272-3552 272-4038	<b>MULESHOE CO-OP GINS</b>	<b>WHITES CASHWAY GROCERY</b> 402 Main "Where Friends Meet and Prices Talk"	<b>WESTERN SPRINKLERS INC.</b> W. Hwy. 84 272-4544
<b>BRATCHER MOTOR SUPPLY</b> 107 E. Ave. B 272-4288	<b>ST. CLAIRS</b> 110 Main	<b>DENT-REMPE IMPLEMENT CO.</b> John Deere Dealer Muleshoe 272-4297	<b>Dairy Queen</b> Margie Hawkins, Manager 272 3412
<b>MAIN STREET BEAUTY SALON</b> 115 Main 272-3448	Compliments of <b>STATE LINE IRRIGATION</b> Littlefield-Muleshoe-Levelland	<b>MULESHOE PUBLISHING CO.</b> Muleshoe 272-4536	<b>MULESHOE BODY SHOP</b> 402 N. 1st 272-4246

# BUYING? LOOK AT THE CLASSIFIED ADS

**Deadline For Classified Ads Is At 11:00  
Tuesdays And Fridays**

**OPEN RATES**  
1st insertion, per word - \$11  
2nd and add., per word - \$0.9

**NATIONAL RATES**  
1st insertion, per word - \$11  
2nd and add., per word - \$0.7  
Minimum Charge:  
1st insertion - \$1.65  
2nd insertion - \$1.35  
CARD OF THANKS  
30 words - \$3.00  
Over 30 words charged at regular classified rates.  
Classified Display \$1.55 per column inch.  
Double Rate for Blind Ads.

**DEADLINE FOR INSERTION**  
11:00 Tuesday for Thursday  
11:00 Friday for Sunday  
WE RESERVE THE RIGHT TO CLASSIFY, REVISE OR REJECT ANY AD.

NOT RESPONSIBLE FOR ANY ERROR AFTER AD HAS RUN ONCE.  
Effective May 1, 1978.

**1. PERSONALS**

For Your ALOE VERA PRODUCTS See Doris Wedel, 224 W. 2nd. Call 272-3283.  
1-5ss-tfc

**WANTED:** Interior and exterior painting, panelling and all kinds of small carpenter work. Call 272-4874.  
1-6s-4tp

**3. HELP WANTED**

**SALESMAN OPENING**  
Salesman needed for large international chain of agricultural farm stores in fertilizer and pesticides. Good salary - vehicle - exceptional benefits.  
**MULESHOE AREA**  
Agricultural degree helpful or equivalent of selling experience. Must have sales ability. Exposure to product knowledge and agronomy helpful. Send resume to Box 449, Muleshoe, Tx. 79347.  
An equal opportunity employer.  
3-4t-6tc

**KFDW - TV in Clovis** needs full or part time control room operator with FCC first class license. \$35.00 per hour - up. Full time receives free insurance and benefits. Call manager 505-276-8266, weekdays, 9 a.m. to 5 p.m. 3-5s-5tc

**IS INFLATION A PROBLEM?**  
**WANTED:** A sharp lady who is sales oriented to distribute gifts and take orders from established customers. Work your own hours and make high commissions. Call 894-5879 or write Box 1074, Levelland, Texas 79336.  
3-5ss-8tc

**RESPONSIBLE PERSON** WANTED to own and operate candy or Horoscope vending route. Muleshoe and surrounding area. Pleasant business. High profit items. Can start part time. Age or experience not important. Requires car and \$1495 to \$4995 Cash investment. For details write and include your phone number:  
**Eagle Industries**  
3938 Meadowbrook Road Minneapolis, Minn. 55426 3-6t-2tp

**HAVE A HIGHLY PROFITABLE** and beautiful Jean shop of your own. Featuring the latest in fashions, jeans, denims, tops and sportswear. \$15,500 includes beginning inventory, fixtures, training and grand opening. Call anytime for Mr. Waters at 501-568-5125.  
3-6s-11tp

**4. HOUSES FOR RENT**

**FOR RENT:** 1 bedroom house. Call 272-3163 after 6 p.m.  
8-5ss-4-3-tfph

**FOR RENT:** 2 bedroom, 1 1/2 bath. Fenced backyard, no pets. Close to Richland Hills Elementary. Unfurnished with built-ins. Call 933-4386 or 946-3681.  
4-3s-tfc

**8. REAL ESTATE**

**HOMES FOR SALE**

4 bedroom with built-ins good location. FHA loan, excellent condition, garage, only \$29,700.

Large 2 bedroom with duplex, close to school.

Nice 3 bedroom house, ready to move into.

5 bedroom, 3 bath, under \$25,000.00.

Two bedroom, under \$10,000

2 bedroom, fenced backyard, small house in back.

Brick 3 bedroom, 13/4 bath, good location.

Want your business "REMEMBER" REID REAL ESTATE THURSDAY 272-3142  
8-3s-tfc

**IF YOU MAKE \$16,000 or less** a year and have a good credit rating you can qualify for a new FmHa home. Contact J&R Construction about their FmHa approved homes. Call 272-3758 or 272-4347.  
8-50s-tfc

**HOUSE FOR SALE:** 3 bedroom, 1 bath, fenced backyard, 1208 W. Ave. B. Call 272-3908.  
8-5ss-8tc

**RICHLAND HILLS HOME FOR SALE:** Excellent location across from school. Brick, 3 bedroom, 1 3/4 baths, den with fireplace, carpet and panelling like new. Lots of storage, double garage and fenced backyard. Call 272-4391.  
8-5t-tfc

**FOR SALE:** 2 bedroom, 1 bath, living room and den area, single garage. Dishwasher, fully carpeted and draped, nearly new air conditioner. Large fenced backyard with fruit and shade trees. Call 272-3003, 214 E. Fir, Lenaau Addition.  
8-6t-tfc

**LOT FOR SALE:** 114' x 140' near school, corner lot, house can be moved in. 801 W. 8th. Call 806-965-2351.  
8-53s-tfc

**FOR SALE OR TRADE:** Dinner Bell Cafe. Price includes business, fixtures, building and lots. Call 505-546-6233 or write P.O. Box 1279, Deming, N.M. 88030.  
8-44s-tfc

**FOR SALE:** New 3 bedroom energy efficient brick home, 1 car garage, 1 3/4 baths, wood fence, by J&R Construction. 707 Ave. J. 8-50s-tfc

For all your real estate needs Call: **GLAZE & GOFORTH** 112 Ave. C 272-4208  
8-11s-tfc

**FOR SALE BEAVERS FLOWERLAND CALL** 272-3024.  
8-42s-tfc

**KREBBS REAL ESTATE** 122 W. Ave. C Phone 272-3191

13 acre tract - terms One 3 bedroom home - lease or trade. One 3 bedroom home - lease purchase. Two bedroom, 2 lots - reasonable.  
8-2t-tfc

**RICHLAND HILLS HOME FOR SALE:** 3 bedroom, 2 bath, single garage, carpet and drapes. Fenced backyard with storage house. Call after 5 p.m., 272-3041.  
8-43t-tfc

**HOUSE FOR SALE:** Choice location, 3 bedroom, brick, fireplace, at 314 Ave. J. Call 272-4772 or 272-3100.  
8-3t-tfc

**HOLLAND REAL ESTATE** 113 W. Ave. D Ph. 272-3293 ANY TIME **ROBIN DAVIS SALESMAN**  
156 Acres, 3 bedroom home, 3 wells: domestic, 30 and 50 hp motors, underground pipe for sprinkling, on Friona Highway, close in.  
8-5t-tfc

**FOR SALE:** 19 ft. self contained travel trailer. New upholstery, drapes and carpet. Call 272-3921.  
9-6s-tfc

**FOR SALE:** 1973 Ford pickup with camper. 1968 Buick. Both in good condition. 617 W. Ave. G. Phone 272-5053.  
9-6s-3tp

**10. FM. EQPT. FOR SALE**

**FOR SALE:** Nice two bedroom home, single garage, utility room. Nice size livingroom. Good location. Nice view, no neighbors on back. Deep lot, large enough for utility building. \$18,000, shown by appointment only. Phone 272-4960 afternoons. Ruth Briscoe, Real Estate Broker.  
8-5ss-4tc

**TWO BEDROOM HOUSE FOR SALE:** Carpet, panelling, 6 ft. cedar fence. Priced under appraised value. Call 272-4347 or 272-8938.  
8-4s-tfc

**FOR SALE:** Three bedroom, remodeled, 1 3/4 bath, kitchen built - ins, central heat, large family room, draped, storm windows, repainted inside and out. Call 272-4754.  
8-4t-tfc

**FOR SALE:** 2 acres, fenced, trees, well, storm cellar and shed. Four miles North East of Muleshoe, \$6,500. Call 272-5061.  
8-5t-tfc

**HOUSE FOR SALE BY OWNER:** 2400 sq. ft. - livingroom, den, 2 large bedrooms, 2 baths, utility room, dining room. All carpeted, 2 cedar closets, 2 car garage, fenced in yard, corner lot, underground sprinkler system. Call 272-3483 after 6 p.m.  
8-47s-tfc

**FOR SALE:** 75 HP Vertical electric motor with sheaves, belts and starter box. \$1,200. Call 925-6786.  
10-5t-tfc

**GOING FISHING:** Check this GOOD FARM EQUIPMENT: 760 MF combine, Lilliston 6 row cultivator, 6-row Hamby chicken picker, couple grain tractors, white air planter; MC corn dryer, other items. Kenneth Nesbitt, 806-272-3578 before 8 a.m. or after 5 p.m.  
10-6s-tfc

**11. FOR SALE OR TRADE**

**FOR SALE** or will trade for good two bedroom mobile home; 2 bedroom house with extra lot, good well, 2 storage buildings. Second house west of Baptist Church in Progress. Call 925-6418 or 272-4907.  
11-5t-4tp

**FOR SALE OR TRADE:** 80 acres, 1 good 8" well, 2 side row springlers, 3 bedroom brick house, 800 head feed lot with one Harvester. Will sell all as complete unit or will divide. Contact T.L. Timmons, Phone 272-3819.  
11-36s-tfc

**FOR SALE:** Registered Pit Bull puppies, 6 weeks old. Call 272-5045.  
11-6s-tfc

**SMALLWOOD REAL ESTATE** 272 4838  
232 Main  
New 3 bedroom, 2 bath, brick home.  
New 3 bedroom, 2 bath, 2 car garage, fenced back yard.  
Three bedroom, two bath, brick home, two car garage, 2,000 sq. ft.  
Three bedroom, bath and half, in Lenaau Addition. Approved for FHA loan.  
8-2t-tfc

160 Acres irrigated with circle sprinkler, good water.  
CALL **J.B. SUDDUTH REALTY, INC.** 806-481-3288  
**FARWELL, TEXAS**  
8-51s-tfc

**LOOK:** The nicest neighbors in town. You will also have 3 bedroom, 2 bath brick home with den, fireplace, new carpet on corner lot. Will sell or consider trade, owner finance to the right family. Phone 806-272-3578 before 8 a.m. or after 5 p.m.  
8-6s-tfc

**9. AUTOMOBILES FOR SALE**

**FOR SALE:** 1978 Cougar, 14,000 miles. Loaded. Call 965-2365, daytime, or 272-4983 nights.  
9-6t-tfc

**FOR SALE:** 19 ft. self contained travel trailer. New upholstery, drapes and carpet. Call 272-3921.  
9-6s-tfc

**FOR SALE:** 1973 Ford pickup with camper. 1968 Buick. Both in good condition. 617 W. Ave. G. Phone 272-5053.  
9-6s-3tp

**10. FM. EQPT. FOR SALE**

**FOR SALE:** 1973 Ford pickup with camper. 1968 Buick. Both in good condition. 617 W. Ave. G. Phone 272-5053.  
9-6s-3tp

**FOR SALE:** 1973 Ford pickup with camper. 1968 Buick. Both in good condition. 617 W. Ave. G. Phone 272-5053.  
9-6s-3tp

**FOR SALE:** 1973 Ford pickup with camper. 1968 Buick. Both in good condition. 617 W. Ave. G. Phone 272-5053.  
9-6s-3tp

**FOR SALE:** 1973 Ford pickup with camper. 1968 Buick. Both in good condition. 617 W. Ave. G. Phone 272-5053.  
9-6s-3tp

**FOR SALE:** 1973 Ford pickup with camper. 1968 Buick. Both in good condition. 617 W. Ave. G. Phone 272-5053.  
9-6s-3tp

**FOR SALE:** 1973 Ford pickup with camper. 1968 Buick. Both in good condition. 617 W. Ave. G. Phone 272-5053.  
9-6s-3tp

**FOR SALE:** 1973 Ford pickup with camper. 1968 Buick. Both in good condition. 617 W. Ave. G. Phone 272-5053.  
9-6s-3tp

**FOR SALE:** 1973 Ford pickup with camper. 1968 Buick. Both in good condition. 617 W. Ave. G. Phone 272-5053.  
9-6s-3tp

**FOR SALE:** 1973 Ford pickup with camper. 1968 Buick. Both in good condition. 617 W. Ave. G. Phone 272-5053.  
9-6s-3tp

**FOR SALE:** 1973 Ford pickup with camper. 1968 Buick. Both in good condition. 617 W. Ave. G. Phone 272-5053.  
9-6s-3tp

**FOR SALE:** 1973 Ford pickup with camper. 1968 Buick. Both in good condition. 617 W. Ave. G. Phone 272-5053.  
9-6s-3tp

**FOR SALE:** 1973 Ford pickup with camper. 1968 Buick. Both in good condition. 617 W. Ave. G. Phone 272-5053.  
9-6s-3tp

**FOR SALE:** 1973 Ford pickup with camper. 1968 Buick. Both in good condition. 617 W. Ave. G. Phone 272-5053.  
9-6s-3tp

**FOR SALE:** 1973 Ford pickup with camper. 1968 Buick. Both in good condition. 617 W. Ave. G. Phone 272-5053.  
9-6s-3tp

**FOR SALE:** 1973 Ford pickup with camper. 1968 Buick. Both in good condition. 617 W. Ave. G. Phone 272-5053.  
9-6s-3tp

**FOR SALE:** 1973 Ford pickup with camper. 1968 Buick. Both in good condition. 617 W. Ave. G. Phone 272-5053.  
9-6s-3tp

**FOR SALE:** 1973 Ford pickup with camper. 1968 Buick. Both in good condition. 617 W. Ave. G. Phone 272-5053.  
9-6s-3tp

**FOR SALE:** 1973 Ford pickup with camper. 1968 Buick. Both in good condition. 617 W. Ave. G. Phone 272-5053.  
9-6s-3tp

**FOR SALE:** 17 foot Arrow-glass boat, 140 HP Mercurse inboard - outboard motor, like new, \$5,250. Call 272-4637, Vance Waggon.  
11-6t-tfc

**FOR SALE:** 6" Turbine pump, like new, 240 ft. setting. Call 272-5521, Wilson Drilling.  
11-6s-2tc

**12. HOUSEHOLD GOODS**

**BURROWS UPHOLSTERING\*** new address, 118 W. Ave. C in the rear. Phone 272-4255  
12-39s-tfc

**FOR SALE:** 90 year old Piano, perfect working condition. See at 1829 W. Ave. E. Call 272-4044.  
12-6t-2tp

**14. PROPERTY TO RENT**

**FARMS FOR RENT** at Muleshoe - 100 acres 3 miles east, 300 acres 4 miles east, 160 acres 20 miles southwest. Phone 799-5881 - 744-2001 or 799-7342 in Lubbock.  
14-5t-4tc

**15. MISCELLANEOUS**

**BOAT STORAGE** Locked inside dark storage, by month or year. Call 272-3330.  
15-49s-tfc

**BUYING A NEW CAR? SEE US FIRST.**  
Shop with ease after the financing is arranged.

**TRI-COUNTY SAVINGS & LOAN ASSOCIATION** SERVING YOUR AREA **MULESHOE LITTLEFIELD FRIONA FARWELL**  
15-5s-8tc

**ELECTRICAL WORK:** Reasonable rates, jobs large or small, Jerry Teaff Electric. Phone 933-4659, Bula  
15-31t-tfc

**FOR SALE:** Baled Millet and baled hay grazer. Call 925-6431.  
15-5s-8tp

**ASPHALT ROOFING, COMPOSITION SHINGLES,** new roof and repairs. Free estimates. Call Collect **RON FOSHEE** 385-5680.  
**LITTLEFIELD ROOFING**  
15-47s-tfc

**AKC REGISTERED** Labrador puppies for sale. Call 272-3537 or 965 - 2491.  
15-5s-tfc

**CASH LEASE** 320 acres or sell some equipment. Call 927 - 5305.  
15-4t-6tc

Custom Designed and Made-To-Order **RINGS-N-THINGS BY JEROLLY** 918 E Hickory  
Phone 272-3163

**TIRED OF HIGH FUEL COSTS? CALL RICK'S INSULATION FREE ESTIMATES** PHONE 272-3159  
15-6t-2tc

**FOR NEW HOMES,** add on or remodel. Call J&R Construction, 272-4347 or 272-3758.  
15-41t-tfc

**RESIDENTIAL . . . COMMERCIAL TROUBLE SHOOTING**

**CRAWFORD ELECTRIC**  
907 WEST THIRD STREET MULESHOE, TEXAS 79347  
DOUG CRAWFORD 806 272-5198  
15-6t-6tc

**TRAPPERS AND HUNTERS RAW FUR WANTED** Top prices paid, skinned or unskinned. Coyotes, Bobcats, Badgers, Fox, etc. **PETTIGREW FUR CO.** RT. 2, BOX 230 CLOVIS, N.M. 88101 PHONE 505-763-7610 15-50t-23tc

**ROOF LEAKING? Call for free estimate 5 yr. guarantee against hail, wind and rain. Call 272-3836 for Jerry Helton**  
15-5t-6tp

**18. GARAGE SALES**

**FARWELL FLEA MARKET** Every Saturday & Sunday \$1.50 per day Your Table Tables Available 201 2nd St. Phone 481-3655  
18-6t-8tp

**RENTAL SERVICE** Washers, dryers, televisions, refrigerators. By week or month. Call 272-5531 **WILSON APPLIANCE** 117 Main MULESHOE, TX. 15-51s-stfc

**DITCHING** Water, electric and gas lines **Wilson Drilling Co.** Highway 84 Phone 272-5521  
15-6s-14tc

**BUTLER AGRI-BUILDER** Buildings, Grain Storage **IDEAL STEEL** Clovis, N.M. (505) 769-1941 15-51s-17tc

**RENT A NEW MAGNAVOX** Mediterranean Cabinet Phone 272-5531 **WILSON APPLIANCE** 15-51s-stfc

**SOFT WATER** FINEST RESIDENTIAL AND COMMERCIAL WATER CONDITIONING EQUIPMENT

**WILSON DRILLING COMPANY** P.O. Box 412 MULESHOE, TEXAS 79347  
15-6s-5tc

**GRAPEFRUIT PLAN** with Diadex, eat satisfying meals and lose weight, now extra strength formula. Western Drug. 15-6s-2tp

**WE GOT CAUGHT IN A FISHY BUSINESS**

**WE NEED YOUR HELP** If you would like a neat pet for your children, we have a lot of nice fish for sale, they don't eat much, they are clean, they don't bark, they don't bite the mail man and they are very personable and friendly. We also have pet supplies for sale. Also several used 20 gallon aquariums, out-fitted with gravel, filter, hood and light. Motors also available. Will consider any offer. Call 272-4412 AFTER 6 P.M. 15-5t-tfph

**SIGN UP NOW** for piano lessons. Twelve years experience, Bachelor of Music Degree. Call Mrs. Susie Rhodes, 272-4139  
15-47s-stfc

**FOR SERVICE ON T.V. CALL 272-5531. WILSON APPLIANCE** 117 MAIN MULESHOE, TX. We stock parts and do service on Zenith, Sylvania, RCA, Catalina and Magnavox. Store Hours 8-6 Monday - Saturday. 15-51s-stfc

**ROOF LEAKING? Call for free estimate 5 yr. guarantee against hail, wind and rain. Call 272-3836 for Jerry Helton**  
15-5t-6tp

**TRAPPERS AND HUNTERS RAW FUR WANTED** Top prices paid, skinned or unskinned. Coyotes, Bobcats, Badgers, Fox, etc. **PETTIGREW FUR CO.** RT. 2, BOX 230 CLOVIS, N.M. 88101 PHONE 505-763-7610 15-50t-23tc

**FOR SERVICE ON T.V. CALL 272-5531. WILSON APPLIANCE** 117 MAIN MULESHOE, TX. We stock parts and do service on Zenith, Sylvania, RCA, Catalina and Magnavox. Store Hours 8-6 Monday - Saturday. 15-51s-stfc

**ROOF LEAKING? Call for free estimate 5 yr. guarantee against hail, wind and rain. Call 272-3836 for Jerry Helton**  
15-5t-6tp

**TRAPPERS AND HUNTERS RAW FUR WANTED** Top prices paid, skinned or unskinned. Coyotes, Bobcats, Badgers, Fox, etc. **PETTIGREW FUR CO.** RT. 2, BOX 230 CLOVIS, N.M. 88101 PHONE 505-763-7610 15-50t-23tc

**ROOF LEAKING? Call for free estimate 5 yr. guarantee against hail, wind and rain. Call 272-3836 for Jerry Helton**  
15-5t-6tp

**TRAPPERS AND HUNTERS RAW FUR WANTED** Top prices paid, skinned or unskinned. Coyotes, Bobcats, Badgers, Fox, etc. **PETTIGREW FUR CO.** RT. 2, BOX 230 CLOVIS, N.M. 88101 PHONE 505-763-7610 15-50t-23tc

**ROOF LEAKING? Call for free estimate 5 yr. guarantee against hail, wind and rain. Call 272-3836 for Jerry Helton**  
15-5t-6tp

**TRAPPERS AND HUNTERS RAW FUR WANTED** Top prices paid, skinned or unskinned. Coyotes, Bobcats, Badgers, Fox, etc. **PETTIGREW FUR CO.** RT. 2, BOX 230 CLOVIS, N.M. 88101 PHONE 505-763-7610 15-50t-23tc

**ROOF LEAKING? Call for free estimate 5 yr. guarantee against hail, wind and rain. Call 272-3836 for Jerry Helton**  
15-5t-6tp

**TRAPPERS AND HUNTERS RAW FUR WANTED** Top prices paid, skinned or unskinned. Coyotes, Bobcats, Badgers, Fox, etc. **PETTIGREW FUR CO.** RT. 2, BOX 230 CLOVIS, N.M. 88101 PHONE 505-763-7610 15-50t-23tc

**ROOF LEAKING? Call for free estimate 5 yr. guarantee against hail, wind and rain. Call 272-3836 for Jerry Helton**  
15-5t-6tp

## Public Notice

Ordinance No. 197A  
Annexing the hereinafter described territory to the City of Muleshoe, Bailey County, Texas, and extending the boundary limits of said city so as to include said hereinafter described property within said city limits, and granting to all the inhabitants of said property all of the rights and privileges of other citizens and binding said inhabitants by all of the acts, ordinance, resolutions and regulations of said city.  
Whereas, said petition, desiring and requesting the annexation of said territory to said city, has been presented to the City

Council and has attached to it the affidavit of said applicant to the effect that said petition is signed by a majority of the qualified voters within said property;

### NOW THEREFORE BE IT ORDAINED BY THE CITY COUNCIL OF THE CITY OF MULESHOE, TEXAS:

That the following described property, to - wit:  
A tract of land out of Section Number Fifty Four (54), Block Y, W.D. & F.W. Johnson's Subdivision No. 2, Bailey County, Texas, and being more particularly described by metes and bounds as follows:

BEGINNING at a point from whence the Northeast Corner of Section No. 54, Block Y, bears S. 89 degrees 10' 10" E. 240 feet and N. 0 degrees 49' 45" E. 1710 feet, said point also being 10 feet N. 89 degrees 10' 10" W. of the Northeast Corner of the former Lot No. 17, Block No. 26, Country Club Addition to Muleshoe, Bailey County, Texas;

THENCE N. 89 degrees 10' 10" W. and along the North line of the former Block Number 26, Country Club Addition to Muleshoe, Bailey County, Texas, a distance of 410 feet to a point in the East line of East Joliet Street in the Country Club Addition to Muleshoe, Bailey County, Texas;

THENCE S. 0 degrees 49' 45" W. along the East line of East Joliet Street, at 280 feet pass the Southwesterly corner of the former lot No. 10, Block No. 26, Country Club Addition to Muleshoe, Bailey County, Texas, and in all 330 feet to a point in the Southerly line of East Elm Street in the Country Club Addition to M

### Nursing Home News

By Joy Stancoll

The ladies' fellowship from the Richland Hills Baptist Church came to give a devotional to the residents Friday. Those attending were Maggie London, Marie Engram, Clara Angeley, Ed Clark, Arthur Bradley, Archie Scarlett, W.W. Parker, Abe Mallouf, Guy Nickels, Marie Patton and Effie Splawn.

E.B. Wilson came Sunday morning to hold a Bible Study with the residents. Those attending were Marie Engram, Dottie Wilterding, Maggie London, Carrie Boydston, Rose Sebring, Lottie Hall, Onnie McDaniel, Archie Scarlett, W.W. Parker and Guy Nickels.

The Needmore and Circleback singers came Sunday afternoon to sing to the residents. Those coming to listen were Guy Nickels, Willie Steinbock, W.W. Parker, Archie Scarlett, Arthur and Chellie Bradley, Rose Sebring, Dottie Wilterding, Lottie Hall, Carrie Boydston, Annie Brown, Maggie London, Onnie McDaniel and Marie Engram.

C.W. Burford came Monday to play 42 with Onnie McDaniel, Marie Engram and Effie Splawn.

The Muleshoe Hospital and Nursing Home Auxiliary came Tuesday morning to shampoo and set the women's hair. Those having their hair done were Marie Engram, Maggie London, Edna Henderson, Chellie Bradley, Lottie

Hall, Birdie Phelps, Onnie McDaniel, Rose Sebring, Marie Patton, Effie Splawn and Clara Angeley.

W.W. Parker, Archie Scarlett, Abe Mallouf and Mr. Clark had their hair cut by Mrs. Finnis Kimbrough.

Tuesday afternoon at crafts, the residents made a Valentine centerpiece. Popcorn was served afterwards. Those taking part in the activities were Marie Engram, Marie Patton, Carrie Boydston, Rose Sebring, Maggie London, Chellie Bradley and Onnie McDaniel. Mrs. Afton Stancoll and Mrs. Elmer Corn helped with the crafts.

Wednesday and Thursday morning was exercise and reading time.

Glenda Jennings came Wednesday afternoon for Music Therapy. Old favorite songs and hymns were sung. Residents attending

were Marie Engram, Clara Angeley, Maggie London, Dottie Wilterding, Onnie McDaniel, Arthur Bradley, Annie Brown, Archie Scarlett, W.W. Parker, Abe Mallouf, Carrie Boydston, E.P. Farmer, Guy Nickels, Rose Sebring, Lottie Hall and Willie Steinbock.

Hattie Bennett received a visit from Mr. and Mrs. P.D. Arnold.

Walter Underdown has been walking around the Nursing Home. He states that he feels stronger.

Bulah Harper is back in the Nursing Home after her surgery.

E.P. Farmer's granddaughter, Kim and her girlfriends, visited him last week.

Edith Lambert and Opal Lambert visited Annie Brown, Friday afternoon. Visiting her Monday was Maude Kersey. Mrs. Guy Nickels and Nina Aduddell visited her Saturday. Her daughter, Mr. and Mrs. E.W. Simpson also visited her from Clovis.

Margaret Green had her 99th birthday, Feb. 5. She has three children, Mrs. Paul Lewis, Mrs. Johnny Trulock and Ernest Green; 14 grandchildren and sev-

eral great - great - grandchildren. She was visited this week by her son from Springlake and her daughter from Lubbock, Mr. and Mrs. Lewis. A long time friend also visited her.

Carrie Boydston received a visit from Dorothy Knight, Vickie Henderson and her great - grandchildren, Ricky and Sheila.

Edna Henderson is back in the Nursing Home after being hospitalized. Her daughter, Jessie Halloman and son, Kenneth Henderson visited with her.

Arthur and Chellie Bradley were visited by

their grandson, Mr. and Mrs. David Bradley and David, Jr.

Shelia and Wilma Waddle visited Marie Engram.

Onnie McDaniel's son, Mr. and Mrs. Monroe Schmitz and Sandra of Elreno, Okla. visited her. She also had a visit from Judy and Shea Wilbanks.

Claude Patton visited his mother, Marie Patton and took her out Wednesday.

Effie Splawn had a visit from her daughter, Pearl Brown and Jody Whatley

her granddaughter.

Abe Mallouf was visited by his granddaughter, Tuesday.

Margaret Jones received a visit from Mr. and Mrs. Driscall Bryant of Whitharral on Sun. Mrs. Don Riding and Shorty Wade spent the day on Wednesday.

Jerry Weaver visited his mother, Clara Weaver.

Dottie Wilterding was visited by Lona and Calvin Embry and Mildred Head.

Don't forget the Rock N

Roll Jamboree, February 14. Anyone wishing to make a pledge, call the Nursing Home or Terry Bouchelle.

Melissa Biggerstaff came to give manicures and to put make up on the women Wednesday.

Mrs. Hugh Young of the Epsilon Delta chapter of E.S.A. stated they will make cakes for the bake sale during the Rock N Roll Jamboree.

The Xi Omicron Xi sorority sent a donation for the benefit of the Heart Association.

### Consumer Food News

Eggs, especially large sizes, are among this week's budget buys, reports Gwendolyn Clyatt, a consumer marketing information specialist.

Also, chicken livers on special, some fresh fruits and vegetables, and canned tomatoes and corn.

Mrs. Clyatt is with the Texas Agricultural Extension Service, The Texas A&M University System.

This week's price and quality trends are the following:

Poultry -- Egg prices remain stable, although severe winter weather could slow production, cut supplies and raise prices.

Fryer chicken prices are slightly higher, although some have thrifty price tags in some markets.

Fresh fruits -- Reasonable prices appear on three pound size bags of apples. Grapefruit crops suffered some winter losses, but fruit now on the market has excellent quality.

Prices on Temple oranges and tangelos are lower -- with good quality.

Fresh Vegetables -- Cabbage is still a budget item in spite of slightly higher prices. Other economical vegetables are potatoes, carrots, broccoli, eggplant, sweet potatoes and rutabagas.

Dairy -- Look for budget prices on yogurt, cheeses and milk.

Grocery Market Aisles -- Some canned vegetables make economical "stand-ins" for higher priced fresh ones. These include tomatoes, tomato products and corn.

Frozen Food Chests -- Features are bread dough, dinners, ice cream and orange juice.

Red Meats -- Prices are up this week in general. Beef features include chuck roasts and steaks, ground beef, round steaks and liver -- with occasional specials on sirloin steaks and sirloin - tip roasts.

Port features include Boston butt roasts, quarter loins cut into chops, rib and loin - end roasts and liver. Look for lower prices on lamb shoulder chops in some markets.

Consumer Watchwords -- For economy meat buys, figure "cost per serving," not cost per pound. Also, shop meat specials and plan menus around them.

### Courthouse News

**MARRIAGE LICENSES...**  
Reynaldo Gonzales Ornelas, 16 and Shirley Jo Christine Sanchez, 15.

**WARRANTY DEEDS...**  
Carroll W. Kelton and Doris Jean Kelton to D. Elwood Allen and Barbara P. Allen. Labor 13, league 170, Hale County School Land.

Estate of Arthur W. Crow, deceased to Roy D. Whitt. All of lots 6, 7, 8, 9, and 10, block 14, Muleshoe. All of lots 1, 2, 3, block 2, Wagon's Addition.

Estate of Mabel D. Raymond, deceased to Bobby D. Raymond and Claudetta McClain. All of lot 2, block 2, Lenau Subdivision.

L.G. Wilson to John Tucker. Section 3, league 142 and 143, Hansford County School Lands.

Claudetta McClain to Bobby D. Raymond. All of lot 2, block 3, Lenau Subdivision.

Bobby D. Raymond and Kathy Raymond to Roy T. Bratcher and Melba D. Bratcher. Lot 2, block 3, Lenau Subdivision.

Douglas W. Crozier and Debra Joy Crozier to Stanley S. Austin and Karen K. Austin. W/2 of section 55, block Z, W.D. & F.W. Johnson's Subdivision.

Kenneth Wayne Powell and Rose Lee Millen Powell to David Pedroza and Mary Pedroza. Tracts 22, 23, 24, and 25, Lathy's Acres Subdivision, Section 92, Block Y, W.D. & F.W. Johnson's Subdivision no. 2.

PIGGLY WIGGLY OFFERS YOU BIGGER

# savings and value



"Each of these advertised items is required to be readily available for sale at or below the advertised price in each store, except as specifically noted in this ad. We reserve the right to limit quantities. None sold to dealers."  
Prices good February 11 thru February 17, 1979.



**DOUBLE STAMPS EVERY WEDNESDAY**

We give Double S&H Green Stamps every Wednesday with any purchase of \$2.50 or more (excluding beer, wine & cigarettes).

PIGGLY WIGGLY GRADE 'A' **LARGE EGGS**

SAVE 9¢

**76¢**

DOZ.

KRAFT **MAYONNAISE**

SAVE 60¢

**99¢**

32-OZ. JAR

Limit one (1) 32-oz. Jar with \$10.00 or more additional purchase

LARGE FULLY DECORATED VALENTINE'S DAY FLOWERS

BEAUTIFUL FLOWERING **GLOXINIAS** \$5.29

FULL OF BUDS & FLOWERS **AZALEAS** \$7.49

**Stan's Produce Sale!**

"BE SATISFIED WITH PIGGLY WIGGLY PRODUCE OR DOUBLE YOUR MONEY BACK!"

WASHINGTON STATE, EXTRA FANCY, RED & GOLDEN **DELICIOUS APPLES** 2 **88¢** LBS.

BUTTERY **SMOOTH AVOCADOS** 4 **98¢** FOR

ALL PURPOSE **YELLOW ONIONS** 3 **58¢** LB. BAG

MILD **GREEN ONIONS** 2 **38¢** FOR

SAVE 15¢ ON 5 CANS



CAMPBELL'S **TOMATO SOUP** 5 **\$1** 10 3/4-OZ. CANS

**Barney's Butcher Shop Sale**

"BE SATISFIED WITH PIGGLY WIGGLY MEAT OR DOUBLE YOUR MONEY BACK!"

USDA HEAVY WESTERN BEEF, BONE-IN, FULL CUT **ROUND STEAK** LB. **\$1.89**

USDA HEAVY WESTERN BEEF, BONELESS **RUMP ROAST** LB. **\$1.89**

WILSON CERTIFIED **BONELESS HAM** LB. **\$2.29**

FRESH, LEAN **GROUND CHUCK** LB. **\$1.69**

FARMER JONES **DELICIOUS SAUSAGE** 1-LB. PKG. **\$1.09** 2-LB. PKG. **\$2.15**

FARMER JONES OR GLOVER **ALL MEAT FRANKS** 12-OZ. PKG. **99¢**

PIGGLY WIGGLY **WHITE BREAD** 2 **79¢** 1 1/2-LB. LOAVES

SAVE 31¢ ON 2 LOAVES

WHOLE KERNEL CORN, CREAM STYLE CORN, CUT GREEN BEANS **PIGGLY WIGGLY VEGETABLES** 3 **89¢** 16 TO 17-OZ. CANS

SAVE 21¢ ON 3 CANS

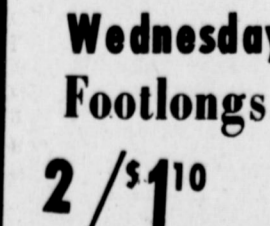
BULK **PINTO BEANS** 2 **59¢** LBS.

SAVE 10¢

## 2 Fur Sale



**Tuesday Hamburgers** 2 / \$1.10



**Wednesday Footlongs** 2 / \$1.10

**IONIC**

272-3998

1633 W. Amer. Blvd.