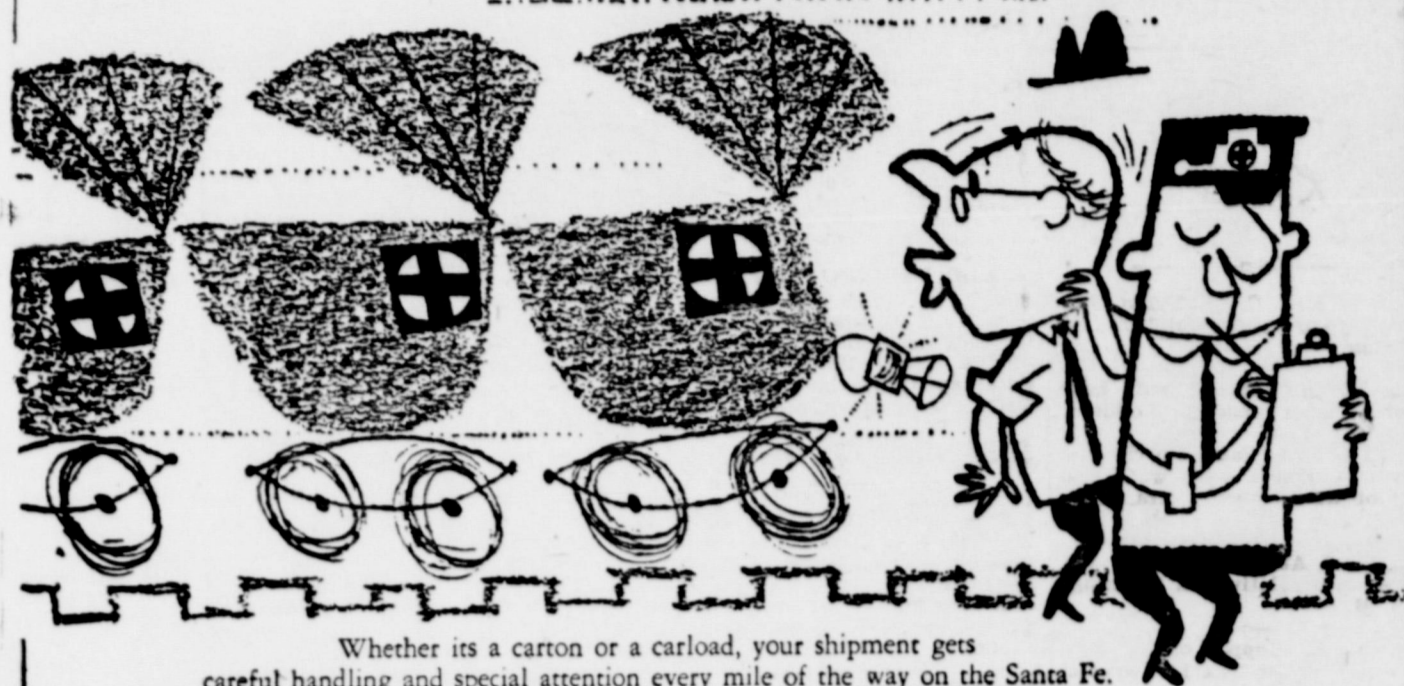




# Babying freight is routine—



Whether its a carton or a carload, your shipment gets careful handling and special attention every mile of the way on the Santa Fe. For safe—yet swift—freight service, call:  
**your local Santa Fe agent**

Just Around The Corner Is ---

## Christmas

Gifts from Baby to Grandpa

## Lott Pharmacy

Hugh Lott, Registered Pharmacist

### GIVEN THRU JANUARY JR. HI ASSEMBLY PROGRAMS

Following is the Junior High program for the next few months —

Thursday, Dec. 20th — 6A Section, Mrs. Doss, a play, "When The Little Angel Sang."

Thursday, Jan. 10 — Film, "Master Whitetail"

Thursday, Jan. 17 — 7A, Mrs. Furlow play, "Judy Takes Over" 10:30.

Thursday, Jan. 25th, Southern School Assembly Program, 10:15

Thursday, Jan. 31 — Film "Behind the Flyways" 10:30

### BASKETBALL SEASON HERE

Dec. 18th, here Denver City A & B boys 6:30

### WORLD NEIGHBORHOOD

## International Kids' Village Peace Inspired

TROGEN, Switzerland—In the Swiss canton of Appenzell, overlooking the Boden See (Lake of Constance) and the German shore across the lake, is a new kind of village, an experiment in bettering international relations through the minds of children.

The International Pestalozzi Children's Village, on the outskirts of the modest village of Trogen, is the temporary home of some 200 children of varying European nationalities. All of them were in need of help when they arrived, and many were war orphans.

The village is the outgrowth of the idealism and compassion of Walter Corti, an Italian-speaking Swiss, who not only deplored the ravages of war upon children in belligerent nations, but who did something about it.

#### Popular Subscription

Corti first suggested a children's village in neutral Switzerland in 1944, while the war was still raging. The suggestion was received with enthusiasm by the Swiss.

Thus French children live in French homes, English children in English, and so on. They live much as they would in normal homes in their own countries, speaking their mother tongues and studying the subjects they would in their native schools, with teachers of their own nationality.

#### Joint Activities

There is a difference, however. In some classes the entire group works together. Recreation and community duties are international. Italian, Greek, German and English children may be playing soccer together while French children teach Finns the French words to a German tune.

Mutual suspicion and distrust were problems when the school first opened. In the immediate postwar days Polish children refused to play with Germans and the Finns had a tendency to keep to themselves.

### Santa's Little Helper Was Scandinavian Elf

Where did Santa's Little Helper come from?

In the Viking age in Scandinavia, long before Leif Eriksen discovered America, the little North Children believed that a little elf with long white whiskers—Jul Tomten—lived in the stable. He saw that the earth was abundant with good food and that the animals and birds were taken care of. After the pagan Vikings became Christianized, little Jul Tomten became the giver of presents—like our Santa Claus today. The children left a bowl of porridge on the kitchen table for which Jul Tomten would exchange gifts for the good boys and girls. Travelers brought back the legend of Tomten and he has come down to us as the busy jolly, good little elf who works in Santa's workshop.

Commercial and fine quality portraits, weddings, anniversaries, etc. Prompt film developing. W. D. Parker, 3rd house west of Methodist Church. etc



This is a time  
for remembering old friends,  
and we number you among ours.

## Lyntegar Electric Cooperative, Inc.

Owned And Operated By Those We Serve

Save Time And  
and Avalanche Sub For Friday  
aturday

Issue.....  
almon .....  
S .....  
ten Corn 6 cans for .....

price  
New crop Shelled Pecans 1 lb .....  
Quart Speas Distilled Vinegar .....  
\$3.95 No. 2 1-2 Libby's Sliced Halves, Peaches 3 for .....  
\$2.60 Libby's Frozen Fish Sticks 3 for .....  
\$2.95 No. 1 Libby's Crushed Pineapple 6 for .....  
\$11 2 lbs Thick Sliced BACON .....  
time 2 lb Pure Pork Sausage .....  
All Meat Franks .....



Her Stamps On Wednesday  
ONTIER SAVING STAMPS

## Gibson's Motor Freight



May your Christmas candle  
light a world of peace

O'DONNELL FARM AND RANCH STORE



May a serene happiness be  
yours this Holiday Season



## Edwards Imp. Co.

Your M. - M. Dealer Clyde Edwards, Owner



**Palmer  
Grocery  
& Market**

Santa's smile reflects  
the happiness we wish  
for you.

AT THE NORTH "Y"

PHILIPPINE ISLANDS (Maliga-  
yang Pasko) — Church services,  
singing and dancing are Yuletide  
favorites in the islands.



**First Community Tree  
At Christmas Was Held  
In City of Cleveland**

THE COMMUNITY Christmas  
tree idea was born in Cleveland,  
Ohio, in 1912. The community  
raised funds to defray the cost of  
the tree and celebrations through  
the sale of preferred stock in  
"Cleveland, the city of good will  
(unlimited)", incorporated under the  
laws of the commonwealth of good  
cheer."

Holders of preferred stock were  
entitled to "dividends payable  
daily in the form of happy voices  
of robust children, the contented  
faces of friendly fellow citizens  
and the advancement of the city of  
good will."

Sale of stock was pushed every-  
where, the most unique place being  
the Cleveland stock exchange  
where the stock was listed at the  
head of other securities. The sale  
brought \$12,000, which purchased  
Christmas cheer for 13,000 citizens,  
as well as the first community  
Christmas for the city.

EXCLUSIVE FRANCHISE avail-  
able. Sell liquid fertilizer to farm-  
ers, full or spare time. Liberal pro-  
fits, free local advertising. No in-  
vestment, no experience required.  
Write "Na-Churs" Plant Food Co.,  
300 Monroe St., Marion, Ohio

Buy your daily paper

at home-- it's same price  
at Index office

Star Telegram \$13.95

6 days only \$12.60

Lubbock Avalanche

7 days a week \$12.95

6 days a week \$11

Take Index at same time  
for \$1 more



**HARTLEY'S SHOE STORE**

Home Of Red Goose Shoes In Lamesa

204 N. Austin

a joyous  
Noel



Old fashioned greetings  
to old-time friends.

**Harris Pontiac**

JOE AND ZANE HARRIS



SNOWMEN FOR YOU . . .  
Your local lumber dealer may  
have patterns for these ply-  
wood and hardboard "snow-  
men" which you can make  
yourself. If not, use this pic-  
ture for a pattern and go to  
work.

For sale — dining room suite  
(table, 6 chairs, buffet) also Frigid-  
aire refrigerator. Phone 203 Mrs  
Roy Miles



Holiday GREETINGS

To all our  
many friends a  
Merry Christmas.

**Everett Barber  
Shop**



1956

**Merry  
Christmas**

It's the season for happiness.  
May each day be filled with it.

**Dr. O. H. Nance**

502 N. 1st

OPTOMETRIST  
LAMESA

Ph. 554



**Higginbotham  
Funeral Home**

AND HIGGINBOTHAM INSURANCE  
ASSOCIATION IN LAMESA



**The Vogue**

LAMESA



**Lamesa Music Co.**

Mr. and Mrs. B. D. Wiggins

Give the Gifts that Keep on Giving...

# ELECTRICAL GIFTS

for better living



There's a special thrill in Christmas giving when the gifts are electrical because you know they'll bring pleasure, comfort and convenience year after year. So whether you're shopping for the family or for friends, consider these suggestions—

- ELECTRIC BLANKET
- AUTOMATIC COFFEEMAKER
- ELECTRIC FOOD MIXER
- BLENDER
- ELECTRIC ROASTER-OVEN
- ELECTRIC CLOCK
- ELECTRIC TOASTER
- WAFFLE MAKER-GRILL
- ELECTRIC SHEET
- ELECTRIC SKILLET
- ELECTRIC SHOP TOOLS
- ELECTRIC SHAVER
- ELECTRIC LAWN EDGER
- READING LAMP
- FREEZER-REFRIGERATOR
- REFRIGERATED AIR CONDITIONER
- ELECTRIC TRAIN
- ELECTRIC CORN POPPER
- ELECTRIC HAIR DRYER
- TELEVISION SET
- CLOCK RADIO
- RECORD PLAYER
- ELECTRIC RANGE
- ELECTRIC WASHER-DRYER

See your Favorite Electric Appliance Dealer

**TEXAS ELECTRIC SERVICE COMPANY**

J. H. LEMONS, Manager

## Christmas Trees Can Be Put to Many Uses After New Year's

There are a number of things you can do with your Christmas tree after New Year's besides burning it.

If it is a fir, for instance, it can be anchored in the back yard—perhaps in a corner of the garden—and used as a bird feeder the remainder of the winter. Pieces of suet and little feed bags may be tied to the branches. A container of water should be placed beneath the tree and kept filled so the birds will have a drink every day.

Or, cut off the branches and place them, curved ends up, over flower beds when the ground is exposed. An evergreen mulch helps prevent the soil from heaving dur-



ing alternate freezes and thaws. Long branches may be built into little lean-tos to protect tender shrubs from sun scald.

The needles of a Christmas tree can be sprinkled beneath acid-loving plants such as laurel, andromeds, rhododendron and blueberries.

If the needles on the tree are still firm, use the branches in an outdoor windowbox. Moisten the soil in the box. Then push the cut ends of the branches down to the bottom and tamp the soil firm around them. This will generally give you greenery all winter.

If you must burn your Christmas tree, don't toss it into a fire-place. Cut off the branches and burn them safely one by one.

And remember, a Christmas tree tossed into the street can become a fire hazard if playful children pick it up and make a bonfire of it in a vacant lot.

### Assembly of God

Sunday School 9:45 a. m.  
Worship Service 11:00 a. m.  
Evening service: 7 p. m.

### FIRST BAPTIST CHURCH

Ernest D. Stewart, Jr. Pastor

Sunday  
Morning Worship 11:00 a.m.  
Sunday School 9:45 a.m.  
Youth Choir Practice 6:00 p.m.  
Training Union 7:00 p.m.  
Evening Worship 8:00 p.m.  
Monday:  
Womans' Missionary Union 4:00 p.m.  
Girls' Auxiliary 4:00 p.m.  
Royal Ambassadors 4:00 p.m.  
Sunbeams 4:00 p.m.  
First and Third Tuesdays:  
Brotherhood 8:00 p.m.  
Wednesday:  
Life Service Band 7:30 p.m.  
Officers' and Teachers' Meeting 7:30 p.m.  
Prayer Meeting 8:00 p.m.  
Church Choir Practice 8:00 p.m.

### METHODIST CHURCH

Rev. Marvin Fisher, Pastor

Sunday School 9:45  
Morning Worship 10:55 a.m.  
Junior Friends 6 p.m.  
M. Y. P. S. 8 p.m.  
Adult Fellowship 6 p.m.  
Evening worship 7 p.m.  
Woman's Society of Christian Service — Faith Circle Monday 2:30 p.m.; Mary Martha Circle 9:30 a.m. Tuesdays  
Methodist Men meet Monday at 8 p.m.

### CHURCH OF THE NAZARENE

Rev. J. L. Mayhall, Pastor

Sunday School 10:15  
Morning worship 11:00  
N. Y. P. S. at 6:30 p.m.  
Evangelistic Services  
Prayer service Wednesdays

## Need Printing?

May we suggest you look over your supply

- Imprinted Checks
- Statements
- Letterheads
- Envelopes
- Tabulated and Registered Forms
- Poster Forms
- Rubber Stamps

"A dollar spent in O'Donnell CIRCULATES times before going inactive... trade at home"

If we can't save you from 10 to 25 percent, don't want your job!

## The Index

### SHOP OUR PRE-CHRISTMAS SALE

#### Universal Or General Mills Betty Crocker

Automatic Coffee Maker  
Was \$29.95 Now on sale at \$16.95

★ Universal Automatic Toasters  
Was 24.95 now on sale at only \$16.95

Radiant Sunbeam Toasters  
Was \$29.95 Now only \$19.95

● Sunbeam Fry Pan With Lid  
Was \$27.95 Now \$18.95

★ BIG ROCKING CHAIRS  
Was \$69.95 on Christmas sale at \$39.95

● Armstrong Congo Wall  
Reg. 68c foot Now on sale at 30c ft.

● RECLINING CHAIRS  
WAS \$89.50 NOW ONLY \$44.25

● Another Group Reclining Chairs  
Was \$79.58 Now on Christmas sale at \$38.25

● LIVING ROOM SUITE by National  
Was \$239 Now on sale at \$114.50

★ Delaney Sofa Bed Suite  
Was \$149 Now on sale at \$99

● Bedroom Suites in Northern Hard Rock Salam  
Maple Were \$289 now on sale at \$169

● Several Brands Of Mattresses  
Were \$69.50 now 2 for \$69.50

● Armstrong Fiber Rugs (9x12 ft)  
Were \$26.50 now on sale at \$13.25

● Apex Cleaner Heavy Duty 7-8th H. P. MOT  
all attachments was \$89.50 now only \$39.95  
Guaranteed

● 5-Piece Chrome Set, Reg. \$69.50 now \$39.95

● Tappan Gas Ranges, full size \$119.

★★ CLOSE OUT ON ELECTRIC RANGES 1-2

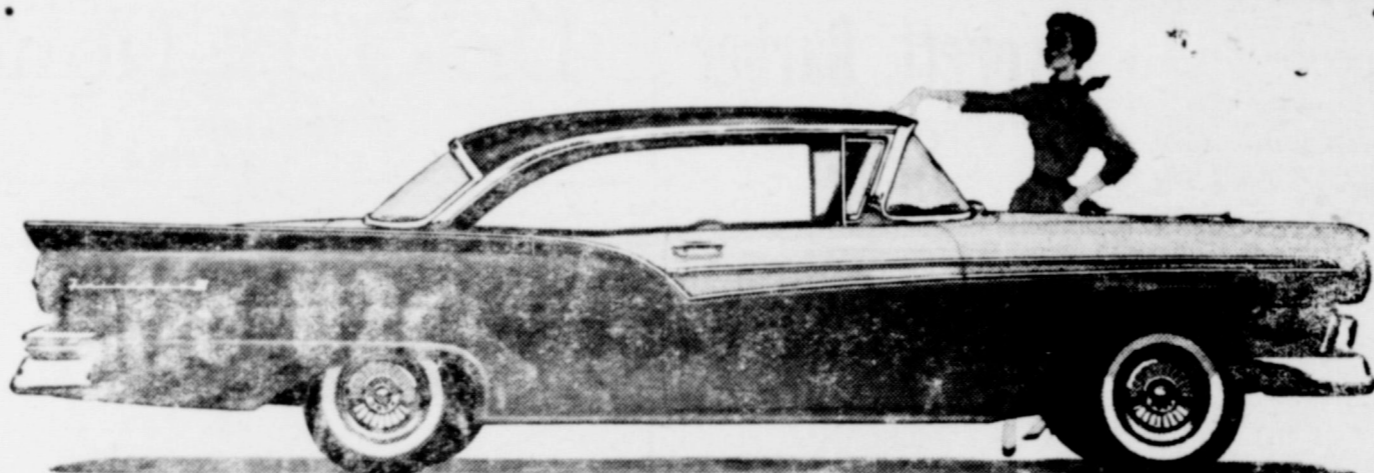
● Deltex Wool Rugs 9x12 were \$43.50 now \$21

● 17 ft. Hot Point Home Freezer  
Was \$469 Now only \$329

Bring Your Trucks and Trailers and Load Up  
The Greatest Saving on Quality Home  
Furnishings

## Amos Supply

LAMESA



The exciting Ford Fairlane 500 Club Victoria (above)—over 17 feet long—is one of two new, bigger Ford sizes this year.

If you think it looks new...  
wait till you drive it!

...For there's where Ford's newness really pays off  
...in melting mountains...in smoothing the bumps  
...in straightening the curves



You can see that Ford's longer, lower Sculptured Look makes other cars look downright old-fashioned. But the part you can't see—the new "Inner Ford"—is what shows its stuff when you drive a Ford. It's revolutionary from the wheels up! And it feels it.

Ford's wider frame lets you sit sweet and low. And Ford's new front suspension, rear springs and new easy handling are part of the scheme to make you think every road is cloud-smooth.

The magic touch of the new Ford power plants makes mountains disappear. What looks like uphill feels like downhill. You get this surging power in a wide choice of Silver Anniversary V-8 engines. Or choose Ford's Mileage Maker Six, the most powerful Six in the low-price field.

There's magic in Ford's price tag, too! You won't believe this big new Ford is still priced Ford-low. But it is. Come in and test its magic. It's a real "Wizard of Ah-h-h-h's!"

Action Test the New Kind of **FORD**  
**FORBES MOTOR CO.**

Ford Sales and Service

Phone 92, O'Donnell, Texas



NEW YORK, N. Y.—Author Aldous Huxley, right, who foretold the coming of the tranquilizing drugs more than 25 years ago in his novel, "Brave New World," chats with Dr. Frank M. Berger, center, Medical Director of Wallace Laboratories, New Brunswick, N.J., who headed the research group that developed the tranquilizer, "Miltown," (meprobamate). Shown at left is Mr. Huxley's brother, Julian, a noted biologist. The occasion was a conference on "Miltown" held by the New York Academy of Sciences. Nearly 600 doctors and guests, one of the largest groups to attend an Academy conference, heard Aldous Huxley discuss the historical and philosophical aspects of tension.



DEVOTION . . . Christmas is not so much a time of receiving as it is a time for giving. These children, in their prayers, are giving by far the best gift of them all—themselves.



SHIRT-SLEEVED SANTA . . . It's not a common subject for discussion, but Santa Claus sometimes does take off his coat and just lounge around in his beard and shirtsleeves. However, this is not standard procedure, and it's mighty few Santas you see sitting on a park bench in New York.

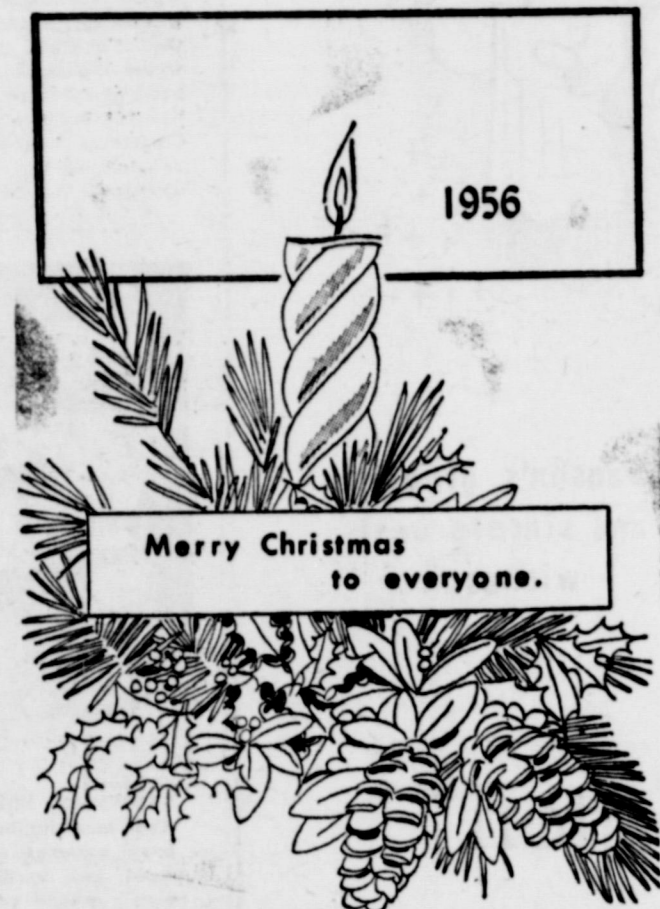
## Merry Christmas



May we knock on your door to give you our Holiday Greeting?

### O'Donnell Hotel

MRS. BOB GOLIGHTLY



### SMILEY VARIETY STORE

MRS. WILLIE SMYLLIE



### Rebel Beauty Shop

MRS. ZHEL SINGLETON



### Stanley Funeral Home

TAHOKA



To all our friends we say "Merry Christmas".

### Lamesa Steam Laundry

O'Donnell Agent is Gibson's Cleaners



To Every Member of Your Family . . . Merry Christmas

### Frances-Nell Fashion Center

Phone 207

MM


A MERRY  
**Christmas**



Season's greetings  
and sincere best  
wishes...

**Dr. J. M. Harrington**  
OPTOMETRIST IN LAMESA

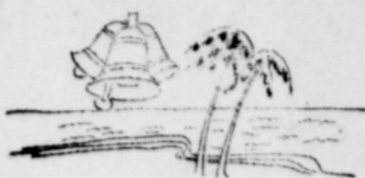
Merry  
**Christmas**



We're not  
depending on Santa.  
We say it ourselves...  
Happy Holiday

**Price And Black Hospital**  
LAMESA

PHILIPPINE ISLANDS (Maliga-  
yang Pasho - Church services,  
singing and dancing are Yuletide  
favorites in the islands.



**First Community Tree  
At Christmas Was Held  
In City of Cleveland**

THE COMMUNITY Christmas  
tree idea was born in Cleveland,  
Ohio, in 1912. The community  
raised funds to defray the cost of  
the tree and celebrations through  
the sale of preferred stock in  
"Cleveland the city of good will  
(unlimited), incorporated under the  
laws of the commonwealth of good  
cheer."

Holders of preferred stock were  
entitled to "dividends payable  
daily in the form of happy voices  
of robust children, the contented  
faces of friendly fellow citizens  
and the advancement of the city of  
good will."

Sale of stock was pushed every-  
where, the most unique place being  
the Cleveland stock exchange  
where the stock was listed at the  
head of other securities. The sale  
brought \$12,000, which purchased  
Christmas cheer for 13,000 citizens,  
as well as the first community  
Christmas for the city.



**SNOWMEN FOR YOU . . .**  
Your local lumber dealer may  
have patterns for these ply-  
wood and hardboard "snow-  
men" which you can make  
yourself. If not, use this pic-  
ture for a pattern and go to  
work.

**History of  
Christmas Seals**

When you see the Christmas seal  
do you ever wonder how it started?  
It was born in Denmark, home of  
the fairy tales of Hans Christian  
Anderson.

Einar Holboell, a Copenhagen  
postal clerk, was sorting mail one  
snowy afternoon before Christmas,  
1903, when he thought of the idea  
of a penny stamp to swell a fund  
for children's hospitals.

Authorized by King Christian,  
the first Christmas seals were sold  
in Copenhagen in 1904.

Holboell's scheme outgrew his  
wildest imaginings, for before his  
death in 1927, he lived to see it  
spread to 45 countries.

The seals found their way to  
America on letters and packages  
and first attracted the attention of  
Jacob Riis who wrote an article  
about them. Few people, however,  
were interested in the idea.

Then, in the autumn of 1907,  
Emily Bissell, a public health  
worker, concerned about the fate  
of a small sanatorium, recalled  
the article and sat down to sketch  
America's first Christmas seal, a  
wreath of holly encircling the  
words "Merry Christmas."

With 50,000 stamps printed and  
nowhere to sell them, Miss Bissell  
at last enlisted the aid of a colum-  
nist on a Philadelphia newspaper.  
The idea caught and within a few  
weeks \$3,000 was collected.

The first nation-wide sale was  
held the following year and was  
backed by newspapers all over the  
country, religious and civic groups,  
and sponsored by the American  
Red Cross and the National  
Tuberculosis association.

Buy your daily paper  
at home-- it's same price  
at index office

Star Telegram \$13.95  
6 days only \$12.60  
Lubbock Avalanche  
7 days a week \$12.95  
6 days a week \$11  
Take index at same time  
for \$1 more

RENEW YOUR SUBSCRIPTION



Best wishes to  
you and yours.

**The Fabric Shop**  
LAMESA



Our Very Best  
to You  
and Yours . . .

**DAVIS FURNITURE STORE**  
406 North 2nd St. Lamesa



Merry  
Christmas

JOYOUS  
GREETINGS TO  
ALL OUR  
FRIENDS.

**Collins**  
LAMESA

Seasons Greetings



To all the good people of our town we wish the sum of all happiness.

# Winans Hardware

MR. AND MRS. CLYDE WINANS



## O'Donnell Auto Supply

BOYD SMITH, OWNER



**HIGGINBOTHAM FUNERAL HOME**  
 "Dedicated to Helpfulness"  
 408 N. Austin St. Lamesa Phone 4586  
 24 Hour Ambulance Service  
 Burial INSURANCE "Bonded Protection"

## Lynn County Farm Bureau

Office in Thomas Bldg. 1608 Sweet - J Streets  
 Tahoka Phone 528

We Attend to Your Insurance Need.  
 Gas Exemption Forms Filled Out for any  
 Farmer FREE!

FARM BUREAU INSURANCE SERVICES  
 Auto - Fire - Life - Polio - Blue Cross, Blue Shield  
 Farm Liability

Office Hours: 9 to 5 Six Days a Week  
 9 until Noon on Saturdays  
 EARL CUMMINGS, Agt. John A Roberts, Agt

### That REINDEER

FAIRY TALES and Christmas stories are a Yuletide tradition. It is thus fitting that the story which promises to be America's most popular and long-lived fairy tale is related to the Christmas season.

Once upon a time there was a reindeer with a built-in flashlight bulb for a nose. You know, Rudolph, the red-nosed reindeer. From a small beginning in 1938, the little animal with the built-in beacon has become as familiar as Humpty-Dumpty and Cinderella to youngsters everywhere.

First invented as a sales giveaway promotion for Montgomery Ward by Robert L. May, Rudolph was featured in many free booklets before he became associated with Christmas. Songwriter Johnny Marks liked the title "Rudolph, the Red Nosed Reindeer", so he wrote a song about it. He was so sure he had a success that he started his own Publishing company, using "Rudolph" as his first release. Gene Autry made the initial recording, and that one record sold 2,000,000 copies.

Last year, there were 16 different recordings of the song for sale, ranging from boogie-woogie by Sugar Chile Robinson to Bing Crosby, and cowboy singers.



... A HERALD OF THE KING ...

### Tree Decoration Has Ancient Source In Arabian Legend

When you fasten the ornaments to your Christmas tree this year you will be commemorating a centuries-old Arabian legend that relates how plants blossomed and flowered and trees miraculously bore ripened fruit on the eve of the first Christmas.

In fact, the Christmas tree itself stems from the story of a Scandinavian "sacred" tree and Martin Luther, a German, is said to have brought the first one indoors and decorated it for the Yule season in the early 16th century.

These are only two of more than a score of legends from which today's Christmas symbols and customs stem. According to Jeannette Lee, who has probed their origin for nearly a dozen years, the American Christmas symbols — from candles and bells to kissing under the mistletoe — have no common nationality. They have come from all parts of the world.

Mrs. Lee, who is supervisor of creative art for a greeting card company, constantly utilizes the traditions and emblems of the festival as ornaments for Christmas cards and is just as constantly searching for new ones. This year, for example, the bright-colored tree ornaments are in high vogue as decorative devices on Christmas cards.

### Christmas Helps World's Economy

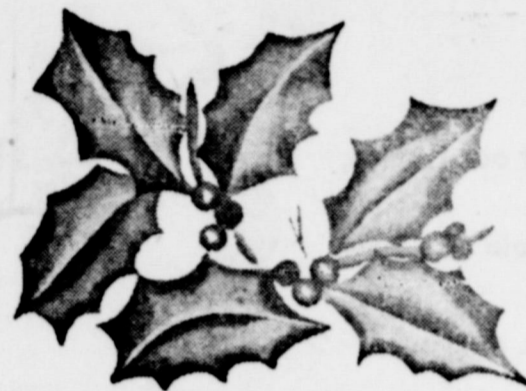
Many people, with the total exception of children, have come to believe that Christmas has become too commercial. In a spiritual sense, this is true to some extent.

Economically, however, no other holiday or festive season contributes so much to the welfare of the world. Christmas has hardly passed into the new year before thousands are at work on toys and myriads of other Christmas specialties for the next holiday. Each year, as the lights of Christmas trees twinkle on a wintry night, how many of us think of the millions who have gained employment through the Christmas shopping industry?

And yet, "too commercial" may be an understatement. Is it too wrong, once a year, to make the dominant theme one of giving, rather than of receiving? Christmas, and the spirit of Christmas, has endured wars and great chaos through centuries as a time of joyousness and happiness, and giving has always been an important part of the festivities.

The picture of the family united, with presents opened, and children wrapped in the joyousness of childhood's greatest emotion is still, and will remain the Christmas story.

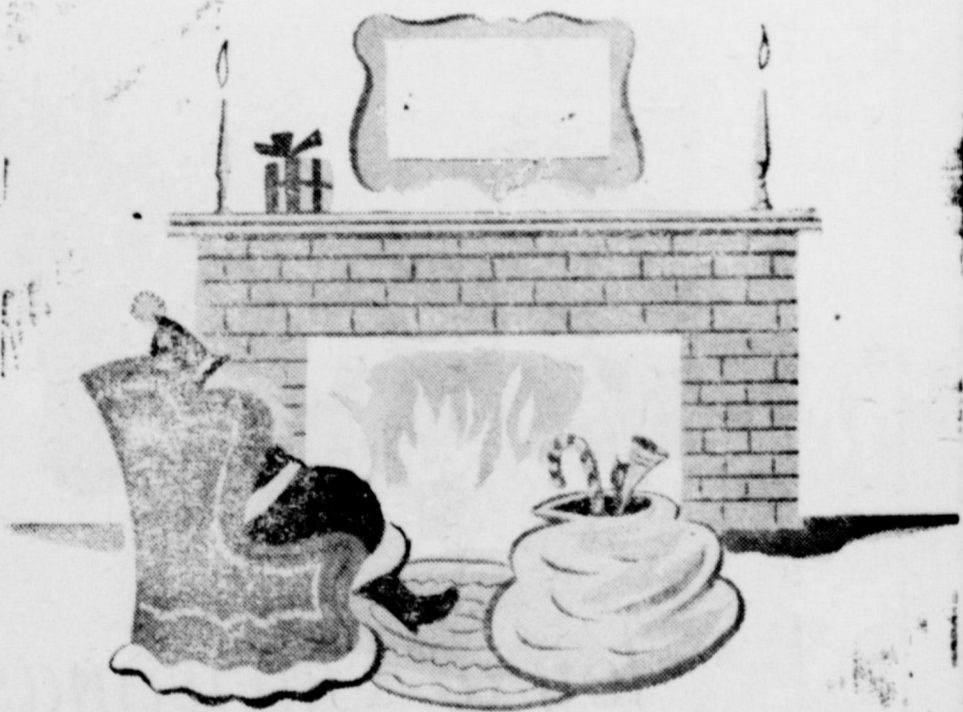
See that your news gets to your home town paper



We would share the blessings of the season with you.

## FORBES MOTOR CO.

MR. AND MRS. JIMMY FORBES



Merry Christmas

We take "time out" from a busy season to extend our very best to you.

First National Bank Of O'Donnell



To all our friends,  
both old and new.

## PAYMASTER GIN

CLYDE WINANS, MGR.

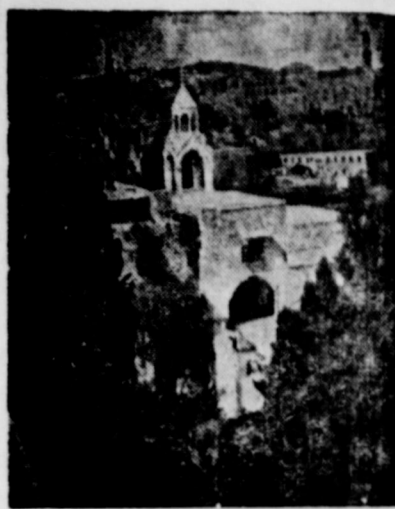


## Joy at Christmas

May your Christmas  
be filled with  
happy memories

## O'Donnell Compress

Mr. and Mrs. Johnny Billingsley



BETHLEHEM  
The Church of the Nativity

## Everyone Wants To See Just One 'Good Old' Yule

"How I would long to see just one more 'old-fashioned Christmas!'"

These are familiar words at this time of the year. Before the Yuletide season is over, some member of the family, grandfather or grandmother, probably, is certain to pass that remark, as they have done each Christmas of the past.

And yet, if we search back into the records . . . to the turn of the century, say . . . we find that, even then, someone was wishing for "an old-fashioned Christmas." It is then that we realize that the celebration of the birth of Christ has not changed greatly with the passage of centuries. Basically, Christmas is the same, year after year. It is only the world and the people who are not the same.

He may not admit it, but when grandfather first began to raise a family, he overheard his elders musing over the changing Christmas customs and heralding the approach to "complete commercialism" of the Yuletide celebration. Even then they were worried.

No one can deny that Christmas has been greatly "commercialized" since the days of early America. Yet, so has the entire nation. In the days of our ancestors there were none of the vast trading centers and commercial marts that we know today. Our very way of life has been greatly changed with modernization. Our holidays, and Christmas is the principal one, have managed to keep abreast.



CHRISTMAS BACKDROP

## Christmas Seal Idea Conceived In Denmark

A DANISH postal clerk thought of the idea of attaching stamps to Christmas packages and letters in 1903, and a few years later the scheme was tried in America.

This year millions of Americans will receive a letter from their local chapter of the National Tuberculosis association containing Christmas seals, the seasonal reminder of the never-ending fight to stamp out the disease.

Einar Holboell, at work in a Danish postoffice conceived the idea of attaching decorative stamps to Christmas packages, the sale of which could be conducted by some worthwhile organization.

He mentioned it to his fellow workers and they decided it would be a great help in defraying the cost of fighting tuberculosis. The idea reached King Christian, who approved, and the image of Queen Louise was placed on the first seals in 1904.

Jacob Riis, Danish-born American, heard about the idea and sold it to the American public in 1907 through a magazine article written for Outlook magazine. A Red Cross worker, Miss Emily Bissell, started the first American sales that year.

Larger debts sometimes force one into larger earnings.

When it gets down to the dollar, life usually becomes a cat fight.

As yet we haven't seen a do it yourself operating kit.

RENEW YOUR SUBSCRIPTION



## JEWEL'S CAFE

Mr and Mrs. Pete McMillan



## Quick Service Station

Mr. and Mrs. J. C. Swinney



Gay spirits are more commonplace during the Yule season than at any other time of the year. We hope you're fitting in.



## O'DONNELL FARMERS FUEL Association

Wholesale And Retail Gas And Oil



# Save 1 Per Cent

**PAY YOUR STATE AND COUNTY TAXES NOW AND SAVE**

1 percent discount will be allowed on all 1956

State And County Taxes if paid during the month Of December

ALSO, Do Not Forget To Pay Your Poll Taxes

J. E. (Red) BROWN, Tax Assessor-Collector  
LYNN COUNTY, TEXAS



Are you willing to forget what you have done for other people, and to remember what other people have done for you; to ignore what the world owes you, and to think what you owe the world; to put your rights in the background, and your duties in the middle distance, and your chances to do a little more than your duty in the foreground; to see that your fellow-men are just as real as you are, and try to look behind their faces to their hearts, hungry for joy, to own that probably the only good reason for your existence is not what you are going to get out of life, but what you are going to give to life; to close your book on complaints against the management of the universe, and look around you for a place where you can sow a few seeds of happiness—are you willing to do these things even for a day? Then you can keep Christmas.

In 1956, 25,000,000 Americans fished and hunted and spent a healthy \$3 billion in connection with their activities. In Texas 1,625,000 hunted or fished or did both and spent more than \$165,000,000. Hunting and fishing are big business, says Ed Cooper, extension specialist in wildlife conservation, and landowners can help the business by joining their friends and neighbors in wildlife conservation associations.

#### NOTICE

Do you prefer White Leghorn chickens? Book your orders NOW with J. C. Swinney for the famous H. & N. "Nick" Leghorn chick

Commercial and fine quality portraits, weddings, anniversaries, etc. Prompt film developing. W. D. Parker, 3rd house west of Methodist Church, etc

See Mrs. Ben Moore, sr. for all Fuller Brush Products and Cosmetics. Phone 166

When it gets down to the dollar, life usually becomes a cat fight.

#### METHODIST CHURCH

Rev. Marvin Fisher, Pastor  
Sunday School 9:45  
Morning Worship 10:55 a. m.  
Junior Friends : 6 p. m.  
M. Y. F. 6: p. m.  
Adult fellowship: 6 p. m.  
Evening worship 7 p. m.  
Woman's Society of Christian Service — Faith Circle Mondays at 2:30 p. m.; Mary Martha Circle at 9:30 a. m. Tuesdays  
Methodist Men meet each 4th Monday at 8 p. m

See that your news gets to your home town paper

#### CHURCH OF THE NAZARENE

Rev. J. L. Mayhall, pastor  
Sunday School ..... 10:00 a. m.  
Morning worship .... 11:00 a. m.  
N. Y. P. S. at 6:30 p. m.  
Evangelistic Services 7 p. m.  
Prayer service Wednes. 7 p. m.

#### Assembly of God

Sunday School 9:45 a. m.  
Worship Service 11:00 a. m.  
Evening service: 7 p. m.

# REX

#### Wed. and Thurs.

Dec. 19th and 20th  
Wm. Holden, Kim Novak and Rosalind Russell in  
**PICNIC**  
Color, Cinemascope

#### Fri. and Sat.

Dec. 21 and 22nd  
Walter Brennan and Brandon de Wilde in  
**Goodbye, My Lady**

#### Sunday and Mon.

Dec. 23rd and 24th  
John Wayne, Jeffery Hunter in  
**The Searchers**  
Color, VistaVision

From All of Us to You and Yours...

## MERRY CHRISTMAS!



Our gift to you... the comfort and convenience assured by the bright blue flame of natural gas.

At this time of the year, particularly, it is extremely gratifying to be providing a service which contributes so much to warmth and contentment in the home during the Holiday Season.

So from each and every one of us at Pioneer, Best Wishes for good health — and the happiest Christmas you've ever had!

**Pioneer Natural Gas Company**  
FUEL FOR A GROWING EMPIRE

### TO EACH AND ALL

**When We Count Our Blessings** we find many we had not thought about. Among the outstanding blessings in our list is the good will of the people of this community.

**WE THANK YOU** most cordially for this good will and assure you of our deep appreciation. We wish for you a pleasant holiday, and a New Year that is the harbinger of many blessings to come.

**Higginbotham-Bartlett  
Lumber Company**  
E. T. Wells, Manager



May the  
bough of your tree  
bend low  
with good things



D. W. Gaignat

HARDWARE AND FURNITURE  
TAHOKA



**THIS MAY BE** the post office's biggest Christmas. The postmaster general estimates that more Christmas mail—packages and cards—will be handled in 1952 than in any previous year. With this in mind, the post office department has hired extra employees and arranged for use of extra trucks for the holiday period.

The post office is Santa Claus' good right arm. It delivers gifts and greetings throughout the world, and it will do its best to get them there by December 25—if they are mailed on time.

Much Christmas mail going overseas is handled in cooperation with the postal systems of other nations. But in the United States and its possessions, in U. S. -trusted islands in the Pacific and among U. S. servicemen in all parts of the world, delivery of holiday greetings is strictly a United States affair.

The army takes over, through its army post office, for troops serving outside the United States, be they in Germany, Korea, or somewhere on the way.

Best known special Christmas business done by any post office is that of Santa Claus, Indiana.



**HOLY GLASS** . . . This stained window is in the church of Oberdorf, Germany, where the beloved Christmas carol, "Silent Night, Holy Night," was first sung.

Send us your NEWS

**"Greetings by Mail"**

Originated in 1846,  
Now a Modern Custom

Look at the paintings on the Christmas cards you send and receive—you'll find famous names and some of the best contemporary art. Here is how it all began.

On a December day in 1846, a middleclass Englishman, Henry Cole, sat at the library desk of his London home addressing to his friends what were probably the first Christmas cards ever printed. The cards depicted a Victorian family assembled at the festive board and the traditional Christmas customs of giving to the poor. They also bore the now-classic greeting: "A Merry Christmas and a Happy New Year to you."

Cole, in a historic move, two months before had commissioned John Calcott Horsley, a Royal



Academy artist, to paint the illustration for the card and had struck off a thousand lithographed copies. He dispatched them that December. This was such a markedly successful stroke of good will that plain Henry Cole subsequently became Sir Henry Cole.

Horsley's art was a far cry from today's Christmas card paintings, but he started a cycle which a hundred years later was to bring fine art into high favor on Christmas cards.

An American shopping for cards may select, for instance, a painting called "Snow Under the Arch" by another Royal Academy member—Winston Churchill, Britain's wartime prime minister and famed amateur artist. Or he might choose Peter Hurd's "One Night in Winter" or "Grandma" Moses' "The White Church" or "The Nativity" by Alexander Ross.

**Custom of 'Pinata'.**

Observed in Mexico.

Is Spreading to U.S.

The pinata, Christmas custom so long observed by the happy children of Mexico, is gradually spreading into the United States.

Although it performs year-round duty in the land south of the border, the pinata is busiest during the Mexican Christian festival that lasts from December 16 to January 6. In America, it is used in various parts of the country only at Christmas time.

The pinata is made of thin, fragile clay, and is filled with sweetmeats and trinkets before being suspended from the ceiling.

Each of the guests, not always only just children—is blindfolded and given a stick. The object is to swing the sticks overhead until someone shatters the pinata, sending the delicious contents pouring out, whence a mad scramble takes place for the spoils.

The pinata is a great aid in making the long Christmas season tolerable for Mexican children. Tradition decrees that they must wait until the final day of the 21-day Christmas season to receive their gifts.

**Christmas Was Once Holiday That Moved About on Calendar**

Christmas was once a movable feast. The eastern branches of the Christian church usually celebrated it in April or May. Western Europe sometime in January.

In 337 A.D., St. Cyril, bishop of Jerusalem, set out to make the date universal. With the permission of Pope Junius I, he appointed a commission to determine, if possible, the precise date of Christ's nativity. The theologians of the Church finally agreed upon December 25, and since the year 354 this date has been celebrated.

Members of the Greek, Russian and Ukrainian Orthodox churches in the 20th century observed the date of January 7, because they use the Julian calendar, which lists December 25 on that date by our calendar.

Buy your daily paper at home-- it's same price

at index office

Star Telegram \$13.95  
6 days only \$12.60

Lubbock Avalanche  
7 days a week \$12.95

6 days a week \$11  
Take index at same time for \$1 more

RENEW YOUR SUBSCRIPTION



May Santa fulfill all your hopes.

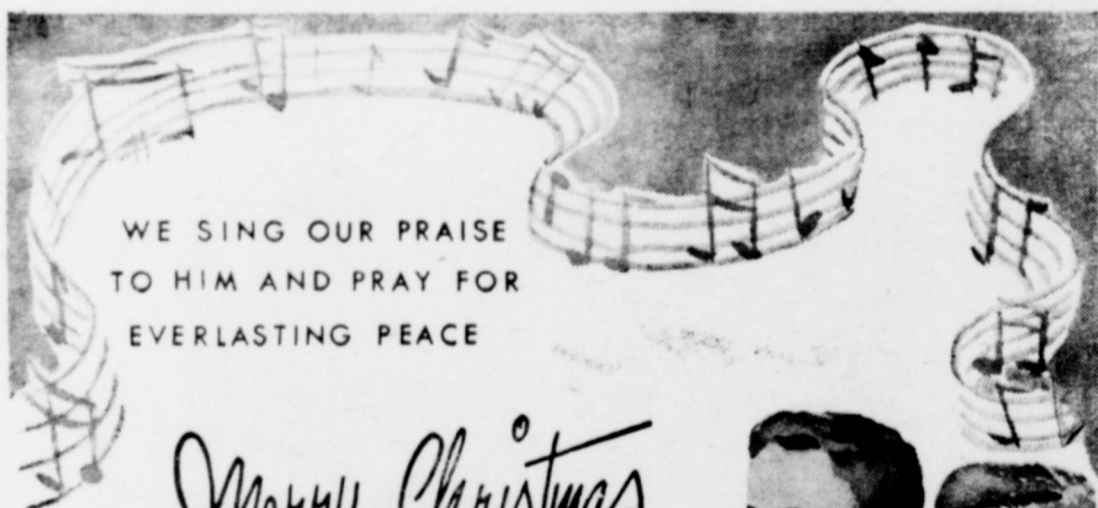
DIXIE DRIVE-IN

JOHN AND MAGGIE SPEARS



GULF OIL PRODUCTS

MR. AND MRS. ARCHIE HANEY



WE SING OUR PRAISE TO HIM AND PRAY FOR EVERLASTING PEACE

Merry Christmas

First National Bank of  
Tahoka

Merry Christmas



Our song is for your happiness this Yule season.

House Of  
Flowers

TAHOKA



**DEVOTION** . . . Christmas is not so much a time of receiving as it is a time for giving. These children, in their prayers, are giving by far the best gift of them all—their selves.

See Mrs. Ben Moore, sr. for Fuller Brush Products and Remedies. Phone 166

**NOTICE**

Do you prefer White Leghorn chickens? Book your orders NOW with J. C. Swinney for the famous "Nik" Leghorn chick



**SHIRT-SLEEVED SANTA** . . . It's not a common subject for discussion, but Santa Claus sometimes does take off his coat and just lounge around in his beard and shirtsleeves. However, this is not standard procedure, and it's mighty few Santas you see sitting on a park bench in New York.

**Assembly of God**

Sunday School 9:45 a. m.  
Worship Service 11:00 a. m.  
Evening service: 7 p. m.

**HOLIDAY GREETINGS**



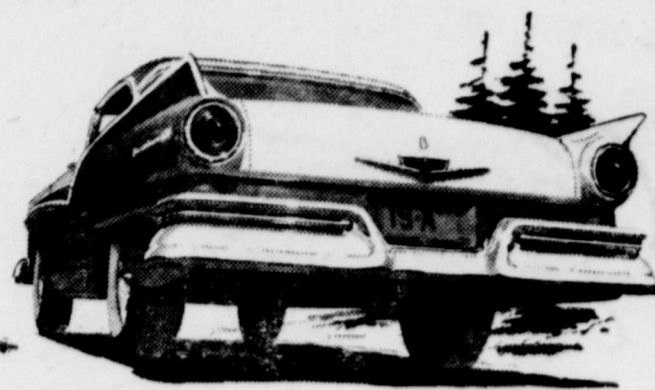
**MOORE INSURANCE AGENCY**

MR. AND MRS. ELVIN R. MOORE

**Fleet**

with Thunderbird GO

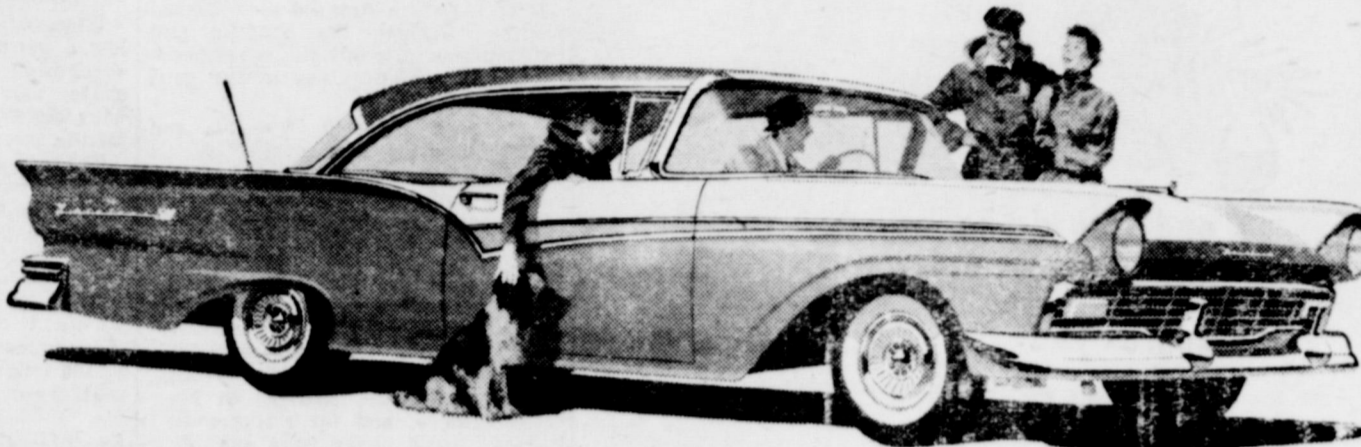
There's new power for the new kind of Ford in the great new Silver Anniversary V-8's . . . with new, wider horsepower ranges to meet your needs.\* Or choose the new Mileage Maker Six—the world's most modern.



**Low**

long and light, it hugs the highway

Fairlane 500 (shown) and Fairlane models are over 17 beautiful feet long. Custom and Custom 300 models, over 16 feet. Every one of the 20 brilliant new Fords is longer, lower, roomier than ever before.



**Lovely**

. . . with beauty that's more than "skin-deep"

The new kind of beauty in the '57 Ford is only the lovely "complexion" over the tough and precisely co-ordinated muscles of the stronger "Inner Ford" . . . that rides so silent . . . so solid . . . so secure!



\*A special 270-hp Thunderbird 312 Super V-8 engine available at extra cost. Also, extra-high-performance Thunderbird 312 Super V-8 engine delivering up to 285 hp.

Come in and Action Test the new kind of

**FORD** for '57

**FORBES Motor Co.**

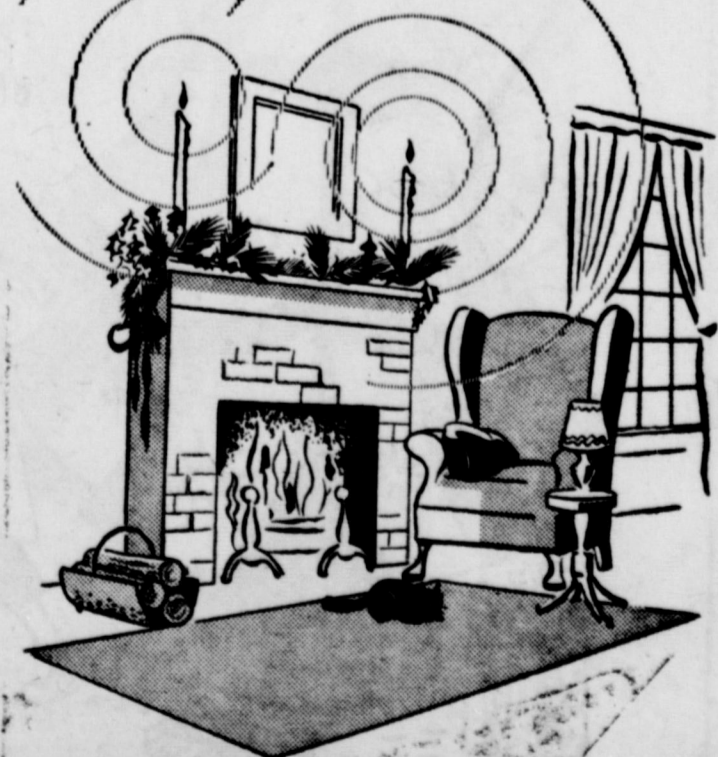
Phone 92, O'Donnell, Texas

FORD Sales And Service

**Your Lynn County Officials**

- WALTER MATHIS, County Judge
- WILLIAM B. GRIFFIN, County Agent
- NORVELL "Booges" REDWINE, Sheriff
- MRS. BEULAH PRIDMORE, County Clerk
- TOM REID, County Treasurer
- J. E. (Red) BROWN, Tax Collector - Assessor
- SKIP TAYLOR, Lynn County Abstract Co.
- MITCHELL WILLIAMS, District Attorney
- MMS. RUTH JOLLY, County Superintendent
- MRS. WOODROW McLAURIN, Co. Commissioner
- WOODROW BREWER, County Commissioner

*Season's Best*



We'd like to sit at your fireside to greet you personally, Merry Christmas.

*Greetings*



and may the angel of peace guard you.

**Thompson  
Toggery**

Mr. and Mrs. Floyd Thompson

**Tell the truth about Santa**

Among the myriad problems which beset parents at Christmas time are the many questions from the small-fry about Santa Claus. And the business of telling Junior or his little sister the truth about the jolly old gentleman in the red suit is really a major task.

However, the situation is bound to arise, and when it does, it does something to your heart strings—so you draw the little ones close and cast about for the best explanation.

Oddly enough, the true story is best—and the easiest to tell. So why not just tell the little ones this?

St. Nicholas (or Nicolas) is Santa Claus' real name. He lived in Asia Minor and was the beloved bishop of the Greek church of Myra in Lycia. He is the patron saint of the young, and in some European countries a person dressed as a bishop still assembles the children and distributes gifts of nuts, sweetmeats and other nice things to the good boys and girls.

Children loved St. Nicholas and trudged along beside him as he trudged the dusty roads of the Lycia countryside, bringing fruit and candy to the sick and needy.

One of many stories told of his goodness concerns a poor and honest man and his three good and beautiful daughters. The father was unhappy for poverty prevented his giving the customary dowries to his daughters, and for this reason they could never have suitable husbands.

One night a bag of coins was tossed in at the man's window. The next night the act was repeated. But on the third night the father watched, and the anonymous giver was detected. The jolly bishop stood with the third bag of coins in his hands. The father was very proud and would not accept the money. The good bishop begged the poor man to accept the gifts and use them for his daughters' dowries, requesting that his name never be revealed.

At last, the father accepted the money for his daughters, but he could not keep the name of the generous bishop secret—so the legend of the goodness of St. Nicholas was further spread and strengthened.

Larger debts sometimes force one into larger earnings.

**Interesting Job?  
Santa's Beats All  
At This Season**

WHO HAS ONE of the most interesting jobs this time of year? That's easy. It's Santa.

The rotund gentleman hiding behind the red ensemble and the flowing white beard learns a great deal about the nature of humans, especially children, at this time of year.

However, after receiving thousands of letters from all over the



country, and talking to thousands of youngsters on street corners and in department stores. Santa usually comes to the same conclusion each year. Times and customs change, but children seldom do.

Requests that Santa receives follow a general pattern each year—everything from bicycles to roller skates and cowboy suits for boys, with dolls and elaborate accessories the favorite with the girls.

There are some exceptions. Lots of children make requests for useful items, typewriters and such, in the hope of becoming writers and stenographers. Last year one lad asked for a Bengal tiger.

Santa, understanding human that he must be, promises to fill all the requests that he can and explains tenderly why there are some that are out of reach.

**St. Nicholas Possessed  
Of Great Virtue, Piety**

Saint Nicholas, Bishop of Myra, was said to have been a saint of great virtue and piety.

An ancient legend is told that he became the patron saint of school boys when he restored to life the sons of a rich Asiatic, who had been murdered by a robber-innkeeper while they were enroute to school in Athens. It is said that he was warned of the crime in a vision, but was unable to reach the inn in time to prevent the murders. He restored the boys to life through prayers and also forced the murderer to confess his crime to authorities.

**Naturalized Citizen—  
That's Our Santa**

Santa Claus as Americans know him is a naturalized American citizen, and as such is America's contribution to the Christmas legend. That's the opinion of Dr. Gustav O. Arit of the department of Germanic languages on the Los Angeles campus of the University of California.

"The Norwegians who settled early in America brought the first version of the modern Santa Claus, who in Europe had been known as St. Nicholas, but never adequately personally described," said Dr. Arit.

"When the American Clement Moore described the jolly, rotund gentleman in minute detail in his poem 'Twas The Night Before Christmas,' he assumed the proportion of living legend and thus became an integral part of Christian legend and folklore," the professor stated.

**Archaeologists' Findings  
Bear Out Bible Stories**

Archaeologists' findings oftentimes serve to further establish the authenticity of the story of Jesus. Only recently a group discovered the name of Jesus, carved before 70 A.D. and perhaps by an eyewitness to the crucifixion, among inscriptions on 11 early Christian burial urns found in a cave on the Jerusalem-Bethlehem road.

The urns may provide the "oldest archaeological record of Christianity" and an historical confirmation of the trial and crucifixion of Christ, the archaeologists said.

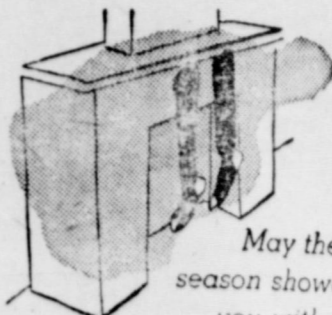
A sect of Hebrews, who followed Jesus, denounced Pontius Pilate and mourned the crucifixion of their leader, was believed to have left the writings on the urns in the cave.

The Hebrew and Aramic inscriptions contained common names like Miriam, Simeon, and Matti. The Greek inscriptions and symbols beside them contained references to Christianity and, it seems probable to the crucifixion.

Buy your daily paper at home-- it's same price at Index office

Star Telegram \$13.95  
6 days only \$12.60  
Lubbock Avalanche  
7 days a week \$12.95  
6 days a week \$11  
Take Index at same time for \$1 more

RENEW YOUR SUBSCRIPTION



May the season shower you with excellent gifts of gladness

**Doss Laundry**

C. A. DOSS, OWNER



For a smile on every face and a carol in every heart we commend you to the spirit of Christmas. Happy holiday

**ED JAMES FEED AND SEED STORE**



**Merry Christmas**

May each gift you receive be a gift of happiness...

**ELLIS CHEVROLET**

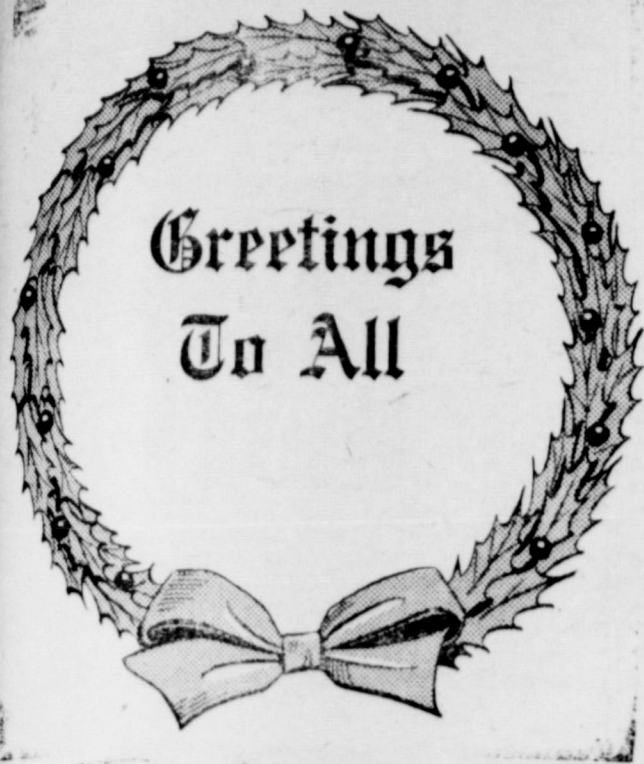
JOHN ELLIS



As the Spirit of Christmas unfolds itself over the countryside, we add our greetings and best wishes of the season.

**O'Donnell Flowers  
And Gift Shop**

Mr. and Mrs. W. E. Tredway



**Morris Shoe Shop**  
 And Western Wear  
 Claude Morris, Owner

WITH EVERY GOOD WISH

at *Christmas*

To our customers and  
 to our fellow business  
 Associates, Greetings...

**HASH CLEANERS**

Mr and Mrs. L. J. Hash



**Highway Garage**

Mr. and Mrs. John Earles



English children look for a Santa Claus who closely resembles our own and gifts are tied to Christmas trees.

In Finland, Santa has elves who pass out gifts for him.

In Italy there is no Santa Claus. Instead, they have a benevolent old witch, Befana, who sails through the air on a broom stick on Christmas Eve.

Brazil has Papa Noel, very much like Santa. He wears a red suit and travels in a sleigh drawn by reindeer. However, he enters the house through a window.

Spanish children place their straw-filled sleeves on the window sills so that the Magi may feed their horses while they leave gifts. The older people fill an Urn of Fate from which gifts are drawn on Christmas Day.



**THE JOY OF CHRISTMAS . . .**  
 Much of the joy of Christmas for mothers and fathers is watching the thrill children get from finding toys under the tree. These children express their joy on Christmas morning. Much of the joy for the children is the anticipation of and mystery in Santa's visit and the guessing about what the old fellow will bring.

*Your Poinsettia  
 Will Bloom  
 Next Christmas*

**THE POINSETTIA** has long been a popular Christmas plant but probably few people have given much thought to the fact that it does come into bloom each year only at this season.

The poinsettia is one of a group of plants known as short day plants because it will bloom only in the season of the year with short day length periods, preferably 10 hours or less. That is why it is always in bloom during the Christmas season and not during the summer. It could be prevented from blooming now by lengthening the daylight period to 15 hours by means of artificial lights.

Flower growers have learned how to bring garden chrysanthemums into bloom any month of the year by using shading cloth to shorten the days and artificial lights to lengthen the days. The chrysanthemum is also a short day plant.

How can one keep a poinsettia plant until next season? After its usefulness is over, place it in the basement or some dry place where it will not freeze. Do not water it, or at least very little, and let the soil dry up. Next May bring the plant out, cut the stem back about two-thirds, wash the old soil off the roots and re-pot in new soil.

**Bay and Rosemary  
 Christmas Tradition**

Bay and rosemary have also been represented among our Christmas plants from time immemorial. An ancient writer says: "Rosemarie and Baies that are most faire were stuck about the houses and the churches at the time of Christmas."

According to tradition it was the bay tree, with its lance-like leaves and purple berries, that sheltered the holy family during a thunderstorm. Accordingly it was believed that lightning will never strike a bay tree.

The association of the rosemary plant with Christmas also goes back to the early childhood of our Lord, namely to the flight into Egypt to escape the wrath and jealousy of King Herod. Its branches are said to have held the little garments of the Christ-Child that were placed upon them by the Virgin Mother. Originally, its flowers were supposed to have been white, but the plant changed the color of its blossoms to lavender, same as Mary's cloak.

Not every religious person understands religion and religions.



**O'Donnell Farmers Co-op  
 Association  
 GIN AND ELEVATOR**

J. W. MARTIN, MGR.



And a Merry, Merry  
 Christmas to one  
 and all

**O'Donnell Implement Co.**

Mr and Mrs. Carr Spraberry



May you prosper in the wealth with which Christmas abounds . . .

Peace, love of life, kindness and the brotherhood of all people.



**Lott Pharmacy**

MR. AND MRS. HUGH LOTT

**Yule Tree Business Figured in Millions**

CHRISTMAS TREES are a multi-million dollar business. Throughout the nation, some 15 million trees are shipped to the holiday demand. Prices range from \$1 to \$5, and that adds up to real money.

A Christmas tree, in the lake states, is usually a balsam or a spruce. The same is true in New England and the Appalachian section. Elsewhere in the country, virtually all kinds of evergreens are used.

The lodgepole pine and Douglas fir are frequently used in Colorado. On the Pacific coast, it is principally Douglas fir.

In Maryland, Virginia and Washington, D. C., a scrub pine takes a trimming.

In other localities, white pine, southern pine, hemlock, red and white cedar and redwood are used.

The business of harvesting this annual crop begins in the fall, when cutters go into the woods after trees. It continues as truckers bring huge loads to metropolitan markets.

Many land owners manage their swamps to make them yield a crop of trees year after year. Thinning operations are another source of Yule trees.

Farmers have discovered that they can get a cash crop from eroded acres by harvesting Christmas trees 10 or 15 years after they are planted.

**STANLEY**

Funeral Home

And Burial Association

phone 233 Bx 185 Tahoka

**VAN'S**

SOFT WATER  
Help-Your - Self

**Laundry**



The practice of holding "open house" has been a Christmas tradition through the years.

The Saxon lords threw open the doors of their great halls to peasant and noble alike during the festive season and all enjoyed a great feasting, songs and the exchange of gifts. A tremendous Yule log was dragged upon an open fire pit and festivities lasted until the embers alone remained.

The same custom was followed in the pre-Civil War South. The slaves often soaked a log in the cypress swamps long before Christmas so that it would burn slowly, and extend their Christmas freedom.

"Open House" during the Yuletide season is a true mark of democracy.

**Cowboy's Party Is Real American Fete**

One of the most typical of our American holiday celebrations is the Cowboy's Christmas Ball, which has been held almost every year since 1884 in the small town of Anson, Texas.

The celebration started as a wedding party in the old Star Hotel when ranchers poured in from the widely scattered ranges to honor Cross P. Charley and his bride. It was such a success that it was repeated year after year.

Christmas Eve brought the spirit of the old West to Anson. Cowboys donned their colorful dress, their gay shirts and decorated boots. Cowgirls outfitted themselves in gingham dresses "like mother wore". A cowboy band swung out and the dancers perform the heel and toe polka, the Varsouvienne, and other old folk dances.

**Origin of Symbolic Tree**

**Shrouded in Old Legends**

The origin of the Christmas tree symbol is shrouded in legends that reach back to the period of Druid tree worship long before the advent of Christianity. Credit for tree decoration and gift-giving, however, is generally given to Germany, where the customs were started in the 16th or 17th centuries. Over a period of years the practice spread into northern Europe and from there to America.

Outside tree decorating is essentially an American trademark and a special feature of community spirit. The best known outside displays in America are on the White House lawn and at the Rockefeller Plaza in New York City.

**Noble L. Rumbo, M. D.**

Medicine and Surgery

RUMBO CLINIC

OFFICE TELEPHONE 61

RESIDENCE PHONE 180

**Dr. O. H. NANCE**  
Optometrist

528 N. 1st Lamesa ph. 554

**Real Estate**

—FARMS — RANCHES —  
CITY PROPERTY  
Leases and Royalties

**B. M. Haymes**

**Gibson's**

CLEANERS  
CLEANING  
PRESSING

Alterations  
Ag't. For Lamesa Steam Laundry

We Give S. and H. Green Stamps



**Cicero Smith Lumber Co.**

Joe Hromas, Troy Veach, Mrs. Virginia Thompson

RENEW YOUR SUBSCRIPTION



**Vernon Cook**

GENERAL ELECTRICAL WORK

HAPPY  
**HOLIDAYS**

**PROCTOR BARBER SHOP**

MR. and MRS. JOE PROCTOR



May your happiness match the brightness of Yuletide.

**Singleton Appliance**

MR. and MRS. HAL SINGLETON, JR.

**KCBD TV: Channel 11**

Sunday  
 12:30 Frontiers Of Faith  
 1:00 News  
 1:15 Norman Vincent Peale  
 1:30 Family Bible Quiz  
 1:40 Lawrence Welk Show  
 2:00 The Corn Is Green  
 2:30 Faith For Living  
 3:00 Capt. Gallant  
 3:30 Hopalong Cassidy  
 4:30 Frontier  
 5:00 Comedy Hour  
 5:30 Highway Patrol  
 6:00 District Attorney  
 6:30 Loreta Young  
 7:00 Cavalcade Theater  
 7:30 News  
 8:00 Weather  
 8:45 Sports  
 9:00 Film  
 Monday  
 6:55 Program Preview  
 7:00 Today  
 9:00 Ding Dong School  
 9:30 Ernie Kovacs Show  
 10:00 Home  
 11:00 Tennessee Ernie Ford  
 11:30 Feather Your Nest  
 12:15 News  
 12:30 Serenaders  
 1:00 Matinee

2:30 Cook Book  
 3:00 News  
 3:15 Modern Romances  
 3:30 Queen For A Day  
 4:00 Pinky Lee  
 4:30 Howdy Doody  
 5:00 Superman  
 5:30 Theater  
 6:00 Hospitality Time  
 6:15 News  
 6:20 Weather and Sports  
 6:45 Here's Howell  
 7:00 The Great Gildersleeve  
 7:30 My Little Margie  
 8:00 Badge 714  
 8:30 Robert Montgomery  
 9:30 Serenaders  
 10:30 News, Weather and Sports  
 Tuesday  
 Same as Monday to 5:00 P. M.  
 5:00 Roy Rogers  
 6:00 Hospitality Time  
 6:15 News  
 6:20 Weather and Sports  
 6:30 Dinah Shore  
 6:45 Here's Howell  
 8:00 Fireside Theater  
 8:30 Ford Theater  
 9:00 Texas In Review  
 9:30 Big Town  
 10:00 Justice  
 10:30 News, Weather and Sports  
 Wednesday  
 Same as Monday to 5:00 P. M.

5:00 Western  
 6:00 Hospitality Time  
 6:15 News  
 6:20 Weather and Sports  
 6:45 Here's Howell  
 7:00 Disneyland  
 8:00 Father Knows Best  
 9:00 This Is Your Life  
 9:30 Theater Hour  
 10:30 News, Weather and Sports  
 11:00 Waterfront  
 Thursday  
 Same as Monday to 5:00 P. M.  
 5:00 Gene Autry  
 6:00 Hospitality Time  
 6:15 News  
 6:20 Weather and Sports  
 6:30 Dinah Shore  
 6:45 Here's Howell  
 7:00 Groucho Marx  
 8:00 People's Choice  
 8:30 Dateline Europe  
 9:00 Science Fiction Theater  
 9:30 Tales Of Texas Rangers  
 10:00 Star Showcase  
 10:30 News, Weather and Sports  
 11:00 Hospitality Time  
 11:15 News  
 11:20 Weather and Sports  
 11:30 Eddie Fisher  
 11:45 Here's Howell  
 12:00 Dr. Hudson's Secret Journal  
 12:30 Life Of Riley  
 8:00 Big Story

8:30 The Stu Erwin Show  
 9:00 Cavalcade of Sports  
 9:45 Red Barber Show  
 10:00 Break The Bank  
 10:30 News, Weather and Sports  
 11:00 The Vise  
 Saturday  
 12:00 Roy Rogers  
 12:30 Comedies  
 1:00 Western  
 4:00 Playtime  
 4:30 Matinee  
 6:15 News, Weather and Sports  
 6:30 George Gobel  
 7:00 Lone Ranger  
 7:30 Cisco Kid  
 8:00 Star Stage  
 8:30 Crossroads  
 9:30 Your Hit Parade  
 10:00 Ted Mack's Amateur Hour  
 10:30 News, Weather and Sports

**NOTICE**

Do you prefer White Leghorn chickens? Book your orders NOW with J. C. Swinney for the famous H. & N. "Nick" Leghorn chick



**DEVOTION . . .** Christmas is not so much a time of receiving as it is a time for giving. These children, in their prayers, are giving by far the best gift of them all—their selves.

**SHIRT-SLEEVED SANTA . . .** It's not a common subject for discussion, but Santa Claus sometimes does take off his coat and just lounge around in his beard and shirtsleeves. However, this is not standard procedure, and it's mighty few Santas you see sitting on a park bench in New York.

*Merry Christmas*



MAY ALL THE JOY OF THE SEASON BE WITH YOU.

**Lamesa Tin and Radiator Shop**

411 N. 2nd St., LAMESA

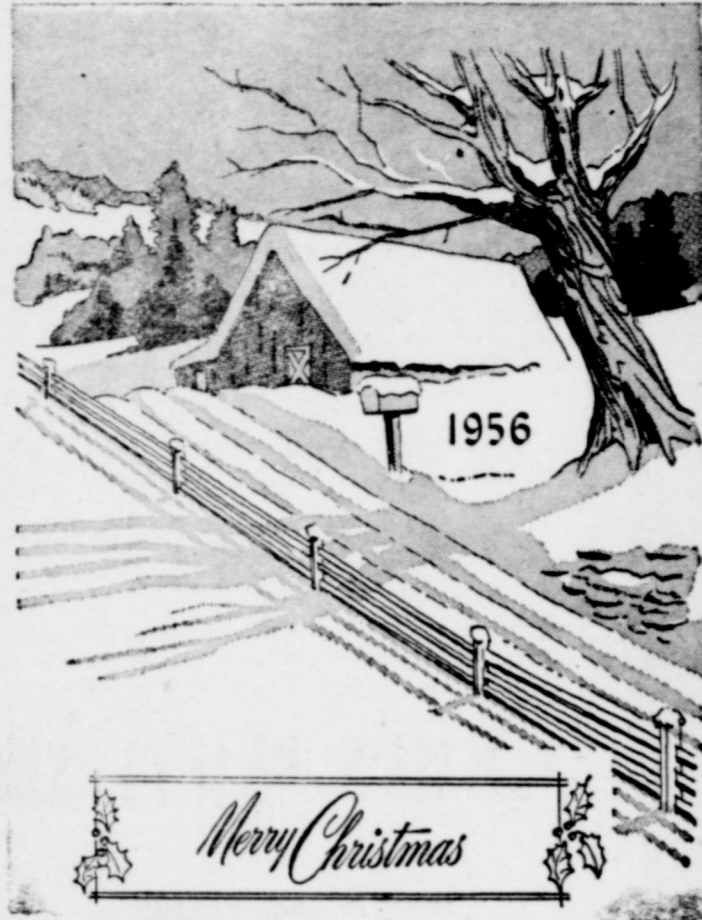


FOR EVERY GLOWING CANDLE MAY SOME GLADNESS COME TO YOU.

1956

**BALDWIN'S**

Lamesa's Leading Store



*Merry Christmas*

**Lamesa Hardware And Builders Supply**

LAMESA



MAY HAPPINESS BE WITH YOU EACH STEP THIS CHRISTMAS SEASON

**Middleton Furniture**

LAMESA



A Most Merry Christmas Season Be Yours

**Lamesa Cotton Oil Mill**

LAMESA



And time to send you Greetings.

**Amos Supply**

LAMESA



May you prosper in the wealth with which Christmas abounds . . .

Peace, love of life, kindness and the brotherhood of all people.



## Lott Pharmacy

MR. AND MRS. HUGH LOTT

### Yule Tree Business Figured in Millions

CHRISTMAS TREES are a multi-million dollar business. Throughout the nation, some 15 million trees are shipped to the holiday demand. Prices range from \$1 to \$5, and that adds up to real money.

A Christmas tree, in the lake states, is usually a balsam or a spruce. The same is true in New England and the Appalachian section. Elsewhere in the country, virtually all kinds of evergreens are used.

The lodgepole pine and Douglas fir are frequently used in Colorado. On the Pacific coast, it is principally Douglas fir.

In Maryland, Virginia and Washington, D. C., a scrub pine takes a trimming.

In other localities, white pine, southern pine, hemlock, red and white cedar and redwood are used.

The business of harvesting this annual crop begins in the fall, when cutters go into the woods after trees. It continues as truckers bring huge loads to metropolitan markets.

Many land owners manage their swamps to make them yield a crop of trees year after year. Thinning operations are another source of Yule trees.

Farmers have discovered that they can get a cash crop from eroded acres by harvesting Christmas trees 10 or 15 years after they are planted.

## STANLEY

Funeral Home

And Burial Association

phone 233 Bx 185 Tahoka

## VAN'S

SOFT WATER  
Help-Your - Self

## Laundry



The practice of holding "open house" has been a Christmas tradition through the years.

The Saxon lords threw open the doors of their great halls to peasant and noble alike during the festive season and all enjoyed a great feasting, songs and the exchange of gifts. A tremendous Yule log was dragged upon an open fire pit and festivities lasted until the embers alone remained.

The same custom was followed in the pre-Civil War South. The slaves often soaked a log in the cypress swamps long before Christmas so that it would burn slowly, and extend their Christmas freedom.

"Open House" during the Yuletide season is a true mark of democracy.

### Cowboy's Party Is Real American Fete

One of the most typical of our American holiday celebrations is the Cowboy's Christmas Ball, which has been held almost every year since 1884 in the small town of Anson, Texas.

The celebration started as a wedding party in the old Star Hotel when ranchers poured in from the widely scattered ranges to honor Cross P. Charley and his bride. It was such a success that it was repeated year after year.

Christmas Eve brought the spirit of the old West to Anson. Cowboys donned their colorful dress, their gay shirts and decorated boots. Cowgirls outfitted themselves in gingham dresses "like mother wore". A cowboy band swung out and the dancers perform the heel and toe polka, the Varsouvienne, and other old folk dances.

### Origin of Symbolic Tree

#### Shrouded in Old Legends

The origin of the Christmas tree symbol is shrouded in legends that reach back to the period of Druid tree worship long before the advent of Christianity. Credit for tree decoration and gift-giving, however, is generally given to Germany, where the customs were started in the 16th or 17th centuries. Over a period of years the practice spread into northern Europe and from there to America.

Outside tree decorating is essentially an American trademark and a special feature of community spirit. The best known outside displays in America are on the White House lawn and at the Rockefeller Plaza in New York City.

### Noble L. Rumbo, M. D.

Medicine and Surgery

RUMBO CLINIC

OFFICE TELEPHONE 61

RESIDENCE PHONE 100

Dr. O. H. NANCE

Optometrist

528 N. 1st Lamesa ph. 554

### Real Estate

— FARMS — RANCHES —  
CITY PROPERTY  
Leases and Royalties

B. M. Haymes

## Gibson's

CLEANERS

CLEANING

PRESSING

Alterations

Agt. For Lamesa Steam Laundry

We Give S. and H. Green Stamps



## Cicero Smith Lumber Co.

Joe Hromas, Troy Veach, Mrs. Virginia Thompson

RENEW YOUR SUBSCRIPTION



## Vernon Co

GENERAL ELECTRICAL WORK

## HAPPY HOLIDAYS

## PROCTOR BARBER SHOP

MR. and MRS. JOE PROCTOR



Joy to the World

Christmas

May your happiness match the brightness of Yuletide.

## Singleton Appliance

MR. and MRS. HAL SINGLETON, JR.



**KCBD TV: Channel 11**

Sunday  
 12:30 Frontiers Of Faith  
 1:00 News  
 1:15 Norman Vincent Peale  
 1:30 Family Bible Quiz  
 1:45 Lawrence Welk Show  
 2:00 The Corn Is Green  
 2:30 Faith For Living  
 3:00 Capt. Gallant  
 3:30 Hopalong Cassidy  
 4:00 Frontier  
 4:30 Comedy Hour  
 5:00 Highway Patrol  
 5:30 District Attorney  
 6:00 Loretta Young  
 6:30 Cavalcade Theater  
 7:00 News  
 7:40 Weather  
 8:00 Sports  
 8:45 Film  
 Monday  
 6:55 Program Preview  
 7:00 Today  
 7:30 Ding Dong School  
 8:00 Ernie Kovacs Show  
 9:00 Home  
 10:00 Tennessee Ernie Ford  
 11:30 Feather Your Nest  
 12:15 News  
 12:30 Serenaders  
 1:00 Matinee

2:30 Cook Book  
 3:00 News  
 3:15 Modern Romances  
 3:30 Queen For A Day  
 4:00 Pinky Lee  
 4:30 Howdy Doody  
 5:00 Superman  
 5:30 Theater  
 6:00 Hospitality Time  
 6:15 News  
 6:20 Weather and Sports  
 6:45 Here's Howell  
 7:00 The Great Gildersleeve  
 7:30 My Little Margie  
 8:00 Badge 714  
 8:30 Robert Montgomery  
 9:30 Serenaders  
 10:30 News, Weather and Sports  
 Tuesday  
 Same as Monday to 5:00 P. M.  
 5:00 Roy Rogers  
 6:00 Hospitality Time  
 6:15 News  
 6:20 Weather and Sports  
 6:30 Dinah Shore  
 6:45 Here's Howell  
 8:00 Fireside Theater  
 8:30 Ford Theater  
 9:00 Texas In Review  
 9:30 Big Town  
 10:00 Justice  
 10:30 News, Weather and Sports  
 Wednesday  
 Same as Monday to 5:00 P. M.

5:00 Western  
 6:00 Hospitality Time  
 6:15 News  
 6:20 Weather and Sports  
 6:45 Here's Howell  
 7:00 Disneyland  
 8:00 Father Knows Best  
 9:00 This Is Your Life  
 9:30 Theater Hour  
 10:30 News, Weather and Sports  
 11:00 Waterfront  
 Thursday  
 Same as Monday to 5:00 P. M.  
 6:00 Gene Autry  
 6:00 Hospitality Time  
 6:15 News  
 6:20 Weather and Sports  
 6:30 Dinah Shore  
 6:45 Here's Howell  
 7:00 Groucho Marx  
 8:00 People's Choice  
 8:30 Dateline Europe  
 9:00 Science Fiction Theater  
 9:30 Tales Of Texas Rangers  
 10:00 Star Showcase  
 10:30 News, Weather and Sports  
 6:00 Hospitality Time  
 6:15 News  
 6:20 Weather and Sports  
 6:30 Eddie Fisher  
 6:45 Here's Howell  
 7:00 Dr. Hudson's Secret Journal  
 7:30 Life Of Riley  
 8:00 Big Story

8:30 The Stu Erwin Show  
 9:00 Cavalcade of Sports  
 9:45 Red Barber Show  
 10:00 Break the Bank  
 10:30 News, Weather and Sports  
 11:00 The Vise  
 Saturday  
 12:00 Roy Rogers  
 12:30 Comedies  
 1:00 Western  
 4:00 Playtime  
 4:30 Matinee  
 6:15 News, Weather and Sports  
 6:30 George Gobel  
 7:00 Lone Ranger  
 7:30 Cisco Kid  
 8:00 Star Stage  
 8:30 Crossroads  
 9:30 Your Hit Parade  
 10:00 Ted Mack's Amateur Hour  
 10:30 News, Weather and Sports

**NOTICE**

Do you prefer White Leghorn chickens? Book your orders NOW with J. C. Swinney for the famous H. & N. "Nick" Leghorn chick



**DEVOTION . . .** Christmas is not so much a time of receiving as it is a time for giving. These children, in their prayers, are giving by far the best gift of them all—themselves.

**SHIRT-SLEEVED SANTA . . .** It's not a common subject for discussion, but Santa Claus sometimes does take off his coat and just lounge around in his beard and shirtsleeves. However, this is not standard procedure, and it's mighty few Santas you see sitting on a park bench in New York.

*Merry Christmas*



MAY ALL THE JOY OF THE SEASON BE WITH YOU.

**Lamesa Tin and Radiator Shop**  
 411 N. 2nd St., LAMESA

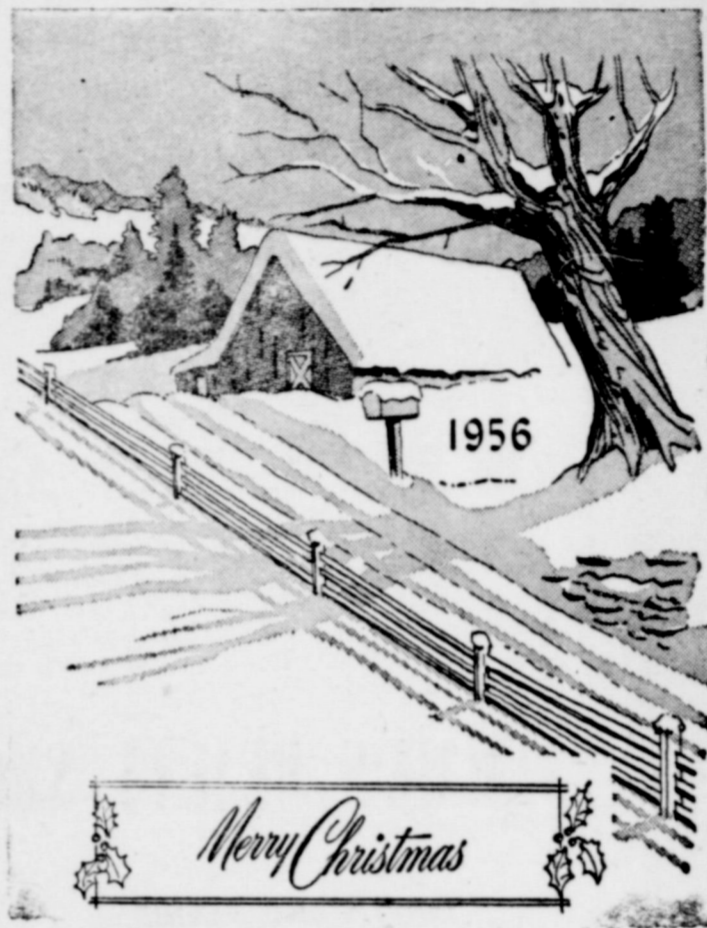


FOR EVERY GLOWING CANDLE MAY SOME GLADNESS COME TO YOU.

1956

**BALDWINS**

Lamesa's Leading Store



*Merry Christmas*  
**Lamesa Hardware And Builders Supply**

LAMESA



MAY HAPPINESS BE WITH YOU EACH STEP THIS CHRISTMAS SEASON

**Middleton Furniture**

LAMESA



A Most Merry Christmas Season Be Yours

**Lamesa Cotton Oil Mill**

LAMESA



And time to send you Greetings.

**Amos Supply**

LAMESA



To all our customers  
this holiday season.

**VERNIE'S BEAUTY SHOP**

HATTIE AND VERNIE

**Burial Place of Santa Said to Be in Italy**

**S**ANTA CLAUS, otherwise St. Nicholas, otherwise the one-time bishop of Myra in Asia Minor, is buried in Bari, Italy. His body was stolen from its original tomb in Myra and swiftly borne to Bari by Italian sailors, who thought back in 1087 that a saint's body brought prosperity and good luck to your town.

St. Nicholas, who was tortured and imprisoned for his faith during the reign of Emperor Diocletian, found no rest in his first tomb at Myra. Always some expedition was attempting to remove his remains. However, once buried again in Bari, the saint's body was credited with curing 30 people of distemper and performing other miracles. So Bari became a place of pilgrimage, and the legends about St. Nicholas multiplied apace.

We owe our notion of Santa Claus as a secret dispenser of gifts to a story that St. Nicholas once saved three girls from a life of prostitution by throwing purses of gold through a window in Patara, thus permitting a poverty stricken nobleman to give his daughters suitable dowries as custom demanded.

In addition, St. Nicholas was credited with restoring life to some boys who had been slain and dismembered by a wicked innkeeper of Myra—hence the occasional stained glass windows in which the saint is shown beside three lads in a tub.



**TIME OUT** . . . Santa Claus pauses in his Christmas Eve visits sometimes to pick up a hot dog and ice cream cone at an all-night hamburger stand.

Send us your NEWS

**Abbreviation, Xmas Of Greek Origin**

There has been much unfavorable comment on the abbreviated form for Christmas that is commonly used. Many think it inappropriate and undignified to use the shortened form, Xmas.

The explanation of its origin is that the initial letter of the Greek name for Christ is X and the coincidence of its cruciform shape led to an early adoption of this letter as the figure and symbol of Christ. X is frequently found on walls of the catacombs. When the early Christians wished to make a representation of the Trinity, they would place either a cross or an X beside the names of the Father and the Holy Ghost. From this came the shortened form Xmas, instead of Christmas.



The poinsettia has no Christmas legend and its adoption as a symbol or decoration for Christmas is of recent origin. In Spain it is known as the flor de noche-buena, and is connected with the sentiment of Christmas.

Its beautiful flaming star is one of the favorite flowers of the Christmas season, and its use as an indoor decoration is universal.

**Legends of Holly**

Many beliefs are connected with the Christmas holly:

Legends relate that the crown of thorns was plaited from the holly, the white berries turning red like drops of blood after the crucifixion.



It is said that whoever brings the holly into the house first, either husband or wife, is the one who will rule in the ensuing year.

For many years the superstition persisted that holly was hateful to witches. It was placed on doors and windows to keep out evil spirits.



**EVERY AVERAGE** American home will have a Christmas tree this year. Traditional and symbolic as the trees are, they present a great fire hazard, and should be carefully watched.

Remember that when you bring a tree into the house it is going to dry up. A freshly-cut tree will not take fire any easier than the evergreen trees growing outside, but the hazard increases by the hour. For this reason, it is not wise to put up the tree too early before Christmas day or to leave it too long after the 25th. Trees of all kind will become highly inflammable at the end of a week.

Families, clubs, churches or organizations that wish to keep their trees up longer than a week should take special safeguards to keep it reasonably safe.

The tree can be kept fresh by setting it up in a pan of water. Cut off the base of the tree at an angle at least one inch above the original cut and keep it standing in water during the entire period it remains in the house. It may be necessary to add water from time to time to keep the water level above the cut.

Place the tree well away from stoves, radiators, and other sources of heat. When you smoke, stay away from the tree. Also be sure that the tree is secured in such a way that it cannot fall. Do not put it near a doorway where it might block an avenue of escape, should a fire occur.

**JR. HI ASSEMBLY PROGRAMS GIVEN THRU JANUARY**

Following is the Junior High program for the next few months—  
Thursday, Dec. 20th — 6A Section, Mrs. Doss, a play, "When The Little Angel Sang."  
Thursday, Jan. 10 — Film, "Master Whitetail"  
Thursday, Jan. 17 — 7A, Mrs. Furlow play, "Judy Takes Over" 10:30  
Thursday, Jan. 25th, Southern School Assembly Program, 10:15  
Thursday, Jan. 31 — Film "Behind the Flyways" 10:30

**Buy your daily paper at home-- it's same price at Index office**

Star Telegram	\$13.95
6 days only	\$12.60
Lubbock Avalanche	
7 days a week	\$12.95
6 days a week	\$11
Take Index at same time for \$1 more	

RENEW YOUR SUBSCRIPTION



May the guardians of the Christmas Season attend you.

**Barrington Grocery & Mkt**  
Mr. and Mrs. Cleve Barrington



**Joe Burkett**

★ T. V. AND RADIO REPAIRS



We wish you contentment and happiness this Christmas season.

**Clayton Insurance Agency**

S. M. CLAYTON, JR.

**Season's Greetings**



May yours be filled with pleasant people all through the Holidays.

**Jones Service Station**

SHAMROCK GAS AND OIL

Ervin "Bud" Jones, Owner

The capabl  
genera that r  
felt by  
ly sort  
reveal that w  
duced  
preed  
The upon t  
confes  
vions. He is pentan  
follow of the  
The commu  
is for and hl  
fessor who b  
This New T  
arge i  
eterna compl  
SUNDA  
Bible  
Worsh  
WEDNES  
Mid-w  
Beauty  
As May  
WILDW  
and pers  
wardwalk  
and ann  
ground sav  
ides in t  
and entran  
died along  
two-hour  
Highlight  
the crown  
Barbara  
Harry Ste  
and was t  
stand, whi  
Glenwood  
This al  
humorous  
Mickey S  
as MC fo  
the mayor  
crowning  
from her  
Shaughnes  
one girl  
the mayor  
vent thr  
again with  
F  
We  
I  
Georg  
The  
Vis  
Dec  
Tab  
The  
Cin  
Sun  
I  
Rande  
Sev  
STORI  
When  
is comin  
proteitic  
doesn't  
Fire, w  
peril ma  
edily at a  
not read  
quote in  
C L  
Insur  
Phone

### The Scheme Of Redemption

Those who hold the doctrine that man is born in sin and is incapable of doing anything to save himself until he has been regenerated by the miraculous influence of the Holy Spirit maintain that repentance must precede faith. There is a sorrow that is felt by some who have never heard the gospel, but this is a world-felt sorrow which results in death, II Cor. 7:10. (This same verse reveals that sorrow is not repentance!) Godly sorrow, the sorrow that works repentance and results in salvation, can only be produced by hearing the word of God. Therefore, repentance does not precede, but must come after hearing and believing.

The person who has heard, believed, and repented is next called upon to confess his faith in Jesus as Lord, Rom. 10:9, 10. That confession comes after hearing, believing, and repenting is obvious. No one will confess Jesus as Lord who does not believe that He is the Son of God, and to confess Jesus as Lord without believe is to confess a falsehood. This oral confession must be preceded by a Christian life that daily manifests the truthfulness of the oral confession.

The last step in the Scheme of Redemption is baptism. Jesus commanded all believers to be baptized, Mark 16:15, 16. Baptism is for the remission of past sins, Acts 2:38. When one is baptized, and his baptism has been preceded by faith, repentance and confession, he obtains the cleansing from sin that God grants to all who believe and obey the gospel, Acts 22:16; I Pet. 3:21.

This is the plain, simple plan of salvation that is revealed in the New Testament. If you have not believed and obeyed this plan, we urge you to give it some very serious thought and study. Your eternal destiny— heaven or hell — will be determined by your compliance with the will of God.

### CHURCH OF CHRIST

**SUNDAY**  
Bible Study ..... 10:00 A. M.  
Worship and Communion ..... 10:45 A. M.  
Evening Service ..... 6:00 P. M.  
**WEDNESDAY**  
Mid-week Bible Study ..... 7:30 P. M.

### Beauty 'Flips Lid' As Mayor Kisses Her

WILDWOOD, N.J.—Several thousand persons crowded Wildwood's boardwalk recently to watch the 33rd annual baby parade. The crowd saw one of the biggest parades in history as seven bands, 300 entrants and the queen's float led along the boardwalk in a two-hour spectacle.  
Highlight of the gala affair was the crowning of the queen, Miss Barbara Blake, by Mayor W. Harry Steele. Queen Oceania, the 4th was crowned at the reviewing stand, which was situated between Glenwood and Magnolia ave.  
This also provided the most humorous comment of the day by Mickey Shaughnessy, who served as MC for the entire parade. As the mayor kissed Miss Blake after crowning her, the crown slipped from her head which prompted Shaughnessy to remark, "There's one girl who flips her lid when the mayor kisses her." The mayor went through the proceedings again without mishap.

### Principal Outlaws T-Shirts, Dungarees

ROSELLE, N.Y.— Schoolboys should dress properly for an occasion and school is an occasion was the recent ruling of Albert S. Peling, principal of the Abraham Clark school here.  
He told the parent-teacher association that clothes may make the man but all types of clothing are not becoming to school boys.  
He called upon parents to see that their sons were dressed properly. "T-shirts and dungarees are all right for a job, he opined, but they are not appropriate for school attire. He made no criticism of the apparel of the girl students.

See that your news gets to your home town paper

### JR. HI ASSEMBLY PROGRAMS GIVEN THRU JANUARY

Following is the Junior High program for the next few months —

Thursday, Dec. 20th — 6A Section, Mrs. Doss, a play, "When The Little Angel Sang."

Thursday, Jan. 10 — Film, "Master Whitetail"

Thursday, Jan. 17 — 7A, Mrs. Furlow play, "Judy Takes Over" 10:30.

Thursday, Jan. 25th, Southern School Assembly Program, 10:15

Thursday, Jan. 31 — Film "Behind the Flyways" 10:30

### BASKETBALL SEASON HERE

Dec. 18th, here Denver City A & B boys 6:30

### Commuter Snags Train But Can't Hold It

EUREKA, Calif.—Loafers around the railroad station here tell this for the truth. Seems the station agent heard a loud crash on the platform. He ran out and saw the rear end of a train disappearing around a curve. A disheveled gent lay prone on the ground, surrounded by the contents of his banged-up suitcases.

An owlish youngster stared at the gent, but made no effort to assist him. "Was he trying to catch the train?" the station agent asked the youngster.

"He did catch it," replied the youngster, "but it got away."

## There's No Finer Gift For Christmas

delicious! **DANBURN'S**

THE ORIGINAL MILK AND HONEY "Ruff-Dip" CHOCOLATES

... an assortment for every taste  
... packed in colorful, gay gift packages ... for a very Merry Christmas!

LOTT PHARMACY

### Tax Collector Shows No Mercy to Rich Dog

BOSTON—"Dog or no dog," Henry F. Long, state tax commissioner says, she must pay an inheritance tax."

Long wants \$369 in taxes from Lassie, a collie left \$5,000 in the will of her late master.

Axel R. Carlson, Lassie's late owner, left the sum to pay for the collie's care. The dog was sent to live with Mrs. Gertrude Hanson of Quincy.

Long figured the tax as being six percent of \$5,000 plus 23 percent temporary surtax.

Besides the inheritance tax, Lassie will also have to pay income tax annually on any income the inheritance draws.

Mrs. Hanson will turn the matter over to Lassie's lawyers

### First Flight of Pig Is Commemorated

LEWSDOW, Isle of Sheppey—A memorial will be erected here to commemorate the first plane flight of a pig.

Sheppey was the island where British aviation pioneers designed their heavier-than-air machines and where the Short Brothers Aircraft company was founded in a wooden shed. Moore (Lord Brabazon) flew the animal in the first British plane to fly a circular mile, to prove that pigs could "fly."

"He bought it for 70 cents from my grandfather," said a local farmer, Harold Love, who is sponsoring the idea of the memorial. Many persons in the aeronautical world have promised to contribute toward the cost.

with **WESTERN Deep Well TURBINE PUMPS**

✓ Check this 30-year record! Western Pump Company's first vibration dampened tubeline pumps were installed in 1922. A recent check of pump registration cards for that year shows an amazing performance record! Of 47 pumps installed not a single length of tubeline has had to be replaced because of excessive wear!

See Your Local Western Pump Dealer  
**ROY F. SMITH, Irrigation**

## Winged Performance and a Floating Ride make The Big M the road-hungriest car ever built



**BIGGEST SIZE INCREASE IN THE INDUSTRY**—Mercury is now over 17½ feet long, more than 6½ feet wide. Wheelbase is a big 122 inches. Inside there are inches more headroom, leg room—as much shoulder room, for example, as in many of the most expensive cars.

### 3-WAY POWER CHOICE

**New 290-hp Turnpike Cruiser V-8**—Wait till you feel its silk-and-dynamite performance! Optional on all Montclairs and Montereys.

**New 255-hp Safety-Surge V-8 with Power-Booster Fan**—A Mercury "first" in the Montclair Series. The engine fan coasts when not needed for cooling. You save horsepower other cars waste, enjoy a far quieter ride.

**New 255-hp Safety-Surge V-8**—Dream-car performance in the Monterey Series—Mercury's lowest priced line! Features another Mercury "first" which you get at no extra cost on all big M engines for '57—a Thermo-matic Carburetor. It automatically controls the temperature of the air the engine breathes—helps keep it uniform summer and winter. Engine starting is easier, usable power and economy are increased.

### YEAR'S MOST IMPORTANT RIDE IMPROVEMENTS

**Exclusive Full-Cushion Shock Absorbers**—One of Mercury's great Floating Ride features. The first shock absorbers in the industry to give such amazing bump-smothering control on rough roads without sacrificing a soft, satin-smooth ride on average roads.

**New Swept-back Ball-Joint Front Suspension**—Mercury introduces a new improved version of its famous suspension system. Because of the new swept-back design, the front wheels are now, in effect, pulled gently over bumps, rather than pushed into them.

**New balanced weight distribution** greatly reduces nose dipping on sudden stops and lurching on fast starts.

**New road-hugging center of gravity**—Everything is lower. Car height, passenger compartment, frame, and rear axle. You enjoy an amazing sense of "nailed-down" stability on curves.

You've got to feel Mercury's new Floating Ride to believe it. We invite you to do just that, today, at our showroom.

STRAIGHT OUT OF TOMORROW **MERCURY for '57** with DREAM-CAR DESIGN

## FORBES Motor Co.

Phone 92, O'Donnell, Texas FORD Sales And Service

# REX

### Wed. and Thurs.

Dec. 26th and 27  
George Gobel and Mitzzi Gaynor in

### The Birds And The Bees

Vista Vision, color

### Fri. and Sat.

Dec. 28th and 29th  
Tab Hunter and Natalie Wood in

### The Burning Hills

Cinemascope, color

### Sunday and Mon.

Dec. 30 and 31  
Randolph Scott and Gail Russell in

### Seven Men From Now

In Color



### STORM WARNING

When you know a storm is coming, you head for protection. But disaster doesn't give warnings. Fire, windstorm or other peril may strike unexpectedly at any time. If you are not ready NOW with adequate insurance call us.

CLAYTON'S Insurance Agency

LOANS

Phone 148 O'Donnell

# Cheerio



We send you a bright note of cheer this Holiday.

## W. J. SHOOK

Butane and Propane Products

Agent For Magnolia Pet. Co.

## Christmas Quotes

"Christmas is the time you decide to pay your doctor something on account. You know you will need him the day after."

-Walter Pulitzer.

"What do people mean by sending you a dozen Christmas cards during the festive season, and not deigning to send you three lines by way of a letter the rest of the year?"

-J. Ashby-Sterry.

"At every Christmas party, just as things are beginning to get good, someone shuts his eyes, puts his head back and moans softly: 'Ah, well, this isn't like the good old days. We don't seem to have any good old-fashioned Christmases any more.'"

-Robert Benchley.

### Christmas: 'Good Time; A Kind, Forgiving Time'

Charles Dickens once referred to Christmas as "a good time; a kind, forgiving, charitable, pleasant time." This is an adequate description of the Christmas spirit. Why not make this an old-fashioned Christmas?

Elaborately planned parties, those great time-takers, should not be a part of the Christmas scene. A homey, hospitable get-together will create an atmosphere in which everyone can relax.

Since Christmas is really "the children's hour", why not give them a greater part in preparing for the day? Children will get more delight from helping prepare and decorate the tree than in seeing only the finished product.

### Small Amount of Plant Food Will Keep Needles on Tree

If you have the type of a tree-holder that permits the tree trunk to rest in water, you will find that a small amount of plant food dissolved in the water will aid in retaining the needles on the tree, and keep the needles green. If you use a pebble or rock-filled pail to support the tree, cover the pebbles or rock with a plant food solution.

Use one teaspoonful of plant food, powdered form, to each gallon of water in the container, or use one plant food tablet to each gallon of water.

## United States Top Buyer and Supplier In Tree Industry

The United States is the world's leading source of supply as well as the top buyer in the Christmas tree industry—a better than \$50,000,000 business.

The majority of our Christmas trees come from New England, New York and Pennsylvania, the north Midwest, and the Northeast Pacific regions. In recent years, New Jersey has annually marketed around 100,000 trees for local use.

Most of the trees for Christmas sales are cut early in the fall and the trees are kept green with plenty of water until shipped to distribution centers.

Some mass producers, however, cut trees early in the new year, and treat them with preservatives and coloring solutions for storage in chilled warehouses.

### 'Snapdragon' Popular

A game called "snapdragon" was very popular at Christmas time in England more than 200 years ago. To a limited extent it is still played in some parts of England, as well as in America.

The original game called for a quantity of raisins to be deposited in a large bowl or dish. Brandy or some other spirit was then poured over the fruit and ignited. At a given signal, the participants attempt to snatch a raisin from the blazing bowl.



SECRETS . . . This little girl wants something for Christmas, but she's not telling anyone except Santa Claus, who looks like he understands the problem.

### NOTICE

Do you prefer White Leghorn

chickens? Book your orders NOW with J. C. Swinney for the famous H. & N. "Nick" Leghorn chick

## CHRISTMAS AROUND THE WORLD

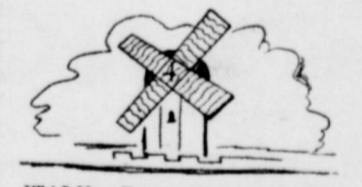
UNITED STATES (Merry Christmas)—Christmas tree, mistletoe and Santa Claus.



BRAZIL (Boas Festas)—A family dinner is first on the list of festive celebrations in Brazil. Christmas trees, gift exchanges and other typical U.S. holiday customs are being adopted in South America.



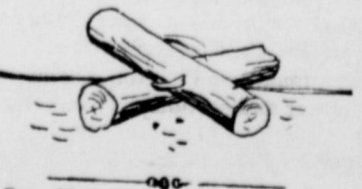
HOLLAND (Hartelijke Kertgroeten)—Land of old St. Nicholas, forerunner of our Santa Claus. In former years, the Dutch celebrated for a month. St. Nick scattered his gifts about the floors of Dutch homes as early as December 6.



ITALY (Bono Natale)—Shepherds gather in villages on Christmas Eve to play musical instruments as townfolks sing sweet Nativity songs. Thousands flock to St. Peter's in Rome on Christmas Day.



GREECE (Kaia Kristouyeha)—Decorated trees, greeting cards and gift exchanges are season highlights. New Year's Eve is really the top holiday, with big dances, parties and other celebrations for young and old.



See Mrs. Ben Moore, sr. for all Fuller Brush Products and Cosmetics. Phone 166

Commercial and fine quality portraits, weddings, anniversaries, etc. Prompt film developing. W. D. Parker, 3rd house west of Methodist Church. etc

RENEW YOUR SUBSCRIPTION

## it's Christmas



We send you a package of good cheer

## Noble Rumbo, M.D.

AND STAFF



May your Christmas be merry and bright!

## Pelts School Store

MARY and ROCHELL PELTS

## -and on earth, peace-

May the deep meanings of the first Christmas bless your home.

## WELLS CO-OP GIN

Mr. and Mrs. A. A. ALLEN

# Christmas Peace

be yours during this wonderful season.

## C. J. BEACH

Real Estate Loans, Oil And Gas Leases and Royalty

## Bethlehem Rites Feature March To Nativity Cave

CHRISTMAS is observed in Bethlehem on December 25 by the Roman Catholics and Protestants. On January 6, by the Greek Orthodox and affiliated churches, and on January 18 by the Armenians. All Bethlehem, however, turns out on December 24 for the arrival of the Patriarch of Jerusalem—Cardinal of the Holy Land—who each year brings an ancient effigy of the Infant Jesus to Bethlehem which he lays in the manger with the cave where Christ was born. Dramatically the procession approaches: heralded by a single horseman, his banner streaming aloft. A corps of native police mounted upon fiery Arabian horses follow and then another single horseman upon a prancing black steed carrying the cross on high; the Patriarch in his cardinal and ermine, mitred bishops, clergy in embroidered vestments and white robed acolytes—swinging golden censers—precede the jeweled palanquins of government officials, foreign embassies, bands, religious organizations follow, and finally, American made automobiles mingle with native two-wheeled carriages.

## Why You Hang Holly at Yuletide

CREDIT THE PAGAN Druids for inspiring one of the nice Christmas customs — decorating with holly. The traditional holly for the holidays is widely believed to have had its origin in the Druid practice of bringing holly sprigs indoors. The Druids woodland spirits lived in the holly.

Indoors, holly gave the spirits a warm place in winter. Besides, the lush green holly and the contrast of its red berries provided beauty that could be revered by men when the sacred oaks were in burn of their foliage.

The early Christian church frowned on such pagan customs and tried to stamp them out. In due time, however, it was felt that some of the customs could be adapted to the new Christmas conception.

Some beautiful legends associate the holly with Christ. In fact, it is often called the Christ thorn. One legend depicts the leaf spines as the crown of thorns; the red berries as the blood of Christ. Another credits holly with first springing up from the footsteps of Christ. The plant is said to remain green all winter as a reward for once hiding Christ from his pursuers.

The impact of the holly on the Christmas celebration is evidenced in the traditional holiday colors, green and red. The Druids weren't the only people of old who thought the holly was something special. Ptolemy, the great Roman historian, stated holly blossoms caused water to freeze. Also, that holly thrown at any wild beast would make it lie down tamely next to the branch.

These legends, forgotten by many people, are said to be the reason we decorate with holly.

For sale — dining room suite (table, 6 chairs, buffet) also Frigid-aire refrigerator, Phone 203 Mrs Roy Miles

## Real Estate

— FARMS — RANCHES —  
CITY PROPERTY  
Leases and Royalties

B. M. Haymes

## Allegorical Parades Mark Mexican Yule

THE people in Mexico build elaborate floats for allegorical parades during the holiday season.

For eight evenings before Christmas there is a religious procession at the head of which the figures of Joseph and Mary are borne.

On the ninth evening entrance is permitted and a religious ceremony conducted about the straw-filled manger of the Babe.

## True Christmas Spirit Is Found in Sharing

FOR a really satisfying and meaningful Christmas, share yours with the old and feeble, the ill and shut-in, the bereaved whose sorrows you might lighten.

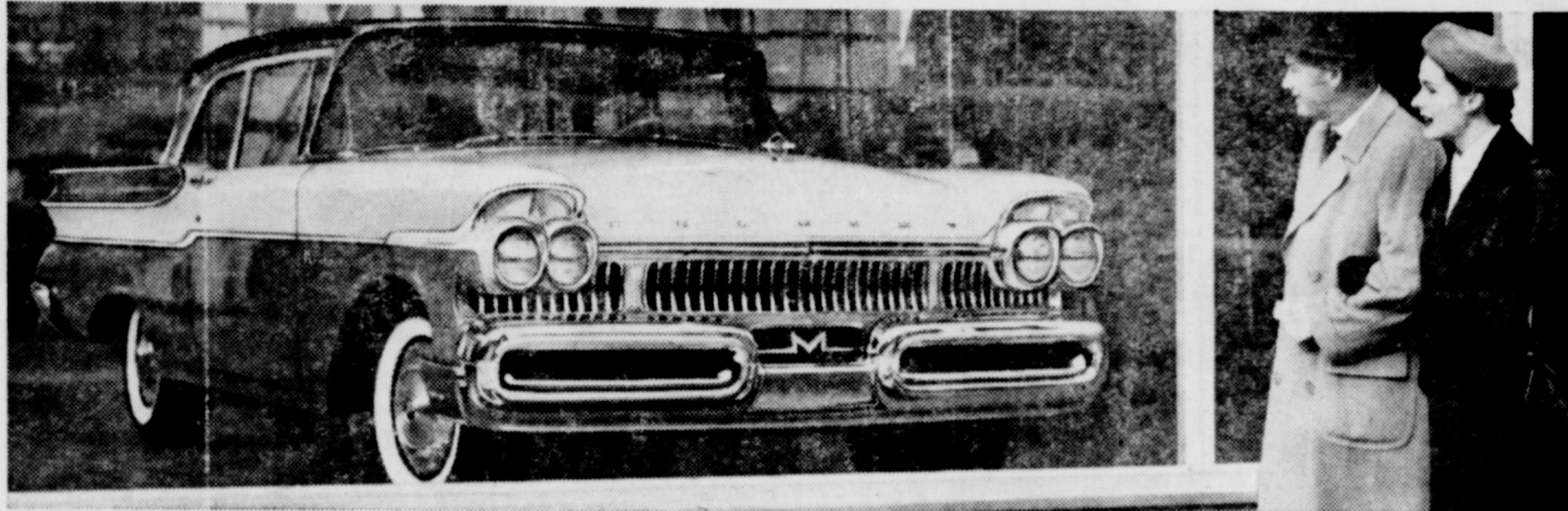
Unfortunately, all the flurry and preparation associated with Christmas are apt to make parents as well as children overlook the real significance of the coming birthday of Christ.

## RENEW YOUR SUBSCRIPTION

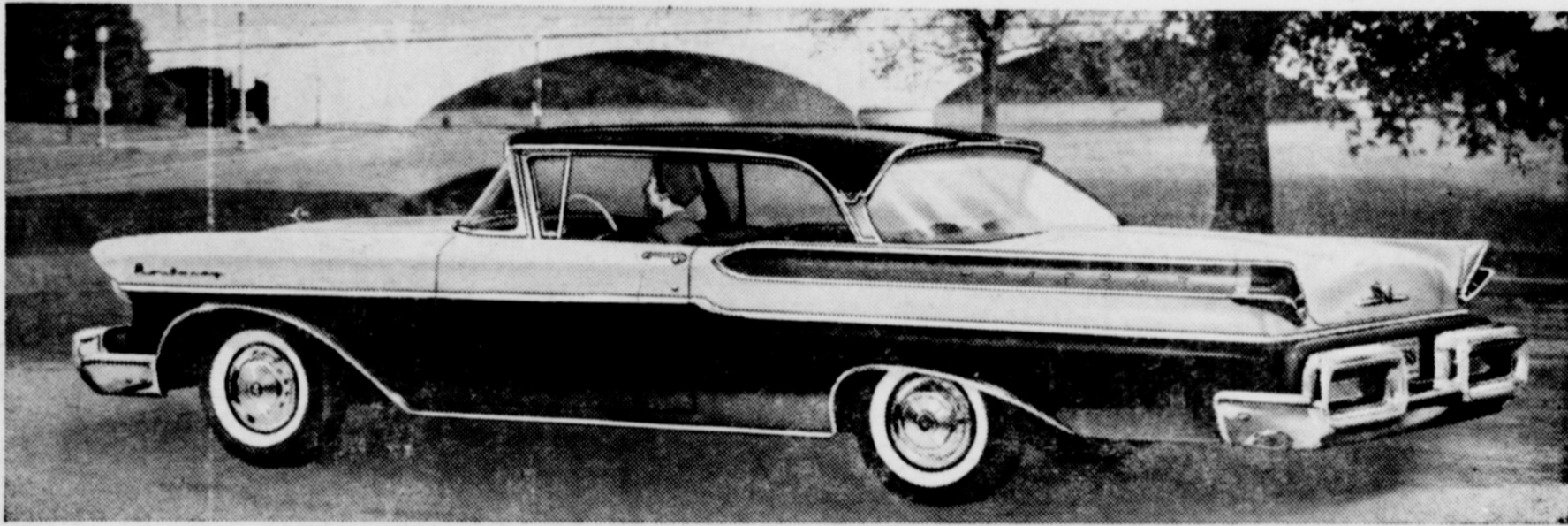


**HIGGINBOTHAM FUNERAL HOME**  
"Dedicated to Helpfulness"  
408 N. Austin St. Lamesa Phone 4585  
24 Hour Ambulance Service  
Burial INSURANCE "Bonded Protection"

Subscribe For Your Ft. Worth Star Telegram and The Lubbock Avalanche At Index Office



Don't guess Mercury's price by the new size and luxury (never before has so much bigness and luxury cost so little)



IN MERCURY'S LOWEST PRICE SERIES—Monterey Phaeton Coupe. Also in the big-value Monterey series: Phaeton Sedan, 2-door Sedan, 4-door Sedan.

THE '57 MERCURY brings you the biggest size increase in the industry. It's over 17½ feet long, more than 6½ feet wide. Bigger in every important dimension — with inches more leg room, hip room, shoulder room, headroom.

Mercury brings you Dream-Car Design — shared by no other car on the road. Notice the unique straight-line sweep of the roof, the V-angle Tail-lights, the rear projectiles, the Jet-Flo Bumpers, and the Quadri-Beam headlamps.

Exclusive Floating Ride combines 4 of the greatest bump-smothering features ever put between you and the road. Exclusive Keyboard Control outdates all push-button transmissions. An exclusive power seat that "remembers" finds your favorite seat adjustment at a touch of a dial. In

all, there are 21 dream-car features waiting for you to see and try.

**3-WAY POWER CHOICE**—A 290-hp Turnpike Cruiser V-8 engine is optional. A 255-hp Safety-Surge V-8 with Power-Booster Fan is standard in Montclair Series. A 255-hp Safety-Surge V-8 is standard in Monterey Series.

All engines feature a unique Thermo-matic Carburetor. Controls temperature of air engine breathes. Greater efficiency and economy result.

Power-Booster Fan in Montclair series *coasts* when not needed for cooling, saves power and fuel other cars waste.

**YOU PAY LITTLE MORE DOWN...OR PER MONTH...THAN FOR THE LOWEST PRICED CARS** Check price tags at our showroom. You'll find that anyone who can afford a new car can afford BIG M bigness and luxury.

ALL-WEATHER AIR CONDITIONING IS NO LONGER A LUXURY — IT IS A LOW-COST FEATURE WITH MERCURY'S NEW CLIMATE-MASTER SYSTEM.

STRAIGHT OUT OF TOMORROW **MERCURY for '57** with DREAM-CAR DESIGN

**FORBES MOTOR CO.**

Ford Sales and Service

Phone 92, O'Donnell, Texas

## NOTICE

Do you prefer White Leghorn chickens? Book your orders NOW with J. C. Swinney for the famous A. N. "Nick" Leghorn chick



# TAYLOR'S

YOUR JOHN DEERE DEALER IN O'DONNELL  
WAYLAND F. TAYLOR

We Wish To Take This Opportunity To Thank You For Your Patronage And Wish You And Yours . . .

A Very Merry Christmas And A Happy New Year



May your homes be alight with warmth and peace.

# BLOCKER GROCERY

Your S. & H. GREEN STAMP store  
SPECIALS For Friday and Saturday

**S. & H. GREEN STAMPS**  
Serving Since  
1896



**GREEN STAMPS**  
Save as you spend

The Sperry and Hutchinson Company

★ You can fill your books more rapidly by trading with O'Donnell Merchants who give S. and H. Green Stamps... they're valuable

Ask us for a free catalogue

● Yes, Sir, Double Stamps

EVERY WEDNESDAY

**Coconut 15c**

4 oz. pkg. "Baker's" Premium Shredded

**DATES 15c**

1 lb Pkg. "Dromedary" Pitted

**Christmas Candy 25c**

Cello pkg. 12 oz. "Kimbell's" Ribbon Or Mix

**Crustine 59c**

Shortening 3 lb Ctn.

**Fruit Cocktail 23c**

303 can Del Monte

**Red Plum Jam 31c**

20 oz. Tumbler "Bama"

**Pineapple 25c**

"Del Monte" No. 2 can Crushed in Heavy Syrup

**Cranberry Sauce 2**

**for 39c**

1 lb can Ocean Spray

**Flour 89c**

Gold Medal 10 lb print bag

**Oranges 29c**

Texas, 5 lb bag Full of Juice

*Finest Quality* **MEATS**

sliced **Bacon 45c**

SAVORY, PER LB

**beef roasts 45c**

Choice cuts per lb

**beef ribs 1b 22c**

FRYERS AND

LARGE FAT HENS

Plenty of CURED HAMS AND ALSO CANNED HAMS



this year **GIVE FOOD**

**Double SILVER DOLLAR Stamps**  
Every Day Until Christmas

**CRISCO**

**3 lb 89c**

3 lb can

**PUMPKIN**

**19c**

Del Monte No. 2 1-2 size can

**PEAS 2 for**

**38c**

Del Monte Earl Garden 303 can

**Dates 35c**

Dromadary 1 lb can

**Pet Milk 2 for 25c**

Large cans

**Jello 2 for 15c**

**Cranberry Sauce 2**

**for 32c**

Kimbell's 1 lb can

**Napkins 2 for 25c**

80 count, Charmin

**Pineapple 25c**

Del Monte, crushed No. 2 can

**Kleenex 25c**

Large box of 400

★ ALL OF US AT MANSELLS WISH ALL OF YOU A MOST MERRY CHRISTMAS

**Hams 1b 59c**

Christmas hams, half or whole

**Banner Bacon 49c**

per lb

**Picnic hams 39c**

Per lb

We have a full stock of Christmas Candies, Fruits and Nuts

**FREE FREE**

★ Christmas TURKEY  
★ 8 cup Mirro-matic coffee  
★ 5,000 Silver Dollar Stamps

You do not have to present to win. To be given at 4:30 Christmas Eve, Dec. 24. Register As Often As You Wish

We have all your holiday needs

\$\$\$\$\$\$\$\$\$\$\$\$  
SILVER DOLLAR THRIFT STAMPS



\$\$\$\$\$\$\$\$\$\$\$\$

★★ WE GIVE DOUBLE SILVER DOLLAR THRIFT STAMPS  
● EVERY WEDNESDAY

Accept our hearty thanks for the pleasant business associations of the past year. Once again we say

**Merry Christmas!**  
**Free 4 Big Prizes**

- ★ 1st Prize -- \$25.00 U. S. Bond
- ★ 2nd Prize -- 5,000 S. and H. Green Stamps
- ★ 3rd Prize -- 14 lb Cured HAM
- ★ 4th prize -- 5 lb Baldrige Fruit Cake

- NOTHING TO BUY
- You Do Not Have To Be Present To Win.
- Come In And Register as often as You Wish
- Only One Award To A Person

**Drawing on Dec. 24**

TRADE WHERE MA SAVES MONEY FOR PA

A HAPPY  
**NEW YEAR**



**MANSELL BROS**

PHONE 50

SPECIALS FOR FRIDAY AND SATURDAY  
FREE DELIVERY

PHC