

The Social Security Amendments 1958 will provide increased monthly payments to about 230 people in Lynn County beginning in the checks which are due early in February according to John Hut-

Under other changes made by the law, social security benefits will become payable to a number of people not previously eligible for payments. They must, however, apply to their social security offices for payments can start. Among the groups now eligible because of amendments are —

Dependents of people who are 50 or over who are now getting disability insurance benefits (children 18 or disabled; a wife of any age who has a child in her care who entitled to benefits; a wife 62 or over, or a dependent husband 65 or over).

Disabled people 50 or over who did not qualify for benefits under the old law because they did not work as much as 18 months of work in 3 years before they were disabled. A total of at least 5 years of work under the law is still required. Dependent parents whose son or daughter died after 1939 and who did not qualify for benefits under the old law because the son or daughter left a widow, widower or a child.

Adopted children under age 18 whose adopting parent began receiving retirement benefits less than 3 years after the adoption. In many cases this provision will make possible payments to the father of the adopted child.

A person receiving benefits who marries another person also will receive benefits can continue to receive monthly checks or can become eligible as a dependent of the new husband or wife without waiting three years.

Some people in situations similar to those mentioned above may have applied for benefits in the past and been notified that they did not qualify for payments. Those people should get in touch with their social security district offices promptly about filing new applications. Mr. Burton noted.

HOUSEWIFE FAVORS CIVIC IMPROVEMENTS

I will vote for the City bond issue on October 4, for two reasons. First—there are some city improvements that O'Donnell must make.

Second—I believe this proposed bond issue is a sound and practical plan of financing the needed improvements.

It is difficult for us who have lived in O'Donnell all our lives to see the changes that have crept in. It is just as difficult for us to note the lack of some changes that should have developed. We have failed to keep in mind that nothing alive stands still. It either grows or perishes; it goes forward or slips back. We in O'Donnell have never identified ourselves with the dead small towns—and set an almost casual study will give us have not kept pace with the live towns of our own size.

Modern communication and transportation has made it impossible for us not to know what other people and other towns are doing. We must either strive to keep up—or give up and die.

Statistics prove that small towns in America are growing old. This means that young people are moving to large cities; that old people are staying in and returning to small towns. We know that O'Donnell is a good place to grow old because the best people in the world live here. But we must keep some of our young people here, and it is vital that we attract these young people to our town. We must have youth to preserve our growth, our life.

We can hardly convince our children of our great city pride and our love for its people if we're not willing to provide for wholesome family and community recreation and assembly, and an adequate place to carry on our City business and house our volunteer fire protection.

We certainly cannot hope to attract other young and growing people if they cannot see some tangible evidence of our town pride. We need—in fact, we must have—these young and growing people in our schools, our churches, our businesses, our professions.

The proposed City building and fire house, the park and swimming pool will be real and lasting evidence of the pride we feel in our town, of our belief in its people.

Since the company that proposes to buy these City Bonds is confident of our financial stability and ability, it seems sound economy to vote the bond issue.

Since a twenty-five percent interest in taxes will finance the bond, I feel the city improvements will become the wisest investment we have made in O'Donnell.

Mrs. Douglas Ballew

Now is the time to poison John- grass, Atlatcle, Sodium Chloride and Dowpon available at Dale Thuren Farm Store.

You can get Golden Harvest Cotton Defoliant and Crop Dryer at Dale Thuren Farm Store here.

# Vote For Progress Saturday, Oct. 4

## O'DONNELL INDEX PRESS

37th year No. 2

O'DONNELL, LYNN COUNTY, TEXAS, Wed. Oct. 1, 1958

\$2 And \$2.50 Per Year

### Residents To Vote On Bond Issue Here Saturday

#### Much Interest In Issue

Saturday, Oct. 4th from 8 a. m. until 7 p. m. voters may decide the fate of a proposed \$50,000 bond issue. It is estimated it will raise city taxes 1-4th. Voting is at the City Tax office and Mrs. J. M. Noble is judge of the election.

All persons eligible to vote in a state election (poll tax or overage exemption and who own property on City's tax roll and who now live within the city's limits, may vote. If the money is made available, it is proposed that a swimming pool be built, a club house and a fire hall. A public park will be built and improved.

There is some confusion as to who will have authority over these improvements. All will be the property of the City of O'Donnell and the mayor and council will make all governing rules and maintain and keep up the improvements. The mayor and council are elected every two years and the people have the final say in management by this democratic method.

P. S. — The Index has been asked where the City will get water to fill the pool. It takes 17,000 gal. to fill pool and in Aug. the City sold 3 million gal. The pool is filled once a year and then the water is filtered with a complete exchange of the pool every two hours.

#### District FHA Meet Held Here Saturday

The District 3 FHA met Saturday here for the first time. O'Donnell the host city. President Sarah Prather called the 300 girls from 12 chapters to order. Supt. John Criner gave the address of welcome and Mayor Jimmy Forbes extended the welcome of the community. Rev. W. G. Burton, pastor of the Baptist Church here spoke on "Love, Courtship and Marriage."

In the business session at noon Marcheta Wood of here and Sharon Applewhite of Tahoka were elected to run for area office in the spring. The afternoon session featured entertainment from many chapters.

From O'Donnell Sandra Singleton Donna Vestal and Dan Seely entertained with several songs such as "Melody of Love" and "Mama, he's kissing me". Tahoka presented an act of the 1920's by six girls known as the Flappers. Plains featured a twirling act. Ackerly gave a group of popular songs. Mrs. Madeline Hegl, home making teacher of Tahoka gave an enjoyable book review on "Please Don't Eat The Daisies." She gave an unforgettable picture of a mother's life with four small boys.

An inspiring devotional was given by Sue Lott followed by the "Lord's Prayer" sang by Donna Vestal.

A report of interest covering all phases of FHA work was given.

#### McLaurin - Cathey Vows Exchanged

Miss Margaret Ann Cathey, daughter of Mr and Mrs. H. L. Cathey became the bride of Johnny McLaurin son of Mrs. Beatrice McLaurin at 8 p. m. in the O'Donnell Methodist Church with Rev. Bill Burton, pastor of the local Baptist Church, reading the ceremony.

Travis Pierce was best man, Ethel Simpson was bridesmaid and Lyndel Kinley and Ronnie Rainey were ushers. Brenda Parker, niece of the bride, and Fran McLaurin, sister of the groom, were candlelighters.

The bride was given in marriage by her father. She wore a waltz length gown of lace and tulle. The bodice was lace with long tapered sleeves and a rounded neckline tapered to a V in the back. The skirt was of tulle over a ruffled underskirt of tulle was scalloped with rows of lace. The veil was edged in scalloped lace. She carried a colonial bouquet with a detachable corsage.

At the reception in sellowship Hall of the Church, Miss Linda Parker, niece of the bride, and Miss Barbara White, cousin of the groom, served refreshments.

When the couple left on a wedding trip, Mrs. McLaurin wore a 2 piece green suit with white velvet hat and black accessories. They are at home at 1913 13th st in Lubbock.

Mrs. McGlaun, daughter of Mr. and Mrs. Cleon Eason had surgery at Lamesa last week.

Mrs. Etta Abernathy flew home Sunday after visiting at Paris and at Hugo, Okla. Her nephews, Orville, Larry and Henry Fry flew her in their private plane.

For sale — 1955 model AC combine No. 66 excellent condition, also 1946 GMC truck with good grain bed ready for use, also 1950 Chevrolet Pickup, A. B. Furlow — Aten 2342, 3 miles East, 1-2 mile south Harmony Glen

#### Look Who's New

Congratulations to Mr and Mrs. Carl Houser on arrival of a fine son, James Brent, Sunday at a Seminole hospital. Grandparents from here are Mr and Mrs. Harvey Line.

### Country Editor

Note — our thanks to Editor Frank Hill of Tahoka for setting some type for us. We had press time facing us and several letters to editor to read. Thanks, Frank.

The Index, editorially and personally supports the Civic Improvement Bond Issue to be voted on here Saturday.

We believe that this October day, 1958, may well decide the fate of our town. If the bond issue is defeated civic pride will take a nose dive. We will say "What's the use of trying to improve our town?" If the property owners Saturday pass the bond issue it will mean "My town comes first and I am willing to pay more taxes for more benefits and a better town."

The line is drawn clearly. The Index has presented the facts fully and clearly (see last week's paper). The City Council is backing the proposal. The Rotary Club, The Study Clubs, The Fire Department — all are behind the project.

Mr. Property Owner consider this — your house or business property value is tied DIRECTLY to the economic welfare of O'Donnell. If our town degenerates into a slum town your house would approach a much smaller value. If our town grows, as it is reasonable to expect, your property values will grow. More taxable property will be built and entered on the tax rolls and the taxes will DECREASE.

The Index believes passage of the bond issue will be a fire to wipe out our civic indifference that causes our beloved town to drag its feet.

Big O is ours. We know you love the town. Let's dream BIG, plan BIG, and ACT BIG by putting our pocketbook where our heart is — in the future of our town.

After 14 years with you we feel we know you. The issue is sure to carry.

#### O'DONNELL NEEDS TO TAKE STEP FORWARD

Flow Citizens of O'Donnell: A few weeks ago, the Mayor and City Council of our city met with a group of representative citizens and discussed the need for civic improvements in our City.

This meeting was the clearing-house of ideas and plans of many citizens and groups that were several years in the making, and it was decided at this meeting, by unanimous approval, that the time had come for O'Donnell's Hour of Decision, and the question posed was very simple, yet very important: Do we, as citizens and as a community, wish to make our town a better and more progressive place to live? The decision was emphatically "Yes," and pursuant to the will of the people, our City Officials are giving us the opportunity to order this decision on Saturday, October 4, 1958, at which time a Bond Election is to be held to finance the much needed civic improvements in our town, such as a new City Park, a new Swimming Pool, a new Community Civic Building, and a new City Hall and Fire Station for our Volunteer Firemen.

This is the first time in the history of O'Donnell that we have had the opportunity to take such a long stride forward, and the future direction of our town for many years to come will depend to an enormous extent on how well we take advantage of this opportunity.

It is legendary over the South Plains area how enthusiastically and generously O'Donnell has over the years supported such civic undertakings as the March of Dimes, Red Cross and Salvation Army Drives, the annual O'Donnell Rodeo, the Boy Scouts, Girl Scouts, Cubs and Brownies, and all activities of our School, Churches, Civic and Service Organizations, and numerous other worthwhile projects in our town, and we have justification in being mighty proud of these accomplishments.

Now, as we are approaching another landmark community undertaking, let each of us lend our support on October 4, 1958, by enthusiastically approving the whole Bond Issue for Civic Improvements — this is truly O'Donnell's Hour of Decision.

Respectfully Submitted JOHN SALEH

Mr and Mrs. Jesse Lane visited their children in Midland and Odessa Sunday.

### FIRE CHIEF JONES SUPPORTS CIVIC IMPROVEMENTS

As Fire Chief of the O'Donnell Fire Department, I would like to urge all the interested citizens of our town to go to the polls Saturday and vote FOR the bond issue.

Our Fire Hall, for many years has been a hazard and does not set a proper example toward asking others to eliminate fire hazards. The fire boys do not have adequate space to take care of equipment and keep it in good condition.

I am vitally interested in not only this project but also the swimming pool, park and community house. I believe these projects are good for our community and we should all go to the polls on Saturday and show our confidence in our present city officials and volunteer fire department by voting for these three issues.

For the past twenty years our Volunteer Fire Department has gone all out for you people, so now I am asking that you go all out for us.

F. M. JONES, Fire Chief

For sale — 4 rooms and bath, stucco, 2 70 ft lots and 1 60 ft lot on pavement. Can be sold on 1 or 2 or 3 lots. A bargain. B M Haymes

#### MAHON TO SPEAK TO LYNN CO FARMERS OCT. 6TH

The Lynn County Farm Bureau will have its annual meeting on Oct. 6th in the WOW Hall in Tahoka at 3 p. m. After a business session, Rep. George Mahon will speak on the farm program and other subjects of interest to the Lynn Co. farmers. Refreshments will be served at the close of the meeting according to Elnora Curry, secretary of the Lynn Co. Farm Bureau.

#### GREENHANDS NAME OFFICERS

Newly elected officers of the O'Donnell Greenhand Chapter of FFA are —

President: Tom Hoskins, Vice-President, Dennis Jordan, Secretary, Don Thomas, treasurer, Darrell Rogers, Sentinel, Dale Finch, reporter, Billy Amaro.

#### JOURNALISM STAFF LISTED

Marla Caswell is this year's editor of the school paper. Gloria Line is Co-editor, Sue Lott, Society. Dora Botello, Gossip, Lanny Brewer, Sports, David Gary, Art and Coach Palmer, sponsor.

#### ANNUAL STAFF LISTED

Following are members of the school Annual Staff: Secretary, Editor, Sarah Prather, Business manager, Dorthey Thornton, Art editor, Helen Moreno, Photographer, Billy Edwards, Assistant Editor, Kay Franklin, Assistant business manager, Sherry Middleton, Assistant Art Editor, Gonzalo Botello, Assistant photographer, Kenneth Moore.

#### 7TH GRADE OFFICERS

Nancy Street is president of this year's 7th grade. Janice Clayton is vice president, Carol Ann Moore, secretary, Linda Howell is reporter. In section 7B Joe Wayne Emerson and Ronnie Wood are fire chiefs.

#### BAND ATTENDS LUBBOCK FAIR

The O'Donnell High School Band with 28 members marched in the South Plains Fair parade in Lubbock Monday. Bill Schoeller is the director of the band. Sandra Singleton is president, Dorothy Botello is vice president, Jo Ann Lacy is secretary and Gonzalo Botello is parliamentarian.

Majorities include Norma Yocham, Therlene Mahurin, Mary Beth Gardenhire and also Misses Singleton, Botello and Lacy.

The next PTA meeting is Tuesday, Oct. 14th at 7:30 p. m. The program will include a "Dragnet" skit and a film strip titled "Your Community and Schools"

Elzie Davis, who lives 5 miles NW of Welch, said he has plenty of blackeye peas for you O'Donnell pea-pickers.

Miss Lillie Reynolds of Seminole will wed Jack Brown of the same city Oct. 7th at 8 p. m. at the Nazarene Church there. All friends are invited as no formal invitations are being sent. Miss Reynolds graduated from high school here about four years ago.

#### HOME COMING IS OCT. 24TH

Oct. 4th has been set as Home-Coming Day for all ex-students of the O'Donnell Schools. J. C. Harris is president of the Ex-student Association and Mrs. Gus Sherrill of Draw is vice president. Mrs. Roger Doss is secretary-treasurer.

Entertainment will include the annual banquet, the Plains-Eagle football game and many hours of visiting. A fine time is being planned. Circle Oct. 24th and plan now to come home.

Jerry Pendleton is ill in a Lamesa hospital with polio.

### BUSINESS MAN SUPPORTS CITY BOND ISSUE

As a former Mayor of the City of O'Donnell for six years, I had the opportunity to meet and work with the officials of many of our neighboring towns and cities on numerous Municipal problems, and it became evident to me during such period of years that our home town, while having the same or similar resources and economy, was grossly lacking in Civic physical facilities, even though the desire to have such facilities on the part of our citizens was frequently expressed.

Long years of background work by many of our citizens and groups, as well as city officials, has finally culminated in a Bond Issue being presented to the citizens to determine whether or not we have the Civic facilities which we need, and want.

The passage of this Bond Issue, which is to be voted on this coming Saturday, October 4, is necessary in order that we have necessary financing for the civic improvements, and it is sincerely urged that each and every citizen of our town seriously consider the features of the forthcoming Bond Issue, as well as the great benefits to our Town that will accrue from its full passage, and you are respectfully solicited to vote "FOR" the Bond Issue in its entirety, and we can all look forward to a finer and better hometown.

Sincerely Submitted, Jimmy Hash

Doyle Lane and family have recently moved to Midland where he manager of Jenkins Music store.

If you need Christmas cards see me or call 259, Alene Line 37p

#### Eagles Claw Post 20-0

The high flying Eagles rolled over the Post Antelopes 20 to 0 here last Friday nite. Although the locals scored in the first half, they really got rolling in second half with two more TD and a 2 point conversion. The Eagles offense was sparked by Gardenhire, Dunn, White and Bessire. Rogers, James and Dunn were good on defense.

#### Speaks At Rotary

The O'Donnell Rotary Club met Tuesday in its regular meeting with President Jimmy Forbes in charge. John Criner, Superintendent of O'Donnell Schools, gave a vocational talk on modern education. Fred Raney was a local guest and Jim Moody of Lamesa was a guest.

#### A MINUTE EDITORIAL

Big O tops neighboring towns in quotas for Red Cross, for March of Dimes, Salvation Army, etc, but no town in West Texas our size have as few public benefits. Vote Saturday "FOR" a better town.

#### PTA MEMBERSHIP DRIVE

The PTA here is still seeking membership. If you have not yet joined this worthy organization, you are urged to do so. Membership is a nominal fee of 50 cents for each person. Mothers and Daddys certainly ought to support PTA as well as those who have no children in school but are interested in our schools, our children and our community. See Mrs. Hulen Bolch membership chairman, Rev. Bill Burton, PTA president or any of school faculty. Membership will close Oct. 15th.

#### MR. COTTON FARMER

Catch your cotton seed and I will buy them

Check With L. G. Clark for price

HIGHEST PRICES FOR

## EGGS

A FULL LINE OF QUALITY

## COTTON DEFOLIANTS

Tell us your needs -- We Will Get It

Always A complete line of Vet. Supplies

### O'DONNELL FARM & RANCH STORE

Paymaster FORMULA FEEDS

L. G. CLARK, OWNER

PHONE 200

### Forks You Know

Mr and Mrs. Carl Hefner and children of Willis, Okla. visited his brother Mr and Mrs. Roy Hefner and Linda over the week end.

Mr and Mrs. Bud Autry and family of Lubbock visited in the Bill Autry home Sunday.

Mr and Mrs. Lewis Henderson of Goodland and M. rand Mrs. Bobby Henderson of Wells visited in the H F Lindly home Sunday.

Mr and Mrs. A. L. Ellis of Hereford visited her sister Mr and Mrs. Bill Gardenhire over the week end.

Connie Faye Smith of Lubbock visited her grandmother Mrs. Effie Bazer over the week end.

Mrs. Willie Smylie and Mrs. Sid Jones attended the market show at Lubbock Sunday.

John Ellis was in Oklahoma City early this week on business.

Shag Garrett and Roy Allen Gibson of Denver City attended a National Guard annual inspection at Brownwood last week. Mrs. Roy Gibson visited in Brownwood last week.

Mr and Mrs. L. W. Barton visited her mother Mrs. E. W. Stevens at Knox City over the week end.

Mr and Mrs. C. M. Harry of Ackerly visited their daughter Mr and Mrs. J. A. Hogg and family over the week end.

Mr and Mrs. E. G. Bartlett and son Jack of Anson and Vernon Sprabery of Anson visited in the Carr Sprabery home over the week end.

Mr and Mrs. Hilton Wood of Tahoka visited his sister Mr and Mrs. Elvin Moore Sunday.

#### 2nd Birthday Celebrated

Charles Elvin Moore celebrated his second birthday with a party at his home last Thursday. Present were Marsha Palmer, Bobby Joe Agnew, Clark Swinney, Paul Smith, Mary Ann Sumrow, Paul David, and Ann McLaughlin, Cookie and Johnny Curley, Sharla Pace, his grandmothers, Mrs. Ben Moore, and Mrs. H. E. Wood of Tahoka, his great grandfather, Mrs. H. R. Max well, Madams Bill Dorman, Joe Palmer, Bob Agnew, O. G. Smith, Jr. Hollis Swinney, Darius Sumrow, Shorty McLaurin, Dale Cary, A. H. Party.

#### School Menu

Wednesday — sausage green beans, sliced tomatoes, jelly, rolls, butter, milk, bread.

Thursday — franks and cheese strips, pinto beans, vegetable salad, ice cream, corn bread, butter, milk, bread.

Friday — fish sticks, blackeye peas, creamed potatoes, cold slaw, jello with fruit, bread milk.

Monday — meat patties, English peas, buttered potatoes, celery stick, peach loaf, milk, bread.

Tuesday — bacon strip, navy beans, mixed greens, vegetable salad, apple pie, corn bread, butter, milk, bread.

Wednesday — sausage green beans, sliced tomatoes, jelly, rolls, butter, milk, bread.

Thursday — franks and cheese strips, pinto beans, vegetable salad, ice cream, corn bread, butter, milk, bread.

Friday — fish sticks, blackeye peas, creamed potatoes, cold slaw, jello with fruit, bread milk.

Monday — meat patties, English peas, buttered potatoes, celery stick, peach loaf, milk, bread.

Tuesday — bacon strip, navy beans, mixed greens, vegetable salad, apple pie, corn bread, butter, milk, bread.

Wednesday — sausage green beans, sliced tomatoes, jelly, rolls, butter, milk, bread.

Thursday — franks and cheese strips, pinto beans, vegetable salad, ice cream, corn bread, butter, milk, bread.

Friday — fish sticks, blackeye peas, creamed potatoes, cold slaw, jello with fruit, bread milk.

Monday — meat patties, English peas, buttered potatoes, celery stick, peach loaf, milk, bread.

Tuesday — bacon strip, navy beans, mixed greens, vegetable salad, apple pie, corn bread, butter, milk, bread.

Wednesday — sausage green beans, sliced tomatoes, jelly, rolls, butter, milk, bread.

Thursday — franks and cheese strips, pinto beans, vegetable salad, ice cream, corn bread, butter, milk, bread.

Friday — fish sticks, blackeye peas, creamed potatoes, cold slaw, jello with fruit, bread milk.



**Dr. O. H. NANCE**  
**Optometrist**  
 528 N. 1st Lamesa ph. 554

**Real Estate**

—FARMS—RANCHES—  
 CITY PROPERTY  
 Leases and Royalties

**B. M. Haymes**

When the disease attacks humans it causes lingering fever, weakness, and loss of resistance, and is occasionally fatal.

There are few things a pretty girl can't have, if she combines personality with judgement.

For most people, high ideals arrive late in life, after financial security or guilt complex.

**Noble L. Rumbo, M. D.**

**Medicine and Surgery**

RUMBO CLINIC  
 OFFICE TELEPHONE 61  
 RESIDENCE PHONE 180

**WE HAVE "GOLDEN HARVEST" DESSICANT COTTON DEFOLIANTS**

If your dry land cotton is mature and 75 percent open, consider using "Golden Harvest" and Machine Stripping within a week.

**DALE THUREN FARM STORE**

Tahoka and O'Donnell



**HIGGINBOTHAM FUNERAL HOME**  
 "Dedicated to Helpfulness"  
 408 N. Austin St. Lamesa Phone 4585  
 24 Hour Ambulance Service  
 Burial Insurance "Bonded Protection"

**WHY NOT GET THE BEST?**  
 Place Your Order NOW For

**DeKalb Hybrid Sorghum Seed and DeKalb Chicks**

★ Discounts on all early orders  
 Pay on delivery in the Spring  
 Call or see Today ----  
 ★★ **BILL SNELGROVE**  
 PHONE NELMS 3309

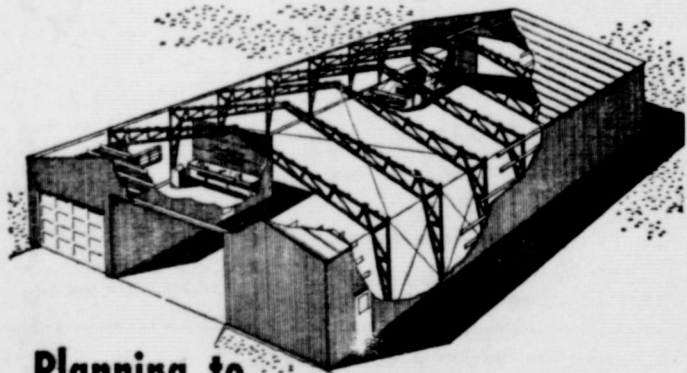
**STANLEY FUNERAL HOME**

**AND BURIAL ASSOCIATION**

Day Or Nite Call 233 At Tahoka

"Thoughtful, Courteous Service"

We Accept Burial Policies Of All Companies



**Planning to Build an ALL-PURPOSE BUILDING?**

- WORKSHOP — MACHINE STORAGE
- CATTLE BARN — HAY STORAGE
- GARAGE — MACHINE STORAGE
- GRAIN STORAGE — HAY STORAGE

These are just a few of the many building combinations you can enjoy—easily and economically—the CUCKLER STEEL SPAN way. You get 100% usable space—wall to wall and roof to floor. These buildings are easy to erect—yet built with the strength of a bridge. And priced much lower than you would expect for quality buildings of this type.

CUCKLER STEEL SPAN BUILDINGS are available in widths of 32', 44', 50', 60' and multiples—any length. Choose the siding, roofing and other materials from our stock. Let us help you plan your All-Purpose Building now. CALL US TODAY FOR FREE ESTIMATE.

If Pays to Plan with Your Steel Span Man

**Cicero Smith LUMBER COMPANY**

**O'Donnell Index - Press**

Box B. O'Donnell, Texas  
 Published Every Wednesday

**O. G. SMITH, JR.**  
 Advertising Rate: 50c col. inch  
 Entered as second class matter  
 September 23, 1923 at Post Office  
 at O'Donnell, Texas under Act of  
 Congress March 3, 1879.  
 (Rain Or Shine)  
**SUBSCRIPTION RATES**  
 In Lynn, Dawson and Borden  
 Counties ..... \$2 per year  
 Elsewhere in U. S. .... \$2.50  
 Carriage charges 50c Classified  
 advertising 2c per word with minimum  
 charge 50c  
 Lead label at top of paper to see  
 when your paper expires.

**CHURCH OF THE NAZARENE**

Sunday School ..... 10:00 a. m.  
 Morning worship ..... 11:00 a. m.  
 N. Y. P. S. at 6:30 p. m.  
 Prayer service Wednes. 7 p. m.  
 Evangelistic Services 7 p. m.

**FIRST BAPTIST CHURCH**

**SUNDAY**  
 Sunday School ..... 9:45 a. m.  
 Morning Worship ..... 11:00 a. m.  
 Concord Choir ..... 6:00 p. m.  
 Training Union ..... 7:00 p. m.  
 Evening Worship ..... 8:00 p. m.  
 Youth Fellowship 1st Sunday at  
 9:00 p. m.

**MONDAY**

W. M. U. .... 3:45 p. m.  
 G. A. Sunbeams ..... 3:45 p. m.  
 Jr. G. A. .... 3:45 p. m.

**WEDNESDAY**

Intermediate G. A. 7:00 p. m.  
 Officers and teachers 7:30 p. m.  
 Prayer, Bible Study 8:00 p. m.  
 Church Choir ..... 8:45 p. m.

**Assembly of God**

Sunday School 9:45 a. m.  
 Worship Service 11:00 a. m.  
 Evening service: 7 p. m.

**METHODIST CHURCH**

Sunday School 9:45  
 Morning Worship 10:55 a. m.  
 Evening Fellowship  
 Children, Youth, Adults 6:30 p. m.  
 Evening worship ..... 7:30 p. m.  
 Woman's Society of Christian  
 Service — Faith Circle Mondays at  
 2:30 p. m.; Mary Martha Circle at  
 9:30 a. m. Tuesdays  
 Methodist Men meet each 4th  
 Monday at 8 p. m.

**Mahurin Laundry**

SOFT WATER  
 Help - Your - Self

**Laundry**

Wet Wash, Ruff Dry  
 IRONING

**CLAUDE'S**



All Kinds Cowboy and Wellington  
 BOOTS — WESTERN SHIRTS  
 MOCCASINS — LOAFERS — ALL  
 KINDS FINE LEATHER GOODS  
 EXPERT REPAIR ON ALL  
 SHOES AND BOOTS



**DON'T BE CAUGHT LIKE THIS!**

If your property is insured at 1947 price levels, your protection is as inadequate as is this bewildered little fellow.

If you have made additions or improvements on your home and property, be sure you make these same improvements in your insurance program.

Don't be caught with your sensitive spots exposed. Call your local Capital Stock agent for a complete analysis of your insurance coverage.

He is an expert who represents only SOUND, RELIABLE Capital Stock companies.

**LOANS**

**MOORE INSURANCE**

**AGENCY**

Phone 220, O'Donnell

**Problems Of Atom Age**

With the coming of the atomic age and all its benefits to mankind, also comes new problems and hazards.

All of us recognize the hazard faced from enemy action in dispersing radioactive contaminants over wide areas, and with continuing information released by various authorities, everyone is coming to realize the many other dangers of excessive radiation.

Through continuous educational activities the State Department of Health is in the forefront in safeguarding Texas citizens against the dangers of careless and unnecessary use of isotopes, x-rays and other radioactive substances.

The cooperation on the part of industrial and medical users in the employment of proper procedures and safety devices has been commendable.

The Department does not attempt to regulate the use of x-rays used in the healing arts. But improvements in radiological techniques in the use of x-ray equipment, installation of cones, filters, shields, more sensitive films, accurate focusing, and shorter exposure time has decreased the amount of radiation to both the examiner and the examinee. Also the indiscriminate use of shoe-fitting fluoroscope has been controlled.

Too, there is a diminishing need for use of x-rays in area-wide mass surveys, formerly justified when tuberculosis was more widely prevalent. Today such surveys are directed only to exposed groups or to those who have been previously screened through the use of tuberculin tests.

However, this watchful attitude does not mean that all radiation should be avoided. The State Department of Health continues to publicize the fact that anyone who hesitates to accept diagnostic or therapeutic x-rays properly recommended by a qualified physician is needlessly jeopardizing his health without justification.

Diagnostic x-rays, the use of radioactive iodine in thyroid studies, fluoroscopy for gastric disorders, radioactive sodium for heart studies, and the use of radioactive phosphorus in the treatment of blood cancer, are valuable aids which have reduced suffering and contributed to the study and treatment of disease.

Health and medical authorities are ever alert to the benefits and dangers of radiation. Knowing this should put Texans at ease and prevent radiation hysteria.

Buy your daily paper at home-- it's same price at index office  
 Lubbock Avalanche  
 7 days a week \$12.95  
 6 days a week \$11  
 See that your news gets to your home town paper

*Elizabeth Arden*  
 presents

**Crème Extrordinaire**



This special size

**150**  
 plus tax

for 4 weeks only!

(September 22 through October 18th) Miss Arden offers every woman this special introductory jar, so you may see for yourself what an out of the ordinary cream this is in every way!



Crème Extrordinaire works wonders at lessening wrinkles and lines; fills out hollows and reclaims fullness and texture of youth! No other cream has ever helped the skin so much, smoothing, moisturizing, nourishing and neutralizing acid skin conditions. Regular sizes, in apothecary jar, 10.00, 18.50, 27.50 plus tax

Lott Pharmacy

**LIMITED TIME ONLY**  
 17 Jewel, Waterproof and Shock-proof WATCH FOR ONLY \$12.95 (And your old watch)  
 Fully Guaranteed For 1 year  
 ★ **HALE VARIETY**  
 All Watch repairs Unconditionally Guaranteed.

**GOING PLACES?**

Don't forget Travel Accident Insurance! Broad Coverage — low cost!  
**MOORE INSURANCE AGENCY**

**HOT BAR-B-QUE**

**Bob Johnson**  
 1st door East Ford Co.

For sale — 2 bedroom house, carpeted, nearly new. B. M. Haymes

For sale — Apt. size gas range and gas or electric refrigerator H L Wood stx

For sale — 2 Ford tractors, 49 Chrysler, James Reed, Box 412, Phone 99

FOR SALE — my home in O'Donnell. J. V. BURDETT, Jr.

Will make belts and buttonholes Mrs. W L Pendleton at former Don Edwards home 22p

Wanted to buy land on GI bill, have 20 days or will rent 1-4 or 1-2 section. James Reed.

candy bars are still five cents, though they have undergone surgery in recent inflationary

One doesn't have to believe anything in any church doctrine going to church.

No two people ever thought and it takes some individuals a time to find that out.

Some local residents never realize what a line place they live until they go away from home to try life in another place.

**O'Donnell Lodge No. 1**  
**A. F. and A. M.**  
 STATED MEETING 4th THURSDAY  
 All Visiting Brothers Invited  
**TED ROGERS, W. M.**

**WANTED** — A good used tub. Rumbo Clinic

For sale — Rye in 100 lb \$2.75. Howard Draper, Rt. 2, Oka.

Wanted d Latin American to work Sat. and Sun. at phone 1st door east Wimas Hardware

Attention — I still make buttonholes, belts, contour, good supply of popular large buckles, also draperies. Mrs. Wood, 511 South 12th

Wanted — a good used or, steel tower, must be in shape, John Stephens

**Need Printing?**

May we suggest you look over your supply of

- Imprinted Checks
- Statements
- Letterheads
- Envelopes
- Tabulated and Registered Forms
- Poster Forms
- Rubber Stamps

"A dollar spent in O'Donnell CIRCULATES times before going inactive... trade at home"

If we can't save you from 10 to 25 percent, we don't want your job!

**The Index**

**MR. COTTON PRODUCER --**

We have two sets of LINT COMBER-BLENDING MACHINES of the most modern design which makes our plants equal to or better than any plant on the Plains.

★ These machines are designed to GIN QUALITY into your COTTON — to make it possible for you to get the TOP DOLLAR for your year's work

This is a service organization and we are striving to serve you better.

**Wells Farmers Co-operative Gins**

DEALERS IN ---  
 COTTON, COTTON SEED AND COTTON SEED PRODUCTS

B. J. (Shorty) McLaurin, Mgr.

**There's A C. P. Policy For You**

Farm Bureau's Farmers Liability Insurance Plan To Fit The Needs Of Lynn County Farmers.

- Section 1. Public Liability
- Section 2. Employer's Liability
- Section 3. Physical Damage To Property

★ ★ ★  
**SEE US TODAY ---**

**Lynn County Farm Bureau**

Charles Reid, Insurance Agent

Phones, office 528, home: 414. Tahoka



DUB - TV. Ch. 13

Saturday
Sign On
Captain Kangaroo
Mighty Mouse Playhouse
Jimmy Dean Show
Learn to draw
Cartoon Circus
57 Sports Highlights
Sports Page
Baseball Game of Month
To be announced
Bowling Stars
The Bls Picture
Frontier Theater
20th Century Fox
Sign Off
Kingdom of the Sea
Popeye Theater
Sgt. Preston of the Yukon
Perry Mason Show
26 Men
Oh, Susanna
Have Gun, Will Travel
Gunsmoke
Goodyear Theater
News
United Artists Showcase
Sing Off
Sunday
Sign On
Church

11:45 Baseball Preview
11:55 Baseball Game
2:25 Harry Reasoner News
2:30 The Christophers
3:00 This is the Life
3:30 As We See It
4:00 The Last Word
4:30 Face the Nation
5:00 The Search
5:25 Robert Trout News
5:30 20th Century
6:00 Lassie
6:30 -to be announced-
6:30 Ed Sullivan
6:30 G. E. Theatre
8:30 Alfred Hitchcock
9:00 \$64,000 Challenge
9:30 Amos 'n' Andy
10:00 What's My Line
10:30 Sunday Night News
Monday
7:50 Sign On
7:55 News
8:00 Captain Kangaroo
8:43 CBS News
8:55 Local News
9:00 Gary Moore Show
9:30 How Do You Rate
10:00 Godfrey Time
11:00 Love of Life
11:30 Search for Tomorrow
11:45 Liberace
12:15 Noon News and Weather

12:30 As the World Turns
1:00 Beat the Clock
3:00 The Brighter Day
3:15 The Secret Storm
3:30 The Edge of Night
4:00 Home Fair
4:30 Looney Tunes
5:30 Superman
5:55 News
6:00 News, Weather, Fea. Sec.
6:15 Doug Edwards
6:30 Robin Hood
7:00 Burns & Allen
7:30 Gray Ghost
8:00 Danny Thomas Show
8:30 December Bride
9:00 Studio One
10:30 News, Weather Fea. Sec.
11:00 Columbia Showcase
12:30 Sign Off
Tuesday
7:50 Sign On
7:55 News
8:00 Captain Kangaroo
8:43 CBS News
8:55 Local News
9:00 Gary Moore Show
9:30 How Do You Rate
10:00 Godfrey Time
10:30 Dotto
11:00 Love of Life
11:30 Search for Tomorrow
11:45 Liberace
12:15 Noon News and Weather
12:30 As the World Turns
1:00 Beat the Clock
3:00 The Brighter Day
3:15 The Secret Storm
3:30 The Edge of Night
4:00 Home Fair
4:30 Looney Tunes
5:55 News
6:00 News, Weather, Fea. Sec.
6:15 Doug Edwards
6:30 Name that Tune
7:00 Mr. Adams & Eve
7:30 Zorro
8:00 To Tell The Truth
8:30 Official Detective
8:55 \$64,000 vustion
9:30 Mike Hammer
9:30 Red Skelton
10:00 News, Weat., Public Aff.
11:00 Worner Bros. Showcase
12:30 Sign Off
Wednesday
7:50 Sign On
7:55 News
8:00 Captain Kangaroo
8:43 CBS News
8:55 Local News
9:00 Gary Moore Show
11:45 Liberace
12:15 Noon News and Weather
12:30 As the World Turns
1:00 Beat the Clock
3:00 The Brighter Day
3:15 The Secret Storm
3:30 The Edge of Night
4:00 Home Fair
4:30 Looney Tunes
5:55 News
6:00 News, Weather, Fea. Sec.
6:15 Doug Edwards
6:30 Circus Boys
7:00 Leave It To Beaver
7:30 Johnson's Wax Theatre
8:00 The Millionaire
8:30 I've Got A Secret
9:00 -to be announced-
10:00 Stories of the Century
10:30 News, Weather, Pub. Aff.
11:00 United Artists Shodcase
12:30 Sign Off
Thursday
7:50 Sign On
7:55 News
8:00 Captain Kangaroo
8:42 CBS News
8:55 Local News
9:00 Gary Moore Show
9:30 How Do You Rate
10:00 Godfrey Time
10:30 Dotto
11:00 Love of Life
11:30 Search for Tomorrow
11:45 Liberace
12:15 Noon News and Weather
12:30 As the World Turns
1:00 Beat the Clock
3:00 The Brighter Day
3:15 The Secret Storm
3:30 The Edge of Night
4:00 Home Fair
4:30 Looney Tunes
5:55 News
6:00 News, Weather, Fea. Sec.
6:15 Doug Edwards
6:30 Circus Boys
7:00 Leave It To Beaver
7:30 Johnson's Wax Theatre
8:00 The Millionaire
8:30 I've Got A Secret
9:00 -to be announced-
10:00 Stories of the Century
10:30 News, Weather, Pub. Aff.
11:00 United Artists Shodcase
12:30 Sign Off
Friday
7:50 Sign On
7:55 News
8:00 Captain Kangaroo
8:43 CBS News
8:55 Local News
9:00 Gary Moore Show
9:30 How Do You Rate
10:00 Godfrey Time
10:30 Dotto
11:00 Love of Life
11:30 Search for Tomorrow
11:45 Liberace
12:15 Noon News and Weather
12:30 As the World Turns
1:00 Beat the Clock
3:00 The Brighter Day
3:15 The Secret Storm
3:30 The Edge of Night
4:00 Home Fair
4:30 Looney Tunes
5:55 News
6:00 News, Weather, Fea. Sec.
6:30 Boing Boing Show
7:00 Trackdown
7:30 Zane Gray Theater
8:00 Phil Silvers
8:30 Union Pacific
9:00 The Line - Up
10:00 Talent Scouts
10:30 News, Weather, Pub. Aff.
11:00 United Artists Showcase
12:30 Sign Off

10:30 Dotto
11:00 Love of Life
11:30 Search for Tomorrow
6:30 Whirlybirds
7:00 Private Detective
7:30 Climax
8:30 Playhouse 90
10:00 Adorn Playhouse
10:30 News, Weather, Pub. Aff.
11:00 Chicago Wrestling
12:00 Sign Off
Friday
7:50 Sign On
7:55 News
8:00 Captain Kangaroo
8:43 CBS News
8:55 Local News
9:00 Gary Moore Show
9:30 How Do You Rate
10:00 Godfrey Time
10:30 Dotto
11:00 Love of Life
11:30 Search for Tomorrow
11:45 Liberace
12:15 Noon News and Weather
12:30 As the World Turns
1:00 Beat the Clock
3:00 The Brighter Day
3:15 The Secret Storm
3:30 The Edge of Night
4:00 Home Fair
4:30 Looney Tunes
5:55 News
6:00 News, Weather, Fea. Sec.
6:30 Boing Boing Show
7:00 Trackdown
7:30 Zane Gray Theater
8:00 Phil Silvers
8:30 Union Pacific
9:00 The Line - Up
10:00 Talent Scouts
10:30 News, Weather, Pub. Aff.
11:00 United Artists Showcase
12:30 Sign Off

SAVE MONEY ★ SAVE TIME
By Buying Your Printing At Home
THE O'DONNELL INDEX-PRESS

STAR-STUDED FUN!
THE MUSIC MAN
SHOWER OF STARS
STATE FAIR of Texas
10,000 EXHIBITS
ICE CAPADES
OCT. 4-19
LIVESTOCK FOOTBALL
DALLAS TEXAS INTERNATIONAL TRADE FAIR

Santa Fe
Ship and Travel Santa Fe
It's the only railroad under one management linking Chicago, California, Colorado, Texas and points in the busy southwest.

Stick to little tasks in life and you will soon find out that someone else has the big jobs for himself.
Giving advice is a habit with human beings, but fortunately ignoring advice is even more strongly ingrained.

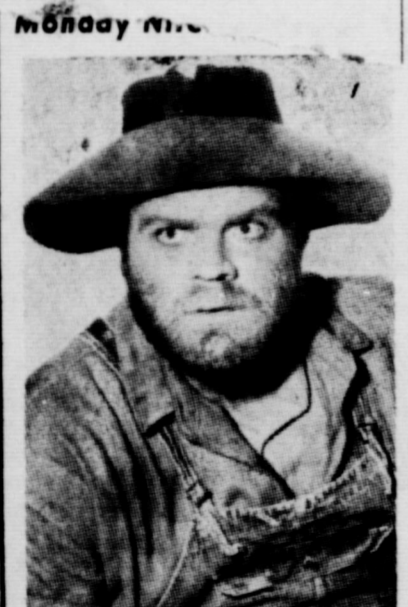
To hear some people tell it, all the world's problems fade into no-brains.

Advertising is not bragging. It is merely a device to show buyers where they can get more for their money.

REX
Friday Nite and Sat. Mat. Oct. 3rd and 4th
William Prince in MACABRE
Sun. Mat. and Monday Nite
Oct. 5th and 6th
Brian Keith in SIERRA BARON

We Invite . . . YOU TO ---
Gin With Us
★ WE BELIEVE YOU WILL BE PLEASED WITH OUR SERVICE
★ WE HAVE THE VERY LATEST AND MODERN GIN EQUIPMENT TO BETTER YOUR TURN-OUT AND SAMPLES.
YOUR PATRONAGE INVITED --- GIVE US A TRY
Producers Gin
FRED RANEY, Manager
Office Phone 251 Home Phone 304

School Menu
Wednesday - stew meat and veg
Wedges, blackeye peas, jelly, rolls,
ater, milk, bread
Thursday - turkey and gravy,
ressing fruit salad, English peas,
cream, milk, bread,
Salmon loaf, pinto beans, butter-
corn, oat meal cookies, milk,
read.
Monday - bacon strip, macaroni
ad cheese, green beans, cherry
e, milk, bread.
Tuesday - navy beans, chilled
matatoes, hot tomatoes, pineapple
as, milk, bread, corn bread, but



Dan Blocker was seen here Monday nite on "Restless Gun". He had the role of a mountain lover, Jud Starbuck, and his performance was the best since his role of a deaf mute seen last Christmas. His role Monday nite was that of a bashful mountain lover who thought he had lost his gal to a city man. He is on TV Saturday nite but not on any West Texas stations.

Monday nite
Mrs. Mary Peit...
Mires, Mrs. Glen Allen, Thompson, Sr., Mrs. R C tended Friendship nite o at Seagraves last Thursd.
Mr and Mrs. Bill Shoem, daughters if Levelland vis mother Mrs. J L Shoemak day.
Mr and Mrs. H C Frost their daughter Mr and Mrs Dunlap at Sefinole over the end.
Mrs. J. N. Robertson and O'Brien visited in H L Wood Sunday.

More FARMERS Plant
DEKALB Hybrid SORGHUM
than ANY OTHER BRAND
WHY? ... because once again, DEKALB was 'tusted with the mostest.' FIRST in research, FIRST in testing ... and NOW, FIRST IN PREFERENCE.
BILL SNELGROVE
Neims 3309, Rt. 2 O'Donnell

Working to make this a safer community...
The Junior Fire Marshals need your help
If your youngster is in the Junior Fire Marshal program, he is learning fire safety principles that may save a life ... perhaps his own.
You can help by inspecting your home with him when he brings his Fire Prevention Report home from school.
We are behind this program 100% ... we're sure you will be, too. It's a wonderful way to help make our community a safer place to live.
★MOORE INSURANCE AGENCY

LIVE BETTER... ELECTRICALLY
Enjoy COOL Electric Cooking
One practical advantage of an electric range is that it cooks your food with a minimum of heat in the kitchen. Electric range surface units transfer heat by direct metal-to-metal contact ... and electric ovens, insulated on all sides, top and bottom, keep flavors in the food and heat out of the kitchen. For a cool, fresh and clean kitchen, cook electrically. See your dealer soon and discover how many ways you'll enjoy a new electric range. Cook electrically ... live better electrically!
TEXAS ELECTRIC SERVICE COMPANY
C. R. REESE, Manager Phone 60



# BLOCKER GROCERY

Your S. & H. GREEN STAMP store

SPECIALS For Friday and Saturday

Coffee . . . . . 79c

1 lb "Folger's" reg. or drip

Hi-C Orange Drink . . . . . 25c

46 oz. can

CORN . . . . . 2 for . 25c

303 can Diamond Golden Cream Style

BAKERITE 3 lb can . . . . . 79c

Shortening

PEACHES . . . . . 25c

No. 2 1/2 can "Hemet" whole sliced

Pound Cake mix . . . . . 29c

Glaiola 18 oz. pkg

Strawberries . . . . . 6 for \$1

10 oz. pkg. Sliced Frozen

sliced Bacon lb 69c Beef roasts 61c

CRISPRITE

CHOICE CUTS PER LB

Fresh Fryers

TRADE WHERE MA SAVES MONEY FOR PA

## Weekend Specials

SPECIALS FOR FRIDAY AND SATURDAY

PORK CHOPS 65c

Lean and fresh per lb

Weiners all meat . . . . . 45c

Biscuits 12 cans for . . . . . \$1

Pork and Beans 12 cans for . . . . . \$1

Shortening White Swan 3 lb can . . . . . 69c

Cake mix Betty Crocker, white, Devil Food,

Yellow 3 for . . . . . \$1

MELLORINE Swift's 1/2 gal . . . . . 39c

Louisiana Golden Yams No. 303 cans . . . . . 4 for \$1

Peaches Sliced No. 2 1/2 can . . . . . 25c

Milk - - 3 for \$1

HOMO, KELLY'S 1/2 gal.

OPEN ON SUNDAYS

# JACKSONS Grocery & Market

★ We give Double Thrift Stamps And Double, Double Thrift Stamps On Wednesdays AT THE NORTH "Y"

LIMITED TIME ONLY  
17 Jewel, Waterproof and Shock-proof WATCH FOR ONLY \$12.95  
(And your old watch)  
Fully Guaranteed For 1 year  
★ HALE VARIETY  
All Watch repairs Unconditionally Guaranteed.

GOING PLACES? - - -

Don't forget Travel Accident Insurance! Broad Coverage - low cost!

MOORE INSURANCE AGENCY

For sale - 2 bedroom house, carpeted, nearly new, B. M. Haymes

For sale - Apt. size gas range and gas or electric refrigerator H L Wood xte

Will make belts and buttonholes Mrs. W L Pendleton at former Don Edwards home 27p

\$1,000 in cash in case of Death by fright while seeing "Macabre" at Rex Theatre Fri. - Sat.

We Pay cash for Dry Blackeyes, New Eras, other Cowpeas, Pinto Beans, Mung Beans, Grass Seeds, Other seeds, Quality custom cleaning - Storage



## Specials For Friday and Saturday

- Libby Vienna Sausage . . . . .
- 46 oz. Libby Pineapple Juice 3 for . . . . .
- 14 oz. Libby Deep Brown Beans . . . . . 7 for . . . . .
- No. 2 1-2 Libby Halves Peaches 3 for . . . . .
- 303 can Libby Pears . . . . .
- 16 oz. Armour Beef Stew . . . . .
- Chicken of Sea Tuna green label . . . . . 3 for . . . . .
- 3 lb Mrs. Tucker's Shortening . . . . .
- Large can Libby's Pink Salmon . . . . .
- 80 count Napkins 2 for . . . . .
- 1 lb White Swan Coffee . . . . .
- 12 qt. Instant Pet Powdered milk . . . . .
- 18 oz glass Zestee Peach or Apricot Preserves 3 for . . . . .
- All meat Bologna lb . . . . .
- Club or chuck steak lb . . . . .
- Cottage Cheese pint . . . . .
- Fresh Onions 2 bunches for . . . . .
- Large cello pkg. Celery . . . . .
- Large cello pkg. carrots . . . . .

★ ★ Double Frontier Stamps On Wednesday WE GIVE FRONTIER SAVING STAMPS

## Line Grocery And Market

Plenty of parking behind the store; come in and with us WE DELIVER PHONE 110



Peaches 2 for 57c

No. 2 1/2 can in heavy syrup . . . . .

Hi-C 25c



This special size 150 plus tax for 4 weeks only!

(September 22 through October 18th) Miss Arden offers every woman this special introductory jar, so you may see for yourself what an out of the ordinary cream this is in every way!



Crème Extrordinaire works wonders at lessening wrinkles and lines; fills out hollows and reclaims fullness and texture of youth! No other cream has ever helped the skin so much, smoothing, moisturizing, nourishing and neutralizing acid skin conditions. Regular sizes, in apothecary jar, 10.00, 18.50, 27.50 plus tax

Lott Pharmacy

## Finest Quality MEATS

We have two sets of LINT COMBER-BLENDING MACHINES of the most modern design which makes our plants equal to or better than any plant on the Plains.

★ These machines are designed to GIN QUALITY into your COTTON - to make it possible for you to get the TOP DOLLAR for your year's work.

This is a service organization and we are striving to serve you better.

## Wells Farmers Co-operative Gins

DEALERS IN - COTTON, COTTON SEED AND COTTON SEED PRODUCTS B. J. (Shorty) McLaurin, Mgr.

There's A C. P. Policy For You Farm Bureau's Farmers Liability Insurance To Fit The Needs Of Lynn County Farmers.

- Section 1. Public Liability
- Section 2. Employer's Liability
- Section 3. Physical Damage To Property

★ ★ ★ SEE US TODAY - - -

## Lynn County Farm Bureau

Charles Reid, Insurance Agent Phones, office 528, home: 414. Tahoka

Attention - I still make buttons, buttonholes, belts, contour, etc., A good supply of popular large size buckles, also draperies. Mrs H L Wood, 511 South 12th 9-26c

O'Donnell Lodge No. 1187 A. F. And A. M. STATED MEETING 4th THURSDAY All Visiting Brothers Invited TED ROGERS, W. M.

For sale - 1 Holstein milk cow fresh Oct. 24 and 50 chickens Earl Winters Nelms 22883

Buy your daily paper at home - it's same price at Index office Lubbock Avalanche 7 days a week \$12.95

STATEMENT REQUIRED BY THE ACT OF AUGUST 24, 1912, AS AMENDED BY THE ACTS OF MARCH 3, 1933 AND JULY 2, 1935 (Title 39, United States Code, Section 2283) SHOWING THE OWNERSHIP, MANAGEMENT AND CULATION OF

O'Donnell Index-Press, published weekly at O'Donnell, Texas from September 29, 1958.

- The names and address of the publisher, editor, managing editor and business manager: Publisher, O. G. Smith, O'Donnell, Texas. Editor, same. Managing editor, same. Business manager, same.
- The owner is: O. G. Smith, O'Donnell, Texas.
- The known bondholders, mortgagees, and other security holders owning or holding 1 percent or more of total amount of mortgages or other securities. None.
- Paragraphs 2 and 3 include cases where the stockholder security holder appears upon books of the company as trustee, in any other fiduciary relation, name or the person or corporation for whom such trustee is acting, also the statements in the two paragraphs show the affiant's knowledge and belief as to the circumstances and conditions which stockholders and holders who do not appear upon books of the company as hold stock and securities, acty other than that of a owner.
- The average number of each issue of this publication sold or distributed, thru or otherwise to paid subscribers during the 12 months preceding date shown above was - 87 O. G. Smith, Jr. Sworn to and subscribed me this 29th day of September 1958 Seal . . . . . T. J.