

# BAILEY COUNTY JOURNAL

'The Community of Opportunity-Where Water Makes the Difference'



20¢

Volume 20, No. 12

14 Pages Today

Published Every Sunday at Muleshoe, Bailey County, Texas 79347

Sunday, March 21, 1982

## Farm Bill Revision Fight Begins Monday

### Around Muleshoe

Storm sentries are now available at the Civic Center at a cost of \$29.00. The sentries will be checked out and instructions given as to use upon purchase. 272-4051.

There will be a sign-up meeting for Girls' Little Dribblers on Tuesday, March 23, at 6 p.m. in the High School gymnasium. Fifth and sixth graders only will be eligible. There is a \$12.50 enrollment fee.

Frank Hinkson of Muleshoe has been recognized nationally by the American Angus Association for having registered Angus cows qualified to be listed in the Association's 1982 Pathfinder Recognition Report.

The ribbon cutting ceremony of the Harmon Elliott Senior Citizen Complex at 901 West Avenue K, is planned for 10 a.m. on April 7. The ceremony will take place in the community room of the complex.

### Trinity Begins Revival Service

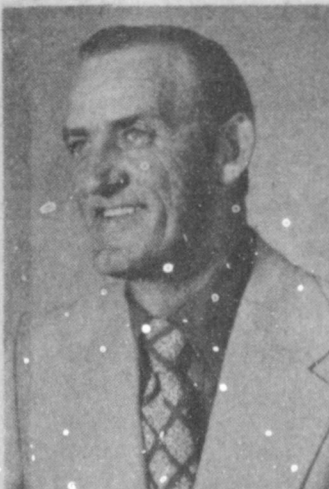
A revival meeting will begin at the Trinity Baptist Church March 28-April 4. The evangelist will be Bro. Jim Mosley, pastor of the First Baptist Church of Ackerly, Texas.

Bro. Leon Bagwell will conduct the song service. He is from the First Baptist Church in Loop, Texas.

Services at noon Monday through Friday, a meal will be served each day.

The evening services through the week will be at 7:30 p.m.

Nursery will be provided.



JIM MOSELY

### De Shazo Students Jump For Heart Association

Approximately 150 students participated in the Jump For Heart event held at the Bailey County Coliseum, Saturday, March 13.

Twenty-four teams composed of six persons from Mary DeShazo School were involved in the three hour event. Each team member jumped until he tired and then passed the rope to another team member. The team members had secured pledges in advance on each minute their team jumped.

Bill Taylor, principal, cooperated in this event and Toni Eagle coordinated the Jump-A-Thon. Olga Perez directed the Saturday event because of the death of Mrs. Eagle's father. Teachers and aides

12 <sup>9</sup>	110 <sup>9</sup>	112 <sup>9</sup>
REGULAR DIESEL	UNLEADED	REGULAR
16 <sup>9</sup>	114 <sup>9</sup>	113
REGULAR UNLEADED	FULL SERVICE	
09		
UNLEADED		
13		

**A DIFFERENCE?—YOU BET—**A check of gas prices in Muleshoe revealed prices on regular gas to be from \$1.09 to \$1.13, on unleaded gas \$1.13 to \$1.16.9 and diesel, which first gained popularity as a low priced fuel, delivered the final blow with a price of \$1.12.9. All of these prices were found as *The Journal* traveled American Boulevard Friday.

### City Sales Tax March Rebate Reflects Upward Trend

State Comptroller Bob Bullock Monday sent checks totaling \$48.9 million to 962 cities as their share of the one-percent city sales tax for March.

The payment is the largest representing a single month's tax collections ever distributed—29 percent over the same period in 1981.

This record payment, reflecting taxable sales made by Texas businesses in January, is the second record payment in two

months, but Bullock added a note of caution.

"Record sales can be one indicator of good times but they are not an indicator of profit margins. These taxes are based on sales price or market value. True, Texans are spending more but these figures don't tell us what the merchants or suppliers or manufacturers are having to pay for the goods they buy."

Bullock explained that last month's record \$106.4

million payment to cities who levy the local sales tax represented collections from taxpayers who pay monthly as well as those who pay quarterly and yearly.

The City of Muleshoe's share of the one percent city sales tax for March, 1982, netted \$15,207.07, an increase of \$3,420.47 over the comparable payment of \$11,786.60 for the prior year. Total 1982 payments for Muleshoe to date register \$54,402.40, an increase of \$2,467.71 over the \$51,934.69 recorded in 1981. These figures reflect a 4.75 percent change up to March 11, 1982.

In nearby Morton, the one percent sales tax for March was \$3,213.44. Comparable payment for the same period of the prior year was \$3,088.11. Cont. Page 8, Col. 2

### Students Participate In UIL Contests

Over thirty students from Mary DeShazo Elementary and Muleshoe Junior High School will travel to Friona in the near future to compete in the UIL District 2AAA Literary events. These students competed with other interested students individual events in order to qualify for this honor.

On Monday, March 29, the ready writing contest will be held and the other UIL events will be held on Friday, April 2, when the remaining students will go to Friona by bus.

Those who will be competing, their event in which they qualified and the grades they represent are listed as follows: Amy Been, ready writing, five and six; Leah Bell, alternate ready writing, seven and eight; Brent Black, oral reading, seven and eight; Melissa Burnett, alternate oral reading, five and six; Andrew Espinoza and Tim Gray, picture memory. Also Rick Grant, alternate spelling, seven and eight; Jennifer Green, ready writing, five and six; spelling; Sue Haire, ready writing, five and six; spelling; Duane Hamilton, alternate story telling, Mike

Cont. Page 8, Col. 3

### School Board City Elections Set April 3

A total of five men have filed for trustee position in the upcoming school board elections. With the exception of Royce Harris, who is an incumbent, all candidates are first time candidates.

Others who have filed are: George Nieman, a real estate agent; Steven J. Neptune, a feed mill manager; Gordon Wilson, the owner of Wilson Appliance and Sam Gonzales, owner of Sam's Sporting Goods.

School board elections will be held on April 3, 1982 and voters may ballot from 7 a.m. until 7 p.m. in the High School cafeteria. Absentee voting may be done from March 15 through March 30 at the Bailey County Courthouse.

City elections also fall on the April 3 date. Voting may be done at the City Hall from 7 a.m. to 7 p.m. As with the school board, city absentee voting may be done from March 15 to March 30, at the City Hall.

Cont. Page 8, Col. 1

### Relay Members Set New School Record

The Muleshoe Mules varsity track team competed on Saturday, March 13, in Floydada against eleven other schools and came out with a third place overall win, racking up 78 points. Muleshoe was bested only by Frenship with a total of 104 points and Floydada with 99.

A school record was set in the event of the shuttle hurdle relay with a third place win in the meet. Time recorded for this was 46.2. Team members were Monty Hysinger, Raul Garcia, John Wuerlein and Mark Moton.

The 2-mile relay event also set a Muleshoe school record with a second place

### Girls Softball Signup Set March 23 Only

Registration for 1982 Girls Softball League will be held on Tuesday, March 23 from 5:30 to 7 p.m.

All girls should be accompanied by a parent or guardian and must have their birth certificates to show proof of age.

Those wishing to play should bring a \$10 registration fee, which will be used to cover the cost of shirts, and visors for play.

"Girls wishing to play must register at this time," says Carolyn Harris, president of the association. **NO LATE REGIS-** Cont. Page 8, Col. 2

### Junior-Senior Prom Plans Underway

Well, mothers, it's that time again. Graduation and prom time will roll around sooner than is expected.

An organizational meeting of all Muleshoe High School junior and senior mothers was held Wednesday, March 17, at Muleshoe State Bank's community room.

The Junior-Senior prom will be held on May 15 this year with the decorations being scaled to an "Underwater" theme. The civic center has been chosen for the event. The price per family (that is, if there is one or more junior or sen-

ior student in your family) is \$10.00. Guests who are not in the two classes will be allowed at a \$7.50 charge. The band will be the same one as last year, according to Donna Black and Norma Prater, band chairman and co-chairman.

Sandy Turner was elected as General Chairman of the event, with Patsy Poyner as co-chairman; Decoration chairman is Betty Carpenter with Mary Denney and Marilyn Cox as co-chairmen; the Finance chairman is Sue Holt, co-chairman, Sandy Peterson; Cont. Page 8, Col. 4

### Hance Joins With Farm Crisis Group

Congressional Democrats, stating the claim that President Reagan has failed to stop the slide of agriculture into a depression have launched an attack on his farm policies and have called for higher federal price supports.

On Monday, Congressman Kent Hance will join with approximately forty other farm belt democrats in a "farm crisis group" which will begin drafting amendments to the 1982 farm bill.

Several congressmen from the West Texas area will combine their efforts to revise the current farm bill, which Kent Hance has described as "just not working."

The push is being made for major farm policy changes and is due in part to severely depressed market prices and production costs that have spiraled to surpass prices received for farm products.

With farm liquidations reaching an all-time high, reports from Hance's Lubbock office reveal that Secretary of Agriculture, John Block, is still refusing to infuse the \$600 million in economic emergency loan

money into a sagging farm economy. Miller Bonner, Hance's Washington Administrative assistant stated to *The Journal* Friday that the Congressman had stated it was time to go public with the problems since both President Reagan and Secretary Block have refused to use their discretionary powers in order to seek a solution to the problems facing the farm economy.

Administrative Aide Don Richards in Hance's Lubbock office reported to *The Journal* that as many as several hundred farmers in the West Texas area are in deep trouble -- trouble that they could be helped out of by the release of these emergency funds. "The emergency loan funds are already set up, legislation has been passed and the release of these funds would not be an added increase to the budget," Richards said.

Secretary Block stated in his Lubbock visit that the EE loan money should not be used as a "cure-all" and should be held out of the economy until the situation was severe enough to warrant its release. Many farmers and legislators, as well, would question Block's "ostrich-like" tactics.

Sam White, in Hance's Washington office said that congressmen from farm belt states consider the current farm situation as a depression .... not a recession.

Agriculture Secretary Block has not been exercising his authority to increase farm credit, so Hance believes that "it's time to do something legislatively," White said.

Block has stated that the Cont. Page 8, Col. 1

### Pat R. Bobo Services Held Here Thursday

Services were held on Wednesday at 2 p.m. in the First United Methodist Church for longtime Bailey County resident and attorney, Pat R. Bobo. An apparent victim of heart attack, Bobo was dead on arrival at West Plains Medical Center at 10:40 p.m. Tuesday, March 16. Officiating at the services were Rev. Bill Kent, pastor, assisted by Bishop W. McFerrin Stowe of Dallas and the Rev. James Carter

of Polk Street United Methodist Church in Amarillo. Burial was in the Muleshoe Cemetery under the direction of Ellis Funeral Home of Muleshoe.

Bobo was born on April 15, 1902 in Rhome, Texas, moving to Muleshoe in 1926. He married Inez Farrell on February 6, 1932 in Muleshoe.

Bobo, a prominent attorney, was also a member of the First Baptist Church Cont. Page 8, Col. 1

### County Farm Producers Reminded Of Dates

Bailey County ASCS director, Rusty Williamson has issued a reminder to farm producers to sign-up their intentions to participate in the 1982 Farm Program. The deadline for this sign-up is April 16, 1982. "No acreage certification will be needed at this time," said Williamson. "All we need to know is if a producer plans to participate or not." The director cautioned that failure to sign intention will disqualify producers for the 1982 program.

Another important date that Bailey County producers need to keep in mind is that of April 1. Production evidence must be furnished by that date in order to have it used to establish the current year's cotton yield. The current year yield for a producer will be set at zero if production is not submitted by April 1. This zero yield cannot be adjusted in the current year, if production is subsequently furnished.

Notices of 1982 acreage bases and yields have been mailed to each individual producer in the county; and should be received shortly. Farmers are advised to take the time to look at these notices, since they are very important.

The following rates have been established for 1982 measuring rates: Aerial measurement will be charged. Cont. Page 8, Col. 4

### Thirteen Complete Basic Life Support Training

Several Muleshoe residents completed a six hour course on March 17 in Basic Life Support and Cardio Pulmonary Resuscitation.

Those who participated were required to perform basic life support measures in one-man operation and two-man operations, as well as on infants, using mannequins as patients. In addition to simulated real

life situations, students were required to take a written test.

Instructors for the classes were Mattie Hicks, RN and director of nurses at West Plains Medical Center; Mark McClanahan, physical therapist at WPMC and Pat Holland, RN, also at WPMC.

Those who completed the national cognitive apt. Cont. Page 8, Col. 3



**GYMNASTS QUALIFY**—Two gymnasts from Hawkins and Purdy School of Dance and Gymnastics qualified for state sectionals in a Pampa meet. (L-R) Back Row: Kendra Wilson and Michelle Finney; Front row: State Qualifiers Brenna Matthews and Casey King.



**LEPRECHAUN VISITS**--This little Leprechaun, Kyle Embry, visited the Muleshoe Nursing Home Wednesday for their special St. Patrick's Day dinner. Fried chicken, potato salad and homemade ice cream was on the menu. Volunteers helped to prepare and serve the ice cream. Kyle is the son of Mr. and Mrs. Darrell Embry.

### Two Gymnasts Qualify For State Sectionals

Four girls from Hawkins and Purdy's School of Dance and Gymnastics competed in a sanctioned Class IV meet in Pampa Saturday. Two of the four qualified to compete in the Class IV State Sectionals in Pampa April 24th.

Casey King, daughter of Mr. and Mrs. Joe King, qualified in the 12-14 year old category with an all-around score of 32.08. Qualifying score for sectionals is 31. Casey scored 7.75 on vault, winning 5th place, 8.55 on uneven bars winning third place, 8.35 on beam winning 6th place and a 7.4 on floor exercise.

Brenna Matthews, daughter of Mr. and Mrs. Derrell Matthews, also qualified with an all-around score of 32.20. She scored a 7.95 on vault, winning fifth place in the 9-11 year old competition. Brenna scored 7.8 on uneven bars, 8.3 on beam, and an 8.15 on floor exercise.

Michelle Finney, the daughter of Mr. and Mrs. Bob Finney, scored a 7.85 on beam, 7.9 on uneven bars, 8.45 on vault, and a 7.1 in floor exercise with an all-around score of 28.30.

Kendra Wilson, daughter of Mr. and Mrs. Gordon Wilson, scored a 6.8 on vault, a 7.25 on uneven bars, a 6.35 on beam, and a 7.65 on floor with an overall score of 28.05.

Coaches Drew Overbeck, Sheri Hawkins, and Cindy Purdy accompanied the gymnasts to Pampa. The Class IV team will travel to Lubbock Briercroft Gymnastics this Saturday to compete again in a sanctioned Class IV meet.

Hawkins and Purdy will host a sanctioned girls and boys meet on Saturday, March 27. Teams that will compete will be Golden Spread School of Gymnastics of Amarillo, Briercroft of Lubbock, Farwell Gymnastics and Abilene School of Gymnastics. The public is invited to attend.

**INDIANS & LAND**  
The Reagan administration is expected to give its support to legislation introduced recently in the House and Senate, that could virtually wipe out pending land claims by Indian tribes for millions of acres in States along the East Coast. The Indians would be restricted to monetary damages limited to the value of the lands when they were taken, plus a small interest payment.

### Maurine Hooten Presents ESA Program

Epsilon Delta Chapter of ESA Sorority met recently in the home of Judy Watson with Denise Bland as co-hostess.

Sharon Montgomery, president read the opening ritual and called the meeting to order. The invocation was led by Diana Harrison.

Maurine Hooten gave a program on the recent trip she and her husband took to Switzerland. During the program, she showed slides of the places they went and things they saw.

During the business meeting, a number of items were discussed. Jonquil girl announced birthdays and anniversaries for March.

An Easter Egg hunt for the member's children will be held on April 7 at 4 p.m. in the home of Diana Harrison.

Mrs. Montgomery announced the nominating committee for new officers, and the committee for the mother-daughter banquet to be held in May.

It was decided to donate

\$25 to the Friends of the Library to help purchase a new projector.

ESA voted to sponsor Mary Obenhaus as a nominee for the Texas Panhandle award for Distinguished Service at West Texas State University.

The meeting was closed with everyone repeating the closing ritual.

Refreshments were served by the hostesses to Maurine Hooten, Elaine Burgess, Jan Crawford, Louvenia Gaughton, Diana Harrison, Debbie Kittrell, Rita Lane, Lisa McElroy, Sharon Montgomery, Magann Rennels, Sylvia Vourazeris and Pat Young.

*A Conscience*  
All too often a clear conscience is nothing more than a poor memory.  
-Barker, Des Moines.

### WOTS Weekly Meeting

Linda Cogliandro and Pat Cummins were hostesses for the Thursday, March 18, WOTS luncheon at Summit Savings and Loan. The hostesses used St. Patrick's Day theme with a shamrock centerpiece. Mrs. Cummins crocheted shamrock pins and coasters for each lady.

Rose Bowman was presented with a bud vase and a yellow silk rose, along with a birthday card. She celebrated her birthday on March 14.

The March 25 meeting will be held at the Pizza Hut. This is the group's "Eat-Out Day." Following

the luncheon, the ladies will regroup at the home of Mrs. Mary Smith, 409 W. 7th, Apt. A, for a baby shower honoring Mrs. Thereasa Todd of Texico, N.M.

The next luncheon at Summit will be on April 1, with Lydia Wright and Thereasa Todd as the hostesses.

Members present included Marv Smith, Kay Madry, Lois Martinec, Linda Cogliandro, Mildred Williams, Pam Thomason, and Brandon, Elaine Greenhouse and Denise, Mary Winnill, Glenda Duncan, Gayle Jouis, Ramona Enggram of Sudan, Dell Aycock of Sudan, Colleen Agnew, Lydia Wright, Betty Barker, Jo Ann Flanary, Sean and Amy, Millie Mitchell, Thereasa Todd of Texico and Rhonda Hugg.

New members are Elaine Greenhouse, her husband, Sam, works for Southwestern Public Service; Mary Winnill, whose husband, Mikel, works as a pipefitter for Missouri Valley and Colleen Agnew, whose husband, Hubert, also works for Missouri Valley as a pipe fitter.

For more information on WOTS you may contact Mildred Williams at 272-5260 or Lois Martinec at 272-3019. You may also contact any WOTS member.

**ON RESERVE UNITS**  
WASHINGTON--American commanders fighting a land war in Europe would begin to run out of soldiers and equipment after about two months of hostilities because of shortages in reserve units, Gen. Robert M. Shoemaker, a senior officer testified recently.

### Watermelons Beat Onions

AUSTIN--Watermelon was the biggest produce crop harvested in Texas last year with 43,900 acres harvested worth \$37,002,000 to Texas watermelon producers, Agriculture Commissioner Reagan V. Brown reports.

Texas onion producers harvested 24,000 acres of onions worth \$99,095,000.

The figures were released by the Texas Crop and Livestock Reporting Service which placed Texas third in total harvested acreage, production and value of fresh market vegetables. Growers harvested 156,920 acres, 1 percent above 1980 but 8 percent below 1979.

The state ranked first in harvested acres of fresh market spinach and onions. It was second in cabbage, cantaloupes, bell peppers, honeydew melons and watermelons.

Government will sell unneeded lands.

## Save At Our MARCH BARGAIN BLAST!

Prices Good Thru March 27



5/8" x 75 Ft. All Weather

- + Bias Belted, Radial Reinforced, 4-ply construction
- + Attractive Transparent Jacket
- + Will Withstand 425 lbs. Pressure
- + Coils Easily Year Round
- + Solid Brass Couplings
- + 100 Percent Cynil Tire Cord Reinforced

**SPECIAL 9<sup>95</sup>**

(Similar to Illustration)

### Five Point Dog Food

The Dog Food That Dogs Really Like!

50-Lb. Bag **7<sup>99</sup>**



### EarthWay PRECISION GARDEN SEEDER

Simple one step operation:  
• Opens Soil • Plants and spaces seeds • Covers seeds • Packs soil • Marks next row

NEW LARGER FRONT WHEEL MAKES SEEDING EVEN EASIER

One-year guarantee from date of purchase on factory-installed parts and workmanship.



SPECIAL

**39<sup>95</sup>**

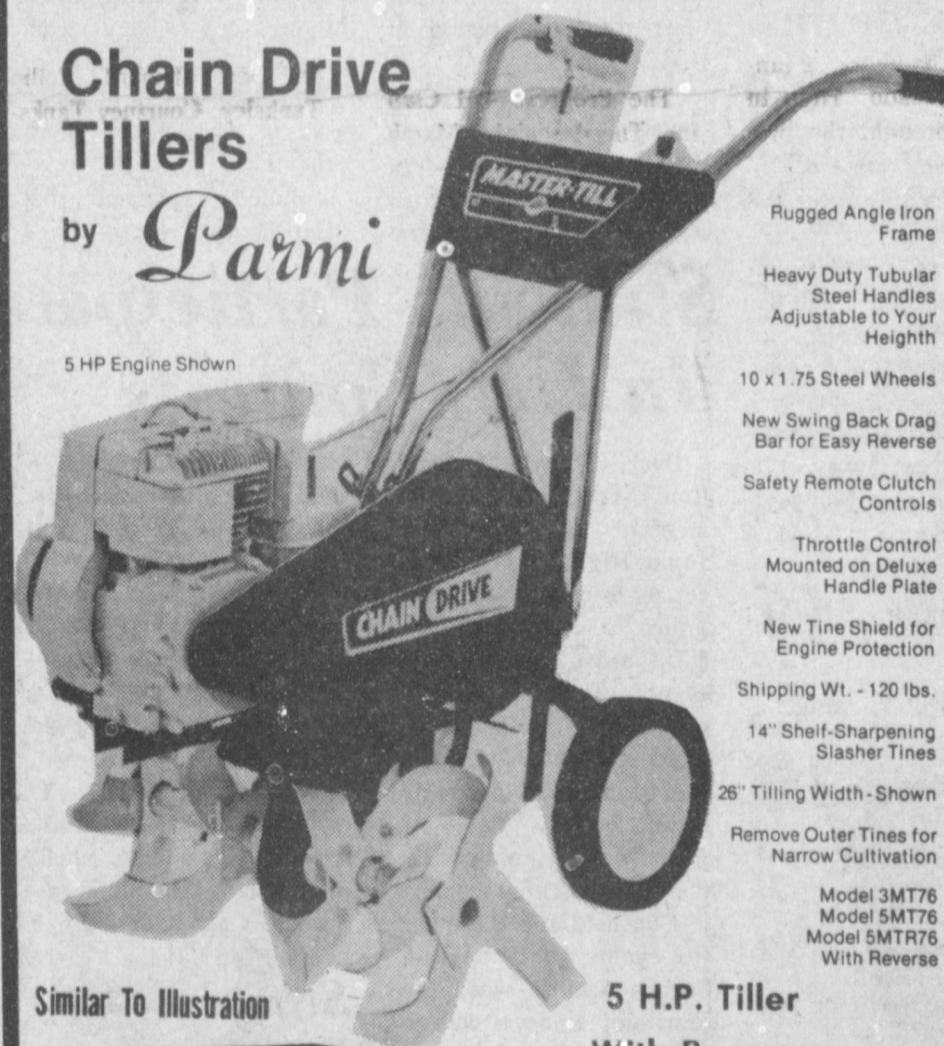
SIX SEED PLATES INCLUDED WITH EACH PRECISION GARDEN SEEDER:

- 1. CORN 8 1/2" Spacing
- 2. BEANS 3 1/2" Spacing, Small Peas
- 3. PEAS 3" Spacing, also will plant Jumbo and Early June Peas
- 4. RADISH 1 1/2" Spacing, also will plant Lettuce, Asparagus, Spinach
- 5. CARROT Uniform Spacing, also will plant Lettuce, Turnip, Cabbage, Endive, Onions, Tomatoes
- 6. BEETS 2 1/2" Spacing, also will plant Okra, Swiss Chard

### Chain Drive Tillers

by *Parmi*

5 HP Engine Shown



- Rugged Angle Iron Frame
- Heavy Duty Tubular Steel Handles Adjustable to Your Height
- 10 x 1.75 Steel Wheels
- New Swing Back Drag Bar for Easy Reverse
- Safety Remote Clutch Controls
- Throttle Control Mounted on Deluxe Handle Plate
- New Tine Shield for Engine Protection
- Shipping Wt. - 120 lbs.
- 14" Self-Sharpening Slasher Tines
- 26" Tilling Width - Shown
- Remove Outer Tines for Narrow Cultivation

5 H.P. Tiller With Reverse

**SPECIAL 299<sup>95</sup>**

Chain Drive Oil Bath Transmission

SPECIAL

**True Value**  
TOOL VALUE OF THE MONTH

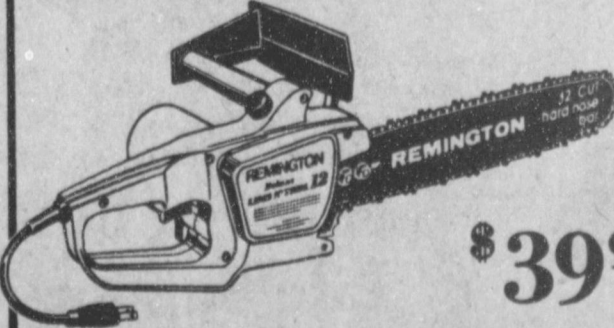


now **3<sup>49</sup>** While Supplies Last  
5-Pc. Combination Wrench Set  
Durable chrome vanadium steel, drop-forged for strength. Sized 3/8 to 5/8 inches. Plastic pouch for storage. 171155A  
Quantities Limited

**True Value**  
BARGAIN OF THE MONTH  
FREE 12 RUBBISH TRASH BAGS  
15 FREE 12 RUBBISH TRASH BAGS  
15 FREE 12 RUBBISH TRASH BAGS

FREE 12 Lemon-Scented 44-Qt. Size Kitchen Bags  
now **2<sup>99</sup>** While Supplies Last  
33-Gal. Rubbish & Trash Bags  
You'll want a supply of these heavy duty bags for spring cleanups—plus storage of out-of-season items. TVH12TLK27  
Quantities Limited

**REMINGTON DELUXE LIMB N' TRIM**  
ELECTRIC CHAIN SAW



**\$39<sup>99</sup>**

8" ELECTRIC CHAIN SAW, DOUBLE INSULATED 7 AMP MOTOR, FRONT AND REAR HAND GUARDS, AND SAFETY SWITCH.

ATTENTION: 3-1-82 New Store Hours  
Mon. - Fri. 8:00 A.M. - 6:30 P.M.  
Sat. 8:00 A.M. - 6:00 P.M.

**Fry & Cox, Inc.**

401 S. Main

272-4511

Pre-Packaged Garden Seed 10 Pkgs. **1<sup>00</sup>**

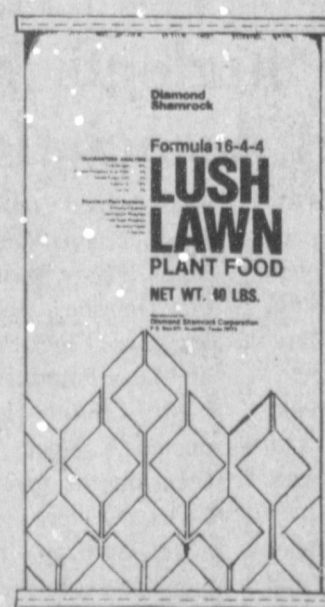


### Lush Lawn Plant Food

for healthy, green, lush lawns.

Professional lawn-care specialists recommend plant food with a balanced diet... a fertilizer with high nitrogen content and with phosphoric acid, potash and trace minerals. Shamrock's FORMULA 16-4-4 LUSH LAWN PLANT FOOD gives you all this and more. It provides a measured release of nutrients. For best results, apply Lush Lawn seasonally, as directed, depending on your type of lawn. A convenient 40-pound bag covers 4,000 square feet.

Total Nitrogen... 16%  
Available Phosphoric Acid (P2O5).... 4%  
Soluble Potash (K2O)..... 4%  
Sulphur (S)..... 2%  
Iron (Fe)..... 16%



40 Lb. Bag Retail 9.95

Special **5<sup>99</sup>** Bag



**A & M**  
FARM & RANCH SUPPLY

3 Convenient Locations  
1601 S. Ave. C Portales  
2600 E. Mabry Drive Clovis  
300 W. American Blvd. Muleshoe



**YANKEE DOODLE SWEETHEARTS**--These children were part of a patriotic program for the PTA on Monday night at 7 p.m. They are (back) Melissa Lopez, Jill Foster, Tory Matthews, Tiffany Angeley, Jessica Orozco and Patrica Del Toro. (Front) Virgil Snell, Mickey Trussell, Colby Cox and Steven Noble all play "Yankee Doodle Dandies."

## Elaine Stout Receives PTA Life Membership

Election of officers was the main topic of the Muleshoe Elementary PTA meeting held on Monday, March 15, in the cafeteria of Dillman Elementary. Robin Neptune welcomed parents, teachers and friends to the meeting. Superintendent Harold Horne led the invocation. Following the pledge of Allegiance, Elaine Stout, secretary, read the minutes of two previous meetings. The financial report was given by Kerma McGuire, treasurer.

Mrs. Neptune made announcements and read thank you cards from Mary Mardis, Dillman Elementary Librarian and Nita

Burreson, Mary DeShazo Librarian for the ceiling fans; and Mrs. Jo Jinks, Dillman Elementary music teacher, for the stage carpet.

Mrs. Obenhaus presented the Texas PTA Life Membership to Elaine Stout. This is the highest honor bestowed on an individual from the PTA.

Mrs. Georgia Pena presented nominations for the 1982-83 officers. They are President, Jean Richardson; first vice president, Joyce Scott; second vice president, Elaine Stout; third vice president, Toni Eagle; secretary, Jim Ella Clemmons; parliamentarian, Sherry Shipman; and historian, Jean Treadwell. The names were voted in by acclamation.

Mrs. Neptune closed the meeting by presenting certificates of appreciation for the 1981-82 year. Receiving these honors were membership chairperson, Shirley Reynolds, third

vice president, Debra Noble; secretary, Elaine Stout and Betty Chamberlain.

These honors were given by the president in appreciation for their support and willingness to work on projects throughout the year.

Debra Noble introduced Jo Jinks and her first and

second grade students who presented the patriotic program "One America."

Stories of American history were presented in song and dance routines.

They Do  
Old salesmen never die--they just get out of commission.  
-Record, Columbia, S.C.

## Sudan Senior Class Members Honored

A Mexican Fiesta was the theme carried out in the annual banquet sponsored by the First Baptist Church honoring members of the 1982 graduating senior class of Sudan High.

The fellowship hall was decorated with colored streamers from ceiling to floor interspersed with bright flowers, lanterns, greenery and other Mexican decor. Place favors were "Mexican Senors" at each plate and the tables were covered in various bright colors.

The Invocation was given by Kendall Johnson followed by the meal of Enchiladas, Tacos, Frijoles, Salsa Picante, Ensalada and Limon el Pie.

Reverend Truman Johnson gave the Bienvenida and Paul Kent gave the Resputa.

Leslie Chambers, a junior of Coronado High in Lubbock brought the program of special music.

Dale Harper gave the Benediction.

Ladies of the church cooked the meal and decorated for the occasion.

Serving the class members were Shawni DeLoach, Kim Powell, Missy Fisher, David Harper and Randall Damron, who were dressed in Mexican outfits.



**YANKEE DOODLE DANDIES**--Also participating in the PTA patriotic program were twirlers and they are (back l to r) D'Anne Box, April Watkins, Charla Holt and Shea Wilbanks. (Front) Kristin Chitwood, Angie King, Edi Black and Audrey Anzaldua. All of the girls are first and second graders at Dillman Elementary.

## 4-H Club

### View Solar

### Energy Film

The Progress 4-H Club met Tuesday night, March 16, in the fellowship hall of the 16th and D Church of Christ. Jacinda Gleason,

vice president, presided over the business meeting.

Members attending were Tracy Tunnell, Jay Gleason, Jacinda Gleason, Jerry Gleason, Kim Farmer, Dee Kinard, Collin Tanksley, Courtney Tanksley and Darin Shaw.

A film on solar energy was shown by Linda Tanksley.



Miss Emma M. Nutt broke the male monopoly on telephone company jobs when she was hired as an operator for the Telephone Dispatch Company in Boston on September 1, 1878.

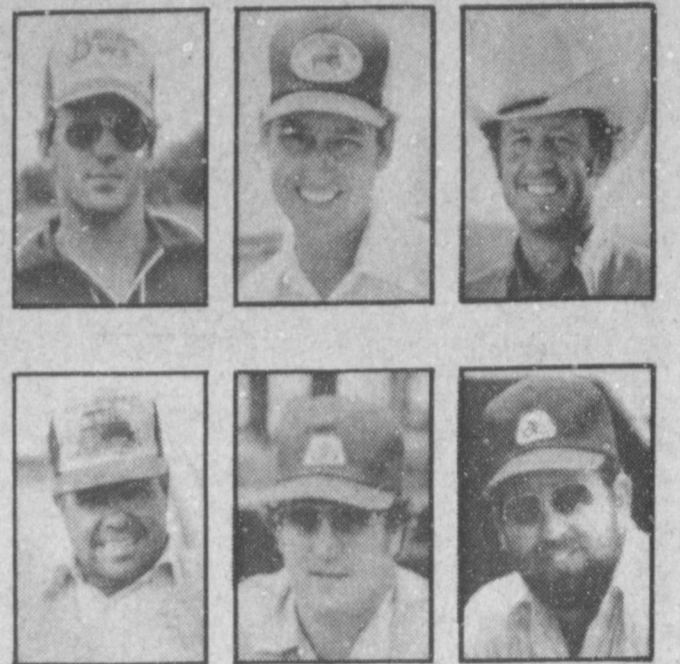
## Progressive Home Club

The Progressive Homes Club met on Wednesday, March 17, in the home of Naoma Black. Wenona Gibson conducted the business meeting.

Minutes of the previous meeting were read and approved. The hostess gift was drawn by Wenona Gibson.

Refreshments were served to Wenona Gibson, Norene Thomas, Mozelle Rippie, Roxie Hoover, by the hostess, Naoma Black.

The next meeting will be on April 21 with Wenona Gibson as hostess.



Ask a neighbor about  
**Pioneer® 3186**  
brand then come see us!

- Newcomer with outstanding yield record
- Excellent grain quality plus very good head smut and MDMV resistance
- Excellent stalk strength and outstanding stay-green ability

We're convinced this variety can give you a performance advantage in this area. And we can show you field data to back us up.

First chance you get, come on by and let's talk about your seed needs for the coming year. Together we'll select the right combination of Pioneer® brand seeds to give you the advantage you need.

## Wiedebush & Co.

1620 W. Amer. Blvd.

272-4281



**PIONEER**  
BRAND  
SEEDS

\*Pioneer is a brand name. Numbers identify varieties. Registered trademark of Pioneer Hi-Bred International, Inc.

**Bailey County Journal** USPS 060-200  
Established March 31, 1963. Published by Muleshoe Publishing Co., Inc. Every Sunday at 604 W. Second, Box 449, Muleshoe, Texas 79347. Second class postage paid at Muleshoe, Texas 79347.

**MEMBER 1982**  
**TA TEXAS PRESS ASSOCIATION**

L.B. Hall, President  
James Woods, Vice President  
Shirley Parker, News  
Eveline Harris, Society  
Beth Millap, Advertising  
Kann Benson, Bookkeeper

Muleshoe Journal and Bailey County Journal  
Bailey and surrounding counties..... 12¢  
Muleshoe Journal and Bailey County Journal  
Elsewhere..... 13¢

Advertising rate card on application.

"Here's #2 of my 17 reasons why H&R Block should prepare your taxes."

Shirley M. Block

**REASON #2: Free brochure about the new tax laws.**

If the recent tax law changes have you confused, we can help. H&R Block is offering a free brochure on the Economic Recovery Tax Act of 1981. We'll show how you can benefit from the new tax changes.

**H&R BLOCK**  
THE INCOME TAX PEOPLE  
17 reasons. One smart decision.

**New One Day Short Form Service**

224 W. 2nd  
272 3332  
Weekdays 9-6  
Saturday 9-5

Our 60th year!

# VALUE OF THE WEEK

**\$25 values to \$29**

## Junior Spring Dresses

The dress is, best for all-around fashion: A. 100% polyester stripe, button front, ruffle collar with ribbon tie, belted with linen jacket. Blue or Red, sizes 3-13. B. Linen sundress with "hanky" neckline embroidery, belted with matching jacket. Pink, Mint, Lilac; sizes 5-13. C. Poly crepe with lace sleeves and yoke, standup collar, self belt. Blue, Pink, White; sizes 5-13. D. Interlock button front, tie neck, belted with linen jacket. Blue or Red, sizes 3-13. E. Poly crepe with lace trim button front and standup collar, gathered shoulders, belted. Blue, Pink, White; sizes 5-13.

**Anthony's**  
C.R. ANTHONY CO.  
CELEBRATING OUR 60TH YEAR 1922 - 1982

321 MAIN STREET  
MULESHOE



**APRIL DATE SET**--Mr. and Mrs. Albert Garcia announce the engagement and approaching marriage of their daughter, Patricia Ann, to Joe Mack Ruthardt, son of Mr. and Mrs. H. D. Ruthardt. The couple is planning an April 23rd wedding at the First Assembly of God Church in Muleshoe.

### Alpha Zeta Pi Hears Jazzersize Program

On Tuesday, March 16, members of Alpha Zeta Pi Chapter of Beta Sigma Phi met in the home of Dani Heathington, with Jana St. Clair and Khristi Phelps serving as co-hostesses.

A Jazzersize program was given by Jenny Oliver. Jazzersize is a planned exercise program done with music.

Following the program, a meal of spaghetti, bread, salad, coconut cream pie and tea was served.

The opening ritual was recited and the business meeting held. Thank you notes were read including one from the Muleshoe Nursing Home.

Other business for the evening was the election of officers. Officers for the

coming year are: President, Marilyn Riley; vice president, Debbie Nickels; recording secretary, Alice Liles; corresponding secretary, Betty Bush; treasurer, Melissa Kelley; extension officer, Monica Reynolds; city council representatives, Jan King and Debbi Hutto.

Those attending were Tammy Black, Tonya Pool, Khristi Phelps, Brenda Black, Alice Liles, Debbie Nickels, Dani Heathington, Peggy Pohlmeier, Rickie Warren, Betty Bush, Marilyn Riley, Jan King, Melissa Kelley, Marilyn Saylor, Monica Reynolds, Ruth Locker, Jana St. Clair, Debbi Hutto, Renee Anderson and Joan Lewis.

### Julia Cage Candidate For Board Of Directors

"Mrs. J. D. Cage was nominated by the Muleshoe Board of Trustees to be placed on the ballot as a candidate for the office of Board of Directors of the Education Service Center, Region XVII," Mr. Harold Horne announces.

The Board of Directors of the Education Service Center serves in a similar capacity as a local Board of Trustees. The ESC Board of Directors is composed of seven members, serves twenty counties and sixty-four school districts in the region.

The Muleshoe Board is proud to nominate Mrs. Cage and will support her as a candidate for this position.

Julie Alexander Cage was born in Topeka, Kansas in 1943. She is the daughter of Donna White Alexander and Robert W. Alexander, a Galveston attorney. She received all of her elementary and high school education in Lamarque, Texas followed by a year at Bradford College in Bradford, Massachusetts. Upon returning to Texas, she completed her degree in English and History at the University of Texas in Austin, graduating in 1965.

Julie married J. D. Cage in 1965 and moved to Eagle

Pass, where they were engaged in the ranching business. While in Eagle Pass, Mrs. Cage served on the Board of Directors for the Eagle Pass Library helping that community service expand to almost double in the two years she was in that position.

In 1968 she and her family moved to Costa Rica, Central America where they had purchased a ranch. They embarked upon a nine year adventure that broadened and will influence the rest of their lives. Julie was involved in the Costa Rican Women's Club, American Embassy, and American Community activities. As her children became school aged, Julie became directly involved in the English speaking schools which were parent owned and directed.

Since their return to the United States and their move to Muleshoe, the Cages have remained interested in civic activities. Julie is a member of the AAUW in Muleshoe and is on the Board of Overseers for the Ranching Heritage Association at Texas Tech University Museum in Lubbock.

Julie and her husband have two children; a 16 year old son, Jay, and a 12 year old daughter, Alexandra.



MRS. J. D. CAGE

### Mrs Jinks Leads Fundraising Drive In May

Mrs. Tom Jinks will lead Bellringer workers in a fundraising drive during May, the Mental Health Month. Mrs. Jinks will be calling on others in the community to assist with the organization and working of the drive. All citizens are called upon to aid in this drive to benefit the fight against mental illness and for the improved care for the mentally ill.

"Proceeds will benefit the Mental Health Association in Texas," said Virginia Barlow, state President of the voluntary citizens' association.

As a non-governmental agency, the association can and does speak out for the consumer -- the person who needs professional help for an emotional disturbance. Mental illness is America's most costly health problem -- in excess of 40 billion dollars annually. More than two million Texans are affected by mental health illness.

The association offers literature to the public on a variety of topics including depression, stress, and positive mental health concepts. For free information contact the Mental Health Association in Texas, 4600 Burnet Road, Austin, Texas 78756 (512-459-6584).



**ENGAGEMENT ANNOUNCED**--Mr. and Mrs. Jack Treat of Oklahoma City, Okla. announce the engagement and approaching marriage of their daughter, Debbie Treat of Edmond, Okla. to Ross Dodson, of Muleshoe, son of Louis Dodson of Stinnett, Texas, and Mrs. Lena Brookshire of Warsaw, Missouri. Vows will be exchanged at 2 p.m., July 3, at the First United Methodist Church in Edmond. Dodson graduated from Central State University, where he was a member of the football team. Miss Treat will graduate in May from Central with a degree in Elementary Education. She is listed on the dean's honor roll. The couple will make their home in Muleshoe where Dodson is a teacher and a coach in the Muleshoe School system.

### QUICK QUIZ

TRUE or FALSE?

Of the 55,000 people who die a year, a reliable estimate is that 5,500 might never have developed cancer if cigarette smoking had not been romanticized (sometimes for secret payments) in motion pictures. True  False



False. Although painful deaths from lung cancer have risen along with rising cigarette sales, there is no scientific proof of how many deaths from lung cancer are attributable to romanticizing smoking in motion pictures.

**Amazing New Discovery**  
After 11 Years Of Research  
A New Dietary Breakthrough.  
A Supplement To Take At Mealtime That Takes Care Of 100 Grams Of Starches. (400 Calories).  
- Not a Drug -  
A Natural Food Substance  
For More Information, Call (806) 272-4439  
Monday - Saturday

### Panhellenic Plans Cake Party For Senior Girls

The Plainview Panhellenic has planned a Panhellenic Cake Party Sunday, April 4, at 2:00 p.m. in the home of Mrs. Coe Branch at 207 Yucca Terrace, Plainview, for graduating senior girls and their mothers.

### Sudan 4-H Group Met Monday Night

The Sudan 4-H group met Monday night, March 8 with Gordon Martin giving the inspiration. Gary Fields led the motto and pledge.

Marvin Ensor, Sandra Hill and Debbie Hill brought the program on Method Demonstration.

Others attending were Stephanie Bickett, Cathy Powell, Cheri Ford, Wade Donell, Dora Black, Jeff Gordon, Ben Schuster and leaders, Pattie Miller, Linda Sumner and Marvin Ensor.

The purpose of the Cake Party is to inform the girls about national collegiate Greek sororities and rushing. There will be representatives from several colleges discussing sorority life and rushing procedures. They will be there to answer any questions the girls might have.

Muleshoe High School senior girls and their mothers are extended an invitation to come to this Cake Party, and will be most cordially welcomed.

**Good Advice**  
The best way to break a bad habit is to drop it. -Spotlight, San Diego.

**SINGER Spring Sale-A-Thon**

**Model 1411**  
11 built-in Fashion\* and Flexi-Stitch\* patterns • Easy to use self-winding drop-in bobbin • One-step buttonfitting buttonholer

**Model 834**  
8 built-in utility and Flexi-Stitch\* patterns • Free-arm • Front drop-in bobbin

**Big Trade Ins On All Singers!**

**HARVEY BASS**

**SINGER** 122 S. 1st. Muleshoe 272-3030

**New Playtex®**

**PLAYBOTTOMS®**

A sports panty from **Cross Your Heart™** uniquely designed for the active woman

\*516 available in white and beige S-XXL

New Playbottoms - with a ventilated 100% cotton panel and a special body fabric that breathes like a second skin. It's a winning combination to help keep you cool and dry - moisture evaporates completely to help keep you comfortable all over.

New Playbottoms are available in white or beige, sizes S-XXL. And for freedom of movement whatever your game, try Playtops® sports bras. Get **20% off** on both Playbottoms and Playtops for a limited time only. (Offer ends April 17, 1982.)

**Anthony's**  
C. R. ANTHONY CO.

321 MAIN STREET MULESHOE

**1¢ SALE**

Kill Whiteflies, Spider mites, Scale Insects and Feed your foliage plants Ready-to-use

**ferti-lome**

**Baker Farm Supply Inc.**  
1532 W. Amer. Blvd. 272-4613

**Tax Relief!**

- The State Property Tax Board reminds you that if you own farm or ranch land, you may qualify for significant tax relief. For details, contact your county appraisal district or local tax office before May 1st.
- You can help protect your rights as a taxpayer by estimating and rendering the value of your property on a rendition form. Contact your county appraisal district or local tax offices before May 1st for details.
- Homeowners may lower their property taxes by applying for exemptions before May 1st. The State Property Tax Board suggests you contact your county appraisal district or local tax offices for details.
- A new pamphlet by the State Property Tax Board explains property taxation in Texas and outlines your rights and remedies as a taxpayer. Pick up your free copy at your county appraisal district or local tax offices.
- If you are 65 or over or disabled, you may qualify for additional property tax exemptions on your home. The State Property Tax Board says contact your county appraisal district or local tax offices for details.
- The State Property Tax Board reminds you that the filing deadline for property tax exemptions in Texas is April 30. Contact your county appraisal district or local tax offices for additional information.
- Texas taxpayers have the right to render their property... to provide local tax officials with their opinion of what their property is worth. For information, contact your county appraisal district before May 1st.

**Bailey County Appraisal District**

104 E. Ave C Muleshoe 272-5501



**ANNIVERSARY CELEBRATION**—Mr. and Mrs. Ralph Black were honored with a fiftieth wedding anniversary reception in Bailey County Civic Center on Sunday, February 28. The former Naomi Owen and Ralph Black were married February 29, 1932 in Clovis, N.M. Hosting the occasion were their children, Katherine McCain and Dean Black of Odessa; Shirley Waggoner of Bledso; Karon Murray of Chesterfield, Missouri; Reta Morris of Midland; Lyndal and Bill Black of Plainview; Gaylon, Ronnie, Rickey, Rex and Kim Black and Maxine Rogers, all of Muleshoe.



The name xylophone is from the Greek words meaning "wood tones."

**New Location "Special"**

Gift Certificate

Regular T-Shirt &  
Regular Transfer

**\$5.50**

Good Anytime

Buy As Many As You  
Want!

Christmas Birthdays  
Graduation "Appreciation Gift"

**Ann's T-Shirts**

124 E. Ave B.

272-5633

**Bridal Shower Honors  
Miss Robin Trobrough**

Miss Robin Trobrough, bride elect of Randy Gore, was honored recently with a bridal shower held in the home of Virginia Barrett.

The serving table was covered with an ecru lace over ecru cloth and enhanced by apricot colored candles in a brass candleabra along with apricot and rust floral arrangement in a brass container.

The honoree and the mother of the prospective groom were presented corsages of apricot colored flowers.

Tona Simnacker served apricot colored fruit punch and assorted cookies form crystal appointments.

Gwenna Gore and Mrs. June Gore assisted the honoree in opening and recording the gifts.

Guests registered at a table covered with a white cloth and centered with an apricot colored floral arrangement.

**Ruth Class  
Has Salad  
Supper**

Members of the Ruth S.S. Class of the FBC held their March salad supper on Monday, March 8 at the fellowship hall of the church.

The group made plans for the birthday party to be held on Thursday for those having March birthdays at the Amherst Manor.

Plans were finalized and decorations finished for the Senior class banquet that was held Tuesday night.

Attending were Edna Seymore, Elsie Seymore, Rosemary Seymore, Billye Doty, Jean Harvey, Mary Harper, Zetha Young, Timie Williamson, Helen Churchman, Milt Hana, Pill Bellar, Martha Markham, Pee Wee Lance, Frances Gardner, and Sue Whiteaker.

angement. The hostessed gift was a set of Faverware cookware.

Special guests included June Gore and Mrs. Alta Gore, mother and grandmother of the prospective groom.

Hostesses included Sue Killough, Wanda Shafer, Virginia Barrett, Nono Griffin, Wanda Kittrell, Shirley Bean, Tona Simnacker, Suzan Wheeler, Sue Bush, Sharon Dale, Mary Hanna, Louise Legg, Bertha Beene, Kathryn Rogers, and Janie Morrow.

**Rebekah Lodge  
Will Attend  
Joint Meeting**

Muleshoe Rebekah Lodge No. 114 met Tuesday night at the Lodge Hall with 27 members present. Frances Stevens, Noble Grand, and Patsy Chance presided over the business meeting.

The Lodge will go to Dimmitt May 10 for a joint meeting of District Five the State president will attend this meeting.

It was announced that Mr. and Mrs. Frank Snyder have moved to Tucumcari, N.M.

Adell Tompkins and Juanita Busby were in charge of the St. Patrick's Day celebration.

Imogene Tiller gave a story about the history of St. Patrick and Joylene Costen read Irish fair and each member told an Irish joke.

Lela Atchley baked a cake and decorated it with a four leaf clover of green and white.

The hostesses were Lela Atchley, Imogene Tiller, Juanita Busby, Jessie Robinson and Adell Tompkins.



**GOLDEN ANNIVERSARY**—Mr. and Mrs. M. G. Kellar will be honored on their 50th wedding anniversary, with a reception on Sunday, March 28, from 2-4 p.m. in their home northwest of Earth. Kellar and the former Ida Waide were married on March 27, 1932, in Clovis, N.M. The reception will be hosted by the couple's family, Mr. and Mrs. Harlon Watson and Marty of Springlake and Monty of Earth. The couple request no gifts, please.

**ENMU Plans  
Two Special  
Courses**

Two special courses designed to assist teachers who have not met the State mandated certification requirement in reading will be offered by Eastern New Mexico University during late March and April.

"Reading in the Content Area" will be offered on March 27 and April 10, while "Diagnosis and Remediation of Reading" will be held April 3 and 17.

Teachers enrolling in either of the special Saturday courses can complete the three semester hour certification requirement by attending Eastern's Reading Conference on June 3-5.

Additional information on the special courses and the conference may be obtained from the Office of Continuing Education, ENMU, Portales, N.M. 88130, 562-2165.

**SMILES**

**Always The Loser**  
"John, wake up! There's a burglar going through your pockets!"  
"Well...fight it out between you."

**Know Her?**  
Two things make a woman happy—a husband and someone to compare him with.

**No Changes**  
"Has James changed much in the years he has been away?"  
"No, but he thinks he has. He keeps talking about what a fool he used to be."

**Parmer County  
History Books  
On Sale**

The Parmer County Historical Commission still has a number of the new history books, "Prairie Progress," for sale.

Grace Whitfield says, "The books are \$50 per copy. If the book is to be

mailed, \$2.50 will be added for postage."

To order, you may send your check and order to Parmer County History Book, P. O. Box 606, Friona, Texas 79035.

For more information, you may call 265-3340 or 925-2191. Also, Gene Smith's Shop in Lazbuddie.

Flattery corrupts both the receiver and the giver.  
—Edmund Burke.

**Elegance is the point  
of view!**



Our staff will assist in any way possible to make sure every member of the wedding party is fitted to perfection in the latest formal attire for all the gentlemen.

Come in and see how little it costs to rent such perfection.

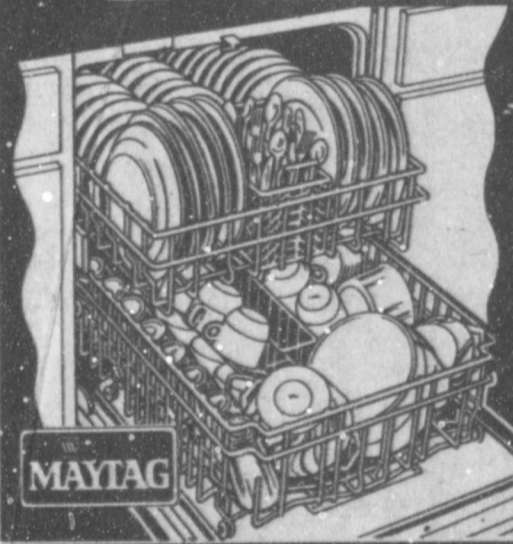
Tuxedos By Skeffingtons  
**Albertson's Shop  
For Men**

228 Main

272-3000

**HARVEY BASS Spring**

**SALE on MAYTAG**



MAYTAG JETCLEAN DISHWASHERS

Nobody gets dishes cleaner! Low Energy cycle for everyday loads • Energy Saver Drying cycle circulates air without heat • Exclusive Micro-Mesh Filter • 3 level Jet Wash System



AMERICA'S NO. 1 PREFERRED WASHER

Most to cost consumers were asked which washer they would like to own—the answer: Maytag No. 1 over any other brand!

Don't Miss Out HURRY!

BIG SAVINGS on fantastic Maytags

**HARVEY BASS**

122 1st MULESHOE

PHONE 272-3030

**Announcing.....**

**A Spring Revival**

Will Be Held At The  
**Richland Hills Baptist Church**

Sunday, March 21

Thru

Friday, March 26

Evangelist Will Be

Rev. Bobby Myers Of Providence, Texas

Music Will Be Directed By Brock Sanders

Services:

Sunday Morning..... 11 a.m.

Sunday Evening..... 6:30 p.m.

Monday - Friday..... 7:30 p.m.

Nursery Will Be Provided

**Richland Hills Baptist Church**

1631 W. Ave. D.

272-4813



Rev. Bobby Myers



PRICES EFFECTIVE MARCH 22 THRU MARCH 27, 1982  
WE RESERVE THE RIGHT TO LIMIT



SHURFRESH BUTTERMILK OR SWEETMILK  
**BISCUITS**

**6** 8 OZ. CANS **\$1**

SHURFINE VAC PAK  
ALL GRINDS  
**COFFEE**

**\$1.99**

16 OZ. CAN

GET READY FOR

SHURFINE HAMBURG  
**SLICED DILL**

32 OZ. JAR **99¢**

SHURFINE  
**BARBECUE SAUCE**

18 OZ. BTL. **69¢**

SHURFINE  
**SALTINE CRACKERS**

**2** 16 OZ. BOX **\$1**

**DAIRY AND FROZEN FOODS**

MARGARINE SHURFRESH QUARTERS	3 16 OZ. PKGS.	<b>\$1</b>
CHEESE SHURFRESH IND. WRAP SLICED AMERICAN	12 OZ. PKG.	<b>\$1.39</b>
CHEESE SHURFRESH HALFMOON COLBY LONGHORN/CHEDDAR	10 OZ. PKG.	<b>\$1.29</b>
ICE CREAM SHURFRESH ASSTD.	1/4 GAL. SQ. CTN.	<b>\$1.29</b>
JUICE SHURFINE APPLE	12 OZ. CAN	<b>79¢</b>
POTATOES SHURFINE KRINKLE CUT	32 OZ. PKG.	<b>99¢</b>

**DINNER**

SHURFINE MAC. & CHEESE		
SHURFINE TASTY		
SHURFINE MANDARIN		
SHURFINE APPLE		
SHURFINE FANCY TOMATO		
SHURFINE SLICED		
SHURFINE LEAFY		
SHURFINE WHITE		
SHURFINE FRESH SHELL		
SHURFINE EARLY HARVEST SWEET		
SHURFINE INSTANT		
SHURFINE PINK		
SHURFINE APPLE		
SHURFINE STRAWBERRY		
SHURFINE GRAPE		

**SPECIALS FROM THE GROCERY DEPARTMENT**

SHURFINE LIQUID	1 GAL. BTL.	<b>69¢</b>
SHURFINE YELLOW CLING SLI./HLVS.	16 OZ. CAN	<b>59¢</b>
SHURFINE HLVS. BARTLETT	16 OZ. CAN	<b>59¢</b>
SHURFINE GOLDEN WK./CS.	5 17 OZ. CANS	<b>\$1.99</b>
SHURFINE CUT GREEN	5 16 OZ. CANS	<b>\$1.59</b>
SHURFINE TOMATO	8 8 OZ. CANS	<b>\$1.89</b>
SHURFINE PURE VEGETABLE	48 OZ. CAN	<b>\$1.49</b>
SHURFINE EVAPORATED	2 13 OZ. CANS	<b>89¢</b>
SHURFINE DEVILS FOOD-WHITE-YELLOW CAKE	18 1/2 OZ. BOX	<b>69¢</b>
SHURFINE ALL PURPOSE	5 LB. PAPER BAG	<b>79¢</b>
SHURFINE WAFFLE	32 OZ. BTL.	<b>99¢</b>
SHURFINE BABY	14 OZ. CAN	<b>\$1.49</b>
SHURFINE BABY	16 OZ. BTL.	<b>\$1.29</b>
SHURFINE TALL KITCHEN	15 CT. BOX	<b>99¢</b>
SHURFINE TRASH CAN	10 CT. BOX	<b>\$1.19</b>
SHURFINE ALUMINUM	12x25 ROLL	<b>59¢</b>
SHURFINE POWDERED BLUE/ALL PURPOSE	49 OZ. BOX	<b>\$1.49</b>
SHURFINE FABRIC SOFTENER	40 CT. PKG.	<b>\$1.49</b>
SHURFINE VEGETABLE	24 OZ. BTL.	<b>89¢</b>
SHURFINE TEA	100 CT. BOX	<b>\$1.69</b>
SHURFINE COFFEE	11 OZ. JAR	<b>89¢</b>
SHURFINE ASSORTED	2 LITER	<b>89¢</b>
SHURFINE VANILLA/FUDGE READY-TO-SPREAD	14 OZ. CAN	<b>99¢</b>
SHURFINE MEDIUM GRAIN	2 LB. BAG	<b>79¢</b>
TOM THUMB PRESEEDED PLANTERS	EACH	<b>29¢</b>

SHURFINE  
**PORK & BEANS**

**6** 16 OZ. CANS **\$1.99**

FRUIT COCKTAIL

16 OZ. C

**59¢**



PRICES EFFECTIVE MARCH 22 THRU MARCH 27, 1982  
WE RESERVE THE RIGHT TO LIMIT



FOR THOSE WARM WEEKENDS!

HAMBURGER  
DILLS  
99¢  
SHURFINE GROUND  
BLACK PEPPER  
4 OZ. CAN 69¢

SHURFINE  
BECUE  
AUCE  
69¢  
SHURFINE PREPARED  
MUSTARD  
16 OZ. JARS 89¢

MEAT SPECIALS

BONELESS FULLY COOKED  
HALF OR WHOLE

SHURFRESH  
HAMS

\$1.99

LB.

BACON SHURFRESH SLICED 1 LB. PKG. \$1.39  
SAUSAGE SHURFRESH PURE PORK 1 LB. ROLL \$1.09  
HENS SHURFRESH BAKING LB. 65¢  
FRANKS SHURFRESH MEAT OR BEEF 12 OZ. PKG. 97¢



SHURFRESH  
JALAPENO OR PIMENTO  
CHEESE  
SPREADS  
7 1/2 OZ. CTN. 99¢

MEAT SHURFRESH BOLOGNA-P&P LOAF-SALAMI-SPICED LUNCHEON LUNCH 6 OZ. PKG. 69¢  
BOLOGNA SHURFRESH MEAT OR BEEF 12 OZ. PKG. \$1.09  
SALAD SHURFRESH CHICKEN 8 OZ. CTN. 89¢  
SALAD SHURFRESH HAM 8 OZ. CTN. \$1.09

- 3 7 1/2 OZ PKGS. 89¢
- 4 16 OZ CANS \$1.79
- 3 11 OZ CANS \$1.69
- 32 OZ JAR 89¢
- 46 OZ CAN 89¢
- 2 16 OZ CANS 79¢
- 5 15 OZ CANS \$1.89
- 6 15 OZ CANS \$1.89
- 5 15 OZ CANS \$1.69
- 5 17 OZ CANS \$1.99
- 13 OZ BOX 89¢
- 15 OZ CAN \$1.89
- 28 OZ JAR 89¢
- 18 OZ JAR \$1.19
- 18 OZ JAR 79¢

SHURFINE LIGHT CHUNK  
WATER OR OIL PAK  
TUNA  
79¢  
6 1/2 OZ. CAN

SHURFINE  
TOMATO  
CATSUP  
89¢  
32 OZ. BTL.

California Fuerte  
AVOCADOS  
4.99¢

California Sunkist Navel Oranges 3 lbs. 99¢  
California Green Broccoli lb. 49¢  
Texas Ruby Red Grapefruit 5 lb. bag 99¢  
Large Ties Fresh Green Onions 2 for 49¢

SHURFINE FROZEN WHIPPED  
TOPPING  
59¢  
8 OZ. BOWL

ALL PURPOSE RUSSET  
POTATOES  
\$1.29  
10 lb. BAG

**Farm...**

Cont. From Page 1  
administration is leading the offensive against the problems confronting farmers, including sagging income. However, farmers are still reeling from the effects of the past year's disaster, high interest rates and lack of funding. The current rate of interest on a farm operating loan is 16 percent. Close on the heels of last year's disaster is Block's opposition to any change in the 1982 farm program that he pushed through in December. Changes that many legislators think are necessary to preserve the farm economy of this nation.

**Elections...**

Cont. From Page 1  
Incumbent mayor, Charles Bratcher has filed for re-election. He is unopposed.

**Heart...**

Cont. From Page 1  
ed were Lloyd and Vera Haire, Don and Laura Seales, Betty and D. O. Burelsmith, Glenda Dale, Elizabeth Watson, and JoAnn and Marshal Head. Others who helped were Georgia Pena, Robert Sanders, Sue Haire and many parents. Through a united effort of parents, students, and the citizens of Bailey County, it is hoped the campaign goal will be reached for the American Heart Association.

**Bobo...**

Cont. From Page 1  
of Muleshoe. He was a charter member of the Muleshoe Lions Club and a member of the Muleshoe Masonic Lodge. Survivors include his wife, Inez; four sisters, Mrs. Sally Christian of Decatur; Mrs. Virginia Renshaw and Mrs. Bess Ellis, both of Rhame; and Mrs. Florence Huddleston of Fort Worth; and a brother, Zack, of Arlington. Serving as pallbearers were Sam Fox, Charles Le-nau, Bernard Phelps, Noel Woodley, Travis Bessire, Stanley Fox, Barry Lewis and Herbert Griffiths. The family has suggested that memorials be made to the First Baptist Church or First United Methodist Church of Muleshoe.

**Daffynition**  
The money the other fellow has is capital. Getting it away from him is labor.  
-Coast Guard Magazine.

**Tax...**

Cont. From Page 1  
showing the 1982 payment to be up by \$125.33. Morton's 1982 total payments to date reflect \$13,660.45, a \$534.29 difference over the 1981 payments of \$13,126.16. Farwell's rebate this period was \$1,876.36, compared to last year's of \$1,850.88; only a small increase. Total 1982 payment to date are \$5,842.80 slightly up from 1981 total payments to date of \$5,601.14 - a 4.31 percent change. Dimmitt's net payment for the March period reached \$10,407.01 - up from the \$8,546.38 comparable payment from last year. Dimmitts 1982 payment to date have reached \$38,289.56 which is up from the \$36,986.61 of 1981 payments to this date. This reflects a 3.52 percent change to date.

The biggest check this month went to Houston, which received \$10.3 million, compared with \$8 million last March.

Dallas received \$5.2 million, up 32 percent from that city's March 1981 payment of \$4 million; San Antonio's check of \$2.4 million is 22 percent more than last March.

Austin received \$1.5 million, compared with \$1.2 million in March last year, and El Paso received \$1.3 million, up 44 percent from last March's payment of \$919,000.

Bullock also forwarded March rebates to the state's two Metropolitan Transit Authorities. The Houston MTA received \$10.8 million and the San Antonio MTA got \$1.1 million.

The city and MTA sales taxes are collected along with the state sales tax by merchants and businesses and rebated monthly to the cities in which they are collected by the Comptroller.

**Softball...**

Cont. From Page 1  
TRATIONS will be accepted other than for new residents.

A coaches meeting was held Tuesday, March 16, to plan and discuss the upcoming season.

Make it a rule never to say anything about anyone and you might, in time, find a friend.

To get rich, amuse the people; to stand alone, know something; to be feared, be above reproach.

**UIL...**

Cont. from Page 1  
Harris, ready writing, seven and eight, number sense. Also Carolyn Hodges and Monte Horne, spelling, seven and eight; Debbie Isaac, alternate oral reading, seven and eight; Casey King, ready writing, seven and eight; Stacy Knowlton and Jeff McGuire, story telling; Lisa Noble, alternate ready writing, five and six, number sense; Tanya Nowell, spelling, five and six; Lee Palmer, story telling; Mandy Plank, oral reading, seven and eight; Frank Precure, picture memory; Shawn Rejino, alternate picture memory; Dusty Rhodes, oral reading, five and six; and Mary Janice Sanchez, number sense, five and six.

Others included are Julie Sanders, oral reading, seven and eight; Jake Scott, picture memory; Jami Shank, alternate spelling, five and six; Sherri Stovall, ready writing, seven and eight; Kristi Taylor, number sense, five and six; Renee Snell, alternate number sense, seven and eight; Lisa Triana, picture memory; Loy Triana, spelling, seven and eight; number sense; Kevin Truelove, oral reading, five and six; Becky Vela, oral reading, five and six and Brandon Wilson, number sense, five and six.

All events except picture memory have three entries from each town, plus one alternate. The picture memory team has five members and one alternate.

**Training...**

Cont. from Page 1  
performance examinations in accordance with the American Heart Association for Basic Life Support included: Robert Nowlin, Lori Butler and Shirley Farmer. Firemen who completed the course were Owen Jones, Donald Phelps, Johnny Ziegenfuss, Mark Tutt, Wayne Wauson, Bob Copeland, Billy Tosh, H. E. Reeder, Jr., Tom Ladd and J. O. Parker.

Another class is scheduled for March 24, 25. The classes are held in the evenings from 7 till 10 p.m. for a total of six training hours. Persons interested in this instruction should contact Trey Ellis, J. O. Parker or any of the instructors previously mentioned.

*So They Say*  
American women are the best-yessed women in the world.

**Prom...**

Cont. from Page 1  
Invitations, Joy Whitt, chairman, Joni Branscum, co-chairman. Band chairman and co-chairman were elected for next year. (These are elected one year in advance). Bobby Dunham and Kathryn Taylor will serve in this capacity. Refreshment chairman is Anita Allgood, co-chairman, Melba Bratcher. Cleanup chairman is Berta Combs and co-chairman is Janie Saldana. All parents are requested and needed to help clean up the coliseum following the prom.

Jan Pierce and Donna Black will serve as photographer chairman and co-chairman. Bids will be taken from local photographers for individual photos the night of the prom. Anyone wishing to submit a bid should contact one of these two ladies.

Serving as publicity chairman is Shirley Farmer and as co-chairman, Norma Prather.

As soon as completed plans are made, a notice will be posted as to where and when work will be done on decorations. Any junior or senior mother wishing to help with the prom will be appreciated and everyone's help is needed to make the event a memorable one for the junior and senior classes of 1982.

**ASCS...**

Cont. from Page 1  
ges at \$10 for the first plot, plus \$5 for each additional plot. For stake and reference measurement, the charge will be \$40 for the first plot, plus \$10 for each additional plot. Ground measurement, re-measurement, re-appraisal, and appraisals for proven yields will be charged out at \$30 for the first plot, plus \$15 for each additional plot. Bin measurement will be charges at \$20 for the first bin and \$10 for each additional bin.

Farmers contemplating growing peanuts should take care that they don't set themselves up for the possibility of heavy monetary penalties by growing non-quota peanuts in 1982. Williamson said that farmers should check out all the rules with the ASCS office before planting.

Non-quota peanuts must be handled in one of two ways: either offered for government loan at the additional loan rate of \$200. per ton or contracted for export or crushing prior to April 15 on Form CCC-1005. A penalty amounting to \$770 per ton would be incurred on peanuts dug and handled in any other way.

**Gone**  
The trouble with resisting temptation is that it may never come again.  
-Airman, Norman, Okla.

**Final '82 Report Shows Cotton Prices Steady**

Texas' High Plains cotton prices held steady during the week ended March 11, according to Mack Bennett, Area Director for USDA's Marketing Service Office at Lubbock. Growers sold mixed lots of mostly grades 42 and 52, staples 31 and 32, mike 35 - 49 at around 46.00 cents per pound, unchanged from a week earlier. Grade 52, staple 32, mike 30 - 32 brought about 41.00 cents - unchanged also, Bennett said. Demand slowed as shippers filled commitments.

Growers continued moving cotton into Commodity Credit's loan. An estimated 1,208,000 bales of 1981-crop, or about 52 percent of Lubbock's classing total, had entered the loan by early this week. The survey covered counties served by Lubbock's Marketing Services Office and included Form A, Form G and seed cotton loans. No equity trading was reported.

The lightest January export shipping total since 1979 was reported by the U. S. Census Bureau. January's volume was 652,600 running bales and compares with 731,500 shipped during December.

Lubbock's Marketing Services Office classed 9,000 samples during the week ended March 11 for a season's total of 2,336,000.

This compares with 1,614,000 classed by the same date last year. Predominant grades were grade 42 at 21 percent, grade 52 - 31 percent; grade 43 - eight percent and grade 53 was 19 percent. About 73 percent was reduced one grade because of bark. Nine percent was below grade.

Predominant staples were staple 29 - 17 percent, staple 30 - 43 percent, staple 31 - 25 percent and staple 32 was six percent for an average of 30.0 thirty-seconds of an inch. Micronaire 35 - 49 was 14 percent, 33 - 34 was 13 percent, 30 - 32 was 29 percent, 27 - 29 was 20 percent and 26 or below

was 24 percent for an average of 30. Gins paid High Plains growers \$70 to \$80 per ton for cottonseed, mostly \$75. This is the final release for the 1981-82 season. Cotton market information on a daily basis may be obtained by telephone at (806) 763-7870.

**Local Man Graduates From Sales School**

Rick D. Wilcox, a sales representative for Combined Insurance Company of America, has returned

home from Chicago where he graduated from an intensive training course held in the firm's corporate

headquarters. Donald F. Veit, vice president and senior divisional manager for National Health Care Sales said, "As a result of the specialized training course in personal disability insurance, Wilcox can look forward to a promising career with Combined as we are the number one seller of non-cancellable accident and health insurance in the United States."

Wilcox resides with his wife, Vada, and their two children at 204 12th. He is the son of Mr. and Mrs. Ike Wilcox.

**County Agent Speaks To Rotary**

Muleshoe Rotarians had several guests for their regular meeting on Tuesday, March 16. Among the guests were Robert Wert,

amount of the cattle shown were locally bred and raised in Bailey County.

The Rotarians also saw a film on 4-H entitled "People Helping People," featuring the various organizations and activities of the Texas Agricultural Extension Service.

Robert Wert entertained the group with vocal renditions of "Old Man River" and "Mariah."

County Extension Agent Spencer Tanksley was the guest speaker and told the club that the Bailey County 4-H livestock exhibitors had a most successful year. "Our county was well represented at most of the livestock shows around," Tanksley said. "And, we had one steer to win Grand Champion at the El Paso Show, which was shown by Alan Harrison." A large

**Wilson**  
Appliance  
**Sales & Service For**  
**MAYTAG**  
For 14 Years And Will Continue To Be  
**Come In Today & Let "Smiling" Gordon Make You A Deal!**

**IRON**  
will  
make  
your  
lawn  
greener!  
**Be the neighborhood SHOW OFF!**  
**ferti-lome**  
**Baker Farm Supply**  
1532 W. Amer. Blvd.  
272-4613

**Sportsman** Complete & Balanced Nutrition Dog Food  
**PUPPY FOOD**  
27% PROTEIN \$5.95  
20 LB. Bag

**HI-PROTEIN DOG MEAL** 50 LB. Bag \$10.59  
26% PROTEIN

Five Point  
**Dog Food**  
50 LB. Bag \$9.36  
25 LB. Bag \$5.15  
Alert

**A&M**  
FARM AND RANCH SUPPLY  
**Cat Food** \$3.45  
10 LB. Bag

**Boy, These Maytags Are Really Built!**

**MAYTAG**

Your Authorized Sales & Service Dealer  
**HARVEY BASS**  
122 S. 1st  
272-3030

**Tax Relief!**

1 State law on property taxation seeks to ensure that Texas property owners pay their fair share—no more, no less. You have the right to file a rendition statement before May 1st, telling tax officials what you think the value of your property should be. You may also apply for available exemptions to reduce your tax bill. For information about property taxation, pick up a free copy of the "Taxpayers' Rights and Remedies" pamphlet at your new county appraisal district office, or contact your school, city or county tax office.

2 If you own farm or ranch land, you may able to substantially reduce the amount of property tax you pay each year by having your land value based on its productivity rather than market value. This valuation is not automatic, however. You must apply for this tax relief at your new county appraisal district office before May 1st. While you're there, pick up your free copy of the Texas "Taxpayers' Rights and Remedies" pamphlet which explains property taxation and gives details on other exemptions for which you may qualify.

3 Did you know that Texas law provides important tax exemptions for qualified property owners? For example, a \$5,000 homestead exemption from the appraised value of your home for school taxes! An additional \$10,000 residence exemption for property owners 65 and over or for those who are disabled! Plus tax relief for disabled veterans! These exemptions are NOT automatic. You must apply for them before May 1st. For more information, contact your new county appraisal district office or your city, county or school tax office.

**Bailey County Appraisal District**  
104 E. Ave C Muleshoe 272-5501



## Outstanding Persons Honored At Banquet

The Sudan Chamber of Commerce held their regular monthly meeting on March 2 at 7:30 p.m. at the First National Bank with President, Ron Montgomery, calling the meeting to order and presiding over the meeting.

Election of officers was held for the 1982 year with new officers as follows: Terry Tennyson-President; Ron Montgomery - Vice President; Pete Lance, Agriculture Industrial and Economic Vice President; Norma Burnett as secretary-treasurer and reporter. Plans were finalized for the Chamber of Commerce

## Childrens Home Associates Meeting Held

The Portales Children's Home Associates met on Monday, March 15, in the home of Ethel Julian to make quickpoint snowflakes and mice hot pads to sell for the home.

Those present included Ethel Julian, Ruth Williams, Onedia Cornelison, Mattie Smith, Modine Elmore, Vickie Hendricks, and Mabel Caldwell.

Officers for the coming year were elected. They were Vickie Hendricks, president and Modine Elmore, secretary-treasurer.

Refreshments of homemade ice cream, coffee, cold drinks and chocolate dream cake were served.

On Tuesday, March 16, Onedia Cornelison, Ethel Julian and Mabel Caldwell went to the once a month associates for the election of officers. Ethel Julian was elected president of the Portales Associates. She will take office in April.

Banquet held on Saturday March 20 at 7:00 p.m. at Sudan Cafeterium.

Dr. Raymond Cook a veterinary consultant for nearly 20 years gave the program for the evening. He has traveled to Europe, South America and Mexico and has seen most of the U.S. through consulting work in agricultural and industrial veterinary science. He has more than 17 years of experience in researching new compounds for animal, working through universities and large livestock operations and related concerns.

Dr. Cook has been in demand as a speaker for the past 15 years for banquets ranging in interests from church to civic work and service clubs to cattlemen's associations. Primarily a humorist, he's been called the "Herb Shriners of the veterinary profession", but his rib-tickling country philosophies appeal to all groups.

Outstanding persons of the community were announced and honored. Those having been nominated and in the top three of each group include Lucy Kent, JoAnn Chester and Geneva Newman as Outstanding Woman of the Year; Outstanding man of the year include Orville Hill, Carl Barnett and Theon Hill. Outstanding Citizen Through the Years include Hoyt Robertson, Marvin Tollett and Maxine Nichols. Nominees for Outstanding Farm Family of the Year are James Withrow family, Wix Gaston family and the Dan Wood family.

Also being recognized were members of the Sudan Volunteer Fire De-

partment and the Sudan EMT group. Libby Mudgett provided the dinner music during the meal.

Carl Burnett was guest speaker for the meeting explaining some things about the fire department and the fire trucks as well as the key rate on fire insurance for Sudan.

There will be a called meeting of the Chamber of Commerce on March 23 at 7:30 p.m. at the First National Bank and all members and other interested persons are urged to attend.

The next regular meeting will be April 6th.

Use special precautions when taking prescribed drugs, advises Dr. Mary Ann Shirer, a health education specialist with the home economics staff of the Texas Agricultural Extension Service, the Texas A&M University System. "Certain medications interact with natural and added chemicals in foods, and this can cause an unexpected effect," she says. "Ask your doctor when to take prescribed drugs—before, after or between meals, and ask about foods or beverages to avoid. Also be sure to tell the doctor of other medicines you're taking," she says.

## Sudan News By Evelyn Ritchie

Mr. and Mrs. Lewis Fields and Gary and Mr. and Mrs. Sam Bingham and Alyson of Lubbock visited in Crosbyton on Sunday to celebrate the birthday of their son and brother, Jim Fields.


Mr. and Mrs. Tom Word of Lockney visited one day last week with Mr. and Mrs. Claud Kropp.

Mr. and Mrs. R. B. Knox are vacationing this week.

On Thursday, April 1, there will be a Baseball Association meeting at 7:30 p.m. at the community center. All parents are urged to attend this very important meeting. Coaches and officers are to be elected. All interested persons are asked to attend.

Dates for the Spring Revival meeting for the First Baptist Church has been set for March 28 through April 2.

Lon Chaffin will be the music director and Don Chaffin the evangelist. There will be a church wide banquet on March 27.



### West Texas KARATE

Offering Karate Classes Beginning April 5. Come By 215 E. Ave. B. Or Call 272-5190, Danny Kelley, 2nd Degree Black Belt, Inst.

## Public Service Announcement From Bailey County Appraisal and State Property Tax Board

Homeowners who are 65 years of age or older and failed to receive their school district homestead exemptions in 1979 have until April 1 of this year to do so. In this way, elderly homeowners will be able to take advantage of the tax freeze associated with the \$10,000 homestead exemption, said Dale Jones, chief appraiser for the Bailey County Appraisal District.

According to a law passed by the Special Session of the 67th legislature, over-65 homeowners who qualified for the school homestead "tax freeze" in 1979, but did not apply for the limitation, may file an application with the chief appraiser of the appraisal district in which the home is located.

Application must be made with Dale Jones before April 1, 1982. To qualify for their tax limitation, on January 1, 1979 a homeowner must have satisfied these requirements:

- Be 65 years or older
- Own his home
- Use that home as his principal residence

The chief appraiser will consider all applications and notify each applicant before April 15, 1982. If the application is approved, the chief appraiser will make an entry on the appropriate school district's 1982 appraisal records.

This entry will indicate the amount of tax the over-65 taxpayer should have paid in 1979, had he been granted the \$5,000 general homestead exemption and the \$10,000 over-65 homestead exemption. No refunds of taxes paid will be given for 1979, 1980, or 1981.

For 1982, the taxpayer's amount of homestead taxes paid may not exceed the amount of taxes the school district would have imposed on the homestead for 1979, had the taxpayer been granted his homestead exemptions. This frozen tax amount will remain in effect as long as the homestead remains the same.

For applications contact Dale Jones at the:

# Bailey County Appraisal District

104 E. Ave. C

272-5501

**CRISPY, FRESH COOKED CHICKEN FRIED STEAK SANDWICH ONLY 99¢**

**BUY ONE GET 8OZ. BAG BBQ POTATO CHIPS \$1.29 VALUE FREE! CLOVER CLUB CRINKLE POTATO CHIPS 10OZ. BAG \$1.59**

**SHURFINE GRAPE JELLY 10OZ. JAR 79¢**

**SHURFINE EVAPORATED MILK 12OZ. CANS 89¢**

**SHURFRESH BUTTERMILK OR SWEETMILK BISCUITS 6 8OZ. CANS \$1.00**

**SHURFINE ALL GRINDS COFFEE 1LB. CAN \$1.99**

**SHURFINE SPINACH 5 15OZ. CANS \$1.89**

**SHURFRESH HALFMOON GOLBY CHEESE 10OZ. PKG. \$1.29**

**SHURFINE FRUIT COCKTAIL 16OZ. CAN 59¢**

**SHURFINE HALVED BARTLETT PEARS 16OZ. CAN 59¢**

**SHURFINE WHOLE KERNEL GOLDEN CORN 17OZ. CANS 5 \$1.99**

**SHURFINE SLICED PEACHES 16OZ. CAN 59¢**

**SHURFINE APPLESAUCE 4 10OZ. CANS \$1.79**

**SHURFINE STRAWBERRY PRESERVES 10OZ. JAR \$1.19**

**SHURFINE PORK 'N BEANS 6 16OZ. CANS \$1.99**

**SHURFINE FLOUR 5LB. BAG 79¢**

**SHURFINE WHITE OR GOLDEN HOMINY 6 15OZ. CANS \$1.89**

**SHURFRESH SLICED AMERICAN CHEESE FOOD 12OZ. PKG. \$1.39**

**SHURFINE IN OIL OR WATER CHUNK TUNA 6 1/2OZ. CAN 79¢**

**SHURFINE VEGETABLE OIL 24OZ. BTL. 89¢**

**Spring Savings Sale PRICES EFFECTIVE MARCH 22-28, 1982 WHILE SUPPLIES LAST**

**SHURFINE GREEN BEANS 5 16OZ. CANS \$1.59**

**SHURFINE SALTINE CRACKERS 2 1LB. BOXES \$1.00**

**SHURFINE FANCY TOMATO JUICE 40OZ. CAN 89¢**

**SHURFINE BLACKEYES 5 15OZ. CANS \$1.69**

**SHURFINE TOMATO SAUCE 8 8OZ. CANS \$1.89**

**MARIGOLDS OR COLEUS TOM THUMB PRESEEDED POTS 29¢ EA.**

**GLADIOLA YELLOW OR WHITE CORNHEAD MIXES 4 8OZ. PKGS. \$1.00**

**SHURFINE CATSUP 32OZ. BTL. 89¢**

**If it's Borden, it's got to be good 1857 BORDEN 1982**

**BORDEN'S HI-PROTEIN MILK 1/2 GAL. \$1.09**

**BORDEN'S COTTAGE CHEESE 12OZ. CTN. 79¢**

**BORDEN'S NUTTY BUDDY'S OR ICE CREAM SANDWICHES 6CT. PKG. \$1.19**

**SHURFINE PINK SALMON 15OZ. CAN \$1.89**

**SHURFINE MEDIUM GRAIN RICE 2LB. PKG. 79¢**

**SHURFRESH MARGARINE 3 1LB. QTRS. \$1.00**

**SHURFINE ALUMINUM FOIL 25FT. ROLL 59¢**

**SUNSHINE CHIP-A-ROOS 12OZ. PKG. \$1.29**

**SHURFINE WAFFLE SYRUP 32OZ. BTL. 99¢**

**SHURFINE EARLY HARVEST SWEET PEAS 5 17OZ. CANS \$1.99**

**ALLSUP'S CONVENIENCE STORES "THERE'S ONE NEAR YOU"**



# MULE'S TALE



Editor : Jan Whitt

Official Publication of Muleshoe High School Written and Edited by Students of the Muleshoe Schools

Volume 17, No. 22

Sunday, March 21, 1982

## Student Body Names 1982 Class Favorites

### Muleshoe School Menu

March 22-26

#### MONDAY

**Breakfast**  
Milk  
Cereal  
Fruit  
**Lunch**  
Milk  
Spaghetti with Meat Sauce  
Green Beans  
Corn  
Cornbread  
Fruit

#### TUESDAY

**Breakfast**  
Milk  
Honeybun  
Juice  
**Lunch**  
Milk  
Hamburger  
Lettuce and Tomato  
Pickles and Onion  
Tater Tots  
Fruit Cobbler

#### WEDNESDAY

**Breakfast**  
Milk  
Toast  
Jelly  
Fruit  
**Lunch**  
Milk  
Chicken Pot Pie  
Spinach  
Jello Salad  
Peanut Butter Confection

#### THURSDAY

**Breakfast**  
Milk  
Honeybun  
Juice  
**Lunch**  
Milk  
Sandwiches  
Vegetable Beef Soup  
Crackers  
Brownies  
Fruit

#### FRIDAY

**Breakfast**  
Milk  
Cooked Cereal  
Toast  
Fruit  
**Lunch**  
Milk  
Fish Krispies  
Macaroni and Cheese  
English Peas  
Hot Rolls  
Fruit

### Calendar Of Events

Tuesday-23  
Band Clinic 8 to 11:30 a.m.  
Boys Golf-Abernathy  
Thursday-25  
One Act Play, Muleshoe, 1 p.m.  
Boys Golf-Clovis  
Tennis-Springlake at Muleshoe.  
Friday-26  
Boys Track-San Angelo  
Saturday-27  
Girls Track-Abernathy  
Boys Track-San Angelo

#### ONE MINUTE SPORTS QUIZ

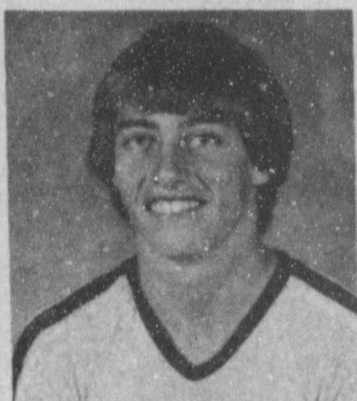
1. Moses Malone played basketball originally for what pro team?
2. Who won the N.Y. Jets, Buffalo Bills clash?
3. Which boxer holds the record for most consecutive knockouts?
4. Who won the N.Y. Giants, Philadelphia Eagles game?
5. Which NHL defenseman holds the record for most goals scored in one game?

#### Answers To Sport Quiz

1. Buffalo.
2. Bills 31, Jets 27.
3. Lamar Clark
4. Giants 27, Eagles 21.
5. Ian Turnbull.



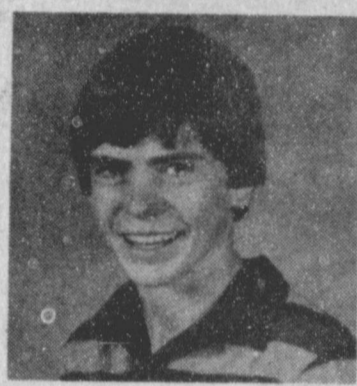
JAN WHITT



RONNIE ANGELEY



RHONDA DUNHAM



SCOTT CAMPBELL



SHERRI BESSIRE



JEFF HAMILTON

### FFA Officers Present Lion's Program

Three of the Muleshoe FFA officers attended a meeting of the Lion's Club Wednesday, March 17, to give a program on the FFA.

Starla Black, Kay Lynn Prather and Curtis Wheeler presented the program. They were accompanied by their advisor, Carl Wheeler.

The presentation covered different areas of the FFA such as the national convention, what the local chapter is doing, and some interesting facts about the organization.

Let those flatter who fear; it is not an American art.

-Thomas Jefferson.

### Home Ec. Classes

#### Hear Energas Advisor

Students in the Home-making Department were privileged to hear Mrs. Nita Loyd, Home Service Advisor for Energas, Tuesday, March 16. She presented an interesting program on ways individuals or families can save money daily, by making or substituting many common household products.

Mrs. Loyd explained that many well-known brands of furniture polish, spot remover, pre-washes, window cleaner and other household products that are expensive, can be substituted



LORI ELLIS



CARLOS CARMONA

### Vo Ag Sponsors Welding Short Course

Muleshoe High School Ag Department sponsored an oxy-acetylene welding short course March 15-18. There were various door prizes furnished each night of the course by local merchants. On Monday night, March 15, Robert Martin won some welding tongs

and vise grips provided by Fry & Cox, and Gene Rogers won a welding face shield furnished by Mohawk Auto Parts.

Tyri Vandiver, a Muleshoe FFA student, was the winner of one quart of Roundup donated by Riverside Chemical Tuesday night. Jerry Haley also won an arc welding helmet from Wiedebush and Company.

The last night of the course, one quart of Roundup provided by Riverside Chemical was won by Eugene Houston. Ramon Guillen won a digital watch supplied by A&M Farm Supply.

We would like to congratulate all of these winners and thank all of the merchants for their donations.

It is hoped that students will use and share these ideas for money and time savings in the home.

Recipes for mixes such as biscuits, rolls, and seasonings were given to the students.

The annual staff would like to wish the following people a very happy birthday.

- March 22-Debbie Pugh
- March 23-Melissa Wilbanks.
- March 24-Maria Rodriguez.
- March 26-Ramon Valdez and Patty Garcia.
- March 27-Hector Orozco
- March 28-Shannon Nieman and Lori Hartline.

A flattering mouth worketh ruin.

-Proverbs 26:28.

When he who everybody else flatters, flatters me, I then am truly happy.

-Samual Johnson.

### Students Asked To Meet Challenge Of Budget Cuts

An intensive campaign is being launched in hopes of heading off proposed massive cuts in federal support for higher education.

Students -- and their parents -- are being asked by supporters of higher education to help meet the critical challenge of a federal budget which the American Council on Education says "would clearly be a disaster for American higher education."

President Reagan, in his budget message early in February, called for cuts which will take another \$950 million out of student aid and reduce most other programs by 25 percent.

According to the administration's proposed FY 83 budget, the cuts include a 40 percent reduction in Pell Grants; a 30 percent cut in College Work-Study; total elimination of Supplemental Grants, National Direct Loans, State Student Incentive Grants and graduate fellowships, and further restrictions in the Guaranteed Student Loan Program as follows:

A proposal to drop graduate and professional students from the guaranteed loan program.

Require all students to demonstrate financial need before they qualify for a loan. Under existing law, all students from families earning less than \$30,000 a year are automatically eligible for loans, while more affluent students may borrow only if they pass a financial need test.

Boost from five to 10 percent the fee that students pay to banks when they take out guaranteed loans.

Require students to repay their loans at market rates - rather than at nine percent interest - two years after they leave college.

Require the state agencies that administer the program and guarantee the loans to turn back to the government half the money they collect from students in the fees known as "insurance premiums." To finance their operating expenses, those agencies are authorized to charge students up to one percent of the amount borrowed.

The administration wants the changes to take effect by April 1 - in time to affect loans made for next fall.

These proposed reductions will adversely impact on the number of students receiving aid and may prevent many students from returning to college because of financial problems.

The immediate effects of the proposals, say education leaders, will be that: --Equal access to education may be a thing of the past.

--Students may be forced to drop out of school.

--Prospective students may find that college is no longer an attainable goal.

--Institutions will be faced with declining enrollments and retention problems.

A February 15, 1982 article in the Houston Post stated: "Mack Adams, assistant commissioner for student services at the Coordinating Board, analyzed the Reagan proposals and found Texas' \$293 million in aid would be reduced by \$122 million and would thereby eliminate almost 90,000 students who otherwise would qualify for grants or loans. Adams says all those factors paint a dismal picture: "I think many students who otherwise would have been in school will not be."

Many others who will stay in school are going to have to pull in the belt very tight because there just won't be enough money.

"It will mean a loss of enrollment on most campuses and, within all probability, some of the smaller institutions that have primarily catered to low-income students will probably face closing."

Individual students especially are urged to write to their elected federal officials, stressing the importance of aid to them in completing their education and asking for the support of their senators and congressmen.

The Texas Guaranteed Student Loan Corporation, which administers guaranteed student loans in the state of Texas, continues to administer the program under the current law and will keep lenders, schools and students advised of any Legislative changes. Since January 1981 TGSLC has guaranteed \$141,000,000 in loans to 55,000 students.

The 1981-82 class favorites have been chosen by the student body. Each class elected one boy and one girl for their favorites.

Senior class favorites are Jan Whitt and Ronnie Angeley. Jan is the 18 year old daughter of Mr. and Mrs. Roy Whitt. She is president of Student Council, vice president of FTA and Editor for the Mule's Tale. She enjoys being an ambassadorette for the Chamber of Commerce and an honorary sweetheart of the Lion's Club. She is also a member of FCA and UMY.

Ronnie, the son of Mr. and Mrs. Ken Angeley, is 18 and is FTA president as well as vice president of the senior class. He enjoys athletics and being a member of FCA.

Junior class favorites are Rhonda Dunham and Scott Campbell. Rhonda is FTA secretary, FCA treasurer, Junior vice president, and a varsity cheerleader. She is the 16 year old daughter of Mr. and Mrs. Jack Dunham.

Scott is a member of FCA, secretary - treasurer

### LCC Group Presents Assembly

Muleshoe High School Student Council sponsored the "Hard Travelers," a singing group from Lubbock Christian College, in concert Thursday, March 18. The concert was presented at 10:00 a.m. in the high school auditorium. Admission was 50 cents.

The "Hard Travelers" played mainly contemporary rock music. Some of these selections were "Long Time (Boston)," "You Make My Dream," and "Orange Blossom Special."

The young men making up this group are Jeff Persival, Mike Shanaberger, Gary Moyers, and Mike Prather. The Admissions Counselor is Kent Rhodes.

Muleshoe High students and faculty enjoyed the concert and express their appreciation to the Student Council and the "Hard Travelers" for the presentation.

of the Junior Class, parliamentarian of District XVII FTA, and enjoys being on the tennis team. He is the son of Mr. and Mrs. Tim Campbell.

Sherri Bessire and Jeff Hamilton were selected the sophomore class favorites. Sherri, the 15 year old daughter of Mr. and Mrs. Travis Bessire, is a member of FCA and FTA, is a JV cheerleader, plays basketball, runs track, and is a twirler for the Mighty 'M' Band.

Jeff is the 16 year old son of Mr. and Mrs. Kenny Hamilton. He is a member of FCA and FTA and plays football, basketball and tennis.

Freshman favorite Lori Ellis is the 15 year old daughter of Mr. and Mrs. Joe Ellis. She is a member of FTA and FCA. She runs track and is a Junior Varsity Cheerleader.

Carlos Carmona, freshman favorite boy, is the 15 year old son of Mr. and Mrs. Carlos Carmona. He especially enjoys his membership in FFA and his involvement in agriculture. He is in athletics and is a member of FCA.

The Mule's Tale staff and the classes congratulate these students on their selection as class favorites for 1981-82.

### WHO KNOWS?

1. What is the capital of the Netherlands?
2. What is the Roman Numeral for 1900?
3. When is the next leap year?
4. Which U.S. president was born January 7, 1800?
5. What is the area of Great Britain?
6. Define acoustics.
7. What famous Southern General was born January 19, 1807?
8. Who was the last French King?
9. Define "modus vivendi."

#### Answers To Who Knows

1. Amsterdam.
2. MCM.
3. 1984.
4. President Millard Fillmore.
5. 94,000 square miles.
6. The science of the production and behavior of sound.
7. Robert E. Lee.
8. Louis Philippe, 1830-48.
9. Latin phrase, meaning "way of living."



PRESENTED PROGRAM TO ASSEMBLY--The "Hard Travelers" presented a program Thursday during assembly. Pictured L-R are: Jeff Persival, Mike Shanaberger, Gary Moyers and Mike Prather. Not pictured is Kent Rhodes, Admissions Counselor. The group is from Lubbock Christian College.

**West Plains Medical Center Report**

**ADMITTED**  
 March 15-Charlie Miller, Margie Hawkins.  
 March 16-Stephanie Jones, Evette Freeman, Jim Haynes, Olene Watts, Debbie Alcorta and Daniel Reyes.  
 March 17-Tommy Sullivan, Dona Trague, Trinidad Ortiz, Klyde Krebs, Thelma Venable, Nellie Connell, Elizabeth Gallman.  
 March 18-Brima Davila, and Kevin Morris.  
**DISMISSED**  
 March 15-Chera Foster, George Sifuentez, Modesta Garcia, Evette Freeman and Cynthia Garrison.  
 March 16-Hazel Stratton, Gloria Mahaney, Rosa Allison, R. W. McCaskill, Lupe Martinez and baby girl.  
 March 17-Glenn Willoughby, Lola Pylant, Claudia Nichols, Juanita Lumbra, Stephanie Jones and baby girl, Lillie Simkins, and Alma Ott.  
 March 18-Ernest Martin, Jerry Mick, Manuelita Silguero, Patsy Shafer and Dorothy Gibson.

**Local Coop Leaders Attend Conference**

Local cooperative leaders Bob and Louise Newton and Gary and Jenny Welch, representing the Farmers Co-op Gin of Enochs, were among more than 250 agricultural cooperative managers, directors, and wives from across Texas that recently attended the 31st annual Cooperative Manager-Director conference in McAllen, Texas. The conference was held at the Holiday Inn Civic Center Hotel.  
 The conference theme "Cooperatives Respond to Change" was harmonious with the purposes of the conference-(1) to broaden skills in managerial decision-making for managers and directors; and (2) to keep abreast of changes and challenges facing agricultural cooperatives. The speakers at the conference included Dr. Brice Ratchford, University of Missouri at Columbia; Dr. Bill Black and Dr. Ron Knutson, Texas Agricultural Extension Service, College Station; Bob Beasley of Farmland Industries, Inc.,

Kansas City, Missouri; Jeff Royer and Roger Wissman, USDA, Washington, D. C.; Dave Dewey of Wichita, Kansas Bank for Cooperatives; and Eric G. Thompson of MFA, Inc., Columbia, Missouri. A special ladies program featured Frank Brooks of Texas Department of Agriculture and a representative of Texas sweet citrus association.  
 When these conferences began in 1952, they were known as Agricultural Cooperatives Managers School, but in 1961, the name was changed to include both managers and directors of farmer cooperatives. In addition to the various sessions, participants had the opportunity to visit several local cooperatives, observe Rio Grande Valley agricultural crops, and Reynosa, Mexico by special tour buses.  
 The conference was sponsored by the Texas

Federation of Cooperatives the Texas Cooperative Ginners Association, the Texas Bank for Cooperatives, and Texas Agricultural Extension Service

**Large onion crop expected this spring**

AUSTIN--The largest crop of spring onions since 1979 is expected in Texas this year, with growers anticipating 19,400 acres for harvest.  
 "We're right on schedule. Harvest usually begins in mid-March, providing the country with its first taste of fresh green onions since the previous summer," Agriculture Commissioner Reagan V. Brown said.  
 Brown added that the quality has been "very good" and yields are average or above.  
 Texas is the country's second biggest producer of onions. Most of these are harvested in the spring. Valley growers will pick around 16,400 acres this year. Growers in San Antonio-Winter Garden and Laredo in South Texas will begin harvest around April 1, adding another 3,000 acres to production.  
 Kodak unveils new disc camera.

**Courthouse News**

**MARRIAGE LICENSES**  
 Haynes Jackson, Jr. and Martha Olga Ruvalcaba, of Muleshoe.  
 Lawrence Fluellen and Pearl Ruth Briscoe, of Muleshoe.

**WARRANTY DEEDS**  
 Robin E. Davis and Donald Dustin Davis to Leon Warren and wife, Carol Warren--All of Lot Number (6), Block Number (1), Parkland Addition to the Town of Muleshoe, Bailey County, Texas.  
 Lee R. Pool and wife, Jewel N. Pool to Calvin A. Meissner and wife, Gereta Miessner--the Northeastly 56.69 feet of Lot Number (14) and the Southwestly 13.31 feet of Lot Number (15), in Block Number (1),

Parkland Place Addition to the City of Muleshoe, Bailey County, Texas.

Calvin A. Meissner and wife, Gereta, to Michael L. Davenport and wife, Cara E. Davenport--the Northeastly 56.69 feet of Lot Number (14) and the Southwestly 13.31 feet of Lot Number (15), in Block Number (1), Parkland Place Addition to the City of Muleshoe, Bailey County, Texas.  
 Roger Gene McGuire and wife, Kerma Linda McGuire, to Doran Reynolds and wife, Monica Reynolds--All of Lot (38) richland Hills Addition to Muleshoe, Bailey County, Texas.

**COUNTY COURT**  
 Emilio Sandoval -- Theft \$25 Fine.

**Hopeless**  
 No matter how much you nurse a grudge, it won't get better.  
 -Journal, Petersburg.

**Ellis Funeral Home**  
 24 Hour Ambulance Service  
 Ph. 272-4574 Muleshoe

**Feedlot Inventory Down**

AUSTIN--The number of cattle on feed in Texas this January was 9 percent below January 1981 and three percent below last month at 1,660,000 head, Agriculture Commissioner Reagan V. Brown reports.  
 The Texas Crop and Livestock Reporting Service reports that lots across the state are operating slightly above 55 percent of capacity.  
 There were 1,105,000 cattle placed on feed in Texas feedlots during the October-January period, representing a 1 to 2 percent decrease from the same period last year.  
 "The impact of reduced

placements of feeder cattle over the past few months resulted in reduced marketings toward the end of 1981," Brown said.

**Correct?**  
 It seems that modern statesmen can't tell a lie, either. The correct name for it is an "official denial."  
 -Star, Minneapolis.

**MEET THE CANDIDATES**  
**Parmer County Democratic Commissioner Precinct 4**  
**Raymond McGehee Raymond Treider, Jr.**

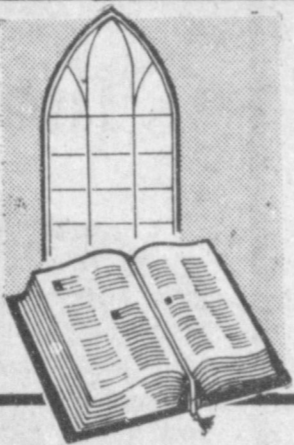
**MEET THE CANDIDATES**  
**Muleshoe ISD School Board**  
**Steve Neptune**

**VOTE FOR THE CANDIDATES OF YOUR CHOICE!**

Rates for listing in the Journal's Political Column is: \$35 for all offices except those for City Council and School Board post which is \$15. This fee includes a front page announcement article and a one column photograph at the time the announcement is made, in addition to the listing in the Political column from the date of announcement until the final election.  
 Charges for announcements are cash in advance, and this same policy applies to all political advertising carried in the columns of this newspaper.  
 Names for each office will be listed in the Political Column in the order they are received at the newspaper office.  
 The Journal has been authorized to announce the following candidates for public office:

**Democratic**

- \* County Clerk \*  
**Barbara McCamish**
- \* District Clerk \*  
**Nelda Merriott**
- \* County Treasurer \*  
**Dorothy Turner**
- \* Tax Assessor \*  
**Kathleen Hayes**
- \* Justice Of Peace \*  
**Precinct No.1**  
**Tana Holmes**  
**Jack Bates**
- \* County Commissioner \*  
**Precinct No. 4**  
**Rudolph Moraw**  
**Frankie Dee Fine**  
**Dale Middlebrooks**  
**Pete Hurtado**
- \*287th Judicial District Judge \*  
**Bailey & Parmer Counties**  
**Jack D. Young**
- \* County Judge \*  
**Gordon H. (Corky) Green**
- \* Commissioner \*  
**Precinct No. 2**  
**Glen Dalton Harris**  
**Roy Whitt**  
**Don Seales**  
**William Carl Patterson**  
**Charles Glover**
- Republican**
- \* County Treasurer \*  
**Jean Treadwell**
- \* County Attorney \*  
**Lamar Dee Treadwell**
- \* County Judge \*  
**Thomas S. Freeman**
- \* Justice of Peace \*  
**Precinct 1**  
**Paulette Cuevas**



**ATTEND THE CHURCH OF YOUR CHOICE**



- FIRST CHRISTIAN CHURCH**  
 130 W. Ave. G  
 Rev. Walter Bartholf  
 Sunday School - 10 a.m.  
 Worship - 11 a.m.
- LATIN AMERICAN METHODIST MISSION**  
 Ave. D and Fifth Street  
 R.Q. Chavez, Pastor
- THE COMMUNITY CHURCH**  
 H.D. Hunter, Pastor  
 Morton Highway
- CALVARY BAPTIST CHURCH**  
 James Williams, Pastor  
 1733 W. Ave. C
- PROGRESS SECOND BAPTIST CHURCH**  
 Clifford Slay, Pastor  
 1st and 3rd Sundays
- FIRST UNITED METHODIST CHURCH**  
 Rev. Bill Kent  
 507 W. Second, Muleshoe
- ST. JOHN LUTHERAN**  
 Lariat, Texas  
 Herman J. Schelter, Pastor  
 Sunday School - 10 a.m.  
 Worship - 11 a.m.
- PRIMITIVE BAPTIST CHURCH**  
 621 South First  
 Elder Bernard Gowets  
**MULESHOE CHURCH OF CHR.'ST**  
 David Cox, Minister  
 Clovis Highway
- JEHOVAH WITNESS**  
 Friona Highway  
 Boyd Lowery, Minister
- ST. MATTHEW BAPTIST CHURCH**  
 Corner of West Boston & West Birch  
 Rev. M.S. Brown, Pastor
- SPANISH ASSEMBLY OF GOD**  
 East 6th and Ave. F  
 REV. DAVID LARA

**NO LONGER Sewing**

Once this home housed a family, was full of laughter, protected its members from the elements. Now it is an old abandoned home... decaying, and falling apart. No longer of any use to anyone.

A person away from God is like this old abandoned home, gradually decaying in spirit and serving no purpose in God's will. Return to a regular church worship with the Lord. Receive God's great love, and live a joyous full life.

"I was glad when they said unto me, let us go into the house of the Lord."

The Church is God's appointed agency in this world for spreading the knowledge of His love for man and of His demand for man to respond to that love by loving his neighbor. Without this grounding in the love of God, no government or society or way of life will long persevere and the freedoms which we hold so dear will inevitably perish. Therefore, even from a selfish point of view, one should support the Church for the sake of the welfare of himself and his family. Beyond that, however, every person should uphold and participate in the Church because it tells the truth about man's life, death and destiny; the truth which alone will set him free to live as a child of God.

**EVERYONE IN THE CHURCH THE CHURCH IN EVERYONE**

- MULESHOE BAPTIST CHURCH**  
 8th and Ave. G  
 Bob Dodd, Pastor
- FIRST BAPTIST CHURCH**  
 Rev. J.E. Meeks, Pastor
- CHURCH OF THE NAZARENE**  
 Ninth and Ave. C  
 Rev. Jimmie Williams, Pastor
- MULESHOE ASSEMBLY OF GOD**  
 517 S. First  
 Rev. James Golaz
- EMMANUEL BAPTIST CHURCH**  
 Iglesia Bautista Emmanuel  
 107 E. Third  
 Isaias Cardenas, Pastor
- RICHLAND HILLS BAPTIST CHURCH**  
 17th and West Ave. D  
 Brock Sanders, Pastor
- SPANISH BAPTIST MISSION**  
 Rev. Aradio Gonzalez  
 East Third and Ave. E
- TRINITY BAPTIST CHURCH**  
 314 Ave. B  
 Don Knight, Pastor
- LONGVIEW BAPTIST CHURCH**  
 B.C. Stonecipher, Pastor  
 Phone 946-3413
- 16th AND AVE D CHURCH OF CHRIST**  
 James Johnson, Pastor  
 Sunday - 10:30 a.m.  
 Evening - 6 p.m.  
 Wednesday - 8 p.m.
- PROGRESS BAPTIST CHURCH**  
 Progress, Texas  
 Danny Jackson
- NORTHSIDE CHURCH OF CHRIST**  
 117 E. Birch Street

- NEW COVENANT CHURCH**  
 Plainview Highway  
 Jimmy Low, Pastor  
 Sunday: 10 a.m.  
 Wednesday: 7:30 p.m.
- TEMPLO CALVARIO**  
 507 South Main  
 Rev. J. L. Soto, Pastor  
 Sunday 10: a.m.  
 Sunday, 7 p.m.  
 Evangelistic Services
- UNITED PENTECOSTAL GOSPEL LIGHTHOUSE**  
 207 E. Av. G  
 George Green, Pastor
- IMMACULATE CONCEPTION CATHOLIC CHURCH**  
 Father Patrick Mahar  
 Northeast of City in Morrison Addition

<b>Bratcher Motor Supply</b> 107 E. Ave. B 272-4288	<b>Muleshoe Publishing Co.</b> Muleshoe 272-4536	<b>White's Cashway Grocery</b> Where Friends Meet & Prices Talk	<b>Dent-Rempe Implement Co.</b> John Deere Dealer 272-4297
<b>Western Drug</b> 114 Main 272-3106	<b>James Roy Meat Market Co.</b> 506 W. Amer. Blvd. 272-4361	<b>Baker Farm Supply Inc.</b> 1532 W. Amer. Blvd. 272-4613	<b>Muleshoe Co-op Gins</b>
<b>Dairy Queen</b> Margie Hawkins Manager 272-3412	<b>First National Bank</b> "Home Owned" 202 S. 1st 272-4515	<b>Lambert Cleaners</b> Steam Carpet Cleaning Drapery Cleaning 123 Main 272-4626	Attend the Services of Your Choice
<b>Thornton Chevrolet</b> 201 Main 272-3100	<b>Farmers Spraying Service</b>	<b>American Valley Inc.</b> 272-4266	



# BUYING? SELLING? CHECK OUT THE...

# CLASSIFIED ADS

**UPHOLDS APPROVAL**  
CHICAGO -- The American Bar Association rejected efforts to lift its academic approval of Oral Roberts University Law School, which requires faculty and students to subscribe fundamentalist Christian beliefs.

**DEADLINE FOR CLASSIFIED ADS IS TUESDAYS AND FRIDAYS 11:00 A.M.**

**CLASSIFIED RATES**  
1st Insertion, Per Word -- \$.15  
Minimum Charge--\$2.30  
2nd Insertion, Per Word--\$.13  
Minimum Charge--\$2.00  
CARD OF THANKS Charged at Regular Classified Rates  
CLASSIFIED DISPLAY \$1.55 per column inch  
BLIND AD RATES 50% More  
DEADLINE FOR INSERTION

11 a.m. Tues. for Thurs.  
11 a.m. Fri. for Sun.  
WE RESERVE THE RIGHT TO CLASSIFY REVISE OR REJECT ANY AD.  
NOT RESPONSIBLE FOR ANY ERROR AFTER AD HAS RUN ONCE.

## PERSONALS

**WE BUY USED FURNITURE AND APPLIANCES CALL 272-3030 HARVEY BASS APPLIANCE**  
1-18s-tfc

**FREE complimentary facial.** Mary Kay Cosmetics. Yolonda Bell, Beauty Consultant. 925-6664. 1-8s-tfc

**CREDIT PROBLEM?** Guaranteed. Receive a MasterCard or Visa with no credit check, even if you have had credit or no credit. For free brochure, send self-addressed stamped envelope to House of Credit, P. O. Box 280570, Dallas, Texas 75228. 1-9s-4tsc

**TENNIS LESSONS:** Private or small group in Muleshoe. Beginning or Intermediate. 272-4664. 1-12s-5tc

## HELP WANTED

**JOB INFORMATION:** DALLAS, Houston, Overseas, Alaska. \$20,000 to \$50,000 possible. 602-998-0426 Dept. 0511. Phone call refundable. 3-11t-2tpt

**DISTRIBUTOR WANTED:** Filmark Water filter, removes bad taste, smell, chlorine and impurities. Used in outer space. New car available. [806] 793-6412. 3-11t-8tc

**CLERK-TYPIST NEEDED:** Come by The Muleshoe Journal and fill out application. 3-11s-tfc

**WANTED:** Experienced beautician. Apply in person at Main St. Beauty Salon. 3-8s-tfc

**WELDER AND SHOP HELP NEEDED:** KMP Mfg. 257-3411, Earth. 3-11t-2tc

**HELP WANTED:** Full time permanent employment as a waitress at the Muleshoe Country Club Restaurant. Call 272-4004. 3-11t-tfc

Applications are being accepted for the VISTA Project to work within Bailey County.

One year of service is minimum requirement. Stipend and Health Insurance provided. Contact Cecilia Anguino at 222 W. 2nd. Muleshoe, Tx. or write VISTA Director, Box 610, Levelland, Texas 79336, for an application. 3-11t-2tcts

## APARTMENTS

**TRAILER FOR RENT:** 14 x 60 furnished or unfurnished, central heat and air, real clean. 257-3776. Earth Tex. 5-9s-tfc

Cabin for rent in Ruidoso. Call 272-4365. 4-9t-8tc

**FOR RENT:** 3 BR, 2 Baths, brick, carpet, drapes, built-ins, air, central heat, fenced backyard, single car garage, nice neighborhood, will lease, 272-5637, if no answer call 272-5279. 4-12s-2tc

**SARATOGA GARDENS**  
1300 N. Walnut, Friona  
Phone 247-3666

1, 2, or 3 bedroom apartments modern, wall to wall carpet, heating/cooling, kitchen equipped, laundry facilities, parking. Low rent for needy families. Call collect. 5-46t-tfc

**FOR RENT:** 4 BR, double carport. 40 x 60 quonset barn. 247-2331. 4-11t-2tp

Nice 1 BR, furnished apartment for rent in Muleshoe. Carpeted, good air conditioner. All bills paid. \$225 month, plus \$100 deposit. Call Mrs. Rounton. 1-825-3555. 5-12s-2tc

**FOR RENT:** 2 BR apt. Furnished. Bills paid. Phone 272-5030 or 965-26-26. 5-12s-3tc

## REAL ESTATE

Choice Building site. Richland Hills. Will finance. 272-4096 11-49s-stfc

**HOUSE FOR SALE OR FOR LEASE:** Attractive L. R., Dining Room, Kitchen combination (W/fireplace). 3 bedroom, 2 bath, double garage. 272-4428. 8-6s-tfc or 272-5578.

Irrigated, new underground pipe. 2-158 acre tracts near Muleshoe. \$1150 / acre Norman Realtors 806-795-9514 8-42s-tfc

**3 BR HOUSE FOR SALE:** Central heat and air, fully carpeted, 1 bath, garage, cellar drop in back, fenced yard, 1300 sq. ft. 606 NE 4th, Earth, Call after 5 p.m. 806-637-8907. 8-9s-4tsc

**FOR SALE:** 3-BR brick house, 1-3/4 baths, living room, den with fireplace, large storage in back. 1713 W. Ave. H. Call 272-3400 after 5 and on weekends. 8-3s-stfc

**FOR SALE:** 2 bedroom, 1 bath, totally remodeled, new plumbing and fixtures and central heat. Garage in back. 272-5186.

**HOUSE FOR SALE:** 3 BR, 1 3/4, LR, kitchen-dining combination, den, ample storage, corner lot, near 3 schools, 1928 sq. ft. living area, 621 West 6th. Phone 272-4732 days or 272-4827 evenings. 8-2s-tfc

**HOUSE FOR SALE:** Four miles NE of Muleshoe, 2 acres of land. 2 BR. 806-258-7587. Leroy Johnson. 8-11s-5tc

**1-3BR, Garage in back, storm cellar, small 1 room in back, wired and has heat. Also, 1-BR house in back can be used as rent house. Located 200 S. Fir Drive, Earth, Tx. All for \$25,000. 806-273-9837. 8-10t-tfc**

## Henry Realty

2 BR house, 2 bath. Stucco, 100 ft. lot. Ideal for apartment housing. Located near grade school and downtown.

316 acres, 18 miles north of Muleshoe in Parmer County. 2-pivot systems, 2 irrigation wells. Established alfalfa hay. Low down payment. Good terms.

Country living 3 bedroom, 2 bath, double garage, brick home or Hwy 2 miles from town. Immediate possession. 8-4t-8-46t-tfc

Small acreage 3 miles east of Muleshoe on highway.

**For Sale or Trade**  
320 acre farm 5-irrigation wells, underground pipe, 2-pivot sprinkler systems, 2 houses, all metal barn, Lamb County, good terms.

111 W. Avenue B, Muleshoe 272-4581 8-44s-tfc

## DENT & ASSOCIATES REAL ESTATE

**FARMS--RANCHES COMMERCIAL RESIDENTIAL**

LEON DENT, broker nites 272-3580

DON REMPE nites 272-4643

1516 W. AMERICAN MULESHOE, TX. 79347 OFFICE 272-4296

LIST YOUR PROPERTY WITH US

8-6t-tfc

**HOUSE AND 2 ACRES:** 3 bedroom, 1 bath, newly remodeled inside. Outside needs more repair. 272-4552 or call Amherst, 246-3472, after 6:30. 8-4t-tfc

**Krebbs Real Estate**  
201 W. Ave. C Appraisals

Serving Muleshoe Area 35 years. We Appreciate your business. 8-52t-tfc

**JIMMIE CRAWFORD**  
REAL ESTATE & INSURANCE

1-3 Bedroom house with fireplace and cellar.

1-3 Bedroom house with enclosed garage.

1.97 acres with 2 Bedroom trailer house and barn.

320 acres N.E. of town with 3 wells.

310 acres west of town with 5 wells.

40 acres east of town with 8" well.

30 acres east of town with 5" well.

1-59 x 140 ft. city lot by park.

**Smallwood Real Estate**  
232 Main 272-4838 \*\*\*\*\*

3 Bedroom brick, 2 bath, dishwasher, central heat, refrigerated air, one car garage & fenced backyard. Richland Hills

2 Apartments, 2 bedroom, w/bath each, new carpet and paint. Small down payment, owner financing.

3 BR, w/bath, brick, large living room, fenced backyard and storage building.

2 BR stucco, small down payment. Owner will finance.

See or call Joe Smallwood, Broker

**TOWN and COUNTRY REAL ESTATE**  
FARMS RANCHES HOMES  
John W. Smith 272-4578, 272-5335

Stucco house painted inside and out. 3 bedrooms, 2 baths. All new carpet.

Nice brick home in Richland Hills, 3 Bedroom, 2 Bathroom, Living Room, Den w/Fireplace, and Office. 8-10t-tfc

Large brick home over 2300 sq. ft. 3 bedroom, 2 baths, 2 car garage, fireplace, central heating and lots of extras.

Nice 3 bedroom, 2 bath brick home with fireplace. Has 2 car garage, covered patio, storm cellar and back yard fence.

Small 3 bedroom home. Asbestos siding, F.H.A. loan. 8-5t-tfc

For all your real estate needs call:  
**GLAZE & GOFORTH**  
112 Ave. C 272-4208  
8-11-tfc

**BINGHAM & NIEMAN REALTY**  
116 E. Ave. C 272-5285 965-2488

Approx. 5 yrs. old and over 1600 sq. ft. of living area in this 3 BR, 1-3/4 bath home, plus built-ins, isolated master bedroom, much more.

Total energy efficient is this 3-1-3/4-2 home on 1-1/3 acres, built-ins, fireplace, many other extras, and close to town

3-1-3/4 home on a corner lot, over 1500 sq. ft. built-ins, fenced yard, possible owner financing.

2-1+ carport, close to hospital, and also has a rental unit to help make your payment.

Priced to sell at FHA appraisal is this 3-1-3/4 home. Large rooms, fenced yard and storage building.

3-1+ detached garage on corner lot, concrete cellar, storage room, fruit trees, grape and berry vines, and also a 1 BR rental unit. Priced to sell.

2-2 home with beautiful rock fireplace, guest cottage and storage building.

Near Tolk - Large 3-2-2 home on 60 acres.

EARTH: 3-1 home on corner lot plus storage building.

2-1 stucco home, Country Club Add., priced to sell, low \$20's.

**FARMS**  
Parmer County  
320 ac., 2-8" wells, underground tile and pump back system, \$800 per acre.

320 ac., 2-8" wells, 2 electric circles and much more.

Bailey Co. 395 ac., 4 wells, 1 circle, 320 ac., 3-6" wells, a good level farm.

We have several other 80-320 ac. farms.

"We appreciate your business"  
George & Dianne Neiman  
8-10s-tfc

**J. B. SUDDERTH REALTY INC.**  
Box 627  
109 Fifth St.  
Farwell, Texas 79325  
Phone [806] 481-3298 or 481-9149

160 Acres, Lazbuddie area, lays good. Excellent water. Excellent terms. Priced to sell.

Many Farms, 160 to 1,000 acres, Too numerous to mention. In both Bailey and Parmer Counties. 8-4s-stfc

**REID REAL ESTATE**  
we want your business  
Remember  
**REID REAL ESTATE**  
1614 W. American Blvd. 272-3142

**LARGE HOUSE:** Approximately 2400 sq. ft. 4-2-1 central heat and air, cedar linen closet.

3 BR, living room with cathedral ceiling, 1-3/4 baths, fireplace, 2-car garage.

3 BR, 1 bath, bar, carport, nice location.

Large nice house, 3-2-2, fenced back yard.

3-year old mobile home, partially fenced yard on corner lot. Owner will carry.

Large brick building, priced right.

**FARMS**  
80 acres, no improvements. 1-6 inch well. Only \$525 an acre.

40 acres. No improvements, side roll sprinkler.

3 labors of dry land on pavements. No improvements.

See us for additional listings.  
Thursie Reid  
8-10s-tfc

## USED CARS-TRUCKS

1976 Buick, Park Avenue. 965-2448. 9-8t-tfc

1974 CHEVROLET VEGA. Needs motor. Good body and interior. 272-4552, or call Amherst, 246-3472, after 6:30 9-5s-tfc

1977 3/4 ton, Chevy 4-speed with power and air. 272-3732. 9-12s-6tc

## REAL ESTATE

1967 Chevrolet Pickup, 48 gal. propane system, fits Ford or Chevrolet. 272-4967 after 6 p.m. 9-11t-2tc

## FOR SALE OR TRADE

USED 50 hp. IV-8F, Vertical hollow shaft motor, new switch gear. \$8,145.00. Owens Electric, Hereford, Tx. 364-3572. 11-5t-tfc

**FOR SALE:** 1980 cotton seed, 92% germ. Irrigation Engine: 3-292's, 1-318, 1-AMC. Terry Wheeler. 925-6488. 10-10s-tfc

**FOR SALE:** 1980 cotton seed, 92% germ. Irrigation engines 1-292; 1-AMC. Terry Wheeler. 925-6488. 10-11t-tfc

**FOR SALE:** King goose-neck trailer. 16 ft.-7 1/2 ft. nose. Good condition. Call 925-6611 after 6 p.m. 10-11t-2tc

**FOR SALE:** Used vertical hollow shaft, electric motors, 30hp, 50hp, 2-75hp. 272-3802 or 272-4805. 11-11t-4tc 272-4086

**FOR SALE:** Warm winter nest, furnished 2 BR trailer on lake LBJ with stove, refrigerator, washer, central heat and air. Nice. 272-5408. 11-2s-tfc

**NEW Litton microwave oven.** \$260. Call 272-5289. 11-12s-2tc

## HOUSEHOLD GOODS

**BURROWS UPHOLSTERY AND FURNITURE REPAIR**  
209 W. 2nd  
phone 272-4255  
12-44s-tfc

## FARM LAND FOR LEASE

80 acres, irrigated for lease. Phone 965-2647. 14-1t-2tp

## MISCELLANEOUS MISCELLANEOUS

**Rent-To-Own Color TV**  
Stereos Microwave Ovens, Dryers  
Refrigerators Freezers Washers  
Dishwashers  
No Service Expense No Interest To Pay  
**Wilson**  
Appliance  
117 Main MULESHOE 272-5531

NEW RESIDENTIAL - COMMERCIAL  
REMODEL OR REPAIR  
ROTO-ROOTER SERVICE  
**GORDON PLUMBING**  
BONDED-LICENSED  
Free estimates  
20% discount for senior citizens  
24 hour service  
221 EAST FOURTH STREET  
MULESHOE, TEXAS 79847

**FOR RENT:** 3 quarters of land, with circle sprinklers in West Camp area. 272-3802 or 272-4805. 272-4086 14-11t-4tc

**FARMLAND** for rent or lease. Approx. 4 miles east of Muleshoe on south side of Hwy. 70. Phone 806-799-7342 or 806-799-5881. 14-10t-6tc

**QUARTER** of land for rent or sale. 3 1/4 miles southeast of Lazbuddie. 247-2331. 14-11t-2tp

## MISCELLANEOUS

7-family garage sale, bunk beds, cabinet stereo, brass fireplace screen with tools, dresser and much, much more. 122 W. 16th, Muleshoe. Thursday, Friday and Saturday. 15-12s-2tc

Want a propane system? check with **SMITH LP GAS MULESHOE**  
15-30s-tfc

Several good used lake pumps. Floating pumps and slant pumps. KMP Pumps, 257-3411 15-11s-tsc

**WANTED TO BUY**-used aluminum pipe of all sizes. Also side roll sprinklers of all sizes. No quantities too large. Top prices paid. **Stateline Irrigation** 272-3819 or 272-3450 15-33t-tfc

4-14x6 white spoke wheels. \$100. 4-Bridgestone HR 78 -15 tires. \$250. 965-2448. 15-8t-tfc

**FRANK'S REFRIGERATION APPLIANCE & SERVICE PARTS & REPAIR**  
315 W. 3rd Ph. 272-3822 15-7t-tfc

## LIVESTOCK

**NOW STANDING:** Registered AQHA Stallion; 'Lucky Bug Rex' S1-88, Conformation, disposition, plus. Call 272-5317 after 6 p.m. 16-4t-tfc

**REID REAL ESTATE**  
Do You Want To Buy A New Home?  
If you qualify we now have 100% financing with closing cost not included.  
Call Today!  
Thursie Reid  
272-3142  
stfc

### Senior Citizens Plan 10 - Day Hawaii Trip

The Hockley County Senior Citizens Association of Levelland, is planning a 10-day trip to Hawaii beginning April 26 through May 6. A deposit of \$200 will hold a reservation. The total cost is \$1,175, due one month before departure.

The trip will originate from Lubbock Municipal

Airport with a change of planes to go directly to the islands. This saves the customary air fare to Dallas from the West Texas area.

For more information, call 894-7642 or 894-9939 and ask for Jimmie Lea Payne or Ruth Warren, or send deposit and reservation to Hockley County Senior Center, 1202 Houston St., Levelland, Texas 79336.

### Tax Service Provided With Updates

Walt McAdams, Director of Satellite Franchise Operations for H&R Block, visited this week with Doris Wedel, franchise owner of the Muleshoe H&R Block office.

According to Mrs. Wedel, the primary purpose of McAdams' visit was to provide the local franchise with all the new and updated methods for improving the client service. This included information on current taxpayer trends as reported by Block's national network of offices.

H&R Block currently has around 9,500 offices worldwide. There are nearly 3,000 franchise offices in the U. S. and Canada. The local Block office is located at 224 W. 2nd St. Muleshoe.

### Grapefruit exports increase

AUSTIN—A 30-day Florida embargo on overseas citrus shipments has boosted Texas grapefruit export to Japan nearly 170,000 cartons, Agriculture Commissioner Reagan V. Brown reports.

"The freeze that struck Florida in mid-January has had a beneficial effect on Texas grapefruit exports. Some 330,000 cartons were shipped out in the two week period ending Feb. 4," Brown said.

Brown added that figures released from the Texas Valley Citrus Committee showed that 185,511 cartons had been shipped to Japan this season through Feb. 4 and fewer than 16,500 had been exported prior to this time.

### Enochs News By: Mrs. J.D. Bayless

Guests in the home of Rev. and Mrs. Mike Heady Saturday till Monday was her mother, Mrs. T. M. Cardwell, and a brother, Mr. and Mrs. Phillip Cardwell and children of Aleda. They visited at the Baptist Church Sunday.

A cold front was through Thursday night with some freezing mist Friday morning, a little sleet and snow. The temperature dropped to nine degrees Saturday morning and 17 degrees Sunday morning.

Jerry Nichols of El Paso and Gene Richardson spent Thursday night till Saturday with Jerry's parents, the Dale Nichols.

Mr. and Mrs. Buford Peterson took their granddaughter, Kristen Abney, home Tuesday and visited their daughter, Rev. and Mrs. Harold Abney at

White Deer then drove to Hillsboro and visited their son, Mr. and Mrs. Morris Peterson and family till Monday.

Mrs. Bill Key and Mrs. Ina Roberts visited Mr. and Mrs. D. P. Brinker at the West Plains Nursing

### Teacher of the Week

This week, Miss Brenda Scott was chosen for the Teacher of the Week. Miss Scott graduated from South Plains Junior College and Texas Tech University. She has a Bachelor of Science degree from Texas Tech and an associate B.S. from South Plains College. Her hobbies include sports such as basketball, softball and playing pool.

When asked if she had any comments, she had this to say: "Our basketball team did a superb job this year. I really enjoyed working with this group of young ladies. They have a lot of enthusiasm to go along with their ability. If everyone continues with this attitude, they should be the team in the district to beat in a couple of years."

About track, she said, "I am looking forward to track this year. This group won district last year so we are expecting another great year."

Mrs. Pat Gunter was recently chosen as Teacher of the Week by the MJH Student Council.

Mrs. Gunter lives on a farm and is married to John Gunter. They have three children, John, Gary and Brent. She went to college at Tarleton State University and North Texas State University. She majored in Home Economics and has a Bachelor of Science degree.

This is her 13th year to teach. She has taught in elementary, junior high and high school. She commented, "Junior High is my favorite. I enjoy this age group, watching them change from children into young adults."

### Sherri's Spots By: Sherri Stovall

Open house was last Thursday. That was also the science and history fairs. The projects looked great. The students spent a lot of time and hard work with the projects and reports. Congratulations to all the winners.

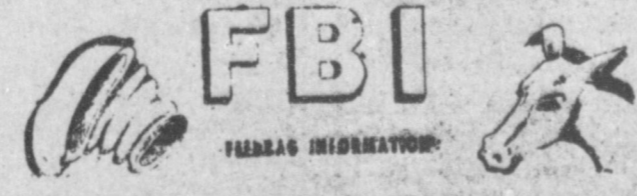
The MJH annuals will be coming about the middle of April. Can everyone wait?

The UIL events are still going on. District will be held at Friona April the 2nd. The events include ready writing, oral reading, number sense, and spelling. Best of luck to everyone entered.

Track season is coming along great. The first track meet was March 13 at Farwell. The boys were supposed to have one last Saturday at Hereford, but was cancelled due to the weather.

Well, that's all that's happening at MJH. See ya next week.

At Muleshoe Junior High



### Summit Savings Association

Introduces "No Cost Checking"

Summit Pays You 5 1/2 % Compounded Daily

And Your First Check Order Is FREE

You Pay No Service Charge And No Minimum Balance Is Required

Open Your Account Today!

We Invite You To "JOIN US AT THE TOP" SUMMIT SAVINGS ASSOCIATION

OFFICES IN: FLANKVIEW, FLOYDADA, MATADOR, HALE CENTER MULESHOE, LITTLEFIELD, FRIONA, FARWELL, PLAND AND ALLEN

Home in Muleshoe Friday.

Mr. and Mrs. Goldman Stroud kept their grandchildren, Brittany and Monty while their parents, Mr. and Mrs. Craig Kirby went to the Fat Stock Show at Houston the past week.

Mr. and Mrs. Tom Bogard and Dusty visited their daughters, Mrs. Tommy Gasion and Mr. and Mrs. Delbert Roberts and family recently at Junction.

Mrs. Chester Petree drove to Lubbock last Saturday and spent the night with a sister, Mrs. Audra Hill, and Sunday, Mrs. Hill Mrs. Petree and another sister, Mrs. Clara Williamson drove to Fort Worth to visit another sister, Mr. and Mrs. Melvin Cowart. They returned to Lubbock Monday. Mrs. Petree then spent the night before returning to her home.

Mrs. Bill Key, Mrs. Ina Roberts and Mrs. Chester Petree attended the Baptist Women's Prayer Retreat Thursday, March 4, at the Parkview Baptist Church in Littlefield.

Several of the women from the community, Mrs. Clifford Snitker, Mrs. E. N. McCall, Mrs. Winnie Byars, Mrs. J. D. Bayless and Mrs. Edward Crume took days to go to the hospital in Littlefield the past week to be with Mrs. J. W. Layton as she sat with her husband at the hospital.

Other friends and relatives sat and visited with them. Lee Olan Chick, a nephew of Borger, spends every other night sitting with him. His daughter, Mrs. Eldred Mize of Crosbyton came Friday and Sunday to visit him.

Federal study of smoking marijuana inconclusive.



"IT'S AN ILL WIND" - Strong westerly winds have swept Bailey County over the past few weeks, loosing millions of tumbleweeds into yards and roadways causing hazardous driving. Highway 214, south of Muleshoe was on it's way to becoming covered with the flying weeds several times this past week.

Atlanta: Williams found guilty of murder.

Grace period ends for draft registration.

Ford workers okay historic pact.

## GET PLANTING AND SAVE!

**Seed Potatoes (Red & White)**

**Onion Plants**

**All Kinds Of Garden & Grass Seed**

**Lawn & Garden Fertilizer**

**Brown Seed**

2015 W. Amer. Blvd. 272-3335

# Smart Spring Shoppers SALE

**20 Lb. Freezer Pack**

**\$27<sup>50</sup>**

7 lbs. Roast & Chuck Steak, 7 lbs. Pork Chops, 4 lbs. Hamburger & 2 lbs. Patties

**35 Lb. Family Pack**

**\$66<sup>50</sup>**

7 lbs. Roast & Chuck Steak, 7 lbs. Pork Chops, 4 lbs. Hamburger, 2 lbs. Patties, 5 lbs. T-Bone, 5 lbs. Sirloin & 5 lbs. Tenderized Round Steak

<p><b>Hamburger</b></p> <p><b>\$1 49</b></p> <p>lb. <b>1</b></p> <p>2 lb. pkgs.</p>	<p><b>1/2 Beef</b></p> <p><b>\$1 25</b></p> <p>lb. <b>1</b></p>
<p><b>Sausage</b></p> <p><b>\$1 19</b></p> <p>lb. <b>1</b></p>	<p><b>Easter Hams</b></p> <p><b>\$1 29</b></p> <p>lb. <b>1</b></p> <p>Whole Dry Hickory Smoked Home Cured Bone In</p>

## Winkler Meat Co.

401 Main 272-4703

**Ask a neighbor about Pioneer brand 3311 then come see us!**

- Proven performance - nearly 800 lbs./acre yield advantage in over 170 on-farm tests
- Excellent heat tolerance and head smut resistance
- Excellent MDMV and head smut resistance

We're convinced this variety can give you a performance advantage in this area. And we can show you field data to back us up.

First chance you get, come on by and let's talk about your seed needs for the coming year. Together we'll select the right combination of Pioneer brand seeds to give you the advantage you need.

**Gene Paul Jarman**  
965-2340

**Franks Bros. Seed**  
925-6626

**PIONEER BRAND SEEDS**

\*Pioneer is a brand name. Numbers identify varieties. Registered trademark of Pioneer Hi-Bred International, Inc.