





PROPER STOCKING, BRUSH CONTROL, ETC.

### Several Factors Involved In Good Range Management, Says Specialist

COLLEGE STATION (Spl.) — A combination of practices is essential in any good range management program, asserts Extension Range Specialist G. O. Hoffman, and all share equal importance. Some of the most common ones are proper stocking, effective brush control, knowledge of range plants, range reseeding and range fire protection.

Don't plan on restocking pastures until this winter, warns Hoffman. Most of the currently early spring rains which have followed recent rains is annual weeds and grasses and probably won't last over six weeks.

Where growth conditions are favorable, the specialist recommends planning for aerial spraying of oak

and mesquite. Original or normal mesquite growth must be sprayed with at least 1/3 pound of 2, 4, 5-T or silvex acid of low volatile esters mixed in 1/2 gallon of diesel oil and enough water to make 3 gallons of spray solution per acre. Swath width should not exceed 60 feet.

Hoffman says regrowth mesquite with heavy foliage should be treated with a mixture of 1/2 pound 2, 4, 5-T or silvex acid mixed in one gallon of diesel oil and enough water to make 4 gallons of spray solution per acre. Swath width should not be more than 42 feet, he concludes.

There are 2,150,000 members of the 4-H Club in the United States.

### Babson Says—

(Continued From Page 2)

I scarcely dare to tell you again in this column about a little non-profit organization in New Boston, N. H., known as the Information Center, which will show you for \$3.00 how a fortune could be made. Old Boston, Mass. will tell you old ways of getting 4% interest, but go to New Boston, N. H., for the coming ways of making millions by investing in nuclear power, electronics, rare metals, and other miraculous industries of the future.

One thing more: Give attention to Church Averages rather than Dow-Jones Averages. Consider the graduates from our Colleges and the work being done by Youth Organizations. The Hearts and the Brains of our young people are what will determine employment and business conditions.

Mineral Wells has a small amount of this great hotel and there will be an pleasant living and For reservations

SEE: Munkett's Wood Trained Chimpanzee, Pick-Out Pony, Musical Acts, Circus Act, Walking Elephant

ALL FREE 3 SHOWS MORNING NOON NIGHT

## Hundreds Of Garza Countians Receive Easter Seal Letters

A sure sign of spring is the opening of the 1957 Easter Seal Appeal in Texas and the nation.

Spring's harbingers — Easter Seals decorated this year with lilies and tulips—cascaded into the mails last week for delivery to 36 1/2 million American homes.

Several hundred Garza County residents were among the million

in Texas receiving the Easter Seals Seeking support for the continuation and expansion of Easter Seal services for crippled children and adults, the Appeal, conducted by the National Society for Crippled Children and Adults and its 1,655 affiliated local groups in all states and territories, will continue through Easter Sunday, April 21.

Euclid Hudson, president of the Texas Society for Crippled Children and Adults and 1957 Easter Seal campaign chairman for Texas, said every American will have the opportunity to help crippled children this year.

"In the real spirit of Easter—and of spring—we hope for the greatest outpouring of support from the public in the history of the Easter Seal Society.

"It is important that this should be the greatest campaign, for although medicine has overcome some of childhood's important crippling conditions, accidents are on the increase and, with our rapidly expanding population, the number of children crippled at birth increases correspondingly.

"Fortunately in our democratic way of life each of us can help one of these crippled children to overcome his particular crippling condition through our own gift of a very small portion of our money. Each of us can know with certainty that our dollars have given a crippled child a chance at a full life, when we give to Easter Seals."

The 1957 Easter Seal Appeal seeks funds to support a \$15 million program of care and treat-

ment services for crippled children. Hudson said that the Texas goal is \$300,000.

In the past year, nearly 150,000 crippled children and adults in the United States benefited from Easter Seal services.

In Texas, 5,514 children were served last year by the Society in the 30 strategically located treatment centers it has established in this state since 1946. Other services provided wheelchairs, braces, crutches, artificial limbs, orthopedic and plastic surgery, transportation, hospitalization, psychological evaluation, education, employment, recreation, custodial care and rehabilitation for the crippled in Texas.

The Society serves all crippled persons, regardless of the cause of crippling, and regardless of race, creed, color, or financial status.

Approximately 90 per cent of funds raised during the annual Easter Seal Appeal finances services within the state where raised. The remainder goes to help support a national program of service, education and research conducted by the National Society.

### Owners Lagging On Inspection Stickers

As elsewhere in Texas, issuance of 1957 vehicle inspection stickers is lagging in Garza County, according to Col. Homer Garrison Jr., director of the Texas Department of Public Safety.

In announcing that only two-thirds of the total number of vehicle owners in Texas have received their 1957 stickers, Garrison warned against the last-minute rush at inspection stations at the close of the inspection period April 15.

"Of the more than four million vehicle owners in Texas only about 2,500,000 have had their cars, trucks and other vehicles inspected, leaving more than 1,000,000 to act within the remaining three weeks."

The state police director reminded motorists of the impending deadline with a note of concern. He suggested that automobile owners visit a near-by inspection station now before inspection lines become long and they suffer an undue loss of time and effort.

In commenting generally on the

### Spring Clean-ups Make For Safer Farms And Homes

Get in the swing and clean up for spring, is the latest word from the Texas Farm and Ranch Safety Council. The lengthening spring days will provide extra time for farmers everywhere to give their farms a new look and make them safer places to live and work.

Help nature by cleaning up around the farm and in the farm home. Make it easy to keep clean too, the Council urges, by assigning everything a definite place and keeping it there.

Disorder ranks second only to poor judgment as a cause of accidents, according to Safety Council statistics. One out of every five people contacted in a recent study of hospitalized home accident cases was put there by disorder. Accidents happen far more often in cluttered, untidy surroundings.

Fire finds a breeding place in paper, rags and rubbish tucked into closets, attics or corners. Volatile fuels, paint, cleaners and insecticides are other important fire hazards. Check your farm for overloaded circuits; lubricate all electric motors; and take a good look at your home ventilating system.

Eliminate fall hazards by keeping stairs, halls and alleyways clear of obstructions. Check light bulbs and clean all lamp shades to make stairs and hallways safer. Careless clean-up practices can result in serious foot injuries to humans and livestock. Remove nails from used boards; pick up broken glass and loose wire.

Rodents don't like a clean farmstead! Creating an atmosphere of cleanliness will help rid your farm of countless rodent-influenced dangers such as disease, fire and building deterioration.

Include a paint-up campaign in your spring cleaning for safety as well as appearance. It can accentuate hazards! Remember, a clean and orderly farm produces more at lower cost.

WHETHER YOU NEED FIRE? WINDSTORM? MEDICAL EXPENSE? PERSONAL LIABILITY?

DON'T THINK OF INSURANCE BY ACCIDENT

Bryan Williams and Son REALTORS INSURORS

# ATTEND DAILEY BROTHERS FREE CIRCUS AND PALACE of WONDERS



POST

LOCATED DOWN TOWN --- 3 FREE SHOWS

FRIDAY, APRIL 12

Sponsored By POST FIRE DEPARTMENT

PYTHON SNAKE, SAM THE BLACKFACE GORILLA, 5 LEGGED HOG, BILLY THE RICHBIT-LIVE PONIES, COTTON CANDY CONCESSIONS ALL AT SMALL

Speed... Economy... and Dependability... Go FIRST CLASS when You Cook With GAS!

FLORENCE deluxe gas range featuring the automatic burner with a Brain that prevents boil-overs, scorching or burning.

fuel for a growing empire Pioneer Natural Gas Company

# NEW FORD PICKUPS

COST LESS... to buy

LOWEST-PRICED WITH FULL-WIDTH BODY!

COST LESS... to run

LESS GAS AND OIL TO BUY!

RIDE BEST... like a car SMOOTH

FORD TRUCKS COST LESS



TOM POWER, INC. — FORD DEALER





READ THE CLASSIFIED ADS!

WE GUARD YOUR WELFARE AND OUR REPUTATION AT

**HAMILTON DRUG - 174**

BY FILING EVERY PRESCRIPTION WITH CARE AND PRECISION!

**HAMILTON DRUG STORE**

WE HAVE IT O.G. HAMILTON R. Ph. Student

174 POST TEX

WE GIVE 5¢ GREEN STAMPS

### Four-Day Run Set Here For 'Giant'

George Stevens' production "Giant" from the novel by Edna Ferber, starring Elizabeth Taylor, Rock Hudson and James Dean, is to show at the Tower Theatre April 13, 14, 15 and 16, John N. Hopkins, theatre manager, announced this week.

"Giant" represents a Warner-Color achievement for which some of the most prodigious talents in both the cinematic and literary worlds gave three of the best years of their lives.

Filming "Giant" carried Stevens & Company to the scenes envisioned by Miss Ferber in her novel—Virginia and Texas. Stevens began his picture where Miss Ferber began her book—in the lovely Virginia countryside near Charlottesville. Following two weeks of shooting here, the company moved to the vast open spaces near Marfa, Tex., for the better part of three months. Interior scenes went before the cameras at Warner Bros. in Burbank, Calif.

The star-studded cast of "Giant" also includes Jane Withers, Chill Wills, Sal Mineo, Mercedes McCambridge, Carroll Baker and a host of others.

### Deferred Grazing As Described As Aid To Range Rebuilding Practice

Deferred grazing can give the good perennial range grasses the boost they now need for survival, declares A. H. Walker of College Station, extension range specialist.

In some areas of the state, such grasses as sideoats gramma, little bluestem and switchgrass are now making seed. This situation, according to Walker, is most unusual since these grasses normally produce seed in the fall. Overgrazing and the prolonged drought have interfered with the normal growth habits of the range plants and "mother nature" is doing her best to reseed the ranges. Give her a chance to succeed by deferring as much range now as is possible, advises Walker, for the improved moisture situation should materially add to the benefits to be derived from deferred grazing.

Grasses need top growth to make root growth, and because of the drought, root systems are far below normal and need time to get re-established. Walker believes that ranchmen generally should be able to rest at least a fourth of their range without overstocking the remainder. He emphasizes that it is better to remove all stock from a pasture than to stock

lightly. A few animals can graze off the good plants left and keep them from making seed.

Walker suggests that the best conditioned pastures be rested first. On these will be found more of the good grasses and their recovery will be faster. The rest period will vary, he says, but the longer the better or until the good grasses have produced a seed crop. Graze the deferred pastures moderately during the winter, he advises, in order to plant the seed and distribute the litter.

As for reseeding, Walker says, if as much as 15 per cent of the good or key grasses are left on the range, defer rather than reseed. Reseeding is expensive and hazardous and requires some type of seedbed preparation, he says. And, too, reseeded ranges must be rested. His advice, don't reseed but give the pastures a year's rest and see what happens. Local county agents can supply information on how to help the range recovery program along.

### Changes Affecting Farm Labor Made By Social Security

Rules covering farm workers under social security changed beginning Jan. 1, 1957, John G. Hutton, manager of the Lubbock social security office, reminded farm employers today. Changes were included in recent amendments to the Social Security Act.

"If a farm employer pays a farm worker \$150 or more in cash during 1957, the cash pay is covered by the law," Hutton said.

"Also, even if the worker fails to earn as much as \$150 cash pay from a farm employer but works for that employer on 20 or more days in 1957 for cash pay figured on a time basis rather than a piece-rate basis, the pay is covered."

The total number of days worked and the manner of figuring the pay do not count if the worker meets the \$150-a-year test.

Farm employers are required to keep accurate records of the amounts paid to farm workers who will meet either the wage or time test during the year. Their cash pay for 1957 must be reported next January.

A representative from the Lubbock social security office will be in Post on April 5 at 1 p. m. at the district courtroom.

#### IS MEET DIRECTOR

F. W. Callaway, superintendent of schools at Southland, served as a director Saturday at the District 6-B Interscholastic League contests at Wilson High School. H. E. Owen of Cooper was general director.

### Construction Is Slated To Begin Soon On First Building At Lubbock College

With approximately \$750,000 now subscribed to the Lubbock Christian College Development Fund, work will soon begin on construction of the first building. It will cost about \$671,000.

The new school will be located on a 160-acre site in Lubbock on 19th Street just west of Chicago Avenue.

This building will be 350 feet long with a four story tower area which will house five levels of book stacks. It will also contain the administrative offices of the school, a reading room sufficiently large to accommodate 300 students at tables, a chapel and study,

and 17 classrooms and laboratories. Seven hundred students can be accommodated.

The school will open next September 23 at which time registration begins. It is estimated that the student population this fall will be around 200 with an increase by fall of 1958 to 500 and it is presently thought that within ten years 2,000 students will be in attendance.

Three men with Ph.D. degrees have been employed in administrative capacities as the two deans and registrar beginning this fall. Eight of the 20 additional faculty members have been employed and

all will hold an MA degree.

Approximately \$500,000 was raised by the membership of the Churches of Christ in Lubbock. At the present time a solicitation is being made of the membership of the Churches throughout West Texas and the eastern section of New Mexico. \$250,000 has already been subscribed in these area churches with the program only about 30 per cent complete. It is felt that this phase of the campaign will produce in the neighborhood of \$600,000.

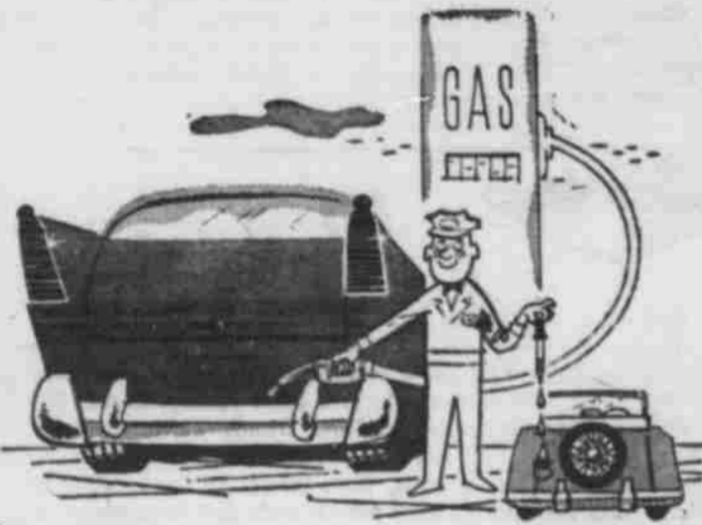
A campaign is now being organized for an additional \$500,000 among business and industry in

Lubbock making a tax deduction. As soon as the additional \$500,000 is available, two dormitories, gym, and a student center will be erected.

Temporary buildings already have been moved on site with full assurance that will open this fall.

Before producer East presented his famous reviews on Broadway, U. S. Army air pilot in War 1.

**BIG**  
or little job...



whatever you need—find it fast in **YELLOW PAGES**

Tells at a glance who makes, sells, repairs it. Saves time, steps. Shop this smart and easy way.



**GENERAL TELEPHONE COMPANY OF THE NORTHWEST**

A Member of One of the Great Telephone Systems Serving America

AIR CONDITIONING—TEMPERATURES MADE TO ORDER—AT NEW LOW COST. GET A DEMONSTRATION!

Who rates what for performance and smoother riding in the low-priced three? Chevrolet has laid the answer and the proof on the line!

First, Chevrolet won the Auto Decathlon over every car in its field, and over the higher priced cars that were tested, too. This rugged ten-way test (right, below) showed Chevrolet was the champ in handling ease, braking, acceleration, passing ability, smooth-

ness of ride and other driving qualities you want in a car.

Then, Chevy won the Pure Oil Performance Trophy at Daytona (left, below) as "best performing U. S. automobile."

It's quite a feeling to know that you are driving a car that performs so well, responds so beautifully and is so finely built. You feel proud, of course. But you also enjoy a surer, smoother, steadier way of going, a keen

cat-quick response of power, and the easiest handling you've ever experienced behind a wheel. Just try this Chevrolet (V8 or Six) and see!



*Chevy showed it's still the champ... at Daytona... and in the Decathlon!*



ENTER CHEVROLET'S \$275,000 "LUCKY TRAVELER" CONTEST!

Come in now—get a winning deal on the champion! **CHEVROLET** Only franchised Chevrolet dealers display this famous trademark

See Your Authorized Chevrolet Dealer

# It's A Mighty Good Time



Quick  
Low Cost  
**LOANS**

## To Look Into Your BUILDING NEEDS!

FORREST'S FINANCE PROVIDES A MEANS FOR ALL BUILDING REQUIREMENTS.

WE OFFER A LOAN FOR EVERY BUILDING PURPOSE

We also invite you to take advantage of FORREST'S FINANCE PLAN... We can, without delay, arrange a suitable loan for any kind of building project... We have a special loan to cover all purchases made from Forrest Lumber Company or affiliated stores. A loan plan to cover cost of all types of repairs, alteration, or improvement to your existing residence. The same type of loan to cover multi-family dwellings. A loan to cover buildings and commercial structures. A finance plan for new structures for agricultural purposes; and loans for new homes.

### LET US ACQUAINT YOU WITH SOME OF THE MANY TYPES OF LOANS OFFERED THROUGH FORREST'S FINANCE PLAN

We have a loan designed so that you can finance any purchases made from this Forrest yard or any affiliate stores. Purchase any amount from \$65.00 to \$5,000. You can re-pay this loan in from 6 months to 60 months. Payments may be made monthly, quarterly, semi-annually, or annually. This type loan is designed to enable you to purchase new bath fixtures, floor coverings, home furnaces, paints, new fences, or any materials carried by the firm. An ideal loan for the man who likes to "Do It Himself."

We offer a loan plan, purpose of which is to enable a home-owner to repair, make alterations and improvements to his existing home. This loan will cover all costs of labor and materials. This loan offers borrower to secure up to \$2,500.00 and may be re-paid in from 6 to thirty-six months.

A loan is provided, (F.H.A. Title) to enable borrower to make alterations, repairs and improvements, or conversion of an existing structure, or to be used as an apartment house or dwelling for 2 or more families. This loan provides \$2,500.00 per dwelling unit and a total maximum of \$10,000.00. Repayment ranges from six months to seven years.

#### BUILDING AND COMMERCIAL STRUCTURES

If you are interested in building a new business structure we can arrange a small building loan. The maximum is \$3,000.00, exclusive of financing charge. Repayment extends from six months to three years.

#### FARM BUILDINGS

This loan is designed to enable farmers and ranchers to build structures for agricultural purposes, exclusive of residential purposes. The loan provides a maximum of \$3,000.00, repayable six months to seven years.

#### NEW HOMES AND ADDITIONS

We have a loan designed to enable you to add an extra room or two, build a new garage or make any kind of extensive addition and improvement to your home. You can borrow from \$2,000.00 to \$5,000.00. Repayment ranges from five to 15 years.

If you are interested in building a complete new home... we can fix you up with a GI or FHA to include purchase of real estate and completely build the structure. Complete cost for a 2-bedroom home will range from \$7,000 to \$10,000. Low monthly payments, including taxes and insurance, will retire the loan over a period of years. Come in and talk it over with us.

**Forrest LUMBER COMPANY**

Everything for the Builder

WE OFFER A NEW FINANCE PLAN For Repair Loans

Come In And Discuss Our REVOLVING CREDIT PLAN

It May Best Suit Your Needs!

Telephone 80

County Extension Agents Have New Leaflet On Household Pest Control

MEANS OF BUILDING UP FEED RESERVES

Summer Temporary Pastures Are Of Value To Grazing Program

COLLEGE STATION (Spl.) — Seldom can one observe a home and its surroundings without finding some form of insect life. That's the text of a new leaflet compiled by extension entomologists offering today's best control measures for household pests.

laminated food, or attack dwellings, others bite humans, carry diseases, or cause infections. Sanitation and good housekeeping are usually effective in controlling or preventing most of these nuisances.

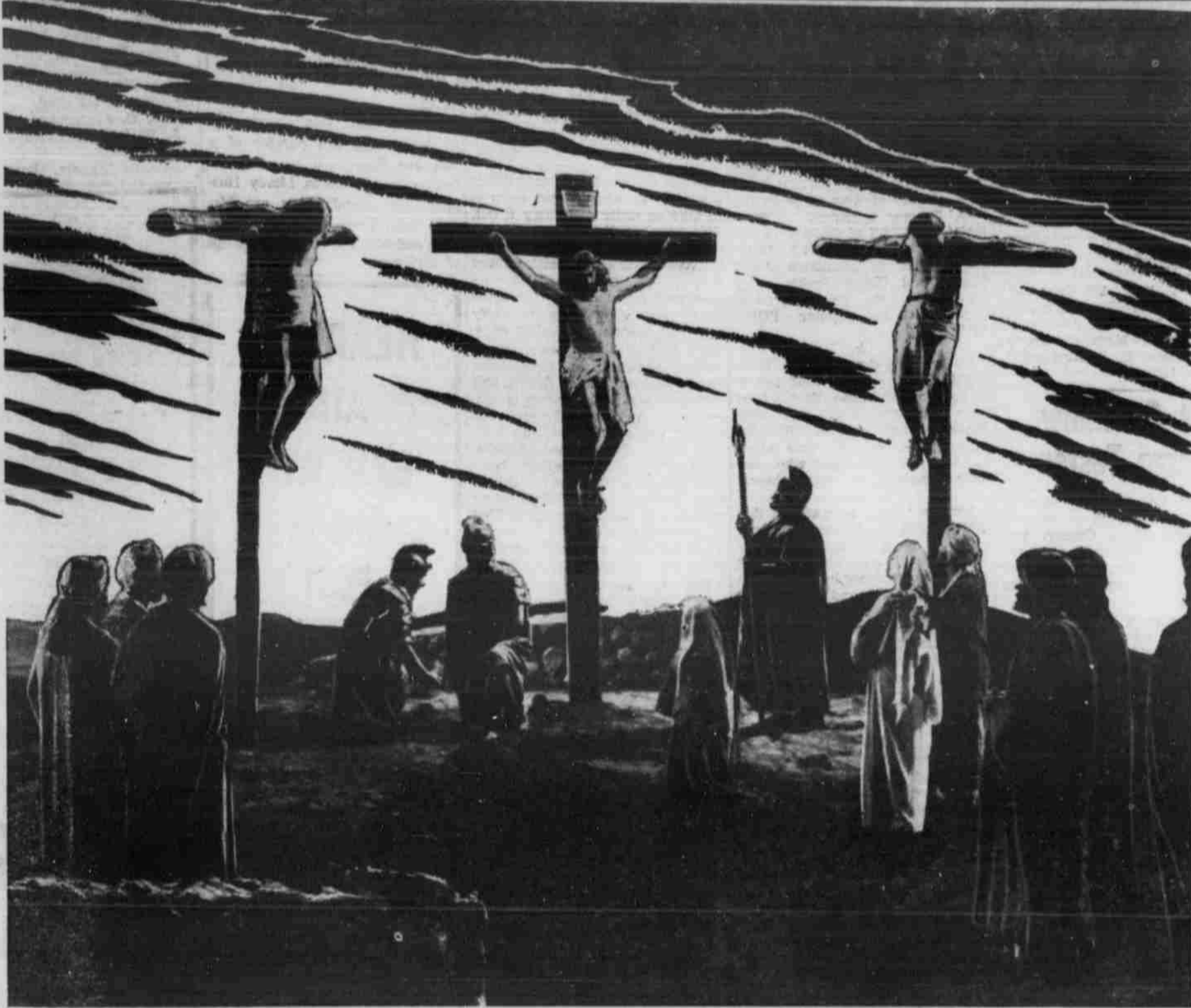
Some cautions listed by the specialists concerning application of oil solutions include: never spray near pilot lights or other open flames; don't apply directly to the skin of humans or pets and always allow sprayed surfaces to dry before touching them to prevent smears.

Mr. and Mrs. Dowe H. Mayfield were in Lubbock last Thursday to attend a meeting of International Harvester dealers and employees from the Texas and Oklahoma Panhandles and eastern and southern New Mexico.

COLLEGE STATION (Spl.) — Don't overlook the value of summer temporary pastures in your grazing program, advises E. M. Trew, extension pasture specialist. Such pastures in farm or ranch planning will permit a resting period for permanent pastures and provide a means for building up feed reserves.

Dr. A. T. Nixon... CARL L. DEAN Optometrist with offices in the GREENFIELD BUILDING SATURDAY - 2 to 5 P. M.

Funeral Home, Chevrolet, Ranch Cafe, Implement Co., Wacker Stores, Rogers' Feed Store



Postex Cotton Mills, Inc. "Sleepy Time Is Garza Time"

Brown Brothers, Et Al Compliments Of

Franleigh Fashions Because You Love Smart Things Mrs. Reba Driver Mrs. Hazel Greer

LOVELL'S HUMBLE SERVICE Humble And Atlas Products "See You In Church Sunday"

Wilson Brothers "Bumper To Bumper Service"

Mason Funeral Home Dignified Service Since 1915

MCCRARY Appliance Company Frigidaire, Coleman and Youngstown SALES AND SERVICE

Kirkpatrick Auto Electric "Exide Battery Headquarters"

Graeber's Grocery & Market "Serving This Community For 39 Years"

Forrest Lumber Co. "Everything For The Builder"

D. C. Hill Butane Clairmont Highway

Higginbotham Bartlett Co. "We Furnish Your Home From Plans To Paint"

Church listings: BAPTIST CHURCH, FIRST METHODIST CHURCH, CALVARY BAPTIST CHURCH, UNITED PENECOSTAL CHURCH, MEXICAN BAPTIST CHURCH, CLOSE CITY CHURCH OF CHRIST, FRIENDSHIP BAPTIST CHURCH, PLEASANT HOME BAPTIST CHURCH, GRAYSON BAPTIST CHURCH, CHURCH OF CHRIST, CHURCH OF GOD OF PROPHECY, ASSEMBLY OF GOD, CHURCH OF THE NAZARENE, HOLY CROSS CATHOLIC CHURCH

ONE FRIDAY

When we become mired in the routine of life, one day is like any other. This was just another working-day for most of the people in Jerusalem.

Three men died on Calvary Hill. One of them was the Galilean!

Business as usual in Jerusalem. Unless we understand the whole significance of what is happening we pay little attention.

Do you understand what happened that Friday? Do you realize WHO hung on that central Cross. Do you know WHY He died. And FOR WHOM?

There is nothing more necessary in our lives than the deep, personal knowledge of what happened that Friday... and the Sunday following.

Come to Church!

THE CHURCH FOR ALL... ALL FOR THE CHURCH. The Church is the greatest factor on earth for the building of character and good citizenship. Includes a table with columns for Day, Book, Chapter, Verses.

Texas Bird Manual Is To Be Published Soon

AUSTIN (Spl.)—A new book, "A Field Guide to the Texas Birds," has been ordered for June delivery in 1958, reports the executive secretary for the Game and Fish Commission.

Bowling was introduced into North America by the Dutch.

FREE COLOR SCHEMES

Let us help you with your new paint colors! We're headquarters for decorating ideas, beautiful room pictures, how-to-paint hints, and a complete line of paints and accessories that make your week-end decorating easy.

BUTE Colorizer PAINTS R. E. COX LUMBER Co.









# Simultaneous Revivals Are To Begin Here On Sunday

Members of the Post Dispatch have announced plans for simultaneous revivals to be held in Lubbock, April 14, and in other cities through Saturday.

Speakers at the Assembly of God Church will be the Rev. J. O. McElyea of Spur. The Rev. J. R. Brincefield is the pastor.

The Calvary Baptist Church will have as its speaker the Rev. Glenn Roenfelt of Lubbock.

Speaker at the Assembly of God Church will be the Rev. J. O. McElyea of Spur. The Rev. J. R. Brincefield is the pastor.



LYMAN P. WOOD of Nazarene  
GLENN ROENFELT Calvary Baptist

**EXTRA SPECIAL!**

8 Dozen Long Sleeve Sport Shirts

100 Value ..... for \$2.00

100 Value ..... for \$3.00

105 Value ..... for \$3.95

105 Value ..... for \$4.95

105 Value ..... for \$5.95

Have received large shipments of SHIRTS, HATS, SUITS, SPORT COATS - - - Every-thing for the MAN'S EASTER.

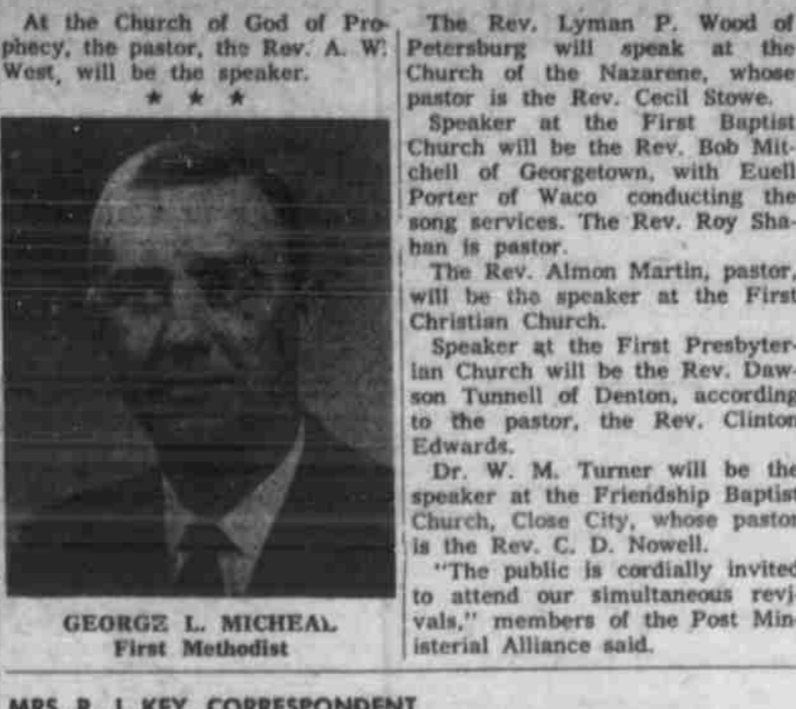
**Wendley's Mens Wear**



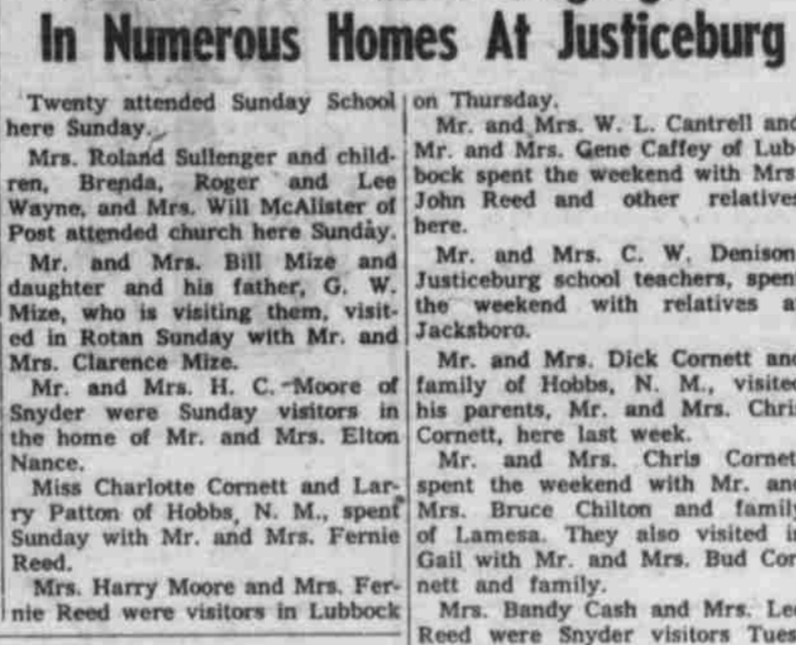
BOB MITCHELL First Baptist  
W. M. TURNER Friendship Baptist



ALMON MARTIN First Christian  
DAWSON TUNNELL First Presbyterian



GEORGE L. MICHEAL First Methodist



MRS. R. J. KEY, CORRESPONDENT

**New Phase Social Security Covers Disabled Workers**

Social Security benefit payments to qualified disabled workers, age 50 or over, will begin in August, 1957, for July.

This marks another important milestone in the progress of the Federal Old-Age and Survivors Insurance program, according to John G. Hutton, district manager of Social Security. Originally designed to provide protection against the risk of total and permanent disability.

The disability payments will be made to persons who are unable to work because of a severe disability, which has existed for at least six months and is expected to continue indefinitely. Hutton pointed out that the applicants must have worked at least five years out of the 10 years before the disability began, and one and one-half years out of the three years before that date.

Anyone who meets the above requirements is urged to visit his Social Security district office and make application, if he has not already done so.

A representative from the Lubbock Social Security office will be in Post at 1 p. m. April 19 in the district courtroom.

**GIRL SCOUT NEWS**

By KATHARINE TRAMMELL

Caprock Chevrolet, Inc., took our old tables out of the Little House for us. Not only that, but the fellows at Caprock also painted them for us. These freshly painted tables make a nice addition to our backyard furniture. Our sincere thanks to John Lott and Harold Lucas and all the fellows at Caprock.

Troop V with Mrs. Clint Herring, leader, are working on their metal badge and are now doing hammered aluminum work.

Troop VIII with Mrs. H. L. Penny, leader, are making pot-holders on a loop-weave loom.

Brownie Troop XIII with leaders Mrs. John Lott and Mrs. Tom Power went to the City Park Wednesday afternoon. The group studied outdoor safety and enjoyed hiking in the park. Refreshments were served by hostess: "Queen for a Day" Jacqueline Wilson.

Brownie Troop X met Friday afternoon at the Little House with Mrs. J. M. Hutchins, leader. The girls learned to make flowers from cleansing tissues. Troop members present were: Betty Sue Hutchins, Mary Annette Madison, Janette Peden, Delores Strofer, Joyce Corley, Sherry Burks, Diane Martin, Diana Pruitt, Deborah Britton, Judy McCampbell and Beverly Duncan.

Brownie Troop XV met Tuesday at 2:30 p. m. in the Little House with leaders: Mrs. Robert Meisch and Mrs. W. G. Mathis. The girls enjoyed learning new

**TEST IS FAILURE**

Curtis R. Inman, Midland, No. 1 Knox Estate, Section 23, Block 6, H&GN Survey, two and one-half miles northwest of the Justiceburg-Glorieta pool, was a failure to 2,784 feet.

singing games. Troop members present were: Daylene Fry, Deana Adams, Cheryl Pennell, Deana Mathis, Mary Eubank, Theresa Dean, and Marie Shaw.



... a good sound policy in one of America's strongest stock companies... protects the whole family... issued immediately in amounts up to \$25,000 for 3 days to 180 days... See us now.

**We STAND Between You and Loss**

**SEXTON INSURANCE AGENCY**

HEAR REV. BOB MITCHELL AT FIRST BAPTIST CHURCH EACH DAY DURING SIMULTANEOUS REVIVAL MEETING.

MUSIC DIRECTED BY MR. EUELL PORTER.

SERVICES EACH DAY 10:00 A. M. — 8:00 P. M.

APRIL 14th THROUGH 21st.

# SIMULTANEOUS REVIVALS

Sponsored By POST MINISTERIAL ALLIANCE

APRIL 14-21 SERVICES: 10:00 A. M. and 8:00 P. M. MONDAY-SATURDAY IN EACH CHURCH (Except As Noted Below)

- |   |   |  |  |   |
|---|---|--|--|---|
| <p><b>Assembly Of God</b><br/>Speaker: Rev. J. O. McElyea<br/>Spur, Texas</p>                                 | <p><b>Calvary Baptist</b><br/>Speaker: Rev. Glenn Roenfelt<br/>Lubbock, Texas</p>   | <p><b>Church Of God Of Prophecy</b><br/>Rev. A. W. West<br/>(No Saturday Service)</p>  | <p><b>Church Of The Nazarene</b><br/>Rev. Lyman P. Wood<br/>Petersburg, Texas<br/>(No Saturday Service)</p>    | <p><b>First Baptist</b><br/>Rev. Bob Mitchell<br/>Georgetown, Texas<br/>Song Leader: Euell Porter<br/>Waco, Texas</p> |
| <p><b>First Christian Church</b><br/>Speaker: Rev. Almon Martin<br/>(No Services On Saturday, April 20th)</p> | <p><b>First Presbyterian Church</b><br/>Speaker: Rev. Dawson Tunnell<br/>Denton, Texas<br/>SERVICES:<br/>7:00 A. M.<br/>8:00 P. M.<br/>(No Service At 10:00 A. M. — No Service On Saturday)</p> | <p><b>First Methodist Church</b><br/>Speaker: Mr. Geo. L. Micheal<br/>Bartlesville, Okla.<br/>SERVICES:<br/>7:30 - 8:15 ..... Youth Service<br/>8:15 - 8:30 ..... Coffee Time<br/>10:00 A. M.<br/>8:00 P. M.</p> | <p><b>Friendship Baptist Church</b><br/>Close City, Texas<br/>Speaker: Dr. W. M. Turner<br/>Lubbock, Texas</p> |   |

The Following Business Are Cooperating By Closing From 9:45 — 11:00 A. M. Monday-Friday, April 15-19, So That Employees May Attend Their Church; Please Give Them Your Cooperation.

- |   |   |  |   |
|---|---|--|---|
| <p>CAPROCK CHEVROLET, INC.<br/>FASHION CLEANERS<br/>PIGGLY WIGGLY<br/>PICKETT ABSTRACT CO.<br/>DR. B. E. YOUNG<br/>DOWE H. MAYFIELD<br/>STEVENS STYLE &amp; BEAUTY SHOP<br/>GARZA TIRE CO.<br/>KIRKPATRICK AUTO ELECTRIC<br/>MORGAN STUDIO<br/>PARKER'S BAKERY<br/>CARL RAINS, SHERIFF<br/>T. H. TIPTON, TAX COLLECTOR AND ASSESSOR<br/>DEAN ROBINSON, COUNTY SUPERINTENDENT<br/>CARL CEDERHOLM, COUNTY CLERK<br/>JUDGE PAT WALKER<br/>BILL'S GRILL<br/>WINDHAM, GROCERY &amp; SERVICE STATION<br/>SANDERS BARBER SHOP<br/>POST WRECKING YARD</p> | <p>CAYLOR'S SERVICE STATION<br/>POST FEED &amp; SEED<br/>SHYTTLES IMPLEMENT CO.<br/>CITY RADIO SERVICE<br/>FORREST LUMBER CO.<br/>TOM'S PLACE<br/>YOUNGS FOOD MARKET<br/>WEST SIDE CLEANERS<br/>POST AUTOMATIC LAUNDERETTE<br/>HIGGINBOTHAM-BARTLETT CO.<br/>COOKS GROCERY—CLOSE CITY<br/>BRYAN WILLIAMS AND SON<br/>MALOUF DRY GOODS<br/>PIONEER NATURAL GAS CO.<br/>S. E. CAMP, TEXACO<br/>THAXTON CLEANERS<br/>PETERSON SHOE REPAIR<br/>GRAEBERS GROCERY<br/>CHAMBER OF COMMERCE<br/>TV-APPLIANCE CENTER</p> | <p>C. P. WEBB, ATTORNEY<br/>HUNDLEY'S MEN'S WEAR<br/>FERGUSON GROCERY<br/>R. E. COX, LUMBER CO.<br/>GARZA HOTEL<br/>OWEN'S GROCERY<br/>HODGES TRACTOR CO.<br/>SOUTHWESTERN PUBLIC SERVICE CO.<br/>JUAN DE LEON<br/>MAXINE'S<br/>GREENFIELD HARDWARE CO.<br/>MASON &amp; COMPANY<br/>DODSON JEWELRY<br/>FRANLEIGH FASHIONS<br/>R. J. FURNITURE CO.<br/>JAKE'S RECREATION CLUB<br/>INGRAM BARBER SHOP<br/>CUMMINGS BARBER SHOP<br/>WESTERN AUTO STORE<br/>POST AUTO SUPPLY</p> | <p>ROGERS FEED &amp; TRACTOR CO.<br/>POST FOOD LOCKER<br/>T. L. JONES, ICE &amp; GRAIN<br/>HUDMAN FURNITURE CO.<br/>SHORT HARDWARE<br/>JOE BOATRIGHT<br/>WHITE AUTO STORE<br/>DUNLAP'S<br/>G. F. WACKER STORE<br/>PARSONS DRESS SHOP<br/>MARSHALL-BROWN<br/>HERRING'S DEPT STORE<br/>BOB COLLIER DRUGS<br/>K &amp; K FOOD MART<br/>HUDMAN SERVICE STATION<br/>LAVELLE DRY GOODS<br/>O. K. FOOD STORE<br/>CITY BEAUTY SHOP<br/>PARRISH GROCERY<br/>THE FLOWER SHOP</p> |
|---|---|--|---|

MRS. DILLARD THOMPSON WRITES

Graham Residents Birthday Honorees In Homes Of Families And Friends

Mr. and Mrs. Alvin Davis and Glenn Robert of Brownfield visited Sunday afternoon in the homes of Mr. and Mrs. Glenn Davis and Mr. and Mrs. Elvus Davis and family. Other afternoon guests in the Glenn Davis home were Mr. and Mrs. Dwight Kinard and Kelley of Memphis, Mrs. Jewel Graham and Moody and Miss Janene Haynie of Post.

Elva Peel attended funeral services in Southland Sunday afternoon for J. M. Robinson.

Mr. and Mrs. Harlan Morris and family and Mr. and Mrs. L. W. Evans and family of Lubbock were Sunday guests in Post of Mr. and Mrs. Clarence Martin. Visiting recently at Meadow in the home of Mrs. Ruby Dalton and family were Mr. and Mrs. Alfred Oden and family.

Mrs. Lawrence Bilberry and children of Snyder was a guest Thursday night in the Luther Bilberry home.

Leo Cobb spent from Friday until Sunday afternoon fishing at Possum Kingdom. Mrs. Cobb and children visited at Big Spring Saturday and Sunday with her parents, Mr. and Mrs. Luther Harper.

Mr. and Mrs. James Stone were Sunday dinner guests in the Albert Stone home.

Mrs. O. H. Hoover spent the weekend at Crosby in the home of her son and family, Mr. and Mrs. Herbert Hoover.

Jack Wright of Lubbock visited recently in the home of his parents, Mr. and Mrs. Will Wright.

Mrs. Lucille McBride, who recently underwent surgery in West Texas Hospital in Lubbock, returned to her home Sunday after recuperating last week at Lorenzo in the home of her parents, Mr. and Mrs. Alex Kittrell. Mrs. Kittrell accompanied her home to spend this week.

Mr. and Mrs. Roy Holland of Portales, N. M., visited over the weekend in the Bryan and Quannah Maxey homes and in Post. The Hollands and Noel White were Sunday dinner guests in the Quannah Maxey home.

Mr. and Mrs. Jess Propst were guests Sunday of her cousin and wife, Mr. and Mrs. Clarence Reddy, in Floydada.

Mr. and Mrs. A. D. Crockett of Shallowater and Mr. and Mrs. K. V. Sneed of Abilene visited recently in the home of Mr. and Mrs. J. C. Howard.

Mrs. Paul Hedrick and daughters of Lubbock were dinner

guests Sunday of her sister and family, the Elva Peels.

Sunday guests in the home of Mr. and Mrs. Carter G. White were Mr. and Mrs. Barry Ford and two sons of Amarillo. Sunday evening visitors were their parents, Mr. and Mrs. Hardie Smith of the Pleasant Valley community and Mr. and Mrs. L. G. White of Post. Cynthia White accompanied her grandparents, the Smiths, home for a visit.

Sunday guests in the home of Mr. and Mrs. H. L. Mason were Mr. and Mrs. Walter Jones and family of Post. Afternoon visitors were Mr. and Mrs. Gene Mason and family of Post and Mr. and Mrs. Bud Mason and Brenda.

Mr. and Mrs. J. M. Bush left the first of last week for a several days visit in Truth or Consequences, N. M.

Mrs. Fred Gossett and Linda McMahon visited Saturday night in the Jimmy Doggett home. Shirley accompanied them home and spent the night.

Mrs. Harley Wallace entertained with a supper Sunday night honoring her son, Charles, and sister-in-law, Mrs. Shorty Hester, on their birthdays. Those present were Mr. and Mrs. Shorty Hester and baby and the Wallace family.

Friday night visitors in the home of Mr. and Mrs. Elmer Dee Jones were Mr. and Mrs. Elmo Bush and Ricki. Sunday visitors were Mr. and Mrs. W. O. Fluit Sr. and Bernice Jones and children of Post.

Mr. and Mrs. Quannah Maxey, Jane and Diane visited at Abernathy Sunday afternoon in the Lewis Sinclair home.

Mr. and Mrs. Delmer Cowdrey spent Sunday afternoon in Post in the home of Mr. and Mrs. Bobby Cowdrey and Sue.

Mr. and Mrs. Carl Fluit, Delwin and Jacky were guests Sunday of her parents, Mr. and Mrs. L. W. Gandy, near Tahoka.

W. C. W. Morris was honored Thursday night on his birthday when the Harlan Morris family and Mr. and Mrs. Alvin Morris went to the Morris home and enjoyed cake, coffee and hot chocolate.

Mr. and Mrs. Luther Harper of Big Spring were guests Wednesday night in the Leo Cobb home. Linda McMahon visited Cheri on Sunday afternoon and also Wednesday night. Mary Ann Stone was a Friday night guest of Cheri.

Mr. and Mrs. C. R. Baldwin and Mrs. Minnie Maxey visited

Harris Funeral Is Held At Southland

Funeral services for Mrs. J. C. Harris, 77, a resident of Southland 20 years, who died Friday in Slaton Mercy Hospital, were conducted at 2:30 p. m. Saturday in Southland First Methodist Church.

The Rev. Silas Dixon, pastor of the church, and the Rev. Elmer Crabtree, retired Methodist minister of Slaton, officiated. Burial was in Southland Cemetery.

Mrs. Harris suffered a stroke at her home last Thursday.

She is survived by her husband; one daughter, Mrs. Glenn Allen of Patterson, Calif.; three sons, Ennis Harris of Slaton, Fern R. Harris of Albuquerque, and Wayne Harris of Ralls; 13 grandchildren and 18 great-grandchildren.

Post Wins Two Firsts In Literary Contests

Post High School contestants won two first places and two third places Friday in the District 2-A Interscholastic League literary contests at Floydada.

The high school spelling team of Andy Schmidt and Jimmy Short won first place, and Lexa Acker won first in boy's extemporaneous speech.

The third places were won by Andy Schmidt in boy's declamation and by Ronnie Morris in boy's poetry reading.

Lexa Acker will represent the district this weekend in the Region I extemporaneous speech contest at Lubbock.

Mr. and Mrs. Mack Terry visited Mrs. Terry's brother and family, Mr. and Mrs. Jack Ballentine and Mark, in San Antonio this weekend.

Saturday evening in the home of Mr. and Mrs. Elvus Davis and family.

Mr. and Mrs. Jess Gregg, Gale and Judy, and Joyce King of Ropesville visited Sunday in the Dillard Thompson home.

Mrs. Jess Propst and Mrs. Morris Huff and Traci visited in Lubbock last Tuesday in the Meryle Jenkins home. Ricki and Vicki accompanied them home for the rest of the week. Ricki was a guest of the Propsts and Vicki visited in the Huff home.

Jacky Fluit was honored Friday on his birthday when his aunt and cousin, Mrs. Elmo Bush and Jerry, surprised him by serving pops, cookies and Easter eggs and giving balloons as favors to classmates and also to the fourth and sixth grade pupils in his room.

Kathy Stone entertained Friday night with a slumber party. Girls enjoying the party and refreshments of hot dogs, candy, pops, gum and ice cream were her classmates, Sandra Stewart, Shirley Wallace, Peggy Morris, Carolyn Moore, Patsy Thompson and Jane Maxey and Judy Morris of the Close City community.

Guests from outside the community attending the pink and blue shower honoring Mrs. Harlan Morris on Thursday afternoon in the school lunchroom were her mother, Mrs. Clarence Martin of Post and her sister-in-law, Mrs. J. E. Evans of Lubbock.

# You'll be the best-dressed family in the

# EASTER PARADE

Dad, Mother, Sis and Junior... come one, come all for what it takes to put you at the peak of your "Easter Sunday best!" Revel, in our world of fashions... get an extra thrill from our modest prices!

### Fashions for Dad

See our complete completion.

#### VAN HEUSEN DRESS SHIRTS

with famous CENTURY one-piece collar that won't wrinkle, ever.

Whites	\$4.00
Colors	\$5.00

### Smart HANDBAGS by GARY

from **5.00** plus tax

### GIRLS' FASHIONS

It's a girl's EASTER in these pert, pretty togs. Come pick her Spring Wardrobe now.

#### FACHO HATS

are the essence of Easter and Spring. Cute, cute styles and of course, fine quality.

**1.98 - 2.98 - 3.98**

#### Young Gents' Togs

Sturdy and handsome to suit the smartest "younger" men in the Parade. Come choose.

Tot's Suit shorts 'n shirt	<b>1.98</b>
	<b>2.98</b>
	<b>3.98</b>

#### WEMBLEY TIES

**1.50 - 2.00**

### Silk Dresses

**19.98 - 24.98**

### PRISSY MISSY DRESSES

Superior workmanship and only the finest materials go into

Sizes 3 to 6x **4.98 to 10.98**

Sizes 7 to 14 **5.95 to 12.98**

#### Flannel Shorts BLAZER SUIT

**6.98**

#### BOY'S SPORT COATS

— whites — colors — wash 'n wear

Sizes 6 to 12 **8.98 and 9.98**

HEAR REV. BOB MITCHELL AT FIRST BAPTIST CHURCH  
EACH DAY DURING SIMULTANEOUS  
REVIVAL MEETING.  
MUSIC DIRECTED BY MR. EUELL PORTER.  
SERVICES EACH DAY 10:00 A. M. — 8:00 P. M.  
APRIL 14th THROUGH 21st.

# PROFITS

## your aim?

## read these facts!

More sales mean more profits. The question is: How to get them. The answer is: tell more people what you've got for sale. Do your telling where folks in-the-market-to-buy look for shopping information: in the advertising columns of this newspaper.

## the Post Dispatch

Purchased And Read By 1,800 Families For News And Advertising Information.

*Herring*

**How Nice They'll Look All Dressed Up For Easter!**





Distance between San Antonio and New York City is 1,800 miles.

WANT TO ADD GALA TOUCH GALA EVENING?

NEW SHOP

FRANK CHANT LEE

POST TEXAS

### VA Questions And Answers

Q. I have just retired from the Armed Forces after 30 years of service. Would it be possible for my GI insurance premiums to be paid by allotment from my retirement pay?

A. Yes. However, authorization must be registered with your branch of service.

Q. Is it possible to take college extension courses by correspondence under the War Orphans Education program?

A. No. Correspondence courses are prohibited by the War Orphans Education law.

Q. I am a disabled Korea veteran and I am planning to take vocational training under Public Law 894. What is the maximum length of time I will be allowed to train?

A. You will be authorized whatever length of time is needed to rehabilitate you so that you can earn a living in spite of your handicap. Generally, however, the maximum is four years.

Q. I understand that a World War II veteran must file his application for a GI loan by July 25, 1958. Just what steps have to



### RESCUE OUTFIT—"Ridgerunners" Jeep Club members of San Diego, Calif., demonstrate how they could rescue and transport victims trapped under debris of buildings shattered by war or earthquake. The four-wheel-drive vehicle club is the only one of its kind known to have joined local civil defense in a group as a rescue outfit. In addition to their regular civil defense rescue classes, the 60 club members conduct runs into nearby desert and mountain country to practice search and rescue of plane crash victims, lost tourists and other emergencies.

### FOR POULTRY, CROPS, ENTOMOLOGY WINNERS Scholarships, Club Congress Trips Await Nation's 4-H Club Members

Hard work and a determination to make the best better will earn college scholarships worth \$400 each for 18 national winners this year in the 4-H poultry, field crops and entomology programs.

Hard work and a determination to make the best better will earn college scholarships worth \$400 each for 18 national winners this year in the 4-H poultry, field crops and entomology programs.

by taken by that date? A. By that date, a lender must at least have agreed to make the loan and must have requested VA's approval. The law allows up to an additional year, after that deadline, to complete the deal.

The 4-H boys and girls who enroll in the poultry program will learn the latest methods in poultry and egg production, and in marketing. Last year 4-H Club members handled nine and one-half million birds, according to the Extension Service. The Sears-Roebuck Foundation will continue to provide all awards.

Incentive awards in the 4-H field crops program will be provided by the Arcadian Products Department of Allied Chemical and Dye corporation. More than 800,000 acres were cultivated, planted and harvested by 4-H'ers carrying the field crops project last year. Members are encouraged to demonstrate to others what they learn about soil nutrition and fertility, as well as recommended crop production practices for their particular locality.

Introduced to 4-H Club only six years ago, the entomology project last year alone helped 28,000 members. Knowing the difference now between an ant and a termite could save many dollars in damage to homes and farm buildings later on, cautions one entomologist. And this is one of the many valuable lessons taught in the 4-H entomology program. The Hercules Powder company is donor of awards.

Arrangements with the awards donors were completed by the National Committee on Boys and Girls Club Work, Chicago. Details about participation in these national 4-H awards programs and others can be obtained from the state or county Extension Service office.

**VISIT GRANDMOTHER**  
Sandra and Billie Sue Baker of Slaton visited here recently with their grandmother, Mrs. L. M. Baker, and Cora Baker.

### HATS

Cleaned and Blocked \$1.50

**THAXTON CLEANERS**

### LONE STAR AGRICULTURE Texas Department Of Agriculture Reaches 50th Birthday This Month

By JOHN C. WHITE, Commissioner of Agriculture

The Texas Department of Agriculture is 50 years old this month.

Voted into existence by the Texas Legislature in January of 1907 to become operative in March of that year, the original agency had four employees whose duty was nothing more than to organize farmers' institutes over the state to keep alive agricultural interests.

Future sessions of the legislature broadened the scope of activities and established greater powers for the protection and furtherance of Texas agriculture.

Today, 50 years after its inception as a bureau of limited function, the Texas Department of Agriculture is a major state agency charged with the administration of agricultural laws and providing services to all Texans through its many and varied duties.

To carry out the numerous and important tasks of the department there are now some 140 employees with the Commissioner of Agriculture, as head.

Briefly, the Texas Department of Agriculture serves to keep open the channels of trade within and without the state for Texas farm products.

- ### HAPPY BIRTHDAY
- Please Call Or Mail Your Family's Birthday Dates To The Post Dispatch.
- April 13  
Karen Davis  
O. L. Weakley  
Mrs. Frank Chandler, Fort Worth
- Mrs. Walter Crider  
Mrs. A. J. Matlock  
Mrs. J. C. Howard
- April 14  
Mrs. Mason Justice  
Auvy Lee McBride  
Mrs. James Altman  
Wanda Ruth Hawkins
- April 15  
Ozell Williams  
Ira Lee Duckworth  
Larry Welch  
R. E. Cox  
R. J. Hundley  
G. R. Evans, Slaton  
Marilyn Terry, Lubbock  
Curtis Didway
- April 16  
Arthur Floyd  
Dickie Milton Wallace  
Huston Hoover, Littlefield  
Gerald Carpenter, San Antonio
- April 17  
E. E. Peel  
Rhea Peel  
Billy Hamilton  
Billy Byrd Holly  
Gayla Dawn Bowen, Levelland  
Marilyn Kay Smith, Lubbock
- April 18  
H. E. Butler  
Walter Josey  
Linda Gail Hays
- April 19  
Billy Max Gordon  
Janett Hutto  
Mrs. D. C. Hill

### ROPING MATCH SET

Clifton Smith of Tell, who has served as pick-up man and participated in the roping events at Post rodeos the past few years, will meet Toots Mansfield of Big Spring in a \$2,000 winner-take-all roping contest at City Park in Childress at 2 p. m. Sunday, April 14. The contest will be a 10-call event. There will be a two-call \$25 jackpot and \$5 jackpots.

Congress provided a half billion dollars for relief in the U. S. drought of 1934.

States.

Through reorganization plans carried out in the last few years, the Texas Department of Agriculture has become more self-sustaining in order to provide more services to more Texans at less general cost than at any time in its entire 50-year history.

### ATTENTION!!

## LUBBOCK PRODUCTION CREDIT

### 23rd ANNUAL STOCKHOLDERS MEETING

Registration Begins 9:30 A. M.

### SATURDAY, APRIL 20

Entertainment — Business — Fish Lunch

### FAIR PARK COLISEUM

Lubbock, Texas

### THERE'S AN ELECTRIC HEATING METHOD FOR EVERY HOME NEED!

*Electric Heating is CLEAN, MODERN, AND SAFE!*

Instantaneous, comfortable heating — of any room, in any house. Whether you are building your new home, remodeling or adding a room to your present home, you can use electric heating. The advantages you have with your electric working appliances are also yours with electric heating. Electric heating is the cleanest form of heating known. Now is the time to solve your heating problems for next winter and years to come. For information, without obligation, see your Public Service Company manager.

- YOUR PRESENT HOME**
  - CEILING HEATING UNIT WITH CIRCULATING FAN**  
Ceiling heating units are ideal for bedrooms, living rooms or kitchens. They can be used as the main heat source or as auxiliary heating. A fan of the ceiling group you look for circulates air and, if desired, a thermostat can be added for automatic operation.
  - RADIANT-CONVECTION WALL HEATERS**  
The type of electric heating you've seen many times either in portable heaters or in wall-mounted units. Such electric heating units are inexpensive, can be thermostatically controlled and are easily installed. One except to the problem of leaving a room added on.
  - RADIANT GLASS, METAL or CERAMIC PANELS**  
Never thing in the world of the earth's natural heat rays is electric radiant heat. During material which, through radiation, warms your family, floor, furniture. These units, mounted on walls, over doors, come in various sizes, up to 200 inches long.
  - HEAT LAMPS**  
Heat lamps are used where quick spot heating is desired — over work benches, in garage, workshop or in the kitchen. A heat lamp can be mounted in place of a regular lighting bulb, or it can be installed permanently in bathroom ceilings, etc.
- THAT ROOM YOU'RE ADDING ON**
  - BASEBOARD HEATING UNITS**  
Electric baseboard heating is completely instantaneous since it can be gained in minutes or contrast with wall heaters. It is particularly all because the heating requirement is met by installation along outside walls only. Furniture can be placed anywhere without interfering with your heating.
  - EMBEDDED CEILING CABLES OR PANELS**  
As in all electric heating your future is today. You can get a quick and get completely clean electric heat. Continuous cable or panel heat and fresh air come out of ceiling area and clean covered with plaster or various paint colors. Heating system is completely out of sight.
- YOUR NEW HOME**
  - THE AMAZING NEW HEAT PUMP**  
Here's the amazing "heat pump" which uses the principle employed in your electric refrigerator to "pump" heat to you in winter and cool air in the summer. It's a combination metal unit which uses approximately the same amount of electrical energy as the cooling and heating units in a conventional home. The heater the outside weather, the "heat pump" adjusts itself automatically to give you the weather you want inside your home.

FOR ADDITIONAL INFORMATION, CALL YOUR PUBLIC SERVICE OFFICE!

**PUBLIC SERVICE COMPANY**

# NOW . . . . .

## IS THE TIME TO HAVE YOUR AIR CONDITIONER CLEANED, OILED AND NEW PADS INSTALLED.

## WE HAVE A COMPLETE STOCK OF PADS AND PARTS.

### CALL US

# Hudman Furniture Co.

## Here's what makes it a new kind of Ford

The frame is wider . . . wheels are lower  
*(Lets you ride sweet and low)*

The power is bigger  
*(Most power in Ford's 25 years of V-8 leadership)*

The comfort is greater  
*(You've never had it so plush)*

The body is "beefier"  
*(Up to 9 inches longer, 4 inches lower, with full head room, full road clearance)*

From top to floor, front to rear, this body is built like a "battleship." You ride surrounded by new strength.

... and best of all it's the lowest priced of the low-price three!

Ask for an Action Test in the new kind of **FORD**

**TOM POWER, INC. — FORD DEALER**

**PIGGY WIGGLY & KRAFT'S**



# BIG TOP SALE



**Kraft Prepared Salad**  
 4 med. thin slices white bread, crusts trimmed  
 4 Kraft DeLuxe Slices Fast-Froc. Amer. Cheese  
 4 frankfurters, broiled  
 Pickle chips

Spread mustard on each slice of bread, then cover with a slice of cheese. Lay a frankfurter diagonally across each cheese slice. Bring the other 2 corners of bread and cheese together around the frankfurter and hold in place with toothpicks. Toast under broiler.

- KRAFT'S, 8 OZ. JAR MAYONNAISE ..... 25c
- 6 OZ. JAR KRAFT'S MUSTARD ..... 10c
- KRAFT'S, 8 OZ. JAR FRENCH DRESSING ..... 25c
- DELUXE SLICED, 1/2 LB. KRAFT'S AMERICAN CHEESE ..... 35c
- PHILADELPHIA, 8 OZ. PKG. CREAM CHEESE ..... 39c

It's a three ring circus of values... the Kraft's Big Top sale at Piggly Wiggly supermarkets. No clowning, your savings won't be peanuts, as they say in circusland, they'll be super-colossal. With the greatest of ease you'll collect S & H Green Stamps, as you get thrilling, spectacular savings at Piggly Wiggly's and Kraft's Big Top Sale.

WHITE SWAN, OLE FASHION, NO. 303 CAN NAVY BEANS ..... 24c  
 EGG NOODLES, 14 OZ. CELLO BAG SKINNERS ..... 24c



**PINEAPPLE SANDWICH SALAD**  
 2 cups diced cooked chicken  
 1 cup thinly sliced celery  
 1/2 cup Kraft Mayonnaise  
 Salt, pepper  
 2 green peppers  
 1 8-oz. pkg. Philadelphia Brand Cream Cheese  
 1 teaspoon finely chopped chives

1 teaspoon finely chopped parsley  
 8 slices pineapple  
 Ebb lettuce  
 Romaine  
 Kraft French Dressing  
 Waffle French Fried Potato slices  
 Spiced crap apples

Combine the chicken, celery, mayonnaise and seasonings. Toss lightly. Cut a slice from the top of each pepper, remove the membrane and seeds and fill with the cream cheese blended with the chives and parsley. Chill, and slice. Cover the pineapple with chicken salad, top with another slice of pineapple and place a mound of salad on it. Place 2 green pepper slices on romaine on the plate and dress with French Dressing. Garnish with potato slices and crap apples.

- FRESH, CRISP, BUNCH ROMAINE ..... 10c
- BUNCH PARSLEY ..... 7 1/2c
- FRESH BUNCH GREEN ONIONS ..... 7 1/2c
- & TOPS, LARGE BUNCH TURNIPS ..... 10c
- TEXAS SEEDLESS, 5 LB. BAG ORANGES ..... 39c
- U. S. NO. 1 REDS, COLORADO, 10 LB. BAG POTATOES ..... 49c

**MIRACLE WHIP COFFEE**  
 MARYLAND CLUB, 1 POUND CAN ..... 99c

SALAD DRESSING, PINT JAR ..... 33c

**CELERY** CALIFORNIA, LARGE GREEN STALK ..... 12 1/2c  
**CARROTS** TEXAS, 1 POUND CELLO PKG. .... 7 1/2c

**FRUIT COCKTAIL**  
 HUNT'S, NO. 300 CAN ..... 20c

QUART JAR KRAFT'S SALAD OIL ..... 67c  
 PARKAY, 1 LB. CARTON MARGARINE ..... 32c

**SLICED BACON** SWIFT'S PREMIUM, POUND ..... 63c  
**CHUCK ROAST** U. S. GOOD HEAVY BEEF, POUND ..... 39c  
**FRANKS** SKINLESS, E & R BRAND, 3 LB. BAG ..... 95c

KRAFT'S, 1 LB. PKG. VELVEETA ..... 49c  
 FIRST CUT, LB. PORK CHOPS ..... 49c  
 Steak, U. S. Good Beef, Loin ..... lb. 79c  
 Steak, U. S. Good Beef, T-Bone ..... lb. 89c  
**LONGHORN CHEESE** KRAFT'S WISCONSIN, POUND ..... 43c

KRAFT'S, 1 LB. BAG CARMELS ..... 35c

WAFERS, SHEDDS, 15 OZ. JAR CUCUMBER ..... 19c

ROSEDALE, CREAM STYLE GOLDEN, NO. 303 CORN ..... 2 cans 25c

PAR PURE STRAWBERRY, 20 OZ. TUMBLER PRESERVES ..... 39c

KRAFT'S MINIATURE, 6 1/4 OZ. BAG MARSHMALLOWS ..... 19c  
 KRAFT'S CHOCOLATE, 1 LB. CAN MALTED MILK ..... 47c



**ORANGE DRINK**  
 KRAFT'S, 46 OZ. CAN ..... 25c

KRAFT'S, 8 OZ. ITALIAN DRESSING ..... 31c  
 LIBBY'S SLICED, NO. 1 1/4 FLAT CAN PINEAPPLE ..... 20c

PLAINS, 1/2 GALLON ASSORTED FLAVORS MELLORINE ..... 31c  
 TOWIE, 8 OZ. JAR, MARISCHINO CHERRIES ..... 25c  
 POPSRITE, 10 OZ. WHITE OR YELLOW POP CORN ..... 15c  
 REGULAR BAR, 10c OFF, NET PRICE DIAL SOAP ..... 3 bars 31c  
 STARCH, 12 OZ. BOX NIAGARA ..... 24c  
 RED HEART, 16 OZ. CAN DOG FOOD ..... 24c

**STRAWBERRIES** FRESH PACT, FROZEN, 10 OZ. PKG. .... 17c

FLOOR POLISH AEROWAX, QUART 63c  
 LIBBY'S, FROZEN, CUT, 10 OZ. PKG. GREEN BEANS ..... 19c  
 LIBBY'S, 6 OZ. CAN FROZEN GRAPE JUICE ..... 18c  
 POLAR, FROZEN, 8 OZ. PKG. BRUSSEL SPROUTS ..... 19c  
 Whole, Frozen, Hills-O-Home, 10 Oz. Pkg. OKRA ..... 15c

**SHAMPOO** LUSTRE CREAM, 1.00 SIZE EACH ..... 69c

1/2 GALLON PUREX BLEACH ..... 33c  
 LARGE BOX TREND ..... 2 for 39c  
 REGULAR, 25 LB. BAG VIGORO ..... 1.70  
 ROYAL FLASH, 25 BIG BOOKS MATCHES ..... 19c  
 100 COUNT BUFFERIN ..... 99c  
 40 TO BOX COETS ..... 19c

**1/2 SALE**  
 New Formula Ipana with bacteria-destroyer  
 Regular 37c  
 Now ONLY 12 with 50¢ tube or regular price  
**TRY NEW IPANA - SAVE 20¢**

