

The Post Dispatch

USPS 439-620

The Newspaper Serving all the people of Garza County

Sixty-sixth Year Number 27

Newsstand Price 50 cents

Wednesday, December 4, 1991

New TDH rules may force city to close landfill in March

Cities across state fighting proposed regulations

by Wes Burnett

Parkhill, Smith and Cooper engineer Butch Davis told Post city council members at the regular meeting Monday night that new proposed regulations by the Texas Department of Health may force the closure of the city landfill in March if the rules become effective.

Davis told the council that legislators are being asked by cities across the state to put pressure on the TDH to delay implementation of the proposed regulations, which are more stringent than the new rules announced recently by the U.S. Environmental Agency.

"As it now stands," Davis said, "we could not expand the landfill as we had planned, because the new rules require special lining and permits which we could not possibly get by the deadline of March 1."

Davis' comments followed a report by city manager Bob Turner on the area meeting held in Lubbock by TDH officials to hear from city officials.

"There is widespread and general discontent with the new rules," Turner said. The information led to a lengthy discussion by council members concerning the implementation of user fees at the landfill, in an attempt to control the volume of materials in order to keep the facility from filling up before other arrangements can be made.

No decision was made on fees, but a proposal of rates will be discussed at the January meeting. Turner had suggested using a fee chart similar to the one that Slaton had used prior to closing its landfill.

Council members urged that county and city residents be exempt from the fees as long as it is possible and if some system could be devised to identify county and city residents.

The low bid of \$111,020.31 from Pharr and Company to complete the 18 inch cover at the landfill to meet the closing requirements was discussed as well as the low bid of \$3,575 for seeding by Knowles Contractor. The council took no action on the bids, pending a meeting later to consider a proposal by Herb Walls to complete the job with city employees and equipment on their own time.

Davis pointed out that the other bidders did not have the same information to bid on, therefore a rebidding process might be required. No date or time was set for the meeting, although Turner suggested a meeting this Thursday. The council was reminded that any meeting of two or more council members requires public notice as outlined by the Texas Open Meetings Act.

In other action council members approved the installation of street signs at Two Draw Lake, with that portion of the road in the city limits. The request for the sign came from resident Carol Tobias. The council also adopted an official name for the street as Two Draw Road.

A policy to determine city employees participation in ambulance duty was discussed at length, with the council deciding to allow employees to serve one weekday per week on duty, as long as the employee is able to do city work without disrupting service or morale.

Although the one employee currently certified for ambulance duty was not named, the discussion centered on Derrick Walls and his request to be on call for ambulance duty during regular work hours. Turner explained that Walls had signed up for ambulance duty before requesting permission to take time off from work to answer ambulance calls.

"This is a policy decision," Turner explained, "and I denied the request pending your decision on this matter."

Council members aired the various problems involved with employees leaving the job while answering an ambulance call, including the tradition of employees serving as volunteer firemen.

Council member Larry Waldrip pointed out that firemen do not have to respond, whereas ambulance duty requires immediate response. Council member Jim Schooler said that he felt that employees not allowed to serve on ambulance duty should also be restricted from answering fire calls.

In the end the council compromised to try the one day per week on-call for ambulance duty and review the situation in 30 days to determine the impact on city operations.

Waldrip suggested that perhaps the city should follow the example of the state, which requires that volunteer firemen take vacation time for any calls during time on the job for the state. Waldrip says that his vacation time is used whenever he has to be on city duty during regular work hours.

"What a city employee does on his or her own time is their business," Waldrip said, "but I'm concerned about setting a precedent for allowing employees time off during regular work, what will that do to the others who are in the middle of a water leak repair or other emergency when one has to answer the ambulance call?"

The council also authorized the demolition and removal of debris of a house at 507 S. Avenue H which was recently burned. The owner of the property is listed as John Henry Osby. The condemnation proceeding has been completed.

The EMT association request for purchasing new pagers and chargers was explained by council member Irene Fry and Turner told council members the purchase was authorized through the normal budget process and no decision was necessary by the council. "They have the money in their budget and they should go ahead and order the equipment," Turner emphasized. "These people are serving us and what they do is a matter of life and death, we do not need to stand in the way of getting them properly equipped."

Attending the meeting were council members Fry, Waldrip, Dan Lamb, Schooler and Larry Mills, Mayor Jim Jackson, city manager Turner and city secretary Wanda Wilkerson.

VFW Post 6797 sets December 7 observance

The Veterans of Foreign Wars Post 6797 will conduct a flag service at 10 a.m. Saturday, December 7, commemorating the 50th anniversary of the bombing of Pearl Harbor.

All servicemen, their families and friends as well as the entire community is invited to attend the special service at the VFW Post on U.S. Hwy 380 east. (Continued on Page 5)



"ONCE UPON A MATTRESS" cast members prepare for the All-School Play which will be performed Thursday and Saturday evenings with 7:30 p.m. curtain times. Reserved seating at \$4 per ticket may be obtained by calling

495-2770. General admission tickets will be sold at the door for \$2. (Photo by Becky Warren)

All-School play presents popular comedy, 'Once Upon A Mattress'

The All-School Play, which opens Thursday at 7:30 p.m. at the Elementary School Auditorium, features Post students in the popular comedy, "Once Upon A Mattress," directed by Post High School drama instructor Candace McConnell. The play will also be presented Saturday at 7:30 p.m.

Both performances offer reserved seating at \$4 per person or general admission at \$2 per person. Reservations may be made by calling 495-2770. General admission tickets will be sold at the door.

The cast includes Sara Hudman as 'Queen Aggavain', Cody Collier as 'Wizard', Amber Harp as 'Princess No. 12', Radley Nichols as 'Minstrel', Amber Little as 'Lady Merrill' and Michael Voss as 'Prince Dauntless'.

Other cast members are Darren Wood as 'King Sextimus', Cole LeBlanc as 'Court Jester', Jamie Feagin as 'Princess Winnifred', Amanda Richardson as 'Lady Rowena', Mia Mitchell as 'Lady Lucille', Dalyn McDougale as 'Sir Studley', Tray Payne as 'Sir Harry' and Sara Hodges as 'Lady Larkin'.

Shauna Poe is production assistant. Others in the production are Salli Bush, Shelly Haney, Lynette Graham, Wesley Anderson, Bitt Sims, Anthony Martin, Elaine Valdez, Jennifer LeBlanc, Thomas Albert, Shane Beavers, Tonya Harp, D'Lynn Wood, Kembra Kemp, Trudy Woods, Dianne Ammons and Sara Alexander.

Christmas parade highlights Saturday's downtown activities

'Main Street Christmas in Post, Texas'

by Wes Burnett

A unique lighted Christmas parade will highlight activities in Post this Saturday as merchants and civic organizations join in the "Main Street Christmas in Post" celebration. The parade starts at 6 p.m., complete with lighted floats, wagons, surreys and antique autos.

The day begins with music, food and drink booths and special sales in stores.

The Artisan Walk features local artists and craftsmen in downtown stores and the Gamma Mu Sorority annual Christmas Bazaar will be held at the Post Community Center from 10 a.m. to 4 p.m.

Photos with Santa will also be available as well as free surrey rides.

The Post Merchants' Association will hold drawings at 1, 3 and 5 p.m. for trucks and hams. The drawings will be held at the Plaza on East Main Street.

The Artisan Walk features eight local artists in downtown stores, which will be identified with bright and unique flags outside.

"Chief" Runkles at Happiness Is... with his centuries old native American artifacts and trade-bead necklaces. "Chief" Runkles has had a one-man show at Texas Tech Museum.

James Bell at The Spotted Pony will offer demonstrations of the centuries old folk art of Ukrainian egg decorating. This intricate art form is a most unique and very popular feature of the Artisan Walk.

Marie Neff at The Frame Shoppe presents her multi-media fine art exhibit. Her work is represented in galleries in Carlsbad, New Mexico and Oklahoma. She was recently invited to exhibit in a gallery in Santa Fe.

Sue Trammell at Twins Fashions features her ceramic nativities plus other Christmas decorations. Sue's work has been on display at many shows.

Charles Wallace at Hudman Furniture displays his "Intarsia" unique mosaic woodwork. Charles has been awarded numerous blue ribbons at juried shows throughout the state for his work. (Continued on Page 5)

...your subscription
BAZE BOOKBINDING
514 W. 7TH ST
AMARILLO TX 79101

Letters to Santa Claus to be published in the Dispatch

The popular annual "Letters to Santa Claus" and Merry Christmas edition of The Post Dispatch will be published Tuesday, December 24.

Deadline for the Christmas edition will be Friday, December 20 at 5 p.m. In addition to the popular "Letters to Santa Claus" from area youngsters, the special Christmas edition will also include Merry Christmas greeting advertisements.

Merchants and businesses should plan now for the special edition, call Becky Warren at the Dispatch (495-2816) to reserve your Christmas Greeting ad.

NEWS BRIEFS

Appreciation for Doctors to be Sunday

An appreciation for Dr. Wilson, Dr. Rodriguez and their families will be held Sunday, December 8, from 1 to 3 p.m. at the Post Community Center.

4-H Major Stock Show Meeting

A 4-H major stock show meeting is today, December 4, from 5 to 6:30 p.m. at the Courthouse. Exhibitors and a parent must attend. Bring your social security number, checkbook, and entry information.

Extension Program Council to meet

Garza County Extension Program Council will meet Monday, December 9, 7 p.m. in the County Courtroom for the annual meeting. "Pot-Luck" supper will be followed by a brief meeting. All members are urged to attend.

Extension host Open House

Garza County Texas Agricultural Extension Service, 1st Floor, Courthouse, will host Open House Monday, December 9, from 10:30 a.m. to 4:30 p.m. Please come by and meet new County Agent, John Senter.

Community Wide Christmas Sing

The Annual Community Wide Christmas Sing will be held at the First United Methodist Church in Post on Wednesday, December 4, 1991 at 7 p.m. Special music and carols will be sung to usher in the Christmas season involving all the Churches. Everyone welcome! An offering will be taken for Post Cares.

Bethlehem Joy

A Christmas Cantata - "Bethlehem Joy" will be presented by the Alleluia Choir of the First United Methodist Church, Post, at 7 p.m. Sunday, December 8, 1991. The public is invited - there is no admission charge.

Legal Services Board of Directors to meet

There will be a meeting of the West Texas Legal Services Board of Directors on Saturday, December 7, 1991 at 10 a.m. at the Fort Worth offices of West Texas Legal Services - 600 East Weatherford Street, downtown Fort Worth.

Gamma Mu Christmas bazaar

Gamma Mu will hold its annual Christmas bazaar on Saturday, December 7 from 9 a.m. to 4 p.m. at the Post Community Center. Pictures with Santa will be taken from 11 a.m. to 1 p.m. There will be a \$1 donation at the door for "Toys for Tots." Arts and crafts, a bake sale and concession stand will be featured at the event. Funds from the bazaar are used by the sorority to benefit the annual scholarship program.

'Toys for Tots' campaign underway

The Post Lions Club annual "Toys for Tots" campaign is now underway with a December 9 deadline for applications from those in need. People interested in donating to the program, which provides toys for needy children who might not otherwise have Christmas gifts, should mail contributions to Post Lions Club, P.O. Box 644, Post, Tx 79356. New toys may be donated directly at the Southwestern Public Service office on West Main Street. Applications for assistance with toys are available at the SPS office or at City Hall.

Sign-up for major stock show is Dec. 4

Sign-up for 4-H entries in major stock shows is December 4 from 5:00 to 6:30 p.m. at Courtroom, Garza County Courthouse. Bring social security number, checkbook to pay entry fees and hotel reservation information.

CCA reception for Jane Prince Jones

The Caprock Cultural Association is extending an invitation to the public to a reception honoring Jane Prince Jones, managing director of The Garza Theatre. The reception will be held Thursday, December 19 from 4:30 to 6:30 p.m. in the CCA Building at 127 East Main St. in Post.

Live Nativity at Graham United Methodist

On December 22, 1991, the Graham Chapel United Methodist Church and "friends" will present a live nativity at the church in Graham. All are invited to come and enjoy the re-creation of the Bethlehem stable from 6:30 to 9 p.m. on the Sunday before Christmas.

Literacy Program to begin after January 1

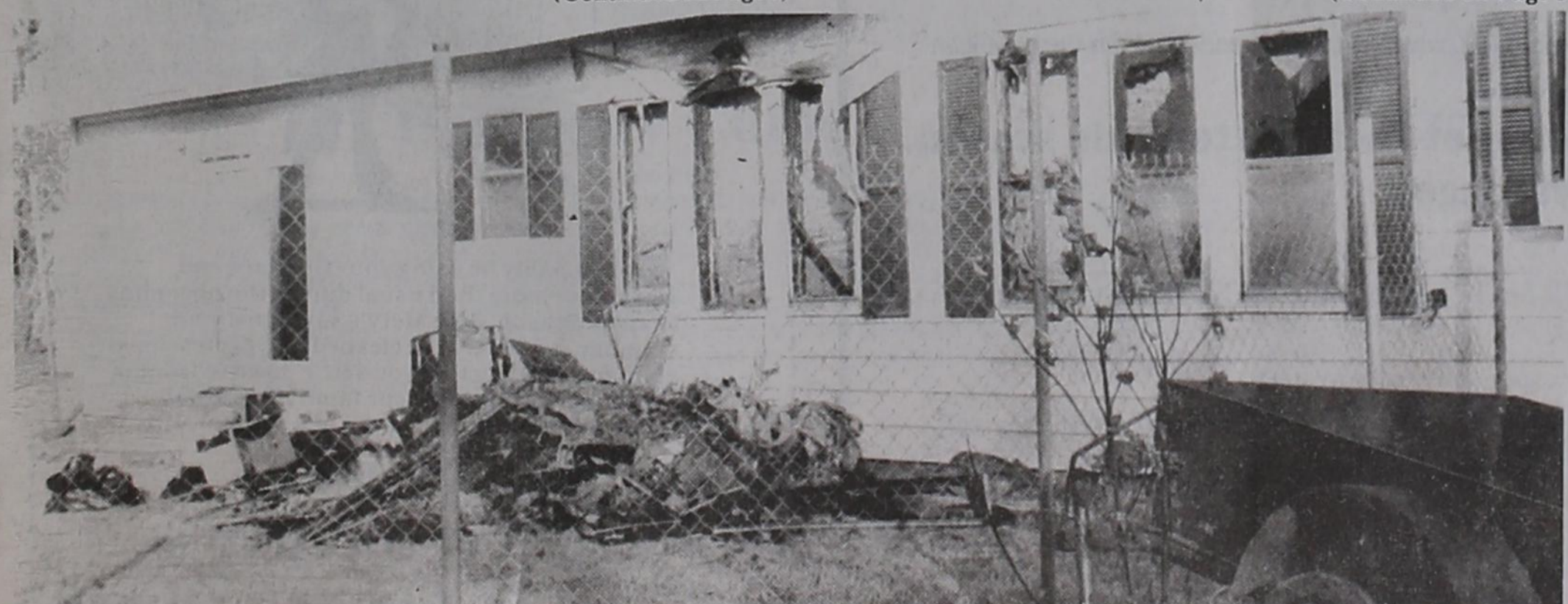
The Literacy Program is scheduled to begin after January 1. Anyone interested in participating may contact the Post Public Library at 495-2149. Tutors and students alike are welcome. It takes approximately three hours a week for the tutors for a worthy cause. Alice Sell of the Lamb County Literacy Council, Inc will be assisting. Your response will be greatly appreciated.

Commodities distribution

The commodities distribution will be held on Tuesday, December 17 at the Service Center on the Snyder Highway. The center will be open for the distribution from 9:30 - 12 and from 1-3:30 p.m. The distribution is held on the third Tuesday of each month.

Poker Run to benefit the needy

On December 8, 1991 the VFW Ladies Auxiliary with assistance from the Blue Knights - Texas Chapter IX (law enforcement riders) and Dust Bowl Beavers Plus are hosting a Poker Run to gather non-perishable food items to give to the needy. Entry fee is six food items. The event is open to anyone who rides a motorcycle. Starting time is noon at the Post VFW and prizes will be given to the first three places. If you have any questions you may contact J.W. Jolly at 495-3128.



FIRE RUINS HOLIDAY - A house fire last Friday night marred the holidays for Lisa and Skip Starkey. Two rooms of their home were damaged by the fire and extensive smoke damage was reported throughout the house. No one was injured in the blaze, although Post Volunteer Fire Department fireman Daniel Yarbrow was taken to Garza Memorial Hospital for heat and exhaustion while fighting the fire. The fire started at approximately 11 p.m. and was reported by

Garza County Sheriff Freddy Cockrell, who was patrolling and noticed smoke coming out of the house at 107 N. Avenue S. A total of 12 firemen and three trucks responded to the fire, which was considered extinguished at 3 a.m. Saturday. No cause of the fire has been determined. Four children were at home at the time and left the house unharmed. (Photo by Becky Warren).

Obituaries

Helen Juanita Burnett

Graveside services were held Friday, November 29, 1991 at Willow Wild Cemetery in Bonham for Helen Juanita Burnett, who died early Wednesday morning, November 27 at her home in Ladonia.

Her son-in-law Ron Bolton of Wichita, Kan. and her son Wesley W. Burnett of Post, conducted the graveside services, assisted by her nephew Lyle Burnett of Bowie and her grandson James W. Burnett of Pearland.

Pallbearers were grandsons James W. Burnett of Pearland and Zachary Bolton of Wichita, Kan. and nephews Rodney Samuel of Fort Worth, Randy Roberts of Greenville, Chandler Burnett of Whitesboro and Lyndell Burnett of Ladonia.

Mrs Burnett had been under hospice care with family members since November 8 following diagnosis of cancer.

She was born October 18, 1918 at Bugtussle near Ladonia in Fannin County in the home of her grandparents, Jacob and Martha Duke.

She was the daughter of the late Vona Brucilla Duke and Bruce Walker Samuel.

She attended school at Petty and Ladonia. She married Roy Edwin Burnett Sr on May 29, 1939 in Bryan, Texas and lived at College Station until his graduation from Texas A&M in 1940.

The family lived in Savoy until August 1945 when they moved to Brownsville.

In 1950 Mrs Burnett graduated from Jack's Beauty School in Sherman and later operated a beauty shop in Brownsville.

She also lived in San Antonio and Houston before Mr Burnett's retirement in 1978, when they moved to Ladonia.

Her husband preceded her in death on July 14, 1989.

Survivors include sons Wesley

W. Burnett of Post, Jerry Lynn Burnett of Ladonia and Roy E. Burnett Jr of Ladonia and daughter Beverly Ann Bolton of Wichita, Kan.;

Brothers Robert Jacob Samuel of Denton, William Paul Samuel of Ladonia, Fred Ray Samuel of Greenville;

Sisters Mildred Roberts of Ladonia, Ann York of Corsicana, Martha Houchin of Seminole, Jeannie Logsdon of Garland and Fayra Bankston of Cumbly;

Grandchildren Timothy W. Burnett, James W. Burnett, Morris Edwin Burnett, Chantelle Burnett, Kimberly Joy Dolberry, Zachary Bolton and Rachel Ann Bolton.

Mrs Burnett's brother Bruce Walker Samuel Jr died during World War II in the Pacific Theatre.



Helen Juanita Burnett
R.E. Shedd

Funeral services for R.E. Shedd, 76, were held Friday, November 29, 1991 at 2 p.m. in the Calvary Baptist Church with Rev Billie S. Smith, pastor of Trinity Baptist

Church, officiating. He was assisted by Paul D. Jones, minister of Post Church of Christ.

Burial was in Terrace Cemetery under the direction of Justice-Mason Funeral Home.

He died Wednesday, November 27, 1991 at 5:23 a.m. in Methodist Hospital following a lengthy illness.

He was born in Coryell County. He started school at Gatesville and moved to Lometa. He came to Post at the age of 14 with his family to farm.

He married Ruby Gray on June 23, 1935 in Post. They farmed until 1943 when he went into the army. He served in the 88th Division during World War II. He went to work for the Texas Highway Department in 1947. He retired in 1974 due to medical reasons.

He was a member of the Calvary Baptist Church since 1954, and was a Deacon there.

He was preceded in death by a son, Charles Edward Shedd on July 16, 1954.

Survivors include his wife, Ruby Shedd of Post; one son, Robert E. Shedd of Garland; daughter-in-law, Sharon Shedd of Garland; two brothers, A.T. Shedd, Jr of Crescent City, Ca. and Noble F. Shedd of Winkelman, Az.; two sisters, Verdine Price of Olancha, Ca. and Pauline McDade of Buchanan Dam;

Three grandchildren, Staci Shedd Barsuhn of Pensicola, Florida, Michael Charles Shedd of San Francisco, Ca. and Andrew Joseph Shedd of Garland and three great-grandchildren, Grant, Dustin and Blayne Barsuhn.

Pallbearers were Daymon Ethridge, Glenn Polk, Vernon Nesmith, Darrell Cowles, Benny Gray and Don Gray.

Honorary pallbearers were T.C. Polk, Marion Cruse, Bill Shiver, Mutt Rankin, Fred Cowles, Robert Hays, Jerry Hays, Delbert Rudd, Barney Jones, Everett Windham, Chip Polk and Buster Gray.

Estelle Byrd Hernandez

Services for Estelle Byrd Hernandez were held Monday, December 2, 1991 at 2 p.m. in the Post Church of Christ with Dell Young, minister of Sand Springs, Church of Christ in Valliant, Oklahoma, officiating.

Burial was in the Terrace Cemetery under the direction of Justice-Mason Funeral Home.

She died Friday, November 29, 1991 at 6:30 a.m. at her residence in Houston after a lengthy illness. She was under hospice care.

She was born September 30, 1940 in Dublin, Texas to Samuel George and Anna Lucile Stanley Byrd. They moved to Spur when she was four years old. They moved to Post in 1952 where she attended school and was a graduate of Post High School. She had lived in Houston for the past 22 years. She and her husband owned and operated C&S Refrigeration.

She was a member of the Kerby Street Church of Christ.

Her father preceded her in death on September 21, 1987. Survivors includes her husband, Narcisco Hernandez of Houston; her mother, Mrs Sam Byrd of Post; three sons and daughter-in-laws, Chuck and Jackie Boling of Roberta, Georgia, Jerre and Stephanie Boling of Dallas and Michael and Sheila Hernandez of Houston; two daughters and son-in-laws, Paula and Silver Recio of Houston and Patrice and Chris Walker of Augusta, Georgia;

Four brothers, Delbert Byrd of Slaton, George Byrd of Post, Melvin Byrd of Port Orchard, Oregon and Ed Byrd of Crosbyton; five sisters, Edna Swan and

Linda Byrd, both of Tulsa, Oklahoma, Lois Thomas and Jody Ammons, both of Post and Ann Lowe of Meridian, Mississippi and eight grandchildren, Nikki and Christopher Boling, Travis and Tyler Recio, Lynde and Kayse Boling, Kiersten Walker and Michael Hernandez, Jr.

Nephews served as pallbearers. The family requests memorials to Hospice.



Estelle Byrd Hernandez
Ima Smithey

Graveside services for Ima Smithey were held Monday, December 2, 1991 at 4:30 p.m. in the Terrace Cemetery with Rev Billie S. Smith, pastor, Trinity Baptist Church, officiating.

Burial was in the Terrace Cemetery under the direction of Justice-Mason Funeral Home.

She died Saturday, November 30, 1991 at 12:50 a.m. in Methodist Hospital in Lubbock after an illness.

She was born November 27, 1905. She came to Post on Thanksgiving Day, 1945 to live and to farm. She married Frank Smithey in 1939, he preceded her in death in 1960.

She has worked as a nurse's aid in several nursing homes. She is also preceded in death by a son, William Everette "Bill" Smithey on October 1, 1979. She was a member of the Trinity Baptist Church and was a homemaker.

Survivors include a son, Thurlowe Hadley of Springdale, Arkansas; two daughters, Sonja Sue Smithey of Post and Leslie George of Granby, Missouri and five grandchildren, Vonda Kaye Schone, Kenny Smithey, Roxanna Smithey, Donnie Cowley and Ronnie Cowley.

Grandsons served as honorary pallbearers.

Bernice Camp

Bernice Camp, 93, of Sherman, Texas, died Tuesday, November 26, 1991 in Sherman.

The graveside services were held Wednesday, November 27, 1991 in a Sherman cemetery.

She was born October 19, 1898. Mrs Camp was preceded in death by her husband, William B. Camp, and only son, Shelley E. Camp of Post.

She is survived by two grandchildren, Roger Camp of Hartsdale, N.Y. and Carol Camp DeVinny of Bedford and four great-grandchildren.

Benefits should boost Texas economy for holidays

"The economy has not been very friendly to anyone in Texas lately," said Texas Employment Commissioner Mary Scott Nabers, "but we certainly are going to try our best to make the holidays a little bit brighter for some individuals."

TEC employees announced today that they are committed to administering the Emergency Unemployment Compensation Act, which extends unemployment benefits to unemployed individuals as quickly as possible.

"State employees are working very hard to get as many checks as possible in the mail by Thanksgiving because we know what a difference this money can make," Nabers said.

The new federal law, signed recently by President Bush, will extend benefits for up to 13 weeks for unemployed individuals who have exhausted all benefits under this insurance program. Commissioner Nabers said today that 117,000 notices have already been sent to Texans identified as potential recipients. The legislation also has a "reach back" provision that includes people whose benefits expired any time between March 1 and November 16 of this year, and continue to be unemployed.

"Texans can receive extended benefits for periods of unemployment beginning November 17," said Nabers. "But to get the benefits mailed quickly, it's necessary for those we contact to respond promptly."

According to Nabers, millions of dollars will be pumped into the state's economy by December. "That will benefit businesses as well as the people receiving the money. Many Texans don't realize what a stabilizing force unemployment insurance benefits tend to be in a faltering economy," she said. "These benefits will have a huge impact on the state as recipients purchase food, clothing and other necessities."

Nabers said employers' state tax rates will not be affected by this new federal legislation.

TEC serves as the state's official employment agency serving both employers and employees.

Central Bail Bonds opens new office

Central Bail Bonds has officially opened its new office at 101 West Main on December 2.

Central has been in Post since 1987 serving Garza, Crosby, Dickens, Lynn, Scurry and Lubbock Counties.

The local agent is Audra Sanchez and the area agent is Jan Boles, both are Post, Texas natives.

Along with their 24 hour Bail Bond Service Central will also be your Western Union headquarters for your convenience of sending or receiving money 24 hours a day.

Central is the states largest private Bail Bond Surety Company with 11 offices serving 52 counties with 26 agents, six of whom are spanish speaking.

Kenneth Knowles, owner, has been on the board of directors of the Professional Bondsmen of Texas for several years and is a founding member of Professional Bondsmen of the United States.

Audra and Jan invite everyone to come by and visit the new office.

DR. ANDREW MAGER
CHIROPRACTOR
BACK PAIN?
WE CAN HELP!
OFFICE HOURS
TUESDAY 2-6 P.M.
215B W. 10TH
CALL COLLECT IN LUBBOCK
791-2266
OPEN SATURDAYS
10 A.M. TO 2 P.M.

QUALITY HEARING AIDS
At Beltone, we encourage you to compare Beltone quality and value to other hearing aids...including our automatic in-the-ear hearing aid. Call or stop by your neighborhood Beltone Service Center or a Beltone licensed specialist will conduct the same professional services, including a free hearing test in your home. Don't delay...See your Beltone Hearing Aid Specialist and compare today!

Beltone 50
Our next Service Center will be:
Wednesday, December 11, 1991
Senior Citizens Center
10:00-12:00 p.m.
Everyone is welcome!
Beltone of Lubbock
1(800)222-4410

DOWE MAYFIELD, C.L.U. C.D. Maturing?
How about **8.0%** tax deferred interest?
3305 81st, Suite F, Lubbock
1-800-658-6130 (toll free)

Hudman Funeral Home
615 W. Main 495-2821

Farm Bureau Insurance
Insurance For All Your Needs
Life * Auto * Fire * Farm Liability
Travelers Health Insurance

FARM BUREAU INSURANCE

Phone 998-4320 or 998-4591
PAT GREEN, LUTCF, Agency Manager
Danny Preston - G.G. Fillingim

Entered at U.S. Post Office, Post, Texas for transmission through the mails as Second Class matter, according to an Act of Congress, March 3, 1879.

Subscription Rates:
Zip Codes 79356 and 79330 - \$15 per year
All other 793 Zip Codes \$15 per year,
plus Postal Zone surcharge
All other Zip Codes - \$26 per year,
plus postal zone surcharge
Wesley W. Burnett
Publisher
Pat Burnett
Business Manager
Becky Warren
Advertising Sales
Tyler Duncan
Photographic Technician

Deadline:
Mondays at 5 p.m.
P.O. Box 10
Post, Texas 79356
806-495-2816
Wesley W. Burnett and Pat Burnett,
Owners
Member
Texas Press Association
West Texas Press Association

THE TELCOT ADVANTAGE
To Cotton Marketing in 1991-92

Recently, the Adjusted World Price (AWP) for cotton fell below the base loan rate, throwing a new twist in cotton marketing. As provided in the 1990 Farm Bill, this development gives cotton growers two options in marketing their loan-eligible bales. These are:

1. Placing the cotton into the government loan and marketing the equities. Cotton can be redeemed at the lower AWP, and all storage charges are waived.
- OR
2. Electing to forego the loan in exchange for a Producer Option Payment (POP), which is the difference between the base loan and the AWP.

TELCOT is the BEST WAY for growers to market their cotton this season, offering these advantages:

- **SECURITY**
Growers who sell equities on TELCOT know that they will not be responsible to CCC for storage and forfeiture charges if the cotton eventually forfeits to CCC.
- **SPEED AND CONVENIENCE**
When growers forego the loan, TELCOT can apply for the POP on their behalf such that when they sell their cotton on TELCOT they receive their lint proceeds "PLUS" the POP, normally within 24 hours.
- **ACCESS**
TELCOT gives growers access to more than 50 cotton buyers every day.

See Your Ginner TODAY
TELCOT — the Window of the Market Place
U.S. Patent No. 5,063,507

Clean Your Flue 'Cause Santa's Due

You'll probably be using your fireplace and woodstove more than usual during the upcoming Holiday Season. For safety's sake have your chimney inspected and cleaned by a professional chimney sweep before you settle down in front of that cozy fire. Protect your family, home and property against the ravages of a chimney fire.

Santa will appreciate it, too!

Bottom's Chimney Sweep
Box 62 Gail
756-4411



You are invited to join us
at our

Christmas Open House

Thursday, Friday and Saturday
December 5-7, 1991
9:30 a.m. until 5:30 p.m.

Happiness Is . . .

128 E. Main Post, Texas
Chief Runkles will be our guest
at the Artisan Walk on Saturday



Manna Square

Jason's Sports Cards
First Annual Sports Cards Show
December 7, 10 a.m. - 4 p.m. Door Prizes

Creatively Yours

Artist's Walk
10 a.m. - 5 p.m. daily
Kathy also takes special orders

Rumors

Call 495-3825 for
Juanella or Jesse for all your holiday hair styles

Jan's

1991 Swarovski Christmas Ornament
Just Arrived 35.00

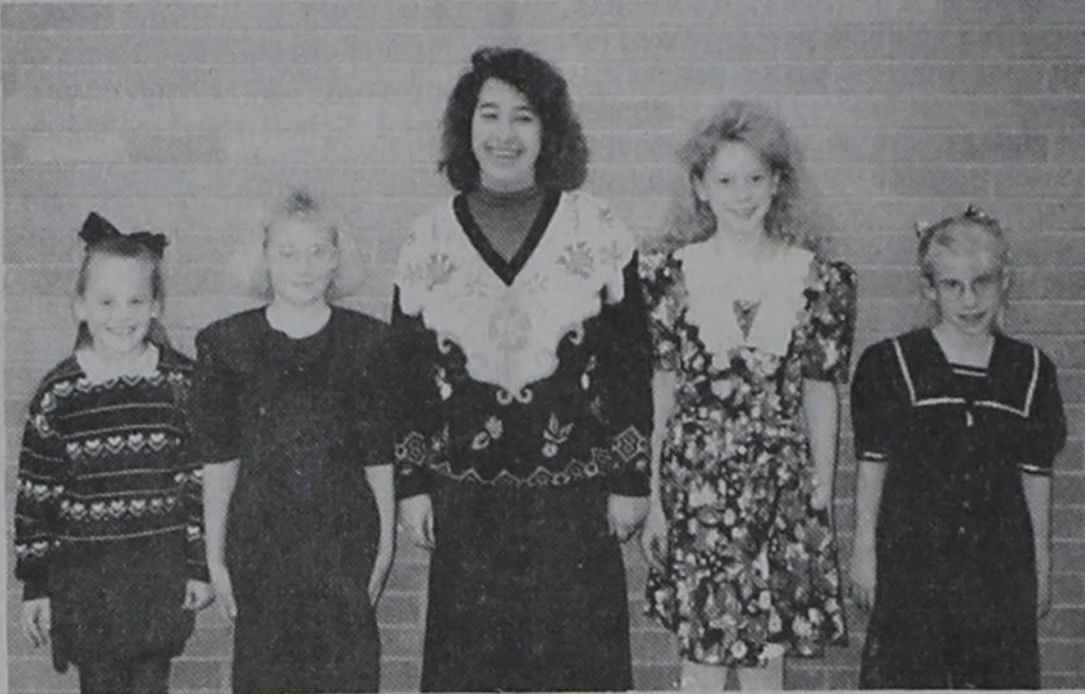
Little Luxuries... Small Indulgences...
211 E. Main 495-3311

Alexander honored with wedding brunch Nov 30

Tyra Alexander, bride-elect of Mitchel Raspberry, was honored with a wedding brunch on November 30 in the parlor of the First Christian Church at 9:30 a.m. Sandra Alexander, mother of the bride, Janice Bartlett of Katy, mother of the groom, Irene Alexander of Arlington, grandmother of the bride and Benellen Hofmann of Mason, grandmother of the groom were honored guests. Barbara Hardin and Jane Davis were hostesses assisted by Leanna

Davis of San Antonio and Cathy Davis of Albuquerque. Tables were set with white linen with burgundy and emerald green colors used on the tables.

Guests includes Sara Alexander, Darby Webb, Alicia Pettyjohn, Crystal Greer, Keitha White, Kasey and Billie Osborn, Wendy Zahn, Shirley Enos, Nelda Fletcher, Anna Lea Faulk, Linda Faulk, Candi Raspberry, Tammy Kirchof, Tanna Hofmann and Margie Pennell.



DISTRICT 2 4-H Food Show participants from Garza County recently were (left to right) Laci Williams, Kelli Collier, Lorry Ledbetter and Kelci Hart.

4-H'ers bring home blue ribbons from food show

by Ann Nobles, CEA-HE

Garza County participants in District 2 4-H Food Show brought home two blue ribbons and three red ribbons in competition held at Levelland High School November 23.

Receiving blue ribbons were Laci Williams, Junior I Fruits and Vegetables, and Kelli Collier, Junior I Nutritious Snacks and Desserts. Bringing home red ribbons were Lorry Ledbetter, Senior Breads and Cereals, Kelci Hart, Junior I Main Dish and Shanna Pennell, Junior I Breads and Cereals.

Each division of competition

has one entry from each county of the twenty county district making for a very tough contest. As is the usual case, fractions of points separated all participants.

"I'd like to congratulate each person who participated here today on your impressive knowledge of nutrition," said Kandy McWhorter, District 2 4-H Food Show Chairman.

Educational programs conducted by the Texas Agricultural Extension Service serve people of all ages, regardless of socioeconomic level race, color, sex, religion, handicap or national origin.

ACS offers Christmas cards

The Texas Division "greet" the holiday season with its Holiday Greeting Card Program. Now in its second year, the program offers a unique opportunity to send friends and family a beautiful holiday message while contributing to the very important work of the American Cancer Society.

Each of the 12 artfully designed cards carry the message, "This card represents a gift to the American Cancer Society." The cards include traditional holiday scenes - snow-covered houses, Santa at work, etc. Envelopes are foil lined, and cards and envelopes

can be imprinted. Prices range from \$14.50 to \$26.50 per box of 25 cards.

Proceeds from the Holiday Greeting Card Program help fund ongoing American Cancer Society projects and research in communities throughout Texas.

So rather than rushing to the mall and battling the crowds, rush to your phone and call 1-800-ACS-2345 to receive an order form. Check, Master Card and Visa accepted.

Better hurry, the order deadline is December 1.



Sandra Matthies

Matthies-Benham announce plans

Janet Matthies would like to announce the engagement and forthcoming marriage of her daughter, Sandra, to Russel Benham.

The wedding is set for December 21, 1991.

Garza County Extension Open House

by Ann Nobles, CEA-HE

Garza County Extension Office will host an Open House on Monday, December 9, from 10:30 a.m. to noon and 1:00 - 4:30 p.m. at the Courthouse. Newly hired County Extension Agent, John Senter plans to be in Post for the day and to attend the Open House.

Please come by and meet John and visit with Ann about plans for Extension programs for 1992. Both agents would like to become better acquainted with everyone in the community.

Refreshments will be served.

Birth Announcements

Dillon Lee Duncan

Matt and Jennie Duncan are proud to announce the birth of their son, Dillon Lee, born Tuesday, November 19, 1991 at 11:46 a.m. in St Mary's Hospital.

Dillon weighed seven pounds eight ounces and was 20 inches long at birth.

Maternal grandparents are Lin and Sue Warren.

Paternal grandparents are the late Hubert and Sylvia Duncan.

Maternal great-grandparents are Ray and Irene Wagner of Snyder and Travis and Henrietta Thomas and the late Ray Warren of Post.



Dillon Lee Duncan

Mary Kay Christmas Open House

Thursday, December 5

10 a.m. - 7 p.m.

2025 N. 6th

Tahoka

Discounts, door prizes and sale items

Carol Bokins

998-5300

Bridal Selections

Sandra Matthies and Russel Benham

Handy Hardware or Handy Gifts

231 E. Main 495-3516

You are cordially invited to a
Christmas Open House

at the

Victor Hudman's
604 W. Main

December 15
from 2 to 4 p.m.

Tahoka Daisy Final Days Sale

40% to 50% OFF

Last day of business

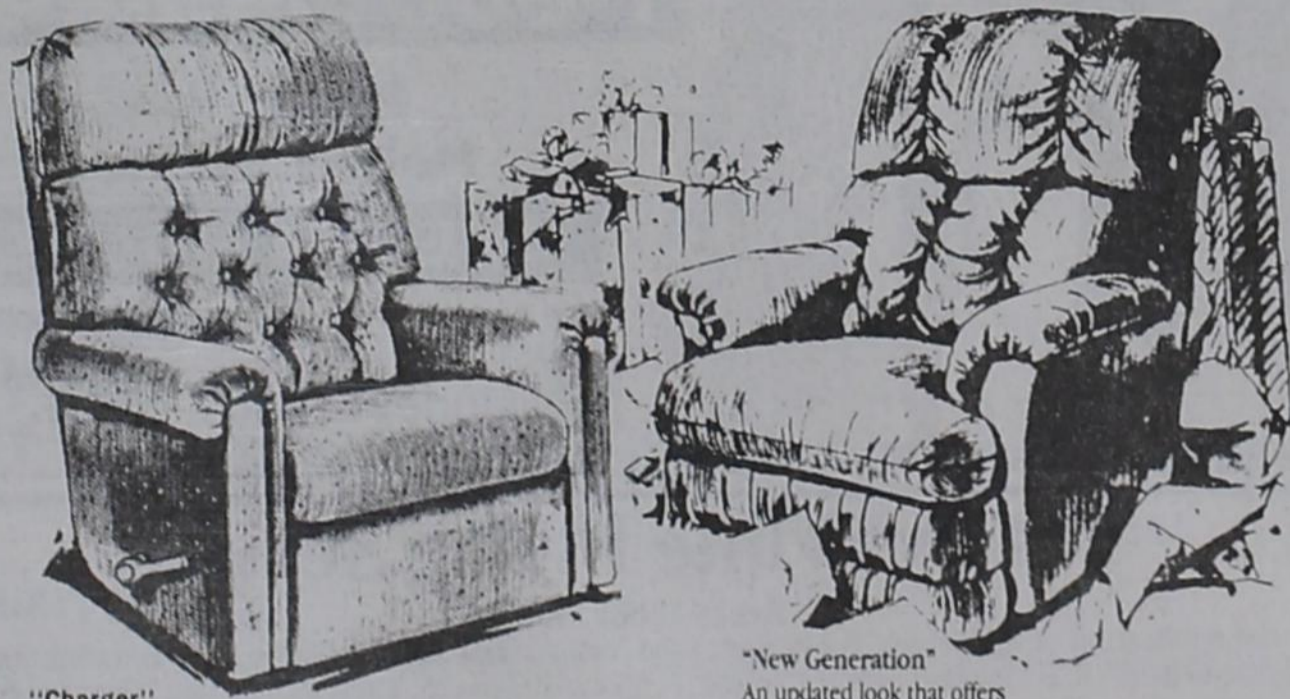
December 28

no further reductions

1926 Lockwood Street, Tahoka, Tx

LA-Z-BOY HOLIDAY SALE!

The gift they'll open again and again! It's the gift they've always wanted and it's never been easier to give! We're offering sale prices that will give the man in the red suit a run for his money. The exceptional quality of a La-Z-Boy® recliner...styled from contemporary to classic and built, to feel as good as the look!



"Charger"
Luxuriously tufted transitional with a large head roll, padded arms, deep cushion seat. Available as a Reclina-Rocker® Recliner or Reclina-Way® Wall Recliner.

Sale! 298⁰⁰

"New Generation"
An updated look that offers pillowed comfort dramatic style. Choose as a Reclina-Rocker® or Reclina-Way® recliner.

Sale! 385⁰⁰

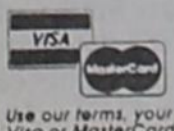
Leather Match 619⁰⁰

LA-Z-BOY®

Hudman Furniture Co.

301 E. Main

495-2615



Use our terms, your Visa or MasterCard



ERIC REECE was among six Southwestern Oklahoma University students selected for the "Who's Who Among Students in American Universities and Colleges." Reece, a 1988 Post High School graduate, is the son of Barbara and Darrell Reece of Post.

DANISH IMPORTS

GIFTS & COLLECTIBLES

Christmas on Main Street
Post, Texas

Holiday Open House

We have gifts for everyone on your list! On our Christmas list, you're at the very top. So, let us give you time for the joy of giving... or a cup of coffee or spiced cider while your gifts are wrapped.

Thursday, December 5th 9:00 a.m. - 6:00 p.m.
Friday, December 6th 9:00 a.m. - 6:00 p.m.
Saturday, December 7th 9:00 a.m. - 8:00 p.m.

Register for a \$500.00 Danish Imports Gift Certificate.
Drawing will be held Saturday, December 14.

Gift Selections

Sandra Matthies and Russel Benham
Ashley Starkey and James Byers

Mon. - Sat.
9:30 a.m. - 5:30 p.m.

FREE GIFT WRAPPING
Lay-Away Charge Privileges

201 E. Main
(806) 495-2314



POST SCHOLAR - South Plains College student Marilyn Bell (right) from Post was recently honored for scholarship achievement in her high school and college studies at South Plains College's annual Scholarship Recognition Luncheon. She has been named a Smallwood Scholar which awards a \$2,000 scholarship at SPC. Marilyn is joined by her parents Jeanette and Dennis Bell of Post. More than 275 SPC students and their parents were honored during the recognition luncheon. Keynote speaker was Walt Clark, former SPC student and president of Brandon & Clark, Inc.

Artisan Walk Saturday...

(Continued from Page 1)

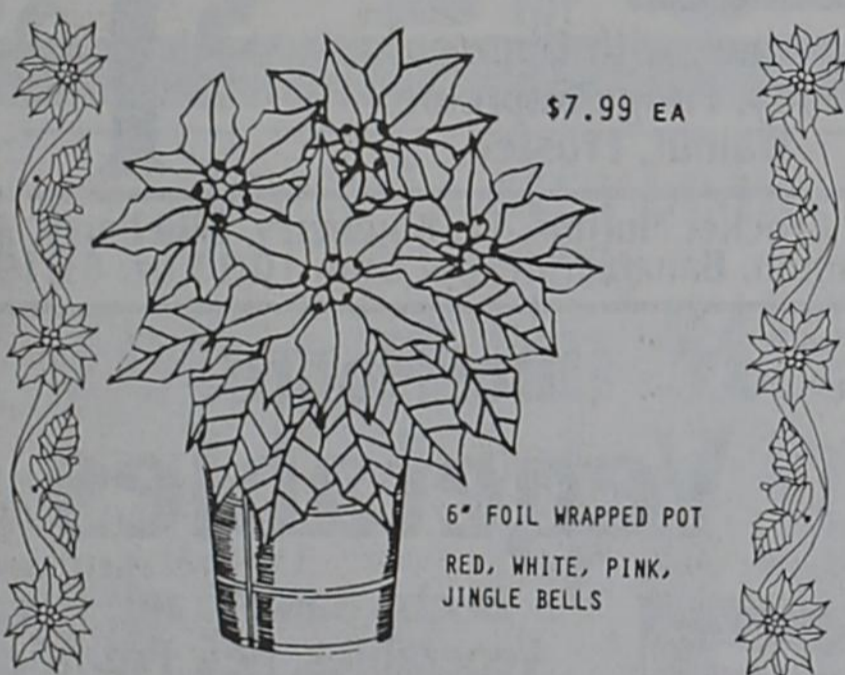
Allen Johnson at **Hudman Furniture** shows his collectible handcrafted woodwork and toys. His work was recently featured in an article in the Lubbock Avalanche Journal and he is also to be included in an upcoming publication of "Ripley's Believe It Or Not."

Jan Crawford at **Jan's** will show her lovely and well known calligraphy. Jan's custom work is available for all occasions. **Dick Powell** at **Danish Imports** presents his "Texas from the Rear". The western artist and author's work not only graces canvas, but clothing as well.

**NURSING ASSISTANT
INTERESTING HEALTH
SERVICE CAREER
RECEIVE STATE NURSE
ASSISTANT CERTIFICATE
Training - no tuition
Housing, meals provided
Get your G.E.D.
Receive Cash &
Clothing Allowances
FEMALES - MALES Ages 16-21
A U.S. Department of Labor
Program
TRAIN FOR YOUR FUTURE
Call: 1-800-733-JOBS
or (806) 763-6416**

JUST IN TIME FOR THE HOLIDAYS

POINSETTIAS



\$7.99 EA

6" FOIL WRAPPED POT
RED, WHITE, PINK,
JINGLE BELLS

Sold only at the following locations:
Colorado City, Floydada, Hereford, Matador, Post, Stanton, Texas

Quantities may be limited to stock on hand. Available as of December 2, 1991

HIGGINBOTHAM-BARTLETT CO.

"Quality & Service At The Right Price"

110 S. Broadway 495-2080

FEEL THE HEAT!



6 Day, 5 Night Hotel & Bahama Cruise Vacation Packages
SAVE UP TO 70% OFF OF APPROXIMATE \$1,000 VALUE

FOR ONLY \$165*
PER PERSON
Limited Amount of Cruise Package Available

REPRESENTATIVES ARE STANDING BY!
Monday - Friday 9 a.m. to 10 p.m. EST
MUST CALL NOW!

1-800-783-2381

* Certain restrictions apply

Void where prohibited by law

This ANN That

by Ann Nobles
Extension Agent
Home Economics

Gift selections are in every magazine, newspaper, and on TV now. I'd like to add a suggestion and some guidelines for purchasing a gift that is a practical, yet most enjoyable for the whole family - a recliner, also called motion furniture.

When shopping for motion furniture here are some things to consider.

* **Comfort** - take the recliner for a test drive. Take your time. How comfortable will it be for long periods of time? Is the head properly supported in the television position? Give your body time to relax and then concentrate on how comfortably the chair fits your body.

* **Ease of use** -- spend time operating the controls to ascertain their ease of use, both for layout and effort of operation. Don't be afraid to ask the salesperson how to operate the chair; they may be able to show you options you would not find on your own.

* **Number of positions** -- what will it primarily be used for: watching television, reading, relaxing, traditional seating or a combination of these? How many positions do you really want? The more positions, the greater the comfort level.

* **Useful additional features** -- besides the recline mechanism, other mechanical features are available in the recliner market: in-chair heaters and vibrators. An electric mechanism is available to take you through the reclining function and can even raise the entire chair while tipping it forward to provide ease for standing up. Some chairs have adjustable lumbar supports for the lower back. Some have adjustable arms. In addition are the platform rocker, glider, swivel, rocker and swivel/rocker functions available on some recliners.

* **Safety** -- do you have small children in the house? Watch out for pinch or snag points where exposed mechanism components could pinch a finger or snag clothing. Manufacturers vary in their attention to the safety features of their products.

Voluntary construction standards have been established by the American Furniture Manufacturers Association. These standards mandate that there is to be no more than a five-inch opening between the upholstered seat rail and the upholstered leg rest in that area between the extended leg rest supports. It further states that the leg rest shall be so constructed that it will disengage or pop off when an obstruction is encountered as the leg rest is closed. Look for a label attesting to the manufacturer's adherence to these standards.

Some swivel and swivel-rocker style recliners should be avoided by older or disabled users because they have a tendency to tip when too much weight is put on one side or arm. This is often the case when entering or leaving the chair.

* **Durability and construction quality** -- frames made of kiln-dried hardwoods, usually oak or birch, are desirable. Make sure the wood is adequately thick and has screws, double doweling and corner blocks in high stress areas, especially where the mechanism anchors to the frame.

In the mechanisms, look for heavy gauge steel and solid rivets rather than tubular or "pop" rivets. Also, look for synthetic bushings which separate metal parts to help them wear longer. Well-made

Pearl Harbor...

(Continued from Page 1)

The event will remember the attack on Pearl Harbor which precipitated the United States entry into World War II.

The local event is held in conjunction with the observance in Honolulu, Hawaii and the kickoff to the beginning of the 50th anniversary of World War II.

Similar events of remembrance will occur at more than 10,600 VFW Posts in every state, throughout the Pacific, Panama, Puerto Rico and the Virgin Islands.

The Veterans of Foreign Wars of the U.S., founded in 1899, is the nation's oldest major veterans organization.

The VFW membership exceeds 2.2 million, including more than one million World War II veterans, 300,000 Korean War veterans, 600,000 Vietnam veterans and veterans from conflicts such as Panama, Grenada, Lebanon and Desert Storm.

Thanksgiving guests

Doll Haire enjoyed numerous guests over the Thanksgiving holidays.

They were Mr and Mrs Carl Kline of Rosemont, Ca., Mr and Mrs Jack Dunn, Hillary, Matthew and Jefferson of Dallas, Christie Kemp and daughter Kascidee of Lubbock, Gregg Haire of Lubbock and Johnny Haire of Austin with sons Jason and Justin of Southland.

Drop-in guests were Cori Weaver and Joel Basinger of Southland.

mechanisms will operate quietly and will have little side-to-side motion.

View the frame and mechanism by tipping the chair on its side and looking at the bottom.

* **Quality materials** -- always look for good quality, durable material. Check the smoothness and thickness of the padding on the arms and back. Look at the quality and uniformity of stitching and seaming. Is the tailoring a good fit, or does the material bunch or pucker? Is the cover lined or unlined? Lined is better. Seat-cushioning foams having a density of 1.8 to 2.0 pounds per cubic foot or higher offer the best support and durability characteristics.

* **Appearance** /style /serviceability -- comfort is important but also consider how the chair will fit into the decor of your house. Will it be placed next to a table or other pieces of furniture? Does it need to be placed in close proximity to a wall? These questions will affect the control placement and mechanism choice. Are the style and color right? There are over 40 manufacturers producing reclining furniture; shop around for the one that will fill all your needs.

* **Price** -- shop around for a price you want. The recliner market goes from a low end of around \$300 to a high end of \$4,200. Therefore, it pays to define your needs before your shop.

Dr Lewis Moore OPTOMETRIST

Announcing New Office Hours:

- Wednesdays - 9:30 a.m. to 5 p.m.
206 West Main
495-3687

COMPLETE VISUAL CARE

ALLSUP'S

SPECIALS GOOD WHILE SUPPLIES LAST.

Allsup's #61
409 N. Broadway
495-4146

Allsup's #124
326 W. 8th
495-4069

PRICES EFFECTIVE DEC. 4-10, 1991

CHRISTMAS TREES

NEW MEXICO MOUNTAIN & SCOTCH PINE

\$9.99 & UP



69¢

HAM & CHEESE SANDWICH EACH

\$1.49



ALLSUP'S BREAKFAST BURRITO EACH

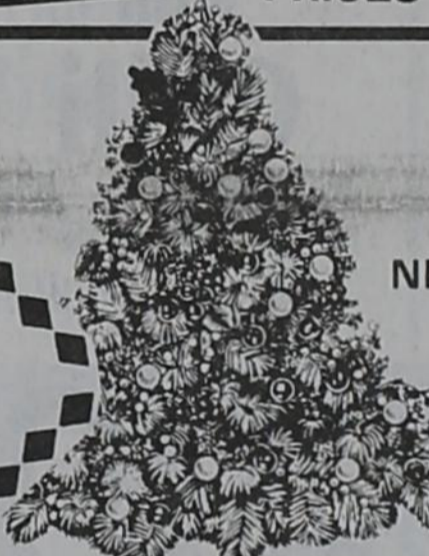
89¢

CHOCOLATE, FUDGE OR PEANUT BUTTER
COOKIES'N CREME
16 OZ. PKG. **\$1.59**

ALLSUP'S BREAD 2 FOR 1.00

SHURFINE DOG FOOD 3.99 25 LBS.

DUBUQUE BACON 89¢ 12 OZ. PKG.



COOKED FRESH 24 HRS. A DAY		HOT FOODS MENU		AVAILABLE AT ALL ALLSUP'S LOCATIONS	
BARBECUE BEEF SANDWICH	99¢	9 PIECE BOX CHICKEN	\$4.99	BARBECUE PORK RIBS (LB.)	\$3.99
BARBECUE WHOLE CHICKEN	\$3.99	DELICIOUS HAMBURGER	59¢	BURRITO	79¢
BURRITO	99¢	WILSON HOT LINKS	99¢	BREAKFAST BURRITO	99¢
BURRITO BEEF & SALSA	\$1.19	SAUSAGE ON A STICK	\$1.59	BURRITO CHICKEN	99¢
DELICIOUS CHEESEBURGER	79¢	SAUSAGE & BISCUIT	79¢	BURRITO BEEF & SALSA	\$1.19
CHICKEN FRIED STEAK	\$1.59	SAUSAGE, EGG & BISCUIT	\$1.09	DELICIOUS CHEESEBURGER	79¢
3 COUNT CHICKEN STRIPS	\$1.49	SAUTEYA SAUSAGE	\$1.09	CHICKEN FRIED STEAK	\$1.59
W/POTATO WEDGES/ CHICKEN (2 PCS)/BISCUIT	\$1.99	4 COUNT STEAK FINGERS	\$1.00	3 COUNT CHICKEN STRIPS, 1 BISCUIT & 3 JO JO POTATO WEDGES	\$1.49

CALL-IN ORDERS WELCOME

CHECK OUR WEEKLY SPECIALS

CHICKEN STRIP DINNER EACH

\$1.49

M & M's CANDIES REGULAR 55'

3 FOR \$1



ALL TYPES COCA-COLA

12 OZ. CANS **3.69** 12 PACK

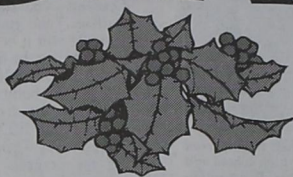
PAGE PAPER TOWELS 2 FOR 89¢

PENNY SMART BATHROOM TISSUE 4 CT. PKG. 59¢



SAVINGS OF THE SEASON

GOOD THRU DEC 10 IN LUBBOCK, SLATON, POST, BROWNFIELD, LEVELLAND, LITTLEFIELD, LAMESA AND PLAINVIEW.



WED	THUR	FRI	SAT	SUN	MON	TUE
4	5	6	7	8	9	10



Pepsi
Assorted
.79
2 liter

Pepsi 6 Pak cans \$1.69

Nabisco Oreos
Reg or Double Stuff
\$1.99
16 oz.

Del Monte Ketchup
32 oz.
.99

Brach's
Starlight Mints or Cinnamon Discs 15 oz. **\$1.19**
Chocolate Peanuts, Raisins, Peanut Clusters, Malted Milk Balls, Bridge Mix 13.8 oz. **\$1.69**

Texsun Apple Juice
46 oz.
.89

Ralston Chex Cereal
Rice, Corn, Wheat
\$2.29
12-16 oz.

Lea & Perrins Worcestershire Sauce 10 oz. \$1.49

Mrs. Baird's Split Top Wheat Bread
24 oz. **.79**



Skippy Honey Roasted Peanut Butter Smooth or Crunchy 18 oz. \$1.99

Nabisco Ritz Crackers
Regular or Low Salt
Ritz Bits Peanut Butter or Cheese 16 oz. **\$1.79**
10.5 oz.



Chicken of the Sea Tuna
Water or Oil 6 oz. **.39**



Doritos Tortilla Chips
Assorted 15 oz.
\$1.99

Wolf Chili
No Beans 19 oz.
.99

Casserole Pinto Beans
4 lb. **.99**



Betty Crocker Brownie Mix
20-27 oz. **\$1.39**
Caramel, with Dinosaur Candy, Fudge Supreme, Walnut, Frosted

Betty Crocker Muffins -Lt. Blueberry, Blueberry, Apple Cinnamon, Banana Nut, Oat Bran 10-13 oz. \$1.19

Del Monte Yellow Cling Peaches
Halved or Sliced Regular or Lite
16 oz. **.79**



Lipton Noodles & Sauce, Rice & Sauce
Asst. 4-5 oz. **.79**

Skinner Elbow Macaroni
24 oz. **.69**

Del Monte Vegetables
Beets, Sauerkraut, Mix Vegetables, New Potatoes or Carrots
16 oz. **2 for .89**



NONFOOD

HEALTH & BEAUTY



Dish Liquid
Ivory, Joy, Dawn Reg. or Mountain Spring
22 oz. **\$1.19**



With Bleach 110 oz.

Ultra Tide
Regular or Unscented 98 oz.
\$5.99



Salon Selectives
Mousse, Gel, 5-8 oz. Shampoo or Conditioner 15 oz.
each **\$1.89**



Degree
Anti Perspirant Solid 2 oz., Roll-On 1.5 oz., Aerosol 4 oz.
Assorted **\$1.89**

Nice 'n Soft Bath Tissue
Asst. 4 roll **.69**

Zee Paper Towels
each **2 for \$1**

Nice 'n Soft Facial Tissue
Assorted 175 ct. **2 for \$1**



Bic Disposables
Regular or Sensitive 5 ct. pkg. **.89**



Colgate Instant Shave
Assorted 11 oz. **.69**

DOUBLE COUPONS! 7 DAYS A WEEK! SEE STORE FOR DETAILS

Sunkist Medium Size Naval Oranges



2 lbs. **\$1**

Iceberg Lettuce
Large Head

ea. **.79**

Mustard, Collard or Turnip Greens

2 for **\$1**

Tomatillos lb. .98

FRESH PRODUCE

Fresh Broccoli lb. **.69**

Fresh Green Bell Peppers **3** for **\$1**

Fresh Bunch Green Onions **3** for **\$1**

Red Radishes **4** for **\$1**

Cherry Tomatoes lb. **.79**

Super Select Cucumbers **3** for **\$1**

Dole Golden Ripe Bananas



lb. **.15**

Hass Avocados
Salad Size

2 for **\$1**

Fresh Jicama

Great for Dips & Party trays!

2 lbs. **\$1**

FROZEN



Bell Ice Cream

3 for **\$5**

Assorted Red or Gold Ring 1/2 gallon

Banquet Dinners



Assorted 9-12 oz.

.69

DAIRY

Treesweet Orange Juice

64 oz.

\$1.39

Bluebonnet Margarine Sticks

1 lb.

2 for **.99**



Red Barron 12" Pizza

2 for **\$6**

Asst. 22-24 oz.



Bird's Eye Cob Corn

4 ct. **.99**

Ore Ida Reg. Crispy Crowns 30 oz. or Tator Tots Reg. Onion, Bacon 32 oz. \$1.39



Fine Fare Biscuits

Sweetmilk or Buttermilk

5¢

Bell Cottage Cheese
Creamed or Slim 'n Trim or Lite Time

12 oz. **.69**

United Extra Lean Boneless Top Sirloin Steak



lb. **\$1.89**

USDA Choice Top Sirloin Steak lb. \$2.39

QUALITY MEAT

Decker Bacon

Regular or Low Salt



12 oz. pkg. **.89**

Tyson Grade "A" Fryer Breast

Boneless Skinless



lb. **\$2.79**

Casa Rica Corn Tortillas

Flour Tortillas 20 oz. .78

36 ct. pkg. **2** for **\$1**

Hillshire Farm Deli Select Lunchmeats



All Varieties 6 oz. **\$1.59**

Farmland Smoked Sausage

Meat or Polish



lb. **\$1.79**

Beef Smoked Sausage lb. \$1.99

Decker Meat Franks



12 oz. pkg.

.88

Beef Franks 12 oz. \$1.28

Delta Pride Farm Raised Whole Catfish



lb. **\$1.98**

Catfish Fillets lb. \$3.29

Farmland Extra Tender Super Valu Pak Pork Chops



Center Cut

lb. **\$1.68**

Regular Pak lb. \$1.78

Potters Whole Hog Pork Sausage

Regular or Hot



\$2.77

2 lb. roll

1 lb. roll \$1.39

Classified Advertising

Private Party Classified Rates

PAYABLE IN ADVANCE
All private party classified ads must be paid in advance.

Rate Per Word **25¢**
Minimum \$3 per ad

NO BUSINESSSES AT THIS RATE. STRICTLY NON-COMMERCIAL, PRIVATE PARTY RATE.

Cards of Thanks Up to 50 words free. All words over 50 at 25¢ each.

DEADLINE FOR COPY AND PAYMENT IS Mondays at 5 p.m.

Number of Times	Per Word Per Time	Rate
1		.35
Bold faced copy		.50

Personals

Post Group of Alcoholics Anonymous meets every Thursday night at the First Presbyterian Church, 901 West 10th at 8 p.m. Closed meetings are held except on the last Thursday night of the month, which is an open meeting. We have supper at 7 p.m. and the speaking starts at 8 p.m. Anyone who wishes to talk or ask about an alcohol problem, call 495-3667 or 629-4393.

City County Drug and Alcohol Abuse
A non-profit service organization to assist with treatment placement, referrals, and confidential counseling for the substance abuser, alcoholic or family members concerned about their loved ones drinking or drug addiction. For information or appointment call office 495-3173 or 24 hour number 495-3788. All call strictly confidential. We Care. Director Glenda Baker CADAC, Assistant Director Lynette Massey CADAC.

Post Group of Alcoholics Anonymous meets every Thursday night at the First Presbyterian Church, 910 W. 10th at 8 p.m. Closed meetings are held except on the last Thursday night of the month, which is an open meeting. We have supper at 7 p.m. and the speaking starts at 8 p.m. Anyone who wishes to talk or ask about an alcohol problem, call 495-3667 or 629-4393.

Miscellaneous for Sale

Mesquite firewood for sale, \$125.00 a cord. Call Brandon Bird at 629-4213 or Aaron Davis at 495-3442.

ARROWHEADS for Christmas, gift boxed, 800 year old pots. Beautiful old trade bead necklaces. 128 East Main, December 7.

PIANO FOR SALE
Wanted: Responsible party to assume small monthly payments on piano. See Locally. Call credit manager 1-800-447-4266.

Drums - CB 700-150, 9 piece drums, silver color, 3 cymbals, 495-2570.

For sale, beds - \$55 (includes frame). Rocket Motel, 495-2883.

1977 Suzuki - \$600.00, call 495-2369.

Boat for sale: 18' Glastron, 190 horsepower inboard/outboard, easy load tandem trailer, lake ready & clean, 495-3700.

Trail Blazers Lunch Menu

Thursday, December 5
Sloppy joe, regular French fries, canned pineapple tidbits, white cake with lemon frosting, margarine or butter, milk or beverage choice.

Friday, December 6
Pinto beans/ham, cooked cabbage wedge, spinach, cornmeal muffin, chocolate cake with chocolate frosting, milk or beverage choice.

Monday, December 9
Pepper steak with brown gravy, rice pilaf, golden carrots, fruit salad, dinner roll, applesauce cake, milk or beverage choice.

Tuesday, December 10
Baked ham, potatoes Au Gratin, broccoli with cheese sauce, southern fried okra, dinner roll, peach cobbler, milk or beverage choice.

Wednesday, December 11
Hoagie style sandwich, vegetable soup, fruit salad, assorted cookies, milk or beverage choice.

NOTICE OF BID
Post Independent School District will receive bids for girls and boys track equipment for the 1992 season. Bids will be received until 9:00 a.m., December 19, 1991. Bids must be addressed to the Athletic Director, P.O. Box 70, Post, Texas, 79356 and envelope must be marked "Bid on Track Equipment." Sealed bids will be opened at 9:00 a.m., December 19, 1991. Bid specifications may be obtained from Dewayne Osborne, Athletic Director.

Post School Menu

Monday, December 9
Breakfast- Assorted cereal, toast with peanut butter, fruit, milk.
Lunch- Chicken strips with cream gravy, green beans, whipped potatoes, mixed fruit, rolls, milk.

Tuesday, December 10
Breakfast- Cowboy bread, fruit, milk.
Lunch- Enchiladas with sauce, cabbage slaw, Spanish rice, pinto beans, sliced peaches, milk.

Wednesday, December 11
Breakfast- Ham, gravy, biscuits, fruit, milk.
Lunch- Sloppy Joe's, French fries, pork 'n beans, birthday cake, milk.

Thursday, December 12
Breakfast- Malt-o-meal, bacon, toast, fruit, milk.

Friday, December 13
Breakfast- Oatmeal, toast, sausage, fruit, milk.
Lunch- Fish, macaroni & cheese, sweet peas, carrots, pineapple cobbler, corn bread, milk.

Card of Thanks

Thank each one of you for your prayers, cards, calls, visits and food while I was in the hospital and since I have been home. A special thanks to Dr Chen and nurses at the hospital.

Jewell & Ambers Parrish

Perhaps you sent a lovely card,
Or sat quietly in a chair.
Perhaps you sent a funeral spray,
If so we saw it there.
Perhaps you spoke the kinest words,
As any friend could say:
Perhaps you were not there at all,
Just thought of us that day.
Whatever you did to console our hearts,
We thank you so much whatever the part.

A special "Thank You" to Bro Billie Smith, Paul D. Jones, Penny Mahan, Joe Shedd, Juanella Hays and our many friends who supplied the food and served our family during our time of need.

The family of R.E. Shedd
Ruby Shedd
Robert and Sharon Shedd
Bernhard and Staci Barsuhn & boys
Michael and Tina Shedd
Andy Shedd

We wish to express our sincere appreciation to everyone for all the beautiful flowers, phone calls, cards, food, visits, hugs, prayers, memorials, and support during the loss of loved one, Bishop Mathis. Thank you all for being there for us.

Johnnie Mathis
Minnie boyd family
Della Swartz family

Help Wanted

Wanted: a hot oil truck operator. Apply in person. Bergstein Oilfield Services, Lubbock Highway.

Jobs Wanted

"Machine quilting" Barbara Hadderton, (806) 748-2199."

Homes for Rent

3 bedroom house for rent - 2 miles West on 84, call 495-3112.

Office Space for Rent

La Iglesia De Dios De La Profesia, 508 North Avenue G will be selling beef taquitos at \$1 each, Thursday and Friday, from 8 to 5 p.m. for building fund. Call in orders 495-3735.

Homes for Sale

2 - bedroom and small mobile home - both for \$9,000; 3 - bedroom, \$18,000; 4 - bedroom "shell" - make offer. TRAVIS ELLIS, Realtor, 495-2480.

2 bedroom, central heat & air, carpet, needs some work. Contact 495-3880.

3 bedroom, 1 bath, with 3 room rent house and 2 car garage. For appointment call Johnnie at 495-3031.

3 bedroom house located on 2 lots, carpeted, storm windows, steel siding, storage building, new roof. Call 495-3796 after 5 p.m.

Garage Sales

Saturday, December 7, 8:30 a.m. to 12 noon, several pieces of furniture, sofa, two swivel rockers and two occasional chairs, 109 South Avenue Q.

Over 1,000 pcs of very good clothes. Some worn once or twice, some new. All proceeds from sale goes to help the needy. Sale being held by Gods Will Ministry and the Lighthouse Church, Saturday, December 7th, 8 a.m. (rain or shine) at 314 North Avenue I (inside). Low, low prices. Men/women suits - pants/slacks - blouses - shirts - skirts - blue jeans - sweaters - coats and jackets. Donate 2 cans of can goods, and receive 10% off of your total purchase.

Friday, 10 a.m. - 1 p.m., 615 North Avenue G., weather permitting.

Pets and Supplies

Wanted: wheat pasture for calves. Call 806-271-3112 after 7 p.m.

Wanted to Buy

We buy pecans - custom shelling. Bar T Pecan Orchards, Lubbock, 806-792-7238.

Lost and Found

LOST: kid's pet - red dachshund - female - answers to Pooh - lost November 27th from the 500 block of 6th Street - if found please call 495-2605.

Legal Notices

NOTICE OF INTENTION TO CONDUCT WEATHER MODIFICATION OPERATIONS IN THE STATE OF TEXAS
Date of the first of three weekly publications of this Notice: November 27, 1991

1. Notice is hereby given that the Colorado River Municipal Water District has filed an application with the Texas Water Commission for a State permit to conduct weather modification operations to change or attempt to change the natural development of clouds for the purpose, objective, period, and by the method summarized hereinbelow.

2. The Colorado River Municipal Water District has a valid Texas weather modification license. The initial license was issued on December 18, 1974, and was renewed in 1976, 1977, 1978, 1979, 1980, 1981, 1982, 1983, 1984, 1985, 1986, 1987, 1988, 1989, 1990, and 1991.

3. The purpose of the weather modification operation is to increase rainfall to affect water resources. The period of the permit is March 1 through November 30 during the years 1992, 1993, 1994, and 1995.

4. The proposed weather modification operation is to be conducted for and on behalf of the Colorado River Municipal Water District, P.O. Box 869, Big Spring, Texas 79721-0869.

5. The proposed weather modification operation is to be carried out in both an "operational area" and a "target area" to cause the intended effects to occur only in the target area. The operational area is that area described as being the area between an outer boundary which is defined by a line that encompasses the block of counties of Lynn, Garza, Kent, Fisher, Nolan, Runnels, Coke, Sterling, Glasscock, Marin and Dawson, and an inner boundary which is that of the target area.

6. The area to be affected by the proposed weather modification operation is the target area. The target area is that area described as bounded by a line beginning at a point of origin at Big Spring, Texas, and running along Highway 87 in a northwesterly direction to Lamesa; thence, north-northeast on Highway 87 to the north border of Dawson County; thence, east along the northern boundary lines of Dawson, Borden, and Scurry Counties to Highway 84; thence, southeast along Highway 84 to Roscoe, in Nolan County; thence, south-southeast to Maryneal; thence, east to the Nolan-Taylor County border; thence, south along the eastern Nolan County line to the Runnels County border; thence, east along the northern Runnels County line; thence, south along the eastern Runnels County line; thence, west along the southern Runnels County line; thence, north along the western Runnels County line to a point where the southern Coke County line meets Runnels County; thence, west along the southern Coke County line to a point 13 miles south of Robert Lee in Coke County; thence, north to Robert Lee; thence, west to Highway 87 at a point approximately 13 miles northwest of Sterling City; thence, northwesterly along Highway 87 to the point of origin at Big Spring, Texas.

7. The methods and materials to be used in conducting this operation are summarized herein: A licensed meteorologist will select cumuloniform clouds for cloud seeding using a weather radar display, standard meteorological analyses, forecast techniques, observations, and pilot reports to direct an aircraft equipped to dispense the seeding particles, silver iodide crystals, into the updraft air cloud base.

8. Persons interested in knowing more about the technical aspects of the proposed operation should contact the applicant or the Weather & Climate Section of the Commission.

9. A public hearing on this application may be called by mailing a petition that requests a hearing to the Executive Director, Texas Water Commission, P.O. Box 13087, Capitol Station, Austin, Texas 78711. The petition must contain (1) the signature, full name, address, and phone number of each person requesting; (2) a statement that each person is at least 18 years of age and resides or owns property in the operational area; and (3) a description of each person's interest and how that interest would be adversely affected. Requests for hearing must be received by the Commission within 30 days of the date of the first publication of this notice. More information on calling a hearing can be obtained through the Legal Division of the Commission.

Jimella Simpson
Special Occasion Cakes
495-3318
after 5 p.m.

Jimella Simpson
Special Occasion Cakes
495-3318
after 5 p.m.

Piano Tuning Piano Lessons David King 495-3341

Johnny Dale Kite
owner
Gail - (806) 756-4411

Hoover
Bookkeeping and Tax Service
• Payroll, sales tax
Quarterly reports, P&L
• Income Tax Returns
495-2894
122 E. Main

Germania
Farm Mutual Insurance Association
Locally served by
Jerry Taylor
115 N. Ave. H
Post, Texas 79356
495-3330
OR
495-3875

Follis Heating & Air Conditioning
Sales, Installation & Service
TRANE EQUIPMENT
FREE Estimates
Dial 628-6371
Insured and Licensed

LubTex
Chisel Sweeps
Best quality & price
-- New & Used Equipment --

ADAMS
Farm Equipment Co.
Idalou Hwy - Lubbock
762-2510

5/3,5/2 COUNTRY ESTATE on 15 acres. 4,000 s.f., office library, cath. ceiling. Luxurious home. Barn & add'l acreage available. 149,000

3/2/2 Brick. Luxury living. Large LR, separate den, bath with cath, beam ceilings; isol. MBR & bath with dbl. lavs., separate tub/shower; covered patio, wet bar, beautiful paneling and carpets. \$115,000

3/2.5 2-story; double FP; huge living area with beam ceilings; in Cedar Hills; approx. 2,000 sq. ft. 75,000

3/2/1 brick; VERY nice, great location for children 60,000

3/1 with central heat, bath redone, 2 lots, large bedrooms, storage everywhere. REDUCED! 37,000

2/2 Beautiful home, completely remodeled 5 yrs ago, professional landscaping, central H&A, fenced yard, ceiling fans 40,000

3/2/2 + RV cover. Beautiful paneling; good carpet; stove & DW; plbg, wiring, & roof good. 37,500

4/2/2 with two living areas, rock FP, library, office; 2100 sq. ft. = \$14.00 per. GREAT BUY! 29,500

Two, 2 bedroom homes. Well kept. Good location. \$15,000 each or both for 28,500

3/1/2 on 3 acres. House in good condition. Some new carpet. Stove, freezer, butane tank included. 26,000

3/1/CP, carpeted, good storage, large MBR, small lot. 19,500

2/1/1 New windows, carpet, plbg, wiring. Large utility. Must see inside to appreciate. 14,500

Mitchell Real Estate

Kim 495-3719
Travis 495-2480
Mike and Wanda 495-3104
Barbara 495-3987

Post Insurance
Serving Post Since 1911

- All Your Insurance Needs
Auto - Home - Commercial - Bonds
- Quotes available by phone

122 E. Main 495-2894

LIQUIDATION
Due to the illness of Dr Ivan Barber
MUST SELL
4 large lots in Arroyo Addition (10th & Arroyo Drive)
2 lots at 7th & Avenue I
Contact Lewis Holly
495-3078 or 495-2704

Kings of the Range Bull Sale

Friday, Dec. 6 • 12:30 p.m.
Snyder Coliseum • Snyder, Texas

Selling 100 Service Age Red Brangus & 10 Service Herefords Plus 20 Fancy Registered Red Brangus Heifers & 20 Red Baldie Commercial Heifers Bred to Red Brangus Bulls

Pied Piper FARMS

David Moore
(915) 576-3684
(915) 576-2205

Robert Hall
Chevrolet-Olds-GEO
Jayton, Texas
806-237-2182
Program Cars

91 Beretta 2 door Retail New \$13,452.00	9,775 ⁰⁰
91 Lumina 4 Door Retail New \$16,234.00	10,700 ⁰⁰
91 Lumina Euro 4 Door Retail New \$17,201.00	11,200 ⁰⁰
91 Olds Silhouette Van Retail New \$19,740.00	13,975 ⁰⁰
91 Astro Vans (2 your choice) Retail New \$18,695.00	13,850 ⁰⁰
91 Suburbans (2 in stock) Retail New \$24,865.00	19,500 ⁰⁰

Used Cars

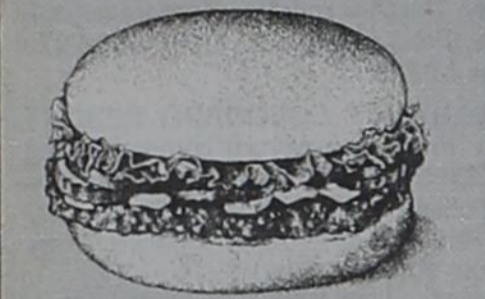
88 Chevrolet Suburban	10,800 ⁰⁰
88 Olds Firenza 4 Door	4,750 ⁰⁰
84 Chevrolet Silverado Pickup	4,000 ⁰⁰
89 Chevrolet Silverado Pickup low miles	9,250 ⁰⁰
84 Chevy Citation nice car	1,250 ⁰⁰
89 Chevy Blazer Full size 4 X 4	9,750 ⁰⁰

New Cars

92 Suburban 1 white, 1 red Retail \$25,538.00	22,550 ⁰⁰
91 Ninety Eight Elite 4 Door Retail \$25,754.00	20,588 ⁰⁰
91 S10 Extended Cab PU Retail \$13,879.00	11,264 ⁰⁰
91 Chevrolet Conversion Van Retail \$26,202.00	20,568 ⁰⁰
91 Diesel Crew Cabs 4 in stock Retail \$20,806.00	16,953 ⁰⁰



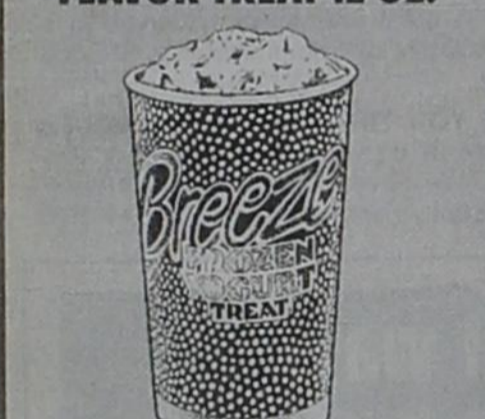
THESE ITEMS 99¢ EACH



HUNGR-BUSTER JR.



BLIZZARD FLAVOR TREAT 12-OZ.



BREEZE FROZEN YOGURT TREAT 12-OZ.



SEASONED CURLY FRIES
ALL ON SALE DEC. 2 - 22, 1991



Reg. U.S. Pat. & Tm. Off. Am. D.Q. Corp. TM D.Q. Corp. All Participating Dairy Queen Stores.

New law encourages patients to know their rights

Patient-Physician Communication Vital

Effective December 1, 1991, every adult admitted to a U.S. hospital will receive information on patient treatment rights and advance directives to make their wishes known concerning the providing or withholding of medical care.

The increased focus on helping patients understand their rights is the result of a new federal law, the "Patient Self-Determination Act." The law is aimed at improving patient knowledge about freedom of choice and at fostering better communication among the patient, family and attending physician.

In the U.S., every adult of sound mind has a right to accept or refuse medical treatment, even if refusal might prolong an illness or lead to death. This freedom is enjoyed by every adult, provided the consequences of refusal are understood and will not injure another person.

This right of self-determination allows a patient to make all medical decisions, whether they be relatively simple (an epidural during childbirth?) or extremely difficult (withholding hydration and nutrition?). But there are times when a patient may be unable to communicate treatment desires. An accident might result in a coma, or an advanced medical problem may lead to incapacitation. In times like these, an advance directive helps physicians prescribe treatment based on patient desire. By using a directive, a person can indicate what kinds of life-sustaining procedures he wants withdrawn or withheld in the event of terminal illness.

In Texas, methods for preparing advance directives are established through the Natural Death Act and the Durable Power of Attorney for Health Care Act.

The new federal law will help disseminate information about patient rights and encourage individuals to exercise options for preparing advance directives.

Outlining Patient Rights, Hospital Policy

The federal Patient Self-Determination Act requires that hospitals and other Medicare providers give all adult patients written information on patient rights and hospital policy.

Patient Rights - This written information outlines freedom of individual choice under state law, including a person's right to accept or refuse medical treatment. In Texas, hospitals will provide information on the Natural Death Act, which allows a person to request the withdrawal or withholding of medical care in the event of terminal illness, and the Durable Power of Attorney for Health Care Act, which allows the naming of a person to make even routine medical decisions, should the patient become incapacitated.

Hospital Policy - Written information must detail the hospital's policies with regard to implementing patient rights under state law. This policy will outline methods for providing information to patients; a method of documenting in the patient's medical record whether or not advance directives were issued; a statement assuring that execution or non-execution of an advance directive will have no effect on patient care; assurances that each of the provider's facilities are complying with state law regarding advance directives; and provisions to educate hospital staff and the community on advance directive issues.

The Patient Self-Determination Act does not prohibit a caregiver

from refusing to implement an advance directive on the basis of conscience, if this refusal is allowed under state law. In Texas, the Natural Death Act allows a physician to refuse compliance with directives, and it protects the physician from civil or criminal liability if reasonable efforts are made to transfer the patient to another physician.

According to the new federal law, all adults, whether competent or incompetent, must receive the information when admitted as an inpatient to the hospital.

Texas' Natural Death Act

The Natural Death Act allows the withdrawal or withholding of medical care to be requested by a competent adult who is suffering from a terminal illness. This directive, often referred to as a "living will," may include instructions for a physician not to use mechanical or other artificial means of support when the only purpose of those measures is to postpone the natural dying process.

A directive outlining a patient's desires may be prepared at any time, but does not become operative until the patient is terminally ill.

There are specific guidelines for drafting a directive under this state law. The directive must be signed by the patient and witnessed by two persons, with severe restrictions placed on who may serve as witnesses. The directive may be verbal or drafted via another non-written means of communication, but must be done in the presence of the attending physician and two eligible witnesses.

The patient issuing a directive must be a competent adult. An advance directive may be prepared on behalf of someone under age 18 by that minor person's adult spouse, parents or legal guardian.

Before a directive may be carried out, the terminal illness must be confirmed and certified by two physicians. The directive may be revoked at any time, even in the final stages of a terminal illness. The expressed desire to receive life-sustaining treatment at all times supersedes the directive.

In times where a directive has not been executed and a terminally ill patient is unable to communicate, family members or the patient's guardian and the attending physician work together to make decisions about life-sustaining treatment.

Texas' Durable Power of Attorney for Health Care Act

The Durable Power of Attorney for Health Care Act offers more flexibility than the Natural Death Act. It allows a patient to name another person to direct medical decisions, even routine procedures, in the event of incapacitation. Unlike the Natural Death Act, use of the durable power of attorney is not restricted to life-death treatment questions involving a terminally ill patient.

In preparing a power of attorney under the Durable Power of Attorney for Health Care Act, specific procedures must be followed. The document must be signed by the patient and two qualified witnesses, and it must be affirmed that the patient appeared to be of sound mind, was aware of the nature of the document, and signed voluntarily and while free of duress. The person given power of attorney for health care may exercise authority only if the patient's attending physician, following specific guidelines, judges that the patient lacks the capacity to make health care decisions. The transfer of power is revoked if the patient

regains decision-making capabilities.

The person making medical decisions on behalf of the patient is responsible for following the patient's wishes, based on either guidelines in the power of attorney or using the best assessment of the patient's desires. There are, however, five areas where authority cannot be transferred from the patient: voluntary inpatient mental health services, convulsive treatment, psychosurgery, abortion and discontinuing care intended to provide for the patient's comfort.

Pearl Harbor remembered 50 years later

by Congressman Charles Stenholm

December 7, 1941, "a date which will live in infamy" - a date synonymous with the horrors of war and the treachery of tyrants. The surprise attack on Pearl Harbor was one of the blackest moments in our nation's history.

"The horrors of that bloody and immoral attack will be forever branded in the minds of those who survived that tragic day" stated Congressman Charles W. Stenholm. Those who were on Battleship Row, Wheeler Field and the other points of attack faced the terror of the Japanese surprise assault.

Stenholm noted that: "ultimately, history rendered its verdict, justice prevailed, and the perpetrators of this atrocity paid dearly for this crime."

1991 marks the fiftieth anniversary of the attack.

This anniversary is an occasion to remember the world we left behind, a world where Americans lived in total security protected by two oceans from the violence and disorder of other nations; and the new world which has come in the wake of Pearl Harbor, a world where vigilance is the price of security.

This anniversary is also an occasion to remember the unity of national purpose which followed in the wake of Pearl Harbor.

Our unity demonstrated that there is nothing America cannot do if we stand united behind an objective, no matter how steep the odds.

This national unity brought a total and unconditional victory in the wake of numerous battles in Asia, Africa and Europe in the war against Japanese and Nazi fascists.

Our perseverance of unity will ultimately bring the same unqualified triumph to our struggle against Communism and brought overwhelming victory in our recent war against Iraqi imperialism.

Let us remember and salute the valiant efforts of all who participated in these struggles for freedom and America in distant locations throughout the world.

This anniversary is also an occasion to honor those who lost their lives and those who survived the unprovoked Japanese attack on American soil.

On the 50th anniversary date, December 7, 1991 at 2 p.m. at the Officers' Club at Dyess Air Force Base there will be a ceremony to honor those who survived Pearl Harbor.

Congressman Stenholm will be presenting the survivors attending with a Pearl Harbor Commemorative Medal in accordance with Section 1492 of Public Law 101-501. In the 17th District of Texas there are 50 certified survivors of the attack from 29 different towns including John Douglas Tipton of Post.

Living on the Edge of the Caprock

by Garza County Extension Office

Multiple Peril Crop Insurance Seminar Offered at Farm Show

A seminar to introduce farmers and crop insurance agents to a new computer software program designed by Texas A&M University to help evaluate crop insurance alternatives will be presented December 5 during the Amarillo Farm and Ranch Show at the Civic Center here.

"Although producers understand the basics of crop insurance, it is very difficult to evaluate it in a whole farm setting," says Dr. Ashley Lovell, agricultural economist with the Texas Agricultural Extension Service at Stephenville. He will conduct the seminar from 11 to 11:45 a.m.

"Recognizing the need for crop insurance is one thing," Lovell said. "But knowing which price selection and yield coverage will provide optimum farm protection consistent with the grower's risk preference is complex." Many factors must be considered in each situation, he noted.

Given this wide array of considerations, agricultural economists at A&M are developing and field testing an expert computer model, CIRMAN (Crop Insurance Risk Management Analyzer). It runs a computerized model for 100 simulations and summarizes the results.

Lovell and Greg Allen, Extension Service management associate, will explain CIRMAN in the seminar. CIRMAN applies advanced computer technology to the evaluation of the many choices faced in a whole farm environment where multiple crops may be involved, Allen said.

The model incorporates such factors as yield and price risk dimensions, the farm's financial condition, taxes, family consumption, machinery replacement, marketing and crop mix.

Multiple Perils Crop Insurance Shortcourse Offered Farm Advisers

Changes and prospects for multiple peril crop insurance in 1992

will be examined during a one-day workshop here December 6. In addition to providing farm advisers and insurance agents an update on provisions of the 1990 federal farm bill, most of the course is to provide hands-on experience with two computer decision models for selecting crop insurance.

The workshop will be in the Texas A&M University System Computer Training and Education Center at the Texas Agricultural Experiment Station facility here, 14 miles west of Plainview on U.S. Hwy 70. It will be taught by specialists with the Texas Agricultural Extension Service (TAEX). It is sponsored by TAEX, the Federal Crop Insurance Corp (FCIC) and the Federal Extension Service - U.S. Department of Agriculture.

"The 1990 farm bill enhanced the role of multiperil crop insurance (MPCI) as a production risk management option for crop growers," said Dr. Ashley Lovell, Extension Service economist at Stephenville.

"This workshop will look at the latest prospects for MPCI within the context of the 1992 farm program provisions," he said. "And it will offer hands-on computer experience which should enable participants to determine which yield and price elections for various crops may be appropriate in their areas."

The course will begin at 8:30 a.m. with a review by Lovell of the farm bill and the role of MPCI as a risk management tool. Dottie Sampley, area claims specialist with FCIC, will explain changes in MPCI for 1992 and answer questions.

The \$50 registration fee includes a catered lunch, workshop materials and refreshments. Due to limited class seating and computers, pre-registration is on a first-come basis. Pre-registration by December 4 is required.

For registration details telephone Lovell, Allen or Susan Snider at the Texas A&M University Agricultural Research and Extension Center at Stephenville, (817) 968-4144.

BUCKS BACK

- RECEIVE CASH REBATES
- CONSERVE ENERGY
- LOWER YOUR ELECTRIC BILLS




And a comfortable home. That's what you'll get when you take part in this exciting new program sponsored by your electric cooperative. Now you can rack up savings and get cash rebates for installing high efficiency air conditioners (1) and heat pumps (2) in your home. Your electric cooperative is in the business of saving you money!

To learn more about how you can reduce your electric bills and receive cash rebates, call:

Dickens Electric Cooperative, Inc.
(806) 271-3311
(1) SEER 12.5 or greater (2) SEER 11.0 or greater

Today...it takes more than the Kettle...



We've built a lot with the Kettle: a tradition, a symbol of help, no matter what your race or creed.

But today, it takes more than the Kettle to meet human needs. We need your helping hand, and The Salvation Army's **Planned Giving Program** is the answer. You can arrange a financial gift to day and earn a lifetime of income from it; The Salvation Army benefits after your lifetime. You give, and you receive. Choose from many plans available to you such as Trusts, Unitrusts and Annuities. Let's help each other. Send for details now. *That's a fine Kettle.*

Cut Out and Please send me, without obligation, more information on your Planned Giving Program. Mail Today! The Salvation Army, Planned Giving Department

NAME _____ PO _____

ADDRESS _____ CITY _____ STATE _____

ZIP _____ DATE OF BIRTH _____ AREA CODE & TELEPHONE NO. _____

Tom Reynolds
The Salvation Army
Planned Giving
P.O. Box 2785
Lubbock, Texas 79408

IN THE HOLIDAY SPIRIT

Our Christmas Special

The Doctors and Staff of South Plains Veterinary Clinic, in the holiday spirit of giving, present our annual **Christmas Special**.

A 10% discount will be given on any services delivered between now and Dec. 24 in exchange for any item of clothing or canned goods brought to our clinic.

The items brought to us will be donated to the Salvation Army.

Sincerely Dr. Bud Farr
& Staff

Here's Wishing You & Yours a Very Merry Christmas

South Plains Veterinary Clinic

Ask about our Senior Citizens Discount!

U. S. 84 North 828-5895

To Report Information On Missing Persons Contact

TEXAS DEPARTMENT OF PUBLIC SAFETY
BOX 4143, AUSTIN, TEXAS 78765-4143

MISSING
Persons Clearinghouse

1-800-346-3243 (IN TEXAS)

CATERING!

ANYTHING & EVERYTHING

No matter how small or large!

- Party Trays - for any occasion

Call us now to order your holiday festivities!

OPEN: Sunday thru Friday 6 a.m. to midnight
(grill closes at 11 p.m.)
Saturday 6 a.m. to 1 a.m. (grill closes at midnight)

Delicious
Homemade
Pies & Rolls

P.D.Q.

495-2365
503 E. Main

Absolutely the
best
hamburgers
you ever tasted!