

\$175 in total prizes offered every week in The Post Dispatch Football Contest

A weekly football contest is scheduled to begin Thursday, September 6 in The Post Dispatch, featuring 21 games, placed one each in the ads of participating sponsors.

First place prize for picking the most winners will be \$40, followed by \$25 for second place and \$10 for third place.

The prizes will be awarded in "Post City Bucks" redeemable at any of the 21 participating sponsors.

There will also be a \$100 "Post City Bucks" bonus for anyone correctly picking all 21 games, for a total prize offering of \$175.

The football contest entry form will be printed in The Post Dispatch on Wednesdays throughout the 1990 Post Antelope football season. Deadline for submitting entry forms will be no later than 5 p.m. on Friday prior to the games of that week. There will be a limit of one entry per person and only the person completing the entry form may sign the form. The contest is open to anyone 12 years old or older.

Completed entry forms, using only the official entry form published in The Post Dispatch, must be submitted to any of the three designated participating sponsors for that week. Individual games will be listed in each sponsor's ad on the contest page.

The names of winners will be announced in the next edition, where they will be informed as to which sponsor to visit to claim their "Post City Bucks."

The "Post City Bucks" certificates are redeemable at any of the 21 football contest sponsors.

Boxes for entry forms will be moved to three different sponsors every week.

Merchants or businesses in Post who are interested in participating in this exciting football contest are encouraged to contact the Dispatch at 495-2816 to reserve a sponsorship. The spaces will be offered on a first come, first served basis.

Family entertainment comedy on tap at the Garza Theatre

The next production at Post's Garza Theatre will be the outrageously funny little comedy, "Bullshot Crummond," a two-act laugh-filled satire of the 1930s low budget "Grade B" detective movies, which featured a character named 'Bulldog Drummond.'

Seven performances of the family entertainment comedy will be offered Thursday through Sunday, August 30, 31 and September 1 and 2 and Friday through Sunday, September 7, 8, and 9.

The play opened in New York in 1974, ran for over a year, and was later filmed for television with the original cast.

The Garza Theatre production will feature several area favorites including Jon Steele in the title role of 'Bullshot Crummond', following up on his popular appearance as the "evil villain" 'Zambra' in "A Harley Sadler Show."

Also appearing will be Jane Prince Jones, who most recently starred as 'Dolly Levi' in "The Matchmaker." Joining the cast is Alison Hoefler, who is remembered for her role as the "saucy French maid" 'Mignonette' in "The Happy Time".

Rounding out the cast will be Rich Warren, who gave an outstanding performance as 'Benvolio' in "Romeo and Juliet" and designer/director Will McCrary.

Call the Garza Theatre box office at 495-4005 for information and reservations. The box office is conveniently open Monday through Friday 10 a.m. to 4 p.m.

Tickets are \$7 for adults and \$3 for children 12 years or younger.



THE CAST OF "BULLSHOT CRUMMOND" are having fun rehearsing for the family entertainment comedy which starts next week at the Garza Theatre. Cast members are (left to right) Rich Warren, Alison Hoefler, Jon Steele, Jane Prince Jones and Will McCrary.

Sponsors hitch their wagons to a championship 1990 Post Antelope football season, every week...

The popular Post Antelope Football Page kicks off another season with the September 6 edition of *The Post Dispatch*, just in time for the 1990 opening game at Abernathy.

Each week throughout the Post Antelope football season, (and if the state-wide predictions mean anything at all, it will be another championship trip) sponsors on the promotional page get the best exposure possible, as their ads literally surround the weekly photos of coaches and players.

The page also includes information about the up-coming varsity game and schedules for the Middle School, Freshmen and Junior Varsity teams.

Sponsorships continue to be priced at only \$7.50 per week, which allows for anyone interested in showing their support for the Post Antelopes to be included on the page. While costs of almost everything else have risen dramatically in the past few years, advertising on this community-spirited page remains the same.

Those businesses and individuals interested in participating on this popular special page should call Becky Warren at *The Post Dispatch*, 495-2816.



SETTING THE TONE for the 1990 Post Antelope football team, coach Dwayne Osborne gives the squad a personal message just prior to the first

contact scrimmage Saturday morning on the practice field. The Antelopes host Floydada Friday for the first of two scrimmages in preparation for the September 7 opening game at Abernathy.

The Post Dispatch

USPS 439-620

The Newspaper Serving all the people of Garza County

Sixtyfourth Year Number 12

Newsstand Price 50 cents

Wednesday, August 22, 1990

Post ISD trustees consider use of property at Justiceburg

by Wes Burnett

A group of parents met with Post ISD trustees at the regular meeting Tuesday, August 14 to discuss what appeared to be a misunderstanding about credits allowed to students for physical education.

After reviewing the Texas Education Agency rules on physical education credits, board president Royce Hart explained to the parents that a maximum of two credits of physical education could be applied toward requirements for graduation. Superintendent Bill Shiver added that students receive full credit for all physical education classes, and those grades are counted for grade averages, but the TEA will not allow more than two credits toward graduation.

Parents present at the meeting were complaining that they understood their children would receive only one-quarter credit per semester for physical education. "If that were true," Hart said, "then students would have to take four years of physical education to graduate, I just think there must be a misunderstanding here."

Shiver told board members that he felt certain that students were earning one-half credit per semester for physical education classes, and that he would look into the matter.

The superintendent also informed trustees that the career ladder funding "at some point will become a problem." He reminded trustees that funding by Post ISD for the career ladder was strictly from state funds, and that when the qualified teachers for career ladder exceed the amount the state can pay, there will be problems for teachers who are qualified for the extra pay but unable to receive it.

The board approved the substitute teacher list and certified bus drivers. The board approved the setting of budget hearing for Monday, August 27 at 1 p.m. in the high school library. The tax rate hearing will immediately follow the budget hearing.

Financial statements were approved and paying of bills. Certificates of deposit were also approved, one for \$1,906,729 @ 6.86 percent for 30 days and one for \$1,641,295 @ 6.74 percent for 30 days.

GMH board of directors approve two for registered nurse degree program

Applications from Deborah McKee and Jane Redman to pursue the R.N. Degree Program were approved by the Garza Memorial Hospital board of directors at the regular meeting August 14.

Both McKee and Redman are serving as L.V.N.s at the hospital. The board denied two indigent applications, citing the applicants' income exceeds guidelines.

An amendment to the patient transfer policy was approved and delinquent accounts of \$499.85 were submitted to HRS and \$7,685.34 to Retail Merchants for collection.

Attending the meeting were board members Jack Alexander, David Tyler, Zoe Kirkpatrick, David Nichols and Becky Warren and hospital administrator Maritta Reed.

Post gets Urban Design Award, to be presented at area meeting here in October

Post Mayor Giles McCrary was informed this week that the City of Post has been chosen the winner of the 1990 Northwest Texas Section of the American Planning Association Urban Design Award. The award will be officially presented to the mayor at the Section Banquet to be held here in October.

"All of the entries exhibited exemplary urban design elements, but the Post project was deemed the most deserving of the award," section director Rick Osburn.

The Northwest Texas Section is composed of 96 counties in West Texas, from the top of Texas, south to Sutton County, east to Throckmorton County and west to Reeves County.

"We are certainly pleased to be named for this award," McCrary said, "it is just another indication of the outstanding efforts our community has shown in developing good things for Post. Our Mainstreet Project is the envy of many cities in Texas, and to be recognized by the American Planning Association is indeed an honor."

The section meeting here will bring planners from a wide area of Texas to see Post.

"Congratulations not only on the award, but also on the progressive attitude of your community as indicated by this project," Osburn added.

Marshall directs, acts in Lubbock Christian University production

Rodney Marshall, former general manager of The Post Dispatch, a senior elementary education student at Lubbock Christian University, is directing and acting in a two-act production of "Mary Love" at the LCU Christian Development Center Theatre.

The performances begin at 7:30 p.m. Friday and Saturday. Tickets are \$2.50 and may be purchased at the door or reservations may be called to 796-8800 extension 378.

The play is an original work by Mary Jo Clendenin of LCU's education department.

Marshall was active in the Garza Theatre, receiving several nominations for "Willy Awards". He will be performing in the LCU production as 'Robert E. Love' and also is the director.

Under new business Hart requested trustees to consider a visit to Justiceburg to personally inspect the property owned by the Post ISD and to assess the potential of that property. Shiver told the board he is preparing a packet of information which will specify descriptions of the property. Hart pointed out that the old school building appears to be in poor condition.

NEWS BRIEFS

Post Elementary School Pre-School Registration

Dan Rankin, principal of Post Elementary School asks parents who missed pre-school registration in May or parents who may be new to our city to please pre-register their children before the start of school. You will need to bring your child's birth certificate, immunization record and child's social security number. These will be copied and returned to you later at your request. Our office will be open from 8:00 a.m. to 12:00 noon and 1:00 to 4:00 Monday through Friday. Our phone number is 495-3436 or 495-3414.

Dispatch Closes Labor Day

The Post Dispatch will be closed, Monday, September 3, to observe the Labor Day holiday. Deadline for news and advertising for the Thursday, September 6 issue will be Tuesday, September 4 at 5 p.m.

Mens Suit Needed for Theater

The Garza Theater is in need of a mens brown English looking style three piece suit approximate size 38-40. If you have one please call the theater at 495-4005.

VFW to Host Dance

The VFW will host a "D.J." dance on Saturday, August 25, 1990 at the local VFW. Featured D.J. will be Danny Gonzales of "Night Crew" fame. The dance will be held from 9 p.m. to 1 a.m.

Back to School Dance

A back to school dance will be held Friday, August 31 at the Post Community Center from 9 p.m. to 1 a.m. The cost is \$5 for adults and \$3 for students. Music will be provided by the "Club House Gang". Ice will be furnished. Everyone is invited to attend.

Back to School Luncheon and Style Show

The annual back to school appreciation luncheon and style show will be held Thursday, August 23 at the school lunchroom. The event is sponsored by Post Main Street and they invite all teachers and school personnel to come and enjoy themselves. There will be door prizes and discounts by local merchants. The style show will be presented by local merchants.

Women's Hand Gun Class

A women's hand gun familiarity class will be held Wednesday, August 29 from 3 p.m. to 8 p.m. at the Senior Citizen's Center. Thursday, August 30, from 8 a.m. to 4 p.m. the ladies will meet at the shooting range. The event is sponsored by the Women's Division of the Chamber of Commerce and the Garza County Sheriff's Department. Ladies are to have their own guns, revolvers only - prefer 38 special. If you will need ammunition for your weapon you may call Maurice Herridge at the Sheriff's dept. There will a \$5 charge plus cost of ammunition. If you are planning to attend please call Nell Mathews at 495-3284 or be at the Senior Citizen's Center Wednesday, August 29 at 3 p.m.

Immunization Clinic

The Texas Department of Health will have an immunization clinic on Tuesday, August 28, 1990 from 0 a.m. to 4 p.m. at the Barn on the Snyder Hwy. Please bring your children's social security numbers.

Golf Tournament to aid the Cancer Society

The Caprock Golf Course and the American Cancer Society are sponsoring a golf tournament on Monday, September 3. The one-day event will be made up of teams of four people (3 men and 1 woman) with the same format as the July 4th tournament. The entry fee is \$10 plus cart fee and a portion will be donated to the American Cancer Society. Morning and afternoon tee-off times are available. Please call the Golf Course at 495-3029 for more information.

Parents invited to informative meeting

Parents of freshman students and any interested parents of high school students are invited to an informative meeting in the High School Library Thursday, August 23, at 7:00 p.m. Explanations of course requirements, credits, rules and expectations will be made and any questions that parents may have concerning their student's education will be addressed.

Season tickets are now on sale

Season tickets for the 1990 school year are now on sale in the High School Principal's office. Ticket prices are \$15.00 per seat for the season. Persons who had tickets for the past year have an option for those same seats through September 14. After that date any unsold seats will be available. Home games will be: Slaton, Sept. 14; Idalou, Oct. 5; Tahoka, Oct. 19; Crosbyton, Nov. 2; and Ralls, Nov. 9.

Post CARES accepts donated items

The Post CARES facility, 222 E. 8th St., is open from 1 to 3 p.m. Monday through Friday and is accepting donations of food or clothing.

Obituaries

Ima Irene Lester

Services for Ima Irene Lester, 97, of Levelland, were held at 11 a.m. Friday, August 10, 1990, in the First United Methodist Church in Slaton with the Rev Charles Hastings officiating.

Burial was in Southland Cemetery under the direction of Englund's Fu-

neral Service.

She was born in Johnson County and moved from Post to Levelland in 1987. She married W.P. Lester January 22, 1922, in Johnson County. He died in 1968. She was a former resident of Lynn County and was a Methodist. A son, Billy, died in 1972. Also a grandson, Gary, died in 1988.

Survivors include three sons, Lee Troy of Midland, Joe B. of Amarillo and Winston of Lubbock; a daughter, Maureen Duff of Levelland; a daughter-in-law, Doris Lester of Post; 12 grandchildren and 26 great-grandchildren.

Hubert Anthony

Services for Hubert Anthony, 75, of Post were held at 3 p.m. Sunday, August 19, 1990 in Calvary Baptist Church with the Rev Steve Long, pastor, officiating.

Assisting was the Rev Billie Smith, pastor of Trinity Baptist Church. Burial was in the Terrace Cemetery under the direction of Justice-Mason Funeral Home.

Anthony died at 5:47 p.m. Friday, August 17, 1990 in Methodist Hospital after an illness.

He was born in Roxton and attended school in Post. He married Liberty Hays on July 14, 1937, in Post. He served in the U.S. Army Corps of Engineers during World War II. He worked for the Postex Cotton Mill and in the oil fields, retiring in 1976. He was a Baptist.

Survivors include his wife, a son, Royce of Lubbock; a daughter, Kay Peoples of Amarillo; three sisters, Ruth Martin of Lubbock, Madge Jinkins of Norman, Okla., and Ethel Mae Odom of Denison; six grandchildren and three great-grandchildren.

Pallbearers were Derek Walls, David Peoples, Roger Peoples, Chris Anthony, Jeff Anthony and Greg Anthony.

Homer Adolphus McCrary

Services for Homer Adolphus McCrary, 80, of Post are pending with Justice-Mason Funeral Home.

Burial will be held in the Terrace Cemetery.

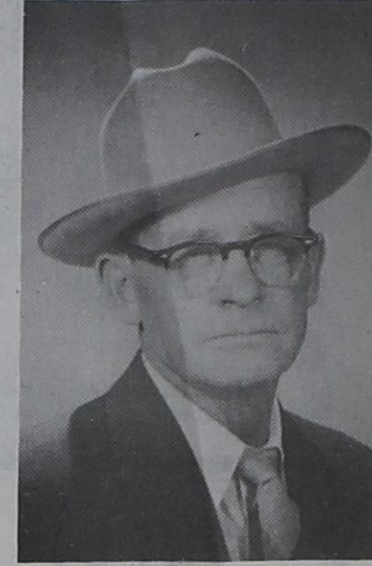
He died Tuesday, August 21, 1990 at his home in Post.

He was born February 11, 1910 and was the son of Samuel William and Abigail 'Doll' McCrary. He had lived in Post all of his life.

He graduated from Post High School with the Class of 1927. He had worked for 15 years for Greenfield

Hardware before operating his own business 'McCrary Appliances' from 1940 to 1957 at 111 West Main in Post. He was a past member of the fire department and had served as fire chief for several years. He was a past member of the Rodeo Association and served as its president. He had been honored as parade marshal during the 1988 rodeo.

Survivors include his wife, Eleanor of Post; a step-son, Herbert Glenn McCrary of Odessa and a brother, Leroy Samuel McCrary of Post.



Pharmacy & Your Health

Wells Pharmacy

132 W. Main
495-2535

Jim Wells,
Pharmacist

Caring for Diarrhea in Children

Untreated diarrhea in infants can become a serious problem. Parents may not realize that water is a large percentage of infants' total body weight. If part of this water is lost through vomiting or acute diarrhea, dehydration and electrolyte imbalance can result. According to the *Handbook of Nonprescription Drugs*, after 8 to 10 bowel movements in 24 hours, a 2 month-old infant could lose enough fluid to cause circulatory collapse and renal failure.

If infants or small children experience diarrhea for 18 to 24 hours with six to eight watery stools, they should be taken to a clinic or physician's office for evaluation. With less severe diarrhea, commercial or homemade electrolyte solutions may be helpful in preventing dehydration. If the child is old enough and can tolerate a bland diet, apples and/or bananas are recommended.

Nonprescription medicines (containing kaolin, pectin, and/or carbophil) for older children may be useful in relieving acute diarrhea. According to a recent report in *American Pharmacy*, the non-prescription medicine *loperamide* is best for children because of its action on the electrolyte transport of chloride. Recommended doses are based on age and weight of the child. Do not use loperamide for more than 48 hours if diarrhea continues.

SOUTHLAND ISD ANNOUNCES ELIGIBILITY GUIDELINES FOR SCHOOL MEAL BENEFITS

Nutritious meals are served every day at the Southland Independent School District. Student lunches are \$1.00 and breakfast is .50 cents.

Children from households that meet Federal Income Guidelines are eligible for free or reduced price meals at .40 cents for lunch and .30 cents for breakfast. To apply for these reduced price meals, you may pick up an application at the school principal's office.

If you currently receive food stamps or "aid to families with dependent children" for your child, you only have to list your child's name and food stamp or AFDC case number, print your name and sign the application. Since you have already given income information to the welfare office, the school can confirm your eligibility.

The income eligibility guidelines for 1990-91 are as follows:

Family Size	Annual		Monthly		Weekly	
	Free	Reduced	Free	Reduced	Free	Reduced
1	\$ 8,164.	\$11,618.	\$ 681.	\$ 969.	\$157.	\$ 224.
2	10,946.	15,577.	913.	1,299.	211.	300.
3	13,728.	19,536.	1,144.	1,628.	264.	376.
4	16,510.	23,495.	1,376.	1,958.	318.	452.
5	19,292.	27,454.	1,608.	2,288.	371.	528.
6	22,074.	31,413.	1,840.	2,618.	425.	605.
7	24,856.	35,372.	2,072.	2,948.	478.	681.
8	27,638.	39,331.	2,304.	3,278.	532.	757.

Each additional family member: 2,782. 3,959. 232. 330. 54. 77.

If you do not agree with the school's decision on your application, or the results of verification, you may wish to discuss it with the school. You also have the right to a fair hearing. You can call or write to: L. D. Monroe at Rt 2 Box 103 in Southland, Texas, 79364-9549, phone number is 806 996 5599.

The information you provide will be treated confidentially and will be used only for eligibility determination and verification of data.

Is it really nifty to be fifty, Bryan?

P.D.Q. Weekly Lunch Menu

Wednesday, August 22

Broasted Chicken	Stuffed Peppers
Chicken Fry	Peas & Carrots
Mashed Potatoes	Okra & Tomatoes
Fried Okra	Rolls
Red Beans	Peach Cobbler

Thursday, August 23

Broasted Chicken	Pepper Steak
Chicken Fry	Stir-fried vegetables
Mashed Potatoes	Fried Rice
Fried Okra	Egg Rolls
Red Beans	Cherry Cobbler

Friday, August 24

Broasted Chicken	Fried Catfish
Chicken Fry	Mac & Cheese
Mashed Potatoes	Corn on the Cob
Fried Okra	French Fries
Red Beans	Rolls
	Banana Pudding

Saturday, August 25

Broasted Chicken	BBQ Brisket
Chicken Fry	Baked Beans
Mashed Potatoes	Potato Salad
Fried Okra	Rolls
Red Beans	Apple Cobbler

Sunday, August 26

Broasted Chicken	Baked Ham
Chicken Fry	Green Beans
Mashed Potatoes	Corn
Fried Okra	Rolls
Red Beans	Peach Cobbler

Monday, August 27

Broasted Chicken	Swedish meatballs/noodles
Chicken Fry	Scalloped potatoes
Mashed Potatoes	Spinach
Fried Okra	Rolls
Red Beans	Cherry Cobbler

Tuesday, August 29

Broasted Chicken	Smothered Steak
Chicken Fry	Cheese Potatoes
Mashed Potatoes	Broccoli
Fried Okra	Rolls
Red Beans	Apple Cobbler

Try our "Home Smoked" BBQ Brisket on Saturdays
We also have homemade pies & rolls

503 E. Main 495-2365

Open: Grill Open til 11:00 p.m.
6 a.m. to Midnight Mon-Sun Sat. til 12:00 a.m.
6 a.m. to 1 a.m. Saturdays

NOW SERVING DAILY

"Homemade Ice Cream"

We have Daily Hot Lunches, Sandwiches, Hamburgers & Fast Food!

Save our weekly lunch menu from Wednesday's Post Dispatch.

And as always, serving your favorite COLD beverages.

We appreciate your patronage.
Harold and Pat Sparkman

FREE HEARING TESTS FOR SENIOR CITIZENS

Senior Citizens Center
Post
Tuesday ONLY - August 28
Come by or call 998-5264
10 day FREE TRIAL
12 BRANDS TO CHOOSE FROM
SATISFACTION GUARANTEED

1803 19TH LUBBOCK, TX 79401
806/762-2951
606-B QUINCY, PLAINVIEW, TX 79072
806-293-8874

Sponsored by
LIVINGSTON HEARING AID CENTER



Meet one of the most important insurance agents in this town.

We've discovered one of the most important people in your community.

Your independent agent who carries Allstate. After all, Allstate doesn't let just anyone write policies for your car, home, life, business, even boat or RV. Independent agents who carry Allstate offer the competitive rates and fast, fair claim service that Allstate has always stood for.

In this town it's: **The Norman Agency**
Call and compare. And find out why you're in Good Hands With Allstate.

The Norman Agency

204 E. Main
495-3050 or after hours 495-2504

Allstate Insurance Company, Northbrook, Illinois. Allstate Life Insurance Company, Northbrook, Illinois.

Dr Lewis Moore OPTOMETRIST Complete Visual Care

Office Hours:
Thursday 9:30 a.m. to 5 p.m.

206 West Main
495-3687

1990 Property Tax Rates in Post I.S.D.

This notice concerns 1990 property tax rates for Post I.S.D. It presents information about three tax rates. Last year's tax rate is the actual rate the taxing unit used to determine property taxes last year. This year's effective tax rate would impose the same total taxes as last year if you compare properties taxed in both years. This year's rollback tax rate is the highest tax rate the taxing unit can set before taxpayers can start tax rollback procedures. In each case these rates are found by dividing the total amount of taxes by the tax base (the total value of taxable property) with adjustments as required by state law. The rates are given per \$100 of property value.

Last year's tax rate:		
Last year's operating taxes	\$	3,159,623.34
+ Last year's debt taxes	\$	-0-
= Last year's total taxes	\$	3,159,623.34
÷ Last year's tax base	\$	395,196,306.
= Last year's total tax rate	\$.81 /\$100
This year's effective tax rate:		
Last year's adjusted taxes (after subtracting taxes on lost property)	\$	3,155,068.56
÷ This year's adjusted tax base (after subtracting value of new property)	\$	414,239,806.
= This year's effective tax rate	\$.76057 /\$100

(In the first year a city or county collects the additional sales tax it must insert the following lines unless it made its first adjustment last year.)

- Sales tax adjustment rate	\$	-0-	/ \$100
= Effective tax rate	\$	-0-	/ \$100
× 1.03 = maximum rate unless unit publishes notices and holds hearing	\$.78339	/ \$100

This year's rollback tax rate:		
Last year's adjusted operating taxes (after subtracting taxes on lost property)	\$	3,155,068.56
÷ This year's adjusted tax base	\$	414,824,368.
= This year's effective operating rate	\$.76 /\$100
× 1.08 = this year's maximum operating rate	\$.822606 /\$100
+ This year's debt rate	\$	-0- /\$100

(A school district must insert the following lines)		
= This year's rollback rate before adjustment	\$.8226 /\$100
+ Rate to recoup lost state funds	\$.0068 /\$100
= A. Adjusted rollback rate	\$.8294 /\$100
B. Rate that would result in maximum state funds	\$.5308 /\$100
Rollback Rate (greater of A or B)	\$.8294 /\$100
= This year's rollback rate	\$.8294 /\$100

SCHEDULE A: Unencumbered Fund Balances

The following balances will probably be left in the unit's property tax accounts at the end of the fiscal year. These balances are not encumbered by a corresponding debt obligation.

Type of Property Tax Fund	Balance
General Fund	3,327,962.57

This notice contains a summary of actual effective and rollback tax rate calculations. You can inspect a copy of the full calculations at Garza County Appraisal Office 124 East Main, Post, Texas

Name of person preparing this notice Billie Y. Windham
Title Chief Appraiser
Date prepared August 13, 1990



Roger Adams

Roger Adams attends Mustang Corral at Lake Texoma August 18 - 21

Roger Adams was among 70 first year students at Southern Methodist University to be invited to attend Mustang Corral. This was a summer orientation camp at Lake Texoma, approximately 75 miles from Dallas. This is the first year that this unique experience has been offered. The four-day three-night program was held from August 18 - 21 and emphasized building community. Faculty, staff and upper class students were the leaders for the camp. Students first met on campus at

S.M.U., then went by buses to the lake site. This experience allowed the students to meet other first year students, upper class students and faculty and staff in a relaxed environment. They learned the history and traditions at SMU and set up goals for their college career. The students also participated in recreational activities, intermural sports and evening mixers. Roger is a freshman computer-engineering student at SMU this fall and is a 1990 graduate of Post High School.



TANDI HUMBLE was named Most Typical Little Cowgirl at the recent Post Stampede Rodeo Parade. (Photo courtesy Pam Humble)

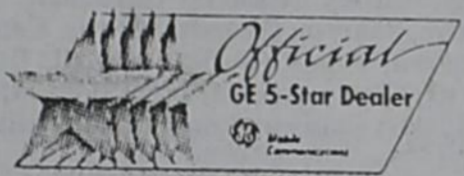


For Your Next Mobile Radio System, Start With A GE 5-Star Dealer.

When your business depends on 2-way radio, you depend on your 2-way radio dealer. Simply look for the official GE 5-Star Dealer symbol. It assures you:

Plus, you'll receive GE's 90 day Satisfaction Guarantee. Now, that's confidence.

- Quality GE products for years of reliable service.
- Factory trained sales & service people who ensure that GE products are readily available and perform to the highest standards.
- Expert systems planning so your communications system grows as your business grows and changes.
- Convenient financing that offers working capital flexibility.
- A locally owned and operated business that you can count on to be there now and in the future.



PARKINSON ELECTRONICS COMPANY



Mobile Communications

Texans can make dreams come true ...with college savings bonds



Low-cost, tax-free bonds, designed to help pay the rising cost of a college education, are available from the State of Texas.

For information consult your investment advisor before September 15, 1990 or call: Texas Veterans Land Board 1-800-252-VETS

Entered at U.S. Post Office, Post, Texas for transmission through the mails as Second Class matter, according to an Act of Congress, March 3, 1879.

Subscription Rates: Garza, Lynn, Borden, Lubbock, Crosby, Kent and Scurry County: - \$15 per year All others - \$26 per year

Wesley W. Burnett
Publisher
Pat Burnett
Business Manager
Becky Warren
Advertising Sales
Tyler Duncan
Photographic Technician
Deadline: Mondays at 5 p.m. P.O. Box 10 Post, Texas 79356 806-495-2816 Wesley W. Burnett and Pat Burnett, Owners

Member Texas Press Association West Texas Press Association



Belts and Bags— A Winning Combination

Texas Coalition for Safety Belts

Post School Menu

- Monday, August 27**
Breakfast- Assorted cereal, peaches, milk.
Lunch- Chili dogs, French fries, glazed carrots, pear halves, home made buns, milk
- Tuesday, August 28**
Breakfast- Oatmeal, bacon, toast, apple juice, milk.
Lunch- Enchiladas, spanish rice, pinto beans, cookies, milk
- Wednesday, August 29**
Breakfast- Cowboy bread, fruit cocktail, milk.
Lunch- Chicken fried steak pattie, gravy, green beans, whipped potatoes, jello, hot rolls, milk.
- Thursday, August 30**
Breakfast- Sausage, gravy, biscuits, fruit, milk.
Lunch- Tacos with sauce, lettuce, butter corn, cherry cobbler, milk.
- Friday, August 31**
Breakfast- Malt-o-meal, bacon, orange juice, milk.
Lunch- Fish, sweet peas, cabbage slaw, peanut butter cake with peanut butter icing, corn bread, milk.

Lucky Clover 4-H

by Amber Cooper
The Lucky Clover 4-H Horse project group received the first place trophy for best junior riding club in the Post Stampede Parade. The trophy will be on display at the County Agents office.

Members riding with the group were: Amber Cooper, carrying the Texas flag, Amanda Richardson, club sweetheart, Aaron Cooper, Jarrod Greene, Shawn Pennell, Justin Norman, Seth and Shanna Pennell, Shayla Wallace, Candice Howard, Wendy McNeely and Amber Hammond.

Byrd Reunion held August 11

Fifty-six members of the S.G. and Ann Byrd family gathered in Post Saturday and Sunday, August 11 and 12, for their annual family reunion.

All ten of the Byrd children were present including Edna Swan and Linda Byrd of Tulsa, Oklahoma; Delbert Byrd of Slaton; Lois Thomas, Jody Ammons and George Byrd of Post; Estelle Hernandez of Houston; Melvin Byrd of Port Orchard, Washington; Ed Byrd of Crosbyton; and Ann Lowe of Meridian, Mississippi.

Also attending were several of their spouses and grandchildren.

Trail Blazers Lunch Menu

- Thursday, August 23**
Baked fish with creole sauce, lima beans, tossed salad/dressing, cornbread, margarine or butter, apricot cobbler, milk or beverage choice.
- Friday, August 24**
Polynesian chicken salad, green beans, sliced tomatoes, yeast roll, margarine or butter, cantaloupe cubes, assorted cookies, milk or beverage choice.
- Monday, August 27**
Beef burrito, refried beans, tossed salad/dressings, watermelon wedge, margarine or butter, milk or beverage choice.
- Tuesday, August 28**
Roast beef/gravy, potatoes Au Gratin, zucchini squash, whole wheat roll, margarine or butter, plum cobbler, milk or beverage choice.
- Wednesday, August 29**
Baked ham, blackeyed peas, fried okra, cornbread, margarine or butter, watermelon and cantaloupe cup, milk or beverage choice.



#1 FIT
#1 COMFORT
#1 WEAR
#1 SATISFACTION

AA	A	B	C	D	E	EE	EEE
10-14	10-13	8-16	8-13	5-16	7-14	7-14	6-14

Twins Fashions

210 E. Main Post Vm, Mastercard, Discover & America Express Welcome! 495-3387



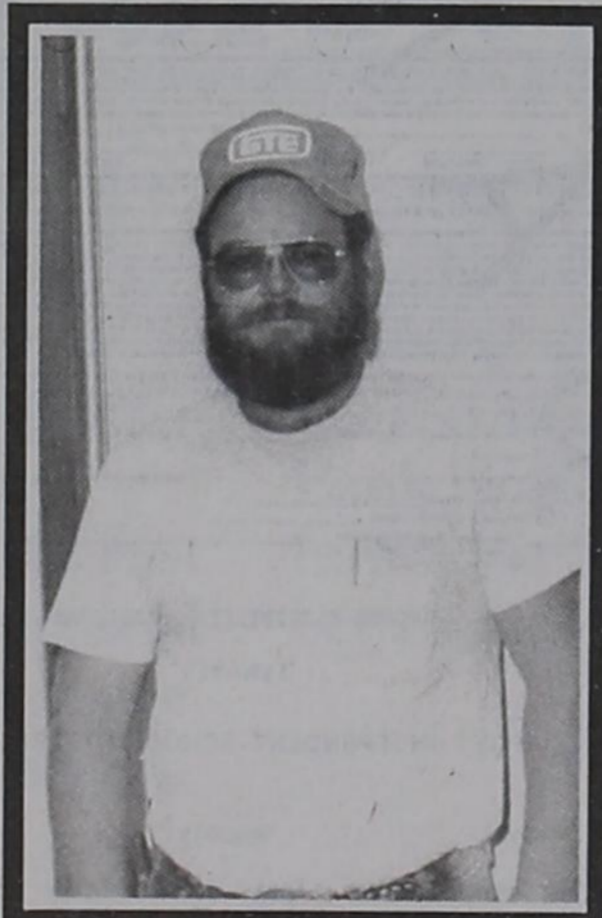
LEASE COUPON
MOBILE TELEPHONES
Down Payment Starting At \$185.00
36-Month Lease/Purchase With Cell-X Access Starting At \$73.95 Per Month
PARKINSON ELECTRONICS COMPANY
Levelland, Texas 1-800-332-7003
Lubbock, Texas 1-800-654-7003
Coupon Expires August 31, 1990

EXCELLENCE

Meet Terry Flanagan, a Cable Splicer at GTE. Some of you already know Terry, but we wanted to make sure you knew who one of your GTE representatives is in Post, Texas. Terry will be happy to visit with you about your service questions as well as adding touch call in your home or business.

Regardless of your need with GTE, Terry will be here to make sure your telecommunications are taken care of promptly and to ensure that you receive the quality service that GTE stands for.

Please feel free to call us anytime.
(806) 637-7641 (Business)
(806) 637-8531 (Residential)



THE POWER IS ON



Convenience Store

405 N. Broadway **CONOCO** 495-3794

HOTTEST BRAND GOING

Summertime specials!

3 liters

PEPSI
or
COKE  **1.99**

BBQ SANDWICH **99¢**
FRITO PIE

GOLD BAND 30 OR 40 WT. **MOTOR OIL** **89¢**

AUTO GUARD **BRAKE FLUID** **1.09**

LUBRIGUARD TRANSMISSION FLUID **1.09** | AUTO GUARD POWER STEERING FLUID **89¢**

We accept CONOCO - VISA - MasterCard - Discover
OPEN EVERYDAY 6 a.m. to Midnight
405 N. Broadway **495-3794**

PHS Class of 1960 enjoys 30 year class reunion August 10

The Class of 1960 enjoyed a fun filled weekend August 10 and 11 during their 30 year reunion. Friday night the class met at the First National Bank community room

for a time of looking at old pictures, annuals, school newspapers and a lot of remembering. Saturday morning we met at the city park for more remembering of old times and to look

at more pictures and annuals.

Saturday afternoon the group toured the middle school and gym and then went on a tour of the Garza Theater, which in our younger days were showing films such as "Lash LaRue," "Hop Along Cassidy," "Roy Rogers and Gene Autry." Both places were enjoyed by all.

Saturday night the group enjoyed a Mexican food buffet at the Chaparral Steak House Garden Room. Peggy (Butler) Howell won the distance traveled award coming from Hinesville, Georgia, and was presented with an antique maple spindle donated by Danish Imports.

To close out the reunion the group attended the rodeo dance Saturday night.

Those attending were: Rhea (Peel) Huntley, Lubbock, Sherry (Custer) Norman, Lubbock, Sharron (Jobe) Hegi, Lamesa, Shirley (Masters) Gardener, Midland, Wilma (Allen) Yarbro, Post, Pat (Wheatley) Webb, Plainview, Sharron (Woods) Morris, Post, Carolyn (Jones) Gray, Graham, Kathy (Weatherby) Warren, Tahoka; Peggy (Butler) Howell, Hinesville, Ga., Dorothy (Kurkendell) Brad-



PHS CLASS OF 1960 boys attending the recent reunion here included (back row, left to right) Charles Gordon, Larry Welch, Don Richardson, Delwin Fluit, Dan Rankin, Horace Smith, Tom Drake, (middle row, left to right) Lewis Mason, Allen Johnson, (seated, left to right) Curtis Didway, Leon Braddock, Roger Sullinger and Kenny Poole.

dock, Lubbock, Linda (Wilks) Poole, Bryan, Leta (Stone) McClendon, Tahoka, Allane (Norris) Ammons, Post, Joy (Nichols) Greer, Post, Judy (Gossett) Morris, Clovis, N.M., Charles Gordon, Diane, Larry Welch,

Don Richardson, Big Spring, Delwin Fluit, Post, Dan Rankin, Post, Horace Smith, Houston, Tom Drake, Post;

Lewis Mason, Post, Allen Johnson, Lubbock, Curtis Didway, Pampa, Leon Braddock, Lubbock, Roger Sullings, Snyder and Kenny Poole, Bryan.



PHS CLASS OF 1960 girls attending the reunion here recently were (standing, left to right) Rhea (Peel) Huntley, Sherry (Custer) Norman, Sharron (Jobe) Hegi, Shirley (Masters) Gardener, Wilma (Allen) Yarbro, Pat (Wheatley) Webb, Sharron (Woods) Morris, Carolyn (Jones) Gray, Kathy (Weatherby) Warren, Peggy (Butler) Howell, Dorothy (Kurkendell) Braddock, Linda (Wilks) Poole, (seated) Leta (Stone) McClendon, Allane (Norris) Ammons, Joy (Nichols) Greer and not in photo Judy (Gossett) Morris.

Get Ready!
Get Set!
New fall selections for school
Kid Stuff
213 E. Main 495-3872

Double Offer.

Free Gift. The Country Autumn Bonus. Free With Any \$14.50 Purchase.

Our Country Autumn Gift is yours, free, with any \$14.50 Merle Norman Cosmetic purchase.

There are eyeshadows in Rosewood and Smoke Blue, plus Spicy Rose lipstick, Luxiva Energizing Concentrate and Luxiva Night Creme with HC-12.*

Free Mini-Makeover.

We have five new Mini-Makeovers that are fast, easy and make you look great. There's the Youthful Effects mini-makeover, the Quick And Natural, the Eye Enhancing mini-makeover, Your Best Colors and the Long Lasting Makeup mini-makeover.

MERLE NORMAN COSMETIC STUDIOS
Twins Fashions
210 E. Main 495-3387
Post Visa, Mastercard, Discover & American Express Welcome!

Mr. and Mrs. Robert J. Taylor and Mr. and Mrs. Wendell Johnson invite you to share the joy of the marriage uniting their children.

Stacy Leigh and Michael Haden

This celebration of love will be on Saturday, the twenty-fifth of August Nineteen hundred and ninety at half past six o'clock in the evening

First Baptist Church Post, Texas

Reception following in Fellowship Hall

Ragtown-Garlynn reunion August 18 is third anniversary

Over 125 people registered Saturday, August 18, for the Ragtown-Garlynn reunion held in the Post Community Center. This was the third reunion since the two communities joined together to form one reunion.

were both teachers in the Ragtown school and they were next with only one week difference in their ages.

Clyde Hodges received the prize for the furthest distance. He lives in Gravette, Ark.

In business meeting with W.D. (Dub) Kenley served as president and it was noted to have the reunion every year on the third Saturday in August in the same place.

The names of the 45 people that have died that registered at the first Ragtown reunion in 1983 were read and a moment of silence and a prayer followed.

Eldon Roberts was elected president and J.F. Brandon as vice-president for the coming year. Eula B. Smith was elected secretary.

Out of state visitors were from Gravette, Ark., Portales, N.M., Tulas, Oklahoma City and Yukon, Oklahoma.

Towns in Texas that were represented were Denison, Amarillo, Lubbock, Greenwood, Tahoka, Richardson, Converse, Lockney, Granbury, Levelland, Abilene, Hawley, Midland, Austin, San Antonio, Seminole, Idalou, Jayton, Floydada, Shallowater, Plainview, Breckenridge, Seymour, Pampa, Slaton and Post.

Everyone enjoyed lots of visiting and lots of good food.

Back to school safety advised by DPS

It's that time of year again, when vacations end and back to school for school children. "Unfortunately, this also means an increase in traffic accidents involving school children," stated Major Vernon Cawthon, Regional Commander of the Texas Department of Public Safety. "Most of these accidents are caused by drivers who fail to follow safe operating procedures, as well as laws pertaining to passing a school bus."

State law requires drivers on the same roadway as a school bus that has stopped to load or unload school children to stop and REMAIN stopped until one of three things happen. The bus driver signals you to go on by or they turn off the flashing red lights, or the bus itself goes into motion. This law applies whether you are meeting the bus or whether you are going in the same direction as the bus. It also applies inside the city limits, as well as outside the city limit. The only exception to the law is that drivers on the other side of a divided highway (roadways separated by a physical median) are not required to stop.

Motorist who fail to stop for a school bus could be fined up to \$200.00.

"We as drivers, should realize the dangers involved and do everything possible to prevent these needless deaths and injuries involving our school children," Major Cawthon stated.

POST INDEPENDENT SCHOOL DISTRICT

LETTER TO HOUSEHOLDS
NATIONAL SCHOOL LUNCH PROGRAM/SCHOOL BREAKFAST PROGRAM

Dear Parent/Guardian:

The Post Independent School District takes part in the National School Lunch Program/School Breakfast Program. Meals are served every school day. Children grades PK-5 may buy lunch for \$1.15. Children in grades 6-12 may buy lunch for \$1.25. Meals are also available free or at a reduced-price.

(if you now get Food Stamps or Aid to Families with Dependent Children (AFDC) for any of your children, those children can get free meals.

(If your total household income is at or below the amounts on the Income Chart, your children can get free meals or reduced-price meals for 40 cents for lunch and 30 cents for breakfast.

(if you have a foster child, that child may be eligible for benefits regardless of your household income.

INCOME CHART
Effective from 7/1/90 to 6/30/91

Household Size	Annual	Month	Week
1	11,618	969	224
2	15,577	1,299	300
3	19,536	1,628	376
4	23,495	1,958	452
5	27,454	2,288	528
6	31,413	2,618	605
7	35,372	2,948	681
8	39,331	3,278	757

For each additional family member +3,959 +330 +77

OTHER INFORMATION:

(VERIFICATION: Your eligibility may be checked by school officials at any time during the school year. You may be asked to send information to prove that your children should get free or reduced-price meals.

(FAIR HEARING: If you do not agree with the school's decision on your application or the results of verification, you may wish to discuss it with the principal. You also have the right to a fair hearing. You can do this by calling or writing your child's principal.

(REPORTING CHANGES: If your children get meals based on income information, you must tell the school if your household size decreases or your income increases by more than \$50 per month of \$600 per year. If your children get meals based on AFDC/food stamp information, you must advise the school if you no longer get AFDC or food stamps for your children.

(CONFIDENTIALITY: The information you give on the application will be used only to allow your children to get free or reduced-price meals and to verify eligibility.

(REAPPLICATION: You may apply for free and reduced-price meals at any time during the school year. If you are not eligible now but have a change, such as a decrease in household income, an increase in household size, become unemployed or get food stamps or AFDC for your children, fill out an application than.

(In the operation of the child feeding programs, no child will be discriminated against because of race, sex, color, national origin, age, or handicap. If you believe you have been discriminated against, write to the Secretary of Agriculture, Washington, D. C. 20250.

You will be notified when the application is approved or denied.

Sincerely,
W. F. Shiver, Superintendent
Post Independent School District

WFS:kh

ATTACHMENT C - APPLICATION (MULTI-CHILD)

APPLICATION FOR FREE AND REDUCED-PRICE SCHOOL MEALS

To apply for free and reduced-price meals for your children, read the instructions on the back, complete this form, sign your name and return it to the school.

PART 1 - STUDENT INFORMATION:

Last	Child's Name	First	M.I.	Grade	School

PART 2 - FOSTER CHILD: Complete a separate application for each foster child. Complete this Part and sign the application in Part 4.

PART 3A - HOUSEHOLDS NOW GETTING FOOD STAMPS OR AFDC FOR THEIR CHILDREN: Complete this Part and sign the application in Part 4. In addition, complete Part 3B if there is any child in your household for whom you do not get food stamps or AFDC.

PART 3B - ALL OTHER HOUSEHOLDS: If you did not write a Food Stamp or AFDC case number for all your children, complete this Part and sign the application in Part 4.

NAME	DATE BORN	CHILD'S CURRENT INCOME/FREQUENCY	W	F	R	1/2	WEEKLY
Smith, Robert J.	1/20/1960	160					
Johnson, Wendell	1/15/1960	160					

Names and Social Security Numbers of Primary Wage Earners in Household Member who signs this form. (See Privacy Act Statement)

PART 4 - SIGNATURE: An adult household member must sign this application before it can be approved.

PART 5 - HEAD OF HOUSEHOLD (H.O.H.): You are not required to answer this question.

DATE SIGNED: Home Telephone: Work Telephone: Home Address: Zip Code: 1/1/90

PART 6 - HOUSEHOLD INFORMATION:

NAME: ADDRESS: PHONE: SOCIAL SECURITY NUMBER: HOUSEHOLD TYPE: HOUSEHOLD SIZE: HOUSEHOLD INCOME: HOUSEHOLD TYPE: HOUSEHOLD SIZE: HOUSEHOLD INCOME:

INCOME ELIGIBILITY GUIDELINES
1990-91

POST INDEPENDENT SCHOOL DISTRICT

Annual:	Monthly:	Weekly:				
Family Size	Free	Reduced-Price	Free	Reduced-Price	Free	Reduced-Price
1	\$ 8,164	\$11,618	\$ 681	\$ 969	\$157	\$224
2	10,946	15,577	913	1,299	211	300
3	13,728	19,536	1,144	1,628	264	376
4	16,510	23,495	1,376	1,958	318	452
5	19,292	27,454	1,608	2,288	371	528
6	22,074	31,413	1,840	2,618	425	605
7	24,856	35,372	2,072	2,948	478	681
8	27,638	39,331	2,304	3,278	532	757

Each Additional Family Member:
\$ 2,782 \$ 3,959 \$ 232 \$ 330 \$ 54 \$ 77

First Christian Church welcomes Rev. and Mrs John J. Walker to Post

Members of Post's First Christian Church earlier this month welcomed their new minister, Rev. John J. Walker, and his wife Ruth to the church and Post.

Walker's first service here was conducted Sunday, August 5. They arrived in Post Friday evening, August 3 in the middle of the heavy rainstorm.

"It looked as if the community was totally baptized, but we decided to stay anyway," Walker remarked.

Ruth and John have served churches in Kansas, Indiana, Arizona, New Mexico and in Texas at

Bowie, Plains, Fort Worth, Bryan-College Station, Dallas and Bonham.

Walker received his B.A. degree at Phillips University and the Master of Divinity and Doctor of Ministry degrees at Texas Christian University.

A new teacher at Southland, Ruth will teach fourth grade there. She received her B.A. and M.A. degrees in education from Arizona State University.

Three of their four daughters are married and live in Texas, the fourth lives in Connecticut. Ruth and John have five grandchildren.



Rev. John Walker and Ruth.

DOWE MAYFIELD, C.L.U. C.D. Maturing?

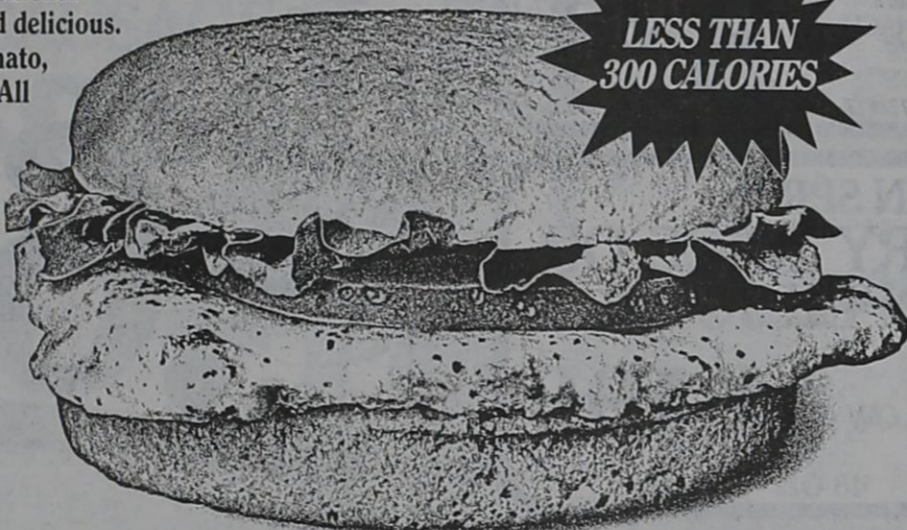
How about **8.6%** tax deferred interest?
3305-81st, Suite F, Lubbock
806-797-8089



NEW! GRILLED CHICKEN SANDWICH!

A tender, marinated chicken breast fillet, grilled and delicious. Crisp lettuce, fresh tomato, and light mayonnaise. All on a whole wheat bun. That's the new Grilled Chicken Sandwich from Dairy Queen.

THIS IS
DQ
COUNTRY



LESS THAN
300 CALORIES

Reg. U.S. Pat. & Tm. Off. Am. D.Q. Corp. TM Reg. U.S. Pat. & Tm. Tx. D.Q. Op. Coun. © Tx. D.Q. Op. Coun.

Birth Announcements

Schelli Marie White

Cheyenne White wishes to announce the birth of a baby sister, Schelli Marie, on Thursday, August 2, 1990 at Methodist Hospital in Lubbock.

Schelli weighed eight pounds 14 1/2 ounces and was 21 inches long at birth.

Their parents are Steve and Jackie White of Gail.

Paternal grandparents are Noel and Orabeth White.

Great-grandparents are Mr and Mrs Lowe White and Mr and Mrs Quannah Maxey.

Wiley Erik Lowe

Dee and Cheri Lowe are proud to announce the birth of their son, Wiley Erik, on Wednesday, July 25, 1990 at 7:37 a.m.

Erik weighed five pounds three ounces and was 18 inches long at birth.

Paternal grandparents are L.D. Lowe and Billye Lowe of Lubbock.

Maternal grandparents are George and Viola Clark of Lubbock.

Paternal great-grandmother is Ruth Hill and great-great-grandmother is Bessie Windham, both of Post.

Maternal great-grandmother is Minerina Ann Kelso of Lubbock.

ANNIVERSARY CELEBRATION!



Summer FLY AAWAY

semifinalists

ROUND TRIP AIR TRANSPORTATION FOR 2!

Every Friday for 3 weeks your neighborhood United store will select 5 names to become semifinalists for our Summer Flyaway Giveaway. Our third week, August 17, our semifinalists are:

- Karla Melton
- Nita Gibbs
- Kay Smith
- Michael Robertson
- Jane Terry

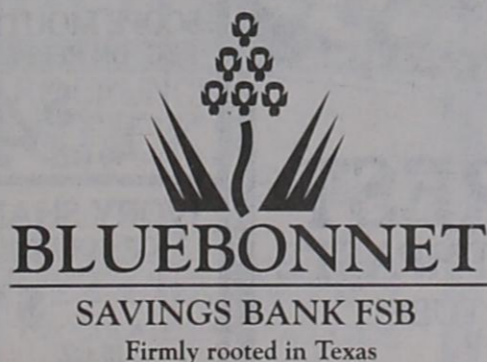
Plant a Bluebonnet Fast Bloomer C.D. and watch it grow.

3 - Month CD*	6 - Month CD*	1 - Year CD*
\$1,000 minimum	\$1,000 minimum	\$1,000 minimum
7.875%	7.875%	7.625%

Bluebonnet Savings Bank is rich soil indeed for C.D.'s. With rates* like these, your money literally blooms right before your eyes.

Bluebonnet's high-yield Fast Bloomer C.D.'s grow financial roots that are deep and secure and the results are downright beautiful.

Interested in a friendly neighborhood approach to banking? Then stop by your nearest Bluebonnet Savings Bank branch. We'll show you how together, we can grow a better future.

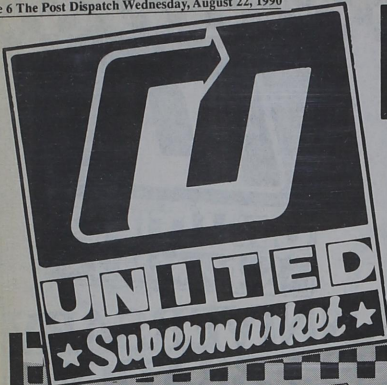


106 N. Broadway 495-2837 Terry Moore

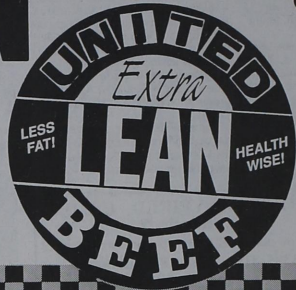
*\$1,000 minimum deposit. Rates subject to change without notice. Annual Yield based on simple interest. Substantial penalty for early withdrawal.



HAVE FUN WITH US!



LEAN ON US



Try our Extra Lean quality beef from our fresh meat dept. today!

GOOD THRU AUGUST 28 IN LUBBOCK, SLATON, POST, BROWNFIELD, LEVELLAND, LITTLEFIELD, LAMESA AND PLAINVIEW.

Grocery

CAMPBELL'S CHICKEN NOODLE SOUP

LIMIT 4 with \$10.00 or more purchase THEREAFTER .39 EACH

10.75 OZ. **.29**

DEL MONTE VEGETABLES

- CUT GREEN BEANS
- FRENCH STYLE GREEN BEANS
- GOLDEN CORN WHOLE KERNEL OR CREAM STYLE
- SLICED BEETS • SPINACH
- SLICED CARROTS
- PEAS & CARROTS

7.75 OZ.-8.75 OZ. **3 \$1** FOR 1

FINE FARE SALAD DRESSING

32 OZ. **.69**

OCEAN SPRAY CRANBERRY JUICE OR CRANAPPLE JUICE

REG. OR LOW CAL **\$1.99**

48 OZ.

HEINZ KETCHUP

28 OZ. **\$1.29**

LUZIANNE FAMILY TEA BAGS

24 CT. **\$1.49**

FINE FARE OIL VEGETABLE OR CORN

48 OZ. **\$1.89**

PETER PAN PEANUT BUTTER

30¢ OFF LABEL SMOOTH OR CRUNCHY

18 OZ. **\$1.69**

NABISCO NILLA WAFERS

12 OZ. **\$1.49**

POST RAISIN BRAN OR SUPER GOLDEN CRISPS

20 OZ. 18 OZ. **\$2.49**

FINE FARE APPLE JUICE

64 OZ. **\$1.19**

FINE FARE PORK & BEANS

16 OZ. **3 \$1** FOR 1

NO SALES TO DEALERS • QUANTITY RIGHTS RESERVED

COKE, 7-UP OR DR. PEPPER

ASSORTED

6/12 OZ. CANS **\$1.59**

HUNT'S GOURMET DINNERS

ASST. **.99**

HI C DRINKS ASSORTED

3 PACK **.69**

RAGU SPAGHETTI SAUCE

ASSORTED

28 OZ.-30.75 OZ. **\$1.29**

RIPPLIN'S POTATO CHIPS

REG. • BBQ • RANCH 6.5 OZ. **.89**

SHARK BITES OR BERRY BEARS

ASSORTED 5.4 OZ. **\$1.59**

FINE FARE RAISINS

15 OZ. **.99**

Nonfood

Health & Beauty

White Cloud BATH TISSUE

15¢ OFF LABEL

ASST. 4 ROLL **.99**

VIVA TOWELS

ASST. JUMBO ROLL **.79**

LEMON JOY DISH LIQUID

32 OZ. **\$1.29**

PEDIGREE DOG FOOD

ASST. 14 OZ. **.39**

Clorox BLEACH

REG. 5¢ OFF LABEL

GAL. **.99**

Crest TOOTHPASTE

TUBE

6.4 OZ. **\$1.69**

SCOPE MOUTHWASH

REG. OR PEPPERMINT 40 OZ. **\$4.39**

IVORY SHAMPOO OR CONDITIONER

15 OZ. **\$1.59**

PERT PLUS SHAMPOO

15 OZ. **\$2.99**

SECRET DEODORANT

WIDE SOLID OR ROLL ON 1.7 OZ. OR SPRAY 4 OZ.

\$1.89

PRICES GOOD THRU TUES. AUGUST 28TH

WED	THUR	FRI	SAT	SUN	MON	TUES
22	23	24	25	26	27	28

The Post Dispatch Wednesday, August 22, 1990 Page 7


Quality Meat



UNITED SUPER VALU PAK EXTRA LEAN ROUND STEAK
CENTER CUT
\$1.69 LB.

EXTRA LEAN SINGLE PAK LB. **\$1.79**

USDA CHOICE SINGLE PAK ROUND STEAK LB. **\$1.89**



TYSON SOUTHERN FRIED CHICKEN BITS
\$2.39 LB.



UNITED EXTRA LEAN RUMP ROAST BONE IN
\$1.68 LB.

USDA CHOICE RUMP ROAST BONE-IN LB. **\$1.78**



KRAFT VELVEETA SLICES
REGULAR OR THICK SLICED
\$1.89 12 OZ. PKG.




UNITED PREMIUM QUALITY WHOLE HOG PORK SAUSAGE
REG. OR HOT
\$3.69 2 LB.

ARMOUR TURKEY SELECTS BREAKFAST SAUSAGE
\$1.19 1 LB. ROLL

SUPER VALU PAK EXTRA LEAN GROUND BEEF
\$1.88 LB.

REG. PAK LB. **\$1.98**

WILSON SMOKED SAUSAGE
•MEAT •BEEF •POLISH
\$2.28 LB.



WILSON BACON
REG. OR LOW SALT
\$1.78 1 LB. PKG.



UNITED EXTRA LEAN BONELESS SIRLOIN TIP ROAST
\$2.98 LB.

USDA CHOICE SIRLOIN TIP ROAST LB. **\$3.19**



UNITED EXTRA LEAN CLUB STEAK
\$3.98 LB.

USDA CHOICE CLUB STEAK LB. **\$4.19**



UNITED EXTRA LEAN RIB STEAK
\$2.98 LB.

USDA CHOICE RIB STEAK LB. **\$3.19**



WILSON BOLOGNA MEAT OR BEEF
\$1.68 1 LB. PKG.

Produce



DOLE GOLDEN RIPE BANANAS
3 \$1 LBS.

EAST TEXAS SWEET POTATOES	2 LBS.	\$1
FRESH BUNCH RED RADISHES	2 BUNCHES	\$1
FRESH LEAFY SPINACH	2 BUNCHES	\$1
RED ROMA TOMATOES	LB.	.69



RED OR GREEN LEAF LETTUCE
2 \$1 BUNCHES

QUANTITY RIGHTS RESERVED • NO SALES TO DEALERS

Frozen



ORE IDA TATER TOTS
•PLAIN •ONION •BACON
LIMIT 2 WITH \$10.00 PURCHASE THEREAFTER \$1.39
.99 32 OZ.

MINUTE MAID LEMONADE OR FRUIT PUNCH
.69 16 OZ.

FINE FARE CRUNCHY FISH STICKS
\$2.49 32 OZ.

BANQUET CREAM PIES COCONUT, CHOCOLATE, BANANA, LEMON
\$1 14 OZ. 2 FOR



EL CHARRITO MEXICAN DINNERS
ASSORTED
13.75-14.24 OZ.
\$1.19

Dairy



FINE FARE MARGARINE
LIMIT 2 WITH \$10.00 PURCHASE THEREAFTER .99
.69 3 LB.



UNITED HOMO MILK
1/2 GAL. **.99**

FINE FARE BISCUITS
SWEET MILK OR BUTTERMILK
6 \$1 75 OZ. FOR

LA CORONA YOGURT ASSORTED
4 \$1 8 OZ. FOR

the personal touch, it's **UNITED**



LUBBOCK, Friday, August 17, 1990

The average farm price of U. S. cotton, weighted by sales volume, through the first six months of the 1990 calendar year stands at 62 cents per pound, according to numbers compiled by Lubbock-based Plains Cotton Growers, Inc. PCG used preliminary figures released monthly by the National Agricultural Statistics Service (NASS).

In the most unlikely event the 62-cent average holds at precisely that level through December 31, PCG adds, the 1990 deficiency payment would total 10.9 cents — the difference between the farm price and the year's 72.9-cent target price. That would indicate a final payment of 6.7 cents above the 4.2-cent advance for which producers qualified at program sign-up time.

The advance payment amounted to 40 percent of USDA's then-projected total payment of 10.5 cents. However, PCG notes, producers received a net advance of only 3.63 cents after a total of .57 cents was lopped off by the 1989 Budget Reconciliation Act and the Gramm-Rudman-Hollings (GRH) sequestration order. The budget act reduction was a fixed .515 cents per pound and the GRH reduction was figured at 1.4 percent of the remainder.

PCG hasn't been able to get a firm answer from Washington officials on what reductions, if any, will be applied to the final payment due in January. But two sources say they are "almost sure" the final payment will be cut by 1.4 percent to comply with GRH.

Pressed by producers and their bankers for a projection of what the ultimate average price and resulting deficiency payment may be, PCG officials point out the difficulty of such a projection. The average price and sales volume figures used to calculate the farm

price average are reported monthly by NASS, but all are preliminary and subject to revision before final determinations are made.

And the six-month price average this year may be even more unreliable than usual as an indicator of the year-long average. That's because only 3.943 million bales were marketed in that period, probably less than a third of the year's total sales. Therefore prices for the remaining six months can be expected to carry about twice as much weight in the final calculation as prices recorded before mid-year.

In addition, PCG continues, efforts to assess future price prospects this year are being greatly complicated in the wake of world-wide turmoil following the Iraqi invasion of Kuwait.

With all the imponderables, says PCG Executive Vice President Donald Johnson, assuming a reasonable volume of sales for the year and doing the arithmetic on that volume at different price levels is "about the best we can do."

To that end PCG assumes another nine million bales will be added to sales during the July through January period. With that constant volume, an average price for the final six months of 60 cents would yield a 12-month average of 60.6 cents and a total deficiency payment of 12.3 cents. At 61 cents the corresponding figures would be 61.3 cents and 11.6 cents.

From there, calculations are simple. For every cent of average price increase during the final six months, add .7 cents to the year's average price and deduct .7 cents from the deficiency payment. Therefore, PCG figures, the price through December would have to average over 71 cents before producers would be required to refund any part of the advance.

To illustrate the variability of monthly prices, PCG points to a 59.8-cent price in January this year, inching up to 60.6 cents in February, jumping to 64.1, 65.0 and 65.4 in March, April and May, then falling back to 62.3 cents in June. The mid-month price for July has been reported at 63.7 cents, but the full-month price won't be released until August 31.

Saturday's intra-squad scrimmage, Monday's heat gives Antelope coaches something to think about

by Wes Burnett
Saturday's first contact scrimmage for the 1990 Post Antelope football team was crisp, and overall the team looked very sharp.

"We were pleased Saturday, the defense, of course, was the strong suit, but we saw some good things on offense too," coach Dewayne Osborne commented Monday afternoon.

"But, wow, today was just absolutely rotten, I just don't know, we sure didn't look like the number seven team in the state," he observed about Monday's workout.

"Maybe the heat was a factor, but somehow the players just weren't in stride, it was just awful," Osborne

lamented.

The coach says that following this Friday's scrimmage with Floydada coaches should have a better idea about starting positions, although final decisions will not be made until after the August 31 scrimmage with Midland Greenwood.

Both scrimmages begin with junior varsity contact at 6 p.m., followed by the varsity squads at approximately 7:30 p.m. at Antelope Stadium.

The team opens the 1990 season at Abernathy September 7.

"I am pleased with the progress of our linemen," Osborne added, "they are beginning to look good."



Bobby Curtis (20) picks up about five yards on this dash through the line of scrimmage during Saturday's Post Antelope intra-squad scrimmage. B.J. Funk (80) provides a block as Tony Patterson (72) gets ready to bring Curtis down.



Tommy Ammons (44) gets ready to stop Darren Brown (21) during the Antelope intra-squad scrimmage last Saturday morning.

Circle F Glass

we have moved our shop and office to
Route 3
Post, Tx
Call
495-3069
(24 hours answering service)
495-4117
495-2702

We appreciate everyone's business and continued support!

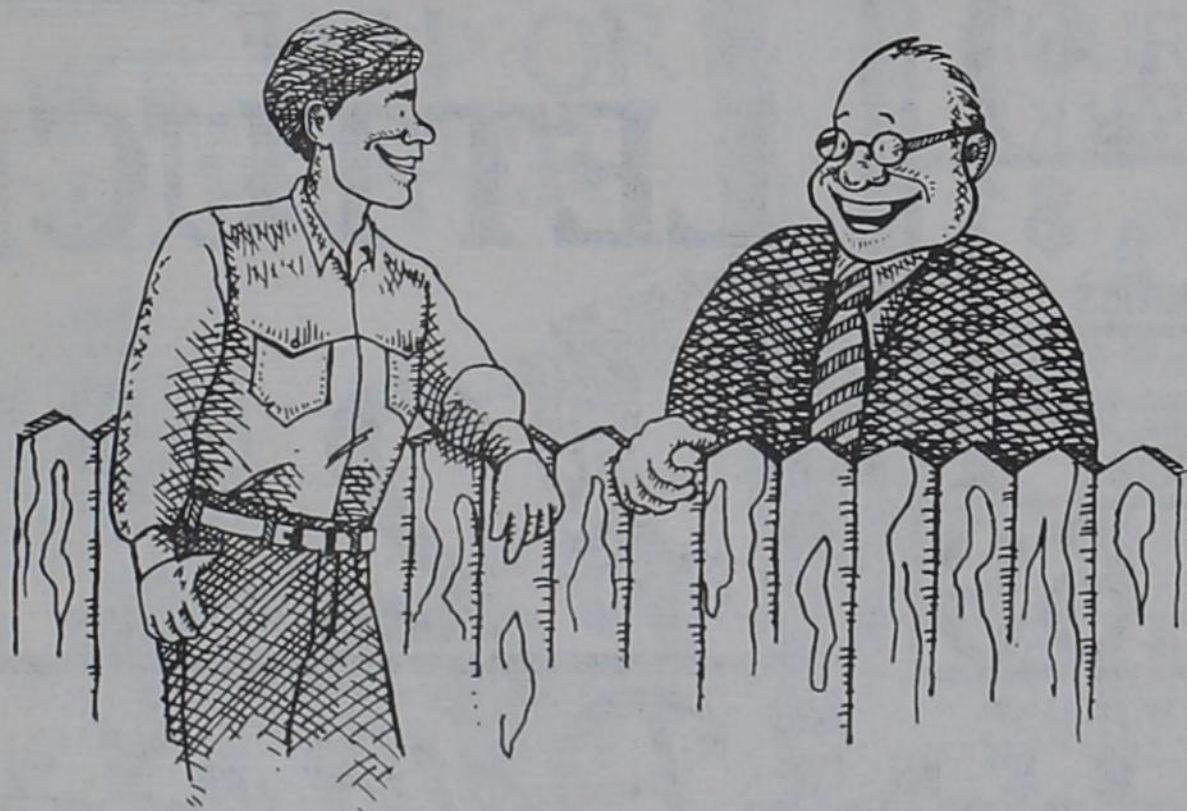
they won't mix.



A message from this newspaper and the Texas Department of Public Safety



You can talk to your Bluebonnet banker across a desk.
Or, you can just holler over the fence.



Our folks do things a little differently at Bluebonnet Savings Bank. Because we're more than just your bankers, we're your neighbors.

We grew up in west Texas, we're raising our kids here, and we have the same stake in its growth that you do. So our customers are not just account numbers to us—they're our friends.

If you are new to Post, or if you're just ready for a more neighborly way to bank, stop by the Bluebonnet Savings Bank for a cup of coffee.

Of course, if you prefer, you could just go out to the backyard and give us a shout...



106 N. Broadway 495-2837 Terry Moore



STATE CAPITAL



HIGHLIGHTS

By Lyndell Williams
TEXAS PRESS ASSOCIATION

AUSTIN - Caustic barbs and advertisements remind us that Labor Day, just around the corner, marks the beginning of the end-game for the Texas campaign season.

The gloves are coming off, Texas politicians are used to saying. Other states say we never use gloves in the first place, just shoulder pads and helmets.

In the gubernatorial race, Democrat Ann Richards released a series of media ads painting Republican opponent Clayton Williams as a shady character and slamming the GOP as mud-slingers.

Williams camp said this is the dirty, low-down kind of attack they've been expecting her to wage because she's so far behind in the polls. She did it to Mark White, they reminded.

Richards is expected to characterize Williams as a Texan grown super wealthy from Big Oil and shady dealings, who wants to control state agencies which regulate his financial empire.

Campaign Themes

If past campaigns are repeated, Richards and other Democrats will stress an income class welfare theme designed to get low-income voters to vote against the affluent.

Republicans will counter with a theme of business leadership, not state employee leadership, and bring in the kinder, gentler President Bush to help win independents.

Quite likely, many Texas ticket-

spliters will be swayed by national politics; whether Democrats lower or raise the deficit, and how well the Bush Administration handles the Iraq crisis.

Hightower Rips Clements

Any slate of nominations for "most feisty state official" must necessarily include Agriculture Commissioner Jim Hightower, who last week took his nemesis, Gov. Bill Clements, to task over the Galveston Bay oil spill.

Hightower, who promotes Texas-grown farm and ranch products, ate a shrimp lunch with bay fisherman to convince the world that the oil spill did not contaminate the seafood.

He also hit into Clements for failing to fund an oil spill response team with the feds' \$360 million "oil overcharge fund."

Clements hasn't tried to demonstrate sensitivity on the oil spill issue, and it has hurt Republicans more than anything this summer.

When Clements left his political jaw unprotected, claiming the funds for research and development while the coast mopped two more minor spills, Hightower couldn't resist throwing a jab.

After all, here was a chance to tag Clements and Big Oil at the same time, and there's nothing Hightower likes better than stirring up the little people against the big people, especially if it's Big Oil or Big Corporate Farms.

Never mind that the oil spill response issue was developed by Land Commissioner Garry Mauro, who has been very careful not to play too much politics on the issue.

That's why some people call Hightower the "P.T. Barnum of Texas Politics." Hightower is the consummate political showman.

Oil Spill Agency

Meanwhile, Mauro predicted the Legislature will create an oil spill agency to contain and clean spills like firemen answering an alarm.

Mauro wants an elected official put in charge of the agency and

will ask the state to purchase spill equipment and establish regional centers on the coast.

"It's time we decided that oil spills are like fires. We need fire stations, we need fire trucks, we need a fire chief," he said.

Medicaid to Resume

The insurance company that administers Medicaid payments to doctors and hospitals will resume payments under an agreement reached with state officials last week.

The company stopped the checks when the state missed its \$117 million premium payment in August.

Other Highlights

■ Texas was ranked 27th of 29 industrial states in a study of business costs by a Chicago-based accounting firm.

■ A recent Gallup poll indicates 77 percent of Texans favor drug testing at the workplace and 25 percent responded that they have seen co-workers use illegal drugs on the job. The poll was commissioned by the Institute for a Drug Free Workplace.

■ Bill Kenyon, a campaign strategist for Clayton Williams, was hospitalized last week in Austin after suffering a heart attack.

■ Chuck McDonald, former editor of the *Graham Leader*, a semi-weekly in West Texas, has joined the Richards campaign staff as a press spokesman. He will coordinate all press relations with rural and suburban publications.

■ James Crouch, a retired Air Force brigadier general, was appointed executive director of the Public Utility Commission, a position which pays \$61,500 to oversee 200 employees and a \$9 million budget.

■ Former state Rep. Ben Reyes, now a Houston city councilman, owes more than \$2.7 million according to records in his bankruptcy case.

■ The state hired Ben Nix and Associates of Arlington to probe allegations of racism and sexism against the Capitol police chief

DRIVE BY THE RULES SAVE SCHOOL CHILDREN'S LIVES

Mr and Mrs Motorist Post Schools Will Open

Monday, August 27



It isn't that children mean to be careless...it's just that in their zest and vitality they sometimes forget to stop, look and listen before crossing the street. It isn't that we mean to be careless, yet the very car we drive may be considered a lethal weapon and the consequences of our negligence could be fatal. It is our moral obligation to be extra alert these days when school children crowd the crosswalks!

DRIVE SAFELY

This Page Sponsored by
These Community Spirited Firms Who
Offer These Safety Slogans to Drive by:

Guin, Charla and Chase Miller

Slow down in school zones - you'll save the most precious energy of all

Justice-Mason Funeral Home

Dee, Janet, Bryan and Brent

Take care of our Junior Citizens, they'll be senior citizens before you know it

Dickson Acid Co. & Dickson Chemical Co. Inc.

Lubbock Hwy 495-3016
It's a wise motorist who drives safely in school zones.

Isaac's Welding

P.O. Box 693 - 495-2369

Let's make school time safety time where our children are concerned.

Wallace Lumber Co.

119 N. Ave H 495-2835

Cross the street on the corner, don't just jay walk.

Post EMT's

608 W. 6th 495-3900

School zones must be safety zone, so drive with caution.

Prairie Flower Shop

232 E. Main 495-2658

Drive carefully...this community hasn't a child to spare.

Dickens Electric Coop

Spur, Texas

Cautious driving pays off nowhere as much as in a school zone.

Higginbotham-Bartlett

110 S. Broadway 495-2080

Take care of other children as you would your own.

Custom Upholstery

Rt 2 Box 23 495-2295

We care about our children and we hope you will keep that in mind when driving.

Caprock Golf Course

Rt 1 495-3029

No one is more responsible for your child's safety than you and I, let's drive safely!

Starkey Oilfield Services, Inc.

124 S. Ave. I - 495-2543

This is an important time for our children, don't ruin it by being careless.

Dr. G. Jeffrey Young, M.D.

495-2853

Make safety the first and last rule.

Hudman Funeral Home

615 W. Main 495-2821

Good driving is the mark of a good American, especially in a school zone.

Country Carousel

416 W. 8th 495-2522

Children don't always think before darting into the street. Watch for them.

Harold Lucas Motors & Realtor

122 E. Main - 495-3939

There is no excuse for driving unsafely around our schools.

Dowe Mayfield, C.L.U.

3305 81st, Lubbock - 797-8089

Our children are so important to us, please drive with extra care.

Ammons Printing & Office Supply

123 E. Main 495-2743

Watch carefully - a 50 pound child has no chance against a 1 1/2 ton automobile.

The Norman Agency

204 E. Main - 495-3050

Cautious driving pays off nowhere as much as in a school zone.

Post Insurance Agency

122 E. Main - 495-2894

What is a few seconds saved, compared to a youngster's whole lifetime?

Bergstein Oilfield Services, Inc.

Slow down in school zones - you'll save the most precious energy of all.

Snak Shack

220 W. 8th - 495-2137

Drive with caution, our children's future is in your hands.

First National Bank

216 W. Main 495-2804

Think of any child in the street as your responsibility.

H & M Dirt Contractors

Clairemont Hwy 495-3293

School zones must be safety zones, so drive with caution.

The Bovaird Supply Co.

309 E. Main - 495-3521

Please protect my child and yours!

El Matamoros Cafe

701 N. Braodway - 495-3848

Our children are so important to us, please drive with extra care.

Hudman Funeral Home

615 W. Main - 495-2821

Safety is an attitude that needs our constant attention.

Mason Warner & Co., P.C.

108 S. Ave. I - 495-2872

The best way to protect our future is to drive carefully in school zones.

The Post Dispatch

The child you save... may be your own!