

The Post Dispatch

USPS 439-620

If it's news to you...it's news to us!

Sixtythird Year Number 36

Newsstand Price 50 cents

Thursday, December 28, 1989

Activity Quiet Politically as Deadline Nears

by Lonnie Welborn
With the January 2 filing deadline fast approaching, activity remains quiet on the Garza County political scene, with no new candidate filings reported for the March 13, 1990 primary elections.

A total of nine candidates, all Democrats, had filed as of Wednesday, December 27. Candidates and the offices they seek are:

County Judge - E.A. Howard, Jr., incumbent.

County Commissioner, Precinct 2 - Bill Aten, Jerry Windham and A.J. McAlister.

County Commissioner, Precinct 4 - Herbert Walls, incumbent.

County Clerk - Sonny Gossett, incumbent.

County Treasurer - Voda Beth Gradine, incumbent.

Justice of the Peace, Precinct 1 - Shelia Melton, incumbent.

Justice of the Peace, Precinct 4 - Dee C. Justice, incumbent.

No Republican candidates had filed as of Wednesday, December 27.

Candidates may file with either the Democratic party chairmen, Johnny Haire or Billie Cross at 495-2848 or the Republican party chairman, Giles McCrary, at 495-2051. Prior to filing with a party chairman, candidates should file a campaign treasurer designation in the county clerk's office.

Absentee voting for the March 13 primary will open on February 21 and continue through March 9.

February 11, 1990 is the last day to register to be eligible to vote in the March 13 primary election.

Progress Edition January 31

The Post Dispatch annual Progress Edition, featuring area businesses, will be published Wednesday, January 31, 1990. All area businesses are encouraged to contact the Dispatch to be included in the special edition. Forms are available to assist in preparing information for the publication.

"We are mailing information to all of our established customers," Dispatch publisher Wes Burnett comments, "but there is always that chance that we might miss someone, so please call us before January 15 if you haven't received information in the mail."

Advertising and business features for the special edition must be to the Dispatch no later than Thursday, January 25.

TEC Says 'Employer Tax Relief Coming in 1990'

The Texas Employment Commission (TEC) reports that the trust fund from which unemployment benefits are paid is again on "sound footing" and should result in a substantial decline in unemployment insurance taxes for most Texas businesses in 1990.

The minimum tax rate for experienced employers will be .29 percent of the first \$9000 of each employee's wages. This is down from .64 percent in 1989. The maximum rate will be 6.29 percent, down from 8.34 percent. The entry level rate for most new businesses remains 2.7 percent.

"These rates are the lowest that Texas employers have seen in many years," Mary Scott Nabers, Employer Representative on the TEC said.

The decade of the '80s brought

Changes in Payday Laws Are Effective January 1

"Some changes are about to take place with the state's payday laws, and business men and women need to be aware of them," Mary Scott Nabers, Commissioner at the Texas Employment Commission, warns.

The 71st Texas Legislature amended the Texas Payday Law during the regular 1989 session and transferred enforcement responsibility to the Texas Employment Commission beginning in January of 1990. The new law requires the Commission to collect wages owed to workers that have not been paid. The new law also authorizes the Commission to levy administrative penalties against employers who in bad faith fail to pay wages or who fail to pay them when due. This penalty may not exceed the amount of wages in question or \$1,000. The old Payday Law had no wage collection provisions and provided for a flat penalty of \$50 against employers who failed to pay wages



MEALS ON WHEELS clients received a surprise with their meal delivery during the Christmas season when each person was presented with an afghan donated to the program by Mrs. Mary Ruth Pittman of Amarillo. The 35 afghans donated by Mrs. Pittman were distributed by Meals on Wheels staff members (left to right) Jo Ella Sparlin, cook; Twana McCrary, director; Alma Bland, dietitian; and Eddie Moore, driver.

Increased Oil Activity Nice Christmas Present for Texas

Three straight months of rising rig counts, oil well completions and applications to drill new wells were a Christmas present for the state's energy industry according to Railroad Commissioner James E. (Jim) Nugent.

"More rigs are working in the state's oilfields than we've seen at any time in last two years," Nugent said. "Add to that more oil wells coming on production and increasing numbers of producers seeking drilling permits and you can't help but feel that Santa Claus came to the oilpatch."

The active rig count in Texas hit 342 late last week, the highest weekly total since December 1987. "Relatively low drilling costs, coupled with steady oil prices over the last six to eight months and exciting new developments like the rapid expansion of horizontal drilling seems to be encouraging operators to get back into the exploration business."

The number of new oil wells coming on production is also on the

tough times to the state, and record numbers of unemployed Texans filed for unemployment benefits, quickly depleting the state's trust fund. Higher tax rates replenished this fund at a time when employers could least afford it. Now, with the trust fund at a healthy level, Texas employers should get a break.

Translating the new rates into dollars, a minimum rated employer will pay \$26.10 per employee per year. A maximum rated employer will pay \$566.10 per employee per year. Roughly 40 percent of all Texas employers are minimum rated, four percent have the maximum rate, and the remaining 56 percent are somewhere in between.

The TEC will begin mailing 1990 tax rate notices the first week in February.

Post Dispatch Closed on New Year's Day

The Post Dispatch will be closed Monday, January 1, 1990 for the New Year's Day holiday.

The Dispatch will be published on Thursday, January 4. The deadline for that edition is at 5 p.m. Tuesday, January 2.

On Wednesday, January 10, The Post Dispatch will return to its regular schedule.

rise, echoing the climbing rig count. "Each of the last three months the number of newly-completed wells reported to us has increased," Nugent said. "From 387 new oil wells in September to 470 last month. That's good news for the producers, but it's also a nice Christmas present for the investors, royalty owners, local governments and school districts, and merchants in nearby towns."

Short Agenda for Early Commissioners' Court

A short agenda was handled quickly when Garza County Commissioners' Court met in an early session Friday, December 22.

Items covered at the Friday meeting included:

- Donald Windham's request for a part-time secretary to help with ambulance runs and tickets. The commissioners denied the request on the basis that Judge E.A. Howard's secretary could handle the extra work.

- A request from Dick Milam of Mid Plains for his company's use of the county's right-of-way. The matter will be put back on the agenda at a later date.

- County Tax Assessor-Collector Chita Hataway's request for a

Nugent said indicators are pointing to a rosy start to the new decade for the Texas oil industry. "Operators continue to stream in to the Commission filing applications to drill new wells," he said. "The 1,366 drilling permits we issued in November is the highest monthly total in all of 1989. It now looks like operators will be extending the state's drilling upturn into the new year."

new copy machine for her office. Hataway reported that a service agreement on the old copier would cost almost as much as a new machine. No decision was made on a copier purchase and the request will be added to the agenda at a later date.

The appointment of a representative from Garza County to the 9-1-1 Emergency Telephone System. The commissioners unanimously voted to rename Dee Justice to the position with Sammy Ellis as an alternate.

Present at Friday's meeting were County Judge E.A. Howard, Jr.; Commissioners Herbert Walls, John Valdez, Ted Aten and Sammy Ellis; Voda Beth Gradine; and Sonny Gossett.



CERAMICS STUDENTS - Betty Boren of Justiceburg and Geraldine Butler of Post display pieces they made as students in ceramics classes at Western Texas College this semester.

Area Artists Find Special Place in Ceramics Studio

For Geraldine Butler of Post and Betty Boren of Justiceburg, the ceramics studio at Western Texas College in Snyder has become a special place.

As students in ceramics classes, they have learned to make decorative and useful pieces, with the added bonus of working with others interested in creating one-of-a-kind pieces and watching those pieces take shape from start to finish.

"I've met some of the nicest people from other towns in the area, Betty Boren commented. She first came to WTC with a niece, interested in metalworking for jewelry-

making, but she found her real interest in ceramics.

Geraldine Butler started her work in ceramics by making functional pieces and is now beginning to think about sculpture - one of her new pieces is a sculptured head.

Ty Brunson, who teaches the ceramics classes, joined the WTC faculty in the fall of 1988, coming from Louisiana. He teaches students to use the potter's wheel and hand building techniques. He enjoys working with students of all ages and finds the adult students are sometimes more serious about their

(Continued on Page 2)

Consumption will Jump

As the 1989 crop progresses rapidly from fields to compress both the National and Texas Agricultural Statistical Services are making fine adjustments to their forecasts of the year's production. In the crop production reports issued recently, total U.S. production estimates were dropped by just 20,000 bales to 12.083 million with Texas Upland cotton estimates for Districts 1-N and 1-S combined also down by the same 20,000 bales to 1.5 million bales.

Districts 1-N and 1-S include 20 of the 25 cotton-producing counties represented by Lubbock based Plains Cotton Growers, Inc.

Consumption forecasts from USDA project U.S. mill use of cotton in 1989-90 marketing year to be 8.2 million bales with exports of 7.8 million bales. Outstanding sales and shipments in November were 4.8 million bales. World cotton consumption is expected to jump by 1.7 million bales to 86 million for 1989-90.

World production, however, is forecast to drop four percent from 1988 to just 80.6 million bales. The gap between foreign consumption and production is forecast to widen by 1.5 million bales thus lowering foreign exports stocks.

Reviewing these supply and demand factors, PCG's Executive Vice President Donald Johnson surmises that, in the long term, fundamental economic principles should return their influence to the cotton market. The recent slide on cotton prices seems to have evolved from heavy liquidations as one large trader, fallen on hard times, failed to meet margin calls.

Johnson concluded that although the fundamentals indicate a reasonably tight supply situation, prices over any given period of time are difficult to predict. Indications seem to point to a fairly favorable situation for the grower but only time will give us the answer to where the price will go from here.

Radio Control Car Club Organizing January 9

Radio control car enthusiasts are invited to attend a meeting Tuesday, January 9, 1990 at 7 p.m. in the Post Junior High School building to organize a Post Radio Control Car Club and to elect officers for the club.

This organization meeting is important as work will start soon, weather permitting, on the car track at David Nichols Park.

Mattox Names Demming Coordinator for County

Democratic gubernatorial candidate Jim Mattox has announced that Leroy Deeming of Post will serve as the Garza County coordinator for his 1990 primary campaign.

Mattox also announced that he has accomplished the amazing political feat of establishing coordinators in all 254 of Texas' counties. "This proves the strength of our grass-roots organization and the appeal of our pro-lottery/anti-tax campaign," the Attorney General said.

"When this campaign moves into full swing after the first of the year, I'm confident that Demming will be a lead driver on our road to the nomination. Garza County is an important part of our campaign, and I'm proud to have Demming on board."

Theatre's Willy Awards Ceremonies January 20

To celebrate the end of the Garza Theatre's fourth successful season, and to honor outstanding performers for their work in 1989, the annual Post Academy Awards party will be held Saturday, January 20, 1990 in the Post Community Center.

Ballots are now being readied to mail to theatre-goers and participants who will cast their votes to determine who will win the 1989 Willy Awards.

The evening which will once again have as its theme "Let's Dress Up and Go Hollywood," promises to be an exciting one, with a silent auction, a raffle, a Tex-Mex dinner, special musical performances, and during the awards ceremony, appearances by the 1988 Willy Award winners and special invited celebrity guests.

The doors will open at 6 p.m. and dinner will be at 6:30, followed by the awards presentations at 7:30 p.m. After the awards are presented, the evening will continue with a dance until 12 midnight, with music by "Tommy Reed and The Texas Stars."

Tickets, which are \$8 per person for dinner, awards and dance, must be purchased in advance. Tickets will not be available at the door.

Tickets may be purchased at the Garza Theatre box office, 226 E. Main, from 10 a.m. to 2 p.m., Monday through Saturday.

1990 Financial Changes Will Affect Budgets

With the coming of a new year and a new decade, both businesses and individuals will be faced with financial changes that will affect budget and management decisions.

The Texas Press Association (TPA) has released the following statistics/facts for your information:

Social Security payroll tax goes from 7.51 percent to 7.65 percent for both employees and employers. Maximum annual earnings subject to the tax rise from \$48,000 to \$50,400.

Minimum Wage will rise from \$3.35 to \$3.80 on April 1, 1990 and to \$4.25 on April 1, 1991.

Social Security enrollees will get a 4.7 percent cost-of-living adjustment increase in benefits next month, the largest since 1982 when monthly checks went up 7.4 percent.

Postal Rates are expected to remain unchanged until 1991 when Postmaster General Anthony Frank has predicted a 15 to 20 percent increase in second, third and fourth-class mail and a three to seven percent increase in first-class mail.

NEWS BRIEFS

VFW New Year's Eve Dance

The VFW will sponsor a New Year's Eve dance, Sunday, December 31, 1989 from 9 p.m. to 12 midnight. Music will be provided by "Night Crew" and tickets are \$4 per person.

Bingo January 2

The Post Chamber of Commerce has announced that bingo will resume with the regular Tuesday night game on January 2.

Post Head Start

Post Head Start is in need of coats, jackets and sweaters of all types for children. Please bring your contribution to the Post Head Start office, 210 S. Avenue E, or call 495-4037 and your gift will be picked up.

Chamber of Commerce Ballots

The Chamber of Commerce asks you to complete the ballots you will find in this edition of The Post Dispatch for the annual "Citizen of the Year" and "Business of the Year" awards to be presented at the Chamber of Commerce banquet, which will be held on Saturday, January 13, 1990.

Ballots with your choice for "Citizen of the Year" and "Business of the Year" should be completed and returned to the Chamber office by Friday, January 5, 1990.

Commodity Distribution

The next commodity distribution will be Tuesday, January 16, 1990 from 9:30 a.m. to 12 noon and 1 p.m. to 3:30 p.m. at the 4-H Barn on the Lubbock Highway. Unless notice is received of a change, commodity distribution will continue on the third Tuesday of each month.

Post CARES

Post CARES is located at 222 E. 8th, and is open from 1 p.m. to 3 p.m. Monday through Friday for your donations of food or clothing.

Garden Club Pilgrimage Tours Lubbock Lights

by Marge Barley
Yes, Virginia, Mary, Helen or whoever; there are still pilgrims in our land, and a hardy bunch we are. Witness our stouthearted group of Garden Club members, and husbands, who took the Lubbock Parks and Recreation Department Christmas-light tour December 15, after consuming a hibernation-type meal at the Western Sizzler. We were well aware that as with any arduous undertaking, being well-stocked with foodstuffs is of utmost importance.

Alma and Joe Williams, Carlene Kyle, Ida and Ivan Jones, Gladys and Jess Hendrix, Marge and Glen Barley, Thelma and Lawrence Epley and Annie Laurie and

Thurman Francis all made this arctic-like trek. Talk about cold! But the weather was not our only foe. If you've never ridden for two hours on a bus with seats so close together only people under three-feet tall have enough knee room, then pardner, don't even try to call yourself a pilgrim. We, the above, have survived and conquered all these adverse conditions and consider ourselves sturdy stock, suited for any trial.

We did, however, see some beautiful lighting. Our bus, sometimes sort-of-cold and sometimes sort-of-warm, and as the night wore on with the inside of the windows sort-of-iced over, did take us to tour the Lakeside Addition and they

have some tremendous decorations. Also, be sure to see the Plains National Bank at Night - simply beautiful!

Somehow, though, I still have the feeling it would have been even prettier had we done it on Thursday when we weren't shivering.

Next month's meeting will really be fun. Betty Dennis is going to show us how to pack for a week with one suitcase. When I told Glen what the program was to be, he said, "You couldn't go next door to borrow an egg with just one suitcase." Everyone has limitations - right?

Happy New Year to all of you from the Garden Club.

Letters to the Editor.....

Really this letter should be addressed to Main Street Mania. But I can't see what they have accomplished lately to improve the looks of Main Street.

They stopped putting the beautiful Christmas tree on Main Street and running lights across the streets. All we have now are small banners on each corner of the street. Which you hardly notice at all.

I would like to know what they have done to improve Main Street. The merchants were out a lot of money, not the Main Street Mania.

Sure, we would like to have a beautiful Main Street, but we would like to see what good it does. We have not got enough industry and jobs for people that live here. I think that is what the city should work on more right now.

I am thankful we got the United Sewing Center here. At least some people are at work.

Vera Seals

Post School Menu

Tuesday, January 2
Breakfast - malt-o-meal, toast, bacon, apricots, milk.

Lunch - spaghetti w/meat sauce, lettuce salad, pinto beans, peanut butter cake w/p.n.b. icing, garlic bread, milk.

Wednesday, January 3
Breakfast - asst. cereal, toast, peanut butter, fresh fruit, milk.

Lunch - stew, home made cheese sandwich, fried okra, mixed fruit, cookies, milk.

Thursday, January 4
Breakfast - oat meal, sausage, toast, orange juice, milk.

Lunch - fish nuggets, macaroni & cheese, green beans, whipped potatoes, jello w/topping, corn bread, milk.

Friday, January 5
Breakfast - ham, gravy, biscuits, fruit, milk.

Lunch - taco w/sauce, lettuce, butter corn, pineapple cobbler, milk.

Entered at U.S. Post Office, Post, Texas for transmission through the mails as Second Class matter, according to an Act of Congress, March 3, 1879.

Subscription Rates:
Garza, Lynn, Borden, Lubbock, Crosby, Kent and Scurry County: \$15 per year
All others - \$26 per year

Wesley W. Burnett
Publisher
Lonnie Welborn
Editor
Gail Burnett
Advertising Sales

Deadline:
Mondays at 5 p.m.
P.O. Box 10
Post, Texas 79356
806-495-2816

Member
Texas Press Association
West Texas Press Association

Yesteryears...

by Lonnie Welborn

As gleaned from the files of The Post Dispatch. Copies available on microfilm at the Post Public Library.

10 Years Ago
December 27, 1979

The Garza Memorial Hospital has received a \$2,500 donation from the G. Harold and Leila Y. Mathers Charitable Foundation of New York City. The Post Public Library received the same contribution last week.

Luke Bilberry was honored Thursday by the ASCS office for completing his third consecutive three-year term on the ASC committee.

Seventy-six Garza County senior citizens and guests enjoyed a Christmas dinner when the Trailblazers met for their December meeting.

The Reverend Thomas E. Evans is the new pastor at the Post Church of the Nazarene.

Coach Sonja Curry's Post Does played their finest game of the season when they defeated Seminole 68-35. The Does had three players in double figures - Luann Kennedy, Marinette Hays and Jerri Baumann.

Larry Willard, president of the First National Bank, announced that the local bank will pay out approximately \$1,125,000 in interest to its depositors this year.

20 Years Ago
December 25, 1969

Randy Hudman, Jimmy McKamie and Neff Walker were named to the All South Plains Class AA football team selected by the Lubbock Avalanche-Journal.

Wayne Whitten's name was drawn for the final \$50 cash prize in the third Christmas drawing sponsored by the Post Chamber of Commerce Retail Promotion Committee.

Mr. and Mrs. Benny Owen announce the birth of a daughter, Jennifer Lee, December 22.

Jewell Long, Shirley Bland and Velma Long presented the program at the Barnum Springs Home Demonstration Club's Christmas party.

The Post Does defeated Olton Saturday to win the consolation championship of the New Deal basketball tournament.

The Post Jaycees will sponsor a New Year's Eve Dance, Wednesday, December 31, in the room between the bank and the post office.

30 Years Ago
December 24, 1959

Linda Payton will represent Garza County in the District 9-A finals of the "Make it Yourself With Wool" contest January 9 on the Texas Tech campus.

King Ardis has purchased the K&K Food Mart from Wallace Simpson.

A Garza County Lyndon B. Johnson for President Club was organized here Saturday morning with J. B. Potts as president and Jim Sexton secretary-treasurer.

Lester Nichols' Gulf Wholesale will move across the street from 103 East Main to 103 West Main. The quarters on the corner occupied by Nichols for a number of years has been sold to the City of Post. The 103 West Main location was formerly occupied by Ila's Snack Bar, which was closed a week ago.

Somebody dipped his hand into

Ceramics Studio Special Place

(Continued from Page 1)

work than those younger.

Mrs. Butler and Mrs. Boren are planning to continue their ceramics classes in the 1990 spring semester starting January 15, and Brunson says he looks forward to working with them. Anyone interested in enrolling for the ceramics classes is invited to contact Brunson for more detailed information about what the classes offer.

R.E. Shedd and Mike Custer.

Almost everybody at the E.M. Bass home, including a young visitor from Lubbock, has the mumps. Sheriff Bass, who has escaped so far, wasn't feeling well last night and is making hourly attempts to drink buttermilk and eat pickles to make sure he did not have the mumps.

Mrs. D.C. Williams is entertaining at her home from 3 until 5 o'clock on New Year's afternoon.

Jerald Bowen is managing the OK Food Store while Mr. and Mrs. Bowen and children are visiting in south Texas.

Machinery has been moved to the caliche pit on the A.R. Robinson farm to provide gravel for the hard surface road which will be built to join the Wilson Highway.

Six body styles of the new 1990 Dodge will be introduced here in January by Storie Motor Company, S.C. Storie, manager, has announced.

After Christmas Sale
30% - 50% OFF
Selected Items
Happiness Is...
128 E. Main 495-2438

January Clearance
SALE!
Twins Fashions
210 E. Main
Post Visa, Mastercard, Discover & American Express Welcomed! 495-3387

DANISH IMPORTS

Gifts and Collectibles

Sale!
Christmas Items!
- 50%
Storewide!
- 30%

Gift Selections
Sherri and Ken Young

201 E. Main Mon-Sat 10:00 - 5:00 495-2314

Post Dance Club
presents
New Year's Eve Dance
music by
Texas Class
December 31
9 p.m. to 1 a.m.
Post Community Center

Season's Greetings
Tom Power INSURANCE
Post's Friendly Agency
Independent Insurance Agent
495 3050 & 3051
AUTO, HOME, BUSINESS, LIFE HEALTH
Bonds, R.V.'s, Commercial

BIRD'S NEST
Clearance
SALE
Starting Friday, Dec. 29
New Hours: Mon-Fri 9 a.m. to 6 p.m.
Sat. 10 a.m. to 5:30 p.m.
213 E. Main 495-3872

This New Year's Eve... Room Packages:

Package #1 includes:
• Two room atrium suite
• Complimentary split of Champagne
• Deluxe Dinner buffet from 7 - 9pm
• Party favors and Champagne toast
• Music of the Rex Thomas Band
• Late Check-out of 3pm
\$99.00 per couple / \$79.00 for 1 person

Package #2 includes:
• Same as Package #1, EXCEPT sleeping room is a Deluxe Standard or King. (Sorry, NO suites available)
• Late Check-out of 3pm
\$79.00 per couple / \$59.00 for 1 person

Package #3 includes:
• Deluxe Dinner buffet from 7 - 9pm
• Party favors and Champagne toast
• Music of the Rex Thomas Band (Overnight accommodations are not included.)
\$59.00 per couple / \$39.00 for 1 person
For reservation information, contact Vicki.

General Admission
The Dance will be open AFTER 9:00pm for \$10/person and includes party favors and Champagne toast at midnight.

Brass Banjo
General admission to the Brass Banjo is \$5/person at the door and includes party favors and snacks between 8 - 10pm, and Champagne toast at midnight.

Greenery
Midnight Breakfast Buffet-Greenery
A fantastic breakfast buffet will be available from 12 - 3am for \$4.95 per person.

Holiday Inn Civic Center
801 Ave. Q • 763-1200

• INTRODUCING •
Weight Watchers®
New...

Wouldn't it be wonderful if you could keep right on eating the foods you love, living the same lifestyle, and still lose weight FAST? That's exactly what Weight Watchers incredible new FAST & FLEXIBLE Program is all about.

Go to your favorite restaurant, go to parties, enjoy your everyday life with family and friends while eating three delicious meals plus an evening snack. Yes, it's all part of Weight Watchers new Fast & Flexible Program. It's the smart way to lose weight and keep it off!

So, get smart...get started...join Weight Watchers today!

FAST & FLEXIBLE PROGRAM

JOIN NOW FOR ONLY... \$14
Registration Fee \$19.00
First Meeting Fee ... \$ 9.00
Regular Price \$28.00
YOU SAVE \$14.00
Offer ends January 27, 1990

Come to the Weight Watchers meeting nearest you.

POST
1st Methodist Church
216 W. 10th Street
Tue: 5:00 pm

NOTHING WORKS LIKE WEIGHT WATCHERS!
Offer ends January 27, 1990. Offer valid at locations listed (areas 37, 96, 107) only. Offer valid for new and renewing members only. Offer not valid with any other offer or special rate. Weight Watchers is a trademark of WEIGHT WATCHERS INTERNATIONAL, INC.
CALL TOLL FREE **1-800-359-3131**

Sheila Falk, Area Director

YEAR-END CLEARANCE!
Continuing
Savings to
50% and 75%
Store Wide on Clothing, Shoes and Jewelry
SHOES \$10 - \$15
Be sure to come by and take advantage of these great prices!
LA POSTA
412 N. Broadway 495-2648



10 START OUT THE New Year WITH SAVINGS

PRICES GOOD THRU DEC. 30TH IN LUBBOCK, SLATON, POST, BROWNFIELD, LEVELLAND, LITTLEFIELD, & PLAINVIEW.



FOLGERS COFFEE
REG. ASST. GRINDS
\$3.99
26 OZ.

STYLE RANCH BLACKEYE PEAS
4 \$1
REG. 15 OZ. FOR

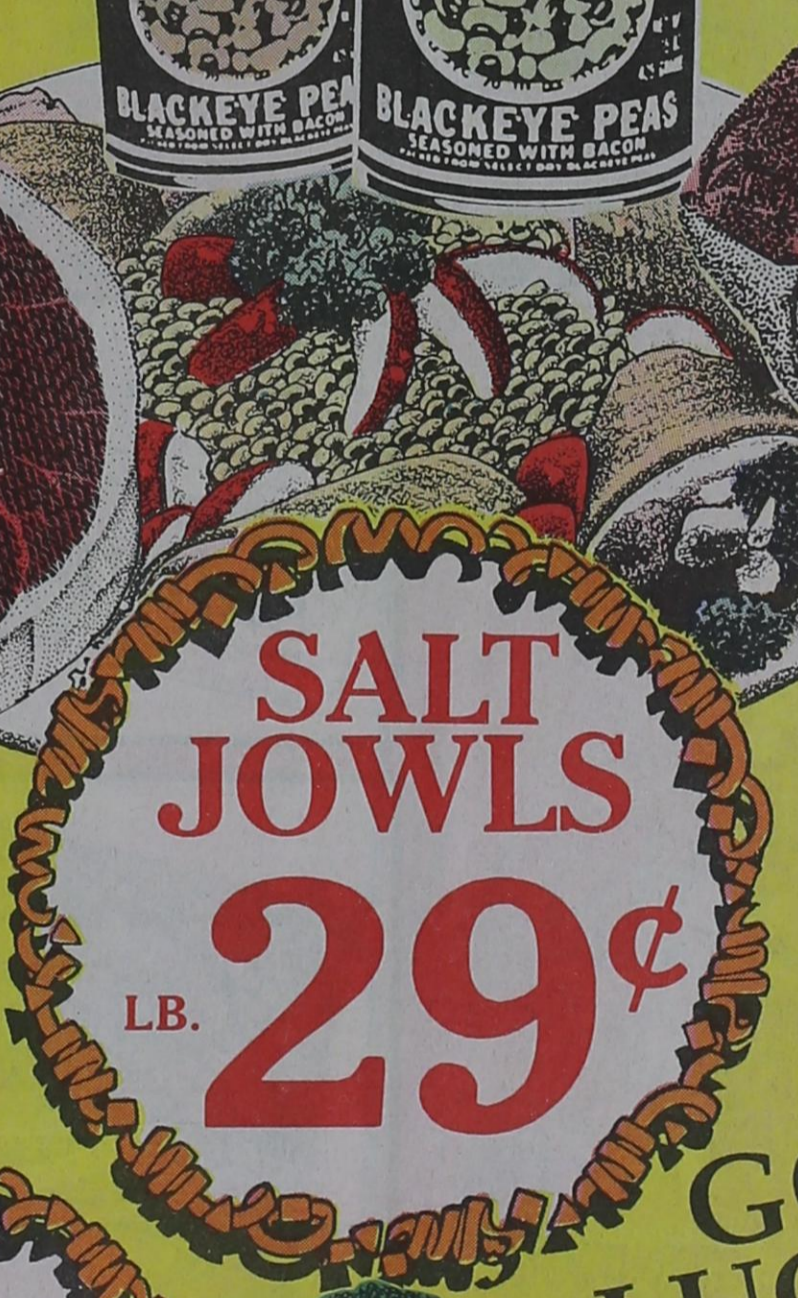


BAKERITE SHORTENING
42 OZ. **89¢**



UNITED TRU TENDR OR USDA CHOICE
SUPER VALU PAK
BONELESS TENDERIZED
BOTTOM ROUND STEAK
\$1.88
LB.

SINGLE PAK \$1.98
LB.



SALT JOWLS
29¢
LB.



UNITED TRU TENDR OR USDA CHOICE
BONELESS RUMP ROAST
\$1.98
LB.



FRESH CRISP BROCCOLI
2 \$1
LBS.

GOOD LUCK TECH!





Grocery

QUANTITY RIGHTS RESERVED • NO SALES TO DEALERS



FINE FARE
SALAD
DRESSING

32
OZ.

.69

COKE OR 7-UP
6-12 OZ CANS

\$1.69

POST HONEYCOMB CEREAL

14.5 OZ.

\$1.89



CHICKEN OF THE SEA
TUNA
IN WATER OR OIL

2 \$1
6.5 OZ. FOR

*Manager
Specials*

PLAINSMAN POTATO CHIPS
REG. OR DIP

7 OZ.

.79

ROSARITA PICANTE SAUCE
ASST.

16 OZ.

.99

Lipton FAMILY SIZE

LIPTON FAMILY SIZE TEA BAGS

\$1.59
24 CT.



MRS. BAIRD'S WHITE BREAD
EXTRA THIN OR LARGE

1 1/2
LB. LOAF

.79

HUNT'S TOMATO JUICE
REG. OR NO SALT

46 OZ.

.79

LUCKY LEAF APPLE SAUCE
REG. OR NATURAL

50 OZ.

\$1.29

VALUE... it's the personal touch

FINE FARE CRACKERS

2 \$1
16 OZ FOR

CASSEROLE PINTO BEANS

\$1.89
4 LB. BAG

Gold Medal FLOUR
Better for bread
Self-Rising
Unbleached

5 lb. bag **89¢**

Post Cereals

- Honey Nuts & Oats
- Cocoa Pebbles
- Honey Nuts & Oats with almonds

16 oz. **1.99**

Captain Crunch Christmas
CEREAL
15 oz. **2.99**

Mrs Tucker's
SHORTENING
42 OZ. **1.19**

Purina Mainstay
DOG FOOD
20 lb bag **5.99**

Kingsford
CHARCOAL
Regular
10 lb bag **2.59**

Produce

the personal touch, it's

UNITED
★ Supermarket ★



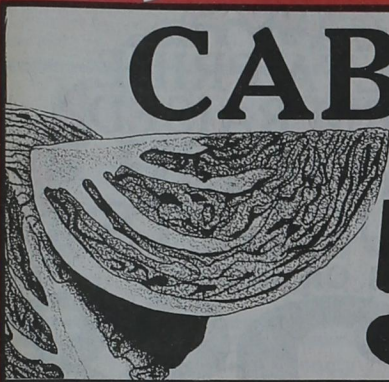
FRESH CRISP
BROCCOLI

2 \$1
LBS.



CRISPY
GREENS
• MUSTARD • COLLARD
• TURNIP

3 \$1
BUNCHES



CABBAGE

5 \$1
LBS.



GRANNY SMITH
APPLES

2 \$1
LBS.

QUANTITY RIGHTS RESERVED • NO SALES TO DEALERS

Dairy



BLUEBONNET SPREAD
3 LB. TUB

.99

MINUTE MAID
ORANGE JUICE
REG. OR COUNTRY STYLE
\$2.99
96 OZ.



BELL
HOMO MILK

\$1.99
GAL. JUG

GAL. JUG

Nonfood



COTTONELLE
BATH TISSUE
ASST.
4 ROLL

99¢

FINE FARE
BLEACH
GAL.

79¢

FINE FARE
TOWELS
JUMBO ROLL

2 \$1
FOR



SURF
DETERGENT
40¢ OFF LABEL

\$1.89
42 OZ.

Frozen

FISHERBOY
FISH STICKS
\$1.99
2 LB.



TONY'S
PIZZA
ASST.
3 \$5
15.3-17.5 OZ. FOR



MINUTE MAID
ORANGE JUICE
REG. OR COUNTRY STYLE

\$1.49
12 OZ.

MORTON MINI
HONEY BUNS
\$1.69
16 OZ.

Health & Beauty



JERGEN'S
LOTION
REG. OR EXTRA DRY

\$2.49
15+ 5 OZ. FREE



COLGATE
SHAVE CREAM

.69
11 OZ.

FREE STYLE HAIRSPRAY 7 OZ.
• NON-AEROSOL SPRITZ 7 OZ.
• MOUSSE 7 OZ.
• SCULPTURING GEL 4 OZ.

99¢

DEP
COMBO GENTLE PROTECTION
• ALOE VERA • JOJOBA • SILK PROTEIN

\$1.89
16 OZ.

1000

START OUT THE
New Year
WITH
SAVINGS

UNITED

★ Supermarket ★

...it's the personal touch

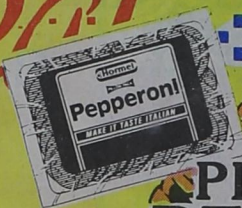
QUANTITY RIGHTS RESERVED • NO SALES TO DEALER

Quality Meat



JIMMY DEAN
PORK
SAUSAGE
• REG • HOT • MILD • SAGE

\$3.35
2 LB.
1 LB. \$1.69



HORMEL
PILLOW PAK
PEPPERONI

\$1.88
8 OZ.
PKG.



DELTA PRIDE
FARM RAISED
CATFISH
NUGGETS
REG. OR BREADED

\$3.98
2 LB.

MICKEY BROWN
TAMALES
15 OZ. PKG.
REG. OR HOT
\$2.48



FINE FARE
PIMENTO SPREAD
\$1.98
14 OZ.



SALT
JOWLS
.29
LB.



UNITED TRU TENDR OR USDA CHOICE
EYE OF ROUND
ROAST
\$2.78
LB.



EXTRA LEAN
CHILI MEAT
COARSE
GROUND
\$1.88
LB.



UNITED TRU TENDR OR USDA CHOICE
BONELESS
RUMP
ROAST
\$1.98
LB.



KAHN'S
COCKTAIL
SMOKIES
\$2.68
1 LB.
PKG.

UNITED TRU TENDR OR USDA CHOICE SUPER
VALU PAK BONELESS TENDERIZED
BOTTOM
ROUND
\$1.88
SINGLE PAK LB \$1.98 LB.



SUPER VALU PAK EXTRA LEAN
GROUND BEEF
\$1.88
REG. PAK LB. \$1.98 LB.



FINE FARE
AMERICAN
SINGLES
\$1.68
12 OZ.
PKG.

the personal touch



IT'S UNITED

Classified Advertising

Private Party Classified Rates

PAYABLE IN ADVANCE
All private party classified ads must be paid in advance.

Times	Rate Per Word
1	.20
1/2 Price each additional time.	

NO BUSINESSES AT THIS RATE.
STRICTLY NON-COMMERCIAL, PRIVATE PARTY RATE.

DEADLINE FOR COPY AND PAYMENT IS Mondays at 5 p.m.

Commercial Classified Rates	
Number of Times	Rate Per Word Per Time
1	.25
2 or more	.20

Legal Notices

No. 1427
ESTATE OF JAMES R. HUNDLEY, JR., DECEASED
NOTICE TO CREDITORS
Notice is hereby given that Letters Testamentary were granted to DEBO-

RAH HUNDLEY BOYD as Independent Executrix on December 4, 1989, in the above-entitled and numbered cause, in the County Court of Garza, Texas.

All persons having claims against this Estate are required to present such claims within the time and in the manner prescribed by law to MADISON SOWDER, Resident Agent for Service, HURLEY & SOWDER, Attorneys for the Estate of JAMES R. HUNDLEY, JR., Deceased, at 1703 Avenue K, Lubbock, Texas 79401.

DATED this 21st day of December, 1989.

Respectfully submitted,
DEBORAH HUNDLEY BOYD,
Independent Executrix
HURLEY & SOWDER
1703 Avenue K
Lubbock, Texas 79401
806/763-0409

By: Madison Sowder
Bar Card No. 1886400
ATTORNEYS FOR THE ESTATE

REQUEST FOR BIDS ON TEXAS HIGHWAY CONSTRUCTION
Sealed proposals for .437 miles of replace bridge and approaches on US 84 at Post City Limits (AT&SF Railroad), covered by BRF 635(12) in Garza County, will be received at the State Department of Highways and Public Transportation, Austin, until 1:00 P. M., January 10, 1990, and then publicly opened and read.

This contract is subject to all appropriate Federal laws, including Title VI of the Civil Rights Act of 1964. Plans and specifications including minimum wage rates as provided by Law are available for inspection at the office of Frank Phillips, Resident Engineer, Lubbock, Texas, and at the State Department of Highways and Public Transportation, Austin, Texas. Bidding proposals are to be requested from the Construction Division, D. C. Greer State Highway Building, 11th and Brazos Streets, Austin, Texas 78701. Plans are available through commercial printers in Austin, Texas, at the expense of the bidder. Usual rights reserved.

Application for Liquor License
The undersigned hereby gives notice of application to the Texas Alcoholic Beverage Commission, Austin, Texas, for a Package Store Permit to be located on FM 651 East side .3 miles south of Crosby County line, Garza County, Texas. Said business to be operated under the name of White Top Package Store.
Lee Alex Lambert, owner

Application for Beer Retailer Off-Premise and Wine Only Package Store Permit
The undersigned hereby gives notice of application to the Texas Alcoholic Beverage Commission, Austin, Texas, for a wine only package store permit to be located on FM 651 East side .3 miles and 47 ft. south of Crosby County line, Garza County, Texas. Said business to be operated under the name of County Line Beer.
Lee Alex Lambert, Owner

Wanted to Buy

Interested to lease pasture for 50-100 cows and to buy farm or ranch land. Call 253-2368 or 253-3097. Ralls.

Personals

City County Drug and Alcohol Abuse
Glenda Baker - Director
Lynette Massey - Asst. Director
We Care
495-2818 495-3788

Post Group of Alcoholics Anonymous meets every Thursday night at the First Presbyterian Church, 910 W. 10th at 8 p.m. Closed meetings are held except on the last Thursday night of the month, which is an open meeting. We have supper at 7 p.m. and the speaking starts at 8 p.m. Anyone who wishes to talk or ask about an alcohol problem, call 495-3667 or 629-4393.

Jobs Wanted

Experienced hand wants to day work with cattle. Has own horses/trailer. Call 828-4725.

Homes for Rent

Three room small house for rent. \$150 month plus \$150 deposit. Call 495-3031.

Homes for Sale

3 bedroom, 1 bath house with 3 room rent house and 2 car garage. For appointment call Johnie. 495-3031.

Miscellaneous for Sale

WHIRLPOOL, NO FROST, REFRIGERATOR-FREEZER
Three door, Almond color, 26 CF total, 10 CF freezer, automatic ice maker, exterior water and ice dispenser, 2 1/2 years old, 5 year warranty, extended maintenance contract and food spoilage insurance, transferable. \$975. Also Charbroil gas grill, mint condition, \$50. Call 495-3101.

Special Cakes

Birthday, anniversary or weddings.
Call Jimella Simpson at 495-3318 after 5 p.m.

Taylor Appliances

495-3330

201 S. Broadway
Servicing
GE, Maytag
and other brands.

Seals Furniture Sales and Service

720 N. Broadway
495-3190

We now have in stock television antennas made by WineGard - also t.v. wire - poles - guide wire.

Rebuilt Washers
90 day guarantee
start at \$169.95

Dryers start at \$89.95

Refrigerators start at \$159.95

New Glass Top
Dinettes Set - \$169.95

Rebuilt gas and electric
Ranges start at \$169.95

Mesquite wood for sale. Stacked and delivered for \$85 a cord. Call 495-3223 or 495-3608.

All Sizes - Propane Tanks. Contact E. A. Howard. Call 495-3326.

GOT ROACHES?
Guaranteed Roach Extermination OVERNIGHT or your money back. OVERNIGHT Roach Spray can be found at Wallace Lumber Co., 119 N. Ave. H, Post.

Garage Sales

Friday and Saturday. 8 a. m. til ??
Clothes, waterbed, dining table and misc. 116 West 5th.

Wanted to Rent

The U. S. Department of Agriculture, Agricultural Stabilization and Conservation Service's (ASCS) Garza County Office, along with the Soil Conservation Service (SCS), presently occupy 1748 square feet of office space and 427 square feet of storage space at 208 and 210 W. Main in Post. ASCS is interested in signing a succeeding lease for this space, but it will consider relocation if economically advantageous to ASCS. Occupancy is required by January 1, 1990. Anyone interested should call Victor Ashley at 495-2801 for more information.

Follis Heating & Air Conditioning

Sales, Installation & Service

TRANE EQUIPMENT
FREE Estimates
Dial 628-6371
Insured and Licensed

Hoover

Bookkeeping and Tax Service
• Payroll, sales tax
• Quarterly reports, P&L
• Income Tax Returns
495-2894
122 E. Main

Germania Farm Mutual Insurance Association
Locally served by
Jerry Taylor
201 S. Broadway
Post, Texas 79356
Call 495-3330 or 495-3875

In the Neighborhood

(Continued from Page 8)

unemployment line.

Made in the U.S.A.?

And yet another dream has been shattered by a well-meaning person who told me that what I thought were all-American toys are not. "Legos" are made in Denmark; "Tonka" trucks and "Matchbox" cars are made in China; and "Barbie," who is as American as apple pie, is made in Malaysia.

Cold Remedies
Seems that chicken soup is not the only tried and true remedy for a cold. Check out these suggestions I received in the mail:

Make oregano tea and drink it for coughs and colds.

Drink garlic with honey three or four times a day. You can also use a teaspoon of garlic powder in hot water.

Raw onion is good for colds and (this is my favorite) save the juice of fried onions and mix it with a little sugar to use as a cough syrup.

All things considered, I'd rather be sick.

Up With People
If you've ever seen an Up With People performance, you know that the group provides a spirited evening of entertainment - and they are bringing that spirit to our area in January.

The Up With People program, sponsored by KCBD Channel 11, will be in Lubbock to perform "Face to Face," the Silver Anniver-

sary edition of UWP on Thursday, January 18 at 7:30 p.m. in the Lubbock Civic Center Theater.

And right now Up With People is looking for host families in this area. Wherever they travel, the international cast of 120 young men and women, representing 16 countries, stays with hosts who provide not only a place to stay but a personal perspective of the community in which they live.

The advance team would like to contact families in this area to provide beds for two nights, a few meals and limited transportation. In return, each family will receive tickets to the January 18 performance.

For more information, call 762-5216 and ask for the Up With People Advance Team.

Happy New Year
Last year at this same time I was wondering why we eat black-eyed peas on New Year's Day and I finally got an explanation of sorts.

I still don't know where the tradition comes from, but I now know that eating black-eyed peas on January 1 insures health and wealth for the coming year. Down south it is said you'll be poor as a church mouse if you don't eat your black-eyed peas.

And while you're eating your black-eyed peas, I wish you a Happy New Year.

Post Insurance

Serving Post Since 1911

- All Your Insurance Needs
Auto - Home - Commercial - Bonds
- Quotes available by phone

122 E. Main 495-2894

G.H. (Jerry) Conoly Heating and Air Conditioning Co.

Sales-Service-Installation

Home Owned Authorized Heat Pump Contractor
Free Estimates

Licensed by the State of Texas - Fully Insured

495-2950 or 495-2332

- Windshields • Residential Glass
- Industrial • Equipment Glass
- Mobile Service

CIRCLE 7 GLASS

132B W. Main

495-4117 495-3069 495-2702

Having problems with your washer, dryer, vacuum, sewing machine or any small appliance?

Give us a call...
495-3190

We pick up and delivery
All labor and parts guaranteed.

Seals Furniture and Appliances

720 N. Broadway

New Listing

Three bedroom, 2 bath, brick, central heat and air.

Great Family Home

Three bedroom, two full baths, swimming pool, 2 car garage on corner lot.

Horseman's Dream

Large brick home on three acres. Located in Lynn County and in the Wilson School District. Additional acreage available.

First Home

We have several small homes for sale including a mobile home. Call for details.

Silk Stocking

Three bedroom, two bath, basement, 2 car garage, central heat and air.

Country living, three bedrooms, two bath, brick, central heating and air conditioning, fireplace, on one acre.

Mitchell Real Estate

Kim 495-3719 Travis 495-2480

Mike and Wanda 495-3104 or 828-5878 Barbara 495-3987



How to clean up your act.

Motorcraft's quality, Extended-Tip Spark Plug is actually designed to self-clean at low engine speeds—to keep damaging deposits from forming.

Plus it is capable of surviving surges up to 38,000 volts, twice that experienced during normal engine operations, without failing.

That's power. That's Peace of Mind™

That's Motorcraft—the original equipment parts in Ford-built vehicles.

SMITH FORD MERCURY

\$200 plus tax

Hwy 84 By-Pass Slaton, Tx Lubbock/Slaton Texas Watts
828-6291 1-800-692-4457

New Year Special!

15 Months... ONLY \$15

You get three months FREE!!

Start My Subscription This Week

Name _____
Address _____
City _____ State _____ Zip _____
Enclosed is my check for \$ _____

ONLY \$15 for 15 months
IN GARZA, LUBBOCK, LYNN, SCURRY, BORDEN AND KENT COUNTIES

This offer expires January 31, 1990 \$26 Per year all others

The Post Dispatch

P.O. Box 10
Post, Texas 79356
495-2816

FunTimeChristmas Party

Twenty Fun Time Club members attended the supper and exchanged gifts when the group held its Christmas party Monday night, December 18 at the Trailblazers Center.

Attending the festivities were: Cleo Sappington, Jean Tipton, Marietta Pruitt, Inez Grantham, Winona Ward, Mary Gunn, Ruby Carpenter, Johnnie Francis, Verna Roberts, Inez Ritchie;

Hooter Terry, Mary Landreth, Doris Riddle, Jewell White, Nona Lusk, Zillah Huddleston, Mayeth Clarke, Inez Huntly, Pansy Smith and Louzell Chandler.

Members are reminded to mark their calendars for the next meeting of the Fun Time Club at 6:30 p.m., January 29, 1990 at the Trailblazer's Center.



HIGH ROLLERS who participated in the December 9 Southwest Tumbling and Trampoline Association Division 1 meet in Wolforth were (front row, left to right) Dawn Massey, Tye Mason, April Line, Ronnie Jay Parrish, Stace Norman, Rachel Redman, Donae Dalby, Keatha Palmer; and (back row, left to right) Ashley Mason, Lesli Monroe, Erin Gregory, Davida Gregory, Nicole Gray, Lindsey Rudd, Heather Palmer, Lesa Monroe, Laci Williams and Chris Massey.

High Rollers Win Trophy

Members of the Post/Spur High Rollers participated in the December 9, 1989 Southwest Tumbling and Trampoline Association Division 1 meet held in Wolforth.

The High Rollers girls' tumbling team were winners of the Championship trophy.

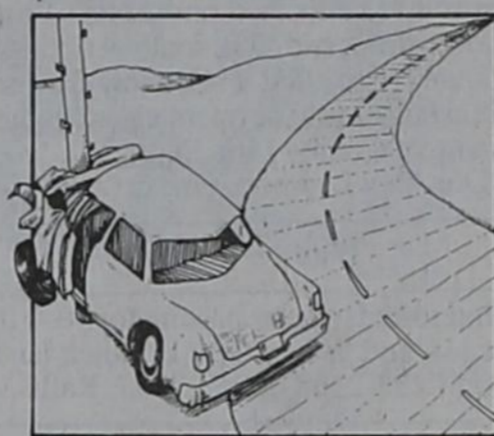
High Rollers and their standings at the Wolforth meet included:

Chris Massey, 1st trampoline; Dawn Massey, 5th tumbling, 4th trampoline; Ronnie Jay Parrish, 2nd tumbling, 1st trampoline; Donae Dalby, 1st tumbling; Rachel Redman, 3rd tumbling; Tye Mason, 3rd tumbling, 2nd trampoline; Lindsey Rudd, 3rd tumbling, 7th trampoline; Lesli Monroe, 1st tumbling, 5th trampoline;

Lesla Monroe, 1st tumbling, 2nd trampoline; Laci Williams, 2nd tumbling, 5th trampoline; Keatha

Palmer, 6th tumbling; Heather Palmer, 4th tumbling, 5th trampoline; Erin Gregory, 3rd tumbling, 1st trampoline; Davida Gregory, 1st tumbling, 7th trampoline; Nicole Gray, 2nd tumbling, 7th trampoline; April Line, 2nd tumbling, 8th trampoline; Stace Norman, 5th tumbling; and Ashley Mason, 5th tumbling, 3rd trampoline.

Coaches for the High Rollers are Amy Thuett and Cheryl Thompson.



**DON'T LET DWI
DETOUR YOUR
PLANS!**

**The Post Dispatch
Political Advertising
Column**

The following candidates are seeking election for these offices in the primary election to be held Tuesday, March 13, 1990.

Democratic Party

Garza County Treasurer
Voda Beth Gradine

County Commissioner Precinct 2
Bill Aten

Justice of the Peace Precinct 4
Dee C. Justice

Garza County Judge
E.A. Howard Jr.

Paid Political Advertising paid for by the candidates or their campaign treasurers.

Nomination for Post Business of the Year Award

NAME

for the following reason:

Clip and mail by January 5, 1990

to:

**Post Merchants'
Association**

#1 Santa Fe Plaza
Post, Texas 79356

Award to be presented at the annual banquet
January 13, 1990

Letter to the Editor:

Dear Sir:

We would like to take this opportunity to extend our congratulations and thanks to the Post Antelopes on their successful football season.

They were consistently out-weighted and outmanned, but never outfought.

We have been very proud of these fine young men in the manner they represented our town.

Again, we say thanks, guys, we enjoyed the season.

Sincerely,

A.J. and Judy McAlister

In the Neighborhood

by Lonnie Welborn

Is nothing sacred? Now the American Council of Life Insurance is attacking Santa Claus for being overweight.

In Clement Moore's poem, he describes Santa as having "a broad face and a little round belly that shook when he laughed like a bowl full of jelly."

Jelly, indeed, say today's nutritionists. "It is nothing more than excess fat guaranteed to lead to all kinds of un-merry complications."

Besides his weakness for sweets, Santa does not get enough exercise. Worse, after doing nothing throughout the year, he works strenuously on Christmas Eve.

This could put a strain on the heart of a much younger man. All that extra weight! Think of Mrs. Claus. The reindeer!

So what does current medical wisdom recommend for Santa? A

low-fat diet, a close watch on his cholesterol count and a daily exercise plan, that's what.

If Santa succeeds, and I wish him luck with the project, I have the feeling you're going to see a slim, trim man in a red suit in the

(Continued on Page 7)

**Dr. Lewis Moore
OPTOMETRIST
Announces Office
Office Hours**

Complete Visual Care

Thursday 9:30 a.m. to 5 p.m.

206 West Main
495-3687



DOWE MAYFIELD, C.L.U.

Medical insurance too high?
Call us. We may be able to help.

3305 81st, Suite F, Lubbock
806-797-8089

Nomination for Post Outstanding Citizen Award

(Man or Woman)

NAME

for the following reason:

Clip and mail by January 5, 1990

to:

**Post Chamber of
Commerce**

#1 Santa Fe Plaza
Post, Texas 79356

Award to be presented at the annual banquet
January 13, 1990

CORNER GROCERY & MARKET

We will be OPEN
New Year's Eve

8 a.m. - 6 p.m.

New Year's Day

6:30 a.m. - 7 p.m.

Mrs Baird's Sta-Fresh
BREAD

1 1/2 lb. loaf

78¢

Janet Lee 40 oz. bottle
PRUNE JUICE

59¢

PEPSI

6 PACK

CANS

1.39

OR

3 Liter

Bottles

1.39

• Meat Market •

SIRLOIN STEAK lb. **2.98**

Shurfine
BISCUITS **3 for 89¢**

Wilson's All Meat
BOLOGNA lb. **1.69**

**** **Marvin's Special** ****
**BOWL OF
CHILI** w/crackers **\$2**

OPEN MON-SAT
6:30 a.m. to 7:00 p.m.
SUN 8 a.m. til 6 p.m.

WE DELIVER IN POST
CITY LIMITS!

Shop where the 'Lopes Shop (#20)

419 E. Main

Marvin Williams and Kenneth Williams

495-2951

(same old phone number)

DUNN
Seed Farms

**FARMERS,
WITH OUR
\$2 DISCOUNT
ON DUNN COTTONSEED
BOUGHT BY DEC. 31st,
IT'S LIKE
GETTING PART
OF ANOTHER BAG FREE!**

CONTACT YOUR LOCAL GINNER OR BIG CROP SEED



BIG CROP SEED, INC.

800-658-2016