

# The Post Dispatch

USPS 439-620

If it's news to you...it's news to us!

Sixtythird Year Number 12

Newsstand Price 50 cents

Wednesday, August 16, 1989

## TEA Team Report Shows Post ISD Meets Compliance Requirements

by Lonnie Welborn

At the Monday, August 14 regular meeting of the Board of Trustees of the Post Independent School District, Superintendent Bill Shiver made available to the newspaper a copy of the letter received by the school district from Robert Alexius, Equal Education Opportunity Director, Division of Accreditation, regarding the April visit to Post of the TEA Accreditation team.

The letter, announcing that the Post ISD was in compliance, read:

"Thank you for the courtesies and cooperation extended by you and your staff to Dr. Ron Singleton of the Texas Education Agency Accreditation team during their visit of April 5-7, 1989. It was his pleasure to work with you and visit your district. Please be reminded that the review of extracurricular activities and treatment of staff was required by Sections D and E of the statewide Court Order Civil Action 5281.

"It is my pleasure to inform you that, following the on-site review, it is the opinion of this office that the Post Independent School District is in compliance with Sections D and E of Civil Action 5281. This finding will be communicated to the proper sources, according to the mandate of the court order.

"Of additional importance is that fact that your district's minority student population constitutes approximately 46 percent of the total student enrollment. However, of 90 district professional staff, two minorities were employed. It is recommended that the district continue in its active recruitment of qualified personnel. The recruitment efforts, as well as the pool of applicants reflecting all ethnic groups, should be documented and kept on file in the district..."

In other business, Caprock Cultural Association administrator, JoAnn Mock, met with the board to ask for its sponsorship of a fine arts workshop for teachers to be held in Post sometime next year.

The proposed Post workshop is the outcome of a similar workshop, sponsored by the Texas Arts Council, held in Lubbock, July 10-14, and attended by Post teachers Nancy Norman, Nancy McDonald, Debbie Palmer and Marge Tannehill.

The board of trustees made no decision on the workshop sponsor-

ship, but are giving the matter their consideration.

The motion was made and approved to extend new assistant band director Aaron Rathbun's contract by adding an extra month, so he can begin work in August.

The board accepted the resignation of Mrs. Dana Pittman and approved the recommendation of

Deborah Ann Webb as a replacement for Mrs. Pittman.

In other action, the board approved the recommended list of substitute teachers and adopted a new rate of \$30 per day with no college credit; \$40 per day with some college credit; and \$50 per day with a college degree.

Budget hearings were set for

Friday, August 18 at 1:30 p.m. in the Post High School Library, to be followed by rate hearings in a separate meeting.

Present at Monday's meeting were Jack Kirkpatrick, Don Payne, Pru Basquez, Royce Hart, Jerry Hays, Dan Hodges, Ronnie Gradine and Bill Shiver.

## Garza County Gives Helping Hand to 'My Special Place' Child Care Center

by Lonnie Welborn

"My Special Place," Post's child care center, received a helping hand from Garza County when commissioners' at the Monday, August 14 regular session voted unanimously to give the care center \$5,000, one-half of the proposed budget for set-up costs of a third building.

Meeting with the commissioners were Giles Dalby, Ruby Williams, Debbie Macy and Melissa Cunningham who presented the proposed budget and ex-

plained that there was a need for immediate assistance in order to repair and equip the third house to meet licensing specifications; to be able to meet the needs of parents as the new school year begins; to pay salaries for the first month, until fees are paid at the end of that month; and for the cost of formula and baby food for a three-month period. (The care center is contracting with the USDA for a reimbursement program for the cost of this food item.)

In addition, and in an effort to reach more children in the community, negotiations have been initiated with the Post ISD to provide after-school care for children whose parents are working. Nutritious snacks would be provided and supervision given from 3 p.m. to 5 or 6 p.m. This program would be designated within government funding.

(Continued on Page 9)

## Truck Driver Killed in Hwy Accident

Benjamin Bullard, a truck driver from Chalmette, Louisiana, was killed instantly early Monday morning when his vehicle overturned on a rain-slick Highway 84, trapping the driver in the cab of the truck.

The accident occurred at about 3 a.m., four and one half miles northwest of Post on U.S. 84, according to a Department of Public Safety report.

Bullard's tractor-trailer rig was south-bound when it veered into the center median, skidded and overturned.

A north-bound 1984 Peterbilt truck also overturned when its driver attempted to avoid Bullard's truck. Officials said that the driver of the second truck was not injured in the accident.

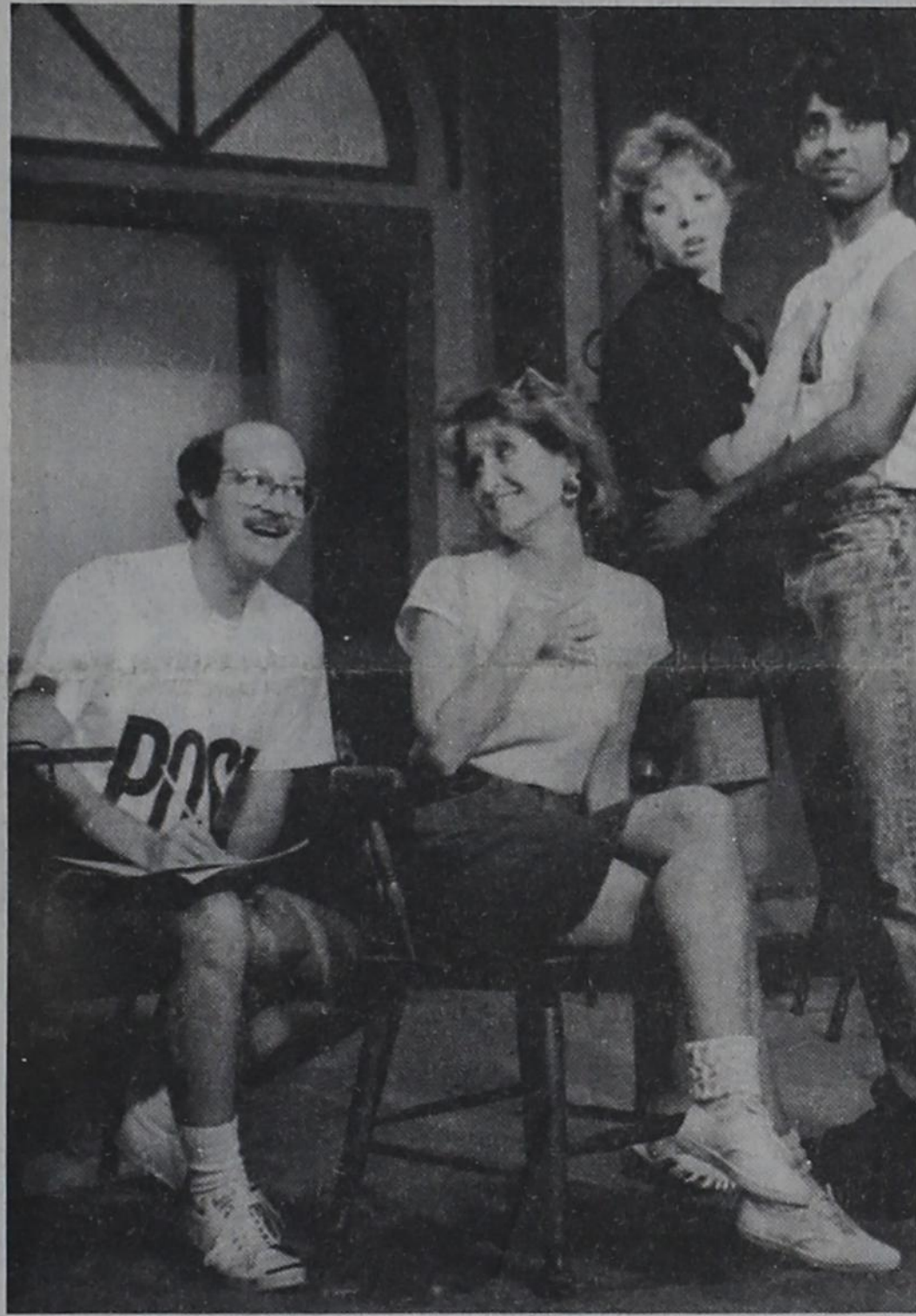
Bullard was pronounced dead at the scene of the accident by Justice of the Peace Dee Justice.

## Reception Honors R. Syd Conner Sunday, Aug 20

A reception Sunday, August 20, 1989 from 2 p.m. to 4 p.m. in the Post Community Center will honor R. Syd Conner, Garza County Extension Agent-Agriculture, on his retirement after 33 years with the Extension Service.

Everyone is invited to attend the reception and a special presentation which will begin at 3 p.m.

Congratulatory messages or retirement gifts are being accepted at P.O. 444, Post 79356.



REHEARSING FOR THE AUGUST 31 opening of "A Shot In The Dark" at the Garza Theatre are (left to right) Greg Wortham, Laura Mack, Mandy Swafford and Matthew Thomas. The famous Broadway play and movie by the same name will run through Sunday, September 3.



EVERYONE LOVES A PARADE and these youngsters got their chance to enjoy the annual Post Stampede Rodeo parade downtown from riding in one of the Post Volunteer Fire Department trucks. (Photo by Gail Burnett)



GARZA COUNTY ROPING - Deb McKee (left) accepts the Novice Heeler trophy for John Beaty with other Garza County roping winners (left to right) Clay Johnson, Novice Leader; Jeff Williams, All Around; Robbie King, Champion Heeler; Mike Babb, Champion Stopper and Richard Hart, Champion Header. The roping took place during last weekend's Stampede Rodeo. (Photo by Gail Burnett)

## Tahoka Firm is First in Rodeo Parade

The Hochheim Prairie Insurance of Tahoka float was selected as the best in the Post Stampede Rodeo Thursday, August 10 and was awarded the first place cash prize of \$225, presented by the Post Chamber of Commerce.

The second place winners of \$175 were the Post Explorer Scouts and third place, \$100, went to Gamma Mu Sorority for its "Noah's Ark" float.

In the decorated bicycle division, winners were: Stephanie Rodriguez, first place, \$25; Mickey Rodriguez, second place, \$15; and Auburn Hammond, third place, \$10.

## Special Sunday Edition Scheduled for September 3

A special Sunday edition of The Post Dispatch will be published September 3 celebrating Labor Day. Advertising and news deadline for the special edition will be Thursday, August 31 at 5 p.m.

The Dispatch will be closed Monday, September 4 to observe Labor Day, and will open Tuesday morning, September 5 to accept news and advertising until 5 p.m. for the Thursday, September 7 edition.

Advertisers will find this Sunday edition an excellent opportunity to begin promotion of fall sales.

The Sunday Dispatch will be delivered city-wide in Post and mailed to rural route customers, providing advertisers a total circulation of 2,600.

Labor Day Holiday Schedule Thursday, August 31, 5 p.m.

Deadline for Sunday, September 2 Edition

Monday, September 4 Office Closed

Tuesday, September 5, 5 p.m.

Deadline for Thursday, September 7 Edition

Monday, September 11 Return to regular schedule

## 1989-90 Garza County United Way Campaign Goal Set at \$17,320

Getting an early start this year, the Garza County United Way board of directors has approved a 1989-90 campaign goal of \$17,375 to fund 12 different participating organizations in support of a wide variety of community projects.

Board members Carol Peppers, Debbie Macy, Jacky Harp and Wesley Burnett met Thursday, August 3 with representatives of organizations presenting budget requests and set the first week of September as the kick-off for the campaign.

The single largest budgeted item goes to the Garza County youth summer baseball program at \$4,760.

"Of course," Garza County United Way board president Peppers emphasized, "we obviously can't fund these budget requests 100 percent unless we achieve our goal."

"We will need the help of everyone in this community to see that these important community organizations are funded to do the job," Peppers added.

The purpose of the United Way campaign is to provide adequate funding for participating organizations and eliminate duplication of fund raising and allow contributors to give one gift for all.

Donations to United Way are tax deductible.

Participating organizations and budgeted goals are:			
Summer Baseball	4,760	Salvation Army	750
Mental Health	400	Girls' Basketball	425
Boy Scouts	3,600	Trailblazers	500
Girl Scouts	3,600	Satellite School	250
Child Welfare	1,000	Meals on Wheels	1,250
Red Cross	340	United Way	500

## Post Cereal Box Tops Benefit Founder's Day

You can support Post's annual Founder's Day Celebration by saving your Post Cereals box tops and turning them into the Main Street Project.

Post Cereals and General Foods, Inc., have agreed to reimburse the Founder's Day Celebration \$1 for every five (5) Post Cereals box tops collected between now and October 14, in an effort to assist the Main Street Project in funding and to meet expenses for the October event.

Until drop stations for the box top collections are placed throughout town in early August, Post Cereals box tops may be left at the Main Street Project office in City Hall.

## Governor Appoints Mayor to Grant Review Panel

Post mayor, Giles C. McCrary, has been selected by Governor Bill Clements as a member of the South Plains regional committee that will review local applications for federal block grants.

Federal block grants typically are used to finance public facilities and provide housing assistance.

The regional review committees examine requests for federal Community Block Grant funds appropriated to smaller Texas cities and counties that are not direct recipients of federal money. The regional recommendations ultimately will be forwarded to the State Community Development Review Committee for consideration. That panel, in turn, forwards its funding recommendations to the Texas Department of Commerce. The governor

has final approval over all federal grants awarded under the program.

According to Governor Clements, the regional Community Development Block Grant Review Committees ensure a strong local voice in the administration of federal funds.

Also appointed to the South Plains committee were Darrell Turner, Muleshoe mayor; Billy D. Carter, Cochran County commissioner; and E.V. Riddlehuber, Plainview mayor. The South Plains committee serves Bailey, Cochran, Crosby, Dickens, Floyd, Garza, Hale, Hockley, King, Lamb, Lubbock, Lynn, Motley, Terry and Yoakum counties.

The new appointees announced by the governor will serve terms ending January 1, 1991.

## NEWS BRIEFS

### Movie at Outreach Center

The movie, "Cross and the Switchblade" will be shown at the Youth Outreach Center, 220 E. Main St., Saturday, August 19 at 8 p.m. There is no admission charge and everyone is welcome.

### In Grassland Concert

The Anchor Brothers, who are featured on KTXN, Channel 5 in Lubbock, will be in concert at the Grassland Community Church of the Nazarene, Sunday, August 20 at 6 p.m.

The Anchor Brothers are a favorite among South Plains residents and Pastor Bob Ferguson urges to come early as the church is expected to fill up fast for this popular gospel singing group.

### Cub Scout Party

Cub Scout Pack 314 will have a swimming party at the City Pool Friday evening, August 18 from 7 p.m. to 8:30 p.m. Parents are invited to swim with the boys.

### Pool Closes August 20

The last day to enjoy the City Pool this summer will be Sunday, August 20. The pool will close for the season after that date.

### Band Rehearsal August 18

There will be a full band rehearsal for Post High School band members, Friday, August 18 from 7 p.m. to 8:30 p.m.

Following the rehearsal, there will be a swimming and ice cream party for the high school band members and their families at the City Pool, thanks to Mrs. Harp. Please bring your homemade ice cream, as more can always be used.

### F.B.C. Christian School

The First Baptist Church Christian School is now registering students for the 1989-90 school year. Classes are provided for pre-school (ages three and four) through 7th grade. You may call the church office at 495-3554 for more information.

### Founder's Day Booths

Sponsors for food and drink concession booths are needed for the 1989 C.W. Post Founder's Day Celebration in October. With an expected attendance of over 6,000, including students from West Texas area high school bands, help is needed to feed the visitors. If you, your group or organization are interested in a space during the activities, call the Main Street office at 495-4157 or Barbara Hardin at 495-3987.

### Veteran's Service Officer

Nick Vukad, quartermaster of V.F.W. Post 6797, has announced that Don Harwood, veteran's service officer, will be at the Garza County Courthouse from 9 a.m. to 12 noon and 1 p.m. to 4 p.m. on the first and third Thursday of each month. Harwood's visits will fall on the following dates: 1989 - August 17; September 7 and 21; October 5 and 19; November 2 and 16; and December 7 and 21. 1990 - January 4 and 18; February 1 and 15; and March 1 and 15.

### Teacher Appreciation Luncheon

The Main Street Project will again host its annual Teacher Appreciation Luncheon and Style Show, Friday, August 25. At its August meeting, the PMA voted to join in this promotion by offering a 10 percent discount to all teachers on any purchases made at participating member businesses August 25 and 26.

### Commodity Distribution

Commodities will be distributed Tuesday, September 19 from 9:30 a.m. to 12 noon and 1 p.m. to 3:30 p.m. at the 4-H Barn on the Lubbock Highway. Unless notice is received of a change, commodity distribution will continue on the third Tuesday of each month.



**-Obituary-**

**J.B. Robinson**

Services for J.B. Robinson, 76, of Tow were held at 3 p.m., Tuesday, August 8, 1989 in the First Baptist Church with the Reverend Stanley Nixon, pastor, officiating. Burial was in Tow Cemetery under the direction of Waldrop-Hatfield Funeral Home of Llano. He died Sunday, August 8, 1989 in his home. Justice of the Peace Betty Graham ruled that death was due to natural causes.

He was born in Young County and moved to Garza County from Olney in 1915. He moved from Post to Tow in 1980. He was a farmer and was a member of the Baptist Church. He was married to Hope Hitt in Abernathy on September 1, 1939. Survivors include his wife; two sons, Gary of Odessa and Delton of Allen; a daughter, Nancy Swords of Richardson; a brother, Zearl of Malakoff; two sisters, Verna Roberts of Post and Jewel Ward of Slaton; nine grandchildren; and one great-grandchild.

**Yesteryears...**

by Lonnie Welborn  
As gleaned from the files of The Post Dispatch. Copies available on microfilm at the Post Public Library.

**10 Years Ago August 16, 1979**  
Chad Morris, Chad Davis and Lance Bagby were the top three winners in the Post Stampede Rodeo Parade's decorated bicycle division. After employing 13 new teachers, many of them without prior classroom experience, only two weeks before the start of the fall school term, school trustees Tuesday night decided to look into early formulation of a teacher retention policy for the 1980-81 school year.

Antelope Booster Club president Jimmy Redman said club caps and windbreakers in "bold gold" have been ordered and should be here prior to the season's opener.

Ten returning lettermen were on the field this week as workouts began at Antelope Stadium. Returning players are Jackie Stelzer, Chuck Black, Rance Adkins, Barry Wyatt, Deb Palmer, Alonzo Luna, Lynn Simpson, Larry Rodriguez, Mike Macy and Noel Pena.

Garza County's oil production, after a seven-year climb, dropped slightly in 1978, according to figures released this week by the Texas Mid-Continent Oil and Gas Association.

Leon Flemmer was appointed pastor of the local Church of God of Prophecy during the 46th annual state convention in Abilene recently.

Funeral services for Post Police Chief Bill Gordon were held Monday in the First Baptist Church of Haskell.

**20 Years Ago August 14, 1969**  
More than 50 Post citizens were briefed - and some took ride - last Friday afternoon on the Department of Public Safety's helicopter, based at Lubbock Municipal Airport.

Funeral services for Mrs. Jessie Voss, a resident of Garza County since 1915, were held Wednesday in the First Methodist Church.

The Garza County Commissioners Court Monday adopted the county 1970 budget calling for a reduction of \$75,488.15 in expenditures, basically in debt payments and hospital operations.

The Post Dispatch won runner-up honors for general excellence in its division in the 1969 Better Newspaper Contest of the West Texas Press Association.

Don Noel and Joe McCowen won first and second places respectively in the Post Jaycee's beard growing contest held in connection with the Post Stampede Rodeo.

**30 Years Ago August 13, 1959**

The Farmer's and Businessmen's Barbeque sponsored by the Post Chamber of Commerce -- at which all farmers and their families in the Post trade-area are to be guests - is expected to draw between 1,500 and 2,000 to the 4-H Building and grounds Saturday night, September 19.

Garza County Commissioners voted this week to extend the county's contract with the U.S. Department of Agriculture for surplus commodities for an additional 12 months.

Entered at U.S. Post Office, Post, Texas for transmission through the mails as Second Class matter, according to an Act of Congress, March 3, 1879.

Subscription Rates:  
Garza, Lynn, Borden, Lubbock, Crosby, Kent and Scurry County: \$15 per year  
All others - \$26 per year

Wesley W. Burnett  
Publisher  
Lonnie Welborn  
Editor  
Gail Burnett  
Advertising Sales  
Deadline:  
Mondays at 5 p.m.  
P.O. Box 10  
Post, Texas 79356  
806-495-2816  
Member  
Texas Press Association  
West Texas Press Association

The resignation of Miss Jessie Pearce, Garza County Home Demonstration Agent, has been accepted by the commissioners' court. Miss Pearce is moving back to her hometown of Lometa.

Clean-up Week at Terrace Cemetery, sponsored by Business and Professional Women's Club, with the City of Post cooperating, continues through August 21.

Sara Lou Ray, Willa Faye Graves and Juanelle Nichols returned recently from a vacation in Denver, Colorado Springs and other points of interest in Colorado and New Mexico.

**40 Years Ago August 18, 1949**

The "Up And Down Main Street" column gave a lot of credit for a successful Southwestern Championship Junior Rodeo to "Willie Ward Cross and Lois Floyd, who made a good percentage of the milkshakes, sundaes, cokes, etc., which gave the contestants added strength for their performances."

Rev. A.B. Cockrell will be the preacher for a revival meeting at the Verberna Church this week.

Calvin Storie and Ronald Joe Babb were elected co-captains of the Post Antelope football team.

Two Post business houses were broken into Sunday night, but only one, Hodges Tractor Co. was robbed. The other break-in was at Ben Williams' Barber Shop.

John Smith of Post narrowly escaped serious injury when his car was hit by Santa Fe train No. 95 at a local crossing. He was taken to Post clinic in a Hudman ambulance for treatment of cuts and bruises. The car was badly damaged.

The Southland school will open this year with the same faculty as last year. School faculty members are C.S. Lindsey, Mrs. C.S. Lindsey, Mrs. Eula Tillery, I.J. Duff, A.T. Nixon, Mrs. J.O. Roberts, Mrs. I.J. Duff and Mrs. A.T. Nixon.

**SCS Provides Info On Fire Guards**

If you have land in the Conservation Reserve Program and are interested in installing a fire guard, there are ways to do so without violating your contract.

Obie Kelley, Jr., District Conservationist for the USDA Soil Conservation Service in Post, said that he understands that the rules for installing them are fairly simple. The contract requirements are set by the Agricultural Stabilization and Conservation Service.

"First, you need to protect the fire guard from excessive erosion," Kelley instructed. "The fire guard also needs to be next to a road and to be written into a CRP plan."

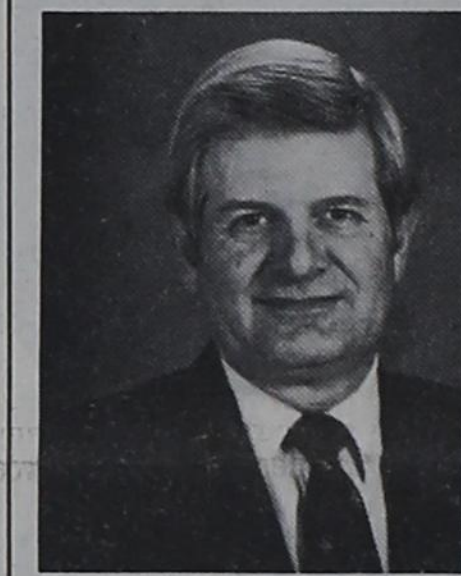
"To prevent excessive erosion, farmers may want to plant annual wildlife strips instead of leaving the ground bare, or the producer may prefer to keep the guard mowed down or closely shredded."

For information about fire guards on CRP lands, contact any local USDA agency. Programs and assistance from the USDA Soil Conservation Service are available to persons of all ages regardless of socioeconomic level, race, religion, color, sex, handicap or national origin.

One termite queen produces about half a billion offspring during her lifetime.

**Dr. Lewis Moore OPTOMETRIST**  
Announces New Office Hours for 1989  
Complete Visual Care  
Thursday 9:30 a.m. to 5 p.m.  
206 West Main 495-3687

**Alpha Christian Counseling Center**



(Professional Answers to Life's Difficulties)

**Dr James Adams**  
122 N. Ave. K  
Post, Texas

Phone:  
495-3849  
495-2765

Depression - Anger - Stress  
Marriage and Family  
& Divorce Counseling

**1989 Property Tax Rates in Garza County and Garza Memorial Hospital District**

This notice concerns 1989 property tax rates for Garza County. It presents information about three tax rates. Last year's tax rate is the actual rate the taxing unit used to determine property taxes last year. This year's effective tax rate would impose the same total taxes as last year if you compare properties taxed in both years. This year's rollback tax rate is the highest tax rate the taxing unit can set before taxpayers can start tax rollback procedures. In each case these rates are found by dividing the total amount of taxes by the tax base (the total value of taxable property) with adjustments as required by state law. The rates are given per \$100 of property value.

	General Fund	Farm to Market/ Flood Control Fund	Hospital District
<b>Last year's tax rate:</b>			
Last year's operating taxes	\$ 839,977.	\$	\$ 503,748.
+ Last year's debt taxes	\$ 0	\$	\$ 0
= Last year's total taxes	\$ 839,977.	\$	\$ 503,748.
+ Last year's tax base	\$ 479,986,792.	\$	\$ 479,760,390.
= Last year's total tax rate	\$ .175/\$100	\$ /\$100	\$ .105/\$100
<b>This year's effective tax rate:</b>			
Last year's adjusted taxes (after subtracting taxes on lost property)	\$ 838,473.	\$	\$ 501,711.
+ This year's adjusted tax base (after subtracting taxes on new property)	\$ 430,358,069.	\$	\$ 428,109,972.
= This year's effective tax rate for each fund	\$ .1948/\$100	\$ /\$100	\$ .1172/\$100
Total effective tax rate	\$ .1948/\$100	\$	\$ .1172/\$100

A county that adopted the additional sales tax in a 1989 election must include the following lines:

- Sales tax adjustment rate	\$ 0 /\$100	
= Effective tax rate	\$ 0 /\$100	

x 1.03 = maximum rate unless unit publishes notices and holds hearing \$ .2006/\$100 \$ .1207/\$100

This year's rollback tax rate:

Last year's adjusted operating taxes (after subtracting taxes on lost property)	\$ 838,473.	\$	\$ 501,711.
+ This year's adjusted tax base	\$ 430,358,069.	\$	\$ 428,109,972.
= This year's effective operating rate	\$ .1948/\$100	\$ /\$100	\$ .1172/\$100
x 1.08 = this year's maximum operating rate	\$ .2104/\$100	\$ /\$100	\$ .1265/\$100
+ This year's debt rate	\$ 0/\$100	\$ /\$100	\$ 0/\$100
= This year's rollback rate for each fund	\$ .2104/\$100	\$ /\$100	\$ .1265/\$100
This year's rollback rate	\$ .2104/\$100	\$	\$ .1265/\$100

A county that imposes the additional sales tax must include these lines, regardless of when it held the election:

- Sales tax adjustment rate	\$ 0 /\$100	
= Rollback tax rate	\$ 0 /\$100	

**SCHEDULE A: Unencumbered Fund Balances**

The following balances will probably be left in the unit's property tax accounts at the end of the fiscal year. These balances are not encumbered by a corresponding debt obligation.

Type of Property Tax Fund	Balance
General Fund	\$470,790.04
Roads #1, #2, #3 & #4	\$329,303.88
Garza Memorial Hospital District	\$488,972.00

**SCHEDULE B: 1989 Debt Service**

The unit plans to pay the following amounts for long-term debts that are secured by property taxes. These amounts will be paid from property tax revenues (or additional sales tax revenues, if applicable).

Description of Debt	Principal or Contract Payment to be Paid	Interest to be Paid	Other Amounts to be Paid	Total Payment
N/A				
Total required for 1989 debt service				
- Amount (if any) paid from funds listed in Schedule A				
- Excess collections last year				
= Total to be paid from taxes in 1989				
+ Amount added in anticipation that the unit will collect only ___% of its taxes in 1989				
= Total Debt Service Levy				

**SCHEDULE C: Expected Revenue from Additional Sales Tax**  
(For counties and cities with additional 1/2 cent sales tax)

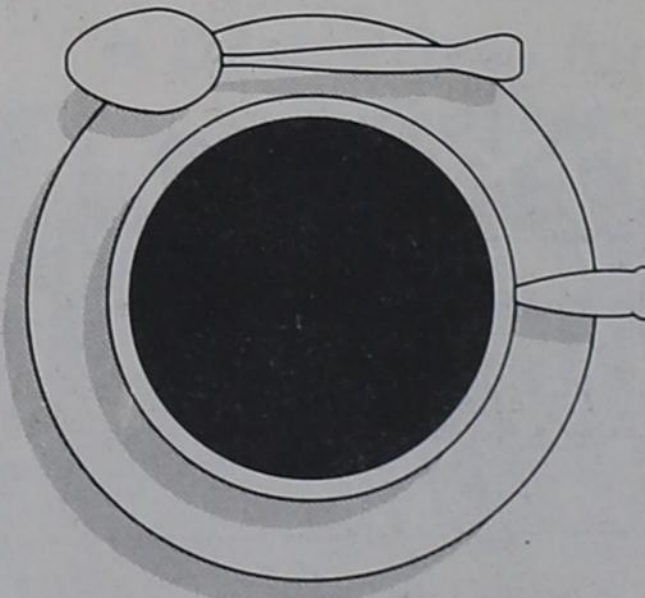
In calculating its effective and rollback tax rates, the unit estimated that it will receive \$ -0- in additional sales and use tax revenues.

This notice contains a summary of actual effective and rollback tax rate calculations. You can inspect a copy of the full calculations at Garza County Tax Office, County Courthouse, Post, Texas.

Name of person preparing this notice Laura Hataway  
Title Tax Assessor/Collector  
Date prepared August 9, 1989

**Refreshments and Bluebonnets**

**1:00 pm Thursday**  
a new Bluebonnet will bloom in Post.

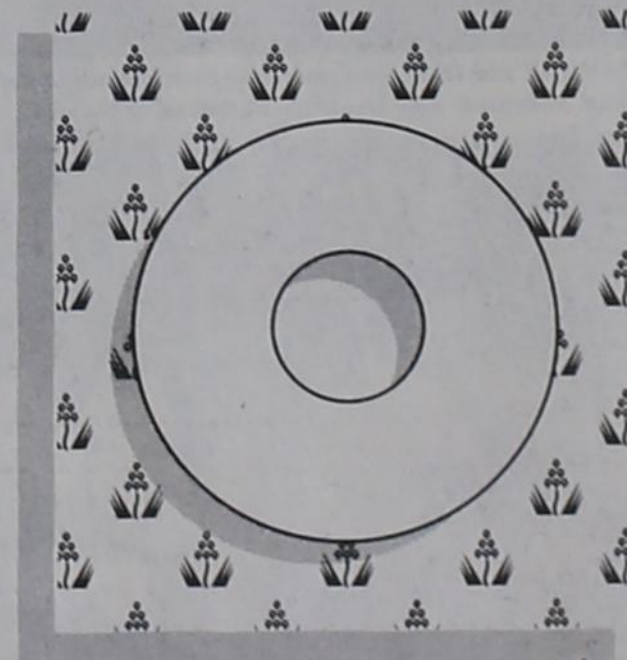


You'll find that we've changed our name but haven't changed the way we do business ... or the warm, knowledgeable people who work here. So come on by for refreshments and bluebonnets and share the blossoming of our new bank.

Open House Thursday, August 17,

1:00 pm until 4:00 pm.

Ribbon cutting at 3:00 pm.



**BLUEBONNET**  
SAVINGS BANK FSB

106 North Broadway, Post, Texas.



## Wade Giddens With NYC Architectural Firm

Wade Giddens, son of Joe and Doris Giddens of Post, is now a resident of New York City where he is employed by The Cowperwood Company, an architectural firm on Lexington Avenue. Wade made a job-hunting trip to New York after his graduation from Texas Technological University in May with a degree in architecture and a degree in civil engineering - graduating magna cum laude in both schools.

While a student at Tech, he was awarded the Alpha Rho Chi Bronze Medal for Leadership, Service and Merit in 1989, the AIA Henry Adams medal for Excellence in Architecture in 1989 and the Dads' and Moms' Association Scholarship and Citizenship Award in 1987.

He was named to Who's Who Among Students in American Colleges and Universities in 1986 and received the Dads' and Moms' Association Award as Top Graduate in 1989.

Wade was active in Phi Beta Delta Honor Society for International Scholars and was vice president of that organization in 1987-88-89. In addition he was a member and active participant of Omicron Delta Kappa Service/Leadership Honor Society, American Institute of Architecture Students, American Society of Civil Engineers Student Chapter, Tau Sigma Delta Architecture Honor Society, Chi Epsilon Civil Engineering Honor Society, Tau Beta Pi, Golden Key Senior Honor Society and Phi Eta Sigma.

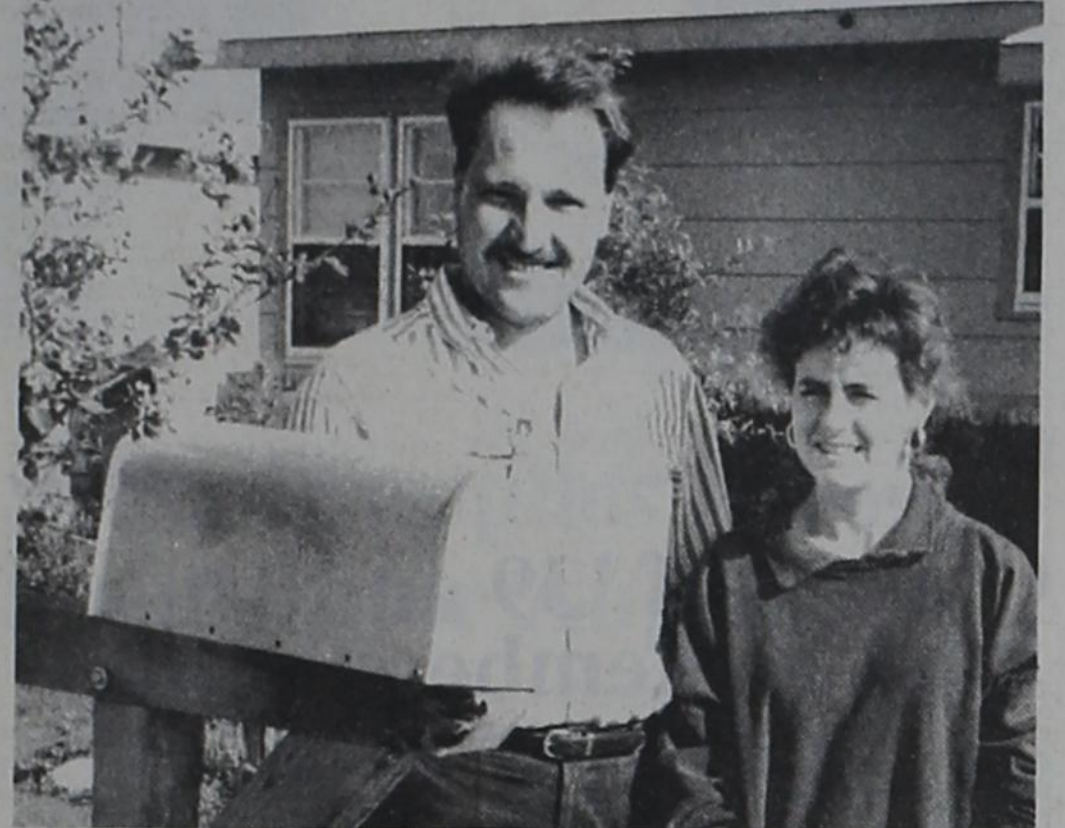


Wade Giddens

You are cordially invited to a Retirement Reception honoring R. Syd Conner Sarza County Extension Agent - Agriculture Sunday, August 20, 1989 From 2:00 p.m. until 4:00 p.m. Special presentation at 3:00 p.m. Post Community Center - Post, Texas



BEST RODEO WINDOW was awarded to Danish Imports as Greg Wortham presents the Post Merchants' Association certificate to Orabeth White (center) and Linda Lewis (right). (Photo by Gail Burnett)



YARD OF THE WEEK honors were awarded to Benny and Michelle Jackson. Their home is located at 305 W. 6th.

## Savings Bank Celebrates Name Change

To celebrate its name change, Bluebonnet Savings Bank, formerly Consolidated Federal Savings Bank, invites the public to attend an open house, Thursday, August 17, 1989 from 1 p.m. to 4 p.m. at the savings office, 106 N. Broadway. Ribbon cutting ceremonies will be held at 3 p.m.

Howard R. Neff, CEO of the federally chartered savings bank, will be on hand for the open house, and commented, "We are committed to the revitalization of the Texas economy and are dedicated to provide community banking in the towns we serve. We encourage everyone to attend our open house, enjoy some refreshments and have some fun."

Local branch manager, Terry Moore, in announcing the name change celebration, said, "Bluebonnet Savings Bank is proud to be a part of this community and this is our way of thanking our customers for their business."

## In the Neighborhood

by Lonnie Welborn

One of the newest additions to the shelves at the Post Public Library is "Stepfathers," an insightful book on dealing and coping with ready-made families.

The book donor, and also the book's author, is Charles Somerville, pastor of Post's First Presbyterian Church.

Check out Charles' book the next time you're in the library. It makes interesting reading - even if you aren't a stepfather.

### Ex-Resident on Parade

If you caught the rodeo parade Thursday afternoon - and a lot of people did - you probably noticed the sharp looking riding group from Tarrant County.

Well, the smiling, waving gentleman heading up that Sheriff's Posse was former Post resident Don Carpenter, who was very happy about coming back to his old home to ride in the Stampede Parade.

### In California

Mr. and Mrs. Raymond Rivera and other members of the family were in Orange, California recently to attend the celebration of the final vows of Sister Angela Rivera.

### A Different Bingo

As first I thought it was a joke, but there it was on the front page of The Slatonite - "Cow Patty Bingo."

Now, Jim Davis of The Slatonite is a relatively sane, trustworthy, dependable newsman who wouldn't allow something like that on his page one unless it was a bona fide story and, as I read on, I found that it was exactly as reported.



Rev. Rachel Stockle

## Rev. Stockle to Intern at Local Church

Reverend Rachel Stockle will arrive in Post, August 20, to spend nine months as Intern Pastor working in the First United Methodist Church and in the community.

A student from Perkins School of Theology, S.M.U., where she has completed two years toward her Master of Divinity degree, Rachel is 24 years old and comes from a small farm community in East-Central Illinois. She brings many skills to the local congregation, including experience in Christian Clown Ministry.

Dr. James Bell, pastor of First United Methodist Church, has been designated as Rachel's field instructor and he will be working closely with an intern committee chaired by Randy McCallister.

After her year in Post, she will return to Perkins for her senior year of Theological Studies.

## FORD BEDLINER SALE

**\$100 off FORD BEDLINERS**  
Suggested Retail Price 299<sup>00</sup>  
Special August Price 199<sup>00</sup>  
Available for all F-Series Pickups & Rangers  
offer expires Aug. 31st

### ORDER YOURS TODAY

#### ASK ABOUT OUR LIFETIME SERVICE GUARANTEE.

Just ask and we'll tell you what makes our free Lifetime Service Guarantee the best car repair guarantee in the country. With it, you pay just once for a covered repair on your Ford, Lincoln, Mercury, or Ford light truck.

Then, if that repair ever needs to be done again, we'll do it free. Free parts, free labor. For as long as you own your car or truck.

The Lifetime Service Guarantee covers thousands of parts and repairs, not just a few. And we don't care where or when you bought your vehicle.

Drop by and ask us to see a copy of the Lifetime Service Guarantee. Read about it and you'll be sold on it for a lifetime.

Quality Care for Quality Cars.

# SMITH

Hwy. 84 By-Pass Slaton, Texas Lubbock/Slaton 828-6291 Texas Wats 1-800-692-4457

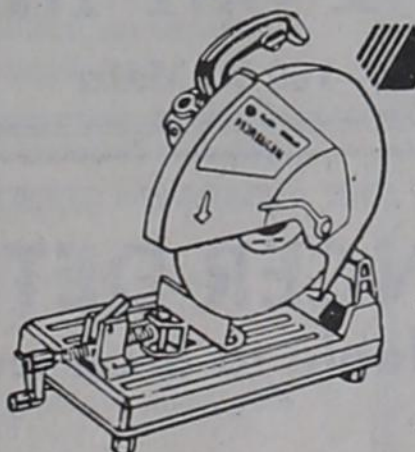


# END OF SUMMER CLEARANCE SALE

**50% OFF - 2 for 1 - BUTE Paint SALE**  
Buy One Gallon at Regular Price the Second Gallon is FREE!

This Super Sale is Good on Ready Mixed or Custom Mixed Colors on our entire line. Quarts and Gallons.

POWER CHOPSAWS (B & D ACCESSORY) PROFESSIONAL 14 INCH HEAVY DUTY



BLACK & DECKER.

**Black and Decker 14" Chop Saw**  
Sale Price \$164.95

The one tool for cutting pipe, tubing or Angle Iron.  
**FREE** with each saw - one extra blade!

All Sale Items Subject to Present Stock

Garden & Flower Seed Reg. 59¢ pkg. NOW ONLY 3 packages for **50¢**

PICNIC TABLES AND GLIDER SWINGS **15% OFF**

GOTT & COLEMAN WATER CANS & ICE CHESTS **15% OFF**

RAINDRIP DRIP IRRIGATION SYSTEM **20% OFF**

CHECK OUR DUMP BIN FOR SAVINGS OF UP TO **75% OFF** ON SELECTED ITEMS

WALLACE LUMBER CO., INC.

119 N. Avenue H Post, Tx 495-2835



# Jackson, Swiggart... Exchange Vows August 12

Darla Jackson and Brian Swiggart exchanged wedding vows Saturday, August 12, 1989 at 2 p.m. in Post's First Baptist Church with Dr. Sam Douglass officiating.

Parents of the bride are Jim and Dortha Jackson of Post. The groom is the son of Mr. and Mrs. Jerry

Swiggart of DeSoto and Sylvia Clemons of Greenville.

The aisles of the church were lined with topiary trees and plumosa garlands and iridescent bows marked the pews. Flowers used in the church decoration included pink rubrum lilies, pink and

white gerbera daisies, beargrass, eucalyptus, alstroemeria lilies and tree fern.

The altar featured two gothic columns with topiary trees in white urns and candelabra decorated with greenery and iridescent bows.

Given in marriage by her father, the bride wore a white designer gown by Marilee. The dress, which was accented in the back by six strands of pearls, featured a Victorian neckline and a white lace bodice with pearls and iridescent sequins. The scallop-edged train was decorated with a lace and pearl design which was repeated on the front of the dress.

The bride's bouquet, which was made by her brother, Benny Jackson, was composed of white and pink roses, bear grass, Queen Anne's lace, iridescent moire ribbon, silk English ivy and white and pink pypsophila.

Maid of honor was Tina Taylor and serving as bridesmaids were Jerri Penney, Robin Edgemon, D'Ann Porter, Heather Hampton and Susan Flomm, sister of the groom. Three of the attendants wore dresses of pink polished cotton with a teal and white floral design and three wore teal polished cotton with a pink and white design. The straight dresses were decorated with a ruffle and were mid-calf in front, dipping to lower-calf in back.

Best man Rob Wiley and groomsmen, Kenny Swiggart, brother of the groom; Paul Mints; Joel Stark; John Hall; and Benny Jackson, brother of the bride, all wore basic black tuxedos, with either teal or pink bow ties and cummerbunds.

Raelye Taylor served as flower girl and Jay Waylon Strawn was ring bearer.

Music was provided by Nancy Flanigan, piano and Robby Rhea, trumpet. Singers were Miriam Wallace, Teresa Gomez and Nathan Kinler.

A reception at the Chaparral Steak House Garden Room followed the ceremony. The bride's table featured a four-pedestal white cake with fresh flowers and a "Precious Moments" figurine, punch and cream cheese mints.

The groom's chocolate cake was decorated with a "Precious Moments" figurine of a bride and groom in a car. Coffee and mints were also served at the groom's table.

The refreshment table, decorated with two swan ice sculptures and flowers, held a Pavlova fruit tree, vegetable plate, pineapple cream cheese balls and shrimp.

Members of the house party were Peggy Lott, Susan Strawn, Cindee Witcher, Angie Wiley, Melinda Phillips, Jackie Pewitt, Twila Holly, Opal Rudd and Wanda Simecek.

After a wedding trip to Hawaii, the couple will live in Arlington.

The rehearsal dinner was hosted by Jerry and Tish Swiggart and Sylvia Clemons at the Chaparral Steak House Garden Room.

The bride is a graduate of Texas Tech University with a degree in Family Studies. The groom is a graduate of Hardin Simmons University with a BA in Management. He is employed by Allied Van Line, Fort Worth/Carrollton and by Westridge Baptist Church in Grand Prairie.



Mrs. Brian Swiggart

## Classes of '39 and '40 Plan September Reunion

The Post High School classes of 1939 and 1940 will hold their 50th and 49th reunions Saturday, September 30, 1989 and are trying to locate the following class members: Helen Ruth Bell, J.T. Ferguson, Bonnie Faye Young, Juanita Wheeler, Lillian Rogers, James McAnally and Phil Foreman.

If you know the whereabouts of these graduates, please notify Jim Mason, Box 703, Slaton 79364 or Ida Wilkes, 307 W. 6th, Post 79356.

Just in...  
Original  
Coyote  
Country  
T-Shirts



Balloon Bokays for Birthdays  
Get well, New Baby, Holidays  
Special Occasions or any  
decorating need.

*The Balloon  
Post*

#5 Manna Square - Post, Tx  
495-2121  
Mon-Sat 9-5 Free Delivery

**Come See What's  
New for Fall at the  
BIRD'S NEST**  
Also check out our **1/2 OFF**  
**SUMMER CLEARANCE**

New Hours: Mon-Fri 9 a.m. to 6 p.m.  
Sat. 10 a.m. to 5:30 p.m.

213 E. Main 495-3872

**OPENING MONDAY  
August 21  
6 a.m. to 6 p.m.  
Country Carousel**

416 W. 8th  
Across from  
Junior High School

- Fresh Donuts & Lots of Different Pastries
- Burgers and Fries
- Frozen Yogurt coming soon!

**Summer Clearance Sale!**  
Up to **50% OFF**  
Selected paints, basket lids, woodlet scenes, minis and letters.

Also a large group of pre-cut mats, ranging in sizes 5 X 7 up to 30 X 30.

Come by and check out these and many more in-store specials.

**The Frame Shoppe**  
Custom Framing & Art Supply

115 N. Avenue H Post, Tx 495-2836

**CHICKEN FILLET BASKET™!**

**\$2.99\*** SALE PRICE AUGUST 14-27, 1989

ON SALE IN **DQ COUNTRY**

Four chicken fillet strips. Plenty of fries. Texas toast. And DAIRY QUEEN's creamy country gravy on the side.

\*Reg. TM Tex. D.Q. Op. Coun. \*Reg. TM Am. D.Q. Corp. \*1989  
Tex. D.Q. Op. Coun. \*At participating Dairy Queen stores

## LaDonna Craig Honored With Bridal Shower

LaDonna Craig, bride-elect of Kevin Buschmann, was honored with a miscellaneous bridal shower in the Fellowship Room of the Post Church of Christ, June 29, 1989. The bride-elect's chosen colors of

peach and white were carried out in the table decorations.

Special guest for the occasion were Donna Craig, mother of the bride-elect; René Craig, sister of the bride-elect; Mary Hogue, grandmother of the honoree; and Alissa Mitchell, cousin of the honoree.

Refreshments of breakfast breads, sausage balls, a variety of mini-muffins and spiced tea were served to the guests.

Hostesses for the shower were Joyce Tatum, Theona Josey, Betty Jo Sharp, Thelma Epley, Dorothy McCook, Billie Lou Thomas, Barbara Tatum, Sherry Jones, Diane Josey, Teresia Williams, Sandy Wilson, Jewel White, Lana Daniells and Marianne Hart. Their gift to the bride-to-be was a 15 piece set of cookware and a service for four in the bride-elect's Corelle dinnerware.

## Party Honors Bride-Elect Donna Weston

The Garden Room of the Chaparral Restaurant was the scene of a Friday evening banana split party honoring Donna Weston, bride-elect of Curt Cowdrey.

Hosting the event were Tom, Janey and Jana Middleton and Noel, Orabeth and Keitha White.

Family members attending were Mrs. Beverly Weston of Lubbock, mother of the bride-elect; the honoree's aunt, Mrs. Artie Weston of St. Louis, Missouri; Mr. and Mrs. Bobby Cowdrey, parents of the prospective groom; Mrs. Gary Luft of Lubbock; Mr. and Mrs. James Easterling; and the hosts.



Concerned parents choose their children's snack foods wisely.

Putting it together - your way  
come to  
**LA POSTA**  
Hang Ten - Rocky Mountain Jeans  
plus a lot more  
**SALE CONTINUES - 50% OFF**

412 N. Broadway 495-2648

**MATINEE SPECIAL!**  
Rent movies in the  
morning...back by 2 p.m.

**\$1.59** New Releases  
**.59** All Others

**New Hours:**  
8 a.m. til 8 p.m. Mon-Sat.

**Come in and see our new  
tapes - Thursday, Aug. 17**

Watch for video accessories soon  
to be in stock

**POST MOVIE MAGIC**

109 W. Main 495-2345

ACCREDITED BY THE AMERICAN COLLEGE OF RADIOLOGY

**BREAST CANCER DETECTION UNIT**  
available to area women!

FRIDAY, AUGUST 18th  
GARZA MEMORIAL HOSPITAL  
POST, TEXAS

Call 495-2828 for appointment

According to the American Cancer Society, one out of ten women will develop breast cancer sometime in her lifetime. It is currently estimated that over 37,000 women die each year as a result of breast cancer. Ninety percent of breast cancers are diagnosed by women or their physicians finding a lump in the breast. Women who are diagnosed with a lump large enough to feel have a 50 percent five year survival rate. A woman who is diagnosed as having breast cancer by mammography, before a lump can be felt, has a 97% five year survival rate and a 90% 10 year survival rate. The cost is only \$60.00. A mammogram can detect a cancer this small, even before it can be felt.



## Wright, Burnett...

### Wed in Ceta Glen Ceremony

Ceta Glen was the setting as Marilyn Gail Wright and James Wesley Burnett were united in marriage Saturday, July 29, 1989 in an 11 a.m. ceremony with Charles Somerville officiating.

The bride is the daughter of Sid and Bobbie Childs of Houston. Parents of the groom are Wes and Pat Burnett of Post.

Given in marriage by her parents, the bride wore a white dress with embroidered lace decorating the neckline and sleeves.

The bride's bouquet was made of white carnations, yellow sweetheart roses and baby's breath with yellow ribbons, carried on a white bible belonging to Lorene Voyles, grandmother of the groom.

Baby's breath was also used as

the bride's headpiece, worn in her French braid.

Carrying out the bridal traditions, "something new" were the couple's wedding rings; "something old" was a penny with the bride's birthdate, a gift from the groom's mother; "something borrowed" were a pearl necklace and pearl earrings; and "something blue" was a blue satin garter, trimmed in white lace with a white beaded feather, a gift from the groom.

Attending the bride as her matron of honor was Joyce Reber of Fort Davis, aunt of the groom. Her blue dress was accented with embroidered lace and she carried long stem yellow rose and white carnations with yellow ribbon.

Timothy W. Burnett of Hickam

Air Force Base, Hawaii, served as his brother's best man.

After a wedding trip the couple is at home in Post.

The bride attended J. Frank Dobie High School and is em-

ployed by The Post Dispatch.

The groom is a graduate of Ballinger High School and attended Tarleton State University. He is currently attending Texas Technological University where he is a Civil Engineering student.



Mr. and Mrs. James W. Burnett

### Alicia Rivera Completes Final Vows as Sister

Sister Alicia first joined the Sisters in June, 1982 and has been active in ministry among the poor in Southern California as well as being a Parish Sister among the Hispanic people in Costa Mesa. The last two years were devoted to her studies at California State University, where she will graduate this year with a Bachelor's Degree in Sociology. Even during these years of study, Sister Alicia has been involved with the ministry to "Children of War" and has worked with the poor and dispossessed. She hopes one day to serve as a missionary in a third-world country.

Born August 4, 1958, she is the seventh child born to Raymond and Juanita Rivera. She attended Post Elementary and High Schools and studied for a short time at Wayland Baptist College before joining the Sisters of St. Joseph of Orange.

As a young adult she was active in her home parish. Because of her involvement, enthusiasm for service, faith and interest in church life, she was encouraged to consider a religious vocation. After meeting with the sisters of St. Mary of the Plains Hospital, she was introduced to the Sisters of St. Joseph and made the decision to begin the process of becoming a sister.

The Sisters of St. Joseph of Orange recently celebrated the final vows of Sister Alicia Rivera, the daughter of Raymond and Juanita Rivera of Post.

Family, friends and associates gathered from around the Southwest to attend the Mass of Final Profession and to witness Sister Alicia's pronouncement of final vows of poverty, chastity and obedience as a Sister of St. Joseph of Orange.



Sister Alicia Rivera

### School Supplies Among Specials for August

August's arrival means it's time to start shopping for school supplies, shoes and clothes as summer speeds away.

One of the fastest growing sources of school supplies is your favorite retail food store, according to Dr. Dick Edwards, a Texas A&M University food marketing expert with the Texas Agricultural Extension Service.

"Massive displays featuring school-related items began appearing at supermarkets early in August. Numerous specials will be noted on lunch boxes, notebooks, pens, pencils, paper and even calculators," Edwards said.

Food retailers also will offer specials on school lunch food items as the first day of school approaches, he said.

"Besides traditional sandwich items of luncheon meats, peanut butter and jelly, parents should watch for specials on single serving pak items such as assorted individual packages of puddings and fruit," Edwards said.

August also is one of the few months when most of the nation's

fruit and vegetable production areas are supplying products, thus produce prices are generally lower than during other months, the economist said.

New items will include pears and table grapes. Apples also will continue to be featured, along with applesauce and apple juice.

Other produce items available at lower prices will include blueberries, peaches, cherries, plums, watermelons, cantaloupes and melons.

Many retailers will continue specials on canning and freezing supplies and on sweet corn, tomatoes and green beans.

August beef prices should continue to be about 15 percent below their highs of the March-April period, Edwards said. This situation likely will change in September as supplies become tighter.

Producers continue to expand their swine and poultry numbers as they compete for the consumer's dollar. Ribs, chops, picnic hams and shoulder roasts all will be featured as pork specials. At the poultry counter, leg quarters and whole birds will continue as good buys.



#### DOWE MAYFIELD, C.L.U.

The TAX-MAN is coming!  
See us for your IRA or Keough!  
3305-81st, Suite F, Lubbock  
806-797-8089

### 25-point maintenance / service inspection for only \$12<sup>95</sup>

For your continued driving pleasure, one of our certified technicians will perform the following 25-point service inspection on your car or truck.

NAME	YEAR & MODEL	LICENSE	LICENSURE			Comments
			Is O.K.	Needs Attn.	Approx. Repair Cost	
1. Inspect tire wear & condition (front)						
2. Inspect tire wear & condition (rear)						
3. Inspect front-end alignment (tire wear)						
4. Test brake pedal adjustment						
5. Inspect front brake pads and shoes						
6. Inspect rear brake shoes						
7. Inspect brake hydraulic system						
8. Test parking brake adjustment						
9. Test clutch adjustment - standard trans models						
10. Inspect condition of universal & C.V. joints						
11. Inspect condition of front shock absorbers - Mac Pherson						
12. Inspect condition of rear shock absorbers						
13. Inspect condition of muffler						
14. Inspect condition of exhaust						
15. Inspect engine oil						
16. Inspect condition of						
17. Test drive belt adjust						
18. Analyze coolant lamp						
19. Inspect condition of rad						
20. Inspect for coolant leaks						
21. Analyze battery condition						
22. Inspect condition of battery						
23. Inspect operation of air cond						
24. Inspect condition of wiper blades						
25. Test operation of turn signals, headlights & interior lights						

**Guaranteed Pricing**  
You know exactly what your vehicle needs & exactly what the repair costs would be.

GM QUALITY SERVICE PARTS  
McGinnis CHEVROLET  
Hwy. 84 ByPass 828-6261

## WHEAT SEED

Supply is short! We have limited quantities of high quality wheat seed of popular varieties available.

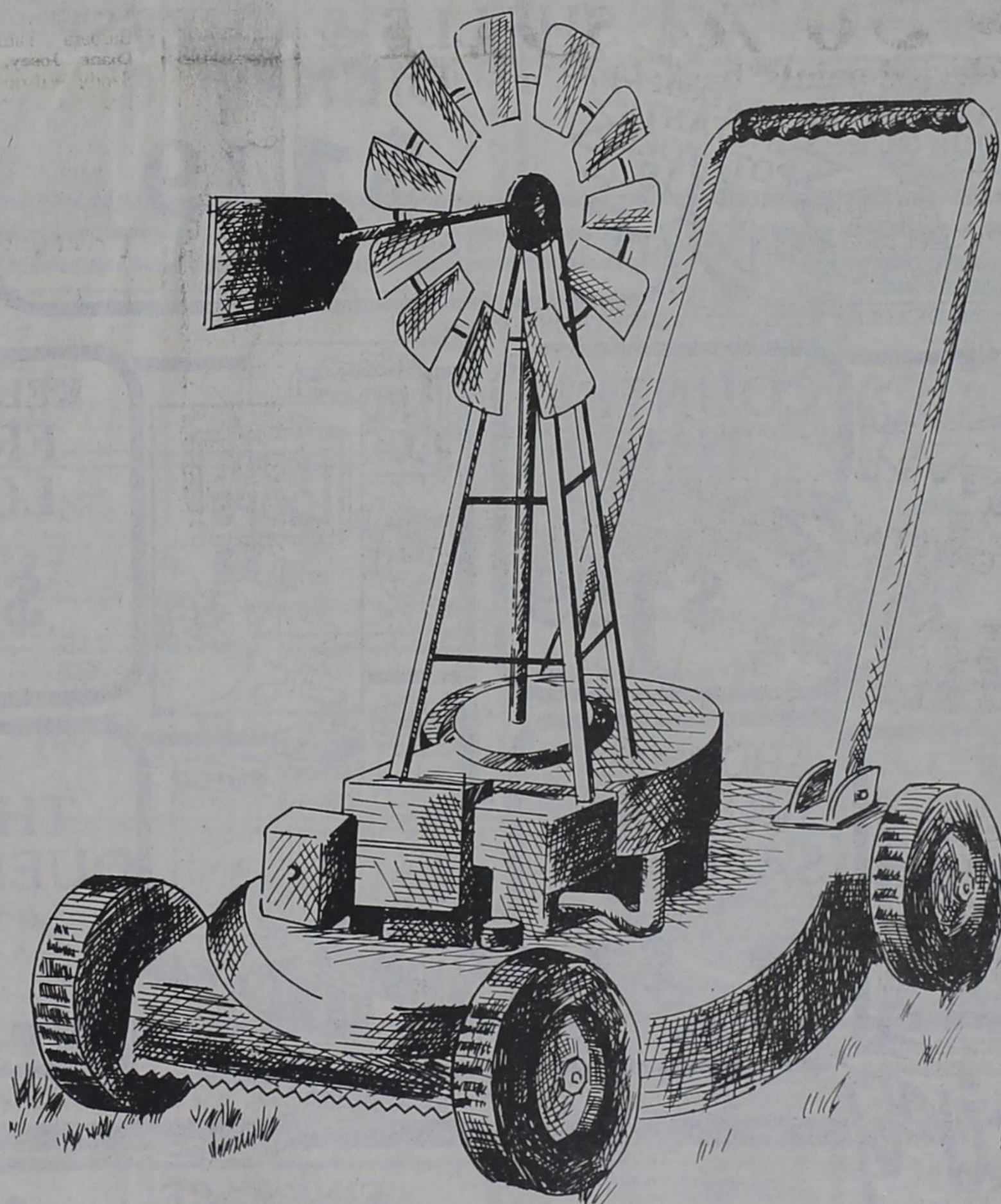
We are now taking bookings for wheat seed on a first come, first served basis.

Contact Ken Evans at  
**Oilseed Systems, Inc.**  
Crosbyston, Texas  
806-675-7351

### \* Lunch Specials \*

- Monday**  
Chicken fried steak or meatloaf, mashed potatoes, red beans, squash, blackeyed peas.
- Tuesday**  
Smothered steak or fish sticks, macaroni and cheese, mixed greens, red beans, mashed potatoes.
- Wednesday**  
Chicken and dumplings or chicken fried steak, fresh carrots, Au gratin potatoes, red beans, green beans.
- Thursday**  
Hamburger steak or chicken nuggets, mashed potatoes, red beans, fried okra, corn.
- Friday**  
Chopped BBQ beef or fish sticks, potato salad, cole slaw, red beans, green beans.
- Saturday**  
Fried chicken or meat loaf, macaroni and tomato, mashed potatoes, red beans, mixed greens.
- Sunday**  
Roast beef or chicken and dressing, mashed potatoes, red beans, green beans, corn.

Each Special **ONLY 3<sup>95</sup>**  
**JACKSON'S CAFE**  
212 N. Broadway 495-2970



## Use the right energy for the right job.

Yes, we get a lot of wind in West Texas. But a gadget like this just can't do the job when you want to mow your lawn.

A gadget like a heat pump can't cool your home as well as a high-efficiency air conditioner, either. And it can't warm your home as well as a natural gas furnace.

Think of winter this summer. Nothing heats your home like natural gas from Energas, West Texas' best energy value.



**ENERGAS**

Don't mess with your furnace.





**UNITED**  
★ Supermarket ★

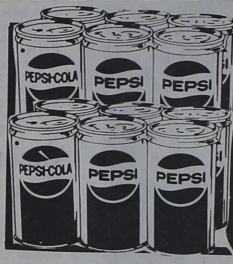
**S&H GREEN SEALS 50**  
WE GIVE S&H GREEN SEALS EVERYDAY DOUBLE ON WEDNESDAY  
PRICES GOOD THRU AUG. 18TH IN LUBBOCK, SLATON, POST, BROWNFIELD, LEVELLAND, LITTLEFIELD, & PLAINVIEW

*Grocery*

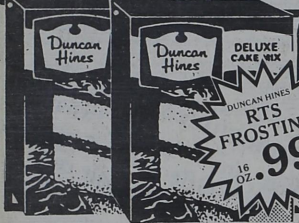
**MMMMMMMM YOU CAN ALMOST TASTE IT!**



**TEXSUN ORANGE JUICE**  
46 OZ.  
**\$1.19**



**PEPSI**  
6-12 OZ. CANS  
**\$1.49**



**DUNCAN HINES LAYER CAKE MIX**  
ASST.  
**.79**  
18.5 OZ.

**FRITO'S CORN CHIPS**  
ASST.  
**.89**  
8 OZ.

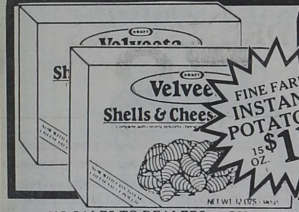
**BETTY CROCKER FAMILY BROWNIE**  
**.99**  
21.5 OZ.



**MARYLAND CLUB COFFEE**  
REG. ASST. GRINDS  
**\$1.69**  
13 OZ. CAN

**LUCKY CHARMS**  
**\$2.49**  
14 OZ.

**KEEBLER COOKIES**  
• PECAN SANDIES 18 OZ.  
• CHIPS DELUXE 19 OZ.  
**\$1.89**



**VELVEETA SHELLS & CHEESE DINNER**  
**\$1.19**  
12 OZ.

**WYLER'S FRUIT SLUSH**  
ASST.  
**\$1.29**  
4.4 OZ.

**UNDERWOOD DEVILED HAM**  
**.59**  
2.25 OZ.

NO SALES TO DEALERS • QUANTITY RIGHTS RESERVED



**COUNTRY TIME SUGAR SWEET**  
**\$1.99**  
8 QT.



**KELLOGG'S FROOT LOOPS**  
**\$2.49**  
15 OZ.

**SKINNER EGG NOODLES**  
ASST. 8 OZ.  
**2 \$1** FOR

**HUNT'S SQUEEZE KETCHUP**  
64 OZ.  
**\$2.49**



**HORMEL VIENNA SAUSAGE**  
5 OZ.  
**3 \$1** FOR



**10K THIRST QUENCHER**  
ASST.  
**.89**  
46 OZ.

**PIONEER BISCUIT MIX**  
REG. OR BUTTERMILK 40 OZ.  
**\$1.69**

**FINE FARE BLACK PEPPER**  
4 OZ.  
**\$1.29**

*Dairy*



**SHEDD'S COUNTRY CROCK MARGARINE**  
3 LB. TUB  
**\$1.69**

**FINE FARE ORANGE JUICE**  
64 OZ.  
**\$1.49**

**BELL COTTAGE CHEESE**  
REG. OR SLIM 'N TRIM 12 OZ.  
**.69**

**BELL CHOC-O-RIFFIC**  
GAL.  
**\$1.29**



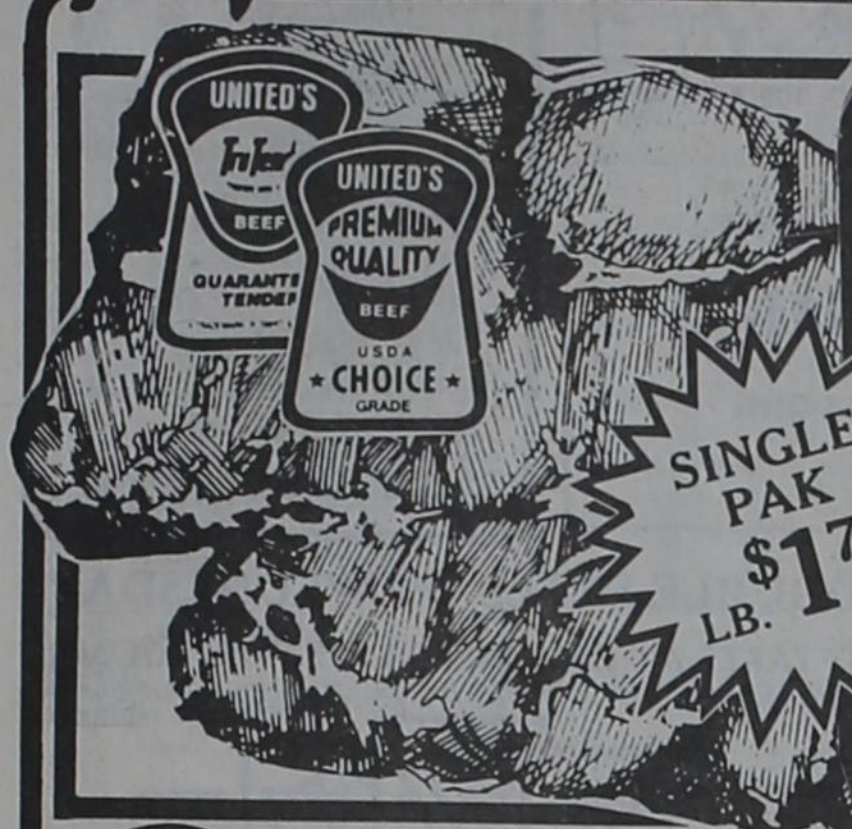
**BORDEN HOMO MILK**  
GAL.  
**\$1.89**

*the personal touch*



# Meat

# UNITED



UNITED TRU TENDR OR  
USDA CHOICE  
SUPER VALU PAK  
BONELESS  
SHOULDER  
ROAST

SINGLE  
PAK  
\$1.78  
LB.

LB. **\$1.68**



UNITED TRU TENDR  
OR USDA CHOICE  
**K-BOBS**  
BEEF OR CHICKEN

EXCELLENT  
FOR  
COOKOUTS

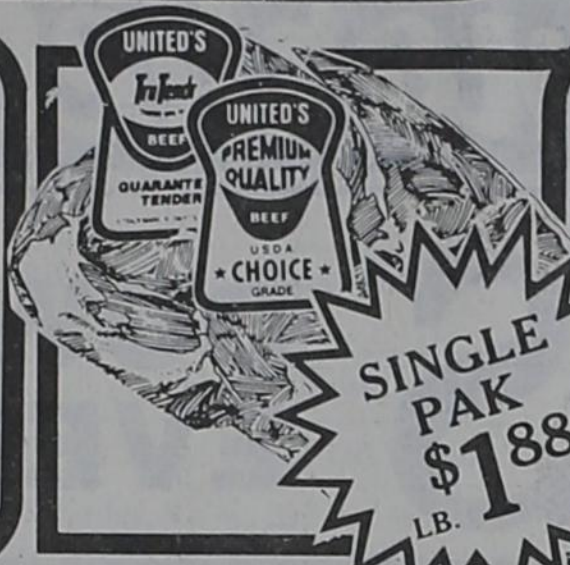
LB. **\$3.48**



UNITED TRU TENDR  
OR USDA CHOICE  
SUPER VALU PAK  
BONELESS  
FAMILY STEAK

SINGLE  
PAK  
\$1.88  
LB.

LB. **\$1.78**



UNITED TRU TENDR  
OR USDA CHOICE  
SUPER VALU PAK  
BONELESS  
ARM ROAST

SINGLE  
PAK  
\$1.88  
LB.

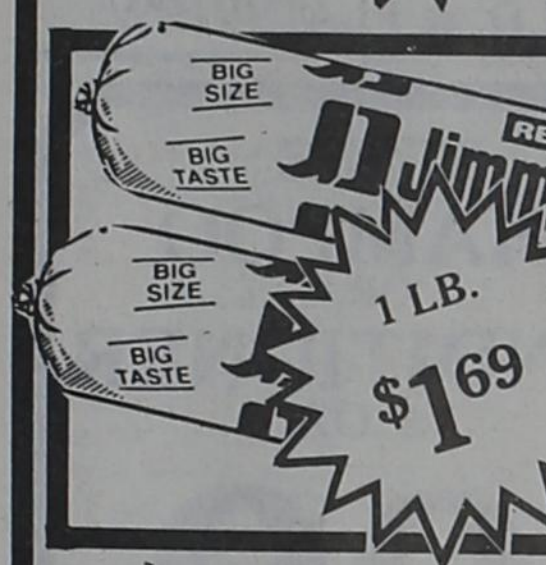
LB. **\$1.78**



SUPER VALU PAK  
LEAN  
GROUND  
BEEF

REG.  
PAK  
\$1.78  
LB.

LB. **\$1.68**



JIMMY DEAN  
PORK  
SAUSAGE  
REG. • HOT • MILD • SAGE

1 LB.  
\$1.69

2 LB. **\$3.35**



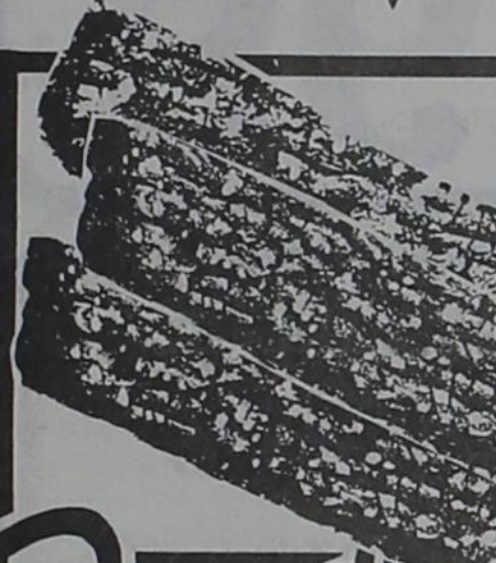
SLICED  
BEEF  
LIVERS  
PEELED & DEVEINED

LB. **.68**



DELTA PRIDE  
FARM RAISED  
CATFISH  
FILLETS

LB. **\$3.68**



EXTRA LEAN  
STEAK  
FINGERS  
(EXCELLENT FOR CHICKEN  
FRY)

LB. **\$2.98**

HILLSHIRE  
SMOKED  
SAUSAGE

MEAT  
OR  
BEEF LB.

**\$1.68**

COUNTRY PRIDE  
GRADE A FAMILY PAK  
FRYER THIGHS  
OR DRUMSTICKS

LB. **.78**

QUANTITY RIGHTS RESERVED • NO SALES TO DEALERS

# Produce



CALIFORNIA  
NECTARINES

2 **\$1**  
LBS.

MEXICO  
LIMES

EA. **.5**

JALEPENO  
PEPPERS 2 **\$1**  
LBS.



FRESH  
CRISP  
BROCCOLI

2 **\$1**  
LBS.



RED RIPE  
ROMA  
TOMATOES

2 **\$1**  
LBS.

LONG GREEN  
CUCUMBERS 4 **\$1**  
FOR

SWEET  
CORN 5 **\$1**  
EARS



LOCALLY GROWN  
GREEN  
BELL PEPPERS

5 **\$1**  
FOR

# Frozen



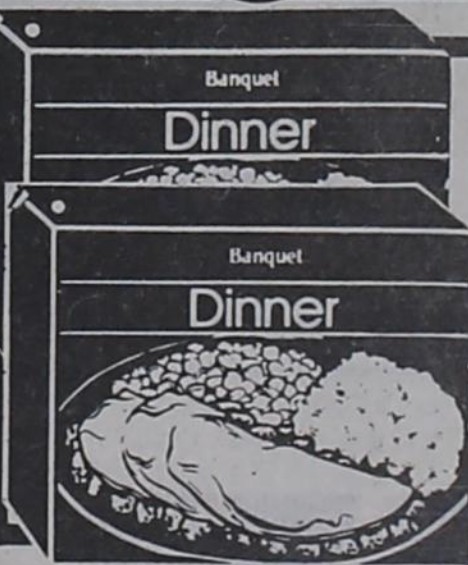
ORE IDA  
TATER  
TOTS  
• REG. • ONION • BACON

2 LB. **\$1.19**



UNITED  
ICE  
CREAM  
ROUND CARTON

1/2 GAL. **\$1.69**



BANQUET  
DINNERS  
EXCEPT HAM OR  
BEEF

**\$1.19**

VAN DE KAMP'S  
• BATTERED  
FISH FILLETS 10.6 OZ.  
• BREADED  
FISH STICKS 12 OZ.

**\$1.99**

FINE FARE  
CUT  
OKRA

16 OZ. **.99**

FINE FARE  
GRAPE  
JUICE

12 OZ. **.69**

MORTONS  
MINI  
HONEY  
BUNS

16 OZ. **\$1.69**



# IRS Provides Ruling on Drought Related Income

Agricultural taxpayers may qualify for special tax treatment of income received because of the drought, according to an economist in management with the Texas Agricultural Extension Service.

Dr. Wayne Hayenga said the Internal Revenue Service has explained the extent to which payments received by farmers under the Disaster Assistance Act of 1988 and certain other income may qualify for deferral.

He said the IRS also addresses the proper tax treatment of payments and other benefits received by farmers under the act.

Categories of the act include crop loss assistance, livestock sales and feed assistance.

Hayenga said according to the IRS, farmers may elect to defer the inclusion of crop loss assistance payments received under the Drought Assistance Act until the next tax year.

"All Title II payments are eligible for elective deferral under Section 451(d), regardless of whether they were received before or after the date of enactment," he said.

The time and manner of making this affirmative election is described in IRS Publication 225,

Farmer's Tax Guide.

Concerning livestock sales caused by the drought, the IRS has ruled that gain from such sales that took place solely because of the drought can be deferred for one year by electing farmers.

"The IRS explains how to qualify for the deferral. For example, the sale must occur solely because of drought conditions in the designated area that affected the water, grazing or other requirements of livestock to necessitate the sale," Hayenga said.

Concerning feed assistance, Title I of the act authorizes programs to provide feed assistance and certain other benefits to qualifying livestock producers if the Secretary of Agriculture determines that a livestock emergency exists because of a natural disaster, such as drought.

"Here, the IRS has said the Title I payments are not proceeds from the sale of livestock and so are not eligible for deferral under Section 451(e), nor are they eligible for deferral under Section 451(d) because they aren't compensation for the loss of crops, where income would have been reported in a later tax year," Hayenga said.

He said generally, reimbursement payments under Title I programs are to be included in gross income according to the recipient taxpayer's accounting method.

**We're Just a Phone Call Away\***



Mozelle Rogers 495-2159  
 Betty Curry 495-2761  
 Lois Cook 495-2392  
 Gladys Blair 495-2360  
 Betty Posey 495-2067

YOUR LOCAL UNIT OF THE AMERICAN CANCER SOCIETY OFFERS THESE AND OTHER PROGRAMS AT NO CHARGE. PROGRAMS MAY BE LIMITED TO VOLUNTEER AVAILABILITY IN SOME AREAS.

**AMERICAN CANCER SOCIETY**

**WE GIVE S&H GREEN SEALS EVERYDAY**



# UNITE

## ★ Supermarket ★

**DOUBLE SEALS ON WEDNESDAY**  
 IT TAKES 24 SEALS TO FILL A SAVER FOLDER  
 ONE SEAL ISSUED FOR EVERY \$5 EXCLUDING BEER, WINE AND TOBACCO PRODUCTS



# SAVINGS DOWN EVERY AISLE

PRICES GOOD THRU AUGUST 13TH IN LUBBOCK, SLATON, POST, BROWNFIELD, LEVELLAND, LITTLEFIELD, & PLAINVIEW



**TIDE DETERGENT**  
 •REG. •BLEACH •UNSCENTED  
 \$1.50 OFF LABEL

**\$5.99**

147 OZ.

IVORY PERSONAL SIZE  
 15' OFF LABEL 4 BAR PACK **.89**

IVORY LIQUID DISH SOAP  
 22 OZ. **.99**

VIVA NAPKINS  
 140 CT. **.79**



**STYLE SHAMPOO OR CONDITIONER**  
 15 OZ.

**.99**



**CLOROX BLEACH**  
 REG. 5' OFF LABEL GAL. **.99**


**CLOROX 2 LIQUID**  
 64 OZ. **\$2.59**

REG. \$2.29



**FREESTYLE**  
 •HAIR SPRAY  
 •MOUSSE  
 •STYLING SPRITZ 7 OZ.  
 •SCULPTING GEL 4 OZ.

**.69**



**SURE SOLID**  
 2 OZ.

**\$2.19**



**BRAWNY TOWELS**  
 ASST. JUMBO ROLL

**.69**



**AQUA NET AEROSOL HAIR SPRAY**  
 9 OZ.

**.99**



**AQUA FRESH PUMP**  
 •TRIPLE PROTECTION 4.6 OZ.  
 •TARTAR CONTROL 4.3 OZ.  
 •KIDS 4.6 OZ.

**\$1.39**



**POLIDENT TABLETS**  
 20 CT.

**\$1.29**




**BIC SHAVER**  
 REG. OR SENSITIVE 5 CT.

**.59**



**TIC TAC**  
 3 PACK **.79**



**COLGATE TARTAR RINSE**  
 MINT OR PEPPERMINT  
 12 OZ.

**\$1.69**



*the personal touch.*

QUALITY  
 VALUE  
 SELECTION



**Classified Advertising**

**Private Party Classified Rates**

**PAYABLE IN ADVANCE**  
All private party classified ads must be paid in advance. Eulogies and card of thanks for a death in the family, up to 50 words free, limit one insertion per family death. Card of thanks for hospitalization or illness, first 50 words free. A 30 percent discount is allowed for all private party, non-commercial, non-profit paid in advance classified ads.

**DEADLINE FOR COPY AND PAYMENT IS Mondays at 5 p.m.**

Classified Rates	
Number of Times	Rate Per Word Per Time
1	.25
2	.20
3	.15
4	.125

**Legal Notices**

**NOTICE OF INTENTION TO BECOME INCORPORATED**  
THE CONNELL ESTATE, located at 130 E. Main, Post, Texas 79356, is incorporating, and will continue its business under the same management, as two separate corporations with the names "CONNELL ESTATE NORTH, INC." and "CONNELL ESTATE SOUTH, INC."

**Wanted to Buy**

**WANTED LIVE - ALL SNAKES:** Rattlesnakes, \$5 per lb. Bull Snakes, \$1.50 per ft. - (NO Water Snakes or Coach Whips). Dryland Turtles, \$1.50 ea. - Mountain Boomers, \$2.00 ea. Call 806-495-2738 or 806-495-2774.

**Card of Thanks**

I would like to thank all my friends and staff of Twin Cedar Nursing Home for the visits and care I have received. It really makes my day to see all my old friends from Post. Thanks to all the staff for the courtesy they have shown to all my family and friend's. With love and thanks, Roy Stevens

Thank you for the visits, calls and cards following Fred's accident. Your concern was a great help to us. Fred, Pam, Monty and Tandi Humble

I wish to thank everyone for their many acts of kindness while I was in the hospital. Thanks for your concern. Audrey Rolan

I want to say thank you to all of my friends and family for the food, visits, driving me places I needed to go, and for the phone calls while I was in the hospital. God Bless You, Verna Roberts

**Personals**

**City County Drug and Alcohol Abuse**  
Glenda Baker - Director  
Lynette Massey - Asst. Director  
We Care  
495-2818 495-3788

If you have recently lost your job or if you are having problems with your current employment because of alcohol or drug abuse, WE CAN HELP. Call 1-800-621-8580 or 1-817-445-HELP. Ask for Jack.

Post Group of Alcoholics Anonymous meets every Thursday night at the First Presbyterian Church, 910 W. 10th at 8 p.m. Closed meetings are held except on the last Thursday night of the month, which is an open meeting. We have supper at 7 p.m. and the speaking starts at 8 p.m. Anyone who wishes to talk or ask about an alcohol problem, call 495-3377 or 495-4173.

To Whom It May Concern:  
This is to notify Maurine Jackson, formally of 109 N. Ave. N, Post, Texas, if her personal belongings stored in Post, Texas are not collected by her personally in ten (10) days from

**Circle 7 Glass**  
• Windshields • Residential Glass  
• Industrial • Equipment Glass  
• Insurance Rebates • Mobile Service  
132B W. Main  
495-4117 495-3069 495-2702

**G.H. (Jerry) Conoly Heating and Air Conditioning Co.**  
Sales-Service-Installation  
Home Owned Authorized Heat Pump Contractor  
Free Estimates Licensed by the State of Texas - Fully Insured  
495-2950 or 495-2332

date of this notice, they will be disposed of in some manner.

**Services and Repairs**

Clean alleys, light hauling, lawn work, clean flower beds, other odd jobs. Free estimates. Call Roger 495-3013.

**Help Wanted**

**WANTED - Experienced Packer and Anchor Man** to live in Post, Texas, call GIBGO Pump & Packer in Lamesa 806-872-6561.

**Crew Supervisor** to monitor developmentally disabled clients performing roadside park maintenance; knowledge of moving equipment upkeep required. Other duties to be discussed at interview. Applications may be picked up between 12 noon and 1 p.m. at Post Satellite Workshop, 316 S. Ave. F, Post, Texas 806-495-3295 or Lubbock State School 806-742-8116. Salary: \$1,059 monthly. E. O. E.

**ATTENTION LADIES**

We are now hiring demonstrators to show toys, gifts, home decor and furnishings, Christmas decorations, fashions and jewelry on party plan. No investment, collecting or delivery. Free kit, supplies and training. Work your own hours. 806-793-5883.

**Jobs Wanted**

Typing done - reasonably priced - call 495-3319. Ask for Becky or leave message.

**Homes for Rent**

(1) large one bedroom house, unfurnished. Call 495-3229.

3 bedroom, 2 bath house for rent or sale. \$300 month rent, reference required. 495-3057.

**Apartments for Rent**

**PLEASANT LODGE APARTMENTS:** 109 N. Ave. N.

All furnished:  
(2) 3 room apartment for rent.  
(1) 2 room apartment for rent.  
(1) 1 bedroom apartment for rent. Call days 495-4061 or nights 495-2520.

Apartment coming up for rent. Tom Power, 495-3051.

**Mobile Home Lot to Rent**

Reduced to \$37.50 per month. Small yard, garden plot, storm cellar. 495-2480.

**Mobile Homes for Sale**

1978 Lancer mobile home. 3 bedroom/2 bath. Joe Mason. Call 495-2285.

Assume \$240 payments on extra nice 2 bedroom, 2 bath home with \$1,000 equity, 1984 model in excellent condition. Travis Ellis, Realtor. 495-2480.

**Homes for Sale**

Two bedroom - 1 bath. 1 1/2 lots. 910 W. 6th. \$16,000. Barbara Hardin, Realtor. 495-3987.

Two bedroom with dining room and utility room. GREAT BUY. Call 495-4015.

Nice brick home, 510 W. 10th. Call 495-2338

Three bedroom, one bath, best offer. Call 495-4018.

3 bedroom, 1 bath house with 3 room rent house and 2 car garage. For appointment call Johnnie. 495-3031.

House for sale: 107 E. 12th, \$22,000. For more information call #495-3833 days - Wayne

615 N. Ave. P. Call 495-3208.

3 br. 2 bath, large den, fireplace. Util. room. Brick with siding trim - large shop. 114 South Ave. Q. Call 495-2687.

4 bedroom, reduced \$4,000. \$3500 down with second note by owner.

**NEW LISTING:** 3 - bedroom brick; beautiful, roomy home. \$55,000. ALSO: Wide lot in great location with small house needing repairs. \$6500, or make offer. Travis Ellis, Realtor. 495-2480.

**Miscellaneous for Sale**

Two bicycles for sale. Price negotiable. Call Cody after 6 p. m. 495-3739.

Like new - BALDWIN PIANO - 495-3371.

**Garage Sales**

Friday 9 a. m. til ? at 116 W. 5th.

Saturday, 8 a. m. til ? 915 W. 8th.

Two families, 510 W. 11th, Wednesday, Thursday and Friday, 9 a.m. til ? odds and ends furniture, lots of misc.

Thursday, 9 a.m. to 3 p.m. Clothes, shoes, linens, pot plants, fabrics, misc. 119 N. Ave. S.

Saturday - August 19th. Lots of misc. items. 219 S. Ave. F. 8:30 a. m. til ?

Friday & Saturday. 9 a.m. til ? Baby clothes and a little bit of everything. 609 N. Ave. L.

**Post Community Housing Association, Inc.**

509 N. Avenue S Post, Texas 495-2140

**Equal Housing Opportunity**

**Follis Heating & Air Conditioning**  
Sales, Installation & Service  
**TRANE EQUIPMENT**  
FREE Estimates  
Dial 628-6371  
Insured and Licensed

Yard sale - Thurs. & Friday. 506 W. 11th. From 9 a. m. til 5 p. m.

Saturday - 805 W. 3rd. From 8:30 a. m. til 2 p. m. Microwave, queen box springs and mattress, baby clothes and etc.

Enormous Garage Sale: August 18 and 19th. Baby clothes and things, girls clothes, maternity clothes, toys, stuffed animals, dolls, brass king size headboard. 615 W. 7th.

**Pets and Supplies**

Only 2 male puppies left to give away. 8 weeks old. Part Blue Healer. Call 495-3204 or 495-4081.

**Feed and Seed**

Clean hay for sale. W. C. Graves 629-4239.

**Trailers for Sale**

16 foot Tandem trailer. Call 495-3005.

**Vehicles for Sale**

1981 1000 cc. Harley Davidson, 4600 miles, good shape, 495-3413.

**Business Opportunities**

**DREAM JOB**

\$25 to \$35 per hour. No experience. Will train as ladies' fashion consultant. 915-573-0403.

"The Star Spangled Banner," when it was first published, bore the title "The Defense of Fort McHenry."

**Order your subscription today!**  
**ONLY \$15 in Garza and adjacent counties!**  
Call 495-2816

**Special Cakes**  
Birthday, anniversary or weddings.  
Call Jimella Simpson at 495-3318 after 5 p.m.

**Seals Furniture Sales and Service**  
720 N. Broadway  
495-3190

We now have in stock television antennas made by WineGard - also t.v. wire - poles - guide wire.  
Rebuilt Washers 90 day guarantee start at \$169.95  
Dryers start at \$89.95  
Refrigerators start at \$159.95  
New Glass Top Dinette Set - \$169.95  
Rebuilt gas and electric Ranges start at \$169.95

**County Budget Reviewed**

(Continued from Page 1)

Representatives of the center reported that, based on enrollment, costs for the existing program and secured assistance for two employees from JTPA, it was expected that the three cottages would be self-supporting.

Mike Nedela, as representative of the Post Satellite School, also met the commissioners with a 1989-90 budget consideration request for \$3,180 - one-third of the yearly \$9,540 provided by the county, city and schools. This is the same amount budgeted for the satellite school last year and Nedela was assured by Commissioner Herbert Walls that "he saw no problem with the school getting that amount this year."

In other business, the commissioners' court:

Heard a presentation from Lewis Earl on the designation of an area in Post as an Enterprise Zone.

A division of the Texas Department of Commerce, the purpose of the Enterprise Zone Program is to create jobs and encourage investments in economically poor areas.

The Enterprise Zone Program will be discussed at length in a public hearing Wednesday, August 16 at 6 p.m. in City Hall.

Re-appointed Pru Basquez as representative to the South Plains

**Housing Authority.**

Voted approval for County Judge E.A. Howard, Jr., to lower the Lubbock County Youth Center yearly bedding total from 182 beds to 92 beds. The reduction, sought on the recommendation of Ed Sawyers, would save the county money.

Opened bids for a county truck for Precinct 1 and awarded the bid to Jimmy Moore for a used 1981 Mack truck for \$22,000. Other bids included three from Bruckner's Truck Sales in Lubbock: a 1980 used Mack truck for \$23,500; a 1989 new Mack truck for \$60,529; and a 1980 used Mack Superliner for \$23,500.

Approved the appointment of Ruby Jones as absentee ballot judge.

Reviewed the certification of the 1989 tax appraisal roll which showed a collectible total of \$430,262,251, as compared with 1988's \$480,385,399.

The meeting was recessed and reconvened at 1:30 p.m. for budget hearings, with Sammy Ellis as judge pro tem in the absence of Judge Howard.

Present at the meeting were Judge Howard; Commissioners Walls, Ellis, John Valdez and Ted Aten; Voda Gradine, and Sonny Gossett.

**Impact of '89 Ag Losses Estimated \$3.5 Billion**

A projection of effects of weather-related factors during 1989 on Texas crops and livestock indicates the impact to the Texas economy could top \$3.5 billion.

This figure is the result of estimates compiled by the Texas Agricultural Extension Service to emphasize the disaster that many Texas farmers and ranchers are facing as a result of unfavorable weather conditions, including drought, hail and floods.

Dr. Zerle L. Carpenter, Extension Service director, said that loss estimates were projected for major commodities and geographical areas by county Extension agents serving all 254 counties of Texas.

"The impact of the drought and other related problems already is a grim reality in South and West Texas and throughout most of the state's wheat area," Carpenter said.

He said research indicates that the total economic impact on the production and agribusiness sectors of the state for each \$1 of farm product sales is about \$3.10.

"Therefore, the so-called domino effect of weather-related losses through rural towns and the urban centers will result in significant impacts to the entire state," Carpenter said.

The wheat loss situation primarily is the result of cold weather early in 1989. The corn, sorghum and cotton situation is mainly the result of drought and is focused in the western and southern part of Texas, although major hail damage has occurred in the South Plains.

Carpenter said the livestock analysis reflects added costs to producers of maintaining livestock during the drought above normal costs. This also is concentrated mostly in South and West Texas, he said.

Additional livestock production costs that are drought-related are projected at about \$507 million. Total crop loss projections are estimated at about \$975 million.

The biggest loss is expected to be in the cotton crop with about \$465 million estimated. The wheat loss is estimated to be about \$350 million, while the sorghum crop loss is projected at around \$80 million.

Loss estimated to the Texas corn is about \$70 million and the unfavorable weather is expected to trim the rice crop by an estimated \$15 million.

Carpenter said the total crop loss and livestock cost estimate to the producer is projected at \$1.4 billion. The economic impact of projected crop and livestock losses is estimated at more than \$3 billion, he said.

Dr. Carl Anderson, Extension Service economist, said all farm and ranch marketing cash receipts in 1988 totaled about \$10.95 billion.

He said a marked increase in grain prices and a large cotton crop boosted crop sales substantially last year, while somewhat higher prices for cattle, broilers, wool, dairy and poultry marketings helped increase livestock sales.

The agricultural production system in Texas is estimated to have an economic impact of about \$35 billion. The entire food and fiber production, processing and retail marketing chain has about twice that impact, Anderson said.

Carpenter said the economic situation for agriculture for the remainder of 1989 will depend on weather conditions where crops are still in various stages of production.

But for many producers in South, Southwest and Far West Texas where the drought has persisted severely for the past two years, it has already meant shat-

tered dreams and devastation.

"The drought will worsen the rural crisis and its impact on Texas' people and towns. The agricultural industry's general health or problems will reach well beyond the farm and ranch gate," Carpenter said.

The report was coordinated by Dr. Chester Fehlis, state leader for county Extension programs, in cooperation with Dr. Roland Smith, Extension economist in agribusiness and marketing.

**Cotton Talks...**

from Plains Cotton Growers, Inc.

Eleven experienced two-person teams working for Plains Cotton Growers, Inc. of Lubbock will have, by the first part of August, completed detailed maps of almost a half million acres of cotton. The objective: to delineate the size, shape and location of about 4,000 fields situated in 12 weevil-prone counties along and on either side of the Caprock that forms the jagged eastern High Plains boundary.

As every year, mapping is a key step in the meticulous job of preparing for PCG's High Plains Boll Weevil Control Program now going on its 26th year. All fields planted to cotton in the area's "control zone" are pinpointed on maps for quick location by spray plane pilots in the fall.

Every county through which the Caprock passes, from Briscoe on the north through Floyd, Gaines, Garza, Borden, Dawson and Howard on the south will be mapped, plus Motley, Dickens, Kent and Scurry counties to the east.

All fields in the zone aren't expected to require spraying, program officials say. But when weevil populations begin to build, they explain, treatment can't wait for mapping.

Weevil emergence from winter hibernation has been monitored by traps baited with pheromone, a synthetic sex attractant, throughout the control zone and in adjacent fields to the east since early spring.

Trapping gives preliminary indications of where manual surveys should be concentrated prior to the initiation of spray operations this fall. And, by comparing trap catches inside the zone with those outside, officials also can gauge the effectiveness of the previous year's program.

Reports show that 30 traps in untreated territory outside the control zone through July 19 this year have yielded 49,267 weevils while less than a third as many, 14,184, were retrieved from 45 traps where control was exercised last year. Average weevils per trap, in-zone vs out-zone, PCG officials note, make the success of last year's control effort look even better. Outside the zone, each trap caught an average of 1,642 weevils, more than five times the 315 per trap catches inside.

Manual surveys, involving 35 two-person teams, began September 5. Spraying will start in late September or early October as dictated by survey results.

Accumulative trap catches below the Caprock this year (63,451) are significantly greater than in 1988 (38,593). But program operators cite three reasons why they don't think these numbers indicate a larger program than the 600,000-acre, \$1.9 million program of 1988.

First, under this year's government program, permitted acreage is 12.5 percent below the acreage permitted in 1988. Second, late planting this year delayed the availability of a food supply for weevils, probably causing a heavier-than-normal "suicidal emergence."

**Post Insurance**  
Serving Post Since 1911  
• All Your Insurance Needs  
Auto - Home - Commercial - Bonds  
• Quotes available by phone  
122 E. Main 495-2894

**Horseman's Paradise**  
Large brick home on three acres. Located in Lynn County - Wilson school district. Additional small acreage available for purchase with home.  
New Listing  
Three bedroom, two bath, swimming pool, two car garage, corner lot.

**Great Older Home**  
Three bedroom, two bath, basement, two car garage, central heat and air, corner lot.  
.....  
Three bedroom, one bath, carport, central heat and air.  
.....  
**Doll House**  
Two bedroom, one bath, beautiful decor, gorgeous yard.  
.....  
160 acres farmland in Garza County.  
.....  
**Mitchell Real Estate**  
Kim 495-3719 Travis 495-2480  
Mike and Wanda 495-3104 or 828-5878 Barbara 495-3987





QUARTERBACK RANCE SAPPINGTON tosses a pitch-out running left during practice Monday afternoon as the Post Antelopes prepare for their first scrimmage August 25 at Floydada.

# Post Antelopes Open '89 Season with 'Two-a-Days'

"I tell you, I'm really excited about this football team and its prospects," Post High School football coach Dwayne Osborne commented Monday afternoon following the first "two-a-day" practice session for the varsity and junior varsity players.

"Today we mainly did some testing, looking at their conditioning, seeing what we need to do," Osborne added.

A total of 50 students reported for practice Monday morning, with six offensive and six defensive starters returning from the 1988 team.

"I'm looking forward with great anticipation," the coach continued, "we have got a great opportunity to

do something special this year, and we're going to play some exciting football."

The players have 10 practice days to prepare for the first scrimmage August 25 at Floydada, followed by a second scrimmage August 31 at Haskell with Henrietta.

The team opens the season September 8 at Abernathy with an 8 p.m. kickoff.

Scrimmage times are yet to be announced.

Osborne put the players through a series of workouts Monday afternoon before switching to practice on particular plays.

"We go into pads Friday morning,"

he added, "and Saturday morning, after all the picture-taking is over, we're going to have some sort of contact practice, maybe an intra squad scrimmage."

"Next week we're really going to get after it!" Osborne emphasized.

Of the 50 players reporting, there are 17 seniors, 19 juniors and 14 sophomores. Freshmen report for practice August 23 and will work once a day.

"One thing fans will see a little different this year," the coach concluded, "is a more aggressive style defense, we plan to take up where we left off toward the end of last season."

**Antelope Practice Schedule**  
 • August 25, scrimmage at Floydada  
 • August 31, Henrietta scrimmage at Haskell  
 • September 8, first game at Abernathy

# Texas Working to Steer Clear of Brucellosis

In West Texas, ranchers are apt to be more concerned about "drought" than "brucellosis." In these parts, there's more occurrence of dry, hot weather than of brucellosis, or "bang's," and incurable bacterial disease that can cause cows to abort, deliver weak calves, or produce less milk. What may come as a surprise, however, is the link between "drought" and "bang's" in this arid section of the state.

"Drought plays a key role in

brucellosis infection in West Texas," said veterinarian Jimmy Dusek of the Texas Animal Health Commission (TAHC), the state agency charged with eradicating the disease.

Dusek, director of TAHC's Area 2, and his staff of seven animal health inspectors work with ranchers and livestock markets in 32 West Texas counties, including Garza. They have found two basic drought-related factors that contribute to brucellosis infection.

Dusek explained that during a drought, ranchers typically sell off cattle they can't feed or water. When the weather eases, producers have to by "replacement" breeding stock. These heifers or cows may come from other states or areas of Texas where brucellosis infection is more common. "Producers mix new animals into their herd, and then get the nasty surprise of finding these new cows and heifers were infected - and spread the disease," he said.

Another factor, Dusek said, was that some ranchers ship their cattle to green pastures during a drought, often transporting them across or out of the state. "In 1983, a West Texas producer hauled animals to the Houston area, and the herd picked up infection from a herd nearby," he said. Dusek cautioned producers to carefully consider where they ship or pasture animals during droughts.

"We've been spared the higher rates of infection found to the east," Dusek said. "But this is no time to become complacent about protecting hers, if West Texas is to remain 'clean.'"

Dusek said only seven herds in Area 2 are under quarantine because of brucellosis, compared to 832 herds throughout the rest of the state. Area 2 includes a portion of the South Plains and North Central Texas. Area 2 stretches through Gaines County and includes Dawson, Borden, Garza, Crosby, Floyd and Briscoe Counties in the western border. The northern edge reaches to Wichita County, before dropping through Archer, Young and Stephens Counties on the east. The southern border includes Shackford, Jones, Fisher and Scurry Counties.

"West Texas has been able to maintain good control of brucellosis because of the awareness and concern of producers and their cooperation with the TAHC," Dusek said. "Years of vaccinating replacement heifers have resulted in a population of adult cows with a high degree of immunity to brucellosis."

"A herd that had remained quarantined for more than four years was discovered to have home-raised infected heifers as the source of reinfection to the adult cows," Dusek said. "This herd was cleaned up quickly after a plan was instituted to separate heifers from the main cow herd until after the heifers had calved and were tested. This verifies the need for tough restrictions on heifers from an infected herd to eliminate bang's, not only in West Texas, but throughout the state."

Dusek explained that an infected herd is usually detected

when a cow aborts, or when cows are blood-tested for the disease prior to private sale, or at a livestock market. To stop disease from spreading, infected cattle are slaughtered (the meat is safe to eat), while the animals remaining in the herd are quarantined until they undergo a series of blood tests to determine there is no more infection.

Dusek said brucellosis is usually spread among a herd when cattle lick infected cows, or nuzzle the bacteria-covered calves or aborted fetuses of infected cows. Bacteria can also be spread if an aborted fetus from an infected cow is dragged to another pasture by dogs or other animals. Infected cows can also transmit brucellosis to their calves, these calves may not test positive for the disease until they are grown and ready to calve.

"Brucellosis infection can be prevented, particularly in West Texas, where infection rates are already low," Dusek said. "Taking a few precautions can provide added protection for a herd."

Dusek recommended producers purchase heifers and cows only from herds certified by the TAHC to be brucellosis-free. In Texas, 2,113 producers have earned the

certification by having their herds tested annually with no indication of infection. Dusek also suggested ranchers buy heifers that were vaccinated against brucellosis when they were between the ages of four and eight months.

"Keeping fences mended protects herds," Dusek remarked. "Cattle that wander into nearby pastures could contract brucellosis and other diseases from infected animals."



SECRET SHOPPER award went to Happiness Is as Greg Wortham (left) presents the Post Main Street Project certificate to Cindy Mitchell. (Photo by Gail Burnett)



SPECIAL GUEST AT CHAMBER OF COMMERCE BREAKFAST last week was State Representative David Counts (center). Joining Counts were board of directors members (left to right) Dale Redman, Jack Alexander, Larry Waldrip, Joy Fluit, Joyce Strubhart, Susan Pennell, Ann Stelzer, Kathy Floyd and Joe Harris.

## My Special Place

- We care and love children of all ages.
  - We offer basic skills to help children develop learning habits in a loving and caring atmosphere.
  - Our teachers attend 20 hours of early childhood development education per year.
  - Our meals and snacks are monitored by a qualified nutritionist.
  - We provide infants with formula, juice and all baby food.
  - We provide after-school pickup and have a limited space for drop-ins.
- Open Monday through Friday  
7:30 a.m. to 6 p.m.

208 Ave. E Post, Texas (806) 495-3446

# Things they never told you about a heat pump.

Fact #9

A heat pump will not work well enough by itself to keep you warm all winter.

Someone selling you a heat pump will either attach it to your natural gas furnace or even try to sell you a new furnace you probably don't even need. All because a heat pump won't do the job by itself.

If you need a new air conditioner this summer, get a modern high-efficiency air conditioner. But don't let 'em mess with your furnace.

ENERGAS



## Grand Opening Special

# 10% OFF

all dry cleaning until school starts.

Laundry pick-up service available Monday - Wednesday - Friday for starching.

Normal laundry services available daily.

Please Help us out... We are cleaning house... pick up your clothing at your earliest convenience.

Come in and see the changes at Post Fashion Cleaners

111 W. Main

495-2345

There must be 100 reasons or more to subscribe to The Post Dispatch

but these four should be enough:

Dollar Value	Free to Subscribers
17.50	1. FREE - Cards of Thanks (up to 100 words).
5.60	2. FREE - Lost or Found or give away (20 words, two times).
25.00 15.00 10.00	3. FREE - Wedding stories and photos Anniversary stories and photos Engagement announcements and photos. Birth announcements and photos.
5.00	4. FREE - Extra copies of issues when something special to you is published. (up to 5 per issue).
2.50	

\$80.60 Total Savings!

Now, since a subscription in Garza and adjacent counties is only \$15 per year... (that's about 25¢ a week)

Doesn't it make sense to order your subscription now?

The Post Dispatch

P.O. Box 10 Post, Texas 79356 495-2816