

## Coming Sunday in Your Dispatch

● Complete Local TV Schedule ● Crossword Puzzle ● Horoscope



495-2626

### Crime Line Pays Cash Rewards

The Crime Line offers \$300 reward for information leading to the arrest of any person or persons connected with the burglary of the Caprock Veterinary Clinic between the hours of 7:30 p.m. on Saturday, January 9, 1983 and Sunday, January 10, 1983 at 8 a.m. The loss included an undetermined amount of jewelry and cash.

#### How It Works

You call the Crime Line with information about a crime...the Crime Line will give you a number for identification...your name will not be asked or used.

The Crime Line will take your information and ask you to call back in 24 hours.

When you call back in 24 hours, you give your identification number and you will be given a report on the status of the investigation.

If enough evidence has been provided to make an arrest which would lead to an indictment, the Crime Line will tell you and ask you to call back in 10 minutes to receive instructions on where and when to get your cash reward.

Contributions are requested for the Crime Line Reward fund and may be sent to Crime Line, P.O. Box 11, Post, Tx., 79356. Contributions are tax deductible and receipts will be provided to contributors.

### Garza County News Briefs

#### '42' at Grassland

Grassland Community folks are holding a "42" party tomorrow, beginning at 6:30 p.m. and will feature all the beans and hush puppies a person can eat...the admission is \$1 per person.

The Grassland Community center event is open to everyone, even those who don't play "42".

#### Farm & Ranch Journal

Advertising space for the 1983 Garza County Farm and Ranch Journal is now being accepted.

The special tabloid edition to The Post Dispatch will be published as a supplement to the Wednesday, March 30, 1983 issue.

Deadline for stories, photos and advertising for the special edition is Wed., March 23.

The 1983 Garza County Farm and Ranch Journal will include information about agricultural activities, outlook and messages from state and national political leaders.

The salute to Garza County farmers and ranchers is an ideal opportunity for businesses to advertise directly to an important segment of this area.

The Dispatch staff is available to help advertisers plan for the special edition.

#### Historical Commission

The Garza County Historical Survey Commission will have its meeting Tuesday, March 1, at the bank community room, at 10 a.m.

Members are urged to attend.

#### April 1 School Day

Post Independent School District Superintendent Bill Shiver has announced that Friday, April 1 will be a bad-weather make-up day at all Post schools.

April 1 had been previously scheduled as a holiday but was also listed as a potential make-up day.

# The Post Dispatch

25¢

USPS 439-620

Fifty-Sixth Year

Number 52

Serving the People of Garza County

Wednesday, February 23, 1983

## Jr. Livestock Show Opens with Judging Thursday, Auction Saturday

Final preparations are in full swing for the 18th annual Garza County Junior Livestock Show and Fair, to be held beginning with weigh-in at the new show barn on the Lubbock Highway, Wednesday afternoon, and continuing through Saturday, ending with the sale which begins at 1:30 p.m. Saturday afternoon.

The new show barn in its fifth year to be used in showing is already bursting at the seams. Lots of rearranging was done this year to handle 10 extra calves for the show, with the number of lambs, and hogs still about the same.

The building, which is almost paid for, has been a work of labor and love, by the directors of the Garza County Junior Livestock Association, and the members of the community, as a boost for all Garza County youngsters.

Fund raising events were the sole revenue used to pay for the building, and the payment has been in record time. The fund raising event that will be featured during the show

this year is the donation of a John Deere riding lawn mower, which will be given to the person holding the winning number for their \$5.00 donation. The lawn mower was donated by B-Bar T Farm Supply, and will be the first prize given, with a second prize being a pig and the processing donated by Ronnie Dunn.

\$5.00 donation tickets will be on sale at the show barn beginning Wednesday, with deadline for purchasing one at noon on Saturday. The prizes will be awarded during the sale on Saturday.

The cake auction, which is held during the show, is still a popular money making event, with the cakes baked and donated by Garza

County women.

One major rule change this year was noted by the Association, and that is that no foreign matter can be used on Pigs being shown, such as oil, powder or paste.

The show involves many of the youth of the County, both in 4-H Clubs and FFA chapters from both Post and Southland, and is the culmination of long hours of work and preparation. Take the time to support the event, and do your part to help the youth of our community.

The Fair which is held in connection with the show, is also a popular event, with many crafts, photos and art shown, by Garza County residents.

## Welding Short Course Planned

An Oxy-Acetylene Welding Short Course for adult farmers and others interested will be held March 14-17 at 7 p.m. under the

sponsorship of the Post High School Vocational Agriculture Department, according to William F. Shiver, superintendent, and E. A. Howard, Jr., teacher of Vocational Agriculture.

Charles Yeates, Welding Specialist with the Agricultural Education Adult Specialist Program and the Department of Agricultural Engineering at Texas A&M University, will be the instructor for the course.

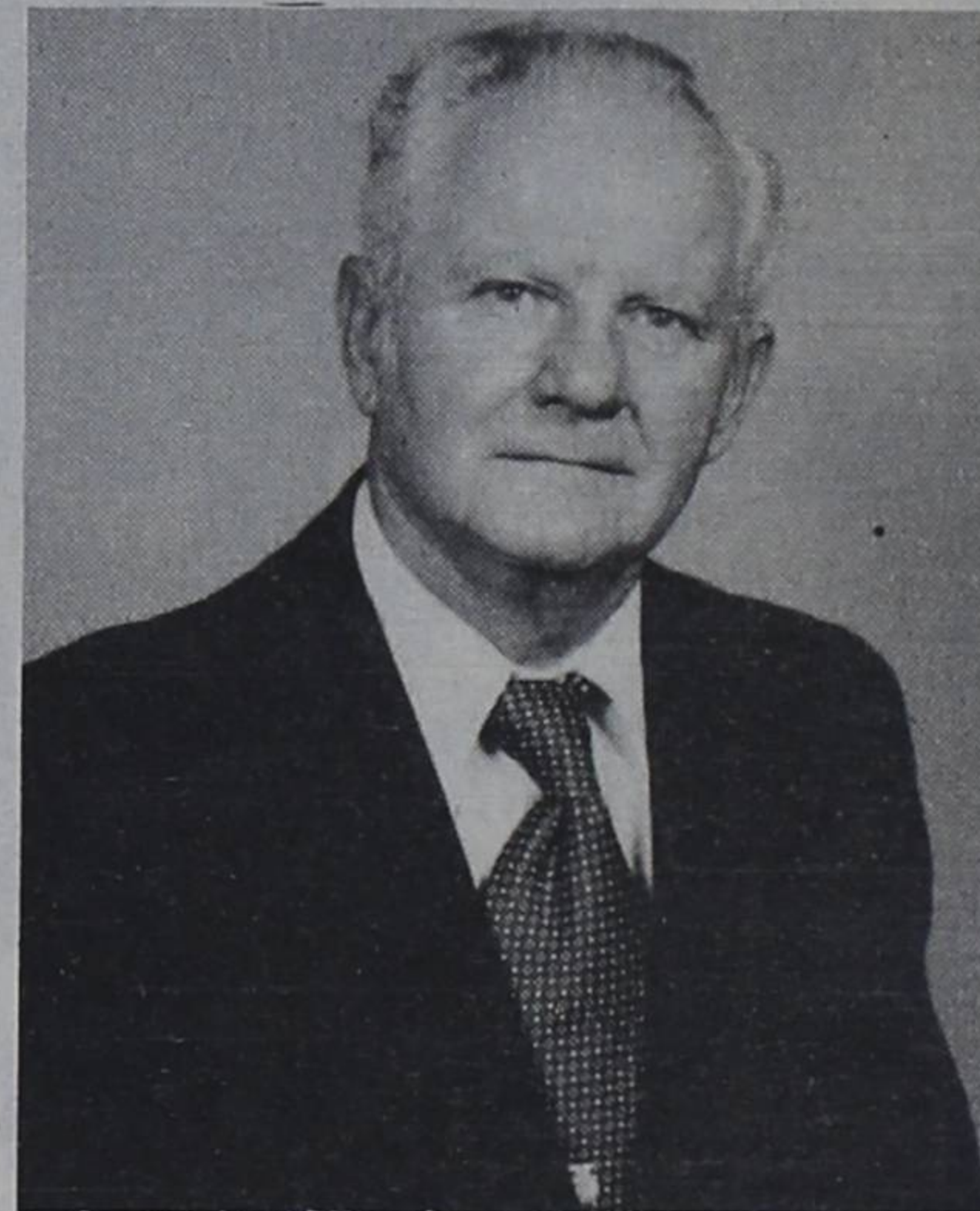
Farmers or any adult interested in attending the short course should call or write the Teacher of Vocational Agriculture, E. A. Howard, Jr., Oxy-Acetylene Welding Short Course. Certificates will be presented to each enrollee who attends all four of the training sessions.

Yeates stated that the short course will be adjusted to the wishes and interests of farmers enrolled, but that he expects to cover such subjects as safety in handling and using oxygen and acetylene, proper flame types, cutting and welding mild steel, brazing and welding cast iron, hardfacing, welding aluminum to aluminum and welding aluminum to steel and cast iron.

Short courses in welding, as well as in other areas, are available to farmers throughout the state under this cooperative program between the Texas Education Agency and Texas A&M University. This program is designed to make the services of specialists available to conduct short courses under the supervision of the public schools.

The program enables teachers of vocational agriculture to provide improved educational services to farm people.

Specialists are available in the field of Beef Production, Farm Arc Welding, Farm Electric Wiring and Safety, Horticulture, Oxy-Acetylene Welding, Pasture Management, and Tractor Maintenance.



## Chamber of Commerce Installs New Officers, Directors Monday

Newly elected officers and directors will be installed at next Monday evening's Post Chamber of Commerce banquet, which will feature entertainment by Jerry and Benjamin Hitt.

The banquet, catered by Jackson's

### Thressa Harps' Pie Wins First Place

Thressa Harp's cherry pie was named "most delicious" and Annette Castro's was picked as "best decorated" by judges at the First National Bank in Post during last Friday's George Washington's Birthday celebration.

Hourly winners of the surprise George Washington commemorative half dollar pieces were Bud Davis, Margaret Barley, Loveta Josey, Steven Traw, Arnold Sanderson, Carolyn Williams, Noel White, Donald McLendon and Don Glidewell.

(See Photo on Page 2)

Cafeteria, will include a steak dinner and keynote speech by Congressman Charles Stenholm.

The citizen of the year will also be honored, as well as the senior class of Post High School.

Tickets for the event are \$10 per person and may be purchased at the First National Bank, The Post Dispatch or members of the Chamber of Commerce.

The father-son entertainment by Jerry and Benjamin Hitt includes popular musical selections.

Jerry, a 1958 graduate of Post High School, is now appearing at the Adolphus Hotel in Dallas and has recorded six albums.

**FREE**  
Private Party Classified  
495-2816



**SHEARING TIME** — Ray Magnolenas of Slaton, center, is shown shearing the fine wool lamb of Junior Gossett at the Livestock Barn

last Saturday. The lambs were being sheared in preparation for the annual Livestock Show to be held this weekend. Looking on is Pru Basquez and an unidentified onlooker.



An onion or garlic odor on your hands can be removed with lime juice.

Federal Crop Insurance  
April Is Sales Closing Date

**Tom Power INSURANCE**  
Post's Friendly Agency  
495 3050 & 3051  
**We get things done.**

**Quinn Brackett**  
ATTORNEY AT LAW  
Announces the Opening of His  
SLATON OFFICE  
for the  
PRACTICE OF LAW  
160 South Eighth Slaton 828-4755

VINYL TOPS FREE INSURANCE ESTIMATES  
**Ty's Body Shop**  
409 West 13th St.  
Post, Texas  
Phone 495-2627  
10% OFF With This Coupon  
COMPLETE AUTO PAINTING GLASS WORK

# Savers Get Ripped-Off

By WESLEY W. BURNETT

Last Sunday we expressed our consternation about the threat of additional taxes to people who dare to question congressional decisions, especially the one to automatically withhold 10 percent of savings.

Now, let's take time to look at the legislation itself, and see why so many people are writing their congressmen and senators demanding the law be changed.

First, the law is unnecessary. It is designed to catch a very small number of people who do not report their earned interest when they file their annual income tax.

So, in order to raise more money to pay for the massive federal spending, our congress voted to take everyone's taxes on interest automatically throughout the year, then if the taxpayer is due a refund, give it back later.

In the meantime, the federal government spends the money that taxpayers could be earning interest on.

Just to catch a few cheaters, millions of honest taxpayers have to be punished.

It reminds me of the teacher who punishes the entire class because one or two

students won't follow the rules.

I personally resent being treated as a dishonest taxpayer, and I demand that congress undo this injustice.

Another thing that disturbs me about this federal government rip-off is the millions of elderly folks who are probably going to be exempt from the withholding on their savings, but will be confused as to how to go about getting their money.

The real facts are that the government will end up getting huge amounts of "windfall profits" from our senior citizens and other taxpayers who just won't fill out the forms.

And, even for those who take the time to complete the paper work, the taxes withheld will not be earning interest while they wait for their refunds.

And one more thing...why is it that we who are able to put a little money in a savings account now and then are penalized in the first place?

Maybe we should take a lesson from the Japanese and other countries who encourage their citizens to save money...and instead of punishing them with taxes on their interest, they actually get a tax break when they save. What a twist that would be.

As it is now, there is no incentive really to save money in America. The spenders get the tax break, the savers get the rip-off.

I wonder how long the American people will put up with this kind of theft from their government?

## Letter to Editor

Dear Editor:

If you received the February issue of the Texas Hereford Magazine, you will note the cover is done by a very talented local artist.

"Days End and Still Not Finished" is a pastel done by Vicki Diggs. Vicki expertly captures this familiar scene at the Double U Ranch, using ranch foreman, Kenneth Marts, and Hereford calves as her subject. Vicki has been doing pastels for two years.

She is a self-taught artist who took up painting and sketching to fill her free time.

Vicki's husband, Mike has been with Double U for nine years. They have two children, Erin, 6, and Zackery 3.

Vicki is a member of the Post Art Guild, and holds the office of treasurer.

We will be privileged to see more of Vicki's work in the June issue of Texas Hereford.

Linda Puckett

## Deadline for PIK Nears

Western musicians, it seems, are always "a-pickin' and a-grinnin'."

And a few in agriculture, says a spokesman for Plains Cotton Growers, Inc., Lubbock, referring to the government's new payment-in-kind (PIK) program, are doing the same, while many more are still "a-PIK in' and a-scratchin'" their heads.

Meanwhile there is a growing realization that time is running out. March 11 is the final sign-up date.

And, even with the recent authorization of a special registry on which farmers can indicate sign-up intentions on March 11 when there isn't time to complete the full PIK contract, there remains a strong indication that a virtually impossible log-jam may develop at ASCS offices in early March.

Farmers signing the registry on March 11 still will have to complete the sign-up procedure by March 17, according to a state ASCS official, to

permit the scheduled opening of whole-farm bids on March 18. So, he adds, considering that the sign-up is taking an average of two to three hours per farmer, the situation is going to get serious if too many farmers wait until the last minute.

PGC officials, too, are urging farmers to sign up as early as possible, reminding them that PIK contracts signed now can be modified or withdrawn at the producer's request any time before March 11 if a situation later develops that indicates the need for a change.

"This is not a program in which temporary help can be used by ASCS for individual farmer sign-up," says PGC Executive Vice President Donald Johnson. "It is far too complicated for that, which means county ASCS people are going to need all the cooperation they can get from farmers if they are to meet deadlines."

So, Johnson adds, "we are encouraging producers to sign up now for what they think they are going to do."

The Post Dispatch  
Published Sundays and Wednesdays

P.O. Box 10

Post, Texas 79356

Entered at U.S. Post Office, Post, Texas for transmission through the mails as second class matter, according to an Act of Congress, March 3, 1879.

Subscription Rates:

Garza and Adjacent Counties...\$8.50 per year  
Other Texas Counties...\$10.00 per year  
Outside of Texas...\$15.00 per year

Wesley W. Burnett  
Publisher

Norma Baumann  
Editor

Beth Short  
Office Assistant

Rachelle Braddock  
Circulation

Timothy W. Burnett  
Photography

## Make Radio Shack Your Telephone Co.

★ Wire

★ Phones

★ Plugs

★ Jacks

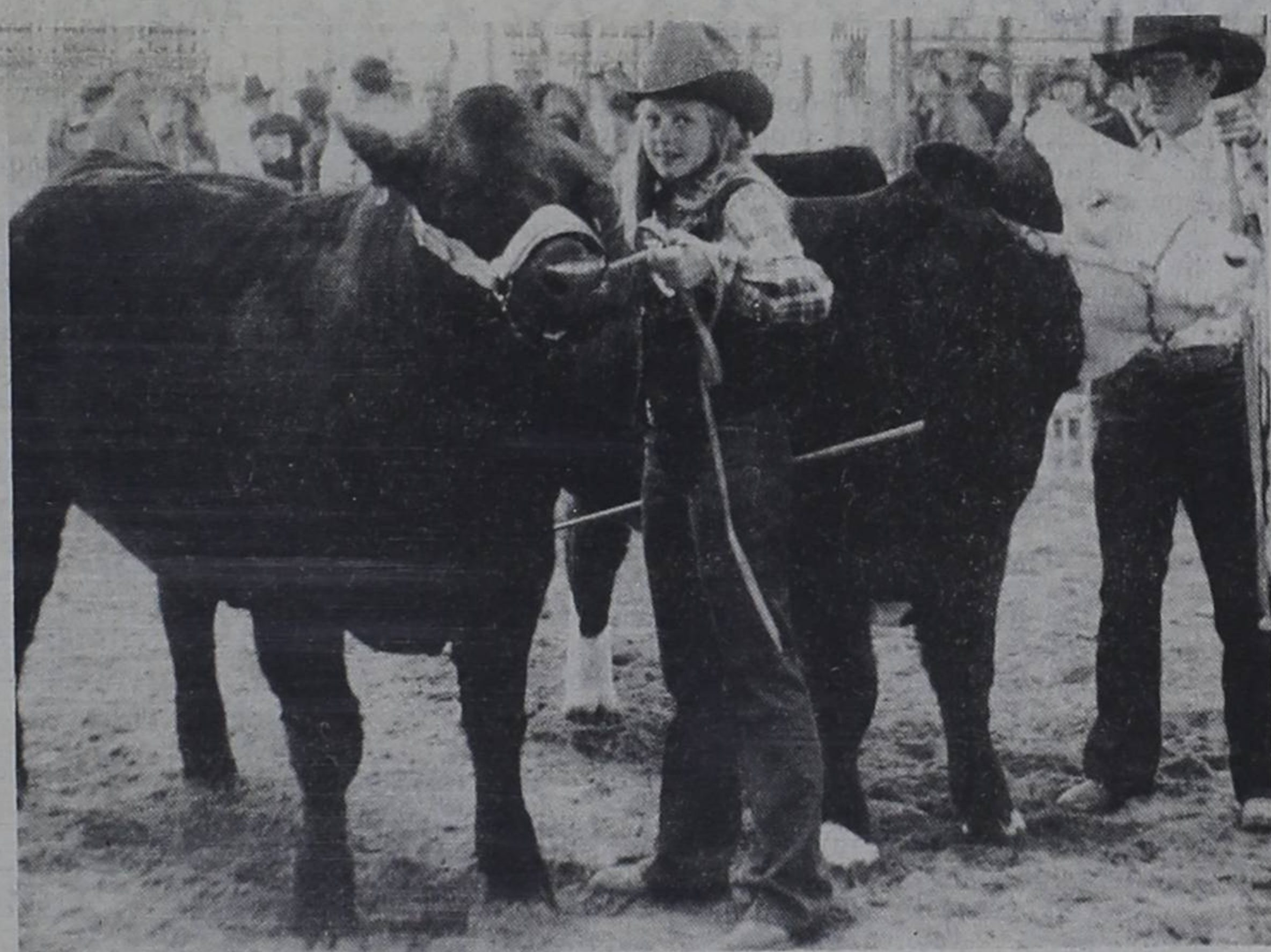
**Radio Shack**

105 West Main

806-495-3666

Post, Texas

## PUT A SHINE IN THEIR EYES!



## SUPPORT OUR GARZA COUNTY YOUTH

Participating in the 18th

## GARZA COUNTY JR. LIVESTOCK SALE

SALE STARTS 1:30 P. M. SATURDAY

IN THE JUNIOR LIVESTOCK BUILDING

See you there!



**THE FIRST NATIONAL BANK**

495-2804

Member F. D. I. C.

A FULL SERVICE BANK.

HAVE YOU TRIED OUR SOUP AND SALAD?

**JACKSON'S**  
CAFETERIA SERVICE & QUALITY  
The Steak Place!

**TOP SIRLOIN STEAK**

These steaks are charbroiled to your taste . . . and the steak comes with potato of your choice . . . soup and salad bar and thick, Texas sliced toast.

EVERY TUESDAY - WEDNESDAY - THURSDAY EVENINGS  
ONLY \$3<sup>95</sup>

**JACKSON'S CAFETERIA**

LUBBOCK HWY. CATERING FOR ANY SIZE GROUP 495-2970

### Women's CofC Meets

Members of the Women's Division of the Chamber of Commerce met on February 9, in the Reddy Room for their regular monthly meeting. Members present were Ruby Kirkpatrick, Arleta Carpenter, Donna Stelzer, Betty Posey, Juanita Peel, Lois Cook, Iva Hudman, Geraldine Butler, Nell Mathews, Bobbie Edler, Voda Beth Gradine, Diane Graves, LaGayluah Feagin, Cherryl Walker, and new member, Janey Middleton.

Betty Posey was voted to be vice president for the 1983 year.

The Post Dispatch welcomes new subscriber Mrs. Wesley Higgins of Post.

The Post Dispatch welcomes new subscriber J.C. Gill of Post.

The Post Dispatch welcomes new subscriber DeWitt Wood of Post.

Members were asked to decorate for the Chamber banquet on Feb. 28.

Members are to meet on Feb. 21, to make decorations and to meet on Feb. 27 to decorate the community center at 2 p.m.

Ruby Kirkpatrick was appointed chairman for the decoration committee.

The Post Dispatch welcomes new subscriber, Thomas Price of Rocky Mt., Va.

### Economic conditions creating job market for agriculture grads

COLLEGE STATION — The sagging economy, which has forced thousands of American farmers out of business and resulted in declining enrollments in the nation's colleges of agriculture, will ultimately create good opportunities for future farmers, says the dean of agriculture at Texas A&M University.

"Although the current depressed economic condition discourages students from looking at agriculture as a career option," says Dr. H. O. Kunkel, "the situation should create substantially increased needs for agriculturalists within the next decade."

Kunkel said a national manpower assessment study conducted by the U.S. Department of Agriculture's Office of Higher Education indicates a shortage of trained professionals in agriculture will occur by 1985. He said if agriculture enrollment continues to decrease, serious manpower shortages could be acute by 1990.

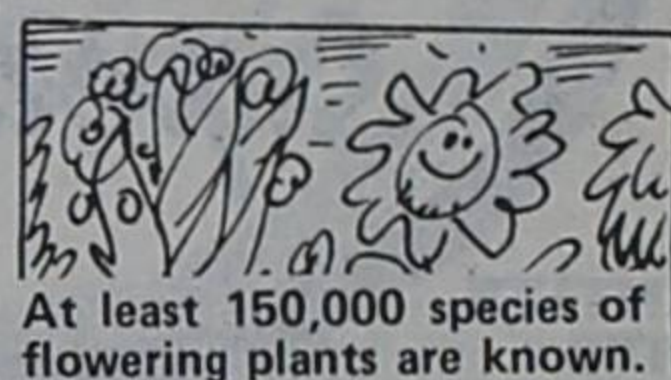
### Twin Cedars News

To start our news us. Our activities this week have been dominos, films, Bible lessons, exercises and Bingo. Everyone is doing great in exercises that I am so proud of them. Our bingo winner this week was Irene Wheeler.

I would like to thank our visitors, Ronnie, Christopher and Scott Metzgar of Post, Angel Reeves of Post, Ray Reeves of Post, P.K. Wilkerson of Post, Darie Roberge of Post, Jet Puckett of Post, Melinda Cowley of Lubbock, Roberta Bales of Post, Edith Clary of Post, and Lorrye and Matt Ledbetter of Post. And I would also like to thank all our other visitors and we hope you all keep coming.

We thank Mrs. Paty Craig for her Bible lessons. Mrs. Bessie Lee for her Bible readings, and Miss Lisa Claborn for the films she brings from the library to show us. And thanks to everyone else that comes to share something with

We thank Mrs. Paty Craig for her Bible lessons. Mrs. Bessie Lee for her Bible readings, and Miss Lisa Claborn for the films she brings from the library to show us. And thanks to everyone else that comes to share something with



**DOWE MAYFIELD, CLU**  
 Jefferson Standard Life  
 7204 Joliet No. 3, Lubbock  
 806-797-8089  
 Life, Health, Mutual Funds  
 IRA HR-10



**AMBULANCE DISPLAYED** — Glen Barley, right, and Marle Odom, left, local EMTs displayed the ambulance to Elementary students last week.

### Sunday Puzzle Solution

```

MARSH SERF
ALPHA ODIOS
SAVOY LINEMEN
TIER PACK PRO
TRACT DIVE
VACATE MURAL
PIRATE WIDENS
ALIKE FOREST
GLEE POKER
EAT SIRE AFAR
SITTING SNARE
NAILTO ACRES
MOOT WHEAT
    
```

### STATEMENT OF INTENT TO CHANGE RATES

General Telephone Company of the Southwest, in accordance with the Rules of the Public Utility Commission of Texas, hereby gives notice of the Company's intent to implement a new schedule of rates in Texas effective March 18, 1983.

The proposed changes in rates will affect all customer classes and are designed to increase the Company's gross intrastate revenues by approximately 15 percent annually.

A complete set of revised rate schedules has been filed with the Public Utility Commission at Austin, Texas, and is available for public inspection in each of the Company's Business Offices in the State of Texas. A summary of the Company's rate filing has also been sent to the Mayor's Office of each affected Municipality.

General Telephone



**CHERRY PIE JUDGING** — Shown l to r, Jack King, Jack Alexander and Lesa Windham are shown 'sampling' the cherry pies entered in the pie contest at the bank last Friday.

### Recycled wastewater may be a solution to water shortage woes

COLLEGE STATION — Although seven-tenths of the Earth's surface is water, there is hardly more than a drop of fresh water for drinking and industrial use, says a Texas A&M University researcher specializing in recycling treated wastewater.

Research has already given planners an idea of the limits on available groundwater, said environmental engineer Dr. Bill Batchelor.

Figures provided by the federal government more than a year ago revealed that the nation's fresh water supply was being reduced daily by 21 billion gallons more than rainfall could replace.

Batchelor says recycling relatively clean wastewater for industrial or agricultural use could provide a practical alternative to reducing our consumption.



**SIGNS WITH UTEP** — Bill Black signed a letter of intent with the University of Texas at El Paso Tuesday morning in the local field house. Shown with Black are Coach David Thompson, left and Bill's father, Chilli Black, right.

### Double R Beauty Bar

★ ★ Now Open ★ ★

Tues. — Friday

9 — 6

Saturday

9 - 12

Call for Appointment

495-2511

Susan Fumagalli

Billie Redman

**ALLSUP'S**  
CONVENIENCE STORES

PRICES EFFECTIVE  
FEB. 24-26, 1983

WHILE SUPPLIES  
LAST

**"THERE'S ONE NEAR YOU"**

---

FOR YOUR CONVENIENCE

**MONEY ORDERS**

ONLY **19¢** EACH

---

REG. \$1.39  
**FRITO LAY TOSTITOS**

**\$1.09**

BAG

---

<p>MRS. BAIRDS <b>HONEY BUNS</b> 3/\$1 REG. 51c</p>	<p>SHASTA <b>SOFT DRINKS</b> 25¢ 12 OZ. CANS EA.</p>
<p>ASSORTED FLAVORS ALLSUP'S <b>ICE CREAM</b></p> <p style="font-size: 1.5em;"><b>\$1.59</b></p> <p>1/2 GAL. RD. CTN.</p>	<p><b>Coke</b></p> <p>TAB — SPRITE — DIET COKE</p> <p>16 OZ. BOTTLES 6 PACK <b>\$1.99</b></p>
<p>SHURFINE <b>SWEET PEAS</b> 3/99¢ 16 OZ. CAN</p>	<p>VAN CAMP <b>PORK &amp; BEANS</b> 3/99¢ 16 OZ. CAN</p>

---

FRITO LAY REG. \$1.29  
**CHEE-TO'S**

**99¢**

PKG.

---

BORDEN'S  
**PUDDING BARS**

**\$1.69**

12 PACK

---

BORDEN'S  
**BUTTERMILK**

**\$1.09**

1/2 GAL.

---

COOKED FOOD SPECIAL OF THE WEEK

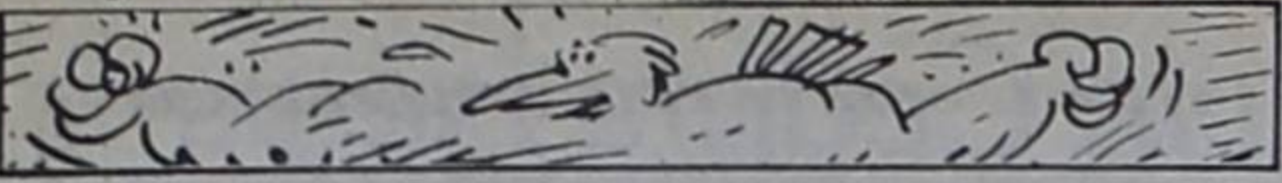
HOT-DELICIOUS-READY TO GO

**B.B.Q. SANDWICH**

FRESH COOKED

EACH **99¢**

ALLSUP'S FAST FOOD CENTERS!



Birds, in proportion to their size and weight, are about 75% stronger than are human beings.

**Professional Income Tax Service**  
 • Tax Service  
 Also W-2 Forms, Bookkeeping and Copying  
**Co-Ed Income Tax & Bookkeeping Service**  
 202 E. Main Dial 3721

# TSTA News

By Elaine Wright

Be a well-informed stockholder in America's greatest investment. Get a full report on your child's education. For all the facts, visit your school during Texas Public Schools week from March 7 to March 11.

Two TSTA members in the Southland ISD are:

Thomas V. Avlis — a graduate from Texas Tech University

with a Bachelor of Science degree and Texas A&M University with both a Master's and Ph.D. He is certified in Professional Administration, Physical Handicap, Earth Science, Biology, and Vocational Agriculture. Seven of his 21 years teaching and administration experience have been as the superintendent of the Southland ISD. Last

summer he attended administrative workshops at the University of Texas as a member of the Texas Community Schools organization. He has been a past president, treasurer, and state convention delegate of TSTA and is also a member of the Texas Association of School Administrators.

Wynelle Craft — has worked as the secretary-bookkeeper with the Southland ISD for the last eight years. She has worked with schools for a total of 12 years and in the private business sec-

# Carriker Opens Office

State Representative Steve Carriker has announced the opening of a district office in Roby. The office is located on U.S Highway 180 one-half block west of the

traffic signal. Marjorie Mitchell, a former Roby school teacher, is serving as the District Office Manager. The District office will be open mornings, Monday through Friday. The mailing address is Box 517, Roby, 79543, and the telephone number is 915-776-2358. When not in Austin, Representative Carriker can be reached at the district office number. "I try to

make it back to the district about every two weeks to take care of things around the farm and handle constituent matters," Carriker said. Carriker, a first term representative, sits on the Agriculture and Livestock Committee, the County Affairs Committee, the sub-committee for Budget and Oversight of County Affairs, and the 17-member Executive Committee for the House Democratic Caucus.

PRICES GOOD FEB. 23 THROUGH FEB. 26



QUANTITY RIGHTS RESERVED

NO SALES TO DEALERS



# UNITED HAS LID ON HIGH

**KLEENEX HUGGIES** \$2.88  
 ALL TYPES

**GERBER STRAINED BABY FOOD** REG. 26¢  
**4 FOR 88¢**

**FORMULA SIMILAC** \$1.48  
 REG. & W/IRON 32 OZ.

**MENNEN BABY MAGIC SHAMPOO** 11 OZ.  
**\$1.98**

**BABY MAGIC BABY BATH** 9 OZ.  
**BABY MAGIC "LATHERING" WASH CLOTHS** 36 CT.

**MENNEN BABY MAGIC LOTION** 9 OZ.  
**\$1.88**

**GOLD MEDAL FLOUR** 5 LB. BAG  
**88¢**

**OIL CRISCO** 48 OZ.  
**\$1.68**  
 25¢ OFF LABEL

**UNITED ICE CREAM** ALL FLAVORS 1/2 GAL.  
**\$1.18**

**BETTY CROCKER LAYER CAKE MIXES** ALL FLAVORS  
**78¢**

**PLUS DOUBLE S&H GREENS WITH A \$2.50 PURCHASE OR MORE**

**BETTY CROCKER FUDGE BROWNIE MIX SUPREME** 23 1/2 OZ. \$1.49  
**BISQUICK** 40 OZ. \$1.59

**BETTY CROCKER READY TO SPREAD FROSTING** 16 1/2 OZ.  
**\$1.18**

**U.S. NO.1 RUSSET POTATOES**  
 LONGHORN 5 LB. BAG  
**59¢**

**U CRISP GREEN CABBAGE**  
 LB.  
**10¢**

**U CALIFORNIA ICEBURG LETTUCE**  
 LB.  
**33¢**

### Martha Compton is Elected Representative for Easter Seals

Martha Compton of the First National Bank Post has volunteered her services as the 1983 Easter Seal Garza County Representative. Mrs. Compton has given outstanding service in the past to County residents and has shown her concern for handicapped

citizens through her involvement with Easter Seals. The Texas Easter Seal Society now in its 51st year, provides such services as physical, occupational and speech therapy; orthopedic equipment such as wheelchairs, walkers and crutches; hearing evaluations

and transportation to rehabilitation centers. Funds are used to serve individuals in this area regardless of financial status or disability. Today as programs and services for the handicapped increase in magnitude and complexity, the need for the disabled person to obtain information on referral and follow-up services becomes increasingly evident. Many disabled people are not receiving the services they require, despite the

availability of such services, simply because they do not know where to go for help. If you are handicapped or know someone who is, contact your Garza County Easter Seal Representative at the First National Bank of Post. To request additional assistance call the Easter Seal Action Line number toll-free at 1-800-492-5555 Monday through Friday from 8:30 a.m. to 5 p.m. Ask for the Treatment and Service Coordinator

### HEALTH HINTS

#### SUGARLESS SNACKS

#### APRICOT CANDY

1/3 cup grated coconut  
3/4 cup chopped pecans  
1 teas. lemon juice  
1 teas. lemon rind  
1 teas. orange juice  
3/4 cup dried apricots  
1/3 cup water

Steam apricots five minutes in the water. Cool and mix with rest of ingredients in a blender. Form into balls and roll in coconut. Refrigerate several hours. Makes about a dozen.

#### PEANUT BUTTER BALLS

1/2 cup peanut butter  
1 teas. vanilla  
2/3 cup coconut  
1/4 cup chopped nuts  
1 teas. lemon rind  
1/2 cup raisins

Mix well and form into balls. Roll in coconut or sesame seeds. Chill until firm. Makes about a dozen.

Children love snacks. And much to the chagrin of the dental profession, they love snacks filled with sugar.

According to the American Dental Hygienists' Association, when sugar reacts with the bacteria in your mouth, plaque is formed on your teeth. The acid from the plaque causes tooth decay.

### VFW FISH FRY

Saturday, Feb. 26

Serving from 5:30 - 8:30 p. m.

\$4 Plate

All to go orders must be picked up inside

Dance 9 to 1

\$5 Couple

\$3 Single

# AS PUT THE HIGH PRICES!

VOLUME 1  
**69¢**

VOLUMES 2-12 ONLY  
**\$2.69 EACH**

• 12 VOLUME SET  
**The Children's BIBLE**  
THIS WEEK'S FEATURE VOLUME 4  
**\$2.69**

**U**  
**UNITED**  
Supermarkets

**UNITED TRU TENDER OR CHOICE RUMP ROAST**  
BONE-IN LB.  
**\$1.88**

**GARY'S SUPER DOG**  
10 CT. PKG. 26 OZ.  
**\$1.98**

**ECKRICH SMOKED SAUSAGE**  
• REGULAR • BEEF • POLISH LB.  
**\$1.98**

**LOUIS RICH QUARTER BONELESS TURKEY BREAST**  
LB.  
**\$2.98**

**LOUIS RICH PASTRAMI'S OR TURKEY HAM**

DELI SLICED 8 OZ. PKG.

**\$1.39**

**LOUIS RICH CHOPPED HAM OR SMOKED TURKEY**

DELI SLICED 8 OZ. PKG.

**\$1.39**

**LOUIS RICH CHICKEN OR TURKEY BREAST**

DELI SLICED 6 OZ. PKG.

**\$1.39**

**LOUIS RICH DELI SLICED TURKEY BOLOGNA**  
8 OZ. PKG.  
**\$1.59**

**WISCONSIN RED RIND CHEDDAR CHEESE**  
LB. HALF MOON  
**\$1.98**

**FRESH FAMILY PAK GROUND BEEF**  
LB.  
**98¢**

**SHOP 'N SAVE**

2-4 LB. AVERAGE

**LONGMONT HALF TURKEY HAMS**  
LB.  
**\$1.49**

# STAMPS WED!

MORE EXCLUDING CIGARETTES



**FLEISCHMANN'S CORN OIL**  
1 LB. QTRS.  
**98¢**

**YOPLAIT YOGURT** 6 OZ. ALL FLAVORS  
**PILLSBURY "ALL READY" PIE CRUST** 15 OZ.  
**2 FOR \$2.89**  
**\$1.19**

**DR. PEPPER SUGAR FREE & PEPPER FREE**  
6 PK. 32 OZ.  
**\$1.88**  
PLUS DEPOSIT

**MINUTE MAID FROZEN ORANGE JUICE**  
16 OZ.  
**\$1.28**

**BANQUET POT PIES**  
BEEF, CHICKEN & TURKEY 8 OZ.  
**\$3.11**

**KING'S HAWAIIAN BREAD**  
1 LB. LOAF  
**\$1.38**

# Library Receives New Books

Buck Faulkner dreamed of being the first man to fly across the Atlantic alone. Of course, he lost to Lindbergh, but he went on to be one of the captains of aerospace industry, shattering all opposition just by the force of his own will. Building World War II bombers, then space craft, he manipulated men and women, companies and nations. William Kinsolving weaves the tale of Buck Faulkner, calling it "Raven."

There's just one thing wrong with living in Hampstead, an affluent commuter town. The town is about to be visited by a siege of unspeakable horror. Peter Straub, who also wrote "Ghost Story," fills his novel, "The Floating Dragon," with horror and fantasy.

"Men of Men," follows the African fortunes of the tumultuous Ballantyne family in Wilbur Smith's novel of men, women, diamonds, power, greed, and passionate pursuit.

Alistair MacLean, who wrote "The Guns of Navarone," returns to World War II for his newest novel's scene, "Partisans." The Partisans are Yugoslav Royalists who prefer death to salvery, and withstand countless Nazi assaults. The book has surprises and twists, violence and strange turns of plots.

Our hero tried once before to assassinate Hitler and failed. With Britain now in the war, and unable to go home to England, he decides to masquerade as a sympathetic neutral in Germany, but the plot fails, he escapes to Sweden, and cannot persuade his own embassy that he is, indeed, English. Rejected as an enemy agent, and now a man without a country, our anonymous hero declares his own lonely war on Germany. The book by Geoffrey Household is "Rogue Justice."

Carola Salisbury in "An Autumn in Arab," celebrates Suzanna's graduation from Florence Nightingale's School of Nursing, and her potential rise up the slippery nineteenth-century social ladder, but alas, she must flee London to go to the Castle Delamere to nurse the delicate child of one of England's great painters. There she discovers unsettling mystery. When the painter is commissioned to go to Egypt to paint scenes relating to the opening of the Suez Canal, Suzanna goes along to end her story in a romantic and dangerous climax, one man trying to kill her, and the other trying to marry her.

"IRA." It once meant Irish Republican Army. Now, to millions of Americans, it means "Individual Retirement Account," a way for all working Americans to invest in their own retirements for the day when Social Security will either be totally inadequate or non-existent. James Michael Ullman describes "How to Build a Fortune with an IRA," and he does it for only \$7.95. Even better than that, you can check it out from the Post Public Lib-

rary and get all that information free!

What if the energy unleashed by evil does not die, but glides silently along the edges of our lives, generation after generation, guiding us toward an appointment with retribution never satisfied? College student Mark Simpson jogs the deserted streets of an abandoned naval base near his campus, nearly retracing the steps of his father who was stationed there before his death at

Midway. Mark can almost feel his father's presence in the shadows of that ghost base, and then sees a vision of inexplicable horror. Startled by the sudden appearance of his running coach, he recovers to confront a different vision, that of a very lovely, very real young woman. Mark and Cass begin to explore the area where his father's past lies buried, and in their innocence, suffer a horrible, twisted judgment. Marilyn Harris is the author of "The Diviner."

Cleo Spearfield is the daughter of a famous Australian senator. To make a name for herself she goes to Vietnam as a

war correspondent. When her editor suppresses her story of a massacre in a Vietnamese village, she resigns and goes to London. She battles to the top in a man's world in a novel to entertain women and men, "Spearfield's Daughter," by Jon Cleary.

### "No" To PUC

White also criticized the Public Utilities Commission's attempt to eliminate the controversial automatic fuel cost pass-through. Commission officials said their new emergency rule adopted last week would outlaw the pass-through, but White said "No."

"I made it very clear when I said I wanted the fuel pass-through abolished. That's simple English. I don't want them to hide it. I want them to abolish it."

# United Convalescent

By NELL MATHEWS

Attention families, our family night will be Feb. 25, at 7 p.m. and not at 7:30 as planned.

Our Valentine party was so nice, we were entertained by Noel White and Jane Mason. The we had crowning of our sweethearts, Travis Gilmore and Irene McCommis. We had refreshments of red punch, cookies, cake, coffee and chips and dips. Thanks to all the ladies that helped. I am sorry I can't name them all.

Mrs. Jobe is our bingo winner this week.

Our employee of the week for Feb. 9 to 16, is Nell Mathews, and Patricia Greathouse is from Feb. 16 to 23.

Nell and Winnie won a game of dominoes from Mr. Warren and Mrs. Spralin.

Going for a walk in the nice sun shine Friday afternoon was Lewis Babb, Eunice Portor, Ruby Woodard, Henrietta Nichols, Irene Fluit, Sarah, Barbara, and Nell sure enjoyed it.

Our church service

this weekend will be by the Church of Christ. See you next week.

## Researcher says managers should reward performance

COLLEGE STATION — Bosses who get upset over employees coming to work late or socializing on the job often care more about them putting in the time than putting the time to use, says a Texas A&M University management professor.

"Managers who focus on time usually concentrate on the wrong things," says Dr. David Van Fleet, an expert in time management and organizational behavior.

"They're saying being on the job is the important thing, but what's really important is doing the work."

The professor pointed out that some people with lenient working hours who are regularly tardy, normally leave a little early to lunch and get back a little late may do more than others who are on time.

### Battleship Texas

The Battleship Texas moored at the San Jacinto State Park near Houston is like "a slave galley," according to Galveston Rep. Lloyd Criss.

Criss blasted officials of the Battleship Texas Commission for consistently mistreating its employees and ignoring the safety of its workers and tourists.

He pointed out the case of one employee who was fired for reporting a leak in the ship's hull. The report was later confirmed and cost the state \$70,000 to repair.

Criss has filed a bill to abolish the battleship commission and transfer control to the Parks and Wildlife Department.

- MODERN BEAUTY SHOP**  
They're Our Stockmen of Tomorrow  
126 East Main 495-2373
- GEORGE R. BROWN**  
Backing This Fine Youth Project  
Lubbock Highway 495-2886
- AMMONS PRINTING & OFFICE SUPPLIES**  
Junior Livestock Beef Is the Most Important  
Beef You Can Buy  
123 East Main 495-2743
- THE SHOE BOX**  
Our Youngsters are Our Best Crop by Far  
213 East Main 495-2691
- JAY'S CHEMICALS**  
Bid Up and Promote our Future  
Clairemont Highway 495-2422
- HILL & HILL TRANSPORT**  
Boost Our Youth By Bidding Saturday  
Clairemont Highway 495-2871
- HAROLD LUCAS INSURANCE**  
Bid Up and Promote our Future  
112 East Main 495-2894
- HAPPINESS IS . . .**  
Boys and Girls are Our Best Investment  
128 East Main 495-2438
- PRESCRIPTION SHOP**  
Make Them All Winners in the Sale Ring  
318 West 8th 495-2535
- R. E. COX LUMBER Co., INC.**  
Let's Make Every Youngster a Winner  
119 N. Ave. H. 495-2835
- EDITH'S LIQUOR STORE**  
See What's Really Going On Saturday  
503 East Main 495-2769
- JACKSON BROS. MEAT PACKERS**  
Buy Premium Garza Beef Saturday  
121 S. Ave. H 495-3245
- BOB COLLIER, DRUGGIST**  
Youngsters are a Tonic to us All  
203 East Main 295-2856
- WESTERN AUTO**  
Show the Youngsters We're Proud of Them  
212 East Main 495-2455
- DANISH IMPORTS, INC.**  
Be Present at that Sale Ring Saturday  
211 East Main 495-2314
- THE POST DISPATCH**  
Youngsters Make the Best News  
123 East Main 495-2816
- SOUTHWESTERN PUBLIC SERVICE**  
See Educational Projects Saturday  
217 West Main 495-2891
- B BART FARM SUPPLY**  
Youngsters are our Best Assets  
Lubbock Highway 495-3363
- damon's RESTAURANT**  
Your Bid Is Their Reward  
215 South Bdwy. 495-2367
- PIGGLY WIGGLY**  
Support 4-H and FFA in Action  
125 West 8th 495-2217
- GRAHAM CO-OP GIN**  
Put Premium Dollars on Premium Kids  
Route 3 495-2179
- BOSTICK PUMP & AG. EQUIP.**  
Congratulations to All Entrants  
Route 3 495-2357
- COUNTY JUDGE GILES W. DALBY**  
Saluting Our 4-H and FFA Youth  
228 East Main 495-2073
- JAE'S**  
All These Youngsters Wear a Star  
220 East Main 495-2620

# POST MERCHANTS SUPPORTING THE JUNIOR LIVESTOCK

Thursday, Friday, Saturday Feb. 24, 25, 26

Garza County's

Junior

1:30 p. m.

## Livestock Show Program

WEDNESDAY, FEBRUARY 23, 1983  
4:00 p. m. - 9:00 p. m. — Barn opens to weigh in all animals.

THURSDAY, FEBRUARY 24, 1983  
2:00 p. m. — Judging of Rabbits  
Lynn Wallace, Big Spring, Judge  
3:00 p. m. — Judging of Market Broilers  
Lynn Wallace, Big Spring, Judge  
7:30 p. m. — Judging of Swine  
Dwayne Brown, Klondike, Judge

FRIDAY, FEBRUARY 25, 1983  
2:00 p. m. — Judging of Horses  
Marvin Ensor, Plains, Judge  
7:30 p. m. — Judging of Lambs  
Allen Turner, Ballinger, Judge

SATURDAY, FEBRUARY 26, 1983  
9:00 a. m. — Judging of Heifers  
Jim Jenkins, Levelland, Judge  
Followed by  
11:30 a. m. - 1:00 p. m. — Judging of Steers  
Jim Jenkins, Levelland, Judge  
1:00 p. m. — Noon Lunch  
Awarding of Showmanship and Sportsmanship Trophies  
Setting of floor price on steers  
Premium Sale

**HIGGINBOTHAM-BARTLETT**  
Don't Miss Our Junior Livestock Sale  
110 South Bdwy. 495-2080

**PALMER WELL SERVICE**  
Backing Garza Youth All the Way  
Clairemont Highway 495-3460

## Farmers Get Break in Crop Insurance

High Yields and good records can pay off in increased crop insurance protection for many farmers, according to F. W. "Ted" Crouch, Jr., Field Operations Office Director of Federal Crop Insurance Corporation.

Crouch reports that a major change in the method of calculating insurance yield guarantees makes it possible for qualifying farmers to obtain additional coverage at no additional cost.

"Our goal is to offer each farmer a guaranteed yield that re-

flects his own yield experience. Thus, if a farmer can prove that his yields during the past three or more years have been above the average for his area, we'll also give him credit for above-average yields in any years for which he doesn't have the necessary records."

"We'll assume his yields in those years were above average by the same percentage as his recent yields," explains Crouch.

The insurance official states that the improved Individual

Yield Coverage Program, as it is called, will make Federal Crop Insurance policies significantly more attractive than in the past to those farmers who have a history of high yields. "The fact that there's no increase in cost for the increased protection should also provide an incentive to carry insurance," he adds.

The county ASCS office can provide information about the procedure for verifying above average yields. The farmer must provide ASCS with records of planted acreage and all production of a crop for at least the past three years.

For 1983, the Individual

## October Crude

Railroad Commission Chairman Mack Wallace has announced that 61 refineries in Texas processed 133,804,257 barrels of

dual Yield Coverage program is open to farmers who produce corn, cotton, grain sorghum, rice, and soybeans. Insurance agents can explain exactly what coverage is available and what the protection would cost. To make the insurance as affordable as possible, the Federal Government pays up to 30 percent of the premium cost.

crude oil and hydrocarbon blends during October 1982.

Through the first ten months of 1982, Texas refineries ran 1,279,413,471 barrels.

October's volume compares with 121,901,085 barrels in the same month a year ago, the Commission's Oil and Gas Division reported its monthly recapitulation of Texas refinery operations.

Inputs of crude oil and blends totaled 130,953,909 barrels in September 1982.

Texas refineries ran 103,734,681 barrels of crude oil in October compared to 92,927,629 barrels in October 1981, and 100,335,516 barrels in September 1982.

Products manufactured in October 1982 totaled 134,969,944 barrels, up from 122,534,263 barrels in the same month the previous year, and up from the 131,592,361 barrels in September 1982.

October 1982 manufacture of motor gasoline totaled 55,012,683 barrels, compared to 52,907,701 barrels in the year earlier month and 55,308,718 barrels in September of 1982.

Texas refineries manufactured 13,776,135 barrels of home heating oil in October 1982 — an increase of 6,374,990 barrels from the year-earlier volume.

September 1982 output was 9,724,156 barrels.

## MICROWAVE MAGIC Citrus fruits to the rescue

By DESIREE VIVEA  
Copley News Service

A white, grainy powder derived from lemon skins and membranes, known as "pectin," was used by World War II soldiers to sprinkle into wounds as a blood coagulant. There are many more enjoyable methods of meeting your daily vitamin C requirements, however, and with oranges and lemons readily available year round at the supermarket, it is easy to get your pucker-power.

Your body does not store vitamin C. Because of that, nutritionists recommend that all ages drink a 4-ounce glass of orange juice,

eat a large orange, a half grapefruit or three tangerines daily. Other sources of vitamin C, in addition to all the citrus fruits, are potatoes, cabbage, melons, and strawberries.

When cruising through the produce section searching for your mental conception of the "perfect orange," bear in mind that the fellows looking a little green around the gills have not necessarily been plucked prematurely. They are, more than likely, quite ripe. The neon-bright, deep orange oranges, waxed to a high gloss, are dyed with chemicals to reach that shade. Skin color is little indication to the quality stored within. The Valencia orange undergoes a phenomenon known as "re-greening"; a perfectly ripe orange will start to turn green at the stem area while still on the tree.

Always store oranges in a hydrator in your fridge and wrap cut fruit with plastic wrap or foil. When you've grated a lemon skin, the best way to store the remains is to either juice the lemon or pop it into the freezer.

And to obtain the most juice possible from citrus fruit, throw it in the microwave for about 5 seconds or so before squeezing to free the juice.

Today's microwave recipes include citrus juice.

### ELEGANT

#### CHICKEN WINGS

2 1/2 lbs. chicken wings  
1/2 cup all-purpose flour  
1/2 tsp. salt  
2 cups carrots, sliced  
1/2 cup onion, chopped  
1 tbsp. parsley flakes  
2 whole cloves  
1/2 tsp. garlic salt  
1/4 tsp. basil  
1 1/4 cups tomato juice  
1 tbsp. lemon juice

Cut tips from chicken wings. Measure flour and salt into paper bag, shaking several wings at a time to coat. Place in 2-quart casserole and cook 5 minutes in microwave. Turn halfway through cooking time. Arrange carrots and onion around chicken. Sprinkle spices on top. Combine lemon juice and tomato juice and pour over chicken and vegetables. Cook, covered for 18 to 20 minutes, turning casserole every 4 minutes. Chicken and carrots should be just tender. Good with cooked rice or noodles. Serves 4.

#### LEMON MERINGUE PIE

1 cup sugar  
1 1/4 cups water  
1 tsp. butter  
1/4 cup cornstarch  
3 tbsps. cold water  
6 tbsps. lemon juice  
1 tsp. lemon zest  
3 egg yolks  
2 tbsps. milk  
Baked 8-inch pie shell  
3 egg whites  
6 tbsps. sugar  
1 tsp. lemon juice

Combine sugar, water and butter. Heat in microwave until sugar dissolves, about 3 minutes. Stir. Mix cornstarch with cold water. Stir into butter-sugar mixture. Cook in microwave for about 2 minutes, stirring every 30 seconds. Stir in lemon juice and lemon zest. Beat egg yolks with milk and stir slowly into cornstarch mixture. Return to microwave for 2 1/2 minutes, stirring every 30 seconds. Cool and pour into pie shell. Beat egg whites till they are stiff but not dry. Mix in sugar gradually, adding lemon juice last. Spread over cooled filling, sealing edges of pastry. Cook in microwave 3 minutes, turning dish quarter turn every 30 seconds.

Being a secretary is highly stressful

Being a secretary is highly stressful. Says Dr. Dale Masi, a professor in the University of Maryland's School of Social Work, "Studies indicate that secretaries represent the second-highest category of stress-related occupations today (laborers such as coal miners and construction workers are first.)"

# 18TH ANNUAL GARZA COUNTY SHOW & FAIR

— Garza Co. Jr. Livestock Building

## 18th Annual

## Livestock Sale

## Sat., Feb. 26

### Garza County Fair Program

THURSDAY, FEBRUARY 24, 1983

8:30 a. m.

8:30 a. m. - 12:30 p. m.

8:30 a. m. - 10:00 p. m.

1:00 p. m. - 3:00 p. m.

3:00 p. m. - 10:00 p. m.

During Swine Show

FRIDAY, FEBRUARY 25, 1983

8:30 a. m. - 10:00 p. m.

Concession Stand by Close City E. H. Club, assisted by Post E. H. Club

During Lamb Show

SATURDAY, FEBRUARY 26, 1983

8:30 a. m. - 3:00 p. m.

Concession Stand — Close City, Graham & Post E. H. Clubs

11:30 a. m. - 1:00 p. m.

1:00 p. m.

3:00 p. m.

Awarding of High Point Overall Youth

Check-out of Fair Exhibits

Fair Building Opens  
(Workers Be There Please)

Check-in of Fair Exhibits

Concession Stand by Graham  
E. H. Club assisted by Post E. H. Club

Judging of Fair Exhibits

Exhibits on Display

Cake Auction

Cake Auction

Exhibits on Display  
Close City E. H. Club, assisted by  
Post E. H. Club

Ham Lunch

Check-out of Fair Exhibits

TG & Y

Our Hat Is Off to Junior Stockmen  
Slaton Plaza

FIRST NATIONAL BANK

Show the Kids We Appreciate Them  
216 West Main 495-2804

### GARZA AUTO PARTS

Juniors Now — Seniors Tomorrow  
110 West Main 495-2888

### CAPROCK GOLF COURSE

Invest in our Youth at the Sale  
Route 2 495-3029

### HARMON'S HAMBURGER HUT

We're Backing our Junior Stockmen  
312 N. Bdwy. 495-2101

### POST GIN INC.

Saluting Our 4-H and FFA Youth  
Ralls Road 495-3457

### SENTRY SAVINGS ASSOCIATION

Your Bid Is Their Encouragement  
106 N. Broadway 495-3696

### TOM POWER INSURANCE

Post Youth Make Good Aggies  
204 East Main 495-3050 or 3051

### D. C. HILL BUTANE, CO. INC.

Youngsters are our Real Money Crop  
Clairemont Highway 495-2425

### DR. CHARLES MCCOOK, DDS

Only You Can Put a Shine in their Eyes  
204 West Main 495-3600

### PALMER OILFIELD CONSTRUCTION

Show the Kids we Appreciate Them  
Clairemont Highway 495-2710

### D. E. MORRIS ELECTRIC

Your Bid Is What They've Worked For  
206 South Bdwy. 495-3214

### CLOSE CITY CO-OPE GIN

What Happens Now Depends on Us  
Route 3 495-2753

### SOUTHLAND BUTANE

Let's Give our Kids a Big Boost  
Ralls Road 495-2159

### JUSTICE-MASON FUNERAL HOME

Give Them a Boost, Give Them a Bid  
301 West Main 495-2833

### MAURINE'S FLOWERS

Make Every Youngsters a Real Winner  
615 West 5th 495-2187

### SOUTHWEST AUTOMATIC MACHINE

Make Every Entry a Winner  
318 East Main 495-3235

### HUDMAN FURNITURE

Back Our Youngsters Saturday  
301 East Main 495-2615

### STRAWN TRANSPORT & ACID

Boost Their Pride, Be at the Show  
Clairemont Highway 495-2422

### RADIO SHACK

Let's Help Them to Learn and Profit  
105 West Main 495-3666

### BRADDOCK WELDING

Make It a Real Community Day  
705 West 6th 495-3826

### CAPROCK VETERINARY HOSPITAL

Your Presence Is Needed  
Lubbock Highway 495-3726

### UNITED SUPER MARKET

Let's Help Them to Learn and Profit  
123 N. Broadway 495-3217

### S. L. BUTLER LP GAS

Be Present at the Sale Ring Saturday  
715 N. Broadway 495-2210

### FASHION CLEANERS

Everyone Should Leave the Ring a Winner  
111 West Main 495-2345

### PEWITT AND SON WELDING

Bid Up and Promote our Future  
Clairemont Highway 495-2401





# Lunch Menus

**Monday, February 28**  
**Breakfast**  
 Assorted cereal, mixed fruit and half pint of milk.  
**Lunch**  
 Barbecue on a bun, tater tots, mixed fruit, fudge cookies, homemade bun, and half pint of milk.  
**Tuesday, March 1**  
**Breakfast**  
 Oatmeal, bacon, biscuits, pineapple juice and half pint of milk.  
**Lunch**  
 Stew, cheese sandwich, fried okra, chocolate pudding and half pint of milk.  
**Wednesday, March 2**  
**Breakfast**  
 Apple coffee cake, applesauce and half pint of milk.  
**Lunch**  
 Roast, gravy, green beans, whipped potatoes, jello with topping, hot rolls and half pint of milk.  
**Thursday, March 3**  
**Breakfast**  
 Eggs, sausage, biscuit, orange juice and half pint of milk.  
**Lunch**  
 Enchiladas with sauce, pinto beans, cabbage slaw, pineapple cobbler and half pint of milk.  
**Friday, March 4**  
**Breakfast**  
 Donut, peach halves and half pint of milk.  
**Lunch**  
 Fish, sweet peas, carrot sticks, peanut butter cake with icing, cornbread and half pint of milk.



**RIDING LAWN MOWER** — Benny Aldez, B Bar T Farm Supply employee is shown on the riding lawn mower which will be given away during the annual Junior Livestock Show and Sale with proceeds going towards the building.

# Amy Hazlewood honored with shower

A bridal shower honoring Amy Carole Hazlewood, bride-elect of Shelby Barley, was held in the Post Community Center on Saturday morning, February 12. Special guests for the occasion were Mrs. Cliff Hazlewood, Jr., mother of the bride-elect, Mrs. Cliff Hazlewood, Sr., grandmother of the bride-elect, Mrs. Steve Garlington, sister of the bride-elect, all of Stanton and Mrs. Glen Barley, mother of the prospective bridegroom. Approximately forty guests registered. An assortment of nut and fruit breads, a fruit bowl, coffee, and tea were served from a table covered with an apple green cloth overlaid with lace. The centerpiece along with a bedspread, food processor and coffee maker was a gift to

the honoree from the hostesses. Hostesses for the occasion were Mrs. Willie McBride, Mrs. Cindy Mitchell, Mrs. Helen Miller, Mrs. Doris Lucas, Mrs. Linda Waldrip, Mrs. Joy Pool, Mrs. Betty Boren, Mrs. Billie Windham, Mrs. Carolyn Sawyers, Mrs. Johnnie Willson, Mrs. Kay Hays, Mrs. Julie Hudman, Mrs. Geraldine Butler, Mrs. Dorace Wilson and Mrs. Sue Shytles. Miss Hazlewood and Shelby Barley will be married March 13, in Stanton, Texas.

**GARZA AUTO PARTS**  
 110 West Main  
 495-2888

**CATTLE FOR P I K PROGRAM**  
 We'll help you buy cattle for P I K Program and can sell your cattle off grazed out wheat and hay grazier.  
**Tommy Turner Cattle Co.**  
 Tulia, Texas

**Texas FB**  
 FARM BUREAU INSURANCE CO'S.  
 -- Home Owners -- Automobile Insurance  
 -- Farm Liability -- Crop Hail  
 -- Life Insurance -- Estate Planning  
 -- Hospitalization  
 We now have an office at 204 S. P & Tahoka Hwy.  
**SEE A 24 Hour Agent**  
 FARM BUREAU INSURANCE  
**LEON GIBBS** PHONE 495-3266

# Post Art Guild Hears Program

The Post Art Guild held its monthly meeting Feb. 14, at Glenda's Gallery. Hostesses were Geraldine Butler and Linda Puckett. The program on "Foreground" was presented by Sheri Riedel. With the Spring Art Show preparations underway, the Art Guild has selected Garza Memorial Hospital as the recipient of the Citizen's Award this year. Members of the Art Guild voted to donate \$100 toward that award. Anyone wishing to contribute to this fund may contact Marie Neff or Geraldine Butler. Members present were JoAnn Mock, Sheri Riedel, Glenda Morrow, Geraldine Butler, Nancy Childers, Vicki Diggs, Lil Conner, Minnie Ola Stewart, Quinnie Cook and Linda Puckett. Gary Adelman, a well know artist from Lubbock, will present the program at next months meeting. Visitors are welcome.

The Post Dispatch welcomes new subscriber Linda Puckett of Post.  
 The Post Dispatch welcomes new subscriber Lee Braddock of Post.  
 The Post Dispatch welcomes new subscriber Coy D. Samples of Post.  
 The Post Dispatch welcomes new subscriber W.C. Ryan of Post.  
 The Post Dispatch welcomes new subscriber Adell Gannon of Post.  
 The Post Dispatch welcomes new subscriber P.K. Thomas of Abilene, Tx.

**COW POKES** By Ace Reid

One thing about this road, nobody's ever got a ticket for speedin' on it!

**IF YOU HAVE THAT "NAGGIN" FEELING THAT YOUR CAR OR TRUCK IS GOING TO "JUST SIT THERE", IT MAY BE TIME TO SEE WILSON STATE BANK FOR FINANCING ON A NEW ONE! OUR AUTO LOANS, AT GOOD BANK RATES, WILL KEEP YOU MOVING!**

**Wilson State Bank**  
 WILSON, TEXAS  
 FDIC  
 A FULL SERVICE BANK

**JOHN DEERE** **SPRING BONUS SPECIALS**

**\$500 to \$5,800 END-OF-MODEL REBATES**  
 On remaining 40 Series John Deere tractors, including a bonus for financing without waiver

Believe it: Now is the best time to buy a new 40- to 228-hp 40 Series John Deere tractor. But don't delay: when the inventory is gone so are the tractor savings. Get a cash rebate (first dollar column below) direct from John Deere in addition to our good deal on the 2WD or 4WD tractor of your choice. These tractors carry a 1981 sticker price, so we're offering rebates and discounts from prices already competitively low. Here's more: During February, 1983, pay cash for your new tractor, finance it where you choose, or finance it with John Deere without waiver\* and you'll collect the cash rebate in lieu of finance charge waiver as shown. Or you can elect to have the John Deere finance charge waived to November 1, 1983, instead of taking the additional cash rebate.\* If you prefer 50 Series 4WD tractors there are also special rebates during February. Cash rebates up to \$8,200 on new models that replace the 40 Series 4WDs being cleared out. And, if you finance with John Deere, finance charges will be waived to June 1, 1983.\* But John Deere may withdraw these special offers at any time. Come on in soon!

Model	Cash Rebate on Purchase	Feb. '83 Cash Rebate in Lieu of Waiver	Maximum Rebate
228-hp 8640	\$3,200	\$2,600	\$5,800
179-hp 8440	3,000	2,000	5,000
180-hp 4840	2,700	1,800	4,500
155-hp 4640	2,300	1,600	3,900
130-hp 4440	1,700	1,200	2,900
110-hp 4240	1,500	1,100	2,600
90-hp 4040	600	1,000	1,600
80-hp 2940	1,400	700	2,100
70-hp 2640	900	600	1,500
60-hp 2440	400	500	900
50-hp 2240	100	450	550
40-hp 2040	100	400	500
370-hp 8850	\$8,200	NA	NA
290-hp 8650	6,400	NA	NA
225-hp 8450	5,700	NA	NA

(Offer subject to tractor availability)  
 \*Availability of John Deere financing plans subject to approval of credit. These offers may be reduced in value or withdrawn at any time.

**B Bar T Farm Supply**  
 Lubbock Highway 495-3363

**SPRING SPECIAL ON GRASLAN BRUSH CONTROL:**  
**FLY NOW, PAY LATER.**

**Order aerial-applied Graslan now and save all these ways:**

- Buy at 1982 price with guaranteed protection.
- No payment required until December 15, 1983.
- Extra discounts for payment before December 15.
- Additional 4% discount when Graslan applied at Elanco's convenience.\*

Graslan gets the brush. You get the grass. Graslan is a totally new, proved effective approach to brush control. A high-density, pelleted herbicide that works through the roots of sand shiner, oak and other troublemakers... controls them for years in just one application. For early-order savings, see your Graslan Range Management Specialist. Or right now, call toll-free: **ELANCO** Pioneering a new era in range management.

**1-800-428-4441**  
 Graslan® — (tebuthiuron, Elanco)

# Be Ye Transformed

By Steve Traw  
First Christian  
Church

Powerful evidence for the gospel is found in the changed lives of those who embrace it. The new creature in Christ produces good works that testify to the transformation that has taken place.

The story of the English nobleman illustrates well the point. Upon his visit to the Fiji Islands the atheist complained to the elderly chief,

"You're a great leader, but it's a pity you've been taken in by those foreign missionaries. They only want to get rich through you. No one believes the Bible anymore. People are tired of the threadbare story of Christ dying on a cross for the sins of mankind. They know better now. I'm sorry you've been so foolish as to accept their story."

The old man's eyes showed his perception as he answered, "See

that great rock over there? On it we smashed the heads of our victims. Notice the furnace next to it. In that oven we formerly roasted the bodies of our enemies. If it hadn't been for those good missionaries and the love of Jesus that changed us from cannibals into Christians, you'd never leave this place alive! You'd better thank the Lord for the gospel; otherwise we'd already be feasting on you. If it weren't for the Bible and its salvation message, you'd now be our supper!"

Indeed, the grace of God transforms completely. Sunday, salvation is shown from scripture as more than reformation; it is transformation. First Christian Church extends an invitation to you as we study from God's Word this week.

# Cotton Talks

Representatives of the industry's seven segments were told this week by a National Cotton Council economist that modest growth of the world economy in 1983-84 is likely to result in better domestic and export demand for cotton.

He said this market improvement, together with a 1983 crop held down by the government's acreage reduction program, could cut the U.S. carryover by more than 2 million bales and bring it down to slightly over 6 million by August 1, 1984.

Dr. Dean Ethridge made the comments in an outlook report to committees preparing for the Council's annual meeting which opens Feb. 6 in

Phoenix. "The implication of this carryover level is that a second year of supply reduction programs will likely be necessary in 1984 to bring U.S. stocks down to an acceptable level," he stated.

Dr. Ethridge said the balancing of supply and demand will require aggressive selling along with supply adjustment, and a strong effort to preserve the industry's structure while adjustments are being made. This will involve some agonizing policy decisions and severe tests for the industry in the coming year.

The economist pointed out that the serious imbalance in cotton's situation is the result of two consecutive years of worldwide recession and bumper crops. U.S. cotton stocks, which totaled 6.6 million bales at the beginning of the 1982-83 crop year are expected to be up to at least 8.4 million bales when the season ends next July 31. While foreign stocks declined half a million bales during the season, Dr. Ethridge said the U.S. build-up is expected to make world stocks grow from 27.7 million to 29 million.

Emphasizing the potential for error in projections for the coming crop year, the economist said the outlook for U.S. stocks to be reduced to about 6.1 million bales is based on a projected production of about 9.5 million bales, with domestic mill use pegged at 5.8 million and exports at 6 million.

Even with prospects for lowering world cotton stocks by about 2 million bales during

the 1983-84 marketing year, the Council economist said these stocks — at 27 million bales — will still be 15 percent higher than the average of recent years.

Peter E. Hirschfeld, Dallas cotton merchant is the new president of Cotton Council International, overseas arm of the National Cotton Council. He succeeds Harold C. Weeth, Coalinga, Calif., who becomes CCC board chairman.

Other CCI officers elected at the annual meeting in Phoenix are: C.L. Boggs, Lubbock, cooperative executive, first vice president; Rudi E. Scheidt, Memphis merchant, second vice president; and C.L. (Bill) Scott, Casa Grande, Ariz., produce, treasurer.

The Post Dispatch welcomes new subscriber Julius Stelzer of Post.

The Post Dispatch welcomes new subscriber Ronnie Hardin of Post.

The Post Dispatch welcomes new subscriber Gene Claborn of Post.

# Pleasant Home

By Annie Gilbert

Devotion was held by Deacon Jim Osby Sunday at the Pleasant Home Baptist Church, with Sister Fisher Wynne and Sister Thelma Moore, reading scripture.

All officers were in attendance and prayer was led by Rev. Arthur Kelly.

The lesson was brought by Rev. Kelly from St. Matthew, 4:1-11, the title "Thank God for Jesus."



Happy 1st Birthday CHAD

Love, Daddy, Mamma & Amanda

## NOTICE

Mitchell Williams announces that, effective immediately, his office will be open for the general practice of law from 8:00 a. m. to 6:00 p. m. Monday through Friday at 227 West Main, Telephone 495-2174 in Post. He will be available to handle a general civil and criminal practice including:

**Probate & Estate Matters**  
**Civil & Criminal Trials**  
**Real Estate**  
**Oil and Gas Matters**

## Directory of Post Churches

**ASSEMBLY OF GOD**  
12th and Avenue I  
J. W. Brown  
Church Phone 495-2359  
Sunday School: 9:45 a.m.  
Worship Services: 11 a.m. and 6 p.m.  
Mid-Week Service: 7 p.m. Wednesday

**CHURCH OF CHRIST**  
108 N. Avenue M  
Paul D. Jones  
Phone 495-2326  
Bible School: 9:30 a.m.  
Worship Services: 10:30 a.m. and 6 p.m.  
Mid-Week Service: 7:30 p.m. Wednesday

**CHURCH OF GOD IN CHRIST**  
812 Pine  
E. L. Hastings, Minister  
Phone 747-5612  
Sunday School: 10 a.m.  
Worship Service Sunday 11 a.m.  
Mid-Week Prayer Meeting 8 p.m.

**CHURCH OF THE NAZARENE**  
202 West 10th Street  
J. R. Smith  
Church Phone 495-3044  
Sunday School: 9:45 a.m.  
Worship Services: 10:45 a.m. and 6 p.m.  
Mid-Week Service: 7 p.m. Wednesday

**FAITH LUTHERAN**  
10th and Avenue K  
Rev. Bob Ray, Minister  
Sunday School: 10 a.m.  
Sunday Worship: 11 a.m.

**FIRST BAPTIST CHURCH**  
402 West Main  
Rev. Glenn Reece, Minister  
Church Phone 495-2814  
Sunday School: 9:45 a.m.  
Worship Services: 10:50 a.m. and 6 p.m.  
Mid-Week Service: 7:30 p.m. Wednesday

**FIRST CHRISTIAN CHURCH**  
812 West 13th Street  
Pastor Steve Traw  
Church Phone: 495-3716  
Sunday School: 9:45  
Worship Services: 11 a.m. and 6 p.m.  
Mid-Week Youth: 6 p.m. Wednesday

**BETHEL BAPTIST CHURCH**  
North Broadway (Hwy. 84)  
Rev. Paublo Pequeno  
Sunday School: 9:45 a.m.  
Worship Services: 11 a.m. and 6 p.m.  
Mid-Week Service 7 p.m. Wednesday

**CALVARY BAPTIST CHURCH**  
210 East 6th  
Vernon Andrews  
Church Phone 495-2342  
Sunday School 9:45 a.m.  
Worship Services: 11 a.m. and 7 p.m.  
Mid-Week Service: 7:30 p.m. Wednesday

**FIRST PRESBYTERIAN**  
910 West 10th Street  
Rev. Tom Pass, Minister  
Church Phone 495-2135  
Sunday School: 10 a.m.  
Sunday Worship: 11 a.m.

**FIRST UNITED METHODIST CHURCH**  
216 West 10th Street  
Kenney Kirk, Pastor  
Church Phone: 495-2942  
Sunday School: 9:45 a.m.  
Worship Services: 10:55 a.m.

**14TH AND K CHURCH OF CHRIST**  
14th Street and Avenue K  
S. G. Byrd, Minister  
Church Phone 495-3329  
Sunday Services: 10:30 a.m. and 5:30 p.m.  
Mid-Week Service: 6 p.m. Wednesday

**HOLY CROSS CATHOLIC CHURCH**  
Avenue K at West Main  
Father George Roney  
Church Phone 495-2791  
Sunday School: 9:30 a.m.  
Sunday Worship: 10:45 a.m.  
Week Services: 7 p.m. on Tuesday, Thursday, Friday and 6:30 p.m. Saturdays

**JUSTICEBURG BAPTIST CHURCH**  
Justiceburg  
Sunday School: 10 a.m.  
Sunday Worship: 11 a.m.

**IGLESIA DE DIOS DE LA PROFESIA**  
508 North Avenue G  
Phone 495-2610  
Pastor - Leon Medina  
Servicio  
Domingo por la mañana 9:45 a.m.  
Servicio Devosional 11 a.m.  
Domingo en la noche 6:30 p.m.  
Miercoles por la noche 7 p.m.  
Uirenes noche de Jovenes 7 p.m.

**GRAHAM CHURCH OF CHRIST**  
Graham Community  
Sunday School: 10 a.m.  
Worship Services: 11 a.m. and 6 p.m.  
Mid-Week Service: 7:30 p.m. Wednesday

**PLEASANT HOME BAPTIST**  
14th Street and Avenue F  
Rev. Arthur Kelly, Minister  
Church Phone 495-3192  
Sunday School: 10 a.m.  
Sunday Worship: 11 a.m.  
Mid-Week Service: 7 p.m. Wednesday

**PLEASANT VALLEY BAPTIST**  
Pleasant Valley  
Rev. Kenneth Winchester, Minister  
Church Phone 828-4174  
Sunday School: 10 a.m.  
Sunday Worship: 11 a.m. and 7 p.m.  
Church Training: 6:15 p.m.  
Mid-Week Service: Wednesday 7 p.m.

**SOUTHLAND BAPTIST CHURCH**  
Southland, Texas  
Rev. T. C. Bell, Minister  
Sunday School: 10 a.m.  
Sunday Worship: 11 a.m.

**TEMPLE BAPTIST (SPANISH)**  
302 North Avenue M  
Sunday School: 9:45 a.m.  
Sunday Worship: 11 a.m. and 6 p.m.  
Mid-Week Service: 7:45 p.m. Wednesday

**TEMPLO BETHEL ASAMBLEA DE DOIS**  
407 May Street  
Post, Texas  
Juventino Sanchez, Minister  
Phone 495-3632  
Sunday School: 9:45 a.m.  
Sunday Worship: 5 p.m.  
Worship Services: 6 p.m. Tuesdays

**TRINITY BAPTIST CHURCH**  
915 North Avenue O  
Rev. Albert Shults, Minister  
Church Phone 495-3038  
Sunday School: 9:45 a.m.  
Sunday Worship: 11 a.m. and 6 p.m.  
Mid-Week Service: 7:30 p.m. Wednesday

**UNITED METHODIST CHURCH**  
Graham Community  
Rev. Donny Crowson  
Sunday School: 10 a.m.  
Sunday Worship: 11 a.m.

## Sentry has two new accounts that rate your attention.

# SUPER CHECK-PLUS

## 7.50%

Super Check-Plus is the new account which has all the features you wanted in a money market fund. A Super Check-Plus account earns interest at money market rates with a minimum average balance of only \$2,500. You can write an unlimited number of checks. Each account is insured up to \$100,000 by the FSLIC.

Super Check-Plus is available for individuals, sole-proprietors, governmental units and non-profit organizations. For more information call or come by Sentry Savings.

# HI-FI ACCOUNT

## 9.00%

The Sentry High Interest-Federally Insured Account is the new account which pays our highest money market rate. A HI-FI Account earns interest at money market rates with a minimum average balance of only \$2,500. You may write three checks each month or withdraw money in person as often as you like. Each account is insured up to \$100,000 by the FSLIC.

The Sentry HI-FI Account is available for individuals, corporations, sole-proprietors, governmental units, non-profit organizations and commercial accounts. For more information call or come by Sentry Savings.



**SENTRY SAVINGS**

NEWSPAPER SET ADDRESS & PHONE

## This Directory Made Possible By:

- |                              |                        |                                       |
|------------------------------|------------------------|---------------------------------------|
| Burlington's Postex Plant    | Winn's                 | Hudman Funeral Home                   |
| Maurine's Flowers            | First National Bank    | United Super Market                   |
| Charles Wallace & Robert Cox | Mayor Giles McCrary    | H & M Construction                    |
| Justice-Mason Funeral Home   | Dalby Cattle Co.       |                                       |
| D. E. Morris Electric        | Harold Lucas Insurance | Bostick Pump & Agri. Equipment, Rt. 3 |
| Southland Butane             | The Post Dispatch      |                                       |