

Dispatch Editorials

Page 2 The Post (Tex.) Dispatch Thursday, Feb. 28, 1980

Momentum is real key

Momentum is the key in any presidential campaign. Just a few weeks into the 1980 race for political gold, there have been some tremendous surprises all tied to momentum.

First, Ted Kennedy almost got knocked out of the show with a loss in the Iowa caucuses. His political fund sources dried up almost overnight and there was no money to pay his staff.

If Kennedy hand't won some delegates in Maine, he would have been a goner. Just like that.

Then there is the momentum story of George Bush. This determined Texas simply "outworked" everybody in Iowa to win most of the Republican delegates.

All of a sudden Bush is on everybody's tongue. Overnight he became Ronald Reagan's No. 1 challenger. In fact, he now leads all comers among Republicans in committed convention delegates.

John Connally, who had the most money, all of a sudden was going broke in a hurry.

It will be interesting to see if the New Hampshire primary next week will knock somebody right on out in the first lap. For example, if Bush wins big there he just might skin the hide right off Reagan.

And then there's the interesting thought about momentum in reverse.

President Carter's popularity, once far behind Kennedy's last fall, climbed back with the 50 hostage crisis in Iran.

After over 100 days of hostage headlines,

it now appears the fifty are near release.

That has been Carter's big political advantage as the campaign got under way. When that issue is settled, the campaign momentum might shift in several directions.

One of the most probable will be the familiar "pocketbook issues" down the stretch. These include such things as inflation, unemployment, recession, etc.

Carter's record isn't so good here and such a shift will put him on the defensive.

It's going to be a long tough campaign. And the expense of all this is staggering. If Connally can spend his \$10 million wad in four weeks, one wonders where all the money will come from — and why.

One place it is coming from of course is the taxpayers pockets. Presidential candidates can now receive something like "matching federal funds" for the amount of money they can raise in the private domain.

The other place it is coming from basically is from those forces who expect something in return. Not that this is illegal by any means.

Momentum has just about ruined Connally's chances. He just couldn't generate any of it and now has shifted to a southern strategy to try to put him back in the race.

There are a lot of candidates in the primary picture right now. But none can afford to stay long unless they attract a lot of attention.

Withdrawal time is just about here for several.

Happy Birthday

February 21
Paul Duren, Jr.
Charles Huffman
Susie Hughes
Paul Ray Martin
Karon Stanley
Gloria Wright
Terry Bilberry
Martin Nichols

February 22
Richard Jones
Pamela Reynolds
David Nichols
Cherri Lanthrop
Maritta Reed
Jerry Hays
Pat Sullivan
Dennis Yarbrow
Weldon Horton
Darrell Ray Norman, Jr.
Vicki Sue Bilbo
Willie Ruth Fry
Kenneth Smith
Kathleen Zachary
A.D. Sparlin

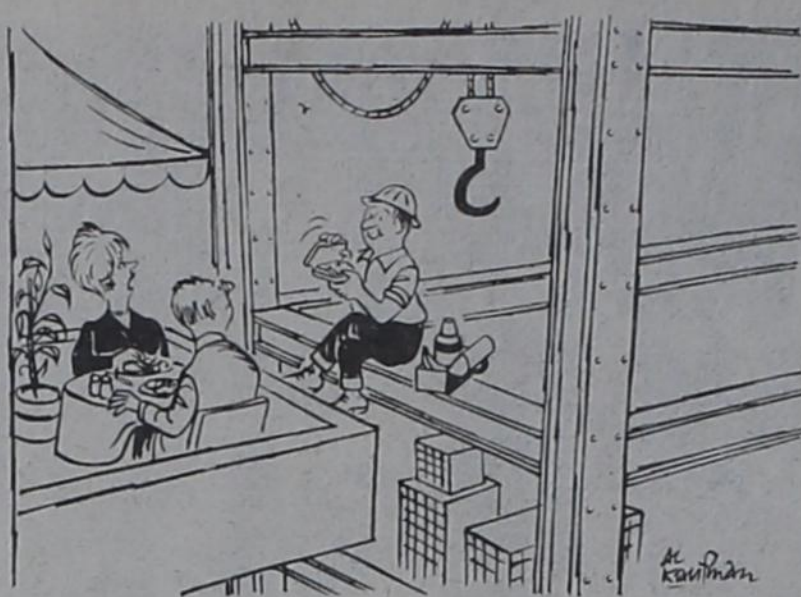
February 23
Mrs. W.W. Stephens
H.J. Bingham
Marilyn Jones
Maurice Morris
Lee Lester
Martha Miller
Helen Pate
Norma Guterrez
Norma Ann Soto
Joel Kirkpatrick
Madelyn Downey

February 24
Mrs. Dillard Thompson
Mrs. Ivan Clary
Billy Carl Claborn
Kim Hester
Donna Sparlin
Kimberly Culvahouse

February 25
Mrs. Roy Stephens
Dianne Farmer
Mrs. Lee Proctor
Jack Hair
Billy Jack Baker
Brad Greer

February 26
H. C. Drake
Mrs. Don Altman
Mrs. Margie Lewis
Jayne Claborn
Mike Hair

February 27
Dee Justice
Linda Williams
Sheila Melton
Sheila Laurence
Charlie Benson
Don Tatum
Geneva Turner
Marcella Hair
M.D. Heaton
J.W. Jolly
Cindy Thomas



"No, we will not pass the salt."

Remember When

10 YEARS AGO

Record number of entries on tap for 1970 livestock show; Mrs. Helen Cornish and Earl W. Chapman Jr., were awarded the "Outstanding Man and Woman" at annual chamber banquet; City Patrolman Jerry Jolly, injured when the police car he was driving struck a telephone pole after blacking out; Bill Lentz files in sheriff race; Texas Painter Delbert Windberg gives demonstration at First National Bank; Housewarming is held for Mr. and Mrs. Henry Key; Boyd Noble and Neff Walker picked for South Plains team; Larry Scrivner places second in 100-yard dash at Brownfield; Jimmy McKamie goes to McMurry.

25 YEARS AGO

Mrs. E.O. Young, Mrs. Opal Pennell and Mrs. C. H. Spears are first women to be called for grand jury duty in Garza County; Chant D. Lee resigns as high school principal; Mr. and Mrs. Arnold Sanderson lease 160 acres of land for uranium; \$2,370.95 total reached in March of Dimes drive; Post Antelopes finish season with 5-14 mark.

Little Known Facts



When the song "Good Morning to You" was published in 1893, it gained no popularity. But a two-word change turned it into one of the most-sung songs in the world. You know it as "Happy Birthday to You."

15 YEARS AGO

Standard Soil Survey completed in county; 23 teacher contracts expiring this year receive extensions; oil valuations down for schools; Jack Kirkpatrick reelected as president of Post Stampede; Sam Gannon hired as dog pound man for city; Tavern loses \$300 loot to burglars; Diane Maxey, Ronnie Graves set March 21 as wedding date; Miss Billie Wolfe, guest

Senator seeking senior interns

WASHINGTON, D.C. — Senator Lloyd Bentsen said Thursday he is looking for older Texans to work in his Washington office as Senior Citizen interns for two weeks this May.

Bentsen, who has co-sponsored legislation to establish a permanent Senior Citizen Program in Congress, asked that any interested Texans, age 65 or older, write to his office.

"Every day in this country 5,000 people celebrate their 65th birthday," the Senator said. "Our senior citizens have special skills to offer and a wisdom that comes only with age."

The intern program not only offers these Texans valuable information on how Congress and the federal bureaucracy works; it also provides a forum for the mutual exchange of ideas on the problems of aging, Bentsen added.

This is the fourth consecutive year that the Senator has participated in the Senior Citizen Intern Program. The senior interns will take part in working sessions with cabinet and agency officials, White House briefings and congressional committee hearings all related to the

problems of aging. The program is also a great opportunity to share ideas with concerned Senior Citizens from around the nation. As an added bonus in the 1978 program a female intern from Texas married a male intern from Kansas.

This year the program will be conducted May 5-16. More than 170 House and Senate offices will sponsor over 200 interns. Forty-five states will be represented, including Alaska and Hawaii.

Any Texan interested in becoming a Bentsen Senior Citizen Intern for 1980 should write to the Senator at the Russell Senate Office Building, Washington, D.C. 20510.

Reliable
TAX SERVICE
Call Glenda Shobe
Office — 495-3074
or Call
495-2186
after 5 p. m.

FARM BUREAU INSURANCE

Insurance For All Your Needs

Life-Auto-Fire-Farm Liability
Blue Cross-Blue Shield

Robert Harvick, Agency Mgr.

Ph. 998 4320 & 998 4591, Res. Ph. 628 2841

TAHOKA, TEXAS

Still want parity

The American Agricultural Movement is holding its 1980 convention in the outskirts of Washington, D.C.

It is the third invasion of the capital by farmers seeking parity prices.

They hope for something more than they received the past two years as the inflationary spiral squeezes them tighter and tighter.

The farmers are counting on this being an election year to win some monetary

concessions. This sounds logical in one way, but its bad in another.

Consumer-area congressmen will think twice about jacking up food costs by aiding the producer, just as farm belt congressmen will try to help the farmers along.

The full parity goal should be looked at as a long range objective.

One thing in the farmers' favor though. Being this is a convention they can write the cost off their income taxes.

COTTON TODAY

Bill Would Hurt Cotton
Rep. Boner (D-Tenn.) has introduced a bill that would require the consumer Product Safety Commission to extend the children's sleepwear flammability standard to all items of children's underwear. Under the bill, the standard would take effect 18 months after its enactment, regardless of when the CPSC issued the necessary regulation. Some 100,000 bales of cotton currently are used in the children's underwear market, according to the National Cotton Council.

Exports Reported

New sales of upland cotton were reported at 66,900 running bales for the week ended Feb. 3 to bring the season's total to 8,478,200. The major buyer was Japan at 52,700 bales. The week's exports were reported at 201,300 running bales (24,400 to China) compared with 168,400 a week ago, bringing the total to 3,667,800 for the year. The week's sales for 1980-81 delivery reached 30,600, almost triple a week ago. Most were sold to Japan.

Hotline Will Help Move Cotton

A new hotline is in operation at the U.S. Department of Agriculture to help the cotton industry avoid a serious transportation crunch brought on by increased exports. Assistant Secretary Bobby Smith says USDA's Office of Transportation started the telephone hotline to reduce obstacles that may occur in moving large shipments. Smith said the hotline number (202-447-5617) may be called by industry members to report bottlenecks and expedite USDA aid.

And Cotton Yesterday
In 445 B.C. Herodotus wrote of trees which grew wild in India, the fruit of which was cotton.

Pickens County

"Talk about lucky! That barb wire is all that saved you from landing in the middle of them prickly pears!"

Depending on luck seldom improves a bad situation. In your financial matters don't substitute luck for sound planning and advice; our experience and resources are available whenever you need them.

FDIC

THE FIRST NATIONAL BANK

YOU EXPECT US THERE

Yes you expect us there and You depend on Southwestern Public Service electricity to provide a lot of things to make your life better and more comfortable at home and work.

You depend on SPS to restore service quickly after a storm or accident.

When you need us we'll be there. It's good to know there's something you can depend on.

SPS
SOUTHWESTERN PUBLIC SERVICE

930.1



Jack (the old pro) Family Pack, Ground Beef \$1.19
Meat Specials Hamburger 1 lb.

Choice
Round Steak **\$1.89**
1 lb.

Lean
Stew Meat **\$1.89**
1 lb.

Choice Beef
Sirloin or Cubed Steak **\$2.39**
YOUR CHOICE 1 lb.

Wright's Sliced
Slab Bacon **99¢**
1 lb.

Pinto Beans 1 Lb. Bag FREE! <small>With 1 Filled Discount Specials Booklet</small>	Spam Luncheon Meat, 12 Oz. 89¢ <small>With 1 Filled Discount Specials Booklet</small>	EGGS Shurfresh, Small One Dozen FREE! <small>With 1 Filled Discount Specials Booklet</small>	Golden Bake Bread 1 1/2 lb. Loaf FREE <small>With 1 Filled Discount Specials Booklet</small>	Coca Cola 32 Oz. 6-Pack \$1.39 <small>With 1 Filled Discount Specials Booklet</small>	Cake Mix Duncan Hines Assorted 39¢ <small>With 1 Filled Discount Specials Booklet</small>
---	--	---	---	--	--

MIX OR MATCH
 FLORIDA RUBY RED
Grapefruit
 OR
 CALIFORNIA LARGE SUNKIST
Oranges **5¹/₁** **LBS.**

Coca Cola
 32 OZ. 6-PACK
\$1.89

CALIFORNIA GREEN PASCAL Celery **29¢** LARGE STALK
CALIFORNIA ICEBERG Lettuce **3¹/₁** **LARGE HEADS**
ALL PURPOSE RUSSET Potatoes **20 LBS. BAG \$1.69**
CALIFORNIA LARGE TIE Onions **2 BUNCHES \$3.50** GREEN

Potatoes 5 lb. Bag FREE <small>With 1 Filled Discount Specials Booklet</small>	Ice Cream Shurfresh Half Gallon 99¢ <small>With 1 Filled Discount Specials Booklet</small>	Crisco 3 Lb. Can \$1.69 <small>With 1 Filled Discount Specials Booklet</small>	Gold Medal Flour 5 Lb. Bag 59¢ <small>With 1 Filled Discount Specials Booklet</small>	Tuna Shurfine 6 1/2 Oz. 19¢ <small>With 1 Filled Discount Specials Booklet</small>	Milk Shurfresh Half Gallon 59¢ <small>With 1 Filled Discount Specials Booklet</small>
---	---	---	--	---	--

DELI SPECIAL OF THE WEEK
BARBECUE SANDWICH **LARGE BUY ONE GET ONE FREE**

WE ALSO HAVE
 FOUNTAIN DRINKS
 SUPER DOGS
 CHILI DOGS
 BARBECUE (pt. & Qt.)

Use Our Dining Area
 Set Up for Your Convenience

Rick's HOME OWNED

Venture FOODS

DOUBLE GOLD BOND STAMPS ON WEDNESDAY
 PRICES EFFECTIVE THURSDAY FEB. 21 - FEB. 27



POST MERCHANTS ARE SUPPORTING THE LIVESTOCK SHOW

THURSDAY, FRIDAY & SATURDAY, FEBRUARY 21-22

GARZA'S 15th JUNIOR LIVESTOCK SALE
1:30 P. M. Saturday

Auctioneering by
DANNY BURNS & KEVIN HUDSON
 OF
HERB HENDERSON AUCTIONEERING SERVICE

The top animals shown in show by Garza 4-H, FFA & FHA youngsters will be auctioned off to highest bidders. Bidding will be on a dollar basis for each animal with dollars bid going as premium

JUNIOR LIVESTOCK SHOW PROGRAM

WEDNESDAY, FEB. 20

4 p. m. - 8:30 p. m. Animals Weigh In

THURSDAY, FEBRUARY 21

All Day Animals on Exhibit
 7:30 p. m. Swine Show
 Dr. Jerry Stockton of Texas Tech Judge

FRIDAY, FEBRUARY 22

All Day Animals on Exhibit
 1 p. m. Horse Entries Report to Superintendent
 Ed Crawford of Crosbyton, Judge
 7:30 p. m. Lamb Show
 John Kearney of Sterling City, Judge

SATURDAY, FEBRUARY 23

9:00 a. m. Calf Show
 Spencer Tankersley, Muleshoe, Judge
 1:30 p. m. Junior Livestock Sale

SHOWMANSHIP TROPHIES IN EACH DIVISION AND OVERALL SPORTSMANSHIP TROPHY WILL BE PRESENTED

Concession Stand

will be operated Thursday, Friday and Saturday in conjunction with Fair by Garza Extension Home makers Clubs

- Modern Beauty Shop**
They're Our Stockmen of Tomorrow
126 E. Main Dial 2373
- Mayor Giles C. McCrary**
Junior Livestock Sale Beef Is The Most Important Beef You Can Buy
- George R. Brown**
Backing This Fine Youth Project
Lubbock Highway Dial 2886
- H&M Const., & Dirt Contr.**
Our Youngsters are Our Best Crop by Far
Clairemont Hwy. Dial 3293
- Jackson's Cafeteria**
Bid Up and Promote Our Future
214 N. Broadway Dial 2970
- Jay's Chemical**
Distributors of Cardinal Products
Jay & Susan Strawn
- Hill & Hill Transport**
Boost Our Youth by Bidding Saturday
Clairemont Hwy. Dial 2871
- Post Insurance Agency**
Boost Beef Prices in Sale Ring Saturday
112 E. Main Dial 2894
- Happiness Is . . .**
Boys and Girls are Our Best Investment
128 E. Main Dial 2438
- Hackberry Co-Op Gin**
Make Them All Winners in Sale Ring
Route 2, Post Dial 996-5311
- R. E. Cox Lumber Co.**
Let's Make Every Youngster a Winner
119 N. Ave. H Dial 2835
- Edith's Liquor Store**
See What's Really Going on Saturday
503 E. Main Dial 2769
- Jackson Bros. Meat Packers**
Buy Premium Garza Beef Saturday
121 S. Ave. H Dial 3245
- Bob Collier, Druggist**
Youngsters are a Tonic To Us All
203 E. Main Dial 2856
- Western Auto**
Show the Youngsters We're Proud of Them
212 E. Main Dial 2455
- Hudman Texaco Service**
Be Present at That Sale Ring Saturday
431 E. Main Dial 3114
- Wacker's**
Youngsters are Our Best Assets
117 E. Main Dial 2869
- Dodson's**
Your Bid Is Their Reward
206 E. Main Dial 3451
- The Post Dispatch**
Youngsters Make the Best News
123 E. Main Dial 2816

Southwestern Public Service
See "Educational Projects" Saturday
217 W. Main Dial 2891

Postex Plant
Congratulations to All Entrants
Mill Road Dial 2818

County Judge Giles W. Dalby
Backing Garza Youth All the Way

Taylor Tractor & Equip. Co.
Support 4-H and FFA in Action
Lubbock Hwy. Dial 3363

Graham Co-Op Gin
Eat More 4-H and FFA Beef
Route 3, Post Dial 2179

Jae's
Juniors Now - Seniors Tomorrow
220 E. Main Dial 2820

damon's Restaurant
Show Your Interest and Concern Saturday
215 S. Broadway Dial 2367

Ince Fina Station
Saluting Our 4-H and FFA Youth
604 N. Broadway Dial 495-9928

First National Bank
We're Backing Garza's Junior Stockmen
216 West Main Dial 2804

Handy Hardware
Put Premium Dollars on Premium Kids
211 E. Main Dial 3036

Frances L. Camp
All These Youngsters Wear a Star
108 E. Main Dial 3404

Higginbotham
Don't Miss Our Junior Livestock Sale
110 S. Broadway Dial 2080

THE 15TH ANNUAL GARZA CO. JUNIOR SHOW AND FAIR

22-23 GARZA CO. JUNIOR LIVESTOCK BUILDING



GARZA COUNTY FAIR PROGRAM

WEDNESDAY, FEBRUARY 20
4-6 p. m. Entries Accepted

THURSDAY, FEBRUARY 21
8:30 a. m. to 12:30 Adult and Youth Entries Accepted

12:30 p. m. Entries to be Put in Place
1:00 p. m. Judging Begins
5 to 9 p. m. All Fair Exhibits Open to Public

FRIDAY, FEBRUARY 22
9 a. m. to 9 p. m. All Fair Exhibits Open to Public

SATURDAY, FEBRUARY 23
9 a. m. to 3 p. m. All Fair Exhibits Open to Public
3:00 p. m. Entries to be Taken Home

CONTEST DIVISIONS FOR FAIR:

- Educational Exhibits — Culinary —
- Canning — Clothing — Crafts
- Antiques — Flowers — Handiwork
- Art — Photography
- Men's Division

TROPHY WILL BE PRESENTED TO THE HIGH POINT OVERALL YOUTH

Cake Auction Will Be Conducted in Show Arena Both Thursday & Friday Nights

to youthful owner. If bidders wish to keep animals bought for slaughter, they must also pay "floor price" on animals as well. "Floor price" for each division will be set at beginning of sale. Come to auction prepared for some spirited bidding.

Close City Co-Op Gin
Help Stake a Youngster Saturday
Route 3 Dial 2753

Caprock TV

Boost Our Youngsters With a Sale Bid
132 West Main Dial 2263

Pequeno Phillips 66

Let's Give Our Kids a Big Boost
512 N. Broadway Dial 3220

Southland Butane

Little Mary's Lamb is Premium
116 West 11th Dial 2159

Justice-Mason Funeral Home

Give Them a Boost. Give Your Bid.
301 West Main Dial 2833

Dickson Chemical Co.

Make Every Youngster a Real Winner
116 South Ave. O Dial 3422

Harold Lucas Motors

Make Every Entry a Winner
111 S. Broadway Dial 2825

Hudman Furniture

Let's Give Our Kids a Real Boost
301 East Main Dial 2165

Trends for Men

What Happens Now. Depends On Us
215 East Main Dial 2976

The Twins Fashions

Bid On Our Kids. Be at the Sale Saturday
213 E. Main Dial 3387

Strawn Transport & Acid

Boost Their Pride. Be at the Show.
Clairemont Hwy. Dial 2422

Caprock Liquor

Show Your Interest and Concern Saturday
208 N. Ave. F Dial 2944

Hundley's Mens' Wear

They Can't Do It All By Themselves
119 E. Main Dial 2176

Rick's Venture Food

Your Presence Is Needed
125 W. 8th Dial 2716

Lotts White Auto

Make It a Real Community Day Saturday
207 E. Main Dial 3380

United Super Market

Let's Help Them to Learn and Profit
123 N. Broadway Dial 3217

S. L. Butler LP Gas

Be Present at That Sale Ring Saturday
715 N. Broadway Dial 2120

Fashion Cleaners

Everyone Should Leave the Ring a Winner
111 West Main Dial 2345

Nelson & Son Automotive

Bid Up and Promote Our Future
704 N. Broadway Dial 2526

Palmer Well Service

Invest In Our Youth at the Sale
Clairemont Hwy. Dial 3460

Tom Power Insurance

Post Youth Make Good Aggies
204 East Main Dial 3050 or 3051

D. C. Hill Butane Co., Inc.

Youngsters are Our Real Money Crop
Clairemont Hwy. Dial 2425

P&W Acid

Your Bid Is Their Encouragement
112 S. Ave. O Dial 3046

Sentry Savings Association

Make Premium Bids for Premium Kids
106 N. Broadway Dial 3696

Dr. Charles McCook, DDS

Let's Help Them to Learn & Profit
204 West Main Dial 3600

Harmon's Hamburger Hut

Our Hat Is Off to Junior Stockmen
312 N. Broadway Dial 2101

Wilson Brothers

Only You Can Put a Shine in Their Eyes
606 South Broadway Dial 2109

Palmer Oilfield Const.

Our prosperity depends on their knowledge
Clairemont Highway Dial 2710

La Posta Gifts

Back Our Youngsters Saturday
412 N. Broadway Dial 2648

Terry's & Son Tires

Show the Kids We Appreciate Them
110 N. Broadway Dial 3671

Texas Electric

Your Bid Is What They've Worked For
330 E. Main Dial 2610

Public review sought of conservation programs

This week is the start of a 60-day public review period during which time interested people are being asked to comment on the direction they think future U.S. Department of Agriculture conservation programs should take.

The public review period started January 28 and ends March 28.

Four draft documents describing the Nation's non-federal soil and water resources, their condition, projected demands, and seven proposed alternative strategies can be reviewed at the local Soil Conservation Service and ASCS

offices in the Williams Building here in Post.

Duaine Binford said the proposals for a national soil and water conservation program were developed by a coordinating committee made up of members from nine U.S. Department of Agriculture agencies plus the Office of Management and Budget and the Council on Environmental Quality. The process, mandated by the Soil and Water Resources Conservation Act of 1977 (RCA), included consideration of public input from 9,000 public meetings held in the United States during 1978.

The Act directs the USDA to appraise the condition of the Nation's renewable natural resources and to propose alternative programs to guide the Nation's conservation activities. The appraisal revealed that one-third of the Nation's cropland — 136 million acres — is eroding at an excessive rate.

Basic information about the RCA process and proposals may be seen in four documents:

The first document, Draft Appraisal Part I, describes the status and condition of our natural resources and provides information on their quantity and quality and major uses of nonfederal land.

The first document, "Draft Appraisal Part I," describes the status and condition of our natural resources and provides information on their quantity and quality and major uses of nonfederal land.

Predominant grades for the week were grade 32 at 23 percent, grade 42-39 percent and grade 43-13 percent.

Predominant staples were staple 30-23 percent, staple 31-47 percent, staple 32-20 percent.

Micronaire 30-32 was 33 percent, 27-29 accounted for 38 percent while 26 and below amounted to 10 percent, according to USDA's Agricultural Marketing Service.

Average fiber breaking strength was 35,000 pounds per square inch for the samples tested.

formation on their quantity and quality and major uses of nonfederal land. The completed draft identifies national conservation objectives for: reducing erosion and preserving prime farmlands; improving water quality; conserving water; improving fish and wildlife habitat, including the preservation of wetlands; reducing upstream flood damages; conserving energy

Cotton price is up again

LUBBOCK — Spot cotton prices advanced for the 12th consecutive week, according to Paul R. Dickson, Area Director for the Texas High Plains Cotton Division Offices.

High Plains growers sold mixed lots of miked 30-32 around 1675 points over 1979 loan rates, up 225 points compared to a week earlier. Mixed lots of mostly mikes 27-29 brought around 1350 points over 1979 loan, up 225 points, also, Dickson said.

High Plains Cotton Division Offices graded 41,000 samples during the week ended February 14, as ginning continued to wind down. This brought the season's classing total to 2,401,000.

Predominant grades for the week were grade 32 at 23 percent, grade 42-39 percent and grade 43-13 percent.

Predominant staples were staple 30-23 percent, staple 31-47 percent, staple 32-20 percent.

Micronaire 30-32 was 33 percent, 27-29 accounted for 38 percent while 26 and below amounted to 10 percent, according to USDA's Agricultural Marketing Service.

Average fiber breaking strength was 35,000 pounds per square inch for the samples tested.

and solving related resource problems.

The second document, "Draft Appraisal Part II," projects demands on soil and water resources to the year 2030 and suggests levels of management that could be used to preserve these resources. It also summarizes trends in rural land ownership and describes the contribution of state and local programs to soil and water conservation.

The third document, "Program Report and Environmental Impact Statement," outlines seven possible approaches — called alternative strategies — for changing USDA conservation programs and outlines the probably environmental impact.

The fourth document, "Summary of Appraisal, Parts I and II, and Program Report" is a brief summary of the other three documents.

During the public review period, three public meetings will be held in Texas to discuss content of the documents and provide an opportunity for comments. The meetings will be held in Arlington on February 26; Lubbock, March 4; and San Antonio, March 6.

Interested citizens are invited to send written comments about the documents or suggestions about future conservation programs to the RCA Response Analysis Center, P. O. Box 888, Athens, Georgia 30603.

Anyone interested in reviewing the documents or finding out more information about upcoming RCA meetings should contact Duaine Binford of the Soil Conservation Service office or Joe Barnes of the Agricultural Stabilization and Conservation Service. The offices will be open from 8 a.m. to 5 p.m. Monday through Friday.

GREAT ALL-AMERICAN WORKSHOP SALE

SAVE NOW! SPECIAL OFFERS!

SAVE 50 PCT. ON REG. \$19.99

Black & Decker 1/4" Electric Drill **ONLY \$9.99**



Socket Sets
Reduced
50%

Wrench Sets
Reduced
50%



C.P. 734
275+ Lbs Torque
OLD RELIABLE
THE MECHANIC'S CHOICE

\$79.95

Reg. \$99.95

Prices Cut 50-90%

Metric Tools
Buy Them Now!

Order Model 79-009 WORKMATE

Get a **FREE Model 7300 CIRCULAR SAW**

Handy Hardware
231 E. Main
Dial 3036

Family Shoes and Men's Work Boots
Including Steel Toe Boots
The **SHOE BOX**
213 E. Main

SAVE AS NEVER BEFORE DURING...
WE RESERVE THE RIGHT TO LIMIT PRICES EFFECTIVE FEBRUARY 21-23, 1980
SPECIALS GOOD WHILE SUPPLY LASTS - LIMITED SUPPLY



TAX REDUCTION SALE

HAMBURGER PEPPERONI SAUSAGE
JENO'S PIZZA
13 1/2 OZ. PKG.
\$1.29

BORDEN'S COTTAGE CHEESE
12 OZ. CTN.
79¢

KRAFT DELUXE CHOICE CHEESE SLICES
12 OZ. PKG.
\$1.79

LIMITED SUPPLY
TURKEYS Lb. **49¢**

ASSORTED
ALLSUP'S ICE CREAM
1/2 GAL. RD. CTN.
\$1.39

FOLGER'S FLAKED COFFEE
13 OZ. JAR
\$2.79

FRESH COOKED
BURRITOS **2/79¢**

FRESH COOKED
BRISKET SANDWICH EACH **89¢**

FROM \$00.00 TO \$200.00
ALLSUP'S MONEY ORDERS
FOR **19¢**

GOLDEN OPPORTUNITY
Due to the growth of Allsup's Convenience Stores, we are now taking applications for store managers, Asst. Managers, Supervisors, Full Time Clerks and Part Time Clerks in Post, Snyder and other areas. Interviews will be held Feb. 25 & 26th from 9 a. m. to 5 p. m. at Store No. 124, 326 West 8th, Post, Tex.

ACE
1 1/2" **\$219**
2" **\$229**

Thorsen Tat Tools
-25%

ACE
\$6.98
Ace Propane Torch
Features pencil-type flame burner. Refill w/ standard propane cylinder.

Miscellaneous Tools **25¢**

Miscellaneous Tools **50¢**

Miscellaneous Tools **\$1**

Associated Service Quality FAST CHARGER & CAR BOOSTER
6, 8 & 12 Volt
No. 6008
Special Price **\$199.95** Reg. 248.00

Whole Whiskey Barrels SPECIAL
55 Gal. Size
\$21.95
•MANY USES
•FURNITURE
•PLANTERS
1" Oak
JUST USE YOUR OWN IMAGINATION!
110 lbs.

DURO TOOLS -25%

TUTHILL 12 VOLT ELECTRIC FUEL PUMP
Basic pumping unit, complete with 10' hose and nozzle, and adjustable suction pipe. NO. 1210
\$193.66
Reg. \$216.00

12 VOLT ELECTRIC WINCH
123 TO 1 RATIO
1-1/3 H.P. Motor
\$149.95
1500 lbs., vertical lift

TOOL SALE

Huntley Nursing Home News

Last week the theme at our home was Valentine's Day. Cupids and hearts decorated the resident's doors and the living area. The residents had a Valentine's Party Feb. 14th. The serving table was beautifully decorated with a red net cloth and the centerpiece was red roses. Red fruit punch with a heart ice ring, a double heart valentine cake and valentine cookies were served. The residents were given valentines from the home and favors of heart candies. A king and queen of hearts was chosen. The King of Hearts, Oliver, McMahon, and the Queen of Hearts, Victoria Vargas were presented heart shaped

boxes of candy. Etta Odum said our prayer and Mildred Stewart presented an old fashioned sing-along with "Let Me Call You Sweetheart", topping the list. Johnnie Wilson, our Social Activity Director was responsible for providing such a fun day for our residents.

Friday night, Feb. 15th, was movie night. A mystery story, "The Ice Storm", and a comedy, "The Frog Went Courting," were viewed by the residents. Movies will be a weekly event at Huntley's.

Monday afternoon we played bingo. Prizes of fruit were given to the winners. One of our first items to

be made in our arts and crafts program will be a project brought to us by Etta McMahon, decorated waste cans. These projects will be for sale at the later date and will be on display at our home.

We would like to invite anyone interested in giving some of their time to our Volunteer Program to meet with us at 3 p.m., Feb. 2 in our dining room. A few minutes of your time could make someone happy.

We have so many thank you's to hand out that we had better get started before we run out of space.

Faye Maddox, daughter of Lucy Clary, provided the punch and cake for our party. Socorro Storie, daughter-in-law of Sadie Storie furnished the candy and decorations. Felipe Vargas, son of Victoria Vargas, donated cookies for the party. Thanks to all these people for their help in making our party a success.

We want to thank Bonnoie McMahon for delivering our mail to our rooms and Henrietta Nichols for her help in decorating our doors.

To our librarian of Post,

Pee Wee Pierce, our thanks for bringing us paperback books.

The POST DISPATCH has our thanks for covering our Valentine Party and printing our column. This enables the people of our community to follow our progress.

The Administrative Staff of Huntley Nursing Home would like to thank our

Director of Nursing, Nell Smith, and all of our employees for the outstanding job they have done in helping to prepare and open our Nursing Home. They have spent many hours and it certainly is apparent when you view the patient care that they are providing. Hearts and flowers to them for a wonderful job. Last, but certainly not least, is our sincere thanks

to all the people of Post and the surrounding communities for their support. Never have we met more understanding and gracious people. To, all of you, the People of Post, for your kindness and courtesy, we send our heartfelt thanks and promise you the utmost in patient care for your friends and relatives. To quote Hank Huntley, "It's good to be back home."

DR. FRANK BUTTERFIELD
Optometrist
Office Hours: Tues 1-5 p.m., Thurs 9:30 a.m.-5:30
206 W. Main Ph.495-3687

The Church of God of Prophecy
Psalms 60:4
Sunday School 9:45 am Sunday Evening 6 pm
Bible Study 7 pm Tues Wed. Evening 7 pm
602 West 14th St. Post
Pastor Leon Flemmer - 495-3474

Steel Buildings
FOR SALE
Sizes from 30' x 30'
to 70' x 120'
Delwin Fluitt
Dial 495-2702

PRICES GOOD THRU FEB. 23

U
UNITED Supermarkets

QUANTITY RIGHTS RESERVED

FULL BOOK

PLAY BINGO

FOLGER'S COFFEE

1 LB. \$2.98
2 LB. \$5.95

FRISKIES CANNED DOG FOOD 14 OZ. CAN 4 FOR \$1

SAFEGUARD SUPER SIZE BAR BATH SOAP 7 OZ. 2 PACK \$1.19

AJAX DISHWASHING LIQUID 15c OFF 22 OZ. 89c

FINE FARE AUTOMATIC DISH DETERGENT 50 OZ. \$1.29

RANCH STYLE CHILI
W/BEANS
15 OZ. CAN 59c

SPAM
REG. OR SMOKED
12 OZ. CAN \$1.09

PAMPERS
CONVENIENCE PACK
48 CT. 60 CT. \$5.99

HEALTH & BEAUTY AIDS

COLGATE INSTANT SHAVE *REG. *MEN. *MED. *LIME 11 OZ. 79c	INTENSIVE CARE LOTION REG. OR HERBAL 10 OZ. \$1.19	RAVE HAIR SPRAY 7 OZ. 99c
---	---	-------------------------------------

KEEBLER ELFWICH COOKIES 14 OZ. 89c

WHITEHOUSE APPLE JUICE 32 OZ. 89c

COMSTOCK CHERRY PIE FILLING 21 OZ. CAN \$1.39

NESTLE HOT COCOA MIX 12 OZ. \$1.19

PET RITZ 24 OZ. MINCE PIES 79c

PET RITZ PUMPKIN 24 OZ. 69c

ROME BEAUTY EXTRA FANCY APPLES LB. 39c

WASH. D'ANJOU PEARS LB. 39c

NO. 1 RUSSET POTATOES BAKER SIZE LB. 19c

CRISP GREEN CABBAGE LB. 9c

GREEN ONIONS BUNCH 19c

BBB alert out on fake tours prizes

South Plains Consumers should be on the look out for mail solicitations and phone call solicitations from the Las Vegas, Nevada based Vegas International Travel and Tours.

This company does not meet Better Business Bureau standards due to advertising practices used by the company. The company has contacted hundreds of consumers stat-

ing that they (the consumer) have won a vacation to Las Vegas. This is not accurate since the consumer has to pay a service charge that may exceed the amount paid for the same services secured through a local travel agency. Also, the company is asking through their phone solicitations for credit card numbers of consumers. The BBB has received several

complaints and inquiries concerning bills they have received for unordered vacation packets.

Vegas International's most recent written promotional material mailed to South Plains residents states, "V.I.P. is registered ... and has an excellent reputation with the Better Business Bureau." This is an absolutely false statement. The Las Vegas

'80 sales tax here away up

Post is receiving a \$10,859.88 check for its one percent sales tax paid in January, up about 60 percent from the same period last year when \$6,364.21 was received.

That gives Post \$14,190.10 in 1980 payments to date as compared to \$10,591.42 for the same period last year. This is a 33 percent increase.

Bureau reports that they are having great difficulty with the company.

Listeners are encouraged to contact the BBB South Plains for further information on its toll-free number 1-800-692-4466 and for Lubbock and Slaton consumers, the number is 763-0459.

Lunar rock at Big Spring show

BIG SPRING — The 11th annual Prospectors Extravaganza March 1-2 under sponsorship of the Big Spring Prospectors Club, will feature for the first time in West Texas a display of an Apollo Lunar Sample (moon rock), courtesy of NASA.

Features of the show will include a seminar by Terry Gilbreath, curator of the Diamond M Museum in Snyder on the art of lost wax bronze metal sculpture and casting.

Other working demonstrations will include sandpainting, wire craft jewelry, arrowhead making, silver-

smithing, metal sculpture, jade carving, faceting, cabling, slabbing saw, core capper, geologist identification of gems and minerals, tumbling, display of pegmatite dike, and display of stones and their medicinal or romantic history.

Nine dealers will exhibit, demonstrate and sell. Hourly door prizes will be awarded.

The show will be open from 9 a.m. to 9 p.m. Saturday, March 1, and the same hours Sunday, March 2. It will be located in the Dora Roberts Exhibit building at the Howard County Fair Grounds here.

Letters to the Editor

OVERDUE BOOKS

Dear Editor: Approximately 25 persons have overdue library books from May 1979 through December 1979. This is a total of 59 books lost to the library.

I would like to ask these people to please return them to the library. No fines will be charged and they can be put in the book drop. This is a great loss of books as well as money to the library so will you please return them?

Sincerely,
Pee Wee Pierce
Librarian

income taxes prepared
by Experts

We prepare W-2s too!

Co-Ed Income Tax Service and Bookkeeping

202 E. Main Dial 3721

Since 1915

Justice-Mason

301 W. MA POST, TEXAS

FUNERAL HOME

DIAL 495-2033 DEE AND JANET JUSTICE

Insurance Associated with Landmark Life Ins.

WIN 1200 EXTRA S&H GREEN STAMPS

UNITED'S TruTendr BEEF

SIRLOIN CENTER CUT STEAK **\$2.29** LB.

T-BONE STEAK **\$2.89** LB.

BONELESS STEW **\$1.98** LB.

KRAFT CRACKER BARREL CHEESE **\$1.59** 10 OZ. STICK

EXTRA LEAN CUBES OF BEEF **\$1.98** LB.

SHARP OR EXTRA SHARP **\$1.59** 10 OZ. STICK

5¢ PER ITEM DONATED TO SPECIAL OLYMPICS

ROMAN MEAL DINNER ROLLS

12 OZ. **69¢**

12 CT. PKG. **69¢**

MAXWELL HOUSE INSTANT COFFEE

10 OZ. JAR **\$4.69**

WHITING FISH

WHOLE **59¢** LB.

GROUND BEEF

FRESH FAMILY PACK **\$1.39** LB.

SHENANDOAH TURKEY DRUMSTICKS OR WINGS

49¢ LB.

RANCH STYLE BEANS **3 FOR \$1** 15 OZ. CAN

DEL MONTE WHOLE DILL PICKLES **89¢** 22 OZ. JAR

EATWELL TOMATO SARDINES **79¢** 6 1/2 OZ.

RICH & READY ORANGE DRINK **89¢** PLASTIC GAL.

BONELESS HAM

WILSON'S CERTIFIED FULLY COOKED

\$1.59 LB.

FROZEN FOOD

PET RITZ DEEP DISH 12 OZ. PIE SHELLS ... **79¢**

MORTON CHICKEN BEEF TURKEY POT PIES **4 FOR \$1**

PATIO MEXICAN SALTILLO CHEESE ENCH. COMB. BEEF ENCH. FIESTA DINNERS **69¢**

DAIRY

FINE FARE 8 OZ. BISCUITS **6 FOR \$1**

VELVET SPREAD 2 LB. CTN. OLEO **89¢**

BELL BUTTER-MILK **89¢** 1/2 GAL.

S&H GREEN STAMPS

UNITED Supermarkets

QUANTITY RIGHTS RESERVED

PRICES GOOD THROUGH FEB. 23

Final fair plans made

Final plans were made for the upcoming county fair when the Close City Extension Homemakers club met recently with Mrs. Thurman Francis.

Roll call was answered with "Where I Would Like To Go On My Next Trip." The program was presented by Lottie Shelton who showed the club members a part of her thimble collec-

tion and gave the history of each one.

Hostess, Mrs. Francis served refreshments to members, Helen Richards, Hooter Terry, Virginia Custer, Linda Malouf, Oreta Bevers, Inez Ritchie, Cleo Sappington, Thelma Epley, Jewel White, Faye Payton, Thelma Thomas and guests, Lottie Shelton, Gwen Boren and Helen Clement.

Tuesday rites for Basinger

Funeral services for Haywood Basinger, 75, of Slaton were held at 2 p.m. Tuesday in the First Baptist Church of Slaton with the Rev. Robert Moore, pastor, and the Rev. Charles Hastings of Lubbock officiating. Mr. Basinger is the father of Mrs. Ronnie Dunn of Post.

Basinger died about 2 p.m. Sunday in his home of an apparent heart attack. He was under a doctor's care.

Basinger, an Oklahoma native, moved to the Southland area in 1914, where he farmed until he retired in 1961. He was married to Mary Ella Jones in August, 1923.

Survivors other than his daughter include his wife; two sons, J. Martin and Donald, both of Slaton; three daughters, Mrs. Pat Taylor of Slaton, Mrs. Dunn and Mrs. Dub Pierce of Houston; a brother, Paul of Lubbock; a sister, Thelma Winterroud of Amarillo; 12 grandchildren and three great-grandchildren.

Newcastle, England, was built on the site of an old Roman fort that defended the eastern end of the wall Hadrian built across Britain.



LUBBOCK — According to Donald Johnson, Executive Vice President of Plains Cotton Growers, Inc., Lubbock, it now appears virtually certain that the six-year-old disaster program which expired with the 1979 crop year will be extended through 1981.

The House in Washington Feb. 13 on a vote of 202 to 140 approved a two-year extension as part of a bill establishing a new and expanded all-risk Federal Crop Insurance program. The Senate passed a similar measure late last year and the issue now goes to a House-Senate Conference Committee for resolution of differences.

The disaster extension parts of the two bills are almost identical, notes Johnson, "so we don't anticipate any serious problem getting the bill out of conference or back through both houses."

The only major difference in the bills relates to the Federal Crop Insurance program. The House measure gives producers the option to secure private hail and fire insurance in return for a 25 percent credit on federal premiums for other coverage. The Senate bill has no such provision.

Details on the insurance program won't be available until sometime after the final measure becomes law. Nor is it now clear when all farmers will have access to the new insurance.

"But it doesn't seem reasonable to expect that federal crop insurance in 1980 will be much if any

different from that available in 1979," Johnson says. Meanwhile producers will have the disaster program in 1980 and will have the option to either retain that protection or take federal crop insurance in 1981.

The next action on a disaster program extension will come February 19 when House and Senate conferees meet on legislation raising target prices for wheat and feed grains. Besides target price provisions, the Senate bill to be discussed also provides a one-year extension of the disaster program with a payment limitation of \$50,000 per producer.

It is possible but by no means assured, Washington sources say, that the target price conferees will now agree to drop all mention of the disaster program from that bill.

Disaster protection was first written into the Agriculture Act of 1973 and was extended for the first two years of the four-year 1977 farm law, expiring with the 1979 crop year.

Guilty pleas in 3 cases

Jannan Lee of Oregon was arrested here Saturday on a charge of passing a worthless check. She pleaded guilty and was probated a 30 day jail sentence.

Maguel Fuentez of Snyder, who was shot during a fracas at a local tavern was arrested Sunday after his dismissal from a Lubbock hospital and charged with disorderly conduct.

He pleaded guilty and paid fine and court costs of \$203.50.

Rhonda Holly Curb and Jackie Curb pleaded guilty to an assault charge Monday and were ordered to pay fines and court costs totaling \$103.50 each.

There are about 300 species of holly shrubs and trees throughout the world.

School board—

(Continued From Page One) for sale via private bids.

Joy Dixon was named as election judge for the school board's spring election in April.

Supt. Bill Shiver presented his recommendations for teacher pay increases to the board which trustees took under advisement. They had asked his recommendations.

Mrs. Danny Shaw, representing the Texas State Teachers Association appeared before trustees to present that organization's views on pay increases. Mrs. Shaw said the organization is opposed to merit pay hikes and desired across the board increases.

"In the morning of life, work; in the midday, give counsel; in the evening, pray." Greek Proverb

ANNOUNCEMENT

Wanda Wray and Dick Alexander

wish to announce their association for the General Practice of Law. The Law firm of Wray and Alexander is located at

122 East Main
Phone 495-3160

Office Hours:

Monday — Thursday
9 — 4

Criminal, Civil, Real Estate, Oil and Gas, Family Law and Personal Injury.

RHYTHMIC AEROBICS CLASSES

Each Monday Night from 7 — 8 p. m. beginning February 25

6 weeks for \$6

Come experience a fun way to fitness. Taught by Patricia Reynolds in the Elementary Gym.



HAPPY BIRTHDAY
Danny No. 2
(Sorry to be Late)
Mom & Dad T

HOME AND GARDEN TOUR

12 Days \$464 (Escorted)

Depart Lubbock March 28 — Reservations Being Taken "BLOSSOM TIME TOUR" of the Deep South — Visit in fabulous antebellum homes . . . Explore famous Southern gardens festooned with blossoms by the millions . . . Old Natchez-on-the Mississippi, New Orleans, St. Augustine, Olde Charles Towne . . . and much more.

Non-Profit Group Can Take 10 to Complete Quota To Receive Free Information Brochure by Mail . . . Phone John McKinney (806) 762-6915 In Lubbock T. N. M. & O. Tour Service Ph. 763-5389

WEST TEXAS ROSE BUSHES

Pride Roses
\$1.99

All American
\$3.19

Country Squire Patent
\$4.39

Onions Sets or Bulbs
White — Yellow — Red 79¢

Suburban Beauty
\$2.59

Mayflower
\$2.19

Pot-in-All
\$4.39

RICK'S
Venture
FOODS
125 W. 8th Dial 2716

ATTENTION

CLASS OF 1950

Would you like to attend your 30th class reunion?

Send all suggestions, your address, information on any classmate, best time of year, (summer or 1980 football homecoming).

Also, any friend or relative knowing the address of any of the following people, please send to:

Class of "50"
P. O. Box G
Post, Tex. 79356

Geraldine Hicks
Iva Jones
Peggy Moreland
Bob Baker
James Barnes
Wanda Bilberry
Boyd Bowen
Charles Bowen
Charles Brookshire
Sue Bell Brister
Frances Buchanan
Herbert Buchanan
Margene Buchanan
Catherine Carter
Robert Craig
Winifred Craig
Helen Baylor
Gloria Jean Caylor
Lois Carter
Melba Carpenter

Clara Bell Jones
Jeanneane Kiker
Barbara Lusby
Donald Carpenter
Loretta Caraway
Minnie Davis
Elwanda Davies
Anita Eckols
Faye Eckols
Maurice Fluit
Eugene Ford
Bonnie Gary
Raymond Gary
W. J. Goss
Donald Gossett
H. C. Gribble
Buddy Hays
Daisy Holly
Patsy Holly
Vada Holly

Henrietta Carey
Lorance Pinkerton
Janie Shepherd
Wayland Hood
Dale Howard
Donald Hunt
Billy Hunt
Juanita Jiminez
Lathan Johnson
J. W. King
Wayne Kennedy
Verna Dell Long
G. W. Lewis
Betty Mills
Bob Mason
O'Della Morgan
Billy Jean Longshore
Bobby Pennington
Katherine Porter

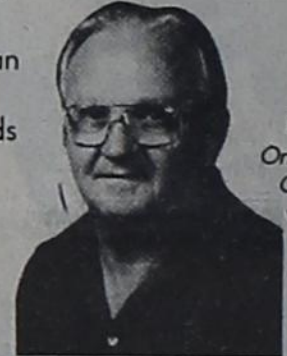
Mary Francis Dodson
Evelyn Sugg
Fern Womack
Jim Bob Porterfield
Doyle Purcell
Billy Thomas Ramage
Zoe Sims
Clifford Smith
Jimmy Smith
Walter Smith
Maurice Stelzer
Joy Stewart
Calvin Storie
Billy Ross Sullivan
D. C. Taylor
Wayne Thomas
Doris Turner
C. W. Wade
Tommy Walls

Virginia Sanders
Retha Williams
Wanda Runkles
Betty Smith
Jill Welch
Benny Wilks
Bonnie Fay Williams
Ethel May Williams
Melvin Williams
Peggy Wilson
Irene Woods
Herbert Walls
Bobby Trice
Pauline Smith
Beatrice Bruton Falls
Cletta Buster
Jimmy Carter
Charlene Chambers
Thurmon Crossan
Lillie Davis



LIFESAVER.

"Whether you're lost in a strange neighborhood, or just going to be late for dinner, a telephone booth is a welcome sight. That's why it's important that we keep them in working order. In my job, I do more than collect the change from the coin box. I also make sure that the instrument is working correctly. If it needs minor repairs I do them on the spot. That way, we make sure that you get a working phone when you need it. That's one reason I'm proud to be one of the people General Telephone is talking about when they say 'We keep you talking.'"



Dean Winkles, Coin Telephone Collector, Texarkana, AR. One of the 100,000 GTE professionals who are working to bring you better and more efficient telephone service.



SAVE

SAVE

SAVE

WACKERS WANTS YOU TO SAVE

WE GLADLY TAKE ALL MFG. COUPONS ON ITEMS WE SELL.

CLIP THEM AND REDEEM THEM AT

W WACKER'S

217 East Main

WHERE YOU SAVE EVERY DAY