

# Santa Letters Coming Wednesday

This edition of The Post Dispatch is a special pre-Christmas issue. The Dispatch will also publish its regular Wednesday editions

December 24 and December 31. Next Wednesday's issue will be the traditional Merry Christmas edition, complete with the popular "Letters to Santa" from Post elementary students.

The Dispatch will be closed for Christmas beginning Wednesday, December 24 and open again with regular hours Monday, December 29.

Deadlines for the Wednesday editions continue to be Mondays at 5 p.m. We wish you a Merry Christmas.

## Government Holiday Schedules

Government offices in Garza County will have the following holiday schedules:

**U.S. Post Office**  
Closed Christmas Day and New Year's Day.

**Department of Human Services**  
Closed December 24, 25 & 26 and New Year's Day.

**City Hall**  
Closed Christmas Day and December 26 and New Year's Day.

**Courthouse**  
Offices will close on Wednesday, December 24th at approximately 10 - 10:30 a.m. and will be closed until December 29. They will be closed New Year's Day.

## Garza County News Briefs

**Live Nativity Scene**  
The First Christian Church will present a "Live Nativity Scene" on Sunday, December 21, 1986. The times for the event are at 7, 8, & 9 p.m. The public is urged to attend.

## Social Security Representative Cease Visits

Beginning in January, 1987, Social Security representatives will no longer visit Post on a regular basis.

Due to budget cuts and reduced staffing within the agency, it is impossible to continue monthly visits to many communities in the area served by the Lubbock district office.

In almost all cases, business with the Social Security Administration can be handled either by telephone or mail and residents of Garza County are encouraged to use these methods.

Mrs Cleo Sappington at the Garza County Trailblazers, 1010 Avenue I, is available to assist residents on some issues concerning their Social Security or Supplemental Security Income.

She has on hand a number of pamphlets which address common questions.

Also, she has applications for Social Security numbers.

The Lubbock Social Security office is open to the public from 9 a.m. to 4:45 p.m. Monday through Friday, except national holidays.

The mailing address is 1611 10th Street, Regency Plaza Building, Lubbock, TX 79401.

The telephone number in Lubbock is (806) 743-7381.

Questions regarding the filing of claims for benefits, Medicare SSI, obtaining Social Security cards and general inquiries should be directed to that number.

# The Post Dispatch

In the shadow of the Caprock

439-620

Special Pre-Christmas Edition

Sunday, December 21, 1986

## Rebecca Traw Wins 4-H Food Show Award

by Colleen England  
County Extension Agent  
Home Economics  
Rebecca Traw Wins  
District 4-H Food Show

Congratulations goes to Rebecca Traw who placed first in her category, Junior I Breads, at the District 4-H Food Show on Saturday, December 6 at Texas Tech University.

Others who participated at the District 4-H Food Show included:

Junior I Division: Doug Flanigan, Main Dish; Salli Bush, Fruits and Vegetables; Lorry Ledbetter, Nutritious Snacks and Desserts.

Junior II Division: Mikki Wilks, Main Dish; Shelly Haney, Breads and Cereals; Aimee Stevenson, Fruits and Vegetables; Mandi Holly, Nutritious Snacks and Desserts.

Senior Division: Monica Odom, Main Dish.

All 4-H'ers represented Garza County well!

Keep up the good work!  
Food As Gifts

When you give food as a gift, be sure to include storage information on how to keep the food safe to eat.

Some food given as gifts come from commercial establishments, which will

have directions for storage on the label.

But we sometimes forget to do the same on highly-prized homemade food gifts.

The most perishable foods are those which have a high protein and high moisture content.

Meat, cheese and fish fit into this category.

Or skip some of the more complicated dishes and have them at other times of the year when they may be enjoyed more.

Educational programs conducted by the Texas Agricultural Extension Service serve people of all ages regardless of socio-economic level, race, color, sex, religion, handicap, or national origin.

Cured meat, like sausage or ham, have less moisture so it isn't as vulnerable to spoilage, but it shouldn't be left at room temperature indefinitely.

Food in which the surface area is exposed to air also is vulnerable.

The presence of air supports the growth of bacteria, increasing the possibility for contamination.

Any food with all three characteristics - high protein, high moisture and open sur-

face - is very perishable and needs to be kept under refrigeration.

The items that are least perishable are those with a high sugar or salt content, and those packaged so that all the air is excluded such as jars of canned food or vacuum packed meats.

Cookies, candy and fruit-cake are high in sugar and

keep very well.

Other cakes, like pound cake, have a shorter storage life.

A good way to give a gift of food is to give a card offering the food at a later time.

That eliminates the possibility of having the food at room temperature during a gift exchange.

## Reduce Stress Of Holiday Food Preparation

During the holidays keep food preparation as simple as possible.

Good food need not require a lot of preparation time.

Make one dish that involves a lot of work, and have simpler dishes for the rest of the meal.



**YOUNG BAKERS--** Junior I winners in the breads and cereals category of the South Plains District 4-H Food Show are, from left, Ananda Floyd, Cochran County, third; Julie Boyd, Dawson County, second, and Rebecca Traw, Garza County, first.

## Santa Claus' History Varied, Changing Through the Years

Santa Claus wasn't always the round, cheerful figure we know today.

He was first pictured as a rather dignified person in long robes.

That's because the idea of this gift-bringer is based on St Nicholas, a real 4th-century Archbishop of Myra (a city in Turkey), a man who devoted his life to good deeds and gift giving.

One of the stories about him is this:

Hearing of a nobleman who had no money for his daughter's dowries, St Nicholas rode by their house and tossed in three bags of gold.

One bag fell into a stocking drying by the chimney--and so the custom of hanging up Christmas stockings also began.

The legend of St Nicholas--and the stocking--spread throughout Europe.

Other stories tell that St Nicholas placed candy and money in wooden shoes of children.

When the Protestant Reformation swept through northern

Europe, reformers attempted to wipe out all veneration of saints.

One target was St Nicholas.

But Protestants, or perhaps, children of Protestants, adopted their Catholic neighbors' love of this special saint.

As a result, St Nicholas began to appear across Europe as Pere Noel in France, Father Christmas in England, and Kris Kringle in Germany.

Whatever he was called, this kindly man brought gifts to children.

He love them; they loved him.

In Europe, Santa traveled in a variety of popular conveyances.

The sleigh drawn by reindeer is purely American; its first known mention was in an 1821 publication called The Children's Friend.

Some stories report that Santa Claus was brought to this country by the Dutch.

St Nicholas was hard for children to pronounce so it was simplified: First they called him Sinterklaas, but English-speaking settlers changed it to Santa Claus.

"Twas the night before Christmas, when all through the house, not a creature was stirring, not even a mouse...." Everyone has heard these lines from the Christmas Eve story "A Visit from St Nicholas."

The poem is best known as "The Night Before Christmas."

The poem was written by Dr Clement Clarke Moore, an early 19th century scholar and writer.

Moore described St Nick as a happy, elfin-like man with "...a little round belly/That shook when he laughed, like a bowl full of jelly."

The poem written in 1822 was shared publicly for the first time in the December 23, 1823 issue of The Troy (New York) Sentinel.

The final touch came 1866 when famous cartoonist Thomas Nast drew a red-cheeked santa with his Christmas list.

Nast is the political cartoonist who created the elephant and donkey symbols for America's major political parties.

Nast, a German immigrant,

used Moore's description as the basis for a drawing that appeared in Harper's Weekly.

From 1863 until 1886, Harper's

## Watch Out for Alcohol and Driving

Getting into the spirit of the season by drinking too much alcohol can have deadly consequences, particularly if the drinker tries to drive.

The National Highway Traffic Safety Administration, which sponsors National Drunk and Drugged Driver Awareness Week December 14-20, estimates nearly half the deaths on America's highways involve alcohol.

In 1984, for example, more than 23,500 persons in the U.S. died in crashes in which alcohol was a factor.

"Alcohol is a drug," said Dr Robert Bernstein, Texas Commissioner of Health.

"And like any other drug that slows reflexes, limits coordination, or dulls responses, liquor bottles should bear labels that say: 'Don't Drive When Taking This Medication!'"

To stay alert and sober when drinking, most persons should limit their alcohol consumption to two drinks or beers within a two-hour period.

Consuming three or four drinks within two hours will cause drinkers' decision-making and driving skills to be diminished markedly.

More than four drinks or beers consumed in two hours will cause drinkers to have enough alcohol in their bloodstreams to be drunk.

It takes about an hour for each ounce-and-a-half of liquor or 12-ounce beer to be metabolized.

Eating foods rich in protein and carbohydrates can help slow the absorption of alcohol into the bloodstream, but food will not keep someone from getting drunk.

published Nast's Santas.

Until that time, Santas took on whatever form the artist imagined.

Some were thin and sometimes bore a striking resemblance to leaders of the day.

The favorite version, however, was Father Christmas, a stately bearded gentleman dressed in clerical robes.

Throughout the 19th century, Santa wore a variety of color; blue, gold, purple, green, brown, red or black.

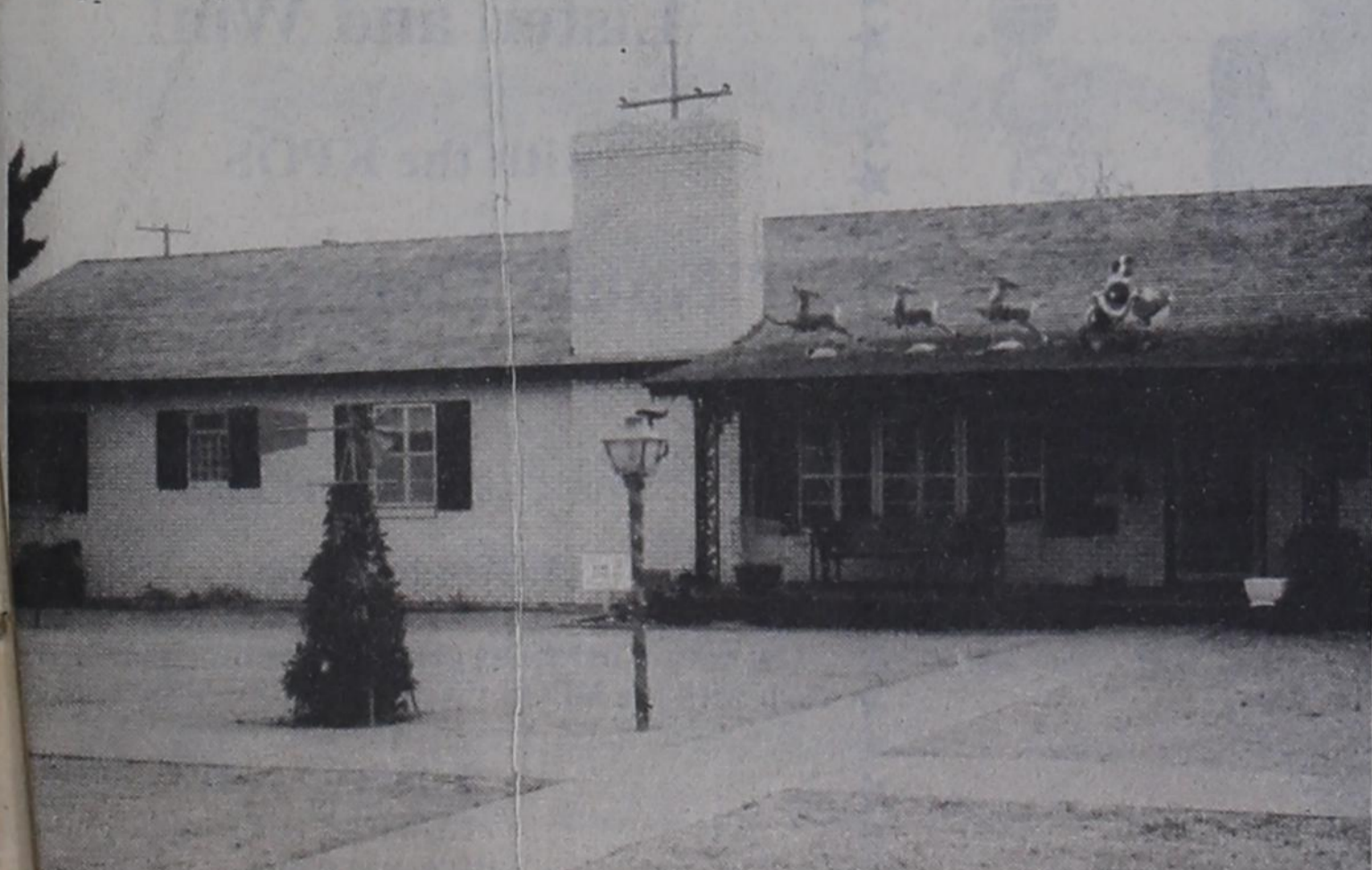
Nast popularized not only the figure of Santa Claus, but also many of the practices with which Santa is associated; making toys in his workshop, keeping records of good and bad children, receiving letters, and driving his reindeer.

Nast is also credited with creating the red coat, the result of a Civil War cartoon in which Santa patriotically wore a red, white and blue suit.

By 1910, Santa was settled into the way we recognize him today.



Mrs Maxine Earl was recently presented a special plaque of recognition by the Caprock Cultural Association. Mrs Earl was praised for her efforts in organizing and establishing the arts program in Post.



Decorated House award last week went to David and Nellie Tyler, 901 West Main, in the Post Home Owners' Association holiday contest.

(Continued on Page 5)

# Windbreaks Can Save Heating Bills

by Danny Richardson  
Farm Stead Windbreaks, such as the one pictured below, not only add beauty and value to your farmstead,

they also help save you money on your heating bills. When the cold North wind blows it can drive the cold right through your walls and

cool your house down faster so your furnace has to work harder.

Evergreen trees such as Arizona Cypress, Eastern Red Cedar, and various pines are fast growers and provide excellent wind protection.

The Garza Soil and Water Conservation District is now taking orders for seedling windbreak trees.

The Evergreen trees cost \$42.00 for 30 trees. Some hardwood trees are available at different costs.

The trees will be delivered in early March 1987.

For more information and to place orders for trees go by the Soil Conservation Service office at 210 West Main in Post.

# DPS Estimates 41 Holiday Death Toll

The Department of Public Safety is estimating that 41 traffic deaths will mar this year's peak holiday travel periods in Texas.

"Christmas and New Year's should be two of the best times of the year for everyone, but each holiday season, many traffic deaths that could have been prevented occur on our roads and highways," said DPS Director Jim Adams.

"Our intention in reminding Texans of the grim possibilities is not to sound a discouraging note as people prepare their travel plans, but to encourage driving safety by showing what could happen. I hope our estimate proves to be too high."

During the 54-hour Christmas holiday period, an estimated 23

persons may die in traffic accidents in the state, Adams said.

The estimate for the New Year's period, which also is 54 hours, is 18 traffic deaths.

In 1985, because of the day of the week on which Christmas fell, the prime travel period was 30 hours long.

During that time, 15 persons were killed in traffic mishaps.

Two other persons later died of injuries suffered during the period, bringing the final 1985 Christmas death toll to 17.

Last year, 17 persons died in traffic accidents during the 54-hour New Year's period, with seven later deaths making a total of 24 fatalities associated with the period.

"The way to help make this year's estimates inaccurate is to refrain from drinking alcoholic beverages before driving or while behind the wheel and hold driving speeds down," Adams said.

"Those two steps will go a long way toward keeping drivers from having a traffic accident. But, if worse comes to worse and you are in an accident due to the carelessness of another driver, your chances of survival will be greatly improved if you are wearing your safety belt."

This year, the DPS Operation Motorcade period will begin at 6 p.m. Tuesday, December 23 and continue until midnight Christmas Day.

The New Year's counting period will begin at 6 p.m. Tuesday, December 30 and continue through midnight New Year's Day.

During both periods, as part of the Department's Operation Holiday effort, additional Highway Patrol Troopers will be out to assist motorists and enforce traffic laws, with particular emphasis on DWI arrests, speeding and safety belt violations.

Please don't become one of this year's highway death statistics.

Slow down, don't drink and drive, and make sure everyone is buckled up.

# Official Court Records

Justice the Peace, Precinct One Justice Sheila Melton, presiding Judgements as of December 12, 1986

Douglas Derek Holden, Lubbock, speeding - \$41.  
Charles Wayne Morris, Jr., speeding - \$47.

Linda Brown Goodgion, Lubbock, speeding - \$45.  
Laura Klassen Fuller, Lewisville, speeding - \$47.

Robert M. Petricko, Albuquerque, N.M., disregard officer signals - \$39.

Minor, minor in possession - \$113.

Louise Wilson Senning, Lubbock, speeding - \$51.

Patrick William Maler, Boling, speeding - \$37.

Minor, minor in possession - \$113.

Minor, minor in possession - \$113.

Minor, minor in possession - \$113.

Minor, minor in possession - \$113.

Felix Bustos, unsafe speed - \$39.

Larry Joe Norris, Abilene, speeding - \$39.

Larry Joe Norris, Abilene, driver unsecured by seat belt - \$39.

Lamont Gregory Soloman, speeding - \$47.

Joseph Wade Steel, Springtown, display expired registration - \$31.

Miguel Soria, speeding - \$35.

Dora Weiss Schuster, Portland, speeding - \$33.

Shirley Kauffman Miers, Abilene, speeding - \$41.

Shelby Christopher Stien, Lubbock, speeding - \$35.

Tracy Ward, Clovis, N.M., speeding - \$47.

Tommy Joe Stone, Tahoka, speeding - \$45.

Eliodora Munguia, Jr., Lubbock, speeding - \$33.

Forrest W. Rader, Albuquerque, N.M., speeding - \$47.

Carol Norman Lemaster, Edinburg, speeding - \$39.

Dicky Milton Wallace, speeding - \$21.

Omar Rojas, De Soto, speeding - \$33.

Penny Renea Sappington, speeding - \$33.

Lee Geneva, Aztec, N.M., speeding - \$43.

Terrill Ray Davis, Mineral Wells, speeding - \$45.

Lesley Allyson Webb, fail to signal - \$21.

Charles Mack Hicks, Levelland, speeding - \$41.

Charles Mack Hicks, Levelland, expired registration plate - \$31.

Daniel Johnstone Young, Dallas, speeding - \$33.

Stephanie Jean Moczygemba, display expired registration - \$31.

Margarita Riveria Davila,

Colorado City, expired operators drivers license - \$24.

Lee Fisher Middleton, Lubbock, speeding - \$43.

Charles Russell Griffen, Ouanah, speeding - \$39.

Donald Ray Smith, Riverside, Ca., speeding - \$51.

James Munsell Hollingsworth, Edna, speeding - \$35.

Roberto Luis Soza, Midland, speeding - \$71.

Kenneth Allen Hays, Aspermont, speeding - \$35.

Judith Rosner Gedalia, Houston, speeding - \$41.

Jerry Dale Ward, Snyder, speeding - \$45.

Candace Kay McConnell, speeding - \$39.

Shelia Gray Teeters, Clyde, speeding - \$39.

Charlene Elizabeth Lee, Temple, speeding - \$43.

Mark Steven Lewis, Lubbock, speeding - \$43.

Philip G. Farah, Albuquerque, N.M., speeding - \$39.

Jerry Jefferson McDonald, San Angelo, speeding - \$49.

Rickey Clay Childers, Abilene, speeding - \$35.

Kevin Wilson Dennis, Lubbock, speeding - \$31.

Trina Lois Caraway, Lubbock, speeding - \$45.

Russell James Warren, Plains, speeding - \$51.

Johnny Marshall Ross, Jr., Lubbock, speeding - \$51.

Willie Leon Washington, Lubbock, speeding - \$63.

Travis Earl Guy, Lubbock, speeding - \$41.

Vicki Lyn Nelson, Georgetown, speeding - \$41.

Melissa Kay Tammen, Crowley, speeding - \$53.

Terry Lynn Thames, Snyder, speeding - \$71.

James Brannon Street, Austin, speeding - \$39.

Marion Lewis Kiber, Abilene, speeding - \$31.

Jeffrey Weldon Wood, Arlington, speeding - \$33.

Minor, minor in possession - \$53.

Minor, minor in possession - \$168.

James Douglas Sharp, defective brake lights - \$31.

Ank Nguyen, Panhandle, no valid motor vehicle inspection sticker - \$33.

Minor, purchase an alcoholic beverage for or gives or knowingly make available an alcoholic beverage to a minor - \$98.

Jerry Neal Surratt, Snyder, speeding - \$31.

Deborah Martin Cowley, speeding - \$41.

Raymon Osby, Lubbock, speeding - \$37.

Efrain Hill, Bridgeport, speeding - \$22.

Shawn Todd Dillon, Lubbock, speeding - \$41.

Elbert Wayne McClenney, Austin, drunk pedestrian - \$83.

Marvin J. Ball, Van Buren, Ark., no seat belt - \$39.

James Frederick McConoghly, Round Rock, speeding - \$45.

Ramon Torres, public intoxication - \$83.

Antonio Hernandez Mendez, public intoxication - \$83.

Edwardo Martinez, public intoxication - \$83.

Demetrio Garcia, public intoxication - \$113.

David Lee Booker, public intoxication - \$113.

Rafael Reyes Olivias, public intoxication - \$175.25.

# Stocking Fun Goes Way Back

Children in most countries enjoy the excitement of hanging up a stocking to be filled by St Nicholas.

In Britain and America, children hung stockings on the mantelpiece or at the end of the bed.

Traditionally, the toe of the stocking was filled with an apple, for good health, the heel with an orange because they were rare and expensive, and a nut.

A bag of gold-wrapped chocolate coins commemorated St Nicholas, while a mint-fresh coin symbolized wealth for the future.

A piece of coal wrapped in paper used to be included to indicate warmth in the years to come and salt was for good luck.

Modern stocking-stuffers include almost everything.


**Dr. Lewis Moore**  
**OPTOMETRIST**  
Announces New Office  
Hours for 1986  
Complete Visual Care  
Thursday 9:30 a.m. to 5 p.m.  
206 West Main 495-3687

**Season's Greetings**  
**Tom Power INSURANCE**  
Post's Friendly Agency  
495-3050 & 3051  
ALL FORMS OF INSURANCE  
AUTO, HOME, BUSINESS, LIFE, HEALTH  
Bonds, R.V.'s, Commerical

You Are Cordially Invited To Our  
**Open House**  
Tuesday, December 23, 1986  
refreshments will be served  
We would also like to invite you to welcome  
**Charles and Barbara Hardin**  
back to Post  
reception from 1-3 pm

**THE FIRST NATIONAL BANK**  
216 W Main 495-2804

**A Very Merry Christmas**  
from all of us at  
**Vyas Motors Inc.**



VIAS MOTORS - Harold Lucas, general sales manager; Sweetie Vyas, Mike Vyas, owner; Charoo Vyas, Debbie Sneed, office manager; Tommy Gonzales, shop steward; Arthur Striblin, parts manager; Bud Goodman, mechanic; and Charles Johnson, body shop.

We take this opportunity to thank you for your patronage and wish you a happy holiday season!

Where we respect our customers  
"Buy a domestic car your job may depend on it"  
111 S. Broadway 495-2825

**Listen and Win!**  
with the KPOS  
**"Name That Sponsor Contest"**  
WIN CASH - WIN PRIZES!  
Listen to KPOS  
Get your Christmas going by winning prizes and cash with the KPOS "Name That Sponsor Contest"

**KPOS**  
1370 AM  
Listen and win

# Woman's Culture Club News

by Doll Haire  
Mrs W.M. Kirkpatrick's home was the scene of the Womans Culture Club Christmas Party, held December 10.

You truly felt the Christmas spirit as you entered the spacious entertaining rooms decorated with nativity scene's from different countries, holly, choir boys, and a beautifully decorated Christmas tree.

You received a warm welcome from hostesses, Ruby and Dorace Wilson.

Maxine Earl, president, welcomed the guests and members, and expressed her appreciation to the hostesses.

Katherine Cathcart presented Ruby, Dorace, Maxine and Lillian Potts with mementos of appreciation.

Katherine read from the Book of Luke, chapter two, the story of the Birth of Jesus, followed by a prayer for the Christmas season.

Lillian brought a wonderful story from "The Little Book About God," by Lauren Ford.

Once upon a time the

whole world was called B.C. and now it is called A.D.

God was in Heaven and he decided it was time to make the Earth.

So he made a pattern of sea's, rivers, and hills and North Pole.

He made trees, buttercups, grass and pussy willows. But he wanted to have something moving, so God created animals, birds, snakes, and all other creatures of the Earth.

Then he created people. God created Adam, telling him not to eat the fruit from the tree of Knowledge. Adam was lonely so God created Eve. Eve was tempted to eat of the forbidden fruit and gave some to Adam. God was displeased so Adam and Eve left the Garden.

Soon there were roads, and they learned to build houses, then towns. There were stupid people and lazy people causing wars. God told Noah to build an Ark.

God made a great flood so that the world would be clean and fresh again.

God said there is a little girl on Earth and when she grows up she will be the mother of my little son.

The little girl grew up and her name was Mary.

The Angel Gabriel told Mary "Thou shall have a baby boy and he shall be called the Son Of The Most High."

Mary and Joseph went to Bethlehem and the baby boy was born in a stable and laid in a manger, as there was no room in the Inn.

The Lord told the Shepherds, who were near by, "Fear not, for I bring you good tidings of great joy - for this day is born to you, A Savior, who is, Christ the Lord."

The people praising God saying "Glory to God in the Highest and on Earth Peace."

Delicious refreshments were enjoyed by Ms Earl, Cathcart, Potts, Lois Cook, Ada Buchanan, Lisa Kirkpatrick, Danielle Chapman, Buena Bouchier, Cora Fleming, Joyce Strubhart; Pauline Warren, Estelle Davis, Doll Haire, Ruby and Dorace.

## Favorite Recipes

**Microwave Peanut Patties**  
Combine in 2 quart casserole or measure cup:

- 2 cups sugar
- Dash of salt
- 1/2 cup water
- 1/2 cup white corn syrup
- Bring to boil in microwave (approx. 3 minutes), stir & add:
- 1 1/2 cups raw peanuts
- Return to microwave & cook approx. 7 to 9 min. or until soft ball stage. Remove from oven and add:

- 2 Tablespoons butter
- 1 teaspoon vanilla
- 2-3 drops red food color
- Cool and beat until creamy.
- Drop by tablespoons onto greased cookie sheets or make into large patties.

**Microwave Peanut Brittle**  
Stir together in 1 1/2 quart casserole:

- 1 cup raw peanuts
- 1 cup sugar
- 1/2 cup white corn syrup
- 1/8 teaspoon salt
- Cook 4 minutes in microwave, stir, cook 4 minutes more & add:
- 1 teaspoon butter
- 1 teaspoon vanilla
- Blend well and return to microwave for 2 minutes. Peanuts will be lightly browned and syrup very hot. Add:
- 1 teaspoon baking soda
- Gently stir until light and foamy. Pour mixture onto lightly greased cookie sheet. Let cool one hour, break into small pieces and store in airtight container.

# Rainbolt, WTC Cast to Compete at Fort Worth

The Western Texas College production of "Terra Nova" will move to Fort Worth in January for competition in the five-state regional American College Theatre Festival after winning both the Critic's Choice and the Director's Choice awards in competition in El Paso recently.

WTC will be the only junior college advancing to the Fort Worth festival.

## Christmas Holly Story

Long ago, Holly was associated with the Passion, the leaves representing Christ's crown of thorns and the berries the drops of blood.

It was also held to be the symbol of the burning bush in which God appeared to Moses.

In Denmark, the holly was known as the Kristdorn, or Christ Thorn.

Later, in northern Europe, it was only natural that the holly was thought to be a symbol of rebirth and life in the winter whiteness of the land.

Holly is evergreen and its bright shiny leaves and beautiful red berries are looked upon as the official colors of Christmastime.

The holly stands as a promise of the winter's end and the spring to come.

This promise of life in the midst of death is a fitting symbol for the birth of Christ.

## Birth

### Ruben Storie II

Ruben and Brenda Storie are proud to announce the birth of their son, Ruben Storie II.

Ruben II was born at Lynn County Hospital in Tahoka on November 10, 1986.

Ruben II weighed eight pounds and three ounces and was 21 inches long at birth.

Maternal grandparents are Luis and Lydia Rodriguez of Southland.

Paternal grandparents are S.C. and Socorro Storie of Post, and Arthur and Lucy Rivas of Waco.

Maternal great-grandmother is Tomasa Moreno of Lubbock.

Paternal great-grandmothers are Angela Raymundo of Post, and Lucy Rivas of Mart.

Rainbolt was named Best Actor in straight drama and he, along with Milburn and Mendez, receive Irene Ryan Scholarship nominations.

Other colleges and universities advancing will be Texas Tech University, North Texas State University, Texas Wesleyan College, the University of Arkansas, the University of Louisiana, Southeast Oklahoma University and Tulane University.

A trip to Washington, D.C., awaits the winners of the Fort Worth festival.

"Terra Nova" is a dramatization of the final journey of the English explorer Capt. Robert F. Scott to the South Pole in 1911-12.

Members of the cast are Jeff Milburn of Brownfield, Jim Rainbolt of Post, Shauna Gibson of Vernon, Jamie Cofer of Snyder, Bret Dillon of Seagraves and Jim Miller and Bobby Mendez of Lubbock.

The play is under the direction of Jim Rambo.

In El Paso, "Terra Nova" received Theatre Excellence Awards for make-up and special effects, program design and costume design.

Rambo received a Theatre Excellence Award for production coordination.



**SALE**  
Christmas Gift Items  
Ornaments  
Candles  
Gift Wrapping  
**25-50% OFF**  
Happiness  
128 E Main Is...  
495-3516  
© 1984 Hallmark Cards Inc.



**MERRY CHRISTMAS!**  
Joyous tidings, one and all.  
**Bud & Maryann Howell**

**Hancy's Jewelry**

Pearls                      Watches  
Sterling                    Stocking Stuffers

**Extended Hrs. Starting**  
**Thursday, Dec. 11 8:00 am - 6:00 pm**

(915)573-1508  
Snyder, Texas 79549  
College Heights Shopping Center

Visit **THE Christmas Shop** and find  
All Christmas Memories Scent  
**2<sup>00</sup> OFF with AD**

Hand Etched Jewelry Boxes 8<sup>50</sup>  
Night Notes 10<sup>95</sup>  
1987 Far Side Calendars 6<sup>95</sup>  
Stocking Stuffers from 10<sup>00</sup>

100% Cotton Towels by Utica from  
J. P. Stevens  
Gift Wrapping Service

**Jan's**  
Little Luxuries...  
Small Indulgences...  
211 E. Main 495-3311

COUPON

Now until January 15, 1987, receive a  
**15% Discount**  
on all medical services

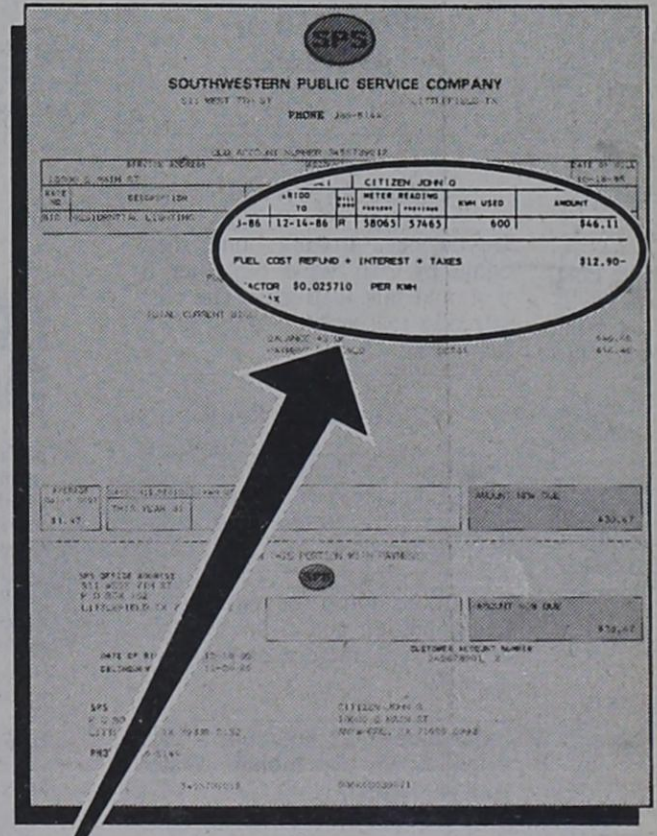
**EXPRESSCARE**

St. Thomas Clinic • 650 S. 22nd St. • Slaton, TX • 828-4139



**Wilson State Bank**  
cordially invites you to a  
**Christmas Open House**  
Mon., December 22nd, 1986  
from 9 a. m. to 4 p. m.  
Refreshments and Hot Apple Cider will be served.  
Bring the kids to see Santa Claus!

Texas Customers of SPS.\*  
**Check your electric bill carefully this month.**



It's your refund due to our fuel-cost savings.\*\*

You will find a credit on your electric bill this month. It's your share of savings resulting from our obtaining lower prices for the coal and natural gas used to generate your electricity. We have also increased the efficiency of our power plants.

At SPS, we are doing everything we can to keep the cost of your electricity as low as possible.

**SPS**  
SOUTHWESTERN PUBLIC SERVICE COMPANY

\*SPS customers in New Mexico, Oklahoma and Kansas have already been enjoying reduced fuel costs through their automatic fuel-cost adjustments.  
\*\*This is a one-time credit. It reconciles the fuel revenue with the fuel cost since October 1985. We're returning this savings to you with interest at 11.70%.  
The example used in the statement illustrated is based on typical residential use.



# Trees Can Be Bother

One thing nobody needs on the list of things to do for Christmas is to have an allergy attack.

But every year, some people suffer through a would-be merry season with what feels like a head cold, a rash, itchy eyes, headaches and other symptoms, just because they picked the wrong king of Christmas tree.

Allergy sufferers are plentiful in Texas, especially in the central region and hill country.

And December is one of their worst months, according to the Texas Department of Health (TDH), since the onset of colder weather invariably brings "cedar fever".

Cedar fever is an allergic reaction to the pollen of the male mountain cedar (actually a juniper, Juniper Ashei), which grows wild throughout Texas.

The male trees have ting green cones which turn brown, spring

open, and release pollen in the early winter.

The minute, sticky grains of pollen irritate the eyes and sinuses, and enter the sufferer's respiratory system, triggering the allergic reaction.

Allergy specialist in Texas say that cedar fever is second only to ragweed allergy in the number of people it affects. And its severity may be greater.

TDH recommends that persons who like to cut their own Christmas trees should look for the female cedar trees, which have small blue berries.

But cedar fever is not the only threat to allergy victims.

TDH also warns that those who purchase "pre-cut" Christmas trees of other evergreen species also may suffer allergy attacks brought on by invisible mold spores.

Even those who choose artificial trees may end up with the sneezes, if they are allergic to dust.



**DISTRICT 4-H GOLD STAR BANQUET WILL ATTENDED BY GARZA COUNTY** - A large delegation representing Garza County attended the District Gold Star Banquet on November 24. Those attending included: (front row, left to right) Bart Mason, Clay Cowdrey, Amber Harp, Keitha White, Judi Traw, Derick Dunn, Angela Graves, Ron Graves, Korren Payton; (back row, left to right) Ronnie and Eydie Dunn, Ronnie and Diane Graves, J. W. Payton, Colleen England, Breana Payton, Tommy Payton, Sue and Quannah Maxey, Syd and Lil Conner, Orabeth and Noel White.

# Garza Land Highly Erodible

A list of highly erodible and potentially highly erodible soils was released this week by the USDA Soil Conservation Service as mandated by the Food Security Act of 1985.

The list revealed that most of the land in Garza County is highly erodible.

The conservation compliance provisions of the Act

denies most USDA farm program benefits to farmers who farm highly erodible land unless the land is being farmed in accordance with a conservation plan approved by the local conservation district.

The Act allows a grace period for those who are not using a conservation plan.

They have until January 1, 1990 to develop and begin actively applying a plan.

They have until January 1, 1995 to have the plan fully in effect.

The provisions will have no effect on farmers who are using up-to-date conservation plans.

If you are farming highly erodible land with a conservation plan, check with your local Soil Conservation Service office to find out if it meets conservation compliance provisions.

"We are ready to help anyone prepare a conservation plan that doesn't have one," Dwaine Binford, district conservationist for the SCS said.



Mt. Hekla, a volcano in Iceland, is known to have erupted 20 times.

## Post Oil and Gas

Maguire Oil has posted first production figures for a re-entry operation at a wildcat location in Garza County.

The well is designated as the No. 3 Fletcher-Lott "A", with drill-site six miles southeast of Graham.

Location is in an 80-acre lease in the G.N. Fletcher Survey.

The well showed ability to pump 139 barrels of oil per day, plus 27 barrels of water.

It will produce from perforations in the Strawn Formation, 8,056 to 8,094 feet into the well-bore.

The operator originally completed the well October 2, 1982, and it pumped 83 barrels of oil per day from Strawn Formation perforations at 8,260 to 8,264 feet into the hole.

The original total depth was 8,531 feet.

Maguire deepened the well to 8,550 feet, and plugged back to 8,155.

\*\*\*

Sun Exploration & Production of Abilene has revealed plans to drill two 3,900-ft. developmental wells in the Garza Field.

The operator has 72 acres leased, with drillsites in the D&SE Survey.

The wells will be known as the Nos. 34 and 35 Post Estate "C".

Drillsites are two miles southeast of Post.

\*\*\*

BTA Oil Producers has hung the "dry hole" tag on the No. 6W Swenson "B" 8602-JV-P, a developmental well in the Swenson-Barron Field, Garza County.

It was a work-over operation originally completed by Sun Oil Co. in May of 1972.



It is the season to buckle up... wherever you travel.

## CARRY OUT SPECIAL

Dinner for Four  
1 lb. slice or chopped BBQ  
1 pt Cole Slaw  
1 pt Potato Salad  
1 pt Red Beans-4 rolls

ONLY \$10 (tax included)

JACKSON'S CAFETERIA

495-2970

# Salute to the Garza County Petroleum Industry

A Special Edition To The Post Dispatch

January 25, 1987

Reserve your advertising space in this popular special edition 495-2816

The Oil Industry Is ALIVE and WELL Thank You!



As we bask in the light of His love, let us remember the ever-inspiring message of that first Christmas. May the warmth of the holiday bring you joy.

## SEASON'S GREETINGS

Pat, Wes, Kim, Tim, James Burnett

## Driving...

(Continued from Page 1)

Dr. Bernstein also recommends a "designated driver" plan, in which one person in a group of volunteers not to drink and assumes responsibility to drive the others home.

More than 8,000 persons in the U.S. between age 16 and 24 were killed in alcohol-related crashes in 1985.

Of these, more than 6,200 were in accidents in which the driver was intoxicated.

Statistics show that alcohol-related fatal crashes are about three times greater at night than during the day.

"If we can stop people from drinking and driving, we can prevent many needless deaths," Dr. Bernstein said.

Nor will coffee or cold showers.

Hosts can help guests avoid drinking too much by refilling glasses at a slower rate, having plenty of food available, and offering a variety of nonalcoholic beverages.

Because new laws have made hosts, restaurants, and drinking establishments liable for the actions of their inebriated guests or customers, many communities are arranging taxi service to transport persons unable to drive safely.



The average American speaks on the phone about six times a day.

**ROPER BOOTS**  
10.00 TO 30.00  
OFF  
Shoe Box



**DOWE MAYFIELD**  
Jefferson Standard Life  
7204 Joliet #3, Lubbock  
806-797-8089  
Life, Health, Mutual Funds

## MITCHELL WILLIAMS

Attorney at Law

announces the moving of his law offices to 227 W. Main in Post, entrance on Avenue L., for the general practice of law.

# *A Merry Christmas to All*

We wish all of you and your loved ones the most wonderful Christmas ever and in this coming year of 1987, it is our hope that you may have

Enough happiness to keep you sweet  
Enough trials to keep you strong  
Enough sorrow to keep you human  
Enough failure to keep you humble  
Enough hope to keep you happy  
Enough Success to keep you eager  
Enough friends to give you comfort  
Enough wealth to meet your needs  
Enough enthusiasm to look forward  
Enough faith to banish depression  
Enough determination to make each day a better day than yesterday.



# HOLIDAY GREETINGS



RICES GOOD  
THRU DEC. 24  
POST

FOR EXTRA GIFTS  
AT NO EXTRA COST  
CONTINUE  
TO PLAY

## Trim-A-Tree

ENDS DEC. 24TH  
REDEEM YOUR CARDS THRU JAN. 10.

UNITED SUPERMARKETS WILL BE  
CLOSED CHRISTMAS DAY SO OUR  
EMPLOYEES CAN BE WITH THEIR  
FAMILIES



**FARMLAND MAPLE RIVER BONELESS WHOLE HAM**  
\$1.88 LB.

**BONELESS HALF HAM 93% FAT FREE**  
\$2.18 LB.

**WRIGHT'S DRY CURED WHOLE HAM**  
17-20 LB. AVG.  
\$1.58 LB.

**WRIGHT'S SLICED SLAB BACON**  
\$1.48 LB.

**UNITED PREMIUM QUALITY EXTRA LARGE EGGS**  
DOZEN .69

**FINE FARE SUGAR**  
5 LB. BAG  
\$1.39

WE GIVE S&H GREEN STAMPS EVERY DAY  
DOUBLE STAMPS ON WEDNESDAY  
with purchase of \$2.50 or more, excluding cigarettes

**UNITED OR BELL WHIPPING CREAM**  
HALF PINT  
3 \$1 FOR

**Del Monte SWEET PEAS**  
**Del Monte FRENCH STYLE GREEN BEANS**

**DEL MONTE VEGETABLES**  
REG. OR NO SALT  
• FRENCH STYLE OR CUT GREEN BEANS  
• WHOLE KERNEL OR CREAM STYLE CORN  
• LEAF OR CHOPPED SPINACH • PEAS  
303 CAN  
3 \$1 FOR

**UNITED BROWN 'N SERVE ROLLS**  
12 CT.  
3 \$1 FOR

**FRESH TEXAS RUBY RED GRAPEFRUIT**  
LB. .39

**FRESH CALIFORNIA CELERY**  
3 \$1 STALKS

**FRESH CALIFORNIA CELERY**  
3 \$1 STALKS

WINCE S&H GREEN STAMPS EVERY DAY  
 DOUBLE STAMPS ON WEDNESDAYS  
 with purchase of \$2.50 or more, excluding cigars

# Happy Holidays



LIBBY'S  
**PUMPKIN**  
 16 OZ.  
**.48**



OCEAN SPRAY  
**CRANBERRY SAUCE**  
 JELLIED OR WHOLE  
 16 OZ.  
**.48**



BAKER'S  
**ANGEL FLAKE COCONUT**  
 14 OZ.  
**.98**



GOLD MEDAL  
**FLOUR**  
 5 LB. BAG  
**.89**



NESTLE'S  
**MORSELS**  
 ASSORTED  
 10-12 OZ.  
**\$1.98**



REGULAR OR BUTTER FLAVORED  
**CRISCO**  
**\$1.98**  
 3 LB. CAN



RALSTON  
**CHEX CEREAL**  
**\$1.59**  
 12 TO 15 OZ.

UNITED SUPERMARKETS WILL BE CLOSED CHRISTMAS DAY SO OUR EMPLOYEES CAN BE WITH THEIR FAMILIES.

SUGAR SAM CUT YAMS 23 OZ. <b>.69</b>	FINE FARE WHOLE SWEET PICKLES 22 OZ. <b>\$1.19</b>
SPILLMATE TOWELS <b>.59</b>	FINE FARE PINEAPPLE ASSORTED 15.25 OZ. <b>2 FOR .89</b>
JUMBO ROLL FINE FARE FOIL 37 1/2 Ft. <b>.98</b>	CHIFFON DINNER NAPKINS 50 CT. <b>.79</b>



RED LABEL  
**KARO SYRUP**  
**\$1.69**  
 32 OZ.



SWANSON  
**BROTH**  
 BEEF OR CHICKEN  
 14.5 OZ.  
**3 \$1** FOR



NABISCO  
**SNACK CRACKERS**  
 ASSORTED  
 7 oz. to 10 OZ.  
**\$1.19**



**COKE**  
 6/32 OZ.  
**\$1.78**  
 PLUS DEPOSIT

QUANTITY RIGHTS RESERVED • NO SALES TO DEALERS



KRAFT  
**MARSH-MALLOW**  
 JET PUFF OR MINIATURE  
 10.5 OZ.  
**.49**

KRAFT  
**MARSH-MALLOW CREME**  
 7 OZ.  
**.49**



SUNSHINE  
**RAW PEANUTS**  
 8 OZ.  
**.59**

SUNSHINE  
**PECANS**  
 HALVES OR PIECES  
**\$1.19**  
 6 OZ.

CHARMIN  
**BATH TISSUES**  
**\$1.59**  
 6 ROLL



## NON FOODS



**PEPTO BISMOL**  
 12 OZ.  
**\$2.59**

DURACELL BATTERIES  
 2 PACK AA, AAA **\$1.29**  
 2 PACK D&C OR 1 PACK 9 VOLT **\$1.69**



**HEAD & SHOULDERS**  
 BONUS PACK 18 OZ.  
**\$2.99**  
 20% MORE!

POLAROID FILM  
 600 SINGLE 50¢ OFF LABEL **\$7.49**  
 E-Z FOIL GIANT OVAL ROASTER #874 **\$1.19**  
 BRACH'S CHOCOLATE COVERED CHERRIES 12 OZ. **\$1.49**



WE GIVE S&H GREEN STAMPS EVERY DAY  
DUBIO STAMPS ON WEDNESDAY with purchase of \$2.50 or more, excluding cigarettes  
UNITED WILL BE CLOSED CHRISTMAS DAY SO OUR EMPLOYEES CAN BE WITH THEIR FAMILIES

# Christmas Cheer



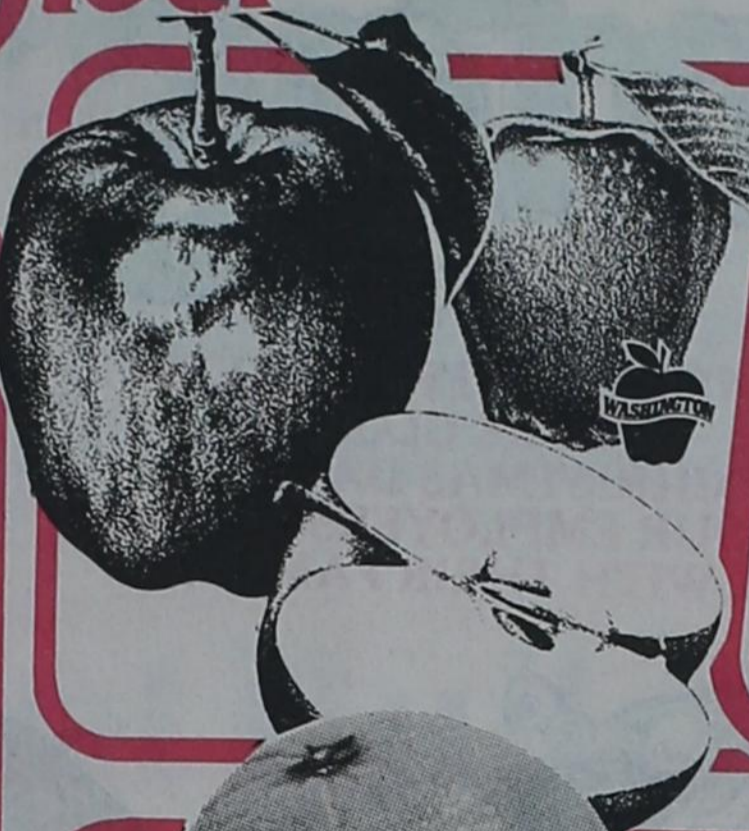
**SUNKIST TANGELOS**  
2 LBS. FOR **\$1**

**FRESH, CALIFORNIA BROCCOLI**  
LB. **.69**

**FRESH CRISP GREEN ONIONS**  
4 BUNCHES FOR **\$1**

**MEDIUM YELLOW ONIONS**  
4 LBS. FOR **\$1**

**SNOWWHITE MUSHROOMS**  
8 OZ. PKG. EA. **.98**



**FRESH WASHINGTON RED DELICIOUS APPLES**  
EXTRA FANCY  
2 LBS. FOR **\$1**



**SUNKIST NAVAL ORANGES**  
LB. **.39**



**FRESH TEXAS YAMS**  
LB. **.39**



PRODUCE

QUANTITY RIGHTS RESERVED



**BELL EGG NOG**  
QUART **.98**

**UNITED OR BELL WHIPPING CREAM**  
HALF PINT  
**3 FOR \$1**

**BELL ASSORTED DIPS OR SOUR CREAM**  
8 OZ. **2 FOR \$1**

**BELL REGULAR OR SLIM 'N TRIM COTTAGE CHEESE**  
12 OZ. **.59**

**PARKAY OLEO QUARTERS**  
1 LB. PKG.  
FOR **2.89**

DAIRY

NO SALES TO DEALERS



**BELL ASSORTED ICE CREAM**  
RED OR GOLD RING  
HALF GAL. **\$1.78**

**FINE FARE BROCCOLI CUTS**  
16 OZ. **.79**

**MRS. SMITHS PIES**  
PUMPKIN OR APPLE  
26 OZ. **\$1.59**

**FINE FARE DEEP DISH PIE SHELLS**  
12 OZ. **.79**

**FINE FARE WHIPPED TOPPING**  
8 OZ. **.59**



**TROPICANA ORANGE JUICE**  
12 OZ. **.69**

FROZEN



# Merry Christmas

**UNITED**  
★ Supermarket ★

UNITED SUPERMARKETS  
WILL BE CLOSED  
CHRISTMAS DAY SO  
OUR EMPLOYEES CAN  
BE WITH THEIR FAMILIES



QUALITY MEATS

 <b>WRIGHT'S SLICED SLAB BACON</b> <b>\$1.48</b> LB.	 <b>HORMEL LITTLE SIZZLERS</b> REG. OR HOT 'N SPICY 12 OZ. PKG. <b>\$1.18</b>
 <b>HONEYSUCKLE BONELESS TURKEYS</b> GRADE A <b>\$1.78</b> LB.	 <b>FARMLAND MAPLE RIVER BONELESS WHOLE HAM</b> <b>\$1.88</b> LB.
 <b>SUNDAY HOUSE GRADE A SMOKED TURKEYS</b> <b>\$1.38</b> LB.	 <b>HONEYSUCKLE OR UNITED PREMIUM QUALITY TURKEYS</b> GRADE A SELF-BASTING 10-22 LB. AVG. <b>.89</b> LB.
 <b>WRIGHT'S DRY CURED WHOLE HAM</b> 17-20 LB. AVG. <b>\$1.58</b> LB.	 <b>COUNTRY PRIDE BASTED, GRADE A TURKEY BREAST</b> <b>\$1.98</b> LB.
 <b>FARMLAND BONELESS PORK STRIPS</b> <b>\$1.78</b> LB.	 <b>TYSON CORNISH GAME HENS</b> GRADE A 22 OZ. EACH <b>\$1.58</b>
 <b>WISCONSIN RED RIND 1/2 MOON CHEDDAR CHEESE</b> <b>\$1.98</b> LB.	 <b>KRAFT JAR CHEESE</b> ALL VARIETIES 5 OZ. JAR <b>.78</b>
<b>EXTRA LEAN GROUND BEEF</b> LB. <b>\$1.48</b>	<b>UNITED PREMIUM QUALITY 93% FAT FREE WHOLE HAM</b> LB. <b>\$2.48</b>
<b>FARMLAND BOSTON BUTT PORK ROAST</b> LB. <b>\$1.38</b>	<b>WHOLE HAM HALF HAM</b> LB. <b>\$2.68</b>
<b>FARMLAND PORK STEAK</b> LB. <b>\$1.48</b>	

WE GIVE S&H GREEN STAMPS EVERY DAY  
DOUBLE STAMPS ON WEDNESDAY  
with purchase of \$2.50 or more, excluding cigarettes



RESERVED NO SALES TO DEALERS