

# The Post Dispatch

In the shadow of the Caprock

Sixtyeth Year, Number 12

Newsstand Price 50 cents Per Copy

Wednesday, August 20, 1986

HAZE BOOKBINDING  
514 W. 7TH ST  
AMARILLO TX 79101

## PMA Finishes Main Street Application

Don Glidewell guided a group of concerned citizens and merchants question by question through the Main Street application at the Post Merchants Association Thursday night, August 14.

In the session, the group had an opportunity to revise the answers and add to the answers to help prepare it for delivery later in August.

All of the people present contributed to making the answers to these important questions fuller and more complete, adding on to some and deleting things that had been mentioned earlier.

Glidewell asked Rodney Marshall to get copies of all of the articles and Main Street related material that has been published in the Post Dispatch to send along with the application.

Patty Kirkpatrick, President of Post Chamber of Commerce, discussed with the PMA members the upcoming Lone Star Wagon Train and the many activities planned with it.

The "Pioneer Lady" was of big interest and the merchants agreed to have a bottle placed in their store for people to vote on their favorite "Pioneer Lady" for twenty-five cents per vote.

Darrell Hackney, manager of United, volunteered a space on his "Bold Gold" advertising page for a place to cut out and vote with on this event.

Present for the meeting were Glidewell, Marshall, Hackney, Roy & Lovetta Josey, Jerri Lott, PMA President Robert Wall, Chamber of Commerce Secretary Judi Wall, Roger McCurrin, Kirkpatrick, Marie Neff, Curtis Hudman, Post City Manager Bill Pool, Charles Wallace, Chamber of Commerce Manager Lewis Earl, and Maxine Earl.

## Garza County News Briefs

### Free Ice Cream

A city-wide free ice cream serving, celebrating open house for the Post Antelope Band, is scheduled Thursday, August 28 at 8 p.m. on the practice field adjacent to the band hall.

Sponsored by the Post Antelope Band Boosters, the event features free, homemade ice cream as long as it lasts.

The purpose of the event is to introduce the 1986-88 Post Antelope Band to the community.

### Theater Tickets

The Caprock Community Theatre Box Office, located at 226 E. Main, will be open for ticket reservations for the upcoming production "Never To Late."

The box office will be open from 11 a.m. to 1 p.m.

The play will be presented August 28, 29 & 30 in the School Auditorium.

Reserve your seats now for this hilarious production.

### Booster Club Meets

The Post Booster Club will meet Thursday, August 21st at 7:30 p.m. in the FNB Community Room.

The club will discuss "Meet the Antelope" Night, which is scheduled for September 2.

Everyone is urged to attend.

### Tumblers' Registration

Registration for the Top of Texas Tumblers will be held on September 8 at the Elementary Gym.

The cost for the classes will be \$20 for one child; \$35 for two children; and \$50 for three children.

The classes will be held on Monday's with classes meeting at the following times; 4:00-5:00 for beginners; 5:00-6:00 for intermediate; and 6:00-7:00 for advanced classes.

The instructors will be Amy Thuett and Dawn Fortner (866-4707). You may also contact Kim Mills at 495-3719.

The Top of Texas Tumblers are members of Tri-State Acrogymnastics Association and United States Acrogymnastics Fed.

### Football Tickets

Reserve seats for the Post Bold Gold Antelope season are now on sale.

The seats will cost \$15 per seat for the season.

The tickets may be purchased at the High School Principal's Office.

Persons who had reserved seats last season have until September 5 to get same seat as last year.

Antelopes  
Scrimmage Friday...  
Page 10

# Major Fossil Discovery Here Changes Theories

Fossils identified as those of the earth's oldest birds, at least 75 million years older than any found before, have been discovered

near an excavation point near Post.

The bones, belonging to 225 million year old crow-sized birds with teeth and

long bony tails, were recovered by a team of scientists from Texas Tech University headed by paleontologist Sankar

Chatterjee.

Chatterjee has named the genus Protoavis and is convinced that the bird could hear and communicate with others of its kind.

"The Protoavis bones are at least 75 million years older and more birdlike than Archaeopteryx, and will shed new light on the early origin and diversity of birds," says Chatterjee, whose work is supported by the National Geographic Society.

Archaeopteryx was discovered in a limestone quarry in Bavaria in 1861 and had been considered the earliest forerunner of today's birds.

Its skeleton, embedded in a stone slab, showed a strange, partly feathered creature with the characteristics of both bird and reptile.

The feathers indicated that Archaeopteryx could fly, but scientists disagree on how far and how fast.

The creature had the type of large wishbone that aids powered flight, but it might have lacked the hollow bones and keel-like breastbone that made its early bird relatives masters of the sky.

Powerful wing beats,

(Continued on Page 13)



Paleontologist Sankar Chatterjee excavates a Texas site for fossils dating from the Triassic period about 225 million years ago. Among his finds have been evidence of the world's oldest birds, as well as dinosaur-like creatures and mammal-like reptiles. Chatterjee thinks that a flash flood killed the creatures and mud preserved them.

## Lone Star Wagon Train Arrives Here September 3

The Lone Star Wagon Train will arrive in Post on Wednesday, September 3, traveling through our great State celebrating its 150th birthday.

This will be the only sanctioned wagon train traveling through Texas for the balance of 1986.

The Lone Star Wagon Train will travel through hundreds of towns and communities on their way to Austin for the closeout of the Sesquicentennial year.

They are expecting horseback riders, wagons, buggies, surries and stagecoaches to convene with them on their ride through Post to help with the greatest celebration of the Sesquicentennial year.

The wagon train will parade through downtown Post at 5 p.m. that afternoon and will then make their way to the Rodeo Grounds where they will camp for the night.

The Post Chamber of Commerce, who is sponsoring this event, will be selling hamburgers, hot dogs, B-B-Q sandwiches, homemade ice cream, and cold drinks to the public who is invited to come and

talk to the people on the wagon train.

At 8 p.m. that evening an old fashioned Camp Meeting is scheduled with many events going on.

A drawing for a pair of Tony Lama boots with the Texas Sesquicentennial logo stitched in the front of the boot.

Raffle tickets for the boots can be purchased at any Post Merchant Association store for the cost of 50 cents.

Young people are encouraged to register for a bicycle to be given away by the Western Auto Store.

Registration for the bicycle must be made at the Western Auto Store in Post.

A "Pioneer Lady" will be announced the night of the camp meeting also.

This has already generated a great response with ten ladies already nominated at this writing.

(Continued on Page 2)

## Red Raider Road Rider Rally Sept. 6

-- Imagine a bike -- almost any version of a motorcycle -- and it likely will be in Post Saturday, Sept. 6 for a rally staged by a Lubbock-based riding club.

Sponsored by the Red Raider Road Rider Motorcycle Club, the rally will begin at 2 p.m. with a parade through the main street.

Post High School's Antelope Band will provide a musical background as motorcycles of all types

sputter by for the on-lookers.

Club organizers said riders will straddle dirt bikes, three-wheelers, four-wheelers and regular street bikes for the parade.

Anyone with such a vehicle is encouraged to join the parade.

Following the parade, the club will present a bike show downtown. In addition, there will be games and a light show later at the rally

(Continued on Page 10)

## School Board Okays Bids on Services

Bids for the 1986-1987 school year were approved by the Post ISD Board of Trustees in their regular meeting Tuesday, August 12.

Ammons Printing was awarded the bid for printing the Football Programs while Garza Auto received the bid for oil.

The Wash-Grease-Oil Filter change was given to Peel's Conoco, the milk for the school awarded to Borden and Griffin Oil was given the Gasoline bid and the Antifreeze bid.

The resignations of Mrs. Melanie Hawk, William Mullins and Mrs. Theresa Mullins was accepted.

Mrs. Paulette Savage, Mrs. Cathy Courtney, of Southland, Travis Ellis

and Mrs. Leta P. (Martin) Warren were all hired by the trustees.

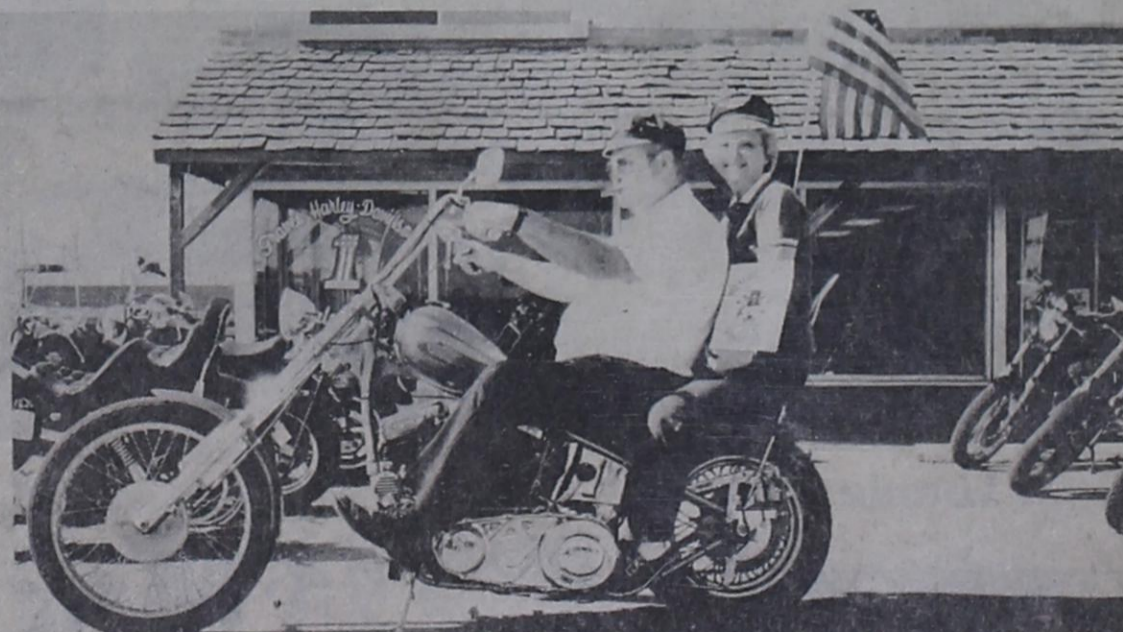
A report was given to the board on the building projects for the school.

The fieldhouse was finalized with the touch up work that was required, while the football field press box should be going up very soon.

The trustees were presented with budget data for the 1986-1987 school year and a budget hearing was set for Wednesday, August 27, at 1 p.m.

In a discussion of the budget Jack Kirkpatrick asked Superintendent Bill Shiver, "If we have to have budget cuts in the future,

(Continued on Page 2)



ROAD RIDER RALLY - Cletus and Jerry Graves, of Lubbock, will be with many other bikers when the Lubbock Red Raider Road Rider convene in Post on Saturday, September 6.

# — Obituaries —

## Heriberto Berlanga, Jr.

Graveside services were held Monday, August 18, 1986 for Heriberto Berlanga, Jr., infant son of Mr and Mrs Heriberto Berlanga, Sr. of Monterrey, Mexico.

officialiated at the graveside services.

The infant was stillborn at Lynn County Hospital in Tahoka on August 16, 1986.

Burial was in Terrace Cemetery under the direction of Hudman's Funeral Home.

### Call for a quote on your auto or homeowners insurance.

Compare Allstate for value. Absolutely no obligation. Call now for an estimate.

**Tom Power**  
AGENCY

(806) 495-3050 or 495-3051  
204 EAST MAIN STREET  
POST, TEXAS 79356

**Allstate**  
Allstate Insurance Company

Leave it to the Good Hands People.

Survivors include his parents of Monterrey, Mexico; grandparents Pedro and Carmen Rameriz of Waco, Texas.

## H.M. Ford

H.M. Ford, age 64, of Iredell, died early Monday morning, July 21, 1986, at his residence after a long illness.

Funeral services were held Wednesday afternoon, July 23, 1986, at 2 o'clock in the Iredell First United Methodist Church with Rev. Joyce Yant officiating. Burial was in the New Iredell Cemetery with Lawson Funeral Home of Meridian in charge of arrangements.

Mr Ford, son of the late Homer Milton Ford and Mattie Young Ford, was born November 20, 1921, at

Post, Texas, where he was raised and educated. He attended Texas A&M University before entering the U.S. Marines and served during World War II and Korea. On November 15, 1947, he was united in marriage to Mary Lou Koger in South Carolina. He had resided in San Antonio for 38 years where he retired from the U.S. Postal Service in 1977. He and his wife moved to Iredell about one year ago. He was a member of the Iredell First United Methodist Church, and the Iredell V.F.W.

Survivors include his wife, Mary Lou Ford of Iredell; two daughters and sons-in-law, Susan and Travis McKnight and Martha and Bill Andrews, both of Arlington; two granddaughters, Treva and Shauna McKnight, both of Arlington; one sister, Alline Brown of Dallas; one brother, M.B. Ford of Frankston; and a number of other relatives.

Pallbearers were Travis McKnight, Bill Andrews, Nolan Chaffin, Roy Davis, Elmer Stires and B.F. Strong.

Memorials may be made to the Bosque County Cancer Society or to a favorite charity.

## Clary Gets ACU Honor

Ronnie Clary, a 1981 graduate of Tahoka High School was presented the Board of Directors of Abilene Christian University Alumni Association 1986 Senior Service Award, August 15, 1986 in Abilene at a dinner honoring graduating seniors and their families.

This award was to a student who has rendered outstanding service to his fellow students and to the university.

He received his Bachelor of Science in Physical Education.

Ronnie is the son of Don and Wanda Clary of Lubbock and grandson of Robert Lee and Opal Hagler of Slaton and Nolan and Edith Clary of Post.

## GMH Board Studies New Collection Procedures

Garza Memorial Hospital Administrator Maritta Reed asked the hospital board to consider a new collection policy at the hospital board's regular meeting Thursday, August 14.

"Let the office management use discretion in sending certified letters," said Reed.

She continued, "They know who will more than likely pay and who will not and it will save us some money also."

The board members agreed with this suggestion and acted in passing the new policy.

It was decided to send delinquent accounts that have not received certified letters to the collection agency, other delinquent accounts to the Attorney.

An indigent application was approved by the directors as they were shown

that the person qualified under the indigent guidelines.

Reed told the directors that she would finish a draft of the proposed budget and get to them soon.

She would then contact each person and set up a time to meet about the budget.

Reed also agreed to check with the Medical Staff and set up a joint meeting with them.

The directors received a letter from Jackson & Coker, the firm that was trying to recruit a physician for the hospital, about their contract expiring.

It was with the suggestion of the firm not to renew the past contract.

Present at the meeting were Jack Alexander, David Tyler, David Nichols and Norma Baumann.

## Crenshaw Enters Sul Ross

Bruce Crenshaw of Post recently participated in freshmen orientation at Sul Ross State University in preparation for the fall term.

He was one of the approximately 80 students attending the session.

Crenshaw is the son of Glenda Booth and grandson of C.B. Bilberry of 816 West 8th, Post.

The orientation session was designed for both incoming students and their parents.

The purpose was to acquaint students with the university, give them a

preview of college life and the opportunity to meet other incoming freshmen as well as consult with their major advisor and register for fall classes.

While the students were learning what to expect from college life, parents were learning about university programs, meeting university personnel, learning about financial obligations and touring the campus and downtown area.

The fall semester at Sul Ross begins Aug. 25 with orientation for new students, registration Aug. 26-27 and classes beginning Aug. 28.

## Wagon Train

(Continued from Page 1)

The ladies nominated are: Agnes Surman, Pee Wee Pierce, Ruby Kirkpatrick, Buena Bouchier, Lillian Nance, Pearl Nance, Mary Peel, Sue Maxey, Vada McCampbell, and Lucy Callis.

Criteria for selection of "Pioneer Lady" are as follows:

1. 5 points for each of the years lived in Garza County.
2. 5 points for each year of her age over 60.
3. 5 points for every club, organization or church activity in which she participates (or has in the past).

Twenty-five cents can also buy a vote for your particular nominee.

Voting places are located in many stores in Post, just sign the name of your choice and the amount of

you donation and place the slip of paper, with your money, inside the jar provided for it.

Deadline for nominating your favorite pioneer is Friday, August 22.

To make your nomination call the Chamber of Commerce office at 495-3461.

The public is invited to all events of the wagon train and especially the camp meeting that evening at the Rodeo Grounds.

## School Board

(Continued from Page 1)

where do we look first?"

Shiver answered the question with three areas: personal, benefits and bonuses, in that order.

It was emphasized that budget cuts hopefully would not be required if the economy turned around.

Shiver briefed the board about the appraisal training that the administration had successfully completed.

Attending the meeting were trustees Alexander, Royce Hart, Prudencio Basquez, Tom Middleton, Don Payne, Jimmie Bartlett and Superintendent Shiver.

## KID'S COOKING SCHOOL

TUESDAY, AUGUST 26  
2:00 P.M.

### 1ST NATIONAL BANK

Community Room - 210 W. Main - Post

Learn to cook snacks, main dishes and sweets. Free recipe booklets and tasting.

All school-age children are welcome.

Presented By:



CHRISTY COPPAGE  
SPS Home Economist

Electricity is a Product —  
Use It Wisely  
& Efficiently



SOUTHWESTERN  
PUBLIC SERVICE  
COMPANY

A143-8-86-930.1

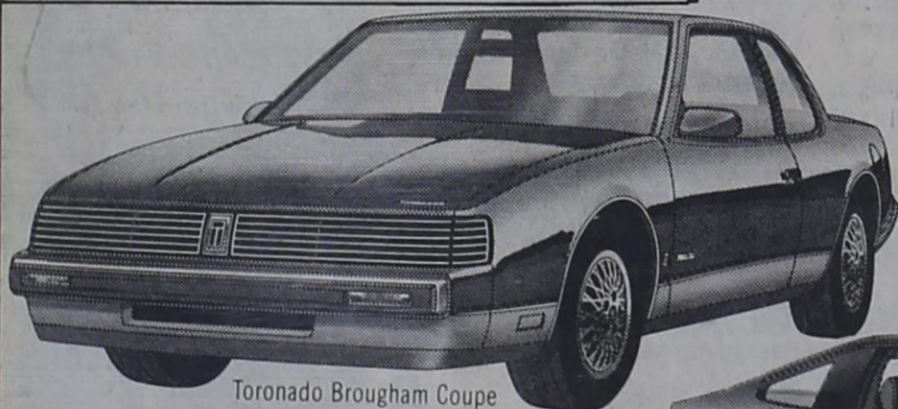
### CARRY OUT SPECIAL

Dinner for Four  
1 lb. sliced or chopped BBQ  
1 pt Cole Slaw -  
1 pt Potato Salad  
1 pt Red Beans-4 rolls  
ONLY \$10  
(tax included)  
JACKSON'S  
CAFETERIA  
495-2970

# NEW CAR BUYING MADE EASY

'86 Model Clearance

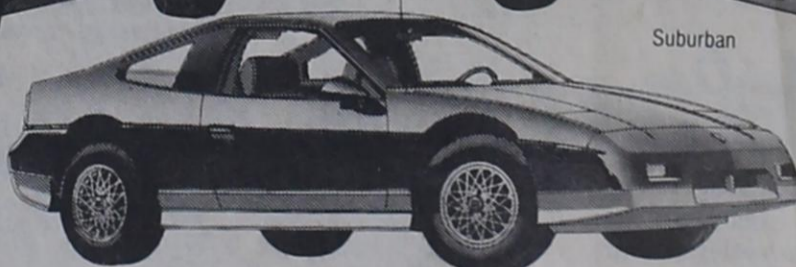
5.9% APR GMAC  
Financing on Selected  
New Models



Toronado Brougham Coupe



Suburban



Ronney Jones  
Ron Rogers  
Lonnie King

Curt Kykendall  
Jesse McGuire



U.S. 84 BYPASS/SLATON/828-5317



GENERAL MOTORS CORPORATION

The Post Dispatch  
Published Wednesdays  
123 East Main St.  
Post, Texas 79356

Entered at U.S. Post Office,  
Post, Texas for transmission  
through the mails as Second  
Class matter, according to an  
Act of Congress, March 3, 1879.

Subscription Rates:  
Garza County - \$13 per year.  
Outside of Garza County - \$26  
per year.

Wesley W. Burnett  
Publisher

Rodney Marshall  
General Manager

Rachelle Braddock  
Advertising Sales - Production

Becky Warren  
Typesetting - Production

Deadline:  
All stories and advertising:  
Mondays at 5 p.m.  
P.O. Box 10  
806-495-2816

Member  
Texas Press Association

# Duren, Warden Wed

Karla Kay Duren and Pickett Edward Warden exchanged wedding vows Saturday August 9, 1986 in the First Baptist Church in Post.

The double ring ceremony was officiated by the Rev S.W. Keeton and Rev Ronnie Tritten of the Bellaire Baptist Church of Lubbock at 7 o'clock in the evening.

The bride is the daughter of Mr and Mrs Joe Duren of Post.

The bridegroom is the son of Mr and Mrs Robert Pickett Warden of Grants, N.M.

The church altar was decorated with an arch candleabra entwined with greenery and white blossoms, accented on each side with large pedestal baskets of pink gladiolas and spiral candleabras also entwined with greenery and white blossoms and large bows. The unity candle was placed in the center of the arch candleabra. Mothers of the couple lit candles on either side of the unity candle as Mrs Millie Skidmore of Austin, sister of the bridegroom, sang "Sunrise, Sunset." Large pink bows marked the pews.

As the bride was escorted by her father to be presented in marriage, she stopped and presented her mother with a long stem pink rose. Upon leaving the church after the ceremony, the bride presented her mother-in-law a long stem pink rose.

The bride chose for her wedding gown a re-embroidered alencon lace and satin one shoulder fitted bodice with scattered pearls with a candy box bow at the shoulder. The skirt was of solid satin with a chapel length train edged with lace.

The veil was a uniquely designed headpiece with a double row of pearls which sat on the bride's forehead, accented to the left side with a sprig of crystals and pearls. The veiling is a double silk illusion with a finished edge of ruffling and a poof at the crown.

The bride's bouquet was a cascade of gardenias and stephanotis. Following the tradition of something old, the bride carried a handkerchief in her bouquet belonging to her aunt Linda Gordon, who also carried it in her wedding bouquet and given to Linda by Mrs Lois Childs, something new was her gown and veil, something borrowed, her pearls, belonging to the groom's sister, Mrs Millie Skidmore, something blue, her garter.

Mrs Linda Gordon, aunt of the bride, served as matron of honor. Bridesmaids were Lana Conner of Post, Nita Jo Heckaman and Dana Bird of Lubbock and Kathleen Warden, sis-

ter of the groom of Grants, N.M.

The bride's attendants wore light pink antique satin tea length dresses with drop waist fitted bodice, with stand up shoulder ruffles and accented with a large bow in back. The headpieces were fashioned after the brides with the poof in the back, silk flowers and pearls to the left. Each carried long stem pink roses.

Candlelighters were Angela Holleman, daughter of Arleta Gary and Darby Gordon, daughter of Mr and Mrs Billy Max Gordon of Post and cousins of the bride. They wore identical dresses to the bride's attendants in cherry pink antique satin with the same style headpiece.

Flower girls were Katherine Skidmore, daughter of Mr and Mrs Gary Skidmore of Austin and Chelcy Paschall, daughter of Mr and Mrs Skip Paschall of Albuquerque, N.M., nieces of the bridegroom. They wore dresses of cherry pink antique satin, ruffles at the shoulder, drop waist with sash and scooped edge.

Ring bearer was Brandon Morris, son of the bride.

Robert Warden served his son as best man.

Groomsmen were Sam

Warden of Austin and Stacy Warden of Albuquerque, N.M., brothers of the groom. Charles Stone of Dallas and David Bliss of Lubbock.

Ushers were the bride's brothers, Kelly Duren of Wilson, Kyle Duren of Pearsall and Kevin and Kent Duren of Ruidoso, N.M.

The groom wore a gray pin strip tux, white shirt and pants with a pink shoe string tie. The best man, groomsmen, ushers and ring bearer all wore black tuxes, white shirts and gray strip ascot ties.

Music was presented by Mrs Glen Norman at the organ. Nancy Flanagan at the piano accompanied Mrs Millie Skidmore of Austin, sister of the groom, as she sang "Let It Be Me" as the couple lit the unity candle. She also sang "For Baby for Bobbie."

Guests were registered by Mrs Donna Stotts of Hereford.

The reception was held in the fellowship hall of the church.

The hall was decorated with the bride's chosen colors of light and cherry pink floating balloons.

Mrs Peggy Duren of Pearsall and Mrs Joann Duren of Ruidoso, N.M.,

sister-in-laws of the bride, served the wedding cake from the bride's table covered with a white cloth with a pink net over skirt and gathered at the corners with large pink bows. The bride's bouquet was displayed in a crystal vase for the centerpiece. Serving punch from the bride's table was Mrs Kerri Taylor of Houston.

Tricia Craig of Lubbock, served the chocolate cake from the groom's table with Mrs Donna Stotts serving the coffee. The groom's table was decorated identical to the bride's and displayed the bride's attendants long stem roses in a crystal vase for the centerpiece. Crystal and brass appointments were used.

Members of the house-party were Mrs Arleta Gary, Marilyn Williams, Twilight Dudley, Janet Bell and Jimella Simpson.

The family will be at home in Lubbock after a wedding trip to the Bahamas. The groom attends Texas Tech and the bride is a hairstylist.

Mr and Mrs Robert Warden, parents of the groom, hosted the rehearsal dinner August 8 at the Chaparral Restaurant in Post.



Mrs Pickett Edward Warden

## Trends for Men & Family

Al Centro de Post

La tienda a comprado un inventario de grande especialidad para el Regreso a La escuela

Tamanos Infante Hasta 18 años de edad.

Pantolones Levis Y Wranglers Para Hombre Jover a \$ 7.99 El Par.

Pantolones Wranglers para niños a \$ 7.99 para arriba.

Una extra grang grande de Selecsion de Camisas Y blusas. Para Niños Y Niñas. a grande Reduccion. Nesesita ver para creer



HELPS YOU PREPARE YOURSELF FOR EMPLOYMENT THROUGH OUR NEW COMPREHENSIVE COMPETENCIES PROGRAM

If you qualify for the JTPA Program you may be eligible to enter our new Comprehensive Competencies Program (CCP). This program consists of six hours of training per day for a period of eight to ten weeks.

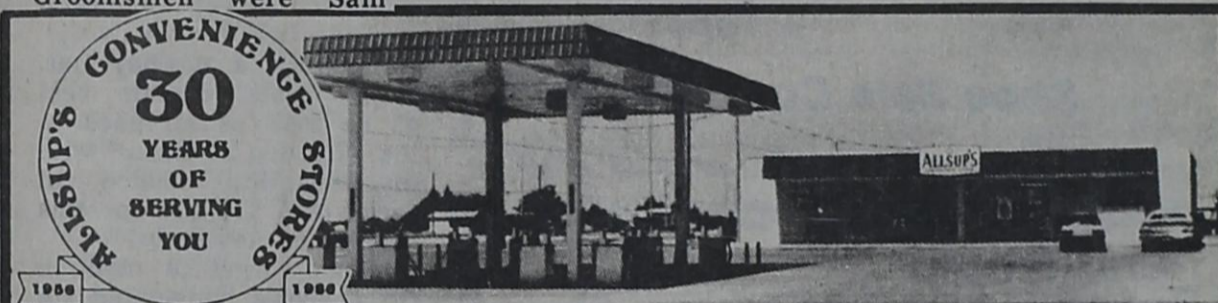
The CCP program costs the qualified JTPA applicant absolutely nothing: In fact, we will pay Garza County residents 75 cents per hour of attendance to help cover transportation costs to Lubbock.

Specialized Training Through CCP Includes

- Clerk Typist Training
- Data Entry Training
- File Clerk Training
- GED Preparation
- Retail Sales Training
- Shipping and Receiving Training
- Secretarial Course Available

For High School Graduates or GED Recipients

For More Information on this Program Contact: Texas Employment Commission's JTPA Outreach Office Multi-Service Center Snyder Highway Post, Texas (806) 495-3941



30 YEARS OF SERVING YOU

1956 1986

ALLSUP'S CONVENIENCE STORES

PRICES EFFECTIVE AUGUST 21-22-23, 1986 WHILE SUPPLIES LAST

Shurfine Fruit Cocktail 69¢

ALLSUP'S ICE \$1.09

LARGE BAG

MADE WITH 99% PURIFIED WATER

on the GO!

Shurfine Peaches 59¢

ICE CREAM SANDWICHES OR NUTTY BUDDIES 99¢

6 CT. PACK

Shurfine Tomatoes 2/89¢

ASSORTED BORDEN'S FRUIT DRINKS 89¢

1 GAL. BTL.

ALLSUP'S HOT LINKS 2 FOR 99¢

ALLSUP'S 30 YEAR COMMEMORATIVE MUG 99¢

FILLED WITH YOUR FAVORITE FOUNTAIN DRINK ONLY REFILLS 49¢

NO. 4 FACTOR DARK TANNING LOTION OR OIL HAWAIIAN TROPIC \$5.79

8 OZ.

WITH SUNSCREEN-NO. 2 FACTOR DARK TANNING OIL \$6.09

BTL.

Tostitos Frito Lay® REGULAR OR NACHO CHEESE TOSTITOS TORTILLA CHIPS \$1.29

REGULAR \$1.59

Shurfine Macaroni & Cheese Dinners 5/\$1.00

Pork 'n Beans 4/\$1.00

Enjoy Coca-Cola CLASSIC

16 oz Bottles COCA-COLA \$2.09

Six Pack

# Patschke, Sanderson Hitched

You would have had to tell you all about it. been there early to catch Judy Patschke of it...but if you weren't we'll Lubbock and Bruce

## Bridal Selections for

Terri Sansing  
Bride-Elect of Rex Cash

Mrs Sam Dunn  
nee Denise Smith

## Handy Gifts

## La Posta

Mens & Ladies Apparel and Shoes

\$5 - \$10 - \$15

## Tables

★ Pants

★ Sweaters

★ Skirts

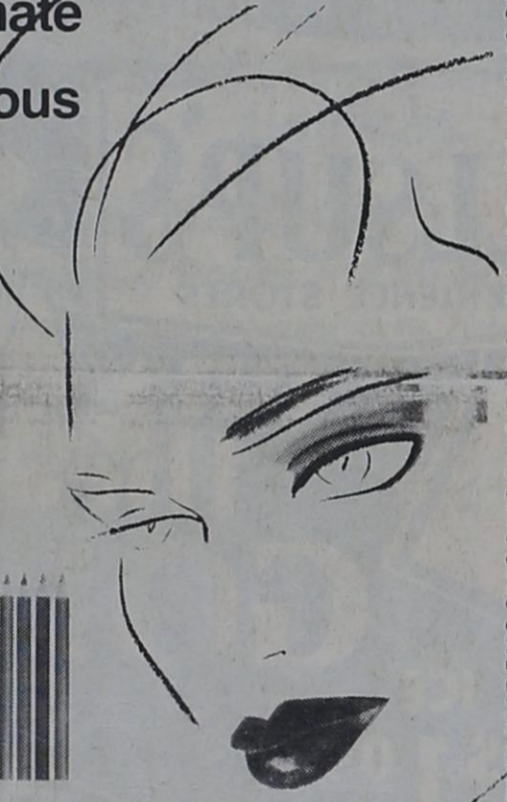
★ Tops

Shoe Sale Continues!

Penultimate Pencils. Outrageous Offer.

For Lips. For Eyes. Our Color Complements Offer For Fall.

From August 10 through September 30, these four coordinated color pencils—Warm Rose, Cerise, Goldspice, Slate—a \$27 value, are yours for only \$1.50 with a \$12 minimum purchase of Merle Norman cosmetics.



Woman to Woman

**MERLE NORMAN**

## Twins Fashions

210 E. Main

495-3387

Advisor, Loveta Josey

Sanderson of Post (White River Lake) were "hitched" just about sunrise on Saturday, August 9, 1986 at White River Lake Youth Camp.

Guests came from all around - San Antonio, Dallas, Tulia, Woodrow, Lubbock, Crosbyton, Post and Spur.

The wedding was "COUNTRY".

The morning was cool, clear and beautiful for this outdoor wedding.

Picture a gazebo covered with English ivy, Baby's Breath, Daisies and almost every kind and color of spring flower under the sun.

The guests were seated on hay bales arranged by the gazebo as Noel White played the guitar and sang several songs prior to the ceremony.

"Oh what a voice!" The bride and groom rode to the "hitchin post" atop "Rawhide" and "Little Red" Sanderson. "Little Red" wore on the bride a bouquet of baby's breath, yellow and white daisies and miniature pink carnations.

The Church of Christ minister Joseph Johnston wed the two.

He wore a cowboy hat, jeans, boots, denim vest as he took us all back to the "Garden of Eden" with his beautiful choice of words and prayers for this particular ceremony.

(Can't forget to mention the sheriff's badge and six shooter! Glad to say that we had no use for either!)

The "bride" wore a long full blue denim skirt, a beige cotton blouse with puffed sleeves and ruffles, grey granny boots, beige

hat with a short face veil and spring flowers, and silver accessories.

The "bride's" bouquet consisted of all of the mentioned colorful spring flowers and baby's breath along with white roses.

The "groom" wore his cowboy hat (Sunday best), boots, a beige shirt, ascot tie with grey TAILS and his good 'ol wranglers (freshly starched).

The maid of honor was Debra Timmons of Lubbock.

The best man was (also proud father of the groom) Arnold Sanderson of Post.

The ring bearer was (son of the bride) Brandon Patschke.

The flower girl was (niece of the bride) Amber Wilke (daughter of Clyde and Merri Wilke) of Wilson.

Mother and Father of the bride, Sally and Billy Holmes, gave the bride's hand in marriage.

After the wedding everyone sat down to a most delicious country breakfast fixed by Rusty and Nelda Wright, J.W. and Bessie Strawn, Teresa and Roger Marley, Mary and Bill Terpening, Jean Westfall, and Frank and Josephina Serina.

The table was complete with orange juice, coffee, scrambled eggs, bacon, grits, a fruit bowl, homemade biscuits and gravy, cinnamon rolls and last but not least, Patsy Sanderson (mother of the groom) tempted everyone's taste-buds with homemade grape and plum jellies! Yummy! Needless to say...We all got fat!

Following the breakfast, the couple left for their honeymoon in the Bahamas.

After the honeymoon, the couple will hang their hats and spurs in their home at White River Lake.

## Birth

Mr and Mrs Jeff Lott would like to announce the birth of their son, Jeff Slaughter Lott, born July 25, 1986.

Jeff weighed eight pounds

## Theta Eta Chapter Meet

by Connie Flores

The Theta Eta Chapter of Delta Kappa Gamma held its planning session on August 12, in the Post Media Center.

The society's executive board, committee chairman and members met to discuss and plan the activities for the year.

Following the work session, members met in the Primary lounge for a salad luncheon.

Members from Southland, New Home, Wilson, O'Donnell, Tahoka, Brownfield and Post were in attendance. Special guest was Virginia Howle.

and two ounces and was 21 1/4" long at birth.

Proud grandparents are Mr and Mrs Jack Lott of Post and Mr and Mrs Weldon Garrett of Lubbock.



Mr & Mrs Bruce Sanderson

## BACK TO SCHOOL SPECIAL

Good thru September

PERMS

\$25.00 and \$30.00

Includes cut and style

Hair Painting, Highlighting & Tipping

\$35.00

Call Teresia or Janice at Unique Beauty Shop 495-2001

## DANISH IMPORTS

Gifts and Collectibles

The Best!

Gorham

Anti-Tarnish Silver Polish

Anti-Tarnish Copper & Brass Polish

Bridal Registry

Terri Sansing

Bride-Elect of Rex Cash

Mrs Sam Dunn

nee Denise Smith

Mon-Sat 10-5

201 E. Main

495-2314

# 'CAJUN CREOLE COOKING

FREE — RECIPES AND SAMPLING  
Tips on Using Energy Efficiently

**THURSDAY, AUGUST 21**  
2:00 P.M.

**SPS REDDY ROOM**  
217 W. Main — Post

Creole Cooking Using Energy Efficient Appliances.

PRESENTED BY:

CHRISTY COPPAGE  
SPS Home Economist

Electricity is a product — use it wisely and efficiently.

SPS  
SOUTHWESTERN PUBLIC SERVICE COMPANY

A-142-8-86-930.1

## Trends for Men & Family

Downtown

Post, Texas

Store Hrs. Mon-Sat. 9-6

We Have Bought Just In Time for  
**Back-to-School**  
an Inventory of a Fine Specialty Store.  
Sizes Infant thru 18

Levi & Wrangler Boys

Jeans

\$799 & up

Wrangler Children's

Jeans

\$799 & up

An Extra Large Selection of  
Boys and Girls Tops & Shirts at  
**Huge Reductions**

You Must See It To Believe It!

## Gordon-Hardin Exchange Vows in Ceremony

A backyard wedding was the setting as Pamela Lynn Gordon became the bride of Sammy Ray Hardin on August 15, 1986.

The double ring ceremony was performed by Rev. Danny Jackson, pastor of the MacKenzie Terrace Baptist Church of Lubbock, uncle of the bride.

The bride is the daughter of Mr and Mrs Terry Reed of Slaton and the late Dale Gordon.

The groom is the son of Mr and Mrs Ronnie Hardin of Post.

An archway was decorated with greenery flanked by baskets of flowers on pedestals to carry out the bride's chosen colors.

The bride, given in marriage by her parents, wore a formal bridal gown of Coup de Sheen Crepe. The bodice was overlaid with Chantilly lace and featured a low scooped neckline. Full bishop sleeves were caught at the elbow with wide bands of Chantilly lace. The skirt was gathered to a fitted waistline that came to a point in the front. To complete her wedding attire she chose a lace hat that dipped in the center-front. A fingertip veil fell from a pouf attached to a Chantilly lace band accented with pearls sheared around the crown.

The bride wore a special necklace given to her by her mother. The necklace was made out of the ring that was presented to her mother by the bride's late father.

She carried a lace edged cascade of bridal roses and lilies in her chosen colors of pink, blue and yellow. White stephanotis, morning glory, pearls and tulle accented the bouquet which featured sweetheart roses in the soft rainbow colors. Streamers tied in love knots and accented with tiny flowers fell from a bow of white satin and picot ribbon.

Maid of honor was Vicki Davidson of Slaton with Suzanne Irleck and Edie Bartos, both of Slaton, serving as bridesmaids.

The bride's attendants wore intermission length dresses made of soft taffeta in solid colors of blue, pink and yellow. The bodice was fashioned with a V-neck and fitted waistline that came to a point in the center front. Butterfly sleeves were attached with pleats and formed a cape effect in the back that featured a low V. They wore lace hats that were adorned with lilies to match the color of their dress and satin loops with pearls and had satin and picot ribbon bows with long streamers. Their lace fans were trimmed with lilies, gypsophila, satin loops and pearls to match the arrangements on their hats. They too had satin and picot bows with streamers and love knots.

Best man was Sam Binford with Greg Adams and Keith Hart serving as groomsmen, all of Post.

The groom wore a white tuxedo with tails and a white cummerbund and tie.

The groomsmen wore silver tuxedos with cummerbunds and ties to match the maid of honor and bridesmaids dresses.

Ushers were Glenn Hardin, brother of the groom, Keith Craig and David Shults, all of Post.

A reception was held at the Post Community Center after the ceremony.

The wedding cake was three-tiered placed on separate pedestals with each layer being decorated with pink, blue and yellow roses.

The serving table was laid with silver and crystal appointments. A blue linen tablecloth topped with white lace covered the table.

Serving at the bride's table were Darla Ardrey, Ann Marie Kitten and Noel Sparkman, all of Slaton.

The groom's table was laid with a blue linen cloth with brass appointments. The groom's cake was a chocolate cake in the shape of a boot.

Serving at the groom's table were Shari Gordon, sister-in-law of the bride, and Teri St. John, both of Lubbock.

Registering guests was Linda Baxley of Slaton.

Members of the house-party included Margaret Barley, Margin Carpenter, Lois Cook, Nita Gibbs, and Judy McAlister.

Following a wedding trip to New Orleans and Louisiana the couple will make their home in Levelland where they both will be attending South Plains College.

The bride is a 1986 graduate of Slaton High School and the groom is a 1986 graduate of Post High School.

The groom is currently employed by George R. Brown Oil Company.

The rehearsal dinner, given by the groom's parents, was held at the Chaparral Restaurant.



Mr & Mrs Bryan Taylor

## Willborn-Taylor

### Exchange Vows in Home

Mr and Mrs Lanny Willborn announces the marriage of their daughter, Terisa to Bryan Taylor, son of Mr and Mrs R.B. Taylor.

The single ring ceremony was performed in the home of the groom's parents on July 25, 1986 by Bro. Loyd Castle of Trinity Baptist Church.

The couple are making their home in Post where Bryan is employed by Palmers.

Grandparents are Mr and Mrs Richard Souter of Alpine, Texas, and great grandparents are Mr and Mrs J.R. Hagins of Post.

Birth  
Mr and Mrs Benny Granger wish to announce the birth of their daughter Brittney DaLayne on August 3, 1986.

Visiting in Post  
Visiting this week in the home of Wesley and Pat Burnett were her mother, Mrs Lorene Voyles of Silverton; her sister, Mrs Fay Mann of Clovis, N.M.; her great-niece Mandy Mann also of Clovis; His nephew and niece Zachary and Rachel Bolton of Wichita, Kansas.

They are the children of his sister Beverly and her husband Dr Ron Bolton.



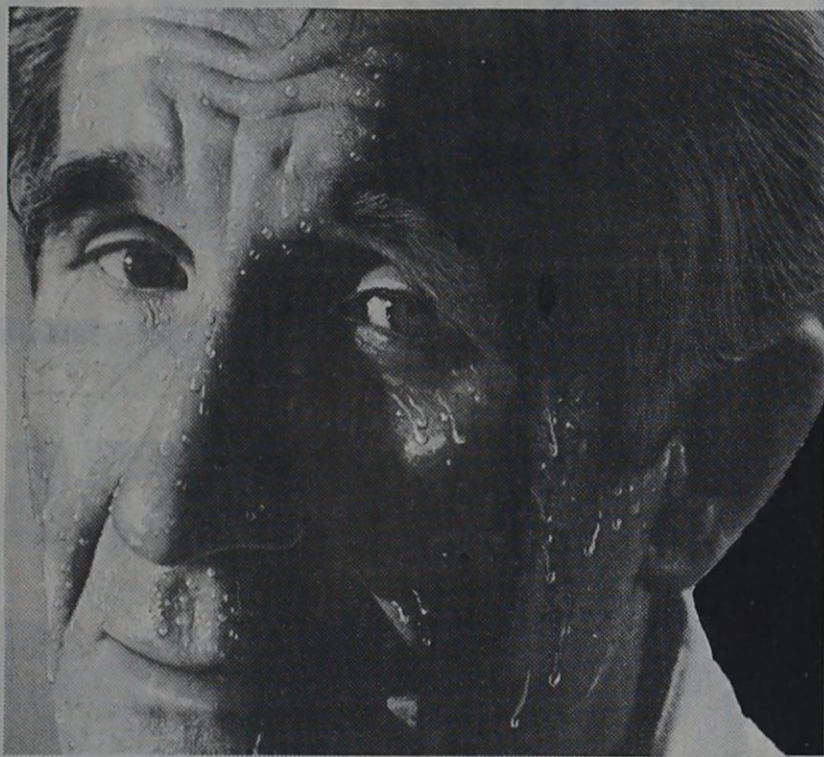
Mrs Sammy Hardin

### INVITATION EXTENDED

Mr and Mrs Gerry K. Sherrill extend an open invitation to friends and relatives to attend the marriage of their daughter Darla K'Laine to Johnny Ray Dillard.

The couple will be married at seven o'clock in the evening Friday, the twenty-second of August, in the Rose Garden at K.N. Clapp Park, 41st and University, Lubbock, Texas.

Reception follows at J.A. Hodges Community Center, Golden Age Room.



If your air conditioner goes out this summer,  
**Replace it with a heat pump.**

A heat pump can utilize your present system to both cool and heat your home. It offers the ultimate in home comfort. The heat pump is clean, quiet and efficient. Economical to operate, too. So, if your air conditioner has to be replaced, call your heat pump dealer. He will help you make the best of a bad situation.

## Truckload Fabric Sale

Fashion Fabrics from Dallas

Prices: \$ 1.99 to \$ 5.99

WHEN: **Monday, August 25**

WHERE: **Post Community Center**

TIME: **10:00 A.M. to 5:30 P.M.**

Sponsored by:

Garza County  
Extension Homemakers

# CARPET

Beautiful Colors  
100% CONTINUOUS FILAMENT

**NYLON SHAG**  
NOW ONLY  
Regular \$7<sup>95</sup> Sq. Yd. **\$6<sup>95</sup>**

Plus Pad and Installation

One of America's most popular!  
CUT AND LOOP

**NYLON SHAG**  
REGULAR \$8<sup>95</sup> Sq. Yd. **\$7<sup>95</sup>**  
NOW ONLY SQ. YD.

Plus Pad and Installation

**We have a large selection of Bedroom Sults in various finishes to choose from.**

**Sizes vary from single to fit a small bedroom to a big triple for the master bedroom.**

Here are a few examples

4 pc. Memphis bedroom Oak consists of dresser, mirror, night stand, 5 drawer chest. **Sale**  
Reg. \$869<sup>95</sup> **\$695<sup>50</sup>**

4 pc Orleans -bedroom Cherry consists of dresser, mirror, night stand, headboard, chest. **Sale**  
Reg. \$798<sup>50</sup> **\$698<sup>00</sup>**

4 pc Frisco bedroom Pine consists of dresser, night stand, mirror, bookcase headboard, 4 door chest. **Sale**  
Reg. \$439<sup>95</sup> **\$389<sup>95</sup>**

4 pc bedroom Dixie Cherry, triple dresser, mirror, night stand, headboard, armoire. **Sale**  
Reg. \$1398<sup>50</sup> **\$1199<sup>00</sup>**

## Hudman Furniture

301 E. Main

495-2615



PRICES GOOD AUGUST 20 THRU 23 IN LUBBOCK, SLATON, POST, LAMESA BROWNFIELD, LITTLEFIELD, LEVELLAND AND PLAINVIEW

# Summer Savings


## GROCERY

**FINE FARE CORN**  
WHOLE KERNEL OR CREAM STYLE  
17 OZ.



**\$4.19** FOR

**PILLSBURY CAKE MIX**  
18.5 OZ.



**69¢**

**COUNTRY KITCHEN SYRUP**  
36 OZ.

**\$1.69**

**FINE FARE CUT GREEN BEANS**  
16 OZ.



**\$4.19** FOR

**HEINZ BARBECUE SAUCE**  
ASSORTED  
18 OZ.



**69¢**

**MIRACLE WHIP**  
REGULAR OR LIGHT  
32 OZ.



**\$1.39**

**COKE**  
6 PACK  
32 OZ.



**\$1.98** PLUS DEPOSIT

**MERICO TOASTER PASTRIES**  
11 OZ.



**69¢**

**HEINZ BABY FOOD**  
STRAINED 4.5 OZ. **\$1.50** FOR  
INSTANT 4.5 OZ. **\$1.20** FOR



**SPAM LUNCHEON MEAT**  
REGULAR/LESS SALT/SMOKED  
12 OZ.



**\$1.18**

**FINE FARE NAPKINS**  
140 CT.




**59¢**

**SCOTT TOWELS**  
JUMBO ROLL



**59¢**

**HEALTH AND BEAUTY**  
**GLEEM TOOTH PASTE**...7 OZ. **\$1.59**  
**PRELL LIQUID** 7 OZ. **SHAMPOO OR CONDITIONER 77¢**



# SALE!



**WE GIVE  
S&H GREEN STAMPS  
EVERY DAY!**




**DOUBLE STAMPS  
ON WEDNESDAY  
WITH \$2.50 PURCHASE  
OR MORE EXCLUDING  
CIGARETTES**

**NO SALES  
TO DEALERS**

**QUANTITY  
RIGHTS  
RESERVED**

## QUALITY MEATS

**DECKER**  
**BACON**  
**98c**  
12 OZ. PKG.




**ECKRICH**  
**SMOKED SAUSAGE**  
MEAT OR BEEF  
**\$1.88**  
LB.



**UNITED TRU TENDR  
OR USDA CHOICE**  
**EYE OF  
ROUND  
STEAK**  
**\$1.88**  
LB.  
**SUPER VALU  
FAMILY PAK**  
**\$1.98**  
LB.

**DECKER**  
**FRANKS**  
MEAT OR BEEF  
**88c**  
12 OZ. PKG.



**UNITED TRU TENDR  
OR  
USDA CHOICE**  
**BONELESS BOTTOM  
ROUND STEAK**  
**SUPER VALU  
FAMILY PAK \$1.18**  
LB.  
**\$1.28**  
SINGLE PAK LB.



**UNITED PREMIUM QUALITY**  
**WHOLE HOG  
PORK SAUSAGE**  
REGULAR OR HOT  
**\$2.95** 2 LB. **\$1.49** 1 LB.



**UNITED TRU TENDR OR USDA CHOICE**  
**BONELESS  
RUMP ROAST**  
**\$1.28**  
LB.



**FINE FARE**  
**BISCUITS**  
SWEETMILK OR BUTTERMILK  
**8 FOR \$1**  
7.5 OZ.



**FROZEN & DAIRY**  
**FINE FARE**  
**ORANGE JUICE**.....12 OZ. **59c**  
**FINE FARE CRINKLE CUT POTATOES** 2 LB. **69c**  
**BELL HOMO MILK**.....GAL. **\$1.98**

**UNITED GRADE A**  
**MEDIUM EGGS**  
18 COUNT  
**79c**



**CALIFORNIA PASCAL**  
**CELERY**  
**3 STALKS FOR \$1**



**PRODUCE**  
**FRESH CRISP**  
**LEAF LETTUCE**  
GREEN, RED, OR ROMAINE  
**3 BUN. FOR \$1**



**FRESH KENTUCKY**  
**GREEN BEANS**  
**2 \$1**  
LBS.

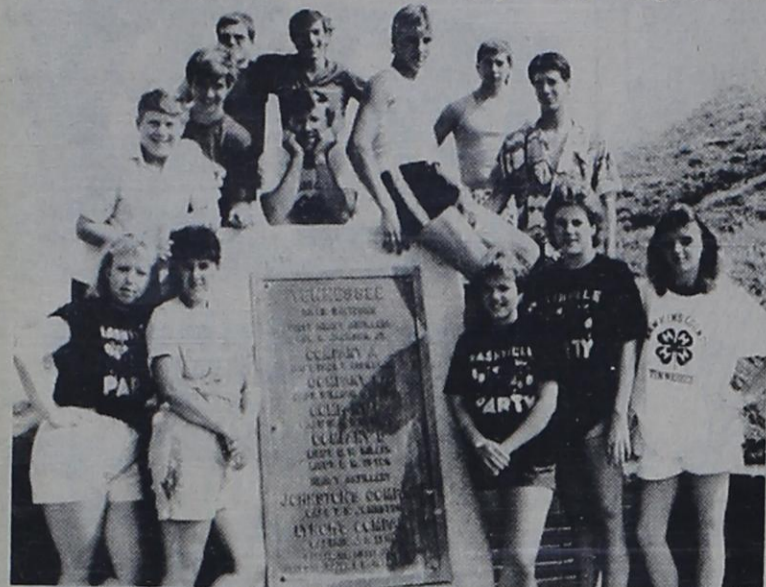


**NEW RED POTATOES**  
3 LBS. \$1



# Local 4-H'ers Enjoy Tennessee Trip

Thirteen Garza County 4-H'ers and five adults returned recently from a 4-H Exchange Trip through nine states. Destination of the trip was Rogersville, Tenn.



TENNESSEE EXCHANGE TRIP - 4-H'ers (left to right) Debbie Ethridge, Keitha White, Mike Traw, Jarret Dickson, Ron Graves, Jimmy Holleman, Eric Reece, Bart Mason, Robert Wood, Glen Hardin, Melanie Reece, Angela Graves, and Betsy Ethridge.

After many hours of fund raising and planning, the group traveled to the northeast corner of Tennessee in a chartered bus, to return a visit by Hawkins County 4-H'ers in 1985.

Many of the group stayed in homes of 4-H'ers who had visited with them here. They left Post at 10 p.m. on Saturday night, went to Dallas, Little Rock, Ark., and to Memphis, Tenn., where they toured "Graceland", the home of Elvis Presley and other points of interest.

Monday morning, they left for a three hour drive to Nashville to see the old Ryman Auditorium, home of the Grand Ole Opry. They sang on stage and saw other highlights of

Nashville. They arrived in Rogersville Monday night where they were greeted by their host families.

Tuesday morning, they took a historic tour of a 1700 restored inn, the Hawkins County Courthouse, the oldest courthouse in Tenn., and the cemetery where Davy Crockett's grandparents are buried.

Tuesday night all of the 4-H'ers met at the Tunnell's Dairy Farm for a cookout. Their home was a three level log house. They were all entertained by a member of the "Hee Haw" cast, Hannah McConnell, who told them tales and ghost stories of Tenn. Then they were carried on a walk thru the woods.

Wednesday morning, they left on a tour of the Smokey Mountains National Park, with a visit to Cade's Cove, a tour of Gatlinburg, and on to "Dollywood", an amusement park owned by Dolly Parton.

Thursday, was a free day to visit, shop, wash and rest. Some of the group went to Virginia and Cumberland Gap, Ky. That evening was spent at the Donald Carters where 100 chickens were barbecued. Games and a dance were enjoyed.

Friday morning, a farewell breakfast was held at the park in Rogersville where each of the Texas guests were presented with a gag memento of their trip.

After a tearful goodbye, the group headed for Texas with stops in Chattanooga, Tenn., Georgia, Birmingham, Ala., and spent the night in Vicksburg, Miss. In

Vicksburg, they toured the Vicksburg National Military Park and Cemetery and headed for home arriving at one o'clock Sunday morning.

It was a fun filled trip as well as educational with visits to many historic and interesting points.

Seeing tobacco as it grows in the fields and all of the trees was very different from West Texas. Crossing the Mississippi River was another highlight.

Friendships new and old were made and renewed.

Those making the trip were: Eric and Melanie Reece, Mike Traw, Jarret Dickson, Robert Wood, Debbie and Betsy Ethridge, Bart Mason, Ron and Angela Graves, Jimmy Holleman, Glenn Hardin and Keitha White.

Accompanying them were Linda Wood, Jane Mason, Barbara Reece and drivers George Reece and Diane Graves.

## Memorial Roping Held

The First Annual "Pee Wee Johnson Memorial Tournament Roping" was held June 21, 1986 at the Post Stampede Rodeo Grounds.

A total of 10 teams, consisting of six ropers per team, competed in the double elimination tournament.

Winners of this year's Roping were Bob Byrd's team winning 1st place - team members included - Mike Seago, Buddy Baldrige, J.Ray Basinger, James Koonsman, Tim Fanning and team captain Bob Byrd.

Winning 2nd place was team captain Tommy Riley's team with team members Johnny Reed, J.D. Ragland, Kinney Hart, L.J. Mueller, Steve York, and Barry Byrd.

Fastest time team went to Tommy Young's team with team members Sonny Hart, Woody Byrd, Jimmy Kent Byrd, Fred Humble, Ronnie Hart and team captain Tommy Young.

This is an annual event held on the 3rd Saturday of June at the Post Stampede Rodeo Grounds.

## Post Teachers Attend International Convention

by Connie Flores  
Connie Flores and Nancy Vaughn were among the 2,199 participants attending the Delta Kappa Gamma Society International Convention in Indianapolis, Indiana on August 4-10.

Presiding was Miss Jessie Sim, International president and the convention theme was "New Perspectives."

All fifty states, Puerto Rico and nine European and Latin American countries were represented.

Leadership Management Seminars were presented by Janet O. Hagberg, author of Real Power and Dr John E. Roueche, co-author of Profiling Excellence in America's Schools.

Convention activities included five general sessions, Texas Bluebonnet Breakfast, society affair workshops, birthday luncheon, ceremony of remembrance, founders banquet, national forums and the installation of new officers for the 1986-88 biennium.

Other Theta Eta members attending were Carmen Camp and Adene Dixon of Brownfield.

## Slaton Municipal Airport Having Re-Opening Ceremony

On August 24, 1986 (Sunday) Slaton Municipal Airport will have re-opening and re-dedication ceremonies at the airport on FM 400.

A fly-in will be staged by a number of World War II airplanes and various other kinds of aircraft staging flying activities from 1-4 p.m.

Ribbon cutting events will be at 1:30 p.m.

The public is invited. Admission will be \$5 per adult and children 11 and under free. Concession will be available.

For more information contact the Slaton Chamber of Commerce at 828-6238.

SCHOOL DISTRICT: Southland ISD

### CALCULATION OF EFFECTIVE TAX RATE, ESTIMATED UNENCUMBERED FUND BALANCES, AND DEBT SCHEDULE

I, Jean M. Westfall, Chief Appraiser for Southland ISD, in accordance with Sec. 26.04, Property Tax Code, have calculated \$ .9282 per \$100 of value as the tax rate which may not be exceeded by more than three percent by the governing body of the Post ISD without holding a public hearing as required by the code.

The estimated unencumbered fund balance for Maintenance & Operation fund: \$ -0-

The estimated unencumbered fund balance for Interest & Sinking fund: \$ 23,248

The following schedule lists debt obligations that 1986 property taxes will pay:

	Principal	Interest and Paying Agent Fees	Total
1977 General Obligation	\$40,000	\$11,380	\$51,380
Fritz Leifeste, Superintendent			
August 15, 1986			

### CALCULATION OF EFFECTIVE TAX RATE

#### MAINTENANCE AND OPERATION (M&O) TAX RATE

1. 1985 total tax levy	\$ 506,081
(1985 tax rate: M&O \$.79 + I&S \$.09 = \$.88 /\$100)	
2. Subtract 1985 debt service (I&S) levy	\$ 51,758
3. Subtract 1985 taxes on property in territory no longer in unit in 1986	\$ 145.
4. Subtract 1985 taxes for property becoming exempt in 1986	\$ -0-
5. Subtract 1985 taxes for property appraised at less than market value in 1986	\$ -0-
6. Subtract frozen M&O levy of over-65 homesteads	\$ 759.
7. Subtract 1985 M&O taxes used to regain lost 1984 levy	\$ -0-
8. Adjusted 1985 M&O levy (subtract #2, #3, #4, #5, #6, and #7 from #1)	\$ 453,419
9. 1986 total taxable value of all property	\$ 55,738,651
10. Subtract 1986 value of new improvements added since 1/1/85	\$ 597,526
11. Subtract 1986 value of annexed property added since 1/1/85	\$ -0-
12. Subtract 1986 value of over-65 homesteads with frozen taxes	\$ 797,390
13. Adjusted 1986 taxable value for M&O (subtract #10, #11, and #12 from #9)	\$ 54,343,735
14. Divide the adjusted 1985 M&O levy (#8 above) by the adjusted 1986 taxable value for M&O (#13 above) (\$ 453,419 ÷ \$ 54,343,735)	\$ .008344
15. Multiply by \$100 valuation	× \$100
16. Effective M&O rate for 1986	\$ .8344 /\$100

#### INTEREST AND SINKING (I&S) TAX RATE

17. 1986 I&S levy needed to satisfy debt	\$ 51,530
18. Subtract frozen I&S levy of over-65 homesteads	\$ 87.
19. Adjusted 1986 I&S levy (subtract #18 from #17)	\$ 51,443
20. 1986 total taxable value of all property	\$ 55,738,651
21. Subtract 1986 value of over-65 homesteads	\$ 797,390
22. Adjusted 1986 taxable value for I&S (subtract #21 from #20)	\$ 54,941,261
23. Divide the adjusted 1986 I&S levy (#19 above) by the adjusted 1986 taxable value for I&S (#22 above) (\$ 51,443 ÷ \$ 54,941,261)	\$ .000938
24. Multiply by \$100 valuation	× \$100
25. Effective I&S rate for 1986	\$ .0938 /\$100

#### APPRAISAL ROLL ERROR RATE

26. Rate to raise the 1985 levy because of appraisal roll errors \$ _____ ÷ (\$ _____ - \$ _____) × \$100	\$ -0- /\$100
27. Add rate to regain 1985 taxes lost because of appraisal roll errors \$ _____ ÷ (\$ _____ - \$ _____) × \$100	+ \$ -0- /\$100
28. Total rate to adjust for appraisal roll errors	\$ -0- /\$100

#### TOTAL EFFECTIVE TAX RATE FOR 1986

29. Effective M&O rate (#16 above)	\$ .8344 /\$100
30. Add effective I&S rate (#25 above)	+ \$ .0938 /\$100
31. Add rate to adjust for appraisal roll errors (#28 above)	+ \$ -0- /\$100
32. 1986 Effective Tax Rate	\$ .9282 /\$100

1986 Effective Tax Rate is the tax rate published as required by Sec. 26.04, Property Tax Code.

#### STATE AID/EQUALIZATION ENRICHMENT AID RATE

33. Rate to replace lost state aid or qualify for maximum equalization allotment \$ -0- ÷ (\$ 55,738,651 - \$ 797,390) × \$100	\$ -0- /\$100
---	---------------

## Post Bold Gold Antelope Junior High 1986 Football Schedule

Date	Opponent
September 11	at Seagraves
September 18	Colorado City
September 25	Brownfield
October 2	at Roosevelt
October 9	at Idalou
October 16	*Denver City
October 23	at Slaton
October 30	Seminole
November 6	at Cooper

7th Grade Games at 5 p.m.  
8th Grade Games at 6:30 p.m.

\*8th Grade First Game - Kickoff - 5 p.m.

**Palmer Well Service**  
**Palmer Construction Co.**



# Colleen's Comments

by Colleen England  
County Extension Agent  
Home Economics

The Garza County Extension Homemakers are again sponsoring a Fall Fashion Fabric Sale at the Post Community Center from 10 a.m. til 5:30 p.m. on Monday, August 25.

You will want to come select from the wide variety of beautiful fall fabrics!

**Poison Proof Your Kitchen**  
Is your kitchen poison-proof?

If it's not, someone - especially your preschooler - could get hurt.

**4-H Kids Cooking School...**  
...will be Tuesday, August 26 at 2:00 p.m. at the Bank Community Room.

Christye Coppage, S.P.S. Home Service Representative, will present demonstrations of easy-to-prepare dishes emphasizing nutritional information.

All interested youth are encouraged to attend!  
E.H. Fabric Sale

Make sure you can answer "yes" to the following questions:

- Do all harmful products in the cabinets have child-resistant caps?

- Are all potentially harmful products in their original containers? If not, someone might think they're food and eat them. Also, labels on the original containers often give first aid information if someone should swallow the product.

- Are harmful products stored away from food?

- Have all potentially harmful products been put up high and out of reach of children? Locking all cabinets that hold dangerous products is the best poison prevention.

- Have medicines been taken off kitchen counters and window-sills? These storage places may be convenient but they put danger within the easy reach of children.

# Chief Deputy Timms Becomes Member of Texas Chief Deputy's Association

Chief Deputy Billy L. Timms of Post, Texas Garza County Sheriff's Department has become a member of the Texas Chief Deputy's Association.


The association was formed on October 24, 1985 to achieve the objectives of promotion cooperation and communications between law enforcement agencies in the State of Texas; promoting the exchange of ideas and information among law enforcement agencies in the State of Texas, and promoting all possible means of improving the quality of law enforcement so that safety and well-being of the citizens of the State of Texas will be assured.

The knowledge, profes-

sionalism, and expertise of Chief Deputy shall be very important in accomplishing the goals with membership

available to any reputable person who is presently serving or has served as a Chief Deputy to any Sheriff in the State of Texas.

THIS COUPON GOOD FOR  
1.50 OFF GENERAL ADMISSION  
(EXPIRES 9-27-86)



**Texas Water RAMPAGE**  
LUBBOCK, TEXAS

GROUP RATES  
(806) 741-1400

Feel the wave in our new 9,000 sq. ft. "Tidalwave Pool" Experience the thrills at Islands Race Way Twist & Turn with the Twin Twisters



**LEADING THE COUNTY AG AGENTS ASSOCIATION** - This group of county agents with the Texas Agricultural Extension Service will lead the Texas County Agricultural Agents Association for 1986-87. Left to right are Roger Corbin of Waxahachie, Ellis County, president; Syd Conner of Post, Garza County, first vice president; Duery Menzies of Fredericksburg, Gillespie County, second vice president; David Reue of Caldwell, Burleson County, secretary-treasurer; and Bill Thane of Brenham, Washington County, past president. The new officers were installed at the annual TCAA meeting in Fort Worth, Aug. 3-6.

## Close City-Garlynn Reunion

by Faye Mathis  
The Close City and Garlynn Communities enjoyed a reunion at the Post Community Center on Saturday, August 16.

A buffet was served at noon by Consuelo Thuett, Inez Huntley, Inez Ritchey, Evelyn Jones, Hooter Terry, Ida Jones, Batchie Morris and Loretta Shaw.

Following the luncheon, Faye Mathis introduced Lewis Kenley from Lubbock to present the program.

Lenley has been a chalk artist for many years performing in communities, cities and abroad.

One of the highlights of his career was in 1976 when he was invited to Delfzie, Holland. He was received royally by the Dutch people.

His drawings are of the religious theme and for this program he chose two very creative subjects, "The Good Shepherd" and "The

Old Country Church." The lighting effects on his drawings made his work very impressive.

Mrs Eula B. Smith accompanied the artist at the piano with a medley of appropriate music.

Mrs Nancy Thuett provided the art work above the stage depicting our next reunion which will be August 20, 1988.

Eva Lee Roberts, Laverne Aten, Oneita Gunn and Eula B. Smith registered 150 guests from Texas, New Mexico, Oklahoma and Arkansas.

Emceeding the occasion was Eldon Roberts from Abilene.

The executive officers and committees would like to express their appreciation to everyone for making the reunion a success.

Newly elected officers are President, Faye Mathis; Vice-President, Alvin Young and Secretary-Treasurer Eula B. Smith.

SCHOOL DISTRICT: Post Independent School

### CALCULATION OF EFFECTIVE TAX RATE, ESTIMATED UNENCUMBERED FUND BALANCES, AND DEBT SCHEDULE

I, Jean M. Westfall, Chief Appraiser for Post ISD, in accordance with Sec. 26.04, Property Tax Code, have calculated \$ 6957 per \$100 of value as the tax rate which may not be exceeded by more than three percent by the governing body of the Post ISD without holding a public hearing as required by the code.

The estimated unencumbered fund balance for Maintenance & Operation fund: \$ 2,000,000

The estimated unencumbered fund balance for Interest & Sinking fund: \$ -0-

The following schedule lists debt obligations that 1986 property taxes will pay: -0-

William F. Shiver, Superintendent

August 14, 1986

#### CALCULATION OF EFFECTIVE TAX RATE

##### MAINTENANCE AND OPERATION (M&O) TAX RATE

1. 1985 total tax levy	\$ 3,327,768
(1985 tax rate: M&O <u>\$.59</u> + I&S <u>\$.00</u> = \$ <u>.59</u> /\$100)	
2. Subtract 1985 debt service (I&S) levy	\$ -0-
3. Subtract 1985 taxes on property in territory no longer in unit in 1986	\$ 19,332
4. Subtract 1985 taxes for property becoming exempt in 1986	\$ -0-
5. Subtract 1985 taxes for property appraised at less than market value in 1986	\$ -0-
6. Subtract frozen M&O levy of over-65 homesteads	\$ 4731.
7. Subtract 1985 M&O taxes used to regain lost 1984 levy	\$ -0-
8. Adjusted 1985 M&O levy (subtract #2, #3, #4, #5, #6, and #7 from #1)	\$ 3,303,705
9. 1986 total taxable value of all property	\$ 511,995,155
10. Subtract 1986 value of new improvements added since 1/1/85	\$ 22,472,631
11. Subtract 1986 value of annexed property added since 1/1/85	\$ -0-
12. Subtract 1986 value of over-65 homesteads with frozen taxes	\$ 8,981,560
13. Adjusted 1986 taxable value for M&O (subtract #10, #11, and #12 from #9)	\$ 480,540,964
14. Divide the adjusted 1985 M&O levy (#8 above) by the adjusted 1986 taxable value for M&O (#13 above) (\$ <u>3,303,705</u> ÷ \$ <u>480,540,964</u> )	\$ .006875
15. Multiply by \$100 valuation	× \$100
16. Effective M&O rate for 1986	\$ .6875 /\$100

##### INTEREST AND SINKING (I&S) TAX RATE

17. 1986 I&S levy needed to satisfy debt	\$
18. Subtract frozen I&S levy of over-65 homesteads	\$
19. Adjusted 1986 I&S levy (subtract #18 from #17)	\$
20. 1986 total taxable value of all property	\$
21. Subtract 1986 value of over-65 homesteads	\$
22. Adjusted 1986 taxable value for I&S (subtract #21 from #20)	\$
23. Divide the adjusted 1986 I&S levy (#19 above) by the adjusted 1986 taxable value for I&S (#22 above) (\$ _____ ÷ \$ _____)	\$
24. Multiply by \$100 valuation	× \$100
25. Effective I&S rate for 1986	\$ _____ /\$100

##### APPRAISAL ROLL ERROR RATE

26. Rate to raise the 1985 levy because of appraisal roll errors \$ _____ ÷ (\$ _____ - \$ _____) × \$100	\$ -0- /\$100
27. Add rate to regain 1985 taxes lost because of appraisal roll errors \$ _____ ÷ (\$ _____ - \$ _____) × \$100	+ \$ -0- /\$100
28. Total rate to adjust for appraisal roll errors	\$ -0- /\$100

##### TOTAL EFFECTIVE TAX RATE FOR 1986

29. Effective M&O rate (#16 above)	\$ .6875 /\$100
30. Add effective I&S rate (#25 above)	+ \$ -0- /\$100
31. Add rate to adjust for appraisal roll errors (#28 above)	+ \$ -0- /\$100
32. 1986 Effective Tax Rate	\$ .6875 /\$100

1986 Effective Tax Rate is the tax rate published as required by Sec. 26.04, Property Tax Code.

##### STATE AID/EQUALIZATION ENRICHMENT AID RATE

33. Rate to replace lost state aid or qualify for maximum equalization allotment \$ <u>41,392</u> ÷ (\$ <u>511,995,155</u> - \$ <u>8,981,560</u> ) × \$100	\$ .0082 /\$100
---	-----------------

## Post Bold Gold

### Antelope

### Junior Varsity

### & Freshmen

### 1986 Football Schedule

Date	Opponent
September 4	at Littlefield
September 11	* Seagraves
September 18	at Colorado City
September 25	at Brownfield
October 2	Roosevelt
October 9	Idalou
October 16	at Denver City
October 23	Slaton
October 30	at Seminole
November 6	Cooper

Freshman Games at 5 p.m.  
JV Games at 6:30 p.m.

\*JVs only - Kickoff at 5 p.m.

Palmer Well Service  
Palmer Construction Co.

## Post Notes

by Wes Burnett

Last week Rodney Marshall told you in this column about the Crosbyton City Council resolution opposing legislation to authorize Garza County to implement planning and zoning ordinances in our county.

Although the purpose of the ordinance will be to provide orderly growth and protect the taxpayers of Garza County, there are those involved in the White River Municipal Water District board of directors who object to what they call interference with the WRMWD's development of the Post Lake.

After last week's edition was printed, the Garza County Commissioners re-

ceived a copy of the resolution worded exactly like the Crosbyton document, signed by the city council of Spur.

It doesn't take too much figuring to see that both of these resolutions are the work of Spur and Crosbyton directors on the WRMWD board.

What offends me about these resolutions is the fact that these two government bodies have stepped beyond their bounds of jurisdiction and are attempting to control the destiny, safety and economic future of Garza County taxpayers and citizens.

It is meddling in the simplest form.

The fact is, Crosbyton nor Spur city councils have absolutely any authority to dictate action to the governmental units in Garza County.

Crosbyton and Spur city councils need to tend to their own business.

In the resolutions the neighboring city councils point out that since they are participating members in the White River Municipal Water District they have a say in the Post Lake.

True...but since the lake will be totally located within the bounds of Garza County, the development of the lake falls directly in the laps of Garza County taxpayers.

Crosbyton's resolution points with pride to the operation of the White River Lake and sees no need for any controls other than what the WRMWD board believes is necessary.

I want to point out to the Crosbyton and Spur city councils that the main concern in Post and Garza County is to insure that our lake does not look like White River.

It is a poorly developed recreational lake, both from the shoreline use as well as the tourism value.

It is poorly promoted.

True, recreational income is a major part of the revenue at White River... and that in itself is an example of how badly people in West Texas want to be near water.

At White River there are little or no restrictions or building codes and from the experiences of those of us who use the lake occasionally and regularly, it is obvious that the WRMWD board has little or no interest in developing the lake for recreational purposes.

The lake is well managed...Al O'Brien has done a masterful job and the board has done a great job of hiring a good manager. The water supply is tops, service great.

That's not the issue.

The issue is how will the Post Lake be developed and what is the best way to insure its full recreational and economic development for the benefit of Post and Garza County.

Since the lake will be at our back door, it seems to me that we as taxpayers and citizens must have control over the shoreline development.

To repeat what Judge Giles Dalby has told the WRMWD time and again,

the planning and zoning ordinances will not interfere with WRMWD's operation of the lake.

The ordinances will establish building codes and restrictions, and insure that development will follow a prescribed comprehensive plan to provide the best possible use of the shoreline.

Lots of questions need to be answered...where will the public boat docks be?

How about picnic areas and overnight camping?

Does the WRMWD have the answers to these questions?

How about sewer and water facilities for the residential and commercial development?

So far there has been no information from WRMWD about any specific plans for developing the Post Lake.

The Garza County Commissioners' Court is taking action to see that the citizens and taxpayers of Post and Garza County are protected.

I urge the WRMWD board of directors to stop meddling in Garza County affairs and get on with their designated task of building the Post Lake.

The permit has been granted, the city of Lubbock wants the lake, so what's the hold up? Perhaps more time should be spent getting ready to build this lake and less time trying to figure out ways to keep total control.

## Antelopes' Quickness May Be Key to '86

by Wes Burnett

"We are quick, really quick," Post High School athletic director David Thompson summarizes the 1986 Antelopes following the first full week of two-a-day practice sessions.

"I think overall this may be the quickest set of players we've had here," Thompson adds.

He reports that all 64 sophomore, junior and senior players came into the two-a-days Monday, August 11 "in fairly good condition."

There were 26 freshmen players reporting for workouts.

"We had a really good intrasquad scrimmage last Saturday," Thompson adds, "with our first and second offense getting 600 yards offense on 47 plays."

Quarterbacks Jay McCook and Eric Reece completed eight of 11 passes and two interceptions.

"We are still studying all positions," the coach continues, "we will not make any firm decisions until later this month."

Thompson expects to get a better picture after this Friday's scrimmage here with Floydada and another good look August 29 at Lamesa.

The Junior Varsity scrimmage will begin at 6:30

p.m., followed by the varsity at approximately 8 p.m.

Thompson says he feels good about the team's depth, planning to play only three starters on both offense and defense.

"We will run the same type offense we have always worked," the coach adds.

There will be three new faces on the coaching staff with Lester Titsworth, Ricky Long and Jim Burks filling vacancies.

Titsworth, who will coach offensive and defensive lines, comes here from Brady where he was an assistant.

Long, coming from Midland Lee where he was a freshman coach, will also coach offensive and defensive lines.

Burks, a recent graduate of Panhandle State University, Oklahoma; will coach junior high and provide scouting.

Coach Thompson says he thinks Idalou, Denver City and Roosevelt will be tough competitors in this year's district and that improvements in Slaton and Brownfield will make the district really competitive.

"We expect to win and we have a good attitude," Thompson says about the team and its coaches.

**True Value**  
HARDWARE STORES

**BARGAIN OF THE MONTH**

**Tuck Tape**

**DUCT TAPE**  
Energy Saving  
**DUCT TAPE**

**2.99** While Supplies Last

2-In. x 60-Yd. Cloth Duct Tape helps keep heated and cooled air inside 9360FS

QUANTITIES LIMITED

VISA MasterCard

**Handy Hardware**

**Thank You**  
The Post EMT's would like to thank  
**Will Burks, Kathy Rankin, Monk Palmer, Wade Bridgeman & Mr Hodges for their contributions to our float for the Rodeo Parade.**

## Traffic Watch Urged

Vacation is almost over for the children.

This means "Back to School."

For the motoring public this means we should prepare ourselves for the Back to School traffic.

Major V.J. Cawthon, Regional Commander of the Texas Department of Public Safety in Lubbock said, "Every year as school starts we have a rash of accidents caused by drivers not watching for children on their way to and from school."

"When you see children walking on the side of the road or waiting for a school bus, reduce your speed in case a child darts into the street in front of you. When children get together they tend to get

excited and even though they know better, will run into the street without looking," Major Cawthon explained.

Whether meeting or following a school bus state law requires all drivers to stop and remain stopped when the bus has activated its alternating flashing red lights while loading or unloading children.

You cannot start again until the flashing red lights are no longer activated or the bus driver signals you to proceed.

"Be especially watchful in school zones as this is where students will be congregated. Extra effort on a drivers part will pay off in preventing traffic accidents in these areas," advised Major Cawthon.

## Labor Day Trips Need Not Be Dangerous

With Labor Day coming on Monday this allows most people to have a three day weekend.

Major V.J. Cawthon, Regional Commander of the Texas Department of Public Safety in Lubbock said, "This will be an extremely dangerous time for motorists since we do have a three day weekend. This is the last weekend of the summertime vacations and activities."

Major Cawthon also stated, "Most people will be out to have a good time just before school starts and some of these people will get carried away and have too much to drink. The drinking driver can be seen around recreational areas such as lakes and camp grounds."

Cawthon urges all drivers to be alert for the drunk driver and to report all infractions of the law to your area law enforcement agency.

The Texas Department of Public Safety will have all available troopers working

around the clock to make operation motorcade a safer time for all who will be using the highways. These troopers will be especially on the lookout for the drinking driver, the speeding driver and the reckless driver, since these are the three main causes of fatal accidents.

Major Cawthon said, "Remember to protect yourself and your family by buckling up everytime—all the time. Observe the speed limit, and if you drink don't drive and if you drive don't drink."

### Rider Rally

(Continued from Page 1)

site. Persons interested in joining the festivities should contact Bobbie Boyd at (806) 799-1484 in Lubbock or Jim Jackson.



Very few great Flamenco guitarists can read music. They learned their art from childhood.

**Post Bold Gold Antelope Varsity 1986 Football Schedule**

Date	Scrimmages	Opponent
August 22	JV - 6:30 p.m.	Floydada
August 29	Varsity - 8 p.m.	at Lamesa
September 5		Littlefield
September 12		at Seagraves
September 19		Colorado City
September 26		Brownfield
October 3		at Roosevelt
October 10		at Idalou
October 17		Denver City
October 24		at Slaton
October 31		Seminole
November 7		at Cooper

**Palmer Well Service**  
**Palmer Construction Co.**

**Let McGinnis Make Your Day!**

**McGinnis CHEVROLET INC.**

828-6261  
U.S. 84 - Slaton

**New cars and trucks**  
**Check our O.K. Used Cars**

**OVER 150**

**\$500 or 6.9% Financing Available on All Celebrities**

**SERVICE SPECIALS**

- FREE Air Conditioner Service Check**
- Lubrication, Oil Change, filter Change...\$18.50**

Offer expires 8-30-86 \* Quaker State

**Mr. Goodwrench**

**We will honor Chevrolet warranty on new cars and trucks**

# Legal Drinking Age Rises

A different kind of dry spell is coming soon for some Texans.

W.S. McBeath, administrator of the Texas Alcoholic Beverage Commission today issued a reminder that the legal drinking age will rise to 21 on Labor Day. The present legal age is 19.

At 12:01 a.m. on Monday, September 1, possession or consumption of alcoholic beverages will be illegal for any person who has not reached his or her 21st birthday.

The only exception is if the under-age person is in the immediate physical presence of his own parents or spouse who is over 21.

Possession of an alcoholic beverage by the underage person is a misdemeanor with a possible fine of \$25 to \$200.

It is also a crime for the underage person to present false identification or to misrepresent his age in an

attempt to purchase alcoholic beverages, or to successfully make such a purchase even without misrepresenting his age.

In either case, the first offense fine is the same as for possession.

Giving alcohol to a minor carries a fine of \$100 to \$500.

Sale of alcoholic beverages to an underage person is the most serious offense.

A fine of \$100 to \$500 and/or a year in jail is the penalty for the first violation. A second violation can result to the same jail term and/or a fine of \$500 to \$1,000.

McBeath also cautioned that the age change will affect persons entering package stores.

Liquor stores may not allow underage persons to even enter the store, and

most such establishments have warning signs prominently posted.

"Many young people do not realize it is a criminal offense to ignore the warning signs and enter a liquor store," said McBeath. "It is criminal trespass under section 30.05 of the Texas Penal Code, which is a Class B Misdemeanor."

Another common miscon-

ception is that drinking age violations only apply in public places.

"That's not true," said McBeath. "It will be just as illegal in a party barn, a fraternity house or a car parked on private property," he said.

McBeath urged voluntary compliance on the part of

both licensees and underage former customers.

Anyone who has a question about the upcoming change can obtain clarification from the nearest district office of the Texas Alcoholic Beverage Commission, or at the main office in Austin, telephone (512) 458-2500.



**DOWE MAYFIELD**  
Jefferson Standard Life  
7204 Joliet Nq. 3, Lubbock  
806-797-8089  
Life, Health, Mutual Funds

## Wilson Completes Challenge Camp

Jennifer N. Wilson, daughter of Dr William C. Wilson of 711 Seventh St., Post, Texas, has completed training in fundamental military skills at the Army ROTC Challenge camp, formerly Basic camp, at Fort Knox, Ky.

The Challenge camp is designed to give college juniors and sophomores who have not taken ROTC courses the chance to enter the program.

The camp also qualifies high school graduates for the ROTC program at any of the nation's six military junior colleges.

During the encampment, cadets received training in basic rifle marksmanship, military drill and ceremonies, communications and individual and small unit tactics.

Wilson plans to enter the ROTC program at Hardin-Simmons University, Abilene, Texas.

## Oil & Gas Report

A 3,900-ft. developmental well is planned by BHP Petroleum of Midland at a drillsite seven miles northwest of Post. The location is in a 291-acre lease in Garza County's BS&F Survey.

Well's designation is the No. 14 Richardson Unit. It will be drilled in the P.H.D. Field.

The No. 50 Exxon Fee "G" is shut-in for potential testing in the Dorward Field, Garza County. Exxon Corp. is the well's operator.

The venture is located four miles southeast of Justiceburg in the H&GN Survey. It was spudded February 6, and carried permit for 2,900-ft maximum depth.

Drilling is nearing the 4,000-ft foot mark at the No. 1 Slaughter Estate, a wildcat venture of Coastal Oil & Gas. The well is projected to an 8,480-ft. bottom.

The venture is located 12 miles southwest of Justiceburg in the G.E. Lockhart Survey. Drilling operations commenced July 26.

Drilling is nearing projected total depth of 2,700 feet at the No. 6 Exxon Fee "R", a developmental venture of Exxon Corp. Location is in Garza County's Dorward Field, four miles southeast of Justiceburg.

Drilling operations commenced July 26.

Meanwhile, testing for potential is underway at the No. 8 Exxon Fee "P" in the Dorward Field. The well has been bottomed at 2,535 feet, and perforations have been made in the San Andres Formation at 1,795 to 1,993 feet into the wellbore. The well was spudded June 21, and is located three miles southeast of Justiceburg.

BHP Petroleum has revealed plans to drill a 3,900-ft. developmental well in the P.H.D. Field, Garza County. The operator has 165 acres leased, with drillsite in the D&W Survey.

The venture has been designated as the No. 2 S.D. Sims. Drillsite is seven miles northwest of Post.

# LUBBOCK



# FALL FEST



Lubbock Music Festival  
September 1 - 7

A week to celebrate, reminisce, to enjoy... packed with musicians, concerts, and events. Highlighting the week is Friday's concert with Carl Perkins and Friends, Ace Cannon, Bo Diddley, The Crickets, Bobby Vee, Del Shannon, Buddy Knox, Sonny Curtis and the Rockin' Ricochettes.



Texas International Wine Classic at Lubbock  
September 12 & 13

It's Lubbock's third annual salute to the wine industry. Wineries from across the nation will be serving both the connoisseur and the novice. Events include seminars, tastings and gourmet meals. Ticket information available.



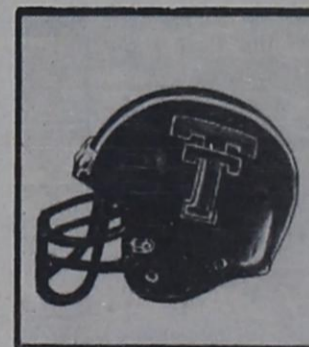
Lubbock's Second Annual Hot Air Balloon  
September 13 & 14

Over 30 balloons take to the air both mornings at sunrise for a day of "balloon tag". The event is held in conjunction with the Reese Air Force Base open house and all proceeds go to Lubbock's Ronald McDonald House. Free Admission.



69th Annual Panhandle South Plains Fair  
September 20 - 27

Fair Park, Broadway & Avenue A. Featuring fun for everyone with exhibits, entertainment, contests, livestock show, carnival rides and live variety shows.



Texas Tech University Homecoming  
September 27th

Texas Tech Red Raiders vs. the Baylor Bears 12 Noon, Jones Stadium. The SWC has some of the better football games seen anywhere and this promises to be one of the best.

*a september to remember...*

Special September hotel rates available.

For Information Call 1-800/692-4035

Lubbock Visitors and Conventions Bureau Box 561 Lubbock, Texas 79408



# Fossil Discovery

(Continued from Page 1)

making sustained flight possible, depend on two sets of muscles attached to the deep keel of the breastbone.

Chatterjee's bird fossils include hollow bones, a wishbone, a breastbone with a keel, a skull with avian features such as wide eye sockets, and a large brain case.

Although feather impression weren't found with the Texas fossils, a forearm and hand show a series of nodes or bumps to which feathers were attached, says Chatterjee.

The pelvis and hind legs resembled those of a small dinosaur.

The strong hind legs enabled the creature to run as well as fly.

Most scientists trace the ancestry of birds to a small, meat-eating, fast-running dinosaur.

Protoavis also shows other prominent reptilian features such as clawed fingers, a tail, and teeth.

Chatterjee says that Protoavis strengthens the evolutionary relationship of dinosaurs and birds.

But, Chatterjee maintains, "There's a big difference between the two early birds. Protoavis displays more birdlike bones and already has lost the teeth in the back part of its jaw, indicating that it was more advanced than Archaeopteryx. This will lend support to those who feel that Archaeopteryx was already on a side branch of avian evolution in the Upper Jurassic period some 75 million years later."

Teeth and the strong jaws necessary to support them are heavy, and evolving birds needed reduced weight for efficient flying.

Chatterjee contends that Protoavis, although not a long-distance flier, could easily have flown from tree to tree and navigated from the ground to the tallest branches to escape predators.

Protoavis also would imply that birds were much more diverse in the remote past than previous evidence has suggested.

Not until the late Cretaceous period, 70 million to 135 million years ago, did birds begin to flourish worldwide.

Many of them were water birds with skeletons similar to those of modern birds.

In the United States, their fossils were found in 70-million-year-old chalk beds in western Kansas, once an inland sea. Hesper-

ronis, a toothed, loon-like swimmer about five feet long, might have given birth to live young; its stubby wings were useless for flying.

Ichthyornis, the first known creature with wings developed for sustained flight, was gull size, had teeth, and probably ate fish.

The gap between such species and Archaeopteryx has always seemed illogical to scientists.

The Cretaceous burst of bird life, including some species remarkably close to modern families, implied the presence of earlier birds such as Protoavis.

Bird bones, particularly those of small species, are hard to find because the bones are hollow and fragile, likely to be crushed, deformed, or eroded.

Chatterjee believes that the bones found at the Post site were drowned in a flash flood and their bones preserved by a surge of water that pushed mud and debris over them.

The collection of other strange creatures uncovered at the same site, the mudstone quarry carved out of the Dockum Formation near Post, supports the theory.

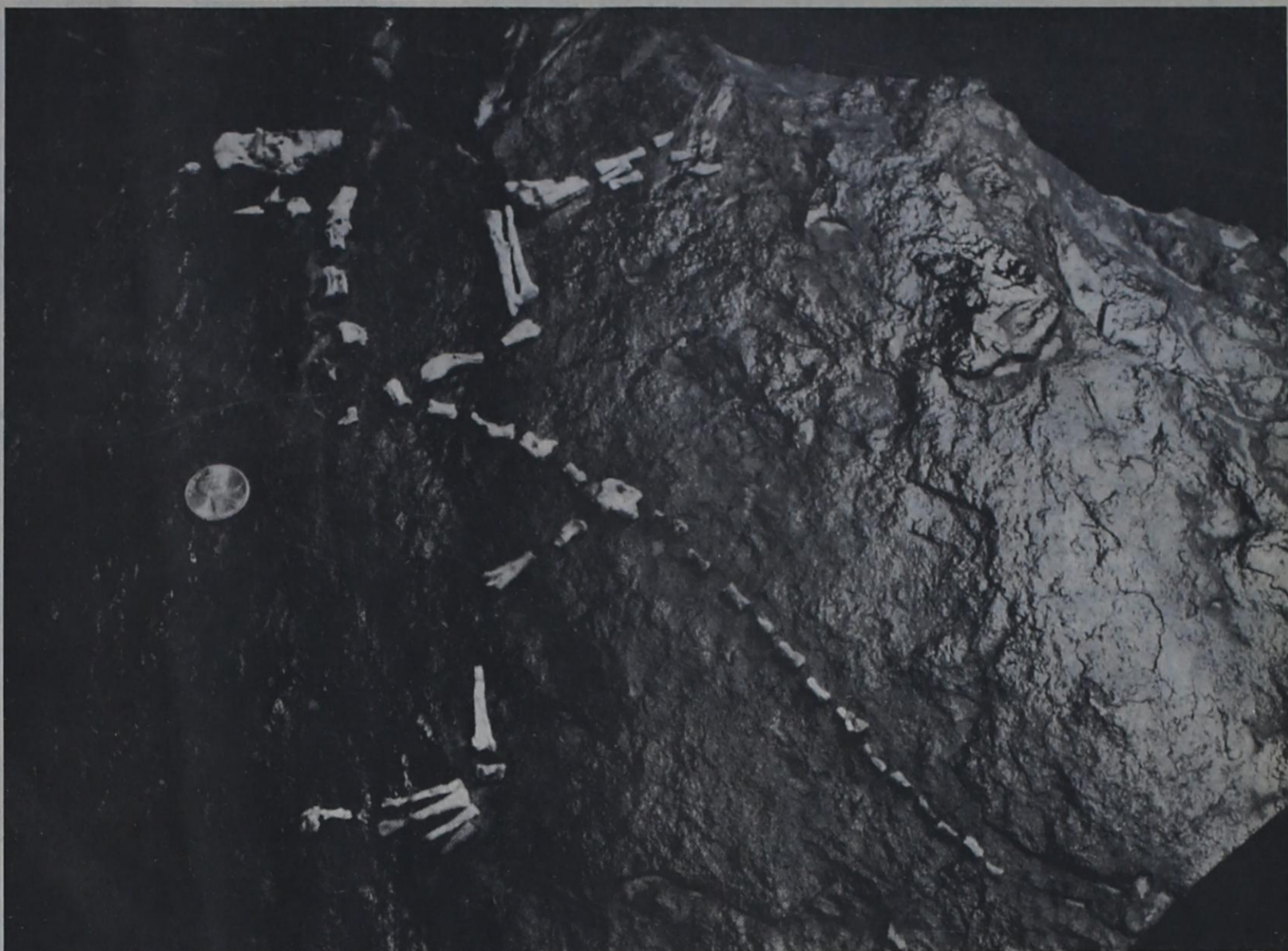
Among other fossils found at the Post site was a man-eating champion named Postosuchus by Chatterjee, after the Post site.

A dry and forbidding place that stretches from parts of New Mexico to western Texas, the Dockum Formation 225 million years ago was lush in tropical forest vegetation and full of ponds, lakes and large rivers.

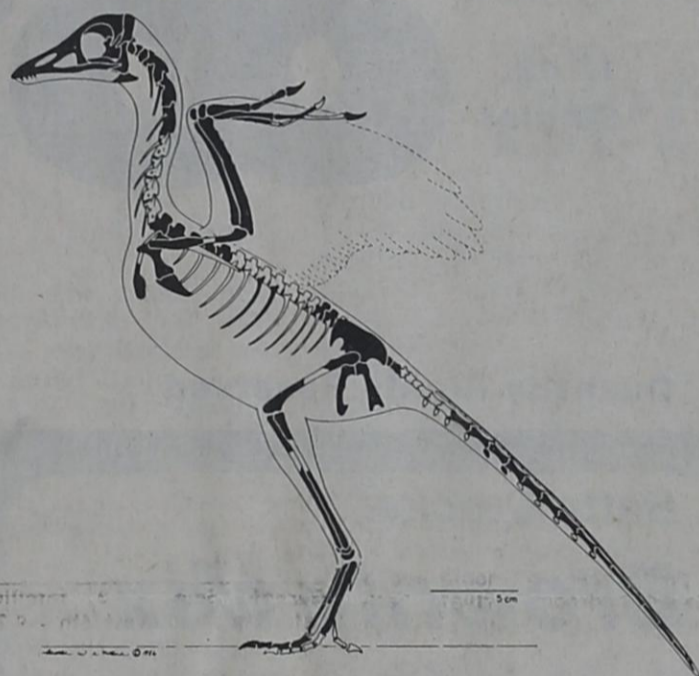
Chatterjee thinks the flood that devastated his strange menagerie was triggered by a tributary of a river the size of the Mississippi.

## Hospital Report

- August 4 - Cecil V. Smith, dismissed.
- Maria Ortiz, dismissed.
- Baby Boy Ortiz, dismissed.
- August 5 - Regina Palmer, admitted.
- Baby Girl Palmer, admitted.
- Kristie Odom, dismissed.
- August 6 - Clyde Haynes, dismissed.
- Baby Boy Odom, dismissed.
- Elizabeth Davis, dismissed.
- August 7 - Anita Abraham, admitted.
- Baby Boy Abraham, admitted.
- Regina Palmer, dismissed.
- Baby Girl Palmer, dismissed.
- August 9 - Anita Abraham, dismissed.
- Baby Boy Abraham, dismissed.
- August 11 - Janet Blacklock, dismissed.



Fossil bones shape the outline of what paleontologist Sankar Chatterjee of Texas Tech University says is one of two 225-million-year-old birds. The remains of the juvenile bird, along with those of an adult, may provide new insight into birds' origins and show that they were more advanced in the distant past than has been previously thought, says Chatterjee, whose work is supported by the National Geographic Society.



Artist's drawing shows recovered fossil bones (dark areas) of what is described as the world's oldest bird, which paleontologist Sankar Chatterjee will name Protoavis. Several features made Protoavis more birdlike than an earlier creature that has been considered a link between dinosaurs and birds.

## Letter to the Editor

Letter to the Editor:  
I am sure whoever climbed over my backyard fence and stole the big watermelon enjoyed it.  
If they will come back during the day time I will give them another one.  
Mary Nell Ford

**DR. LEWIS D. MOORE**  
OPTOMETRIST  
Announces New Office  
Hours for 1986  
Complete Visual Care  
**Thursday 9:30 - 5:00**  
206 West Main 495-3687

**Back-To-School Special**  
Any Size Livingroom & Hall  
**\$49<sup>95</sup>**  
Free Carpet Freshner  
**Steammagic 495-3213**

**Brunken's Wipe Out Sale**

We have over 350 cars and trucks to "Get Rid" of... Come Help Us!

<p><b>'86 C-10</b></p> <p>As Low As <b>\$153<sup>07</sup></b> PER MONTH Stk #C739472</p> <p><small>\$300 Down, plus T.T.L. Buyers Choice Financing based on 48 months at 9.9% APR. Total Amt. Fin. \$7,495. Total Payments \$8,143.47. Payments of \$153.07. Last Payment \$2,286.76, with approved credit.</small></p>	<p><b>'86 SPRINT</b></p> <p>As Low As <b>\$151<sup>53</sup></b> PER MONTH Stk #C474830</p> <p><small>\$300 Down, plus T.T.L. Buyers Choice Financing based on 48 months at 9.9% APR. Total Amt. Fin. 7,410. Total Payments \$8,048.76. 47 payments of \$151.53. Last Payment of \$2,216.82 with approved credit.</small></p>	<p><b>'86 CAVALIER</b></p> <p>As Low As <b>\$164<sup>48</sup></b> PER MONTH Stk #C219154</p> <p><small>Based on 48 mo. Buyers choice at 9.9% APR. NO Money Down. Pay T.T.L. with Approved Credit Only. Total Amt. Fin. \$8,000. Total Payments \$8,150.42 at 47 payments of \$164.48. Last Payment of \$2,426.96.</small></p>
<p><b>'86 SILVERADO</b></p> <p><b>\$222<sup>56</sup></b> PER MONTH Stk #C156346</p> <p><small>\$300 Down, Plus T.T.L. Buyers Choice Financing based on 48 months at 9.9% APR. Total Amt. Fin. \$10,757. Total Payments \$11,518.88. 47 Payments of \$222.56. 1 Payment of \$3,114.48. With approved credit.</small></p>	<p><b>'86 CHEVETTE</b></p> <p><b>\$99<sup>65</sup></b> PER MONTH Stk #C170254</p> <p><small>\$100 Down, plus T.T.L. Buyers Choice Financing based on 48 months at 9.9% APR. Total Amt. Fin. \$2,879. Total Payments \$3,418.85. 47 payments of \$99.65. Last payment \$1,636.76, with approved credit.</small></p>	<p><b>'86 NOVA</b></p> <p><b>\$156<sup>09</sup></b> PER MONTH Stk #C230209</p> <p><small>\$300 Down, Plus T.T.L. Buyers Choice Financing based on 48 months at 9.9% APR. Total Amt. Fin. \$7,795. Total Payments \$8,393.12. 47 Payments of \$156.09. 1 Payment of \$2,518.76, with approved credit.</small></p>

**BRUNKEN CHEVROLET**

"Where the Excitement Is"

5211 S.W. Loop 289 794-4000

**WE MUST WIPE-OUT OVER 350 1986 CHEVROLETS BY SEPT. 1st!**

**A College Education is the Key to a Good Oil Industry Career**

SOUTH PLAINS COLLEGE'S Petroleum Technology Program can help you qualify for those hard-to-get, good-paying technical positions in the oil industry in just two years and with an Associate Degree.

Students in the program get a superior, practical education of the ins and outs of the oil field. Job opportunities are available for men and women alike.

If you are interested in a career in the petroleum industry, plan it carefully and get a degree. If you need additional training, you can begin at SOUTH PLAINS COLLEGE in Levelland, Texas.

**PETROLEUM TECHNOLOGY SCHOLARSHIPS ARE AVAILABLE to Help Pay for the Cost of Tuition, Fees and Books**

Registration for Fall Classes is August 28 -29, 1986.  
Late Registration Runs Sept. 2 to Sept. 10  
CALL (806) 894-9611 TODAY!

**South Plains College**  
Keeping pace with tomorrow

Petroleum Technology Program  
South Plains College  
1401 S. College Ave.  
Levelland, Texas 79336



# BOLD GOLD SUPER SAVINGS

These Specials Good Until August 16

POST STORE ONLY

While Supplies Last  
No Rain Checks  
No Sales to Dealers

*Top Sirloin*  
**Steak**  
**\$1.98**  
Lb.

*Fisher*  
**Sandwich Mate**

12 oz.  
Singles

**88¢**

*Oscar Mayer*  
**Bologna**  
Meat Only  
**\$1.38**  
12 oz. Pkg.

Quantity Rights Reserved

*Mazola Corn Oil*  
**Cooking Spray**

5 oz.  
**79¢**

*Betty Crocker*  
**Brownie Mix**  
**89¢**

*Mrs Bairds*  
**Cinnamon Rolls**  
Cinnamon  
Apple  
Cherry  
4 1/4 oz. **FOR \$1**

**Clorox Bleach**  
16 oz.  
**4 FOR \$1**

WE GIVE  
S&H GREEN STAMPS  
EVERY DAY!

DOUBLE STAMPS  
ON WEDNESDAY  
WITH \$2.50 PURCHASE  
OR MORE EXCLUDING  
CIGARETTES



**Joy Dish Detergent**  
12 oz.  
**2 FOR \$1**

**Garza County Pioneer First Lady**  
One Vote 25¢

Points will also be given for:  
Years lived in Garza County  
Membership in past & present organizations  
Number of votes cast (25 cents)  
Minimum age - 65

NAME \_\_\_\_\_

*Fresh Lg. Size*  
**Tomatoes**  
**2 LBS. FOR \$1**

*Fine Fare*  
**Corn Flakes**  
18 oz. Box **89¢**