



# - Obituary -

**John Stewart**  
 Funeral services for John Stewart were held April 4, 1985 at the First Baptist Church with Rev. Steve McMeans officiating. Stewart died April 2 at the Golden Plains Care Center.

He was born Jan. 19, 1897 in Cisco and had lived in Garza County since 1916 and was a retired farmer. Interment was at Terrace Cemetery, under the direction of Hudman Funeral Home.

Stewart married Lelia Head March 25, 1917 in

Southland. She preceded him in death April 1, 1984.

He was the son of Mr and Mrs August Siewert.

A member of the Baptist Church, Siewert was also a deacon in the church.

He is survived by his son Roy of Post and daughter Clara Elliott of Levelland, five grandchildren, seven great grandchildren and two great-great grandchildren.

Deacons of the First Baptist Church served as pallbearers.

## Little Mr, Miss Contest Friday

The Little Mr and Miss Post Contest, sponsored by Beta Sigma Phi Xi Delta Rho, will be held April 13 at 7 p.m. in the Primary School Auditorium.

A rehearsal will be held at 6:30 p.m. April 12 at the auditorium.

There will be a \$5 entry fee.

For more information, contact Cheryl Blair at 495-2090, Diane Stelzer at 495-2503 or Theresa Harp at 495-2467.

The contest is open to children ages four to first grade.

The contest has two divisions: ages 2-3 for mini Mr and Miss Post and ages four to first grade for Mr and Miss Post.



**NEW BUSINESS - Glory Rental Tool Inc.,** a new member of the Post Chamber of Commerce, was welcomed as a new business in Post recently with ribbon cutting ceremonies hosted by the Chamber

of Commerce. At the event were (left to right) Mike Barber, Patty Kirkpatrick, Bill Terpening, Lewis Earl, Lois Cook, Charles Wallace, Dick Tanner and Glory Rental's Vick N. Miller Jr of Snyder and Post manager Tino Guerrero.

## All Forms Insurance

- Life • Health • Bonds
- Auto • Home • Farm
- Business • Commercial • RVs

### Tom Power INSURANCE

Post's Friendly Agency  
 495 3050 & 3051

I would like at this time to thank the citizens of Post and Garza County who supported and voted for me in the Garza Memorial Hospital election.

Also, I would like to congratulate the three incumbents on their reelection.

Again, thank you to everyone who helped.

Ronald G. (Ronny) Ammons

## Senior Citizen Bus Schedule

The Garza County Senior Citizen mini bus will be going to Lubbock each Tuesday.

Those who have doctors' appointments will need to be ready to return to Post when the last patient's

appointment is completed.

Senior citizens are asked to arrange the schedules accordingly.

Senior citizens are also asked to call Joan at 495-2998 to make an appointment, and not to call the bus driver or Donald Windham...please contact Joan.

## Golf Tourney

The Fina Partnership Golf Tournament will be held May 4-5 at the Caprock Golf Course with a \$20 per team entry fee.

Golfers interested in signing up for the mixed partners tournament should contact Bill Shumard at 495-2259.

## Art Center Courses

**Workshops for 1985**  
 April 22-25 - 6:30-9:30 p.m., workshop in Clay, Cecily Garnett.  
 April 25 - 3-5 p.m., workshop in Clay, Cecily Garnett.

## Post Notes

(Continued from P1)

I think the main problem is that when traffic is entering Post from the north there is a long downhill smooth run...and when you're accustomed to the four lane speed, it kinda takes you by surprise when you hit the city limits of Post and all of a sudden you're having to slow down to 35 and then a red light...and then another one, just a block away.

When you come into town from the south, you naturally have to slow down because of the downhill curve just at the city limits by the park.

And then there's a light... I'm not necessarily calling for a (dare I even mention such a dastardly thing) by-pass...but with the increasingly high volume of traffic through Post, we either are going to have to insist on better traffic control...or look for a truck by-pass of some sort.

The Post City Council is getting prices on civil defense sirens...thanks...we need to get at least four or five put in place at strategic spots in town...and soon... the tornado season is here!

It's getting warm again... time for my annual editorial to the school board... we want our classrooms air conditioned for the sanity of our teachers and the welfare of our children.

How about putting that in the budget for next year?

# ALLSUP'S

## CONVENIENCE STORES

PRICES EFFECTIVE APRIL 11-13, 1985

GROCERIES, SOFT DRINKS, SNACKS- HOT COOKED FOODS- SELF SERVE GAS-MONEY ORDERS- WHILE SUPPLIES LAST

COOKED FOOD SPECIAL AS FEATURED ON TV

**GOLDEN BROWN ALLSUP'S BURRITOS**

MEAT OR BEEF BOLOGNA, SALAMI, P & P LOAF, LUNCHEON LOAF

**LUNCH MEAT** NEW DECKER GOLD

8 OZ. PKG.

**299¢**

**99¢**

ASSORTED STYLES

**GRANDMA'S COOKIES**

10 1/2 OZ. BAG

**\$1.69**

**Come Home for Good**

**MARYLAND CLUB**

1 LB. CAN

**\$2.29**

**NON DAIRY CREAMER COFFEE MATE**

16 OZ. JAR

**\$1.69**

**BUY ONE GET ONE FREE TOM'S SNACKS**

NACHO CHEESE TORTILLA CHIPS, HOT FRIES, TOM'S CORN CHIPS

PKG.

**89¢**

**ALLSUP'S ASSORTED FLAVORS ICE CREAM**

1/2 GAL. CTN.

**\$1.59**

**Fast-Hot**

**DOUBLE CHAR BROILED BURGER**

REG. \$1.99 EACH

**\$1.59**

**Fresh From our Deli Allsup's Ham & Cheese Sandwich**

**99¢**

**BORDEN'S CHOCOLATE MILK**

QT. CTN.

**79¢**

**PEPSI FREE, PEPSI LIGHT, DIET, OR PEPSI-COLA**

12 oz. cans 6 pack

**99¢**

**SAVE \$1.89**

Thank you, the voters of the Post Independent School District, for your support in the Place 1 election last Saturday.

I appreciate your vote and ask for your support in the runoff election May 4.

I promise to represent you and work for quality education for our children.

**Jimmy Bartlett**

Adv paid for by Jimmy Bartlett

# Those who know best

(The top heating and air conditioning contractors in this area)

## recommend the heat pump

for modern, energy-efficient heating and cooling.

The top heating and air conditioning contractors in this area recommend the heat pump for its clean, quiet, economical operation. They agree it's the system to bring you comfort now and for a long time to come.

Contact your heat pump contractor.  
 Or call Southwestern Public Service Company for your free Heat Pump Buyer's Guide.

**SPS SOUTHWESTERN PUBLIC SERVICE COMPANY**

Protect and Beautify with Bute!

**BUTE VALUE-LINE Latex House Paint**

Quality Exterior Latex Protection for the Budget Minded

Manufacturer's Retail \$11.99 Gallon

SAVE \$9.79 GAL SALE PRICE

**SPECIAL SAVINGS**

- 9" Roller Cover and TRAY SET ..... \$1.99
- 9" Twin Pak Roller COVERS ..... \$1.19
- 9" X 12" Drop CLOTHS ..... .49
- 4" Wood Extension HANDLE ..... \$1.49

**BUTE VALUE-LINE Latex Flat Wall Paint**

Quality Interior Latex Beauty for the Budget Minded

Manufacturer's Retail \$10.99 Gallon

SAVE \$8.99 GAL SALE PRICE

Wallace Lumber Co.  
 119 No. Ave. H 495-2835  
 Sale Prices Thru April 13, 1985

# TORNADO! TORNADO!



## Tornado Destruction

Every tornado is a potential killer and many are capable of great destruction. Tornadoes can topple buildings, roll mobile homes, uproot trees, hurl people and animals through the air for hundreds of yards, and fill the air with lethal, windborne debris.

Sticks, glass, roofing material, lawn furniture all become deadly missiles when driven by a tornado's winds.

In 1975, a Mississippi tornado carried a home freezer for more than a mile.

Tornadoes do their destructive work through the combined action of their strong rotary winds and the impact of windborne debris. In the most simple case, the force of the tornado's winds push the windward wall of a building inward.

The roof is lifted up and the other walls fall outward. Until recently, this damage pattern led to the incorrect belief that the structure had exploded as a result of the atmospheric pressure drop associated with the tornado.

Mobile homes are particularly vulnerable to strong winds and windborne debris. Because they have relatively large surface area to weight ratios, they are easily over-turned by high winds.

Their thin walls make them extremely vulnerable to wind blown debris. Even if tied down, mobile homes should be evacuated for more substantial shelter.

Mobile home parks should have storm shelters for their residents if located in areas where strong thunderstorms or tornadoes occur.

## Tornado: Nature's Most Violent Storm

### Tornado Characteristics

By definition, a tornado is a violently rotating column of air in contact with the ground. The air column may be seen when it contains condensation in the form of a cloud or when it contains surface dust and debris. Often its appearance is a result of both. When a tornado touches the ground there usually is a swirl of dust and debris even when the visible cloud portion is missing or fails to reach all the way to the ground. When the column of air is aloft and does not produce damage, the visible portion is properly called

a funnel cloud. A waterspout is a tornado in contact with a water surface.

Tornadoes vary greatly in size, intensity, and appearance. Most (64 percent) of the tornadoes that occur each year fall into the weak category. Wind speeds are in the range of 100 miles an hour or less. Weak tornadoes account for less than 3 percent of all tornado deaths. About one out every three tornadoes is classified as *strong*. Wind speeds reach about 200 miles an hour with an average path length of 9 miles and a width of 200 yards. Almost 30 percent of all tornado deaths occur each year from this type of storm. Nearly 70 percent of

all tornado fatalities result from *violent* tornadoes. Although very rare (only about 2 percent are violent), these extreme tornadoes can last for hours. Average path lengths and widths are 26 miles and 425 yards, respectively. The largest of these may exceed a mile or more in width, with wind speeds approaching 300 miles an hour.

The color of a tornado is determined by a number of factors such as the amount and direction of sunlight and the type of debris being picked up at the surface. Not only does the shape of a tornado vary from one storm to another, but an individual tornado usually changes its shape frequently during its life

cycle. During the late stages of a tornado's life, it is not unusual for the tornado to become highly tilted and shrink in size. This reduction in size does not mean that it is less intense. It is still very dangerous! With exceptionally large tornadoes, the classic "funnel shape" may be absent. The tornado may appear to be a large, turbulent cloud near the ground. It may even be mistaken for a large rain shaft or even a non-weather event such as a fire.

Sometimes a series of two or more tornadoes is associated with a parent thunderstorm. Occasionally, two or more tornadoes can occur simultaneously, extending downward

from the same thunderstorm. As the parent thunderstorm moves along, tornadoes may form, travel along in contact with the ground, and dissipate or lift, followed shortly by other tornado touchdowns, and so on. Tornadoes can also be made up of a number of smaller, but intense vortices that rotate about a common center. With this type, the most intense damage is concentrated along the paths of the small vortices.

While an individual tornado usually destroys a relatively small area, major tornado outbreaks may cause widespread damage over an extensive area. During the afternoon and evening of April 3 and the early morning of April 4,

1974, a "super outbreak" of 148 tornadoes across 13 states killed more than 300 people, injured more than 6,000, and caused \$600 million in damage. On March 18, 1925, the Tri-State tornado traveled some 219 miles across Missouri, Illinois, and Indiana. It lasted for over 3½ hours and killed 689 people.

Except for weak tornadoes and waterspouts in coastal areas, tornadoes usually develop from strong or severe thunderstorms. Most significant tornadoes have their origin within the right rear quadrant of the thunderstorm where a circulation develops at heights between 15,000 and 30,000 feet. A tornado or funnel cloud is observed when this circulation develops further downward toward the surface. Tornado development can also occur along the leading edge of a single thunderstorm or line of thunderstorms. While dangerous, such tornadoes are usually weak and short-lived.

## TORNADO FACTS THAT CAN SAVE YOUR LIFE

Tornadoes travel at an average speed of 30 miles an hour, but speeds ranging from stationary to 70 miles an hour have been reported. While most tornadoes move from the southwest to the northeast, their direction of travel can be erratic and may change suddenly.

In populated areas, it is very dangerous to attempt to flee to safety in an automobile. Over half of the deaths in the Wichita Falls tornado of 1979 were attributed to people trying to escape in motor vehicles. While chances of avoiding a tornado by driving away in a vehicle may be better in open country, it is still best in most cases to seek or remain in a sturdy shelter such as a house or building. Even a ditch or ravine offers better protection than a vehicle if more substantial shelter is not available.

While hail may or may not precede a tornado, the portion of a thunderstorm adjacent to large hail is often the area where strong to violent tornadoes are most likely to occur.

Once large hail begins to fall, it is best to assume that a tornado may be nearby, and seek appropriate shelter. Once the hail has stopped, remain in a protected area until the thunderstorm has moved away. This will usually be 15 to 30 minutes after the hail ceases.

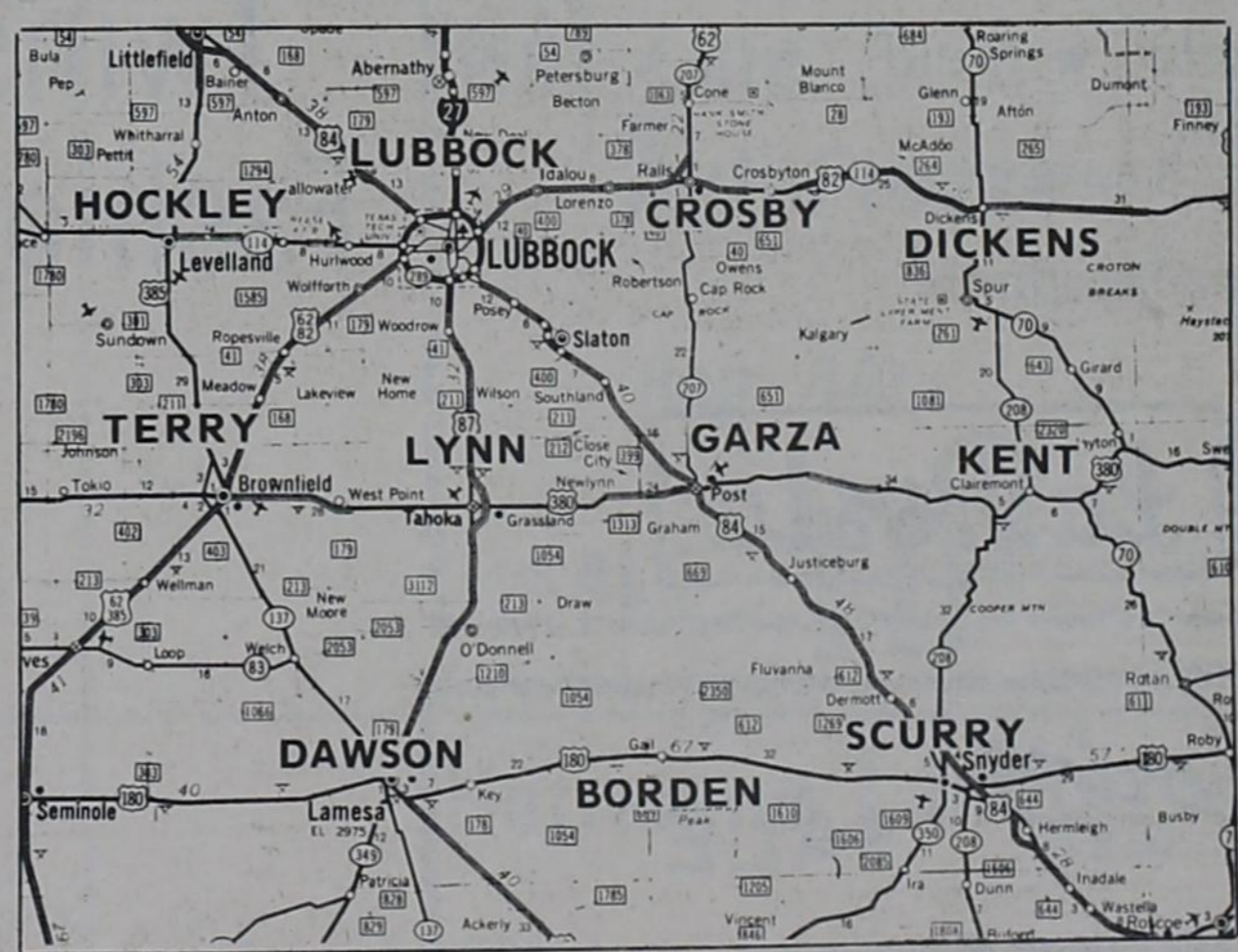
The tornado's atmospheric pressure drop plays, at most, a minor role in the damage process.

Most structures have sufficient venting to allow for the sudden drop in atmospheric pressure. Opening a window, once thought to be a way

to minimize damage by allowing inside and outside atmospheric pressures to equalize, is not recommended. In fact, if a tornado gets close enough to a structure for the pressure drop to be experienced, the strong tornado winds probably already will have caused the most significant damage. Furthermore, opening the wrong window can actually increase damage.

While most tornado damage is caused by the violent winds, most tornado injuries and deaths result from flying debris.

Small rooms, such as closets or bathrooms, in the center of a home or building offer the greatest protection from flying objects. Such rooms are also less likely to experience roof collapse. Always stay away from windows or exterior doors.



Information provided by the U.S. Department of Commerce, National Oceanic and Atmospheric Administration, National Weather Service.

**Higginbotham-Bartlett**

495-2080

**United Supermarket**

495-3217

**Garza Memorial Hospital**

495-2828

**H & M Construction**

495-3293

**Palmer Well Service and Palmer Construction Co.**

495-3460 & 495-2710

**WellTech**

495-3665

**Post Insurance Co.**

495-2894



**ENGAGEMENT ANNOUNCED** - Mr and Mrs Lloyd Coppedge of Kildeer, Ill. and Mr and Mrs E.A. Howard of Post, Texas wish to announce the engagement and approaching marriage of their children Tracie Coppedge and Brent Howard. They will be married June 8, 1985 in the First Baptist Church of Post.

### Mason Family Reunion

The family of Willie Mason held their family reunion April 5-7 at the Community Center in Grassland.

The dinner was followed by an Easter egg hunt.

Attending the family event were Jody and Helen Mason, Heather and Ashley, Joe and Melinda Mason and Kelly and Tammie Mason, Rachael and Sarah;

Mr and Mrs Glynn Barron and Rhon Barron of Bossier City, La.; Glynnna and Lee Hopper and Justin of Haughton,

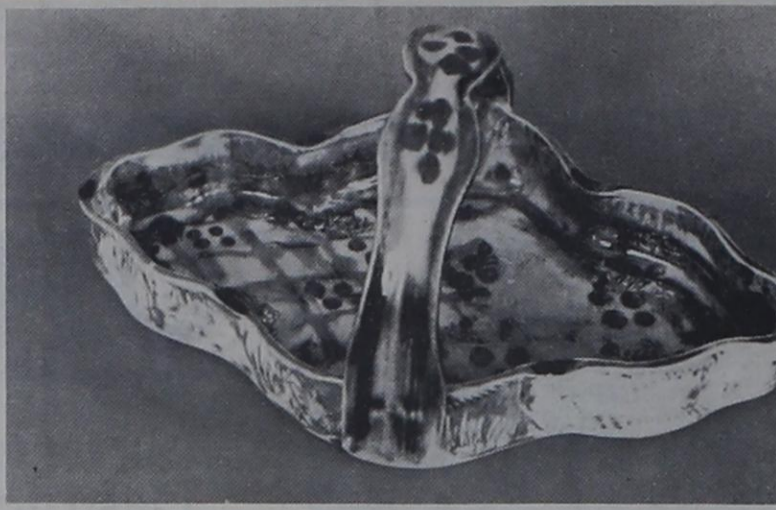
La.; Jeffrey Barron of Haughton, La.;

Mr and Mrs Jimmy Hutton of Ft Stockton, Lisa and Johnny Joyce of Fort Stockton;

Marla and Lyndsay Stanford of Sanderson; Mark and Brenda Hutton, Kim and Megan of Burleson;

Lewis and Jane Mason, Bart, Brenda, Michelle Tyler, Brad, Penny and Jessica of Post;

G.T. and Brenda Mason, Michele, Michael, Julie of Lubbock and Fanny Richards of Andrews and Opal Williams of Post.



### Clay Workshop April 22-25

Cecily Smith Garnett, a specialist in clay work, will conduct a four day workshop in terracotta clay at the Algerita Art Center, April 22-25.

A 15-hour course, classes will be held from 6:30-9:30 p.m. Monday, Tuesday, Wednesday and Thursday. There will also be a 3-5 p.m. class Thursday.

Deadline for enrollment in the class has been set

for April 15. The class is limited to 12 students.

Those wishing to enroll for the classes are asked to call Geraldine Butler at 495-3308 or may call the Algerita Art Center on Thursday at 495-4000.

Mrs Garnett is self employed in the wholesale manufacture of pottery and clay jewelry, contract demonstrations and teaching.

### Post CARES Serves 18 Families Since Opening

The Post CARES facility reports growth and activity, with the center serving 18 families since its opening March 1, 1985.

The board of directors and staff have been working on taxes, legal business and paperwork in general.

Office procedures, screening processes, and guidelines for determining eligibility are currently being revised as are all other general procedures for the organization's various functions and duties.

The center will begin contacting its numerous volunteers sometime next week, for work in specific duties as designated by the staff and board members.

Executive director Elizabeth Haynes heads up the staff at the Post CARES offices, located at 222 East 8th St, just behind Jackson Brothers Meat.

The new hours for the facility, as of last week, are Monday through Friday, from 1-3 p.m.

In case of emergencies, staff members are available at other times and Pastor Steve Traw at the First Christian Church may be contacted.

In response to several inquiries from concerned citizens in Post, the board emphasizes that the objectives of the Post CARES organization is in its name: Community Assistance and

Resources for Emergency Services, meaning that the purpose is to offer temporary, one-time emergency aid to needy individuals or families, in crisis situations.

Post CARES is not intended to be a supplement to those recipients of welfare, food stamps or unemployment compensation, or

other forms of public assistance.

The board plans to eventually establish an outreach program, which would locate and serve those in need who for one reason or another are unable to come to the center on their own.

The day-to-day needs to operate the facility include: Men's and children's

clothing, clothing racks, hangers, canned and packaged foods, such as spaghetti, chili, meats, stews.

The facility is also in need of five gallon popcorn gift tins, for food storage, and a two-drawer locking file cabinet.

Anyone who has any of these items to donate to the

(Continued on P6)

### DANISH IMPORTS

GIFTS & COLLECTIBLES  
201 East Main

### Gifts for the bride-to-be

- Measuring sets
- Colorful mugs
- Terracotta Cookware
- Acrylic glasses in pastel and bright shades

### Bridal selections for

Penny Scott nee Dale Redman  
Darlene Gunn nee Gary Speck  
Sherri Wall nee Gerald Carlton

John Meyer  
Coordinates  
30% Off

★ Turquoise

★ Purple ★ Plaid

Come, Browse in our  
Mens Department

La Posta



### Spring SALE

Take advantage of our sale prices to come in and see our new merchandise

20% Off

store wide (except gifts)

Other sale racks throughout the store.

Friday & Saturday

1/2 OFF \$5.00 rack misses sizes

1 Group Jewelry \$5.00 rack children

No approvals on layaways on sale merchandise.

Jae's

Register for gift certificate and a set of Mikosa Dishes

### Win a fabulous shopping spree for your new face.

Twins Fashions

Twins Fashions



1st prize-\$100 • 2nd prize-\$50 • 3rd prize-\$25

Merle Norman Beauty Advisors can teach you your face free. Win \$100, \$50, or \$25 worth of Merle Norman cosmetics for your new face. Help us celebrate our

### GRAND OPENING

Now it's your turn to be beautiful - Register today

Grand Opening Dates: April 10,11,12,13 Address: 210 E. Main Post, Tx

MERLE NORMAN®

The Place for the Custom Face® Mastercharge and Visa Welcomed

## R.B. and Beatrice Dodson Celebrate 55th Anniversary

by Juanita Peel

The Lee Dodson family and W.C.W. Morris family came to Garza County in 1916.

The Dodsons settled in the Rag Town Community and the Morrises in the Graham Chapel Community, both engaged in farming.

The families did not meet until the summer of 1925. Mr Morris had a syrup mill and Mr Dodson came in a wagon to buy home-made sorgham syrup from Mr Morris.

That fall Mr Dodson bought a new Chevrolet 4-door sedan and R.B., his oldest son, and Reubin Stanley, a friend of the Morris boys, came in the new car to visit Wilburn and Alvin Morris.

Their sister, Beatrice, then 11 years old, recalls her brothers teasing her about this good-looking young man and she told them when she got married it would be someone like him.

Almost a year later Beatrice and Wilburn were at a party and R.B. was there.

R.B. took her home that night, which was the beginning of a beautiful friendship that led to their engagement in 1928.

R.B. graduated from Rag Town school in 1926. He found he could get courses at Graham Chapel to further his education. He enrolled there and graduated with the class in 1928.

The next summer with two diplomas and very little money, he went to Houston to find work.

In a short time R.B. wrote Beatrice, he had a job at Hughes Tool Co., making 38 cents per hour, so they could get married, which they did on January 30, 1930.

They lived in a two-room apartment in Houston where Molly, their first baby, was born March 2, 1931.

By this time it was necessary due to the depression, they came back to Garza County where they hoed and picked cotton to live.

They rented a small farm from T.L. Jones.

They recall farming very different then, there was no help from the government, you lived on what you made.

They had cows and chickens and a garden and sold cream and eggs to pay for things they could not raise.

During this time, R.B. studied electronics and built their first radio and a wind-charger.

Then he wired the house for electric lights, which were car light bulbs hung on a drop-cord in the center of each room.

Beatrice said they were funny looking little things but much better than the kerosene lamp.

In January 1936 they moved to Post, where R.B. worked for Mr Sims in his shoe shop and also put in his first business.

Radio repair and selling wind chargers was his

main line, later he moved into a building at Cox's Lumber Co. and also worked for Mr Cox.

About this time in their busy lives, R.B. became a member of the Masonic Lodge and is a Past Worshipful Master here while Beatrice served three separate terms as Worthy Matron in the Eastern Star and is Past Mother Advisor of the Rainbow Girls.

By 1940 they had two girls and two boys.

Molly, Agness, V.A. and Boyd and had to have more

income. They took a course in horology which included making clock and watch parts.

They cut and polished these on a lathe.

After getting their diploma, they put in their first radio and watch repair shop, which grew to jewelry and gifts.

They recall buying gold chain on spools and gold hearts and crosses to make jewelry on their first Christmas.

Due to World War II,

merchandise was hard to get, but what they made sold like "hot-cakes."

Now you could not give them away.

This has brought them through many good times as well as bad ones, to their 50th year in business and 55th year of married life, which has been happy and rewarding as they can brag about their 11 grandchildren and 16 great-grandchildren.

They are still happy in their work and plan to continue for some time.



R.B. & Beatrice Dodson

MR AND MRS R.B. DODSON - married for 55 years, in business for 50 years.

Sale Ends April 14

Items Available At TG&Y Family Centers Only.

# TG&Y

## Family Centers

Copyright 1985, TG&Y Stores Co.

A HOUSEHOLD

# REMODELLING SALE

Currently Going Through Total Store Remodelling.

This Means Great Savings To You Our Valued Customer.

Please Excuse Our Mess During Remodelling.

Large Selection Of  
**Aquariums & Stands**  
Priced To Sale

Stands Reg. \$29<sup>96</sup> SALE \$10<sup>00</sup>

10 Gal. Aquarium & Starter Kit Reg. \$36<sup>97</sup> SALE \$15<sup>00</sup>

10 Gal. Aquarium & Kit Reg. \$25<sup>97</sup> SALE \$15<sup>00</sup>

20 Gal. Aquarium Reg. \$59<sup>97</sup> SALE \$25<sup>00</sup>

21"  
**Chubbykins Doll**

Reg. \$18<sup>99</sup>

Sale **\$7<sup>00</sup>**

Mechanics Heavy Duty  
**Rolling Tool Chest  
& Cabinet Set**

Reg. \$88<sup>88</sup>

SALE **\$40<sup>00</sup>**

Gas Line  
**Anti-Freeze**

Reg. 44¢

SALE **10¢**

For The Home  
**Drapes**

Large Selection Of

Reg. Prices From \$19<sup>97</sup> to \$36<sup>00</sup>

Your Choice **\$15<sup>00</sup>**

**Hurricane Lamps**

Reg. \$29<sup>99</sup>

Reg. \$49<sup>99</sup>

SALE  
**\$15<sup>00</sup>**

SALE  
**\$25<sup>00</sup>**

Large Selection Of-

## Starwars, GoBot Models, GI Joes

Priced To Sale **\$4<sup>00</sup>**

Sale Good 4/10 - 4/14

Slaton TG&Y Only

No Rainchecks

The Hobby Club met in the Grassland Community Center April 2, with president Fay Ramsey calling the meeting to order.

Mrs Laverne McCleskey gave the invocation.

The items on display were a home made bonnet, a sweater made in England, home made table cloths and sweater made in Brazil.

Hostess for this month Lena Short and Sharla Ray served refreshments to 11 members and four visitors: Thelma Mason, Eva Smith, Lindsay Ray and Jeremy Laws and one new member, Belindha Williams.

The club was entertained by Belindha with music and songs in her native Brazilian language.

The next meeting will be May 2.

## Mabel Caldwell and Glass...

Mabel Caldwell moved to Garza County from Stonewall County in 1927 and while living near Close City, she was instrumental in organizing the Close City Extension Homemakers Club.

In 1930, Mabel entered a Living Room Contest and won first place due to her creative, pragmatic decorating techniques.

Mabel refurbished her pine wood floor by filling cracks with paper pulp and then varnishing.

Together with her husband, they built a living room couch utilizing boards and car springs.

After the couch frame was built, it was an easy task to pad and upholster the "new couch."

After residing in Garza County for 20 years, Mabel and her family moved to Muleshoe in 1947.

She now resides near Muleshoe, where she has built a most fascinating home.

## Engagement Announced

Mr and Mrs Herman Guthrie announce the engagement and approaching marriage of their daughter, Kimberly Diann, to Raymond Lewis Bennett, son of Mrs Robbie Bennett and the late Roy Bennett of Denver City.

A May 18 wedding date has been set.



SCOUT APPRECIATION - Getting special recognition for helping Girl Scouts were Ronnie Metsgar, Dickie Wallace, A.B. Gutierrez and Noah Gutierrez. (left to right) scout executive Kathy Hunt of Lubbock, Nell Morris, Charles Wallace,

## Alcoholism Hits Women Too

by Glenda Baker  
There are as many different kinds of alcoholics as there are people, therefore the old myth that alcoholics are skid-row bums is simply that, a myth.

Alcoholism is no respecter of persons, the disease often develops in the one you least likely think of as becoming alcoholic.

This is especially true in women with society unwilling to believe that the wife, mother or daughter in a family has alcoholism.

Many women die of alcoholism each year due to a family's denial and over-protection, preventing them from seeking help for the proper treatment of the disease.

Progressive alcoholism symptoms for women include:

The Prodromal stage - increased tolerance (drinking more to achieve the same affect), unwillingness to discuss drinking, personality change when drinking, more drinks before menstrual period, supersensitivity, vague religious disires.

Earl alcoholism symptoms - tries periods of abstinence, others disapprove of drinking, rationalizes drinking, memory blackouts, unexplained bruises or burns, drinks before facing a new situation, involvement in children's or civic activities to overcome guilt about drinking.

Middle stages of alcoholism - neglects eating, protects liquor supply, more and more self-pity, unreasonable resentments, drinks to feel happier but becomes more depressed, asking question, "Am I an alcoholic?" before starting second addiction by accepting prescriptions for

"nerves" or sleeplessness, pre-drinking before party, post-drinking after party, binges, permissive with children because of guilt about drinking.

Late stages of alcoholism - Eye-opener drinks, tremors or "shakes" (external or internal), reduced tolerance (less liquor intoxicates now), sneaks drinks, gulps drinks, persistent remorse (loss of self respect), devalues personal relationships, indefinable fears, suicide attempts, DTs, alcoholic convulsions, alcoholism cirrhosis of the liver, death.

For help, call the Garza County Alcohol-Chemical Abuse counselor, 24 hour assistance hotline, 495-3788.

## Looking Good in Post

by Philip K. Jordan  
Tom Landry, head coach of the Dallas Cowboys, was in Garza County recently. (Maybe he was looking for a quarterback).

He stopped at Fort Justice, the fine new business just across the river from Justiceburg.

He signed the guest register on the counter, and went on his way.

He is one of many distinguished visitors to which Post and Garza County play host every day.

An estimated 9,000 vehicles travel through Post on U.S. Highways 84 and 380 daily.

Other establishments besides Fort Justice have welcomed travellers distinguished by the distances from which they have come.

Danish Imports claims customers from cities such as Orchard Park, NY; Mission Viejo, CA; Liberal, Kan.; Pinetop and Willcox, Ariz.; Anderson, South Carolina; Winter Park and St Augustine, Fla. and Jefferson, Ga.

Many of these guests remember the quality of gifts displayed there and continue shopping by mail and phone.

The folks at Bob West's Saddlery and Western Wear point with pride to an international reputation carried away by visitors who have shopped in the store and sometimes order custom leather work from the store to be mailed to them across the world.

In addition to all the Canadian provinces, the guest book at the distinctive store recalls visitors from places like Ayr, Scotland; LaRippe, Communy and Zurich, Switzerland; Stockholm, Sweden; Hong Kong; West Germany; Paris, France; Chile; Amman, Jordan; Kimberleys, Western Australia; Caracas, Venezuela; Copenhagen, Denmark; Wakefield, England and elsewhere.

Other fine establishments have their own claim to a wide-spread clientele.

Jackson's Cafeteria has enjoyed a reputation for barbeque that prompts many travellers to stop and eat, no matter what the hour.

Many of LaPosta's most enthusiastic customers

## Colleen's Comments

by Colleen England  
County Extension Agent  
Home Economics



### April: National Good Grooming Month

This April the dry cleaning and related fabricare industries will once again promote good grooming.

With the theme, "When you look good, you feel good," the industry hopes to make consumers more aware of its services.

This will be a good time to look for discounts on dry cleaning, open houses, plant tours and "best groomed lists", sponsored by your local dry cleaners.

### Food Allergy and Food Tolerance

How many times have you heard people say they're "allergic" to chocolate, strawberries or Aunt Martha's homemade pickles?

Chances are, they actually have a food intolerance rather than a food allergy.

Researchers maintain that food intolerance reactions far outnumber true allergy reactions, which are triggered by the body's immune system.

True allergic reactions to foods are most common in infants.

It's estimated that about one percent of infants consuming cow's milk have an allergic reaction to it.

Genuine food allergy reactions in adults are relatively uncommon.

About 90 percent of food allergic reactions are caused by a relatively few foods, including milk, eggs, legumes, tree nuts and wheat.

Other foods associated with allergies include fish, shrimp, and to a lesser degree, citrus fruit, melons, bananas, tomatoes, corn, barley, rice and celery.

Skin problems such as hives or eczema and gastrointestinal problems like vomiting or abdominal pain are among the most common symptoms of food allergy.

People with other symptoms are more likely to be suffering from food intolerance.

The primary treatment for all adverse reactions to food - whether a true food allergy or intolerance - is to avoid the food that causes the problem.

If you think you have a food allergy, consult a

physician for diagnosis and treatment, if necessary.

Canned Food Additives Preservatives and additives are found in minimal amounts in canned foods because of the role the can and the canning process play in preserving foods.

In the canning process, foods are packed in airtight containers and heated to destroy any microorganisms that could cause spoilage.

The can provides the perfect environment for keeping bacteria out and nutrients in for a long period of time.

But natural flavoring or natural acids are added to some canned food products to suit consumers' tastes or to ensure the proper balance of the foods' natural acidity, preventing the growing of bacteria.

These substances are clearly marked on the labels of products in which they are found.

They are added for consumer safety and to enhance flavor.

**DR. LEWIS D. MOORE**  
OPTOMETRIST  
Announces New Office  
Hours for 1985  
Complete Visual Care  
THURSDAYS 9:30 - 5:30  
206 West Main

**HUDMAN FUNERAL HOME**  
615 West Main 495-2821

**Harmon's Burgers**  
We now have pizza's available  
495-2101 312 N. Broadway

**COW POKES** By Ace Reid

"Wul, heck, I'm over-worked, over-drawn, over-taxed and now I'm over-loaded!"

NO NEED TO GET OVER-ANXIOUS ABOUT HAVING ADEQUATE RECORDS AT INCOME TAX TIME! A CHECKING ACCOUNT PROVIDES A PERMANENT RECORD AND RECEIPT FOR EVERY DEDUCTIBLE EXPENDITURE! YOUR CANCELLED CHECKS ARE PERFECT RECIPES!

**Wilson State Bank**  
WILSON, TEXAS  
FDIC

The energy and imagination invested by these people has paid large dividends, not just financially, but in good will and pleasant memories.

The opportunity to enjoy these local joys are abundantly available to local residents.

And finally, we as a community may need to identify and spruce up other areas in town, so that more of those 9,000 travellers who pass through Post every day may be more inclined to slow down long enough to discover the unique treats that are here.

**Post CARES**  
(Continued from P4)  
facility should contact Pastor Steve Traw at 495-3716 or bring the items to the facility at 222 East 8th St, Monday through Friday from 1-3 p.m.  
For additional information on Post CARES, contact Traw at 495-3716.

The Absolutely Best Tasting  
**COCONUT PIES**  
You Ever Tasted!  
+ FRESH  
+ HOMEBAKED  
Now Taking Orders for Lorene's Pies...  
495-2816 495-3884  
**ONLY \$5.00**  
9" Creamed Coconut Pie, loaded with coconuts and  
No one makes a better pie anywhere!

**SUPER-SOLE SAFETY BOOTS**

2221  
915

- Safety Steel Toe
- Tough Long-wearing SuperSole

**Red Wings Shoe Box**  
213 E. Mian

XI DELTA RHO  
Little Mr. & Miss Post Contest  
Entry Fee \$5.00

Post Primary Auditorium  
APRIL 13, 1985  
7:00 P.M.

Child's Name \_\_\_\_\_ Birth Date \_\_\_\_\_ Age \_\_\_\_\_  
Parent's Name \_\_\_\_\_ Telephone No. \_\_\_\_\_  
Address \_\_\_\_\_  
Names of brothers and sisters \_\_\_\_\_  
Child's special interest or hobbies \_\_\_\_\_

Mini Contest Ages 2 & 3 years old  
Rehearsal Nite April 12, 1985 6:30 p.m.  
Little Mr. & Miss Contest Ages 4 yr. old thru 1st Grade

# Twin Cedar News

by Darla Davis

You should have been here Friday at our Easter party, we had such a good time. We had a bunny rabbit cake made by Christine Smith, with green coconut and jelly beans surrounding the rabbit, we also had cup cakes with little jelly beans on the top, we had little finger sandwiches made by Maude Dobbs and little chicken, rabbit and duck cookies made by Lola Ledbetter.

We were real surprised when three bunny rabbits came in the doors and gave each of our residents a bar of candy for Easter.

We would like to thank Jo Ella Sparlin and Maleecy Johnston from the Ladies Auxiliary to the VFW for bringing the children dressed like cotton tail rabbits.

We had so many surprises over the Easter holiday.

Many of our residents were surprised with Easter baskets from family members and secret pals.

Freda Harmon received a floral arrangement from her daughter Ann Johnson of Beaumont.

Several people sent Easter Lilies to us, they are so pretty, we would like to thank them so much for being so thoughtful to us.

We also received a large floral arrangement with all the spring colors in it from Sue Cornell.

Ollie Cooper received a pink corsage from her son

and daughter-in-law Charlie and Myra Cooper. Evelyn Roach received a stuffed chick that hops from her granddaughter Sherry Compton, everyone had such a good time, watching it hop all over the sun room.

Tommie Thomas went out for the day to Frank and Ruby Bostick's.

Everyone was surprised when Darleen Errisuriz, just a year and one-half old, brought Easter eggs filled with candy, and passed them out to all the residents. She didn't want to quit when her basket was empty.

She was so cute, we want to thank her for adding to our day.

Sunday services were brought to us by the Graham United Methodist Church.

Patsy Craig came Tuesday and brought us our Bible lesson, we really enjoyed it and want to thank her for being so loyal to us.

Virginia Babb was here Thursday with our film. We always enjoy her coming and showing us the films.

Visitors this past week were Jewell White, Effie Boyd, Mary Vasquez, Tina Rodriguez, Maude Dobbs, Shirley and Margie Young from Midland, Surman and Bonnie Young from Fort Worth, Mack and Lola Ledbetter, Leocadie and Refugio Gomez, Lydia Rangel, Caroline and Darleen Rangel, Carol Errisuriz, Carol Lane, Sherry Compton and Bryan Compton.

Unitil next week.



**IRENE ARREDONDO** is Garza Memorial Hospital employee of the week. Irene is a nurse's aid and has worked at the hospital for two years. She has lived in Post 23 years, having been born in the Garza Memorial Hospital. She is the eldest in her family and is married to George Arredondo. They have three children. Irene attended Post school and has attended several nursing seminars offered by the hospital. She lists being a good housewife and homemaker as her outside interests.

# Light From Darkness

by Pastor Steve Traw  
First Christian Church

A somber mood fell over the disciples. What had always been a festive celebration was dramatically altered. The Passover, the eating of the Paschal lamb by the throngs of pilgrims in Jerusalem was ending. Unleavened bread and bitter herbs accompanied the meat prepared with great precaution as to purity.

The laws of Judiasm directed the elders to speak to the younger ones at the feast.

The story of the great deliverance was retold. The nation Israel was spared by the Passover angel and the years of

exodus to their promised land. God's personal hand in their history was thus recalled each year at this seder meal, at the very time the sacrificial lamb was slain.

For the 12 who met with the man of Nazareth, there was no gaiety in the upper room. Jesus, in the place of honor at the table, had ended with an illusion to His pending death.

The history of the nation, the message of the prophets was to be fulfilled in Christ and the cross.

Our own doubts, depression and uncertainties of today parallel the disdain, darkness and death Christ had echoed from Isaiah 53.

Too many fear what tomorrow may hold in international affairs or personal dilemma. But beyond the cross came the resurrection, redemption and reign of the Messiah as foretold by the prophet.

The victory and deliverance over the tomb, of sin and death, was to follow their utter despair by only two days.

Slowly those of the upper room realized the victory on their behalf.

The victory belongs to us and our todays as well.

May His resurrection life shine into and through each of us.

Then the darkness of doubt and apprehension may flee till just the hope and light He brings fills our lives this Easter season.

**Pleasant Home Church News**  
by Annie Gilbert

Holy Greetings everyone this beautiful day which the Lord has made for us to see and enjoy as his children. Now I'm still living for our Lord and Master with my mind made up to forever be a Christian, with my mind made up to be what God would have me be.

We thank God for such a lovely and high spiritual worship service. The lesson for the day: Raised From the Dead - John 20:1-23, key verse: Mary Magdalene went and said

to the disciples, "I have seen the Lord." John 20:18.

Very beautiful lesson. Attendance good, all at their place of duty. During the 11 a.m. service, devotion by Deacon Burleson, Sisters Burleson, Wynn, Johnson and Sister Wynn read entire chapter 24 of St Matthew.

The Lord visited and the spirit was high at altar prayer.

The choir's presentation was at their place of duty with Sister Moore playing beautiful music as always. Speaker of the hour was

Rev Arthur Kelly, his scripture was taken from St John 19:25 and his topic was, "The Funeral Service of Jesus Christ."

A very highly spirited sermon, from his heart and soul. God is not through with us yet.

Let's pray for one another always amen and amen God is still in his Holy Temple.

Let's remember to pray for and visit the sick and shut-ins of our Lord's Church and elsewhere.

Among our sick are Brother Malachi Mitchell Sr, Sister Emma Griffin, each in their resident. Sisters Lizzie Milo, Sirloma Steel, Brothers Harry Trueblood, Raymond Latson, who are patients in Golden Plains Care Center.

Please continue to pray for their speedy recovery. Others in surrounding community not mentioned also, so let's pray for and visit our sick ones.

We had lovely and beautiful visitors from Amarillo and Lubbock. You all truly made our day. Please visit anytime you are always welcome to Pleasant Home Baptist Church.

The reporter prays that everyone at the staff and elsewhere had a blessed and happy Easter day.

This reporter and Rev Kelly and members would like to thank Mayor Giles McCrary, Brother and Sister Bryan J. Williams and all the others you know who you are, for their lovely donations.

May the God of Peace bless you always and always.

"Let's be and look alive in Eighty Five."

Duncan, Orlando  
Win Prizes

Charles Duncan and Frank Orlando were winners of last Saturday's Post Merchant Association sponsored Easter Egg hunt at the city park.

Duncan won the 6-10 year old age group and Orlando won the 1-5 year old group.

There were 2500 eggs in the park, with approximately 300 youngsters looking for the goodies in an eight minute long hunt.

Winn's of Post donated the eggs for the event.

**Mrs Askins' 87th Birthday**

Mrs Rose Askins was honored on her 87th birthday with some friends and a get-together.

The friends came by and shared coffee and cake... Mrs Askins said this was the best birthday she'd ever had.

**Golden Plains News**  
by Nell Mathews

We want to thank Mrs Zella Thomas' daughter for the beautiful serving trays. Thank you to Mrs Keeton from Trinity Baptist Church for the good cookies.

Wynona Ward comes in on Monday and spends the morning, she has been gone two Mondays and we miss her.

Patsy Craig, we enjoyed your Bible study last week. Patsy comes every first, third and fifth Tuesday at 10 a.m. for our Bible study.

On the second and fourth Tuesday it is someone else, sometimes it is Nell Mathews.

This last Tuesday it was Nell and on Thursday it is Maysel James with Bible on tape.

On March 21 we had Noel White and Jane Mason to come and play and sing for us.

On March 26 it was our family night, we had such a good time.

Our table was covered with white lace cloth and Easter decorations with our center piece a basket of painted eggs, made by some of the children here in town.

We had green punch with two rabbit cakes.

Our napkins had Easter decorations on them and our music was provided by Frank Herridge, Jim Proctor and Fernie Reed.

Bill Cornett, Bob "Cat" Durham and Gene Moore.

Wednesday was Bingo and Ruby Woodard was the big winner.

Thursday it was just our popcorn, our movies were not shown, due to Mrs Babb being ill, we hope she is doing better and will be back soon.

**NOTICE**

On page 7 of this week's TG&Y Family Center circular, copy on the boys' camp short and men's athletic short was transposed. Prices on each are correct: Boys 4-7 camp short reg. 6.99 now 4.99; Men's Athletic Short 2 for \$5. We regret this error and any inconvenience it has caused.

**DOWE MAYFIELD**  
Jefferson Standard Life  
7204 Joliet No. 3, Lubbock  
806-797-8089  
Life, Health, Mutual Funds

The following members of the Post Economic Development Corporation have been called to the first annual membership meeting:  
Tuesday, April 16  
7 p.m. - Post Community Center

Dr James G. Morris	Jack Alexander
Marie Neff	Ivan J. Barber Jr
Glenn G. Norman	Mrs Eleanor C. Barzin (David P. Close)
P.L.K., Inc. (Mark Kirkpatrick)	Caprock Veterinary Hospital (Larry Mills)
W.G. Pool Jr.	City Council (City of Post)
Mrs Adelaide C. Riggs	Dr Stephen Chun
A.T. Sanderson	Giles W. Dalby
Dr and Mrs A.C. Surman	Lewis Earl
VFW No. 6797	Maxine Marks Earl
Robert Wall Sr	E.A. Franklin Estate (Giles C. McCrary)
Edward Neff	Lewis Holly
David Newby	Insurance Man and Associates
Jerry Osborn	Insurance Man and Associates (Wayne and Linda Runkles)
James E. Pollard	K.W. Kirkpatrick
Post Chamber of Commerce	John F. Lott Jr
Nedinia H. Robertson (Donald Handelman)	Harold Lucas
William L. Smith	Giles C. McCrary
Southwestern Public Service	Wanda Mitchell
Linda Waldrip	First National Bank
Wallace Lumber Co.	Higginbotham-Bartlett Lumber Co.
Energas	Hudman, Inc.
General Telephone Co.	Roy Josey
Homer Gordon	Mrs W.M. Kirkpatrick
Ronnie Hardin	John F. Lott
Charles Adams	Robert Macy
Jack Ault	Billy J. or Agnes
Michael J. Barber	Billy J. or Agnes McKamie
Mary Brewer	Kenneth Montgomery
A.C. Cash	
George Childers	
Robert Cox	
Ray J. Diekemper	

Post Economic Development Corp.

## Garza Exxon

Wheel Alignment Complete Brake Service  
Complete Front End Service  
Wheel Balancing  
300 North Broadway 495-3031

I wish to express my appreciation to the voters of the City of Post for the confidence they have placed in me during the recent election to the city council.

I pledge my continuing interest and efforts to represent the best interests of the taxpayers while I serve on the council.

Sincerely  
Charles Wallace

## Tinker's

Friday and Saturday

April 12th & 13th

## Dance

to

Country Express Band







LUBBOCK:  
50th & Slide  
4th &  
University

Prices Effective  
April 10th thru  
April 16th, 1985.

# THE BEEF AUTHORITY!

Nobody knows fresh meats like we do! All over the southwest, we're setting the standards of meat excellence!



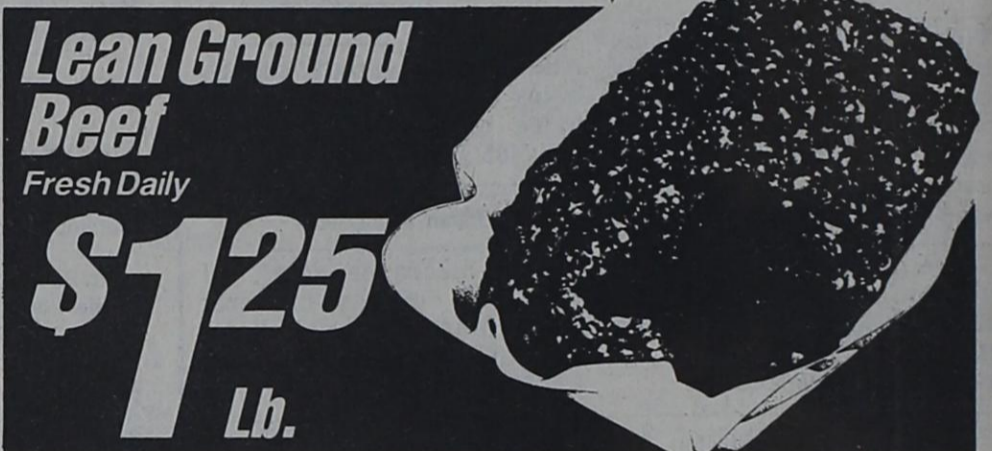
**Chuck Roast**  
Blade Cut  
Lb. **99¢**



**7 Bone Chuck Roast**  
Lb. **\$1.29**



**Arm Roast**  
Round Bone Cut  
Lb. **\$1.49**



**Lean Ground Beef**  
Fresh Daily  
**\$1.25**  
Lb.

**Chuck Tender Roast**  
Lb. **\$1.79**

**Chuck Tender Steak**  
Lb. **\$1.79**

**Rib Steak**  
Small End  
Lb. **\$2.29**

**Blade Cut Chuck Steak**  
Lb. **\$1.19**

**Extra Lean Ground Beef**  
Fresh Daily  
Lb. **\$1.49**



**Ribeye Steak**  
**\$3.97**  
Lb.

**7 Bone Chuck Steak**  
Lb. **\$1.48**

**Arm Swiss Steak**  
Lb. **\$1.67**

**Ribeye Roast**  
Lb. **\$3.87**

**Rib Roast or Steak**  
Large End Lb. **\$1.89**

**Rib Roast**  
Small End Lb. **\$2.19**

**Boneless Rump Roast**  
Lb. **\$1.89**

**Lean Cube Stew Meat**  
Lb. **\$1.59**

**Country Pride Fryer Thighs**  
Lb. **82¢**

**Sliced Beef Liver**  
Skinned & Deveined, Lb. **72¢**

**Pork Feet**  
Lb. **39¢**

**Beef Hearts**  
Lb. **98¢**

**Pork Neckbones**  
Lb. **39¢**

**Pork Stomachs**  
Lb. **39¢**

**Pork Ears**  
Lb. **39¢**

**Turkey Drumsticks**  
Lb. **47¢**

**Turkey Tails**  
Lb. **42¢**

**Beef Tripe**  
Lb. **39¢**

**Beef Kidneys**  
Lb. **39¢**

**Boneless Round Steak**  
Lb. **\$2.09**

**Top Round Steak**  
Lb. **\$2.18**

**Sirloin Tip Roast**  
Lb. **\$2.39**

**Sandwich Steak**  
Loin Tip, Lb. **\$2.98**

**Beef Tenderloin Steak**  
Lb. **\$5.00**

**Beef Tenderloin Roast**  
Lb. **\$5.00**

**Bottom Round Roast**  
Lb. **\$1.97**

**Eye Round Steak**  
Lb. **\$2.88**

**Sirloin Tip Steak**  
Lb. **\$2.39**

**Beef Brisket, Packer Trim**  
Whole Cryvac, Lb. **\$1.28**

**Cube Steak**  
For Chicken Fry, Lb. **\$2.39**

**Pork Spare Ribs**  
Lb. **\$1.48**



**Boston Butt Pork Roast**  
**\$1.00**  
Lb.



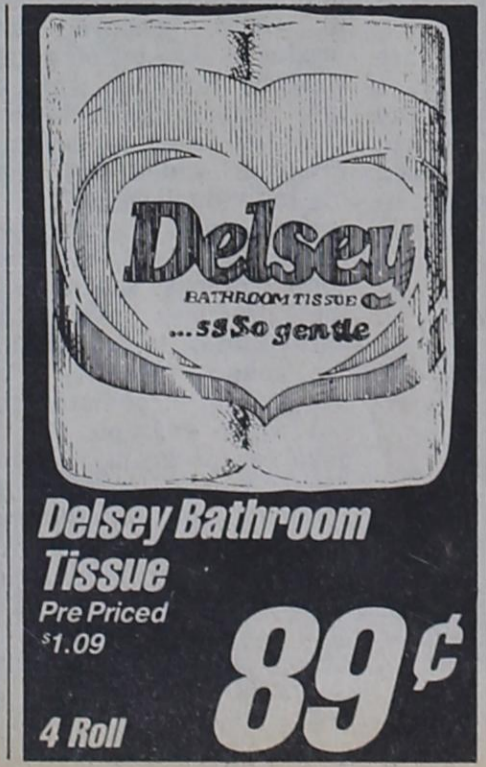
**Country Pride Fryer Breast**  
Boneless  
Lb. **\$2.25**

**Country Pride Pick Of The Chick**  
Lb. **99¢**

**Country Pride Fryer Drumsticks**  
Lb. **99¢**



**Strawberries**  
Red Ripe, Quart Basket  
**\$1.17**  
Ea.



**Delsey Bathroom Tissue**  
Pre Priced \$1.09  
**89¢**  
4 Roll



**Coca-Cola**  
3-liter Bottle **\$1.55**



**SAVE n GAIN**

**THE SOUTHWEST BEEF AUTHORITY!**