



JOSHUA RAY GREATHOUSE (left) is the first baby of 1985 born in the Garza Memorial Hospital. Joshua is joined by his parents, Patricia and Donnie.

Garza County's First 1985 Baby

The first baby born in Garza County arrived at Garza Memorial Hospital Tuesday, January 1 at 7:30 p. m., the son of Patricia and Donnie Greathouse of Post.

Joshua Ray Greathouse weighed seven pounds, four ounces and was 19½ inches long at birth.

Mom and baby are doing just fine and are under the care of Dr. Stephen Chun.

Joshua's maternal grandparents are Doc and Dora Williams of Post.

His paternal grandparents are Ella Louise Greathouse of Post and Willie Greathouse of Snyder.

Hulen and Bernice Hoyle of Post are the new baby's paternal great-grandparents.

Joshua will receive a lifetime subscription to The Post Dispatch and his parents will receive a free room and board during the hospital stay, courtesy of Garza Memorial Hospital.

Other gifts include a sleeper and blanket from Jae's, case of baby formula by United Supermarket, baby blanket from Twin's Fashions, floral arrangement from Maurine's Flowers, first prescription from Bob Collier Drugs, \$50 U.S. Savings Bond from the First National Bank and a green plant from Prairie Flower Shop.

Firemen Sponsor Blood Drive

The Post Volunteer Fire Department is sponsoring a Blood Drive in Post on January 21, 1985 at the Fire Station located at East 8th Street and South Avenue H.

Statistics show that at least 60 percent of Americans will require blood or its derivatives in their lifetimes.

Blood doesn't magically appear when needed, however. It's there only because healthy people are willing to donate.

Unfortunately, only about five percent of the eligible population give blood. They shoulder the burden for everyone. Some of them are disqualified for health reasons, however, and

(Continued on P. 3)

Base Bookbinding
514 W. 7th St.
Amarillo, Tx. 79101

Garza County News Briefs

Football BBQ

The Post Antelope Booster Club has scheduled a special evening to honor the 1984 Bi-District Championship football team.

The event will be held at the Community Center, January 17 starting at 7 p. m., with a barbecue meal being offered at \$2.50 per person.

The entire community is encouraged to attend this event, which will honor the coaches and players of the 1984 championship Antelope football team.

Concert Sunday

The "Sunlighters" will be in concert at the Grassland Community Church of the Nazarene January 6, at 6 p. m.

Pastor Bob Ferguson and the entire congregation gives to all a special invitation to come fellowship with them in worship and song.

Film Scheduled

The film "Martyrs of the Underground" provides a stirring insight into communism's losing battle against the Kingdom of God.

You are invited to experience this eye-opening film at First Christian Church, 806 West 13th, on January 6, Sunday, at 6 p. m.

Family Histories

There will be a workshop January 7 at 7 p. m. at the First National Bank for all parties interested in writing or telling their family story for the new Garza County History Book.

Jesse White of Taylor Publishing Co., will conduct the session and will answer any questions you may have about how to write your story.

Remember, January 7 at 7 p. m. First National Bank Community Room.

Contest Winners

Winners of the last Dispatch Football Contest held two weeks ago are Sammy Basquez in first place and the winner of \$10 and Willie Gibbs came in second for the \$5 prize.

Each contestant missed three of the games with Basquez being 18 points off the tie breaker between Daingerfield and Medina Valley, while Gibbs was 21 points off.

Gross Sales Up in Post

A Texas State Comptroller analysis of the second quarter 1984 sales and use tax shows Garza County with a 1.7 percent increase in gross sales over the same period in 1983.

The report shows the county with 123 reporting outlets with \$9,236,505 in gross sales.

The same period last year had \$9,079,397.

The second quarter 1984 amount of sales subject to tax is \$3,712,106.

Lynn County showed 113 reporting outlets with \$13,725,292 in gross sales, compared to \$11,954,171 in 1983 for a 14.8 percent increase.

Crosby County showed 144 outlets reporting \$11,474,921 in gross sales, compared to 1983's \$10,315,476 for an 11.2 percent increase.

Stolen Stereo, Auto Reported to Sheriff

Arroyo Country Motors reported a stereo taken from a pickup on their parking lot December 28 to the local sheriffs office with the incident still under investigation.

A stolen car was also reported to local officers. The car reportedly was taken from a local bar. The car was found abandoned and no charges have been filed at the present time.

In other activity, officers arrested a male suspect for DWI on December 22 and was released on a \$400 cash bond.

A male subject was arrested Dec. 22 for DWI and released on a \$750 bail bond.

A male subject was arrested for forgery December 28 and received five years probation, \$500 court fine, \$258 court costs and restitution.

A male subject arrested Dec. 29 for DWI and traffic offenses was released on a \$750 Surety Bond for the DWI and \$215.50 in traffic fines.

A male subject arrested

Reward Money
495-2626



NEWS
439-620

The Post Dispatch

In the shadow of the Caprock

Fifty-Eighth Year Number 32

Friday, January 4, 1985

Buckle Up Children . . . or Pay Fine

By Wes Burnett

Starting January 1, 1985 Texas motorists caught driving with a child under four years old not secured in a safety seat restraint will be fined not less than \$25 and as much as \$50.

The state law requiring children to be in safety restraints went into effect last October, but fines were specified in the law to begin January 1.

The law specifically requires that children younger than two years old be "secured during the opera-

tion of the vehicle in a child passenger safety seat system according to the instructions of the manufacturer of the safety seat system."

Motorists will also be fined for failure to keep a child two years old or under four years "secured during the operation of the vehicle in a child passenger safety seat system according to the instructions of the manufacturer of the safety seat system or by a safety seat belt."

(Continued on P2)



BETTY DENNIS straps her son Jeffrey in the child's safety seat in her auto. Jeffrey is accustomed to the safety restraint, as Mrs Dennis has been a believer and user of the restraint system for years. She is demonstrating the system to illustrate the new state law.

Scout Cookie Sale

The annual Girl Scout Cookie Sale will begin at 4 p. m. January 11 with the annual event being different than in years past in that it will be an order taking sale.

Girls will take orders for cookies from January 11 through January 20 and cookies will then be delivered from February 22 through March 3.

A new cookie will be offered this year, "The Chocollage". A crunchy, chocolate cookie bar will be offered along with the same favorites of Scot-Teas, Thin Mints, Hoedowns, Coconut Cremes, Savannahs and Golden

Yangle Cheese crackers.

Cookie profits are used to improve and maintain Camp Rio Blanco, supplement council budget and provide funds for troop activities.

The local cookie chairmen this year are Angela Hammond, first grade; Judy Bush, second grade; Kathie Hubble, third grade; Sandy Davis, fourth grade; Diane Wade, fifth grade and Carol Tobias, sixth grade and above. Carol Peppers is the Neighborhood Chairman.

Please order and buy the cookies as your way of supporting Post Girl Scouts.



SWEARING IN CEREMONY — This group of newly elected officials was sworn in by County Judge Giles Dalby on New Years Day in the Garza County Courtroom. Shown l to r, Precinct 1 Commissioner T. D. (Buck) Craft; Constable Precinct 1 Lonnie Gene Peel;

Constable Precinct 3 Leroy Demming; County Attorney, Preston Poole; County Tax Assessor-Collector, Ruth Reno; Justice of the Peace, Precinct 1 Shelia Melton, and County Commissioner Precinct 3, Tommy Young. Not shown is Garza County Sheriff Jim Pippin.

The Way I See It

"Perfection is something we will not achieve in this lifetime."

If there is any one single idea I hope will take hold as this new year opens, it is that we as individuals and as a community will keep this simple thought in front of us daily.

We are, after all, only frail human beings, filled with all the weaknesses

and problems shared by all people.

Don't expect perfection or anything near it.

You won't find it in Post City, Texas or anywhere else...especially not in this lifetime.

The only perfection you'll find is in our shared imperfection.

It bears repeating... "perfection is something we will not achieve in this lifetime."

Remember that the next time you get ready to lash out at someone you feel has fallen short of the mark of your expectations.

Before you find fault or spew forth your own brand of criticism, stop just for a moment and ask about your own perfection.

It doesn't take much effort to find something wrong with everyone. You know there is not a single person who can't be found with some fault and if you look hard enough, long enough, you'll sure find it.

My hope for our community is that a movement for compassion and understanding for each other will smother the insidious harping and griping about this or that which all too often dominates conversations.

For no other reason, let's launch a new year's resolution to take special efforts to find something good in people...and if not that, then at least silence the negative.

It's so easy to criticize... complain, gripe, harp and point out all the things that aren't up to par.

It's a different story entirely to look at a person or situation and find something worthwhile.

If we accept the fact that "perfection is something we will not achieve in this lifetime," then we can move on to the realization that people are by their very nature going to stumble, fall down, and yes, even at times make fools of themselves.

We are just that way. How we react to each other in these situations is the difference.

I can choose to ignore your failings...and find the good that surrounds you... perhaps your stumble will not hurt quite as much.

There are very few people who purposely set out to be failures or simply don't care. You have to really search long and deep to find those few folks.

Come on, let's agree that we are basically good people all aiming for basically the same goals...a little security, a little happiness and every now and then a thank you or a little praise from another fellow being.

To illustrate this point, recently a genteel person came into our office and complimented us on what a good job we had done on a photo we had published.

The sad news is that we are so unaccustomed to this kind of comment that we all sat in silence, trying to figure out if the fellow was being sarcastic or serious.

When we realized he really was happy with us, we were embarrassed.

I suspect that our reaction is not that uncommon, try giving someone a special compliment the next time you're out and see what sort of response you get.

I ask each of you to join me with this new year's resolution...to seek out the good in one another and go ahead and tell someone they're allright.

That idea could actually change the whole atmosphere of our community.

And please, remember, "Perfection is something we are not going to achieve in this lifetime," no matter how much we wish we were.

Wesley W. Burnett

WESLEY W. BURNETT
Publisher



GLENN BARLEY was honored last week with a special reception upon his retirement from Southwestern Public Service following more than 30 years of service. He is joined at the reception by his wife, Marge. Barley received a number of gifts and a portfolio from SPS commemorating his years of service.

O Holy St. Jude, Apostle and Martyr, great in virtue & rich in Miracles, near Kinsman of Jesus Christ, Faithful Intercessor of all who invoke Your special patronage in time of need, to you I have recourse from the depth of my heart and humbly beg to whom God has given such great powers to come to my assistance. Help me in my present urgent petition. In return I promise to make Your name known and cause You to be invoked. Say 3 Our Fathers, 3 Hail Marys and Glorias. Publication must be promised. St. Jude pray for us all who invoke your aid. Amen. This Novena has never been known to fail. This Novena must be said for nine consecutive days. My prayers have been answered. A. K.

WE CAN CONTINUE TO DEVIATE - DISCOUNT HOME POLICIES UP TO 30% PLUS UP TO 20% OFF ON AUTO INSURANCE THROUGH THE TRAVELERS & ALLSTATE CO'S

Tom Power INSURANCE
Post's Friendly Agency
495 3050 & 3051

ALLSUP'S
CONVENIENCE STORES

PRICES EFFECTIVE JANUARY 3-4-5, 1984

OPEN 24 HOURS EVERYDAY
ICE- MILK- BREAD- SOFT DRINKS- CHIPS & DIPS- SELF SERVE GAS- COOKED FOODS- MONEY ORDERS- GROCERIES WHILE SUPPLIES LAST

THERE'S ALWAYS SOMETHING GOOD COOKING AT ALLSUP'S

COOKED FOOD SPECIAL AS FEATURED ON TV SOUTHWESTERN STYLE

BARBEQUE SANDWICH ON A BUN **99¢ EACH**

DECKER LUNCHEON LOAF SALAMI, BOLOGNA, P & P LOAF

LUNCH MEAT **6 OZ. PKG.** **69¢**

BORDEN'S BUTTERMILK **\$1.19** 1/2 GAL. CTN.

BORDEN'S ASST. FLAVORS ICE CREAM **\$1.79** 1/2 GAL. RND. CTN.

GREAT FOR BREAKFAST OR ANYTIME **Fast 'n' Hot**

SAUSAGE & BISCUIT **2 CT. PKG. 99¢**

COKE - SPRITE - DIET COKE 12 OZ. CAN 6 PK. **\$1.99**

ROYAL SNACK CAKES 15' EA. **99¢** OR A BOX OF 10 FOR **99¢**

ASSORTED CASSETTES **\$3.97 EA. OR 2/\$5.99**

LARGE COFFEE 12 OZ. SIZE **29¢**

CHILI CHEESE DOG 79¢ EA. OR **2/\$1.29**

TURKEY SANDWICH WITH MEDIUM FOUNTAIN DRINK **\$1.29**

Sarah Cole

Funeral services are pending at Justice-Mason Funeral Home for Thelma Jo (Sarah) Cole, 61, of Sweetwater who died January 1 at her home. Brenda Morgan, Nolan County Justice of the Peace is withholding a ruling on the death pending the outcome of an autopsy.

Born March 23, 1923 in Post, she attended and graduated from the Post schools. She married J. B. Cole December 1, 1947 in Post and he preceded her in death October 18, 1983.

She worked as a clerk for Hundley's Men Store and at Westside Cleaners. She was a member of the Baptist Church.

Survivors include two sons, Don E. of Snyder and Tommy of Post; her mother, Montee James of Sweetwater; one brother, Carl Adams of Post; one sister, Velma Zabatsky of Denton and eight grandchildren.

Burial will be in Terrace Cemetery.

Grace Cummings

Funeral services for Grace T. Cummings, 87, were held January 1 at 3 p. m. in the Hudman Funeral Home Chapel with the Rev. Steve McMeans, pastor of the First Baptist Church, officiating.

Born December 24, 1897 in Decatur, Texas, she died December 31 at her home 916 West Main.

A resident of Post since 1917, she was a housewife. She married Ed Cummings January 15, 1920 in Post and he preceded her in death July 11, 1976.

Survivors include her daughter, Eddie Aten, her son in law, Ted Aten; two grandchildren, Bill Aten and Ann Stelzer and two great-grandchildren, William Ross Aten and Michael David Stelzer.

Pallbearers included Jimmy Redman, Edwin Lewis, Jack Burkett, Virgil Smith, James Aten and Mike Aten.

Burial was in the Southland Cemetery under the direction of Hudman Funeral Home.

Arnold Pickett

Funeral services for Arnold H. Pickett, 68, of Wimberly, Tex., were held Thursday, December 27 at 2 p. m. in the West University United Methodist Church, Houston.

Pickett died December 23 in Wimberly.

Pickett attended Post High School and was a 1938 graduate of Texas A&M University and was a member of the Texas A&M

Alumni Association

He served in the U. S. Navy during World War II, was a member of the Methodist Church and was the former owner of Texas Lawn Sprinkler, retiring in 1981.

Preceded in death by his wife, Mary Bryant Pickett, survivors include his wife, Paula McGirr Pickett; daughters, Julia Pickett, Huntsville, Linda Neuman, Stone Mountain Georgia, Martha Davis, Vernal, Utah and step-daughter, Kit Blomquist, St. Louis; one son, Walter H. Pickett, Houston; sisters, Lyall Davis, Austin, Elizabeth Davis, Crowell, Doty Piddcomb, Spring, Tex., Agnes Muller, Houston; brother, Charles Lewis Pickett, Lafayette, Louisiana; 12 grandchildren and numerous nieces and nephews.

Charles Luttrell

Memorial services for Charles L. Luttrell, 59, will be held Saturday, January 5 at 11:30 a. m. in the First Christian Church with Pastor Steve Traw officiating.

Born June 6, 1925 at Graham Chapel, he died January 3 at his home in Lubbock following an illness.

A resident of Lubbock for the past year, he was a retired service station operator.

Luttrell married Sally Davis March 12, 1943 in Dallas. He served with the Army Air Corp in the Philippines during World War II.

Luttrell grew up in Post and moved to California in 1945 and returned to Post in 1960, then back to California in 1964 and

Obituaries

resided there until 1983 when he moved to Lubbock.

Survivors include wife; two daughters, Charlotte Carlson of Anton and Diane Brookshire, Lubbock; four brothers, Bobby, Richard, David and Doc and one sister, Mildred; seven grandchildren and three great-grandchildren.

Honorary pallbearers will be A. C. Cash, Bryan J. Williams, Mike Mitchell, and Preston Poole.

Services are under the direction of Hudman Funeral Home.

Seat Belts

(Continued from P1)

Children over two years old may be secured in the regular seat belts of vehicles to comply with the law.

Using seat belts is a good idea, accident studies prove beyond any doubt the merit of the systems, and the state law will do what volunteer efforts have failed to do.

Children in safety seats or seat belts may not like being tied down... but their chances of surviving an accident are increased dramatically when they are in seat belts.

DR. LEWIS D. MOORE OPTOMETRIST

Announces New Office Hours for 1985 Complete Visual Care THURSDAYS 9:30 - 5:30 206 West Main

C&M Productions Proudly Presents

"Fool Hearted Memory"
"Unwound"
"Does Ft. Worth Ever Cross Your Mind?"
"Marina Del Rey"
"Down & Out"
"A Fire I Can't Put Out"
"Let's Fall To Pieces Together"
"If You're Thinking You Want A Stranger"
"You Look So Good In Love"
"Right Or Wrong"

THE GEORGE STRAIT SHOW
SPECIAL GUESTS: Ronna Reeves and Clay Blaker

Thursday, Jan. 17, 8 p.m. Scurry County Coliseum Snyder

TICKET OUTLETS:
Bar-H-Bar - Snyder
Boss & Hoss - Snyder
Clothes Line - Snyder
La Posta - Post

TICKETS:
\$10.00 - Advance
\$12.00 - At Door

Joe Reed Western Wear - LaMesa
Farm & Ranch Western Wear - Sweetwater
Bowers Western Wear - Colorado City
Hastings - Big Spring

1985 Farm Prospects 'Mixed'

Many factors will affect the Texas farm economy in 1985 making farm prospects somewhat "mixed", say two agricultural economists with the Texas Agricultural Extension Service, Texas A&M University System.

The state's agricultural economy will be heavily influenced by U. S. economic policies that affect government revenues and spending, business conditions, level of interest rates, trade policies and exports, weather, farm policy and abundant crop supplies. If moisture conditions remain favorable, the livestock sector may fare slightly better than most crop producers, predict Dr. Carl G. Anderson and Dr. Mechel Paggi, Extension economists.

"On balance, the year ahead may register little change in farm income over the depressed conditions of recent years," they add.

Farming and ranching business costs may increase moderately, assuming inflation remains at current to slightly higher rates.

The enormous government deficit is the major culprit keeping interest rates high, and these high rates and causing serious financial setbacks to agriculture. They not only increase the cost of doing business, but high rates also strengthen the dollar which discourages exports, encourages imports and stimulates efforts to increase foreign production, the economists explain.

Livestock prices may rise slightly, since the cattle inventory is fairly low, they emphasize. Favorable feed-price relationships are expected to encourage pork and poultry production. Large supplies will probably dampen any sustained price recovery for most crops. Additionally, fairly strong farm program incentives to remove acreages from cotton and rice production may discourage excess production and maintain fairly stable supplies for those commodities.

In 1985, retail food price rises are expected to be small due to ample supplies of crops and livestock products. Marketing services associated with moving food from the farm to the supermarket are expected to account for most of the price increase, Anderson and Paggi say.

Outlook for U. S. Agricultural exports continues to be dominated by world economic and political forces. Overall, the current global supply and demand picture is not likely to bring U. S. agricultural exports back to 1980-81 levels. A modest increase in U. S. export volume may result from somewhat lower prices. Major factors influencing agricultural exports are the value of the U.S. dollar relative to other currencies, debt problems of the world's less developed and developing econo-

mies, the global economy and handling of sensitive trade policy issues here and abroad.

Any improvement in demand for U. S. agricultural exports also is dependent on general economic recovery worldwide, and the way that countries handle increasing pressure to institute protectionist policies, contend Anderson and Paggi.

"Levels of interest rates and exports will have

major roles in determining the final outcome," the economists say.

They suggest that agricultural management strategies favor wise use of capital and sharp marketing skills.

"The real key to successful farming and ranching businesses is to place available funds where they return the most and to rely on marketing skills to take advantage of favorable price swings," they say.

As fate of farmers and ranchers becomes more influenced by global and national economic and political events beyond their control, producers should develop a financial risk management strategy. This strategy should rely on proven production practices and year-round marketing plans that include using quality planting seed, the appropriate amount of fertilizer, herbicides and pesticides, as well as minimum tillage.

1985 FORT WORTH STOCK SHOW



ORDER TICKETS BY MAIL
23 Great Performances ★ Jan. 23-Feb. 3

\$10 FRI. NIGHTS AND ALL WEEKENDS \$8 MON.-THURS. NIGHTS \$6 MON.-FRI. MATINEES

Send cashier's check or money order with \$1 extra per order (postage and handling) to: P.O. Box 150, Fort Worth, Texas 76101. Ticket office open 9AM-5PM daily in Will Rogers Coliseum lobby. 817-335-9346.

Items Available At TG&Y Family Centers Listed Below Only.

TG&Y Family Centers

Copyright 1985, TG&Y Stores Co.

A HOUSEHOLD

INTERNATIONAL COMPANY

Super January Clearance Sale

Hurry in today! While quantities last. Sorry, no rainchecks.

Entire Stock Ladies Coats 40% Off	Ladies House Slippers Reg. \$3 ⁴⁴ Sale \$2⁰⁰	Entire Stock Ladies Robes 40% Off	Entire Stock Infant and Girls Coats and Sweaters 35% Off	Ladies Costume Jewelry Rings, Bracelets & Earrings 50% Off
Mens Insulated Coveralls Reg. \$37 ⁹⁹ Sale \$25⁰⁰	Entire Stock Mens Coats and Jackets 40% Off	Entire Stock Girls, Boys, Ladies and Mens Winter Gloves, Mittens & Hats 40% Off	Boys Flannel Shirts Reg. \$4 ⁹⁹ Sale \$3⁵⁰	Entire Stock Boys Coats 40% Off
Knight Rider Slot Racing Set Reg. \$39 ⁹⁹ Sale \$20⁰⁰	Clip Clop Wonder Horse With 5 electronic sounds, the horse kids love to ride Reg. \$69 ⁹⁹ Sale \$35⁰⁰	Stomper Action Track System Earthquake Alley Set Reg. \$21 ⁹⁹ Sale \$15⁰⁰	Magnetic Peg Desk Has chalk board, peg board magnetic alphabet board, great fun for the kids Reg. \$21 ⁹⁹ Sale \$15⁰⁰	Robo Force Action Robot Figures Reg. \$5 ⁴⁴ Sale Priced \$2⁰⁰

All remaining Christmas Decorations, Wraps, Bows, Ribbon, Candles, Candies and Cheese Sets

75% off

Slaton Store Only

Slaton Plaza

No Rainchecks

Limited To Quantities On Hand

Blood Drive

(Continued from P1) some move away. So we are constantly seeking new donors.

This explains why a blood drive is so important to our community.

Contact any fireman for details. The blood drive will be held from 6 p. m. to 8 p. m.

\$5 Discount on ALL SAFETY SHOES

Oil-resistant, long wearing sole + Water-repellent leather

2221 Safety Red Wings

The Shoe Box
213 E. Main

Hospital Notes

Those admitted to Garza Memorial Hospital from December 18 through January 2 include:

- Tim Tanner, medical
- Brooks Conner, medical
- Vicki Gray, surgical
- Kathy Gonzales, medical
- Clovis Hudman, medical
- Sandra Wilson, medical
- Malachi Mitchell, medical
- Ora McDaniel, medical
- Ascension Solis, medical
- Agnes Odom, medical
- Georgie Wilson, medical
- Charles Benson, medical
- Karla Melton, medical
- Patricia DeLa Cerda, obstetrical
- Mamie Carter, medical
- Talmadge Tipton, medical
- Patricia Greathouse, obstetrical
- Kathy Morris, medical
- Dismissed**
- Parlee Strawn
- Marcella Hair
- Roberta Barnes
- Brooks Conner
- Vicki Gray
- Tim Tanner
- Kathy Gonzales
- Clovis Hudman
- Malachi Mitchell
- Sandra Wilson
- Georgie Wilson
- Agnes Odom
- Karla Melton



GARZA COUNTY EH COUNCIL AND OFFICERS - The 1985 Garza County Extension Homemakers Council and Officers include (left to right) Nona Lusk, TEHA Chairman and Historian; Sue Maxey, Council Chairman; Faye Payton, Council Vice-Chairman and Secretary; Jewel Parrish representing Graham EH Club and Becky Warren, representing Post EH Club. Not in the photo are Lucille Bush, Council Treasurer and Oreta Bevers, representing Close City EH Club.

Colleen's Comments

By Colleen England
County Extension Agent
Home Economics
Loucille Morris Memorial
4-H Scholarship

There has been a Scholarship Fund established by the Garza County Extension Homemakers to honor Loucille Morris. The scholarship will go to a Garza County 4-H'er. Those wishing to make a contribution in memory of Loucille may simply request a special deposit at the Post First National Bank. Those wishing to apply for the scholarship need to contact the County Extension Office at 495-2050.

Imitation Cheese Nutrition
It may look and even taste like cheese, but these days, only the label will tell you what you're eating. Under Food and Drug Administration (FDA) regulations, a dairy product which does not meet the relevant standard of identity must be called "imitation." But if the product substitutes for and resembles another food and is not "nutritionally inferior" it does not have to be called imitation.

Some cheeses are labeled as imitation simply because of a change in ingredients from real cheese. For example, some grated Italian style cheeses which contain added whey fall into this category.

Another class of "imitation" cheese is the non-dairy product, made from vegetable oils, sugars, a protein source such as sodium caseinate and other ingredients. Some of these products, like imitation cream cheese, are not nutritionally equivalent to the products they imitate. They must be labeled imitation, may be marked "non-dairy product," and may bear a nutrition label.

An "imitation" label also appears on a popular and

economical category of substitute cheese which have been fortified to contain the same amounts of protein and the 19 other ingredients for which U. S. Recommended Daily Allowances have been established.

The nutrition labels on these products indicate that they are equal to or better than natural cheese in providing protein, vitamin A, riboflavin and calcium. These products may be equivalent in fat content to natural cheese.

For consumers, the labels on packages of imitation cheese can be confusing. The FDA requires full ingredient listing but nutrition labeling is not normally required.

Shoppers may have even more difficulty identifying imitation cheese in processed foods since the processor does not always have to state on the label that imitation cheese is being used.

For example, if a pizza is called "cheese" pizza and the processor uses imitation cheese, the word imitation must be stated on the label. When a pizza is called "mushroom pizza", that means mushrooms are the primary topping ingredient and any cheese used is secondary, so that imitation label does not have to appear.

When the cheese is genuine, the word cheese will appear in the ingredient listing. But the only way a consumer can identify imitation cheese in many processed foods is to look for sodium caseinate and vegetable oil, its two primary ingredients, on the ingredients listing.

Thawing Frozen Pipes

If this winter is anything like last winter, some Texans will find themselves confronted with frozen plumbing. Even in a nor-

mal moderate Texas winter, it's possible to have pipes freeze because of a sudden drop in temperature.

Pipes are most likely to freeze if homeowners turn the heat off while they go away on vacation. Whenever the house will not be lived in for a period of time, set the thermostat at 55 degrees to protect the plumbing.

Should the pipes freeze, there are two important rules for thawing them in a way that won't do more damage in the process.

First, always open faucets connected to the pipe being thawed. When faucets are left closed during the thawing process, the pipe may burst if steam develops in the blocked pipe.

Second, don't use the open-flame heat sources to thaw pipes. The pipes could be damaged and dry or flammable materials near the pipe may ignite.

The safest and most effective way to thaw pipes is to use electric heating tape. Simply wrap the tape around the pipe at the points most likely to be frozen, and plug it into an appropriate outlet to start the thawing process.

One advantage of electric heating tape is that it can be left in place on pipes likely to freeze frequently during the cold season and plugged in when needed. Consumer's should check to make sure the heating tape bears an Underwriters Laboratories (UL) label.

Other means of thawing pipes include the following:

Hair dryers or other hot air gun-type heaters. Use the high heat settings and direct the hot air along the frozen pipe. Clear cobwebs and flammable material from the area to be heated.

Vacuum cleaners - Connect the vacuum cleaner hose to the discharge outlet of the machine and blow air from the vacuum cleaner and the room onto the pipe. This is good if the room is warm and the pipes are in cupboards, closets or under floors and in walls where air can be easily blown.

Small fans - If the room is above 40 degrees, direct the fan onto the area where the pipe is frozen. This works well if the pipes are in cupboards or closets.

Hot water and rags - Wrap the pipe with rags and pour hot water on the rags. Continue pouring hot water until the pipe thaws. This technique is not suitable where water will damage walls, floors or other areas.

Homeowners can save themselves the trouble of having to thaw pipes if they'll simply wrap any exposed pipes or encase them in insulated tubing before the worst of the winter cold is here.

Artist of the Month

Sheri Riedel was recently named 'Artist of the Month' by the Post Art Guild and Sheri has always wanted to be an artist, drawing people, animals and working in school plays on the sets since she was very young.

Several books of stamps bought her first set of paints and she started by entering in Lubbock and Post fairs.

Many ribbons were won and gave her the courage to enter the Post Art Show. Ronald Thomason was the judge and gave the first art show ribbons she ever received and his advice to her was "take lessons, and never stop learning."

She began with Jeanie Elliott, studying for a full year, then workshops with Paul Milosovich, Leo Smith, Pat Krahn, Mac Carow and several others.

Many people started asking if she would teach, which she did, holding two and three classes a week for three years.

During this time, she also did commissions for private individuals and offices. She has paintings in Texas, Wisconsin, California, Arkansas and New Mexico. Several offices in Post have her paintings including Palmer's, Preston Poole and Pat Walker.

Mrs. Riedel states she enjoys doing oil field paintings, such as intricate and authentic rigs and pulling units, including an oil field mural on an 8 x 10 foot wall in C & C Well Service.

She has also done the art work for offices in Lubbock such as Family Counselor, Darrell Ferris, surgeon; David Hall, SoHail Investors and just completed the offices of Halmark Real-

tors. The painting she was show with in The Dispatch recently of the "Chinese Princess" has been delivered to Wesley Halmark for his office. Sheri has also done several portraits of Post people.

A member of the Post Art Guild for the past nine years, she has lived in Post 19 years with her husband, Jerry and four children and now two grandchildren who all give her lots of encouragement.



EMPLOYEE OF THE WEEK - Bonnie Louise Medlin has been selected as 'Employee of the Week' at Garza Memorial Hospital, where she serves as Lab Technician. A resident of Post for the past 21 years, Bonnie has been an LVN since 1959 and has worked in hospitals since she was 16 years old. She also holds a nursing home administrator license, has been an EMT since 1978 and a paramedic since 1982. Bonnie has been married for 32 years and is the mother of two daughters, Deborah Stevens and Charlotte Holbert and has three grandchildren. In her spare time, she enjoys camping, traveling and fishing.

Births

Mr. and Mrs. Kenny McKamie of Lubbock announce the birth of their daughter, Casie Ren'ee, born December 27, weighing 5 lbs., 9 ozs. Grandparents are Mr. and Mrs. Jack Williamson of Lubbock and Mr and Mrs Billy McKamie of Post.

Mr. and Mrs. Lee Hopper of Haughton, Louisiana, announce the birth of their son, Justin Scott, born December 9, weighing 7 lbs., 12 ozs., and was 20 inches long. Paternal grandmother is Mrs. Eldora Hopper of El Monte, California and maternal grandparents are Mr. and Mrs. Glynn Barron of Bossier City, La. Justin's great grandmother is Mrs. Willie Mason of Post.

NOTICE

Due to shipping difficulties, the Ladies' missy and x-size Fleecewear advertised on page 1 of this week's TG&Y circular will not be available. We regret any inconvenience this may have caused.



DANISH IMPORTS

GIFTS & COLLECTIBLES
211 E. MAIN - POST, TEX. 79356
(806) 495-2314

1/2 Price Sale

- Music Boxes
- Decorations
- Place Mats
- Cards
- Nativity Sets
- Candles

Monday - Saturday 10:00 - 5:00

Announcing THE BODY SHOP HAS MOVED TO 202 East Main

- Offering More Class Times
- More Classes for Children ages 3 & up
- New Diet Plan Offered
- Bigger Facilities

FOR MORE INFORMATION CALL

Julie Mason

495-2747

INSULATE your PIPES!
PREVENT FREEZING IN BRIEF COLD SNAPS use **WRAPON® 40** FIBER GLASS INSULATION
35' ROLL
Wallace Lumber Co.

JANUARY CLEARANCE

WATCHES 25% OFF	DOLLS 33% OFF
COSMETICS 33% OFF	PIZZA SETS 33% OFF
JEWELRY 50% OFF	BASKETS 50% OFF
Pangburn CANDY 25% OFF	CANDLES 1/2 Price

SALE BEGINS JANUARY 7 - JANUARY 12
Bob Collier Drug
203 East Main 495-2856

STATE CAPITAL



HIGHLIGHTS

By Lyndell Williams
TEXAS PRESS ASSOCIATION

AUSTIN—The governor and the attorney general traveled together last week to tell a Panhandle town citizenry they would fight to stop the federal government from turning a nearby site into an atomic waste dump.

But whether their political promises to a Deaf Smith County primed for fear will ever need to be kept, only time will tell.

The feds will pick the proposed site in 1990, and the Texas site near Hereford is one of the top three locations.

No one in Texas appears to like the federal action, especially since the region around the site is fertile enough to generate yearly some \$248 million worth of agriculture products.

The land also sits over the Ogallala Aquifer, a major source for the Panhandle's water supplies. If nuclear contamination made it into the aquifer, opponents fear, the entire region's population could be affected.

The feds plan to actually use the high level radioactive waste dump, whichever site is selected, by 1998.

Texans have a few years ahead

of them to convince the federal officials to go elsewhere.

Lawsuit, Veto

But Gov. Mark White and Attorney General Jim Mattox, perhaps the best pair of campaigners in the Lone Star State, haven't missed this excellent opportunity to step to the fore.

Mattox has filed a lawsuit challenging the method which picked the site. White promises to use state veto power to stop the dump.

Under federal law, the state selected for the waste burial site can refuse it, but Congress can override the veto.

To Back Down?

That means the responsibility for making a Texas veto stick lies with the Texas congressional delegation, and not really with the Texas Legislature or its executive branch.

But White, a Democrat who cam-

paigned staunchly against Reagan, has seized this moment as an entry for Democrats back into the Panhandle which has lately voted increasingly Republican.

The political furor, plus a large Texas voting population and a large Texas delegation in Congress, may cause the U.S. Department of Energy to pick on another state with less clout and back down on the Texas site.

Galveston Beach

Mattox scored a victory in the courtroom last week when a state district judge ruled he had the authority to confiscate property of Galveston beach-front owners after Hurricane Alicia shifted their property lines.

The land once owned by over 250 private citizens is ruled to be now in the public domain, which by law is the area between the existing natural

vegetation line and the mean low tide line.

Mattox had sued to stop property owners from rebuilding homes on what is now state land because the hurricane changed the shore line.

Pesticide Confrontation

Texas Agriculture Commissioner Jim Hightower has modified his controversial new pesticide regulations, but the state's largest farm group, the Texas Farm Bureau, wants to investigate whether he has stayed within his authority.

His final version, modified after

complaints from some agriculture groups, was released last week and will go into effect Jan. 21. Hightower's goal is to protect farmworkers who might unknowingly enter fields too soon following pesticide applications.

A spokeswoman for the United Farm Workers Union said union members will monitor treated fields for compliance and report findings to Hightower in three months.

Pleasant Home Church

By Annie Gilbert

Yes I thank God here we are again. Holy greetings everyone this nice, beautiful New Year's Day which the Lord has made for us to see and enjoy as His children. Now I'm still living for our Lord and Master with a mind made up to forever be a Christian with my mind made up to be what God would have me be.

Rev. Kelly, pastor; Rev. James Associate Pastor and Sister Gilbert, reporter.

Attendance very good with all at their Post of Duty. It began with a beautiful lesson subject: "Receive New Life," John 2: 1-11, 3: 16-18. Golden text: God sent not his son into the world to condemn the world; but that the world through him might be saved, John 3:17.

Devotion conducted by Deacons Willie Burleson and Jim Osby and Sister Fisher Wynn who read Hebrews 11: 1-6.

Altar call very highly prayed by our pastor. Choirs presentation beautiful to our Lord Jesus Christ.

Our pastor delivered a beautiful message from the book of I Peter 1: 7. His subject from the seventh verse "Go for the Gold." He truly preached. God is not through with us yet. Let's pray for one another always, amen.

God is still in His holy temple here.

Our love, sympathy and prayers go out to our bereaved Greathouse, Harper and Price families during their bereavement at this time.

Sick and shut-ins include Sisters Lizzie Milo, Sirloma Steel, Brothers Harry Trueblood and Raymond Latson who are patients in Golden Plains Care Center, Brother Malachi Mitchell who is ill at home and Brother Ora D. McDaniels who is a patient in Garza Memorial Hospital, room 107. There are others in the community also, so let's pray for and visit our sick ones.

Thought: "Though justice by the plea, consider this, that in the course of justice, none of us should see salvation."

This reporter says Happy New Year to one and all.



HEADED FOR TEXAS TECH - Tim Tannehill (seated) has accepted a full athletic scholarship to Texas Tech University, enrolling this month. The former Post Antelope All-State and All-District quarterback was welcomed to the Red Raider football program by head coach Jerry Moore who came to Post for the signing. Tim is joined in the signing by his parents Marge and Lane. Tim has been attending Kilgore Junior College for the past three semesters, where he was a starting quarterback.

19 WALLET SIZE COLOR PHOTOS
WE USE KODAK PAPER **99¢**
No limit on this offer

AT **WINN'S**
217 E. Main
Friday & Saturday
January 4 & 5

Ask about our FREE 8 x 10 offer

Shugart's inc.

Group charge 99¢ per person per 19 wallets

Kodak paper. For a Good Look at the Times of Your Life. TM

Congratulations Joshua Ray Greathouse!

Garza County's First 1985 Baby

First National Bank

\$50 U. S. Savings Bond

Collier Drug

First Prescription

Maurine's Flowers

Floral Arrangement



PATRICIA AND DONNIE GREATHOUSE with their son, **JOSHUA RAY**, born January 1, 1985 at 7:30 p.m. in the Garza Memorial Hospital.

Garza Memorial Hospital

Free Room and Board

Prairie Flower Shop

Green Plant

Jae's

Sleeper & Blanket

United Supermarket

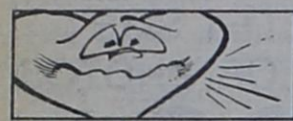
Case of Baby Formula

Twins Fashion

Baby Blanket

Commercial & Legal Rate

Number of Times	Rate Per Line
1.....	\$1.00
2.....	1.50
3.....	2.00
4.....	2.50
5.....	3.00
6.....	3.50
7.....	4.00
8.....	4.50



During a lifetime, the average human heart beats 2.5 billion times.

PRIVATE PARTY

\$2 for first insertion of 20 words or less. **PAYABLE IN ADVANCE.** ALL private party classified ads must be **PAID IN ADVANCE.** Each multiple run is half price after the first time. Eugolgoies up to 80 words free. Private-party, non-commercial, non-profit rates only. No businesses at these rates. **PAYABLE IN ADVANCE.** **DEADLINE: Mondays at 5 p.m.**

PAYMENT IN ADVANCE

All private-party classified advertising **MUST** be paid in advance. NO private-party classified billing. Established commercial and government bodies may be billed at the expiration of the advertisement. **ALL private-party classified advertising MUST be paid in advance.**

"All doors are open to courtesy." Thomas Fuller

A-1 Public Notices

NOTICE OF APPLICATION FOR FLUID INJECTION WELL PERMIT

Beverly SWD, Inc., Drawer 280, Post, Texas 79356 has applied to the Railroad Commission of Texas for a permit to inject fluid into a formation which is productive of oil or gas.

The applicant proposes to inject fluid into the Clearfork Kline, Well Number 1. The proposed injection well is located five miles East of Justiceburg in the Tuf-bow Field in Garza County. Fluid will be injected into strata in the subsurface depth interval from 2,233 to 4,172 feet.

LEGAL AUTHORITY: Chapter 27 of the Texas Water Code, as amended, and the Statewide Rules of the Oil and Gas Division of the Railroad Commission of Texas.

Requests for a public hearing from persons who can show they are adversely affected, or requests for further information concerning any aspect of the application should be submitted in writing, within fifteen days of publication, to the Underground Injection Control Section, Oil and Gas Division, Railroad Commission of Texas, Drawer 12967, Capitol Station, Austin, Texas 78711 (Telephone 512 445-1373).

I will not be responsible for debts made by anyone other than myself.

Wayne Carpenter

Arlita Gary Carpenter is no longer responsible for Wayne Carpenters' debts.

A-5 In Memoriam

To the wonderful people of Post, we the family of W. J. "Bill" Hughes wish to extend our thanks to each of you who came to the home, sent food, flowers, cards and phone calls. To the Church of God of Prophecy for the lovely lunch prepared for us. To each of the ministers who came to the home and helped in the beautiful service, Rev. Gary Cunningham, Rev. Oscar Newdiger, Rev. James Enger and Rev. James Gillentine.

To James Mathis, Melba Feagin, Penny Mahan, Sue Browning, Rev. and Mrs. Enger and Rev. and Mrs. Gillentine and Boo Olson for the songs and music. A special thanks to Dr. Rodriguez for his loving care and concern. To the nurses and hospital personnel, to Pauline Mathis, Lorena Benham and Delia Raymundo for the home care they gave to our loved one.

To Dee and Janet Justice and Mike Custer for the encouraging words and the way the service was conducted.

To our grandsons (the pallbearers) and the EMTs, we are eternally grateful. May God bless each one.

Ione Hughes
Harvey & Ann Hughes and family
Charles & Helen Hughes and Family
Maudie Sue & Weldon Jones & Family

"What is easy is seldom excellent." Dr. Johnson

A-7 Lost & Found

FOUND: Black male dog approximately one year old. Very smart. To claim, call 629-4222.

A-9 Personals

GLENDIA BAKER
Garza County Alcohol-Chemical Abuse Counselor. For information or assistance, call **495-3788** day or night

ALANON

A self-help group for persons whose lives are affected by the drinking or drug problems of their loved ones. Meeting will be Thursdays at 8 p.m. in the First Presbyterian Church Annex. Call day or night (24 hours) **495-2065, 495-3377.**

Post Group Alcoholics Anonymous Closed Meetings, 8 p.m., Thursdays at the First Presbyterian Church Annex, 10th and Ave. S. Your anonymity will be respected. Open meetings 7 p.m. last Thursday of each month. Call **495-3377** or **495-4173.**

A-17 Services & Repairs

Want to keep infant or small child in my home. Lots of tender loving care. Call **495-2439.**

I do babysitting in my home day or night, also weekends. Fenced play area, hot meals and snacks. Very reasonable rates. Call LaDonna at **495-4117.**

Special occasion cakes. Birthday, anniversary or weddings. Call Jimella Simpson at **495-3318** after 5 p.m.

Bob Collier Drug
203 East Main St
Post, Tx 79356
10 Pct OFF
All Photo Processing

FOLLIS HEATING & AIR CONDITIONING
Sales & Installation Service
PAYNE EQUIPMENT FREE ESTIMATES
DIAL 628-3271

MARY KAY COSMETICS
Call
VADA CLARY
In Post
495-2582

All Types
CEMENT WORK
N.H. ROBERTS
Cement-Contractor
Sidewalks, Driveways
Patio - Foundations
Aggregate - Slabs
Curbing
Slaton, Tx 828-6991

Have your old family pictures copied and or restored by
C. EDMUND FINNEY
We also make 16 X 20 oil painted portraits from your snapshots.
1813 North First Street
Tahoka, Texas 79373

COOK BOOKKEEPING AND TAX SERVICE
Bookkeeping - Payroll
RRC Reports - Typing
Income Tax Preparation
Mrs Lois Cook
Owner and Operator
218 West 8th 495-2392

"Great ideas come from the heart." Vauvenargues

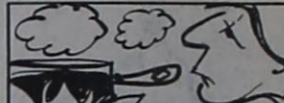
Classified Advertising

F-13 Farm Equipment

Front end loader to fit a Ford or Ferguson tractor. See at 407 North Ave. I.

G-7 Trucks-Trailers

1974 F-100 pickup, 302 engine. Real nice. \$2,500. See at Shamrock Station.



In old India, people once believed that a watched pot foretold the future. If a pot of milk boiled rapidly, the coming year would be prosperous; if slowly, the reverse.

Herbs And Spices Replace Salt In This Italian-Tasting Sauce



Excessive salt consumption is a national health issue that is not going away. For those consumers cutting back on salt or adhering to sodium restricted diets, Prego® No Salt Added Spaghetti Sauce offers homemade taste without added salt, sugar, starch, artificial colors, flavors or preservatives.

A deft use of authentic Italian herbs and spices is what gives Prego® No Salt Added Spaghetti Sauce its rich, robust flavor and aroma. With only 35 mg. sodium per serving, it is ideal to serve over cooked pasta, perfect for poultry, meat and fish, and superb as a base for more elaborate sauces.

STUFFED SHELLS IN RED SAUCE

- 8 jumbo shell macaroni
 - 2 cups shredded low sodium Swiss cheese
 - 1 cup dry curd cottage cheese
 - 1/4 cup chopped parsley
 - 1 jar (15 1/4 ounces) Prego No Salt Added Spaghetti Sauce (about 1 3/4 cups)
 - 1/4 cup Burgundy wine or water
 - 1/4 teaspoon fennel seed
 - 1/8 teaspoon garlic powder
1. Cook shells according to package directions. Drain; set aside.
 2. In small bowl combine cheeses and parsley. Stuff into shells.
 3. In 10-inch skillet over medium heat, combine spaghetti sauce, wine, fennel and garlic. Bring to a boil.
 4. Place shells in skillet. Reduce heat to low. Cover; simmer 10 minutes. Spoon sauce over shells. Makes 4 servings.

READY TO MOVE IN!!!

Three BR, two bath, den kitchen with appliances, living room, two car garage on three lots. 12 x 40 Morgan Bldg. in fenced back yard. Fresh paint and powder.

WANT TO FINISH REMODELING?
Would you like to complete remodeling? Three BR, one bath.

NEED A TAX BREAK?
Two newly remodeled two bedroom houses. Would make excellent rental property or nice homes for small families.

DO YOU LIKE LOTS OF ROOM?
Large two BR, two bath with large living room and huge den. Basement, storage galore. Fenced. Ready to move in.

NEW LISTING!!!
Three BR, two bath, large kitchen, den, LR, two car garage, lots of storage and lots of room to roam in fenced yard. Perfect family home. 95 percent financing.

MITCHELL REAL ESTATE

Kim 495-3719
Mike & Wanda 828-5878 495-3104
Travis 495-2480

COUPON

SAVE 63% NOW!

Order your subscription to
The Post Dispatch

In Garza or surrounding counties

ONLY \$10 PLUS TAX per year get the Dispatch mailed to your home - Save . . . Newstand price is 50¢ per copy
Your subscription is only 19¢ per copy!

NAME _____

MAILING ADDRESS _____

CITY _____ ZIP _____

Enclose \$10.51 Check or Money Order

The Post Dispatch P. O. Box 10, Post, Tex. 79356

J.L. ROOFING & CONSTRUCTION

For a hole in your roof, or a whole new roof, call J.L. ROOFING and CONSTRUCTION at 495-3190. We stock roofing material, to save you time and money or we will install your material. For a FREE estimate and a FREE telephone book cover, call now or come by 508 South Ave. N.

Owner James Leslie Seals

WE BUY, SELL OR TRADE

Furniture, appliances, tools and anything of value. Call 495-3190 or come by 508 South Ave. N.
JAMES & EDNA SEALS

NEED STORAGE SPACE???

(Pest Control Used)
120 sq. ft of Storage Space (10' X 12')
Only \$35 Per Month
Plus \$15 Refundable Deposit
Sue Little - Omega Properties
495-2589

★ Cabinets

★ Additions

★ Accent Walls

★ Concrete

★ Fireplaces ★ Remodels

★ Local References

LOWELL BRYAN

610 West 4th

495-4105

IF NO ANSWER

495-2518

INSULATE NOW

WITH SUPER INSULATION

Natures Own Natural Insulation

Wood Fiber

CALL FOR FREE INSPECTION

495-3213

Joe Harris Promoted

Southwestern Public Service Company (SPS) has promoted Joe Harris, an engineering estimator for SPS at Lubbock, to local manager of the electric utility's office in Post.

Harris will assume the duties of Glen Barley on January 1, 1985.

Barley is retiring from the company, which he joined on July 27, 1953 as a meter book clerk in Amarillo. Barley has served as the SPS manager in Post since 1964, and as a senior and chief clerk in Lubbock.

Harris began his career with SPS on July 1, 1964 as a truck driver at Plainview. He became an apprentice lineman, and a journeyman lineman in 1972. He was promoted to engineering estimator in 1974 and transferred from Plainview to Lubbock in 1983.

He is a 1961 graduate of Plainview High School, and is working on a bachelor's degree in occupational education from Wayland Baptist University.

Harris was a Worshipful Master of the Masonic Lodge 709 in Plainview in 1978-77. His hobbies are golf and fishing.

He and his wife, Wanda,

have a daughter, Stacey, a junior at Plainview High School.

Southwestern Public Service Company primarily provides electric power to a population of about one million in the South Plains and Panhandle of Texas, eastern and southeastern New Mexico, the Oklahoma Panhandle and southwestern Kansas.

School Menus

Monday, January 7
Breakfast

Assorted cereal, banana, half pint milk.

Lunch

Stew, home made cheese sandwich, fried okra, mixed fruit, fudge cookie and half pint milk.

Tuesday, January 8
Breakfast

Oatmeal, bacon, toast, orange juice, half pint milk.

Lunch

Corn dog, cole slaw, pork 'n beans, Reese cup, half pint milk.

Wednesday, January 9
Breakfast

Assorted cereal, mixed fruit, half pint milk.

Lunch

Taco, lettuce salad, Pinto beans, prunes, corn bread, half pint milk.

Thursday, January 10
Breakfast

Muffin, apple, half pint milk.

Lunch

Fried chicken, gravy, corn on cob, green beans, peanut butter cake with peanut butter icing, hot roll, half pint milk.

Friday, January 11
Breakfast

Malt-O-Meal, sausage, toast, orange juice, half pint milk.

Lunch

Enchiladas, tossed salad, French fries, apple cobbler, half pint milk.

Sponsored as a Community Service By:

Post Dispatch
495-2816



JOE HARRIS

PREVENTION

America, we have the cure for your Alcohol Problem . . .
PREVENTION!

An ounce of prevention is worth a pound of cure. Why not make the decision NOT TO DRINK.

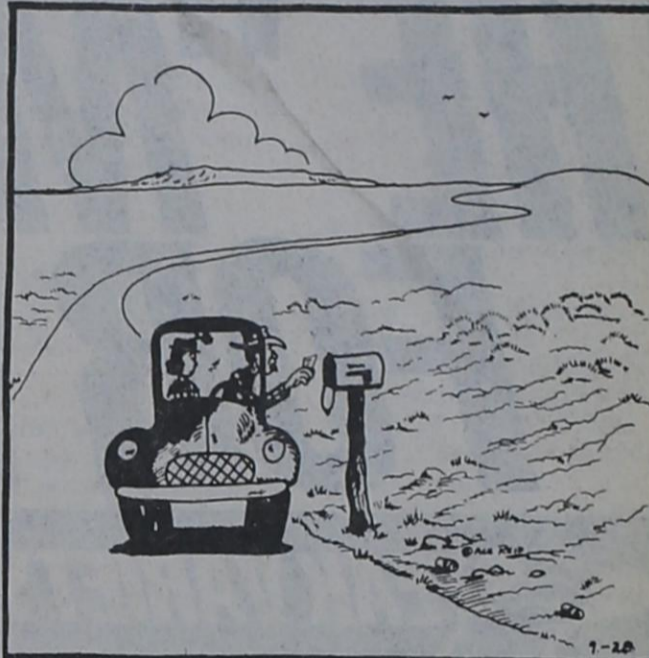
In parts of France it was once considered good for the crops for the farmer's wife to be tossed in a blanket.



DOWE MAYFIELD
Jefferson Standard Life
7204 Joliet No. 3, Lubbock
806-797-8089
Life, Health, Mutual Funds
628-3271

COW POKES

By Ace Reid



"Wul, we have driven 24 miles to the mail box to git a notice to drive 45 miles to town, to pay 3c postage due on a bill from the feed store!"

IF YOU LIVE FAR OUT AND WANT THE EASY BANK TO BANK WITH...LOOK TO WILSON STATE BANK! OUR HANDY BANK-BY-MAIL SERVICE WAS DESIGNED WITH YOU IN MIND!

Wilson State Bank
WILSON, TEXAS
FDIC
A FULL SERVICE BANK

The Post Dispatch
Published Wednesdays
123 East Main
Post, Texas 79356

Entered at U.S. Post Office, Post, Texas for transmission through the mails as second class matter, according to an Act of Congress, March 3, 1879.

Subscription Rates:
Garza and Adjacent Counties . . . \$10 per year
Other Texas Counties . . . \$15 per year
Outside of Texas . . . \$20 per year

Wesley W. Burnett
Publisher
Norma Baumann
Editor, General Manager
Pat Burnett
Circulation, Classified
Rachelle Braddock
Telephone Sales

Deadline:
All stories and advertising Mondays at 5 p.m.
806-495-2816



HUDMAN FUNERAL HOME
615 West Main 495-2821

purposes, and (non-wealth is willing) contribute, give and donate the Theatre and the property to the City for such public purposes."

The warranty did restrictive language says, "For a period of twenty-one (21) years from the date this Deed is recorded no part or parts of the subject property may be used for theatre, motion picture, exhibition of theatrical purposes;"

Commonwealth Thres Realty Inc., is local in Jackson County, Missi.

The council insttied city attorney Harveyorton to write Commonwealth advising them of their action and that the property could not be acced with any restrictionsn use.

The council also heard a report from council member Weaver McKamie concerning the recent purchase of equipment by the EMS.

In an apparent violation of state law, the EMS purchase did not comply with bid procedures. (related story this page).

The council approved bid from South Plains Chevrolet for the purchase of a pickup truck at a price of \$8,848.09 after trade-in of a 1977 pick

up order for life-support systems by the Post EMS sparked a controversial discussion during Monday night's Post City Council meeting.

In an apparent violation of state law, the Post EMS ordered the equipment without following state required bidding procedures.

Council member Weaver McKamie, who also sits on the Ambulance Committee for the city of Post, explained to the council that the purchase of the equipment by the EMS was done prior to the approval of the committee.

Funded jointly by the city, county and hospital board, the EMS is under the jurisdiction of the Ambulance Committee.

"We were told at the committee meeting that since each government unit was only supplying \$4,000, that bids were not required," McKamie reported.

After a lengthy discussion, city attorney Harvey Morton cautioned the council, "I can not recommend disbursement of funds when the law has been clearly violated."

The life-support equipment was ordered from one supplier, but includes three major items, one of which is less than \$5,000.

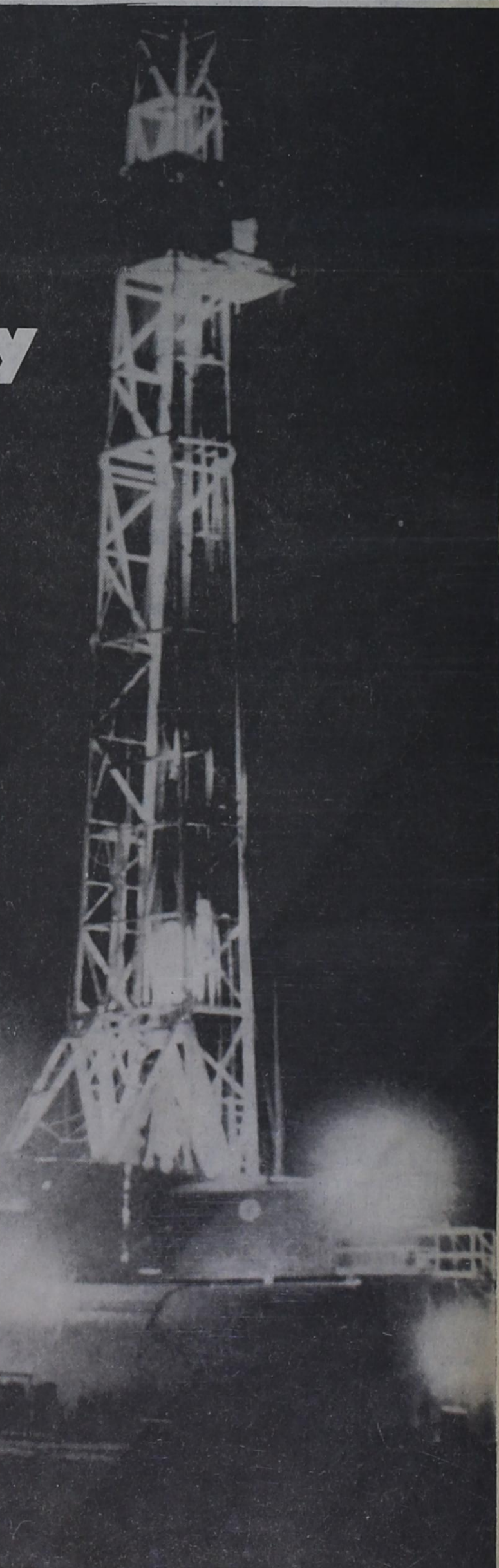
The state law requires publicly funded government

Salute to the Garza County Petroleum Industry

A Special Edition To The Post Dispatch

Wednesday, January 30, 1985

Reserve your advertising space in this popular special edition
495-2816



SAVE'N'GAIN THE "MEATING" PLACE FOR WEST TEXAS

STEAK VARIETY



Boneless Chuck Steak
 Lb. **\$1.55**



Ribeye Steak
 Lb. **\$3.97**



T-Bone Steak
 Lb. **\$2.76**



Arm Swiss Steak
 Round Bone Cut
 Lb. **\$1.67**



Boneless Shoulder Steak
 Lb. **\$1.67**



Large End Rib Steak
 Lb. **\$1.89**



Small End Rib Steak
 Lb. **\$2.29**



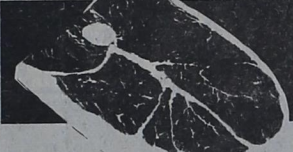
Top Round Steak
 Lb. **\$2.18**



Bottom Round Steak
 Lb. **\$2.07**



7-Bone Chuck Steak
 Lb. **\$1.48**



Round Steak
 Lb. **\$1.89**



Chuck Tender Steak
 Lb. **\$1.79**



Blade Cut Chuck Steak
 Lb. **\$1.19**



Eye Round Steak
 Lb. **\$2.88**



Loin Tip Sandwich Steak
 Lb. **\$2.99**



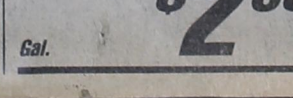
Porterhouse Steak
 Lb. **\$2.88**



Sirloin Steak
 Lb. **\$1.99**



Tenderloin Steak
 Lb. **\$5.00**



Cube Steak
 Lb. **\$2.39**

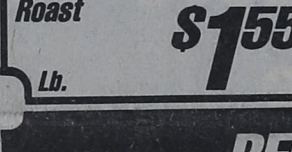
ROAST VARIETY



Boneless Chuck Roast
 Lb. **\$1.49**



Prime Rib Roast
 Large End
 Lb. **\$1.89**



Tenderloin Roast
 Lb. **\$5.00**



Boneless Shoulder Roast
 Lb. **\$1.55**



Boneless Rump Roast
 Lb. **\$1.89**



Beef Brisket
 Whole Cryvac
 Packer Trim
 Lb. **\$1.28**



Loin End Pork Roast
 Lb. **\$1.59**



Chuck Tender Roast
 Lb. **\$1.79**

POULTRY VARIETY

Pilgrim's Pride Prime Parts
 Grade A
 Fresh, Lb. **99¢**

Pilgrim's Pride Fryer Breast
 Grade A
 Fresh, Lb. **\$1.19**

Pilgrim's Pride Fryer Drumsticks
 Fresh Grade A, Lb. **\$1.03**

Pilgrim's Pride Fryer Thighs
 Fresh Grade A, Lb. **82¢**

Pilgrim's Pride Fryer Wings
 Fresh Grade A, Lb. **59¢**

Pilgrim's Pride Fryer Livers
 Lb. **85¢**

Pilgrim's Pride Fryer Gizzards
 Lb. **85¢**

Pilgrim's Pride Fryer Breast
 Boneless, Lb. **\$1.99**

Turkey Wings
 Lb. **43¢**

Turkey Drumsticks
 Lb. **47¢**

BEEF & PORK VARIETY



Quarter Loin Pork Chops
 Asst. Ends & Centers
 Lb. **\$1.59**



Lean Ground Beef
 Fresh Daily
 Lb. **\$1.25**



Extra Lean Ground Beef
 Fresh Daily
 Lb. **\$1.49**



Center Cut Pork Chops
 Lb. **\$1.99**



Beef Short Ribs
 Lb. **Kim 495-3719**



Flanken Short Ribs
 Lb. **Mike & Wanda 828-5878 495-3104**



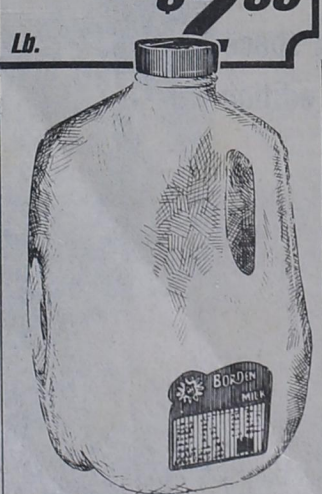
Pork Spare Ribs
 Lb. **\$1.48**



Beef Short Ribs
 Lb. **Travis 495-2480**



Coke, Diet Coke or Sprite
 Reg. or Sugar Free
 2 L. **99¢**



Borden's Homogenized Milk
 Gal. **\$2.09**



Scott's Toweles
 Asst. Lg. Roll **59¢**



Pillsbury All Flavors
 18 Oz.

COUPON
SAVE 63% NOW!
 your subscription to
Post Dispatch
 for surrounding counties
 year get the Dispatch mailed to
 you. Newstand price is 50¢ per copy
 only 19¢ per copy!

ZIP _____
 1 Check or Money Order
 P. O. Box 10, Post, Tex. 79356