

WEATHER		
Date	High	Low
January 27	33	15
January 28	33	15
January 29	32	16
January 30	30	17
Moisture to date .27		

# BAILEY COUNTY JOURNAL

'The Community of Opportunity-Where Water Makes the Difference'



20¢

Vol. 18, No. 5

10 Pages

Published Every Sunday at Muleshoe, Bailey County, Texas 79347

Sunday February 3, 1980



**BABE RUTH PRESIDENT CONGRATULATED**--From left, John Neil Agee, Babe Ruth Vice President; David Cox, Babe Ruth President; Buddy Blackman, Optimist Club of Muleshoe President and K.Y. Givens, District Director for Junior and Senior Babe Ruth from Olton, are shown as Blackman congratulates Cox on being elected president of the Muleshoe Junior Babe Ruth League. Thursday night, during a meeting, the Optimist Club of Muleshoe agreed to take over the financially-troubled Junior Babe Ruth League to operate this year. They plan projects to help pay outstanding debts and purchase necessary equipment.

## Optimists To 'Bail Out' Babe Ruth League

### Cox Named President; Agee Vice President

### Soil Conservation Plans Three Program Sessions

This week is the start of a 60-day public review period during which time interested people are being asked to comment on the direction they think future U.S. Department of Agriculture conservation programs should take.

The public review period starts January 28 and ends March 28.

Four draft documents describing the Nation's nonfederal soil and water resources, their condition, projected demands, and seven proposed alternative strategies can be reviewed at 111 Avenue D, Muleshoe, at the SCS and ASCS offices.

Jim Lutz, District Conservationist from SCS in Bailey County said the proposals for a national soil and water conservation program were developed by a coordinating committee made up of members from nine U.S. Department of Agriculture agencies plus the Office of Management and Budget and the Council on Environmental Quality. The process, mandated by the Soil and Water Resource Conservation Act of 1977 (RCA), included consideration of public input from 9,000 public meetings held in the United States during 1978.

Lutz said the Act directs the USDA to appraise the condition of the Nation's renewable natural resources and to propose alternative programs to

guide the Nation's conservation activities. The appraisal revealed that one

Cont. on Page 6, Col. 3

### Social Security Supplemental Adds Dollars

Jim Latimer, field representative of the Lubbock Social Security office said that 122 Bailey County residents draw the government's supplemental Security Income (SSI) in Bailey County.

"Of this total, one is blind, forty-eight are disabled, and the rest are age 65 or older," he commented.

Average payment of SSI in Bailey County is \$91 and the total amount paid monthly is \$11,149.

"Persons with very low income and with very limited resources are paid SSI to supplement regular Social Security or other income," Latimer stated.

Thursday night, to close a rather lengthy meeting, the Optimist Club of Muleshoe voted unanimously to take over the Junior Babe Ruth League this year.

Meeting with the Optimist Club were several members of the Babe Ruth League and coaches. They expressed their desire for the local Optimist Club, who has an emphasis on assistance to youth, to operate the league, and possibly help them out of their current financial bind.

Meeting with the group was K.Y. Givens, District Director of Junior and Senior Babe Ruth Leagues from Olton. He explained the dates of the playoff games, and gave the locations for the games. Givens also complimented the local people who attended the meeting, telling the more than 20 people present that he had been to many Babe Ruth meetings when only three or four people showed up.

Optimist members approved assuming responsibility for conducting the business of the league, however, did not assume responsibility for the current \$1,700 indebtedness of the league from last year.

Buddy Blackman, Optimist President, commented, "We are here to consider whether or not parents, coaches and others want the Optimist to operate the League. We are considering taking it over and operating it as a business."

Loy Dominguez, president of the League for 1978-79, explained problems the league had encountered in trying to acquire necessary equipment and uniforms, and attempting to obtain team sponsors.

Blackman also told the group that the Optimist "would control the purse strings" and approve all purchases and pay all bills for the league.

It was explained that being the president of a league involves many hours, and Buck Campbell said the only reason Loy Dominguez agreed to take the league for last year was because no one else would take responsibility, and Dominguez did not want the league to die.

"Loy worked on the league and spent time I

Cont. on page 6 col. 1

## Sunshine, Clear Skies Return Highlight Weekend Weather

Bright sunshine returned to the Muleshoe area Saturday morning despite predictions by the National Weather Service that the area was in for another

weekend of icy roads and sidewalks that have marked the last three weekends in this area.

No moisture is in the forecast for the next several days and the weather was expected to be a boon for outside activities to early next week.

Despite minor problems with electric power lines breaking, along with several power poles, Bailey County escaped a major problem that plagued a lot of communities who were without electrical service for up to several days in some instances.

Only two minor 'fender-bender' accidents were re-

ported in the city limits of Muleshoe, and no wrecks were reported on highways in the county during the ice storm last weekend and the first of last week.

Although the National Weather Service predicted a slight chance of rain and possible freezing rain for the Lubbock area and to the south and west of that area, the weather was not expected to reach to the Muleshoe vicinity.

On Friday, the temperature warmed to the high 30s, following several days of temperature being only in the 20s for daytime highs.

The weekend forecast

called for the temperature to be in the 40s for Saturday, warming to near the 60 degree mark for Sunday.

Cont. on page 6 col. 1

### Jaycees Plan

### Volleyball Tournament

Muleshoe's Jaycees will sponsor a men's and women's invitational volleyball tournament in Muleshoe March 10-15. Individual and team trophies will be given to the first place winner, explained Jaycee President Johnny St. Clair, and team trophies will be given for second through fourth places. A team sportsmanship trophy and most valuable player trophy will also be given.

The tournament will be double elimination and professional referees will be provided. A total of 24 teams will be accepted on a first-come, first-serve basis, according to the time the applications arrive.

Local rules and regulations will be furnished to teams entered and entry fee is \$50 to be remitted with the entry blank.

Entries may be mailed to the Muleshoe Jaycees at P.O. Box 571, Muleshoe, Texas 79347. Additional information may be obtained from Kent Kelly at 806-272-4251.

### Basketball Tournament Slated Soon

An outsider's basketball tournament will be conducted at Hart February 26-28 and 29 and March 1, according to a telephone notation of the upcoming tournament.

Entry fee is \$50 per team and deadline for entering the tournament is February 12.

Interested team members may call 938-2572 or 647-5278 for additional information concerning the

### Around Muleshoe

Tomorrow, Monday, February 4, is the final date for candidates to file for the Primary Election scheduled in May. Deadline for filing for the Democratic Primary is 5 p.m.

Interested candidates may file with Dick Pylant at 103 West Avenue D. His office phone is 272-4276.

Three indictments were returned by a grand jury in session in Parmer County Thursday, January 31, in Farwell.

Among items considered by the Parmer County Grand Jury was the fatal shooting of James A. Botts near Lazbuddie on January 8. No indictment was returned by the grand jury.

The Muleshoe City Council will meet in regular session at 8:30 a.m. on Tuesday, February 5 at the Muleshoe City Hall.

On the agenda will be a discussion of the city's role in providing office space to the Texas Employment Commission and considering consultants for an Airport Master Plan contract for the City of Muleshoe. Also, councilmen will transfer delinquent accounts to Bad Debts.

Wendy Stancell, a freshman at South Plains College, Levelland, was listed on the dean's honor roll for the fall semester.

Two pictures were destroyed from the Bailey County Livestock Show, when the camera took a double exposure. The pictures of Staci Kirby and Greg Heston did not

## Pete Black Announces As Sheriff Candidate

J.D. 'Pete' Black of Muleshoe, has authorized the Journal to officially announce his candidacy for Sheriff of Bailey County, subject to the Democratic Primary in May, 1980.

Pete Black has been a resident of Bailey County since 1932, and farmed in this area for many years. He served as coordinator of the Bailey County Veteran's Vocational Agricultural School for six years, and was secretary of the Bailey County Junior Livestock Show for a number of years.

On January 1, 1970, Pete Black was employed by the Bailey County Sheriff Dee Clements as deputy sheriff, a position he had

until February, 1978.

Pete and his wife, Ruth, are the parents of two sons, Bobby and his family and Buddy and his family, all of Dumas.

Speaking of his candidacy, Pete Black commented, "I believe that knowing most of the officers in the area, and having a working association with them all contribute to having the fullest cooperation from all law enforcement people in Bailey County and the region.

"I believe that my training, which includes a knowledge of civil procedures, will help the responsibility of the sheriff. I believe also, that the sheriff is a public servant of the people and for the people, of Bailey County.

"I will dedicate my full efforts as a professional law enforcement officer to serving as your sheriff, to having Bailey County the best community in which to live and rear a family.

"I hope to see every voter to personally ask for your vote and support in the Democratic Primary in May -- and I thank you for your help."



## Williams Is Candidate In Commissioner Race

Marshall 'Catfish' Williams, 40, has authorized the Journal to officially announce his candidacy for Bailey County Commissioner, Precinct One, subject to the Democratic Primary in May, 1980.

He is a self-employed carpenter and resides at Progress. He has made his home in Bailey County for the past five years, moving to Progress from the Lazbuddie Community in Parmer County.

He is married to the former Ann Martin, and they are the parents of three daughters, Kim and Marsha, Muleshoe High School Students, and Suzanne, a student in Muleshoe Junior High School. They are members of the Primitive Baptist Church.

Of his candidacy, Williams said, "If elected Bailey County Commissioner for Precinct One, I will fill the position to the best of my ability. I pledge to work with the county commissioners and the county judge, and to work for the best interest of the people in Precinct One, and all of Bailey County.

"After much thought and consideration, I have decided to seek the office of Commissioner of Precinct One, Bailey County.

"I am qualified. I began working on roads at the age of 15, helping Jack Henry, Crosby County Commissioner, during summer months when school was out. Later, I was given the maintainer job of keeping up the roads

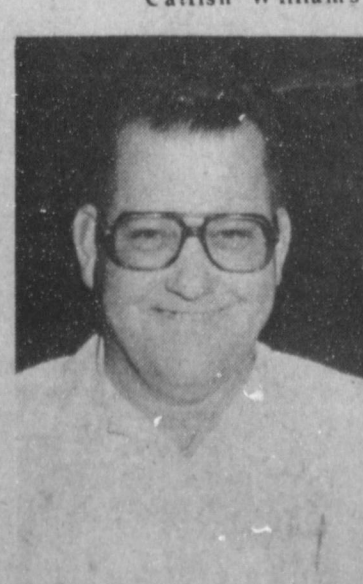
maintainers, backhoes and heavy equipment. I have worked on heavy equipment repair for American Equipment Company in Lubbock.

"I served as an employee of Crosby County for three years, driving a maintainer and worked in Parmer County in the same capacity for one and one-half years. I feel that I have a working knowledge of how to care for county roads.

"Also, I would work to the best of my ability to fairly represent the people of the county, and would make every attempt to handle the financial affairs of the county in a manner to best serve the people in a conservative, conscientious manner," he added.

I hope to contact every voter in Precinct One, if I possibly can. I earnestly solicit your support and your vote in the Democratic Primary," added Williams.

Pd. Pol. Adv. by Marshall 'Catfish' Williams



## Hearing Slated For New Road Here Wednesday

The State Department of highways and Public Transportation will conduct a public meeting on February 6, 1980, at 1:30 p.m. in the District Court Room of the Bailey County Courthouse in Muleshoe for the purpose of discussing the construction of F.M. 54, 1 mile west of Bula in Bailey County.

All interested citizens are invited to attend this public meeting.

The proposed improvement will consist of the construction of a farm to market type pavement consistent with other farm to market highways in the area. Proposed right of way width will be 100 feet.

Maps and other drawings showing the proposed location will be displayed at the public meeting.

Personnel from the State Department of Highways and Public Transportation and the Bailey County Commissioners' Court will be in attendance at this meeting to answer questions and give information concerning the design, the State's Relocation Assis-



# Gunsmithing The American Long Rifle

By: Shane London Smith, an eighth grade student, at Lazbuddie Junior High School.

"The most lethal widow and orphan maker in the world"... "a superb arm"... "deadly at unheard of distances", these and other related comments brought to the attention of the world the first truly American gun, the American long rifle.

Born in Pennsylvania, raised all along the frontier from Kentucky to California, the American long rifle ranked with ax and hoe as basic equipment for pioneer and frontier men as well.

Like many men who used it, the gun was a reconstructed immigrant. Some newcomers to America were gunsmiths. They brought the short, big caliber rifles of their native land. German settlers in the 1700's began lengthening and lightening a short lauded Bavarian rifle into the sleep and deadly mother of future Daniel Boones. The needs that shaped this new type of rifle were threefold: accuracy at extreme distance, economy of operation, and easy handling in wooded country. Barrels were lengthening and caliber sizes were charging. By the time of the Revolution, bore sizes had gone down to .45 or .60 calibers. Decreasing the size of the caliber made the gun slender. Thick butts gave way to smaller ones. These small ones had a graceful droop and a crescent shaped buttplate that fit to the shooter's shoulder. This made the gun lighter. It weighed less than ten pounds, took less lead and powder, and a hunter could roam the woods for weeks without breaking his back.

Its no wonder the American long rifle gained so much acclaim. An average man could hit someone in the head from two hundred yards or on his body somewhere from three hundred to four hundred yards. In Pennsylvania, a good short with a good gun could hit the bobbing head of a chained turkey easily at one hundred yards. In the settling, the range grew and the targets shrank. Rifling grows inside a barrel put a spin on the ball. These groves made the air pressure uniform. This made true flight at longer distances possible. This was not the case with a smooth bore rifle. These groves made the rifle slow to load. When a good short ment life or food in the stomach, riflemen aimed with care. A wild turkey

would fly, a deer flee, or any enemy shoot back in the time it took to measure a charge of powder, pour it down the barrel, lick a linen patch and lay it over the muzzle, put a bullet on top, ram it down on the powder, lower the rifle.

## West Plains Medical Center Report

### ADMITTED

Jan. 28, Gayle Morris, Rogelio Mejia, Melanie Briscoe, Manuel Flores, Willis James, Loyce Bebbs

Jan. 29, Stacy Harlan, Sara Ramos, Joe A Duarte, Sarah Graham, Mary Corley, A.P. Lambert, Edgar Boyce, Jennifer Miller

Jan. 30, Archie Laurence, Nancy Suddeth, Dale Burden, Odessa Pritchard

Jan. 31, Betty Ban

### DISMISSED

Jan. 28, Florence Young, Cindy McDaniel, Monique Herrera

Jan. 29, Ruby Mills, Kathleen Hamilton, Clarence Kube

Loyce Bebbs, Frank Madrid, Sara Ramos, John Noland, Durward Head

Jan. 31, Willis James, Rogelio Mijia

prime the pan, set the steel, raise the gun into position, sight, and fire.

A need for more men to make and fix grew more vital in the Revolution. In the ten months before July 1776, Virginia bought 2,098 of these rifles and contracted for more. One contractor, the owner of one of the largest foundrys in America put this add in the "Virginia Gazette": "Wanted at Hunter's iron Works, the Falls of Rappahannock River, a number of hands who understood the file." After supplying part of Virginia's need for more than a year, Hunter closed his armery for lack of workmen, lost ironically by militia duty and the draft law.

Forge-welding a rifle barrel entailed wrapping a heated flat bar around a cylindrical core. A hand cranked reamer opened

up the barrel. Rifling, spiral grooves inside a barrel, improved accuracy.

To make trigger Guards, imparints were made in fine, damp sand held in a wooden box. Brass, hot from the crible, flowed through duets in the sand to fill impressions. Securing the flintlock completed an American long rifle, lock and barrel of iron, and stock of airy maple. An engraved brass plate framed the hinged lid of a patchbox recessed into the stock. When made entirely by hand it took some three hundred hours of precision work.

This was the American long rifle, a gun that was more than a superb weapon. For it climbed to it's place in history and became a part of the American legend.

If Persian Gulf blocked, Iran threatens war.

## Three Way News

By Mrs. H.W. Garvin

Three Way basketball teams played Whiterrel, Friday night on the home court, loosing both games to Whitherrell.

Mrs. Bulah Toombs,

was in Lubbock Thursday, on business.

Wednesday, the Prayer group met for their regular weekly meeting, in the home of Mrs. Bobby Kin-dle.

Mrs. H.C. Toombs, came home from Methodist hospital, Saturday after surgery last Tuesday. She is doing fine.

Mr. and Mrs. Jack Furgeson, were in Lubbock last week on business.

The youth from the community won several prizes on their fat stock at Muleshoe the past week end.

Mr. and Mrs. George

Tyson, were in Lubbock Thursday night on business.

The community has received very little moisture, but a lot of ice the past week.

**Definition**  
The World: A big ball which revolves on its taxes.

-Soundings, Newport, R.I.

### PLAY THE ALL NEW

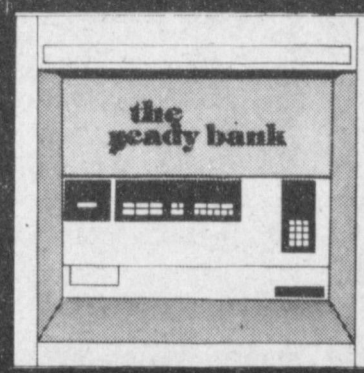
# Instant Vegas Bingo

ODDS CHART EFFECTIVE FEBRUARY 4, 1980

PRIZE VALUE	NUMBER OF PRIZES	ODDS FOR ONE GAME TICKET	ODDS FOR FIVE GAME TICKETS	ODDS FOR TEN GAME TICKETS
\$1,000	1	1 in 10,000	1 in 2,000	1 in 1,000
100	10	1 in 1,000	1 in 200	1 in 100
50	50	1 in 200	1 in 40	1 in 20
25	250	1 in 40	1 in 8	1 in 4
10	1,000	1 in 16	1 in 4	1 in 2
5	5,000	1 in 4	1 in 1	1 in 1
TOTAL NO. PRIZES	10,001	1 in 1.0001	1 in 0.20002	1 in 0.10001

ODDS TO WIN  
Odds are determined upon the number of prizes which are awarded. This means that the odds for winning are better than the odds for losing.

Instant Vegas Bingo (IGB) is the only bingo game in the world that is played on a single card. It is played on a single card that is 10x5 inches in size. It is played on a single card that is 10x5 inches in size. It is played on a single card that is 10x5 inches in size.



**OPEN!**  
**168** hours a week  
the 24 hour bank

**MULESHOE STATE BANK**  
A FULL SERVICE BANK

101 AMERICAN BLVD. • 272-4561 • Member FDIC

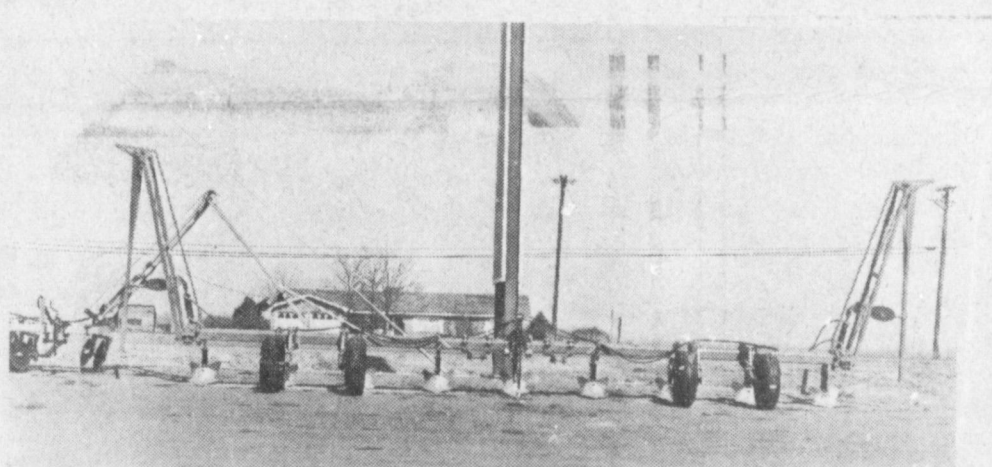


## You're A Winner... Shop With Us!

Prices Good Thru Sat., Feb. 9, 1980

Each of these advertised items is required to be readily available for sale at or below the advertised price in each store, except as specifically noted in this ad. We reserve the right to limit quantities. None sold to dealers.

## FARM EQUIPMENT HEADQUARTERS



### 9 Row Johnson Lister

W/2 Sets Gables & Markers

**\$3595**

Come In And See Bill Harmon, Kirby Carrell or Bill Wooley Today About Your Lister!

## Wooley-Hurst, Inc.

W. Hwy 84 272-5514

Fresh Ground, Delicious

# Ground Beef

(3-lbs. or more) **\$1.18** lb.

Swift's **Sizzlean** 12-oz. pkg. **\$1.38**

Kraft, Philadelphia **Cream Cheese** 12-oz. pkg. **59¢**

Fully Cooked, Shank Portion **Smoked Hams** **88¢** lb.

Save When You Use So Many Ways

## Spam Lunch Meat

12-oz. can **99¢**



Kraft

## Macaroni & Cheese Dinners

7 1/4-oz. pkgs. **3 for 87¢**



Piggy Wiggly

## Peeled Tomatoes

16-oz. cans **3 for 99¢**

Casserole

## Pinto Beans

2-lb. bag **79¢**

Minute Maid, Frozen

## Orange Juice

12-oz. can **77¢**



U.S. No. 1, Russet

## Baking Potatoes

5 lb. bag **59¢**



Gold Medal

## Flour

5 lb. bag **86¢**



California, Sunkist

## Navel Oranges

Crispy, Fresh Large **10 for 99¢**

**Green Peppers** **6 for 99¢**

Large Heads Snow White Cauliflower **60¢** For Baking or Snacking Icy Fresh, Bunches

### Would You Like To Be Paying LESS For Your Life Insurance?

Compare Your Premium To These Below;

Male Age	Amount of Insurance	Yearly Premium	Cash Value 10th. year	Cash Value 20th. year	Cash Value Age 65
16	\$100,000	\$499	\$3,900	\$12,900	\$54,100
25	\$100,000	\$734	\$6,600	\$19,300	\$51,400
35	\$100,000	\$1,194	\$11,000	\$28,000	\$46,400
45	\$100,000	\$1,935	\$16,200	\$37,600	\$37,600
55	\$100,000	\$3,162	\$22,100	\$46,600	\$22,100
60	\$100,000	\$4,100	\$25,400	\$51,100	\$10,800
1	\$100,000	\$312	\$12,000	\$63,000	\$52,800

The Above Prices Do Not Include Waiver of Premium & Double Indeminty

Call or Write: Tom Hudson



## Area Students Write Winning Essay's

Los Ciboleros Chapter Daughters of American Revolution, sponsored a D.A.R. American History Essay, contest in area schools. The purpose of the contest was to stimulate interest among students, in the history of our county.

The subject for the essay's was, "Industries and Trades During The American Revolution." The first place winner received a "bronze medal", second a certificate of award, a certificate of appreciation was presented to all other contestants.

A total of 337 essays, were submitted, from Dimmitt, Friona, Hereford public schools and Saint Anthony's, Lazbuddie and Springlake-Earth.

The fifth grade, at Lazbuddie submitted, seven essay's, and had two winners, Kristine Miller a first place winner received a "bronze medal", Tracie Elliott won second place and received a certificate of award.

Lazbuddie sixth grade class, had 23 entries, seventh grade 21 and 22 from the eighth grade, with two winners, Shane London Smith, submitted a first place winner and Luna Brockman, a second.

From the Dimmitt school, there were 38, fifth grade essay's submitted. Jacalyn Tompson, submitted a first place winner and Tim Sims a second.

Amy Downing, a sixth grade student, at Dimmitt received a first place medal. Tammy Malone and Bonnie Roland, tied for second place. There were 31 essay's submitted from the sixth grade.

Friona, sixth grade class, submitted 25 essay's, also had two winners Robin Gail Houlette, first place and a second place award went to Kelly Wied.

The Hereford school's submitted a total of 77 essay's. Fifth grade had two winners, Shyla Gerik, Saint Anthony's received a first place award, Robbie Phillips, West Central, second.

Kelly Burrus, Saint Anthony's, a sixth grade student won first place and Jean Sherman, Aikman, second.

Springlake-Earth submitted 92 essay's. Joe

Sisneros a seventh grader submitted the most original.

Because the N.S.D.A.R., is striving to upgrade, the quality of the essay's, the judges complied closely with the rules, given all schools in September. With regret some grades did not qualify for awards, because more than one industry was selected, for an essay.

### County 4-H Host Student Exchange

The Bailey County council met January 21, in the Bailey County Court House.

The chairman Jimmy Gleason, presided over the meeting. Items discussed were the 4-H'er of the month. Brenda Flowers was elected 4-H'er of the month of November.

The council also discussed various trips, that the county 4-H could make.

The other item of business discussed was the exchange program. It was decided to host a student exchange program.

Members present were, Jimmy Gleason, Jacinda Gleason, Belinda Wheeler, Zanna Huckaby, Brenda

Other reasons for disqualification were: not relating the industry to the American Revolution; copying directly from the source; lack of information on cover sheet and excessive spelling and punctuation errors.

In order to qualify the essay's for fifth and sixth grades, were to be from 300 to 600 words, seventh and eighth grades 600 to 1,000 words.

Award recipients, parents and teachers will be extended an invitation to a reception, planned for April 27.

Flowers, Tamara Gilliland, Kim Farmer, Casey Farmer and Perry Flowers.

\*79 wholesale price hike five-year high.

## Hobby Club

The Muleshoe Hobby Club, met Thursday, January 31, for an all day workshop in the Muleshoe State Bank reception room with two visitors, Ladonna Scott and Modene Elmore.

Members present were, Ruth Williams, Sammie Ethridge, Opal Robinson, Bernice Amerson, Allie Barber, Jo Wilson, Ethel Julian, Fiddle Shafer, Vickie Hendricks, Mabel Caldwell, Gertie Kirk, Hallie Briscoe, Myrtle Chambless, Veta Self and Myrtle Wells.

Articles on display were, needlepoint pillow, needlepoint kleenex box, two wood slice plaques, with owls painted on mirrors, beat baskets and

owl fringes.

Bernice made an owl frigate and several ladies assisted Ruth Williams on a faceted bead basket made of the beads and safety pins and wire.

The next regular club meeting, will be Thursday, February 7, with Ethel Julian as hostess.

### ONE MINUTE SPORTS QUIZ

1. Who was named female Athlete of the Year, 1979?
2. Who was named Male Athlete of the Year, 1979?
3. Who won the Bob Hope Desert Golf Classic?
4. Who was named LPGA Rookie of the Year?
5. Who won the Grand Prix Masters Tennis tournament?

### Answers To Sports Quiz

1. Tracy Austin.
2. Willie Stargell.
3. Craig Stadler.
4. Beth Daniel.
5. Bjorn Borg over Vitas Gerulaitis.

# MICHELIN SALE

STARTING AT  
**\$39.88**

165-13  
FET: \$1.79

Regular Michelin Exchange: \$70.56

## MICHELIN X WHITEWALL

SIZE	PRICE	SIZE	PRICE
165-13	39.88	165-15	53.50
175-13	53.50	195-15	68.50
175-14	56.50	205-15	77.50
195-14	65.50	215-15	79.50
205-14	70.50	225-15	83.50
215-14	74.50	235-15	94.50

EXCHANGE • FET: \$1.75-3.38



As low as **21.88**  
(A78x138W plus F.E.T.)

**Whites Service Custom...**  
the tough tire with the tough-to-beat price!

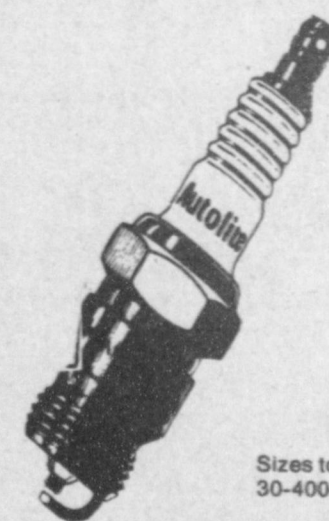
4 strong, bias body plies of polyester cord. 155-14Q-154  
Other sizes available at similar savings.



Special 50th Anniversary Savings

Save over \$9  
Reg. 58.95  
**49.88**  
Exchange

Never needs water...and the corrosion free terminals seldom need servicing. Meets auto manufacturer's recommended cold cranking amps for most cars.  
152-500-508



**68¢** Ea.

Autolite Regular Spark Plugs

Sizes to fit most cars. 30-400-414.

Resistor Plugs Slightly Higher



**2.88**  
Fram Oil Filters  
44-606-949

Stock Up Savers!

Your Choice **64¢** Qt.



Whites Automatic Transmission Fluid  
Choose Dexron or Ford.  
46-202, 204

Whites Non-Detergent 30 Wt. Motor Oil  
46-270

Whites Heavy Duty Motor Oil, SAE 20 or 30  
46-282, 284

**P O Y N O R ' S**

## FINAL Reduction Sale

Latrells Will Be Closed

Mon., Feb. 4 & Tues. Feb. 5

Preparing For Final Markdowns!

Sale Starts  
Wednesday, Feb. 6

We Will Be Open From 10a.m. to 8 p.m.  
For Your Shopping Convenience.

**LATRELL'S FASHIONS**

Phone 806 272-3459  
Muleshoe 1519 West American Blvd.

**YOU EXPECT US THERE**

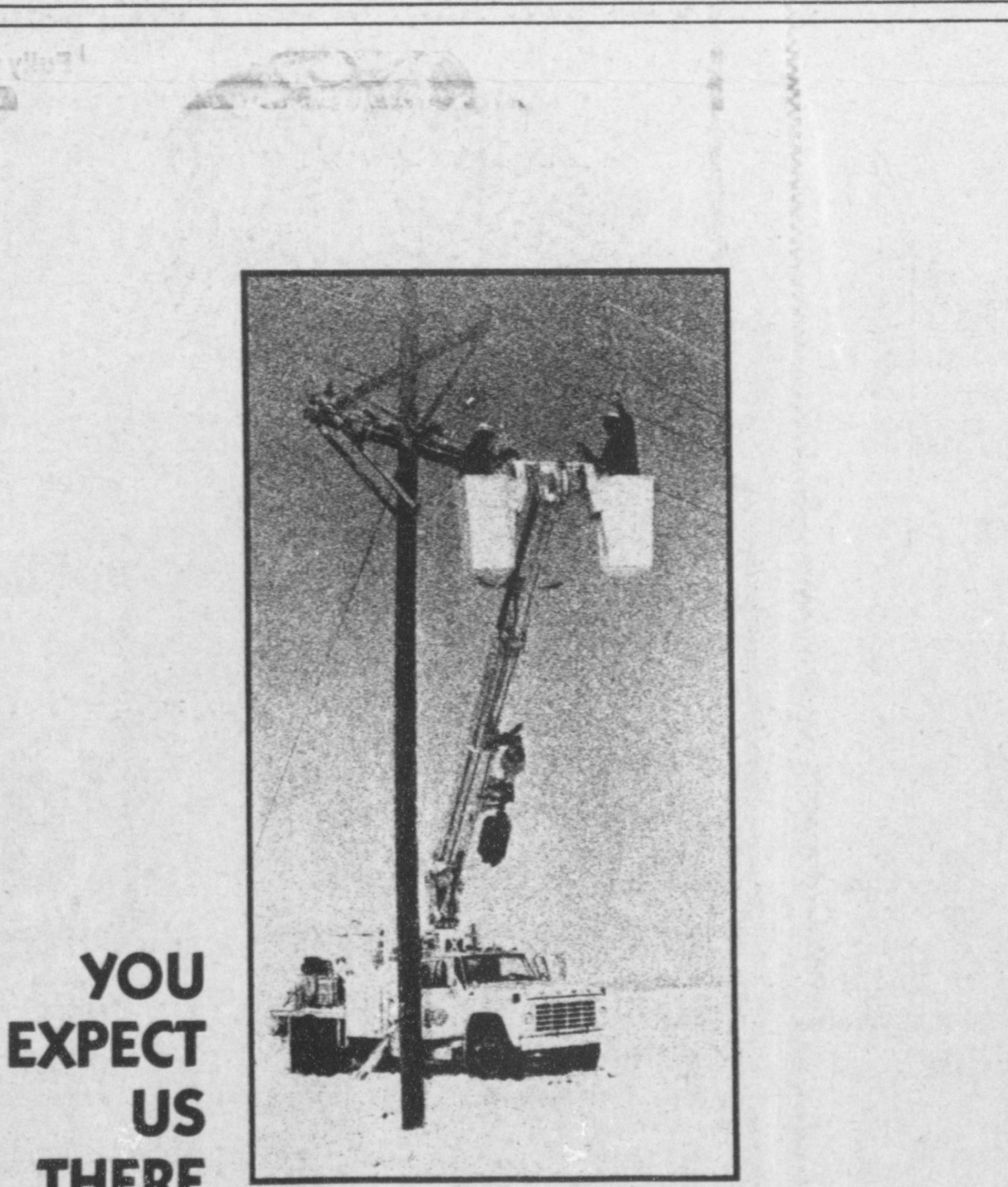
Yes you expect us there and You depend on Southwestern Public Service electricity to provide a lot of things to make your life better and more comfortable at home and work.

You depend on SPS to restore service quickly after a storm or accident.

When you need us we'll be there. It's good to know there's something you can depend on.



SOUTHWESTERN PUBLIC SERVICE



## True Value BARGAIN OF THE MONTH



now **344**  
WHILE SUPPLIES LAST

### SELF-CLOSING WASTEBASKET

Compact container for trash or laundry. Lid swings open & shut. In chocolate or gold. 11 1/4 x 15 x 24 1/2 in. 2864

Quantities Limited

401 S. 1st.  
Muleshoe  
272-4511





# Candle Light Ceremony Unites Cindy Harvey, Wootton

The Highland Baptist Church, was the setting for the ceremony uniting, Cindy Harvey and Benny Wootton, in marriage. Dr. V. Elmer McGuffin, officiated the double ring candlelight ceremony, January 12, at 6 p.m.

The bride is the daughter of Mrs. Alice Davis, of Texico and Leon Harvey, of Clovis. Grandparents of the bride are Mrs. Raneta Dawson of Muleshoe, and Mrs. Florence Harvey of Clovis. Grandparents of the groom are Mrs. Merle Greer of Lovington and Mr. and Mrs. Bill Cox, also of Lovington.

Vows were exchanged before an altar decoration of a fifteen branch candleabra holding white candles and accented by a large arrangement of white gladiolas and blue carnations interspersed with baby's breath.

On each side of the main candleabra was a nine branch candleabra with candles entwined with greenery. Family pews were marked with large blue bows.

Betty Gunnels, pianist, played wedding selections as the candles were lit by Craig Wootton, brother of the groom. Mrs. LeAnn Rogers presented the wedding selections "We've Only Just Begun" and "Color My World" at the beginning of the ceremony. Before the bride was given in marriage by her father, Mrs. Rogers sang "The Twelfth of Never" and to seal the vows she sang "The Lords Prayer."

Escorted to the altar by her father, the bride was attired in a white quina

empire waist gown with a Watu chapel length train. The dress featured a Queen Ann neckline, accented with wide lace and fitted sleeves trimmed in sheer lace.

A headband of white embroidered lace enhanced a finger-tip illusion veil, trimmed in matching lace.

Her bouquet was fashioned in a cascade of white rosebuds and blue carnations, baby's breath and accented with white flowing ribbons carried on a white Bible, given by the brides grandmother, Mrs. Raneta Dawson.

In keeping with bridal tradition, the bride carried a handkerchief of her great-great grandmothers, for something old, borrowed was a pair of diamond earrings, belonging to her grandmother, something new was her wedding attire, something blue was a blue garter, with an attached bridal charm, engraved with the names of the couple and the wedding date given, and designed by her aunt, Allene Harvey.

Maid of honor was Donna Riegel, bridesmaids were Kathy Priest, sister of the bride, and Crystal Wootton, sister of the groom. The flower girl was Connie Miller.

The guest was registered by Darla Roark of Clovis.

Best man was Jeff Porter, of Los Cruces, N.M., groomsman were Smiley Wootton, brother of the groom, and Dick Holland. Ringbearer: Jody Priest, nephew of the bride, carried a white lace heart shaped pillow.

A wedding reception was held in the following

room at the church. Shirley and Janet Tiffin, entertained the guests with assorted piano music.

The brides table was decorated with a three tiered round cake highlighted with lace work and tiny blue flowers. A white bell inside a pearl shaped heart topped the cake made by the brides sister, Kathy Priest. Serving at the brides table was Sondra Andes and Kelly Harris.

The grooms table, held a horseshoe shaped red velvet cake, made by Waynette Wootton, mother of the groom. Serving at the grooms table Johna Hunton and Charla Cooper.

Following a trip to the Inn Of The Mountain of Gods, the couple will reside in Los Cruces, N.M.

## Mrs. Lucille Fox Honored On Birthday

Mrs. Elsie Seymore, hosted a luncheon Tuesday, January 15, in honor of Mrs. Lucille Fox on her birthday.

Present were Mrs. Doris Pierce, Mae Fisher, Opal McCaghen, Micky Stephens, Nellie Kersler, Maxine Nichols, Elsie Welson, Jeanne Bartley, Neel Ingle, Bethlene Harper, Evelyn Fisher.

Also Yvonne and Heather Pierce, Heath Pierce, Verna Wimberley, Mrs. Lena Humphrey, Elsie Seymore and Sissy and the honoree, Lucille Fox.

Mr. and Mrs. Benny Wootton



WORTHY ADVISOR...Tena Landers, daughter of Mr. and Mrs. Henry Landers, will be installed as Worthy Advisor, of Muleshoe Rainbow Assembly No. 161. The installation will be February 9, at 7:30 p.m.

**Singleton-Ellis Funeral Home**  
24 Hour Ambulance Service  
Ph. 272-4574 Muleshoe

**CAR-SENSE**  
Linda Nowell  
Hardly a day goes by that you don't hear someone say something about gas mileage with an automobile. This, of course, is for good reason. Gasoline has risen at least a little each year, so it stands to reason, when you buy a new car you want the best gas mileage possible. With this in mind, and if you don't want to sacrifice comfort, it would be wise to check our sub-compact models. These can be purchased with a small engine which will get you virtually the same mileage as a small compact without much comfort. Don't overlook, in your next new car, the possibility of a six cylinder engine. These have been perfected to the point that they stand up well and are good for long mileage and are less expensive to maintain than an eight cylinder engine.  
**Muleshoe Motor Co**  
1225 W. Amer. Blvd. Ph. 272-4251

## Library Workshop Tuesday

The Muleshoe Area Library will host a

Library Workshop Tuesday, February 5, in the basement of the Library, from 9:30 a.m. to 3 p.m.

Other member libraries of the West Texas Library System, have been invited, as well as any interested person.

The special attraction for this workshop will be, Glynda Collins, from Amarillo, who will bring an innovative, new and easy use of Puppetry.

This program will be most interesting, and of special interest to anyone who works with children.

If there is anyone, teacher, Sunday School teacher, or kindergarten worker, who would like to attend, they are asked to call the library, Monday before the workshop on

Tuesday. For the month of February, we are happy to have a display some articles of hand-painted china done by, Errold Gross.

### BIBLE VERSE

1. Who was the author of this verse?
2. To whom was he writing?
3. What man made the last clause of this verse famous?
4. Where may this statement be found?

### Answers To Bible Verse

1. The Apostle Paul.
2. The believers in the City of Rome.
3. It caused Martin Luther to question his Roman Catholic adherence.
4. Romans 1:17.

## Spectacular WINTER SALE!

**DRESS MAKER LENGTHS**  
**COTTONS & COTTON BLENDS**  
45 in. wide  
SOLIDS  
STRIPES  
PRINTS  
PLAIDS  
Reg. \$1.29  
**88¢** YD.

**SHORT LENGTHS**  
**TERRY VELOUR**  
60 in. wide  
MACHINE WASH  
\$3.99 Value  
**\$1.47** YARD

**SATHERS COOKIES AND CANDIES**  
COOKIES 3 PKGS. For \$1.00  
CANDY 2 PKGS. FOR \$1.00

**EXTRA HEAVY WEIGHT MENS FLANNEL SHIRTS**  
SMALL MEDIUM LARGE X-LARGE  
REG. \$8.88  
13.99

**COLGATE INSTANT SHAVE**  
11oz. SIZE  
**57¢**

**SCOPE**  
18oz. BOTTLE  
**\$1.23**

**RIGHT GUARD DEODORANT**  
3oz. CAN  
**77¢**

**JOHNSON'S BABY OIL**  
10oz.  
**\$1.77**

**10 PAGE MAGNETIC PHOTO ALBUM**  
**\$1.27**

**1¢ Key Sale**  
Buy a key at regular price, get a spare key for a penny. Be safe and save. Get extra keys now! At our Key Department.

**PERRYS**

303 Main 272-4620

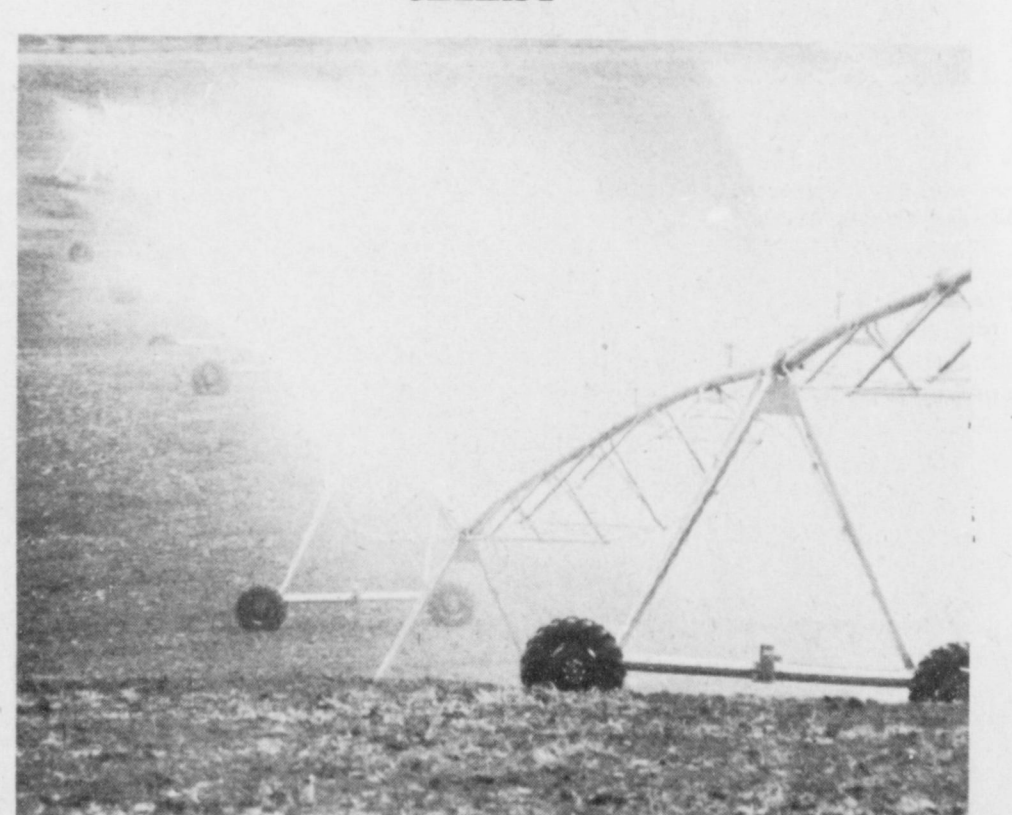


**Coats**  
All At Reduced Prices

**ee's WESTERN WEAR**

Muleshoe 1910 W. Amer. Blvd. 272-4663

## The difference between center pivots is how many times they can do this.



## Valley builds them tougher.

It isn't just one thing. It's the toughest gearbox in the industry — the one they put on other make center pivots by the thousands when their gearboxes fail. It's a new, no-grease urethane U-joint that easily outlasts conventional U-joints. It's a proven three-direction flex joint guaranteed on grades of up to 30%. It's a structure where you can see the difference when you put a ruler to it. And that's just for starters. Let us show you the rest.

Valley dominates the field.  
**VALLEY**  
New Valley Lease  
10% Down  
8.82% Interest Rate  
Expires Feb. 22, 1980

American Valley, Inc.





DONNA LOCKER, BRIANNE

### Study Club Views Film

The Muleshoe Study club, met January 24, in the home of Mrs. E.L. Blackburn.

Members answered the roll call with places they have visited and would like to return to.

They were: Mrs. Joe Costen, who would like to go back either to San Francisco or Mexico City; Mrs. Wilma Thompson, Hawaii; Mrs. John Agee would like to return to the home of her childhood in Kiowa County, Okla.

Mrs. Mervin Wilterding loved the beautiful garden cities, of places she visited. Mrs. J.G. Arnn, London England; Mrs. Wilma Witherspoon, said London England was her favorite. Mrs. Charles Shain has traveled extensively, during her husbands service career, but she said she was happy to be in Muleshoe; Mrs. Doyle Turner, said Lake Conroe, close to Houston, was a beautiful place to see; Mrs. A.C. Neely said Spain and Alaska, were two of her favorite, but to

### Mrs. Donna Locker, Honored With Baby Shower

Donna and Brianne Locker, were honored with a baby shower, January 29, at 7 p.m., in the home of Elaine Burgess. Guests were greeted by the hostesses.

### Mrs. Ethridge Reports On Christmas Card Project

The Muleshoe Hospital and Nursing Home Auxiliary met Thursday, January 24th at 2:00 p.m. in the Conference Room of the West Plains Medical Center.

President, Dorothy Green presided over the business meeting and heard the various committee reports.

Mrs. S.M. Ethridge, chairman of "Project Christmas Card" reported that \$3,796.50 was made on this project. The members voted to use this money to help refurbish and remodel the Dining Room in the Nursing Home. They also voted to purchase a new Serving Cart to be used by the Auxiliary in the Hospital and Nursing Home.

A nominating committee with Mrs. Neal Bradshaw, Chairman Mrs. Joe Smallwood and Mrs. Finis Kimbrough was appointed to select a slate of officers

covered with a yellow, linen cloth, centered with a musical animal mobile.

Finger sandwiches and sausage rolls were served, by the hostesses from crystal appointments.

to be voted on at the next meeting.

Those present were visitors: Mrs. Carol Whitecotton, and new member: Mrs. Cliff Goodrich. Members present were: Mrs. Owen Jones, Mrs. Clara Crain, Mrs. Hancy Poynor, Mrs. Herb Ramage, Mrs. A.E. Redwine, Mrs. Joe Smallwood, Mrs. Finis Kimbrough, Mrs. Willard Tibbets, Mrs. S.M. Ethridge, Mrs. Dorothy Green, Mrs. Robert Kimbrough, Mrs. Mabel Caldwell, Mrs. R.A. Bradley, Mrs. Marvin Locker, and Mrs. Randy Johnson.

Special guests were, Mr. Wilcy Moore, Mrs. B.C. Locke, Mrs. Morgan Locker and Mrs. Jim Walker.

The hostesses presented Donna with a corsage of sock rosettes, high chair and lamp.

Hostesses were: Randy Hodge, Mrs. George Whatley, Mrs. Jim Burges, Mrs. Roy Bara, Mrs. Ronnie Altman, Mrs. Betty Carpenter, Mrs. Burl Mardis, Mrs. Perry Stockard, Mrs. Alvis Burge, Mrs. Mike Roberts and Mrs. Wayne Gregory.

### TOPS Has Weekly Meeting

Thursday, January 31, the TOPS Club met in the meeting room of the Bailey County Electric. Clara Lou Jones called the meeting to order.

Roll call was by, Evelene Harris, 21 members weighed in.

Rose Sain and Leavell Parker, tied for best loser. Brenda Murphy, was first runner up, with Linda

Vinson as second. One transfer member, Hazel Dupler, was welcomed, also a visitor Carrie Rich.

The next meeting will be the crowning of the TOPS, best loser, also the TOPS queen.

The meeting was dismissed with the singing of the goodnight song.

**Strange**  
Helen--Isn't it odd many people are suffering from head colds this winter.  
Dorothy--Yes, it is rather strange how this little germ can always seem to find our weakest spot.

**Truth**  
Teacher (brightly): "As we walk out-of-doors on a cold winter's morning and look about us, what do we see on every hand?"  
Class: "Gloves!"

Let Us Do Your Spraying  
Ron Kidd  
Custom Application

Treflan-Atrazine  
Milogard & Other  
Chemicals

We Are Now Taking orders  
on Bo-Bar Rope wick  
Applicators

Contact: Ron Kidd

Day: 965-2374 Night: 272-3705

"We'll lend you more than an ear"

MULESHOE STATE BANK

101 AMERICAN BLVD. • 272-4561 • Member FDIC

## PICK-A-POCKET



ATB's good looks steal you some good looks with more pocket styles than a month of Sundae! Every pair's a treat with that great ATB flair! Juniors styles feature straight and flare legs in dark indigo denim with a fit that never quits in sizes 3-15. Men's ATB's offer rugged fashion with flare and boot-cut bottom jeans in both light and dark denim, sizes 28-40. ATB's for the little ones give the same super fit and detailing for only 12.50. Reward yourself with ATB!

**atb**  
\$13 TO \$22

60" Stretch Gabardine  
VISA® Royal Crogdon stretch Gabardine, great for Jackets, Slacks, and Active Sportswear in new Spring colors.

48" Terry Cloth  
Fancy terry cloth in a rainbow of colors to sew tops, dresses, and sportswear.

60" Gauze Knit Coordinates  
A lustrous knit gauze that is perfect for today's soft, fluid dressing.

2 yds. for \$5.

Looking Good For A Whole Lot Less...  
That's Why There's

**Anthony's**  
C. R. ANTHONY CO.

321 MAIN  
MULESHOE

OPEN 9 am to 6 pm

"You Block people really know your stuff. I shoulda come here last year."



Each year, all Block preparers are updated on all the latest changes in the tax laws. That's another way of making sure we can complete your return accurately and correctly.

**H&R BLOCK**  
THE INCOME TAX PEOPLE

224 W. 2nd  
Ph. 3332  
Wkdys. 9-6  
Sat. 9-5

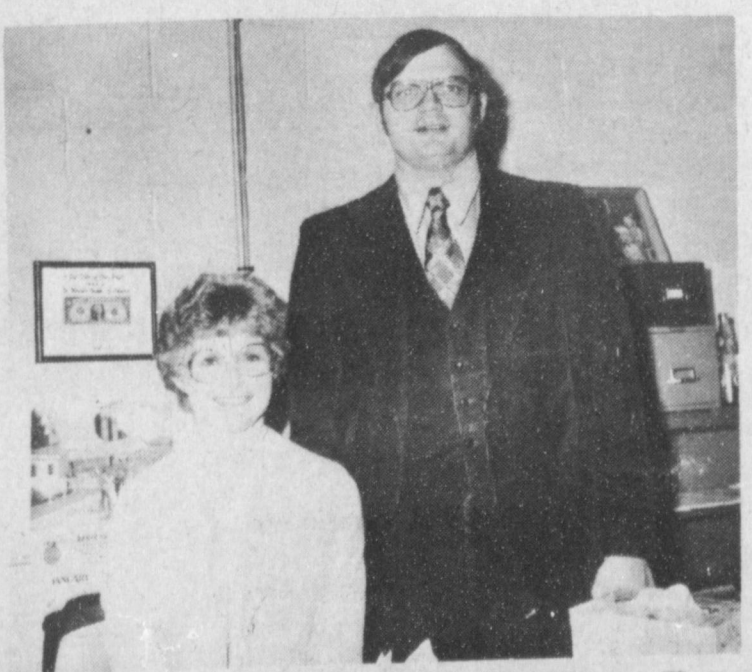
### SMILES

**He Knew**  
Youthful Bridegroom -- My wife has come into my life like a ray of sunshine.  
Cynical Benedict -- Give her time and she'll go through your pockets like a streak of lightning.

**Dumb-bell!**  
He (calling from house) -- Take a glance at the gas, will you Mabel?  
Mabel -- The indicator says half but I don't know if it means half full of half empty.

## Announcing... The Opening Of The Terry Field Insurance Agency

Located At 1534 W. American Blvd. Between Baker Farm Supply & Leal's Restaurant



Terry & Charlotte Invite All Their Friends & Customers To Come By Their New Location

For Competitive Rates

On Auto, Home, Business, Life or Health Ins.

See Terry Field At

**Terry Field Insurance Agency**



### Babe Ruth...

Cont. from page 1

wouldn't have," said Campbell. "You have a lot of people donating time who didn't get anything but criticism."

Optimist members voted to pay interest currently due on a bank note made last year by the Junior Babe Ruth, and to conduct projects to help pay the debt. They also favored getting Babe Ruth Baseball players involved in helping pay the debt through projects.

Also, apparently it is going to cost from \$5-\$10 for each player to help

### Weather...

Cont. from page 1

NWS says the weather through Tuesday will be mostly fair, with gradual warming before the next cold front whistles through late Tuesday to again become winter weather. Little moisture is in the forecast for the immediate future and winter wheat is beginning to show the effects of the lack of moisture. Despite frequent cloudy skies, moisture derived from the cold fronts moving through the area has been light.

purchase the cap, uniform and insurance for the player.

Discussed at length were repairs which are becoming necessary at the park, including deterioration of the dugouts and fences at the ball park.

The possibility of once again seeking sponsors for the teams was discussed.

Elected as President of the League was David Cox, with John Neal Agee elected vice president. They are to find and appoint a player agent; along with a secretary. In the interim, Winston Allison, secretary of the Optimist Club agreed to act as secretary until a new one can be named.

Blackman said the Optimist Club would like to see every boy on every team have the best uniforms and equipment, so the Optimist Club will be working on projects to acquire new uniforms.

The draft was discussed, and beginning dates for preparing the field, and for baseball practice to begin.

### BROCK ON CARTER

In his first criticism of administration actions in the Iranian crisis, the Republican national chairman Brocks said that President Carter's only real policy is "a policy of deception" aimed at fooling the American people.

### SCS...

Cont. from page 1

Third of the Nation's cropland -- 136 million acres -- is eroding at an excessive rate, explained the conservationist.

Basic information about the RCA process and proposals may be seen in four documents.

The first document, Draft Appraisal Part I, described the status and condition of our natural resources and provides information on their quantity and quality and major uses of nonfederal land. The completed draft identifies national conservation objectives for:

- Reducing erosion and preserving prime farmlands
- Improving water quality.
- Conserving water
- Improving fish and wildlife habitat, including the preservation of wetlands.
- Reducing upstream flood damages
- Conserving energy
- Solving related resource problems

The second document, Draft Appraisal Part II, projects demands on soil and water resources to the year 2030 and suggests levels of management that could be used to preserve these resources. It also summarizes trends in rural land ownership and describes the contribution of state and local programs to soil and water conservation.

The third document, Program Report and Environmental Impact Statement, outlines seven possible approaches -- called alternative strategies -- for changing USDA conservation programs and outlines the probable environmental impact.

The fourth document,

Summary of Appraisal, Parts I and II, and Program Report is a brief summary of the other three documents.

During the public review period, three public meetings will be held in Texas to discuss content of the documents and provide an opportunity for comments. The meetings will be held in Arlington on February 26; Lubbock on March 4 and San Antonio on March 6.

Interested citizens are invited to send written comments about the documents or suggestions about future conservation programs to the RCA Response Analysis Center, P.O. Box 888, Athens, GA 30603.

Anyone interested in reviewing the documents or finding out more information about upcoming RCA meetings should contact Jim Lutz of the Soil Conservation Service office or Rusty Williamson of the Agricultural Stabilization and Conservation Service staff. Offices will be open from 8 a.m. to 5 p.m. Monday through Friday.

### The Lonely Heart



Bailey County Journal (ISSN 0402-2000)

Established March 11, 1963. Published by Muleshoe Publishing Co., Inc. Every Sunday at 304 W. Second. Box 489, Muleshoe, Texas. "544" Second class postage paid at Muleshoe, Texas.

MEMBER 1980 TEXAS PRESS ASSOCIATION

L.R. Hall, President  
James W. Woods, Vice-President  
Clara Williams, Secretary  
Fletcher Harris, Secretary

SUBSCRIPTIONS:  
Muleshoe Journal, And Bailey County Journal, Bailey and surrounding Counties... \$10.50  
Muleshoe Journal and Bailey County Journal, Everywhere in Texas... \$11.95  
Muleshoe Journal, and Bailey County Journal, Outside of Texas... \$12.45  
Monthly by carrier... \$6.50  
Advertising rates: call on application... \$ 8.00

### Trend Continues; Texas Farms Likely Down by 2,000 in '80

AUSTIN--Texas, which has seen a steady trend toward fewer acres devoted to farmland, will likely see the

loss of another 2,000 farms representing some 300,000 acres in 1980, Agriculture Commissioner Reagan V. Brown has reported.

### - VARSITY & JUNIOR VARSITY - Boys and Girls

Feb. 5 MORTON*	T	4:00
Feb. 8 DIMITT*	H	5:00
Feb. 12 LITTLEFIELD*	H	5:00
Feb. 15 FRIONA* (Boys)	T	6:30
Feb. 19 OLTON* (Boys)	H	6:30

\* - DISTRICT 3-AA CONFERENCE GAMES

All games include Boys and Girls Varsity and Junior Varsity schedule unless otherwise indicated.

### "Bank on us for Banking"

MULESHOE STATE BANK A FULL SERVICE BANK  
101 AMERICAN BLVD. • 272-4561 • Member FDIC

In 1979, there were 161,000 farms in the state with a total of 138,700,000 acres, according to surveys conducted by the Texas Crop and Livestock Reporting Service.

"And even with the continuous losses of farmland, we have produced some record amounts of crops in recent years," Commissioner Brown noted.

"However, we have reached the point where technology cannot push yields much beyond the present level, and if we don't put the brakes on this slide, we could see some serious food supply problems in the coming decades."

Brown said. "It's time for our nation to take a serious look at this trend. In Texas we are trying to curb the loss of farmland by encouraging more people to get into farming through the Family Farm and Ranch Security Program. By guaranteeing loans for people who are really qualified and have the desire to make agriculture their life's work, we hope to keep food and fiber production an important industry in the state."

\*\*\*\*\*  
Freedom of the press is fine for a nation which has a press that is free.

### General Cement Construction All Types Cement Work Big or Small

Specializes In: Storm Cellars  
Slab Foundations, Metal Buildings  
Sidewalks & Drives.

Free Estimates

### Garcia Bros.

Hereford, Tex. Phone 364-3507  
614 Ave. K Mobile 578-4692

# MICHELIN

## MANIA More than a Sale!

STARTING AT  
**\$39.88**  
165-13 XWX B/W  
FET \$1.79

Regular Michelin Exchange: \$70.56

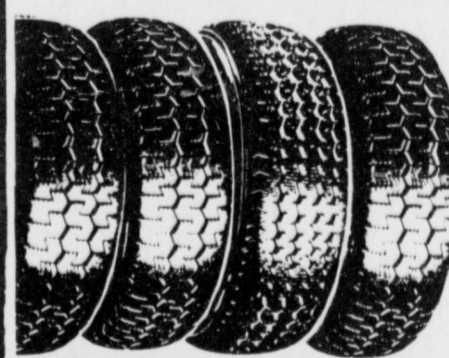
### MICHELIN X WHITEWALL

Size	Reg. Exch. Price	Mania	Size	Reg. Exch. Price	Mania
165-13	70.56	39.88	165-15	74.49	53.50
175-13	74.74	53.50	195-15	94.80	68.50
175-14	79.18	56.50	205-15	104.18	77.50
195-14	90.54	65.50	215-15	110.05	79.50
205-14	98.00	70.50	225-15	114.69	83.50
215-14	104.03	74.50	235-15	137.39	94.50

Exchange • FET: \$1.75 - 3.38



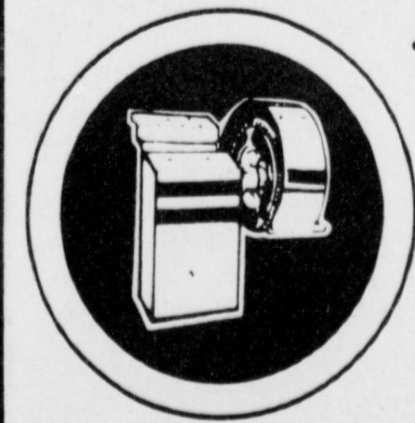
### Register today for a set of Michelins



During Shook's Michelin Mania, each store will give away a free set of Michelin X Steel Belted Radials for passenger cars. Simply come in and register at your convenient Shook Tire Store. Winners will be selected at random March 9. Winners need not be present to win. If winner has already purchased a set of Michelin passenger tires from Shook within 90 days of drawing, his original purchase amount will be refunded.



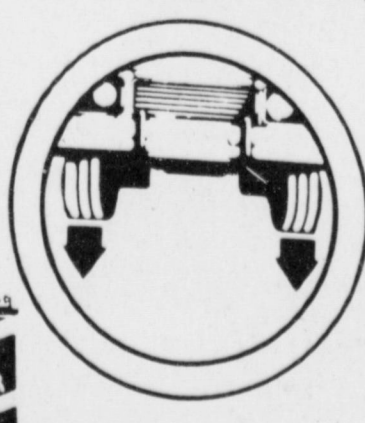
### Computer Balance Wheel Alignment



Recommended For steel belted radials

5.00

Mag wheel slightly higher



- Set caster and camber
- Set toe-in
- Road test car

14.50

Most Cars

Parts Additional If Needed

# SHOOK

TIRE COMPANY

301 N. First • 272-3420 • Manager: John P. ...



RAIN CHECK POLICY:  
Shook Tire Company makes every effort to insure adequate supplies at sales items. Despite these efforts, certain sizes and products may be temporarily out of stock. In these cases, rain checks are always issued except when the sale pertains to clearance items or indicates quantities limited.

Proudly Announces  
**Tim Smith**  
Box 163 Lazbuddie, Tex 79053  
806-265-3325  
Has been appointed New Northrup King Seed Dealer handling Corn, Cotton, Sunflower, Milo & Soybean  
More From Every Acre Through Creative Seed Research.  
NORTHROP, KING & CO.

"WHERE YOU ALWAYS BUY THE BEST FOR LESS"  
**GIBSON'S DISCOUNT CENTERS**

Store Hours: Mon-Sat. 9-7 Sun. 1-6  
Prices Effective Feb. 3-6

Loma Laundry Baskets No. 831 \$2.99

Renuzit Solid Air Freshener 6 oz. 2/90¢

Jergens 10 Fl. oz. 99¢

Triaminic Tablets 48 Ct. \$1.99

Furnace Filters 3/89¢

Vicks Formula 44 6 Fl. oz. \$2.25

New STP Foaming Degreaser 16 oz. \$1.59

Do It Yourself Insulating Against Cold Storm Window Kits Self-Stick plastic foam Weatherstrip Tape 69¢ ea.

All Lee Air Filters 1/2 Price

Felt Weatherstrip 3/99¢

Gleem Toothpaste 7oz. 99¢

Blankets 72x90 2/\$13.00

EVERY DAY LOW PRICES  
Gal. Homo Milk \$2.05  
1/2 Gal. Homo Milk 96¢  
Gal. Lowfat Milk \$1.89  
1/2 Gal. Lowfat 94¢  
1/2 Gal. Buttermilk 98¢  
2 Lb. Cottage Cheese \$1.69  
1 Lb. Cottage Cheese 91¢  
Sour Cream 49¢  
Whipping Cream 58¢

Superior Clearance Electric Heater No. 650 \$19.00 \$10.00





# MULE'S TALE



Editors Lynnette Shafer and Keva Roming

Official Publication of Muleshoe High School Written and Edited by Students of the Muleshoe Schools

Volume 15, No. 16

Sunday Feb. 3, 1980

## Texas Future Teachers, State Convention

### Honor Society Meeting

The MHS faculty have selected students of the month for January Cindy Hamblen, Lynnette Shafer, Kristi Henry and Michael Isaac.

These students have shown hard work in their studies, organizations that involve the school and their ability to get along with everyone in high school.

Cindy Hamblen, a Senior, is the 17 year old daughter of Dr. and Mrs. John David Hamblen. Cindy is involved in many activities, including, FCA, FTA, Varsity Basketball and Tennis. She is National Honor Society Chaplain.

Junior for the month of January is Lynnette Shafer. She is the 16 year old daughter of Mr. and Mrs. Ronnie Shafer. She is on the one act play, stage crew, and is co-editor of the Mule's Tale.

Kristi Henry, is the 16 year old daughter of Mrs. Marcia Henry. As a Sophomore, Kristi is a member of FCA and FTA. She plays basketball, is an officer in Rainbow for Girls, and the President of FHA.

Michael Isaac is the 14 year old Freshman, son of Mr. and Mrs. Charles Isaac. Michael participates in Student Council, FTA, Speech and athletics.

Congratulations to these student for this recognition.

### DECA To Area Contest

Seven students have been chosen to represent the Muleshoe Chapter of DECA in the 1980 area contests to be held February 22-23 at Wichita Falls. Those attending will be:

Food Service series--Yolanda Hernandez, Petroleum series--Ray Castorena, Food Marketing series--Jim Ellis, Apparel and Accessories series--Jerry Puente, Apparel and Accessories written--Brenda Stevens, Finance and Credit series--Sandra Hughes, and General Merchandising series--Albert Lopez.

Muleshoe will also be participating in the 1980 7-Up Muscular Distrophy, DECA Civic Consciousness written event at State to be held March 13 16 in Houston. Jerry Puente is chairman for the event, and Debra Stevens is the writer for the event. Any first place winners at area will also participate in State Competition. Good Luck to all these students.

DECA -- Developing Future Leaders in Marketing and Distribution.

### Campus Activities At Texas Tech

Texas Tech University will again sponsor a full day of campus activities designed specifically for prospective students. Seniors are extended a most cordial invitation to attend this University Day on Friday, February 29, 1980.

Students attending University Day will be provided morning afternoon academic advisement programs offered by each of the six colleges. Student-conducted tours will acquaint visitors with the Tech campus and physical facilities. Student organization and academic colleges plan to maintain booths in the University Center Ballroom to provide students with more information concerning their programs.

The high school counselor has additional materials--the day's schedule, campus map, and a



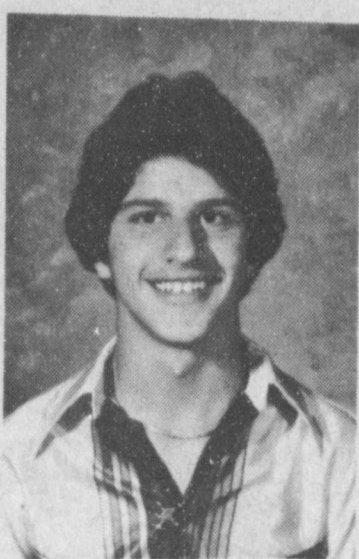
CINDY HAMBLÉN



LYNNETTE SHAFER



KRISTI HENRY



MICHAEL ISAAC

### FFA Holds Show

Members of the Muleshoe FFA Chapter exhibited their livestock at the Bailey County Livestock Show, held at the Bailey County Civic Center, January 24 and 25.

Ten members exhibiting lambs were Ben Harmon, Kellie Overman, Starla Black, Brenda Dodd, Tamara Gilliland, Lyndal Stovall, Lisa Black, Todd Ellis, Delia Shaw, and Beth Harmon.

Forty members exhibited hogs were Todd Ellis, Gary Cox, Kay Lynn Prather, Michelle Stevenson, Johnny Puckett, Lynn Moore, Curtis Wheeler, Tom Dulin, Ben Harmon, Kent Rempe, Larry Nowell, Randy Isbell, Derek Prater, Wade Prater, Benton Glaze, Tyri Vandiver, Tori Holt, Earl Parish, Bobby Grumbles, Curby Brantley, Kim

ter between the WTSU Buffaloes and the Drake University Bulldogs in the season home finale for the Buffs.

Scholarships of \$100 each will be awarded to three high school seniors present during Senior Day, Friday and Saturday, Feb. 22 and 23 at West Texas State University.

Interested students have until Monday, Feb. 11, to make reservations because the number of participants will be limited.

Senior Day is sponsored by the WTSU Student Foundation, a group of students recognized for leadership abilities. Bryan Johnston, Friona sophomore, is president of the Student Foundation.

The "cruise" will begin on Friday evening, Feb. 22, with a dance for high school and university students from 9 p.m. to 1 a.m. Visiting students will be provided lodging in dormitories.

On Saturday, Feb. 23, students will embark on a scavenger hunt across campus beginning at 10 a.m. following breakfast in the dormitories. A noon luncheon will feature a unique fashion show.

From 2 p.m. to 5 p.m., WTSU instructors and administrators will treat the visiting seniors to an educational smorgasbord and talk with seniors interested in various fields of study. WTSU President Max Sherman will be the guest speaker at dinner on Saturday evening.

Following the dinner,

Gatewood, Robbie Barrett, David Pruitt, Lisa Black, Roby Kelton, Blake Stevens, Brenda Dodd, Robin Moore, Bryce Holmes, Scott Saylor, Tommy Wheeler, Lee Free, Monty Hysinger, Starla Black, Casey Farmer, Danny Seales, Brian Powell, Tommy Edmondson, Welsey Rasco, Kim Farmer, and Jay Pearson. Brenda Dodd was awarded the showmanship Award for the lambs. Mr. Gentry Lynn and Mr. Bill Bickel provided assistance in all areas of the show.

Mr. Lynn, Jim Overman, Todd Holt, Lyndal Stovall, Ben Harmon, and Beth Harmon will be leaving Friday, February 1, for the El Paso Stock Show.

Good Luck to these students.

### "Buff Boat" Cruise During Senior Day

WTSU--Seniors from more than 300 high schools in Texas, Oklahoma, New Mexico, Kansas and Southern Colorado will board the "Buff Boat" for a cruise during Senior Day, Friday and Saturday, Feb. 22 and 23 at West Texas State University.

Interested students have until Monday, Feb. 11, to make reservations because the number of participants will be limited.

Senior Day is sponsored by the WTSU Student Foundation, a group of students recognized for leadership abilities. Bryan Johnston, Friona sophomore, is president of the Student Foundation.

The "cruise" will begin on Friday evening, Feb. 22, with a dance for high school and university students from 9 p.m. to 1 a.m. Visiting students will be provided lodging in dormitories.

On Saturday, Feb. 23, students will embark on a scavenger hunt across campus beginning at 10 a.m. following breakfast in the dormitories. A noon luncheon will feature a unique fashion show.

From 2 p.m. to 5 p.m., WTSU instructors and administrators will treat the visiting seniors to an educational smorgasbord and talk with seniors interested in various fields of study. WTSU President Max Sherman will be the guest speaker at dinner on Saturday evening.

Following the dinner,



The Mule's Tale Staff would like to wish the following people at MHS a very Happy Birthday!!! Sunday, February 3--Monty Hysinger, Billy Ray Wade, Jimmy Gleason.

Monday, February 4--Andy Snell

Tuesday, February 5--Tammy Grigsby, Bobby Perez

Wednesday, February 6--Kevin Dudley

Thursday, February 7--Zeke Pecina

Friday, February 8--Jackie Leyva, Eneida Almanza

Saturday, February 9--Belinda Clayton, Debra Briscoe

### National Honor Society

The National Honor Society met January 28, at 6:00 p.m. at the Pizza Hut.

President Mark Northcutt opened the meeting. Mrs. Lucy Faye Smith opened the discussion of the National Honor Society Scholarship Awards Program. This program is sponsored by the National association of Secondary School Principals. This program will provide 225 scholarships of \$1,000 to students throughout the country.

Each NHS chapter wishing to participate in the program is asked to nominate two chapter members. These members need to have demonstrated outstanding leadership, scholarship character, and service. Each nominee must complete a Scholarship Selection questionnaire that will assist the Scholarship Board in assessing the student's participation in service organizations, clubs, and athletics.

The Blood Drive was also discussed at great length. The second drive for Muleshoe High School will be held in March.

Jerry Puente presented rules and regulations to each member present for the Rock-A-Thon. The Student Council sponsored an assembly Thursday morning at 8:30. A pantomime performer from International Lectures presented a program.

### "Check us out for Checking"

MULESHOE

### South Plains College Tejano Day

Registration will be held in the lobby of the Fine Arts Building at 12:30. Campus tours will be held from 1:15 to 2:30 with South Plains College Presidential Hostesses directing the tours.

A general session will be held at 2:45 in the auditorium with the Welcome and Introduction of Guest Speaker by Nathan Tubb. The guest speaker will be Dr. Eliseo Ruiz, Jr.

A talent show will be held at 3:30 featuring the Baker's Dozen.

At 4:15 p.m. on Oratory Contest will be held in the Auditorium. Each contestant must prepare a 5-7 minute speech based on one of three topics listed below, and can be in either English or Spanish:

I. What are your views concerning higher education? II. What can you contribute to your community through higher education? III. What are your views about Mexican-American Involvement in American Politics today? Contestants must meet at 4:00 p.m. in the Lobby of the Fine Arts Building, and all entry forms must be received by February 13.

A beauty contest will be held at 7:30 p.m. in the Student Union Building with the candidates judged on appearance, poise, personality, and speaking ability. Contestants must have casual wear and formal wear. They will meet at 10:30 a.m. in the Lobby of Gillespie Hall for a session with Gloria Madrid, Fashion and Make-up Coordinator / Model. Applications must be in by February 13.

The dance will be at 7:30 p.m. in the Student Union Building with the presentation of the Tejano Queen 1979, Otelia Lopez, at 7:45 p.m. and the Coronation of the Tejano Day Queen 1980 at 8:00 p.m.

Texas Future Teachers of America held its 31st annual State Convention February 1 and 2, Friday and Saturday, in the Astro-arena in Houston. Approximately 5,000 members and advisors were present.

District meetings were held February 1. Skits and speeches for state officer candidates highlighted the second general session at 7:30 p.m. Friday. From 9:30 p.m. until midnight, a disco dance and light show was held.

Workshops were held Saturday morning. At 9:30, attention was focused on Mr. and Miss FTA competition. Shelley Splawn represented District XVII in this competition awards assembly was held at 7:30 p.m.

Students attending from Muleshoe were Becky Turner, acting District XVII President; Leslie Wagon, District Historian; Clifford Watson, incoming District President; Michelle Agee, Local Chapter Chaplain; Brad Poyner, voting delegate; Zeke Pecina, voting delegate; and Shelley Splawn, District XVII Miss FTA. Mr. Stephen Johnson sponsored this trip.

Results of state office elections, Mr. and Miss FTA contests, and the awards program were not known at press time. These students in attendance will be representing the Blackburn-Moore Chapter of FTA, whose sponsor is Mr. Kerry Moore, assisted by Mr. Stephen Johnson.

Sam Whalin, the 17 year old son of Mr. and Mrs. Herbert Whalin, is the local chapter President. Sam is a senior and is involved in all sports, and is District FTA Parliamentarian.

Clifford Watson, 17, son of Mr. and Mrs. W.T. Watson, is the local chapter Reporter. Clifford is a junior and is in FCA, FFA District President Elect, Student Council Vice-President, all sports, and is Junior Class Vice-President.

Carroll Precure, the 17 year old son of Mr. and Mrs. Ray Precure is the local chapter Vice President. He is a junior and is involved in FCA, athletics, and is Junior Class President.

Becky Turner, the 17 year old daughter of Mr. and Mrs. Doyce Turner, is the local chapter Historian. Becky is a senior and is in National Honor Society, FTA District Vice-President, Cheerleader, and FCA.

Michelle Agee, the 16 year old daughter of Mr. and Mrs. John Neil Agee, is the local chapter Chaplain. She is a junior and is involved in Varsity Basketball, FCA, Jr. Class Reporter, and the Mule's Tale Staff.

JoRonda Rhodes, the 17 year old daughter of Mr. and Mrs. Joe Rhodes, is the local chapter Secre-

Head Varsity Cheerleader, Basketball, Tennis and Mule's Tale Staff.

Shelly Dunham, the 18 year old daughter of Mr. and Mrs. Jack Dunham, is the local chapter Parliamentarian. Shelly is a senior and is in FTA, Art Club, Student Council, all sports and FCA.

### Muleshoe School Menu

Monday BREAKFAST

Milk Cereal Fruit

LUNCH

Milk Meat Loaf Blackeyed Peas Buttered Whole Potatoes Corn Bread Fruit

Tuesday BREAKFAST

Milk Toast Jelly Juice

LUNCH

Milk Juicy Burger Lettuce and Tomatoes Pickles and Onion Tater Tots Cobbler

Wednesday BREAKFAST

Milk Peanut butter sandwich Fruit

LUNCH

Milk Pizza Mixed Veg. Pickles Pineapple upside Down cake

Thursday BREAKFAST

Milk Honey Bun Juice

LUNCH

Milk Corn Dogs Veg. Beef Soup Crackers Cinnamon Rolls Fruit

Friday BREAKFAST

Milk Toast Oatmeal Fruit

FRIDAY

Milk Chili Beans Cole Slaw Buttered Corn Corn Bread Pudding

### Calendar Of Events

Monday, February 4 Dimmitt Freshman Girls here 5:00 Dimmitt Freshmen Boys there 5:00 Tuesday, February 5 Morton A&B Boys & Girls there 4:00 Friday, February 8 Texas Tech Speech Tournament Dimmitt A&B Boys & Girls here 5:00 Saturday, February 9 Texas Tech Speech T...



### Mrs. Pritchard Services Held

Funeral services for Mrs. Lona Odessa Pritchard 83, will be held Monday, February 4, at 11 a.m., in the Valley Funeral Home Chapel, in Tucson, Arizona, with Rev. Bill Merwin, minister of the Catalina Methodist Church of Tucson officiating.

Burial will be in, South Lawn Memorial Park. Local arrangements were by Singleton Ellis Funeral Home.

Mrs. Pritchard, died January 31, in the West Plains Medical Center.

She was born, February 20, in Tolar County, Texas and had been a resident of Muleshoe for a year, moving from Tucson.

Survivors include a sister Mrs. Rob Damron, Muleshoe.



MRS. PRITCHARD

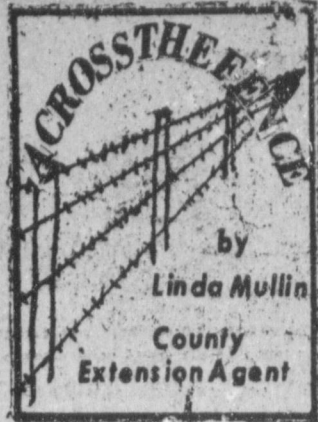
### Enochs News

By Mrs. J.D. Bayless

Baptist Mens Day "Bold Witnessing" was observed at the Baptist Church Sunday 27, the men's Choir was led by Buford Peterson, Scripture Reading and prayer by J.E. Layton, welcome and announcement by Pastor Rev. Mike Heady, Sunday school report, Jarrol Layton; Testimony, Buford Peterson; Special music, J.D. Bayless; Scripture reading, Keith Layton; Message by G.O. Smith, special music by mens choir.

Evening Services Those taking parts on program are prayer Carl Hall; Testimony by Sid Key; Special Music, Ted Belez, Sid Key and J.D. Bayless; Scripture reading, J.C. Snitker; testimony, Glenn Price; Special music, Chester Petree; Message, Dale Nichols.

The men of the Baptist Church had a breakfast at the fellowship hall of the church Saturday morning at 7:00. There were 15 present. Rev. Mike Heady, G.O. Smith, Ted Belez and sons, Carl Hall, Buford Peterson, Clyde Price, J.D. Bayless, Clifford Snitker, Chester Petree, E.N. McCall, Dale Nichols, Sid Key and one visitor, Rev. Harold Abney of Three Way, Rev. Abney brought the devotional.



### MAKE A VALENTINE CAKE WITH ORDINARY PANS

Make a perfectly shaped valentine cake with just two cake pans--a square and a round one--and share it with someone you love.

Here's how: From a commercial cake mix or from a scratch recipe, make one eight-inch square layer cake and one eight-inch round layer cake. Cut the round layer into two equal parts. Place the cut edge of each round layer portion on adjacent edges of the square cake, and you have a heart-shaped cake without having to buy a heart-shaped cake pan. Use your favorite icing and decorate the

cake as desired for a quick and simple Valentine treat.

If you're history-minded, here are some other tidbits for mulling as you make the cake or share it with someone. There are many ideas about how the name Valentine came to be connected with the day on which lovers send tokens of affection to one another. One is based on the belief throughout Europe during the Middle Ages that the birds began to mate on February 14.

In addition to honoring Saint Valentine, February,

1980 takes on an extra-special air of romantic antiquity--with the observance of "Lovers Leap Season," or "Leap Year."

This holiday occurs once every four years with the appearance of an extra day in February--"Leap Day"--and retains the mysterious belief that women may propose marriage to men with perfect propriety throughout the entire year. According to an old English saying, ladies may propose during Leap Year, and, if rejected, they may claim a silk gown.

And in many a European

town or country, there allegedly have been laws to legalize the custom!

But the mystery remains to be solved: nobody knows just how this tradition got started, and no

satisfactory explanation has ever been offered.

In the United States, in New England there used to be a curious belief that during Leap Year beans grow on the wrong side of

the pod. No matter what the origin or belief of Valentine customs, you can still share the heart-shaped cake with a special person.

## Sonic Presents...

### Tuesday Night Family Special

For Only \$5.99

You Get 10 Pieces Of Fried Chicken, Fries, Texas Toast, Salad & 1 Liter Pepsi.

Tuesday ONLY 6-9 p.m.

Call Ahead and We'll Have It Ready For You.

272-3998



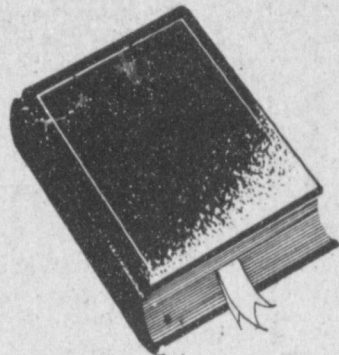
## "Trust us with Your Trust"



MULESHOE STATE BANK



101 AMERICAN BLVD. 272-4561 • Member FDIC



# ATTEND THE CHURCH OF YOUR CHOICE



## The Marvels of God's Creations

WHY DO FISH LIVE IN WATER? We can answer this

question partially by saying: that their lungs were created to draw oxygen from the water. However, to know how and why, we must look to God's word.

"In the beginning God created the heaven and the earth." ... "And God said, let the waters bring forth abundantly the moving creature that hath life..."

Attend Church and worship the one who created these marvels.

The Church is God's appointed agency in this world for spreading the knowledge of His love for man and of His demand for man to respond to that love by loving his neighbor. Without this grounding in the love of God, no government or society or way of life will long persevere and the freedoms which we hold so dear will inevitably perish. Therefore, even from a selfish point of view, one should support the Church for the sake of the welfare of himself and his family. Beyond that, however, every person should uphold and participate in the Church because it tells the truth about man's life, death and destiny; the truth which alone will set him free to live as a child of God.



EVERYONE IN THE CHURCH THE CHURCH IN EVERYONE

**CHURCH OF THE NAZARENE**  
Ninth and Ave. C  
Dana Shunko, Pastor

**FIRST CHRISTIAN CHURCH**  
130 W. Ave. G.  
Rev. Walter Bartholf  
Sunday School 10:00 a.m.  
Worship 11:00 a.m.

**LATIN AMERICAN METHODIST MISSION**  
Ave. D and Fifth Street  
R.O. Chavez, Pastor

**THE COMMUNITY CHURCH**  
H.D. Hunter, Pastor  
Morton Highway

**CALVARY BAPTIST CHURCH**  
James Williams, Pastor  
1733 W. Ave. C

**PROGRESS SECOND BAPTIST CHURCH**  
Clifford Slay, Pastor  
1st and 3rd Sundays

**FIRST UNITED METHODIST CHURCH**  
Rev. David Hamblin  
507 West Second, Muleshoe

**ST. JOHN LUTHERAN**  
Lariat, Texas  
Herman J. Schelter-Pastor  
Sunday School Classes 10:00 a.m.  
Worship Services 11:00 a.m.

**PRIMITIVE BAPTIST CHURCH**  
621 South First  
Elder Bernard Gowens

**MULESHOE CHURCH OF CHRIST**  
David Cox, minister  
Clovis Highway

**JEHOVAH WITNESS**  
Friona Highway  
Boyd Lowery, Minister

**IMMACULATE CONCEPTION CATHOLIC CHURCH**  
Father Patrick Mahar  
Northeast of City in Morrison Edition

**MULESHOE ASSEMBLY OF GOD**  
517 S. First  
Rev. Joe Stone

**EMMANUEL BAPTIST CHURCH**  
Iglesia Bautista Emmanuel  
107 E. Third  
Isaias Cardenas, Pastor

**RICHLAND HILLS BAPTIST CHURCH**  
17th and West Ave. D  
Roy L. Sikes, Pastor

**SPANISH BAPTIST MISSION**  
Rev. Ynes Aleman  
East Third and Ave. E.

**TRINITY BAPTIST CHURCH**  
314 Ave. B  
Rev. Gene Prevo

**LONGVIEW BAPTIST CHURCH**  
Pastor B.C. Sronecipher  
ph 946-3413

**SIXTEENTH AND AVENUE D CHURCH OF CHRIST**  
Sunday-10:30 a.m.  
Evening-6 p.m.  
Wednesday-8 p.m.  
Terry Bouchelle, Minister

**PROGRESS BAPTIST CHURCH**  
Progress, Texas  
Rev. Gearld Albers, Pastor

**NORTHSIDE CHURCH OF CHRIST**  
117 E. Birch Street

**SPANISH ASSEMBLY OF GOD**  
East 6th and Ave. F  
Rev. Hipolito Pecina

**UNITED PENTECOSTAL GOSPEL LIGHTHOUSE CHURCH**  
207 E. Ave. G  
George Green, Pastor

**MULESHOE BAPTIST CHURCH**  
8th Street and Ave. G.  
Bob Dodd, Pastor

**FIRST BAPTIST CHURCH**  
220 West Ave. E.  
Rev. J.E. Meeks

### True Value Hardware value of the MONTH



now 11.99

### INDUSTRIAL SHELVING UNIT

Sturdy steel construction. 4-shelf unit; "W" posts, sway braces. Gray enamel finish. Easy assembly, incl. hardware. 58x30x16 inches. 69A23

Quantities Limited



Ph. 272-4511  
401 S. 1st  
Muleshoe, Texas

## A GIFT FOR ALL SEASONS



### PORTRAITS

In Living Color

8 x 10 99c

1 PER SUBJECT Plus 60c Film Charge  
2 PER FAMILY

Thursday and Friday

February 7 and 8,

From 10 A.M. to 6 P.M.

**Muleshoe Home Center, Inc.**

**ROBERT GREEN INC.**  
Your Oldsmobile, GMC, Pontiac, Buick Dealer  
W. Hwy. 84 272-4588

**Ana's House Of Beauty**  
109 E. Ave. B 272-4152

**WESTERN DRUG**  
114 Main

**WATSON ALFALFA**  
272-3552 272-4038

**MULESHOE CO-OP GINS**

**WHITES CASHWAY GROCERY**  
402 Main  
"Where Friends Meet and Prices Talk"

**WESTERN SPRINKLERS INC.**  
W. Hwy. 84 272-4544  
ZIMMATIC

**BRATCHER MOTOR SUPPLY**  
107 E. Ave. B 272-4288

**ST. CLAIRS**  
110 Main

**DENT-REMPE IMPLEMENT CO.**  
John Deere Dealer  
Muleshoe 272-4297

**Dairy Queen**  
Margie Hawkins, Manager  
272 3412

**Main Street Beauty**

**Kemp's Discount Furniture**

**MULESHOE PUBLISHING CO.**

**MULESHOE**



# AID TO MILLIONS CLASSIFIED ADS



Deadline For Classified Ads Is 11:00  
Tuesdays And Fridays

**CLASSIFIED RATES**  
1st Insertion, per word -- \$1.11  
Minimum Charge -- \$1.80

2nd Insertion, and thereafter per word -- \$0.99  
Minimum Charge \$1.50

**CARD OF THANKS**  
25 words -- \$3.00  
Over 25 words charged at regular classified rates

Classified Display -- \$1.55 per column inch  
Double Rate for Blind Ads

**DEADLINE FOR INSERTION**  
11 a.m. Tues. for Thurs.  
11 a.m. Fri. for Sun.

WE RESERVE THE RIGHT TO CLASSIFY, REVISE OR REJECT ANY AD.

NOT RESPONSIBLE FOR ANY ERROR AFTER AD HAS RUN ONCE.

**PERSONALS**  
WE BUY USED FURNITURE & APPLIANCES  
CALL 272-3030 HARVEY BASS APPLIANCE  
1-18s-tfc

**LOST AND FOUND**

Lost: Small Black and White Collie. Tags say Colorado Springs. Answers to the name of Kelly. If found call 272-5097 or 272-3847.  
2-5s-2tc

**FOUND:** Ginger colored Charolais heifer calf, weighs around 500 pounds. Has marking on left ear. H.O. Huff, Jr. 927-5391  
2-52s-TFC

**HELP WANTED**  
EXPERIENCE John Deere parts personnel, insurance paid, vacation, uniforms, sick leave. Call 257-3785 after 6 p.m.  
3-46t-tfc

**NEEDED:** Someone to help care for elderly woman during day while convalescing. 272-4614 nights, 272-3413 during day.  
3-50s-tfc

**HOME WORKERS WANTED:** Stuff envelopes. We pay 30 cents each. Information send Stamped, self-addressed envelope to Syntex Enterprise, P.O. Box 1501, Bloomfield, NJ 07003  
3-1s-12tc

West Texas Legal Services is Accepting Applications for Paralegal in its Plainview office. Responsibilities include: interviewing clients, representing clients before administrative agencies, case investigations, and routine client services, all under the supervision of an attorney. Relevant experience includes: prior work as a paralegal or social case worker and / or education and work experience in the court system or in the areas of specialized law involved. Bilingual English/Spanish extremely helpful but not required. Salary from \$9,500.00 depending on experience. Resumes should be submitted to Ralph Knoblauch, 1415 West 5th, Plainview, TX 79072  
3-1s-12tc

**REAL ESTATE FOR SALE**

Nice, large brick veneer house with 3 bedrooms, living room and den, 2 baths and 2 car garage. Also 2 bedroom tenant house on 2.05 acres. Northwest of Muleshoe.

Large 3 bedroom house with 2 baths, living room, extra large den with fireplace, enclosed porch and workroom, double carport in the Leau Addition.

House for Sale at 421 East Dallas. Has 3 bedrooms, 1 3/4 baths, living room, one car garage, carpet and central heat.

**TOWN and COUNTRY REAL ESTATE**  
806-272-4678  
JOHN W. SMITH, Broker  
Call 4307 or 3725 Muleshoe, Texas  
8-5s-tfc

**TWO BEDROOM MOBILE HOME** for sale. Call 272-3319 after 6 p.m.  
8-31-tfc

**88 ACRES FOR SALE:** Close into town, 6" well, 60 acres in hay, 20 acres wheat. Low interest loan. Contact 272-5378 from 8 till 5, 272-3658 after 5 p.m.  
8-49s-tfc

**SMALLWOOD REAL ESTATE**  
272-4838 232 Main Street  
Joe Smallwood & Ricky Smallwood  
907 W. 7th, 3 bedroom, 2 bath, car port, brick, fenced back yard.  
New brick homes, 3 bedroom, 2 bath.  
8-43s-tfc

For Sale: 3 bedroom brick house, 2 baths, living room and den, fireplace and double garage. 2124 sq. ft. Call 272-4744.  
8-3s-tfc

Quick Sale: Reduced from \$42,000 to \$36,000. Three bedroom brick home, two baths. Large living room with den, two car garage. In Country Club addition. Call 272-3029  
8-5t-tfc

**FOR SALE:** 3 bedroom, 2 bath stucco home, cellar and lots of extras, must sell. Call 272-4403.  
8-43i-tfc

**FOR SALE:** 1973 model Castle Mobile Home 14 x 68. Call 965-2666.  
8-46s-tfc

Brick home, 3-2-2 utility, living room, den, central air and heat, cable TV, fenced backyard, 2 miles north on Priona highway. Call 272-3668  
8-5i-tfc

**THREE LOTS** for sale on Ivy in Country Club Addition. Call 214-372-9264  
214-372-9264 after 5 p.m.

**Ludderth Realty, Inc.**  
Box 427 - 109 09 01  
Plainview, Texas 79072  
Phone (806) 491-3200 or 491-9110

160 acres North of Progress, good water area, 1 well, priced to sell.  
11-4t-6tc

160 Acres northwest of Muleshoe, 2 wells, lays good on FM highway.

120 acres irrigated with 2 electric wells and circles, all wheat, fenced, excellent water area. Near Bovina Feeders.

320 Acres in Lazbuddie area, good water area, circular sprinkler, 1 mile off highway.

160 Acres irrigated, Circle Sprinkler, 2 wells, 200 ft. water plus, 3 bedroom house, new steel barn. On highway northwest of Muleshoe.

80 A irrigated with side-roll sprinkler, 6 inch well, Northwest of Muleshoe.  
8-50s-tfc

**FOR SALE:** 4 bedrooms, 2 bath, brick, 1-acre in country. Call 965-2660 after 5 p.m.  
8-2t-tfc

For all your real estate needs Call  
**GLAZE & GOFORTH**  
112 Ave. C  
272-4208  
8-11s-tfc

**KREBBE REAL ESTATE**  
122 W. Ave. C  
Pb. 272-3191  
All Your Real Estate Needs  
APPRAISALS  
8-18t-tfc

**9. AUTOMOBILES FOR SALE**  
**FOR SALE:** 1979 Datsun 200 SX. Call Delbert Barry 272-4835 or 272-4236.  
9-2s-tfc

1976 Ford Eldorado Mini-Motor Home 28,000 miles, 3,000 watt power unit. Rear bath, sleeps five. Roof air and dash air. Call 265-3325.  
9-5i-3tc

1977 Chevrolet Van 67,000 miles. New Carpet 400 Cu. in engine, 33 gallon gas tank. Call 265-3325.  
9-5i-3tc

For Sale: 1977 LTD 4 Dr. Good condition. Call 272-4321 or after 6 p.m. call 272-3482.  
9-5i-4tc

**AUTO FOR SALE:** 73 Olds 98. Still a good car. Four new wheels. \$1200. Call 933-4448.  
9-4s-4tc

**10. FARM EQUIP. FOR SALE**  
**FOR SALE:** 60 horse electric motor. Phone 806-965-2177. Deltor Wenner.  
10-5i-16tp

**FOR SALE:** 1 new 6 row Lilliston Roll cultivator with burning off discs. 1 new Wylie Spray Rig. 8 row with 400 gallon poly tank, 1 Green Bear head 75 HP, 1 lot of stand pipes. Call 825-3822.  
10-47i-tfc

**11. FOR SALE OR TRADE**

Have you tried goats milk for those dogie lambs or drop calves? Almost magic! Call 272-3378.  
11-4t-6tc

For Sale: 1978 Yamaha Dirt Bike. Very low mileage. Call 927-5415 or 927-5433.  
11-5t-tfc

**FOR SALE:** 2 Piece Quarter Mile side roll sprinklers, 1 5 inch pump, motor, and control panel. Call 946-3359 nights only.  
11-4t-4tc

**FOR SALE:** One 403 Moline motor in good shape with one 50 HP Gearhead, in good shape. New cooling coil, new drive shaft, concrete motor stand, \$1,400.00 for whole package. Call Woody Lambert at 272-4726 (days) or 272-4889 (nights) or call Ricky Barrett at 272-3808.  
11-51t-tfc

**FOR SALE - REGISTERED GOATS:** 2 does, just fresh; 3 does, freshen soon; one young bred doe; 5 baby bucks, 2 baby does, more coming. Call 272-3378.  
11-4t-6tc

For Sale: One Pickup-camper shell like new, excellent shape. Also 16 x 25 steel buildings for \$3,000.00 Call 272-4544  
11-5s-2tc

For Sale: Great Dane puppies. Call 925-6755 after 5 p.m.  
11-5s-2tp

**12. HOUSEHOLD ITEMS**  
For Sale: Black vinyl spanish-style chair. Call 272-4621  
12-5s-tfc

**BURROWS UPHOLSTERY & FURNITURE REPAIR**  
118 W. Ave. C  
in the rear.  
Phone 272-4255  
12-39s-tfc

For Sale: Frigidaire washer and dryer, matching set. See at 1622 West Avenue C or call 272-3767.  
12-3s-2tfc

A good and faithful judge prefers what is right to what is expedient.  
Horace

**Davis Cesspool Pumping**  
DOMESTIC AND COMMERCIAL  
"IF IT'S PART LIQUID & NOT OVER 20 FT. DEEP WE'LL TRY TO DRAIN IT."  
PHONE 806 272-3467  
Elmer and Terry Davis  
15-2s-8stp

**TO SETTLE ESTATES**  
FARMS TO BE SOLD:  
150 Acres, home 2 wells  
160 Acres, home, barns, 1 well, pump back pit with underground line  
3 west and 2 south of Clays Corner  
Contact Glen Watkins, Exec. 806-925-6743  
8-2t-tfc

**TV & Appliance Service**  
**Wilson**

**15. MISCELLANEOUS**

**STUD SERVICE**  
Registered, AKC Doberman. Call 272-4012.  
15-50s-tfc

**FOR SALE:** Workable piano. Call 272-3622  
15-2s-tfc

Have Brush Will Paint  
Call: Charles Harvey  
806-272-4059  
Muleshoe, Texas 79347  
15-5t-8tc

Attention Mr. Cattleman: Interested in a cross-breeding program? Registered Limousine Bulls for sale. Call 946-3497 after 6 p.m.  
15-5t-tfc

**PROFESSIONAL DOG GROOMING**  
By a graduate of Barkers Barber Grooming Academy. Call for appointments 272-3061.  
15-49s-tfc

**ASPHALT ROOFING COMPOSITION SHINGLES**  
new roof and repairs. Free Estimates. Call Collect  
**Ron Roehoe**  
385-5660

**LITTLEFIELD ROOFING**  
15-16s-tfc

**TREPLAN FOR SALE**  
272-4737  
Watson Chemical  
15-4s-tfc

Need: 160 acres in Lazbuddie district. Have buyer, E.E. Holland Real Estate, 113 W. Ave. D. Phone 272-3293 day or night.  
15-3t-tfc

Frank's Refrigeration and Appliance Service  
315 W. 3rd, Muleshoe  
Phone 272-3822  
15-3t-8tp

Wedding Cakes, Birthday Cakes, Special Occasion Cakes and Decorative Mints. Will Deliver. Call Sue Haberer 965-2890.  
15-2s-8tstp

Plaster and Stucco Work. Call collect 885-2471. Residential or commercial.  
15-5s-tfc

**Large Auction**  
Tractors & Trailers

Tractors  
Conventional  
Cubtractors  
Big Cabs

Tractors  
Cubtractors  
Big Cabs

Miscellaneous  
Straight Trucks  
Wreckers  
Pickups

**Taylor & Martin, Inc.**  
Auctioneers  
10-5s-ttc

**Notice**  
Notice to Bidders

The City of Earth, Texas is accepting bids for a metal building.  
Specifications: 1. 24' wide x 28' long with 12' walls  
2. Concrete foundation 6" side 12" deep  
3. Colored metal standard gauge walls (Beige)  
4. Heavy duty metal roof  
5. Batt insulated  
6. 1-10' x 10' overhead door  
7. 1-9' x 10' overhead door  
8. 1-36" walk through door  
All bids to be in the office of the City Secretary no later than 5:00 p.m. February 14, 1980. Bids will be opened and reviewed at 9:00 a.m. February 15, 1980.

The City of Earth reserve the right to reject any or all bids. Bids to be mailed to the City of Earth, Box 1, Earth, Texas 79031  
15-5s-2tc

**Public Notice**  
NOTICE OF DISSOLUTION OF PARTNERSHIP AND CONTINUANCE OF BUSINESS

Notice is hereby given that Joe L. Smallwood, Don Harmon, and Terry Field, heretofore doing business as Partners under the firm name of Smallwood - Harmon - Field Insurance Agency at 232 Main, Muleshoe, Texas, have dissolved their Partnership as of December 31, 1979, by mutual consent of Partners.

Terry Field, residing at 1709 W. Ave. H, Muleshoe, Texas, has withdrawn from and has ceased to be associated in the carrying on of the business.

Joe L. Smallwood and Don Harmon will conduct the business in the future under the firm name of Smallwood - Harmon Insurance Agency and will pay and discharge all liabilities of the firm and receive all moneys payable to the firm.

DATED: December 31, 1979

**Courthouse News**

**MARRIAGE LICENSE**  
Jerry Dwain Hutton and Wanda Neil Horn, both of Muleshoe.  
Jerry Dean Hodge, Earth and Cindy Lu Roberts, Friona.

**WARRENTEE DEEDS**  
Gordon H. Green and wife, Donna Jo Green to W. M. Pool, II, a 4.16 acre tract of land out of Section (39), Block Y, W.D. & F.W. Johnson Subdivision No. 2.

Pete Quinn Jr. and wife, Donna Quinn to Florentino Mendoza and wife Dolores Mendoza, a tract of land in the form of a rectangle and being 69' by 140', and described as all of Lot No. (22) Block No. (1), Muleshoe Park Division.

E.W. Locker, and wife, Iva I. Locker to Alfred L. Patterson and wife, Elizabeth A. Patterson, (NE 1/4) of Section No. 12, Block X, W.D. & F.W. Johnson Subdivision, (E80A) of the (SE 1/4) of Section (12) Block Y W.D. & F.W. Johnson Subdivision.

**COUNTY COURT**  
Anselmo Montreal Jr., DWI \$150 fine, four days jail  
Clyde Bean - Worthless Check - \$10 fine

**17. SEED AND FEED**  
**FOR SALE:** Buffalo Alfalfa Hay Seed - No. One Seed - Yernon, Texas. (817) 552-2979. Before 7:30 a.m. and after 9:00 p.m. and all day Sunday.  
17-5s-2tc

Gordon Blevins - Worthless Check - \$25 fine  
W. T. Kirkland - Order Discharging Probation  
Gilberto Recio - Order Discharging Probation  
Ralph Odell Weaner - Order Discharging Probation  
Jerry Don Beasley - Order Discharging Probation  
Ruymundo Falcon Delarosa - Order Discharging Probation  
Pablo Sanchez Lira - Order Discharging Probation  
Justo A. Garcia - Order Discharging Probation  
Maria Sierra  
Welfare Fraud - \$50 Fine

**DISTRICT COURT**  
George Calvin Potteet vs Plains Insurance Company - Judgement  
Guy Belt Jr., Patty Belt d/b/a Ranch House Motel vs Triangle Manufacturing Company - Motion to Dismiss  
Pablo Lira and wife, Alicia Lira vs Robert Kelton and wife, Faye Kelton - Motion to Dismiss  
Willis James vs Grain Co-op of Arizona, an Arizona Corporation - Order of Dismissal  
Muleshoe Independent School District vs L.A. Harper - Motion to Dismiss  
Dub Hays vs Winston Wilson and Marion Wilson - Judgement

**The Lonely Heart**  
DOG SHOW

**MEET THE CANDIDATES**

Rates for listing in the Journal's Political Column is: \$35 for all offices except those for City Council and School Board post which is \$15. This fee includes a front page announcement article and a one-column photograph at the time the announcement is made, in addition to the listing in the Political Column from the date of announcement until the final election.

Charges for announcements are cash in advance, and this same policy applies to all political advertising carried in the columns of this newspaper. Names for each office will be listed in the Political Column in the order they are received at the newspaper office.

The Journal has been authorized to announce the following candidates for public office:

**STATE SENATE DISTRICT 31**  
Bill Sarpatus  
Gerald McCathern  
**COMMISSIONER Precinct 1**  
Raymond Scott

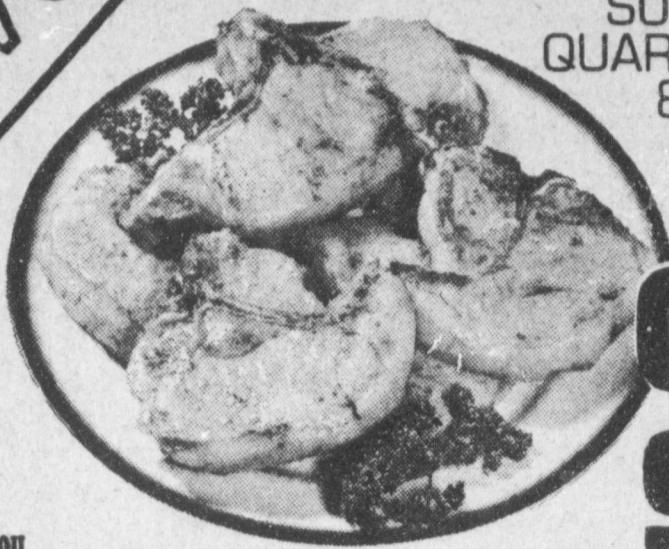
**Precinct III**  
R.P. (Bob) Sanders  
**REPRESENTATIVE**  
Bill Clayton  
**SHERIFF**  
Bob Henderson  
Jerry Hicks

**DISTRICT ATTORNEY**  
Jack Young  
**COUNTY**  
Toby Anderson



**WE'VE GOT YOUR DOLLARS WORTH AT**  
**Pay-n-Save**

THE FINEST QUALITY MEATS AVAILABLE AT SPECIAL SAVINGS TO YOU



# IT PAYS TO SAVE WITH US!

SUPER SELECT FRESH PORK  
 QUARTER LOINS OR FAMILY PACK  
 8-11 ASSORTED CHOPS

**PORK CHOPS**  
**\$1.19**  
 LB.

SUPER SELECT FRESH PORK SPARE 3-5 LBS. AVG.  
**RIBS** **\$1.19**  
 LB.

MEAT SPECIALS		
<b>STEAKS</b>	LEAN TRIM FRESH PORK	LB. \$1.19
<b>PORK CHOPS</b>	LEAN TRIM RIB CENTER CUT	LB. \$1.79
<b>PORK CHOPS</b>	LEAN TRIM LOIN CENTER CUT	LB. \$1.89
<b>PORK RIBS</b>	COUNTRY STYLE LOTS OF MEAT	LB. \$1.39
<b>WIENERS</b>	OSCAR MAYER MEAT REGULAR/JUMBO	1 LB. PKG. \$1.59
<b>FRANKS</b>	OSCAR MAYER BEEF REGULAR/JUMBO	1 LB. PKG. \$1.79
<b>BOLOGNA</b>	OSCAR MAYER SLICED MEAT/BEEF/THICK/THIN	12 OZ. PKG. \$1.49
<b>BACON</b>	OSCAR MAYER FINEST QUALITY SLICED	12 OZ. PKG. \$1.79



ALL PURPOSE GOLD MEDAL  
**FLOUR**  
**79¢**  
 5 LB. BAG

WITH \$7.50 PURCHASE OR MORE EXCLUDING CIGARETTES LIMIT 1.



DEL MONTE VAC PAK  
**GOLD 3 CORN** **99¢**  
 12 OZ. CANS

<b>CEREAL</b>	KELLOGG'S FROSTED FLAKES	25 OZ. BOX	\$1.39
<b>COFFEE</b>	HILL'S BROTHERS ALL GRINDS	1 LB. CAN	\$2.89
<b>DEODORIZER</b>	LOVE MY CARPET	20 OZ. CAN	\$1.69
<b>FRESH AIR</b>	TOILET BOWL DEODORANT	4 EA.	\$1.00
<b>DOG FOOD</b>	PURINA BUTCHER BLEND	5 LB. BAG	\$1.99



SWIFT'S BREAKFAST  
**SIZZLEAN STRIPS** **\$1.29**  
 12 OZ. PKG.

**SPECIALS FROM THE GROCERY DEPARTMENT**

<b>BEANS</b>	DEL MONTE WHOLE GREEN	16 OZ. CAN	39¢
<b>BEETS</b>	DEL MONTE CRINKLE CUT	16 OZ. CAN	\$1.00
<b>PINEAPPLE</b>	DEL MONTE SLI./CHU./CRU.	20 OZ. CAN	69¢
<b>SAUCE</b>	CONTADINA TOMATO	8 OZ. CANS	\$1.00
<b>MIX</b>	PILLSBURY GINGERBREAD	14 1/2 OZ. BOX	69¢

Payton Delmonte

**Bocon** 12 OZ. PKG. **\$1.39**

**Ranch Style Bean** 15oz. Cans **3/99¢**

**Kleenx** 200ct. **69¢**



PLAIN RANCH STYLE  
**CHILI**

15 OZ. CAN **79¢**



MARSHMALLOW  
**KRAFT CREME** **2 49¢**  
 7 OZ. JAR



SENECA PIECES & STEMS-\$1.49  
**MUSH-ROOMS** **\$1.59**  
 WHOLE/SLICED 8 1/2 OZ. JAR

**DAIRY AND FROZEN FOODS**



KRAFT VELVEETA  
**CHEESE SPREAD** **\$2.69**  
 2 LB. BOX

<b>PARKAY</b>	KRAFT SCT. F MAXI CUP	1 LB. BOWL	79¢
<b>BISCUITS</b>	PILLSBURY BUTTER-MILK/COUNTRY STYLE	2 6 CT. CANS	29¢
<b>SINGLES</b>	KRAFT LIGHT N LIVELY	12 OZ. PKG.	\$1.29
<b>ICE CREAM</b>	BORDEN'S BUCKET	5 QT. SIZE	\$3.59
<b>CHEESE</b>	BORDEN'S COTTAGE	24 OZ. CTN.	\$1.29

**PRODUCE SPECIALS**



RED RIPE SLICING

**TOMATOES**  
**3 \$1.00**  
 LBS.

<b>CAULIFLOWER</b>	SNOW-WHITE	HEAD	69¢
<b>GRAPEFRUIT</b>	RUBY RED	4 LBS.	\$1.00
<b>ONIONS</b>	SAPNISH SWEET YELLOW	2 LBS.	29¢

**HEALTH AND BEAUTY AIDS**



FAST PAIN RELIEF  
**BAYER ASPIRIN** **\$1.39**  
 100 CT. BTL.



REG. ANTI-PERSPIRANT DEODORANT  
**SECRET SPRAY** **\$1.79**  
 6 OZ. CAN



NIGHT  
**OLAY CREAM** **\$3.29**  
 2 OZ. JAR



COLGATE REG./MINT/LIME  
**INSTANT SHAVE** **79¢**  
 11 OZ. CAN



SHAMPOO DRY/NORMAL/OILY  
**SHORT N SASSY** **99¢**  
 7 OZ. BTL.



20% OFF LABEL DETERGENT  
**PALMOLIVE LIQUID** **\$1.19**  
 32 OZ. BTL.

PAY-N-SAVE LOW FAT  
**MILK**  
**\$1.55**  
 1 GAL. CTN.

COME TO PAY 'N' SAVE FOR YOUR W I C CARD PURCHASES

We Welcome USDA FOOD STAMP COUPONS

