



BAILEY COUNTY JOURNAL

'The Community of Opportunity-Where Water Makes the Difference'

Weather

	HIGH	LOW
November 10	46	41
November 9	76	41
November 8	83	39
November 7	77	41
Rainfall to Date:	14.78	

VOL. 10 No. 45

12 PAGES

Published Every Sunday at Muleshoe, Bailey County, Texas 79347

10 CENTS

Sunday, November 11, 1973

Light Turnout Noted In Election

Seven Of Nine Pass In State

Only 345 voters out of 3,586 registered voters in Bailey County voted on nine amendments Tuesday, November 6.

Amendment One failed in Bailey County as it did in the state. In the county, 88 voted for the amendment and 235 voted against the amendment that would have authorized annual sessions of the legislature and increased legislative pay from \$4,800 to \$15,000 per year.

Amendment Two passed in the county as well as the state, with 216 voting for the amendment here and 102 voting against the amendment that was a proposal that would give single adults with real property the same protection and security from forced sale for debts of their homestead that is now given to families. It also provides that a family homestead may not be abandoned without the consent of both spouses.

Amendment Three passed in the county and state with 207 voting for it in Bailey County and 109 voting against the amendment that would extend the \$3,000 ad valorem tax exemption to the homestead of unmarried adults.

Amendment Four failed in the county, but passed in the state. 172 persons voted against the amendment here with 120 voting for the amendment that would provide notice to cities and counties and give them the authority to approve or disapprove the creation of conservation/reclamation districts.

Amendment Five passed in both county and state returns with 151 voting for the amendment and 147 voting against the amendment that would provide that counties and cities bordering the Gulf of Mexico may levy a tax for construction of sea walls and breakwaters by majority vote of the resident tax payers.

Amendment Number Six failed in Bailey County, but passed overall in the state. There were 80 voting for the amendment here and 216 voting against the amendment that would grant the district court the general jurisdiction of a probate court and would authorize the legislature to adjust

Cont. on Page 3, col. 2

Robert Parker Elected New Seed President

Over 300 seedsmen representing Texas and many of the Southern and Western states met at the Shamrock Hilton Hotel in Houston on Nov. 1 and 2.

The Texas Seedsmen's Association is the largest state seed association in the United States. Texas is an exporter of planting seed and leads the nation in the production of total pounds of seed which are marketed in nearly every state of the United States and in many foreign countries.

Speakers for the two-day meeting included the Hon. Dolph Briscoe, Governor of Texas, Dr. L.S. Pope, Associate Dean for Administrative Affairs, Texas A&M University, and Laurel C. Meade, Export Sales Manager, U.S.D.A./ASC, Washington, D.C.

Officers and directors were elected at the convention and

Cont. on Page 3, col. 1

Man Killed In One Car Wreck Tuesday

Albert Eugene Noble, 56, was pronounced dead on arrival at West Plains Memorial Hospital about 9:30 p.m. Tuesday evening, November 6.

Noble was killed in a one-car accident on a dead-end road south of Lazbuddie while he was en route to visit a sister. Noble apparently died when his car tumbled into a ditch skirting the country road and overturned four miles south of Lazbuddie. He was the only occupant in the car.

He was born April 17, 1917 in Floyd County, Texas and was

Cont. on Page 3, col. 3

Tri-County Will Move To Old Bank Building

The Muleshoe State Bank will be moving into their new facilities at 101 West American Blvd. this weekend and will be open for business on Monday morning.

The new building, costing over \$500,000 will have between 15,000 and 16,000 square feet of floor space. There will be ample parking for customers outside the building and there



around muleshoe with the journal staff

Mrs. Mattie Hicks of Muleshoe and Mrs. Betty Eubanks of Maple were among 14 new members initiated into the Phi Theta Kappa Honor Society at South Plains College Tuesday evening.

To become a member of Phi Theta Kappa, students must have a 3.5 grade point for the preceding semester, a 3.25 overall grade point and at least 12 hours in academic work, said Ron Carden, assistant professor of history at SPC and sponsor of the group.

Devona G. Bradley, daughter of Mr. and Mrs. R.A. Bradley 1701 West Avenue D has been named to the Honor Roll at Oklahoma Christian College, Oklahoma City, Okla., for the first six weeks of the trimester. Her average was 3.25.

According to Registrar Bob Smith, 39 students were named to the Dean's List and 138 were named to the Honor Roll.

Fuel Will Be Short Agriculturist Says

AMARILLO, Tex.--The current fuel crisis may not be near an immediate solution, a West Texas State University agriculturist says, so farmers can expect to be without adequate fuel this fall and winter.

"If allocations are to be with us," says Dr. Jimmie L. Green, chairman of the plant science department, "the problems the farmer will encounter will be the problems of differing requirements in different years."

Green adds: "For instance, last year was wet during the fall, so some farmers in the

will also be a drive-up window for the convenience of the customers.

Pioneer Natural Gas will occupy the east wing of the building and they will also be open for business in their new facilities on Monday morning.

The grand opening for both Muleshoe State Bank and Pioneer Natural Gas has been tentatively set for December 2. Refreshments and door prizes will be offered at the opening.

The Muleshoe State Bank began in Muleshoe under the name of Blackwater Bailey Bank which was organized in August of 1914.

Tri-County Savings and Loan President Don Harmon has announced that renovation will begin on the former Muleshoe State Bank building in a few days and it is anticipated that Tri-County Savings and Loan will move in the building in March or April of 1974.

Skeet Shoot Will Be Held At Bovina

The Bovina-Friona Knights of Columbus will sponsor a Skeet Shoot on Saturday and Sunday, November 17 and 18, from 2 p.m. until dark.

The shoot will be located south of U.S. 60 two miles east of Bovina. Signs will be up along the roads. Prizes will be awarded.

Traveler Commends Local Store

Jimmy Denson of Duncan, Oklahoma was moving a mobile home through Muleshoe last week when he stopped at Gibson's Discount Center.

The manager or assistant manager cashed a check for

Cont. on Page 3, col. 1



BANK TO OPEN IN NEW FACILITIES . . . The Muleshoe State Bank is in the process of moving this weekend and will be open in their new facilities at 101 West American Blvd. Monday morning. The building is now completed after many months of work. Pioneer Natural Gas will share the building with the bank.

they also will be open for business in the East wing of the building Monday morning. Pictured is the west end of the building and some of the landscaping that has been done to the premises.

Eagles Overpower Mules On Friday

Friday night the Mules played a game which represented their last hopes for a tie in the district championship. The game, however, was won by Canyon, 30-6, thus preserving Canyon's hope for the district championship.

The game started well enough for the Mules as they drove 55 yards in eight plays setting up a seven yard touchdown run by sophomore quarterback, Carey Sudduth. On the PAT the Canyon Eagles were detected offside and were penalized half the distance to the goal. The Mules then elected to go for two but fullback Hector Posados was stopped just inches from the goal line after hitting off right tackle.

The Mules defense held Canyon scoreless in the first quarter allowing them only two first down. But as it turns out, the Canyon defense was what the Mules needed to worry about as the Eagle defense set up one Canyon touchdown on an interception of a Carey Sudduth pass with the defender returning it 21 yards to the Mules' four yard line. Canyon took it on the very next

play and kicked the extra point giving them a 7-6 lead.

On Muleshoe's next possession, the Canyon defense again came into play as they blocked a punt after Muleshoe's kicker Perry Stockard bobbed the snap from center. The Eagle

defenders grabbed the bouncing ball and took it in for Canyon's second TD of the game. The PAT gave the Eagles a 14-6 lead at halftime.

Although the Mules were in the game at the start of the second half, mistakes by the Mules and an awakened Canyon offense put the game out of reach in the third quarter on a 30 yard TD run by Eagle quarterback Ed Lair and a 37 yard field goal. The Eagles added another touchdown in the fourth quarter to make the final score read 30-6 in favor of Canyon.

Cont. on Page 3, col. 4

Chamber President Issues Statement

The following news release has been issued by Gordon H. (Corky) Green, President, of the Muleshoe Chamber of Commerce and Agriculture.

Community attention having been recently focused on fuel and fertilizer shortages and the economic importance of fuel and fertilizer to the farmers and our Nation has prompted Harmon Elliott, Chairman of the Agriculture Committee of the Muleshoe Chamber of Commerce and Agriculture, to write the following letter to our National and State agricultural leaders, Congressmen and State Representatives regarding the situation.

"The fertilizer and fuel shortage for agriculture purposes is getting worse! With the fixed high cost of production, maximum production yields are mandatory.

"A local and area check with fuel and fertilizer dealers reveals that no change is being made and it seems there is no change in the future offering. Research on this problem indicates that--the Cost of Living Council--and exports--are the major cause of our shortage problem. If this trend continues to go unchecked, it will bankrupt the farmers and our Country.

"We think that the Cost of Living Council should have its thinking changed if we are to survive and that exports should be stopped until an adequate supply of fuel and fertilizer for the American farmer is assured.

"As Chairman of this Committee, I will be required to give a progress report on the actions you are taking. I would, therefore, appreciate your response to this letter."

Needmore To Sponsor Annual Turkey Dinner

The Needmore Community Club Women are preparing for their Annual Turkey Dinner to be held Saturday, November 17, beginning at 5:30 p.m.

Turkey and dressing and all the trimmings will be served. Tickets are priced at two dollars for adults and one dollar for children under 12.

The ladies are also selling tickets for a quilt to be given away that evening. Tickets are 50 cents each for the quilt.

Young Farmers To Meet Monday

The Muleshoe Young Farmers will have a meeting Monday night, November 12, at 7:30 p.m. in the Ag. Building at Muleshoe High School.

Alex Williams will present a program on new tax laws and rules.

Annual Water, Inc. Drive To Be Launched

LUBBOCK--Water, Inc. leaders from throughout West Texas and Eastern New Mexico will converge on Lubbock Saturday (Nov. 10) to launch the annual drive for membership support for the organization.

John J. Kendrick, Brownfield, who served as the first president of the non-profit organization, will challenge the membership drive workers at the luncheon session at the Red Raider Convention Center. Kendrick has served continuously on the Water, Inc. board of directors since its founding in 1967.

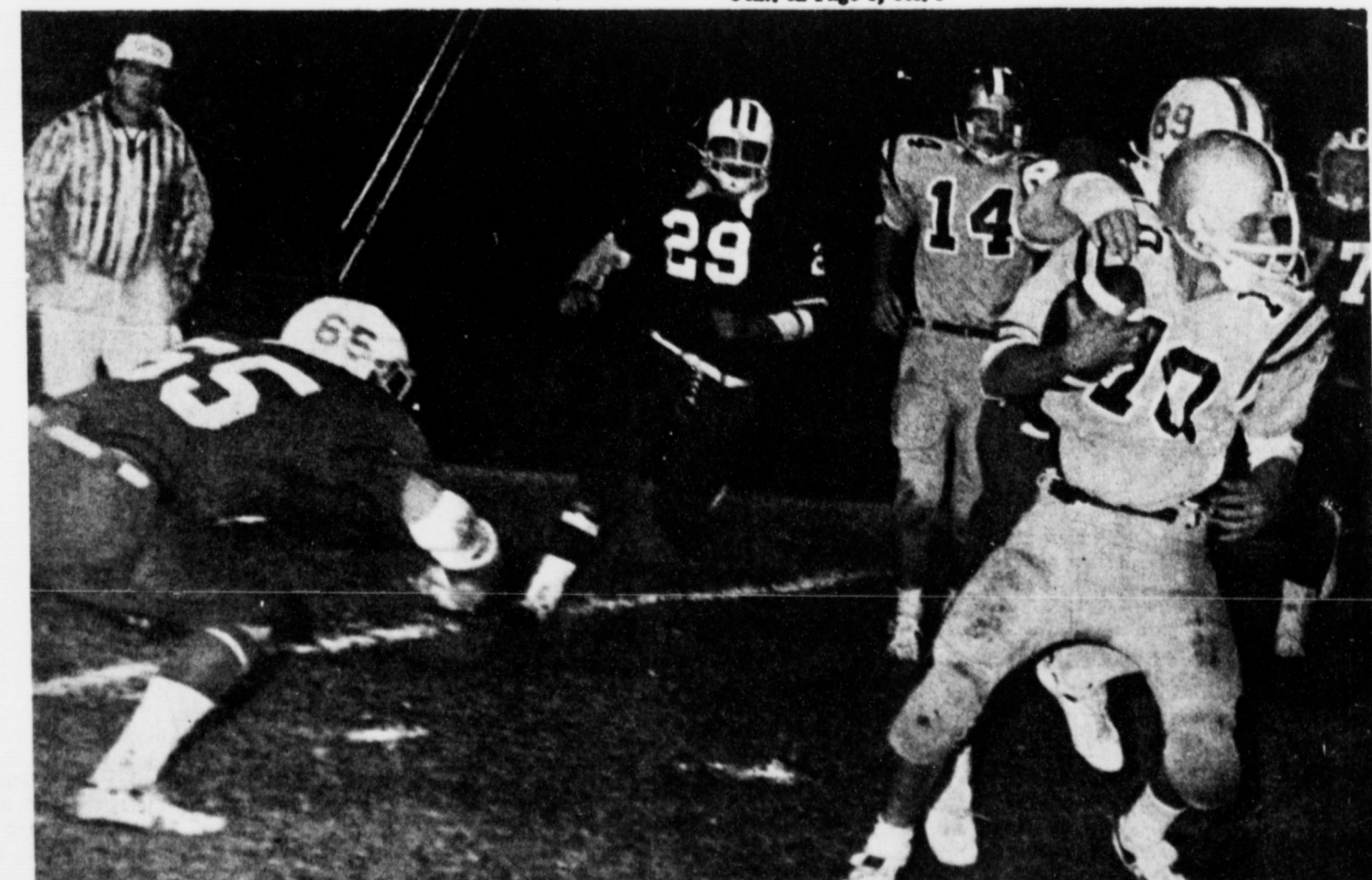
Water, Inc. is spearheading the drive for supplemental water for the area. More than 5,000 individuals, businesses and organizations have contributed to the financial support of the work through annual membership contributions.

A report on a federal study of an importation project utilizing Mississippi River water has been branded by Water Inc. leaders as a giant step forward toward the goal of imported water. Although the study failed to show economic feasibility, it did show water availability and engineering feasibility. With fast changing agricultural economics in recent months, new studies could well demonstrate economic feasibility, officials say.

Meanwhile, Water, Inc. leaders point to the growing need for agricultural production as the catalyst that could trigger approval of a supplemental water project. "The nation and the world needs increased production badly," A.L. Black of Friona, Water Inc. president said, "and with supplemental water, we can meet these needs."



ROBERT PARKER



MULES LOSE TO CANYON . . . The Muleshoe Mules played Canyon at Canyon Friday night losing the game 30-6. The Mules have had a tough season this year and will be playing their final

game next Friday night, November 16 against the Perryton team here in Muleshoe. The game will begin at 7:30 p.m. The Mules now have three losses and 0 wins in district competition.

Statewide Hearing Set On Energy Problems

AUSTIN--With energy curtailments threatening to affect everyone, citizens are urged to present their views and proposals at a public hearing November 20 in Dallas, according to Agriculture Commissioner John C. White.

chairman for a state committee on the environmental and social aspects of the energy shortage. The committee has been appointed as part of the Governor's Energy Advisory Council, headed by Lt. Gov. William P. Hobby.

mittee are Willard Barr, former mayor of Fort Worth; Austin attorney Thomas Cowden; Douglas Toole of Houston, chairman of the Texas Water Quality Board; Edwin L. Cox of Dallas, representing the oil industry; Herbert C. McKee of Houston, chairman of the Tex-

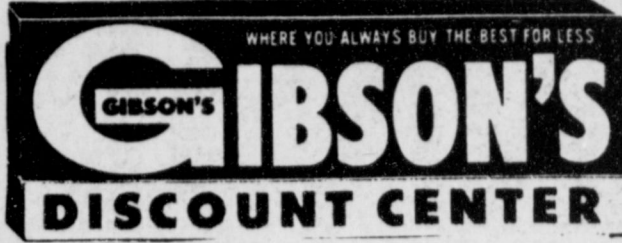
as Air Control Board, and J.R. Maxfield, Dallas physician. The hearing is scheduled for 10:30 a.m. to 4:30 p.m. in the Embassy West Room of the Statler-Hilton Hotel, 1914 Commerce Street.

as the city on the relationship between energy problems and patterns of life," Commissioner White said. Realistic adjustments in transportation practices and changes in individual living patterns evolving from energy cutbacks are problems to be ex-

plored. Other topics to be covered are regulations that will provide for the most efficient use of energy in the state and alternative sources of energy that are practical and attainable. "Texans must plan now to be prepared for shortages in

traditional energy and the ultimate effects on homes and working patterns," Commissioner White said. "Actual energy shortages have already been experienced in agriculture; some industries have had but the individual in the state has yet to experience severe shortages in the fuels he needs."

ance. If witnesses cannot be present at the hearing, they should send testimony on any of the issues to John C. White, Commissioner of Agriculture, Committee Chairman, P.O. Box 12847, Austin, Texas 78711. **Probably True** Customer in store: "Why is it that I never get what I ask for?" Floorwalker: "Perhaps, Madam, because we are too polite."



1723 W. AMERICAN BLVD.
MULESHOE TEXAS
OPEN 9 am TO 8 pm
MONDAY THRU SATURDAY
SALE STARTS NOV. 11
GOOD THRU NOV. 14

HURRY!

while our stock is complete!



DON'T WAIT!

LAYAWAY NOW FOR CHRISTMAS

LADIES
Brushed Tricot LONG PAJAMA
YELLOW PINK OR BLUE
REG. \$5.19
\$4.59
80% Acetate 20% Nylon

QUESTOR TINKER TOOLS
FOR BOYS AND GIRLS
EDUCATIONAL TOY **\$2.88**
#330 REG. \$3.49

FOR A LITTLE BOY'S CHRISTMAS
ERTL. 8 pc. **MINI FARM**
\$6.29 SET
REG. \$7.49

LUX LIQUID GIANT BOX
1 PT. 6 OZ.
47¢
LOW LOW PRICE

LADIES LONG BRUSHED TRICOT PEGNOIR SET
YELLOW PINK BLUE
REG. \$6.19
\$5.29
80% ACETATE 20% NYLON

GRAND PRIX CAR RACING SET
WITH 4 CARS
4 FT. OF TRACK
REG. \$2.99
\$2.49
GIBSON'S PRICE

BUDDY L #4998
4 PIECE SLICKSTER SET
REG. \$4.99
\$4.19

FAB DETERGENT GIANT SIZE
64¢
10¢ OFF

LADIES BRUSH TRICOT LONG GOWNS
80% ACETATE 20% NYLON
YELLOW-PINK-BLUE
REG. \$3.39
\$2.88
NOW AT GIBSON'S

PLAY DOH FUN FACTORY
MAKES 12 GREAT SHAPES FOR PLAY AND BUILDING FUN
REG. \$4.39
\$3.88
NOW ONLY

MINER SLEEPOVER CASE
COMPLETE WITH TRAVEL ACCESSORIES
#1-729
REG. \$3.33
AT LOW PRICE OF **\$2.69**

JOHNSON'S KLEAN 'N SHINE
THE FOAM THAT CLEANS EVERYTHING
15 OZ.
\$1.29

MEN'S WINDBREAKERS
ASSORTED COLORS
100% NYLON
REG. \$4.17
\$3.59
GIBSONS LOW LOW PRICE

Eee Gee BABY CARE AND HER COMPLETE LAYETTE
#749
LAYAWAY SHE DRINKS & WETS
\$6.29

FOR A LITTLE GIRL'S CHRISTMAS
Eee Gee CANDICE DOLL
12" TALL
REG. \$3.49
NOW! **\$2.88**
#1170

BEST PAK OUTDOOR BAGS
EXTRA HEAVY-DUTY PLASTIC
HOLDS UP TO 33 GAL.
BOX OF 5'S
59¢

BOY'S WINDBREAKERS
ASSORTED COLORS
100% NYLON
REG. \$3.97
NOW! **\$2.88**

WINDSOR A.M. AC-DC RADIO
WITH BUILT-IN BATTERY CHARGER #2076
REG. \$12.97
\$9.88
SALE PRICE

HOYLE OFFICIAL PLAYING CARDS
2 PKG. WITH THE WORLD FAMOUS BOOK ON RULES OF GAMES
REG. \$2.49
\$1.99

FUTURE ACRYLIC FLOOR FINISH
46 oz.
\$1.79

POLLENEX FOOT MASSAGER
HI LO WITHOUT HEAT
WITH HEAT ONLY
WITH HEAT & MASSAGE
#HM60 REG. \$14.97
GIBSONS SALE PRICE
\$6.99

WRIST RADIO
IN BRIGHT COLORS
REG. \$6.97
\$4.88
GIBSONS LOW PRICE

JOHNSON'S WEATHER WAX
CLEANER AND WAX FOR CARS
18 fl. oz.
REG. \$1.33
NOW AT GIBSONS
99¢

Self-Styling
ADORN HAIRSPRAY
EXTRA HOLD REGULAR UNSENTED ULTIMATE HOLD
\$1.19

WESTMARK 4 qt. BUTTER TOPPER POPCORN POPPER
REG. \$10.97
NOW! **\$7.88**
#1186-4

SNOOPY ELECTRIC TOOTHBRUSH
BATTERY OPERATED
REG. \$7.97
\$6.88

GASOLINE CAN
ONE US GALLON
REG. \$1.17
NOW! **99¢**

White Rain SHAMPOO
HERBAL BALSAM
REG. LOTION 14 OZ.
69¢

WICKER BUN WARMER
ELECTRIC
PLAID CLOTH COVER
REG. \$2.79
SALE PRICE
\$1.99

SNAP RUST BUSTER
FREES NUTS, BOLTS AND FITTINGS
14 oz.
REG. 93¢
GIBSONS PRICE
69¢

HI CHARGE 1 AMP BATTERY CHARGER
6 OR 12 VOLT
REG. 7.99
NOW **\$6.49**

MENTHOLATUM DEEP HEATING RUB
1.25 OZ. TUBE
67¢

MENTHOLATUM OINTMENT
1 OZ JAR
33¢

Chamber...

Cont. from Page 1
 presstime and they all are working with various agencies who they feel can get the problem in proper perspective so that an adjustment can be made.
 Every effort will be made by the Agriculture Committee of the Chamber to keep these leaders informed on the rural situation in our area and reports of their response will be issued by the Muleshoe Chamber of Commerce and Agriculture as they become available.
 The Muleshoe Chamber of Commerce and Agriculture Committees are actively en-

Parker...

Cont. from Page 1
 the new president is Robert Parker president of Paris Milling Company, Paris, Texas which owns Texas Sesame in Muleshoe.
 Other officers are Nathan Boardman, Crosbyton Seed Co., first vice-president; Jim Lindsey, Pioneer Hi-Bred Seed Co., Plainview, Texas, second vice-president.
 The outgoing president is George Warner, President of George Warner Seed Co., Hereford.

Denson...

Cont. from Page 1
 him and made a \$20 mistake, Denson was quite a ways out of Muleshoe before he noticed that he had come up \$20 short.
 He later called back to the Muleshoe store and told them of the mistake. A couple of days later Denson said he received a check in the mail for \$20 from Gibson.
 Denson stated to the Journal that he travels all over the United States and he thinks that the courtesy shown him in Muleshoe by the merchants on this last trip and previous trips through Muleshoe has been outstanding.

Fuel...

Cont. from Page 1
 Green says, "Of course, the individual farmer should have a tremendous storage problem."
 With changes in fuel availability, Green feels some farm operations may have to be cut back.
 "There are several possibilities," he says. All of them have some repercussions. One thing is to go toward minimum tillage where the farmer cuts back on some operations such as weed and wind erosion control."

gaged in several projects to help make the Muleshoe trade area a prosperous and enjoyable community.
 The recent GOSPEL SING TIME show sponsored by the Business Activities Committee of the Chamber was successful due to the work of many local citizens. This year's program was a pleasant departure from the ordinary, and proceeds, of course, are used to finance our Community Christmas Tree and other such activities. Tommy Black is General Chairman for the Business Activities Committee and this particular show had as its co-Chairmen, Gil Lamb and Rev. H.D. Hunter.

Chairman of the Twenty-Fourth Annual Chamber Banquet, David Sudduth, who is also incoming President for the Chamber in 1974, is working on plans for the Banquet which will be sometime in January. A number of persons, including some nationally known, have been contacted regarding speaking engagement availability.

Answering correspondence, telephone and personal inquiries is a major function of the Chamber Office. In response to a letter from the Lubbock Chamber Office, the Muleshoe Chamber office has been working on a Market Survey for the past few weeks. The survey includes information on Bailey County such as economic growth, population projections, education facilities, em-

Election...

Cont. from Page 1
 the jurisdiction of the courts in probate matters.
 Amendment Seven also failed in Bailey County, but passed in the state. There were 152 votes for the amendment here and 161 against the amendment that would provide an additional \$100 million in state bonds for the veterans land fund and would also extend the classification of those eligible to include surviving spouses of an eligible veteran.
 Amendment Eight failed in both county returns and state returns. There were 90 votes cast for the amendment and 216 votes against the amendment that would authorize and require cities, towns and villages to levy ad valorem tax sufficient to pay principal and interest on their general obligations issued in the future.
 Amendment Nine failed in Bailey County, but passed in the state. There were 129 votes for the amendment and 181 against the amendment that would exempt certain personal and real property of non-profit water supply corporations and cooperative from property taxation.

ployment, transportation, construction and building activity, wholesale, retail and service trade and other related data and statistics. The Chamber office has had numerous inquiries are given a personal reply. The Jaycee Annual Crane Hunt has prompted correspondence and telephone calls for the past several weeks. Also, advertisement on Triciale Foods Corporation has prompted several inquiries about this promising new agriculture product within the past few months.
 Green stated that "the Muleshoe Chamber of Commerce and Agriculture is striving to promote the interests of industry, agriculture and commerce and to make our community a better place to live. You are encouraged and invited to contact the Chamber office whenever we can be of assistance to you."

Wreck...

Cont. from Page 1
 stationed with the U.S. Weather Service at Huntington, West Virginia, but prior to that he had lived in Lubbock for the time he was four years old until he graduated from high school.
 He was a veteran of World War II serving in the U.S. Air Force and a member of the Catholic Church.
 Funeral services were held at 10:30 Friday morning at the Immaculate Conception Catholic Church in Muleshoe with the Rev. Fr. Timothy Schewertner of the Muleshoe church officiating. Burial was in the Dimmitt Cemetery in Dimmitt. Pallbearers were E.T. Jennings, D.B. Ivy, Reyford Wanner, Glenn Scott, Gene Smith and J.H. Gallman.
 Survivors include three daughters, Mrs. Sandra Duffey of Long Beach, Calif., Miss Jean Noble of Renton, Wash., and Mrs. Gail Ramos of West Germany; his mother, Eula Noble of Roswell, N.M.; two sisters, Mrs. Loraine Gallman of Lubbock and Mrs. Mary Hennington of Roswell; one brother, Eldred of Big Springs; and four grandchildren.

Bailey County Journal
 Established March 31, 1925
 Published by Muleshoe Publishing Co., Inc.
 Every Sunday at 25¢ w. Second. Box 443
 Muleshoe, Texas 79347
 Second class postage paid at Muleshoe, Texas
 Muleshoe, Texas 79347
 L. R. Hill, President
 Joseph P. Hill, Sec. - Treas.
 L. R. Hill - Managing Editor
 K. L. Hill - News Reporter
 Tom Eade, News Reporter
 Joyce Eldred, Advertising
 Paul Oswald, Editor
 Zone 1 - Bailey - Farmer - Cochran - Lamb
 counties, \$4.00 per year, \$4.50 per year by carrier, W. & W. Thursday Muleshoe Journal, 10¢ papers, \$5.50 per year; \$6.00 per year by carrier.
 Zone II - Out-of-Territory:
 With Thursday Muleshoe Journal, 10¢ papers, \$6.25 per year.
 Monthly, by carrier, \$5.50; single copies - 10¢
 Advertising rate card on application

Football...

Cont. from Page 1
 In the game Canyon scored two touchdowns and a field goal set up by three Muleshoe turnovers. Statistically Canyon gained 161 yards rushing and 89 yards passing. They had a total of 12 first downs. All of this compared to 92 yards rushing, 36 yards passing and 10 first downs for the Muleshoe Mules.
 The Mules will be hoping

to close the season on a good note against Perryton next week. Canyon has no remaining games.

Card Sharp
 First Card Player—"We'd better stop the game now; we're even."
 Second Card Player—"Even! How do you make that out?"
 First Player—"Why, you had all my money a little while ago and now I've got yours!"

Volunteers Attend Heart Meeting

Volunteers from the Bailey County Division of the American Heart Association participated in the Region II Campaign Workshop held Tuesday, October 29, at Lubbock. The meeting brought together

volunteers from a wide area to discuss plans for the American Heart Association's Fund Raising Campaign in Region II. Workshop discussions centered around the development of the various facets of the campaign as well as a preview of new publicity materials.
 Attending the Regional Meeting from Muleshoe were Sandy Bass, Bailey County Heart Fund Chairman; Dean Spraberry, Campaign Chairman; Imogene Tiller, Community Services;

and Elizabeth Watson, Public Education Services.
 The American Heart Association Campaign will be conducted in Muleshoe and throughout the United States in February, 1974.

Girls
 "When a man is faced with two evils, what is usually the best choice?"
 "It's hard to say; but I've noticed most of them pick up the blonde."

Home, home to the range, with a pocket of extra change! It's like a raise in pay. The bargains I'm finding today!

Shur & Fine

- Shurfine Poly Bag Powdered Or Brown 32 oz. **SUGAR** 2 FOR 89¢
 Shurfine Pure 4 oz. Can **BLACK PEPPER** 39¢
 Shurfine Whole Peeled 16 oz. Can **TOMATOES** 4 FOR \$1
 Soflin Pinless 12's Overnight 69¢
DIAPERS
 Disposable 30's Daytime \$1.29
 Shurfresh Buttermilk 8 oz. Can **BISCUITS** 11 FOR \$1
 Shurfresh Sweetmilk 8 oz. Can **BISCUITS** 11 FOR \$1
 Shurfresh Halfmoon Colby 10 oz. Pkg. **LONGHORN CHEESE** 69¢

FROZEN FOODS

- Shurfine Frozen 6 oz. Can **ORANGE CONCENTRATE** 5 FOR \$1
 Shurfine Frozen Chopped 10 oz. **BROCCOLI** 4 FOR \$1
 Shurfine Frozen 10 oz. **BROCCOLI SPEARS** 4 FOR \$1
 Shurfine Frozen 10 oz. **BRUSSEL SPROUTS** 4 FOR \$1
 Shurfine Frozen 10 oz. **CAULIFLOWER** 4 FOR \$1

- Shurfine 32 oz. Bag **PANCAKE MIX** 49¢
 Shurfine 14 1/2 oz. Can **PUMPKIN** 6 FOR \$1
 Shurfine Pieces & Stems 4 oz. Can **MUSHROOMS** 3 FOR \$1
 Shurfine 8 oz. Can **TOMATO SAUCE** 9 FOR \$1
 Shurfine Chunk Style 6 oz. Can **TUNA** 2 FOR 89¢
 Shurfine Strawberry 18 oz. Jar **PRESERVES** 59¢
 Shurfine Light Corn 32 oz. Blt. **SYRUP** 49¢
 Shurfine 16 oz. Can **FRUIT COCTAIL** 3 FOR 89¢
 Shurfresh 32 oz. Bag **ORANGE SLICES** 49¢
 Shurfine Halves Partlet 16 oz. Can **PEARS** 3 FOR 89¢
 Shurfine Crushed or Chunked, Natural Juice 15 1/2 oz. Can **PINEAPPLE** 4 FOR \$1
 Shurfine Strained or Whole 16 oz. Can **CRANBERRY SAUCE** 4 FOR \$1
 Shurfine 16 oz. Can **PORK & BEANS** 5 FOR 88¢

A BONANZA SPECIAL
SHURFINE GOLDEN CORN
 Cream Style or Whole Kernel
 17 oz. Can **5/\$1**

A BONANZA OF FOOD SAVINGS!
CARNIVAL
 SHURFINE Drip, Elec. Perk or Reg. Grind Vacuum Pak **COFFEE** 16 oz. Can **COFFEE COUPON**

A BONANZA SPECIAL
 SHURFINE FRESH SHELLED **BLACK EYE PEAS**
 15 oz. Can **5/\$1**

GRAPEFRUIT JUICE
 Shurfine Natural Pink Texas **2 / 89¢**
NOTICE
 JIM'S PAY AND SAVE has been authorized by the Department of Agricultural to accept your Food Stamps effective immediately.

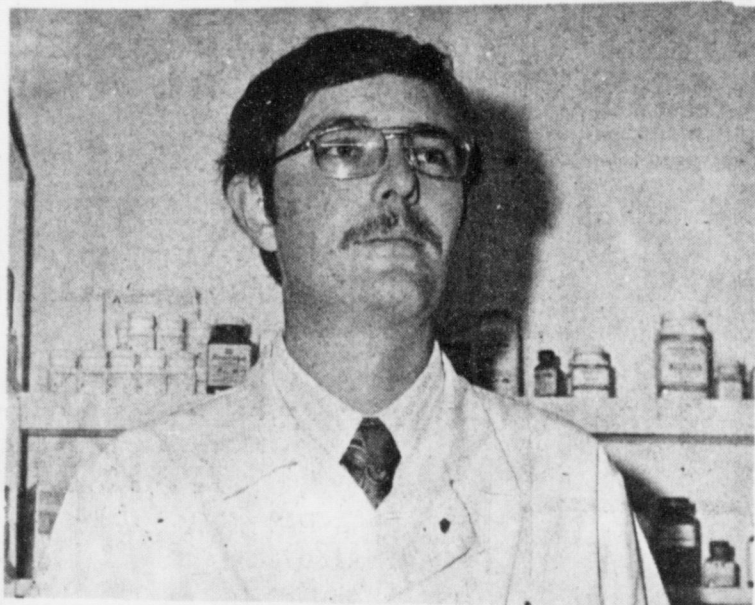
A BONANZA SPECIAL
 SHURFINE CUT **GREEN BEANS**
 16 oz. Can **5/\$1**

SHURFINE DRINKS
 Grapefruit, Orange, Pineapple/Orange Fruit Punch and Grape
 46 oz. Can **3 FOR 89¢**
VIKING 12 X 22 ALUMINUM FOIL **4/\$1**
SOFLIN 2 PLY BATHROOM TISSUE
 White, Pink, Yellow, or Aqua **79¢**
SHURFINE SWEET PEAS
 Early Harvest 17 oz. Can **4 FOR 89¢**

SHURFINE CAKE MIXES **\$1**
 DEVILS FOOD, ORANGE, MARBLE, SPICE, WHITE OR YELLOW 18 1/2 oz. **4 FOR**

Jim's Pay N' Save
 FRIENDLIEST STORE IN TOWN
 OPEN 8 AM-10 PM 7 DAYS A WEEK
 SPECIALS GOOD MONDAY NOV. 5-17
 QUALITY MERCHANDISE AT LOWEST PRICES
 201 S. 1st. Street

Welcome to Muleshoe



BOB ADDISON

Bob Addison, a pharmacist at Damron Drug is a newcomer to Muleshoe. Addison lives at 424 West Fifth Street and has been a resident for about two weeks, moving from Tulsa, Oklahoma. He received his BA degree from Southwestern State College and attends the Church of Christ.

THE FOLLOWING FIRMS WELCOME ADDISON TO MULESHOE:

James Crane Tire Co. GOODYEAR	MULESHOE STATE BANK MEMBER FDIC
DAMRON DRUG CO. REXALL 308 MAIN	James Glaze Co. INSURANCE REAL ESTATE LOANS

Double Shower Fetes Hardaway Sisters



MISS BOBBA HARDAWAY

A double bridal shower honoring Miss Bobba Hardaway bride-elect of Dwight Lewallen and Miss Regana Hardaway bride-elect of William Michael Clark of Seminary, Mississippi was held Tuesday, November 6 at 7:00 p.m. in the Muleshoe State Bank Community room.

Special guest for Miss Bobba Hardaway were Mrs. Bob Hardaway, mother of the bride-elect; Mrs. Mary Johnson, maternal grandmother; Mrs. Ray Hardaway, paternal grandmother; Mrs. Forrest White, the prospective groom's mother; Mrs. P.O. Stickey, prospective groom's grandmother; Mrs. J.C. Odam, great aunt; Mrs. H.L. Hardaway and Mrs. Bill Johnson, aunts of the honoree.

Special guests for Miss Regana Hardaway were Mrs. Bob Hardaway, mother of the bride-elect; Mrs. Mary Johnson, maternal grandmother; Mrs. Ray Hardaway, paternal grandmother; Mrs. J.C. Odam, great aunt; Mrs. H.L. Hardaway and Mrs. Bill Johnson, aunts of the honoree.

Registering guests and gifts for Miss Bobba Hardaway was Mrs. Elmer Davis.

Registering guests and gifts for Miss Regana Hardaway was Mrs. Jerrell Otwell.

Lime sherbert punch, cake, mints and nuts were served from two tables. Miss Bobba Hardaway's table was laid with a white lace table cloth over blue and centered with three blue candles. White and blue cake was served from it. Miss Regana Hardaway's table was laid with a white lace table



MISS REJANA HARDAWAY

cloth over pink and centered with three pink candles. White and pink cake was served from it.

The hostess presided at the tables with assistance from Miss Debra Glass and Miss Brenda Glass.

Hostess gifts were a Duncan Hines stainless steel cookware set, a Proctor Silex toaster, a Robinson set of kitchen utensils, a Nordic bundt pan and a decorative towel set.

Hostesses for the occasion were Mrs. Bob Dodd, Mrs. Bud Barber, Mrs. Don Puckett, Mrs. Bob Glass, Mrs. Danny Kelly, Mrs. Leonard Evans,

Mrs. Shirlee Richardson, Mrs. Elmer Davis, Mrs. Jerrell Otwell, Mrs. Johnny Williams, Mrs. Gordon Murrah, Mrs. Ted Millsap, Mrs. David Beckett, Mrs. Weldon Eagle, Mrs. Carry Don Elliot, Mrs. Vernal King, Mrs. R.E. Burham, Mrs. L.K. Dean, Mrs. Owen Jones, Mrs. James Rucker, Mrs. Arnold Gross, and Mrs. Lona Brown.

Miss Rejana Hardaway and Michael Clark will be married Saturday, November 10.

Miss Bobba Hardaway and Dwight Lewallen will be married Thursday, November 22.

Bridal Shower Fetes Mrs. Ricky Morris

A Bridal Shower honoring Mrs. Ricky Morris, nee Joyce Camp, was held in the First National Bank Community Room on Tuesday, November 6, from 7:30 to 9:00 p.m.

Mrs. Randy Cornelison, sister of the honoree, registered the guests.

Special guests were Mrs. Bernis Camp, mother of the honoree, Mrs. Woody Keith and children of Odessa and Mrs. Randy Cornelison of Borger, sisters of the honoree.

The serving table was laid with a sheer cloth, appliqued with wedding bells, over pink. The centerpiece was a floral and candle arrangement in the brides chosen

colors of shades of pink. Cranberry punch, thumbprint cookies, nuts and mints were served from crystal and silver appointments by Mrs. Hal Tibbits, sister of the honoree.

The hostess gift was a Sunbeam electric frypan, in Harvest Gold.

Hostesses were: Mrs. J.W. Robert, Mrs. Sam Hopper, Mrs. Pesky Winn, Mrs. Ted Millsap, Mrs. Howard Watson, Mrs. Kenneth Precure, Mrs. Monty Dollar, Mrs. Jim Small, Mrs. H.A. Douglass, Mrs. Gwen Taylor, Mrs. Bobby Nickels, Mrs. Willard Tibbits, Mrs. W.H. Lee, Mrs. Bobby Henderson, Mrs. Joe Soter and Mrs. Dennis Williams.

Art Association To Have Guest

The Muleshoe Art Association will meet Tuesday, November 13, at 9:30 a.m. in the Community Meeting Room of the New Muleshoe State Bank. This will be the first time we will meet in the new room, but should the "unexpected" happen and something not be quite ready, then we will meet in the usual place. However we do not expect anything to prevent our meeting there at this meeting. Business will be taken care of promptly at 9:30 and as soon as that is over the program will be turned over to our guest artist, Virginia Gregory, of Clovis, New Mexico, who will give an oil demonstration.

Virginia, believing anyone can learn to paint if one really has the desire, enjoys working with others and trying to help them develop. She believes in a down to earth approach and feels that sharing certain views will give one a new outlook at God's earth and a sincere desire to create and a desire to study. Painting can be learned through practice and one may develop their own style and should be encouraged to do so. Painting is an individual thing. Repeated painting helps to develop the richness of the quality of a painting - No man has a right to reject a painting, when the painting has quality.

Although Virginia feels the foundation of her work was built by years of painting in the heart of the bluebonnet country in Central Texas, she has continued to seek out new ideas and made numerous trips to Northern New Mexico to get ideas and understands the adobe and loves the West.

While in Texas, her instructors included: Mr. Gaitha Browning, Mrs. Frances Bell, Wionon Peirson and in Howard Payne College she studied under Maurine Stewart.

Other teachers include Mr. Richard Goetz of Oklahoma City, Mr. Henry Henchey of Cape Cod and Mr. George Walker of California.

Virginia believes that art is an unexcelled means of self expression. Ideas must be nurtured and put down or they may be lost and gone forever.

We believe that anyone who is interested in the art of painting will enjoy seeing this demonstration and listening to Mrs. Gregory state her desires to create through painting. We would like to extend an invitation to anyone who would like to come to be our guest at this meeting.

Spring is a virgin, Summer a mother, Autumn a widow, and Winter a step-mother.

-Polish Proverb.



MRS. RICKY MORRIS
nee MISS JOYCE CAMP

WEST PLAINS HOSPITAL Hospital Briefs

ADMISSIONS:

Delmar Eaves, Mrs. James Gary Phillips, baby boy Phillips, Mrs. Mamie Miller, Clarence (Spud) Thomas, Charles Ray Young, Louis Munoz, Martin Oliver, Mrs. Bruce Chapman, baby boy Chapman, Margarito Garza, Mrs. Domingo Garcia, Mrs. Russell Byard, Mrs. Phillip Wilcox, baby girl Wilcox, W.L. Middlebrooks,

Mrs. J.D. Carpenter, J.W. Hamilton, Mrs. Jess Bryant, Mrs. Jerry Taylor, Mrs. Bonnie Harlin, baby boy Taylor, Mrs. J.W. Barber, Weldon Cody and Mrs. Bulah Harper.

DISMISSALS:

Mrs. Gail Gibson, Mrs. Ronald Wallace and baby girl, Delmar Eaves, Mrs. James Gary Phillips and baby boy, Mrs. C.D. Noland, Mrs. J.O. Reed, W.M. Oliver, Louis Munoz, Clarence (Spud) Thomas, Mrs. Jess Bryant, Mrs. Bonnie Harlin, Mrs. Jerry Taylor and baby boy, Charles Ray Young, W.L. Middlebrooks, Mrs. Phillip Wilcox and baby girl.

Mr. and Mrs. Eugene Louis Lewentha Jr. request the honor of your presence at the marriage of her daughter

Clairie Lyle (Sissy)

to

Troy Lee Steinbock

on Sat. the 5th day of January at eight o'clock in the evening

St. Peter Prince of the Apostles San Antonio, Tex.

Reception immediately following at the Bright Shawl Tea Room

JANUARY WEDDING PLANNED . . . Mrs. Eugene L. Lewentha Jr. of San Antonio and Mr. T. Roy Flournoy of Laredo Tex. Announces the engagement and approaching Marriage of their daughter Claire Lyle (Sissy) Flournoy to Troy Lee Steinbock son of Mr. Rex Steinbock of Lazbuddie. The couple plans to be married Jan. 5 in St Peter Prince of the Apostles Church in San Antonio. Miss Flournoy is a 1971 graduate of Alamo Heights High school in San Antonio and is attending Texas Tech. Steinbock is a 1969 graduate of Lazbuddie High school. And is employed by a business firm in Lubbock.



BE AN 'EARLY BIRD' WITH YOUR CHRISTMAS SHOPPING

Selected Group

Pant Suits 1/3 Off

All Coats 20% Off

One Rack Dresses 1/3 Off

Selected Blouses 1/3 Off

For The 'Unique' Look For The Holiday Occasion
Our New Holiday Fashions - - Including
The Strikingly Colorful Caftan!

Lucille's
Smart Shop

Hill Top Plaza

BankAmericard

Master Charge

CLOVIS

ANNOUNCING

New
Savings Rates

Pass Book Accounts 5 1/4 %

Certificates Of Deposit *

1 Year - \$1,000. Min. 6.50%

2 1/2 Years - \$1,000. Min. 6.75%

4 Years - \$1,000. Min. 7.50%

ALL ACCOUNTS COMPOUNDED QUARTERLY

* Substantial Loss Of Interest For Early Withdrawal

Tri-County

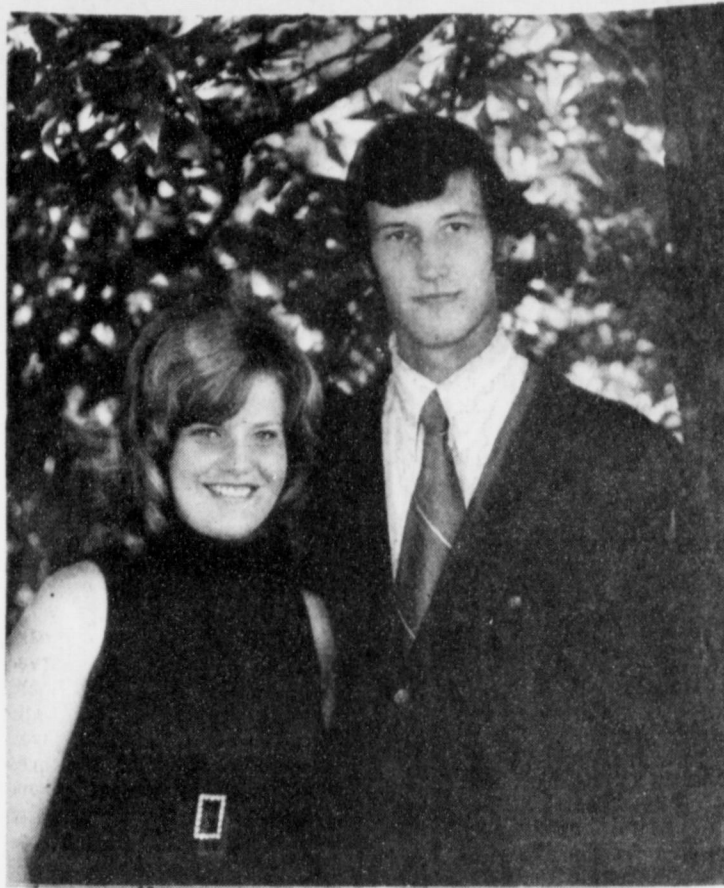
SAVINGS AND LOAN ASSOCIATION Muleshoe, Texas



ENGAGEMENT . . . Mr. and Mrs. James P. Wedel of Muleshoe announce the engagement and approaching marriage of their daughter, Miss Charlotte Wedel, to Allan Davis, son of Mr. and Mrs. J.D. Davis of Three Way. The prospective bride is a 1972 graduate of Muleshoe High School. The prospective groom is a 1971 graduate of Three Way High School.



APPROACHING MARRIAGE . . . Mr. and Mrs. D.L. Redwine of Lazbuddie, announce the engagement and approaching marriage of their daughter, Miss Connie Redwine, to Bobby Morris, son of Mr. and Mrs. Vinton Morris of Lazbuddie. The couple plan a December 29 wedding at the Progress Baptist Church.



JANUARY WEDDING PLANNED . . . Mr. and Mrs. Jimmy H. Milner announce the engagement and approaching marriage of their daughter, Miss Becky Shariisse Milner, to Mr. John Edmond Jones, son of Mr. and Mrs. Robert L. Jones of Lazbuddie. Miss Milner is a 1972 graduate of Muleshoe High School, and is a sophomore student at Texas Woman's University in Denton. The prospective bridegroom was graduated from Lazbuddie High School in 1971. He is a junior student at West Texas State University in Canyon. The couple plan a January 4th wedding at the Church of Christ in Muleshoe.

4-H Members Installed

The Pleasant Valley 4-H Club held its meeting in the home of Mrs. Kirk Pitts. An informative slide program on 4-H projects was presented by Lyn Byman, Lamb County Home Demonstration agent. Rad Huckle-

bee, Sharla Hawkins and Tod Holt were installed as members.

Refreshments were served by the hostesses to members, Shelly, Kelly, and Keith Hawkins, Tommy Kervin, Brad Hucklebee, Aubrie Pitts, and Ronnie Angley. Adult leaders present were Mrs. Ken Angley, Mrs. Kirk Pitts, Lyn Barramen and guest Mrs. Holt. Their next meeting will be December 3.

NOTICE

In the interest of the Present Energy Crisis, Wellborn Beauty Shop is issuing a new schedule for operating hours.

Tues. thru Fri. 9 am to 5 pm
Saturday 8 am to 12 Noon

WE FEATURE

- Quick Service Styling
- Uni Perm Permanent Waving
- Deeya Cosmetics

Faye and Curtis Wellborn



PLEDGES RECEIVED . . . Alpha Zeta Pi received pledges from Mrs. Bill Bruns, Mrs. Jerry Gleason, Mrs. Ted Barnhill, Mrs. Tommy Black, Mrs. Danny Noble, Mrs. Mike Miller, Mrs. Monty



Dollar and Mrs. Tim Cambell in a pledge ritual held Tuesday evening in the home of Mrs. Don Cihak. One transferee was present, Mrs. Eugene Howard.

Pledge Ritual

The Alpha Zeta Pi chapter of Beta Sigma Phi met Tuesday night in the home of Mrs. Don Cihak. Mrs. Eugene Howard was received into the membership of the chapter having been a Beta Sigma Phi mem-

ber in Hereford. Eight pledges were received during a Pledge Ritual. Mrs. Monty Dollar, Mrs. Tim Campbell, Mrs. Ted Barnhill, Mrs. Tommy Black, Mrs. Jerry Gleason, Mrs. Bill Bruns, Mrs. Danny Noble, and Mrs. Mike Miller received their pledge pins.

Following the Opening Ritual, a business meeting was held in which final plans were made for the Bingo Carnival, November 15. The committees reported on progress of plans for the event. A letter was read from International Office commending the chapter for their work during the Fall Rush ac-

tivities. The letter was written to Mrs. Curtis Walker, Vice-President and Membership Chairman. The chapter felt very proud that Alpha Zeta Pi had been noted for its efforts and were especially grateful to Mrs. Walker and her committee, Mrs. Spencer Tanksley, Mrs. Reagan Cox, Mrs. Bill Russell, and Mrs. John Neil Agee for their outstanding job.

Refreshments were served by hostesses Mrs. Don Cihak and Mrs. Ken Box. A special guest was Louis Collis who recently moved to our community. In addition to the new members, those present were Mrs. Dick Johnson, Mrs. Glen Watkins, Mrs. Reagan Cox, Mrs. Jimmy Dale Black, Mrs. Ken Box, Mrs. Karney Scoggin, Mrs. Curtis Walker, Judy Lee, and Mrs. Bob Finney.

Nursing Home News
by Myrtle Guinn

Mrs. Brown returned from spending ten days visiting her daughter and family, Mr. and Mrs. Twaddell of Amarillo.

Mr. and Mrs. Clyde Chappell returned to their home at Lockhart, Texas after visiting their mother Mrs. Epperly and Mr. and Mrs. Odie Epperly for several days, they went home on Wednesday.

Mr. Rogers had company Monday. His wife and a daughter and her children came to visit. He seems to be feeling much better.

The Needmore singers came Sunday afternoon. We enjoyed them very much.

Mrs. Epperly is recovering from her illness of several days.

Mrs. Ora Martin of Littlefield, Mrs. Perry's daughter, granddaughter, Robert and Opal Collins of Chillicothe, Texas and Adrain Johnston of Amarillo all visited Mrs. Perry over the weekend.

Mr. and Mrs. R.D. Carpenter of Temple, Texas are here visiting Mr. Carpenter for a few days.

Mr. Whitford hasn't been feeling very well but is better now.

Mr. Leon Lewis and Mrs. May also Mrs. Jackson have visited Mrs. Lewis recently.

Mrs. Mills also has been visiting in the nursing home calling on several friends.

8 KING Size Wallets **UNIQUE COLOR PORTRAITS**
GET THE WHOLE FAMILY TAKEN AT THESE LOW PRICES.

9 A.M. UNTIL 6 P.M.

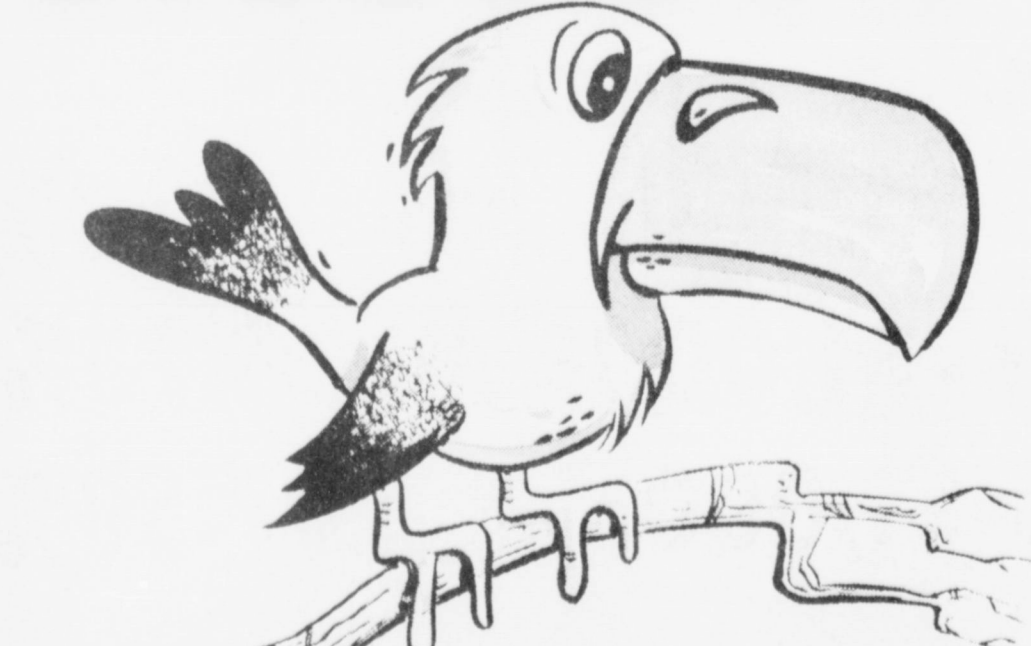
99c
Plus 50¢ Handling

2 each of 4 Poses 1 DAY ONLY

GROUPS ACCEPTED
99¢ PER PERSON
ONE SPECIAL PER PERSON

DATE **THUR. NOV. 15th**
WILSON APPL. 117 MAIN
MULESHOE, TEXAS
ORDER NOW FOR CHRISTMAS

Big Bills??



Some birds are stuck with big bills. But that doesn't mean you'll be. The way to find out? Call the "wise birds" at the electric company for a free personalized electric heat cost estimate for your home.



MADE TO MEASURE DRAPERIES



You measure the windows and install your own drapes, save!

Save yourself some money and still have the finest. Measure your own windows and install the draperies yourself. We have a beautiful selection of fabrics. Drapes will be fan folded, with drapery hooks, weighted, ready to hang.



TO TOP IT OFF . . .

100% ENCRON® POLYESTER TURTLENECK TOPS

Easy to wear, season after season . . . they match, accent and layer up with shirt, blazers, sweaters, jackets, skirts, and pants . . . and of course they are machine washable and need no ironing. White, black, red, brown, and navy.



Textured Encron® Polyester by ENKA

Sleeveless \$8
Long Sleeve \$9



ENCRON is a Reg. T.M. of American Enka Co. Enka, Inc. a Part of Alzona, Inc. for its Polyester Fiber



MULE'S TALE



Official Publication of Muleshoe High School Written and Edited by Students of the Muleshoe Schools

VOL. 10 NC. 9

EDITED BY GENE ROGERS

NOVEMBER 11, 1973

Muleshoe Schools End First Quarter

MHS National Honor Society Students Of The Month Named

National Honor Society students of the month of November have been selected by the faculty.

Cynthia Chandler, Bulletin Board Chairman, has displayed the pictures of these students on a very attractive bulletin board in the Thanksgiving motif.

Steve Block, Senior Student of the Month, is the son of Mr. and Mrs. Burel Block. He is President of the MHS Student Council, Parliamentarian and Social Committee Chairman of the German Club, member of the Junior Classical League, and a very active participant in Contest Speech.

Tim Sooter is the son of Mr. and Mrs. Joe Sooter. He is the Junior Class Vice-President, a member of the Mighty "M" Band and Stage Band. Tim is also a Key Club member and a member of the National Rifle Association.

Johnny Ramage, Sophomore Student of the Month, is FFA reporter and represents his Orientation Class on the Student Council. He is the son of Mr. and Mrs. H.D. Ramage.

Tom Pepper, a new student in the Muleshoe schools, has been chosen Freshman Student of the Month. His parents are Rev. and Mrs. Gerald Pepper.

District FTA Plans Set

F.T.A. met in the auditorium Monday, November 5, to discuss the District Convention to be held in Roosevelt on Saturday, November 10.

Those attending will leave at 7:30 Saturday morning, and will be back by 6:00 that evening. Debbie Dunbar is a candidate for District XVII Vice-President. A campaign skit will be rehearsed Tuesday, November 6, at 7:30 p.m.

Jana Oyler attended the District XVII T.S.T.A. District Convention held October 26 in Lubbock. FTA members were special guests of TSTA. About 5,000 teachers were at the meeting.

"What's Gnu" In DE?

If asked "What's A Gnu?" by a person who had never seen one, you would face a real challenge to your communication skills. Yet the Gnu, for all its odd appearance, functions quite successfully and is one of the most prolific and hardy animals of its native veldt.

It should be evident to the competent observer of both Distributive Education and the Gnu that there are some definite analogies between the two. We are each saddles with a misnomer, for example, The Gnu, a Wildebeest, is really no more wild than other beasts. Neither does Distributive Education adequately describe or discipline; distributing education is a function common to all educators and not our exclusive right. Because of our name we are forced to spend much time and effort explaining who we are and what our educational role is.

Much like the Gnu, DE is made up of bits and pieces seemingly borrowed from many sources. Our curriculum is taken from such subject areas as Marketing, Economics, Math, English, and Psychology. Nor are the methods and media we employ unique to Distributive Education.

Fortunately, in spite of our identification problem, our ungainly appearance, and our creative borrowing, DE is a vocational program that succeeds with students. We work-it works--and our students survive and succeed in reaching the distributive career goals they have set.

So what's new in DE? Everything--and nothing! Newness (Gnu-ness) is an individual and transitory experience.

DECA Club Has Meeting

DECA met in room 14 Monday, November 5.

There was no old business to be discussed, but several topics of discussion were brought up. Some of them were paper-gathering project, the treasurer's report, a party which is being planned by the social committee and will be part of initiation, and the Christmas Movie to be held December 19. Running for an Area office and Area contest were also discussed briefly.

Roy Bara gave a report on Student Council News and Nick Black reminded us to turn in a picture for the scrapbook.

There were ideas brought before the club on how to get more people involved in DECA. The meeting was adjourned at the end of Orientation.

Tom plays Offensive Guard and Defensive Noseman for the Freshman Mules. Congratulations Students of the Month.

B Team Ties Levelland

In last weeks game against Levelland, the B Team Mules kicked to the Lobos to begin the game. Two plays later the Mules recovered a Lobo fumble on the Lobo 30 and they were in scoring position. Three plays later the Mules scored when Curtis Carpenter went the thirty yards for the 6 points. Mike Silguero went in for the conversion. The score was 8 to 0 for the Mules. The Mules kicked and the Lobos fumbled. On the last play in the first quarter Mike Silguero threw a touchdown to Danny Wilson. The conversion failed and the score was 14 to 0 for the Mules. This score held until late in the second quarter when a Lobo player ran 30 yards for the Lobos first score. They got the conversion and the score was 14 to 8 for Muleshoe.

The Mules received the kick in the second half and were unsuccessful in scoring. They had to punt. The Lobos got the ball; and, two plays later scored from 40 yards out. The conversion failed and the score was tied at 14 all. The Lobos kicked but the Mules were unsuccessful in scoring and had to punt. The Lobos couldn't get the yards needed either and also had to punt. Three plays later the Lobos got an interception on a deflected pass and scored on the next play. They also brought the ball in for the two extra points. The Lobos were ahead 22 to 14. In the middle of the fourth quarter Mike Silguero again threw a touchdown pass, this time to Billy James. Martin Nowlin threw to Edwin Watson to tie up the game 22 all. The Mules played good defense the rest of the game and it ended, 22 to 22.

The Mules are now three wins, two ties, and two losses.

Band Attends Contest Nov. 7

On Wednesday, November 7, the Mighty "M" Band traveled to Lubbock for the annual UIL Marching Contest. The contest was held in Jones Stadium at Texas Tech.

The band marched several drills while playing, "The Standard of St. George," "Big Four," "Bombasto," and "Peacemaker."

Other bands and their ratings in Class 3AAA were Lamesa, Division I; Brownfield, Division III, Estacado, Division II; Levelland, Division I; Seminole, Division I; and Dunbar, Division III.

The Mighty "M" Band received a Division II rating. At this time the band would like to thank Mr. Clines for all his hard work during this marching season, the Fine Arts Booster, and everyone in Muleshoe for all their support.

After the Canyon and Perryton football games, the band will turn their attention to concert season. The Christmas concert will be held on December 10, and concert contest on April 24.

Congratulations go to the band for their many hours of practice, and their fine effort at contest this year.

Thanksgiving Supper Called A Success

Friday night beginning at 5:00 p.m. many eager junior mothers and junior students were ready to start serving the delicious meal prepared by these mothers.

Many people supported the juniors by attending the turkey dinner. These jumping juniors are really on the ball. The juniors appreciate the support of the community, with a special thanks to the mothers.

On Thursday, November 15, the Muleshoe High School Annual sales will begin. The "Muletrain" is expected to be better than ever! Sales will end Wednesday, November 21; so hurry and buy your annual for the best deal yet! \$7.35 will purchase your annual or you may pay a \$4.35 deposit with the balance due when annuals are delivered.

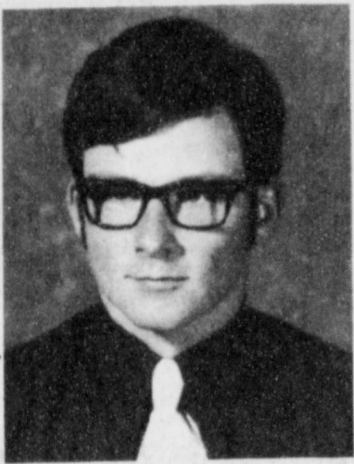
FFA News

The Muleshoe FFA Chapter met Monday night in the Ag. Department at 7:30 p.m. for its regular monthly meeting.

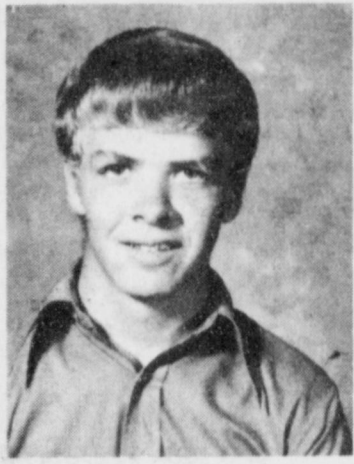
The fine for talking out of turn was limited to fifty cents; then the member would be asked to leave the meeting.

The chapter rescinded the motion that each member must sell ten crates of citrus fruit or pay the profit the chapter would have made. The Chapter then decided that each member should try to sell at least five crates of citrus fruit.

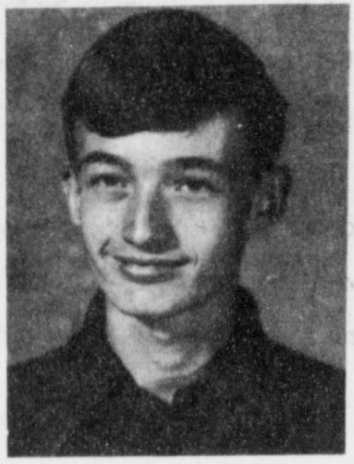
The question of whether or not to lease the Chapter stock trailer was brought before the meeting. The Chapter decided not to lease the trailer out. The Littlefield District FFA Banquet will be held here on November 19. The price for banquet tickets was set at \$2.75. A Thanksgiving type supper will be served. Johnny Wells, state Vice President, will be the guest speaker.



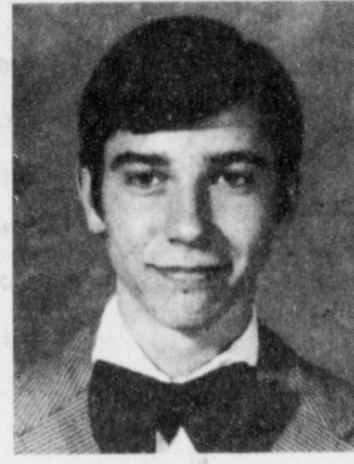
TOM PEPPER



TIM SOOTER



JOHNNY RAMAGE



STEVE BLOCK

Basketball To Begin

The Varsity and J.V. girls basketball teams will play their first games November 17 at New Deal. All of the girls are looking forward to the start of the season. The girls have been working hard for the past two months on fundamentals and physical conditioning. We feel like we have the girls that enjoy playing the game and are dedicated to the sport, their school, and teammates. Basketball is a team sport and requires the efforts of all the players working together. We don't strive to have individual stars but stress the importance of every player to the team. We will have a young inexperienced team this year but we think we can overcome this through hard work. The following girls will be on the Varsity and J.V. teams this year.

Forwards include Jan Harlin, Jonice Killough, Sarah Patterson, Cynthia Rogers, Jana Bruns, Darla Hunter, Sherrel Rasco, Debbie Purcell and Diane Vinson. Guards include Belinda Throckmorton, Brenda St. Clair, Lavern Carpenter, Ellen Dale, Susie Cousatte, Ellen Shaffer, Chris Dobbins, Jana Garrett, Joie Carpenter, D'Anne Clark, Teresa Hamilton, Debbie Bergred, Nita Wall and Pam Roberts. Managers will include Rhonda Stevenson, Terri Bryant and Pam Davenport.

Demonstration Held On Microwave Oven

by Terina Whalin Tuesday, November 6, the HERO girls helped to conduct a demonstration for the microwave oven. Jimmy Gary or "Salty Sam" was demonstrating the oven to interested teachers and to all Home Economics students. Mr. and Mrs. Harvey Bass sponsored the demonstration and assisted Mr. Gary. The girls thoroughly enjoyed helping out in the demonstration, and everyone learned a lot about these ovens.

Last week the girls took a field trip to Harvey Bass Appliance to see the new Touch-N-Cook stove. The girls were able to practice operation of the range and found that though it looks complicated, it is really very easy.

This week the HERO girls

The Freshman girls will play their first game November 20th in Muleshoe against Tulia at 5:00 p.m. The Freshmen girls have been working hard and have shown a lot of hustle and determination. The following girl will be on the Freshman team, Tanya Burton, Tammy Bruns, Sheryl Stovall, Cynthia Isaac, Connie Griffin, Patti Poyner, Jo Roming, Mitzi Murdis, Laura Beene, Nancy Ramm, Darla Duncan, Vicki Reese, Sherry Washington, Caro Ware, Tammye Hicks, Cindy Dodd, and Cynthia White. We would like to invite everyone to come to the games and support the Mulettes this season.

Choir News

Monday, November 5, the High School Choir sang for the Classroom Teachers Association at the High School Cafeteria. The choir sang two patriotic songs, two spiritual songs and two show tunes. They also gave a preview of their Christmas musical. Choir members who participated Monday were Frances Baca, Kim Covan, Gayla Hooten, Terina Whalin, Cindy Hall, Debra Mills, Randal Bryant, Royce Hamilton, Danny Jones, Sherrel Rasco, and Lawrence Jacques.

Library News

Muleshoe High School Library received a new cassette system. It works on the monthly subscription basis and it consists of vital history speeches which were recorded by CBS. The system is classified as reference and may not leave the library.

Coaches' Comment



The Mules had one of their best efforts of the season against the Levelland Lobos but fell short on the score board. George Mitchell returned for his first game since having his ankle broken in the Mule's first contest. However, as in other weeks "Luck" wasn't on the Mules side as starting tackle Jerry Hodge missed the Levelland game with intestinal flu.

The Mules also lost the services of Senior David Wheat for the remainder of the season with a broken bone in his right foot. David has been one of the fine running backs on the South Plains for the past three years, and it will be a long time before people from all areas forget ole "33".

The Mules played a big Canyon Eagle team this week that also possesses one of the state's best quarterbacks. The Mules Defense were put to the test.

DECA Officers Have Pictures Made Friday

Friday, November 2, the DECA officers went out to the play ground equipment in the new park to have their pictures made.

Between changing film and waiting for the pictures to develop, the officers went back to their childhood days by sliding down the slide and climbing through and on the different "play things."

Even though all were very cold, each went reluctantly back to his third period class.

New Calendar System Shows First Effects

MHS is operating under a new calendar system this year and its first real effects will be felt on November 16 when the first quarter ends. The Texas Legislature bill originally stipulated that all Texas schools must convert from two semesters of 18 weeks each to three quarters of 12 weeks each beginning with the 1973-74 school year. A two year moratorium was later granted, but Muleshoe Schools felt that the change should be made now rather than waiting until 1975-76.

The main courses affected this year have been Health, Texas History, Civics, and Economics. All were one semester courses last year. Under the new system Texas His-

tory and Economics will be one quarter in length and Health and Civics will be two quarters in length. In addition, senior English has been divided into several mini-courses based on interest of the students. These mini-courses are Drama, Research Paper, Types of Literature, and Creative Writing. We hope to add other short courses in the future which would not have been possible under the old semester system and to extend these quarter courses to other subjects such as Freshman, Sophomore and Junior English, American History, and to any other courses that might be beneficial to students.

THRILL

One of the great thrills of being a DE teacher, coordinator, or administrator is the opportunity it provides for discovering anew with each group of new students what Distributive Education is and what it can do for them. The vicarious DE experiences we share in every new class keep us constantly stimulated and enthused. We are blessed with a career in which the old familiar becomes revitalized and refreshingly new each time we share it.

The last few years have spawned a wave of national growth in numbers of students served and in concern for quality programs that is nothing less than phenomenal. This growth is based on our proven past successes and on a realistic response to the need for trained career minded employees and managers in distribution. As educators for the distributive occupations, we find ourselves running at top speed to keep up with the vocational preparation demands of an increasingly distribution-oriented economy. We are an example of an idea whose time has come.

Halloween Carnival Held Here

by Shelly McLaughlin The M.J.H.S. Journalism staff would like to congratulate Morgan Pena and Dean Northcutt in the King and Queen contest. Other contestants were Sandra Palomin, Dani Dunham, Brent Gunter and Ignacio Agundis.

There was quite a few people at the Halloween Carnival. Some students reported that it was real good.

The proceeds went to the Fine Arts Department and they appreciated your support.

Senior Chili Supper
 November 16, 1973
 High School Cafeteria
 4:30 - 6:30 p.m.
 \$1.50



HECE HAS DEMONSTRATION . . . Jimmy Gray is shown as he demonstrates a Microwave Oven for Muleshoe High School Home Economics classes as Harvey Bass looks on.

Experiment Station Eying Control Steps For Whiteweed

LUBBOCK--Starting out slow and finishing fast does not necessarily apply only to turtles, say research scientists at the Texas Agricultural Experiment Station at Lubbock.

A perennial weed known as whiteweed, or silverleaf nightshade, once the "turtle" among the weeds growing in High Plains soils, is fast becoming what many people consider the number one weed problem.

This year alone the whiteweed will infest over one million acres of West Texas farmland, say researchers.

Due to the whiteweed's supremacy in the field, Dr. John Abernathy, weed research scientist with the TAES and his staff are studying possible control measures for the profit-robbing plant.

"The whiteweed has always been in the West Texas area because of its tolerance of arid conditions," he points out. "But only within the last decade has the plant become predominant

among the weed pest problems. "The increase mainly is due to three main factors, says Abernathy.

"First, preplant incorporated herbicides commonly used in cotton do not effectively control whiteweed seedlings.

"Second," he adds, "herbicides drastically reduce the whiteweed's competition, annual weeds.

"Third, the old reliable but costly farming practices of cultivation and hand-hoeing have been greatly curtailed with farmers' increased reliance upon herbicides. This change has allowed deep-rooted perennial weeds to escape, since regular herbicidal applications do not control them."

Whiteweed roots, says the research, may penetrate the soil to depths of as much as eight feet, with the weed growing from the previous year's roots.

The weed itself contributes to the problem by producing a

large supply of seed which helps to spread the plant into new areas, he adds.

Different herbicides have been tested for control of whiteweed, the scientist explains. One of the biggest obstacles to finding the solution is that the chemicals which have the best control also burn or kill the upper portions of the cotton plants.

Reports Abernathy, "As for this year's growing season, some growers obtained effective whiteweed suppression with a mixture of diuron and MSMA applied as a spot treatment.

"Also, a new compound known as Roundup was very effective in giving season-long control when applied as a postemergence spray. 'However,' he

added, "the Roundup herbicide is still in the experimental stages and is not yet on the commercial market."

Another promising technique for season-long control, the researcher adds, is an application of a preplant herbicide such as Treflan about six to eight inches under the soil surface prior to cotton planting. The application is made with a specially designed plow with spray nozzles mounted beneath large sweeps," he says.

"These chemicals are broadcast beneath the soil surface, providing a protective herbicide layer against the whiteweed root's upward growth. If the herbicide is applied correctly, the weed is suppressed during the entire growing season."

The weed control research program is being conducted at the Texas A&M University Agricultural Research and Extension Center just northeast of Lubbock and in several commercial fields within a 100-mile radius of Lubbock.

Lazbuddie School Menu

November 12 - 16
MONDAY
 Milk
 Corn Dogs
 Mustard & Catsup
 Oven Brown Potatoes
 Shredded Lettuce
 Fresh Apple Cobbler
TUESDAY
 Milk
 Tacos
 Hot Sauce
 Baked Beans
 Lettuce & Tomato Salad
 Cornbread - Butter
 Apricot & Pineapple Perserves
WEDNESDAY

Milk
 Chicken & Dressing
 Giblet Gravy
 Green Beans
 Cranberry Sauce
 Fruit Jello
THURSDAY
 Milk
 Hamburger Patties & Sloppy Joes on Bun
 French Fries
 Lettuce - Tomatoes
 Fruit Kolaches
FRIDAY
 Milk
 Beef Stew
 Cheese Sticks
 Buttered Rice
 Crackers - Loaf Bread
 Butter Cookies
 1/2 oz. peanut butter with each serving (Menu subject to change)

Bula News

By Mrs. John Blackman

November 7, our FFA boys will be participating in a contest at the Friona High school.

Mrs. Natilee Luna underwent an emergency appendectomy at the Methodist Hospital Tuesday

morning, Mrs. Luna was assistant cook in the Bula school lunch room.

 We welcome Mr. Wiley Jacobs and his daughter Mrs. Sue Mullins into our community. They have moved here from Littlefield.

 Mr. and Mrs. J.D. Rowland visited Sunday night in Leveland with friends the James Fine.

TELEX. Hearing Aids
Clovis Hearing Aid Center
 Batteries & Molds. Free Tests. Service All Makes.
 416 Mitchell Phone 763-6900
 Clovis, N.M.

Agriculture Deserves "Thanks"

COLLEGE STATION -- Everyone appreciates a simple "thank you" or a pat on the back for doing a good job. So it is that the month of November is being set aside as a time when we show our appreciation to those engaged in food and fiber production and processing for a job well done.

Officially, November is being called "Food and Fiber Appreciation Month."

"Consumers throughout our state and nation are blessed with high quality food and fiber products," points out Dr. William Vastine, food distribution and marketing specialist for the Texas Agricultural Extension Service. "There life styles and living standards continue to be envied by other countries, and this prosperity is largely a result of a productive, efficient agricultural industry."

According to Bastine, food products are still one of the best bargains to be had anywhere despite recent rising prices. And the quality of products is second to none. "Never in the history of the world have so few fed so many well with such a selection of quality foods," emphasizes the economist. "Less than five percent of the population is required to supply our food needs

compared to more than 50 percent for many undeveloped countries."

Vastine looks at the recent price increases of food items as "a blessing in disguise."

"The food price situation has brought agriculture to the forefront and has helped to tell the story of our tremendous agricultural industry--long taken for granted. Hopefully, it has focused more attention on the importance of agriculture and has instilled in consumers some appreciation of the work of those who provide food and fiber for our daily lives. "Our country and the entire world depends on the food and fiber production, marketing and distribution industry."

News of Our SERVICEMEN Steve Holfield

SAN DIEGO--Navy Aviation Electronics Technician Third Class Steven E. Holfield, son of Mr. and Mrs. Jake Andringa of Route 2, Muleshoe, Tex., graduated from a seven-week radar maintenance school at the Naval Air Station North Island here.

He is a 1971 graduate of Muleshoe High School.

An investment in Your Future ATTEND CHURCH

The Protecting LIGHT

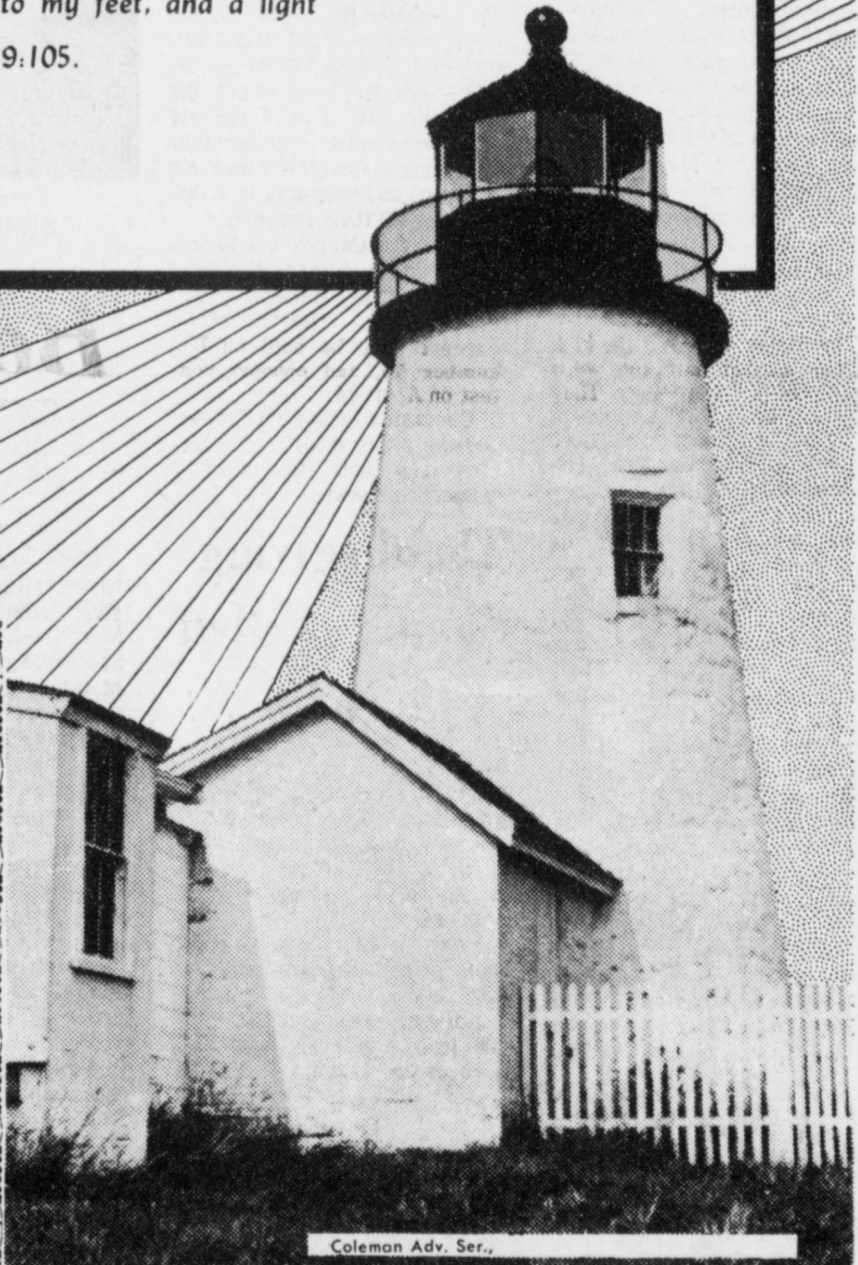
This lighted tower is a light shining in the darkness to guide sailors and ships through the night. Our Lord is our light who guides us faithfully through life, even though it be as a stormy sea—He knows the way. His word, as proclaimed in His church, will light your way and bring peace, joy and comfort.

"Thy word is a lamp unto my feet, and a light unto my path." Psalm 119:105.

- YL METHODIST CHURCH
Rt. 1, Muleshoe
Arron L. Mitchell, Minister
- ZION REST PRIMITIVE BAPTIST CHURCH
207 E. Ave. G
Glen Williams, Elder
- PRIMITIVE BAPTIST CHURCH
621 S. First
Aron Richards, Elder
- FIRST CHRISTIAN CHURCH
130 W. Ave. G.
S. S. Class - 9:45
Church - 11:00
Rev. Walter Bartholf
- LATIN AMERICAN METHODIST MISSION
Ave. D & 5th Street
Esteban Lara, Pastor
- FIRST PRESBYTERIAN
Morton Highway
Edwin L. Manning, Pastor
Sunday Morning Service
- CHURCH OF THE NAZARENE
Ninth & Ave. C
Robert Bybee, Pastor
- CALVARY BAPTIST CHURCH
1733 W. Ave. C.
Charles Kenneth Harvey, Pastor
- TRINITY BAPTIST CHURCH
314 E. Ave. B
V.L. Huggins, Pastor
- MULESHOE ASSEMBLY OF GOD
517 S. First
H.D. Hunter, Pastor
- JEHOVAH'S WITNESS
Friona Highway
Boyd Lowery, Minister
- RICHLAND HILLS BAPTIST CHURCH
17th & West Ave. D

EVERYONE IN THE CHURCH
THE CHURCH IN EVERYONE

The Church is God's appointed agency in this world for spreading the knowledge of His love for man and of His demand for man to respond to that love by loving his neighbor. Without this grounding in the love of God, no government or society or way of life will long persevere and the freedoms which we hold so dear will inevitably perish. Therefore, even from a selfish point of view, one should support the Church for the sake of the welfare of himself and his family. Beyond that, however, every person should uphold and participate in the Church because it tells the truth about man's life, death and destiny; the truth which alone will set him free to live as a child of God.



- SPANISH BAPTIST MISSION
E. 3rd and Ave. E
John Jaquez, Pastor
- FIRST UNITED METHODIST CHURCH
507 West Second
J.B. Fowler, Jr., Pastor
- MULESHOE BAPTIST CHURCH
8th Street & Ave. G
- ST. JOHN LUTHERAN
Lariat, Texas
Rev. Martin M. Platzer, Pastor
- FIRST BAPTIST CHURCH
220 W. Ave. E
Douglas DuBose, Pastor
- SPANISH ASSEMBLY OF GOD
East 6th and Ave. F
Rev. Hipolito Pecina
- ST. MATTHEW BAPTIST CHURCH
W. Third
E. McFrazier, Pastor
- NORTHSIDE CHURCH OF CHRIST
117 E. Birch Street
- PROGRESS BAPTIST CHURCH
Progress, Texas
Murrell Johns, Pastor
- SIXTEENTH & D CHURCH OF CHRIST
Sunday-10:30 a.m.
Evening-6 p.m.
Wednesday-8 p.m.
Ivan Woodard, Minister
- IMMACULATE CONCEPTION CATHOLIC CHURCH
Father Robert O'Leary
Northeast of City in Morrison Edition
- MULESHOE CHURCH OF CHRIST
Clovis Highway
Royce Clay, Minister

THE FARMERS FRIEND CARPENTERS & CONSTRUCTION WORKERS CHOICE EQUIPMENT OPERATORS SPECIAL

FIT for a man's work

Pull on a pair of Pecos boots—and you're wearing the smartest footwear that ever stood toe-to-toe with rough work! Crafted for comfort, plus long wear. Made from fine leathers. Saunter in, have a look-see!

\$32.99

RED WING

work around gas or oil?

also available with steel toe

\$19.99

Sure cure for 5 o'clock feet

Perfect for work in service stations, garages, machine shops—wherever there's gas/oil. Tough Neoprene sole stands up to petroleum and rough wear. Come in—try 'em for comfort!

RED WING

Anthony's MULESHOE, TEXAS

Muleshoe Co-op Gin

Art Craft Printing Co.
105 E. Avenue D.

Bailey County Memorial Park
"Every Service A Sacred Trust"

Chow-Tex Feed Lot
"Complete Feed Program"
Route 1, Box 134
Muleshoe 965-2900

Bratcher Motor Supply
107 E. Ave. B
272-4288

White's Cashway Grocery
"Where Friends Meet and Price Is Talk"
402 Main

City Cleaners
Quality & Fast Service
119 Ave. C
272-3248

Dairy Queen
1201 West American
272-3412

Gibson's Discount Center
1723 West American Blvd.
272-4306

Kemp Pump Service
Sales & Service for Pumps
272-4175

Western Drug
114 Main

Muleshoe State Bank
304 W. Second

Lambert Cleaners
Steam Carpet Cleaning
Drapery Cleaning
123 Main St. 272-4726

Homer Redwine Phillips 66
715 West American 272-4424

Whitt-Watts & Rempe Implement Co.
"John Deere Dealers"
Muleshoe, Texas 272-4297

Dial 272-3737 for better turnouts, better samples with **Progress Gin**
7 1/2 miles west of Muleshoe on Clovis Highway

St. Clair's
110 Main

B & S Irrigation Company

Decorators 216 Floral
"Flowers Express The Handiwork of God"
216 S. First 272-4340

Dari-Delite Drive-In
210 N. First
Take Out Orders 272-4482

Bob's Safety Center
Wheel Aligning, Brakework & Automotive Air Conditioning

San Francisco Cafe
"Tortilla Factory"
121 Main St. 272-3502

A & B Plumbing, Heating & Air Conditioning
We Sell the Best and Service the Rest
272-3734



MONEY DOLL Shown with the Chapter's money doll are Mrs. Lou Ann Black, Mrs. Mike Miller and daughter, Kristine and Mrs. Max King. Tickets are available from Tommy Black at Cobb's, Mrs. Tommy Black at the First National Bank, Mrs. Glen Watkins at City Hall, Mrs. Don Cihak at Mode O Day or Mrs. Bill Russell at King Grain.

Bingo Prizes

The merchants of Muleshoe have donated the following prizes for the Beta Sigma Phi annual bingo carnival: L.A. Hobbes, lamp; St. Clairs, fish knife and clothes brush; Perry's, covered candy bowl; Rasco, Polly perk coffee pot; Harvey Bass, ice server; Leas, gift certificate for two special dinners; Corral, steak for two; XIT, one \$10.00 gift certificate; Allison Shoes, \$5.00 gift certificate; Lambert Cleaners, \$2.50 gift certificate; Mode O Day, \$5.00 gift certificate; Western Drug, warm and creamy facial; Poynor's Whites, camp stove and stereo fuel; Dot's shop, Steam iron cover; Anthony's, blanket; Damron's Drug, nut cracker; Williams Bros., two boxes stationery and mini-oval easel picture frame; Western Auto, kitchen knife set; Mohawk Auto Parts, waterproof lantern; Barry and Young, two toy case tractors; Muleshoe Jewelry, costume dinner ring; Cashway Grocery, two \$5.00 gift certificates; Fair Store, thermal blanket; Cobb's, black tote bag; Muleshoe Antennae, \$10.00; James Glaze, \$10.00; Lindsey Jewelry, hair spray container, address book and purse spray; Heathington Lumber, "make-it-yourself" purse; Muleshoe Floral, Herb Garden; Higginbotham Bartlett, bird feeder; Jim's Pay and Save,

ham; Western 66, sprinkler; Whitt, Watts, and Rampe, John Deere toy farm set; First National Bank, \$25.00 savings bond and Muleshoe State Bank, \$25.00 savings bond.
Special games will be played for the two \$25.00 savings bonds.

November Concert

There are at least three ways to pronounce him but only one way to describe him - talented. If you are not Italian, pronunciation of the name may be difficult, but it's all right because Robert de Gaetano is on a first name basis with the people of Lubbock. The young, handsome pianist will appear with the Lubbock Symphony on the stage of the Lubbock Municipal Auditorium for the second time as the second concert of the season takes place on Monday, November 19, 1973, at 8:15 p.m. under the direction of William A. Harrod, Founding Conductor.

The soft-spoken young artist teaches music appreciation in New York when he is not on tour and has a weakness for gourmet cooking. Bob previously toured under Sol Hurok but when his manager went with Columbia Artists he added his name to their list of outstanding performers. He was discovered by two musicians from the Soviet Union, Sviatoslav Richter and David Oistrakh, while serving as a stand-in and assistant to Richter during the filming of a CBS special.

Starting out on an accordion because his parents could not afford a piano, his first chance to play a real piano came when a friend of the family donated one to him. From that first piano and \$2.00 lessons, he has advanced his education to include Mannes College of Music, Juilliard, and study under Alexis Weissenberg in Paris. As for talent, what can you say about an artist who is under demand to play with an orchestra two years in a row. Bob, has not only been a big hit here but recently in Dallas he added many fans to his already long list of followers. His appearance, youth and talent provide the perfect mixture, yet, in all the excitement and hard work of his life, he is still a very down-to-earth person who speaks softly in company but strongly and emotionally through his piano.

His repertoire for the November concert will include the Greg Piano Concerto in A Minor and the Gershwin Piano Concerto in F. Tickets for the concert are available at the Lubbock Symphony Office, 1721 Broadway, 762-4707 and will also be available at the Lubbock Municipal Auditorium box office on Tech Campus on the Sunday before the concert and until concert time on November 19. Ticket prices are \$5.50, \$5.00, \$4.00, \$2.50 and \$1.00.



STORY HOUR The Muleshoe Public Library basement was the scene of the Story Hour held Wednesday, November 7, from 10:00 to 11:00 a.m. Co-sponsors are the Llano Estacado Civic Club and the Young Homemakers. Pre-schoolers enjoying the hour were Patrick Sutfenuss, Laura Allen, Latrice Barrett, Shelly Lynn Caferra, Scotty McCormick, Cristine Miller, Robin Moore, Lainie Miller, Lisa Bizzell, Scotty Spirs, Lisa Black, Nathan Loyd, Shantel Robinson, Scotty Williams, Karen Kinnemer, and Brandy Allero. Leaders were Arlene Sutfenuss and Renie Barrett.

Eastern Star Slated Meeting

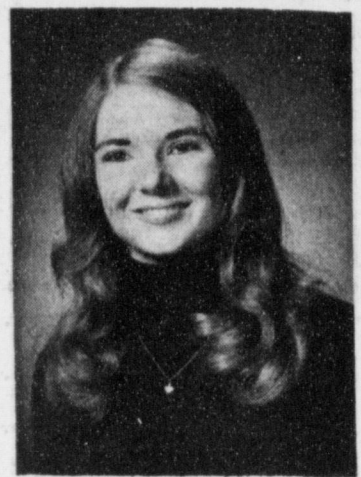
Mr. and Mrs. Wayne Williams, Worthy Matron and Worthy Patron of Muleshoe Chapter No. 792, Order of the Eastern Star, presided at the stated meeting, Tuesday evening, November 6.

Plans were made for the annual Christmas party for members and their families with the traditional Turkey dinner being served at 6:30 p.m. on December 4. Following the regular meeting of the chapter, the party, with Christmas tree and Santa Claus will be held. Gifts will be exchanged, as in previous years.

Invitations to Friendship Nights were received from Friona Chapter, November 17 at 6:30 p.m. and from Tulla Chapter, November 20, at 6:00 p.m. The Chapter voted to participate in the Santa's Helpers program, and a Committee was appointed, by the Worthy Matron, to meet with the sponsors.

Mrs. J.H. Clay was appointed Chairman of the Pink Ladies and Pink Ties Committee.

The following Grand Officers were presented behind Esther's station, escorted to the East, introduced and given a hearty welcome. Mrs. Lavonne Hinkson, member of Treasurers unlimited Committee; Mrs. Hazel Nowell, Chairman of District 2, Section 3, Commemorative Medalion Committee; Elbert Nowell, member of Home Endowment, Education Committee; Mary Farley, Chairman of District 2, Section 3, Time & Talent Committee; Mrs. Sidney Dell Bullock, Founders Day Committee; Wyle Bullock, Masonic Ambassadors Committee, and Frank Hinkson, member of Arthritis, Rheumatism and Cancer Committee, all of the Grand Chapter of Texas, Order of the Eastern Star.



PLEDGING SORORITY Jenny Milburn and Marilyn Clair Pool, sophomores at West Texas State University are pledging Zeta Tau Alpha National Social Sorority. Marilyn is the daughter of Mr. and Mrs. W.M. Pool II and Jenny is the daughter of Mrs. Barbara Milburn.

The Worthy Matron announced the annual Eastern Star School will be held in Canyon, January 9th and 10th, 1974. A letter was received from Mrs. Sally Teague, of Plainview, Deputy Grand Matron of District 2, Section 3, requesting an official visit to Muleshoe Chapter on February 5, 1974. Her request was granted. Mrs. Wayne Williams, Worthy Matron, gave a fine report of her attendance at the Ninety-First Session of Grand Chapter, held in Dallas, October 1st thru the 4th. The members who attended Grand Chapter with her, surprised her with a lovely corsage in recognition of her 100% participation in all events for Worthy Matrons.

Refreshment Hostesses were Mary Farley, Viola Layne and Phyllis Beavers, with Elizabeth Harden and Spencer Beavers assisting.

Lucky Pup
"There are direct and indirect taxation. Give me an example of indirect taxation."
"The dog tax, sir."
"How is that?"
"The dog does not have to pay it."

Walter Chapman
Mr. and Mrs. Walter Bruce Chapman of Muleshoe are the proud parents of a new baby boy born November 5 at 11:35 p.m. in the West Plains Memorial Hospital of Muleshoe. The baby weighed eight pounds and three and one half ounces and was named Walter Brent. He is the couple's first child.

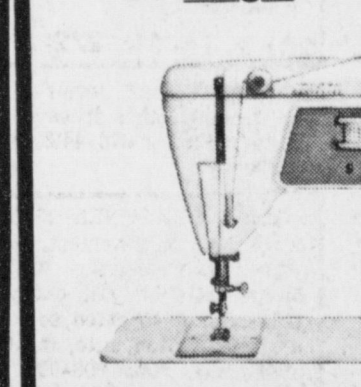
Michael Ray Taylor
Mr. and Mrs. Jerry Allen Taylor of Muleshoe are the proud parents of a new baby boy born November 6, at 6:19 p.m. in the West Plains Memorial Hospital of Muleshoe. The baby weighed six pounds and six ounces and was named Michael Ray. He is the couple's third child.

Three Little Words
"What does the bride think when she walks into the church?"
"Aisle, Altar, Hymn."

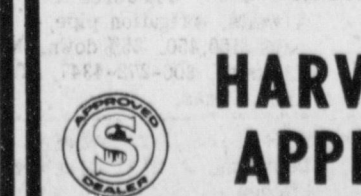
HELP WANTED
Missouri Beef Packers, Inc. is now accepting applications for female production workers. No experience necessary, but must be willing to learn and work. This is year around employment, not seasonal work. We offer paid vacation, paid holidays, company paid group hospitalization insurance, and good wages. Apply at personell office, Missouri Beef Packers, Inc., Friona, Texas, 4 miles west of Friona on highway 60. EQUAL OPPORTUNITY EMPLOYMENT

10% OFF REG. PRICES
on Singer sewing machines

Old Machine Makes Downpayment With 36 Months



Touch & Sew zig-zag sewing machine with your choice of 3 cabinets
Cabinet styles: 686/687/699
Has 14 built-in stitches, built-in button-holer, the exclusive Singer push-button front drop-in bobbin, more!
We have a Credit Plan designed to fit your budget. We also have a liberal trade-in policy.



NEW ARRIVALS
Tanya Jill Wilcox

Mr. and Mrs. Philip Edward Wilcox of Muleshoe are the proud parents of a new baby girl born November 6, at 12:43 a.m. in the West Plains Memorial Hospital of Muleshoe. The baby weighed eight pounds and two ounces and was named Tanya Jill Wilcox. She is the couple's second child.

Walter Chapman

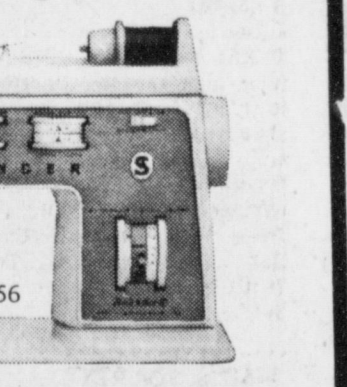
Mr. and Mrs. Walter Bruce Chapman of Muleshoe are the proud parents of a new baby boy born November 5 at 11:35 p.m. in the West Plains Memorial Hospital of Muleshoe. The baby weighed eight pounds and three and one half ounces and was named Walter Brent. He is the couple's first child.

Michael Ray Taylor

Mr. and Mrs. Jerry Allen Taylor of Muleshoe are the proud parents of a new baby boy born November 6, at 6:19 p.m. in the West Plains Memorial Hospital of Muleshoe. The baby weighed six pounds and six ounces and was named Michael Ray. He is the couple's third child.

Three Little Words

10% OFF REG. PRICES



Touch & Sew zig-zag sewing machine with your choice of 3 cabinets



Xi Omicron Xi Plan Float

Xi Omicron Xi chapter met Tuesday evening, November 6 in the home of Mrs. Don Barnes.

Final plans were made for the Beta Sigma Pi bingo carnival to be held Thursday November 15. Plans were started for the Christmas float and the Christmas party to be for Mrs. Guy Kendall's students at Richland Hills.

Individual gifts are to be made for the girls at Girls Town at the next meeting on November 20 at Mrs. Eric Smith's home.

Mrs. Joe King gave the program "The Written Word." Those attending were Mrs. Marcia Henry, Mrs. Max King, Mrs. Don Rempe, Mrs. Joe King, Mrs. Eric Smith, Mrs. Doyce Turner, Mrs. David Hamblen, Mrs. Tom Jinks and hostess, Mrs. Don Barnes.

School Menu

NOVEMBER 12--16--1973.

MONDAY

Milk

Chicken Fried Steak

Gravy

Creamed Potatoes

Blackeyed Peas

Hot Rolls

Sliced Peaches

TUESDAY

Milk

Hamburgers

Pickles

Onions

Lettuce and Tomato Salad

French Fries

Fruit Cup

WEDNESDAY

Milk

Meat Balls With Spaghetti

Green Beans

Whole Kernel Corn

Corn Bread

Peanut Butter Confection

THURSDAY

Milk

Corn Dogs

Mustard

Cheese Stick

Veg. Beef Soup

Crackers

Cinnamon Roll

FRIDAY

Milk

Fried Chicken--Gravy

Whole New Potatoes In Cream

Sauce

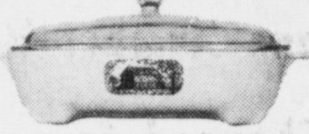
Garden Peas

Hot Rolls

Fruit Jello

FREE Amana Browning Skillet

made expressly for the Radarange by CORNING



when you buy any Radarange MICROWAVE OVEN made only by Amana

You can: BROWN - GRILL - SEAR - FRY - SAUTE in the Radarange

Amana offers 3 models to choose from: Model RR-4 Model R-2 Model R-1J



We've Moved!

We are now located at 101 West American Blvd. in the Muleshoe State Bank Building East Wing.

We Will Be Open Monday Morning In Our New Office.



Pioneer Natural Gas

101 West American Blvd. Muleshoe

TAX DISCOUNT TAXPAYERS OF BAILY COUNTY TAKE ADVANTAGE OF YOUR DISCOUNT

2% IF PAID DURING NOVEMBER
1% IF PAID DURING DECEMBER

This Discount Is On All State And County Taxes Collected By The County Tax Collector

JEAN LOVELADY

TAX ASSESSOR AND COLLECTOR

BAILY County, Texas



CLASSIFIED ADS

THE PLACE TO LOOK



WANT ADS PH.272-4536

CLASSIFIED RATES

OPEN RATES
 First insertion, per word-9¢
 Second and additional insertions-6¢

NATIONAL RATES
 First insertion, per word-11¢
 Second and additional insertions-7¢
 Minimum Charge-

CARD OF THANKS.....\$2.00

Classified Display \$1.12 per col. inch
 Double rate for Blind Ads \$1.15 per col. inch for Reverses

DEADLINE FOR INSERTION

Thursday's Muleshoe Journal-Noon Tuesday
 Sunday's Bailey County Journal-Noon Friday

The Journals reserve the right to classify, revise or reject any classified ad.

Check advertisement and report any error immediately. Journals are not responsible for error after ad has already run once.

meets every
Tuesday at 12:00
DINING ROOM
 XIT Restaurant
Muleshoe Rotary Club
 Jess Winn, President

LODGE NO. 1237 AF & AM
Masonic Lodge
 meets the second
 Tuesday of each month
 practice night each Thursday
 Frank Hinkson, WM
 Elbert Nowell, Sec.

VFW
Walter A. Moeller
 Post #8570
 8:00 p.m. 2nd & 4th Mondays
VFW Hall
 Joe T. Gonzales, Commander

Meets Every
 Wednesday
 8am
 XIT Restaurant
KIWANIS CLUB
 R.A. Bradley, President.

Jaycees
 meets every
 Monday, 12 Noon
 XIT Steak House
 Bill Russell, President

Lions Club
 meets each
 Wednesday, 12 Noon
 XIT Restaurant
 Jim Shafer, President

Lodge
 No. 58
Muleshoe Oddfellows
 meets each
 Thursday 8:00 p.m.
 Joe Carroll
 Noble Grand

3.HELP WANTED
 HELP WANTED: Day carhop. Come by Bill's Drive In or call 272-4725, 3-45t-tfc

WANTED: Beautician needed at once, call 272-3448. Main Street Beauty Shop. 3-40t-tfc

NEED EXTRA CASH? Willing to work? You are worth \$3.00 to \$5.00 an hour - Full or part time. Write box 60, Muleshoe, Texas 79347. 3-45t-tfc

TEXAS REFINERY CORP. offers high income opportunity to mature individual in Muleshoe area. Plus regular cash and vacation bonuses, fringe benefits. Regardless of experience airmail A.W. Pate, Pres Texas Refinery Corp., Box 711, Fort Worth, Texas 76101. 3-45s-ltp

5.APTS. FOR RENT
 FOR RENT: 2 bedroom unfurnished apartment. Phone 272-4838. Smallwood Real Estate. 5-47s-tfc

FRIONA APTS. now have available 1, 2, & 3 bedrooms. Call 247-3666 or come by 1300 Walnut Street Friona. 5-29s-tfc

6.ROOMS FOR RENT
 FOR RENT: Bedroom with carport and garage. May have kitchen privileges. Call 272-3815. 6-44s-3tc

JAMES GLAZE COMPANY
REAL ESTATE AND FARM & RANCH LOANS
 Phone 272-4549 219 S. 1st. 42t-tfc

FOR SALE by owner: Call Joan Gaston, 272-3232 or Evelyn Riley, 272-4775 or Bertie Nickels, 272-4669 for appointment to see house at 307 W. 6th, Guy Nickels residence. 8-42s-tfc

FOR SALE: 1 quarter section of land with well and base for circular sprinkler system. See Lee Pool or Woody Goforth at Pool Real Estate. 8-43s-tfc

FOR SALE
 One brick three bedroom home
 NEED LISTINGS FOR HOUSES AND ACREAGE
 HOLLAND REAL ESTATE
 113 W. Ave D
 Phone 272-3293 day or night 32t-tfc

9.AUTOMOBILES FOR SALE

FOR SALE: 73 LTD Braugham 2 door hardtop, beautiful blue metallic with vinyl top; loaded with optional equipment, Mitchell Radial tires. Call 272-4203 or 272-4928. 9-41t-tfc

FOR SALE: 1972 Vega Hatchback. 30,000 miles. Call 272-4379. 9-45s-tfc

FOR SALE: 1971 Ford Pickup automatic transmission, long wheel base, and saddle tanks. It's real nice. Call 272-3074. After 6 call 272-4476. 9-43t-tfc

FOR SALE: 1955 Chevrolet 6100 series wench truck equipped with new V-6 motor, has 10 ton wench, cables, 2 in. poles and a fifth wheel. 1966 Ford 100 pick-up in fair condition. Call 272-3307 or 272-4407. 9-45t-3tc

FOR SALE: 1969 Riviera - 47,000 miles. 272-3384 or 272-3800. 9-37s-tfc

FOR SALE: 1970 white VW with red vinyl interior. Radio, air conditioner, rear view defroster, standard shift, oil filter. Call 272-3148 or 948-2518. 9-44t-tfc

FOR SALE: 1970 LTD and 1972 Gran Torino. Call 272-4914.

10.FARM EQUIP. FOR SALE

VALLEY SELF-PROPELLED SPRINKLER SYSTEMS
 standard and reversing. Let us talk with you about our new 6-8-10 year lease. Programs which now include PVC plastic pipe, AVI, Inc. 1534 W. American Blvd. Muleshoe, Tex. Phone 806-272-3565. 10-33t-tfc

FOR SALE: Lima brushless 10KW generator. 240 or 480 volt. Call 272-3307 or 272-4407. 10-45t-3tc

WE PAY CASH for tractor and equipment of all kinds. Tom Flowers Auction, Inc. Day 272-4154 Night 10-2s-tfc

FOR SALE: Truck burr spreader. \$500.00 Call 247-3403 10-43s-4ts

12.HOUSEHOLD GOODS
 FOR "a job well done feeling" clean you carpets with Blue Lustre. Rent our Blue Lustre electric shampoo machine. Higginbotham-Bartlett 215 Main

FOR SALE
New & Rebuilt Kirbys
 Carolyn Duncan
 Ph. 272-4182 220W.10

FOR SALE: 1971 350 Honda XL. Call 272-3138 or see at 117 Main. Wilson Appliance 11-36t-tfc

SOUP'S on the rugs that is, so clean the spot with Blue Lustre. Leaves no rings. Rent our Blue Lustre electric shampoo machine. Perry's 128 Main.

Thinking about buying used furniture?
We Have It At The Swap Shop
 Call 272-3074
 213 S. Main
 Muleshoe, Texas

14.FARM PROPERTY TO RENT

For Cash lease: 40 acres dryland 10 West of Muleshoe Phone 762-5186. 14-42t-tfc

15.MISCELLANEOUS

Will sell at 20% discount, amplifier, guitars, pianos, and other musical instruments and accessories. 2 free lessons given with purchase. Send correspondence to Stratton School of Music, 3321 Mandell, Clovis, New Mexico 88101. 15-43t-tfc

Natural Gas Carburators and parts. Smith L.P. Gas. Friona Highway. 15-43t-tfc

FOR SALE: 160 acres dryland, lays perfect. Southern Bailey County. \$210.00 per acre. Call Wingo Real Estate 385-4684, 143 N. Westside Ave. Littlefield, Texas. 8-44s-3tc

This is neither an offer to sell nor a solicitation of an offer to buy these bonds. The offer is made by the offering circular.

First Revenue Church Bonds

8% For Sale Offering You Up To 8% Interest. For More Information Call Collect or Write,
 Rev. Bill Hart, Pastor
 Paramount Baptist Church
 1706 Slide Rd. Lubbock, Tex. 79461 Ph.795-8937

OFFICE SPACE FOR RENT: 1614 West American Blvd. Next door to Farm Bureau Office. Contact Farm Bureau office for further information. Phone 272-4567. 15-29s-tfc

WE STOCK bulk motor oil. A real money saver. Smith's L.P. Gas Co. Friona Highway. 15-43t-tfc

WANTED TO BUY: Used propane tanks. Any size. Call 272-4678. Smith's L.P. Gas Co. 15-44s-tfc

***Expert and Colorful Weddings**
***Family Groups**
 Anywhere, Anytime
PHOTOGRAPHY by Oecia
 CALL 385-6083
 Littlefield 409 W. 2nd

November 6, 1973. After this date, I will not be responsible for any debts but my own. C.J. Gatewood 15-45t-3tp

FOR SALE: 8 foot Cabover Camper. Call 272-4485. 15-44s-tfc

Cess Pool Cleaning
 Acid for Cess Pool Available
 Phone 272-3677 or 272-3467
 ELMER DAVIS

FOR SALE: Pigs. Call 272-4128. 15-45t-2tc

CARD OF THANKS
 I would like to take this means to thank everyone for all the cards, letters and calls sent to me while I was at Houston. May God richly bless each of you is my prayer.
 Eloise Gray
 15-45s-ltp

CARD OF THANKS
 We wish to take this means of thanking everyone for the prayers, flowers, food, cards, and other expression of sympathy and kindness shown at the loss of my wife, our mother, and grandmother, Mrs. Lois Moore. May God bless each of you.
 Alva Moore
 Dewey Moore family
 Raymond Hill family
 Bill Myers family
 Richard Hayes family
 15-45s-ltp

Out of Orbit

We've Moved!

We're Now In Our New Building
 And Are Open For Business.

Our Telephone Number Has Been
 Changed To
272-4561

THE
Muleshoe State Bank
 FDIC

101 W. American Blvd. Muleshoe, Texas

Thank You

The Business Activities Committee of The Muleshoe Chamber of Commerce wish to thank each of the following firms for their support in presenting The Galilians and furnishing prizes for the candy sale.

- | | | |
|---------------------------------------------------------------------------------------------------------------------------------------------------------------------------------------------------------------------------------------------------------------------------------------------------------------------------------------------------------------------------------------------------------------------------------------------------------------------------------------------------------------------------------------------------------------------------------------------------------------------------|-----------------------------------------------------------------------------------------------------------------------------------------------------------------------------------------------------------------------------------------------------------------------------------------------------------------------------------------------------------------------------------------------------------------------------------------------------------------------------------------------------------------------------------------------------------------------------------------------------------------------|--------------------------------------------------------------------------------------------------------------------------------------------------------------------------------------------------------------------------------------------------------------------------------------------------------------------------------------------------------------------------------------------------------------------------------------------------------------------------------------------|
| RASCO'S
DAIRY QUEEN
SPUDNUT SHOP
PIGGY WIGGLY
X I RESTAURANT
DOLLY CUP DRIVE IN
BAKER FARM SUPPLY
SINGLETON-ELLIS
MULESHOE LOCKER
WEST 6TH TEXACO
DEEP ROCK STATION
JOHNSON FURNITURE
PAT'S PHOTO PARLOR
WHITT, WATTS & REMPE
JAMES CRANE TIRE CO.
MULESHOE ANTENNA CO.
POOL INSURANCE AGENCY
BLACK INSURANCE AGENCY
BOBO INSURANCE AGENCY
HARMON-FIELD INS. AGENCY
MURRAY'S MULESHOE JEWELRY
POYNOR'S WHITE STORES, INC.
MAYTAG LAUNDRY & CLEANERS
TRITAGLE FOOD PRODUCTS CORP.
WILLIAMS BROTHERS OFFICE SUPPLY
PRODUCTION CREDIT ASSOCIATION | COBB'S
GIBSONS
CITY CLEANERS
SOUTHSIDE GULF
DINNER BELL CAFE
CORRAL RESTAURANT
ART CRAFT PRINTING
FIRST NATIONAL BANK
HOWARD'S BOOT SHOP
MULESHOE AUTO PARTS
REDWINE'S 66 STATION
HOLT'S FINA STATION
MULESHOE STATE BANK
MOHAWK AUTO PARTS
ANTHONY DEPT. STORE
DARI DELITE DRIVE IN
LEO'S BLACKSMITH SHOP
CHUBBY'S BEAUTY SALON
L & A HOBBIES AND GIFTS
WELBORN'S BEAUTY SHOP
PIONEER NATURAL GAS CO.
HENRY INSURANCE AGENCY
WHITE'S CASHWAY GROCERY
CALVERT'S DRIVE IN GROCERY
ERNEST KERR THOROUGHBREDS
SOUTHWESTERN PUBLIC SERVICE CO. | LEAL'S
ART LOFT
FAIR STORE
SWAP SHOP
DOT'S SHOP
PLAINS AUTO
FRY AND COX
MODE-O-DAY
WESTERN DRUG
ALLISON SHOES
BASS APPLIANCE
WOOLEY-HURST
DAMRON DRUG
SHOOK TIRE CO.
CROW CHEVROLET
LINDSEY JEWELRY
DECORATOR'S 216
LAMBERT CLEANERS
MULESHOE ELECTRIC
GOODLUCK LAUNDRY
BEAVERS FLOWERLAND
SANITARY BARBER SHOP
MAIN STREET BEAUTY SHOP
TOWN AND COUNTRY OLDS
GORDON WILSON APPLIANCE
HIGGINBOTHAM-BARTLETT CO. |
|---------------------------------------------------------------------------------------------------------------------------------------------------------------------------------------------------------------------------------------------------------------------------------------------------------------------------------------------------------------------------------------------------------------------------------------------------------------------------------------------------------------------------------------------------------------------------------------------------------------------------|-----------------------------------------------------------------------------------------------------------------------------------------------------------------------------------------------------------------------------------------------------------------------------------------------------------------------------------------------------------------------------------------------------------------------------------------------------------------------------------------------------------------------------------------------------------------------------------------------------------------------|--------------------------------------------------------------------------------------------------------------------------------------------------------------------------------------------------------------------------------------------------------------------------------------------------------------------------------------------------------------------------------------------------------------------------------------------------------------------------------------------|

Underwriting For Galilians
 KMUL RADIO
 ST. CLAIR'S
 FIRST NATIONAL BANK
 TRI-COUNTY SAVINGS & LOAN ASSN.
 MULESHOE STATE BANK

Program Launched To Make Texas No.1 In Agriculture

AUSTIN--Gov. Dolph Briscoe asked for a vast expanded rural development program and launched a campaign to make Texas No. 1 in agricultural production during the Governor's Conference on Rural Development here Tuesday.

More than 2,000 community and organization leaders were on hand for the conference, first of its kind in the state.

Six major speakers discussed various aspects of the conference theme, "Planning Today for Tomorrow's Balanced Growth," and community leaders reviewed the state's rural resources and outlined ways to utilize these resources more fully for a better Texas.

"We will make every possible resource available to help people in rural areas achieve maximum support for a more abundant life," Briscoe said in his keynote address on "Planning for a Rural-Urban Balance."

Briscoe emphasized that loss of people from rural areas has created many dilemmas in the cities, and said that high priority must be given to rural development and job opportunities, orderly development of natural resources, improvement of services and facilities, better rural labor market service, more emphasis on vocational training, improved health service and adequate housing.

"Agriculture alone cannot solve the problems of rural Texas, but can be a great factor in the solution," Briscoe declared. "You have done a magnificent job in the past in making agriculture great in Texas, so let's make it even better."

Dr. John E. Hutchison, director, Texas Agricultural Extension Service, said that Texas appears to have the necessary resources to achieve the goal of becoming No. 1 in agriculture.

"Among the state's advantages are available land resources plus the technological and knowledge reserve from agricultural research for expanding production of all phases of the livestock industry."

Mr. and Mrs. Charlie Haight and girls from Muleshoe were dinner guests in the Dutch Powell home Sunday.

Mr. and Mrs. John Gunter spent last week visiting relatives in Waco.

Mrs. Rayford Masten has been in Lubbock the past week with her mother who is ill.

Mrs. Beadie Powell was a medical patient in Cochran Memorial hospital the past week.

Mr. and Mrs. Dan Siewert moved to Slaton Thursday. We regret to see this fine couple move from our community.

Jack Ferguson was a medical patient in Cochran Memorial hospital the past week.

Mr. and Mrs. Tommy Terrell gave a haloween party for the young people of the Three Way Baptist Church and the Church of Christ of Maple last Wednesday night with all having a good time. The children of the community had a party at the Three Way Baptist church.

Joe Wheeler from Comanche spent Friday night with his parents the Jonnie Wheelers.

Mr. and Mrs. T.D. Davis and Mr. and Mrs. Joe Sowder spent the past week fishing at Amstead Lake.

Mr. and Mrs. Grady Cranford from Lovington N.M. spent the weekend visiting their parents the Fred Kelleys.

Mr. and Mrs. Andy Vinson from Clovis N.M. and Lanita Powell visited their parents, the Dutch Powells Sunday.

Mr. and Mrs. Johnnie Wheeler and Mr. and Mrs. H.W. Garvin attended the progress 4H banquet at Larriet Saturday night. Mr. and Mrs. Garvin furnished the dinner music for the club.

All gins in the community are busy now as cotton harvest has started. Some feed is still to green to cut.

Mr. and Mrs. D.S. Fowler were in Lubbock shopping last Monday. They also visited their sons the James Fowlers and Ray Fowler.

Mr. and Mrs. Jack Reeves visited Sunday in Shallowater with the James Reeves.

ble resource available to help people in rural areas achieve maximum support for a more abundant life," Briscoe said in his keynote address on "Planning for a Rural-Urban Balance."

Briscoe emphasized that loss of people from rural areas has created many dilemmas in the cities, and said that high priority must be given to rural development and job opportunities, orderly development of natural resources, improvement of services and facilities, better rural labor market service, more emphasis on vocational training, improved health service and adequate housing.

"Agriculture alone cannot solve the problems of rural Texas, but can be a great factor in the solution," Briscoe declared. "You have done a magnificent job in the past in making agriculture great in Texas, so let's make it even better."

Dr. John E. Hutchison, director, Texas Agricultural Extension Service, said that Texas appears to have the necessary resources to achieve the goal of becoming No. 1 in agriculture.

"Among the state's advantages are available land resources plus the technological and knowledge reserve from agricultural research for expanding production of all phases of the livestock industry."

food and feed grains for domestic and export; cotton and other natural fibers; fresh and processed vegetables, fruits and nuts; soybeans and sunflowers; sugarcane, mariculture, and expanding processing industries near production areas.

"The increasing economic momentum of Texas agriculture is another favorable factor, with the percentage change in the state's agricultural income from 1968 through 1972 a whopping 48 per cent, compared to an upward change for California of 28 per cent during the same period.

Based on both gross and net income projections through 1980 on trend and potential, our goal appears to be realistic. To become No. 1 will require total cooperation and mutual support of all agencies and groups and each segment of the agricultural industry," Hutchison said.

Texas Commissioner of Agriculture John C. White said, "Texas should become No. 1 in the quality of life, agricultural opportunity and profits, as well as agricultural production." He recommended a state program similar to the Veteran's Land Board to as-

sure funds for young people getting into full-time agriculture, improved water resources, a do-it-yourself rural development program and recreation development in rural areas.

Texas Cong. W.R. (Bob) Poage said there is "no effective way to deal with national urban concentration problems until we solve rural problems." He pointed out that locating industries in rural areas has paid for itself, and said he hopes for further implementation of the 1972 Rural Development Act soon.

Dallas County Judge W.L. Stretter said rural development "is important to the city dweller in assuring adequate food and fiber and maintaining that

delicate economic balance so essential to survival," Roy B. Davis, chairman of the 25-member Texas Rural Development Commission, suggested policy directions, programs and additional research needed to reach the commission's objectives for building

rural Texas. Workshops followed focused on housing, transportation, economic development, health, education, human and natural resources a general government.

Nation's planners look beyond Phase 4.

delicate economic balance so essential to survival," Roy B. Davis, chairman of the 25-member Texas Rural Development Commission, suggested policy directions, programs and additional research needed to reach the commission's objectives for building

rural Texas. Workshops followed focused on housing, transportation, economic development, health, education, human and natural resources a general government.

Nation's planners look beyond Phase 4.

Santa Is Coming Soon

Have Your Christmas Pictures Made Early



Photography By Oecia

409 West 2nd
Littlefield, Texas
AC-806-385-6083



Brenna De Shan Roberson
Daughter of
Mr. & Mrs. Bill Roberson

Seven days a week dead stock removal please call as soon as possible

ATTENTION MULESHOE AREA CATTLEMEN

In regard to dead stock removal. . . .
If you have had a problem with service. . . whether in the feedyard or on the farm. . . please give us a chance!

Your local used cow dealer is **muleshoe bi-products**

Thank you
Phone-965-2903
Mobil Phone 965-2429

PIGGY WIGGLY

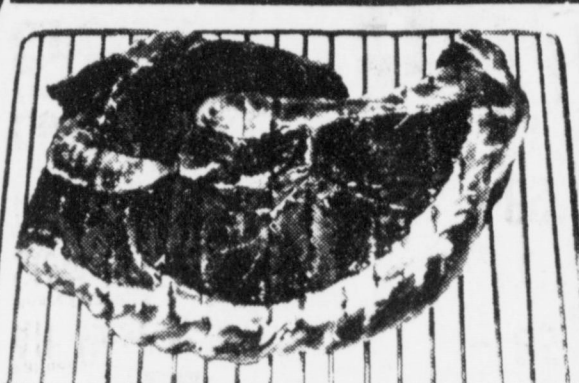
STORE HOURS
7AM-12PM DAILY
7AM-10PM SUNDAY

TANNER HOT HOUSE TOMATOES

35c
Lb.

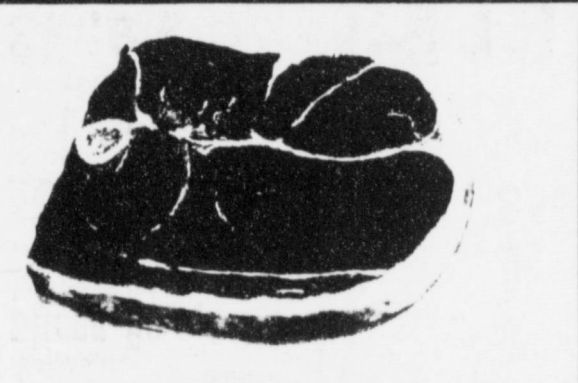
- Creamy & Ripe California Avocados Ea. 59c
- Cool, Delicious Leaf Lettuce Ea. 23c
- Tart, Bright Tangel Lemons 2 FOR 29c
- Yellow Onions Lb. 12c
- Ruby Red Grapefruit Lb. 18c

EVERYDAY VALU-PRICES



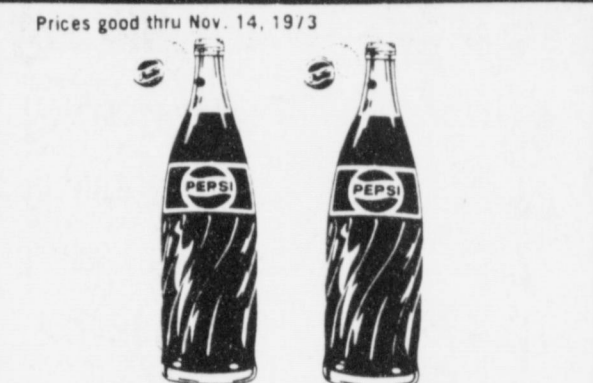
SUPERB VALUE TRIM SIRLOIN STEAK

\$1.29
Lb.



SUPERB VALUE TRIM ROUND STEAK

\$1.29
Lb.



Prices good thru Nov. 14, 1973
32 oz. Btls., Plus Deposit PEPSI COLA

6 \$1
FOR

- All Meat Franks 12-oz. Pkg. 85c
- Meaty Boneless Stewing Beef Lb. \$1.19
- Red Hot Link Sausage Lb. 89c
- Superb Value Trim Cube Steak Lb. \$1.59
- Fresh Ground Beef Lb. 98c

- Sliced Bologna 12-oz. Pkg. 89c
- Superb Value Trim, Center Cut Chuck Steak Lb. 98c
- Grade A Baking Hens Lb. 85c
- Boneless Pork Cutlets Lb. \$1.29
- Fresh Sliced Bacon Lb. \$1.19

- Carol Ann Snack Crackers 11-oz. Box 37c
- Piggly Wiggly, Evaporated Canned Milk 13 1/2-oz. Can 22c
- Pine Oil, Soft Pine Disinfectant 28-oz. Btl. 97c
- Piggly Wiggly Fabric Softener 64-oz. Btl. 49c
- Heavy Duty Laundry Bonne' Detergent 49-oz. Box 49c

Piggly Wiggly, 100% Pure Florida, Frozen

Orange Juice

6 \$1
6-oz. Cans
Limit 6, please

Cough Mixture

Vicks Formula 44

3-oz. Btl. **79c**

IMPORTED FINE

Carolin

Porcelain China by Crown Victoria

This Week's Feature:

Cup Each 49c with each \$3.00 purchase

Piggly Wiggly Assorted Colors

Paper Towels

3 \$1
175 Sheet 1 Ply Rolls

- Ar or Pinto Beans Lb. 27c
- Regular, Pre-Cooked Minute Rice 7-oz. Box 41c
- Piggly Wiggly, Plain or Iodized Salt 26-oz. Box 11c
- Piggly Wiggly, Pure Ground Black Pepper 4-oz. Can 35c
- Carol Ann Saltine Crackers 3 Lb. \$1.00
- Piggly Wiggly, Chic./Rice, Cr./Chic, Lr./Mushroom, & Chicken Noodle Soup 10 1/2-oz. Cans 6 \$1

Holly Sugar

5 59c
Lb. Bag

Limit one with \$7.50 or more purchase

- Whitehouse Applesauce 25-oz. Jar 55c
- Piggly Wiggly Fruit Cocktail 16-oz. Can 30c
- Piggly Wiggly, Halves & Slices Cling Peaches 16-oz. Can 28c
- Piggly Wiggly, In Juice, Hawaiian Pineapple 15-oz. Can 31c
- Piggly Wiggly Tomato Juice 15-oz. Cans 16c
- Piggly Wiggly Macaroni & Cheese Dinners 7-oz. Pkgs. 2 43c

SAVE 37c

With this coupon at Piggly Wiggly when you buy one (1) Enriched

Gold Medal Flour

5 59c
Lb. Bag

09192 Without coupon 96c. Offer good thru Nov. 14, 1973.

- Our Darling, Cut Asparagus Spears 14 1/2-oz. Can 49c
- Piggly Wiggly, Evaporated Green Beans 16-oz. Can 25c
- Piggly Wiggly, Cream Style or Whole Kernel Golden Corn 16-oz. Can 23c
- Rosedale Garden Sweet Peas 16-oz. Cans 21c
- Piggly Wiggly, California Whole Tomatoes 16-oz. Can 27c
- Piggly Wiggly Assorted Colors Bath Tissue 2 Roll Pkgs. 4 \$1

SCHEDULE OF EVENTS

MONDAY, NOV. 12
Progress WSCS
8 p.m.-School Board
9:30 a.m.-Muleshoe Art Asso. - Muleshoe State Bank

TUESDAY, NOV. 13
10 a.m.-BAC
7:30 p.m.-BSP
7:30 p.m. - OES-Masonic Hall
8:00 p.m.-ESA Progress HD
7:30 p.m.-AA-AA Meeting Room
8:00 p.m.-Rebekahs-Odd-fellow Hall
7:30 p.m.-Bailey County 4-H Banquet

WEDNESDAY, NOV. 14
7:30 - DeMolay -Masonic Hall

THURSDAY, NOV. 15
Hobby Club-REA
6:30 p.m. - TOPS - REA Meeting Room
5:30 p.m.-Weight Watchers - 1st Presbyterian Church
7 p.m.-Beta Sigma Phi-Bingo Carnival - Catholic Center

FRIDAY, NOV. 16
7:30 p.m. - Perryton at Muleshoe

Compliments of:
MULESHOE STATE BANK
MEMBER FDIC
MemberFDIC