



# BAILEY COUNTY JOURNAL

The Community of Opportunity-Where Water Makes the Difference

## Weather

	HIGH	LOW	PREC.
Nov. 22	31	18	0.04
Nov. 23	45	18	0.13
Nov. 24	41	19	0.27
Nov. 25	45	29	0.27

Rainfall Year to Date 16.23

VOL. 9 NO. 48

20 PAGES

Published Every Sunday at Muleshoe, Bailey County, Texas 79347

10 CENTS

SUNDAY, NOVEMBER 26, 1972

# Snow Accumulates Over 3" In Area

## Junior Livestock Show Part Of UF

## Fourth Snow Of The Season Falls Here

Included in the Muleshoe Area United Fund this year is the annual Bailey County Junior Livestock Show.

The year the Livestock Show has received a budget of \$3,700. This annual show is for Ba-

iley County youths who are members of a 4-H Club, FFA or FHA.

Last year over \$3,000 was awarded in cash prizes.

This coming year the Livestock Show will be held on February 8, 9 and 10, 1973.

The following directors are responsible for the proper conduct of the show: Chairman, Loyd Throckmorton; Secretary-Treasurer, Pete Black; Jimmy Dale Black, Lewis Scoggin, Russel Kirby, Gordon Murrah, Bob Newton, Leon Lewis, Eugene Black, Donald Harrison and Freddie Parkman.

Any boy or girl who is a member of the 4-H, FFA and FHA whose projects are supervised by the County Extension Agent or Vocational Agriculture Teachers of Bailey County and attend school in Bailey County, is eligible to show in the Bailey County Junior Livestock Show. An exhibitor must be nine years of age by the day of the show to be able to participate in the show.

Exhibitors must have owned their pigs, lambs and feeder steers and have them in their care not later than December 1, 1972. Steers must be on feed by October 1, 1972.

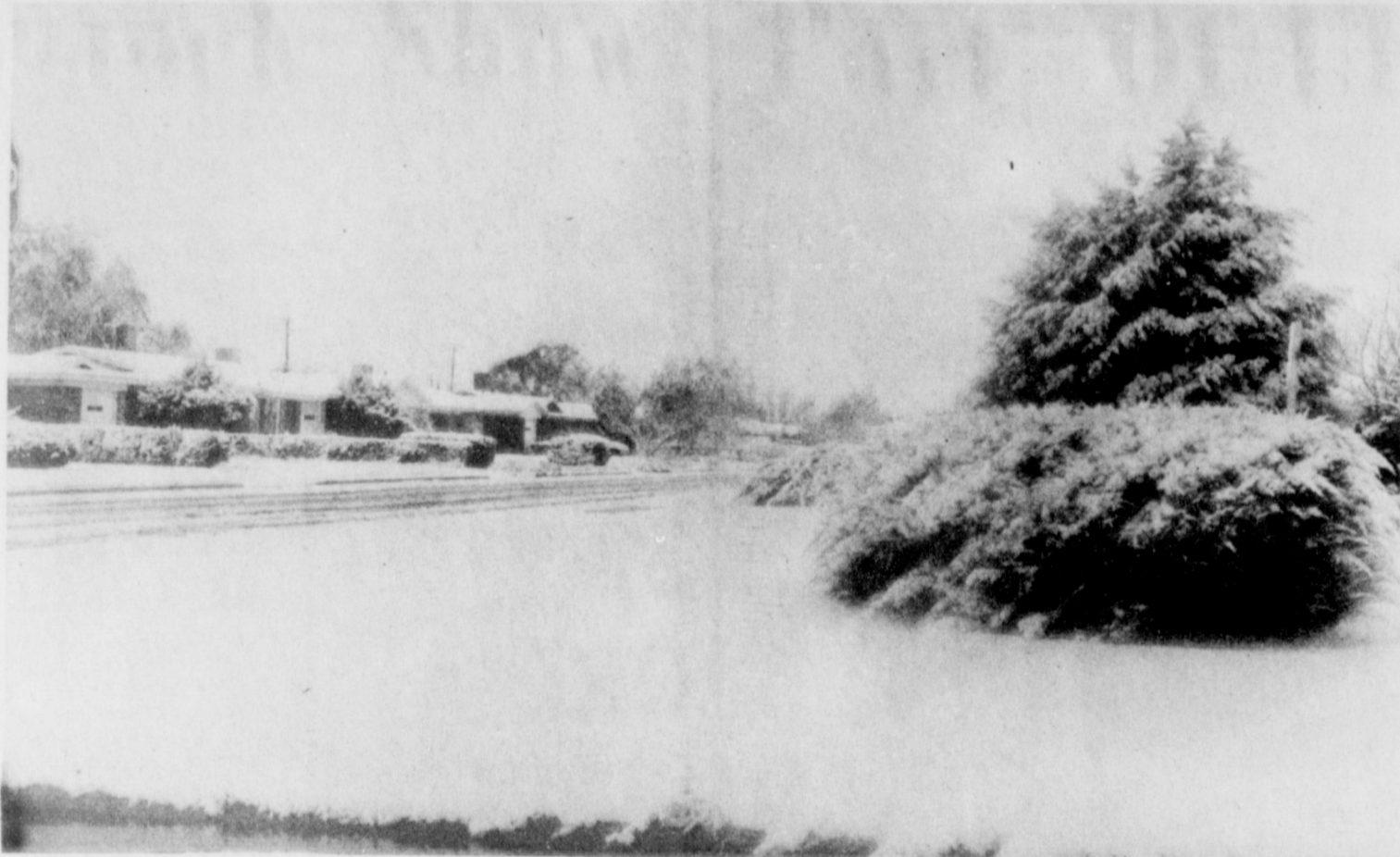
Cash prizes to be awarded this year include:

Heifers and Steer Classes - First, \$60; Second, \$50; Third, \$40; Fourth, \$30; Fifth, \$20; Sixth, \$10; Seventh, \$8; Ninth, \$6; and Tenth, Eleventh and Twelfth, \$4.

The Grand Champion Steer will be awarded \$100, and the Reserve Champion Steer, \$50.

Barrow, gilt, lamb and feeder

Cont. on Page 3, col. 7



WINTER STRIKES AGAIN . . . For the fourth time this autumn, Muleshoe citizens awoke to a blanket of snow Friday morning. During the early morning hours, accumulations of up to three inches had fallen on the Muleshoe area. Snow also fell in varying amounts across the panhandle, South Plains and Eastern New Mexico. The sun was out by Friday afternoon and most of the snow melted off by sundown. This view of the snow was taken in the Richland Hills Addition in Muleshoe.

Already winter-weary citizens awoke Friday morning to still another blanket of snow in Bailey County. This is the fourth snow of the season and winter is still just under a month away.

Although there were accumulations of up to three inches in and around Muleshoe, the snow melted quickly and by afternoon it was mostly slush.

Highways and streets were extremely treacherous in the early morning hours due to the snow which covered a thin sheet of ice. Sleet, mixed with rain started falling around 8 p.m. Thursday night and changed to snow in the early morning hours Friday.

Travelers warnings were issued throughout the night for West Texas and Eastern New Mexico as the storm became progressively worse.

Farmers were forced to put off the harvesting of both grain and cotton as the fields are still much too wet to hold up machinery.

Snow fell Thursday night from the West Texas mountain areas east of El Paso toward the north and south Plains area. Muleshoe evidently came in with the most snow accumulated as it varied from the three inches here to just a trace at

Cont. on Page 3, col. 2

## around muleshoe with the journal staff

Mr. and Mrs. Howard Splawn will visit their son, Capt. Arthur Splawn and wife of Big Springs this weekend to celebrate Thanksgiving. On their return trip home they will stop in Levelland and visit their son, Coach and Mrs. Kenneth Splawn and baby.

Mr. and Mrs. Tony Young, Dimmitt; Mr. and Mrs. Hal Newsom and Jason, Muleshoe; Mr. and Mrs. Lewis Embry from West Camp visited their parents, Mr. and Mrs. Ben Gramling over the holidays.

Mr. and Mrs. L. B. Hall and children visited with her parents, E. Q. Perry of Plainview over the holidays.

Mr. and Mrs. Charles Thatcher of Portales N.M., visited her parents, Mr. and Mrs. Eric Smith over the Thanksgiving holidays.

Janie Crane of Farwell visited her parents, brother and sister, Mr. and Mrs. James Crane, Kim and Terri, over the holidays.

Mr. and Mrs. W. F. Creamer were visited over the holidays by their daughters, Mr. and Mrs. Johnny Schneider of Cozad, Nebraska; and Mr. and Mrs. Ray Kemp and daughter Karen of Amarillo.

Mrs. Horace Blackburn had her aunt, Mrs. O. H. Atchison, from Levelland visiting during Thanksgiving. She also received a phone call from her daughter.

Mr. and Mrs. Larry Goree spent Thanksgiving with their parents, Mr. and Mrs. C. E. Simmons, Plainview; and Mr. and Mrs. Harold Goree, Halfway.

Mr. and Mrs. Richard Alsup spent Thanksgiving with her parents, Mr. and Mrs. Charles R. King from Dimmitt and his aunt and uncle, Mr. and Mrs. Raynes Sparks and Johnny from Hobbs, N.M.

Mr. and Mrs. Charlie Phipps



FIRST DOLLAR OF PROFIT . . . Darrell Turner of Muleshoe Mobile Home Sales, left, is shown accepting their First Dollar of Profit certificate from R.A. Bradley, President of the Muleshoe Chamber of Commerce and Agriculture. The certificate is presented to all new businesses in Muleshoe by the Chamber.

## SPAG Board Will Meet On Tuesday

The monthly meeting of the South Plains Association of Governments (SPAG) Board of Directors, postponed last week due to inclement weather, has been rescheduled for Tuesday, November 28th, at 9:30 a.m. in the E.O.C. (Emergency Operations Center) of Lubbock City Hall.

Highlighting the ten item agenda facing the directors will be:

Authorization to file an application for the Texas Planning Grant which is an appropriation grant from the Governor's office; this year's grant could amount to approximately \$43,000.

Initiation of a dues call for

Cont. on Page 3, col. 2

# Local Cotton Harvesting Gets Off To Slow Start

The 1972 cotton harvest in the Muleshoe area is at a stand-still at the present time due to the inclement weather.

Rain and snow this past week has kept farmers and machinery out of the fields.

The area harvest hadn't really started at any great lengths before the bad weather set in.

Most of the cotton is ready however and across the South Plains, the cotton harvest was well underway until forced to come to an abrupt halt by the recent snows.

A few days of clearing weather with some warm temperatures will dry out the fields, enabling farmers to get back in and harvest this season's crops.

Damage to the cotton due to the snows, rain and freezing weather is not fully known at this time.

The 1,250,764 bale cotton crop on the High Plains in

1971 compares with a crop of 1,734,767 bales in 1970, and was the smallest area turnout since 1967. Weather conditions were primarily responsible for a per-acre yield of only 264 pounds, the lowest since 1952, and for a drastic drop in fiber quality.

In grade, the crop was 15

per cent White, 58 per cent Light Spot and 26 per cent Spot and "Others", as compared with 41 per cent White, 45 per cent Light Spot and 14 per cent Spot and "Others" in 1970.

Staple length for the 1971 season averaged 30.2 thirty-

seconds of an inch, almost a full thirty-second below last year's 31.1 thirty-seconds average. This was the third year since 1963, when the High Plains' average staple was only 29.8 thirty-seconds, that the area failed to record an increase in staple length. Th-

Cont. on Page 3, col. 3

# City Evaluation Shows Civic Pride Felt By Local Citizens

Several months ago the Businessmen's Activities Committee of the Muleshoe Chamber of Commerce and Agriculture approved a project whereby a neighboring city and Muleshoe would inspect and evaluate one another.

The city of Tulia, due to the many similarities between it and Muleshoe was selected. Arrangements were made with the Tulia Chamber of Commerce manager, Don Crocker, and several men from Tulia came to Muleshoe to plan the project. Royce Clay, minister of the Muleshoe Church of Christ, was named as Chairman of the project.

Since that time, seven individuals from each city have taken part in exchange shopping tours. After each visit in a retail establishment an evaluation sheet was completed.

Last week, Muleshoe received Tulia's evaluation of this

city. According to the evaluation, Muleshoe as a whole, has many things going for it.

Among the things noted by the visitors were: due to the covered trash receptacles, the downtown area, and the town in general, was found to be remarkably free of trash. This cleanliness makes a good impression on visitors. Second, the new library building makes it possible to arrange books for easy browsing and access. The Tulia visitors were "very impressed". Third, the attractive Highway Department facility was visited and helps make entrance into Muleshoe from the west a pleasant experience.

While many things of a physical nature were viewed as assets to Muleshoe, the greatest assets reported by the visitors, is a non-physical attribute. The visitors reported that Muleshoe's greatest asset is the attitude of its citizens.

# 3 Faculty Members In Education Center

Three faculty members of the Muleshoe Independent School District serve in an advisory capacity for the Education Service Center, Region XVII, Lubbock.

With the help of its Board members, the Service Center offers schools a variety of programs and activities, all having the common goal of bringing the best possible learning opportunities to every student in the region.

Reviewing all ESC programs and activities is Ms. Elizabeth Watson, who also helps assume responsibility for films

being placed in the Media library. Ms. Watson previews films in the area of language arts.

Tom Jinks, the director of federal programs for Muleshoe, serves on two advisory committees. He is a member of the data processing committee and also the vocational evaluation of the handicapped committee.

Ben Gramling, a counselor for the school system, serves on the special education advisory committee.

The Lubbock-based Center serves 66 school districts in 20 West Texas counties.

# Thursday Is Deadline For Parade Entries

The annual BAC Christmas Parade will be coming down Main Street of Muleshoe Saturday afternoon, December 2, beginning at 3 p.m.

An array of floats and beautiful girls have been entered in the parade along with bands and riding clubs.

Santa Claus himself will also be in Muleshoe for the parade.

This year, the Llano Estacado Civic Club is in charge of the parade. Entries will be taken until Thursday, November 30.

Anyone wishing to enter may do so by contacting Mrs. Lee Kimbrough at 965-2723 or Mrs. Jim Tucker at 272-3027.

Children have been invited to decorate their bicycles and enter the parade. Ribbon awards will be given by the Llano Estacado Civic Club for the best decorated bicycle.

Cash awards will be given to prize-winning floats. First prize will be \$100; second prize, \$75; third prize, \$50; and fourth prize will be \$25.

Float entries to date are the Muleshoe Girl Scouts, Lubbock State Children, Parents and Friends Organization, ESA Sorority, Oklahoma Lane Baptist Church GA's and RA's, and the Muleshoe Chamber of Commerce.

Other entries include Little Miss Muleshoe Lisa Bennett and the ESA Sorority Queen.

All local queens and sweethearts including school related honors are urged to enter the

parade this year. All parade participants are asked to meet no later than 2 p.m. December 2 at the vacant lot near the Boy Scout Hut or on the street parallel to the lot.

## Young Men Reminded Of Obligation

AUSTIN, Texas: -- Colonel Melvin N. Glantz, the State Director of Selective Service for Texas, has again reminded young men of their obligation to register with Selective Service within 30 days of their 18th birthday.

Glantz stressed that the requirement to register will continue in full effect whether the all-voluntary military force becomes a reality or not. Every native born and resident-alien young man is required to present himself for registration from 30 days before to 30 days after his 18th birthday. If, for any reason, a young man has failed to register he should do so immediately to escape the penalty of Federal law.

Failure to register may result in a fine, imprisonment, or both, under provisions of the Military Selective Service Act. Young men may register at the office of the local board

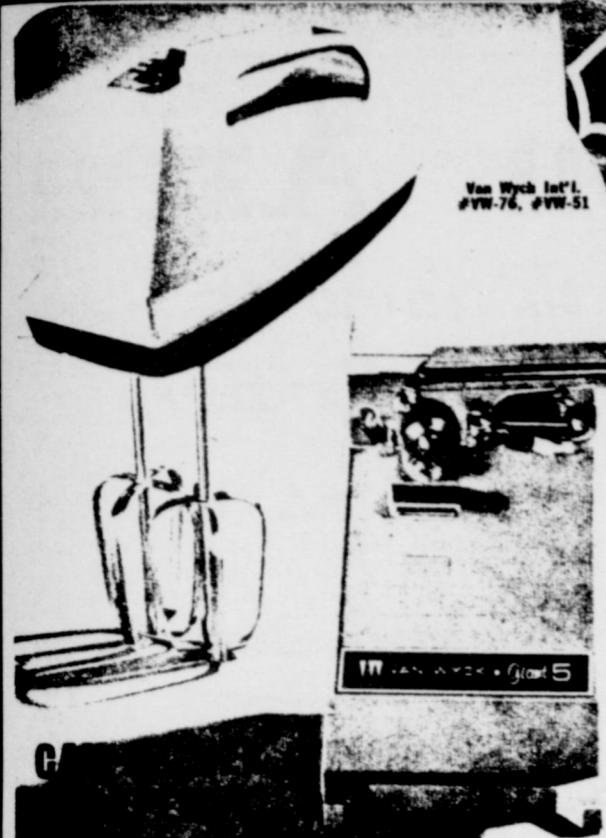
Cont. on Page 3, col. 3



FROSTY THE SNOWMAN . . . Muleshoe Girl Scouts leaders are shown working on the float that the Girl Scouts will enter in the BAC sponsored Christmas Parade Saturday. Leaders pictured left to right are Mrs. Alton Parker, Mrs. J.O. Parker, Mrs. Don Martin and Mrs. Odell Rasco. The leaders are working on a giant Frosty the Snowman for their float. The parade will be held at 3 p.m. in downtown Muleshoe on Saturday, December 2.

# GIBSON'S DISCOUNT CENTER

Muleshoe, Texas Monday thru Sat.  
Open 9A.m. To 8p.m.



These handy kitchen knives can open, sharpen, permanent bottle opener, electric knife and scissor sharpener. Portable mixer is lightweight and compact, has push-button ejector. Twin chrome beaters. White, avocado, gold.

**YOUR CHOICE 5<sup>47</sup>**

**SELF CLEANING BROILER OVEN 15<sup>47</sup>**

This Udico Broilmaster by Cornwall cleans itself as used with Du Pont's new catalytic "continuous clean" process. Double-wall construction, 2 tubular elements for broiling and baking porcelain enames on steel drip pan.

**SLIMLINE CANISTER VACUUM CLEANER 24<sup>88</sup>**

This Hi-Power Portable has powerful 840-watt motor that develops a whirlwind of suction for deep cleaning power. Ruggedly-built all steel canister is lightweight and maneuverable. Attachments included. Vinyl hose telescoping extension wand, crevice tool, etc.

**IONA 5 SPEED BLENDER 9<sup>97</sup>**

Solid state with push button controls, this blender has 5 speeds to meet all needs. East-to-clean removable cutting blades, unbreakable 48-oz. heat resistant jar, built-in cord storage. Avocado or harvest gold.

**VERY SPECTACULAR**

Quality hosiery made especially for Gibson by one of America's leading manufacturers. Great values! Season's newest shades. Choose the style most appealing to you — and the price will also appeal to you!

#964 One Size PARTY HOSE **37c**

#494 "Hole Look" SANDAL/FOOT PARTY HOSE **64c**

#899 "Big Girl" PARTY HOSE **84c**

#441 "Tummy Control" Sheer Leg, Girdle Top PARTY HOSE **94c**

#6's 482, 408 Nylon Blank or Plain Girdle HOSE, Sizes 8 1/2-11 **25c**

**LADIES FUR CAR COATS 15<sup>87</sup>**

The ever-popular car coat in a choice of fake fur or corduroy. A wide selection of styles in addition to those illustrated. There is one to suit you. Assorted sizes, colors.

**BOYS SPORT SHIRTS**

Featuring the "Layered Look," these long sleeve sport shirts are permanent press in sizes 8-18 and 3-7. Solids and fancies with assorted trims. Button or zipper front.

Sizes **2<sup>27</sup>** Size **2<sup>77</sup>**  
3-7 8-18

# Christmas Preview

**SALE CONTINUES THRU WED. 29th**

**POPCORN POPPER 7<sup>44</sup>**

#6726

**SKIL JIG SAW, DRILL 19<sup>88</sup>**

**JIG SAW** — Double insulated, tilting foot, 2 speeds, (2800 and 3300 SFM). Foot tilts up to 45 deg., 2.5 amp motor. Save BIG on this model.

**DRILL** — 3/8" double insulated, variable speed drill with dependable 3 amp motor that develops 1.5 h.p. Can pre-set and lock in any speed up to 1000 RPM.

**Your Choice**

**MEN'S SPORT SHIRTS 2<sup>99</sup>**

These long sleeve men's sport shirts feature new fashion colors and styling. They are permanent press 50% polyester, 50% cotton and are tapered, long tail, and have 2-button cuffs. Choice of assorted prints and two-tones, S-M-L-XL.

**'WALLACE BERRY' SHIRTS 2<sup>77</sup>**

Men's 100% combed cotton Wallace Berry top in an assortment of colors and styles. They are rib stitched, some with two-tone trim. #1400 Sizes S-M-L.

**TRICOT SLEEPWEAR LADIES 2<sup>77</sup>**

Choose from a wide selection of styles of ladies and girls' sleepwear in brushed tricot. Ladies long gowns (not shown) are available in two styles, in sizes 32-40 — also in extra sizes 42-48. Girls' sizes 7-14 available in Long Gowns, Waltz Gowns and Pajamas. Assorted Colors.

**GIRLS 2<sup>27</sup>**

**MEN'S WESTERN BOOTS 13<sup>67</sup> PR.**

This classy looking, long wearing 11" brown buggy whip Western boot has fancy stitched upper with smooth cowhide leather vamp and walking heel. You'll like the quality; you'll like the price!

#72-297

**LADIES FASHION PURSES 2<sup>88</sup>**

Large assortment includes fashion fashion purses and wallets for the ladies. Choose from this elegant line of 4" French purses, 5" Cachet purses, 6 1/2" Clutches and billfolds. Top quality at low, low price!

**THERMOS SPORT KIT 8<sup>77</sup>**

Ideal for sports, beach, camping, travel—unlimited outdoor living. Kit includes two vacuum quart bottles, one with standard neck, one with wide mouth. Luxurious expanded brown vinyl case has roomy self-hinged sandwich and food box. Bottles keep drinks hot or cold.

**"LADY PEPPERELL" SHEETS, TOWELS, CASES**

Great Daisy and solid velour towels, wash cloths, hand towels. Also Great Daisy no-iron muslin print sheets. Variety of colors.

Bath Towels **1<sup>37</sup>** Hand Towels **87c** Wash Cloths **37c**

SHEETS: 72 x 104" Queen Fitted **2<sup>37</sup>** 81 x 104" Double Fitted **2<sup>97</sup>** 108 x 118" King Flat, Fitted **5<sup>77</sup>**

PILLOW CASES: 42 x 36" **1<sup>97</sup>** 42 x 46" **2<sup>87</sup>**

**ONLY 29 MORE SHOPPING DAYS UNTIL CHRISTMAS**

**6-FOOT SCOTCH PINE 9<sup>77</sup>**

Rich green deluxe tree with thick life-like needles. 100 tips insure extra fullness. Flame resistant. Just the tree to say "Merry Christmas" to your friends. High quality, low, low price!

Consolidated Jewelry #4-102-7722

**6 ROLL GIFT WRAP 77c**

Gay, holiday-colored gift wrapping. This 6-roll combination includes 4 rolls of foil and two rolls of paper. Total: 55-sq. feet.

**CERAMIC ASH TRAYS 97c**

Colorful assortment of beautifully colored ceramic ash trays—one for every room, for every mood. Several styles and shapes. They make excellent gifts.

**YOUR CHOICE**

**BIG FRAMED PICTURES 3<sup>44</sup>**

A special assortment of 24 x 48" pictures with scooped and scalloped 2" frames. You'll love browsing through this fine selection. There's one for every room.

**YOUR CHOICE**

**FRAMED PICTURES 99c**

Choose from a big assortment of beautifully colored pictures in 12 x 24" and 16 x 20" sizes. Beautiful brush-stroke complement and match any motif.

**YOUR CHOICE**

## TOYLAND SPECIALS

**POGO STICK 3<sup>88</sup>**

Split-top adjustable Pogo stick for years of action! Features heavy duty springs, rubber treads and tip, bright vinyl grips and tassels. Adjusts to 4 lengths. Steel shafts.



**DOLL COACH OR STROLLER 3<sup>88</sup>**

Proud is the little girl who has one of these for her dolls. Pink candy stripe 18" coach or tubular stroller. Perhaps she'll want them both.

**BABY TWEAKS' OR NEW ARRIVAL DOLL 4<sup>88</sup>**

"BABY TWEAKS" (2 styles) are soft foam fillies. "I coo" when you squeeze my body, arms or legs. Cuddly, lovable. "NEW ARRIVAL" says "MAMA" when you squeeze her arms, body or legs. Soft, foam filled.

**DRINK & WET DOLL 4<sup>66</sup>**

17" Drink and Wet baby in large crib. "Lorrie" has pixie hair style, moving eyes, movable arms and legs. The 24" "Baby Lorrie" waddles with you. She drinks and wets just like a real baby. Beautiful life-size, she has pixie hair style, moving eyes, movable arms and legs.

**FLOOR MODEL POOL TABLE 10<sup>97</sup>**

Introducing a new tournament pool table that's 25" x 40". Features sturdy foldaway, tubular steel legs, double wall construction live rebounding surface, gold felt surface, automatic ball return, two cues, plastic ball rack.

**RAMROD COMBINATION SET 4<sup>37</sup>**

Means big trouble for bad hombres and range rustlers. 20" plastic rifle shoots 250 caps, rapid fire. Two 200-shot, cap firing metal pistols are 2" long with stag handles. Set also include 3-piece bat bullet clip, kerchief & loop, Deputy Badge, canteen and tank note.

**HEAVY DUTY BASKETBALL 4<sup>88</sup>**

Official size and weight basketball with tough Ny-Weave inner construction, Permalite cover, double nylon wound. Finest butyl rubber bladder. Play on asphalt, driveways, concrete, backyards, playgrounds and indoor courts.

**STAGECOACH, FT. FRONTIER 1<sup>66</sup>**

WESTERN STAGECOACH — Features 13" long stage. Coach "pulled" by a 2-horse team. 3 plastic cowboys and Indians with accessories. **FRONTIER** — Fully assembled frontier fort plus horse and wagon, driver, more horses, saddles and Calvary figures. **Your Choice**

**ETCH-A-SKETCH 2<sup>33</sup>**

World famous drawing toy-no pencils, no pens, no paper, no erasers. Turn knobs to draw, shake to erase. Self contained.

**MUSICAL COLOR TV 2<sup>97</sup>**

A play plastic portable color TV. School Days scenes slowly move in time to "School Days" song. Genuine Swiss music instrument. TV is 10" x 9" x 5 5/8".

**SWING ALONG DRUM SET 4<sup>88</sup>**

One of our hottest sellers year after year. This drum set has everything a young percussionist would want! 21" bass drum, 9" side drum, 8" tom-tom, polyethylene bearing surfaces, two 8" cymbals with safety edges, wooden percussion block, two 10" drumsticks.

**WABASH 15<sup>97</sup>**

This complete freight outfit is the perfect starter set. Has new heavy-duty "Brute" motor and Pullmor Power that hauls five times as many cars as before. Loco has forward, reverse neutral. UL listed transformer, 8 curved and 2 straight tracks. Great for youngsters! Great for Parents!

**FIRE ENGINE GAS PUMP 1<sup>97</sup>**

Heavy duty fire engine package for added play value. Crank pump, gallons register as bell rings. Large nozzle and hose for play with large and small wheel toys, air hose, pressure selector attachment and Fire Engine package.

**MINI FARM SET 3<sup>97</sup>**

A Gibson Special! Ertl farm and barn set offers real play value. 36 pieces of excitement, includes IH Tractor, wagon and plow made of durable die cast zinc, 14 realistic animals, 12 pieces of farmyard fence, 6 bales of hay.

**RIDE 'EM SUPER RACER DUNE BUGGY 3<sup>66</sup>**

Sturdily built of break-resistant plastic, these four-wheelers steer freely and are complete with built-in horn, indoor and outdoor toys for boys and girls. Completely assembled.

**POLAROID 420 LAND CAMERA \$42**

(B) MODEL 420—Low priced camera with deluxe features. Has transistorized electronic shutter and electric eye. Perfect exposure every time. Just focus and shoot. Coupled range and viewfinder (Focused Flash System available at extra cost). Polaroid guarantees every picture you take with this camera. Focused Flash System (for Model 420).....\$7.47

TYPE 88 FILM **2<sup>75</sup>** COLOR FILM TYPE 108 **3<sup>75</sup>**  
FOR SQUARE SHOOTER FOR MODEL 420

**MECHANICS TOOL CHEST 8<sup>47</sup>**

2-Drawer tool box especially for mechanics, servicemen, hobbyists—all purpose. Perfect way to separate tools for quick, easy use. Drawers have full-suspension slide and lock when cover is closed. Durable baked enamel finish. 18 1/4" x 2 3/8" x 7 1/2".

**THE STYLER HOT COMB 5<sup>88</sup>**

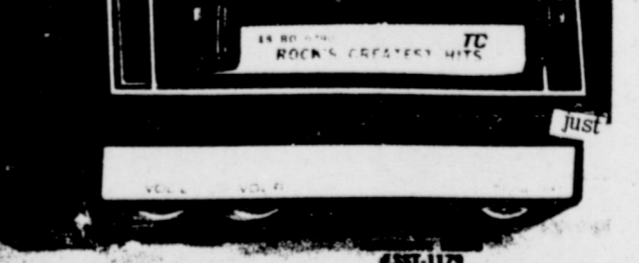
Lightweight "Blow out Comb" with 3 attachments ideal for styling, curling and straightening. Thermally controlled heat. Temperature settings. Styling and straightening bar, 2 combs and bristle brush, 1-year warranty.

**HI-LO TV POLE #3801 5<sup>47</sup>**

The light that floats! Tough plastic construction to withstand hard, rough treatment. Rustproof and waterproof. Great gift idea! Ideal for boating, hunting, camping, fishing. Keep in auto, home, garage, trailer. Includes heavy duty F4M 6-volt battery.

**DOLPHIN LANTERN 2<sup>29</sup>**

Takes up virtually no floor space. Adjustable heights, fits most slim line portable TV sets. Made of strong steel tubular tubing. Adjusts to fit most ceiling heights.



**8-TRK. AUTO STEREO TAPE PLAYER 24<sup>88</sup>**

Compact size auto 8-Track stereo tape player has program selector, program indicator lights and thumb wheel tone and balance controls. High quality unit at low discount price. (Speakers available, but not included). (Tape not incl.)

**DELUXE BOSTON ROCKER 4<sup>66</sup>**

The nation's hottest, rocker. New styling, beautiful maple finish. Height 27", seat 12" x 14", seat height 11". Comes fully assembled in colorful carry-out box.

## Wheat Confab Slated In Amarillo Nov. 29

Topics ranging from wheat production and grazing to ecology will highlight a Wheat Symposium at Amarillo on Nov. 29. On the following day, several out-of-state speakers will discuss key topics related to the overall wheat situation, farm programs, and transportation during the 22nd annual meeting of the Texas Wheat Producers Association (TWPA). The two-day program will be conducted at the Holiday Inn West and will begin each day at 9 a.m., announces County Extension Agent Spencer Tanklesy.

The first day's program will include discussions on ecology, current wheat situation, con-

trol of wheat insects, diseases and weeds, wheat varieties, feed wheat, wheat grazing, and health problems of animals on wheat pastures.

Among the keynote speakers will be Bill Nelson, executive vice president of the Texas Wheat Producers' Board, and Dr. L. S. (Bill) Pope, associate dean of agriculture at Texas A&M University. Also on hand will be specialists with the Texas Agricultural Extension Service and scientists with the Texas Agricultural Experiment Station. A consultant in feed wheat nutrition and a livestock and wheat producer will also be on the program. The TWPA meeting on Nov-

ember 30 will feature several outstanding speakers on the national scene, according to Tanklesy. Among these are Joe Halow, Executive vice president of Great Plains Wheat, Inc., Washington, D.C., who will discuss the world wheat situation. Gene Moos, president of the National Association of Wheat Growers, will talk on farm programs and how they affect wheat farmers.

Another speaker on wheat programs will be Victor A. Seneschal with the Agricultural Stabilization and Conservation Service, Washington, D.C.

A panel discussion that afternoon will feature the topic, 'Transportation--The Key to Wheat Marketing.'

The two-day program is being sponsored by the Texas Wheat Producers Association and the Texas Agricultural Extension Service and three of its area income programs--Panhandle Economic Program, South Plains Development Program, and Rolling Plains Development Program.

Leo Witkowski of Hereford is president of the TWPA.

Tanklesy urges all wheat producers, agribusinessmen and others in Bailey County interested in wheat production to attend either or both of the programs.

## Ft. Worth Stock Show Mails Premium Lists

FORT WORTH -- More than 8,000 Premium List books offering over \$260,000 in awards have been mailed for the 1973 Southwestern Exposition and Fat Stock Show, reports W. R. Watt, Jr., general manager.

The new Premium List outlines facts and rules for exhibitors at the 77th annual Stock Show, Jan. 26 through Feb. 4. Some Horse Show events begin Jan. 23.

"All prospective exhibitors should study the new Premium List carefully," Watt said, "because of the several changes from previous shows."

Watt said previous Stock Show exhibitors are to receive the 1973 book. Additional requests for the booklet should be made by writing Southwestern Exposition and Fat Stock Show, P.O. Box 150, Fort Worth, Texas 76101.

The 1973 Stock Show will be host to the Golden Anniversary American Polled Hereford Association Show and Sale. Premiums for Polled Hereford breeding classes have been increased 100 per cent to \$20,000

for the special show. Over 500 entries are expected.

Another big increase, \$5,845 in awards for the Junior Steer Show, is due partly to the addition of two exotic breeds, Limousin and Simmental. The Sale of Champion Steers is scheduled at 9 a.m. Tuesday, Jan. 30 with Walter S. Britten as auctioneer.

The Horse Show, in addition to breeds showing in past years, has added classes for Peruvian Paso horses, a smooth-gaited walking horse type.

"Entries for the Polled Hereford breeding cattle close Nov. 15. Other cattle, horses, sheep and swine entries close Dec. 15, while exhibitors of rabbits, poultry and pigeons have until Jan. 15, 1973, to enter," Watt said.

New in the carlots and pens category are Angus performance tested bulls, offering \$5,000 in premiums. A sale is set at 1 p.m. Jan. 29. Back again in 1973 will be judging classes and a sale for commercial Hereford heifers. "These heifers are from top herds in

the southwest, and this once-a-year sale allows purchases which otherwise cannot be made," Watt said. The sale is

## Show...

Cont. from Page 1

steer classes all conform to the following pay scale that varies as numbers in classes vary: First, \$30; Second, \$25; Third, \$20; Fourth, \$15; Fifth, \$10; Sixth, \$4; Seventh, \$4; Eighth, \$4; Ninth, \$3; Tenth, \$3; Eleventh, \$2; and Twelfth, \$2.

Classes of six to nine animals: First, \$25; Second, \$20; Third, \$15; Fourth, \$10; Fifth, \$4; Seventh, \$3; Eighth, \$2; and Ninth, \$2.

Classes of five or less animals: First, \$15; Second, \$10; Third, \$4; and Fourth, \$3.

The Grand Champion Barrow will bring \$25; The Grand Champion Lamb, \$25; the Grand champion Gilt, \$25; Reserve Grand Champion Barrow, \$15; Reserve Grand Lamb, \$15; and the Reserve Grand Gilt, \$15.

The Livestock Show is just one of the many agencies funded through the local United Fund drive that is now in progress in Muleshoe.

at 1 p.m. Jan. 28. A first-time auction at the Stock Show will be held at 7 p.m. Feb. 1 for Gebvich cattle, a German yellow breed.

## 3 Accidents Investigated

The Texas Highway Patrol investigated three accidents on rural highways in Bailey County during the month of October, according to Sergeant Thurman Keffer, Highway Patrol supervisor of this area.

These crashes resulted in one person killed and no persons injured.

The rural traffic summary for this county during the first ten months of 1972 shows a total of 43 accidents resulting in three persons killed and 25 persons injured.

Region 5 of the Texas Department of Public Safety shows a total in October, 1972 of 605 accidents, resulting in 20 persons killed, and 280 persons injured as compared to the same month in 1971 with 494 accidents resulting in 19 persons killed and 294 persons injured. This is 10 more accidents, one more fatality and 14 less injured in 1972 at the same period of time.

## Services Set Sunday For Mrs. Sterling

Mrs. Rachel C. Sterling, 88, died at 4:35 Friday morning in West Plains Memorial Hospital.

She lived at 424 West Third Street and had been a resident of Muleshoe since 1923, moving from Abilene, Texas. She was born September 29, 1884 in Fayetteville, Arkansas. Mrs. Sterling was a member of the First United Methodist Church of Muleshoe and a member of Senior Citizens.

Funeral services will be held Sunday afternoon at 3:00 p.m. in the First United Methodist Church with Rev. J. Frank Peery, pastor of the First United Methodist Church and Rev. J. B. Fowler, pastor of the First United Methodist Church of Muleshoe, officiating.

Interment will be in the Bailey County Memorial Park under the direction of Singleton-Ellis Funeral Home of Muleshoe.

Survivors include two daughters, Mrs. Houston Hart and Mrs. George Tompkins, both of Muleshoe; one son, Oia A. Sterling of Brady; two sisters, Mrs. Mae Posey, Talco, Texas and Mrs. Susie Westbrook, Alameda, California; one brother, Fred Farris of Fort Worth; eight grandchildren and 12 great-grandchildren.

## Muleshoe...

Cont. from Page 1

visited their son, C. M. Phillips and family in Friona during Thanksgiving.

Charlotte Wedel, Roger Patrick, Carolyn Wedel, Wanda Jennings, and John Economy all of Lubbock; Mr. and Mrs. Paul Stanton and Christa Jill of Irving, visited in the home of their parents, Mr. and Mrs. James Wedel over the holidays.

Ronnie Blevins of Houston is staying with his grandparents, Mr. and Mrs. Leo Pool of Muleshoe until Christmas. He spent the Thanksgiving holidays with his father, Bari Blevins of Amarillo and his grandparents, Mr. and Mrs. W. C. Levins of Spearman.

The Lee Pools spent the Thanksgiving holidays with their son and family, Mr. and Mrs. Roger Pool of Seminole. Pool is a co-owner and manager of the Singleton Funeral Home in Seminole.

Pablo Mendoza of Lubbock, junior student at West Texas State University, was one of 10 students and one faculty member who were initiated into the Delta Xi Chapter of Beta Beta Beta, National Biology Society, recently.

Mr. and Mrs. Jerry Boug of Dallas visited her brother, Mr. and Mrs. Ray Clayton. They are on the way to visit her parents in California.

Mr. and Mrs. Bud Gilliland of Lubbock, visited their parents, Mr. and Mrs. D. Gilliland and Mr. and Mrs. Leonard Evans, over the Thanksgiving holidays.

**Bailey County Journal**  
Established March 11, 1905  
Published by Muleshoe Publishing Co., Inc.  
Every Sunday at 201 W. Second, Box 443  
Muleshoe, Texas 79847  
Second class postage paid at Muleshoe, Texas  
Postmaster: Please send address changes to Muleshoe Publishing Co., Inc., P.O. Box 443, Muleshoe, Texas 79847.  
Subscription Rates: Single copy, 10¢; 3 months, \$2.50; 6 months, \$4.50; 1 year, \$7.50. Single copies 10¢.  
Advertising rates on application.

## CONGRESSMAN Bob Price 18th Congressional District

In a personal letter congratulating him for his overwhelming victory, Congressman Bob Price offered his full support and cooperation for President Nixon's announced plan to seek greater efficiency and economy in government spending as a first-priority goal of his second Administration.

Price, who has received the "Watchdog of the Treasury" award from the National Association of Businessmen of three different occasions for his fiscally conservative voting record in Congress, praised the President for taking a "courageous step in the name of sound government." The Congressman emphasized the importance of bringing under control runaway government spending promoted by a liberal dominated Congress which has been the primary cause of high taxes and inflation suffered by American working men and women.

Price told the President: "Several news accounts since election day have reported your expressed intention to set a high priority during your second Administration on arresting run-

way government spending and trimming the overpopulated and unwieldy Federal bureaucracy. I want to assure you of my full support in this endeavor, and speaking in behalf of my constituents. I wholeheartedly agree that this action would be in the best interests of our Nation. You are completely correct in your recent observation that Americans are sick and tired of government at every level, and I believe in view of your tremendous popular endorsement that you are in an excellent position to stem the tide of increasing government control and interference over the lives of our people.

"You have my pledge of support and cooperation for the goal you have expressed of returning the government to the people, and reinstating the morality of hard work and self reliance which made our Nation so great and powerful. I will welcome this opportunity to work in cooperation with you in pursuance of this noble and timely goal."

## Obligation...

Cont. from Page 1

near their home or place of residence, or may be registered by volunteer registrars who are located in most high schools or other similarly convenient locations. Registrars in the Muleshoe area are: Local Board Office, 117 East Ave. D, Muleshoe; and Judge Glen Williams, Courthouse, Muleshoe.

## Cotton...

Cont. from Page 1

ere was also a sharp decline in the amount of cotton stapling in the one inch or longer category, from 36.1 per cent in 1970 to only 4.3 per cent this year.

Micronaire average for the 1971 season came to only 2.9, with a meager 7 per cent 3.5 or above. The 1970 crop micronaire average was 3.7 with 65.3 per cent 3.5 above. Average Pressley, or fiber strength (zero gauge), was 77, 200 pounds in 1970 as compared to only 66.4 per cent in 1971.

Elongation, the percentage of stretch a given cotton will experience before breaking, averaged 8.3 per cent for the season, an increase of one per cent over 1970.

The following charts show first the Total Production 1967-1971 in running bales for Bailey, Farmer and Lamb Counties; the second set shows the Average Production Pounds per Acre Harvested Acre, 1967-1971; and the third set of charts shows the Total Acreage Available For Planting.

## SCHEDULE OF EVENTS

Monday, November 27  
7:30 p.m. -- Rainbow  
7:30 p.m. -- Square Thrus ALH

Tuesday, November 28  
7:30 p.m. Order Eastern Sta.  
7:30 p.m. Alcoholic Anonymous.  
8 p.m. Rebekahs, Oddfellows Lodge.  
8 p.m. ESA

Wednesday, November 29  
8 p.m. Demolay

Thursday, November 30  
6:00 p.m. -- TOPS

5:30 p.m. -- Weight Watchers-First Presbyterian Church

Any upcoming community event for Schedule of Events please report to the Journal office.

Compliments of:  
**MULESHOE STATE BANK**  
MEMBER FDIC

# BUDGET BEEF BARGAINS

## USDA GRADED BEEF

### T-BONE STEAK

**lb. 98¢**



<h4>Extra Lean Boneless STEW MEAT</h4>  <p style="text-align: right; font-size: 24pt;"><b>lb. 89¢</b></p>	<h4>Fresh GROUND BEEF</h4> <p style="text-align: right; font-size: 24pt;"><b>2 lb. pkg. 1<sup>09</sup></b></p>	<h4>Extra Lean GROUND BEEF</h4>  <p style="text-align: right; font-size: 24pt;"><b>lb. 79¢</b></p>
---	--	---

### SIRLOIN STEAK

**lb. 98¢**

### CLUB STEAK

**lb. 89¢**

### CHUCK ROAST

**lb. 79¢**

### ARM ROAST

**lb. 79¢**

### RIB STEAK

**lb. 89¢**



### ROUND STEAK

**lb. 1<sup>09</sup>**

### Texas RUBY RED GRAPEFRUIT

**5 lb. Bag.. 59¢**

### TEXAS SWEET ORANGES

**5 lb. bag 39¢**

### AVOCADOS

**2 for... 25¢**

### WHITE POTATOES

**10 lb. bag... 59¢**



### Shurfine FLOUR

**49¢**

5 lb. bag

### Three Flower BRILLIANTINE

**63¢**

3 oz. jar

### LISTERINE MOUTHWASH

**1<sup>19</sup>**

20 oz. bottle

## Jim's Pay N' Save

FRIENDLIEST STORE IN TOWN

8 a.m. till 9 p.m. 6 Days A Week Sundays 9 a.m. till 9 p.m.

201 S. 1st. Street

TELEX. Hearing Aids

Clovis Hearing Aid Center

Batteries & Molds. Free Tests.  
Service All Makes.

416 Mitchell Phone 763-6900

Clovis, N.M.

## Miss Yerby, Larry Baker Pledge Double Ring Vows

Miss Lee Ann Yerby and Larry Milford Baker repeated nuptial vows Friday evening, November 24, at 7:30 p.m. in the Trinity Baptist Church. Rev. Troy Walker, pastor of the East Ridge Baptist Church in Amarillo, performed the double ring ceremony, and Rev. V. L. Huggins, pastor of the Trinity Baptist Church, dedicated their home and read a scripture from Ruth.

Parents of the couple are Mr. and Mrs. Chester Yerby and Mr. and Mrs. Lester Baker, all of Muleshoe.

The altar was decorated with an arc of candles beneath the cross. Candle trees, flanked by spiral candelabra, were accented with elegance carnations and happiness cardones. The kneeling bench centered the arrangement of candles.

Special musical selections, including "Somewhere", "The Wedding Song" and "Bless This House", were presented by Stephen Garms of Canyon, soloist, accompanied by Becky Milner, pianist. Linda Middlebrooks was organist. Attendants entered to the procession, "Arioso" by Mendel and the bride entered to the traditional "Wedding March" by Lohengrin. The recessional was "Joy" by Bach.

Attending the bride as matron of honor was Mrs. Michael McDonald of Brownwood. Bridesmaids were Mrs. Rick Bomer of Okmulgee, Okla., Mrs. Richard Warren of Muleshoe and Mrs. Lynn Tanner of Gallup, N.M., cousin of the bride. The attendants wore formal length dresses of cranberry crepe designed with portrait necklines, long sleeves with narrow box pleat ruffle cuffs and pyramid skirts. Pink ribbons circled the empire waists ending in back bows with long streamers. They wore cranberry bow headpieces with pink velvet flowers. They each carried a colonial nosegay of pink elegance and cranberry exquisite carnations and pinnichio roses accented with velvet and silk flo-

wers and better times star flowers.

Sidney Kay Moffitt of Borger, niece of the groom, was flower girl. She wore a pink dress trimmed in cranberry which was styled identical to those of the other attendants and carried a small nosegay of the same flowers.

Roy Baker served his brother as best man. Gary Little of Lubbock, Alvin Walker of Slaton and John Gulley of Midland were groomsmen. Ushers were Rick Bomer of Okmulgee, Okla., and Lynn Tanner of Gallup, N.M. The ushers also served as candlelighters. Terry Baker, nephew of the groom, was ring bearer.

Escorted and given in marriage by her father, the bride wore a formal gown fashioned of antique ivory peau de soie and re-embroidered Alencan lace featuring a lace bodice, scalloped portrait neck, long fitted sleeves and a trumpet skirt. Lace formed a deep border on the skirt and impressed pleats swept to a wide chapel train. Her chapel length veil of silk illusion cascaded from a matching Cameo hat. The bride carried a cascading bouquet of exquisite pink carnations, elegance pink roses, silk renuculas, better times cardones and English Ivy accented the bouquet.

The bride carried out the tradition of something old, new, borrowed and blue by wearing a gold wedding band that belonged to the bride's maternal grandmother, new wedding attire, and the traditional blue garter and borrowing a lace trimmed handkerchief from Mrs. Harry Waddle. She wore pennies in her shoe minted in the years of their births.

The mother of the bride was attired in a formal length gown of deep rose textured accordeon pleated chiffon accented at the waist with a velvet ribbon of the same shade. She carried a corsage of Mary DeVore roses.

The groom's mother wore a formal gown of pale pink textured silk crepe with pink accessories. She wore a Mary DeVore rose corsage.

A reception followed the ceremony in the fellowship hall of the church. Guests were registered by Mrs. Gary Little of Lubbock, Karen Lewis of Gallup, N.M., presented each guest with a program.

The bride's table was laid with a white net cloth trimmed with a wide band of white satin, iridescent sequins and felt bells, over pink peau de soie. A silver candelabra with candles and the bride's flowers accented the table setting. The tiered wedding cake was accented with fresh flowers. Presiding at the bride's table were Mrs. Johnny St. Clair of Lubbock, Sharon Martin of Muleshoe, Mrs. Terrell Ott of Denton and Mrs. Sam Feagley of College Station.

The groom's table, covered with a doubonette cloth, was centered with an arrangement of fresh fruit and flowers. Fruit cake and coffee were served from copper and brass appointments.

Becky Lewis of Gallup, N.M., Becky Sain and Mrs. Ronnie

\*\*\*\*\*  
A nation is as strong as its average citizen.

Barrett presided at the serving table.

Members of the house party were Mr. and Mrs. Harry Waddle, Mr. and Mrs. H. A. Douglass, Mr. and Mrs. Ernest Dale Martin, Mr. and Mrs. Charles Mayhugh, Mr. and Mrs. S. P. Stockard, Dr. and Mrs. Charles Lewis, Mr. and Mrs. Royce Turner and Mr. and Mrs. J. D. Small.

For travel the bride chose a navy blue A-line dress with matching double-breasted coat. She wore red accessories and a rose corsage lifted from her bridal bouquet.

Following a short wedding trip, the couple will be at home at Bledsoe Hall in Lubbock.

Mrs. Baker, a Muleshoe High School graduate, is a sophomore student at Texas Tech University.

Baker was graduated from Muleshoe High School and is a senior at Texas Tech University.

Out of town guests attended the wedding from Plainview, Lubbock, Brownwood, Wingate, Dimmitt, Fort Worth and Gallup, n.m.

A rehearsal dinner was given by the groom's parents at their home on Thanksgiving evening, November 23.



DECEMBER WEDDING PLANNED...Mr. and Mrs. Karl Lovelady of Muleshoe announce the engagement and approaching marriage of their daughter, Karla Jean, to Robert B. Eubank of New Boston, Texas. Miss Lovelady, a graduate of Muleshoe High School, is a senior at East Texas State University of Commerce. Eubank is currently employed by Red River Army Depot in Texarkana. Vows will be solemnized on December 28 at 7:30 p.m. in the First Presbyterian Church.

## Buffet Supper Honors Miss Douglass, Ferris

A buffet supper honoring Ann Douglass and Leland Ferris was held on Saturday evening, November 18, in the home of the

### Choruses Schedule Concert

The Muleshoe High School Chorus will perform for the Rotary Club on November 27, and the Muleshoe Lions Club on November 28.

The Jr. High School Choruses and the Sr. High School Chorus will present a Christmas concert, free to the public, in the High School Auditorium on December 19, at 7:30 p.m. The choirs will sing familiar carols.

The Jr. High Choralairs will sing "Christmas Folk Style". The Choralairs will be wearing their new choir sweaters for the first time.

The Sr. High Chorus will be singing a setting of the Burk Carols and this will be staged and narrated by the Sr. High speech department under the direction of Kerry Moore.

## Debbie Kerr To Be In All Region Choir

On Saturday, November 18, Muleshoe High School Choir Director, took a group of students from the Muleshoe High School Chorus to Lubbock to try out for the All Region and All State Chorus. These students were in competition with 500 other students from Region XVI.

Debbie Kerr, daughter of Mr. and Mrs. Ernest Kerr, placed fifth in competition with 42 other first sopranos. This placed her in the All Region Choir and first runner-up for the All State

Bill Jim St. Clairs. Miss Douglass and Ferris plan to be married on December 16.

Decorations in the Christmas motif were used with red candles, greenery and red satin balls.

Special guests were the parents of the couple, Mr. and Mrs. Morris Douglass and Mr.

and Mrs. Joe Ferris. Forty-two friends of the couple from Muleshoe, West Texas State University in Canyon, and Texas Tech University in Lubbock attended.

Guests brought as gifts Christmas ornaments for the couple to use on their first Christmas tree.

Host couples were Mr. and Mrs. Sam Damron, Mr. and Mrs. Myron Pool, Mr. and Mrs. Bernard Phelps and Mr. and Mrs. Bill Jim St. Clair.

## Mrs. Craft Presents Program To Muleshoe Music Teachers

The Muleshoe Music Teachers Association met on Monday night, November 20, at the home of Mrs. Jimmy Craft.

Special music was presented by Stephanie Bryant, who played the "Fourth Sonatina" by Haydn; Glenn Craft, who played "The Irishman Dances" by Cawell and "Wild Horseman" by Schumann; and Tim Craft who played "Sonatina" by Dussek, "Lament" by Albeniz and "Novallette" by Kabebusky. Miss Bryant is a pupil of Mrs. Sam Damron and both Tim and Glenn are students of Harold Carson of Ol-

ton. Mrs. Craft was in charge of the program. She gave a talk giving the highlights of the life of Franz Joseph Haydn, who was a composer of the classic period of music.

Mrs. Craft served refreshments to Mrs. W.T. Watson, Mrs. Sam McKinstry, Mrs. Sam Damron, Mrs. Jim Milner, and the student performers, Stephanie Bryant and Tim and Glenn Craft.



MISS DEBBIE KERR

Joe Bob Fudge, senior; Debra Mills, sophomore; and Sheryl Rasco, freshman.

\*\*\*\*\*  
It's a smart child who understands her parents.



MRS. LARRY MILFORD BAKER, the former Lee Ann Yerby

For the Holidays...  
Long and Short  
\$17.



\$14.

Long and short holiday dresses for the young set. All with a velvety smooth feel. Beautiful trims on all of them to get you in that party mood. Assorted sleeve, trim and collar styles, with embroidered appliques on some, and sewn-on lacey things on others. You'll fall in love with all of them. In navy, plum, rust, brown, black. Junior sizes 5 to 13. And Junior Petite 3 to 11 in the short dresses.

SHIMMERING HOLIDAY ELEGANCE

You'll be a star in this shining white crepe stitch, satin blouse. Tucked front with glittering rhinestone buttons. Sizes 30-38.

\$12

Elegant is the word for the Black satin palazzo pant of 87% Acetate and 13% Nylon with flip tie belt. Sizes 8-16.

\$14

Thrifty Shoppers Buy Gifts Early!



America's hottest love affair...



Homes and electric heat. They were made for each other. Electric heat solves so many of the homeowner's problems. Convenient. Worry Free. If you're shopping for a new home see how much more you can get for your money with total electric. Or, if you own an older home it can be switched to electric heat in a matter of hours. Call us for a free estimate. It's a real eye-opener.

electric heating estimate



## Muleshoe Area Library Is Member Of Lubbock Area Library System

Once upon a time—maybe even as late as just one year ago—public libraries had an image as prim and proper as a mid-Victorian lady.

Anyone who went to a public library ran the risk of appearing too brainy for the rest of society, so lonely that books were company, or as a type who thrived on peace and dead-as-a-tomb quiet. It's no longer true.

## ESA Builds Float For Christmas Parade

In a barn on the Billy Jim St. Clair farm in 20 degree weather Tuesday night, the Epilson Sigma Alpha Sorority sisters gathered for a salad supper and float building party.

It was estimated that the 18 members present stuffed at least 11,000 pieces of Kleenex through chicken wire in making their float for the Christmas parade.

## Hobby Club Plans Christmas Party

The Muleshoe Hobby Club met Thursday, November 16, in the community room of the Muleshoe State Bank with Myrtle Chambless as hostess.

Fifteen members attended the meeting. Ethel Julian, president, presided over the business meeting. Mrs. Julian also drew the hostess gift.

The Hobby Club will have Christmas party on December 7. The club will entertain the Senior Citizens on Monday, November 27.

Two visitors, Nina Barfield of San Diego, Calif., and Victoria Hendricks, attended the meeting. Mrs. Hendricks joined the Hobby Club.

Members displaying items were Ethel Julian, picture; Mabel Caldwell, owl and flower planter of art metal and shell cat and owl; Ruth Bass, crochet shawl; Ola Pesch, crochet tablecloth; Ruth Williams, decorative bottles; Myrtle Wells, egg shell basket; and Zula Carlisle, crochet doll.

Other members present were LeVina Pitts, Barbara Burton, Euna Mae Oswald, Eva Dell Gillis, Mae Henderson, Blanche Cash and Myrtle Chambless.

## NEW ARRIVALS



**Annette Gutierrez**  
Mr. and Mrs. Margarito Gutierrez of Muleshoe are the parents of a daughter born on November 20 at 4:24 a.m. in the West Plains Memorial Hospital. She weighed six pounds 13 ounces and was named Annette Acosta.

**Sean Thomas Counce**  
Mr. and Mrs. Self James Counce of Lazbuddie are the parents of a son born in the West Plains Memorial Hospital on November 17 at 9:08 a.m. The baby was named Sean Thomas and weighed six pounds nine ounces.

**Rebecca Gonzales**  
Mr. and Mrs. Raul Gonzales of Muleshoe are the parents of a daughter born on November 18 at 11:54 p.m. in the West Plains Memorial Hospital. She weighed six pounds five ounces.

**Sonia Judy Viera**  
Mr. and Mrs. Marcos Sena Viera of Muleshoe are the parents of a daughter, Sonia Judy, born at 5:21 p.m. on November 16 in the West Plains Memorial Hospital. Sonia Judy weighed five pounds five ounces.

**Lisa Coleman**  
Mr. and Mrs. Therman Coleman of Muleshoe are the parents of a daughter born in the West Plains Memorial Hospital on November 16 at 8:51 a.m. The baby weighed eight pounds four ounces and was named Lisa.

## Goodland Bible Study Meets

The Goodland Bible Study was entertained with a Thanksgiving luncheon in the home of Mrs. Cass Stegall on Tuesday, November 21, the regular meeting date for the study group.

The Thanksgiving motif was carried out with gold and brown tablecloths and candles. Plastic fruit and vegetables were used on tableplace cards.

Fifteen guests attended. Dinner was sent out to Mr. and Mrs. Pete Tarleton. Mrs. Tarleton is a member of the study group and is recuperating from recent surgery.

Past members honored were Mrs. Cecil Cole, Mrs. Clint Everett, Mrs. Dolly Ann and Mrs. Horace Hutton, all of Muleshoe, and Mrs. Frank Stegall and Mrs. Frank Knox of Goodland.

Regular members attending were Mrs. Tommy Galt, Mrs. L. W. Chapman, Mrs. Ted Simpson, Mrs. W. C. McCeivey, Mrs. Terry Hutton and baby, Mrs. Bobbie Kindie, Mrs. Freddie Parkman and Mrs. Buck Ragsdale.

The blessing was given by Mrs. Stegall's five year old grandson, Brett Stegall. The white elephant sale went to Mrs. Freddie Parkman.

The book of Daniel, which has been completed, was reviewed with questions and answers prepared by Mrs. Stegall.

*In Fashion*  
Silver jewelry is enjoying popularity this winter. It is particularly good with gray and blue garments.

If some of the dresses in one's wardrobe are in style except for tight skirts they can be helped by easing out the side seams from the bottom of the hem up to the hip line.

Denim suits for men and women are popular.

port good library service by visiting the library regularly; informing lawmakers of the need for good library service and voting for its support; and by giving directly to the library through a group such as Friends of the Library.

As the world becomes increasingly complex, more people require more knowledge on varied subjects. The library is the place to go. The Muleshoe Area Library invites you to visit this week and find out how really exciting a library can be. You'll be pleasantly surprised. What's more—you'll have a good time.

## Library News

By Anne Camp

During Children's Book Week, two Storyhours for pre-school age children were held, with 45 children coming for the stories, songs, filmstrips and games. The next storyhour will be the first Wednesday in December, at 10 a.m. in the basement of the library.

The Muleshoe Area Library is a member of the Lubbock Area Library System and together with other members is engaged in a full-scale public service campaign to attract more of the public to the library and its resources.

In order to promote themselves, libraries in the Lubbock Area Library System, a 29 county portion of the state, are endeavoring to let the public know that they have services for anyone wishing more information, more knowledge, books for reading enjoyment, or specialized services such as records, art objects, paintings and micro-film.

This network consists of 10 areas and at the head of each of these areas is a main library: The Major Resource Center.

As a member of the Texas Library Major Resource System and the Lubbock Area Library System, the Muleshoe Area Library meets requirements of the Library Systems Act and the State Library and Historical Commission, which specify the number of volumes the library must retain, the amount of money and local support needed, the type and number of staff employed and the number of hours per week the library must be open for public service.

Major resource centers and area libraries in the Lubbock Area Library System employ at least one professional librarian: a woman or man who holds a master's degree in library science.

Information through the library is more easily obtained today through the use of a system called Telex. Each major resource center in the state is linked by Telex. Smaller libraries can ask for information or a particular book from a major resource center and get it—either from their area major resource center or another one in the state.

Another service relatively new to most libraries is the lending of art objects such as sculpture and paintings. Many libraries do not yet have this service, and it is hoped that the interest of patrons will help to get the service started in other libraries.

Of course, other unusual services, such as the lending of records and listening centers for music and languages enjoyment inside the library, are doing well and experiencing popularity with regular library patrons.

Micro-film, a mysterious sounding feature, due to movie and television spy-thrillers, is another popular service—although not so glamorous as it seems. Micro-film is used mainly to make ordinary research materials easily available to the public. By putting information on micro-film, much valuable library space is conserved.

Almost all libraries within the Lubbock Area Library System have a newspaper and magazine corner, too. The Muleshoe Area Library is no exception.

Libraries within the system are urging their patrons to sup-



**BIRTHDAY PARTY...**The Esther-Dorcas Circle of the First United Methodist Church hosted a birthday party at the Muleshoe Nursing Home for the residents having birthdays in November. Zed Robinson played the piano and sang songs, including "Happy Birthday". Refreshments of angel food cake, punch and hot teas were served. Beavers Flowerland

furnished corsages for the honorees. Celebrating November birthdays are, from left, Mrs. Nellie Norwood, 85; Mrs. Lois Robinson, 85; Mrs. Sarah Harris, 82; and Mrs. Leota Witterling, 79. Also celebrating a November birthday, but not pictured, is Mrs. Lillie Wiseman, 83.

## Nursing Home News

by Myrtle Guinn

Mrs. Claudia Lite returned to the Nursing Home on Monday from Methodist Hospital in Lubbock. Mrs. Lite is recovering from a broken arm and hip. We are all glad she is able to be home and are wishing for her a speedy recovery. She is in Room 81.

The Esther-Dorcas Circle of the First United Methodist Church sponsored a birthday social for the ladies who are having birthdays in November. Honored this month were Mrs. Lois Robinson, Mrs. Lillie Wiseman, Mrs. Leota Witterling, Mrs. Sarah Harris and Mrs. Nellie Norwood. The ladies served refreshments of angel food cake, punch and hot tea. Ted Robinson played several numbers on the piano and sang songs which were enjoyed. We all say "thank you" and do appreciate your doing this.

## TOPS Hold Weekly Meeting

The Muleshoe TOPS Chapter No. 34 met Thursday, November 16, with 21 members weighing in. Selma Redwine, leader, conducted the meeting. Members repeated the Pledge and sang the Friendship Song.

The losing side of the recent weight contest presented their skit with the theme of the "Old Timey Schoolhouse". Queen for the week was Polly Clark. First runner-up was Leta Hefner. Bobbie Spurgeon and Evelyn Moore tied for second runner-up.

Guests attending the meeting were Shirley Jones of Plainview, Vicki Garner and Nan Gatlin.

On Wednesday, November 22, members of the TOPS Chapter weighed in. There was no regular Thursday meeting because of the Thanksgiving Holiday.

## Witnesses Attend Seminar

Presiding Minister Warren J. Meeks announced that meetings for the Muleshoe congregation of Jehovah's Witnesses were resumed this week with the regular schedule of Bible study activity being conducted at the Kingdom Hall, Friona Highway.

Area members returned home from having attended a two-day Bible seminar staged in the Marshall Junior High School Auditorium in Clovis, New Mexico this past weekend where by peak time of 2 p.m. Sunday, 1,557 assembled to hear the main Bible lecture, "Is This Life All There Is?"

In commenting about the assembly Meeks said, "It was encouraging for us to see the fruits of our labor as 38 new ministers symbolized their dedication to Jehovah by water baptism on Sunday morning. Meeks stated, "Over 680,000 people worldwide have made a like response to the Bible educational activities of Jehovah's Witnesses and have joined in their global preaching and teaching program in the last five years."

Meeks concluded "If there are any individuals or families in the area that would like to take advantage of the free home Bible study course offered by Jehovah's Witnesses they can contact me by telephone at 965-2710 or drop a note addressed to me at Rt. 4, Box 96, Muleshoe.

**CATCHUP SUNDAY**  
Nov. 26 At Calvary Baptist Church

During the campaign of the Twelve Some of the boys and girls had to miss a Sunday or two because of sickness or one reason or another.

**Nov. 26 has been designated Catchup "Catch Up" Sunday**

THIS WILL BE THEIR OPPORTUNITY TO BRING A FRIEND, RELATIVE OR NEIGHBOR TO BE THEIR GUEST & GET THE MISSING DISCIPLES HEAD.

**CATCHUP SUNDAY WILL ALLOW THEM TO COMPLETE THEIR BRACELET OR KEY CHAIN.**

Every visitor in the Sunday School Hour at 10 a.m. at **CALVARY BAPTIST CHURCH** 18th & Ave C Muleshoe

**Nov. 26 will receive a bottle of Libby's catchup.**

**THIS SUNDAY ONLY NOV. 26 IS CATCHUP SUNDAY**

**ZIP BOOTS**

Don't get all tied up in knots. Give it the boot... Zip Boot. Zip, you're in... way in. Zip again for the easy out. Put your foot down for style. Like now... with Zip!

Put your foot down for **STYLE!**

**RAND.**

*Anthony's*

**OLD FASHION BARGAINS**  
Nov. 27-28

**CONES**  
REG. 10¢

**5¢**

**Dairy Queen**

**"Will the fireman ever come!"**

Whether you rent or own your home, or apartment, you can get insurance to pay the added cost of living elsewhere while your damaged living unit is repaired and made livable. The **POOL INSURANCE** Agency also has "rental income" insurance to reimburse the building owner for lost rentals due to damage.

**POOL Insurance Agency**

Joe Smallwood  
Bob Blackwood  
MULESHOE Ph 274531



**PIGGLY WIGGLY**

We re-serve the right to limit quantities, please.

VALUES GOOD Nov. 27-29 501 W. American Muleshoe, Texas



**Sundown**

*Elegant dinnerware*  
Sundown Dessert Dish with each \$3 purchase 29¢  
Satin Rose Stainless Salad Fork with each \$3 purchase 29¢

**DOUBLE**  
S&H Green Stamps every Wednesday with \$2.50 purchase or more excluding beer, wine and cigarettes

Sudden Beauty Reg. or Hard to Hold

**Hair Spray** 12.5 Oz. Can 39¢

All Vegetable Shortening

**CRISCO** 3 Lb. Can 79¢  
Limit 1 with \$7.50 purchase or more

Piggly Wiggly, Layer, Cake

**MIXES** 4 18 1/2 Oz. Pkgs. \$1

Bonne', Assorted Colors, Bath

**TISSUE** 5 2 Roll Pkgs. \$1

Piggly Wiggly, Chicken Noodle, Crm of Chicken or Crm of Mushroom

**SOUP** 6 10 1/2 Oz. Cans \$1

Decker's Smoked

**PICNICS** 6 to 8 Lbs. 43¢

**PORK CHOPS** 88¢

U.S. No. 1

**POTATOES** Lb. Bag 69¢

Swanson's, Beef, Chicken or Turkey

California Navel

**Pot Pies** 80z. Pies \$1

**Oranges** Lb. 19¢

Piggly Wiggly Macaroni & Cheese Dinner 6 70z. Pkgs. \$1

Piggly Wiggly, Liquid Detergent 3 32 Oz. Btts. \$1

**WIN FREE CASH!**  
This week's Jackpot  
**200**  
Register just once!  
Nothing to buy  
Get your card punched this week!

**JACKPOT Day**

**PIGGLY WIGGLY**

**Houston Livestock Show Slates Super Show Of The Century**

The Super Show of the Century with an array of stars to dazzle the imagination has been scheduled for the 1973 Houston Livestock Show and Rodeo, President Tommie Vaughn announced today.

The Rodeo will begin February 23 and run through March 4 in the A-trodome adjacent to the Exposition Building, which will house the livestock show opening Wednesday, February 21.

**Muleshoe Man Has Bulls In Tech Test**

LUBBOCK, Texas -- A 14-month-old Hereford bull belonging to Paul Dauer of Panhandle has shown an average daily gain of 5.92 pounds during the first 28 days of consignment to the Texas Tech University Center at Amarillo.

The cattle on the program this year include 23 Herefords, 11 Angus, 12 Charolais, five Santa Gertrudis, two Simmentals and one Red Poll.

Returning to Houston for the third time and opening the '73 show with matinee and evening performances on Friday, February 23 will be Charley Pride, recently named Top Male Vocalist of the Year by the Contry Music Association.

Another summary of results will be released after the animals have been on the special ration 56 days.

The date of the 1973 Performance Tested Bull Sale has not been announced, but it likely will be held late in March, according to Texas Tech University Animal Science officials.

Poteet took over the program after the resignation of Keith Hansen. Poteet works only with the test program, and the position, Klett, said, should enhance the program since Poteet will have more time to work with cooperators and solicit buyers.

Sale date and plans for the Southwest Beef Industry Conference which precedes it will be announced soon. The conference is sponsored jointly by the Texas Tech University Center at Amarillo and by Tech's Department of Animal Science.

The conference will cover a wide range of subjects to provide feedlot operators, beef producers, packers and related industry personnel with an updating of new developments in the industry.

sonny & Cher, the dynamically talented husband and wife singing-comedy duo, will appear at matinee and evening performances on Saturday and Sunday, February 24 and 25.

Country and western fans will want to see the talented Merle Haggard on Monday, February 26. Merle, who was the Country Music Association's entertainer of the year in 1970, captured the best album of the year award for 1972 for "Let Me Tell You About a Song".

Rick Nelson, popular TV and recording artist and recently of "Garden Party" fame, will appear on Tuesday, February 27.

The Wednesday, February 28 performance will feature two well-known stars--Donna Fargo, who won the award for best single of the year for "Happiest Girl in the Whole USA", and the Sensational Southern Gentleman, Sonny James. Sonny has had twenty-seven Number One records in a row, an unheard of record in the world of country music.

Young and old alike will enjoy the one and only, Engelbert Humperdinck, at the evening performance Friday, March 2 and matinee and evening performances Saturday, March 3.

A little confidence in a person can often produce great results.

We often wonder where TV sponsors get their writers and plots.

A tired business man can get unusually spry when its time to play.

The world's largest calf scramble and the ever-popular Chuckwagon Races will be exciting everyone at all performances.

Top professional cowboys will compete for the world's largest rodeo purse--over \$100,000. The Houston show will again feature a Rodeo Finals on Sunday evening, March 4, with the leading cowboys in each event competing for the big money.

Ticket prices range from \$1.50 to \$4.50. For ticket information, write Ticket Director, Houston Livestock Show and Rodeo, P. O. Box 20070, Houston.

**Mary DeShazo Honor Roll**

Mary DeShazo Elementary School Second Six Weeks Honor Roll

Third Grade: Ronnie Angeley, Cara Bass, Kevin Beimer, Regina Bevers, Jesse Beversdorf, Eddie Black, Michelle Bryant, Margie Castilla, Colby Cole, Damon Cooper, Sandra Dalton, Shelly Davis, Tina Davis, Kevin Dudley, Magdaline Espinoza, Robert Gonzales, April Green, Alan Harrison, Beth Harvey, Donna Hawkins, Sherri Henry, Doyla Hight, Donald Howard, Donna Howard, Rosemary Lopez, Trinidad Lopez, Greg Parks, Buck Pierce, Susie Pierce, Lupe Rosales, Lavon Rhodes, Cindy Turner, Jill Turner, Curtis Wheeler, Kristi White, Jan Whitt and Paula Williams.

Fourth Grade: Michelle Agee, Larry Beene, Beverly Clark, Brenda Clay, Leslie Cowan, Nancy Garcia, Greg Harrison, Jill Johnson, Tina Landers, Sally Lunsford, Shelly Macha, Mary Mata, Lupe Pacheco, Benny Pena, Brad Poyner, Sandy Rojas, Keva Roming, Brenda Stevens, Leslie Wagon, Clifford Watson and Mary Louise Ybarra.

Fifth Grade: Scott Baker, Joel Bratcher, Terry Burton, Darrell Chancey, Jalayne Collins, Brenda Dodd, Sandy Dunbar, Sheryl Dunham, Ruby Elliott, Manuel Garcia, Sandra Hughes, Cindy Hamblen, Mike Henry, Robert King, Jesse Lackey, Victor Leal, Lamont Lewis, Lnette Newman, Kim Nolan, Mark Northcutt, Mike Northcutt, Charise Nolan, Colette Ogerly, Jerry Puate, Jo Rhonda Rhodes, Gloria Reico, Debra Stevens, Shelly Splawn, Jesse Silguero, Devanee Smith, Becky Turner, Tammie Williams, Tommy Wheeler Dennis Watson, Pam Young and Sharla Henry.

**SANTA Arrives...**

**In A New 1973 FORD**

**A FREE TURKEY WILL BE GIVEN WITH EACH NEW FORD OR MERCURY**

**FROM Muleshoe Motor Co.**  
"Car Capital Of The West Plains"

# READ and USE CLASSIFIED ADS

## WANT ADS PH. 272-4536

### CLASSIFIED RATES

#### OPEN RATES

First insertion, per word-9¢  
 Second and additional insertions-6¢

#### NATIONAL RATES

First insertion, per word-11¢  
 Second and additional insertions-7¢  
 Minimum Charge-

CARD OF THANKS.....\$2.00

Classified Display \$1.12 per col. inch

Double rate for Blind Ads \$1.15 per col. inch for Reverses

### DEADLINE FOR INSERTION

Thursday's Muleshoe Journal-Noon Tuesday  
 Sunday's Bailey County Journal-Noon Friday

The Journals reserve the right to classify, revise or reject any classified ad.

Check advertisement and report any error immediately. Journals are not responsible for error after ad has already run once.

**Lions Club**  
 meets each  
 Wednesday, 12 Noon  
**XIT RESTAURANT**  
 J.W. Coppedge, President

**Masonic Lodge**  
 meets the second  
 Tuesday of each month  
 practice night each Thursday  
 Ross Mick WM  
 Elbert Nowell Sec.

**VFW**  
**Walter A. Moeller**  
 Post #8570  
 8:00 p.m. 2nd & 4th Mondays  
**VFW Hall**  
 Joe T. Gonzales, Commander

**Jaycees**  
 meets every  
 Monday, 12 Noon  
 Max King, Pres.

**Muleshoe Rotary Club**  
 Kerry Moore, President

**Muleshoe Oddfellows**  
 meets each  
 Thursday 7:30 p.m.  
 Roy Quisenberry,  
 Grand Noble

**Bras & Girdles By PENNYRICH AT Main Street Beauty Salon**

**HELP WANTED**  
 Need some extra Christmas money or money to help with college expenses? Call on established Fuller Brush customers in Muleshoe and surrounding territory. Requirements: neat appearance, car, and phone. Excellent part time job for students or housewife. Write Box 667, Littlefield, Texas or call 946-5543, 8-44t-8tp.

**HELP WANTED:** Salesman - Texas Oil Company has opening in Muleshoe area. No experience necessary. Age not important. Good character a must. We train Air Mail, A.S. Dickerson, Pres., Southwestern Petroleum Corp., Ft. Worth, Tex., 3-47t-tfc

**WANTED:** Beautician at once, Apply at Main Street Beauty Shop, 7-23t-tfc

**WANTED:** Ranch hand familiar with cattle, Call 272-3056, 31t-tfc

**HOUSES FOR RENT**  
 RENT Small furnished home suitable for one person contact Ida Myers 1R15 West h, 11t-tfc

**APTS. FOR RENT**  
 or Rent: 2 bedroom apt, 205 W. 20th Street. Un-furnished, built in range, carpeted. Call 272-4284 or after 4 272-4491, 45t-tfc

**FOR SALE:** Two bedroom house and lot 519 West 5th located between schools. Comfortable home for retired couple. Call 272-3537 for appointment, 8-47s-tfc

**9 AUTOMOBILES FOR SALE**  
**10 CARRY EQUIP. FOR SALE**  
**11. FARM PROPERTY FOR RENT**  
 Used galvanized Valley system for sale Seven to choose from. Write or call Bennett Irrigation 505-763-5501; Drawer B, Clovis N. M. 88101, 10-44s-9tc.

**FOR SALE:** 1965 Chevrolet grain truck with lift 965-2776 or 965-2359, 11-44s-tfc.

**For Sale:** Wheel-move sprinker good condition, 90 foot move. Phone 2724869 10-45s-16tc

**SAVE - SAVE - SAVE - PVC** Plastic Pipe and fitting in size from 3/4" to 12". All pipe meets or exceeds SCS specification. Save money by installing your own. See State Line Irrigation in Littlefield and Muleshoe, 1-47t-tfc

**FOR RENT:** Large or small apt. Furnished, bills paid. Call 3465, Muleshoe, 5-48s-tfc

**FOR RENT:** Bedroom at 410 West 2nd. Phone 272-3928, 6-16s-tfc

**FOR RENT:** Wheat Pasture for calves or cows. H.M. Gable, 965-2601, 14-43s-tfc

**WANTED TO RENT:** Irrigated land. Contact John Mitchell, 965-2160, 15-33s-tfc

**FOR SALE:** 12x60 Trailer House. 1973 model. Write Rt. 1; Box 5; O'Donnell, Texas, Jim Brinkley, 8-47t-2tc

**FOR SALE:** 22 ft, self-contained older trailer. Call 272-5587. \$1100 11-47s-4tc

**FOR SALE:** Fire wood. Call Curly Brantley Phone 272-4109, 11-47t-2tc

**FOR SALE:** Fire wood. Call Curly Brantley Phone 272-4109, 11-47t-2tc

**FOR SALE:** Fire wood. Call Curly Brantley Phone 272-4109, 11-47t-2tc

**FOR SALE:** Fire wood. Call Curly Brantley Phone 272-4109, 11-47t-2tc

**FOR SALE:** Fire wood. Call Curly Brantley Phone 272-4109, 11-47t-2tc

**FOR SALE:** Fire wood. Call Curly Brantley Phone 272-4109, 11-47t-2tc

**FOR SALE:** Fire wood. Call Curly Brantley Phone 272-4109, 11-47t-2tc

**FOR SALE:** Fire wood. Call Curly Brantley Phone 272-4109, 11-47t-2tc

**FOR SALE:** Fire wood. Call Curly Brantley Phone 272-4109, 11-47t-2tc

**FOR SALE:** Fire wood. Call Curly Brantley Phone 272-4109, 11-47t-2tc

## STATE Capital NEWS

By BILL BOYKIN

**AUSTIN, TEX.** --A total revision of the finance system for Texas public schools will be reviewed by the State Board of Education at a special meeting in December 9.

The plan, which would hand to the state over a six-year period the entire cost of the basic public school program, was submitted by a board public school finance committee November 11.

A three-judge federal court last December in San Antonio held unconstitutional the present school finance formulas which are based heavily on local property taxes. The decision, now on appeal to the U. S. Supreme Court, concluded the system provides educational advantages for pupils in rich districts over those in poor districts.

Under the five-member finance panel's recommendations, the state would assume the "comprehensive foundation school program" cost completely from state taxes by 1978-1979. Local share of the current foundation school program is about 20 per cent.

Local taxes after 1978-1979 would be relied on only for building and equipping schools and for "enrichment" (expansion beyond the state standard) of individual school programs.

Increases already approved in the foundation school program will cost \$464 million during the next six years. The committee-proposed improvements are estimated to cost \$400 million by 1978-1979.

"Enactment and implementation of the comprehensive foundation school program will require some of the most far-reaching public policy decisions ever made in Texas," said State Board of Education Chairman Ben Howell of El Paso.

Committee members made clear they stand back of the recommendations regardless of the Supreme Court's ruling in the finance case.

**OIL ALLOWABLE AGAIN AT 100 PER CENT**--The statewide oil allowable for next month will remain at 100 per cent.

Railroad Commission action retaining the all-out production formula marked a year at the nearly wide-open level due to increased energy demands.

Average monthly factor for 1972 is 94.1 per cent or 344.4 producing days during the year, top figure since 1948 when the 100 per cent allowable applied throughout the year.

An exception to the 100 per cent order is East Texas field which will be held to 86 per cent as a waste prevention measure.

**NEW TEXTBOOKS APPROVED** New textbooks in 18 subjects were approved by State Board of Education for use in classrooms next September.

Sample copies of the books will go to all districts beginning December 1, and local textbook committees will recommend selections to local school boards from the state adoption list.

The \$18.6 million adoption includes, for the first time, material for state-supported kindergartens. Other subject areas include reading in grades four, five and six; fifth grade history; American history and civil government, eighth grade; high school world geography studies; American history; civ government; economics; trigonometry; home-making; business education; typography; health education; graphic arts trades; French and German, all for high schools.

New books will be adopted for four- or five-year periods. Total textbook bill for 1973-74 will be about \$26 million, including new copies of books already approved.

Members of the State Textbook Committee received reports from 822 professional teachers before making their recommendations to Education Commissioner Dr. J. W. Edgar.

**PAY BOOST PROPOSED**--A \$92 million pay increase for state employees has been recommended by the Legislative Budget Board, but the people it would benefit term the proposal "woefully short."

Raises of 3.4 per cent a year, plus provisions for merit boosts of up to 3.4 per cent were suggested by the Board. Amount is subject to change before the final LBB budget draft is submitted to the Legislature on January 9.

For all practical purposes, the raise would barely cover the cost of living increase since September, 1971.

**CONTRACTORS' NOTICE OF TEXAS HIGHWAY CONSTRUCTION**

Sealed proposals for constructing 205,789 miles of Seal Coat

Fr: Parmer Co. Line To: Taylor St. (Muleshoe)

Fr: Spur 331 To: Lynn Co. Line

Fr: Traffic Circle (Lubbock) To: Spur 331

Fr: S. Akron Ave. (Lamesa) To: Martin Co. Line

Fr: Chicago Ave. (Lubbock) To: US 62-82

Fr: Gaines Co. Line To: SH 349

Fr: Martin Co. Line To: Dawson Co. Line

Fr: US 70 (Floydada) To: Crosby Co. Line

Fr: Floyd Co. Line To: US 82

Fr: Yoakum Co. Line To: US 180 (Seminole)

Fr: FM 2055 To: SH 214

Fr: FM 829 To: US 87

Fr: SH 349 To: FM 829

Fr: US 87 To: FM 400 (Wilson)

Fr: FM 37 To: Crosby Co. Line

Fr: Lubbock Co. Line To: US 87

Fr: FM 789 To: Floyd Co. Line

Fr: FM 2528 To: Spur 461 (New Deal)

**CONSTITUTIONAL REVISION PLANNED**--First steps toward implementation of a new plan for revising the 96-year-old state Constitution were taken by a state Senator-elect last week.

Voters on November 7 approved a constitutional amendment authorizing the Legislature to sit as a constitutional convention in January of 1974.

The amendment also authorized appointment of a citizens' commission to study needed constitutional changes and report its recommendations next November.

Sen. Nelson Wolff pre-filed resolutions calling for appointment of a 36-member commission by a five-member group headed by the Governor and for formation of a 10-member House-Senate committee to plan convention mechanics.

Wolff also offered a bill to appropriate \$900,000 to the commission for its work. Any constitutional revision agreed on would have to be approved by a two-thirds vote of the Legislature and submitted to voters for a final review.

**COURTS SPEAK**--North Texas State University's right to fire a teacher accused of using profane words in talking about its administration was sustained by the Fifth U. S. Circuit Court of Appeals.

The Third Circuit of Civil Appeals turned down a bid by Texas Education Agency for an injunction blocking a Florida promoter from offering his self-improvement courses in Texas. The Court noted the firm already had ceased to do business in Texas.

**SHORT SNORTS**

Sen. Nelson Wolff pre-filed resolutions calling for appointment of a 36-member commission by a five-member group headed by the Governor and for formation of a 10-member House-Senate committee to plan convention mechanics.

Wolff also offered a bill to appropriate \$900,000 to the commission for its work. Any constitutional revision agreed on would have to be approved by a two-thirds vote of the Legislature and submitted to voters for a final review.

**COURTS SPEAK**--North Texas State University's right to fire a teacher accused of using profane words in talking about its administration was sustained by the Fifth U. S. Circuit Court of Appeals.

The Third Circuit of Civil Appeals turned down a bid by Texas Education Agency for an injunction blocking a Florida promoter from offering his self-improvement courses in Texas. The Court noted the firm already had ceased to do business in Texas.

**SHORT SNORTS**

Legislative Budget Board directed the State Building Commission to plan a parking garage on the site near the capitol which the Legislature vetoed last month as a location for a \$20.5 million highway building.

A Texas superport would pump \$119.4 billion into the state's economy and create 336,770 new jobs in a decade, according to Texas A&M University researchers.

More than 690 state-chartered banks reported total assets and liabilities of \$11,547,854,563 -- an increase of \$1.9 billion over 1971.

A new state plan to provide jobs for the poor is being reviewed in Washington. It would be financed with federal funds.

Republicans set capturing the Texas governor's office their major 1974 goal following a strong showing by State Sen. Henry Grover of Houston in the gubernatorial race November 7.

Required booster dose were the factors that caused the polio statistics to trail those for the other diseases. In many cases, as a result, complete immunization against polio was not reported by the end of the reporting period on May 1, 1972.

"We feel the pre-school age child, from birth to five years of age, is where the disease problem is now in Texas," said Dr. Peavy. "By May 1, 1973, occurrence of these common childhood diseases in the pre-school population will be our biggest remaining problem."

State health authorities have already mounted a massive pre-school immunization campaign. The Texas Immunization Program will now lay plans to work closely with the Department of Public Welfare in enforcing the required immunizations in kindergartens and day care centers.

Under state law, children attending such day care centers must be immunized against whooping cough (pertussis), polio, diphtheria, rubella, measles, and tetanus.

## Common Childhood Diseases No Longer Frequent Companions

Texas school children and some of the common childhood diseases, hopefully, will soon no longer be frequent companions. Thanks to a mandatory school immunization law being implemented by state and local health authorities, Texas school children have the best protection against disease outbreaks they have ever had in the history of the state.

After the first full year since implementation of the new state law began, state health officials report immunization levels of the school population are up considerably over previous years. And early indications this year are that those immunization levels will continue on the upswing.

As of May 1, 1972, the great majority of all school children in Texas had begun or completed their required immunization program for five common childhood diseases: diphtheria, polio, measles, rubella, and tetanus. Smallpox, the standard immunization school children received for decades, is no longer a required immunization.

"We feel great progress has been made in the past year particularly when you view the fact that out of 2.9 million school children in Texas some 2.3 million are on record in their schools as protected," said Dr. James E. Peavy, Texas Commissioner of Health.

"Our forecast is for even better levels next May."

The mandatory immunization law passed by the Texas Legislature in April, 1971 required a monumental effort on the part of health authorities, school officials, and private medicine.

Prior to enactment of the law, each individual school district set their own immunization requirements and some had no requirements. Quite often, in those areas where children needed the full-range of protection, smallpox was the only immunization required.

Under the new law, a child must be immunized against certain diseases to enroll in school.

School authorities worked closely with health officials to see that all parents were advised of the new requirements and that all school children began their immunization programs as soon as possible. The result was that three-fourths or more of all Texas school children were protected against each disease by the end of that first year under the new law.

With the 80 school districts that began late campaigns and continued enforcement of the mandatory law in all school districts, state health officials foresee a substantially better immunization level at the end of this school year.

"Our Immunization Program has spot-checked several school districts around the state, with most reporting a rise in their immunization level to include more than 90 percent of all school children in their district," said Dr. Peavy. "Less than one percent of the school children involved admitted no immunizations at all. We believe the outlook for achieving close to 100 percent protection among the school population is very bright."

Of the 1200 school districts in Texas, 400 are being revisited this year by state health authorities. School officials are offered assistance, advice,

immunization clinics, and assistance to their school nurse from state or local health authorities.

"If it were not for the work done by local health departments and school nurses, the program would not have been as successful as it has been to date," said Dr. Peavy. "Of course, a lot of the immunizations were obtained through private physicians, and their cooperation has also been phenomenal."

Taking all groups as a whole, probably among the best immunized at the present time in the state are Catholic school children, with better than a 90 percent immunization level.

As of May 1, 1972 some 74 percent of all Texas school children are immunized against polio; 79 percent against diphtheria; 79 percent against measles; 78 percent against rubella; and 79 percent against tetanus. Health officials believe the required two months spread between the three diagnoses of polio vaccine and the

## The Sandhills Philosopher



Dear editor:  
 Now that the election is over by a landslide (the day after it was over an intellectual-type neighbor of mine went into town and told his barber "give me a haircut quick that'll make me look like a Republican") we can get down to normal discussions, and I got interested in an article I read on the celebrated grain deal with Russia, which I can discuss objectively as I don't grow any grain. I lose money on cotton.

According to it, while it's true the Russians, caught without enough grain to feed themselves, bought one billion dollars worth from us, they borrowed half the purchase price, 500 million dollars from us to buy it with. At the same time, seeing as how they still owed us two billion dollars for material we let them have during World War II, they agreed to settle that debt, I guess to keep their credit rating up, and the terms we agreed on were seven cents on the dollar, to be paid back before the year 2,000.

I have been thinking this over, sort of letting it sink in, and have come to two conclusions: (1) American farmers unquestionably can out-produce Russian farmers and (2) Russian financiers unquestionably can out-think American financiers.

I'll tell you, if I could just locate a banker that operates on the international level there's no telling how far I could expand my operations. If he'd lend me say \$50,000 and then 25 years later come around, clear his throat, and say the note really ought to be settled and how about paying it off at seven cents on the dollar some time in the next 25 years, and in order not to offend me how about another loan of \$10,000 to buy groceries with, I'd say that's the banker I've been looking for all my life.

You know, as I understand it, practically every unit of government in this country and every other one on earth is in debt, along with millions of private citizens, and I was just thinking, why don't we all settle for seven cents on the dollar and get everybody out of debt and back on his feet?

Yours faithfully,  
 J. A.

## Hospital Briefs

**West Plains Memorial ADMITTED**

Mrs. Josie Gonzales, Mrs. Kenneth McGehee, Mrs. Cassie Moxom, Bailey Sonya Viera, Carlos Brewer, Mrs. James Counce, Mrs. Leonard Peel, Gary Hicks, Mrs. Raul Gonzalez, Leslie Price, Miss Kayla Bayless, Mrs. Laura E. Cole, Mrs. Celestine Lewis, Mrs. Margarito Gutierrez, Mrs. Rachel Sterling and Mrs. E. Q. Nichols.

**DISMISSED**

Mrs. Raul Gonzalez, Mrs. Leonard Peel, Miss Kayla Bayless, Mrs. Margarito Gutierrez, Mrs. Cassie Moxom, Mrs. James Counce, Bill Loyd, Joe Smith, Mrs. Therman Coleman, Miss Cathy McCormick and R. H. Sneed.

Also B. H. Wagon, Mrs. Celestine Lewis, Mrs. Jim Shank, Frank Saldano, Miss Claudette Faubus, Miss Christi Henry, Miss Jo Renae Rutherford, Bailey Sonya Viera, Rogelio Puente, Mrs. Kenneth McGehee and Michael Henry.

**\*Expert and Colorful Weddings**  
 \*Family Groups Anywhere, Anytime

**PHOTOGRAPHY**  
 by Oecia  
 CALL 385-6083, Littlefield  
 409 W. 2nd

**Singleton-Ellis Funeral Home**  
 24 Hour Ambulance Service  
 Ph. 272-4574 Muleshoe

**Dr. R. Paul Tandy announces the opening of the Tandy Chiropractic Clinic**  
 102 E. AVE. C  
 Phone: 272-3642  
 Hours by appointment  
 Mon.-Fri. 9-12 & 2-5

Everyone has good traits, if you will take the time to discover them.



Over 500 cotton producers and business members of Plains Cotton Growers, Inc. gathered in Lubbock November 15 for the commodity organization's sixteenth annual meeting. The program, aimed at cotton legislation, featured Congressman Bob Poage of Waco, Chairman of the House Agriculture Committee, and Lubbock's Congressman George Mahon Chairman of the House Appropriations Committee.

The membership also heard reports from PCG President Ray Joe Riley of Hart and the association's Executive Vice President, Donald Johnson of Lubbock. The PCG Board of Directors convened immediately following the general assembly and re-elected all current officers for a second one-year term. They include Riley, Paul Bennett of Littlefield, Vice President, and Don Marble of South Plains in Floyd County, Secretary-Treasurer.

benefits to smaller growers could not be passed through Congress, he said, "and unless the larger producers participate in the program after it is passed, you don't have a program that will work at all."

Congressman Mahon had high praise for the effectiveness of PCG as Washington spokesman for cotton producers on the Plains. He said the information and guidance supplied by PCG was a great help where cotton legislation was concerned, and added, "I can assure you that the doors of Congress and of the Agriculture Department are always wide open to your Executive Vice President, Donald Johnson."

Both Riley and Johnson in their reports mentioned technological developments in the textile industry which offer possibilities for greater utilization of the kinds of cotton widely grown on the Plains.

The current cotton program expires following the 1973 crop year, and both Congressmen expressed concern about the success of efforts in 1973 to pass an acceptable program for the future through an increasingly urban Congress. One of the major obstacles, according to both, will be the issue of payment limitation.

Poage stated that any program will have to appeal to both small and large producers. A program without substantial be-

And Riley suggested that "Participation by producers, or vertical integration, in the textile processing of our own fiber may prove one of the solutions to our cotton price problems on the Plains." He pointed to the price benefits that have accrued to feed grain producers from the growth of the High Plains cattle feeding industry, and said "If we can develop and invest in an economically feasible textile industry on the Plains that will use 20 percent, 10 percent

or even 5 percent of our production, we will have done a lot to relieve some of the supply pressure on our prices.

"I think this may be a definite possibility in the not-too-distant future," he stated.

Johnson called attention to the fact that the PCG Board for 1972-73 has shifted more of the fact that the PCG Board for organization's available funds into studies and research aimed at preparing the High Plains to take advantage of changes in the textile spinning and weaving processes. He mentioned open-end spinning, zero twist yarns, progressive shedding looms and living-ring spinning as "just a few of the new processing techniques which, if widely used, will have a definite effect on our ability to market our cotton in competition with other fibers and other cottons."

It was also noted by Johnson that more PCG money this year will be channeled into the legislative area. "We have a tough legislative year ahead as we try to develop and pass a cotton program for 1974 and the future," he said, "and it was the Board's feeling that we should devote as much of our resources to this effort as can be spared from other activities."

### GOLDEN GLEAMS

No one can be perfectly free till all are free. -Spencer.

None can love freedom heartily but good men; the rest love not freedom, but license. -John Milton.

## Judges Named For Fort Worth Show

FORT WORTH--Judges for the 77th annual Southwestern Exposition and Fat Stock Show have been announced by W. R. Watt, Jr., Stock Show general manager.

The 1973 Stock Show will begin Jan. 26 and run through Feb. 4. Some Horse Show classes will begin Jan. 23.

Two highlights of the forthcoming show will be the Golden Anniversary National Show and Sale of the American Polled Hereford Association and the

National Meet of the American Bantam Association.

In announcing the judges, Watt reminded potential exhibitors of livestock that deadline for entries for cattle, horses, sheep and swine is Dec. 15, 1972. Exhibitors of poultry, pigeons and rabbits must submit entries by Jan. 15, 1973.

Following is a list of judges who will decide winners of over \$180,000 in premiums available in the livestock and horse show:

STEERS - George W. Strathearn, Redwood City, Cal.; CARCASS STEERS, ON HOOF - Bob Morford, Abilene, Tex.; ON HOOF - Dr. Gene King, College, Tex.; HEREFORD - Dr. Herman Purdy, Alexandria, Pa.; POLLED HEREFORD - Dr. Gary L. Minish, Blacksburg, Va.; Dick Hubman, Grass Lake, Mich., and Wayne Haygood, New Harmony, Ind. SHORTHORN - Bert L. Moore, Fargo, N.D.; SHORTHORN JUNIOR HEIFERS - Dr. Gary L. Minish; ANGUS - John McNeil, Lexington, Ky.; BRAHMAN - S. E. McCrae, Woodville, Miss.; SANTA GERTRUDIS - Stanley R. Woelfel, Kingsville, Tex.; SANTA GERTRUDIS JUNIOR HEIFERS - W. F. Barrett, Valley Mills, Tex.; CHAROLAIS - Roger Hunsley, Lafayette, Ind.; CHAROLAIS JUNIOR HEIFERS - Larue Douglas, Georgetown, Tex.

RED ANGUS - Allen Poe, Waxahachie, Tex.; CARLOTS & PENS - Angus, John McNeil; Charolais, Dr. Dale W. Zinn, Lubbock, Tex.; and Hereford, Wm. C. and Rozanna Donnell, Marathon, Tex.; DAIRY CATTLE - Dr. C. L. Norton Manhattan, Kans.; FINE WOOL SHEEP - James A. Gray, San Angelo, Tex.; MEDIUM WOOL SHEEP - Allen Turner, San Angelo, Tex.; LAMBS - Gene L. Dunbar, Fort Worth, Tex.; JUNIOR BREEDING SHEEP - Gene L. Dunbar.

BREEDING SWINE - Monte Griffin, Lamesa, Tex.; OPEN BARROWS - Dr. Leland Tribble, Lubbock, Tex.; JUNIOR BARROWS AND CHAMPIONS - Dr. T. D. Tanksley, Jr., College Station, Tex.; POULTRY - J. B. Harrell, Jr., El Dorado, Ark.; Vern Sorensen, Centuria, Wash., and Bill Tripp, Piedmont, S.C.; RABBITS - Robert F. Wallace, Glenwood, Iowa; PIGEONS - Fred Wimberly, A. J. Stratton and Dr. Jack Horn, all Fort Worth, Tex., and Fred Langridge, Dallas, Texas. Horse Show judges will in-

clude: AMERICAN SADDLEBRED, STANDARDBRED, ROAD HORSES, WALKING HORSES AND ARABIAN - Martin Cockrial, Parker, Colo.; APPALOOSA - Jack Brainard, Rochester, Minn., for halter, cutting, calf roping, reining, western and English pleasure, barrel race and pole bending, and T. C. Jinkens, Sylvester, Tex., for cutting; PALOMINA - Roger E. Ruetenik, Vermillion, Ohio. QUARTER - C. W. Cascio, Ruidoso, N.M., for halter, cutting calf roping and western pleasure, and Roger E. Ruetenik for cutting, reining English pleasure, barrel race and pole bending; OPEN CUTTING CONTEST - Jack Brainard and T. C. Jinkens; PAINT - Jack Brainard for halter, cutting, calf roping reining, western/English pleasure and barrel race, and T. C. Jinkens for cutting; GALICENO - T. C. Jinkens; PONY OF THE AMERICAS - Jack Brainard for halter and rail performance, and Martin Cockrial for time performance; PERUVIAN PASO - Harold Adams, Edmond, Okla.

### WOODSY OWL HOOTS:



GIVE A HOOT. DON'T POLLUTE

**steri steam CARPET STEAM CLEANING**

- Extracts the grime from all carpet-gently, safely, completely.
- Pulls up carpet fibers-rotary shampooers pack them down.
- Removes residues and detergents left by other machines.
- Revitalizes original color and texture.
- Lengthens carpet life up to 40% with regular use.

DRAPERY CLEANING PICK-UP & RE-HANGING ON REQUEST.

**LAMBERT CLEANERS MULESHOE**

## Texas Farmers Union President Condemns 1973 Cotton Program

Texas Farmers Union President Jay Naman of Waco condemned the Department of Agriculture's decision on next year's cotton program as being "devastating" to Texas cotton farmers. In a statement released Thursday, Naman said, "The decision by Secretary Butz to reduce cotton payments is the second on a one-two punch on the cotton farmer's chin. Mr. Butz landed the first blow with the announcement that the last year's low loan level would be extended for another year. He now adds insult to injury

by depriving cotton farmers of 13% of their pay acres. This will be a knock-out blow to many Texas cotton farmers."

Naman pointed out that the Department of Agriculture encouraged more cotton production and created the low price condition that now plagues the Cotton Belt. He said that USDA seems intent on putting soybeans and feed grain producers next year in the same predicament as cotton farmers this year.

"By removing the 20% set-aside, Secretary Butz is open-

ing the door to the expansion in production of possibly two million more acres in soybeans on cotton acres that have been out of production. This will provide the incentive for southern and southwestern cotton producers to substantially increase their acreage in grain sorghum and corn next year," Naman said.

"If Secretary Butz had wanted to help cotton farmers, he would have increased the loan to a minimum of 28¢ a pound and announced a paid diversion pro-

gram for cotton in place of the free set-aside. This would provide cotton farmers with some of the options now open to feed grain producers. "Texas cotton farmers stand to loose in excess of thirty-seven (37) million dollars in reduced pay acres on cotton next year because of a decision by the Secretary of Agriculture."

It is time for Congress to remove some of the discretionary power which Mr. Butz now has and uses so irresponsibly," the state farm organization leader said.

The great secret of education is to direct vanity to proper objects.

-Adam Smith.

### One Minute Sports Quiz

- Who won the 1972 World Series?
- Who was named series hero?
- The Davis Cup was won for the fifth year by what country?
- Who is the head coach of the Colts?
- Who was named 1972 Manager of the year in the American League?

### The Answers

- The Oakland A's.
- Gene Tenace.
- The United States.
- John Sandusky.
- Chuck Tanner, Chicago White Sox.

# GREATER SAVINGS

## MAKE MORE CENTS

CHRISTMAS TREES

By the time this paper comes out our Christmas trees should be in. I would like to urge you to get your tree early. We will be short 200 trees due to the fact that I have not been successful in trying to buy mountain trees.

**PER FOOT \$1.25**

SCOTCH PINE

## Giant Size Box OXYDOL COFFEE

1 Lb. Can SHURFINE

9 oz. Ctn. Birds Eye Cool Whip	55¢
Topping	55¢
Family Size Duncan Hines Deluxe	
BROWNIE MIX	67¢
No. 303 Can Shurfine	
FRUIT COCKTAIL	4 for \$1
No. 303 Can Shurfine Yellow Cream Style	
CORN	5 for \$1
18 oz. Glass Shurfine Strawberry	
PRESERVES	2 for \$1
No. 303 Can Shurfine Early Harvest	
PEAS	5 for \$1
2 lb. Bag Shurfine	
RICE	3 for \$1
Gallon Jug Textize Laundry	
FLUFF	89¢
Family Size Pepsodent	
TOOTHPASTE	69¢
2 Roll Pke. Bounty	
TOWELS	49¢

### CANDY MAKING

12 oz. Pkg. FISHER Raw PEANUTS	39¢
Quart Bottle White KARO	73¢
Tall Can SHURFINE MILK	19¢
9 oz. Ctn. HIP O LITE Marshmallow CREAM	29¢
12 oz. Pkg. HERSHEY'S Chocolate CHIPS	49¢

## WILSON'S Sliced 1 Lb. Pkg. BACON

69¢

## WILSON'S MIX or MATCH LUNCH MEAT

79¢

3 for \$1

(Bologna, Pickle loaf, Olive loaf, or Macaroni & cheese)

## Extra Lean Boneless STEW MEAT

lb. 89¢

## Extra Lean GROUND CHUCK

lb. 79¢

Texas Ruby Red GRAPEFRUIT

lb. 15¢

3 Lb. Poly Bag Red Rome APPLES

49¢

Large Size California AVOCADOS

ea. 19¢

### Courthouse News

- NEW CARS
- A. J. Commons, 1973 Ford Muleshoe Motor Company.
  - A. G. Thorn, 1972 Oldsmobile, Brock Motor Co.
  - James Robinson, 1973 Ford, Muleshoe Motor Co.
  - Thomas W. Terrell, 1973 Chevrolet, Crow Chevrolet Co.
  - James Crane Tire Co., Inc., 1973 Oldsmobile, Brock Motor Co.
  - Clavin A. Meissner, 1973 Chevrolet, Crow Chevrolet.
  - Robert L. Jones, 1973 Ford, Muleshoe Motor Co.
  - J. G. Sliker, 1973 Chevrolet, Crow Chevrolet Co.
  - James A. Roberson, Jr., 1973 Chevrolet, Crow Chevrolet.
  - Mrs. Agnes Brockman, 1973 Mercury, Muleshoe Motor Co.
  - Lee Roy Nuttall, 1973 Chevrolet pickup, Crow Chevrolet.
  - Charles L. Glover, 1973 GMC pickup, Forrester Truck Co.
  - Johnny Atkinson, 1973 Ford, Muleshoe Motor Co.
  - Bobby G. Free Farms, Inc., 1973 Ford pickup, Muleshoe Motor Co.
  - Benny Splawn, 1973 Chevrolet, Crow Chevrolet.
  - James Robinson, 1973 Mercury, Muleshoe Motor Co.
  - W. C. Clark, 1973 Ford, Buftington Ford Co.
  - Jim Hoover Ranch, 1973 Chevrolet pickup, Crow Chevrolet.
  - Farmers Spraying Service, 1973 Chevrolet, Crow Chevrolet.
  - Richard A. Isaac, 1973 Oldsmobile, Brock Motor Co.
  - Imogene Tiller, 1973 Buick, Brock Motor Co.
  - Sam E. Fox, 1973 Oldsmobile, Brock Motor Co.
  - DIVORCES
  - Barbara Lynn Mills and Melvin James Mills.
  - James Elder and Ruth Elder.

## CLINICAL MASSEUSE

**THRESIA DAVIS, OWNER**

**MULESHOE, TEXAS**

PHONE 272-3677

**WE CAN TREAT**

Pulled Muscles, Bursitis, Fibrositis, Sinuse, Bell Palsy, Tension Headaches, Planters Warts, Traumatic Swelling, Strains, Muscle Spasm, Charlie Horse, Relief Of Arthritis, Also Can Follow Doctor's Prescriptions And Do A Physical Massage

# 48 oz. Bottle WESSON OIL

## 89¢

## Wagnon Grocery & Mkt.

515 W AMERICAN BLVD. MULESHOE PHONE 272-4406

**VALUABLE COUPON**

This coupon good for 100 (\$10.00) FREE BUCCANEER STAMPS With a Purchase of \$2.50 or More.

NAME \_\_\_\_\_

ADDRESS \_\_\_\_\_

CITY \_\_\_\_\_ PHONE \_\_\_\_\_

This Coupon Good Nov. 7 - Dec. 2