

Knox Prairie Philosopher Claims He Wants In On Assistance Plan, But Later He Backs Out On It

Editor's note: The Knox Prairie Philosopher on his Johnson grass farm on Miller Creek, for the first time in his life, has backed down on accepting some help, his letter this week reveals.

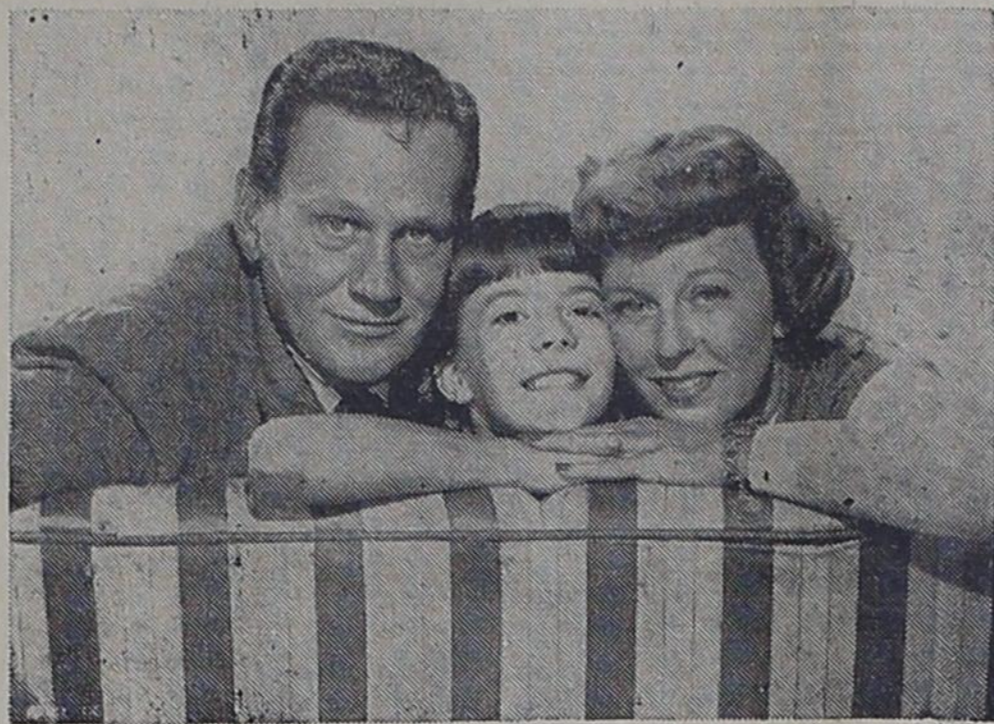
Dear editor: I was sitting on the front porch yesterday afternoon since my wife was attending a Home Demonstration meeting on how to get more work out of husbands and spent the day watching the wind blow a newspaper around in the front yard and along about 4 o'clock the paper sailed up close enough to where I could reach out and pick it up without getting up and I did and



then rested a few minutes and opened it up and read where President Truman has signed a bill for three billion dollars for foreign aid.

As I understand the bill, it is designed to help develop back-

Roxy Theatre, Sunday and Monday



Wendell Corey, Natalie Wood and Margaret Sullivan in a scene from "No Sad Song For Me."

ward areas, and I would like for you to find out why my farm wouldn't come under that classification. Of course it wouldn't qualify as no foreign country, and I know Europe comes ahead of me, I ain't never caused a war, but if the government is really interested in helping backward areas, it oughtn't to let the fact I speak English and ain't never started a war or defaulted on a war loan stand in the way of improvin my area too.

However, I discovered by reading further, there is one catch in the bill which cools me off considerably and I imagine it will chill them foreign countries too.

Accordin to the bill, the three billion dollars is for "technical assistance" to under-developed areas.

I can speak for myself and I think I can for most of Europe when I say we ain't near as interested in technical assistance as we are in out-and-out assistance. We got plenty of the for-

mer. I can drop a hint now to the county agent for the triple A or the Soil Conservation Service and get more technical advice in a day than I could follow in a hundred years. This country is over-run with technical assistance, what I'm interested in is outright assistance.

If technical assistance is all it's gonna amount to, let Europe have it. I had a technician out here one time advisin me what to do with this place. It would have wrecked it, and me too.

Yours faithfully,
J. A.

Banding Of Ducks Begins In Texas

AUSTIN—Two determined young wildlife biologists invaded the southeast Texas rice marshes this week on a prolonged duck banding project. They are Gus Engeling and Don Duncan. Headquarters are at Rosenberg, southwest of Houston.

The mottled duck, the principal native Texas waterfowl species, is the primary objective. Game management staffers of the Game, Fish and Oyster Commission seek more data about this bird which provides considerable sport for Texas hunters.

Armed only with leg bands for the birds and generous quantities of mosquito repellent for themselves, the men hope to band several hundred ducks between now and late August. Last summer, 240 mottled ducks were banded. Hunters returned 29 of the bands to Austin game department headquarters.

By tagging both young and old birds, the biologists have determined that this game spec-

ies, so popular with hunters because of its size and tastiness, concentrate mainly in a 100-mile strip along the Texas coast. They also are found along the coast of Louisiana and of Mexico.

Mottled ducks look so much like mallards that they frequently are mistaken for the former, according to the Director of Wildlife Restoration. He said the mottled species are darker and that they are white beneath their wings. Males do not have green heads or curled tail feathers like mallard males. Thus it is difficult to distinguish mottled males and females.

The Director said the mottled ducks provide as much as 20 percent of the birds bagged dur-

ing the early season in southeast Texas. In some unusually abundant years they have accounted for 40 percent of the hunters' early bags.

DR. J. DOUGLAS LOVELADY

CHIROPRACTOR

—X-RAY—

800 North Main
Phone 215-J Res. 294-W
SEYMOUR, TEXAS

See Our New Improved Model 12-A Combine



New M. T. tractor with 2-row equipment.

New model A John Deere with 4-row equipment.

New Model B John Deere tractor with 2-row or 4-row equipment.

Used Model A John Deere tractor with 2-row and 4-row equipment. Extra good.

Farmall regular tractor with 2-row equipment \$200.00

Farmall 20 tractor with 2-row equipment \$200.00

New one-way plows with 5, 6, 8, 10, 13 and 25 discs.

Two and three-bottom moldboard plows.

HARRELL'S

Hardware — Furniture
John Deere — Maytag — RCA-Victor



PROMOTE

ROY A. JONES

TO

DISTRICT ATTORNEY

50th JUDICIAL DISTRICT

- 15 Years a Practicing Lawyer
- 10 Years a County Attorney
- Possesses LLB and BA Degrees
- Married; Four Children; Veteran

YOUR CONSIDERATION APPRECIATED

COMPLETE INSURANCE FACILITIES

Representing Only LEGAL RESERVE and STOCK COMPANIES

Chas. Moorhouse Agency

BENJAMIN Tel. 24 or 34 TEXAS

Dr. W. E. Ponder Optometrist

Northeast Corner of Square HASKELL, TEXAS

Hours: 9 a. m. to 5 p. m.
TELEPHONE 481-J

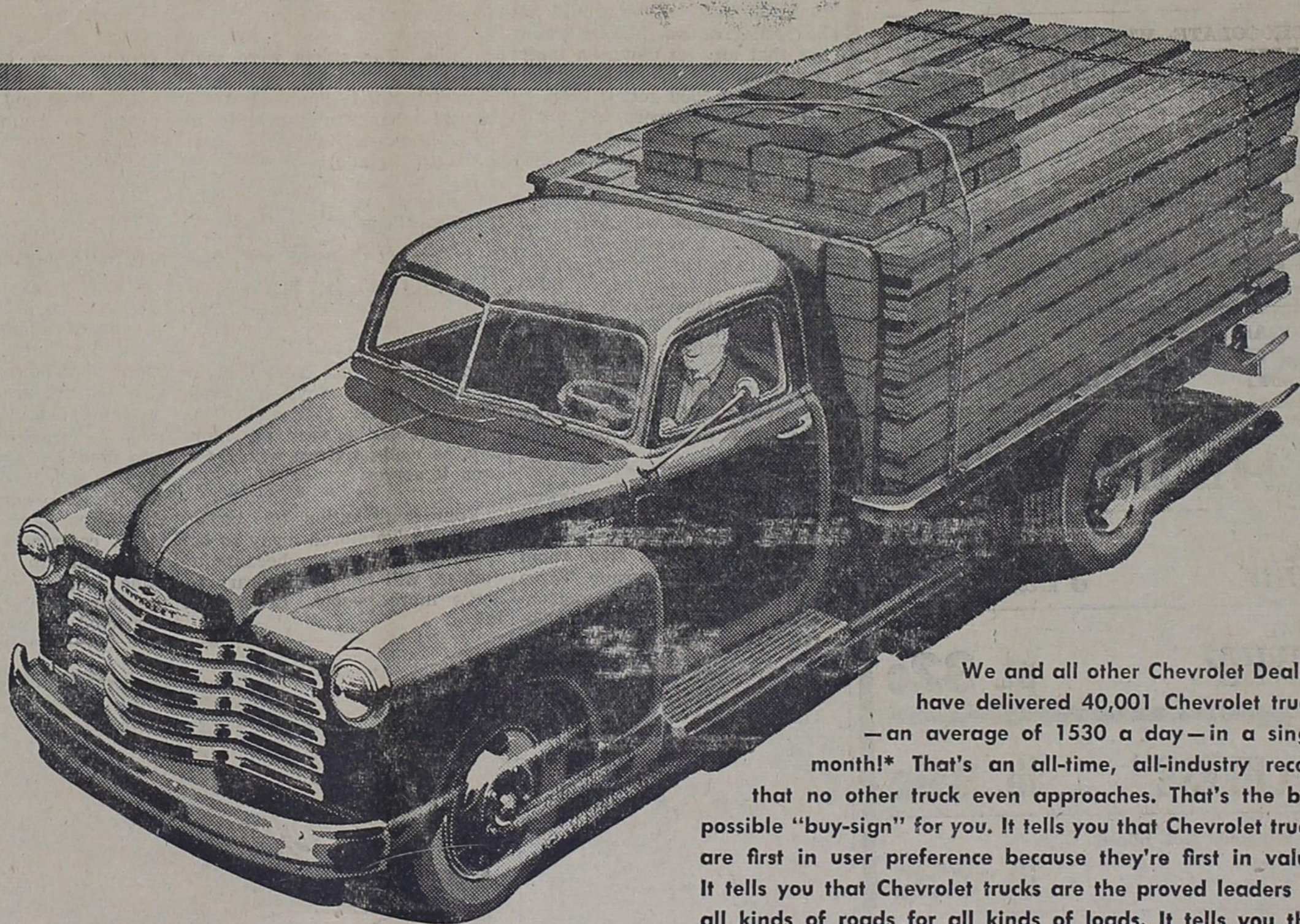


James A. Stephens, Attorney-at-Law

OFFICE IN STEPHENS BLDG. BENJAMIN, TEXAS

Have prosecuted and defended many criminal and civil cases in the trial and appellate courts. The records of the courts in many counties tell the story. Fees reasonable.

New, All-Time Record! Users Now Buying 1530 CHEVROLET TRUCKS A DAY!



We and all other Chevrolet Dealers have delivered 40,001 Chevrolet trucks — an average of 1530 a day — in a single month! That's an all-time, all-industry record that no other truck even approaches. That's the best possible "buy-sign" for you. It tells you that Chevrolet trucks are first in user preference because they're first in value. It tells you that Chevrolet trucks are the proved leaders on all kinds of roads for all kinds of loads. It tells you that Chevrolet trucks will haul your goods more miles at less cost per mile. Come in and get all the money-saving facts!

*Based on official dealer-reported sales during the last full month for which figures are available.



ADVANCE-DESIGN TRUCKS

► Performance Leaders

Chevrolet's newest and most powerful trucks feature an improved 92-h.p. Thriftmaster Valve-in-Head engine and a brand-new 105-h.p. Loadmaster Valve-in-Head engine. Smooth, quick acceleration is provided by Chevrolet's new Power-Jet carburetor. Synchro-Mesh transmission enables driver to shift with greater ease and safety.

► Payload Leaders

Chevrolet trucks deliver the goods at low cost per mile—and deliver them fast! Features like Chevrolet's Diaphragm Spring clutch for smooth engagement and Double-Articulated brakes for complete driver control enable you to meet the most demanding road schedules.

► Popularity Leaders

Chevrolet Advance-Design trucks are America's biggest sellers! That's because users recognize the value of such Chevrolet features as Hypoid rear axles that are 5 times more durable than spiral bevel type and Unit-Design cab and bodies that are built for added strength and durability.

► Price Leaders

Chevrolet's rock-bottom initial cost, economy of operation and upkeep and high trade-in value add up to the lowest price for you. Compare values! Compare what you get for the price you pay. You'll find everything favors Chevrolet trucks.

John Porter Chevrolet Company

Phone 208

Munday, Texas

