



By JOHN C. WHITE, Commissioner

NEW TESTS FOR LIVESTOCK

There are many cattle inoculations that old Bossie must feel like a raw army recruit taking medical shots. Now the scientists have come up with another development with the needle—a test that shows the degree of fatness.

The test was developed specifically for live cattle, sheep or hogs. It should be very useful for pured breeders who want to select their best young animals for breeding stock. The feeder who finishes fat steers or hogs, however, won't be affected.

The test calls for laboratory equipment and technical skill so it probably won't be generally made on the farm. It employs a drug called antipyrine which has been used by the medical profession to reduce a fever.

When a measured dose of the drug is injected into the blood stream of an animal, it dissolves immediately and then begins to be eliminated. On cattle, after 2½ hours, blood samples are taken every hour for four hours. The rate of elimination of the drug is recorded. The fatter the animal, the greater is the concentration of the drug in the blood samples.

Smaller animals such as sheep, can be tested much faster since the drug is distributed more rapidly through the body. Blood samples can be taken from hogs one hour after injection of the drug and at intervals of 30 minutes.

Preliminary tests have been successful enough, the scientists say, to open up the field for critical breeding tests to prove the heritability of the high or low

fat producing characteristics of the animal.

When applied to a few of the best bull calves, a cattleman may be in a better position to select a herd sire that has the ability to transmit early market finish to his calves. With this method, the cattleman would not have to wait to judge by the first crop of calves for each prospective sire.

The hog breeder may be able to select boars and gilts which have small amounts of fat and have the ability to make rapid growth with minimum feed requirements.

The antipyrine test has been used by some medical researchers for several years. But only in recent months have the tests been applied to cattle, hogs and sheep. It may cut out of a lot of uncertainty in good cattle breeding.

contacting the Mayor, Goree, Texas.

The City reserves the right to reject any and all bids and to waive formalities.

It is the intention of the City Council to make payment or partial payment for the hereinbefore described fire fighting equipment, and the contract therefor by the issuance of time warrants in the maximum amount of not exceeding \$7,600.00, bearing interest at the rate of not exceeding 5% per annum, with the maximum maturity date not later than 10 years from their date.

R. C. SPINKS,
Mayor, City of Goree, Texas
11-2tc

Legal Notice

THE STATE OF TEXAS
COUNTY OF KNOX
CITY OF GOREE
TO BIDDERS AND TO THE QUALIFIED VOTERS OF THE CITY OF GOREE, TEXAS:

NOTICE IS HEREBY GIVEN that sealed bids addressed to R. C. SPINKS, Mayor, at Goree, Texas, will be received until 8 o'clock P. M. (CST), on the 26th day of October, 1953, for the purchase of the following described fire fighting equipment:

1. ONE (1) FIRE TRUCK, 500 GPM, 2-stage pumper.
2. 1,000 feet of 2½ inch fire hose.

Prospective bidders may receive further information by

Tips on Cooking

Sunday brunch—sprinkle coconut on waffles just before closing the iron. Good with Log Cabin Syrup!

A flavor treat on pumpkin pie! Shake on a little coconut just before pie is done.

For a quick rice ring, prepare a double recipe of packaged pre-cooked rice according to package directions. Add 2 tablespoons butter or margarine and pack into ring mold. Let stand a few minutes and turn onto hot platter.

For a Savory Rice use 1-1/3 cups packaged pre-cooked rice, 1 can condensed consommé and 1/4 cup water instead of amount of water given on package. Then prepare according to package directions.

To prepare Herb Rice use 1-1/3 cups packaged pre-cooked rice and add 1/2 teaspoon marjoram, thyme, or oregano and prepare according to package directions.

For a different twist to plain, fruit-flavored gelatin, force it through a potato ricer or flake with a fork after it has set. Makes it bubbly and luscious-looking.

For quick and easy unmolding of gelatin salads and desserts, loosen the edges of the mold with a small, warm knife. Then for a second or two, dip the mold, up to its rim, in warm water and gently shake it. That should do the trick.

Next time you're making salads with fruit-flavored gelatin, substitute ginger ale for water for extra zip and sparkle.

Arrange corn flakes on plate; place poached egg on top and serve at once.

Sugar Cookie Garnish. Sprinkle your favorite sugar cookies with instant cocoa mix before baking.

Mr. and Mrs. Cecil Stephens and daughters of Orange visited in the home of her mother, Mrs. Kate Browning, and attended the Weintert School Homecoming over the week end.

Mr. and Mrs. R. L. Ratliff visited relatives in Dallas over the week end.

Drive carefully. The life you save may be your own.

STATE FAIR OF TEXAS

MORE TO SEE IN '53

- ETHEL MERMAN SHOW
- ICE CYCLES OF '54
- AUT SWENSON THRILLCADE
- MILLION DOLLAR MIDWAY
- COTTON BOWL FOOTBALL
- Pan-American Livestock Expo.
- 10,000 FREE EXHIBITS
- 3-D AGRICULTURAMA
- DANCING WATERS

NOW THRU OCT. 25 * DALLAS

LOCALS

Mr. and Mrs. Al Robinson of Fort Worth were week end guests in the home of her sister, Mrs. Sargent Lowe, and family.

Picking Supplies

- ★ SACKS, KNEE PADS, SCALES
- ★ BINDER TWINE
- ★ WATER KEGS
- ★ NEW and USED COMBINES
- ★ TRAILERS—All Sizes

Reid's Hardware

Munday, Texas

SEED WHEAT

Recleaned—Ceresan Treated—Tested—Tag Sacked
1st YEAR from CERTIFIED SEED

- ★ Early Triumph
- ★ Early Black Hull
- ★ Westar
- ★ Wichita

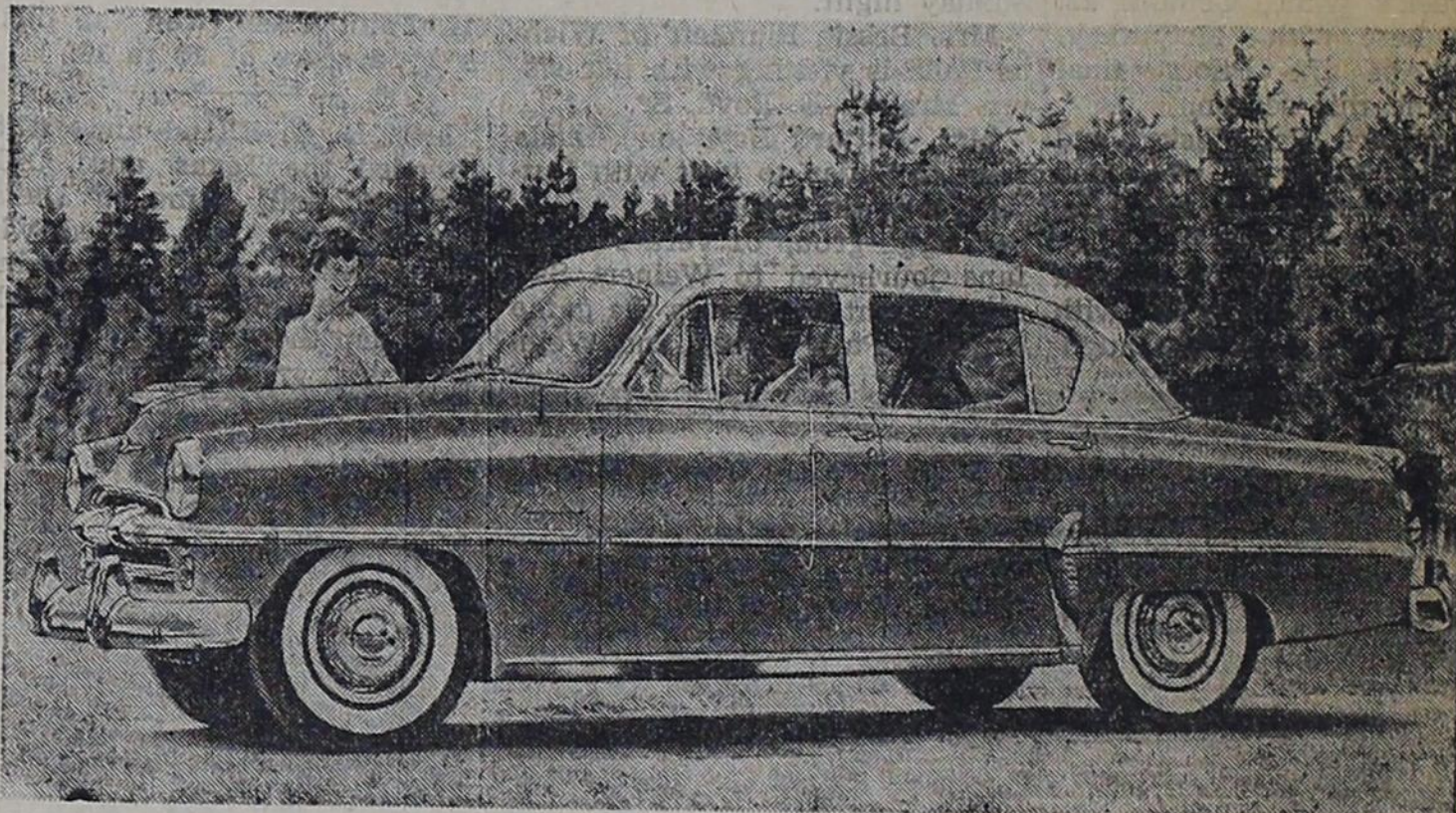
\$3.25 per bu.

J. B. GRAHAM GRAIN COMPANY

MUNDAY, TEXAS

The '54 Plymouth On Display!

'54 PLYMOUTH BELVEDERE



In Styling—In Performance, It's the "Jewel Car" in the Low Price Field!

The sensational new 1954 model Plymouths went on display in our show rooms today (Thursday).

They are longer than last year's models. New body lines, a new front end design, new interiors, new advanced seat cushions and engine improvements are among the 64 advancements in styling and engineering design.

All the new 1954 models are available with Plymouth's new full-time power steering and with Hy-Drive, a no-shift combination.

New 1954 Plymouth cars ride quieter than ever before. This is due to increased silencing materials, composed of asphalt felt and jute, installed all the way from the top of the instrument panel down to the cowl and under the floor. It effectively shuts out road noises.

See the new Plymouths in our show rooms today. You'll still be convinced that "Plymouth Builds Great Cars!"

REEVES

Motor Company

Dodge-Plymouth Dealer

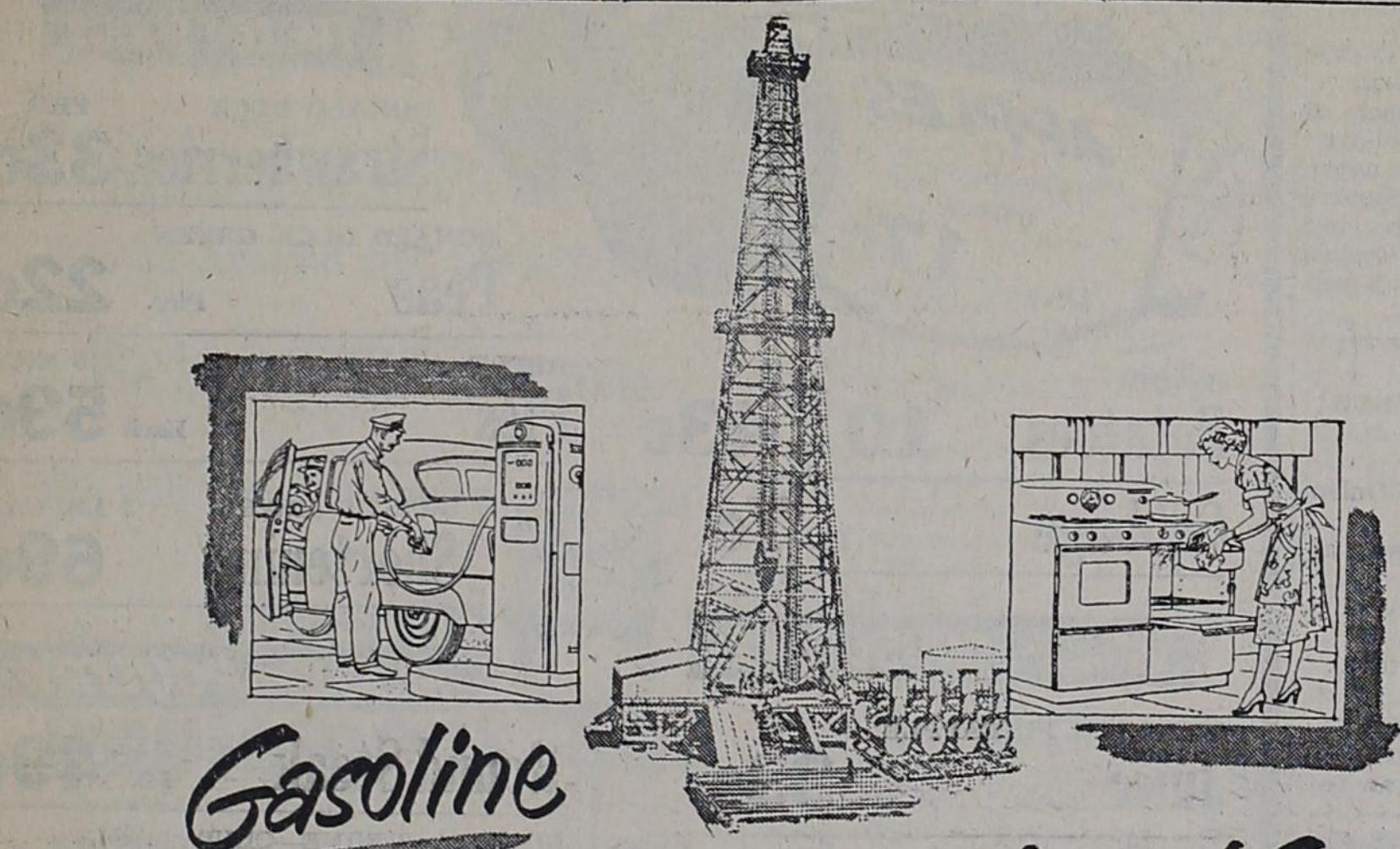
DIAL 5631—MUNDAY

HARRELL'S

Motor & Equipment

Chrysler-Plymouth Dealer

DIAL 4101—MUNDAY



Gasoline
for Sunday driving... or **Natural Gas**
to cook next Sunday's roast?

Most people think only of gasolines, lubricants, and fuel oils when the petroleum industry is mentioned. The fact is, practically all oil producers are also natural gas producers. So today the driller of a wildcat, or exploratory well, calls his venture successful if the well discovers either oil or gas.

If it is an oil well, then he has helped to supply the country's increasing needs for oil and oil products; if it is a gas well, he has discovered additional supplies of an efficient, economical fuel for household and industrial use.

The petroleum industry's development and conservation of the country's natural gas resources is a practical demonstration of the progress to which Oil Progress Week invites attention.

Beginning with the location of the well, advanced geological and geophysical studies of underground formations aid in the selection of likely oil or gas producing

areas, but still the odds against a wildcat well producing either gas or oil are eight to one.

If a natural gas field is discovered, reservoir engineers immediately begin their studies to determine the best producing methods to conserve the underground energy and to obtain the maximum production for the longest possible time.

If the gas that is discovered is "wet," it is processed in gasoline plants which remove the liquid parts and send them to refineries for further processing into motor fuels and aviation gasolines, or to petrochemical plants to be converted into a long list of useful chemical products, among which are the plastics and synthetic fabrics with which you are so familiar. "Dry" gas, the residue from gasoline plants, and sometimes produced direct from the gas field, is the natural gas that burns in literally millions of homes throughout America and under the boilers of thousands of American industries.

So, whether a wildcat well discovers oil for gasoline or natural gas for the kitchen stove, it adds to the available energy resources of the most highly mechanized nation on earth; it supplies products essential for today's and tomorrow's high living standards; it gives additional strength to measures for National defense.



OIL PROGRESS WEEK - OCTOBER 11-17

HUMBLE OIL & REFINING COMPANY
HUMBLE PIPE LINE COMPANY

LET'S TALK LIVESTOCK BY TED GOULDY

Latest newspaper poll conducted by the Amarillo Daily News netted a majority of votes in favor of supports.

The proposal outlined by the House Committee was for support at a certain level for "choice" grade cattle. While there are relatively few "choice" grading cattle produced in the Southwest, the reflected strength that would result from encouraging Corn Belt feeders would help prices here.

Secretary Benson has shown no inclination toward support prices for livestock, and in general is dedicated to self-help attitude toward the farm problem. Self-help is increasingly difficult for stockmen.

Most observers feel that when the chips are down the present administration will come up with a program of supports, etc., not too much at variance with programs already established. Right now a lot of fat is being trimmed off Department of Agriculture programs.

Along with this fat there are many die-hard New Deal political appointees being forced to resign or be fired.

No doubt about it, the farm program is shaping up as the No. 1 issue in political circles and the next congressional and presidential elections are sure to

FORT WORTH—Some sort of price support program appears certain for livestock. About the only thing that could prevent this would be a turnabout that resulted in a sharp rise in cattle and other species of meat animals.

Latest straw-in-the-wind: The House Agriculture Committee late last week called on Agriculture Secretary Benson to extend price supports to cattle immediately to prevent "economic disaster" to producers.

Pressure for price supports has been building up steadily despite strong opposition. Recent indications of this trend were a meeting of several hundred at Matador Texas, where a group was organized and resolutions were passed favoring supports on livestock if they are maintained on other agricultural products.

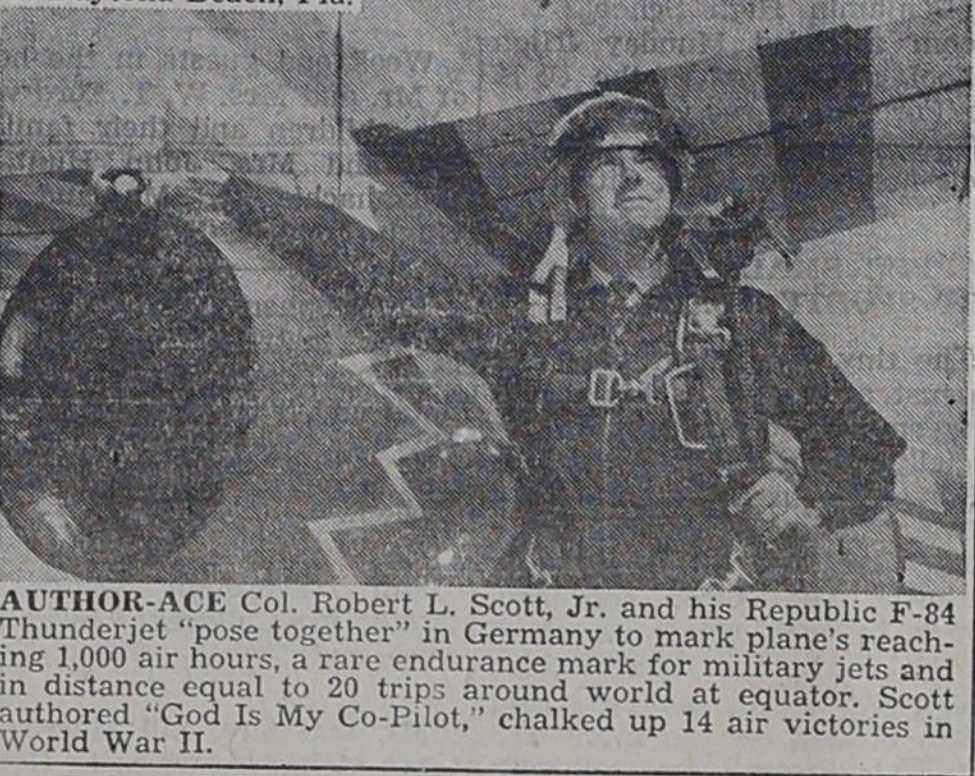
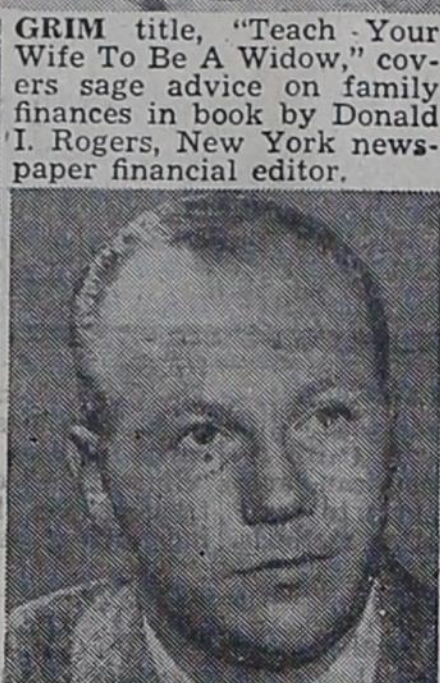
People, Spots In The News



QUICK TAG by Campanella, Dodger catcher, nabs Hank Thompson, Giant third baseman, as he starts for first after dropped third strike.



SANDY ahead and afoot, Jan Holden suns herself prettily on sand at Daytona Beach, Fla.



AUTHOR-ACE Col. Robert L. Scott, Jr. and his Republic F-84 Thunderjet "pose together" in Germany to mark plane's reaching 1,000 air hours, a rare endurance mark for military jets and in distance equal to 20 trips around world at equator. Scott authored "God Is My Co-Pilot," chalked up 14 air victories in World War II.

be decided on that issue.

At Fort Worth Monday the trade on cattle and calves was slow, due to the big run. Probably 50% or more of the grown cattle were cows. Prices were weaker, most cows and bulls 50 cents off, and some bidders trying for bigger reductions. Top fat calves were steady, but stocker trade was very narrow again. Good and choice grain fed steers and yearlings were very scarce, selling from \$17 to \$24, and common and medium grassers drew \$9 to \$15. Cull yearlings sold down to \$17.

Fat cows drew \$8.50 to \$11, and canners and cutters drew \$5.00 to \$8.50, some shells below \$5.00. Bulls drew \$7 to \$11, a few above and below that range. Good and choice fat calves drew \$12.50 to \$16, a few heavies to \$16.50. Common and medium kinds drew \$9 to \$12, with culls from \$7 to \$9. Stocker steer calves drew \$10 to \$16, one top load \$17. Heifer calves drew \$14 down. Stocker and feeder steers and yearlings sold from \$9 to \$14.50. A few stocker cows drew \$7 to \$10.50.

Hog prices tumbled to the lowest point since last Spring (April) and top hogs drew \$21.25 to \$21.50. Sows held steady at \$18 to \$20.50. Underweights

drew \$19 to \$21.

Buyers credit increased seasonal offerings in Corn Belt areas and the abundance of competitive meats for the dive hogs have taken.

Slaughter ewes at Fort Worth were weak to around 50 cents lower. Fat lambs were steady to weak, however, the quality of the run was lower than usual and liberal fills offset some of the lower bids. Feeder lambs drew strong prices.

Slaughter ewes drew \$4 to \$5.50, and some solid mouthed ewes drew \$6 to \$6.50 to go back to the country. Fat lambs of choice grade drew \$16 to \$17, medium and lower grades sold from \$8 to \$14. Feeder lambs drew \$10 to \$13. Yearlings sold around \$8 to \$11. Old wethers cashed at \$6 to \$8. Old bucks drew \$1.50 to \$2.00 per hundred.

ORGANIC MATERIALS AID IN MAKING SOIL MORE DROUGHT RESISTANT

Although Texas farmers and ranchmen are not able to have "made-to-order" weather, recent tests indicate certain practices which increase the moisture penetrating capacity of the soil greatly aids in making land more drought resistant.

Tests conducted at the Spur Experiment Station show that moisture penetration was doubled where cotton burrs were spread over experimental plots the previous spring. Soil moisture also was increased on grass land treated with sorghum litter and barnyard manure. Cotton burrs returned to the soil at a rate of 4, 8 and 10 tons to the acre increased moisture penetration to 28, 30 and 39 inches, respectively. Plots not so treated had water penetration of only 16 inches. The burrs not only increase water storage and penetration, but contain nitrogen, phosphorus and potassium, essential soil elements.

The returning of this "waste" product actually pays off in dollars and cents. Long time rec-

Arthritis?

I have been wonderfully blessed in being restored to active life after being crippled in nearly every joint in my body and with muscular soreness from head to foot. I had Rheumatoid Arthritis and other forms of Rheumatism, hands deformed and my ankles were set.

Limited space prohibits telling you more here but if you will write me I will reply at once and tell you how I received this wonderful relief.

Mrs. Lela S. Wier

2805 Arbor Hills Drive P. O. Box 2695 Jackson 7, Mississippi

LOCALS

Mrs. Charles McCauley returned last Saturday from a week's visit with her parents, Mr. and Mrs. Bryan McCallum, in Mertens.

Mr. and Mrs. Nolan Phillips visited relatives in Foss, Okla., last Sunday. Thier nephew, Eldon Thorp, returned home with them for a few days visit.

Mr. and Mrs. Billy Henslee of Dallas were week end guests in the home of his parents, Mr. and Mrs. Ed Whitmore and Mr. and Mrs. Jim Henslee.

Wayne Smith, a student in McMurry College in Abilene, spent the week end here with his parents, Mr. and Mrs. A. L. Smith.

ords at the station indicate the yield of lint cotton primarily depends on the depth of moisture at planting time.

Cotton yields in 1954 on burr treated plots are expected to be about 175 pounds an acre compared to 50 pounds from untreated areas provided moisture conditions at planting time equal those existing when the tests were made.

In grassland tests on heavily grazed buffalo grass, where 10 tons of barnyard manure to the acre was applied in 1952, moisture reached 30 inches. Moisture penetrated to 18 inches where sorghum litter was spread, but only nine inches on grassland where no organic moisture was applied.

Activities of The Colored People

Sunday morning services at West Beulah Baptist Church were in charge of the pastor, Rev. J. L. Shellman. Evening worship was held early in order that all could hear the Spiritual Five Singers of Fort Worth, who rendered a program at the Sunday School night under the auspices of the Methodist church. Mrs. Sally Wofford of Wichita Falls was a visitor in the home of Mrs. Simon Williams

last Thursday. R. B. Thomas, son of Mr. and Mr. Burton Thomas, is home on an 8-day leave. He is stationed at Fort Leonard Wood, Missouri. Jean Jones spent the week end in Fairfield.

An interesting meeting of the P. T. A. was held last Tuesday night. Dues paid amounted to \$9.35.

We are very happy over the set of encyclopedias and other useful books donated our school this week by Mr. Cook.

Three factors may hold the answer to how much time will be required to rebuild the depleted and drought stunted ranges of the state. Research done at the Sonora Experiment Station show the drain of past grazing, the kinds of grasses and the management practices used after rains finally broke the long dry spell to be of prime importance.

Bertha's Babyland Special!

Betty Marie and Jay Ray, Jr., GIRLS' and BOYS' PAJAMAS. Sizes 2 through 6 years.

ALSO A new shipment of MATERNITY WEAR.

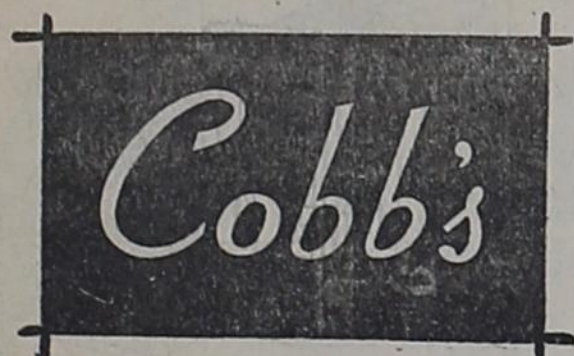
For the small tot, cute CORDUROY CREEPERS in all colors.

Bertha's Babyland

Look smart in Arrow "Dart"... America's favorite white shirt



Count on Arrow Dart to keep you looking your smartest at all times. Its Sanforized® white broadcloth (fabric shrinkage not more than 1%) is meticulously tailored for trim, tapered fit. Styled with the handsome, "regular"-point, non-wilt collar that keeps its fresh good looks all day long. We have a wide range of sizes, including your exact collar size and sleeve length. Ask us for Arrow Dart today.



"The Store With the Goods"

bringing the world to your doorstep...

Wherever you see him working, America is on the march. Building, growing, progressing!

He's a General Telephone lineman... part of the privately owned and operated telephone industry that brings you the finest, most economical service on earth.

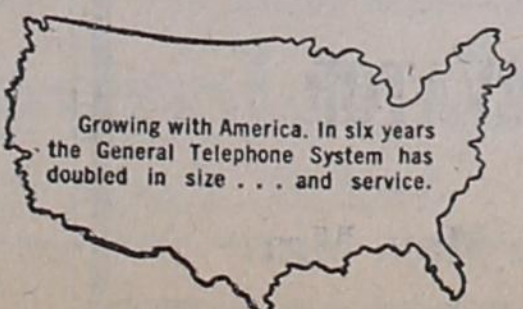
That's a point to remember when someone suggests public ownership "might do it better."



General Telephone Company of the Southwest



One of the Great Telephone Systems Serving America



Growing with America. In six years the General Telephone System has doubled in size... and service.

Ferguson Offers You

- QUALITY—The most copied tractor.
- CREDIT—The easy way to buy tractor. Years to pay if you need it.
- GUARANTEE—Many months.
- SERVICE—By trained mechanics. Complete parts stock, and the longest deal in town. We will trade with you.

Farmers Supply Co.

FOR YOUR OFFICE NEEDS

Bond Papers—

- Medium Grades
 - Part Rag Content
 - 100% Rag Content
- Typewriter and Legal Size (light, medium and heavy weights.)

Onion Skins Second Sheets Carbons

OTHER ITEMS

- Mimeograph Paper
- Ledger Sheets
- Ledger Binders (Post)
- Ledger Index Guides
- Columnar Pads
- Fountain Pens
- Columnar Sheets
- Duplicate Statements
- Mimeograph Stencils
- Mimeograph Ink
- Hektograph Ink
- Typewriter Ribbons
- Correction Fluid
- Gum Tape
- Index Cards
- Index Card Files
- Letter Files
- File Folders
- Staplers
- Staples
- Index Tabs
- Mailing Labels
- Filing Cabinets
- Daters
- Manuscript Covers
- Sales Books
- Portable Typewriters
- Adding Machine Paper

*If we don't have it in stock we can get your office needs if available.

The Munday Times

New 1954 Plymouth Cars Displayed On Showrooms Of Two Munday Dealers

The new Plymouth for 1954 went on display here and throughout the United States on Thursday, October 15.

The new models have optional power steering and three choices of power drives.

The new Plymouth may be seen here at Reeves Motor Company and Harrell's Motor and Equipment.

"We are confident that people will like the new beauty of our 1954 cars," says President John P. Mansfield of Plymouth. "We are absolutely certain that they are the most durable, best riding, best performing and roomiest cars that Plymouth has ever built."

Plymouth is using the link type of power steering. The hydraulic "muscle" is in the steering linkage. Plymouth officials say it is the most effective, compact and serviceable installation produced for cars in the low priced field. It reduces steering effort up to 80 per cent, permits fingertip control in tight parking situations and promotes safe driving through lessening of driver fatigue and absorption of road shock.

In its 1954 line, Plymouth offers three options in power Hy-Drive, a no-shift unit made up of a combination of torque converter and three-speed transmission, was introduced during the 1953 model year. It will be in volume production for 1954 models. The two other options are Synchro-Silent three-speed

transmission and Synchro-Silent with Overdrive, which provides a fourth forward speed for cruising. Mansfield said more than half the Plymouths now being produced have either Hy-Drive or Overdrive.

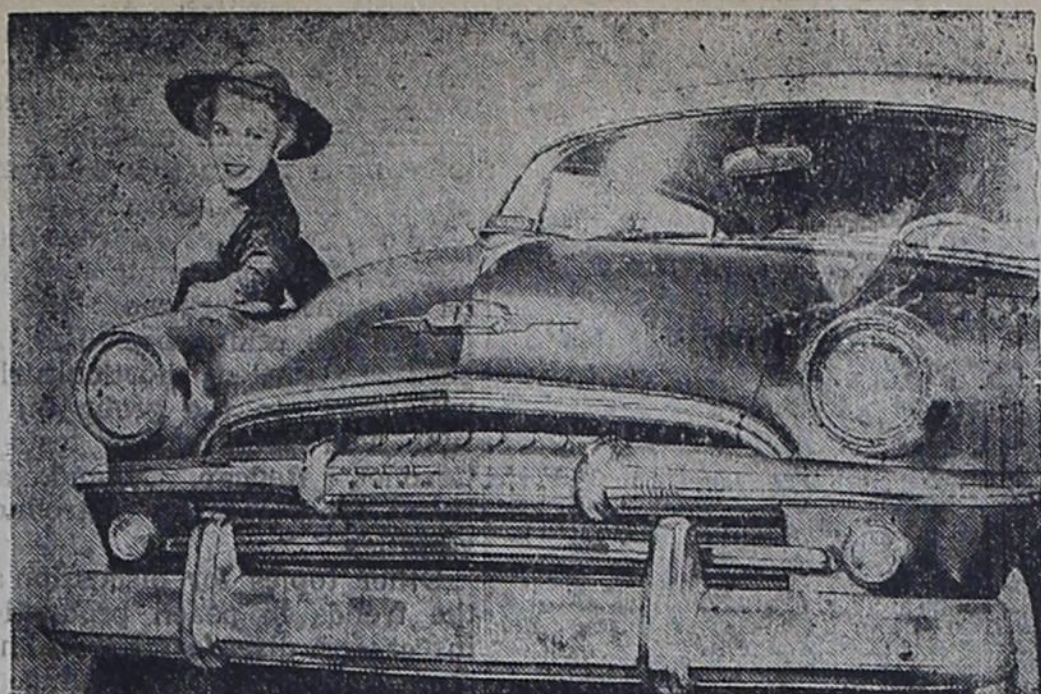
The new Plymouth line is made up of 11 body types in three series. Aristocrats of the line are the Belvederes consisting of a sport coupe of "hard-top" design, a four-door sedan, convertible and Suburban steel-bodied station wagon type car, all beautifully color-styled in two-tone combinations. In the Savoy series are a four-door sedan, club coupe and two-door sedan. In the lowest priced Plaza series are a four-door sedan, two door sedan, business coupe and Suburban.

All models have completely new interiors. Other changes include a increase of 35/8 inches in overall length, a new front end styling treatment, new chromium side moldings and modifications in virtually all exterior designs.

Interiors are designed with emphasis on color harmony and modern decor. Seat and back cushions and door side panels are upholstered in new types of fabrics which are exceptionally resistant to wear.

Plymouth is introducing a new type of seat cushions with Dual Flex springs. They are made up of a combination of coil springs and jack springs, which, working in combination, provide a

Front View of '54 Plymouth



The 1954 Plymouth is longer and looks wider and lower as a result of design modifications. Front view shows new massive bumpers and new grille design with attractive Plymouth identification. The front is designed with a view to ease of cleaning and simplification of repairs.

softer cushioning action in normal riding situations and resistance to "bottoming" when the car hits a bump.

To extend top engine performance over a long period of time, Plymouth is using new silicon chromium alloy intake valves in 1954 models. Exhaust valves inerts have been retained to maintain high compression engine performance in years of service.

Other mechanical improvements include a higher capacity oil pump, new improved clutch, and improved electric windshield wipers.

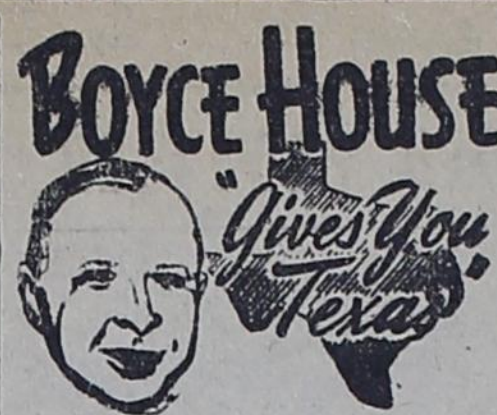
Mr. and Mrs. Glen Bilbrey and Cathy and Mr. J. H. Billbrey of Goree visited relatives in Andrews over the week end.

LOCALS

Mrs. Doug Moore, student in Hardin-Simmons University in Abilene, was a guest in the home of her mother, Mrs. Maurysse Blacklock, over the week end.

Sonny Lang, who is attending Midwestern University in Wichita Falls, was a week end guest in the home of Mr. and Mrs. H. B. Stubblefield.

Mr. and Mrs. V. M. Lee and son, Ronnie, of Denison are spending this week in the home of her mother, Mrs. S. E. Robinson, and sister, Mrs. Jimmie Bulington, and other relatives.



Here's something from James and Cora Kelly's Stanton Reporter—from Snooter's column, some years back:

"OLD FOGY that I am, I still like to hear the ring of church and school bells. The abandonment of church and school bells, and the relegating of their bells to make room for modern civilization, has added and almost graveyard stillness on weekday and Sunday mornings. I tell you the ring of church and school bells was a symphonic melody to my ear. It made a fellow feel upon awakening on a Sunday morning and hearing the sound of bells pealing forth from the little countryside churches, he was glad he was alive.

You remember when a bell hung in the belfry of every church and school house. If they weren't in the belfry, they hung on stilts outside, and if there was no bell of this kind, then some one rang a hand bell. In those days some prominent hotel in the town supported a bell.

By a prominent hotel, I mean the box-boarded structure, the cracks batted up by strips of boards . . . most of them you could throw a cat through. But the ringing of that old bell did not only answer as a call to "come and get it", but it sent clerks, business men, and others scurrying to the noonday meals. On farms and ranches, a bell was found that was rung to warn the hands that the meal

hour was at hand. Even the lead cow and sheep had a bell hung to their necks, so the owner would know where to find his flock.

In 1882, M. P. Bewley, son of a Kentucky steamboat captain, established the first of the three great flour mills operating in Fort Worth. Original capacity of the mill was 50 barrels daily.

TO NEWFOUNDLAND

Airman 3rd Class Kenneth Stubblefield came in last Thursday morning on a fourteen day leave to visit his parents, Mr. and Mrs. H. B. Stubblefield. Kenneth has been stationed at Scott Field, Ill., and will report to Camp Kilmer, N. J., on October 25, to be sent from there to Newfoundland for two years service.

INSURANCE COSTS TOO HIGH?

Check Your Insurance Costs with **STATE FARM MUTUAL**

DIVIDENDS
on Currently Expiring Semi-Annual Automobile Insurance Policies

27 1/2%

Office Phone 5581 Res. Phone 2586 **LEO FETSCH** Haskell Road Munday, Texas

HAMLIN SAND & GRAVEL CO., Inc.

Route 4, Hamlin, Texas

Call on us for your building material needs, quality materials, passing Architect and State Highway Specifications. Washed and graded concrete sand, concrete gravel, roofing gravel, filter rock, shooting gravel. All materials carefully washed, screened and graded to specifications. Rail delivery or by 12 Yard trucks. Prompt and courteous attention will be given to all inquiries.

PHONES: 1064-M Stamford
9008-F2 Hamlin
21688 Abilene

THE BEST NEWSPAPER BUY OF THE YEAR!

SUBSCRIBE TO:

The Abilene Reporter-News

at the Fall Bargain Offer

Daily & Sunday **\$10.75**

Daily Only **\$9.00**

By Mail — Anywhere in West Texas.

More Exclusive Local West Texas News, including Sports.

No increase in price over last year.

See Your Home-Town Agent and Order Today!



From where I sit... by Joe Marsh

Modern Art Takes a Licking!

Did you know we had a real artist in town? Yes sir! Handy Jackson was a contributor to the Sculpture Exhibition at the Centerville Fair last week.

His work was streaky pink and curved all around—sort of streamlined. Caused quite a stir. Nobody was sure what it was supposed to represent, but some liked it and thought it was good art. Handy gave me the lowdown:

"Why, it was nothing but a piece of cattle salt our cows have been lickin' at for months. I just had it mounted. Fooled a

lot of folks — one fellow even wanted to buy it!"

From where I sit, Handy's "modern art" just shows how some people can be led astray. Some even get to be "experts"—especially about the other fellow's business. Whether it's art or music, or a simple thing like choosing, say, beer or milk with a snack, we should live and let live. There's no call for either of us to set ourselves up as a "model" for the other!

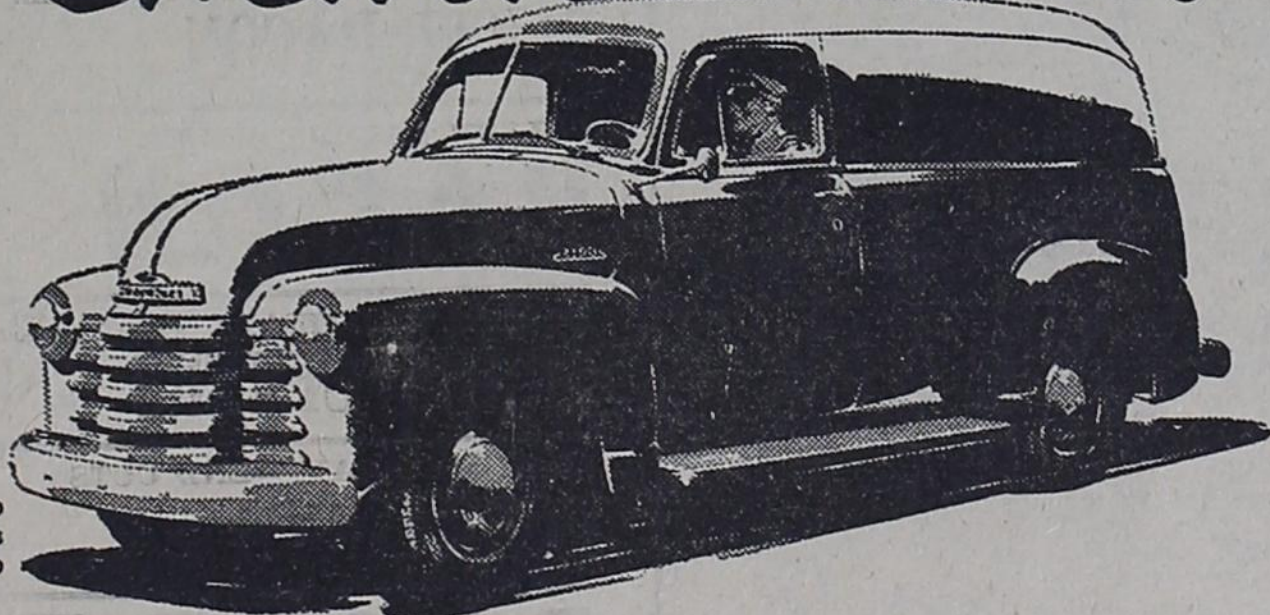
Joe Marsh

Copyright, 1953, United States Brewers Foundation

Get our deal and be ahead!

THE BIG DEAL DAYS ARE HERE!

Chevrolet Trucks!



From light delivery to heavy hauling, there's a Chevrolet truck to fit your needs.



MODEL COMPARISONS SHOW Chevrolet Advance-Design trucks outsell the next two makes combined! More Chevrolet trucks in use than any other make!

You'll save on price!

And you'll save plenty! With all their extra ruggedness and thrifty power . . . with all their exclusive and advanced features . . . Chevrolet trucks are the lowest priced truck line of all!

You'll save on operating costs!

In both light- and heavy-duty models, Chevrolet's advanced valve-in-head engines deliver outstanding economy. And you get extra ruggedness that keeps upkeep down!

You'll get a better trade-in!

You get more truck for your dollars when you buy . . . more dollars for your truck when you trade. Chevrolet trucks traditionally command a higher resale value.

Buy no truck until you get our deal!

Let us show you how easy it is to start saving money with a new Chevrolet truck that's just right for your job.

Sharp Chevrolet Company

MUNDAY, TEXAS

Firestone HARVEST SALE

Super Special!
\$1.59 Value **88¢**
Batteries Extra
3-CELL, CHROME-PLATED FLASHLIGHT

Price Slashed! Famous DORMEYER Mixer-Juicer

Formerly \$29.95 **19.98**

9-Foot EXTENSION CORD
Reg. 55c Special **38¢**

IRONING PAD AND COVER SET
Reg. \$2.59 **2.19**
Reduced to

PLASTIC RAINCOATS Men's or Ladies' . . . Reg. \$2.49 **1.99**

SAVE \$5.00
Portable 3-Speed ELECTRIC PHONO
Reg. \$24.95 — **19.99** Special

Sale-Priced! MOHAIR Steering Wheel COVERS
Reg. 55c **NOW 42¢**

Stodghill Home Auto & Supply

Your FIRESTONE Store

Phone 5451

J. M. Humphries Buried Tuesday At Knox City

Funeral services for Jacob M. Humphries, 71, who died at his home in Knox City on Monday were held Tuesday from the First Methodist Church in Knox City. Rev. Oscar Bruce, pastor, officiated, and was assisted by Rev. E. V. Becker, pastor of the Knox City Baptist Church. Burial was in Knox City cemetery.

Mr. Humphries was born March 9, 1882, in Bonham. He joined the Methodist church in Saint Jo in 1920, and moved to Knox City in October, 1921.

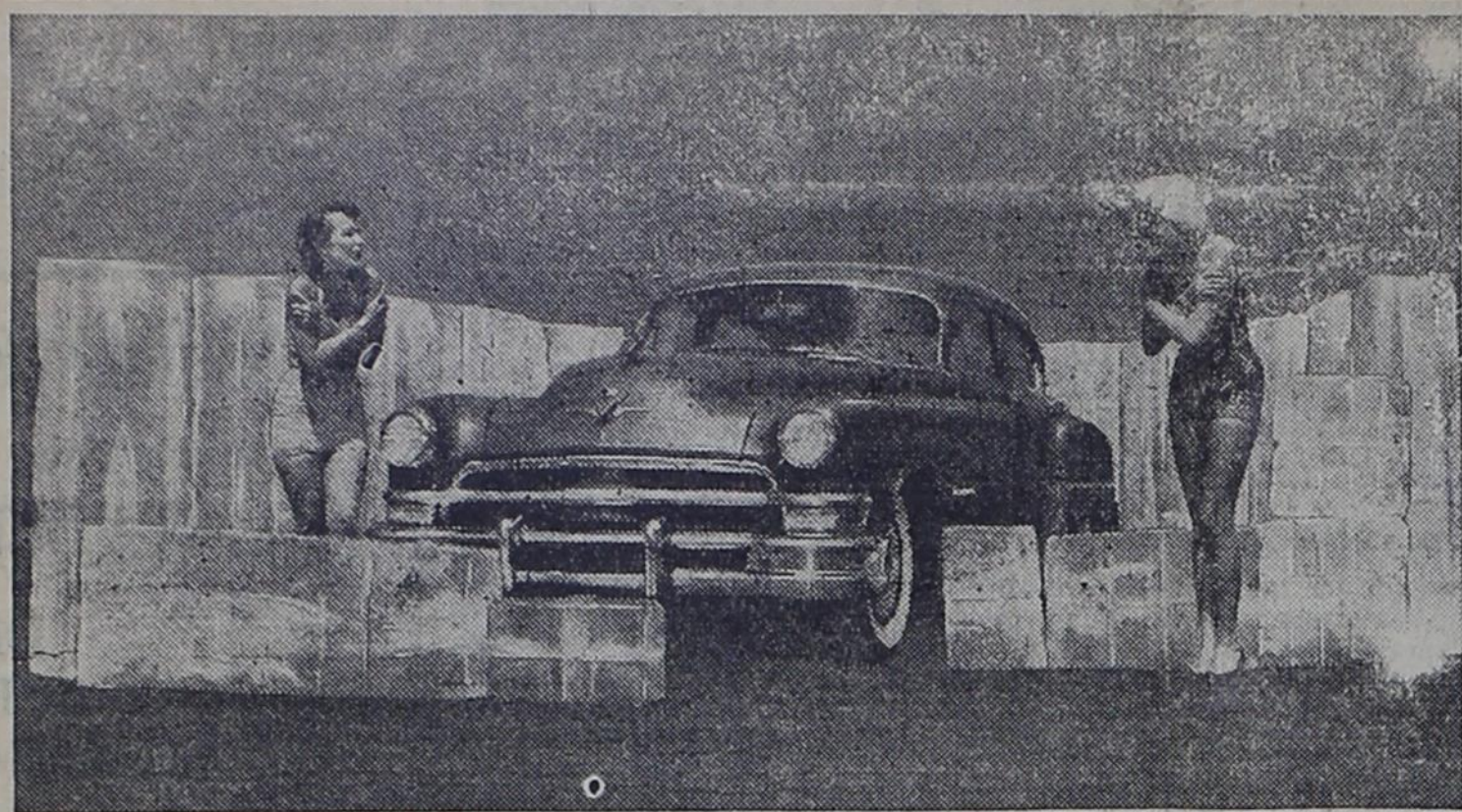
He married Cora Maude Barnes in Memphis on Sept. 13, 1903. Recently Mr. and Mrs. Humphries celebrated their golden wedding anniversary. Four children were born to them: Mrs. Beatrice Hutchinson of O'Brien; Mrs. Oleta Fitzgerald of Knox City; Barnie and R. E. Humphries of Wichita Falls.

His wife and four children survive him, as do four brothers and four sisters; Jim Humphries of Levelland, Joe Humphries of Odessa, and C. F. Humphries of Green Forest, Ark.; Mrs. Tex Tuggle of Gainesville, Mrs. Bill Barnett of Hugo, Okla., and Mrs. Lou Smith of Miami, Ariz.; 15 grandchildren and many nieces and nephews.

Mr. and Mrs. Bill Rippetoe and sons, Mike and Pat, of Arlington visited her parents, Mr. and Mrs. M. H. Dean, over the week end.

Drive carefully. The life you save may be your own.

TONS OF COLD PRODUCED BY CHRYSLER



The air conditioner in this Chrysler produces cold equivalent to melting the three tons of ice shown. When a car is a broiling 110 degrees inside, Chrysler's fast cool-down fresh-air system brings the temperature to the low 70's in four blocks. The unit, which is available in Chrysler New Yorker, New Yorker DeLuxe, and Imperial models, is the highest capacity system now in use.

4-H CLUB GIRLS NAME OFFICERS FOR YEAR

Miss Anna Lee Drechner, new Knox County agent, met with the frade school 4-H girls on September 16th. Officers were elected as follows: president, Sandra Brown; vice president, Sandra Beard; secretary, Linda Smith; treasurer, Linda King; reporter, Bobbie Nelson; song leader, Sharon Cypert.

The name selected for the club was "The 4 Leaf Clover Club" and the club song, "I'm Looking Over for a Four Leaf Clover."

See You in Church Sunday

TO MOTHER'S BEDSIDE

Mrs. Maribelle LaFrance and son of Midland were called to Seymour last week, due to the serious illness of Mrs. LaFrance's mother, Mrs. H. Blackburn. Mrs. LaFrance is well known at Goree, where she operated a beauty shop for several years. Her many friends regret to learn of her mother's condition, and all hope for a speedy recovery.

Mr. and Mrs. E. B. Littlefield and Mr. and Mrs. Gene Harrell were business visitors in Fort Worth last Tuesday and Wednesday.

Mrs. Joe Bill Pierce and children, Cindy and Johnny, of Midland were week end guests in the home of Mr. and Mrs. Jerry Kane.

Mr. and Mrs. Rhoades Allen and daughters attended the Texas Tech and A. & M. football game in Lubbock last Saturday afternoon.

Mr. and Mrs. Chan Hughes and son, Chan, attended the State Fair in Dallas during the week end and visited with relatives in Handley.

Joe David Tidwell of Crosbyton visited from Thursday until Sunday with his grandparents, Mr. and Mrs. S. B. Campsey, and Mr. and Mrs. Buck Tidwell.

Lee Bowden, a student in McMurry College in Abilene, was home over the week end with his parents, Mr. and Mrs. Levi Bowden.

Tommy Gage spent the week end here with his parents, Mr. and Mrs. Carl Gage. Tommy is attending McMurry College in Abilene.

Hilton Stubblefield, who is attending NTSC in Denton, spent the week end here with his parents, Mr. and Mrs. H. R. Stubblefield.

Mr. and Mrs. J. B. Scott and Jerry attende dthe A. & M. and Texas Tech football game in Lubbock last Saturday.

Gerald Morrow, who is attending McMurry College in Abilene, visited his mother, Mrs. Freddie Morrow, over the week end.

PEACH GROWING

The problems of growing peaches in Texas will get a thorough going over when top fruit specialists from over the nation convene with Texas' peach growers at College Station October 13 and 14.

An appearance by Dr. John H. Weinberger, senior agriculturalist, USDA, Fort Valley, Georgia, who developed and introduced new peach varieties suitable for Texas conditions will highlight the two-day session.

Peach growers as well as cotton growers, livestock producers and dairymen have their problems. This meeting, says John Hutchinson, extension horticulturist, is designed to answer the questions of Texas growers and pave the way for increased profits from the sale of peaches.

Texas boasted 12 million peach trees in 1910. Adverse conditions however, caused a sharp decline and in 1952 the state hit an all time low with 27 million trees.

Within the past six years Weinberger has introduced several new early maturing, yellow

skinned varieties. These new strains together with advanced cultural practices and improved methods of insect and disease control are again making peach growing a nattractive enterprise in the state Hutchinson says.

Another feature of the meeting, Hutchinson points out, will be a panel discussion led by peach marketing specialists. Experiment station horticulturists will report to the group on actual field performance tests of Coronet, Redcap, Hiland and many other recently introduced varieties.

Other topics for discussion are the trends in peach production, insect and disease control, new equipment and labor saving devices, Hutchinson adds.

Too Late to Classify

NOTICE OF SALE OF SEWER FARM BY CITY OF MUNDAY

Notice is hereby given that City of Munday will sell to highest and best bidder for cash approximately 28.6 acres of land, known as old sewer farm, lying in East part of town. Sealed bids will be accepted, and such bids may be left with City Secretary. The City reserves the right to reject any and all bids. Such bids must be filed with the City on or before November 1, 1953.

NOTICE OF BUDGET HEARING

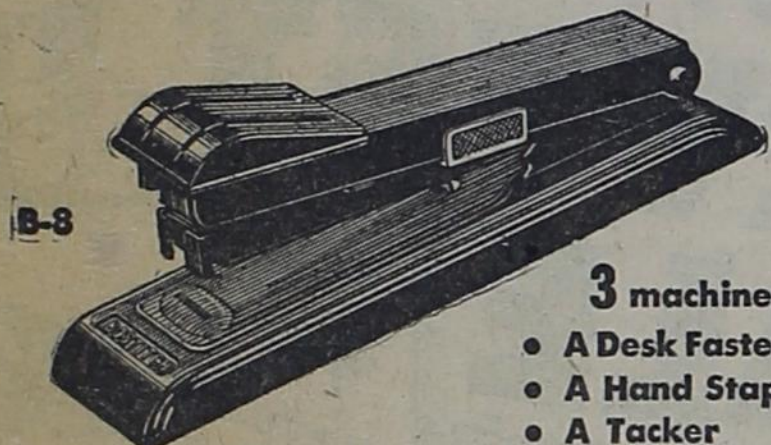
Notice is hereby given that a special meeting will be held at the Munday elementary school building at 7:30 p. m. Tuesday, October 27, 1953, for the purpose of hearing the budget for the Munday Public School System. All interested parties are cordially invited to attend.

LOST—Gold colored pep squad sweater October 9, between Munday Times and Kelsie's Cleaners. Finder please return to Munday Times. 1tp

FOR RENT—Cash rent 243 acres two miles from town, \$15.00 an acre. Cotton farm, good land. Write or call Carl A. Jungman, phone 2-2981, Vernon, Texas. 1tp

FOR SALE—Two pairs of small girls' cowboy boots, worn one day. Sizes 12½ and 6. Vaule, \$15. Will sell for \$6 and \$4.50. Call 2171, or see Pendergraft at Times Office. 1tp

For School and College BOSTITCH Personal Stapler



- 3 machines in 1
- A Desk Fastener
 - A Hand Stapler
 - A Tacker

Every Student should have one

- to . . . — ATTACH PAPERS SECURELY;
— FASTEN BOOK COVERINGS;
— BIND THEMES INTO COVERS;
— TACK UP PICTURES AND BANNERS;
— SEAL LUNCH BAGS;
— FOR HUNDREDS OF EVERY-DAY USES.

Easy to use on desk or in the hand. Compact to carry in bag or pocket. Built by Bostitch for years of use. A really good stapler, for only \$2.20

THE MUNDAY TIMES

BUY YOUR CAR FROM AN Ok. Chevrolet Dealer

- ★ 1950 Chevrolet 2-door
- ★ 1949 Chevrolet 4-door
- ★ 1950 Chevrolet ½-ton pickup
- ★ 1950 Suburban
- ★ 1949 Chevrolet ½-ton pickup

Buy you car where you can get COMPLETE SERVICE by your home town dealer!

★ FRANK TRAMMELL is back with us as our salesman. He invites his friends and customers to see him for their new and used car needs.

A COMPLETE LINE OF PARTS AND ACCESSORIES

Sharp Chevrolet Co.

Phone 2231

Munday, Texas

Worn tires and slippery roads don't mix!



GET NEW

GOODYEAR TIRES TODAY!

Now as low as

\$12.95

plus tax and your old tire 6.00 x 16

Famous Dependable MARATHON

With new Goodyears priced so low it's foolish to take chances driving on worn tires. Goodyear's famous saw-tooth tread is designed to give extra traction on wet roads. Goodyear's quality construction assures long dependable service. Get new Goodyear tires now.

Famous MARATHON \$19.85 TRUCK TIRES plus tax 6.00 x 16 6 ply rating

Other popular sizes priced proportionately low
6.50 x 16 6 ply rating \$24.45
7.00 x 16 6 ply rating \$30.35
7.50 x 16 6 ply rating \$35.10
7.20 x 20 8 ply rating \$39.00



Reeves Motor Co.

Dial 5631 Munday, Texas

Betty Crocker GLAMOUR CAKES



BETTY CROCKER CAKE MIXES

WHITE
DEVIL'S FOOD
HONEY SPICE
3 PKGS. ONLY **93c**

LAKE COUNTY CALIF. BARTLETT PEARS lb. **17½c**

SMALL SUGAR PUMPKIN lb. **9c**

NEW TEXAS JUICE ORANGES SACK **37c**

FRESH COLORADO CAULIFLOWER hd. **27c**

FANCY DELICIOUS CANADIAN APPLES lb. **17½c**

FRESH TOKAY GRAPES lb **12½c**

FRESH CURTIS MARSHMALLOWS lg. bag **15c**

BAKER'S COCOANUT 4 oz. box **15c**

HUNT'S HEAVY SYRUP Peaches 2 ½ SIZE CAN **27c**

NO COMSTOCK SLICED PIE WASTE APPLES No. 2 can **27c**

OUR GARDEN FAVORITE PEAS tall can **15c**

ADVANCE Shortening 3 LB. CART. **59c**

WHOLE BLUE TAG 2 SU. FANCY GR. BEANS tall can **25c**

SUNMAID NECTARS RAISINS box **19c**

STOCKTON CATSUP BOT. **15c**

LIBBY CHILI tall can **33c**

WE BROWNIE HAVE . . . PINEAPPLE UPSIDE DOWN MIXES BLUEBERRY MUFFIN

HORMEL Margarine lb **19c**

FRESH DRESSED FRYERS --- HENS --- FISH

ENDS and PIECES—Good Seasoning SLICED BACON lb. **29c**

WILSON LAUREL SLICED BACON lb **69c**

HORMEL ALL MEAT FRANKFURTERS lb. cello **49c**

LEAN and MEATY—END CUTS PORK CHOPS lb. **49c**

ROAST CHUCK U. S. GOOD BEEF LB. **29c**

★ COOL, COMFORTABLE SHOPPING

Atkeison's

FOOD STORE