





# Farm And Ranch News

By Herman Collier

## CATTLE SCABIES

Every few days we hear of a positive case of scabies being found in another county of Texas, Oklahoma or New Mexico.

The national effort toward complete eradication of scabies has been thwarted for quite a few years due to infestation appearing every year or so, usually involving an area comprised of portions of Texas, Oklahoma, Nebraska, Kansas, Colorado, and New Mexico.

Present infestation and exposure within this general area is more extensive than it has been for many years. The problem is being handled on a regional basis with close cooperation between states in combating this mutual problem.

A State-Federal regional headquarters has been established in Amarillo, Texas, to disseminate information to other states and to supervise and coordinate the work being done in Texas. Texas animal health officials and Federal animal health personnel, extension service personnel, practicing veterinarians, cattle industry organizations and producers are concentrating efforts to eliminate this threat to the industry which involves production as well as marketing cattle.

The condition known as "common cattle scab" is caused by parasitic mites of the pro-

topes variety. Psoroptic mites live in groups on the surface of the skin producing lesions that spread in all directions from the spot first affected.

The first lesions usually occur on the wither, over the back and around the root of the tail. The scab mite pricks the skin to obtain food and in so doing causes a slight inflammation, but this early stage of the disease is rarely detected. As the mites multiply, larger numbers of small wounds are made and are followed by intense itching and oozing of serum to the surface. Serum soon hardens into yellowish or grayish colored scabs which are frequently stained with blood. In the early stages the scab may be about the size of a pea but gradually increases in size. Some of the mites migrate to other parts of the body and start new lesions which expand until they cover large areas. As the disease advances, increasingly large areas show loss of hair and become covered with thick adherent scabs. The itching is severe and the animal is constantly irritated. In its effort to relieve the itching and irritation, the animal spends so much time licking, rubbing, and scratching that it has very little time for feeding; consequently, it loses weight, becomes weak and emaciated and occasionally dies from heavy infestations.

It is a good practice for owners to observe all cattle carefully at regular intervals for evidence of scabies. A location should be selected from which animals can be watched without disturbing them, looking for restlessness, scratching, rubbing, licking, excessive tail switching and rough hair coat. Texas statutes require that all animals in an infested lot be dipped twice in an approved manner and solution at ten to fourteen day intervals. All animals in exposed lots must be dipped once. All dipping must be accomplished under the supervision of a representative of the Texas Animal Health Commission. Spray dipping or box spraying is not approved for eradication purposes in Texas.

It has been estimated that losses may run as high as one dollar per head per day for infested animals on full feed.

Cattle scabies not only causes losses due to constant irritation, but the economic impact on movements of cattle from Texas to other states is severe when an outbreak occurs. In order to protect the livestock industry of the states of destination, the individual states impose dipping requirements for movement of animals from scabies infested areas that cost the producers and shippers an untold number of dollars. The Texas livestock industry cannot afford to live with cattle scabies. Every source of infestation must be located and completely eradicated.

These are the ones that really count.

The Hounds are in good shape injury-wise so far with Greg Clonts recovering from an ankle sprain in the Crowell game. We have had several colds and Bobby Reeves has about conquered a bout with the flu. We sure hope all the Hounds stay healthy for these next weeks as we make our bid for the District crown.

All of the teams in our district have fairly strong clubs and the Greyhounds will have to play well to best any of our opponents. I saw Wylie play over the holidays, and they have another strong ball club with all five starters returning from last year's team.

The thing the Greyhounds must do now is play good consistent basketball and take every game seriously. Because now a missed layup or a mistake on defense might cost a district championship.

Our district is again divided into halves with the first half winner playing the second half winner for the championship. The best way to play in that type of set up is to win both halves and forget the playoff!

Again this year, the Greyhounds will receive their star awards for each ballgame in district play. There are five ways a player may receive a star which is placed on the player's basketball cut outs. By playing an entire game with no turnovers, by pulling down ten or more rebounds, by scoring in double figures, by drawing an offensive foul, and by having five or more assists.

The players take a lot of pride in their basketballs and seeing how many stars they can put on them. It also sure keeps your statistician on his toes because if his game stats show only 4 assists or 9 rebounds the boys have a tendency to think he might have forgotten to put one down.

## School Calendar

Thursday, Jan. 6 Knox City Jr. High Tournament begins.  
Friday, Jan. 7 High School County FFA and 4-41 Livestock show begins. Owners of sheep and breeding swine will be absent.  
Saturday, Jan. 8 All Regional Band-40th Park. KC Jr. High Tournament ends.  
Monday, Jan. 10  
Tuesday, Jan. 11 High School Basketball-Raid here 5:30 p.m.  
Wednesday, Jan. 12  
Thursday, Jan. 13 Crowell Jr. High Tournament begins  
Friday, Jan. 14 Wylie High First Semester Ends  
Monday, Jan. 17 Teacher work-day-student holiday. FFA meeting.



## IN MORGAN HOME

Visiting with Mrs. Carl Morgan and Ethel Lovelace during the holidays were Mrs. Morgan's son and his wife, Mr. and Mrs. Jimmy Morgan, Teresa and Greg of Waco and her daughter, Dr. and Mrs. Jerry L. Gribble, Jay and David of Gaithersburg, Maryland. Dr. Gribble works in Washington, D.C.

Morgan's and Ethel Lovelace's brother and his wife, Mr. and Mrs. Barney Freeman and their son and his family, Mr. and Mrs. Gale Freeman, Sammy and Kevin, all of Hobbs, N.M.

Mr. and Mrs. Jimmy Skiles, Scotty and Kristi of Abilene were guests in the home of Mr. and Mrs. Doug Meinzer and Tyke and Mrs. Lewis Floyd during the Christmas holidays.

Church School ..... 10:00  
Morning Worship ..... 11:00  
Evening Worship ..... 6:00

Rev. B. J. Foster, Pastor

First United Methodist Church  
406 South Second St. Knox City, Texas 79529

## EVERYTHING AUTOMOTIVE

Gates Fan Belts, Hose, Pulleys and Light Duty Belts for Air Conditioners

Fram and Hastings Oil Filters Air Bath Filters.

PISTON RINGS, GASKETS, AND INSERTS FOR ALL MOTORS.

Monroe Shock Absorbers and Load Levelers.

We also carry a complete line of TRACTOR PARTS such as Pistons, Rings, Inserts, Bearings and Gaskets.

## OWENS AUTO SUPPLY

Central Avenue Phone 658-3541

When your water system lets you down...



LYNN ELECTRIC MOTOR CO.  
Knox City Phone 658-4661



## Coaches' Comments

BY JERRY LOWREY

This week signals the beginning of District play for the Greyhounds. We take on Aspermont first and then travel to Roscoe Friday night. These are the games we've been preparing for all year because

these are the ones that really count.

The Hounds are in good shape injury-wise so far with Greg Clonts recovering from an ankle sprain in the Crowell game. We have had several colds and Bobby Reeves has about conquered a bout with the flu. We sure hope all the Hounds stay healthy for these next weeks as we make our bid for the District crown.

All of the teams in our district have fairly strong clubs and the Greyhounds will have to play well to best any of our opponents. I saw Wylie play over the holidays, and they have another strong ball club with all five starters returning from last year's team.

The thing the Greyhounds must do now is play good consistent basketball and take every game seriously. Because now a missed layup or a mistake on defense might cost a district championship.

Our district is again divided into halves with the first half winner playing the second half winner for the championship. The best way to play in that type of set up is to win both halves and forget the playoff!

Again this year, the Greyhounds will receive their star awards for each ballgame in district play. There are five ways a player may receive a star which is placed on the player's basketball cut outs. By playing an entire game with no turnovers, by pulling down ten or more rebounds, by scoring in double figures, by drawing an offensive foul, and by having five or more assists.

The players take a lot of pride in their basketballs and seeing how many stars they can put on them. It also sure keeps your statistician on his toes because if his game stats show only 4 assists or 9 rebounds the boys have a tendency to think he might have forgotten to put one down.

## SS News

id a very enas holiday. dy to get right line of school. ll be preparing tests that are week.

ys, the Hound- ry hard fought well.

## SS News

8:30 Monday at KCHS be- r a ten day y. From the anta was pre- ne.

embers of the mittee will be- nior Play to spring.

ox City Tour- ar 16, 17, and ia Lewis and named to the team.

-4-1 Livestock in Wednesday. w will begin y. Jan Guinn, westmont with r the title of A Sweetheart. and all of the ens who have ow.

## Sophomore News

By MARTHA JONES

Christmas holidays ended for all the Sophomores at 8:30 Monday morning when classes took up where they left off. Most of the kids reported having a fantastic time—the days were short, but the nights were long! In the weird presents department, Rusty Trimuar and Ricky Hacker won this Christmas. They both got haircuts!

The Sophomore Class had a party December 23 at Debbie Bishop's house in Rochester. I warn you—don't try to find Debbie's house at night if you've never been there. In other words, some of us got to the party, and some of us didn't!!!

## Freshman Class News

By STACY ANGLE

Everyone came back to school Monday morning after a nice, long Christmas holiday. Several students were anxious for classes to start back and others could hardly stand for them to begin again.

In English, the Freshman girls are finishing the novel A Tale of Two Cities and are working on their projects which are due by mid-term.

## YOUR BILLS ON 'ICE'



slating on thin ice. The surest and the safest way we know ching your debt free goal is with a savings account. An savings account with your regular deposits can make you big against all of your money woes everytime. Visit our and open an account today.

## CITIZENS STATE BANK

MEMBER F.D.I.C. — INSURED TO \$20,000  
KNOX CITY, TEXAS

## Lowrey's

JANUARY

Clearance

sale

Begins Friday 8:30 a.m.

Store Will Be Closed Thursday



# M SYSTEM

Your FRIENDLY  
SUPER MARKETS

KNOX CITY

SPECIALS START THURS.  
JAN. 6th THRU SAT. JAN. 8th.



## PRODUCE SPECIALS

- TEXAS ORANGES 5lb. BAG 39¢
- CALIFORNIA LETTUCE head 29¢
- U.S. NO. 1 RUSSET POTATOES 5lb. BAG 69¢
- SWISS RED GRAPEFRUIT 3lb. 10¢
- TEXAS CABBAGE 1lb. 7¢

# HERE IS WHERE THE FOOD BARGAINS ARE



"M" SYSTEM GRADE A HOMO SWEET

MILK 53¢

GLADIOLA FLOUR 5lb. BAG 49¢

MORTON Frozen

DINNERS 2 For 79¢



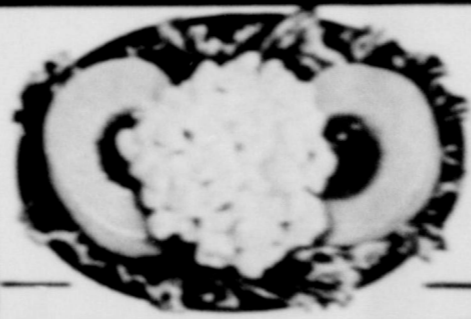
GERBER BABY FOOD 10¢

OAK FARMS WHIPPING CREAM HALF PINT 19¢

Large Selection New Records

DEL MONTE TUNA CAN 39¢

KRAFT MIRACLE WHIP SALAD DRESSING 4oz. 49¢



OAK FARMS COTTAGE CHEESE 1-1/2 Cans 29¢

DOUBLE S & H GREENS WEDNESDAY With The Purchase Of \$2.50 Or More

ZEE BATHROOM TISSUE 4 Roll Pack 39¢

SWIFT'S PREM CAN 59¢

DEL MONTE Cut Green BEANS 4 CANS 89¢

ICE CREAM OAK FARMS HALF GAL. 79¢

500+ NOTEBOOK FILLER 79¢

Diamond SHORTENING 3lb. CAN 69¢

KIMBELL PEANUT BUTTER 1lb. JAR 59¢

LISTERINE 4oz. BOTTLE 69¢

Crest TOOTH PASTE 4oz. TUBE 59¢

KIMBELL COFFEE 1lb. CAN 79¢



LIPTON INSTANT TEA 3oz. JAR 98¢

## meat specials



BEEF CUTLETS 1lb. 69¢

CHICKEN BREAST 1lb. 59¢

ALL MEAT BOLOGNA 1lb. 49¢

CALF LIVER 1lb. 39¢





# Buy the Food Bargain-Beat Inflation

W-P  
**BLEACH**  
1/2 Gallon

**29¢**



Fireside  
**COOKIES** 1/2 Lb. Pkg.  
Vanilla-Lemon-Choc. Creme

**39¢**

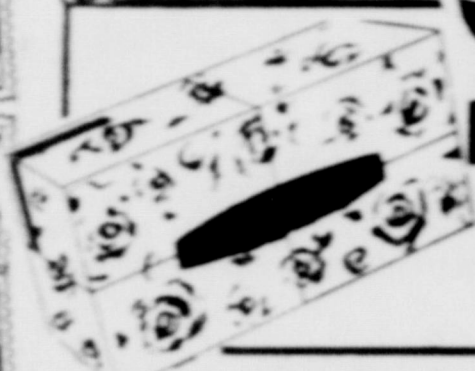


Danka Danish  
**TOAST-EM** 29¢



WHITE SWAN  
**COFFEE**  
Pound

**79¢**



Chiffon  
**Facial Tissue**  
2-Ply  
3 for **89¢**

WHITE SWAN  
**OLEO** 39¢



**BISCUITS**  
3 Reg. Cans

Sweet Sue  
**Noodles & Chicken** 49¢  
24 oz.

GLADIOLA  
**FLOUR** 49¢  
5-Lb. Bag



ZEE  
**BATHROOM TISSUE**  
2 Roll

Wilson  
**Tamales** 29¢  
16 oz. JAR



ARMOUR'S STAR  
**BACON**  
Pound Pkg

**69¢**



Foremost  
**Ice Milk** 65¢  
1/2 gal.



He'll love the taste  
You'll love the convenience

**7¢**



NEW Diet Delight  
Sliced or Halves  
**PEACHES**  
3 No. 2 1/2 Cans **98¢**

Always Fresh!  
OAK FARMS  
HOMO MILK  
Always Good!  
Milk 1/2 Gal. **53¢**



**59¢**  
**Ham Slices**

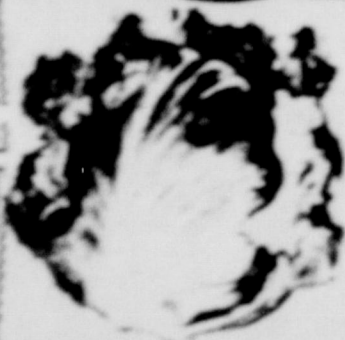


VINE RIPE  
**TOMATOES** 25¢  
Cello Carton

WHITE SWAN  
**SPINACH** 89¢  
5 303 Cans



GOOD BEEF  
**CHUCK ROAST** 70¢  
Pound



CALIFORNIA  
**LETTUCE** 25¢  
Large Heads  
Each



SHORTENING  
**JEWEL** 69¢  
3-Lb. Can

LEAN  
**PORK STEAK** 69¢

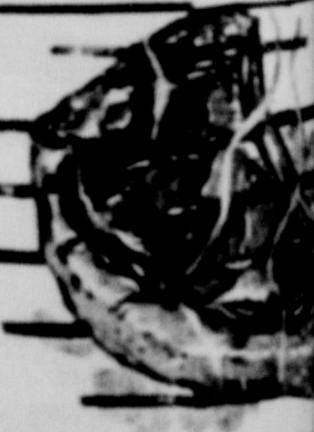


Kounty Kist  
**CORN** \$1.00  
5 12 oz. Cans



BAMA STRAWBERRY  
**PRESERVES** 49¢  
18-Oz. Tumbler

USDA Graded Beef  
**FAMILY STEAK** 89¢



## BOB'S SUPER S