

Bloodmobile Here Today — 1:30 - 6 p.m.



BANK PRESIDENT ABE TURNER and Herman Marcus plant manager Amelia Perry prepare to make the silver-dollar payroll to H-M employees as the first H-M payroll for Haskell County. (Photo by Don Comedy)

Gov. Outlines Emergency Plan

Governor Dolph Briscoe has outlined a 90-day emergency program for energy conservation in both the public and private sectors, and called on all Texans "to save energy to save jobs."

The Governor, who ordered specific energy-saving steps for State government, said that voluntary measures by private citizens and business are absolutely essential in two critical areas: The use of automobiles and energy consumption in homes and buildings.

He asked that all Texans reduce their gasoline consumption by 20 percent and recommended:

- Reduced speed limits to 55 mph for all vehicles.
- Reduction of all unessential automobile trips.
- Use of car pools to work and to school.

Similar fuel reductions can be realized in homes and office buildings:

- By turning out all unnecessary lights.
- By turning off display lights and advertising signs after midnight.
- And most important, by setting thermostats at 68 degrees to heat and 78 degrees to cool.

The Governor ordered all State agencies to take the following steps:

- Reduce the use of motor fuel by state agencies by 25 percent, including fuel used by state airplanes.
- Reduce speed limits to 55 mph for all state vehicles except those involved in emergency operations.
- Set thermostats in all state buildings throughout Texas (except schools and hospitals) at 65 degrees for heating and 78 degrees for cooling, in areas of high humidity, the cooling setting will be 75.
- Begin a car-pooling plan for state employees and provide parking incentives for those who participate.
- Readjust cleanup schedule in state offices so that only one floor will be lighted at a time and all offices will be dark after midnight.
- Purchase smallest cars possible for state use.
- Reduce the use of fuel by the National Guard by 25 percent.

For Public Schools the Texas Education Agency will coordinate an energy saving program in the 1,133 school districts. The goal is to reduce energy consumption by 15 percent.

Each school district is to file a plan with the TEA which includes the following minimum steps:

- Set all thermostats at 68 degrees during cold weather and at 78 degrees during warm weather, with the 75 degree variation for areas of high humidity.
- Reduce the setting of all thermostats to 65 degrees a half hour prior to the departure of students from a building and reset the thermostats to 68 degrees one hour prior to the arrival of students in the morning.
- Schedule, for the months of January, February and March, classes to end at 2:30 p. m. for all students.
- Schedule all student activities, including athletic events, in the afternoons during the months of January, February and March.
- Turn off all unnecessary lighting.
- Close off and reduce heat to the minimum in all portions of buildings not necessary to the instructional program.
- Where possible, plan maintenance and custodial work to be done during the day rather than at night.
- Prepare a plan that will allow that district, during extreme cold weather, to either close the school during that period or start up the school day at mid-morning.

It is conservatively estimated that the implementation of these plans during January, February and March of 1974 will result in a total saving of over one billion cubic feet of gas within the public school rooms alone — enough gas to heat 20,000 Texas homes for one year.

Saturday's Drawing Pulls Record Crowds To The Courthouse Square

The third — and final — drawing for the main pulled a record number of area shoppers to the courthouse square Saturday afternoon.

Les Bundy won the \$150 award on a ticket from Apparel, with Jeanette Bell winning the \$100.00 ticket from J&R Radi-Shop.

Five \$50.00 winners were Grady Roberts on a ticket Parker's Supermarket; Summers on a ticket Lane Apparel; Mrs. E. C. of Rule on a ticket not named; Felton Everett on a ticket from Poque Grocery; and C. D. Pennington on a ticket from M-System Super-Shop.

Total of 271,000 tickets were sold among 75 merchants participated in the Chamber of Commerce sponsored

Bloodmobile To Be Here Today

The Bloodmobile van will be in Haskell today, Thursday, from 1:30 to 6 p. m. in the Community Room at Haskell National Bank. All Haskell County residents are urged to turn out and donate.

The permissible age for donating blood has been lowered to 17 by the American Red Cross and the American Association of Blood Banks in response to numerous requests from younger people to give. It is hoped that this policy will increase the interest of youth in blood donations.

The new policy, adopted jointly by the ARC Blood Program and the AAB, is in accordance with the national blood policy announced last summer by Caspar Weinberger, Secretary of the Department of Health, Education and Welfare, which is aimed at persuading more than the present three percent of the nation's population to give blood.

The new age ruling, which lowers the permissible age for blood donors from 18 to 17, will apply throughout the nation unless contrary to local law. Consent of parent or guardian is required unless the volunteer donor is married, self-supportive or in the Armed Forces. Otherwise, the same health rules for eligibility to donate blood apply.

Dr. Tibor J. Greenwalt, national medical director of the ARC Blood Program, noted that the decision to lower the donor age to 17 was based on three reasons: (1) to make young people, especially those still attending high school, aware of the tremendous national need for more volunteer blood donors; (2) there are no medical contraindications to prohibit 17-year-olds giving blood; (3) some blood banks are already collecting blood from 16 and 17 year old donors.

ADULT NIGHT CLASSES
The Haskell C.A.P. Center is having adult night classes on Tuesday and Thursday each week, from 7:30 to 9:30 p. m. Anyone interested in getting their G.E.D. or in taking a refresher course, is invited to enroll in the classes.

Christmas Comet-Greatest Show Above Earth

A holiday visitor called Comet Kohoutek will rush in from space and whip around the sun between Christmas and New Year's Day and—preceded by its tail—pass within 75 million miles of the earth in what may be the most spectacular comet show of the century.

It will "materialize like the Star of Bethlehem around Christmas." Known as Comet Kohoutek for the Czechoslovakian astronomer who discovered it nine months ago, the object could be as bright as the full moon. Its head will stretch across 60 million miles of space. Its tail will extend across one-sixth of the night-time sky.

Don't get the idea that the comet will be backing up when it passes the earth. The tail-before-the-horse business is caused by the solar "wind"—a gas that expands out of the sun at about 600 miles per second and streaks out the tail behind the comet when its approaching.

Haskell County Accident Report

The Texas Highway Patrol investigated five accidents on rural highways in Haskell County during the month of November, according to Sergeant Frank Jirek, Highway Patrol supervisor of this area.

These crashes resulted in no persons killed and three persons injured.

The rural traffic accident summary for this county during the first 11 months of 1973 shows a total of 75 accidents resulting in two persons killed and 47 persons injured.

The rural traffic accident summary for the 60 counties of the Lubbock Department of Public Safety Region for November, 1973, shows a total of 603 accidents resulting in 25 persons killed and 349 persons injured as compared to November, 1972, with 504 accidents resulting in 14 persons killed and 295 persons injured. This was 22 more accidents, 11 more fatalities, and 84 more injured in 1973 at the same period of time.

The 25 traffic deaths for the month of November, 1973, occurred in the following counties: three each in Oldham, Clay and Lubbock; two each in Floyd, Hale, Lamb, Wise; and one each in Garza, Stonewall, Young, Linscomb, Farmer, Randall, Swisher, and Wilbarger.

the sun and in front of it when it's leaving.

Kohoutek will be traveling about 49 miles a second when it is closest to the earth in mid-January. When it gets into the evening sky from the first week in January to the end of February, that's when most people will be seeing it.

And that's when the tail will be swinging around to a position preceding the head — the same as your coat blows out in front of you when the wind is at your back.

The astronomical world is exuding an air of optimism that Kohoutek will be the comet spectacular of the 20th century. It was very much brighter than most comets at the same distance when it was discovered last March 7.

Astronomers were further alerted to a potentially spectacular event when it was found that Kohoutek will pass only 13 million miles from the sun—that's less than the solar diameter—thus raising the possibility that the intense heat will cause an expansion that will dramatically heighten the comet's brightness.

Kohoutek will be visible from mid-November to late February over the entire world except for the polar regions. At the start, it will be seen rising about three hours before the

sun, a bit south of due east. It gets brighter as it nears the sun, and even in the dawn twilight of an hour before sunrise in mid-December, it should be visible.

About 6 a. m. EST on Dec. 28, it will rush past the sun at perihelion, the closest point, at 250,000 miles an hour—79 miles a second. During the following weeks, it will be seen in the western sky after sunset.

Haley's comet of 1910, through whose tail the earth was supposed to pass, caused some jitters in some circles. A group of miners wouldn't go into the mine because they wanted to be above ground when the world ended.

When the time came, it was a beautiful sight, and that was all.

Kohoutek has stirred astronomers and space scientists around the world. NASA sent a special ultraviolet camera to Skylab when the third space crew blasted off for its orbiting laboratory. The space agency says it will observe and measure the comet with instruments in Mariner 10, and other measurements will be taken by rockets, balloons and airplanes and with ground-based probes.

NASA had considered sending a rocket to intercept the comet, but decided it did not have time to prepare the mission.

Scientists have explained that passing so close to the sun as Comet Kohoutek will, can give it a heat shock. Like what happens to a cold glass when you pour hot water in. This could cause the nucleus to shatter into two or more pieces. Then we'd have two comets leaving the sun, with slightly different paths and histories.

After the intense heating, it should be more spectacular during January than it is in December. A comet is not burning. It gets its light from the sun, the way our planets do. The nucleus, till frozen, reflects sunlight. The gases that are eliminated from the nucleus expand into what is called the coma. Nucleus and coma together are the head of the comet. The head can be 100,000 miles across.

The head reflects light. The gas expansion liberates the dust particles, and the amount of solid dust exposed reflects more sunlight than the nucleus, giving a bigger screen.

Also the gas can react to the ultraviolet light coming from

the sun by fluorescing—translating it into visible light.

The most optimistic prediction is that Kohoutek will be bright enough to be visible in the daytime, even next to the sun.

Meeting Of Council

A specially called meeting of the City Council Thursday evening, Dec. 20, bids were held on a single-pedestal storage tank for the City Hall.

Attending the meeting were Belton Duncan, Councilman Guy Kennedy, Loraine Brown, Jimmy Browning and Anderson, Water Supt. Collins, city secretary Dulaney, and Billy

Chidwell and Iron of Tulsa, who bid \$132,460.00, and a 530 day completion, Pittsburg-Demolition Steel bid \$182,950.00 and a 530 day completion.

Chidwell of Chicago Bridge & Iron was accepted by the Council. The structure will be placed on the corner of North 14th and North Avenue M.

The Council also passed two resolutions concerning the City application for Federal grant for improvement.

WEATHER SUMMARY
by Sam Herren
December 18-26

TEMPERATURE	18
77	20
15	
RAINFALL	19
of Snow	22.79
total to date	28.40



HERMAN MARCUS EMPLOYEES WERE PAID WITH SILVER DOLLARS on the first H-M payroll in Haskell County. Left to right are bank officials R. C. Couch Jr., Royce Williams, R. W. Herren, Royce Adkins and Abe Turner. The plant is in full production, and shipped the first shipment to Dallas last week. (Photo by Don Comedy)

Farmcast

A Weekly Report Of Agri-Business News

Compiled From Sources
Of The Texas Department of Agriculture
John C. White, Commissioner

100,000 Bale Decline . . . Cit- the Dec. 1 cotton crop estimate
rus Projection Unchanged . . . from the Texas Crop and Live-
Milk Production Increases. . . stock Reporting Service. Even
A 100,000-bale decline in Tex- so, it is still the largest crop
as 1973 cotton crop is noted in since 1961.

The Dec. 1 estimate is 4,700,000 bales; the 1961 crop turned out to be 4,754,000 bales. Yield is expected to average 410 lbs. of lint per acre compared with 408 lbs. in 1972. Harvest acres are estimated at 5,500,000 compared with 5,000,000 acres in 1972.

Weather conditions on the High Plains have been excellent for harvest of the crop there. Some cotton has yet to be harvested in the Rio Grande Valley. Many farmers there have given up hope of salvaging the crop and are shredding stalks and plowing whenever field conditions permit. Some areas in the Blacklands were also continuing to have weather

problems in harvesting. Yield and production prospects on the High Plains have been and continue to be excellent. Grade staple and micronaire are considered unusually good.

The Nov. 1 cotton estimate was 4,800,000 bales for Texas.

Citrus prospects in the Lower Rio Grande Valley continue unchanged from a month ago. The 1973-74 citrus crop for the state is now forecast at 20,500,000 boxes. This is 7 per cent above the production of last season.

Grapefruit production is expected to total 12,500,000 boxes, 6 per cent above the 11,800,000 boxes produced last season. Early and mid-season oranges are forecast at 5,400,000 boxes, 8 per cent above the 5,000,000 boxes produced last year.

Valencia oranges are forecast at 2,600,000 boxes, an increase of 8 per cent over last year's 2,400,000 boxes.

Processing fruit increased during the month as processing plants started operating on a volume basis.

Trees remain in excellent condition and soil moisture is adequate.

Nationwide, a record crop of 68,000,000 boxes of grapefruit

is expected for the 1973-74 season.

November milk production in Texas is one per cent above a year ago but one per cent below the previous month's production which continue to have dairy associations worried over the prospects of the future milk supplies.

Milk production throughout the nation is four per cent under a year ago. Milk production in Texas averaged 740 lbs. per cow; nationwide, the average production per cow was 765 lbs.

Texas wheat pasture conditions continue to lag behind a year ago. Continued dry weather has hindered grazing as the roots have not yet set. There is increased reporting of greenbugs and other insects damaging fields.

Seeding of wheat is complete in the state. But even though planting is ahead of last year, growing conditions have been less than ideal, resulting in the lag in condition.

More than a third of the crop in Kansas, Oklahoma, and Texas had sufficient forage to support grazing, but only two-thirds of that acreage is being utilized.

New Uniform Meat Labels for Buyers Convenience Soon To Be Required

COLLEGE STATION — "How about a ribeye steak for dinner tonight? Or would you prefer a Delmonico steak, fillet steak or beauty steak?"

Actually, they're all the same and that's added to the shoppers' confusion over the years.

In the next few months, though, consumers should find some relief in shopping for meat, because grocers and meat markets are joining together in adopting new Uniform Retail Meat Identity Standards, according to Dr. Frank Orts, meats specialist for the Texas Agricultural Extension Service.

The new standards for retail meat cuts were prepared by the National Livestock and Meat Board, which consists of industry representatives from throughout the country, in cooperation with the meat industry and several government agencies.

"With this new system for labeling meat, the total names for retail cuts have been reduced from about 1,000 to 325,"

points out Orts. "Most of the fancy names for cuts have been dropped. In the case of the ribeye steak, the names of 'Delmonico, fillet and beauty' will no longer be used."

Why all this? According to the Texas A&M University System specialist, the new labeling system should help shoppers who move from one part of the country to another, and even within cities where names of meat cuts vary.

The new labels will feature three main parts—the name of the animal specie from which the meat came (beef, pork, lamb, veal) the primal or subprimal cut (rib, shoulder, loin), and the recommended name of the particular cut (steak, roast). A Porterhouse steak, for example, would be labeled "Beef Loin Porterhouse Steak."

"Grocers and meat retailers will still have the option to include some of the 'fancy' names of cuts on the labels if the names are widely used and shoppers are accustomed to

them. However, the recommended name must be on the price-weight points out Orts.

In conjunction with standards, ground meat will also get an even such and the label will the percentage of lean cent to meet government dards.

"If the ground meat comes from a particular of an animal, such as round, chuck or sirloin, can be labeled 'Ground Round, Ground Beef or Ground Beef Sirloin,'" the per cent of lean noted," explains Orts.

The new labeling would eliminate such as "Ground Round, Ground and Ground Sirloin."

Orts feels that the new dard labels system will meat shopping just a easier and less confusing for homemakers.

FILING CABINETS, large small; also check files for end of the year records, guard valuable papers. Free Press.

Pre-Inventory SALE

- MEN'S DRESS SHIRTS 1-3 off
 - Group Men's QUILTED JACKETS . 1-3 off
 - Men's Goose Down JACKETS . . . 1-4 off
 - Men's Western Shirts, H-C & Tem-Tex . 1-4 off
 - Group Men's Polyester KNIT PANTS . 1-2 off
 - Group LADIES' PANTS 1-3 off
 - Group LADIES' PANTS 1-2 off
- NEW SHIPMENT . . . Wrangler Stay Prest Denims, Student Sta-Prest Denim Levi's, Insulated Coveralls.

Wheatley's Western Wear
HASKELL

Haskell County History

60 YEARS AGO
Dec. 27, 1913

W. C. Overton of Tennessee, who was in this city last week, has returned to his home.

Mrs. J. P. Wheatley and Mrs. C. H. Massey are spending the holidays at Glen Rose.

Allen Greer left Saturday night for Malakoff to spend the holidays with his grandparents.

Lee Killingsworth came in from Dallas Saturday, to spend the holidays with the home folks.

J. E. Ward of Goree was in this city Thursday. He left on the evening train for a visit to friends at Cisco.

Mrs. Aubrey Cox is visiting in Wichita Falls.

T. J. Glasscock of San Antonio, came in Wednesday to visit his father, B. A. Glasscock, and sisters, Mrs. Tom Brooks and Mrs. W. E. Dickson.

Mrs. Cosselett has returned from Colorado City where she was called some time ago as nurse in a sanatorium. She will spend the holidays here.

Mr. and Mrs. George Parrott of Throckmorton took the train here Saturday for Detroit, Tex. Mrs. J. S. Blacksher also came via Haskell on her way to Young County.

40 YEARS AGO
Dec. 28, 1933

Mr. and Mrs. Raymond Taylor of Wichita Falls spent the weekend here with their parents, Mr. and Mrs. Joe A. Jones, returning home Monday.

Mr. and Mrs. J. C. Chrisman of Oberlin, La., spent the Christmas holidays with their daughter, Mr. and Mrs. Bert Welsh and family.

John L. McCollum of Washington, D. C. visited with his parents, Mr. and Mrs. N. I. McCollum and family over the holidays.

Miss Clara Cliff of Dallas is visiting her parents, Mr. and Mrs. Bruce Cliff during the holidays.

Mrs. J. H. Morris and daughter, Francis, of Spur, spent Christmas with her sister, Mr. and Mrs. T. J. Arbuckle and family.

Miss Maybelle Taylor of Albany spent the holidays with her parents, Dr. and Mrs. L. F. Taylor.

Mrs. W. M. Reid is visiting with relatives at Sulphur Springs for a few days.

Mr. and Mrs. Virgil Reynolds left Sunday for Austin to visit with her parents, Hon. Bruce W. Bryant and family.

Mr. and Mrs. Arthur Edwards had as their guests during the holidays, Mrs. Edwards' mother and father, Mr. and Mrs. F. M. Mott; her brother, Otto, and her sister, Mrs. Frank Tabor and her daughter, Marylin, all of San Angelo.

30 YEARS AGO
Dec. 31, 1943

Holiday guests in the home of Dr. and Mrs. L. F. Taylor were Mr. and Mrs. Geo. Henshaw and children; Mr. and Mrs. Tom French and Nancy of Ft. Worth; Cadet Tommy French of Ft. Sumner, N. M.; Mr. and Mrs. W. H. Carothers of Rochester and L. and Mrs. Bailey E. Taylor of Phoenix, Ariz.

Mr. and Mrs. M. C. Fields, M. C. and Madlin Hunt of Dallas and Mr. and Mrs. George Hunt of San Angelo spent the holidays visiting with Mr. and Mrs. Courtney Hunt, Mrs. C. D. Grissom and Mr. and Mrs. J. V. Hudson.

Ideal Christmas gift for farmers and ranchers of this section came during the weekend in the form of slow, soaking rains which brought almost three-quarters an inch of mois-

Year End Clearance



POLYESTER DOUBLE KNIT

- JACQUARDS
- PRINTS
- SOLIDS

Reg. \$3.98 yd.

2.98 YD.

Lois' Fabric Outlet
South of Haskell on Stamford Highway

ABILENE SAVINGS' SEVEN SAVINGS PLANS

TYPE OF SAVINGS PLAN	ANNUAL RATE
4-YEAR CERTIFICATE \$5,000 MINIMUM	7 1/2%
30-MONTH CERTIFICATE \$1,000 MINIMUM	6 3/4%
1-YEAR CERTIFICATE \$5,000 MINIMUM	6 1/2%
1-YEAR CERTIFICATE \$1,000 MINIMUM	6 1/4%
90-DAY CERTIFICATE \$1,000 MINIMUM	5 3/4%
VIP 90-DAY PASSBOOK \$1,000 MINIMUM	5 1/2%
PASSBOOK NO MINIMUM	5 1/4%

BE SURE TO ASK ABOUT HIGHER RATES ON CERTIFICATES OF DEPOSIT OVER \$100,000 AND OVER

A substantial interest penalty is required for early withdrawal of certificate accounts.

The Big Country's largest savings and loan offers seven different ways to help your savings grow! Select the plan—or combination of plans—that best suits your goals. Start 1974 at Abilene Savings, where money makes money for you!

Abilene Savings

• Cedar at 4th • River Oaks • Edgewood • Westgate • 116 Commercial/Coleman



Pre-Inventory Sale CLEARANCE

EVERYTHING IN OUR LARGE STOCK ON SALE!

Value	Item	Price
100—\$99.95 Values	WOVEN SUITS . . .	\$49.95
50—\$69.95 Values	Woven Sport COATS . . .	\$34.95
200 Pair \$25.00 Values	WOVEN SLACKS . . .	\$12.95
100—\$110.00 to \$125.00 Values	KNIT SUITS	\$94.95
100—\$75.00 to \$89.95 Values	Knit Sport COATS . . .	\$64.95
50—\$69.95 Values	Knit Sport COATS . . .	\$55.95
25—\$49.95 Values	Knit Sport COATS . . .	\$35.95
Jeans, Casual and Dress Shirts, P. J. Gloves . . . All at Greatly Reduced Prices.		

Value	Item	Price
1 Lot—Regular \$35.95	Corduroy Sport Coats . . .	\$25.95
All \$99.95 to \$125.00	SUITS	\$88.00
200—Values Reg. \$32.50	KNIT SLACKS	\$24.00
\$25.00 Values, Now	ALL KNIT SLACKS . . .	20% off
Reg. Price \$21.95	1,000 PAIR SHOES . . .	\$17.95
1 Lot \$21.95 Values	1 Lot All Weather and Heavy COATS & JACKETS	1/2 Price
All Others	1 LOT SWEATERS	1/2 Price
All Others	Grab Bag Lot of TONY LAMA BOOTS	\$38.00
Values to \$69.95		

Come to Lane Apparel and Get Yourself A Real Bargain!

Lane Apparel For Men

bell, Comedy Vows Read

Janine Isbell became Mrs. Don Comedy in a ceremony read by O. Abbott, pastor, Saturday, Dec. 22, at the Creek United Methodist Church. The altar was decorated with an archway of white flowers interspersed with candelabra holding white flowers, and flanked by poinsettias. The Livestock Center arch, decorated by the couple during the ceremony.

Given in marriage by her parents, the bride chose a carpet-length gown fashioned with high necklines bordered with white mirlam and Cluny lace. The lace bodice was designed with a high standing lace neckline and a high rise waist, with bouffant shepherdess sleeves gathered at the wrist to a wide Cluny lace cuff. Her circle, carpet-length skirt was defined at the waist with a satin ribbon, and streamers fell to the floor at center skirt front. Her double chapel length mantilla veil was completely edged in a wide band of Cluny lace.

Waller Overton of Paint Creek served the groom as best man, and groomsmen were Danny Isbell of Abilene, brother of the bride, and Joseph Thielen of Haskell. Ushers were Greg Talkington of Lafayette, La., and Joe Mickler, cousin of the bride, of Paint Creek. Rob Mickler, cousin of the bride, was ringbearer.



MRS. DON COMEDY
... former's Jeannine Isbell

RUSS AGRICULTURE FLYING

Aerial Spraying

Would like to Wish the Community A Happy Holiday Season

Russ and Jo Matthews

Call 864-7035

South Avenue P and 7th Street
Haskell, Texas

INSURANCE

Automobile - Fire - Life



and Casualty

urrh Lane Agency

510 North First — Phone 864-3216

SHUGART COUPON

M-SYSTEM
112 North Ave. D
THURS., JAN. 3



9
WALLET SIZE
COLOR PORTRAITS
99¢



Extra Charge for GROUPS

SEE US NOW FOR New Higher Savings Rates

ANNUAL RATE ANNUAL YIELD *

SS BOOKS	5.25%	5.39%
Effective January 1, 1974		
Day Notice Certificate	5.75%	5.92%
\$500.00 Minimum		
Month Certificate	6.25%	6.45%
\$1,000 Minimum		
Month Certificate	6.50%	6.72%
\$5,000.00 Minimum		
Month Certificate	6.50%	6.72%
\$1,000 Minimum		
Month Certificate	6.75%	6.98%
\$5,000.00 Minimum		
Month Certificate	7.50%	7.79%
\$5,000.00 Minimum		

A Substantial Interest Penalty is Required for Early Withdrawal

*Where Interest is Accumulated and Compounded

STAMFORD FEDERAL SAVINGS AND LOAN ASSOCIATION

Box 511—Stamford, Texas 79553—915-773-2714

DAILY COMPOUNDING BEGINNING JANUARY 1, 1974
Your "FIRST" Federal Savings and Loan Association

ding tapers, that was circled with the bride's bouquet of white roses. Cake, nuts, mints and punch were served.

The groom's table, all in red, was covered with a floor-length red velvet cloth. A silver candelabra held red tapers. Coffee, cake, nuts and mints were served from silver and crystal appointments.

Members of the houseparty included Mrs. Danny Isbell of Abilene, Mrs. Maxine Young of Abilene, Mrs. Jerry Keenum of Fort Worth, Mrs. Lynette Freeman of Rochester, Mrs. Shirley Douglas of New Deal, Gena and Linda Fischer, Becky Burger, Debra and Linda Wells, Misty Chay Kohout of Stamford, pulled the rice wagon.

The rehearsal dinner, hosted by the groom's parents, was at the Cliff House Restaurant in Stamford, Friday evening, Dec. 21, at 8:30 p. m.

The bride is a graduate of Paint Creek High School and

earned her elementary education degree from Angelo State University. She has done graduate work at Texas Tech University and teaches second grade at Rochester.

The groom graduated from Throckmorton High School and attended Cisco Junior College and Texas Tech University in Lubbock. He is employed at

Marriage Announced

Miss Sandra (Suzy) Randle, daughter of Mr. and Mrs. Martin Randle, 1106 N. Ave. D, Haskell, was married to Mr. Billy Fordjour of Kenya, Africa, Saturday, December 22, at Mount Zion Baptist Church in Brownwood, Texas.

Fordjour and Sandra will graduate from Howard Payne College in December. She will teach in Arlington, and he will teach in Fort Worth.

The couple will make their home in Arlington.

Haskell Free Press. After a wedding trip, the couple will be at home at 302 N. 6th, Haskell.

Christmas Party Held By SS Class

The Ruth Sunday School class of East Side Baptist Church held their annual Christmas social in the home of their teacher, Mrs. Opal Rose, on Friday.

Mrs. Viola Tidwell had charge of the program. Mrs. Maude Kuykendall read the Christmas Story from the Book of Luke. Opal Rose read an appropriate poem, after which Viola led a Bible quiz. Christmas carols were sung, and gifts were exchanged.

A salad supper was enjoyed by Eula Daniels, Grace Andrews, Edna Howard, Frankie Gay, Marie Elmore, Minnie Yarbrough, Mable Mullings, Neat Bevel, Ethel Hill, Virgie Scheets, Ruth Tidwell and guests Nelda, Shulah and Sharla Jetton.

Around Town

Mrs. Annette Hall, her husband, Lamar, and children, Bryan, Johnnie and Angie, left last week for Ohio where they will visit their parents, before going to his new assignment. Lamar returned recently from a tour of duty in Thailand. Annette and the children had lived here several months, having come to be near her grandmother, Mrs. J. A. Yancy. They made many friends here who wish them well.

HAWAII TRIP

Mr. and Mrs. Ray Lusk have just returned from two weeks in Hawaii, on the island of Oahu. They stopped in Fullerton, Calif., on the way over, and toured Knott's Berry Farm and Disneyland.

UNIMOUNT Photo Album for the graduate. This Album will magnetically hold any size photo or clipping. Leather-like red or white cover, refills always available at Haskell Free Press.

Tony
WELDERS and SUPPLIES

New Available Locally

Come in and see the latest and finest in Repair Units

We are proud to be a Dealer for this outstanding line of welders and Supplies. Hitherto they were only available through direct salesmen. Now we can take care of all your welding supply needs right here in town.

Richardson Truck & Tractor
Haskell, Texas

Question:
Is Lone Star doing everything it can to hold down cost?

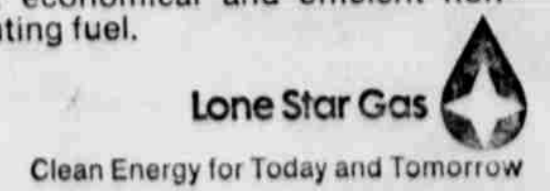
Answer:
Yes!

We're operating more efficiently than ever before. But our costs are going up none the less... just like yours. For instance, the interest rates on money we have to borrow for constructing new gas supply systems have increased dramatically. These rates have recently been at all time highs. Within the last 18 months, we have invested nearly \$100 million:

- to build a large diameter, 400-mile pipeline from West Texas to the Dallas-Ft. Worth area,
- for other facilities along this pipeline,
- to attach major new reserves and
- to pay for well drilling by producers... all for the purpose of assuring continuing natural gas supplies to our customers.

These investments don't even include the cost of all the gas we must buy to fill the line. In 1969, natural gas

cost us about 19 cents per thousand cubic feet. Recently we paid more than 85 cents for major new supplies. And the price is still rising. Costs like these are the price Lone Star must pay for your continuing natural gas supplies. It's important that you understand our need for adequate rates so we can continue to deliver clean gas energy to your home for winters to come. We're doing everything possible to hold down controllable costs. But even with gradual rate increases, natural gas from Lone Star will still be your most economical and efficient non-polluting fuel.



Sagerton News

The children's Christmas program at Faith Lutheran Church was held on Christmas Eve at 7:00 p. m. On Christmas Day, services were held with Holy Communion at 10:30 a. m.

The Christmas program for the Methodist Church was held at the Community Center on Wednesday, Dec. 19, in spite of the very cold weather. A supper and the program was enjoyed together with the warm of the Christmas spirit.

Christmas dinner and party was enjoyed by members of the L.O.C. Home Demonstration Club and their guests in the Sagerton Community Cen-

ter on December 17. The guests were: County Judge and Mrs. B. O. Roberson, Commissioner E. C. Collins and Steve and Mike Money of Haskell, and Mr. and Mrs. Ted Elliott of Haskell. The club will have four new members next year and three of them and their husbands were also guests. They were: Mr. and Mrs. Fred Schreiner, Mr. and Mrs. Ernest Lowack, and Mr. and Mrs. J. B. Toney. The other new member will be Mrs. Le-land Thane.

The first meeting of the year 1974 will be held in the home of the club's president, Mrs. J. A.

Hertel, on Thursday, Jan. 3. Mr. and Mrs. Elmer Boedeker and Mr. and Mrs. F. A. Ulmer attended a dinner given Wednesday night at the Cliff House by members of the Soil Conservation Service, in honor of Elmer Boedeker, who is retiring after 13 years of service with the organization. Mr. Ulmer was recently elected to take his place on the Board from this area.

Mr. and Mrs. August Balzer are spending the Christmas holidays in Lewisville with Mr. and Mrs. Larry Cornelison and Kathy and Doug Doug, who is with the U. S. Navy, will be home for Christmas.

Milton Stein of Baytown visited here last week in the home of Mrs. Cliff LeFevre and with other old friends. He was here visiting his mother, Mrs. Marie Stein, in Rule. They are former residents of Sagerton.

Parliament, civil and criminal courts, and Old Bailey will also be studied. The group will also travel to Birmingham for the study of Police Force practices outside the city of London. Seminars with British leaders in their criminal justice system are planned for an exchange of ideas.

Miss Darnell is a detective with the Irving Police Department, and has completed 30 hours toward a Master's Degree in Police Administration. She is the daughter of Mr. and Mrs. Burl Darnell of Haskell.

Emergency Room Fund

In memory of Wilson Bean Mr. and Mrs. Ed Fouts, Gladys, Frances and Eddie Bess

Total donated to date \$1135.73.

Nearly a million veterans won't see dividends from their National Service Life Insurance policies in 1973 because they instructed the Veterans Administration to use them to buy additional paidup coverage.

11 million persons received an average of \$54 in April 1973 from aid to three million families with 7.9 million children.

NOTICE TO ALL TAXPAYERS AGE 65 AND OVER

Starting Jan. 1, 1974, we will have forms to sign for the exemptions on homesteads. Please bring some proof of age (driver's license or birth certificate). This does not exempt you from the water tax in the City of Weinert, hospital tax, or precinct road tax. Please do this as soon as possible.

JIMMY OWENS

*Tax Assessor-Collector
Haskell County, Texas*

Local Woman To



GLORIA DARNELL

Gloria Darnell, a graduate student at Sam Houston University, will travel to London, England, during the holidays with a Study Abroad Program out of the University of Wisconsin. The topic of study will be a comparative study of law enforcement and government in England and the United States. The trip is offered during the mini-semester from December 27 through January 11.

Included in the study will be a meeting with the Assistant Commissioner of the London Police Force and a visit to the central London police station.

Classified Ads Bring Res

1 Fall and Winter CLEARANCE

Shoe Sale

Buy one pair of dress heel shoes at regular price and receive another pair of heels, flats or casuals for...

Paying the Price of the More Expensive Pair

All Sales Cash - No Exchanges - No Refunds

The Slipper Shoppe

East Side Square

Haskell, Te



"1974 Already?"

Have joy during the New Year—and have adequate insurance to cover the misfortunes.

HAPPY NEW YEAR!

Want to buy or sell a property? It may happen sooner if you list with us. We have many buyers for various types of property and the mortgage loan connections, too.

The HARTSFIELD AGENCY

EVERYTHING IN INSURANCE

HASKELL PH. 864-2665



REDDY TIPS

On how to live better

conserve energy and save money too!

• For savings on operating costs... remember the lower you set the thermostat in the winter, the more money you save on energy cost.

• Let the sunshine help warm your home...open the drapes during the day. Close the drapes at night, this will help insulate your windows and keep cold air out.

• Heat your home, not the outdoors, be sure all doors and windows are closed. Close damper when not using your fireplace.

• Before you leave home, or go to bed, turn off all unneeded lights and small appliances.

West Texas Utilities Company

CALENDER OF EVENTS - JANUARY

	1 *New Year's Day	2 *Church of Christ Ladies' Bible Class *Church Night *FBC RAs, GAs, Youth *FBC Prayer Meeting *B&PW	3 *Rotary *Cancer Center *Center Point HDC *LOC HDC *ALCW *Gen. Meeting WSCS *Progressive Study Club *American Legion *B. B., Hamlin, here	4 *Magazine Club *B. B., Winters, here	5 *B. B., Winters, here
6 *Attend the Church of Your Choice	7 *Haskell Chapter 181 R.A.M. *Haskell Council 119 R&SM *Fire Department *ASC *Community Action *Rebekah Lodge *Organ Club	8 *Lions *Rainbow Sewing Club *Weinert HDC *UFW *WMU *Junior Garden *Chamber of Commerce *B. B., Anson, there *Lutheran Council 7:30 *School Board	9 *Same as Jan. 2 *Sr. Citizens, 2:00 p. m.	10 *Rotary Club *Young Homemakers *Garden Club *Cancer Center	11 *B. B., Stamford, here
13 *Attend the Church of Your Choice *Lutheran League 2:30	14 *Fire Department *ASC *Commissioners Court *Masonic Lodge No. 682 *Farmers Union *Guild *Presbyterian Women	15 *Order of Eastern Star *Lions *WMU *Josselet HDC *UFW *Farm Bureau *B&PW *B. B., Ballinger, there	16 *Same as Jan. 2	17 *Cancer Center *American Legion *Rotary Club *Progressive Study Club	18 *B. B., Hamlin, there
20 *Attend the Church of Your Choice *Lutheran Pioneers 1:30	21 *Fire Department *ASC Comm. *Cub Scouts *Haskell Commandery No. 49, K.T.	22 *Jaycees *City Council *Lions *WMU *UFW *Rainbow Sewing Club *Ruth Class *Josselet HDC *Commissioners Court *Men's Prayer Breakfast *City Cafe, 6:30	23 *Same as Jan. 2 *Sr. Citizens 2:00 p. m. *Elementary PTA	24 *Cancer Center *Rotary	25 *B. B., Winters, there
27 *Attend the Church of Your Choice	28 *Fire Department *ASC *Masonic Lodge 682	29 *B. B., Anson, here *Lions Club *WMU *VFW *City Council *Chamber of Commerce *Lutheran Comm. Night *BB, Anson, here	30 *Same as Jan. 2	31 *Rotary Club *Cancer Center	HASKELL NATIONAL BANK CONGRATULATES ALL YOUNG MEN AND WOMEN WHO ARE ATTENDING COLLEGE



Published as a Public Service by

Haskell National Bank

-MEMBER F.D.I.C.-

ERVATION
POINTS
YEAR, JR.
Conservationist



conservation way on his farm. Alvin Ulmer was elected in October to replace Boedecker, and we welcome Alvin as the newest member of the Board. The California Creek SWCD Board of Directors is now composed of Jim Lee Baucum of Anson, Chairman; H. L. Ford of Hamlin, Vice-Chairman; R. V. Earles of Paint Creek, Secretary-Treasurer; and members H. Birger Haterius of Avoca; and Alvin Ulmer of Sagerton. The Board meets at 2:00 p. m. at the Stamford City Hall on the fourth Tuesday of each month. The public is welcome to attend the Board meetings, especially if a conservation problem exists that the Board can help with.

Goal Has Been Reached

many years. He is presently a member of the Boy Scouts' Concho Valley Council's executive board and on the board of directors of the South Central Region which serves boy scouts in five states. Governor Briscoe explained "I am extremely proud of every new scout and of every person who encouraged young boys to become either a Cub Scout or Boy Scout." Briscoe also praised Brigadier General James M. Rose, the Governor's Special Assistant for Youth Affairs, and Kirk Henry, Director of Support Services of the Dallas Boy Scout Office. Both men have helped with the Governor's Roundup.

ROMANTIC BUT DANGEROUS

In the language of flowers, mistletoe means "give me a kiss." Although it is commonly found in homes at Christmas, it is seldom used in churches because of its pagan associations dating back to the ancient Druids. Mistletoe is also classified "non-edible" and should be kept away from children.

Shop Hassen's-Haskell Famous Annual PRE-Inventory SALE

YOU WILL NOTICE FROM THE DRASTIC CUT IN PRICES THROUGHOUT THE STORE THAT HASSEN'S - HASKELL HAS CUT PRICES TO THE ABSOLUTE BONE!
* All Quality Merchandise
* All Sales Final

PALM BEACH SUITS
For Men. Dacron and Wool Blends. Regularly priced from \$75 to \$90.
\$35 Regulars and Longs

ONE GROUP OF MEN'S YEAR-AROUND WEIGHT **DOUBLE KNIT SUITS**
Reg. Price from \$65-\$75
\$45

ENTIRE STOCK **PALM BEACH SUITS**
For men. 100% Fine Quality Year Around Polyester Suits. Reg. priced at \$90 and \$100.
\$60 Regulars and Longs

CLOSE-OUT ON ALL **MEN'S & BOYS' SWEATERS**
1/2 Price

ENTIRE STOCK OF **MEN'S JACKETS & COATS**
By Campus and McMurry Regularly Priced from \$12 to \$30
1/3 Off

ONE GROUP OF MEN'S **Corduroy Suburban Coats**
By Campus and McMurry Regularly priced at \$28.
Only \$15

ONE GROUP **MEN'S SPORT COATS**
By Campus
\$15 Values to \$45

ENTIRE STOCK **Men's Double Knit SPORT COATS**
By Diplomat **\$30** to \$55 values

LADIES' AND CHILDREN'S **FLEECE SLEEPWEAR**
1/3 Off

A SPECIAL SELECTION OF **MEN'S SHIRTS**
Long sleeve. By Manhattan and Campus. "Never Iron". Regular values to \$8.
\$3 Close-out Price

ONE GROUP OF **MEN'S SLACKS**
Palm Beach and Campus
Values to \$17 **\$6** Close-out

MEN'S **DOUBLE KNIT SLACKS**
by Haggard and Palm Beach
\$13.97 Reg. Value to \$25.

ALL MEN AND BOYS' LONG SLEEVE **KNIT SHIRTS**
by Campus **1/2** Price

ONE GROUP OF MEN'S **Dress and Casual SHOES**
By Rand. Regular values to \$22.
Only \$9

MEN'S **WESTERN HATS**
By Stetson and Dobbs. *3X Beaver. *Silver Belly, and tones of tan and brown. Values to \$25.00.
\$14

BOYS' **COWBOY BOOTS**
by Acme
Sizes 8 1/2 to 3 **\$12.**
Sizes 4 to 8 **\$8.**

MEN'S **COWBOY BOOTS**
by Acme. Values to \$45.
\$24

DACRON DOUBLE KNIT
by Milliken
60" wide. Never Iron. Machine washable. This is a Quality Double Knit Originally valued at \$6.98 yard
\$3.00 yd.

SPECIAL VALUE Ladies' 100% **POLYESTER SLACKS**
\$5.88

LARGE SELECTION OF **LADIES' LINGERIE**
1/3 & 1/2 off

LADIES' DRESSES
Petites, Juniors, Regulars and half sizes
1/3 Off and **1/2** Price & Less

LADIES' **Sweaters & Coat Sweaters**
1/2 And **1/3** Off

LADIES' ORLON CAPES
*Many colors and styles to choose from.
1/3 Off

LADIES' PANT SUITS
1/2 And **1/3** Off

ENTIRE STOCK—GIRLS' **Dresses, Pant Suits and Coats**
1/2 Price and **1/3** Off

AND LESS THAN ONE-HALF PRICE ONE GROUP **LADIES' HANDBAGS**
1/3 Off

LADIES' SHOES
Group 1 Values to \$7.98 **\$4**
Group 2 Values to \$14.98 **\$6**

SHORT & LONG ROBES AND LOUNGE WEAR
1/3 & 1/2 Off

LADIES' COATS
Reg. values from \$25. to \$150.
1/3 Off and **1/2** Price & Less

GIANT JANUARY PLAYTEX BRA & GIRDLE SALE
Now in progress. Savings of 25% on your favorite number.

QUILTED BEDSPREADS
25% Off

NOTICE

der for our employees to be with
ir families, we will be closed

NEW YEAR'S DAY

inning Jan. 17, 1974, we will
be closed each Monday.

the **CLIFF HOUSE**
STAMFORD

MR. FARMER

urchase your 1974 Herbicides
and Save - Booking prices
until January 1, 1974 ...
by and see us.

FARM & RANCH SUPPLY
South First St.—Haskell, Texas



HASSEN'S

STOCK REDUCTION SALE

HIDE-A-BEDS: Little Ones, Big Ones, Herculon Covers, Nylons, Vinelles, Velvets, Early American, Span-ers, Nylons, Vinyls, Velvets, Early American, Spanish, ALL MARKED WAY DOWN FOR THIS SALE!

<p><i>Like This: 2 pc. Vinelle Print</i> SLEEPER AND CHAIR —Was \$369.50— \$249.50 w.t.</p>	<p><i>Or This: 2 pc. Vinelle</i> SLEEPER AND CHAIR —Was \$279.50— \$229.50 w.t.</p>	<p><i>Or This: Herculon Sleeper</i> —Was \$236.50— \$189.50 w.t.</p>	<p>Matching Rocker \$44.50 w.t. <i>Or This: 3 Cushion</i> VINELLE SLEEPER —Was \$273.95— \$199.50 w.t.</p>	<p><i>Or This: Beautiful</i> SLEEPER —Was \$396.00— \$319.50 w.t.</p>
---	---	---	---	---

<p>2-PIECE VINELLE EARLY AMERICAN SOFA & CHAIR Regular \$285.95 \$189.50 w.t.</p>	<p>Fill-A-Room 5-pc Suite . . . * SOFA BED * ROCKER \$229.50 w.t.</p>	<p>2-Piece Herculon— SOFABED CHAIR \$169.50 w.t.</p>	<p>2 Piece Herculon Sofa and Rocker Regular \$339.50 \$269.50 w.t.</p>
---	--	--	--

<p>LAMPS Some as low as \$5.00</p>	<p>BRAND NEW PORTABLE SEWING MACHINE & CASE \$59.50 w.t. Complete. Nothing else to buy!!</p>	<p>4-Drawer Chest of Drawers \$49.50 w.t. Regular \$62.50</p>	<p>WHILE THEY LAST! QUILTED MATTRESS MATCHING BOX SPRING (Regular \$119.50) \$79.50 w.t.</p>	<p>2 pc. Velvet Sofabed - Chair \$199.50 w.t.</p>	<p>BUNK BEDS and MATTRESSES \$139.50 w.t. Complete Trundle Beds \$119.50</p>	<p>7 PIECE DINETTE SUITE \$74.50</p>
--	---	--	---	--	--	---

SOFA BED SUITES - WE GOT 'EM!

SOFA BED AND ROCKER, vinyl cover	\$119.50 w.t.
SOFA BED AND CHAIR, Vinelle cover	\$129.50 w.t.
SOFA BED AND CHAIR, Vinelle cover	\$149.50 w.t.
SOFA BED, ROCKER AND CHAIR	\$199.50 w.t.

SET OF 3 LIVING ROOM TABLES **\$24.50**

DINING ROOM SUITES

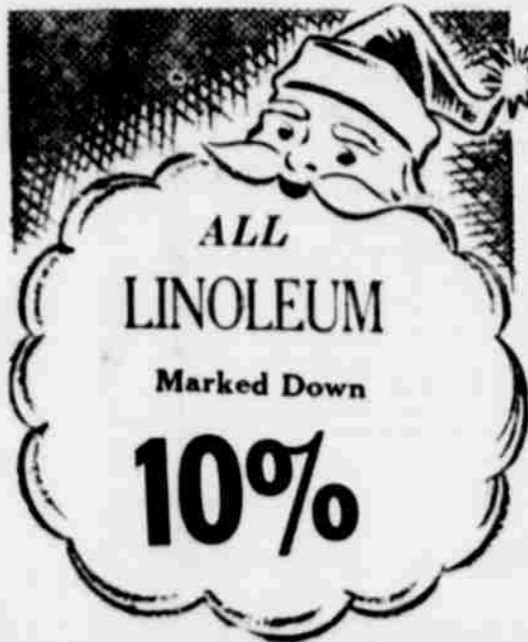
BIG CHINA, 6 UPHOLSTERED CHAIRS, BIG TABLE	\$569.50 w.t.
7 - PIECE MAPLE SUITE	\$249.50 w.t.
7 - PIECE PINE SUITE	\$239.50 w.t.
7-PC, SPANISH, TRESTLE-TABLE 6 Upholstered Chairs	\$269.50 w.t.

SOFA, RECLINER, CHAIR **\$379.50 w.t.**

<p>Spanish Bedroom Suite DRESSER CHEST BED 189⁵⁰ W.T.</p>	<p>Maple Bedroom Suite DRESSER CHEST BED 129⁵⁰ W.T.</p>	<p>Big 5-pc. Bedroom Suite Dresser/twin mirrors Chest Headboard 2 Night Stands ALL FOR 219⁵⁰ W.T.</p>	<p>NICE— Spanish Bedroom Suite DRESSER CHEST BED 3 Piece 249⁵⁰ W.T.</p>	<p>BEAUTIFUL— Spanish Bedroom Suite DRESSER BED CHEST You have to see it! 279⁵⁰ W.T.</p>
---	---	---	---	--



ALL RECLINERS
Marked Down
As Low As
55⁰⁰
W.T.



ALL LINOLEUM
Marked Down
10%



Indoor-Outdoor CARPET
As Low As
1.99
YD.



BIG SWIVEL ROCKERS
As Low As
39⁵⁰



COLOR TV
Big Screen
349⁵⁰
W.T.

SAVE GAS! SHOP AT HOME!

9x12 CARPET .. \$32.50	36 INCH GAS RANGE \$169.50 w.t.	REAL NICE Spanish Table Group \$49.50 each	MAPLE BOSTON ROCKER \$27.95	CONSOLE STEREO AM-FM Radio Record Player Tape Player 229⁵⁰
-------------------------------	---	--	---------------------------------------	--

Extra Nice Sofa & Chair Regular \$369.50 Matching Love Seat \$159.50	VELVET LOVE SEAT \$139.50	EYE-LEVEL GAS RANGE (2 Ovens) \$319.50	(Maple) ROCKING LOVE SEAT \$99.50	ZIG-ZAG Sewing Machine \$89.50 w.t.	BIG BOY RECLINER 99⁵⁰
--	-------------------------------------	---	---	---	--

THIS IS OUR WAY OF WISHING YOU THE BEST HOLIDAY SEASON AND SAYING "THANK YOU" FOR A GOOD YEAR . . . EVERYTHING MARKED WAY DOWN, NOTHING HELD BACK

BOGGS & JOHNSON

East Side of Square

Haskell, Tex

CLASSIFIED * ADS

RULE ROUNDUP

BY: OLETA CORNELIUS—PHONE 997-2167

ED
ING
Insertion;
subsequent
change of
\$1.00 per

REAL ESTATE FOR SALE

FOR SALE: 500 acre farm in Stonewall Co. Good peanut, cotton, and feed grain allotments. Priced for quick sale, \$100.00 per acre. Phone Bill Dennison, 817/983-2938. 51-52p

REAL ESTATE FOR SALE

185 acres west of Rochester to settle estate. Need some offers. \$12.91 choice acres close in to town. No improvements. 3 real nice brick homes. 2 bedroom house with storm cellar \$2500.00.

HARTSFIELD AGENCY

884-2665 51-52c

FOR SALE: Small house and two lots, north of Fair Park, Ivey Rhodes place. If interested, see or call Dora Cook, 1006 N. Ave. G, 864-2136. 50-2p

PUBLIC NOTICE

STOCKHOLDERS MEETING
Notice is hereby given that a meeting of the stockholders of THE HASKELL NATIONAL BANK of Haskell, Texas, will be held in the Community Room in the City of Haskell, State of Texas, on the third Tuesday in January, A. D. 1974, the same being the 15th day of said month, at 3 o'clock in the afternoon, for the purpose of electing a board of directors for said bank and the transaction of such other business that may properly come before said meeting.
David Conner, Asst. Vice-President and Cashier 50-1c

STOCKHOLDERS MEETING

Notice is hereby given that a meeting of the STOCKHOLDERS OF THE FARMERS NATIONAL BANK, Rule, Texas, will be held in the office of said bank, in the City of Rule, State of Texas, on the second Tuesday in January A. D. 1974, the same being the 8th of January, 1974, at 3 o'clock in the afternoon, for the purpose of electing a Board of Directors for said bank, and the transaction of any other business that may properly come before said meeting.
Morris Neal, President 50-1c

A COURTESY REMINDER:

Please remember that classified ads are cash in advance for individuals not owning businesses and not having charge accounts with the Haskell Free Press. Rate is 4c per word for the first insertion and 3c per word thereafter with a minimum of \$1.00 per week. Please bring your ad by (we will be happy to help you with it) or mail it with your check. Thank you for your cooperation. Classified Ad Dept. tfc

LANE APPAREL

CAN SUIT YOU 49fc

We Buy, Sell, Trade

Used Furniture and Antiques One Piece or An Estate H. A. SHERMAN 864-2491 15fc

H. F. LANGFORD

Sand and Gravel Caliche and Fill Rule Hwy. West Haskell

GRAND Stamford

Fri. 28, Sat. 29, Sun. 30 "The Last of Sheila" Dyan Cannon Color

DRIVE-IN Theatre

Fri. 28—Sat. 29 "SKIN GAME" James Garner Color

Sun. 30, Mon. 31, Tues. 1

"ROMEO & JULIET" Olivia Hussey Color

Wed. 2—Thurs. 3

X—ADULTS ONLY No One Under 18 Proof Required "1869 Love Root Elk" Nude Color

Wed. 2—Thurs. 3

X—ADULTS ONLY No One Under 18 Proof Required "1869 Love Root Elk" Nude Color

mechanic and wash-

up boy. Perry 2550. 43fc

Pol. Calendar

The Free Press is authorized to make the following announcements for office in Haskell County, subject to the action of the Democratic Primaries in 1974. All political advertising, announcements, and printing is cash in advance.

STATE SENATOR

30th Senatorial District

Charles Finnell Ray Farabee

FOR DISTRICT CLERK:

Carolyn (Lusk) Reynolds (Re-election)

COUNTY SUPT.

Cleatus W. (Biggon) Drinnon

HASKELL COUNTY CLERK

Jeany Brazell

FOR COUNTY TREASURER

Artie Bradley (Re-election)

FOR JUSTICE OF PEACE

H. M. Bledsoe (Re-election)

COUNTY COMMISSIONER, PRECINCT 4:

E. C. Collins (Re-election)

C. A. (Bud) Turnbow

COUNTY JUDGE, HASKELL COUNTY

B. O. Roberson (Re-election)

O. E. Patterson

COUNTY COMMISSIONER, PRECINCT 2:

W. R. Hager, Jr. R. L. (Jiggs) Edwards Colen Hammer

Rice Springs News

By Princella Ford

The Philadelphian Club from Rule entertained us with carol singing. We thank you, ladies. Please come again.

C. B. Rhea and his country band made it to Rice Springs Care Home Dec. 13. We enjoyed it.

Mrs. Cal Young and Mrs. Georgia Hines from Hamlin visited Mr. and Mrs. L. E. Hines of Rice Springs.

Mr. Sam Wright of the home was visited by his wife, Mrs. Wright.

Mrs. Mary Place took Mrs. Bradley to Abilene for her final eye check up. The next trip she will get her permanent glasses. We are all happy for Mrs. Bradley.

Mrs. Faye Thompson came to Rice Springs and played Christmas carols for the residents. There was singing, too.

We had two new residents move to Rice Springs, Mrs. Elmer Turner and Mrs. Georgia Davis.

Mrs. Minnie Turnbow expired this morning at 1:15 a. m. Mrs. Turnbow had been ill quite awhile. She entered Rice Springs June 6, 1973. She was born on March 8, 1892. She was 81 years old. Mrs. Ocie Karr, her daughter, is a nurses' aide here. We of Rice Springs offer Mrs. Karr and family our deep sympathy.

Mrs. Christyne Green, a nurses' aide at Rice Springs since March of 1971, is leaving today. She is moving to Kingston, Texas.

Mrs. Ophelia Gipson, also an aide, is leaving.

Meditation of the week: "I often walk heart-heavy and feel alone even though I'm with people. I pray a lot even with other people and my worries and loneliness disappear. I am a child of God."—Lillie Hagle.

Mrs. Louell Gipson of Dallas visited Mrs. Highnote of Rice Springs.

The Central Baptist Church held the devotional and Rev. Timm, the pastor's sermon, was "The Two Men Who Prayed," taken from St. Luke.

Mr. and Mrs. Elva Hines from Hamlin visited Mr. and Mrs. L. H. Hines of the home.

Mr. and Mrs. Aubrey Spalding of Hamlin visited their mother and mother-in-law, Mrs. Ethel Rose and Aunt Charity Bradley.

Mr. and Mrs. Taylor Shelly of Houston, Mrs. Brazzell of Montgomery visited Mr. and Mrs. Cathey and Mrs. Cally Shelly of Rice Springs.

Mr. and Mrs. Rolland Rose and children, Kathy and Junior, from Abilene, visited their parents and grandparents, Mrs. Callie Shelly and Mrs. Ethel Rose, both of the home.

Mr. and Mrs. Sam Kelso, Linda and Matthew of Amsterdam, Holland visited Mrs. Callie Shelly, their grandmother, of the home.

The Church of Christ held their worship service. Rev. Larry Suttles' sermon was "Brotherly Love" taken from Romans. Mr. Charles Abernathy from Aspermont surprised his mother, Mrs. Abernathy, with a visit.

Mrs. Cora Davis came home from the hospital.

Rice Springs has a new resident, Mr. H. E. Harrison.

Mrs. Birdie Smith expired in Memorial Hospital at 1:30 a. m. She was born Feb. 25, 1885. She was 88 years old. She came to Rice Springs Oct. 23, 1972.

Mrs. Lillie Hagle visited in Throckmorton a few days.

Mr. and Mrs. Allen Davis of Old Glory visited Mr. and Mrs. L. E. Hines of Rice Springs.

Dec. 18 was a big night at Rice Springs for the entire personnel's Christmas party. There was lovely carol singing, exchanging gifts, and lots of de-

MEN IN SERVICE

CHERRY POINT, N. C. (FHTNC) Dec. 12—Marine Cpl. Edward L. Wright, son of Mr. and Mrs. Vernon T. Wright of 504 N. Ave. G, Haskell, Tex., was promoted to his present rank while serving at the Marine Corps Air Station here.

A graduate of Haskell High School, he joined the Marine Corps in October 1971.

and Jerry Walter of Haskell; and Ronnie Lee of Graham; one daughter, Mrs. Gary Posey of Longview; 7 grandchildren; three brothers, C. C. of Graham and A. D. and Jim, both of Haskell; and one sister, Mrs. Opal Isbell of Haskell.

Pallbearers were Danny Payne, Jonnie Wilson, J. C. Short and J. C. Tidrow.

MRS. DAVIS

Rule lost a beloved citizen with the passing of Mrs. Cora Davis. Affectionately known as Mrs. Doctor Davis, she loved the people of Rule and her church and was active until moving to the Haskell Nursing home.

Mrs. Davis, 93, died Friday, December 21, at 4 a. m., following a brief illness in the nursing home. Services were held Saturday, December 22, in the First United Methodist Church. Rev. Lloyd Futch, pastor, officiated, assisted by Judge Thompson of Crowell. Burial was in the Rule Cemetery.

Mrs. Davis was born October 22, 1880, in Van Zandt County and married Dr. J. C. Davis, December 25, 1903, in Van Zandt. He preceded her in death June 21, 1966. Mrs. Davis had been a resident of Rule since 1909 and she was a member of the United Methodist Church.

Survivors are three sons, Foster Davis of Crowell, J. C. Davis Jr. and Thomas Gilmer, both of Austin; eight grandchildren and five great-grandchildren.

Mrs. Paula Oliver, leader of the Brownies from Rule, sang a number of carols for us in the home. The parents sent cookies. Mrs. Janice Marquis and Mrs. Yvonne Ratliff were helpers. We thank you for helping to make our Christmas merry.

Menus...

School lunch menus for week of January 2-4:
Monday: Christmas Holiday, Tuesday Christmas Holiday, Wednesday: Pork in gravy, mashed potatoes, green beans, hot rolls, butter, peach cobbler, milk.
Thursday: Red beans, macaroni and cheese, mixed greens, cornbread, butter, pear halves, milk.
Friday: Fish cakes, tartar sauce or catsup, potatoes in cheese sauce, English peas, hot rolls, butter, fruit jello, peanut butter cookies, milk.

College News

ABILENE, TEX.—Mrs. Anna Threlkeld Kimbrough of Haskell, Texas is one of approximately 63 Hardin-Simmons University students who have completed their degree requirements and will participate in commencement exercises in the spring, May 12, with next semester's graduates.

Mrs. Kimbrough will receive a bachelor of science degree from Hardin-Simmons University.

TALLEY'S PAINTING SERVICE

Exterior & Interior Painting Residential & Commercial Caulk, Putty, General Repair Quality Work Guaranteed Reasonable Rates Ph. 864-2459—Haskell 49-8p

HOLLY BY GOLLY

Holly comes in over 100 varieties, and is almost universally grown.

INSURANCE

Automobile - Fire - Casualty - Life Belton Duncan D B A Cahill-Duncan Agency 306 North First Phone 864-2646

The Haskell Free Press

Established January 1, 1886 PUBLISHED EVERY THURSDAY

Member TEXAS PRESS ASSOCIATION

BILL COMEDY, G. E. TALKINGTON—Co-Owners **BILL COMEDY—Publisher** **CLYDENE COMEDY—Editor**

Entered as second-class matter at the postoffice at Box 577, Haskell, Texas 75921, under the Act of March 3, 1879

SUBSCRIPTION RATES

In Haskell and Adjoining Counties			
	Sub	Tax	Total
One Year	\$ 5.00	.25	\$ 5.25
Six Months	\$ 3.00	.15	\$ 3.15
Two Years	\$ 9.50	.48	\$ 9.98
Elsewhere in Texas			
One Year	\$ 6.00	.30	\$ 6.30
Six Months	\$ 4.00	.26	\$ 4.26
Two Years	\$11.50	.58	\$12.08
Outside of Texas			
One Year	\$ 8.00	.40	\$ 8.40
Six Months	\$ 4.50	.23	\$ 4.73
Two Years	\$15.50	.78	\$16.28

NOTICE TO PUBLIC—Any erroneous reflection upon the character, reputation or standing of any firm, individual or corporation will be gladly corrected upon being called to the attention of the publishers.

MRS. DAVIS

two friends in town. Christmas fellowship was enjoyed by all present.

LOOK WHO'S HERE

Mr. and Mrs. Robert Jones of Plainview announce the arrival of their daughter, Heather Diana, born Dec. 15 at 8:59 p. m. in the Hale Center Hospital. Little Miss Heather weighed 7 lbs., 14 ozs. She has a sister at home, Jana Michella, waiting to welcome her.

Guests at the Rule Rotary Club meeting last Monday were Hooper Wilkinson, Chief Escobedo and J. B. Gipson, all of Haskell.

Survivors are three sons, Foster Davis of Crowell, J. C. Davis Jr. and Thomas Gilmer, both of Austin; eight grandchildren and five great-grandchildren.

Mrs. Paula Oliver, leader of the Brownies from Rule, sang a number of carols for us in the home. The parents sent cookies. Mrs. Janice Marquis and Mrs. Yvonne Ratliff were helpers. We thank you for helping to make our Christmas merry.

Mrs. Ophelia Gipson, also an aide, is leaving.

Mrs. Minnie Turnbow expired this morning at 1:15 a. m. Mrs. Turnbow had been ill quite awhile. She entered Rice Springs June 6, 1973. She was born on March 8, 1892. She was 81 years old. Mrs. Ocie Karr, her daughter, is a nurses' aide here. We of Rice Springs offer Mrs. Karr and family our deep sympathy.

Mrs. Christyne Green, a nurses' aide at Rice Springs since March of 1971, is leaving today. She is moving to Kingston, Texas.

Mrs. Ophelia Gipson, also an aide, is leaving.

Mrs. Louell Gipson of Dallas visited Mrs. Highnote of Rice Springs.

The Central Baptist Church held the devotional and Rev. Timm, the pastor's sermon, was "The Two Men Who Prayed," taken from St. Luke.

Mr. and Mrs. Elva Hines from Hamlin visited Mr. and Mrs. L. H. Hines of the home.

Mr. and Mrs. Aubrey Spalding of Hamlin visited their mother and mother-in-law, Mrs. Ethel Rose and Aunt Charity Bradley.

Mr. and Mrs. Taylor Shelly of Houston, Mrs. Brazzell of Montgomery visited Mr. and Mrs. Cathey and Mrs. Cally Shelly of Rice Springs.

Mr. and Mrs. Rolland Rose and children, Kathy and Junior, from Abilene, visited their parents and grandparents, Mrs. Callie Shelly and Mrs. Ethel Rose, both of the home.

Mr. and Mrs. Sam Kelso, Linda and Matthew of Amsterdam, Holland visited Mrs. Callie Shelly, their grandmother, of the home.

The Church of Christ held their worship service. Rev. Larry Suttles' sermon was "Brotherly Love" taken from Romans. Mr. Charles Abernathy from Aspermont surprised his mother, Mrs. Abernathy, with a visit.

Mrs. Cora Davis came home from the hospital.

Rice Springs has a new resident, Mr. H. E. Harrison.

Mrs. Birdie Smith expired in Memorial Hospital at 1:30 a. m. She was born Feb. 25, 1885. She was 88 years old. She came to Rice Springs Oct. 23, 1972.

Mrs. Lillie Hagle visited in Throckmorton a few days.

Mr. and Mrs. Allen Davis of Old Glory visited Mr. and Mrs. L. E. Hines of Rice Springs.

Dec. 18 was a big night at Rice Springs for the entire personnel's Christmas party. There was lovely carol singing, exchanging gifts, and lots of de-

Maternal grandparents are Mr. and Mrs. Thurman Rhoads of Haskell and paternal grandparents are Mr. and Mrs. James Jones of Rule.

Great grandparents are Mrs. Violet Jones of Plainview and Mr. and Mrs. Tom Rhoads of Haskell.

Guests at the Rule Rotary Club meeting last Monday were Hooper Wilkinson, Chief Escobedo and J. B. Gipson, all of Haskell.

May your New Year begin with fun, and go on to bring you many rewards. It's a privilege to serve you.

For ALL Your Banking Needs
FARMERS NATIONAL BANK
—MEMBER F.D.I.C.—
RULE, TEXAS

NOTICE

Contrary to rumor, I am not quitting business. Although I have resigned as executive director of the Housing Authority, my income tax service will continue as usual.

Opal Rose Tax Service
314 N. 1st St.—Haskell, Texas

Thursday, Jan. 3

99¢

KING SIZE WALLPAPER CREATIVE COLOR PORTRAITS FOR ONLY

Extra Charge for GROUPS

NO LIMIT

GET PICTURES MADE OF GRANDPARENTS, GRANDCHILDREN, DAUGHTERS AND ALL THE LITTLE ONES AT THESE SAME LOW PRICES!

SHUGART COLOR PHOTOS

ASK About Our FREE 8 x 10 OFFER

M-SYSTEM

112 North Ave. D

M SYSTEM

Your FRIENDLY
SUPER MARKETS
HASKELL, TEXAS

"Where Your Dollar Buys More"



FOOD BUDGET BLUES?

Change the Tune - Shop Here for Less

SPECIALS GOOD
THUR., FRI., &
SAT., DEC. 27 -
28-29.

DOUBLE
S & H GREEN STAMPS
WEDNESDAYS
With The Purchase
Of \$2.50 Or More



ASSORTED FLAVORS

JELL-O

BOX **10¢**

**DIAMOND
BLACKEYED
PEAS**
WITH BACON
FOR NEW YEARS
4 300 CANS **59¢**

WE WILL BE CLOSED NEW YEAR'S DAY



Russet
Potatoes 10 lb. bag **89¢**

Red or Golden Delicious
Apples LB. **29¢**

GREEN
CABBAGE lb. **10¢**

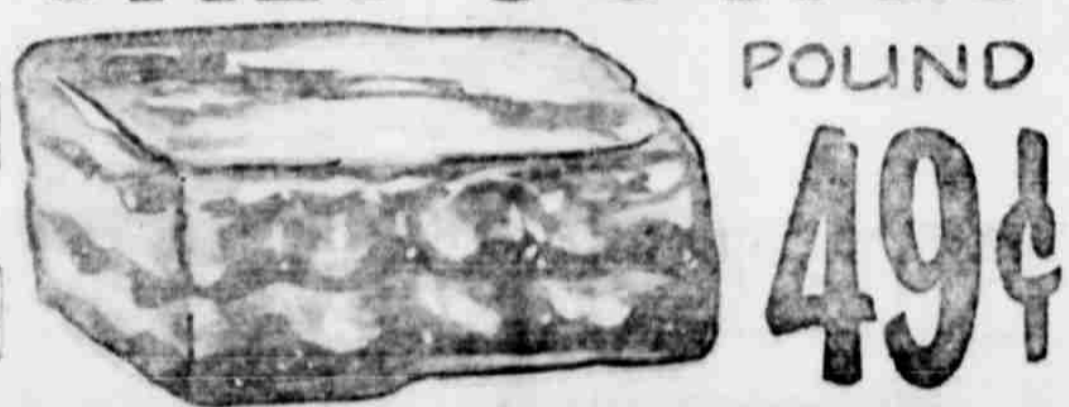
KOUNTRY FRESH
CARROTS 2 lb. BAG **29¢**

TEXAS JUICE
ORANGES 5 lb. BAG **59¢**

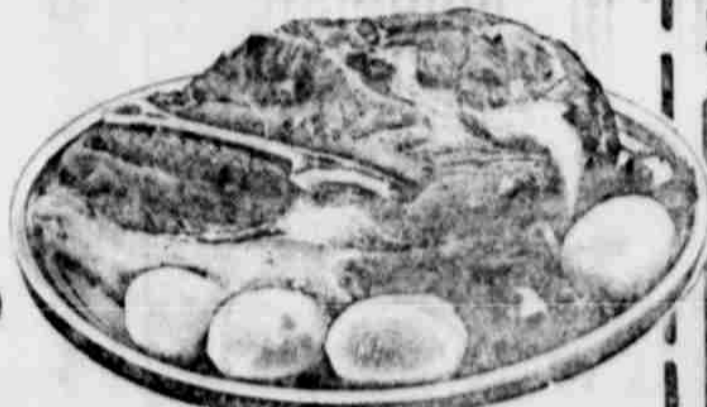
MEDIUM YELLOW
ONIONS lb. **19¢**

SUPER SELECT CUCUMBERS EACH **10¢** | TEXAS Ruby Red GRAPEFRUIT 5 lb. BAG **69¢**

SALT JOWLS POUND **49¢**



CHUCK ROAST LB. **\$1.09**



BEEF CUTLETS LB. **98¢** | Slab Sliced **Bacon** LB. **98¢**

OAK FARMS
COTTAGE CHEESE 16 oz CTN **55¢**

GLADIOLA
FLOUR 5 lb. BAG **79¢**



RIGHT RESERVED TO LIMIT
GERBER STRAINED
BABY FOOD ASSORTED JARS EACH **10¢**

CHUCK WAGON
BEANS 5 300 CANS **\$1.**

OAK FARMS
ICE CREAM HALF GAL. **79¢**

M SYSTEM
BUTTERMILK HALF GAL. **59¢**

KIMBELL
SALAD DRESSING Full Qt. **49¢**

RUBBING ALCOHOL PINT **19¢**

M SYSTEM
HOMO SWEET
MILK HALF GAL. **73¢**

ALKA SELTZER 25 ct BTL **59¢**

LADY KIM
TOWELS 3 JUMBO ROLLS **\$1.00**

BANQUET
FROZEN
POT PIES 3 ASST PRGS **69¢**

WHOLE SUN
ORANGE
JUICE 5 6 oz CANS **\$1.**

BIRDSEYE
COOLWHIP TOPPING 3 4 1/2 oz CTNS **\$1.**

LIPTON
INSTANT
TEA 3 3 oz JAR **99¢**