



THE OLTON ENTERPRISE

Phone 3971
CONSUMERS
BUTANE, INC.
OLTON, TEXAS

"The Golden Gate To The Golden Road"

VOLUME 33

OLTON, LAMB COUNTY, TEXAS, THURSDAY, DECEMBER 10, 1959

NUMBER 44

HOLE IN ONE



Flake Price, right, poses with the ball with which he fired a hole in one this week at Olton Recreation Center. With him is Ralph Glover, the only other man who ever shot a hole in one at the ORC course.

"I HIT STRAIGHT FOR THE FLAG."

Flake Price Raps Out Hole-In-One

Flake Price fired a hole-in-one at Olton Recreation Center Golf Course Monday afternoon.

It was the second such shot in the history of the course and the first for Mr. Price. The near-miraculous shot was on number two hole.

The cup is 165 yards from the tee box and its par is three. Flake was using a three iron and hitting into the wind at about 4:30 o'clock in the afternoon. "I hit straight for the flag," declared the jubilant golfer. "I didn't see it go into the hole. Truitt Sides found it."

Sides looked into the cup after Flake jokingly suggested that he do so after the latter had been unable to find the ball near the green. Sides looked in the cup and there it was!

With Mr. Price, other than Mr. Sides, were Leroy Hackler and B. C. Cooner. Mr. Price has been a golfer for about two years.

Ralph Glover happened along later to congratulate Mr. Price. Mr. Glover was first to fire a hole-in-one at ORC. He performed the feat in early May of last year. He was using a seven iron and was also on number two hole. He and Mr. Price are the only two members of ORC's hole-in-one club, a society in which Mr. Glover had been exceedingly lonely until Monday afternoon.

OFS Handling Freight Here For Carriers

Olton has a new freight facility. Olton Farm Supply is handling freight as a freight dock facility for Lang Truck Lines and Hub Motor Freight.

Olton Farm Supply will make in town deliveries and pick up out-going freight. Anyone having freight to be shipped should get in contact with Olton Farm Supply for pick up service.

Bill Williams, representing Hub and Lang, signed a contract with Olton Farm Supply owner Don Spain Monday.

"We've been trying to establish this service for seven or eight months," declared Mr. Williams. "This will enable us to give early morning delivery from all major points in Texas, mostly from Fort Worth and Dallas."

"Olton has needed this service for a long time and we think it will help the town in general," he declared.

Olton Farm Supply has warehousing and dock high loading docks.

"We'll do our best to do a good job both for the town and for the motor freight lines," declared Mr. Spain.

FREIGHT DOCK



Don Spain is shown here signing the agreement which made his Olton Farm Supply a freight dock. Looking on is Bill Williams, representative of Hub and Lang Transit Lines.

Couple Asks Help In Repair Of Yule Toys

Mr. and Mrs. W. B. Dickenson Sr., say they need help in repairing toys for Christmas presents for needy children.

Mrs. Dickenson said two pickups loads of toys came in Tuesday. They must be ready for delivery by Christmas.

ORC Directors Studying Plans For Club House

Olton Recreation Center directors already are studying the possibility of building a club house or recreation hall at the Center.

This information came this week from Elmer Moore, Center president, following a directors meeting.

Mr. Moore expressed belief the membership is ready for such a move and said the club house proposal will be one of the major items of business at the annual membership meeting in February of next year.

He said the annual membership meeting probably will be a dinner affair.

Mr. Moore also revealed the final note of \$3,500 on the swimming pool will be paid by Jan. 1.

"Securing freight dock facilities for Olton was one of the major projects for Olton Chamber of Commerce and Agriculture this year."

EIGHT RATE HONORABLE MENTION

Mustangs Get Five All-District Spot

Olton got five spots on the 2-AA all-district team of 22 this year.

All five schools in the district were represented with Muleshoe and Morton each landing four berths and Abernathy three. Lockney had six on the mythical team.

Dan Smith, Lockney tackle, was the only player to make both the offensive and defensive teams by unanimous choice.

Besides Smith there were four other unanimous choices on the offensive unit. They include Oyma Buchanan, end from Lockney; Tommy Wilson, Olton guard; Phil Neinst, Olton center; and Aubrey Smith, Abernathy back.

Rounding out the offensive team were end Lyndal Black of Muleshoe; tackle Bob Camp of Muleshoe; guard Murvin Gathright of Morton and backs Robert Priest of Olton, Butch Naim of Morton and Derrell Oliver of Muleshoe.

Name Captains For Mustang '60 Grid Team

Olton Mustang tri-captains have been named for the 1960 football season.

They are Robert Priest, Bobby Brown and Kenneth Hooper. Priest played fullback this year and is a three-year letterman.

Bobby Brown earned his first letter this year in the end position. Hooper plays guard and is a two-year letterman.

Norman Smith's Mother Dies

Funeral services for Mrs. Rachel Elizabeth Smith, 77 years old, Lodi, Cal., were held at 2 o'clock Wednesday afternoon in Lemons Funeral Home Chapel in Plainview.

She was the mother of Norman Smith of Olton. She died Friday at Lodi.

Officiating was Rev. A. J. Douglas, pastor of Olton Nazarene Church. He was assisted by Rev. Corby Grimes, pastor of Plainview Nazarene Church.

Burial was in Plainview Cemetery.

UNDER DIRECTION OF DON WALDRIP

Olton's First Christmas Cantata Saturday Night

Yuletide Memories, a Christmas Cantata arranged by Ira Wilson, will be presented in the high school auditorium at 7:30 Saturday evening. Director of the musical presentation is Don Waldrip.

Invocation will be given by the Reverend E. Lee Stanford, pastor of the First Methodist Church. The cantata will be composed of two choirs, a girl's chorus which will supply background music, and the adult choir.

Singing in the girl's chorus are Nancy Brown, Koenia Schenck, Geneva Curry, Sharon and Nancy Brigrance, Joy Cole, Judy Pinson, Becky Hall, Donna Whittington and Joyce Curtis.

Choir members include Messrs. and Mesdames William DeBerry, W. C. Gunter, W. E. Andrew, Don Waldrip. Also Mesdames Jean Craft, J. C. Brown, Troy Martin, Leo Ross Bryant, Merrill Brigrance, Owen Norfleet, E. R. Spain, Delmer Givens and Misses Alice Ross Bryant and Joanna Lewis.

Other choir members include Jerry Parker, Bill Walden, J. T. Tollett, Don Spain, Jimmy Tollett and Slim Pinkerton.

Harold Dean Carson will furnish piano accompaniment for the cantata. Yuletide Memories program is as follows:

No. 1—Praise and Glory—Girl's Chorus and Choir

No. 2—The Prophecy—Tenor soloist, Don Waldrip and Girl's Chorus

No. 3—Bethlehem—Alto soloist, Mrs. William DeBerry, choir and chorus

No. 4—The Shepherd's Vision—Quartet, Mesdames Troy Martin, Owen Norfleet, Messrs. J. T. Tollett, Jerry Parker

No. 5—Midnight Choir—Mezzo Soloist, Mrs. Jean Craft and Girl's Chorus

Benediction will be given by The Reverend John E. Lewis, pastor of First Baptist Church.

House of Flowers will be in charge of floral arrangements and stage decorations. The Christmas Cantata is sponsored by Chamber of Commerce and Agriculture.

Santa Claus Coming To Olton In Yule Parade Next Saturday

ONLY ONE CANDIDATE SO FAR

Special Election Scheduled Jan. 5

Order for a special mayoralty election has been issued for January 5.

The order became official Tuesday night after being ratified by the city council. The election will name a mayor to replace D. Y. Ray, whose resignation became effective Tuesday.

Mayor Ray officially surrendered his gavel of office Tuesday night to A. D. Adams, mayor pro tem.

Only one candidate has announced for the vacant post. He is B. C. Fitts, Olton machine shop operator. Mr. Fitts declared his intention to become a candidate shortly after the vacancy occurred.

In other action Tuesday night the council accepted the oral resignation of Dr. B. J. Souders as city health officer. Serving in his place will be Dr. Basil Johns. Dr. Souders is moving to Lub-

Judging To Be Done In Lighting Contest Friday

Santa Claus is coming to town. The rotund Christmas Saint will distribute some 1200 bags of fruit and toys to an eager crowd of children immediately following Chamber of Commerce Christmas parade.

Local firemen will be present to aid the be-whiskered idol in handing out the gifts. Olton Chamber of Commerce and Agriculture is sponsoring the parade which will begin at 2:30 Saturday afternoon. The parade will be followed by a program of Christmas music at 7:30 in the evening.

Marching in the parade will be Olton Cadet and Mustang Bands and Petersburg Jr. High School Band. Several local merchants have entered floats in the parade. Chairman of the business float committee is Mrs. Richard Robertson.

According to Wayne Cooper, Chamber of Commerce manager, prizes of \$25, \$15 and \$10 will be given to the three best exhibits displayed around the square by various Women's Clubs. They will be judged Friday evening. Women's Club chairman is Mrs. Albert Jeffrey.

Judges Award Two Rating To Mustang Band

Olton High School Band was given a two rating at University Interscholastic League Marching Contest in Levelland Saturday.

Ten area bands were entered in the AA Class. Only two of these, Abernathy and Floydada were given one superior ratings.

Lockney, Tahoka, Post, Spur and Morton were given three or average rating. Muleshoe, Slaton and Olton received two or excellent ratings.

Ratings one through five were given bands in all classes. Judges for the contest and the ratings they gave Olton include Jack Mahan, Arlington State College, one; Pete Long, Ponca City, Okla., one; Leonard Haug, University of Okla., two; and J. D. Bradbury, inspection judge of Artesia, NM, one.

The eighty-three piece Olton Marching Band was led by drum major, Elza Miller and majorette, Becky Hall. Band director is Dick Bentz.

In addition to the program planned for Saturday, other Christmas projects of the Chamber of Commerce include the placing of Christmas lights around the square. They have also decorated the old hospital building with blue lights which form a Christmas star.

Moline Firm Opening Here

C. J. Dorris is opening a Moline dealership here. Mr. Dorris formerly was Moline dealer in Plainview. The new firm will be located in the Milton Hines building on Highway 70 just west of G. H. Bley.

Mr. Dorris said his firm will be open for business in a few days. He has been associated with the company for the past 25 years.

Mr. and Mrs. Dorris have an 8-year-old daughter.

Home Lighting

A Home Lighting Contest is also scheduled. This event is to be judged Friday and prizes will be the same as above. Mrs. A. D. Melton is in charge of home lighting.

The parade will form at the north end of Main St. It will proceed around the square and be climaxed by the appearance of St. Nick on the east side of the square. Parade committee is headed by Mrs. Ed Thompson.

In place of the annual Christmas program usually scheduled by the Chamber of Commerce, a Christmas Cantata will be presented in the high school auditorium at 7:30.

Immediately following the cantata, prizes will be awarded to winning float, display and home lighting entries.

Horace Cates remains in Doctor's Hospital in Dallas after suffering an heart attack Friday evening of last week.

According to Mrs. Jack Silcott, Horace is doing somewhat better, although he is still quite weak. His address at Doctor's Hospital is 9323 Garland Rd. Room 317. Mrs. Cates may be reached at phone number Davis 8-2556, Dallas.

HOLD IT!



Jimmy Lawson is in there trying to stop Floydada ace Don Vickers from scoring in the consolation finals of the Olton tournament. Hawking for a rebound is Johnny Schenck (13).

(STAFF PHOTO)

(STAFF PHOTO)

THE HART BEAT

CHAMPIONSHIP PLAY SCHEDULED SATURDAY

Play Gets Under Way In Hart Cage Tournament

Play is underway in the Hart Invitational Basketball Tournament in Hart High School Gymnasium this weekend.

The tournament will wind up Saturday of this week.

Participating are boys and girls from Hart, Spade, Adrian, Bovina, Lazbuddie, Farwell, Nazareth and Amherst.

In the girls' division, Adrian and Bovina were to open the tournament Thursday and then Hart was to play Spade the same

afternoon. Winners of these encounters will clash at 2:30 PM Friday.

Lazbuddie girls will play Farwell at 9:30 AM Friday and Nazareth will meet Amherst at 1 o'clock the same day.

Winners of these two contests will play Friday evening. Championship game will be at 7:30 PM Saturday. Consolation play will be at 4 o'clock Saturday afternoon.

Adrian boys were to play Bovina at 6 PM Thursday. Hart was to play Spade later that night. Winners will meet at 1 PM Saturday.

Lazbuddie will play Farwell at 11 AM Friday and Nazareth will play Amherst at 7 PM the same day. Winners will meet at 2:30 PM Saturday. Championship game will be at 9 PM Saturday. Consolation play will be at 6 PM Saturday.

Hart Teams Lose Games In Tourney

Hart girl and boy cage teams lost out in the Olton invitational basketball tournament last week.

The girls won their first game 28 to 26 over Anton. They lost in the second round 32 to 20 to Springlake.

Hi-point girl for Hart in the tournament was Jo Sanders with a total of 24 points. Freddie Popejoy was next with a total of 19 points.

Hart boys lost their first game with Anton 35 to 34 and the second to Olton 39 to 35. High point boy for Hart was J. D. Myrick with a total of 30 points and Ralph Myrick was second with 14 points.

Hart will play host to a tournament Thursday, Friday and Saturday of this week.

Hart Cagers Lose To Kress

Hart boys and girls lost a double-header basketball game to Kress Tuesday of last week.

The girls dropped their game 58 to 34. High scorer for Hart was Jo Sanders with 22 points. Barbara Beeson was second with 10 points.

Hart boys were defeated 47 to 32. High scorer for Hart was J. D. Myrick with 13 points. Ralph Myrick was second with 5 points, while Gene Varner, Larry Lee and Orval Hughlett each scored four points.

Hart Woman's Grandmother Dies Recently

Funeral services for Mrs. F. Detwiler, 89 years old, grandmother of Mrs. Granville Martin of Hart, were held recently in Amarillo.

Mrs. Detwiler was a pioneer of Cottle County and was a charter member of Paducah Missionary Baptist Church.

Hart Vo. Ag. Welding Course Is Next Week

Dates for the Hart Vocational Agriculture Department's welding school are December 14 through 18.

The school will be under instruction of Robert Cates of Forney Arc Welding Company. Anyone interested should contact Lanny Tucker at the high school.

Rev. D. Leonard Speaks At PTA

Principal speaker at a meeting of Hart Parent Teacher Association at 8 o'clock next Monday night at Hart school will be Rev. Denzil Leonard.

His subject will be "Strengthening Our Home Through Spiritual Values." Second grades taught by Mrs. Paul Kennedy and Miss Loretta Pough will present a program.

Zealot Club Meeting Held In Garrison

Home November 24

"Family Fun" was the program subject for the November 24 meeting of the Zealot Club. The meeting was held in the home of Mrs. Shirley Garrison.

Plans were tentatively made for a Christmas party. It was decided to give the club's annual Christmas Penny Auction proceeds to a needy Hart family.

Active and inactive lists of the club's members are being compiled.

Present at the meeting were Mesdames Daryl Clevenger, Tom Burrus, Wister Clevenger, Walt Hansen, W. A. Hawkins, Jr., Glyn Reed, Theron Morrison and the hostesses, Mrs. Bill Bell and Mrs. Eldon Shive.

CARD OF THANKS

I want to thank my many friends and neighbors for their thoughtfulness during my recent illness. You made my stay in bed more endurable. Thanks for the many cards and flowers. Thanks to the Methodist Friendship and to Rev. Crouch, Rev. Fairbanks and Brother Fred Butler. May God bless you.

Mrs. Johnnie Sullivan

Harvey Davis' Are Honored At Affairs

Mr. and Mrs. Harvey Davis were honored recently at two affairs celebrating the couple's 25th wedding anniversary.

A reception feted the couple Sunday in their home. Sixty-eight guests attended, and were received by Miss Marie Davis. Signatures of the guests were secured by Mrs. Weldon Davis.

Mrs. Howard Mitchell and Mrs. Jim Brooks served from a table laid with white lace over white. Red candles and greenery, touched with red and white, decorated the table. Appointments were of silver and crystal.

Sharing hostess duties at the reception were Mesdames Jim Brooks, H. E. Loman, R. A. Futrell, O. C. Kittrell, Howard Mitchell and D. D. Myrick.

In Jimmy Davis Home The couple were guests of honor at a dinner December 2 in the home of Mr. and Mrs. Jimmy Ray Davis.

A set of silverware was presented the couple from their children and grandchildren.

A white double wedding ring cake, decorated with silver, was served with the dinner.

Present were Mr. and Mrs. Jimmy Ray Davis, Mr. and Mrs. Weldon Davis, Leslie and Vivian, Mr. and Mrs. Floyd Light and Cynthia, the honored couple, Roger Davis, Marie and Freda Davis.

Hart Trio In Roller Follies

Three Hart youngsters will participate in the Plainview Roller Follies to be staged in Plainview Roller Rink at 7:30 o'clock the evenings of December 14 and 15. They are Verletta Crick, Rebecca and Donnie Burress.

Mrs. Hawkins Hosts Shower In Home Sat.

Red and white decorations were used at a pre-nuptial courtesy feting Miss Joyce Bowden Saturday.

Miss Bowden is the bride-elect of Larry Johnson of Kress.

A kitchen clock was presented the honoree by the hostess, Mrs. W. A. Hawkins, Sr., in whose home the affair was held.

Guests included the honoree and Misses Myrtis Calthorp, Texas Tech; Ione Van Vliet, Amarillo; Royce Lynn Pyeatt, Hart and Mrs. Melvin Aven, Hart.

Senior HD Club Has Christmas Social

Mr. and Mrs. Willis A. Hawkins, Sr., showed films made on a recent trip to Alaska and other parts of the United States December 5 to the Senior Home Demonstration Club.

The affair was a Christmas social and was held in the Legion Hall.

Games were directed by Roma Lee Swindle, and Neoma Brooks accompanied the group as Christmas carols were sung.

Birthday Luncheon Given For Mrs. Ray Bennett December 2

A surprise birthday luncheon feted Mrs. Ray Bennett December 2 in the Ed Bennett home.

Those attending included Mesdames Hubert Maples, Homer Winnett, Avery Adams, W. A. Hawkins, Sr., T. R. Davis, L. C. McLain, Bryon Bennett, Plainview, the honoree and hostess.

Those attending included members of the club and their guests.

HART LUMBER CO.

WE HAVE CHRISTMAS TREES

Proceeds Go To The Hart

Lions Club

HATTIE MAE'S HOBBY SHOP AT HART TRACTOR SUPPLY

Norge Washers \$199.95
Norge Dryers \$159.95

Famous names electrical appliances
—What-nots and wall plaques—

SOILA'S BEAUTY SHOP

Specials from December 7 to December 18

PERMANENT WAVES

Regular	NOW	Special Price
\$10.00	NOW	\$ 8.50
12.50	NOW	10.00
15.00	NOW	12.50
25.00	NOW	15.00

Hair Cut, Style, Shampoo And Set

PARSONS Funeral Home

"AS NEAR AS YOUR NEAREST TELEPHONE"

Oxygen equipped ambulance Service.

We accept any funeral home burial policy.

Phone 5211 Olton

Hart Legion Offers Prize For Decorations

Hart American Legion post will award prizes for the best outside decorations in Hart during the Christmas season.

Judging will be December 24 by out of town judges.

Daughter Born To Davenport

Mr. and Mrs. Howard Davenport are parents of a baby girl born December 3 at a Plainview hospital.

The young lady weighed 7 lbs., 9 oz., at birth. She has been named Cindy Wardena. Grandparents are Mr. and Mrs. J. W. Davenport of Hart and Mr. and Mrs. W. H. Duke of Floydada.

Award Winner



Award winners at the National Municipal League's annual National Conference on Government held in Springfield, Mass., are shown with league president Cecil Morgan. Left to right are Ben B. Ehrlichman, Mr. Morgan, James A. Norton, Robert Coldwell Wood and Stanley Scott. Mr. Scott is a former resident of Hart. He received his award for collaboration with Lewis Heller on a book entitled "A Guide for Community Action."

Seek Funds To Pay Debt On Diamond

Hart American Legion Post is accepting donations to cover the indebtedness on Hart baseball field.

A balance of \$2,000 is to cover the purchase of poles, lights, wire, switches and installation.

Total cost of the baseball field will come to about \$4,000. It will be donated to the community.

CLASSIFIED ADS

FOR RENT: 12 1/2 x 50 feet cement block construction building. Located in Hart. Call Rue Smitherman. Hart, 2672. 38-tfc

LISTINGS wanted. Hart Real Estate Agency. Norlan Dudley. 25-tfc

ALL kinds of Insurance. Hart Insurance Agency. Norlan Dudley, owner. 32-tfc

WANTED: To buy a used piano. Mrs. Willis A. Hawkins, Sr., Call 2341 or write Box 403, Hart, Texas. 44-tfc

B & K STORE

DRY GOODS—GAS—OIL—TIRES
GROCERIES—MEATS—HARDWARE

FLOUR SHURFINE 25 LB. FOR \$1.65

SURFRESH CHEESE 2 LBS 65c

SHURFINE Shortening 3 LBS. 65c

AUSTEX CHILI 303 SIZE 43c

COFFEE SHURFINE REG. OR DRIP. LB. 65c

LIBBY'S—FROZEN CUT OKRA 10 OZ. 15c

LIBBY'S—TOMATO JUICE 46 OZ. 25c

400's KLEENEX 4 for 98c

BISCUITS SHURFRESH 3 for 25c

GERBERS STRAINED FRUITS 3 cans 25c

PINTO BEANS 2 LBS. 23c

JELLO 3 OZ. 3 for 25c

SPECIALS GOOD DECEMBER 11, 12, 14, & 15

DOUBLE GUNN BROS. STAMPS ON TUESDAYS WITH PURCHASE OF \$2.50 OR MORE.

Highway 194

HART, TEXAS

Phone 2351



Play Safe
Pay Bills
by
CHECK

FARMERS STATE BANK

HART MEMBER FDIC TEXAS

For All Your

FERTILIZER NEEDS

ANHYDROUS AMMONIA &
PHOSPHORIC ACID

Also—Butane, Propane And
Farm Supplies

HI-POINT FERTILIZER, INC.

Phone 2771

Hart, Texas

CHRISTMAS ALL PERMANENT WAVES

\$10.00 permanent waves \$ 7.50
\$13.15 permanent waves \$10.00
\$20.00 permanent waves \$15.00

All Permanent Waves complete with hair cut, shampoo, set—all waves guaranteed!

PHONE 2681

FOR APPOINTMENT ON TUESDAY, WEDNESDAY AND THURSDAY.

BEESON'S BEAUTY SHOP

MELBA BEESON, owner-operator
VELMA LAMBRIGHT, operator
HART TEXAS

HART to HART

Roy Bennett, T. R. Davis, Granville Martin and Bob Bennett were in Cottle County the first of the week to do some bird hunting. Visiting Mr. and Mrs. L. J. Rice were Mrs. Rice's parents, Mr. and Mrs. L. M. Carter of Dimmitt.

Mr. and Mrs. W. P. Holland, Sr. and Mr. and Mrs. W. P. Holland, Jr., and children were guests of Mr. and Mrs. L. L.

Swindle and Mr. and Mrs. Fred Hamm. Those attending the Farmer's Union State Convention in Fort Worth were Mr. and Mrs. Joe Newman and Ralph Futrell. The convention was highlighted by US Senator and Democratic Presidential candidate Hubert H. Humphrey of Minnesota. Lions Club will meet Monday December 14. Also P-TA will meet Monday night, Dec. 14. Earl Jones and Theron Morrison attended Wayland College's presentation of Handel's Messiah. Mr. and Mrs. J. P. Armstrong visited Mr. and Mrs. Tom McCary in Tullia. Mr. and Mrs. Olen Rice of Dimmitt were visitors in the L. J. Rice home Sunday. Mrs. Ena Bowden was a guest at a tea honoring Miss Joyce Bowden at the home of Mrs. Earl Boggs at Kress, Saturday, December 5. Roy Cluck who has been in an Amarillo hospital for some time is now able to be at his home. Last Friday, Mrs. Charlie San-

KITCHEN KORNER
BY LELIA GALLION

Since it is close to Christmas time many of us will be wanting to make candy, so I will give you some of my favorite recipes. This is our favorite candy:

Boston Creams
2 cups brown sugar
1 cup white sugar
½ cup butter
1 cup cream
1 "scant" cup white syrup
1 cup English walnuts
Mix all together and cook until it forms a firm ball. Keep fire fairly low and stir often so the nuts don't burn. Cool and beat until mixture loses gloss. Pour into buttered dish. Be sure and

Others were honored with a birthday luncheon in the home of Mrs. Ed Bennett. Mrs. Edgar Varner suffered a back injury from a fall in her home early last week and was confined to her home.

use pure butter, instead of oleo.

We also like this Peanut Brittle:
2 cups sugar
½ cup water
1 cup white syrup
2 cups "raw" peanuts
1 tsp. soda
Cook sugar, water and syrup until it spins a long thread. Add peanuts and cook until golden brown, stirring constantly. Add soda and stir quickly and pour on well buttered baking sheet.

So far I've had good luck with this recipe.

Taffy
2 cups sugar
½ cup syrup
1 cup water
3 tbl. butter
1 tbl. vinegar
1 tsb. vanilla
Cook all together, without stirring, to a HARD ball stage. Remove from fire. Add vanilla and pour onto buttered platters. When cool enough to handle, pull until creamy white. Cut in strips and wrap in wax paper.

Methodist Set Revival Meet Next Month

"Total Enlistment for Christ's Mission" is the theme for the week-long revival at First Methodist Church. The Revival will begin January 3. Dr. Luther Kirk, District Superintendent of Plainview District will be speaker for the series of programs. General Chairman of the program is Mrs. Bill Walden. Chairmen of each division should turn in reports to Mrs. Walden each Sunday until January 3. Don Waldrip will be in charge of music for the revival. Rev. E. Lee Stanford is pastor of First Methodist Church.

Feathergills Have First Child Tuesday

A daughter was born Tuesday morning, December 8, to Mr. and Mrs. Edward Feathergill of Lubbock. The first child of the couple was born in Muleshoe Hospital and Clinic at 3:40 AM. At birth she tipped the scales at 6 pounds. She was named Linda Denise. Maternal grandparents are Mr. and Mrs. Basil Sherman, Olton. Maternal great-grandparents are Mr. and Mrs. F. M. Holland and Mr. and Mrs. Lee Sherman, all of Olton. Paternal grandparents are Mr. and Mrs. Paul Feathergill of Olton. Paternal great-grandparents are Mr. and Mrs. A. H. Allen of San Antonio. Paternal great-grandmother is Mrs. Sula Feathergill of Independence, Kan. Mrs. Feathergill is the former Miss Kay Sherman.

VISIT IN HOUSTON

Mr. and Mrs. Emmett Harper spent Saturday and Sunday in Houston visiting Emmett's brother and family, Mr. and Mrs. Royce Harper. The Harpers spent Sunday evening and Monday in Austin on business.

Hart School Lunchroom Menu

DEC. 14-18

- MONDAY:**
Steak fingers & gravy
Blackeyed peas
Creamed potatoes
Carrot stick
Lemon Pudding
½ pint milk
Bread & Butter
- TUESDAY:**
Chuckwagon beans
Spinach with bacon
Pickle & onion
Cornbread
Cake
½ pint milk
Butter
- WEDNESDAY:**
Sandwiches
French fried potatoes
Cheese stick
Slice tomato
Peanut butter cookie
½ pint milk
- THURSDAY:**
Bar-B-Q
English peas
Candied yams
Hot rolls
Jelly
Butter
½ pint chocolate milk
- FRIDAY:**
Salmon croquettes
Spaghetti with Italian sauce
Green salad
Beet pickle
Fruit jello, whipped topping
½ pint milk
Bread & butter

Principal Is Honored With NHS Membership

Fourteen OHS students were inducted into the National Honor Society Tuesday afternoon in formal ceremonies. Miss Johnny Beth Crawford, president, conducted the ceremony. The four principles of the society were explained by Sue Witten, Paul Ray Montgomery, Gayle McAnally and Joyce Curtis. A history of the NHS was given by Terry Gail Hooper. Don Waldrip, OHS principal, was honored with a honorary membership in the society. Secretary, Gayle Machen, introduced the fourteen to be inducted. Certificates of membership, NHS pins and membership cards were presented the new members, who are all OHS junior and seniors. Sponsor of the NHS chapter is Mrs. Katherine Brink. Baskets of holly and ivy decorated the auditorium stage. White candles were used in the ceremony, and then placed on a table laid with a white cloth. Those inducted included Wyona Cox, Pat LaFrance and Judy Laewell, seniors; Sharon Smith, Hazel Beth Smith, Gayle Ann Parsons, Ronald Fancher, Freddie Riney, Barbara Hamm, juniors. Also the four juniors who were provisional members last year, Becky Hall, Robert Priest, Kenneth Hooper and Sammy Kendall. Also recognized were the eight sophomores who are now provisional members. They include Lana Hair, Geneva Curry, Sandra Cox, Marilyn Jones, Joanna Lewis, Alice Ross Bryant, Donald Oursbourn and Kenneth Blades.

Jerry Parker Featured In College Drama

Jerry Parker, music director of First Baptist Church, will appear with the Departments of Music and Drama of Wayland College in the production "God's Trombones." The program will be Friday night at 8:00 o'clock in the Wayland College Chapel.

CONVENE IN RALLS

First Baptist Church will hold District 9 Convention in Ralls Friday morning. The program will begin at 9:45. Speaker for the occasion will be the Rev. J. Ralph Grant, pastor of First Baptist Church of Lubbock.

Dale Carnegie Men Present Lion Program

Two Dale Carnegie representatives from Lubbock presented the program at Olton Lions Club Tuesday noon. They are Forrest Criswell and Joe Hood. The two will begin a Dale Carnegie course at Springlake school early next year.

This Christmas Give—
Jayson Dress Shirts
Whites & Colors
\$3.95 — \$4.95
FROM
KELLEY'S
OLTON TEXAS

SALE
Our Gigantic December Clearance Sale Is Still Going And Will Continue Thru The Entire Month In Order To Make Your Christmas Money Go Further—**COME IN AND SHOP NOW!**

—We Are Listing Only A Few Of Our Hottest Specials—

9 Piece
Livingroom Suite
Studio Couch (makes bed), chair (swivel), 1 coffee table, 2 end tables, 2 lamps, 2 foam toss pillows—All 9 pieces only—
\$129

Bunk Beds
Complete — can be used as twin beds — Complete with extra thick mattress, ladder and rail—
\$119

SPECIAL ON ALL LAMPS \$295 UP

SET OF 4 LARGE TV TRAYS ONLY \$750 SET

Lady Waltham
ELECTRIC SHAVER
Reg. \$6.95, Sale Only
\$495

GIVE YOUR HOME A GIFT THIS YEAR
We Give And Redeem Big Chief Stamps
THOMAS FURNITURE
EAST SIDE OF THE SQUARE
OLTON TEXAS

Phillips 66
MAKE US YOUR HEADQUARTERS FOR TIRES—TUBES BATTERIES—V-BELTS PHILLIPS 66 GASOLINES OILS AND GREASES
G. H. BLEY
Your Phillips "66" Jobber
PHONE 2721 OLTON, TEXAS

OLTON HAS A FREIGHT DOCK



Bill Williams, left, is shown completing arrangements for freight dock facilities in Olton.

OLTON FARM SUPPLY
Now is representing Hub and Lang Motor Freight Lines as a dock and warehouse facility in Olton. Pickup and delivery service is available. In-coming freight will be delivered. If you have out-going freight call the Olton Farm Supply Number **2261**
Through this new facility we will better be able to serve Olton.

LANG TRANSIT CO.—HUB MOTOR FREIGHT

DENNIS Builders Supplies General Contractor
I Have On Hand Plenty Of 2 and 2½ Inch Construction Pipe and Sheet Iron
Corner Avenue E and 6th Street
Phone 2431 Olton, Texas

News Of Interest To Women

TO MARRY



MISS LEABELLE SLUDER

Leabelle Sluder, Mr. Finch Plan February Vows In Olton Church

Mr. and Mrs. Tom Sluder announce the approaching marriage of their daughter, Leabelle, to Mr. Orville Henry Finch, Jr.

Finch is the son of Mr. and Mrs. O. H. Finch, Dalhart.

The public is invited to attend the ceremony Feb. 28 at 3:00 PM in the First Baptist Church, Olton. Miss Sluder is a graduate of West Texas State College, Canyon and is presently in her second year as homemaker teacher in Dalhart High School. The prospective bridegroom was graduated from the University of Texas, and now ranches near Dalhart.

Christmas Everywhere Is Theme Of Meeting

Topic of study at the New Century Study Club meeting Wednesday, December 2, was "Christmas Everywhere."

Mrs. Gilbert Roberson spoke on "Customs of Christmas," and Mrs. Frank Struve told "How Christmas Is Celebrated in Other Lands."

Hostess to the meeting was Mrs. J. C. Brown. She was assisted by Mrs. Tom Carlisle.

The group was accompanied in the singing of Christmas songs by Mrs. Delmer Givens.

Plans were made for the club's Christmas parade float and scene. Members present included Mesdames Wilton Bodkin, Elmo Bryant, Glen Exter, Fred George, Murray Snyder, Alva Spain, Don Spain, Ed Thompson, E. C. Jones, Fred Thompson and those named.

WMU Schedules Last December Meeting

Women's Missionary Union of the First Baptist Church met in Circles Monday for a Bible study.

Mrs. Lacy Armstrong taught "Cheer for Anxiety," and "The Mission Challenge" to the members of the Circle, of which she is chairman.

"Human Relations" was given by Mrs. Clary Phillips in the other Circle. Mrs. J. G. Estes is chairman of this Circle.

The last December meeting of the WMU is scheduled Monday at 3:00 PM at the church. It will be a business meeting and the quarterly planning session. Mrs. Robert Edwards, president, urges all members to be present.

Pittman Speaks At LCC Associates Meeting Tuesday

K. D. Pittman was guest speaker when the Earth-Olton-Springlake Chapter of the Associates met at the Springlake Community Building Tuesday.

"Rome: It's Religious Relics and People" was the subject of Mr. Pittman's lecture. Slide films which were taken during his three and one-half years stay in Italy were used to illustrate the talk.

Mr. Pittman, minister of the Springlake Church of Christ, was among the first group of missionaries to enter Italy following World War II.



Miss Darlene Mandrell

Miss Mandrell, Mr. Carver Plan Vows

The betrothal and forthcoming marriage of Miss Darlene Mandrell and Mr. Bobby Carver, Lubbock, has been announced by the bride-elect parents, Mr. and Mrs. Frank Mandrell, Olton.

Parents of the prospective bridegroom are Mr. and Mrs. Joe Carver, Lubbock, and formerly of Earth.

Vows will be repeated January 1 in the Mandrell home. Miss Mandrell is attending OHS, and her fiance attended Springlake schools.

New Century Club Plans Christmas Social Dec. 17

Mrs. Elmo Bryant will be hostess Thursday, December 17, to the New Century Study Club.

The yuletide social will be attended by the members and their husbands.

Time is 7:30 PM.

Ladies Auxiliary Installs Officers

Officers were installed Wednesday afternoon at the meeting of Ladies Auxiliary of the Cumberland Presbyterian Church.

They include Mrs. Gerald Thomas, president; Mrs. Willard Morris, vice-president; Mrs. M. A. McCraw, secretary and treasurer; Mrs. James Martin and Mrs. Bill Lunsford, reporters.

Mrs. Leroy Bodkin was elected Secretary of Sunday School of Missions at the meeting.

The program was presented by Mesdames Bodkin, Thomas and Morris. Theme of the program was "Emmanuel—God with Us."

Mrs. Morris closed the meeting with a prayer, and then refreshments were served by Mrs. Martin and Mrs. Lunsford to those named and Mesdames Bessie Cowart, G. A. Bodkin, Murray Snyder and Eddie Moore.

Stork Shower Fetes Mrs. James Ellis

Mrs. James Ellis was named honoree Dec. 2 at a pink and blue shower in the home of Mrs. Robert Dennis.

Guests were registered by Mrs. Bobby Daugherty.

Refreshments were served by Mrs. A. C. Turelock and Mrs. Doyce McAdams from a table laid with lace over blue.

Centerpiece on the table was a baby doll in a blue bassinet, with a stork figurine of blue. Also used was an arrangement of flowers.

Mrs. Dennis gave a reading, "What Is A Boy?" Two guessing games were played by those attending.

The hostesses' gift was a house coat. It was presented to the honoree by Mrs. E. G. Phillips.

Sharing hostess duties included Mesdames Dennis, Phillips, Turelock, Daugherty, McAdams, C. W. Grant, G. W. Berry, Robbie Traynor and Sonny Miller.

Firemen, Wives Are Entertained

Mesdames David Maxey and Percy Parsons were hostesses to the Firemen's game night Thursday night week.

Table games were played during the evening.

Cinnamon rolls and coffee were served to Messrs. and Mesdames Lynn Fite, John Schenck, Tom Smith, Parsons, Maxey and Mesdames Sonny Low and Bill Kemp.

Olton Study Club Plans Dinner For Monday Night

Era Maye's Dining Room will be the scene Monday night for the Christmas dinner of the Olton Study Club.

Members and their husbands are to attend the social, which will begin at 7:30 PM.

Hostess is to be Mrs. Raiford Daniel and Mrs. Jim Fuller is to be co-hostess.

Bykota Club Meets Tuesday Night; Gives Box Of Food

Mrs. Edd Burrus and Mrs. Bill Lunsford were hostesses to the 1956 Bykota Study Club members Tuesday night.

The group met at Era Maye's Dining Room, and composed a large box of groceries for a needy Olton family. Also the members brought cosmetics, combs, etc., for the state hospital at Wichita Falls.

Sandwiches, pumpkin pie and hot spiced tea were served to Mesdames Andy Stroebel, Billy Smith, Harley Don Bryant, Bobby Copeland, Basil Johns, Max Malone.

Joe Hall, Jerry Dennis, James Martin, Dwayne Wilks, Carl Moore, Billy Guy Thomas, Lunsford and Burrus.

Bridge Club Meets; Dadds Win Prizes

Mr. and Mrs. Jackson Dodd won prizes for high score as the Saturday Evening Bridge Club met in Era Maye's Dining Room.

Hostesses for the occasion were Mesdames Jim Brown and Norris Sampler. The dining room was decorated in a Christmas theme.

Refreshments were served to fourteen members and two guests to include Messrs. and Mesdames Dodd, Brown, Sampler, Joe Hall, Edd Burrus, Don Waldrip, Robert Meinecke and Dwayne Wilks.

Members of the club voted not to meet again until January 16.

Louisa Dennis Circle Has Party In Home Of Namesake Tues.

Mrs. Louisa Dennis was hostess as the Methodist circle bearing her name met Tuesday morning.

Mrs. Don Spain gave several Christmas readings and poems, and Mrs. James Caley gave "One Solitary Life."

Christmas records were played during the exchange of gifts.

Mrs. Dennis served cheese and crackers, pie, coffee and Cokes to Mesdames Bob Coen, Jeff Smart, Jim Mills, J. L. Snider, Dwayne Wilks, Garland DePrang, Clifford Carlisle, Sonny Low, Caley and Spain.

Miss Bradley To Be Shower Honoree

Miss Sharon Bradley, Hart, will be the honoree at a pre-nuptial shower Tuesday in the W. T. Hankins home.

Hours of the shower are from 3:00-5:00 PM.

The Hankins home is located 3 miles west on the Muleshoe highway and 3 miles north.

Miss Bradley is the bride-elect of Weldon Motley, Olton.

Forty-One Attend Girls 4-H Meeting

Home Demonstration Agent, Lady Clare Phillips spoke on making fruit loaf candy to the Girls 4-H Club Dec. 3.

A demonstration on making the candy was also given.

The Home Demonstration Agent was assisted by Mrs. Hulsey. Forty-one members were present.

Methodist Women Schedule Meeting

Women's Society of Christian Service will meet Wednesday morning at 9:30 AM for a Christmas program.

The women will meet at the First Methodist Church.

Christmas Social Is Held By HB Class

A covered dish supper was held Tuesday night for the Home Builders Sunday School Class of the First Methodist Church.

The Christmas social was held in the Fellowship Hall of the church.

About thirty persons attended the party. Seasonal carols were sung and games played.

Workday Planned Tuesday By Class

Workday of the Young Ladies Bible Class will be Tuesday.

The women will meet at the Main Street Church of Christ at 10:00 AM.

A covered dish luncheon is planned, and each lady is to bring a covered dish.

Olton Methodists Attend Meeting

Delegates from the First Methodist Church attended Plainview District Conference Wednesday week in Bovina.

Those attending the yearly event were Rev. and Mrs. E. Lee Stanford, Mr. and Mrs. Bill Walden, Mrs. Owen Norfleet, G. T. Sides, Dick Cade and H. R. Curtis.

AT MEETING



Mrs. Watson, left, of Muleshoe, president of the Epsilon Delta Chapter of Delta Kappa Gamma was here Saturday as the chapter met in the home of Mrs. Roye Aikman. Mrs. Aikman is pictured at right. (STAFF PHOTO)

Wesleyan Guild To Have Christmas Party Tuesday Night

Mrs. G. Trotter will be in charge of the program as the Wesleyan Service Guild meets Tuesday night.

The Christmas social of the women will be held in the Fellowship Hall of the First Methodist Church at 7:30 PM.

Hostesses are Mrs. Jim Williams and Mrs. Bailey Hair.

Methodist Class Has Party Thursday Night

Thirty-one persons attended the Christmas social of the Mattie Wiles Sunday School Class Thursday night week.

Each couple brought a covered dish for the supper. Main dish was baked chicken and dressing.

Mrs. E. R. Spain was in charge of the program. A Christmas story was given by Mrs. E. Lee Stanford.

Gifts were exchanged and games played as the group met in the Fellowship Hall of the First Methodist Church.

Scout Troop 140 Plans Party Mon.

Christmas party for the Girl Scout Troop 140 will be Monday night in the Junior High gymnasium.

Time of the party is 4:00 to 5:00 PM.

Mothers of the girls are invited and are asked to bring a gift, whose value is not more than fifty cents.

Gifts will be exchanged.

Garland DePrangs To Host Beacon Social

Members of the Beacon Class of the First Methodist Church will be entertained Wednesday night in the Garland DePrang home.

The Christmas social will begin at 7:30 PM.

Sponsors of the class are Mr. and Mrs. Raiford Daniel.

Ladies Bible Class To Meet Wednesday

G. B. Stanley taught Ladies Bible Class Wednesday morning as the group studied in Job.

Another lesson from Job will be given next Wednesday as the women meet at 10:00 AM.

About twenty-five women attended the Bible study.

Epsilon Delta Has Meeting In Olton

Olton members of the Epsilon Delta Chapter of Delta Kappa Gamma were hostesses to the Chapter Saturday. Twenty-six members were present at the meeting in the Roye Aikman home.

Iona Donnelly, Littlefield, directed a "TV Quiz Program." Program title was "Delta Kappa Gamma Standards—How Do You Measure Up?" Members of Scholarship and Selective Recruitment committees were participants in the program.

Luncheon was served, and was followed by an exchange of gifts.

Olton members were all present. They included Mesdames Roye Aikman, J. W. Dale, Fred Gordon, John Campbell, Joe Harper and Murray Snyder.

Young Ladies Class Discusses Program

Young Ladies Bible Class met Wednesday morning at the Main Street Church of Christ. Program of the previous week was discussed.

Mrs. G. B. Stanley and Mrs. Bill Kemp were nursery keepers.

Those attending included Mesdames Thomas Davis, Don Williams, J. W. Huckabee, Robert Williams, Jay Rainey, Willie Gene Green, C. W. Wilkinson, and D. M. Granbery and Miss Helen Locke.

For unusual and sure-to-please small gifts, come and see what we have just received... There are small plastic padded photo albums for \$1.00 (from Stylecraft)... And useful and attractive files and Busy Bee items...

The younger ones will like our DENNIS THE MENACE PUPPETS...

And we have all kinds of special Christmas books from—

CHRISTMAS WITH ED SUL-LIVAN

to

CHRISTMAS WITH MRS. BILLY GRAHAM,

CHRISTMAS IS ALWAYS by Dale Evans,

The Christmas IDEALS, and many others...

And if you should happen not to find the right book for that very special interest or hobby, remember we give gift certificates...

This Christmas Give—
Jockey Underwear & Socks
 FROM
KELLEY'S
 OLTON TEXAS

OGLETREE'S
Bookshop
 Olton, Texas

LITTLEFIELD HIGH SCHOOL
HOMEMAKING DEPARTMENT
 will sell seven Supernova Necchi sewing machines — blond cabinets — almost New — great bargains.

This Christmas Give—
Tom Sawyer Apparel for Boys
 FROM
KELLEY'S
 OLTON TEXAS

This Christmas Give—
JAYSON ENRO MCGREGOR Sport Shirts
 FROM
KELLEY'S
 OLTON TEXAS

Bykota Drawing For Doll To Be Dec. 23
 1956 Bykota Study Club will hold a drawing Dec. 23 at 3:00 PM. To be given away is a Patti-Play Pal doll, which is 34 inches tall.
 Tickets are priced at fifty cents each, and may be purchased at the House of Flowers, Jeanne's, or from any club member.
 Attendance at the drawing is not required to win the doll.

Santa Specials

ONE LARGE GROUP OF REDUCED FROM 30 TO 50% DOLLS

BATTERY OPERATED U.S. ARMY TANK REGULAR \$12.95 SANTA SPECIAL \$7.95	FOR BOYS—6 to 60 POOL TABLE REGULAR \$19.95 SANTA SPECIAL \$14.95
REGULAR \$14.95 Santa Special \$11.95	REGULAR \$21.95 Santa Special \$16.95

WANTED BY EVERY LITTLE GIRL Table & Chair Sets

WE HAVE MANY OTHER TOYS MARKED WAY DOWN! COME IN AND CHECK OUR PRICES!

We have a complete assortment of **BEAUTIFUL CHRISTMAS RIBBON AND WRAPPING PAPER**

A LARGE SELECTION OF **CHRISTMAS TREE DECORATIONS**

SHOP NOW AND SAVE— USE OUR CONVENIENT LAY-AWAY PLAN!

Duncan 5¢ & 10¢ Store
 OLTON TEXAS

Olton Cagers Drop Two Tilts

Olton boys and girls dropped a doubleheader to Muleshoe here Tuesday night.

The girls lost their game 53 to 35, Pat LaFrance was high point for the Olton team.

Olton boys lost 62 to 39.

Friday night will find Olton girls and boys on the maplewood here hosting teams from Whitehall. Boys will play A and B games with Littlefield here beginning at 6:30 o'clock Monday night.

Hart boys and girls will play here beginning at 7 o'clock next Tuesday night and Olton teams will be in the Tulla tournament beginning Thursday of next week.

K. Harpers Parents Of New Daughter

A daughter weighing 6 lbs. 13 ozs., was born Thursday at 8:05 AM, to Mr. and Mrs. Kenneth Harper of Olton.

The little miss was named Terri Denise and was born in Methodist Hospital, Lubbock.

The Harpers have another daughter, Darla Kim, age 15 months.

Maternal grandfather is L. R. Goyne of Olton. Maternal great-grandparents are Mr. and Mrs. J. E. Elliott of Fieldton. Maternal great-grandmother is Mrs. T. D. Goyne of Olton.

Paternal grandparents are Mr. and Mrs. Emmett Harper of Olton. Paternal great-grandmothers are Mrs. Ethel Bloodworth of Olton and Mrs. Lizzie Harper of California. The father is engaged in farming.

SCOUT MEETING

Melvin Hines, cub master, announces there will be a den meeting Monday night at 7:00 at the Cub Scout House.

All scouts and parents are invited to attend.

Cubs To Get Awards Monday

Awards will be handed out to about a score of Cub Scouts at 7:30 o'clock next Monday night at the Scout House.

Cubmaster is Melvin Hines. Receiving awards will be Roger Thompson, Bobby Turner, Don Mitchell, Jimmie Ferguson, Dale Gabehart, Steve Spain, David Stackhouse, Larry Green, Joe Lee, Otis Neal Patterson, Doyle Cordero, Danny Collins, Mike Trotter, Charles McLain, Guy Ballard, Benny Akin, Steve Henley and Glen Loveless.

Olton People Attend Wayland Choir Performance

Several Oltonites attended the Christmas presentation of "The Messiah" at Wayland College Sunday afternoon.

The musical oratorio was opened with tenor solos by Jerry Parker, Director of Music in the First Baptist Church of Olton.

Miss Judy Price, daughter of Mr. and Mrs. Duward Price, and freshman music major at Wayland, assisted in the performance.

FROM CORPUS CHRISTI

Mr. and Mrs. J. O. Funderburk and daughters of Corpus Christi visited her mother, Mrs. Maude Funderburk, and his sister, Mrs. H. R. Curtis, and family recently.

IN HOBBS

Mrs. C. L. Robbins and Jimmy visited her mother, Mrs. M. J. Marler, Sunday in Hobbs, NM. Mrs. Marler is hospitalized in that city.

Nab Two Men In Entry Of Olton Store

Two Plainview men remained in jail this week in lieu of bond as an aftermath of burglaries pulled off here and at Spade the latter part of last week.

Charged with burglary are two men identified by officers as Jimmie Parker, 19 years old, and Tom Malone, 21. They are being held in Littlefield.

The two were charged in justice court here with the burglary of the J. C. Jones Store from which about \$35.00 was taken last Thursday night.

Some cigarettes were taken from a store in Spade.

Deputy Sheriff V. L. Smith and Police Chief Floyd Cavin investigated the Olton burglary. The break-in was discovered early Friday morning by Manager Jim Hayes as he opened the store.

Burglars had entered the firm through an air conditioner vent after gaining access to the roof by means of a ladder. A window was smashed at the Spade store.

They were arrested about 3:30 o'clock Monday afternoon in Springlake by Deputy Sheriff V. L. Smith, Jr.

Tip that led to the arrest came from city night officer Emmett Burrow who noticed a strange automobile in town the night of the burglary and recorded its license number.

VISIT WALDENS

Mr. and Mrs. C. R. Walden and Judy of Wickett visited recently in the E. W. Walden home.

Olton Chapter Receives Awards At Littlefield

Olton FFA Chapter received three awards at the district FFA banquet held last Thursday night in Littlefield.

Sharon Dennis was named runner-up in the district queen contest. The chapter radio broadcasting team received a third place banner and Enterprise Publisher Troy Martin received the honorary Lone Star Farmer Degree.

The broadcast team is made up of Waymon Smith, Rande Buchenau and Jimmy Tollett.

Miss Dennis was in competition with 13 other girls.

Calvin Horn, vocational agriculture instructor, also holds the honorary Lone Star Farmer Degree. The Olton Enterprise was awarded the State FFA Distinguished Service Award last year.

Olton's Gerry George, district president, presided over the district meeting last Thursday night.

Ex-Students To Meet At Cafetorium

Ex-Students and Teachers Association will sponsor a coffee December 26 in the school cafetorium.

The coffee replaces the annual banquet which is annually held in December.

Time of the event is 7:30 PM. Officers of the Association are Joe Hysinger, president; Mrs. Wayne Hair, vice-president; and Mrs. Bill Walden, secretary-treasurer.

Singletery Daughter Has Baby In Okla.

A third child was born to Mr. and Mrs. Neal Pock, Norman, Okla., Tuesday morning at 3:15. Mrs. Pock is a daughter of Mr. and Mrs. Glen Singletery, Olton.

The baby, a girl, was unnamed at press time. She weighed in at 7 lbs., 13 ozs.

Other children of the couple are Carey Lynn, 3; and Paul Phillip, 1½.

Maternal great-grandparents are Mr. and Mrs. T. C. Singletery, Clayton, NM; and Mr. and Mrs. W. M. Mason, Elk City, Okla.

Mr. and Mrs. George Pock, Stillwater, Okla., are the paternal grandparents.

Sunday Night Music Program

A musical and scripture program will be presented at the Sunday evening services of the First Baptist Church.

Excerpts from the cantata "Love Transcending" will be presented along with additional musical selections.

The program will be under direction of Jerry Parker. Harold Dean Carson will be accompanist.

Christmas Parties Will Be Dec. 18

Christmas parties in the first eight grades will be held December 18, according to Mrs. Gilbert Roberson, P-TA Room Representative Chairman.

Mrs. Roberson stated plans are in the process for the parties to be held in each room after 1:00 PM, with each room's having its own tree and Christmas stories. Busses will run that day at 2:30.

Olton Doctor Announces Lubbock Move

Dr. B. J. Souders will be moving to Lubbock Dec. 20, according to an announcement made by the doctor this week.

Taking over his practice in Community Hospital here will be Dr. Basil Johns. Dr. Johns has been on the staff of the Olton hospital for some time.

Dr. Souders was associated with Olton Memorial Hospital before opening Community Hospital here. Dr. Souders moved to Olton from Lubbock.

Dr. and Mrs. Souders have three children, Ben, Jr., John and Elizabeth.

Charles Golden Seriously Ill

Charles Golden was admitted to the Plainview hospital Friday evening with internal infection. The doctors expect to operate sometime this week.

As of Wednesday evening it is reported he is still very ill.

LEGAL NOTICE

NOTICE OF ELECTION

Notice of special election for Mayor for the City of Olton, Texas, at a regular meeting of the City Council of the City of Olton, Texas, held on the 8th day of December, 1959, the following order was passed, to-wit:

ELECTION ORDER
It is ordered by the City Council of the City of Olton, Olton, Texas:

That a special election be held in the City Hall in the City of Olton on the first Tuesday in January, 1960, the same being the 5th day of January, 1960, for the election of the following officers for the said City, to-wit:

A Mayor for the unexpired term to take the place of D. Y. Ray, who has resigned, which term of office shall terminate April 1, 1961.

Howard Hall is named presiding judge of said special election and G. T. Sides is named assistant judge of said special election, and Faye Stone is named Clerk of said special election.

A copy of this order, signed by the Mayor Pro Tem and attested by the City Secretary, shall serve as notice of said election and same shall be posted in three public places and published at least ten days prior to the day of election in the manner required by law.

Passed and Adopted This 8th day of December, 1959.

A. D. Adams
Mayor Pro Tem

ATTEST:
SEAL
Berniece Smith
City Secretary

J. C. JONES COMPANY OLTON

79c On The Dollar Sale

Here is a Christmas present for you. We have moved our Semi-Annual 79c on the Dollar sale up a month, so that you can take advantage of the savings during your Christmas shopping.

We have just returned from a market trip to the Fort Worth, Dallas, and Oklahoma City markets, making purchases for our store, that we feel has made the gift merchandise in our store, and the prices in our store compare favorably with anything you can find in the big towns... SEASONS GREETINGS J. C. JONES COMPANY, OLTON
Sim Hayes, manager

HERE'S HOW IT WORKS:
YOU SAVE 21c ON EACH DOLLAR—
CHECK YOUR SAVINGS—

If regular price .98—Sale Price	
1.00	.79
1.49	1.18
1.98	1.56
2.49	1.97
2.98	2.36
3.45	2.73
3.98	3.14
4.98	3.94
5.90	4.66
6.90	5.45
7.90	6.24
10.00	7.90
24.50	19.46

This sale covers practically every department in our store. Some of the many items included follow:

FOR HER
ALL DRESSES — SUITS — COATS
SLIM JIMS — BLOUSES —
HOSE — LINGERIE — HATS — SWEATERS — ROBES — PURSES — SKIRTS
JEANS
GIFT SETS

FOR HIM
ALL JACKETS — DRESS PANTS —
COWBOY BOOTS — HATS
DRESS GLOVES — ROBES — PAJAMAS
SPORT SHIRTS — WESTERN SHIRTS
GIFT SETS

FOR THE HOME
ALL BEDSPREADS — SHEETS —
TOWELS — GIFT SETS
PILLOW CASES — BLANKETS — TABLE CLOTHS — THROW RUGS — PILLOWS

ADDED ATTRACTION
1,000 yds. useable lengths in
REMNANTS
1/2 PRICE

Nice assortment
FAST COLOR PRINT
3 yds. \$1.00

We Will Cheerfully Gift Wrap
Your Purchases
FREE!

This Christmas Give—
Stetson Hats
For Men
\$11.50 — \$25.00
Dress & Western
FROM
KELLEY'S
OLTON TEXAS

MANURE FOR SALE
(Delivered and Spread)
SEE US FOR YOUR MANURE NEEDS—
Phone CA 4-2357 in Plainview.

HILL & RHODERICK FEED YARD
J. C. RHODERICK, JR., manager
1300 Grove Plainview, Texas

LUBBOCK'S ONLY EXCLUSIVE MAPLE SHOP
OLD HOMESTEAD in HAROLD GRIFFITH FURNITURE CENTER

THE BEST KNOWN EARLY AMERICAN LINES

Ethan Allen — Kroehler — Kling — Willett — Heywood Wakefield — O'Hearn

FRENCH PROVINCIAL TABLES DESKS BOOKCASES LAMPS

FRENCH INSPIRATION BY MASTER CRAFTSMEN

Let our trained staff help you plan your provincial room.

Lon Eakle Marguerite Holton

Need Help? Let our home furnishing counsellors help you—No extra cost!

TERMS FREE DELIVERY

RECLINING CHAIRS — PLATFORM ROCKERS — CHAIRS WITH FOOT STOOLS

Large selection of plastics, naugahyde and plyhide for the working man.

HAROLD GRIFFITH

116 N. College Lubbock, Texas

Be sure of **Better Cotton!**

Whatever your crop, reliable irrigation means more yield per acre... and more yield puts more profit in your pocket! Be sure of water with dependable BJ pumps — deepwell or submersible.
BJ Pumps
Plainview, Texas Lubbock, Texas

BYRON JACKSON PUMPS
1305 North Columbia—Ca 4-5504
Plainview, Texas

UNBEATABLE!

...our food values!

Specials
Start
Friday
December
11, 1959

HI-C
ORANGE DRINK

46 OZ. CAN
29c

FOLGERS'—20c OFF LABEL
INSTANT COFFEE

6 OZ. JAR
75c

10c THIS COUPON WORTH 10c 10c



Towards Your Purchase of
INSTANT NESTEA
100% PURE TEA

reg. price **51c** with **COUPON** **35c**

10c Good only at SHERMAN FOOD 10c

Ballard Biscuits 3 cans 25c



F A B

GIANT SIZE
7c OFF LABEL
67c



KILLS ROOM ODORS FAST

Colgate's New Wonderful
AEROSOL AIR DEODORANT
No Wick—No Wail—No Waste
73c

A J A X

GIANT SIZE
4c OFF LABEL
2 for 35c



COOKIES Bowman-Cocoanut Chocolate Drop, 1 Lb. Bag **43c**

PATIO FROZEN BEEF
ENCHILADA DINNERS
12 OZ.
49c

DELSEY
TOILET TISSUE
4 ROLL PKG.
49c

PEAS Libby Garden Sweet 303 Can **2 for 33c**

LIBBY
VIENNA SAUSAGE
4 OZ.
2 for 39c

GEBHARDT'S
PLAIN CHILI
300 CAN
39c

Coca Cola 12 Bottle Carton Plus Deposit **49c**

Get Your Christmas Candy, Fruit & Nuts Now—While we have a good selection—PLACE YOUR ORDERS NOW — FOR YOUR CHRISTMAS HAMS, HENS AND TURKEYS.

FRESH SHOULDER
PORK ROAST
LB.
35c

CRACKERS RECLOSABLE STACK PACKS Keep 'em CRISP! Premium 1 Lb. Box ... **27c**

CRISP
CELERY HEARTS
CELLO BAG
23c

HYDROX
COOKIES
LARGE BAG
2 for 69c

SALAD SLICER
CUCUMBERS
LB.
19c

BACON Cudahay Nutwood 2 Lb. Pkg. **79c**

ALL ACCOUNTS PAID BY 10TH OF MONTH RECEIVE GUNN BROS. STAMPS



SHERMAN FOOD



DOUBLE GUNN BROS. THRIFT STAMPS ON WEDNESDAY WITH PURCHASE OF \$2.50 OR MORE

QUALITY MEATS

PHONE 3701

FREE DELIVERY

Bohner Teams Win Two Over Sudan Squads

Bohner boys and girls won over Sudan teams in basketball games played here last Friday night. The girls won 35 to 17 while the boys edged Sudan 43 to 38. Barbara Harris was leading scorer for Bohner with 28 points. Starting line-up of the girls team included Barbara Harris, Carolyn Poreh and Nettie Sheffield at forward and at guard were Archie Garrett, Sarah Logan and Brenda Smith.

Newcomers to the team are Lavern Clayton, Betty Moore, Iva Nell Moore, Sarah Logan, Brenda Smith, Ella Lucky, Almada Green and Mary Mack. Coach is C. M. Williams.

Euel Jackson was high point man for the boys with 16 points and Julius Sheffield was second with 14 points.

Starting lineup included Euel Jackson, Johnny Harris, Julius Sheffield, Cleo Logan and James O'Hara Moore. George Thomas was the most outstanding defensive player. Newcomers to the team are Benny Harris, Jerry Harris, Alvie Lucky, McArthur Thomas and Don Green. The boys are coached by E. C. Woods. Bohner plays host to Anton here at 7:30 PM Friday.

VISIT HERE

Mrs. Clarence Carpenter, El Paso, visited Sunday and Monday with her mother, Mrs. W. C. Dennis and Judy, and her sister, Mrs. Evelyn Galloway and children. Also, O. D. Dennis, brother of Mrs. Dennis' late husband, visited in the Dennis home, and with his niece and family.

ATTEND COURTESY

Mr. and Mrs. Tom Smith attended a pink and blue shower honoring their daughter, Mrs. Bobby Johnson, of Canyon, Friday night. The affair was held in the Chuck Gorton home in Canyon.

Music Dept. In Concert Next Sunday

Music Department of Olton High School will present a Christmas Concert at 3 o'clock Sunday afternoon in the high school auditorium.

Some two hundred students will participate as band and choir combine to present the holiday musical.

Opening the program the Cadet Band will present four numbers, Challenger March, Little Scotch Suite, John Peel and Rudolph, the Red Nosed Reindeer.

High School Girl's Choir will perform two Christmas Carols, Silent Night and Adeste Fideles. They will also sing Gloria, from 12th Mass.

Blue Notes, high school stage band, will play several popular selections including Basin Street Blues, Embraceable You, White Christmas and two melodies from the musical "Damn Yankees".

Mixed chorus, composed of some fifty male and female voices, will sing four Christmas numbers. They include Deck the Halls, Silver Bells, Santa Claus is Coming to Town and We wish you a Merry Christmas.

Climax of the program will be the eighty-five piece Mustang Band. The senior band will play

Yuletide Sketches and Bells of St. Mary. Miss Koenia Schenck, high school soprano, will be featured soloist as the band closes the program with Bless This House.

This Christmas Give—
Jiffies
For Men & Boys
FROM
KELLEY'S
OLTON TEXAS

Now You Can Receive Service Without Leaving Your Car At Our New

DRIVE-IN WINDOW

In order to better serve our customers, we have installed a drive-in window—Now you can call 4426, place your order, then drive down and pick it up without leaving your car.

TRY OUR NEW DEEP SEA DOODLE

FISH ON A BUN WITH FRENCH FRY'S & VEGETABLE SALAD ONLY **50c**

TASTY CREAM DRIVE-IN

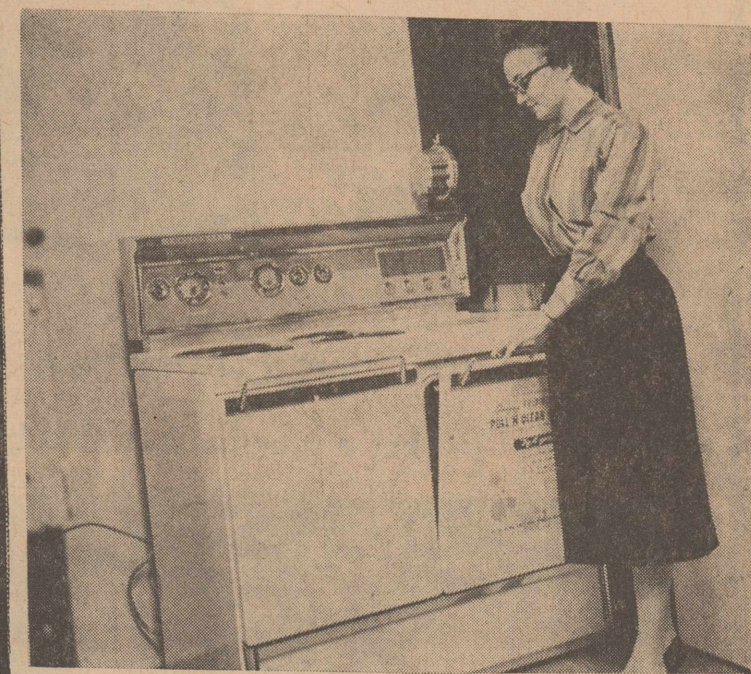
PHONE 4426

CAROL & SUE MAY

OLTON, TEXAS

Electric Gifts keep on saying

BEST WISHES
all year long!



COME IN

Such a range of choice—many electrical gifts from which to choose... and at least one specific gift to fit the individual's need. A price range to fit every giver's budget, too... from major appliances that lighten housework to delightful small, inexpensive appliances like mixers, toasters, etc.

December 16 any time between 9 o'clock in the morning and 4:30 o'clock in the afternoon for free cookies and coffee. Visit with Gaile Ward home service advisor for Southwestern Public Service Co.

Parsons Furniture

"Where A House Becomes A Home"

—"We Give & Redeem Big Chief Stamps"—

Phone 5951

Olton, Texas



GIFTS

Look here!



Best gifts yet!

Complete CAMERA DEPT.
Moving Picture Cameras, Still Cameras, Projectors, Films, Attachments
Polaroid Land Cameras: reg. \$74.95 sale \$54.95, Polaroid camera kits, reg. \$109.95 cash sale \$79.95

JEWELRY

Necklace sets, earrings, bracelets

Billfolds from 98c to \$20

Cigars, Cigarettes, Pipes, Lighters

WATCHES

Gruen, Elgin and Bulova

ELECTRIC SHAVERS

Schick reg. \$29.95, cash sale \$15.95.
Sunbeam reg. \$29.95, cash sale \$15.95. Ronson model 66 reg. \$28.50 cash sale \$12.95. Norelco reg. \$24.95 cash sale \$12.95. Remington Roll-A-Matic reg. \$29.95 cash sale \$15.95

Come in and see our complete selection of toys & games

Olton Drug

COMPLETE PRESCRIPTION PHARMACY

PHONE 2251 OLTON, TEXAS



Bowling Scores

CHANNELETTES

Monday 6:30 PM

	W	L
Hi Lyters	15	17
Pen-Nettes	15	17
Spotters	17	15
Sattelites	12	20
Pen-Heads	17	15
Beatniks	20	14

High team game, The Pen-Heads 54; High three game, The Spotters, 146; High individual game, Laverne Fennell, 181; High individual three games, Bonnie Lunsford & Vera Young, 436

SPRINGLAKE COUPLES

Monday 9:00 PM

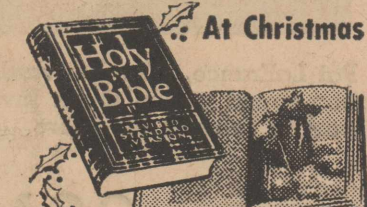
	W	L
Mac's Hdwe-Ashley's Welding	10	22
Cirele Gin	17	15
Watson Butane (2)	19	13
Springlake Elevator	15	17
Springlake Beauty Salon	20	12
Olton State Bank	21	11
Thompson Implement (2)	13	19
Paymaster Gin	13	19

High team game, Olton State Bank, 645; High three game, Olton State Bank, 1701; High individual game (Women) Laverne Fennell, 159 (Men) Dan Quigley, 194; High individual three games (Women) Laverne Fennell, 391 (Men) J. W. Dear 508

TEN SOLDIERS

Tuesday 6:30 PM

	W	L
Bryant-Giles	15	17
Olton Paint & Body Shop	18½	13½
Thompson Chevrolet	10	22
Traylor's	20	12
Merrill's	13½	18½
Olton Auto Supply	19	13



At Christmas

GIVE THE Ideal Gift

—AN ILLUSTRATED EDITION OF THE RSV BIBLE

Written in the language of today, the handsomely-illustrated Revised Standard Version Bible will bring lasting joy to you and your friends at Christmas. Millions enjoy reading the RSV Bible because it brings them a clearer understanding of the great stories, parables and teachings of the sacred Scriptures.

The black leatheroid RSVB, especially popular with young people, contains 12 full-color illustrations, 12 six-color maps, a three-color presentation page, complete footnotes and references. (2803).....\$3.50

Bound in handsome blue washable cloth (2800)..... 3.25

Come in today to see these and other fine RSV Bibles—published exclusively by Thomas Nelson & Sons.

We'll be happy to fill your order by mail

Ogletree's Bookshop

OLTON TEXAS

Consumer Butane 15 17
Spotlite Cafe 17 15
High team game, Thompson Chevrolet, 656; High three game, Olton Paint & Body, 1755; High individual game, A. N. McDonald, 213; High individual three games, A. N. McDonald, 565

SPRINGLAKE MEN

Tuesday 9:00 PM

	W	L
Farm Chemical Co.	25	7
Elroy's	13	19
Earth Machinery	15	17
Jaycees	14	18
Farmer's Union	20	12
Watson's Butane	19	13
Paul's	14	18
Earth Butane	8	24

High team game, Earth Jaycees, 780; High three games, Farm Chemical, 2155; High individual game, Elton Schaefer, 187; High individual three games, Fluff Meyers, 529

TEN PIN BOWLERS

Wednesday 9:00 PM

	W	L
Whittington's	19	9
Thomas Real Estate	14	14
Roberson-Givens	19	9

Olton State Bank 13½ 14½
Olton Enterprise 11 17
Chitwood Insurance 15½ 12½
Tri-County Co-Op Gin 11 17

Farmers Gin 9 19
High team game, Roberson-Givens, 544; High three games, Roberson-Givens, 1571; High individual game (Women) Jane Wilks, 141 (Men) James Hall, 190; High individual three games, (Women) Jane Wilks 384 (Men) James Hall 492

LADIES' LEISURE LEAGUE

Thursday 9:00 AM

	W	L
Botkin Food	18	18
White Auto	13	23
Olton Drug	23	11
Smith & Struve	13	23
Tasty Cream	17	19
Bizzell's	15	21
Gray Gro.	28	8
Jeffrey Lumber	15	21

High team game, Botkin Food, 544; High three games, Gray Gro. 1532; High individual game, Frankie Carlisle, 199; High individual three games, Frances Leathers, 507

OLTONETTES PLUS

Thursday 6:30 PM

	W	L
White Sox	12	8
Twisters	11½	8½
Hart Camp Gro.	19	1
Whats' It	10½	9½
Tigers	10	10
Mustangs	2	18
Ponies	4	16
Sluggers	11	9

High team game, Hart Camp Gro., 632; High three games, Hart Camp Gro. 1826; High individual game, (Women) Mae Neinst, 187, (Men) Wesley Neinst, 247; High individual three games, (Women) Alene Ball, 470, (Men) Dell Tallett, 558

MEN'S CLASSIC LEAGUE

Thursday 9:00 PM

	W	L
Fitts & Townsend	18	18
Thompson Implement	17	19
Olton Co-Op Gin	25	11
Higginbotham-Bartlett	13	23
Olton Grain, Inc.	25	11
Olton Delinting Plant	10	26

Hatley-Machen 18 18

Sanders-Paris 18 18

High team game, Olton Co-Op Gin, 863; High three game, Fitts & Townsend, 2355; High individual game, Frank Struve, 233; High individual three games, M. G.

Olton School Lunch Menu

DEC. 14-18 (Subject To Change)

MONDAY: Fried chicken & gravy
Rice

Brown, 536

PIONEER COUPLE'S CLASSIC

Friday 9:00 PM

W L

Olton Butane	19	17
Williams Insurance	15	21
Botkin Food	17	19
G. H. Bley	18	18
Sherman Food	20	16
Cashway Food	18	18
Parsons Furniture		
Parsons Funeral Home		

W L

Straw-Burrow Gin	20	16
High team game, Cashway, 653;		
High three games, Cashway Food,		
1786; High individual game (Men)		
James Gallagher, 244 (Women)		
Maxine Struve, 176; High individual		
three games (Women) Maxine		
Struve, 436, (Men) James Gallag-		
her, 623		

Buttered peas
Pineapple salad on lettuce
Rolls & honey butter
Milk

TUESDAY:

Ham or Frito pie
Boiled potatoes & butter
Lettuce wedge with dressing
Peach & doughnut
French bread
Milk

WEDNESDAY:

Hamburger or hot dog
Cream of tomato soup
Peanut butter & crackers
Lettuce, tomato & onion
Sliced oranges
Milk

THURSDAY:

Baked turkey & dressing
Giblet gravy
Green beans
Apple sauce salad on lettuce
Fruit cake
Rolls & milk

FRIDAY:

Brown beans or tamales
Tomatoes & macaroni
Potato salad
Cherry cobbler
Cornbread & butter
Milk

VISIT CARLSBAD

Mr. and Mrs. L. L. Hardy recently toured Carlsbad Caverns.

WE PAY \$20.00 PER TON FOR SCRAP IRON

PRICE'S PLACE

Phone 5371

Olton

SAVE MONEY BY SHOPPING THE ENTERPRISE ADS!



The following optometrists have been approved for membership in the South Plains Optometric Society and the Texas Optometric Association. They are voluntarily pledged to a strict Code of Ethics and to the protection of the Visual Welfare of their patients.

This seal will identify them.

LITTLEFIELD:

PLAINVIEW:

Dr. B. W. Armistead

Dr. John Andrews

Dr. Glenn S. Burk

Dr. Clovis Clough, Jr.

OPTOMETRY: The Art and Science of Visual Care

Can YOU really see at night?

Some people cannot. They avoid driving at night because they feel unsafe and unsure. Their vision actually changes after dark.

Night vision can be improved in some cases where special lenses are required. If you are troubled with night blindness, consult a professional optometrist.

And if it can not be improved, he will advise you to:

- * Drive slower
- * Never take your eyes off the road
- * Watch the edge of the highway
- * Don't look at approaching headlights



THIS MESSAGE PRESENTED IN THE INTEREST OF BETTER VISION BY

SOUTH PLAINS OPTOMETRIST SOCIETY

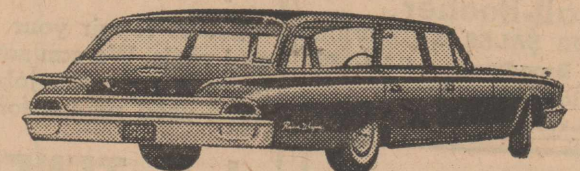
AFFILIATED WITH THE TEXAS OPTOMETRIC ASSOCIATION

Copyright, 1958—TEXAS OPTOMETRIC ASSOCIATION.



all-new agility!

Finer than ever, Ford '60 brings you spirited V-8 response, smooth as cream in every driving range. Just try it!



all-new style!

Look at those lines! Swift, smooth, unbroken, from sloping hood to rakish taillight. New flow-through design blends "inside" and "outside" into one beautifully proportioned unit.



For 1960 FORD...the wagon champ has done it again!

all-new space!

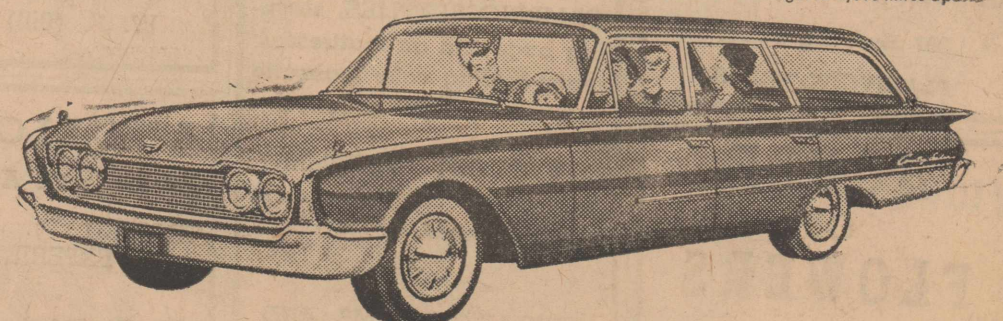
Nearly five inches more shoulder room, more hip and leg room, too. And look at that loadspace...the deck is almost ten inches longer.



FROM ANY POINT OF VIEW—FROM EVERY POINT OF VALUE—Ford's again the Wagon Master, with five new husky, handsome beauties. There's a new "limousine" ride with new 5-foot-long rear springs. Wide-Tread Design with nonsquare, soft-tread tires. You corner "on the level" wherever you go. Built for people as never before—with wider doors (easier to enter with the "dogleg" eliminated)—greater visibility than ever—55% more sky-to-road vision from front seat alone. Come in and see all our Wonderful New World of Fords—models for every purse and purpose.

all-new savings!

Now there are three Ford engines, Mileage Maker Six, Thunderbird 292 V-8 and Thunderbird 352 V-8, that thrive on low-cost regular. And you stretch oil changes to 4,000 miles apart!



COME SEE THE WONDERFUL NEW WORLD OF FORD WAGONS

F.D.A.P.

HALL-SIDES MOTORS, INC.

"YOUR FRIENDLY FORD DEALER"

OLTON, TEXAS

PHONE 4711

Explore the WINTER WONDERLAND OF

GAS RANGE—Here's BEAUTY as classic as a snow-covered countryside... PERFORMANCE as superb as championship skiing! With Gas, there's no warm-up wait, no heat, hang-over. A Gas range costs less to buy, less to use. Look for the Gold Star that signifies the finest cooking appliance you can buy!

GAS LIGHT—So economical, it burns continually to provide a warm welcome to guests... a warning to trespassers. Soft glow does not bother neighbors, gives your home nostalgic charm of bygone days. Ideal illumination along driveways, walks, steps, swimming pools, patios. The Christmas present with a bright future! Priced from \$49.50, installed.

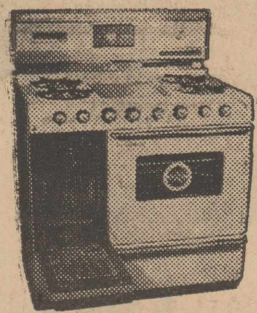
GAS DRYER—On cold, harsh winter days, here's the gentlest, most hygienic way to preserve colors, fiber life. Absolutely safe for all washables, even the daintiest synthetics, because Gas blows moisture away instead of baking it out. Because it has fewer complicated parts, your Gas dryer will last longer... and save you as much as \$24.95 a year to operate.



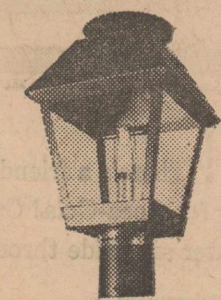
MODERN GAS APPLIANCES!

Right now, your dealer is the nicest guy with the wisest buy. See him, or visit...

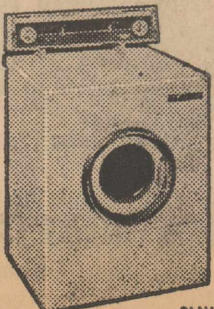
Fuel for a growing empire Pioneer Natural Gas Company



NORGE



Gaslite



PHILCO-BENDIX

SELL • BUY • TRADE • HIRE • SERVICE • REPAIR • MAINTENANCE • REFRIGERATION • PLUMBING • ELECTRIC • PAINTING • ROOFING • WOODWORK • CARPENTRY • CONCRETE • FOUNDATION • SEWER • DRAINAGE • ASBESTOS • REMOVAL • RESTORATION • ETC. WANTED ADS! OPPORTUNITY

The Olton Enterprise

Published each Thursday at Olton, Texas. Entered as second class matter at the post office at Olton, Texas, under the act of Congress, March 3, 1897.

Any erroneous reflection upon the character, firm or corporation which may appear in the columns of The Olton Enterprise, will be gladly corrected upon being brought to the attention of the publisher.

Subscription rates: \$3.00 per year in Lamb and neighboring counties; \$5.00 per year elsewhere.

ALL PHOTOS APPEARING WITHIN THE COLUMNS OF THE OLTON ENTERPRISE ARE STAFF PHOTOS UNLESS OTHERWISE ACCREDITED.



TROY F. MARTIN PUBLISHER
GAYLE McANALLY SOCIETY EDITOR
CELIE WALDRIP REPORTER
MRS. TROY F. MARTIN BOOKKEEPER

ADVERTISING DEPARTMENT

TROY F. MARTIN — RUSSELL L. GRIMES

MECHANICAL DEPARTMENT

RUSSELL L. GRIMES SUPERINTENDENT
JOE H. ALCORTA PRINTER
ELEANOR SUDDUTH TTS OPERATOR

Jesse Osborn Announces For Re-Election

I wish to announce that I am a candidate for re-election as State Representative for the 96th Legislative District composed of Lamb, Castro, Deaf Smith, Parmer and Bailey Counties. I appreciate the support—have received from the people of the district in the past and will appreciate your help and support for the democratic nomination in primary election to be held in May 1960.

Early Corn Produces Better Yield

Corn planted early in May 1959, produced higher yields than later plantings in the date of planting tests at the High Plains Research Foundation at Halfway. Three varieties of yellow corn were planted April 17, May 1, May 15 and May 21 in this test.

THE CRACKER CRUMBS

By Celie Waldrip



I ran across a poem the other day which my perverted sense of humor considered quite hilarious and seasonal, if not altogether true. Thanks a Million Or Less. This tray to hold sealing wax, penpoints and such: Is just what I've wanted . . . but not very much.

candles, some very good articles about worthwhile projects. One magazine show thrilling pictures of toothy young people in goggles and long-johns skimming over acres and acres of snow covered hills. This is a very interesting magazine, but I fail to get the full effect, having never been on a ski or snow covered hill in all my life.

refrain from use of narcotics; It evidently is worthwhile, as I have not had a single "fix" since reading it. Another of these monthlies contained an article not long ago on how to handle Junior if he absolutely refuses to eat macaroni. I can't remember the exact solution, but it had something to do with offering him chocolate cake instead.

tiful do-it-yourself ideas they advertise (the last time I squandered a quarter on a woman's magazine, I discovered by spraying a hub cap gold, one can make a lovely planter . . . but, I neglected to take the hub cap off the car first.) I guess I am forever doomed to pursue literature in the "Texas National Guardsman". I have mentioned all these publications in a light vein (as I am too often wont to do), but we truly do enjoy receiving them each month.

Classified Ads Rates

Rates on classified advertising are: 6 cents per word first insertion; 3 cents per word second insertion, and each additional consecutive insertion. Minimum 60 cents first insertion, 25 cents additional insertions. The Enterprise is not responsible for mistakes after first insertion. Please read your ad.

OLTON LODGE NO. 1257 A. F. & A. M. Stated Meetings 3rd Thursdays W. G. FINNEY, W. M. G. T. SIDES, secretary Visitors Are Welcome Members Urged To Attend.

REGISTERED Polled Herefords Quality Calves MITCHELL HADDAD Box 156 Olton, Texas

HAVE IN STOCK 400 NEW RADIATORS. OLD MODELS CLOSING OUT AT 50 TO 75% DISCOUNT.

Stovall-Booher RADIATOR SALES & SERVICE 1019-25 N Broadway CA 4-2885 Plainview, Texas

Water Well Drilling NO MONEY DOWN 3 YEARS TO PAY Pressure Pump Service CALVIN COOK CA-4 4498 2519 Gladney (Seth Ward) PLAINVIEW, TEXAS

FOR FLOWERS Mrs. Chas. A. Loveless Representing Arch Keys Flowers PLAINVIEW

FOR ALL GEAR HEAD Service and Repair SEE W. M. Whitesides 207 East 5th Street PLAINVIEW, TEXAS

HOUSE OF FLOWERS "Flowers For Every Occasion" CHARLES & SUE Phone 4116 Olton, Texas

For Sale

FOR SALE: Two bedroom home in west Olton. See G. H. Bley. 26-tfc
FOR SALE: Venetian blinds, made and repaired. Corner 5th and Date Street, CA3-3103. Eastern Blind and Awning Co. Plainview. 39-tfc
FOR SALE: Coin operated Coca-Cola box, refrigerated upright type \$35.00. Sanders-Paris Co. 44-2tc

Berkely Pumps Large or Small Everpure Water Purifier We can make bad water pure and safe to use Let us repair your pumps and wells. We can save you money on any size job. Some good used pumps for sale.

J. O. TENERY 601 Wayland CA 4-7715

LEVI'S Smith & Struve OLTON, TEXAS

"We need your head in our business." HUBERT'S BARBER SHOP Hubert - Parley - Charles

ARMY & NAVY STORE BUNK BEDS and pads for storm cellars. Also new and used army blankets, boots, and clothing. CAMPING SUPPLIES, sleeping bags and air mattresses; tents; folding cots; mosquito nets and jungle hammocks. BOY SCOUT EQUIPMENT, pup tents, canteens, mess kits and packs. IRRIGATION DAMS AND SUPPLIES—ALSO NEW AND USED TRUCK TARPES. 122 East Fifth Street PLAINVIEW, TEXAS

Notice

KODAK finishing all sizes and types. Color a speciality. Stone Studio. 23-tfc
TRASH BARRELS delivered \$3.00. Price's Place, Phone 5371. 40-tfc
ELECTRIC SHAVERS: Schick reg. \$29.50 sale \$15.95, Sunbeam reg. \$29.50 sale \$15.95, Ronson model 66 reg. \$28.50 sale \$12.95, Norelco reg. \$24.95 sale \$12.95, Remington Roll-A-Matic reg. \$29.95 sale \$15.95 at Olton Drug. 40-tfc
POLAROID Land Cameras: reg. \$74.95 sale \$54.95, Polaroid camera kits, reg. \$109.95 sale \$79.95 at Olton Drug. 40-tfc
CLOTHING LINES installed complete. \$25.00. Price's Place, Phone 5371. 40-tfc
VISIT McKinzie's pre-Christmas sale. Begins Dec. 5, 9 AM. 43-3tc

Wanted

WANTED: silk finisher, apply at Pollard's Cleaners. 43-tfc
IRRIGATED Land wanted: We have cash buyers for irrigated land in the Olton territory. If you want to sell your farm, give us a try. Call, write or come to see us. Turner Brothers Land Co. Phone 5221, Hale Center. 35-16tp
WANTED: To make buttons, button holes, buckles, belts, children's garments. Dress making. Willena Gordon. Ph. 3081. 27-tfc
SERVICES: We specialize in motor rewinding. Billington & Laceywell Electric, Clovis Highway, Phone 147, Littlefield, Tex. 9-tfc
WANTED: Baby sitting at night. Phone 5891 before 5 PM. 37-tfc

For Rent

FOR RENT: Modern 3-room house in country. 3641. 42-tfc
FOR RENT: Furnished house. Contact or call Mrs. W. C. Dennis, 4135. 43-tfc

Be Wise—Advertise In The Olton Enterprise! GULF SERVICE STATION FOR LEASE HIGHWAY 70 — OLTON Contact G. E. DOUGLAS Box 1209 Plainview, Texas CA 4 4579

When you are in Ruidoso, NM STAY AT El Patio Courts Located on Main Road in the Pines Call CL 7-4531 Owned and operated by John B. and Vaudine Lilley

REAL ESTATE If Your Farm or Property Is For Sale, I Would Like To Have Your Listing. THE THOMAS AGENCY W. E. (Bill) Thomas

AUCTIONEER All Kinds Of Auction Sales TRAINED EXPERIENCED QUALIFIED W. B. Dickenson, Jr. Phone 5884 — Olton, Texas "The Best Of Service To You" . . . Is Our Aim

Andy W. Stroebel General LAW PRACTICE Olton Located in the C. W. Grant building. PHONE 4661

Give a GAS LIGHT for Christmas! A Gas Light helps capture the old-fashioned charm of Christmas . . . all year long. Order now for post-Christmas installation and receive a gift certificate for presentation to the recipient. Choose from six models, priced from \$49.50 installed. Pioneer Natural Gas Company



Pat LaFrance, Olton forward, goes on tip toe to shoot at the basket Saturday in the consolation round of the Olton Invitational Basketball Tournament. An Anton guard is doing her best to prevent the score. (STAFF PHOTO)

COMPANY COMING... STOCK UP ON COKE!



BE REALLY REFRESHED! There's a friendly fire and warm hospitality waiting at home . . . and people waiting for Coca-Cola! Coke . . . with that cold crisp taste that's bright and bracing as the winter air. Ride through the Holidays refreshed and relaxed . . . welcome your friends with the real refreshment . . . plenty of ice-cold Coca-Cola! PLAINVIEW COCA-COLA BOTTLING CO.

Mail Right Now! Holt Admonishes

The time has passed to talk about "Mailing Early for Christmas," Postmaster I. B. Holt said this week, "but our patrons can still help the Postal Service avoid a tremendous last-minute pile-up of Christmas mail by sending all packages and cards right now!"

To the inevitable last-minute mailers he suggests Air Mail postage be used on all gifts and cards going to distant cities.

The Postmaster said Regional Postal officials were expecting the Christmas mail volume this year to break all previous records. This mail load is expected to hit its peak next week.

He cautioned local post office patrons to make sure all packages are addressed carefully and that zone numbers are included on mail going to large cities with zoned delivery.

There is still time to mail cards for local delivery," Mr. Holt said, "but they should all be in the mail by the end of next week."

He recommended cards going out of town be sent by first class mail (4 cent postage) in order that they may be returned or forwarded in case the addressee has moved. And he pointed out it is quite proper to affix your return address on Christmas cards.

The Olton Post Office offers window service from 8 AM until 5 PM.

Attend The Church of Your Choice Sunday!

Pamela Gay Born To Nafzgers Monday

A daughter, weighing 8 lbs., 2 ozs., was born to Mr. and Mrs. J. P. Nafzger, Olton, Monday in a Plainview hospital.

The first child of the couple was named Pamela Gay.

Maternal grandparents are Mr. and Mrs. J. D. Murray, Hart; and maternal great-grandparents are Mr. and Mrs. R. L. Murray and Mrs. R. E. Jones, all of Childress.

Mr. and Mrs. P. A. Nafzger, Olton, are the paternal grandparents. Paternal great-grandparents are Mr. and Mrs. F. L. Thurman and Mrs. San Nafzger, all of Olton.

Dan Quigley's Father Is Ill

Mr. and Mrs. Dan Quigley were called to the bedside of Dan's father in Hinton, Okla., Saturday morning.

Mr. Quigley became extremely ill Friday and was taken to an Oklahoma hospital. At last report Saturday evening, the doctors had not yet determined the cause of his sudden illness.

Mr. and Mrs. George E. Brown Sr., are caring for the Quigleys daughter, Sharon, while they are in Oklahoma.

MRS. MCGILL HOME

Mrs. Elmer McGill is recuperating at home after recent confinement in a Lubbock hospital. Mrs. McGill suffered from a back ailment.

HART CAMP NEWS

BY MRS. BLANTON MARTIN

Mr. and Mrs. Charles Timmins arrived Friday afternoon for a visit with his parents, Mr. and Mrs. C. E. Timmins. Timmins, in the Navy, is on his way to Hawaii. His wife will stay with her parents at Burnet. Sunday the two families visited in the Delbert Timmins home near Bovina.

Mr. and Mrs. J. C. Muller are spending the week at Pauls Valley, Okla., with Mrs. Muller's brother, Buck Groggans.

Attending the Parent-Teacher Association program last Thursday night were Mesdames E. P. Oliver, C. E. Timmins, Elma Burleson, D. R. Leonard, Roy Hendrick and Blanton Martin.

FROM QUITAQUE

Visitors in the H. R. Curtis home Sunday were Mr. and Mrs. Jimmy Davidson and son; Mrs. Estelle Davidson and Freddie, all from Quitaque.

This Christmas Give—

Freeman

Shoes

For Men

FROM

KELLEY'S
OLTON TEXAS

FINE FOODS

for Christmas feasting!

SPECIALS START
FRIDAY, DEC.
11, 1959

MEATS

Bacon Swift Sweet Rasher 1 Lb. Pkg. **29c**

FRESH CALF LIVER LB. **29c**

BOSTON BUTT PORK ROAST LB. **35c**

Steak Choice Pen Fed Beef CLUB. Lb. **59c**

PRODUCE

Avocados Large Size SALAD **2 for 15c**

Extra Fancy Wash. Delicious APPLES LB. **15c**

COLORADO RED POTATOES 10 LB. BAG **39c**

Celery Fancy Green California — Lb. **10c**

FROZEN FOODS

BAR-B-QUED CHICKEN UNDERWOOD'S 14 OZ. **59c**

Welch

6 Oz. Can

Libby

10 Oz. Pkg.

GRAPE JUICE **19c**

WHOLE KERNEL CORN **17c**

Salad Dressing SHEDD QUART JAR **39c**

Cake Mix SWANSDOWN White, Yellow or Devil's Food **29c**

MRS. WINSTON PEACH PRESERVES 20 OZ. **31c**

STRAWBERRY, RASBERRY & CHERRY JELL-O 6 OZ. PKG. **15c**

DEL MONTE PEAR HALVES 303 CAN **25c**

FOLGERS INSTANT COFFEE 6 OZ JAR **75c**

GIANT BOX BREEZE **75c**

KIMBELL FLOUR 10 LB. PRINT BAG **79c**

SWIFT JEWEL SHORTENING 3 LB. CAN **59c**

Oleo Blue Seal 1 Lb. Carton **15c** **Peaches** Del Monte Sliced 303 Can **19c**

KIMBELL GRAPEFRUIT JUICE 46 OZ. CAN **25c**

NABISCO GRAHAM CRACKERS 1 LB. BOX **33c**



DEL MONTE KRAUT 303 CAN **2 for 29c**

SWIFT PREM 12 OZ. CAN **39c**

WHITE SWAN PORK & BEANS 300 CAN **2 for 25c**

KIMBELL (with snaps) BLACKEYED PEAS 300 CAN **2 for 27c**

DIAMOND CUT GREEN BEANS 303 CAN **2 for 23c**

APPLESAUCE COMSTOCK 303 CAN **2 for 33c**

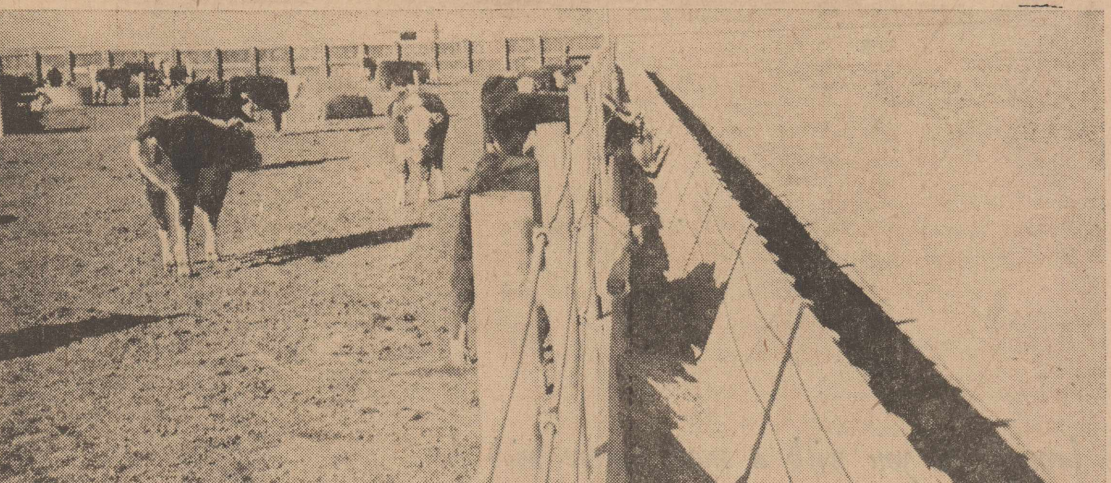
CHOICE BEEF FOR

17¢ A POUND

FEED COST!



Orville Lee is producing choice beef for 17c a pound feed cost, using Purind Steer Fatena and the Purina Check-R-Mix service of Olton Farm Supply.



Orville Lee feeds 270 steers their Check-R-Mix ration in 10 minutes time using a John Deere No. 110 Chuck Wagon to fill the long feed trough shown above. (Note the steers can eat anytime they desire.)

Why don't you come in and let us set you up on a Check - R - Mix feeding program

Olton Farm Supply
PHONE 2261 Don Spain, owner Olton, Texas

Get Your
CHRISTMAS CANDY AND NUTS NOW—
While We Have A Nice Assortment

DOUBLE GUNN BROS STAMPS EVERY WEDNESDAY
Phone 3581



CASH WAY
Where Friends Meet and Prices Talk



SPECIALS EVERY DAY

FOOD STORE

Free Delivery

Political Column

For District Attorney BILL SHEEHAN (re-election) For Sheriff DICK DYER (re-election) Commissioner Precinct 1 C. M. MOSS For Tax Assessor-Collector HERBERT DUNN (re-election) State Representative 96 Legislative District JESSE M. OSBORN (re-election)

TRAVEL

THE HOSPITALITY ROUTE COAST TO COAST

P-TA Will Buy Furniture For Jr. High Library

Tables and chairs for the junior high school library will be provided by the Olton P-TA this year as a school project. This decision was made Thursday night at the December meeting of the group, after a report from the project committee was heard. The equipment is estimated to cost about \$300. "Strengthening Homes Through Spiritual Values," a panel discussion highlighted the program. G. B. Stanley, Church of Christ minister, was moderator and "father" spokesman. Other panelists were Becky Hall, as a daughter; Kenneth Prestridge, son; Mrs. Don Spain, mother; and

BSPA Meeting Is Held Here

Young people of the Baptist Staked Plains Association met last Saturday night at the Trinity Baptist Mission. Seventy-two young people were present, other than the group's sponsors. Brownfield was presented the attendance banner, having fifteen in attendance. Augustin Salazar of Tulia spoke on "Putting Christ in Christmas." Rev. Luis Gomez of Hale Center spoke. Raymond Hernandez of Mrs. John Lewis, teacher. Room count was won for the students of Mrs. Vivian Williams. Also providing entertainment were four piano students of Dean Carson, and the High School Choir, directed by Mrs. Joe Harper. A friendship hour followed the business meeting and program.

Olton Freshmen Teams In Tourney

Freshmen girls' and boys' basketball teams are to participate in Muleshoe's 8th and 9th Grade Tournament Thursday through Saturday. The girls' team, coached by Clifford Curry, were to play Farwell today (Thursday). If they won, they play again tonight, but if the game was lost, the next game would be Saturday at 9:00 AM. Coach Joe Turner's boys play today against Sudan. If they win or lose, their next tournament game will be Saturday morning. Neither the 8th grade girls' or boys' will participate in the tourney.

4-H Groups Set Meetings For Next Few Days

A series of meetings have been scheduled in Olton for 4-H Club members for the next few days. A group was to discuss swine Thursday night of this week in a meeting in Legion Hall. Adult leaders for that group are W. T. Hall, Jr., Elmo Hall and Gene Cade. Jean Hall will teach the boys how to keep records on their projects. A group will study sheep at 7 o'clock next Monday night at the Howard Hall home. Adult leaders are Deryl Dennis and Delmer Givens. Mr. and Mrs.

Uil Gunter HAS SURGERY

Uil Gunter who has been confined in the Plainview Hospital for several weeks following an appendectomy, underwent minor surgery Tuesday morning. His surgeon, Dr. Long, reported another operation might be necessary. As of Thursday afternoon Uil is resting a little more easily. Howard Hall will teach the youngsters how to keep records. A group will study beef cattle at 7 o'clock next Tuesday night at a meeting in Legion Hall. Leaders are Aubrey Oursborn, Frank Farrar and Glen Gibson. T. B. Wheeler will be in charge of record-keeping instructions.

Lonnie Kings Have Son, Mabe Nakota

A son, Mabe Nakota, was born to Mr. and Mrs. Lonnie King of Earth at 6:50 Thursday morning. He was born at Plainview Hospital and Clinic Foundation, weighing 7 lbs., 5 ozs. The mother is the former Jane Gover of Earth. Maternal grandparents are Mr. and Mrs. Roy Gover, Muleshoe. Paternal grandparents are Mr. and Mrs. Virgil King, Olton. Maternal great-grandmothers are Mrs. Gover and Mrs. Stugess, all of Oklahoma. Paternal great-grandparents are Mrs. Mattie King of Clyde and Mr. and Mrs. I. V. McLain, Hart. This is the first child for the Kings.

Jarrell Edwards On Collegiate Blue Book List

Jarrell Edwards, Abilene Christian College senior from Olton, is one of the 32 ACC seniors selected for listing in "Who's Who Among Students in American Universities and Colleges." A Bible major, Edwards is the son of Mr. and Mrs. Jack Edwards, Olton. He was a 1956 graduate of Olton High School. Last year, Edwards was captain of the ACC Track Team. He ran the halfmile in 1:51.9 as a sophomore and runs on the mile relay team. He is a leader of Men's Forum and serves on the Mabee Dorm Council.

KENNETH BOZEMAN & SON

—YOUR FRIENDLY AUCTIONEERS—

Lubbock, Texas

Ken's Office—PO-3-2411

Corky—PO-3-8009

TOO LATE TO CLASSIFY

OPPORTUNITY: I am retiring from business and will sell my store-grocery and general merchandise in Needmore, Texas (13 miles south of Muleshoe) in good irrigation district. Volume will exceed \$215,000.00 this year. Will show 8 percent net profit, or better. Stock will inventory about \$12,000.00, fixtures \$6,300.00. Store building, 1 acre land and 2 bedroom home—\$15,000.00. If you are planning on going into business you cannot beat this deal. Ph. Littlefield, Whitehall 6-2281 day or 6-2122 night. Fred Beene, Member Panhandle Associated Grocers. 44-3tp

VISIT McKinzie pre-Christmas sale for savings. 44-3tc

FOR SALE: 250 DeKalb laying hens. \$1.25 each. Also 1-bedroom house for rent. E. R. Spain. 44-2tc

FOR SALE: I have some good clean used TV's. Some with new picture tubes. Guaranteed. Riley's TV. 44-2tc

WE have a few exclusive TV lamps for sale that would make excellent Christmas gifts. Riley's. 44-2tc

FOR SALE: Stock feeder. E. W. Walden, phone 4508. 44-4tc

FOR SALE: Nice modern 2-bedroom home (28x38 ft.) on West 9th St. Not 2 yr. old. Good deed and abstract. See Mrs. A. C. McKinzie at store. 44-4tc

Visit McKinzie pre-Christmas sale for savings. 44-3tc

There are many HOLIDAY FESTIVITIES coming up—

YOU WILL WANT TO LOOK YOUR BEST... AND YOU WILL LOOK YOUR BEST... IF YOUR CLOTHES ARE CLEANED BY US WITH OUR



POLLARD'S CLEANERS

—PICKUP & DELIVERY SERVICE ANYTIME—

PHONE 5241

OLTON, TEXAS

CHRISTMAS GIFTS

FOR HIM

Suburban Jackets Terry Cloth Robes Suede Jackets Sweaters (OF ALL KINDS) Pajamas Trousers Shirts

Jantzen

Sweaters Skirts Dresses Car Coats Pajamas (INCLUDING 3-PIECE SETS) Gowns Gloves

FOR HER

Bobby Brooks

BEDSPREADS — LACE LUNCHEON CLOTHS BEAUTIFULLY BOXED TOWEL SETS

SHOES FOR THE ENTIRE FAMILY Fashion Craft Shoes for Women • Fortune Shoes for Men

GIFT CERTIFICATES

FREE GIFT WRAPPING REGARDLESS OF PURCHASE!

—Use Our Lay-a-way Plan or Charge It—

WHITTINGTON'S, INC.

PHONE 2331

OLTON, TEXAS

A Christmas Message To Texans Who Care:

WHAT'S WITH TEXAS?

Texans send millions of dollars out of Texas each year in response to appeals for support from various charities.

This is very laudable because most of these appeals are sincere and worthy.

However, TEXAS RANKS NEAR THE BOTTOM of all states in providing for its own citizens needing rehabilitation services.

THE REASON: LACK OF PUBLIC SUPPORT! Surely this is not in the image of true Texans!

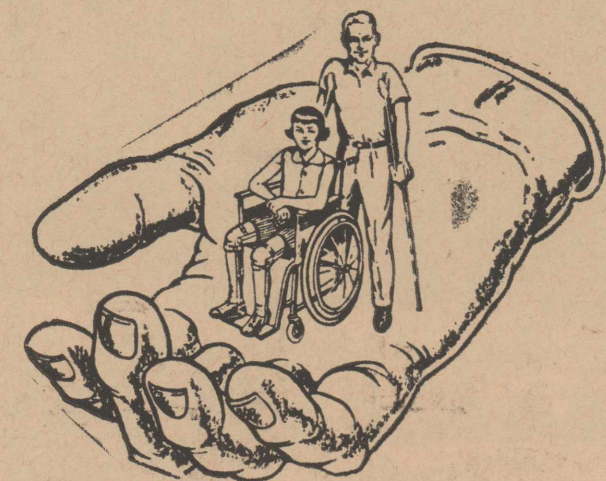
THE TEXAS REHABILITATION CENTER (Gonzales Warm Springs Foundation) is one of the nation's outstanding hospitals specializing in the care of the severely handicapped. TRC urgently needs additional funds with which to carry on its program.

All funds contributed remain in Texas to provide needed services to all Texans, regardless of their age, race, or ability to pay.

Make your own Christmas brighter by sending a contribution to The Texas Rehabilitation Center; P. O. Box 58, Gonzales, Texas.

Form with fields for Name, Street or Box No., City, and Amount.

CLIP AND MAIL WITH YOUR GIFT TO TEXAS REHABILITATION CENTER, P. O. BOX 58, GONZALES, TEXAS



This message is brought to you with a most sincere wish for a very Merry Christmas and a Happy New Year from

THE OLTON ENTERPRISE