

Commissioners Talk Of Building New Jail

Fisher County Commissioners did a little "brainstorming" last Monday during their monthly court meeting, they "thought out loud" about the possibility of constructing a new jail facility.

The jail talk surfaced after Fisher County Sheriff Mickey Counts requested that commissioners look at raising the salary of Fisher County jailers from

\$975.00 a month to \$1,200.00 a month. The commissioners did not take any action on Sheriff Counts request, but did agree to discuss it further on Friday, January 16th when court would again be in session.

Counts contends that he is having a hard time attracting and keeping qualified and dependable jailers when the pay for the position is

\$975.00 a month. He felt he would be more successful in recruiting jailers if he could start them out at \$1,200.00 a month.

In discussing the request for a salary adjustment by Counts for jailers, Commissioner Jimmie Wright posed a plan that could bring additional dollars into Fisher County.

Wright indicated that Anderson County,

Texas just finished constructing a 98 bed jail for a cost of 2.6 million. In computing the agreement Fisher County has with Denton County to house their prisoners at a cost to Denton County of \$30.00 a day, Wright offered the following figures.

If Fisher County could construct a 50 bed jail facility, keep it three-quarters occupied by taking in prisoners

from overcrowded facilities on the area, state and federal level and if it received \$30.00 a day for the housing, Fisher County could expect to profit by \$250,000.00 a year and could pay for the new jail in five years.

During a 12 month period, ending in late 1986, Fisher County Sheriff Counts indicated that \$104,000 was received from Denton

County for prisoners housed and that approximately \$70,000 was put into the general fund after expenses.

All commissioners felt a need to attempt to

do something to head off the financial hard times they know are just around the corner. Fisher County could be losing up to \$200,000 in spendable tax dollars

from oil losses in the very near future—discussing a way to make up that loss is something commissioners are putting a high priority on.

Rotan School Board Extends Superintendents Contract

The members of the Rotan School Board, on a split vote last Monday night, agreed to extend the contract of Superintendent Alton Fields through the 1988-89 school year. The vote on the contract extension was six for the extension and one against. Voting in favor were: Larry Landes, Leo Long, Pete Fowler, Roger Blackwelder, Donald Gruben and Donna Kennedy. Voting against the extension was Joe Morrow.

The board accepted the resignation of Rotan Home Economics teacher Virginia Forshoe effective January 17th and unanimously approved the hiring of Patti Park, a certified home economics teacher, to replace her.

Board members agreed to sell lots 10, 11, and 12 in block 212, owned by the school, to Ken Mills for the sum of \$600.00. Mills expressed an interest in building a home on the lots.

Superintendent Fields, in his report to the board, reviewed the financial condition of the school, discussed paving the parking lot in the future and informed the board that the Ford tractor, currently in use at the school, is either in need of extensive repair or replacement. Board members asked Fields to secure prices on replacing the tractor.

Fields informed the board that the new bus, purchased at a cost of \$23,000 is expected to be delivered in late July.

Fields final report involved the taking of

samples of insulation materials in order to determine if the school complied with regulations concerning using asbestos in public buildings.

Fisher County Unit Of Cancer Society On Board

Plans to organize a Fisher Unit of the Texas Division of the American Cancer Society were announced today by Mrs. Karen Gruben of Roby.

The first organizational meeting will be held January 20, 1987, at the Rotan School Cafeteria, 102 N. McKinley, Rotan, at 6:30 p.m.

All citizens of McCaulley, Roby and Rotan, Mrs. Gruben stated, who are interested in learning how they may join the fight against cancer in their own community are cordially invited to attend.

"Since knowledge is the key to cancer control," Mrs. Gruben pointed out, "twice as many cures could be effected with our present knowledge, if patients were treated promptly. However, the lack of prompt treatment is due to the lack of knowledge of cancer's warning signals or the fear of cancer itself."

"In order to protect Fisher County citizens from the dangers of cancer," Mrs. Gruben said, "we need our citizens to take an ac-

tive interest in the program of the American Cancer Society to save lives from this vicious and silent killer disease."

"Fisher County citizens have a right to know how to protect their lives. It is the responsibility of our community to develop a year-round educational and service program by organizing the Fisher Unit of ACS."

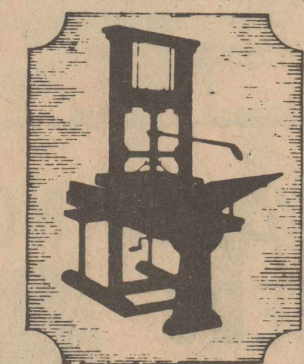
"Through education we can save many lives today and for the future, and through service to the cancer patient we can aid in alleviating the suffering of those who learned the facts about cancer too late," Mrs. Gruben concluded.

Two From Rotan Receive Texas Tech Degrees

Two Rotan residents received degrees from Texas Tech University at December graduation ceremonies conducted on Saturday, December 20th, 1986.

Charlie Cleveland, son of Mr. and Mrs. Charles Cleveland of Rotan, received his bachelor of science degree in agriculture education. He is a 1982 graduate of Paducah High School and will be continuing his education at Texas Tech as a graduate assistant working on his Master's Degree.

Kip Pease, son of Mr. and Mrs. Kim Pease of Rotan, received his bachelor of arts degree in journalism from Texas Tech University. He is a 1982 graduate of Rotan High School and is employed with the weekly Shamrock Texan Newspaper.



Roby Star-Record

The Voice Of Fisher County Since 1907

ROTAN ADVANCE

VOL. 78 NO. 49 THURSDAY JANUARY 15, 1987

TEN PAGES

35¢ Plus Tax

County Could Lose \$200,000 In Spendable Tax Dollars From Oil

Oil tax money pays a large portion of the bills in Fisher County. Last Monday morning, Fisher County Tax Assessor Collector Teddy Kral, informed commissioners of the approximate amount they can expect to lose in oil values because of the depressed

Commissioners Approve 1987 Holiday Schedule

Fisher County Commissioners approved the following list of ten holidays for Fisher County employees for 1987.

The holidays begin with Good Friday on April 17th; Memorial Day on May 25th; Independence Day on July 3rd; Labor Day on September 1st; Veteran's Day on November 11th; Thanksgiving on November 26th and 27th; Christmas on December 24th and 25th and New Years Day on January 1st, 1988.

prices. Of the entire Fisher County tax roll of \$289 million, \$163 million is attributable to oil or 56% of the county tax roll, according to Teddy Kral.

Kral is estimating that some 30% of the 163 million could be lost due to the decreased prices of oil. That thirty percent transforms into approximately \$210,700 based on .43 tax rate.

"It is not out of the realm of probability that Fisher County

Commissioners could be looking at over \$200,000 in less tax revenue to spend next year," according to Kral.

Assuming Fisher County is looking at a loss of 30 percent in oil values and some \$200,000 in spendable

dollars—that amounts to 19.65% of the entire budget of 1,072,480.36 for the calendar year 1986.

Emergency Status Set

Fisher County Commissioners, during the monthly meeting of the Commissioners Court last Monday morning, reviewed a letter from the office of emergency management, State of Texas, informing Fisher

County Judge Marshal Bennett that Fisher County had been declared eligible for Small Business Administration (SBA) loans due to a recent disaster.

According to the information received by Judge Bennett, Fisher County received heavy rainfall between August 25th and September 8th, 1986.

According to L.C.

Huchingson, 5 miles West of Rotan, he recorded a total of 12.80 inches of rain during the stated period.

PCA Meeting Is Conducted

One incumbent director was re-elected to his position, during the 52nd Annual Stockholder's meeting held Friday, December 19, 1986 at the Scurry County Coliseum in Snyder, Texas. Elected for a three year term was Buster Haggard of Stanton, Texas.

After twenty-four years on the Board of Directors Mr. W.J. (Dub) Harvey, Jr. of

Roby chose not to seek re-election.

A.K. McCarley, Jr. Chairman of the Board, called the meeting to order. Mr. McCarley appointed Bill Yoakum as Chairman of the meeting and Linda Fluit as Recording Secretary. Mr. McCarley gave the report to the Board and Mr. Yoakum gave the financial report.

Members elected to serve on the 1987

Nominating Committee were: Dale Froman and Teddy Stewart from the Stanton office; Ricky Bowman and Billy Hamner from the Sweetwater office and R.L. Drum and C.W. Henderson from the Snyder office.

Chairman of the Board for 1987 is A.K. McCarley, Jr. of Colorado City, Texas and Vice Chairman Othell O'Kelley of Trent, Texas.

Rotan High Hosts Fourth Math Science Meeting

Rotan High School hosted its fourth annual invitational math/science meet on Saturday, January 10. Rotan High finished fourth overall among the thirteen schools attending the meet. Shallowater was the top overall team, with Springlake-

Earth second. Rotan won the Science team trophy, while Shallowater won the Number Sense and Calculator team trophies. Individual winners for Rotan were: Randel Clawson (4th in

continued to page 2

See Classified Bargains Pg. 5

West Texas Utilities Opens Oklaunion Power Station

With its new Oklaunion Power Station in commercial operation, West Texas Utilities, Co. is again capable of generating all the power its customers will need during the peak usage period of hot summertime.

The peak demand for electricity exceeded the capacity of WTU's installed general stations several summers ago and additional power had to be purchased from neighboring utility companies.

"This means that we literally have grown into this new power plant," explained Walter Meller, WTU's manager of system production.

"Often, when a new plant is brought on line

it creates an immediate huge surplus of general capacity. In our case, completion of Oklaunion was timed to coincide with our needs."

The coal-burning Oklaunion unit eight miles southeast of Vernon has a net rated capacity of 665 megawatts, which is more than half the 1,070 megawatt capacity of all of WTU's gas-fired plants. WTU owns 54.69 percent, or 370 megawatts, of the new plant, which is the first jointly-owned unit in the Central and South West System. Other owners are Public Service Co. of Oklaunion and Central Power and Light Co., both members of CSW;

the Oklahoma Municipal Power Authority and the City of Brownsville.

The new plant was officially declared commercial December 24. The power is under control of a central dispatcher in Abilene, who economically loads the various generating units in the WTU system.

As Plant Manager Chuck Adami of Vernon explains it, "When the load increases, the unit that can make the next kilowatt the cheapest is the one is brought on line."

Adami's staff includes 126 employees, who work in shifts to keep the plant running 24 hours a day. Most of the staff has been on the

site for several months involved in training and start-up operations.

Construction at Oklaunion was begun in May 1982, and almost all the news regarding the plant since then has been good. The best news is that it was completed on time and under original cost estimates.

The plant will provide over 25 percent of WTU's operating capacity and will end the Company's almost total reliance on natural gas as boiler fuel. The low-sulphur coal comes by rail from Wyoming. Each delivery averages from 100-115 cars, with each car holding 100

tons of coal. About 300 tons will be burned an hour when the plant is in

full operation. The plant is one of the most modern in ex-

istence. Equipment includes the most up-to-date pollution control

facilities and complies with all air quality control requirements.

Rotan One Act Play Director Names Cast

Rotan High School One-Act-Play Director Floyd Garcia, Jr., completed tryouts last week and made casting assignments for the 1987 play entitled "The Arkansas Bear."

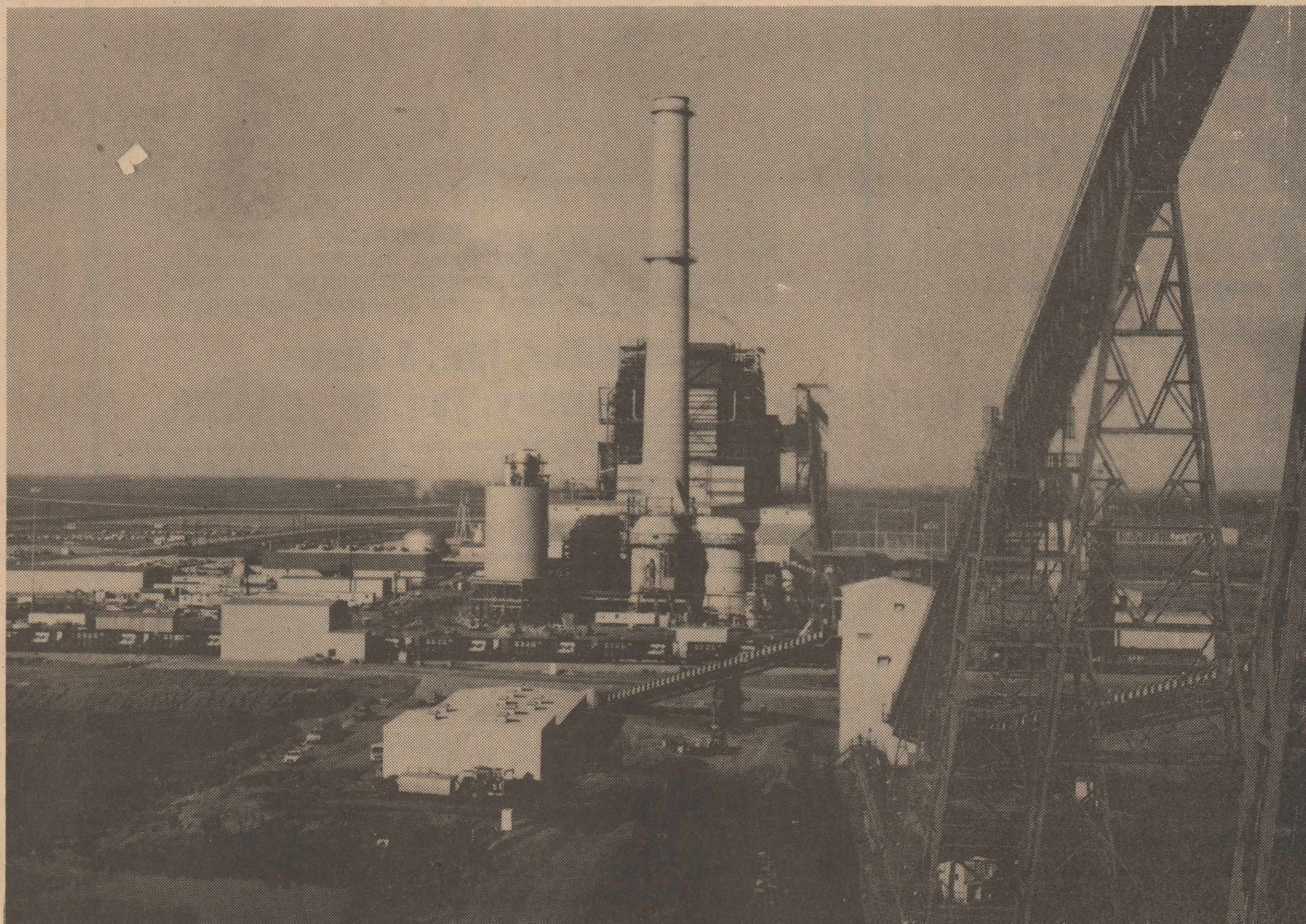
A total of nine students will be involved in acting—they are:

Julie McQueen-Tish; Gray Fowler-Dancing Bear; Steve Dickson-Ring Master; Julie Pease-Aunt Ellen; Carye Gruben-Star Bright; Jenny Dickson-Mother; Candi Hayes-Little Bear; Nathaniel Wynn-Announcer and Cecilia

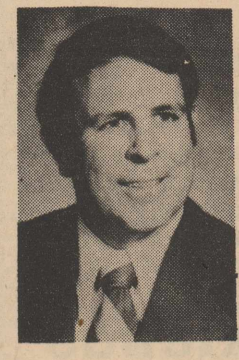
Hernandes-Mime. The technicians selected for "The Arkansas Bear" are: Jon Burns; Kathy Carrillo; Jacqui Cottle; Shannon Boone; Jeri Lynn Boone; and Millie Gaspar. Zone competition takes place on March 17th in Jayton and in-

volves four schools—Jayton, McCaulley, Trent and Rotan.

Play Director Floyd Garcia, Jr., in his 13th year of directing, guided the 1986 One Act Play "Flowers For Algeron" to State competition.



Oklaunion Power Station at Vernon, Texas



The Words Of Wisdom Column

Pat Anderson
Cross Roads Baptist Church
Rotan, Texas

Only God knows what the future holds for us. We all hope that prosperity is just around the corner, but a lot of prognosticators of our day are saying it will not happen. None of us know where we are on God's timetable. We do know that in the end, time of human history world conditions will grow worse according to the Bible. "There shall be a time of trouble, such as never, since the beginning..." (Dan. 12:1; Matt. 24:21) The whole Twenty-Fourth chapter of Matthew presents a sequence of catastrophic and terrifying events approaching the end of time. We don't know when these things will come but Jesus warns us to be ready for them. (Matt. 24:25).

How can we face that kind of future? You may believe that life is tough enough without getting worse. Where will you find the strength to sustain you? The Bible answer is Faith. When the world around you falls apart, Faith in the One who holds the future will see you through.

Too many folks misplace their faith. Everybody has faith, but it makes all the difference in the world where that faith is placed. If your hope and trust is the "American Dream", or the American military power to protect you, then what will happen to you when those things fail? The Word of God teaches us that all earthly things are transient by nature. But it also teaches that there are some absolutes upon which you may depend. They shall never fail regardless of what happens in the world. Let me give you three:

1. The Throne of God shall never be shaken. (Heb. 1:8)
2. The Word of God shall never fail. (Isa. 40:8)
3. The Church that Christ builds shall succeed. (Matt. 16:18)

Letter To The Editor

Sirs,
On December 31st, I was in the County Tax Office in Roby to ask the location of a ranch that had belonged to my family 40 years ago. All I knew was it was out of Rotan and the Parrott family had owned it.

El Paso, Texas

Editors Note: That courteous person you are probably speaking about is Tax Assessor/Collector Teddy Kral.

Thanks to the competent employee in that office I was given the information I wanted. I am sorry I didn't ask the man's name that helped me but Fisher County should be proud to have such a courteous well run office.

Sincerely,
Venetia Hooper

continued from page 1

10th grade Science), Candi Hayes (3rd in 9th grade Calculator, 2nd in 9th grade Science), Todd Gruben (1st in 11th grade Science), Jan Posey (4th in 11th grade Number Sense, 5th in 11th grade Calculator) and Lousinda Ramirez (2nd in 12th grade Science). Also participating for Rotan were Jeff Cave, Ester Guerra, Pat Moffett, and Kevin Smith.

Dr. H.K. Neeley To Hold Bible Study In Roby

Dr. H.K. Neely of Hardin Simmons University will be teaching a study on the Book of James at the Roby First Baptist Church beginning Sunday, Jan. 18 thru Wednesday, Jan. 21. He will preach on the Book of James at 11 a.m., and 6 p.m. on Sunday, Jan. 18. The study will begin at 7 p.m. on Monday, Jan. 19 thru Wednesday.

It will be an enjoyable and provocative study and everyone is invited to attend.

New Year's at the Capitol rang out the Texas Sesquicentennial and rang in the collection of new taxes passed just weeks ago to replenish the dwindling state treasury.

Beginning New Year's Day, retail shoppers pay an additional 1 1/8 cents in sales tax and motorists pay an extra nickel per gallon of gasoline.

While Capitol halls fell silent over the holidays, the lawmakers themselves were busy back home preparing for what many predict may be the toughest session of the century.

And supporters of Gov-elect Bill Clements busily prepared for his Jan. 20 inauguration.

Right after New Year's Day, inaugurations were held for the down-ballot slate officials: Attorney General Jim Mattox, Land Commissioner Garry Mauro, Treasurer Ann Richards and Agriculture Commissioner Jim Hightower.

FLAG DOWN UNDER

One of the last of the 150th-year tributes was the planting of an official Texas Sesquicentennial flag at the South Pole.

Texas scientists there braved a 60-degree below zero wind chill factor to do the icy deed.

In Austin, Sesquicentennial Commission continued winding down amid reports the economic slump somewhat hampered financial expectations of the celebration.

POST-VOTE ANALYSIS

Post-election campaign reports show the governor's race alone cost the two candidates over \$25 million, the costliest in Texas history. Clements spent about \$6 per vote; Mark White, \$8.

The supreme court justice race by state Sen. Oscar Mauzy cost \$1.6 million, or nearly the one-year budget for the entire court.

One of the largest contributors to the White campaign was Texas Commerce Bancshares with \$28,600. White backed the new interstate banking legislation and Texas

Commerce was the first to benefit from the law when it merged recently with Chemical New York Corp.

Utility industry figures gave over \$40,000 to Clements, who wants White's appointees to resign from the Public Utilities Commission. Also targeted for political extinction is the PUC counsel, Austin attorney Jim Boyle, one of the bright spots of competence in the past administration.

MATTOX, HERALD, NEWS

Last week, Attorney General Jim Mattox asked a state district judge to force *The Dallas Morning News* to hand over its circulation figures. A rival newspaper has already supplied similar information.

Mattox is investigating possible deceptive trade practices by *The News* and its cross-town rival, the *Dallas Times-Herald*.

Rotan Varsity Girls Defeated By Jayton Girls

In their second district game, the Rotan Varsity basketball girls were defeated by Jayton Friday night 39-34. High scorer was Shanna Bennett with a total of 11 points. Other scorers were Evette Gruben 9; Vikki Wright 6; Lynette McQueen 4; and Cathy Jones 4. The girls' record now stands at 14-4 for the year and 0-2 in district play.

Rotan Varsity Boys Defeated By Jayton

Rotan varsity boys played their second district game against Jayton, but fell by four points. Rotan was defeated 55-59 Friday night. Leading the Hammers in scoring was Jerry Carter with 21 points. Others scoring were Castillo 13, Almanza 8, Gruben 6, Roddy 5 and Whitefield 2.

In district 18, Rotan's record stands at 0-2 (10-8 overall). Rotan travels to McCaulley Friday night.

State Capitol Highlights

The *Herald* originally filed a complaint on *The News*, which filed a countercomplaint. Then the *Herald* sued *The News*.

In the meantime, Mattox has to deal with charges by *The News* that his actions are politically motivated. The *Herald* endorsed Mattox for re-election, and *The News* endorsed his opponent.

OTHER HIGHLIGHTS

Department of

Thanks Expressed To County For Blood Drive

The Pink Ladies and the American Red Cross would like to thank everyone who came to give blood on Monday, Jan. 5. Those participating in the Blood Drive were: Ivin Martin, Joseph Hernandez, Wendell McWhirter, Sandi Martin, Glenna Gene Moore, James Carter, Alton Fields, Mary Lou Goodwin, Ysabel Almanza, Norene Kersh, Elaine Day, Billy Speck, Carol Roberts, Janice Copeland, George Velez, Sue Shipp, Mike Hull, Joe Teague, Carlos R. Aguirre, Terry C. Lowe, Billy Sparks, Laura Tankersley, Rodney Tankersley, Mable Alls,

Public Safety officials said the state's seat belt law saved at least 200 accident victims in 1986. Some 60 percent of Texas motorists wear seat belts regularly, they observed, compared to the 10-15 percent before the law.

A census report says Texas growth is slowing, but it's still the third most populous state after California and New York. We've got 16.68 million Texans now.

-Texas prison officials

are checking a recently resigned prison guard's allegations he witnessed harassment of inmates and corruption by other guards.

One alleged incident involves the stealing and selling of scrap copper. Another involves the heat-stroke death of an inmate.

The Consumer Union wants auto insurance rates in Texas lowered by almost six percent in-

stead of a 9.8 percent hike recommended by the State Board of Insurance staff.

State Sen. Bill Serpalius, D-Amarillo, was hospitalized for cracked vertebrae after his four-wheel drive vehicle flipped twice on a Canadian River outing. His son, also a passenger, wasn't injured. The senator expects to be present when the Legislature convenes Jan. 13.

January SEWING NEEDS

Roby Flower, Fabric & Gift Shop

Erwin, Maxine & Michelle
776-2292 Roby, Texas

Worship This Week At A Fisher County Church

Church Name	Address	Worship Times	Pastor
MISSION BAPTISTA CALVARIO	Roby, Texas	Sunday School 9:45 Sunday Evening 5:30 Wed. Night 7:30	Worship 11:00 Worship 6:00 Eli Sepeda-Pastor
FIRST UNITED METHODIST CHURCH	735-2334 Roby, Texas	Sunday School 9:15 Sunday Eve. 6:00	Worship 10:30 Terry Lowe-Pastor
FIRST UNITED METHODIST CHURCH	776-2308 Roby, Texas	Sunday School 9:45 Sunday Eve. 5:00 UMYF	Worship 10:50 Worship 6:00
FIRST UNITED METHODIST CHURCH	McCauley, Texas	Wed. Night Choir Practice 7:00 Jim Hawthorne-Pastor	
FIRST UNITED METHODIST CHURCH	McCauley, Texas	Sunday School 10:00 Wed. (2nd Wed. in each month family nite 7:00)	Worship 9:30 George Ragsdale-Pastor
FIRST UNITED METHODIST CHURCH	Sylvestre, Texas	Sunday School 10:30 Every 3rd Tues. Evening Community Dinner 6:30	Worship 9:30 George Ragsdale-Pastor
CHURCH OF CHRIST	735-2344 Roby, Texas	Sunday School 9:45 Sunday Evening 6:00 Sunday-Ladies Bible Class 5:00 p.m. Wed. Eve. Bible Study 7:30	Worship 10:45 Donald Dawes-Minister
CHURCH OF CHRIST	776-2496 Roby, Texas	Sunday School 10:00 Sunday Evening 6:00 Wed. Night 7:00-Nov-April 8:00 May-Oct.	Worship 10:45 Wardell Halliburton-Minister
CHURCH OF THE NAZARENE	Roby, Texas	Sunday School 9:45 Wed. Night Worship	Worship 11:00 Lyle Whitmeyer-Pastor
FOURSQUARE CHURCH	Roby, Texas	Sunday School 10:00 Sunday Evening 6:00	Worship 11:00 Wed. Night 7:00 Ira Burns-Pastor
ST. JOSEPH'S CATHOLIC CHURCH	Roby, Texas	Sunday Morning 9:00 a.m. Mass Saturday Evening 7:30 p.m. Mass	Worship 11:00 Father Austin Klitredge
MARANATHA CHURCH	Roby, Texas	Sunday School 9:45 Sunday Evening 6:00	Worship 11:00 Wed. Evening 7:00

Country Basket

SALE \$1.89

Crisp, tender, chicken-fried fingers of 100% beef, golden fries, Texas toast and creamy country gravy. That's the one and only Dairy Queen Country Basket. So come on by for the Texas taste that's just this side of heaven — now at a heavenly sale price!

Monday, Jan. 5 thru Sunday, Jan. 18 at participating stores.

NOW WITH FOUR NEW SAUCES

Dairy Queen "better than ever."

* Reg. U.S. Pat. & TM Off.
© 1987 TX D.O. Op. Council
® Registered Trademark Am. D.O. Corp.

Rotan Advance
The Voice of Fisher County Since 1907

Post Office Drawer A, Roby, Texas 79546
(915) 735-2592 Office
(915) 735-2276 Home
(915) 735-3115 Home

Kim Pease-Editor/Publisher

Published in Rotan, Texas Weekly. Entered as Second Class mail at the Post Office, Roby, Texas 79546 under acts of Congress.

POSTMASTER: Send Address Correction to the Newspaper Office, P.O. Drawer A, Roby, Texas 79546.

Advertising rate is \$2.00 per column inch. Classified rate is \$3.00 for first 15 words and 10 cents for each additional word. \$5.00 if billed. Classified display rate is \$2.50 per column inch. Card of Thanks \$5.00 minimum charge.

Subscription Expiration dates are listed on each mail subscribers newspaper delivery label each week. Newspapers must be renewed prior to the expiration date. Postal regulations say that subscriptions must be paid in advance to qualify for 2nd class postage regulations.

News and advertising deadline is 12:00 noon on Tuesday of Each Week. The Rotan Advance-Roby Star Record is published 52 weeks a year.

Notice: Any erroneous reflection upon character standing or reputation of any individual firm or corporation will be gladly corrected when brought to the attention of the publisher.

Mail To:
The Newspaper Office
P.O. Drawer A
Roby, Texas 79546 New Renewal

Please Find Enclosed:
1 Year-\$12.00-In County
1 Year-\$15.75-In Texas
1 Year-\$17.00-Out of State

Name _____
Address _____
City _____ State _____ Zip _____

Midwest Electric Cooperative 776-2244 Roby, Texas	Citizens State Bank Member FDIC Roby, Texas	Higginbotham-Bartlett Greg Rains-Mgr 735-2215 Roby, Texas
Farmers Union Co-op Gin Roby, Texas	Central Lumber & Supply 776-2371 Roby, Texas	Rotan Nursing Center Roby, Texas
First National Bank of Rotan Member FDIC	Fisher County Farm Bureau 215 W. Snyder Roby, Texas	Rotan Insurance Agency Joo Burk-Agost Roby, Texas
Weathersbee Funeral Home Roby, Texas	Landes Furniture Loys & Larry Landes 735-3171 Roby, Texas	H.L. Davis & Company Bill & Elaine Day Roby, Texas
		Bart Strayhorn 735-2231 Roby, Texas

Tax Planning
By James Rodgers
CPA



1987 TAX FILING DEADLINES

Some important 1987 tax filing deadlines you may want to write on your calendar include the following:

January 15-Due date for the fourth and final quarterly installment of estimated income tax for individuals.

February 2-Due date for employers to file 1986 federal unemployment tax returns.

February 2-Deadline for employers to provide W-2 statements to employees.

February 2-Deadline for individuals to file 1986 tax return and pay any tax due in lieu of making a final 1986 estimated tax payment on January 15.

February 2-Deadline for payors to give Form 1099s to recipients of such types of payments as interest, dividends, rent, royalties, profit sharing distributions, retirement plan distributions, non-employee compensation, etc.

March 2-Deadline for farmers and fishermen who did not make 1986 estimated tax payments to file 1986 tax returns and pay taxes in full.

March 16-Due date for calendar year corporations to file 1986 tax returns.

March 16-Deadline for calendar year corporations to elect S corporation status for 1987.

April 15-Due date for individuals to file 1986 tax returns.

April 15-Due date for first installment of 1987 individual estimated tax.

April 15-Due date for calendar year partnership information returns for 1986.

Call us for any additional information you need on other filing deadlines or for assistance with those returns mentioned above.

Sponsored By:
James E. Rodgers & Company
Certified Public Accountants
20 Southwest Third St., Hamlin, Tx.

Roby Varsity Girls Team Defeats McCaulley 73-68

The Roby varsity girls basketball team defeated McCaulley on Friday night, January 9 by the score of 73-68 but lost earlier to Jayton by 9 points in district play.

In the McCaulley contest, Cherie Feagan of Roby had 27 points; Kerri Upshaw 3; Deena Williamson 4; Donna

Gordon 2; Missy Turpin 4 and Charla Wiley 6.

Against Jayton, Cherie Feagan had a team high of 33 points, Mary Lee Hicks had 2; Becky Kiser 4; Deena Williamson 14; Donna Terry 2; Donna Gordon 2; Missy Turpin 14 and Charla Wiley 2.

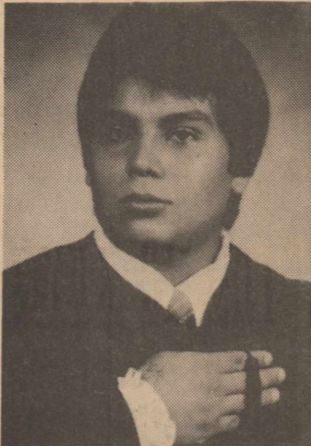
Vahid Morris Receives Nomination To The U. S. Merchant Marine Academy

Roby High School senior Vahid Morris was recently notified by Congressman Charles Stenholm of his nomination to the United States Merchant Marine Academy. Vahid was among the nine students nominated by Congressman Stenholm out of 200 applicants.

As a candidate to the Academy, his competitive standing will be determined by ACT or SAT test scores, class rank in high school, evidence of leadership potential and other factors considered effective indicators of motivation and probability of successful competition of training. Candidates must be nominated by a member of the United

State Congress and are selected competitively for the vacancies allocated to their state. Each state has a quota proportionate to its representation in Congress.

The United States Merchant Marine



Vahid Morris

Academy, located at Kings Point, New York (about 20 miles from New York City) offers a four-year undergraduate program which leads to a Bachelor of Science degree and a U.S. Coast Guard license as a Third Mate or Third Assistant Engineer. In addition, graduates are commissioned as Ensigns in the United States Naval Reserve.

A Midshipman at the Merchant Marine Academy receives a four-year scholarship-tuition, room and board, are all provided at government expense.

The Merchant Marine Academy trains the officers that operate commercial ships. Graduates of the Academy also serve in such other capacities as ship designers, maritime lawyers, oceanographers, port engineers, Naval officers, and Coast Guard officers.

Vahid is the son of Dr. and Mrs. David Morris of Roby. He is a member and treasurer of the Roby National Honor Society.

WTC To Hold Spring Registration Jan. 19-22

Western Texas College will hold registration for the 1987 spring semester on Jan. 19-22. Day and evening classes will start on Jan. 21.

Sophomore students will register from 1-5 p.m. on Jan. 19. Evening students will register from 6:30-9 p.m. that day. Freshmen will register from 9 a.m.-12 noon on Jan. 20 and registration for all students will continue through the afternoon.

Students may use Visa or Mastercard to pay tuition and fees. Dormitories are to open at 10 a.m. on Jan. 19.

Classes at WTC extension centers in Ballinger, Crosbyton, Haskell, and Sweetwater are also to begin

Jan. 21. Students in Haskell and Sweetwater will register on Jan. 15.

Information about spring semester classes can be obtained by calling WTC at 573-8511.

Hobbs Menu

Monday: Stew, corn bread, pear salad, cookies, milk.

Tuesday: Chicken strips, potatoes, peas, hot rolls, pudding, milk.

Wednesday: Corn dogs, fries, ranch style beans, cake, milk.

Thursday: Ham, potatoes, green beans, hot rolls, cookies, milk.

Friday: Frito pie, fries, red beans, cake, milk.

Correction

In last week's paper it was incorrectly reported to the Newspaper that Brandy Long exhibited the Reserve Champion Medium Wool Lamb. Christi Parr exhibited the Reserve Champion Medium Wool which sold in the Premium Sale for \$460 to First National Bank of Rotan and Rotan Insurance. The lamb was bred by Christi's grandad, Mr. Parr of Evant.

Film Developing By:

Keaton Kolor

"Our Business Is Developing Quickly"



Bring In

Your Film

By 2:00 p.m. And Get

Your Pictures Back

By 4:00 p.m. The

Next Day.

That's
Fast, Service!!

The Newspaper Office
Rotan, Texas

JANUARY

CLEARANCE SALE!



Still In Progress

Some Items Drastically
Reduced

Sale Effective Until
Saturday, January 17th

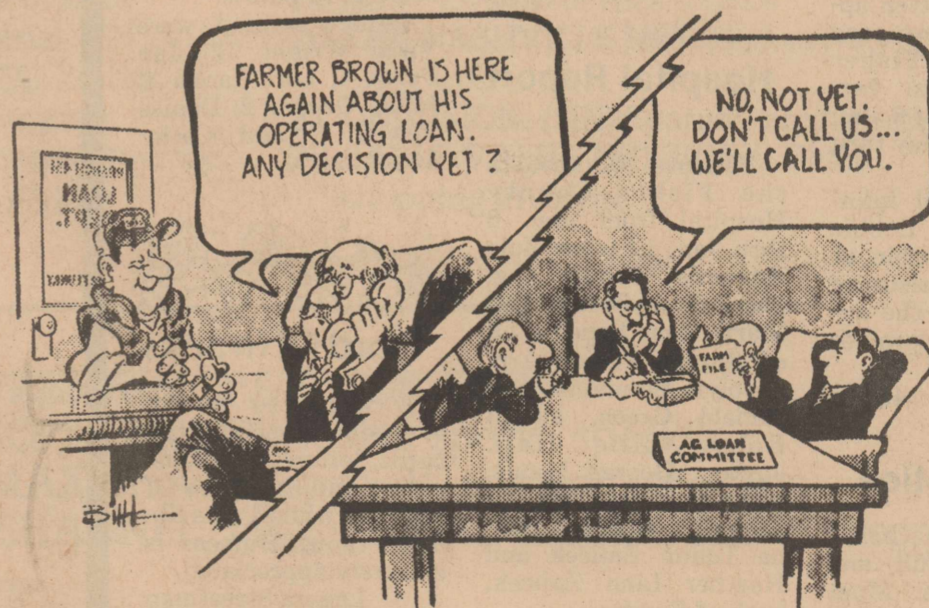
H.L. Davis & Co.

735-2591

"The Friendly Store"

Rotan, Texas

DOES YOUR BANK HAVE TO CLEAR AG LOANS THROUGH THE HOME OFFICE?



If your banker has to clear ag loans through a distant home office ag committee... perhaps it's time to plant your financial future closer to home. Our local Independent Bank understands the needs of farmers and ranchers. We know the importance of agribusiness... because your business is our business. Our Independent Bank is committed to keeping the money

you deposit working right here in our community. Understanding the local economic climate and responding to those local needs is what our Independent Bank does best.

If you get the feeling your bank doesn't understand your ag needs, it's time to bank the Independent Way. When it comes to ag loans, the big banks aren't even in the same field.

You Know Us. We Know You.

The 1st National Bank of ROTAN

"Your Dependable Bank of Service"
Member FDIC Rotan, Texas

735-2224

Member IBA Association of America.
Representing the nation's community banks.

LEGAL NOTICE

THE STATE OF TEXAS COUNTY OF FISHER by virtue of an Order of Sale issued out of the Honorable 32nd Judicial District Court of Fisher County, on the 5th day of January, 1987 by the Clerk thereof, in the case of

Legal Notice

THE STATE OF TEXAS COUNTY OF TEXAS by virtue of an Order of Sale issued out of the Honorable 32nd Judicial District Court of Fisher County, on the 5th day of January, 1987 by the Clerk thereof, in the case of CITY OF ROTAN VS. CLARA MAE DANIELS; Cause No. 4018 and to me, as Sheriff, directed and delivered, I will proceed to sell at 10:00 a.m. on the 3rd day of February, 1987 which is the first Tuesday of said month, at the North door of the Courthouse of said Fisher County, in the City of Roby, Texas, the following described property, to wit:

CITY OF ROTAN VS. ANTONIO YANEZ, JR. Cause No. 3809 and to me, as Sheriff, directed and delivered, I will proceed to sell, at 10:00 a.m. on the 3rd of February, 1987 which is the first Tuesday of said month, at the North door of the Courthouse of said Fisher County, in the City of Roby, Texas, the following described property, to wit:

Legal Notice

The Fisher County Commissioners Court will accept bids on a 1968 Chevrolet 2 ton truck for salvage. Bids will be opened January 16, 1987 at 9:00 a.m. in County Courtroom, Courthouse, Roby, Texas.

Marshal Bennett
County Judge
48:2tc

Legal Notice

BEING ALL THAT CERTAIN EAST 30 feet of Lot 8 and all Lot 9 in Block 191 of the inside addition to the City of Rotan, Texas, and being more more fully described by that deed of record in Volume 354, Page 246, deed records of Fisher County, Texas.

Levied on the 5th day of January, 1987, as the property of CLARA MAE DANIELS, 701 E. Wheeler, Rotan, Texas, 79546 to satisfy a judgment amounting to \$282.69 with interest from the 11th day of October, 1986 at 10 per cent, per annum, and all costs of suit in favor of ROTAN INDEPENDENT SCHOOL DISTRICT, ET AL;

GIVEN UNDER MY HAND THIS 5th day of January

Mickey A. Counts
Sheriff Fisher County
Texas
48:3tc

Fisher County Commissioners Court will accept bids for insurance coverage for vehicles, heavy equipment, property and general liability. Bids will be opened January 16, 1987 at 9 a.m. in County Courtroom, Courthouse, Roby, Texas.

Marshal Bennett
County Judge
48:2tc

Public Notice

The Roby I.S.D. will receive sealed bids on a pre-engineered steel building to house a new cafeteria facility. Plans, specifications, and bid forms are available only at Wadleigh Construction, Inc., Drawer 189, Snyder, Texas, 79549, phone 915-573-6381. A deposit of \$50.00 by cashiers check is required. Additional plans available at \$8.00 per set. Bids must be received by 3:00 P.M. February 2, 1987.

48:2tc

Public Notice

Persuant to the Indigent Health Care Act of 1985, Fisher County Hospital District hereby gives notice of the availability of Health Care for persons who reside within the District and meet the applicable financial guidelines. Written application forms are available at Fisher County Hospital between the hours of 8 a.m. and 4 p.m. Monday thru Friday.

For additional information contact Debbie Hull or Bob Harbin at 735-2256. Assistance with filling out the applications will be provided upon request.

49:1tc

Public Notice

Applications being accepted for full and part time jailers. Must be at least 21 years of

age, have high school diploma or GED, be able to pass a complete mental and physical evaluation including a drug screen, and have no criminal record. Applicants need to apply at Fisher County Sheriff's Dept.

49:2tc

Hospital Report

Patients admitted to the Fisher County Hospital from Jan. 6 thru Jan. 12 were: Zula Edwards; Bonnie Taggart; Nita Posey; and Maria Ann Sepeda, all of Rotan; Eunice Arp; Carolyn Simmons; and Ronald Green, all of Roby; Ellie Hall, Jayton; George Maule; and Josephine Garcia, both of Hermleigh; Donna Leann Zajicek and Heather Linn Zajicek, both of Snyder.

Tract I: All that certain North 70 feet of the Northeast Quarter of Block 21 of the Original Town of Rotan, Texas, more fully described by deed of record in Volume 440, Page 132, Deed Records of Fisher County, Texas.

Levied on the 5th day of January, 1987 as the property of ANTONIO YANEZ, JR., 611 N. McKinley, Rotan, Texas, 79546; SOPHIA YANEZ, 611 N. McKinley, Rotan, Texas, 79546; G.T. PAGE, if living, LEOCADIO YANEZ, if living;

GIVEN UNDER MY HAND THIS 5th day of January.

Mickey A. Counts
Sheriff Fisher County,
Texas
48:3tc

Legal Notice

Notice to all persons having claims against the Estate of Dorothy Eloise Lomax, deceased

Notice is hereby given that original Letters Testamentary were issued on the Estate of DOROTHY ELOISE LOMAX, Deceased, No. 2778, now pending in the County Court of Fisher County, Texas, on the 12th day of January, A.D. 1987, to WAYNE HARRIS, whose residence is Fisher County, Texas, and whose post office address is Post Office Drawer D, Rotan, Texas, 79546.

All persons having claims against said estate now being administered are hereby required to present them within the time and in the manner prescribed by law.

DATED: January 13, 1987

Wayne Harris, Independent Executor of the Estate of Dorothy Eloise Lomax, Deceased.

49:1tc

Rotan Varsity Girls Lose To Aspermont

The Rotan varsity girls basketball team lost an extremely close, physical game to Aspermont Tuesday night, 58-59.

The leading scorers were Evette Gruben and Shanna Bennett, each scoring 15 points.

Others scoring were Vikki Wright 12; Jan Posey 4; Lori Garcia 4; Millie Gaspar 2; Denise Powell 4; and Cathy Jones 2.



Card Of Thanks

I want to thank everyone for all the cards, letters, telephone calls and prayers I received while I was ill. Your thoughtfulness is sincerely appreciated.

Lenora Streetman
49:1tp

Roby Varsity Boys Defeat McCaulley

The Roby varsity boys basketball squad increased their overall season record to 13-3

with an 80-51 win over McCaulley last week. Jerry Carreon was the high point individual

player with 20 points. Others scoring were Jeff Branson 10; Jody Mauldin 6; James Gantt 10; Carter Edmondson 2; Jason Terry 12; Reggy Spencer 6; Rick Onofre 9; David VornKahl 2 and David Shipp 3.

Earlier in the week Roby defeated Jayton by the score of 53-51 in a contest where Carter Edmondson was high individual scorer with 14 points. Others scoring were Jeff Branson 2; Jody Mauldin 2; Jerry Carreon 10; James Gantt 12; Jason Terry 9; Reggy Spencer 2 and Rick Onofre 2.

Letter To The Editor

Dear Editor:

I recently mailed questionnaires to every registered voting household within the region I represent in the Texas House of Representatives. I have asked the people in the 78th District how they feel about the critical issues we will face in the January legislative session, and their response has been extremely helpful.

Although our mailing is derived from the Secretary of State's latest list of voters, we frequently find families who do not receive a questionnaire. I hope that anyone who did not receive one will write to me at:

The Texas House of Representatives
State Capitol

P.O. Box 2910
Austin, Texas, 78769
Or call me at (512) 463-0480 and we will send one out immediately.

Sincerely,
Steven A. Carrier
State Representative

Dr. Bryan Cave

Eye Examinations
Contact Lenses (All Types)
Children Welcome
Snyder, Texas

Cogdell Center
(915) 573-5571
Wed., Thurs. & Fri.
Call 573-4792

Office Hours
Mon. 9-6:00 p.m.
Tues. 8-5:00 p.m.

Lubbock Office (806) 797-4216

DRASTIC

January Clearance

50% Off All Boys & Girls Fall & Winter Clothing

Sizes 9 Months Up To Pre-Teen
Friday & Saturday Only
January 16th & 17th

CAT'S MEOW
215 Oak
Sweetwater, Texas
Open 9:30-5:30 Mon.-Sat.



FISHER COUNTY AUDITOR'S ANNUAL FINANCIAL REPORT CALENDAR YEAR 1986

FUND	BALANCE 1-1-1986	RECEIPTS 1986	TRANSFERS IN	TRANSFERS OUT	DISBURSEMENTS 1986	BALANCE 12-31-1986
AIRPORT	-0-	20 262 14	2 899 28	-0-	19 717 42	3 444 00
GENERAL	450 644 37	1 085 949 51	402 749 97	352 899 28	1 070 514 73	515 929 84
R&B OPERATING #1	148 436 21	178 245 34	-0-	20 759 45	177 091 71	128 830 39
R&B OPERATING #2	99 072 94	169 089 44	-0-	687 50	142 376 45	125 098 43
R&B OPERATING #3	123 950 40	173 246 32	-0-	40 687 49	124 003 84	132 505 39
R&B OPERATING #4	66 459 07	166 478 60	10 071 96	687 49	157 177 24	85 144 90
LATERAL RD.#1	16 85	5 543 68	-0-	-0-	4 575 17	985 36
LATERAL RD.#2	1 136 46	5 543 68	-0-	-0-	5 704 74	975 40
LATERAL RD.#3	6 372 35	5 543 69	-0-	-0-	7 943 78	3 972 26
LATERAL RD.#4	2 064 25	5 543 69	-0-	-0-	7 313 01	294 93
SOCIAL SECURITY	547 67	100 072 40	-0-	-0-	100 204 10	415 97
REVENUE SHARING	27 877 91	97 910 00	-0-	-0-	110 006 55	15 781 36
	926 578 48	2 013 428 49	415 721 21	415 721 21	1 926 628 74	1 013 378 23

On Deposit County Depository Banks-----1 013 378 23

INVESTED:

Citizens State Bank, Roby, Texas C.D.'s 4324, 4325
General Fund 150 000 00
Precinct #1 20 000 00
Precinct #3 30 000 00
200 000 00

Precinct #1outstanding 52 000 00
Precinct #2outstanding 43 865 72
95 865 72

FISHER COUNTY WARRANT INDEBTEDNESS

1 U.S. Gov. Bond 2580 due 8-15-1992 1 000 00
Interest 4 1/2% due 2-15 & 8-15, each coupon 21.25
Redeemed 10 468 50
11 468 50

FISHER COUNTY AVAILABLE SCHOOL FUND

1 072 480 36
22 174 74

Tax Roll for County Tax Purposes 289 859 561 @ 37c 1 072 480 36
Lateral Road Fund received from state of Texas 1986 22 174 74
For Calendar Year 1986 Tax Vehicle registered 5253
Received for registration, replacements, traps, etc.
Paid to Treasurer 234 237 52
\$5.00 Co. fees 21 776 50
Paid State Treasurer 673 50
Tax Collector Comm. 17 754 52
274 442 04

Motor Sales & Use Tax Collected in Calendar Year 1985
Paid to State Treas. 98 262 84
Tax Coll. Comm. 5 071 97
103 334 81

I hereby certify this statement true and correct as reflected by the records of the County Auditor's Office.

Pat Neepser
County Auditor

ALLSUP'S

CONVENIENCE STORES

PRICES EFFECTIVE JANUARY 15-16-17, 1987 WHILE SUPPLIES LAST

Fast n' Hot

FAST 'N HOT Texas Toast EACH \$1.49



ALLSUP'S Chimichangas 89¢ EACH

"Perfect for those chilly mornings" FILLED WITH FRESH HOT COFFEE ALLSUP'S

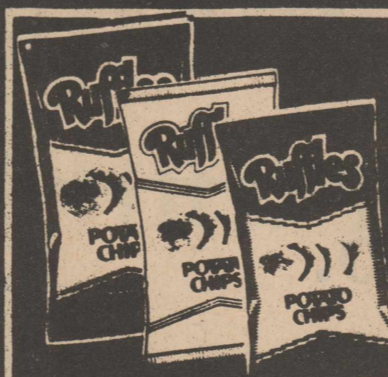
Coffee Mugs 99¢ REFILLS FOR ONLY 25¢

For Those Cold January Nights... Allsup's is Open to Serve You!

BORDEN'S ORANGE Juice 99¢ QT.

LADY BORDEN'S ASST. Ice Cream 79¢ PINT

BORDEN'S ASSORTED Dips 59¢ 8 OZ. CTN.



ALL VARIETIES RUFFLES®

Potato Chips

\$1.19 REG. \$1.39

Funeral Services Held For Rev. Jim Noles

Rev. Jim Noles, 76, of Marble Falls, died December 25, 1986. Rev. Noles was born June 8, 1910 in Rotan, Texas to Alexander N. Noles and Valley Virginia Rinker. Rev. Noles had been a minister for 38 years in West and South Texas and also in Arkansas. He attended Hardin Simmons University and Waylan Baptist College in Plainview. He was married to Ethel Mellie Yates in Rotan, Texas in April of 1931. They had been married for 55 years.

Funeral services were held December 26, at the First Baptist Church in Marble Falls with the Rev. Max Copeland officiating. Graveside services were held Dec. 27 in the Sardin Cemetery in Rotan.

with the Rev. Pat Anderson officiating. Services were under the direction of Clements-Wilcox Funeral Home in Marble Falls.

Survivors include his wife, Mellie Noles of Marble Falls; one son: Glen Noles of Midland; three daughters: Francine Evans of Saudi Arabia, Wanda Sparks of Corpus Christi, and Laura Brigrance of Booneville, Arkansas; thirteen grandchildren; six great grandchildren; three brothers: George Noles of Marble Falls, Cleo Noles of Clarendon, and Alex Noles of Rotan; four sisters: Velma Upshaw of Rotan; Vada Edwards of Corpus Christi; Gladys Riggs of Lubbock and Valley Frondolige of Rockport.

Funeral Conducted For Arminda Pauline Evans

Arminda Pauline Evans, 61, of Odessa, died at 10 a.m. Monday, January 12 at the Medical Center Hospital in Odessa. Funeral services were held at 2 p.m. Wednesday, Jan. 14 at First Baptist Church in Jayton. Burial was in the Jayton Cemetery under the direction of Weathersbee Funeral Home.

Mrs. Evans was born April 23, 1925 at Jayton, the daughter of Mrs. Lessie Harrison and the late John W. Harrison. She married Raymond Evans November 10, 1946 and they

operated a boot and shoe shop in Rotan before moving to Odessa about 30 years ago. She was a retired bookkeeper and a member of the Baptist Church.

She is survived by her husband, Raymond of Odessa; one son, Paul Ray Evans of Odessa; her mother, Lessie Harrison of Jayton; two brothers: Euel and Billy John Harrison of Jayton; two sisters: Sybil Base of Ft. Worth and Norrine Woolsey of Odessa and two grandchildren.

Rotan Nursing Center News

The residents missed having the Fisher County singers come last week, and we hope they are feeling better so they can make it next time. The residents always look forward to their coming and really miss them when they can't.

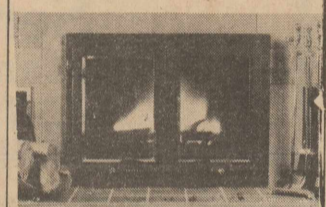
In our resident council last week, the residents decided to have a craft sale and give the money it makes to the Arthritis Telethon. The residents didn't set a date for the sale. They will set a date later, and will probably be in May.

We are happy to have Jewell Willingham back with us. Jewell has been in the hospital at Abilene for the past few weeks.

We had only one couple to visit with us that signed our guest book and that was Mason and Wanda Warren of Red Oak and they visited Gerrald Finch.

Lora Cleveland

Make Your Fireplace More Efficient.



with Nordic Air-Tight Fireplace Doors

Airtight Means Hotter Fires-Longer Burns-Less Ashes-Reduced Heat Loss.

- *Six Sizes Available.
- *Heavy, 9-ga. Steel.
- *Sealed With Special Insulation Material.
- *Special Ceramic Door Glass.
- *Polished Brass Trim.

Special Close Out '86 Models \$150.00 Off Financing Available Wood Stoves

6 MI. W. OF CITY-ROSCOE 1-20, Exit 230
766-3948

Ladies' Colored Jeans

1/2 Price

Ladies Sweaters & Blouses

30% Off

Men's Sport Coats & Group of Men's Western Slacks

1/2 Price

Men's Sweaters & Flannel Shirts

1/2 Price

Men's Coats

30%-50% Off

-H-

Western Wear

College Heights Shopping Center Snyder, Texas

Fisher County Nursing Home News

Janet Conley is still in the hospital in Abilene. We hope she gets better soon.

Mary Ortega went home over the weekend. We wish her well. We have a new resident that I haven't mentioned.

His name is Sidney Staas and he is from Roby. Alice Gann is our Employee of the Month for January. Alice works the midnight shift as a medication aide. Alice has worked here for about one year. Alice and her husband, Jr., live in Roby.

We sure would enjoy somebody to volunteer to come on Mondays about 10 a.m. and just play the piano for us. Our visitors were Jim and Helen Hughes from Houston to see LaNita Moore. Lee and Betty Mauldin from Roby came to see Nash and Bessie Miers. Louise Ashley's visitors were Gladys Farrar and Jessie Ashley and Jerry and Pat Carr from Ft. Worth. Fred Houghton's visitors were Sherman Houghton, Carolyn

and Ginger Houghton, all from Hamlin. Geri, Stacey and Lacey from Snyder visited Roy Cummings. Shelly Sherwitz and Dot Thompson from Roby visited Sidney Staas. Jewell Branch's visitors were Lorena Darden and Doris and Ryan Branch. David Barnard from Hot Springs, Ark. visited in the home. Also Tommy Boothe and Margaret Templeton from Sweetwater. Mrs. Whitten's visitors were Twila Culpepper, May Hurst, and Irene Young. Minnie Porter's visitors were Judy Earl and Judith Hawthorne from Houston.

Come see us soon!
Reyna Garcia

Funeral Services For Alfred Young

Alfred Lee Young, 80, of Pecos and former Rotan resident, died Friday, Jan. 9 at the Methodist Hospital in Lubbock following a lengthy illness. Funeral services were held at 2 p.m. Sunday, Jan. 11 at Weathersbee Chapel in Rotan. Officiating was Rev. Terry Low pastor of the First United Methodist Church. Burial was in the Belvieu Cemetery of Rotan.

Mr. Young was born in Anthony Kansas, March 4, 1906. He was

the son of Clarence and Rheta Maybee Young. He married Trena Miller Jan. 1, 1944 at Abilene. He was a veteran of World War II and returned to Rotan where he operated a mechanic shop until 1951 when the Young's moved to Pecos. Mrs. Young died July 21, 1984.

He is survived by two brothers: George Young of Locust Grove, Cal., and Ralph Young of San Jose, Cal.; two sisters: Blanche Hansell of San Jose, Cal., and Trella Tameny of Sand Springs, Oklahoma.

Palette & Brush Club Meeting

The Palette and Brush Club will have its next meeting at 9:00 a.m. on January 19th, at the Senior Citizens Center. Mrs. Whisenant will bring a lesson on decorative painting. All members are reminded to attend.

Rural Wrens Hold Meeting

Rural Wrens met Monday, Jan. 12. Members present were Cindy Lewis, Kay Moore, Tempie West, Jan Clark, Lisa Carey,

Marsha Smith, Debby Terry and Danette Pope. Marsha Smith was hostess. The next meeting will be Jan. 26 at 7:00 p.m.

CLASSIFIED ADS

ANTIQUES: We have fine furniture, over 400 clocks, and numerous old lamps for your to purchase, plus many gift items. We also repair and refinish clocks, lamps, and furniture. Call us or bring in. All work guaranteed. House of Antiques, 4008 College Ave., Snyder, Texas, 79549. 915-573-4422. 27:ftc

FOR SALE: 2 bedroom house, N 2nd St., Roby, good water well. 776-2367 after 5 p.m., \$9,000. 10:ftc

NEW HOME SEWING MACHINES: Electrolux cleaners, repair all makes. H.B. Stevens, 1101 James St., Sweetwater, 235-2889. 27:ftc

APARTMENTS FOR RENT: Now accepting applications for 2 and 3 bedroom apartments. We are an Equal Housing Opportunity Agency. Rotan Housing Authority. 915-735-2471. 10:ftc

FOR RENT: 2 bedroom house, 1 mile south of Roby on Hwy. 70. \$175.00. Harmon Holcomb, 776-2131. 31:ftc

FOR RENT: Small two bedroom house, \$150.00 month. Call Marvis McClain, 735-2217 or 735-3505 after 5:00 p.m. 41:ftc

FOR SALE: Cedar posts, also corner posts. We got 'em. Farm Tractor and Service, Rotan, 735-2252. 47:ftc

A&B AUTO PARTS: Specializing in Used Auto Parts. Complete Engines & Transmissions. 304 Old Lubbock Hwy. Phone 573-1491, Snyder. 49:12tp

WANTED: Housekeeping. Call 735-2911. 49:1tp

FOR SALE: 249 gallon galvanized long tank, wooden saddle, \$175.00. W.W. Butler, Rt. 1, Roby, 776-2710. 49:ftc

HOUSE FOR SALE: 912 N. McKinley. Jo Tankersley, 735-3614 or 735-3382. 49:2tc

NOTICE: Franks TV and Jewelry in Hamlin is in the Rotan-Roby area 3 times weekly to service your television, VCR or satellite system...we also do antenna work..call us at 576-2122 or 576-2167 nights..Franks TV and Jewelry, 218 S. Central in Hamlin. 8:ftc

FOR SALE: Alfalfa or haygrazer hay. Sqaure bales. Call 735-3171. Landes Furniture. 34:ftc

RENT OWN: Amana refrig., microwave, Maytag washer and dryers, stoves, used also. Bill's Appliances, 113 W. Broadway, Sweetwater, Texas, 235-4349. 23:ftc

NOTICE: Will pay \$15.00 each for old worn out quilts. Nathalies, 735-3122. 1111 N. Cleveland. 34:ftc

FOR RENT: 1 to 3 bedroom apartments starting at \$170. Call 776-2579. 18:ftc

FOR SALE: Washers and dryers. 60 day warranty. 962-5446, McCaulley. 52:ftc

ROCK HOUSE, barns, pens and seven acres for sale. 5 bedrooms, 2 baths, living-dining, kitchen-breakfast, den, utility, and fireplace, with central air and heat and on city water line. Also garage, cellar, and fruit trees. Located 2 1/2 miles North of Rotan. Call Betty Helms, 735-2945 or Tennie Cade, 735-2944. 41:ftc

NOTICE: Mature woman to live in and care for elderly lady. Light housekeeping. Call 776-2160 or 776-2896. 45:ftc

FOR RENT STORAGE SPACES

From \$15.00 Per Month

Lock It And Leave It

Rotan Self Storage

735-3171

NOTICE:

Whoever Borrowed My Chain Saw, Would You Please Return It.

Neal Hargrove, Rotan

FURS UNLIMITED: Wanted, coon, coyote, opossum, fox, badgers, bobcats, and unskinned skunks. Fur buyers will be in Roby, beginning Dec. 2 at Southside of Courthouse, from 2 to 2:30 each Tuesday, throughout fur season. Furs Unlimited, Box 291, Cross Plains, Texas, 76443, (817) 725-7350. We buy rattle snakes. 42:8tp

NOTICE: Bill's Auto Salvage is now open in Snyder. Late model used parts, Chevy, Ford, Chrysler, Toyota, Datsun. East Highway 180 at the traffic circle. 573-9569 or nights 573-9010. 47:1tc 49:1tc

HELP WANTED: Excellent income for part time home assembly work. For info. call 504-641-8003, Ext. 8532. 45:4tp

SALE: Jan. 5-17. 708 E. McArthur. Lots of misc. items. 48:2tc

FOR RENT: Small house. Wanda Murphee 735-2349, nights or weekends. 48:3tp

FOR SALE: AKC Cocker spaniel puppies, 7 weeks old. Call 915-573-7662. 48:2tp

HANDYMAN: House painting inside and out. Repair old trim and siding, plumbing. Real good with old house. 735-3576 or 735-3316. 48:2tp

NEED TO RENT FARM LAND: Contact Harold Gruben, 735-3260 or 735-3555. 48:2tp

NOTICE: Lost your keys? We make keys, house, car, etc. Look out calls. Hall's, Rt. 1 Box 170, Hamlin, Texas. Phone 576-2496. 48:4tp

HAYGRAZER HAY FOR SALE: Square or round bales. Call 735-2400. Horace Carter. 48:3tp

FOR SALE: 79 Dodge Omni, 4 door. Needs some repair. \$600. Call 776-2254. 48:2tc

NOTICE: Will buy old junk cars and pickups. Contact 735-2665, R&R Automotive. 49:3tc

FULL TIME EMPLOYMENT: An opening for a full time advertising sales person with the Big Country Farm and Ranch News will be available in the very near future. Position requires travel to the 26 counties between Stephenville and Big Spring to the east and west and Seymour and Brady to the north and south. Person must be self motivated, productive and have the desire to be successful in advertising sales. If interested, applications available at The Newspaper Office, P.O. Drawer A, Rotan, Texas, 79546. Salary commensurate with experience. 49:4tp

OWN YOUR OWN HOME, little down A1 Mobile Homes. Rose Mendez, 915-695-3270. 49:3tc

Carpet, Linoleum & Carpet Remnants

All Work Guaranteed By Professional Installers

Landes Furniture

113 Garfield Rotan, Texas

SUBSCRIBE By Calling 735-2562

Rotan Advance Roby Star Record

BLACK INVESTMENTS
Real Estate Sales & Appraisals
107 North Garfield
Rotan, Texas

FIRST TIME ON MARKET IN ROBY: Extra nice 2 BR on Neves Street. With good credit and down payment, monthly payments can be under \$210 (9% Loan.)

90 ACRES 3 MILES WEST OF ROTAN: Class II cultivation, 520 lb. yield on 2-in-1 cotton, 1/4 minerals. \$700/ac

TWO PRIME LOTS ON ROTAN MAIN STREET: \$4,000 plus closing costs before Jan. 1; \$5,000 plus closing after Jan. 1

TAKE ADVANTAGE OF REDUCED PRICES IN ROBY: Choice of two 2 BR homes, small monthly payments with cash down and credit check, 8 year payout

EZ CAR WASH MUST SELL: Present price is \$35,000; have out-of-town client thinking seriously; higher profit to local buyer-manager

BRICK HOME AND 87 ACRES: SE of Roby, Class II cultivation, hay barn, some pasture, have to see to appreciate

BACKYARD VIEW OF ROTAN FOOTBALL GAMES: 3 Br, 1 1/2 baths, excellent condition at good price, \$35,000

TWO-STORY: 7 BR, 2 bath, fireplace, \$66,500

REDUCED PRICE: 1 1/2 story Strickland home, 2 bath, corner lot, well, detached apartment, \$35,000

ROYSTON AREA: 3 BR on one acre, \$22,000

ONE MILE WEST OF ROTAN: 3 BR frame on one acre, \$24,500

BEST BUY: Corner location, 2,800 sq. ft., 4 BR, fireplace, great interior decoration, reduced to \$48,000

MYLA BLACK, BROKER, MSA, MRA, MFLA
Office & Home Telephone **(915) 735-3091**

FOR RENT: 2 bedroom house with den, ref. air, gas heat. All kitchen appl. plus partial furnished if needed. Located at 308 N. McKinley. Call 735-3530. 49:4tp

JOBS WANTED: I will do babysitting in my home, morning or evening, hot meals included, no age limit. Please call Kim Goodman at 735-2405 or come by 905 E. 4th St., Rotan. 49:1tc

Linda Cooper & Associates

- * Professional Bookkeeping Service
- General Ledgers, Payroll, Profit & Loss Statements, Financial Statements
- * Tax Preparation
- Individuals, Farmers and Ranchers, Businesses, Estates
- * Railroad Commission Reporting

(915) 576-3193 136 S. Central Hamlin, Texas

When Is Your Selling

CLASSIFIED INFORMATION

No Secret At All?

WHEN OVER 7000 PEOPLE READ IT IN ROTAN ADVANCE ROBY STAR RECORD

If you've got something to sell... we'll get your message across! And our big readership guarantees you lots of prospects!

1986 Crop Wheat, Barley, Oat Producers To Receive \$2.1 Billion In Deficiency Payments

The U.S. Department of Agriculture will make approximately \$2.1 billion in additional deficiency payments to eligible producers of 1986 crop wheat, barley and oats, a USDA official said.

Eligible wheat farmers will receive about \$2 billion, barley producers about \$55 million and oat producers about \$25 million in additional deficiency payments for this year's crops, according to Milton Hertz, administrator of the U.S. Department of Agriculture's Agricultural Stabilization and Conservation Service.

Hertz said the additional deficiency payments will be paid

50 percent in cash and 50 percent in generic commodity certificates. The cash portion of the payments is subject to a 4.3 percent reduction in compliance with the sequester order issued under the Balanced Budget and Emergency Deficit Control Act of 1985 (the Gramm-Rudman-Hollings Act). Generic commodity certificates are not subject to the reduction.

About \$1.4 billion in advance deficiency payments has already been paid to wheat producers, \$150 million to barley producers and \$15 million to oat producers.

Deficiency payments are required under the

1986 wheat, barley and oat programs because

national weighted average market prices received by producers during the first five months (June through October) of the marketing year were below established target price levels.

Deficiency payment rates are determined by the difference between the target price for each commodity and either the national weighted average market price for each commodity from June through October, or the national announced loan rate for wheat and the basic loan rates for barley and oats, whichever is higher. Eligible producers will

be paid deficiency payments at rates shown in the following table.

The deficiency payments for all three crops are the maximum permitted by law. Eligible barley and oat producers will receive additional deficiency payments in July 1987 if the national average market prices received by producers for the entire marketing year for the two commodities are below basic loan rates.

The wheat deficiency payment originally scheduled for 1987 was moved to December 1986 under the Continuing Appropriations Bill for Fiscal Year 1987.

Hertz said the December deficiency payments for wheat, barley and oats will be issued through local ASCS offices as soon as possible after Dec. 15.

Due to adverse weather, some producers may not have all their wheat planted. Two varieties that still have a chance to make this late are Pro Brand 812 and Mit. Since normal stooling and tillering will not occur with these late seedlings, producers should up their seeding rates by 50%. If you plant 60 pounds normally, up it to 90.

Agriculture is the nation's largest industry. In 1985, farm assets totaled 956 billion. Agriculture is also the nation's largest employer. About 21 million people work in some phase of agriculture from growing food and fiber to selling at the supermarkets.

American farmers produce over 80 percent more crop production on an acre of land than did their fathers. Today, 1 hour of farm labor produces 16 times as much food and other crops as it did in the 1919-21 period. Good records can help farmers and ranchers to manage their operations more effectively and to recognize opportunities for increasing profitability. "The benefits of keeping and using records are many. The first big payoff to good

County Agent Report

By Richard Spencer

record keeping is planning. With records from past years, a farmer or rancher can prepare a financial picture (cash flow) for the upcoming year or years. Records also can help the farmer or rancher know his current financial position. Relying on good records and the cash flow statement prepared at the beginning of the year, he can compare actual receipts and expenses to his budgeted estimates. Any adjustments that need to be made can then be planned for rather than coming as a surprise to him and possibly his lender.

Keeping records will provide the farmer or rancher the necessary information to prepare his tax return and avoid making mistakes. If the farmer or rancher faces a year of high taxable income, then good records will allow him to consider making additional purchases before year end to reduce his tax liability and vice-versa.

Two approaches to record keeping for a farmer or rancher are offered. One is to keep records on his own, using either a system he designs for his particular operation, a manual record keeping book provided by the Texas Agricultural Ex-

tension Service, or a commercially available record keeping system (manual or computerized).

The other is to hire an accountant. Either way the farmer or rancher should stay abreast of the situation.

Agnes Crite Celebrates 84 Birthday On Jan. 11th

Agnes Crite celebrated her 84th birthday on Jan. 11. Those present were: Frances Crite, Ft. Worth, Bill and Nancy Crite, Crescent, Jack and Shirley Butler, Springtown, Johnnie and Willie Tunnell, Dublin, Biddie and Charles Shipp, Rotan, Vollie Shipp, Fluvanna,

J.C. Butler, Ft. Worth, Faye and Sarah Nations, Denton, Jackie and Kathy Chapman, Chico; Brenda and Bobby Biggerstaff, Bedford, Ty Butler, Springtown, Sarah Shipp, Donnie May Walker, Katherine Bruce, David Stevens, all of Rotan, and Mike Barker of Sweetwater.

Roby Menu

Monday: Oven steaks, gravy, mixed vegetables, hot rolls and fruit.

Tuesday: Corn dogs w/mustard, cream potatoes, black eyed peas, quick change cookies.

Wednesday: Texas casserole w/cheese,

french fries, salad, and chocolate pudding.

Thursday: Burritos w/cheese, buttered corn, cream potatoes, chocolate chip cookies.

Friday: Hamburgers w/cheese, potato chips, lettuce, tomato, onion, pickles, brownie and fruit.

Notice

There will be a Room Parents meeting on Monday, Jan. 19 at 7:00 p.m. in the Primary LRC. All parents are urged to attend.

Rotan Menu

Monday: Oven fried steak w/gravy, whipped potatoes, english peas, hot rolls, butter, cookies, milk.

Tuesday: Baked ham, candied sweet potatoes, pear halves w/grated cheese, hot rolls, butter, pudding, milk.

Wednesday: Tacos w/meat and cheese, taco sauce, pinto beans, lettuce & tomato salad, cornbread, butter, cake, milk.

Thursday: Chicken & spaghetti, green beans, carrot and cabbage slaw, hot rolls, butter, jello, milk.

Friday: Hamburger w/cheese, lettuce, tomatoes, pickles & onions, potato chips, pork & beans, ice cream cup, milk.

Brangus Bulls For Sale

20 To 30 Months Old
All Bulls Are Out Of Major Herdsire.
\$800 To \$2,000
Tandy Cattle Co.
735-2463 Or 735-2574

AUCTION

January 31, 1987

Consignments Welcome

Sponsored By:
Farm Tractor & Service
Rotan, Texas
915-735-2252

Double Coupons Everyday
Open Until 9:30 P.M.

Prices Effective
January 15-21, 1987

We Reserve The Right
To Limit Quantities



PRICED RIGHT

FOODS

776-2225

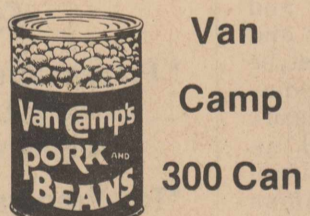
City Grocery & Deli

Roby, Texas



Sliced To Order
Slab
Bacon

\$1.39
LB.



Van Camp
300 Can
Pork & Beans
2/89¢

Gandy's
Ice Cream

\$4.59



Velveeta Cheese

1 LB. \$2.09

Magic (Buy 3-Get 1 Free)

Dream Cookies
4/\$1.00

Huggies

(18, 12, 24 Cnt.)

Diapers

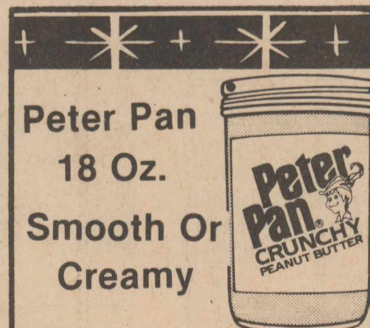
\$3.65



5 LB.
Masa Harina
\$1.99

Bundt 32.5 Oz.

Cake Mixes
\$2.59



Peter Pan
18 Oz.
Smooth Or
Creamy

Peanut
Butter
\$1.89

Hunts 300 Can

Tomato Juice 2/69¢

Post 16 Oz.

Natural Bran Flakes \$1.49

Johnson Regular Or Lemon 7 Oz.

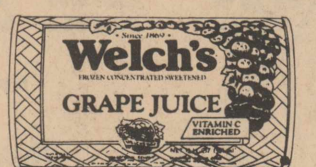
Pledge \$1.29

California Broccoli

39¢ LB.

Frozen Welch's 12 Oz.

Grape Juice
79¢



Bounce 40 Cnt.

Fabric
Softener
\$1.69

Gooch 12 Oz.

German Sausage
\$1.39

Boneless
Chuck
Roast \$1.39 LB.

Trimmed
Barbeque
Brisket \$3.19 LB.

100's

Bayer Aspirin
\$3.39

Yellow Straight

Squash 49¢ LB.

Red Texas Grapefruit

3/\$1.00



Kim Copeland & Brent Brooke

Kim Copeland Engaged To Brent Allen Brooke

Mr. and Mrs. Glenn Copeland of Rotan, Texas, would like to announce the engagement and forthcoming marriage of their daughter, Kimberly Machelie to Brent Allen Brooke, son of Mr. and Mrs. Johnnie Brooke of Bangs, Texas.

Kimberly, a 1977 graduate of Rotan High School, and a 1982 graduate of Angelo State University, is presently employed by the Wylie ISD teaching 4th grade. Brent, a 1977 graduate of Bangs High School, and a 1981 graduate of Tyler Junior College, is presently employed as Base Camp Supervisor for Sun Sudan Oil Company in Khartoum, Sudan. The couple is planning a February 21st wedding to be held at Broadview Baptist Church in Abilene, Texas.

ASCS-Farm Program Signup Underway

The Agricultural Stabilization and Conservation Service is currently accepting applications for the 1987 feed grain, wheat and upland cotton acreage reduction programs. Signup began October 1st for wheat and November 17th for feed grains and cotton. The signup period will end March 30th, 1987.

County ASCS official Billy Don Atkinson said the acreage reduction programs are necessary to bring about a better balance between supply and demand. All farmers with an established crop acreage base are eligible to participate in the voluntary program.

"We encourage all producers to study the programs and consider the benefits in relation

to their farm operations," Mr. Atkinson said.

He said program participants will be eligible to receive price support loans and deficiency payments. Additionally, feed grain program participants will be eligible for land diversion payments. Producers may also receive advance deficiency and diversion payments when they sign up.

The 1987 farm programs offer target prices of \$3.03 per bushel for corn, \$2.88 for sorghum, \$2.60 for barley, \$1.60 for oats and \$4.38 per bushel for wheat. Target prices are 79.4 cents per pound for upland cotton.

According to Mr. Atkinson, a 20 percent acreage reduction requirement is in effect for 1987 feed grains with an optional paid land diversion of 15 percent. Other acreage reduction requirements are 27.5 percent for wheat, and

Hustling Around Hobbs

By Joy Walker

We have sure been having some bad weather and Wednesday it was so cold and then Thursday it was so foggy and miserable. That night it lightened and thundered and we got three tenths of an inch of rain here at the house, but some folks got much more moisture than that. I've heard of the saying "thunder in February, frost in April," so don't know what to expect after the thunder in January.

J.D. Kincaid had hip surgery on Tuesday at Methodist Hospital in Lubbock. He was in I.C.U. for several days, but has now been transferred to Room 380. He seems to be doing real well and we hope that he will continue to improve and will soon be able to return home. They are talking about this Friday or Saturday if all goes well, so hope that will be the case.

Mrs. Opal Phillips went to Mr. and Mrs. Mike Porter's for lunch on Sunday.

Mrs. J.W. Etheredge and Mrs. Lealon Wilburn met Mrs. Todd Etheredge in San Angelo on Wednesday and brought Chase and Skyler Etheredge home with them and they have been staying with their grandparents. Mrs. Wilburn and LaNelle also visited with Mr. and Mrs. David Etheredge and

their new baby, Dustin Ray, while at San Angelo.

Jim and I went to Rotan Tuesday night to watch the basketball games between Aspermont and Rotan. Friday night we watched the games between Jayton and Rotan, which were also at Rotan. Saturday we went to Snyder that night and ate supper with Mr. and Mrs. Doc Davis, and then visited with them for several hours. We have had few visitors out this way on account of the bad

weather I am sure, also everybody seems to have been sick with bad colds or the good old fashioned flu. Maybe we will have some good weather this week, anyway they are predicting warmer temperatures, so that sounds much better. The cotton stripping came to an abrupt halt after we got the rain, but the wind has really been blowing and will dry the fields out in no time.

Well, this is all for now. Keep well and I'll see you next Thursday.

This Week's Special



Fish Basket \$2.35

Special Effective January 15-21st



Rotan Hatahoe 735-2276

Cherita Dossey & Brian Welch Engaged

Cherita Gayle Dossey and Brian David Welch are engaged and plan a March 7 wedding at Cornerstone Baptist Church at Robinson, Texas.

The bride-elect is the daughter of Mr. and Mrs. Sherman P. Daniel of Rotan.

The parents of the

prospective groom are Mr. and Mrs. M. Wade Welch of Waco, Texas.

The bride-elect is a graduate of Rotan High School. She is a personal lines underwriter for Texas Farm Bureau Insurance Co.

Welch is a graduate of Waco High School. He is an electric line con-

tractor for Flowers Construction Co.

Grandparents of the bride-elect are Mr. and Mrs. Jess Berry of Stamford, Texas.

Grandparents of the groom are Mr. and Mrs. Ernest Welch of Albuquerque, New Mexico and Mrs. Evelyn Boehme of Waco, Texas.



Before You Purchase A New Car Or Pick Up ...Give Us A Chance To Show You How Much You'll **SAVE** At

F&M Chevrolet-Buick
Complete Sales & Service

735-2242

111-117 South Cleveland

Rotan, Texas

The New United Cable

Now 19 Basic Cable Channels, Only \$12.95/Month

This Does Include KTVT-11/Dallas

Cable Channel

- 3 WTBS: TV-17; Independent (Atlanta)
- 4 KTXS: TV-12; ABC, (Abilene)
- 5 KRBC: TV-9; NBC, (Abilene)
- 6 WGN: Independent, (Chicago)
- 7 ESPN: Sports programs/business news
- 8 CBN: 24-hrs. of family-type shows
- 9 KTVT: TV-11; Independent (Dallas)
- 10 KTAB: TV-32; CBS, (Abilene)
- 11 THE WEATHER CHANNEL: 24-hrs. of both local and national weather
- 12 CNN: 24-hrs. of indepth news coverage
- 13 NICKELODEON: 24-hrs. of kids programming

Cable Channel

- 16 USA NETWORK: 24-hrs. family-type shows
- 17 C-SPAN I: Live coverage of U.S. House of Representatives
- 18 LIFETIME: 24-hrs. of family/lifestyle shows
- 19 MTV: 24-hrs. of rock videos
- 20 THE NASHVILLE NET: Country-style programs
- 21 UNIVISION: (SIN) Spanish programming
- 22 CABLE VALUE NETWORK: Retail shopping at home

PREMIUM "PAY" SERVICES

- CH. 2: HBO, movies, exclusive sports, specials
- CH. 14: CINEMAX, movies, specials, comedy, concerts
- CH. 15: THE DISNEY CHANNEL, family shows, movies, series, sitcoms

OUR NEW PREMIUM RATES

- 1st Pay @\$11.50
- 2nd Pay @\$6.50
- 3rd Pay @\$6.50

Convenient remote option: \$2.50/month

See What's In It For You!



united cable television of rotan

102 North Florence Rotan, Texas 79546 735-2526

* Converter boxes are now required to receive all 19 basic cable channels. Pick yours up at our office today! Let us show you the convenient remote!

PIZZA BARN

117 West Snyder 735-3537 Rotan, Texas

Pizza Barn Plate Lunch Menu For January 16th-22nd

Friday, January 16th

Chicken fried steak, gravy, creamed potatoes, fried squash, roll, butter, honey, tea.

Saturday, January 17th 6:00-9:30 P.M.

Fried catfish, cole slaw, tartar sauce, fried potatoes, hush puppies, seafood pasta, tea.

Sunday, January 18th Closed Sunday During Noon Open 5:00 p.m

Monday, January 19th

Fried chicken, gravy, creamed potatoes, green beans, roll, butter, honey, tea.

Tuesday, January 20th

Barbeque, pinto beans, tossed salad, cornbread, tea.

Wednesday, January 21st

Meat loaf, fried okra, baked beans, cooked cabbage, cornbread, tea.

Thursday, January 22nd

Chicken fried steak, gravy, creamed potatoes, english peas, tossed salad, roll, butter, honey, tea.

Card Of Thanks

The family of Effie Atwell would like to say thank you to all our friends and neighbors for your love and support during the loss of our loved one.

For the beautiful flowers, cards, letters, phone calls, visits, prayers, and every other act of kindness. To Bro. Lowe for the comforting message, the choir for the music so beautifully rendered.

To the Weathersbee's for a wonderfully arranged funeral. To those who brought food to our home and to the ladies of the Methodist Church for the lovely lunch they served at the church.

Thank you and may the Lord bless each of you.

Thanks to the Doctors and staff.

The Family of Charles Atwell
Mr. & Mrs. J.D. Burk
Mr. & Mrs. Joe Dale Burk
Mr. & Mrs. E.C. Cummings
Mrs. Ray Vinyard
Roy Carlson Family
Walter Atwell Family
Joe Atwell Family
49:1p

Sharron Haggard & Darrin Leverton United In Marriage

Sharron Lynn Haggard and Darrin Wayne Leverton were married Thursday, December 31, at Roby First United Methodist Church. Pastor Jim Hawthorne officiated.

The bride is the daughter of Mr. and Mrs. Eugene Shipp of Roby and Willie Haggard of Ft. Worth. The bridegroom is the son of Waymon Leverton of Rotan and Carol Mooney of San Diego, Cal.

Maid of Honor was Shannon Neighbors of Sweetwater, cousin of the bride and bridesmaid was Jackie Chapmon, of Crane, sister of the bride.

The groom's father, Waymon Leverton of Rotan, served as best man. Billy Dunn of Buffalo, brother-in-law of the groom served as groomsman.

Ushers were Buster Frierson, cousin of the bride and David Shipp,

brother of the bride, both of Roby.

Flower girls were Carlana Chapmon, of Crane, niece of the bride and Becky Frierson, of Roby, cousin of the bride. Ringbearer was Minday Dunn, of Buffalo, niece of the bridegroom.

Stephane Frierson, Roby, cousin of the bride, was candlelighter.

Vicky Castor, Roby, sister of the bride, registered guests.

The music was rendered by Ruth Davis and Betty Rivers sang the songs "Thru The Eyes of Love" and "Till The 12th of Never."

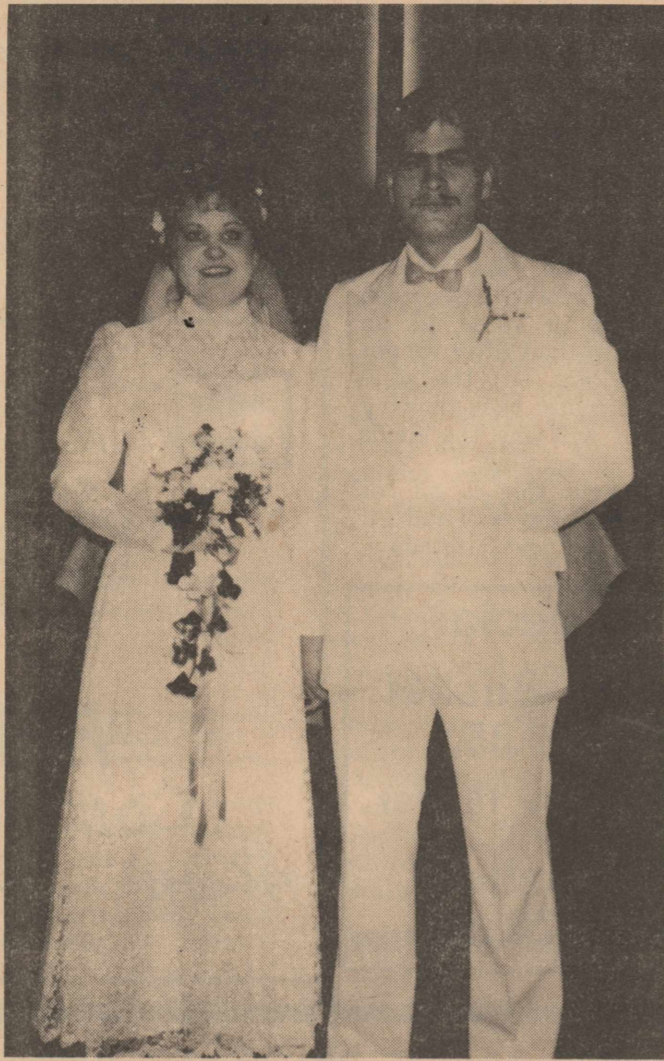
Charlotte Ragan, cousin of the bride, provided the flowers.

The bride graduated from Roby High School and attends McMurry College. She is employed by El Chico Restaurant.

The groom graduated from Rotan High School

and also attends McMurry College. He is also employed by El

Chico Restaurant. The couple will make their home in Abilene.



Mr. & Mrs. Darrin Leverton

News From Down South

By Bertha Warren

Hello from down south.

Sure not much going on this week with anyone. Some have the flu and some are just getting over it.

George Ratliff is out of the hospital and back in the nursing home in Sweetwater. Her daughter, Oleta King came on Wednesday to visit her and Erna Lee Jones. She also visited her aunt, Jewell Ratliff. Erna Lee has had the flu but is feeling better now.

Carrol and Lena Hodges attended the Big Country Holiday Rambler Club get together at the Claytonville/Capitola Community Center Friday thru Sunday. Some of the trailers arrived on Thursday and because of the bad weather a few came out in their cars but returned home at night. There were nine trailers. About 25 people attended Friday and 30 or so on Saturday. They played lots of games and did a lot of

visiting.

Ed and Ollie Ogden visited with Charlie and Thelma Smith of Roby. Vera and Joe Jennings visited with Burt and Ilene Hale over the weekend. Then on Saturday the Hales, Joe and Vera and Bertie Hale went to Sweetwater to see Tommy Ed and Betty Hale.

Edna Gordon is settled in her new home in Snyder. She said she enjoys being in town but still misses her Fisher County friends.

Viola Brazee and I spent all day Monday in Abilene with our mom, Jewel Ratliff getting her ready for eye surgery on Wednesday, Jan. 14.

That's about all for this week. Call and let us know what's going on in your world.

Commodities Distributed February 7th

The Rural Wrens Home Extension Club will not be distributing commodities until Saturday, Feb. 7.



MATH & SCIENCE MEET: The above Rotan High School students participated recently in a Math & Science meet held in Rotan. Back row, left to right: Kevin Smith, Pat Moffett, Todd Gruben, Randel Clawson, and Jeff Cave. Front row, left to right: Ester Guerra, Lousinda Ramirez and Candi Hayes.

7.25% Annual Rate

7.45% Effective Yield

\$500 Minimum Deposit. 24 Month Term.

Rates are subject to change. Substantial penalty for early withdrawal.

Call City Savings for other terms and rates that might meet your needs.

City Savings

HOME STATE SAVINGS DIVISION

...a good place for your money!

Branch Office
302 W. Snyder, Rotan, Tx (915) 735-2273

Home Office
230 West Twohig, San Angelo (915) 658-2629

Plus 19 other locations throughout Texas to serve you

FSLIC
Member of the FDIC

Keaton Kolor

FOR ALL YOUR
PHOTOFINISHING
NEEDS!

Film Developing
Now Available At:

The Newspaper Office
Rotan, Texas

GLEN'S

THRIFTWAY

Rotan, Texas

NOTICE

Due To The Overwhelming

Acceptance Of The New

MITEY MIZER STAMPS

Effective On January 29, 1987

We Will No Longer Give
WESTERN BLUE STAMPS

THANKS FOR SHOPPING

GLEN'S THRIFTWAY

ROTAN,

TEXAS

New Store Hours:
8:00 a.m.-7:30 p.m.
Monday-Saturday





We Are Rolling Out The

RED CARPET

For You To Renew Your
Subscription To The Rotan
Advance-Roby Star Record



Fisher County &
Surrounding Counties

\$12.00 1 Year Tax Included

\$32.40 3 Year Rate

Texas
Subscribers

\$15.77 1 Year

\$42.58 3 Year Rate

Out Of State
Subscribers

\$17.00 1 Year

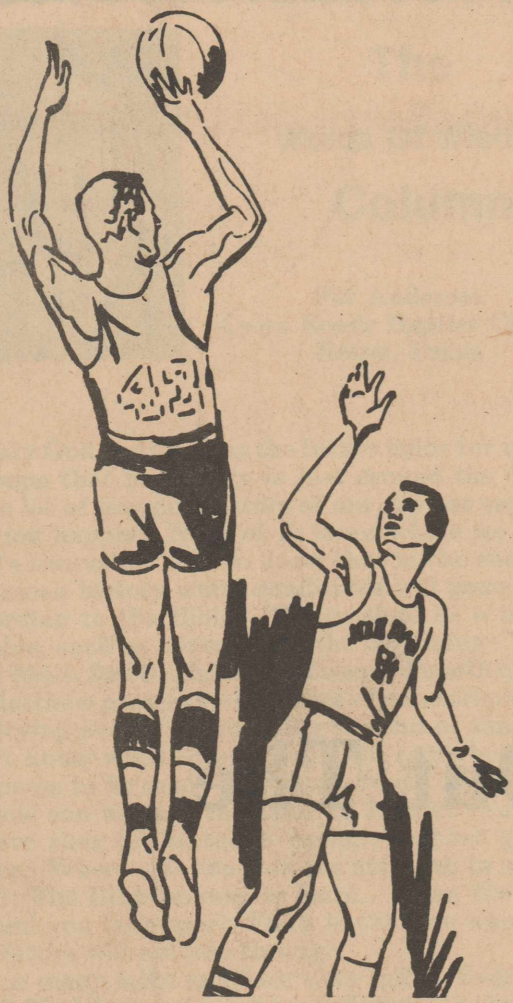
\$45.90 3 Year Rate

Please Check The Expiration Date On Your Label!

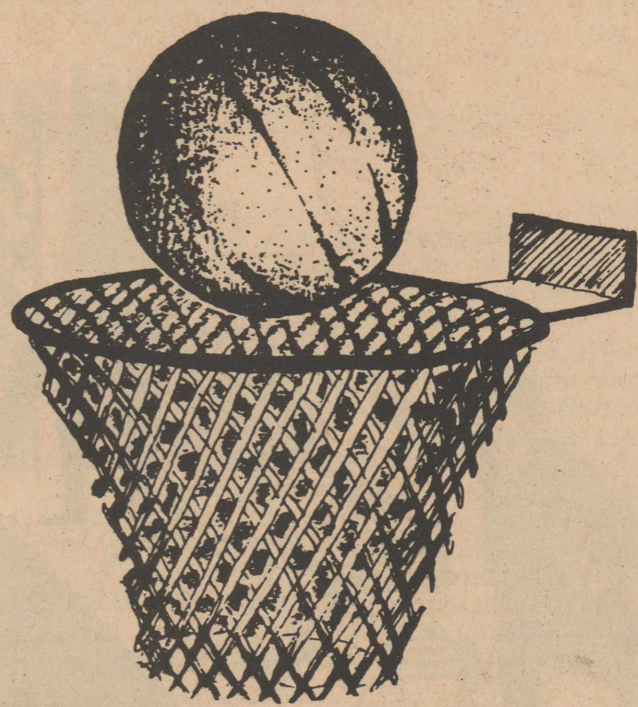
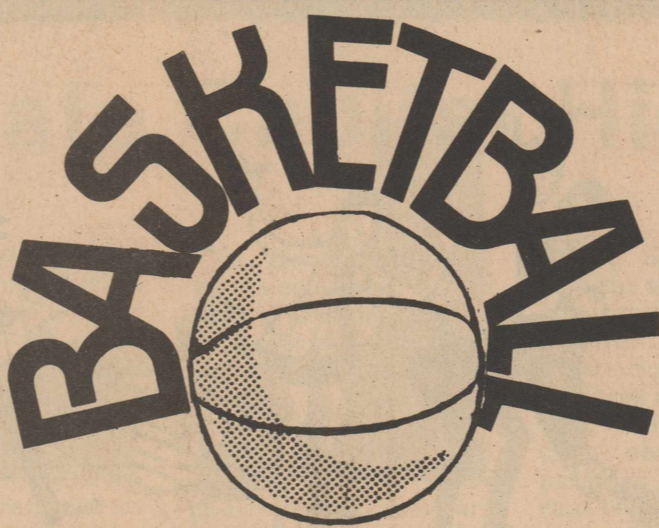
Renew Today, So You Won't Miss A Single Issue

Of The Rotan Advance-Roby Star Record.

**Mail Subscription Renewals To:
The Newspaper Office
P.O. Drawer A
Rotan, Texas 79546**



**FISHER
COUNTY**



**SUPPORTING THE
ROTAN YELLOWHAMMERS
&
THE ROBY LIONS**



**Rotan
Yellowhammer
Basketball
Schedule**
January 16th
McCaulley-There-5:00 p.m.
V-G&B-JV-G
January 19th
Jayton-There-5:30 p.m.
JH-G&B
January 20th
Roby-There-5:00 p.m.
V-B&G-JV-B&G



**Roby Lions
Basketball
Schedule**
January 16th
Robert Lee-There-4:00 p.m.
Non-District
V-G&B-JV-B&G
January 19th
McCaulley-There-4:30 p.m.
Jr. High G&B
January 20th
Rotan-Here-5:00 p.m.
V-B&G-JV-B&G



**Farmers Union
Co-op Gin**
Bud Guelker-Mgr.
776-2237
Roby, Texas

**National Bank
OF ROTAN**
Member FDIC
"Your Dependable Bank
Of Service"
735-2224
Rotan, Texas

**Callan
Clinic**
Dr. M. Callan
Dr. B. LeBleu
735-2211
Rotan, Texas

**Bennett
BW
Walls**

**Rotan
Insurance**
Joe Burk-Agent
735-2571
Rotan, Texas

**Citizens
State
Bank
Member FDIC**
Roby, Texas

**Big 3
Pork Producers**
Johnny Edmondson
Owner
776-2661
Roby, Texas

Dr. Wayne R. Viehweg
Fisher County Doctors' Clinic
735-3611
Rotan, Texas

Silver Spur Cafe
Hwy. 180
Friday-Fish & Shrimp
Daily Plate Lunch
776-2744
Roby, Texas

**LADIES and GIRLS
FASHIONS**
**LIZZIE B's
EMPORIUM**
ELIZABETH BILLINGSLEY, owner
Hrs. 9:00 To 5:30
HAND-MADE,
Specialty Items

**Casa
Morales
Restaurant**
"Serving The Finest In
Mexican & American Foods"
735-2658
Rotan, Texas

**Midwest Electric Co-op
& Employees**
776-2244
Roby, Texas

Central Lumber & Supply
776-2371
Roby, Texas

Nu Tone Cleaners
115 W. Snyder
735-2552
Rotan, Texas

**Fisher County
Hospital
& Staff**
Gary McGee-Adm.
735-2256
Rotan, Texas

F&M Chevrolet-Buick
Yoke Fleming
Murl McKinney
735-2244
Rotan, Texas

ZONE 'N' TRIM
FIGURE TONING STUDIO
*hours by appointment
210 1/2 W. SNYDER
ROTAN, TEXAS 73546
ALTA HINSON
915-735-3514

FLOWERS
**Roby Flower, Fabric &
Gift Shop**
Erwin, Maxine & Michelle
776-2292
Roby, Texas

**KNIGHT'S
MEAT and LOCKER**
"Custom Processing
Individual Meat Sales
From 1 lb. to 1,000 lbs."
OWNERS
D.L. Knight Herschel Shipp
217 W. Snyder (915) 735-2541
After Hours 735-2512
Rotan, Texas

Wynelle's Beauty Shop
Specializing In All Your
Beauty Needs
776-2233
Roby, Texas

Henry's Quick Stop
Gas, Ice, Deli
776-2330
Roby, Texas

H.L. Davis & Company
"The Friendly Store"
735-2591
Rotan, Texas

Gold Bond Building Products
Division Of
National Gypsum Company
Rotan Plant

Rotan Veterinary Hospital
1101 Cleveland
735-2491
Rotan, Texas

Video Village
*Complete Video Rentals & Movies
Tammie Stanford-Owner
Jean Stanford-Owner
735-2155
Rotan, Texas

PIZZA BARN
117 West SNYDER
phone 735-3537
ROTAN, TX.

Higginbotham-Bartlett
735-2215
Rotan, Texas

Roby Drug
Mike Harrell-RpH
776-2431
Roby, Texas

**Weathersbee Funeral
Home**
735-2241
Rotan, Texas

**Larry's
Automotive**
1210 N. Cleveland
735-2425
Rotan, Texas

Roby Hydro
Archie & Bettie Rivers
776-2240
Roby, Texas

Nathalie's
"Tomorrow's HEIRLOOM
TREASURES"
1111 CLEVELAND
ROTAN, TX. 73546
phone 735-3122

**Landes Furniture
Loys & Larry Landes**
735-3171
Rotan, Texas