

1986 ROTAN COMING CANDIDATES

J. 6R2-034 -EXP 01/87
J P PHILLIPS
RT 2 BOX 37
ROTAN TX 79546



Vikki Wright



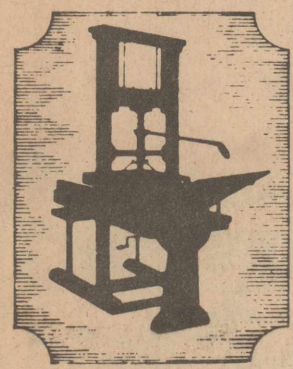
Jenna Thornton



Leticia Reyes



Evette Gruben



Roby Star-Record

The Voice Of Fisher County Since 1907

ROTAN ADVANCE

VOL. 78 NO. 35

THURSDAY, OCTOBER 9, 1986

TEN PAGES

35¢ Plus Tax

Record Rainfall Amounts Recorded In Fisher County

Fisher County has had between 35 and 40 inches of rain since January 1, 1986, depending upon which part of the county is being discussed.

At Roby, Weather Observer Jimmy Price, indicated that a total of 35.42 inches of moisture has been recorded since the first of January. "That is over 20 inches above what is supposed

to be the normal rainfall", said Price. He indicated that the normal rainfall is approximately 24 inches.

At Rotan, Weather Observer L.C. Hutchinson, said he has recorded 40.70 inches since January. His home is located 4½ miles west of Rotan. Hutchinson said that since August 25th, he had recorded 24.7 inches and since October

1st he's recorded 7.6 inches. Jimmy Price at Roby has recorded 7.37 inches since October 1st and 28.5 inches through the month of September.

Measurable rainfall by Price in Roby this year is running over 9 inches more than any year since 1980. In 1985 Price recorded 26.15 inches; 1984-17.97; 1983-27.14; 1982-24.06;

1981-24.33 and 1980-28.20.

Rainfall seems to be pretty much in line across Fisher County since Friday. Annie Weems at Rotan measured 5.35; Jimmy Walker recorded 6.5 at his farm 8 miles west of Rotan; W.J. Coffman has 4 inches at his farm 5 miles northeast of Rotan; Steve Nowlin had 6 inches at his place 14 miles west of Rotan.

WTU Cumstomers Due Another Refund Due To Gas Price Decline

A continuing price decline in the natural gas market means another refund to West Texas Utilities Co.'s retail customers in December.

WTU officials announced Thursday that a request was being filed with the Public Utility Commission of Texas for permission to refund a total of \$6.9 million in retail revenues collected in excess of actual fuel costs, and to lower its fuel charge rate for the months of December 1986 through April 1987. The total includes \$6,740,467 in actual fuel cost savings accumulated in July and August, plus \$149,003 in interest.

Under WTU's proposal, all existing retail customers would receive refunds through one-time credits to their bills in December. A typical residential customer would receive about \$17.

The fuel rate-known as the "fixed fuel factor"-is approved by the PUC. When the actual cost of fuel is below the approved rate, the over-recovery is returned

to the customers, with interest.

WTU's base rates have not changed since December 1984. Company officials have indicated that a rate increase likely will be necessary next year after the new coal-fired Oklahoma Power Station near Vernon is completed and placed in service. The assured supply of coal under a long-term contract is expected to stabilize WTU's power plant fuel costs and to partially offset the necessary base rate increase.

Q. How much money is WTU planning to refund?

A. Fuel cost savings available for refunding amounts to \$6.7 million. With interest added, the total is \$6.9 million.

Q. How is the interest calculated?

A. In accordance with rules of the Public Utility Commission, interest was calculated at a rate of 13.08%, the cost of capital approved in the Company's last general rate filing.

Q. How much refund can the typical residen-

tial customer expect?

A. \$17

How will refunds be calculated and made?

A. WTU will comply with the refund provisions of the Commission's fuel rule. The total refund will be allocated to each rate schedule based upon that schedule's kilowatt-hour usage for the period in which the over-recovery occurred. There are twenty-three (23) rate schedule classes.

Except for the municipal pipeline, cotton gin and large irrigation classes, once the refund is allocated to each state schedule (class) the refund amount is divided by the projected kilowatt-hour usage for that class during the month of refund to develop a refund factor which will be applied to individual customers' usage billed in the refund month.

For the municipal pipeline, cotton gin and large irrigation classes the refund will be a lump sum credit based on their historical usage during the period which the over-recovery occurred.

This complies with the PUC's rule.

Q. Why did WTU over-recover its fuel costs?

A. The PUC requires utilities to use fixed fuel cost factors, which specify the amount to be charged for fuel per kilowatt-hour used by the customer. Because the factors are based on the expected cost of fuel as forecast at the time the factors are set, actual fuel costs probably will turn out to be more or less than the amount of revenue recovered through the fixed fuel cost factors. In WTU's last fuel case fixed fuel factors were set, but, for the past several months, WTU has spent less on fuel than was anticipated with the result that another over-recovery has accumulated. This reduced fuel cost is due to the declining gas market, WTU's continued efforts to take advantage of this gas market and the favorable renegotiation of one of WTU's current gas contracts.



NEW OFFICERS: New officers of Fisher County Program Building Committee are left to right: Chairman, Mrs. Lowell Thornburg, Secretary Mrs. Rudolph Martinez, Vice Chairman, Morris Guelker.



CERTIFICATE RECIPIENTS: Receiving Certificates for 10 years of service on County Program Building Committee are left to right: E.J. Kiker and Gary Floyd.

Building Committee Elects Officers For 1986-87 Year

The annual Extension Program Building Meeting and Information Day was held Sept. 30.

Helen Thornburg presided. Elizabeth Billingsley read the minutes.

Committee reports were given by the following: Home Economics, Ilene Cave, 4-H Jimmy Wright, Livestock Albert Maberry, Crops Mickey Counts, Community Development Helen Thornburg and Pest Management Foy Mitchell.

Roy Keith, Methodist Minister from Trent gave a very interesting program on farm stress.

Appreciation certificates were presented to Gary Floyd, Earl Kiker and Jack McClure.

Fisher County Crops Tour Day To Be Held On October 13th

The Annual Fisher County Farm Tour will be Monday, October 13. The tour will leave from the courthouse at 10:00 a.m.

Cotton variety and fertility demonstrations will be observed.

Al Alexander and Emory Boring, Area Extension Specialists from Vernon, will be on hand to discuss cotton varieties and pest management.

David Kattes, Cotton Breeder with Von Roeder Seed Farms of Snyder will also be pre-

sent to discuss their new experimental varieties. The tour is being

sponsored by the Crops Committee, and the public is invited.

Roby Lions Club Awards Mr. & Mrs. Gene Shipp

The Roby Lions Club, on Thursday, paid special honor to Mr. and Mrs. Gene Shipp of Roby. Lions President Cecil King presented a Corning Ware set as an expression of the Lions Club appreciation to the couple. The Shipp's hamburger cooking efforts at the Fisher County Rodeo, contributed to the Lions successful fund raising campaign. Dr. David Morris, Secretary-Treasurer an-

nounced that \$233.87 has been forwarded to the Fisher County Rodeo Association.

Morris also said that Gary McGee, Administrator of the Fisher County Hospital, is the newest member of the Roby Chapter of the Lions Club International. King again urged other men in the Roby area to join the Lions Club, "help keep Roby and Fisher County a good place to live."

Fisher County Playday To Be Held On October 11th

Fisher County Playday Association will hold their playday Saturday, October 11 at 7 p.m. at the Roby rodeo arena, if weather permits.

Age groups are 5 and under; 6-9; 10-14; 15-18. Events will be dummy

roping, goat hair pulling, flags, and poles. Entry fee is \$2.00 per event. All around, 1st place trophies and ribbons will be given.

4-H will be concession.

Rotan High School Band To Compete At Abilene

The Rotan High School band will be competing in the All District Marching Band Contest Saturday, Oct. 11 at 9:30 a.m., to be held at the Shotwell

Stadium in Abilene, according to Kay Kennedy, Band Director.

Everyone is encouraged to come and support the Rotan High School Marching Band.

FCIC Designates Deadline For Barley, Oats & Wheat

October 31 ends the 1986 year insurance period for barley, oats, and wheat grown in Fisher, Texas and insured by the Federal Crop Insurance Corporation (FCIC) according to Dottie Sampley, a representative for the Federal Crop Insurance Corporation.

"Under the terms of the policy, any acreage on which harvest will not be completed must be left intact until an inspection is made. Any

claim for indemnity may be rejected if these loss reporting requirements are not met," Sampley stated.

"Any notice of loss must be given promptly after the total destruction of the unit, completion of harvest, or October 31, whichever occurs earlier," according to Sampley. The producer who anticipates a claim should notify his or her crop insurance representative immediately.

1986-87 Curriculum Set During Meeting At Hobbs

Parents and teachers met Tuesday night, September 23rd at Hobbs School for the purpose of discussing the 1986-87 curriculum objectives and home reinforcement of students' study skills.

The district discipline management plan, man-

dated by House Bill 72, was presented for discussion by Dale Gibson, superintendent.

Each teacher was available for individual parent-teacher conferences and explained planned courses of study in detail.

Preserving History Of One/Two Room Schools In The Big Country

Dr. Luther Clegg, Professor of Education at Texas Christian University, has been in the area for the last few weeks collecting research on the small rural schools of the early 1900's. Clegg has been granted a leave of absence from TCU for the fall semester to conduct his research project in the Big Country area. His purpose is two fold. First, to interview as many persons as possible who attended or taught in one and two teacher schools in early West Texas and second, to photograph copies of early pictures of children, teachers, schoolhouses and school and community activities related to children and schools during the first half of the twentieth

century. In an interview with Dr. Clegg, he stated that he was interested in all aspects of the small rural school. However, he especially wants to collect stories that show the typical manner in which the schools were run. He cited his interest in such-questions, as, What were the children like and what did they do during a typical day? What were some of the songs and stories they told? What are some of the jokes and tricks they played on each other? How did the teacher conduct the learning activities when he/she had so many grade levels to teach each day? What were the lessons like? How did he/she keep order? What kinds of punish-

ment were administered when children misbehaved or failed to do their lessons? He also wants to collect stories related to other aspects of the schools. These would include stories about getting and keeping drinking water clean; getting to and from school and the problems encountered (snakes, rains, blizzards, mad bulls, etc.); problems related to outhouses; fights with the older boys; hardships related to dry years; and other similar problems. Clegg said that while he generally follows a similar format in his interviews, each interview is unique in that the person being interviewed sets the tone and direction of the discussion. In some of his early interviews, Clegg has col-

lected stories of rattlesnakes under the schoolhouse, dead rats in the school cistern, black widow spiders under the school desks, pranks played on the teacher, teachers punishing children justly and unjustly, cases of community disease which closed down the school, and other such difficulties. "Another important part of my research," Clegg said, "is related to preserving a pictorial record of school life in the early 1900's. I have a camera designed to copy old photographs and would appreciate permission to copy pictures of early school buildings, children at recess, riding the mule to school, or a teacher and the class. Actually I am interested in any picture which depicts clearly a part of the fast fading cultural heritage of the small rural school." He further stated that the old photographs which he wishes to copy need not be limited to the one and two teacher school. "We can get a typical feel for what the small rural school was like by viewing the pictures of school children taken from the early 1900's until about 1940," said Clegg. "That was the time period in which most of the small schools were at their peak in this part of Texas."

News From Down South

By Bertha Warren

Hello from down South. We have had about 7½ inches of rain since last Thursday. All the creeks in this part of the county are out of their banks again. Dr. Luther Clegg is in Fisher County gathering information about one room school house and schools with one or two teachers. He visited with Lorene Henderson on Wednesday and with the Dooley's and the Warrens and had several more stops to make. It was good to see him after so many years. Helen Thornburg spent Friday in Roscoe visiting with her mother, Sally Hobbs. Reports her mother is doing fine. The quilting was held Thursday at the Claytonville/Capitola Community Center. The ladies present were Wanda Justiss, Triva Neeper, Helen Thornburg, Noma Toland, Lydia Henry, Agnes Bunn, Vivian Peacock, and Sis Holiday. The next meeting will be Oct. 16th.

C.J. McIntosh visited Sunday and Monday with Dennis and Lavern. Nelson and Norene Chism of Alvin are visiting relatives in Sweetwater this week. They are at the home of Norene's mother, Mrs. Alma Blythe. Nelson visited his aunt, Jewel Ratliff on Saturday. Frances Morgan reports her sister Margaret, that had a stroke a couple of weeks ago, has been moved to a nursing home in Abilene so she will be able to take therapy at the Rehab Center. We hope she will continue to improve. Bobby, Frances and Chris went to Graham Sunday to see their new granddaughter, Brittany Ann. Her parents are Robert and Melody Morgan. Mable Warren has just returned from a visit to Bill and Lita Jones. She returned home Monday and had to detour because of water going up there and on her way home. She reported seeing a lot of water. She also got to

see Elmer and Bessie Jones and reported they are doing very well. Eircle and Mary Etta O'Donald went to Don's Thursday and on to Dallas to the State Fair Friday. They went with Don and Kari O'Donald. They reported good weather all day Friday and enjoyed the fair very much. Mary Etta's aunt, Lola Wall Dunlap from Clyde visited her last week and the two of them visited Clair Kidd, Opal Austin, Vivian Walker and her sister Lee, also Jack and Reba McCain at Lake Sweetwater, then on Saturday, Mary Etta took her to Oak Creek Lake to meet her daughter, Joy Norton and return home with her. If all goes well at this writing, Carrol Hodges will get to return home Wednesday. We certainly hope so. That's all for this week.

Roby Cubs Tie With Rotan 6-6

The Roby Cubs started off the 85-86 season with a hard fought battle with 28-8. Scoring touchdowns for the Cubs were Jess Cross, Joe Don Helm, Jamie Amador 2 touchdowns, Jess Cross making an extra point and Joe Don Helm scoring an extra point. The second game for the Cubs was Roscoe. This game was also a low scoring game for Roby and the opponents and began to look as if it was going to be a long defensive year. Jess Cross scored Roby's only touchdown. Roscoe scored and made the extra point and got a touchback for their 10 points. The game ended up a good defensive game.

The Cubs jumped out to a quick lead of 14-0 and substituted players in early and everyone got a lot of good playing experience. Scoring in this game was Lucas Sierra two touchdowns, Eddie Onofre one touchdown and Joe Don Helm making two extra points. The last game the Cubs have played was against Aspermont. The Cubs played a very good game with Cubs winning by the score of 28-8.. Scoring touchdowns for the Cubs were Jess Cross, Joe Don Helms, Jamie

Amador 2 touchdowns, Jess Cross making an extra point and Joe Don Helm scoring an extra point. Playing for the Cubs are Jess Cross, Jamie Amador, Harlin Grady, Kenny Heflin, Jeremy Terry, J.R. Liptke, Bryan Mauldin, Eddie Onofre, Lucas Sierra, Chance Vaughn, Mike Williams. Seventh graders are Alfred Anaya, Scott Chavira, Nick Dickson, Joe Gonzalez, David Gonzalez, Joe Don Helm, Kashaun Morris, John Ortiz, Ruple Weems, and Billy Williams.

Senior Citizens Center Needing Quilters

The Senior Citizens Center are needing ladies to volunteer their help with quilting. They will meet on Monday, October 13 at 9:00 a.m. at the Senior Citizens Center.

Please bring a sack lunch.

Rotan Nursing Center News

We would like to thank the Ladies of the V.F.W. for their gift. The residents will find a way to use it. We would also like to thank Edith Everhart and Mildred McCullough for our birthday party for September. Birthdays in September were Octaviano Harrell, Nancy Bagwell, Ada Mitchell and Gerald Finch. Mrs. Frank Sawyer gave some items to the home that the residents are enjoying. Last week a lady brought us some pretty flowers and we didn't get her name and we would like to thank for the flowers. Visitors in the home last week were Bernice Warner of Phoenix, Arizona and Loyd and Wilma Cunningham from Dekalb, Texas visiting Faye Neves and Domingo and Judy Trejo of Sweetwater visiting Johnnie Trejo. Lora Cleveland

STATEMENT OF OWNERSHIP, MANAGEMENT AND CIRCULATION. Includes fields for publication name, frequency, circulation data, and owner information.

Rotan Advance advertisement for Kim Pease, Editor/Publisher. Includes contact information and subscription rates.

SMITH'S MUSIC PLACE advertisement. Includes address, phone number, and list of staff members.

REMEMBER WHEN... Cakes/Photography advertisement. Features a decorative border and contact information for JAYE VOICE CLEMENTS.

TRAMPLING ON JESUS advertisement. A religious article discussing the parable of the speck and the log, with a call to worship.

Worship This Week At A Fisher County Church

Table listing various churches in Fisher County and their weekly worship services, including times and pastors.

\$500.00 Reward advertisement. Seeking information to identify and indict a person or persons responsible for taking cattle belonging to Gene Hudnall.

Rotan Motor Company advertisement listing various local businesses and their contact information, such as Midwest Electric Cooperative and Fisher County Farm Bureau.

Tax Planning

By Gerald Rodgers
CPA



KNOW WHAT YOU'RE PAYING THE GOVERNMENT

Don't pay additional amounts billed by the federal or state taxing authorities unless you're satisfied that the bill is correct.

Government offices are staffed with ordinary people who make ordinary mistakes just like you and me. Add computers with programming bugs, electrical problems, and operator errors, and you have all the ingredients for incorrect tax-due notices.

The IRS is attempting to match certain documents to your social security number and to the figures you reported on your tax return. If you receive interest, dividends, rents, royalties, or any of a number of other types of payments, you will probably be issued a "Form 1099". A copy of each 1099 is mailed to you and to the government. The purpose of such forms is to identify money transactions between two parties.

If the IRS can't readily locate information on your tax return which was reported to them on a Form 1099, they will send you a notice for taxes due. You may get such a notice even though the income is reported somewhere in your tax return.

Don't assume that you owe additional taxes, interest or penalties just because you receive a statement from the government saying so. Because of the possibility of both human and mechanical error, it's worth checking to make sure you owe the amount billed before sending a payment.

If you've paid someone else to prepare your tax return, give them a copy of all correspondence you receive from taxing authorities, even those that do not request additional money. Your tax return preparer needs a full record of all your affairs including all correspondence between you and the taxing authorities.

It is important to act promptly on all correspondence whether the government is right or wrong.

Sponsored By:
James E. Rodgers & Company
Certified Public Accountants
20 Southwest Third St., Hamlin, Tx.

Dr. Bryan Cave
Eye Examinations
Contact Lenses (All Types)
Children Welcome
Snyder, Texas
Cogdell Center Office Hours
(915) 573-5571 Or Mon. 9-6:00 p.m.
Wed., Thurs. & Fri. Tues. 8-5:00 p.m.
Call 573-4792
Lubbock Office (806) 797-4216

Roby 3rd/4th Grade 4-H Club Meets

The Roby 3rd and 4th Grade 4-H Club met October 3 at the courthouse annex at 3:30 p.m.

Bryce Moore presided. They elected officers for 1986. They are President Bryce Moore; Vice President Amy Singletary; Secretary Kye Lamm; Reporter Kelly McWilliams and Treasurer Crissi Kiser. The group made posters to display for National 4-H Week and cleaned around 4-H signs outside of Roby.

The next meeting will be on Nov. 7.

Attending the meeting was Mike and Matt Counts; Leslie Stephens; Amy Singletary; Crissi Kiser; Coby Moore; Amanda Moore; James Arnwine; Kye Lamm; Jeremy Stidham; Bryce Moore; Mario Barrera; Timothy Moore; Chad Arnwine; Kelly McWilliams; Rhonda Henry; Brandy Griffith; Tavis Hawkins; Justin Whittaker; Vivian Elliott; Edward Marquez. Leaders were: Karen Counts, Charla Moore, Genia Kiser, Sally Elliott, Gloria Griffith, Shelia Whittaker, Anne Moore, Marie Henry, and Kay Moore.

Roby Migrant Chapter I Meeting Oct. 9

Roby I.S.D. will hold a Migrant-Chapter I Parent Advisory Council meeting on Thursday, October 9, 1986, at 2:30 p.m. in the Elementary-Migrant Chapter I classroom. An outline of the year's program will be presented. Call Betty Mauldin at 776-2579 if you have any questions.



Julie Ann Morgan & Rodney Pearson

Julie Ann Morgan Engaged To Rodney Paul Pearson

Jake and Alberta Morgan, Rotan, are pleased to announce the engagement of their daughter, Julie Ann Morgan, Rotan, to Rodney Paul Pearson, son of Mrs. Essie Pearson of Rotan and John Earl Pearson also of Rotan. The prospective groom is presently attending the Department of Public Safety Law Enforcement Academy in Austin. He will graduate October 10, 1986. The couple have chosen October 18, 1986 as their wedding date.

Rotan Primary Room Parents To Meet Oct. 14

The Rotan Primary Parents Association will meet Tuesday, October 14th at 7:00 p.m. at the Primary Library. Plans for the Halloween Carnival will be finalized. All parents are urged to attend.

Meek Community Blood Bank Holding Blood Drive For Two Rotan Residents

Rev. Terry Lowe, pastor of the First United Methodist Church in Rotan, announced recently that the Meek Community Blood Bank in Abilene will be holding a blood drive to specifically

benefit two Rotan residents. The two are: Matthew Gruben and Ruby Carver.

The drive is scheduled to take place on Monday, October 13th between the hours of 10:00

a.m. and 4:00 p.m. in the basement of the First United Methodist Church.

Additional information can be secured from Leigh Nowlin, coordinator.



Shawn, Bobby Jack Clark, Niki and Jennifer Moyers are proud to announce the arrival of their cousin, Brittany Ann Morgan, born Sept. 26. She weighed 9 lbs. 6 oz., has dark black hair and dark eyes. Parents are Robert and Melody Morgan of Graham. Proud grandparents are Bobby and Frances Morgan of Roby, Al and Dixie Shipman of Graham and great grandmother, Mrs. Albert Maberry of McCaulley.

Attention Farmers
Canadian Firm Interested In Buying Farm Land And Oil Rights
Contact Pat Franklin For Details At Blue Haven Motel Oct. 14 10:00 a.m.-3:00 p.m.

FOR RENT Storage Spaces From \$15.00 Per Month Lock It And Leave It Rotan Self Storage 735-3171



Before You Purchase A New Car Or Pick Up...Give Us A Chance To Show You How Much You'll Save At F&M Chevrolet-Buick Complete Sales & Service Rotan, Texas 735-2244 111-117 South Cleveland

This boot is at home down on the farm.
HEEL-HUGGIN' PECOS PULL-ON
• Sweat-resistant insole absorbs perspiration
• Full-grain, water-repellent leather
• Pre-molded heel counter for a heel-huggin' fit
• Long-wearin' sole resists barnyard acids

RED WING SHOES

H.L. Davis & Co.
735-2591 "The Friendly Store" Rotan, Texas

DOES IT TAKE A TELESCOPE TO SEE YOUR BANKER FACE-TO-FACE?

Why go to ridiculous lengths to get a financial decision from a big out-of-town banker... when you can meet face-to-face with your local Independent Banker?

Our Independent Bank sets banking policies that are focused on local economic needs and conditions. We're a responsive neighbor who has the knowledge to understand your individual needs, and is interested in your future and the growth of our community. When you need solid financial decisions and a helping hand... why set your sights on the distant horizon... when you can bank the Independent Way?

You Know Us. We Know You.

The 1st National Bank of ROTAN
"Your Dependable Bank of Service"
Member FDIC Rotan, Texas 735-2224
Member Independent Banker's Association of America. Representing the nation's community banks.

Legal Notice

To the Registered Voters of the County of Fisher, Texas:

(A los votantes registrados del Condado de Fisher, Texas.)

Notice is hereby given that the polling places listed below will be open from 7:00 a.m. to 7:00 p.m., November 4, 1986, for voting in the general election to elect Members of Congress, Members of the Legislature, and state, district, county and precinct officers; and FOR the purpose of adopting or rejecting

the proposed Constitutional Amendments as submitted by the 69th Legislature, ALL session(s), of the State of Texas.

(Notifiquese, por las presente, que las casillas electorales sitadas abajo se abriran desde las 7:00 a.m. hasta las 7:00 p.m. el 4 de Noviembre de 1986 para votar en la Eleccion General para elegir Miembros del Congreso, Miembros de la Legislatura, y oficiales del estado, distrito, condado y del precinto y PARA adop-

tar o rechazar las enmiendas propuestas constitucionales asi como fueron sometidas por la 69th Legislatura Todo Sesion(es), de la Estado de Texas.)

Locations Of Polling Places

(Direccion (es) De Las Casillas Electorales)

Precinct No. 1 Coffee Room in Courthouse, Roby, Texas; Distrito Electoral No. 1: Cuarto de cafe en la Casa de Carte, Roby, Texas

Precinct No. 1A City Hill in Rotan, Texas; Distrito Elecctoral 1A:

Casa de la Cuidad en Rotan, Texas

Precinct No. 4 District Court Room in Courthouse; Distrito Electoral No. 4: Cuarto de Carte Distrito en la Casa de Carte

Precinct No. 4A, Public Library, Rotan, Texas; Distrito Electoral No. 4A: Biblioteca Publica, Rotan, Texas.

Precinct No. 6, Fire Station, McCaulley, Texas; Distrito Electoral No. 6, Estacion de Bomberos, McCaulley, Texas.

Precinct No. 10 Community Center in Rotan, Texas; Distrito Electoral No. 10: Escuela Independiente de Rotan, Texas.

Precinct No. 13, School House in Hobbs, Texas; Distrito Electoral No. 13: Escuela de Hobbs, Texas.

Precinct No. 17 Community Center in Capitola, Texas; Distrito Electoral No. 17: Centro de Comunidad en Capitola, Texas

Precinct No. 18 Community Center in Longworth, Texas; Distrito Electoral No. 18: Centro de Comunidad en Sylvester, Texas

Absentee voting by personal appearance will be conducted each week-day at

County Clerks Office, Roby, Texas, between the hours of 8 a.m. and 5 p.m. begin-

ning on, October 15, 1986 and ending October 31, 1986. Applications for ballots by mail shall be mailed to: Bettie Rivers, P.O. Box 368, Roby, Texas, 79543.

Applications for ballots by mail must be received no later than the close of business on October 28, 1986.

Issed this the 6th day of October, 1986.

(La votacion en ausencia en persona se llevara a cabo de lunes viernes en County Clerks Office, Roby, Texas entre las 8

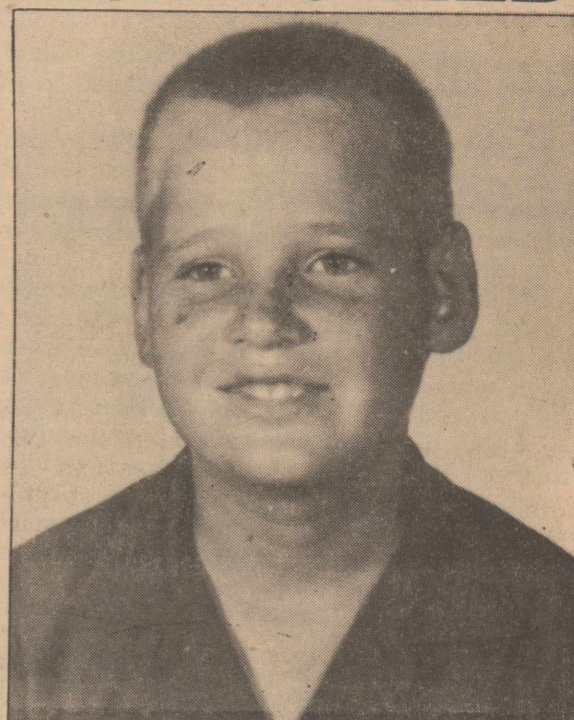
de la manana y las 5 de la tarde empezando el October 15, 1986 y terminado el October 31, 1986.

Las solicitudes para boletas que se votaran en ausencia pro correo deberan enviarse a: Bettie Rivers, P.O. Box 368, Roby, Texas, 79543.

Las solicitudes para boletas que se votaran en ausencia por correo deberan recibirse para el fin de las horas de negocio el October 28, 1986.

Emitada este dia 6 de October, 1986.

LOST CHILD



Born Oct. 9, 1953

Anyone knowing the whereabouts of this child please call the Church of Christ Office 735-2344



ROTAN HIGH SCHOOL CHEERLEADERS: Leading Cheers At Rotan High School this year are, pictured left to right: Lori Garcia, Lori Martinez, Jenna Thornton, Julie Pease and Evette Gruben.



30 YEARS OF SERVING YOU

ALLSUP'S CONVENIENCE STORES

PRICES GOOD OCT. 9, 10, 11, 1986 WHILE SUPPLIES LAST

You're #1 With Us!

OCTOBER-FEST HOT FOOD SPECIAL

CHEESE BURGER \$1.49 ONLY JUMBO SIZE

"30 YEAR ANNIVERSARY SPECIAL" JUST FOR YOU FROM ALLSUP'S!

TALLSUP COKE 39¢ 32 OZ. CUP

Shurfine Peas 3/99c	Shurfine 15 Oz. Dog Food 5/99c
---------------------	--------------------------------

Contadina Tomato Sauce 6/\$1.00	Hot Dogs 3/\$1.00
---------------------------------	-------------------

Allsups Bread 2/99c	Chili Dogs 2/99c
---------------------	------------------

Money Orders 19¢	Borden's ICE CREAM 1/2 GAL. RND. CTN. \$1.59
------------------	--

	Borden's COTTAGE CHEESE 12 OZ. CTN. 69¢
--	---

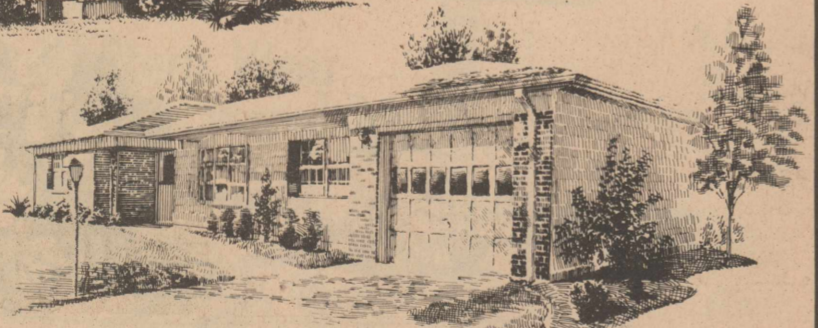
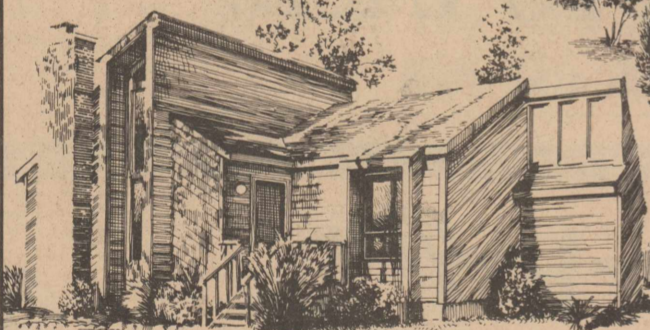
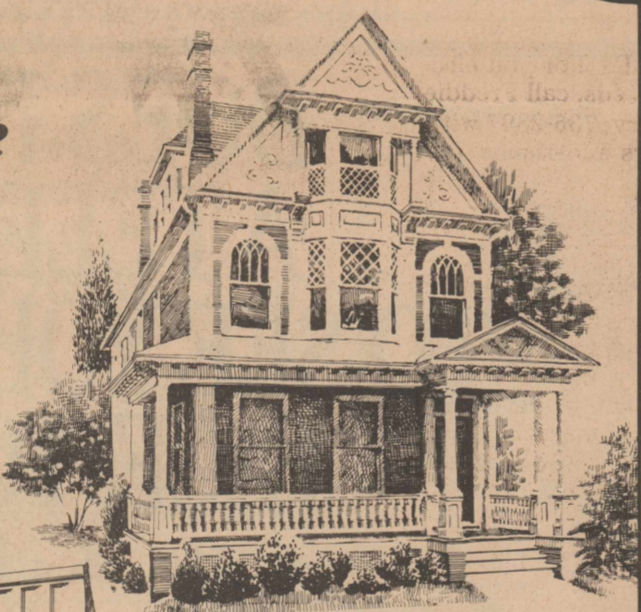
	Borden's HI-PRO MILK 1/2 GAL. CTN. 95¢
--	--

LAY'S® BARBECUE/SOUR CREAM & ONION/REG./UNSALTED

POTATO CHIPS NOW ONLY 99¢ REGULAR \$1.39 PKG.

Borden's 1 Gallon Milk \$1.99	16 Oz. 6 Pack Bottles Diet Coke, Cherry Coke & 7 Up \$1.79
-------------------------------	--

Any New E.S.P. Home Will Save You Money!



SAVE MONEY ON BILLS

You will save money in energy bills for years to come when your new home meets the requirements of WTU's NEW and IMPROVED Energy Saving Plan.

COMPARE THE SAVINGS

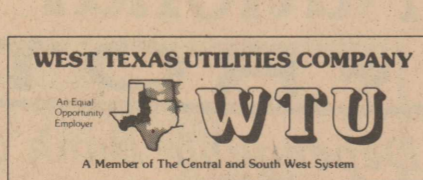
You can save up to twenty-six percent in home energy bills a year with an E.S.P. Home. An average 1800 square foot home will cost approximately \$775 a year to heat and cool. The same size E.S.P. Home will cost approximately \$570 a year to heat and cool. That's an annual saving of over \$200! (Energy savings may vary according to the type of home, family size and individual energy usage habits.)

CASH ALLOWANCES

The NEW and IMPROVED Energy Saving Plan also offers you LARGER cash allowances for installing energy-efficient equipment in your home. The allowances have been restructured, so now, the higher the efficiency rating of the equipment, the more money WTU will pay you through the E.S.P. program. To qualify for the cash allowances, your new home must meet the E.S.P. requirements and be served electricity by WTU.

THE NEW E. S. P. BOOK

For more information on the NEW and IMPROVED E.S.P. program, pick up your FREE copy of the new E.S.P. Book at any WTU office.



Remember REDDY Supplies the energy — but only YOU can use it safely!

STATE CAPITAL HIGHLIGHTS

By Lyndell Williams
TEXAS PRESS ASSOCIATION

The two special tax sessions blew a cockeyed note into the traditional Texas election rhythm, but after the curtain rang down on the Legislature last week, political campaigns finally kicked-started their long-delayed endgame strategies.

For some, the strategies may not work. The confusion and misinformation that came out of these two special sessions may have tried the patience of voters a little more than tolerable.

Lawmakers who dealt straight with their constituencies will hopefully be re-elected. And certainly, some who indulged in fun and games in a budget crisis situation will be re-elected, as always. Maybe some won't, this time.

What it boils down to is who do the voters believe? Mark White, who pushed a "temporary" tax hike? Bill Clements, who says no tax hike was needed? Treasurer Ann, who warned the state would write hot checks in December? Comptroller Bob Bullock, who said the budget would hold until the regular session.

HOUSE FORCES END

A weary and somewhat bloodied Texas House voted for \$582 million in budget cuts and Gov. Mark White's \$872 million tax hike package, and then almost immediately adjourned before the Senate could reject or amend or pressure.

Tired of struggling with the Senate, the more conservative House dropped its resistance to White's package, but forced pro-tax senators and the governor to take what was passed or go ahead and call a third special session.

Just as weary, the Senate tolerated a short filibuster and then rubberstamped the House action, having gotten far more than its half-loaf.

The governor immediately signed both bills into law.

WOES "NOT SOLVED"

Two days after lawmakers went home, Comptroller Bob Bullock said the two back-to-back sessions "improved but did not solve" the budget woes.

When the Legislature convenes in regular session in January, it will face a \$983 million deficit for this biennium and a \$4-86 billion deficit for the 1988-89

SESSIONS SUCCESSFUL

Ways and Means Committee chairman Stan Schlueter said next session's tax debate will "be like drinking picante sauce straight out of the bottle."

SESSIONS SUCCESSFUL

Without doubt, hard feelings still linger between House and Senate colleagues. Considerable ill will was built as the compromise was hammered. The questions of whether the sessions were productive or necessary, will be campaign issues from now until November.

Friend and foe alike say they at least helped White stop his slide in public opinion polls and mount a re-election come-back.

But several Republican legislators termed the sessions a circus which White staged to benefit his re-election.

Without doubt, hard feelings still linger between House and Senate colleagues. Considerable ill will was built as the compromise was hammered. The questions of whether the sessions were productive or necessary, will be campaign issues from now until November.

OTHER HIGHLIGHTS

*Texas Land Commissioner Garry Mauro brought a model of the space shuttle with him when he announced a beryllium mining agreement for state lands. Mauro said the mineral, used in the aerospace and electronics industries, could be the center of a new mining industry in Texas.

*Public Utilities Commission chairman Peggy Rosson, the "housewife" appointed by White per his '82 campaign promise, resigned last week but is reconsidering upon White's request. She is featured in White's television campaign.

*A Houston state district judge upheld, the controversial no-pass, no-play rule as constitutional but advised legislators to correct its disproportionate impact on minority and learning disabled students.

*The Texas malpractice law was ruled unconstitutional in federal court for discrimination against worst-case victims.

*Car dealers are challenging the Texas blue law which allows Sunday sales of all merchandise, except motor vehicles.

*The Silver-Haired Legislature convened last week to pick key issues to forward to the Legislature.



NEW OFFICERS: The Western Texas College chapter of Phi Theta Kappa will be directed by these officers in the 1986-87 school year. Seated are Bobby Mendez of Lubbock, president; and Ellen Walker, Roby and Clayton Sorrells of Rule, co-historians. Standing are Dalia Carrasco of Big Lake, vice president; Sandy Ross of Snyder, reporter, and Emily Thornhill of Haskell, secretary.

SUBSCRIBE
By Calling
735-2562
Rotan-Advance
Roby Star Record

COMING SOON AT
Lizzie B's of Roby

Handcraft classes featuring:
China Painting with Dorothy Decker
Begin to Knit with Ann Holcomb
Counted Cross-stitch with Pat Viewheg
and other selected classes of interest—Come by and sign up now—number of students will be limited.

CLASSIFIED ADS

BLACK INVESTMENTS
Real Estate Sales & Appraisals
107 North Garfield

New Farm & Ranch Finance Program now available: \$100,000 at 7 3/4% for 30 yrs. to qualified applicants. Come to office for details.

FIRST TIME: 3 BR brick, fireplace, excellent location
FIRST TIME: 152 ac cultivation, highway access, 1/2 minerals
GOOD INVESTMENT: 2 BR, 1 bath, well-maintained, \$22,000
OWNER FINANCING: 3 BR, 1 1/2 baths, good location \$25,000
EXCELLENT PRICE: 5 BR 2-story, detached apt., \$35,000
MALOUP TWO-STORY: 7 BR, 2 baths, fireplace, \$66,500
PRIVATE APPT. ONLY: Fine quality 3 BR brick, excellent location
PRIVATE APPT. ONLY: 4 BR, fireplace, fence, 2,800 sq. ft., well
VINYL SIDING: 3 BR, nice corner lot location, \$31,500
WHITE BRICK: 2 BR, wood burning stove, privacy fence, \$36,000
PRICED RIGHT: 3 BR, bath, kitchen bar, corner lot, \$14,000
ROBY: 3 BR, large den, patio, privacy fencing, corner lot, nice
TO BE MOVED: 3 BR frame, well-maintained, under \$16,000
EZ CAR WASH: Rotan established cash business, \$35,000

MYLA BLACK, BROKER, MSA, MRA, MFLA
Office & Home Telephone
(915) 735-3091

NOTICE: Bill's Auto Salvage is now open in Snyder. Late model used parts, Chevy, Ford, Chrysler, Toyota, Datsun. East Highway 180 at the traffic circle. 573-9569 or nights 573-9010. 45:1tc

FOR SALE: Alfalfa or haygrazer hay. Square bales. Call 735-3171. Landes Furniture. 34:1tc

RENT OWN: Amana refrig., microwave, Maytag washer and dryers, stoves, used also. Bill's Appliances, 113 W. Broadway, Sweetwater, Texas, 235-4349. 23:1tc

NOTICE: Beauty consultants for hire. Call Donna 735-2072. 33:4tc

MONUMENTS & CURBING
Buy Where They Are Made & Save
J. B. Smith
308 E. 4th St.
Phone 735-3290

FOR SALE: TAM 105 wheat \$5.50/bushel; grazing oats \$3.50/bushel. Rotan Seed Delinting Co., 735-3341. 33:1tc

FOR SALE: Fed fat locker calves, have had no hormones of any kind, take your pick for 99 cents a pound, dressed weight. Call 735-2062. 35:2tc

FOR SALE: Brand new Sears Craftsman 18" Walking Bean Scroll Saw, \$125.00. Call Nathalie, 735-3122 or 735-2146. 35:1tc

Masterview Book Store
103 Arizona 235-2940
Sweetwater, Texas
Hours: 10:30 to 6:00 p.m. M-Sat.
New Items Including Christian Mother Goose And Amy Grant Bible Stories Now Available
ALL SPECIAL ORDERS RECEIVED IN ONE WEEK! Call In Orders WELCOME

FOR SALE: Montgomery Ward 35,000 BTU natural gas wall heater, \$150.00. 735-2185 evenings. 35:1tc

Small Gas Engine Repair

*Mowers
*Tillers
*Chainsaws
Pickup & Delivery
Call 236-6848
After 5:00 p.m. 776-2593

GARAGE SALE: One miles East Hamlin hiway. Fri., Oct. 10th until noon on Saturday. Was rained out last Saturday. Some new things. Doris Gilliland. 35:1tp

SUBSCRIBE
By Calling
735-2562
Rotan Advance
Roby Star Record

ANTIQUES: We have fine furniture, over 400 clocks, and numerous old lamps for you to purchase, plus many gift items. We also repair and refinish clocks, lamps, and furniture. Call us or bring in. All work guaranteed. House of Antieks, 4008 College Ave., Snyder, Texas, 79549. 915-573-4422. 27:1tc

FOR SALE: 2 bedroom house, N. 2nd St. Roby, good water well. 776-2367 after 5 p.m. \$9,000.00. 10:1tc

NOTICE: Franks TV and Jewelry in Hamlin is in the Rotan-Roby area 3 times weekly to service your television, VCR or satellite system...we also do antenna work...call us at 576-2122 or 576-2167 nights..Franks TV and Jewelry, 218 S. Central in Hamlin. 8:1tc

NEW HOME SEWING MACHINES: Electrolux cleaners, repair all makes. H.B. Stevens, 1101 James St., Sweetwater, 235-2889. 27:1tc

APARTMENTS FOR RENT: Now accepting applications for 2 and 3 bedroom apartments. We are an Equal Housing Opportunity Agency. Rotan Housing Authority. 915-735-2471. 10:1tc

WANTED: Good farm land to rent. Call Donald Gruben, 735-2630. 34:4tc

FOR SALE: Five 670 15 tires with tubes. Contact Richard Fleming, 735-2969. 34:2tp

HELP WANTED: Airline jobs \$17,800 to \$68,500/year, now hiring. Call Job Line 1-518-459-3535 Ext. A-8004. For info. 24 HRS. 33:3tc

FOR RENT: 1 to 3 bedroom apartments starting at \$170. Call 776-2579. 18:1tc

FOR SALE: Washers and dryers. 60 day warranty. 962-5446, McCaulley. 52:1tc

NOTICE: I will buy antiques and collectibles. Call 735-2104. 31:1tc

NOTICE: For you electrical needs, call Freddie Rasberry, 735-2397 with 25 years experience. 34:1tc

SUPER SALE: All of October at Sports Specialties. Now is the time to do your Christmas shopping. Everything on sale, some as much as 25% off. South 3rd at Orange, Roby. 34:2tp

AFGHANS: Taking orders for Roby Lion afghans-red with black lettering woven in, only \$26.95. Call 776-2825 for more information. 34:2tp

NOTICE: Will pay \$15.00 each for old worn out quilts. Nathalies, 735-3122. 1111 N. Cleveland. 34:1tc

NOTICE: Residents and friends of Rotan Housing Authority will have a multiple family garage sale, Oct. 11, 9 a.m.-? at the Rotan Community Center. 34:2tc

YARD SALE: Lots of goodies. 1 1/2 gallon ice cream freezer, 30 cup coffee urn, twin size bed, 2-1973 Camaro's. Thursday, Oct. 9 and Friday, Oct. 10th. 918 E. 5th, Rotan. 35:1tc

GARAGE SALE: 208 N. 2nd, Roby. Sat., Oct. 11, 9:00 a.m.-6:00 p.m., Sunday, Oct. 12, 1:00 to 5:00 p.m. Weather permitting. Misc. items including Garrett metal detector, clothes, etc. 35:1tc

FREE: Cow dog pups, 735-2916. 35:2tc

Happy 16th Bug

Love,
Mom & Dad

GARAGE SALE: Sat., Oct. 11, 8:00-5:00, 112 West McArthur. Dishes, curtains, shoes, purses, clothes and more. 35:1tp

DIVAN: Marflex couch, needs to be reupholstered, \$25.00. 735-2185 evenings. 35:1tc

NOTICE: Anyone interested in donating wood for the homecoming bonfire please contact Debi Mercer, or Jim Cain at 735-3041 or 735-3202. 35:2tp

YARD SALE: 4th St. and N. Concho, Roby. If weather if O.K., Saturday, Oct. 11th, 8 a.m. till ? 35:1tp

FOR SALE: 1982 Chevy pickup. Low mileage, good condition. 735-2123. 35:2tc

NOTICE: OCTOBER 15th IS DEADLINE for prepublication price of "Families of Fisher County" \$36.85 inc. tax. After this date regular price effective \$42.05 inc. tax. Fisher County Historical Commission. 735-3058. 35:1tp

Winners Of Landes Furniture Door Prizes
Thursday, Oct. 2nd

1st Prize-Riverside Curio
Stella Garcia

2nd Prize-Tell City Rocker
Thelma Keener

3rd Prize-Bassett Mirror
Denise Messick

4th Prize-Wall Clock
Hershell Shipp

Mesquite Firewood FOR SALE Green Or Dry Delivered Call 735-2912 After 8:00 p.m.

FOR RENT: 2 bedroom house, 1 mile south of Roby on Hwy. 70. \$175.00. Harman Holcomb, 776-2131. 31:1tc

HOUSE & ACREAGE FOR SALE: 2 bedroom house on water line with 2 acres. Peach, apricot, apple, pecan trees and 4 grape vines. Located 1 1/2 mile north of Rotan on Highway 70. For more information call Mrs. W.D. Elrod, 735-3153. 33:3tp

Carpets, Linoleum & Carpet Remnants
All Work Guaranteed By Professional Installers
Landes Furniture
113 Garfield Rotan, Texas

HERE'S THE BEEF!!
Texas Consumers Use Newspapers 1st For Shopping

Texas consumers name their local newspaper as the usual source of "Best Buy" shopping information, 10 times more than radio or television.

Information Sought By Consumers	PERCENT Newspapers Radio TV		
	Where To Shop	57%	5%
Cost Of Products	57.1%	3.4%	8.3%
Best Buy Info	58.6%	3.2%	7.0%

Texas consumers look to newspapers FIRST and MOST for news and advice about shopping. Newspaper ad information is decisive and always available for reading and study.

SOURCE: 1984 Consumer Data Service (CDS) Survey of Texas Consumers
(This newspaper is a member of the Texas Newspaper Advertising Bureau)

TEXAS NEWSPAPERS
For Your Best Shopping Info

Rotan Advance-Roby Star Record
735-2562 Rotan, Texas



ROTAN TWIRLERS: Twirling for the Rotan Yellowhammer Marching Band this year are left to right: Julie McQueen, Drum Major, Carye Gruben, Jennifer Dickson and Loucinda Ramirez.

Well, has everyone had enough rain? I imagine so, but according to the forecast, we may get some more before its all over. We poured out 6½ inches here at the house, and that was only since Friday, and everyone I have talked to has measured about the same, anywhere from 6 to 7 inches. Of course our roads are terrible, and we have 2½ miles of dirt road whichever way we go out. Maybe the sun will come out in the next few days, and start drying everything out.

Mrs. Opal Phillips ate lunch on Sunday with Mr. and Mrs. Mike Porter. Michael Porter from Mesquite was there visiting for the weekend, also Terry Porter from Vernon.

Mrs. Neil Hyer from Andrews has been here visiting for a few days with her parents, Mr. and Mrs. J.D. Kincaid. J.D. had eye surgery on Wednesday, and at last report was doing real good. Lucy is still going to Abilene to her doctor several days a week. We hope that they both will soon feel very much better and will be able to come back to church every Sunday.

Hustling Around Hobbs

By Joy Walker

Mr. and Mrs. J.C. Cave went to Brownwood on Thursday and visited with Mr. and Mrs. Billy Carter. They spent the night and came home Friday morning. Then on Saturday they went to the homecoming activities at Throckmorton, and Alice got to visit with a number of old friends and a few of her classmates.

We were pleased to have Bro. and Mrs. Donnie Auvenshine and three children from Abilene at church on Sunday; Mrs. Sandy Auvenshine brought our special music Sunday morning, which we really enjoyed.

Jim and I went to Sweetwater Tuesday and visited with Jim's sister, Mrs. Iva Lee Hillis. It was our 42nd wedding anniversary which we almost forgot, guess old age is about to catch up with us.

Heard from Mark and Melody and they had been rodeoing, as they still haven't got very much rain. Had been to Elgin Saturday afternoon, to Cuero Saturday night, and then to Huntsville to the Prison rodeo on Sunday. This is the first time Melody

had ridden in the Prison rodeo, and she said the humidity down there was terrible. They were expecting rain all weekend, but just got showers; they may be going to get all this we have been having later this week.

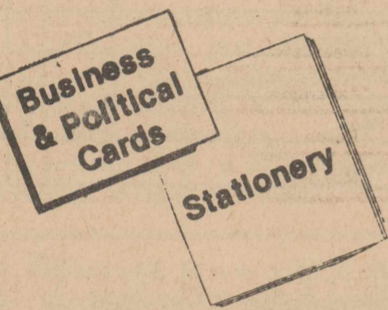
Don't forget the

Hobbs homecoming is coming up. It will be Saturday, November 1st, so everyone make plans to attend. If you know of anyone not on the mailing list, please contact Pat Porter, Hobbs School, Rotan, Texas, 79546 or call 735-2850 or 735-3337.

Lets make this the best homecoming that Hobbs has had.

Not too much news this week, as everyone who lives out this way, have been staying close to home, on account of the bad roads and high water in some places. See you next week.

See Us For Your Printing Needs...



or Wedding Napkins

The Newspaper Office

735-2562

Rotan, Texas

Lizzie B's Emporium

Would invite you to come by and see our local handcrafted items- featuring hand knitted and crocheted sweaters, also concho shirts and much more.



Happy 37th

From: The Sweeties & Little Darlings Who Love You

Food Prices Slashed

City Grocery & Deli

776-2225

Roby, Texas

Prices Effective Oct. 9-15, 1986

Double Coupons Everyday Open Until 9:30 P.M.

We Reserve The Right To Limit Quantities

Contadina 8 Oz.

TOMATO SAUCE 3/79¢

Parade Creamy Or Smooth 18 Oz.

PEANUT BUTTER \$1.09

Carnation 12 Oz. Can

MILK 2/\$1.00

Best Maid 32 Oz. SALAD DRESSING 99¢

Fancy Small MUSHROOMS \$1.59 LB.

50 Oz. CASCADE \$2.39

Post Natural 16 Oz. BRAN FLAKES \$1.59

Parade 32 Oz.

SYRUP 89¢



Family Pack PORK CHOPS \$1.69 LB.

Gandy's ½ Gal. BUTTERMILK 99¢

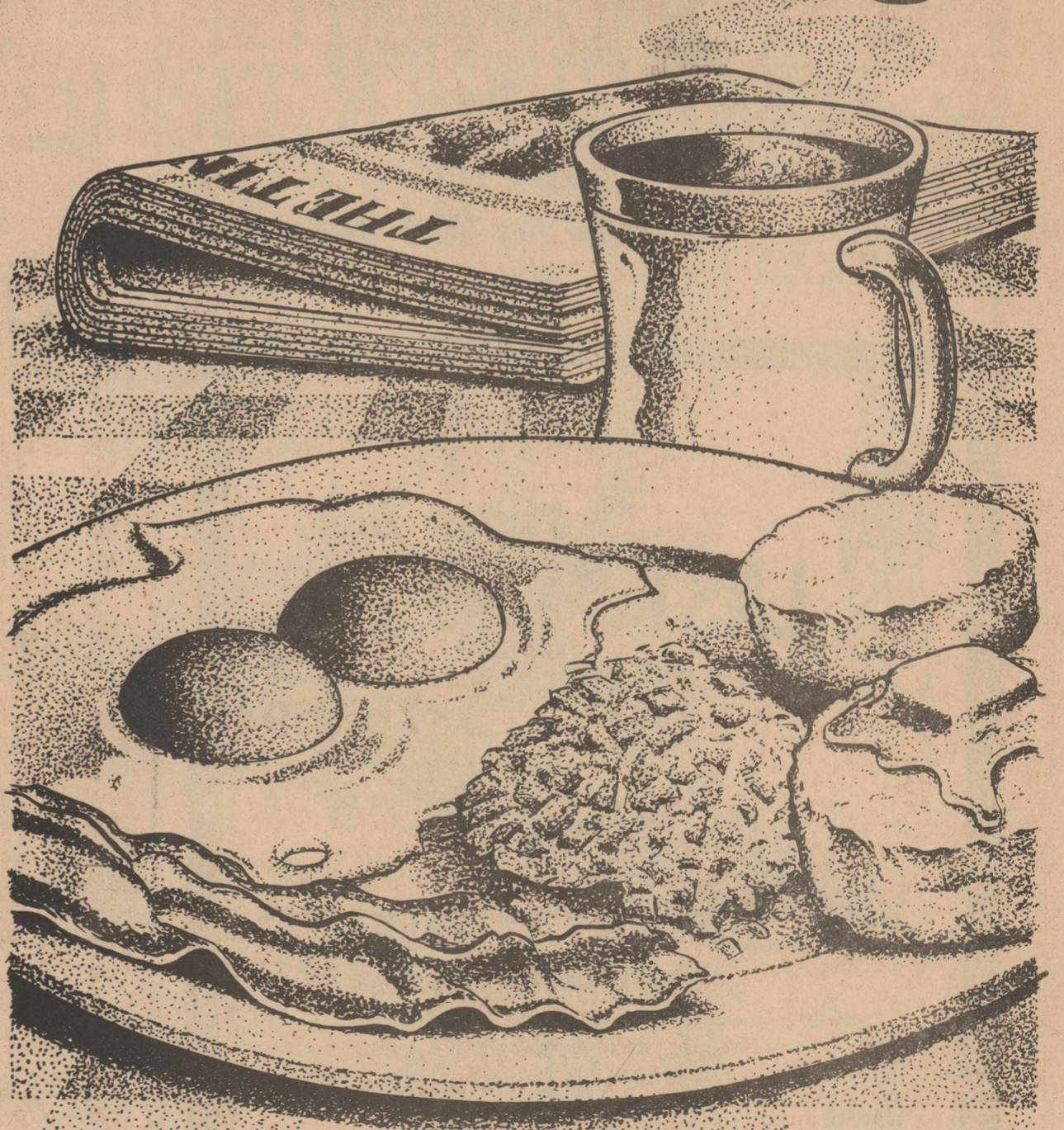
15 Oz. LIQUID LAVA 79¢

PORK ROAST \$1.49 LB.

Green CABBAGE 19¢ LB.

Cello 1 LB. CARROTS 2/59¢

Dairy Queen puts the good in good morning.



At Dairy Queen, we have all kinds of good things to get your day off to a great start. Like piping-hot coffee, farm-fresh eggs, savory hash browns, lean crispy bacon, flaky golden-brown biscuits and

much, much more. All made-to-order when you order and served right at your table or ready to go.

Enjoy a Dairy Queen breakfast soon. And discover just how good your mornings can be.

Dairy Queen



Rotan Yellowhammers Defeated By Hawley Bearcats

Friday night proved to be a successful effort for the Hawley Bearcats as they won their homecoming game over the Yellowhammers in a 7 to 0 defensive game. Hawley scored their only touchdown early in the second quarter.

After moving the ball to a first and goal, Hawley fumbled the ball and then recovered it for second and fifteen. Brad Long forced the Bearcats to third and eleven with a good solid tackle. But with fourth and four after the next play the Bearcats ran the ball in for what was to be their winning touchdown.

Rotan played tough defensively all night. During the first quarter, Billy Speck caused a fumble giving Rotan the ball on the 35 yard line. Steve McClain on a third and four for a yard and then passed to Jerry Carter for the first and ten. That drive was then stopped with a fumble giving Hawley back the ball. Rotan tried to pressure the quarterback with Brad Long during the second quarter. Rotan also forced Hawley to punt several times and on a punting effort during the last few minutes of the game Todd Gruben deflected the ball and almost got a block.

Six helmet awards were given to the defense. Three linemen: Darrian Ragan, Mitch Whitefield, and George Reyes received awards. George Patterson received an award for causing a fumble as did Billy Speck for causing a fumble. Kenneth Warren received a helmet award for a fumble recovery. Kenneth was busy most of the night with 7 unassisted tackles and 11 assists. George Reyes had nine unassists and six assists. Robert Roddy had six unassisted tackles and five assists and Billy Speck had four unassisted tackles, with four assists as did Junior Almanza.

Offensively, George Patterson was the most productive. He had

eight attempts for sixty one yards that is an average of 7.6 yards per carry. Patterson made an excellent run down

the sidelines during the only real drive Rotan had. Unfortunately, the play was called back with a flag on the play.

Jerry Carter had a good night with three receptions for 26 yards, but was not as successful as

he could have been, as he and Steve McClain were not able to connect on a couple of key

passes. Next week the Yellowhammers start District play at Munday

for what may prove to be the biggest game of the season. Munday has a talented quarterback

and several good athletes. Starting time will be at 7:30 Friday night at Munday.

LEGAL NOTICE

Notice to all persons having claims against the Estate of Nora Cloud Leon, Notice is hereby given that original Letters Testamentary for the Estate of NORA CLOUD LEON are issued on August 25, 1986 in Cause No. 2766, pending in the Probate Court of Fisher County, Texas to

1. Joe B. Cloud, whose residence is Rule, Haskell County, Texas; and
2. C.D. Leon, whose residence is Abilene, Taylor County, Texas at 3385 North Third

Street, Suite 2, Abilene, Texas, 79630.

All persons having claims against this Estate which is currently being administered are required to present them within the time and in the manner prescribed by law.

Dated the 30 day of September, 1986.

John N. Barnhart
Attorney In Charge For Applicants
State Bar No. 01789000
440 Louisiana, 16th Floor
Houston, Texas, 77002
(713) 222-2626
35:1tp

Rotan/Roby Jr. High 4-H Club Hold Regular Meeting

The Roby/Rotan Jr. High 4-H Club met Sept. 2 at the Calvary Baptist Church at 2:00 P.M. Christi Parr presided. They registered and talked about 4-H projects, and the food and nutrition show.

At the next meeting

they plan to re-elect officers and plan for National 4-H week.

Members present were Christi and Julie Parr, Brandon Sheehan and Monte McKinney.

Brandon Sheehan provided refreshments.



Rotan Yellowhammer Boosters

- James & Dianne Rattliff
- The Jerry Marshall Family
- Ken, Susan & Lonnie Foster
- The Bennie LeBleu Family
- Bettie Hargrove
- Florence & Charla Wiley
- Richard, Kathy, Ricky & Reggie Spencer
- Mr. & Mrs. Max Stuart
- Dwight & Irene Nowlin
- Harold, Carol & Rocky Roberts
- Jimmy, Jodie, Jamie & Julie Grisham
- The Bob Harbin Family
- The James Carter Family
- Leo, Relna, Brad & Dilana Long
- Donnie Powell
- Roger, Josie, Amy & Laura Blackwelder
- Neal, Donna, Jason, Dustin & Sabra Hargrove
- Tom & Janis Collins
- Mr. & Mrs. Pat Zambrano & Family
- Nathan, Tammie, Guy & Lindy Kelley

- Mr. & Mrs. Billy Henderson
- Robin, Karla & Brandy Roberts
- Mr. & Mrs. Rudy V. Hamric & Conrad
- The Donald Gruben Family
- Mr. & Mrs. Truett Strickland
- Donald, Shirley, Shannon & Phillip Hull
- Mr. & Mrs. W.B. Hardin
- Joe, Linda & Blake Morrow
- Norvelle, Donna, Katie, Byron & Lauren Kennedy

- Mr. & Mrs. Joe G. Martinez
- Glenn & Janice Copeland
- The Kim Pease Family
- Billie Jo & Vera Ellen McCombs
- Calvin & Glenna Crow
- Wayne, Dot, Mark & Robin Harris
- Kenneth, Barbara, Wes, Twyla & Kimmia Hardin

Rotan Yellowhammers Vs Munday Moguls

October 10-7:30-There

Date	Opponent	Time	H/T	Us	Them
Sept. 5	Robert Lee	8:00	H	19	0
Sept. 12	A.C.H.S.	8:00	T	21	14
Sept. 19	Spur	8:00	H	35	19
Sept. 26	Anson	8:00	H	14	6
Oct. 3	Hawley	8:00	T	0	7
Oct. 10	*Munday	7:30	T		
Oct. 17	*Aspermont	7:30	T		
Oct. 24	*** Roscoe (Homecoming)	7:30	H		
Oct. 31	*Roby	7:30	H		
Nov. 7	Open				

Joe Adams Pit Barbeque

Mesquite Smoked:

*Brisket *Sausage *Ham

Dine In Or Take Out

126 South Central Hamlin, Texas

Hours: Tues.-Sun. 11:00 a.m. to 7:00 p.m.

Saturday 11:00 a.m. to 2:00 p.m.

Phone 576-3875

10% Off Any Plate Or Sandwich With This Ad.

The National Bank of ROTAN
ROTAN * TEXAS

"Your Dependable Bank Of Service"

735-2224

Member FDIC Rotan, Texas

COX

BOOKKEEPING and INCOME TAX

JOHN M. COX

212 W. Snyder Rotan, Tx. 79546 915-735-3553

Higginbotham-Bartlett Lumber Co.

Greg Rains-Mgr. 735-2215 Rotan, Texas

Casa Morales Restaurant

"Serving The Finest In Mexican & American Foods"

735-2658 Rotan, Texas

KNIGHT'S MEAT and LOCKER

Custom Processing Individual Meat Sales from 1 lb. to 1,000 lbs.

D.L. KNIGHT 217 W. Snyder Rotan, Tx. 79546 HERSHEL SHIPP (915) 735-2541 after hours 735-2512

LARRY'S AUTOMOTIVE

GENERAL AUTOMOTIVE REPAIR LARRY CALLAN, OWNER

TELEPHONE (915) 735-2425

P.O. BOX 394 ROTAN, TEXAS 79546

S&L Shamrock

735-3500 Rotan, Texas

Rotan Insurance Agency

Joe D. Burk-Agent 735-2571 Rotan, Texas

Gold Bond Building Products

Division Of National Gypsum Company Rotan, Texas

H.L. Davis & Co.

"The Friendly Store" 735-2591 Rotan, Texas

Summers Spraying Service

735-3477 Rotan, Texas

Farmers Gin Company

735-2572 Rotan, Texas

Callan Clinic

Dr. M. Callan Dr. B. LeBleu 735-2211 Rotan, Texas

F&M Chevrolet-Buick

Yoko Fleming 735-2244 Murl McKinney Rotan, Texas

City Auto Supply

735-2242 Rotan, Texas

Teague Grocery

Evonne & Jackie Teague 735-2556 Rotan, Texas

City Savings

Homestate Savings Division Rotan Branch 735-2273

Clinic Pharmacy 735-2500

Country Pharmacy 735-2121 Rotan, Texas

Weathersbee Funeral Home

735-2255 Rotan, Texas

Midwest Electric Co-op & Employees

Parker Weisell-Mgr. 776-2244 Roby, Texas

Garcia's House of Flowers & Gifts

118 E. Snyder Ave. Rotan, Texas Bus. 915-735-3449 Home 915-735-3174

Nowlin Farm Services, Inc.

735-2371 Rotan, Texas

True Value Hardware Store

735-2501 Rotan, Texas

Landes Furniture

Loys & Larry Landes 735-3171 Rotan, Texas

Rotan Flower Shop

735-2261 Rotan, Texas

Smith & Cyphers Gulf Service Station

735-3461 Rotan, Texas

Rotan Veterinary Hospital

735-2491 Rotan, Texas

Lee's Quality Meats

*Custom Slaughtering *Full Line of Smoked & Cured Meat *Wholesale, Retail & Cured Meats (915) 773-2201 Stamford, Texas

Nu Tone Cleaners

115 W. Snyder 735-2552 Rotan, Texas

First Baptist Church

735-3471 Rotan, Texas

Prica's Boot & Barber Shop

Rotan, Texas

EXXON Carrillo Exxon

735-8005 Rotan, Texas

D. E. DOZERS

ROTAN, TEXAS OIL FIELD * FARM & RANCH SHOP FULLY INSURED 915/735-2199 DONNIE EATON DALE EATON 915/735-2338 808/254-2238

Western Wear
College Heights Shopping Center Snyder, TX.

LAST CUT

SALE PRICE

1/2 of 1/2

EXAMPLE Reg. \$20.00 Sale \$10.00 \$5.00 Price You Pay

On Group of Men's and Boys' Knit Shirts Group of Men's Short and Long Sleeve Western Shirts Group of Ladies' Wear

Group Boys' Boot Cut, Denim **WRANGLERS & Tall & Slim** Sizes 1-14 Reg. \$14.95 NOW **\$4.95**

4H



National 4H week



4-H Week, October 6 - 12



4H



Landes Furniture

Loys & Larry Landes
735-3171
Rotan, Texas

Midwest Electric
Co-op
& Employees



Parker Wetsel-Mgr.
776-2244
Roby, Texas



White's True Value
Hardware Store

735-2501
Rotan, Texas

ZONE 'N' TRIM

FIGURE TONING STUDIO
• hours by appointment

210 1/2 W. SNYDER ALTA HINSON
ROTAN, TEXAS 79546 915-735-3514

Farmer's Union
Co-op Gin



776-2237
Roby, Texas

Rotan Seed Delinting Co.

735-3341
Rotan, Texas



S&L Shamrock

735-3500
Rotan, Texas

Nowlin Farm Services, Inc.

735-2371
Rotan, Texas

Rotan Insurance
Agency



Joe D. Burk-Agent
735-2571
Rotan, Texas

The National Bank
of ROTAN
ROTAN * TEXAS

"Your Dependable Bank
Of Service"

735-2224 Member FDIC



4-H Believes

in

YOUTH!

We

Salute

The 4-H

Clubs Of

Fisher

County



City Auto Supply

735-2242
Rotan, Texas

F&M Chevrolet-Buick



Yoke Fleming
Murl McKinney
735-2244
Rotan, Texas



Weathersbee Funeral
Home

735-2255
Rotan, Texas

H.L. Davis & Co.

"The Friendly Store"
735-2591
Rotan, Texas



united
cable television
of rotan

102 North Florence
Rotan, Texas 79546
735-2526

KNIGHT'S MEAT and LOCKER

*Custom Processing
*Individual Meat Sales
from 1 lb. to 1,000 lbs.

D.L. KNIGHT
217 W. Snyder
Rotan, Tx. 79546

owners

HERSCHEL SHIPP
(915) 735-2541
after hours 735-2512

Silver Spur Cafe

Bill & Barbara Brzezinski
776-2744

Farmers Gin Company



735-2572
Rotan, Texas



Roby Drug

Mike Harrell-RpH
776-2431
Roby, Texas

Clinic Pharmacy

735-2500

Country Pharmacy

735-2121

Rotan, Texas



**HIGGINBOTHAM-
BARTLETT CO.**

BUILDING MATERIAL

Greg Rains-Mgr.
735-2215

Southern Styling

Gwen Helms & Lisa Nowlin
735-3130
Rotan, Texas

**Hargrove Crop
Insurance**

735-2176
Rotan, Texas

**LARRY'S AUTOMOTIVE
GENERAL AUTOMOTIVE REPAIR
LARRY CALLAN-OWNER**

735-2425
Rotan, Texas

Compliments Of

Bart Strayhorn

Gold Bond Building Products

Division Of
National Gypsum Company
735-2221
Rotan, Texas

Farm Bureau Insurance



Reid Cave-President
Ben Reaid-Agent
Pat Cadenhead-Secretary
735-3491
Rotan, Texas

**Central Lumber &
Supply**

776-2371
Roby, Texas

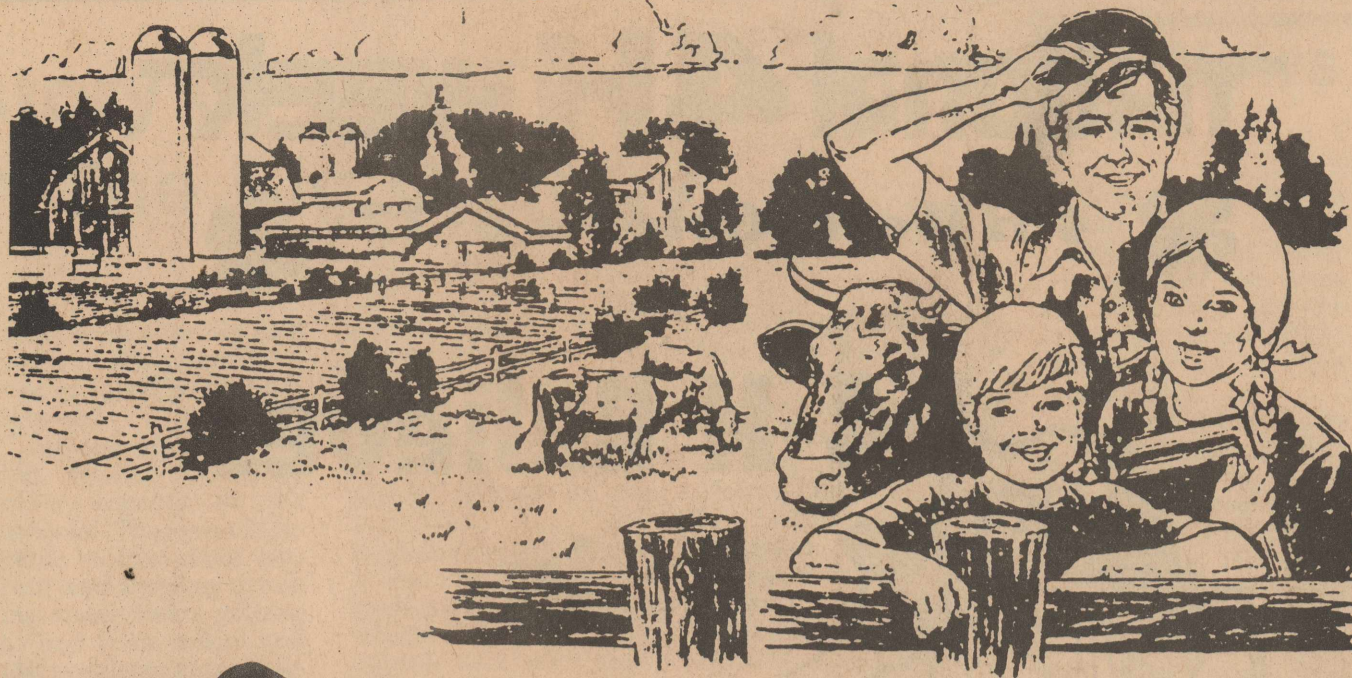
**Rotan Gin
Company**



Jim Gruben-Mgr.
735-2217
Rotan, Texas

**Rotan Veterinary
Hospital**

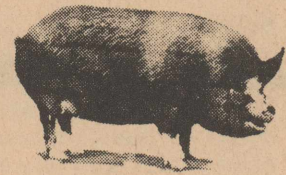
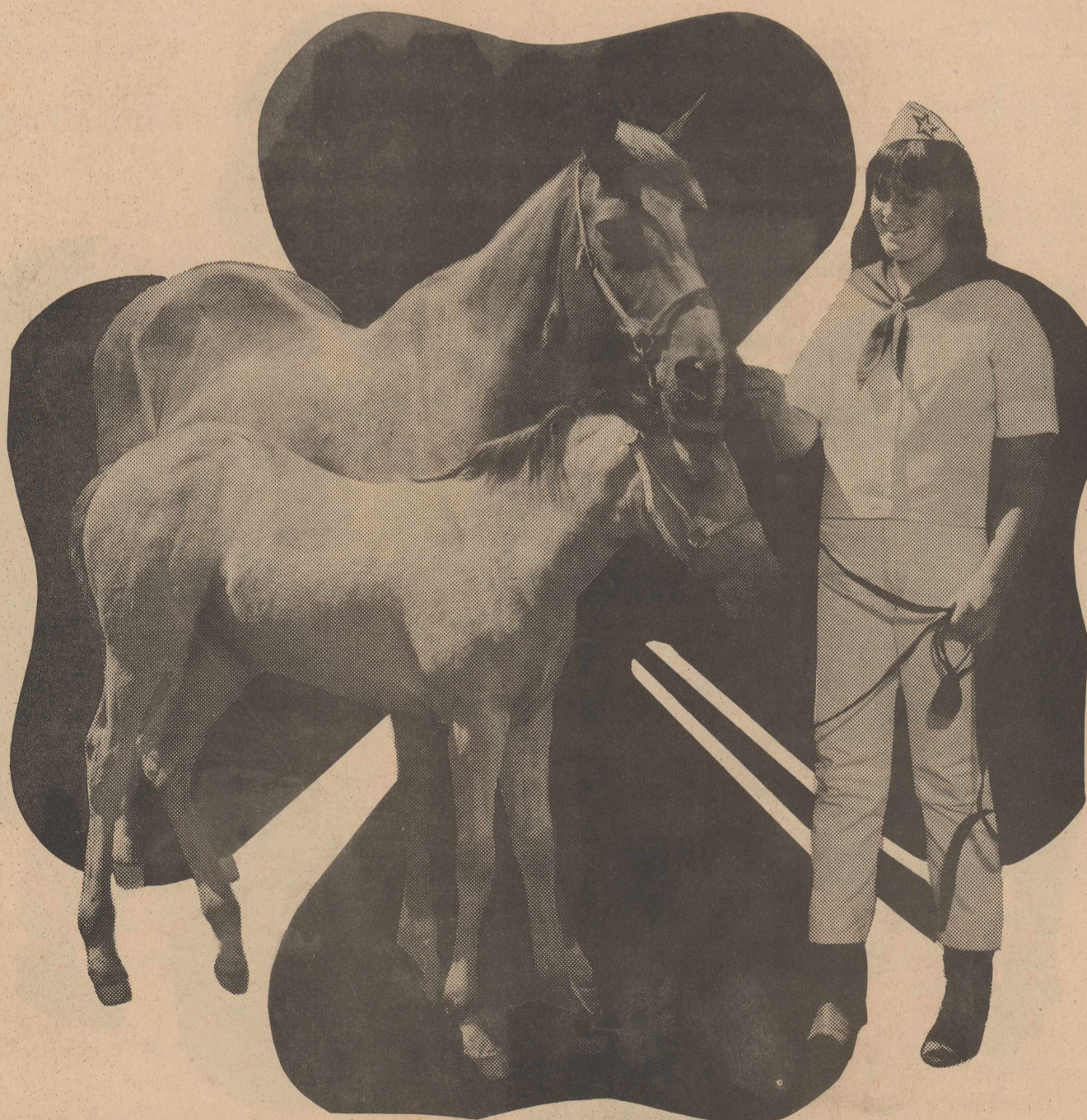
Dr. Vick Burk
735-2491
Rotan, Texas



NATIONAL 4-H WEEK

A Salute To Our Fisher County 4-H Clubs

We Are Proud Of You



**Big 3 Pork
Producers**

Johnny Edmondson-Owner
776-2661
Roby, Texas

**Casa Morales
Restaurant**



"Serving The Finest In Mexican &
American Foods"
735-2658
Rotan, Texas

R&R Automotive

Ike Rodriguez-Owner
735-2665
Rotan, Texas

Callan Clinic

Dr. M. Callan
Dr. B. LeBleu
735-2211
Rotan, Texas

FLOWERS



For All Occasions

Rotan Flower Shop

735-2261
Rotan, Texas



Citizens State Bank

Member FDIC
776-2261
Roby, Texas

**Fisher County Hospital
& Staff**

Gary McGee-Adm.
Rotan, Texas

City Grocery & Deli

Keifer & Aubrey Nell Cauble
776-2225
Roby, Texas

**Farm Tractor &
Service Inc.**



735-2252
Rotan, Texas



**Roby Flower, Fabric
& Gift Shop**

Erwin, Maxine & Michelle
776-2292
Roby, Texas