

# Roby Star-Record

The Voice Of Fisher County Since 1907

## ROTAN ADVANCE

VOL. 78 NO. 33 THURSDAY, SEPTEMBER 25, 1986 TEN PAGES 35¢ Plus Tax



Foy Mitchell

### Foy Mitchell Member Of Lubbock Advisory Board

Foy Mitchell of Roby, a retired farmer and cotton ginner, is a member of the newly formed 19-member Lubbock District Agriculture Advisory Board of the Texas Department of Agriculture.

The board was announced at its first meeting, Friday, August 15, by Texas Agriculture Commissioner Jim Hightower, making it the ninth such board in the state of Texas. During its first meeting, the board also received an overview of its function, TDA's marketing initiatives and the agency's regulatory services in

the 24 counties that the Lubbock District serves.

Joe Heinrich, a Slaton milo and cotton farmer, was elected board chairman. Ted Higginbottom of Seminole, who grows vegetables, cotton and grain sorghum, was elected vice chairman.

### Great Day In The Morning To Be Held At Roby

Sunday, September 28th, is high attendance Sunday for Texas Baptist. First Baptist Church, Roby has set a goal of 275 in Sunday School for this day and the members are working to reach this goal. Every member of First Baptist Church is invited to be in Sunday School at 9:45 Sunday morning. If you do not have a Sunday School class to attend, we invite you to come and attend our Bible study time.

### Arts And Crafts Sale To Be Held On December 6th

A Christmas Arts and Crafts Sale will be sponsored by the Rotan Homemakers on Dec. 6, 1986. The final date for booth reservations is October 31, 1986. For information on reserving a booth, please contact Jaye Neice Clements or Patti Park.

### Six Former Rotan Students Entered In 1986 Coming Home Queen Festivities

There will be a total of six former Rotan High School students entered in the 1986 running for Coming Home Queen, according to Polly Denton, chairman of the 1986 Rotan Homecoming festivities.

The six candidates and their escorts are: Thelma Palmer Peoples, escorted by Yoke Fleming from the class of 1936; Norma Dry Cave, escorted by Joe Dale Burk, class of 1946; D.L. Noles Goodwin, escorted by James Goodwin from the class of 1956; Janie Kevellighn, escorted by Randy

Hughes of class of 1966 and Tammie Strickland Nowlin escorted by Burt Weathersbee, class of 1976.

### F.C. Ministerial Alliance Holding Community Survey

The Ministerial Alliance of Fisher County has been working on a community survey. We would like for every home in Fisher County to be included. If you have not been contacted

The coming home queen will be announced during halftime at the Rotan, Roscoe football game on Friday, October 24th.

### Program Building Annual Meeting On Sept. 30th

To complete a form on your family, we would surely appreciate your letting us know. Please call 735-3067 or 735-2334 as soon as possible. Thank you for your cooperation.

### Roby First Baptist Church Aims For 150 In Attendance

Each year on a chosen Sunday in late September or October, every Southern Baptist Church in Texas is encouraged to strive for a high attendance in Sunday School.

Sunday, Sept. 28th is the high attendance Sunday for this year.

First Baptist in Roby is participating in the attendance thrust by seeking to have 150 in Bible Study next Sunday morning 10 a.m.

First Baptist Sunday School Superintendent Alvin Smith states that the average Sunday School attendance is 102.

Smith believes in high attendance campaigns. He says "it was a similar emphasis some years ago that inaugurated his family

into regular Sunday School attendance.

The hospitality committee of First Baptist has planned a pot luck dinner following the Sunday morning services.

Pastor Alvin Petty invites everyone to attend Bible Study, worship services, and the dinner next Sunday. The worship service begins at 11 a.m.

### Roby Volunteer Fire Dept. Sets Turkey Shoot

The Roby Volunteer Fire Department has set the date for their annual Turkey Shoot for October 19th. Details will be published in this paper at a later date.

### Roby School Board Leaves Tax Rate Same As In 1985

The members of the Roby School Board, after discussing the option of increasing local school taxes, opted to leave the rate the same as it was in 1985, according to Superintendent Jimmie Laurie.

The rate for 1986 will be .86 cents per \$100 valuation. Superintendent Jimmie Laurie said "we, in these economic hard times, are trying to do our part to keep costs down and still provide quality education."

The maximum effective

rate for Roby Independent School District for 1986 was set by the County Appraiser at \$1.16 per \$100 valuation. Roby's board members could have increased the rate to \$1.16 (the figure Appraiser Teddy Kral computed it would take to bring in the same spendable tax dollars in 1986 as the .86 cents brought in during 1985) but instead voted to leave the 1986 rate the same as it was in 1985.



Dawnette Magner

### Dawnette Magner To Speak At Fishfry, Sept. 27

Dawnette Magner, missionary candidate to Taiwan, will be the guest speaker at the Big Country Men for Missions annual fishfry. She is a graduate of Baylor University.

A special time of singing by Witness (group from Snyder) at 5:15 p.m. will feature gospel and contemporary music.

A catfish meal will be served at 6:30 compliments of MFM.

Hear special music, crusade reports, and see missions in a new fresh way. Come, enjoy the evening.

### Bishop Louis Schowengerdt To Officiate In Dedication Of New Sanctuary In Roby

Bishop Louis Schowengerdt will deliver the dedication sermon and officiate at the Dedication of the New Sanctuary at First United Methodist Church of Roby, Texas.

The Dedication Service will be held on September 28th, 1986 at 4:00 p.m. The Bishop will preach at the dedication Worship Service and will perform The Rite of Dedication. Also participating in the service will be Rev. Kenneth E. Ford, District Superintendent, Abilene District, Rev. Loren W. Gardner and Rev. Warren Schoenecker, former pastors, and Rev. Jim Hawthorne, present pastor of FUMC., Roby, Texas.

Four churches have been constructed on the present site, land given by the Roby brothers. The final note was paid in 1985. The Roby Methodist Church was organized in 1886. The first meeting place was in the home of V.H. Anderson, located on the Southwest corner of

the square. Rev. J.W. Dickerson was pastor of the Sweetwater mission, Roby was one of his circuit charges. FUMC., Roby celebrates its

centennial year with the dedication of the new sanctuary.

A reception will be held following the dedication service.



YELLOWHAMMER MASCOT: Shanna Bennett, Sophomore, daughter of Mr. and Mrs. Marshal Bennett of Rotan is the Yellowhammer Mascot for the 1986-87 school year.

### Cross Roads Church To Hold Gospel Musical

The public is invited to the country gospel musical and singing at Cross Roads Baptist Church, Sunday evening, Sept. 28 at 6:00 p.m. Anyone desiring to participate will need to call the church

(735-2178). A group of musicians will provide background music for the occasion. These include Danny Weaver, Pat Porter, Walter Miers, George and Pat Anderson.



STUDENT CONGRESS: Members of the Rotan High School Student Congress for the 1986-87 school year are: Back row, left to right: Todd Gruben, Joe Almanza, Randall Clawson, and Candi Hayes. Middle row, left to right: Cathy Jones, Lucy Stinson, Jeff Cave, Lane Landes, Lori Garcia, Jan Posey. Front row, left to right: Kevin Smith, Jimmy Pittman, Lousinda Ramirez, and Evette Gruben.

## Thirty-Nine Cowgirls & Cowboys Participate In Fisher County Playday

Thirty-nine cowgirls and cowboys participated in the Fisher County Playday, Sept. 20th.

The results were: Roping, 5 & Under: 1st Jennifer Fowler; 2nd Chance McClure; 3rd Kyle McWilliams; 4th Monroe Moore; 5th Ashley Smith. Other entries were Randi Herrington and Shelley Burk. 6-9: 1st Justin Herrington; 2nd R.J. Lewis; 3rd Justin Smith; 4th Ty West; 5th Jessica Fowler; 6th Brandy Long. Other entries: Melissa Burk, Will Kiker, Kelly McWilliams, Timothy

Moore, Becky Frierson, Ryan Parr, and Dana Parr. 10-14: 1st Bryce Moore; 2nd Coby Moore; 3rd Jason Gruben; 4th Buster Frierson; 5th Christi Parr; 6th Stephanie Frierson. Other entries were: Stephanie Long, Matt Kiker, and Julie Parr. 15-19: Rouna Casey and she didn't place.

Goat Hair Pulling: 5 & Under: 1st Chance McClure; 2nd Kyle McWilliams; 3rd Jennifer Fowler; 4th Monroe Moore; 5th Randi Herrington; 6th Ashley Smith. Other entries were: Shelley Burk, Sabrina Vahlenkamp,

and Lance Moore. 6-9: 1st Melissa Burk; 2nd Brandy Long; 3rd Will Kiker; 4th Danna Parr; 5th Justin Herrington; 6th Amanda Moore.

Other entries were Justin Smith, Kelly McWilliams, Jessica Fowler, Ty West, Becky Frierson, Ryan Parr. Goat Tying, 10-14: 1st Matt Kiker; 2nd Coby Moore; 3rd Stephanie Frierson; 4th Robert Vahlenkamp; 5th Jason Gruben. Other entries were Stephanie Long. 15-19: 1st Rouna Casey; 2nd Shannon Heflin.

Barrels, 5 & Under:

1st Chance McClure; 2nd Jennifer Fowler; 3rd Kyle McWilliams; 4th Monroe Moore; 5th Randi Herrington. Other entries were Lance Moore. 6-9: 1st Melissa Burk; 2nd Brandy Long; 3rd Will Kiker; 4th Justin Herrington; 5th Becky Frierson; 6th Amanda Moore. Other entries were Kristi White, Justin Smith, Kelly McWilliams, Jessica Fowler, Ty West, R.J. Lewis, Ryan Parr, Danna Parr. 10-14: 1st Robin Harrel; 2nd Matt Kiker; 3rd Christi Parr; 4th Robert Vahlenkamp; 5th Julie Parr; 6th Stephanie

Frierson. Other entries were Stephanie Long, Jessica Moore, Jason Gruben, and Coby Moore. 15-19: 1st Rouna Casey; 2nd Shannon Heflin. Flags, 5 & Under: 1st Chance McClure; 2nd Jennifer Fowler; 3rd Monroe Moore; 4th Kyle McWilliams; 5th Randi Herrington; 6th Lance Moore. 6-9: 1st Will Kiker; 2nd Danna Parr; 3rd Melissa Burk; 4th Brandy Long; 5th Becky Frierson; 6th Jessica Fowler. Other entries were Justin Herrington, Justin Smith, Amanda Moore, Kelly McWilliams, Ty West.

and R.J. Lewis. 10-14: 1st Stephanie Frierson; 2nd Robin Harrell; 3rd Stephanie Long; 4th Christi Parr; 5th Coby Moore; 6th Jason Gruben. Other entries were: Matt Kiker and Robert Vahlenkamp. 15-19: 1st Shannon Heflin; 2nd Rouna Casey.

Poles-5 & Under: 1st Chance McClure; 2nd Kyle McWilliams; 3rd Randi Herrington; 4th Monroe Moore. Other entries were Jennifer Fowler, and Lance Moore. 6-9: 1st Will Kiker; 2nd Brandy Long; 3rd Danna Parr; 4th Amanda Moore; 5th

Becky Frierson; 6th Melissa Burk. Other entries were Kristi White, Justin Herrington, Kelly McWilliams, Ty West, R.J. Lewis, Danna Parr, Ryan Parr and Jessica Fowler. 10-14: 1st Matt Kiker; 2nd Coby Moore; 3rd Christi Parr; 4th Rolan Harrell; 5th Julie Parr; 6th Stephanie Long. Other entries were: Robert Vahlenkamp, Stephanie Frierson, and Jessica Moore. 15-19: 1st Shannon Heflin; 2nd Rouna Casey.

All Around received buckles. 5 & Under: Chance McClure; 6-9:

Will Kiker; 10-14 Matt Kiker and 15-19 Rouna Casey.

Our next playday will be Saturday, October 11 at 7 p.m. at the Roby rodeo arena. 4-H will have concession.

Break Away roping was held after the playday. Those participating were Stephanie Long, Buster Frierson, Coby Moore, Matt Kiker, Stephanie Frierson, Jason Gruben, Robert Vahlenkamp, Justin Herrington.

We want to thank Donnie and Teresa Kiker for bringing the calves for the kids to rope.





Pamla Antonette Hoelscher & William Mark Harris

### Pamla Hoelscher Engaged To William Mark Harris

Mr. and Mrs. Charles E. Hoelscher of San Angelo have announced the engagement of their daughter, Pamla Antonette to William Mark Harris, son of Mr. and Mrs. Wayne Harris of Rotan.

The bride-elect graduated from Lake View High School in San Angelo and attend-

ed Southwest Texas State University in San Marcos and Angelo State University. She is employed by West Texas Medical Associates in San Angelo.

The prospective bridegroom graduated from Rotan High School and is a senior at Angelo State University.

A January 3 wedding is planned at Sacred Heart Catholic Church in San Angelo.

### McCaulley 4-H Group Elects New Officers

The McCaulley 4-H group met Wednesday, Sept. 17th to enroll for the new year and elect officers. Officers for the 1986-87 year are: Doug Decker, President; Chris Estes, Vice President; Rachel Coleman, Secretary/Treasurer; Shelly Dominey, Reporter.

The next meeting will be held Wednesday, October 14th.

### Card Of Thanks

We want to thank Jimmy Wright and Tommy Frierson for getting the arena back into shape. Also Armstrong Implement and Alvin Smith for dragging the arena each playday.

### USDA Extends Comment Period On Highly Erodible Land Provisions

The closing date for comments on the proposed Highly Erodible Land and Wetland Conservation provisions—commonly referred to as cross-compliance, sod-buster and swampbuster—of the Food Security Act of 1985 has been extended from Aug. 26 to Oct. 25 the U.S. Department of Agriculture announced today.

These provisions are designed to reduce soil loss due to wind and water erosion; protect the nation's long-term capability to produce food and fiber, reduce sedimentation and improve water quality; assist in preserving the nation's wetlands; and lessen the incentives to produce agricultural

commodities on highly erodible farmland.

The comment period was extended because of the complex issues involved in implementation of the new provisions.

Comments should be sent to: Director, Cotton Grains and Rice Division, USDA/ASCS, P.O. Box 2415, Washington, D.C., 20013 and must be received on or before Oct. 27 to be assured of consideration.

Contact: Bruce Merkle (202) 447-6787.

### Rotan Primary Room Parents Hold Meeting

The Rotan Primary Room Parents Organization met Tuesday, Sept. 16th at the Primary Library. There were 42 members present. Minutes from the last meeting were read and a report was given on proceeds from the book fair and track meet concession stand. Members were informed of the bank balance. Officers were voted on and will be: Erma Carreon, President; Donna Kennedy, Vice President; Brenda Goodwin, Sec./Treas.; and Susie Martin, Reporter. Members voted to hold the Halloween Carnival on Thurs-

day, Oct. 30 from 6:00-9:00 p.m. in the old gym. Booths were discussed. Items and prices for the concession stand were decided on. Chairmen for each booth were named. Work schedules and booth supply lists are to be made up. The next meeting will be Tuesday, Oct. 14th at 7:00 p.m. at the Rotan Primary Library.

### Rotan Menu

Monday: Chicken paty w/gravy; whipped potatoes; buttered English peas; hot rolls; butter; honey; fruit cobbler; milk.

Tuesday: Pizza w/meat and cheese; buttered corn; lettuce & tomato salad; jello; milk.

Wednesday: Baked ham; candied sweet potatoes; seasoned green beans; cranberry sauce; hot rolls; butter; honey; peanut clusters; milk.

Thursday: Spaghetti w/meat sauce; seasoned black eyed peas; cabbage and green pepper slaw; hot rolls; butter; honey; cookies; milk.

Friday: Hot dogs w/chili sauce; french fries w/catsup; baked beans; cheese wedge; strawberry cake; milk.

### American Red Cross To Offer CPR Courses

The American Red Cross will offer the basic life support course in Cardiopulmonary Resuscitation on October 8 and 15 at Kid's College Day School. The CPR class will be held from 6-10 each night. You must attend both nights to become certified. The cost for the eight hour course is \$25.00. If you are interested or if you need more information, please call Dee Ann Mullins, 735-2196 or 735-3560.

### Center Extension Homemakers Meet

Mrs. Lynn Randolph was hostess Tuesday when the Center Club met at the Annex in Roby. The program "The Battle of the Bulge" was given by Alice Ballenger, stating that half the population in the United States are overweight and that dieting and diet centers have become a great American past time.

Fay Anderson called the meeting to order and Audie Burk held a comical quiz for recreation. After the minutes were read by Bernice Randolph, Britty Turnbow gave the council report. Elizabeth Billingsley was elected nominee from Center Club for T.H.D.A. Chairman. A nominating committee composed of Eilene Cave, Bernice Ran-

dolph, and Luella Waddell were appointed.

The meeting was then turned over to Alice Ballenger for the program which was most enlightening, stating that good eating habits and exercise were most beneficial for weight loss. Over eating is the main reason for persons being over weight, and most causes for overeating is stress, nervousness, loneliness, and socializing. The bottom line to weight loss is to retrain your eating habits, eat slowly, start the meal with a light filler, and refrain from over indulging.

Those present for this meeting were Caroline Hawthorn, Elizabeth Billingsley, Fay Anderson, Audie Burk, Britty Turnbow. Imagene

Harvey, Mayme Kemp, Helen Thornburg, Mrytle Moore, Luella Waddell, and the hostess, Bernice Randolph and Eilene Cave.

### State Mission In Gather Day Set In Rotan

First Baptist Church will meet Sunday evening following the evening worship service for a time of fellowship and following the fellowship each one will be given the opportunity to present their gift to the State Mission Offering. It is hoped that the church goal of \$3,850,000 will be received at the In-Gathering.

\*\*\*\*\*  
  
**Before You Purchase A New Car Or Pick Up...Give Us A Chance To Show You How Much You'll Save At**  
**F&M Chevrolet-Buick**  
 Complete Sales & Service  
 735-2244  
 111-117 South Cleveland  
 Rotan, Texas  
 \*\*\*\*\*

### Worship This Week At A Fisher County Church

|  |  |
|--|--|
| <p>Read: Romans 7:14-25<br/> <b>GET OFF MY BACK!</b><br/>                 Who will deliver me from this body of death?<br/>                 CENTURIES ago, emperors of the Roman Empire saw torture as a legitimate way to put muscle and teeth into their laws. They were known to inflict punishment as hideous as that of binding a dead body to the back of a sentenced person. Under penalty of death, no one was allowed to release the condemned criminal. This terrible practice calls to mind the words of the apostle Paul in today's text: "It is as if he felt that something dead was strapped to him and accompanied him wherever he went. He was actually expressing the experience of every child of God. We long for purity and holiness, yet at times we feel helplessly bound to the 'dead body' of our flesh. Even though we are new creatures in Christ, and we know that the physical body itself is not evil, the tendency to sin is always with us. This causes us to cry out with the apostle, 'O wretched man that I am! Who will deliver me from this body of death?' Paul went on to answer his own cry in chapter 8. He said that through the forgiveness of Christ we are freed from eternal condemnation (v. 1). Then by the strength of the indwelling Holy Spirit we are empowered to do the will of God (v. 9). And someday in heaven even these mortal bodies of ours will be redeemed (v. 23). How liberating! We are not hopelessly bound by the flesh. Praise God, Christ broke the power of sin! By yielding our bodies to the Holy Spirit, we can serve in newness of life."<br/>                 —M.R.D. II</p> | <p><b>MISSION BAPTISTA CALVARIO</b><br/>                 Roby, Texas<br/>                 Sunday School 9:45<br/>                 Sunday Evening 5:30<br/>                 Wed. Night 7:30<br/>                 Worship 11:00<br/>                 Worship 6:00<br/>                 Eli Sepeda-Pastor</p>   |
| <p><b>FIRST BAPTIST CHURCH</b><br/>                 Sunday School 9:45<br/>                 Sunday Eve.-Church Training 6:00<br/>                 Wed. Night 7:30<br/>                 Rotan, Texas<br/>                 Worship 10:55<br/>                 Worship 7:00<br/>                 Steve Peace-Pastor</p>   | <p><b>FIRST UNITED METHODIST CHURCH</b><br/>                 735-2334<br/>                 Sunday School 9:15<br/>                 Sunday Eve. 6:00<br/>                 Rotan, Texas<br/>                 Worship 10:30<br/>                 Terry Lowe-Pastor</p>  |
| <p><b>CROSS ROADS BAPTIST CHURCH</b><br/>                 735-2178<br/>                 Sunday School 10:00<br/>                 Sunday Eve.-Training Union 6:00<br/>                 Wed. Night 7:00<br/>                 Rotan, Texas<br/>                 Worship 11:00<br/>                 Worship 7:00<br/>                 James P. (Pat) Anderson-Pastor</p>   | <p><b>FIRST UNITED METHODIST CHURCH</b><br/>                 776-2308<br/>                 Sunday School 9:45<br/>                 Sunday Eve. 5:00 UMYF<br/>                 Wed. Night Choir Practice 7:00<br/>                 Jim Hawthorne-Pastor<br/>                 Rotan, Texas<br/>                 Worship 10:50<br/>                 Worship 6:00</p>  |
| <p><b>LITTLE ZION BAPTIST CHURCH</b><br/>                 Sunday School 9:45<br/>                 Worship 11:00<br/>                 James Carrington-Pastor<br/>                 Rotan, Texas<br/>                 Wed. Night 7:00</p>  | <p><b>FIRST UNITED METHODIST CHURCH</b><br/>                 Sunday School 10:00<br/>                 Wed. (2nd Wed. in each month family nite 7:00)<br/>                 Alvin G. Smith-Pastor<br/>                 Rotan, Texas<br/>                 Worship 9:30</p>  |
| <p><b>FIRST BAPTIST CHURCH</b><br/>                 776-2159<br/>                 Sunday School 10:00<br/>                 Sunday Evening 6:00<br/>                 Wed. Night 7:00<br/>                 Roby, Texas<br/>                 Worship Service 11:00<br/>                 Worship 7:00<br/>                 Alvin Petty-Pastor</p>  | <p><b>CHURCH OF CHRIST</b><br/>                 735-2344<br/>                 Sunday School 9:45<br/>                 Wed. Eve. Bible Study 7:30<br/>                 Rotan, Texas<br/>                 Sunday Evening 6:00<br/>                 Sunday Ladies Bible Class 6:00 p.m.<br/>                 Donald Dawes-Minister<br/>                 Rotan, Texas<br/>                 Worship 10:45</p> |
| <p><b>CALVARY BAPTIST CHURCH</b><br/>                 735-3464<br/>                 Sunday School 10:00<br/>                 Sunday Eve.-Bible Study 6:00<br/>                 Wed. Night 7:00<br/>                 Rotan, Texas<br/>                 Worship 11:00<br/>                 Worship 7:00<br/>                 Dutch Parks-Pastor</p>  | <p><b>CHURCH OF CHRIST</b><br/>                 776-2496<br/>                 Sunday School 10:00<br/>                 Sunday Evening 6:00<br/>                 Wed. Night 7:00-Nov.-April 6:00 May-Oct.<br/>                 Wardell Halliburton-Minister<br/>                 Roby, Texas<br/>                 Worship 10:45</p>   |
| <p><b>EMMANUEL BAPTIST CHURCH</b><br/>                 735-2478<br/>                 Sunday School 10:00<br/>                 Sunday Eve. 6:30<br/>                 Rotan, Texas<br/>                 Worship 11:00<br/>                 Wed. Night 7:30<br/>                 Address Rodriguez-Pastor</p>   | <p><b>CHURCH OF THE NAZARENE</b><br/>                 Sunday School<br/>                 Wed. Night Worship<br/>                 Lyle Whitmeyer-Pastor<br/>                 Rotan, Texas<br/>                 Worship 11:00</p>  |
| <p><b>SYLVESTER BAPTIST CHURCH</b><br/>                 993-4479<br/>                 Sunday School 10:00<br/>                 Sunday Evening 6:00<br/>                 Sylvester, Texas<br/>                 Worship 11:00<br/>                 Wed. Night 7:00<br/>                 Ira Burns-Pastor</p>   | <p><b>FOURSQUARE CHURCH</b><br/>                 735-2553<br/>                 Sunday School 10:00<br/>                 Sunday Evening 6:00<br/>                 Rotan, Texas<br/>                 Worship 11:00<br/>                 Wed. Night 7:00</p>  |
| <p><b>HOBBS BAPTIST CHURCH</b><br/>                 Sunday School 9:45<br/>                 Sunday Evening 6:00<br/>                 Hobbs Community<br/>                 Worship 11:00</p>  | <p><b>ST. JOSEPH'S CATHOLIC CHURCH</b><br/>                 735-3285<br/>                 Sunday Morning 9:00 a.m. Mass<br/>                 Saturday Evening 7:30 p.m. Mass<br/>                 Father Austin Kittredge<br/>                 Rotan, Texas</p>  |
| <p><b>MCCAULLEY BAPTIST CHURCH</b><br/>                 Sunday School 10:00<br/>                 Sunday Evening 6:00<br/>                 Worship 11:00<br/>                 Rick McMinn-Pastor</p>  | <p><b>MARANATHA CHURCH</b><br/>                 Sunday School 9:45<br/>                 Sunday Evening 6:00<br/>                 Roby, Texas<br/>                 Worship 11:00<br/>                 Wed. Evening 7:00</p>   |

**JOHN DEERE COTTON STRIPPERS**

**SAVE BIG and then some**

John Deere has made us a deal that will save you a bunch. Big pass-along savings on all John Deere Cotton Strippers are available to you right now. Come in and save big and then save more by waving finance charges good-bye until the 1987 harvest season. OR take a big discount in lieu of finance waiver.\*

**Farm Tractor & Service, Inc.**  
 309 South Cleveland  
 Rotan, Texas 79546  
 735-2252 or 735-2253 or 735-2254

\*Availability of John Deere financing subject to approval of credit. This offer may be withdrawn at any time.

|   |   |   |   |
|---|---|---|---|
| <p><b>Rotan Motor Company</b><br/>                 Ray Brown<br/>                 Archib Nooley<br/>                 Rotan, Texas</p> | <p><b>Midwest Electric Cooperative</b><br/>                 776-2244<br/>                 Roby, Texas</p>                                   | <p><b>Citizens State Bank</b><br/>                 Member FDIC<br/>                 Roby, Texas</p>                 | <p><b>Higginbotham-Bartlett</b><br/>                 Greg Rains-Mgr<br/>                 735-2215<br/>                 Rotan, Texas</p> |
| <p><b>Farmers Union Co-op Gin</b><br/>                 Roby, Texas</p>  | <p><b>Central Lumber &amp; Supply</b><br/>                 776-2371<br/>                 Roby, Texas</p>                                    | <p><b>Rotan Nursing Center</b><br/>                 Rotan, Texas</p>  | <p><b>Rotan Insurance Agency</b><br/>                 Joe Burk-Agent<br/>                 Rotan, Texas</p>                              |
| <p><b>First National Bank Of Rotan</b><br/>                 Member FDIC</p>   | <p><b>Fisher County Farm Bureau</b><br/>                 215 W. Snyder<br/>                 Rotan, Texas</p>                                | <p><b>H.L. Davis &amp; Company</b><br/>                 Bill &amp; Elaine Day<br/>                 Rotan, Texas</p> | <p><b>Bart Strayhorn</b><br/>                 735-2231<br/>                 Rotan, Texas</p>  |
| <p><b>Weathersbee Funeral Home</b><br/>                 Rotan, Texas</p>  | <p><b>Landes Furniture</b><br/>                 Loys &amp; Larry Landes<br/>                 735-3171<br/>                 Rotan, Texas</p> |   |   |



**Tax Planning**  
By James Rodgers  
CPA



**1986 TAX ACT**  
(What to do now?)

Now that the 1986 Tax Act is out of the joint committee, it's possible to make some tax planning suggestions with the hope that the law doesn't get changed in the House and Senate before final approval.

Some planning suggestions:  
Go ahead with sales of long-term capital assets before the end of 1986 so gains on those assets will be taxed at the preferred capital gain rate. The maximum capital gains tax in 1986 is 20 percent; that rate will be 28 when the law is fully in effect.

If you have losses from certain tax shelters, you might want to consider investing in good income-producing limited partnerships. The new law would allow such losses to offset income from other passive investments.

Defer income into later years when possible. Professionals should consider delaying their December

Due to the drop in tax brackets, charitable deductions will be worth less to you after 1986. Consider increasing your 1986 charitable deductions.

Even though the IRA deduction will be disallowed for certain taxpayers, the earnings in the IRA will still be non-taxable until withdrawn. Review the benefits of an IRA in your situation.

401 (k) pension contribution deductions drop from \$30,000 in 1986 to \$7,000 in 1987. Contribute as much as you can to your 401 (k) plan this year.

Pay the balance of your local tax bills before December 31, 1986, to provide for deduction on your 1986 federal tax return.

Consider borrowing against your home to reduce consumer debt on automobiles, credit cards, etc. Consumer interest deductions will be phased out, home mortgage interest remains deductible (with some limits.)

We will be watching progress of the tax bill through the House and the Senate and keeping you posted on tax planning opportunities.

**Sponsored By:**  
**James E. Rodgers & Company**  
Certified Public Accountants  
20 Southwest Third St., Hamlin, Tx.

**Rural Wrens Hold Meeting**

Rural Wrens met Monday, Sept. 22nd. Members present were Jan Clark, Lisa Carey, Cindy Lewis, Kay Moore, Tempie West, Karan McClure, Danette Pope, Becca

Frierson. Hostess was Jan Clark. The Wrens worked on commodities. The next meeting will be Oct. 13th at 7:00 p.m. Becca Frierson will be hostess.



**JUNIOR CLASS OFFICERS:** C.C. Hernandez, Steve McClain and Jan Posey.

**USDA Announces Seed Needed For Conservation Reserve Program**

If you have grasses or forbs that can be harvested for seed this fall, you might make a bundle of money.

That's because at least five million pounds of seed will be needed to plant 1.1 million acres of land accepted in the Conservation Reserve Program in Texas this year.

And with another sign-up expected this winter, the demand could be even greater.

Charles Black, district conservationist for the USDA Soil Conservation Service at Rotan, said several kinds of seed are needed.

"There is going to be a strong demand for both native and introduced species," Black said. "And the seed will probably bring premium prices."

Some of the grass seed needed include native bluestem mix-

tures, little bluestem, indiagrass, switchgrass, sideoats grama, blue grama, kleingrass, King Ranch bluestem, green sprangletop, and lovegrass.

Since land placed in the CRP can be leased for hunting, seed for wild plum and forbs including Maximilian sunflower, illinois bundleflower, and engelmanndaisy will probably be in very short supply.

"If you have land that can produce any of the seeds and it can be harvested, now is the time to act," Black said. "Removing all livestock from the land will give it a chance to produce a seed crop. You may also recommend that you contact a commercial seed grower to learn if you can work out a contract for handling the seed."

Richard Heizer, state

plant materials specialist for SCS at Temple, has offered to serve as a clearing house to put farmers and ranchers who can harvest seed this year in contact with members of the Texas Seed Trade Association. For information, write Richard Heizer, Soil Conservation Service, 101 South Main Street, Temple, Texas, 76501-7682, telephone number (817) 774-1294.

Use Our  
Copy  
Machine  
25¢ Each  
The  
Newspaper  
Office

**Extension Homemakers Report**

By Alice Ballenger

The Program Committee of Fisher County Extension Homemakers Clubs met recently to compile a list of suggested programs for the 1987 club year.

Members attending were Tempie West, Eda Bickerstaff, and Dorothy Decker.

Each club member will be given an opportunity to mark the eight programs they prefer to see and hear next year. When these are returned and tabulated, the yearbook committee will meet to complete the yearbook.

Every Extension Homemaker Club member is urged to attend the next meeting of her club in order to have the opportunity to have an input into the programming for another year.

The Home Economics Committee of Fisher County Program Building Committee met with Mrs. James Cave, chairman, presiding. The committee discussed plans for 1987 Home Economics Programs.

Emphasis in the new year will be on Food Nutrition, Health and Consumer Decision making. Programs, newsletters, newspaper and Educational meetings are planned to cover such topics as arthritis, sodium and hypertension, nutrition for the elderly, and food preservation.

Other members of this committee attending were Louise Martinez, Helen Thornburg, Dorothy Decker, and Bonnie Estes.

The Fisher County Extension Homemakers

Council met with Dorothy Decker presiding. A report on the County Fair was given by Florene Stuart, General Chairman of the County Fair. Bernice Randolph gave a report on the concessions clubs had in the exhibit building.

Officers elected to serve for 1987 are Chairman, Dorothy Decker; Vice Chairman Mrs. Z.H. Anderson; Secretary Jan Clark and Treasurer Britty Turnbow.

Fisher County 4-H organization and project leaders met to make plans for the new 4-H year. The upcoming County Food Show was

discussed. Plans were made for new clubs to be organized, 4-H'ers to be enrolled, officers elected.

4-H clubs and leaders are as follows Roby 3rd and 4th grades-Karen Counts and Charla Moore; 5th and 6th grades-Jan Clark and Sally Elliott; 7th and 8th-Charla Moore; Rotan 3rd and 4th-Karla Roberts and Connie Early; 5th and 6th-Susie Martin; 7th and 8th-Brendis Sheehan. Junior leaders or High School Club leaders Kathy Spencer and Sheila Gruben, Hobbs 4-H-Carla Bavousette and McCaulley leaders, Bonnie Estes and Elaine Coleman.



**JIDENT CONGRESS OFFICERS:** Jeff Cave, Jan Posey, Lousinda Ramirez, and Evette Gruben.

30 YEARS OF SERVING YOU

**ALLSUP'S**  
CONVENIENCE STORES

**Dress Right . . .**

... in the Wrangler western dress shirt. It's plaid! It's perfect for the well-tailored look and feel you've always wanted.

*Wrangler*

**INVESTMENT ACCOUNTS**

**DON'T BE "FOOLED" BY A SLICKED UP INVESTMENT SALESMAN!!**

**KNOW THE FACTS BEFORE YOU DECIDE WHERE TO INVEST YOUR SAVINGS!**

When you deposit your savings here, we have more money to lend. When we have more money to lend, it helps people and businesses in our area... and that helps us all grow...together!

**The 1st National Bank of ROTAN**

"Your Dependable Bank of Service"  
Member FDIC Rotan, Texas 735-2224

Member Independent Bankers Association of America. Representing the nation's community banks.

**H.L. Davis & Co.**

735-2591 "The Friendly Store" Rotan, Texas





SENIOR CLASS OFFICERS: Jenna Thornton, Lousinda Ramirez, and Julie McQueen.

### Roby FFA Selling Sausage

The Roby FFA is holding their annual sausage sale. This year we are offering our regular and smoked specialty line. A 2½ lb. box of sausage patties or links sell for \$6.75. A 4 lb. box of extra thick bacon is \$10.00 and hamburger patties, 4 lbs. are \$8.75.

The smoked specialty line includes a 3-4 lb. pepper ham; 10-12 lb. dinner ham; 2 lb. peppered dry beef; 3 lb. summer sausage; 2 lb. peppered bacon; ½ lb. beef jerky. To place your order, FFA members will be coming by, or you may call any member. The Roby FFA appreciates your

support of our program.

### Hospital News

Patients admitted to the Fisher County Hospital from Sept. 16 thru Sept. 22 were: Callie Shipp; Minnie Nolen; Maude Gruben; Margaret Sires; D'Lina Sires; Teresa Tankersley; Dianna McKinney; Mildred Rains; Ronnie Martin and Winnie Kinsfield, all of Roby; Nettie Etheredge; Mary Lamm; Kayla Ryan Lamm; and Rachel Rasberry, all of Roby; Royce Stone, McCaulley; Linda Arnold, Snyder; Eunice Daniels, Jayton.

### Roby Garden Club Holds Regular Meeting

The Roby Garden Club met Thursday, Sept. 11 at 9:30 a.m. at the Mid-West Electric Co-Op, Inc., at Roby. Hostesses were Mrs. L.L. Stuart and Mrs. Edd Carter.

The meeting opened with Mrs. Jesse Goforth, president, presiding. It was an organizational meeting, and plans were made for 1986-87. It was decided that the Garden Club

would meet at 9:15 a.m. the second Thursday of every month at the Mid-West Electric Co-Op, Inc., instead of 9:30 a.m.

After a short business session delicious refreshments were served from an appointed table that was covered with a beautiful white cloth. A silver service from which coffee was poured was on one end of the table, and a base of pink rosebuds graced the other end of the

table.

Members present were Mrs. Coy Carriker, Mrs. W.W. Morton, Mrs. Jesse Goforth.

Mrs. Dwalyn Parker, Mrs. Earnest Hammer, Mrs. Gene Turnbow, Mrs. Frank Leach and Mrs. Forrest Tefteller.

### SUBSCRIBE

By Calling  
735-2562

Rotan Advance  
Roby Star Record

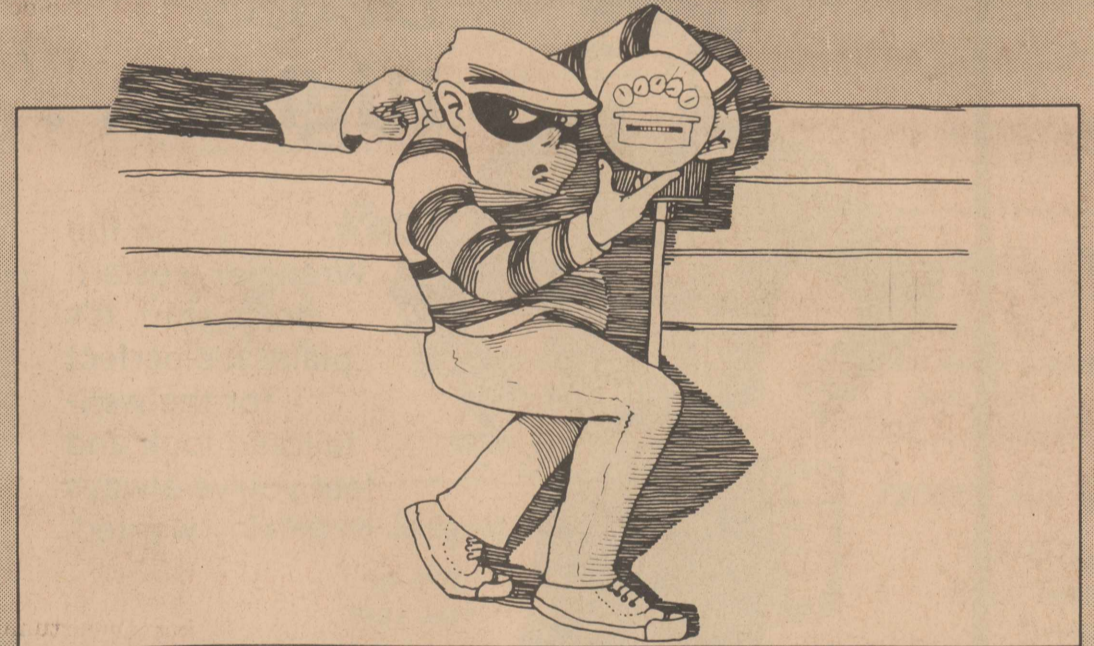
The new "Kid" in town invites you in for a visit...

## LIZZIE B's EMPORIUM

offering ladies and girls clothing, hand-made and specialty items.

store hours: MON-SAT 9 to 5:30  
1st Street Roby, Texas.  
ELIZABETH BILLINGSLEY, owner

## STEALING ELECTRICITY IS AGAINST THE LAW



### Stealing Energy is a Felony

Some people tamper with their electric meters to avoid paying for the energy they use. Stealing electricity is a felony offense in the state of Texas and violators will be prosecuted. West Texas Utilities' Current Diversion Department is working hard to help combat the growing problem of energy theft.

### A Crime Against You

When someone steals electricity, they are not only stealing from WTU — they are also stealing from you, as a rate-payer. Just as shoplifting increases the cost of items you buy in the store, power theft increases the cost of your electric service.

### Energy Theft is Dangerous

Not only is service theft a crime, but it is also very dangerous. Serious injuries can result from meter tampering.

### WTU Will Prosecute

Because we are concerned about the dangers and costs resulting from meter tampering, West Texas Utilities will prosecute energy thieves.

WEST TEXAS UTILITIES COMPANY



A Member of The Central and South West System

Serving you with dependable electrical energy from the Red River to the Rio Grande.

will be opened Monday, Oct. 13, 1986 at 10 a.m. in the Commissioners Courtroom, Courthouse, Roby, Texas.

Fisher County Commissioners reserve the right to accept or reject any and all bids.

Marshal Bennett  
County Judge  
32:2tc

### Legal Notice

The City of Roby has for sale two (2) 1979 F-100 Ford Pickup Trucks. Sealed bids will be expected until 4:30 P.M. October 7, 1986. At which time bids will be opened. Both pickups can be seen at Roby City Hall, Roby, Texas. The City reserves the right to reject any or all bids.

32:3tc

### Rotan 4-H Express Club

The Rotan 4-H Express Club met Tuesday, Sept. 16 in the school cafeteria. Amber Martin presided. They elected officers as follows: president, Amber Martin; vice president, Amber Martin; secretary, Amber Martin; treasurer, Amber Martin. The meeting was held by production in and to the Northeast.

The most competitive line: Ge Reyes, M Whitefield, Dar Ragan, and David reon. Mitch White gave good pass protection early in the second quarter as Steve

### Rotan JV Over Spur

The Junior Varsity won again! The defeated Spur on a goal from the yard line to preserve shutout 19-0.

The Yellowhamr scored first on a 10 y touchdown pass from Kevin Smith to Will Roddy. On the v

### eyes Are Wed

12, 1986 in Las Vegas, Nevada.

They will make their home in Snyder.

### Notice

submit written bids (all cash to Sellers) on or before 5:00 p.m., September 30, 1986. Bids shall be submitted to Rudy V. Hamric, Attorney, Post Office Box 176, Roby, Texas, 79543. Owners reserve

the right to reject any bids. Possession of property to be delivered January 1, 1987. 33:1tc

# FALL FESTIVAL of SAVINGS

## City Grocery & Deli

776-2225 Roby, Texas

Prices Effective  
Sept. 25-Oct. 1, 1986

Double Coupons Everyday  
Open Until 9:30 P.M. We Reserve The Right To Limit Quantities

**HARVEST SPECIALS**

3 LB. Armour Star PS CAN HAM \$6.99

Comet 14 Oz. CLEANSER 2/89¢

Parade 3 Oz. INSTANT TEA \$1.79

Parade 1 Gal. BLEACH 69¢  
Gooch Beef 12 Oz. FRANKS \$1.19

**HARVEST SPECIALS**

Brawny PAPER TOWELS 69¢

Parade 32 Oz. CATSUP 89¢

Parade Frozen 6 Oz. ORANGE JUICE 2/89¢

Best Maid 32 Oz. SALAD DRESSING \$1.09

**HARVEST SPECIALS**

Parade 303 Can SWEET PEAS 2/69¢

Cello 2 Bags For RADISHES 69¢

Gandy's Slim-N-Trim 24 Oz. COTTAGE CHEESE \$1.79

Washington Red Delicious APPLES 59¢ LB.

BROCCOLI 49¢ LB.



# County Agent News

By Richard Spencer

Use of growth implants in suckling calves is one sure way to increase net returns, yet many producers still don't take advantage of the practice. A 1985 Extension study showed that the average return cost was carried on in drought conditions. Under normal conditions, the average results were 10 to 1, similar to studies done

10-15 years ago.

There are four species of fire ants in Texas. The Southern Fire ant is a native of Fisher County. The red imported fire ant has not been found here but has been found in Wichita, Taylor and Tom Green Counties and in a few West Texas Counties. It is well established in much of East Texas. The

desert fire ant has been reported from only two Texas counties. The Tropical fire ant is found primarily within 150 miles of the coast but has been found in a few counties well away from the coast.

The Southern fire ant and the red imported fire ant look very much alike but can be separated by a specialist familiar with the two species. The worker ants of both species

range in size from 1.6 to 6 mm (.064 to 0.24 inch) in length. When collecting ants for identification, be sure to include several of the larger (major) workers. Worker ants larger than .25 inch in length are not fire ants.

The nests of the Southern fire ant may be crater shaped or a mound several inches in height. Nests of the red imported fire ants vary in size depending on soil

characteristics and size of the colony; mounds can reach 10 to 12 inches in height.

When the nest of either of these ants is disturbed, the workers stream out attacking the intruder. The workers will sting repeatedly. Symptoms of the red imported fire ant sting include burning and itching, followed by the development of a white sore or pustule that may leave a perma-

nent scar. Person reacting severely to fire ant stings should see a physician immediately.

Fire ants feed on the flesh of insects, birds, mammals, the sap of plants and fruits, seeds and honeydew. High protein foods such as meat, cheese, peanut butter, and nuts are preferred. They are highly predaceous on other insects.

Information on identification and the collec-

tion of fire ants to be submitted for identifica-

tion is available from our office.

## Extension Homemakers Meet

The Extension Homemakers Club had our meeting with Richard and Ardell Floyd. The husband and wife were invited. We didn't have a program but sandwiches, homemade ice cream and cake. The ladies played games and the men visited.

Those present were Clifton and Eda

Bickerstaff; Joe and Gaynell Henry; Jeb and Oma Long; Francis and Wanda Floyd; Beatrice Hargrove; Hazel Hudson; Mary Posey; Lois Sparks; Hilda Rollins; and our host and hostess, Richard and Ardell Floyd.

Our next program will be with Bobbie McKinney, Oct. 2.

## Fisher County Nursing Home News

Mrs. Julia Harvey reported that she had a very nice birthday party Sunday. She told us there were many friends and relatives present, and the refreshments were delicious. Mrs. Harvey was 99 years old on Sept. 23rd.

Other residents with Sept. birthdays are Jewel Branch, the 13th; Louise Schubert the 12th; Susie Soliz the 21st; and Lottie Rushing on the 27th. They were honored with a birthday party by the Alathan Class of the First Baptist Church. Ladies present for the party were Icie Hughes, Vera Mann, Dovie Schooley, Oma Long and Viola Hawkins.

Our employees with birthdays this month are Diana Presley,

Helen Gauna, Birtha Daniel and Janie Cabello. We wish them a happy birthday.

This Saturday, Sept. 27th, we will have an anniversary reception for Luis and Louise Schubert. They will be married 66 years. The Schuberts have one son, Zane, who lives in Houston. They have 3 grandchildren and four great grandchildren. The reception will be from 2 to 3 p.m. Sept. 27 at Fisher County Nursing Home Lobby.

Our bingo winner was Maude Smith.

Our visitors this week were Mrs. George Branch and Mrs. Ralph Bratter from Jayton, Relna Sue Long and Nancy Counts and Jackie from Rotan visited Jewel Branch.

Mrs. Conley's visitors were Rev. Allen Guthrie from Sweetwater, Mrs. Robert Moore, Mrs. John Holloman from Victoria, Mr. and Mrs. Cliff Thompson from San Antonio and Debra Sutton from Roby.

Reyna Garcia

## Card Of Thanks

We wish to thank our many friends and relatives for all the kindness and concern shown during the long fight Rebecca Anne had with cancer.

Thanks for the cards, calls, memorials, flowers, food and most of all your prayers. Your kindness and support will be remembered and cherished always.

May God bless each and everyone of you. Reid & Brooke Stephens Juanita & Gary Graham Laura & Tom Grothe Charlotte & H.B.

Riggs, III Pamela Graham Forrest Graham Faye Ray Roland Ray 33:1tp

**Roby Star Record**  
The Voice of Fisher County Since 1907  
**ROTAN ADVANCE**  
Post Office Drawer A, Rotan, Texas 79546

(915) 735-2562 Office  
(915) 735-2278 Office  
(915) 735-3115 Home

Kim Pease-Editor/Publisher

Published in Rotan, Texas Weekly. Entered as Second Class mail at the Post Office, Rotan, Texas 79546 under acts of Congress.

POSTMASTER: Send Address Correction to the Newspaper Office, P.O. Drawer A, Rotan, Texas 79546.

Advertising rate is \$2.00 per column inch. Classified rate is \$3.00 for first 15 words and 10 cents for each additional word. \$3.50 if billed. Classified display rate is \$2.50 per column inch. Card of Thanks \$5.00 minimum charge.

Subscription Expiration dates are listed on each mail subscribers newspaper delivery label each week. Newspapers must be renewed prior to the expiration date. Postal regulations say that subscriptions must be paid in advance to qualify for 2nd class postage regulations.

News and advertising deadline is 12:00 noon on Tuesday of Each Week. The Rotan Advance-Roby Star Record is published 52 weeks a year.

Notice: Any erroneous reflection upon character standing or reputation of any individual firm or corporation will be gladly corrected when brought to the attention of the publisher.

Mail To: The Newspaper Office P.O. Drawer A Rotan, Texas 79546 New Renewal

Please Find Enclosed:  
1 Year-\$12.00-In County  
1 Year-\$15.77-In Texas  
1 Year-\$17.00-Out of State

Name \_\_\_\_\_ Address \_\_\_\_\_ City \_\_\_\_\_ State \_\_\_\_\_ Zip \_\_\_\_\_

**BLACK INVESTMENTS**  
Real Estate Sales-Appraisals-Petroleum Landwork  
107 North Garfield

Due to anticipated tax changes on depreciation and capital gain, experts recommend buying rental property now and selling other real estate before 1st of year. Federal Housing Adm. & VA loans still available at 9.5%.

OWNER FINANCING ON GOOD RENTAL INVESTMENT: 3 BR, 1 1/2 baths, good location, downpayment at 10% rate

LOWER PRICE: Strickland house on Cleveland, 2-story, 5 BR, rentable apt., well, \$35,000

MALOUF TWO-STORY: 7 BR, 2 baths, fireplace, \$66,500

PRIVATE APPT. ONLY: Quality 3 BR brick, excellent location, call for details

PRIVATE APPT. ONLY: 4 BR, fireplace, fence, 2,800 sq. ft., below \$50,000

VINYL SIDING: 3 BR, nice corner lot location, \$31,500

WHITE BRICK: 2 BR, wood burning stove, privacy fence, \$36,000

PRICED RIGHT: 3 BR, bath, kitchen bar, corner lot, \$14,000

ROBY: 3 BR, large den, patio, privacy fencing, corner lot

TO BE MOVED: 3 BR frame, well maintained, just off Hwy. 70

EZ CAR WASH: Rotan established business, extreme price reduction, \$35,000

**MYLA BLACK, BROKER, MSA, MRA, MFLA**  
Office & Home Telephone (915) 735-3091

**ANTIQUES:** We have fine furniture, over 400 clocks, and numerous old lamps for you to purchase, plus many gift items. We also repair and refinish clocks, lamps, and furniture. Call us or bring in. All work guaranteed. House of Antieks, 4008 College Ave., Snyder, Texas, 79549. 915-573-4422. 27:tf

**Masterview Book Store**  
103 Arizona 235-2940  
Sweetwater, Texas  
Hours: 10:30 to 6:00 p.m. M-Sat.  
Masterview Welcomes All WASP  
For Their Reunion  
New Items Including Christian Mother Goose And Amy Grant Bible Stories Now Available  
ALL SPECIAL ORDERS RECEIVED IN ONE WEEK!  
Call In Orders WELCOME

**EXCELLENT IN-COME** for part time home assembly work. For info. call 504-641-8003 Ext. 8532. 31:4tp

**FOR RENT:** 1 to 3 bedroom apartments starting at \$170. Call 776-2579. 18:tf

**FOR SALE:** Washers and dryers. 60 day warranty. 962-5446, McCaulley. 52:tf

**FOR RENT:** 2 bedroom house, 1 mile south of Roby on Hwy. 70. \$175.00. Harman Holcomb, 776-2131. 31:tf

**FOR RENT:** Garage apartment. Call 735-3348. 32:2tc

**WANTED:** Fifth wheel trailer chassis. No beds wanted. Rotan Delinting Co., 735-3341. 32:2tc

**FOR SALE:** Mitt Wheat Seed, call Ted Posey, 776-2689. 31:3tc

**NOTICE:** I will buy antiques and collectibles. Call 735-2104. 31:tf

**NOTICE:** Bill's Auto Salvage is now open in Snyder. Late model used parts, Chevy, Ford, Chrysler, Toyota, Datsun. East Highway 180 at the traffic circle. 573-9569 or nights 573-9010. 45:tf

**FOR SALE:** Alfalfa or haygrazer hay. Square bales. Call 735-3171. Landes Furniture. 34:tf

**RENT OWN:** Amana refrig., microwave, Maytag washer and dryers, stoves, used also. Bill's Appliances, 113 W. Broadway, Sweetwater, Texas, 235-4349. 23:tf

**FOR SALE:** 2 bedroom house, N. 2nd St. Roby, good water well. 776-2367 after 5 p.m. \$9,000.00. 10:tf

**NOTICE:** Franks TV and Jewelry in Hamlin is in the Rotan-Roby area 3 times weekly to service your television, VCR or satellite system...we also do antenna work...call us at 576-2122 or 576-2167 nights..Franks TV and Jewelry, 218 S. Central in Hamlin. 8:tf

**SECURITY FINANCE**  
Your Friend When You Need Cash  
Now Making Back To School Loans Up To \$300.00  
117 West Broadway Street Sweetwater, Texas 79556  
Phone 236-6894  
Ask For: Nancy Or Rhonda

**WANTED:** Land to rent. Call David Hudson, 735-3597. 3 1:4tc

**LOTS FOR SALE:** 2 lots, size 50 X 100 each on Forrest St., Lot 109 and 110. Please call 214-225-3828, Hutchin, Texas. 31:3tp

**FOR SALE:** TAM 105 wheat \$5.50/bushel; grazing oats \$3.50/bushel. Rotan Seed Delinting Co., 735-3341. 33:tf

**HOUSE & ACREAGE FOR SALE:** 2 bedroom house on water line with 2 acres. Peach, apricot, apple, pecan trees and 4 grape vines. Located 1 1/2 mile north of Rotan on Highway 70. For more information call Mrs. W.D. Elrod, 735-3153. 33:3tp

**FOR SALE:** Our residence at 606 E. Beauregard. Mr. or Mrs. D.T. McDonald, (806) 799-8337. 33:6tp

**NOTICE:** Walken oats, cleaned, bagged and treated. \$5/bushel. Combine run \$3.50/bushel. 735-2944. 33:2tc

**NOTICE:** Beauty consultants for hire. Call Donna 735-2072. 33:4tc

**MONUMENTS & CURBING**  
Buy Where They Are Made & Save  
J. B. Smith  
308 E. 4th St.  
Phone 735-3290

**GARAGE SALE:** 6 miles South of Roby and 1 mile East, home of Mrs. B.C. Killingsworth. Antique iron cook stove, chairs, toys and clothes. Saturday, Sept. 27th only. 33:1tp

**FOR SALE:** 1970 half ton Chevy pick up. 61,000 actual miles. Clean, good condition. \$1,000. Call 735-3453 or can be seen at 209 E. 6th. 33:1tc

**FOR SALE:** Two new 2-drawer filing cabinets with fitted 5 1/2" desktop and matching chair. Myla Black, 735-3091. 33:1tc

**LOST:** Large male cat, neutered, gray in color, minkx (no tail) no collar, lost 2 miles East of Roby, Reward. Call 695-3525. 33:2tc

**CARPOR SALE:** Friday & Sat., 26th & 27th. 209 E. 6th. Sale begins at noon Friday. Lots of goodies. 33:1tp

**FOR SALE:** 1973 Dodge Charger. Call 735-2595. 33:1tc

**Full Line Ambassador Every Day Cards**

The Newspaper Office

**Rubber Stamps**

The Newspaper Office 735-2562

**When Is Your Selling**

**CLASSIFIED INFORMATION**

**No Secret At All?** WHEN OVER 7000 PEOPLE READ IT IN ROTAN ADVANCE ROBY STAR RECORD

**HELP WANTED:** Airline jobs \$17,800 to \$68,500/year, now hiring. Call Job Line 1-518-459-3535 Ext. A-8004. For info. 24 HRS. 33:3tc

**NOTICE:** Want to buy old faded, worn out quilts. Call Nathalie's, 735-3122 or 735-2146. 21:tf

**HERE'S THE BEEF!!**  
Texas Consumers Use Newspapers 1st For Shopping

Texas consumers name their local newspaper as the usual source of "Best Buy" shopping information, 10 times more than radio or television.

| Information Sought By Consumers | PERCENT    |       |      |
|---------------------------------|------------|-------|------|
|                                 | Newspapers | Radio | TV   |
| Where To Shop                   | 57%        | 5%    | 9.3% |
| Cost Of Products                | 57.1%      | 3.4%  | 8.3% |
| Best Buy Info                   | 58.6%      | 3.2%  | 7.0% |

Texas consumers look to newspapers FIRST and MOST for news and advice about shopping. Newspaper ad information is decisive and always available for reading and study.

SOURCE: 1984 Consumer Data Service (CDS) Survey of Texas Consumers  
(This newspaper is a member of the Texas Newspaper Advertising Bureau)

**TEXAS NEWSPAPERS**  
For Your Best Shopping Info

**Rotan Advance-Roby Star Record**

**NEED**

- \* Job Printing
- \* Rubber Stamps
- \* Office Supplies
- \* Film Developing
- \* Old Photos Copied

**The Newspaper Office**  
735-2562 Rotan, Texas

**When Is Your Selling**

**CLASSIFIED INFORMATION**

**No Secret At All?** WHEN OVER 7000 PEOPLE READ IT IN ROTAN ADVANCE ROBY STAR RECORD

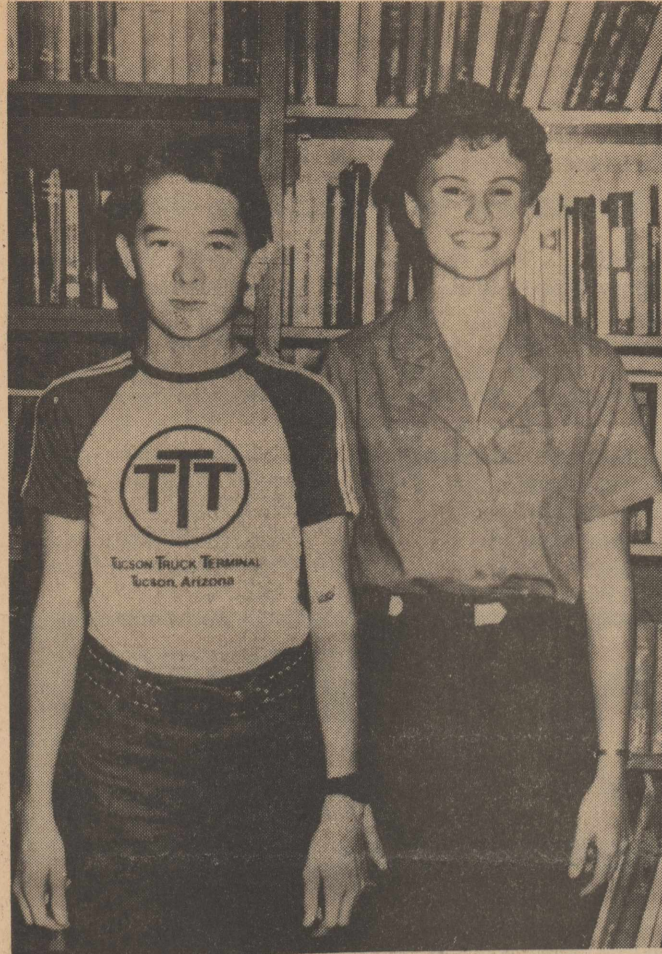
If you've got something to sell... we'll get your message across! And our big readership guarantees you lots of prospects!

**we know PLANTS inside & out**

**Roby Flower, Fabric & Gift Shop**  
Erwin, Maxine & Michelle  
776-2292 Roby, Texas

**Carpet, Linoleum & Carpet Remnants**  
All Work Guaranteed By Professional Installers  
Landes Furniture  
113 Garfield Rotan, Texas





SOPHOMORE CLASS OFFICERS: Jeff Cave and Shanna Bennett.

### News From South Fisher County

By Bertha Warren

Hello from down South.

We sure have been fighting the mosquitoes the last few days.

Callie Shipp is visiting her daughter, Dorothy Walden in Abilene for a few days.

Bobby and Frances Morgan traveled to Pecos to see Linda, John, Shawn and B.J. Clark. They helped their grandson Shawn, celebrate his 15th birthday on Saturday.

Frances' sister, Margaret (Shipp) Hankins had a stroke Sunday at her home in Stephenville and was taken to the hospital in Granbury where she is in I.C.U. Frances and Chris Reddin, Margaret's grandson left Tuesday to be with her. We hope by now that she is out of I.C.U. and on the road to recovery.

Two Fisher County ladies, Helen Thornburg and Bobbie McKinney attended the Texas Extension Homemakers Association at McAllen. There were 900 delegates from all over the state attending. Helen said they had some very informative meetings, met lots of nice people and had a wonderful time.

Helen's mother, Sally Hobbs of Roscoe spent the weekend with the Thornburgs.

Lydia Henry was hostess for the quilting the 18th at the Claytonville-Capitola Community Center. Those present were Vivian Peacock, Norma Toland, Erna Lee Hartgraves, Eugene Rogers, Wanda Justiss, Triva Nepper and Ellen Williams. The next quilting will be Oct. 2nd.

Ollie Ogden attended the funeral services for Clark Taggart Saturday at the First Baptist Church in Rotan. Our sympathy to the Taggart family. Ollie visited with Ed's sister and brother-in-law, Bertha and Frank Sawyer, also on Saturday.

Frank and Dot McCain and Jewel Ratliff visited with Max and Melba Ratliff from Thursday to Saturday at Rising Star. Saturday afternoon Max and Melba and Melba's mother, Lillian Smith left for Cimmarron, N.M. to visit their son, Buster and Cindy. On their return trip they stopped at Dumas to visit their daughter, Treasa and family.

Melissa Dulin and a friend, Stephanie Ingram of Denton visited Jewel Ratliff Sunday

before returning to school. C.W. and Sue Dulin along with Melissa and Stephanie went to Rotan Saturday to see Damon, Shelby and Sunni Shipp.

Erna Lee Hartgraves has a new great granddaughter. She was born Sept. 20 and named Cody Nicole. Her grandparents are Dwaine and Micky Bryant of Covington, La. Parents are Gwen and David Herrin of Ruston, La. She was welcomed home by her brother, David.

Roy and Pauline Kimzey visited with us on Sunday of last week. They live in Sweetwater, but are formerly of the Claytonville Community. Wayne and I went to Snyder Sunday afternoon to visit Steve and Tachi Warren and girls. We had not been over there in some time and really did enjoy our visit.

Well, can you believe it has been two years since the last Hobbs homecoming and its about that time again, so everyone start making plans to attend. I'm sure it will be as good this year as it was in 84 because of the same officers, J.W. and Lee Kincaid, Pat Porter and Peggy Vernon. This year you will get to meet the new Supt., Dale and Annetta Gibson and their children Jenny and Kurt. If you know of anyone who is not on the mailing list, please send a card to Pat Porter, Hobbs School, Rotan, Texas, or call 735-2850 or 735-3337. Help make this year one of the best.

Remember Nov. 1st, Hobbs Homecoming. Call and let us know what's going on in your world.

### 4-H Food Project Group Holds Meeting

Rotan 4-H Food Project Group met Sept. 20 at the community center. We elected officers. President Rebakah Dawes; Vice President Melissa Burk; Secretary Buffy Shipp; Reporter Shana Schooley; Parliamentarian Cassidy Early.

We learned about 5 food groups and how to make lemonade. Jan Posey was our Jr. Leader for the meeting. Ten members were present.

Our next meeting will be Sept. 27 at the community center from 10:00-11:00 a.m.

Options to help agricultural producers and families of Fisher County extend their income will be explained at the annual meeting Wednesday, October 4, of the Rolling Plains Economic Program.

The meeting will be in the Wilbarger County Auditorium, 2100 Yamparika St., Vernon. Registration will begin at 9 a.m. The meeting is free and pre-registration isn't required, but persons planning to attend are asked to contact the

### Rotan Jr. High Defeats Spur Jr. High Team

The Rotan Junior High traveled to Spur last Thursday and walked away with a victory. The Yellowhammers were led by a strong rushing performance by Efrain Pizarro (12 carries for 196 yards and 2 touchdowns) who scored on touchdown runs of 80, 50 and 22 yards. Rotan's final score came on a twenty-five reverse to Joey Thomas.

Leading tackles on the team were Fabian Flores, Danny Warren, Herman Zavala, and Sammy Daniels.

The Junior High travels to Anson Thursday for a game with the tigers.

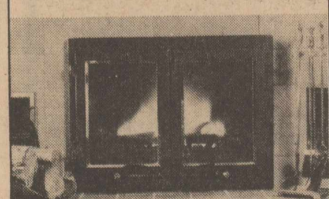
### Martin's To Hold Tire Sale, Oct. 2-4th

Martin's Feed and Garden will have a truck load of tires on hand for their tire sale on October 2, 3 and 4th. There will be a factory representative present to help with tire sales and answer questions. The special prices on Lee tires featured in the ad in this week's paper are for tires mounted and balanced, plus trade-in and sales tax.

Martin's tire department handles Lees, Armstrong and Michelin brands. If they do not have the tire or size in stock you are looking for, they will get them for you. You may get large pickup tires, trailer tires for your cotton trailers, large truck tires, front and rear tractor tires and also the raised letter sports type tires, in addition to regular passenger car tires.

They also fix all size flats, a regular size flat for \$3.50. Come by 301 W. Snyder to see what's going on, or call 735-3261.

### Make Your Fireplace More Efficient.



with Nordic Air-Tight Fireplace Doors

Airtight Means Hotter Fires-Longer Burns-Less Ashes-Reduced Heat Loss.

See Display At The Abilene Fair & At The Snyder Fair  
Special: \$100 Off

- \*Six Sizes Available.
- \*Heavy, 8-ga. Steel.
- \*Sealed With Special Insulation Material.
- \*Special Ceramic Door Glass.
- \*Polished Brass Trim.

**Wood Stoves**  
6 Mi. W. Of City-Roscoe  
I-20, Exit 230  
**766-3948**

## Meeting Offers Farmers Families Options For Better Future

County Extension Office.

"The program is timely to problems facing families in our county," said Richard Spencer, County Agent.

In one of two concurrent sessions beginning

at 9:30 a.m., John Ireland, director of the education department of the Chicago Board of Trade, will discuss ways producers can make best use of futures and options markets.

In the other session,

ways to supplement and extend family income will be explained by Nancy Granovsky, family economics specialist with the Texas Agricultural Extension Service, College Station. In a concluding ses-

sion, Delton Gerloff, Extension management economist at Vernon, will discuss what the Extension Service is doing and can do to expand the future for the farm and family. The Rolling Plains

Economic Program is a regional organization sponsored by the Texas Agricultural Extension Service to promote economic growth and development in a 30 county area.



## Roby Lions Vs O'Donnell

Sept. 26th-7:30-Here

# ROBY LIONS

| Date     | Opponent        | Time | H/T | Us | Them |
|----------|-----------------|------|-----|----|------|
| Sept. 5  | A.C.H.S.        | 8:00 | H   | 0  | 22   |
| Sept. 12 | Miles           | 8:00 | T   | 7  | 0    |
| Sept. 19 | Open            |      |     |    |      |
| Sept. 26 | O'Donnell       | 7:30 | H   |    |      |
| Oct. 3   | Meadow          | 7:30 | T   |    |      |
| Oct. 10  | *Roscoe         | 7:30 | H   |    |      |
| Oct. 16  | Sweetwater J.V. | 7:30 | T   |    |      |
| Oct. 24  | *Aspermont      | 7:30 | H   |    |      |
| Oct. 31  | *Rotan          | 7:30 | T   |    |      |
| Nov. 7   | *Munday         | 7:30 | H   |    |      |

### Roby Lion Boosters

Keifer & Aubry Nell Cauble  
Jerry, Jane, Julie, Jeff & Jill Branson  
B.B. & Nettie Etheredge  
Mr. & Mrs. Jack Terry, Marlon, Donna Kay & Casey  
Larry, Marty & Deena Williamson  
Jerry, Sano, Jeff & Kerri Upshaw  
Jim, Jodie & Warren Huff

The Dutch Parks Family  
Derwayne, Barbara & Shad Rascoe  
Mr. & Mrs. James Cave  
Steve & Kathy Carriker, Jake, Karen & Stephanie

Florence & Charla Wiley  
Olen D, Sandra, Kenlee Dennis & Stephen Henington  
J. Rosemary, Todd & Shawn Donham  
Linda, Teresa, Tina & Tonya McClure  
Ronnie, Manan, Lance & Rodney Green  
Gene, Buelene, David & Sharron Shipp  
Mr. & Mrs. Max Stuart  
Bettie Hargrove

Larry, Terry & Jason Gruben  
The Gayle Morgeson Family  
The Jerry Marshall Family  
Melvin, Velma, Darry, Scott & Pat Thomson  
Lee, Nita & Denise Goolsby  
Mr. & Mrs. Jack Morton & Jeff Terry, Judy, Mark, Marcie & Jodie Mauldin  
Gary, Kathie & Autumn Daniel  
George & Janet Price  
Mr. & Mrs. Jimmy Laurie  
Charles, Norma, Mike & Greg Meek  
B.J., Nell, Kelly & Kathy Hunt  
Rex, Bobbie, Michelle & Amy Beauchamp  
Mr. & Mrs. Micheel Counts, Mike & Matt  
The Kim Pease Family  
Richard, Kathy, Ricky & Reggy Spencer  
Loyd, Lucille, Alvin & Marsha Armstrong  
Mr. & Mrs. Jim Streety & Gerry  
The Bennie LeBleu Family  
Leland, Kathleen & Mary Lee Hicks  
Ronald, Marie & Rhonda Henry  
Bobby & Frances Morgan & Chris Reddin  
Sue, Joe Paul & Karen Barerra

Jimmy, June & Jennifer Wright  
Mike, Jo Ann, Chad, Jason & Jeremy Terry  
Mr. & Mrs. Rudy V. Hamric & Conrad Kenneth, Barbara, Kristy, Debbie, John, Toni & Carl Martin  
Truman, Zelma, Tana, Tammy & Brian Mauldin

### Henry's Quick Stop



Gas, Ice, Deli  
776-2330  
Roby, Texas



"Your Dependable Bank Of Service"

735-2224

Member FDIC Rotan, Texas



Farmer's Union  
Co-op Gin  
776-2237  
Roby, Texas

### FLOWERS



Roby Flower, Fabric & Gift Shop  
Maxine, Erwin & Michelle  
776-2292 Roby, Texas

### H.L. Davis & Co.

"The Friendly Store"  
735-2591  
Rotan, Texas

### Casa Morales

Restaurant  
"Serving The Finest In Mexican & American Foods"  
735-2658  
Rotan, Texas

### Rotan Insurance Agency

Joe D. Burk-Agent  
735-2571  
Rotan, Texas

### Rotan Veterinary Hospital

735-2491 Rotan, Texas

### Weathersbee Funeral Home

735-2255 Rotan, Texas

### F&M Chevrolet-Buick

Yoke Fleming 735-2244  
Murl McKinney Rotan, Texas

### Callan Clinic

Dr. M. Callan  
Dr. B. LeBlou  
735-2211  
Rotan, Texas



Roby Drug  
Mike Harrell-RpH  
776-2431 Roby, Texas

### Midwest Electric Co-op & Employees

Parker Wetsel-Mgr. 776-2244 Roby, Texas



Landes Furniture  
Loys & Larry Landes  
735-3171  
Rotan, Texas



Nowlin Farm Services, Inc.  
735-2371  
Rotan, Texas



City Auto Supply  
735-2242  
Rotan, Texas



Roby Hydro  
Archie & Bettie Rivers  
776-2240 Roby, Texas

### HOMESTATE SAVINGS

Rotan Branch 735-2273



Clinic Pharmacy 735-2500  
Country Pharmacy  
735-2121 Rotan, Texas



Lee's Quality Meats  
\*Custom Slaughtering  
\*Full Line of Smoked & Cured Meat  
\*Wholesale, Retail & Cured Meats  
(915) 773-2201 Stamford, Texas



White's True Value  
Hardware Store  
735-2501 Rotan, Texas

Summers Spraying Service  
735-3477  
Rotan, Texas





FRESHMAN CLASS OFFICERS: Lori Martinez, Mary Martinez, Candi Hayes and Kevin Smith.

### Satin And Jeans To Host Dance

Fisher County Satin and Jeans Square Dance Club's monthly dance will be Saturday, Sept. 27th at the Senior Citizens Building. Area dancers are invited to join members at 8:00 p.m. If you haven't square danced in a while, this Hobo dance would be a good chance to get back into this fun filled activity. Senior citizens, we've missed you. Remember you are welcome to dance between tips or just come visit.

Beginning lessons, sponsored by the club and taught by Tracy Dowell, continue on Monday night, Sept. 29th. All ages are tak-

ing the lessons, which are still open for interested persons. For

further information call Lee and Betty Mauldin at 776-2579.

### Rotan Nursing Center

The residents painted ceramics Thursday getting ready for their craft sale. A few of the residents are still doing handwork in their rooms and stay busy with it.

Roy Bonner is back from the hospital. Maude Gruben has also been in the hospital but is back with us.

Nancy Bagwell went to Hamlin for the weekend to celebrate her

birthday with her family.

Visiting in the home last week was Emily Garrett's niece, Wyvone Cox and husband, from Lubbock. Maurine Mitchell's granddaughter, Connie Wright of Lueders visited her Sunday. Friday, Marie Cobb of Robstown picked up her mother, Nancy Bagwell and took her to Hamlin for the weekend. Lora Cleveland



STUDENT CONGRESS OFFICERS: Jeff Cave, Jan Posey, Lousinda Ramirez, and Evette Gruben.

### F.C. 4-H Organization & Project Leaders Meet

Fisher County 4-H Organization and Project Leaders met Tuesday to make plans for the County Food Show, Foods Project and the entire year of programs for respective 4-H Clubs.

The County Food Show will be Sunday, October 19 at 2:00 p.m. in the Senior Citizen Building.

Leaders who will assist with the Food Show include Carol Posey, Jan Clark, Sheila

Gruben, Karla Roberts, Maxine Burk, Elaine Coleman, and Karen Counts.

4-H members must be enrolled in or have completed a 4-H Foods Project. 4-H Leaders are conducting Foods Projects now. 4-H members desiring to be in Foods Projects and Food Show must make sure to contact their leader to participate in Foods Projects and learn how to prepare for the Food Show.

### Jr. Leaders 4-H Meeting

The Fisher County Junior Leaders met for the first time this year on Sept. 14. At this meeting, officers were elected and they are as follows: President Reggy Spencer; Vice President Charla Wylie; Secretary Mary Lee Hicks; Co-Reporters Jan Posey and Carye

Gruben. We also discussed where we might go on an exchange trip this next year and some community service we could do each month. We decided our meetings would be held on Sundays and if you are interested in joining call Kathy Spencer.

### Roby 3rd & 4th Grade 4-H Club Holds Meeting

The Roby 3rd & 4th grade 4-H club met Friday, Sept. 5 at the Fisher County Annex. They enrolled for the 1986-87 year.

The next meeting will be Oct. 3rd at the Annex. They plan to prepare window displays for National 4-H week and to elect officers.

Members present were: Mike & Matt Counts, Vivian Elliott, Coby & Bryce Moore, Justin Whittaker, Amanda Moore, Taris

Hawkins, Amy Singletary, Kye Lamm, Timothy Moore, Brad Atkinson, Calvin Pippin, Jr., Jeremy Stidham, Leslie Stephens, R.J. Lewis, Rhonda Henry, Mario Barrera, Edward Martinez, Laura Jiminez, Crissi Kiser, Brandy Griffith, James & Chad Arnwine.

Refreshments were served by Mike and Matt Counts.

### TRUCKLOAD TIRE SALE



Martin's Feed & Garden  
Rotan, Texas

October 2, 3 & 4, 1986  
Factory representative will be on hand to help with tire sales and answer questions.

| Prices On Lee Tires |         |
|---------------------|---------|
| P195/75R14          | \$44.95 |
| P215/75R14          | \$48.95 |
| P215/75R15          | \$49.95 |
| P225/75R15          | \$50.95 |
| P235/75R15          | \$53.95 |

These prices include mounting & balancing + trade & sales tax.

Farmers-get your cotton trailers ready. Trailer tires 9.5L & 11L-14 & 15

We Also Have---

- Large Pickup Tires
- Front & Rear Tractor Tires
- Large Truck Tires
- Raised Letter Sports Typo Tires

We Fix Flats!!!! \$3.50 Ea. Reg. Size  
Dealer In Lee, Michelin & Armstrong Tires.

REMEMBER WHEN... with  
**Cakes** JAYE NEICE CLEMENTS  
135-2010  
**Photography**

**Western Wear**  
College Heights Shopping Center  
Snyder, Texas

**LIZARD ROPERS \$119<sup>95</sup>**

**Ropers \$49<sup>95</sup> - \$59<sup>95</sup>**

All Leather No Seconds  
Sug. Retail \$215.00  
Ostrich Belly . . . . \$119.00  
Sug. Retail \$185.00  
Elephant Roper \$99.00

Brown, Grey, Navy, Black, Taupe, Red, Mule Skin (Perfect Work Boot) Powder Blue, Dusty Rose - New Colors

NOW ACCEPTING DISCOVER FINANCIAL SERVICES CARD

We Carry A Full Line Of Office Supplies  
The Newspaper Office  
Rotan, Texas  
735-2562

**Autumn Sale** AT ALLSUP'S CONVENIENCE STORES  
PRICES GOOD SEPT. 25, 26, 27, 1986 WHILE SUPPLIES LAST

**30 YEAR ANNIVERSARY SPECIAL** ALLSUP'S TALLSUP 32 OZ. CUP **39¢** FOR ONLY

ALLSUP'S FRENCH FRIES ONLY **49¢**

IT'S MORE THAN A MEAL! BEEF 'N' SALSA  
ALLSUP'S BURRITOS **\$1.49** EACH

Bean Burritos **2/99¢**

Frito Lay Reg. \$1.59  
Doritos **\$1.09**

BORDEN'S BUTTER-MILK 1/2 GAL. CTN. **99¢**

BORDEN'S ASSORTED ICE CREAM 1/2 GAL. RND. CTN. **\$1.69**

12 Oz. Spam **\$1.49**  
Wesson Oil **\$1.79**  
Libby's Vienna Sausage **3/99¢**

Shurfine Early Peas **4/\$1.00**  
Contadina Tomato Sauce **6/\$1.00**  
Hunts 46 Oz. Tomato Juice **69¢**

Dr Pepper, Diet Dr Pepper, Big Red & A&W Root Beer  
12 Oz. Cans 6 Pack **\$1.99**



**Legal Notice**

Fisher County Commissioners will accept bids for sale of 1982 LTD 4 door car. For further information contact Sheriff Mickey Counts. Bids will be opened Monday, Oct. 13, 1986 at 10 a.m. in the Commissioners Courtroom, Courthouse, Roby, Texas.

Fisher County Commissioners reserve the right to accept or reject any and all bids.

Marshal Bennett  
County Judge  
32:2tc

**Legal Notice**

Fisher County Commissioners will accept bids for telephone system to replace rotary dial. For more information, call County Judge's Office. Bids will be opened Monday, Oct. 13, 1986 at 10 a.m. in the Commissioners Courtroom, Courthouse, Roby, Texas.

Fisher County Commissioners reserve the right to accept or reject any and all bids.

Marshal Bennett  
County Judge  
32:2tc

**Legal Notice**

The City of Roby has for sale two (2) 1979 F-100 Ford Pickup Trucks. Sealed bids will be expected until 4:30 P.M. October 7, 1986. At which time bids will be opened. Both pickups can be seen at Roby City Hall, Roby, Texas. The City reserves the right to reject any or all bids.

32:3tc

**Rotan 4-H Express Club**

The Rotan 4-H Express Club met Tuesday, Sept. 16 in the school cafeteria. Amber Martin presided. They elected officers for the 1986-87 year. They are going to observe 4-H week.

Members present were: Traci Hull, Janet Martin, Eric Smith, Shana Schooley, Missy McKinney, Amber Martin and Penny Tankersley.

Refreshments were served by Amber and Jan Martin.

**Rotan Yellowhammers Take Victory Over Spur Bulldogs**

During Friday night's game with the Spur Bulldogs, Rotan Yellowhammers pass defense was challenged. Spur has two excellent receivers and passing quarterback. The Yellowhammers Jerry Carter blocked three of those passes and Todd Gruben blocked one. Spur was forced to go to the running game with No. 5 Cody White. They proved unsuccessful with the ending score of 19 points to the Yellowhammers 35 points.

Coach Richard Gorman and staff worked during the week of the pass defense and Jerry Carter blocked the pass on a key play with six minutes left in the 3rd quarter.

The most consistent play came with the offensive line: George Reyes, Mitch Whitefield, Darrian Ragan, and David Carreon. Mitch Whitefield gave good pass protection early in the second quarter as Steve Mc-

Clain completed a pass for the first down to Jerry Carter. On that drive, Rotan scored with passes to McClain twice and one to Jimmy Pittman. With 8 minutes left in the second quarter Vicente Ortega, who had an excellent game, scored. When Ortega then attempted to kick the extra point he miss handled the ball and elected to run it in for the 2 point conversion.

With 1:21 left in the second quarter Spur close to it's final score gets pressure from George Patterson, who caused a fumble and Todd Gruben picked up the ball and runs untouched for the score.

During the 4th quarter, Steve McClain gained long yardage on a keeper play. Then on a goal to goal situation, McClain scored with an impressive fake by George Patterson. Brad Long also scored with a long run down the side line after a beautiful block by George Reyes.

McClain also scored the final points with a good run from the Yellowhammers 42 yard line.

On defense 4 of the Yellowhammers had outstanding tackles.

Ortega, who seemed to be in on several plays had 9 unassisted tackles and 5 assists, Kenneth Warren had 10 unassisted and 3 assisted, George Reyes had 6 unassisted and 7

assists. Steve Dickson was busy with 3 unassisted and 7 assisted, one for a loss of 7 yards. Nathaniel Wynn had a good night especially when he was able to prevent long

yards to be gained by Spur during the second quarter with a solid tackle. The best hit for the night was when Joe Almanza nailed the quarterback causing an incomplete pass and a

loss of 5 yards on the play.

Next week, the Yellowhammers will face a good running team here against Anson. This should be an exciting game.



**Rotan Yellowhammer Boosters**

James & Dianne Ratliff  
The Jerry Marshall Family  
Ken, Susan & Lonnie Foster  
The Bennie LeBleu Family  
Bettie Hargrove  
Florence & Charla Wiley  
Richard, Kathy, Ricky & Reggie Spencer  
Mr. & Mrs. Max Stuart  
Dwight & Irene Nowlin  
Harold, Carol & Rocky Roberts  
Jimmy, Jodie, Jamie & Julie Grisham  
The Bob Harbin Family  
The James Carter Family  
Leo, Relna, Brad & Dilana Long  
Donnie Powell  
Roger, Josie, Amy & Laura Blackwelder  
Neal, Donna, Jason, Dustin & Sabra Hargrove  
Tom & Janis Collins  
Mr. & Mrs. Pat Zambrano & Family  
Nathan, Tammie, Guy & Lindy Kelley

Mr. & Mrs. Billy Henderson  
Robin, Karla & Brandy Roberts  
Mr. & Mrs. Rudy V. Hamric & Conrad  
The Donald Gruben Family  
Mr. & Mrs. Truett Strickland  
Donald, Shirley, Shannon & Phillip Hull  
Mr. & Mrs. W.B. Hardin  
Joe, Linda & Blake Morrow  
Norvelle, Donna, Katie, Byron & Lauren Kennedy

Mr. & Mrs. Joe G. Martinez  
Glenn & Janice Copeland  
The Kim Pease Family  
Billie Jo & Vera Ellen McCombs  
Calvin & Glenna Crow  
Wayne, Dot, Mark & Robin Harris  
Kennith, Barbara, Wes, Tuyla & Kimmia Hardin

**Rotan Yellowhammers Vs Anson Tigers**  
Sept. 26th-8:00-Here

| Date     | Opponent                | Time | H/T | Us | Them |
|----------|-------------------------|------|-----|----|------|
| Sept. 5  | Robert Lee              | 8:00 | H   | 19 | 0    |
| Sept. 12 | A.C.H.S.                | 8:00 | T   | 21 | 14   |
| Sept. 19 | Spur                    | 8:00 | H   | 35 | 19   |
| Sept. 26 | Anson                   | 8:00 | H   |    |      |
| Oct. 3   | Hawley                  | 8:00 | T   |    |      |
| Oct. 10  | *Munday                 | 7:30 | T   |    |      |
| Oct. 17  | *Aspermont              | 7:30 | T   |    |      |
| Oct. 24  | *** Roscoe (Homecoming) | 7:30 | H   |    |      |
| Oct. 31  | *Roby                   | 7:30 | H   |    |      |
| Nov. 7   | Open                    |      |     |    |      |

**Rotan JV Takes Victory Over Spur JV Team 19-0**

The Junior Varsity wins again! The defense stopped Spur on a 1st and goal from the one yard line to preserve the shutout 19-0.

The Yellowhammers scored first on a 10 yard touchdown pass from Kevin Smith to Willard Roddy. On the very

next possession the two teamed up again this time for an 80 yard touchdown pass.

Kevin Smith later tackled on an additional touchdown run of 2 yards and Lonnie Foster added the extra point as the J.V. improved its record to 2-0.

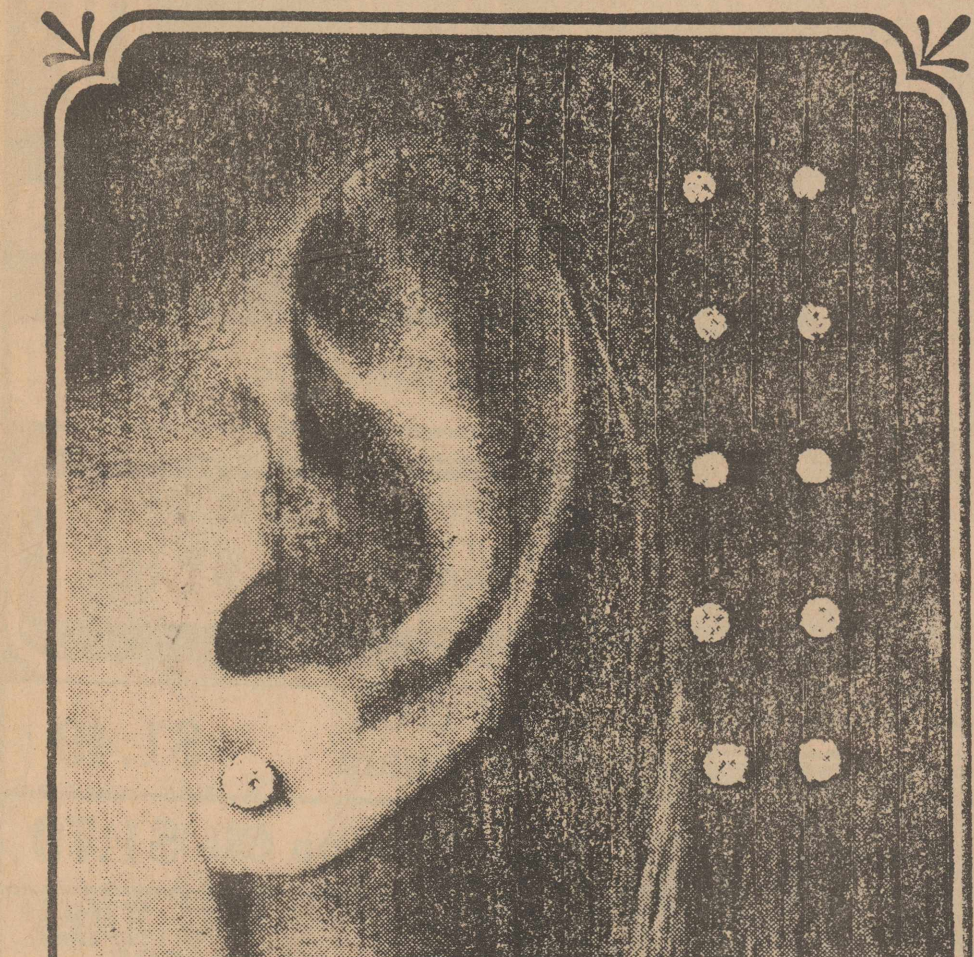
**Rotan Class 1976 Reunion**

The Rotan Class members of 1976 will meet Thursday, Sept. 25 at 7:00 p.m. at Homestate Savings.



**Happy Birthday Honey**

Love, Your Wife & Son



**Precious Diamond Earrings in 14K Gold**

What they've always wanted at prices you can afford.



In Store Charge Account

Hancys Jewelry

3203 College Ave.

573-1508



"Your Dependable Bank Of Service"

735-2224

Member FDIC Rotan, Texas



JOHN M. COX

212 W. Snyder Rotan, Tx. 79546 915-735-3553

**Higginbotham-Bartlett Lumber Co.**

Greg Rains-Mgr. 735-2215 Rotan, Texas

**Casa Morales Restaurant**

"Serving The Finest In Mexican & American Foods" 735-2658 Rotan, Texas

**KNIGHT'S MEAT and LOCKER**

\*Custom Processing \*Individual Meat Sales from 1 lb. to 1,000 lbs. D.L. KNIGHT 217 W. Snyder Rotan, Tx. 79546 HERSHEL SHIPP 619-735-2541 after hours 735-2512

**LARRY'S AUTOMOTIVE**

GENERAL AUTOMOTIVE REPAIR LARRY CALLAN, OWNER TELEPHONE (915) 735-2425 P.O. BOX 394 ROTAN, TEXAS 79546

**S&L Shamrock**

735-3500 Rotan, Texas

**Rotan Insurance Agency**

Joe D. Burk-Agent 735-2571 Rotan, Texas

**Gold Bond Building Products**

Division Of National Gypsum Company Rotan, Texas

**H.L. Davis & Co.**

"The Friendly Store" 735-2591 Rotan, Texas

**Summers Spraying Service**

735-3477 Rotan, Texas

**Farmers Gin Company**

735-2572 Rotan, Texas

**Callan Clinic**

Dr. M. Callan Dr. B. LeBlou 735-2211 Rotan, Texas

**F&M Chevrolet-Buick**

Yoke Fleming 735-2244 Murl McKinney Rotan, Texas

**City Auto Supply**

735-2242 Rotan, Texas

**Teague Grocery**

Evonne & Jackie Teague 735-2556 Rotan, Texas

**HOMESTATE SAVINGS**

Rotan Branch 735-2273

**Clinic Pharmacy Country Pharmacy**

735-2500 735-2121 Rotan, Texas

**Weathersbee Funeral Home**

735-2255 Rotan, Texas

**Midwest Electric Co-op & Employees**

Parker Wetsel-Mgr. 776-2244 Roby, Texas

**Garcia's House of Flowers & Gifts**

113 S. Snyder Ave. Roby, 915-735-3429 Rotan, Texas Home 915-735-3174

**Nowlin Farm Services, Inc.**

735-2371 Rotan, Texas

**White's True Value Hardware Store**

735-2501 Rotan, Texas

**Landes Furniture**

Loys & Larry Landes 735-3171 Rotan, Texas

**Rotan Flower Shop**

735-2261 Rotan, Texas

**Smith & Cyphers Gulf Service Station**

735-3461 Rotan, Texas

**Rotan Veterinary Hospital**

735-2491 Rotan, Texas

**Lee's Quality Meats**  
\*Custom Slaughtering  
\*Full Line of Smoked & Cured Meat  
\*Wholesale, Retail & Cured Meats  
(915) 773-2201 Stamford, Texas  
Lee Walston-Owner

**Nu Tone Cleaners**  
115 W. Snyder 735-2552 Rotan, Texas

**First Baptist Church**  
735-3471 Rotan, Texas

**Price's Boot & Barber Shop**  
Rotan, Texas

**EXXON Carrillo Exxon**  
735-8005 Rotan, Texas

**D. E. DOZERS**  
ROTAN, TEXAS  
OIL FIELD & FARM & RANCH SHOP  
FULLY INSURED 915/735-2192  
DONNIE EATON DALE EATON  
915/735-2335 806/254-2235



## State Capital Highlights

Like the Texans at the Alamo who held as long as they could, House Speaker Gib Lewis last week was overrun by the waves of pro-tax legislators led by Gov. Mark White. White had a good week, all the way around.

Lewis and his band of anti-tax House members had held out for a month and a half. They had hoped to force more budget cuts and forestall tax action until the regular session convenes.

But matched against a determined governor and a willing Senate, they crumbled under the odds. Even most skeptics now agree the beleaguered re-election campaign of Gov. Mark White just bottomed out and is on the rebound. The tax victory will at least silence complaints that White cannot exercise leadership in the Legislature.

Last week's Democratic victory in an East Texas special election, 58 to 42 percent, was touted as a clear message of support for White.

White was feisty enough last week to blast President Reagan once more for failing to impose an imported oil fee and a slap at Bill Clements' charge he has no influence with the White House.

### WRITING ON WALL

Only the day before his reversal, Speaker Lewis criticized senators for failing to make more budget cuts. Overnight, he must have read the writing on the wall.

Some pro-tax legislators were prepared to sabotage efforts to lower the deficit, even as the state approaches the day when it will write hot checks. In the face of all that, and with time running out, Lewis decided the inevitable had better be done quickly.

Most Capitol watchers think it's just a matter of a few more days before the sales tax is raised another 1 1/8

cents, even though the anti-tax House faction is very much alive and well.

### LAST HURDLE

Now that Lewis has agreed to support White's tax plan, the last major hurdle the governor must leap is the Ways and Means Committee, where the tax bill has languished.

Last week, after Lewis' reversal, the committee began public hearings on tax proposals. Dominated by GOPs, and conservative Democrats, the panel is not likely at this time to send a favorable tax report to the floor.

The anti-tax bunch also pushed the House to approve a ban on state income taxes, which pro-tax folks say will die in the Senate, and they'll try to stonewall a sales tax hike unless the Legislature settles the budget cuts issue.

But since the pro-tax forces have maneuvered around Speaker Lewis, they're thinking victory, not compromise.

Instead, lawmakers favoring a tax hike are hoping to get enough votes to wrangle at least an unfavorable report out of committee and to the House floor. There, they'll try to leverage enough votes to pass the tax and send it to the already willing Senate.

### TEXAS SUPREME COURT

Texas Chief Justice John Hill last week said Lewis and Lt. Gov. Bill Hobby have joined his campaign to have Texas judges appointed by the governor instead of elected.

Last week, the State Bar declined to take a position and will poll Texas lawyers on which method they favor. State Bar president William Whitehurst said the issue is too divisive. The other Texas Supreme Court justices agree.

Hill's plan would have a 15 member commission submit three nominees to the gover-

nor, who would appoint his favorite. So far, Gov. White says he favors elected judges.

### CAMPAIGN JABS

Highlights from the campaign trail, where the numerous charges and countercharges were slung:

\*State Senator-elect Richard Anderson was sworn in last week following his special election win over Edd Hargett. The GOP lost a legal battle which claims Anderson violated the Constitution by not first resigning his county judgeship.

\*The Mark White campaign committed another of those pesky mailing list mistakes by

sending a letter to his opponent's wife, asking for \$10,000. Former Texas First Lady Rita Clements declined to send a contribution.

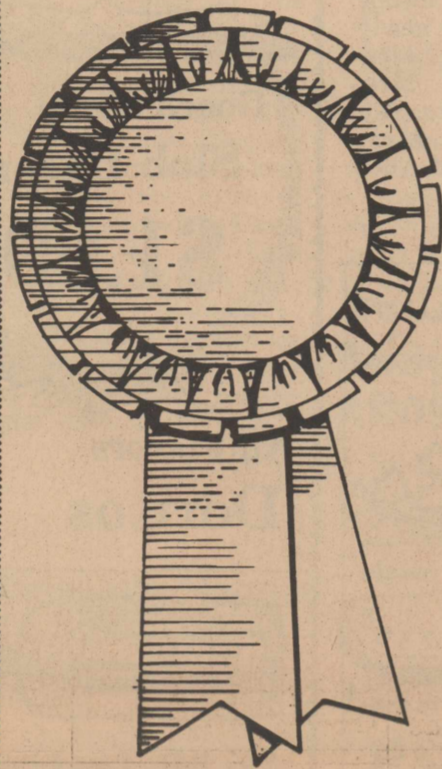
White and Bill Clements have started up the television ads war early, and both are running negative image messages about the other.

Clements had laid off for awhile, presumably by attacking White while the Legislature grappled with the budget crisis.

But with polls showing him trailing Clements, White launched another media blitz, and Clements didn't waste much time getting back into the fray with his own commercials.



ROBY JV: Gerry Streety #10 for the Roby Lions during a recent game as the Lions were pitted against the Rotan Yellowhammer Jr. Varsity team.

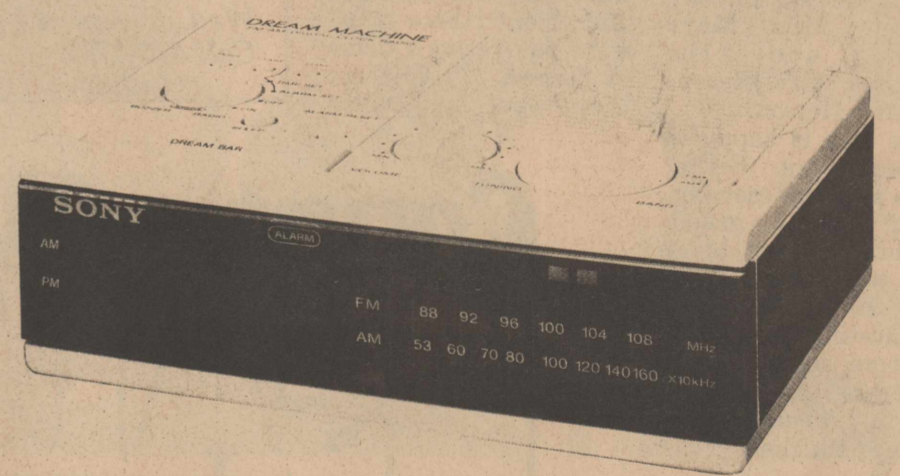


# GAZETTE

**FARIBO  
PAK-A-  
BLANKET**



**SONY  
AM/FM  
DREAM  
MACHINE  
CLOCK RADIO**



NOW ONLY  
**\$12.95**  
REG. \$22.00

NOW ONLY  
**\$16.95**  
REG. \$24.95

**The Newspaper Office**

735-2562

Rotan, Texas

**FAST Printing Service**

The Newspaper Office  
735-2562

**When Is Your Selling**

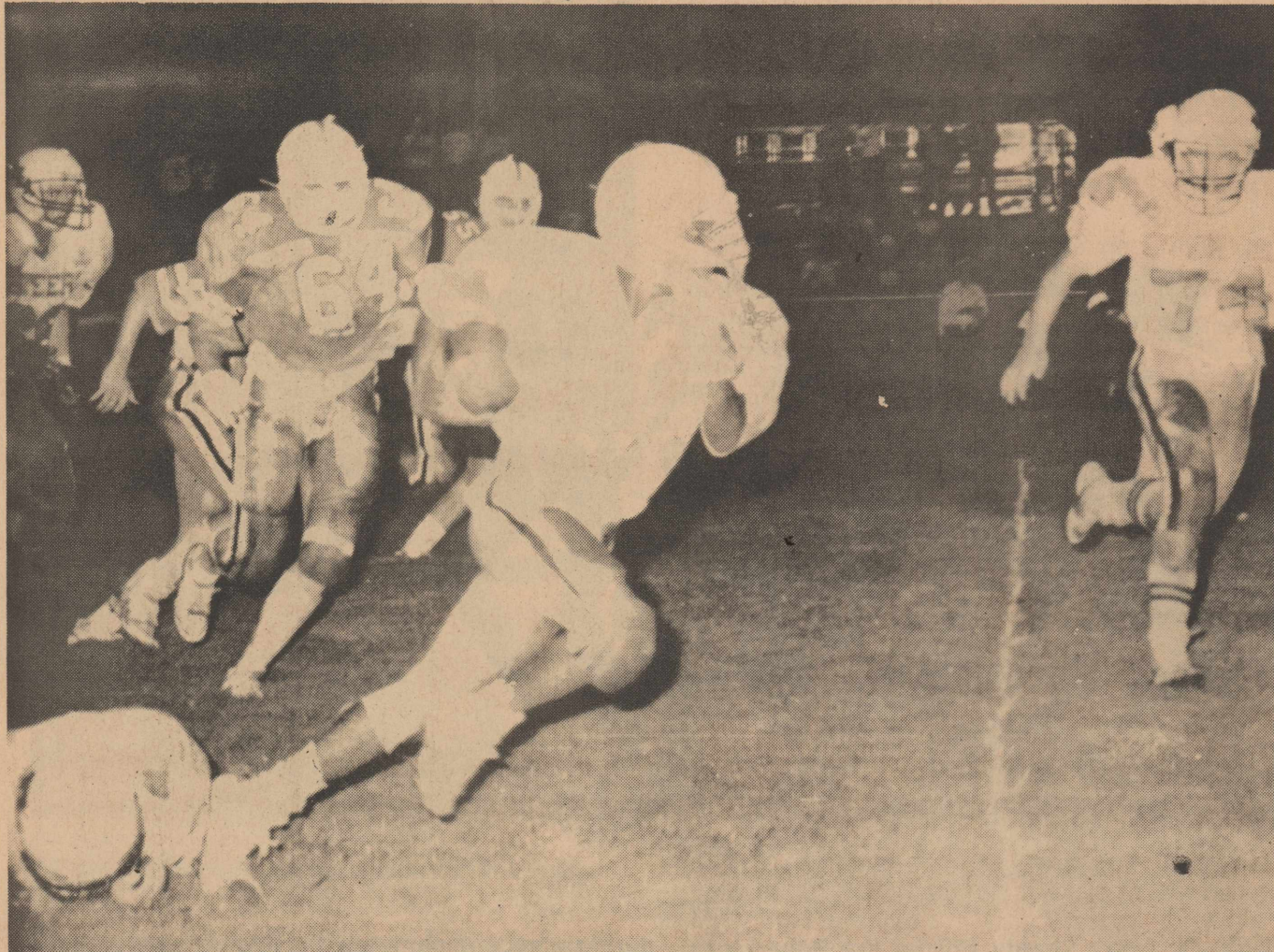
**CLASSIFIED INFORMATION**

**No Secret At All?**

WHEN OVER 7000 PEOPLE READ IT IN ROTAN ADVANCE ROBY STAR RECORD

If you've got something to sell...we'll get your message across! And our big readership guarantees you lots of prospects!





**SPRINTS TOWARD GOAL:** Kevin Smith of the Rotan Yellowhammer JV Squad sprints toward the goal for a touchdown as the Yellowhammers defeated the Roby Lions in a recent JV game.

### Fisher County 4-H Club Holds Meetings

The Fisher County 4-H Club met on Monday's Sept. 8 and 15th in Anson. The club and their leaders attended a two day 4-H Food and Nutrition Workshop, hosted by Jones County. Tips for the workshop were: Meat Identification and Selection; Stir Fry Fajitas; Making Tortillas; Roast Peppers; Crepe Cooking and Menu Planning.

Members present were: Mike and Matt Counts, Jessica Moore, Audra and R.J. Lewis, Kelly McWilliams, Rhonda Henry, Monica Pullig, Jennifer Kincaid, Zachary Clark, Stephanie and Buster Frierson, Jason Gruben, Ben and Amy Singletary, Anita Floyd, Linda Castor, Mike and Vivian Elliott, Martha

Billingsley, Sybil Gonzalez, Karen Barrera, Joanna Chaveria, Mario Barrera, Robert Vahlenkamp, Michelle Burk, Mary Lee Hicks and Rachel Petty.

Adults attending were Alice Ballenger, Charla Moore, Karen Counts, Jan Clark, Marie Henry, Sally Elliott, and Terry McWilliams.

(915) 573-5937 **SMITH'S MUSIC PLACE** JESUS IS LORD!  
 SNYDER'S COMPLETE MUSIC STORE  
 J.D. SMITH, Pres.  
 DONNA SMITH, Treas.  
 JON ALAN SMITH, Vice Pres.  
 PAM SMITH, Vice Pres.  
 GARY LINDSEY, Sales Rep.  
 P.O. BOX 1384  
 2509 COLLEGE AVE.  
 SNYDER, TEXAS 79549

### McCaulley Demonstration Club Meets

The McCaulley Home Demonstration Club met Tuesday, Sept. 16th. New officers were elected as follows: President, Mrs. David Estes; Vice President, Dycie Kemp; Secretary, Elaine Coleman; Reporter, Mrs. Monroe Tabb; Council Delegate, Eddie Brigham.

Alice Ballenger presented a program on "The Battle of the Bulge." Refreshments were served by Elaine Coleman to the newly elected officers, Mrs. Martin Decker, Mrs. Gene Wilcox, Mrs. Addie Maberry, Mrs. Julius Decker and Alice Ballenger.

### Hustling Around Hobbs

By Joy Walker

Well, this wind we are having almost every day should dry out some of the fields, unless of course it should rain again. It has been so hot some days, just like summer time, and when its that hot, we usually get a cloud and some rain.

#### Secret Pal Club Holds Meeting

Mrs. Willia Dean Reaves and Mrs. Lillie Herron were hostesses to the Secret Pal Club recently at the Fisher County Senior Citizens building in Rotan.

Members present were Mrs. Emma Lloyd Morris, Mrs. Opal Burch, Mrs. Frankie Harris, Mrs. Ruth Hammer, Mrs. Clyde Farrar, Mrs. Annie Lee Martin, Mrs. Lucy Neal, Mrs. Florine Swaringen, Mrs. Hazel Hudnall, Mrs. Bessie Eaton, Mrs. Treasa Dycus, Mrs. Maggie Briggs, Coese Palmer, Mrs. Gaynell Henry, Mrs. Clara Rogers, Mrs. Bertha Allen, Mrs. Lorena Darden, Mrs. Mary Allen, and the hostesses, Mrs. Reaves and Mrs. Herron.

The club is happy to welcome Mrs. Esther Jones as a new member.

Buffy Shipp, granddaughter of Mrs. Mary Allen was a guest.

At the conclusion of the meeting refreshments were served buffet style.

Mrs. Lorena Darden returned thanks.

#### Attended Funeral

Local friends and relatives of the former Miss Texas National Teenager, Rebecca Ann (Graham) Stephens, who attended her funeral in Ft. Worth on Tuesday were: Mrs. Cindy Posey, Snyder, Mrs. Ted Posey, Mr. and Mrs. Bob Terry, Mrs. Thurman Terry, Mike Terry, David Gaona, Ricky Morton, Ruben Castillo, Francis Morgan, Pauline O'Briant, Roland Ray, Melanie Ray, all of Roby; Mike Wilburn, Abilene; Mr. and Mrs. Glenn Gabel, Rotan; Tom Ray, Austin; Rod Young, Ft. Lauderdale, Fla.; Julius Decker, McCaulley; Mrs. Bessie Decker, McCaulley; Johnnye Blakely, Grapevine; Homer and Altie Freeman, Coppell; Gynetta Borg and Patricia O'Briant, Arlington.

Etheredge spent Sunday night and part of Monday with their grandparents, Mr. and Mrs. J.W. Etheredge. They are the children of Mr. and Mrs. Todd Etheredge.

Jeffrey Martinez and Mrs. Sara Jara, both from Ft. Worth spent the weekend visiting with the Rudolph Martinezs. Jeffrey is their son and Mrs. Jara is Rudolph's sister.

Buddy Burnett rode shot gun on the stage coach in the sanctioned Sesquicentennial Lone Star Wagon Train on Friday. They left Snyder at 7:30 and went to Colorado City and then rode in the big parade they had. This particular wagon train left Weatherford July 7th and will wind up November 30th in Austin.

Mrs. Bea Hardin has been gone two weeks as her son, Wesley, has again been in the Baylor Hospital in Dallas. Joe Hardin from Merkel came after Be on Wednesday and she spent the night in Merkel. Thursday they met Wesley in Eastland and from there they went to Wesley's home in Strawn. From there they went to Dallas

where they stayed from Thursday until the following Saturday. Wesley had some more surgery on his heart. He seems to be doing fine and got to come back to Strawn this Saturday. Be came home with Mr. and Mrs. Larry McBeth Sunday evening. We hope that Wesley will continue to improve after his recent surgery.

Mrs. J.D. Kincaid is still going to the doctor in Abilene every day. She may be feeling a little better, we sure do hope so. Know that the trip to Abilene is very tiring for her, especially having to go every day except Saturday and Sunday.

Jim and I went to watch the Rotan-Spur football game Friday night at Rotan. Then Saturday we went to

Abilene for the day. Sunday I spent the day with Carye Gruben at her house and then that night we went to Evette Grubens where we all spent the night. The Donnie Grubens and the Wilber Grubens were all in Midland as Donnie Carl had knee surgery early Monday morning after extensive tests the doctor made last Friday. We heard from them after the surgery, and the doctor said he repaired all the torn ligaments, etc., and now its a long time of waiting for it to heal and physical therapy etc.

Not too much news this week, as everyone has been staying close to home.

See you next Thursday.

**Dr. Bryan Cave**  
 Eye Examinations  
 Contact Lenses (All Types)  
 Children Welcome  
 Snyder, Texas

Cogdell Center Office Hours  
 (915) 573-5571 Or Mon. 9-6:00 p.m.  
 Wed., Thurs. & Fri. Tues. 8-5:00 p.m.  
 Call 573-4792  
 Lubbock Office (806) 797-4216

## Country Basket

# SALE \$1.89

Crisp, tender, chicken-fried fingers of 100% beef, golden fries, Texas toast and creamy country gravy. That's the one and only Dairy Queen Country Basket. So come on by for the Texas taste that's just this side of heaven — now at a heavenly sale price!

Friday, Sept. 19 thru Sunday, Sept. 28

**Dairy Queen**



NOW WITH FOUR NEW SAUCES

"better than ever."

Copyright 1986 Tex. D. Q. Corp. All Rights Reserved. TM Trademarks of the Tex. D. Q. Corp. Registered Trademark Am. D. Q. Corp.

## FAVORITE FALL FOODS

FREE EACH WEEK TV SCHEDULE FAMILY FUN BOOKLET

**Teague Grocery**  
 We Appreciate Your Business  
 Rotan, Texas  
 Specials Good Sept. 25-30, 1986

WE GIVE



Hormel 12 Oz. Spam \$1.99



Parade 5 LB. Sugar \$1.79

Limit One Please

Gooch Sliced Slab Bacon \$1.89 LB.



Parade Cut 303 Can Green Beans 49¢

All Flavors Doritos Reg. \$1.59 \$1.19



1 1/2 LB. Loaf 69¢

Parade Bread 69¢

Coca Cola 2 Ltr. \$1.29 12 Oz. Cans 6/\$1.99

Wooden Tulips, Amish Dolls and Watermelons - much much much more!  
**Nathalie's**  
 735-3121 ROTAN, TX.

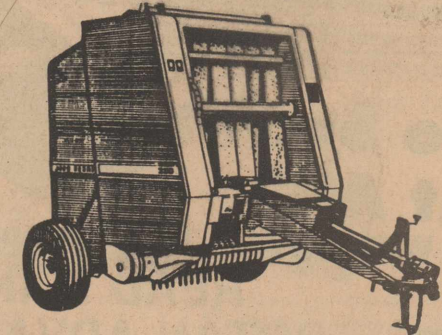
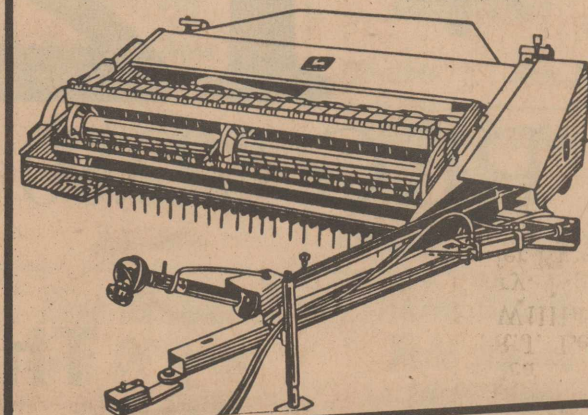
## JOHN DEERE HAY AND FORAGE EQUIPMENT

# SAVE BIG and then some

John Deere has made us a deal that will save you a bunch. Big pass-along savings on hay and forage equipment are available to you right now. Come in and save big and then save more by waving finance charges good-by to March 1, 1987. OR take a big discount in lieu of finance waiver.\* There's also a finance waiver to January 1, 1987, on used John Deere hay and forage equipment. And you can get customer discounts up to \$3,000 on hay equipment and up to \$850 on pull-type forage harvesters.



\*Availability of John Deere financing subject to approval of credit. This offer may be withdrawn at any time.



**Farm Tractor & Service, Inc.**  
 309 South Cleveland  
 Rotan, Texas 79546

735-2252 or 735-2253

or 735-2254