

County Hospital Taxes Could Increase

The members of the Fisher County Hospital Board, during a meeting last Thursday, July 17th, held preliminary discussions on the 1987 operating budget for the Fisher County Hospital District.

According to preliminary figures presented to the board by Fisher County

Hospital Administrator Gary McGee, it is going to take approximately \$1,892,512 in income to operate the facility in 1987.

In his presentation, McGee broke down the \$1,892,512.00 into four funding areas. (1) hospital operating cost \$1,440,457.00; (2) clinic operating cost

\$185,725.00 (3) debt service of \$241,330 and acquisition and replacement of equipment of \$25,000.00. He anticipated needing \$1,892,512.00 to operate the facility in 1987.

McGee projected income in six areas as follows: (1) Hospital occupancy income of \$1,149,600.00. This is

based on 35% occupancy or 3,832 days at \$300 per day. (2) Contractual adjustments of \$100,000.00 an anticipated payback to Medicare (3) Pass through payments \$108,000.00 (4) clinic income \$264,000 (5) uncollectable accounts of \$113,088.00 and income from taxes of \$584.00.

Assuming these figures hold, this would generate the \$1,892,512.00 to meet expenses.

The \$584,000.00 McGee anticipated generating in income from taxes is based on a taxable value of \$243,330,725.00 taxes at .24 cents per \$100.00 valuation. This is an in-

crease over the \$502,149.00 generated this year at a tax rate of .17 1/2 cents per \$100.00 valuation.

The big decrease in taxable values is in the area of oil and gas. In 1983 mineral values in Fisher County to \$244 million; it slid to \$213 million in 1984 to \$198 million in 1985 and it is projected to be down to \$154 million for 1986.

The total projected budget for 1987 of \$1,892,512.00 is approximately \$80,000.00 less than the 1986 budget, according to Gary McGee, Administrator.

Board members are studying the 1987 budget and will be further briefed at the August board meeting.

Hospital Board Dismisses Firm, Hires G. McGee

Fisher County Hospital Board members unanimously voted to exercise their 60 day escape clause and dismiss the Fisher County Hospital management firm of Capitol Medical Resources (Dan Powers) of Austin, Texas immediately. The contract will be terminated on September 16th.

Powers, as head of the YDP Corporation and later Capitol Medical Resources, has had the management contract at the local facility since October of 1982.

It is anticipated that the cancellation of the contract with CMR in Austin, Texas will save the hospital some \$20,000 in annual fees.

In the same motion to dismiss the Capitol Medical Resources, board members voted to hire current Administrator Gary McGee as the administrator/consultant at the facility.

McGee is currently acting as the Fisher County Hospital Administrator under contract with Capitol Medical Resources.



Hereford Site

Several weeks ago we mentioned in the column that Hereford, Deaf Smith County, was a potential site for a high level nuclear waste dump. Since Hereford is approximately 4 hours to the north of Fisher County and since water runs downhill, we should be as concerned as the High Plains residents about the selection of this site.

Below, Senator Lloyd Bentsen, had some remarks concerning this selection and what he is doing to hopefully prevent this "plum" from being placed in the Lone Star State.

The President announced in May that the Search for the nation's first high-level nuclear waste dump site has been narrowed down to three Western states, one of them Texas.

On the day of that announcement the Secretary of Energy revealed that he was "indefinitely postponing" the search for a second permanent dump site in the Eastern U.S.

These two decisions, announced on the same day, mean that Texas could wind up hosting the first, and only, nuclear dump in the country.

Both decisions are unwelcome to Texans, the second made more so by the fact that it was totally unexpected.

Secretary of Energy John Herrington, maintained that declining amounts of civilian nuclear waste eliminate the need for a second repository. That is not correct. It tells only half the story, omitting the fact that the amount of military nuclear waste is increasing.

It is true that the energy department's total estimates of need have declined. In 1982 they estimated we would have accumulated 140,000 metric tons of nuclear waste requiring storage by the year 2020, some 20 years after the first dump is scheduled to open. Today, they have cut that estimate to 130,000 tons.

But the first nuclear waste repository wherever it is built, is limited to a capacity of 70,000 metric tons—barely over half of the storage space that will be needed.

I have written Secretary Herrington pointing out the impracticality of his decision and noting the shortfall in storage capacity that it would create. I also testified about the problem at a recent hearing of the Senate Energy Committee.

Compounding the shortfall problem, of course, is the fact that if this national winds up building a single nuclear waste repository in a Western state we'll have to transport a lot of waste generated in Eastern states a long way.

I have also written U.S. Comptroller General Charles A. Bowsher, seeking a ruling on the legality of the Secretary's action.

I believe he is in violation of the Nuclear Waste Policy Act, which clearly requires him to recommend to the President six potential sites, three for a first repository and three for a second.

This is much more than a legal technicality, it is a major change in policy since the understanding all along has been that the first nuclear waste dump in the West would be followed by a second in the East.

Both the law and common sense clearly indicate the Secretary's decision was a mistake. I am continuing my efforts to turn it around.

Roby Star-Record

The Voice Of Fisher County Since 1907

ROTAN ADVANCE

VOL. 78 NO. 24

THURSDAY, JULY 24, 1986

EIGHT PAGES

35¢ Plus Tax

Nineteen 4-Hers Will Make Montana Trip

A total of 19 Fisher County 4-H members will be taking part in the first leg of an exchange program with 4-H students in Montana when they depart for an 8 day stay on Sunday, July 26th in Custer County, Montana, according to Fisher County Agent Richard Spencer.

The group will leave Fisher County early Sunday July 26th and return late the following Sunday, August 3rd.

Those 4-H members planning on making the trip include: Kathi Mize, Jerry Carreon, Kenlee Dennis, Reggie Spencer, Rocky Roberts, Julie Pease, Shad Rasco.

Matt Floyd, Donna Kay Terry, James Gantt, Stephen Henington,

County Line, Cottonwood Flat Reunion Aug. 3rd.

The annual reunion for County Line, Cottonwood Flat, and Riverdale Communities will be Sunday, August 3rd at the Rotan Community Center. Everyone is asked to bring a covered dish for the noon meal. Bread, drinks, plates and utensils will be furnished. Those interested are urged to attend and help make this reunion a success.

Benny Carreon, Carye Gruben, Kim Justiss, David Shipp, Norris Green, Jr., Michelle Burk, Joey Teague and Donnie Carl Gruben. Sponsors for the trip

are Mr. and Mrs. Erwin Burk, Kathy Spencer and Mr. and Mrs. Harold Roberts.

Tish Fowler Is Named To Texas Tech Dean's List

More than 1,900 Texas Tech University students qualified for the academic honors lists at the end of the 1986 spring semester.

Students making the honor rolls included the following from Rotan: Tish Fowler, Rt. 1, Dean's List.

Texas Health Department To Give Shots

The Texas Department of Health will be providing immunizations at the Roby annex on Wednesday, August 6, 1986 at 9:15 a.m. - 12:00 p.m. and 1:00 p.m. - 3:30 p.m. If you have any questions, please don't hesitate to contact us at 235-8368 or 776-2178.

Remember that school starts soon and we need our shots.

Roby Baptist Church VBS

The members of the First Baptist Church of Roby will be holding their annual Vacation Bible School beginning on Monday, August 11th and continuing through Friday, August 15th, according to Rev. Alvin Petty, Pastor.

The Vacation Bible School Director is Kathi Spencer. Ages for the school will be three years through the 6th grade.

There will be a special Commencement Service at noon on Friday, August 15th.

County Schools Measured In Research League Report

According to a report released by the Texas Research League—entitled "Bench Marks For 1986-87 School District Budgets In Texas" the Roby Independent School District ranked highest of the three school districts in Fisher County taking the October 1985 TEAMS tests administered to 11th graders. An average of 50 on the test indicates the students in the

district on the average could be expected to rank at the average for students in all states.

In the below information (sections 25-27)

Roby students had scores of 57 in math, 57 in reading and 52 in writing. Rotan students scored 39 in math, 36 in reading and 48 in writing. McCaulley students had scores of 25 in math, 24 in reading and 34 in

writing. While Roby scored above the national average in all three categories, Rotan and McCaulley were below the average.

Rotan had the highest ADA (average daily attendance) in Fisher County. They reported an ADA during the 1984-85 school year of 469 while Roby had 342, McCaulley had 113 and Hobbs 26.

The Hobbs School spent the most money

on administration (section 2) with Roby allocating the least amount of any school district in Fisher County.

Administration covers the overall administration of the entire school system and administration of a school or campus. It includes salaries of superintendent, principals, administrative staff and personnel who supervise and coordinate

instruction. Hobbs spent \$3,056.34 per student; McCaulley spent \$1,211.70; Rotan-\$549.31 and Roby-\$421.25.

In the transportation section of the Report, Rotan's district used the fewest dollars to transport students while Hobbs expended the most in transportation funds. Hobbs spent \$1,599.96 per student enrolled for transportation. McCaulley ex-

pended \$234.37; Roby spent \$146.77 and Rotan spent \$49.17.

In the area of debt per ADA, Roby had the highest figure (\$1,632.20 per student) while McCaulley reported no debt as of 8-31-84. Rotan had \$852.93 and Hobbs had \$966.74.

In area 17 (teacher's salaries) all four Fisher County schools fell below the state wide

average of \$23,281 per teacher including career ladder funds. The counties highest paid teachers were at Roby where the average was \$20,983.00; Rotan's teachers averaged \$20,945.00; McCaulley's-\$20,758.00; and Hobbs-\$18,455.00.

The average administrator at Hobbs was paid \$44,146.00; at Rotan \$34,339; at McCaulley \$33,353 and at Roby \$32,397.00.

In section 21 of the report, the four Fisher County schools fell below the state-wide average of 16.3 pupils

per classroom teacher. At Hobbs the average was one teacher per 6.5 students; McCaulley was one classroom teacher to each 11.3 students, at Rotan it was one teacher to every 12.0 students and at Roby it was one teacher to each 15.3 students.

District	AMOUNT PER STUDENT BUDGETED 1985-86 BY FUNCTION										PER ADA				AVERAGE SALARY 1984-85				1984-85 STAFF PER 1,000 ADA				OCT. 1985 TEAMS TEST NATIONAL PERCENTILE RANK						
	Students (ADA)	Admin. (1)	Instructional Service (2)	Related (3)	Pupil Service (4)	Curricular Activities (5)	Transportation (6)	Plant Maint. (7)	Community Service (8)	Total Cur. Op. Expense (9)	Debt Service (10)	Capital Outlay (11)	Op. Fund Bal. (12)	Teachers (13)	Admin. (14)	Support (15)	Aides (16)	Ratio (17)	Admin. (18)	Support (19)	Aides (20)	Math (21)	Reading (22)	Writing (23)	District				
REGION 14																													
HOBBS ISD	C	26	3056.34	5269.99	144.34	698.05	81.21	1599.96	2815.55	.00	13655.14	.00	284.22	11858.82	8431.94	966.74	8197.63	18855	44146	0	8663	6.5	37.6	.0	114.0	0	0	HOBBS ISD	
McCAULLEY ISD	C	113	1172.82	2825.43	77.53	876.14	321.17	234.37	543.77	.00	5637.17	133.17	253.32	520.15	299.13	.00	3946.54	20758	33553	8242	8793	11.3	17.8	4.8	26.4	25	24	34	McCAULLEY ISD
ROBY ISD	C	242	421.25	1820.99	30.40	145.91	144.12	186.77	275.60	.00	2989.04	154.25	255.21	670.37	667.16	1632.20	2199.25	20983	32397	0	9294	15.3	8.8	.0	13.2	57	57	52	ROBY ISD
ROTAN ISD	C	469	549.31	2375.40	45.37	205.82	213.45	49.17	366.78	.00	3502.29	115.68	507.06	1463.56	1289.91	852.93	2721.67	20935	34339	0	9742	12.0	5.5	.0	5.3	39	36	48	ROTAN ISD
WEINERT ISD	C	70	1670.25	3472.15	113.25	185.81	787.45	332.18	600.28	.00	7161.39	4.47	85.77	1509.19	1562.23	.00	4531.90	19576	46914	0	7478	6.7	13.9	.0	58.8	73	78	75	WEINERT ISD
PAINT CREEK ISD	C	97	1211.70	3212.13	71.73	396.44	152.17	292.72	900.85	.00	6247.75	.00	223.32	1731.95	1731.95	.00	4165.33	19148	32389	0	5820	8.1	20.7	.0	10.3	60	48	56	PAINT CREEK ISD
HASKELL ISD	C	642	459.82	1670.55	43.48	286.57	103.80	83.86	358.16	.00	3006.24	44.12	253.73	416.34	416.34	96.53	2246.76	20826	34868	20900	7748	13.8	4.8	3.1	10.9	57	51	54	HASKELL ISD
ROCHESTER ISD	C	143	955.80	2182.73	49.05	291.36	170.26	121.11	498.08	.00	4298.39	.00	119.98	864.72	669.77	.00	3099.43	19127	36182	0	7609	8.9	14.3	.0	20.1	52	35	30	ROCHESTER ISD
RULE ISD	C	189	752.37	2585.56	99.74	191.53	82.01	108.17	421.16	.00	4240.54	83.01	42.33	1832.00	1993.37	1010.59	3168.42	19365	34064	0	8665	10.0	10.6	.0	23.3	55	46	48	RULE ISD
ANSON ISD	C	797	338.95	1825.31	6.48	231.30	193.79	114.54	279.19	.00	3004.71	62.13	268.43	730.02	772.10	.00	2295.11	23267	33794	0	9221	14.3	5.1	.0	12.7	52	59	55	ANSON ISD
HAMLIN ISD	C	745	555.23	1708.12	86.12	254.40	151.07	60.51	415.30	.00	3440.75	231.01	214.44	974.48	974.48	1816.35	2566.85	23027	35266	23610	9672	13.2	5.4	2.7	14.7	34	32	35	HAMLIN ISD
HAWLEY ISD	C	550	498.29	1726.18	49.89	195.68	142.76	131.67	426.46	.00	3160.92	37.46	350.82	386.34	373.20	336.44	3359.19	23021	30864	16540	7770	13.1	9.1	1.8	9.1	73	56	62	HAWLEY ISD
LUEDERS - AVOCA	C	218	870.53	2317.85	63.01	323.72	122.95	169.26	551.80	.00	4419.12	.00	317.60	1080.11	1055.65	.00	2914.79	18272	26711	0	10810	12.2	13.5	.0	4.5	43	50	53	LUEDERS - AVOCA
STAMFORD ISD	F	783	570.36	1976.40	56.53	379.05	283.48	82.37	435.70	.00	3705.52	245.71	194.05	504.11	539.63	1916.54	2704.35	20324	31862	20900	8307	12.9	7.1	1.3	12.7	59	46	59	STAMFORD ISD
WESTBROOK ISD	C	163	1114.01	3955.37	86.95	70.67	248.89	211.65	654.19	.00	6341.73	.00	261.30	2248.88	2239.16	.00	4709.18	23948	40194	0	12665	8.3	12.1	.0	19.4	77	64	69	WESTBROOK ISD
COLORADO ISD	C	1354	547.64	2239.52	85.39	298.08	187.83	129.70	485.99	75.40	4029.52	161.03	282.14	1400.19	1040.24	1264.71	2953.55	21156	35876	21962	9251	13.7	5.9	3.6	11.3	44	35	43	COLORADO ISD
LORAINE ISD	C	235	601.82	2238.37	7.26	232.50	87.12	184.01	477.21	.00	3808.30	276.63	127.55	598.37	449.31	2213.35	2663.47	18338	33791	0	9592	12.4	8.4	.0	12.7	49	33	44	LORAINE ISD
BLACKWELL ISD	C	195	911.77	2187.31	58.02	120.70	402.79	189.41	498.86	1.02	4579.88	1355.77	81.85	7.78	277.70	50.45	2636.56	23084	35977	0	7804	13.2	6.9	.0	9.2	41	56	62	BLACKWELL ISD
ROSCOE ISD	C	436	497.41	2375.76	50.63	239.23	155.43	75.19	348.10	.00	3478.00	.00	92.14	84.91	206.84	915.52	2503.13	21885	36423	23854	9809	15.7	6.4	6.7	9.3	50	46	48	ROSCOE ISD
SWEETWATER ISD	F	2608	429.48	1927.70	47.12	333.13	165.23	148.44	469.16	.00	6082.65	314.27	142.85	1005.47	4270.51	10113.38	3962.11	22426	34279	0	13806	10.2	11.7	.0	5.7	51	56	67	SWEETWATER ISD
HIGHLAND ISD	C	146	1258.19	2906.16	62.81	377.13	368.45	187.19	735.05	.00	5894.98	1416.48	200.91	4657.74	79.90	207.29	3624.04	19719	30610	0	9243	9.7	16.5	.0	41.4	52	46	47	HIGHLAND ISD
HERMLEIGH ISD	C	171	906.78	2876.29	9.11	299.39	128.06	186.85	650.90	.00	5057.38	66.27	571.57	51															



Evette Gruben

Evette Gruben To Participate In Pageant

Evette Gruben, daughter of Mr. and Mrs. Wilber Gruben of Rotan, will be among 25 contestants taking part in the 1987 Texas Junior Miss Contest in New Braunfels, Texas on August 2. The winner of the contest will represent Texas in the 1987 America's Junior Miss Contest. The girls will participate in activities during the week, culminating in the selection of Texas' Junior Miss on Saturday, August 9th.

Preliminary competition will be held at 7 p.m. Thursday, Aug. 7 and Friday, Aug. 8. The finals will start at 7 p.m. Saturday, Aug. 9. Preliminaries and finals will be held in the New Braunfels Civic Center.

The 1987 Texas Junior Miss will follow in the footsteps of Margo Whitt, the 1986 Texas Junior Miss who received a total of \$5,000 worth of scholarships during the national contest, and Valerie Lowrance of Seguin, who was selected as the 1985 America's Junior Miss.

The contestants' schedule for the week in-

Sgt. Reymundo Carreon Home On Leave

Marine Sgt. Reymundo Carreon, son of Maria and Frutos Carreon, Sr. of Roby, Texas, recently returned from a six-month deployment to the Western Pacific while stationed with Marine Light Helicopter Squadron 367, based at Camp Pendleton, Ca.

While deployed, Carreon participated in training exercises with allied and American ground and air units to perfect the missions, maneuvers and tactics that would be used during actual combat situations.

Some training included helicopter escort tactics, helicopter versus helicopter and helicopter versus fixed wing air combat maneuvers. Carreon also participated in night vision goggle flying, troop insert and extract, tactical formation flying and simulated electronic warfare and ordnance delivery by attack helicopters.

A 1975 graduate of Roby High School, he joined the Marine Corps in November, 1976.

cludes rehearsals, interviews with the judges, and competition in youth fitness, poise and appearance, creative and performing arts, and scholastic achievement.

The theme for 28th annual state competition is "The Spirit of Texas" in honor of the state's Sesquicentennial celebration.

Participants from South and Central Texas will be: Amy

Hoekstra, Del Rio; Kathryn Kyle, New Braunfels; Shari Cowan, Devine; Jill Duggan, Laredo; Nancy Rector, Kerrville (Hill Country Junior Miss); Michele Foster, San Marcos; Jenny Gibbons, Seguin; Sharron Melton, San Antonio; and Laura Reed, Hondo.

The contestants from the Dallas/Ft. Worth area will be: Kayse Kendall, Garland; Amy Jordan, Dallas; Yolanda

Norman, Ft. Worth; and Kimberly Shea, Grapevine.

Contestants from the West Texas and Panhandle area will be Evette Gruben, Rotan (West Texas Junior Miss); Lori Johnson, Childress; Rebecca K. Minsch, Lubbock (South Plains Junior Miss); Laura Cox, Rising Star (Big Country Junior Miss); and Lori Bloodworth, Odessa (Permian Basin Junior Miss).

Participants from the Waco area include: Suzie Smith, Goldthwaite (Heart of Texas Junior Miss); Julianne Wade, Belton; Shannon Hinton, Waco; and Rachel E'iese Tension, Hamilton.

Contestants from the Houston and East Texas area include: Amy Murphree, Orange; Kristie Lynn Usrey, Avery (Red River Junior Miss); and Melinda Birge, Texarkana.

Board Reviews Finances At Fisher County Hospital

The Fisher County Hospital Board is taking a hard, long look at finances at the local medical institution and last week initiated a personnel staffing plan, geared to the occupancy rate that is expected to save a large sum of money, once implemented.

Administrator Gary McGee presented the plan to the board. The plan calls for the areas of (1) nursing services (2) dietary (3) diagnostic (4) accounting (5) housekeeping and (6) EMS services to be capped at a maximum number of man hours based on the percent of occupancy.

McGee informed the board that had this plan been implemented 3 months ago, it would have saved approx-

imately \$10,000 in nursing service salaries during that period.

Principal Being Sought For Rotan High

It is expected that there could be a decision made on a new Rotan High School principal as early as Friday night, according to Alton Field, Rotan Superintendent.

Field interviewed two candidates for the position last Monday, two on Tuesday and was scheduled to interview one on Wednesday. "I will be taking the name of one candidate to the board for their approval," said Field.

PIK Cotton Available Before August 1st

PIK cotton available before August 1.

The Council and other members of the Fiber, Fabric, and Apparel Coalition on Trade, Cline noted, were able to obtain 372 signatures from House and Senate members on a letter urging President Reagan to implement the Multi-Fiber Arrangement more aggressively and renegotiate bilateral agreements to establish over-all limits on textile imports.

Plans call for enabling legislation extending the cotton research and promotion assessment to textile imports to be offered to Congress either late in the current session or early next year. Cline said 21 producer organizations already have endorsed a non-refundable assessment that would necessarily apply to both the U.S. crop and textile imports to meet General Agreement on Tariffs and Trade rules.

H.L. Hodges, Cotton Council International President, Greenwood, Miss., told the board that even though the new cotton program creates the competitive environment needed, effective promotion and salesmanship are necessary to regain U.S.

cotton's share of the world market.

"By bringing special trade missions to the U.S. and sending more U.S. cotton trade teams abroad, we are working hard to convince our

Conservation Reserve Program Signup Aug. 12-15

The next signup for the 1987 Conservation Reserve Program will take place August 4-15 at Agricultural Stabilization and Conservation Service county offices.

Farmers may offer bids to place highly erodible cropland into the reserve for the third time this year.

Annual payments for 10 years will compensate farmers for retiring highly erodible land from crop production. The amount of the payment is determined by the accepted bid per acre and the number of accepted acres.

Participants will also receive cost-share assistance for establishing grass, trees or wildlife plants on the acreage placed in the reserve.

Hunting is allowed on the land but no crops can be harvested while it is in the reserve.

Charles Black, distri-

established markets that U.S. cotton prices will be competitive August 1 and thereafter," said Hodges, a Staplcotn official.

ct conservationist for the USDA Soil Conservation Service at Rotan, said land that is eroding at more than three times the tolerance level is eligible to be placed in the reserve if it was farmed three or more years between 1981 and 1985.

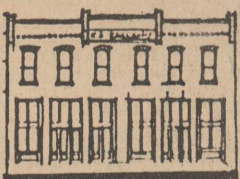
During the first two signups, bids were tentatively accepted from more than 1,200 Texas farmers on 310,000. Bids accepted ranged from \$25 to \$50 per acre.

Legal Notice

The Fisher County Commissioners Court will conduct a public hearing purposed use of Revenue Sharing Funds and 1987 Budget. This is to be held on August 11, 1986 at 10 a.m. in the Commissioners Courtroom, Courthouse Roby.

Marshal Bennett
County Judge
24:2tc

Use Our Copy Machine 25¢ Each The Newspaper Office



Main Street Cafe

Sweetwater, Texas

*The Freshest Seafood This Side Of Galveston

*The Best Mexican Food Between San Antonio & Albuquerque

*The Finest Steaks This Side Of Kansas City..

Located North Side Of Square In Historic Downtown Sweetwater

Patio Dining Available

Private Club Available On A Membership Basis Only

Worship This Week At A Fisher County Church

Read Luke 6:27-28
Do not be conformed to this world but be transformed by the renewal of your mind, that you may prove what is the will of God, what is good and acceptable and perfect. —Romans 12:2 (asv)

WHEN I was a teenager an experience during worship had a profound effect on me. At the end of the service, the pastor asked if anyone present wanted to say anything before the benediction was pronounced. Suddenly an older member of the congregation began to speak. With studied words, he looked at us and began: "You know, I've lived a long life, and I've been a member of this church for a good part of it. But I've come to realize only lately that I've been all wrong about the race issue. God is working with me on that!"

Seldom had I sensed the spirit of God in such a real way. In those moments I learned more about the Christian faith and the call to discipleship than in many a sermon or Sunday school lesson.

I have since been able to perceive God's working in various ways, among diverse kinds of people, in different circumstances. But I continue to marvel at the entrance of God into our lives. God's presence has an immeasurable impact on each of us.

PRAYER: O Lord, grant us openness to Your Spirit. In Christ's name. Amen.

735-3471 Sunday School 9:45 Sunday Eve. Church Training 6:00 Wed. Night 7:30	FIRST BAPTIST CHURCH Rotan, Texas Worship 10:55 Worship 7:00 Steve Peace-Pastor
735-2178 Sunday School 10:00 Sunday Eve. Training Union 6:00 Wed. Night 7:00	CROSS ROADS BAPTIST CHURCH Rotan, Texas Worship 11:00 Worship 7:00 James P. (Pat) Anderson-Pastor
735-3464 Sunday School 10:00 Sunday Eve. Bible Study 6:00 Wed. Night 7:00	LITTLE ZION BAPTIST CHURCH Rotan, Texas Worship 11:00 James Carrington-Pastor
776-2159 Sunday School 10:00 Sunday Evening 6:00 Wed. Night 7:00	FIRST BAPTIST CHURCH Roby, Texas Worship Service 11:00 Worship 7:00 Alvin Petty-Pastor
735-3464 Sunday School 10:00 Sunday Eve. Bible Study 6:00 Wed. Night 7:00	CALVARY BAPTIST CHURCH Rotan, Texas Worship 11:00 Worship 7:00 Dutch Parks-Pastor
735-2478 Sunday School 10:00 Sunday Eve. 5:30	EMMANUEL BAPTIST CHURCH Rotan, Texas Worship 11:00 Wed. Night 7:30 Andress Rodriguez-Pastor
993-4479 Sunday School 10:00 Sunday Evening 6:00	SYLVESTER BAPTIST CHURCH Sylveste, Texas Worship 11:00 Wed. Night 7:00
Sunday School 9:45 Sunday Evening 6:00	HOBBS BAPTIST CHURCH Hobbs Community Worship 11:00 Sunday Evening 6:00
Sunday School 10:00 Sunday Evening 6:00	McCAULLEY BAPTIST CHURCH Worship 11:00 Rick McMinn-Pastor

Sunday School 9:45 Sunday Evening 5:30 Wed. Night 7:30	MISSION BAPTISTA CALVARIO Roby, Texas Worship 11:00 Worship 6:00 Eli Sepeda-Pastor
735-2334 Sunday School 9:15 Sunday Eve. 6:00	FIRST UNITED METHODIST CHURCH Rotan, Texas Worship 10:30 Terry Lowe-Pastor
776-2308 Sunday School 9:45 Sunday Eve. 5:00 UMYF	FIRST UNITED METHODIST CHURCH Roby, Texas Worship 10:50 Worship 6:00 Wed. Night Choir Practice 7:00 Jim Hawthorne-Pastor
Sunday School 10:00 Wed. (2nd Wed. in each month family nite 7:00)	FIRST UNITED METHODIST CHURCH McCauley, Texas Worship 9:30 Alvin G. Smith-Pastor
Sunday School 10:30 Every 3rd Tues. Evening Community Dinner 6:30	FIRST UNITED METHODIST CHURCH Sylveste, Texas Worship 9:30 Alvin G. Smith-Pastor
735-2344 Sunday School 9:45	CHURCH OF CHRIST Rotan, Texas Worship 10:45 Sunday Evening 6:00 Wed. Morn. Ladies Bible Class 9:30 Donald Dawes-Minister
776-2496 Sunday School 10:00	CHURCH OF CHRIST Roby, Texas Worship 10:45 Sunday Evening 6:00 Wed. Night 7:00-Nov. April 8:00 May-Oct. Wardell Halliburton-Minister
Sunday School Wed. Night Worship	CHURCH OF THE NAZARENE Rotan, Texas Worship 11:00 Lyle Whitmeyer-Pastor
735-2553 Sunday School 10:00 Sunday Evening 6:00	FOUR SQUARE CHURCH Rotan, Texas Worship 11:00 Wed. Night 7:00 Ira Burns-Pastor
735-3285	ST. JOSEPH'S CATHOLIC CHURCH Rotan, Texas Sunday Morning 9:00 a.m. Mass Saturday Evening 7:30 p.m. Mass Father Austin Kiltrege
Sunday School 9:45 Sunday Evening 6:00	MARANATHA CHURCH Roby, Texas Worship 11:00 Wed. Evening 7:00

Rotan Motor Company Ray Brown Archie Nooley Rotan, Texas	Midwest Electric Cooperative 776-2244 Roby, Texas	Citizens State Bank Member FDIC Roby, Texas	Higginbotham-Bartlett Greg Rains-Mgr 735-2215 Rotan, Texas
Farmers Union Co-op Gin Roby, Texas	Central Lumber & Supply 776-2371 Roby, Texas	Rotan Nursing Center Rotan, Texas	Martinez Dairy Rudy, Louise & Jeff Martinez Hobbs Community
First National Bank Of Rotan Member FDIC	Fisher County Farm Bureau 215 W. Snyder Rotan, Texas	Roby Insurance Agency 776-2361 Roby, Texas	Rotan Insurance Agency Joe Burk-Agent Rotan, Texas
Weathersbee Funeral Home Rotan, Texas	Landes Furniture Loys & Larry Landes 735-3171 Rotan, Texas	H.L. Davis & Company Bill & Elaine Day Rotan, Texas	Bart Strayhorn 735-2231 Rotan, Texas

State Capital Highlights

Two unrelated events occurred recently which promise to alter significantly the course of Texas government and politics:

Texas Comptroller Bob Bullock told a stalemated Legislature his plan for resolving the deficit, and,

Texas Republicans formally targeted Democratic House Speaker Gib Lewis for defeat.

Extension Homemakers Hold Meeting

The Extension Homemakers Club met in the home of Georgia Ashton July 17. There were 12 members and two guests present. Dee Kiker and Christine Rackley.

Eda Bickerstaff presided, Gaynell Henry called the roll and read the minutes. The minutes were approved. The business was more plans for the fair, and the nominating committee reported and presented the new officers for the year 1987.

Beatrice Hargrove brought the program, "Steps toward a drug free community" and handed out several sheets of information to members. We enjoyed the fellowship and refreshments. Those present were Ardell Floyd, Hazel Hudnall, Eda Bickerstaff, Mary Posey, Wanda Floyd, Bobbie McKinney, Hilda Rollins, Beatrice Hargrove, Lois Sparks, Oma Long, our hostess, Gerogia Ashton, and our visitors, Dee Kiker and Christine Rackley.

Legislature meets in special session, he will provide a plan to roll-back the sales tax by widening the base to include all goods and services, except food, medicine and medical services.

It's the first real plan to diversify the state's tax base away from unreliable oil and gas revenues. But as it turns out, the Legislature won't bet to consider Bullock's plan until next January. Following Bullock's announcement, Gov. Mark White called for an Aug. 6 special session for budget cuts, not tax issues.

White is relying on lawmakers to work the details. Insiders say the state can raise \$1 billion by making agency cuts and redirecting the cigarette tax from parks to general revenue. This keeps the state in the black until the regular session.

Speaker Gib Lewis has steadfastly opposed consideration of a tax hike in special session.

Speaker Targeted

Lewis holds that since private industry has made cuts, state government should do likewise, and he hinted at the early retirement of over 5,000 state employees to balance the budget.

But in a surprise development, the state GOP Campaign Committee voted unanimously to target him for defeat by giving out-of-district contributions to his opponent.

"I wasn't for us making this race (Lewis') at first, but I am now," said GOP state chairman George Strake, adding the move has more

potential risk and reward for the party since Phil Gramm switched parties.

Maybe more than any other strategic act this election year, the GOP decision will have a dramatic impact on the face of Texas politics: it's controversial enough to be rehashed emotionally for years to

Rotan Gin To Host Program On Cotton

Jim Gruben, manager of the Rotan Gin Company extends an invitation to persons interested in learning more about cotton. This is an attempt to promote and better inform the general public about the cotton industry.

A color slide presentation, cotton samples at different stages of the ginning process, a portable section of a saw gin stand, and a tour of the gin plant are available.

"I have conducted tours for guests visiting the county from Iowa, California, Bahamas, Tennessee, Kentucky, Oregon, Missouri, Canada, and Japan," Gruben said.

We request that you call ahead of time and avoid a conflict with a previous commitment or meeting.

We Sell BIBLES At The Newspaper Office

come.

Why controversial? Lewis is popular and respected in the House by the GOP block which helped put him in the Speaker's chair. Historically, they have never had more influence in committees and on the floor.

But his home district grew increasingly straight-ticket Republican, and last election he got only 47 percent of the vote unopposed. His home Democratic base has dwindled.

For Republicans to attack a sitting speaker in his home district, ap-

Second Annual Bass-Carp Tourney To Be Held Aug. 9

The Stonewall County Jaycees will be staging their Second Annual Bass-Carp Open Tournament at Lake Stamford beginning on Saturday, August 9th and continuing through Sunday, August 10th.

One entry fee of

\$50.00 will be charged. A total of \$4,000 cash guaranteed. In addition merchandise will be awarded.

Additional information may be secured by contacting George Abernathy, P.O. Box 186, Aspermont, Texas, 79502 or call 817-989-3343.

Physical Examinations On August 7th

All Rotan high school athletes, planning on participating in any sport during the 1986-87 school year, will be given physical examinations on Thursday, August 7th, according to Athletic Director Richard Gorman.

Both boy and girl athletes will meet at the Callan Clinic at 1:00 p.m. Thursday, August 7th for the physical examination. The examination will be paid for by the school.

parently on the basis of party politics and despite the fact he has been good to that party, has all the elements of a political back-shoot. Then again, that's politics.

Two months ago, apologetic Texas Republicans had an excuse, saying it was "a local" deal. Now, the state GOP is in it up to the elbows, and Lewis and conservative Democrats have grown warier.

The GOP gamble is, if Lewis is defeated, their House bloc will grow with new seats won and converted conservative

Democrats, and a Republican could be elected speaker.

The risk is that if Lewis is reelected, many GOP House members can kiss their political plums and perqs good-bye and watch the reuniting of a stronger Democratic party faction.

Another scenario has Lewis and the Republicans falling out, the GOP picking their own speaker candidate, and the Democrats choosing someone more liberal than Gib for Speaker.

Other Highlights

The U.S. Department of Energy has run into a roadblock in its plans to build a high-level nuclear waste dump in a Panhandle farming county. First, they need a Texas Water Commission permit to drill a test shaft through the underground aquifer.

Texas Water Commissioner Ralph Rooming, who happens to be a

long-time activist for Panhandle farming and water interests, said last the feds could wait "years" to get their permit.

Houston state Rep. Ron Wilson renewed his call for the Legislature to pass his bill creating a state lottery which he says would raise the state \$600 million annually.

The Select Committee on Higher Education agreed not to close three state universities, East Texas State University, Texas A&M at Galveston, and the University of Texas at Permian Basin.

It came nowhere close to agreeing on proposals merging UT-Arlington, and UT-Dallas, North Texas State University with Texas Woman's University (both in Den-

ton). Witnesses testified in a Houston state district court that no-pass, no-play affected more than one in five minority students, one in three learning disabled pupils, as compared to 15 percent of white students. Data came from hundreds of school districts.

Responding to a petition, the Railroad Commission decided it will hold public hearings on whether the state's allowable oil and gas production can be regulated to avoid waste.

Hispanic leaders asked Attorney General Jim Mattox to take legal sanctions against a paramilitary group which plans to patrol the Rio Grande border for drug smugglers and illegal aliens.

JESUS IS LORD!

SMITH'S MUSIC PLACE
SNYDER'S COMPLETE MUSIC STORE

J.D. SMITH, Pres.
DONNA SMITH, Treas.
JON ALAN SMITH, Vice Pres.
PAM SMITH, Vice Pres.
GARY LINDSEY, Sales Rep.

P.O. BOX 1384
2509 COLLEGE AVE.
SNYDER, TEXAS 79549

(915) 573-5937



Before You Purchase A New Car Or Pick Up...Give Us A Chance To Show You How Much You'll Save At

F&M Chevrolet-Buick

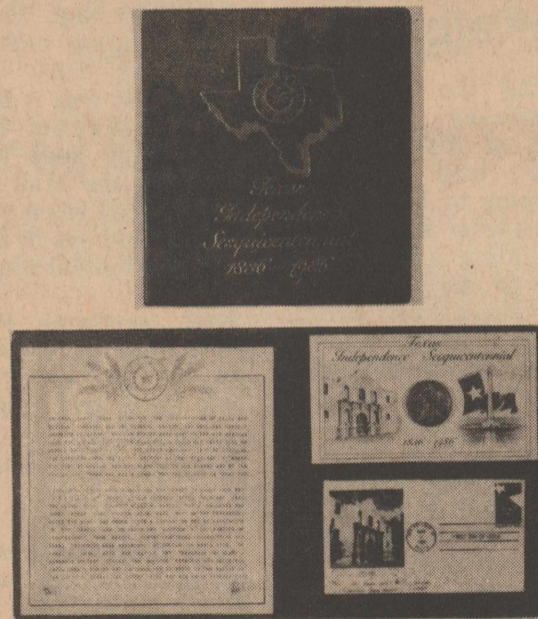
Complete Sales & Service

111-117 South Cleveland

Rotan, Texas

735-2244

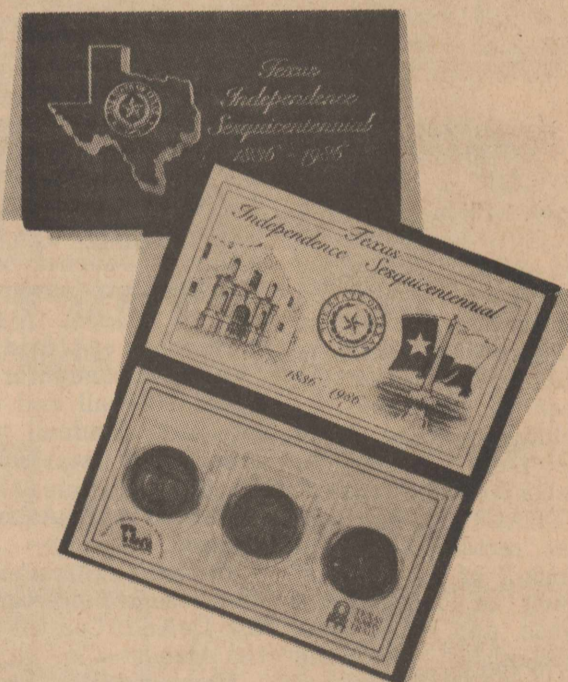
Texas Sesquicentennial Commemorative Souvenir Coin Package



Commemorative Souvenir Coin Package

Contains
1 Bronze Coin Stamp
And Letter Of Description.

\$10.50



Commemorative Bronze Medal Collection

Contains
3 Bronze Coins

\$10.50

Also Available

Silver Souvenir Coin Package

Contains One Coin-Stamp-Description Letter

\$28.00

Available In Bank Lobby

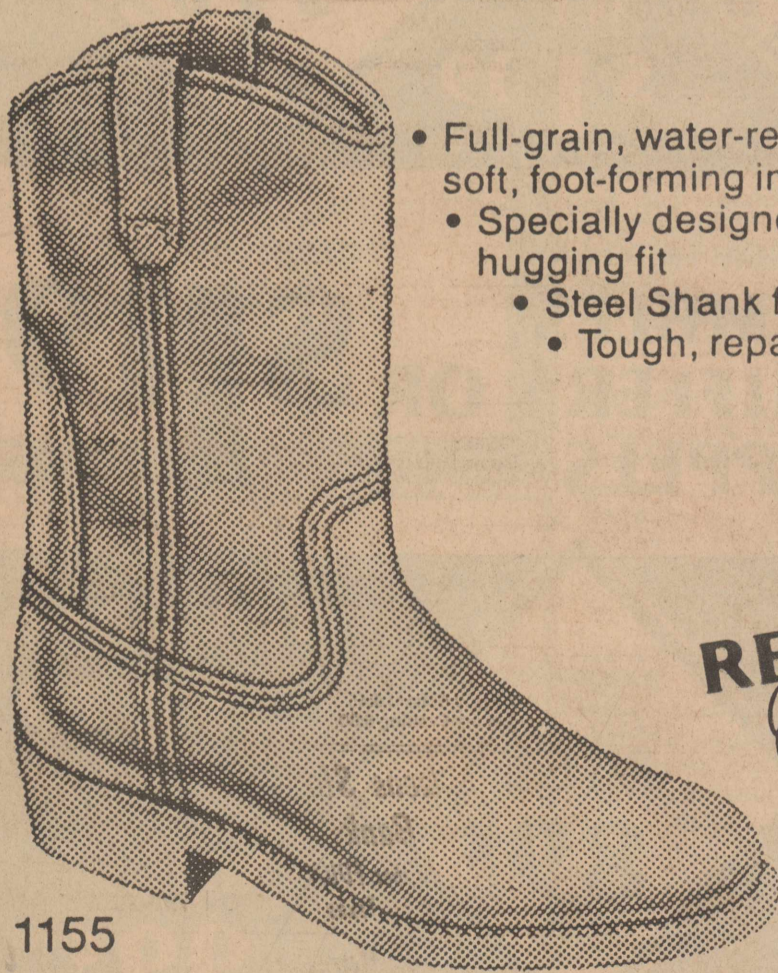
The 1st National Bank of ROTAN

"Your Dependable Bank of Service"

Member FDIC Rotan, Texas 735-2224

Member Independent Bankers Association of America.
Representing the nation's community banks.

This 12-inch Pecos boot gives you a foot of comfort.



- Full-grain, water-repellent leather Cushion-soft, foot-forming insole
- Specially designed to provide a heel-hugging fit
 - Steel Shank for foot support
 - Tough, repairable sole and heel



1155

H.L. Davis & Co.

"The Friendly Store"
Rotan, Texas

Legal Notice

THE STATE OF TEXAS COUNTY OF FISHER by virtue of an Order of Sale issued out of the Honorable 32nd Judicial District Court of Fisher County on the 1st day of July, A.D., 1986, by the Clerk thereof, in the case of the SWEETWATER INDEPENDENT SCHOOL DISTRICT VS. C.C. MAGENHEIMER, Cause No. 4100, and to me as Sheriff, directed and delivered, I will proceed to sell, at 10 o'clock a.m., on the FIRST TUESDAY in August, A.D., 1986, it being the 5th day of said month before the North Courthouse door of said Fisher County in the City of Roby, Texas, the following described property, to-wit:

Levied on this 2nd day of July, 1986, as the property of C.C. MAGENHEIMER, W.L. BATES, M.W. CASSENS, and R.W. MONTGOMERY, and the unknown owner or owners and any and all other persons unknown, including adverse claimants, owning, having or claiming any legal or equitable interest in or lien upon the real property hereinafter described; the heirs and legal representatives and the unknown heirs and legal representatives of each of the above named and mentioned persons who may be deceased; and the corporate officers, trustees, receivers and stockholders of any of the above named and mentioned parties which may be corporations, foreign or domestic, defunct or otherwise, together with the successors, heirs and assigns of such corporate officers, trustees, receivers or stockholders, to satisfy a judgment amounting to \$2,139.25 with interest from the 22nd day of May, 1986 at 10% per annum and all costs of suit in favor of SWEETWATER INDEPENDENT SCHOOL DISTRICT, ET AL GIVEN UNDER MY HAND THIS 2nd day of July, A.D., 1986.

Mickey A. Counts Sheriff Fisher County Texas EXHIBIT "A"

TRACT I: Being all those certain Lots 1, 2, 3, 4, 5, 6, 7, 8, 9, 10, 11, and 12, in Block 5 of the Original Town of Longworth, Texas, and being more particularly described in that certain Deed of the record in Volume 44, Page 510 of the Deed Records of Fisher County, Texas.

TRACT II: Being all that certain Lot 3 in Block 7 of the Original Town of Longworth, Texas, and being more particularly described by that certain Deed of Record in Volume 90, Page 499 of the Deed Records of Fisher County, Texas.

TRACT III: Being all those certain Lots 1 and 2 in Block 18 of the Original Town of Longworth, Texas, and being more particularly described by that certain Deed of Record in Volume 38, Page 338 of the Deed Records of Fisher County, Texas.

TRACT IV: Being all that certain Lot 6 in Block 21 of the Original Town of Longworth, Texas and being more particularly described by that certain Deed of Record in Volume 67, Page 212 of the Deed Records of Fisher County, Texas.

TRACT V: Being all those certain Lots 4, 7, 8, 9, and 10 in Block 21 of the Original Town of Longworth, Texas, and being more particularly described by those certain Deeds of Records in Volume 246, Page 432, Volume 35, Page 167 and Volume 44, Page 510 of the Deed Records

of Fisher County, Texas. TRACT VI: Being all that certain Lots 11 thru 20, both inclusive, in Block 21 of the Original Town of Longworth, Texas, and being more particularly described by those certain Deeds of Record in Volume 26, Page 278, Volume 26, Page 279, and Volume 44, Page 510, of the Deed Records of Fisher County, Texas.

TRACT VII: Being all that certain Lots 1 thru 18, both inclusive, in Block 23 of the Original Town of Longworth, Texas, and being more particularly described by those certain Deeds of Record in Volume 23, Page 89, Volume 35, Page 167, and Volume 44, Page 510 of the Deed Records of Fisher County, Texas.

TRACT VIII: Being all that certain Lot 1 in Block 94 of the Original Town of Longworth, Texas, and being more particularly described by that certain Deed of Record in Volume 23, Page 89 of the Deed Records of Fisher County, Texas.

22:3tc

Signup Underway For 1987 Conservation Program

Secretary of Agriculture Richard E. Lyng announced that signup for the 1987 Conservation Reserve Program will take place Aug. 4-15 at Agricultural Stabilization and Conservation Service county offices.

According to Lyng, farmers may volunteer highly erodible cropland for entry into the Conservation Reserve Program, under a provision of the Food Security Act of 1985.

"We are pleased with the response from farmers during the 1986 signup," said Lyng. "Now that producers are aware of the other provisions of the Act, such as sodbuster and conservation compliance, we expect even more interest by producers in the Conservation Reserve Program this year."

Producers wishing to put land into the program are eligible for cost-share payments of up to 50 percent of the eligible costs to establish a cover crop. The annual rental payments are for 10 years.

The total amount of rental payments for any

fiscal year may not exceed \$50,000 or its equivalent if in-kind payments are made.

Lyng said producers will be allowed to harvest their 1986 crop before the contract becomes effective, if necessary.

Land that is designated may not be grazed after the Commodity Credit Corporation approves the contract.

Two A Day Workouts Begin In Rotan Aug. 11

Rotan Athletic Director Richard Gorman indicated earlier this week that students intending on participating in the football program will be issued equipment on Wednesday, August 6th between the hours of 8:00 a.m. and 5:00 p.m.

The players will be issued shorts, t-shirts, helmets, socks, shoes and physical forms.

Two a day workouts for players will begin on August 11th at 8:00 a.m. with the second session scheduled to begin at 6:00 p.m.

Decedents Of John A. Waddell Hold Reunion

Members of the family of the late Mr. and Mrs. John A. Waddell of Roby, met Thursday at the new community center in Roby, in honor of the Robert Carter

Minnie Parker Host Guests

Guests in the home of Mrs. Minnie Parker during the 4th of July holiday were her daughter and husband, Bill and Billie Collier from Possum Kingdom Lake, also David Hicks from Spokane, Washington and Rusty Hicks and daughter from Houston, Texas, Lisa Farr and children from Abilene also Jerry and Jim Collier of Abilene.

Waddell family from Yorba Linda, California. A covered dish luncheon was served at the noon hour, to friends and relatives from California and all parts of Texas. While in Texas the Waddells will attend a reunion of the family of the late Mr. and Mrs. Oscar Carter family, and a reunion at the Silver Spur Cafe, Sunday of the family of the late Mr. and Mrs. Morse O'Brian family.

Those attending the Waddell reunion Thursday were: Mr. and Mrs. Bob Waddell, Sharron, Leslie, Shannon, Mike Lyon, Glenn Hyde, Glenn Waddell, Anaheim, California; Dorothy Waddell, Loua Bea Patrick, Amarillo; Freddy Jack, Mary Lu,

Shara Waddell, Beaumont; Jean Natchke, Granbury; Glenda Jean Sheffield, Dallas; J.L., M.E., Kim, Ashley Waddell, Midland; Mr. and Mrs. Gerald Waddell, Kingsland; Mr. and Mrs. Weldon Wade, Village Mills; Mr. and Mrs. James Bates, Fannie Bell Bates, Odessa; John and Amanda Waddell, Houston; Linda Luckey, Merkel; Mr.

and Mrs. Rube Waddell, Jimmy Ross Waddell, Jay Waddell, Mr. and Mrs. Allan Waddell, Kimberly and Catherine, Mr. and Mrs. Jimmy Whitworth, James Lee Whitworth, Sweetwater; Don Waddell, Sanger; Ruth Waddell, Mr. and Mrs. Fred Waddell, Jack Daniel, Mr. and Mrs. Gene Turnbow, Mr. and Mrs. Garland Moore, Roby.

ferti-lome
LAWN FOOD PLUS IRON

Easy to use on:

- Shrubs
- Trees
- Flowers
- Vegetables
- Foundations

ferti-lome

For a greener lawn

ferti-lome

Martin's Feed & Garden
735-3261 Rotan, Texas

Dr. Bryan Cave
Eye Examinations
Contact Lenses (All Types)
Children Welcome
Snyder, Texas

Cogdell Center
(915) 573-5571 Or
Wed., Thurs. & Fri.
Call 573-4792

Office Hours
Mon. 9-6:00 p.m.
Tues. 8-5:00 p.m.

Lubbock Office (806) 797-4216

Hustling Around Hobbs

By Joy Walker

Has it been hot enough for everyone this past week? The temperatures have been almost 100 degrees for several days now, and we could use a little rain right about now. We did get a light shower in the night or early Monday morning, with plenty of thunder and lightning, but not enough rain to measure.

Marvin Adams, Mr. and Mrs. Marshall Cook, all from Tenaha, and some friends from south of Dallas, all visited with the Clarence Andersons Saturday and Sunday.

Mr. and Mrs. Billy Carter from Brownwood were here for the weekend; the Carter reunion was held this weekend near Merkel and the Billy Carters took Mrs. Edd Carter to it, Saturday and Sunday. Mrs. Billy Carter visited with the J.C. Caves Friday evening before going back to Roby.

Rosalee Harper and two girls from Detroit, Michigan, and Rosalee's mother, Retha Horton from Las Cruces, New Mexico, and Rosa Horton from Rotan, all visited with Linda

Williams on Monday. She really did enjoy their visit.

Sue Medrano is still staying with her daughter in Dallas, but she may get to come home at the end of the week if she continues to improve.

Friday night all three grandchildren stayed with the J.W. Etheredges all night. They are the children of Mr. and Mrs. Todd Etheredge of Snyder.

Jim and I went to the Snyder Rodeo Thursday, Friday and Saturday nights. Sure got lots of visiting done, and saw several old friends. The rodeo was in the Coliseum at Snyder, and it was almost too cool in there. Saturday, Mrs. Donnie Gruben and I spent the day in Abilene, and was it hot there. Maybe its because they keep the stores and the Mall so cool, and then when you have to come out in the heat, it seems that much hotter.

Well, everyone has been staying in close to home, in the cool, so don't have too much news this week.

See you next Thursday.

Barbara Chamness Named Top Citizen By DeKalb

The daughter of a Rotan resident was recently named one of the top ten citizens of DeKalb County (Atlanta, Georgia) by the Atlanta Journal and Constitution newspaper.

Barbara (Aldridge) Chamness, daughter of Hazel Hudnall and the late H.E. Hudnall was first on the list. Below is the information published in the Atlanta Journal.

Barbara Chamness, 47, executive director of the DeKalb Council for the Arts.

Few people know more about DeKalb's visual and performing artists than Barbara Chamness. She has in-

troduced the business community to the wealth of DeKalb artists and urged developers to buy local art whenever a new office building is erected.

One of the Council's most successful programs in recent years has been the Mardi Gras for the Arts, an annual show and party held each year to show off the talents of local artists. Mrs. Chamness helped start the exhibition four years ago in conjunction with former council president Beth Parker.

Under her tutelage, the arts council budget, which relies heavily upon contributions, has grown from \$24,000 in 1981 to its current level of \$400,000.

Rotan Nursing Center News

It has been so hot in the afternoons lately that the residents are getting out early in the mornings for their walks. They walk, then some of them take a nap, then get up and we have exercise and current events.

We would like to thank James Carter and Mildred McQueen from the First Baptist Church for their services each Sunday morning.

We had two guests at our popcorn party last Thursday. They were Evelyn and Bill Cobb of Houston. They were here visiting Nancy Bagwell. Other visitors in the home were Cherry Garcia and Ruby Joyce Macek of Bryan and Sue Grenwelve of Hearne all

visited Russell Aharlett, Inez Purser of Merkel visited Maude Gruben. H.J. Kemp, Sherry Kidd, Randi Kidd, and Jennifer Fields of Alamogordo, N.M. visited Vineta Goodman. Mr. and Mrs. Sims of Sweetwater also visited Vineta.

Lora Cleveland

We Copy Old Photos
At The Newspaper Office
735-2562

Rotan Advance
The Voice of Fisher County Since 1907
Post Office Drawer A, Rotan, Texas 79546

(915) 735-2562 Office
(915) 735-2278 Office
(915) 735-3115 Home

Klm Pease-Editor/Publisher

Published in Rotan, Texas Weekly, Entered as Second Class mail at the Post Office, Rotan, Texas 79546 under Act of Congress.

POSTMASTER: Send Address Correction to the Newspaper Office, P.O. Drawer A, Rotan, Texas 79546.

Advertising rate is \$2.00 per column inch. Classified rate is \$3.00 for first 15 words and .10 cents for each additional word. \$3.50 if billed. Classified display rate is \$2.50 per column inch. Card of Thanks \$5.00 minimum charge.

Subscription Expiration dates are listed on each mail subscribers newspaper delivery label each week. Newspapers must be renewed prior to the expiration date. Postal regulations say that subscriptions must be paid in advance to qualify for 2nd class postage regulations.

News and advertising deadline is 12:00 noon on Tuesday of Each Week. The Rotan Advance-Roby Star Record is published 52 weeks a year.

Notice: Any erroneous reflection upon character standing or reputation of any individual firm or corporation will be gladly corrected when brought to the attention of the publisher.

Mail To:
The Newspaper Office
P.O. Drawer A
Rotan, Texas 79546 New Renewal

Please Find Enclosed:
1 Year-\$12.00-In County
1 Year-\$15.77-In Texas
1 Year-\$17.00-Out of State

Name _____
Address _____
City _____ State _____ Zip _____

CONVENIENCE STORES
30 YEARS OF SERVING YOU
1956 1986

ALLSUP'S
CONVENIENCE STORES

Shurfine Corn 3/99c

Shurfine Green Beans 3/99c

PRICES EFFECTIVE JULY 24-25-26, 1986

on the GO!

YOGURT FREE! BORDEN'S ASSORTED BUY ONE GET ONE 8 OZ. CTN.

ICE \$1.09 ALL SUP'S ICE LARGE BAG MADE WITH 99% PURIFIED WATER

ICE CREAM \$1.69 BORDEN'S ICE CREAM 1/2 GAL. ROUND

FLOUR 69¢ SHURFINE 5 LB. BAG

EGGS 89¢ SUNNYFRESH GRADE A EXTRA LARGE 18 CT. CTN.

BURRITO \$1.49 BEEF & SALSA EACH MORE THAN A MEAL

TEA BAGS \$1.79 LIPTON FAMILY SIZE 24 CT. PKG.

MUG 99¢ ALL SUP'S 30 YEAR COMMEMORATIVE FILLED WITH YOUR FAVORITE FOUNTAIN DRINK ONLY REFILLS ONLY 49¢

Barbeque Sandwiches 99¢

Pepsi Cola, Diet Pepsi, Mountain Dew 4 Pack 16 Oz. \$1.39

Fisher County Bug Scoop

By Paula Verden

General Situation: Age of cotton ranges from just squaring to bloom. Beneficial populations are building. Weevil trap numbers are down. Fleahoppers: Fleahoppers are ranging 0 to 40 per 100 terminals. Percent square set is ranging from 70% to 100%. If you have high fleahopper numbers and a square set below 75%, you should treat for fleahoppers in order for the cotton to set a good fruit load. Please, check for fleahoppers before spraying for them. Don't spray just because your neighbor across the road is spraying. Unnecessary spraying can kill off beneficials which will be helpful in controlling worm populations. Aphids: Aphids are

in some fields. Isolated plants in the fields have light to medium populations of aphids on them. I have not seen any fields that need spraying for aphids at this time, however, it is best to keep checking your fields for these and other pests. Aphids are small, slow moving insects. They vary in color from green to black and may be winged or wingless. They have two tail-pipes (or cornicles) on their back-ends. They secrete honey dew, and can be found on the undersides of leaves or behind bracts around squares. They look similar to immature fleahopper, but the fleahoppers move much more quickly and do not have tail-pipes. Aphid infested plants may look wet or sticky. Bollworms: At this time we are seeing 0 to

20 bollworms per 100 terminals. 14 bollworms per 100 terminals justifies treatment. The worms we are finding are very tiny and found inside the tender new growth in the top portion of the plant and small squares. We are expected increased bollworm moth activity around July 18th and an increased bollworm egg-lay is expected July 20-25. Be Sure To Keep Your Fields Checked!

We certainly don't want a repeat of last year's surprise attack from bollworms. Boll Weevils: Weevil trap numbers are remaining low. Boll weevil punctured square percentages are also dropping off. Weevil punctured squares are averaging 0-16%. Beneficials: Beneficial populations are increasing. Lady beetles, lacewing larvae, minute pirate bug

adults and nymphs, big-eyed bugs and spiders are the beneficials that are being found. Scouting Program: The Fisher-Jones Pest Management Association is still accepting cotton acreage to check. Fields are scouted weekly and a field report is filled out for each individual that puts acres in the program. If you would like to know more about the scouting program, call or come by

the office. Paula Verden, EA-Entomology (PM), Rm. 109 Fisher County Courthouse, Roby, Texas. Phone: 915-776-2706 or 915-776-2862 (evenings). Educational programs conducted by the Texas Agricultural Extension Service serves people of all ages regardless of socioeconomic level, race, color, sex religion, handicap or national origin.

THANK YOU
TROPICAL SNO of Rotan wishes to take this means of saying "Thank You" to all the great people of Rotan, Roby & Hobbs for your support in making our business a success. We couldn't have asked for a better reception anywhere. We really appreciate your patronage.

Thanks
James, Jeana, Tanner & Ty Means

CLASSIFIED ADS

Roby Fire Dept. To Sponsor Canine Flea Dip On July 26

The Roby Volunteer Fire Dept. will sponsor a special service to area residents who own dogs. On Saturday, July 26, beginning at 9:00 a.m., residents can have their canine friends dipped for fleas. Dr. Vick Burk

will also be available to administer rabies vaccinations. The service will be held at the Roby Fire Department. More information can be obtained from members of the department.

Senior Citizens To Host Covered Dish Supper

The Fisher County Senior Citizen's Center will be holding a covered dish supper and bingo party on Friday, July

25th at 6:30 p.m., according to Annie Weems, Fisher County Senior Citizen's Center coordinator.

Personalized Toning Warm? Cool? Are You Everything You Can Be?
"Images" of Success & Beauty"
Invites You To Share With Us:

1. Complete Lady Love Skin Care Program
2. Kosmeo Glamour And
3. Professional Gem Toning.

(Diamond, Sapphire, Topaz, Opal) Toning.

Be The "Best" You Can Be...
Walk Smart, Think Smart, Act Smart, And Look Smart!
Feel Good About Yourself!! Easy As 1-2-3...
Call Mon-thru-Thurs. From 9:00 a.m.-5:00 p.m. For Appointment...
735-2072

10% VALUABLE COUPON
In FREE PRODUCTS With This Coupon

Donna Springer
Certified Lady Love
Color Consultant

BLACK INVESTMENTS
Real Estate Sales-Appraisals-Petroleum Landwork
107 North Garfield

SOLD-105 El Johnston, 3 BR brick veneer
SOLD-137 acres East of Rotan, mixed land

SPECIAL: 100.6 acres S. of Rotan on Hwy. 70, cultivation or suitable building site, 1/2 minerals, \$432.50 per acre, CASH

HOBBS AREA: 160 acres versatile farm (cotton, bermuda grass, pasture) with residence, pens, tank, minerals

ROBY AREA: 87 acres, Class II cultivation, some pasture, hay barn, 3 BR brick home

ROYSTON: 3 BR home on one acre, \$22,000

ROBY: Nice 3 BR, large den area, patio, privacy fencing, corner lot

TO BE MOVED: 3 BR frame, well maintained, just off Hwy. 70, \$16,000

E-Z CAR WASH: Rotan established business

MOBILE HOME: fence, owner financing, \$8,000

CORNER LOT: 2 BR, 1 1/2 bath, carpet, \$25,000

PRICED RIGHT: 3 BR, bath, kitchen, bar, \$14,000

TWO-STORY: 5 BR, plus servants quarter, well, \$45,000

MODERN: 3 BR brick, corner lot, \$40,000

WHITE BRICK: 2 BR, wood burning stove, \$36,000

SKYLIGHTED BEDROOM: 3 BR, carpet, \$22,000

VINYL SIDING: 3 BR, corner lot, \$31,500

Come By The Office For Discussion On Other Residential Properties As Well As Farm & Ranch Listings.

MYLA BLACK, BROKER, MSA, MRA, MFLA
Office & Home Telephone
(915) 735-3091

NOTICE: Want to buy old faded, worn out quilts. Call Nathalie's, 735-3122 or 735-2146. 21:tf

FOR SALE: Washers and dryers. 60 day warranty. 962-5446, McCaulley. 52:tf

SALE: Women's Spring and Summer apparel, 20% to 50% off. First Place, 225 Oak Street, Sweetwater. 20:tf

FOR SALE: 2 bedroom house, N. 2nd St. Roby, good water well. 776-2367 after 5 p.m. \$9,000.00. 10:tf

FOR RENT: 2 bedroom, 2 bath, mobile home in country. 735-3477. 23:tf

FOR SALE: House in Roby, brick, 3-2-2 cp. All the extras. Call 915-776-2371 or 776-2377 or 573-3465 after 5:00 P.M. 11:tf

FOR SALE: 2 bedroom home, fenced back yard, covered patio, attached garage. United Real Estate, Harmon Holcomb, 776-2131.9:tf

WILL TRADE: Income producing 6 unit apt. building in Roby for farm or ranch. Write Dan Swaffar, 7477 Wallingford, Cincinnati, Ohio, 45244 or call (513) 232-8700. 23:2tc

HAY FOR SALE: Round bales. Call 735-2602. 23:2tp

NOTICE: Custom hay baling and hauling round bales only. Also have haygrazer and hegari round bales for sale. Call Mac Rains, 735-2640. 23:2tc

APARTMENTS FOR RENT: Now accepting applications for 2 and 3 bedroom apartments. We are an Equal Housing Opportunity Agency. Rotan Housing Authority. 915-735-2471. 10:tf

FOR SALE: 1984 Chevrolet Suburban, fully loaded. Call Wes Morrow, 735-2252 or 735-2187. 6:tf

NOTICE: Managers, full/part-time, Rotan area. Rapid advancement, career opportunities, bonuses! Resume to Ron, P.O. Box 1577, Sweetwater, 79556. 22:4tp

RENT OWN: Amana refrig., microwave, Maytag washer and dryers, stoves, used also. Bill's Appliances, 113 W. Broadway, Sweetwater, Texas, 235-4349. 23:tf

FOR SALE: 8 mm sound movie camera and projector. Like new. 735-2596. 21:tf

NEW HOME SEWING MACHINES: Electrolux cleaners, repair all makes. H.B. Stevens, 1101 James St., Sweetwater, 235-2889. 27:tf

DIRT WORK: Backhoe, \$30.00 hr., dirt hauling, 776-2859. 4:tf

NOTICE: Bill's Auto Salvage is now open in Snyder. Late model used parts, Chevy, Ford, Chrysler, Toyota, Datsun. East Highway 180 at the traffic circle. 573-9569 or nights 573-9010. 45:tf

FOR SALE: Alfalfa or haygrazer hay. Square bales. Call 735-3171. Landes Furniture. 34:tf

WANT TO BUY: Girls & boys 26" single speed bicycle. Call 735-2025. 21:4tp

PAINTING: Will do interior house painting. Call 735-2025. 21:4tp

CHRISTMAS DECORATIONS: Now hiring demonstrators in your area for season. Free \$300 kit, no investment, collecting or delivery. Party plan. Own hours. Weekly paycheck. Also need hostess who would like \$40 and up in free merchandise. Call Evonne 915-735-2302 or 735-2556. 21:5tc

FOR RENT: 1 room, nice garage apartment. Call 735-3348. 24:2tp

WANTED: Experienced tractor driver. Call David Hudnall, 735-3597. 24:2tc

YOU'RE INVITED: To the 1986 Christmas Around The World introductory party, Thursday, July 24th, in my home, South 3rd St, Roby. Come and go, 10 to 5. Demonstration 5 to 6:30. Parties booked and held before Aug. 6th receive free wreath. Susan Griffith, 776-2403. 24:1tc

FOR SALE: 1975 Chevy Vega, 4 speed, standard transmission, runs good. \$500.00 as is, 735-2146 or 735-3122. 23:1t

GARAGE SALE: Saturday, July 26, 8 a.m.-108 W. Beauregard. Furniture, clothes, dishes, etc. 24:1tp

CUSTOM HAY BALING: New John Deere equipment. For information call Windell Barrett, 573-6438. 24:4tp

FREE PUPPIES: 1/2 Collie, Alton Smith, 735-2908. 24:1tc

FOR SALE: Refrigerator side by side. Avacado color, \$100.00. 735-2407. 24:1tp

WANT TO BUY: 2 or 3 bedroom house on pier and beam to be moved. Call 735-2669 after 6 p.m. 24:1tp

BACKYARD SALE: Fri. & Sat., lots of girls clothes and toys. 308 E. 6th St. 24:1tp

FOR RENT: 1 room, nice garage apartment. Call 735-3348. 24:2tp

WANTED: Experienced tractor driver. Call David Hudnall, 735-3597. 24:2tc

YOU'RE INVITED: To the 1986 Christmas Around The World introductory party, Thursday, July 24th, in my home, South 3rd St, Roby. Come and go, 10 to 5. Demonstration 5 to 6:30. Parties booked and held before Aug. 6th receive free wreath. Susan Griffith, 776-2403. 24:1tc

FOR SALE: 1975 Chevy Vega, 4 speed, standard transmission, runs good. \$500.00 as is, 735-2146 or 735-3122. 23:1t

GARAGE SALE: 201 N. 2nd, Roby, Sat., July 26, 10 to 5. 24:1tc

NOTICE: Free puppies, small breed. Call 735-3134 after 5:30 p.m. 24:1tc

NOTICE: Zenith Television sets are now in our line along with Magavox. No need to go to Abilene to try to save money. We have the best discount prices anywhere, low interest financing, and we are right here to service them. Come in today and see us at Frank's TV and Jewelry, 218 S. Central, Hamlin. 576-2122. 24:1tc

GARAGE SALE: 802 E. 7th, Rotan, Friday, July 25th. 24:1tc

SUBSCRIBE By Calling 735-2562 Rotan Advance Roby Star Record

Masterview Book Store
103 Arizona Sweetwater, Texas 235-2940
*Bibles, Books, Gifts & Christian Music Items
*Specializing In Personalized Engraving, Name Plates, Plaques & Souvenir Items!
Welcome SHS Class Of '87 Come By & Register For Door Prizes & Certificates To Be Given Away On July 28th

SECURITY FINANCE
Your Friend When You Need Cash
Loans Up To \$300.00
Now Making Vacation Loans!
117 West Broadway Street Sweetwater, Texas 79556
Phone 236-6894
Ask For: Nancy Or Rhonda

We Sell BIBLES At The Newspaper Office

When Is Your Selling
CLASSIFIED INFORMATION

No Secret At All?
WHEN OVER 7000 PEOPLE READ IT IN ROTAN ADVANCE ROBY STAR RECORD

If you've got something to sell...we'll get your message across! And our big readership guarantees you lots of prospects!

FAST Printing Service
The Newspaper Office
735-2562

Fashion Sewing needs

Roby Flower, Fabric & Gift Shop
Erwin, Maxine & Michelle
776-2292 Roby, Texas

MONUMENTS & CURBING
Buy Where They Are Made & Save
J. B. Smith
308 E. 4th St.
Phone 735-3290

FOR RENT Storage Spaces
From \$15.00 Per Month
Lock It And Leave It
Rotan Self Storage
735-3171

NEED

- *Job Printing
- *Rubber Stamps
- *Office Supplies
- *Film Developing
- *Old Photos Copied

The Newspaper Office
735-2562 Rotan, Texas

News From Down South By Bertha Warren

Hello from down south.

Eircle and Mary Etta O'Donald went to Brad Friday to visit Don, Nancy and their family.

They returned on Saturday and their granddaughter, Kari O'Donald returned home with them to spend a few days. Nancy and the girls spent Sunday night with the O'Donalds.

The Quilting Club met Thursday. Lucy Vines was hostess. Others present were Eugenia Rogers, May Rogers, Trivia Neeper, Agness Bunn, Lydia Henry, Noma Toland, Vivian Peacock, and Erna Lee Hartgraves. Judy Cave visited with the Quilting Club and Ollie Ogden dropped by for a visit.

Randle, Erma Jones and children from Huntsville visited with Dale and Oleta King at Kaufman last week, they had been to Indiana to see Randle's sister, LaRue Stevens and family and on to Green Bay, Wis. to see another sister, Vonda. Dawana Stevens came home with them to spend a few days.

Troy Hartgraves from Denton is home for a few days. Congratulations to Boomer Hartgraves, he had his 16th birthday last week and his drivers licenses this week.

Hazel Smith had visitors from Green Forest, Ark. Her great niece, Alice Marie Youngblood. Her daughter, Vera and Joe Jennings visited her and Burt and Ilene Hale Sunday. Burt and Ilene took Hazle to Anson to visit her niece, Amy Harrison and a sister-in-law May Blankenship. The Hales went to Blackwell to meet Blandon Rember and his friend, Ricky and bring them back home with them to spend a few days.

Eddie and Andi Thornburg have been visiting his parents Lowell and Helen. Eddie took part in the stockholders roping at the coliseum at Snyder and congratulations are in order for that young man. He won the trophy

belt buckle for being high point man and he won the stocktrailer for winning the most money at the roping. Again congratulations to Eddie. Helen and Lowell's daughter is visiting them this week. They are Gayle and Marion Carter from Hereford.

Eugene, Bulene and David Shipp, Jackie, Carlena and Sam went to Ft. Knox, Kentucky to see John graduate. His wife Lana and baby flew up to be with him. Then all of them took a tour of Nashville on their way back home. They visited Opry Land, rode the General Jackson train and visited other historical spots. They reported having a wonderful time the entire trip. They had John's birthday party Saturday and he has gone on to Ft. Bliss where he will be stationed for a while. Lana and baby will follow him later. Damon and Shelby had Sunni's first birthday party on Sunday. Present were Sunni's 3 great grandmothers, Callie Shipp, Rotan; Jewel Ratliff, Sweetwater; and Kate Fancher of Rotan. Three grandmothers, Bulene Shipp, Roby; Sue Dulin, Maryneal; and Lorraine Edgar. Two granddads, Eugene Shipp and Dub Dulin. David Shipp and Buffy Shipp attended the party along with Kim and Eddie Daniels and daughter, Kandis. Sunni's cake was the cookie monster. Happy birthday, John, Sunni and our daughter-in-law, Tachi Warren.

Ollie Ogden went to Abilene with the senior citizens of Rotan to the McLane Food Show Saturday. They saw a lot of new and different foods. She reported they all had a wonderful time. Ollie went with

Lena and Carrol Hodges to see Maynard Johnson perform at Trinity Baptist Church. He came to Sweetwater, guest of the Great Lion Baptist Church. Mr. Johnson was the first black man to graduate from Southwestern University with a Dr. of Ministry and Music. He has been on the Billy Graham program and is very well known. They had a very large crowd and said it was just wonderful.

Charlie and Thelma Smith visited their son, Ted at Merkel Sunday then went on to Eldon and Rogene Hicks for Eldon's birthday party. It was from 5 to 7 and they served ice cream, cake, punch and cookies. Thelma's niece, Sandra Gardner of Ira has been in the hospital at Snyder for a couple of weeks. She got to go home Thursday. We're happy she is feeling better.

Jerry and Karen Hodges have their five granddaughters home with them, so I'm sure they have a lively household. Can you imagine the laughter, fun and happenings in a household with five young ladies. Amy and Melissa are from Snyder, Rachel lives in Lubbock and Nikkie and Kary live here.

Our visitors over the weekend were Steve, Tachi, Stephanie, Nicole, Sabrina and Tonya and her friend, Trish Evans of Snyder. Monday my nephew, Pete and Sandy Ratliff and children from Brownwood came and

spent the night with us. Jewell and Bill Ratliff had supper with all of us Monday night.

The Claytonville-Capitola reunion will be at the community Center Saturday, Aug.

2nd. Call and let us know what's going on in your world.

Legal Notice

NOTICE OF APPLICATION FOR OIL AND GAS WASTE DISPOSAL WELL PERMIT Equitable Petroleum Corporation, P.O. Box 8407, Metairie, La., 70011, has applied to the Railroad Commission of Texas for a permit to dispose of produced salt water or other oil and gas waste by well injection into a porous formation not productive of oil or gas.

The applicant proposes to dispose of oil and gas waste into the C.T. McLaughlin Heirs, Well Number 2. The proposed disposal well is located 10 miles NW of Sweetwater in the Pyron Field, in Fisher County. The waste water will be injected into strata in the subsurface depth interval from 730 to 920 feet.

LEGAL AUTHORITY: Chapter 27 of the Texas Water Code, as amended, Title 3 of the Natural Resources Code, as amended, and the Statewide Rules of the Oil and Gas Division of the Railroad Commission of Texas.

Requests of a public hearing from persons who can show they are adversely affected, or requests for further information concerning any aspect of the application should be submitted in writing, within fifteen days of publication, to the Underground Injection Control Section, Oil and Gas Division, Railroad Commission of Texas, Drawer 12967, Capitol Station, Austin, Texas, 78711 (Telephone 512-445-1373.)

24:1tc

Exchange Group To Serve Hamburgers At Playday

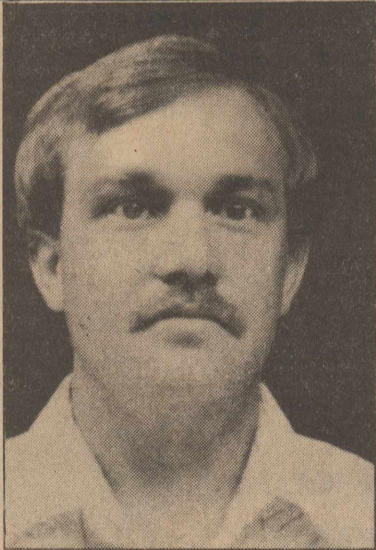
Fisher County 4-H Exchange Group will serve hamburgers and all the trimmings, homemade ice cream and pies at the Playday

this weekend in Roby at the Fairgrounds. Everyone come eat with the 4-H'ers. All proceeds go to the Montana trip.

Hospital News

Patients admitted to the Fisher County Hospital from July 15 thru July 21 were: Lewis Cleveland; Ruth Martin; Jerry P. Helms; Ann

Paske; and Cheryl Moore, all of Rotan; Minnie Callan, Sweetwater; Bob Echols, Carlsbad, New Mexico.



Kevin Tandy
Rotan
Fisher County
Representative

**MR. & MRS. HOMEOWNER:
ARE YOU TIRED
OF PLAYING WITH
YOUR THERMOSTAT
BECAUSE YOUR HOUSE
DOESN'T STAY
COMFORTABLE!!**

**SAY "GOODBYE" TO HIGH
UTILITY BILLS...
SAY "HELLO" TO MORE
COMFORT IN YOUR HOME!**



Can be installed through walls of brick, wood, rock, asbestos or stucco!!

Re-insulation of walls and attics...
...in homes with or without existing insulation



ALL AT ONE LOW PRICE

SUPER FILL
INSULATION & SIDING

735-2300

100% FINANCING

CALL NOW FOR A FREE ESTIMATE WITH NO OBLIGATION

WTU's New And Improved Energy Saving Plan...



Look for This New E.S.P. Book At Your Local WTU Office.

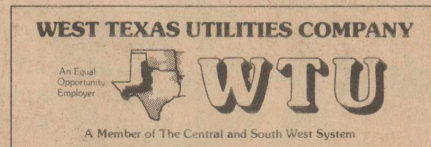
WTU's New & Improved E.S.P. Program Will Pay* You Larger Cash Allowances for Installing:

- Electric Heat Pumps
- Energy-Efficient Air Conditioners
- Heat Recovery Units

Cash Allowances Available for:

- Single-family Homes (New & Existing)
- E.S.P.-Approved Apartments to Owners
- New & Existing Small Commercial Businesses.

*To Qualify, You Must Meet The E.S.P. Requirements & Be Served By WTU.



For More Information on the New E.S.P. Program, Call your Local WTU Office or Come by and Pick up Your FREE Copy of The New E.S.P. Book.

Chris Hayes Named Academic All-American

The National Secondary Education Council announced today that John Christopher Hayes has been named an Academic All-American.

The NSEC has established the Academic All-American Scholar Award Program in order to offer deserved recognition to superior students who excel in the Academic disciplines. The Academic All-American Scholars must earn a 3.3 or better grade point average. Only Scholars selected by a secondary

school instructor, counselor, or other qualified sponsor are accepted. These scholars are also eligible for other awards given by the NSEC. These are awards few students can ever hope to attain.

Chris Hayes who attended Graham High School was nominated for this National Award by Pam McClure, math teacher. Chris will appear in the Academic All-American Scholar Directory, which is published nationally.

"Recognizing and supporting our youth is

more important than ever before in American history. Certainly, winners of the Academic All-American Awards should be congratulated and appreciated for their dedication to excellence and achievement," said Dr. George Stevens, Executive Director of the National Secondary Education Council.

The Council selects Academic All-American Scholars upon the exclusive recommendations of teachers, coaches, counselors, and

other qualified sponsors. Once awarded, the students may be recognized by the NSEC for other honors.

Chris is the son of Mr.

and Mrs. Jimmy Hayes. The grandparents are Mr. and Mrs. J.C. Hayes of Roby and Mrs. Inzer Whitefield of Graham, Texas.



Mr. & Mrs. R.E. (Estelle) Johnson

Mr. and Mrs. R.E. (Estell) Johnson To Observe 50th Wedding Anniversary

Mr. and Mrs. R.E. (Estell) Johnson will observe their fiftieth wedding anniversary Sunday, August 3, 1986 starting at 2 p.m. at Fisher County Senior Center. It is South of the Fisher County Hospital, Rotan, Texas.

LEGAL NOTICE

ADMISSION POLICY
Male and female adult patients, including married couples are admissible to the Nursing Home without age restrictions. All patients are admitted only under Doctor's orders. It is the policy of the home to admit and to treat all patients without regard to race, color, or national origin. The same requirements for admission are applied to all. Patients are

Johnson of Canton, Texas.

Estell and Louise first met when he was working as a cowboy on the J.D. Smith Ranch in Stonewall County in 1935.

They were married August 1, 1936 at Rotan, Texas by Rev. Fred Clark at the Baptist parsonage. Mrs. Charlie Hicks, Louise's aunt, came for them to be married, was their attendant and their honeymoon was spent at the Hicks' home.

Estell farmed in Wrights Chapel, Fisher and Hobbs Communities except from the fall of 1961 to May 1964 when they lived in Canton, Texas.

August 19, 1965, they moved to Abilene to 725 S. Willis where they now reside. He did yard work and was custodian at Abilene High School from 1969 to 1980 when he retired. Louise has been employed at Abilene State School since Sept. 15, 1975.

They are members of 11th and Willis Church of Christ.

Their children are Mrs. Lamar (Nita) Cowan of Farmington, N.M., Mrs. Billy (Linda) Sparks, Midland, and Cynthia Johnson of the home. Twin grandsons, Mark and Scott Cowan of Albuquerque, N.M., one granddaughter, Jamie (Potts) Corbin of Midland, two great grandsons and one great granddaughter of Midland.

assigned within the home without race, color or national origin. All persons and organizations having occasion to refer patients for admission or to recommend the home, are advised to do so without regard to the patient's race, color, or national origin, or handicapped.

Sue Hitt-Administrator-Fisher County Nursing Home, Rotan, Texas, 735-3291.

24:1tc

Fisher County Nursing Home News

Paula Rudnick from Abilene came last week to show us a film on elder abuse. It was very interesting and educational. Annie Mae Weems was the only guest at this meeting.

We have a new resident. Estelle Acker, she will be staying with us and we hope we can make her feel at home.

Bill Starnes went to Odessa with Charlene last week and is now back home. He had a nice visit.

Mrs. Ashley has had quite a few visitors the last 2 weeks. Ronaie,

Lynn and Judy Kahl from Princeton, Texas and Jessie Ashley from Roby.

Fred Houghton's visitors were Sheman Houghton, Ginger and Carolyn Houghton from Hamlin.

Lottie Rushing's visitors were Don and Patty Dobbins from Stephenville, Jennifer, Jeff and Linda Benson from Brownwood and Betty Masters from Brownwood.

Roy and Jewell Cummings' visitors were Minnie and Doug Noles

and Carole Green from Rotan, Jerry Jack Parker from Snyder, Ginger from Rotan, Mr. and Mrs. G.W. Joplin from McCaulley.

Maude Smith's visitors were all from Odessa...Patty Bledsoe Stovall, Willie Hodges, Pamela Bledsoe and Chalit Bledsoe.

Lucille Wright and Jewell Branch's visitors were Claire Halliburton and Faye Wright from Rule and Janet and Ashley Branch.

Susie Soliz's visitors were Mr. and Mrs. Frank Soliz from Post and Mr. and Mrs. Limones and sons from Ft. Worth.

Mrs. Kinsey's visitors were Meta and Doc Johnson from Brownwood and Wanda Murphree from Rotan.

Other visitors were Lon and Vera Weems, Eva Boen and Fennie Bostick and Jim and Iva visited Nellie McGuire. Also Bertha Warren visited the residents.

Reyna Garcia

Rotan First Methodist Church To Host VBS

An all-new and exciting program has been prepared by Rotan First United Methodist Church for Vacation Bible School to be held July 28 through Aug. 1.

Jesus, I Love You is the theme for the school, to be held each weeknight from 7 p.m. to 9:15 p.m..

Classes will be offered for all ages from nursery (ages 3) through college age and adult.

A back-to-basics approach to Christian living is offered in VBS. Bible-based lessons will be taught with excitement and variety through the use of many advance teaching methods. Students will be challenged and involved through such activities as these: song time, Bible study, interesting visual demonstrations, classroom interaction, craft making, and many other innovative methods in keeping with the theme, Jesus, I Love You.

The challenging lessons let students and teachers encounter real love...HIS love...and the results are life-changing. Come along if you want to grow!

Bring the family, friends, and neighbors. There is help, (and fun) and spiritual growth for all at Vacation Bible School!

Take Time to Love

Come to VBS

ROTAN METHODIST CHURCH

Place

July 28-Aug 1

Date

7:00 PM - 9:15 PM

Time

Sharrock Saddle Shop

313 Pecan Sweetwater, Texas 79556



*New And Used Tack
*New And Used Saddles
*Buy And Trade Saddles And Tack
*Complete Saddle & Tack Repair
*Custom Handmade Leather Items

JUL 26 TEXAS 86

DAN CLAYTON

GRND + OPEN

1986

DEALER

The Clayton tradition for excellence in customer service started with my first dealership back in 1981. Now, almost 6 years later, we are still committed to that tradition of service excellence. It is in this spirit that we proudly announce the Grand Opening of the new Dan Clayton Chevrolet in Sweetwater, Texas.

To celebrate the Grand Opening of Dan Clayton Chevrolet, we have over 100 new and used cars and trucks priced to sell. We are ready to deal, and no reasonable offer will be turned down.

Our Chevrolet facility houses one of the Big Country's finest service operations. We have spared no expense in giving you the latest in service technology and state-of-the-art equipment to properly and efficiently service your automobile.

Come by this weekend for a hotdog and soft drink and register for prize giveaways that include TV's, microwaves, and service specials, to name a few. DAN CLAYTON CHEVROLET is not a high pressure dealership. We still confirm a car deal with a handshake and smile.



President





601 Lamar Under the Big Flag

236-6844



Mr. Goodwrench

"Your Satisfaction Is Our Future"
601 LAMAR, SWEETWATER, TEXAS 75584
Sales • Service • Parts

HERE'S THE BEEF!!

Texas Consumers Use Newspapers 1st For Shopping

Texas consumers name their local newspaper as the usual source of "Best Buy" shopping information, 10 times more than radio or television.

Information Sought By Consumers	PERCENT		
	Newspapers	Radio	TV
Where To Shop	57%	5%	9.3%
Cost Of Products	57.1%	3.4%	8.3%
Best Buy Info	58.6%	3.2%	7.0%

Texas consumers look to newspapers FIRST and MOST for news and advice about shopping. Newspaper ad information is decisive and always available for reading and study.

SOURCE: 1984 Consumer Data Service (CDS) Survey of Texas Consumers
(This newspaper is a member of the Texas Newspaper Advertising Bureau)

TEXAS NEWSPAPERS
For Your Best Shopping Info

Rotan Advance-Roby Star Record

735-2562 Rotan, Texas

sidewalk SALE

Moved Inside!
Still Have Good Selections
Of Girls & Boys Swimwear
& Dresswear At
50% & 60% Off

**Selected Bedding
30% Off**

**New Fall Items
Arriving Daily
We Welcome Layaways**

THE CAT'S MEOW



215 Oak, Sweetwater
Open 9:30 - 5:30 Mon. - Sat.

Fisher County

GRANDPARENTS CORNER

This column will be featured in our paper each week that space allows. Please bring or send in your grandchildren pictures with the information you wish to put in the paper. We will mail them back to you or you can pick them up at The Newspaper Office.



Tiffany Klepper, 6 year old daughter of Frank and Lou Klepper of Sequin, Texas and Tara Sue, 7 months old daughter of Martin and Tina Blair, Midland, Texas are the grandchildren of Mr. and Mrs. Billie McCombs of Rotan. Tiffany is also the granddaughter of Evonne Klepper and Tara is also the granddaughter of Mr. and Mrs. Marshall Blair of Ackerly, Texas.

WTC Offers Intramural Sports Programs

Getting involved in extracurricular activities at college is often the key to smooth adjustment for new students. Realizing this, Western Texas College encourages all students to become part of campus life by participating in the intramural sports program and in student government.

Mike Harrison directs WTC's intramural sports and Mickey Baird serves as advisor for the Student Senate.

Harrison is a physical education instructor who joined the WTC faculty in the 1985-86 school year. Mrs. Baird is Student Activities Director and is responsible for planning and coordinating student events throughout each semester.

Flag football gets

WTC's intramural program underway each fall. Also popular are 3-on-3 basketball, 5-man basketball and co-ed volleyball. Co-ed softball was added to the intramural last spring. Competition, in tennis and racquetball is available if there are enough players.

Intramural players from WTC also participated in an Extramural Playday at South Plains College in Levelland last fall, entering competition in swimming, pool, ping pong and tennis.

"Our intramural program is flexible," Harrison emphasizes. "We try to include every sport that students want. Anyone interested in participating needs to see me to sign up and we'll take it from

there."

Opportunities to participate in student government come through the Student Senate. The work of the Senate deals with many aspects of campus life and includes planning social activities. These range from various holiday festivities to the annual Spring Formal where Mr. and Mrs. WTC are introduced.

Freshman and Sophomore representatives to the Senate are elected each fall. Students interested in serving go first to the Student Activities office in the Student Center where Mrs. Baird will explain the election procedure. Officers for the Senate are elected each spring for the coming school year and are chosen from freshmen representatives who have completed a year as Senators. The officers return to the campus early each fall to begin making plans for the coming semester.

Students who would like to know more about campus life are invited to visit the campus on weekdays and can arrange for a tour of the campus by calling the Student Services office at 915-573-8511, extension 394.

Federal Income Tax To Affect Nonprofit Groups

Representatives of various charitable and nonprofit organizations met with David Tobin, assistant director of government relations for Independent Sector, to discuss provisions of federal tax reform plans that will affect nonprofit groups. Independent Sector is a national forum to encourage giving, volunteering and not-for-profit initiative.

The Charitable Contributions Law, passed as part of 1981 Tax Act, extended to nonitemizers the charitable deduction. However, this law is due to expire in 1986. H.R. 3838, the House of Re-

presentative tax reform bill, would make the charitable deduction for nonitemizers permanent. Unless enacted, some 62 million low and middle income nonitemizers would lose this deduction.

Smith's Pay Visit To Rotan

Mr. and Mrs. Mike Smith of Lewisville, spent last weekend visiting with Laura C. Smith and Jill Darden.

ADVERTISER

SUBSCRIBE
By Calling
735-2562
Rotan Advance
Roby Star Record

ALL LADIES' SUMMER FASHION WEAR

1/2 Price

-H-

Western Wear
College Heights Shopping Center
Snyder, Texas

County Agent Report

By Richard Spencer

Perhaps the recent concerted efforts by persons and organizations within the agricultural economy to place more emphasis on marketing of farm products is beginning to pay off.

Until recent times people in the industry concentrated their efforts toward the production of farm commodities, developing technology that made us the major producer of food and fiber in the

world. And we had ready markets for much of the abundant supply of products in developing nations throughout the world. As the U.S. began to lose markets for manufactured products to other countries that could produce them more economically, namely Japan, our exports and imports were kept somewhat in balance by the sale of agricultural products

abroad. But in recent years that situation has changed drastically. We also began to lose markets for our farm products and we find ourselves with a huge trade deficit of some \$150 billion, hurting our entire economy.

Competition is now coming from developing nations which we have helped in the past few years by furnishing our technology, technicians and money through direct loans and loans through the International Monetary Fund. There are numerous examples China has become a major exporter of cotton and we are certain that our technology has helped since that nation opened its borders, somewhat, to the rest of the world a few years ago. We read a report this week that said as late as 1982 the U.S. furnished almost all of the feed grains purchased by South Korea, but so far this year that country is buying only 16 percent of their imports from us, most of the rest coming from Argentina and Australia.

At a time when it was sorely needed, a bright note came recently with the announcement that the U.S. had sold 90,000 metric tons of beef to Brazil, said to be the largest sale of beef in U.S. history. According to the USDA, the meat will be delivered July through October and consist of 63,000 tons of steer and heifer beef and 27,000 tons of cow beef. The sale could not have come at a better time; a time when everyone in the cattle industry was worried about the effects of the Dairy Herd

Buyout Program. The National Cattlemen's Association, said it is the equivalent of Brazil's purchasing nearly 400,000 dairy cows and since Brazil is a new market, it will not displace normal overseas sales. And, as a result of the recent lawsuit which the NCA, and others, filed against USDA, and won, USDA has agreed to institute action to guarantee a more orderly marketing of the dairy cattle and a meat purchasing program that should add stability to the cattle market.

On another front, the Texas Department of Agricultural states that sales efforts by department through M-TEC,

the Mexico-Texas Exchange Commission, have resulted in many recent sales of Texas agricultural products to individuals and cooperatives in that nation. It is pointed out that Texas had record sales of livestock to Mexico in 1985. 2,500 Beefmaster cattle had been imported by Mexico during the year, putting Beefmasters among the top breeds in exports.

Farmers should be on the alert for bollworms in cotton. Moth catches are up and a large number of eggs are being found in the fields by scouts. Beneficials are also reported to be low.

Funeral Services Held For Curtis Acker

Curtis Acker, 71, lifelong Fisher County resident, died at 1:45 P.M., Monday, July 21, at Brownfield Nursing Home in Brownfield. Funeral services were

conducted at 10 a.m. Wednesday, July 23, at the First United Methodist Church. Officiating was Rev. Steve Peace, pastor of the First Baptist Church. Burial was in the Belvieu Cemetery under the direction of Weathersbee Funeral Home.

Some Crop Loans May Be Extended For 12 Months

Producers holding Commodity Credit Corporation loans on 1985 crops of feed grains, rye, soybeans and wheat may at their option extend the loans for 12 months, Secretary of Agriculture Richard E. Lyng announced.

Lyng said the action was taken to encourage producers to take advantage of all available on-farm storage space in preparation for the projected large grain harvests this fall. The action is expected to help make available more commercial warehouse space at harvest. Lyng added that the action also would give additional marketing flexibility to producers who have outstanding or unsettled matured loans on 1985-crop barley, corn, oats, rye, sorghum, soybeans, and wheat.

Storage costs for the added 12 month loan period will be paid by CCC for all the above commodities except soybeans, Lyng said. The Agriculture and Food Act of 1981 prohibits CCC from paying storage on soybeans.

Producers who wish to extend their loans must request extensions by writing their local offices of the U.S. Department of Agriculture's Agricultural Stabilization and Conservation Service. The request must be filed no earlier than 60 days before the loan maturity date.

Advance storage payments will be issued for all crops except soybeans. The annual storage rates are 26.5 cents per bushel for wheat, barley and corn, 47.32 cents per hundredweight for grain sorghum and 20 cents per bushel for oats.

Bill's Appliance
Formerly Curry Appliance
New Location: 113W. Broadway
235-4349 235-2229

Amana Refrigerator

17.8 Cu. Ft.
Glass Shelves
Ice Maker
Two Crispers
Dell Drawer

\$699
Reg. \$899
Model TRG185PH

rentOwn
Plans Now Available
We Service All Major Appliances!!
"We Sell The Best...& Service The Best"
Maytag, Amana, Frigidaire
Washers, Dryers, Stoves, Refrigerators, Freezers

Have an old fashioned COOKOUT

City Grocery & Deli

776-2225 Roby, Texas

Double Coupons Everyday
Prices Effective July 24-30, 1986
Open Until 9:30 P.M. We Reserve The Right To Limit Quantities

- Parade Yellow 6 Oz. Cornbread Mix **2/39¢**
- Parade 18 Oz. (Crunchy Or Cream) Peanut Butter **\$1.09**
- Pringle 7.5 Oz. Potato Chips **\$1.09**
- Gandy's 1/2 Gal. Milk **99¢**
- Gandy's 8 Oz. Sour Cream **69¢**
- #1 Cello Carrots 3 Bags For **\$1.00**
- Yellow Onions **19¢ LB.**
- Valencia Oranges **39¢ LB.**

Kraft 32 Oz. (Reg. Or Lite) **Miracle Whip \$1.69**

Galante 16 Oz. **Diced Jalapenos \$1.79**

Keebler 1 LB. **Saltines 99¢**

Ground Chuck **\$1.19 LB.**

Crisco All Vegetable 3 LB. (Regular Or Butter Flavor) **Shortening \$2.49**