

## Baseball

**V Indians vs Forsan/Olney Scrimmage**  
**Sat., Feb. 20, 10 a.m.**  
 at Haskell

**JV/V Indians vs Seymour**  
**Tues., Feb. 23, 5 p.m.**  
 at Seymour

## Calendar

### Food distribution

The Haskell County Ministerial Alliance Food Distribution Center will distribute food Sat., Feb. 20 from 10 a.m. til 11:30 a.m. at 206 S. 2nd (building east of Civic Center) in Haskell. Volunteers and boxes are needed.

### Food distribution

The Haskell County Ministerial Alliance Food Distribution Center will distribute food Sat., Feb. 20 from 9:30 a.m. til 11 a.m. at the First Baptist Church in Rule. Volunteers are welcome.

### Black history

Greater Independent Baptist Church, 301 N. 3rd St. in Haskell, will present a Black History program Sun., Feb. 21 at 2:30 p.m. The theme is "One Person Can Make A Difference." A. Penns of Abilene Valley View Baptist Church will lead the program. Everyone is invited.

### Revival in Rule

The First Baptist Church of Rule will be in revival Sun., Feb. 21, through Fri., Feb. 26. Services on Sun., Feb. 21st, will be at 11 a.m. and 5 p.m. and other services the rest of the week Monday through Friday, will be at 7 p.m. Randy Mac and Julie McLelland will be the evangelists. All are welcome to attend. Pastor of First Baptist Church of Rule is Rev. Scott Hensley. For more information, call 940-200-0241.

### Fish fry

A fish fry will be held Sun., Feb. 28 from 11:30 a.m. to 1 p.m. at the Haskell Civic Center by the Trinity Lutheran Church. Plates are \$8 and include fish, hushpuppies, french fries, coleslaw, drink and dessert. Come join us for praise and worship beginning at 10:30 a.m. Benefits go toward the youth attending church camp.

### HHS, HJH report card pick up

Haskell High School and Junior High parent report card pick up day is Wed., March 2 from 5:00 to 6:30 p.m.

### Easter Cantata

The Community Choir Easter Cantata rehearsals are held every Sunday, at 4 p.m. in the First Baptist Church Chapel. The Easter Cantata will be presented Sun., March 20. A nursery will be provided.

### Music Jubilee

The Haskell County Music Jubilee will be held the second Monday of the month at 7 p.m. at HTS in Haskell. Those interested in playing and listening are encouraged to come and enjoy the fun. Practice sessions are held on Thursday nights at HTS.

## Index

Out of the Past.... Page 4  
 Menus ..... Page 8  
 Classifieds..... Page 9  
 Weather ..... Page 10



# Congratulations Maidens

# The Haskell Free Press

VOL. 130-NO. 7, ©FEBRUARY 18, 2016

"The People's Choice"

10 PAGES-ONE SECTION-75 CENTS



**DISTRICT CHAMPS**—The Haskell Maidens won their back-to-back 7-2A district championship Tues., Feb. 9 against Hawley. The Bi-District game was played Tues., Feb. 16 against Forsan at Winters. Team members are, l-r, Jordan Garvin, Ariel Martinez, Ashlyn Bevel, Destiny Benavides, Taylor Manske, Courtney Whitt, Hollyn Hadaway, C'Era Taylor and Makinzie Garvin.

## Maidens are District Champions

### Maidens capture back to back district 7-2A championship

The Haskell Maidens won their third district championship in four years with their 54-49 win over

the Hawley Lady Bearcats 15-13 (7-7). Haskell outscored Hawley 33-29 the second half to get the tough road win and move to 20-9 overall and 12-2 in district 7-2A.

The Maidens were (21-

69) 30% from the field, (2-22) 9% for three pointers, and (10-18) 55% from the free-throw line. Junior Ashlyn Bevel had a team high 20 points followed by Jordan Garvin with 12, Taylor Manske 10, C'Era Taylor 5, Destiny Benavides 5 and Courtney Whitt 2. Leading the team in assists were Benavides with 6, Ariel Martinez 3 and Bevel 2.

"Offensively, I thought we did a pretty good job executing and I felt all right about our shot selection. We got some great looks on the inside and outside. We did not shoot the ball well from the three point line, but we were still able to generate a lot of points," head coach Blake Eddleman said.

Haskell allowed Hawley to shoot (19-49) for 38% from the field and the Maidens were outrebounded 28-30. J. Garvin had a team high 10 rebounds followed by

Taylor with 6 and Manske 6. Leading the team in steals were J. Garvin with 6, Benavides 3 and Manske 3.

"Defensively, we did not play up to our potential and we were fortunate to get out of there with a win. We had too many defensive breakdowns and they also outrebounded us. We will have to play much better than that in the playoffs if we expect to win and advance," Eddleman said.

"Overall, we were extremely happy and relieved to get out of Hawley with a win and capture the district championship. This year's district championship did not come easily and that makes it so much more rewarding. We have a very resilient young team this year and that makes this one extremely special."

"I am so proud of this year's team and words can't express how I truly feel. The girls improved so much throughout the season and they always stayed the course through times of adversity. They portrayed so much toughness, determination, and perseverance throughout the course of the season and in pursuit of this year's district championship. All of their hard work and sacrifice throughout the last nine months paid off and I could not be more proud of them," Eddleman added.

Haskell 12 9 16 17 = 54  
 Hawley 11 9 14 15 = 49  
 JV Maidens lost to Hawley 25-35.

They finished with a 20-3 overall record, 14-2 district record, and they are the district runner-up. Please congratulate this group of wonderful girls and Coach Missy Burson. They had another outstanding and impressive season!

## Ideas Challenge competition set Feb. 23

The Springboard Ideas Challenge, sponsored by ACU's Griggs Center for Entrepreneurship and Philanthropy, has made some big changes for 2016.

Founded in 2007, the program has made a name for itself by allowing local college students and members of the community a chance to pitch their ideas to local investors and possibly walk away with thousands of dollars in startup funding and other resources. Over the last nine years, the competition has awarded more than \$400,000 in winnings to aspiring entrepreneurs.

For 2016, the program will make significant changes to the overall process.

"One of the biggest changes has been moving from a business plan to a business model competition," Karen Heflin, Springboard program coordinator, said. "A business plan, which is what we've required in the past, is a lengthy report. A business model is more of a storyboard presentation with initial research done by participants. It gives aspiring entrepreneurs valuable information before they ever launch their business, helping them be more successful."

In 2016, the Springboard Ideas Challenge will be making it easier for entrepreneurs across the Big Country to compete. Participants will get started by presenting a two-minute elevator pitch instead of submitting a plan or written application. These first round elevator pitch events will be hosted in several cities including Sweetwater (Feb. 8), Brownwood/Early (Feb. 11), Haskell (Feb. 23), Abilene (Feb. 22) and Snyder (TBD).

Training and mentors will be available to teams that advance past the first round of the competition. These resources will help prepare contestants to take their initial idea, and transform it into a working and applicable business model that investors would be interested in.

The competition will end in May with the top three teams presenting their final business model to a group of local investors for a chance to win \$15,000.

For more information, visit [acu.edu/springboard](http://acu.edu/springboard), call Heflin at 325-674-6485 or email [griggscenter@acu.edu](mailto:griggscenter@acu.edu).

## Haskell Co. Arrest Report

The following arrests were reported by the Haskell County Sheriff's Office during the week of Feb. 8-14:

Michael Erwin Anderson, District Court order.

Kennie Powell Moore, criminal mischief \$2500.00 to \$30,000.00.

Joseph E. Barraza, possession of marijuana over 50 lbs. less than 2000 lbs.

Jorge Alberto Zalazar-Franco, possession of marijuana over 50 lbs. less than 2000 lbs.

Miguel Guzman, injury to a child.

Tony Dale Bradley, assault family violence house member impeded breathing

or circulation, Stonewall Co. warrant.

Stephanie Michelle Coleman, motion to revoke theft of property.

Shamone Weaver, theft by check.

Timothy Lyn Sanders, forgery.

Billy Glover, possession of methamphetamine 1.8 g., Throckmorton Co.

Terry Cogburn, possession of methamphetamine, 1.8 g. Throckmorton Co.

Robert Clark, possession of methamphetamine 1.8 g., Throckmorton County.

Twenty-five calls were made to 911.



**MARIJUANA SEIZED**—Haskell Chief of Police Scott Kennedy reported that on Feb. 10, Officer Jason Torres from the Haskell Police Department made a traffic stop and uncovered approximately 128 pounds of marijuana, with aid from Haskell County Sheriff's Department, that was concealed in the vehicle. Two men, Joseph Barraza and Jorge Zalazar-Franco, were both arrested and charged with possession of marijuana more than 50 pounds, but less than 2,000 pounds.

FOR NEWS ITEMS OR TO SUBSCRIBE, CALL 940-864-2686



# JIM REID CONSTRUCTION CO.

**Our Trade Skills include:**

- Custom Homes
- Major Remodels
- Bathrooms
- Kitchens
- Additions
- Painting
- Texture
- Tile
- Flooring
- Decks



**Call Jim**  
**Cell 940-207-1796**  
*"One Company, One Job,  
One Price!"*  
Serving the  
Big Country

*"The only job worth doing, is the one well done"*

**Jim Reid, Owner**  
No trip charges • No delivery charges • Free estimates



**MAIDEN STRUGGLE**—Haskell Maiden #35 Ashlyn Bevel fights for possession of the loose ball against Hawley.



**HEADED TO SCORE**—Haskell Maiden #25 Jordan Garvin drives past her defender and heads in for the easy lay up in the Maidens' win over Hawley.

## ELECT Dale Carroll

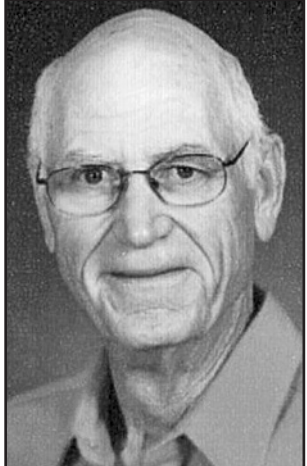
FOR  
Haskell County  
Commissioner Precinct 2

I am Dale Carroll. I am running for Commissioner of Haskell County Precinct 2.

I have lived all my life, except for a short time in the late 60's, in Haskell County, all of that being around Weinert. I graduated from Weinert High School, I attended Ranger Junior College for 2 years then attended Midwestern State University for 2 years. My wife and I raised all of our children in Haskell County. I farmed in Haskell County for 35 years. I also worked for WTU/AEP at the Paint Creek Power Station, Haskell Soil and Water Conservation Service, Natural Resource Conservation Service and I was service manager for Parker Implement Co. for several years. I have served many years on various county boards, Weinert School board, Haskell Hospital District and Haskell County Water Supply District #1. I've retired and have 100% of my time to apply to the job of commissioner. The commissioner's job will not be a part time job for me. I will be available to address all requests and everything will be addressed equally. I have no other commitments. I will do everything possible that is not restricted by budget or manpower to the upkeep of our county roads.

I appreciate each one's consideration and I will do everything I can to represent this precinct and Haskell County to the best of my ability. Remember to vote on March 1st in the Republican primary. Voting locations are the Weinert school and Haskell City Hall for Precinct 2.

**Pd. for by Dale Carroll**



## February sales tax receipts show increase in revenue for county towns

Texas Comptroller Glenn Hegar announced that he sent cities, counties, transit systems and special purpose taxing districts \$867.1 million in local sales tax allocations for February, 0.7 percent less than in February 2015. These allocations are based on sales made in December by businesses that report tax monthly; October, November and December sales by quarterly filers; and 2015 sales by businesses that report tax annually.

"Energy-centric cities such as Odessa, Midland, Corpus Christi and Houston continued to see decreases in sales tax allocation," Hegar said. "Other areas of the state helped to somewhat offset those losses as cities such as San Antonio, Austin, Fort Worth and Dallas saw moderate increases in allocations."

Haskell County had a 3.08 percent increase for February 2016 of \$61,980.08 in comparison to \$60,125.31 for February 2015. 2016 payments to date of \$101,993.36 reflect a 2.13 percent increase over 2015 payments to date of \$99,861.84.

The City of Haskell had a 2.79 percent increase for February 2016 of \$56,837.24 in comparison

to \$55,292.26 for February 2015. 2016 payments to date of \$94,044.43 reflect a 2.10 percent increase over 2015 payments to date of \$92,103.41.

The City of O'Brien had a 51.75 percent increase for February 2016 of \$625.67 in comparison to \$412.29 for February 2015. 2016 payments to date of \$905.62 reflect a 55.41 percent increase over 2015 payments to date of \$582.72.

The City of Rochester had a 23.79 percent increase for February 2016 of \$1,053.72 in comparison to \$851.19 for February 2015. 2016 payments to date of \$1,472.28 reflect a 12.59 percent increase over 2015 payments to date of \$1,307.60.

The City of Rule had a 7.55 percent decrease for February 2016 of \$2,998.96 in comparison to \$3,244.03 for February 2015. 2016 payments to date of \$5,006.54 reflect a 6.04 percent decrease over 2015 payments to date of \$5,328.79.

The City of Weinert had a 42.68 percent increase for February 2016 of \$464.49 in comparison to \$325.54 for February 2015. 2016 payments to date of \$564.49 reflect a 4.66 percent increase over 2015 payments to date of \$539.32.

## What Texans should know about claiming the Health Coverage Tax Credit

The Health Coverage Tax Credit is a tax credit that pays 72.5 percent of qualified health insurance premiums for eligible individuals and families. You are required to attach certain documents with your income tax return to verify you were eligible to claim the credit, that your 2015 health insurance plan was qualified, and that the premiums claimed for your 2015 coverage were paid for the IRS to process your claim for the HCTC. If you do not attach the required documentation, processing delays may occur.

Here's what you should know about the HCTC:

1. Who Can Claim the HCTC. You may only claim the credit if you are:
  - An eligible trade adjustment assistance (TAA) recipient, alternative (ATAA) recipient or reemployment (RTAA) recipient.
  - An eligible Pension Benefit Guaranty Corporation (PBGC) pension payee.
  - The family member of a TAA, ATAA, or RTAA recipient or PBGC pension payee who is deceased, finalized a divorce with

**Go Indians!  
Go Maidens!**

you, or started receiving Medicare. NOTE: A family member is only eligible for two years after the date that created the eligibility.

If someone else can claim you as a dependent on their federal income tax return, you are not eligible for the HCTC.

2. What Health Insurance Plans Qualify for the HCTC. Not all plans qualify. Here are some things to remember:

- All plans that previously qualified for the HCTC qualify for the HCTC through 2019.
  - This includes individual-private and non-group - health insurance that you purchase for yourself or your family from an insurance company, agent or broker.
  - Review the Instructions for Form 8885 for information about qualified health insurance plans that are eligible.
  - For 2015, qualified coverage includes qualified health plans offered through a federal or state-based Health Insurance Marketplace.
3. How to Claim the HCTC. If you've met the requirements, here's how to claim the credit on your 2015 tax return:
    - File Form 8885, Health Coverage Tax Credit, with your 2015 income tax return

and elect HCTC when you file.

- Attach an official letter reflecting your eligibility for the months claimed in 2015 following the special instructions posted on IRS.gov.

- Attach documentation about your HCTC eligibility, showing that your 2015 health plan was qualified and that the premiums were paid.

- Follow special instructions, if you or anyone claimed on your federal income tax return enrolled in 2015 Marketplace coverage and received the benefit of advance payments of the premium tax credit in 2015. You must reconcile the advance payments on Form 8962, Premium Tax Credit.

See the Questions and Answers and Instructions for Form 8885 for more information.

### Singles Around Town

Singles Around Town is a non-denominational fellowship of singles dining out together on Thursdays between 6 and 7 p.m. For the month of February, dining will be at the Dairy Queen. For more information, call Pam Heezen at 940-863-4225 or Tommy Butler at 940-207-0205.

# WIN \$15,000

**Have an idea for a business or invention?**

PRESENT YOUR IDEA IN 2 MINUTES OR LESS FOR A CHANCE TO ADVANCE TO THE FINAL ROUND IN FRONT OF INVESTORS

1<sup>ST</sup> ROUND ELEVATOR PITCH IN HASKELL FOR ALL SURROUNDING COMMUNITIES.

DO YOU HAVE THE NEXT MILLION DOLLAR IDEA?

**WHEN & WHERE**  
**FEBRUARY 23, 2016**  
**5:30 - 7:00PM**  
**CITY HALL - 301 S. 1<sup>ST</sup>**  
**HASKELL, TEXAS**  
**(940) 864-2477 FOR MORE INFO.**

**SPRINGBOARD**  
**IDEAS CHALLENGE**  
COMMUNITY DIVISION

VISIT US AT:  
[WWW.ACU.EDU/SPRINGBOARD](http://WWW.ACU.EDU/SPRINGBOARD)



## AT **First Bank** ★ Texas

### YOU'RE NOT JUST ANOTHER DOLLAR IN THE VAULT

[www.go2fbt.com](http://www.go2fbt.com)

Abilene, Baird, Clyde, Haskell, Mid-Cities, Munday and Stamford



Our goal is customer satisfaction.  
- Melodie

We will always greet you with a smile at the drive-thru window.  
- Patty



MEMBER FDIC



# Annual Senior Angel banquet held by FUMC

Haskell First United Methodist Church held its 10th annual Senior Angel Banquet Wed., Feb. 10. Since its beginning in 2007, the Senior Angel Banquet is a church event that is looked forward to all year. This year the banquet was held at noon instead of night and the ladies attending were encouraged to wear hats. The hats added the atmosphere of days gone by where ladies' luncheons were a dressy social event and something looked forward to. The hats were fun and the participation by the ladies was well received.

As the 13 angels and other guests arrived, Sandra Fry made each of their portraits and group portraits. They will each be given these portraits as a gift. Fry graciously does this gift for the "Angels" and puts a smile on their faces.

Ladies of the church decorated the fellowship hall for the occasion with pink and white table and chair covers with silver sheer bows. Each table had a candle centerpiece with mirror and fuchsia pink accents. For each angel, there was an angel wing pendant with crystal stones to take home.

A meal of ham, green beans, scalloped potatoes, homemade bread, cheesecake with strawberry topping, tea and coffee was prepared by the Methodist ladies.

Pastor David Johnson was on hand to greet the ladies. Pastor Johnson greeted each one with his contagious smile and set the mood of the ladies for feeling very special and added fun to the event. Pastor Johnson also gave the welcome and invocation before the meal was served.

Before the invocation, Pastor Johnson introduced the special guest, Mike Schuler, also known as "Piano Man Mike." He provided dinner music as the ladies arrived and ate. After dinner Schuler took requests from the ladies, playing each song without music and with enthusiasm, he charmed each one present.

Piano Man, Mike Schuler, grew up in New York City playing the trumpet since age 9, performed in Carnegie Hall at 13, joined the U.S. Air Force Band at 17, and then came to college in Abilene where he studied music theory and composition. This was Schuler's second appearance at the Angel Banquet, first playing for the ladies in 2014, but brought back by popular demand and his delightful gift of entertainment. Schuler has traveled around the country and performed all over the state of Texas from Dallas/Fort Worth to South Padre Island, but he has always returned home to Abilene, where he is best remembered as the Piano Man at local



**SENIOR ANGELS**—The Senior Angel's Banquet was held at the Haskell First United Methodist Church Wed., Feb. 10. Honored angels were, front row, l-r, Rowena Hester, Jane Coston, Dwanna Klose,

Naoma Fain, Billie Parsons, Alma Terrell and Jerry Josselet; back row, Steffi Overton, Anita Medford, Darlene Belew Smith, Pastor David Johnson, Myrtle Kutch, Oleta Cornelius and Ruby Lee Medford.



**RED HAT WORKERS**—Ladies of the Haskell First United Methodist Church helped with the annual Senior Angel's Banquet held Wed., Feb. 10. Helpers include, l-r, JoNell Roberts, Paula Everett, Mollie Moeller, Jill Everett, Sandy Sanford, Sharon

Lusk, Alice Ballard, Pat Shaw, Sherry Adams, Marijane Cunningham, Cathy Bartley, Tommye Jo Clark, Mary Rike, Pam Norton, Linda Parsons, Sandra Fry and Shirley Sloan. Not pictured is Nelda Lane.

venues like Crystal's Pizza, Cahoots, Ruby's, Cypress Street Station, Spano's Italian Restaurant, Embassy Suites, the Kiva Inn, the Paramount Theatre, the Mall of Abilene, Dyess Air Force Base, Fairway Oaks, the Petroleum Club, Abilene Country Club, Heff's Burgers, HSU and ACU. You can find more information about Schuler and his music at: <http://www.pianomanmike.com/>

As Feb. 10 was Ash Wednesday, Pastor Johnson offered the Presentation of Ashes to anyone who would not be able to make it back for the Ash Wednesday service that night. This was an added blessing to many of the ladies.

The ladies left laughing and feeling very special and blessed, already talking about and looking forward to next year.

## Food certification training course set

by Jane Rowan  
CEA/FCS, Taylor Co.

Statistics indicate that foodborne illness continues to be a health issue in the United States. Each year, 1 in 6 Americans will become sick, 128,000 will become hospitalized, and 3,000 will die due to a foodborne illness.

Texas Food Establishment Rules state that each food establishment is required to have one certified food manager on site.

Texas A&M AgriLife Extension Service in Taylor, Jones and Nolan Counties, is offering a professional food manager certification training course. This two day program will be offered for \$125.00 on March 21 and March 22 at the Taylor County Extension Office. Cost includes training, materials, and the ServSafe food manager certification examination. The food

manager's certification will be valid for five years. Registration deadline is March 7.

This program is designed to not only prepare foodservice managers to pass the certification examination; it will provide valuable education regarding the safe handling of food. Almost 50 cents of every dollar Americans spend on food is spent on meals prepared away from home. Therefore, careful attention to food safety will help keep customers safe and satisfied. Foodborne illnesses are estimated to cost thousands of dollars in lost wages, insurance, and medical bills. With these statistics, knowledge of how to prevent foodborne illness is essential. The benefits of improved food safety include:

- Increased customer satisfaction
- Improved relationships

with health officials

- Prevention of bad publicity and lawsuits due to foodborne illness

By attending the course, foodservice managers will learn about:

- identifying potentially hazardous foods and common errors in food handling
- preventing contamination and cross-contamination of food
- teaching and encouraging personal hygiene for employees
- complying with government regulations

maintaining clean utensils, equipment and surroundings

- controlling pests

Foodborne illnesses can be prevented by following simple food safety practices. For more information about the Professional Food Manager Certification Training course of Texas A&M AgriLife Extension Service, called "Food Safety: It's Our Business," call Jane Rowan at 325-672-6048. You may also access a downloadable registration form at <http://taylor.agrilife.org>.

**The Haskell Free Press**  
Faithfully covering the news and events of Haskell County since 1886.

**Looking for a Great Rate?**

We can customize a loan to meet your needs. Ask about our:

- Competitive rates
- Terms up to 30 years
- Choice of payment plans

See us for all your rural mortgage financing.

**Central Texas Farm Credit, ACA**  
[www.centraltexasaca.com](http://www.centraltexasaca.com)

**550 South 2nd  
Haskell, Texas 79521  
940-864-8565**

Part of the Farm Credit System

February is the perfect time for a **SWEETHEART DEAL FROM SRTC!**

Receive free standard installation when you sign up for Telephone, TV or Internet service during the month of February. Plus, have your name entered in a drawing for a weekend getaway. The lucky winner will choose from four Texas destination options for a dinner out and overnight accommodations for two. *Sweet!*

**SANTA ROSA Telephone Cooperative**

<b>VERNON OFFICE</b> 7110 US Hwy 287 E Vernon, TX 76384 (940) 886-2217 (888) 886-2217	<b>HASKELL OFFICE</b> 113 N Ave. D Haskell, TX 79521 (940) 863-1125 (888) 863-1125	<b>SEYMOUR OFFICE</b> 310 W California Seymour, TX 76380 (940) 889-1125 (877) 889-1125
---	--	--

[ask@srtccaccess.net](mailto:ask@srtccaccess.net)

Offer expires February 29, 2016. Some restrictions apply. Services where available. Up to three (3) connections waived. Additional connections \$20.00 each. Winner will choose between the destinations of Wichita Falls, Amarillo, Abilene or Dallas Texas. Prize will consist of a Visa gift card for use at a restaurant of choice and one night of hotel accommodations for one room at a designated hotel. Date will be coordinated with winner based on availability.

**This Is It!**  
SALE CONTINUES  
Our Final Reductions  
Fall and Winter  
**Sale Shoes**  
\$19<sup>90</sup> \$29<sup>90</sup> \$39<sup>90</sup> \$49<sup>90</sup>

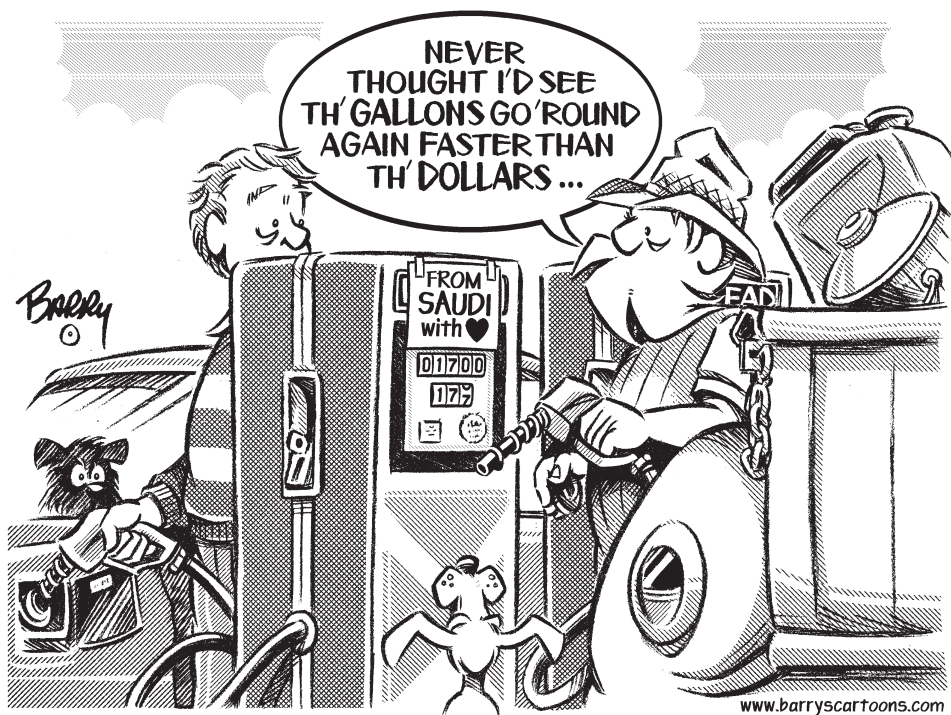
UP TO **60%** OFF  
**All Sale Clothes**  
**Personality-Slipper Shoppe**  
940/864-2501 • 864-3051  
South Side of Square Haskell, Texas

**THE DRUG STORE**  
100 S. Avenue E • Haskell, TX 79521  
940-864-2673  
[www.haskelldrugstore.com](http://www.haskelldrugstore.com)  
**Shop Local!**  
Support our businesses that support our community!  
**We Are Your Locally Owned & Operated Full Service Pharmacy, serving the Haskell area for more than 46 years!**  
*No waiting in line for your Prescriptions!*

- \*Fast, Friendly Service
- \*Hundreds of Generics only \$18 for #100  
Please ask for details
- \*Most Insurance Copays are the same at any Participating Pharmacy!
- \*Text Notifications when your Prescriptions are ready!
- \*Convenient Drive-Thru Window
- \*24/7 Emergency Prescription Service
- \*Prescription Delivery Service Available Monday-Friday  
Please ask for details
- \*Home Medical Equipment Oxygen, Diabetic Supplies and More!
- \*Large Selection of OTC Medications
- \*Health & Beauty Items
- \*Gifts for all Occasions!
- \*Russell Stover Candy
- \*American Greetings Cards
- \*'Leaning' Tree Cards
- \*Jewelry & Fashion Accessories

*Bridal Shower Registry*  
Erin Hise and Brent Watson  
Mackenzie Thomas and Tyler Reese  
Nancy Bostek and Gary Frierson





## From Out of the Past

From the files of The Haskell Free Press

### 10 Years Ago February 16, 2006

Augustene Lara and Mollie McKnight were chosen Basketball Hero and Sweetheart at Haskell High School.

Jeffrey Blanks, son of Terry and Susan Blanks of Haskell, graduated from Abilene Christian University with a Bachelor of Business Administration degree in Accounting, during the December commencement.

Cameron Short, a 4 year letterman for the Haskell Indians, has committed to play football for Hardin-Simmons University next fall. He is the son of Clifford and Mynea Short.

### 20 Years Ago February 15, 1996

The Haskell Indian band has twelve members advancing to the Texas State Solo & Ensemble Contest. They are Philip Huff and Kaki Stapleton, piano solos; Wendy Dulaney, Mary Kay Watson and Chris McSmith, alto saxophone trio; and twirlers Jessica Bridwell, Tenille Mathis, Kimberly Skiles, Shelly Palacios, Vanessa Miller, Shannon Jordan and Missy Teague.

Stamford Electric Cooperative, Inc. has announced Sara Kitley, a junior at Rule High School, as the winner of the Youth Tour Speech Contest. She earned a 13-day all-expense paid trip to Washington D.C.

The Paint Creek Pirates are the District 20-A

Champions. Team members are Aaron Watson, Bobby Scheets, Shannon Waters, Casey Thompson, Josh Howard, Jodie Reel, Lee Gonzales, Wayne Briggs, Jason Shackelford, Nick Goss, Johnny Martinez, Hegan Lamb and Coach Jeff Williamson.

### 30 Years Ago February 13, 1986

Norma Senter Richardson of Haskell, graduated summa cum laude, at the very top of her class at Midwestern State University.

Kelly McGuire from Weinert, will appear in the cast of "The Backyard Story." The children's musical theatre production is presented by the Western College theatre department.

Lisa Wheatley, daughter of Mr. and Mrs. Boyd Baird of Rule, was elected president of Southwestern Oklahoma State University Student Pharmaceutical Association.

### 40 Years Ago February 12, 1976

A school wide election was held at HHS to elect student council officers. Serving as officers will be Johnny Hawkins, president; Emily Thigpen, vice-president; Bennita Jackson, secretary; and Cindy Thomas, reporter.

Effective February 9, Bill Comedy and Mr. and Mrs. Don Comedy are owners of the Haskell Free Press. In 1970, Mr. and Mrs. Bill Comedy and Mr. and Mrs. G.E. Talkington purchased the paper from Mr. and

Mrs. Jetty Clare.

The Weinert Matrons Club met in the home of Mrs. Floyd McGuire. Education was the theme for the program presented by Mrs. D.L. Moody and Mrs. R.W. Raynes.

### 50 Years Ago February 17, 1966

Representing Paint Creek High School at the Wichita Falls Beef Judging Contest were Kenneth Dudensing, Steve Livengood and Phil Coleman. They were accompanied by Ag teacher Willie Lee Medford.

The HHS class favorites of 1966 were revealed by Mrs. Terry Diggs. Chosen were Billy Joe Macias and Bonnie Howard, seniors; Kelly Adkins and Pam Druesedow, juniors; and Derrell Davis and Kathy Burson, sophomores.

### 100 Years Ago February 12, 1916

At Farmers State Bank, they are installing a new safe. It is the last word in safe building, with a double screw door, triple timer and one foot thick walls. Built in the shape of a ball, it would be impossible to "blow it" and would take 24 hours to drill through.

Another big rabbit hunt was pulled off when about 40 or 50 of our local townsmen gathered at the farm of J.C. Holt. In all 400-500 rabbits were killed.

J.M. White is preparing to open up a first-class confectionery, cold drink, fruit, etc. store in the building now occupied by Logan's fruit stand.



## Texas A&M University AgriLife Extension Service

by Jason Westbrook, CEA-Ag, Haskell Co.

### New Trichomoniasis regulation

The Texas Animal Health Commission made some changes to the Trich control program regulations that will be implemented starting Jan. 1, 2016. The regulations now state:

"The maximum age for bulls to be sold as 'virgins' in Texas was lowered from 24 to 18 months. Bulls may still be sold as 'virgins' up to 30 months of age if a veterinarian will co-sign a statement along with the owner, stating that the bull has not been in contact with female cattle. Virgin bulls are not required to be tested upon change of ownership. A separate Trichomoniasis rule passed which requires the testing of bulls on adjacent pastures to where an infected bull was disclosed."

(<http://www.ta.hc.state.tx.us/news/pr/2015/2015-10-21-CommissionMeetingRelease.pdf>)

### Genetic selection for reproductive success

Breed association genetic evaluation programs continue to expand to include additional production traits. Initially, Expected Progeny Difference (EPD) was limited to immature weight traits and predicted milk production. Later, other groups of traits were added including carcass merit. Traits are being added which measure, or are thought to be related to, reproductive success. EPDs for these traits (and the relevant breed association/s) currently include:

- Heifer pregnancy or heifer calving rate (Angus, Gelbvieh, Hereford, and Red Angus);
- Sustained cow fertility (Hereford);
- 30-Month Pregnancy (Gelbvieh);
- Stayability (Gelbvieh, Limousin, Red Angus, and Simmental).

Stayability is generally defined as the percent of daughters staying in the cowherd at 6 years of age. It is assumed that such females have reproduced relatively successfully or they would not still be in a herd.

### Does implant status affect price in a video auction?

Data from one video auction service were analyzed from 2.75 million head sold in 27,746 lots (average of 99 hd/lot) through 92 auctions conducted from 2010 to 2013. The analysis adjusted for 18 variables (such as sale weight, vaccination protocol, age/source verification, number of days to planned delivery) other than implant status, which might influence price. Findings were:

- % of lots implanted was very consistent, ranging across years from 28.4 to 30.5;
- implanting was lower (18.2% to 27.9%) in lots from the West Coast, Rocky Mountain, North Central, and South Central regions;
- implanting was 64.9% in lots from the South East region;
- across all regions, 33% of steers and 25% of heifers were implanted;
- being implanted or not did not statistically (P<0.05) affect sale price in any year;
- in one year, implanting very slightly reduced price (by \$0.40/cwt);
- in three years, not implanting very slight increased price (by avg. of \$0.13/cwt).

According to the most recent survey by the National Animal Health Monitoring

System, only 14.3% of herds utilized growth implants for suckling calves. And this has declined over the at least 40 years that implants have been available. Note: Across many research and field trials, implanting suckling calves averages increasing weaning weight by about 20 lb, for a product cost of only ± \$1.50/head. For most producers, there's money being left on the table.

(Prof. Anim Sci. 31:443; Kansas St. Univ., Ohio St. Univ., Grassy Ridge Consulting, Merck Anim. Health)

### New feeder cattle futures contract index weights

My colleague Dr. Rick Machen, Texas AgriLife Center at Uvalde recently called my attention to a change in feeder cattle futures. The Index price for feeder cattle futures contracts includes separate values for medium and large frame #1 steers and medium and large frame #1-2 steers. Within those two classifications there have been provisions for cattle weighing 650-849 lb with four 50-lb. brackets within that range. Beginning Nov. 7, 2015, the weight ranges for both grade classes have increased to 700-899 lb. Price tends to decrease as feeder cattle weight increases, so this change should narrow the previous average spread between feeder price index and fed price index. Note: This change is a reflection of the continuously increasing size (weight) of cattle in the US. For a complete explanation of the Index see:

[http://www.cmegroup.com/trading/agricultural/files/Understanding\\_CME\\_Feeder\\_Cattle\\_Index.pdf](http://www.cmegroup.com/trading/agricultural/files/Understanding_CME_Feeder_Cattle_Index.pdf).

### Genetic variation in fecal egg counts?

Internal parasite infestation can cause important performance and profit reductions in grazing beef cattle. If there is genetic resistance to parasites it might be used to counter ill effects from parasitism. Records collected over two years on fecal egg count, birth weight, weaning weight, and weaning temperament were analyzed from 201 Nelore-Angus cross steers. There was no relationship detected between fecal egg count and any other measured variables. However, calves from one sire family had significantly (P<0.05) less (only about one-half) the level of fecal egg count as the other three sire families. The authors suggested this difference indicated "the presence of genetic variation for fecal egg count." Note: Some previous research showed *Bos indicus* have somewhat higher resistance than *Bos taurus* to some parasites. Perhaps genetic variation within breeds, as suggested in this study, also could be used in genetic selection to reduce parasite loads.

(2015 So. Sec. Am. Soc. Am. Sci. Meeting, Abst. 5; Texas A&M Univ.)

### Effect of suckling and developing nutrition on Heifer performance

Beef-type Brown Swiss heifers were managed to gain at rates of 1.5 lb/day (LO) or 2.2 lb/day (HI) during birth to weaning at 6 months of age and/or development from weaning to 15 months of age. This resulted in four treatment groups based on gain before and after weaning: LO-LO, LO-HI, HI-LO, and HI-HI. Results were:

•HI gain to weaning were significantly (P<0.001) heavier and taller at weaning;

•LO gain to weaning subsequently gained more (P<0.001) during development but were still not as heavy at 15 months of age;

•there was no significant difference in weight at onset of puberty (which averaged 56% of mature weight) but HI-HI averaged younger in age at puberty;

•fertility rate was similar at 86%;

•HI gain during development were older and required more AI services to conceive.

The authors concluded that, based on their results, weight gain of 1.5 lb./day from birth to first breeding had "no negative effect on reproductive performance." However, they cautioned that more research would be needed to assess any possible lifetime effects.

(J. Animal Sci. 93:3871; Univ. of Technology, Aragon, Spain and Univ. of Bologna, Italy)

### Effect of organic acids on acidosis in high-concentrate feeding

Ruminal acidosis is a common problem in cattle finished on high-concentrate rations. Antimicrobial compounds have been used in some situations to reduce acidosis. However, use of antimicrobials in livestock, for a number of purposes, has come under increasing concern by some segments of science and the public. Dicarboxylic acids have been shown to possibly affect the rumen environment.

Ruminally-cannulated crossbred heifers were used to study the effects of low and high levels of fumaric and malic acid in a 92% concentrate ration. No significant effects were found on dry matter consumption, ruminal pH, total volatile fatty acid concentration, or lactic acid-utilizing bacteria. The authors concluded that, based on their study, "organic acid supplementation did not have any significant effects on rumen fermentation" and "did not prevent acidosis in high-grain diets".

(J. Animal Sci. 93:3950; Agriculture and Agri-Food Canada at Lethbridge, AB)

### What could foot-and-mouth disease cost the U.S.?

According to a recent research report, an outbreak of foot-and-mouth disease in the midwestern U. S. would result in likely losses to producers and consumers of \$188 billion. Associated cost to government would likely total \$11 billion. Use of emergency vaccination against FMD coupled with other disease management practices has been proposed as a means of addressing such an outbreak. However, emergency vaccination has been challenged by some, citing possible problems:

- difficulty in distinguishing vaccinated and infected animals;
- delay or loss of export markets;
- vaccination cost;
- uncertainty of actual value of vaccination;
- uncertainty of vaccine availability for specific strain of virus involved in outbreak.

Using an aggressive emergency vaccination program, the study estimated loss to producers and consumers would be reduced by 70% (to \$56 billion) and loss to government by 90% (to \$1.1 billion). Note: Such reductions in loss would have to be compared to overall cost of implementing the program.

E-mail your news, photos and ads to The Haskell Free Press at [hfpnews@lycos.com](mailto:hfpnews@lycos.com) or [hfp@valornet.com](mailto:hfp@valornet.com)

## Calendar

### Al-Anon

Al-Anon meets Thursday evenings at 8 p.m. at the AA building across from the RV park in Haskell.

### Vet office open

The Veterans Service office in Haskell is now open. The office, located on the first floor of the west wing of the courthouse, will be open on the first and third Thursdays of each month from 10 a.m. to noon. For information, call 940-256-1125 any time or email [Haskell\\_vaso@yahoo.com](mailto:Haskell_vaso@yahoo.com).

### TeamKID

TeamKID will be held Wednesdays from 5:30 p.m. to 6:45 p.m. for 4 year old Pre-K students through sixth grade at First Baptist Church in Haskell. Drop children off at west parking lot door of main building. Call 864-2581 if your child needs a ride.

### Deadlines

All deadlines for issues of the Haskell Free Press are at noon on Mondays.

## The Haskell Free Press

Established January 1, 1886  
PUBLISHED EVERY THURSDAY  
420 North First Street • P. O. Box 555  
HASKELL, TEXAS 79521  
Phone 940-864-2686 • Fax 940-864-2687  
[hfp@valornet.com](mailto:hfp@valornet.com)

John McDougal .....Publisher  
Lisa Shaw .....Business Manager  
Doris McDougal .....Production  
Caron Yates .....Editor

Periodical Paid Haskell, Texas 79521  
(USPS 237-040)

### SUBSCRIPTION RATES:

Haskell County, one year, \$25.00.  
Outside of Haskell County, one year, \$34.00.

NOTICE TO PUBLIC-Any erroneous reflection upon the character, reputation or standing of any firm, individual or corporation will be gladly corrected upon being called to the attention of the publisher.

POSTMASTER: Send address changes to The Haskell Free Press, P.O. Box 555, Haskell, TX. 79521-0555.

This issue mailed Wed., Feb. 17, 2016







# Haskell Maidens

# Basketball

## District 7-2A Champions



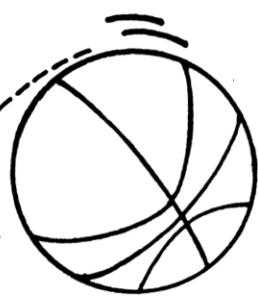
HASKELL MAIDENS—Members of the Haskell Maidens basketball team include, l-r, Destiny Benavides, Taylor Manske, Ariel Martinez, Hollyn Hadaway, Jordan Garvin, Courtney Whitt, Mackinzie Garvin, C’Era Taylor and Ashlyn Bevel.

# Good luck in the Playoffs!

*This Page Sponsored By The Following Maiden Boosters*

**Big Country Electric Cooperative**  
**Summit TrueValue & NAPA Auto Parts**  
**Smith Family Funeral Homes**  
**Communication Connection/Verizon Wireless**  
**HTS Services**  
**Better Bodies Gym & Fitness**  
**Hanson Paint and Body**  
**Modern Way/ACE & Fuel**  
**Personality-Slipper Shoppe**

**First Bank Texas**  
**Haskell Co-op Gin**  
**Haskell National Bank**  
**Haskell Free Press**  
**Haskell Save-A-\$**  
**Larned Sales Center**  
**Smitty’s Auto Supply**  
**Matlock & Associates**  
**Double A Drive Inn**  
**Haskell Feeds**  
**Haskell County Grain LTD**  
**V’s Fresh Flowers**





# Refinancing your home

Refinancing your home is a big decision that requires much thought and research, but if done wisely it can lead to substantial savings. When you refinance, you pay off your existing mortgage and create a new one. Questions to consider to determine if this is the right option for you include: Have interest rates fallen since you secured your mortgage? Has your credit score improved? Do you want to switch to a different type or length of mortgage? If you answered yes to any of these, it may be worthwhile to refinance. Below are additional questions to consider and tips to help along the way.

## Why do you want to refinance?

Many homeowners refinance to lower their monthly payment by securing a lower interest rate. Others refinance to shorten their loan term (i.e., 30-year to 15-year loan) so it's paid off sooner. This reduces the total cost because of less interest paid but increases the monthly payment. Yet another reason is to switch mortgage types, usually from an adjustable rate mortgage to a fixed rate mortgage. This will

help simplify mortgage payments and protect against rising rates. These are a few of the most common reasons to refinance.

## Didn't interest rates just rise?

Although the Federal Reserve recently raised the key interest rate for the first time since the financial crisis in 2008, interest rates are still low. The current average interest rate on a typical 30-year fixed rate mortgage is 3.9 percent, which is expected to gradually increase this year. Let's take a historical look: 10 years ago, mortgage rates were near 6.3 percent and 20 years ago, they were 7.2 percent, so they're still much lower than in the past. While there is no immediate rush, now is a good time to start thinking about refinancing to lock in the lowest rate possible.

## What are the costs to refinance?

Deciding whether to refinance is a numbers game. If you won't save money, don't do it. You must ensure that the charges and fees associated with refinancing don't outweigh the savings. Lenders typically charge fees for the mortgage broker's services, application,

loan origination, home appraisal, home inspection and title insurance, in addition to other costs. Some lenders charge a prepayment penalty for paying the loan off early. Ask your lender for a "loan estimate" to get an idea about the costs involved. Even if refinancing lowers your monthly payment, it will take time to recoup your expenses so ensure you'll stay in the home long enough to make it worth it.

## How do you get started?

A good credit score, equity in your home, a verifiable source of income and steady employment are helpful when you want to refinance. Start with your current lender but shop around to find the best loan. Get quotes from several banks and lenders, including the interest rate and associated costs, and have them put it in writing. You can save thousands of dollars by shopping, comparing and negotiating.

Refinancing may seem scary but it isn't when you understand the process, and the outcome is well worth it in the long run. Your local community banker will be happy to answer any questions or talk to you more in-depth about refinancing.

# Rule ISD announces honor and perfect attendance rolls

Rule ISD has released the names of students on the A and A-B honor rolls, and the perfect attendance record for the fourth six weeks of school.

Pre-K: Perfect attendance, Callie Sorley.

Kindergarten: Perfect attendance, Cheyenne Guzman, Hannah Hertel, Emma Vance and Tyreike Vanderbilt.

First grade: A honor roll, Madisyn Hollabaugh, Jayde Leek, Natalie Murray, Conner Russell, Haylee Stone and Brylee Teague; A-B honor roll, Arena Caldwell and Rylan Green; perfect attendance, Leslie Caldwell, Rylan Green, Conner Russell and Fabian Valdez.

Second grade: A honor roll, Skylor Kreger and Kaitlyn Saffel; A-B honor roll, Waylynn Caldwell, Dylan Campbell, Samantha Farquhar, Juliana Flores,

Octavious Guzman, Skylar Leek, Lacoste Navarrette, Leland Short and Abigail Watson; perfect attendance, Dylan Campbell, Octavious Guzman, Skylor Kreger, Leland Short, Kaylee Silva and Abigail Watson.

Third grade: A honor roll, Diego Amaya, Jelena Alvarez and Luther Smith; A-B honor roll, Kyle Adkins, Hailey Garcia, Max Hollabaugh, Kyleik Mason and Frankie Olivera; perfect attendance, Max Hollabaugh, Jelena Alvarez, Julio Tapia and Tristan Watson.

Fourth grade: A honor roll, Shelby Saffel; A-B honor roll, Astrid Guzman; perfect attendance, Zachary Campbell, Donna Green, Astrid Guzman, Zachary Ingram, Justin Maynard and Timothy Moore.

Fifth grade: A-B honor roll, Karcin Smith; perfect attendance, Sean Gatlin, Patrick Lightfoot, Karcin Smith and Ragen Thompson.

Sixth grade: A honor roll, Lenzi Manske and Jaella Alvarez; A-B honor roll, Abigail Ortiz, Jillian Herrera, Macy Rogers and Jaci

Watson; perfect attendance, Kurt Leek, Macy Rogers and Bryson Silvas.

Seventh grade: A-B honor roll, Kayla Hollingsworth, Dean Kreger, Jysela Alvarez and Christian Speck; perfect attendance, Dean Kreger, Yesenia Moreno and Christian Speck.

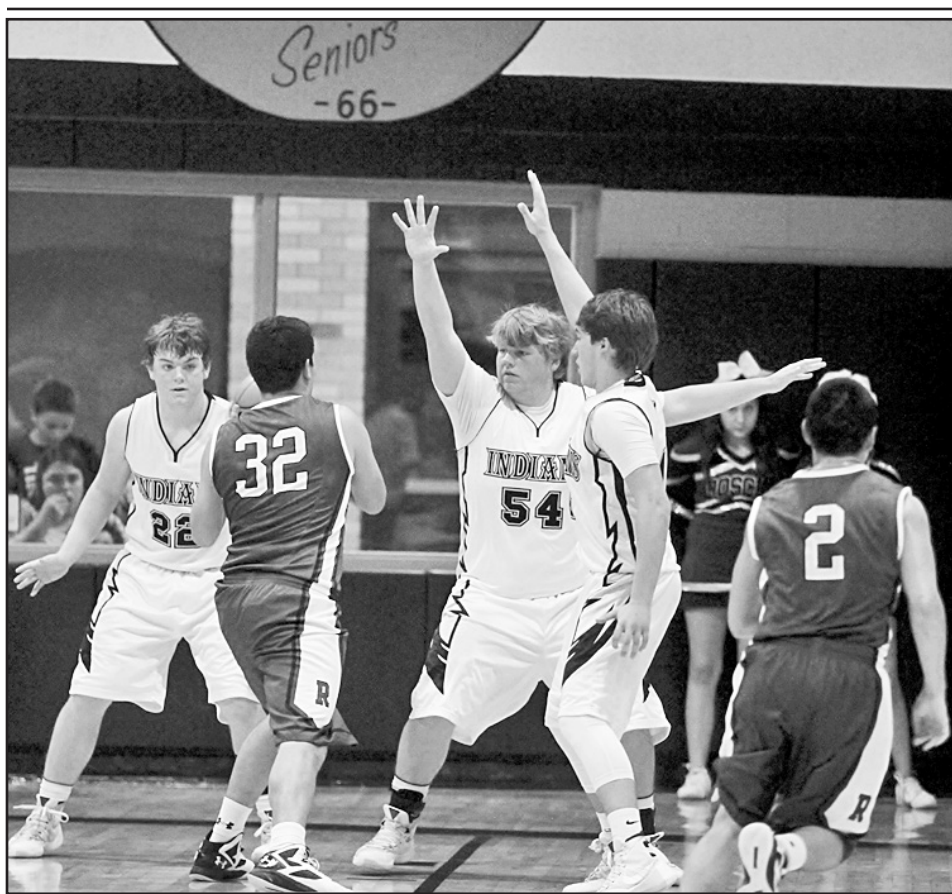
Eighth grade: A honor roll, Kennedy Fritzler and Ian Sotelo; A-B honor roll, Danny Kreger and Madalyn Navarrette; perfect attendance, J.W. Eppler, Kennedy Fritzler and Danny Kreger.

Ninth grade: A honor roll, Del Fritzler and Kourtney Hertel; A-B honor roll, McKenzie Gray, Leann Manske and Chase Thompson; perfect attendance, Del Fritzler, Kourtney Hertel and Angelica Navarrette.

Tenth grade: A-B honor roll, Kaysen Barnett, Christina Moore and Thomas Short; perfect attendance, Thomas Short.

Eleventh grade: A-B honor roll, Chase Helms and Austin Redden; perfect attendance, Austin Redden.

# Indians' basketball



**INDIAN DEFENSE**—Haskell Indians #22 Lane Burson, #54 Chase Gibson and #14 Aaron Skiles on the defensive front against Roscoe.

## Indians fall to Hawley, 24-54

The Haskell Indians traveled to Hawley Tues., Feb. 9 for a district 7-2A matchup. The Indians didn't start out as planned and were only able to score 2 points in the first quarter to Hawley's 13. The Tribe would outscore Hawley in the second quarter and be down to Hawley at half by 10.

But, just as all season has gone for the Tribe, Hawley's second half proved to be too much for the Indians as they would be outscored 33-13. Coach Tate Thompson had this to say about last night's game, "We played really good defense in the first half holding a high powered offense to just 21 first half points and giving ourselves a chance in the second half, but just has all year has gone for us, we can't score after the break. We will go to work to get better over the next two days and look to get back into the win column when we host Roscoe on Friday."

The Indians were led in scoring by Alec Roewe and Caleb Wheat both with 5 points, Kellen Parks, Kyler Hoover, and Rocky



**SETS UP TO SHOOT**—Haskell Indian #44 Ezell Woods sets up to take the shot against Roscoe.

Haggard with 4 each and Ezell Woods with 2.  

Haskell	2	9	7	6	= 24
Hawley	13	8	13	20	= 54

## JV Indians 19 Hawley 30

\*\*\*  
**Indians fall to Roscoe, 42-64**

The Haskell Indians were held out of the win column again Fri., Feb. 12 as the Roscoe Plowboys would use a huge 23 point second quarter to get the large lead. The Indians would finish the first quarter only down by 1 point, but the Plowboys would find rhythm behind the three point line as they hit three second quarter threes to go up big.

Haskell could never get going in the second quarter and were outscored by 17 points. The Indians would find a little fire on their side coming out in the third quarter, scoring 13 points and closing the gap to 11 points, but could never get closer to Roscoe

than that.

Coach Tate Thompson had this to say about tonight's game, "I felt like we had a really good game plan coming in to keep Leanos (15 points, 3-3's) from having a huge night and make someone else beat us and they did just that. When you shoot the ball like they did tonight, it is hard to beat any team. I feel like once we got down big we shut it down and that is not the game we play. We will look to rebound and close out the season with a win at Winters Tues., Feb. 16."

The Indians were led in scoring by Rocky Haggard with 11, Ezell Woods with 8, Kyler Hoover with 5, Caleb Wheat, Lane Burson and Kellen Parks with 4, Aaron Skiles with 3 and Alec Roewe with 2.

Haskell	12	6	13	11	= 42
Roscoe	13	23	15	13	= 64

## JV Indians 47, Roscoe 40

## Area Basketball scores

### Boys

**Rotan 41, Paint Creek 35**  
 Scoring for Paint Creek: Priddy 15, Trotter 10, M. Acosta 6, Lopez 2, Yanez 2.  
**Jayton 77, Paint Creek 26**  
 Scoring for Paint Creek: M. Acosta 11, Priddy 10, Lopez 3, Trotter 2.

### Girls

**Lueders-Avoca 74, Rule 42**  
 Scoring for Rule: Manske 28, Beck 8, Gray 2, Hertel 2, Moore 2.

Clear Fork  
 Crime Stoppers  
 1-800-222-TIPS

## Operation Round Up Accepting Applications for Assistance

Applications for assistance from the Operation Round Up program's quarterly review period will be accepted through **February 22, 2016**.

Operation Round Up funds are distributed to individuals and organizations for charitable purposes only in the counties served by Big Country Electric Cooperative: Borden, Fisher, Garza, Haskell, Jones, Kent, Mitchell, Nolan, Scurry, Shackelford, Stonewall and Throckmorton. Applications are considered and funds are awarded by the trust's Board of Directors—not Big Country EC board members or employees—but your peers and neighbors, who volunteer their time, hearts and consideration to making decisions that will positively impact lives in our communities. The directors on this board equally represent the counties in our service territory from north to south, and east to west. Decisions are made without regard or preference to location and each application gets thorough review, discussion, and consideration.

If you have questions about Operation Round Up or know of an individual, family, or organization who could benefit from this wonderful program, please contact Sarah McLen at (325) 776-3803 or smclen@bigcountry.coop, or share this contact information with the interested party. You may access information and download applications on our website, [www.bigcountry.coop](http://www.bigcountry.coop), and selecting the Operation Round Up icon pictured here.



Big Country Electric  
 Cooperative

Stamford • Roby • Snyder

# Scott Langford

SEEKS ELECTION FOR

# Haskell Co. Commissioner Precinct 2

Your vote is appreciated!



Pd. for by Scott Langford





888.678.SEED • www.americot.com

# TRIPLE YOUR PROTECTION



NEW NEXGEN B2XF & XF cotton varieties – tolerant to THREE different herbicides: dicamba, glyphosate, & glufosinate.



We know it is challenging right now dealing with a low cotton price and a tight budget. We are committed to providing quality products with proven performance at affordable prices. We have dropped our seed prices \$20-\$50 a bag for the 2016 season. We appreciate your business and thank you for planting NexGen varieties.

**Terry Campbell**, General Manager



## 2016 Suggested Retail Prices

Seed Drop Zone E

	VARIETY	SEED	SEED + TECH FEE
<i>Bollgard II® XtendFlex™ Brands</i>	NG 3405 B2XF	\$149.00	\$328.80
	NG 3406 B2XF	\$149.00	\$328.80
	NG 3517 B2XF	\$149.00	\$328.80
	NG 3522 B2XF	\$149.00	\$328.80
	NG 4545 B2XF	\$149.00	\$328.80
	NG 5007 B2XF	\$149.00	\$328.80
<i>XtendFlex™ Brands</i>	NG 3500 XF	\$149.00	\$290.80
<i>Bollgard II® with Roundup Ready® Flex Brands</i>	NG 3306 B2RF	\$119.00	\$298.80
	NG 1511 B2RF	\$119.00	\$298.80
	NG 4012 B2RF	\$49.00	\$228.80
<i>Roundup Ready® Flex Brands</i>	NG 4111 RF	\$99.00	\$240.80
	NG 1551 RF	\$99.00	\$240.80
	NG 1572 RF	\$99.00	\$240.80
<i>Conventional Varieties</i>	AM UA 48	\$69.00	\$69.00

B2XF/XF/B2RF/RF/Conv. packaged in 230,000 seeds/unit; Bulk Box: 40 units; All prices and marketing offers are subject to change at any time without prior notice.

## NexGen Offers Replant, Drought & Finance Programs

75% Replant Program

Drought Program

(For Dryland acres yielding less than 175 lbs per acre)

John Deere Finance Program

Prime minus 3% on seed only purchases • Prime plus 1% on seed & technology fee

(visit [americot.com](http://americot.com) for complete details)

Contact your local seed dealer or Americot Sales Representative for more information!

**CARTER SMITH** | *Americot, Southwest Sales*  
325.268.6801 • [csmith@americot.com](mailto:csmith@americot.com)



[www.americot.com](http://www.americot.com) | 888.678.SEED | [facebook.com/AmericotNexGen](https://www.facebook.com/AmericotNexGen)

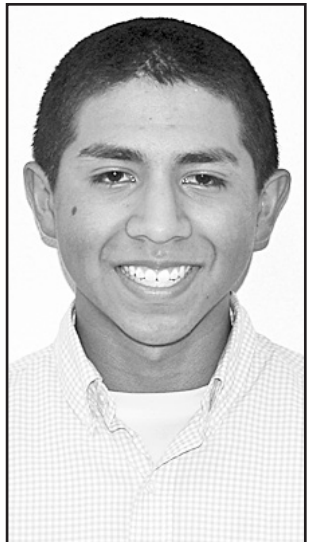
As of November 1st, 2015 no dicamba herbicide product has been approved for commercial in-crop use with Bollgard II® XtendFlex® Cotton. If a federal dicamba label is not imminent or has not been approved for commercial in-crop use by June 1st, 2016, the Bollgard II XtendFlex Cotton technology fee will be adjusted and republished to be the same as Genuity® Bollgard II® with Roundup Ready® Flex cotton.

**DO NOT APPLY DICAMBA HERBICIDE IN-CROP TO Bollgard II XtendFlex Cotton in 2016** unless a dicamba herbicide product is approved that is specifically labeled for that use in the location where you intend to make the application. Contact the U.S. EPA and your state pesticide regulatory agency with any questions about the approval status of dicamba herbicide products for in-crop use with Bollgard II XtendFlex Cotton.

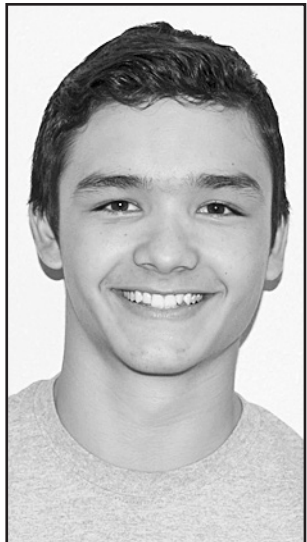
**IT IS A VIOLATION OF FEDERAL AND STATE LAW TO MAKE AN IN-CROP APPLICATION OF ANY DICAMBA HERBICIDE PRODUCT ON BOLLGARD II XTENDFLEX COTTON UNLESS THE PRODUCT LABELING SPECIFICALLY AUTHORIZES THAT USE.**

**ALWAYS READ AND FOLLOW PESTICIDE LABEL DIRECTIONS.** Bollgard II® XtendFlex® cotton and XtendFlex® cotton contains genes that confer tolerance to glyphosate, the active ingredient in Roundup® brand agricultural herbicides, dicamba, the active ingredient in M1691, and glufosinate, the active ingredient in Liberty® brand herbicides. Roundup® brand agricultural herbicides will kill crops that are not tolerant to glyphosate. Dicamba will kill crops that are not tolerant to dicamba. Glufosinate will kill crops that are not tolerant to glufosinate. Contact your Monsanto dealer or refer to Monsanto's Technology Use Guide for recommended Roundup Ready® Xtend Crop System weed control programs. Bollgard II®, Genuity Design®, Genuity Icons, Genuity®, Respect the Refuge and Cotton Design®, Roundup Ready®, Roundup® and XtendFlex® are trademarks of Monsanto Technology LLC. LibertyLink® and the Water Droplet Design® is a registered trademark of Bayer. Americot® and NexGen® are registered trademarks of Americot, Inc.





JARRETT LOPEZ



MATTHEW PETE

## Students visit Rotary Club

Jarrett Lopez is active in basketball, One Act Play and serves as senior class treasurer at Paint Creek High School.

He plans to attend Texas Tech University and major in business.

\*\*\*

Matthew Pete participates in cross country, football, basketball, track, and One Act Play at Paint Creek High School.

He has enlisted in the Army and will report for duty this summer.

## Haskell School Menu

Feb. 22-26

### Breakfast

Milk variety and 100% fruit juice; and muffin, yogurt, PBJ, animal crackers and cheese stick are offered at every meal.

**Monday:** Sausage roll, yogurt or cereal variety and toast

**Tuesday:** Cheese omelet wrap or cereal variety and toast

**Wednesday:** Breakfast pizza or cereal variety and toast

**Thursday:** Waffles, sausage or cereal variety and toast

**Friday:** Cinnamon roll, bacon or cereal variety and toast

### Lunch

Milk variety is available at every meal.

**Monday:** Chicken nuggets, mashed potatoes with gravy, savory green beans, roll, fruit cup

**Tuesday:** Enchiladas, Spanish rice, salsa, garden salad, refried beans, applesauce

**Wednesday:** Pizza, garden salad, California blend, apple slices

**Thursday:** Soft tacos, baby carrots with ranch, seasoned corn, salsa, cookie, orange smiles

**Friday:** Cheeseburger with hamburger garnish, zesty cucumbers, sweet potato fries, sliced peaches

## Rule School Menu

Feb. 22-26

### Breakfast

Fresh fruit, juice or milk are offered daily.

**Monday:** Chicken, waffles

**Tuesday:** Pancakes, egg, bacon

**Wednesday:** Toast, eggs, sausage

**Thursday:** Muffins, yogurt

**Friday:** Breakfast pizza

### Lunch

Milk is served daily.

**Monday:** Pork chops, gravy, baked potato, roll, glazed carrots, strawberries and bananas

**Tuesday:** Spaghetti and meatball, Tuscan veggies, salad, breadstick, peaches, chocolate pudding

**Wednesday:** Chicken quesadilla, Mexicali corn, charro beans, cinnamon applesauce

**Thursday:** Chili with cornbread, broccoli bites, salad, orange

**Friday:** Sloppy Joes, chips, tomato/cucumber cups, fruity cocktail

## Youth Tour speech contest set Feb. 17

The public is invited to the Big Country Electric Cooperative (BCEC) Government-in-Action Youth Tour speech contest Wed., Feb. 17 at 6:30 p.m. at Big Country Electric Cooperative's Roby office. Six local high school students will be giving 10-minute presentations on the topic, "How would your life change if electricity no longer existed?" The three highest-scoring contestants will be chosen as the winners and will represent Big Country Electric Cooperative on the Youth Tour—a 10-day, all-expense paid trip to Washington, D.C. this June. An alternate will also be chosen in the event the winner(s) cannot make the trip to Washington, D.C. Each winner and the runner-up will also receive a \$1,500 scholarship.

The purpose of the Youth Tour is to provide an opportunity for outstanding young people to better understand the value of rural electrification and to become more familiar with the historical and political environment of the nation's capitol. This is achieved through visits to monuments, government buildings and cooperative organizations. Also, the opportunity to visit elected officials allows youth to better understand how the federal government works.

In the beginning, the Youth Tour was inspired by then Senator Lyndon Johnson when he addressed the National Rural Electric Cooperative Association (NRECA) Annual Meeting in Chicago in 1957. "If one thing goes out of this meeting," the Senator declared, he hoped it would be "sending youngsters to the national capitol where they can actually see what the flag stands for and represents." That year and for several more, some of the Texas electric cooperatives sent groups of young people to Washington to work during the summer in Senator Johnson's office, to learn more about government in action.

The next year, 1958, rural electric people in Iowa sponsored the first group of 34 young people on a week-long study tour of the nation's capitol. Later that same year, another bus load came to Washington from Illinois. The idea grew, and other states sent bus loads

of young people throughout the summer. In 1959, the Youth Tour had grown to 130 youths.

In 1964, NRECA began to coordinate the program and suggested that the states arrange to be in the city the same week. The first year of the coordinated tour included some 400 young people from 12 states. The idea has continued to grow, and today more than 1,000 young people and chaperones participate in the tour each year.

The Rural Electric Youth Tour is sponsored by local cooperatives, statewide organizations, and NRECA. Local cooperatives select a student who will attend the Youth Tour by means of a speech contest, essay and various other methods. Statewides organize the trip to Washington, D.C. They arrange for transportation, chaperones, the tour schedule and coordinate with NRECA on group events such as Youth Day activities. On Youth Day, all Youth Tour participants meet together to listen to prominent speakers and wind up the day with a dinner and dance. NRECA coordinates hotel space for the tour, run a Youth Tour office, hire a nurse, coordinate group events such as Youth Day and the Co-op educational seminars. NRECA also arranges for insurance for the Youth Tour participants.

Many people are involved to give youth the opportunity to grow and experience many things that may never be offered to them again. Although few are chosen, many do go that would not have been able to otherwise. Many youth of Texas and across the nation will enjoy the best of Washington, D.C., tour the Smithsonian Institute, Mount Vernon and more, experience the sight of Arlington National Cemetery, the Vietnam Memorial, and the changing of the guard at the Tomb of the Unknown Soldier, visit their Congressman's office and find out face to face what's going on in National Government. Congressmen will meet with students from their districts and answer questions about current governmental issues.

For more information, contact Sarah McLen at 325-776-3803 or smclen@bigcountry.coop.

## Paint Creek School Menu

Feb. 22-26

### Breakfast

Milk and juice are served daily.

**Monday:** Sausage roll

**Tuesday:** Omelet, toast

**Wednesday:** Breakfast pizza

**Thursday:** Waffles

**Friday:** Cinnamon roll

### Lunch

Milk is served daily.

**Monday:** Chicken nuggets, mashed potatoes, gravy, green beans, fruit

**Tuesday:** Tacos, beans, salad, applesauce

**Wednesday:** Chicken spaghetti, salad, vegetable medley, breadstick, peaches

**Thursday:** Frito pie, baby carrots, corn, oranges

**Friday:** Hamburger, fries, salad, pickles, cookies

## Advanced traffic signal coming to Abilene intersection

The Texas Department of Transportation will soon activate the Abilene District's first-ever flashing yellow arrow, or FYA, traffic signal at the intersection of SH 351 and FM 2833 (East Lake Road). This type of signal, in use by TxDOT since 2011, is designed to reduce confusion and increase safety at intersections. An official activation date will be announced at a later date.

The signal is currently in place and flashing red as part of the ongoing SH 351 access management project. Once activated, the flashing yellow arrow will indicate motorists may make a left turn if there is no oncoming traffic. The yellow arrow replaces the solid green light which typically indicates that drivers may make a left turn but must yield to traffic.

Transitioning to this

type of traffic signal offers several benefits including improved safety by reducing crashes, increased flexibility by allowing more options for motorists making left turns, and more consistency as these signals are adopted as the national standard.

Motorists will see the following indicators at the FYA signal:

Red Arrow: Stop. Do not make a left turn.

Solid Yellow Arrow: Left-turn signal is about to turn red. Prepare to stop. Complete your left turn only if you are in the intersection and it is safe.

Oncoming traffic may have a green light.

Flashing Yellow Arrow: Left turn permitted, but drivers must yield to oncoming traffic and proceed with caution.

Green Arrow: Safe to turn left. Oncoming traffic has red light.

Drivers are reminded to use caution when traveling through this and all work zones, especially as traffic is adjusting to a new signal in this location.

Find more information about these signals and how they affect motorists on the TxDOT website.

## ECC Menu

Mon., Feb. 22

Hamburger on bun and all the trimmings, chips, pinto beans, dessert, tea or coffee

Wed., Feb. 24

Beef enchiladas, potato salad, pork n beans, chips and salsa,

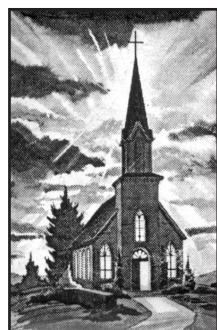
dessert, tea or coffee

Fri., Feb. 26

Ham and beans, coleslaw, onions, pickles, cornbread, dessert, tea or coffee

Announcements begin at 11:45 a.m. followed by lunch.

## This Week's Devotional Message:



### Let faith be your light in the roadway

In the eternal conflict between light and darkness, remember that light is a positive force, while darkness is merely the absence of light, without power of its own. Therefore, it takes but a small amount of light to carry you through the darkest hours of your life; if faith is the source

of it. By living one day at a time, you will allow this ray of light to cast its protective beam far enough ahead on the roadway to guide your footsteps. Then follow it to church where you will learn to walk in the light of faith and banish the darkness forever.

### ATTEND CHURCH THIS SUNDAY

#### —HASKELL—

#### East Side Baptist Church

Terry Bunch, pastor  
Sun. 9:45 a., 11 a., 6 p.; Wed. 7 p.  
600 N. 1st East, Haskell

#### Christian Church

Sun. 10:45 a.m.  
107 N. Ave. F, Haskell

#### Church of God

Bruce Ray, pastor  
Sun. 10:30 a.m. Thurs. 7:00 p.m.  
714 North First East, Haskell

#### Trinity Lutheran Church

Rev. David White, pastor  
Sunday 9:30 a., Worship 10:30  
Hwy 380 East, Haskell

#### Iglesia Bautista

#### El Calvario

Sun. 9:45 a., 10:45 a., 5 p.; Wed. 7 p.  
607 S. 7th, Haskell

#### First United

#### Methodist Church

Rev. David Johnson, pastor  
Sun. 9:45 a., 10:50 a., 6 p. Wed. 6 p.  
201 N. Ave. F, Haskell

#### First Assembly of God

Rev. J.C. Amburn  
Sun. 9:45 a., 10:45 a., 6 p.; Wed. 7 p.  
1500 N. Ave. E, Haskell

#### St. George

#### Catholic Church

Father Angelo Consemينو  
Sat. Mass 7 p.m.; Sun. 9:00 a.m.  
901 N. 16th, Haskell

#### Church of Christ

Philip Sims, minister  
Sun. 9:30 a., 10:30 a., 6 p.; Wed. 7 p.  
510 N. Ave. E, Haskell

#### First Presbyterian Church

Kelly Pigott, interim pastor  
Sun. Morn. 9:30 a.m.  
306 N. Ave. E, Haskell

#### Trinity Baptist Church

Larry White, pastor  
Sun. 10 a., 11 a., 6:30 p.; Wed. 6:30 p.  
114 S. Ave. D, Haskell

#### Hopewell Baptist Church

Sun. 9:30 a., 11:00 a.; Wed. 7 p.  
908 N. Ave. A, Haskell

#### Greater Independent

#### Baptist Church

Sun. 9:30 a., 11:00 a., 6:30 p.; Wed. 7 p.  
301 N. 3rd St., Haskell  
940-863-4405

#### New Covenant Foursquare

Bill and Renee Glass, pastors  
Sun. 10 a., 11 a., 6:30 p. Wed. 7 p.  
200 S. Ave. F, Haskell

#### First Baptist Church

Ollie Pierson, pastor  
Jason Daniels, minister  
of Youth and Music  
Sun. 9:45 a.m., 10:55 a.m., 6 p.m.;  
Wed. 6:30 p.m.  
301 N. Ave. E, Haskell

#### Cornerstone Fellowship

#### Baptist Church

Morris R. Johnson, pastor  
Sun. 9:30 a., 10:45 a., 6 p., Wed. 7 p.  
1600 N. First St., Haskell

#### God Loves You Ministries

Mark Wallace, pastor  
Church Service 10 a.m.  
West side of square, Haskell

#### —WEINERT—

#### First Baptist Church

Dan Bullock, pastor  
Sun. 10 a., 11 a., 6 p., Wed. 7 p.  
Weinert

#### Weinert

#### Foursquare Church

Rev. Robert Harrison  
Sunday 11 a.m  
Weinert

#### —ROCHESTER—

#### Church of Christ

Church of Christ  
Minister  
Sun. 10 a.m., 10:45 a.m.  
West on Main Street, Rochester

#### First Baptist Church

Jim McCurley, pastor  
Sun. 9:45 a.m., 11 a.m., 6 p.m.;  
Prayer Time/Team Kids 5 p.m.;  
Wed. Youth meeting 7 p.m.  
500 Main, Rochester

#### Union Chapel Baptist Church

Clovis Dever  
Sun. 9:45 a., 10:45 a., 6 p.; Wed. 7 p.  
Rochester

#### Faith Chapel of Rochester

Randy Hollingsworth, minister  
Sun. 10 a.m., 11 a.m., Wed. 6 p.m.  
Hwy. 6, Rochester

#### —SAGERTON—

#### Sagerton Methodist Church

Cory Graham, pastor  
Sun. Morn. 9:45 a.m.  
Sagerton

#### Faith Lutheran Church

Anna Robbins, pastor  
Sun. 10:30 a.m.  
Sagerton

#### —RULE—

#### First Baptist Church

Scott Hensley, pastor  
Sun. 9:45 a., 11 a., 5 p.; Wed. 7 p.  
1001 Union Ave., Rule

#### Primitive Baptist Church

Dale Turner Jr., pastor  
First & Third Sundays 10 a.m.  
Corner of 8th & Robins, Rule

#### Church of Christ

Paul Leonard, minister  
Sun. 9:45 a., 10:40 a., 6 p.; Wed. 7 p.  
811 Union, Rule

#### Primera Iglesia Bautista

Alfa y Omegas  
Manuel Marin, pastor  
Sun. 10 a., 11:00 a., 5 p.; Wed. 6 p.  
500 Elm Street, Rule

#### Sweet Home

#### Baptist Church

Russell Stanley, pastor  
Sunday 10 a.m.  
Gladstone Ave., Rule  
940-997-2296

#### West Bethal

#### Baptist Church

Rev. Clovis Dever  
Sun. 10 a., 11 a., 8 p.; Wed. 7:30 p.  
300 Sunny Ave., Rule

#### —PAINT CREEK—

#### Paint Creek

#### Baptist Church

Sun. 10:00 a.m., 11 a.m., 6 p.m.  
Paint Creek

#### —O'BRIEN—

#### O'Brien Baptist Church

Jim Reid, pastor  
Sun. 9:45 a., 11 a., 5 p., 6 p., Wed. 6 p.  
O'Brien

### Sonic Drive-In

1402 N. Ave. E  
864-8533  
Randy Phelps, Manager

### Steele Fire Apparatus

Hwy. 380 East • 864-2208

### Modern Way Food Store

1202 N. Ave. E • 864-3763

### HANSON PAINT & BODY SHOP

207 S. 1st • 864-3631  
Professional Auto Body Repair  
Glass Installation • 24 Hour Wrecker Service

### Rule Co-op Gin & Elevator

301 Adams • Rule • 996-2421

### Smitty's Auto Parts

107 N. 1st East • 864-2607



# 2016 tax season underway; seventy percent of taxpayers qualify for IRS Free File

More than 150 million federal income tax returns are expected to be filed this year, and people will have several extra days to file. Taxpayers have until Mon., April 18, to file their 2015 tax returns and pay any tax due because of the Emancipation Day holiday in Washington, D.C., falling on

Fri., April 15. The IRS expects more than 70 percent of taxpayers to again receive tax refunds this year. Last year, the IRS issued 109 million refunds, with an average refund of \$2,797. The IRS encouraged taxpayers to plan ahead and take advantage of the online resources

available on IRS.gov. "Find answers to many common tax questions on IRS.gov," said Clay Sanford, an IRS spokesman. "E-file plus direct deposit is still the fastest and safest way to receive a refund." More than four out of five returns are expected to be filed

electronically, with a similar proportion of refunds issued through direct deposit. The IRS anticipates issuing more than nine out of 10 refunds in less than 21 days. The IRS Free File program, available at IRS.gov, offers free brand-name software to about 100 million individuals

and families with incomes of \$62,000 or less. Seventy percent of the nation's taxpayers are eligible for IRS Free File. All taxpayers regardless of income will again have access to online fillable forms, which provide electronic versions of IRS paper forms to complete and file.

This option, available through IRS.gov, is free. The IRS urges all taxpayers to make sure they have all their year-end statements in hand before they file their return. This includes Forms W-2 from employers and Forms 1099 from financial institutions.

## Shop The Haskell Free Press

# CLASSIFIEDS

940-864-2686 ALL DEADLINES MONDAY AT NOON • hfpnews@lycos.com 940-864-2686

### Help Wanted

**HELP WANTED:** Hanson Paint and Body Shop in Haskell needs a full time employee. Experienced preferred, but would train right person. Apply in person. 50tfc

**HELP WANTED:** Steele Fire Apparatus, LLC located at 806 N. 1st St. East, Haskell, TX 79521 is seeking a full-time employee in the assembly department. Candidates must be knowledgeable in automotive wiring and small engine repair. This position is 8 a.m. to 5 p.m. Monday through Friday. Pay is dependent on experience. If you wish to apply, please bring in resume and completed application (which can be found at www.sfabrushfiretrucks.com). Must apply in person. Office 940-864-2208. 7c

**LABORATORY PHLEBOTOMIST:** Haskell Memorial Hospital in Haskell, Texas seeks a full time Phlebotomist for our laboratory. Qualified applicant should be certified and have six months to one year of experience performing in a hospital or independent

### Help Wanted

lab setting. Only applicants meeting these minimum requirements need apply. Haskell Memorial Hospital has an excellent salary and benefit package including health insurance and retirement. Please send resumes to Human Resources via email at emoore@hmmhhealth.org, via fax at 940-864-5014, or call 940-864-2621 X301 if you would like an application mailed to you. EOE. 7c

### Real Estate

**FOR SALE BY OWNER:** 3 bedroom, 2 1/2 bath, brick house at 700 N. Charles St., Seymour. Call 940-888-2047 or 940-923-9112.4-7c

### Public Notices

**ACCEPTING BIDS**  
The City of Rule is accepting sealed bids for contracted cemetery maintenance work at the Rule Cemetery. The contract runs from 04/01/2016 through 03/31/2017. Bids must

be received no later than 4:00 p.m. March 2, 2016. For more information, go by Rule City Hall, 701 Union Ave., Rule, Texas, or call 940-996-2214. Bids may also be mailed to City

of Rule, Attn: Cemetery Maintenance Bid, P.O. Box 607, Rule, Texas 79547. The City of Rule reserves the right to refuse or accept any bid. 5-8c

### COOK/ DIETARY

**I M M E D I A T E OPENING!** Must be able to prepare meals for special diets. Experience preferred. EOE/MFHV. Call Administrator 940-864-8537 or apply in person. Mon.-Fri., 9:00 a.m. to 5 p.m. **HASKELL HEALTH CARE CENTER** 1504 North First St. Haskell

### Weekend RNs

Immediate openings on **ALTERNATING WEEKENDS** for several nurses with state license. We offer a competitive salary and benefits available for FT employees. EOE. For more info call 940-864-8537 or apply at: **HASKELL HEALTH CARE CENTER** 1504 No First St. Haskell

CNAS

Full/Part Time  
2p-10p Shift

Immediate openings for professionals with State certification. We offer a competitive salary & benefits available for full time employees. EOE. For more information, please call (940) 864-8537, or apply at:  
**HASKELL HEALTH CARE CENTER**  
1504 No First St. Haskell

FOR RENT

45' Man Lift	\$250 per day
Dump Trailer	\$75 per day
Bobcat & Bucket	\$125 per day
Forks	\$25 per day
Digger 9" & 12" Auger	\$50 per day
Tree Sheer	\$75 per day

Steele Fire  
940-864-2208

Scott Langford

(940) 256-0535

Owner

Tim Pearson (940) 256-0874     Jason Langford (940) 864-3490

# RIKE

## REAL ESTATE LLC

Megan Cox, Owner/Broker  
415 S. First St. • Haskell, TX 79521  
940-864-2411    325-370-6572  
[www.rikerealestate.com](http://www.rikerealestate.com)

FARM & RANCH

**85.84 +/- AC. E OF ROCHESTER**—Just off FM 617 blacktop. \$1550/Ac.—**NEW**

**63.7 +/- AC. SOUTH OF ROCHESTER**—New 6 tower pivot on cultivated land. \$1550/Ac.—**NEW**

**56.7 +/- AC.**—Just outside the city limits of O'Brien. \$800/Ac. Located close to Highway 6—**NEW**

**162.9 +/- AC. NW HASKELL CO.**—Ideal dryland farm on CR 188. \$1050/Ac.—**NEW**

**219.5 +/- AC. WEST OF O'BRIEN**—Dryland farm amongst pivots. \$1050/Ac.—**NEW**

**79.54 +/- AC.**—Good irrigated farm land off of CR 185. New pivot. \$1650/Ac.—**NEW**

**158.6 +/- AC.**—Irrigated farm west of O'Brien on CR 185. \$1650/Ac.—**NEW**

**380 +/- AC. SE KNOX CO.**—Mainly cultivated with new fences, dozer work, working pens, water wells and a current cash lease. \$1350/Ac.—**REDUCED**

**135 +/- AC. STONEWALL CO.**—SE of Old Glory, current 10 yr. CRP contract. \$1200/Ac.—**NEW**

**48.2 +/- AC. NORTH OF RULE**—Nice, smaller farm made up of old CRP. \$1300/Ac.—**NEW**

**18394 CR 4180, KNOX CO.**—Over 3200 sq. ft. 3/2 home on 412 acres. \$600,000—**REDUCED**

**231.1 +/- AC.**—Prime Haskell Co. dryland farm located on FM 618. \$1200/Ac.—**REDUCED**

**355 +/- AC.**—On Hwy. 6 and FM 1225. Good balance of cultivation and pasture. \$950/Ac.—**REDUCED**

**30 AC. WEST OF O'BRIEN ON 2229**—\$1500/AC

**160 +/- AC. NW HASKELL CO.**—All pasture, great hunting potential. \$1000/Ac.

HASKELL RESIDENTIAL

**703 N. AVE. L**—4/3 and 2 half baths. Exquisite home on 1 ac. Contact for more information.

**1706 N. AVE. H**—Well maintained 3/2 with double garage on corner lot. \$77,500—**NEW**

**1407 N. AVE. E**—Historic 4/2 with shop and excellent parking \$190,000—**NEW**

**1507 N. AVE. F**—4/2 with large bonus room on corner lot and original hardwoods. \$157,500—**NEW**

**406 S. AVE. H**—3/2 with dual living areas. \$62,500—**NEW**

**2174 EAST RD**—**SOLD**

**703 N. AVE. E**—Large 4/3.5 with a pool. \$212,500—**NEW**

**131 CR 412**—Newly remodeled 3/2 on 2 ac. right outside of the city limits. \$139,900—**REDUCED**

**308 S. AVE. L**—New 2/2. \$39,000—**REDUCED**

**203 N. AVE. M**—3/1 w/metal roof. \$49,900—**REDUCED**

**801 N. AVE. F**—3/2 open floor plan. \$89,900—**REDUCED**

**1507 N. AVE. E**—Historic 4/3.—**REDUCED**

BIG COUNTRY RESIDENTIAL

**401 S. HILMAR, WEINERT**—3/2 on large corner lot with sunroom. \$58,000—**NEW**

**2605 FM 1661, SAGERTON**—4/2 on 3.5 +/- Ac. with hardwood floors. \$62,000—**NEW**

**909 RAILROAD, ROCHESTER**—3/2.5 on over 4 ac. of land with a small orchard. \$189,000—**NEW**

**600 N. MUNDAY, MUNDAY**—Quaint 2/1 on corner lot with covered parking. \$29,900—**NEW**

**159 FM RD 2976, LAKE STAMFORD**—2/2 lake front property. \$25,000—**NEW**

**18394 CR 4180, KNOX CO.**—Over 3200 sq. ft. 3/2 home on 412 acres. \$600,000—**REDUCED**

**608 SUNNY AVE, RULE**—\$59,900—**PENDING**

**1008 SE 5TH ST., KNOX CITY**—3/2 with great storage. \$59,900—**REDUCED**

COMMERCIAL

**707 S. AVE. E, LIFESPAN**—Stand-alone comm. building with ample parking. \$47,500—**NEW**

**419 S. 1ST ST. WILD HORSE TRADING POST**—Thriving business on downtown square including real estate and inventory—**NEW**

**510 N. 1ST ST-WHORTON BAIL BONDS**—Perfect comm. office space or residential investment. Must see to appreciate. **POSSIBLE OWNER FINANCE**

**621 5TH ST., RULE-BOBCAT CAFE**—2500 sq. ft. turnkey bldg. with newer roof. \$29,900—**REDUCED**

**512 N. 1ST ST.**—Better Bodies Gym and Fitness with fixtures and all equipment. \$135,000—**SOLD**

**551 US HWY 277, MACIAS BALLROOM**—Over 9000 sq. ft. multi-use building. \$212,500

**412 N. 1ST, YESTERDAY'S MEMORIES**—Comm. bldg., living quarters and large upstairs. \$49,500—**REDUCED**

**7734 HWY. 6**—Rule Drive in theater on 4 ac. Many amenities. \$49,900—**REDUCED**

Texas REALTORS®

Dodson  
Concrete  
Construction

Commercial - Residential

David Dodson

704 N. Ave. F • Haskell

940-864-2038

Over 30 Years  
in the Business  
FREE ESTIMATES

Decker  
Electric

TECL#22826

Marty Decker

Electrical Contractor  
Master Electrician

325-261-2372

906 N. Ave. K • Haskell

EXPERT AUTO WORK  
REASONABLE RATES

See us for all your auto mechanic needs. 20 years experience. We do it right the first time.

US 277 South • Haskell

## Like what you're reading?

We'll send it to you each week for just \$25 a year. (in Haskell County)

Yearly Subscription Rates

\$25 a year in county • \$34 out-of- county

Name \_\_\_\_\_

Address \_\_\_\_\_

City \_\_\_\_\_ State \_\_\_\_\_ Zip \_\_\_\_\_

Clip and Mail Coupon, Along with Check or Money Order to:

## The Haskell Free Press

P. O. Box 555, 420 N. First, Haskell, TX 79521

# HCR

## HASKELL COUNTY REALTY

MLS Realtor  
realtor.com

940-864-2665

Chan Guess, agent  
Rhonda Lisle, agent  
Roger Roewe, agent  
Bridget Guess, broker

For more listings call or go to  
[haskellcountyrealty.com](http://haskellcountyrealty.com)

LAND LISTINGS

3 +/- ACRES HWY 380 E—Great home site!  
133 +/- ACRES FM 1225 & CR 425—SW Haskell. The perfect Combo! 45.5 Acres Cultivated, 87.5 Acres Pasture. **UNDER CONTRACT**

153 +/- ACRES, CR 150—Cultivated, Northwest Haskell County!

257 ACRES +/- KNOX COUNTY—Good Mix of Cultivation & Pasture. **UNDER CONTRACT**

160 +/- ACRES, CR 324—THROCKMORTON COUNTY—Ideal Property w/ pasture, Cultivation, CRP, tank and seasonal creek.

320 +/- ACRES, CR 268—Northeast Haskell County. Fantastic cattle grazing or hunting w/water, electricity, one tank and much more!

580 +/- ACRES, CR 265—Northeast Haskell County, the perfect place! 134 Acres of Cultivation and 446 Acres Pasture, Four Tanks, Seasonal Creek.

672 +/- ACRES MUDDY CREEK—US Hwy 277, diverse mix of 397 acres native pasture, 56 acres CRP and 211 acres cultivation, 4 tanks, 1 acre lake, seasonal creek.

330 +/- ACRES CR 321—ASPERMONT—Dynamic Hunting. Set up and ready for the weekend Hunter!

202 +/- ACRES FM 617, RULE—State of the art Background Yard! **NEW**

VACANT LOTS

2 +/- ACRES EAST ROAD—Perfect Home site! \$9,500 **UNDER CONTRACT**

3 +/- ACRES HWY 380 E—Great Home site! \$25,000

500 BLK N AVE A—Hwy By-pass Access. \$ 24,500

N AVE B—4 Lots. \$14,900

700 N 3RD ST—\$4,900

506 N 11TH—\$6,900

1601 DERRICK DRIVE—\$8,500

1600 ROBBYN LANE—\$9,000

1602 ROBBYN LANE—\$7,500

1608 ROBBYN LANE—\$8,500

1601, 1603, 1605, 1607, 1609 ROBBYN LANE—\$5,000 EACH

AVE K EAST—Two lots. \$7,500

110 S AVE M—Residential Lot. \$3,250.00

RESIDENTIAL

706 N 18TH—Stunning Custom Home on Edge of Town! 5/4.5. \$307,500 **REDUCED**

222EM 2976—Here is your Chance! 9 +/- Acres. Barn plus so much more! 4/3. \$305,000 **NEW**

1387 N HWY 6—O'BRIEN—Ideal Package. Lovely Three Bedroom Home on 117 +/- Acres. \$297,000

1103 N. AVE. E—Everything You Could Want in a New Home! 3/3. \$259,000 **REDUCED**

121 Hwy 380 W—Outskirts of Town w/ 3.5 Acres! 3/2. \$229,000 **REDUCED**

821 HWY 380 W—6 +/- Acres 3 Miles from Town! 4/2. \$185,000 **REDUCED**

701 N AVE L—Country Living in Town on 1 +/- Acre lot! 4/3.5. \$184,900 **REDUCED**

11 AVE K EAST—Fabulous, Immaculate home is waiting for You! 3/3. \$169,900 **SOLD**

1002 N 3RD E—Don't miss this One! \$147,500 **SOLD**

1406 N AVE J—Granite Countertops & Hardwood Floors! 4/2. \$142,500 **NEW**

1000 MAIN—ROCHESTER—Fantastic Home and Barn on 2 acres! 3/2. \$125,000 **UNDER CONTRACT**

500 N 16TH—Recently Updated. Must See! 3/2. \$125,000 **NEW**

500 N 16TH—Recently Updated. Must See! 3/2. \$125,000 **NEW**

RESIDENTIAL

203 N. AVE. G—Unbelievable Space 4/2! \$115,000 **UNDER CONTRACT**

907 S ASPEN, KNOX CITY—Unlike anything you will find! 3/2 \$109,000 **SOLD**

503 S. 9TH—Unbelievable Updates! 3/2. \$109,000

101 S AVE K E—Endless Possibilities on the outskirts! 3/2. \$89,900 **REDUCED**

1704 N AVE G—Easy Living. Beautiful Landscape! 3/2. \$96,500 **UNDER CONTRACT**

3121 HWY 6 ROCHESTER—Country Living at its Best! 3/2. \$82,900 **REDUCED**

1605 N. AVE E—For Sale or Lease. 3/2. \$75,000

102 S AVE L—Cute. Move in ready! 2/2. \$59,900 **REDUCED**

605 S AVE G—Motivated to Sell! 3/2. \$58,500 **REDUCED**

1307 N AVE L—Don't Miss this Opportunity! 3/2. \$66,500 **UNDER CONTRACT**

809 S ASPEN, KNOX CITY—Family Friendly, Spacious & Stylish. 3/2. \$48,000 **NEW**

130 MADDEN LANE—Lake Stamford Vedas Camp—fully furnished 3/2. \$36,500

210 GLADSTONE, RULE—Fantastic Starter Home! 2/2. \$32,000 **NEW**





**DISTRICT RUNNER-UP**—The Haskell JV Maidens' season has come to an end. They earned second place in district with a 14-2 record and 20-3 overall record. Team members are, front row, l-r, Jessica Andrews, Allie Andress, Shaylee Rodriguez and Kaelyn Bevel; back row, Ryanna Rodriguez, Grace Colley, Areli Torres, Hannah Stout, Colbie Mckoy and Sarah Fouts. They are coached by Missy Burson.

## Early voting for Texas primary is underway

by Caron Yates

With less than three weeks left before the March 1 Texas primary, campaigning is in full swing. Registered Haskell County republicans and democrats alike will help decide federal and state nominees, as well as choose local government positions.

In addition to voting for the presidential candidate of your choice, voters will also help pick Railroad Commissioner, Supreme Court Justices for places 3, 5 and 9, and three judges on the Court of Criminal Appeals.

If you choose to vote in the Republican Primary, you will also vote for a member of the State Board of Education for District 15, State Senator in District 28 and State Representative for District 68. All three are unopposed.

With the retirement of current U.S. Representative for District 19 Randy Neugebauer, nine candidates for the office will appear on the Republican ballot.

There are two contested local races to be decided on the Republican side. Commissioner Bill Hester is being challenged by Fritz Buerger for Precinct

1, while Dale Carroll and Scott Langford are both vying for the nomination for Commissioner Precinct 2.

Appearing unopposed on the Republican ticket will be Chris Rogers for Sheriff, Connie Benton for Tax Assessor-Collector, Kenny Thompson for Commissioner Pct. 3 and Kim Bassett for Constable.

If you prefer to vote in the Democratic Primary, the contested races are for president and railroad commissioner. On the ballot locally are Mike Fouts, District Attorney; Kris Fouts, County Attorney; Winston Stephens, Sheriff; and Elmer Adams, Commissioner Pct. 2.

The primary election for both parties will be held March 1, 2016. Early voting runs Feb. 16 through Feb. 26, and will take place at the Haskell County Courthouse. You may request a ballot by mail by calling the County Clerk's office at 864-2451 through February 19. A request may also be made in writing, but must be received by the February 19 deadline.

You can check your voting precinct number on your voter registration card. Polling places for the Democratic Primary include: Box 1-St. George's Catholic Church, 901 N. 16th, Haskell; Box 2-Assembly of God Church, 1500 N. Ave. E, Haskell; Box 3-Extension Building, 101 S. Ave. D, Haskell; Box 4-Experienced Citizens Center, 1404 S. 1st St., Haskell; Box 5-Rule High School Library, 1105

Union Ave., Rule; Box 6-Rochester Fire Dept., 214 Carothers Ave., Rochester; Box 7-O'Brien City Hall, 1002 Grand Central Ave., O'Brien; Box 8-Weinert School Building, 202 S. Hilmer, Weinert; Box 9-Paint Creek School Library, 4396 FM 600, Paint Creek; Box 10-Sagerton Community Center, 103 Grant Ave., Sagerton.

Polling places for the Republican Primary for all registered voters in voting precincts 1, 2, 3, 4, 5, 9 and 10 will be at Haskell City Hall, 301 S. 1st, Haskell; voting precincts 6 and 7 will vote at Rochester High School cafeteria, Rochester; and voting precinct 8 will vote at Weinert School, Weinert.

Since 2011 voters are required to show photo identification when voting in person. Acceptable forms of photo ID include Texas driver license, Texas Election Identification Certificate, Texas personal identification card, Texas license to carry a handgun, U.S. military identification card with photo, U.S. citizenship certificate with photo or U.S. passport. These need to be current or no more than 60 days expired.

You may only vote in one primary, either the Democratic or Republican, not both. In the general election, all registered voters are eligible to vote, regardless of the primary in which they voted.

If necessary, a Primary Run-off Election will be held May 24, 2016, and the general election is scheduled for November 8, 2016.

## Fri., Feb. 19 is filing deadline for city and school elections

by Caron Yates

Political candidates are certainly grabbing the headlines on the national level these days. However, on a local level, it is also time to start thinking about our city government and school board elections.

The date for city elections, as well as school board elections has been set for May 7, 2016. If you intend to run as a candidate, you have until 5 p.m. on February 19 to apply. Applications to file for a place on the ballot may be obtained from the respective city hall and school administration offices.

In the city of Haskell, voters will elect two aldermen to two year terms. Council seats held by Dan Hoover and Jill Druessedow will be up for election. The mayor's position will also be on the ballot this year.

On the Haskell CISD school board, places #1 and #6, currently held by Joel Torres III and Tyke Meinzer, will be voted on. Both are three year terms.

The city of Rule will vote on two council seats, along with the mayor's position. Serving the city presently are Mayor Jerry Cannon, Patrick Pace and Bobby Robinson.

The Rule ISD school board has three spots up for election. Incumbents are Wade Gomillion, Elana Mathis and Theresa Baiza.

In the Weinert city government, places held by Cherie Dutton and Mary Murphy will be on the ballot. These seats are for two year terms.

The Rochester city council seats now served by John Hicks and Juan Herrera will be up for election as well.

If you have not registered to vote, you may want to do so as soon as possible. Early voting by personal appearance, runs from April 25 through May 3. Early voting will take place during regular business hours at the city hall of each city, as well as the respective school administration office for the school elections.

Robert Gonzales  
P. O. Box 929  
Stamford, Tx  
79553

**GONZALES  
CARPET CLEANING**

Carpet Cleaning • Upholstery Cleaning  
Emergency Water Extraction • Expert Floor Care  
Waxing Polishing & Cleaning

Residential & Commercial  
(325) 721-8195 • (325) 773-2258

SNAP UP  
EXTRA CASH WITH  
AN AD IN THE CLASSIFIEDS

Your ad in the Classifieds puts the bite on the right buyer for most anything you have to sell. Call today and we'll help you put some real teeth into your message.

**The Haskell Free Press**

**940-864-2686**

**Dunn's FISH FARM**

P.O. Box 85 Pittsboro, OK 74842  
www.dunnfishfarm.com  
(800) 433-2950

Delivery of Black Crappie, Channel Catfish, Bass, Hybrid Bluegill, Redear Bream, Coppernose Bluegill, Fathead Minnows and Triploid Grass Carp are now available for Pond and Lake Stocking. A permit and 10 days notice are required for the purchase of Triploid Grass Carp.

**Friday, Feb. 26<sup>th</sup> - 2:00-3:00 p.m.**

**Haskell • Summit Supply • Hwy. 277 N.**

We furnish hauling containers! Live Delivery Guaranteed!  
Discounts/Special Deliveries on large orders!  
Turtle Traps, Fish Feeders, Fish Traps! Decorative Fountains, Aerators, Windmill Aerators! Vegetation Control, Pond Fertilizers!

To place an order or for more information, call one of our Aquatic Consultants, your local dealer, or email sales@dunnfishfarm.com.

Mon.-Fri. 7 a.m.-5:30 p.m. Sat. 8 a.m.-12 p.m. CST  
1-800-433-2950 Fax 1-580-777-2899  
www.dunnfishfarm.com

# HASKELL GUN & KNIFE SHOW

**AMERICAN LEGION FUNDRAISER**  
Rogers-Cox Post 221  
507 S. Ave. E, Haskell, Texas

**Saturday, March 5, 2016**  
9:00 a.m. to 5:00 p.m.  
**Sunday, March 6, 2016**  
10:00 a.m. to 4:00 p.m.

**Admission \$5.00 per person**  
(children under 10 free)  
Persons under 18 MUST be accompanied by an Adult

### Weather

by Kim Hutto  
National Weather Service  
Volunteer Co-op Observer

**Temperature**

Mon., Feb. 8..... 33°/57°  
Tues., Feb. 9..... 33°/58°  
Wed., Feb. 10..... 36°/79°  
Thurs., Feb. 11..... 36°/57°  
Fri., Feb. 12..... 34°/58°  
Sat., Feb. 13..... 38°/60°  
Sun., Feb. 14..... 38°/61°

## Re-Elect Billy Wayne Hester

for

### Haskell Co. Commissioner Precinct 1

*Your vote is appreciated!*

Paid for by Billy Wayne Hester

# REVIVAL

## February 21-26

**Sunday, Feb. 21, 11:00 a.m. & 5:00 p.m.**  
**Mon. - Fri. at 7:00 p.m.**

We would like to invite everyone to come and join us in a time of revival with

## Randy Mac and Julie McLelland

Randy Mac McLelland has been speaking to and/or entertaining groups for many years. Whether Randy's providing entertainment for a banquet, giving a motivational talk, doing a concert of gospel music, leading in worship, or preaching, his love of life, laughter, and people is very obvious in his presentation. Through the years, Randy has worn a LOT of hats: Pipe-fitter, insurance salesman, youth minister (at FBC Haskell), radio personality, pre-need funeral counselor, and pastor...to name SOME of 'em.

Check out Randy's website at: [Randymac.com](http://Randymac.com)

## THE FIRST BAPTIST CHURCH OF RULE, TEXAS

1001 Union Ave., Rule, Texas (940) 997-2321