

463rd Tactical Airlift Wing Competes In North Carolina

By Kip Pease

Members of the 463rd Tactical Airlift Wing returned to Dyess Air Force Base after competing in the 6th annual Volant Rodeo at Pope Air Force Base in North Carolina. The 463rd brought home three trophies, which were first

places in the aerial delivery joint inspection and the engine running and off load competitions and a third place in the maintenance competition. The 463rd had its best showing ever over the 34 teams which included teams from

foreign countries.

The Volant Rodeo tests the skills of the airlift teams with events for aircrews, combat control teams, security police teams, maintenance support teams, and aerial delivery teams within their respective area of proficiency.

The Volant Rodeo allows airlifters to demonstrate capabilities, improve procedures, compare notes, and it also enhances standardization for uniform and fast-acting worldwide deployment. The contest had over 30 aircraft and some 1,200 participants. Pope Air Force Base serves as the site of the Volant Rodeo every year for several reasons.

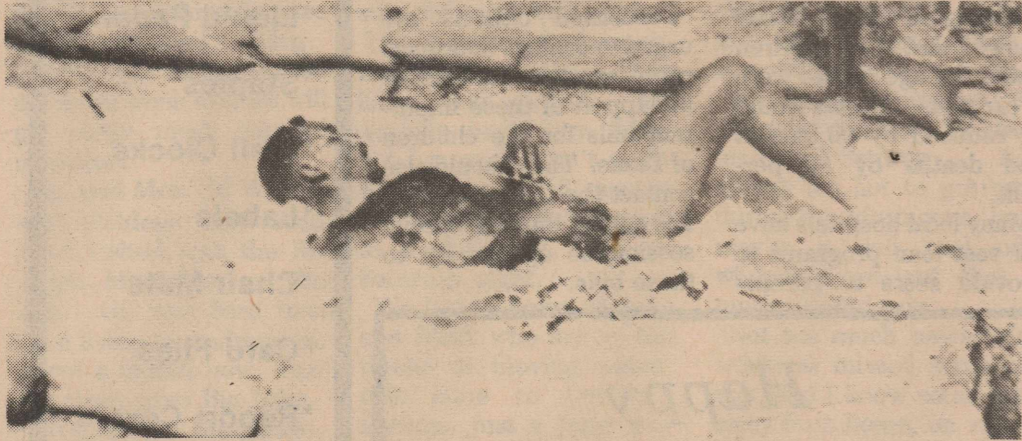
The main reason is that Pope Air Force Base is the "Home of Tactical Airlift" and it is adjacent to Fort Bragg, the home of the

82nd Airborne Division which is considered the "Home of the Airborne".

Other reasons include its adequate parking space for aircraft, its fuel supply,

and its ability to conduct drop contests at Fort Bragg to cut fuel cost. The tax payer should note that all fuel and flying hours for the competition are drawn from budgeted operations and training funds without additional costs. According to General Thomas

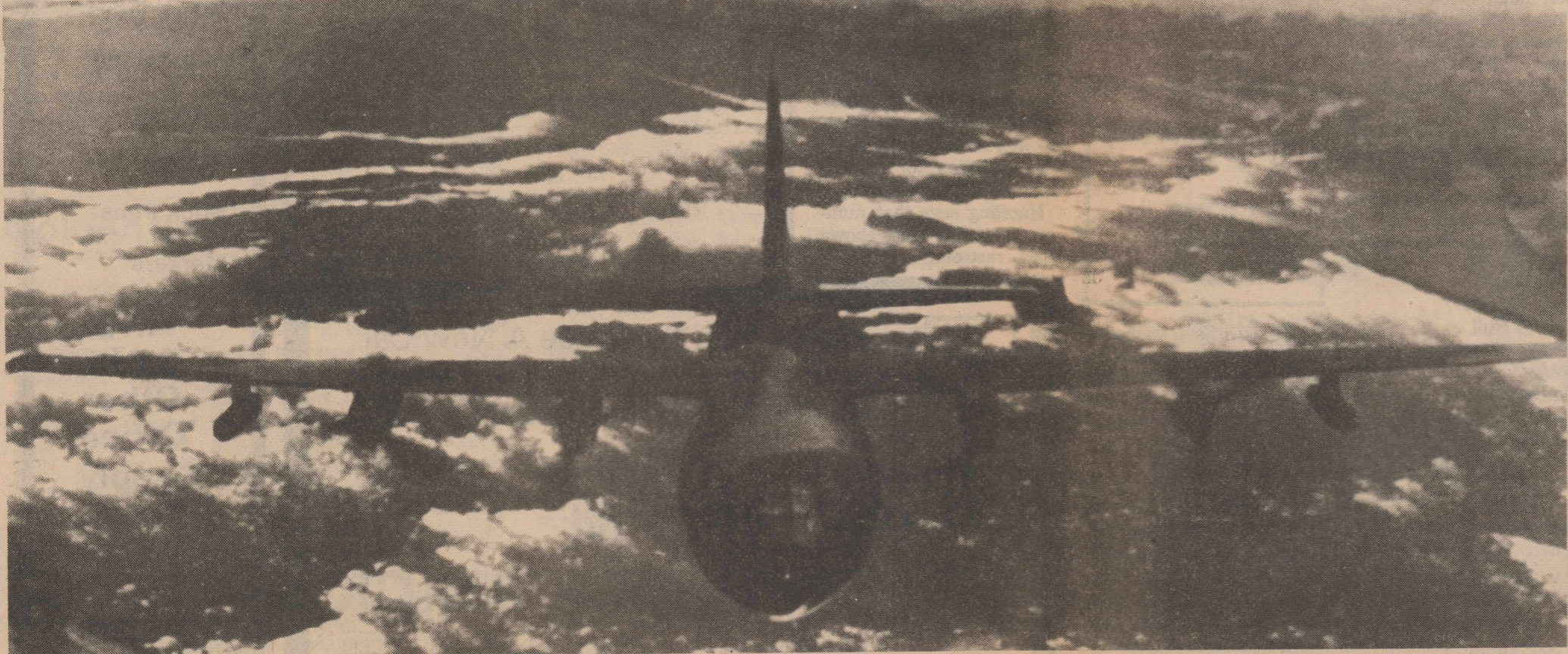
Rhine "the reason for inviting the media is not to provoke them and the tax payers into writing their Congressman to give us more money, but to impress upon everyone what is being done with the money that is already allocated to us."



CRAWLS UNDER BARBED WIRE: An unidentified Dyess Airman competes in one of the Volant Rodeo events at North Carolina.



ASSISTS CAMERAPERSON: Sgt. Jimmie Jones, Dyess Air Force Base, assists Von Chavez, Channel 12 News, in interviewing a Dyess Captain in North Carolina.



The C130 from Dyess Air Force Base

Cottonteed Treatment-Amplify D

Easy Application At Planter Boxes
Aids In Stand Establishment
And Enhances Seedling Vigor
Reduces Risks At Planting Time
A New Economic Development

Call 735-2145

USE NOW



Kill winter weeds
Prevent spring weeds

ferti-lome



Systemic action goes directly into the root systems and works throughout the entire plant.
Control aphids on your roses

ferti-lome



IN DOUBT? USE

ferti-lome

Weed & Feed Special

Martins Feed & Garden

301 W. Snyder

735-3261

Rotan, Texas




Work in style... Western style!

- Soft, cushion insole
- Full-grain, water-repellent leather
- Pre-molded heel counter for a heel-huggin' fit
- Long-wearing sole



1155



Red Wings




We Will Be Closed July 4th

H.L. DAVIS & CO.


"THE FRIENDLY STORE"

NO NEED TO COVER ANY 'WIDE OPEN SPACES' LOOKING FOR A GOOD PLACE TO BANK! WE ARE RIGHT HERE AT HOME AND CAN HANDLE ALL YOUR BANKING NEEDS!

COW POKES By Ace Reid



"Jist shows you ole hoss, these wide open spaces ain't always so wide!"



735-2224

\$100,000 maximum insurance for each depositor

County Agent Report

By Richard Spencer

Farmers made a lot of wheat hay this spring due to dry conditions which hurt grain prospects. This hay should be tested for nutritive value.

The quality of wheat hay can vary widely depending largely on the stage of maturity when cut.

A cool season forage such as wheat is naturally higher quality than forages growing during the warm season. But all forages lose quality rapidly as they begin to mature.

A forage analysis can reflect these differences. Wheat that was cut for hay when seedheads were beginning to form could have a protein content of 12 percent or higher. If seed were beginning to ripen when wheat was cut, protein would be much lower. A rough estimate of wheat cut in the dough stage is 8 percent protein and 63 percent dry matter digestibility.

In addition to the stage of maturity, fertilizer improves the protein content of wheat hay. Wheat that received topdress applications of fertilizer this spring should be higher in protein than non-fertilized wheat. Samples of wheat hay can

be sent to the Forage Testing Lab at Texas A&M University to determine the hay's protein content and feeding value. Information sheets for submitting hay samples are available at the county Agent's Office.

Litter size in sows has not appreciably changed during the last 34 years. More research effort is needed to correct this situation. Since it requires 5 or 6 pigs per litter to break even, every extra pig weaned has a tremendous influence on profitability.

The beef cattle industry is the largest segment of agriculture in the US and

accounts for about 23% of all farm marketings. But, the calf crop still has not increased much from an approximate 70% to 80%.

Performance of athletes has increased greatly during the last 30 years, but this has not been the case with race horses. This indicates the need for greater research activity with horses. During the last 30 years horse racing has been America's leading spectator sport and has generated more than 1 billion dollars in revenue for federal, local and state governments. This alone would justify more research for the horse industry, which now numbers about 8.5 million horses.

Albany Fandangle

Tickets for the 1984 version of the Fort Griffin Fandangle, scheduled to run for six performances June 21-23 and 28-30 at the Prairie Theater, are now available to the public, according to Patsy Rose, executive secretary of the Fandangle Association.

The annual production, which was first produced in Albany almost 50 years ago, will this summer feature the "old time cowboy," depicting through song, dance and narration his life as a pioneer in the

cattle industry. The show as a whole attempts to recreate the "look and feel of times long since past," and involves around 200 local amateur performers, directed by Marge Bray.

Tickets in four different price ranges, \$7, \$6, \$5, and \$3, may be reserved by calling a special Fandangle telephone number, 762-3642, or by writing P.O. Box 185, Albany, Texas, 76430. Group discounts are also available. Reservations not accompanied by payment will be held only until 5:00 p.m.

on the day of the performance.

Although the Fandangle itself doesn't begin until dusk, around 8:45 p.m., Fandangle visitors are encouraged to come early to order to participate in several related activities:

Barbecue will be served on the courthouse square from 5:00 to 8:00 p.m. prior to each performance.

Joe Allen's Barbecue of Aiblene will cater the meals, with prices set at \$5 for adults and \$3 for children, plus tax.

The courthouse, which celebrated its centennial in 1983, will remain open while barbecue is being served.

Information sheets listing all activities and times will be available at the Albany Chamber of Commerce office, located in a restored railway depot near the Bank Park. The depot also houses the Fandangle office.

Additional sheets will be placed at the courthouse and the Old Jail Art Center.

WEST TEXAS BARBER & BEAUTY SUPPLIES
 1112 Broadway-Nolan Plaza
 Sweetwater, Texas 79556
 915-235-1288
 Open Mon.-Sat.-10:00 a.m.-5:30 p.m.
 Ear Piercing \$10.00
DENECE DENT **DELIAH BROWN**

senn satellite systems
 Rotan, Texas
 208 S. Cleveland (Next to Hatahoe)
 Phone 915-735-2119

We will make you the best deal short of our taking a loss, so check with us. We offer economy to luxury.

Complete Satellite Systems at the best prices to date. Over 5 Years experience. 2 financing plans available.

Mon.-Fri. 10 a.m.-6 p.m. - Sat. 9 a.m.-6 p.m.

First United Methodist Church
 Sunday School... 9:15
 Morning Worship... 10:30
W. H. Fred Brown
 MINISTER

Office 735-2334
 Home - 735-2352
 401 North McKinley
 209 North McKinley
 Rotan, Texas 79546

FAST Printing Service

The Newspaper Office
 735-2562

When Is Your Selling

CLASSIFIED INFORMATION

No Secret At All?
 WHEN OVER 7000 PEOPLE READ IT IN ROTAN ADVANCE ROBY STAR RECORD

If you've got something to sell... we'll get your message across! And our big readership guarantees you lots of prospects!

NEED

- * Job Printing
- * Rubber Stamps
- * Office Supplies
- * Film Developing
- * Old Photos Copied

The Newspaper Office
 735-2562

Ronald Green
 CEMETERY CURBS, SLABS & MONUMENTS
 (915) 776-2108

P.O. BOX E
 ROBY, TEXAS 79543

WE HAVE

- * Wedding Invitations
- * Wedding Napkins
- * Printed Thank You Notes

The Newspaper Office
 735-2562

Mr. and Mrs. George Robert Price request the honor of your presence at the marriage of their daughter

Kristi Kim

to

Mr. Ben M. Givens III

on Saturday, the thirtieth of June nineteen hundred and eighty-four at two o'clock

Church of Christ
 Highway 180 and Church Street
 Roby, Texas

Lufkin R. Moses, D.O.
 Announces The Relocation Of His Office To
 1300 Hailey
 In Sweetwater
 Effective July 2, 1984

ADVERTISING PAYS
 735-2562

The Newspaper Office

ATTENTION: PARENTS OF CHILDREN THROUGH AGE 9

Kid-Co Day Care Center will be opening soon in Roby. So...we are having a PRE-Grand Opening Enrollment Party for all prospective KID-CO KIDS and their parents. Come get to know Susan Griffith, owner/operator, and Sue Turpin, director. We will be discussing policies and prices, activities planned for each day and for special occasions, tour the new facilities that are almost finished, and have enrollment. The regular enrollment fee of \$10.00 per child will be half price (\$5.00). Each child must be enrolled to attend whether it will be for regular full day, after-school or drop-in care. Enrollment is limited----So...FIRST COME-FIRST SERVE!! We will have two drawings--One for a free enrollment and one for a free week of child care. So come on down to 407 West South 3rd in Roby to our new building on Sunday, July 1, 1984 from 3:00-4:30 (approx.) and sign your kid(s) up to be a KID-CO KID!!!!

P.S. Refreshments will be served and we'll have someone to watch the kids while we have our discussion.

REMEMBER: Sunday, July 1, 1984 3:00-4:30
 407 West South 3rd, Roby (next door to Susan Griffith's house)

An Ad This Size Every Week Sells For \$10.80

The Newspaper Office

Hi Tech Electronics
 Sale Prices Good 27th Thru 30th

- Satellite Sales and Service
- Sylvania, Sharp, Sansui, and Pioneer
- Rent To Own Satellites Systems

Model CLC234HP
 SYLVANIA CONSOLE COLOR TV
 Reg. \$585.00
 Sale \$499.00 w/Trade

Model RXC168WA
 SYLVANIA COLOR TV
 18" diagonal Dark-Life black matrix picture tube
 E-300 chassis... 100% solid-state
 QT-Matic Color System
 Automatic sharpness
 Random Access digital tuning
 Infrared Remote Control with Quick View and Mute
 112 channel capability
 \$449.00 w/Trade

Model CWC 141WA
 SYLVANIA COLOR TV
 19" diagonal Dark-Life black matrix picture tube
 E-1000 chassis... 100% solid-state
 Mechanical tuning
 APT (Automatic Fine Tuning)
 Telescoping dipole VHF, bowtie UHF, antennas
 Sharpness Control
 \$339.00 w/Trade

Model WRD 140WA
 SYLVANIA
 • Sequential play dual cassette system
 • AM/FM/FM-Stereo tuner
 • L/R side bass and treble controls
 • Slide balance with center detent
 • Loudness/fi-filter controls
 • Stereo microphone jacks
 • Semi-automatic turntable
 • 5 1/2" drivers
 • 2.5 watts per channel at 8 ohms, 80Hz-20kHz @ 5% THD
 \$259.00

Model WRD141WA
 SYLVANIA
 • Built-in infrared remote control (operable up to 20 ft.)
 • 5 band graphic equalizer
 • AM/FM/FM-Stereo tuner with digital display
 • 4 FM presets
 • Soft touch controls
 • Metal tape capability
 • Semi-automatic turntable
 • Headphone jack
 • Slide balance control
 • 6" speakers
 • 3 watts per channel at 8 ohms, 100Hz-10kHz @ 5% THD
 \$299.00

Sharp SYS-200
 DELUXE STEREO RECEIVER
 SEMI-AUTOMATIC TURNTABLE
 SP-220 3 SPEAKER SYSTEM
 MCR-220 STYLISH COMPONENT-RACK
 STEREO CASSETTE DECK
 \$399.95

One Three Left

300 Hailey **235-4173**