



# The Olton Enterprise

"The Golden Gate To The Golden Road"

CONSUMER'S  
BUTANE, INC.  
Phone 3971  
Olton, Texas

Volume 30

OLTON, TEXAS, LAMB COUNTY, THURSDAY, OCTOBER 25, 1956

Number 37

## Research Foundation Farm Near Olton

### Holt, Granbery On Advisory Board; Area Productivity Boost Predicted

Site of the regional Texas Research Foundation experiment farm and station has been designated as nine miles east of Olton at the outskirts of Halfway.

I. B. "Doc" Holt and D. M. Granbery have been named members of the foundation regional council.

Announcement of the station site was made Saturday afternoon at a meeting in Plainview. The independent, long-range research program which the High Plains branch will carry out will serve 19 counties.

### Large Number Attends Two-Day Showing Of 1957 Model Chevrolet

#### Olton Youth To Make CROP Drive

Christian youth of Olton will canvass the residential sections of town for donations for CROP next Monday night.

The money will buy powdered milk for overseas children. For all the money turned in, the government will give nineteen times the amount.

Those planning to help with the drive will meet at the Methodist Church at 7:30 p.m. After making collections, they will assemble back at the church for games and refreshments.

It was emphasized that this effort is not limited to one denomination, but is to include all the Christian youth of Olton. All workers will wear a card stating that they are representing CROP, an organization for the Christian Rural Overseas Relief.

#### TWO INJURED IN ACCIDENT

Frank Baldernas, an employee of Thompson Chevrolet Co., received head injuries requiring eleven stitches in a two-car collision at the intersection of 8th street and highway 304 around Saturday noon, according to Vernie Head, city marshal.

Ramona Baldernas, his wife, was driving the car and was not injured; but their baby received a slight head injury. Both Baldernas and the child were treated by Dr. Ben Souders.

Driver of the second car was Tomas Cabrira, Jr.

Between five and six hundred people were estimated to have attended the Friday and Saturday showing of the 1957 Chevrolets, according to Fred Thompson of Thompson Chevrolet Company.

"Everyone expressed pleasure at the appearance of the new Chevrolet—especially the front end appearance," stated Thompson. He added that special interest was shown in the Bel Air sport sedan. However, reaction to all the models were favorable, which, together with the large number of people coming out for the showing, resulted in making the event a successful one.

Placed on exhibit during the showing were five cars and a pickup. These included two Bel Air four-door sedans, a Bel Air four-door hardtop, a Bel Air two-door sedan, a 210 four-door sedan, a Bel Air sport sedan, and a 1957 half-ton pickup.

A choice of 460 color combinations is available to the customer in the 1957 passenger cars, almost one-third more than was available at the first showing of the 1956 line. Customers this year will have the widest selection of models in history in these 1957 Chevrolets.

Overall length of the passenger cars is increased to a total of 200 inches with wheelbase remaining at 115 inches. The lowered hood emphasizes the horizontal sweep of body lines to the flared rear fender fins for balanced beauty. Twin lance-shaped windshields replace the conventional hood ornament, and the 1957 models have headlights spaced farther apart than the 1956.

with work planned on grain sorghum, soy beans, corn, and other crops economically practical for this area.

The farm will be located on a half section of land at the southeast edge of Halfway, with its north boundary along US Highway 70. The land was formerly part of the R. L. Hooper farm.

Harold Hinn, chairman of the Regional Council, told the group of 61 council members, representatives of the press, and special guests meeting at the Hilton Hotel that the program will be financed by farmers and businessmen of the area.

Total estimated cost of the project is \$350,000 for five years. This would provide \$150,000 for capital needs, and \$400,000 for operating purposes at the rate of \$80,000 a year.

"We are now well on our way toward obtaining a field station for the High Plains," Hinn, chairman of the board and president of Harvest Queen Mill & Elevator said in opening the luncheon meeting.

"We have made arrangements for 310 acres of land in Hale County, for a permanent site for the field station, and it is now a matter of obtaining operating capital.

"Just as soon as we can secure pledges for the five-year operating fund, we can begin a research program which should increase the productivity of this 19-county area many fold.

"In order to guarantee the success of the effort, Texas Research Foundation requires that we must underwrite the work in advance for five years," he continued.

Hinn said that the Harvest Queen Foundation will provide immediately 160 acres of land which will be turned over indefinitely to Texas Research Foundation for experimental purposes, and that 150 acres adjacent at Halfway will be purchased in the name of Texas Research Foundation.

The purchase of the 150 acres will be underwritten by George Green, president of Green Machinery Company of Plainview, the purchase price to be repaid over a five-year period out of capital funds subscribed by businessmen and farmers of the High Plains.

### OHS BAND SELLING CALENDARS

Sponsored by the Band Boosters Club of Olton, birthday calendars are being sold by band members, the proceeds to be utilized in the building up of the 88-piece Mustang Band.

To secure additional funds the Band Boosters are soliciting advertising for the calendars. Each calendar has a changing panel of 12 pictures of band activities.

All clubs are invited to place meeting dates on calendars. In addition to family birthdays and anniversaries, the names of boys in service may be listed.

Family listings are \$2 with the calendar, including birthdays of each family member as well as a wedding anniversary.

Individual listings are 25c per name plus \$1 for the calendar. Anyone desiring a birthday calendar may contact any band member or Fred Stockdale, band director. Deadline for the listings is Oct. 31.

### LOCAL YOUTH HURT AS CAR OVERTURNS

Jerry Young, 15-year-old son of Mr. and Mrs. A. J. Young and a junior student in Olton High School, suffered a broken shoulder and bruised jaw when the "hot rod" in which he was riding overturned out on his parents' place southwest of town. The accident occurred Monday afternoon about 5:30 o'clock.

Other occupants of the car were Harold Dean Nicholson, son of Mr. and Mrs. G. A. Nicholson, and Lennon Young, son of Mr. and Mrs. E. L. Young, no relation to Jerry. Lennon was uninjured and Harold Dean received a leg bruise.

The three boys were riding out in the field at the Young's place when the stripped-down car hit soft dirt and overturned, pinning Jerry underneath. The other two boys lifted the car off of Jerry and they pulled the car out of the field with a tractor. The car belongs to a group of high school boys.

Jerry's parents took him to the Medical Arts Clinic-Hospital in Littlefield where he was treated by Dr. R. E. Maurer and given x-ray examinations. Placed in a cast from the waist up, he will stay in the Littlefield hospital for a week.

His mother said that, although he can return to school next week, he will remain in a cast for six weeks.

### HIGHWAY MISHAP FRIDAY NIGHT PROVES FATAL TO PEDESTRIAN

#### Dickie Will Address Olton Farmer Union

Farmers Union President Alex Dickie will be the principal speaker next Tuesday night as the Olton Farmers Union elect officers for the coming year.

Mr. Dickie is from Denton. The meeting will be held at the Legion Hut at 7:45 o'clock.

Present officers are Raymond Cooper, president; Wilton Bodkin, vice-president; and Paul Nafzger, secretary.

The public is invited to attend the meeting and hear Mr. Dickie talk, declared Mr. Cooper. There will be a question and answer period following the address, Mr. Cooper declared.

Richard Porch, about 57 years old, was killed about 10 o'clock Friday night when he was struck by a car on Highway 70 about four miles west of Olton.

Peace Justice Louis Schreier returned a verdict of "death by accident unavoidable."

Judge Schreier said Porch had just gotten out of a car parked on the north side of the highway.

A car driven by a California man was approaching from the opposite direction. Judge Schreier said the California man dimmed his lights to pass the other car and Porch apparently walked onto the highway in front of the moving vehicle.

The accident was investigated by Deputy Sheriff V. L. Smith and Highway Patrolmen.

Porch was employed by R. H. Thomas. He is survived by a wife and four children. Funeral services were held Monday.



FRED THOMPSON, left, presents the keys of the new Chevrolet driver training car to School Superintendent Carl Macon. This is the second year that Thompson Chevrolet has furnished the school with a driver training car. Driver training teacher is Coach Joe Turney.

## Olton Mustangs Edge Muleshoe Mules One Point In 1-AA Conference Opener

Big Dan Wallace nailed a Mule ball carrier on the two yard line at Muleshoe Friday night and barely kept Olton in the District 1-AA running as he staved off a Muleshoe extra point.

The Mustangs eked out a 7 to 6 victory over the stubborn Mules who had Olton outdistanced on both penetrations and first downs.

The Mules had scored their lone tally in the closing minutes of the final quarter. The Mustangs fell upon an onside kick and hung on for dear life as the clock ticked the knell of the ball game.

Mustang co-captain Teddy Jack Estes provided one of the biggest thrills of the season as he threaded 60 yards down the gridiron to a touchdown on a punt return.

Teddy Jack shook off two tacklers, faked and swivel-kipped to the double stripe in one of Olton's most spectacular runs since R. V. Alcorn went all the way with a Phillips kick off at Amarillo back in 1953.

Jack Royce Straw—out with a leg injury since the Hale Center game—was in on only one play but he booted the sugar point that spelled victory for the Mustangs.

A violent dust storm and threatening rain opened the ball game but the weather subsided

to relative calm by the end of the first quarter.

The first half of the game went scoreless. Muleshoe lost an opportunity to score in the second period when a touchdown was called back because of a backfield in motion penalty.

A Mule player gave the red flag a costly kick and the Mules were assessed a 15 yard penalty for unsportsmanlike conduct and set the ball on the 30.

The Mule ball carrier was nailed back on the 39 on a fourth down try with 30 yards to go and thus Olton took possession as the half ended.

A great deal of the first half of play took place on Olton's end of the field.

It was early in the third quarter that Estes made his spectacular run. Olton kicked off to Muleshoe and then held to force the punt from the Muleshoe 21 yard line.

Estes picked up some of the most beautiful blocking assistance yet displayed this year by the Olton Mustangs.

Olton missed another golden opportunity to score in the fourth quarter.

It was Olton's ball first and 10 on the Muleshoe 47. Wallace made his way to the 40 and then Estes scampered to the 25.

Unnecessary roughness penalty against Olton set the ball back

on the 35 where it was first and 10. A James Ray Hyatt pass to Estes was good for a first and 10.

Wallace took a pitchout and made it to the 18. A few plays later, Hyatt tossed again to Estes for another first down on about the 14 yard line. Olton drew a third down delay of the game penalty and then David Price picked up four.

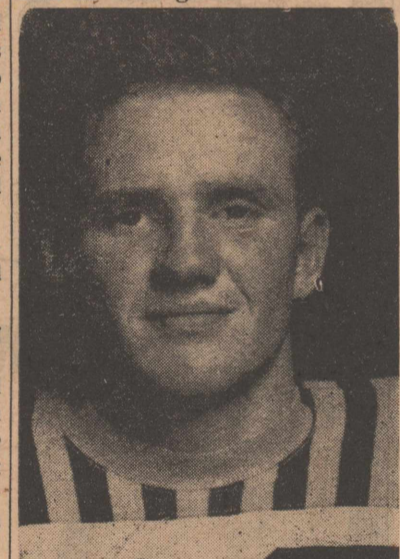
A fourth down pass rolled incomplete and the Mustangs had lost a scoring opportunity.

Billy King played outstanding defensive ball for Olton.

Muleshoe's football coach said he had spared no trouble in scouting the Mustangs before the game. Mule players spent a great deal of last week studying films of Olton's previous games.

Tullia's Hornets will come to Olton Friday night in quest of their first conference win. The Hornets can be a tough crew at times. They held Littlefield to a one touchdown lead in the first half.

Mighty Canyon led the Hornets only two touchdowns at the half in their game.



KIRK McADAMS, outstanding Olton Mustang, will be out of service for the remainder of the season as a result of a jaw fracture suffered in the recent game with Hereford.

### FFA Boys Stack Up More Honors In Competition At Dallas Fair

Olton FFA boys rolled up several more honors at the Dallas Fair recently.

In the shorthorn steer junior division, Sammy Thomas exhibited the fifth place winner, a heavyweight that sold for 35 cents a pound.

In the same division, Darryl Dennis showed the seventh place winner, a lightweight that sold for 36 cents a pound.

Nancy Brigance, a 4-H Club girl, also exhibited a steer at Dallas.

Miss Brigance, Houston Hamby, Royce McFadden, Elmer Houston, Harlan Carson, Don Kidd, Lennon Young, Dewey Hukill and John Adams exhibited commercial market fed steers that graded from choice to prime and sold at from 32 to 36 cents a pound.

Some 100 lambs competed in the lamb show. Darryl Dennis exhibited the fourth place South-down and Houston Hamby ex-

hibited the sixth place lamb in the same division.

Royce McFadden exhibited the fourth and sixth place Hampshire lambs in a field of 150.

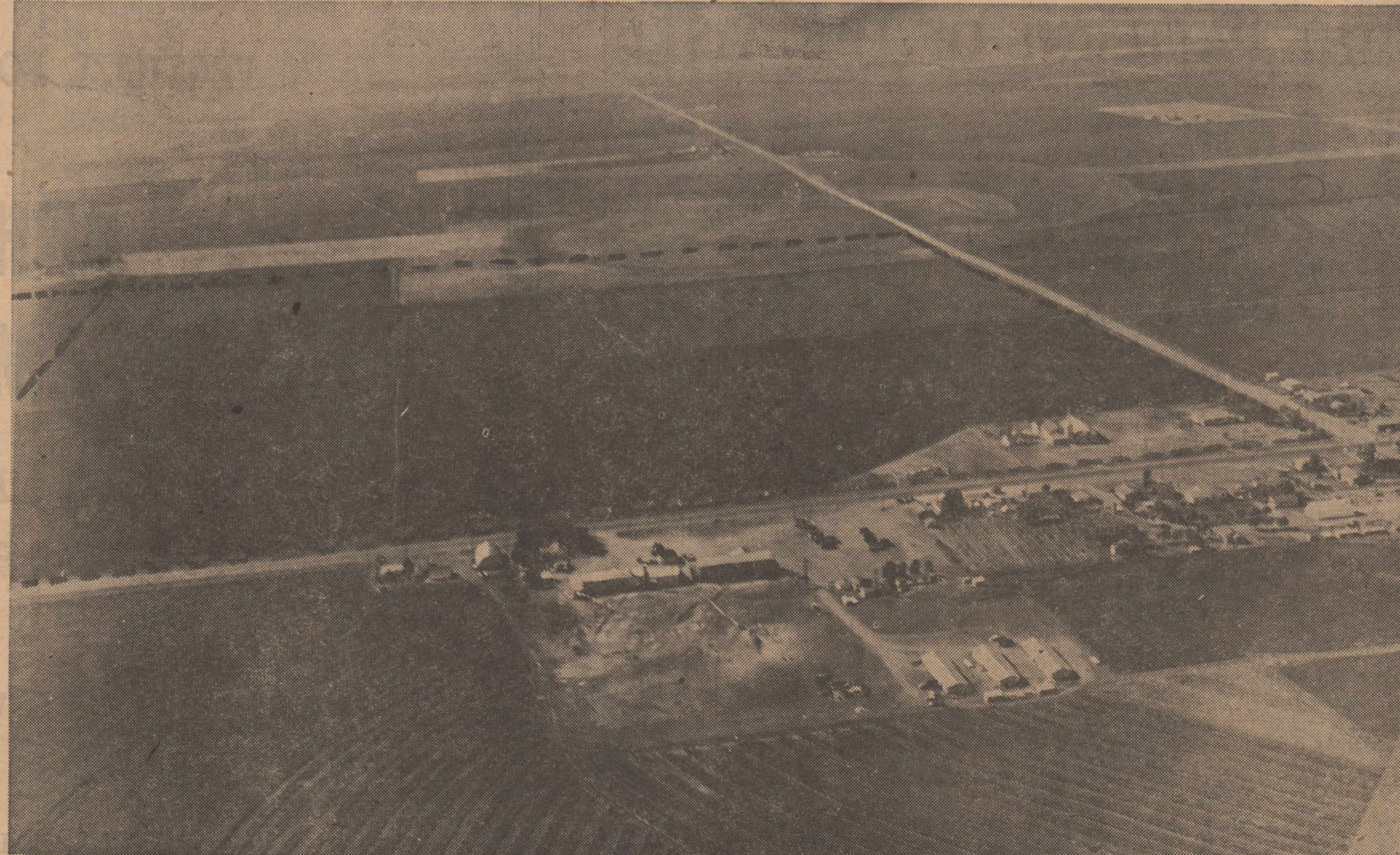
In the swine show with 50 hogs competing, Jerry Moore showed the second place middleweight Hampshire and Carl Nafzger exhibited the third and fourth place swine in the same division.

Houston Hamby showed the sixth place Chesterwhite and Royce McFadden exhibited the 12th place swine in that division.

Dewey Hukill showed the third place middleweight Poland China and the 11th place heavyweight Poland China.

Miss Brigance and the Olton boys sold 13 calves and 10 hogs at the Dallas Fair for a total sum of \$4,700.

The sheep were brought home to be shown in the spring shows.



THIS AERIAL PHOTOGRAPH supplied by The Plainview Herald shows part of the half section which will serve as the High Plains Field Station of the Texas Research Foundation. Highway 70 is shown running left to right.

The town in the picture is Halfway. The dotted lines indicate the land included in the site.

### Social Security Credit Allowed On Farm Rental

Do you get social security for your income from land you rent to someone else for farming? It depends on the rental agreement and on how much you participate in the operation and management of the farm, says John G. Hutton, manager of the Lubbock Social Security Office.

Under some circumstances your income from the land may be "rental income" and not covered by the law; under other circumstances your earnings will be considered "earnings from self-employment" as a farmer. If you simply rent the land

in return for cash or a share of the crops or livestock, and you take no part in the production or management of the crops or livestock, then the cash or crop share you receive is rental income and it does not count toward social security.

But for taxable years ending after 1955, you can get social security credit for your income from land you rent to someone else under an agreement that you will "materially participate" in the management or production of the farm commodities.

What do you have to do to "materially participate" in the management or production?

First, there must be an arrangement between you and the renter that you will take part in the management or produc-

tion. This arrangement may be either written or unwritten.

Second, you must actually take part in the production or management of the production.

Even if you don't actually do any physical work, you must be materially participating in the production or management of production if you:

1. Advise and consult regularly with the person who rents the land on the operation and management of the farm.
2. Inspect the production activity regularly.
3. Furnish part or all of the equipment, machinery, or livestock.
4. Pay part of the expense of production.

Mr. Hutton pointed out that each of these must be considered, together with any work you may do on the farm and management of the enterprise. It's not necessary that you do everything listed above to qualify; in some cases it is sufficient if you have an arrangement to participate in the farming and you actually perform some of these activities.

A representative of the Lubbock Social Security Office will be in Plainview on Oct. 23, 1956 at 10:00 a. m., at the Employment Office and will be glad to assist in all matters pertaining to Social Security.

#### VISITS PARENTS

Ann Ford, sophomore at Howard Payne College in Brownwood, recently visited in the home of her parents, Mr. and Mrs. Harry Ford.

#### FIRST PLANE TRIP

Taking his first plane trip at 78 years of age, C. T. Mason, long-time Olton resident, left this week to visit his brother, John Mason, in Woodford, Va. His brother met him in Washington, D.C. Prior to his departure for Virginia, Mr. Mason had visited his sister and his daughter, Mrs. Ernest Emmett, in Vernon.

#### TWINS BORN

Mr. and Mrs. D. R. Davis are grandparents of twin girls born last Wednesday, Oct. 17, to Mr. and Mrs. Billy Mayfield of Big Spring. Mrs. Mayfield, the former Joyce Davis, and her husband are both former Olton residents.

### Parade Of Scouts To Start Pow-wow

The annual Girl Scout Pow-wow will be staged Tuesday night, Oct. 30, by almost 200 youngsters in scouting organizations, complete with warpaint, Indian costumes and jewelry, torches, and peace pipes.

Participating in the colorful affair will be Olton Girl Scouts and Brownies, Cub Scouts, and Brownies from Springlake.

To initiate the pow-wow, the call to council will consist of a parade by all participating scouts. The girls will assemble in front of the grade school and march through town, ending up at the old baseball field, site of the pow-wow, which is northwest of the football field.

Following the call to council, the torch bearers will light the council fire. Then representatives from each troop, with Mrs. Jerry McKinzie as chief, will stage the peace pipe ceremony.

At the council fire ceremony, Mrs. G. H. Buchenau will introduce new Brownies, followed by songs sung by all the scouts.

Troop 20 and 7 will perform in a Forty-niners Dance; and after more group songs, the Fallen Leaves Dance will be presented by Brownie Troops 31 and 32.

After a skit by the Cub Scouts, all the scouts will raise their voices in their Song of Departure.

#### ATTEND THE CHURCH OF YOUR CHOICE SUNDAY!

#### WHEEL-MOUNTED DISC HARROW NO GREASING

Super sealed Teflon bearings permit 15 per cent less pull and eliminate the necessity of greasing parts. Easily converted from manual to hydraulic operation in only a few minutes time.



FREE ILLUSTRATED FOLDER ON REQUEST HARVESTER PLOW CO. AIR BASE, PRATT, KANSAS

**Bodkin - Nixon**  
Phone 3151 Olton, Texas

### Doleful Senators Due Shock When Ike Wins, Fears Doc

One of the strongest Eisenhower men in our town is Doc Brown. Doc says he just can't put up with Stevenson's socialized medicine program; there are a lot of other things he doesn't like about Adlai, but that one is enough for him, he says. Doc is a pretty outspoken cuss, but he's a good doctor. At least, he's the best one in town, being the only one, and our people always call him when they get sick whether they like his politics or not.

The other day several of us were standing around in front of the post office, talking politics—some Eisenhower men and some for Stevenson—when Doc walked up looking glum. One of the Stevenson men said: "Hey, Doc, what's the trouble, did Ike just call you in some bad news?"

Doc Brown said no, he hadn't heard from Ike this week, but he was worried.

"Not about Ike, you understand," he told the Stevenson fellow. "Ike has got it made. Even the Stevenson people are beginning to admit that. Poor old Adlai isn't going to get any farther in this race than he could throw Kefauver's conks cap with the tail cut off."

"The ones I am worried about are these out-of-state senators who are coming down here to Texas to tell us how to vote. I sure feel sorry for those boys. It must be tough to face life with their attitude."

"To hear them tell it, this country is in a terrible shape. All the farmers are starving, all

the businessmen are going broke, and all the working people are just barely making enough to keep body and soul together. The only reason some little country doesn't step in and whip us tomorrow is that they know they can just wait a few days and the United States will fold up of its own accord. That's what I understand from listening to the visiting senators.

"Of course, they know how to correct the situation overnight. Elect Adlai, and let him abolish the draft and do away with the H-bomb, and let Estes establish the Atlantic Union which he has made speeches about all over the country, and everything will be all right."

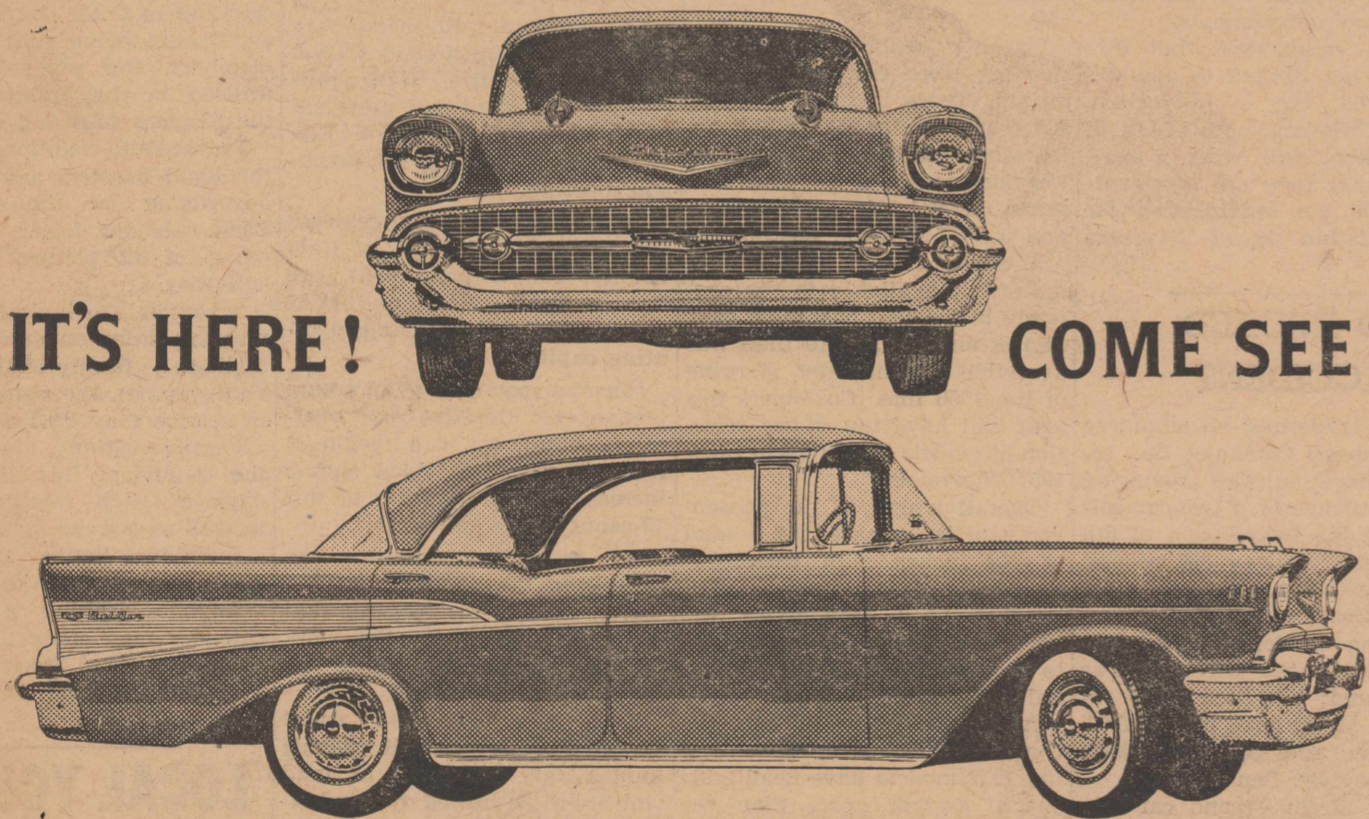
"These things are too important, of course, for these senators to waste time telling us Texans why they voted against the Texas tidelands bill."

"As a medical man, I am worried about the great shock these senators are going to get, after the election is over and Ike is re-elected and this country keeps on being peaceful, prosperous and progressive. It's liable to put them all in bed."

And Doc Brown walked on off, shaking his head. Of course, the Stevenson man caught on that Doc was hurrahing him, and he didn't like it much, but he'll still have to call him the next time one of the kids gets the croup, because like I said he's the only doctor in town.

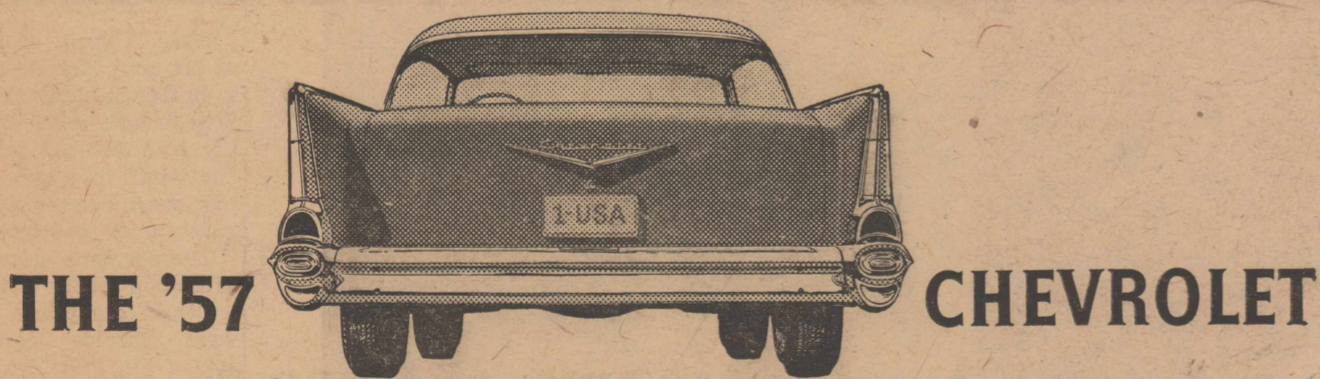
Yours Truly,  
*Jex*

(Pol. adv. paid for by Texas Democrats for Eisenhower, Weldon Hart, Director.)



IT'S HERE! COME SEE!

IT BREAKS THE PATTERNS OF THE PAST!



THE '57 CHEVROLET

Chevrolet takes a daring departure for '57. This is the new car that goes 'em all one better with fuel injection . . . with bold new ideas in design . . . in styling . . . in automatic driving. It's sweet, smooth and sassy!

Chevrolet is the place where new ideas grow. And what a crop of them this year! . . . Fuel injection . . . a brand-new Turboglide automatic transmission (optional at extra cost) with Triple-Turbine take-off. A full range of five potent engines, with horsepower options

ranging clear up to 245.\* A functional new "face" in which bumper and grille are styled as a single unit. Dozens upon dozens of other brilliant touches including smaller 14-inch wheels. It's an idea year at Chevrolet—and you'll want to sample them all!



\*270-h.p. engine also available at extra cost. Also Ramjet fuel injection engines with up to 283 h.p. in Corvette and passenger car models.

Only franchised Chevrolet dealers display this famous trademark

**THOMPSON CHEVROLET COMPANY**  
OLTON HIGHWAY 70 TEXAS

"A GOOD PLACE TO BUY A CAR"

# GRAIN GROWERS

TRY US FOR—

## Quick, Efficient Service

WE'LL BUY YOUR GRAIN

Or

PUT IT IN THE LOAN.

- PLENTY OF STORAGE SPACE
- YOUR LOAN PAPERS PREPARED
- WAREHOUSE RECEIPTS IMMEDIATELY

HIGHEST PRICE OR GOVERNMENT LOAN FOR YOUR SOY BEANS

FERTILIZE FOR NEXT YEARS CROP

WITH

**ANHYDROUS AMMONIA**



ON MAIZE STUBBLE.

SEE US BEFORE YOU BUY!

**HALFWAY GRAIN CO.**

HALFWAY, TEXAS

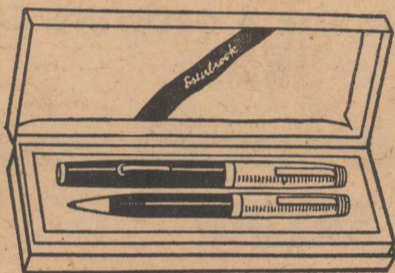


YOU DON'T HAVE TO WORRY  
ABOUT A TRIP OUT OF TOWN FOR

# Office Supplies

ANYMORE.

*Esterbrook*



SEE OUR LINE OF  
**ESTERBROOKS**  
THE WORLD'S FINEST  
LOW PRICED PEN.

Also

**PAPER MATE**  
THE WORLD'S FINEST  
BALL-POINT PEN.

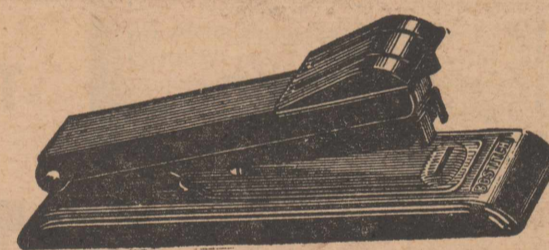
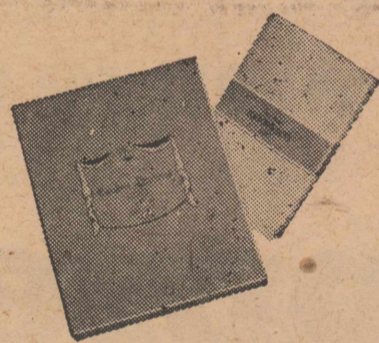
WE'RE STOCKING A COMPLETE

LINE RIGHT ON OUR FLOOR!!

THE ENTERPRISE  
PRESENTS

**MONTAG'S  
STATIONERY**

A FITTING COMPANION  
FOR OUR FINE PENS!!

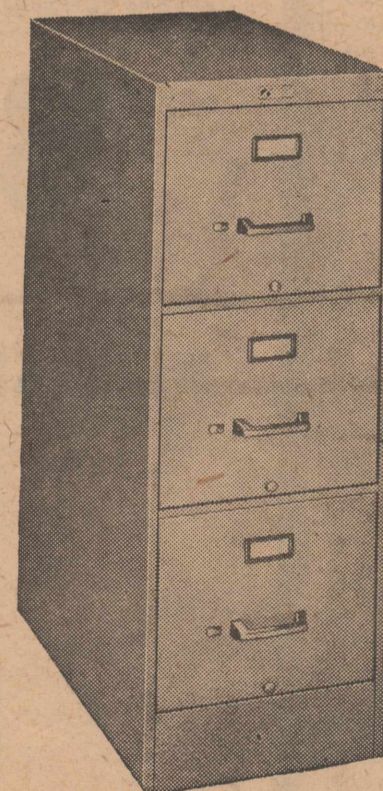


NO HOME OR  
OFFICE SHOULD  
BE WITHOUT A  
**BOSTICH  
STAPLER**

ORDER CHRISTMAS CARDS

BEFORE DECEMBER 1

AND GET A 10% DISCOUNT.



FOR THE FIRST TIME—

FILING CABINETS RIGHT ON OUR  
FLOOR.

- BOOK KEEPING SUPPLIES
- LEDGERS
- LEDGER LEAVES
- GUMMED LABELS
- INVENTORY SHEETS
- WIRE DESK BASKETS

# ENTERPRISE OFFICE SUPPLY

PHONE 3361

**PERSONALITIES ELECTED AT OHS**



**TEDDY JACK ESTES**

Janice Ford and Teddy Jack Estes are Miss and Mr. OHS for 1956-57 following a recent election of school personalities by high school students.

Daughter of Mr. and Mrs. Harry Ford, Janice is serving as secretary of the National Honor Society, drum major of the OHS Mustang Band, and is the Lions Club Sweetheart.

Teddy Jack, son of Mr. and Mrs. Jack Estes, is a senior and is president of the student council. He is also co-captain of the football team on which he is an outstanding player.

Charlotte Porter was named "Most Beautiful Girl" and Terry Don Allen as "Most Handsome Boy."

Titles of "Most Dependable Boy" and "Most Dependable Girl" were placed on Donald Mason and Essie Sluder, Essie also being elected as the girl



**JANICE FORD**

"Most Likely to Succeed." Kirk McAdams was elected as the boy "Most Likely to Succeed." Anita Sorley and Teddy Jack Estes were chosen as "Most Athletic."

Pictures of these school personalities will appear in the annual.

**News From SUNNYSIDE**

By Wanda Rogers

Mrs. Houston Carson gave a Stanley party in her home Tuesday morning. Eighteen women were present.

Otis English was admitted to a Lubbock Hospital Tuesday morning with a kidney ailment. He was released Thursday.

Approximately 3/4-inch of rain was received in the community Wednesday.

The book review to have been given by Mrs. Ray Axtell at the community center Wednesday was postponed because of rain.

The Community Missions skit was presented before the WMS Wednesday night. The regular meetings were not held due to the small crowd. Regular prayer meeting followed the skit.

Over an inch of rain was received again Thursday afternoon.

The Community Recreation Meeting was rained out Thursday night. Several played volleyball on Friday night instead.

Mr. and Mrs. Dale Widner spent Thursday and Thursday night in Melrose with her parents.

Margaret Burden of Littlefield visited this week with her grandparents.

Mr. and Mrs. H. R. Braly from Pampa and Mrs. B. M. Lester from Tahoka visited Friday with Mr. and Mrs. E. D. Thompson.

Mr. and Mrs. Mack Wolf from Belen and C. J. Fowlkes from Lubbock, visited with Mr. and Mrs. M. H. Fowlkes and Mr. and Mrs. E. R. Sadler, Saturday.

Mr. and Mrs. Cleo Widner and grandson Bill Howel from Melrose, and Mr. and Mrs. Weldon Bradley and family from Dimmitt visited Saturday with Mr. and Mrs. Ezell Sadler and family and Mr. and Mrs. Dale Widner.

Mr. and Mrs. Howard Bridges visited Sunday afternoon in Hart with Joe and Sarah Hart.

Mr. and Mrs. Roy Lilley and family spent Sunday afternoon with her parents, Mr. and Mrs. Johnnie Armstrong in Hart.

The film, "A Missionary to Walker's Garage," was shown after the Sunday night service. Sunday School was attended by 110 and Training Union by 88.

Mr. and Mrs. Raymond Haydon went to Temple over the week-end to be with her brother-in-law, Otto Phillips, who has undergone surgery.

**CADET BAND NETS \$400**

Members of the Cadet Band, which is made up of high school students, netted \$400 on their recent magazine subscription campaign, according to announcement of Fred Stockdale, band director.

The proceeds were for the purchase of new drums, music stands and music for the Cadet Band.

**AREA INVITED**

Dr. Morris Wallace, dean of education at Texas Tech, will speak at the P-TA meeting in Sudan, Thursday night at 7:30 o'clock in the Sudan high school auditorium. An invitation has been extended to anyone who would like to hear his discussion of legislation effecting the teachers as well as other phases of education today.

**Learn The Latest**

OLTON TEEN-AGE NEWS BY BARBARA HUFF

Yea! Mustangs! Beat Tulia!!

Say, Barbara White and Margie Copeland are sporting FFA rings. Whom do they belong to girls?

We are glad to have the FFA boys back in school after a week's trip to Dallas.

Say, just who is this boy Vera Stiles is always talking about?

Monday the Olton High School had a "slave sale." The senior boys and girls were sold as slaves and they worked Tuesday and Wednesday. Proceeds went to the senior class. Everyone had fun and it went over good, although some may be a little worse for wear now.

I've noticed Sharon and Caron Copeland are happy now that the FFA boys are back.

Who is this boy Johnny Crawford is so excited about now?

Who is Syd Hair seen with so much? Does anyone know??

We're all sorry to hear about Jerry Young being hurt in a car accident Monday.

Everyone missed the friendly smile of Mr. Williams at school Monday and Tuesday while he was away on a business trip.

**IDEAL TEACHER**

- Good-natured.....Mr. Stockdale
- Tact.....Mrs. Campbell
- Personality.....Coach Turner
- Good looking.....Coach Goss
- Dependable.....Mrs. Ford
- Interesting.....Mrs. Higgins
- Likeable.....Mrs. Pharis

**BAG DEER**

H. B. Carson, J. L. Carson, Jr., Houston Carson, and Bro. Raymond Carson each brought home a deer from Rifle, Colo., last week.

**BROTHERS VISIT**

Guests in the A. C. Brigrance home last week were W. P. Brigrance of Bowie and Mr. and Mrs. J. W. Brigrance of Big Spring.

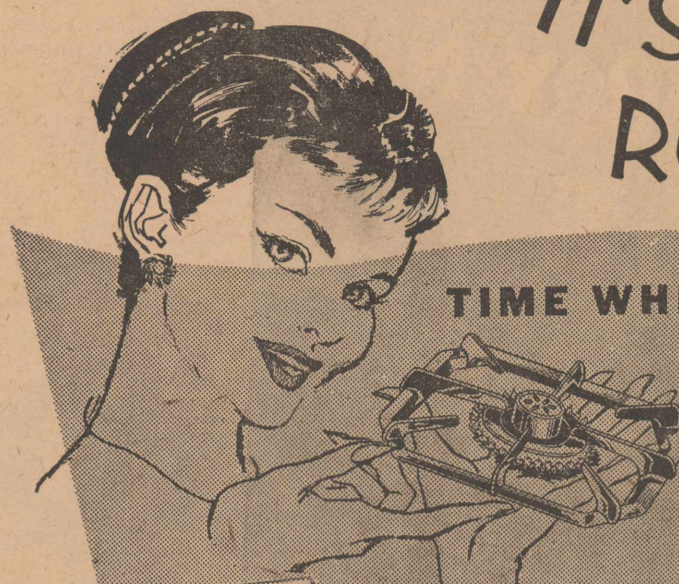
**IN MULESHOE**

Mr. and Mrs. Tom Perry, Jr. and son visited in Muleshoe Sunday afternoon with friends, Mr. and Mrs. Cleo Davis.

**IN LEVELLAND**

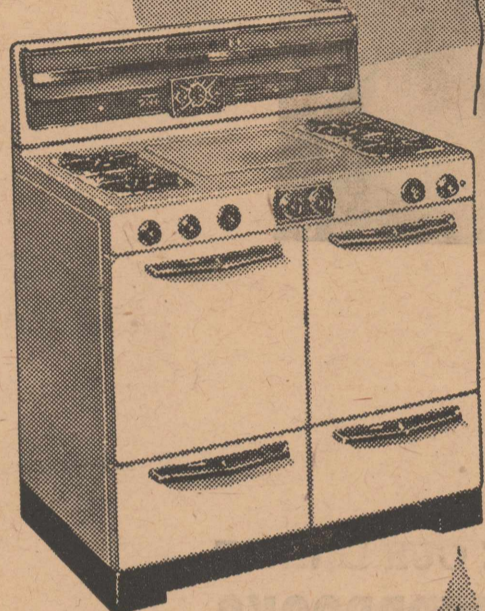
Mr. and Mrs. Parley Meyers and daughters, Alana and Denise, visited with her parents in Levelland Sunday.

**IT'S OLD STOVE ROUND-UP!**



TIME WHEN

*Smart* MODERNS CHANGE TO A NEW GAS RANGE



BETTER DEALS... WIDER SELECTIONS... EASIER TERMS ON THE BEST GAS RANGES EVER OFFERED... SENSATIONALLY NEW WITH THERMOSTATICALLY-CONTROLLED TOP BURNERS!

Now's your golden opportunity to "move up" to one of these better lookin', better cookin', COMPLETELY automatic GAS ranges. Smartest lookin' critters in the herd, and you'll SAVE on the original cost — as well as on every meal you prepare. Buy NOW, during Old Stove Round-up... see your gas appliance dealer right away!

UNIVERSAL gas range with thermostatically-controlled top burner.

**Pioneer Natural Gas Company**  
FUEL FOR A GROWING EMPIRE

WE TAKE THIS MEANS OF SAYING

**THANK YOU**

TO THE FOLKS IN THE OLTON AREA FOR YOUR RECEPTION TO OUR FIRM.

**We Appreciate...**

THE BUSINESS YOU HAVE GIVEN—AND ARE GIVING US. WE SHALL ALWAYS SHOW OUR APPRECIATION BY HELPING YOU HANDLE YOUR GRAIN TO YOUR

**Best Advantage**

WE TAKE PLEASURE IN ANNOUNCING BEGINNING CONSTRUCTION OF AN

**On-The-Spot Storage Facility**

- FAST UNLOADING
  - TOP PRICES FOR GRAIN
  - EXPERT SERVICE
  - GOVT. LOAN IF DESIRED
- MINIMUM DELAY IN HANDLING YOUR GRAIN!

**OLTON GRAIN CO.**

PHONE 4441

GLEN SINGLETERRY, Manager

OLTON, TEXAS

**FREE PARKING — STAY ALL DAY — HAROLD GRIFFITH FURNITURE CENTER**



**OLD HOMESTEAD**

**120 NORTH COLLEGE AVENUE**  
COLONIAL MAPLE—ACCESSORIES



**HAROLD GRIFFITH FURNITURE**

**116 NORTH COLLEGE AVENUE**  
QUALITY FURNITURE—MEDIUM PRICE



**FURNITURE BARN**

**216 NORTH COLLEGE AVENUE**  
LOW PRICED NEW AND GOOD USED FURNITURE AND APPLIANCES

**FALL SALE—NOW—AT ALL THREE STORES**

ALL ON YOUR WAY INTO LUBBOCK  
ALL ON YOUR WAY HOME

**HAROLD GRIFFITH FURNITURE CENTER**

LUBBOCK, TEXAS

### SWPC Keeps Pace With City Growth

"Olton's growth has almost tripled in the last decade," says Ralph Glover, manager of Southwestern Public Service's Olton office. "This is shown by the increase in the number of electric customers over the ten year

period." "Every 24 hours electric customers in Olton use the equivalent of approximately 31,320 horsepower," the power manager said. He explained that there were just less than 1,000 electric meters in the Olton area serving residential, commercial and industrial customers. "Modern commercial and industrial apparatus is electric and Olton business men have kept pace with modern business installations," Glover reviewed. "Of course, the homemaker receives

the most benefit from use of electric power in the modern electric kitchen. Olton homemakers use an average of 2,100 kilowatt hours per year." **Opening New Office** The occasion for Glover's comments was the opening of Public Service's spacious new offices. Over 500 visitors saw the new facilities at an open house program last Friday. Coffee and cookies were served while favors were given to both adults and children. The new office provides space for displaying modern electric appliances which are sold at Reddy Kilowatt dealer's stores in Olton. Another feature of the new power company offices will be the use of a mural which will depict the growth of this city and area.

"Sure, we are proud of the new office," Glover said, "but most of all, we are happy to be in a downtown location and add our bit to the progress of our city." Southwestern Public Service Company has had an office in Olton since shortly after the integration of its present electric system in 1942. The first manager was J. B. McAdams who opened the first office in 1943. Everyone remembers McAdams and his untiring efforts to promote his community and provide all the electric power in the area. Public Service's first manager's interest in Olton dates back to 1928.

McAdams came to Olton during 1928 to survey some equipment for West Texas Utilities. He became vitally interested in Olton as a community in 1936, and remained here until he transferred to Plainview in 1950. M. O. Blackshear, another progressive minded Public Service manager, followed McAdams as head of the Olton office. In the early part of 1953, Blackshear was transferred to Boise City, Okla., as manager of the electric company's office there.

The next community and civic minded Public Service manager was Max Houk. Like his predecessors, Houk was dedicated to betterment of his community and providing dependable electric service. Max left Public Service early this year due to ill health.

Orville Overstreet took the reins of the power company's business in Olton in March of this year. Overstreet went into business for himself the first of October and the present manager, Ralph Glover, came to Olton to direct his company's operation here.

**Present System Outlined** "At the present time there is 15 1/2 miles of distribution line in Olton, serving 988 electric meters," Glover said. Power to Olton comes over two (2) transmission lines; one from the east at 66,000 volts, and one from the north at 66,000 volts. The

**BUYING? SELLING? HIRING?**

**APARTMENT? TENANTS? LEGAL NOTICE?**

**OH! WHAT A BUY!**

**HELP-MEN**

**Tourist and Room**

**ROOM DOWN PATIENT**

## Use CLASSIFIED ADS

**Classified Ads Rates**

Rates on classified advertising are: 5 cents per word first insertion; 3 cents per word second insertion, and each additional consecutive insertion. Minimum 40 cents first insertion. 25 cents additional insertions. The Enterprise is not responsible for mistakes after first insertion. Please read your ad.

**• Fox Sale**  
FLOWERS AND GIFTS for all occasions. Power & What-Not Shop. 47-tfc

FOR SALE: 1950 model Ford sedan. Tudor. See Sam Cannon. DH-TFC

FOR SALE: Anhydrous ammonia. Farmers Butane. Phone 4001. 43-tfc

FOR SALE: Rye seed. See C. E. Bley. 33-tfc

FOR SALE or TRADE: 254 acres, level, 4 miles west of Pecos. Two 8-inch wells, underground tile, Quonset barn. Trade for Plainview or North Olton half section. Phone 5-2242, Pecos, Tex. 30-8tc

NEW SHIPMENT of costume jewelry from 5th Ave., N.Y. Gifts for all occasions. Yandell Jewelry. 37-tfc

For Beauty Cosmetics and free demonstration see Mrs. Emmitt Harper, 3 1/2 miles east of Olton, Phone 3848. 23-tfc

3 Horsepower "Century" Single Phase Electric Motor. See at the Olton Enterprise.

**• Notice**  
LET ME help you have a successful auction sale. See J. W. Brown, auctioneer, Olton, Texas. Phone 4776. 29-tfc

FINISH HIGH SCHOOL or Grade School at home spare time. Books furnished. Diploma awarded. Start where you left school. Write Columbia School, Box 5061, Lubbock. 32-26-tc

PRIVATE home for elderly person, excellent care and food. 4004 E. 13th, Amarillo, or phone DR 3-9803. 36-4tc

ATTENTION—Ladies of Olton and surrounding territory: A factory-trained sewing machine mechanic will be at Thomas Furniture, phone 4631, Friday and Saturday, Oct. 26 & 27 only. Repairs and parts for all machines. Contact us for free estimates. 37-11p

**• Wanted**  
WANTED: Tires to repair. OK Tire & Radiator Shop. 29-tfc

WANTED: To make buttons, button holes, buckles, belts. Miss Willena Gordon, phone 3081.

WANTED: Radiators to repair for winter. OK Tire & Radiator Shop. 29-tfc

WANTED: Grain to combine. Two Massey-Harris 90 combines. New equipment. Will do a good job. O. J. Lee. Phone 3921. 30-tfc

WANTED: To buy 1,000-gallon propane tanks. Farmers Butane, Olton, Texas. 35-tfc

For Office Supplies Come To The Enterprise

We offer complete insurance service covering your every insurance need.

You'll find that our service is prompt, friendly and dependable. Talk over your insurance problems with us at your first opportunity.

**GRANBERY**  
Insurance Agency  
Phone 2921 Olton, Texas

**LEVI'S**  
Smith & Struve  
OLTON, TEXAS

"We need your head in our business."  
**HUBERT'S BARBER SHOP**  
Hubert - Parley - Morlex

**FOR FLOWERS**  
CALL 3536  
Mrs. Chas. A. Loveless  
—Representing—  
Arch Keys Flowers  
PLAINVIEW

**FLOWER & WHAT-NOT SHOP**  
MRS. ANN BLYTHE  
"FLOWERS BY WIRE"  
ANYWHERE — ANYTIME  
For Weddings - Sick Rooms and Funerals  
Day Phone 4116 or Night 2281  
Olton, Texas

Our Only Business Is  
**RADIATORS**  
Stovall-Booher Radiator  
SALES & SERVICE  
Phone 4-2865 Plainview, Texas

**Shop Every Thursday Nite 'till 9**  
—at—  
**Meinecke Bros.**  
205-11 West 5th  
Plainview, Texas  
We are the official  
**SCOTIE STAMP REDEMPTION CENTER**  
We are remaining open every Thursday nite until 9 p. m.  
WE CLOSE AT 6 P. M. SATURDAYS

**Water Well Drilling**  
NO MONEY DOWN  
3 YEARS TO PAY  
Pressure Pump Service  
**CALVIN COOK**  
CA-4 4498 2519 Gladney  
(Seth Ward)  
PLAINVIEW, TEXAS

**ARMY & NAVY STORE**  
122 East Fifth Street — Plainview, Texas  
C. L. BAYLEY, Owner  
All Kinds of Camping Supplies, Including  
Camp Stoves — Sleeping Bags — Air Mattresses, Folding Cots, Comforts & Blankets; Also Tarps, irrigation Dams and Rolls of Canvas to be sold by the Yard.

**3% For Your SAVINGS**  
Current Dividend Rate  
Whether you have \$1.00 or \$10,000 to invest, this association offers you a convenient investment plan with **INSURED PROTECTION**. Let us discuss this insured investment plan with you.

**Plainview Savings & Loan Ass'n**  
Plainview, Texas  
716 Broadway Dial 4-8236

### ACCORDING TO THE WORD OF GOD— DID THE LORD OR DID PETER TELL CORNELIUS WHAT TO DO TO BE SAVED?

THE ANGEL OF THE LORD SAID UNTO CORNELIUS:  
"... send men to Joppa... fetch one Simon... surnamed Peter... lodgeth with... a tanner whose house is by the sea" (Acts 10:5-6).  
PETER SAID UNTO CORNELIUS:  
"... God is no respecter of persons... Jesus of Nazareth... whom they slew and hanged on a tree. Him God raised up... And he commanded up to preach to the people... can any man forbid water that these should not be baptized...?" (Acts 10:35-48)?  
One must learn from the word of the Lord (the New Testament) what to do to be saved and not from an angel or other source.

**Main Street Church Of Christ**

SUNDAY: BIBLE STUDY..... 10:00 a.m.—6:00 p.m.  
WORSHIP..... 10:50 a.m.—7:00 p.m.

TUESDAY: LADIES' BIBLE STUDY..... 4:00 p.m.  
BIBLE STORY HOUR..... 4:00 p.m.

WEDNESDAY: BIBLE STUDY..... 7:00 p.m.

E. R. Higgins, Minister

**SOS SAVE OLD SUITS THEY'LL LOOK LIKE NEW AFTER BEING SANITONED**

AT  
**Olton Cleaners**  
H. A. CATES—Owner

**NOTICE!**  
Have buyer for good 80 acres of land in Olton territory. Also have prospective buyer for 320 acres in Olton territory. Would like to have your listings.

**THE THOMAS AGENCY**  
W. E. (BILL) THOMAS

**FOR THE FINEST IN OFFICE SUPPLIES DROP BY THE OLTON ENTERPRISE**

**Andy W. Stroebel**  
General LAW PRACTICE  
Olton  
Located in the C. W. Grant building.  
PHONE 4661

**Body & Fender REPAIRING**  
Seat Covers — Upholstering  
Windshield and Door Glass Installed  
**Newman Motor**  
Chrysler Plymouth  
623 Austin St. Dial 4-2768  
Plainview

**City Barber Shop**  
YOUR HEAD IN THE CLOUDS AFTER WE GET IT OUT OF THE BRUSH!

• Headquarters for athletic equipment and sporting goods.  
• A complete line of boys' clothing and accessories. Sizes 4 thru 18.

**The Sport Shop**  
620 Broadway Plainview

**IRRIGATION PUMP REPAIR. CLEAN OUT SERVICE.**  
Pressure Pump and Windmill Repair.  
Winch Work of All Kinds.

**LAMB COUNTY IRRIGATION SERVICE**  
G. H. BUCHENAU  
Box 488 Phone 2351  
Olton, Texas

# Announcing Rambler For '57

With the Power and Economy News of the Year!



**LIKE SURPRISES? FUN-TEST RAMBLER!**

TODAY'S the day, the new 1957 Rambler's "coming out" party! Come and enjoy the happy surprises.

See new cars built the modern way, with Single Unit Construction that gives big-car room and comfort... sports-car handling and maneuverability... plus dollar-saving economy!

- Distinctively smarter styling—lower, sleeker lines—lavish interiors.
- Room for six 6-footers in the compact car that parks easiest of all.
- New performance and economy with 190 HP V-8 or thrifty 6!
- Only low-priced car with longer, softer coil springs on all four wheels, All-Season Air Conditioning, Hydraulic Drive, Airliner Reclining Seats, Twin Travel Beds.
- Twice the safety with welded steel, box-girder frame that surrounds entire passenger compartment.

Fun-test the new 1957 Rambler. See the low price tags for the car that's most fun to drive... brings highest resale value.

**Get a Lift Out of Going... Go Rambler**

Smartest Style • Lowest Cost • Highest Resale Value  
Tune in Disneyland—ABC Network. See TV listings for time and channel.

SEE THE NEW Rambler—AT YOUR DEALER NOW!

**OLTON MOTOR COMPANY**  
PHONE 3671

OLTON TEXAS

# News Of Interest To Women

## Miss Ruthe Osthus Shower Honoree

A shower honoring Miss Ruthe Osthus of Hart Camp, bride-elect of Billy Pierce of Littlefield, will be given Thursday afternoon, Nov. 1 at 2 o'clock, in the home of Mrs. Wesley Neinast of Hart Camp. Assisting Mrs. Neinast in hospitalities will be Mrs. A. J. Young.

Miss Osthus and Mr. Pierce are to be married on Nov. 2.

## HART CAMP COUPLE WED IN LITTLEFIELD

Standing before a background of greenery and candelabra, Miss Ruth Ellen Cox and Delbert Frank Timmins were married in a double ring ceremony in the Littlefield Nazarene Church, with the Rev. William H. Anderson officiating, on Saturday evening, Oct. 20, at 8 o'clock.

Parents of the couple are Mr. and Mrs. John L. Cox and Mr. and Mrs. C. E. Timmins, all of Hart Camp.

Given in marriage by her father, the bride wore a grey suit with blue accessories and carried a white Bible and a white carnation bouquet arranged with white streamers.

Miss Ruby Braden of Littlefield was maid of honor, wearing a white faille street-length dress and carrying pink carnations.

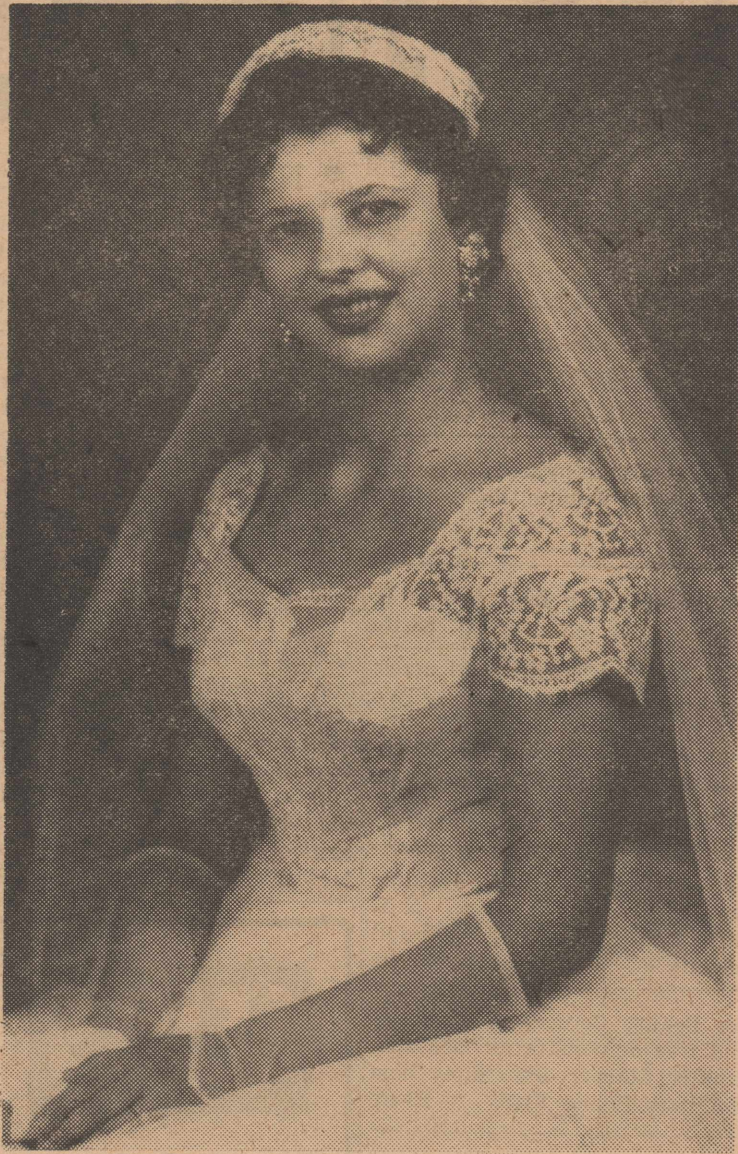
James Hickman of Hart Camp served as best man. Don Kidd and Joe Don Mote, both of Spade, ushered. Candles were lighted by the ushers.

Mother of the bride wore a navy blue dress with pink accessories, and the mother of the groom wore a black suit with white accessories. Both wore pink carnation corsages.

Following a wedding trip to Carlsbad, N.M., the couple returned to their home in Hart Camp.

The bride graduated from Spade High School and her husband attended school there.

## FLORENCE MAE AXTELL IS WED TO MELVIN MAX MALONE IN CHAPEL



MRS. MAX MALONE

In wedding rites read at 6 o'clock Thursday evening in Ford Memorial Chapel of the First Baptist Church in Lubbock, Miss Florence Mae Axtell, daughter of Dr. and Mrs. J. W. Axtell of Lubbock, became the bride of Max Malone, son of Mr. and Mrs. Walter Malone of this city.

Altar decorations of eucalyptus foliage highlighted with white gladioli formed the setting of the double ring ceremony read by the Rev. Dr. J. Ralph Grant. Traditional wedding music was played by Miss

Gail Owens, organist, and she accompanied Miss Sue Dickson as she sang "Because" and "I'll Walk With God." Escorted to the altar by her father, the bride wore an original gown of white French lace and nylon tulle over net and satin. Designed with a portrait neckline outlined by scalloped lace, the fitted bodice had appliqued lace sleeves completed by gauntlets. Stemming from a pointed waistline, the waltz-length skirt was made by fully shirred tulle and enhanced by a wide ruffle of pleated tulle

held by an scalloped band of lace at the bottom edge.

A veil of silk illusion fell from a coronet of shirred tulle and lace embroidered with iridescent sequins and seed pearls. She carried a white Bible topped by a cascade arrangement of feathered white carnations, stephanotis and sweetheart roses with white satin streamers tied in French sweetheart knots.

Attending the bride as matron of honor was Miss Joan Abel of Lubbock. Bridesmaids were Miss Geneva McLain, cousin of the groom from Hart, and Miss Eva Axtell, sister of the bride, who served as junior bridesmaid, Diana Malone, sister of the bridegroom, was flower girl.

The attendants wore identical waltz-length dresses of nylon chiffon over taffeta in shades of soft blue. The elongated bodices were of deep blue and featured a portrait neckline framed by drapery of pale blue fabric held at the cented back, then released into full-length panels. The junior bridesmaid's gown was of blue net and taffeta styled with drop sleeves.

Their matching bandeaux of transparent braid held small nose veils and cascade bouquets of white feathered carnations with white net and white satin streamers were carried.

Edd Lyn Burrus of Olton served as best man. V. E. Nichols of Friona and Walter and Howard Axtell, brothers of the bride, ushered. Howard Axtell was also candlelighter.

Mother of the bride wore blue lace over taffeta with white accessories, and mother of the groom wore Delta blue crepe with lighter blue accessories. They wore white carnation corsages.

Following the ceremony, a reception was held in the chapel reception room. The bridal table was laid with blue net over white linen and centered with an arrangement of white chrysanthemums and white carnations accented with blue ribbon.

Assisting in hospitalities were Mmes. Ira Owens, Charles Still, Naomi Caddel, Larry Rice, and Miss Pat Dorsey, all of Lubbock, and Mrs. V. E. Nichols of Friona.

For a wedding trip to New Mexico, the bride wore a light blue sheath topped by a tweed-trimmed bolero. Her accessories were white cloud and navy and she wore a white orchid corsage. The couple is at home in Lubbock at 1913 17th Street. Having graduated from Lubbock High School, the bride attended Texas Tech and is now employed at Lauf Clinic. Her husband is a graduate of Olton High School. After serving four years in the US Navy, he entered Texas Tech where he is now a junior agriculture student.

Olton guests attending the wedding were Bill Walden and Messrs. and Mmes. Jack Allcorn, Bill Weaver and Floyd Harcrow;

Mmes. H. B. Carson, Raymon Carson, Paul Burrus, Jim Fite and Toni and Mike, Wayne Hair, Bill Nichols and daughter, Gene Cottrell and Edd Lyn Burrus. Guests from Hart were Messrs. and Mmes. W. C. Malone, D. L. McLain, and Cleve McLain.

## ATTEND THE CHURCH OF YOUR CHOICE SUNDAY!

## XIT STUDY CLUB HAS CALLED MEET

SPRINGLAKE—Mrs. Jess Watson presided over a called meeting of the XIT Study Club held at the Community Building Saturday afternoon, Oct. 20.

A report of the Girl Scout drive was given and Mrs. Kenneth Hinson was received as a new

member. The club voted to invite the city aldermen to hear Fire Marshal Guy Harbert of Dallas at the next meeting.

Members present were Mesdames Billy Clayton, Ernest Baker, W. T. Clayton, Ronnie Smith, Roy Byers, Jimmy Banks, Around Washington, Z. T. Byers, Kenneth Parish, James Busby, and Watson.

## Recipes Requested

Mrs. Fred George announces that the Vivian George OES Study Club still is in need of recipes for the cookbook that is being compiled. The club plans to publish a cookbook of favorite recipes of area cooks and would like to have it completed before the Holiday season is here.



## DEKALB HYBRID GRAIN SORGHUMS PAY OFF!

HERE ARE SOME FARMERS WHO TRIED IT:

NAME	ADDRESS	VARIETY	YIELD
L. B. BOWDEN	Rt. 1, Dimmitt	E-56, F-62, Martin	4744, 4460, 4170
O'DELL JAMES	Rt. 1, Springlake	E-56, Martin	4880, 3330
TROY BLACKBURN	Rt. 1, Dimmitt	F-62, Combine Kaffir	5470, 4670
BILL SUMMERS	Rt. 1, Dimmitt	F-62	9% over Martin
JESS WOOTEN	Rt. 4, Dimmitt	F-62, Martin	3250, 2850
ELMO BELL	Dimmitt	E-56, Martin	4800, 4400
NOBLE HOWARD	Dimmitt	E-56, Martin	4430, 3750
J. C. HOLBROOK	Rt. 1, Springlake	F-62	30% over Martin
E. R. SADLER	Rt. 1, Dimmitt	F162, E-56, Martin	6285, 6047, 6019

DeKalb at 5 Pounds Per Acre  
Martin at 7 1/2 Pounds Per Acre

NOTE: This shows 719-pound average increase over competitor varieties, October 18, 1956

Make Arrangements For Your DeKalb Seed

at

# Olton Farm Supply

OLTON

PHONE 3101

TEXAS

Bentley's presents **IMPORTED CASHMERE** at its finest  
PLAINVIEW



Dalton Coordinates

We're in love with Honey... the collared pullover of 100% pure imported cashmere blazing a trail of smartness with detachable blazer tie. Dalton's divine sheath skirt... in famous fabrics... matches magnificently.

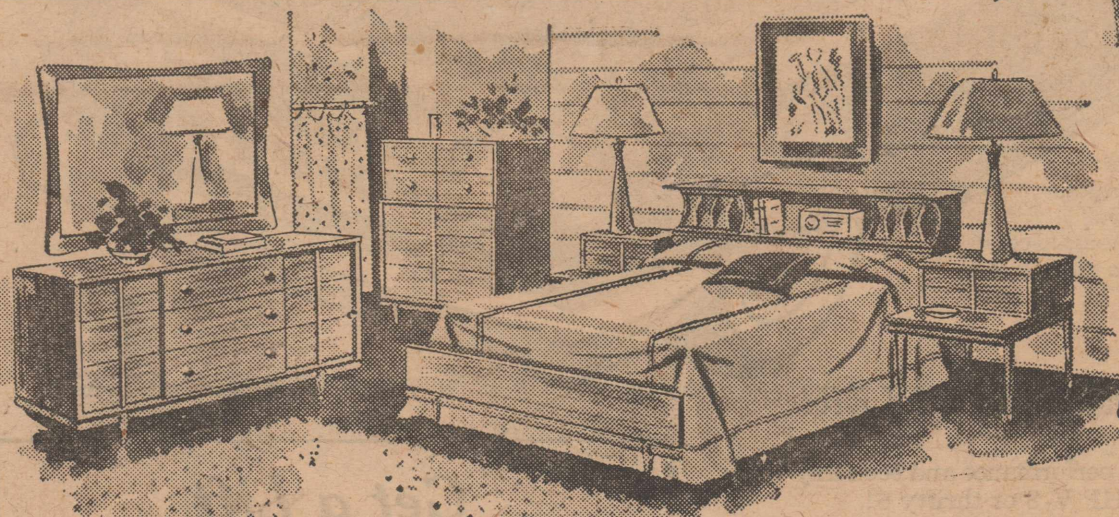
Sweater sizes 34 to 40, \$29.98  
Skirt sizes 8 to 18, \$19.98

All Dalton Sweaters and Skirts are durably mothproofed

## SEE This Handsome 2-Pc. Sectional Sofa for Yourself

... see how it will "make" your living room... make it more important looking, give it a focal point of color and comfort, as you place these two big pieces in the most strategic corner where everyone can see it.

**\$139.95**

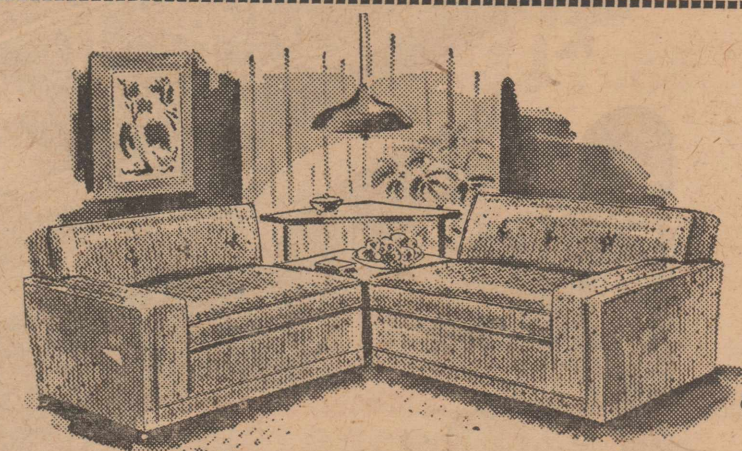


## SEE This "Elegant" Modern 2-Pc. Bedroom Suite

... and you'll love its elegance, either in a warm cherry or "antique" white tone. Beautiful brass decorative drawer pulls... beautiful detailing and perfect workmanship distinguish these three graceful pieces.

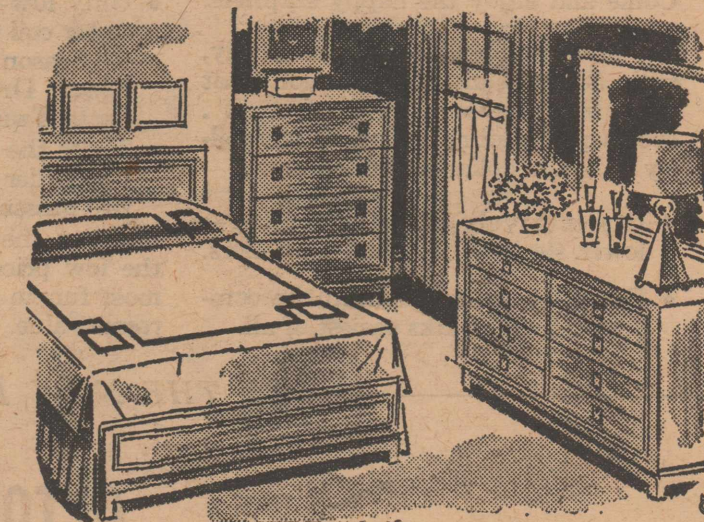
**\$115.00**

CHEST — \$39.95



A New Contemporary **BEDROOM GROUP**  
**\$229.00**

Yes, it's modern, but there's a new "softened" look, achieved through a new way with panels, and the use of soft natural wood finishes. Practical too, is the bookcase bed and the big triple effect dresser. **THREE PIECES.**



# Thomas Furniture

"Your G. E. and Hotpoint Appliance Dealer"

PHONE 4631 EAST SIDE OF SQUARE OLTON, TEXAS

### Miss Shari Watts and James A. Measles Are Married Recently In Home Ceremony

The marriage of Miss Shari June Watts of Plainview and James A. Measles of Lubbock was solemnized in a double ring ceremony held in the home of the groom's parents, Mr. and Mrs. J. G. Measles of this city, Friday evening, Oct. 19.

Officiating for the ceremony was the Rev. J. R. Jennings, Presbyterian pastor, in a setting enhanced with baskets of white mums and greenery.

Parents of the bride are Mr. and Mrs. J. D. Watts of Plainview.

Given in marriage by her father, the bride wore a street-length dress of baby blue lace over blue taffeta, styled with a Peter Pan collar, three-quarter sleeves, and tiny buttons down the front to the scalloped waistline. She wore a white hat, blue shoes, and carried a white carnation bouquet with a white Bible.



MRS. JAMES MEASLES

Attending the bride as maid of honor was Wilma Measles, sister of the groom, wearing a pink taffeta dress designed in a low necked princess style.

Mrs. Watts, mother of the bride, wore a beige lace over satin with beige accessories. Mother of the groom wore a navy dress with black accessories.

Wayne Moore of Olton served as best man.

For a wedding trip to parts in New Mexico, the bride wore a pale blue knit suit and brown lizard accessories.

The couple will be at home in Lubbock.

A graduate of Childress High School, the bride has been employed with Southwestern Bell Telephone Company in Plainview and plans to transfer to the Lubbock office.

Measles is a graduate of Olton High School with the class of 1949. After serving four years with the US Navy, he attended Draughon's Business College in Lubbock.

Wedding guests were Messrs. and Mmes. Billy Tom Grant and Shelly, Littlefield; Lloyd Blackwell and children; Ken Kinneer of Plainview; Mrs. T. C. Measles, Sr., Joyce and T. C. Jr., of Tullia; Bernita Obenhaus, Tullia; and Clifford Curry.

### UNICEF-Halloween Party To Be Held In G. Long Home

A UNICEF party, a takeoff on the conventional Trick or Treat Halloween celebration, is to be given by Mrs. Garland Long and her children, Lawana and Dap, for the children's schoolmates on Saturday night, Oct. 27. The guests will be pupils in the sixth and seventh grades taught by Mrs. John E. Lewis and Mrs. Raiford Daniel, Sr., as well as some of the parents.

Sponsored and established by the United Nations in 1946, UNICEF is a specialized agency established to fight ancient enemies of man—ignorance, hunger and insecurity. In 1954, the work of UNICEF was greatly aided by the Trick or Treat Halloween programs held in about 4,000 communities in the US. About a million children collected \$271,844 while helping their communities learn what UNICEF is doing to meet children's need.

Mrs. Long announced that parents are to take children around before going to the 8 o'clock party and instead of collecting treats, they will take milk bottles and collect donations for UNICEF. Then they will proceed to the Long home, which is six miles east and five miles north of Olton, and have their "treats."

The party will be a Halloween Pirate Party and all the children are to come dressed as pirates.

Typical of the accomplishments of UNICEF was the establishment of a milk-drying plant in Latin America to supply milk for 100,000 children. In Latin America UNICEF made a mass attack on malnutrition so successful that the country became enthusiastic enough to match UNICEF's aid of powdered milk and clinics on infant nutrition almost 5 to 1.

Because governments receiving UNICEF aid contribute to their own projects at least the equivalent of aid received, this UN organization is the biggest joint effort to make the world a better place. Last year UNICEF vaccinated 13,384,000 children and mothers against tuberculosis, protected 7,256,000 against malaria, cured 1,486,000 cases of

### Post-Nuptial Shower

Mrs. Lonnie Smith, the former Miss Norma Lobaugh, will be honored with a miscellaneous shower in the home of Mrs. H. L. Dennis, Thursday, Nov. 1, from 2:30 to 5 o'clock.

### Miss Joyce Davis To Marry Kenneth Hicks In November



MISS JOYCE DAVIS

The engagement of Miss Joyce Davis, daughter of Mr. and Mrs. Ashley Davis of Springlake, and Kenneth Hicks, son of Mr. and Mrs. G. E. Hicks of Muleshoe, has been announced. The wedding will take place in November.

Graduating from Springlake High School in 1955, Miss Davis has been employed in Springlake and Muleshoe. Her fiancée graduated from Muleshoe High School in 1951 and is now farming near Muleshoe.

yaws and 679,000 cases of trachoma; 318,000 mothers and children benefited from the long-range feeding program, and 4,108,000 were given emergency feeding. The total number of mothers and children treated for or protected against tuberculosis, since UNICEF began its work, is 111.5 million in 58 countries and territories. The total for malaria is now 17.3 million and for yaws, 17.6 million.

### Winners Are Announced For 1956 Flower Show

The 1956 Fall Flower Show sponsored by the Olton Garden Club took place in the home of Mrs. Jake Mitchell Thursday, Oct. 18, highlighted with a luncheon attended by 17 members and the judging committee.

Chairman of the judging committee was Mrs. Jack Grace, national flower show judge from Anton. Entries judged were exhibited by garden club members only, but the show was open to visitors from 2 to 5 o'clock in the afternoon.

Mrs. H. B. Carson, president and Mrs. Doyle Pinson, Mrs. Lindsey Dennis, and Mrs. Walter Schreier, members of the Flower Show committee, announced, "We wish to thank every one who had a part in making our show a success."

Results of the judging were as follows:

#### Division I, Artistic Arrangements

1. Arrangement using candles and berried branches, blue ribbon, Mrs. Jack Allcorn.

2. Flat arrangement not over five inches in height, blue, Mrs. A. D. Melton.

3. Arrangement using kitchen container, blue, Mrs. Walter Schreier; red, Mrs. H. G. Walker; white, Mrs. A. D. Melton.

4. Arrangement using crooked branch for line interest, blue, Mrs. H. G. Walker; red, Mrs. Charlie Jones.

5. Mass arrangement, blue, Mrs. Jack Allcorn; red, Mrs. W. A. Schreier; white, Mrs. Charlie Jones.

6. Crescent arrangement, blue, Mrs. H. G. Walker; red, Mrs. Jack Allcorn; white, Mrs. W. A. Schreier.

8. "Autumn Brilliance" featuring accents of red or orange, blue, Mrs. W. A. Schreier.

9. An arrangement featuring a Madonna, red, Mrs. Charlie Jones.

10. An artistic arrangement, blue, Mrs. A. D. Melton; red, Mrs. Charlie Jones; white, Mrs. A. D. Melton.

#### Division II, Horticulture

1. Hybrid tea, blue, Mrs. Jack Allcorn; red, Mrs. Jack Allcorn; white, Mrs. Lindsey Dennis.

2. Polyantha, blue, Mrs. H. G.

Walker.  
3. Other type, red, Mrs. Jack Allcorn; white, Mrs. Charlie Jones.  
4. Three specimens, blue, Mrs. Lindsey Dennis.  
5. Red single full bloom, blue, Mrs. Jack Allcorn; red, Mrs. Charlie Jones; white, Mrs. H. B. Carson.

6. Buds, red—blue, Mrs. Lindsey Dennis; red, Mrs. Charlie Jones.

7. Buds, bi-color, red, Mrs. Lindsey Dennis; white, Mrs. H. B. Carson.

8. Buds, white—blue, Mrs. Lindsey Dennis.

#### Dahlias:

1. Formal decorative, blue, Mrs. A. D. Melton; red, Mrs. H. B. Carson; white, Mrs. Jake Mitchell.

2. Ball, blue, Mrs. Jake Mitchell; red, Mrs. H. B. Carson; white, Mrs. H. B. Carson.

3. Best collection, blue, Mrs. Lindsey Dennis; red, Mrs. H. B. Carson.

4. Pompon, blue, Mrs. Doyle Pinson.

#### Chrysanthemums:

1. Spider type, blue, Mrs. A. D. Melton; white, Mrs. W. A. Schreier.

2. Anemone type, blue, Mrs. W. A. Schreier; red, Mrs. H. G. Walker.

3. Hardy, garden, Pompon, 1 spray, blue, Mrs. A. D. Melton; red, Mrs. W. A. Schreier; white, Mrs. A. D. Melton. Hardy, blue, Mrs. H. B. Carson; red, Mrs. A. D. Melton; white, Mrs. Jake Mitchell. Medium hardy, blue, Mrs. Charlie Jones; red, Mrs. W. A. Schreier; white, Mrs. W. A. Schreier.

#### Missionary Group Meets

"I Will Give God My Tithes" was the program topic of Cumberland Presbyterian Woman's Missionary Auxiliary meeting held recently in the church.

A group discussion centered on the topic. Election of officers is slated for Nov. 14, and a nominating committee was appointed.

Attending the meeting were Mesdames Bob Coker, Ruel Fanning, Ray Thornton, F. V. Dodson, Eddie Moore, Earl Jackson, and Tom Sluder, a guest.

ATTEND CHURCH SUNDAY!!

### Colors Chosen By Bykota Club

Yellow and bronze were chosen as club colors at a meeting of the recently organized 1956 Bykota Study Club held Tuesday night in the home of Mrs. Jimmy Briggs.

The chrysanthemum was selected as the club flower, and "Today is mine—how can I make the most of it?" as the motto. Installation of officers will be held Nov. 6 in the home of Mrs. Jim Brown.

Attending the meeting were Mesdames Don Franks, Andy Stroebel, Max LaDuke, Fred Burgess, Jim Brown, Hilbert Wisian, Clinton Green, R. V. Allcorn, John Carson, Edd Lyn Burrus, Carol J. May, and Briggs.

### OSC Hears Safety Talk

Safety was the theme for the Olton Study Club as members met in the home of Mrs. Elmer Moore, Monday night, Oct. 22.

Mrs. Jack Straw discussed traffic safety.

Attending were Mesdames Jim Fuller, Roye Aikman, Jack Allcorn, Frank Cornelius, Raiford Daniel, D. M. Granbery, I. B. Holt, Carl Hooper, Carl Macon, Basil Sherman, Truitt Sides, C. S. Silcott, Bill Thomas, Bill Yates, Straw, and Moore.

### OES Study Club Meets

The Vivian George OES Study Club met at Clara's Cafe Monday morning for a breakfast and study period.

Present were Era Mae Wallthall, Leona Dickenson, Sue Hair, Loraine Stewart, Lonria Smith, Mildred LaDuke and Winona Cure.

Meeting dates have been set for 8:30 on second and fourth Monday mornings at Clara's Cafe. There are no dues for these meetings.

### FAST ACTION

First notices of 1956 city taxes were sent out Friday morning and by Tuesday \$1454.25 in taxes had already been received, according to an announcement from city hall.

### Projects Chosen By Campbell FTA

Three projects were chosen at a meeting of the Campbell Future Teachers of America held Oct. 15 in the Olton High School homemaking cottage.

The group will sell stationery identified with the Olton Mustang emblem. They will help Littlefield and Springlake FTA units in their organization plans. As the third project, FTA members will place colorful posters in the high school study hall for the purpose of making it more attractive.

Next meeting of the FTA is scheduled for Nov. 5.

### Mrs. Allen Hodges Speaks At Club

SPRINGLAKE—The Springlake Garden Club met Thursday night at the Community Building with Mrs. Kenneth Boone presiding over the business meeting. Mrs. Allen Hodges of Littlefield spoke on wild flowers, birds and trees.

Mesdames Orlan Bibby and Alton McNamara were hostesses and served banana cake, coffee and cocoa to Mesdames Hilbert Wisian, Hershah Sanders, L. L. LaDuke, Lee Neinaat, Ashley Davis, Sue Smith, Wayne Davis, Ralph Rudd, Elma Criswell, W. T. Clayton, Bud Matlock, James Packard, Edna McClure, Billy Watson, Boone and Hodges.

### FOR OFFICE SUPPLIES COME TO THE ENTERPRISE

**TOO LATE TO CLASSIFY**

WANTED: Experienced bookkeeper, woman over 25, 44-hour week. Write Box 788, stating qualifications, salary expected, etc. 37-1tc

FOR SALE: Four room house with bath, to be moved. Also, one bedroom suite and O'Keefe-Merit range. 37-1tc

FOR SALE: Three school buses in good condition. To be auctioned Nov. 3 at the Olton Auction Sale just south of Plains Agriculture. Olton Independent School District. 37-2tc

**SERVICE IS THE WINNER!!**

**The Extra Point...**

... often decides the game. Most insurance policies look alike but the **SERVICE** you get from your local insurance agent is a big factor in determining the value of your policy.

YOU CAN ALWAYS COUNT ON US TO SCORE THAT **EXTRA POINT** IN SERVICE TO YOU WHEN YOU NEED IT MOST.

**Howard Hall Insurance**

OLTON      PHONE 3601      TEXAS

**ELECTRIC RANGE AND WATER HEATER FIT INTO ANY PLAN...**

*the modern way!*

It's 1956... start now to live better electrically. See your Reddy Kilowatt Electric Appliance Dealer

Plan your home around electric living. You can start with a built-in electric range which consists of the electric surface units and the electric oven, or, if you prefer, you can choose the popular "stand-up" electric range. Either way you'll find that electric cooking blends into the decorative scheme of the modern home. Electric appliances are modern to use; best of all they even LOOK modern. The electric water heater can be a part of the kitchen cabinet line giving you more table top work space and a silhouette which marks your kitchen as up-to-date. And, remember, an electric range and water heater require no vents or flues. They are perfectly safe, too. Yes, electric cooking and electric water heating fit into any plan whether you're building new or remodeling. You CAN live better electrically.

**SOUTHWESTERN PUBLIC SERVICE COMPANY**

## DO WE WANT TEACHERS FOR OUR CHILDREN?

In the world of industry and business, leaders are aware that they must offer certain monetary and employee benefits to keep their shops manned, their offices staffed, and the wheels of industry moving.

By the same principle, we as citizens of the State of Texas must use our voting power to keep our teachers in the classrooms. Statistics show that 7,000 teachers leave their profession annually. We must hold a substantial number of these teachers, or recruit 28,000 new teachers to replace them within the next four years.

It is known that 350,000 additional children will enter public schools by 1960, and 15,000 more teachers will be required to take care of them. Therefore, cold facts indicate that 43,000 addi-

tional teachers must be supplied within this short period or our entire public school system will be placed in jeopardy. The teaching staff of many schools will be of insufficient number to maintain current quality of education.

Our only alternative is to strengthen the teaching profession by giving it more security. We wish neither to deny our children the right to a free public education nor do we wish to undermine the standards set up for public school education in Texas. And yet the Teacher Retirement System has remained unchanged since 1937.

Teacher Retirement Amendment No. 4 is one of the eight constitutional amendments that will be placed on the ballot of the November 6 election, an

amendment which provides for the revision of the present Texas Teacher Retirement System.

Teachers are asking the right to increase their own retirement contributions; the State will match their deposits. Under the new system they would be allowed to deposit to their retirement program six per cent of their salaries, with a maximum deposit of \$504 per person per year instead of the current \$180.

The improved system will provide disability benefits, death benefits and survivor's benefits,

as well as providing a minimum retirement benefit of \$100 for any teacher now retired or for any teacher coming to retirement with 20 years or more of service and attaining the age of 60.

Actually, this amendment represents the most economical approach to solving the problem of teacher shortage. It will cost an average of 50 cents per Texan to provide this improved program. It will cost far less than an old-age pension because half the amount is contributed by the teachers themselves.

So on November 6, we as Texans, will have our chance

to give our teachers a retirement system comparable to the best in the nation. And by so doing we will do much toward alleviating current and future teacher shortages by providing an incentive for our young people to enter the profession and for our experienced teachers to remain within the ranks.

### RECUPERATING

Mrs. Leslie Armstrong, who has been ill with encephalitis, is still confined to her home for convalescence. She had been hospitalized during the early part of her illness.

## Goal Is Reached In Scout Drive

Olton's quota of \$484 to finance the newly-formed Caprock Council has been reached, it was announced this week by adult Girl Scout workers. The first day of the drive, Monday, Oct. 15, saw a total of \$310 in donations come in, with the remainder coming in throughout last week and the early part of this week.

worker on the drive, said that, outside of one large donation given by a business firm, the quota was reached by spontaneous gifts of individuals. She emphasized that all Girl Scout workers in the community wish to announce their deep appreciation to all those who were so cooperative and generous with their time and financial support during the drive.

For Office Supplies  
Come To  
The Enterprise

### RETURNS HOME

Mrs. W. H. McLeod returned to her home in Maplewood, La., last week after visiting with her daughter, Mrs. Don Williams.

### ATTEND THE CHURCH OF YOUR CHOICE SUNDAY!

RADIO & TELEVISION SERVICE AND REPAIR on all makes and models.

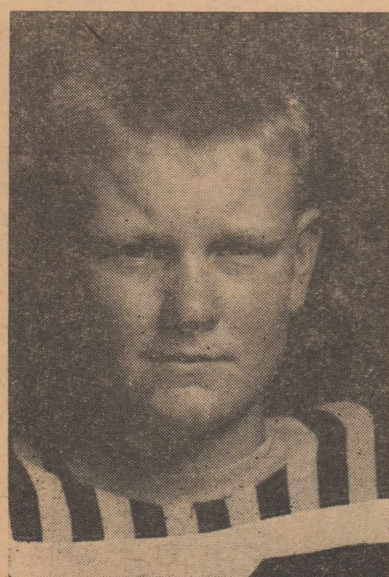
**WADE**  
Radio & TV Service  
Phone 3256  
CORNER 7th & AVE. E

# GOLDEN KRUST

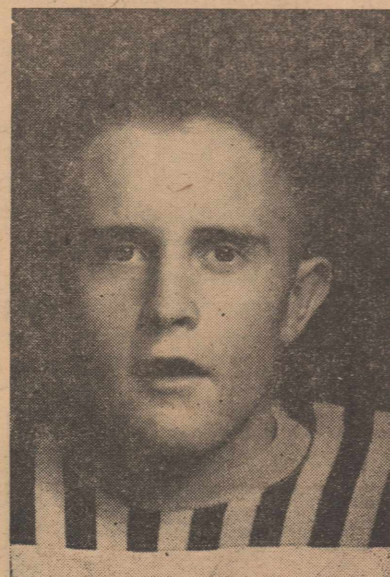
BAKED RIGHT HERE AT HOME AT OLTON BAKERY. IT'S BOUND TO BE FRESHER!

## Let's Go MUSTANGS!!

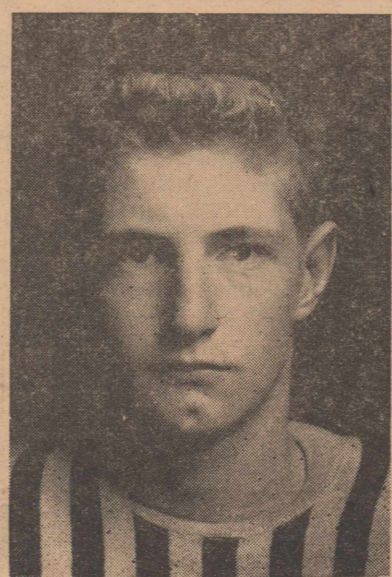
# BEAT Tulia



PHIL NEINAST



JAMES MOORE



JERRY GEORGE



**G. H. BLEY SERVICE**  
WHOLESALE                      RETAIL



TEXAS                      OLTON

**THOMPSON BROS. IMPLEMENT CO.**  
"YOUR JOHN DEERE DEALER"

OLTON                      TEXAS

PHONE 2211

**CONSUMERS BUTANE COMPANY INC.**  
"WHERE SERVICE IS MORE THAN JUST A WORD"

OLTON                      TEXAS

PHONE 3971

**OLTON CO-OP GINS**

OLTON                      TEXAS

PHONE 3091

### Season Record

Olton 20 .....	Abernathy 19
Olton 34 .....	Floydada 13
Olton 12 .....	Littlefield 12
Olton 27 .....	Hale Center 32
Olton 19 .....	Hereford 6
Olton 7 .....	Muleshoe 6
TOTALS 119	88

### REMAINING SCHEDULE

#### —CONFERENCE GAMES—

October 26—TULIA .....	(Here)
November 2—DALHART .....	(Here)
November 9—CANYON .....	(There)
November 16—DIMMITT .....	(There)

**STRAW-BURROW GIN COMPANY**

PHONE 3991

JACK STRAW                      BRENT BURROW  
OLTON                      TEXAS

**OLTON BUTANE COMPANY**

DIAL 2191

OLTON                      TEXAS

**HIGGINBOTHAM-BARTLETT COMPANY**  
"GOOD LUMBER"

Phone 3511

OLTON                      TEXAS

**FARMERS GIN COMPANY**

Our Gin Is Equipped With New Moss-Gordin Cleaners

LAUIS AND SHORTY  
Phone 3191

OLTON                      TEXAS



### HART CAMP NEWS

BY BARBARA HUFF

Mr. and Mrs. S. O. Owens visited Mrs. Ivy Thompson Sunday afternoon.

Juniors and Intermediates had fellowship Sunday night after church. After a business meet-

ing Kay Cox, Lois McAteer and Barbara Huff gave a program. Present were Clayton and Trevis Vanlandingham, Jerry Cox, Larry Timmins, Sammie Wheeler, Lois McAteer, Kay Cox, Gerold and Jean Vanlandingham, Kerwin Oliver and Barbara Huff.

Mr. and Mrs. S. O. Owens were dinner guests of Mr. and Mrs. Mack Tucker of Littlefield Saturday night.

Mr. and Mrs. Albert Scribner, Mary and Wendell visited relatives in Mobeetie, Sunday.

Mr. and Mrs. R. D. Oliver were

guests in the W. C. Huff home Sunday afternoon.

Congratulations to the newlyweds Mr. and Mrs. Delbert Timmins, who were married Saturday night at the Nazarene Church in Littlefield.

Yvonne Huff moved from her Lubbock apartment where she has been living and working in Lubbock back to Hart Camp with her parents. She will continue work in Lubbock but will drive to and fro for a while.

Mr. and Mrs. Jude Muller went to Villa Park, Ill., Saturday. They will return next week with Mr. and Mrs. Don Muller who will make their home here after serving with the US Army.

The Gerry Langfords of Leveland spent the week-end with the Junior Mullers.

Mr. and Mrs. Thurman Moore of Petersburg and Ernest Ragle of Plainview visited the R. S. Moores, Sunday.

The Blanton Martins visited relatives at Southland during the week-end.

The Roy Osthus family visited her grandparents at Plainview Friday night.

Gary Parkey had two teeth extracted last week after knocking them loose in a fall.

Mr. and Mrs. Dewey Parkey visited his parents near Floydada, Friday.

Mr. and Mrs. Roy Osthus visited the A. Boggs at Canyon, Sunday.

H. R. Monroe flew to Dallas Monday for medical examinations.

Mrs. Monroe was on the sick list Monday.

#### HALLOWEEN PARTY SET FOR MONDAY

All young people of the First Baptist Church are invited to a Halloween party Monday night at 7:30 o'clock in Fellowship Hall, according to an announcement of Mrs. Charles Loveless.

To create the proper atmosphere for Halloween fun, there will be ghosts, fortune tellers, corpses and many other "spook night" props.

#### SUPPER SET FOR CUB PACK

A hamburger supper is scheduled for Cub Scouts and their parents Monday night, Oct. 29, at 7:30 o'clock in Clara's Cafe, according to an announcement by Charles McClain, cubmaster. Merit badges will be presented and Mrs. Quentin Redinger's den will present a program.

### Honor Roll Is Announced

Honor roll students for the Olton High School and elementary grades have been announced for the first six weeks period, ending Oct. 5. This honor roll includes those students with a grade of B plus or above in all subjects.

#### HONOR ROLL FOR ELEMENTARY GRADES

##### Grade 2:

Kathy Burgess, Eulinda Dyer, Judy Kay Jackson, Donna Kay Roberson, Donna Smith, Jerolyn Timmins, Dale DeBerry, Mike Ogletree, Jackie George, James Elbert Smith, Valda Jones, Karen Hipp, Linda Waldrop, Ruth Ann Williams, Terry Goodman, Jimmy Schreier and Jerry Kemp.

##### Grade 3:

Richard Redinger, Iva Tanner, Charles Church, Judith Pool, Mike Bodkin, Carla Sue Choate, Susan Norfleet, Shirley Leonard, Cheryl Yandell, Francine Struve, Joe Priest and Mike Williams.

##### Grade 4:

Mike Dellis, Patricia Limbacker, Leon Kendall, Billy Ray Smith, Cindy Cross, Laquita Small, Mike Pite, Lana George, Nancy Tully, Pamela Hair, Jan George, Stephen Smith, Mike Hipp and Suzanne Martin.

##### Grade 5:

Elaine Lewis.

##### Grade 6:

Nelda Rucker, Dana Speer, Ilona Tanner, Robert Struve, Rhonda Follis and Sammie Clark.

##### Grade 7:

Lavon Estes, Geneva Curry, Karen Smith, Robert Gary Duncan and Janice Galloway.

##### Grade 8:

Georgia Billingsley, Nancy Critchfield, Dona Malone, Shirley Matney, Nicky Redinger, Fred Riney, Hazel Smith and Marilyn Young.

##### Freshman:

Terry Gail Hooper, Judy Laceywell, Gayle McAnally and Kenneth Prestridge.

##### Sophomore:

Gayland Graham, Sydney Hair, L. H. McAdams, Judy Moore, Judy Price and Mary Scribner.

##### Junior:

Margie Henderson, Jerry Moore, Doniece Silcott, and Lonnie Thomas.

##### Senior:

Teddy Estes, Janice Ford, Brooke Johnson and David Price.

a whale of a deal

- More For Your Old Tractor
- Better Value
- Bigger Savings

Your old tractor is worth BIG DOLLARS on a new Massey-Harris. Now is the time to trade!

It's a fact! Your old tractor is worth more to us now than ever before. Now is the time to make that "old timer" pay you a farewell bonus in a top-value trade.

And a new Massey-Harris was never easier to buy! For little more than the price of a late model trade-in, you can have all the advantages of farming with a new Massey-Harris tractor.

See us now for a whale of a deal... make your biggest "catch" a new Massey-Harris.

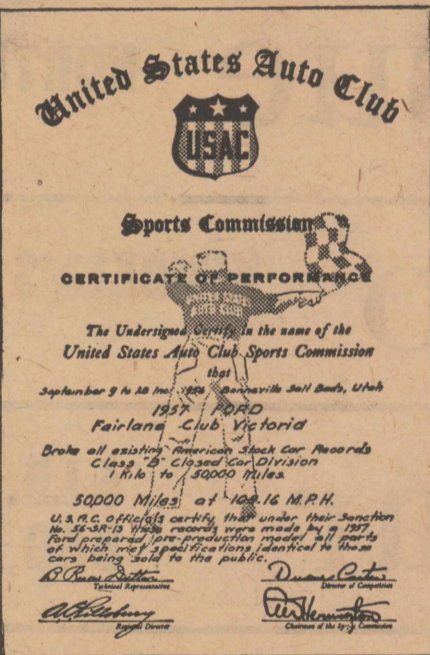
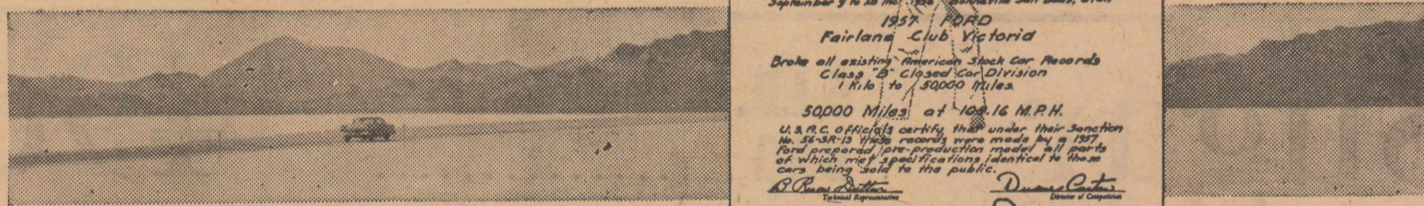
Lamb County Implement Co.

EARL POAGE  
OLTON

PHONE 4991

ELMER GRAY  
TEXAS

Never before in history has anything built by man traveled so far in so short a time —by land or sea!



An announcement of decisive importance to anyone about to buy a new automobile

The most exhaustive endurance test ever given an automobile has just been completed by two stock '57 Fords—identical in every respect with cars now being offered by Ford Dealers.

Under the supervision of the United States Auto Club and the Federation Internationale de Automobile, each of these two '57 Fords traveled 50,000 miles in less than 20 days. Ford No. 1 averaged 108.16 mph for the entire run... Ford No. 2, over 107 mph. These averages include time for all pit stops.

In all, the '57 Ford smashed 458 national and international records.

This test was run on the Bonneville Salt Flats in Utah... it was the longest left turn in history.

A car, like a man, is known by its deeds, not words.

That is why, we at Ford, despite our confidence in our '57 cars, let their deeds of accomplishment speak for themselves.

Therefore, we engaged an independent engineering organization to test our '57 cars more thoroughly than any other cars have ever been tested before—in this country or abroad.

We provided them with '57 Fords—cars identical with those now offered by Ford Dealers. The rest we left up to them.

Here is what they did:

They took these cars to the Salt Flats at Bonneville, Utah.

Here, twelve of the world's greatest drivers took over.

In relays they drove these cars night and day for a distance greater than twice around the world... a distance equal

to 5 years of normal driving.

Not in all history has a man-built machine traveled so far in so short a time—by land or sea!

But this was not a test of speed—but of endurance of the "Inner Ford." A trial to take the measure of Thunderbird Y-block V-8 power without qualification of any kind. A test of running gear—of brakes, of materials in body and chassis. Of steering and roadability, yes, and comfort, too!

A test, indeed, such as no other cars have ever undergone, let alone successfully concluded.

Surely they have told you, in decisive terms, that they are worth more when you buy... and when you sell!

Your Ford Dealer will gladly place at your disposal the new kind of Ford that means a new kind of value for your car-buying dollar—the greatest the world has ever seen.

FORD goes First

HINES MOTORS  
OLTON, TEXAS

PHONE 4711

# BIG BUYS

BEGIN FRIDAY, OCTOBER 26TH.

**Ballard Over-Ready Biscuits**  
PER CAN ..... **10¢**

CAMPFIRE  
**MARSHMALLOWS**  
10-OUNCE BAG ...  
**17¢**

**PEAS** MISSION BRAND. NO. 303 CAN..... **2 FOR 29¢**

**SALT** PLAIN OR IODIZED 20-OUNCE BOX ... **9c**

HELP OUR SCHOOLS VOTE FOR AMENDMENT 4!!

**Bacon** WILSON'S—Certified. 2-LB. FAMILY PACK **79¢**

**Pop Corn** White Swan. 10-OZ. CANS.. **2 FOR 29¢**

**Carrots** CELLO BAGS ..... **2 FOR 25¢**

**Grapefruit** ARIZONA. (Ruby Red) PER POUND ..... **13¢**

**Cabbage** Large Firm Heads. PER POUND ..... **2¢**

**PEANUTS** New Crop—Roasted. BULK PER POUND... **39¢**

SUNSHINE **CRACKERS** 2-POUND BOX ... **45¢**

GIANT SIZE **TIDE**

**69¢**



DOUBLE GUNN BROS. THRIFT STAMPS ON WEDNESDAY WITH PURCHASE OF \$2.50 OR MORE



QUALITY MEATS

**SHERMAN FOOD**

PHONE 3701



FREE DELIVERY

**P-TA To Have Safety Quiz**

Mrs. Fred Thompson, safety chairman, will be the moderator for a safety quiz at the regular P-TA meeting to be held in the high school auditorium Thursday afternoon, Nov. 1, at 3 o'clock.

A brief discussion of Teacher Retirement Amendment will be given by Mrs. E. R. Higgins. Mrs. Tom C. Smith will be program leader.

A movie for children will be shown in the high school film room.

ATTEND THE CHURCH OF YOUR CHOICE SUNDAY!

**CUB SCOUTS NET \$241**

Olton's Cub Scouts cleared \$241 last week-end, \$138 from the pony and kid rides Friday and Saturday and \$103 from a rummage sale held Saturday afternoon at the site of the rides.

V. L. Smith announced that he wishes to thank everyone who bought tickets for the rides, as well as all the Cub Scouts and parents who helped with the rides and the rummage sale. Helping with the rummage sale were Mesdames Charlie McClain, Quentin Redinger, Earl McClain, James Hall, Howard Hall, Jeff Marshall and James Fite.

**TSA Chief Advises Pedestrians**

"Check yourself, and check accidents."

That, in a nutshell, is the advice J. O. Musick, General Manager of the Texas Safety Association, handed motorists and pedestrians today. Seeking support in the remaining days of TSA's October safety-after-dark program, Musick pointed out that more than 50% of pedestrian accidents happen between 5 and 8 p.m.

"Twilight and darkness intensifies all traffic problems, but it makes conditions especially hazardous for pedestrians and bike riders. It conceals them from drivers and puts the responsibility for their safety directly on their own shoulders," Musick said.

To reduce the odds against them, Musick had these four safety tips for each pedestrian and cyclist:

- For walkers:**
1. Always walk on the sidewalk when possible. If there is no sidewalk, walk on the left shoulder of the road, facing traffic.
  2. In urban areas, always cross at intersections. At night, cross at lighted intersections.
  3. Remember, pedestrians in dark clothing are difficult for motorists to see. When walking at night it's a good idea to wear light or reflectorized clothing. Better still, carry a flashlight, or something white or reflectorized.
  4. Don't trust your judgment too far in estimating the speed of an approaching car by its headlights. Never cross a street or highway unless you are absolutely certain you have ample

**WT Demos Set Meet Monday Nite**

West Texas Democrats will gather at the Caprock Hotel in Lubbock at 7:30 p.m. Monday for a \$10-a-plate fund raising dinner which will be highlighted by an address by Rep. George Mahon of the 19th Congressional District and a panel discussion in which a number of West Texas Congressmen have been invited to take part.

Bob Dennis, Lubbock County Democratic Chairman, said Tuesday that invitations had been extended to Reps. Omar Burleson of Anson, Clark Fisher of San Angelo, J. T. Rutherford of Odessa, Frank Ikard of Wichita Falls and Walter Rogers, Pampa.

The dinner, billed as an "Adlai-Estes" affair open to any and all Democrats and other interested in attending, will be the highlight of the current national campaign in West Texas. Dennis said Tuesday that all indications pointed toward an overflow crowd.

"We are expecting a big turnout," Dennis said, "and I want to extend an invitation to everyone to attend. Tickets can be obtained by dropping by or telephoning the Democratic Campaign Headquarters at 2333 19th Street, Porter 5-9290, in Lubbock. "This is a good time for all Democrats, regardless of past feelings, to get together behind Gov. Adlai Stevenson and Sen. Estes Kefauver and insure a Democratic victory at the polls in November."

time to reach the other side safely.

**For cyclists:**

1. A good headlight and tail light, or reflector, are essentials for night riding.
2. Make your bicycle still more visible to motorists by trimming it with white or reflectorized material. Wear white or reflectorized clothing.
3. Be alert at all times for holes or ruts in the road. Fallen branches or any object might cause you to lose control of your bicycle.
4. Never 'cut-up' on a bicycle, any more than you would with a shotgun, and never carry passengers.

**Band Sweetheart To Be Crowned Friday Night**

High point of the half-time activities of the Olton-Tulia football game Friday night will be the crowning of the Band Sweetheart.

Candidates for this honor are Alisse Smith, Sue Witten, Judy Ogletree, Sydney Hair, Oneeta Yates, Yvonne Pinkerton, Mary Scribner and Linda Fent.

The sweetheart is elected through votes of the Olton Mustang Band members.

**TROOP 7 MEETS**

Troop 7 met Tuesday, Oct. 23, at the Scout House.

Linda Ray served soft drinks and peanuts to Ellen Jones, Gayle Nicholson, Sylvia Nicholas, Mary Ann Caldwell, Ilona Tanner, Tanya Bryant, Cheryl

**MEETING OF BAND PARENTS IS THURSDAY**

All Band Boosters are reminded to attend the meeting scheduled for Thursday evening at 7 o'clock in the Band Hall for the purpose of discussing the proposed band trip to El Paso. The Mustang Band has received an invitation to perform in the Sun Bowl on New Year's Day.

Fred Stockdale, band director, stressed the importance of parents' attending this meeting if they desire that their children go on the trip. Those who cannot be there at 7 o'clock are asked to come as early as possible.

Poteet, Sue Mitchell and Bobby Lyn Tollett.

Ellen Jones helped the group with their songs for the pow-wow.

**WAIT A FEW DAYS... BE 3 YEARS AHEAD!**

On October 30 you'll see a car so advanced it will make so-called "new" cars seem three years out of date. On October 30 you'll see years-ahead features like Torsion-Aire Ride, Flight Sweep Styling, Total Contact Brakes, a Fury "301" V-8 engine. On October 30 you'll see one car leap three full years ahead of the low-price field when you see and drive

**PLYMOUTH BUSBY MOTOR COMPANY**

HIGHWAY 70 SPRINGLAKE

Enterprise Want Ads Get Results

**WALLER'S CLEANERS**

of

Plainview

announces

that

**PEGGY'S**

**BEAUTY SALON**

is now a

pick up and delivery

station.

Pick Up and Delivery

**TUESDAYS AND FRIDAYS.**

**BOOT & SHOE REPAIR COMPLETE WESTERN STORE RAGLAND'S Western Wear**  
622 Broadway Plainview

**FARMERS**

LET OUR 40 YEARS OF HONEST, REPUTABLE SERVICE TO GRAIN PRODUCERS OF THIS AREA BENEFIT YOU.

BEN F. SMITH GRAIN CO. OFFERS:

- FAST TRUCK UNLOADING
- PLENTY STORAGE—OVER ONE MILLION BUSHELS
- LOAN PAPERS OR CHECK IN FIVE MINUTES.
- HONEST, RELIABLE REPUTATION.

Try Us With Your Next Load Of Grain

**WHEAT SEED**

FOR SALE

- COMANCHE
- CONCHO
- WESTAR
- WICHITA

**BEN F. SMITH GRAIN CO.**



**SPECIALS START**

**FRIDAY, OCTOBER 26TH.**

SIZE 303 CANS

OCEAN SPRAY **Cranberry Sauce** 2 FOR 39c

**Syrup** KIMBELL'S—Waffle. 24-OUNCE BOTTLE ..... 33c

**Tissue** NORTHERN ..... 3 ROLLS 25

**Oleo** KIMBELL'S ..... 19c

**Sugar** 5-LB. BAG ..... 49c

KRAFT'S. 46-OZ. CAN

**Orange Aid** 29c

**Miracle Whip** KRAFT'S. PINT SIZE ..... 33c

**Meats Produce**

PINKNEY'S—All Meat 3-LB. BAG | CALIF.—Fresh Vine Ripe PER LB.  
**FRANKS** ..... 88c | **TOMATOES** ..... 15c

FRESH PURE PORK 3-LBS. | CALIFORNIA PER LB.  
**SAUSAGE** ..... 88c | **LEMONS** ..... 12½c

BABY BEEF PER LB. | CELLO BAG  
**CHUCK STEAK** ..... 49c | **CARROTS** ..... 10c

**Botkin Food Store**

Phone 3591 — We Deliver — Olton, Texas — Louis Botkin, Owner

WE GIVE S. & H. GREEN STAMPS

—Double on Tuesday with Purchase of \$2.50 or More—

**HAS OPERATION**

Mrs. Earl Smith of Lubbock, daughter of Mr. and Mrs. Jack Silcott, underwent surgery last Thursday at St. Mary's Hospital in Rochester, Minn. Prior to the operation, she had undergone a week's series of tests at Mayo

**Clinic.**

Mr. Silcott said that his daughter's condition is satisfactory, but she will remain in the hospital for two or three weeks. Mrs. Bill Irby, Mrs. Smith's sister from Clovis, NM, is staying with her.

**SPRINGLAKE NEWS**

BY MRS. ERNEST BAKER

Mesdames Orlan Bibby, Kenneth Boone, Jack Sanders, Edna McClure, Hershall Sanders, L. L. LaDuke, Ralph Rudd and Elma Criswell attended a Federated Garden Club meeting at the First Baptist Church in Leveland recently.

Bill Bearden of Olton was in Springlake Tuesday.

Jimmy Burgess, Franklin Starkey and Don Clayton left Thursday for Colorado deer hunting.

Lee Bolinger of Hereford called at the A. C. Loftis home Sunday.

Mrs. A. C. Loftis visited Tuesday with Mrs. Gus Parish.

Mrs. Billy Wayne Clayton visited Saturday afternoon with Mrs. Bill Burrow.

Mrs. John Williams left Saturday for Biloxi, Miss., to visit her daughter, Mr. and Mrs. Don Stout and son. She will also visit in Houston with Mr. and Mrs. Wayne Parton and family, and Mr. and Mrs. Jimmy Burnett and family before returning home.

The Junior boys and Girls Training Union class enjoyed

fellowship in their department after services Sunday night at the Baptist Church. Mrs. Ernest Baker directed several games and Mrs. Jim Stone, Junior leader led the closing prayer. Mrs. Lester Kelley and Mrs. F. W. Bearden served cup cakes and punch to Noble Miller, Jimmy Stone, Phil Bearden, Ronnie Huckabee, Joyce Jones, Janice Blackburn, Beverly Kelley and Judy Jones.

There were 133 present for Sunday School at the Baptist Church Sunday and 52 for Training Union. The Mexican Mission had 93 present.

Tom Breeze was in California last week visiting his children. Mrs. Breeze returned home with him after a month's visit there.

Mr. and Mrs. W. T. Clayton visited Sunday with her brother, Mr. and Mrs. Floyd Chitwood at Pampa.

Billy Wayne Clayton, Bill Burrow and Sandy Sanderson flew to College Station Friday to attend the A & M-TCU football game.

Mr. and Mrs. E. W. Johnson of Amarillo visited Sunday with Mr. and Mrs. B. V. Padon and Mr. and Mrs. Almon Whitford.

B. V. Padon, Jimmy Ray Banks, Bob Boone, Jonas English and E. W. Johnson returned home after spending several days at Choma, Colo., deer hunting.

Mr. and Mrs. J. T. Gibson are driving a new Chrysler.

Mr. and Mrs. Richard McCaskill of Denver City were Saturday night guests of Mr. and Mrs. Dwayne Louder.

Mr. and Mrs. Robert Huckabee visited Sunday with his parents in Olton and helped them celebrate their 56th Wedding Anniversary.

Mrs. James Packard and Linda were in Littlefield Saturday. Diana McNamara visited Saturday morning with Linda Packard.

Mr. and Mrs. Pete Grisham and Nina Vee of Plainview visited Sunday with Mr. and Mrs. Ernest Baker and attended services at the Baptist Church.

Mr. and Mrs. Bob Boone, Mrs. Eula Whitford, Mr. and Mrs. J. T. Gibson, Mr. and Mrs. Ernest Baker and Mr. and Mrs. Richard

McCaskill visited with Mr. and Mrs. Almon Whitford Sunday. Mr. and Mrs. Robert Huckabee transacted business in Amherst Thursday and visited her parents, Mr. and Mrs. Thommarson at Muleshoe.

Mr. and Mrs. Rube Caruthers left Sunday for a visit with their daughter, Norita, at San Marcos. Mrs. W. T. Clayton visited Mrs. Almon Whitford Tuesday afternoon.

Mr. and Mrs. Billy Wayne Clayton and Sandy Sanderson were in Plainview Wednesday.

Mr. and Mrs. Walden of Bula visited Wednesday with their son, Mr. and Mrs. Lowell Walden.

Mr. and Mrs. Leslie Watson were in Dallas last week.

Mr. and Mrs. Lowell Walden, Mrs. Duke Powell and Rev. and Mrs. John Williams shopped in Lubbock Tuesday.

Mr. and Mrs. Ernest Green shopped in Lubbock Tuesday.

Mr. and Mrs. Odus White of Bovina visited recently in the home of Mr. and Mrs. Lester Kelley. Mrs. White is a sister of Mr. Kelleys.

Mrs. Duke Powell of Littlefield was a Tuesday overnight guest of her parents, Mr. and Mrs. Lowell Walden.

Kenneth Boone and Jack Wattenburger were transacting business in Plainview Tuesday.

Mrs. W. B. Hucks shopped in Littlefield Tuesday.

Mrs. Sam Borden, accompanied by her parents, Mr. and Mrs. Glen McClesky of Earth, was shopping in Littlefield on Tuesday.

Earl Watson made a business trip to Muleshoe Tuesday.

L. L. LaDuke was in Plainview Tuesday.

Mr. and Mrs. Ernest Baker shopped in Plainview and Littlefield Tuesday.

Bryant Hucks was in Olton Wednesday.

Mr. Hall was shopping in Plainview Tuesday.

Mrs. H. A. McClanahan and Mrs. Douglas Avery shopped in Lubbock Wednesday.

Brenda and Tommy Clayton visited Wednesday with their grandparents, Mr. and Mrs. W. T. Clayton.

Mrs. Ernest Green was on the sick list over the week-end.

Mr. and Mrs. H. E. Weaver visited Mr. and Mrs. Gus Parish Saturday.

Mrs. George Hooper and her daughter, Mrs. Gaston, were

**The Olton Enterprise**

Troy F. Martin Publisher & Editor

EDITORIAL DEPARTMENT  
 FELICIA DUNCAN . . . . . SOCIETY EDITOR  
 MRS. TROY F. MARTIN . . . . . REPORTER & FEATURE STORY WRITER  
 SAMMY HALE . . . . . SPORTS WRITER  
 JIMMIE DALE IVERSON . . . . . BOOKKEEPER  
 MECHANICAL DEPARTMENT  
 WAYNE O. MOORE . . . . . OPERATOR-PRINTER  
 RUSSELL L. GRIMES . . . . . OPERATOR-PRINTER  
 JOE H. ALCORTA . . . . . APPRENTICE



Published each Thursday at Olton, Texas. Entered as second class matter at the post office at Olton, Texas, under the act of Congress, March 3, 1897.

Any erroneous reflection upon the character, firm or corporation which may appear in the columns of The Olton Enterprise, will be gladly corrected upon being brought to the attention of the Publisher.

Subscription rates: \$3.00 per year in Lamb and neighboring counties; \$4.00 per year elsewhere.

**shopping in Littlefield Thursday.**

LaVerne Bibby was selling Christmas cards in Springlake for the Junior class Thursday.

Mr. and Mrs. Capp Davis and Mr. and Mrs. Clyde Davis were shopping in Littlefield Thursday.

Mrs. Tom McGill and her mother, Mrs. Don Bryant of Olton, were shopping in Littlefield Thursday.

Mr. and Mrs. Kenneth Heard and children of Littlefield visited Sunday with her parents, Mr. and Mrs. G. H. Miller.

Mrs. Flo Sanders left last week for Clovis, NM, to stay with Mr. and Mrs. Russell Weems for awhile.

Mr. and Mrs. Ernest Baker shopped in Lubbock Friday.

Mrs. Z. T. Byers and her mother, Mrs. Williams of Leveland, were in Brownwood two days last week.

Mrs. T. B. Dyer visited relatives in Sweetwater recently.

Mrs. E. W. Johnson and her daughter, Elaine of Amarillo,

**TRANSIENT ENROLLMENT**

Fifty-three students, grades one through four, are enrolled in the transient school located at the fire station, according to Fred Gordon, elementary principal. He stated that the attendance record of this transient group is better than in former years.

**COMPLETES TOUR**

Bro. Raymon Carson, president of the Western Texas District of the Reorganized Church of Jesus Christ, has completed a tour of the district which he undertook last week.

Plans are being made for the district conference's semi-annual meeting which will be held in Olton on Nov. 11.

visited Friday with Mrs. Almon Whitford.

Mr. and Mrs. Almon Whitford visited Thursday in Hereford with Mr. and Mrs. A. J. Jones.

**FORMER OLTONITE**

R. B. Cleveland from Lamesa visited the Tom Rosses and Joe Turners last week-end. Cleveland is a former agriculture teacher at OHS.

**ATTEND CHURCH SUNDAY!!**

**Dr. C. M. Baldwin**

Announces his return from military service and the re-opening of his offices for the practice of

**GENERAL DENTISTRY**

11 Veigel Bldg. Plainview  
 Phone CA 4-7112  
 Office Hours: Daily 8-12; 1-5  
 Wednesday 8-12.

**FINEST SEED CLEANING FACILITIES ON THE PLAINS.**

**FAST — COMPLETE SEED CLEANING SERVICE**

**SMITH-BAWDEN GRAIN COMPANY**

DATE STREET Capitol 4-2119 PLAINVIEW, TEXAS

**...symbol of QUALITY!**

The petroleum products you buy at the sign of the big green Shamrock sign are of the highest quality. Millions of dollars have gone into the physical facilities necessary to produce that quality. Additions to these facilities are constantly being made, like the platinum reformer now being completed at Shamrock's McKee Refinery.

From Wyoming to Texas . . . Kansas to Arizona

QUALITY you can measure by your car's PERFORMANCE

**Panhandle Compress & Warehouse Company**

**LOAN COTTON**

The services of an approved cotton warehouse are essential to the Government loan program. This company has always cooperated with the Government and the farmers in making the loan available to our customers. We have served this territory for twenty-five years. The loan when offered by the government has always been available to the farmers in this territory and no customer has been forced to sell his cotton on a distress market because of the lack of the services of a qualified warehouseman.

**Panhandle Compress & Warehouse Company**

**CONTRIBUTION TO THE COMMUNITY**

We are glad to be a part of each community served by these compress and warehouse plants. These facilities not only serve the farmer, the ginner, and the cotton merchant directly, but they also render a real public service, in the maintenance of substantial local payrolls, and the payment of city, school and county taxes; thus contributing to the general public welfare.

**Panhandle Compress & Warehouse Company**

HART, TEXAS PHONE 2401 BOB RICHMOND, Mgr.

**HERE'S HOW TO ASSURE GOOD GOVERNMENT IN TEXAS**

EMOCRATIC PARTY FOR GOVERNOR  
 REPUBLICAN PARTY FOR GOVERNOR  
 WRITE-IN FOR GOVERNOR

**SCRATCH ALL OTHER CANDIDATES!**

**W. Lee O'Daniel**

IN THIS COLUMN Write In the Name **W. LEE O'DANIEL**

(Political Adv. Paid For by W. Lee O'Daniel)

For big jobs ...small jobs ...all jobs

**FORD TRUCKS COST LESS**

...less to own...less to run...last longer, too!

● Before you buy your next truck, look at both sides of Ford's story of value. You'll like what you see.

Look at costs. Ford's first cost is low. Resale value is high. Modern Short Stroke engines—V-8 or Six—are designed for less friction, less wear, lower running costs. Maintenance costs are lower, too, because Ford trucks are built stronger for rugged long life.

Look at what you get and you'll see you get more for your money in a Ford. For example, only Ford gives you modern, gas-saving Short Stroke power in every truck, V-8 or Six. More comfort with a Driverized Cab. More safety with Ford's exclusive Lifeguard features.

Look carefully : : : consider everything. You'll agree Ford trucks cost less, give you more. If you want a great deal—a great deal more for your money—see your Ford Dealer.

The big fleets buy more Ford trucks than any other make

**FORD TRUCKS LAST LONGER**

Using latest registration data on 10,502,351 trucks, insurance experts prove Ford trucks last longer

**COME IN! See us today**

**HINES MOTORS**  
 OLTON, TEXAS  
 HIGHWAY 70  
 PHONE 4711

fill 'em up faster with...



# BIG 2-WAY SAVINGS!

The Stamp That Gives You MORE!

SPECIALS  
START  
FRIDAY  
OCT. 26th

LARGE FIRM HEADS  
COLORADO  
CABBAGE  
LB. 5c



FANCY YELLOW  
ONIONS  
LB. 5c

CALIFORNIA JUICY  
LEMONS  
LB. 12 1/2c

CARROTS  
1 LB. CELLO BAGS  
2 for 13c



WE GIVE GUNN BROS STAMPS

CONCHO TOMATOES  
303 CAN ...  
2 for 29c

BISQUICK  
40 OZ. BOX  
43c



MAXWELL HOUSE  
COFFEE  
1-POUND CAN ...  
99c

SHEDD  
SALAD DRESSING  
QUART JAR  
39c

WHITESWAN  
PUMKIN  
300 CAN  
2 for 25c

BETTY CROCKER  
BROWNIE MIX  
16 OZ. BOX  
33c

NEW BLUE DOT  
DUZ  
LARGE BOX  
29c

VELVEETA  
CHEESE  
2 LB. BOX  
79c

BLUE SEAL  
OLEO  
1 LB. CARTON  
19c



GOLD MEDAL  
"Kitchen-Tested"  
FLOUR  
25-Pound  
Pillow Case Bag  
\$1.95

JEWEL  
SHORTENING  
3 LB. CAN  
73c

SUNSHINE  
CRACKERS  
1 LB. BOX  
25c

SCOTT  
PAPER TOWELS  
SMALL ROLL  
19c

VELVET  
CLEANSING TISSUE  
400 COUNT BOX  
19c

OUR VALUE  
PEACHES  
2 1/2 CAN  
29c

WHITESWAN  
APPLE BUTTER  
21 OZ. JAR  
19c

CURTIS  
MIRACLE AID  
6 Pkgs. 15c

HUNTS  
APRICOTS  
2 1/2 CAN  
27c



WE GIVE GUNN BROS STAMPS

PINKNEY PURE PORK 2 lb. SACK  
SAUSAGE ..... 59c

BOSTON BUTT  
PORK ROAST .. 39c



WILSON'S CERTIFIED

BACON  
1 LB. PKG.  
49c

CHOICE BEEF  
LB. ...  
63c



DOUBLE  
GUNN BROS STAMPS  
EVERY WEDNESDAY



MAXWELL  
HOUSE  
COFFEE  
(Instant)  
6 OZ JAR  
FIRST JAR 79c  
ALL OTHERS \$1.59



Free Delivery

CASH WAY

Where Friends Meet  
and Prices Talk

WE GIVE GUNN BROS STAMPS

RATH—VEAL, BEEF OR PORK  
CHOPPETTS ..... 45c

SNOWCROP  
Brussell Sprouts 29c

MORTON  
BEEF POT PIES ..... 25c



Phone 3581

SPECIALS EVERY DAY

FOOD STORES