

# Roby Star-Record

The Voice Of Fisher County Since 1907

# ROTAN ADVANCE

VOL. 75 NO. 1

THURSDAY, FEBRUARY 17, 1983

TWELVE PAGES

## County Appraisal Board Names Ginger Green Chief Appraiser

The Fisher County Appraisal District board of directors, after being challenged on naming Kathy Smith to replace Billie Lou Holcomb as Chief Appraiser, made another move last Monday night that they are in hopes will squelch the problems surrounding the naming of an appraiser for 1983.

The board voted to hire temporary Chief Appraiser Ginger Green on a permanent basis at a salary of \$1,000.00 a month for the remainder of 1983. She has been an employee of the Fisher County Appraisal District for the past 2 years, was named temporary Chief Appraiser effective January 1, 1983 and is a former Tax Assessor-Collector for the McCaulley Independent School District.

In other action last Monday night the board voted to accept a contract with the Sweetwater Appraisal District for computer work at a cost of .25 cents per parcel based on approximately 10,000 parcels. Total cost is expected to be \$2,500 to be paid in four quarterly

payments of \$625.00. The board authorized the payment of two quarterly payments last Monday night.

### Five Seeking Spots On County Hospital Board

Fisher County Hospital Board member Glenn Copeland, after previously announcing that he did not intend to seek re-election to another term, has re-considered and filed to have his name placed on the ballot. Copeland said "I did not intend to re-file, but have re-considered after having numerous people call and contact me expressing a desire to see me serve another term."

Two other new announcements concerning candidates filing were made this week. Annie Mae Weems, Fisher County Senior Citizen's Center Coordinator and W. L. "Bill" Gribbins of Roby filed along with Kim Pease for two vacant Fisher County Hospital Board slots. Another new development was the addition of Kirmitt Terry, former

The board voted to send the appraisal district employees to a school in Austin on March 14, 15, & 16 and discussed over/

Fisher County Hospital Board member, to the growing list of candidates filing. Terry officially filed for the board last Tuesday afternoon.

The terms of Board President Albert Maberry and Board Member Glenn Copeland expire this year. Board members Dave Williams, Frank Mitchell and Raford Hargrove all have an additional term remaining on their elected terms.

The deadline for filing for one of the two open Fisher County Hospital Board slots terms is prior to March 2nd with the election set for Saturday, April 2nd. Individuals interested in filing can complete the necessary forms at the office of the Administrator, Fisher County Hospital.

under payments by taxing entities.

Board members accepted a letter of resignation by L. W. Knox as a member of the Fisher County Appraisal Review Board and named Roy Noles to take his place on the board. Terms of Blair Berry and Harvie Davis expire this year. Others serving on the Appraisal Review Board include Joe Dale Burk and Julius Decker.

In final action the board

### Two At Rotan Named To McM Dean's List

Two students of Rotan have been named to the Dean's List at McMurry College for the Fall 1982 semester.

They are: Conrad Hamric and Angela Pack.

To be eligible for the Dean's List, a student must have a grade point average (GPA) of 3.5 or better on a 4.0 scale. Students who continually make the list and maintain a certain academic standards may qualify for additional financial aid at McMurry.

authorized an advertisement to be placed in the Rotan Advance-Roby Star Record outlining the various deadlines for exemptions. It was noted that 92% of the farmers entitled to sign-up for agricultural use exemptions had exercised that option.

Approximately 10 visitors were in attendance at the meeting that lasted until 9:50 p.m. The next regular meeting of the Fisher County Appraisal Board will be on Monday, March 14th, 1983.

### Sardis Church Family Banquet

Sardis Family Banquet will be at 7:00 p.m. Saturday night at The Roby Fire Hall.

Speaker for the event will be Floyd Miller of Abilene and music will be presented by Danny and Linda Murphree of Friona, Texas.

During the Sunday morning worship service, the Murphrees will present a mini-concert following the Sunday School hour when Danny will be speaking to the youth.

## Blackwelder, Landes Enter Race For Rotan School Board

A total of two individuals have authorized their names to be placed on the ballot for the Rotan Independent School District trustee election, according to Superintendent Jerry Dickson.

Board member Roger Blackwelder has filed for re-election and Larry Landes has announced his intention to seek a spot on the board.

The terms of James Carter, Blackwelder and Donnie Gruben expire in 1983. The term currently being filled-out by Bobby Smith will also be voted on

in April. Smith is filling the unexpired term of Allan Houston. Other board members include Leo Long, Pete Fowler and Wayne Harris. The deadline for filing for Rotan School Board posi-

tions is prior to March 2nd, 1983. Election day is April 2nd. Those desiring additional information concerning the filing for positions can contact Superintendent Jerry Dickson.

### Morgeson, Wright Re-File For Roby School Board

Roby School Board President Gayle Morgeson and Board Member June Wright have both re-filed for positions on the Roby Independent School District Board of Trustees, according to Superintendent Jimmie Laurie.

The Roby election has been set for Saturday, April 2nd. Other board members with terms re-

maining include: Judy Mauldin, Mike Terry, Calvin Elkins, Jerry Yrshaw and Scott Feagan.

Deadline for filing for one of the two open slots is prior to March 2nd. Additional information can be obtained from the Office of Superintendent, Roby, Texas.

### Soil, Cotton Meeting Set For Wednesday

A meeting on soil fertility and cotton pest management will be held Wednesday, February 23 at 7:30 p.m. at the Court House Annex in Roby according to Richard Spencer County Agent.

Dr. Dale Pennington area extension soil chemist from Lubbock will speak on cotton, wheat and sorghum fertility. The roll of phosphorous in this area will be emphasized.

Emory Boring, area entomologist from Vernon will speak on cotton pest management and the importance of the uniform planting date.

### D. Leverton Named To Get Scholarship

Darrin Wayne Leverton of Rotan has been named to receive a Presidential scholarship at McMurry College for the coming year, according to Dr. Thomas Kim, McMurry President.

To be eligible for a Presidential scholarship at McMurry, a student must graduate in the top quarter of his high school class. A score of 21 or better on the ACT qualifies a recipient for additional presidential scholarship funds.

Mr. Leverton is a May 83 graduate of Rotan high school. He is the son of Mr. and Mrs. Wayman Leverton, 502 E. Lee Street, Rotan, Texas.

### Commissioners Award Hay Bid, Grant Depository

The members of the Fisher County Commissioners Court met last Monday and awarded the county depository to the First National Bank of Rotan and the Citizen's State Bank of Roby for 1983 and 1984. County officials will continue to use each of the two banks 6 months out of the year for checking purposes.

In other action the commissioners approved a bond for Karen Counts, as Deputy District Clerk to work as needed in the office of District Clerk Betty Hargrove.

Annie Mae Weems of the Fisher County Senior Citizen's Center reported to commissioners that a total of 1254 meals had been served Fisher County residents during January for an average of 114 per day. A total of 430 home meals were served and a total of \$722.76 was collected from donations for those meals.

Judge Marshal Bennett informed the commissioners of a meeting of the Emergency Management team from Dyess Air Force Base. At this meeting the crisis re-location program was to be reviewed with county officials. Bennett indicated that in the near future a drill would be conducted to see the probability of Fisher County providing re-location space for 13% of the Dyess AFB personnel in the event of nuclear attack.

Commissioners opened one bid from M&C Lumber and Hardware in Rotan for \$12,500.00 to panel 11 offices in the Fisher County Court House. The bid was

rejected after commissioners decided to pursue a less costly avenue of paneling.

Commissioners received 6 bids on mowing and bailing hay at the Fisher County Airport. The high bid was submitted by Kyle Moore for \$480.00 a year with an option to renew for 4 years. Others bidding included: Mickey A. Counts-\$270.01; Ivin Martin-\$475.99; E. J. Kiker-\$301.10; Carroll Murphree \$351.00 and Fred Cross-\$455.00.

Commissioners received three bids on remodeling at the "Pink Building" in Roby. Bids were received from AM & E Enterprises (Lee Mauldin) for \$11,975.00 and Reese Welding of Rotan for \$12,769.16. Both of the above bids met advertised specifications. A third bid, not meeting specifications, was submitted by Central Lumber at Roby. It was submitted for \$11,885.00. After opening the bids the commissioners voted to reject all bids, re-submit specifications and accept bids again on the project.

Opened bids on the liability insurance program for the county. Two bids were received, one from Roby Insurance Agency for \$15,765 and one from Rotan Insurance Agency for \$15,535. After considerable discussion on the program, Rotan Insurance Agency withdrew their bid. The bid was awarded to Roby Insurance Agency, however commissioners are expected to study alternative insurance plans in the future.

## Carriker Opposes Proposal To Hold-Out Savers Earnings

State Representative Steve Carriker (D-Roby) has filed a resolution for action by the House of Representatives which would put the State of Texas on record as opposing the Reagan Administration's proposal to withhold ten percent of a saver's earnings as an income tax advance payment. The resolution, which Carriker authored, calls on Congress to reverse the new policy.

"This withholding proposal is patently unfair. It is an administrative burden on banks, thrifts, and even small farmer cooperatives," commented Carriker. Carriker added,

"I'm afraid that the red-tape involved in getting money back from the IRS will cause many small savers, especially elderly people, to forfeit money to the Federal Government that they don't owe."

Carriker's house Concurrent Resolution, which was filed today, will, if adopted by the Legislature, be sent to the President, the Vice-President, the Speaker of the House, and the Texas Congressional Delegation. This resolution will "lend support to the outpouring of citizen sentiment against the withholding proposal," Carriker said.



VALENTINE SWEETHEARTS: Johnnie Trejo was named queen and Gaines Smith was named King at the annual valentine part at the Rotan Nursing Center last Monday.



1983 FFA WEEK  
FEBRUARY 19-26

## Proclamation

WHEREAS, the Future Farmers of America with vocational agriculture education is a strong force for America's agriculture; and  
WHEREAS, members of the FFA are playing an outstanding role in assuring the future progress and prosperity of our nation; and  
WHEREAS, the FFA motto--"Learning to do, doing to learn; earning to live, living to serve"--gives a direction of purpose to these future leaders for tomorrow's agriculture; and  
WHEREAS, the FFA performs the valuable service of developing leadership, encouraging cooperation, promoting good citizenship, teaching modern agriculture information, and inspiring patriotism among its members,

THEREFORE, we, W. C. Matthies, Mayor of the City of Roby and Lester Sescil, Mayor of the City of Rotan do hereby designate the week of February 19-26, 1983 as FFA WEEK.

VOCATIONAL AGRICULTURE  
Educating Through Experience

## Hits & Misses

By The Newspaper Staff

### DID YOU KNOW???

\*There are only two places on earth where a moonbow can be seen. One is in South Africa, and the other is over Cumberland Falls in Kentucky. It occurs when the moon is full (four or five days a month) and when atmospheric conditions are right.

\*The San Antonio Zoological Gardens and Aquarium in Texas is the only zoo in the world where whooping cranes may be seen in captivity. The cranes once dwindled to an all-time low of 15 (!) but now number more than 120. The majority of them live in the migratory flock that winters at Aransas National Wildlife Refuge, also here in Texas.

\*Wakulla Springs near Tallahassee, Florida, ranks among the largest, clearest, and deepest springs in the world. About 600 gallons of water per minute flow from an underground cavern, never varying from year-round temperatures of 70 to 72 degrees. The spring is so clear that a penny dropped at the surface can still be seen 185 feet below when it reaches bottom.

\*The New River, which flows through North Carolina and Virginia, is believed to be the second oldest river in the world--second only to the Nile.

NOW YOU KNOW...  
Debby Wilfong, Production

I want to congratulate the Roby Girls and boys basketball teams on their winning season. Hope you go all the way to state and win!!!

Janece Pease, Associate

## Roby School Board Grants Two Contract Extensions

The members of the Roby School Board met last Monday night for their regular monthly meeting

and re-hired Principals George Price and Mickey Early. They accepted the resignation of Rita Ray,

high school math teacher at the end of the 1983 school year.

The board accepted the resignation of Harmon Holcomb, Roby School Tax Assessor Collector and hired Billie Lou Holcomb for the same position.

Board members named Joe Dickson, Fisher County Juvenile Officer as the Roby School Probation officer and approved the establishment of a flag corps for the Roby band.

At Monday's meeting the board hired Linda Dickson as the driver education instructor beginning in May and approved George Price to take part in a Alcohol and Health Education plan with the Texas Commission of Alcoholism.

The Fisher County 4-H clubs are currently in full swing, participating in Method Demonstrations, illustrated talks, range and grass judging, leathercraft and stock shows. Also livestock judging and rifle club picking up momentum. However, program leaders for the 4-H clubs is still in first gear.

The different 4-H clubs are extending an invitation to any adult who is

## Barn Talk By Pete Flores

Asst. Fisher County Agent

interested in helping with the 4-H to please come to the meetings.

What is a program leader? Program leaders are the cornerstone of the 4-H program. They organize and manage 4-H clubs, conduct educational and recreational activities. These leaders can be referred to as coaches, because young people do not develop their under-

standing, attitudes and skills overnight. They need and want guidance and encouragement as they strive to discover their own abilities.

Volunteer 4-H leaders are the key to a successful 4-H program. They have the opportunity to help young people develop into responsible and productive individuals. Working with youth is exciting and challenging and provides personal satisfaction.

## Extension Homemakers Conduct Meeting In Rotan

The Extension Homemakers Club met in the Homestate Savings and loan building February 3. Twelve members were present and one visitor. Jessie Atkins was hostess.

The President Jessie Adkins presided. Oma Long led in a quiz session. Ardell Floyd called the roll. We answered with our favorite type of handwork.

Report on council meeting was given by Eda Biggerstaff.

Jessie Adkins gave us a report on the plans, the meetings and dates. Jessie Adkins was nominated as a delegate for the District meeting at Benjamin, Texas April 19. She was elected.

Wanda Floyd and Jessie Moore showed some beautiful plastic canvas needlepoint art and instructed the club how to work it. The art was enjoyed very much.

Refreshments were served to Ardell Floyd, Dollie Curry, Effie Murphy, Eda

Biggerstaff, Mary and Louada Posey, Tennie Bostick, Hilda Rollins, Wanda Floyd, Oma Long, Jessie Adkins, Lois Sparks and one visitor Jessie Moore.

The next meeting will be in the home of Mary and Louada Posey February 17.

**NATIONAL MOTOR CLUB**  
Henry Ellis  
776-2376  
Roby, Texas

## PUBLIC NOTICE

On January 25, 1983, Texas Electric Service Company, a subsidiary of Texas Utilities Company, in accordance with procedures established in PUC Docket No. 4224, filed with the Public Utility Commission of Texas a request for approval of certain payments to affiliates. Such payments will be reflected in the Company's fuel cost factor for all classes of customers during the billing quarter April through June 1983.

A public hearing concerning this request will be held at the offices of the Public Utility Commission, 7800 Shoal Creek Boulevard, Austin, Texas, March 7, 1983 at 9:00 a.m.

Payments to Texas Utilities Generating Company for which approval is requested are in accordance with the following prices:

Big Brown	\$0.673215 per one million Btu
Martin Lake	\$1.047895 per one million Btu
Monticello 1, 2	\$0.733081 per one million Btu
Monticello 3	\$0.803260 per one million Btu

Payments to Texas Utilities Fuel Company for which approval is sought are in accordance with the following price:

\$0.161958 per one million Btu

A copy of the request is on file with the Public Utility Commission.

TEXAS ELECTRIC SERVICE COMPANY

## Tammy Stuart Named To Nat. Honor Schol. Soc.

Tammy Stuart, daughter of Mr. and Mrs. Richard Stuart was notified this week that she has been selected to be a member of the Texas Alpha Iota Chapter of Alpha Chi, the National Honor Scholarship Society at Angelo State University. Selection is limited to junior and senior students who have the highest scholastic achievements at the school. To be named a member of the National

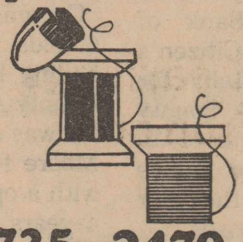
Honor Scholarship Society is the highest honor any student can receive on a university campus.

**SHELLED PECANS**  
Buy by the 30 lb box  
SAVE  
Dwight Nowlin  
735-3071

## Monogramming !!

Now at the Gumdrop Tree.

Towels, shirts, pillow cases, etc; Have your favorite mascot put on a sweat shirt.



735-2479

**New Hours**  
Monday-Friday  
8:00 A.M. - 5:00 P.M.

**The Gumdrop Tree**

Rotan, Texas

## Legal Notice

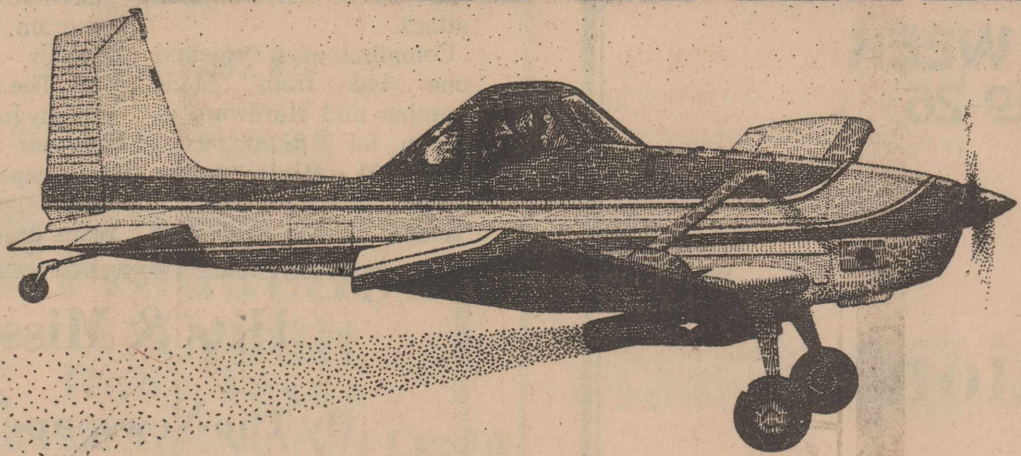
Notice is hereby given by the Parks and Wildlife Department that a public hearing will be held at 2 p.m. on March 22, 1983 at the County Courthouse at Roby for the purpose of gathering information concerning proposed hunting and fishing regulations for Fisher County.

As the result of action by the Texas Legislature, the Texas Parks and Wildlife Commission, under the authority of the Uniform Wildlife Regulatory Act, Chapter 61, Texas Parks and Wildlife Code, is responsible for the setting of seasons, bag limits, means and methods for taking the wildlife resources in Fisher County. All interested persons are urged to attend and comment upon the proposed regulations.

Additional information concerning the public hearing may be obtained by calling our Toll Free Number 1-800-792-1112 or 512-479-4974. 53:1tc

## SPRING SPECIAL ON GRASLAN BRUSH CONTROL:

# FLY NOW, PAY LATER.



**Order aerial-applied Graslan before June 30 and save all these ways:**

- Buy at 1982 price with guaranteed protection.
- No payment required until December 15, 1983.
- Extra discounts for payment before December 15.
- Additional 4% discount when Graslan applied at Elanco's convenience.\*

\*We recommend application this Spring to get Graslan's brush control benefits a year earlier. Then, when the cattle market improves, you'll be ready with more grass for higher carrying capacities.

**Graslan gets the brush. You get the grass.**

Graslan is a totally new, proved effective approach to brush control. A high-density, pelleted herbicide that works through the roots of sand shiner, oak and other troublemakers... controls them for years in just one application. For early-order savings, see your Graslan Range Management Specialist. Or right now, call toll-free:

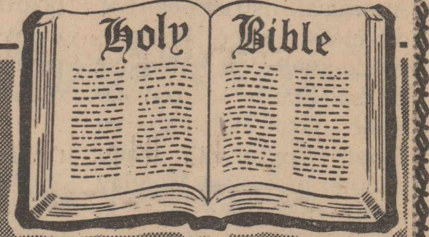
**ELANCO**

Pioneering a new era in range management.

# 1-800-428-4441

Graslan® - (tebuthiuron, Elanco)

Copyright 1983 Keister Advertising Service and Williams Newspaper Features Syndicate, Inc. P.O. Box 8024, Charlottesville, Va. 22906



## PINES IN WINTER

Among the many kinds of trees in existence, very few retain their foliage during the cold winter months. Only a few withstand the driving winds and storms and still maintain beautiful green branches.

The graceful scene below shows a remarkable characteristic in the pine tree. Some miraculous element within the pine enables it to display its lush greenery amid the whiteness of fallen snow.

Such are the amazing qualities of nature — the millions of wonders in God's creation.

In order to understand more fully the God-given powers within ourselves, we must study the Holy Word and attend regularly the services of our church or synagogue. By doing this we will come to realize our potentialities and talents and will learn to live a fuller more useful life.

Monday Genesis 2:5-25	Thursday Isaiah 45:9-19
Tuesday Psalms 104:1-35	Friday Psalms 95:1-11
Wednesday Isaiah 45:1-8	Saturday Psalms 19:1-6
Sunday Genesis 1:1 2:4	Scriptures selected by The American Bible Society

This Week's Featured Church Page Sponsor:

H.L. Davis & Co.

<b>H.L. DAVIS &amp; CO.</b> Bill & Elaine Day Rotan	<b>ROTAN MOTOR CO.</b> Ford & Mercury Rotan
<b>CITIZENS STATE BANK</b> Member FDIC Roby	<b>FISHER COUNTY NURSING HOME</b> 735-3291 Rotan
<b>ROBY INSURANCE AGENCY</b> 776-2361 Roby	<b>ROTAN NURSING CENTER</b> 711 E. 5th Rotan
<b>CENTRAL LUMBER &amp; SUPPLY</b> 776-2371 Roby	<b>MARTINEZ DAIRY</b> Rudy, Joe B. & Emilio Martinez Hobbs Community
<b>FARMERS UNION CO-OP GIN</b> Roby	<b>ROTAN PAINT &amp; BODY SHOP</b> Rotan
<b>ROBINS INSURANCE AGENCY</b> Joe Burk-Agent Rotan	<b>BART STRAYHORN</b> 735-2231 Rotan
<b>LANDES FURNITURE</b> Loys Landes Larry Landes Rotan	<b>FISHER COUNTY FARM BUREAU</b> 215 W. Snyder Rotan
<b>M&amp;C LUMBER &amp; HDW., INC.</b> Rotan	<b>FIRST NATIONAL BANK OF ROTAN</b> Member FDIC
<b>WEATHERSBEE FUNERAL HOME</b> Rotan	

# THE HAMMER HUT



BY THE JOURNALISM CLASS OF ROTAN HIGH SCHOOL

### Senior Spotlight

by Teresa Cantu  
 Name: Eddie Martin, son of Mr. and Mrs. Byrle Martin  
 Birthdate: February 18, 1965  
 Height: 6'3"  
 Color of Eyes: Brown  
 Color of Hair: Brown  
 Favorite Color: Blue  
 Favorite Food: Bar-B-Que Chicken  
 Favorite Music/Group/Song: Country/Alabama/You and I  
 Favorite T.V. Show/Movie: Fall Guy/Escape From New York  
 Favorite Sport/Hobby: Fishing and Hunting/Causing trouble  
 Career Choice: Work at Gypmill  
 Person You Consider a "10": Sally Field  
 Comment: I'm ready for the year to be over with.

### Interview

by Trina Ortiz  
 This week's interview is from our high school secretary.  
 Name: Nell Crawford  
 Birthday: June 20  
 Hometown: Rotan  
 Color of Hair: Grey  
 Color of Eyes: Brown  
 Favorite Food: Mexican food  
 High School Attended: Rotan High School  
 Favorite Hobby: Sewing  
 Family Portrait: Husband, Woody, 2 daughters, 1 son, and 4 grandchildren  
 Dream Occupation: To own children's shop.  
 Occupation: Secretary  
 Comment: It has been a good year: busy, but fun.

### Birthdays

Michael Simmons on February 2, Armondo Yanez on February 4, Randy Martinez on Feb-

ruary 5, Annette Martinez on February 7, and Sidney Hoyle on February 9.

### Quote of the Week

We should all be concerned about the future because we will have to spend the rest of our lives there.

### Mystery Student

by Stephanie Pack  
 This week's mystery student is a Junior guy. He was born on January 26, 1966, in Rotan. He is 5'11" tall, has brown hair, and dark brown eyes. He enjoys tennis and fooling around. He likes the color blue, and his favorite foods are steak and hamburgers. His favorite group is Journey, which performs his favorite song: "Don't Stop Believin'". He likes to watch the *Bozo Show*, and believe it or not, his favorite movie is *Grandpa Goes to Washington*. For further clues as to the identity of this mysterious guy, here is his class schedule: English III, Typing I, World History, Math, American History, and Biology. The last mystery student was LaTonya Daniel.

### Did You Know?

Stephanie Pack  
 Did you know that one of the most expensive cars ever built was the Presidential 1969 Lincoln Continental Executive for the U. S. Secret Service? It was 21 feet long and weighed 12,000 pounds. The cost was estimated at \$500,000 for the research, development, and manufacture of it. Even if all 4 tires were shot out, the car would still be able to travel

at 50 miles per hour on inner rubber-edged steel discs.

Did you know the longest prison sentences were those of 7,109 years? They were given to two tricksters in Iran on June 15, 1970.

### Your Opinion

by Robin Harris  
 Do you think our school should have more assemblies? If so, what kind?

Joe Paul Soliz-Yes, we should have more assemblies. I would like anything that's entertaining.

Deanne Harbin: Yes, I would like to see bands and musical entertainment because it would give us the opportunity to decide if we want to do something like that or go to that school.

Russell Smith-Yes, I think we should be able to have more assemblies such as bands, musical acts, and maybe a few speakers.

Allen Coventry-Yes, I do think we should have more assemblies, like jazz bands, movies, and stage acts.

### Mystery Plate

The license plate number this week is BXV-798. Last week's belonged to Mr. Hargrove.

**We Sell A Full Line Of OFFICE SUPPLIES**  
 The Newspaper Office

On Thursday, February 3, the All-District Concert Band students will be traveling to Hardin-Simmons University. After a practice session of six hours or more, a concert

was held that evening. Students participating in this event from Rotan include John Underhill, Tish Fowler, and Allen Coventry. Good Luck!! Hobbs School Menu-

Ronald B. Green  
 GENERAL CONCRETE WORK  
 CONCRETE AND LABOR CONSTRUCTION  
 CEMETERY CURBING - YARD CURBS  
 WALKS AND DRIVES - PATIOS  
 Box E 776-2108 Roby, Texas

# MONEY MARKET DEPOSIT ACCOUNT

It's HERE! Our best NEW SAVINGS ACCOUNT in years!

- Federally insured up to \$100,000.00
- No early withdrawal penalties
- High yield MONEY MARKET earnings
- Unlimited withdrawals in person or by other authorized means
- Unlimited deposits
- \$2500 minimum deposit

CALL FOR DETAILS



ABILENE: 1209 East So. 11th/673-8339 and 1500 Industrial Blvd/695-6330  
 BIG SPRING: Coronado Plaza/263-0251 COLORADO CITY: 2205 Hickory/728-2667  
 HAMLIN: 443 So. Central Ave./576-2631 ROSCOE: Broadway and Main/766-3996  
 ROTAN: 302 W. Snyder/735-2273 SNYDER: 3405 College Ave/573-4943  
 SWEETWATER: 208 Elm/236-6364

## Casa Morales

Serving The Finest

In Mexican

& American

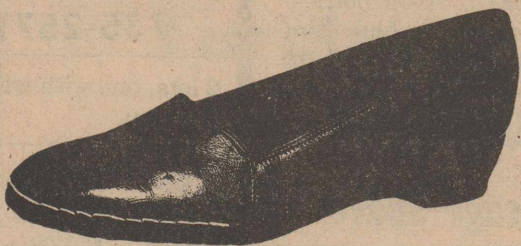
Foods.

735-2658

We Will Be Closed On Mondays

Come Shop From "Charm Step"

for Spring



The Maxima Women's Classics

Colors  
 Red Navy  
 Black Bone  
 White Tan



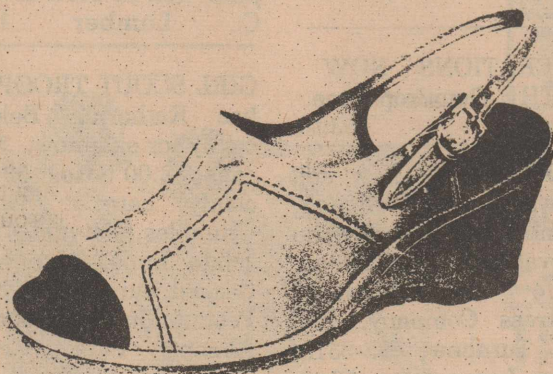
The Mattie

Black Platinum  
 White



The Christie

Black Platinum  
 White



The Cloud

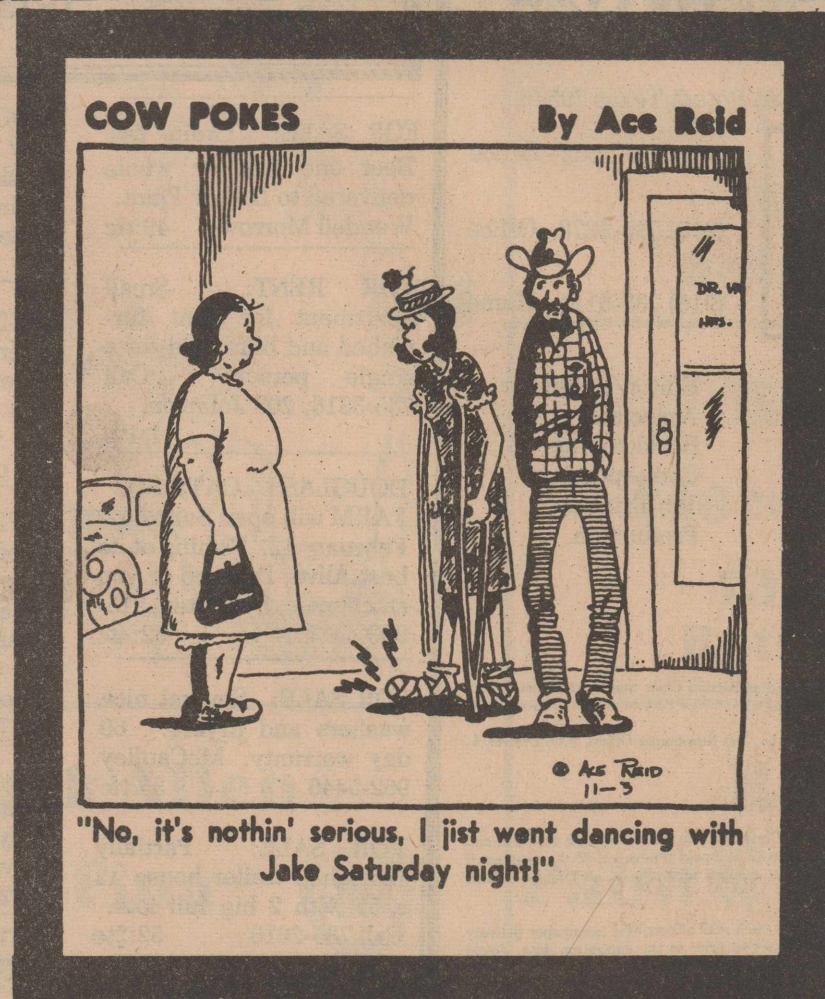
Black Bone  
 White

# H.L. DAVIS & CO.

"THE FRIENDLY STORE"

ROTAN, TEXAS

YOUR BANKING CONNECTIONS ARE SERIOUS BUSINESS! YOU WILL FIND EVERY BANKING SERVICE FOR EVERY MEMBER OF YOUR FAMILY AT OUR BANK! YOU CAN BE ASSURED OF HELPFUL EXPERIENCED ATTENTION TO ALL YOUR FINANCIAL NEEDS WHEN YOU BANK WITH US!



First National Bank Of Rotan

735-2224

Rotan, Texas



## Copeland Enlists In Navy

Bryan Keith Copeland, son of Mr. and Mrs. Glenn Copeland of Rt. 2, Rotan, Texas recently enlisted in the U. S. Navy's Delayed Entry Program in Dallas in the Advanced Electronics Field.

In the Advanced Electronics Field, a specialized six-year advanced electronics program, candi-

dates will be enlisted in pay grade E-3 and automatically advanced to E-4 upon successful completion of the preliminary phase of basic technical school in the electronics field. Occupations in this field include Data Systems Technician; Electronics Warfare Technician; Cryptologic Technician (Main-

tenance); Fire Control Technician or Polaris/Poseidon electronics.

Applicants must be high school graduates 17-31 years old.

Keith departs August 29 enroute to Recruit Training Command, Great Lakes, Ill., where he will attend an eight-week Basic Military Training course. Upon completion of the training course, Keith will then report to technical

training in his chosen field of Aviation Electronics.

Keith is a 1982 graduate of Rotan High School, where he was active in FFA, 4-H, Band, football, basketball and track.

When asked why he chose the Navy, Keith replied, "The Navy gave me the best opportunity for the enrichment of my desires. I love ships and open water."

## Council Slots Open

Rotan Mayor Les Sescil and Rotan Councilmen Rodney Tankersley and Dr. Jerry Marshall all have elected terms expiring in 1983. With two weeks remaining prior to the filing deadline, no one has

yet to file for any of the open positions on the Rotan Council.

Additional information on filing for Rotan Council posts can be obtained by contacting Rotan City Secretary Kenneth Vann.

## Rotan Girls Finish 11-11

Martinez and Jerilyn Marshall.

"I would like to thank Coach Lepard and the boys

### Rotan Boys Win Final Game Over Seymour

The Rotan varsity boys team ended the season on a winning note by defeating Seymour 87-73 with Scott Bryan scoring a season high 27 points for the Yellowhammers.

Two other Rotan players were in double figures for the night. Greg Gruben had 19 points and Sammy Turner had 12 points.

Others scoring were Ben Bryan 7; Darrin Levertton 6; Kevin Copeland 4; Endgate Adkins 6; Charles Williams 5.

basketball team for the flowers presented the girls before the game against Seymour. Also, thanks to our fans for supporting us this year. Parents of these girls should be very proud of them because they work so hard and are truly fine

young women. It's been a pleasure coaching them", said Coach Damron.

The girls ended the season with an 11-11 record including scrimmages. They lost 5 games by only four or less points.

## Two Nursing Homes Will Conduct "Pet Day" Soon

The residents of the Fisher County Nursing Home and Golden Haven Nursing Home will be taking part in a special "Pet Day" arranged through the Rotan Veterinary Hospital and Dr. Vick Burk.

The "Pet Day" has been set for 2:00 p.m., Thursday, February 24th at the

Fisher County Nursing Home and for 2:00 p.m., Wednesday, February 23rd at the Golden Haven Nursing Home.

Both homes have invited various youth organizations, GA's, 4-Hers to take part in the pet day by bringing their animals to the nursing homes.

## MARTIN'S FEED & GARDEN

NEW NURSERY Now Open

our new nursery is fully stocked with a wide variety of trees, shrubs, rose bushes and fruit trees.

### FRUIT TREES

Kieffer Pear  
Bartlett Pear  
Orient Pear  
Bing Cherry  
Methley Plum  
Texas Fig

Red Delicious Apple  
Yellow Delicious Apple  
Golden Dorsett Apple  
Moore Park Apricot  
Elberta Peach  
Hale Haven Peach

### SHADE TREES

Cottonless Cottonwood  
Fruitless Mulberry  
Red maple  
Silver Maple  
Live Oak  
Weeping Willow

### ALL TYPES ROSES

Climbing & Tea Roses  
Large Selection Colors

### SHRUBS

Double Mock Orange  
Azaleas  
Pampas Grass  
Nandaria  
Thrift  
Old Fashion Lilac  
Golden Eumonymus

Lerirape  
Red Quince  
Homesuckle  
Pansythin  
Purple Wisteria  
Juniper

Gold Spot Eumonymus  
Yaupon Holly  
Japanese Boxwood  
Wintergreen Boxwood  
Privet Hedge  
Snowball  
Blue Hydrangea

8 foot Pecan  
TREES  
in 8 varieties

Grapes & Berries  
● Blackberry  
● Concord Grape  
● Niagara Grape

### Martin's Feed & Garden

301 W. Snyder 735-3261 Rotan, Texas



BEN READ  
AGENCY MANAGER  
DICKY KNIGHT  
SPEC. AGENT

FARM BUREAU INSURANCE SERVICES  
215 W. SNYDER ROTAN, TEXAS 79546  
BUS. (915) 735-3491  
RES. (915) 735-2583

**Silver Spur Cafe**  
**Sunday Menu**  
Beef Brisket or German Sausage  
With Kraut Creamed Potatoes English Peas  
or Buttered Carrots Green Salad  
Chocolate Cake  
Roby, Texas 776-2744

**TOMMY MARRICLE WELL SERVICE**  
WINDMILLS & DOMESTIC PUMPS, MOVE, REPAIR & REPLACE  
ROUTE 2 - BOX 74  
SNYDER, TEXAS 79549  
TOMMY (915) 573-2493  
BENNIE (915) 573-8710

# CLASSIFIED ADS

### BLACK INVESTMENTS

#### REAL ESTATE SALES—APPRAISALS—

#### PETROLEUM LANDWORK

Large 3 B/R Stucco, Fireplace, 3 lots

Two BR Mobile Home with Acreage in Roby

Nice 3 BR Country Home, one acre

3 BR Home on two acres west of Rotan

2 BR Brick, Owner Financing, Only \$12,000

6-Unit Brick Apartment Building, Roby

220 Acres Prime Cultivation, Oil Royalty

Older Home, next to Allsup's, Rotan

Older Homes, \$5500-12,500, 10% Financing

**Myla Black, Broker (915)735-3091**

FOR SALE: Grain fed Beef one half or whole delivered to Locker Plant. Wendell Morrow 49:tf

FOR RENT: Small apartment for rent furnished and bills paid for a single person. Call 735-3316, 208 Johnson. 1:1tp

WOOD CUTTERS: We now have a new machine to sharpen chains for all chain saws. Farm Tractor & Service, Inc., Rotan. 40:tf

NEED IT FIXED? Will do general repair work, small carpenter jobs, plumbing work on any small fix-it job. Call Ben Silvas after 4:00 p.m. 735-3277. 47:tf

DOUGLASS CATFISH FARM will open Saturday, February 12. Fishing at its best Alive, Dressed or you catchum. Sylvester 915-993-4487 52:4tc

FOR SALE: Several nice washers and dryers. 60 day warranty. McCaulley 962-5446 35:tf

FOR SALE: Partially furnished trailer house 12 x 65 with 2 big full lots. Call 735-2610 52:2tc

P and F Thrift Shop 222 W. Snyder Ave. Used furniture, small appliances, odds and ends, Handmade items (by local people) Open Mon-Fri) 8-5 1:2tc

GARAGE SALE: The Springer Family Saturday 9th of February 110 E. McArthur 9-5 1:1tc

FOR RENT: 3 Bedroom country house. Call 735-3156 52:3tc

NEW HOME SEWING MACHINES: Electrolux cleaners, repair all makes. H.B. Stevens, 1101 James Street, Sweetwater, 235-2889. 27:tf

Custom Backhoeing also specializing in cellars. Call 776-2827. 45:tf

FOR SALE 3 BR House on 2 lots, central heat and air. Good location. Call 735-2587 or come by 803 East 7th. 44:tf

NOTICE: Now with all the rain and snow, the weeds and grass will grow. Stop them with weed and feed special or crabgrass control. February is the month to put this down. MARTINS FEED & GARDEN 51:3tc

One of the nicest small homes in Roby. 2 Bedroom, brick. Single garage with door opener and covered patio and car port. Near churches and post office on 1 1/2 lots, fenced with a pecan and fruit trees. Central heat, refrigerated air, ceiling fans. Call 776-2581 James Cave 52:2tp

NOTICE: J.B. SMITH MONUMENTS & CURBING. 308 East 4th St., Rotan. 735-3290. 6:tf

Have Spatula will travel Charlie, Elsa, Becky. 1:1tc

ALTERATIONS NOW AT THE Gumdrops Tree. 7352479 53:tf

MATTRESSES: New and renovated, choice of color, firmness and size. Save on renovating; guaranteed. Made by Western Mattress Company. Call Mrs. Turnbow, 735-2313, Rotan, Leave name. 50:tf

WANTED: Full time waitress Call for appointment Casa Morales 735-2658 52:tf

Silver Spur Cafe in Roby Friday nights catfish ALL YOU CAN EAT. \$4.25 776-2744 52:tf

We will buy one piece of Furniture or whole house full or anything of value. Call 735-3566 or 735-2595 after 6. 1:2tc

RUBBER STAMPS: Fast service from our Abilene supplier. Samples at office. All sizes available. The Newspaper Office. 735-2562. Rotan, Tx. 9:tf

FOR SALE: Large round bales of forage sorghum hay. Priced in the field or delivered. Call John Cox 735-2883 or 735-2808. 40:tf

FOR SALE: General Electric refrigerator used one year Call 735-3522. 53:TFC

FOR SALE: Rock Home 6 rooms with apartments 302 E. Burnside Phone 735-2549 or 692-7630 53:3tp

FOR SALE: Pecans Shelled \$3.00 lb. Unshelled \$1.25 lb. M.\*L. Hayes 735-2972 53:4tp

FOR SALE: 1977 Monte Carlo. Call 5-3453 after 6 p.m. Can be seen at M. & C. Lumber 1:1tc

GIRL SCOUT TROOP 280 has Katherine Beich candy for sale now. \$4.00 cans, \$2.00 boxes, 50 cent candy bars. Golden Crumbles, Katydid's, Chocolate Imps, buttermints, Carmel Bars, Party Nuts, Peanut Butter Crunches, Almond Bars, Crunch Bars, Mint Truffles. Contact Della Jones at 776-2775. 53:2tp

**We Sell**

- Bibles
- Books
- Religious Books

**The Newspaper Office**

---

**Pay your Telephone Bill at The Gumdrops Tree**

YARD SALE Saturday February 19, 1983 at 503 E. Beaugard from 8:00 a.m. till 5:00 p.m. 1:1tp

FOR RENT: 2 bedroom apartment in Roby. Call 776-2723 53:tf

WANTED: Dishes in Vineyard pattern by Vernon Call 735-3133 1:1tp

WANTED: Avon bottles-bird bath with blue bird Call 735-3133 1:1tp

ANTIQUA AUTO SWAP MEET, March 19-20, sponsored by Abilene Model "A" Ford Club at Taylor County Expo Center, Abilene, Texas. Wendell Mathis, P. O. Box 3093, Abilene, Texas 79604. 915-673-0792. 53:4tp

**B And T Real Estate**  
113 W. Snyder  
735-2571

2 lots, one with trailer hook-up.

EXTRA NICE-New listing. 3 bedroom choice location, excellent condition. Nice yard, fenced. Ready for occupancy.

CORNER LOT - 2 Bedroom, Living Room, Kitchen, 1 1/2 baths, 3 lots. Nice Location.

Joe D. Burk, Broker  
H. Thompson,  
Salesman, 735-3223

---

**FOR RENT**

**Storage Spaces**  
From \$15.00-Up per month.

**LOCK IT OR LEAVE IT**

**ROTAN SELF-STORAGE**  
735-3171

**FAST Printing Service**  
FOR ALL YOUR PRINTING NEEDS

**The Newspaper Office**  
Rotan, Texas

**Coke 7 Up**

**Mr. Pibb**

**2 liter \$1.39**  
Special Good Feb. 17-23, 1983

**Teague Grocery**

**Roby Star-Record**  
The Voice Of Fisher County Since 1907

## ROTAN ADVANCE

Post Office Drawer A, Rotan, Texas 79546

**MEMBER 1982**

(915) 735-2562 - Office  
(915) 735-2278 - Office  
(915) 735-3115 - Home

**TEXAS PRESS ASSOCIATION**

Kim Pease  
Jancee Pease  
Jimmy Markham  
Joy Walker  
Hooper Shelton  
Debby Wilfong

Editor/Publisher  
Associate  
Bookkeeping  
Correspondent  
Job Printing  
Production

Published in Rotan, Texas weekly. Entered as Second Class mail at the Post Office, Rotan, Texas 79546 under acts of Congress.

POSTMASTER: Send Address Correction to: The Newspaper Office, P.O. Drawer A, Rotan, Texas 79546.

Advertising rate is \$1.80 per column inch. Classified rate is \$2.50 for first 15 words and 10 cents for each additional word. Minimum \$2.50 if paid in advance. \$3.00 minimum if billed. Classified display rate is \$2.50 per column inch. Cards of Thanks - \$5.00 minimum charge.

Subscription Expiration dates are listed on each mail subscribers newspaper delivery label each week. Newspapers must be renewed prior to the expiration date. Postal regulations say that subscriptions must be paid in advance to qualify for 2nd class postage regulations.

News and Advertising deadline is 12:00 noon on Tuesday of Each Week. The Rotan Advance-Roby Star Record is published 51 weeks a year. No paper is printed on the last Thursday of each year.

Notice: Any erroneous reflection upon the character, standing or reputation of any individual, firm or corporation will be gladly corrected when brought to the attention of the publisher.

Mail To:

The Newspaper Office  
P.O. Drawer A  
Rotan, Texas 79546

Please find enclosed for my subscription for \_\_\_\_\_ years. New Renewal.

Name \_\_\_\_\_

Address \_\_\_\_\_

City \_\_\_\_\_ State \_\_\_\_\_ Zip \_\_\_\_\_

Top Line Code O=Mail Label

## Hustlin' Round Hobbs

By Joy Walker

Well its almost like Spring and the weather has been pretty good this past week, although we have been having some strong winds, but that is only normal as its getting about time for the sands:orms; I believe I will take them over all that snow and ice any day.

Morris Hardin and Alton White from Lubbock visited with Mrs. Bea Hdardin all day Sunday.

Mr. and Mrs. Lealon Wilburn and Mrs. J. W. Etheredge all went to Abilene Friday night to watch the Roby girls play Novice in a practice basketball game. The Roby boys also played a practice game against Eula the same night. Good luck to both Roby teams as they prepare for the Play-offs.

Jim and I went to Jayton on Monday night to watch the 8th grade boys and girls play basketball. Donnie Carl Gruben accompanied us. Tuesday we went that long trip to Seymour and watched the Varsity girls and boys play there. We went with Mr. and Mrs. Wilber Gruben. Thursday went to Rotan to watch the basketball games as we had a make-up game with Seymour. Thats all of the basketball for this year and now its track season; I can tell by the windy days we are already having. Melody came home for the week-end and we sure enjoyed her visit; it was the first time she had been home since Christmas. Mark was in San Antonio with his FFA boys at the Stock show; he is now teaching AG. at DeSoto, and lives in Arlington, so is sure busy. Melody is in charge of the UIL Math at her school in Saginaw, so will sure be busy for the next few weeks.

We are glad to hear that Wendle Kincaid is now out of the hospital and seems to be feeling pretty good.

Not too much news this week, as everyone was enjoying the warmer weather and have been catching up on all the things they have been putting off doing when the weather was so bad. It will soon be time to start gardening, and I know the weeds will grow as we have had quite a bit of moisture.

Hope that you had a happy Valentines Day. See you next week.

### Hustling

We have had another week of bad weather, but not as much snow as was predicted, thank goodness. The roads were sure bad around Snyder on Friday, although out this way, the roads were freshly graded and we didn't get much moisture, so were able to get in and out without any difficulty.

Glenn Phillips and Mrs. Opal Phillips went to Whitney on Thursday, and they returned home Friday. They attended the funeral of C. A. Stewart, who is Opal's brother-in-law.

Mrs. Marcus Medrano and Mrs. Bea Hardin went to Sweetwater last Tuesday, and then on Sunday they visited with Mrs. Polly Helms. She had surgery before Christmas and is slowly but surely improving. Mrs. J. W. Ehteredge attended a Wedding Brunch Saturday morning at the home of Mr. and Mrs. Doug Weathersbee. Mrs. Sam Etheredge, Mrs. James Sherrill from Sweetwater, Mrs. Debra Yearwood from Houston, Mrs. Lealon Wilburn, Mrs. Jim Wilburn and girls and Mrs. David Etheredge all attended the brunch. The rehearsal supper for Vicki Moore and Randy Etheredge and the wedding party was held Friday night at the Hobbs school cafeteria-50 guests attended. Then everyone attended the beautiful wedding at Crossroads Baptist Church on Saturday afternoon, and the weather was really nice for a change.

Teresa Ratliff went to Fort Worth Thursday morning and came back Saturday afternoon. She went with Mr. and Mrs. Harold Roberts and Robin Harris, daughter of Mr. and Mrs. Wayne Harris. They all showed their lambs at the Fort Worth Stock Show, and they sure had a good week-end.

Mr. and Mrs. J. D. Kincaid have been visiting their son, Windle, who is in the Fisher County Hospital. He has really been feeling bad, and we hope that he will soon begin to feel very much better. We went to Paducah on Tuesday with Mr. and Mrs. Wilber Gruben and Evette, and boy, did it snow while we were there. We visited in Paducah with Mr. and Mrs. Doug Yarborough, before going to the basketball games.



HERO: Sammy Turner was named the 1982-83 Basketball hero at Rotan.



SWEETHEART: Pat Martinez was elected Basketball Sweetheart at Rotan last week.



make someone happy

with

Flowers

Roby Flower, Fabric & Gift Shop

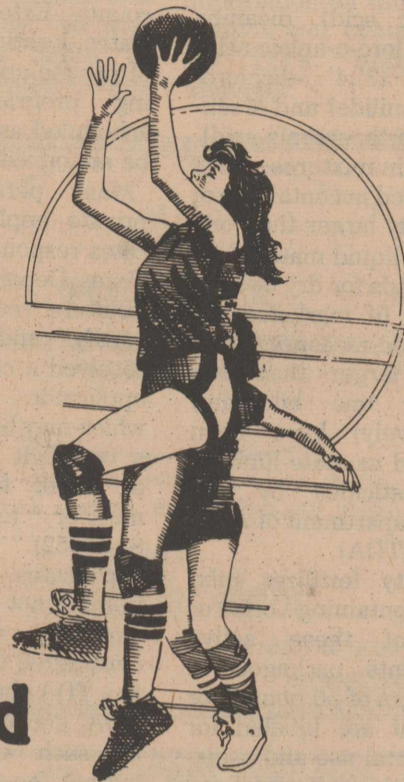
776-2292 Roby, Texas



# Fisher County Basketball

Support Our Fisher County

Basketball Players By  
Attending The Games



COMING ROBY BASKETBALL GAMES

**Roby Boys VS Greenwood**

Snyder Coliseum

Thursday, Feb. 17 at 8:00 P.M.

Practice Game

**Roby Girls VS Paint Creek**

At Aspermont

Friday, Feb. 18 at 7:00 P.M.

Bi-District Game

**Roby Boys VS Cristoval**

At Highland

Monday, Feb. 21 at 7:00 P.M.

Practice Game

**Roby Boys VS Rule**

At Abilene Cooper

Thursday, Feb. 24 at 7:30 P.M.

Bi-District Game

This Week's Featured Basketball Page Supporter:

★ Rotan Insurance Agency

# basketball

★ National Farmers Union Insurance    ★ Rotan Motor Company    ★ Landes Furniture

★ Rolling Plains International    ★ City Auto Supply    ★ H.L. Davis & Company

★ M&C Lumber & Hdw., Inc.    ★ Gold Bond Building Products    ★ Carrillo Exxon

★ Citizens State Bank    ★ Roby Flower, Fabric & Gift Shop    ★ Henry's Quick Stop

★ White Auto Store    ★ City Grocery & Deli    ★ Roby Drug    ★ Roby Hydro

★ Nowlin Farm Supply    ★ Midwest Electric Cooperative    ★ Teague Grocery

★ Weathersbee Funeral Home    ★ Hobbs Co-op Gin    ★ Casa Morales Restaurant

★ First National Bank of Rotan    ★ F&M Chevrolet-Buick    ★ Rotan Paint & Body Shop

★ Texanna's Shear Perfection    ★ Rotanna Inn    ★ Farmers Union Co-op Gin

## County Agent Report

By Richard Spencer

Pesticide products containing the active ingredients 2,4-D (2,4-dichlorophenoxyacetic acid), 2,4-D B (4-A[2,4-dichlorophenoxy], butyric acid), 2,4-DP (2-[2,4-dichlorophenoxy] propionic acid), 2,4,5-T (2,4,5-trichlorophenoxyacetic acid), MCPA (2-methyl-4-chlorophenoxyacetic acid), silvex (2-[2,4,5-trichlorophenoxy] propionic acid), dicamba (3,6-dichloro-o-anisic acid) propanil (3',4'-dichloropropionanilide) and arsenic acid (orthoarsenic acid), alone or in mixtures, when distributed in containers of a capacity larger than one quart for liquid material or two pounds for dry or solid material (if marketed using metric measures—containers larger than one liter or one kilogram, respectively) have been classified as state-limited-use pesticides by the Texas Department of Agriculture (TDA).

Specialty fertilizer mixtures containing one or more of these active ingredients packaged in containers of 50 pounds or less that are labeled for ornamental use and registered with the Texas Feed and Fertilizer Control Service for sale and distribution in this state are exempt from the classification as state-limited-use pesticides.

Products for home use containing one or more of these active ingredients requiring no further mixing or dilution before use and packaged in containers with a capacity of one gallon or less for liquid formulations or four pounds or less for dry or solid materials are also exempt from the classification as state-limited-use pesticides.

State-limited-use pesticides and restricted-use pesticides may only be sold to certified applicators, persons acting under the direct supervision of a certified applicator, or a licensed dealer. Fisher County producers who anticipate use of a state-limited-use or restricted-use pesticide and who do not currently hold a private applicator certificate may wish to obtain a certificate from the Texas Department of Agriculture.

A person is a "private applicator" if the person uses or supervises the use of a restricted-use or state-limited-use pesticide for the purpose of producing an agricultural commodity 1) on property owned or rented by the person or the person's employer or under the person's general control; or 2) on the property of another person if applied without compensation other than trading of personal services between

producers of agricultural commodities. Persons meeting these qualifications may obtain certification as private applicators from the Texas Department of Agriculture through completion of an approved training program conducted by the county Extension agent or through home study using materials available at the county Extension office. Dates, locations and times of private applicator training program sessions, scheduled as needed, will be announced.

Many persons holding private applicator certificates responded to a 1981 Texas Department of Agriculture request to "re-certify" and in so doing received a current private applicator certificate which may be identified by a two-digit prefix—81, 82 or 83—or the certificate number (example: 81-17952). Initial issue certificates (certificate number not preceded by a two-digit number) are considered valid according to a TDA source, however, TDA encourages holders of such certificates to submit an "application" for renewal. A limited supply of the TDA Application for Private Applicator Certificate Renewal is available at the county Extension office.

Richard Spencer

Regulations encouraging vaccination for brucellosis control have gone into effect in Texas.

The regulations apply to cattle being shipped into Texas as well as cattle being moved intrastate.

The two-area program for Texas has become Class B and Class C, effective January 12. The Class B area is comprised of 140 counties in the western half of the state, and the Class C area is composed of 114 counties in the eastern and coastal areas of Texas. These areas were previously known as the Class A control and Class B control areas, respectively.

New vaccination requirements for cattle entering either area of Texas from outside the state include:

After July 1, 1983, female breeding cattle four months of age or older must have been vaccinated before entering Texas with these exceptions: a. Cattle from a certified free herd. b. Cattle being shown in fairs or exhibitions. c. Cattle from commuter herds. d. Cattle for slaughter or quarantine feedlot.

Female cattle four months of age or older born after January 1, 1983 must have been vaccinated when moving from one area to another in Texas, while those born

before that date can move within Texas without having been vaccinated. Cattle born after January 1, 1983 changing ownership within the C area must have two negative tests at least 60 days apart unless they have been officially vaccinated. Officially vaccinated heifers of dairy breeds under 20 months and beef breeds under 24 months which have not calved and are not pregnant are exempt from test.

Non-vaccinated female cattle entering either B or C area of Texas from a Class C state or area require two negative tests 60 days apart until July 1 of this year, after which all females will need to have been vaccinated.

The major stock show circuit begins this week with Ft. Worth followed by San Antonio, Houston, and San Angelo. Fisher County 4-H members have some good steers and lambs to exhibit at these shows.

### Fisher County Nursing Home

Take time to give thanks...for the beauty of today.

Our visitors this week: Visiting Lucille Wright-Doris Branch of Aspermont. Visiting Elvia Sartar-Mary Addington of Possum Kingdom Lake. Visiting Beulah Moffett-Rev. and Mrs. Babbs of Sylvester. Visiting Cora Roberts-Hoarace Mitchell of Roby and Rev. Bill Fee and son of Sylvester. Visiting Josephine Martin-J. D. and Juanita Martin of Edmond, Oklahoma. Visiting John Cox-Mrs. E. M. Toelee of Garden City

The 1983 Girl Scout Cookie Sale will begin Friday, February 18 at 4:00 p.m. Brownie, Junior, Cadette, and Senior Girl Scouts throughout the West Texas Council

will be selling the delectable variations of Girl Scout cookies until March 5. The theme for this year is "COOKIE BEE IN '83". Seven varieties of cookies

### Final Rites Held For R. C. Edwards

Richard C. Edwards, 86, of Sweetwater formerly of

Roby died at 6:50 p.m. Thursday at Rolling Plains Memorial Hospital in Sweetwater after a long illness. Service were at 2 p.m. Saturday at First Church of God in Sweetwater.

### Hospital News

Patients admitted to the Fisher County Hospital February 8 thru February 14 were Maria Mize of Colorado City. Patricia Acorn, Abbie Tankersley, Hortencia Yanez, Danie Gruben, Mark A. Marshall, Edna Taggart, Lurline Murff, Zora McBeth, Minnie McKinney, Robert L. Harrison, Chris Reyes, Sylvester T. Martin and Alice Dodd of Rotan. Carolina Rivera and Willie John May of Snyder. R. B. Jenkins of Aspermont. David Estes of Sylvester. Emmitt M. Hicks of McCaulley.

Roy DeBusk, lay minister officiated. Burial was in the Palava Cemetery in Fisher County, directed by Weathersbee Funeral Home.

Born March 27, 1896, in Mississippi, the son of the late Mr. and Mrs. Dabney E. Edwards, he moved from Hobbs, N. M. to Roby in 1971. He had lived in Sweetwater the past 3 1/2 years. He was a retired employee of the New Mexico Highway Department. He was a Methodist.

Survivors include a brother, W. W. "Bill" of Clifton; and several nieces and nephews.

Tempie West Activity Director

## Girl Scouts Begin Cookie Sale On Friday

hard work during the sale. By selling 3 cases of cookies, a Girl Scout will receive a "Cookie Bee in '83" patch. For 5 cases she receives the cookie patch and a Cookie Bee Wallet. First and second grade Brownies, who sell seven cases are awarded a special Brownie/Dad Weekend at Camp Boothe Oaks in Sweetwater.

Susan Martinez is in charge of the Rotan Brownie Troop 391 that will begin selling cookies. The brownies are Kristi, Martinez, Christi Parr, Jennifer Martinez, Leticia Martinez, Jody McClain, Kelli Weaver, Lychelle Monday, Elizabeth Gonzales, Sharilyn Murdoch, Misty Tankersley, Aletha Flores, and Czrens West.

### Roby Boys Now 20-5

The Roby boys basketball team upped their season record to 20-5 last week by defeating Eula 69-48.

Robby King and Jerry Wallace pumped in a total of 45 points between them to capture scoring honors in the Eula game. King has 22 points while team-member Jerry Wal-

lace had 23 points. Others scoring were Terry Coker 9, Danny Carreon 2 and Chad Terry 13 points.

The Roby boys take on Greenwood in a practice session on Thursday night, February 17th at Snyder Coliseum beginning at 8:00 p.m.

### County 4-H Winners

The Fisher County 4-H exhibitors took four steers to San Antonio Livestock Show and placed two steers. Ryan Jeffrey's Lightweight Chianina placed 6th with Mike Byrd's Middleweight Limousin also placing 6th.

Fifteen exhibitors are currently preparing for the Houston Livestock show, which will be held in March. These exhibitors will participate in the Junior Steer, Lamb and Heifer Divisions.

## Farm Tractor & Service, Inc.

411 S. Cleveland

Rotan, Texas

### NEW EQUIPMENT

Reynolds 5C-5yd. Scraper \$4985.00

Browne Bros. 10 ft. Land leveler w/tires \$1325.00  
Browne Bros. 12 ft. Land Leveler w/grader blade \$1685.00

Bulldozer-J. D. 9 ft. Reg. \$3085.00 Sale \$2885.00  
Bulldozer-J. D. 10 ft. Reg. \$3185.00 Sale \$2985.00  
Bulldozer-Degelman 9 ft. Reg. \$2965.00 Sale \$2785.00  
Bulldozer-Leon 9 ft. Model 770 Reg. \$2450.00 Sale \$2250.00  
Bulldozer-Leon 10 ft. Model 1020 Reg. \$3185.00 Sale \$2985.00  
Bulldozer-Waldon 8 1/2 ft. Reg. \$2385.00 Sale \$1500.00  
USED TRACTORS

JD 730 LP, 1SCV, good tires, good cond., \$2450  
JD 730 LP (clutch-PS steering-PTO starter repaired) new battery, \$2450  
'79 4640, SGbody, QR trans, 3SCV, 2800 hrs. excellent cond., new tires, \$29,500  
'79 4640, SGbody, PStrans, 3SCV, 2683 hr. excellent Cond., \$27,500  
'69 4020, Cab-Hinson, SR trans, 2 SCV good, \$7985

### USED TILLAGE EQUIPMENT

JD1608 chisel plow, 18ft., 16 shank folding w/cyl., 2 pr GW, \$2950  
Bush Hog tandem, 21 ft., good disk, \$3000  
JD Fertilizer applicator, 2 row w/shank 680 capacity, \$750  
Case offset Tandem, 12 ft., new disk on front, \$2150  
Noble Field cultivator w/rake, good, drag type 28 ft., \$1985  
Athem 10 disk one way, \$950

### USED PLANTING EQUIPMENT

DRB Grain drill 16 x 10, good cond., \$1250  
PA804 planters w/beamw/press wheel, good cond., \$275 per row

### USED CROP CARE EQUIPMENT

400 Rotary hoe(extended to 21'-braced) open in center, \$1350  
FM cultivator, excellent, less cylinders \$1785  
AT20 Cultivator, good, \$450

Rear Cultivator, 9 row, folding w/cylinder \$2135

IH 4 row cultivator, \$550

Double tool bar, 7 ft., 3 shank & GW, \$125

### MISCELLANEOUS USED EQUIPMENT

Grain Buggy-Wetmore, 14,000 capacity, \$2250

## COKE

Coca Cola, Mr Pibb, 7-Up, Tab, Sunkist Orange & Barq's Root Beer

16 Oz.

48¢

Teague Grocery

Rotan

## City Grocery & Deli

Supermarket Prices—Quality Products  
Plus Rosebud Stamps—Double on Wednesday  
Prices Effective Feb. 17—Feb. 24, 1983

Roby, Texas

776-2225

 Kleenex Huggies Daytime 18 cnt. \$2.59 With One Super Six Card	Wright Slab Bacon \$1.59 Lb. Bananas 3 Lbs. for \$1.00 Lettuce 39¢ a head	 Parkay Quarters Lb. 3c With One Super Six Card
Gooch (fully cooked—boneless) Country Ham \$1.79 Lb.	Kraft Sliced American Cheese Slices 12 oz. \$1.65	Gladiaola White or Yellow Cornbread Mix 3/59¢
 Pinesol—Deod. Disinfectant 28 oz. \$1.35 With One Super Six Card	Stogg Chili 15 oz. 99¢ Gandy's 8 oz. Yogart 49¢ Deli Pizza Rolls 2/99¢	 Brawny Paper Towels 17c With One Super Six Card
Keebler Zesta Saltines (crackers) 1 lb. box 89¢ Gandy's Slim—Trim Ice Milk 1/2 Gal. \$1.49	Ballard Biscuits 8 oz. Sweet or Buttermilk 5/\$1.00 Gooch Round Steaks \$1.99 Lb.	Texas Ruby Red Grapefruit 5 lb. bag \$1.19 Folgers Instant Coffee 10 oz. \$3.79
Gladiola Flour 5 Lb All Purpose 49c With One Super Six Card	Duncan Hines Cake Mixes 79¢ Ranch Style Beans 2/79¢ Windex Aerosol 15 oz. can \$1.13 With One Super Six Card	 Quaker Oats 18 oz. 39c With One Super Six Card



also feeds lawn for deep green growth

ferti-lome

Martins Feed & Garden

301 W. Snyder

735-3261

Rotan, Texas

Back in my old high school days (the late 60's), about the only thing to do was to go downtown and make the "drag". If my memory serves me right it, the drag, started at the swimming pool. you go down hospital hill until you get to the red-light, turn right (North), and go until you get to the old rock building. Turn around and head back to town, at the light, turn right and go west until the end of town and then turn back east. At the light, turn south and go to the old Drive-in (Kid's Kollege) turn back north. At the light turn east and go back up the hill.

After countless times around the drag you finally get the hang of it. You get so good that you timed the light so that you never have to stop. That conserves gas, you do not have to do all that stopping and starting. After a while, you are good enough to start your own variation of the drag. You go around and around the main drag or go north and south until your heart's content.

This is almost a lost art, high school students these days do not have gas money to do this for long periods of time, like we used to. I guess that they stay home and study, HUH???

Jimmy Markham, Bookkeeping

The 1982-83 Pro Football season will down in history as the season of changes. The prolonged players strike which damaged every phase of the organization. Even the super bowl and pro bowl games had capacity crowds, many of the games resumed after the strike played to much smaller crowds, with few exceptions.

Then comes the bombshell—United States Football League formed and ready to start this spring. It remains to be seen, success of the new league. 12 months of pro football it may dull the appetite. NFL autumn and winter and USFL in spring and summer. History tells us the World Football League, American Football League and All America attempted to break NFL monopoly, with the last two being absorbed by NFL, and the WFL failing miserably.

USFL is reportedly well financed, has a group of capable coaches and players to start the season. The organization does not view itself as rival to NFL, but we feel fans will consider them arch rivals.

Only time will tell if we need 12 months of Pro Football. Hooper Shelton, Printing

Can Changing your name change your life? by Antonia van der Meer. When my grandfather first met my grandmother, he introduced himself as Leo: she told him her name was Helen. When he decided to ask my grandmother to marry him, he nervously told her the truth—his real name is Albert. Although fearful of rebuke, he received a startling confession instead—her real name is Concetta. They decided they were perfect for each other anyway and got married. In fact, they just celebrated their 50th anniversary, as Leo and Helen. Although there are no accurate statistics available, it appears that changing one's name is becoming an increasingly popular trend. About 25 name-changes a week are reported in Los Angeles alone. There seems to be something particularly American about name changing. As immigrants arrived at Ellis Island in New York during the early 1900s, foreign names were often immediately abbreviated and Americanized. Today many people are switching first and/or last names simply because they've decided that the names they received at birth just don't suit them. Its silly to stick with a name you don't like, its like wearing clothes that don't look good on you, or wearing shoes that are too small. A new name can make a difference in how people perceive you, but often that's because the change allows you to perceive yourself differently. Changing your name usually involves no legal complications. In the U. S. you can call yourself anything you like as long as there is no attempt at fraud. Its not necessary to have your name legally changed in court, but the procedure is suggested to avoid confusion. If you do decide to take this route, contact your county clerk for details. The procedures vary from state to state. Even if you don't legally change your name, you should inform Social Security, the motor vehicle department and board of elections of your switch.

Joy Walker, Correspondent

## Eighteen 4-Hers Making Houston Stock Show

Eighteen 4-H members from Roby and Rotan will participating in the 1983 Houston Livestock Show and Rodeo, February 19-March 6. With more than 30,000 expected livestock entries, the Houston Livestock Show is once again the world's largest.

The Houston Show holds the world's record for prices paid for all grand and reserve grand champions in each of its five market divisions. With the 1982 Grand Champion Steer bringing \$127,000, it's easy to see why Houston is the place to be.

Among those participating in the Houston Stock show are Mike Byrd, Danny Carreon, Matt Floyd, Robin Harris, Ward Hayes, Ryan Jeffrey, Alan Kiker, Stephanie Long, Rodney Matthias, Todd Matthews, Dana Nowlin, David Shipp, John Shipp, Reggy Spencer, Ricky

Spencer, Jennifer Wright, Chris Young, and Scott Young.

Ward Hayes and Rocky Roberts, 14 year old FFA members from Rotan, will participate in the calf scramble at the 1983 Houston Livestock Show and Rodeo.

They will both scramble during the February 26th performance in the Astrodome. The contestants who manage to catch a calf, halter it and drag it across a finish line, the scrambling is only the start of a year-long educational experience.

Each winner in the calf

scramble receives a \$600 calf purchase certificate which enables the winner to purchase a purebred, registered heifer that he or she agrees to feed, fit, groom and return to the Houston Livestock Show for special show ring competition the following year. Each winner also agrees to keep accurate monetary records, submit monthly progress reports both to the Livestock Show and the individual sponsor, photographically chronicle the progree of the calf and prepare a 500 word essay on the project.

## Inside The Lions Den

By Mickey McCarty

Roby won their eleventh game in a row to run their record to 20-5. We beat Eula in a practice game 69-48. Eula was the best team we have played in the last couple of weeks. We played good in spots but were not consistent. We also looked out of shape. All the teams we have left will be better than Eula.

If we can play with Zephyr 22-2 and Greenwood 22-2 and ranked 3rd in the State and also state runner-up last year, we can play with anyone in the state. We will find out this week if we deserve to be in the play-offs.

Greenwood has been to the State Tournament the last two years in a row. Two years ago they beat us in the regional semi-finals, so we have an added incentive. Greenwood has lost only to one class A team in two years. Snook beat them in the state finals last year. Most people I tell we're playing Greenwood, think I'm nuts. I might be but we have to play these type of teams if we plan on going very far. I actually think we have a chance to pull the upset. I do not think we will play many teams better than Zephyr and Greenwood. Zephyr will be one of the strongest teams in our region and Greenwood in the state.

Greenwood is a very big team 6'6", 6'5", 6'4", 6'2" and 5'9". The 6'2" player was All state last year and can dunk it backwards, he also won state in tennis, and set the state record high jump at 7'.

You will get your money's worth by going to the Snyder Colesium and watching the game Thursday the 17th at 8:00.

Also there will be a good game before ours. Roscoe will play Sands at 6:30 adn our game will follow. I would like to see a big crowd, cause I know Greenwood will bring a good crowd. You will get to see one of the best teams in the state, and hopefully see us pull the upset.

We need these tough games cause I felt like we lost some of our sharpness during district play. We got into some bad habits—now we must play good to beat these teams. Maybe we can reach our form again.

Remaining tentative schedule is February 18th—Roby Girls Bi District vs Paint Creek at Aspermont at 7:00. February 21st Roby boys vs Christoval at Highland at 7:00. February 24th Roby boys Bi-district vs Rule at Cooper High School at 7:30.

### Rotan School

#### Board Hires

#### Personnel

The members of the Rotan School Board re-hired three principals and Athletic Director Robert Damron at their regular meeting last Monday night, according to Superintendent Jerry Dickson.

The board extended the contracts of principals David Hargrove, M. T. Hill and Donald Bryan through the 1983-84 school year. Damron's contract was also extended through 1983-84 as athletic director and head football coach.

Board members met with Gary Graham of AHAM, Inc and voted to renegotiate the oil lease contract originally executed.

### F. C. Hospital Board Will Meet Monday

The members of the Fisher County Hospital Board are scheduled to meet for their regular monthly meeting on Monday night, February 21st at the Fisher County Hospital, according to Administrator Gary McGee.

The board is expected to review a contract proposal submitted to Dr. V. Carandang and will hear from Parker Wetsel who is expected on some cost saving measures on the heating and air condition system.

Dr. V. Simpao's last day to see patients was Thursday, February 10th, according to McGee, he has moved to the Gorman-Rising Star area to continue his practice.

## Gribbins Files For Roby Council

W. L. "Bill" Gribbins, a Roby farmer and-resident of Roby for the past year, has filed for one of two

vacancies on the Roby City Commission, according to Jimmy Price, Roby City Manager.

Gribbins moved to Roby from Roscoe about a year ago and has also filed for the Fisher County Hospital Board.

Roby Mayor Carl Matthies and Roby City Commissioners Ed Deaton and Jack McClure have all re-filed for positions on the ballot in the upcoming Roby City election set for Saturday, April 2nd, 1983.

Deadline for filing is March 2nd. Those interested in additional information on filing for a position can contact Jimmy Price, Roby City Manager.

## Rotan Nursing Center

Welcome home to Susie Ahrlette and Osbay Owens from Fisher County Hospital. Happy to have them home.


Mr. Rollie Curlee celebrated a birthday this month. His children brought him a lovely birthday party on the weekend. They were Mr. and Mrs. Jack Coonce and family of Odessa, Mr. and Mrs. Harvey Acker and family of Monahans, Mr. and Mrs. Harmon Curlee of Colorado City and Mr. and Mrs. Max Stuart of Roby. Needless to say Rollie and other residents really enjoyed the party.

Mr. and Mrs. Willie Waddell of Muleshoe, Texas visited Emily Garrett. Mr. and Mrs. Kerry Bredemeyer and family of Snyder visited Romie Kersh.

Mrs. Inez Purser of Merkel visited Maud Gruben. Mary Lynn Crawford of Denton visited Mr. Bud

Crawford. Mrs. Calvin Danial and son David of Sweetwater visited the R. T. Shipp and Hubert Danial.

Our deepest sympathy to R. T. Shipp in the loss of a sister on Sunday. Mr. and Mrs. Charlie Smith of Sweetwater visited Gaines Smith.



**ROLEX**  
AUTHORIZED ROLEX SALES  
AND SERVICE

Prompt and guaranteed service done by professional watch and jewelry repairmen at our location.

**COX'S JEWELERS** . . . Since 1895

ONE HUNDRED AND TEN EAST BROADWAY  
SWEETWATER, TEXAS 79556

South Side of Square  
915-235-8611

**573-3602**  
**3925 Colorado City Highway**

# CROCKETT Warehouse Foods

Store Hours 9:00 A.M. - 7:00 P.M.  
Monday Thru Saturday

**We Accept Food Stamps & Coupons**  
Prices Effective Feb. 15 - Feb. 19, 1983  
Snyder, Texas

<b>Armour Treet</b>	12 oz. <b>\$1.46</b>
<b>Van Camp Pork &amp; Beans</b>	16 oz. <b>3/\$1.09</b>
<b>Gold Medal Flour</b> 5 lb. bag <b>89¢</b>	<b>Hersheys Chips</b> Semi Sweet or Milk Chocolate 12 oz. <b>\$1.99</b>
<b>Instant Maxwell House</b> 10 oz. <b>\$4.69</b>	
<b>White Swan Pineapple Sliced or Crushed</b> 15 1/4 oz. <b>2/99¢</b>	
<b>R C Cola</b> 6 pack <b>\$1.29</b>	<b>Washington Delicious Apples</b> 4 <b>/\$1.00</b>
<b>Navel California Oranges</b> <b>8/\$1.00</b>	
<b>No. 1 Irish Potatoes</b> 10 lb. bag <b>\$1.49</b>	<b>Farm Fresh Bread</b> 1 lb. <b>5/\$1.00</b>
<b>Ocean Spray Fruit Juice</b> 8.5 oz. <b>3/89¢</b>	
<b>20 Piece Set Cook Ware Anchor Hocking</b> <b>\$30.95</b>	
<b>Lays Tostitos</b> 1/2 Pounder <b>99¢</b>	<b>Mortons Twin Pack Chips or Ridges</b> 8 oz. <b>89¢</b>
<b>EVERYDAY LOW PRICES</b>	
<b>Generic Dill Pickles</b> Whole or Sliced 32 oz. <b>96¢</b>	<b>Generic Pancake or Waffle Syrup</b> 24 oz. <b>79¢</b>
<b>Generic Peanut Butter</b> 18 oz. <b>\$1.13</b>	<b>Generic Yellow Cake Mix</b> 16 1/2 oz. <b>69¢</b>
<b>Generic Tomatoe Ketchup</b> 32 oz. <b>\$1.06</b>	<b>Generic 2 liter Drink</b> <b>79¢</b>
<b>Generic Apple Sauce</b> 16 oz. <b>3/\$1.26</b>	<b>Generic Tea Bags</b> 100 Count <b>99¢</b>
<b>Generic Bath Tissue</b> 6 roll <b>\$1.09</b>	<b>Generic Fabric Softner</b> 40 Count <b>\$1.19</b>
<b>Generic Black Pepper</b> 8 oz. <b>99¢</b>	<b>Breeze Detergent</b> 38 oz. <b>\$2.34</b>
<b>Wisk Detergent</b> 32 oz. <b>\$2.19</b>	



**ROLEX**

THE RIGHT TIME IS ONE OF LIFE'S ESSENTIAL LUXURIES.  
CERTAIN WOMEN HAVE AN EYE FOR IT: ROLEX

She's credible, classic. She expects encounters in excellence. Time is on her side when it meets her standards of action and elegance. She demands a matching timepiece: the self-winding Rolex Lady-Date, a superb hand-crafted instrument in gold and stainless steel with matching Jubilee bracelet, as fitting at the track as at the hunt ball, and pressure-proof down to 165 feet in its seamless Oyster case.

**COX Jewelers**  
Since 1896 Sweetwater, Texas

Join Us For

## ROBY AEROBICS

Mon./Wed. 5:30 in Pink Building  
New Members Class Begins  
March 2 Call 735-3165



**Professional Watch and Clock Repair**  
Prompt service at reasonable prices  
Labor and material guaranteed for one year.  
Free estimate on all work.

**COX'S Jewelers**  
Since 1895  
Sweetwater, Texas 79556

• SALES • SERVICE



Before You Purchase A New Car Or Pick Up ...  
Give Us A Chance To Show You How Much You'll SAVE At

**F & M Chevrolet - Buick**

Complete Sales & Service  
735-2244  
105 S Cleveland  
Rotan, Texas 79546

## Tax Planning By Gerald Rodgers, CPA



### IRA OR NOT?

For 1982, you are able to make a tax-deductible contribution of up to \$2,000 per year to an individual retirement account (IRA) up to the due date of your 1982 return. How beneficial will such a plan be by the time you retire?

The following schedule has been prepared with the assumption that you contribute a full \$2,000 each year, that your IRA earns 12% interest to age 65 and continues to earn 12% while you draw out your monthly benefits. We are also assuming inflation from now until retirement at 10% annually.

The actual purchasing power benefits at your retirement age are going to depend on the difference between the earnings percentage and the inflation percentage. If you start at age 20, contribute \$2,000 per year, earn 12% and have inflation of 10%, your purchasing power at retirement would be \$372.98 per month.

Column 4 shows a very impressive monthly retirement benefit for a total of 20 years of retirement. Column 5 shows the equivalent purchasing power if inflation remains constant at 10%.

Age	2	3	4	5
Deposited by Age 65	Accumulated Value At Age 65	Monthly Benefits	10% Inflation Equivalent Purchasing Power	
20	\$90,000	\$2,716,000	\$29,905	\$372.98
25	\$80,000	\$1,534,000	\$16,890	\$339.26
30	\$70,000	\$ 863,000	\$ 9,502	\$307.38
35	\$60,000	\$ 482,665	\$5,314	\$276.85
40	\$50,000	\$ 266,667	\$ 2,936	\$246.35

With a difference of 2% between the inflation rate and the earnings rate, it isn't likely that your retirement will be very comfortable at the equivalent purchasing power of \$372.98 per month.

If inflation averaged only 8%, your equivalent purchasing power would be a more appealing amount of \$867.46. Despite the possible negative aspects that could result as shown by the above assumptions, the IRA is still a solid investment for providing supplemental income during your retirement years.

Sponsored by  
**JAMES E. RODGERS & COMPANY**  
Certified Public Accountants  
20 Southwest Third St. Hamlin, Texas

## County Extension Agent Home Economics By Alice Ballenger

interested in some form of food preservation. In early March, I will be attending a two day inservice training to update my knowledge on food preservation. The training includes canning, pickling, jelly, proper equipment to prevent spoilage, and testing pressure canners. Following this training, I will be conducting a series of programs in the county on all phases of food preservation including the above mentioned, and adding freezing and drying methods to this.

This is planned to be five separate meetings emphasizing a different form of food preservation in each class. Keep this in mind if you are interested as dates, place, and other information will follow.

Don't forget that you can still enroll in the "Nutrition Today-Weight Control Tomorrow" mail out series to be offered through this office. The series is planned to begin March 7. We need your name and address as soon as possible in order to estimate the amount of material to be ordered for the mail out. The purpose of this mail-out is to help people analyze their eating behavior; learn how to determine overweight, normal and underweight; learn how to plan nutritionally adequate meals with low calories; and learn why people overeat and how to change eating behavior to lose weight and maintain normal weight.

If you wish to enroll in this class call me at

776-2171 or write to me at Box 187, Roby 79543. We need your name and mailing address.

\*\*\*\*\*  
19 Tuesday, Feb. 22  
\*\*\*\*\*

KING SIZE WALLET CREATIVE COLOR PORTRAITS FOR ONLY **99¢**

Kodak paper. For a Good Look at the Times of Your Life. TM

Extra Charge for GROUPS

NO LIMIT

ASK About Our **FREE** 8 x 10 OFFER

**Shugart's inc.**  
**COLOR PHOTOS**  
Winn's 110 W. Snyder

GET PICTURES MADE OF GRANDPA GRANDMA, DAD, MOM AND ALL THE LITTLE ONES AT THESE SAME LOW PRICES

## County Young Homemakers Conduct February Meeting

The Rotan Young Homemakers met February 8, at the homemaking department at Rotan High School. Bart Strayhorn presented a program on Income Tax and Household Bookkeeping. After the conclusion of his program, refreshments of brownies, cookies and cakes were served.

During the meeting, plans for a bake sale to be held in March were

discussed. Information on the bake sale will be announced at a later date. Members present were: Cindy Fryar, Becky Burk, Jaye Neice Clements, Jan Wetsel, Cindy Posey, Barbara Tankersly, Tammy Kelley, Patti Morrow, Irma Carreon, Terri Morrow, Katherine Ragan, Marilyn Ramsey, DeeAnn Mullins, and Mary Grace Carrillo.

## Golden Haven Home

of Sweetwater. Visiting Eva Chapman-Bill and Bessie Pillow, Golden Pety and Ruth Spence of Roscoe. Bertha Carlile and Nanie Keating of Sweetwater. Visiting Julia Harvey-Kathryn and Leigh Harvey of Austin. Visiting Johnnie Mulanax-Mr. and Mrs. Author King of Midland. Visiting Lizzy Rasco-Doyle Rasco of Sweetwater. Visiting Jack Daniel-Fannie B. Bates and O. R. Roduiks of Odessa.

Our Bingo winner this week was Eva Chapman. We would like to welcome Paula Claunch and Elida Carreon as nurses aids. Also Roxie McDonald who will be working with us as a LVN. Thank you Glenda for the Valentine cake.

Tempie West  
Activity Director

## Card Of Thanks

We would like to thank everyone for all the prayers, cards, flowers, visits and support during Jane's illness and death.

Robert, Diane, and Maxine

I want to thank Dr. LeBleu, Nurses, and other hospital staff for being so nice to me while I was in the hospital. Also, I want to thank everyone that sent cards, visited, phoned, sent flowers, and showed other acts of kindness to me and my family during my stay in the hospital.

Billie Coffman

## Mr. and Mrs. Coy Stuart

### Celebrating Anniversary

The family of Mr. and Mrs. Coy Stuart invite you to celebrate with them the 50th wedding anniversary of their parents.

The reception hosted by James of Lubbock, Landon (Jug) of Carrollton; Tommie Jack of Roby, and Don of Cisco will be from 2 until 5 p.m. at the Roby Fire Hall.

Life long residents of

Fisher County, Coy Stuart married Florene Carter on February 18, 1933 in Sylvester, Texas. They are the children of the late Mr. and Mrs. J. D. (Jeff) Stuart and the late Mr. and Mrs. T. L. (Sell) Carter, Sr.

The couple has 13 grandchildren and 3 great-grandchildren.



Mr. and Mrs. Coy Stuart

## School Lunches

The Rotan Lunchroom menu for February 21-25, 1983 is MONDAY pizza w/meat and cheese, buttered corn, lettuce, tomato, salad, mixed fruit, and milk. TUESDAY Ground meat casserole, pinto beans, lettuce tomato, corn bread, butter, cherry cobbler, and milk. WEDNESDAY chicken salad and pimiento sandwich, tater tots, cole slaw, carrots, frosted cake, and

milk. THURSDAY chicken patties w/gravy, chipped potatoes, green beans, hot rolls, butter, apple sauce, cookies, and milk. FRIDAY hamburger w/cheese, lettuce, tomato, pickles and onions, pork and beans, french fries w/catsup, chocolate pudding, and chocolate milk.

## Roby School Spring Break Date Changed

The Roby Independent School spring break has been changed from March 14-18 to March 28 - April 1.

## Rotan Nursing Center

We are planning a family and friend night on February 28 at 7 p.m. Everyone put it on your calendar and plan to attend. We ask that each one bring either a vegetable, salad or dessert. We hope to have a country western band to entertain.

Also we are planning our Rock and Roll Jamboree for March 4th. Residents will rock and roll for donations for the American Heart Association. We will try to contact each one. If you would like a certain resident to rock or roll please call 735-2233 and make your pledge. Nelda Cox of Midland and

Mr. and Mrs. James Welch of Sweetwater visited Gaines Smith, Mr. and Mrs. Gaines Shipp of Roswell, New Mexico, Mrs. Calvin Danial and son David visited the R. T. Shipp and Hubert Danial. Visiting Fay McClure was Mrs. H. T. Neves of Roby.

Mr. and Mrs. Jess Hallmark of Gorman and Mr. and Mrs. Dalton Sharp of Roby visited Pearl Sharp. Mr. and Mrs. Ennis Floyd of Snyder and Mrs. Rita Warren and girls of Hamlin visited Romie Kersh.

Come See us. P. W. Don't forget the dinner and our Rock and Roll Jamboree.

## PUBLIC NOTICE

### EXEMPTIONS

Persons whose property lies with the Appraisal district of Fisher County and who are due an exemption for property taxes and *did not sign an application in 1982* must submit an application for such exemption by April 30 of this year to the Appraisal District of Fisher County office.

Disabled Veterans must file an exemption each year.

In order for the application to be valid, all information required must be furnished.

### AGRICULTURAL VALUES

All persons who wish to have their property taxes based on open space value and *did not sign an application in 1982* must file proper application this year with the Appraisal District of Fisher County office.

All persons who wish to have their property taxes based on the agricultural value must file, proper application by April 30 of this year with the Appraisal District of Fisher County.

Persons who signed for valuation of their property under the open space application in 1982 do not need to sign up again. Any person who has purchased land from another person in 1982 must file an application as the new owner for 1983.

### RENDITIONS

All persons whose property lies in the Appraisal District of Fisher County whether it be real property or personal property shall render such property for taxation between Jan. 1 and April of this year.

Renditions and applications must be made on forms provided by the Appraisal District of Fisher County office. Rendition forms are available in the Appraisal District of Fisher County office which is located at the Fisher County Courthouse, Rooms 113, 114, 115, Roby, Texas.

The Appraisal District will mail the necessary forms upon request.

FISHER COUNTY APPRAISAL DISTRICT  
P. O. Box 516  
Roby, Texas 79543

1:30c  
FC Appraisal

**FARMERS & RANCHERS UNITE FOR SURVIVAL**  
Join Texas Farmers Union Now

Call 776-2529

## TREES

We are taking orders for FRESH bare root trees.

Pecans, Fruit, Shade, also Grapes, Roses, etc.

These trees will be FRESH. They are the best trees and so are the price. The pecan trees are one and two years root stock and we have had the best luck with these trees in the past.

Discounts for ten or more.

Quality Tree Sales  
Becca Frierson 776-2673  
or  
Roxie Herron 993-4508

PRICES GOOD  
FEB. 17-19, 1983

WHILE SUPPLY LASTS

**ALLSUP'S**  
CONVENIENCE STORES

COOKED FOOD SPECIALS OF THE WEEK

**HAM-EGGS-CHEESE**  
ON A MUFFIN WITH SMALL ALLSUP'S COFFEE

**\$1.29**

**CANADIAN BACON-CHEESE**  
ON A ROLL WITH SMALL ALLSUP'S COFFEE

**2 FOR 99¢**

BORDEN'S  
**HOMO MILK**

**\$2.59**

GAL.

BORDEN'S ASSTD. FLAVORS  
**ICE CREAM**

**\$1.59**

1/2 GAL. RD. CTN.

**Folgers**  
ALL GRINDS  
**FOLGER'S COFFEE**

**\$2.59**

1 LB. CAN

Shurfine 8 oz.  
**Tomatoe Sauce 3/99¢**

Pine—Sol  
**99¢**

15 oz.

American Beauty  
**Egg Noodles 12 oz. 89¢**

Mrs. Bairds  
**Honey Buns 3/\$1.00**

Comet 1/4 oz. **49¢** a can

Minute Maid  
**Lemonade 6 oz. can 3/99¢**

Can Cokes, 7 Up,  
& Tabb 6 pack

**\$1.89**

FOR YOUR CONVENIENCE  
**MONEY ORDERS**

**19¢**

ONLY EACH



**Citizen's  
State  
Bank**

Member FDIC

**Morgeson  
Insurance**

776-2669  
Roby, Texas  
Federal All-Risk Crop  
Insurance

**Wetsel's Locker  
Plant**

735-2541  
Rotan, Texas

**Farmers Union  
Co op Gin**

735-2572  
Rotan, Texas

**Martin Feed &  
Garden**



735-3261  
Rotan, Texas

**Landes  
Furniture**

735-3171  
Rotan, Texas

**M & C Lumber &  
Hdw. Inc.**

735-2448  
Rotan, Texas

**Atwell  
Cleaners**

735-2552  
Rotan, Texas

**City Auto  
Supply**

735-2242  
Rotan, Texas

**Teague  
Grocery**

Rotan, Texas

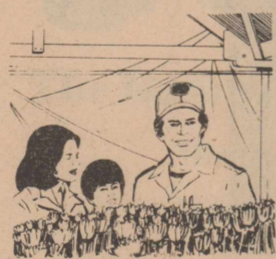
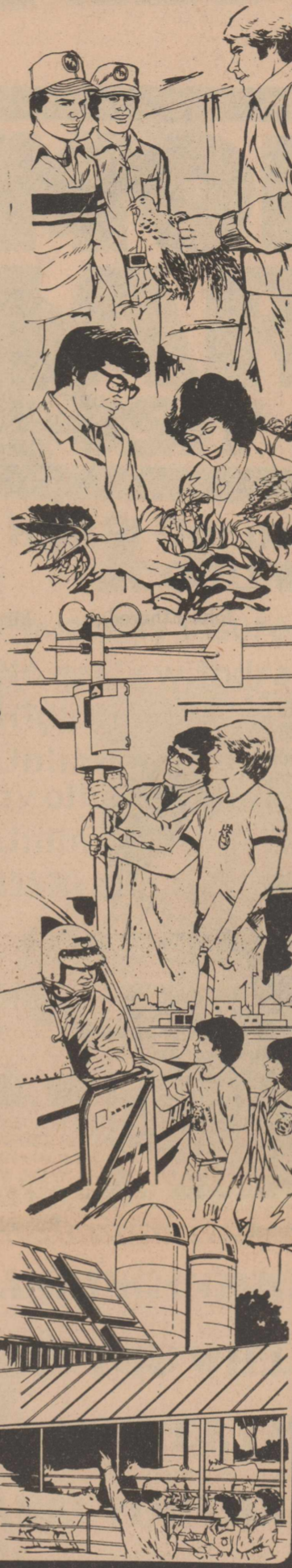
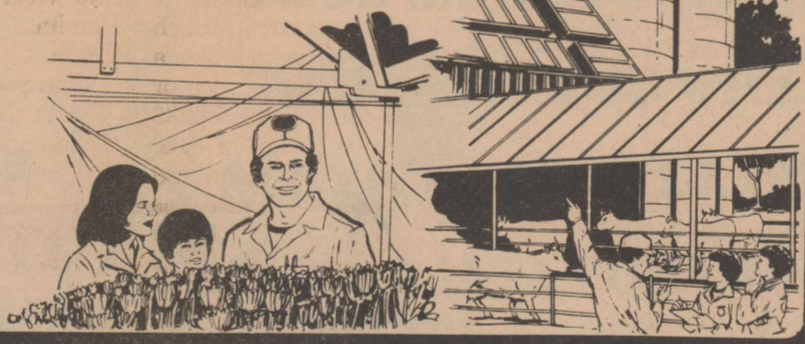
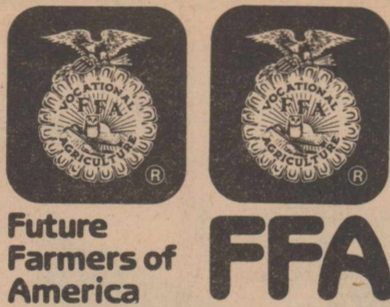
**FFA Week**

**FFFA**

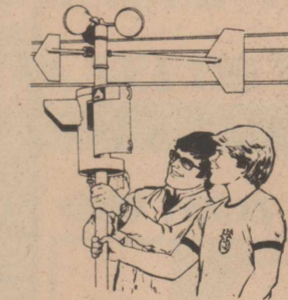
**PREPARING THE AGRICULTURISTS OF TOMORROW**

Through practical training,  
FFA prepares students for  
career opportunities in our  
community. On our farms and  
in our family-owned  
buisnesses, FFA members will  
be playing key roles in the  
future.

We urge you to support  
this fine organization.



**VOCATIONAL  
AGRICULTURE**  
Educating  
Through  
Experience



**Rolling  
Plains International**



735-2274  
Rotan, Texas



**Jack Allen**

**Fina**



735-3212  
Rotan, Texas

**Gray Fuel &  
Chemical Co. Inc.**

735-2381  
Rotan, Texas

**Summers  
Pharmacy**



735-2442  
Rotan, Texas

**Mid-West  
Electric  
Co op  
Inc.**

776-2244  
Roby, Texas

**Clinic Pharmacy**  
735-2500

**Country Pharmacy**  
735-2121  
Rotan, Texas

**Rotan  
Motor Co.**

735-2217  
Rotan, Texas

**Roby  
Insurance Agency**

Roby, Texas

**Terry  
Gin Inc.**

776-2257  
Roby, Texas

**F & M Chevrolet—  
Buick**

735-2244  
Rotan, Texas

**White  
Auto Store**

735-2501  
Rotan, Texas

**Rotan  
Flower Shop**

735-2261  
Rotan, Texas

**Rotan  
Paint & Body Shop**

735-3441  
Rotan, Texas

**Smith & Cyphers  
Gulf Station**

735-3461  
Rotan, Texas



**FFA**

Rotan

**FFA Members**

Rotan FFA Members in VAI are Chad Alls, Michael Grady, Bobby Harbin, Ward Hayes, Edward Martinez, Robert Martinez, Rue Moran, John Pease, Sammy Ramirez, Rocky Roberts, Joe Sparks, David Stevens, Reggie Stinson, David Zambrano, Steve Tamez, and Joe Tamez.

The VAII class is Tim Carrillo, David Carter, Tony Gruben, Shelli Hayes, Larry Messick, Annette Overby, Dion Sepeda, Jerry Turnbow, and Armondo Yanez.

The VA III class is Charles Adkins, Ben Bryan, Chris Duhadaway, Lance Greenway, Greg Gruben, Sidney Hoyle, and Jackie Ragan.

The General Ag Mechanics Pre Lab is Scott Bryan, Kevin Copeland, Rodney C. Denton, Alan Kiker, Toby Moore, Larry Ramirez, Russell Smith, Darren Stevens and Dennis Warren.

# Rotan—Roby FFA Members In The Classroom



**Future  
Farmers of  
America**

**Roby  
FFA Members**

Roby Vo Ag I

Frank Cabello  
Benny Carreon  
David Garcia  
Mark Gordon  
Warren Huff  
Pat Martinez  
Patricia Parks  
Gary Teague  
Clifton Terry  
Bruce Williams  
Treavor Williams  
Joe Acevedo

Vo Ag II

Jimmy Carreon  
Todd Donham  
Nyle Field  
Cindy Gonzales  
Lance Green  
Wenzal Hardwick  
Mike Meek  
Penny Price  
Ricky Spencer

Vo Ag III

Billy Brezenski  
Todd Coker  
John Etheredge  
Stevie rivas

Ag Mech.

Danny Allen  
Bob Burk  
Terry Coker  
Ricky Gordon  
Joel King  
Robby King  
Steve Solis  
Larry Williams  
Kirk Williamson

Sweetheart: Julie Branson



John Etheredge Mr. Daniels



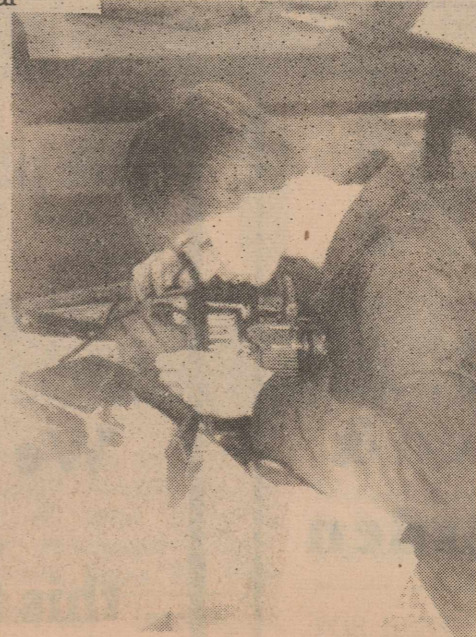
Russell Smith Rodney Denton  
Darren Stevens Mr. Fryar



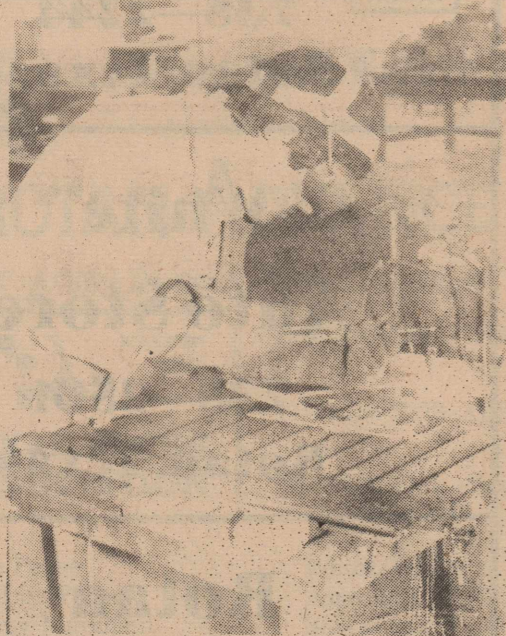
Billy Brezenski



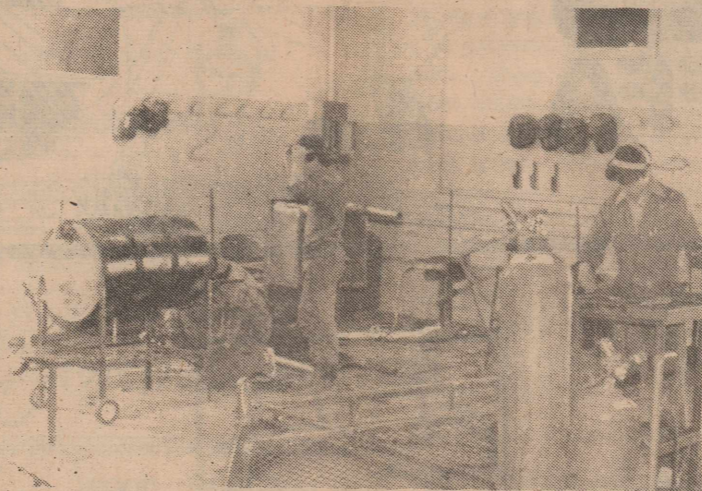
Russell Smith Darren Stevens Rodney Denton



Scott Bryan



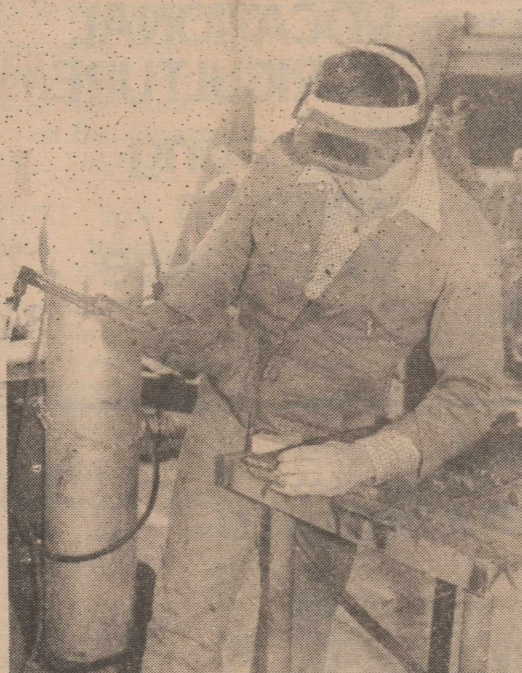
Kevin Copeland



Larry Rameriz Dennis Warren Kevin Copeland



Todd Coker



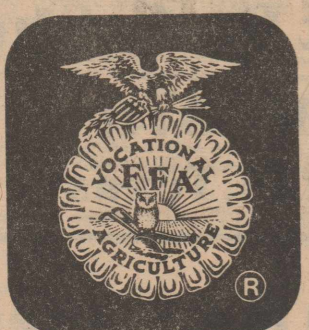
Kevin Copeland



Stevie Rivas



Dennis Warren Larry Rameriz



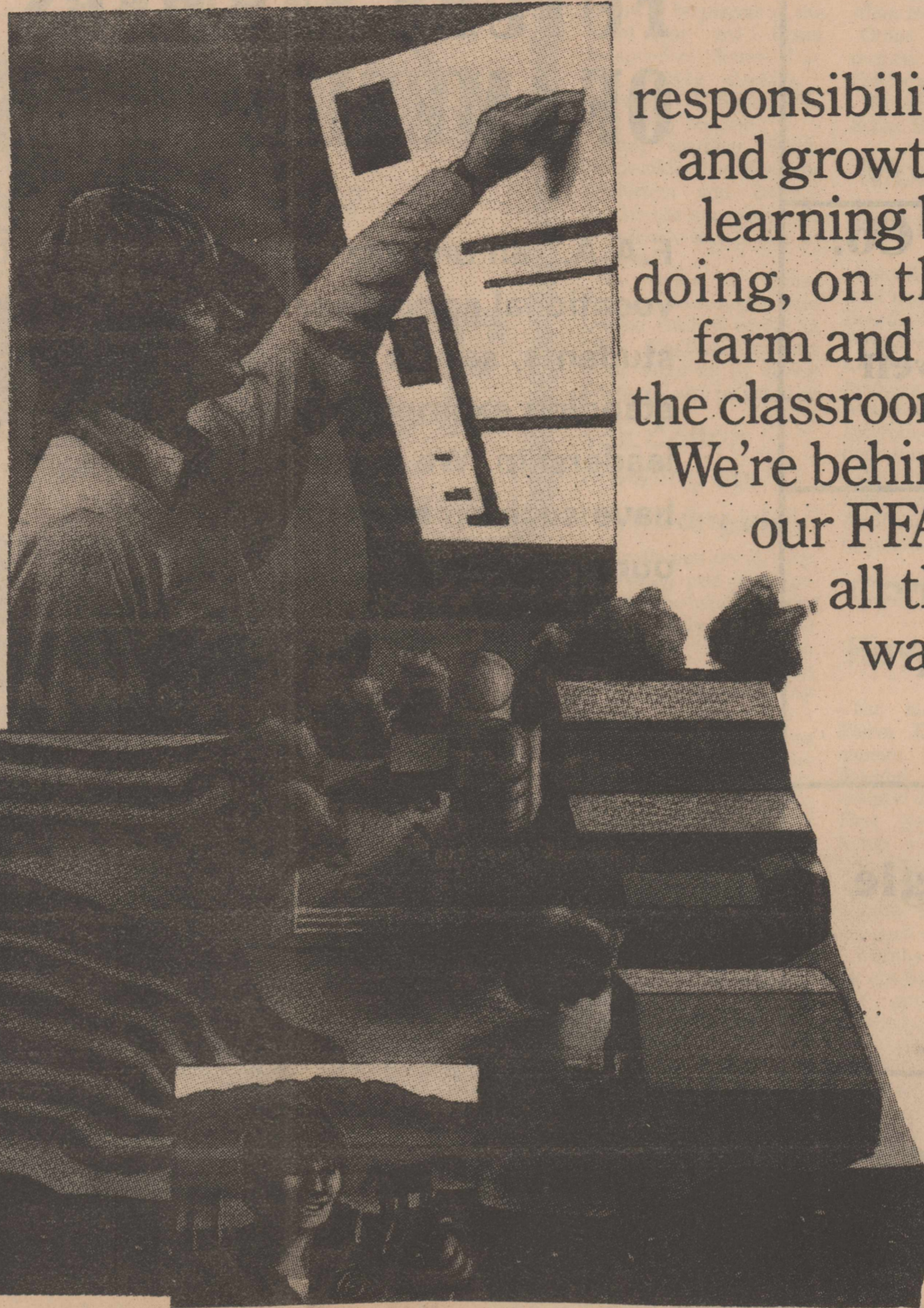
**FFA**



**Future  
Farmers of  
America**

# FFA

Technology is an amazing thing! Our Future Farmers are learning the latest skills and newest techniques, developing a sense of






responsibility and growth, learning by doing, on the farm and in the classroom. We're behind our FFA's all the way!



**Future Farmers of America**



**FFA**

<p><b>Farmers Union Insurance Co.</b> 735-2529 Rotan, Texas</p>	<p><b>Rotan Seed Delinting Inc.</b> 735-3341 Rotan, Texas</p>	<p><b>Rotan Insurance Agency</b> 735-2571  Rotan, Texas</p>	<p><b>Dianne's Beauty Shop</b> 735-3187 Rotan, Texas</p>
<p><b>Farm Tractor &amp; Service Inc.</b> 735-2252  Rotan, Texas</p>	<p><b>Farmers Gin Co.</b> 735-2572 Rotan, Texas</p>	<p><b>Rotan Veterinary Hospital</b> 735-2491 Rotan, Texas</p>	<p><b>Dr. &amp; Mrs. Jerry Marshall Jerilyn &amp; Mark</b> Rotan, Texas</p>
<p><b>Martinez Dairy</b> 735-2903 Rotan, Texas</p>	<p><b>Casa Morales</b> 735-2658 Rotan, Texas</p>	<p><b>McClain's Laundry</b> 735-3101 Rotan, Texas</p>	<p><b>W. A. Cross</b> Sylvester, Texas</p>
<p><b>Dairy Queen</b> 735-2227  Rotan, Texas</p>	<p><b>Roby Hydro</b> 776-2240 Roby, Texas</p>	<p><b>Kids College Day School</b> Donna Kennedy 735-2196</p>	<p><b>Donnie Eaton Dirt Contractor</b> Rotan, Texas</p>
<p><b>Rotana Inn</b> 735-2214 Emmett, Dorothy, and Jennifer Gish</p>	<p><b>First National Bank</b> Member FDIC</p>	<p><b>Kennith &amp; Barbara Hardin</b> Rotan, Texas</p>	<p><b>Jay &amp; Marie Hendon</b> Rotan, Texas</p>

**Rotan Gin Co.**

735-2217

Rotan, Texas

**Poza Rica Oil Co. of Texas**

Thomas B. Colwell  
President  
Rotan, Texas

**Billy Henderson**

**Clay & Margie Fowler**

**Jinkins Ranch**

Mr. & Mrs. T. C. Jinkins

**Big Three Pork Producers**

776-2661  
Roby, Texas

**Nowlin Farm Supply**

735-2371  
Rotan, Texas

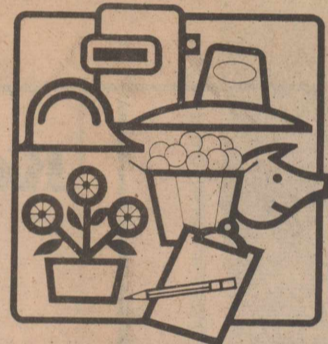
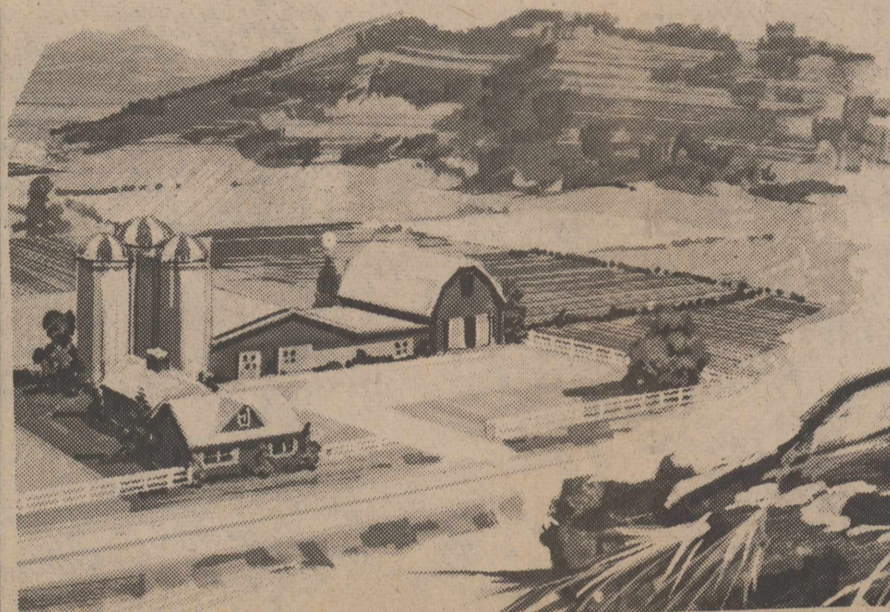
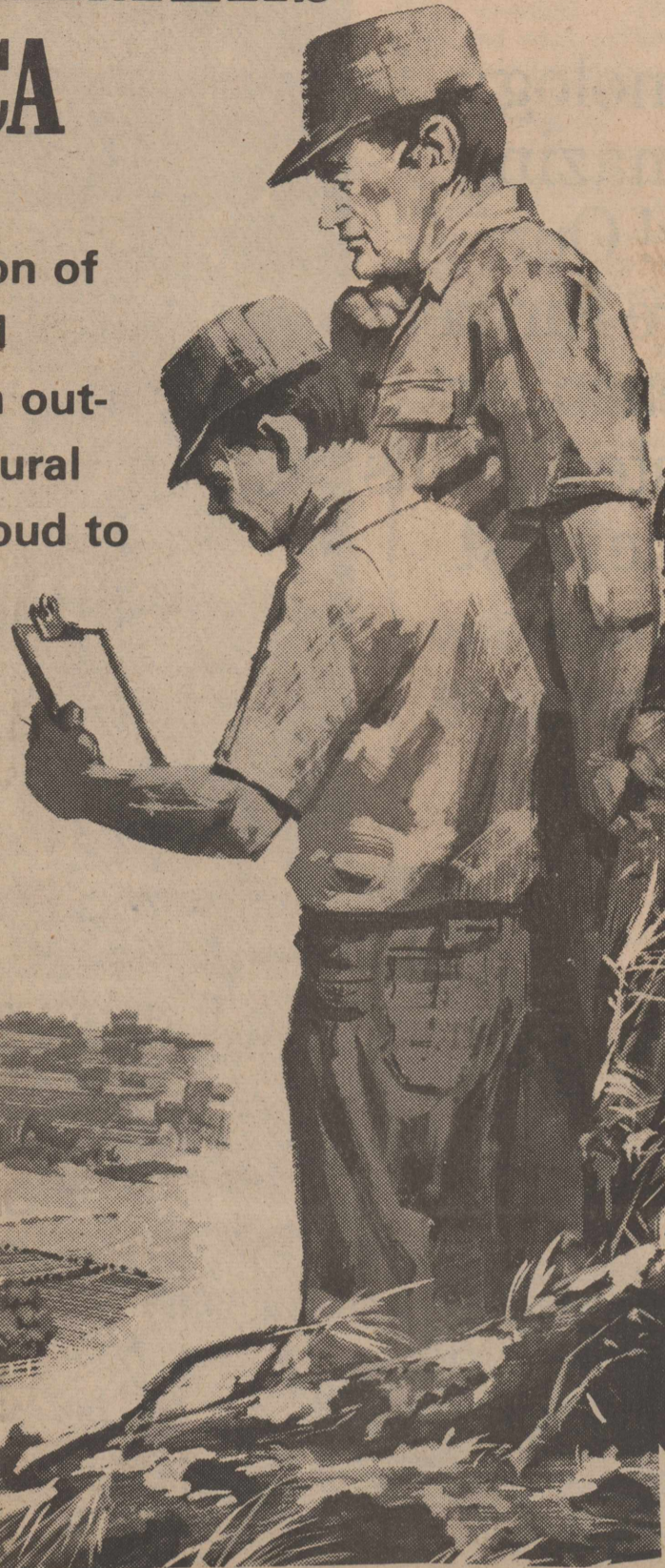


**Sweetwater Production Credit**  
Roby, Texas

"Dependable Agriculture Credit For Farmers & Ranchers Since 1933"

**WE SALUTE THE FUTURE FARMERS OF AMERICA**

F.A.A., an organization of vocational agricultural students, serves as an outstanding example of rural leadership. We are proud to have such an asset in our community.



**VOCATIONAL AGRICULTURE**  
Educating Through Experience



**Gold Bond Building Products**

Division of  
National Gypsum Co.,  
Rotan, Texas

**The Newspaper Office**

735-2562  
Rotan, Texas

**Stuart Carey Texaco**



Roby, Texas

**Mc Clure's Inc.**

776-2448  
Roby, Texas



**F. C. Farm Bureau**

735-3491  
Rotan, Texas

Compliments of

**Bart Strayhorn**

Rotan, Texas

**Weathersbee Funeral Home**

735-2255  
Rotan, Texas

**United Cable**



**Lewis Pest Control**

Registered Prof. Entomologist  
235-5772  
Sweetwater, Texas

**Longworth Gin**

776-2515  
Roby, Texas

**Carrillo's Exxon**

735-8005  
 Roby, Texas

**Henry's Quick Stop**

776-2330  
Roby, Texas

**Jimmy Wright**

Congratulations to the FFA members in Fisher Co.  
Roby, Texas

**Upshaw Trucking**

Mr. & Mrs. Garland Upshaw  
735-2062  
Rotan, Texas

**Martinez Fina**

735-8016  
 Roby, Texas

**Central Lumber Supply**

776-2371  
Roby, Texas