

Roby Star-Record

The Voice Of Fisher County Since 1907

ROTAN ADVANCE

VOL 74 NO. 39

THURSDAY, NOVEMBER 11, 1982

TEN PAGES

Commissioners OK \$919,000 Budget, Set New Tax Rate

The members of the Fisher County Commissioners Court officially accepted the 1982 tax roll and set the tax rate at their monthly meeting last Monday morning. The board accepted the 1983 budget of \$919,000.00 and set the tax rate at 30 cents per \$100 valuation. Based on the county valuation of \$339 million, anticipated taxes collected should be \$919,363.58.

Commissioners allocated the \$919,000 budget in three basic categories. General operating fund is to receive \$485,000, Jury fund is to get \$18,380.00 and each of the four road and bridge funds will get \$103,847.00 making a total of \$919,000.00.

In other action the commissioners discussed an available plan to construct an additional hanger at the Fisher County Airport. Under the plan, with a 20 year payback at 5 percent interest, funds could be available for the construction. However, after Judge Bennett read the letter informing the court of the plan he indicated that he felt the plan was not workable, because of pending problems indicating that the plan could be unconstitutional for cities and counties to get a federal loan.

Commissioners accepted the canvass of the recent election, agreed to pay election judges and workers at the same rate as

paid by Democratic Primary officials and voted to lease approximately 74.31 acres of land for oil, gas and mineral exploration at

the Fisher County Airport to Herbert Wales of Midland, Texas an oil operator for \$106.00 an acre or \$7,876.86. The

lease is for two years with 3/16 production.

In final action the commissioners listened to a report by Bernie Cumbie outlining a new program for replacement of bridges in the county on a cost share basis with the State Department of Highways and Public Transportation.

Replacement costs of bridges in the program would be shared on a 20 percent - 80 percent basis, 20 percent by the county and 80 percent by the state. Commissioners took no action but took the program under advisement.

Rotan School Approves Govan Field Naming

In recognition of the outstanding service by H. Govan to the Rotan School in his volunteer capacity as football trainer, the members of the Rotan School Board voted unanimously to name the field playing surface "H. Govan Field" at their regular board meeting last Monday night. The stadium, previously dedicated "Memorial Stadium" in honor of the veterans of WWII, remains unchanged. The playing surface is being named "H. Govan Field" in honor of Govan's contribution to athletic functions. The request was made by Head Coach Robert Damron on behalf of the Rotan Booster Club and Rotan Ex-Students Association.

In other action, the board voted to purchase a new 19 passenger bus to be ordered from the State Board of Control. This bus will cost approximately \$16,000 and will phase out

one of the older busses in the 8 bus local fleet. The board plans to purchase a new bus each year for the next 3 years in order to update the busses owned by the district.

The board discussed the

tax discount rates as they apply to school taxes for the 1982 collection year.

In the past the school has granted a 3 percent, 2 percent and 1 percent discount for payments of

Continued from page 1

Roby School Board OK's Spring Break Change

The members of the Roby School Board re-adjusted the 1982-83 school calendar at their meeting last Monday night, according to Superintendent Jimmie Laurie. The board moved the dates for the spring break from March 14th to the 18th to March 24th through the 31st (Easter Weekend) because of a multitude of conflicts with University Interscholastic League activities.

In other action the Roby School Board accepted the audit report of Riggs and

Whooten for the 1981-82 year, set policies on student activities fund controls, and added two new teachers to the roll of

VFW Flag Will Fly In Vet. Day Raising

The Rotan VFW will have a flag raising ceremony at the Rotan High School Veterans Day November 11. The ceremony will begin at 8:00 a.m.

substitute teachers Ann Stevens and Viola Benson both of Sweetwater.

The board also set goals and goal indicators as part of the 2nd 5 year accreditation plan. This plan was reviewed by teachers, superintendent, board members, parents and administration personnel.

The board plans a special meeting on Friday, November 12th at 7:30 a.m. for the purpose of setting the tax rate for the 1982 taxing year.

District Judge Revokes Two Probations

District Judge Weldon Kirk revoked the probation of two individuals last Friday in 32nd District Court and both individuals are in jail pending notice of appeal before being sent to the Texas Department of Corrections in Huntsville.

The first individual, Mosies Ortega of Rotan, was on probation for conspiracy to commit burglary in connection with a burglary at the Glenn Copeland home. He was on probation for theft and as a result had probation revoked and was sentenced to 3 years in the Texas Department of Corrections.

In the second case, Howard O'Conner of Sweetwater, was on probation for unauthorized use of a motor vehicle and was charged with failure to support dependents and leaving the state without permission. His probation was revoked and he was sentenced to 5 years in the Texas Department of Corrections.

County Cattle Management Meeting Set

Fisher County farmers and ranchers will have the opportunity to attend a beef cattle management meeting on Wednesday, November 17th at 7:30 p.m. at the Fisher County Courthouse Annex building in Roby, according to Richard Spencer.

Topics of discussion will include: breeding, diseases and management. This meeting is sponsored by the Texas Agricultural Extension Service.

Sgt. H. Velozi Returns To Marine Duty

Marine Sgt. Hector Velozi, son of Elida O. Velozi of 511 E. Sixth, Rotan, Texas, has returned from a deployment to Okinawa.

He is a member of Marine Medium Helicopter Squadron 268, Marine Corps Helicopter Air Station Tustin, Calif.

Hits & Misses

Column By The Newspaper Staff

In all my hustle and bustle Monday, I forgot to mention how beautiful the trees were at Lubbock. The Texas Tech campus and the surrounding area around Tech was really and truly breathtaking with all the beautiful gold and red leaves on the trees. If you have a chance to go to Lubbock go by the campus and on 19th and see how pretty it is.

Also in my hustle and bustle, I came back to work Tuesday and began trying to get all the type set for the paper and make up for lost time. I came upon a newsletter from Richard Spencer about the State Fair show and glanced over it very quickly and thought I already had that information from the State Fair itself. Well, I didn't Richard took time to mention all the participants and how they placed and the names of the people participating from Fisher County, The State Fair only mentioned two persons names. I'm sorry I should have read more closely so this week Richard's article is in the paper. Sorry kids. I do hope you got after Richard thinking he left it out because he talked my boys into raising four pigs in my backyard one year and he needs some trouble now and then just to make up for that.

Janece Pease, Associate

Well, football season is finally over for school. I must say we survived just fine with no injuries and every bone is in place and working well. Most parents are afraid for their kids to participate in football because they are afraid they will get hurt. I'm not that way. My boys can manage to get hurt doing nothing. Todd is the one who usually manages to be the victim, but this weekend it was Shawn. He fell on the school ground and had to have stitches put in his eyelid. As I was taking him to the bathroom to wash it off he replied "Boy I'm a real cub". Admirable remark Huh Coach. Mother wasn't quite so thrilled tho. I don't understand why, but most boys his age think it's neat to get hurt. Never mind what it does to mother. When we were in the emergency room Shawn was very brave and wanted to see the stitches after the cut was sown up and I must say Dr. Carandang did a fine job. I took a mirror out of my purse and let him see, his reply was "O Neat-O. Now who but a kid would think stitches were neat. Coelle Allen, the attending nurse, just smiled. Dr. Carandang, it should make you feel better to know that your work is Neat-O. I hope its along while before one of them decides that getting hurt is fun....

Rosemary Donham, Advertising

HE IS ONLY A BOY

Please don't curse the boy down there. He is my son you see. He's only just a boy you know. He means a lot to me. I did not raise my son, dear fan, For you to call him names. He may not be a super-star, It's just a high school game. So please don't curse those boys down there, They do the best they can. They never tried to lose a game, They're boys and you're a man. The game belongs to them you see, You are just a guest. They do not need a fan like you, They need the very best. If you have nothing nice to say, Please leave the boys alone And if you have no manners, Why don't you stay at home. So please don't curse those boys down there. Each one's his parent's son. Win or lose or tie, you see, To us they're "NUMBER ONE." Anonymous.

Kim Pease, Publisher

Fisher County farmers and the good Lord has turned what appeared to be a crop failure in June into a very bountiful yield, considering conditions. Fisher County has best crop in the immediate area, if not most of the state.

When the uniform planting date passed with fields soggy and much erosion damage we thought this year was missed crop wise, but with modern equipment, improved seed and the know how our farmers quickly got a crop growing after fields died out. After the cotton crop was developed...

Fisher County Gold Star 4-Hers

Three Fisher County 4-H Members were named Gold Star Winners for the 1982 year. They are Tisa Lovett, Darren Jeffrey and Todd Etheredge.

Tisa is a Senior in Roby High School and daughter of Mr. and Mrs. Dwight Lovett. She has been active in 4-H Club work for nine years. Projects and activities that have been most important in her 4-H work include sheep, horse, home improvement, lead-

ership, health, public speaking and method demonstrations.

Her most exciting achievement came in 1981 when she and her teammate won with their Horse Demonstration in State 4-H Round-Up and were awarded a trip to Southern Regional Horse Contest in Raleigh, North Carolina.

Tisa's leadership has included serving locally as President, Secretary and Representative to District 3, 4-H Council. She conducted a workshop on

Method Demonstrations for 4-Hers throughout the District at teen leader lab this past spring.

Tisa has been on the honor roll in school throughout the entire twelve grades. She is a member of National Honor Society, Roby High School Band, participates in basketball and track and is very active in the youth program of the First Baptist Church.

Darren Jeffrey, son of Mr. and Mrs. Jerry Jeffrey of McCaulley has been a member for 10 years. He

has carried projects in beef, field crops, leadership, veterinary science and safety. Darren is one of the top beef showman in the state having won champions at Fort Worth, San Antonio and Houston as well as Fisher County. He has competed at State 4-H Roundup in livestock judging. His leadership activities have included fitting and showing clinics and 4-H recreation.

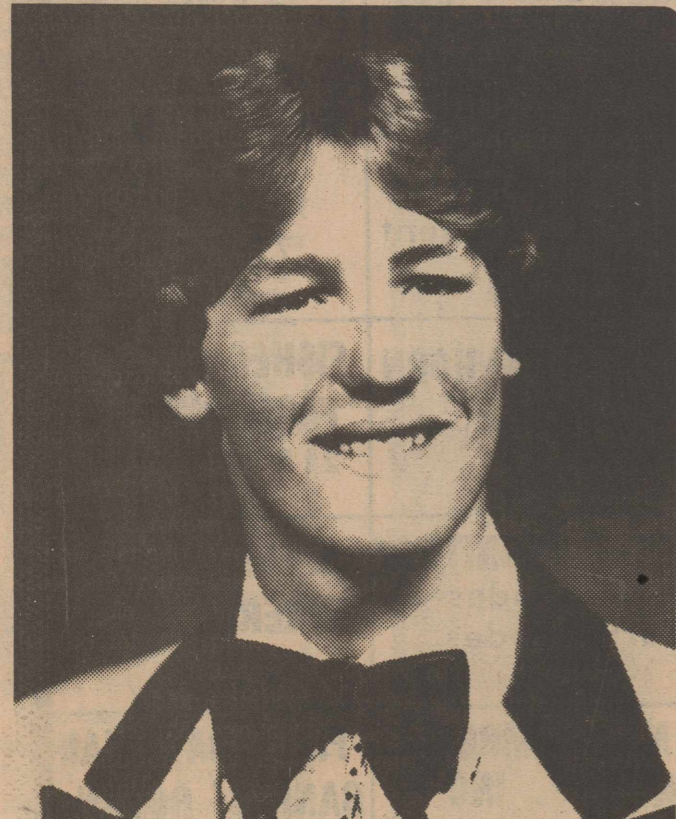
Darren plans a career in farming and ranching where he will use his 4-H experiences.

Todd Etheredge is the son of Mr. and Mrs. Jackie Etheredge of the Hobbs Community and is also a 10 year veteran of 4-H. He has carried projects in Horse, Beef, Sheep, Field Crops and Leadership. Todd has competed in District and State 4-H Horse Shows for many years and has excelled in the reining event. He has been a member of the Horse Judging Team for many years and competed in the State Contest. He and Tisa Lovett won National in 1980 with a

4-H Horse Demonstration. He has also won numerous Champions in Beef and Sheep at the Fisher County Show. His leadership activities include fitting and showing clinics for Fisher County 4-Hers. Todd is a freshman, Pre-Vet major

at San Angelo State where he is a member of the Ram basketball team.

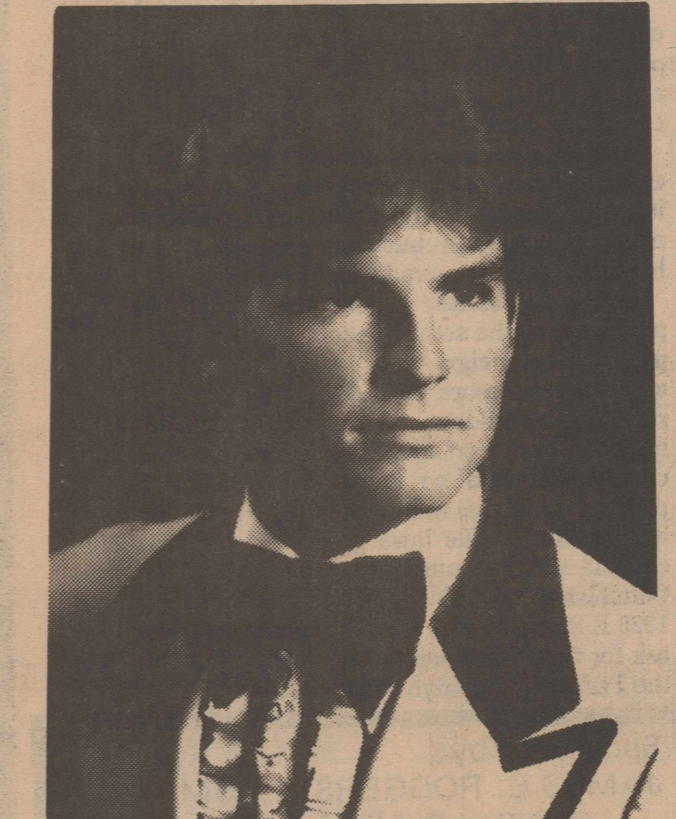
All 3, 4-Hers are very deserving of the honor according to County Extension Agents Spencer, Ballenger and Flores.



Todd Etheredge



Tisa Lovett



Darren Jeffrey

SAVE \$50⁰⁰ on this TAPPAN gas range.

...and better leadership. The competition between the two parties would be so keen that there would not be time to do much mud slinging. Texas would have better qualified people running for public office. Each party would keep the other in line. The parties could not make empty promises and would also have to "stay on their toes" for fear of losing a vote. The "Eyes of Texas" would be watching.

In a couple of years, let us see if we still have to pay that fuel adjustable clause, and see how many housewives are appointed to the utility board.

Jimmy Markham, Bookkeeping

This week I'd like to pass on some unusual miscellaneous pet remedies for those of you who share life with a dog, cat, and/or bird(s). No cat food in the house and Kitty is climbing the drapes? Scramble your cat an egg, throw in some cheese bits, cottage cheese and plain yogurt also do nicely in a pinch. No bone for the dog and he really deserves one? Offer him a cooked corn on the cob. How about flea problems and your animal is allergic to flea collars? Try brewer's yeast. Sprinkle it on top of dog or cat food, it not only makes the food more appetizing, it supplies a lot of B vitamins. Fleas don't care at all for B vitamins and will not suck your pet's blood if it contains them. Fleas also don't like

continued to page 3

Texas Farm Bureau Holding Annual Meet, 1,400 Voters

Farm Bureau
 The Texas Farm Bureau, the state's largest farm organization, will hold its 49th annual meeting here Nov. 28-Dec. 1, at which time some 1,400 voting delegates will decide policies for 1983.
 Theme of the convention will be "United to Solve Problems".
 The voting delegates from 216 organized counties will adopt state policies for the coming year. Approved resolutions on national issues will be forwarded to the 64th annual meeting of the American Farm Bureau Federation which meets Jan. 9-13, also in Dallas.
 Dean Kleckner, president of the Iowa Farm Bureau Federation, will be the keynote speaker. He will address the organization during the Nov. 29 general session in the Dallas Hilton ballroom.
 TFB President Carol Chaloupka will deliver his annual address at the same session. TFB Secretary-Treasurer Wayne Cranfill will precede with his annual report.
 TFB Executive Director Warren Newberry will begin the business session on Nov. 30 with his annual administrative report. The convention business will conclude on Dec. 1 with the election of new members of the board of directors and the TFB president.
 Seven special conferences will be conducted

on Nov. 29. One directed to the Young Farmers and Ranchers will be held at a 6:30 a.m. breakfast with AFBF field representative Vernie Glasson speaking.
 The other six conferences set for 1 to 3 p.m. will include livestock, transportation, field crops, natural resources, taxes and labor.
 Youth activities will include selection of a TFB queen from 13 contestants; a talent find winner from 13 finalists, and a free enterprise speech contest winner from 25 contestants.
 The speech and talent contests will be held beginning at 7 p.m. on Nov. 28. The queen contest will be held at 7 p.m. on Nov. 29. The Outstanding Young Farmer and Rancher for the year will be announced during the queen contest.
 The speech winner receives a \$2,000 scholarship; the next five finalists a \$1,500 scholarship and the last four finalists, a \$1,000 scholarship.
 The talent winner receives a \$1,500 scholarship; the runnerup a \$1,000 scholarship. The queen will receive a \$1,500 scholarship; the runnerup a \$1,000 scholarship.
 The queen, her runner-up, and talent winner and runnerup will all receive trips to the AFBF Youth Leadership Conference in April 1983 in Missouri.
 The top four speech finalists will receive trips

to Washington D. C. and Williamsburg, Va.
 The Outstanding Young Farmer/Rancher will receive free use of a 1983 Chevrolet Silverado for one year, contributed by friendly Chevrolet of Dallas, and free trip to the AFBF convention and the AFBF Young Farmers and Ranchers Leadership Conference Feb. 11-13 in Las Vegas.
 During the convention, the TFB Meritorious Service Award, and recognition for public relations, safety and membership acquisition will be announced.
TSTI Offering Typewriting Course Soon
 Texas State Technical Institute in Sweetwater is sponsoring a defensive driving course in Rotan, Nov. 16 and 17.
 Successful completion of the eight-hour course may qualify students for discounts of up to ten per cent on their automotive liability insurance.
 Classes will meet from 6-10 p.m. each evening in the Rotan Community Center. There is no cost for taking the course, but enrollment is limited to the first forty applications.
 To enroll, contact the Continuing Education Department of TSTI at (915) 235-8441 Ext 73 or write to the Continuing Education Department; TSTI-Sweetwater; Route 3, Box 18, Sweetwater, Tx 79556.

Roby Jr. High Cubs End Season

The Roby Cubs ended their football season Thursday when they hosted the young men from Roscoe. The first game of the evening was a scrimmage game between the 7th grades. Each team had a hard time holding onto the ball in the first quarter. The Cubs had the ball once in this quarter and the Roscoe team had it twice. On the first play of the 2nd quarter Roscoe scored. To take a 8 to 0 led. The Roscoe team had the ball one more time in the 2nd quarter. The Cubs had the ball for two series in this quarter but could not sustain a drive.
 In the 3rd quarter the Roscoe team kept the ball the entire quarter beginning on their 20 yard line. The young plowboys moved the ball to the cubs 38 yard line, the quarter ended on a 2nd and 4 at the 38, 3 plays into the 4th quarter. The Cubs stopped the Plowboys on a 4th and 2.
 The Cubs had the ball 3 times in the 4th Quarter but were unable to score. The Plowboys scored one more time before the game ended making the final score of the 7th grade scrimmage 16 to 0 in favor of Roscoe.
 In the 8th grade game again the Roscoe team came out the winner on the

scoreboard 48 to 8.
 The young Cubs were unable to stop the good running game. Of the Roscoe team. The Cub started out with a good drive keeping the ball for 7 plays and had moved the ball to the Plowboys 30 yard line and were stopped 2 yards short of a 1st down on a 4th and 5. The Plowboys took over on their 28 yard line and moved the ball down the field and scored on a 44 yard run. The first quarter ended with Roscoe leading 6-0. On the first play of the 2nd quarter the cubs fumbled and it took Roscoe one play to go the 31 yards for the touchdown. The Cubs had the ball one more time in the 2nd quarter but the Plowboys scored again when they returned the cubs punt for their 3rd TD of the night. The first half ended with the score Roscoe 18 Roby 8.
 In the 3rd quarter the Cubs had one possession as did the Roscoe team. Roscoe scored late in the 3rd quarter and threw the cubs for a safety to have the 3rd quarter end with

the score of 28 to 8. In the 4th quarter the Cubs lost the ball twice on interception and the Plowboys made 3 more touchdowns. The season ended for the cubs with Roscoe winning 48 to 8.
 The young players for Roby did a good job this year and we the fans would like to thank you for your efforts on the grid iron this year. Roby is proud of you and your

accomplishments. Roby is anticipating the bright future in football because of what you did this year. These men are: Santiago Guerro, Lee Carlisle, Rodney Green, Sharon Thompson, Jason Terry, Freddy Perales, Jeff Green, Rudy Wallace, Gerry Streety, Murry Wright, Reggie Spencer, Jody Mauldin, Heath Dickson, Matt Floyd, Kevin Stuart, Jay Linn Helm, Darry Thom-

son, Jeff Branson, Ken Lee Dennis, Mike Carlisle, Shad Rasco, John Shipp, John Cogdill, Matt Cave, Jesse Carreon, Greg Meek, Morris Green, John Everett, Todd Matthies, Tom Etheredge, Steven Hennington, Shawn Donham, Russell Elkins, Jeff Morton, Kris Neven, Paul Hyer, James Gantt, Steven Carter, Trey Gardner. Manager Jerry Carreon.

SALES • SERVICE



CHEVROLET

735-2244

Before You Purchase A New Car Or Pick Up ... Give Us A Chance To Show You How Much You'll SAVE At

F & M Chevrolet - Buick

Complete Sales & Service

735-2244
105 S Cleveland
Rotan, Texas 79546

Funeral Services

Ruby Green

Ruby Green, 82 of Rotan died after a brief illness at 7:15 p.m. Tuesday November 2 at Fisher County Hospital. Services were Thursday, November 4 at the First Baptist Church.
 The Rev. David Bugg of First Baptist Church in Merkel will officiate. Burial was at the Rotan Cemetery.
 Born May 12, 1900 in Blossom, she married Clyde Green Nov. 30, 1918, in Greenville. They moved to Fisher County in 1924 from Hunt County. Mr. Green died July 17,

1968. She was a member of First Baptist Church and the Fisher County Senior Citizens Organization.
 She was preceded in death by two sons, Durwood, in 1926, and Ray, in 1963, and by a daughter Arlene House, in 1980.
 Survivors include a son, Jack of Colorado City and a granddaughter, Cathy Woods of Irving.
 Pallbearers were Barron Wetzel, J. C. McCullough, Dan Park, Obie Kelley, Mack Blair And Hollis Swaringen.

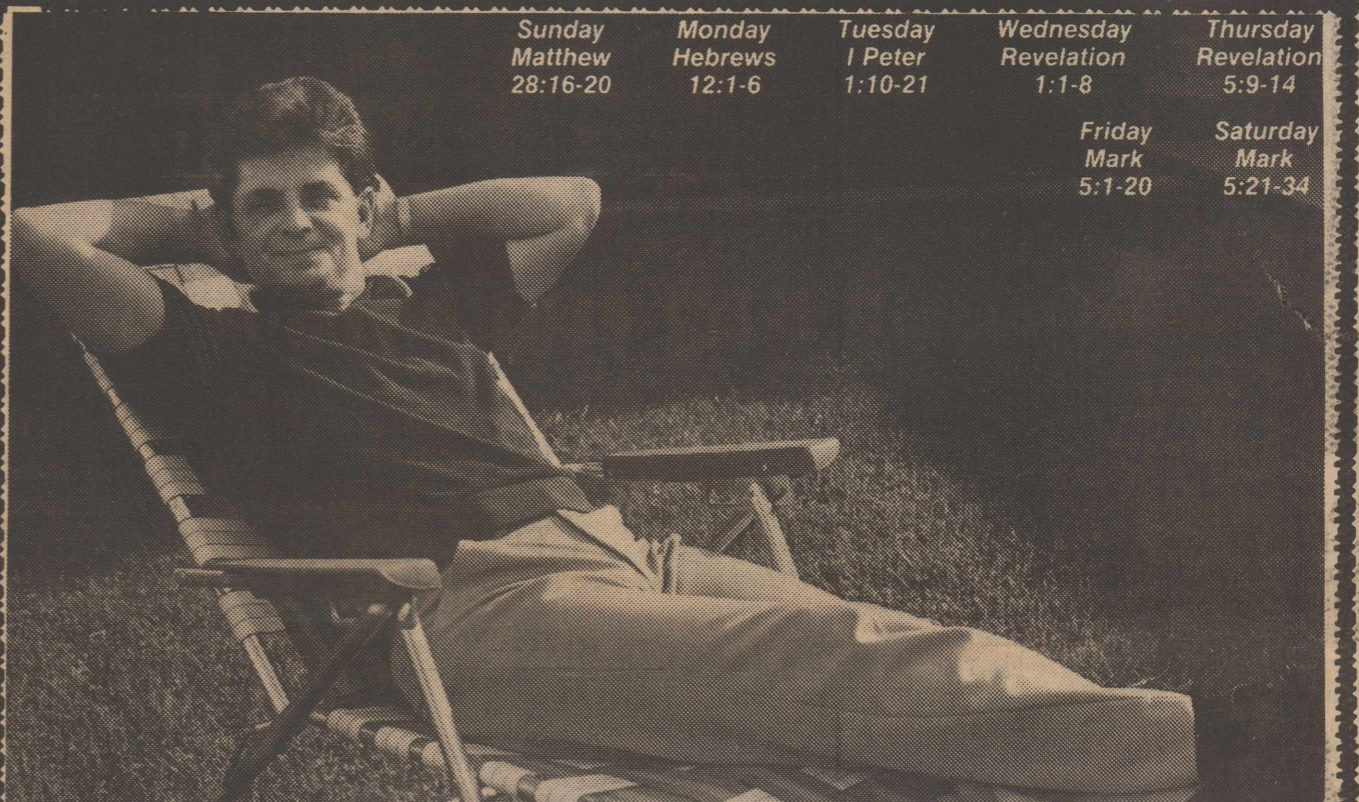
Rotan Young Homemakers Meet Tues.

The Rotan Young Homemakers will hold their monthly meeting Tuesday, November 16, at 7:30 p.m. at the Homemaking Department Rotan High school. Carolyn Schur, Home Economist with West Texas Utilities will present a program on "Christmas Packaging and Holiday Delights".
 Great Christmas ideas and delicious refreshments-everyone plan to come!!
 39:3tc

Legal Notice

Tract No. 3: 11.5 acres out of the Southwest part of Section No. 54 and the Northwest part of Section 53, Block No. One (1), H. T. & B. Ry. Co. Survey, Fisher County, Texas and being the same land described in Deeds recorded in Volume 90, Page 311, Volume 90 Page 331, and Volume 100 Page 423 Deed Records of Fisher County, Texas.
 The Commissioners Court of Fisher County, Texas will receive and consider bids for said oil, gas and other mineral leases at 10:00 a.m. on November 8, 1982.
 Said leases will be awarded to the highest and best bidder and Fisher County reserves the right to reject all bids.
 Marshal Bennett, County Judge
 Fisher County, Texas.

Sunday Matthew 28:16-20	Monday Hebrews 12:1-6	Tuesday I Peter 1:10-21	Wednesday Revelation 1:1-8	Thursday Revelation 5:9-14
			Friday Mark 5:1-20	Saturday Mark 5:21-34



I DON'T NEED TO GO TO CHURCH

Yes, I'm one of those seventy-five million Americans who are not members of a church.
 Saturday and Sunday are the two days of the week I like to devote entirely to relaxation and recreation. Why should I spend an hour or so in church?
 I try to live straight—to put in a full day's work for my boss, to get along with my neighbor, to bring up my children in the proper way. As long as I'm trying to live respectably, why do I need to go to church?
 There is an answer, my friend. Since the beginning of history, you and millions like you have been trying to run your lives and this world of ours by your own knowledge and strength. You've said you didn't need help. But human experience declares that you have failed. The past has left us an ugly picture of cruelty and bloodshed, of hate and crime. The present finds us on the edge of fresh disaster—of devastating war on the outside and moral decay from within. This is the tragedy of man's proud attempt to live without God.
 You need help—help beyond the pale of human resources. You need the love of God that empowers a man to live a good life. You can find this love only in your place of worship—in fellowship and communion with Him. He is in His Church—forgiving, loving, strengthening, giving men the courage and power for right living.
 Copyright 1982 Kelster Advertising Service
 P. O. Box 8024, Charlottesville, Virginia 22906
 Scriptures selected by The American Bible Society

PERT	13 OZ. BTL.	
VICK'S FORMULA 44		
COUGH SYRUP	6 OZ. BTL.	\$3.49
Vaseline Dermatology		
HAND LOTION	5.5 OZ. Btl.	\$2.59
VICK'S TABLETS		
HEADWAY	20 CT. PKG.	\$2.19
CONDITIONER		
ENHANCE	8 OZ. BTL.	\$1.79
SHAMPOO		
ENHANCE	8 OZ. BTL.	\$1.79



TAX PLANNING

by **James Rodgers, CPA**



POLITICAL CONTRIBUTIONS
 Since this is an election year, you may have made political contributions and wonder whether there's a tax benefit for your donations.
 "Individuals" may take a tax credit for half of the political contributions they make during the year, up to a maximum of \$50 on a single return and \$100 on a joint return. The contributions must be in money to qualify for the credit rather than in goods or services, and the money must be used to get the candidate, his campaign committee, or to a national, state or local committee of a national political party.
 Contributions to a newsletter fund for newsletters circulated by a person who holds or is running for political office will also qualify for the credit. The cost of raffle, lottery, or similar tickets to raise campaign funds does not qualify.
 You must have a written receipt or a cancelled check to substantiate your contribution. The credit is for individuals only. Political contributions are not deductible as business expenses, nor can businesses claim a credit for them.
 There are limits, other than those for tax purposes, on the actual amount you can donate to a political campaign. In brief, individuals can contribute no more than \$1,000 for each political race of a candidate, no more than \$20,000 to a national party or House and Senate campaign committees, and no more than \$25,000 for all political donations in any calendar year. For more information on the laws governing contributions, call the toll free number of the Federal Election Commission, 1-800-424-9530. Or write them at 1325 K Street N. W., Washington, D. C. 20463, and ask for their informative brochure, "The FEC and the Federal Campaign Finance Law."

Legal Notice

The Fisher County Commissioners Court will accept bids on a new vehicle for the Sherriff's Department. For information regarding specifications, contact Sheriff Mickey Counts.
 Bids will be opened November 15, 1982, at 10:00 a.m. in the Commissioners Courtroom, Courthouse, Roby, Texas.
 The Commissioners Court reserves the right to accept or reject any or all bids.
 Marshal Bennett
 County Judge
 38:2tc

Cake Decorating

A course in cake decorating for beginners will begin on the campus of Texas State Technical Institute Tuesday, Nov. 16.
 Classes will meet Tuesday evenings from 7-10 p.m. through Dec. 14. Cost for the course, which is limited to the first 15 students, is \$15.00.
 Techniques is basic decorating including frostings, trims, shapes of borders, flowers and more will be covered.
 More information may be obtained by contacting the Continuing Education Department of TSTI at 235-8441, extension 73.

Sponsored by
JAMES E. RODGERS & COMPANY
 Certified Public Accountants
 20 Southwest Third Str Hamlin, Texas

This Week's Featured Church Page Sponsor:		H.L. DAVIS & CO.	ROTAN MOTOR CO.
Roby Midwest Electric		Bill & Elaine Day Rotan	Ford & Mercury Rotan
CITIZENS STATE BANK	FISHER COUNTY NURSING HOME	ROTAN INSURANCE AGENCY	ROBY MIDWEST ELECTRIC
Member FDIC Roby	735-3291 Rotan	Joe Burk-Agent Rotan	776-2244 Roby
ROBY INSURANCE AGENCY	ROTAN NURSING CENTER	BART STRAYHORN	FISHER COUNTY FARM BUREAU
776-2361 Roby	711 E. 5th Rotan	735-2231 Rotan	215 W. Snyder Rotan
CENTRAL LUMBER & SUPPLY	MARTINEZ DAIRY	LANDES FURNITURE	WEATHERSBEE FUNERAL HOME
776-2371 Roby	Rudy, Joe B. & Emilio Martinez Hobbs Community	Loys Landes Larry Landes Rotan	Rotan
FARMERS UNION CO-OP GIN	ROTAN PAINT & BODY SHOP	M&C LUMBER & HDW., INC.	FIRST NATIONAL BANK OF ROTAN
Roby	Rotan	Rotan	Member FDIC

Continued from page 1

3,319 Bales Ginned By Seven County Gins

the odors of mint, sassafras, camomile, and pennyroyal. Stuff a pillow with any of these dried plants, tie it well and put it in your pet's bed. I liked this idea because it smells nice too! Find yourself buying lots of birdfood especially in the winter? Spread any of the following kitchen leftovers on the ground to feed birds. Stale bread crumbled crackers, crushed biscuits, cooked rice (never raw), cheese, fruit, even leftover canned dogfood. In this day and age when we all want to make our dollars go further remember some of these ideas. Our feathered and furry friends depend on us so let's not cut corners on their needs.

Debby Wilfong, Production

Cotton stripping is really under way out here, and I think some of the cotton is the best we have had in a long time, but the price is pretty bad, for as much as it costs to make this kind of crop, or for that matter, any kind of crop. Some folks defoliated and a number have already stripped the defoliated cotton, and most of them are using the big trailers until the gins get real busy, then they'll start using the Module builders. Out cotton right around this area is so much better than a lot of places, especially where they got that hail and had to plant over, it isn't very good and although it looks like it is loaded, its not opening at all. So we should feel lucky that we have such a good crop. Now if the price would only sky rocket, then we would feel like all that work wasn't in vain. It usually starts raining right about harvest time, but so far, the farmers have had some excellent weather for stripping. Of course we need some moisture, as the small grain looks pretty good, but could use a good soaking, and the pastures are really dry, although the cows seem to be doing O.K. and are fat.

Joy Walker, Correspondent

A total of 3,319 bales of cotton have been ginned by the Fisher County gins as of this date. Rotan Gin has ginned 830 bales according to Jim Gruben, Manager. There are about 40 bales on the yard said Gruben. The Rotan Gin has installed some new equipment this year including six Horn and Gladden lint cleaners, two Horn and Gladden incline cleaners two Horn and Gladden stick machines,

one set of seed scales and a Lummus automatic overflow. Gruben estimates a total of 14,000 bales to be ginned this year. Farmers Gin Co. has ginned 255 bales with about 25 bales on the yard according to gin manager Bonnie Duke House. The new ginning equipment added totaled 1.5 million dollars updating and equipping the gin to better serve the people. An estimated 6,000 bales

will be ginned by Farmers Gin Co. according to one of the gin employees. The Farmers Union Co-op Gin in Roby has completed ginning 542 bales with an estimated 40 on the yard and has done some repair to the gin, according to manager Gene Turnbow. An estimated figure of 8 to 9,000 bales is anticipated be ginned this year by the Farmers Union Co-op Gin. Terry Gin in Roby has ginned 462 bales of this date with about 60 on the yard. Two new Lummus stands and a new cleaning system has been added and an estimated 7,000 bales will be ginned according to gin manager Kermit Terry.

The Hobbs Gin has ginned 543 bales with 20 on the yard. Danny Helms, gin manager estimates about 8,000 bales to be ginned this year. Helms reported new lint cleaners had been added along with a new humidifier.

The Sylvester Gin in Sylvester, with gin manager Billy Jeffrey reported 492 bales with 50 on the yard. No new equipment has been added, but repair has been done, with an

estimated 3,500 bales anticipated to be ginned. Fisher County Gins are not running full time yet but all reported to be running eight to twelve hours a day.

Palette & Brush Meets With Mrs. Joiner

The Palette and Brush Club met November 1st for an all day workshop with Myrtle Joiner. Members present were June Anderson, Nan Arnett, Billie Coffman, Linda Callan, Neoma Cauble, Wanda DeBusk, Ester Guerra, Jonnie Hooden-

pyle, Edna McArthur, Glenna Gene Moore, Carolyn Simmons, Sis Killingsworth, Jackie Terry and Joan Terry. The next meeting will be November 15th at Midwest Electric building. It will be an all day workshop for members.

Square Dance Clubs Raises \$218.00

Ruffles and Spurs square dancing club held a benefit cake auction in conjunction with their monthly dance Saturday night. A total of \$218.00 was raised by auctioneer Tommy Jack Stuart. Chances were sold on 2 cakes which were donated by Bylinda Rains and Frances Doty for a total of \$164.00. The cakes were drawn by John Stewart and Maureen Parker. Another \$68.00 in donations was given for a

total of \$450 which was donated to the fund for Belinda Ramirez. Belinda a member of Ruffles and Spurs has been in Hendricks Medical Center several weeks. The club would like to thank each one who helped in anyway to make the benefit a success. Charles and Judy Doty are club presidents.

FARMERS & RANCHERS UNITE FOR SURVIVAL
Join Texas Farmers Union Now
TFU
Call 776-2529

We Sell Religious Books The Newspaper Office



HALLOWEEN PARTY: Mandye Dycus daughter of Mr. and Mrs. Jerry Dycus and Anthony Martinez son of Miss Margie Martinez of Hobbs were best dressed at a Halloween birthday party for Brian Carreon on October 23, 1982.

NOTICE
FISHER, SCURRY, NOLAN & MITCHELL COUNTY COTTON GROWERS!

MJB GIN
ROSCOE, TEXAS

YOUR COTTON IS SAFE WITH MJB... WE WANT YOUR BUSINESS

LET MJB GIN YOUR COTTON -

- *Total module handling system
- *\$1.90 per hundred-hauling and ginning modules
- *\$14.00 for ties and bagging incl. USDA Gr.
- *Tarp furnished for all modules
- *All modules insured from date of stripping
- **Our U.D. pressed bales sell better, save dollars
- *MJB Gin features computer bookkeeping and daily ginning records

FOR ADDITIONAL INFORMATION CONTACT
MAX WRIGHT, OWNER OR DAVID ALLEN
915-766-3314*Route 2*Box 34*Roscoe, Texas 79545

COTTON DEFOLIATION !!!
— NEW PRICES! —

1 qt. Acid.....\$5.75 acre
1/3 gal. Acid.....\$6.25 acre
1 gal./12 acre
Paraquat\$6.00

Same Quality Work!
Since we pay cash for our chemicals-these prices are good only for cash on completion-no credit.
(100 ac. minimum order)
MURPHREE FLYING SERVICE, INC
Rotan, TX. (915) 735-2266

COW POKES

By Ace Reid



"Wul, now whose gonna get the grass stains outa them pants?"

DID YOU EVER HAVE A NAGGIN' FEELING ABOUT THE SAFETY OF YOUR MONEY? THEN BANK AND SAVE WITH US! YOUR SAVINGS AND CHECKING ACCOUNTS ARE INSURED BY AN AGENCY OF THE FEDERAL GOVERNMENT!

First National Bank Of Rotan

735-2224

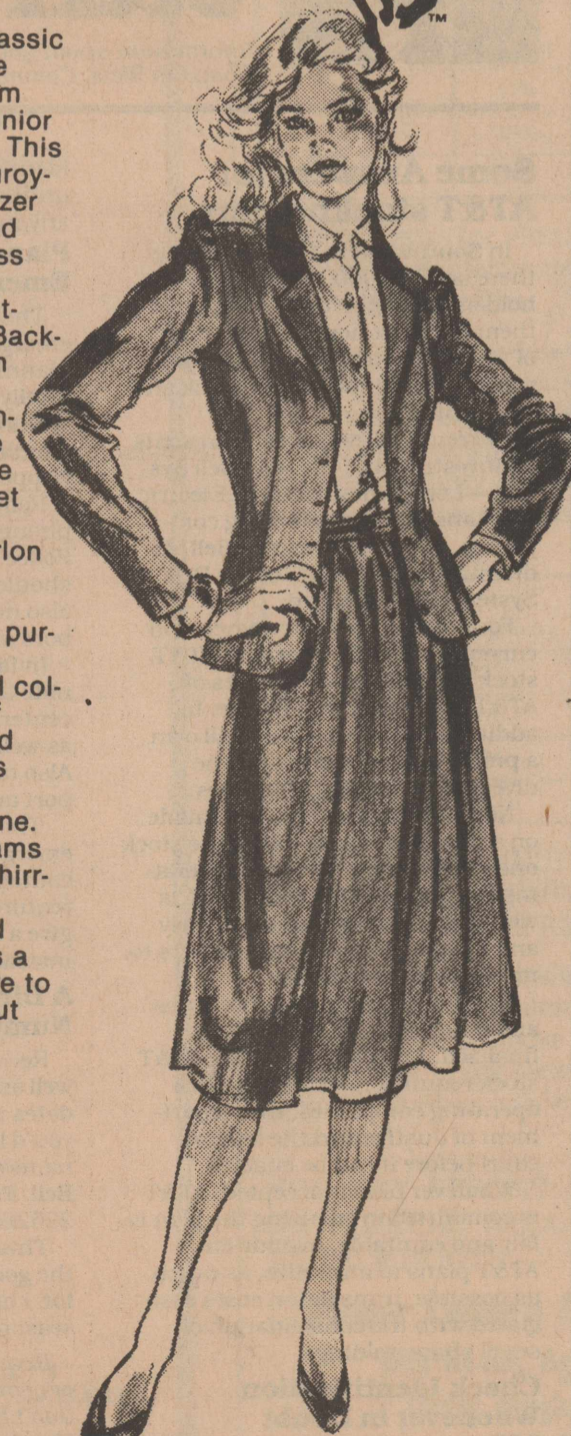
Rotan, Texas

\$100,000
Maximum Insurance for each depositor
BY FEDERAL DEPOSIT INSURANCE CORPORATION

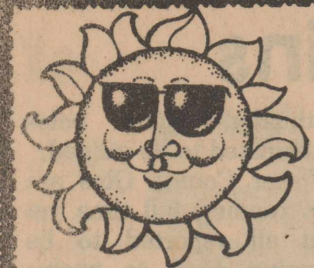
Wrangler JUNIORS



Here is a classic study in fine tailoring from Wrangler Junior Sportswear. This fitted, corduroy-trimmed blazer has front and back princess seams for a clean, uncluttered look. Back-zip skirt with side seam pockets compliments the styling of the blazer. Jacket and skirt of polyester, orlon and avril available in camel, grey, purple and rust. Dainty round collar blouse of polyester and cotton, looks great under blazer or alone. Princess seams and gentle shirring at the shoulder and sleeves adds a feminine flare to this knock-out look.



H. L. DAVIS & CO.
"THE FRIENDLY STORE"
ROTAN, TEXAS



Looking Back

Casting A Little Sunshine On The Past
10 yrs. ago, 5 yrs. ago and last year.
By Rosemary Donham

Ten Years Ago
November 9, 1982
Terry Lou Posey was chosen Best All Around Girl at Roby High and Freddy Carreon was chosen Best All Around Boy. Kathy Murphree received her nursing cap in a formal capping ceremony at First Methodist Church in Lubbock. Brent Jones, Bryan Cave, Burt Weathersbee, Glenn Wilfong, Tim Allen, Dan Burk, Brad Hale and Monte Morrow were on the FFA Jr. Chapter Conducting Team. Dr. Jerry Marshall was the head of the 1972 Girl Scout membership drive. Mr. and Mrs. Jessie R. Hicks opened a new Western

Auto Store in Rotan.
Gorge Goodrum and Dono Campbell attended TSTI participating in Auto Mechanics. Terry Bennett and Sue Donham were attending TSTI participating in the Licenses Vocational Nursing program. The Rotan Yellowhammers suffered their second district loss to Baird 21-18.

Five Years Ago
November 10, 1977
Debbie Day Burns was selected the 1977 Rotan Homecoming Queen. Cheering for the Roby Cubs were Paula Terry, Lisa Hoodenpyle, Tyula McCright, Merry Johnson and Mary Nell Clayton. Jill Laurie was the winner of a Winchester rifle given away by the Roby Senior Class. H. Govan was honored by the football boys and given a letter jacket inscribed 55 years as Trainer, the seven county gins had baled a total of 28, 379 bales of cotton. Linda Vann was

nominated as WTC Queen. Penny Coker was the high point girl in the Rochester vs Roby game with 22 points. The Hobbs Panthers won second place in their district in football.

One Year Ago
November 12, 1981
The Rotan and Roby Bands scored a three at UIL contest. Carol Posey and Edwin Jackson received 4-H Spur Clip Awards. Kelly West, Regina Stewart, Kelly Hunt, Tisa Lovett, Johnny Moesch, Julie Branson, Jana Jennings and Kristi West were named to the Roby National Honor Society. 8,326 bales of cotton had been ginned in Fisher County. Lt. Gary Powell was promoted to Captain. Sterling City blanked the Roby Lions in the last season game 26-0. The Roby JV was defeated by the Haskell Indians 34-14. Lance McWilliams was elected president of the Fisher County Young Farmers of Roby.

TSTI Holding Defensive Drive Course

The Technical Office Training Department of TSTI-Sweetwater is offering a Typewriting I course, beginning Dec. 1.

The class will meet in the Technical Office Training building on Monday and Thursday evenings from 6 to 8:30 p.m. The 60-hour course will continue until February 25 and will cost \$22.00. The cost of the textbook is not included. Early registration for winter quarter classes is Nov. 15-19. Regular registration is Nov. 30. As enrollment is limited, interested persons are encouraged to register early.

For further information, contact the Technical Office Training Department at TSTI. The phone number is 235-8441, ext. 49.

Longworth Gin Burglarized, Suspects Known

The Longworth Gin was burglarized in late October and several hundred dollars in office machines and equipment damaged, according to Fisher County Sheriff Mickey Counts.

The unknown person or persons broke into the Coke machine, taking approximately \$31.00 in change and soft drinks, vandalized the candy machine, removed two stereo speakers and destroyed several office calculators, clocks and a small portable television.

Sheriff Counts indicated that he has some suspects in connection with the burglary.

Walter Grubbs Accepts Position With W.T.U.

Walter Grubbs of Abilene, a state representative since 1978 and former assistant to two U. S. congressmen, has joined West Texas Utilities Co. as governmental affairs representative.

Grubbs will maintain an office in WTU's General Office Building in Abilene and also will spend time in Austin and Washington. His appointment with WTU was effective November 1.

Grubbs is a former mayor of Colorado City, where he

was reared, and is a World War II Air Force veteran. He was administrative assistant to Congressman George Mahon in Washington from 1958-64 and served as district manager for Congressman Omar Burleson in Abilene from 1965-78. He then was elected to two terms in the Texas House of Representatives before losing his bid for a third term in the Democratic Primary this past spring. His current term ends December 31.

continued to page 4

taxes in October, November and December respectively. Because tax notice are not expected to be mailed until mid to late November, the board by law, can only grant 2 percent and 1 percent discounts.

Board members discussed updating the policy manual and agreed to adopt specific changes over the next two months in order to get the manual in compliance with state laws.

Board members acting on a request by the Rotan Band Booster Club, agreed to share on a 50/50 basis the cost of a band booster trailer to haul band instruments. The anticipated cost of the trailer is expected to be \$1,000 to \$1,500 for both the band and school district.

Board members discussed the correspondence credits for courses but did not change the existing policy, discussed the capital improvement program outlining priorities and paid bills before adjourning at approximately 11:00 p.m.

Legal Notice

Notice is hereby given that Fisher County, Texas is hereby advertising for a bid for oil, gas and other mineral leases covering the following described tracts of land.

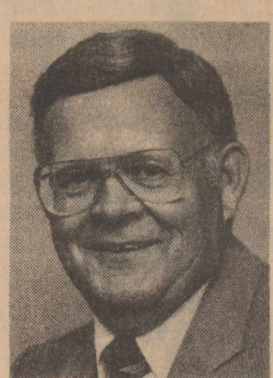
Tract No. 1: 10.99 acres of land, more or less, being a part of the NW/4 of Section No. 53, Block 1, H. T. & B. Ry. Co. Survey, Fisher County, Texas and being the same land described in deeds recorded in Volume 90, Page 324, Volume 90, Page 327, Volume 96, Page 505 and Volume 100 Page 351, Deed Records of Fisher County, Texas.

Tract No. 2: 6.198 acre tract or parcel of land lying and being situated in the SW corner of a certain 200 acre tract of land out of the John Chumley Survey No. 312, Fisher County, Texas and said 6.198 acre tract being more particularly described in a Warranty Deed dated September 5, 1974 and recorded in Volume 379, Page 90, Deed Records, Fisher County, Texas.

The Commissioners Court of Fisher County, Texas will receive and consider bids for said oil, gas and other mineral leases at 10:00 a.m. on December 13, 1982.

Said leases will be awarded to the highest and best bidder and Fisher County reserves the right to reject all bids.

Marshal Bennett,
County Judge
Fisher County, Texas
39:3tc
FC Comm



Let's talk.

Information about your changing telephone service from Jim West, Community Relations Manager.

Some Answers for AT&T stockholders

In Southwestern Bell's territory, there are 224,000 AT&T stockholders and more than 100,000 of them are right here in Texas. Many of you have questions about what will happen to your AT&T stock after divestiture.

Currently, AT&T stock represents an investment in the total Bell System—Long Lines, Western Electric, Bell Labs and the operating companies, like Southwestern Bell. At divestiture, the assets of the Bell System will be divided.

For example, a share owner who currently owns 50 shares of AT&T stock will still own 50 shares of AT&T stock after divestiture. In addition, the stockholder will own a proportionate interest in the divested operating companies.

No final decision has been made on a procedure for dividing the stock once AT&T spins off the 22 operating companies. However, AT&T is working on a plan to make it easy and inexpensive for share owners to manage their holdings.

Specific investment procedures and other details have not been finalized. Any plan regarding AT&T stock requires review by the Bell operating companies, the Department of Justice and the federal court before it can be enacted.

Whatever plan is accepted, AT&T is committed to ensuring the plan is fair and equitable. In addition, AT&T plans to minimize, as much as possible, transaction costs associated with the consolidation of small share holdings.

Check Identification Whenever in Doubt

It's a good idea to make sure you're satisfied before letting anyone in your home. That's why every Southwestern Bell employee carries an identification card.

The ID card shows his or her name, a photograph and an expiration date. The next time a Bell employee comes, you can request

identification, if desired. He'll understand that you don't let just anyone enter your home.

Planning Before Emergencies Occur

The best way to prepare for emergencies is through advance planning. Make sure that every family member—especially small children—understand what they should do when the unexpected happens.

Remember to keep important telephone numbers near the phone. Police, fire and ambulance numbers should head your list. You might also note doctors, hospitals, neighbors and near-by relatives.

In families with small children, note the pediatrician, poison control center, school or day care numbers as well as how to reach you at work. Also take time to review how to report an emergency with youngsters.

They should give the nature of the emergency, name and address and a contact number. If the emergency requires leaving the house, always give a neighbor's phone number instead of your own.

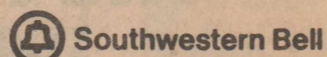
A Directory Keeps Numbers Safe, Handy

Record emergency numbers as well as important addresses and dates in a Personal Directory. If you'd like a free copy, send your name and address to: Southwestern Bell, Personal Directory, P.O. Box 225265, Dallas, Texas 75265.

This time of year reminds me of all the good things in life to be thankful for. I hope that this year's holiday season is equally special for you, too.

Remember, if you have a question or comment you'd like to pass along, don't hesitate to drop me a line. Here's my address:

Jim West
Southwestern Bell
916 Denver
Plainview, Texas 79072



IF YOU ARE NOT SAVING
Rosebud Stamps
YOU ARE NOT SAVING MONEY

776-2225

City Grocery & Deli

Quality Products, Friendly Service,
Super Market Prices
PLUS ROSEBUD STAMPS

Prices Effective Nov. 11-17, 1982

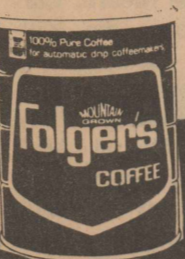
Roby, Texas



Chuck Roast
\$1.39 LB.

Sliced Slab Bacon
\$1.79 LB.

Wolf Brand 19 Oz.



Folgers
1 LB.
Assorted Grinds Coffee
\$1.65
With One Super Six Card

Chili \$1.29

Wonder 28 Oz.
Rice 85¢

Join Our Parade
You'll Like It!!



Eagle Brand Condensed Milk
65c
With One Super Six Card

Parade 17 Oz.

Fruit Cocktail 55¢

Parade 15 Oz.

Pork & Beans 2/69¢

Parade 8 Oz.

Tomato Sauce 3/77¢

Parade 7.5 Oz.

Macaroni & Cheese 4/99¢

Parade Sliced Or Half 17 Oz.

Peaches 2/99¢

Parade Assorted Cuts

Pineapple In Juice 65¢



Zee Nice-N-Soft 4 Roll
Bath Tissue 66c
With One Super Six Card

Armour Treet



12 Oz. Can \$1.23

2 LB. Bag Casserole Pinto Beans 1c
With One Super Six Card



Gainsburger Dog Food \$1.79

Texas Pink Grapefruit 5/\$1.00

Kotex Reg. Or Super 12 Ct.

Feminine Napkins \$1.47

Lux 12 Oz. Dishwashing Liquid 59¢



Carrots

2 Bags For 49¢

Texas

Cucumbers 5/\$1.00



Kraft 16 Oz. Salad Dressings 63c
With One Super Six Card

DELI Burrito With Chili & Cheese \$1.49
Box Lunches To Go
Homemade Chili

Gladiola All Purpose 5 LB. Bag Flour 29c
With One Super Six Card



ROTAN TWIRLERS: Competing in the Twirling competition at Shotwell Stadium in Abilene were Deserrie Gray, Dilana Long and Jerilyn Marshall. Deserrie received a division II for solo twirling, Dilana

received a division II for solo twirling, and Jerilyn received a division I for solo twirling. The ensemble received a division I rating and will travel to Austin in May to compete in the State Twirling competition.

4-H Wins AT Dallas

Fisher County 4-H members placed 10 steers, 5 lambs and 1 heifer at the State Fair of Texas held in Dallas last week.

In the steer division, Ricky Spencer showed his 1020 pound heavyweight steer to Champion Angus honors. The steer was bred by Charles Black of Rotan. Scott Young placed second and Jennifer Wright 5th in the same class. Matt Floyd placed 6th in the lightweight Angus Class. Reggy Spencer placed 10th and David Shipp 14th in the lightweight Polled Hereford class. Mike Byrd placed 7th and Shad Rasco 14th in the lightweight Crossbred Class. Ryan Jeffrey placed 6th in the heavyweight Crossbred class.

The champion angus steer sold for \$2500 in the premium sale. Six other Fisher County steers sold in the sale from 67 cents to \$1.00 a pound. All steers that sold in the premium sale were bred in Fisher County.

Ben Bryan placed 10th in the Junior Hereford heifer class.

In the lamb division, Stephen Hennington placed 12th and Robin Harris 16th in the Heavyweight Columbia crossbred class. Kenlee Dennis placed 8th in the heavyweight Finewool Class. Robin Harris placed 35th in the heavyweight Suffolk crossbred class.

Four lambs sold in the premium sale for an average of \$1.10 a pound.

STRETCH & FLEX
New stretching routines will be featured in AEROBIC DANCE classes in November. Visit our classes to see the new routines. Call 735-3165 for more information. Classes FREE in Rotan.

Roby Ends Season With Defeat By Roscoe, Zone Contest Next

The Lions traveled to Roscoe Friday and ended their season with a defeat by the Plowboys. The Lions could never get untracked and only managed 43 yards rushing and 52 passing for the night and the Lions only crossed into the Plowboy territory one time.

The Plowboys showed why they won this zone, with a powerful rushing game that made 363 yards for the night, they made 82 more passing. The Plowboys ran off 80 plays to Roby's 42. Roscoe won the game 45 to 0.

The Lions had a good season and we would like to thank the players and coaches, the cheerleaders, the band and twirlers for

the fine effort they have put out this year.

The fans and backers of the Lions are very proud of you and what you accomplished this football season.

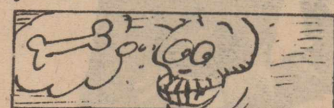
Through your dedication and your hard work and competitive spirit and good sportsmanship you have made Roby a winner that cannot be counted by a scoreboard. Again we say thank you Roby High.

The Lions will be back next year with a very powerful team with all the jr. soph, and fresh. returning plus the ones coming from the eighth grade but this year's seniors will not. So we would like to say a very special thank you to these young men and for all they

have done for the Lions fans. These young men are Robby King quarterback, Larry Williams tight end, Kirk Williamson tailback, Joel King center, Terry Coker tackle, Bob Burk tackle, Rickey Gordon tackle and Tom Duckworth flanker.

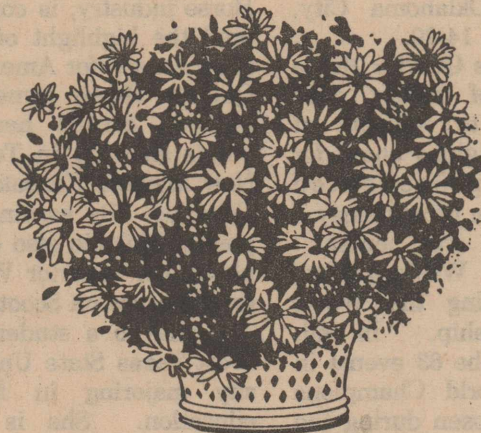
Basketball will start the

18th with a scrimmage with the Hamlin boys in Roby. Everyone needs to get behind our boys and girls in Basketball this year.



Teeth are bones—but harder than most of the other bones in the body.

Say "I Love You" With Flowers



Roby Flower, Fabric & Gift Shop

776-2292

Roby, Texas

COKE

Coca Cola, Mr Pibb, 7-Up, Tab, Sunkist Orange & Barq's Root Beer

16 Oz.

48¢

Teague Grocery

Rotan

CLASSIFIED ADS

BLACK INVESTMENTS

Myla Black, Broker

• Real Estate Sales • Appraisals • Petroleum Landwork

• 2 BR, Brick, only \$12,000

• NICE 3 BR, Country home, central air

New reduced price on 220 acres cultivation west of Rotan.

• 3 BR brick home, carport, central air & heat, cellar, workshop, fence, excellent location.

• 3 BR Home on two acres west of Rotan.

• Older home, next to Allsups

• 6-unit Brick Apartment Bldg., Roby.

• 3 Farm/Ranch Tracts, mineral, Sylvester.

Will do property search for your land needs; will obtain leasing for your oil properties.

(915) 735-3091

BLACK INVESTMENTS OFFERS FOR SALE

Quality commercial business in Rotan.

Main Street building with complete interior setup

Low sales price includes inventory and extras

Qualified purchasers only

Call Myla Black, (915) 735-3091

\$100 Per week part time at home. Webster, America's favorite dictionary company needs home workers to update local mailing lists. All ages, experience unnecessary. Call 1-716-842-6000. Ext. 8612. 39:2tp

We now have fall flower bulbs. Martin's Feed & Garden 38:3tc

FOR SALE: 3 BR house to be moved after 6 p.m. Call 735-2971 38:2tc

Would like to buy some used pickett fence and tile. Martin's Feed & Garden 38:3tc

Now is the time to put down weed and feed, winterizer and crabgrass control fertilizer on your lawns. Martin's Feed & Garden 38:3tc

WOOD CUTTERS: We now have a new machine to sharpen chains for all chain saws. Farm Tractor & Service, Inc., Rotan. 40:4tc

Section of grass land in Borden County near Snyder, Texas. Active oil play nearby and we're letting a portion of minerals and royalties go with the sale. Nearly 100 acres has been tree plowed at one time. Rob Ramby Realty 915-698-4440 or 692-6235. 36:4tc

FOR SALE: Several nice washers and dryers. 60 day warranty. McCaulley 962-5446 35:1tc

FOR SALE: Baled bermuda grass will be ready the 16th or after. Heavily fertilized. Call 735-2376 31:1tc

Silver Spur Cafe
Roby, Texas 776-2744

Open Thanksgiving
From 8:00 a.m. to 2:00 p.m.

Serving an old fashion Thanksgiving Dinner
Turkey & dressing, cream potatoes, green beans, buttered corn, green salad, hot rolls, pumpkin or apple pie, tea or coffee.

Family Style, Plate Lunch, Take Out
Call for Reservations

FOR SALE: 1973 Mercury Marquis Brougham, Full power and air, cruise control, good work car. Contact Charles Thornton. 39:7tc

REMEMBER: The Gum-Drop Tree for Wedding and Baby Shower gifts. 42:4tc

Let the Silver Spur Cafe cook your turkey, dressing, and pies for you. PLAN AHEAD - CALL AHEAD Will take orders up until November 20 776-2744. 38:3tc

MATTRESSES: New and renovated, choice of color, firmness and size. Save on renovating; guaranteed. Made by Western Mattress Company. Call Mrs. Turnbow, 735-2313, Rotan, Leave name. 50:4tc

NOTICE: J.B. SMITH MONUMENTS & CURBING. 308 East 4th St., Rotan. 735-3290. 6:4tc

AUTOS FOR SALE: Cars \$100! Trucks \$75! Available at local government sales. Call (refundable) 1-714-569-0241 ext 7913 for your directory on how to purchase. 14 hrs. 39:1tp

We Sell
Legal & Letter Size
Filing Cabinets
The Newspaper
Office

FOR SALE: 1980 Delta Royal 88 Oldsmobile. Call 735-2630. 34:4tc

DISTRIBUTORSHIPS AVAILABLE-National manufacturing company based in Denton, Texas, looking for distributors to handle complete line of low cost steel homes, single and multi-family, one and two story and tri-level. Tremendous benefits and earnings potential. Show homes available. \$3000 investment required-100% refundable. Total line of commercial and agricultural buildings also available. Call Mr. Brown at 817-566-1386. 38:2tp

FOR SALE: One 3 year old mare mule Call Harold Roberts 735-2815 37:3tc

FOR SALE: Good Jersey Milk cow. See or call William Cleveland, Jr. 735-3237 35:4tc

Dishwasher needed Golden Haven Nursing Home 776-2391. 39:1tc

FOR RENT
Storage Spaces
From \$15.00-Up
per month.
LOCK IT OR
LEAVE IT
ROTAN
SELF-STORAGE
735-3171

MARTINS FEED & GARDEN 735-3261 383tc

FOR SALE: 640 acres -87 acres cultivated, 7 miles east of Rotan. State Hwy 92 on North side. Hap Bratcher Realtor, Lamesa, Texas. Phone 806-872-7850 office or 806-872-7243 residence. 39:4tp

NEW HOME SEWING MACHINES: Electrolux cleaners, rey air all makes. H.B. Stevens, 1101 James Street, Sweetwater, 235-2889. 27:4tc

Third Annual Arts and Crafts bazaar Roby Methodist Church Thursday and Friday November 18th and 19th 9-5:30 Christmas decorations. Home baked dessert and gifts. 39:2tc

FOUND: Black and white male cow dog. If anyone wants it or is missing a dog. Call Robin Roberts 735-2855. 39:1tc

LAMAR TV AND RADIO REPAIRS: Daily pickup in Rotan. Call 235-2224 in Sweetwater. Daily Pickup in Rotan and Roby. Antenna services and systems. You can get local channels clear on a good antenna system. 37:4tc

FOR SALE: Registered Nubian milking goats, Longman bred, Call B. S. Wright 915-735-2843 33:9tp

FOR SALE: Couch, chair, rocker, refrigerator, 1 gas stove and 1 electric stove. 735-2464 or 735-2341. 39:2tp

NOTICE: Will build, remodel, improve and add-on to homes. Interior and exterior work such as paneling, carpeting, roofing, etc. Free estimates. Clifton Griffith Construction. 776-2403. 37:4tc

B And T Real Estate
113 W. Snyder.
735-2571

2 lots, one with trailer hook-up.

PRICE REDUCED-VA or FHA financing available. New Listing. 3 bedroom, paneled, carpet, cedar fence, large corner lot, excellent condition.

EXTRA NICE-New listing. 3 bedroom choice location, excellent condition. Nice yard, fenced. Ready for occupancy.

CORNER LOT - 2 Bedroom, Living Room, Kitchen, 1 1/2 baths, 3 lots. Nice Location.

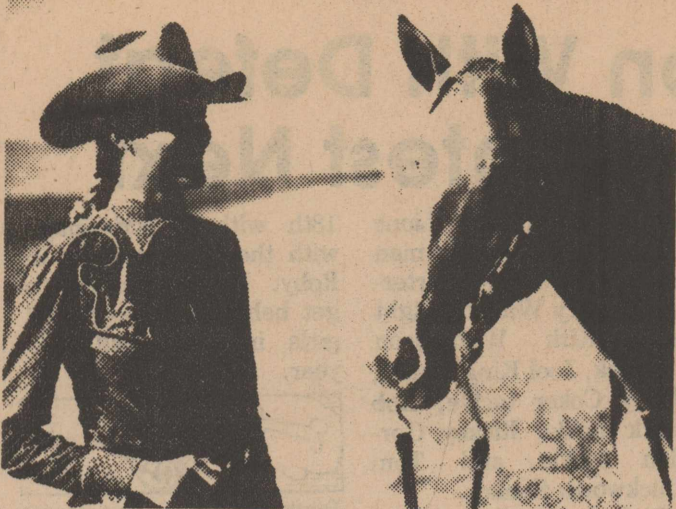
Joe D. Burk, Broker
H. Thompson,
Salesman, 735-3223

Rotan Hatahoe
New Operating Hours:
11:00 a.m. to 7:30 p.m.
Monday-Saturday
12:00 to 2:00 p.m.
Sunday
Your Patronage Sincerely
Appreciated.

YOUR Independent AGENT
The more-than-one-company insurance agent
Deaton Insurance Agency
Roby, Texas 79543
Telephone 776-2228

Roby Star-Record
The Voice Of Fisher County Since 1907
ROTAN ADVANCE
Post Office Drawer A, Rotan, Texas 79546
TEXAS PRESS ASSOCIATION
(915) 735-2562 - Office
(915) 735-2278 - Office
(915) 735-3115 - Home
Kim Pease Editor/Publisher
Janece Pease Associate
Rosemary Donham Advertising
Jimmy Markham Bookkeeping
Joy Walker Correspondent
Hooper Shelton Job Printing
Debby Wilfong Production

Published in Rotan, Texas weekly. Entered as Second Class mail at the Post Office, Rotan, Texas 79546 under acts of Congress.
POSTMASTER: Send Address Correction to: The Newspaper Office, P.O. Drawer A, Rotan, Texas 79546.
Subscription price \$8.50 yearly in Fisher and surrounding counties. \$9.50 remainder of Texas counties. \$10.50 in United States.
Advertising rate is \$1.80 per column inch. Classified rate is \$2.50 for first 15 words and 10 cents for each additional word. Minimum \$2.50 if paid in advance. \$3.00 minimum if billed. Classified display rate is \$2.50 per column inch. Cards of Thanks - \$5.00 minimum charge.
Subscription Expiration dates are listed on each mail subscribers newspaper delivery label each week. Newspapers must be renewed prior to the expiration date. Postal regulations say that subscriptions must be paid in advance to qualify for 2nd class postage regulations.
News and Advertising deadline is 12:00 noon on Tuesday of Each Week. The Rotan Advance-Roby Star Record is published 51 weeks a year. No paper is printed on the last Thursday of each year.
Notice: Any erroneous reflection upon the character, standing or reputation of any individual, firm or corporation will be gladly corrected when brought to the attention of the publisher.
Mail To:
The Newspaper Office
P.O. Drawer A
Rotan, Texas 79546
Please find enclosed for my subscription for _____ years. New _____ Renewal. _____
Name _____
Address _____
City _____ State _____ Zip _____
Top Line Code On Mail Label



Melanie Mason

Melanie Mason Makes Quarter Horse Finals

Melanie Mason, Wildorado, Texas has qualified her Quarter Horse, Scoots Velvet, for the 1982 World Championship American Quarter Horse Show to be held in Oklahoma City, November 14-20.

Melanie's Quarter Horse is one of nearly 1500 expected to compete at this prestigious show for an unprecedented \$300,000 in prize money.

Melanie will enter Scooter in Western Pleasure seeking the World Championship. In all, there will be 63 events in which World Champions will be chosen during the 11 performances.

To qualify for this invitational Show, horses must earn a pre-determined number of points by

competing at AQHA shows held between August 1, 1981 and July 31, 1982. Winning a World Championship, the "Oscar" of the Quarter Horse industry, is considered the highlight of the show season for American Quarter Horse owners. Melanie earned her 50 points showing in Texas, New Mexico, Kansas and Colorado. By earning 50 points, Melanie also completed her superior Western Pleasure on Scooter.

Melanie is a student at West Texas State University majoring in Math education. She is the grand-daughter of Mrs. Will Hargrove and her mother is the former Janie Hargrove.

Fisher County Nursing Home

Mr. Tom Latham is in the hospital. Hope he will be feeling better soon. Mary Gram is out visiting her daughter Francis Batteas of Sweetwater, for several days. Visiting Dana McReynolds is Earl and Mildred Mills of Albany. Visiting Beulah Moffett was Edna and Letha Laneton of Abilene. Visit-

ing Hub Goolsby - Nita Goolsby of Roby. Visiting Ollie Shipp her daughter from Ft Worth. Visiting Jane Phillips Morrison of Abilene. Visiting John Cox - Sug Sherrell of Bonn, Germany. Our thanks to the volunteers who come to visit. Come see us anytime. Tempie West

Gins Receive Honors

Sylvester, Rotan, Hobbs, and Farmers Gins have been honored for five years of service to farmers on the Rolling Plains as a dealer for Pioneer brand seeds. To mark their anniversary, a representative was presented a plaque by the sales manager Rodney Clark.

Dealers on the Rolling Plains were honored with the service awards at a recent gathering in Abilene, Texas. Clarence Kerns, general sales manager for the Southwestern Division was on hand to congratulate the award recipients.

Rotan Nursing Center

Mrs. Charles (Peggy) Richburg is our new administrator. Peggy comes to Rotan from Roscoe. She is the mother of three children and two grandchildren. We welcome Peggy to Rotan and hope she will be happy in her new position.

Sunday November 7th was Susie Ahnlettes birthday. Her daughter Marge Fowler also has a birthday on the 7th. Marge provided a beautiful birthday party for Susie with yummy devils food cake and also the beautiful white birthday cake Susie and the other residents seemed to really enjoy the party.

Our out of town visitors has been Mr. and Mrs. Joe Johnson and Mr. and Mrs. Calvin Danial all of Sweetwater visited the R. T. Shipp and Hubert Danial. Pauline Chandler and friend of Abilene visited Lena Williams.

Visiting Mrs. Ed Price was daughters Mary Frances Fulcher of Odessa and Mrs. Troy Goodwin of Sweetwater. Mr. and Mrs. Edwain Cunningham of Edmond, Oklahoma visited Helen Warner.

Our deepest sympathy to Gaines Smith and family in the loss of Stella Smith. We will all miss Stella so much. See you next week.

Golden Haven Nursing Home

Visiting Letha Meeks was Judy Justiss and Misty Peoples of Sweetwater. Visiting Lora Stephens-Carol Floyd of Roscoe and Mr. and Mrs. Albert Hayes of Hamlin. Visiting Ezell Whiten - Maude Sexton of Seymour. Visiting Beulah Herron - Mr. and Mrs. Dan Rollins of New Mexico. Visiting Elizabeth Hale - Jo and Vera Jennings of Throckmorton and out to lunch at Sweetwater. Out to church with Bert and Ilene Hale. Myrtle Woodson - was out for Sylvester Homecoming winning the prize for being the oldest woman to attend. Bertha Smith visited with Octavious Harrell and Myrtle Woodson and Bessie Scott. Visiting Eva

Chapman were Bertha Carlile and Nanie Keating of Sweetwater, Bill and Bessie Pillow, Mammie Leonard of Roscoe and her two daughters. Ed Roberts - out to Sylvester homecoming and stayed over night with his brother. Mildred Fife out with Tucker James of Sweetwater. Visiting Alta Parsons was Vickie and Lula Mary Parson of Abilene. Visiting Bessie Scott was Mr. and Mrs. Robert Scott of Sylvester. Randy and Connie Scott and children of Midland. Edna Singleton of Well Point visiting Lewis Kiser, Bessie Scott and Myrtle Woodson.

Our bingo winner of the week was Ed Roberts. Tempie West

Katherine Ragan Receives Tech Degree

More than 840 students at Texas Tech University received degrees in commencement exercises at the conclusion of the 1982 summer session. Degree recipients included Katherine Ragan, 309 N. McKinley, Rotan.



Nutmeg was once thought to remove freckles.

A WORD ABOUT NEWS: FITZGERALD



We've Got You Covered

Lone Star buys the gas you need. Bob Kimbrel is one of Lone Star's gas buyers who constantly shop the Southwest for gas value and quality, and for contract terms that are favorable to you.



300 smart buys a year help keep gas first in efficiency.

From offshore and onshore. From East Texas, far West Texas, West Central Texas, North Texas, the Gulf Coast and Oklahoma. From 20,000 wells and 790 producers in 690 different fields, Lone Star gets you the gas you need.

Like you, we buy our gas. Lone Star buyers shop for value and quality, and for contract terms that are most favorable to you.

These purchase/delivery transactions are extremely complex. The buyer needs to know the good gas from the not-so-good, the rich source from the skimpy one. Each buy has its own variables, and we make about 300 new buys a year.

Our buyer may have to bid against as many as 15 others from all parts of the country. And Lone Star's delivery system must be right there. Able to move the gas from the wellhead directly to your home. Today, that requires 32,000 miles of pipeline. And the system keeps growing.

There's plenty of gas. But it takes a smart buy to secure it. And a mighty pipeline system to deliver it.

Lone Star has both. We get you the gas you need.



Lone Star Gas Company Gas. First in energy efficiency.

Shur Fine

FANTASTIC FALL SALE! SECOND WEEK!

SHURFINE CHUNK LIGHT WATER PAK TUNA 6 1/2 OZ. CAN 68¢

SHURFINE CANNED HAM 3 LB. CAN \$7.29

DELICIOUS SHURFINE BOLOGNA 12 OZ. PKG. \$1.09

DELICIOUS SHURFINE FRANKS 12 OZ. PKG. 99¢

SHURFINE INDIVIDUALLY SLICED AMERICAN CHEESE 12 OZ. PKG. \$1.39

BORDEN'S PREMIUM ASSORTED ICE CREAM VANILLA 1/2 GAL. RD. CTN. \$1.59

TOMATO SHURFINE CATSUP 32 OZ. BTL. 99¢

SHURFINE TOMATO SAUCE 4 8 OZ. CANS \$1

SHURFINE SALTINE CRACKERS 10 OZ. BOX 59¢

MACARONI AND CHEESE SHURFINE DINNERS 3 7 1/2 OZ. BOXES 89¢

SHURFINE FANCY TOMATO JUICE 40 OZ. CAN 89¢

SHURFINE DEEP DISH PIE SHELLS 12 OZ. PKG. 69¢

SHURFINE VAC-PAC ALL GRINDS COFFEE 1 LB. CAN \$1.79

IN NATURAL JUICE CRUSHED OR SLICED SHURFINE PINEAPPLE 19 1/2 OZ. CAN 59¢

SHURFINE STRAWBERRY PRESERVES 10 OZ. JAR \$1.19

SHURFINE GRAPE JELLY 10 OZ. JAR 79¢

SHURFINE WHOLE OR STRAINED CRANBERRY SAUCE 16 OZ. CAN 59¢

SHURFINE CRUNCHY OR SMOOTH PEANUT BUTTER 10 OZ. JAR 99¢

SHURFINE WAFFLE SYRUP 32 OZ. BTL. 99¢

SHURFINE CUT GREEN BEANS 3 10 OZ. CANS \$1

SHURFINE ALL PURPOSE FLOUR 5 LB. BAG 69¢

SHURFINE DONELESS HALF HAMS 1 LB. \$2.59

SHURFINE SLICED BACON 1 LB. PKG. \$1.69

HALFPOUNDED LONHORN COLBY OR CHEEDAR SHURFINE CHEESE 10 OZ. PKG. \$1.29

SHURFINE PURE PORK SAUSAGE 1 LB. BOLL \$1.19

BORDEN'S HOMOGENIZED PLASTIC JUG MILK \$2.49 GAL.

SHURFINE SELF-DASTING GRADE A TURKEYS 1 LB. 79¢

SHURFINE QUARTERS MARGARINE 4 10 OZ. PKGS. \$1

HAMBURGER/SAUSAGE/PEPPERONI/CANADIAN BACON SHURFINE PIZZA 12 OZ. PKG. 89¢

SHURFINE KRINKLE CUT POTATOES 32 OZ. BAG \$1.19

SHURFINE BUTTERMILK/COUNTRY STYLE BISCUITS 10 4 OZ. CANS \$1

BORDEN'S CREAMY COTTAGE CHEESE 12 OZ. CTN. 79¢

SHURFINE - MAKES GRAVY DRY DOG FOOD 25 LB. BAG \$3.99

SHURFINE TALL KITCHEN BAGS 15 CT. BOX 99¢

SHURFINE PURE VEGETABLE SHORTENING 42 OZ. CAN \$1.39

SHURFINE WHITE 2-PLY BATHROOM TISSUE 6 ROLL PKG. \$1.49

SHURFINE LIQUID BLEACH 9 GAL. 79¢

SHURFINE ALUMINUM FOIL 2 12 X 25" ROLLS \$1

SHURFINE CREAM STYLE OR WHOLE KERNEL GOLDEN CORN 2 17 OZ. CANS 79¢

SHURFINE FRESH SHELLED BLACKEYES 2 15 OZ. CANS 69¢

SHURFINE EARLY HARVEST SWEET PEAS 2 17 OZ. CANS 79¢

SHURFINE WHOLE SWEET POTATOES 10 OZ. CAN 69¢

REFRESHING PEPSI-COLA 2 LITER BTL. \$1.29

PRICES EFFECTIVE THRU NOV. 13, 1982

WHILE SUPPLIES LAST

ALLSUP'S CONVENIENCE STORES

WE RESERVE THE RIGHT TO LIMIT LIMITED SUPPLY!

OPEN 24 HOURS EVERYDAY!

"THERE'S ONE NEAR YOU"

3,319 Bales Ginned By Seven Contract Vote

the odors of mint, sassafras, camomile, and pennyroyal. Stuff a pillow with any of these dried plants, tie it well and put it in your pet's bed. I liked this idea because it smells nice too! Find yourself buying lots of birdfood especially in the winter? Spread any of the following kitchen leftovers on the ground to feed birds. Stale bread crumbled crackers, crushed biscuits, cooked rice (never raw), cheese, fruit, even leftover canned dogfood. In this day and age when we all want to make our dollars go further remember some of these ideas. Our feathered and furry friends depend on us so let's not cut corners on their needs.

Debby Wilfong, Production

A total of 3,319 bales of cotton have been ginned by the Fisher County gins as of this date. Rotan Gin has ginned 830 bales according to Jim Gruben, Manager. There are about 40 bales on the yard said Gruben. The Rotan Gin has installed some new equipment this year including six Horn and Gladden lint cleaners, two Horn and Gladden incline cleaners two Horn and Gladden stick machines,

one set of seed scales and a Lummus automatic over-flow. Gruben estimates a total of 14,000 bales to be ginned this year. Farmers Gin Co. has ginned 255 bales with about 25 bales on the yard according to gin manager Bonnie Duke House. The new ginning equipment added totaled 1.5 million dollars updating and equipping the gin to better serve the people. An estimated 6,000 bales

will be ginned by Farmers Gin Co. according to one of the gin employees. The Farmers Union Co-op Gin in Roby has completed ginning 542 bales with an estimated 40 on the yard and has done some repair to the gin, according to manager Gene Turnbow. An estimated figure of 8 to 9,000 bales is anticipated to be ginned this year by the Farmers Union Co-op Gin. Terry Gin in Roby has ginned 462 bales of this date with about 60 on the yard. Two new Lummus stands and a new cleaning system has been added and an estimated 7,000 bales will be ginned according to gin manager Kermit Terry.

The Hobbs Gin has ginned 500 bales concerning the purpose for the 2 week delay in action on the contract, said "We couldn't come to a vote tonight, but I think in 2 weeks a vote will be taken". A meeting has been set, for Monday night, November 22nd at 8:00 p.m. for

County Appraisal District praisal Review Board mending Chief praiser Billie Holcomb d the members of her ff for the professional ility they demonstrated establishing the Tax praisal Department. e letter was signed by view Board Chairman L.

W. Knox, and members Julius Decker, L. B. Berry, Harvie Davis and Joe Dale Burk. Board members approved minutes, approved the financial report and discussed the possibility of the appraisal district collecting taxes for some of the taxing entities.

Palette & Brush Meets With Mrs. Joiner

The Palette and Brush Club met November 1st for an all day workshop with Myrtle Joiner.

Members present were Myrtle Joiner, Edna McArthur, Glenna Gene Moore, Carolyn Simmons, Sis Killingsworth, Jackie Terry

Social Security Update

"Changing your name on your social security card is a little more complicated than it used to be," stated Glyn Hammons social security manager in Abilene. Although the service is still free, evidence substantiating the change of name is now required he explained.

This means that when a woman marries and changes her name, she must submit a copy of her marriage certificate to social security with her application for a new card. "Although the original or a certified copy of the marriage certificate is required, it will be returned," stated Hammons. "All new and duplicate social security cards are now issued from Baltimore, MD and are received 2 to 4 weeks after the application is filed," he said. Hammons urged all newlyweds whose names have been changed to get their new social security cards as soon as

possible, since using the old card could cause loss of social security credit or a delay in receiving income tax refunds.

RAPID ROOF
An acrylic latex roof coating that is excellent for patios, carports, flat roofs, shingles, metal buildings & mobile homes. Hail resistant.

Line Of OFFICE SUPPLIES

The Newspaper Office

Open Saturdays
9:00 a.m.-12:00
1:00 p.m.-4:00 p.m.
Until Christmas
Come In & See
All Of Our New
Christmas
Decorations &
Gifts..

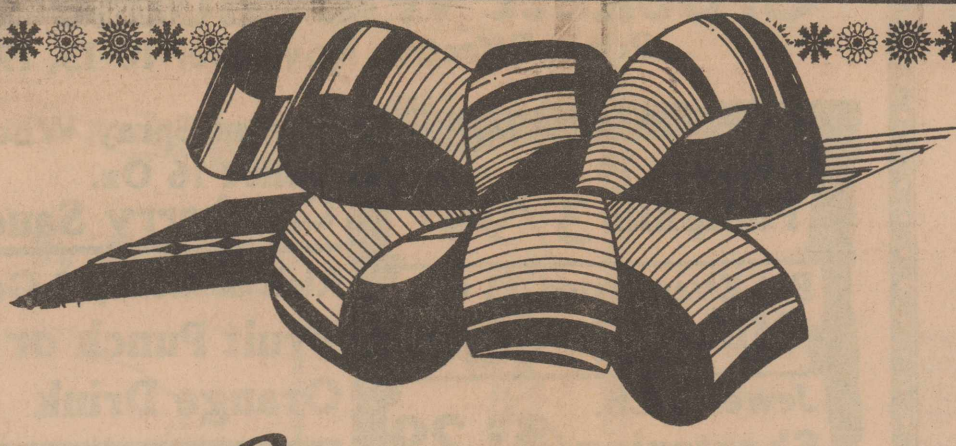
The Gumdrops Tree
Rotan, Texas

TERRY'S INC. GIN

Gin has been completely remodeled with two 158 Lummus stands and new cleaning system.

Ginning - \$1.60
Bagging & Ties - \$11.00
Seed - \$80.00

Your business and friendship appreciated.
KIRMET TERRY Mgr.



Cox Jewelers
Since 1895

Announces A
Pre-Christmas Sale

20% Discount
Thursday, Friday & Saturday
November 18, 19, & 20
9:00 a.m. to 6:00 p.m.

Cox Jewelers
Since 1895

110 E. Broadway Sweetwater, Texas
235-8611

★ Most Items But Not All Items Included
Charge Accounts and Layaways for Christmas Invited.

Happy 124th Birthday To Layne & Loyd
Roy, Mary & Family

★ **Storm Windows**
★ **Screens**
★ **Storm Doors**
116 W. Broadway
Sweetwater, Texas
235-1020
LANCO
Owned By C.J. Langley
15% Tax Credit From The Government On Storm Windows & Doors Until Dec. 31st.

THE DEFERRED ANNUITY OFFERS TAX DEFERRED SAVINGS! FROM SOUTHERN FARM BUREAU LIFE INSURANCE COMPANY

This table shows the interest rate you must earn in a traditional savings plan just to EQUAL the dollars you could accumulate through Southern Farm Bureau's Deferred Annuity:

To equal accumulation of Deferred Annuity interest rate of:	You must earn this rate in an "after-tax" savings plan		
	30% Bracket	40% Bracket	50% Bracket
8%*	11%	13%	16%
10%*	14%	16%	20%
12%*	17%	20%	24%

* Interest rates for illustrative purposes only. For current interest rate contact your Farm Bureau office.

Another way to see how tax deferral can multiply your cash accumulation is to compare the figures in the table below where the same \$10,000 is deposited into two accounts, the Deferred Annuity and an after-tax savings plan, each earning an assumed rate of interest of 10%.

End of Year	Deferred Annuity	After Tax Savings Plan
10	\$ 25,937	\$ 17,908
20	67,275	32,071
30	174,494	57,434
40	452,592	102,857

AND YOUR ANNUITY MAY PROVIDE YOU WITH GUARANTEED RETIREMENT INCOME FOR THE REST OF YOUR LIFE!

Before deciding to transfer your savings into any savings plan, contact your county Farm Bureau office for more information. It could result in the most important decision you'll ever make concerning your retirement planning!

YOU MAY DEPOSIT A SINGLE AMOUNT OR PERIODIC AMOUNTS OF AS LITTLE AS \$50 A MONTH.

Fisher County Farm Bureau
Ben Reaid, Agency Mgr.
Dicky Knight, Agent
735-3491
SOUTHERN FARM BUREAU LIFE INSURANCE COMPANY
JACKSON, MISSISSIPPI



Mr. and Mrs. Charlie Smith

50th Wedding Reception Set For Smith Couple

Mr. and Mrs. Charlie Smith will be honored with a 50th wedding reception from 1:00 p.m. to 3:00 p.m. on Sunday, November 14th at the Firemen's Hall in Roby.

Hosting the celebration will be the couple's children, Mr. and Mrs. Ted L. Smith of Merkel, Texas and Kenneth R. Smith of Sweetwater,

Texas. They have three grandchildren and one great grand child who will share in the celebration.

Mr. and Mrs. Smith were married November 9, 1932 in Fisher County and have made their home in Roby for the last 21 years. All their friends are invited to join them in their 50th anniversary celebration.

Roby FFA Selling Fruit

Members of the Roby FFA will be selling fruit starting this week. The types of fruit are: Grapefruit, apples, and oranges.

The members sell fruit for a money-making project each year. A member will be contacting you, or you may contact a member.

Help support the Roby

FFA Chapter by buying some fruit.

The prices are 40 lb grapefruit \$12, 20 lb grapefruit \$7, 40 lb oranges \$13, 20 lb oranges \$8, 40 lb apples \$17.50, 20 lb apples \$11. 1/2 and 1/2 grapefruit and oranges only large box \$12.50, small box \$7.50.

The fruit will be delivered right after Thanksgiving.

School Menu

The Hobbs lunchroom menu for November 15-19
MONDAY-macaroni and beef, salad, baked potatoes, hot rolls, chocolate chip cookies, and milk.
TUESDAY-green enchiladas, tossed salad, ranch style beans, apple cobbler, tortilla chips, and milk.
WEDNESDAY-sur-

prise hamburgers, salad, french fries, cherry delight cake, and milk.
THURSDAY-steakettes w/gravy, green beans, creamed potatoes, hot rolls, peanut butter spread.
FRIDAY-hamburgers, lettuce, and tomatoes, onions and pickles, french fries, banana pudding and milk.

Back in On The Past go and last year. emary Donham

ominated as WTC Queen. Penny Coker was the high point girl in the Rochester vs Roby game with 22 points. The Hobbs Panthers won second place in their district in football.

One Year Ago
 November 12, 1981

The Rotan and Roby Bands scored a three at UIL contest. Carol Posey and Edwin Jackson received 4-H Spur Clip Awards. Kelly West, Regina Stewart, Kelly Hunt, Tisa Lovett, Johnny Moesch, Julie Branson, Jana Jennings and Kristi West were named to the Roby

The Rotan Home Extension Club met November 4th with Mrs. Effie Murphree with 12 members present. Mrs. Ardell Floyd, President opening the meeting with the thought "Experience is a hard teacher; she gives the test first and the lesson afterwards" Mrs. Effie Murphree gave the recreation. Mrs. Beatrice Hargrove gave the minutes of the last meeting and the treasurer's report. Mrs. Jessie Atkins gave the Council report. Our club will decorate the Christmas tree at the

School Menu

Rotan lunchroom menu for November 15-19, 1982.
MONDAY-spaghetti w/meat sauce, buttered corn, carrots, raisin salad, hot rolls, butter, cookie, milk.
TUESDAY-sandwich, french fries w/catsup, buttered peas, chocolate cake and milk.
WEDNESDAY-frito pie, seasoned pinto beans, onions-pickles, corn bread, butter, fruit jello and milk.
THURSDAY-fried fish w/tarter sauce, green beans, whipped potatoes, hot rolls, butter, frosted cake, and milk.
FRIDAY-hot dogs w/meat sauce, pork & beans, french fries w/catsup, cheese wedge, banana pudding, and chocolate milk.

TSTI Holding Defensive Drive Course

The Technical Office Training Department of TSTI-Sweetwater is offering a Typewriting I course, beginning Dec. 1.

The class will meet in the Technical Office Training building on Monday and Thursday evenings from 6 to 8:30 p.m. The 60-hour course will continue until February 25 and will cost \$22.00. The cost of the textbook is not included.

Early registration for winter quarter classes is Nov. 15-19. Regular registration is Nov. 30. As enrollment is limited, interested persons are encouraged to register early.

For further information,

Council and all the Extension Clubs party December 7th at the Home Extension Annex in Roby.

Hazel Aldridge and Oma Long gave the program on Super Snacks by making a onion dip and a fruit pizza for the club members to eat and enjoy. Other members present were Gaynell Henry, Tennie Bostick, Dollie Curry, Mary and Lou Posey and Hilda Rollins.

Mrs. Beatrice Hargrove will be hostess for our annual Thanksgiving Luncheon and Auction sale November 18th.

Tammi Sparks Attending LCC

Tammi Sparks is among 989 students registered at Lubbock Christian College for the fall 1982 semester.

She is a 1978 graduate of Rotan High School and is a Junior English major. Her parents are Mr. and Mrs. Bill Sparks of Rt. 1, Rotan, Texas.

IF YOU ARE NOT SAVING



YOU ARE NOT SAVING MONEY

776-2225

City Grocery & Deli

Quality Products, Friendly Service, Super Market Prices PLUS ROSEBUD STAMPS

Prices Effective Nov. 11-17, 1982

Roby, Texas



Chuck Roast
\$1.39 LB.

Sliced Slab Bacon
\$1.79 LB.

Wolf Brand 19 Oz.

Chili \$1.29

Wonder 28 Oz.

Rice 85¢

NOW OPEN

ARCADIE CENTER

Family Entertainment

All Types Of Video Games

Plenty Of Snacks

"The Famous Red Baron Pizzas Served"

Open 11:00 a.m. to 11:00 p.m.

Mon.-Thurs.

11:00 a.m. - 1:00 a.m.

Fri. & Sat.

1:00 p.m. to 11:00 p.m.

Sunday

110 Forest St.

(Old Home Lumber Building)
 Rotan, Texas

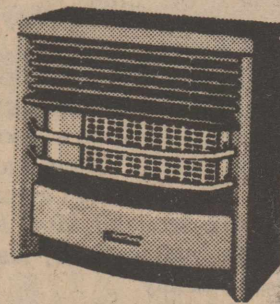
energy

And helps reduce your monthly heating costs.

COME IN TODAY AND SEE OUR COMPLETE LINE OF HEATERS. ELECTRIC HEATERS FROM 1000 TO 1500 WATTS. PRICES START AT \$26.95.

NATURAL GAS OR BUTANE HEATERS START AT \$139.95

WE HAVE 16,000 TO 40,000 BTU'S IN STOCK. WE ALSO HAVE SUNBEAM KEROSENE HEATERS FROM 11,000 TO 18,000 BTU'S IN STOCK. PRICES START AT \$189.95. WE EVEN HAVE WOOD BURNING HEATERS IN STOCK. SO HURRY IN TODAY FOR BEST SELECTIONS.



EASY CREDIT TERMS AVAILABLE

JOE HUDSPETH'S

111 S.E. AVE. A

(915) 576-3656
 HAMLIN, TEXAS

Crockett Warehouse Foods

Prices Effective November 10-15, 1982

We reserve the right to limit sale merchandise.

Stokley 16 Oz. Pumpkin 3/99¢	Ocean Spray Whole Or Jelled 16 Oz. Cranberry Sauce 59¢	Kraft Miniature 10 Oz. Marshmallows 43¢
Pet Evaporated 13 Oz. Milk 2/\$1.03	Rich & Ready 1 Gal. Fruit Punch or Orange Drink 99¢	12 Pk. Carton, Cans Reg. Or Sugar Free Dr Pepper \$3.19
Jewel 3 LB. Shortening \$1.29	Hills Brothers 1 LB. Coffee \$2.29	Generic 2 Ltr. Coke & Assorted Drinks 79¢
Gold Medal 5 LB. Flour 89¢	White Swan 16 Oz. Fruit Cocktail 2/99¢	White Swan 15 1/4 Oz. Pineapple 2/99¢
White Swan 5 LB. Sugar \$1.69	Ellis 6 Oz. Pecan Halves & Pieces \$1.19	White Swan 15 1/4 Oz. Green Beans 3/\$1.00
Nice-N-Soft 4 Roll Bath Tissue \$1.29	Morrison's Corn Kits 5/99¢	Farm Fresh 1 LB. Wheat Loaf Bread 3/99¢
Gerbers Strained 4.75 Oz. Baby Food 4/\$1.00	25 Ct. Btl. Alka Seltzer \$1.49	White Swan 8 Oz. Tomato Sauce 4/\$1
Gandy's 1/2 Gal. Ice Cream \$1.69	Fritos Reg., Barbeque or Light 3/4 LB. Corn Chips \$1.29	Meal Time 25 LB. Bag Less \$1.00 Coupon Dog Food \$7.09
Gandy's 8 Oz. Sour Cream 49¢	Golden Griddle 36 Oz. Pancake Syrup \$2.49	All Flavors Frito Dips 79¢
	Vita Fresh Pure 1 Qt. Orange Juice 79¢	Generic 100 ct. Tea Bags 99¢
		Betty Crocker 15 Oz. Cake Mix 89¢
		Nestle Quick 2 LB. Chocolate Drink \$2.49
		Kleenex 100 Ct. 59¢
		Assorted Flavors Jello 3 Oz. 3/89¢
		2 Ltr. Coca Cola \$1.19
		Orleans Whole 8 Oz. Oysters 89¢

How much is your BANK CHECKING ACCOUNT COSTING YOU?

We'll PAY YOU 5 1/4%!

Does your bank charge you a monthly service charge on your checking account? A charge for each check cashed? A charge for ALL your personalized checks? Does your bank pay you to use the money in your checking account? If you have not examined the monthly charges to your bank checking account, perhaps you should. Why should you pay your bank to use your money when Homestate Savings will pay you 5 1/4% annually on your daily balance and give you up to 300 free personalized checks annually without a service charge or per-check charge REGARDLESS of your account balance. Compare Homestate Savings' checking account services and charges shown below with those of your bank. You'll check at Homestate Savings where you can make money... not spend it!

CHECKING ACCOUNT SERVICES	YOUR BANK	HOMESTATE SAVINGS
PERSONALIZED CHECKS	?	300 FREE ANNUALLY
MINIMUM BALANCE REQUIREMENTS	?	NONE. All your money earns 5 1/4%
SERVICE CHARGES	?	NONE regardless of minimum balance
PER-CHECK CASHED CHARGES	?	NONE regardless of minimum balance
EARNINGS TO YOU	?	5 1/4% annually on daily balance



HOMESTATE SAVINGS

WE'RE HERE TO HELP WITH OFFICES IN:
 SWEETWATER: 208 Elm/234-6364 ABILENE: 1209 East South 11th/673-8339
 BIG SPRING: Coronado Plaza/263-0251 COLORADO CITY: 2205 Hickory/728-2667
 ROTAN: 302 West Snyder/735-2273 HAMLIN: 443 So. Central Avenue/576-2631
 ROSCOE: Broadway and Main/766-3996 SNYDER: 3405 College Ave./573-4943

Crockett Warehouse Foods

Other Specials Through Out Our Store.

New Store Hours: 9 a.m. to 7 p.m. Mon.-Sat.

3925 Colorado City Hwy. Snyder, Texas

THE HAMMER HUT

BY THE JOURNALISM CLASS OF ROTAN HIGH SCHOOL



Senior Spotlight

by Teresa Cantu
 Name: Tony Zambrano, son of Mr. and Mrs. Pat Zambrano
 Birthdate: July 5, 1965
 Height: 5'9"
 Color of Eyes: Brown
 Color of Hair: Black
 Favorite Color: Blue
 Favorite Food: Pizza
 Favorite Music/Group/Song: All Music/Joan Jett and the Blackhearts/Lucky Ones
 Favorite T. V. Show/Movie: Happy Days/An Officer and a Gentleman
 Favorite Sport/hobby: Football/Hunting
 Career Choice: Mechanic
 College Preference: TSTI
 Person You Consider a "10": Cheryl Tiegs
 Comment: It's fun being a Senior, but I can't wait until Graduation.

Teacher Interview

by Trina Ortiz
 Name: Mr. Nelson
 Birthday: December 25
 Hometown: Childress, Texas
 Color of Hair: Brown
 Color of Eyes: Brown
 Favorite Food: Cooked
 High School Attended: Childress High School
 College Attended: Midwestern State University
 Degrees Attained: B. S. in Biology, 30 hours of graduate work
 Favorite Hobby: Shooting
 Family Portrait: Sorry, I left it at home
 Dream Occupation: College Professor of Biology
 Occupation: Chairman of Science Dept., RHS

Your Opinion

by Robin Harris
 Recently, the National news has been filled with reports of food and drug contaminations. This week I asked several students what they thought could be done to prevent the Tylenol scare and other copy-cat crimes.
 Rene Silvas: I think if the companies would put the pills in cellophane it would stop people from tampering with them, but it would cost the consumer a lot more. They also need to

quit publicizing and making such a big deal out of them, because that's where people get their ideas. Steve Witt: I think if they'd put capital punishment on the people doing it, it would stop them.
 Dana Nowlin: If the consumers would start paying closer attention to the packages that they are buying, most of the time you can tell if it has been tampered with. Joe Mike Sparks: If the news and newspapers would stop publicizing it so much, people wouldn't get the ideas. The papers make the biggest scare of all.

Thank You Note
 The Rotan High School Newspaper Staff would like to take this opportunity to publicly thank Mr. Kim Pease, editor of the Rotan Advance, for allowing us to publish our school news in the Rotan Advance. Mr. Pease has enabled us to tell the public about events happening within Rotan High School. Thank You, Mr. Pease; we appreciate your support.

Quote of the Week
 He blows his stack adds to the world's pollution.
Mystery Student
 by Stephanie Pack
 This week's mystery student is a Freshman girl. She was born on May 24, 1967, in Sweetwater, Texas. She is 5'3" tall, has dark blonde hair, and has blue eyes. She likes to run track and play softball. She enjoys cooking and writing short stories. Her favorite song is "Do You Wanna Touch?". "E. T." is her favorite movie, and "Square Pegs" is her favorite T. V. Show. She likes to eat pizza, and her favorite color is black. She thinks Rick Springfield and Mondo Monitez are both "10s". Her class schedule is as follows: 1. Home Economics, 2. English, 3. World History 4. P.E. 5. ITA 6.

Band Competes in Contest
 On Wednesday, November 3, the Rotan High School Band attended the University Interscholastic League Marching Contest held at Shotwell Stadium in Abilene. The band performed before three judges and received a Division III rating.
 Competing in the twirling competition that same day were Jerilyn Marshall, Solo, Division I; Dilana Long, Solo, Division II; and Desirre Gray, Solo, Division II. The ensemble, consisting of Jerilyn Marshall, Dilana Long, and Desirre Gray, received a Division I rating. They will travel to Austin in May to compete in the State Twirling Competition.

Did You Know?
 by Stephanie Pack
 Did you know the most expensive election was the 1972 United States Presidential Election? The cost for the Republican Party was estimated at \$49,070,000; and for the Democratic Party, \$45,000,000.
 Did you know the country with the greatest number of political parties is Italy? It had 73 registered for the elections of May 19, 1968.

Joke of the Week
 "Just the same," said Noah's wife, "I would like to see those two termites locked in a tin box!"

License Plate
 The license plate number this week is KF-5480. Last week's belonged to Mr. Nelson.

Elementary News
 by Allen Coventry
 On Thursday, October 28, the Kindergarten visited the High School Band. The students listened to the band director, Ms. Kennedy, as she explained the different instruments. Mr. Bryan, the Primary

Biology. Last week's mystery student was Joe Flores.

Sport Spectrum
 by Debbie Soliz
 The Rotan Junior Varsity was defeated by Haskell with a score of 14 to 15. Rue Moran made the first touchdown in the third quarter on a kick-off return of 99 yards. Louis Santibanez went in for the second touchdown from 5 yards out. Afterwards, Rue Moran went in for the two points.
 These two young men gave some comments on the game. Rue Moran: I had very good blocking. I wasn't expecting to run it all the way back, but I was very happy about it. I wish football season wasn't over. We've improved a lot. If we would have played in the beginning like we did now, we would have won more games.
 Louis Santibanez: I was tired when I made the touchdown. I'm glad football season is over. I'll wait until next year.

Junior High News
 by Deanne Harbin
 This week was the last week of football games and pep rallies for the eighth-graders. The Poster Award this week went to Mrs. Burk's sixth-grade class. The Spirit Stick went to the eighth-grade. Wednesday was Double-Up-Your Spirit-Day. Each student picked a partner and dressed alike. The winners were Shannon Boone and Valerie Golsen from the fifth-grade; from the sixth-grade there was a tie between Lucy Stinson and Julie Pease, and Jerri Lynn Boone and Shanna Bennett; there were no seventh-grade winners; from the eighth-grade the winners were Roschell Huit and Lydia Garcia. This week, the teachers each wore a letter of the alphabet. The contest was to see who could figure out what the letters spelled.

Book Review Meeting
 The Book Review Club will meet November 16 at 3 p.m. at the First Baptist Church.

Book Review Meeting
 Lydia Yanez will be selling Hot Tamales for \$3.50, On Friday Only from 11:00 to 5:00 p.m. Call-in-for-Your-Order 735-2478 No Delivery

Book Review Meeting
 The Book Review Club will meet November 16 at 3 p.m. at the First Baptist Church.

Book Review Meeting
 The Book Review Club will meet November 16 at 3 p.m. at the First Baptist Church.

Ratliff's Hold Reunion

Those attending were Gill, Sara, Brian and Tena Warren, Edna and Lloyd Ratliff of Odessa, Texas. Steve, Tachi, Stephanian, Necole, Sabrina and Tayna Warren of Snyder, Texas. C. W. Sue, and Missy Dulin of Maryneal, Texas. Marvin Jr, Sandy, Phoebe, Heather and Owen Ratliff of Bird, Texas. Jewel, Georgie Ratliff Dot, F. A. McCain. Bert and Kayne Warren and Ernie Lee Jones of Sweetwater, Texas. Richard, Janice, Ryan, Courtney and Ashlee Ratliff of Monohans, Texas. Max and Melba Ratliff and Lillian Smith of Cimarron, N.M. Billy Burns and Shirley Byron, of Midland, Texas. Calvin, Ginger and Shelja Jones of Ft Bliss, Tex. Johny Dale and Licia Ratliff of Lewisville, Texas. Mary Sutton, Cleo Bailey and Patsy Huber of Rising Star, Texas. Charlie, Linda and Amber Longario of Snyder, Texas. Dale and Cricket King of Garland, Texas. Joyce and Billy Williams of Abilene, Texas. Damon Shipp of Roby, Texas. Johnny N. and Nancy Ratliff of Lewisville, Texas. Viola and Owen Brazee of Guthrie, Texas. Carol, Essie Ann, Cindy and Chelle Brazee and Earnest

Taylor of Aspermont, Texas. Bill Ratliff of Ruidoso, N. M., Marvin and Tiny Ratliff of Santa Fe, N. MK. Rane and Shon of Ruidoso, N. M., Elmer and Bessie Jones of Roby, Texas, Thelma Smith of Roby, Texas. Bob and Helen Ratliff of Halman, Texas and their two grandsons. Minnie Snyder, Texas. Preston and Margaret Reed of Liberty Grove, Texas. Edd

Ogden, Mary Etta O'Donald of Sweetwater, Texas. Roy and Pauline Kinzy of Sweetwater, Texas. Shelby Edgar of Albany and two visitors from Midland, Texas.



The first basket-makers were probably nesting birds.

FISH FRY
 Catfish & All The Trimmings
\$4.99
 Beginning Nov. 5th
 6:00 p.m.-9:30 p.m.
 Every Friday

\$25.00 Drawing
 December-1st Must be 18 or over to register.

Student Lunches
 Monday-Friday
\$1.10

Mystery Breakfast Once A Week
Dairy Queen Rotan, Texas

ROLEX
 AUTHORIZED ROLEX SALES AND SERVICE

Prompt and guaranteed service done by professional watch and jewelry repairmen at our location.

COX'S JEWELERS Since 1895

South Side of Square
 915-235-8611

ONE HUNDRED AND TEN EAST BROADWAY
 SWEETWATER, TEXAS 79556

Rebekah Lodge

Meeting Set

For Monday

The Rebekah Lodge will meet on Monday, November 15 at 7:00. The lodge would like to have all members present.

Hospital News

Patients admitted to the Fisher County Hospital November 2 thru November 7 were Ruby J. Green, Estelle White, Tom Latham, Truman Hawkins, Loretta Ray, Ruby Cave, Sybil Howard, Ellis Markham, Laura L. Hudnall and Clara Latham of Rotan. Bessie Palmer, O. C. Diddle, Jacqueline Derosiers, Russell Elkins of Roby. Rick Steinke of Hamlin. Helen J. Fowler of Snyder. Guadalupe Quintero of Aspermont. Dena Sharp of Hermleigh.

LOOK WHO'S HERE!

Louis and Pam Davis of Anson are the proud parents of a boy, Trussell Lloyd born October 27, 1982. Trussell weighed 8 pounds and 12 ounces. Grandparents are Mr. and Mrs. Douglas Browning of Anson formerly of Roby. Great Grandmother is Irene Kiker and great aunt Charollette Ragan of Rotan.

Why settle for less?
 Choose Frigidaire Quality And Dependability...

Frigidaire 30" Range
 Offer you so much more in

- Value
- Quality
- Dependability

- You can program the oven to start baking or roasting at the time and temperature you desire. — even tell it when to stop — thanks to automatic Cookmaster controls.
- Put the drudgery of oven cleaning behind you. The Electric-Clean oven can clean itself automatically.
- For better, more uniform broiling, a self-cleaning Broiler Shield reflects heat from the broiler unit away from the top of the oven and back across the broil area.

WEST TEXAS UTILITIES COMPANY
WTU
 A Member of The Central and South West System

Qualified Factory-Trained Servicemen Offer You The Finest in Appliance Service

Limited Offer!

Natural Energy Appliance

SAVE \$50.00
Model 30-202

\$299.00
 Sale Price
 REG. \$349.00

on this TAPPAN gas range.

Check these features!

- Concept glass backguard
- Radial clock with four hour timer
- Ignition by pilot light
- Porcelain oven with molded rack
- Porcelain visualite oven door
- Oven light
- Your choice: white, Almond, Harvest

If it's time to replace your old range, here's an unbeatable opportunity. This new gas range offers great features at a bargain price. The gas flame provides instant-on, instant-off heat with infinite temperature control on top burners, plus closed-door broiling for a cooler kitchen. And this bargain price is only the beginning of your savings. Because gas is a natural fuel, not a manufactured energy, it costs less to use. Don't miss this opportunity. Come in today!

Gas. It's first in energy efficiency. And high-efficiency gas appliances make it go even further.

JOE HUDSPETH'S
 111 S.E. AVE A
 HAMLIN, TEXAS
 (915) 576-3656

We Give Circle W Blue Stamps-Double Stamps
From 1:00 P.M. Tuesday
Thru Wednesday

Shur Fine FANTASTIC FALL SALE!



ICE NOW AVAILABLE AT YOUR THRIFTWAY STORE

TOTAL GROCERY SAVERS

- SHURFINE PURE VEGETABLE **SHORTENING** 3 LB. CAN **\$1³⁹**
- SHURFINE CHERRY PIE **FILLING** 21 OZ. CAN **99^c**
- SHURFINE TOMATO **CATSUP** 32 OZ. BTL. **99^c**
- SHURFINE FRT. COCKTAIL/SLI-HLV. PEACHES/PEARS **LITE FRUITS** 16 OZ. CAN **69^c**
- SHURFINE CR. STYLE/WH. KERNEL **GOLDEN CORN** 2 17 OZ. CANS **79^c**
- SHURFINE MACARONI & CHEESE **DINNERS** 3 7 1/2 OZ. PKGS. **89^c**
- NABISCO SPOON SIZE **SHREDDED WHEAT** 18 OZ. BOX **\$1⁴⁹**
- WHITE FACIAL TISSUE **PUFFS** 200 CT. BOX **89^c**
- CHICKEN/ BEEF BI-PACK DINNERS **LA CHOY** 42 OZ. CAN **\$2²⁹**

SHURFINE CUT **GREEN BEANS**
3 16 OZ. CANS **\$1⁰⁰**

15' OFF LABEL **GIANT CHEER**
\$1⁸⁹
 49 OZ. BOX

SHURFINE ALL GRINDS VAC PAK **COFFEE**
\$1⁷⁹
 16 OZ. CAN

SHURFINE WATER OR OIL PAK LIGHT **CHUNK TUNA**
68^c
 6 1/2 OZ. CAN

SHURFINE **SALTINE CRACKERS** 16 OZ. BOX **59^c**

BOUNTY **PAPER TOWELS** JUMBO ROLL **79^c**

CHARMIN **BATH TISSUE** 4 ROLL PKG. **\$1⁰⁹**

SHURFINE ALL PURPOSE **FLOUR**
69^c
 5 LB. BAG

FROZEN FOOD

SHURFRESH ASSORTED FLAVORS **ICE CREAM** 1/2 GAL. ROUND CARTON **\$1⁴⁹**

ASSORTED FLAVORS FROZEN **SHURFINE PIZZA** 12 OZ. PKG. **89^c**

- SHURFINE FROZEN WHIPPED **TOPPING** 8 OZ. BOWL **59^c**
- SHURFINE FROZEN SPEARS **BROCCOLI** 10 OZ. PKG. **59^c**
- SHURFINE FROZEN BROCCOLI & CAULIFLOWER **VEGETABLES** 20 OZ. PKG. **\$1¹⁹**
- SHURFINE FROZEN KRINKLE CUT **POTATOES** 2 LB. PKG. **\$1¹⁹**
- SHURFINE FROZEN DEEP DISH **PIE SHELLS** 2 CT. PKG. **69^c**

HEALTH & BEAUTY AID SAVINGS

- SHAMPOO **PERT** 15 OZ. BTL. **\$2¹⁹**
- VICK'S FORMULA 44 **COUGH SYRUP** 6 OZ. BTL. **\$3⁴⁹**
- Vaseline Dermatology **HAND LOTION** 5.5 OZ. Btl. **\$2⁵⁹**
- VICK'S TABLETS **HEADWAY** 20 CT. PKG. **\$2¹⁹**
- CONDITIONER **ENHANCE** 8 OZ. BTL. **\$1⁷⁹**
- SHAMPOO **ENHANCE** 8 OZ. BTL. **\$1⁷⁹**

DURACELL BATTERIES

- DURACELL SIZE AA **BATTERIES** 4 CT. PKG. **\$2⁶⁹**
- DURACELL BATTERY **9 VOLT** 1 CT. PKG. **\$1⁶⁹**
- DURACELL SIZE AA OR AAA **BATTERIES** 2 CT. PKG. **\$1⁴⁹**
- DURACELL SIZE C OR D **BATTERIES** 2 CT. PKG. **\$1⁶⁹**
- DURACELL 9 VOLT **BATTERIES** 2 CT. PKG. **\$2⁹⁹**

HEAVY GRAIN FED BEEF BONELESS **CHUCK ROAST**
\$1⁶⁹
 LB.

SHURFRESH QUALITY **SLICED BACON** LB. **\$1⁶⁹**

USDA GRADE A FINEST QUALITY SELF-BASTING WITH TENDER TIMER **SHURFRESH TURKEYS** 10-22 LBS. AVERAGE LB. **79^c**

- HEAVY GRAIN FED BEEF BONELESS **CHUCK STEAK** LB. **\$1⁸⁹**
- HEAVY GRAIN FED BEEF EXTRA LEAN **STEW CUBES** LB. **\$1⁸⁹**
- SHURFRESH QUALITY MEAT **FRANKS** 12 OZ. PKG. **99^c**
- SHURFRESH QUALITY SLICED MEAT **BOLOGNA** 12 OZ. PKG. **\$1⁰⁹**
- SHURFRESH BONELESS FULLY COOKED **HALF HAMS** LB. **\$2⁵⁹**
- USDA GRADE A SHURFRESH HEAVY **BAKING HENS** LB. **65^c**
- SHURFRESH BREAKFAST PORK **SAUSAGE** 1 LB. ROLL **\$1¹⁹**
- SHURFRESH BONELESS FULLY COOKED **CANNED HAMS** 3 LB. CAN **\$7²⁹**

EXTRA FANCY RED DELICIOUS **APPLES**
3 **\$1**
 3 LBS.

- CENTRAL AMERICAN **BANANAS** LB. **29^c**
- TEXAS RUBY RED **GRAPEFRUIT** LB. **25^c**

- YELLOW SWEETS **ONIONS** LB. **19^c**
- CALIFORNIA **CELERY HEARTS** LGE. PKG. **59^c**
- CALIFORNIA **CARROTS** 1 LB. PKG. **29^c**

FRESH DAIRY SPECIALS

QUARTERS **SHURFRESH MARGARINE** 4 **\$1**
 16 OZ. PKGS.

- SHURFRESH SWTM/LK/ BTRMLK **BISCUITS** 10 5 CT. CANS **\$1⁰⁰**
- SHURFRESH INDIVI. WRAPPED SLICED AMERICAN **CHEESE FOOD** 12 OZ. PKG. **\$1³⁹**
- SHURFRESH LONGHORN COLBY OR CHEDDAR **CHEESE** HALFMOON 10 OZ. PKG. **\$1²⁹**
- SHURFRESH FRENCH ONION **PARTY DIP** 8 OZ. CTN. **39^c**

FANTASTIC FALL SALE!

- CRANBERRY SAUCE SHURFINE STR/ WHL 16 OZ. 59^c
- DRY DOG FOOD SHURFINE-MAKES GRAVY 25LB. \$3.99
- CAKE MIX SHURFINE DEVIL/ WHT/ YEL 18 1/2 OZ. 59^c
- TISSUE SHURFINE BATH 2-ply WHT. 8 ROLLS \$1.49
- DETERGENT SHURFINE WHITE/ BLUE POWDERED 49 OZ. \$1.49
- BLEACH SHURFINE LIQUID GALLON 79^c
- TOMATO SAUCE SHURFINE 8 OZ. 4/ \$1
- KITCHEN BAGS SHURFINE TALL 15 CT. 99^c
- CAN LINERS SHURFINE 30 GAL. 10 CT. \$1.19
- FOIL SHURFINE ALUMINUM 12x25' 2/ \$1
- FABRIC SOFTENER SHURFINE CONC. 64 OZ. \$1.29
- TEA BAGS SHURFINE 100 CT. \$1.59
- MILK SHURFINE EVAPORATED 13 OZ. 2/ 89^c
- CREAMER SHURFINE NON-DAIRY 11 OZ. 89^c
- FROSTING SHURFINE RTS VAN/ CHOC. 16 OZ. \$1.09
- PANCAKE MIX SHURFINE 32 OZ. 79^c
- RICE SHURFINE LONG/ MED. GRAIN 2 LB. 69^c
- APPLESAUCE SHURFINE GLASS JAR 25 OZ. 79^c
- ORANGES SHURFINE MANDARIN 11 OZ. 59^c
- PINEAPPLE SHURFINE CR/ CNK/ SLI-N JUICE 15 1/2 OZ. 59^c
- JUICE SHURFINE FANCY TOMATO 46 OZ. 89^c
- KIDNEY BEANS SHURFINE DARK RED 15 OZ. 43^c
- WAX BEANS SHURFINE CUT 16 OZ. 43^c
- BEETS SHURFINE PICKLED 16 OZ. 79^c
- BLACKEYES SHURFINE FRESH SHELLED 15 OZ. 2/ 69^c
- SWEET PEAS SHURFINE EARLY HARVEST 17 OZ. 2/ 79^c
- POTATOES SHURFINE WHOLE IRISH 16 OZ. 2/ 79^c
- POTATOES SHURFINE WHOLE SWEET 16 OZ. 69^c
- PRESERVES SHURFINE STRAWBERRY 18 OZ. \$1.19
- GRAPE JELLY SHURFINE 18 OZ. 79^c
- PEANUT BUTTER SHURFINE CR/ SM 18 OZ. 99^c
- SYRUP SHURFINE WAFFLE 32 OZ. 99^c
- CHIPS SHURFINE FRESH PAK CUCUMBER 16 OZ. 79^c
- PEPPER SHURFINE GROUND BLACK 4 OZ. 79^c

Porcelain China
 THIS WEEK'S FEATURE ITEM: **DESSERT DISH** **99^c** EACH

We're proud to give you more!
THRIFTWAY

Prices Effective Nov. 11-17, 1982
 WE RESERVE THE RIGHT TO LIMIT QUANTITIES
 WE ACCEPT FOOD STAMPS