

# Roby Star-Record

The Voice Of Fisher County Since 1907

# ROTAN ADVANCE

VOL. 74 NO. 27

THURSDAY, AUGUST 19, 1982

TEN PAGES

## Fair Begins August 26th

The Fisher County Fair is to begin on Thursday, August 26, 1982. However exhibits that are to be in the County building on the Fair grounds must be entered before 3:30 p.m. on Wednesday, August 25. Work will begin on Monday when all spaces in the building will be marked off. If anyone desires a space, Mrs. Coy Stuart of Roby should be contacted.

On Wednesday, entries will be taken from 9:00 a.m. until 3:30 p.m. Fair catalogues are ready now. You may pick one up at the Extension Agent's Office in Roby, Citizens State Bank in Roby, First National Bank in Rotan or The Newspaper Office in Rotan.

In an attempt to increase participation in the County Fair, some new additions have been made. We encourage entries in these new ones as the Grandparents Brag Contest, an Art Exhibit which will be judged and Floral Arrangements.

Mrs. Coy Stuart is in charge of the Grandparents Brag Contest. Mrs. Fred Waddell is Chairman of the Art Division and Roby Garden Club Members will be in charge of Floral Arrangements.

### Hobbs Students To Register

Hobbs Elementary School students will register on Thursday, August 19th, the first regular day of school. New students will need immunization records and previous school records. Buses will run at about the same time as last year. School begins at 8:00 a.m.

Hobbs teachers will have in-service training beginning on Monday, August 16th. On Thursday, August 24th, Hobbs teachers will be at Hamlin to participate in Special Education in-service training. School students will not report for school on that day.

Also helping with general exhibits are Brenda Sheehan and Cindy Green both of Rotan.

Mrs. Richard Posey is Chairman of the Youth Division. Her assistants are Mrs. Florence Wiley, Mrs. Leland Hicks and Mrs. Stuart Carey.

We'd like to emphasize that this is a County Fair and everyone in the county is eligible to enter their exhibits. Too, we can use help with putting exhibits in on Wednesday and taking them out on Saturday. If you'd like to help with the fair please contact Mrs. Coy Stuart.

### Date Set For Turkey Shoot

Members of the Roby Volunteer Fire Department have set October 17th for their Annual Turkey Shoot. There will be more details at a later date.

### Mason Meeting To Be Held

All Master Masons are cordially invited to attend the Eighth Annual Mulberry Canyon Confab Saturday, August 28, 1982.

Dinner will be served by Hamlin Lodge No. 958 at 6:00 p.m. At 7:00 p.m., an outdoor Master Mason's Degree will be conferred by Scottish Rite Club on the banks of Mulberry Canyon Creek in Suez Shrine Temple Children's Park, 9.2 miles south of Merkel on FM 126.

### Season Tickets Now On Sale

Tickets for the 1982 Rotan Football Season are on sale now. Come by or call the High School Principal's office, 735-3041. Reserved seat tickets for the 5 home games will be \$15.00. If bought at the gate, reserved seat tickets will be \$3.50 each.

Mrs. Richard Posey or Mrs. Alice Ballenger, County Extension Agent-Home Economics.

### Ivin Martin New Owner Of Ezell-Key

Ivin Martin, former manager of Ezell-Key Feed and Seed in Rotan, announced this week that he has purchased the business and will be operating under the name of Martins Feed and Garden. Martin purchased the business on August 1st.

Ezell-Key has been in Rotan for the past 21 years. They have had locations in Big Spring, Rotan and Snyder with a milling operation also in Snyder.

Martin began as local manager of the Rotan-Ezell-Key operation in January of 1979.

The new owner said that operating hours will remain the same but plans are in the making to construct a nursery and greenhouse in the near future.

Ivin Martin and his wife, Beth, have four children: Judy of Seguin, Russell and Lyndell of Midland, and Preston of Roby.

There are currently two employees at Martins Feed and Garden, Doris Gentry, with the organization since 1970, and Debra Barbour, an employee for the past year.

### Mrs. Dennis Receives Degree

Mrs. Mike Dennis received her Master's Degree at graduation ceremonies held at Abilene Christian University last Friday, August 13. Mrs. Dennis is the wife of Mike Dennis, pastor of the Rotan Church of Christ. She is employed as a teacher in the Rotan Elementary School.

### Kim Copeland Receives BS Degree

Kim Copeland graduated August 13, 1982, from San Angelo State University with a Bachelor of Science degree, majoring in Elementary Education.

Kim is the daughter of Mr. and Mrs. Glenn Copeland of Rotan.

### Willis Ogden Transferred

Willis Ogden, an employee of the Rotan Post Office for the past 16 years, is being transferred to Cosse, Texas effective August 16th.

Ogden will be a rural carrier in Cosse, a town in the Waco area.



BRONC RIDER: A full slate of Texas cowboys will be taking part in the annual Fisher County Rodeo at Roby beginning August 26 through 28. The Fisher County Fair and Rodeo Parade is scheduled to begin at 5:00 Thursday, August 26.

## Fisher County Hospital Board Meeting

The members of the Fisher County Hospital Board, during their regular meeting last Monday night, agreed to send two employees to a special respiratory therapy training school in Abilene at Hendricks Hospital as the first step in setting up a local respiratory therapy department.

The board members have been contracting the service from an outside firm, when the two employees finish the class a full respiratory therapy department will be functioning locally. Administrator Jerry Weatherly indicated that he hoped the new department would be operational by November.

In other action Weatherly reported to the board on the financial condition of the hospital district. He indicated that the average patient load for July had increased to 17.34 patients per day over the 13.0 average patient load in June. Profits from operations in July were \$2,700.00 compared to a \$6,000.00 loss in June.

The year to date loss from operations is approximately \$50,000.00 which, according to Weatherly, "is approximately what the loss was at this time in 1981." "We are in much better condition this year, however," said Weatherly, "last year we had to borrow money to operate, this year we're in better shape."

In final action the board continued its discussion of possibly changing the type heating and air conditioning system at the hospital. The electricity bill for the month of July was \$10,270.43. "That figure

is the biggest bill we have paid since I came to the hospital," said Weatherly. Board members are to meet with two engineers in

the near future to discuss the possibility of installing individual heating and air condition units in rooms.

## Tri-County To Hold Childhood Screening

The Roby and the Rotan Independent School Districts have Early Childhood Programs available for young children three through five years of age at no expense to the parent.

This program is for children who need extra help before they are

enrolled in Kindergarten.

In order to be accepted in the Early Childhood Program, you child will be given a test to find his strengths and weaknesses. Those children who show a need for individualized or small group training in order to succeed when entering school later, will be considered for the Early Childhood Program in the Stamford Schools. The results of the test will be shared with you upon request.

This test will be given in Roby on Thursday, August 26, 1982, beginning at 8:00 a.m. Appointments may be made by calling the Roby Elementary School Office. The number is 776-2224.

The test will be given in Rotan on Monday, August 30 in Room 12, beginning at 8:00 a.m. Appointments may be made by calling the Primary School Office. The number is 735-3182. We are looking forward to seeing you and your child.

### Classified

### Bargains

See Page 5

## Hits And Misses

Column By The Newspaper Staff

## Roby Athletic Club To Hold Drive

The Roby Athletic Club will hold a membership drive on Saturday, August 21st. Members will be signing up memberships beginning early Saturday morning. The drive will be conducted by Larry Williamson, head of the membership drive. All Athletic Club members are asked to meet at Terry Gin at 9:00 a.m. Saturday morning to help with the drive.

THE ORGANIZATION OF FISHER COUNTY-In 1876 the Texas Legislature created Fisher County, along with fifty other counties, out of the Bexar Land District. At the time of its creation, Fisher was attached to Shackelford County for judicial purposes.

Up to 1876, virtually all the territory situated west of the west lines of Taylor and Jones Counties had remained a part of the Bexar Land District. In order to facilitate settlement (settlers having to begin to trickle into some portions of this region) the Legislature blocked out plots of land which were, for the most part, geographical units of thirty miles square. Fisher County and many neighboring counties were created from this District during the year of 1876.

After the creation of the county, there were no real settlements in Fisher County in 1876. In the summer of 1877 the first group of permanent residents, travelling in ox-drawn wagons, moved into the county and soon began agitation for an organized county with peace officers and a system of local government.

In 1885 a large colony of Swedes, mostly from Travis and Williamson Counties settled in the northeastern part of the county-north of the present location of McCauley. They built for themselves an adequate school and church house, erected substantial homes, and started agricultural operations in a limited but intense way. The Swedes bought and settled state school land, which was beginning to come into widespread demand by the people who were moving in from all parts of the Southwest.

This colony of Swedes has had great impact in the development of Fisher County. Descendants of these pioneers remain mainly in the northeast portion of the County with a number of them living in Hamlin. Their original settlement was and remains-Swediona.

It soon became evident that shortly the county would need to be organized. The first action toward organization was taken by an enterprising man, E.D. Strang, who was formerly from Wisconsin. He purchased a block of land out of the Breedlove Ranch, laid out a township on this land, named it Fisher, and indicated it as a possible site for the county seat of Fisher County in the early part of 1885. The townsit of Fisher was advertised, by word of mouth, by the close friends of Strang as a prospective site for the county seat; and citizens of the county referred to a county seat as "a consuming pride and joy". Plans were made for a "county seat celebration" ball, with an accompanying barbecue and other festivities, but all plans for such an observance were soon brought to naught by two former Mississippi residents named D.C. and M.S. Roby.

The county-seat "fight" will be discussed next week. Hooper Shelton, Job Printer

Last week was a bad week in Texas; violence piled atop violence for a bloody chapter in Texas history. Monday morning a truck driver in Grand Prairie shot and killed six people in 30 minutes and was killed himself in a fusillade of police bullets. The same day an eccentric Hill Country recluse was charged with three murders. Tuesday, a Houston mechanic admitted to slaying 11 women in Texas, Michigan and Canada. Tuesday night a former mental patient admitted to stabbing and slashing five people in Fort Worth. In 5 days, police learned of 42 deaths from 4 separate multiple murders. Man has certainly grown violent, and I am sure some are very sick, but who is to know who are mentally sick and who are trying to use mental health problems as an excuse for the terrible things they have done. It seems, too, that the penalties for murder are much too lenient; a person convicted of burglary can serve a longer sentence than one who is convicted of murder. Maybe the courts are too easy going, but that's not for me to say. Any it's a sad state of affairs, and many innocent people are usually the ones who end up paying the price; ordinary people who the killer found at work, play or at home. The world would never have known them had their deaths not been so extravagantly ugly. What is the answer to all this terrible carnage and violence? Stricter laws or more time spent in prison, maybe time will tell; we hope so.

Joy Walker, Correspondent

What do you do with your old newspapers? Collect them for a couple of weeks, then burn them or put them out by the trash cans on collection day? Of course, if there is a new puppy around your house we all know what happens to your newspapers; There really are some other very good uses for your collection of papers. Shredded newspapers make excellent shock-absorbent packaging material for mailing or moving, they also make a good storage medium for fruits and vegetables, and of course as I mentioned earlier-perfect animal litter and cage liners because it's absorbent and pest free. I even found a "recipe" for making your own recycled paper that starts with-what else-shredded newspaper, a little water, and an electric blender. A very practical use for newsprint is in garden or yard mulch. In shredded form it conserves moisture, smothers weeds and shelters young plants. Black and white newspaper is 75% ground wood pulp and 25% purified fiber or cellulose. The wood pulp contains all the nutrients and trace elements that were in the trees originally. News ink is made from carbon black and mineral oil and is in no way harmful to plants or soil life. One last use I found was a little amazing. It seems newspapers are rich in carbohydrate energy and have been successfully fed to cattle by agricultural researchers at the University of Missouri and Cornell. Newsprint is one wonderful resource that has been neglected and overlooked for too long. That in itself is worth 25 cents for a paper-don't you think...?

Debby Wilfong, Production

ROTAN'S  
**75**<sup>th</sup>  
anniversary  
IS COMING!  
1907 - 1982

# School Board Adopts Budget

The members of the Rotan School Board met last Monday for the purpose of adopting a budget for the 1982-83 school year. After the budget hearing, the board voted to adopt a

\$1,323,024.00 budget. Last year's budget did not include athletics and lunch

room funds and amounted to approximately \$1,200,000.00, according

to Superintendent Jerry Dickson. The 1982-83 budget includes the afore-

mentioned items as part of a change in reporting procedures by the state.

In other action the board appointed Don Bryan, Elementary Principal, as the textbook custodian and re-wrote the guidelines on personal leave for school personnel.

The board accepted the resignation of Susie Hudnall as 4th grade teacher and employed Floyd Garcia to fill that vacancy.

## Rotan Registration

### Fisher County

#### Fair Book

#### Corrections

The following corrections have been made in the Fisher County Fair Book.

Grandparents Brag Contest  
Entries must be entered before 4:00 p.m. Wednesday, August 25, and will be picked up after Saturday, August 28th.

1. Photographs must be a recent picture of your grandchild. Any type picture will be accepted, including enlarged snapshot.
2. The photograph must be mounted on poster board no larger than 11" high X 17" wide, accompanied by a short composition of 100 words or less why you think your grandchild is the smartest, cutest and best entry. Art corners may be used for mounting. (No Frames.)
3. The name, address and age of the child as well as the grandparents name and address must be on the back of poster board.
4. Ribbons will be awarded to the best entries.

#### Class A: Girls

1. Under 1 year
2. 1 year olds
3. 2 year olds
4. 3 year olds
5. 4 & 5 year olds

#### Class B: Boys

1. Under 1 year
2. 1 year olds
3. 2 year olds
4. 3 year olds
5. 4 & 5 year olds

Registration for Rotan High School will be as follows:  
Wednesday, Aug. 18-9:00 a.m. to 11:30 a.m.-Freshmen.  
Wednesday, Aug. 18-1:00

p.m. to 3:30 p.m.-Sophomores.  
Thursday, Aug. 19-9:00 a.m. to 11:30 a.m.-Juniors.  
Thursday, Aug. 19-1:00 p.m. to 3:30 p.m.-Seniors.  
Students will report to

the Auditorium at 8:00 a.m. on Thursday, Aug. 26 for student orientation. Students should bring schedules and materials for a full day of classes.

Classes will begin on Aug. 26 for all students of the Rotan Independent School District. Students should come prepared for a full day of classes beginning Aug. 26. Buses will run at regular scheduled times beginning Aug. 26. The lunchroom will begin operations Thursday August 26. Lunch prices

will be as follows:

Elementary  
Breakfast-30 cents reduced; 40 cents regular.  
Lunch-40 cents reduced; 60 cents regular.  
Junior High  
Breakfast-30 cents reduced; 40 cents regular.  
Lunch-40 cents reduced; 75 cents regular.

### PHOTOGRAPHS

of the Perfect Wedding

Contact

Kim Pease  
Photography  
735-2562

### Police Request Cooperation

Rotan residents living within the city limits are advised by Rotan Police Department officials to discontinue leaving cars parked on the streets. This action is requested in order that paving contractors can resurface streets in an orderly manner.

"HAVE GUNS"  
"WILL SELL"

Merkel and Bell West-over of Abilene. Granny Shipp is enjoying a beautiful Birthday Boka from Bill, Tina and T.J. Bookman.

The Church Service was enjoyed by all and we want to thank the W.M.U. Ladies for bringing songs and devotionals on Wednesday. Thanks to Glen Cantu for his talk and special music. We shall miss Glen and Belinda and Elizabeth-May the Lord be with you each day. Come to see us!

"Love planted a rose and the world grew sweeter."  
Bettie Hargrove  
Activity Director

## Fisher County

We have had fun shelling peas and enjoying garden vegetables. Thanks to Perry Cummings and Mary Singley. Tishie Hayes celebrated her 90th Birthday August 7. Her family brought a large birthday cake and punch. Good time was enjoyed by all.

Ollie Shipp celebrated her 86th Birthday August 14. Beautiful birthday cake and punch was served by Granny Shipp's family. May they enjoy many more.

Mae Schubert was out visiting and enjoyed a family reunion at Longworth Community Center. Visiting Beulah Herron-Norma Herron of Austin and other family members. Visiting Maebelle Ogden-J.R. Lewis of Freeport. Visiting Cordie Wade-Sybil Wade of Hamlin. Visiting Beulah Moffett-Hoye Moffett of San Antonio and Chester Moffett of Austin, going to Sylvester Cemetery to clean lots and place flowers. Visiting Beulah Herron-Mrs. Nola Jones of



### Timely Pawn Loans

2409 Ave R, Snyder, Texas  
915-573-9335

KEN MINYARD — Buyer - Seller - Trader

# GRASLAN® GETS THE SHINNERY. YOU GET THE GRASS.

For decades, the rangeland of West Texas has been covered with brush troublemakers like sand shinnery. Battling these brush problems has been all uphill for ranchers. Until now.

Now, there's a totally new approach to controlling brush. It's Graslan®. From Elanco. Graslan is a pelleted, aerially-applied brush herbicide. And one application gives years of control.

Graslan. It's the new foundation of a range management program that controls sand shinnery and other West Texas troublemakers, allowing your rangeland to live up to its full potential.

For more information about how Graslan can help you win the war against brush, call the toll-free Elanco Graslan hotline:

**1-800-428-4441**

ELANCO

Pioneering a new era in range management.

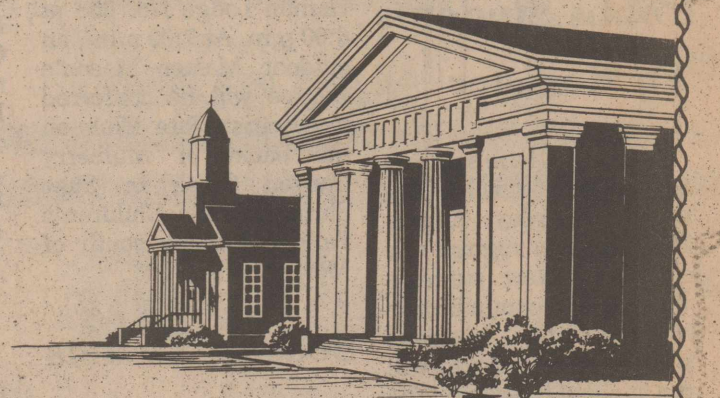
Graslan®—(rebuthuron, Elanco)



There was a time when rivers slowed man's journey. Now we speed across them going to and from our work... with hardly a thought for the engineering genius which has enabled man to span every river with his bridges.

In our journey through life there are times when we face hazards or frustrations. For millions, religious faith has been the bridge to new horizons or opportunity and realization.

You need, your family needs, the spiritual stimulation and enrichment your place of worship can provide. The resources gained can span the week.



Copyright 1982 Keister Advertising Service  
P. O. Box 8024, Charlottesville, Virginia 22906

Scriptures selected by The American Bible Society

	Sunday Job 5:1-8	Monday Job 6:1-11	Tuesday Psalms 67:1-7	Wednesday Psalms 96:1-13	Thursday Psalms 98:1-9	Friday Psalms 142:1-7	Saturday Psalms 143:1-12
--	------------------------	-------------------------	-----------------------------	--------------------------------	------------------------------	-----------------------------	--------------------------------

This Week's Featured Church Page Sponsor:		H.L. DAVIS & CO.	ROTAN MOTOR CO.
Landes Furniture		Bill & Elaine Day Rotan	Ford & Mercury Rotan
CITIZENS STATE BANK Member FDIC Roby	FISHER COUNTY NURSING HOME 735-3291 Rotan	ROTAN INSURANCE AGENCY Joe Burk-Agent Rotan	ROBY MIDWEST ELECTRIC 776-2244 Roby
ROBY INSURANCE AGENCY 776-2361 Roby	ROTAN NURSING CENTER 711 E. 5th Rotan	BART STRAYHORN 735-2231 Rotan	FISHER COUNTY FARM BUREAU 215 W. Snyder Rotan
CENTRAL LUMBER & SUPPLY 776-2371 Roby	MARTINEZ DAIRY Rudy, Joe B. & Emilio Martinez Hobbs Community	LANDES FURNITURE Loys Landes Larry Landes Rotan	WEATHERSBEE FUNERAL HOME Rotan
FARMERS UNION CO-OP GIN Roby	ROTAN PAINT & BODY SHOP Rotan	M&C LUMBER & HDW., INC. Rotan	FIRST NATIONAL BANK OF ROTAN Member FDIC



## LOOKING BACK

Casting A Little Sunshine On The Past—10 yrs. ago, 5 yrs. ago and last year.

By Rosemary Donham

### Ten Years Ago August 17, 1972

A torrential downpour hit Fisher County and flooded the Gyp Mill Road and caused considerable damage to residences and cotton fields. Roby classes were scheduled to begin on August 21. The Rotan Advance-Roby Star Record received The General Excellence Award at the West Texas Press Association Convention held in Brownwood. Elmer Martin, Democratic Party nominee for State Representative, 61st district, visited Fisher County on a Study Tour. Rhonda K. Jones received a B.A. Degree from McMurry College. Peggy Adams received a degree in commercial excellence from Hardin Simmons University. Tereza Hyatt and Donnie Kiker were united in marriage. Horace Carter attended the Farm Bureau Conference held in Austin. Jen Holcomb was elected the new Roby FHA Resident. Mr. and Mrs. A.A. Phillips celebrated their 50th Wedding Anniversary.

### Five Years Ago August 19, 1976

Earl Holcomb, H. Thompson, Jim Loulin, Clay Fowler, C.F. Messick and Mike Hull helped install new playground equipment at the Rotan School. Teacher in-service training began for the Rotan teaching staff. Nineteen contestants entered the Rodeo Queen contest. Tisa Lovett won top honors at the AJRA Finals held in Snyder. Charlie Joe Moore was chosen as the Fisher

County Young Farmers Outstanding Young Farmer. Mr. and Mrs. Lon Weems celebrated their 60th Wedding Anniversary. Janet Callan and Mike Stone announced their engagement. Janie Cantu Diaz and Robert Diaz were united in marriage. Doyle Bell, Jamie K. Bell and Fayma Drummond were hired as the new McCaulley teachers. Conrad Hamric, Historian of Ann Pettus Shelburne Society, Tony Gruben and Laura Gruben attended the Texas State Society Children of the American Revolution Workshop in Austin. Cecilia Jane Adams and Bob Greenlee announced their engagement. Larry Dean Helms received a Doctor of Veterinary Medicine degree from Texas A&M University.

### One Year Ago August 20, 1981

Mike Morrow was elected Public Relations Officer at the State 4-H Council. The City of Roby increased water and sewer rates. Michael Gruben won a Skateathon for "Muscular Dystrophy, skating a full 12 hours. The Rotan School Board granted the teachers a pay raise and discussed a new Field House. Stephanie Frierson and Cody Smith tied for first place at the Rehab Horse Show held at the Wedeking Horse Ranch. Rowdy Raspberry won the bull riding event at the Odessa AJRA Rodeo. The McCaulley Fire Dept. held a community fish fry. Cindy Posey and Dale Putnam exchanged wedding vows. Forty students attended Roby's first Band practice session.

### Golden Haven Nursing Home

Everyone in our home is on a good day. Eula Williamson is still in the hospital but doing better we are happy to report. Our visitors registering this week: Visiting Myrtle Woodson-Robert, and Alma Scott of Sylvester. Visiting Leatha Meek-Judy Justiss and Nancy and Missy Peoples of Sweetwater. Visiting Lora Stephen-Carole Floyd of Roscoe. Visiting Johnnie Mulanax-Billy Clyde Woodward of Mexical, Mexico. Visiting Eva Chapman-Jeneva Chandler, Mayme Leonard, Bessie and Bill and Jack and Irene, all of Roscoe. Visiting Sam Lambert-Bert Warren of Sweet-

water. Elizabeth Hale was out to the Methodist Church with Bert and Ilene Hale and spent the day visiting. Visiting Virginia Melton was her family of Sweetwater and El Paso. Our people have enjoyed the nice garden products furnished by Perry Cummings and Norma Meeks. Thank you. We've had some good Bingo games and Edgar Roberts is still champ at dominoes. We want to say thanks to the church groups who bring church services and music and a spiritual uplifting to our shut-ins. Have a good day and come to see us. Bettie Hargrove Activity Director

We welcome Mrs. L.E. Latham to Rotan Nursing Center. We are happy to have her. Our deepest sympathy to Mrs. Emma Lenued in the

### Senior Citizens Supper Date Changed

The Senior Citizens Covered Dish Supper has been changed to Saturday night, August 28th, at 7:00 p.m.

### Washington Visitors In Rotan

Mr. and Mrs. Walter Rae from Shelton, Washington, visited in the home of Mrs. Jack Darden. They also visited other relatives and friends.



Melinda and P.J. Heffernan of Snyder have a new little baby sister, Holly Jolynda. She arrived August 9, 1982, at Cogsdell Memorial Hospital and weighed 6 lb. 13 oz. and was 17 1/4 inches tall. Their parents are Lyndon and Jo Retta. Maternal grandparents are the James Allen's of Snyder. Paternal grandparents are the Jesse Heffernan's of Rotan and maternal great-grandparents are Mr. and Mrs. J.C. Nichols and Bertha Allen of Rotan.

### Rotan Nursing Center

loss of her son, D.C. Wallace. Also our sympathy to Mrs. Birdy Ramby in the loss of a grandson, Thomas J. Ramby.

Last Thursday the Friendship Class from First Baptist Church brought a wonderful homemade ice cream and cake party to all our residents. Since we had no August birthdays we celebrated Mr. and Mrs. R.T. Shipp's Sixtieth Anniversary. We thank the ladies responsible for this lovely gesture so much.

Our out of town guests have been Mr. and Mrs. Valton Gruben of Tulia, Inez Purser of Merkel visited their mother; Maud Gruben. Mrs. Carrie Allen of Roby visited Lottie Schick. Mr. and Mrs. Eugene Waddell of Waco visited Mrs. Emma Lenued. Visiting Johnnie Trejo was Juan Trejo, Jr. of Sweetwater. Justina

Trejo and son of Sweetwater, Domingo Trejo of Snyder, Mr. and Mrs. Mike Rodriguez of Abilene, Mr. and Mrs. Salinos of Snyder, B.B. Meramontez of Abilene, Paul Trejo of Sweetwater, Rudy Reyes and petro Ramon of Illinois. Visiting the R.T. Shipp was Mr. and Mrs. Gaines Shipp of Roswell, N.M., Mrs. Hazel Hayes and sons of Pecos and Mr. and Mrs. Calvin Daniel and Jenny of Sweetwater. Also visiting the Shipp's

were Mrs. Willa Powell and daughter, Diane, of Sweetwater. Mr. and Mrs. Ben Clark and grandson of Sweetwater and Mrs. Issie Courtney of Dallas visited Emily Garrett. Rev. and

Mrs. Billy Hudnall of Austin are here visiting his father, G.A. Hudnall, who is very ill. See you next week. Ima Berry Activity Director

We Sell  
● Bibles  
● Books  
● Religious Books  
The Newspaper Office

### REAL ESTATE FORECLOSING

Property Owned by Troy F. Gruben

All that certain lot, tract or parcel of land lying and being situated in Fisher County, Texas, and being described as follows, to wit:

All of Section No. 93 in Block One (1), H & T C Railroad Company Survey, containing 631 acres, more or less.

Place: Roby, Fisher County Courthouse, Texas  
Date: September 7, 1982  
Time: 10:00 a.m.

TERMS: The real estate will be sold for cash to highest bidder. Sold subject to all taxes due thereon. Title will be conveyed by substitute trustee's deed.

For information contact Tom Swanner, Small Business Administration, 1205 Texas Ave., Lubbock, Texas 79491. Phone 806-762-7471.

**19** Tuesday, August 24

**99¢**

KING SIZE WALLET CREATIVE COLOR PORTRAITS FOR ONLY

Kodak paper. For a Good Look at the Times of Your Life. TM

Extra Charge for GROUPS

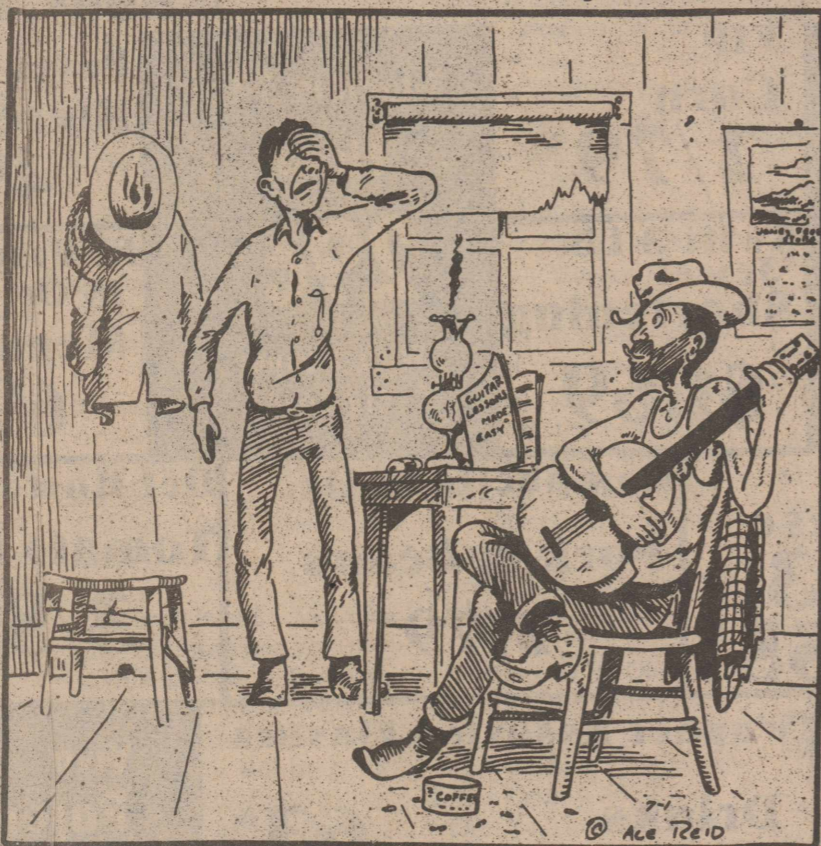
NO LIMIT

ASK About Our FREE 8 x 10 OFFER

**Shugart's inc.**  
**COLOR PHOTOS**  
Winn's  
110 W. Snyder  
Rotan, Texas

### COW POKES

By Ace Reid



"Ch, things ain't bad enough with the drought, low prices and the heat—you have to start takin' guitar lessons."

THERE IS A TIME TO SAVE AND A TIME TO SPEND!!  
WHETHER IT IS A CHECKING ACCOUNT OR A SAVINGS ACCOUNT—KEEP THEM BOTH UNDER THE SAME ROOF...OURS!

## First National Bank Of Rotan

735-2224 Rotan, Texas



## FALL

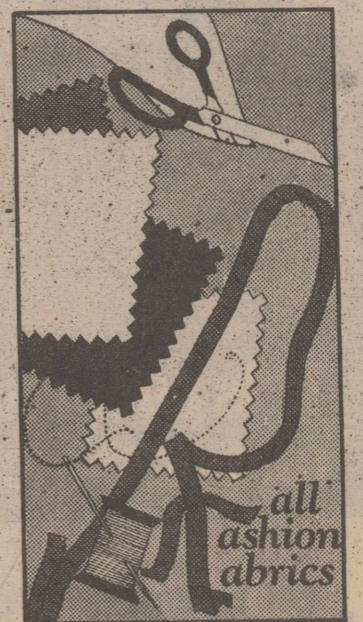


Our New Fall Material And Fall Fashions Have Arrived!

All New For Fall!!!



Come By To Make Your Selection.



## H. L. DAVIS & CO.

"THE FRIENDLY STORE"

ROTAN, TEXAS

## The Recipe Box

Favorite Recipes From Fisher County Folks

By Carol Weatherly

The following recipe for Miniature Cheesecakes comes from Chery (Rogers) Young of Tye, Texas.

### Miniature Cheesecakes

2 pkg. (8-oz. size) cream cheese  
2 eggs  
1 Tbsp. lemon juice (optional)  
½ cup sugar  
¼ tsp. vanilla

Let cream cheese soften in bowl. Add sugar. Mix well. Add eggs, beating well. Blend in vanilla and lemon juice. Place paper liners in muffin tin and fill ½ full. Bake in preheated 300 degree oven for 20 minutes.

### Topping

1 cup sour cream  
½ tsp vanilla  
¼ cup sugar

1 can cherry pie filling

Make topping. Mix sour cream, sugar and vanilla with mixer. Put ½ tsp. of topping on each one. Bake for another 10 minutes. Let cool. Top with pie filling or preserves. Refrigerate. Makes 2 dozen.

\*\*\*

Mrs. Dorothy Fewel of Bartlesville, Oklahoma, sent in the following recipe. Mrs. Fewel was born and raised near Roby.

### Calico Vegetable Salad

2 10-oz. pkgs. Mixed Frozen Vegetables  
3 or 4 stalks from a bunch of celery  
½ large green pepper  
1 medium onion

1 can red kidney beans (drained & rinsed)

Cook vegetables until tender crisp. Chop green pepper, celery and onion. Add to cooled vegetables and kidney beans.

Marinade: Mix ¼ cup sugar, 2 Tbsp. flour, and ½ tsp. salt. Add ½ cup vinegar and 1 Tbsp. prepared mustard. Cook until thick. Pour over vegetables.

Refrigerate several hours or overnight. Will keep at least two weeks in refrigerator.

# Boll Weevil Report In Fisher County

Light to heavy rain occurred over the weekend. Conditions were favorable for the hatching of bollworm eggs.

The first generation of boll weevils after the overwintering generation are damaging area cotton

crops. Economic infestations of 30% weevil punctured 1/3 grown squares are occurring in many fields near boll weevil overwintering habitat. Boll weevils overwinter in the shinnery and also along rivers and

streams where leaf litter is the heaviest. If you had a lot of boll weevils last fall, chances are that you have some now. These fields need to be inspected for boll weevil adults and punctures. I am sure that there are boll weevils in many fields that have gone undetected so far.

City. Many other areas have 10-20% punctured squares and some of these may need treatment in the near future.

Scattered bollworm infestations during and following last weekends rainy weather have occurred. A high percentage of the eggs survived during the wet, cool weather. The egg lays are generally down right now, but are expected to rise this weekend. Small worms should be hatching out next week. This coming egg lay could be bigger than the previous ones, so start scouting for bollworm eggs now. A

microbial insecticide such as Dipel, Thuricide or Elcar will control small bollworms while not harming beneficial insects. One application is usually all that is needed. It is critical that application of any insecticide is made when the bollworms are small and in the plant terminals for best results.

The bollworm egg lay prediction for the Jayton area in Kent County is for a big peak egg lay on August 31.

Now is the time to treat white grubs in your lawn. These C-shaped grubs are the larvae of June beetles, chafers and Japanese beetles. Apply Diazinon granules at 2 oz. per 1,000 sq. ft. Use plenty of water to dissolve the insecticide into the soil. You have until about mid-August to apply this insecticide for best results. To examine for grubs, simply examine the root area of some turf. These grubs feed on the roots and can completely kill sections of your lawn if left untreated.

Grape leaf hoppers are sucking insects that can quickly devastate a grape crop by killing the leaves. These small light yellow insects have mottled brown patches on the wings as adults. The immature nymphs lack this brown color since they lack fully developed wings. Treat the leaves with levin insecticide for control of these pests. There is no waiting period from application to harvest of the grapes. Do not use Sevin (carbaryl) with fixed copper plus lime.

**TURNROW MEETINGS**  
**Fisher County**—Meet in the Fisher County Courthouse Coffee room in Roby. Monday—Aug. 16, 9:00 a.m. and Monday—Aug. 23, 9:00 a.m.  
**Jones County**—Meet in the Jones County Extension Agent's office in Anson. Tuesday—Aug. 17, 9:00 a.m. and Tuesday—Aug. 24, 9:00 a.m.  
**Kent County**—Meet in the Kent County Extension Agent's Office in Aspermont. Friday—Aug. 20,

## Young Homemakers Meeting Held

The Rotan Young Homemakers met Tuesday, August 10, at Homestate Savings for a salad supper. Plans for projects and monthly programs for the year were discussed.

Those present were: Barbara Tankersly, Jaye Neice Clements, Becky Burk, Cindy Fryar, Peggy Williams, Terrie Morrow, Armeta Smallwood, Patty

Morrow, Tammy Kelly, Marilyn Ramsey, Jan Wetsel, Dianna McKinney, Dee Ann Mullins, and Cindy Posey.

The next meeting is scheduled for Tuesday, September 14, 7:30 p.m. at the Homemaking Dept., Rotan High School. A licensed Cosmetologist will be guest speaker so make plans to attend.

## Playnight To Be Held In Anson Aug. 20

The Jones County Fair Association will host an All Trophy Playnight August 20, 1982. Charlie Myatt Arena, Anson City Park. Youth barrels, poles, and flags with a \$2.00 entry fee. Open jackpot barrels and poles. Starts 8:00 p.m.

Books open 7:00 p.m. August 21, 1982-Anson Open Horse Show. 9:00 a.m.-Halter Classes-\$5.00 entry fee; trophies and ribbons.

Showmanship, western pleasure, reining, barrels, poles and flags. 12 and under; 13-18 age divisions. \$3.00 entry fee with trophies and ribbons. Highpoint belt buckle each age division. 19 and over-\$8.00 entry fee, \$5.00 jackpot. High point belt buckle.

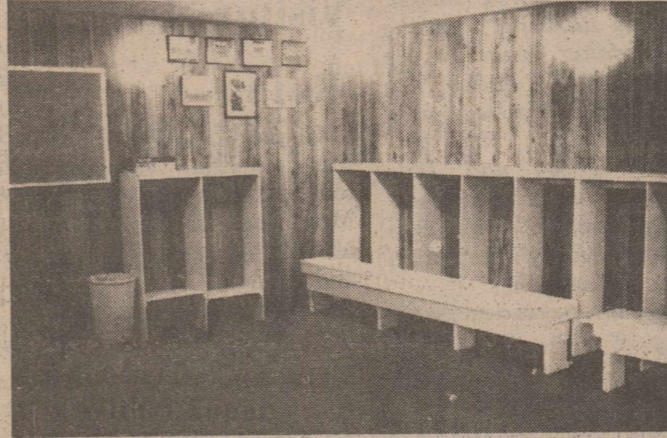
6:00 p.m. August 21, 1982-Jackpot barrel races. Open and Novice Classes. Contact Teresa Kiker-915-823-2939.

\*\*\*\*

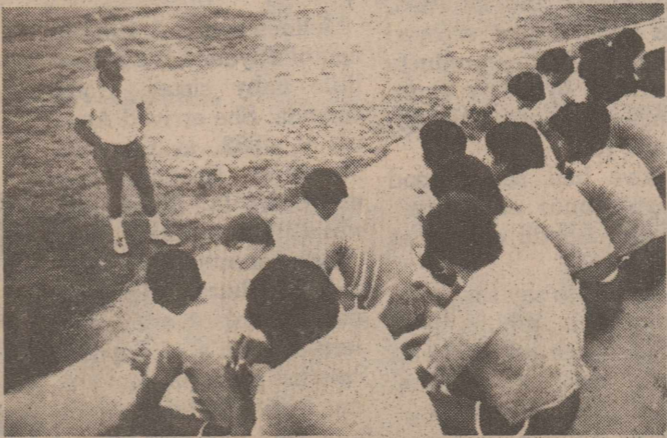
"One man's fault is another man's lesson." H. G. Bohn

\*\*\*\*

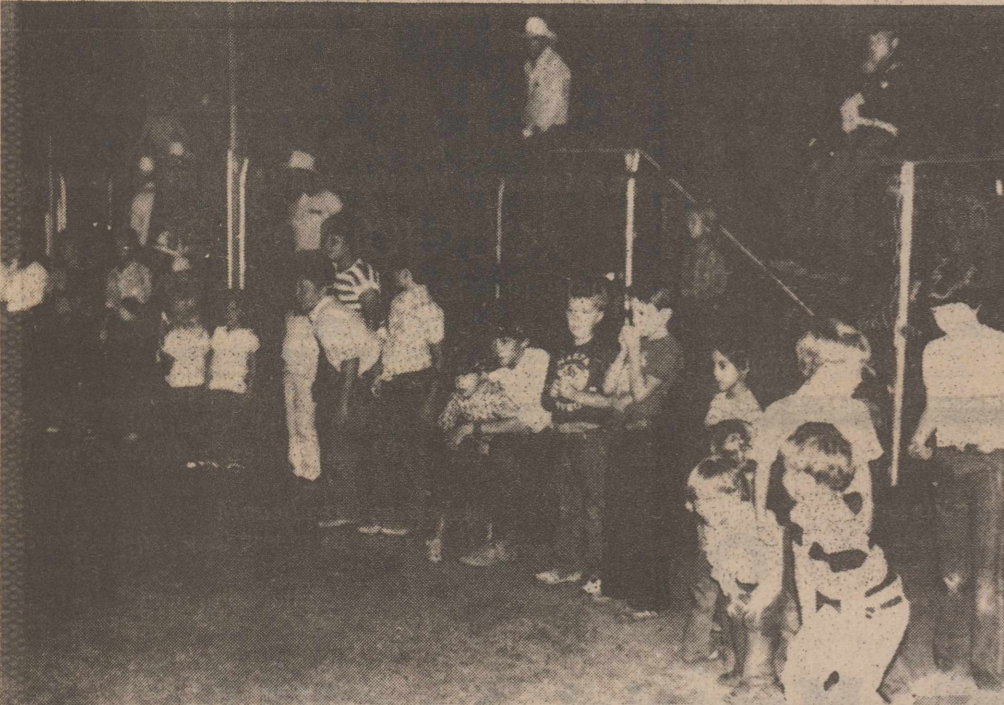
**PRESIDENTS**  
President Harry Truman was distantly related to President John Tyler.



**NEW LOOK:** The above photograph shows the clean, crisp look of the newly remodeled Rotan Field House. The dressing room has been completely paneled, repainted, new carpet installed, and is an asset to the school.



**PEP TALK:** Coach Robert Damron, upper left, gives his 46 boys a briefing prior to morning two-a-day workouts. The Yellowhammers will travel to Crosbyton on Friday for the first of two scrimmages.



**CALF SCRAMBLE:** Approximately 50 youngsters took part in the calf scramble at the A.J.R.A. Rodeo in Roby recently.

## Christmas Cards for 1982

Imprinted With Your Name



The Gumdrop Tee

735-2479

Rotan, Texas

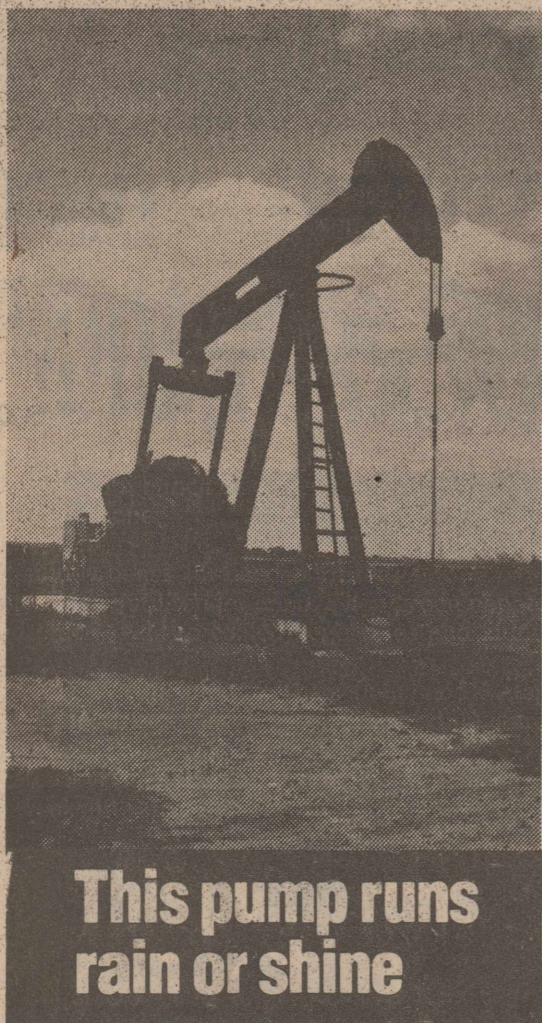
## City Grocery & Deli

Prices Effective Aug. 19-25, 1982

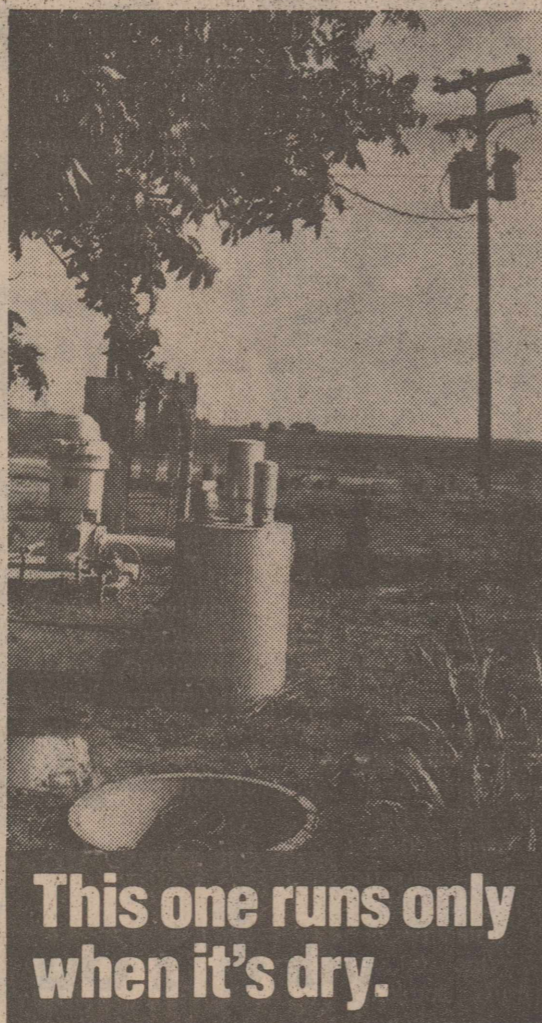
776-2225

Roby, Texas

Kraft 32 Oz. Mayonaise <b>99c</b> With 1 Super Six Card	VIP Corn <b>2/79c</b> Swift 3 LB. Jewel Shortening <b>\$1.69</b>	Gladiola 5 Lb. Flour <b>29c</b> With 1 Super Six Card	Purex Qt. Bleach <b>49c</b> El Paso 15 Oz. Menudo <b>69c</b>
Gandys 12 Oz. Cottage Cheese <b>83c</b> Sour Cream <b>55c</b>	Campbells 16 Oz. Pork & Beans <b>2/79c</b>	Del Monte 8 Oz. Tomato Sauce <b>3/89c</b>	
Palmolive 22 Oz. Dish Soap <b>55c</b> With 1 Super Six Card	Wagner Assorted Flavors Drinks <b>63c</b> DELI Burritos <b>2/89c</b>	Fresh Cut Bologna <b>\$1.39 LB.</b>	Viva Paper Towels <b>39c</b> With 1 Super Six Card
Del Monte 24 Oz. Catsup <b>95c</b>	Colorado Corn 3 Ears For <b>59c</b>	Washington Red Delicious Apples <b>49c LB.</b>	
3 Oz. Lipton Instant Tea <b>\$1.79</b> With 1 Super Six Card	Nabisco Oreo Double Stuff 20 Oz. Chocolate Sandwich <b>\$1.79</b> Bordens Hi Pro Gal. Milk <b>\$2.49</b>	Supermar 18 Oz. Peanut Butter <b>95c</b> With 1 Super Six Card	



**This pump runs rain or shine**



**This one runs only when it's dry.**

Oil wells pump continuously, irrigation pumps are seasonal. The cooperative must forecast demand with a high degree of accuracy so there is adequate power for both.

Because the Public Utilities Commission requires cooperatives to base their rates on the cost of delivering electric services, sporadic high demand, especially during periods of peak usage, requires a higher rate. But it will never be a penny higher than it has to be. That's a promise we've kept for more than 40 years.

**Midwest Electric Cooperative**  
Roby, Texas

# Fisher County

## Weekly Activities

**Thursday, August 19**  
**ROTAN AEROBIC DANCE:** 5:30 p.m. at the Rotan Community Center. New members welcomed.  
**ROBY VOLUNTEER FIRE DEPARTMENT:** Meeting at Roby Fire Hall.  
**FISHER COUNTY SENIOR CITIZENS:** 9:00-3:00 p.m. at the Senior Citizens Building.  
**ROTAN WATER AUTHORITY BOARD:** 2:30 p.m. at City Hall.  
**ROTAN JUNIORS AND SENIORS:** High School registration at 9:00 a.m. to 11:30 a.m. for Juniors and 1:00 p.m. to 3:30 p.m. for Seniors.  
**FIRST UNITED METHODIST CHURCH OF ROTAN:** Sponsoring "Four Days of Fun" from 9:30 a.m. to 11:30 a.m. at the church.  
**ROBY SCHOOL STUDENTS:** First day of classes.  
**HOBBS SCHOOL STUDENTS:** First day of classes.  
**McCAULLEY SCHOOL STUDENTS:** First day of classes.

**Friday, August 20**  
**McCAULLEY FOOTBALL:** High School scrimmage at Goree at 5:30 p.m.  
**ROBY FOOTBALL:** High School scrimmage - Hawley at Roby.  
**ROTAN FOOTBALL:** High School scrimmage with Crosbyton.  
**FISHER COUNTY SENIOR CITIZENS:** 9:00-3:00 p.m. at the Senior Citizens Building.

**Saturday, August 21**

**Sunday, August 22**

**Monday, August 23**  
**ROTAN LADIES AEROBIC DANCE:** 5:30 p.m. at the Rotan Community Center.  
**ROBY AEROBIC DANCE:** 5:30 p.m. Call 735-3165 for location.  
**ROTAN SCHOOL EMPLOYEES:** Report for Inservice Training.  
**ROTAN VOLUNTEER FIRE DEPARTMENT:** 7:30 p.m. at Fire Hall.

**Tuesday, August 24**  
**FISHER COUNTY SENIOR CITIZENS:** 9:00-3:00 p.m. at the Senior Citizens Building.  
**ALL COUNTY TEACHERS:** Inservice at Hamlin. Students do not report for school.

**Wednesday, August 25**  
**ROBY AEROBIC DANCE:** 5:30 p.m. Call 735-3165 for location.

If you would like your organization's activities in this section call 735-3165.

Fall registration for Texas State Technical Institute in Sweetwater is set



A laser technique at the IBM Research Center developed in 1979 can reveal what's happening in a chemical reaction lasting a few billionths of a second.

### Card Of Thanks

Words alone could never express our thanks to the many friends and loved ones for their kindness and love, shown to our family during the loss of our husband and father. Especially did we appreciate the beautiful food and the beautiful floral offering and words of comfort. May God bless each of you.

- Mrs. Leo Jones
- Dwayne Bryant & family
- Calvin Jones & family
- Randel Jones & family
- Mr. & Mrs. Guy Winter
- Mr. & Mrs. Terry Stevens
- Carlos Jones

# TSTI Registration Set

for September 7-8. Classes begin September 9. Students should go to the Related Technology Building on campus, which is directly behind the Administration/Campus Services Building, between 8 a.m. and 5 p.m.

Faculty members from each department will be available to assign class schedules, and a temporary cashier's office will enable students to pay all tuition, fees, housing and board plan costs at that time. Those who have paid a housing deposit will receive their room assignments.

All programs at TSTI are admitting students for the fall except Vocational Nursing. Programs admitting students include Air Conditioning and Refrigeration Technology, Automotive Mechanics, Auto Body Repair, Building Construction Craftsman, Machine Shop Operations, Welding, Livestock and Ranch Operations, Emergency Medical Services, Dental Assistant, Diesel

Mechanics, Drafting, Electronics, Computer Science Technology, and Technical Office Training. Any person wishing to enroll in TSTI should have a high school transcript, or a G.E.D. certificate and a current health record. An admissions packet is available through the Admissions and Records Office at TSTI.

The Differential Aptitude Test is given each weekday during August. This exam is used for counseling purposes only and will not prohibit anyone from entering TSTI. It is beneficial to the student and faculty if the test is taken before a

student enrolls in a program. For students wishing to commute from Abilene, Roby, Rotan, Colorado City, Loraine and Roscoe, a free bus service is planned. Complete schedules can be obtained at registration. One route

will serve Abilene while another makes the run to Roby and Rotan. A third will serve Colorado City, Loraine, Roscoe and parts of Sweetwater. Twelve students must sign up for each route for it to be made. TSTI-Sweetwater is part

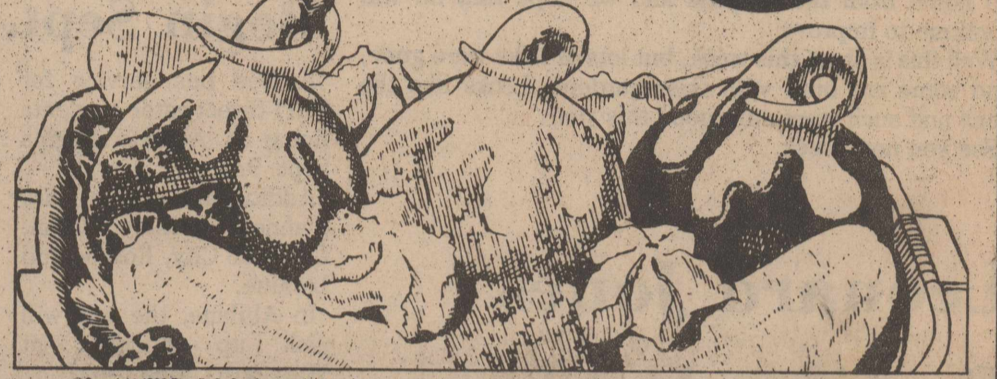
of a state-supported system of four technical schools. It is accredited by the Southern Association of Colleges and Schools. Further information about TSTI can be obtained by contacting the Public Information Office at (915) 235-8441 ext. 39.

# Sale Banana Split \$1.19

This Monday, August 16  
thru Sunday, August 22.

Dairy Queen

We treat you like a Texan.



**FARMERS & RANCHERS  
UNITE FOR SURVIVAL**  
 Join Texas Farmers Union Now  
**TFU**  
 Call 776-2529

**YOUR Insurance AGENT**  
 The more-than-one-company insurance agent  
**Deaton Insurance Agency**  
 Roby, Texas 79543  
 Telephone 776-2228

# CLASSIFIED ADS

**CAKES FOR ALL OCCASIONS**  
 Birthday, Anniversary  
 Shower or Any Special  
 Event  
**SPECIALIZING IN WEDDING CAKES**  
 Fountain and Stairway Available  
**JAYE NEICE CLEMENTS**  
 735-3281 or 735-2010  
 6:00 P.M. and Weekends

**Roby Star Record**  
 The Voice of Fisher County Since 1907  
**ROTAN ADVANCE**  
 Post Office Drawer A, Rotan, Texas 79546  
**TEXAS PRESS ASSOCIATION**  
 (915) 735-2562 - Office  
 (915) 735-2278 - Office  
 (915) 735-3115 - Home  
 Kim Pease  
 Janece Pease  
 Rosemary Donham  
 Carol Weatherly  
 Jimmy Markham  
 Joy Walker  
 Hooper Shelton  
 Debby Wilfong  
 Editor/Publisher  
 Associate  
 Advertising  
 Typesetting  
 Bookkeeping  
 Correspondent  
 Job Printing  
 Production

Published in Rotan, Texas weekly. Entered as Second Class mail at the Post Office, Rotan, Texas 79546 under acts of Congress.  
 POSTMASTER: Send Address Correction to: The Newspaper Office, P.O. Drawer A, Rotan, Texas 79546.  
 Subscription price \$8.50 yearly in Fisher and surrounding counties. \$9.50 remainder of Texas counties. \$10.50 in United States.  
 Advertising rate is \$1.80 per column inch. Classified rate is \$2.50 for first 15 words and 10 cents for each additional word. Minimum \$2.50 if paid in advance. \$3.00 minimum if billed. Classified display rate is \$2.50 per column inch. Cards of Thanks - \$5.00 minimum charge.  
 Subscription Expiration dates are listed on each mail subscribers newspaper delivery label each week. Newspapers must be renewed prior to the expiration date. Postal regulations say that subscriptions must be paid in advance to qualify for 2nd class postage regulations.  
 News and Advertising deadline is 12:00 noon on Tuesday of Each Week. The Rotan Advance-Roby Star Record is published 51 weeks a year. No paper is printed on the last Thursday of each year.  
 Notice: Any erroneous reflection upon the character, standing or reputation of any individual, firm or corporation will be gladly corrected when brought to the attention of the publisher.  
 Mail To:  
 The Newspaper Office  
 P.O. Drawer A  
 Rotan, Texas 79546  
 Please find enclosed for my subscription for \_\_\_\_\_ years. New \_\_\_\_\_ Renewal \_\_\_\_\_  
 Name \_\_\_\_\_  
 Address \_\_\_\_\_  
 City \_\_\_\_\_ State \_\_\_\_\_ Zip \_\_\_\_\_  
 Top Line Code On Mail Label \_\_\_\_\_

**BLACK INVESTMENTS**  
**Myla Black, Broker**  
 Real Estate Sales • Appraisals • Petroleum Landwork  
 • **220 Acres**, West of Rotan with County Road frontage, all cultivation, class II and III soils.  
 • **MOBILE HOME**, 12x60, 2 Bedroom, All Appliances, \$7,000.00.  
 • **INVESTMENT PROPERTY**, 6-unit Brick Apartment Building on 3 lots in Roby, good condition, flexible financing.  
 • **NEW LISTING: 160 Acre Farm** North of Rotan, Brick Home, 2-Bedroom, 1 1/4 Bath, Fireplace, Central Air and Heat, Flexible Financing.  
 • **634.78 Acres**, Fisher County SE of Sylvester, Improved Pasture, 1/4 Minerals, 1/16 Royalty.  
 • **240.7 Acres**, Fisher County, SE of Sylvester, Cultivation 1/2 Minerals, 1/4 Royalty.  
 • **263.35 Acres**, Jones County, SE of Sylvester, Improved Pasture, 1/3 Minerals, 1/6 Royalty.  
 • Other Farms & Ranches Available  
**(915) 735-3091**

**B And T  
Real Estate**  
**113 W. Snyder**  
**735-2571**  
 Older, Home lot of room, good location.  
 2 lots, one with trailer hook-up.  
**EXTRA NICE**-New Listing, 3 bedroom, paneled, carpet, cedar fence, large corner lot, excellent condition - ready for occupancy. Special financing arrangement.  
**CORNER LOT** - 2 Bedroom, Living Room, Kitchen, 1 1/2 baths, 3 lots. Nice Location.  
 Joe D. Burk, Broker  
 H. Thompson,  
 Salesman, 735-3223

**FOR SALE:** Nice washer and dryer. Reconditioned. 30 day warranty. B&F appliance repair. 30 years experience. McCaulley. 962-5446. 1-tfc

**FOR RENT IN ROBY:** 3 bedroom garden apartment. Refrigerator and range furnished. \$250.00 per month. 776-2563. 25-tfc

**LOSE 10 to 29 pounds** in one month. Guaranteed or money back. In Abilene call Lorrie, 673-7979, or Darla, 698-3620. 19-tfc

**GARAGE SALE:** At Sylvester. Children's clothes and lots of miscellaneous items. Two blocks north of Community Center. Friday and Saturday. 27-1tp

**NOTICE:** Southwestern Bell telephone customers can pay their telephone bills at **THE GUMDROP TREE**, Snyder Avenue (across from City Hall) between 9:00 a.m. and 5:00 p.m., Monday through Friday. 23-tfc

**HAY HAULING:** Contact Clay or Glenn Wilfong. 735-2301 Days. 735-2034 or 735-2956 Evenings. 24-tfc

**ARE YOU TIRED** of waiting to get that electrical work done? Call C&K Electric in Sylvester. 993-4575. Commercial, residential, oil field. Also install ceiling fans. 24-tfc

**WANT TO BUY:** Good used barbed wire. Call 735-2018. Forrest Acker. 25-tfc

**HOUSE FOR SALE:** 102 West Burnside, Rotan. Phone 735-2485. Doris Gilliland. 26-tfc

**REMEMBER:** The Gum-Drop Tree for Wedding and Baby Shower gifts. 42-tfc

**NOTICE:** Want to buy long wide bed pickup. 73 model or over. Call 735-2316. 27-1tc

**NOTICE:** Will build, remodel, improve and add-on to homes. Interior and exterior work such as paneling, carpeting, roofing, etc. Free estimates. Clifton Griffith Construction. 776-2403. 37-tfc

**NEW HOME SEWING MACHINES:** Electrolux cleaners, repair all makes. H.B. Stevens, 1101 James Street, Sweetwater, 235-2889. 27-tfc

**MATTRESSES:** New and renovated, choice of color, firmness and size. Save on renovating; guaranteed. Made by Western Mattress Company. Call Mrs. Turnbow, 735-2313, Rotan, Leave name. 50-tfc

**NOTICE:** J.B. SMITH MONUMENTS & CURBING. 308 East 4th St., Rotan. 735-3290. 6-tfc

**WOOD CUTTERS:** We now have a new machine to sharpen chains for all chain saws. Farm Tractor & Service, Inc., Rotan. 40-tfc

**GARAGE SALE:** 401 East Lee. Friday & Saturday. Lots of clothing (mens, womens & childrens) and other miscellaneous items. 27-1tp

**FOR RENT  
Storage Spaces**  
**From \$15.00-Up  
per month.**  
**LOCK IT OR  
LEAVE IT**  
**ROTAN  
SELF-STORAGE**  
**735-3171**

**FOR SALE:** Upright piano. Good condition. \$200.00. Call 735-3234. Mrs. Franklin White. 27-2tc

**FREE:** Envelope printing - your return address printed free on all CHRISTMAS CARDS printed with your name ordered before September 30th, 1982. See the complete selection of Christmas Cards available for imprinting at THE GUMDROP TREE, Snyder Avenue. Open Monday through Friday, 9:00 a.m. until 5:00 p.m., Rotan, Texas. 23-tfc

**LOOKING FOR GOOD HOME** for two male Beagles. Need lots of room to run and play. Call 776-2455 after 5:30 p.m. 27-1tc

**GARAGE SALE:** Piano, twin bedroom set, pots and pans, rabbit fur coat-girl's size 12, clothes, miscellaneous. Starts Thursday, August 19, until all is sold. Call 776-2166 for directions. 27-1tc

**FOR SALE:** 1972 Ford LTD, 2 door hardtop, super nice car. Call 735-2508. 27-2tc

**FOR SALE:** 1968 Plymouth Valiant, 27 miles to gallon, runs good, \$500.00. Call 735-2508. 27-1tc

**LOST:** Somewhere in rotan. Miscellaneous items in Winn's sack. Mrs. Tracy King. 776-2397. 27-2tc

**WANTED:** Refrigerator & 30-inch propane cook-stove. Call 776-2330. 27-2tc

**FOR SALE:** Trombone, Cleveland Superior. \$50. Call 776-2774 or contact Judy Van Liew at City Grocery in Roby. 27-2tc

**PIANO IN STORAGE:** Beautiful spinet-console stored locally. Reported like new. Responsible party can take at big saving on low payment balance. Write Joplino Piano Inc., Joplin, Missouri 64801. Include home phone number. 27-1tp

**FREE:** 4 black puppies. Six weeks old. 735-3519. 26-2tc

**We Sell**  
**Legal & Letter Size**  
**Filing Cabinets**  
**The Newspaper**  
**Office**

**WANTED LVN**  
 Someone special needs you. Try geriatric nursing. Will be a rewarding experience. Positions available from 7:00 to 3:00 or 3:00 to 11:00. Excellent pay with paid holidays. Excellent major medical and life insurance. Apply in person at 1000 North Broadway, Aspermont, Texas, or call 817-989-3526. 23-6tc

**Ronald B. Green**  
**GENERAL CONCRETE WORK**  
 CONCRETE AND LABOR CONSTRUCTION  
 CEMENTERY CURBING - YARD CURBS  
 WALKS AND DRIVES - PATIOS  
 Box E 776-2108 Roby, Texas

## Hustlin' Round Hobbs

By Joy Walker

Has it been hot enough for everyone? Some days it has been almost unbearable, but the cotton seems to be holding up pretty good, although it is beginning to wilt a little in the afternoons when the temperature soars to over 100 degrees. I never thought we would be dry again, but now the cotton needs some moisture to help it along during these hot days.

Mr. and Mrs. J.C. Cave went to Loraine on Sunday and visited with Mr. and Mrs. Eugene Duke.

Stephanie, Nicole, Sabrina and Tonya Warren from Snyder have been spending a few days with their grandparents, Mr. and Mrs. Rudolph Martinez. They are the daughters of Mr. and Mrs. Steve Warren.

Mrs. Marcus Medrano and Doris Medrano from Austin visited with Mrs. Bea Hardin on Sunday. Bea is feeling very much better now.

Mrs. Minerva McCombs has now returned home from the hospital, and is feeling pretty good, but is having to take things real easy.

Mrs. Opal Phillips went to Snyder Sunday to attend the birthday of Christopher Anderle, her great-grandson. He is the son of Mr. and Mrs. Mark Anderle; hope that he had a wonderful 2nd birthday.

Jim and I went to Snyder on Thursday. Melody spent the weekend here, the first time she has been home in a long while. She came late Friday night and stayed until Sunday. We went to Abilene on Saturday and it was sure crowded. Saturday night we visited with the Donnie Grubens, and on Sunday we visited with the Wilbur Grubens. We sure enjoyed Melody's visit and she and Mark plan on coming here the weekend of the Roby rodeo.

We were pleased to hear that Pete Wishert finally got to go home from the hospital and we hope that he will continue to improve.

Well this is short this week, but lots of folks were gone, and some are busy with their gardens. Looks like the peas and such were sure good this year. See you next week.

## Leonard Jones Services Held

Leonard Leo Jones, 59, died Wednesday, August 4, 1982, at his home after a sudden illness. Services were Saturday at McCoy Funeral Home.

The Rev. F.E. Healer officiated. Burial was in Hobbs Cemetery.

Born Feb. 12, 1923, in Lawrence County, Ark., he was a farmer. He married Erna Lee Ratliff Jan. 6, 1947, in Sweetwater and had been a resident of the Claytonville community since 1944. He was a World War II veteran.

Survivors include his wife; two daughters; Von-

da Lee Winter of Green Bay, Wis., and Leta LaRue Stevens of Bedford, Ind.; three sons, Sgt. 1st Class Lloyd Calvin Jones of El Paso, Randel Lynn Jones of Huntsville and Carlos Leo Jones of Carriere, Miss.; a stepson, Dwayne Bryant of Covington, La.; three sisters, Opal Upshaw of Colorado City, Louise Upshaw of Rotan and Mary Lou Eaton of Fort Stockton; a brother, Billy C. of Lovington, N.M.; his parents, Mr. and Mrs. Elmer Jones of Roby; and nine grandchildren.

Pallbearers were Steve Oatman, Dalton and Hollis Head, Jerry Hodges, Bob Moore and Wayne Warren.

## Rotan Workouts Continue

A total of 46 Rotan boys are currently taking part in football two-a-day workouts, according to Head

Coach Robert Damron. Rotan will scrimmage Crosbyton on Friday, August 20th in Crosbyton with

the junior varsity set to get underway at 5:30 and varsity set to begin at 6:30 p.m. "The workouts are going well, we're still trying to get everyone situated in permanent positions," said Damron.

Seniors participating in the football program are: Ernie Carrillo, Kevin Copeland, Roger Hooper, Alan Kiker, Darrin Leverton, Richard Mendoza, Richie Medrano, Tody Moore, Larry Ramirez, Dennis Warren, Tony Zambrano, Mondo Montez and Scott Bryan.

Juniors are: Charles Adkins, Gustabo Almanza, Troy Daniel, Chris Duhadaway, Randy Martinez, Rene Silvas, Joe Paul Soliz, Sammy Turner,

Greg Gruben, Ben Bryan. Sophomore athletes are: Tim Carrillo, David Carter, Rudy Garza, Robert Gauna, Tony Gruben, Jeff Martinez, Larry Messick, Nick Saucedo, Dion Sepeda, Jerry Turnbow and Charles Williams.

Freshman athletes are: Chad Alls, Raymond Baker, Joe Flores, Ward Hayes, Edward Martinez, Rue Moran, John Pease, Sammy Ramirez, Rocky Roberts, Lex Weatherly, David Yanez and David Zambrano.

On Friday, August 27th, the Yellowhammers will travel to Knox City for the final season scrimmage prior to meeting Roscoe at Roscoe in the opening game for both teams.

## Eight Area Residents Among Graduates

Eight Rotan-Roby area residents were among the graduates of Texas State Technical Institute in Sweetwater.

In ceremonies held Friday, Aug. 6 in Sweetwater, 156 graduates were awarded certificates of

completion or associate degrees.

Frank Casas of Roby received a certificate of completion as an air conditioning mechanic.

Receiving a certificate of completion in automotive mechanics was James R. Streety of Roby.

Rita Soliz and Judi Thomas, both of Rotan,

received certificates of completion in drafting.

John Mark Pope of Roby a graduate from machine shop operations. He received a certificate of completion.

Ina Neves Sutto of Roby graduated with a certificate of completion from the vocational nursing program.

Donna G. Hull of Roby received a certificate of completion in the emergency medical services/paramedic program.

William Woodruff of Sylvester was awarded a certificate of completion in the Technical Drafting program.

## TSTI Bus Service to Begin Sept. 9th

A free bus service for TSTI-Sweetwater students living in Abilene begins Sept. 9.

Additional routes are planned for Roby, Rotan, Colorado City, Roscoe and Loraine.

In Abilene, the bus will pick up students at Westgate Mall and at Munden's Discount Center on Amber and Willis, beginning at approximate-

ly 6:45 a.m. Monday through Friday.

The bus will leave the TSTI-Sweetwater campus at 4:55 p.m. each day.

An evening route for night class students is currently being worked out for students in Abilene.

At least 12 students must sign up for the routes to run. Interested persons can contact the Transportation Department at TSTI.

## Art Exhibit At Fair

Paintings to be judged will be included in the Womens Division of the Fisher County Fair. Bring the paintings to the Fair building, Wednesday, August 25, between 8 a.m. and 5 p.m. An entry fee of one dollar will be charged

and up to four paintings may be entered. All Fisher County artists are eligible, with rules and regulations according to Fair catalog. Name cards may be picked up at the County Agent's office or at the Fair building upon entry.

## Casa Morales

We Invite You To Come In And Enjoy The Finest

In Mexican & American Food.

Call For Reservation

735-2658

We Will Be Closed On Mondays

We Sell A Full Line Of OFFICE SUPPLIES The Newspaper Office

## A High Tax-Free Yield Scheduled for Years to Come

is only one reason we recommend this Nuveen trust for certain investors.

Quality is an equally important reason. Every municipal bond issue in the current series of the Nuveen Tax-Exempt Bond Fund is A-rated or better by either Standard & Poor's or Moody's, the two established rating services. Further, each issue has been carefully scrutinized by the Nuveen organization, specialists in municipal bonds since 1898. Nuveen is the largest sole sponsor of tax-exempt bond funds with over \$4.5 billion outstanding.

Another reason for our recommending the Nuveen Tax-Exempt Bond Fund is this. Because it is a trust, you know in advance the specific high return you can receive for many years.

You can receive this interest income monthly, quarterly or semi-annually, as you choose. Or you can have it automatically reinvested in another Nuveen fund.

For more complete information on the current series of the Nuveen Tax-Exempt Bond Fund, including charges and expenses, send for a prospectus by telephoning or mailing the coupon. Read it carefully before you invest or send money.

Interest income may be subject to state and local taxes.

Joe Burk  
Rotan, Texas  
Please send me free information on the Nuveen Tax-Exempt Bond Fund, current series.

name \_\_\_\_\_  
address \_\_\_\_\_  
city \_\_\_\_\_ state \_\_\_\_\_ zip \_\_\_\_\_  
home telephone \_\_\_\_\_  
business telephone \_\_\_\_\_  
I would anticipate an initial investment of \$ \_\_\_\_\_

Joe D. Burk  
Rotan  
Insurance  
Agency  
735-2571 & 735-2271

## PRE-SCHOOL ROUNDUP

For 3, 4, & 5 Yearolds

WESTGATE MALL  
AUGUST 19 THRU 21  
11 A.M. - 5 P.M.

Screening for  
\* motor,  
\* language  
and speech,  
\* and concepts

Sponsored by REGION 14 EDUCATION SERV. CENTER

## SATELLITE TELEVISION RECEIVER

STAR



GAZER

\$ 3,795.00

INSTALLED IN FISHER COUNTY

TAX INCLUDED

CAPACITY OF RECEIVING  
52 CHANNELS FROM 12 SATELLITES

A & M ANTENNAS

RT. 1 776-2855  
ROBY, TEXAS 79543



ROLEX

THE CONCEPT OF ENDURANCE, THE FACES OF INTEGRITY

Rolex Datejust, self-winding chronometer, stainless steel and 14kt. gold Oyster case, Jubilee bracelet. Rolex Lady-Date, self-winding with stainless steel and 14kt. gold Oyster case, Jubilee bracelet. Both models guaranteed pressure-proof down to 165 feet.

COX  
Jewelers

Since 1895  
Sweetwater, Texas

## Top Quality at Low Prices!

BORDEN'S HI-PROTEIN MILK \$1.99 GAL. CTN.

FOLGER'S ALL GRINDS COFFEE \$2.49 1 LB. CAN

Shurfine 16 Oz. Pork & Beans 5/\$1.00

Shurfine Green Beans 4/\$1.00

Shurfine Spinach 4/\$1.00

Super Suds \$1.09

6 PACK REGULAR/DIET PEPSI-COLA \$2.29 12 OZ. CANS

BORDEN'S ASSORTED SHERBET \$1.49 1/2 GAL. RD. CTN.

ALLSUP'S CONVENIENCE STORES "THERE'S ONE NEAR YOU"

Burritos 2/99¢ Bar-B-Que Sandwiches \$1.09  
PRICES EFFECTIVE AUGUST 19-21, 1982 WHILE SUPPLIES LAST - LIMITED SUPPLY

## Fisher County Grandparent's Corner

This column will be featured in our paper each week. Please send in your grandchildren's pictures with the information you wish to put in the paper. We will mail them back to you or you can pick them up at the newspaper office.



Tiffany Lea Klepper is 2 years old and the daughter of Lou and Frankie Klepper of San Antonio. Her grandparents are Mrs. David Klepper and Mr. and Mrs. Billie Joe McCombs, all of Rotan. Her great-grandparents are Mr. Waite Finch of San Angelo and Mrs. Ollie McCombs of Rotan.

## Allsup's To Participate In Drive

Allsup's Convenience Stores will again participate in the Annual Muscular Dystrophy Fund Raising Drive. Allsup's Stores will be displaying the Muscular Dystrophy Collection Canisters in all of the stores in New Mexico, Texas and Oklahoma in order to help meet the goals of this worthwhile association, whose programs are funded almost entirely by private contributions, corporations and the Labor Day Telethon.

The Muscular Dystrophy Association is looking for cures and causes of a group of diseases, marked by progressive weakness and wasting of the skeletal muscles which control body movement. Neuro-muscular disease can strike anyone at any age, they afflict an estimated one million Americans.

In addition to the "in-store" canisters, Allsup's will also be conducting the "Allsup's Doorbell Brigade". Area youngsters are encouraged to visit their local Allsup's Store on Sept. 5th & 6th and pick up a collection packet for the door to door campaign. After collecting donations for "Jerry's Kids" and returning them to the store, Allsup's will give the youngsters a free fountain drink of their choice. It's our way of saying thanks to the kids for caring.

From Jack Crow, Director of Public Relations, "Thanks to all of our customers for your generosity in this fight against neuromuscular diseases, and we at Allsup's are looking forward to working with area youngsters to help the Muscular Dystrophy Associations."



ROBY TWO-A-DAYS: Roby Head Coach Howard McDaniel instructs his players on a new series of plays during two-a-day workouts last week. The Roby Lions will scrimmage Hawley at Roby on Thursday night, August 19th.

## County Agent Report By Richard Spencer



Rodeo tickets are on sale. Good ticket sales are reported. Advance ticket sales-people are still needed. As of now only Shad Rasco and Reggy Spencer are selling advance tickets.

The Livestock Show will be held on August 27th. Several breeders will have their herd bulls on display during the stock show. This year steers will be shown by height instead of weight. Trophies and plaques will be furnished to this year's steer and heifer winners by Gene and Tony Terry, Ed Wilfong and Jerry Stuart. Exhibitors

showing steers this year will also be charged \$5.00 entry fee to go back into prize money. Superintendents for this year's show are as follows: General Superintendent-Gene Terry; Swine-Gary Teague; Beef-Stan Nowlin; Sheep-Olen Dennis and Crops-Jerry Hoodenpyle.

**LIVESTOCK FACTS**  
The world is not giving a high priority to its future ability to feed and clothe itself properly. Only three percent of its research and development funds are spent on agriculture.

A Winrock estimate indicates that increased world

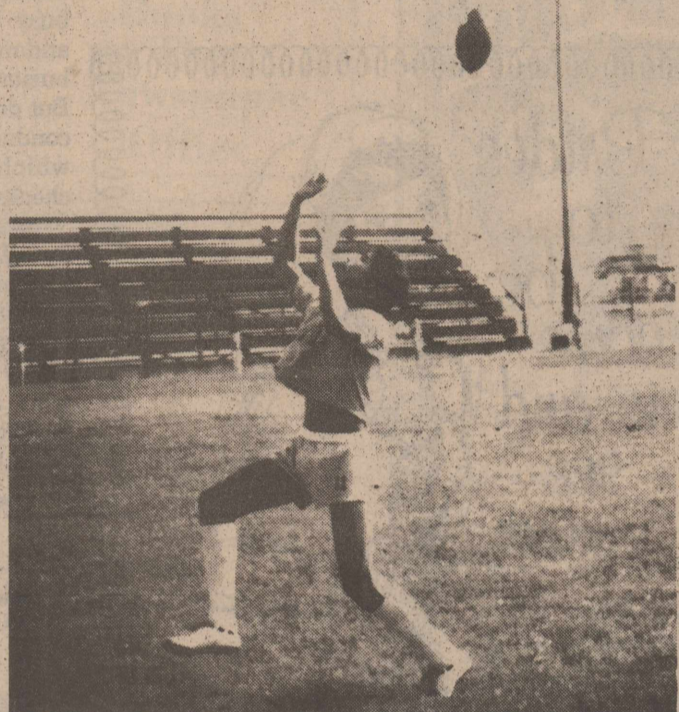
population and increased consumer buying power will create a demand for 74 per cent more milk, 82 percent more beef, and 90 per cent more sheep and goat meat in the year 2000 than was consumed in 1970. About 40 percent of the cattle and 50 percent of the sheep are in the developed countries, but more than 90 per cent of the goats and 99 per cent of the water buffalo are in the developing countries.

### Vittitow

### Rites Held

Mr. Truman C. Vittitow died at YRMC on Sunday, August 8, 1982. A retired U.S. Navy. Survivors include his wife, Floy, of the home; one daughter, Janice Etensohn of Alpine, California; one brother, Charles, of Chicago, Ill.; two sisters, Odessa Clements of Rotan, Texas, and Sue Horton of Blythe, California.

Memorial services were held at 2 p.m. Wednesday, August 11, 1982, at Ryzek Chapel, with private cremation at Ryzek Crematory.



SNAGS PASS: Joe Carreon reaches high for a pass during Roby two-a-day workouts.

## Fisher County Oil News

A 6,400-ft. Fisher County wildcat is scheduled for spudding five miles southwest of Longworth. The explorer well will be known as the No. 1 Roland Kinsey. It is located in a 160-acre unit in the T&PRR Survey. Rover Oil Co. of Fort Worth is the operator.

Pumping oil at the rate of 308 barrels per day, open choke, a new producer has been brought on line in Fisher County's Roundtop Field by Midland-based Conoco Inc.

Showing added ability to make 163,000 CF casing-head gas per day, the well will produce from a perforated interval in the Palo Pinto Reef, 4,615 to 4,772 feet into the hole.

The well is designated as the No. 168 Round Top. Bottomed at 5,000 feet, the well was located in a 4,696-acre lease assembly in Fisher County's A.B. Davis Survey.

Location has been staked for a 6,100-ft. Stonewall County wildcat four miles west of Sagerton. It will be known as the No. 1-A James New, with drillsite in a 134-acre lease in the W.H. Gibson Survey. Danc Inc. of Wichita Falls is the operator.

Pumping oil at the rate of 24 barrels per day, the No. 47 Arthur A. Brinkley has been brought on line in Stonewall County's Flower Field by Conoco of Midland.

Drillsite was in a 2,240-acre lease block in Stonewall County's A&B Survey, eight miles southeast of Aspermont.

The well was taken to 4,250-ft. bottom and was perforated to produce from the Canyon Sand, 3,998 to 4,150 feet into the hole.

Bartex Energy Corp. of Midland has staked drillsite for a Stonewall County wildcat venturá 6.5 miles southeast of Aspermont. It will be spudded in a 640-acre unit in the A. Arnold and Barrett Surveys and will be known as the No. 2 H.G. Flowers. Projected total depth is 6,800 feet.

Lubbock-based McDonald Producing has filed for permit to drill a 6,300-ft. wildcat six miles north of Old Glory, Stonewall County. Drillsite will be in an 80-acre drilling unit in the William F. Maury Survey. Designated as the No. 2 Payne, the well will test the producing zones of the Old Glory South and Northwest Fields, as well as wildcat territory.

Pumping at the rate of 70 barrels of oil per day, the No. 2 D.N. Fitzgerald has been completed in the

Lake Trammel Field by Jerry E. Wylie Drilling Co. of Abilene.

In addition to crude oil, the well showed ability to yield casinghead gas at the rate of 200,000 CF per day. Production will be from a set of Odom Formation perforations 6,422 to 6,440 feet into the wellbore.

Total drilling depth was 7,250. Location is in a 320-acre unit in Nolan County's T&PRR Survey, four miles south of Sweetwater.

An Abilene-based operator has staked location for the No. 1 Homer Lett, a developmental well to be located 1.5 miles southwest of Hodges. With projected total depth of 2,800 feet, the well is in a 508-acre lease in Jones County's J. Winters Survey, Jones County Regular Field. The operator is James L.R. Hines Oil Company.

Deminex U.S. Oil Company of Dallas has revealed plans to drill two developmental wells in Jones County.

The No. 3 B.F. Farnsworth "A", a 3,494-ft. developmental well in the Creslan Field, nine miles southwest of Anson and the No. 4 B.F. Farnsworth, a 3,415-ft. developmental well in the Jones County Regular Field and Creslan (King Sand) Field, five miles southwest of Anson.

Drillsites are in Jones County's J.W. McKissick Survey.

Flowing 179 barrels of oil per day, along with 269,000 CF casinghead gas, the No. 1 Sunny Gray was completed successfully in the J&J Field by R.L. Foree of Dallas.

Drillsite is three and one half miles southeast of Sweetwater. It was drilled to 6,255-ft. total depth and will produce from an interval 6,136 to 6,148 feet into the wellbore. Production tests were run on a 14/64 choke, and tubing pressure registered 400 PSI.

The location is in a 75-acre lease in Nolan County's T&PRR Survey.

A 6,050-ft. developmental well is planned by Sante Fe Minerals Inc. of Midland at a drillsite 12 miles south of Sweetwater, Nolan County. The location is in a 320-acre lease in the T&PRR Survey. Well's designation is the No. 1 Brooks. It is in the Maryneal Field.

At a location four miles east of Sweetwater, Westwind Exploration Inc. of Abilene has finalized a new oil producer in Nolan County's Faver Field.

The well is designated as the No. 1 Faver, pumping oil at the rate of 50 barrels per day. The well also showed potential for a small amount of casing-head gas per day.

Location is in a 320-acre lease in the T&PRR Survey. Bottomed at 6,152 feet, the well will produce from perforations 6,144 to 6,152 feet into the hole.

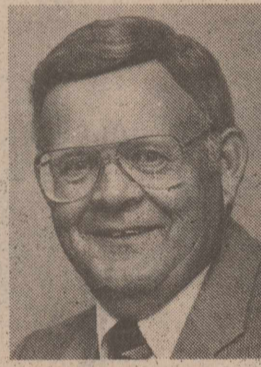
F.W. Burger Inc. of Abilene has filed first production figures on a new oil well in the Southwest Field. The No. 1 D. Frizzell showed potential to make 68 barrels of oil and 82,000 CF casinghead gas per day on a 36/64 choke. Tubing pressure came in at 135 PSI.

The operator has 160 acres leased, with drillsite in Nolan County's T&PRR Survey, three miles northwest of Nolan.

The well will produce from an interval 5,206 to 5,223 feet into the wellbore. Total drilling depth was 5,223 feet.

Location has been staked three miles northwest of Truby for the No. 1 J.H. Gordon, a developmental try in the Jones County Regular Field. Bridwell Oil

Pay your Telephone Bill at The Gumdrop Tree



# Let's talk.

Information about your changing telephone service from Jim West, Community Relations Manager.

### State's Telephone Growth Takes Tall Texas Doings

Hear about the difference between a fairy tale and a "tall Texas tale?" Seems a fairy tale always begins, "Once upon a time..." while a tall Texas tale begins, "Y'all arn't gonna believe this..."

But as a matter of fact, the tremendous telephone growth in Texas creates a story that sounds almost unreal. Nearly 10,000 linear miles of cable were added during the year ending March 31, 1982. Add to that more than 130,000 new phone customers for the same period. And Texans make 72 million local calls during the average business day, 5.1 million long distance messages and 1.4 million calls to directory assistance.

The impressive statistics could go on and on, but more important to most of our customers is the question of whether we're doing a good job in trying to hold down the cost of service in an era of rapid inflation and rising costs?

### Ratepayers Benefit Directly From Productivity Increase

Probably the best indicator is productivity. And the productivity of Southwestern Bell's Texas operations has exceeded that of private industry throughout the nation by a large margin over the past five years. Our company has averaged 3 percent annually in Texas, compared to the national productivity growth of 0.2 percent (two tenths of one percent) for the same period.

This outstanding productivity performance has helped significantly in holding down costs for Texas telephone ratepayers. Each percentage point of productivity directly offsets a percentage point of inflation in operating expenses incurred by the company. However, the rate of inflation during the last five

years has more than doubled Southwestern Bell's productivity performance... good as it is. In other words, we haven't been able to offset inflation, but we keep trying.

Incidentally, our rate application hearings before the Texas Public Utility Commission are scheduled to begin about September 1. If at any time during the hearings you have any questions or comments, I'll be glad to hear from you.

### School Days Bring Need For Extra-Special Caution

Speaking of comments, I appreciate those in response to my first column. Some of my friends around town have been kidding me about saying, "Let's talk," then suggesting you drop me a note instead of calling. But it...re's a simple explanation. I spend most of my working day trying to visit as many customers as possible in the area.

Since I'm not in the office much, I ask you to drop me a note that I can read on the road or at home. Then I can get back to you, already prepared to answer your questions, at the earliest possible time.

Here's a safety reminder: With school beginning, it's more important than ever that all of us exercise extreme caution when driving, especially in school zones and on the highways when school buses are picking up or dropping off children.

Remember, if you have something to talk about don't hesitate to drop me a line. Here's my address:

Mr. Jim West  
Southwestern Bell  
916 Denver  
Plainview, Texas 79072



### Card Of Thanks

To Adult Leaders, 4-H'ers, County Extension Staff and Friends: I would like to express my true thanks for your valued cooperation and help these past two short years in Fisher County. I hope that you have continued success and good luck. Thank you for the nice party and gifts.

Sincerely,  
Gary Mark and  
Pennie Clevenger

**BID A. COOPER, M. D.**

Announces The Opening Of His Office

For The Practice Of  
**FAMILY MEDICINE**

Medical Arts Building  
Cogdell Center

Snyder, Texas 79549

Telephone: (915) 573-1111

## Kid's College Day School

Planned Learning Programs-Now Enrolling Ages 18 Mos. And Up

Full-time Or Part-time Day Care

Call 735-2196

A State Licensed Day Care Facility

# County Oil Report

Flowing 177 barrels of oil per day, along with 948, CFD casinghead gas, the No. 1 Duke was completed successfully in the Dixon-Lawlis Field by HMH Operators of Midland.

Drillsite is seven miles southeast of Sylvester. It was drilled to 5,950-ft. total depth and will produce from an interval 4,012 to 4,037 feet into the wellbore. Production tests

were run on a 10/64 choke, and tubing pressure registered 100 PSI.

The location is in a 160-acre lease in Fisher County's H&T&B Survey.

A 5,250-ft. developmental well is planned by Banam Corp. of Midland at a drillsite six miles

north-northeast of Roby, Fisher County. The location is in a 320-acre lease in the H&T&C survey. Well's designation is the No. 1-8 soloman. It is in the East Saturday Field.

Trail Oil & Gas Corp. of Wichita Falls has filed first

production figures on a new oil well in the Stonewall Field. The No. 5 Trail Ellison showed potential to make 57 barrels of oil per day.

The operator has 165 acres leased, with drillsite in Stonewall County's H&T&C Survey, nine miles northeast of Aspermont.

The well will produce from an interval 2,962 to 2,965 feet into the wellbore. Total drilling depth was 3,001 feet.

At a location four miles north of Noodle, HLH Petroleum Corp. of Dallas has finalized a new oil producer in Jones County's Northwest Noodle Field.

The well is designated as the No. 2-18 McCollum, flowing oil at the rate of 105 barrels per day on a 13/64 choke. Tubing pressure was 410 PSI. The well also showed potential for 300,000 cubic feet of casinghead gas per day.

The location is in a 160-acre lease in the E. Miles Survey, A-219. Bottomed at 4,250 feet, the well will produce from perforations 4,014 to 4,080 feet into the hole.

John R. Thompson Operating Inc. of Abilene has filed first production figures on a new oil well in the Glen Thomas Field. The No. 4 Carlton showed potential to make 67 barrels of oil and 13,400 CF casinghead gas per day on a 13/64 choke. Tubing pressure came in at 80 PSI.

The operator has 150 acres leased, with drillsite in Jones County's H&T&C Survey, five miles east of Stamford.

The well will produce from an interval 2,280 to 2,285 feet into the wellbore. Total drilling depth was 2,400 feet.

Flowing 48 barrels of oil per day, along with a small amount of casinghead gas, the No. 1 Shannon was completed in the Southwest Truby Field by Barbee Inc. of Abilene.

Drillsite is four miles southwest of Truby.

It was drilled to 4,550-ft. total depth and will produce from an interval 4,434 to 4,446 feet into the wellbore. Production tests were run on a 14/64 choke, and tubing pressure registered 600 PSI.

The location is in a 160-acre lease in Jones County's T&P Survey.

RAW Energy Corp. of Weatherford has revealed plans to drill a 2,300-ft. developmental well in the

Lewis Steffens Field. The operator has 40 acres leased, with drillsite in Jones County's T&P Survey and has designated the venture as the No. 2 Hollis. Drillsite is one mile north of Nugent.

## New Phone Numbers For Roby School

Please notice that the telephone numbers for Roby School System have been changed beginning with the 1982-83 school year. Please make a note of these changes in order that you can place your

calls to the proper office. Superintendent-776-2222 High School Principal-776-2223 Elementary Principal-776-2224 Gym-776-2250 Band Hall-776-2731

## Social Security News

People living in Fisher County and the surrounding area should call the Abilene Social Security office to conduct Social Security business. Using Social Security teleservice, people can

conduct most of their business by telephone and save time and money, too, according to Glyn Hammons, district manager.

Unless information or service is needed immediately, it is best to call after the middle of the month. Offices are usually very busy early in the month, and mornings are generally busier than afternoons. But do not delay calling to conduct any business which affects benefit checks.

The Abilene Social Security office is located at 142 S. Pioneer. The telephone number is 698-1360. You may call on 698-2815 to file a new claim or 695-1240 if you are calling about Supplemental Security Income (SSI).

## Hospital News

FISHER COUNTY HOSPITAL 735-2562  
Visiting Hours  
10:00 A.M.-11:30 A.M.  
2:00 P.M.-5:00 P.M.  
7:00 P.M.-9:00 P.M.

Patients admitted to Fisher County Hospital August 10 through August 16, 1982: ROTAN-JoAnn Carrillo, Carmel Thomas, Effie Dennis, Carrillo Baby Boy, Thomas Baby Girl, Joyce Beatty, Cleve Doyle, Bernice Coventry, Rose Maria Saurez, Dora Lee Rushing, Lela Horton, Madie Jones, Annette DeLeon. ASPERMONT-Ted Freeman. McCAULLEY-Audie Burk. SPURINA Joy Smith. ABILENE-Joni Gibbs, Gibbs Baby Boy, Donna Maria Martin. ROBY-Eula Williamson, Jess A. Brooks, Marion Paske, Homer Rucker, O.C. Diddle, Michael L. Putnam. ROSCOE-Ruby Graham. SNYDER-Hellen Juanita Fowler.

KIM PEASE

PHOTOGRAPHY OFFICE 735-2562



Brides to be come in and see our

- INVITATIONS
- ANNOUNCEMENTS
- NAPKINS
- BRIDAL BOOK
- ACCESSORIES

WEDDING STATIONERY  
Tex Corp

The Newspaper Office  
735-2562  
Rotan, Texas

## Having A Party? We Have-

- ★ Invitations
- ★ Plates
- ★ Cups
- ★ Napkins
- ★ Balloons

Flower Arrangements For Rent For Parties And Showers...

Come By And See Our Supply!

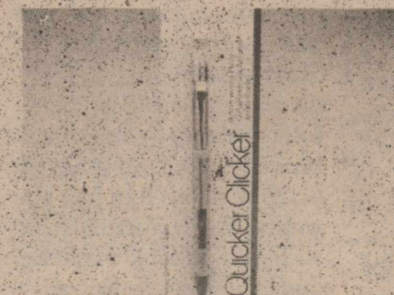
THE GUMDROP TREE  
Rotan, Texas

# Winn's

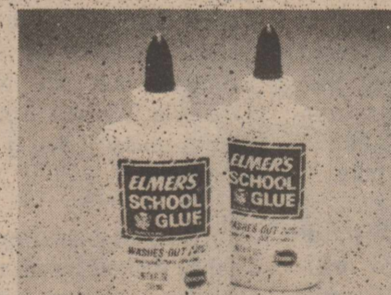
# BACK-TO-SCHOOL SALE DAYS



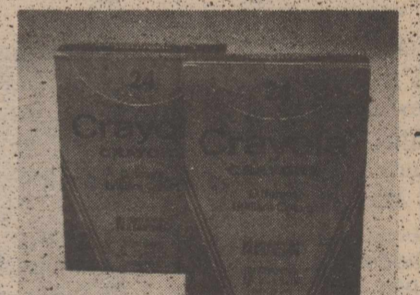
FAMOUS CHARACTER LUNCH KITS. Send your kids to school with their favorite characters on colorful metal lunch kits, complete with thermos. Assorted styles. Your choice. **4.77** REG. 6.49



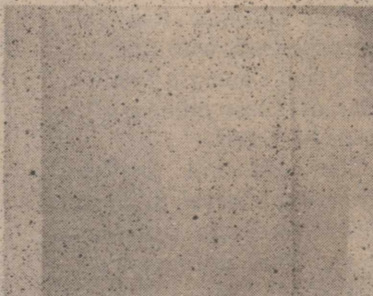
QUICKER CLICKER PENCIL. Ultra-fine 0.5mm automatic pencil features unique styling, side-barrel lead advance, large eraser. **1.77** REG. 2.49



ELMER'S SCHOOL GLUE. Non-toxic glue is safe for kids. Washes out with soap & water. 4-ounce plastic bottle. **44¢** REG. 77¢



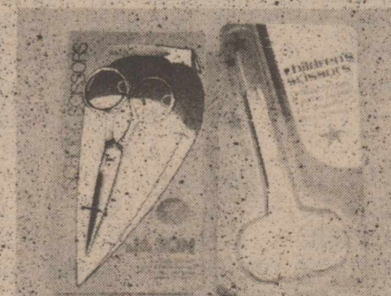
24 CRAYOLA CRAYONS. Box of 24 brilliant, non-toxic colors—a basic for every school box. Buy at Winn's & save! **88¢** REG. 1.15



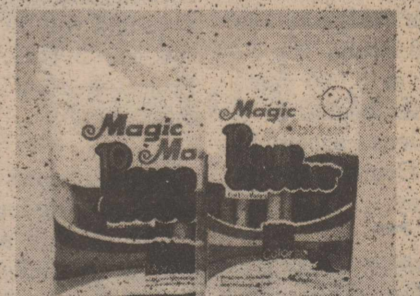
DUO-TANG PORTFOLIO. Metal Duo-Tang fasteners keep report or notes neatly in place; pockets for loose sheets. Available in assorted colors. Your choice. **4/99¢** REG. 33¢



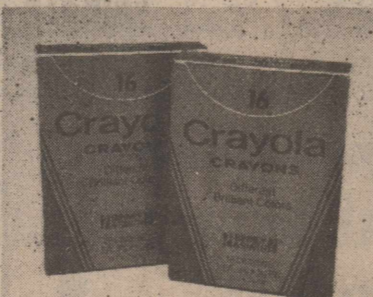
ELMER'S GLUE-ALL. The famous all-purpose glue, for all porous materials. Dries clear, fast, strong, with no harmful fumes. 4-ounce plastic bottle. **44¢** REG. 77¢



SCHOOL SCISSORS. Your choice of 4" blunt-end or 4" pointed scissors. Unbreakable, made of forged steel. **39¢** REG. 59¢



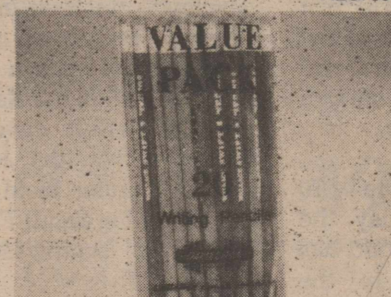
LIQUID CRAYONS. Famous Magic Marker brand water color markers are safe, non-toxic. Set of 10 vivid colors. Your choice of broad line or fine line set. **99¢** REG. 1.15



16 CRAYOLA CRAYONS. Box of 16 brilliant, non-toxic colors—from Crayola, the most famous brand of crayons around. **63¢**



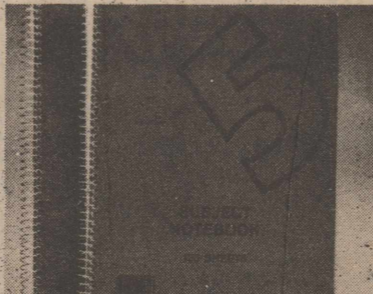
WRITE BROTHERS BALL PENS. PaperMate's economical ballpoint stick pens, in your choice of blue or black ink. Package of 10. **99¢** REG. 1.19



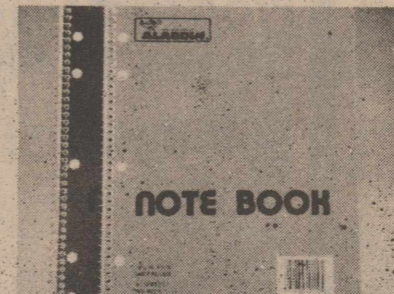
PENCILS. Value pack of 20 #2 writing pencils with eraser tips. Assorted colors. Stock up now at this great low price. **99¢** REG. 1.49



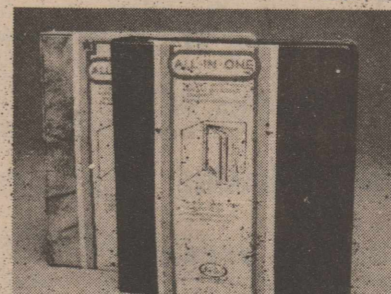
SCHOOL BOX. Colorful box keeps pens, pencils, scissors, other school items neatly organized. Your choice of assorted designs. **39¢** SPECIAL SALE PRICE



5 SUBJECT NOTEBOOK. Spiral bound notebook has 130 pages of ruled paper in 5 sections. Available in 2 or 3 ring binders. Super low price! **99¢** REG. 1.79



5-HOLE COMPOSITION BOOK. 40 pages of quality lined paper, spiral bound, in assorted color covers. Fits 2 or 3 ring binders. Super low price! **37¢** REG. 79¢



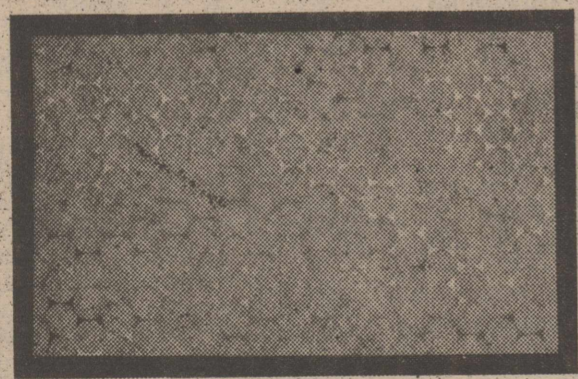
ALL-IN-ONE BINDER. Durable 1 1/2" plastic binder, filled with 40 sheets of 11" x 17" sheets of loose lined paper, 8 inserts providing 4 roomy pockets. Complete set. **1.99** REG. 2.99



PRICES GOOD WHILE QUANTITIES LAST  
Winn's Advertising Policy  
Winn's attempts to please our customers at all times. That includes having ample quantities of advertised items on hand. But occasionally, due to unforeseen reasons, an advertised item may not be available for purchase. In this event, Winn's will issue a Rain Check upon request for the item to be purchased at the sale price as soon as it becomes available. If the item will not be available within a reasonable time, the customer may purchase a similar item at a comparable reduction in price. Merchandise designated as available in "limited quantities" will be sold on a first come, first served basis while quantities last. Winn's reserves the right to limit quantities purchased so that as many customers as possible may benefit from advertised prices.

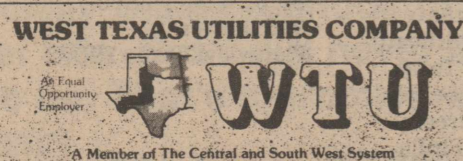
## Summer Fall Winter or Spring

your filter can get dirty, clogged, waste energy...



but a clean filter saves energy, money.

The purpose of a filter on your air conditioning or heating air blower is to help catch dust and dirt before it can enter your unit. In time, the filter will accumulate dust and dirt... if it gets clogged, it can't do the cleaning job it's supposed to and uses more electricity. To avoid damage to your unit and to save energy and money, be sure filters are clean. Permanent types can be cleaned according to the manufacturer's instruction. Non-permanent types should be replaced. It is wise to check filters every 30 days.



Save energy... save money... use clean filters.



usually gets fed up with being the lowest one on the stem pole and can't wait to grow up so he can do what he wants to. Finally the big day comes-he gets his drivers license. Now he thinks that he can do or go where he wants. But wait. Now he has to go to the store for toilet paper, or take little brother to the ballgame. After he has done all his errands he can make the drag a few times before his curfew. At last graduation day comes. He is out of school. Now he can "make it" on his own. Freedom at last, he gets a job, moves into his own apartment, buys a car and does what he wants to for about a month. Then the bills start coming. Now he has to work all the time to pay the rent, car payments, gas, insurance, and now he does not have the time to do all the things he dreamed about. Being grown up is not as much fun as he thought about. Now he gets married, has kids, gets a promotion, moves into a bigger apartment, has more and more responsibilities and less and less time. Now the kids need braces for their teeth, the wife wants to go back to school so she can find herself. He gets gray hair along with his large waistline. Now the children are complaining that they can't do what they want. He thinks to himself--oh, to be young again.

Jimmy Markham, Bookkeeping

\*\*\*

Well, football season is fast approaching and I wonder sometimes how we survive it. Long days in front of the TV and going to all the school games makes me want to shorten the season before it ends. I have decided, for the sake of the wives point of view who are not avid fans, that a strike is not a bad idea. How many of you ladies who have an avid football fan for a husband would know what to do if football went on strike? Just think how nice it would be to talk to your husband and have him answer you instead of saying, "Just a minute, Honey, I'm watching an instant replay." A friend of mine, whom I love dearly because she listens to me gripe about football, gave me a little bank. It's a football fan with his feet propped up and he's all ready for the football season. There is a little sign on the bank that says, "For every quarter of football you watch, please deposit a quarter in the bank and at the end of football season you and I will go out and celebrate the return of our relationship." Well, guess what, girls, I have never received that dinner out and the bank is always empty. I think the problem is that there is not enough money in our household for him to put in the bank, he would be so busy putting money in the little bank, he wouldn't have time to keep up with all the games he watches. I'm really not so sure that football or being married to an avid football fan is all that bad though. After all, he could have a hobby of cooking and a man in my kitchen would drive ME to watch football.

Rosemary Donham, Advertising

\*\*\*

Small towns are usually left out of world news but Tom Collins showed me a copy of The Saturday Evening Post that calls attention to obscure areas. They have a section called "Do You Know Where You Are?" Tucked in among the six different areas in the six different states to be identified was the area around Benjamin, Knox City, etc. I wonder how many people nationwide got the answers right--not many if you judge by me. Texas was the only one I could identify.

Carol Weatherly, Typesetter

\*\*\*

Did you know you cannot legally carry a handgun in Texas and the penalty is not to exceed \$2,000.00 and/or one year or less in County Jail? There is no license to carry a handgun issued in the state of Texas. We received an article about this through the office today and it reminded me of an incident about ten years ago.

We went to Niagara Falls and crossed over into Canada (We had our pop-up trailer with us). The Border Patrol stopped us and asked us several questions. One was--do you have any firearms. Kim said yes, we do. And we did--just a tiny firearm packed way down in our camper. Well--he said you can't cross into Canada with it and you are illegally carrying it in the state of New York. Well, what do you do??? The kids were crying cause Daddy was going to go to jail, it was about midnight and we had to do something with the gun. Kim said, "I'll throw it in the river." Then I said, "What if someone was shot and they find your gun and think you did it." We checked into a motel and I tried to calm the kids down and the kids and I finally fell asleep. Kim solved the problem and, to this day, I still don't want to know what he did with the gun.

Janece Pease, Associate

\*\*\*

I came across the following paragraph the other day when I was glancing through a book.

Thank God every morning when you get up that you have something to do which must be done, whether you like it or not. Being forced to work, and forced to do your best, will breed in you temperance, self-control, diligence, strength of will, content, and a hundred other virtues which the idle never know.

By Charles Kingsley  
Kim Pease, Editor

## Mary Angela Wicker, Gary Glenn Kafer Married

Miss Mary Angela Wicker and Gary Glenn Kafer were united in marriage in a formal double ring ceremony Saturday, July 17, at the First Baptist Church of Gatesville. Dr. Curtis Beaird was the officiant.

The bride is the daughter of Mr. and Mrs. W.R. Wicker of Gatesville. The bride's grandparents are Melvin Watson and Mr. and Mrs. Herman Wicker of Jonesboro, great-grandmother is Mrs. Sadie Watson of Clifton. Parents of the bridegroom are Mr. and Mrs. Ed Kafer of Roby and his grandparents are Mr. and Mrs. O.D. Knox of Roby and Mrs. Karl Kafer of Abilene.

Mrs. Jimmie Davis was pianist and Jeanie and Tommy Johnson of Hewitt sang "Endless Love" and "The Theme From Ice Castles". Bill Rucker of Gatesville sang "Entreat Me" and "The Lord's Prayer".

Rhonda Boston of Brownwood was matron of honor. Bridesmaids were Lisa Davis of Gatesville, Susan Pringle of Amarillo and Marcia Kafer of San Angelo. Tara Boston of Brownwood was flower girl.

Jim Bob Kafer of San Angelo served his brother

as best man. Groomsmen were Markie Necessary and Tom Preston of Gatesville and Chuck Petree of Waco. Ray Bishop of Gatesville was ring bearer. Candlelighters were Mark Wicker, brother of the bride, and James Pringle, cousin of the bride.

Ushers were Paul Hurst of Mexia, Ron Lewis of Abilene and Harry Amanek of Gatesville.

A reception was held in the church parlor. Serving at the bride's table were Miss Heather Necessary, Miss Natalie Logan, Miss Cheryl Thonton and Miss Dana Stamm. Leanna Lewis, cousin of the groom served at the groom's table.

Mrs. Judy Hurst, sister of the groom, registered the guests. Carol Rucker and Jalayne Johnson handed out rice bells tied with blue ribbon.

Following their honeymoon trip to the Rocky Mountains and Grand Canyon, Mrs. Kafer will teach this fall in Gatesville. Mr. Kafer is a teacher and girls' basketball coach in Gatesville High School. They will reside on the Kafer Farm in the White Hall Community.

Mr. and Mrs. Ed Kafer hosted a rehearsal dinner

for the wedding party July 16.

Those attending the wedding from Roby were Mr.

and Mrs. Garland Moore and Reveilee and Meredith Lanning, and Mrs. O.D. Knox.



Mr. and Mrs. Gary Kafer

## WTU Files For Rate Change

West Texas Utilities Company filed Monday for a change in wholesale rates for total requirements electric service it supplies to 14 rural electric cooperatives, one municipality and one investor-owned distribution company, and for partial requirements electric service it supplies to two municipally owned electric systems.

In its filing with the Federal Energy Regulatory Commission, WTU proposed rates which will produce about \$2.1 million in additional revenue for the company during the 1983 calendar year. This amounts to an increase of approximately three per cent from these wholesale customers.

WTU requested that the new rates become effective January 1, 1983. Present total requirements rates have been in effect since February, 1982, and the partial requirements rates have been in effect since 1977. Except for the rate level, no other major changes were proposed.

WTU officials said the rate change is needed to bring the company's revenues from wholesale customers to a level equal to the cost of providing service.

The following wholesale customers will be affected: Coleman County Electric Cooperative, Inc., Concho Valley Electric Cooperative, Inc., Dickens Electric Cooperative, Inc., Gate City Electric Cooperative, Inc., Greenbelt Electric Cooperative, Inc., Light

house Electric Cooperative, Inc., McCulloch Electric Cooperative, Inc., Midwest Electric Cooperative, Inc., Rio Grande Electric Cooperative, Inc., Southwest Texas Electric Cooperative, Inc., Stamford Electric Cooperative, Inc., Taylor Electric Cooperative, Inc., Western Farmers Electric Cooperative, Inc. (which supplies Southwest Rural Electric Association), Brazos Electric Power Cooperative, Inc. (which supplies B-K Electric Cooperative, Inc., Comanche County Electric Cooperative, Inc. and Ft. Belknap Electric Cooperative, Inc.), City of Brady, City of Coleman, City of Sonora and Texas-New Mexico Power Company.

\*\*\*\*

## Veterans May Apply For Hospital Care

A number of honorably discharged veterans appear to have formed the opinion that they cannot be admitted to a Veterans Administration hospital for needed medical care, and such decisions have been made without having personally applied for such care. According to Ed Deaton, Veterans Service Officer for Fisher County, some of these veterans are financially unable to pay for the needed care in civilian hospitals.

Under current laws, the following persons are eligible for admission to Veterans Administration Hospitals when such care is needed:

(a) Any honorably discharged veteran for a service-connected disability; or for a nonservice-connected condition of veteran is unable to pay for his needed care;

(b) A veteran who was discharged from military service because of a

service incurred disability; (c) A veteran who is in receipt of service-connected compensation from the VA, or would be in receipt except for receipt of retirement pay;

(d) A veteran who is a former prisoner of war;

(e) A Vietnam veteran who may have been exposed to dioxin or other toxic substance while in service;

(f) Any veteran for a nonservice-connected condition if he is 65 years of age or older.

Any honorably discharged veteran who meets any one of these requirements, and who is in need of hospital or surgical care, may apply directly to the nearest Veterans Administration hospital for admission. Application may be made by appearing at the hospital, where an examination will be made to determine the need for hospital care.

## Diana Shelton Named Manager

Diana Shelton from Hamlin has been named the new store manager of



Diana Shelton

Winn's in Rotan. Mrs. Shelton was formerly employed as the Assistant Manager of Winn's in Hamlin.

She graduated from Hamlin High School in 1980. She has been employed by Winn's for the past four years. Diana is the daughter of Wilbur White of Hamlin.

**FAST Printing Service**

FOR ALL YOUR PRINTING NEEDS.

The Newspaper Office  
Rotan, Texas

**Business Cards**

As Low As \$15.00

For 250 Cards

★ Raised Lettering

See Samples At

The Newspaper Office

**FISH** It's Time for Ponds & Lake Stocking!  
Channel Catfish, Large Mouth Bass,  
Hybrid Blue Gill & Fathead Minnows.

The Hybrid Blue Gill Will Reach The Weight Of 2 1/2 To 3 Pounds. We Furnish Your Hauling Containers. Delivery Is Mon., Aug. 23, At The Following Towns

& Locations. **ROBY**—Farmers Union Co-op Gin  
915-776-2237 8:00 To 9:00 a.m.

**ASPERMONT**—Stonewall County Feed & Supply  
817-989-3556 10:00 To 11:00 a.m.

**JAYTON**—Farmers Co-op Society No. 1 806-237-2712  
12:00 To 1:00 p.m.

**SPUR**—Farmers Co-op Gin & Supply  
806-221-3391 2:00 To 3:00 p.m.

**CROSBYTON**—Owen Auto Supply 806-675-2305  
4:00 To 5:00 p.m.

Call Your Local Feed Store To Place Your Order Or Call **Dunn's Fish Farm**  
Collect 405-777-4480 Or 405-777-2855

P.O. Box 85 Fittstown, Oklahoma

**Christmas Cards for 1982**

Imprinted With Your Name

YOUR STREET YOUR CITY YOUR STATE & ZIP CODE

**FREE ENVELOPE IMPRINTING** Your return address printed free when you order your Christmas Cards printed with your name by September 30th.

The Gundrop Tree

733-2479

Rotan, Texas

Say "I Love You" With Flowers



Roby Flower, Fabric & Gift Shop

776-2292

Roby, Texas

**FREE 5 1/4%\* CHECKING!**

• No Minimum Balance

• No Service Charge

• FREE Personalized Checks (300 ANNUALLY)

\* We pay you 5 1/4% compounded daily on your checking account balance.

**HOMESTATE SAVINGS**

WE'RE HERE TO HELP WITH OFFICES IN:  
SWEETWATER: 208 E. Hwy. 736-6364 ABILENE: 1209 East South 11th/673-8339  
BIG SPRING: Coronado Plaza/263-0251 COLORADO CITY: 2205 Hickory/728-2667  
ROTAN: 302 West Snyder/735-2273 HAMLIN: 443 So. Central Avenue/576-2631  
ROSCOE: Broadway and Main/766-3996 SNYDER: 3405 College Ave./573-4943

We Give Circle W Blue  
Stamps-Double Stamps  
From 1:00 P.M. Tuesday  
Thru Wednesday

# INFLATION FIGHTER SPECIALS



**ICE** NOW AVAILABLE  
AT YOUR THRIFTWAY STORE

ALL GRINDS MARYLAND CLUB  
**COFFEE**  
1 LB. CAN **\$2.29**

**SuperMoist**  
BETTY CROCKER LAYER  
**CAKE MIXES**  
READY TO SPREAD  
BETTY CROCKER  
**FROSTING**  
16 OZ. CAN **\$1.39**  
18 1/2 OZ. BOX **79¢**

20% Off Label  
Joy Liquid  
**DETERGENT**  
22 Oz. Btl. **\$1.19**

Shurfine 6 1/2 Oz. Can  
In Oil Or Water  
**TUNA**  
**79¢**

25% OFF LABEL  
**WESSON OIL**  
38 OZ. BTL. **\$1.49**

40% OFF LABEL-DETERGENT  
**FAB**  
KING SIZE **\$2.99**

NEW SIZE!  
**ECONOMY CASCADE**  
85 OZ. BOX **\$3.39**

Alpo Beef Flavor  
**DOG FOOD**  
12 LB. Bag **\$3.79**

**TOTAL GROCERY SAVERS**

DECANTER JAR-LIPTON <b>INSTANT TEA</b>	3.6OZ. JAR	<b>\$2.39</b>
BAMA RED <b>PLUM JAM</b>	3 LB. JAR	<b>\$1.99</b>
BAMA GRAPE <b>JELLY</b>	3 LB. JAR	<b>\$1.89</b>
SUNSHINE HI-HO <b>CRACKERS</b>	12 OZ. BOX	<b>99¢</b>
Kraft 1,000 Island <b>SALAD DRESSING</b>	16 OZ. Btl.	<b>\$1.29</b>
ZEE FAMILY <b>NAPKINS</b>	360CT. PKG.	<b>\$1.89</b>
NEW! DRY CAT FOOD <b>CRAVE</b>	18 OZ. BOX	<b>99¢</b>
FLY & MOSQUITO KILLER <b>HOT SHOT</b>	11 OZ. CAN	<b>\$1.99</b>

25% OFF LABEL-SPRAY BTL.  
**FANTASTIK SPRAY** 22 OZ. BTL. **89¢**

25% OFF LABEL  
**GLASS PLUS** 22 OZ. BTL. **\$1.19**

HEAVY GRAIN FED BEEF  
**ROUND STEAK**  
LB. **\$1.89**

Ever wonder what Oscar Mayer has in store for you...

ARMOUR STAR FINEST QUALITY  
**SLICED BACON**  
LB. **\$1.79**

HEAVY GRAIN FED BEEF BONELESS 8-12 LBS. AVG. WHOLE IN THE BAG	LB.	<b>\$1.29</b>
ARMOUR'S PURE BEEF READY FOR THE GRILL	3 LB. BOX	<b>\$4.99</b>
HEAVY GRAIN FED BEEF BONELESS CENTER CUT	LB.	<b>\$2.09</b>
HEAVY GRAIN FED BEEF BONELESS TENDERIZED	LB.	<b>\$2.49</b>
OSCAR MAYER REG. SLI. MEAT/BEEF	12 OZ. PKG.	<b>\$1.59</b>
OSCAR MAYER SLICED	8 OZ. PKG.	<b>\$1.59</b>
OSCAR MAYER SLICED	6 OZ. PKG.	<b>\$1.59</b>

**FRESH DAIRY SPECIALS**

KRAFT HALFMOON CHEDDAR OR  
**COLBY CHEESE** 16 OZ. PKG. **\$2.49**

KRAFT DELUXE AMERICAN/PIMENTO  
**SLICES** 12 OZ. PKG. **\$1.79**

ASSORTED VARIETIES PILLSBURY  
**BISCUITS** 4 7.5OZ. CANS **\$1.00**

**FROZEN FOOD SPECIALS**

MORTON FAMILY PAK  
**GLAZED DONUTS** 12 OZ. PKG. **\$1.29**

FRIED CHICKEN/MT LF/TURKEY/  
SALIS STEAK  
**MORTON DINNERS** EACH **79¢**

MORTON MEAT  
**POT PIES** 8 OZ. PKG. **49¢**

FULL EARS  
**COLORADO CORN**  
6 FOR **\$1**

CALIFORNIA VINE RIPENED  
**TOMATOES** LB. **39¢**

LONG GREEN SLICERS	LB.	<b>25¢</b>
STRAIGHT NECK YELLOW OR ZUCCHINI	LB.	<b>49¢</b>
NEW CROP CALIFORNIA BARTLETT	LB.	<b>49¢</b>
CALIFORNIA SANTA ROSA	LB.	<b>59¢</b>
CALIFORNIA LA GRANDE	LB.	<b>59¢</b>
NECTARINES	LB.	<b>69¢</b>

Assorted Flavors  
**POPSICLES** 6 Ct. Pkg. **69¢**

15% OFF LABEL  
**GIANT OXYDOL** 49 OZ. BOX **\$1.89**

E.T.'S FAVORITE CANDY  
**REESE'S PIECES**  
**\$1.09** 8 OZ. BAG

E.T.'s Favorite Candy  
\*A trademark of Univ. Studios

Sylvania  
60-75-100 Watt  
**LIGHT BULBS**  
2 Ct. Pkg. **89¢**

ON SALE NOW!  
Beautiful, Fine  
Porcelain China  
THIS WEEK'S FEATURE ITEM:  
**CUP 99¢** EACH  
with each \$5.00 purchase

MISS AMERICA'S  
**AMERICAN BEAUTY SPECIALS**

ASSORTED FORMULAS  
**SILKIENCE SHAMPOO** 7 OZ. BTL. **\$1.69**

ASSORTED FORMULAS  
**SILKIENCE CONDITIONER** 7 OZ. BTL. **\$1.69**

REGULAR/EX HOLD  
**ADORN HAIR SPRAY** 6 1/2 OZ. CAN **\$1.79**

ROLL-ON DEODORANT  
**DRY IDEA** 1.5 OZ. BTL. **\$1.79**

GENTLE/REGULAR  
**TONI PERMS** EACH **\$3.79**

**AT** AFFILIATED  
FOODS INC.  
MEMBER STORE

We're proud to give you more!

# THRIFTWAY

Prices Effective Aug. 19-25, 1982  
WE RESERVE THE RIGHT TO LIMIT QUANTITIES  
WE ACCEPT FOOD STAMPS