

Hits And Misses

Column By The
Newspaper Staff

If you've been reading the papers or watching T.V. you know there have been a lot of burglaries lately. One way we might help is to be more observant. If you see something "different" happening, don't just assume it's okay--call your neighbor and ask him. Or report the suspicious activity to the police. Being a good neighbor can pay off!

Carol Weatherly, Typesetter

Do you think people really get away with committing crime? Well, Kim has an old saying--"The Law of the Boomerang will get you." (This is lecture #214 of his many lectures at home.) If you do something wrong, then someday the wrong will be done to you. The same thing with doing good.

Well, I always hate it when Kim is right, but the other day John asked me if he could go out and drive. (John is just 14.) We had been working night and day and 7 days a week for a couple of weeks so I had this guilt feeling about neglecting the kids. So I told him we would go out where there would be no traffic and he could drive a little. I know deep down this is wrong because he doesn't have his license and the law says no driver's license, no drive. I thought this one time... (it'll get you every time.) We went out and turned down a road and John said see those trees, I've heard a hermit lives there and he doesn't like people coming down this road. This makes me feel real great and especially since it is getting dark. Went down a little further and John started to turn left. I said John, let's go to the right because we don't have very much gas and this way is closer to home. Well, he turned right and got in the deepest sand I've ever been in. We buried the car up to the bumper. It's dark now. Julie and I had sandals on and John just socks. The way down the road with the "hermit" was the fastest way home, but do you think I'm going to take a chance that there might really be a hermit, not me. So I told the kids we'd walk the other way. We couldn't walk with sandals because the sand was so deep so we went barefoot hoping snakes, bugs, etc. would move.

To make things more entertaining we saw car lights way down the road, so one of the kids said, "You know, Mom, I think this is the road that people park on to get drunk and have 'pot parties.'" I said, "Oh, if we see someone just like we're out for a walk." (My heart would have been beating hard, but it was having trouble beating.) I know we walked 2 miles in sand. Well, we didn't meet up with a car but we did come to the highway. This might have been worse. We were over 1 1/2 miles from town, dark as black and cars passing by. We tried to jog but old Mom couldn't make so we walked. When we were just at the city limit a car passed by slowly and turned around and came back. (Now in a situation like that, you don't know if you're glad or just as soon they pass you by.) When it got even with us, it was John Walker in the police car. I was never so glad to see anyone. He said, "Are you just out for a walk or need some help?" I forgot all about telling the kids to act like we're just out for a walk and jumped in his car and praised him.

As he was taking us home we passed some kids John and Julie knew and Julie was embarrassed that those people thought she was picked up for something. I said good, maybe they'll think something good and juicy. So, Mr. Hill, get ready for John in Driver's Ed.

Janece Pease, Associate

If I may, I would like to air a little complaint here on behalf of everybody I know and everybody I don't know. Something I dislike very much is litter and littering. I know "Give a hoot, don't pollute" is crammed down our throats from kindergarten on, but it seems we just swallow it and go right on. Remember the commercial on television with the Indian crying...don't you feel the same way when you go for a Sunday drive in the country and all you end up seeing is trash instead of scenery? Throw a glass bottle out or leave one sitting on the curb; eventually it gets broken and somebody gets a flat tire. Somehow I don't think that is what the intention was behind the Golden Rule. Everybody is always saying, "Somebody ought to do something." Well, sometimes that somebody needs to be you. So, next time you start to roll down your car window to throw out that gum wrapper; pretend there are eleven commandments instead of ten...how about...thou shalt not litter?!

Debby Wilfong, Production

The number of cattle in the United States on July 1, 1982 totaled 124 million, down 1% from a year ago, according to a report by the Agriculture Department.

The number of milk cows, however, was up 1%, to 11 million. Agriculture officials have estimated that United States Dairy farmers are milking one million more cows than the country needs. As a result, the federal government is buying an enormous and growing surplus of products under the dairy price support program.

Beef cattle declined to 38.6 million head, down 4% from a year earlier, the department said. This reflects efforts of livestock producers to reduce herds to stabilize the prices they receive.

From the looks of the report by the Ag Department, the government is looking at buying more surplus dairy products, storing more butter and cheese and giving it away more often.

Looks to me like the government would be better off buying those one million surplus milk cows, butchering them and giving everyone a hamburger with the cheese they're distributing. Probably cost less in the long run.

Kim Pease, Editor

Most of this swiped--but it conveys my feelings--
Some Words About Texas--

There's something about Texas that gets a hold on you. And you forget about those dust storms and dry spells. You come to realize that the real beauty of this land is in the people who live here. They're a might proud breed. Independent, free and as wide open as the country itself.

Winners For County 4-H Books Named

Fisher County 4-H'ers, judged in Vernon, Wednesday, July 21, 1982, were District winners with their 4-H Record Books.

Sr. Division
Alan Kiker-1st-Agriculture; Todd Etheredge-3rd-Horse; Darren Jeffrey-3rd-Beef; Tisa Lovett-1st-Sheep; Ricky Spencer-1st-Santa Fe; Gary Teague-2nd-Swine; Jill Posey-1st-Safety. The Senior Records winning 1st will be competing at State in August.

Intermediate Division
Matt Floyd-Blue-Beef; Joey Teague-Blue-Swine; Reggy Spencer-Blue-Sheep; Charla Wiley-Blue-Clothing; Michelle Burk-Blue-Poultry; Todd Mathies-Blue-Beef; Mary Lee Hicks-Red-Sheep; Kevin Stuart-Red-Wildlife and Fisheries.

Junior Division
Rodney Matthies-Blue-Sheep; Ryan Jeffrey-Blue-Beef; Lori Garcia-Blue-Clothing; Jerry Wayne Stuart-Blue-Dog Care; Millie Gaspar-Blue-Food & Nutrition; Jan Posey-Blue-Food & Nutrition; Cecilia Hernandez-Blue-Food & Nutrition.

Other Record Books entered for County and District Judging were: Srs. Jennifer Wright-Beef; Robin Harris-Sheep; Dan Robin Carreon-Sheep; Sharon Haggard-Entomology; Darrell Doty-Recreation; Bubba Doty-Recreation; Tammye Halliburton-Recreation. Intermediates: Jeff Branson-Beef; Jill Branson-Beef; David Shipp-Beef. Juniors: Jennifer Pullig-Recreation; James Gant-Recreation; Julie Doty-Recreation; Belinda Ramirez-Recreation; Kenlee Dennis-Sheep; Stephen Henington-Sheep; Jerry Carreon-Sheep; Jesse Carreon-Sheep; Donna Day-Rabbit; James Cathey-Rabbit; David Shipp-Beef.



Roby Star-Record

The Voice Of Fisher County Since 1907

ROTAN ADVANCE

VOL. 74 NO. 24 THURSDAY, JULY 29, 1982 TEN PAGES

Group Of 17 Iowa 4-H Members Due In County Today, Exchange Program

A group of 17 Iowa 4-H kids and sponsors will be arriving in Fisher County at approximately 4:00 p.m., Thursday, July 29th to spend a week in the first part of a 1982-83 summer exchange program, according to Alice Ballenger and Richard Spencer, Fisher County Agents.

The 14 youth and 3 adult sponsors will be staying with Fisher County 4-H families this summer. Next summer a group of Fisher County 4-H members will be visiting for a week in Lee County, Iowa on the second leg of the exchange program.

The group departed Iowa last Wednesday, will spend one night on the road and arrive in Roby at the Fisher County Courthouse at approximately 4:00 p.m., Thursday, July 29th.

Local families have arranged rodeo visits, swimming parties, hamburger suppers, etc., while the Iowa delegations is visit-

ing in Fisher County.

County families keeping exchange 4-H students include: Jerry and Sano Upshaw-entertaining Mr. and Mrs. Frank Mohrfeld-

Iowa sponsors; Mr. and Mrs. Richard Spencer-entertaining 4-H Youth sponsor; Florence Wiley-keeping Karen Mohrfeld; Mr. and Mrs. E.J. Kiker-

keeping Terri Mohrfeld and Sonia Haws; Mr. and Mrs. Rudy Martinez-keeping Randy Loges; Mr. and Mrs. James Ratliff-keeping Robert Lampe, Susie Stein and Linette Pomberg; Mr. and Mrs. Kim Pease-keeping Scott Conrad and Jan Mohrfeld; Mr. and Mrs. Harold Roberts-keeping Tim Traise and Todd Roger; Mr. and Mrs.

Bill King of Roby-keeping Loren Hartkamp; and Mr. and Mrs. Wilbur Gruben-keeping John Pomberg and Sharon Moore.

The group will be leaving Roby on Wednesday, August 4th for a trip to Dallas and the International Trade Center on their way back to Iowa.

Eight Applicants For Rotan Principal Post

Rotan School Superintendent Jerry Dickson indicated last Tuesday that he has received approximately 7 or 8 applications for the position of Primary School Principal. Dickson anticipates taking applications for "a few more days", then having a special Rotan School Board meeting to interview the top 2 or 3 applicants.

It is anticipated that the board meeting will be held in early August.

The necessity for hiring a new principal came when former principal Dr. George Schroyer resigned

to accept the Superintendent position at Lueders-Avoca.

Library To Show Through August 27th

The name of the film to be shown this week at the Rotan Public Library is "Misadventures of Ichabod Crane". The show is at 2:45 p.m., on Friday, the 30th. There will be a film show each Friday through August.

\$810 Contributed To Library Roofing Fund

A total of \$810.00 in donations has been received by the Rotan Library "Roofing Fund", according to Les Sescil, Chairman of the Library Friends Organization, "within the last two weeks."

The new roof has been installed at an estimated cost of \$4,000.00. Library officials voted to purchase the new roof with only \$2,300.00 in the roofing fund. Since the decision to install the new roof Fisher

County residents have donated an additional \$810.00, bringing the balance still needed to pay for the project to approximately \$900.00.

Local organizations and citizens interested in donating to the "Roofing Fund" may do so by mailing contributions to Rotan Library Roofing Fund, % Les Sescil, 911 North McKinley, Rotan, Texas 79546.

Roby Football Opens August 9th

Roby Head Coach Howard McDaniel indicated last Tuesday morning that equipment for two-a-day football workouts will be issued on August 4th at 7:30 p.m., at the Roby field house.

Two-a-day workouts begin at 6:44 a.m., Monday, August 9th and will last for approximately an hour and forty-five minutes.

"We are expecting 32 high school students to report for two-a-day football workouts," said McDaniel.

During the first few two-a-day workouts, McDaniel plans to concentrate on weight programs. Physicals and parent permission forms should be turned in to Roby athletic officials on Wednesday, August 4th.

McDaniel thinks the

prospects of a successful season look good for 1982. "We will be stronger and have a more balanced junior-senior team and should be contenders for the district title," said McDaniel.

County Hospital Board Has Meeting

Members of the Fisher County Hospital Board met last Monday night to review the financial position of the hospital, according to Administrator Jerry Weatherly.

In the report Weatherly informed the board that the financial position of the hospital "seemed to be improving after a bad month of May."

Weatherly indicated that the patient load for June increased to 13.6, down in

Daniel.

Roby opens up regular season play with Aspermont on September 3rd at home; then plays Jayton on September 10 and Bronte on September 17 at

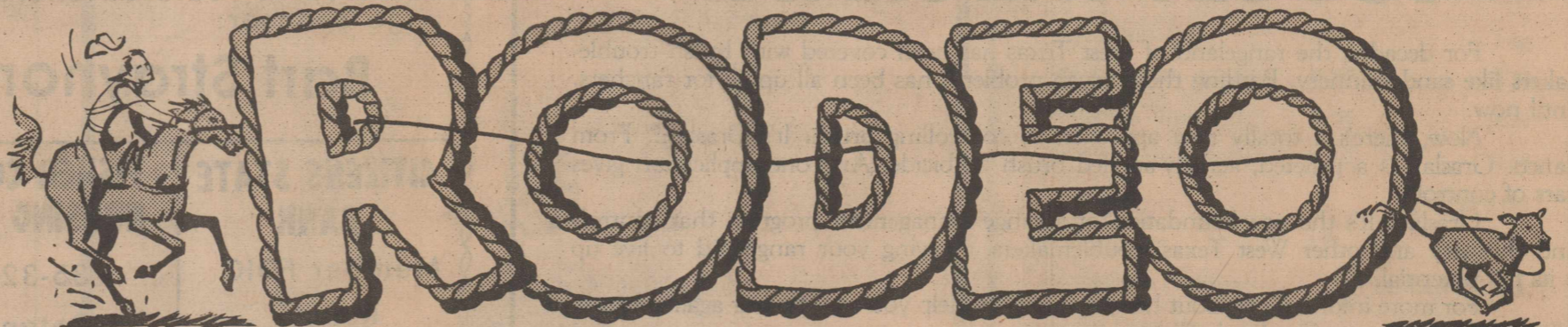
home. The first season road game is on September 24th with Spur followed by an away game on October 1 with Miles.

The Roby Lions return home on October 8th with their first district game against Klondike; play Sands at home on October 15th, then wind up the season with Loraine on October 22 away; Forsan on October 29 at home and Roscoe on November 5 away.

Reunion Set For Saturday

The Capitola-Claytonville Reunion will be held Saturday, August 7, at the Capitola Community Center. Come see old friends and neighbors and bring a covered dish.

**Rotan's
"Diamond
Anniversary"
1907-1982
75 Great Years
The
"Keepsake Edition"
Is Coming**



Fisher County AJRA Junior Rodeo

Thursday, July 29 - Saturday, July 31 7:30 p.m. Nightly

The second annual A.J.R.A. Rodeo will kick off on Thursday at 7:30 p.m. at the Roby Rodeo Grounds. This rodeo is the largest A.J.R.A. show this season. Approximately 420 entries have been mailed in. Last year's entries totaled around 350. Several local cowboys and cowgirls are entered in the Thursday night performance. They are: Rowdy Raspberry, bull

riding; Teresa Ratliff, barrels and goat tying; John Bland, barrels, poles and steer riding; Sarah Bland, barrels and poles; Cody Smith, barrels, poles and break-away roping; Timmy Smith, barrels and poles. Friday night's list of locals are Tisa Lovett, barrel, poles and bread-away roping; Rocky Roberts, team roping; Jared Cook, team roping; and

Joe Mike Sparks, team roping; Annette Overby, barrels, break-away and goat tying; Glen Overby, poles, breakaway roping and ribbon roping; Lorissa Edmonson, barrels, poles and break-away; Carter Edmonson, barrels, poles, and break-away. Saturday night locals are Stephanie Frierson, barrels and poles; Buster Frierson,

barrels, poles, and steer riding; Mark Mauldin, team roping.

There will be plenty of excitement for the 3-day extravaganza with lots of top notch competition. A.J.R.A. contestants from Tulsa, Oklahoma, and New Mexico will be competing for money prizes and the all around

buckles that have been added by donations from local businesses and individuals.

There are three locals who are in the top 5 leading money winners in A.J.R.A. They are Rowdy Raspberry, bullriding; Annette Overby, optional roping; and Mark Mauldin, team roping. We have several top competitors locally and these kids put

in many hours of practice and driving to compete. You can see these along with 400 more beginning Thursday through Saturday, with a Saturday morning slack at 9:00 a.m. You will enjoy the rodeo even more sitting on the new bleachers that have recently been installed. Admission is \$3.00 adults, \$1.50 children. Concession stand will be furnished by Fisher County 4-H'ers.

The Recipe Box

Favorite Recipes From Fisher County Folks

By Carol Weatherly

Lasagna Pie

- 1/2 cup small curd creamed cottage cheese
- 1/4 cup grated Parmesan cheese
- 1 pound ground beef, cooked & drained
- 1 teaspoon dried oregano leaves
- 1/2 teaspoon dried basil leaves
- 1 can (6 oz.) tomato paste
- 1 cup shredded mozzarella cheese
- 1 cup milk
- 3/4 cup Bisquick baking mix
- 2 eggs
- 1 teaspoon salt
- 1/4 teaspoon pepper

Heat oven to 400 degrees. Lightly grease pie plate, 10x1 1/2 inches. Layer cottage cheese and Parmesan cheese in plate. Mix cooked beef, oregano, basil, tomato paste and 1/2 cup of the mozzarella cheese; spoon evenly over top. Beat milk, baking mix, eggs, salt and pepper until smooth, 15 seconds in blender on high speed or 1 minute with hand beater. Pour into plate. Bake until golden brown and knife inserted halfway between center and edge comes out clean, 30 to 35 minutes. Sprinkle with remaining cheese. Let stand five minutes before cutting. 6 to 8 servings.

Cucumbers & Sour Cream

- 1 can (10 3/4-oz.) condensed cream of celery soup
- 1/2 cup sour cream
- 2 T. finely chopped dill pickle
- 2 T. finely chopped onion
- 1/4 cup chopped radishes
- Generous dash pepper
- 4 cups thinly sliced cucumbers (4 medium)
- Parsley

Combine soup, sour cream, pickle, onion, radishes & pepper; add cucumbers. Chill. Serve on crisp salad greens; garnish with parsley & additional radishes. Makes about 4 cups.

Captain Crunch Peanut Butter Candy

- 1 cup Karo
- 1 cup sugar
- 1 12-oz. jar creamy peanut butter
- 4 cups Captain Crunch Cereal

Combine karo and sugar; bring to rolling boil. After it reaches rolling boil, count to 30 then remove from heat. Add peanut butter and cereal. Mix well. Drop by spoonfuls onto waxed paper.

Everyone is invited to send in your favorite recipes to share with our readers. To submit your recipe type or print clearly and mail to The Recipe Box, Drawer A, Rotan, Texas 79546.

Maberry Family Holds Summer Reunion

The annual Maberry Reunion was held Sunday, July 25, 1982, in the Rotan Community Center. Mr. and Mrs. George Snapp were in charge of arrangements. Registration and visiting preceded the basket lunch. Albert Maberry led the memorial service and prayer.

The business meeting followed the bountiful lunch. Arella Maberry Snapp, president, recognized Grover Seaton as the oldest relative in attendance. Youngest relative in attendance were Karen Phillips, daughter of Lindsey Phillips, and Kenneth Darlin, son of Mr. and Mrs. Charles Darwin of Spur. Levora Maberry McElyea was recognized as driving the greatest distance for the reunion. Patsy Hamric, family historian, requested pictures and update on family history for the family scrapbook. Turner and Joy Pope of Abilene were selected to be in charge of the 1983 reunion. It will be held the fourth Sunday in July.

From San Angelo were Mr. and Mrs. L. Neal and family, F.A. and LaVern Teague, Wayne Allison, Kelly Allison.

From Sylvester were Milo

and Pauline Gray; Ross and Lenora Douglass.

From Hamlin were Ray and Bill Maberry; Faye

Address. From Abilene were Turner and Joy Pope.

From Sweetwater were Donald, Mary Lou, Kyle, Melett Rowland.

From Roby was Leslie Carey.

From McCauley were

Baptists Depart For Alaska Mission Work

A group of 30 people (26 from Cross Roads Baptist Church, 2 from First Baptist Church of Rotan, 2 from Roby First Baptist Church) led by Norvelle Kennedy Jr. left D.F.W. Airport Wednesday the 28th of July for a 10 day Mission Trip to Alaska. Most of the time will be

spent at a State Baptist Encampment ground near Anchorage. The group will be doing construction work for the Encampment as well as doing some sight seeing.

The camp grounds where they will be staying has no telephone, no electricity, no running water, no bathroom facilities. In fact about all they do have is a building without doors, lots of mosquitoes, bears, and good fishing near by. Without too much interference from the bears, the group hopes to help change some of these conditions before returning August 8th.

Kenneth.

From Duncanville were Jerry and Charlene Maberry, Bernice and Clinton Maberry.

From Ft. Stockton was Levora Maberry McElyea. From Wylie were Jimmy and Bunny McElyea.

From Odessa were Harley and Peggy Maberry, David and Derrie Snapp, Karen and Lindsey Phillips, Henry McElyea Jr. and Jimmie McElyea, Annette

Snap, Sharon Maberry, Melvin and Frankie Webb. From Rotan were Nash

and Bessie Louise Miers, Patsy and Rudy Hamric, and Conrad Hamric.



"HAVE GUNS" "WILL SELL"

Timely Pawn Loans

2409 Ave R, Snyder, Texas
915-573-9335

KEN MINYARD — Buyer - Seller - Trader

• SALES • SERVICE Before You Purchase A New Car Or Pick Up ... Give Us A Chance To Show You How Much You'll SAVE At

F & M Chevrolet - Buick

Complete Sales & Service
735-2244
105 S Cleveland
Rotan, Texas 79546

735-2244

Sunday Matthew 5:43-48	Monday Romans 12:9-18	Tuesday I Corinthians 13:1-13	Wednesday Ephesians 4:17-32	Thursday Philippians 4:5-13	Friday Hebrews 6:9-12	Saturday Hebrews 10:19-39
------------------------------	-----------------------------	-------------------------------------	-----------------------------------	-----------------------------------	-----------------------------	---------------------------------

Scriptures selected by The American Bible Society



RIPPLES DON'T CHANGE A THING

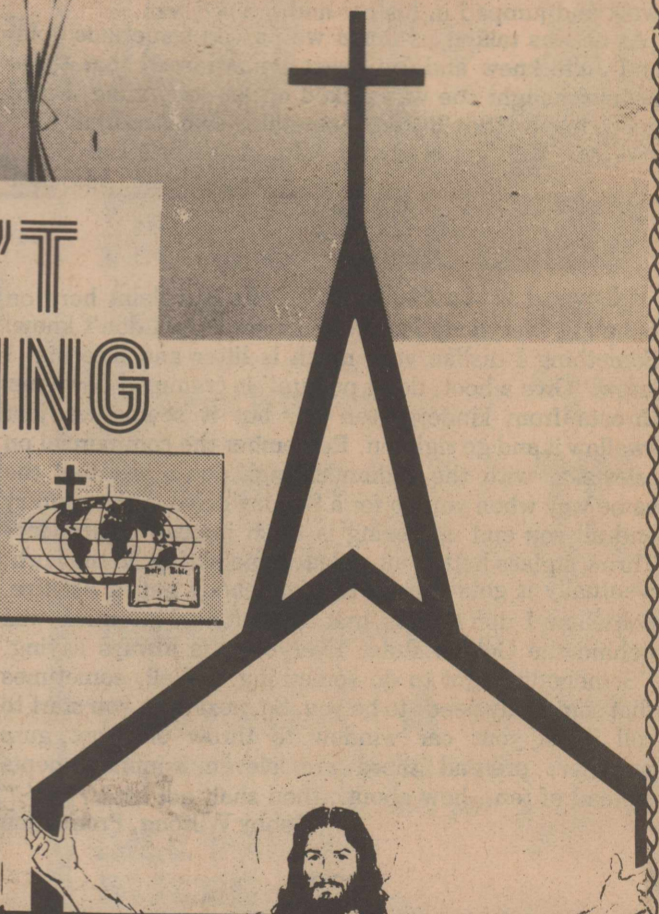
Ripples do not move water—they are only the marks of a momentary disturbance. Neat, orderly, symmetrical as they appear—they're just the remains of a splash.

How often we've tried to make waves... and they turned out to be merely ripples. Our efforts brought no new flow of thought or action. We simply interrupted the tranquility. Or was it the stagnation?

There are new currents stirring today—positive, refreshing, hopeful currents. There are reverent, responsive people who believe it can become a better world.

Why don't you join the folks who are tired of making ripples... who when they see a need or a problem plunge in to help?

You'll find many such people exploring the spiritual wells and springs. Their earnestness and enthusiasm is giving renewed energy to our churches. They would like to share with you their Christian opportunities and challenges.



Copyright 1982 Keister Advertising Service P. O. Box 8024, Charlottesville, Virginia 22906

This Week's Featured Church Page Sponsor: Bart Strayhorn		H.L. DAVIS & CO. Bill & Elaine Day Rotan	ROTAN MOTOR CO. Ford & Mercury Rotan
CITIZENS STATE BANK Member FDIC Roby	FISHER COUNTY NURSING HOME 735-3291 Rotan	ROTAN INSURANCE AGENCY Joe Burk-Agent Rotan	ROBY MIDWEST ELECTRIC 776-2244 Roby
ROBY INSURANCE AGENCY 776-2361 Roby	ROTAN NURSING CENTER 711 E. 5th Rotan	BART STRAYHORN 735-2231 Rotan	FISHER COUNTY FARM BUREAU 215 W. Snyder Rotan
CENTRAL LUMBER & SUPPLY 776-2371 Roby	MARTINEZ DAIRY Rudy, Joe B. & Emilio Martinez Hobbs Community	LANDES FURNITURE Loys Landes Larry Landes Rotan	WEATHERSBEE FUNERAL HOME Rotan
FARMERS UNION CO-OP GIN Roby	ROTAN PAINT & BODY SHOP Rotan	M&C LUMBER & HDW., INC. Rotan	FIRST NATIONAL BANK OF ROTAN Member FDIC

GRASLAN® GETS THE SHINNERY. YOU GET THE GRASS.

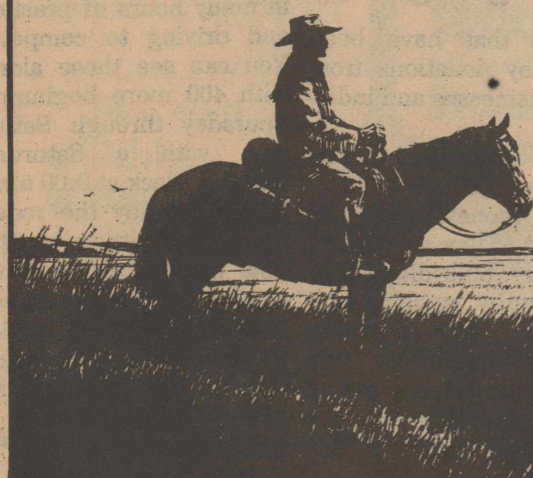
For decades, the rangeland of West Texas has been covered with brush troublemakers like sand shinnery. Battling these brush problems has been all uphill for ranchers. Until now.

Now, there's a totally new approach to controlling brush. It's Graslan®. From Elanco. Graslan is a pelleted, aerially-applied brush herbicide. And one application gives years of control.

Graslan. It's the new foundation of a range management program that controls sand shinnery and other West Texas troublemakers, allowing your rangeland to live up to its full potential.

For more information about how Graslan can help you win the war against brush, call the toll-free Elanco Graslan hotline:

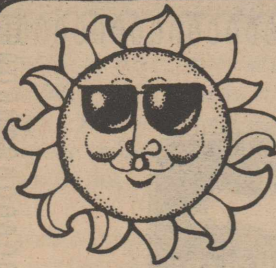
1-800-428-4441



ELANCO

Pioneering a new era in range management.

Graslan®—(tebutiuron, Elanco)



LOOKING BACK

Casting A Little Sunshine On The Past-
10 yrs. ago, 5 yrs. ago and last year.

By Rosemary Donham

Ten Years Ago August 3, 1972

Dianne Terry was the first place winner in the grade Gelding at the District III 4-H Horse Show. The Roby Rough Riders took first place at the Snyder Rodeo. Tony DeLeon attended a convention in Houston for the American National Insurance Co. Michael Thornton was appointed as Art Instructor at Western Texas College. Kevin Wright was named to the Sam Houston State University Dean's List of Academic Honors. Tom DeChairo, former head basketball coach at Rotan High School accepted a position with the Hamlin Independent School District as Head Basketball Coach. Mr. and Mrs. Riley Shipp celebrated their 50th wedding anniversary.

Five Years Ago August 4, 1977

Rebecca Anne Graham, Miss Texas National Teenager, was recognized by the Texas Legislature. Sid Hardegree was appointed to the Roby staff at Sweetwater Production Credit Association. After entering the 36th day the Union and National Gypsum still had not reached an agreement. Shirley Anderle, Pat Reaid and Linda Williamson received their graduation pins from the Vocational Nursing Program at WTC. Sharon Murdoch sang at the Texas Annual Sheriff's Convention in Amarillo. Navy Commander Sidney R. Graham completed the Navy's Advanced Safety Management Course.

One Year Ago August 6, 1981

Roger Graham graduated from Texas Tech University School of Law. Carol Greenway was chairman of the membership drive committee of the Friends of the Rotan Library. Penny Yanez, Jackie Martinez, Evette Gruben, Jenna Thornton and Tina Mendoza, Rotan Jr. High

Cheerleaders, received a top rating at camp held at Hardin Simmons University. Clair Kidd celebrated her eightieth birthday. Martha Hargrove, Keith Armstrong, Donna Martinez, Kellie Pease, Margie Butt and Laura Gruben attended cheerleading camp at Hardin Simmons University.

Secret Pal Club Meeting Conducted

Mrs. Bessie Eaton and Mrs. Vivian Joplin were recent hostesses to the Secret Pal Club at the home of Mrs. Eaton in Rotan.

Members present were Ludie Harris, Mary Ann Rodriguez, Mrs. Virginia Rogers, Mrs. Myrtle Kelton, Mrs. Bea Palmer, Mrs. Hazel Smith, Mrs. Annie Lee King, Mrs. Gladys Farrar, Mrs. Opal Burch, Mrs. Bess Ashley, Mrs. Maudie Ballinger, Mrs. Ruth Hammer, Mrs. Anna Knox, Mrs. Emma Loyd Morris, Mrs. Virgie Weems, Mrs. Lillie Heron, Mrs. Florine Swarngen and the hostesses,

Mrs. Eaton and Mrs. Joplin. Marlene Marshall. Guests were Stacy Joplin, daughter of Mrs. Vivian Joplin, Mrs. Esther Jones of Roby, Mr. Douglas Eaton and Mr. Louis Earl Eaton, son of Mr. and Mrs. Douglas Eaton. Delicious refreshments were served from an appointed table.

Center

ino, Helen Warner and na Williams. Carter of Abilene her mother, Elsie Wayne Smith of on and Nelda Cox of d visited their mottella Smith. Willard of Terrell and his ter-in-law, Ina Foster-Lubbock visited e Maize. Mr. and Bud Morton of San o visited Lena Wil-

you next week.

Fisher County Nursing Home News

At this writing we are experiencing some thunderstorms and good rain. Everyone enjoys the clean air of a good rain.

were Dossia McCain of Sylvester and Addie Maberry of McCaulley. Alice Sutton moved to Dallas

Brown celebrated 79 years. We wish to thank the Ladies Sunday School Class for sharing punch

for spraying. It will bly take 2 to 3 ations at 7 day als. Jose scale seems to ore prominent in s and hedges this Scale can be recog- by white and black particles on leaves with the leaves turning yellow and then dying if not controlled. Scale insects can be controlled with a summer oil and diazinon. Summer oil can be obtained by mixing water and dormant oil-spray in equal proportions.

4-H is as American as baseball or apple pie!

This American education- al program for youth had it's beginning around the turn of the century. In fact, it followed on the heels of a Corn Club organized in Jack County, Texas, in 1908 and has flourished ever since.

The nation boasts a total of some 5 million 4-H youth between the ages of

Golden Haven

This has been a very nice week at our house. We truly hope it's been a good week at your house. We appreciate the Sylvester Baptist Church for good services and lots of good music.

Visiting Mildred Fife was Mrs. Lee Dennis of Sweetwater. Visiting Carlie Butler and going out to visit sister, Mrs. E.F. Campbell, Mr. and Mrs. Carl Elam and sons of Kansas City, Missouri, Mr. and Mrs. Tommy Hood and children of Snyder. Also Mr. and Mrs. Don Elam and children of Abilene. Visiting Eva Chapman were Mr. and Mrs. Bill Pillow of Roscoe, Carl and Bertha Carlie of Sweetwater and Nettie and Raymond Keating of Sweetwater. Visiting Elizabeth Kingsfield were Neva Phillips of Grand Falls and Don Phillips of Sweetwater. Visiting Ezell Whitten were Mrs. Cora Roberts of Sylvester and Mae Hurst of Sylvester. Visiting Lora Stephens were Albert and Ella Mae Hayes of Hamlin, Eunice and Sadler from California. Visiting Sam Lambert

daughter and family of Seminole, nephew and family of Andrews. They all enjoyed the day at the Sweetwater Park. Visiting Leatha Meek were Charles, Norma and sons of Sylvester.

The best times are those shared with others. Come to see us and share your day with us.

Bettie Hargrove, Activity Director

Mrs. Hill G. Smith and son, Mike, of Lewisville, Texas visited with Mrs. Worth Smith Thursday, Friday and Saturday. They remodeled the breakfast room and den while they were here.

We Sell GIFTS

- Pen Sets
 - Stationary
 - Calculators
 - Photo Albums
- The Newspaper

Farmers & Ranchers UNITE
For Survival JOIN TEXAS FARMERS UNION NOW
Call 776-2529

Brides to be come in and see our



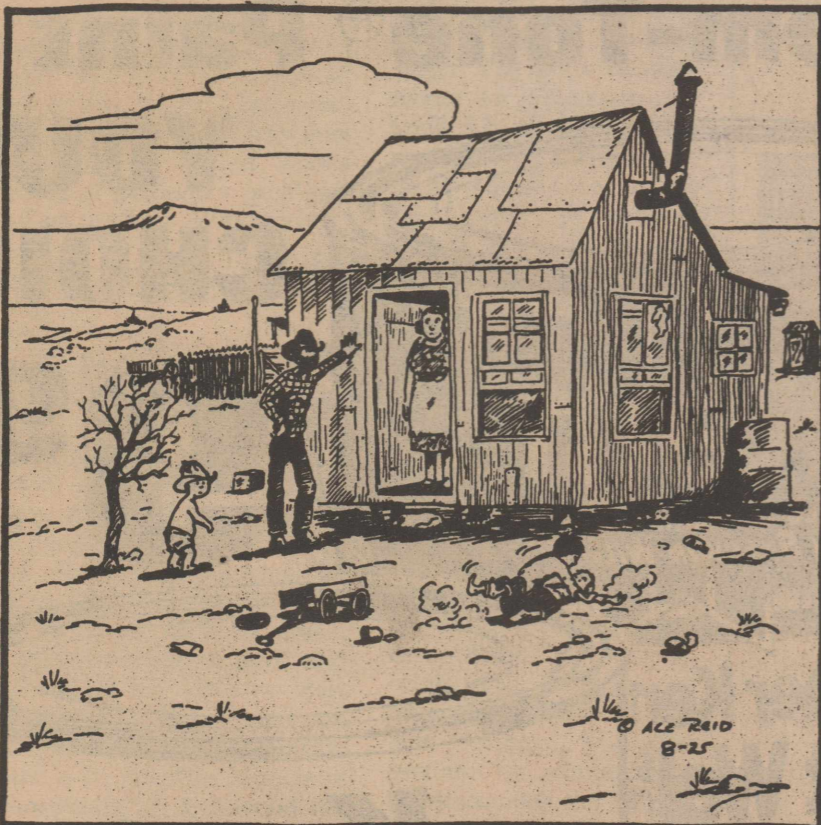
- INVITATIONS
- ANNOUNCEMENTS
- NAPKINS
- BRIDAL BOOK
- ACCESSORIES

WEDDING STATIONERY
Tex Corp.

The Newspaper Office
735-2562
Rotan, Texas

COW POKES

By Ace Reid



"Yep, reckon I'm quite a success. There jist ain't nobody I'd change places with."

LOOKING FOR MONEY TO MAKE IMPROVEMENTS OR EXPANSIONS TO YOUR HOME? WELL, LOOK TO US!! WE HAVE LOAN OFFICERS AVAILABLE TO TALK OVER YOUR NEEDS AND THE MONEY TO LEND YOU WHEN YOU NEED IT!!!

First National Bank Of Rotan

\$100,000 maximum insurance for each depositor by FDIC, FDIC, FDIC

735-2224 Rotan, Texas

HAVE YOU SEEN THE NEW ROOF ON THE PUBLIC LIBRARY?

HAVE YOU DONATED YOUR MONEY?

PLEASE HELP A GOOD CAUSE.

THANK YOU.

H.L. DAVIS & CO.

"THE FRIENDLY STORE"

ROTAN, TEXAS

Funeral Service For Raymond Macias

Raymond Macias, 48, a farmer and lifelong resident, died at 5:30 a.m. Thursday, July 22, 1982, at Fisher County Hospital after suffering a heart attack. Rosary was recited at 8 p.m. Friday at Weathersbee Funeral Home. Services were at 10 a.m. Saturday at St. Joseph Catholic Church.

The Rev. Austin Kitt-ridge, pastor, officiated. Burial was in Rotan Cemetery.

Born Sept. 12, 1933 in Rotan, he married Anita Rodriguez in 1968 in Hobbs. He was a Catholic. Survivors include his wife; his parents, Mr. and Mrs. Ynes Macias of Rotan; two sons, Ray of

Lubbock and Henry of the home; a daughter, Silvia Almanza of Roby; two sisters, Mrs. Eloisa Vina Outstanding Citizen of the first Awards Banquet held by the Rotan Chamber of Commerce. She has served on the staff of the local newspaper as feature

of Abilene and Mrs. Darlene Amador of Snyder; and two grandchildren.

A fund has been set up at First National Bank of Rotan in memory of Raymond Macias.

served as first president of Tejas Chapter since organization. A member of the National Society Daughters of the American Revolution since October of 1928, Mrs. McCrea has served that organization in many capacities at all levels. She is currently National Insignia Chairman and a member of the Board of Kate Duncan Smith DAR School located in Grant, Alabama. She has also served on the Board of Tamassee DAR School at Tamassee, South Carolina, and as State Chairman of DAR Schools procured pianos for use in both schools. She has served the Texas Society as State Librarian and as State Vice Regent, and as chairman of many committees.

Other organizations in which Mrs. McCrea holds

As Co-Chairmen of the Heritage Committee of Fisher County Bicentennial Commission, the Misses Baird compiled and published EARLY FISHER COUNTY FAMILIES in 1976. Mrs. Bernie C. McCrea of Abilene will be installed as President of Tejas Chapter on July 21, 1982. Mrs. McCrea brings to this office a varied record



Mrs. Dan C. Gary

Heatley Baby Born

Holly Heatley is the proud sister of a baby brother, Elijah Matthew Heatley, born July 15, 1982, at Rolling Plains Hospital in Sweetwater.

He weighed 7 pounds 1 ounce and was 20 inches long. His parents are Mr. and Mrs. Don Heatley of Roby.



August 16 we will begin all new fall routines to new music on the charts. This is the perfect time for beginners to join. Classes in Roby & Rotan. Please pre-register by calling 735-3165

VFW Auxiliary Highlights Meet

Admiring a large trophy won by Daphne (Mrs. Hue D.) Moore, Tuesday, July 20, 1982, were Mrs. Matthew W. Ryan, Mrs. James Mann, Mrs. Douglas Eaton, and Mrs. James P. Coats. Mrs. Moore won the trophy at the recently held V.F.W. Women's Auxiliary National meeting. Mrs. Moore was recognized for raising \$1,205.75 for Cancer Aid and Research which is a grant for women's auxiliary members, V.F.W. Mrs. Moore also accepted 11 certificates and two awards for V.F.W. Women's Auxiliary Post #5072-Rotan. This small auxiliary won nearly every national award and citation given. The following is a list of

December 1982 in five months time.

Citation of Merit given for Cancer Educational Program 1981-1982.

One Hundred Percent Participation-Membership for 1982 awarded December 31, 1981-citation.

One Hundred Percent Participation Award-Membership 1981-1982-citation.

Citation for Safety Program (Public Safety)-1981-1982.

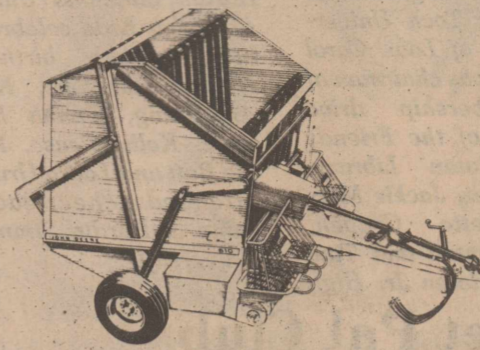
Seventy-five Percent Award for Reporting on Cancer Aid and Research 1981-1982-citation.

Citation for National Teachers Day 1982-citation.

Citation for Outstanding

Casa Morales
 We Invite You To Come In And Enjoy The Finest In Mexican & American Food.
 Call For Reservation
735-2658
 We Will Be Closed On Mondays

CHOOSE A DEERE



FINANCE CHARGE WAIVER OR A BONUS

Now through July, John Deere's making very special offers to buyers of new hay and forage equipment—above and beyond the very competitive deals we're making. These special John Deere offers provide either a waiver of finance charge or a sizable bonus in John Deere money.

If you choose to finance your new hay or forage tool purchase with John Deere, you can elect to take a waiver of finance charge to January 1, 1983.

Or—if you pay cash for your purchase, finance it with Deere (without waiver) or lease it from Deere, you'll be sent a John Deere money bonus of up to \$2,700. John Deere finance and

lease plans are subject to approved credit. You can use John Deere money for any of the goods or services we offer. You must act promptly—the special offers at this level will be effective only through July.

BONUS WITH CASH PURCHASING, LEASING FROM DEERE, OR FINANCING WITH DEERE (without waiver) June-July, 1982

MODEL	
Self-Propelled Forage Harvesters	\$2,700
Self-Propelled Windrowers	\$600
Pull-Type Forage Harvesters	\$500
Round Balers	\$350
Square Balers	\$300
Mower/Conditions	\$250

*This offer may be withdrawn at any time.

FARM TRACTOR & SERVICE, INC.
 ROTAN, TEXAS

ALLSUP'S
 CONVENIENCE STORES

"THERE'S ONE NEAR YOU"

Sunny Specials

BORDEN'S ASSORTED PREMIUM ICE CREAM
\$1.69
 1/2 GAL. RD. CTN.

Cokes
 12 oz. can
 6 pack
\$1.89

Brawney Paper Towels
 Roll 59¢

Maryland Club Coffee
 1 lbs. \$1.89

BORDEN'S ASSORTED FRUIT DRINK

 GAL. **99¢**

GOLD GUTS

Rath CANNED HAM
 3lbs. **\$5.49**

Surfine Pink Salmon
 15 1/2 oz. \$1.89

Kraft Mayonnaise
 1 qt. \$1.15

Burrito's
 2 for 99¢
 Chili Rellenos
 89¢

VALUES UP TO \$15.00
SUNSENSOR SUNGLASSES
\$7.99
 EACH

PRICES EFFECTIVE JULY 29-31, 1982
 WHILE SUPPLIES LAST - LIMITED SUPPLY

Western Auto Introduces Sherwin-Williams Kem-Tone® Paint

YOUR CHOICE
9.99
 Gallon



- INTERIOR LATEX:**
- Velvet Flat Finish
 - Washable
 - Easy Clean-up
 - Stain Resistant
- Each. Gallon. 69-6401-6414

- EXTERIOR LATEX:**
- Flat Finish
 - Resists Mildew
 - Colorfast
 - Easy to apply
- Each. Gallon. 69-6201-3

SHOP WESTERN AUTO FOR ALL YOUR PAINTING NEEDS

Western Auto
 117 Snyder 735-3322 Rotan, Texas

Cross Roads Baptist Pastor Speaks Of Spiritual Handicap

Mike O'Neill

I observed a figure dart across the road about 1/4 of a mile ahead of me. As I passed by I saw the face of a young man, apparently

mongoloid. I watched in the rear view mirror to see how he handled the traffic. He remained still until every moving vehicle was

more than safely away and then again ran across the road as if he only had a few moments.

The Lord spoke to me in many ways, but one outstanding message was this young man's sense of danger. It was wise. To us his actions may seem overly exaggerated, overly cautious, but God could see the wisdom in his actions.

Cars are dangerous and can kill. There is no sense taking any chance in getting close to something that will kill you or harm you in any way. Christians need to take note of the message here. Were we to treat danger as surely as this young mongoloid man did our lives would have far less scars and pain.

Sin is a danger to avoid and yet the world traveling at such high social speeds sees us often as exaggerating the dangers in the world around us. Proverbs 14:9 says, "Fools make a mock of sin". Much of the time we become lax and begin to walk when we should run, teasing the world as a youngster confident in his speed would tease the oncoming traffic. Sin in any form is a killer. It separates man from God and man from man. Romans 6:23 says, "the wages of sin is death". Marriages by the thousands are damaged or broken daily because we do not respect the danger of a cutting remark or sour look. Businesses are

strained and governments crumble under the onslaught of moral decay, for the Bible promises in Proverbs 13:21, "Evil pursueth sinners". Is it possible we are the more handicapped? For

we lack the wisdom to consider even the slightest sins as deadly killers to our families and souls. We are trapped by social pressures to continue in our ways, afraid of lost

friendships or love and all the while in our handicapped ignorance, we are lessening our defenses until finally our lives are found empty and in ruin. Then which is the greatest handicap in this world? The spiritual or the physical?

The spiritual fool who felt himself too far above

being fearful of moral danger risks eternity fearing he too might be viewed as strange, different, less than adequate. His handicap is his choice and he has chosen his own sadness and heartache for he has left Christ and his wisdom to have his own way playing in the streets of sin.

SAVE ★ 35% On Your Homeowners (Form B) -You Pay Less-

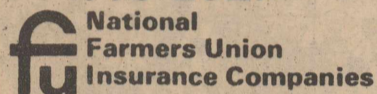
Save Money With Florence Wiley
At 776-2529-Roby

SAVE ★ 35% On Your Farm & Ranch Owners (Form B) -You Pay Less-

Save Money With Florence Wiley
At 776-2529-Roby

★ 35% Deviation Downward From State Board Of Ins. Rates Approved Effective July 1, 1982

Florence Wiley
776-2529



One-Stop Insurance Service for Home, Family and Farm

Mr. and Mrs. Lawrence Dickson
request the honor of your presence
at the marriage of their daughter

Linda Darlene
to
Mr. Johnny L. Wilson
Friday, the thirtieth of July
at eight o'clock in the evening
Calvary Baptist Church
Rotan, Texas

Reception
following the ceremony

BLACK INVESTMENTS
Myla Black, Broker

- Real Estate Sales • Appraisals • Petroleum Landwork
- 220 Acres, West of Rotan with County Road frontage, all cultivation, class II and III soils.
- MOBILE HOME, 12x60, 2 Bedroom, All Appliances, \$7,000.00.
- INVESTMENT PROPERTY, 6-unit Brick Apartment Building on 3 lots in Roby, good condition, flexible financing.
- NEW LISTING: 160 Acre Farm North of Rotan, Brick Home, 2-Bedroom, 1 1/4 Bath, Fireplace, Central Air and Heat, Flexible Financing.
- 634.78 Acres, Fisher County SE of Sylvester, Improved Pasture, 1/4 Minerals, 1/16 Royalty.
- 240.7 Acres, Fisher County, SE of Sylvester, Cultivation 1/2 Minerals, 1/4 Royalty.
- 263.35 Acres, Jones County, SE of Sylvester, Improved Pasture, 1/3 Minerals, 1/6 Royalty.

• Other Farms & Ranches Available

(915) 735-3091

ARE YOU TIRED of waiting to get that electrical work done? Call C&K Electric in Sylvester. 993-4575. Commercial, residential, oil field. Also install ceiling fans. 24-4tc

DAIRY QUEEN help wanted. Mature person. Please apply in person from 1 to 5 daily. Contact E. Zuniga. 24-3tc

AUTOS FOR SALE: Jeeps, Cars, Trucks under \$100 available thru gov't sales in your area. Call (refundable) 1-714-569-0241 ext. 7913 for directory on how to purchase. 24 hrs. 24-2tpts

FOR SALE: Sofa, loveseat & chair-all 3 for \$150.00. Call 735-3202. 24-1tp

LOSE 10 to 29 pounds in one month. Guaranteed or money back. In Abilene call Lorrie, 673-7979, or Darla, 698-3620. 19-1fc

FOSTER ROOFING: Residential and Commercial. Free Estimates. Call Ken Foster. 735-3145. Rotan, Texas. 51-1tc

NEED HAY HAULED? Come by 305 5th Street, Rotan. See Pete Campos. 23-2tp

NOTICE: Southwestern Bell telephone customers can pay their telephone bills at THE GUMDROP TREE, Snyder Avenue (across from City Hall) between 9:00 a.m. and 5:00 p.m., Monday through Friday. 23-1tc

NEW HOME SEWING MACHINES: Electrolux cleaners, repair all makes. H.B. Stevens, 1101 James Street, Sweetwater, 235-2889. 27-1tc

FOR SALE: 1976 Caprice Classic. 4 door, cruise control, tilt wheel, 8-track stereo. \$1,500.00. Call 806-237-2268. Frank Garcia, Jayton, Texas. 24-2tp

FOR RENT IN ROBY: 3 bedroom garden apartment. Refrigerator and range furnished. Reasonable. 776-2563. 24-1tc

FOR SALE: 1976 El Camino. Blue, new paint. Call 735-3441. Days. 24-1tp

FOR SALE: 19-inch color T.V. Excellent condition. Still under warranty. 735-2497. 24-1tc

CAKE DECORATING CLASSES IN Roby at Courthouse Annex. August 9, 16, 23 and 30. Contact Judy Blackstock, P.O. Box 1028, Colorado City, Texas 79512, or Sandra Dennis at City Grocery in Roby for more information. Pre-register by mail. 24-2tc

WANTED: Cook & Nurses' Aide. Apply in person at Golden Haven Nursing Home. Roby 22-1tc

WILL MOW your lawn. Call Ezell-Key Feed and Seed. 735-3261. 23-2tc

WORK IN ROBY: Write names, 5 cents in town. Write: CMS, 8162 Wilshire Blvd., B.H., California 90211. Include phone number. 23-3tp

FREE: Envelope printing - your return address printed free on all CHRISTMAS CARDS printed with your name ordered before September 30th, 1982. See the complete selection of Christmas Cards available for imprinting at THE GUMDROP TREE, Snyder Avenue. Open Monday through Friday. 9:00 a.m. until 5:00 p.m., Rotan, Texas. 23-1tc

FOR SALE: Alberta peaches. 3 miles east of Rotan at Neal's Orchard. 23-2tc

LAND FOR SALE: Accepting sealed bids for 160 acres (W.E. Keener Estate). Will reserve 100% mineral rights and right to reject any and all bids. J.K. Thomas, 4608 Waycrest Dr., Ft. Worth, TX. 76118. Closing date is August 15, 1982. 24-2tc

FOR SALE: 3 heavy duty oilfield type cattle guards. Call 735-2450. 23-4tc

FOR SALE: 1980 Chevrolet pickup. Power, air conditioning, long wheel bed. Toyota pickup. Metal tool box. Fold-up travel trailer. 1968 Dodge 3/4 ton pickup with Lincoln Welder. Down draft air conditioner. Phone 735-3395. 24-1tp

FOR SALE: Used barrel racing saddle made by Luskey's. Good condition. \$100.00. Call 776-2413 anytime. 24-1tc

FOR SALE: 1976 Chevrolet. 4-wheel drive, 1/2 ton, excellent condition. First house west of Rotan on Snyder Hwy, old Davis Place. 24-2tc

FOR SALE: Used barrel racing saddle made by Luskey's. Good condition. \$100.00. Call 776-2413 anytime. 24-1tc

FOR SALE: 1976 Chevrolet. 4-wheel drive, 1/2 ton, excellent condition. First house west of Rotan on Snyder Hwy, old Davis Place. 24-2tc

WANTED R.N. R.N. needed for Director of Nurses position long term care facility. Excellent pay with paid holidays. Excellent Major Medical and Life Insurance. Apply in person at 1000 North Broadway, Aspermont, or call 817-989-3526. 24-5tcts

RN'S & LVN'S Needed for contract (part time help) to make nursing visits in the home during the week. Contact Girling Health Care, Inc., 804 Cedar, Box 146, Abilene, Texas 79604. (915) 677-2713 or (915) 677-5264. 23-1tc

WANTED LVN Someone special needs you. Try geriatric nursing. Will be a rewarding experience. Positions available from 7:00 to 3:00 or 3:00 to 11:00. Excellent pay with paid holidays. Excellent major medical and life insurance. Apply in person at 1000 North Broadway, Aspermont, Texas, or call 817-989-3526. 23-6tc

Ronald B. Green
GENERAL CONCRETE WORK
CONCRETE AND LABOR CONSTRUCTION
CEMENTERY CURBING - YARD CURBS
WALKS AND DRIVES - PATIOS
Box E 776-2108 Roby, Texas

MATTRESSES: New and renovated, choice of color, firmness and size. Save on renovating; guaranteed. Made by Western Mattress Company. Call Mrs. Turnbow, 735-2313, Rotan. Leave name. 50-1tc

NOTICE: J.B. SMITH MONUMENTS & CURBING. 308 East 4th St., Rotan. 735-3290. 6-1tc

NOTICE: Will build, remodel, improve and add-on to homes. Interior and exterior work such as paneling, carpeting, roofing, etc. Free estimates. Clifton Griffith Construction. 776-2403. 37-1tc

FOR SALE: Six used manual typewriters in working condition, \$30.00 each. See at The Newspaper Office. 23-4tp

FOR SALE: Small round haygrazer bales. Very clean. 735-2602 or 735-2916. 24-1tp

GRAPES! GRAPES! White and Concord. Good eating. Also cucumbers, squash, corn, okra, beans, cantaloupes and watermelons. Yeats Farm Store, Roby. 24-2tc

CUSTOM HAY BALING: 1500 lb. round bales. John M. Cox. 735-2883 or 735-2808. 24-2tc

KIM PEASE PHOTOGRAPHY
OFFICE 735-2562

WANTED LVN

Roby Star Record
The Voice of Fisher County Since 1907

ROTAN ADVANCE
Post Office Drawer A, Rotan, Texas 79546

(915) 735-2562 - Office
(915) 735-2278 - Office
(915) 735-3115 - Home

TEXAS PRESS ASSOCIATION MEMBER 1982

Kim Pease
Janece Pease
Rosemary Donham
Carol Weatherly
Jimmy Markham
Joy Walker
Hooper Shelton
Debby Wilfong

Editor/Publisher Associate
Advertising Typesetting
Bookkeeping Correspondent
Job Printing Production

Published in Rotan, Texas weekly. Entered as Second Class mail at the Post Office, Rotan, Texas 79546 under acts of Congress.

POSTMASTER: Send Address Correction to: The Newspaper Office, P.O. Drawer A, Rotan, Texas 79546.

Subscription price \$8.50 yearly in Fisher and surrounding counties. \$9.50 remainder of Texas counties. \$10.50 in United States.

Advertising rate is \$1.50 per column inch. Classified rate is \$2.50 for first 15 words and 10 cents for each additional word. Minimum \$2.50 if paid in advance. \$3.00 minimum if billed. Classified display rate is \$2.50 per column inch. Cards of Thanks - \$5.00 minimum charge.

Subscription Expiration dates are listed on each mail subscribers newspaper delivery label each week. Newspapers must be renewed prior to the expiration date. Postal regulations say that subscriptions must be paid in advance to qualify for 2nd class postage regulations.

News and Advertising deadline is 12:00 noon on Tuesday of Each Week. The Rotan Advance-Roby Star Record is published 51 weeks a year. No paper is printed on the last Thursday of each year.

Notice: Any erroneous reflection upon the character, standing or reputation of any individual, firm or corporation will be gladly corrected when brought to the attention of the publisher.

Mail To:
The Newspaper Office
P.O. Drawer A
Rotan, Texas 79546

Please find enclosed for my subscription for _____ years. New _____ Renewal _____

Name _____
Address _____
City _____ State _____ Zip _____

Top Line Code On Mail Label

NOTICE: All Little League and Farm Team individual player pictures taken by Kim Pease are available to be purchased at The Gumdrop Tree. 22-3tp

WOOD CUTTERS: We now have a new machine to sharpen chains for all chain saws. Farm Tractor & Service, Inc., Rotan. 40-1tc

Belinda Rae, granddaughter of Mrs. Jack Darden, has been visiting her grandmother for the past 2 weeks. Belinda lives in Seattle, Washington. 5-1tc

B And T Real Estate
113 W. Snyder
735-2571

Sold
Older House lot of room, good location.

2 lots, one with trailer hook-up.

EXTRA NICE-New Listing. 3 bedroom, paneled, carpet, cedar fence, large corner lot, excellent condition - ready for occupancy. Special financing arrangement.

CORNER LOT - 2 Bedroom, Living Room, Kitchen, 1 1/2 baths; 3 lots. Nice Location.

Joe D. Burk, Broker
H. Thompson,
Salesman, 735-3223

NOTICE: Come to Ezell Key for all your hay grazer seeds. We have Golden Acre seeds, Big Crop 101F and Ribbon Grazer Seeds, which is a three-way cross. Also we have Hunts Green M Seed this year. Red Top Cain, Hegari, and Common and Sweet Sudan, and several varieties of sorghum seeds. 5-1tc

HOUSE FOR SALE: Large 3 or 4 bedroom house, 3 baths, dining room, barn, many large trees, private back yard. In Roby. Shown by appointment. 776-2432. 19-1tc

REMEMBER: The Gumdrop Tree for Wedding and Baby Shower gifts. 42-1tc

TO GIVE AWAY: 6 puppies. Part Australian Cowsdogs. Mrs. C.H. Carriker. 776-2132. 23-2tc

NOTICE: Will paint houses inside & outside, calk windows & replace glass, ceramic tile work. 17 years experience. Free estimates. Call 776-2551 after 7:00 p.m.

FOR SALE: Nice washer and dryer. Reconditioned. 30 day warranty. B&F Appliance Repair. 30 years experience. McCaulley. 962-5446. 1-1tc

JOBS OVERSEAS: Big money fast. \$20,000. to \$50,000. plus per year. Call 1-716-842-6000. Call 1-716-842-600. Ext. 4498. 24-2tp

FOR RENT
Storage Spaces
From \$15.00-Up per month.
LOCK IT OR LEAVE IT
ROTAN SELF-STORAGE
735-3171

Oil Activity Continues To Flourish In Area

Banam Corp. of Midland has filed first production figures on two new oil wells in the East Saturday Field.

The No. 1-6 Bridges showed potential to make 19 barrels of oil and 17,000 CF casinghead gas per day. The well will produce from an interval 4,988 to 4,995 feet into the wellbore. Total drilling depth was 5,200 feet.

The No. 1-7 Blevins-Stroube showed potential to make 61 barrels of oil and 47,000 CF casinghead gas per day on a 16/64 choke. Tubing pressure came in at 175 PSI.

The operator has 200 and 87 acres leased, with drillsite in Fisher County's H&TCRR County Survey, six miles north-northeast of Roby.

Sum Exploration & Production Company of Abilene has finalized a new producer in Kent County's (prorated in Fisher) North Rough Draw Field, located 12 miles northwest of Rotan.

The well is designated as the No. 39 North Rough Draw Unit, producing oil at the rate of 34 barrels per day. The well also showed potential for a small amount of casinghead gas per day.

Location is in a 7,200-acre lease in the H&TCRR Survey. Bottomed at 4,235 feet, the well will produce from perforations 4,103 to 4,120 feet into the hole.

Producing 144 barrels of oil per day, along with 294,000 CF casinghead gas, the No. 1 Hamner was completed successfully as a wildcat by Augusta Oil & Gas Inc. of Abilene.

Drillsite is 4.5 miles west-southwest of Noodle. It was drilled to 3,635-ft. total depth and will produce from an interval 4,446 to 4,452 feet into the wellbore. Production tests were run on an 18/64 choke, and tubing pressure registered 150 PSI.

The location is in a 120-acre lease in Jones County's S. Scallorns Survey.

At a location seven miles west of Stamford, Mecca Energy Inc. of Abilene has finalized a new oil producer in the Jones County Regular Field.

The well is designated as the No. 2 Aletha Smith, pumping oil at the rate of 4 barrels per day. The well also showed potential for a small amount of casinghead gas.

Location is in a 167-acre lease in the BBB&CRR Survey. Bottomed at 4,944 feet, the well will produce from perforations 2,824 to 2,830 feet into the hole.

A 4,450-ft. wildcat is planned by HLH Petroleum Corp of Dallas at a drillsite three and one half miles southwest of Noodle, Jones County. The location is in a 60-acre lease in the T&PRR Survey. Well's designation is the No. 1-15 H. Boney.

C. Douglas Justice Oil and Gas Inc. of Abilene has filed for permit to drill the No. 1 Duff, a 2,100-ft. developmental well four miles southeast of Nugent. Location is in a 56-acre lease in Jones County's T&PRR Survey. The Duff well is in the Jones County Regular Field.

An Albany-based operator has staked location for the No. 9 Baptist Foundation of Texas, a developmental well to be located four miles southwest of Nugent. With projected total depth of 2,000 feet, the well is in a 320-acre lease in Jones County's Morrell Field, T&PRR Survey. The operator is W.R. Morrell.

Seago Oil Inc. of Abilene has revealed plans to drill a 5,000-ft. developmental well in the East Hamlin Swastika Field. The operator has 156 acres leased, with drillsite in Jones County's SPRR Survey and has designated the venture as the No. 1

Culberson. Drillsite is five miles northeast of Hamlin.

A 2,300-ft. developmental well is planned by Elm Fork Production Company of Abilene Inc. at a drillsite ten miles east of Anson, Jones County. The location is in a 10-acre

lease in the J.C. Patton Survey. Well's designation is the No. 2 Baucum. It is in the Northwest Nugent Field.

Adobe Oil & Gas Corp. of Abilene has filed first production figures on a new oil well in the Hatchett Field. The No. 7 W.E. Hatchett showed potential to make 7 barrels of oil and a small amount of casinghead gas per day.

The operator has 64 acres leased, with drillsite in Jones County's G. Martinez Survey, one mile north of Hawley. The well will produce from an interval 2,008 to 2,250 feet into the wellbore. Total drilling depth was 2,370 feet.

HLH Petroleum Corp. of Dallas has filed for permit to drill the No. 1 H.O. Irwin, a 5,450-ft. developmental well three and one half miles west of Noodle. Location is in a 150-acre lease in Jones County's T&PRR Survey. The Irwin well is in the Ace Tiner Field.

FGB Energy Inc. of Dallas has revealed plans to drill a 3,800-ft. developmental well in the Jones County Regular Field. The operator has 142 acres leased, with drillsite in Jones County's DeWitt County School Land Survey and has designated the venture as the No. 1 Carson. Drillsite is three miles southeast of Noodle.

At a location four miles north of Sweetwater, Arden Oil Corp. of Dallas has finalized a new oil producer in Fisher County's Sweetwater Field.

The well is designated as the No. 60 Sweetwater, pumping oil at the rate of 44 barrels per day. The well also showed potential for 9,200 cubic feet of casinghead gas per day.

The location is in a 3,274-acre lease in the T&PRR County Survey. Bottomed at 5,400 feet, the well will produce from perforations 5,175 to 5,272 feet into the hole.

K&S Land Company Inc. of Midland has filed first production figures on a new oil well in the Sylvester Field. The No. 1

J.P. Maberry 58 showed potential to make 31 barrels of oil and 414,000 CF casinghead gas per day on a 14/64 choke. Tubing pressure came in at 337 PSI.

The operator has 131 acres leased, with drillsite in Fisher County's Bastrop County School Land Survey, 2.2 miles north of Sylvester.

The well will produce from an interval 5,314 to 5,333 feet into the wellbore. Total drilling depth was 6,205 feet.

A 5,600-ft. wildcat is planned by Hopehill Petroleum Company Inc. of Fort Worth at a drillsite four miles northeast of Roby, Fisher County. The location is in a 73-acre lease in the N.W. Burnett Survey.

Equitable Petroleum Corp. of Metairie, La., has filed for permit to drill the No. 1 C.T. McLaughlin Heirs, a 7,400-ft. developmental well ten miles northwest of Sweetwater. Location is in a 640-acre lease in Fisher County's H&TC Survey. The McLaughlin well is in the Pyron Field.

Hopehill Petroleum Company Inc. has revealed plans to drill a 5,600-ft. wildcat. The operator has 519 acres leased, with drillsite in Fisher County's 313 Bastrop County School Land Survey and has designated the venture as the No. 1 W.A. Schundler. Drillsite is four miles northeast of Roby.

A Richardson-based operator has staked location for the No. 1 Moss, a wildcat to be located three and one half miles southeast of McCaulley. With projected total depth of 3,700 feet, the well is in a 40-acre lease in Fisher County's J.C. Cox Survey. The operator is Square Exploration.

A 3,700-ft. developmental well is planned by R.A. Beard Oil Operating Company of Merkel at a drillsite one mile northwest of Stith, Jones County. The location is in a 65-acre lease in the DeWitt County School Land Survey. Well's des-

ignation is the No. 1 L.T. Beard. It is in the Jones County Regular Field.

Flowing 200 barrels of oil per day, along with 150,000 CF casinghead gas, the No. 1-A Irene

Highway Funding Approved

AUSTIN (July 9) -- The State Department of Highways and Public Transportation will receive an estimated \$130 million in additional funding for highway construction and maintenance through 1983, Lt. Gov. Bill Hobby announced Friday.

The Highway Cost Committee provided the additional funds by updating its method of calculating the effects of inflation on the costs of highway construction and maintenance. The committee, comprised of Gov. Bill Clements, Hobby and State Comptroller Bob Bullock, adjusted its calculations to include a change in the process by which contractors bid on highway jobs and to give more stress to highway maintenance.

During the committee meeting, Hobby pinpointed a flaw in the Highway Department's method of calculating the Highway Cost Index and suggested an alternative that will provide an additional \$12 million for 1982-83.

Williams was completed successfully in the Jay Field by Sojourner Drilling Corp. of Abilene.

Drillsite is four miles southwest of Noodle.

It was drilled to 4,406-ft. total depth and will produce from an interval 4,234 to 4,253 feet into the wellbore. Production tests were run on a 12/64 choke, and tubing pressure registered 200 PSI.

The location is in a 40-acre lease in Jones County's I. Miley Survey.

NQR Petroleum Inc. of

Abilene has filed for permit to drill the No. 1 Ashworth, a 2,800-ft. developmental well five miles south of Anson. Location is in a 100-acre lease in Jones County Regular Field.

Markay Oil & Gas Company of Midland has filed first production figures on a new oil well in the Bisset Ranch Field. The No. 1 Covington-Brown 'C' showed potential to make 24 barrels of oil and 17,000 CF casinghead gas per day.

Hustlin' Round Hobbs

By Joy Walker

Well, another good week of hot sunshine which is what the cotton has been needing, and its sure growing now. Mr. and Mrs. J.W. Etheredge and Todd went to Waco on Monday and they stayed until Wednesday. Todd participated in the Reining in the 4-H State Horse Show in Waco. They really enjoyed their trip although the weather was really hot. Mrs. James Sherrill of Sweetwater, LaNelle's sister, is back in the hospital in Lubbock. We hope to hear that she will soon be able to return home, and will begin to feel very much better.

Mr. and Mrs. Clarence Anderson went to Clovis, New Mexico, last Saturday and they came back on Monday. They visited with Mr. and Mrs. Wayne Anderson and David. Wayne, who was in the hospital for a while in Clovis, is feeling very much better now and we hope that he will continue to feel that way.

Gary Finley brought our message at Hobbs on Sunday morning and night during the absence of Bro. Parks.

Mr. and Mrs. James Ratliff and Teresa went to Big Spring on Saturday and Teresa participated in the AJRA rodeo there. Mr. and Mrs. Marion Bohanan from Stanton spent the weekend visiting with the Ratliffs.

Mrs. Neva Phillips from Grand Falls and Don Phillips from Sweetwater visited all day Friday with Mrs. Opal Phillips.

Mrs. Bea Hardin is feeling much better but is still going to Sweetwater for treatments. She was hostess for the Hobbs Home Demonstration Club at her home on Thursday.

Mrs. Billy Carter and Barry from Brownwood visited from Wednesday until Saturday with Mr. and Mrs. J.C. Cave.

Monday night Jim and I went to Snyder, to the Coliseum, and watched the big Jackpot Barrel race they had there. We saw lots of girls we used to know and enjoyed visiting with them. Tuesday we went to Abilene. Went back to Snyder on Wednesday and attended the Amateur Rodey they had at the Snyder Coliseum. Visited with Mr. and Mrs. H.B. Walker and family, Mr. and Mrs. Blake Walker and Mr. and Mrs. Billy Jack Wilson and Bill. Also got to see a number of old friends who we only get to see once a year, seems like. The rodeo was sure nice as it was in the Coliseum and it was so cool in there. Went back Saturday night to the Rodeo and got to visit with Mr. and Mrs. Scott Carey and family from Fort Stockton and Mr. and Mrs. Ron Holder and family from Newport, Virginia. Mrs. Carey and Mrs. Holder are the daughters of Mr. and Mrs. George Maule of Camp Springs and were here visiting with their parents. Also got to see Mr. and Mrs. Leon Wilsie from Oklahoma. Leon is George's nephew. Just a short visit with them all but it was sure good to see them.

Melody went to Burnet on Friday night and met Mark Parrish there. He roped in the Burnet Rodeo. They then went back to Austin and visited with Mark's folks for the weekend, rodeoing at Elgin Saturday night and in Austin on Sunday. Melody returned to Fort Worth Monday.

The Etheredge Reunion was held July 25th at the Hobbs School Gym Annex. 126 people attended and 9 out of 10 of Will and Ruth Etheredge's children were present. Those attending were: Earnest of Tyler, B.B. (Bryan) of Roby, Franklin (Turk) of Waco, Sam of Rotan, C.C. (Pete) of Roscoe, S.L. (Schooner) of Rotan, Bob of Gorman, Tura Lou of Boswell, Oklahoma, Fae of Snyder. Also two sons of the Sidney Bryans, W.J. and wife Lavern of Archer City, Vivian Bryan and wife and daughter of Fort Worth. Connie (Hayter) Tutt, Victor and Clara (Hayter) Womack of Lubbock, Alma (Etheredge) Patrick of Snyder, a son and two daughters of Nathan Etheredge. Homef and wife from Lamesa, Allene (Etheredge) Thurman of Tuscola, Gilbert and Elsie Fae (Etheredge) Pierce of Plains, Jack and Lucy Hatterton and daughter Laverna from Las Vegas, New Mexico. Folks in attendance were from Washington State, New Mexico, Oklahoma, Tyler, Fort Worth, Archer City, Plains, Lamesa, Tuscola, Waco, Brownwood, Cross Plains, Lubbock, Gorman, College Station, Stamford, San Angelo, Abilene, Roscoe, Roby, Rotan and Hermleigh.

Well this is about all for this week. Everyone is sure busy with their gardens right about now and the vegetables have really been plentiful. See you next week.

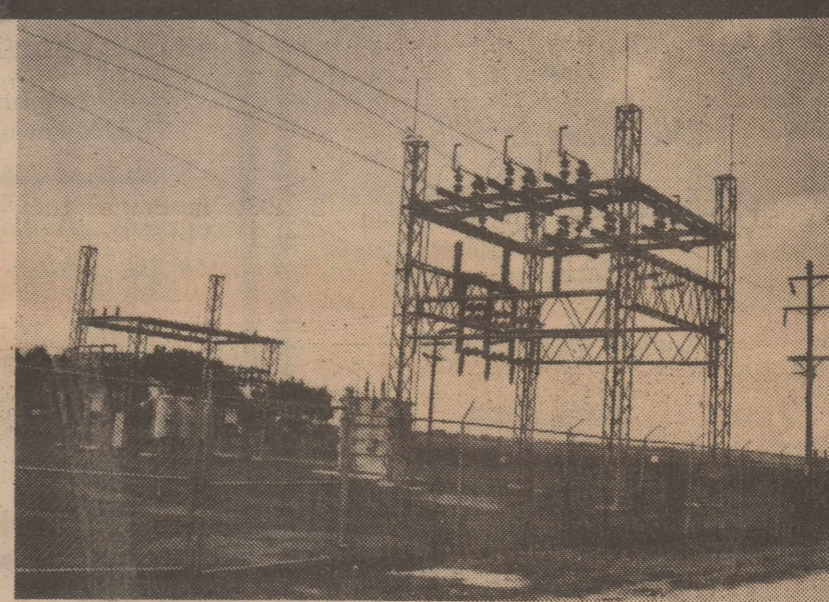
Say "I Love You" With Flowers



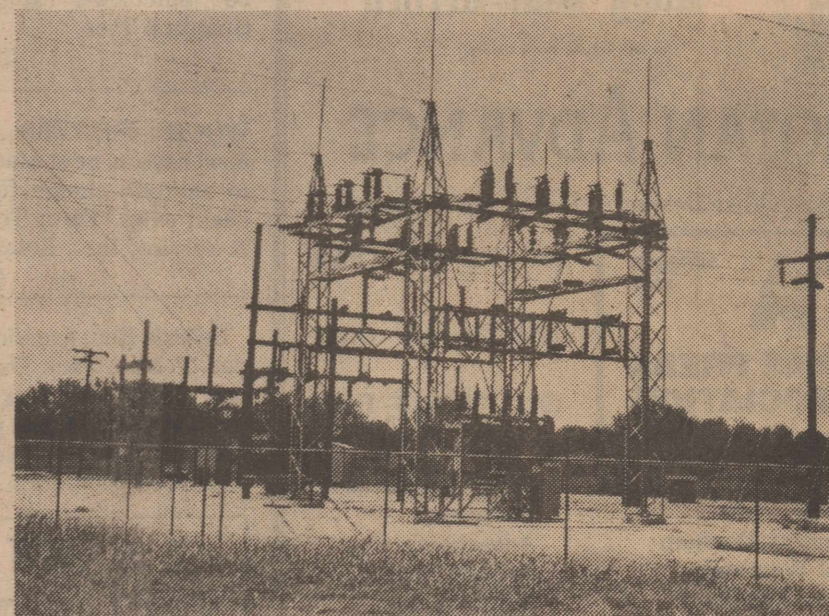
Roby Flower, Fabric & Gift Shop

776-2292

Roby, Texas



\$35,000 in 1954...



\$160,000 TODAY!

These two 5,000 KVA sub-stations were built 27 years apart and the cost increased nearly 500%. Cross arms, galvanized bolts, poles; all electric equipment has increased substantially. Yet for five years the cooperative has held the line on rates. It is the dramatic and continuous increase in generating fuels and wholesale power rates which have made it imperative that we raise those rates.

No one sees construction costs getting lower. But the cooperative does see a continued supply of dependable power at its lowest possible price. That is our mission.

MIDWEST ELECTRIC COOPERATIVE ROBY, TEXAS

Christmas Cards for 1982

Imprinted With Your Name

YOUR STREET YOUR CITY YOUR STATE & ZIP CODE
FREE ENVELOPE IMPRINTING

The Gumdrop Tree

735-2479

Rotan, Texas

THANK YOU

To All The Friends And Customers That Have Called, Sent Cards, Flowers And Visited During My Illness

I AM NOW BACK WORKING FULL TIME

And Invite You To Visit Anytime

A.B. & OLETA PARKER

IDEAL BARBER SHOP

ROTAN, TEXAS

People coming here from other places feel they can get a new start, do what they want to do. They suddenly have lots of energy. There is promise in every sunrise in Texas. The clear atmosphere and distant horizon make thinking a whole lot easier and you can get things in perspective.

Texas still retains the feeling of the frontier. It is a land of romance, poetry, and stark reality. A land of shifting sand, blazing sun and big dreams. People here have an obligation to be resourceful and they believe in the dignity of simplicity. Texans have a casual approach to life. We appreciate nature. We have time to visit. We care about each other. We have confidence that our way of life offers the freedom to push our horizons as far as our strength and vision can carry us. In Texas a Person is measured by what he is...not by what he has or does. Texas is seashore, mountain, plain, hill, forest and desert. It is small town, big city, shady lane. It is the smile of a child, the gleam in an old man's eye. It is rugged beauty, plenty of sky with lots of sun and a sense of freedom you just don't find anywhere else. Here, we can feel ourselves equal to anything we can dream.

People have always come to Texas for inspiration. To clear away the cobwebs. To think things out. Well, Texas is a great place to visit. But living here is even greater. Texas is more than a place. It's a feeling. Not only can you plot your course out here, you can also follow up on it. And nobody will bother you. Because here, nearly everybody does pretty much as they want to. The greatest natural resource in Texas is independence. There's a spirit that makes you want to accomplish things...build something. In Texas, people don't ask you where you come from. They ask you where you're going. They're more interested in your future than in your past. Optimism prevails here. Thank God there is a Texas.

Hooper Shelton, Job Printer

The cotton out this way sure looks good and this hot sunshine is just what it needs now. Another two weeks of this weather and then we could probably use a little rain. The weeds are also growing and this year, for the first time in a number of years, there seem to be more hoe hands in the field than there have been in the past years. Some have poisoned Johnson Grass and there are reports of a few insects starting up in the fields, which we can sure do without. Some counties, unlike these around here, had way too much rainfall, and hail, also sandstorms and consequently these counties which were declared a Disaster Area, are hoping for some Government help. All in all we here in Fisher County have been lucky and have good crops, but we'll need good weather from here on and a very late frost. Some folks in this area got hailed out and we always hate to hear about that. The flies have been very bad this year; our horses are wearing Fly tags around their necks which seems to be helping a little. Also the mosquitoes have been very bad this year; guess it was all that wet weather we had earlier in the year.

There is a lot of hay being cut and baled this year, a lot more than in previous years, and it sure is good hay. Wheat is in abundance and the price is down which is bad news for the wheat farmers. The supplies of wheat have played havoc with the market and now with the prices below the \$3.50 level and record supplies caused by two consecutive years of record production, Texas wheat producers and industries seem to be looking for ways to handle the problem of oversupply. Maybe all these problems will straighten out in the near future, we sure hope.

Joy Walker, Correspondent

I promise that this will be the last time that I mention the Falkland Islands. I have talked about them for about four consecutive weeks so if nothing major happens this will be absolutely the final time. Since the bombings in London by the IRA last week and the PLO is still in Beirut, I have been thinking, why not put the IRA on one of the Falklands and the PLO on the other. That way they can bomb, kill and terrorize each other to their heart's content. This would solve some of England's problems and also some of the Middle East tensions. Why am I not in politics?

Jimmy Markham, Bookkeeping

Well, by the time the readers will be reading this paper we will be in the great state of Montana. We are in a town called Billings which is right at the edge of Wyoming, almost on the line of Montana and Wyoming. This is the fourth year we have gone on these trips and each one is great. About 70 or 80 people will be here to construct a new church for people who do not have a building to meet in and hold services. People from two churches in Snyder will be here plus the people from Fisher County and other churches from different areas. The church will be built in approximately six days, and we always have services on the Sunday after we start construction on Wednesday. The work is hard and you get pretty tired, but to see the building go up so quickly and everything go as it should is an absolute Miracle of God. The first wall will be constructed by the second day and the roof is usually ready to put on by the third or fourth day. When you get through and start to leave there is no way to describe the joy and love you feel on the inside of you when you see the church complete and watch the people who attend the church and see the joy in them. We don't know what it would be like to be without a place to worship God, but some of these people here in our own country do, and it's a great blessing to be able and to have the opportunity to help someone else.

Rosemary Donham, Advertising

County Agent Report

By Richard Spencer



Grapes have been swarmed recently with insects called grape leaf hoppers. If your grapes appear to be dying; check the leaves for tiny insects. The grape leafhopper can be controlled with sevin. Get the 50 or 80 per cent

sevin for spraying. It will probably take 2 to 3 applications at 7 day intervals.

San Jose scale seems to be more prominent in shrubs and hedges this year. Scale can be recognized by white and black

particles on leaves with the leaves turning yellow and then dying if not controlled. Scale insects can be controlled with a summer oil and diazinon. Summer oil can be obtained by mixing water and dormant oil-spray in equal proportions.

4-H is as American as baseball or apple pie!

This American educational program for youth had its beginning around the turn of the century. In fact, it followed on the heels of a Corn Club organized in Jack County, Texas, in 1908 and has flourished ever since.

The nation boasts a total of some 5 million 4-H youth between the ages of

9 and 19. More than 140,000 of these are Texans. Youth enrolled in the 4-H program in Fisher County total 240.

More and more 4-H'ers are coming from urban areas. In Texas, about 49 percent of the 4-H youth now come from larger urban and suburban areas. However, more than half the Texas 4-H'ers live on farms or ranches or in towns of under 10,000 population.

Adult volunteer leaders are a valuable asset to 4-H as they give freely of their time and talents in assisting in the educational efforts of the 4-H program. There are a half million 4-H volunteer leaders across the country and 15,000 of these are in Texas. Fisher County is

proud to have the leadership of 40 volunteers who contribute much to the overall success of 4-H.

The 4-H program also receives widespread financial support from various businesses, corporations and foundations all over the nation. In this state, the Texas 4-H Youth Development Foundation garners support from the private sector, both individual and business, to support many 4-H activities.

While the 4-H program has enjoyed much success in the past, now is the time to lay the groundwork to face the challenges ahead. Challenges are plenty as 4-H strives to assist youth along the road of life and to prepare them to be the leaders of tomorrow's America.

Rotan Nursing Center

Our deepest sympathy goes to the family of Martin Rackley. Mr. Rackley passed away Saturday morning.

Susie Ahrlette is in Fisher County Hospital and Gaines Smith remains in Hendrick Medical Center. Hope they will soon be able to come home.

We thank the Sunday School Class who brought such a beautiful birthday party last Tuesday. Our honorees for July were Birdie Ramby, Serveo

Palomino, Helen Warner and Lena Williams.

Stella Carter of Abilene visited her mother, Elsie Carter. Wayne Smith of Houston and Nelda Cox of Midland visited their mother, Stella Smith. Willard Maize of Terrell and his daughter-in-law, Ina Foster of Lubbock visited Maudie Maize. Mr. and Mrs. Bud Morton of San Angelo visited Lena Williams.

See you next week.

Golden Haven

This has been a very nice week at our house. We truly hope it's been a good week at your house. We appreciate the Sylvester Baptist Church for good services and lots of good music.

Visiting Mildred Fife was Mrs. Lee Dennis of Sweetwater. Visiting Carlie Butler and going out to visit sister, Mrs. E.F. Campbell, Mr. and Mrs. Carl Elam and sons of Kansas City, Missouri, Mr. and Mrs. Tommy Hood and children of Snyder. Also Mr. and Mrs. Don Elam and children of Abilene. Visiting Eva Chapman were Mr. and Mrs. Bill Pillow of Roscoe, Carl and Bertha Carlie of Sweetwater and Nettie and Raymond Keating of Sweetwater. Visiting Elizabeth Kingsfield were Neva Phillips of Grand Falls and Don Phillips of Sweetwater. Visiting Ezell Whitten were Mrs. Cora Roberts of Sylvester and Mae Hurst of Sylvester. Visiting Lora Stephens were Albert and Ella Mae Hayes of Hamlin, Eunice and Sadler from California. Visiting Sam Lambert was Rube Waddell of Sweetwater. Visiting Alice Hurst were Carolyn and Perry Jones and sons of Seagraves, grand-

daughter and family of Seminole, nephew and family of Andrews. They all enjoyed the day at the Sweetwater Park. Visiting Leatha Meek were Charles, Norma and sons of Sylvester.

The best times are those shared with others. Come to see us and share your day with us.

Bettie Hargrove
Activity Director

Mrs. Hill G. Smith and son, Mike, of Lewisville, Texas visited with Mrs. Worth Smith Thursday, Friday and Saturday. They remodeled the breakfast room and den while they were here.

We Sell GIFTS

- Pen Sets
 - Stationary
 - Calculators
 - Photo Albums
- The Newspaper Office**

Mr. and Mrs. William H. Dickson
cordially invite you

to the marriage of their

daughter

Deborah

to

Jackie Hendon

son of Mrs. Mildred Hendon

and the late W.B. Hendon

on Thursday, August 5th

at eight in the evening

Sardis Baptist Church,

Rotan, Texas

Christmas
for 1
Imprinted With

YOUR STREET YOUR CITY

FREE Your name on each envelope
ENVELOPE

The Gumdrops
735-24
Rotan, T

Legal Notice

It is the policy of the Rotan Nursing Center to admit and to treat all patients without regard to race, color, or national origin. The same requirements for admission are applied to all patients and are assigned within the home without regard to race, color, or national origin. There is no distinction in eligibility for, or in the manner of providing, any patient service provided by the nursing home or by others in or outside of the home. All facilities of the nursing home or by others in or outside of the home. All facilities of the nursing home are available without distinction to all patients and visitors regardless of race, color, or national origin. All persons and organizations having occasion either to refer patients for admission or to recommend the Leisure Lodge Nursing Home are advised to do so without regard to the patient's race, color, or national origin.

24-1tc

olan mills
THE NATION'S STUDIO

One 11 x 14 Color Portrait \$1.50

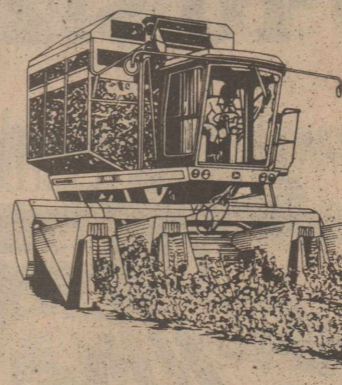
Your choice of family group or individual
One special offer per family, one per person

FAIRY STORE

TUES., AUG. 3rd 10:00 to 5:00 p.m.

Rotan, Texas

CHOOSE A DEERE



WAIVER OF FINANCE CHARGES OR A BONUS

For a limited time on two new John Deere cotton strippers, you have a choice of waiver of finance charges or a bonus, as explained below. This offer is above and beyond our good deals on new self-propelled 4-row 484 and new mounted 2-row 283 Cotton Strippers.

The sooner you get your new stripper, the greater your benefits and bonus.

If you choose to finance it with Deere, you can have finance charges waived until February 1, 1983.

*This offer may be withdrawn at any time.

But if you pay cash for your new stripper...or finance it through (without waiver)...or lease it from Deere, you'll qualify for a John Deere money bonus in big dollar amounts (ask us for the actual figures). John Deere finance and lease plans are subject to credit approval.

If you earn a money bonus, it will be mailed to you after we make delivery (unless other arrangements are made).

Choose your new John Deere cotton stripper during this limited-time special offer.

FARM TRACTOR & SERVICE, INC.
ROTAN, TEXAS

Keaton Kolor
Photographic Products & Services

Take Your Film To
THE GUMDROP TREE

Come To The
ROTAN U.F.W. BARBECUE DINNER

Sat. July 31, 1982

6:00 p.m. til 7:30 p.m.

Followed By Dance

Music By The Clearfork Band

8:30 - 12:30

Local Chapter Celebrating Fifth Birthday

The National Society of Colonial Daughters of the Seventeenth Century was organized in Brooklyn, New York and Incorporated May 4, 1896. Its objects are patriotic, philanthropic, educational and historical. Its purpose is perpetuating the memory of those brave and hardy pioneers who assisted in establishing the Colonies of America with specified services from May 1607 to December 1699. A large membership has never been a goal of this Society. It's aim is a congenial group of women who, with similar interests in heritage and philosophy, can meet together for fellowship and study in meaningful activities. Organizations in various states comprise the units of the Society and are called Chapters. At the present time there are twenty-four such chapters with another nearing completion.

The Texas Chapter is Number twenty-three. It was organized in Washington, D.C. on April 15, 1977 with fifteen members. Its fifth birthday is being celebrated this year. Miss Delila Baird of Rotan was Organizing President and Mrs. Bernice C. McCrea was selected as First Vice President. The name TEJAS was chosen as the official name for the Texas Chapter.

Tejas Chapter has grown from fifteen organizing members to thirty-seven regular members, five junior members and one associate member. At the date of organization there were three members in Texas—Josie Baird and Delila Baird, members of the North Carolina Chapter; and Mrs. Frank G. Trau of Sherman, a long time member of the Pennsylvania Chapter. Tejas Chapter members are scattered over the state with two organizing members residing in Chevy Chase, MD. Membership is by invitation. A prospective member must be recommended by two members of the Society who know her personally and can vouch that she will be a desirable member of the state and the national societies.

Present membership includes Mmes. Whit Clark, Jimmy Hale, Ruple Morrow, L.A. Sparks, F.E. Tutt, and Misses Josie Baird and Delila Baird of Rotan; Mmes. Charles Smith Bell, Joseph N. Weatherby and Miss Nealie Moore of Brownwood; Mmes. M.K. Blackard, Henry F. Clark, Gene L. Dulaney, Leland S. Herod, Douglas K. Hill, and Bernard Longbotham of Snyder; Mmes. Bernice C. McCrea and Kenneth G. Whisenant of Abilene; Mmes. Margaret Barnett and Helen Dawson Cobean of Big Spring; Mmes. Thomas Bachner and Robert R. Truitt of Ft. Worth; Mmes. Ulmont Allison, San Benito; Lorraine Canter, Edna; S.C. Fisk, Valley Mills; William C. Gallaher, Dallas; Alfred P. Harris, Kermit; Randy Hurt, Ft. Stockton; Merkel J. McCoy, St. Jo; R.R. McIntyre, Alice; L.T. Nelson, Sweetwater; R.G. Russ, Hale Center; Ernest Thomas, Odessa; W.J. Wasicek, Hempstead; Miss Frances Edwards, Longview; and associate member Mrs. Frank Garland Trau, Sherman.

Out of state members are Mrs. Woodson Woods Bercaw and Miss Nancy Bercaw, Chevy Chase, Maryland; Mrs. Richard L. Denham, Statesboro, Georgia; and Mrs. Hubert Lynn Gibson, Salina Kansas.

Junior members are Sandra Suzan Harris and Nanci Dianne Harris of Odessa; Gail Ann Heathington, Hawley; Kelly Lynn Herod, Fort Worth; and Christine Sue McIn-

tyre, Alice.

Miss Delila Baird, Organizing President of Tejas Chapter, is an experienced family genealogist. She and her sister, Josie Baird, have researched and published several family histories and have established lineages for membership in many hereditary and patriotic organizations. Among these are Daughters of the American Revolution, Daughters of American Colonists, Colonial Dames of the XVII Century in which they are currently serving as national co-chairmen of the committee on Heraldry and Coats-of-Arms, Order of First Families of Virginia, the Jamestown Society, Descendants of Colonial Clergy, United Daughters of the Confederacy, United Daughters of the War of 1812, and are listed in Volume V of "Living Descendants of Blood Royal in America". The two memberships in which they take most pleasure, because of the difficulty in establishing eligibility, are the National Society of Americans of Royal Descent (the only society of this kind recognized by the British College of Arms), and Order of Three Crusades, 1096-1192. Miss Baird is also a member of Magna Charta Dames and, of course, Colonial Daughters of the Seventeenth Century of which she is serving as national lineage book chairman.

A retired public school teacher and administrator, Miss Baird has had educational articles published in professional magazines. She is a member of the International Society of Delta-Kappa Gamma, an organization of experienced women educators, and a recipient of the Texas State Achievement Award for her service to that Society.

Miss Baird has been active in her church and

community. She was one of six honored as an "Outstanding Citizen" at the first Awards Banquet held by the Rotan Chamber of Commerce. She has served on the staff of the local newspaper as feature



Mrs. Dan C. Gary

story writer and contributed the articles which won a First Place Award in the state for newspapers in their category. This award was given by the Texas Press Association.

Perhaps Miss Baird's favorite organization is Children of the American Revolution. Because of the outstanding work of this society, and her interest in young people, she serves as a senior leader and assists prospective members establish lineages for eligibility.

As Co-Chairmen of the Heritage Committee of Fisher County Bicentennial Commission, the Misses Baird compiled and published EARLY FISHER COUNTY FAMILIES in 1976.

Mrs. Bernice C. McCrea of Abilene will be installed as President of Tejas Chapter on July 21, 1982. Mrs. McCrea brings to this office a varied record

of work in hereditary societies and other service organizations. She has served as first vice president of Tejas Chapter since organization.

A member of the National Society Daughters of the American Revolution since October of 1928, Mrs. McCrea has served that organization in many capacities at all levels. She is currently National Insignia Chairman and a member of the Board of Kate Duncan Smith DAR School located in Grant, Alabama. She has also served on the Board of Tamassee DAR School at Tamassee, South Carolina, and as State Chairman of DAR Schools procured pianos for use in both schools. She has served the Texas Society as State Librarian and as State Vice Regent, and as chairman of many committees.

Other organizations in which Mrs. McCrea holds

membership include Daughters of Founders and Patriots of America, and Descendants of Ancient



TEJAS CHAPTER: Mrs. Bernice C. McCrea, president elect, left; and Miss Delila Baird, right, Organizing President of Tejas Chapter Colonial Daughters of the Seventeenth Century.

and Honorable Artillery, Sovereign Colonial Society Americans of Royal Descent, Descendants of Colonial Governors, Descendants of Colonial Clergy, Society of Mayflower Descendants, Old Plymouth Colony Descendants, Sons and Daughters of the Pilgrims, Piscataqua Pioneers, New England Women, Daughters of American Colonists, Colonial Dames of the XVII Century, and United Daughters of the War of 1812.

Mrs. McCrea is listed in Texas Women of Distinction, Personalities of the South, Community Leaders and Noteworthy Americans, and The Hereditary Registry of the United States of America.

On the community level, Mrs. McCrea has served on the Red Cross Board and received a National Award, "Project Find", for her services. A member of the Mesquite District of Texas Federated Women's Clubs and of the Texas Federation of Women's Clubs, she has held various offices and received Awards for her leadership. She served on the Heritage Committee of Abilene Bicentennial Committee, on the Women's Board of the Abilene Chamber of Commerce, and on both Girl Scouts and Boy Scouts Boards.

On this fifth anniversary of Tejas Chapter members will hold a Luncheon meeting in the home of Mrs. Bernice C. McCrea in Abilene. At this time new officers will be installed with Mrs. McCrea as president. The President General of the National Society, Mrs. Dan C. Gary of Union City, Tennessee, will be a guest at the meeting. Mrs. Gary will also be honored at a dinner party sponsored by Mrs. Kenneth G. Whisenant of Abilene.

VFW Auxiliary Highlights Meet

Admiring a large trophy won by Daphne (Mrs. Hue D.) Moore, Tuesday, July 20, 1982, were Mrs. Matthew W. Ryan, Mrs. James Mann, Mrs. Douglas Eaton, and Mrs. James P. Coats. Mrs. Moore won the trophy at the recently held V.F.W. Women's Auxiliary National meeting.

Mrs. Moore was recognized for raising \$1,205.75 for Cancer Aid and Research which is a grant for women's auxiliary members, V.F.W. Mrs. Moore also accepted 11 certificates and two awards for V.F.W. Women's Auxiliary Post #5072-Rotan. This small auxiliary won nearly every national award and citation given.

The following is a list of those awards:

Trophy awarded for obtaining membership goal for year of December 1981-

December 1982 in five months time.

Citation of Merit given for Cancer Educational Program 1981-1982.

One Hundred Percent Participation-Membership for 1982 awarded December 31, 1981-citation.

One Hundred Percent Participation Award-Membership 1981-1982-citation.

Citation for Safety Program (Public Safety)-1981-1982.

Seventy-five Percent Award for Reporting on Cancer Aid and Research 1981-1982-citation.

Citation for National Teachers Day 1982-citation.

Citation for Outstanding Service and Devotion to members of the Veterans of Foreign Wars 1982-citation.

Social Security Files Reviewed

Beginning in 1981, individuals receiving Social Security disability checks began having their file reviewed. Generally, every three years, unless a shorter or longer period is justified because of the nature of the impairments,

the very competitive deals we're making. These special John Deere offers provide either a waiver of finance charge or a sizable bonus in John Deere money.

If you choose to finance your new John Deere, you can elect to take a waiver of finance charge to January 1, 1983.

Or—if you pay cash for your purchase, finance it with Deere (without waiver) or lease it from Deere, you'll be sent a John Deere money bonus of up to \$2,700. John Deere finance and

asked for current information and evidence on how your impairment affects your ability to work. If additional evidence is needed, the State Agency which does the review for Social Security can send you for a special examination, at Government expense. It is important that you keep this appointment.

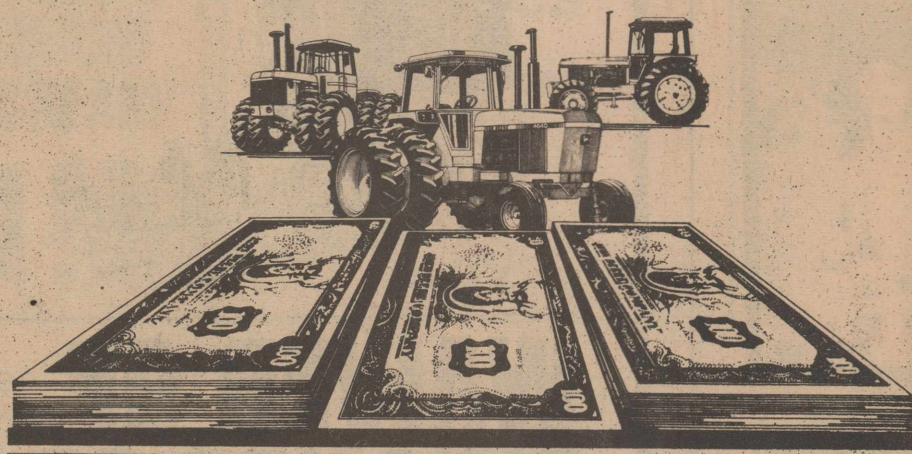
After the file is reviewed, you will be notified in writing of the decision on your file. If the disability requirements are still met, your checks will continue. If the final decision is that you are no longer disabled, the checks will continue for the month of the decision and two additional months, then your checks will stop.

If you have any additional questions about the review of your disability claim, please get in touch with the nearest Social Security office. The Abilene office is located at 142 S. Pioneer. The phone number is 698-1360.

FARM TRACTOR & SERVICE, INC. ROTAN, TEXAS

JOHN DEERE SUPER TRACTOR SAVINGS EXTENDED INTO JULY

SAVE \$1,300...\$3,600 ...UP TO \$12,200*



Super savings on a high resale value tractor are your rewards if you buy your new John Deere during July

You can still save a bundle during the July extension of John Deere's Super Tractor Savings offer.

Just choose any of the 15 new John Deere tractors listed here, from 40-hp to 300-hp, and you'll qualify for Super Tractor Savings from \$1,300 up to \$12,200 in John Deere money...a bonus over and above our good deal on your purchase price.

*Super Tractor Savings are yours if you pay cash for your new tractor... lease from Deere...or finance with Deere (without waiver). John Deere lease and finance plans are subject to approved credit.

But if you choose to take the waiver of finance charges until January 1, 1983, you'll still collect from \$900 to \$8,200 in John Deere money. Hurry, this offer may be withdrawn at any time during this July extension.

TRACTOR MODEL	SUPER TRACTOR SAVINGS WITH CASH PURCHASE, LEASING WITH DEERE OR FINANCING WITH DEERE		BONUS WITH WAIVER OF FINANCE CHARGE
	WITH WAIVER	WITHOUT WAIVER	
8850	\$12,200	\$8,200	\$8,200
8650	\$9,700	\$6,400	\$6,400
8450	\$8,300	\$5,700	\$5,700
8640	\$7,400	\$4,500	\$4,500
8440	\$6,300	\$4,000	\$4,000
4840	\$5,600	\$3,600	\$3,600
4640	\$5,200	\$3,400	\$3,400
4440	\$4,200	\$2,800	\$2,800
4240	\$3,600	\$2,300	\$2,300
4040	\$3,400	\$2,200	\$2,200
2940	\$2,600	\$1,800	\$1,800
w/o SGB**			
2940	\$2,200	\$1,400	\$1,400
w/SGB**			
2840	\$2,000	\$1,300	\$1,300
2440	\$1,800	\$1,200	\$1,200
2240	\$1,600	\$1,100	\$1,100
2040	\$1,300	\$900	\$900

**Sound-Gard® body



FARM TRACTOR & SERVICE, INC. ROTAN, TEXAS

Wes Grocery & Deli

776-2225

Prices Effective July 22-28, 1982

Roby, Texas

Folgers

10 oz. Instant Coffee

\$3.29

With 1 Super Six Card

Windex 15 oz. aerosol can

\$1.09

Starkist Tuna

6 1/2 oz. 29c

With 1 Super Six Card

Del Monte Corn 17 oz. can whole or creamy 2/89c

Borden Eagle Brand Condensed Milk

63 c

With 1 Super Six Card

Ranch Style Beans

16 oz. 2/79c

***Fish Sandwiches

DELI w/Small Drink

*** 99c

Ken-L-Ration Reg.

15 oz. can 2/69c

Armour Treet

12 oz. Can

\$1.29

Spillmate Towels 73c

Half Pounder Tostitos

Reg. \$1.29 Now \$1.09

Round Steak Boneless

\$2.39

Gladiola

Flour

5 lbs.

29 c

With 1 Super Six Card

Mrs Tuckers

Pre Cream

Shortening

79 c

With 1 Super Six Card

Kraft Grape Jelly

2 lb. jar

\$1.13

Oranges 1 lb. 59c

Cantaloupe

1 lb. 29c

IF YOU ARE NOT SAVING

Rosebud Stamps

YOU ARE NOT SAVING MONEY

Jello

assorted flavors

3 oz.

2/13 c

With 1 Super Six Card

Fleahopper Numbers Up In Cotton Fields

Scattered rainfall occurred in the area with some heavy rains in Jones County last week.

The Fisher-Jones Pest Management Association is a non-profit organization. Don't miss the opportunity to sign up for this tax deductible scouting service. We need your participation in our scouting program. Sign up today!!!

Fleahopper numbers

have picked up in fields over the last week. There are still few fleahoppers and very little damage to squaring cotton. Counts of 3-4 fleahoppers per 100 plant terminals were the most that have been found in scouted fields.

Many fleahoppers can be found in wild host plants common to pasture land. The plant is believed to be woolly croton, a fleahopper host plant. The fleahop-

pers could move out of the croton if the pastures start to dry up.

Boll weevil trap catches dropped this past week. Cotton is starting to square in some areas. At this time of year, the cotton becomes more attractive to the boll weevils than our pheromone traps. We have had an abnormal year for boll weevil emergence. A second peak of emerging boll weevils occurred after the 3rd of June through June 22. Fields planted during the last week of May will be the first fields to reach the 1/3 grown square stage. These fields especially if they are near the shinnery, should be checked carefully just prior to 1/3 grown square for boll weevil adults. Check 100 ft. of row on the south or southwest edge of the field for weevils. If boll weevils are found, apply insecticide when first squares reach the 1/3 grown stage. A second application made 3 to 5 days after the first might be required when overwintering populations are large.

If weevils are found and an insecticide application is decided upon, continued scouting will be essential. Beneficial insects killed by the boll weevil insecticide may lead to a greater bollworm problem later on in July and August. The boll weevil trap catches were finally down this past week as most weevils have already emerged.

W.J. Hale (North of Roby) 3 trap total 6 boll weevils--July 6

Don Smith & Foy Mitchell (E. of Roby) 3 trap total 1--July 6 (near shinnery)

Kidd Place (Lawlis Flats) 3 trap total 0 boll weevils--July 6

Orvel Hill (Lawlis Flats) 4 trap total 1 boll weevil--July 6

A slight peak of bollworm eggs occurred this week. Seven eggs per 100 plants is the most we have found. This early July bollworm peak shouldn't hurt the cotton much. Let the beneficial insects build up on these bollworms. Bollworms should increase in

numbers as the season progresses into July and August.

No matter what planting pattern you plant, cotton seems to yield better when the plants are not crowded. A plant every 3 inches or 4 plants/ft. is just a

bout right. Watch your cotton this year. Some of those thinner stands might out yield the thicker cotton.

The delayed uniform planting date allows us to plant cotton when the soil temperature is warmer. This means faster germination and a higher percentage of germinating seed. If you still plant the same numbers of pounds of seed per row acre as you did before the planting date, your cotton stands could get very crowded. Three or four plants coming up in the same spot is what I see as I tour the area and this is definitely too thick.

Bollworms and boll weevils like the thick cotton and so do fleahoppers. Maturity is also delayed by too thick a stand and that could be important this year. Not every year is going to be like this one so consider watching your plant populations in the years to come.

Rites Conducted For Martin Rackley

Martin Rackley, 65, of Rotan, a retired farmer, died at 11 a.m. Saturday, July 24, 1982, at Leisure Lodge Nursing Home in Rotan after a long illness. Services were at 2 p.m. Monday at Weathersbee Funeral Home.

The Rev. Lester Carter, retired Baptist minister, officiated. Burial was at Jayton Cemetery in Jayton.

Born Jan. 27, 1917, in Kent County, he married Christine Holland Sept. 2, 1939, in Jayton. They

moved to Fisher County in 1945 from Kent County. He was a member of Calvary Baptist Church.

Survivors include his wife; two sons, Sammy of Austin; a daughter-in-law, Phyllis Rackley of Killeen; two brothers, Ray of Big Spring and Inzer of Weatherford; a sister, Mrs. Polly Newton of Rotan; and two grandchildren, John and De Ann both of Killeen.

Nephews were pallbearers.

Card Of Thanks

We, the parents of Carlos Perez, Jr., Mr. and Mrs. Johnny Perez from the Blue Haven Motel in Roby, Texas, would like to thank the people from Roby, Texas, who sent our son, Carlos, a gift and get well cards in his time of accident.

May God bless each and every one. Thank you all once again.

Yours truly, Mrs. Lillie Perez P.O. Box 164 Roby, Texas Blue Haven Motel

Mimi's

1/2 Price Sale on all Summer merchandise. Bathing suits, sleeveless tops & shorts - all 50% off

All other merchandise size toddler - 14 20% off.

234 S. Central, Hamlin

576-2610

Under New Management

Fisher County Weekly Activities

Thursday, July 29

FISHER COUNTY SENIOR CITIZENS: 9:00-3:00 p.m. at the Senior Citizens Building.

Friday, July 30

FISHER COUNTY SENIOR CITIZENS: 9:00-3:00 p.m. at the Senior Citizens Building.

Saturday, July 31

TEJAS CHAPTER OF COLONIAL DAUGHTERS OF THE SEVENTEENTH CENTURY: Newly elected officers will be installed at a meeting in Abilene.

Sunday, August 1

COTTONWOOD-RIVERDALE & COUNTYLINE: The annual reunion will be held at the Rotan Community Center.

FISHER COUNTY QUEEN CONTEST: Deadline for entry blanks for the Fair and Rodeo Queen contestants.

Monday, August 2

ROBY LADIES AEROBIC DANCE: 5:30 p.m. Call 735-3165 for location.

ROB VOLUNTEER FIRE DEPARTMENT: 7:30 p.m. at the Fire Hall.

ROBY HIGH SCHOOL BAND: Practice at 6:00 p.m. through 8:00 p.m.

ROBY BAND PARENTS: Meeting at 8:00 p.m. at the Roby Band Hall. All parents are urged to attend.

Tuesday, August 3

FISHER COUNTY SENIOR CITIZENS: 9:00-3:00 p.m. at the Fisher County Senior Citizens Building.

ROBY CITY COUNCIL: 4:00 p.m. at City Hall.

ROB LADIES FIRE DEPARTMENT AUXILIARY: 7:00 p.m. at Fire Hall.

ROBY HIGH SCHOOL BAND: Practice at 6:00 p.m. through 8:00 p.m.

Wednesday, August 4

ROBY LADIES AEROBIC DANCE: 5:30 p.m. Call 735-3165 for location.

ROB HIGH SCHOOL FOOTBALL: Football equipment for two-a-day drills will be issued beginning at 9:00 a.m.

If you would like your organization's activities in this section call 735-3165.

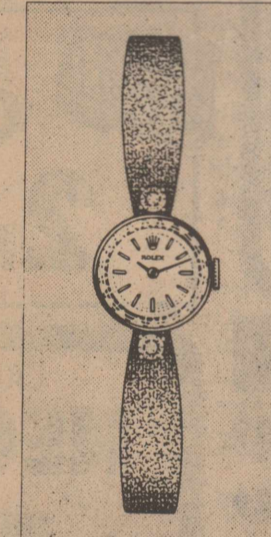
EZELL-KEY INVENTORY SALE
Final Days Thurs., Fri., Sat.

INVENTORY SALE	REG.	NOW
Spectracide - Qt.	9.25	6.94
Tree Spray - Pt.	4.98	3.73
Rose Spray - Qt.	8.98	6.73
Fruit & Veg. Spray - Qt.	8.20	6.15
Liquid Iron - Qt.	2.85	2.14
Zinc - Qt.	3.30	2.47
Fish Emulsion - Pt.	3.50	2.62
Boresol - Qt.	6.35	4.76
Diazinon Spray - Pt.	4.25	3.19
Malathion - Qt.	11.65	8.74
Fertilome Vegetation Killer - Qt.	2.98	2.23
Dog & Cat Flea Collars (Zodiac)	4.75	3.56
Greenlight Many Purpose - 1 lb.	2.80	2.10
Greenlight Bug & Snail - 1 lb.	3.20	2.40
Repel (Dog & Cat Repellent)	3.00	2.25
Crabgrass, Nutgrass, Dallas Grass Killer	4.98	3.73
Golden Malrin Fly Spray - Qt.	13.85	10.39
Gas Cans - 1 gal., 2 gal., 5 gal.		25% Off
Liquid Sevin - Pt.	4.95	3.71
Hanging Basket Food	1.35	.68
Miracle Gro	2.00	1.50
Ortho Garden Fungicide	6.30	4.72
10% Sevin - 1 lb.	2.25	1.69
10% Sevin - 10 lb.	9.00	6.75
5% Sevin - 4 lb.	3.10	2.32
50% Wettable Sevin - 4 lb.	7.85	5.89
5% Sevin - 1 lb.	2.00	1.50
Flea & Tick Granules	11.00	8.25
Hi Yield Ant Bait - 12 oz.	2.25	1.69
Proline Rat Bait - 1 lb.	2.40	1.80
Dowpon Grass Killer	5.10	3.82
Gopher Bait - 1 lb.	2.80	2.10
Ortho Weed B-gon Bars	15.25	11.44
Wasp Spray	3.75	2.81
Neatsfoot Oil - Pt.	3.50	2.62
Absorbine Hooflex - 28 oz.	5.25	3.94
Absorbine Liniment - 1 pt.	4.85	3.64
Farnam Horse Wormer	7.50	5.62
707 Horse Vitamins	13.25	9.94
Hoes, Rakes & Shovels, Post Hole Diggers		25% Off
Corral - 1 gal.	42.00	31.50
Super Dairy & Stock Fly Spray - 1 gal.	7.40	5.55
Complete Cattle Dust Bag Kit	35.20	26.40
Household Insect Spray - Qt.	3.75	2.81
Alco Saddle Blanket Seatcovers	39.95	29.96
100 Ft. 3 wire heavy duty ext. cord	50.75	38.06
Gott Water Coolers 1 gal. & 2 gal.	13.15 & 15.50	9.86 & 11.62
Garden 5/8" Water-hose - 50 ft.	10.80	8.10
Hi Yield Pecan Fert. - 10 lb.	4.50	3.37
1-40,000 BTU Butane Heater		25% Off
Trojan Pigwaterers	23.65	17.74
Potting Soil - 2.5 pk.	3.30	2.47
Potting Soil - 5 pk.	6.00	4.50
74% Chlordane - 1/2 gal.	46.60	34.95
Toxaphene - 1 gal.	17.60	13.20
Electric Bug & Fly Killer	98.00	73.50
All Gloves		25% Off
W.D. 40 - 9 oz.	2.25	1.69
All Fertilome Fertilizers		\$2.00 Off Per Sack
All Box Fertilizers		25% Off
2 Natural Gas Heaters		25% Off
All Shrade Knives		25% Off
3 Models of Kerosun Heaters		25% Off
Fence Stretchers		25% Off
All Garden Seeds		25% Off

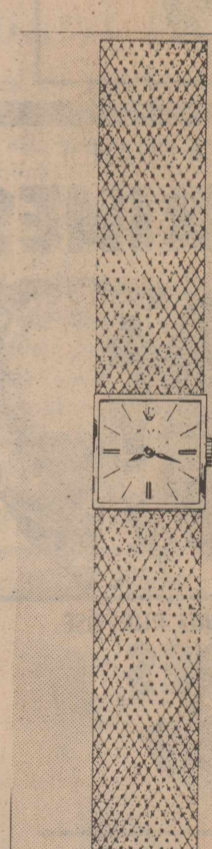
We now have fresh Pork
Steak, Roast, Sausage & Chops.

EZELL-KEY FEED & SEED
735-3261 Rotan, Texas


ROLEX NEW FASHION FOR TIME'S FACE



tapered 14kt gold bracelet with two full cut diamonds and 17-jewel movement



14kt yellow gold square case, matching Florentine mesh bracelet.



Datejust chronometer in 18kt gold with matching bracelet, pressure-proof down to 165 feet in its Oyster case.

COX
Jewelers
Since 1895
Sweetwater, Texas

FREE CHECKING!

- No Minimum Balance
- No Service Charge
- FREE Personalized Checks (300 ANNUALLY)

and we'll PAY YOU
5 1/4% TO CHECK WITH US!

HOMESTATE SAVINGS

WE'RE HERE TO HELP WITH OFFICES IN:
SWEETWATER: 208 Elm/736-6364 ABILENE: 1209 East South 11th/673-8339
BIG SPRING: Colorado Plaza/763-0731 COLORADO CITY: 7205 Hickory/728-2647
ROTAN: 302 West Snyder/735-2273 HAMLIN: 443 So. Central Avenue/576-2631
ROSCOE: Broadway and Main/766-3996 SNYDER: 3405 College Ave./573-4943

Bob Clark Dies In Plane Crash

One man was killed and another injured Thursday, July 22, when the airplane in which they had just taken off crashed just beyond the backyard of a Harrah home, officials said.

The dead man was identified as Bob Clark, 50, of Harrah. He was a passenger in the three-seater Piper aircraft piloted by Darrel Crosby, 38, who was hospitalized at Baptist Medical Center following the 8 a.m. accident. Crosby was reported in good condition.

The path of the airplane was north and west of a day care center on NE 23 Street in Harrah. The 16 children at the center were inside at the time of the crash.

Federal Aviation Administration official Lou Ludwig said the right landing gear of the aircraft hit a fence post on NE 23 and was torn loose shortly after takeoff from Steciak Airfield.

The plane then shot north across the street, Ludwig said, glanced off the roof of a home and crashed nose-down in the backyard of Robert and Sandra Patnaude. The Patnaudes were not at home at the time of the crash.

Ludwig said FAA inspectors gathered evidence at the scene and will report their findings to the National Transportation Safety Board office in Fort Worth, Texas.

Clark was a prospective buyer of the aircraft and had taken off with Crosby on a test flight, officials said.

Crosby's teen-age son had flown with him to the airfield, but remained on the ground when the two

men took off.

BOB CLARK

Bob Clark, age 50, of Harrah, Oklahoma, died Thursday morning, July 22, 1982, as the result of an airplane crash in Harrah, Oklahoma. He was born May 19, 1932 in Abilene, Texas, and had lived in Harrah since 1967, coming there from Grandview, Texas. He was a

member of the Harrah First Baptist Church, the Kiwanis Club and a Marine Officer. He graduated from West Texas State and taught school in Amarillo, Roby, and Anson, Texas. He helped coach football in Harrah and was the owner of Oklahoma Irrigation.

Survivors include his wife, Betty, of the home; one son, J.R. Clark of the

home; three daughters, June Clark of the home, Debbie Anchando of Dallas, Vicky Essary of Austin; one sister, Ann Nitsch of Ballinger.

Services were held Saturday, July 24, at 2 p.m. in Harrah First Baptist Church. Rev. Hoyt Adudell and Rev. Bill Ellif officiated. Burial was in Memory Lane Cemetery in Harrah, Oklahoma.

THE CONTINENTAL Truckload Sale
FACTORY SPECIAL
★ 8 H.P. BRIGGS & STRATTON ENGINES
\$399.95
Compare at \$649.95
SUN. AUG. 1
Holiday Inn
120 and S.H. 351
ABILENE
Come early. Sale starts at 9 a.m.
CONTINENTAL LAWN MOWER MANUFACTURING CO.
1205 E. ABRAMS - ARLINGTON, TEXAS 76010



POLE BARN SPECIAL BY J&A Construction Co.
Rt. 2, Box 132, Parkhill, Ok. 74451
918-456-9769
SPRING SPECIAL
30'X50'X10' W/15' Shed - \$5950.00
We use U.S. Fabral Metal.
34'X56'X10' Poles on 8'
36'X56'X10' Rafters on 4'
30'X50'X8'
40'X60'X12'
40'X80'X12'
Included on all: FREE SPAN TRUSSES*
3X5 poles, treated splash board, 4 skylites, 1 walk-in door, 1 sliding door.
We Build To Any Size And Specification
Colors Available
All Work Guaranteed
STEEL BUILDINGS AVAILABLE AS OF MARCH 1st

We Give Circle W Blue Stamps-Double Stamps
From 1:00 P.M. Tuesday Thru Wednesday

25¢ OFF LABEL-FABRIC SOFTENER
BOUNCE
40 CT. BOX \$1.99



COCA-COLA
6 pack cans \$1.49



NABISCO CHOCOLATE CHIP COOKIES
CHIPS AHoy!
19 OZ. PKG. \$1.69



CRISCO VEGETABLE SHORTENING
PURE CRISCO
3 LB. CAN \$2.09



USDA GRADE A CERTIFIED
FINEST QUALITY COUNTRY PRIDE
WHOLE FRYERS
59¢ LB.



USDA GRADE A CERTIFIED
FINEST QUALITY COUNTRY PRIDE FRYERS
CUT UP WHOLE FRYERS
PAN READY SPLIT FRYER LB. 69¢
BREAST FRESH FRYER LB. \$1.29
DRUMSTICKS FRESH FRYER LB. 99¢
THIGHS BONELESS FRYER LB. 99¢
BREAST LB. \$2.39

Ever wonder what Oscar Mayer has in store for you...

OSCAR MAYER THICK SLICED MEAT OR BEEF	8 OZ. PKG.	\$1.09
BOLOGNA	8 OZ. PKG.	\$1.19
OSCAR MAYER SALAMI/LIVER CHEESE/PICKLE & PEPPER/OLIVE	8 OZ. PKG.	\$1.19
LUNCH MEATS	8 OZ. PKG.	\$1.19
OSCAR MAYER SLICED	12 OZ. PKG.	\$1.89
VARIETY PAK	12 OZ. PKG.	\$1.89
OSCAR MAYER QUALITY SLICED	1 LB. PKG.	\$2.29
BACON	1 LB. PKG.	\$2.29
GOOCH'S MEXICAN STYLE	1 LB.	\$1.39
HOT LINKS	1 LB.	\$1.39
WHOLE FRESHWATER	1 LB.	\$1.39
CATFISH	1 LB.	\$1.39

ICE NOW AVAILABLE AT YOUR THRIFTWAY STORE
Tide FAMILY SIZE TIDE
\$6.39



DUNCAN HINES ASSORTED LAYER
CAKE MIXES
18 1/2 OZ. BOX \$7.99



A High Tax-Free Yield Scheduled for Years to Come

is only one reason we recommend this Nuveen trust for certain investors. Quality is an equally important reason. Every municipal bond issue in the current series of the Nuveen Tax-Exempt Bond Fund is A-rated or better by either Standard & Poor's or Moody's, the two established rating services. Further, each issue has been carefully scrutinized by the Nuveen organization, specialists in municipal bonds since 1898. Nuveen is the largest sole sponsor of tax-exempt bond funds with over \$4.5 billion outstanding.

Another reason for our recommending the Nuveen Tax-Exempt Bond Fund is this: Because it is a trust, you know in advance the specific high return you can receive for many years.

You can receive this interest income monthly, quarterly or semi-annually, as you choose. Or you can have it automatically reinvested in another Nuveen fund.

For more complete information on the current series of the Nuveen Tax-Exempt Bond Fund, including charges and expenses, send for a prospectus by telephoning or mailing the coupon. Read it carefully before you invest or send money.

Interest income may be subject to state and local taxes.

Dealer's name
Dealer's address
Please send me free information on the Nuveen Tax-Exempt Bond Fund, current series.

name _____
address _____
city _____ state _____ zip _____
home telephone _____
business telephone _____
I would anticipate an initial investment of \$ _____

Joe D. Burk
Rotan Insurance Agency
735-2571 & 735-2271

SHURFINE SUGAR
GRANULATED SUGAR
5 LB. BAG \$1.49



FROZEN FOOD SPECIALS
ORE-IDA PLAIN TATER TOTS 2 LB. PKG. \$1.29
STILWELL FROZEN BREADED OKRA 24 OZ. PKG. \$1.29
FRIED CHICKEN/MEAT LOAF/SALISBURY STEAK/TURKEY MORTON DINNERS 11 OZ. PKG. 89¢
MORTON FROZEN HONEY BUNS 9 OZ. PKG. 79¢

HEALTH & BEAUTY AID SAVINGS
REGULAR/MINT/GEL CREST TOOTHPASTE
8.2 OZ. TUBE \$1.59




REG/UNSCENTED ANTI-PERSPIRANT SECRET 4 OZ. CAN \$1.79
SPRAY DEODORANT SECRET 5 OZ. CAN \$1.79
REG/UNSCENTED DEODORANT SECRET ROLL-ON 1.5 OZ. BTL. \$1.49

12¢ OFF LABEL COAST
COAST
2 BATH BARS 89¢



40¢ OFF LABEL-DETERGENT
COLD POWER
KING SIZE \$2.99

CALIFORNIA LA GRANDE NECTARINES
59¢ LB.



CALIFORNIA LONG WHITE ALL PURPOSE POTATOES 10 LB. BAG \$1.69
CALIFORNIA GOLDEN CARROTS 1 LB. PKG. 29¢
CALIFORNIA SANTA ROSA PLUMS LB. 69¢
CALIFORNIA THOMPSON SEEDLESS GRAPES LB. 99¢
CALIFORNIA LARGE SIZE BELL PEPPERS LB. 49¢
GREEN ITALIAN SQUASH LB. 39¢

FRESH DAIRY SPECIALS
MARGARINE BLUE BONNET 2 LB. \$1.00
ORANGE MINUTE MAID 64 OZ. CTN. \$1.99
Kraft Velveeta 2 LB. BOX 2.89

TOTAL GROCERY SAVERS
MOUNTAIN GROWN COFFEE 1 LB. CAN \$2.39
FOLGER'S PETER PAN SMOOTH OR CRUNCHY PEANUT BUTTER 18 OZ. JAR \$1.69
BAMA STRAWBERRY PRESERVES 16 OZ. JAR 99¢
SKINNER LARGE OR SHORT CUT ELBO MACARONI 2 12 OZ. PKG. \$1.00
NABISCO COOKIES NUTTER BUTTER 13 1/2 OZ. PKG. \$1.29
HOLLYWOOD PAYDAY ZERO BUTTERNUT CANDY BARS 4 30' SIZE \$1.00
ATKINS HAMBURGERS 32 oz. jar 99¢
DILL PICKLE SLICES
CARNATION EVAPORATED MILK 2 13 OZ. CANS \$1.00

FROM OUR SHELVES
27¢ OFF LABEL JOY LIQUID DETERGENT
32 OZ. BTL. \$1.59



We Sell
● Bibles
● Books
● Religious Books
The Newspaper Office

AT AFFILIATED FOODS INC.
MEMBER STORE

We're proud to give you more!
THRIFTWAY

PRICES EFFECTIVE JULY 29-Aug.-4, 1982
WE RESERVE THE RIGHT TO LIMIT QUANTITIES
WE ACCEPT FOOD STAMPS