

# County Bank Deposits Over 33 Million

The two Fisher County Banks, First National in Rotan and Citizen's State in Roby, reflected balance sheets at the end of 1981 to indicate that Fisher County residents deposited

more in 1981 and borrowed less. According to reports filed by the two Fisher County banks at the close of business on December 31, 1981, the combined de-

posits of the two banks increased by 6.449 million. Deposits at the Citizen's State Bank increased \$1,563,000 while the First National Bank had an

increase of \$4,886,000. The Citizen's State Bank showed deposits at the end of 1981 amounting to \$9,634,000 while the First

National Bank reflected deposits of \$24,131,000. Loans increased by \$2,073,000 at the two banks in 1981. The First National Bank increased their loans from \$8,572,000 to \$10,149,000 from the close of business on December 31, 1980 to the close of business 1981. Loans at the Citizen's State Bank increased from

\$3,032,000 to \$3,528,000 for the same measurable period 1980 to 1981. Total loans at both banks amounted to \$11,604,000 in 1980 and grew to \$13,677,000 in 1981. The First National Bank in Rotan had deposits of \$19,245,000 at the close of business on December 31, 1980. At the close of business on December 31,

1981, those deposits grew to \$24,131,000. This was an increase of \$4,886,000. Loans at the First National Bank went from \$8,572,000 at the end of 1980 to \$9,634,000 at the end of 1981. This represented an increase in loans of \$1,577,000. The Citizen's State Bank of Roby had deposits of \$8,071,000 at the close of

business on December 31, 1980. At the close of business on December 31, 1981 those deposits had increased to \$9,634,000. This was an increase of \$1,563,000. Loans at the Citizen's State Bank went from \$3,032,000 at the end of 1980 to \$3,528,000 at the end of 1981. This represented an increase in loans of \$496,000.

## Annual Fisher County Junior Livestock Show This Weekend

The annual Fisher County Jr. Livestock Show and Sale will be held Friday and Saturday at the Fairgrounds in Roby, according to Richard A. Spencer, County Agent.

Work is progressing nicely on the completion of the new Show Barn. Wiring is about complete and sand has been leveled inside. Bleachers will be installed this week.

Swine and sheep must be in place by 9:00 a.m. January 15. Cattle must be in place by 7:00 a.m. January 16 but may move in Friday afternoon.

Swine judging will begin at 1:00 p.m. January 15 followed immediately by sheep judging. Broilers and rabbit judging will also begin at 1:00 p.m. January 15. Cattle judging will begin at 9:00 a.m. on January 16 with beef heifers. Steer judging will follow the heifers. The premium sale will begin at 1:30 p.m. January 16.

The Roby Volunteer Fire Department and Fireman's Auxilliary will prepare the buyers lunch for 12:00 noon on January 16. Showmanship trophies for swine, sheep and cattle will again be sponsored by

the Fisher County Young Farmers. Each individual 4-H or F.F.A. member will be allowed to sell one animal in the premium sale with the exception of Champion animals. The designated

champion animals must sell regardless of owners.

Judges for the show include Albert Maberry-Broilers and Rabbits, Bill Scott-Swine, Charles Alcorn-Sheep and Steve Mason-Cattle. David Finley will be the Showmanship judge. Bill Dennis will be Sale Auctioneer again this year.

Superintendents of the various divisions include Billy Henderson-General Superintendent, Jerry Upshaw Assistant Superintendent, Beef Superintendent-Stan Nowlin, Assistants-Jimmy Wright, Gene Terry, Gene Shipp, Sheep Superintendent - Wayne Harris, Assistants-Olin Dennis, Dwight Lovett; Swine Supt. - Thomas Walker, Assistants-Lester Greenway, Joe Teague, James Carter; Broilers and Rabbits-Albert Maberry and E.J. Kiker.

The public is urged to attend and support the Show. The youth of Fisher County need and deserve your support.

The Premium Sale last year grossed over \$43,000. It is hoped that this amount will increase this year.

## Farming Frontier Day Set For January 19th

John Deere "Farming Frontiers 1982" will be held Tuesday, January 19th, at The Rotan Community Center.

Farming Frontiers 1982 is described as a business meeting for farmers by Wendell Morrow, the John Deere dealer at Farm Tractor & Service, Inc. at Rotan. New advances in agriculture, farm management tips, and new John

Deere equipment for 1982 will be featured. Highlighted will be three new and more powerful 4-wheel-drive tractors, the availability of Sound-Gard body enclosure for the 80-hp 2940 Tractor, and many other new implements and equipment improvements. Door prizes will be given away and dinner will be served at 6:30 p.m.

## Four Rotan Band Kids Get All District Bid

A total of eight Rotan high school students auditioned for places on the All-District Band last Saturday at Hardin-Simmons University with four being awarded All District Band positions.

The All-District Try-outs were conducted on Saturday, January 9th at H.S.U. in Abilene.

Those auditioning for a place in the band were John Underhill, Tish Fowler, Martha Hargrove, Conrad Hamric, Moses Gonzales, Laura Denton, Dilana Long and Jerilyn Marshall.

The four students landing spots in the band were: John Underhill, awarded first chair alto saxophone and placing on tenor saxophone; Tish Fowler, awarded second chair piccolo; Martha Hargrove, making third chair tenor saxophone and Conrad Hamric, making fourth chair trumpet.

The All-District Band will meet February 5th and 6th at Hardin-Simmons for a 2-day clinic and will present a free concert at

H.S.U. on Saturday night, February 6th. The public is cordially invited to attend the concert.

## Gas Curtailment Shuts Down Four F.C. Schools

Students in Rotan and Roby schools had two days off earlier this week because of a curtailment of natural gas by Lone Star Gas Company to the schools. The gas company, notified schools early Monday morning that they were "being 100% curtailed" on gas consumption because of the bitter cold conditions in the area.

Rotan and Roby schools are on the industrial rate, paying the lowest rate available for natural gas, and because of that low rate are the first to be curtailed on consumption. Residential gas consumers

pay the premium rate and are the last to be curtailed while commercial users pay a mid-way rate between residential and industrial.

At this writing, it appears that the Rotan and Roby

schools will resume to normal scheduling for Wednesday, January 13th. Students will probably have to make up the two lost days between now and the end of the school year.

## Tammy Stuart Named To ASU Dean's List

Tammy Stuart, daughter of Mr. and Mrs. Richard Stuart, was named to the Dean's List at Angelo State University for the fall

semester. Tammy is a 1980 graduate of Roby High School and is a junior elementary education major.

## Texanna Herron Will Make J.P. No. 1 Race

Texas. The Herrons have lived in Fisher County for 18 years.

Texanna is the wife of Roy W. Herron and they have two daughters-Darlene, who is a graduate of Roby High School and a freshman at the University of Texas at Austin; and Sabrina, who is a freshman at Roby High School.

"If elected I will do my very best to serve the people of Fisher County, honestly, fairly, and open mindedly. I sincerely appreciate your support and vote and hope to visit with each one of you before the May primary."

Her duties in community work include: Girl Scout-Brownie Leader, President of Parent Teacher Council, Treasurer of Athletic Club, and Vice President and Secretary of Band Parent Club.

She is a member of the Order of the Eastern Star Roby Chapter #25, and a member of the First Baptist Church of Sylvester.

She is also a member of Justices of Peace and Constables Association of

Texanna Herron

Texanna Herron

Texanna Herron

Texanna Herron

Texanna Herron

## Kathy Smith Announces For County Treasurer

Kathy Smith, age 35, a resident of Roby, has authorized the Rotan Advance-Roby Star Record to announce her intention to seek the nomination for the position of Fisher County Treasurer.

Kathy and her husband, Don W. Smith, have lived in Fisher County for the past 11 years. He is a Fisher County farmer. They live 6 miles east of Roby.

Kathy is the daughter of Mrs. Erma Frazier of Abilene. She is a 1965 graduate of Cooper High School in Abilene and has taken courses in accounting at Hardin Simmons University and Abilene Christian College.

She was employed at Citizen's National Bank in Abilene for 4 years, from 1966 until 1969, working in the proofing and credit department. Following her employment with the Abilene bank, Kathy Smith was an employee of the Jerry Smith CPA firm in Hamlin for 3 1/2 years and for the past 7 1/2 years has been a clerk in the


office of the Fisher County Tax Assessor-Collector office.

"I feel that the four years I worked for Citizen's National Bank and the work with payroll, and bookkeeping I was responsible for at the Jerry Smith, CPA firm in Hamlin gives me a good foundation for work I'll be responsible for if elected Fisher County Treasurer," said Kathy Smith. "I intend to contact all the voters and personally ask for their help and support as I campaign for the May 1st primary election," she concluded.

Kathy Smith

Kathy Smith

**Roby Star-Record**  
The Voice Of Fisher County Since 1907



# ROTAN ADVANCE

THURSDAY, JANUARY 14, 1982  
VOL. 73 NO. 48 FISHER COUNTY, TEXAS TWELVE PAGES

## Homestead Exemption Forms Will Arrive About Feb. 1st.

Homestead exemptions will be mailed out by Fisher County Appraisal District about February 1, 1982.

Previously, taxpayers had to file their property rendition statements and exemption applications with each jurisdiction which levied an ad valorem tax on their property. For the first time, taxpayers in Fisher County may apply for all applicable homestead exemptions or productivity valuation on their agricultural land at the Fisher County Appraisal District by mailing back the forms mailed to you.

The following types of exemptions are available to property owners in Fisher County:

Homestead. Those persons qualifying for a residential homestead are entitled to a \$5,000 exemption off the market value of the homestead for school tax purposes. Persons 65 or older. Citizens over 65 are entitled to an additional \$10,000 exemption off the market value of their residence homestead for school taxes. Also Fisher County is granting a \$10,000 exemption off market value of homestead for persons 65 or older.

Disability Exemption. Citizens who are totally disabled and qualify for the residence homestead exemption are entitled to an additional exemption of \$10,000 off the market value on their residence homestead for school taxes only. A property owner may not receive both this disability exemption and the \$10,000 exemption for the over 65.

Disabled Veteran or Qualifying Survivor. Certain disabled veterans or their survivors may be entitled to an exemption ranging from \$1,500 to \$3,000 from the value of any property they own.

The amount depends on the percentage of service-connected disability. This exemption may be applied against the value of any one property owned on January 1 of the year in which the application is made. The disabled veteran must be a Texas resident and complete an annual application at the appraisal district office. Only one property may receive the exemption, and VA or armed forces documents verifying disability are required.

Land which is being utilized for agricultural purposes may be eligible for tax relief. Qualified

landowners hold the option of having an agricultural or open-space land valuation applied to

their property. Each of these exemptions will be mailed to all qualified persons about February 1.

## Thirteen In County Announce For Election

A total of 13 Fisher County residents have filed for elected positions that will be voted on by Fisher County residents on May 1st, according to Fisher County Democratic Chairman Bill Smith of Rotan.

The deadline for filing for an elective office is Monday, February 1st, at 6:00 p.m. with the Fisher County Democratic chairman.

Persons already filing for positions on the May 1st Democratic Primary Election include: FISHER COUNTY JUDGE: Marshal Bennett, re-election; COMMISSIONER PRECINCT #2: Billy Henderson, re-election; COMMISSIONER PRECINCT #4: Jimmy Wright, re-election and Gary G. Graham; FISHER

COUNTY CLERK: Betty Sue Mize; DISTRICT CLERK: Eula Mae Hull, re-election; FISHER COUNTY TREASURER: Ilene Hale, Willardene Parker and Kathy Smith; JUSTICE OF THE PEACE, PRECINCT #1: Geneva Chandler, re-election, and Tammy Herron and JUSTICE OF THE PEACE, PRECINCT #3: Ernest Roberts, re-election.

## Representative

The Social Security representative will be in Roby at the courthouse, room 114, Tuesday, January 26, at 1:30 p.m.

The Social Security representative will be in Rotan at the City Hall Tuesday, January 26, at 10:00 a.m.

## Betty Sue Mize Will Seek F.C. Clerk Post

Betty Sue Mize, age 35, of Roby, has authorized this newspaper to announce her intention to seek the office of Fisher County Clerk in the May 1st Democratic Primary.

Betty Sue Mize and her husband Roy are residents of Roby. They live at 108 Neves Street. Roy Mize is employed by E.A. Holder Trucking Company of Quanah, Texas. They have two children, Kari, age 14, in the 9th grade at Roby and Kathi, age 11, in Roby's 5th grade.

Betty Mize is the daughter of Mr. and Mrs. Lee Roy Clark of Roscoe. She is a 1964 graduate of Midland High School.

She has been employed by Texaco, Inc. in the engineering department from 1965 until 1968; worked for the law firm of Hooper & Perry in Abilene from 1969 to 1970 and has been a clerk in the Fisher County Tax Assessor Collector's office from 1978 until present time.

In recent years she has been involved in numerous activities involving her two children, including Girl

Scout leader for 2 years and assisting in 4-H work with the children.

"I feel that my past employment has given me the opportunity to become familiar with legal and land terms and has given me the basic knowledge on the functions of the office of Fisher County Clerk. I am interested in serving the people of Fisher County as clerk, plan on meeting all the voters before the May 1st Democratic Primary and pledge to do the best job possible, within the limits of my ability, if the voters see fit to elect me to the Clerk's position."

Betty Sue Mize

Betty Sue Mize

## Diedra West

### Day Set For

### FBC In Rotan

The members of the First Baptist Church of Rotan are holding a special "Diedra West Day" on Sunday, January 17th, for the purpose of collecting money to help defray hospital costs, according to Rev. Jerry McFather, First Baptist Pastor.

The church will be taking up a special offering at the morning and evening worship service. Diedra West, daughter of Mr. and Mrs. Bob West, has been confined to Hendricks Hospital in Abilene for the past month with meningitis.

## Ernest Roberts

### Announces For

### JP Re-Election

Ernest Roberts of Rotan has authorized this newspaper to announce his intention to seek re-election as Fisher County Justice of the Peace, Precinct #3.

Roberts has been serving as Justice of the Peace since January 16th, 1970. He has lived in Fisher County for the past 82 years.

Roberts and his wife, Lois, have three grandchildren: Ernest Dewaine Roberts, Jr., a student at West Texas State in Canyon; Michael Lynn Roberts, also a WTSU student, and Joy Denise of Greenville, Texas.

"I appreciate the opportunity the voters of J.P. Precinct #3 have given me in allowing me to serve as Justice of the Peace," said Roberts. "I ask for the continued support of the voters as I seek re-election to the post."



# Jimmie Laurie Given Contract Extension

The members of the Roby School Board met last Monday night for their monthly meeting and granted a 1 year extension to Superintendent Jimmie Laurie giving him a

contract through the 1984-85 school year.

In other action the board approved publication of the School Board Election notice calling for an election on April 3rd with a

deadline for filing of March 3rd. Board members named Rose Moore as election judge and Juanita Gaona and Glenna Gene Moore as clerks. Alternate clerks are Inez Neves and Grace Doyle. Marshal

Bennett was named as the absentee election judge. The Roby School Board appointed Roy and Helen Noles as a committee to

secure members of the Roby School District to run for school board posts.

A total of four positions are up for election this

year. Those currently holding the posts are: Jerry Hoodenpyle, Scott Fagan, Roy Herron (three year terms) and Mike Terry (two year unexpired term of John Matthies).

Others on the board and years of expiration are June Wright 83; Gayle Morgeson 83; and Judy Mauldin 84.

## Rotan School Board Awards Curtain Bid

The members of the Rotan School Board met in regular session last Monday night for their monthly school board meeting for January.

At the meeting, moved from the High School Library to the Elementary Library, because of the weather conditions, board members voted to accept a bid of \$5,853.00 from Texas Scenic Company in San Antonio for the purchase of new curtains in the high school auditorium.

In other action the board changed an in-service training day from February 15 to February 12, they approved the Superintendent's budget report, approved minutes and approved the payment of bills.

Board members listened to a report from Athletic Director Robert Damron concerning the financial condition of the athletic program and total number of students taking part in the various aspects of athletics at Rotan schools.

Board members inspected the new doors at the Rotan Elementary School. Four sets of doors (2 double and 2 single) were recently installed at an approximate cost of \$3,450.00.

In final action the board went into closed session to evaluate the Superintendent, Jerry Dickson. No action was taken. When the board re-convened in open session, they voted to adjourn.

The board will evaluate principals and the Athletic Director in February and hire teachers in March.

## Roby School Receives Safety Merit

Roby High School and Elementary School have received a certificate of "Exceptional Merit" and have been placed on the National School Safety Honor Roll of the National Safety Council.

This is the first time the school has received this honor.

## We're here to help you BEAT INFLATION with unbeatable HIGH EARNINGS

At a time when the inflation rate seems to be declining, Homestate Savings offers you the HIGHEST EARNINGS available on insured savings. Why? Because we're here to help. Come see one of our savings counselors, we'll help you beat inflation.

HOMESTATE SAVINGS HIGH YIELD CERTIFICATES	30 MONTH MONEY MARKET CERTIFICATE	12 MONTH TAX-FREE ALL SAVERS CERTIFICATE	26 WEEK MONEY MARKET CERTIFICATE
<b>RATE ANNUAL YIELD</b>	14.00%	10.16%	13.056%
<b>RATE EFFECTIVE ON: MINIMUM DEPOSIT</b>	15.25%*	13.678%**	
	Jan. 5 \$100.	Dec. 28 \$500.	Jan. 12 \$10,000.

\*Yield assumes interest compounded daily, credited quarterly and left on deposit for one year. Substantial penalty for early withdrawal.  
\*\*Yield is based on interest paid at maturity. Government regulations require: Tax exemption will be lost if account is closed before one year or used as collateral for a loan. Maximum lifetime tax exemption is \$1,000 single, \$2,000 interest for a joint return.  
\*\*\*Yield assumes reinvestment of principal and interest at same rate at maturity. Government regulations prohibit ALL financial institutions from compounding interest during term of Money Market Certificate.

# HOMESTATE SAVINGS

WE'RE HERE TO HELP WITH OFFICES IN:

SWEETWATER: 208 Elm/236-6344 ABILENE: 1209 East South 11th/673-8339  
BIG SPRING: Coronado Plaza/263-0251 COLORADO CITY: 2205 Hickory/728-2667  
ROTAN: 302 West Snyder/735-2273 HAMLIN: 443 So. Central Avenue/576-2631  
ROSCOE: Broadway and Main/766-3996 SNYDER: Opening Soon

Dressing her for **SPRING**

SPRINGTIME PRINTS

Come In And See All Of Our New Spring Arrivals

## H.L. Davis & Co.

"The Friendly Store"

Rotan, Texas

## Congratulations To Tish Fowler And Others Placing In The All-District Band Competition We're Proud Of Your Accomplishment

## LIFE: God's Greatest Gift



Babies are really divine. They're life renewing itself. Babies remind us that — while some lives end every day — new ones will begin.

As the years slip away, we sometimes tend to forget how truly precious life is and what a miracle each day really is.

Yesterday is gone. And there's no certain guarantee of tomorrow. So all we really have is today. This truth should inspire each of us to say these words aloud every morning upon awakening: "This is the day which the Lord hath made. I will rejoice and be glad in it."

Every day of your life is a gift from God. Use it well, and worship this week in a spirit of thankfulness and praise.

- Sunday Job 5:8-16
- Monday Job 11:7-20
- Tuesday Psalms 61:1-8
- Wednesday Psalms 94:16-23
- Thursday Psalms 146:1-10
- Friday Isaiah 11:1-9
- Saturday Ezekiel 18:1-9



This Week's Featured Church Page Sponsor

## Citizens State Bank

**H.L. Davis & Co.**  
Bill & Elaine Day  
Rotan, Texas

**Rotan Motor Co.**  
Ford & Mercury  
Rotan, Texas

<b>Citizens State Bank</b> Member FDIC Rotan, Texas	<b>Fisher County Nursing Home</b> 735-3291 Rotan, Texas	<b>Rotan Insurance Agency</b> Joe Burk-Agent Rotan, Texas	<b>Roby Midwest Electric</b> 776-2244 Roby, Texas
<b>Roby Insurance Agency</b> 776-2361 Roby, Texas	<b>Leisure Lodge</b> 711 E. 5th Rotan, Texas	<b>Bart Strayhorn</b> 735-2231 Rotan, Texas	<b>Fisher County Farm Bureau</b> 215 W. Snyder Rotan, Texas
<b>Central Lumber &amp; Supply</b> 776-2371 Roby, Texas	<b>Martinez Dairy</b> Rudy, Joe B. & Emilio Martinez Hobbs Community	<b>Landes Furniture</b> Loys Landes Larry Landes Rotan, Texas	<b>Weathersbee Funeral Home</b> Rotan, Texas
<b>Farmers Union Co-op Gin</b> Rotan, Texas	<b>Rotan Paint &amp; Body Shop</b> Rotan, Texas	<b>M&amp;C Lumber &amp; Hdw., Inc.</b> Rotan, Texas	<b>First National Bank Of Rotan</b> Member FDIC



**NEED A 100% TAX DEDUCTIBLE INVESTMENT WHICH PAYS BIG DIVIDENDS NEXT YEAR?**  
**FERTILIZER IS THE ANSWER**  
**McClures' Inc.**  
 Complete Fertilizer & Chemical Service 776-2448

**Keaton Kolor**  
 Photographic Products & Services

Take Your Film To THE GUMDROP TREE

Check Our Discounts On All Chisel Points And Sweeps. Rolling Plains International Rotan, Texas

## Funeral Services Conducted For Ed Carter

Edd Carter, 69, of Roby, a retired farmer and rancher, died at 1 p.m. Monday, January 11, 1981, at Stamford Memorial Hospital. Services were held at 2 p.m. Wednesday at First Baptist Church, directed by Weathersbee Funeral Home.

Born Oct. 4, 1912, in Oklahoma, he moved to Fisher County as a child and lived most of his life there. He married Lucille Stuart July 15, 1935, in Sylvester. He had worked for Clark Tractor and Implement in Rotan for 14 years. He was a director of the Bitter Creek Water District, and past director of the Fisher County Fair and Rodeo and the Farmers' Union Coop Gin. He was a member of First Baptist Church.

Survivors include his wife; four sons, Chick of Odessa, Harold of Temple, Neil of Carrollton, and Billy of Brownwood; two brothers, George of Sweetwater and Bob of Yorba Linda, Calif.; two sisters, Mrs. W.K. (Ima) Griffing of Brownfield and Mrs. Prentes (Tona Bel) Scott of Sweetwater; and 12 grandchildren.

Other survivors include his wife; four sons, Chick of Odessa, Harold of Temple, Neil of Carrollton, and Billy of Brownwood; two brothers, George of Sweetwater and Bob of Yorba Linda, Calif.; two sisters, Mrs. W.K. (Ima) Griffing of Brownfield and Mrs. Prentes (Tona Bel) Scott of Sweetwater; and 12 grandchildren.

Other survivors include his wife; four sons, Chick of Odessa, Harold of Temple, Neil of Carrollton, and Billy of Brownwood; two brothers, George of Sweetwater and Bob of Yorba Linda, Calif.; two sisters, Mrs. W.K. (Ima) Griffing of Brownfield and Mrs. Prentes (Tona Bel) Scott of Sweetwater; and 12 grandchildren.

Other survivors include his wife; four sons, Chick of Odessa, Harold of Temple, Neil of Carrollton, and Billy of Brownwood; two brothers, George of Sweetwater and Bob of Yorba Linda, Calif.; two sisters, Mrs. W.K. (Ima) Griffing of Brownfield and Mrs. Prentes (Tona Bel) Scott of Sweetwater; and 12 grandchildren.

## Rotan's Fred Acorn Will Be Honored At UT Banquet

Fred Acorn, of Rotan, will be among those honored Friday, January 29, at the 1982 University of Texas Longhorn Football Awards Banquet. Acorn, a cornerback for the Longhorns, is a Junior in Physical Education at UT.

The banquet, to be held at 7 p.m. at the Frank Erwin Center in Austin, will feature highlights of the COTTON BOWL CHAMPION UT team's 1981 season and the presentation of the Most Valuable Athlete Award.

Other awards will be made based on athletic contribution as well as scholastic ability, and lettermen will be presented, by coach Fred Akers. Also included in the program are the visual highlights presentation and the Longhorn Band and cheerleaders. The Master of Ceremonies is the Houston attorney and former Longhorn football player Charles L. (Sonny) Sowell. Coach Fred Akers will present the lettermen and athletic awards.

The banquet is sponsored annually by The Ex-Students' Association of The University of Texas and is the finale for each football season. "Fan" tickets are \$15.00. For further information call The Ex-Students' Association at (512) 476-6271 or write Box 7278, Austin, TX, 78712.

**LOOK WHO'S HERE!**

Hello, my name is Melissa Bredemeyer and I'm three years old. I have someone I would like you to meet. Nicholas Edward is my new brother. He arrived December 31, 1981. He weighed 8 lbs. 6 1/2 oz. and was 18 1/2 inches tall. I am very proud of him and so are my Dad and Mom, Kerry and Betty. Our grandparents are Laurence and Freda Bredemeyer of South Padre Island and Marvin and Norene Kersh of Rotan. Our great-grandparents are Mrs. Romie Kersh of Rotan, Mr. and Mrs. Milton Burk of Roby and Mrs. Alma Jackson of Winters.

**Hospital News**

Patients admitted to Fisher County Hospital January 5, 1982, through January 11, 1982 are: ROTAN-Olga Gonzalez, Robert Almanza, Ruby Carver, Maria Almanza, Edna Taggart, Effie Dennis, Angie Perez, Opal M. Burch, Sylvester Howard, Alberta Vasquez, Pearl O. Bruben, Pearly Jewell Harrison, Cesilia Romero, Mary Grace Carrillo, Karen Sue Martin, David Hudnall. ROBY-O.C. Diddle, Irene Kiker, Preston Beene. STAMFORD-Kody Griffin. JAYTON-Mildred Cave. SWEETWATER-H.F. Guelker.

**WEATHER WISE: BILL CHANEY**

**OKTAB TV**  
 YOUR NEWS STATION  
 We've Got You Covered

**CITIZENS STATE BANK** Roby Texas  
 Serving You Locally

**Six Month Money Market Certificate** Of \$10,000 Or More Earns **13.056%**  
 Annual Rate For Week Ending 1-18-82. Interest Payable Monthly, Quarterly Or At Maturity. Federal Law Prohibits Daily Compounding Of Interest.

**2 1/2 Year "T" Certificates** Of \$500 Or More Earns **13.75%**  
 Annual Rate For Two Weeks Ending 1-18-82. Interest Payable Monthly, Quarterly Or At Maturity. Compounded Daily. 14.74% Annual Yield. Your IRA Funds In This Plan Draw 14%-15.02 Annual Yield By Daily Compounding.

**Individual Retirement Account**  
 Variable Rate Certificate of Deposit

- The maturity date of this certificate is 1 1/2 years.
- Minimum amount of \$500.00 initial deposit.
- Deposits may be added at any time, with original maturity date unchanged.
- The initial rate of interest will be the greater of:
  - The current Money Market rate
  - The current "T" certificate rate plus .25%
- The rate of interest will change on the certificate on the first Tuesday of each month to the greater of (a) or (b) as listed in no. 4 above.
- Interest will be compounded daily to give greater yield.

**All Savers 1 Year Certificate of Deposit**  
 Minimum \$500 Pays **10.16%**  
 Tax Free Interest  
 4-Week Period Beginning 12-28-81  
 \$9,842.52 Deposit Will Earn \$1,000.00

**Citizens State Bank** Roby, Texas  
 Member FDIC

**SUPER Winn's SAVINGS**

# JANUARY WHITE SALE

**THURSDAY - SATURDAY, JANUARY 14TH-16TH**

<p><b>SAVE \$3.00</b></p> <p><b>SHOWER CURTAINS.</b> Full 6' x 6' shower curtain, in a variety of prints and solid colors, complete with co-ordinated shower hooks.</p> <p><b>SPECIAL PRICE \$3.99</b> REG. \$6.99</p>	<p><b>SPECIAL SAVINGS ON SHEET SETS</b></p> <p><b>DESIGNER COORDINATED SHEET SETS.</b> Each set has 1 flat sheet, 1 fitted sheet and 2 pillowcases. No-iron convenience and luxury comfort for your bed, in a variety of prints &amp; solids.</p> <table border="0"> <tr> <td>TWIN REG. \$14.79</td> <td>QUEEN REG. \$27.49</td> <td><b>\$10.88</b></td> <td><b>\$18.88</b></td> </tr> <tr> <td>FULL REG. \$21.49</td> <td>KING REG. \$31.79</td> <td><b>\$14.88</b></td> <td><b>\$19.88</b></td> </tr> </table>	TWIN REG. \$14.79	QUEEN REG. \$27.49	<b>\$10.88</b>	<b>\$18.88</b>	FULL REG. \$21.49	KING REG. \$31.79	<b>\$14.88</b>	<b>\$19.88</b>	<p><b>SAVE 1/3</b></p> <p><b>WOVEN RUG.</b> Popular and useful 24" x 50" woven rug provides decorative accent. Colorful multi-stripe design.</p> <p><b>SALE PRICE \$1.33</b> REG. \$1.99</p>
TWIN REG. \$14.79	QUEEN REG. \$27.49	<b>\$10.88</b>	<b>\$18.88</b>							
FULL REG. \$21.49	KING REG. \$31.79	<b>\$14.88</b>	<b>\$19.88</b>							
<p><b>SAVE \$2.00</b></p> <p><b>"PERSONALLY YOURS" BED PILLOWS.</b> Choose the firmness that's right for you: soft, medium or firm. Polyester fill 21" x 27" pillow, poly/cotton cover on bone background.</p> <p><b>SALE PRICE \$3.99</b> REG. \$5.99</p>	<p><b>SAVE 1/4</b></p> <p><b>CANNON BATH TOWELS.</b> Cannon's 22" x 42" Velour Males fringed towels in a variety of solids, prints, &amp; jacquards. Slight irregulars.</p> <p><b>JUST \$2.88</b> REG. \$3.99</p>	<p><b>1/3 OFF</b></p> <p><b>DISH CLOTHS.</b> First quality waffle weave dish cloths in assorted multi-stripe colors. "A-must" for the kitchen. Pkg. of 3.</p> <p><b>SPECIAL PRICE 77¢</b> REG. \$1.19</p>								
<p><b>Winn's</b></p> <p><b>"VISIT OUR STORES FOR UNADVERTISED SPECIALS"</b></p> <p>VISA MasterCard</p>	<p><b>1/3 OFF</b></p> <p><b>KITCHEN TOWELS.</b> First quality terry velour kitchen towels, 15" x 25". Available in 5 assorted prints, 7 solid colors.</p> <p><b>NOW ONLY 97¢</b> REG. \$1.49</p>	<p><b>Winn's</b></p> <p><small>PRICES GOOD WHILE QUANTITIES LAST</small></p> <p><small>Winn's attempts to please our customers at all times. That includes having ample quantities of advertised items on hand. But occasionally, due to unforeseen reasons, an advertised item may not be available for purchase. In this event, Winn's will issue a Rain Check upon request for the item to be purchased at the sale price as soon as it becomes available. If the item will not be available within a reasonable time, the customer may purchase a similar item at a comparable reduction in price. Merchandise discontinued as available in "limited quantities" will be sold on a first come, first served basis, while quantities last. Winn's reserves the right to limit quantities purchased so that as many customers as possible may benefit from advertised prices.</small></p>								

**"Discovering Your Spiritual Gifts"**

**Seminar, January 15-17**

**Tom Lanier**  
 The Bible Will Be The Primary Textbook For This Course

**Taught By Tom Lanier**  
 President Of Priority Living Ministries, Inc. Of Abilene

**The Seminar Will Begin At 7:30 p.m. On Fri. @ Sat. Night And At 11:00 a.m. On Sun. Morning — 7:00 p.m. On Sun. Night**

**Sardis Baptist Church**

**ALL DENOMINATIONS ARE WELCOME TO ATTEND**



# Approval Granted For Primary Home Care Program By TDHR

The Texas Department of Human Resources has notified the Home Health Agency of Texas, Inc., that this agency is approved for participation in the Primary Home Care Program effective November 1, 1981. The geographical service area for this program corresponds to the licensed area for the agency's Medicare/Medicaid certification service area.

Many community organizations and government bodies contract with the Texas Department of Human Resources to provide medically related services to D.H.R. clients. One of the programs delivered through contract agencies is Primary Home Care. These contracts are funded through Title XIX. Services are provided to the client by an attendant who may be either a part-time or full-time employee of a Class A Home Health Agency. These agencies are reimbursed on a statewide unit rate basis as established by the Department

of Human Resources Board. The attendant cannot be an individual who is a legal or foster parent to a minor child or

spouse of the recipient. Services are provided for aged or disabled adults who are functionally limited in the performance of

daily activities. The range of services include: Personal Care, Housekeeping, Meal Preparation, and Escort Service.

Eligibility is determined by the Department of Human Resources field representative. The D.H.R. worker for Fisher County is Don Pullig. Clients must be S.S.I. recipients and reside in

their own homes. The service must be ordered by a physician and must be provided under the supervision of a registered nurse.

The objective of the Primary Home Care Program is to provide non-technical, medically prescribed and supervised in-home personal and housekeeping services for eligible

Medicaid recipients whose chronic health problems cause them to be functionally limited in the performance

of daily living activities. For more information on the program contact Don

Pullig at the Department of Human Resources, phone 915-823-3234 in Anson.

## Fisher County

The cold weather has kept everyone home and warm by the fire. All our residents have been well, except Mr. Lear who is still in the hospital. Hope he will be back soon. Mr. Cox has had a grandson visiting, Jim Hargrove and a friend from New York drove to Texas. Carolyn Weems of Baylor University also visited Mr. Cox. We want to thank those who come and bring church services to our residents and the music is always a joy.

Thanks to all our local visitors, who make regular visits to the home and bring cheer to our people. We had some visitors who

joined in our bingo game. Dave Blevins and Emma Howard tied in bingo games this week. May we encourage everyone to come by and visit with us anytime.

The sun does not shine for a few trees and flowers, but for the wide world's joy.

Bettie Hargrove  
Activity Director



## M&M WELDING

Ronnie Martin-Owner

General, Farm, & Oil Field Welding  
Custom Carports, Barns, Etc.

Rotan, Texas 79546 915-735-2977

SALES SERVICE Before You Purchase A New Car Or Pick Up Give Us A Chance To Show You How Much You'll SAVE At F & M Chevrolet Buick Complete Sales & Service 735-2244 105 S Cleveland Rotan, Texas 79546

# CLASSIFIED ADS

## Fisher County Political Calendar

Rate for listing in the Rotan Advance-Roby Star Record Political Column is \$80.00 for all offices. This fee includes a front-page announcement article and a one-column photograph to be run with the announcement, in addition to the listing in the Political Column from the date the announcement is made until the final election.

Charges for announcements must be paid in advance, and the same policy applies to all political advertising carried in the columns of this newspaper.

Names of candidates for each office will be listed in the Political Column in the order that they are received at the newspaper office.

The Rotan Advance-Roby Star Record has been authorized to announce the following candidates for public office.

**FISHER COUNTY JUDGE**  
Marshal Bennett - Re-election  
**COMMISSIONER PRECINCT #2**  
Billy Henderson - Re-election  
**COMMISSIONER PRECINCT #4**  
Jimmy Wright - Re-election  
Gary G. Graham

**FISHER COUNTY CLERK**

Bettie Rivers  
Betty Sue Mize

**DISTRICT CLERK**  
Eula Mae Hull - Re-election  
**FISHER COUNTY TREASURER**

Ilene Hale  
Willardene Parker  
Kathy Smith

**JUSTICE OF THE PEACE PRECINCT #1**  
Geneva Chandler - Re-election  
Texanna (Tammy) Herron

**JUSTICE OF THE PEACE PRECINCT #3**  
Ernest Roberts - Re-election

**STATE SENATOR**  
30th SENATORIAL DISTRICT  
Ray Farabee - Re-election

## GREENBUGS CAN DESTROY YOUR WHEAT PROFITS



Have McClures' apply a pesticide to control greenbugs and prevent crop loss.

Fertilizer can be added to revive your wheat and increase yields.

## McClures' Inc.

Complete Fertilizer & Chemical Service  
Roby, TX. 776-2448

Jeff McClure-776-2541 Jack McClure-776-2229

**FILM DEVELOPING:** Done by Keaton Kolor - 3 days and you see your pictures. Leave film at The Gumdrop Tree, Rotan, Texas. 42-tfc

**NOTICE:** Will build, remodel, improve and add-on to homes. Interior and exterior work such as paneling, carpeting, roofing, etc. Free estimates. Clifton Griffith Construction. 776-2403. 37-tfc

**FOR SALE:** 4320 J.D. Tractor Cab, AC, Planters, Cultivator, Chisel Plow, etc. Bill Cade. 735-2853. 47-4tc

## B And T Real Estate

113 W. Snyder  
735-2571

**EXTRA NICE-**Two story brick with balcony, 4 bedrooms, den 3 baths, kitchen, built-ins, lots of extras.

**NEWLY REMODELED-**2 bedroom, 2 bath, living room, kitchen, fenced.

**ROTAN COMMERCIAL-**Former Village Flower Shop building. Main Street location. Owner will finance.

**ROUGH CREEK AREA RANCH-**Approx. 1200 acres west of Rotan, cultivation, pasture land.

**NOW AVAILABLE:** 40 acres on highway, one mile from city limits, pecan and fruit trees, well, city water, fenced.

**NEW LISTING-**3 Bedroom, Living Room, 1 1/2 Baths, Kitchen, Carport, Attached Apartment, Fenced.

**NEW LISTING -**two bedrooms, kitchen, dining area, living room, bath, garage, fruit trees, corner lot.

**CORNER LOT -**2 Bedroom, Living Room, Kitchen, 1 1/2 baths, 3 lots. Nice Location.

**WISE BUY AT TODAY'S PRICES-**Older White Stucco home with 3 bedrooms.

**BUSINESS LOCATION-**Well located commercial building in Rotan.

Joe D. Burk, Broker  
H. Thompson, Salesman, 735-2421

**NOTICE:** Decomposition of crop residue ties up Nitrogen your crop will need next year. Before plowing under cotton burrs let McClure's apply liquid nitrogen. This will speed up decomposition to help provide necessary nutrients for the coming crop. McClure's Inc. Complete Fertilizer and Chemical Service. 776-2448. Roby, Texas. 44-4tc

**NOTICE:** We buy scrap iron. Farm Tractor & Service, "Your John Deere Dealer", Rotan, Texas. 52-tfc

**FOR SALE:** Shelled Pecans. \$2.50 per pound. Unshelled-75 cents per pound. M.L. Hayes. 735-2972. 47-4tp

**HAY FOR SALE:** Alfalfa or Haygrazer. Call 735-3171 or come by Landes Furniture. 43-tfc

**WOOD CUTTERS:** We now have a new machine to sharpen chains for all chain saws. Farm Tractor & Service, Inc., Rotan. 40-tfc

**FOR SALE:** 1980 Ford Mustang, radio, heater, air, 3-speed standard overdrive, 21,000 miles. Low equity and assume payments. Call 735-3149 or 735-2532. 48-1tp

**NOTICE:** Now that stripping is over, let us clean and vat your tractor radiator. Rotan Radiator Service, 112 S. McKinley. 48-4tp

**FOR SALE:** Like new kingsize oak headboard. Kingsize bed, twin canopy bed. Would consider trade for double bed. 735-3355. 48-1tp

**STOP THE SPRING** weeds and grass from coming up in your lawn with the Ferti-Lome Weed & Seed Special or Crabgrass Preventer. Ezell Key. 48-3tc

## S & L Texaco And Parts

Engine Overhaul  
Tune-Up Service  
Windshields Installed  
Road Service  
Tires-Batteries  
Muffler & Tail Pipe  
Sales & Service  
We Take Texaco  
Visa & Mastercharge  
Cards  
Complete Auto Care & Service

735-3200

**NEW HOME SEWING MACHINES:** Electroflux cleaners, repair all makes. H.B. Stevens, 1101 James Street, Sweetwater, 235-2889. 27-tfc

**MATRESSES:** New and renovated, choice of color, firmness and size. Save on renovating, guaranteed. Made by Western Mattress Company. Call Mrs. Turnbow, 735-2313, Rotan. Leave Name. 50-tfc

**TRADE IN ON FARM LAND** or would sell: 4 bedroom, 2 bath, house in Rotan. Well landscaped, central heat and air. Write or call H.T. Fillingim, Jr., Bonito Rt., Nogal, New Mexico 88341. 505-354-2413. 41-tfc

**NOTICE:** Beat the high gas bills with a Kero-Sun kerosene heater. We have five different models. Some will burn 22-30 hours on one gallon of kerosene. Come in for a demonstration. Ezell Key. 48-3tc

**EMPLOYEE needed? MR. EMPLOYER** why not try On-the-Job Training with the Manpower Department of the West Central Texas Council of Governments. To learn more, call (AC 915) 672-5633 collect. Manpower Department, West Central Texas Council of Governments. Equal Opportunity - Affirmative Action Employer. 48-1tc

**WE HAVE A GOOD** supply of pecan trees, from 4 to 8 feet tall. Ezell Key. 48-3tc

**FOR SALE:** 750 and 1500 gallon tanks with baffles and saddles. Ideal for water and diesel hauling. See at Ezell Key. 48-3tc

**FOR SALE:** 1977 Chrysler Cordoba. 735-3145. 45-tfc

**FUR AND HIDE BUYER** will be in Rotan Tuesday, Thursday, Saturday, 2:30-4:00 at Gulf Station on North Cleveland. We start December 3. We will also be in Roby Tuesday, Thursday and Saturday, 4:30 to 5:30 at the Shamrock Station on Highway 180. J&L Fur and Hide Co. 40-8tc

**FOR SALE:** 1966 Chevrolet Pickup, 1/2 ton capacity. (Completely rebuilt engine two years ago.) Real good condition. \$800. For information call Danny Jones. 776-2775. 48-2tc

**OPENING AVAILABLE** for qualified Parts Salesman in local firm. Contact Bob Traylor at Rolling Plains International. 735-2274. 48-tfc

**OWN YOUR OWN JEAN** and Sportswear Shop. Offering all the nationally known brands such as Jordache, Chic, Lee, Levi, Vanderbilt, Calvin Klein, Wrangler and over 100 other brands. \$12,500.00 includes beginning inventory, airfare for 1 to the Fashion Center, training, fixtures and Grand Opening Promotions. Call Mr. Loughlin at Mademoiselle Fashions 612-835-1304. 48-1tp

**NOTICE:** Need Christian nursery worker at Sardis Baptist Church for January 16, 17, & 18. Call 735-2349 or 776-2542. 48-1tc

**FOR SALE:** 21 foot gooseneck trailer with drive-on skids, hitch, and electric brake hookup. See at Ezell Key. 48-3tc

**FOR SALE:** Exercise bicycle. Almost new. \$40.00 735-2208. 48-2tp

**TAKE UP PAYMENTS** with low equity on 14x70 Schultz Mobile Home. Three bedroom, two bath. Unfurnished. Call R.R. Beatty. 735-2407. 47-tfc

**FOR RENT:** 1, 2, and 3 bedroom apartments. Call Kidd Waddell. 776-2362. 45-tfc

**FOR SALE:** Frigidaire Electric Range. 40-inch. White. Good Condition. Clean. 776-2110. 47-2tp

**FOR SALE:** Lawnmower. Good condition. One year old. Make offer. 735-2672. 48-1tp

**FOR SALE:** Fertilized Bermuda Grass Hay. \$2.50 bale. Jim O'briant. 735-2376. 48-3tc

**Fur Buyer** will be in Rotan at Smith & Cypher's Gulf Station each Friday from 7:30 a.m. till 8:00 a.m. beginning December 4th.

We will also be in Roby at Phillips "66" Truck Stop each Friday from 7:00 a.m. till 7:15 a.m. beginning December 4th.

We buy green and dry furs of all kinds. Case skin all fur (like opossum), not open up middle. We also buy deer hides and rattlesnake skins. Well handled furs bring TOP PRICES. Northwestern Fur Co. 241 Walnut Street Colorado City, TX 79512  
Phone: (915) 728-2295  
Red Veale

We Sell  
**WATKINS PRODUCTS**  
Fairy Store  
202 West Snyder  
Rotan, Texas

## Silver Spur Cafe

Roby, Texas

Extends The Selection Of Seafood On Fridays To Include

- ★ Deep Fried Golden Jumbo Shrimp
- ★ Boiled Shrimp
- ★ Clam Strips
- ★ Fresh Water Catfish

Served With French Fries, Coleslaw, Hush Puppies, Tartar Sauce or Cocktail Sauce.

Regular Menu Also Available  
Take Out Orders

Call Ahead For Reservations

776-2744

## OFFSET PRINTING OUR SPECIALTY

The newest and most satisfactory method of printing is offset. It's economical and fast. We guarantee all the printing we do to your satisfaction. Our prices are lower.

The Newspaper Office

Rotan, Texas 735-2562

## JOHNSTON

KORMAN M. 1912 - 1969 MILDRED H. 1914 -

## Smith Monuments

308 East 4th

Telephone 735-3290

Rotan, Texas



# Senator Ray Farabee Announces For Re-Election To Texas Senate Seat

State Senator Ray Farabee announced his candidacy today for re-election to the Texas Senate representing the 30th District. The 30th Senatorial District will cover a twenty-nine county area, plus part of Denton County, in North Central and Northwest Texas, if the proposed redistricting plan is approved. This will include Fisher County. Farabee, who is 49 and a Democrat was elected to the State Senate in 1974 and is now completing his second term of office. Senator Farabee has served for 6 years on the Legislative Budget Board

which has primary responsibility for preparation of the State Budget. He was appointed by Governor Clements to the Texas 2000 Commission where he serves as Chairman of the Agriculture Committee. He was appointed by Lieutenant Governor Bill Hobby to the Select Committee on Public Education and was recently appointed to the Finance Subcommittee of the Water Task Force.

Over the past seven years, Senator Farabee has sponsored legislation to benefit this area as well as the entire State. As a result of his legislation, broad and significant changes can be expected in areas of taxation, education, and criminal justice.

Taxpayers will save \$18 million in 1982 because of the repeal of the state

inheritance tax.

Taxpayers will save \$8 million in 1982 because of the exclusion of livestock and poultry from property taxes.

Small investors will save at least \$4 million annually through the prevention of fraud in the sale of business opportunities.

Prospective public school teachers will have to pass a standardized test demonstrating their competency in basic subject areas, such as English and Math.

Retired teachers will be better able to keep up with inflation due to increased benefits ranging from 7% to 21%, depending on the date of retirement.

Street traffic in prescription-type drugs will be reduced as much as 40% because of stricter record keeping requirements on prescription drug dispensing.

Convicted major drug dealers will serve a minimum of 10 years in prison and will forfeit to the state all property purchased with illegal drug profits.

The backlog in handling criminal appeals after trial, currently 4 years, will be reduced by at least 50% because 14 courts are now able to hear criminal appeals instead of just one.

In October Fisher County received a direct benefit from Farabee's lateral road fund bill in the amount of \$85,463.37.

"Texas is on the right track and we want to keep it there," Farabee said. "As Chairman of the Senate State Affairs Committee, I will work to maintain the healthy economy in Texas and provide solutions to the problems which will be facing us in the 1980's. I would like to continue my public service for the 30th District and the people of Fisher County to deal with these challenges."

Farabee has been cited twice by TEXAS MONTHLY as one of the top ten legislators in Texas.

## Rotan Boys Lose To Baird, Lopez High

The Rotan boys varsity basketball team lost their second district contest last Friday with a defeat at the hands of the Baird Bears.

After trailing by one point at the end of the first quarter and trailing by 7 at the half (29-22), the Bears exploded in the second half, outscoring the Rotan team 34-51 at the final buzzer.

Kip Pease captured high point honors with 18 points in the loss. Others scoring were Henry Williams 8; Eli Turner 9; Jeff Posey 10; Greg Gruben 2 and Sammy Turner 4. Other team members are: Richard Mendoza, Darrin Leverton, Keith Copeland, Endgate Adkins, Randy Martinez and Roger Hooper.

In the junior varsity contest, Baird defeated Rotan 34-46. Herman Lopez was high point individual with 10 points. Others scoring were Larry Ramirez 7; Charles Williams 3; Tim Carrillo 8;

## WTC Spring Registration

Western Texas College has scheduled spring semester registration Jan. 18-19, with classes to begin on Jan. 20.

Sophomore students will register from 1-5 p.m. on Jan. 18 and evening students may take advantage of a special registration period from 6:30-8 p.m. on that day. Freshmen will register from 9 a.m. to 12 noon on Jan. 19, and registration for all students will continue from 1-5 p.m.

## Rotan Girls JV Wins

The Rotan Junior Varsity team took part in a "Round Robin" tourney last weekend and placed second to winner Lamesa. Their only loss was to Lamesa by the score of 30-24. They defeated Coahoma in the opening round 57-25 and beat

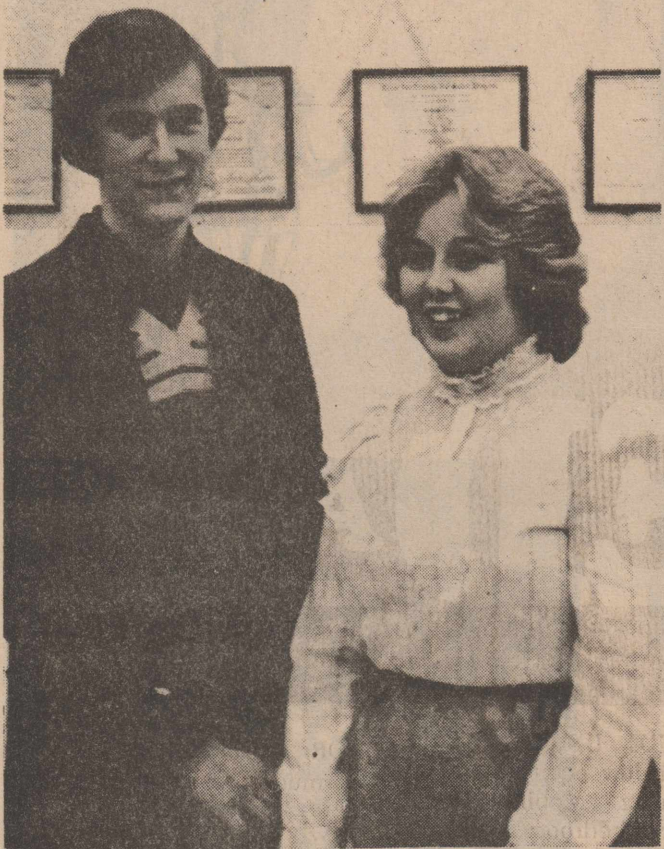
Snyder in the final game 48-45.

In the opening game Rotan defeated Coahoma 57-25 with Cathy Conner scoring 24 points for high point individual honors. Others scoring were Shelly Hayes 4; Desirre Gray 5;

Annette Overby 4; Terrie Whitefield 8; Sonia Carrillo 6; Georgette Ramirez 6.

In the Lamesa game, Rotan was defeated 24-30. Cathy Conner was high point in the game with 8 points. Others scoring were Shelly Hayes 4; Desirre Gray 4; Terrie Whitefield 2; Sonia Carrillo 6.

In the final game Rotan defeated Snyder 48-45 with Conner scoring 16 points. Hayes had 8; Gray 2; Overby 2; Whitefield 10; Carrillo 4 and Ramirez 6.



MIDWEST ELECTRIC NAMES WINNERS OF WASHINGTON D.C. TRIP: Kelly Hunt, 17 year old daughter of Mr. and Mrs. Bobby Hunt of Roby, Texas, and John Underhill, 16 year old son of Mr. and Mrs. C.L. Underhill of Rotan, Texas, were named as winners of the Midwest Electric Youth Tour contest held at the Cooperative office in Roby, Texas, on Thursday afternoon the 7th. They were in competition with other High School students from within Midwest Electric's service area. As winners Kelly and John were awarded an all expense paid 12 day trip to Washington D.C. along with approximately 35 other winners from across the state of Texas. The tour will depart from Lewisville, Texas, on June 10th and stop over in Knoxville, Tennessee, for one full day at the Worlds Fair to be held there this year. The tour will return home on June 22nd.



SCHOLARSHIP: Jill Wright of Roby is among 56 Texas Tech University freshmen receiving \$200 scholarships this year from the Texas Tech Ex-Students Association which makes the presentations annually to all valedictorians or salutatorians attending the university. Wright, 1981 salutatorian at Roby High School, receives congratulations from Association President J.L. Guley. Jill is the daughter of Mr. and Mrs. Jimmy Wright of Roby.

## School Menu

ROTAN LUNCHROOM  
January 18-22, 1982

MONDAY: Burritos, Potato Salad, Seasoned Green Peas, Orange Wedge, Chocolate Cookies, Milk.

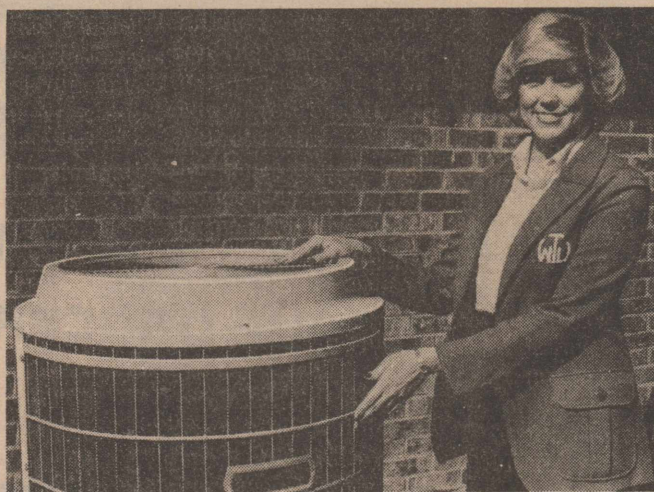
TUESDAY: Chili Beans, Shipped Potatoes, Buttered Spinach, Onion Slices, Cornbread, Butter, Prune Cake, Milk.

WEDNESDAY: Turkey Dressing W/Gravy, Seasoned Green Beans, Cranberry Sauce, Stuffed Celery, Hot Rolls, Butter, Mixed Fruit, Milk.

THURSDAY: Fish W/Tarter Sauce, Creamed Potatoes, Black-eyed Peas, Creamy Cole Slaw, Hot Rolls, Butter, Honey, Milk.

FRIDAY: Hot Dog W/Chili Sauce, Pork & Beans, French Fries W/Catsup, Cheese Wedge, Coconut Pudding, Chocolate Milk.

## IT WILL SAVE YOU MONEY....



## The Heat Pump the most efficient system for heating and cooling.

A heat pump can actually produce more than 2 units of heat for every unit of electricity used, in a properly insulated home.

Unlike a conventional furnace, the heat pump doesn't make heat. It transfers or "pumps" heat. Even on cold days, there is some warmth in the air. The heat pump transfers this heat into your home to warm you and your family.

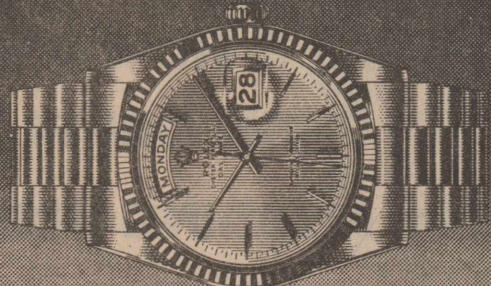
THE ELECTRIC HEAT PUMP WILL SAVE YOU MONEY! If you have plans to buy, build or remodel, or need a new heating and cooling system for your home, call a local factory trained HEAT PUMP DEALER or talk with WTU. We will arrange for a WTU heating and cooling specialist to contact you.

WEST TEXAS UTILITIES COMPANY



Energy savings may vary according to home construction, family size, or energy usage habits.

## ROLEX THE ROLEX DAY-DATE



Bold, brilliant heir to seven decades of precision watchmaking, the Rolex Day-Date is a 30-jewel chronometer, handcrafted in 18kt. gold or platinum. This superbly accurate self-winding instrument, pressure-proof down to 165 feet, has day available in 23 languages, and features the hidden clasp, matching President bracelet.

COX Jewelers Since 1895 Sweetwater, Texas

## COMFORT AND SAVINGS THE YEAR ROUND WITH

Insulation Storm Doors Storm Windows

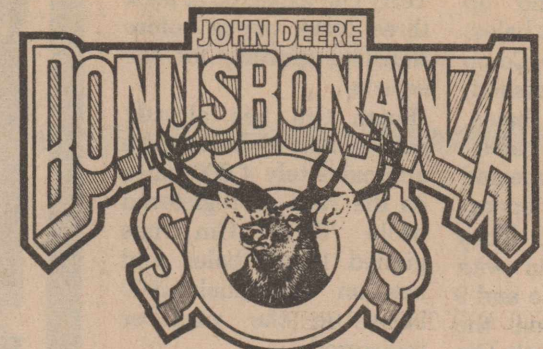
Call Carter Insulation Co. 114 S. Lawrence Roby, Texas 776-2727 Or 776-2220

## 1980 Prices In 1982

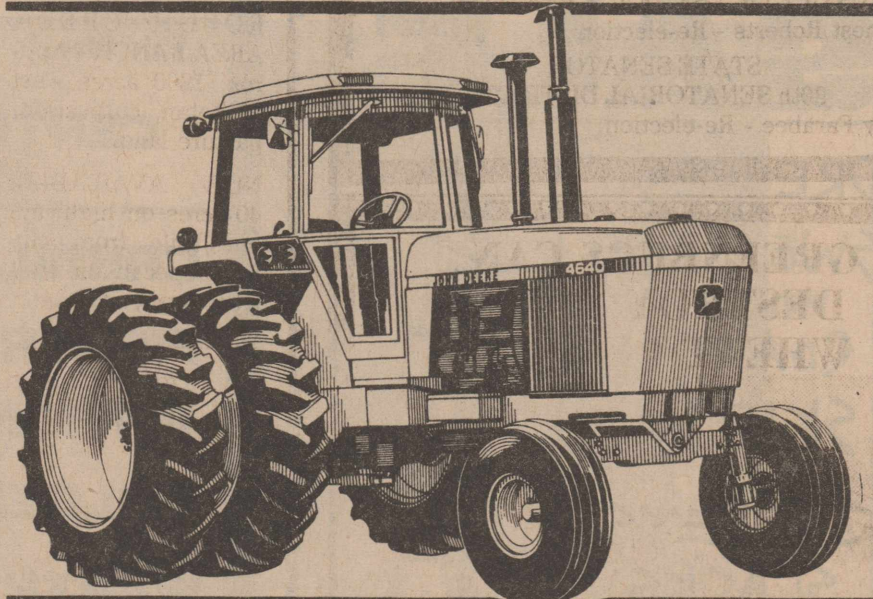
Tax Credit Savings For Insulation, Storm Doors And Storm Windows. Get 15% Off The First \$2,000.00 Of Your Income Tax Return On Short Or Long From.

## Carter Insulation Co. Also Authorized Dealer For

Peerless Products Storm Windows-StormDoors-Sliding Glass Doors



Hurry — bonuses end January 30, 1982: \$3,200 to \$4,000 on 40 Series John Deere 4-WD tractors ... \$1,400 to \$2,600 on row-crops ... plus waiver of finance



January is the last month you can buy a new 90- to 275-hp John Deere tractor listed here and earn a John Deere money bonus from \$1,400 to \$4,000. John Deere money that you can spend for goods or service here will be mailed to you after we make delivery.

That's not all. Use the new variable-rate John Deere finance plan and no finance charges will accrue on these new tractors and new or used implements bought with them until June 1, 1982. Variable-rate financing means you can finance the machines you need now and automatically benefit from any future reduction in interest rates.

Don't miss this chance to earn bonus money on these John Deere tractors.

### 40 SERIES ROW-CROP AND 4-WHEEL-DRIVE TRACTORS

TRACTOR MODELS	BONUS IN JOHN DEERE MONEY THROUGH JANUARY 30, 1982
4040 2-WD, 90 PTO hp	\$1,400
4240 2-WD, 110 PTO hp	\$1,600
4440 2-WD, 130 PTO hp	\$1,800
4640 2-WD, 155 PTO hp	\$2,200
4840 2-WD, 180 PTO hp	\$2,600
8440 4-WD, 215 eng. hp	\$3,200
8640 4-WD, 275 eng. hp	\$4,000

\*This finance offer may be withdrawn at any time.



Farm Tractor & Service, Inc. Rotan, Texas



## Tree Seedlings Can Be Secured Now

Some species have been sold out, but it is not too late for West Texans to purchase several varieties of windbreak tree seedlings from the Texas Forest Service.

The Service's West Texas Nursery in Lubbock still has two varieties of conifers and five types of hardwood seedlings available for the 1981-82 planting season, which ends in late March.

According to Bob Fewin, silviculturist at Lubbock, the conifer species will available are Austrian pine and ponderosa pine. The 6 to 12-inch pine seedlings are grown in individual dual cells, 30 cells to the Styrofoam container. A minimum order is 30, priced at \$30 per container (plus sales tax). They are sold by the container, or in multiples of 30. The containers are 12 inches wide by 14 inches long, by 8 inches deep, and several containers can be easily transported in the back seat of a car or pickup cab.

The hardwood seedling species still available include: green ash, honeylocust, bur oak, mulberry and Russian olive. The hardwoods are sold in minimum lots of 100 for \$20 (plus sales tax and shipping costs).

The West Texas Nursery grows windbreak seedlings for a 60-county High Plains and Panhandle

area, north of Big Spring and west of Wichita Falls.

Fewin said the hardwoods may be shipped, but the containers in which the conifer seedlings are grown are not designed for shipping and these should be picked up at one of three distribution points.

Planters in a 20-county Panhandle area can pick up their orders in Amarillo on March 9. On March 11, residents of a 16-county South Plains area can pick up their seedlings in Big Spring, and on March 16, seedlings will be distributed in Lubbock to resident applicants from the 24 counties surrounding Lubbock.

The hardwood species are bare root seedlings, Fewin said, and can be shipped by normal freight methods.

West Texans interested in planting trees for homestead, field, feedlot or wildlife windbreaks, should write for seedling applications: West Texas Nursery, Texas Forest Service, Rt. 3, Box 216, Lubbock, TX 79401, or call (806) 746-5801.

Windbreak planters may not use these seedlings for landscaping or ornamental purposes.

Fewin said the seedlings would be sold on a first-come basis until the end of the current planting season, or until the supply is exhausted.



# FISHER COUNTY BASKETBALL



## County Gins Record 77,240 Bales To Date

The seven Fisher County Cotton Gins have ginned a total of 77,240 bales for the 1981 season and still have an additional 6,109 bales registered or on the yard.

Two of the seven gins have indicated that they are finished ginning for the season. The Sylvester Co-op Gin is finished ginning and wound up with a total of 4,092 bales. The Farmers Union Co-op Gin at Roby finished, except for a few bales, ending with 10,174 bales.

Two other gins expected to complete ginning operations next week. They include Hobbs Gin with 15,817 bales to date and 9 additional bales on the yard; and Longworth Gin

with 5,530 bales ginned and 300 on the yard.

Farmers Gin at Rotan expects to be ginning for another two weeks. They reported 8,490 bales with 300 on the yard or registered.

The remaining two of the seven gins in Fisher County - Rotan Gin and Terry Gin expected at least three more weeks before finishing ginning for the season.

Rotan Gin has already ginned 22,848 bales with approximately 4,000 bales on the yard or registered while Terry Gin has ginned 10,289 bales and has an additional 1500 bales on the yard or registered.



### This Weeks Rotan Basketball Schedule

Jan. 18-Anson-There-4:00 -Jr. High  
Jan. 14-Winters-There-5:00-Girls & Boys Varsity  
Jan. 19-Anson-Here-5:00 -Girls & Boys Varsity-JU Boys

### This Weeks Roby Basketball Schedule

Jan. 18-McCaulley-Here-5:30- Jr. High  
Jan. 19-McCaulley-There-4:00-Girls & Boys Varsity-  
JU Girls & Boys

This Week's Featured Basketball Page Supporter

**CENTRAL LUMBER & SUPPLY**

### • MARTINEZ DAIRY

TEAGUE GROCERY • F&M CHEVROLET-BUICK

CARRILLO EXXON SERVICE STATION • PORTER LOCKER PLANT

FISHER COUNTY ABSTRACT • FARM TRACTOR & SERVICE, INC.

NATIONAL FARMERS UNION INSURANCE • M&C LUMBER & HDW., INC.

GOLDEN HAVEN NURSING HOME • NOWLIN FARM SUPPLY

WEATHERSBEE FUNERAL HOME • FISHER COUNTY NURSING HOME

MIDWEST ELECTRIC COOPERATIVE & EMPLOYEES • BART STRAYHORN

HOMESTATE SAVINGS • LANDES FURNITURE • CITIZENS STATE BANK

ROTAN INSURANCE AGENCY • GOLD BOND BUILDING PRODUCTS

HATAHOE-ROBY • HENRY'S QUICK STOP • FARM BUREAU INSURANCE

FIRST NATIONAL BANK OF ROTAN • CERAMIC FEVER • ROBY HYDRO

ROTAN PAINT & BODY SHOP • ROBY FLOWER, FABRIC & GIFT SHOP

ROBY DRUG • WHITE AUTO STORE • CITY GROCERY & DELI

ROLLING PLAINS INTERNATIONAL • HATAHOE-ROTAN • H. L. DAVIS & CO.

## WINTER clearance SALE

DRESSES } all 1/2 off  
SWEATERS }  
House COATS }  
SKIRTS }  
JERSEYS } all 1/3 off  
SLACKS }  
BLOUSES }  
COATS }  
JUMPSUITS }  
PURSES } off

JEANS.... 20% off  
MATERIAL up to 1/2 off

all sales are FINAL!

**FAIRY STORE**  
ROTAN, TEXAS



# CONGRATULATIONS

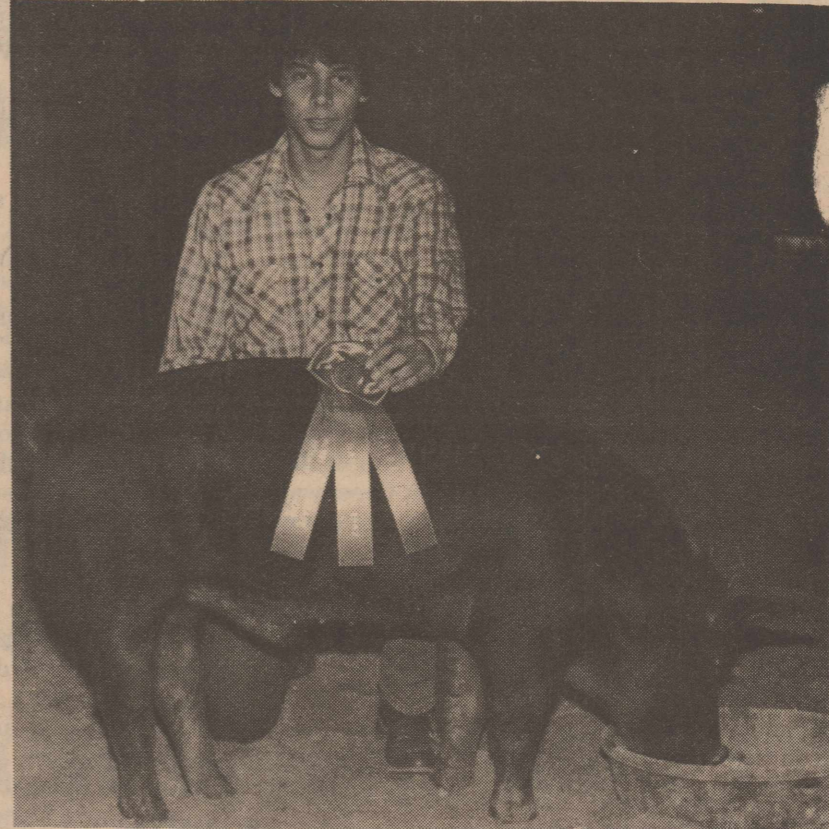
## ROTAN JUNIOR LIVESTOCK SHOW WINNERS



**Grand Champion Lamb**  
Russell Smith



**Grand Champion Steer**  
Blake Morrow



**Grand Champion Barrow**  
Richard Mendoza

### Reserve Champions

**Reserve Champion Lamb**  
Chris Duhadaway

**Reserve Champion Gilt**  
David Carter



**Grand Champion Gilt**  
Jerry Turnbow

### Reserve Champions

**Reserve Champion Steer**  
Pokey Houston

**Reserve Champion Barrow**  
Jackie Ragan

### Showmanship Winners



**Annette Overby**  
Sheep



**Lance Green**  
Swine



**Lance Greenway**  
Steers

This Photo Message In The Interest Of Recognizing Youth For Their Good Accomplishments By

**Farm Tractor & Service**

Rotan, Texas



**Rotan Gin Co.**

Rotan, Texas



# Blake Morrow Takes Top Honors With Heavy Steer

Blake Morrow, 11 year old son of Mr. and Mrs. Joe Morrow of Rotan, showed his 1,348 pound Limousine Steer named "Limbo" Grand Champion honors last Saturday in the annual Rotan Junior Livestock Show.

The steer was purchased by Jerry and Billy Wayne Jeffrey at a club calf sale and given to Mike Morrow and Robert Morgan with the stipulation that the steer be given to a young 4-H or FFA member and that Morrow and Morgan would help the individual learn how to show, etc. Blake Morrow was the recipient of the steer and

for the past 6 months has groomed, petted, fed and cared for the animal. His hard work paid off last weekend. This is Blake Morrow's first year in 4-H. He is in the 5th grade at Rotan Junior High.

Reserve Championship honors in the steer division went to Pokey Houston, son of Mr. and Mrs. Alan Houston, showing his heavyweight that tipped the scales at 1,035 pounds. Others placing (light-weight) were: Teresa Ratliff, 1st; Lance Greenway, 2nd; Lance Greenway, 3rd; and Brad Long, 4th. In the medium weight

division, first place honors went to Pokey Houston; 2nd, Brad Long; 3rd, Toby Moore; and 4th, Weldon Hayes.

Heavy Weight division: Blake Morrow, 1st; and Ward Hayes, 2nd.

Jerry Turnbow, son of Mr. and Mrs. Gerald Turnbow of Rotan, took Grand Champion honors with his 242 pound gilt after his animal placed first in the heavy-weight class. Reserve Champion gilt honors went to David Carter, son of Mr. and Mrs. James Carter, with his medium-weight gilt that weighed in at 211 pounds.

Others placing in the gilt division (lightweights) 1st -Lance Ragan; 3rd-Jackie Ragan; 4th-Jerry Carter; 5th-Tim Carrillo and 6th-Lance Greenway.

Medium Weight Division-2st, David Carter; 2nd, Darrell Carter; 3rd, Larry Messick; 4th, Rob Fryar and 5th, Larry Ramirez.

Heavy Weight Gilt Division: 1st, Jerry Carter; 2nd, Jeff Posey; 3rd, Rob Fryar; 4th, Jeff Posey and 5th, Glen Overby.

Richard Mendoza, son of Mr. and Mrs. Ben Mendoza, showed his medium weight barrow first place winner, to Grand Championship honors. He purchased the pig from Jeff Posey and has been raising it under an FFA project since last September. This is Mendoza's third year to be in an FFA animal program.

Reserve Champion went to Jackie Ragan with his light weight barrow. He is the son of Mr. and Mrs. Ernest Ragan and took first place (light weight) with his 215 pound pig.

Others placing in the barrow division were (light weight) 1st-Jackie

Ragan; 2nd-Lance Green; 3rd-Ricky Ortega; 4th-Glen Overby, and 5th-Dion Sepeda.

Medium Weight Barrows: 1st, Richard Mendoza; 2nd, David Carrillo; 3rd, Darran Ragan, and 4th, Lance Greenway.

Heavy Weight Barrows: 1st, Greg Gruben; 2nd, Jan Posey; 3rd, Endgate Adkins; and 4th, Jill Posey.

In the lamb division of the show, Russell Smith showed his first place medium wool lamb to grand champion honors. He is the son of Mr. and Mrs. Alton Smith. His lamb was purchased at the Albany National Club Calf Sale in Abilene in September and weighed 95 pounds last Saturday.

Reserve Champion honors went to Chris Duhadaway with his 100 pound medium wool lamb that placed 2nd in the medium wool division.

Placing in the lamb division (Fine Wool)-1st Teresa Ratliff; 2nd Teresa Ratliff; and 3rd, Robin Harris.

Fine Wool Cross Division: 1st, Russell Smith; 2nd Annette Overby; 3rd, Russell Smith; 4th, Chris Duhadaway; 5th, Larry Whitley; and 6th, Robin Harris.

Medium Wool Division, Lightweight: 1st, Russell Smith; 2nd, Chris Duhadaway; 3rd, Shelley Hayes; 4th, Travis Whitley. Heavy Weight Division: 1st, Rocky Roberts; 2nd, Annette Overby; and 3rd, Rocky Roberts.

Showmanship trophies were awarded to three individuals last Saturday. Lance Greenway took honors in the beef division; Annette Overby with lambs; and Lance Greenway in swine.

## Rotan Varsity Girls Defeated By Hamlin

The Rotan Varsity Girls were defeated by Hamlin 63-58 last month in the opening district game of the season.

Dana Nowlin was the high rebounder for the game with 10. She was followed by Laura Gruben 9, and Jana Smith 8. Rocky Garza had 6 steals while Elisa Carrillo had 4 steals.

High point individual was Rocky Garza with 18. Others scoring were Elisa Carrillo 13; Laura Gruben 10; Jana Smith 7; Kellie

Pease 6 and Dana Nowlin 4.

"As a team we played real well with our only slump coming in the third quarter. We shot 72% from the free throw line making 18 of 25 shots," said Head Girls Coach Jo Damron.

The junior varsity team lost to Hamlin's JV 35-27 with Cathy Conner scoring 11 points. She was followed in scoring by Kristi Holt 10; Shelley Hayes 4; Terrie Whitefield 1 and Janiece Weatherman 1.

## Golden Haven Home News

We are all trying to stay warm at Golden Haven. The weather is always a surprise-and a good topic for discussion.

We're glad Minnie Beard is back on duty in the kitchen after a stay in Fisher County Hospital. Keep cookin'!

Mrs. Annie Bettis is

## Hollobaugh Hired As F.C. Jailer

O.O. Hollobaugh of Roby was recently hired as the new Fisher County Jailer, according to Sheriff Mickey Counts. His hiring was effective January 1, 1982, and his duties will include full-time responsibility of the jail and prisoners.

His working hours will be Thursday through Monday, from 8:00 a.m. until 5:00 p.m.

In the past Hollobaugh has been employed as a guard at the Texas Department of Corrections and has served as Fisher County Deputy.

With the addition of Hollobaugh, Counts has Iene Hale and L.H. Hicks as deputies.

## Rotan Girls Fall To Baird Team

The Rotan girls varsity team lost a heart-breaker to Baird last week by one point 39-40. Rocky Garza was the high point individual in the game with 14 points. Others scoring were Laura Gruben 4; Jana Smith 3; Elisa Carrillo 8; Dana Nowlin 1; Pat Martinez 4 and Kellie Pease 5.

Rotan trailed 16-18 at halftime; trailed 24-27 at the end of the third quarter and outscored Baird 15-13 in the final period but fell one point shy of a tie and 2 points shy of a win.

## Re-Opening LOMAX PLUMBING CO.

Licensed Plumber  
All Types Of Plumbing

735-3066  
711 Beauregard

FREE ESTIMATES  
All Work Strictly Cash  
Rotan, Texas

## ANNOUNCING A New Business Service For Our Area BLACK INVESTMENTS

Real Estate Sales-Residential, Farms, Ranches; Full Cooperation With Other Brokers

- Real Estate Appraisals-Residential, Farms, Ranches; Currently Working For Certified Appraisal Designation
- Petroleum Landwork.-Land Titles And Minerals Traced
- Oil And Gas Leasing
- Strict Code Of Ethics & Professionalism Employed In All Services

Myla Black  
Owner-Broker



P.O. Box 75  
Rotan, Texas  
79546

(915) 735-3091

# WINTER CARNIVAL



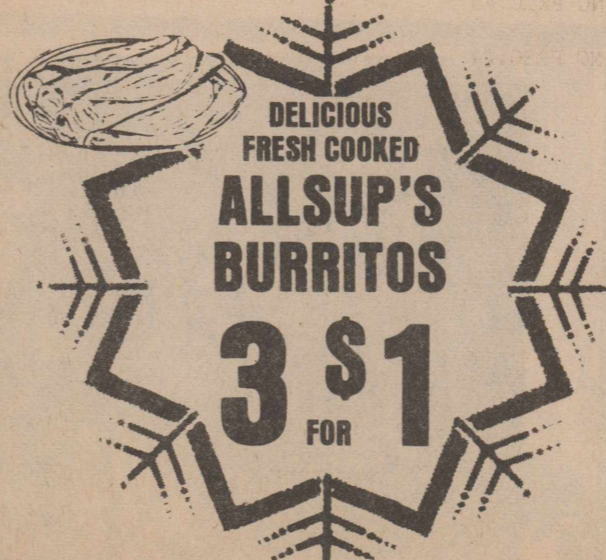
"THERE'S ONE NEAR YOU"

Little Pancho 16 Oz.

Refried Beans 2/99¢



- ALLSUP'S ASSTD. ICE CREAM 1/2 GAL. RD. CTN. \$1.49
- Shurfine Cheddar CHEESE 10 OZ. PKG. \$1.19
- Libby's VIENNA SAUSAGE 2 5 OZ. CANS 89¢
- BORDEN'S HI-PRO MILK 1/2 GAL. CTN. \$1.19



- RATH'S FRANKS 12 OZ. PKG. 79¢
- CRISCO SHORTENING 3 LB. CAN \$2.19
- CHICKEN OF THE SEA TUNA 6 1/2 OZ. CAN 89¢
- RATH BOLOGNA 12 OZ. PKG. 99¢

- RATH BREAKFAST SAUSAGE 1 LB. ROLL 79¢
- FOLGER'S ALL GRINDS COFFEE 1 LB. CAN \$2.19
- SHURFINE GRANULATED SUGAR 5 LB. BAG \$1.19
- RATH'S BACON 1 LB. PKG. \$1.29



- SHURFINE HONEY BUNS ... PKG. 49¢
- MINUTE MAID ORANGE JUICE 12 OZ. CAN 89¢
- DELICIOUS SPAM 12 OZ. CAN \$1.39
- Shurfine 19 Oz. Apple Sauce 2/99¢
- Shurfine 48 Oz. Tomato Juice 89¢

- TENDER MILD HAMS 3 LB. CAN \$5.49
- GOLD MEDAL FLOUR 5 LB. BAG 79¢
- KRAFT VELVEETA 2 LB. BOX \$2.99
- KRAFT 32 OZ. MIRACLE WHIP JAR \$1.19



PRICES EFFECTIVE JANUARY 14-16, 1982  
WHILE SUPPLIES LAST



# Commissioners Pass New Policy On Retirement For County Workers

The members of the Fisher County Commissioners Court, after considerable discussion last Monday, voted approval to a motion calling for no mandatory retirement age for Fisher County employees.

The issue was raised when Commissioner Jay Hendon asked clarification on an existing order calling for mandatory age 70 retirement. The motion requiring retirement at age 70 had been a policy of Fisher County since originally made by former Commissioners Wayne Porter and Thurman Terry and other members of the Court back in the early 1970's. Hendon was of the opinion that commissioners had not been consistent with the enforcement of the 70 year age limit and authored the motion along with Commissioner W.A. Cross saying "In accordance with the policy of the State of Texas, Fisher County hereby declares that there should be no mandatory retirement age for Fisher County employees." The motion passed 4-0.

In other action, Fisher County Commissioners after deadlocking 2-2 on a similar motion, re-worded the motion and agreed to make a contribution of \$800.00 each to Rotan and Roby Fire Departments to be applied toward building programs to house Fisher County Fire equipment.

Commissioners also voted to make a \$100.00 contribution to Rotan and Roby Fire Departments to help defray Christmas program costs of providing assistance to needy and for their work with children.

Commissioners were addressed by Bennie Reaid, representing the Veteran's of Foreign Wars Post at Rotan, requesting action on a petition calling for a local option election

in Justice of the Peace Precinct #3 to legalize bingo. Reaid presented the petitions, signed by approximately 120 residents, and was informed by Judge Marshal Bennett that he would call the election as soon as the signatures were verified by Fisher County Clerk Geneva Perkins.

Commissioners approved the holiday schedule for 1982. The following holiday dates will be observed: Good Friday, April 9th; Memorial Day, May 31st; Independence Day, July 5th; Labor Day, September 6th; Election Day, November 2nd; Thanksgiving, November 25th and 26th; and Christmas, December 23rd and 24th. Also New Years, December 31st.

Commissioners named a grievance committee made up of residents that served on 1981 Grand Jury. That list of Fisher County Grievance Committee members include: Andrew Williams, Mrs. M.E. Doyle and J.W. Donham. Alternates are Mrs. C.M. Callan and Ronnie Jeffrey. Harold Mason appeared before the Commissioners Court requesting assistance with a road, cattle guard and fencing in the southwest portion of Fisher County. Mason relayed

to the court that fences had been cut, cattle guards removed, and he was seeking help in solving the problem. Commissioner Wright agreed to assist Mason and is to meet him in the near future at the site to determine possible solutions.

Annie Weems, Fisher County Senior Citizens Center Coordinator, met with the court indicating that 814 meals were served in December 1981 with a total of \$556.00 taken in.

Court members amended the budget for 1981, were informed that a \$749.00 beacon had been purchased for the Fisher County Airport and voted on a routine motion required by the State of Texas indicating that officers were paid on salary basis and not commission

basis. In final action Commissioner Henderson relayed that vandals stole a dozier on New Years Eve, hot wired the machine and caused considerable damage. Hendon relayed a request from the Appraisal District asking that they (the Appraisal District) be given additional office space. No action was taken.

## FISHER COUNTY AUDITOR'S ANNUAL FINANCIAL REPORT CALENDAR YEAR 1981

Fund	Balance 1-1-1981	Receipts 1981	Transfers		Disbursements 1981	Balance 12-31-1981
			in	out		
JURY FUND	16 770 73	19 501 94	19 598 46	35 000 00	13 481 57	7 389 56
GENERAL FUND	356 400 23	655 310 46	551 822 94	816 300 00	566 103 33	181 130 30
ROAD & BRIDGE, OPERATING PREC. # 1	83 012 10	90 767 96	112 480 09	149 000 00	111 724 59	25 535 56
ROAD & BRIDGE, OPERATING PREC. #2	43 762 46	91 056 11	22 682 74	38 000 00	95 002 89	24 498 42
ROAD & BRIDGE, OPERATING PREC. #3	48 751 07	97 167 66	30 937 37	56 000 00	96 951 69	23 904 41
ROAD & BRIDGE, OPERATING PREC. #4	44 527 94	92 119 16	30 850 40	50 000 00	90 799 37	26 698 13
SOCIAL SECURITY FUND	3 912 21	51 502 66	-0-	-0-	50 705 40	4 709 47
CTHSE CERTIFICATES OF OBLIGATION	-0-	-0-	44 850 00	-0-	44 850 00	-0-
LATERAL ROAD FUND, PRECINCT #1	8 202 51	20 833 54	-0-	-0-	18 108 96	10 927 09
LATERAL ROAD FUND, PRECINCT #2	-0-	20 833 55	-0-	-0-	17 914 08	2 919 47
LATERAL ROAD FUND, PRECINCT #3	-0-	20 833 55	-0-	-0-	20 512 76	320 79
LATERAL ROAD FUND, PRECINCT #4	-0-	20 833 55	-0-	-0-	4 699 14	16 134 41
REVENUE SHARING FUND	20 607 48	57 919 00	-0-	-0-	72 838 01	5 688 47
	625 946 73	1 238 679 14	813 222 00	1 144 300 00	1 203 691 79	329 856 08
FISHER CO. PERMANENT SCHOOL FUND	-0-	4 573 31	-0-	-0-	4 573 31	-0-
	625 946 73	1 243 252 45	813 222 00	1 144 300 00	1 208 265 10	329 856 08

On deposit with Co. Dep. Banks -----329 856 08

### SECURITIES OWNED BY COURTHOUSE CERTIFICATES

1 Certificate of Deposit, The Citizens State Bank, Roby, Texas #2250 6% interest due 3-4-1982 annually	23 932 88
1 Certificate of Deposit, The Citizens State Bank, Roby, Texas #2255 6% interest due 3-4-1982 annually	939 09
1 Certificate of Deposit, The First National Bank, Rotan, Texas #13674 8% interest due 3-5-1982 annually	45 796 26
1 Certificate of Deposit, The First National Bank, Rotan, Texas #13922 8% interest due 5-23-1982 annually	10 683 08
1 Savings Account, The First National Bank, Rotan, Texas # 010499 5.25% interest due quarterly	81 16
	81 432 47

### INVESTMENTS

1 Certificate of Deposit, The First National Bank, Rotan, Texas # 13932, 11.5% interest	100 000 00 (90 days)
1 Certificate of Deposit, Citizens State Bank, Roby, Texas # 2577 11.625% interest	182 000 00 (90 days)
	GENERAL FUND
	JURY FUND
	PREC. #1 R&B
	PREC. #2 R&B
	PREC. #3 R&B
	PREC. #4 R&B
	400 000 00

### FISHER COUNTY PERMANENT SCHOOL FUND INVESTMENTS

25 Haskell County, Texas Water Improvement District, Waterworks Revenue and unlimited tax bonds 66-90 4 1/2 % interest due, \$5,000.00 each year, 11-1-1986	25 000 00
1 U.S. Bond # 268D, due 8-15-1992/87 interest 4 1/2% due 2-15 and 8-15 each year	1 000 00
12 Tobasco Independent School District Bonds, Series 1961, Nos. 536-547, 4.40% interest due 1-1-1982/76	12 000 00
21 Harris County, Texas Water Control and Improvement District No. 48 Waterworks Revenue unlimited tax bonds, Series 1961, Nos. 6-40 and No. 48, 5% interest due 4-1-1982-83, 4-1-1984	21 000 00
1 Certificate of Deposit, The Citizens State Bank, Roby, Texas issued 5-27-76, due 5-27-81, 5 1/2% interest #1075	1 000 00
1 Certificate of Deposit, The Citizens State Bank, Roby, Texas 1-1-79, due 1-1-82, 5 1/2% interest #1557	8 266 46
1 Certificate of Deposit date 4-11-80, 11.75% due annually 10-11-1982, # 1912	5 000 00
1 Certificate of Deposit, 5-19-80, #1943, 10 1/2% interest due 6 months for 30 months	3 000 00
1 Certificate of Deposit, 4-13-81 #2534, 13.750% interest due 6 months, 4-12-1982	10 000 00
	86 266 46

### FISHER COUNTY BUILDING FUND BOND & WARRANT INDEBTEDNESS

Courthouse Certificates of Obligation	Original Issue	Redeemed Prior Years	Redeemed This Year	Outstanding 12-31-1981
		357 000 00	240 000 00	40 000 00
Precinct #1 & Precinct #2 Warrant Indebtedness	84 500 00	-0-	7 500 00	77 000 00
1981 Tax Roll Valuation for County Tax purposes is 306 454 683 00, County Tax Rate 30c, actual roll charge				919 363 58
Lateral Road Fund received from the State of Texas 1981				83 334 19
For the Calendar Year 1981, Tax Vehicles registered 6119				
Amount of money received for registration, replacements, duplicates, transfers etc.				
				107 310 99
				59 688 70
				6 518 90
				173 518 59
Motor Vehicle Sales & Use Tax collected in Calendar Year 1981				85 389 21
				4 113 75
				89 502 96

I hereby certify this statement is true and correct as reflected by the records of the County Auditor's Office.

*Pat Neeper*  
Pat Neeper, County Auditor

### Leisure Lodge

We wish to thank the G.W. Crawfords and the Odell Crawfords for the snacks they brought to all employees. We really enjoyed them and appreciated the treats. Thanks so much.

We still have three residents in Fisher County Hospital. They are Robert Tidmore, Roy McIntosh and Hubert Daniel. Hope they will soon be able to return home.

Our residents all enjoyed the Fisher County Singing Group for the singing last Tuesday night.

I would like to take this opportunity to thank all our Volunteers who so faithfully come and entertain our residents. They are so appreciated.

Our out of town visitors have been Calvin and David Daniel of Sweetwater who visited the R.T. Shipp and Bennie. Mr. and Mrs. Odell Crawford of Odessa are visiting B.B. Crawford. Troy Dement of Burnett visited Mrs. Eula Dement. Mrs. Troy Goodwin of Sweetwater visited Mrs. Ed Price.

I suspect this cold weather has curtailed our out of town visitors. See you next week.

### Rotan Games Re-Scheduled

All Rotan basketball games originally scheduled for Friday, January 15th, have been moved to Thursday, January 14th.

Games start at 5:00 p.m., at Winters and will include Junior Varsity Girls, Varsity Girls, and Varsity Boys.

### Seoul, Korea Group Due At FMC Roby

The Seoul Seminary Singers of Seoul, Korea, will be appearing at the First United Methodist Church of Roby, Texas, on January 19, 1982, at 7:00 p.m. The public is invited to hear this choir sing in both English and Korean as they perform sacred-classical-folk music. There will be fellowship and refreshments in the social hall after the performance.



# Congressman Stenholm Announces Internship Program

Students and teachers interested in participating in the third summer internship program sponsored by Congressman

Congressman's Abilene District Office in the Federal Building.

Applications for the program, which will include two Omar Burleson Congressional Interns and two Lyndon Baines Johnson

Congressional Interns, must be postmarked by midnight, February 12, and mailed to the Abilene office.

The interns selected will receive full Congressional Office experience at Sten-

holm's Washington office, with one intern from each program to serve during June or July, 1982.

"We have had an outstanding group of interns to participate in the program for the past two

summers," Stenholm said. "The competition for the positions has been keen and I would encourage anyone interested to get their applications in as soon as possible."

Selection for the intern-

ships is made by a District-wide selection committee, chaired by former Congressman Omar Burleson.

Applicants for the four intern slots must be at least 18 years of age when he or she is in Washington, allowing high school seniors who have enrolled in an institute of higher learning to be eligible. Others eligible include any student or graduate student who was enrolled during the preceding academic year at any of the District colleges, universities or technical institutes, or any other school, if the person's home of record is within the 17th Congressional District. Teachers, counselors or administrators are also

eligible. "The program is designed to provide the intern with a full Congressional legislative experience in the Washington office," Stenholm said.

Formal applications and further details may be obtained from the Abilene District Congressional Office, P.O. Box 1101, Abilene, Texas 79604, or by calling AC 915 673-7221.

## Ft. Worth Stock Show Begins Jan. 27th

A record number of livestock entries are expected at the 1982 Southwestern Exposition and Fat Stock Show which begins its annual 12-day run Jan. 27 and concludes Feb. 7 at the Will Rogers Memorial Complex in Fort Worth.

Based on the number of entries counted thus far, W.R. Watt Jr., show

president-manager, said, "It appears we will exceed our last year's record entry of 15,215 head of livestock." He said office personnel continues to process entries, and exhibitors of poultry, rabbits and pigeons have until Jan. 15 to enter.

Premiums for the livestock show and accom-

panying World's Original Indoor Rodeo will be more than \$440,000, another record. Rodeo entries, expected to be near 900 cowboys, will be taken by the Professional Rodeo Cowboys Association Pro-Com office in early January.

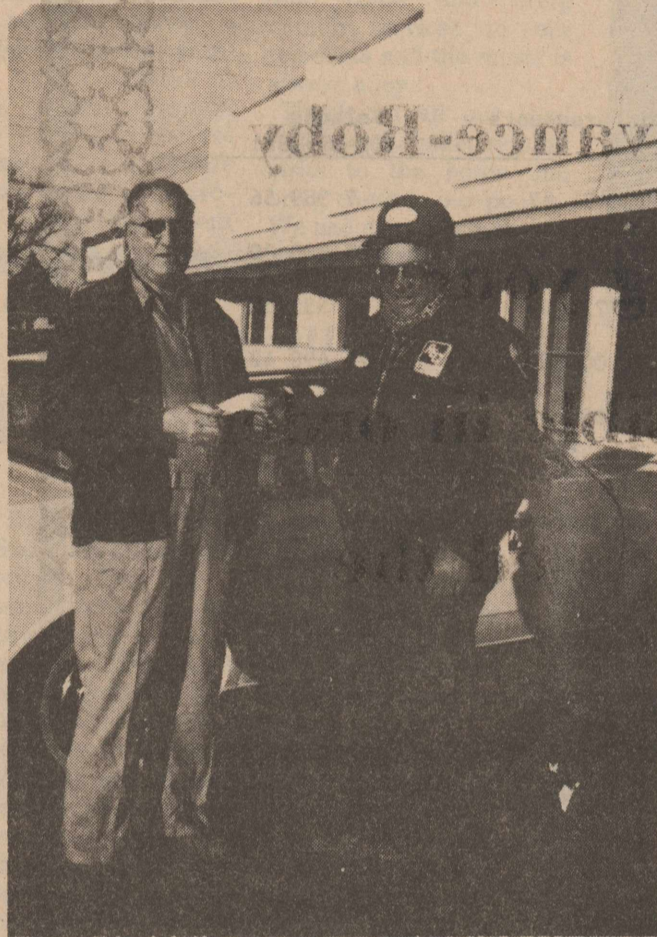
Riding clubs, bands and sponsors of horse-drawn vehicles are invited to participate in the All-Western Parade, scheduled to begin at 2 p.m. Friday, Jan. 29 in downtown. Parade applications, available at the Stock Show office, P.O. BOX 150, Fort Worth, TX 76101, should be returned by Jan. 15.

Neal Gay of Mesquite, Texas, has been named rodeo production manager

for the Fort Worth Rodeo. He has organized a production syndicate that includes six outstanding stock contracting firms, Gay's company and those owned by Bernis Johnson, Cleburne, Texas; Dell Hall, Hulbert, Okla.; Harry Void, Fowler, Colo.; Bradford Ivy, Fairfield, Texas, and Jim Shoulders, Henryetta, Okla.

The Rodeo ticket office in the lobby of Will Rogers Coliseum is open daily, including Sunday, from 9 a.m. until 5 p.m. Mail orders are being taken at P.O. Box 150, Fort Worth, TX 76101. Tickets are \$7 each for night and week-end performances, and \$5 for Monday through Friday 2 p.m. matinees. When ordering by mail,

send cashier or money order, state performance desired and include \$1 extra per order for return postage and handling. Rodeo performances are scheduled at 8 p.m. Jan. 27 through Feb. 7; at 2 p.m. Jan. 30 through Feb. 7; and a special performance at 10 a.m. Saturday Jan. 30.




Roby Fire Chief Gene Shipp presents a check to Roby Mayor Carl Matthies for \$2,500.00. The money is to go toward the completion of the new training room added to the new fire station. The Fire Department would like to express their thanks to those citizens and businesses donating to the building fund.

### Football Story Due Next Week

Space prohibited us from running the full story on the benefit football game that took place last Friday

night. A full story, play-by-play, plus pictures will be carried next week.

## ATTEND JOHN DEERE FARMING FRONTIERS 1982



Plan now to come to our Farming Frontiers. Watch new-for-82 films of three new 4-wheel-drive tractors Sound-Gard® body for the 80-hp 2940 tractor... plus many other new machines tailored to this area. There will be management tips, reports on new advances in agriculture, plus entertainment pictures, food, and door prizes. It's a business meeting on farming in these uncertain times. Make plans now to attend.

DATE: TUES. JAN. 19, 1982 TIME: 6:30 P.M.  
LOCATION: the ROTAN COMMUNITY CENTER

### Farm Tractor & Service, Inc.

Rotan, Texas

## Landes Furniture Rotan, Texas

# JANUARY Clearance SALE

**We Sell & Service Maytag Washers, Dryers & Dishwashers; Also Hardwick Ranges By Maytag**

Carpets, Linoleum, Braided Rugs & Remnants- <b>All Reduced For SAVINGS TO YOU</b> (Installation Available)	Financing Available With <b>Approved Credit</b> <b>FREE DELIVERY</b>	Tell City 7 Piece Dark Maple <b>Table &amp; 6 Heavy Chairs</b> Reg. \$1,144.65 <b>Only \$899</b>
<b>1' SALE BARGAINS</b> Lamps-Stero Table-Living Room Tables-Dining Room Chairs-Pictures-Dresser-Chest-Headboards-Accessories-Sheets-Ect. <b>Buy One At Regular Price, Get One Of Equal Value For 1'</b>		
7 Piece Bernhardt Dining Room Suite Reg. \$899.65 <b>Now \$699</b>	Good Selection Wall Units By Bernhardt & Vaughn Bassett Prices Reduced	7 Piece Broyhill Pine Dining Room Suite Reg. \$894.65 <b>Now \$699</b>
Tell City Maple 42 Inch Table & 4 Chairs Reg. \$529.95 <b>Now \$399</b>	<b>2 FREE Glass Top End Tables</b> With Purchase Of Nylon Velvet Love Seat & Sofa At Sale Price Total Value \$1,359.80 <b>Save \$360.80</b>	Pearl Grandfather Clock Reg. \$759.95 <b>Now \$599</b>
Brass & Glass Serving Cart Reg. \$159.95 <b>Now \$119</b>	3 Piece Pine Bed Room Suite Reg. \$649.95 <b>Now \$449</b>	Riverside 10 Gun Cabinet (Slight Damage) Reg. \$499.95 <b>Now \$379</b>
Good Selection La-Z-Boy Recliners Up To <b>\$90 Off</b>	<b>FREE LA-Z-BOY (\$349.95 Value)</b> With Purchase Of Kroehler Sofa & Chair At Reg. Price Of \$1,059.90	
Ayers Wood Trim Sofa (Floral Print Cover) Reg. \$849.95 <b>Now \$679</b> Matching Love Seat Reg. \$729.95 <b>Now \$579</b> 4 Piece Harrison Solid Oak Bed Room Group Reg. \$1,009.80 <b>Now \$757</b> Dresser, Chest, Nite Stand, Headboard		

### PUBLIC NOTICE

Texas Electric Service Company, in accordance with the rules of the Public Utility Commission of Texas, hereby gives notice of intent to amend its fuel cost factor tariff schedule to establish a procedure for regulatory approval of certain fuel related expenses prior to those expenses being included in the fuel cost factor portion of monthly bills for electric service. This revision will be effective in areas served by the company on the 13th day of January, 1982, or as soon thereafter as permitted by law.

This revision constitutes an administrative change and is not expected to increase or decrease the rates or the revenues of the company.

A copy of this revision is on file with the Public Utility Commission at Austin, Texas, and with each affected municipality. Copies are also available for inspection in each of the company's business offices.

TEXAS ELECTRIC SERVICE COMPANY



# SUBSCRIPTION RENEWAL NOTICE

The majority of the subscriptions to the Rotan Advance-Roby Star Record expire in January of 1982. We are asking your cooperation in renewing subscriptions as soon as possible in order that you will not miss a single issue. We have not increased the subscription price over the 1980 prices.

	Fisher County	Texas	Out of State
1 Year	\$8.50	\$9.50	\$10.50
2 Years	\$16.00	\$18.00	\$20.00
3 Years	\$22.00	\$24.00	\$26.00

When you renew your subscription by mail, please be sure and send a note giving us the information as printed on your address block on page 1.

We appreciate your support and look forward to serving you in 1982.

Thanks,  
Kim Pease



## Cotton Producers To

### Hold February Meeting

For U.S. cotton producers, there's a time to plant, a time to harvest—and a time to become a fully informed fiber producer operating in an increasingly competitive market.

That latter time comes February 17-19, 1982, when, for the third consecutive year, Cotton Incorporated will hold its Annual Producers' Meeting in Raleigh, North Carolina.

Financed by producers' per-bale assessments, Cotton Incorporated conducts an extensive program of research and promotion aimed at lowering producers' costs and expanding cotton's market.

W.T. Robertson of Holly Ridge, Mississippi, chairman of Cotton Incorporated's producer Board of Directors, said the challenges facing cotton producers—including a huge crop and low prices—make these ongoing programs to build cotton's markets and lower producers' costs more essential than ever. "At the same time," he added, "our board recognizes that we cannot expect cotton producers to support our company's programs if they are not kept abreast of how their per-bale assessment dollars are being invested in their behalf."

"Throughout the year, we make an effort to get information to producers, but we feel that there is no better way for a cotton producer to get a grasp on the total program being carried out by his staff of professionals than by attending the Annual Producers' Meeting," noted Robertson.

The first two meetings have drawn more than 400 cotton producers and family members from every Cotton Belt state. "I guarantee that if you go into any cotton-producing community, the best informed producers insofar as Cotton Incorporated is concerned are those who have attended one of the Annual Meetings or otherwise visited our national research center in Raleigh," Robertson said. "We hope that more producer families than ever will be able to be with us this time."

The program will begin the evening of Wednesday, February 17, with a reception and dinner at which producers will be joined by their Board of Directors as well as Cotton Incorporated management and staff.

The Annual Meeting Thursday, February 18, will include reports on the company's programs in agricultural research, textile research, economic research, domestic sales/marketing, international marketing and such marketing support services as advertising. This will be followed by a tour of the research center laboratories.

That evening, a special program for the entire family is planned, including a genuine North Carolina "pig picking."

On Friday, special tours will be held of leading textile mills within easy distance of Raleigh. Buses will be provided for the tour, which will take each producer to at least one mill where he can see cotton being used.

A Raleigh travel agency is assisting with room reservations at the Royal Villa Hotel and Convention Center, one of the Raleigh area's leading facilities. Assistance also is being offered in helping interested producers determine the best airline flights and fares.

Robertson said the company has tried to inform as many producers as possible of the meeting by letter. He said, however,

that any producer who has not received the information can get the appropriate forms by writing to "Annual Meeting," Cotton Incorporated, P.O. Box 30067, Raleigh, NC 27622, or by calling Ms. Evelyn Costello toll-free at 1-800-334-5868. From inside North Carolina, call (919) 782-6330.

Well, has it been cold enough for everyone? Was sure cold on Sunday and Monday, and they are still predicting sleet and snow, but my thermometer shows almost 48 degrees this morning, (Tuesday) so we may not get any moisture out of this. Could do without the sleet and snow, but really could use the moisture.

Larry Phillips from Snyder visited one day and a night with his grandmother, Mrs. Opal Phillips, last week and she really enjoyed his visit.

Wednesday Joe Hardin from Abilene, Kenneth Hardin and Mrs. W.B. Hardin all ate dinner with Mrs. Bea Hardin. Mark and Lisa Nowlin ate dinner with her on Monday, and W.B. and Kenneth visited with Bea on Sunday morning.

### Hustling Round Hobbs

#### Joy Walker

We have been going to the basketball games, Monday at Rotan, Tuesday at Hamlin and Friday at Rotan, so have been seeing some good games.

Melody returned to Stephenville on Saturday, decided to go a little earlier, as she didn't have to register until Monday, but after the weather got so bad on Sunday, am glad that she went on. We attended the Rotan Livestock Show Saturday morning and for a change, the weather wasn't too bad.

Mr. and Mrs. J.W. Etheredge attended all their basketball games during the week, watching Roby play. There isn't very much news this week, guess everyone is just now getting over the holidays, and during the bad weather have been staying close to home. Our fireplace has been working overtime and are glad that we have

plenty of wood out here in the pasture. See you next Thursday.

**Calvary Baptist Church**  
Rotan, Texas  
**Welcome Home**  
Lupe Cabrera

**Medical Expense Fund for**  
Lupe Cabrera  
**First National Bank Of Rotan**

**We Give Circle W Blue Stamps**  
**Double Stamps From 1:00 P.M.**  
**Tuesday Thru Wednesday**

# Economy Foods!



**ROGER STAUBACH**

## AFFILIATED FOODS JANUARY SAVINGS Fiesta

<b>TOMATO HEINZ KETCHUP</b> \$1.19 32 OZ. BTL.	<b>WOLF BRAND PLAIN CHILI</b> \$1.19 19 OZ. CAN
<b>GLAD FAMILY TRASH BAGS</b> \$2.79 20 CT. BOX	<b>5° OFF LABEL-LIQUID BLEACH CLOROX</b> 88¢ 1 GAL. BTL.

**HORMEL'S SUPER SELECT LEAN TRIM 8-11 ASSORTED PORK CHOPS** \$1.39 LB.

<b>SHURFRESH QUALITY BONELESS FULLY COOKED HALF HAMS</b> \$1.99 LB.	<b>SUPER SELECT LEAN TRIM CENTER CUT PORK CHOPS</b> \$1.89 LB.
<b>OSCAR MAYER WIENERS OR BEEF FRANKS</b> \$1.38 1 LB. PKG.	<b>LOTS OF MEAT-COUNTRY STYLE SPARE RIBS</b> \$1.39 LB.
	<b>SUPER SELECT LEAN TRIM FRESH PORK STEAK</b> \$1.49 LB.
	<b>OSCAR MAYER SLICED MEAT OR BEEF BOLOGNA</b> \$1.39 12 OZ. PKG.
	<b>OSCAR MAYER SLICED COOKED HAM</b> \$1.59 6 OZ. PKG.
	<b>OSCAR MAYER SLICED HAM &amp; CHEESE</b> \$1.39 8 OZ. PKG.
	<b>OSCAR MAYER SMOKIE LINKS</b> \$1.79 12 OZ. PKG.
	<b>HORMEL PORK LINK SAUSAGE LI'L SIZZLERS</b> \$1.29 12 OZ. PKG.

**NABISCO PREMIUM SALTINE CRACKERS**  
69¢ 16 OZ. BOX

**KRAFT REAL MAYONNAISE**  
\$1.39 32 OZ. JAR

**NO CHOLESTEROL WESSON OIL**  
\$1.99 48 OZ. BTL.

**ALL PURPOSE RUSSET POTATOES**  
\$2.29 20 LB. BAG

**CALIFORNIA SUNKIST NAVEL ORANGES**  
3 \$1.00 LB.

<b>TEXAS RUBY RED GRAPEFRUIT</b>	2 LBS.	49¢
<b>WASHINGTON DELICIOUS GOLDEN APPLES</b>	1 LB.	49¢
<b>CALIFORNIA GREEN SKIN AVOCADOS</b>	2 FOR	39¢
<b>CALIFORNIA GOLDEN CARROTS</b>	1 LB. PKG.	35¢

**ALL PURPOSE SHURFINE FLOUR**  
85¢ 5 LB. BAG

**Sunbeam Assorted Flavor COOKIES**  
5 Oz. Pkgs. 3 For 89¢

**PENTEL PEN-BLACK OR BLUE ROLLING WRITER** 2 FOR \$1.00

**PENTEL AUTO. PENCIL QUICKER CLICKER** \$1.89 EACH

**TOTAL GROCERY SAVERS**

REGULAR OR DIET SHASTA	6 12 OZ. CANS	\$1.29
MOUNTAIN GROWN COFFEE FOLGER'S	1 LB. CAN	\$2.49
TEXSUN PINK GRAPEFRUIT JUICE	46 OZ. CAN	79¢
ASSORTED COLORS HANDY WIPES	8 CT. PKG.	99¢
SUNSHINE-BONUS PACK CHIP-A-ROOS	14.4 OZ. PKG.	\$1.09
SCHILLING VANILLA	2 OZ. BTL.	\$1.99

**FROZEN FOOD SPECIALS**

MORTON FAMILY PACK GLAZED DONUTS	14 OZ. PKG.	\$1.19
VAN DE KAMP LIGHT & CRISPY FISH FILLETS	14 OZ. BOX	\$1.89
STILWELL FROZEN STRAW-BERRIES	16 OZ. PKG.	\$1.39

**FRESH DAIRY SPECIALS**

Del Monte Whole GREEN BEANS	2/\$1.00	16 OZ. Cans
MINUTE MAID CHILLED 100% ORANGE JUICE	\$1.79	64 OZ. CTN.
PILLSBURY APPLE OR CHERRY STREUSEL COFFEE CAKE	\$1.29	13 OZ. PKG.

**HEALTH & BEAUTY AID SAVINGS**

25° OFF LABEL REGULAR OR WINTERFRESH COLGATE TOOTHPASTE \$1.29 6.4 OZ. FAMILY SIZE

REGULAR, SUPER OR TAMPAX SUPER PLUS \$2.99 40 CT. PKG.

**Scottowels PAPER TOWELS**  
JUMBO ROLL 69¢

**BATHROOM TISSUE NICE'N'SOFT**  
\$1.09 ASST./WHITE/ACCENTS 4 ROLL PKG.

**35° OFF LABEL-DETERGENT TIDE**  
\$2.99 KING SIZE

**We're proud to give you more!**

**WE ACCEPT FOOD STAMPS WE RESERVE THE RIGHT TO LIMIT Prices Effective Jan 14-20, 1982**

# THRIFTWAY



**AFFILIATED FOODS INC.**  
MEMBER STORE