

# Judge Bennett Breaks Vote Tie On New Sheriff Vehicle

Fisher County Commissioners met for their regular meeting last Monday morning and accepted the 1980 audit as presented by Monte West, CPA of Snyder, Texas.

In the presentation of his annual audit report to Commissioners last Monday morning, West strongly suggested that Robert Buck cease "borrowing money out of the cash register". West made his comments when reviewing page 36 of the 1980 Audit Report entitled "Trust and Agency Funds".

The Tax-Assessor Collector balance reflected a shortage of \$144.00, the only shortage of any of the nine funds audited.

West was really not concerned with the \$144.00 shortage. In fact he indicated that the shortage was probably just in bookkeeping and probably didn't really exist.

While discussing the shortage of \$144.00 with Commissioners, West said that he felt Buck's practice of putting IOU's in the cash register needed to stop.

West indicated that he never saw any of Buck's IOU's, saying that he (Buck) always paid them back before the end of the year. However, recently when West attempted to reconcile the books in the Tax-Assessor Collector's office, he said "we were about \$1,500.00 short."

After the clerks in Buck's office scurried around attempting to find the \$1500.00 shortage, according to West, they remembered Buck's IOU's. West said at that time, Buck had about \$1273.00 in IOU's for money he borrowed from the Tax Office register.

West said he paid the money back immediately.

No one accused Buck of misappropriating funds or

### Santa Letter

### Is Needed For Paper

The next issue of the newspaper will be published on Thursday, December 24th and will contain the individual Christmas greeting ads from individuals and business establishments and letters to Santa.

Children wishing their letter to Santa in the December 24th issue should see that the letter is in the hands of the Postal Officials or newspaper personnel by noon on Friday, December 18th.

There will not be a newspaper published on Thursday, December 31st. The first paper of 1982 will be published on Thursday, January 7th, 1982.

felt that Buck had in any way personally removed funds without an IOU.

In a conversation with Robert Buck last Tuesday morning, he said, "There were no IOU's in that cash drawer. There was a check in the cash drawer to cover the cash."

After West presented the audit information to the commissioners, Commissioner Cross made a motion seconded by Commissioner Jimmy Wright to employ Monte West to perform the 1981 Fisher County audit.

The second item to be discussed at Commissioners Court was a presentation by Commissioner Jimmy Wright concerning the acceptance of a proposed \$9,750.00 grant for professional and contract services. The project being discussed was the providing of professional services for delinquent children, i.e. group counseling and psychological evaluations.

After Wright presented a written statement concerning the grant he asked the other commissioners if they wanted Steve Lahon, head of the juvenile program for the tri-county area, to meet later to further explain the grant proposal. It was agreed to table the item, not take any action, until Judge Bennett could coordinate a meeting between Lahon and the members of the Commissioners Court.

While discussing the grant presentation by Wright, commissioners began discussing the overall juvenile program. Two commissioners (Billy Henderson and Jay Hendon) questioned the need for a full-time secretary in the Juvenile Office. Lahon is expected to give commissioners additional information on all phases of the juvenile program in the near future.

Commissioners accepted a letter from Geo-Search Seismic Surveys, Inc., Lubbock, Texas, agreeing to be responsible for damage to the surface on county roads. The motion to accept the letter was made by Commissioner Wright and seconded by Commissioner W.A. Cross with Wright stipulating that it was being accepted provided "all land owners have been contacted and will be paid".

Commissioners discussed a recent inspection by the Texas Aeronautical Commission of the Fisher County Airport; discussed a bridge that was damaged in Commissioner Hendon's precinct and agreed to pay utility bills incurred by Justice of the Peace

Ernest Roberts.

In other action the commissioners discussed a pump-motor that was inoperative on the Fisher County Fire Truck stationed in Rotan. Commissioner agreed to purchase a new unit at an approximate cost of \$2,730.00.

Commissioners discussed changes in precinct lines, a voting box for Henderson's precinct #2 and payments to Pritchett & Abbott, tax evaluation consultants. No action was taken on the items.

In final action the

commissioners deadlocked two to two on purchasing a new car for the Fisher County Sheriff's Department. Commissioner Hendon made a motion seconded by Commissioner Henderson to "pass over accepting the bid". Hendon and Henderson voted to pass over or not accept a bid while Commissioner Wright and Cross voted not to pass over or to accept the bid. Judge Marshal Bennett broke the tie by voting not to accept a bid until after January 1st.

## Roby Band Concert Set For Thursday

The Roby Band's Christmas Concert will be held Thursday night, December 17, in the High School Auditorium at 7:00 p.m. The Fifth Grade Band will perform, as well as the

Junior High and High School Band.

Admission is \$1.00 for adults, 50 cents for students and pre-school free.

## Robert Posey Named To Honor Society

Robert Posey, a junior agricultural business and economics major from Rotan, is one of 63 West Texas State University students to be inducted into Alpha Chi, a national honor society for outstanding students from all academic fields of study.

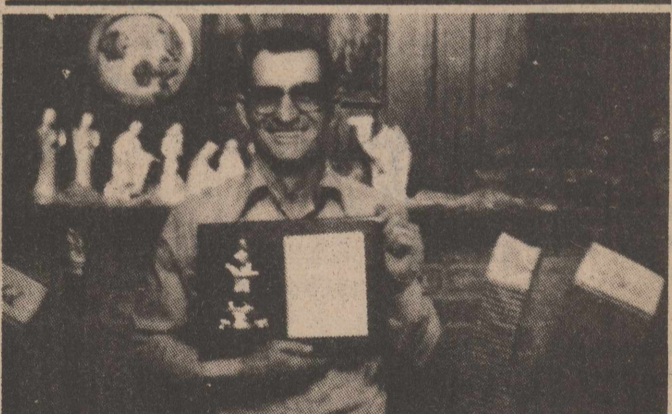
Membership into Alpha Chi requires a minimum

3.5 grade point average on a 4.0 scale and is based on character as well as scholarship and academic achievement.

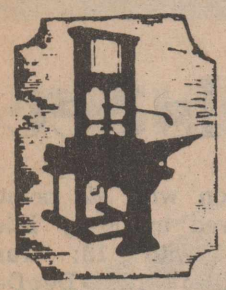
Posey also is a member of Alpha Zeta, a national honorary agriculture fraternity, and he is the son of Mr. and Mrs. Richard Posey.



ALL TOURNAMENT PLAYERS: A total of four Roby High School players were named to the All-Tournament team at the end of last weekend's Roby Tournament. The Roby boys team took first place with the Roby girls taking second behind the Robert Lee team. Roby All-Tournament players (left to right) Todd Etheredge (Most Valuable Player); Mary Nell Clayton, All-Tourney; Tana Mauldin, All-Tourney; and Mark Mauldin, All-Tourney.



FIREMAN OF THE YEAR: Melvin Thomson, Roby fireman for the past 14 years, was given the Roby Fireman Of The Year Award last Saturday night during the annual banquet. Thomson has been first captain, 2nd assistant Chief and President and is currently serving as the First Assistant Fire Chief and Training Officer.



## Roby Star-Record

The Voice Of Fisher County Since 1967

# ROTAN ADVANCE

THURSDAY, DECEMBER 17, 1981

VOL. 73 NO. 44 FISHER COUNTY, TEXAS TEN PAGES

## Rotan School Board Approves Carpet, Curtain Expenditures

The members of the Rotan School Board, after hearing a presentation from the Rotan Jaycees a few months ago concerning a new football field house and discussing the matter collectively agreed last Monday night that the time wasn't right to ask voters of the Rotan Independent School District to consider a bond election for football facilities.

Superintendent Jerry Dickson asked to board to give him some idea of what direction they wanted him to pursue with reference to the football field house issue. The board individually told Dickson that they felt the time was not right to ask taxpayers to consider a bond election.

The board members did approve a re-carpeting program last Monday night. Board members informed Dickson to go ahead and begin replacing worn carpet in the office of the high school principal, high school secretary's office and high school counselor's office as well as the teacher work-room office. Estimated cost of the re-carpeting project is \$1,300.00.

Board members authorized Jerry Dickson to begin advertising for bids on replacing curtains in the school auditorium. Two preliminary estimates for replacing the curtains were presented to the board. The lowest estimate was from Texas Scenic Curtains in San Antonio for \$5,853.00.

Board members budgeted \$32,000.00 into the 1981-82 school budget to take care of capital improvements. The carpeting and curtains will be paid from this fund.

Another capital improvement item discussed by the board was the possibility of running a water line to the main campus area for lawn watering purposes. The line could be run in one of two ways, (1) from the Rotan Gin area to the Elementary School area at an approximate

cost of \$5,969.00 or (2) from the football field area to the Junior High hill at an approximate cost of \$7,102.00. These estimated costs are for running the main line only. Board members informed Superintendent Dickson to secure additional information on the estimated cost of the completed project, including individual taps off the main line. This item

is expected to be discussed again in January.

In final action last Monday night the board approved increasing the lunchroom charges on both breakfasts and lunches served effective Jan. 1, 1982. Breakfast charges for children will increase from 20 cents to 40 cents; adult charges will go from 30 cents to 50 cents and reduced rates will rise

from 10 cents to 30 cents.

Lunch prices for grades kindergarten through 4th grade will increase from 40 cents to 60 cents on January 1, 1982; grades 5-8 will increase from 50 cents to 75 cents and reduced rates will increase from 10 cents to 40 cents. Adult lunch prices were not increased from their current \$1.25 price.

## Appraisal Board Will Refund Surplus Funds

The Fisher County Appraisal Board plans to hold a special meeting on December 28th at 1:00 p.m., for the purpose of refunding approximately \$11,000.00 to \$13,000.00 in surplus funds to the nine Fisher County member agencies. This decision, to make refunds, was made last Monday night at the regular

### M. Gonzales Enlists In Army D.E.P.

Moses Gonzalez, son of Mr. and Mrs. Joe A. Gonzalez, 307 W. Johnson St., Rotan, has recently enlisted in the Army's Delayed Entry Program, according to SSG Vick Langston, recruiter at the Sweetwater Army Recruiting Station.

This program is designed to allow the individual to take up to one year before actually entering active duty. Additionally, this delay insures the individual will be able to select the training of his choice and location of assignment upon entry.

He will report to Fort Sill, Okla., on September 17, 1982, for basic military training. Following basic, he will remain at Fort Sill for advanced individual training as a cannon crewman.

Gonzalez is a senior in Rotan High School and will graduate in May 1982.

monthly meeting of the Fisher County Appraisal Board.

According to figures presented by Chief Appraiser Billie Lou Holcomb, the balance at the end of November in the Appraisal Board account was \$48,667.70. November expenses were \$12,220.30 and December expenses (to date) amounted to \$22,115.51. Any excess in the fund after all December bills are paid will be divided and paid back to the nine member units.

In other action the board

members changed the date of the January meeting to January 4th, because of a conflict with an appraisal meeting in Austin.

Board members instructed Billie Holcomb to ask Geneva Perkins to be on hand at the January meeting to swear in the new board members.

The board discussed re-evaluation with reference to the method to be used and when to perform re-evaluations, and voted to buy \$2,500 in stamps for an early 1982 mailing.

## Roby Band Director Submits Resignation

Roby Band Director Steve Stamets submitted his letter of resignation to the members of the Roby School Board last Monday night during their regular December meeting. The band director's resignation is effective at the end of the current school year. Superintendent Jimmie Laurie indicated last Tues-

day morning that Stamets was in hopes of returning closer to his home in New Mexico as a band director.

In other action the board approved job descriptions on the superintendent and principals; evaluated teachers and accepted the low bid of The Newspaper Office of \$238.59 on eleven manual typewriters.

## Wright Is Treasurer

Robert Mendoza of Sweetwater has been elected President of the Western Texas College Press Club.

Other officers are Patricia Quiros of Snyder, vice president; Margaret Langis of Anson, secretary, and Cheryl Wright of

Roby, treasurer. All journalism students at WTC are eligible for membership in the club. Dr. Mike McBride is faculty sponsor.

Miss Wright is also a member of the staff of the The Western Texan, the campus newspaper.

# Tax Market Value Ratios Vary Among Four County Schools

This is the third Texas Research League report to list assessment ratios for school districts based upon data collected by a state agency. In addition, this report provides estimates derived by the League staff for the level of assessment in every county and in major cities.

There is only one way in which to determine the equity of a property tax levy, and that is to compare the assessment level of a particular parcel of property with the assessment level of other property in the same taxing jurisdiction. If a given property is assessed at 60 percent of its market value when the average of all property assessed is only 30 percent of market

value, then the owner of that property is going to pay twice the tax he would pay with an equitable assessment.

The purpose of this report is to provide taxpayers with information which will assist them in determining the equity of the assessment of the property they own. It also will be helpful to local officials in appraising the equity of their taxing system.

For the most part this is a statistical report. Those using the report do need to know something about the definitions of terms and the limitations of the data. These are set forth in the brief text that precedes the tables and it is important that this material be

understood before attempting to use the statistical information.

This report was prepared by Alan E. Barnes, Research Associate. The cooperation of the staff of the State Property Tax Board, of the Municipal Advisory Council, and of the many local officials who provided additional information is appreciated and acknowledged, but the

Texas Research League staff is solely responsible for the report.

Sam Coats President

TO: Chief Appraisers of the Appraisal Districts

Enclosed is a copy of *Assessment Practices of Texas School Districts, Counties and Cities, 1979* showing the ratio of assessments to market

value as determined by the State Property Tax Board for 1979 tax rolls. The calculation of assessment ratios and the manipulation of school district data to secure ratios for counties and cities was done by the League staff.

As you begin to implement the new Property Tax Code in your county, the former level of assessment should be of considerable

interest to your staff, to the various taxing jurisdictions and, of course, to the property owners. We hope that this report will be useful to you.

Sincerely,  
Sam Coats

Editor's Note: It is apparent that oil companies doing business in Fisher County and paying taxes here, intend to file a

lawsuit if the re-appraisal figures are not placed more in line and equitable. According to a "Ratio of assessed value to estimated market value for Texas Counties, 1979", Fisher County had a market value of 417.8 million, an assessed value of 49.9 million which is a ratio of 11.9% of true market value to assessed value. In the scale below of

"Assessment To Market Value Ratio of Property As Determined By State Property Tax Board, 1979" it must be pointed out that some changes have been made by schools since the report, but at the time the

report was published it was representative of ratios and classes of property.

ASSESSMENT TO MARKET VALUE RATIO BY CLASS OF PROPERTY AS DETERMINED BY S.P.T. BOARD 1979

Claimed Ratio	School District	Actual Ratio	Alternative	Single Family	Multi-Family	Vacant Lots	Agriculture			Cars & Trucks	Bank	Utility	Personal Property			
							Land	Improvements	Commercial & Industrial				Agri.	Business	Other	
FISHER COUNTY																
100.0%	HOBBS ISD	76.0%	79.7%	65%	0%	0%	67%	63%	70%	100%	3%	0%	54%	31%	72%	54%
100.0%	MCCAULLEY ISD	40.3	42.6	47	0	69	20	33	69	100	44	0	64	5	67	57
60.0%	ROBY ISD	23.2	24.3	41	43	29	16	37	35	54	21	27	31	8	33	42
60.0%	ROTAN ISD	22.1	23.1	22	32	42	10	14	44	60	17	21	38	4	31	31



### Hustling Round Hobbs

Joy Walker

Well, had another good week, but it turned much colder on Saturday and we got a little moisture out this way, not enough to measure though, but it has held up the cotton harvest for a few days.

Glenn and Larry Phillips from Post visited with Mrs. Opal Phillips during the week, and she was pleased to see them.

Tuesday night the J.W. Etheredges went to Roby to watch the Roby-Rule basketball games, and then on Thursday they started the Roby Tournament. Roby played Ira that night, so they all attended the games. Friday night they played Rotan, both girls and boys, and then Saturday night both teams from Roby played Robert Lee for 1st place. Todd was selected the Most Valuable Player from all the teams in the Tournament. Congratulations to him. Sunday Mrs. J.W. Etheredge, Mrs. Sam Etheredge, Mrs. Anne Barrett and Taina from Camp Springs, Mrs. Teel, Debra and Darlene, Vicky Moore, Mrs. Lealon Wilburn, Mrs. Marie Phillips Thornton and Mrs. Tonya Jones, also Mrs. Jim Wilburn, Courtney and Shannon all attended a Bridal Luncheon for Debra Teel at Sweetwater in the Southwest Savings & Loan reception room. The Luncheon was hosted by Mrs. James Sherrill from Sweetwater, Mrs. Jim Wilburn from Roby and Mrs. Kenneth Wilburn from Anson. It was really a lovely party and was enjoyed by all.

Mr. and Mrs. J.C. Cave went to Brownwood on Saturday and visited with Mr. and Mrs. Billy Carter and boys. While there they attended the "Gift of Christmas" to the Brownwood Community from the Brownwood 6th grades through the 12th, Choirs and Bands. They said it was just beautiful and they sure enjoyed it, and all of their grandsons participated. They spent the week-end and returned home on Monday.

We want to welcome our new neighbors, Mr. and Mrs. Alan Weathersbee, into the community. They have bought the Andrew Williams home and we are pleased to have them out here at Hobbs. Mrs. Weathersbee is the former Renee Underwood, daughter of Mr. and Mrs. N.G. Underwood of Rotan, and Alan is the son of Mr. and Mrs. Doug Weathersbee, also of Rotan.

Got a Christmas card and a note from my old friend J.R. Mahaffey who now lives in Joshua Tree, California, with his son and wife. He has been in the hospital and isn't feeling too good; we hope he will soon begin to feel very much better.

Tuesday Jim and I went to Colorado City to watch the Colorado City-Rotan basketball games. Mrs. Wilber Gruben and Evette accompanied us. Thursday we started the Roby tournament, not so far this time, and that night we watched Rotan play Loraine, both girls and boys. Friday Mrs. Wilber Gruben and I went to Abilene, shopping, and it wasn't quite as crowded during the week. We came back in time for the Rotan-Roby games that night in the tournament. Went back Saturday afternoon to watch Rotan girls play Roscoe, also the Rotan boys who played Roscoe. Jim and I stayed for the final games between Roby and Robert Lee and they were sure good games, so we saw lots of basketball again last week. Sunday I attended the Rotan Band concert at Rotan and it was very good and all the grades played so well. That night I attended the Community Choir Cantata at the First Baptist Church in Rotan, and it was really beautiful and well worth the trip over there. Such lovely singing and they are to be congratulated on a wonderful program; so much talent from all the Churches in the community. Heard from Melody Sunday night and they are busy with Finals. They went to Lampasas Sunday and met Mark's parents, Mr. and Mrs. Lynn Parrish there and ate lunch with them. They took Mark's roping calves to his folks and then they took them home with them as it will soon be the holidays now.

Kimimia Hardin from Rotan visited on Sunday morning with Bea Hardin and then Bea went to Mr. and Mrs. Kenneth Hardins' for dinner. That afternoon Bea attended the Rotan Band concert. Mr. and Mrs. W.B. Hardin visited Bea Saturday. Friday morning Bea went to Snyder with Mrs. W.B. Hardin and Mrs. Jerry Helms. Friday evening Bea and Mrs. Mark Nowlin went to Snyder and stayed until late that night. Mrs. Hardin and Mrs. Marcus Medrano went to Abilene for the day on Monday.

A baby shower was given on Saturday in the home of Mrs. Odell Rains. It was for Mrs. Donnie Mullins, formerly Dee Ann Weathersbee, who teaches school out here at Hobbs. They sure had a good crowd and got lots of nice things for the baby.

## Roby Girls Second In Annual Lion Tournament

The Roby girls Varsity basketball team was defeated by Robert Lee for the Championship at the Roby Tourney, but on the way to the Championship, the girls defeated three other teams.

The first game pitted Ira against Roby, with Roby defeating Ira 64-44. The high point girl for the Ira game was Mary Nell

Clayton with 22 points, followed by Mary Ellen Cave with 13; Tana Mauldin 12; DeeDee Faught 8; Jana Jennings 5; Paula Terry and Lisa Hoodenpyle 2 points each.

The second game of the tournament Roby defeated Rotan 78-52 in a well-played game. Leading the team in this game as high scorer was Tana Mauldin

with 34 points, followed by Mary Nell Clayton with 24, Mary Ellen Cave 10, Jana Jennings 5, DeeDee Faught and Lisa Hoodenpyle 2 points each and Paula Terry with 1 point.

This game made the girls second win and led them to a third victory against Rule with the final score Roby 64, Rule 25. Mary Nell Clayton was the high

pointer in this game with 12 points, followed by Mary Ellen Cave 11, Tana Mauldin and Merry Johnson each had 9 points, Paula Terry 8, Jana Jennings 6, Diane Alaniz 4, Tammy Jeffrey 3 and Lisa Hoodenpyle 2 points.

In the final Championship game the girls were then defeated by Robert Lee 69-47. It was a

well-played game with Clayton again high pointer for Roby with 18 points, Tana Mauldin 15 points, DeeDee Faught 6, Mary Ellen Cave 4, and Paula Terry and Lisa Hoodenpyle 2 points each.

Members of the girls Varsity team are: DeeDee Faught, Tana Mauldin, Paula Terry, Jana Jenn-

ings, Mary Nell Clayton, Mary Ellen Cave, Lisa Hoodenpyle, Diane Alaniz, Kristi West, Tammy Jeffrey and Merry Johnson.

Mary Nell Clayton and Tana Mauldin made all tournament players.

Roby will play at the Roscoe Tourney December 17, 18, and 19.

## Hobbs Passes Accreditation

The Texas Education Agency conducted an accreditation visit of the Hobbs Independent School during the first week of November. All aspects of

the district's operation relevant to accreditation regulations were examined, with an emphasis on the instructional program.

According to the report recently received by the Hobbs School, there were no areas of concern or suggestions for improvement by the state agency, no corrective action needed to be taken and the board, based on their findings, recommended that the Hobbs School District continue as accredited.

In the report the Texas Education Agency commended the Hobbs Independent School District in 6 specific areas. (1) With reference to the

Learner Based Accountability System, the very small class size enabled individual language instruction on a very personal basis (2) They commended the half-time certified librarian service (3) They commended the kindergarten detailed reporting system (4) They commended the support staff in band, speech, Title and physical education for furthering individualized instruction (5) They commended the facilities and complimented the in-service program at Hobbs.

## Secret Pals Hold Holiday Luncheon

The Secret Pal Club held their Christmas luncheon Monday, December 7, at the home of Mrs. Joe Morris.

Members present were: Mrs. Bessie Eaton, Mrs. Clara Rogers, Ludie Harris, Mrs. Bertha Allen, Mrs. Opal Burch, Mrs. Joe Ballenger, Mrs. John Palmer, Mrs. Gertie Sanders, Mrs. Myrtle Kelton, Mrs. Ruth Hammer, Mrs. O.D. Knox, Mrs. Lillie Herron, Mrs. Marvin Ashley, Mrs. Lon Weems, Mrs. Florine Swaringin, Mrs. Tracy King, Mrs. Clyde Farrar, Sr., Mrs. Hazel Smith, Mrs. Mary

Ann Rodriguez, Mrs. Marlene Marshall, and one guest, Erika Ramirez.

Out of town member was Mrs. Natalie Gribbins of Roscoe.

The home was attractive with Christmas decorations, including a large Christmas tree in the living room. Highlight of the day was when everyone gathered around the tree where they found a lot of gifts.

The luncheon was served buffet style from an appointed table. Mrs. Opal Burch returned thanks.

## Registration For WTC Spring Classes

Registration for spring semester classes at the Sweetwater extension center of Western Texas College will be held January 14.

Students will register from 6:30-8 p.m. in the high school cafeteria and textbooks may be purchased at that time.

Spring semester registration on the Snyder campus is set for Jan 18-19.

Courses on the schedule for the Sweetwater center are Economics 232, English 131, English 132, History 132, Trigonometry 134, Psychology 231, Sociology 232, Sociology 234, Beginning and Intermediate Aerobics, and Law Enforcement 235 and 236. Persons wishing further

information about the Sweetwater center may contact Gary Rotan at 235-8601 in Sweetwater.



Mr. and Mrs. Larry Callan announce the birth of a daughter, Lacy D'Ann, born November 26, 1981. She weighed 8 pounds 15 3/4 ounces and was 21 inches long.

Maternal grandparents are Mr. and Mrs. Jerry Hoodenpyle of Roby, and paternal grandparents are Dr. and Mrs. Maurice Callan of Rotan.

**NOTICE**  
**PEGGY'S COUNTRY**  
**CLASSICS**  
**TELEPHONE NUMBER**  
**IS CHANGING TO**  
**993-4476**  
**EFFECTIVE DECEMBER 9**

## shepherd



Whoever he is, wherever he is — I respect this man.

Naturally I respect anyone whose presence can bring calmness and peace where there could have been confusion and turmoil.

As for me, I'm just a writer. With others I've been writing on behalf of the Church — with conviction and enthusiasm — for many a year. Rarely until now have I written in the first person.

But this picture challenges one to identify himself. On this rocky hillside teeming with restless life only one is master, guide, guardian of all.

I share with you the common realization: I am not that one. We share too the simple faith that knows: *The Lord is my Shepherd.*

Copyright 1981 Keister Advertising Service  
P.O. Box 8024, Charlottesville, Virginia 22906

Scriptures selected by The American Bible Society

Sunday Romans 1:8-17	Monday II Corinthians 4:1-6	Tuesday Galatians 1:1-5	Wednesday Mark 11:20-25	Thursday Acts 20:17-24	Friday I Corinthians 2:10-16	Saturday Romans 5:6-11
----------------------------	-----------------------------------	-------------------------------	-------------------------------	------------------------------	------------------------------------	------------------------------

This Week's Featured Church Page Sponsor

<b>Central Lumber &amp; Supply</b>	<b>H.L. Davis &amp; Co.</b> Bill & Elaine Day Rotan, Texas	<b>Rotan Motor Co.</b> Ford & Mercury Rotan, Texas
<b>Citizens State Bank</b> Member FDIC Roby, Texas	<b>Fisher County Nursing Home</b> 735-3291 Rotan, Texas	<b>Roby Midwest Electric</b> 776-2244 Roby, Texas
<b>Roby Insurance Agency</b> 776-2361 Roby, Texas	<b>Leisure Lodge</b> 711 E. 5th Rotan, Texas	<b>Fisher County Farm Bureau</b> 215 W. Snyder Rotan, Texas
<b>Central Lumber &amp; Supply</b> 776-2371 Roby, Texas	<b>Martinez Dairy</b> Rudy, Joe B. & Emilio Martinez Hobbs Community	<b>Weathersbee Funeral Home</b> Rotan, Texas
<b>Farmers Union Co-op Gin</b> Roby, Texas	<b>Rotan Paint &amp; Body Shop</b> Rotan, Texas	<b>First National Bank Of Rotan</b> Member FDIC
<b>Roby Insurance Agency</b> Joe Burk-Agent Rotan, Texas	<b>Bart Strayhorn</b> 735-2231 Rotan, Texas	<b>M&amp;C Lumber &amp; Hdw., Inc.</b> Rotan, Texas

## Rotan's Most ELIGIBLE BACHELOR TURNS 30, Sunday



THE CONCEPT OF ENDURANCE, THE FACE OF INTEGRITY  
Rolex Datejust, self-winding chronometer, stainless steel and 14kt. gold Oyster case, Jubilee bracelet

COX  
Jewelers  
Since 1895  
Sweetwater, Texas



Marriage Proposals are being accepted at his bachelor pad,

or phone  
735-2072.

DEADLINE HIGH NOON SUNDAY, DEC. 20.



# Rotan Girls Fall To 5-4 After Loss At Roby Tourney

The Rotan Girls Varsity Basketball team, through last weekend's Roby Tournament, compiled a season record of 5 wins and 4 losses, according to Head Coach Jo Damron. In the opening game of the tournament Rotan played Loraine and defeated them by the score of 55-31. The Rotan team lead 25-10 at the end of the first quarter, increased the

lead to 34-20 at the half but fell to only an 8-point lead at the 3rd quarter buzzer. In the final quarter Rotan outscored Loraine 17-1. Dana Nowlin was the game's leading rebounder. Leading Rotan scorer was Elisa Carrillo with 14 points. She was followed by Rocky Garza with 11; Kellie Pease with 10; Laura Gruben with 8; Jana Smith with 6 and Jerilyn

Marshall, Angie Sepeda and Pat Martinez with 2 points each. Rotan lost the 2nd game of the tournament to Roby by the score of 78-52. The Rotan girls trailed by 9 points at the end of the half, trailed by 5 points (39-44) at the end of the third quarter but were outscored 13 for Rotan to 34 for Roby in the final period. Rocky Garza was the game's scoring leader with 15; Jana Smith had 11, Laura Gruben and Elisa Carrillo each had 10 while Dana Nowlin, Pat

Martinez and Kellie Pease each had 2 points. The leading rebounder was Laura Gruben. In the final game with Roscoe, Rotan was defeated for 3rd place by the score of 56-46. Rocky Garza was the high individual scorer of the game with 17 points. She was followed by Laura Gruben with 10; Jana Smith with 9; Dana Nowlin with 8 points and Elisa Carrillo with 2 points. The tournament leader in steals with 28 was Elisa Carrillo.

## Roby Garden Club Christmas Meeting

The Roby Garden Club held their Christmas luncheon Thursday, December 10, at the home of Mrs. Coy Carriker. Coffee was served to members on their arrival. A short business session was held, after which Christmas gifts were exchanged. Following the exchange of gifts luncheon was served. The home was attractive

with Christmas decorations. Members present were Mrs. L.L. Stuart, Mrs. Jesse Goforth, Mrs. Ruth Hammer, Mrs. Faye Ray, Mrs. Richard Ray, Mrs. Coy Carriker and Mrs. Dwalyn Parker. Two guests were present. They were Mrs. George Maberry and Mrs. Rose Mary Minshew of McCaulley.

### PUBLIC NOTICE

In accordance with rule 052.01.00.043(a) of the Public Utility Commission of Texas' Rules of Practice and Procedure, Continental Telephone Company of Texas announces it has petitioned the Commission for increased rates to offset costs associated with a change in accounting for inside station connection costs.

The increase is the result of an order by the Federal Communications Commission, directing telephone companies to expense certain station connection costs in their accounting procedures. The increase in rates to result from the accounting change will produce an increase of less than one half of one percent in gross intrastate revenues of the Company. The increase will not affect monthly recurring charges but will be reflected as an additional element to nonrecurring service connection charges when a premise visit is required.

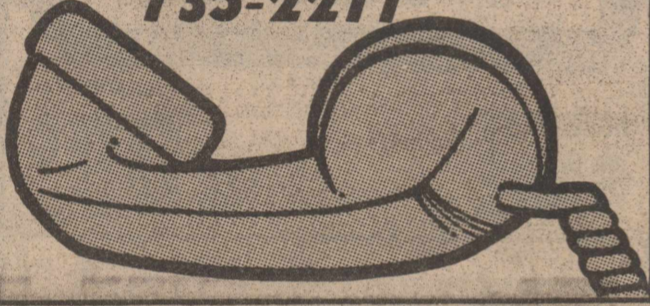
In a separate action, Continental Telephone Company has petitioned the Public Utility Commission to amend its tariff by adding a \$7.50 service charge for each check returned to the Company unpaid due to insufficient funds. The new service charge is intended to offset costs of administering unpaid checks and will affect gross revenues by approximately \$35,000 annually.

The effective date of these rate changes will be based upon approval by the Public Utility Commission.



Continental Telephone of Texas

**The ROTAN HATAHOE Telephone Number has been Changed to 735-2276 or 735-2277**



## Now Is The Time

To Prepare For Your

Retirement

Invest In An

**I.R.A.**

**(Individual Retirement Account)**

A tax-deferred, interest-earning retirement plan available now to practically every working person. New tax law allows you to put up \$2,000 per year, and it's all tax-deductible for immediate tax savings. Money placed in an IRA earns faster because contributions and earnings are **NOT TAXED** until withdrawals are made, usually at retirement.

For the year 1981, an individual may invest as much as \$1500 and for 1982, the maximum has been increased to \$2,000.

Come In Soon - Let us tell you about this Special Savings Plan that will help you during your high-earning years.

**First National Bank Of Rotan**

Member FDIC

Rotan, Texas

## Sparkling CHRISTMAS FASHIONS



**H.L. DAVIS & CO.**

"THE FRIENDLY STORE"

ROTAN, TEXAS

735-2591



## Golden Haven News

We would like to thank the Roby Garden Club for their many gifts, it's really nice to know there are so many giving people who really care. The Senior Citizens came on Thursday and sang Christmas carols. Rev. Gardner from the First United Methodist Church told the story of Christmas. We all enjoyed their delightful Christmas spirit. We would like to thank all of these wonderful people for thinking of the folks here and for making their Christmas so special.

Judy Justiss from Sweetwater came to see Mrs. Letha Meek. Mr. and Mrs. Mutt Early brought their daughter and granddaughter to see Mrs. Lois Henry, also to see Mrs. Henry were Mrs. Roy Rogers and Mrs. Hue

Hood of Sylvester. Among Mrs. Lora Stephens visitors were Mr. and Mrs. Merle Stephens of Plainview, Albert and Ella May Hayes from Hamlin, and Calvin and Judy Davis also of Hamlin. Mrs. Elizabeth Hale had lots of visitors, Brenda and Gary Savage from Denton, Mr. and Mrs. Joe Jennings of Throckmorton, Mr. and Mrs. Skip Riembert and family from San Angelo, Mr. Armond Hale of Lamesa and Mr. and Mrs. Berry Hale from Vernon. We would like to express our deepest sympathy to the family of Mrs. Maude Harris.

Don't forget to join us for a "Country Christmas" on Saturday, December 19th, at 1:30.

Rhonda Wilks  
Activity Director

## Rotan Boys Varsity Win One At Tourney

In the Roby Tournament on December 10, 11, and 12 the Rotan Varsity Boys were defeated twice and won one game.

The first game they defeated Loraine 62-52 with Kip Pease leading the scoring with 15 points followed by Sammy Turner with 11, Jeff Posey 9, Marcus Conner and Henry Williams 8 each, Richard Mendoza 4 and Roger Hooper 1.

In the second game the Rotan Varsity boys were defeated by the undefeated Roby Varsity boys 78-67.

High point for the Rotan team was Kip Pease with 22 points, followed by Sammy Turner with 12, Eli Turner 11, Gregg Gruben 9, Henry Williams 6, Marcus Conner and Endgate Atkins 2 points each and Roger Hooper with one point.

In the third and final game of the tournament for the Rotan team, Roscoe defeated them in a closely played game by 68-57.

In this game Eli Turner and Sammy Turner tied for the most points with 13 each, Marcus Conner had 10, Kip Pease 7, Henry Williams and Richard Mendoza each had 6 points and Roger Hooper

scored 2 points. The members of the Varsity team are: Marcus Conner, Eli Turner, Sammy Turner, Henry Williams, Kip Pease, Roger Hooper, Endgate Atkins, Kevin Copeland, Richard Mendoza, Gregg Gruben and Jeff Posey.

## Max Kemp Is Asst Agent

At Dumas Max Kemp from McCaulley, began employment December 16th for the Texas Agricultural Extension Service in Dumas, Moore County, Texas, as Assistant County Agent under Wayne Holloway.

Kemp was the 1977 recipient of the Houston Livestock Scholarship, graduated in May from West Texas University in Canyon and worked as Demonstration Aide for Fisher-Jones Pest Control this past summer. Kemp is the son of Mr. and Mrs. Fred Kemp of McCaulley.

## Tech Course At WTC

Texas Tech University will offer a graduate course in educational administration and supervision at Western Texas College in the 1982 spring semester.

EDAD 5310 is useful to supervisors, principals, team leaders, grade level chairmen and central office personnel and applies to supervision and mid-management certificates. Topics covered include the role of the supervisor,

supervisor-principal interaction, planning and leading change, teacher evaluation, inservice, and clinical supervision.

Registration will be held at 6 p.m. on Jan. 14 in the WTC Academic Science Building, with the first class to follow. Persons wishing further information may contact the office of Dr. Ben Brock, WTC vice president.

## Rebekah Lodge Party

The Rotan Rebekah Lodge will host their annual Christmas party Monday, December 21, at 7:00 p.m. at the Odd Fellow Hall on North Hwy. 70.

Members, their families,

and guests are invited. Men are asked to bring a gift for a man and ladies are asked to bring a gift for a lady. These gifts will be exchanged at the party. Refreshments will be served.



The more-than-one-company insurance agent

Deaton Insurance Agency  
Roby, Texas 79543  
Telephone 776-2228

New Arrivals  
For Christmas  
Children's T-Shirts In  
Assorted Styles & Sizes.  
Come In And Choose  
The Perfect Gift.

Roby Flower, Fabric  
& Gift Shop

776-2292 Roby, Texas

## Notice

SHERIFF'S SALE  
THE STATE OF TEXAS  
COUNTY OF FISHER

By virtue of an Order of Sale issued out of the Honorable 32nd Judicial District Court of Fisher County on the 14th day of October, A.D., 1981, by the Clerk thereof, in the case of the ROTAN INDEPENDENT SCHOOL DISTRICT VS. HOLLIS B. ELLIS, ET AL, Cause No. 3900, and to me as Sheriff, directed and delivered, I will proceed to sell, at 10:00 o'clock a.m., on the FIRST TUESDAY in January, A.D., 1982, it being the 5th day of said month before the North Courthouse door of said Fisher County in the City of Roby, Texas, the following described property, to-wit:

Being Lots 4 and 5, Block 53, Original Town Addition to the City of Roby, according to the map thereof of record in the Map or Deed Records of Fisher County, Texas.

Levied on this 18th day of November, 1981, as the property of HOLLIS B. ELLIS to satisfy a judgment amounting to \$4,480.42 with interest from the 14th day of October, 1981, at 9% per annum and all costs of suit in favor of ROTAN INDEPENDENT SCHOOL DISTRICT, ET AL.

GIVEN UNDER MY HAND THIS 18th day of Nov., A.D., 1981.

Mickey A. Counts  
Sheriff, Fisher County, TX  
42-3tc

Fertilize  
Your  
Wheat Ground  
Now  
We Have Economical  
Liquid Application  
For  
Pre-Plant  
Or  
Top Dress

With Flotation Truck  
Call Us First For The Best Prices Going

**MURPHREE**  
Flying Service

735-2266

Rotan, Texas

PRICES EFFECTIVE  
DECEMBER 17-19, 1981

SUPPLIES LIMITED  
SHOP AND SAVE TODAY!

**ALLSUP'S**  
CONVENIENCE STORES

OPEN 24 HOURS A DAY  
OPEN 365 DAYS A YEAR

WE ACCEPT  
FOOD STAMPS

"THERE'S ONE NEAR YOU"

## HOLIDAY VALUES

REFRESHING  
**COCA-COLA**  
2 LITER BTL. **\$1.25**

ROCK/EASY LISTENING/  
COUNTRY & WESTERN  
**8-TRACK  
TAPES**  
3 FOR **\$5** OR **\$2.49 EACH**

MARYLAND CLUB ALL GRINDS  
**COFFEE** 3 LB. CAN **\$4.59**

GLADIOLA  
**FLOUR** 5 LB. BAG **\$1.29**

ASSORTED FLAVORS  
**BORDEN'S  
ICE CREAM**  
1/2 GAL. RD. CTN. **\$1.59**

SELF-BASTING  
WITH BUILT-IN TIMER  
**SHURFRESH  
TURKEYS**  
WHILE THEY LAST! **49¢** 10-14 LBS. AVERAGE

MORTON BEEF/CHICKEN  
**POT PIES** 3 8 OZ. PKGS. **\$1**

SCHILLING'S  
**SAGE** 1/8 OZ. CAN **99¢**

Kleenex 200 Ct.  
Facial Tissue **2/99¢**

One Display Of Candy &  
Gum **2/25¢**

BORDEN'S  
**BUTTERMILK** 1/2 GAL. CTN. **\$1.19**

Burritos 2/99¢  
Corn Dogs 2/99¢  
Chili Relenos 79¢

LARGE ASSORTMENT WHITE/GOLD COLORED  
**TIMEX  
WATCHES**  
VALUES UP TO \$45.00 **\$18.88**

TENDERCRUST  
**BROWN 'N SERVE  
ROLLS**  
2 12 CT. PKGS. **99¢** WHILE SUPPLY LASTS!

GLADIOLA YELLOW/WHITE  
CORN BREAD  
**MIX** 4 6 OZ. PKGS. **\$1**

SUNSHINE KRISPY  
**CRACKERS** 1 LB. BOX **89¢**

**Doritos**  
Tortilla Chips  
NACHO/REGULAR FLAVOR  
**FRITO-LAY  
DORITOS**  
REG. \$2.29 **\$1.89**

DELICIOUS  
**BORDEN'S  
EGG NOG**  
QT. **99¢**

## DISCOUNT CHRISTMAS TREES

LARGE SELECTION  
NORTHERN NEW MEXICO  
BLUE SPRUCE/FIRS/BALSAM  
YOUR CHOICE **\$11.99**

FARM GROWN IN MICHIGAN  
SCOTCH PINES  
PURPLE TAG 4 TO 5 FEET **\$15.99**  
ORANGE TAG 5 TO 6 FEET **\$19.99**

NEW SHIPMENT - JUST ARRIVED



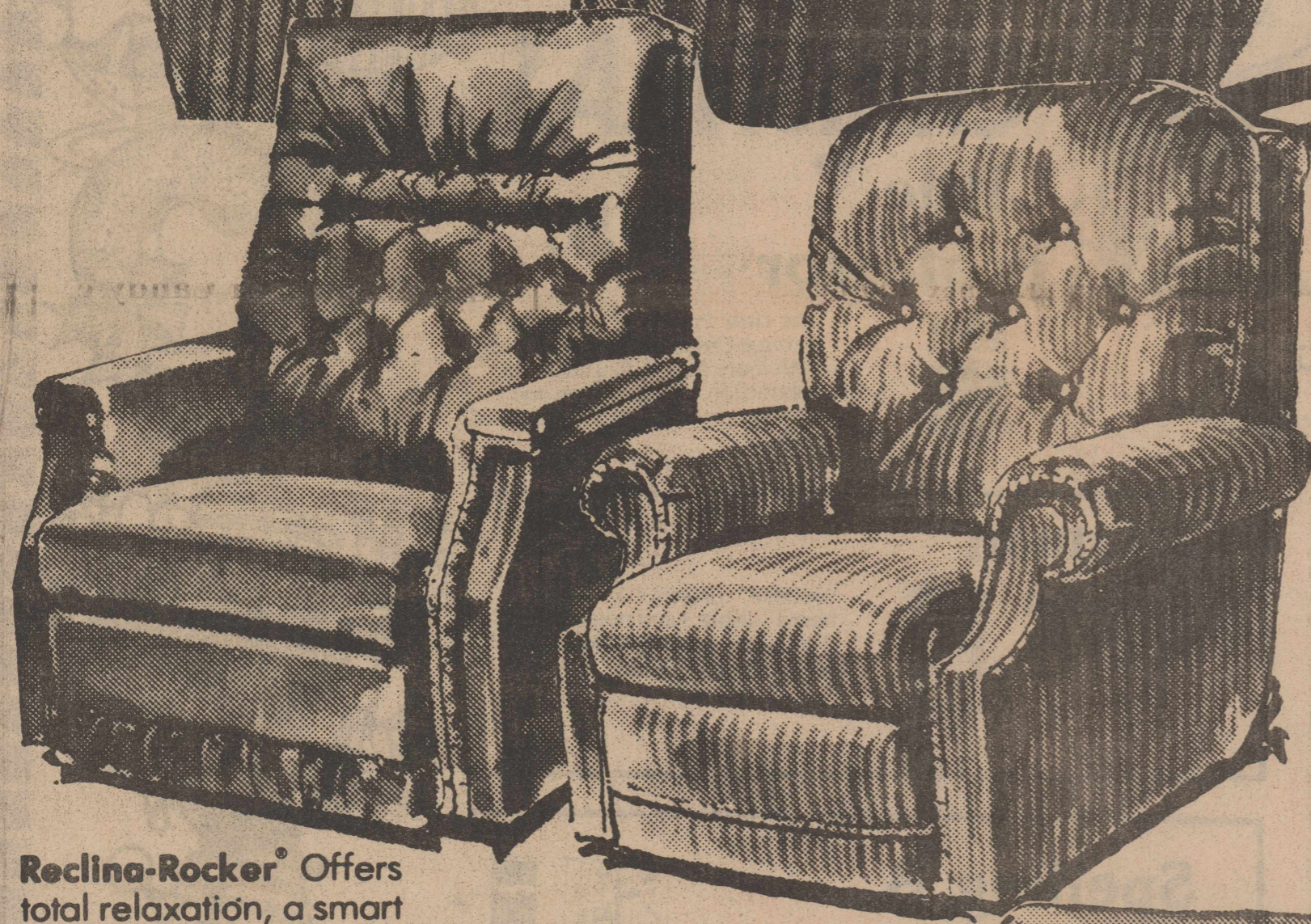
Landes Furniture has a soft spot for the special people on your gift list

# LA-Z-BOY

prices from

## \$249

And these are just a hint of the many styles in stock!



**Reclina-Rocker®** Styled for beauty and comfort in the famous La-Z-Boy® tradition . . . . . from

## \$399

**Reclina-Rocker®** Offers total relaxation, a smart look and a very comfortable price . . . from

## \$249

Large Selection Of LA-Z-Boy Recliners To Choose From

### Landes Furniture

Christmas Sale Continues

735-3171

Rotan, Texas



**Reclina-Rocker®** Classic beauty with La-Z-Boy® comfort, craftsmanship and value.

**Reclina-Rocker®** Sleek styling with legendary La-Z-Boy® quality, value and comfort.



## Funeral Services

### Maud Williams

Maud Williams, 82, of Rotan, died at 6 a.m. December 7, 1981, in Fisher County Hospital.

She was born May 3, 1899, in Stephenville, where she married Ronnie A. Williams on November 3, 1917. He preceded her in death in 1966.

She had lived the past ten years in Rotan after moving from Salt Lake City, Utah.

She was a Baptist. She was preceded in death by two sons, Doyle and Bob.

Survivors include a brother, Joe James of Stephenville; three sisters, Mrs. R.B. Wood of Rotan, Mrs. Chess Bailey of Ira, and Mrs. Lee Cardwell of Stephenville; three grandchildren and two great-grandchildren.

Services were conducted at 4 p.m. Wednesday at Lacy Funeral Home in Stephenville.

Estell Moser officiated and burial was in West End Cemetery.

\*\*\*\*

### Maude Harris

Maude Harris, 85, a longtime Sylvester resident, died at 10:30 p.m. Tuesday, December 8, 1981, in Fisher County Hospital. Services were at 3 p.m. Thursday at Sylvester Baptist Church, directed by Weathersbee Funeral Home.

The Rev. Marshall Stewart of the Church of the Nazarene in Hamlin officiated, assisted by the Rev. P.A. Mitcham of Sylvester Baptist Church. Burial was in Sylvester Cemetery.

Born Oct. 10, 1896, in Grayson County, she moved to Fisher County in 1905 and married Edgar P. Harris Jan. 31, 1915, in Sylvester. He died Jan. 1, 1980. She was a longtime member of Sylvester Baptist Church.

She was preceded in death by a son, Edgar P. Jr., in 1972, and a daughter Willie Lou Harrell, in 1975.

Survivors include a daughter, Katherine

Hogan of Sweetwater; a sister, Delia Beard of Sylvester; five grandchildren and eight great-grandchildren.

Pallbearers were Albert Maberry, Guy Kemp, Milo Gray, Jim Beck, Frank Mitchell and Raybon Stuart.

\*\*\*\*

### Manuel Ortiz Charles Barnes

Manuel Ortiz, 73, of Rotan, died at 10:00 p.m. Monday in Hendricks Medical Center. Funeral Services were at 10:00 a.m. Thursday in St. Joseph Catholic Church with Rev. Austin Kittridge, Pastor, officiating. Burial was in the Rotan Cemetery. Rosary was at 8 p.m. Wednesday at Weathersbee Chapel. Mr. Ortiz was born August 15, 1908, in Mexico and came to Texas when he was 8 years of age. He moved to Rotan in 1947 and has farmed in the area since. He married Socorro Guerrero, in February, 1951, at Gregory. He was a

member of the Catholic Church.

He is survived by his wife; five sons, Joe Marie of Phoenix, Arizona, Juan Manuel, Lupe, Martin, Santos, all of Rotan; five daughters Juanita Torres of Denver, Colorado, Jesse Guzman, Juanita Munoz, and Trina Ortiz of Rotan, Maria Mize of Colorado City; six grandchildren.

Charles Barnes, 85, of Roby, a lifelong Fisher County farmer, died at 5:44 p.m. Wednesday, December 9, 1981, at Fisher County Hospital. Services were held at 2 p.m. Friday at First Baptist Church in Roby, directed by Weathersbee Funeral Home in Rotan. Officiating was the Rev. Harry Grantz, pastor, the Rev. Cooper Waters, retired Baptist minister from Orange, Wardell Halliburton, Roby Church of Christ minister, and the Rev. Shane Barnes of Garland. Burial was in Roby Cemetery.

Born May 24, 1896, in Fisher County, he married Jewel Tomlinson Dec. 25, 1919, in Shamrock. He was a veteran of World War I and a member of First Baptist Church in Roby. A son, Billy Bob, preceded him in death in 1949.

Survivors include his wife; a son, Kenneth of Wichita Falls; three sisters, Lillie Barnes and Jewell Barnes, both of Levelland, and Betty Light of Roscoe; three grandchildren; and two great-grandchildren.

\*\*\*\*

### M.L. Matthews

Funeral services for Mamie Lorene Matthews, 76, of 1332 1/2 S. Sam

Houston St., Odessa, were held Sunday in Easterling-Wilson Funeral Home Chapel in Odessa, with the Rev. Brad Calley of the Lutheran Church of the Risen Lord officiating.

Burial was in Sunset Memorial Gardens.

Mrs. Matthews died in Medical Center Hospital after a short illness.

A resident of Odessa since 1931, she was a member of the Methodist church.

Survivors include her husband, Evertt M. Matthews of Odessa; a son, Evertt D. Matthews of El Toro, Calif.; two daughters, Ann Clark of Odessa and Delores Dotson of Houston; a brother, Jim Vance of Garden City, Calif.; four sisters, Mrs. Rhoda Gore of El Centro, Calif., Lee Jiffery of Delano, Calif., Julie

Knight of Abilene; and goddaughter, Janie and five great-grandchildren; and five great-grandchildren.

## Reminder

On Jan. 1 the Texas Compulsory Liability Insurance Law goes into effect. All Vehicles must, by law, be covered with Minimum Limits Liability.

First fine for non-compliance \$75.00, each additional citation \$200.00 minimum.

### WE HAVE THE PLAN

Call

Ben Reaid

Farm Bureau Insurance

735-3491

Rotan, Texas

## NOTICE

Early Payment Of Fisher County Taxes And Fisher County Hospital District Taxes Will Allow You The Following Discounts:

December 1%

Please Be Sure To Include Statement Number (Upper Right Hand Of Blue Copy) On Your Check And All Correspondence.

Robert Buck  
Fisher County Tax Assessor/Collector

### YOUR BEST DEAL!

our NEW 18 month IRA/KEOGH Retirement Certificate

Government regulations now allow financial institutions to establish their own rates for Individual Retirement Accounts and Keogh Retirement Plans. Income tax on the money set aside for retirement (and the interest it earns) is deferred until you withdraw at retirement... and you can add to the new 18 month certificate at any time WITHOUT extending the term of the certificate. Homestate Savings has consistently paid high rates on all savings programs... and will continue to do so. Our 18 month IRA/KEOGH rate will change every two weeks and be based on current money market rates. So, contact one of our savings counselors for your best deal... your future depends on it and we're here to help.

HOMESTATE SAVINGS HIGH YIELD CERTIFICATES	30 MONTH MONEY MARKET CERTIFICATE	12 MONTH TAX-FREE ALL SAVERS MARKET CERTIFICATE	26 WEEK MONEY MARKET CERTIFICATE
RATE	12.95%		11.845%
ANNUAL YIELD	14.03%	8.34%**	12.372%***
RATE EFFECTIVE ON: MINIMUM DEPOSIT	Dec. 8 \$100.	Nov. 30 \$500.	Dec. 15 \$10,000.

\*\*Yield assumes interest compounded daily, credited quarterly and set on deposit for one year. Substantial penalty for early withdrawal. \*\*\*Yield is based on interest paid at maturity. Government regulations require: Tax exemption will be lost if account is closed before one year or used as collateral for a loan. Maximum lifetime tax exemption is \$1,000 single, \$2,000 interest for a joint return. \*\*\*\*Yield assumes reinvestment of principal and interest at same rate of maturity. Government regulations prohibit ALL financial institutions from compounding interest during term of Money Market Certificate.

**HOMESTATE SAVINGS**

WE'RE HERE TO HELP WITH OFFICES IN:  
SWEETWATER: 208 E. Hwy 236-4364 ABILENE: 1209 E. East South 11th/673-8339  
BIG SPRING: Coronado Plaza 733-2321 COLORADO CITY: 2202 Hickory/778-2647  
ROTAN: 302 West Snyder/735-2273 HAMLIN: 443 So. Central Avenue/576-2631  
ROSCOE: Broadway and Main/734-3996 SNYDER: Opening Soon

### Card of Thanks

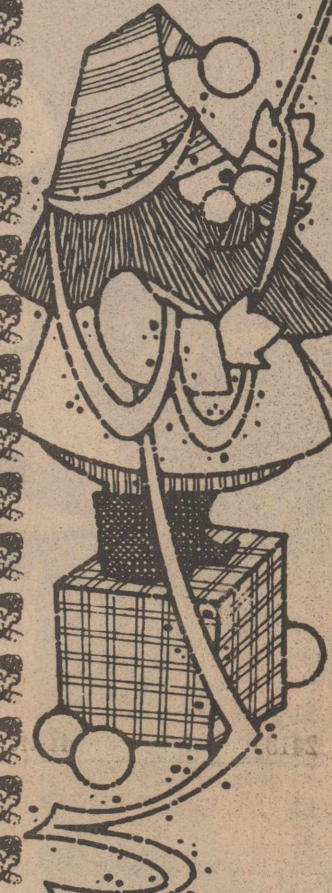
We want to thank everyone for the many kindnesses shown our loved one and all of us during her illness and death; for the prayers, flowers, food and phone calls. We are so grateful to all the people who sat with her and want to thank Dr. Maurice Callan and the Hospital Staff for their good care. Also the staff of the Fisher County Nursing Home who were so good to her during the weeks she was there.

Mac and Doug Weathersbee were so helpful and nice, we want to thank them also.

May God be with each and every one of you.


Mr. & Mrs. Mike Browne  
Mr. Andy Williams  
Mr. & Mrs. R.B. Wood  
Mrs. Chess Bailey  
Mr. & Mrs. Joe James & Family  
Mrs. Lee Cardwell & Family

## FOR AN EXTRA SPECIAL CHRISTMAS



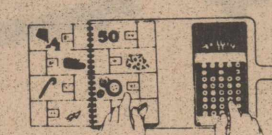
**Little Professor \$15.00**

The Little Professor® Preschool through Grade 4. Preprogrammed with more than 16,000 addition, subtraction, multiplication and division problems in four levels of difficulty.




**Dataman \$25.00**

DataMan® Grades 1-6. "Scoreboard" displays and timed activities encourage practice and positive math attitudes.



**Spelling B \$40.00**

Spelling B® Preschoolers through grade 3. The child sees an object pictured in the colorful book and learns to spell its name. Sound effects add to the fun.



**Speak & Spell \$75.00**

Speak & Spell® — Grades 1-8. Motivates three ways: hearing a word, spelling a word, seeing a word.

### The Newspaper Office

735-2562  
Rotan, Texas



### Fisher County Nursing Home

The residents of our home have had a very busy week. Everyone enjoyed putting up the Christmas tree, a real, natural tree, and all our decorations are handmade. We're celebrating a Country Christmas and invite everyone to visit us.

Our thanks to Bill and Diddle Hardy for the beautiful poinsettia flowers. We want to welcome LaMerle Denton to the Staff as a Foods Service Supervisor. It's good to have you with us, LaMerle.

Our residents enjoyed a Birthday Party given by First Baptist Church Sunday School Class, served by Mary Adams, Wanda White and Barbara Gray. Bro. Jerry McFather, Glen Cantu and Mina Denton brought Church Services and enjoyed singing Christmas songs. Annie Weems and the Senior Citizens of Fisher County entertained with Christmas songs and Glen read the Christmas Story. The Children's Choir of First Baptist Church, under the leadership of Belinda Cantu and Beverly Landes, gave a beautiful Christmas program. Our residents always enjoy children.

Out of town visitors who registered: Rev. Babb and wife of Sylvester visited Beulah Moffett, Lucille Biers of Sweetwater visited Homer Lawlis. Wynette Mullins of Hale Center enjoyed the Children's Choir.

Our Christmas Party for our Residents will be December 20, on Sunday at 1:30 p.m. We invite all relatives and friends to come and enjoy this time with us.

#### Honor Roll

The Rotan School has added one additional name to the Fifth Grade Honor Roll: Jeff Cave.

Texas Electric today filed a proposal with the Texas Public Utility Commission and cities it serves which will amend procedures for obtaining regulatory approval of certain fuel charges.

If accepted, the new procedure would involve TESCO seeking approval of the cost of fuel and fuel-related services provided by any affiliated company before those costs are billed to customers as part of the monthly fuel charge.

The proposal was filed with the PUC in conjunction with Texas Power & Light (TP&L) and Dallas Power & Light (DP&L), which are subsidiaries along with TESCO of the Texas Utilities Company.

#### Legal Notice

**NOTICE TO BIDDERS**  
The City of Roby is the owner of a tract of land approximately 7.5 acres being used as a sewer farm.

It is proposed to lease this tract for a long term lease on such terms as may appear most advantageous to the City Commission. Bidders are invited to submit propositions to the City in writing before January 5, 1982. The bids will then be considered by the City Commission. The Commission reserves the right to reject any and all bids.

The principal obligation of the successful bidder will be to dispose of all water from the City Sewer System, and prevent such water from escaping onto other lands. The successful bidder will be required to furnish his own pumping equipment and all equipment to be used by him on the premises.

For further information contact the City Hall in Roby, Texas. Jimmy C. Price, City Manager.

## Texas Electric Files Utility Proposal

Two other TU Company subsidiaries--Texas Utilities Fuel Company (TUFCO) and Texas Utilities Generating Company (TUGCO)--provide fuel and fuel-related services at cost to TESCO, DP&L and TP&L.

Under current procedure, although the PUC has approved the items to be included in fuel cost, the actual level of those fuel costs and other fuel-related costs incurred in the production of electricity for customers have been subject to review by regulators after they have been charged to customers on monthly bills.

Under the proposed procedure, the companies would file an estimate, for approval by regulators, for the cost of fuel provided by TUFCO and TUGCO at least 70 days before the

month those costs would be charged to customers. TESCO President Bill Marquardt said, "this change could not be expected to either raise or lower the customers' monthly fuel charges."

Marquardt noted that TUFCO and TUGCO are

non-profit service companies formed after it became evident that, because of increasing fuel prices, it would be most economical for TESCO, DP&L and TP&L to combine resources to obtain fuel.

The proposal was filed today after a ruling on

December 4 by District Court Judge Herman Jones decreed that the PUC must grant TESCO, Texas Power & Light Company, and Dallas Power and Light Company prior approval before changes by affiliates can be charged to customers.

### CHRISTMAS PARTY

V.F.W.  
MEMBERS AND GUESTS  
DECEMBER 18TH 7 P.M.  
PRICE OF ADMISSION 2 CAN GOODS  
FOR ROTAN FIREMEN TO DISTRIBUTE

# CLASSIFIED ADS



**AVON CALLING**  
No experience necessary-just a friendly personality. Flexible hours. Need one representative for Rotan, Roby, McCaulley and Sylvester. Call Doris Hale collect at 915-573-8625. 43-3tc

**NOTICE:** Will build, remodel, improve and add-on to homes. Interior and exterior work such as paneling, carpeting, roofing, etc. Free estimates. Clifton Griffith Construction. 776-2403. 37-tfc  
**COME TO EZELL-KEY** for wheat, rye, oats and vetch seed. 26-tfc

**NEW HOME SEWING MACHINES:** Electrolux cleaners, repair all makes. H.B. Stevens, 1101 James Street, Sweetwater, 235-2889. 27-tfc

**FOR SALE:** Fire wood. Also 6 and 8 foot mesquite fence posts. Forrest Acker. 735-2018. 41-5tp

**NOTICE:** Tree trimming, trees cut down, yards cleaned, and roto tilling. Also firewood for sale. 735-2316. 40-tfc

**POODLE GROOMING:** Nancy Boren, Sylvester. 993-4997. After December 9 new phone number is 993-4455. 40-tfc

**NOTICE:** We buy scrap iron. Farm Tractor & Service, "Your John Deere Dealer", Rotan, Texas. 52-tfc

**EMPLOYMENT OPPORTUNITY:** The Fisher County Sheriff's Department will be taking applications for employment as a jailer and part-time jailer, beginning immediately. Applicants must possess a high school diploma or GED, be at least 21 years old, have no previous criminal record and be able to pass a physical examination. Pay is \$800.00 a month for full time. If interested contact the Fisher County Sheriff's Department for additional information. 43-2tc

**TRADE IN ON FARM LAND** or would sell: 4 bedroom, 2 bath, house in Rotan. Well landscaped, central heat and air. Write or call H.T. Fillingim, Jr., Bonito Rt., Nogal, New Mexico 88341. 505-354-2413. 41-tfc

**FOR AN EXTRA SPECIAL CHRISTMAS:** Little Professor - \$15.00, Dataman - \$25.00, Spelling B - \$40.00, Speak & Spell - \$75.00. The Newspaper Office. 43-tfc

**FOR SALE:** 1971 Pinto and 1977 Chrysler Cordoba. 735-3145. 32-tfc

**FUR AND HIDE BUYER** will be in Rotan Tuesday, Thursday, Saturday, 2:30-4:00 at Gulf Station on North Cleveland. We start December 3. We will also be in Roby Tuesday, Thursday and Saturday, 4:30 to 5:30 at the Shamrock Station on Highway 180. J&L Fur and Hide Co. 40-8tc

**FOR SALE:** Shelled Pecans. \$3.00 pound. Call Mary Blanton. 735-3287. 43-2tc

**FOR SALE:** Toy poodle puppy. Registered. Call 776-2233. 43-2tc

**NOTICE:** We have a new supply of all model Kero-Sun heaters. Would make a good Christmas gift. Come in and look at Ezell Key. 44-1tc

**NURSES AIDE**-Must be kind to our patients and willing to work. Apply Fisher County Nursing Home. Jim Finch. 44-1tc

**HAY FOR SALE:** Alfalfa or Haygrazer. Call 735-3171 or come by Landes Furniture. 43-tfc

**FOR RENT:** COTTON FARMERS-Have few storage spaces left-good for storing module tarps. Pay for 11 months, get 12th month free. Call 735-3171. Landes Furniture. 43-2tc

**B And T Real Estate**  
113 W. Snyder  
735-2571

**HAVE QUALIFIED BUYERS FOR RESIDENTIAL & FARM PROPERTIES: NEED LISTINGS!**

**ROTAN COMMERCIAL**-Former Village Flower Shop building. Main Street location. Owner will finance.

**ROUGH CREEK AREA RANCH** - Approx. 1200 acres west of Rotan, cultivation, pasture land.

**NOW AVAILABLE:** 40 acres on highway, one mile from city limits, pecan and fruit trees, well, city water, fenced.

**NEW LISTING**-3 Bedroom, Living Room, 1 1/2 Baths, Kitchen, Carport, Attached Apartment, Fenced.

**NEW LISTING** - two bedrooms, kitchen, dining area, living room, bath, garage, fruit trees, corner lot.

**CORNER LOT** - 2 Bedroom, Living Room, Kitchen, 1 1/2 baths, 3 lots. Nice Location.

**WISE BUY AT TODAY'S PRICES**-Older White Stucco home with 3 bedrooms.

**BUSINESS LOCATION**-Well located commercial building in Rotan.

Joe D. Burk, Broker  
H. Thompson, Salesman, 735-2421  
Myla Black, Salesman, 735-3091

**PLANNING A PARTY?** We have Christmas center pieces, cups, napkins, plates, and invitations. The Newspaper Office. 42-4tp

**WOOD CUTTERS:** We now have a new machine to sharpen chains for all chain saws. Farm Tractor & Service, Inc., Rotan. 40-tfc

**FOR SALE:** Royal Electric Typewriter. \$100.00. 776-2330. 43-2tp

**NOTICE:** Ezell Key Feed & Seed will be closed Dec. 25th and 26th for Christmas. 44-1tc

**FOR SALE:** Complete Farming Equipment. \$16,000.00. 4230 John Deere-2600 H.R.; 4-row Cultivator; 2-row Planter; 7-ft. Dirt Mover; 2-Double Tool Bars; 1-Krause Tandem Plow, 11-ft.; 1 International One-way, 13 disc; 1-50 gallon spray tank, mounted; Lot Sweeps; 4-Busters; 10-Chisel Beams. James Cave. Roby. 776-2581. 44-2tp

**FOR SALE:** Complete 7 Ft. Joedan Pool Table with balls and cues. \$200.00. 735-3523. 44-1tp

**FOR SALE:** A 1086 International tractor, like new. Mechanic's reference available. Approximately 600 hours. \$28,000. Other equipment-such as 9-row tool bar available if desired. Call Tom Colwell. 735-2364. 44-2tc

**We Sell**  
● Bibles  
● Books  
● Religious Books  
**The Newspaper Office**

**M&M WELDING**  
Ronnie Martin-Owner  
General, Farm, & Oil Field Welding  
Custom Carports, Barns, Etc.  
Rotan, Texas 79546 915-735-2977

### PUBLIC NOTICE

Texas Electric Service Company, in accordance with the rules of the Public Utility Commission of Texas, hereby gives notice of intent to amend its fuel cost factor tariff schedule to establish a procedure for regulatory approval of certain fuel related expenses prior to those expenses being included in the fuel cost factor portion of monthly bills for electric service. This revision will be effective in areas served by the company on the 13th day of January, 1982, or as soon thereafter as permitted by law.

This revision constitutes an administrative change and is not expected to increase or decrease the rates or the revenues of the company.

A copy of this revision is on file with the Public Utility Commission at Austin, Texas, Municipality. Copies of this revision are available for inspection in each of the following offices:

TEXAS ELECTRIC SERVICE COMPANY

**URGENTLY NEED DEPENDABLE PERSON** who can work without supervision for Texas oil company in Rotan area. We train. Write W.B. Dick, Pres., Southwestern Petroleum, Box 789, Ft. Worth, Tx. 76101. 44-1tp

**WE SELL WATKINS PRODUCTS.** Fairy Store, 202 West Snyder, Rotan, Texas. 42-3tc

**Fur Buyer** will be in Rotan at Smith & Cypher's Gulf Station each Friday from 7:30 a.m. till 8:00 a.m. beginning December 4th.

We will also be in Roby at Phillips "66" Truck Stop each Friday from 7:00 a.m. till 7:15 a.m. beginning December 4th.

We buy green and dry furs of all kinds. Case skin all fur (like opossum), not open up middle. We also buy deer hides and rattlesnake skins. Well handled furs bring TOP PRICES. Northwestern Fur Co. 241 Walnut Street Colorado City, TX 79512 Phone: (915) 728-2295 Red Veale

**FILM DEVELOPING!** Done by Keaton Kolor - 3 days and you see your pictures. Leave film at The Gumdrop Tree, Rotan, Texas. 42-tfc

**FOR RENT:** Trailer lot for rent. All hookups. Jimmy Markham. 735-3129. 44-tfc

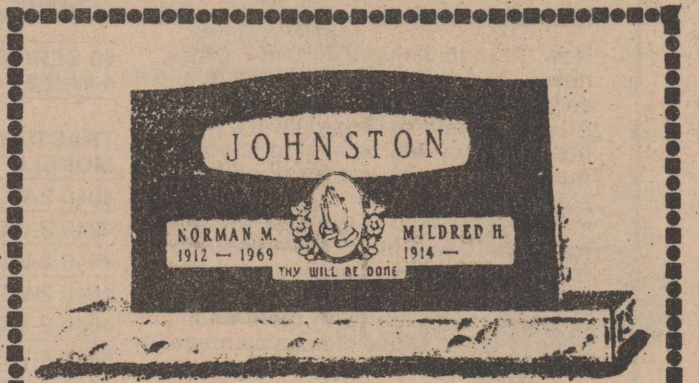
**NOTICE:** Decomposition of crop residue ties up Nitrogen your crop will need next year. Before plowing under cotton burrs let McClure's apply liquid nitrogen. This will speed up decomposition to help provide necessary nutrients for the coming crop. McClure's Inc. Complete Fertilizer and Chemical Service. 776-2448. Roby, Texas. 44-4tc

**DECEMBER CLOSE-OUT SALE:** 20% Off Vet Supplies, Feed, Tach and Harness. McClure's, Inc. Complete Fertilizer & Chemical Service. 44-2tc

### S & L Texaco And Parts

Engine Overhaul  
Tune-Up Service  
Windshields Installed  
Road Service  
Tires-Batteries  
Muffler & Tail Pipe  
Sales & Service  
We Take Texaco  
Visa & Mastercharge  
Cards  
Complete Auto Care & Service  
735-3200

**PHOTOGRAPHS**  
of the "Perfect Wedding."  
Contact  
Kim Pease  
Photography  
735-2562



**Smith Monuments**  
308 East 4th  
Telephone 735-3290  
Rotan, Texas

**Now Open**  
**B&B Pecan Crackers**  
We Will Custom Crack Your  
Pecans. Located  
Burnett Feed Store  
1301 Elm  
Sweetwater, Texas  
Call 235-3115

**GREENBUGS CAN DESTROY YOUR WHEAT PROFITS**

Have McClures' apply a pesticide to control greenbugs and prevent crop loss.  
Fertilizer can be added to revive your wheat and increase yields.

**McClures' Inc.**  
Complete Fertilizer & Chemical Service  
Roby, TX. 776-2448  
Jeff McClure-776-2541 Jack McClure-776-2229



## Cub Report

By Joe L. Coleman

The Roby Junior High Cubs split four games with Hamlin last Monday night. Hamlin won the 7th grade girls' game and the 8th grade boys' game. Roby won the 7th grade boys' game and the 8th grade girls' game.

In the 7th grade girls' game, Charla Wiley scored four points, Johnnie Parks and Magnalene Ozuna scored two each and Michelle Burk scored six.

In the eighth grade game, Tammy Mauldin and Shannon Wilburn shared honors for high point girl with ten points each. Stacy Terry hit two points and Denna Williamson, Mary Gonzales, and Kerry Upshaw scored two points each. Patricia Parks added to the total with one point.

Rodney Green claimed high scoring honors with six points in the 7th grade boys' game. Jeff Branson and Jeff Morton scored four points each. Paul

Hyer and Jeff Green scored two points each and Darry Thomson added one point.

In the eighth grade game, the boys went down fighting and losing by only ten points to a very good Hamlin team. Benny Carreon was the man with high points, 12. Albert Casterada, Frank Teague, Bruce Williams, Mark Gordon, and Clifton Terry each scored two points. The Cubs look forward to playing Rotan next week.

Hale from Vernon would like to express deepest sympathy to family of Mrs. Maude is.

't forget to join us for our Country Christmas' on Friday, December 19th, 30.

Rhonda Wilks  
Activity Director

## Varsity

**Journey**  
d 2 points.

members of the city team are: Marcus Turner, Eli Turner, Sam Turner, Henry Wilks, Kip Pease, Roger Turner, Endgate Atkins, Copeland, Richard Joza, Gregg Gruben Jeff Posey.

## Kemp

**Asst Agent**

## Dumas

Kemp from Mc-ley, began employ-December 16th for Burk, S.T. Martin. Texas Agricultural Extension Service in nas, Moore County, as, as Assistant Cou-Zelma Gruben. SNYDER-Agent under Wayne Rita Hendricks, Christ-opher Wade Hendricks, mp was the 1977

Marla Kaye Jones, Jones Baby Boy. SWEET-WATER-Robert O. Clark. McCaULLEY-Joe Bena-son and worked as nonstration Aide for

## Rotan Boys Defeated By Anson

On December 3, 4, and 5 the Rotan Varsity boys team played in the Anson Tourney.

In the first game Rotan was defeated by Anson 51-44. Marcus Conner was high pointer in this game with 10, Richard Mendoza 8, Eli Turner and Gregg Gruben each scored 6, Henry Williams 5, Sammy Turner 4, Jeff Posey 3 and Kip Pease 2.

In the second game of the tourney, Rotan won 60-41 against Breckenridge.

In this game Kip Pease was high pointer with 14, Richard Mendoza had 9, Marcus Conner and Henry Williams 8 each, Sammy Turner 7, Eli Turner and Roger Hooper each had 4 and Endgate Atkins, Gregg Gruben and Jeff Posey each had 2 points.

In the final game Rotan was pitted against Breckenridge and defeated 62-49. Gregg Gruben was high pointer with 16,

Sammy Turner 8, Marcus Conner 7, Kip Pease 6, Eli Turner and Richard Mendoza 4 each, Henry Williams 3, and Endgate Atkins with 1.

On December 1, the Rotan Varsity boys were defeated by the Roby Varsity boys 72-62 at Roby.

The high scorer for Rotan was Kip Pease with 21 points, followed by Marcus Conner with 20,

Sammy Turner 12, Richard Mendoza 6, and Eli Turner and Henry Williams 4 points each.

On December 8, the Rotan Varsity boys traveled to Colorado City and were defeated 87-56.

Kip Pease was high point with 13 points, Sammy Turner 10, Gregg Gruben 9, Marcus Conner and Eli Turner 8 each, Henry Williams 4, Jeff Posey 3 and Roger Hooper 1.

## Highway Patrol Estimates Holiday Deaths

The Department of Public Safety has estimated that as many as 89 persons may perish on Texas streets and highways during the Christmas and New Year's holidays.

Colonel Jim Adams, DPS Director, asked Texas drivers to make this holiday season the safest in recent years.

Nothing would please us more than to get through these holidays with far fewer fatalities than we project," Adams said.

"We can reduce the number of fatalities if more drivers will moderate their speed, refrain from using drugs or alcohol if they plan to drive and make sure everyone in the vehicle wears a seat belt."

The DPS estimated that 51 persons would die in motor vehicle accidents during the Christmas holiday weekend and another 38 people would be killed during the New Year holiday weekend. Both Holiday periods are 78 hours long.

Adams said 64 persons died in traffic crashes during the Christmas holiday period last year. Motor vehicle accidents claimed 58 lives over the New Year's holiday weekend.

During the first nine

months of this year, 151,261 persons received injuries in Texas traffic accidents.

"That's an increase of slightly over 10 per cent compared to the same period in 1980," Adams said. "More than 19,000 of those people received serious, incapacitating injuries."

Traffic deaths over the same period totaled 3,378, an increase of almost six per cent compared to the first nine months of last year.

The DPS Director said that during the first six months of 1981, more than 98 percent of the persons killed in passenger vehicles were not wearing seat belts.

"A head-on crash at only 30 MPH hurls a person's body forward with the same force as a fall from a third story window," Adams pointed out. "A

buckled seat belt keeps passengers from striking their head or another part of their body and prevents serious injury."

Adams also recommended that before traveling, children under four years of age or weighing less than 40 pounds should be strapped into an approved child restraint seat.

"This would be a very sensible and perhaps life saving gift for an infant or small child from a caring parent or grandparent," he said.

The DPS Director said all available troopers would be on patrol duty during the fatality counting periods. For Christmas, the count will begin at 6 p.m. Thursday, December 24, and end at midnight Sunday, December 31, and ends at midnight Sunday, January 3, 1982.

The DPS Headquarters in Austin will release

information on the various accidents as part of the "Operation Motorcade" program.

We Sell  
GIFTS  
Pen Sets  
Stationary  
Calculators  
Bibles  
Photo Albums  
The  
Newspaper  
Office

**NEED A 100% TAX DEDUCTIBLE INVESTMENT WHICH PAYS BIG DIVIDENDS NEXT YEAR?**  
— FERTILIZER IS THE ANSWER —  
**McClures' Inc.**  
Complete Fertilizer & Chemical Service 776-2118

**SANTA SUGGESTS**  
Hand Made Items  
Dolls, Crochet Items,  
Ceramics.  
Glassware, Plaster  
Oil Painting Lessons &  
Ceramic Lessons  
Open 9:00 a.m.-5:00 p.m.  
Mon., Tues., Thurs., Fri. & Sat.  
Closed Wednesday  
Open Sunday Afternoon From  
1:00 p.m.-5:00 p.m. Till Christmas  
**The What Not Shop**  
Coese Palmer-Owner  
Roby, Texas

## Hospital News

Patients admitted to the Fisher County Hospital December 8, 1981, through December 14, 1981, are: ROTAN-Esteban Velez, Robert Harrison, Felix Garcia, Rufus Goodrum, Bernice Lamberth, Willie Randus, Johnny Flores, Orah Campbell, Lota Kennedy, Urma Lea Shick, J.D. Burk, S.T. Martin. ODESSA-Theresa Chappell. ROBY-Ralph Stewart, Domingo Chasco, Sr., as, as Assistant Cou-Zelma Gruben. SNYDER-Rita Hendricks, Christopher Wade Hendricks, mp was the 1977 Marla Kaye Jones, Jones Baby Boy. SWEET-WATER-Robert O. Clark. McCaULLEY-Joe Bena-son and worked as nonstration Aide for

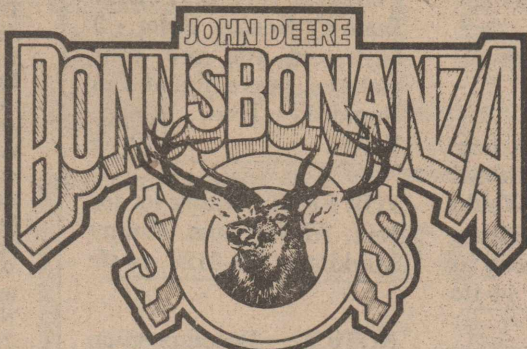
## PUBLIC NOTICE

In compliance with Sec. 43(a) of Art. 1446c, V.A.C.S., West Texas Utilities Company hereby publishes NOTICE that it has filed, on November 25, 1981, its statement of intent to make changes in its rates charged for electricity and services sold and rendered inside and outside municipal jurisdictions, such proposed changes to be effective January 1, 1982. Such Statement of Intent includes the proposed revisions, tariffs and schedules, and a statement specifying in detail each proposed change, the effect the proposed change is expected to have on the revenues of the Company, and the classes and numbers of utility customers affected. Gross revenues are expected to be increased 15.4 per cent over adjusted test year revenues by the new rates. Statements of intent were filed with the Public Utility Commission of Texas and with the following municipalities:

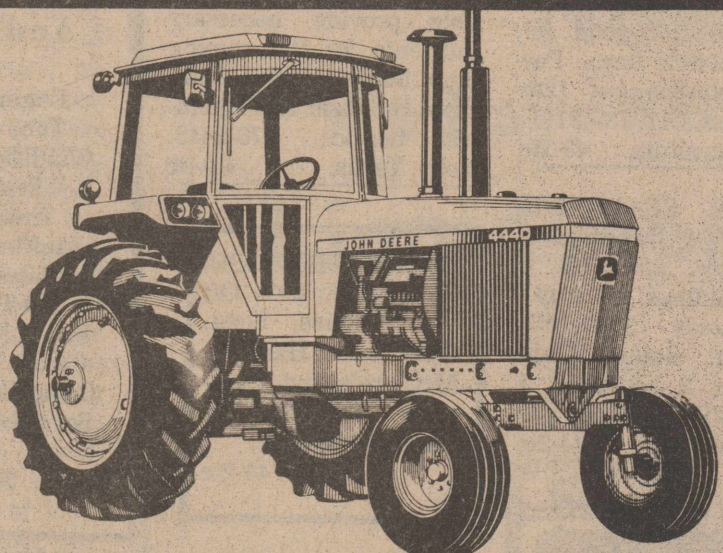
Abilene	Hawley	Quitaque
Alpine	Hedley	Rankin
Anson	Impact	Rising Star
Aspermont	Iran	Roaring Springs
Baird	Jayton	Rochester
Balmorhea	Junction	Rule
Balling	Knox City	San Angelo
Benjamin	Lawn	Santa Anna
Big Lake	Lueders	Shamrock
Blackwell	Marfa	Sonora
Bronte	McCamey	Spur
Buffalo Gap	Melvin	Stamford
Childress	Memphis	Sterling City
Cisco	Menard	Talpa
Clarendon	Merkel	Throckmorton
Clyde	Mertzton	Trent
Cross Plains	Miles	Turkey
Crowell	Moran	Tuscola
Dodson	Munday	Tye
Eden	O'Brien	Valentine
Eldorado	Paducah	Weinert
Estelline	Paint Rock	Wellington
Goree	Presidio	Winters
Hamlin	Putnam	Woodson
Haskell	Quannah	

Areas affected by the filing with the Public Utility Commission of Texas are in the following:

Albany	Lakeview	Roby
Chillicothe	Matador	Rotan
Dickens	Robert Lee	
Counties		
Baylor	Foard	Pecos
Brewster	Gillespie	Presidio
Briscoe	Hall	Reagan
Brown	Hardeman	Reeves
Callahan	Haskell	Runnels
Childress	Irion	Schleicher
Coke	Jeff Davis	Shackelford
Coleman	Jones	Stephens
Collingsworth	Kent	Sterling
Concho	Kimble	Stonewall
Cottle	King	Sutton
Crane	Knox	Taylor
Crockett	Mason	Throckmorton
Dickens	McCulloch	Tom Green
Donley	Menard	Upton
Eastland	Motley	Wheeler
Edwards	Nolan	Wilbarger
Fisher		



For a limited time: bonuses of \$1,400 to \$2,600 on John Deere row-crop tractors ... \$3,200 to \$4,000 on 40 Series 4-WD ... plus waiver of finance



Now through January 30, 1982, buy a new 2- or 4-WD tractor listed here and earn a bonus in John Deere money. After the dealer makes delivery, the bonus money will be mailed to you ... money you can spend for goods or service in this store.

There's more. Use the new variable-rate John Deere finance plan and no finance charges will accrue on these new tractors and on new or used implements bought with them until June 1, 1982\*. One distinct advantage of variable-rate financing is that you can finance the tractor and implements you need now and automatically benefit from any future reduction in interest rates.

### 40 SERIES ROW-CROP AND 4-WHEEL-DRIVE TRACTORS

TRACTOR MODELS	BONUS IN JOHN DEERE MONEY THROUGH JANUARY 30, 1982
4040 2-WD, 90 PTO hp	\$1,400
4240 2-WD, 110 PTO hp	\$1,600
4440 2-WD, 130 PTO hp	\$1,800
4640 2-WD, 155 PTO hp	\$2,200
4840 2-WD, 180 PTO hp	\$2,600
8440 4-WD, 215 eng. hp	\$3,200
8640 4-WD, 275 eng. hp	\$4,000

\*This finance offer may be withdrawn at any time.



**Farm Tractor & Service, Inc.**  
Rotan, Texas

Handmade CHRISTMAS GIFTS

UNUSUAL ONE OF A KIND PERSONALIZED

check your list:

- \* PICTURES large selection
- \* BABY ITEMS
- \* AFGHANS Beautifully Done!
- \* Many uses MACRAME
- \* TOYS something for every child...
- \* all kinds WOODEN PIECES

GO MUCH MORE!

FREE! GIFT WRAPPING on purchase of \$5. or more

HOURS: MONDAY-SATURDAY 9AM to 5PM (until December 23rd.)

**THE GUMDROP TREE**

Janece Pease-Owner  
Rotan, Texas



**Inside The Lion's Den**

Mickey McCarty

Roby won their own tournament in running their record to 10-0 for the season. Roby also broke three tournament records. Roby beat Ira in the first game by the score of 96-57. All twelve players scored as we jumped to an early lead. Jerry Wallace led the way with 15 points, Todd Etheredge 14 points, Terry Coker 13 points, Tom Duckworth 12 points, and Robby King 11 points.

In the second game we beat Rotan by the score of 78-67. This time we had four in double figures, with eight players scoring. Todd had 23 points, Robby 14 points, Mark Mauldin 10 points and Jerry 10 points.

In the Championship game we played a good Robert Lee team and came out with a hard fought 45-44 victory. Robert Lee played a smart game and slowed the ball down on us. I expect to see other teams to play us this way. I was proud of our boys keeping their poise and coming back after Robert Lee built an early lead. Jerry led the scoring with 17 points, and Todd had 12 points. We did come out bad in this game though as we lost Kirk Williamson for 2 or 3 weeks with torn ligaments in his ankle. He will be in a cast for two or three weeks. We will miss him. I'm just glad the

holidays are coming up. She should be back in time for District.

We also beat Rule last week by the score of 60-51. Robby led the scoring with 16 points, Jerry had 14 points, and Terry Coker had 10 points.

We will get a good test this week as we play on the road at Robert Lee and in the Roscoe Tournament. We will play Loraine in the first game Thursday with the girls starting at 10:00 a.m. If we win we will play the winner of the Anson-Highland game with girls starting at 4:00 p.m.

I would like to thank the teachers, Booster Club, and all the others who worked hard to make our tournament a success. I feel each year it gets better.

Our J.V. beat Rule by the score of 40-20. Tom Duckworth had 11 points, John Etheredge 9 points, Chad Terry 8 points, Todd Coker 6 points, and Mike Meek 6 points. The J.V. is still showing some improvement, the two Freshmen are showing some improvement -Mike Meek and Pache Parks.

The J.V. Tournament set for the last weekend in January has been cancelled.

Our J.V. also plays Robert Lee this week.

**Rotan Splits With Roby**

Rotan's Junior High basketball teams won 2 and lost 2 against Roby Monday night. Both 7th grade teams posted victories while the 8th grades lost both games.

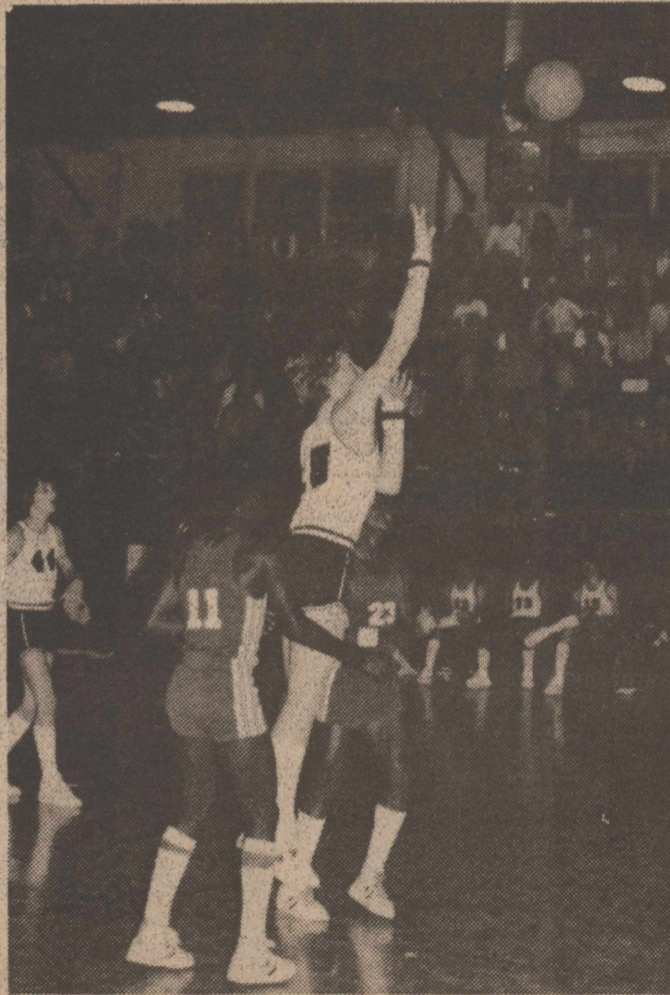
For the 7th grade girls, Evette Gruben scored 15 points to lead all scorers as Rotan won 35-15. Yolanda Acorn scored 10 points followed by Lousinda Ramirez with 4, Lydia Garcia

with 2, Jenna Thornton with 2, and Vikki Wright with 2. Leading rebounders were Gruben and Julie McQueen with 6 apiece.

In the 7th grade boys game Jerry Carter and Leo Castillo paced the Rotan attack with 12 points apiece as they whalloped Roby 31-18. Brad Long scored the other 7 points for Rotan. Leading rebounders were Carter with 12 and Castillo with 9.

**FISHER COUNTY BASKETBALL**

**Support Our Fisher County Basketball Players By Attending The Games**



**MOST VALUABLE PLAYER:** Todd Etheredge, son of Mr. and Mrs. Jackie Wayne Etheredge, was named the "Most Valuable Player" of the Roby Basketball Tournament held last weekend. Above, Etheredge sinks a two-point jump shot against Rotan in his team's march to the championship.

**This Weeks Rotan Basketball Schedule**  
Dec. 17, 18 & 19-Roscoe Tournament-Girls & Boys-Uarsity & JU

**This Weeks Roby Basketball Schedule**  
Dec. 17, 18 & 19-Roscoe Tournament-Girls & Boys-Uarsity & JU

**This Week's Featured Basketball Page Supporter**  
**ROBY DRUG**

- CENTRAL LUMBER & SUPPLY
- TEAGUE GROCERY • F&M CHEVROLET-BUICK
- CARRILLO EXXON SERVICE STATION • PORTER LOCKER PLANT
- FISHER COUNTY ABSTRACT • FARM TRACTOR & SERVICE, INC.
- NATIONAL FARMERS UNION INSURANCE • M&C LUMBER & HDW.,INC.
- GOLDEN HAVEN NURSING HOME • NOWLIN FARM SUPPLY
- WEATHERSBEE FUNERAL HOME • FISHER COUNTY NURSING HOME
- MIDWEST ELECTRIC COOPERATIVE & EMPLOYEES • BART STRAYHORN
- HOMESTATE SAVINGS • LANDES FURNITURE • CITIZENS STATE BANK
- ROTAN INSURANCE AGENCY • GOLD BOND BUILDING PRODUCTS
- HATAHOE-ROBY • HENRY'S QUICK STOP • FARM BUREAU INSURANCE
- FIRST NATIONAL BANK OF ROTAN • CERAMIC FEVER • ROBY HYDRO
- ROTAN PAINT & BODY SHOP • ROBY FLOWER, FABRIC & GIFT SHOP
- MARTINEZ DAIRY • WHITE AUTO STORE • CITY GROCERY & DELI
- ROLLING PLAINS INTERNATIONAL • HATAHOE-ROTAN • H. L. DAVIS & CO.

**ATTENTION**

**Rotan School Tax Office Will Be Closed Dec. 18th Through Jan. 3rd.**

Those Desiring To Pay Taxes During The Period We Will Be Closed-Are Asked To Mail Statement And Check.

Betty Wilfong  
Tax Assessor/Coll.



**SALE!**

**3rd Annual Rotan Jaycees Christmas Tree Sale**

Where: Old J&R Grocery Building

When: Mon.-Fri.-4:00-6:00 P.M.

Sat. -9:00-5:00 P.M.

★ All Profits Go To Belvieu Cemetary Association

**Premium Fir Trees And Scotch Pines**





# Dennis Takes Grand Champion Pecan Honors At Jones Show

By Richard Spencer

Olen Dennis of Roby had the Grand Champion Shelling Pecan Variety at the First Annual Jones County Pecan Show held in Anson last week. The variety was Commanche. The pecans came from the Hambricht Orchard. Dennis also placed second with his Burket Pecans in the Shell Division.

Several changes which will affect Texas in 1982 have been recommended in the Uniform Methods and Rules (UM&R) of the federal brucellosis eradication program by the U.S. Animal Health Association.

The USAHA has the responsibility of making recommendations to the

Secretary of Agriculture regarding changes in the brucellosis eradication UM&R. Provisions of the rules are approved as minimum standards for achieving and maintaining control and eradication of brucellosis.

The Texas Animal Health Commission, the animal health governing body for the state, follows the minimum standards of the UM&R as part of the Texas brucellosis program.

Changes recommended regard the state's classification status. Classifications to be effective Jan. 1 include free, A, B, and C. All are based on the number or percentage of

infected herds-not individual animals-in the state.

To obtain a free status, states would have an 0 percent infection rate. One negative test with health certificate would be required for interstate movement of test eligible cattle. Class B status would be obtained by any state with less than 1.5 percent but more than 0.25 percent infection rate. One negative test within 30 days and one negative test 45-120 days after movement are required for interstate movement of test eligible cattle in the B area.

Class C status would go to all states and areas with greater than 1.5 percent infection rate. In this instance, test eligible non-vaccinated cattle must have two negative tests before movement and one negative test after movement for interstate shipment.

Additionally, test eligible vaccinated cattle in Class C areas may move interstate with one negative test within 30 days and quarantine and retest

45-120 days after movement.

## Hobbs School News

By Rose Ann Miers

Hello! It's almost Christmas and time for presents again. This week we are practicing for the play we're going to have for Christmas. It is going to be at 11:00 a.m. this Friday. We are looking forward to having a big crowd. All the teachers and students have worked hard on it. We will have our big party in the lunchroom after lunch.

Saturday was Mrs. Dee Ann Mullin's baby shower. She received many nice gifts. Donny Gruben made her an oak baby crib. It is very beautiful.

Everyone in the school is coloring pictures called "Christmas Around the World". We are coloring sheets of different places, such as Switzerland and many other places.

Everyone has their Christmas tree up in their rooms. They are very pretty.

We played McCaulley last Thursday evening. There was a good crowd here and we all had a fine time. Hobbs won the girls' game 14 to 5 and the boys' game 16 to 6. We are really looking forward to playing McCaulley again Tuesday, the 15th. The game will be at McCaulley at 1:00 p.m. You all come see us if you can.

Our Bible verse for this week is Luke 16:4 - "I am resolved what to do that when I am put out of the stewardship they may receive me into their houses."

Animals that are exempt (non-test eligible) from testing requirements in all classifications are steers and heifers or official calfhood vaccinates if

dairy breed under 20 months of age; beef cattle under 24 months, and non-vaccinated cattle under 18 months, unless pregnant.

Another important factor in the reclassification of states is that Texas will be permitted to keep a dual classification system. Early indications point to a B and C area, with the B area the western portion which corresponds to the present A area, and the C area the eastern part which closely corresponds to the present B area.

Vaccination also is strongly encouraged since these animals will be able to move more freely than non-vaccinated animals. A major thrust of the Texas brucellosis plan is vaccination with reduced dosage of Strain 19 vaccine.

The classification system is a division to indicate how much infection is in an area, and is not an indication that the state is not making progress.

## 8th Grade Rotan Girls Lose, Boys Get Win

In the 8th grade girls game Tina Mendoza scored 7 points to lead all scorers as Rotan lost 35-18. She was aided by Cynthia Daniel and La-Tonya Daniel with 4 points each, Sherri King with 2 and Pearl Huiitt with 1 point. Cynthia Daniel led all rebounders with 11.

Rotan's 8th grade boys were defeated 44-22 for their 2nd straight loss to Roby. Keith McClain led the scoring with 23 points. Lex Weatherly scored 9. Leading rebounder was Weatherly with 8 caroms.

All the teams will take a break in the schedule till January 4, 1982, when

they open up their district schedule.

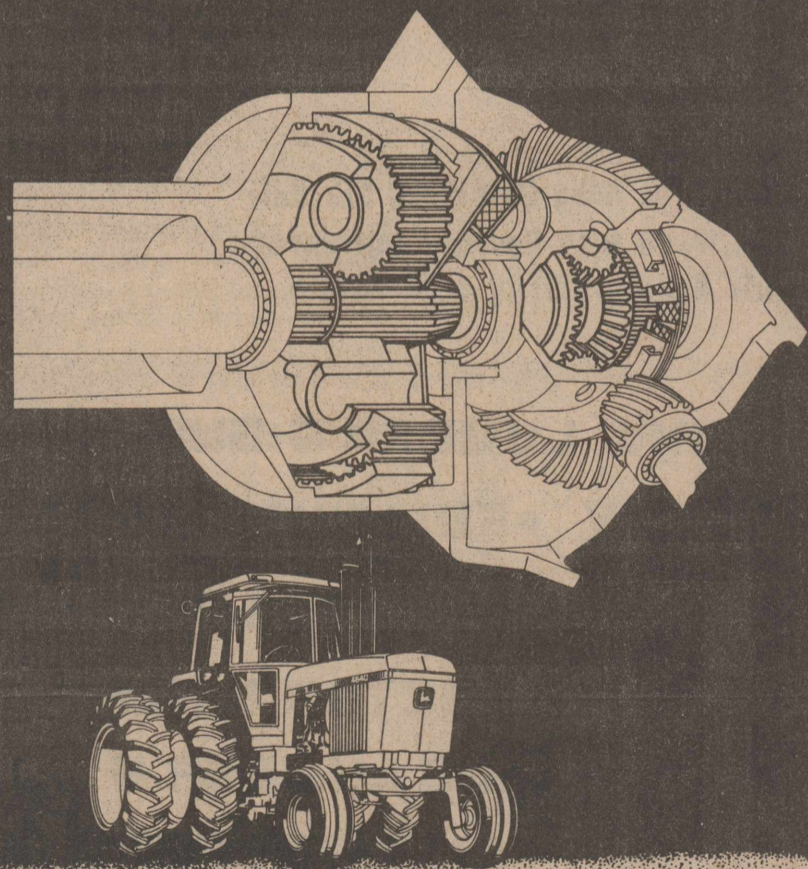
## NOTICE

The Hobbs School Tax Office will be closed from December 18 until January 4. Those desiring to pay taxes before the end of the year are urged to come in before that date. If unable to do so, please mail your tax payment to Hobbs School, Rt. 2, Rotan, Texas 79546.

A December postmark insures that your taxes will show to have been paid before the end of 1981.

SALES SERVICE Before You Purchase A New Car Or Pick Up ... Give Us A Chance To Show You How Much You'll SAVE At F & M Chevrolet - Buick Complete Sales & Service 735-2244 105 S Cleveland Rotan, Texas 79546

John Deere's forward-looking "rear end" design is too tough to top . . . even after 20 years



Many John Deere owners can't remember a time their field tractor didn't have planetary final drives. That's only natural, because John Deere hasn't built a big tractor without them for the past 20 years. Planetary final drives spread stress loads over three points instead of concentrating them in one. It's the best way we know to extend service life.

Wet disk brakes have also been a John Deere standby for the past 20 years. You get positive stopping force combined with extremely long life. The brakes operate in a sealed compartment and are

cooled by hydraulic oil. They also never require adjustment.

About four years ago, John Deere began using additional pinions in the differential. Again, to spread torque load. Our latest designs use needle roller bearings.

John Deere design is still too tough to top . . . even after 20 years.



Year after year, a John Deere seems newer

Farm Tractor & Service, Inc. Rotan, Texas



Together, we can make Christmas a very special time for hundreds of disadvantaged children through the Toys for Tots Campaign. When you donate a new toy you make a child's dream come true.

**YOUR CHRISTMAS WILL BE BRIGHTER TOO . . . BECAUSE WE'LL GIVE YOU A FREE INSTALLATION!!**

Bring your toy to our office now through December 16, 1981 and receive a FREE INSTALLATION on Cable, Premium Service, or Additional Outlet. \* Cable television offers you a great entertainment alternative with MOVIES and SPECIALS, uncut and commercial free — SPORTING EVENTS, RELIGIOUS PROGRAMS, CHILDREN'S SHOWS, LIVE NEWS COVERAGE, major independent networks and MUCH, MUCH MORE!! Best of all, you can enjoy this spectacular programming in the comfort and convenience of your own home. Call today to make sure you are in on all the excitement!

**COME BY OUR OFFICE AND BRING A TOY FOR TOYS FOR TOTS . . . BECAUSE CHRISTMAS IS A CHILD'S DREAM AND YOU CAN MAKE THAT DREAM COME TRUE!**

\*Free offer on one set only, additional sets extra. Offer good in serviceable areas only.



united cable television of rotan

Address and Telephone Number  
102 Florence  
735-2526

LAST CHANCE FOR FREE INSTALLATION OFFER ENDS DECEMBER 16, 1981

## COMFORT AND SAVINGS THE YEAR ROUND WITH

Insulation Storm Doors Storm Windows

Call

Carter Insulation Co.

114 S. Lawrence

Roby, Texas

776-2727 Or 776-2220

1980 Prices In 1981

Tax Credit Savings For Insulation, Storm Doors And Storm Windows. Get 15% Off The First \$2,000.00 Of Your Income Tax Return On Short Or Long From.

Carter Insulation Co.

Also Authorized Dealer For

Peerless Products

Storm Windows-Storm Doors-Sliding Glass Doors