

## Local Farm Income Average 22.5 Million

State Senator Ray Farabee expressed support for higher market prices for farmers and ranchers in a letter written to the U.S. Secretary of Agriculture this week.

"Recent protests have brought public attention to what many of us have known for more than a decade. American farmers have been feeding this country and the world, and it is time for people in agriculture to get a fair share of the dollars spent for food and fiber", Farabee stated to Secretary Robert Bergland.

Fisher County has an average annual income of \$22.5 million dollars from agriculture. He continued, "When the costs of production exceeds that income, it

not only hurts the people of Fisher County, but it hurts Texas and America, and destroys the family farm which has been responsible for making this country the most productive in the world."

Although parity and higher target prices must come from an improved farm bill by our federal Congress, Farabee outlined three things which the Texas Legislature can and should do:

- (1) Provide for taxation of agricultural land on the basis of productivity.
- (2) Increase the State inheritance tax exemption.
- (3) Increase State funding for agricultural research and rural development.

## Jay Naman Blasts Bergland Statements

Texas Farmers Union President Jay Naman of Waco has issued a statement blasting Secretary of Agriculture Bob Bergland, saying Bergland's recent statements concerning parity and government programs for farmers are "preposterous and almost unbelievable."

"destroyed his effectiveness as Secretary of Agriculture" and that "his continuation in government can serve no constructive purpose."

## Jim Baum In Support Of Ag. Movement

Bergland's comments came during a speech to the American Farm Bureau Federation convention in Houston in which he said that the government could not protect farmers with programs allowing for 100 percent of parity because it would amount to a monstrosity of costs and government controls.

Democratic Congressional candidate Jim Baum of Big Spring has voiced his support of the American Agriculture movement for 100 percent parity. During the opening of Baum's headquarters in Big Spring Monday, he said, "I support the farmers' movement and I embrace their call for parity."

Naman says Bergland's speech has "shocked and disappointed farmers to hear the Secretary of Agriculture repudiate the preservation of the family farm system by rejecting the concept of 100 percent of parity".

Baum said the depressed farm prices could be relieved through increments in government loans with an immediate hike to 75 percent of parity, plus mandatory acreage controls and a vigorous export program.

Naman continues by accusing Bergland of "playing politics with agricultural policy by telling each farm group with which he meets that he is in agreement with their particular approach to solving problems." He also says that the speech means "Secretary Bergland identified himself with and joined the American Farm Bureau's traditional attack on the family farm and farm programs which would provide 100 percent parity prices to farmers."

The Democrat candidate also voted to wage a door-to-door campaign in "at least 73" of the towns and communities in the 17th District. "This campaign is directed to the middle income taxpayers," Baum said. He added, "This campaign gives families caught in the middle a chance to elect a man who will make them his 'Special Interest Group'."

The sentiments of the state farm leader are expected to be echoed when the voting delegates and members of Texas Farmers Union gather in Austin, January 20 and 21 for their annual convention. At the same time many Farmers Union members will be taking part in a national protest in Washington. National Farmers Union says its Washington office is ready for the fight for amendments and additions to the inadequate farm bill when Congress reconvenes and expects action during February.

Baum currently is on a tour of cities getting the first week of his door-to-door campaign underway.



Nita Clegg

## Nita Clegg To Speak At N.C.

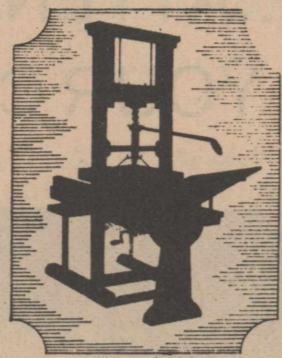
"I must remind the Secretary," says Naman, "that farm programs in the past have provided farmers with 100 percent of parity without the detrimental implications which he described in his speech. I must further remind him that other farmers in the free world are protected by their governments with various programs and pricing mechanisms that guarantee the farmers of those countries a fair return. In fact, this country under this administration is one of the few of the developed countries in the world that is unwilling to protect farm income."

Miss Nita Clegg, missionary nurse to Swaziland, is home on furlough and holding services in Nazarene Churches. This is her fourth furlough since going to the field in 1956.

Naman says that essentially Bergland has told the nation's farmers that "they would be better off bankrupt than to have to comply with the restraints of an adequate farm program." While not calling for Bergland's resignation forthright, Naman says that the remarks have

Miss Clegg graduated from Bethany Nazarene College with an A.B. degree and from Northwest Nazarene College with a B.S. She received her R.N. from Samaritan Hospital School of Nursing. Since arriving on the field, she has been working primarily in nursing.

The service at Rotan Church of Nazarene will be held Thursday at 7:30 p.m. and will feature an exciting look into the work and the growth of the Nazarene Church in Swaziland.



# Roby Star-Record

The Voice Of Fisher County Since 1907

# ROTAN ADVANCE

VOL. 69 NO. 49

THURSDAY, JANUARY 19, 1978

FISHER COUNTY TEXAS

SINGLE COPY PRICE 20 CENTS

TWELVE PAGES

## 40 From County Plan To Make Washington Trip

Approximately 40 Fisher County residents will be departing from the courthouse on Saturday morning at 5:00 a.m., for a 6 day trip to Washington, D.C. in an effort to gain support for fair prices for agricultural products.

The group will leave Roby at 5:30 a.m. Saturday, January 21, and travel by bus to the Dallas-Fort Worth Airport to meet a 12:30 Braniff flight that will arrive in Washington at 4:45 p.m. A spokesman for the group

asked that as many Fisher County people as possible, interested in the movement, make an attempt to be present to show support to the 40 that are representing Fisher County.

The 40 are in the process of lining up meetings with members of the U.S. Senate and House of Representatives as well as both House and Senate agricultural committee members. They have already received confirmation on a meeting with Senator John Tower at 4:00 p.m. Monday, January 23.

Senator Tower's office is in the process of arranging meetings with all members of the Senate Agriculture Committee so Fisher County people can personally relay their story.

The group will be staying at the Quality Inn-Capitol Hill, located at 415 New Jersey Avenue N.W. approximately one block from the Capitol.

Those planning to make the trip include: William Duke, Koen and Eugene McKimney, Eugene Hudson, Monte Morrow, Mike V. Terry, Richard Gaona, Mr. and Mrs. Steve Terry, Tommie Jack Stuart, Mr. and Mrs. Glenn Copeland, Mr. and Mrs. Harold Roberts, Kim Pease, Garland Moore, Linda Lanning, Mr. and Mrs. Mike Terry, Billy Jeffrey, Jerry Jeffrey, Marion Reed, J.O. Decker, Kenneth Martin, Rudy Martinez, Freddy Williamson, Mr. and Mrs. C.D. Herron, L.K. Terry, Sid Hardegree, Gary Stuart, J. Neil McGinnis, Gary Nettleton, Jack Terry, Louie Hayes, Hollis Madden, Mickey Templeton, and Kyle Moore. Steve McCall and Neal Hargrove are travelling by car and will meet the above group in Washington.

The group will be returning to Fisher County on Thursday, January 26. They are scheduled to depart Washington at 4:30 p.m., arrive in Dallas at 7:10 and travel by bus back to the Fisher County Courthouse. The group should arrive home at approximately 1:00 a.m. Friday Morning, January 27.

## Horace Carter Gets New Appointments

The Horace Carters returned this week from their trip to Houston and the American Farm Bureau Convention.

Horace has been appointed the Chairman of the Texas Farm Bureau Cotton Commodity Advisory Committee by President Carroll Chaloupka. Also, he has been asked to serve on the American Farm Bureau Cotton Advisory Board by AFB President Allen Grant.

Carter hopes he will be able to contribute something to the cotton industry by his service on these committees. Already he is scheduled to meet in February with the Texas Group in Waco and the AFB Group in Jackson, Miss. He has been invited to meet with the National Cotton Council in Houston in February also.

During the Convention the Secretary of Agriculture, Bob Bergland, told the 7500 farmers just what the Democratic Administration was doing, and U.S. Rep. John Rhodes, Rep. from Arizona, told what the Democrats were not doing.

The farm strike was one of the controversial issues that was aired at length by the Convention. The following resolution was officially adopted. "The voting delegates of the American Farm Bureau in session at Houston, Texas this 11th of January do hereby express our feeling of sympathy, concern, and understanding of the seriousness of the farm income crisis brought on by low prices--inflated costs and crops lost to drought. We further urge that all national and state Farm Bureau officials and staffs re-dedicate their efforts and talents to im-

provement of farm prices at top priority. We believe the means to do this are contained in the policies and abilities of this organization."

Farm Bureau as an organization cannot legally endorse any form of agreement or understanding which limits the marketing of commodities or controls the prices to be obtained for such commodities without violating the antitrust laws and subjecting itself and its members to severe criminal and civil penalties."

"The two people who made the biggest impression in the Convention, in my opinion", Carter states, "was Gov. Brisco who brought the welcoming address and Anita Bryant with her Christian testimony and singing. Both seemed at their best."

## Then And Now.... Farm Prices And Costs

THEN AND NOW-HOW FARM PRICES AND COSTS DIFFER FROM WHEN 1973 FARM ACT WAS ADOPTED

Here are some interesting comparisons of how economic conditions have changed for farmers since 1973. Although there are some exceptions (soybeans, milk, and oats), most commodities are well below the levels now compared with prices being received by farmers in August or September, 1973. Here are some comparisons:

COMMODITY	THEN	NOW
Wheat, bu.	\$4.62	\$2.00
Corn, bu.	\$2.15	\$2.09
Barley, bu.	\$2.16	\$1.69
Grain Sorghum, cwt.	\$3.87	\$2.96
Rice, ctw.	\$11.60	\$7.23
Flaxseed, bu.	\$7.29	\$5.68
Hogs, cwt.	\$56.50	\$41.90
Beef Cattle, cwt.	\$51.70	\$34.10
Wool, lb.	.808	.737
Eggs, doz.	.642	.468

but, while prices of most farm commodities are low in dollar terms and particularly so in terms of purchasing power, the cost of things farmers buy or use to produce have as much as doubled in the four-year interim. Prices paid by farmers for commodities and services, interest, taxes, and wage rates are up by one-third since August, 1973, but the cost of many individual items are up considerably more than the average. The interest payable per acre on farm real estate debt has more than doubled. Farm wage rates have advanced by an average of 43 percent. Fertilizer prices paid by farmers have risen about 50 percent. Farm machinery prices are up almost 80 percent on the average. Farm supplies have about doubled in price. Here are some item-by-item comparisons:

ITEM	THEN	NOW
Pick-up truck, 3/4 ton	\$3,300.00	\$5,650.00
Anhydrous Ammonia, ton	\$92.50	\$188.00
Grain Drill, 24-tube	\$2,860.00	\$5,210.00
Disk Tiller, 12 ft.	\$1,570.00	\$2,520.00
Wheel Tractor, 90-99 h.p.	\$10,800.00	\$18,800.00
Tandem Disk Harrow, 16-ft.	\$2,050.00	\$4,520.00
Combien, large, self-prop.	\$22,200.00	\$42,300.00
Corn Planter, 4-row	\$1,830.00	\$4,450.00
Gasoline, farm Del., gal.	.328	.572
Diesel Fuel, gal.	.209	.451
Baler Twine, 40-lb. bale	\$8.96	\$15.20

## County Farm Wives Ban Together, Meeting Set

There will be a meeting of Fisher County farm wives on Wednesday, January 25, at 9:30 a.m. at the REA Building in Roby for those interested in the American Agriculture Movement.

The original meeting of the farm wives was attended by 13 women with the goal of involving farm families, business people and consumers in activities designed to support the American Agriculture Movement.

In the future, the group will involve itself in a telephone campaign requesting Fisher County residents to write their congressmen and other Washington officials. They will write letters to producers of agricultural products requesting their support and they plan to actively assist the Fisher County farmers going to Washington on January 21st.

They had a meeting last Wednesday to make cotton duck tote bags for the Washington group. They plan to assemble soil samples for the group to distribute in Washington and they have recruited grade school children to make calling cards to be given to Congressmen and Senators.

The original thirteen farm wives include Juanita Graham, Francis Morgan, Linda

## Ernest Roberts Announces For J.P. Position

Justice of the Peace Ernest Roberts has authorized this paper to announce his intention to seek re-election to that position.

Continued on Page 4

Stuart, Lucille Carter, Faye Ray, Janice Copeland, Carol Roberts, Annie Weems, Clenna Gene Moore, Dorothy Helm, Louise Martinez, JoAnn Terry and Ann

Rowland.

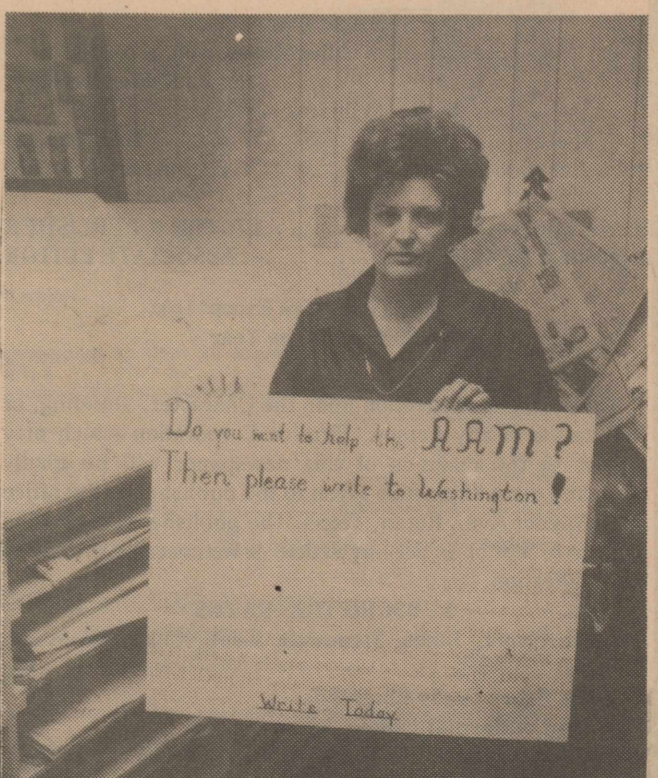
Others interested in the American Agriculture Movement can contact any of the above farm wives for additional information.



COTTON TIES: Mrs. Glenna Gene Moore displays over 30 ties painted with a cotton-boll that will be worn by part of the farmers making the Washington trip on January 21st.

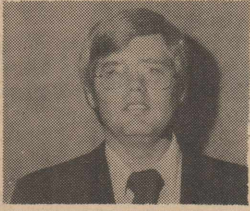


TOTE SACKS: Francis Morgan displays one of the cotton duck tote bags to be used by the farm group making Washington trip later this week.



POSTERS PAINTED: Juanita Graham displays one of the many posters, prepared by farm wives, that will be displayed in businesses asking for support for fair farm prices.





## Words of Life

Johnny T. Robertson, Pastor  
First United Methodist Church  
Rotan, Texas

"Let Not God Speak To Us"

After had God had delivered Israel from the bondage of Egypt, Moses led Israel to Mt. Sinai where they would meet God and become His people. But the people "stood afar off from Moses, and said to him, 'You speak to us, and we will hear; but let not God speak to us, lest we die.'" The Israelites were afraid to hear God Himself speak to them. Why? They did not want to hear God for the same reason we refuse to hear Him. We do not mind listening to a sermon or a personal testimony, but we do not desire to hear God Himself speak to us. We know if God speaks, either we must tell God we will not obey Him or we must do God's word. If, however, it is only the minister's voice we hear, we feel it is not imperative, we can say, "Well, that is simply your own idea, though it might be from God." Then we turn to walk away from what we heard satisfied that we need not act on this work from the minister.

We do only openly and consciously disobey God, we simply do not hear and heed Him. We refuse to believe that God will speak to us through others, and are not open to hear God with our own ears. Therefore, since God does not speak to us through others and we can not or will not hear Him directly, we never hear God speak and we walk in the darkness of our own human inability to be obedient children of God. God has given us His Word in the Bible, but we disobey His Commandments because we do not honestly love and respect Him. Jesus Himself said, "If you love me, you will keep My commandments." We must hear God before we can obey Him, and if we shut out the only means of God speaking to us, we will never hear or obey.

We must stop fooling ourselves and listen to hear God in the obvious message of the Scripture. If we refuse to consider seriously that God will speak to us through others, then we have rejected the means of communicating God's word which God Himself has chose to use from the beginning. For God has always used men and women to speak His Word to us. First came the long line of Prophets, and then God spoke to us in the person of His Son, our Lord and Savior, Jesus The Christ. And following Christ God spoke through the disciples to the Roman world. Today God still uses the human voice to speak His Word. LISTEN! You can and will hear Him! Amen.

### CROSSWORD PUZZLE

**TODAY'S ANSWER**

**ACROSS**

- Smash in
- Steady
- Palo's partner
- Flemish painter
- Plod
- Form mental concepts
- Form of John
- Do sums
- Senora (abbr.)
- Frankenstein's creator
- Have supper
- Hawaiian hawks
- time (never, 2 wds.)
- Eject
- Gordian
- Mom's sister
- 52, in Caesar's palace
- Rainier and McKinley (abbr.)
- Sculptor Benvenuto
- Fuss
- Traitor
- Favorite
- Went sight-seeing
- Saucy
- Congenital
- Gaelic
- Gardener's tool
- Equal

**DOWN**

- Fundamental
- Islamic Supreme Being
- One of the Ages
- Porker
- June VIPs
- Reddish
- Burrows or
- Beame
- 8 - be (disappear, 2 wds.)
- Contest
- Pacific defense org.
- "Thanks -" (2 wds.)
- Tilt, as a ship
- Indigo plant
- Worsted
- Not financially strong
- Highlander's garb
- Violin maker
- Front-runner
- Greek island
- French river
- Eric's men
- Together (prefix)
- Taunt
- Vitality

**CROSSWORD PUZZLE**

1	2	3	4	5	6	7	8	9	10
11	12	13	14	15	16	17	18	19	20
21	22	23	24	25	26	27	28	29	30
31	32	33	34	35	36	37	38	39	40
41	42	43	44	45	46	47	48	49	50

### THE VOICE OF FISHER COUNTY THE ROBY STAR-RECORD AND THE ROTAN ADVANCE

Combined June 13, 1969

"The Supreme Test of Good Journalism is the Measure of its Public Service."

Walter Williams

H.C. Shelton Publisher 1906-1965 E.H. Shelton Publisher 1965-1970

KIM PEASE ..... EDITOR & PUBLISHER  
JANEECE PEASE ..... ASSOCIATE EDITOR

Published Thursdays Except Last Thursday In The Year

Any erroneous reflection upon the Character, Standing, or Reputation of any Person, Firm or Corporation which may appear in the columns of this newspaper will be gladly corrected upon due notice given to the publisher at the office a 114 Snyder Ave., Rotan, Texas. The publisher reserves the right to accept or reject any article or manuscript submitted for publication.

#### SUBSCRIPTION RATES

\$7.50 in Fisher, Jones, Stonewall, Kent, Nolan and Scurry Counties.  
\$8.50 in Other Texas Counties  
\$9.50 in Continental United States  
\$10.50 Outside U.S., APO and FPO Addresses  
Entered as second class matter at the Post Office in Rotan, Texas under the act of Congress of March 3, 1879. Second Class postage paid at Rotan, Texas 79546.

## FAITH BIDS US HONOR THE DEFENDERS OF OUR FREEDOM

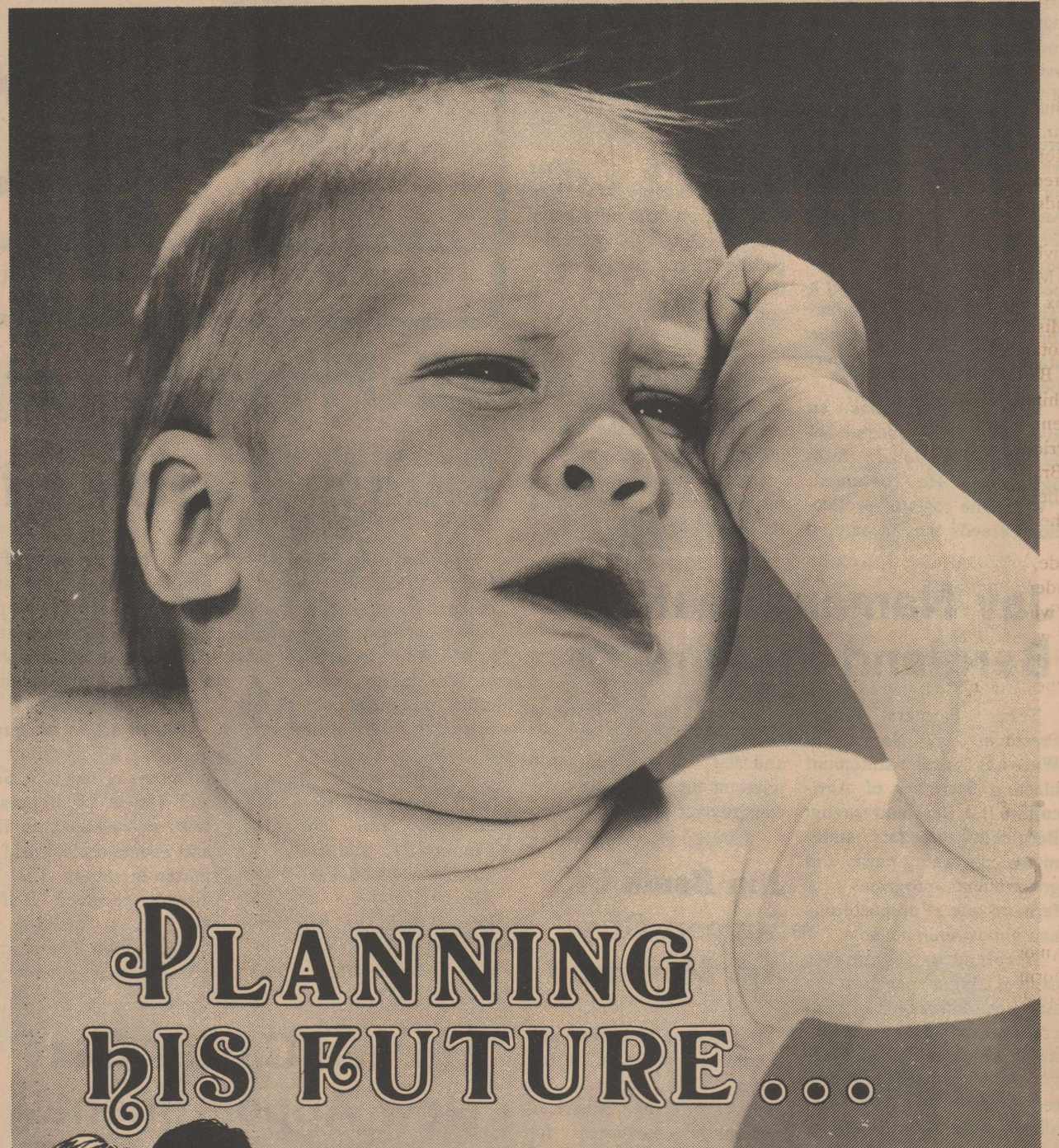
More than one nation has undergone the painful necessity of committing its brave men to battle for the purpose of maintaining its freedom whenever it was threatened by enemy forces from without. Whether we honor them in October or November, or call the occasion Armistice Day, Veterans Day or Remembrance Day, the purpose of it remains the same: to give our humble thanks to those who survived the terrible wars and those who did not. And since the list of our freedoms includes the right to worship God in any way we see fit, let us show our gratitude by attending the Church of our choice regularly, and thereby availing ourselves of one of the most vital freedoms for which our courageous heroes risked everything they had.

- CHURCH OF CHRIST**  
Rotan, Texas  
Charles Lindley  
Bible Study - 9:45 a.m.  
Worship - 10:30 a.m.
- FIRST UNITED METHODIST CHURCH**  
Johnny Robertson, Pastor  
Sunday School - 9:30 a.m.  
Worship - 10:30 a.m.
- CHURCH OF NAZARENE**  
Rotan, Texas  
F. W. Rogers, Pastor  
Bible Class - 9:45 a.m.  
Worship - 10:50 a.m.  
Evening Service - 7:00 p.m.
- SYLVESTER BAPTIST CHURCH**  
Harold Ely, Pastor  
Sunday School - 10:00 a.m.  
Worship - 11:00 a.m.  
Sunday Night - 6:00 p.m.
- SARDIS BAPTIST CHURCH & MILES SW OF ROTAN**  
Bro. Henry Dickson, Hawley  
Sunday School - 10:00 a.m.  
Worship - 11:00 a.m.
- FIRST ASSEMBLY OF GOD**  
Rotan, Texas  
Sunday School - 10:00 a.m.  
Church - 11:00 a.m.  
Night Services - 7:30 p.m.
- CHURCH OF CHRIST**  
Rotan Latin American  
Bible Class - 10:00 a.m.  
Worship - 11:00 a.m.
- FIRST UNITED METHODIST CHURCH**  
Sylvester, Texas  
Buddy Payne, Minister  
Morning Worship - 9:30 a.m.  
Sunday School - 10:30 a.m.  
Sunday Night - 7:00 p.m.
- CALVARY BAPTIST CHURCH**  
Rotan, Texas  
David N. Vickers, Pastor  
Sunday School - 10:00 a.m.  
Worship - 11:00 a.m.
- ST. JOSEPH'S CATHOLIC**  
Rotan, Texas  
John Hoorman, Pastor  
Mass Saturday Eve. - 7:30 p.m.  
Mass Sunday - 9:00 a.m.
- LITTLE ZION BAPTIST**  
Rotan, Texas  
James Carrington, Pastor  
Sunday School - 9:45 a.m.  
Worship - 11:00 a.m.
- CHURCH OF CHRIST**  
Wardell Halliburton, Minister  
Bible Class - 10:00 a.m.  
Worship - 10:45 a.m.
- EMMANUEL BAPTIST CHURCH**  
Rotan, Texas  
Sunday School - 10:00 a.m.  
Worship - 11:00 a.m.

- ROSS ROADS BAPTIST**  
= MIES SW of Rotan  
Michael H. Hicks, Pastor  
Sunday School - 10:00 a.m.  
Worship - 11:00 a.m.
- FIRST UNITED METHODIST CHURCH**  
Roby, Texas  
Rev. Luther Baker, Pastor  
Sunday School - 10:00 a.m.  
Worship - 11:00 a.m.
- HOBBS BAPTIST CHURCH**  
Hobbs Community  
L.D. (Dutch) Parks, Pastor  
Sunday School - 10:00 a.m.  
Worship - 11:00 a.m.
- FIRST BAPTIST CHURCH**  
Roby, Texas  
Rev. Allen Cartrite, Pastor  
Sunday School - 10:00 a.m.  
Worship - 11:00 a.m.
- FOURSQUARE CHURCH**  
Rotan, Texas  
Eighth and Genevieve Sts.  
Sunday School - 10:00 a.m.  
Worship - 11:00 a.m.
- EL PASO BAPTIST CHURCH**  
South of Roby  
F.E. Healer, Pastor  
Sunday School - 10:00 a.m.  
Worship - 11:00 a.m.
- FIRST BAPTIST CHURCH**  
Rotan, Texas  
Sunday School - 9:45 a.m.  
Worship - 10:55 a.m.
- METHODIST CHURCH**  
Longworth, Texas  
Ivan Allen, Minister  
Sunday School - 10:00 a.m.  
Worship - 11:00 a.m.
- LONGWORTH BAPTIST**  
Longworth, Texas  
Rev. Billy Oliver, Pastor  
Sunday School - 10:00 a.m.  
Worship - 11:00 a.m.
- McCAULLEY BAPTIST**  
McCauley, Texas  
Rev. Geroge Caffey, Pastor  
Sunday School - 10:00 a.m.  
Worship - 11:00 a.m.
- PRIMITIVE BAPTIST CHURCH**  
Roby, Texas  
Elder Carl Watson  
Sung Serv. 10 a.m. - 4th Sunday  
Worship - 11 a.m. - 4th Sunday
- FIRST UNITED METHODIST CHURCH**  
McCauley, Texas  
David Binkley, Minister  
Sunday School - 10:00 a.m.  
Worship - 11:00 a.m.

Man needs a power out of and above himself to restore him to the likeness of God.  
—Author unknown

## ...ATTEND THE CHURCH OF YOUR CHOICE THIS SUNDAY



## PLANNING HIS FUTURE ...



Copyright 1978  
Kestler Advertising Service, Strasburg, Virginia  
Scriptures selected by The American Bible Society

... what a responsibility!

That is the crux of parenthood. We not only rear our children, providing for their needs and development, but we make important decisions that can have lasting impact on their lives.

One vital decision concerns their opportunity for spiritual growth. It is a blessing to grow up in a land where faith and freedom are revered. But it is a fact of family life that parents decide whether or not to cultivate their children's moral and religious development.

The churches of our community are eager to help you mold the convictions and character of your children. Welcome their help.

Sunday Luke 2:1-20	Monday Matthew 2:1-12	Tuesday Matthew 2:13-23	Wednesday Luke 2:34-52	Thursday Mark 9:1-13	Friday 1 Peter 1:1-17	Saturday 1 Peter 3:18-22
--------------------------	-----------------------------	-------------------------------	------------------------------	----------------------------	-----------------------------	--------------------------------

This Church Page Is Published In Hope That More People Will Attend Church. It Is Paid For By Firms And Individuals 100% Interested In This County. Let Them Know That You Appreciate Them Supporting This Page. Each Week We Feature One Supporter In Hope That You Will Make A special Effort To Let Your Appreciation Be Known To This Church Page Supporter.

## Weathersbee Funeral Home

<b>Sweetwater Prod. Credit</b> Dwayne Parker-Vice President 776-2311-Roby, Texas	<b>Landes Furniture</b> Loys Landes-Larry Landes Rotan	<b>Rotan Motor Co.</b> Ford and Mercury Rotan	<b>Home Lumber Co.</b> Rotan
<b>Central Lumber &amp; Supply</b> Mr and Mrs Carl Matthies 776-2371 Roby, Texas	<b>Trail's End</b> 735-3575 Rotan		<b>Citizens State Bank</b> Member F.D.I.C. Roby
<b>Dairy Queen</b> Mr and Mrs B.J. Waddell 735-2227 Rotan	<b>Fisher County Farm Bureau</b> 215 West Snyder Rotan	<b>First National Bank Of Rotan</b> Accounts Insured To \$40,000	<b>Weathersbee Funeral Home</b> 735-2255 Rotan
<b>Crestview Lodge</b> 711 East 5th Rotan	<b>Roby Insurance Agency</b> 776-2361 Roby	<b>Roby Hydro Inc.</b> Bettie and Archie Rivers Roby	<b>Fisher County Nursing Home</b> 735-3291 Rotan
<b>Martinez Dairy</b> Rudy, Joe B. & Emilio Martinez Hobbs	<b>Clinic Pharmacy</b> Cleburne Murdoch, R. PH. 735-2500	<b>Rotan Insurance Agency</b> Joe Burk, Agent Rotan	
<b>Rockwell Bros. Co.</b> LUMBERMEN	<b>Farmers Union Co-Op Gin</b> Foy Mitchell, Manger Roby	Rotan, Texas	<b>Rotan Paint &amp; Body Shop</b> Mr and Mrs Carlton Burrow Rotan
<b>Bart Strayhorn</b> 735-2231 Rotan	<b>H.L. Davis &amp; Co.</b> Bill and Elaine Day Rotan	<b>Roby Midwest Electric</b> 776-2244, Roby	<b>Noles Drug Store</b> Mr and Mrs Jack Perkins Roby





## Vivian Joplin Shares Favorite Recipe



By  
MRS. BILL SHARP-735-029



MILLION DOLLAR PIE--by Vivian Joplin

This week our guest is Mrs. Phillip (Vivian) Joplin of Rotan. Vivian is one of the first friends I made after moving to Rotan. I was talking to my husband on the CB and she invited me over for coffee. Well, that's one way to meet new friends so I went. We had a nice visit, and that is how we first met.

Vivian was born and raised in Rotan. Her parents are Mr. and Mrs. Douglas Eaton. Vivian has seven brothers, J.C. of Knox City, Leo of Lubbock, Robert of Hereford, Carroll Ray of Mississippi, Gary of Abilene and Donnie and Lewis, both of Rotan. She has three sisters, Audrea and Billie of Graham and Betty of Abilene.

Philip was born and raised in Patterson, Arkansas. His parents are Mr. and Mrs. P.H. Joplin. He and Vivian were married in 1965, have three children and Philip is employed by Brazos Transport.

Their children are Robin age 12, she is in the sixth grade, in the band and plays basketball. Tammy, 9, is in the third grade, in GA's and is a Brownie, Stacy is 5 years old and is in Kindergarten this year which she enjoys very much.

Vivian's hobbies are cooking and yard work. I would like to thank you, Vivian, for this chance to introduce you to everyone and share with them one of your recipes. Thank you.

Large container of cool whip, 1 can Eagle Brand milk, 1 cup chopped pecans, 1 tbs. lemon juice, 1 can (small) pineapple.  
Mix lemon juice and milk, stir, add pecans and pineapple. Stir to mix well, then add cool whip. Spoon into Graham Cracker Crust, put in refrigerator until ready to serve.

### Zero-Plus Dialing Coming To County

Zero-Plus Dialing--a faster method of making operator-assisted long distance calls--comes to Roby January 19 and Rotan January 23, according to Ben Young, manager for Southwestern Bell.

Young emphasized that One-Plus Dialing is still the cheapest method of calling long distance but that Zero-Plus allows much faster telephone service on other long distance calls.

Young said that Zero-Plus also offers customers more accurate, machine-recorded billing.

### R.E. Douglass Makes Atlanta Catfish Conv.

Mr. and Mrs. R.E. Douglass of Sylvester recently attended a national meeting of the Catfish Farmers of America in Atlanta, Ga. with over 1,000 other catfish farmers from 48 states.

The meeting involved a total of 1,020 members from 48 states and 18 foreign countries.

Mr. and Mrs. Douglass plan to be in attendance at the annual meeting of the Catfish Farmers of Texas on January 26 and 27, at Texas A&M University at College Station.

The service is used when making person-to-person, collect or credit card calls, calls billed to a third number or calls from pay phones and hotels/motels.

"Zero-Plus Dialing works much like One-Plus", Young added.

"The customer dials zero, then the area code unless it's the same as his and then the distant telephone number."

"When the customer finishes dialing the call, an operator will enter to obtain information needed to complete the call. The operator leaves the line as soon as the call is completed."

Southwestern Bell has invested several million dollars to bring the service here and to establish a centralized system for handling the calls throughout West Texas, Young added.

### TSTI To Meet to Organize Courses

An organizational meeting to form several courses will be held Wednesday, January 25, at 7 p.m. at Rotan High School. The courses will be offered through Texas State Technical Institute, Sweetwater.

A class on defensive driving will be held on consecutive nights, with classes lasting four hours. Graduates may qualify for a 10 percent discount on their insurance premiums for a three-year period. No testing is required to successfully complete the course, and no actual driving is involved. A minimum of twelve students will be needed to form the class.

A nurse's aide 120-hour course is available to unemployed individuals or persons who wish to upgrade their present vocational skills in their chosen field of employment. Interested individuals should attend this important meeting.

Vocational office skills courses will once again be offered. Basic and advanced bookkeeping and typing, and

### Roby Girls Win Over Hermleigh Coker Is High

The Roby High School girls defeated Hermleigh last Thursday night by a 50-30 score. Leading the scoring for Roby was Penny Coker with 20, points, followed by Jill Wright 13, Darlene Herron 6, Kathy King 6, Linda Hoodenpyle 3, and Sue Hall 2 points.

Fine defensive performances were turned in by Donna Hataway, Kathy Deaton, Lois Ann Cauble, Sylvia Gaona, Jan Wright and Debbie Stuart.

Next district game is with Hobbs Friday night at Hobbs.

#### TURN ONS



BECAUSE IF I GET ONE SIDE OF THE HORSE TO GO, THE OTHER GOES TOO!  
HOW COME YOU WEAR ONLY ONE SPUR?

**SPECIAL SALE  
ONE WEEK ONLY!!**  
Harlequin Romance  
**ARLENE'S  
BOOK HOUSE**  
116 Oak-Sweetwater

**the  
warwick**  
*In New Orleans*

Elegance Plus ...

the BEST VALUE for Quiet Luxury  
at most moderate rates

Elegance Plus ...

private dressing rooms, walk-in closets  
and two telephones in all rooms and  
suites; free valet parking

Elegance Plus ...

Great location; 2 blocks to the  
Superdome, 1 block to Medical Center,  
3 blocks to Central Business District,  
6 blocks to French Quarter and the  
Civic Center and Oil Center are right  
across the street

Elegance Plus ...

fabulous New Orleans cuisine and  
Continental dishes

---

**the warwick**  
HOTEL

MAIL COUPON FOR BROCHURES AND  
SPECIAL PACKAGE INFORMATION.

NAME \_\_\_\_\_

ADDRESS \_\_\_\_\_

CITY \_\_\_\_\_

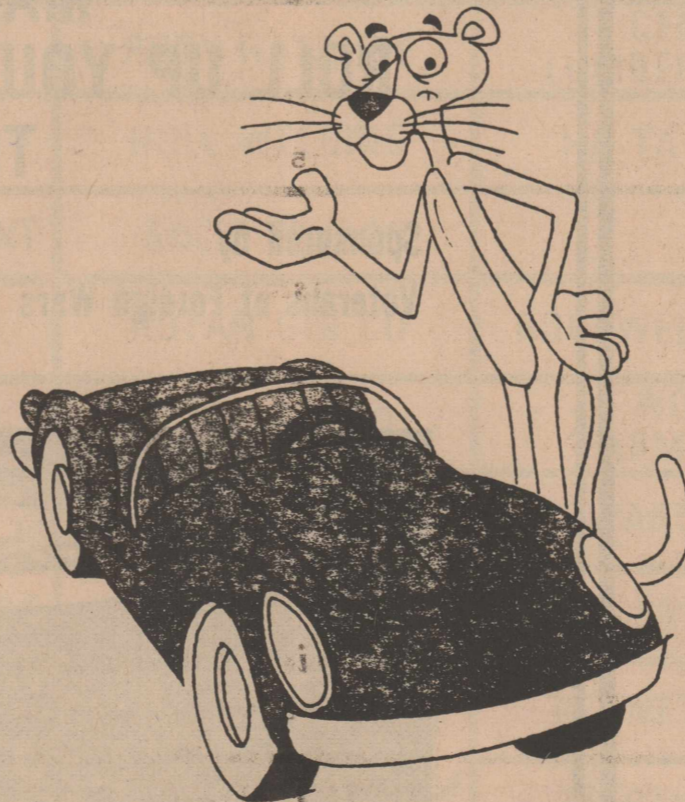
STATE, ZIP \_\_\_\_\_

1319 Gravier Street  
New Orleans, La. 70112  
504-586-0100  
Telex 511000  
1-800-541-9344

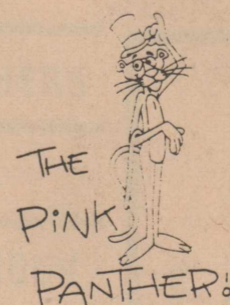
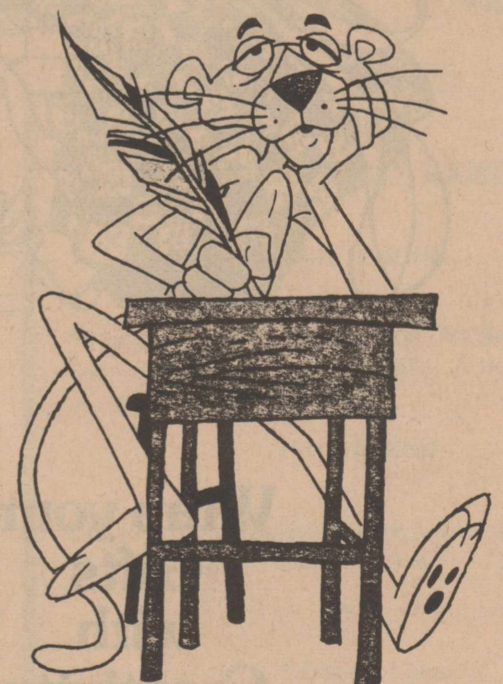
## See Our NEW Selection Of



FOR YOUR BIRTHDAY,  
HOW WOULD A NEW  
SPORTS CAR  
SOUND?



JUST A CARD  
TO LET YOU KNOW  
WHAT'S HAPPENING...



**ONLY  
AT  
THE**

**NEWSPAPER OFFICE**

STORE HOURS: 9:00 am-5:00 pm

"A Full Line Of Office Supplies & Gifts"

735-2562

Rotan, Texas



### Farm-Ranch Management Courses Set

The Farm-Ranch Management Department at Western Texas College will offer two evening courses during the 1978 spring semester.

Artificial Insemination and Palpation (FRM 236) and Fundamental Ranch Management II (FRM 164) are the courses. Both will be offered from 6-10 p.m. on Tuesdays, with labs to be arranged on an individual basis.

Registration for evening classes is scheduled from 6:30-9 p.m. on Monday (Jan. 16). Registration for day or evening students is planned from 8 a.m. to 5 p.m. on Monday and Tuesday.

A.I. and Palpation will offer instruction in reproductive anatomy and physiology, semen evaluation, and artificial insemination of cattle, sheep, swine, and horses. Disease and nutritional aspects pertaining to reproduction will also be covered. Instruction and lab work in palpation of cattle for pregnancy determination will be conducted as well as actual insemination of cattle when possible.

Fundamental Ranch Management II will include the material to be covered A.I. and Palpation and additional information in animal health and nutrition, breeding programs, range plant identification, and grazing management.

Persons interested in information about these courses or others may contact Kent Mills at Western Texas College, or may call him at 573-8511, extension 226.

### Hustlin' Round Hobbs

By Mrs. Jimmy Walker  
Hobbs, Texas 735-2840

Well we got a little shower Sunday night, but just enough to settle the dust. We sure could use a good rain but am afraid its too cold for that. Maybe it will snow this cold spell.

Not too much news this week, as everyone as been staying close to home as its been so cold.

Mr. and Mrs. D.H. Hornsberger from Sweetwater spent Thursday visiting with Mr. and Mrs. J.D. Kincaid.

Mr. and Mrs. Charles Chism and Stanley from Odessa spent the weekend visiting with Mr. and Mrs. Dale Cave.

Mr. and Mrs. Morris Hardin, Vicky and Todd from Lubbock spent Saturday night and Sunday with Mrs. Bea Hardin. Sunday they all ate dinner with Mr. and Mrs. J.A. Barnes at Rotan.

Mrs. Clarence Anderson's mother, Mrs. Hopp, has been in the hospital at Snyder, but she is improving and we hope to hear that she will soon begin to feel lots better.

J.C. Cave still doesn't feel very good, but he is lots better than he was.

Our deepest sympathy goes out to Mr. and Mrs. Bunk Casey on the death of Bunk's mother, Mrs. Eula Casey Garrison, last week.

Happy Birthday to Cecilia Martinez, daughter of Mr. and Mrs. Joe Martinez from all her family.

Well thats about all for this week. Some of our folks have gone to the stockshow at Abilene, and some of the farmers out this way are going to Washington this coming weekend. See you all next Thursday.



**ALL TOURNEY:** Revis Ann Cauble, daughter of Mr. and Mrs. Keifer Cauble of Roby, was named to the All tournament team as a guard at the recent Blackwell-Divide Tournament at Roscoe.

**"Do-it-yourself" Ad for U.S. Savings Bonds.**

If you want it done, you gotta do it yourself. Do what? Well, save for a college education, vacation, or even a down payment on a new home.

How do you do it? With U.S. Savings Bonds, the Payroll Savings Plan, and the chart below.

So, take pen in hand and fill in the blanks.

My dream is \$\_\_\_\_\_

If I joined the Payroll Savings Plan and set aside \$\_\_\_\_\_ each week, I could save enough to make my dream come true in \_\_\_\_\_ years.

Now you know how much and how easily you can save by buying Bonds through the Payroll Savings Plan.

So, why not sign up today?

After all, nobody's gonna do it for you.

Weekly Savings	1 year	3 years	5 years	15 years
\$ 1.25	\$ 7.37	\$ 22.51	\$ 36.47	\$ 124.31
2.50	14.74	45.02	72.94	248.62
3.75	22.11	67.53	109.41	372.93
5.00	29.48	90.04	146.28	497.24
6.25	36.85	112.55	183.15	621.55
7.50	44.22	135.06	220.02	745.86
8.75	51.59	157.57	256.89	870.17
10.00	58.96	180.08	293.76	994.48
11.25	66.33	202.59	330.63	1118.79
12.50	73.70	225.10	367.50	1243.10
13.75	81.07	247.61	404.37	1367.41
15.00	88.44	270.12	441.24	1491.72

\*Based on present interest rate.

### Etheredge High In Hobbs Loss To Loraine

Continued From Page 1

The Hobbs high school boys were defeated by the Loraine boys on Friday, Jan. 13, in a game played at Hobbs.

Those scoring for Hobbs were Randy Etheredge 14, Mark Anderle 22, Parfirio Molano 4, and Johnny Medrano 7.

scores by quarters:  
Hobbs 10-9-19-9-47  
Loraine 10-28-14-16-68

Roberts has served as Justice of the Peace of Precinct 3 for the past four and one-half years.

In his announcement statement Roberts indicated that he wanted to express his appreciation to those that have supported him in the past and asked continued support in his bid for re-election.

He will have a detailed statement to the voters prior to the primary election.

**SHUGART COUPON**  
WINNS 110 W. Snyder  
**Wednesday February 1st**

**9**  
WALLET SIZE  
COLOR PORTRAITS  
**99¢**

ASK About Our  
**FREE**  
8 x 10  
OFFER

Extra charge  
for  
GROUPS

### Card of Thanks

We would like to thank everyone that has helped us financially and otherwise since our home caught fire last week. Thank you to all the girls I work with at

Fisher County Nursing Home, and a special thanks to Madie Jones for her help. We really appreciate you all.

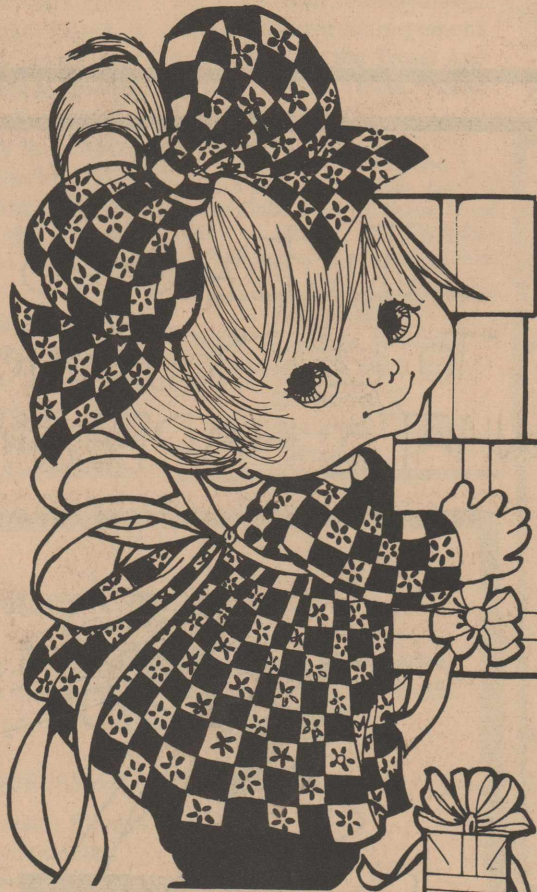
Ray and Reyna Garcia

**Getting Old**  
You're getting old when you have to find your hearing aid to ask for your glasses.

**Saving Words**  
If you're a man of few words, you won't have to take so many of them back.

**Preventing Mold**  
To prevent mold on cheese, wrap in a cloth dampened with salt water before refrigerating.

**Substituting For Cream**  
If you're out of cream and need some for a favorite recipe you can substitute: 3 tablespoons of butter and 1/8 cup of milk for each cup of cream.



Wrap your Gifts with Creativity

**NEWSPAPER OFFICE**

735-2562

Rotan, Texas

# WIN A fun trip for two!

**A Bermuda Bash...** 5 days under the sun, 4 nights under the moon . . . in BEAUTIFUL BERMUDA! Dallas departure in early May, 1978.

Just register at any participating Bull Parts FUL-LINE ASSOCIATE thru March 17, 1978, no purchase necessary. YOU may be the LUCKY WINNER.

**SHOP FUL-LINE!** Buy the best for less—from professional auto parts people who know the products they're selling. You'll like their brands . . . and their brand of service.

Dissolve engine grease and grime—fast!  
**B-33 ENGINE CLEANER/DEGREASER**

Just spray on, let soak in, and hose off. Also great for cleaning concrete driveways, farm machinery, lawn mowers. Contains no fluorocarbons.  
Part #B-33 (16 oz.) Mfg. Sugg. List \$2.49



**SALE!**  
YOUR CHOICE  
**99¢**  
EA.



In the oil . . . in the gas  
**B-12 CHEMTOOL**  
Cleans Carburetor, Crankcase, Automatic Transmission  
Instantly dissolves gum, varnish deposits for better performance and mileage.  
Part #BX-100 (Pint) Mfg. Sugg. List \$2.76

**CITY AUTO SUPPLY**

735-2242  
216 W SNYDER  
ROTAN



# The Canal's Ours

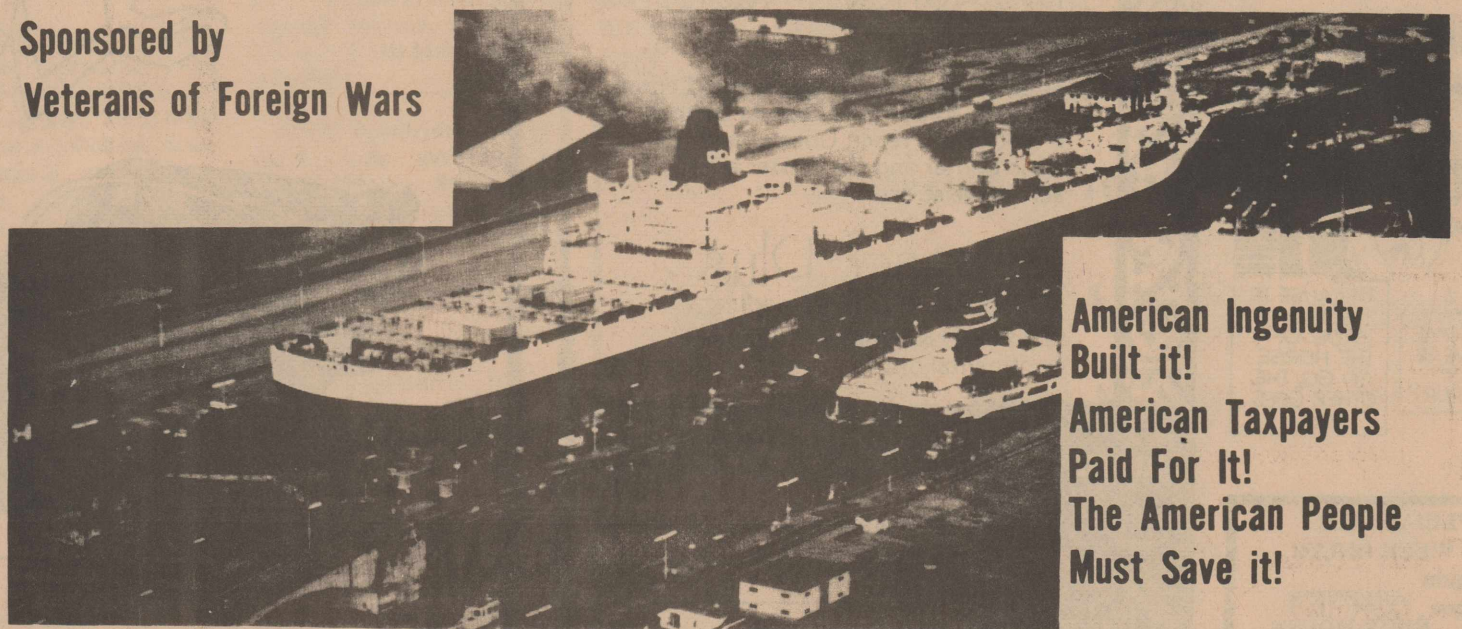
Don't Let Them Take it Away  
**IT'S UP TO YOU!**

The Veterans of Foreign Wars is absolutely against any treaty that weakens U.S. control of the canal, its use, its ownership or U.S. sovereignty over the canal zone. All the polls say the American people are too.

Make sure your senators and representatives know you oppose the treaties. This issue is vital to American security and commerce — write them today — tomorrow may be too late. Don't let your senators vote on ratification without hearing from you now.

**MAKE YOUR VOICE HEARD  
ROLL UP YOUR SLEEVES, GET INTO THE FIGHT  
TO SAVE YOUR CANAL**

Sponsored by  
Veterans of Foreign Wars



**American Ingenuity Built it!  
American Taxpayers Paid For it!  
The American People Must Save it!**



## Grandparents' Corner



Kendra Kay Kiser, age 8 mos., is the daughter of Mr. and Mrs. Cecil Kiser, Jr. of Roby. Grandparents are Mrs. Eva Wilson of Bangs and Mr. and Mrs. Cecil Kiser, Sr. of Sylvester.

## Coach Barnes Comments

Rotan's district record is 3-2, overall 15-9. We had a very bad first half, just could not get a shot off without it being pushed back down in our face. If there is no contact made on a blocked shot then it is just basketball, but there was contact made and officials failed to call it in the first half and it took a lot out of the playing performance of our players.

Crowell has a fine team and I do not degrade their style of play but a foul is a foul which the rule book states very clear. A blocked shot is fine but when body contact is made while blocking a show, then a foul should be called. If I was the only coach in the district that was complaining about the officiating at Crowell then I would not say anything, but I am no.

We need to continue to improve and be ready for these last 9 games in district. A team can lose the first half, come back and win the 2nd half then have a playoff game with the first half winner for district championship. We play Hamlin and Crowell in our own gym the second half so we still have a chance to win district. We still have to play Knox City and Paducah this first half and must not lose another game.

In the Crowell game, Charee Smith led the scoring with 12 points. Cindy Weathersbee had 7 points and Ann Gentry 6 points. Blanch Gentry led in the steals with 9, Cheryl Jones had 6 steals, Ann Gentry 2 and Melody Walker 1. Charee Smith led rebounding with 3, Blanche Gentry and Ginger Duke each had two, Jones, A. Gentry and Tina McCombs each had one rebound.

In the Junior High game at Snyder Jan. 12 the teams upped their records to 9-0 for the 8th grade and 8-0 for the

7th grade.

We had very close games against Snyder's two 8th grade teams. The 8th grade score was 28-20 and 7th grade score was 27-23.

We need to play games away from home because it teaches the kids how to perform in somebody else's gym. They need to do this lots in junior high school and become a more relaxed player outside their own gym. Waiting until they get to high school is too late. They will be much better players when they get to high school if they play a lot of out of town games. Kids learn a great deal from these games.

## Visitors Are Listed To Cardwell Funeral

Out of town visitors attending the funeral service of Mrs. Irene Cardwell were Charles and Hattie Alexander and Lawrence Alexander of Abilene; Don and Billie, Martha J. and Melissa Randolph and Dona and Mike of Humble; Arlene Edmonson, Humble; Mr. and Mrs. J.S. (Bill) Jordan, Hamilton; Mrs. Berta Whitt and Phillis Almond, Llano; Mr. and Mrs. Noiell Cardwell and Rickie Tegg, Port Neches; Sueella and Sammy Hudson, Amarillo; Juanita West, Hanat, Utah; Bill and Dot Matlock, Little Rock, Ark.; Mr. and Mrs. Sam Edmonson, Irving; Mrs. Calvin (Linda) Dumlop, Kermit; and Mrs. Charlie (Janell) Brown, Sweetwater.

Mrs. Don Randolph taught science in Roby High School for several years. She is now the head of the Science Department at Humble and supervises fifteen teachers.

## PUBLIC NOTICE

### Statement of Intent to Change Rates

In accordance with Article III, Section 43 of the Public Utility Regulatory Act and Section 4, Rule 052.01.00-043, paragraph (a), (2), (A) of the Rules of Practice and Procedure of the Public Utility Commission of Texas, Continental Telephone Company of Texas hereby notices its intent to change rates effective February 3, 1978.

designed to increase Continental's gross intrastate revenues by approximately 7.1 percent per year.

A complete copy of the new rate schedule is on file with the Public Utility Commission at Austin, Texas. The new rate schedule is also available for public inspection in each of Continental's business office locations in Texas.

Continental Telephone Company of Texas 48-4tc

Church School	9:30
Morning Worship	10:30
Evening Worship	6:00
Johnny Robertson Pastor	
First United Methodist Church	
209 N. McKinley	Rotan, Texas

## Kathy King Is High Pointer In Lion Game

The Roby girls lost their second district ballgame to Highland by the score of 47-26. Scoring for Roby were Kathy King 13 points, Darlene Herron 5, Penny Coker 4 and Jill Wright 4 points.

Fine defensive performances were turned in by Donna Hataway, Kathy Deaton, Lois Ann Cauble, Sylvia Gaona, Jan Wright and Debbie Stuart.

## Judy Doyle To Get degree At HSU

Mrs. Judy C. Doyle of Rotan, daughter of Mr. and Mrs. Ivin Martin of Roby, completed requirements for graduation at the close of the 1977 fall semester at Hardin-Simmons University.

Mrs. Doyle will receive the bachelor of science degree at Sunday, May 7, commencement exercises since no ceremonies are held in December.

## Mark Pope High In Roby JV Loss To Highland

The Roby JV lost to the Highland JV last week by the score of 35-28. Mark Pope led the scoring for Roby with 11 points. The Roby JV team has been consisting of freshmen, Scott Thomson, Mark Pope, John Morgeson, James Streety, Gordon Maberry and Kenny Martin. Ivan Linbaugh and Gary Huffman joined the team this week, they just moved to Roby from Oklahoma.

## Hospital News

Admissions to Fisher County Hospital, January 10-16, 1978.

John Campbell, Sweetwater; Brenda Rackley, Oran Shelley, Ethel Adams, Mabel Alls, Thaddie Wilson, Vivian Williams, James Yarbrough, Annie B. McGrew, Bill Starnes, Adrain McClain, Rotan; Keith Matthews, James P. Davis, Grace Cunningham, Melvin Thomson, Alma Smyrl, Roby; Jason Dunham, Jayton; Shelby Edgar, Guthrie; Linda Burk, McCaulley; Mary McClain, Callie Jones, Sylvester.

## Hobbs Boys Lose To L.A.

The Hobbs High School boys played the Lueders boys on Tuesday night, Jan. 10, at Hobbs. Final score was Hobbs 57, Lueders 88.

Those scoring for Hobbs were Randy Etheredge 21, Mark Anderle 11, Parfirio Molano 14, Johnny Medrano 1, Jeff Anderle 1, Don Denman 1, David Etheredge 2, and Walter Cave 6. Scores by quarters: Hobbs 13-12-8-24-57 Lueders 15-31-22-20-88

## Funeral Service

### Charlie Starnes

Charlie Starnes, 78, of Rotan died at 10:30 p.m. Monday, Jan. 9, in Fisher County Hospital after a lengthy illness. Services were held at 2 p.m. Wednesday, Jan. 11, in Weathersbee Funeral Home Chapel.

## Three Arrested In Farmers Union Gin Break-In

All three individuals have been arrested in connection with the December 7th breakin at the Farmers Union Cooperative Gin in Roby, according to Sheriff Mickey Counts.

Two of the individuals were juveniles and were turned over to the custody of their parents. One was a Roby resident while the other listed his home as Robstown, Texas.

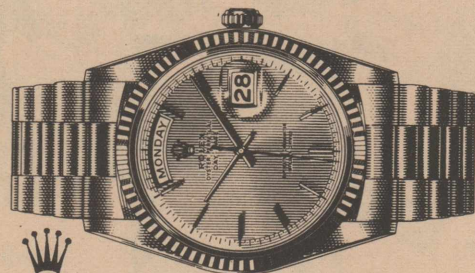
Jerry C. Solesbee, age 17, of Ruidoso, New Mexico, was arrested and is currently in the Fisher County Jail awaiting trial.

The individuals allegedly took approximately \$15,000 and a safe from the gin on the night of December 7, 1977. Only \$1,000 of the \$2,300 in cash that was in the safe was recovered.

### JOIN OUR SERVICES

Sunday 11:00 a.m.-7:00 p.m. Channel 2 First Baptist Church

WHEN ONLY THE BEST IS GOOD ENOUGH



ROLEX

This is the Rolex Day-Date, with matching President bracelet, hallmark of success among statesmen, sportsmen, scientists. Its renowned Oyster case, hewn from a solid block of 18kt. gold or platinum only, houses a 30-jewel self-winding chronometer movement, guaranteed pressure-proof down to 165 feet.

Cox Jewelry

SWEETWATER, TEXAS

## Fisher County Nursing Home

The First Baptist Church brought the Sunday morning service and the Methodist Church brought our Sunday evening service. We thank each one involved in bringing these services.

Lois Rodgers came on Thursday for our Bible Study Class as she does when Bro. Rodgers cannot be here. We appreciate her so much.

Bingo winners this week were Sam Shaw, Lulline Blount, Alice Sutton, Grace Edwards, Alva Teague, Sadie Cross and Rector Brown. This week Amalie Martin will celebrate her 103rd birthday.

Those visiting Grace Edwards were G.W. Fincha and daughters of San Angelo, Edith Everhart of San Angelo, Jess and Inell Goforth of Roby, and Jimmie and J.T. Palmer of Roby.

Lunette Goforth visited her mother Vevie Barnes as she does every week. J.W. Owens of Dallas visited his grandmother Lizzie Owens.

Mrs. Lucille Biers of Sweetwater visited her fa-

ther Homer Lawlis and Beulah Moffett.

Bill Hardy of Rotan visited with several residents here.

Jean Huckaby of Big Spring and her children visited Hilton and Sadie Cross.

We welcome those who would like to come by for a visit.

## Card of Thanks

The family of Albert Neely would like to express their appreciation and thanks to everyone who expressed sympathy in so many generous ways. A special thanks to the pastor

and members of Cross Roads Baptist Church. Everyone of you made our loss easier to bear. God bless you.

Pearl Neely Mr. and Mrs. Billy Eaton and family

We're not a bank. That's why we pay more on federally insured savings!



SWEETWATER ROTAN ROSCOE HAMLIN COLORADO CITY

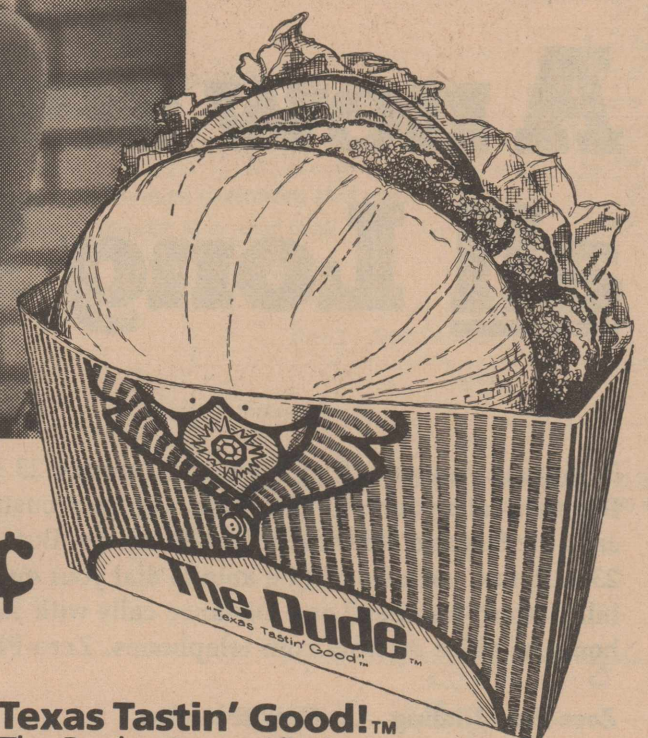
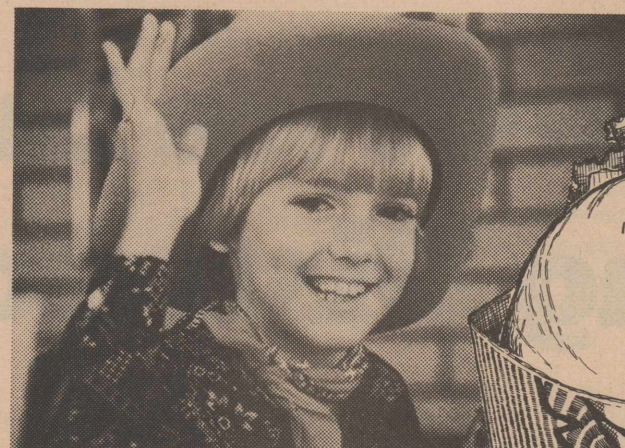
### EARNINGS COMPOUNDED DAILY ANNUAL RATE ANNUAL YIELD\*

7.75%	6 Year Cert.—\$1,000 min.	8.06%
7.50%	4 Year Cert.—\$1,000 min.	7.79%
6.75%	30 Mo. Cert.—\$1,000 min.	6.98%
6.50%	1 Year Cert.—\$1,000 min.	6.72%
5.75%	90 Day Cert.—\$1,000 min.	5.92%
5.25%	Passbook—\$5 min.	5.39%

\*based on daily compounding of earnings for 12 months. A substantial interest penalty is required for early withdrawal of certificate accounts.



# SALES The Dude



79¢



Texas Tastin' Good!™ The Dude. Countrified, chicken-fried meat, crisp fresh lettuce, and red, ripe tomato on a golden bun.

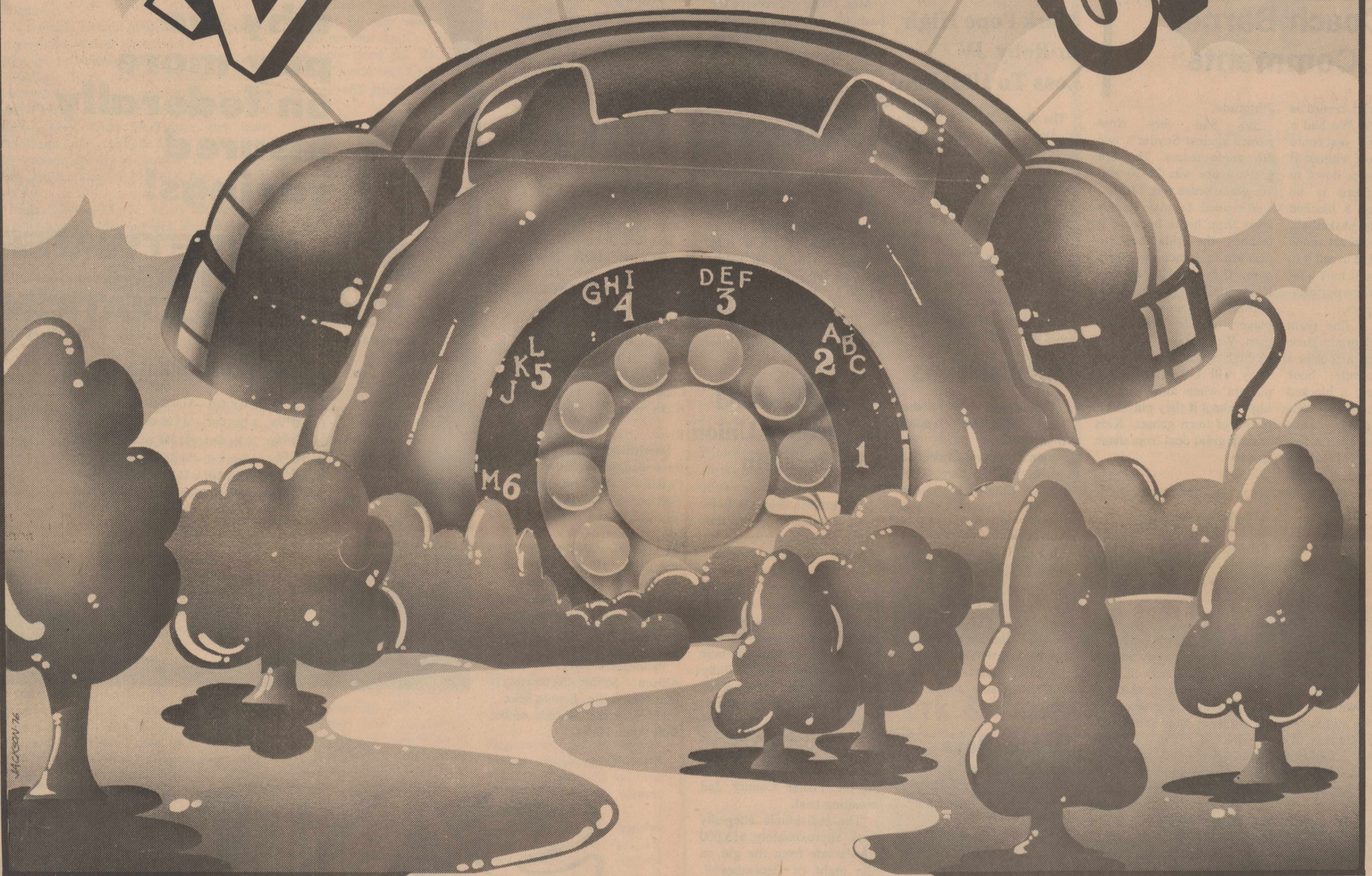
Tuesday thru Sunday January 17 thru 22 only.

Only at participating stores.



Introducing another plus from us

**ZERO-PLUS**



**A new service that allows you to dial all Long Distance calls yourself.**

Beginning January 19 in Roby and January 23 in Rotan, you will be able to dial all Long Distance calls yourself. Of course, you're accustomed to dialing your own station-to-station calls the fast and convenient One-Plus way. But, beginning January 19 in Roby and January 23 in Rotan, you also will be able to dial your own collect, person-to-person, credit card and bill-to-third-number Long Distance calls with Zero-Plus dialing. Zero-Plus can be used at home or office or from coin telephones. Zero-Plus is fast, easy and convenient.

**Zero-Plus Dialing . . . How it works:**

Just dial "0" (zero), plus the Area Code if it's different from 915, plus the distant number. For example, suppose you want to call person-to-person to 621-8997 in St. Louis. You will find St. Louis in the Call Guide section of your directory with Area Code 314. So when you hear the dial tone, dial:

"0" [zero] + 314 + 621-8997 .

When the operator asks, "How may I help you?", explain the type call you've dialed and give the necessary information. (Regular operator-handled rates will apply for all Zero-Plus Calls.) To make a call within the 915 area, just dial "0" (zero) plus the distant number. You don't need to dial the Area Code.



**Southwestern Bell**





Mrs. David Branch

## Regina Gruben, David Branch Vows Are Read

Regina Nell Gruben and David Ray Branch were united in marriage in a double ring ceremony Sunday, January 1, at 4:00 in the home of the bride with Rev. John Branch of Garland, brother of the groom, officiating.

The bride is the daughter of Mrs. Christine Gordon and the late Eugene Gruben. The bridegroom is the son of Mr. and Mrs. Walter Branch of Hamlin.

Forming the background for the ceremony were baskets of white mums and baby's breath, a candelabra with blue tapers and a wedding candle surrounded with blue carnations, signifying unity.

The bride wore a gown of ivory silk organza over satin trimmed with seed pearls and lace. The skirt of the gown formed a train. Her train length veil was trimmed with pearls and lace. She carried a bouquet of white carnations on a white Bible, a gift from her mother.

Sharon McGee of Rochester was matron of honor. She wore an empire gown of blue dotted Swiss and a picture hat. She carried a blue carnation.

Darryl McGee of Rochester was best man.

Sherry Whitten of Hamlin registered guests.

The bride's mother hosted the reception in the home. The table was laid with a white cloth centered with a silver candelabra with blue tapers surrounded with blue carnations and the bride's bouquet. The three-tiered wedding cake was encircled with blue flowers and wedding rings, and topped with a bride and groom. Presiding at the table was Lana Hall of Roby and Beverly Carter of Hamlin.

Following a wedding trip to Dallas the couple will

make their home in Rotan. The bride is a 1977 graduate of Hobbs High School and attended Western Texas College, Snyder.

The bridegroom is a 1970 graduate of Anson High School. He attends Western Texas College at Snyder and is employed at Rem's Machine Shop.

## Weather

From the Record of FRED BYERLY  
Rotan Weather Observer

Jan.78	Prec.	Hi	Lo
Tue.10		24	14
Wed.11	.02	30	21
Thur.12		35	25
Fri.13		57	23
Sat.14		43	19
Sun.15		60	25
Mon.16	.11	55	20
Total		.13	

Total precipitation to date: 1977 .....45  
1978 .....13

## Publishers

### Set Meeting For Textbooks

On Tuesday, January 24, there will be a meeting of publishers of state adopted textbooks and suppliers of other instructional materials. The meeting will be from 8 a.m. to 5 p.m. in the Exhibit Hall of Abilene Civic Center, 1100 North 6th Street.

Representatives from the companies whose books were adopted in November will be on hand to make presentations. Textbook committees, advisory committees, and faculties and staff members of the 54 school systems in the 13 county area served by Region 14 Education Service Center have been invited to attend. The meeting will be open to any private citizen who wishes to attend.

## County Extension Agent

HOME ECONOMICS  
By Alice Ballenger

776-2171 Court House Roby, Texas

Food cost-cutting ideas take informed consumers and imagination—with an eye on family likes and dislikes.

Some of the most economical cost cutting guidelines focus on poultry, dairy products and other meat-buying strategies. They include the following: Use turkey in a variety of ways. Generally larger birds are better buys with more meat in relation to bone. Use only a portion at first; save the rest for later. To save the rest for later, turkey can be frozen uncooked or cooked. Uncooked poultry maintains a desirable flavor and texture longer in freezer storage than cooked poultry, however.

If buying a frozen bird, thaw it in the refrigerator just enough to cut it up. Then package uncooked parts in meal-size packages and freeze immediately for later use. Or cook the whole bird,

then cut up the meaty parts and use as sliced roast turkey. Then freeze.

Ideas for preparing uncooked turkey parts frozen for later include braising the legs and thighs in a little liquid for a "different" main-dish item. Also, slice an uncooked turkey breast across toward the bone, flour the slices and fry them—as a substitute for veal cutlets.

In addition, cover the bones and boney parts of cooked or uncooked turkey with water and boil. Use the broth for soup, gravy or in sauces to season casseroles. The meat that cooked off the bones is used in salads and casseroles.

Remember that whole broiler fryers are often less expensive than quartered or cut-up chicken.

Cut them up at home to suit needs. Cut whole breasts into four or six pieces, so everyone has a part.

Chicken and dumplings uses the whole bird and stretches the chicken flavor further.

Buy parts of chicken instead of the whole chicken if the price per pound is low enough. Chicken breasts can cost up to 49 percent more per pound than broiler-fryers and still provide more meat for the money. Thighs and legs can cost up to one-third more per pound.

In meat buying, think about "cost per serving". Compare costs of meat, fish and poultry with that in mind. More expensive cuts—with less waste—are often better buys.

Boneless lean meat, fish and poultry give three or four servings per pound. Steaks, chops, fish steaks and cut-up chicken parts give only two to three servings. Whole fish, spare-ribs, chicken wings and other fatty or boney meats give only one to two servings per pound.

Remember to slice cheese and luncheon meat at home, since pre-sliced is more

expensive than buying by the chunk.

To save on dairy products, use non-fat dry milk as a coffee cream substitute.

Also, for those who prefer the richness of whole milk, mix reconstituted non-fat dry milk together with whole milk in a half-and-half combination. Since non-fat

dry milk usually costs one-third less than fresh milk, the half-and half mix saves money.

Remember frozen orange juice usually costs less than canned, bottled or fresh squeezed orange juice.

Use less expensive canned mackerel in casseroles rather than tuna, or mix the two.

## Two Arrested In Burglary Of Ogden Groc.

Fisher County Sheriff Mickey Counts reported last Tuesday morning that he had arrested two men and charged them with aggravated robbery in connection with the December 3, 1977 burglary at Ogden's Grocery Store in Rotan.

Counts said that Richard McCann, a black male age 21, and James Ray Pickett, a white male age 40, had been charged with the armed robbery. The men, according to the Sheriff, used a .32 caliber Smith and Wesson revolver and fled Ogden's with \$220.00 in cash in that armed robbery.

Pickett was in the Fisher County Jail on a DWI charge and McCann was arrested on January 16th and placed in the Sweetwater City Jail awaiting transfer to Fisher County.

Both men had prior arrests for armed robbery.

The incident was investigated by the Fisher County Sheriff's Department and Texas Rangers.

**WATCH SERVICES**  
FIRST BAPTIST CHURCH  
Sunday  
11:00 am-7:00 pm  
Channel 2

\*\*\*\*\*

**Wednesday February 1st**

9.99¢

KING SIZE WALLET CREATIVE COLOR PORTRAITS FOR ONLY

Kodak paper. For a Good Look at the Times of Your Life.™

GET 1 FREE WALLET WHEN YOU BUY 9 FOR 99¢

ORDER EASTER PICTURES

NO LIMIT

Extra Charge for GROUPS WE USE KODAK PAPER

GET PICTURES MADE OF GRANDPA, GRANDMA, DAD, MOM AND ALL THE LITTLE ONES AT THESE SAME LOW PRICES!

SHUGART COLOR PHOTOS WINNS

110 W. SNYDER

ASK About Our FREE 8 x 10 OFFER

Sale \$32.95

**TORCH KIT** Reg. \$36.95

9 ft., 12 ft., 18 ft

Electric **HEAT TAPES**

Rolls Foil and Foam **PIPE WRAP**

3' Sticks 1/2" & 3/4" Fiberglass Insulation

ROCKWELL BROTHERS & CO.

Rotan, Texas 735-2431

Comptroller of the Currency  
Administrator of National Banks

### REPORT OF CONDITION

Consolidating domestic subsidiaries of the  
Consolidating domestic and foreign subsidiaries of the  
*The First National Bank* of *Rotan* City

delete whichever caption is inapplicable

In the state of *Texas* at the close of business on *December 31*, 1977  
published in response to call made by Comptroller of the Currency, under title 12, United States Code, Section 161.

Charter number *8693* National Bank Region Number *11*

NAME OF BANK: *The First National Bank of Rotan* CHARTER NUMBER: *8693*  
**BALANCE SHEET** at the close of business on *December 31*, 1977

INFORMATION ABOVE LINE NOT TO BE PUBLISHED  
Statement of Resources and Liabilities

Thousands of dollars

		THOUSANDS	
ASSETS	Cash and due from banks	2 322	
	U.S. Treasury securities	3 817	
	Obligations of other U.S. Gov't. agencies and corps	2 248	
	Obligations of States and political subdivisions	3 219	
	Other bonds, notes, and debentures	none	
	Federal Reserve stock and corporate stock	9	
	Trading account securities	none	
	Federal funds sold and securities purchased under agreements to resell	1 800	
	Loans, Total (excluding unearned income)	4 961	
	Less: Reserve for possible loan losses	147	
	Loans, Net	4 814	
	Direct lease financing	none	
	Bank premises, furniture and fixtures, and other assets representing bank premises	91	
	Real estate owned other than bank premises	none	
	Investments in unconsolidated subsidiaries and associated companies	none	
Customers' liability to this bank on acceptances outstanding	none		
Other assets	3		
<b>TOTAL ASSETS</b>	<b>18 323</b>		
LIABILITIES	Demand deposits of individuals, prtshps., and corps.	9 169	
	Time and savings deposits of individuals, prtshps., and corps.	6 207	
	Deposits of United States Government	52	
	Deposits of States and political subdivisions	1 496	
	Deposits of foreign govts. and official institutions	none	
	Deposits of commercial banks	none	
	Certified and officers' checks	65	
	<b>TOTAL DOMESTIC DEPOSITS</b>	<b>16 989</b>	
	Total demand deposits	9 728	
	Total time and savings deposits	7 261	
	Total deposits in foreign offices	none	
	<b>TOTAL DEPOSITS IN DOMESTIC AND FOREIGN OFFICES</b>	<b>16 989</b>	
	Federal funds purchased and securities sold under agreements to repurchase	none	
	Liabilities for borrowed money	none	
	Mortgage indebtedness	none	
Acceptances executed by or for account of this bank and outstanding	none		
Other liabilities	none		
<b>TOTAL LIABILITIES (excluding subordinated notes and debentures)</b>	<b>16 989</b>		
EQUITY CAPITAL	Subordinated notes and debentures	none	
	Preferred stock No. shares outstanding <i>none</i> (par value)	none	
	Common stock a. No. shares authorized <i>1000</i>	100	
	b. No. shares outstanding <i>1000</i> (par value)	100	
	Surplus	200	
	Undivided profits	200	
	Reserve for contingencies and other capital reserves	834	
	<b>TOTAL EQUITY CAPITAL</b>	<b>1 334</b>	
	<b>TOTAL LIABILITIES AND EQUITY CAPITAL</b>	<b>18 323</b>	
	MEMORANDA	Average for 30 calendar days ending with report date:	
		Cash and due from banks	2 744
		Fed. funds sold and securities purchased under agreements to resell	1 340
		Total loans	5 093
		Time deposits of \$100,000 or more in domestic offices	201
		Total deposits	16 391
Fed. funds purchased and securities sold under agreements to repurchase		none	
Liabilities for borrowed money		none	
<b>TOTAL ASSETS</b>		<b>18 307</b>	
Standby letters of credit (outstanding as of report date)		none	
Time certificates of deposit in denominations of \$100,000 or more (outstanding as of report date)		201	
Other time deposits in amounts of \$100,000 or more (outstanding as of report date)		none	

I, Phil Springer  
Name  
Vice President  
Title

of the above-named bank do hereby declare that this Report of Condition is true and correct to the best of my knowledge and belief.

Phil Springer  
Signature  
January 12, 1978  
Date

We, the undersigned directors attest the correctness of this statement of resources and liabilities. We declare that it has been examined by us, and to the best of our knowledge and belief is true and correct.

[Signatures]  
Directors

Fashion FABRICS

ROBY

Flower, Fabric & Gift Shop

ROBY 776-2613  
P.O. BOX A NIGHT



# Deb's Feathered Quill

By Debbie Stuart  
776-2740

Hi, well maybe things will continue to look up and we will get some rain.

J.P. Davis is in the Fisher County Hospital and I am sure he would enjoy a visit or card from anyone. Mr. Darrell Williams of Blackwell, formerly a Roby math teacher, is in the West Texas Medical Center in Abilene. He is in room 129 if anyone would like to drop a card to him or stop by and see him. He would enjoy the company. Nancy Clark has been transported from Fisher County Hospital to the Golden Haven Rest Home in Roby. She is reported to be doing fine after having a broken hip. Mrs. Louella Flynn is home recovering well from surgery in M.D. Anderson Hospital in Houston. I hope all these people continue to get better.

The Highland girls basketball team defeated Roby at Roby last Tuesday evening. The Roby boys team took the victory over Highland boys though.

Visiting in the home of Dr. and Mrs. Wilkinson the weekend of January 7 and 8th were Mr. and Mrs. Pat Wilburn and children of Carlsbad, New Mexico, and Dr. and Mrs. John Wilkinson of San Antonio.

Max and Lorene Stuart are getting a new Oldsmobile Toronado that they will be sporting around town in later this week.

The Roby girls and boys basketball teams hosted Hermleigh in game last Thursday evening. Roby was victorious in both games.

"I don't know of a single foreign product that enters this county untaxed except the answer to prayer."

Happy Birthdays go to Vanessa Hardwick and Kindra Kiser on Jan. 13; LaVelle Terry, LaNell Chandler of Irving, Allen Goforth, Harmon Holcomb Jr. and Debbie Stuart on January 14; Carmen Carreon on Jan. 15; Dixie Whitfill, Chad Ballenger of Roscoe, Mrs. Willa McWhirter and Jason Walker on Jan. 16; Susan Gaona, LaVelle Stuart and Belynda Stuart on Jan. 21; Victoria Ramon on January 23.

Happy Wedding Anniversary to Mr. and Mrs. Richard Stuart on January 11.

Mr. and Mrs. Scott Presley, Chyrle, Misty and Rocky of Seminole visited in the home of Mr. and Mrs. John Kiker and Mr. and Mrs. Gene Shipp and family for a few hours Saturday.

Mr. and Mrs. Glendal Ballenger, Mark and Chad of Roscoe visited with Mr. and Mrs. Joe Ballenger Sunday.

I was suprised with a Sweet 16 Birthday party Saturday night in the home of Mr. and Mrs. Buster Palmer. Those attending were Coese Palmer, Carole Stuart, Tammie Sparks, Becky LeBleu, Leslie Carey, Pat Cleveland, DeLane Sparks, Jackie Shipp, Mark Cade, Randy Sparks, Belynda and Sharron Stuart and Sue Hall.

Mrs. Neomi Cauble, Aubrey Nell, and Kiefer Cauble have just returned from a one week trip with 185 other "Men For Missions International People" to several of the islands in the Caribbean. The highlight of the trip was a tour of the Mission compound in Cap Ahatien Haiti and an outdoor worship service attended by about 5,000 native Haitians, Missionaries and Men For Mission International People.

The Farm Strike movement group of this area has been coming along real well. There is a group of 38 men and women leaving for Washington on Saturday, Jan. 21, to meet with Congress. A group of farm wives have been meeting to help in the telephone campaign. They are trying to call everyone in the Roby-Rotan telephone book and ask that everyone write the Chairman of the House Committee on Agriculture or one of the people under him, and request support for the farmers. If you have failed to be called you can help by writing one of the people listed, if you support the farmer strike you can help by doing this: Democrat from Washington, Thomas S. Foley, Chariman of House Committee on Agriculture, 1201 Longworth Building, Washington, D.C.; Democrat From Texas, W.R. Poage-Vice Chairman, 2107 Rayburn Building, Washington, D.C.; Democrat from Texas, Jack Hightower, 120 Cannon Building, Washington, D.C.; Democrat from Texas, E.Dela Garza, 1434 Longworth Building, Washington, D.C. This is not just for the people of this area, anyone can help. The people who live in other towns and states that receive this paper and read about it can also help by writing.

"He loves each of us as if there were only one of us."

This poem was written by the late Tommie E. Stuart during his high school days and given to "Aunt" Emma Moore. I would like to share it with you. "An educated people is one who will tell, You to go to heaven and not to hell; To do the right instead of the wrong, Be true to people and get along. Be prepared to give and prepared to take. Keep physically clean and mentally awake. Be willing to work and help the old. Do things that are daring and the things that are bold.

Our deepest sympathy to the families of Mrs. R.H. Stevenson and Mrs. Irene Cardwell.

God bless you, see you next week.



TV INTERVIEW: Texas Tech University's Women's Athletic Director Jeannine McHaney, right, interviews Tech's Women's Basketball Coach Gay Benson, left, in preparation for a video taping session. Texas Tech is distributing videotaped news features to area television stations in an attempt to tell the story of women's sports. The TV news features are part of a public information program sponsored by Tech's Women's Athletic Department.

Before You Purchase A New Car Or Pick Up... Give Us A Chance To Show You How Much You'll SAVE At

**F & M Chevrolet-Buick**  
Complete Sales & Service  
735-2244  
105 S Cleveland  
Rotan, Texas 79546

## Hospital Board Told Of Profit In December

The Governing Board of the Fisher County Hospital District met Monday, January 16, in its regular monthly meeting.

The hospital financial statement for December showed a net profit of \$765.00 for the month. There were 89 patients admitted during December with a 47.06 percent occupancy rate. There were 7 babies born in December.

Despite the net profit for December, the year end figures show a \$53,000.00 net loss from operations for the year. Perry Hunsaker, Hospital Administrator, explained that an average daily occupancy rate of 15 or occupancy rate of 50 percent would put the hospital in the black. He explained that even considering bad debts, "if we had 15 patients in the hospital all the time, we could pay our way". "Then the only need for the tax money would be to pay the interest and principal on our bonds".

In other business the Hospital Board discussed plans for bringing a Doctor for the Clinic in Roby. The administrator reported currently there are three physicians interested.

The Board also voted to share the expense of the Tax Re-evaluation for the county with the County Commissioners. The total cost is estimated at \$24,000.00.

The administrator read to the board the list of deficiencies noted during the recent Medicare survey. He reported the inspection procedures of five Medicare inspectors who were in the hospital January 9,10 and

11,1978. Most of the deficiencies can be corrected within 30 days, showing the hospital well within compliance of Medicare requirements.

The Hospital Board also discussed the need to replace the vacancy in the Respiratory Care Department and Laboratory Department. Lynn Latham resigned recently and Marsha Smith resigned. The board looked at cost and service of having the linen cleaned at the present time. The administrator reported what other hospitals are paying for similar services in this area. The board encouraged the administrator to look even closer at the laundry and linen situation. This expense amounted to \$22,000.00 in 1977.

Perry Hunsaker, administrator, reported the electric bill for November was down \$2,000.00. He stated that several energy saving plans are now being used to help save electricity. It is too early to tell actually how much is being saved at this time, another month or two will tell. Plans are still being

## Rotan Jr. High Splits Games In Haskell

The Rotan Junior High 7th and 8th grade boys split games last Monday night with Haskell. The 7th grade team lost by a score of 28-38 while the 8th graders won in a close game 28 to 21.

In the 7th grade contest Eli Huitt was high with 12, Roger Hooper had 11 points, Richard Mendoza had 3 and F. Sanchez had 2.

In the 8th grade game Jeff Posey and Kip Pease each had 10 points, Henry Williams, Mark Harris, Marcus Connor and Albert Campos had 2 points each.

## WTC Spring Registration Set Jan. 16-17

Registration for spring semester classes at Western Texas College will be held Jan. 16-17, with classes beginning Jan. 18.

Sophomores will register from 1-5 p.m. on Jan. 16, with freshmen to register from 8 a.m. to 12 noon on Jan. 17. Evening students are to register between 6:30-9 p.m. on Jan. 16. Any student not registered may register from 1-5 p.m. on Jan. 17.

Dormitories will open at 10 a.m. on Jan. 16.

Students beginning registration are to go first to the Student Center. Complete copies of class schedules for day and evening classes are available from the office of the registrar in the Administration Building.

Revisit The **SILVER SPUR**  
Open Tuesday Saturday, 6:am 8:pm  
Sunday 7:am 2:pm

DAILY: Regular Menu and Family Style Meals  
SUNDAY: Lunches and Family Style Only  
FRIDAY: Catfish Night

Meals and Short Orders To Go  
Catering and Parties

Ed & Willa Dene  
Roby Kafer 776-9215

made to make minor changes in the air conditioning and heating engineering to help save high operating expense.

## Roby Jr. High Stands 2-1 In Dist. Play

The Roby Cubs are now 2-1 in District play. They have beaten Loraine by the score of 31-24 and Westbrook by the score 23-19. They lost their first district game Tuesday to Highland by the score of 29-24.

The Cubs are in the Blackwell Tournament starting Thursday, Jan. 19. They play Wingate in the opening round with the girls playing at 3:00 and the boys following them.

The next district game is Monday, Jan. 23, against Hermleigh at Roby. Girls start at 6:30, and would appreciate your support.

## Roby Lions Now 3-1 In District Games

By Mickey McCarty

The Roby Lions are 3-1 in District now with two games left to play in the first half.

Tuesday, Jan. 10, the Lions defeated Highland by the score of 59-46. Ricky King led the way with 18 points while Brad Stuart and Brad Wilburn contributed 17 and 14 points respectively.

Thursday, Jan. 12, the Lions defeated Hermleigh by the score of 55-39. Brad Stuart led the scoring with 21 points, King had 18 points.

The Lions end the first half with Ira on Tuesday, Jan. 17, and Hobbs at Hobbs on Friday, Jan. 20. If the Lions win the remaining two games they will gain at least a share of the first half and could possibly win the first half, if Westbrook loses either of its two remaining games.

Our shooting is still not what it should be, but our team play and defense has improved. I feel like our

## Rotan Varsity Boys Defeat Munday 44-43

The Rotan Varsity boys beat Munday by a score of 44-43 last week then were defeated by Crowell 89-45 last Friday night.

## Roby Jr. High Girls Win Over Highland

The Roby Junior High girls defeated Highland by the score of 35-12. The Roby girls are now 3-0 in district action. Leading the scoring for Roby was Lana Mauldin with 14 points, she was followed by Paula Terry 8 points, Mary Nell Clayton 8 points, Jana Jennings 2 points and Diedra Faught with 2 points.

Other girls seeing action were Lisa Hoodenpyle who played outstanding defense, Merry Johnson, Diane Carreon, Kristi West and Lucy Johnson.

The Jr. High girls are playing in the Blackwell Tournament this weekend.

over Munday, after trailing 14 to 9 at the end of the first quarter the Hammers closed the gap to lead 25-22 at haltime. Each team scored 15 points in the third period and Rotan was outscoored 6 to 4 in the final period but still managed a one point victory.

Fred Acorn was high point in the munday win with 24 wins. Robert Morales, Brian

Goodwin and David Posey each had 6 points while Joe Medrano had 2 points.

Other varsity players are Donny Mullins, Mark Henderson, Gary Don Harkey and Allan Houston.

In the Crowell loss, Morales scored 10, Acorn 5, Mullins 7, Goodwin 1, Medrano 10, Henderson 1, and Posey 11.

2 H.P. MINI TILLER  
**184<sup>95</sup>**  
Small & tough!  
9" dia tires  
10, 14 or 18" swath!

**Western Auto**  
Mr. & Mrs. Larry McClain  
735-3322  
Rotan, Texas

Food King 42 oz. **Shortening 99¢**

Van Camp 300 can Always Fresh 1 1/2 **Pork & Beans 3/\$1 Bread 39¢**

Shurfine 5 LB. Bag **Flour 49¢**

Frontier Jumbo Shurfresh 1/2 gal. **Paper Towel 33¢ Buttermilk 79¢**

LB. HE-MAN **Bacon 98¢**

Chicken of the Sea Prestone gallon **Tuna 69¢ Anti Freeze \$3.49**  
Limited Supply

Hunt's 32 oz. **Catsup 69¢**

Open 6:00 A.M. to 12:00 P.M.  
Hot Food To Go  
Call in your order we will have it ready  
735-3502

**FREE** 12 oz. Fountain Drink with Fill up of Gasoline

**HAMMER HUT**  
CONVENIENCE STORE

**MediQuip**  
HOSPITAL EQUIPMENT & SUPPLIES

MediQuip of Abilene  
SERVICING THE BIG COUNTRY  
111 N. Redding  
Abilene, Texas 79602

MediQuip is an authorized Medicare supplier, specializing in:

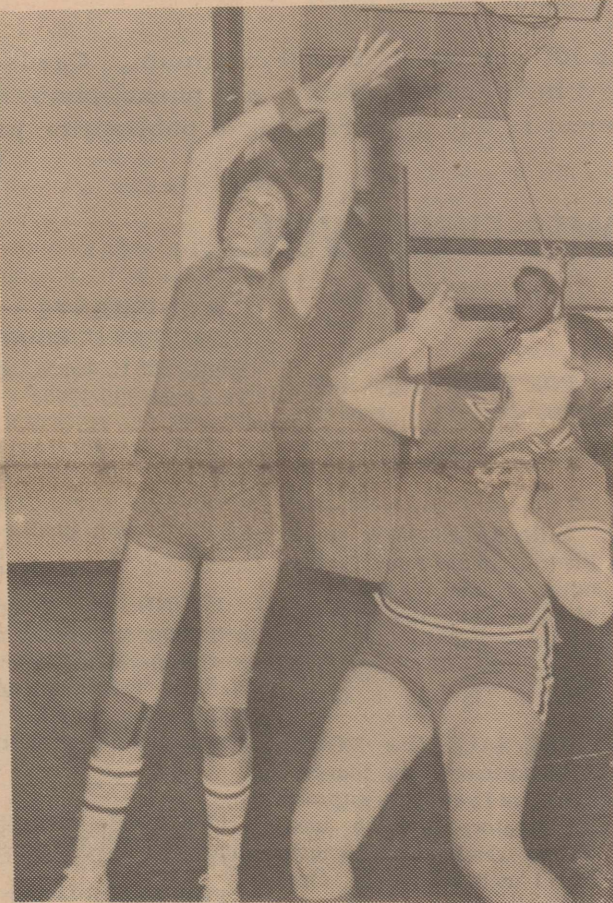
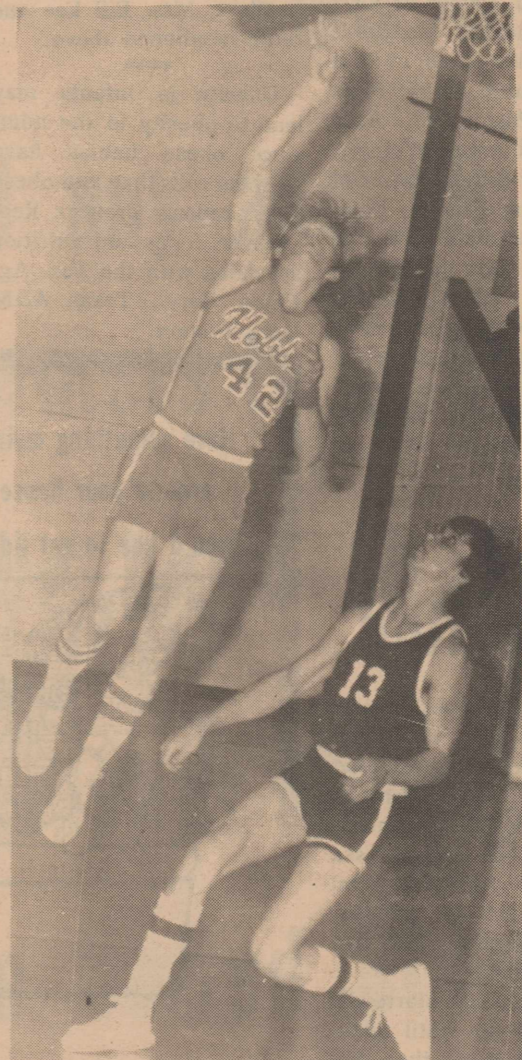
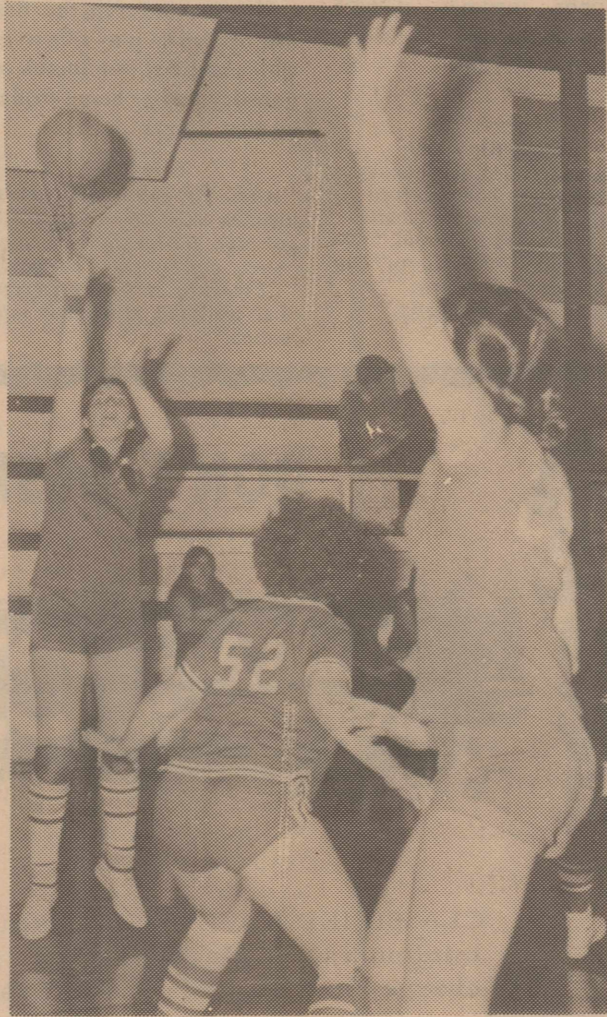
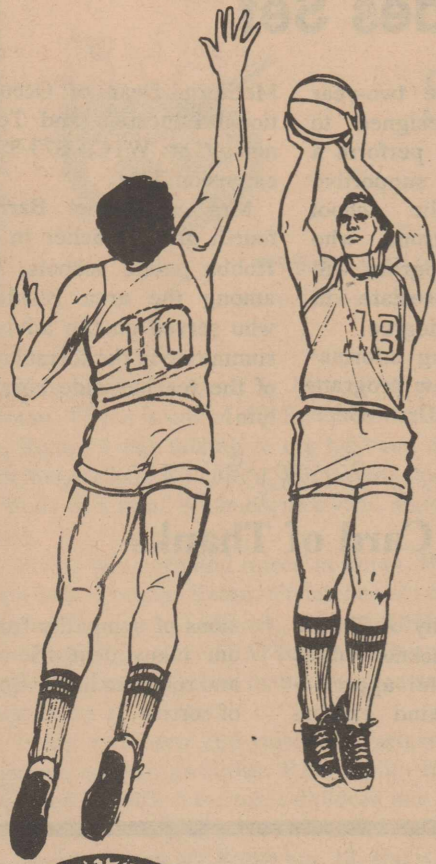
Home Health Care  
Hospital Beds  
Wheelchairs  
Equipment  
Etc.  
MediQuip

**ATTENTION**  
Now handling  
a full line of  
JANITORIAL SUPPLIES

**WATSON-FOCHT COMPANY**  
MARK MAHAFFEY SALES-REPRESENTATIVE  
Now Making local calls  
236-6657  
SWEETWATER



# FISHER COUNTY Basketball



Weathersbee  
Funeral  
Home

McClures  
Feed & Fertilizer

Rotan  
Insurance  
Agency

H.L. Davis  
& Co.

Ogden Grocery

Rotan  
Dairy Queen

Production  
Credit  
Roby

Sylvester  
Coop Gin

Farmers  
Gin Co  
Rotan

Rotan  
Motor Co.

Clinic  
Pharmacy

1st National  
Bank of Rotan

Hobbs  
Coop Gin

Brazos  
Transport

Citizens  
State Bank

Maries  
Art Studio

Gold Bond  
Building  
Products

Noles Drug

### THIS WEEK'S ROTAN BASKETBALL GAME

HIGH SCHOOL

Jan. 20 Paducah Home JVB, VG, VB 5:00  
Jan. 24 Hamlin Home JVG, JVB, VG, VB 5:00

JUNIOR HIGH

Jan. 19,20,21 Anson Tournament 8th Girls & Boys  
Jan. 23 Hamlin Home 7 & 8 Girls & Boys  
4:00

### THIS WEEK'S HOBBS BASKETBALL GAME

HIGH SCHOOL

\* Jan. 20 Roby Home Girls & Boys 7:00  
\* Jan. 24 Highland There Girls & Boys 7:00

JUNIOR HIGH

Jan. 19,20,21 Blackwell Tournament  
Jan. 23 Loraine Home Girls & Boys 6:30  
1st Round Opponent-Divide  
\* District Game

### THIS WEEK'S ROBY BASKETBALL GAME

HIGH SCHOOL

\* Jan. 20 Hobbs There 7:00 A Boys, A Girls  
\* Jan. 24 Loraine Home 5:30 A Boys, A&B Girls

JUNIOR HIGH

Jan. 19,20,21 Blackwell Tournament A Boys, A Girls  
\* Jan. 23 Hermleigh Home A Boys, A Girls  
6:30

\* District Game

### THIS WEEK'S MCCAULLEY BASKETBALL GAME

HIGH SCHOOL

Jan. 19 Old Glory Home 7:00 Boys & Girls  
Jan. 24 Paint Creek There 7:00 Boys & Girls

JUNIOR HIGH

Jan. 19,20,21 Blackwell Tournament  
Jan. 23 Lueders-Avooca There 6:00

\*District Game

ROBY AERO SPRAYING

WESTERN AUTO

FARMERS UNION  
COOP GIN

NATIONAL FARMERS  
UNION INSURANCE

TERRY GIN INC.

RANDOLPH GROCERY

MID-WEST ELECTRIC  
Parker Wetsel, Mg.

ROBY HATAHOE

CENTRAL  
LUMBER & SUPPLY

RONNIE & DIANE  
TOMLINSON

HULL WELDING

HA-TA-HOE ROTAN

BIG DEAL RESTARAUNT

SOLIZ TEXACO

ROTAN GIN CO

ROCKWELL BROTHERS

F & M CHEVROLET

ROBY HYDRO

NOWLIN  
FARM SUPPLY

MR & MRS  
BOBBY WRIGHT

WHITE AUTO

STEWART SHAMROCK

SWEETWATER SAVINGS

HOME LUMBER

BIG 3 PORK PRODUCE

LANDES FURNITURE

BENNETT GROCERY

ROBY FLOWER SHOP

Basketball

MARTINEZ DAIRY



## Baptist Double Mtn. Conference Jan. 30th

"Let the Church Reach Out" is the theme of the Evangelism Conference sponsored by the Southern Baptist Churches of the Baptist Double Mountain Area. The conference will be held in the First Baptist Church in Hamlin, Monday, January 30. The afternoon session will begin at 2:00 p.m. and evening session to start at 7:00.

Special music for both sessions will be brought by the Dietz Brothers of Amarillo who are full time music evangelists. The Dietz Brothers are both graduates of West Texas State University of Canyon. They are natives of Borger where they began their singing live at the age of eight. Andy and Phil have traveled all over the United States and have also been in Panama, Puerto Rico, Cuba and several of the Caribbean Islands where they sang to the Marines, Army, Air Force and Navy troops as

part of a USO tour in 1974. Their travels have also taken them to Canada and Mexico. They were also privileged to be members of the Texas All-State Choir their senior year in high school.

Speakers for the conference will include: Dr. Dan Vestal, Pastor of First Baptist Church, Midland; John Gillispie, Pastor of First Baptist Church, Knox City; Truett Kuenstler, Pastor of First Baptist Church, Jayton; Jim Enfield, Pastor of First Baptist Church, Stamford; Allan Cartrite, Pastor of First Baptist Church, Roby; Paris Barton, Pastor of First Baptist Church, Weinert; and Dudley Bragg, Pastor of First Baptist Church, Haskell. Devotionals will be given by Don Jeffreyes, Pastor of First Baptist Church, Rochester and Fudy Fambrough, Pastor of First Baptist Church, Lueders.

The public is cordially invited to attend either or both sessions.

## Longworth HDC Holds Meeting

The home of Mrs. H.F. Guelker was the meeting place for the Longworth Home Demonstration Club January 9.

House was called to order by the president, Mrs. W.P. Schubert. Handy Andy was won by Mrs. Schubert. Mrs. Guelker gave the council report.

Plans were completed for the new year.

Turkey sandwiches, dips and chips, and spiced tea were served to Mrs. J.W. Landers, Mrs. Bill Lee and those mentioned above.

\*\*\*\*

Obesity in infants may lead to obesity in the adult since obese babies have more fat cells than non-obese ones, reports Frances Reasonover, foods and nutrition specialist with the Tex. Ag. Exten. Serv., Texas A&M Univ. System.

## Hobbs Girls Win 4th Game In District

The Hobbs girls played Lueders-Avoca on Tuesday night and won by the score 75-48. Scoring for Hobbs were Tammy Gover 58 and Cathy Hull 17. Also playing as forwards were Debra Teel, Delinda Teel and Irma Miranda.

Outstanding on defense were Tonya Porter, Judy Medrano, June Martinez, Elva Alaniz, Nancy Martinez, Julie Martin, Paula Martin and Judy Davis.

Hobbs resumes district play with Loraine on Friday at Hobbs, at 7:00.

Friday night the Hobbs girls won their fourth district game by defeating Loraine 75-57. Scoring for Hobbs were Tammy Gover 57, Debra Teel 10, and Cathy Hull 8 points.

Strong defensive efforts by June Martinez, Judy Medrano and Tonya Porter made this one of the team's better game.

The Hobbs girls record is 18-6 with eight games left in district.

Hobbs winds up the first half of district play this week with a game at Westbrook on Tuesday and at home Friday against Roby.

### Sorry Sir

After struggling for several minutes with an uncooperative operator, the gentleman finally raged, "Am I crazy or are you?" "I'm sorry, sir," was the reply, "but we don't have that information."

## WTC Program For Teacher Aides Set

A new vocational-technical program designed to prepare students to work as teacher aides will begin at Western Texas College in the spring semester which opened Jan. 18.

Courses in the two-year program are designed to train students to perform a wide range of supportive duties in public school classrooms. Persons who complete the program will receive the Associate in Applied Science degree.

Persons wishing information about the new program may contact Dr. Gene

McClurg, Dean of Occupational Education and Technology at WTC, 573-8511, extension 220.

Mrs. Kathlene Barron, fourth grade teacher in the Hobbs public schools, was among the area residents who served on the advisory committee in the formulation of the teacher aide curriculum.

### Courthouse Squares



When I was middle-aged, I thought the "good old days" were those of my youth. Now I realize that yesterday wasn't so bad.

### Card of Thanks

The family of Charlie Starnes acknowledges with grateful appreciation the kind expres-

sions of sympathy from our many dear friends and relatives in our time of sorrow.

## Affiliated Foods Stockholders Meeting

The Stockholders of Affiliated Foods were treated to an open house January 8 in conjunction with the Annual Stockholder's Meeting. This is the first open house in eight years to be held at the Affiliated Foods Main Warehouse Center, Amarillo, and featured guided tours of this gigantic facility for stockholders and their guests.

The Affiliated Foods Main Warehouse Center covers more than 35 acres and employs in excess of 370 local people who serve over 400 retail stores in Texas, New Mexico and Oklahoma.

Although Affiliated Foods sales were well above the \$100 million mark last year, the company is relatively young. It was founded in 1946 by a few farsighted store owners who called it The Panhandle Associated Grocers, Inc. Steady growth allowed PAG to merge with a similar company in Lubbock called The South Plains Associated Grocers in 1968. At the time of this merger, PAG became Affiliated Foods, Inc.

Mr. Charles O. McBeath is the only General Manager that Affiliated Foods has ever had. In addition to the foods complex, Mr. McBeath also oversees the operation

of Affiliated's subsidiaries: Tri-State Baking Company, Affiliated Finance, Affiliated Mercantile, the Cash & Carry Wholesale Warehouses in Lubbock and Odessa and the two Affiliated Food store advertising groups, Thriftway Supermarkets and Venture Foods.

The open house started at 8 a.m. and ran until noon, after which more than 500 stockholders and guests adjourned to the Villa Inn for a buffet luncheon and the Annual Stockholder's Meeting.

\*\*\*\*  
Two people or less live in more than half of the U.S. households, although in 1960, such households numbered only 40.9 percent, says Dr. Carolyn McKinney, family resource management specialist with the Texas Ag. Exten. Serv., Texas A&M Univ. System.

\*\*\*\*  
**Football For Everyone**  
On a per capita basis, boys in North Dakota are 10 times more likely to play in an organized football league than boys in New York.

\*\*\*\*  
**WANTED**  
TV Viewers Sunday  
11:00 am-7:00 pm  
Channel 2  
First Baptist Church  
Rotan



## DON'T DESPAIR OR PULL YOUR HAIR

# Small Ads... CLASSIFIED ADS!

Big Results!

CLASSIFIED ADVERTISING cost is 10¢ per word, \$2.00 minimum. Cards of Thanks are \$5.00 minimum to be placed in 2 col. by 2 inch space. Name, not phone number, must be given on all charge classified ads and full payment is due upon receipt of publication proof.

GOING TO 2,100 AREA HOMES EVERY WEEK.....

**FOR SALE:** Kenmore dishwasher, like new. Call 735-3366 between 8 a.m. and 3 p.m. 49-tfc

**NOTICE:** Representative of Higginbottom Fur Co. will be in Roby every Thursday beginning Dec. 8 throughout fur season, at Roby Phillips 66 Cafe, 2:30 to 3 p.m. Cross Plains, 817-725-7350. 42-8tc

**FOR SALE**  
USED  
**Extra Clean JOHN DEERE TRACTORS**

1977 New 4230 with cab, air, heater, radio & quad  
18-4-38 rear  
10.00-16 on front  
\$20,000.00  
1(one) set of  
18-4-38 Tires

for more information call  
**Gary Nettleton**  
735-2912

**BUSINESS OPPORTUNITY**  
**FOR SALE:** 3 lots, 150x83 ft. on highway 180 and College in Roby. One block from city square, commercial property, has house and several old buildings on lot. Call 915-694-0430, or write Dave R. Weeks, 4603 Leisure, Midland, Tex. 79701. 9-tfc

**S & L TEXACO**  
and Auto Parts  
Specializing In  
Engine Tune Ups  
735-3200

**Dr. Blum and Nesbitt**  
Optometrists  
1825 25th Street  
Snyder, Texas  
Phone 573-3992  
**Office Closed**  
**Noon Wed. & Sat.**

**NOTICE:** Baby sitting in my home anytime Monday thru Saturday. Call Lou Randolph at 735-3585. 49-1tp

**FOR RENT:** 3 bedroom house on farm. Call 735-3488 Buddy Murff. 49-tfc

**FOR SALE:** Collectors item 2 thunderbirds, one 1963 Landau coupe, one 1962 coupe. Contact Zanna Anderson 776-2460, Roby. 484tc

**FOR SALE:** 21 ft. Goose-neck tandem axel. Call Ivin Martin, 776-2723. 48-2tc

**NOTICE:** Cakes, wedding, birthday, anniversaries and special occasions. Contact Jaye Neice Clements 735-2010 or 735-2471. 48-4tc

**FOR SALE:** 1972 Pontiac Bonneville, 4-door hardtop, air, good condition. Call 776-2646. 47-tfc

**HAND MADE GIFTS:** Vera's Gift Shop. Open 9 to 11 a.m. and 1 to 5 p.m. 908 E. 8th St., Rotan. 49-tfc

**FOR SALE:** 1280 acres pasture land in Kent County. Call Jake Watson, 817-325-8047, Mineral Wells, Texas. 32-4tc

**NOTICE:** Individual would like to buy up to one section of good dry land or good raw land. 806-792-3246, 9 to 5; or 806-799-4291 after 7:00 p.m. 44-tfc

**FOR SALE:** Busted lumber for firewood. Call Kenneth or Joe Hardin at 735-2412 or 735-2802. 48-2tc

**NOTICE:** Drug abuse and alcoholism education and information consultation and referral agency. Tri-County Council on Alcoholism, Scurry, Mitchell and Fisher Counties. 118 E. Hwy., 573-3233, Snyder, Tex. 24 hour service. 23-tff

**The Deavers Co.**  
SERVICE OF INTEGRITY  
Texas Structural Pest Control License #207-G  
MEMBER  
TEXAS PEST CONTROL ASSOCIATION  
NATIONAL PEST CONTROL ASSOCIATION  
BILL DEAVERS  
P. O. BOX 982  
SNYDER, TEXAS  
Off. 573-7230

**HELP WANTED:** Director of nursing, RN or LVN. Call 735-2233 for appointment for interview. 48-1tc

**WANT TO BUY:** Steel windmill tower, 20 ft. Call 735-2084. 49-2tp

**FOR SALE:** Firewood, \$60.00 cord. We deliver and stack. Spruce wood. Call Jim Radliff 735-2021 or 735-3187. 48-2tc

**FOR SALE:** 2 bedroom house, kitchen, and bath, located one block southeast of City Grocery in Roby. Call 776-2549, Frutoso Carreon, Sr. 48-2tp

**FOR SALE:** Good, clean used Smith Corona electric portable typewriter, has case, \$129.95. See at Newspaper Office. 44-tfc

**MATTRESSES:** New and renovated. Choice color, firmness and size. Save on renovating. Guaranteed. Made by Western Mattress Co. Call 735-3421, J&J Supply, Rotan. In Roby call 776-9211, leave name. 41-tfc

**FOR SALE:** 560 International and M Farmall, all equipment, in good condition. \$5,000 for everything. Call Jack Bruce 735-3258, Rotan. 47-4tp

**FOR SALE:** 4 bedroom home, carpeted, red brick. Call Bill Cade, 1203 N. McKinley, 735-2448. If no answer call 735-2304. 41-tfc

**FOR SALE:** Marie's Art Studio. Owner retiring. Will sell store complete or sell just supplies. With or without fixtures. If you are interested call Marie Phillips 735-2827. 38-tfc

**NOTICE:** Anhydrous ammonia now available in Fisher County. See or call W.J. Coffman phone 735-2066. 41-22tp

**MONUMENTS AN CEMETERY CURBING:** J.I. Smith, 308 E. 4th St., Rotan. Texas call 735-3290. 22t

**FOR SALE:** 14x70 2 bedroom, 2 bath mobile home, 1974 model. Take up payments with small equity. Call 735-3355. 49-1tc

**FOUND:** Pair of glasses near Bennet Grocery day of tractor parade. Owner may claim by identifying glasses and paying for this ad at Newspaper Office, Rotan. 49-1tc

**FOR SALE:** Used upright pinax, call 735-3380. 48-2tp

**FOR SALE:** Living room suite, giant wall mural with frame, coffee table, set of Ludwig drums, bass guitar and amp, La-Z-Boy recliner. Carrol Murphree. 48-1tp

**LOST:** Billfold Dec. 28 in Rotan. Finder keep money and return papers and billfold. E.M. Stricklin, 735-3037, Rotan. 47-3tp

**COLOR PICTURES:** Birthdays, anniversaries, family gatherings, special events, call Kim Pease, 735-2562 or 735-3115. 32-tfc

**FOR SALE:** 1974 Pontiac Grand Ville, clean, one owner, 55,000 miles, full power, air, electric windows and seats, AM-FM tape. Randy Murphree 915-735-3400, Rotan. 40-tfc

**NOW OPEN:** S&T Ceramics, 1007 E. 6th, 735-2382. A large selection of greenware and finished products. Mayco and Duncan paints. All ceramic needs, clean up tools-sponges-brushes-etc. 35-tfc

**WANTED:** Your Butane and Propane Business. Call 735-3378. Ned's Fuel Service Rotan. 17-tfc

**FOR SALE:** 25x65 building in Roby and approximately 900 ft. of pipe and fittings. Also, motors, boiler, washing machine. Call Lunette Goforth, 776-2285. 49-tfc

Top Hog Market last Saturday was \$35.50, we charge no commission, at the W.B. Hogh Buying Station in Haskell, J.E. Williams, Hog Buyer. We have top price for top hogs—we charge no commission. We have a good sow market—we charge no commission. If you want top price for your hogs bring them to us every Saturday. Our Scales are 1 mile east of Haskell on Highway 380. 40-tfc

**C & J**  
T.V. & ELECTRONICS  
ZENITH  
Sales & Service  
TVs  
Radios Stereos  
735-3332  
111 W Snyder Ave  
Rotan

SALES **Kirby** SERVICE  
**Kirby Vacuum Cleaner Co.**  
A F.A. DISTRIBUTOR: JERRY RICHARDS  
**Richardson Sewing Center**  
1900 - 37th St.  
SNYDER, TEXAS 79549  
OFFICE PHONE  
573-2812

Interested in receiving the Snyder  
Daily News in your home? If so, contact  
**Byrle Martin,**  
at  
**735-2464**

**POLITICAL ANNOUNCEMENTS**

The Rotan Advance-Roby Star Record is authorized to announce the following candidates subject to the Democratic primary on May 5, 1978:

**U.S. CONGRESSMAN, 17th DISTRICT**  
A.L. (Dusty) Rhodes  
Charles Stenholm  
Jim Baum  
Fike Godfrey

**TEXAS SENATE, 30th DISTRICT**  
Ray Farabee

**FISHER COUNTY CLERK**  
Geneva Perkins  
Lunette Goforth  
Patsy Neeper

**FISHER COUNTY TREASURER**  
Tom Collins  
Inez Pullig Stephens

**COMMISSIONER, Precinct 4**  
Jimmy Wright

**REPRESENTATIVE, Texas 61st Dist.**  
Walter Grubbs

**DISTRICT CLERK**  
Eula Mae Hull

**JUSTICE OF PEACE, Precinct 1**  
Aubrey Chandler  
Jeff Simmons

**COMMISSIONER, Precinct 2**  
Earl J. Kiker  
Billy Henderson

**FISHER COUNTY JUDGE**  
Dwight Lovett

**JUSTICE OF PEACE, Precinct 3**  
Ernest Roberts



LIST OF PERSONS IN WASHINGTON, D. C. TO WRITE ABOUT AGRICULTURAL CRISIS

MEMBERS OF HOUSE COMMITTEE ON AGRICULTURE

Thomas S. Foley, Chairman (Wash.)  
1201 Longworth Building  
Washington, D. C. 20515

E. de la Garza (Texas)  
1434 Longworth Building  
Washington, D. C. 20515

W. R. Poage, Vice-Chairman (Texas)  
2107 Rayburn Building  
Washington, D. C. 20515

Jack Hightower (Texas)  
120 Cannon Building  
Washington, D. C. 20515

MEMBERS OF SENATE COMMITTEE ON AGRICULTURE

No Texas senators are members.

Herman Talmadge, Chairman (Georgia)  
109 Russell Building  
Washington, D. C. 20510

Senator Gary Hart (Colorado) is not on the Agriculture Committee, but is drafting an agriculture bill. His address is: Gary Hart  
Senate Post Office  
Washington, D. C. 20510

The senators from Texas are:

Lloyd Bentsen  
240 Russell Building  
Washington, D. C. 20510

John Tower  
Senate Post Office  
Washington, D. C. 20510

In addition, other Congressmen from Texas to write are:

Omar Burluson, Congressman  
17th Texas District  
House Post Office  
Washington, D. C. 20515

Robert (Bob) Krueger, Congressman  
21st Texas District  
House Post Office  
Washington, D. C. 20515

George Mahon, Congressman  
19th Texas District  
House Post Office  
Washington, D. C. 20515

Spring Journalism Courses Set At WTC

Several college credit communication courses will be offered during the spring semester at Western Texas College for students of all ages, according to Mike McBride, associate professor of journalism.

Journalism 112, Introduction to Mass Communication will meet from 10-10:50 MWF, or may be taken on an instructor-approved individual study basis.

This survey class stresses study of all the modern mass media, including newspapers, magazines, radio and television. Also, analyzed are the roles and criticisms of communication media, as well as study of advertising, public relations, photography, and book publishing.

Journalism 113, News Editing and Copy Reading, will meet from 1-2:20 TTh or on an individualized study basis. This class includes study of and practice of the tools and techniques of editing copy for publication.

Other areas of interest to be covered are headline writing, layout and design, typography, and in-depth investigative news and feature writing.

Journalism 232, Introduction to Radio and TV, will be offered for the second time at WTC. The class will meet from 9-10:21 am. TTh only.

Two one-hour credit publications laboratories are scheduled for any students wishing to contribute to official student publications.

Journalism 112 is a lab for the college newspaper, Western Texan, and will meet TBA on Tuesdays, unless students have scheduled conflicts. Anyone wishing to work on the staff, in such areas as reporting, photography, typing, and advertising, should be enrolled.

Journalism 113 is a lab for two college magazines, including the general yearbook magazine and the literary magazine. One special edition of each publication is planned for the spring semester, and staff members are needed for both. It will meet TBA on Thursdays, unless students have scheduled conflicts.

For further information, contact Mike McBride, associate professor, in the WTC Student Center, or call 915-573-8511, ex. 273.

Hobbs Victory

The Hobbs Junior High boys played Ira Junior High on Monday, Jan. 9, at Ira. Final score was Hobbs 25, Ira 37.

Those scoring for Hobbs were Benny Medrano 6, Rudy Garcia 4, Mike Porter 3, Jr. Miranda 4, Larry Phillips 5, and Todd Etheredge 3 points.

Score by quarters:  
Hobbs 4-6-6-9-25  
Ira 8-11-8-10-37

Golden Haven Home News

First we want to thank the First Baptist Church and the Church of Christ for bringing our Sunday services. We really enjoy these and we thank all those involved in bringing them.

This week Grace Cunningham, Dana McReynolds and Guy Johnson are celebrating their birthdays.

Winners in bingo this week were Mabelle Ogden, Octavaneous Harrell, Viola Barrington, Mary Hurst, Guy Johnson, and Ed Roberts.

Maebell Ogden was visited by her brother Willis Ogden of Rotan, her sister Mrs. John Leach of Rotan and Wilma Singley of Rotan.

Judy Justiss of Sweetwater visited her mother Letha Meek.

Mr. and Mrs. Luther Miller of Ralls visited Viola Barrington.

Buddy Bryant of Amarillo visited with Gladys Bryant. Elenora Gould's niece, Wilma Miles of Fairfield, Calif. visited her this week.

You are welcome to come and see us anytime.

ARLENE'S BOOK HOUSE

Over 8,000 new and used books  
Buy, sell, trade paperbacks  
Two trading ways!  
Sell at half price!  
See our "Sale" Gifts and homemade crafts.  
116 Oak-Sweetwater



Deaton  
Insurance Agency  
776-2228  
Ed Deaton-Agent-Roby, Texas

Library Application Received, Goals Set

By Kathleen Hale

The application form for the Rotan Library has been received in Rotan by Kathleen Hale and Mr. Sencil, and several are now working to submit the application form, which includes the goals and objectives of the library.

In a newsletter, the Abilene Major Resource Center, has sent its congratulations to the newly established library. The newsletter stated that: "Rotan has done it! Fisher County, formerly an unserved area, has begun work on a new library. The Rotan City Public Library may qualify for an Establishment Grant for \$15,000 in 1978. The City has appropriated \$2,404.00, the County has agreed to pay \$1,000 per year for five years, and gift funds have been gathered to surpass the \$6,344 budget needed to get the library on the way. There is still a lot of work to do to apply for the grant and get a new library started, but the staff sends its congratulations to everyone in Fisher County for supporting library services.

The library has been a dream of many, many people for many years. Those working on the project have been well pleased with the enthusiasm of the people. Kathleen Hale and Dot Harris recently spoke to the Lions Club about the project and answered questions concerning it. They spoke of the advantages of the library and what it will mean to the community.

For those interested in the project, below is a timetable of the project.

March 1, 1978: Applications Due to Texas State Library.

April 15, 1978: Approval of Grant Awards by Texas Library and Historical Commission; Notification of Grant Awards Made to All Applicants.

May 1, 1978: Contracts

Mailed to Grant Recipients. June 1, 1978: Project Start-Up Date.

September 30, 1978: First Performance Report and Expenditure Report Through August 31, 1978, Due to Texas State Library.

March 31, 1979: Second Performance Report and Expenditure Report from September 1 through February 28 due to Texas State Library.

August 31, 1979: Contract Termination Date: All funds must be obligated.

September 15, 1979: Third Performance Report and Expenditure Report from March 1 through August 31 due to Texas State Library.

November 30, 1979: All Obligations (encumbrances) against the Contract must be liquidated.

February 1, 1980: Final Audit of Grant Funds due to Texas State Library.

The Rotan Library will serve the entire county for free library service.

County Students On Honor Rolls At W.T.C.

Several students from Fisher County were among those named to honors lists for the fall semester at Western Texas College.

Larry D. Callan of Rotan was one of 17 students named to the President's List. The President's List is composed of students who carry at least 15 hours of college credit work and who have a grade point of 4.0, the highest which can be attained.

Named to the Dean's List were Wanda Brumfield and Hariece Holik of Roby and Kimberly Ray Mills and James David Nowlin of Rotan. The Dean's List includes students who are enrolled for at least 12 hours and who have a grade point average of 3.5 or more on a 4.0 scale.

Included on the Merit List were Anna Beth Martin of Roby and Gary David Baker of Rotan. The Merit List is for students who are enrolled for at least eight but fewer than 12 hours of college credit work and who have a grade point average of at least 3.5.

PUBLISHER'S COPY State Bank No. 1699

Consolidated Report of Condition of "CITIZENS STATE BANK" of ROBY in the State of TEXAS and Domestic Subsidiaries at the close of business on December 31, 1977.

BALANCE SHEET			ASSETS			Sch.	Item	Col.	Mil.	Thou.
1.	Cash and due from banks	C	7						732	1
2.	U.S. Treasury securities	B	1	E				705		2
3.	Obligations of other U.S. Government agencies and corporations	B	2	E				304		3
4.	Obligations of States and political subdivisions	B	3	E				1 218		4
5.	Other bonds, notes, and debentures	B	4	E				None		5
6.	Corporate stock							None		6
7.	Trading account securities							None		7
8.	Federal funds sold and securities purchased under agreements to resell	D	4					1 450		8
9.	a. Loans, Total (excluding unearned income)	A	10				2 583			9a
	b. Less: Reserve for possible loan losses						039			b
	c. Loans, Net							2 544		c
10.	Direct lease financing							None		10
11.	Bank premises, furniture and fixtures, and other assets representing bank premises							021		11
12.	Real estate owned other than bank premises							None		12
13.	Investments in unconsolidated subsidiaries and associated companies							None		13
14.	Customers' liability to this bank on acceptances outstanding							None		14
15.	Other assets	G	7					040		15
16.	TOTAL ASSETS (sum of items 1 thru 15)							7 014		16
			LIABILITIES			Sch.	Item	Col.	Mil.	Thou.
17.	Demand deposits of individuals, partnerships, and corporations	F	1f	A			2 346			17
18.	Time and savings deposits of individuals, partnerships, and corporations	F	1f	B+C			3 266			18
19.	Deposits of United States Government	F	2	A+B+C			015			19
20.	Deposits of States and political subdivisions	F	3	A+B+C			848			20
21.	Deposits of foreign governments and official institutions	F	4	A+B+C			None			21
22.	Deposits of commercial banks	F	5+6	A+B+C			None			22
23.	Certified and officers' checks	F	7	A			033			23
24.	TOTAL DEPOSITS (sum of items 17 thru 23)						6 508			24
	a. Total demand deposits	F	8	A			2 782			a
	b. Total time and savings deposits	F	8	B+C			3 726			b
25.	Federal funds purchased and securities sold under agreements to repurchase	E	4				None			25
26.	Other liabilities for borrowed money						None			26
27.	Mortgage indebtedness						None			27
28.	Acceptances executed by or for account of this bank and outstanding						None			28
29.	Other liabilities	H	9				None			29
30.	TOTAL LIABILITIES (excluding subordinated notes and debentures)						6 508			30
31.	Subordinated notes and debentures						None			31
			EQUITY CAPITAL						Mil.	Thou.
32.	Preferred stock	a.	No. shares outstanding	None	(Par value)		None			32
33.	Common stock	a.	No. shares authorized	500						
		b.	No. shares outstanding	500	(Par value)					
34.	Surplus						150			33
35.	Undivided profits						250			34
36.	Reserve for contingencies and other capital reserves						106			35
37.	TOTAL EQUITY CAPITAL (sum of items 32 thru 36)						506			36
38.	TOTAL LIABILITIES AND EQUITY CAPITAL (sum of items 30, 31, and 37)						7 014			38

MEMORANDA				
1.	Average for 30 calendar days ending with call date:			
a.	Cash and due from banks (corresponds to item 1 above)		697	1a
b.	Federal funds sold and securities purchased under agreements to resell (corresponds to item 8 above)		698	b
c.	Total loans (corresponds to item 9a above)	2	662	c
d.	Time deposits of \$100,000 or more (corresponds to Memoranda items 3a plus 3b below)		225	d
e.	Total deposits (corresponds to item 24 above)	5	841	e
f.	Federal funds purchased and securities sold under agreements to repurchase (corresponds to item 25 above)		None	f
g.	Other liabilities for borrowed money (corresponds to item 26 above)		None	g
2.	Standby letters of credit outstanding (as of call date)		None	2
3.	Time deposits of \$100,000 or more (as of call date):			
a.	Time certificates of deposit in denominations of \$100,000 or more		118	3a
b.	Other time deposits in amounts of \$100,000 or more		187	b

I, Zanna Anderson, Cashier, of the above-named bank, do solemnly (SWEAR AFFIRM) that this report of condition is true and correct, to the best of my knowledge and belief.

Correct-Attest: *Zanna Anderson*  
*G. L. Drinkard*  
*Cecil J. King* } Directors.

State of Texas County of Fisher ss:  
Sworn to and subscribed before me this 10th day of January, 1978.  
and I hereby certify that I am not an officer or director of this bank.  
My commission expires 9-30, 1978. *Beth Faught*, Notary Public.

SNYDER FIBERGLASS COMPANY  
Fiberglass Tank  
200 Gal. for Tractor Mounts  
750 gal. for Trailer Mounts  
LIQUID FEEDERS  
Let us custom make  
feature all your Fiberglass  
Needs  
Call 573-0502  
Snyder, Texas

Everyone enjoys eating at the Rotan Hatahoe

Hatahoe  
735-3161 Rotan, Texas



# Leisure Lodge Report

By Ima Berry

Most of our residents are fine. We still have two patients in Fisher County Hospital, Charles Davis and Miss Affie Dalton. Hope they are soon able to come home.

Mrs. Charlie Ramby was able to go home on Monday. We will miss Pearl.

Want to thank Oleda Merrick for giving us her time on Thursday. She comes each Thursday and plays and sings for us. Also, want to thank David Frechette for coming and entertaining our residents with his singing and guitar playing. We really appreciate him for this. Everyone really enjoys him too.

We have enjoyed several out of town guests. Some of whom were visiting Essie Kersh and Bud Crawford was Mrs. Eddie Stuart, David and Josh of Snyder.

Mrs. Jane Dever and Mrs. Ruby Hull of Snyder visited the G.A. Hudnalls.

Mary Vaughn of Ralls and Dottie Hall of Snyder visited Maudie Moize.

Miss Ruby Gilbert of Clairmont visited the Charles Davides.

Mr. and Mrs. W.Y. Burns of Abilene, Mr. and Mrs. Ed Struvie of Ingram and John White of Sweetwater visited Mary Lee Barker.

Visiting the Ben Williamses were Mr. and Mrs. Bud

Morton of San Angelo.

Mr. and Mrs. Carl Holoway of Bloomfield, New Mexico came to see her dad, Miller Coppedge last week. Miller also had a brother visit him on Friday.

Guess this is all the news for this week. Come see us.



HOBBS VARSITY BOYS TEAM MEMBERS



HOBBS VARSITY GIRLS TEAM MEMBERS

## Plan Your Meals Around Thriftway!

PURE VEGETABLE  
**Crisco Oil**  
48 OZ. BTL. **\$1.69**

KRAFT MACARONI & CHEESE  
**DINNERS**  
3 7/8 OZ. BOXES **79¢**

FROZEN FOODS MIX OR MATCH  
SHURFINE MIXED VEGETABLES/CUT CORN OR GREEN PEAS 10 OZ. PKGS. **\$1.00**  
**YOUR CHOICE**

KEEBLER LB BOX  
**CRACKERS** **49¢**

ALWAYS FRESH 1/2 LB  
**BREAD** **39¢**



HICKORY SMOKED WATER ADDED 6-8 LB. AVG.

**WHOLE PICNICS**

**69¢**

LB.

BATHROOM TISSUE  
**NORTHERN**  
**69¢**  
4 ROLL PKG.

DEL MONTE WHOLE KERNEL/CREAM STYLE  
**GOLDEN CORN**  
**4 \$1**  
17 OZ. CANS

QUARTER PORK LOINS OR FAMILY PAK  
**PORK CHOPS** **\$1.29**

EXTRA LEAN TRIM CENTER CUT  
**PORK CHOPS** **\$1.59**

COUNTRY STYLE  
**MEATY SPARE RIBS** **\$1.29**

FRESH  
**LEAN PORK STEAK** **\$1.19**

YOUR CHOICE - BEEF FRANKS OR  
**OSCAR MAYER WIENERS** 1 LB. PKG. **\$1.29**

OSCAR MAYER FINEST QUALITY  
**SLICED BACON** 1 LB. PKG. **\$1.69**

OSCAR MAYER ROUND OR SQUARE  
**SLICED BOLOGNA** 8 OZ. PKG. **69¢**

OSCAR MAYER SLICED REG. OR THICK  
**BEEF BOLOGNA** 8 OZ. PKG. **69¢**

RUDY FARM  
**HOT/MILD SAUSAGE** 1 LB. ROLL **\$1.49**

RUDY FARM  
**HOT/MILD SAUSAGE** 2 LB. ROLL **\$2.97**

TOTAL GROCERY SAVERS  
4¢ OFF CLEANSER  
**COMET**  
14 OZ. CAN **25¢**

FRISKIES CANNED  
**CAT FOOD** 5 15 OZ. CANS **\$1.00**

FRISKIES CANNED  
**DOG FOOD** 5 15 1/4 OZ. CANS **\$1.00**

VAL VITA  
**PEACHES** **2/89¢**

SUNSHINE VANILLA  
**WAFERS**  
11 OZ. BOX **49¢**

DEL MONTE FRUIT  
**COCKTAIL**  
17 OZ. CAN **44¢**



TEXAS RUBY RED U.S. NO. 1

**GRAPEFRUIT**

**5 \$1**

LBS.

CALIFORNIA EMPEROR  
**RED GRAPES** **59¢**

WASHINGTON DELICIOUS  
**RED APPLES** 3 **\$1**

LONG GREEN SLICERS  
**CUCUMBERS** **19¢**

GLOSSY BLACK  
**EGGPLANT** **29¢**

CALIFORNIA LARGE TIES  
**GREEN ONIONS** BUNCH **25¢**

CALIFORNIA LARGE SIZE LETTUCE  
**ROMAINE** EACH **39¢**

SWEET  
**YELLOW ONIONS** **12¢**

DAIRY VALUES  
SHURFRESH QUARTERS  
**MARGARINE** 1 LB. BOX **39¢**  
SHURFRESH HALFMOON LONGHORN  
**COLBY CHEESE** 10 OZ. PKG. **99¢**  
SHURFRESH - SQUARE CTN.  
**ICE CREAM** 1/2 GAL. CTN. **98¢**  
SHURFRESH  
**BUTTERMILK** 1/2 GAL. CTN. **79¢**  
SHURFRESH  
**COTTAGE CHEESE** 24 OZ. CTN. **89¢**  
**WE HAVE CRUSHED OR CUBED ICE**

DEL MONTE DELICIOUS  
**TOMATO JUICE**  
**59¢**  
46 OZ. CAN

DEL MONTE BLENDED EARLY GARDEN  
**SWEET PEAS**  
**3 \$1**  
17 OZ. CANS

COUNTRY GARDEN  
**NAPKINS** 140 CT. PKG. **59¢**

PAPER TOWELS  
**SPILLMATE** JBO. ROLL **59¢**

CEREAL  
**POST TOASTIES** 18 OZ. BOX **69¢**

HOME STYLE - ASSTD.  
**HEINZ GRAVY** 12 OZ. JAR **49¢**

CHICKEN OF SEA LIGHT  
**TUNA** 6 1/2 OZ. CAN **69¢**

DEL MONTE-CRUSHED/CHUNK/SLICED IN JUICE  
**PINEAPPLE** 2 15 1/4 OZ. CANS **89¢**

DEL MONTE WHOLE  
**TINY BEETS** 16 OZ. CAN **47¢**

RAGU  
**TOMATO SAUCE** **5/\$1**

DEL MONTE  
**CATSUP** **39¢**  
14 OZ. BTL.

HEALTH & BEAUTY AID SAVINGS

EXTRA STRENGTH  
**TYLENOL**  
YOUR CHOICE 24 CT. OR 30 CT. CAPSULES TABLETS **99¢**

SIGNAL  
**MOUTH-WASH** 12 OZ. BTL. **99¢**

FAMILY SIZE AIM  
**TOOTH PASTE** 6.4 OZ. TUBE **99¢**

SHELF SPECIALS

DEL MONTE EARLY GARDEN NEW  
**POTATOES** 3 16 OZ. CAN **89¢**

DEL MONTE STEWED  
**TOMATOES** 16 OZ. CAN **49¢**

DEL MONTE FRESH  
**WHOLE DILLS** 26 OZ. JAR **69¢**

DEL MONTE HOT  
**CHILI PEPPERS** 11 1/4 OZ. JAR **49¢**

STYLE-REG. OR EXTRA HOLD  
**HAIR SPRAY** 13 OZ. CAN **69¢**

DEL MONTE WHOLE BLUE LAKE  
**GREEN BEANS**  
**3 \$1**  
16 OZ. CANS

grow your own RETIREMENT FUND  
with tax-deductible dollars!  
We'll show you how. No obligation. Call us or stop by your Farm Bureau Insurance office.  
BEN REAID Agent  
Farm Bureau Insurance Service  
Bus. (915) 735-3491  
Res. (915) 735-2583  
215 W Snyder Rotan

WE ACCEPT FOOD STAMPS

**THRIFTWAY**

PRICES EFFECTIVE JANUARY 19-25, 1978