

# HIGHWAY OFFICER EXPLAINS CHANGES IN TRAFFIC LAWS

You may step on the gas a little earlier starting Oct. 1 and still be within the law, according to information given here Saturday by S. O. Hamm, division highway officer for the state highway department.

On that date, he explained, the revised state traffic code went into effect, making several important changes in the law as it now stands.

"One of the most important of the changes is that which increases the speed limit on highways from 35 to 45 miles per hour. The speed limit inside of city limits is set at 20 miles an hour.

Maximum speeds for other vehicles, Mr. Hamm said, include: For trucks weighing not more than 10,000 pounds, including load, 35 miles per hour; for trucks weighing between 10,000 and 16,000 pounds, including load, 25 miles per hour; for trucks weighing more than 16,000 pounds, including load, 18 miles per hour.

Still another important change, according to Mr. Hamm, is that which governs the dimensions of trucks allowed on the highways. Under the new law, the maximum height allowed is 14 feet six inches.

However, when it becomes necessary to haul loads not coming within those dimensions, a special permit may be obtained from the division engineer, who is D. M. Puckett, with headquarters in Wichita Falls.

## LAKEVIEW NOW BEING SERVED BY W. T. U. CO.

The town of Lakeview has been added to the list of advancing cities served by the West Texas Utilities Co. The steady growth and increasing power demands of Lakeview had made it necessary for the company to extend its lines to this town and instantly expand them for the convenience of the customers. The addition of this town brings the total number of cities, towns and communities served by the West Texas Utilities Co. to 111.

Lakeview, which is located southwest of Memphis in Hall County, has a population of 600 people. Sixteen miles of power transmission lines were extended from Memphis to this town to serve the 85 customers now on the list with light and power.

Don't Miss the Radio Show—Something new and different. A laugh a minute! Texas Theatre, Oct. 21. Benefit Christian Ladies Aid. etc.

FOR RENT—Modern six room stucco house near high school building. apply at Free Press office.

Miss Lucy P'Poo of Wichita Falls is the guest of her aunt and uncle, Mr. and Mrs. K. J. Paxton this week.

R. J. Paxton was in O'Brien on business Tuesday.

## P. T. A.'s Sponsor Home Talent Play Tuesday Night

The "Womanless Divorce Case," something entirely new in the way of a comedy farce—one that will appeal to the audience from start to finish, will be the attraction at the High School auditorium Tuesday afternoon of next week at 8 o'clock. The play is strictly a home talent affair, and is sponsored by the North and South Ward Parent-Teachers Associations of this city.

In addition to the play, there will be a beautiful Italian drama lasting twenty minutes which will be given before the presentation of "The Womanless Divorce Case." The setting of the play will be in "Judge" Gaston E. Foote's court, and the cast will be as follows:

Judge—Gaston E. Foote.  
 Bailiff—Lewis Sherman.  
 Clerk—J. L. Southern.  
 Attorney for the Plaintiff—Walter Marchison.  
 Attorney for the Defendant—Raymond Morgan.  
 The Poor Little Deserted Wife—Hyman Davis.  
 Mother-in-law, who causes all the trouble—John A. Couch.  
 Husband—John E. Pouts.  
 The Fair Little Manicurist—A. H. Wair.  
 Jurors—H. Oliver, Herman Henry, O. E. Patterson, J. M. Crawford, Geo. V. Wimbish.  
 Sweet little trusting girl, who hopes the defendant will obtain his release, so that there will be one more eligible man in town—Bill Holden.  
 Fair young flapper who admits to receiving one of the bribes—Dr. Guest.

Music for the occasion will be furnished by the Haskell Municipal Band.

## Art Appreciation To Be Taught In Schools of Texas

Art appreciation will be taught in the Texas Interscholastic League this year for the first time, according to Roy Bedichek, chief of the University of Texas League Bureau. Distribution of the Interscholastic League bulletin on art appreciation will begin soon. This bulletin will be used as a basis for the picture memory contest, and will contain a list of 50 masterpieces of art. Arrangements are also being made for the League Bureau to furnish a number of prints of these pictures to member schools of the League at a small cost.

The purpose of the new contest, Mr. Bedichek said, is to develop in pupils of the grade schools an appreciation for great works of art. Pupils will be graded on recognition of the picture, identification of the artist and recognition of his nationality. The contest is open to pupils of the fifth and sixth grades.

Dr. Georgia M. Moore spent Monday in Abilene.

Mrs. Dee Cannon and Mrs. Paul Mercer of Rule were visitors in Haskell Monday.

## HASKELL HIGH PAPOOSES DEFEAT SAGERTON EAGLES

The little Indians of Haskell High School, known as "Papooses" started out their gridiron season with a win from Sagerton played there Monday. They intend to play several games and win all of them! Some people like these games better than the "big" ones.

When the game first started, the Papooses looked mighty sick. The Sagerton players were men. The Papooses looked sicker than ever when they had a punt blocked and two fast players scored a touchdown for Sagerton. But when the Papooses got the ball it was just too bad! Well, anyway, the score was 19 to 6 with the little Indians holding the big end.

We play Sagerton here next Monday. Come out and see us—we're your future big Indians.—(Contributed).

## Draper-Strickland

Frank Draper and Miss Ruth Strickland were quietly married Saturday night Oct. 12 at 7:30. The ceremony was performed by Rev. G. Robert Forrester, pastor of the First Christian Church, at his home in this city. The bride is the popular and accomplished daughter of Mr. and Mrs. T. D. Strickland of the Savies community. The groom is a popular young farmer, the son of pioneer residents of Haskell, and the young couple will make their home on his farm near this city.

The wedding was a quiet affair, with only intimate friends of the contracting parties present. They have a host of friends who wish for them a long life of happiness and prosperity.

## Senior Class Enjoys Night Picnic

Last Friday night the Senior Class—the "lucky class"—enjoyed a night picnic at Scott's Crossing on Paint Creek. They met at the High School building at 7 o'clock and from there started to Scott's Crossing, the scene of the picnic. A bonfire was made and the eats prepared, consisting of wieners, pickles, olives, huns and other dainties. Games were played and tales were told, and then the party broke up.

Those who attended the affair were: The sponsors, Mr. and Mrs. Geo. V. Wimbish, Vivian Bernard, Henrietta Isbell, Mary Willis, Lois Stoker, J. E. Walling, Jr., Clarence Whiteaker, David Rathiff, Cecil Leflar, Charles "Football" Foote, Croft Laird, Joe E. Bryant, Raymond Liles, Seida Maples, Lorene Edwards, Beatrice Thomason, Nova Griffin and Katherine Wingo.

## Tonk Creek H. D. Club

The Tonk Creek Home Demonstration Club met at the home of Mrs. G. F. Dakin Tuesday October 14. The program and demonstration for the afternoon was "Preparation of Dye Solutions and Dyeing."

The members present at the meeting were Mesdames G. F. Dakin, J. F. Curry, O. S. Bristow,

## Methodist Women to Meet In All Day Study

The women of the Methodist Missionary Society have planned a splendid all day meeting at the church next Monday October 21st, beginning at 10 a. m. The topic of the mission study is "What Next In Home Missions." The opening song will be, "Faith of Our Fathers." Prayer, Mrs. Burl Cox; Duet, "Drifting," Mesdames C. L. Lewis and J. M. Martin; the devotional, "The Supreme Christ of The World's History," Mrs. J. U. Fields; Organ number, Mrs. O. E. Patterson, Chapter 1, "Looking Two Ways," will be taught by Mrs. Ethel Irby; Chapter 2, "Learning to Live Together," Mrs. F. T. Sanders; Chapter 3, "The Outlook for the Church in Town and Country," Mrs. E. Martin; Recess for lunch at 12 to 1:30. Committees: table, Mesdames D. H. Persons, Josette, and A. H. Wair; Menu, Mesdames J. M. Martin, John Wilson, R. J. Earnest and W. H. Murchison and Emer Irwin; Program director, Mrs. Harrison; Piano music, reading, Mrs. Guy Mays; vocal solo, Mrs. J. L. Southern, "Not Half Has Yet Been Told."

The afternoon session will begin by singing, "How Firm A Foundation;" Prayer, Mrs. M. B. Watson; Responsive reading, Appreciation of the Church, Psalms 81. Devotional, "My Peace I Give Unto You," St. John 14, Mrs. F. G. Alexander; Song, "Sweet Peace, the Gift of God's Love." The three chapters taught in the afternoon follow: Chapter 4, The Dominance of the City, Mrs. W. A. Kimbrough; Chapter 5, Undergirding Democracy, Mrs. A. H. Wair; Chapter 6, A New Crusade, Mrs. S. R. Rike, song, Take Time To Be Holy. Benediction.

## C. E. Program For Oct. 20th

The Christian Endeavor of the Presbyterian church will render the following program, Sunday, Oct. 20.

Topic, "The Young People's Meeting."

Worship Service.  
 Prelude.  
 Call to Worship.  
 Opening Prayer.  
 Hymn: Lord's Prayer.  
 Scripture: Colossians 3:12-17.  
 Short Talk and Poem by Beatrice Thomason.  
 Sentence Prayers.  
 Hymn: Follow the Gleam.  
 Leader: Lucile Roberda.  
 Leader's Introduction.  
 Musical Reading—Edna Solomon.  
 Prayer—Hymn 130.  
 Song (start with last verse first) No. 75.  
 Scripture in pantomime.  
 Memory work, 24th Psalm.  
 Talk—Ollie Frazier.  
 Play by Program committee.

A doctor says that telephone operators have excellent memories. Well, they never seem to forget to give you the wrong number.

## Abilene Woman Addresses Little Theatre

The Little Theatre of Haskell, which was organized last month, met in the home of Mrs. Gaston Foote last Friday evening and had as their special guest Miss Hale of Abilene, who is connected with the Little Theatre of that city. Miss Hale spoke to the members, giving many helpful ideas, suggesting new plays and books suitable for their use, and aiding them in completing their organization. Many problems of the work were discussed and several plays and texts ordered. It was a real pleasure and inspiration to have Miss Hale with the organization. She motored from Abilene Friday afternoon in company with her mother and sister, at the invitation of the membership.

iced punch and coconut macaroons were served the Misses Hale and Mrs. Hale, Abilene; Misses Marorie Whiteker, Mary Kimbrough, Mildred Jones, Velma Hambleton, Louise Kaiger, Ruby Martin, Mary Sherrill, Pearl Robertson, and Ella D. Koonce. Two one-act plays were read and cast: "Neighbors," by Zona Gale; and Tennyson's fantasy, "The Falcon," which will be presented on the first guest night in November. Some names were presented for membership which will be balloted at the next meeting.

## Statement of the Ownership, Management, Circulation, etc., Required by the Act of Congress of August 24, 1913

Of the Haskell Free Press, published weekly at Haskell, Texas, for October 1, 1929.

State of Texas,  
 County of Haskell, ss.

Before me, a Notary Public in and for the State and county aforesaid, personally appeared Sam A. Roberts, who, having been duly sworn according to law, deposes and says that he is the Publisher of the Haskell Free Press and that the following is, to the best of his knowledge and belief, a true statement of the ownership, management (and if a daily paper, the circulation), etc., of the aforesaid publication for the date shown in the above caption, required by the Act of August 24, 1912, embodied in section 411, Postal Laws and Regulations, printed on the reverse of this form, to-wit:

1. That the names and addresses of the publisher, editor, managing editor, and business managers are: Publisher, Editor, Managing Editor, and Business Manager: Sam A. Roberts, Haskell, Texas.

2. That the owner is: Sam A. Roberts, Haskell, Texas.

3. That the known bondholders, mortgagees, and other security holders owning or holding 1 per cent or more of total amount of bonds, mortgages, or other securities are:

None.


4. That the two paragraphs next above, giving the names, stockholders, and security holders, if any, contain not only the list of stockholders and security holders as they appear upon the books of the company but also, in cases where the stockholders or security holder appears upon the books of the company as trustees or in any other fiduciary relation, the name of the person or corporation for whom such trustee is acting, is given; also that the said two paragraphs contain statements embracing affiant's full knowledge and belief as to the circumstances and con-

ditions under which stock and security holders who do not appear upon the books of the company as trustees, hold stock and in a capacity other than the bona fide owner; and this affiant has no reason to believe that other person, association, or institution has any interest direct or indirect in the said stock, bonds or other securities than as so set forth.

Sam A. Roberts,  
 Sworn to and subscribed before me this 15th day of October, 1929.  
 (Seal)  
 My commission expires June

**Excelsior "NON-SKID" SCROTAL ELASTIC TRUSS SPOT PAD**

Make sure you are completely protected only EXCELSIOR for protection of all other styles



The Spot fits at internal ring, putting pressure where it is needed.

Non-Torus Rubber Covered Pads—Non Skid Surface. Will not slip. Easily washed Clean—Sanitary

See Fac Simile of Pad Single—Fig. 383-7 Double—Fig. 332-7

**Payne Drug Co.**

# Performance Counts!

## Watch the new Ford on the hills, in traffic, and on the open road, and know that it is truly a great car

The minute you see the New Ford Car you will be delighted with its low, smart lines and the artistic color combinations. There, you will say, is a truly modern car.

But a still greater thrill awaits you when you slip into the roomy seat behind the wheel and away for the first ride.

your mood, or do 55 and even 65 miles an hour if you desire. The New Ford has unusual speed—no doubt of that.

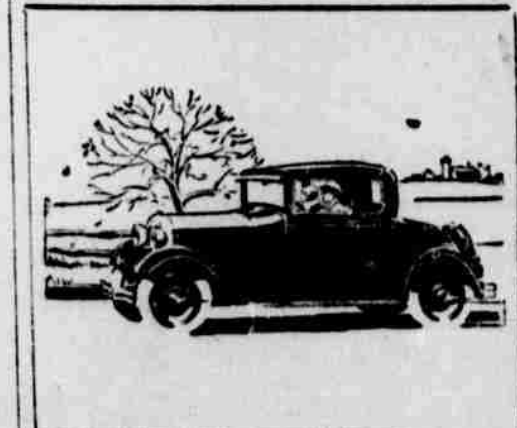
There are still other reasons why the New Ford car is a great car to own and drive. Three important reasons that mean a great

deal to you; reliability, economy, long life.

The New Ford is made to stand up under thousands of miles of steady running; over all kinds of roads, and save

you many dollars in repair bills.

Come in and see this great New Car. Inspect it carefully by part. Then know the thrill of driving it. By its performance you will realize that there is nothing quite like it anywhere in design, quality and price.



Phone For A Demonstration

# Haskell Motor Co.

"Ford Dealers For Ford Service"

# Did You Ever Stop to Think

????????????????

What a difference it makes to send to a power Laundry where every thing is clean and sterilized and there is no question about the safety of your health, as there would be in sending your Laundry out to Questionable Places?

We give the best Laundry Service in this part of the Country; family finish, flat work, bachelor service, wet wash, quilts, blankets, carpets, rugs. We use only pure soft water even softer than rain water, and your clothes are given 9 to 13 different changes of water each time and we do not use the same water over again as you will get from the average wash woman, just pure, clean, filtered water changed each time.

All delicate fabrics are laundered in a special washer to prevent injury or fading.

## LAUNDRY WET WASH SERVICE

### REGULAR PRICES ON MONDAY, TUESDAY AND WEDNESDAY

16 Pounds, or over, per lb. 5c  
 10 to 15 Pounds, per lb. 6c  
 5 to 9 Pounds, per lb. 7c

We are rushed on the above days and in order to over come the rush we are giving the following prices on Thursday and Friday. Please let us have your bundle early, we do not run the Laundry on Saturday.

## PRICES FOR THURSDAY AND FRIDAY

16 Pounds or over, per lb. 4c  
 10 to 15 Pounds, per lb. 5c  
 5 to 9 Pounds, per lb. 6c

These are the best prices you will find in West Texas on Wet Washes.

## Haskell Laundry Co.

Haskell, Texas. Phone 183



# YOU'RE the biggest LOSER!

PROMPT payment is a life-line thrown to a man afloat on the perilous Sea of Finance. It is the line that will draw you safe and sound aboard the ship Good Credit. He who spurns it is left behind when the ship steams out of reach. To be a passenger on the worthy vessel Good Credit or a hopeless drifter—which? DON'T SPURN THAT LIFE LINE!

Published by Ten Haskell Business Firms Who Have Accomodated Their Patrons, and Stand Ready to Extend Further Accomodations to Deserving Customers.

**200 SEEK ROOMS IN MODEL POORHOUSE IN OKLAHOMA**

**New Institution Has Every Comfort and Convenience of Modern Resort Hotel.**

Newkirk, Okla.—"Over the hill to the poorhouse."

That's a journey nobody wants to take, although it has furnished material for poets, dramatists, painters—even movie producers.

To thousands of penniless, homeless ones, who have been forced through circumstances to make such a journey the grave would be more acceptable—but that is all changed now in Kay county, Oklahoma, of which this city is the county seat.

Today 200 names are on the waiting list, men and women clamoring for places as guests of the fine new \$60,000 farm home just nearing completion on a rolling hillside three miles east of this city.

The new building is made possible through oil tax money, the structure itself costing \$30,000 and as much more to equip it. It will have dormitories, private rooms with bath, a fine dining hall and every convenience of a modern resort hotel.

There will be a music hall, radio, player piano, a chef who can prepare the finest of foods, a private hospital and the inmates will be given only such odd tasks about the grounds as they may desire to keep them occupied, for which they will receive small sums weekly as spending money.

The 22 inmates of the old home will be preferred customers and first on the guest list for the new institution.

"No, we are not pampering them," says H. E. Cook, superintendent of the home, "we are just providing adequately for the unfortunate of this district. Kay county is fortunate in having plenty of funds, and we are building for the future as well as for today."

**Boy, 13, Builds Plane; Won't Fly It Himself**

Memphis, Texas.—Construction of an airplane by a thirteen-year-old boy is said by Memphis residents to mark the city as the home of one of the youngest plane builders in the country.

Bobby Ragsdale, son of Mr. and Mrs. R. L. Ragsdale, will have his plane completed in a few weeks. He is building it in the rear of a local garage where he has worked every day except Sunday since school closed last May.

L. E. Clark, garage employee, has aided young Ragsdale in doing the welding and metal work and James G. Hammond helped to cover the wings.

The engine develops 28 horse power. It was bought in Fort Worth by Bobby.

Bobby expects to get an experienced pilot to try out the plane. "I am too young," he says. "The test flight will be made either in Amarillo or Wichita Falls. I want to learn to fly before I try this machine," the youthful builder added.

**Famous Oregon Gold Mine Is Rediscovered**

Fort Oxford, Ore.—Considerable excitement has been caused here by the belief that the Lost China mine on the Sikes river has been found.

The story of Lost China runs back 75 years to the days when Capt. Withamson Tichenor, part-day sea captain, founded this little southern Oregon town.

Captain Tichenor did considerable prospecting in the very district. He is said to have taken out some \$20,000 worth of gold from the mine.

Chinese laborers and Indians digged in the subsequent prospecting, and obliterated the mine, while white men searched other gold fields. Then a fire swept over the country, changing the aspect of the terrain, and the Lost China became somewhat of a legend.

A new discovery of the mine has been reported by S. A. Entrance, local attorney, to H. B. Tichenor, deputy United States marshal during the World war, and grandson of the old captain.

**English Lead Other Foreigners in France**

Paris.—The Englishman leads all nationalities as a permanent resident of France, according to recent statistics of immigration, 84,000 now being classed fixed householders in this country, and not including transient voyagers and tourists. North America follows second with 59,000.

**Kid. Learn to Turn in Alarm, Then Practice**

Southbridge, Mass.—Local school children were given instructions by firemen on "how to turn in an alarm." Police officials now plan to give instructions on "when to turn in an alarm." An extraordinary number of false alarms resulted from the educational efforts of the firemen.

Another "Meanest Thief" Nashville, Tenn.—Another "meanest thief" has been discovered here. Carl Jones, twenty-nine, Memphis, was brought before city court on charges of drunken and disorderly conduct and carrying a pistol. His arrest was brought about after he had taken an ice cream cone from the hands of Duke Vincent, fifteen, son of Patrolman R. S. Vincent.

**Letters and Telegrams to Magazine Club.**

Letters and telegrams were received from the following past presidents of the Magazine Club and were read at the President's Day meeting last Friday. Those letters and messages spoke regrets that the writers could not be present but congratulated the club on past achievements.

**Baptist Boys Auxiliary Enjoy Outing.**

The Boys Auxiliary of the Baptist Women's Missionary Society, The Royal Ambassadors, met at the church last Friday afternoon at 4.15 and went in a body to the Gilliam pasture, two and a half miles north of Haskell and had a most splendid outing.

A short business session was held prior to the fun of the outing. New officers elected follow: Ambassador in Chief, Eloyis Norton; Assistant Ambassador, Cecil Reeves; 2nd Assistant Ambassador, Harvey Simmons; Chapter Recorder, Sammie Kirkpatrick; Chapter Steward, Bob Gilliam; Chapter Custodian, R. C. Couch, Jr.; Chapter Herald, Ronald Bailey. And then the fun began around the camp fire where the "Ambassadors" roared their wipers and with these they had pickles, crackers, candies and ice cold soda pop.

Boys enjoying this outing were Cecil and Bill Reeves, Eloyis Norton, Robert and Freddie Lee Barnett, Bob and Fred Gilliam, Ronald Bailey, Harvey Simmons, Robert Thompson, Buford Ghosson, R. C. Couch, Jr., Milan Jones, Sam Kirkpatrick, Conner Christian, Mrs. Leon Gilliam and daughter, Mrs. J. T. Ellis, Mrs. V. Bailey, Rosella Jones, Young People's Leader, Mrs. W. E. Kirkpatrick and the Counselor for the Royal Ambassadors, Mrs. C. T. Jones.

**Merris Dames in Lovely Club Party.**

Mrs. F. T. Sanders was hostess in her home for the Merris Dames Club and special guests last Tuesday afternoon in the regular tri-monthly meeting. Fall flowers are at their zenith and the hostess chose marigolds and orange cosmos for the living room; white and pink roses for the dining and guest rooms.

Five tables of forty-two were surrounded for the afternoon's games at the conclusion of which the hostess served two delicious courses. The first course was chicken salad, brown bread sandwiches, sweet pickles and iced tea; second course white cake squares and daisies in ice cream mold. Special Guests were: Mesdames A. C. Pierson, W. H. Murchison, Mary Oates, H. S. Post, Elizabeth Martin, P. A. Wombles, W. M. Reid, O. E. Patterson, J. W. Hills of Amarillo, Bruce W. Bryant, S. A. Roberts, John W. Pace, Clayborn Payne, J. L. Southern, Le. Glazener and club members; Mesdames J. U. Fields, J. A. Jones, H. S. Wilson, R. J. Reynolds, C. M. Gosner, C. L. Lewis, Elam Parish, T. C. Rogers, R. C. Couch and A. H. Wair.

**Tuesday Bridge Club Meets With Mrs. Clyde Grisson.**

The Tuesday Bridge Club met with Mrs. Clyde Grisson this week and only club members were present. Zenias were the favored flowers the hostess chose to make the rooms more attractive. Mrs. Grisson served a salad plate to Mesdames Wallace Cox, Theron Cahill, John P. Payne, R. E. Hall, Joe Hendricks, Hill Oates, Wayne Koonce, and Marlin Wilson of Rule.

**Methodist Women's Missionary Society.**

The Methodist Women's Missionary Society met in regular Monday meeting on last Monday afternoon at three o'clock. Mrs. John Wilson was the director and the program was on "The Missionary Voice." The opening song was, The Home

Over There. Mrs. W. J. Sowell led the devotional, using the 21st chapter of Revelations. Prayer, Mrs. Breedlove; Vocal Duet, Mesdames W. A. Kimbrough and C. L. Lewis; Homes of Korea, Mrs. J. L. Southern; Chinese Homes, Mrs. E. Gaston Foote; Some Problems of Our Own Homes, Mrs. S. R. Rike; News Items from the Missionary Bulletin, Mrs. P. A. Womble. There was a short business session with the president, Mrs. C. L. Lewis in the chair. The church was beautifully decorated with roses. The closing hymn was Near The Cross.

Don't Miss the Radio Show—Something new and different. A laugh a minute! Texas Theatre, Oct. 21 Benefit Christian Ladies Aid. Itc.

**The Colonial Bridge Club.**

The Colonial Bridge Club met with Mrs. J. G. Foster on Tuesday afternoon. Vari-colored roses and red dahlias were the flowers Mrs. Foster used in her reception suite. And when the games were over she served the guests a salad plate. They were: Mesdames John Draper, Dennis Ratliff, John Pace, Thos. Donohoo, John V. Davis and Carl Maples.

Harry Betts, manager of the Bettis Chevrolet Company has been spending most of his time in Rule this week looking after the Company's business there while Jack Bettis the Rule manager is in California taking his vacation.

**We have been Your Health**

**Appointed Food Center**

here you can secure

**BATTLE CREEK SANITARIUM HEALTH FOODS**

Delicious Foods for Every Need

To Keep Well Folks Well  
Weight Gaining  
Auto-Intoxication  
Diabetes

Reducing  
Blood Building  
Constipation  
Acid Stomach

Used at the Battle Creek Sanitarium for 50 Years  
Come in and secure free recipe booklet and other health literature telling you how these foods can help you keep well.

**Pearsey & Stephens**  
Haskell Texas

**SALE! SALE!!**

**GOODYEAR**

More Miles at Less Cost Than Ever Before

Record Breaking Sales Bring These Low Prices on



**Goodyear Pathfinder Tires**

HIGH PRESSURE

30x3 1-2 Cl. Regular	\$ 5.15
30x3 1-2 Cl. Oyersize	\$ 5.25
31x4 S. S.	\$ 9.15
32x4 S. S.	\$ 9.85
33x4 S. S.	\$10.45
30x5 Truck	\$17.95

BALLOON

29x4.40	\$ 5.98
30x4.50	\$ 6.89
29x5.00	\$ 8.60
30x5.00	\$ 8.95
31x5.25	\$10.30
32x6.00	\$13.85

Other Sizes in Same Proportion.

Fresh Stocks—All Firsts—Standard Lifetime Guarantee—Free Mounting.

Extra Special for Friday and Saturday Only

30x3 1-2 Speedway Tire	\$3.98	Tube .87
29x4.40 Speedway Tire	\$4.98	Tube \$1.07
Regular 50c Goodyear Cold Patch for only	25c	

**Isbell-Burton Motor Co.**

Haskell Phone 252 Texas

**Starvation Diets Taboo In Chorus Of George White's New "Scandals"**



A few of the "Scandals" beauties. The girl at the left is Lillian Sabalas, pointed to by George White as a perfect example of the type demanded by the changing mode.

Return of Curves Frees Girls From Despised Routine of Lean Chops and Spinach

By Madeline Prescott

"ONCE again, girls. Snap it up, and don't forget the turn at the end. All right, now. Found it out! One, two—let's have it. No, no! Start again. One, two—" The director perspired and gesticulated. Over in the corner, George White weighed the perfections and imperfections of the chorus of his latest "Scandals."

The body of the theatre was dark, but on the stage, under the blinding light of a single, huge bulb, a line of pretty girls kicked and twisted and turned, and kicked and twisted and turned again, while a tiny piano thumped out the unending tune. The girls were lightly clad, some of them in abbreviated bathing suits, and it was cool in the dim theatre, but they were panting and dripping wet with perspiration. They'd been rehearsing for an hour and another hour lay ahead of them. Then time out for dinner. After that the evening performance.

A Sound Prescription

The harried director, his hair plastered on his damp forehead, clapped his hands sharply. During the short rest period that followed, I wandered over to George White in his corner. "That's what I call real work," I said. "About a half

hour of it would finish me for good. How do they stand it?"

Mr. White smiled. "They get used to it. There aren't many athletes who have anything on them in wind, or muscle where they need it. Dancing in the chorus is hard work, though. A husky constitution to begin with, plenty of sleep and plenty of wholesome food—that's the prescription that will carry a girl through the season."

"What do you mean, plenty of food?" I asked. "What's going to happen to the girls' boyish figures?"

Slim Girls Passé

Mr. White shook his head. "I'm no admirer of buxom beauties," he said. "We aren't going to see a return to the billowy lines of Frankie Bailey, but chorus girls must fit into the standard of beauty of the time. A trend toward the return of normal feminine curves started last spring, and girls and women all over the country have been giving up their starvation diets and falling into line."

"You can't put girls on the stage who are shaped differently from girls in the audience. This season's chorus girls aren't going to be fat, but they aren't going to have the skinny, flat-chested figures they've had to cultivate for the last few years. The chorus girl is going to have a chance to eat again; she needs to keep up her strength. These girls know I expect to eat enough to keep strong and we're dead set against starvation diets with their consequent breakdowns."

Hard-Working Beauties

The decrepit piano started thumping again, and George concentrated his attention on the director called. This is twenty-six—or was it the thirtieth time the girls had done it? Months of preliminary rehearsal behind them, and now to show successfully opened seating to capacity houses, the still at it. They would eat it, ceaselessly altering, still improving until the show of the spring.

Certainly, I reflected, as I have benefited more than the working girls of the chorus, changing standard of beauty is rapidly relegating to the past for extreme slenderness starvation diet which it ent

**Get Your Part of The—Ducks**

The Season Is Already Open!

WITH the opening of the Duck Season on Oct. 16th, you'll want to get your share of game and we offer every item for the well-equipped hunter.

AMMUNITION OF ALL KINDS AND A WELL-ASSORTED STOCK OF NEW AND USED GUNS

For your convenience, we will issue Hunting and Fishing License.

**McNeill & Smith Hdwe. Co.**

"Headquarters For Haskell Sportsmen"

**CLASSIFIED ADS**

**Abstracts and Loans**  
 will make your first class Abstracts of land titles promptly, at reasonable prices. We will appreciate your business and be glad to see you. Sanders & Wilson, Haskell, Texas.

**Miscellaneous**  
 For Sale at reasonable price. See Paul Frierson. ttc.

**LANDS FOR SALE**—At 50c per acre in the orchard, four miles from McAuley near Roby, on the highway. No sales on Sunday. J. J. Nickless. 2tp

**KASCH AND MEBANE**—Cotton Plant Quality Seed to raise variety Cotton. Pedigreed seed of variety Kasch #275 Mebane per bushel F. O. B. Haskell, very very limited this year. Your order early to Leon Gilch at Farmers Gin Co. 4tc.

**acre farm, 4 mi. S. E. of We-** trade for Plains land. Do want over 320 acres. Ben Weiner, Texas. 3tc.

**PURE BRED**—Buff Wyandotte hens and Pullets and Buff Bantams for sale. W. W. Haskell, Haskell, Texas. ttc.

**OR SALE**—Canary Birds, either male or in pairs. Mrs. C. K. Jones.

**OST**—One Baby's Tan Oxford, about 3 1/2. Pinder please call. ttc.

**OR SALE OR TRADE**—2 good pianos, one player, both in condition at Real Bargains. C. Woodson, Phone No. 1 or 215. ttc.

**OR RENT**—Filling Station with 3 room dwelling house, good location, known as the South Bend Filling Station. Across Street from Ward School. See W. E. ttc.

**OR SALE**—Underwood portable typewriter and Sonora portable typewriter. Both machines practically new, terms. See Glenn Flewry, at Rose School. 2tp.

**ONT MISS**—Midnight Show, Monday Night, Attraction, "The Show Man." Admission 20c and Rochester Theatre. ttc.

is the young attorney who has tried his first case at the Haskell School Tuesday night, Oct. 15. Be on hand and get a good case and see.

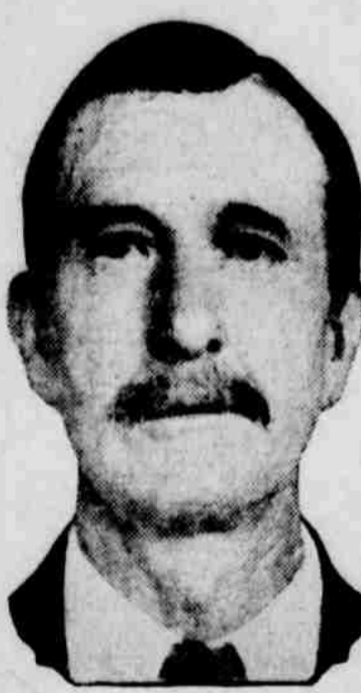
**CARD OF THANKS**  
 We take this means of expressing sincere appreciation of the many kind deeds rendered us during the illness of our dear mother and grandmother, "Grandmother" Scott Midway. Her many friends of Haskell and Weir will be glad to know that she is slowly improving from a lingering illness of over a year. By their cheerful visits and remembrances, life has been made sweeter and suffering more easily borne. We wish especially to thank our hostman and wife, Mr. and Mrs. J. H. Scott, of Haskell. We wish that each of you may just such loyal friends should be to you in illness come your way. Sarah L. Scott. Mr. and Mrs. C. O. Scott and family.

An all star cast, beautiful music and a laugh in every line. See "That Hoodooed Coon, Nov. 8th.

**FOR SALE OR TRADE**—Several good Used Battery Radios in good condition, these sets taken in on Majestic Electric sets, and are real bargains. C. P. Woodson, Phone 1 or 215. ttc.

**WANTS TO TELL HIS FRIENDS OF SARGON**

"I've seen Dallas grow from a small town to a great city and I have many friends in Texas in Texas. I want them all to know about Sargon, and what it did for me.



WM. D. VAUGHN

"My stomach was out of order for a long time. Although I ate very little, I was often in misery after meals and smothering spells, my blood was thin and my color was as yellow as gold. I had severe pains in my back and sides and my kidneys would get me up all during the night.

"Since taking Sargon, I'm in better health than for years. I eat like a hungry school boy and can digest anything. There's not a pain in my body and I sleep good all night. Sargon Pills toned up my liver and ended my constipation. Now my skin has a good healthy color and I feel like a new man." Wm. D. Vaughn, 1910 S. Akard St., Dallas.

**OATES DRUG STORE, Agents**

**FRANK KENNEDY**  
 "Exide Batteries"  
 Haskell, Texas

**Don't Miss the Radio Show**—Something new and different. A laugh a minute! Texas Theatre, Oct. 24. Benefit Christian Ladies Aid. ttc.

Mrs. N. I. McCollum and daughters Misses Nettie and Marguerite, spent the week-end in Dallas.

**The Personal Side**

Dad serves as a certificate of convenience for the whole family.

Another paradox is that nothing is more unholy than a "holy war."

European version: Forgive our debts as we forgive our creditors.

While Ramsey McDonald is here to help President Hoover work out a permanent peace program they might go into a huddle on the Chicago gang war problem.

So far the Farm Board has made no advances to relieve the sowers of wild oats.

If Godiva's ride were to be repeated today, many would peep to see what a horse looks like.

Somehow we just can't keep our mind on the tariff with the football season in full swing.

A Chicago professor declares that the second child in a family is brighter than the first. Maybe so, but the first is generally bright enough to have things pretty much its own way.

It is reported that a record catch of seals was made this season, which may cause a slump in the market for rabbit skins.

A noiseless motor has been invented it is claimed. In some neighborhoods a noiseless radio would be more popular.

Kentucky is said to have 70 per cent too many lawyers. And every state has at least 70 per cent too many laws.

No one who has seen a stocking-less woman wearing a fur neckpiece can doubt the inconsistency of the so-called weaker sex.

A New York man, it is claimed, can put himself into a dull sleep at will. What an armour against high-pressure salesmen.

A Denver couple, each aged 73 have been divorced after a year of married life. We always did appreciate of these early marriages.

A Columbia University professor wants crime news restricted by law. But wouldn't it be better to restrict crime by law?

General Chung-Chang of China probably would agree with Sherman on his definition of war. After being defeated and exiled he had to reduce the number of women in his harem from forty to two.

It is predicted that Panama will become a tourist playground. And why not? Among the attractions will be a race track, unrestricted gambling of all kinds, and an unlimited supply of fancy wines and liquors.

A Fort Worth man suing for divorce was granted an injunction restraining his wife from taking possession of the family snake, a carnival attraction. He ought to remember that a snake caused the first family trouble.

A London woman suing for heart balm asks for only \$25. She ought to have taken a lesson from her American gold digging sisters. And furthermore, how does she expect to pay her lawyer?

The only palm that thrives as well in a cold climate as in a semi-tropical one is the itching variety.

The reformers are at cigarettes again. Now just watch their smoke. Prohibitionists say that public sentiment will close the speakeasies. Perhaps—if the public loses its thirst.

A chicken without wings is the latest in the poultry breeding industry. Now if they just could produce a strain with built-in stuffing.

A Chicago doctor says it's not healthy to suppress a laugh. Especially when the boss springs his newest joke.

The Dutch girls are said to dress exactly like their flapper daughters.

Dumb Dora says that just when her husband was getting into the big money they reduced the size of the bills.

It may be all right for a man to blow his own horn, but going on a "toot" is different.

A gentleman is a man who always removes his hat in his wife's presence—when someone is looking.

It's wonderful what fine memories some people develop after they have done you a favor.

A scientist says that it is possible to make diamonds from sugar. Many a young lady's "sugar daddy" agrees.

A woman writer thinks more marriages would be happier if women did the proposing. But wouldn't that be kind of hard on the bachelors?

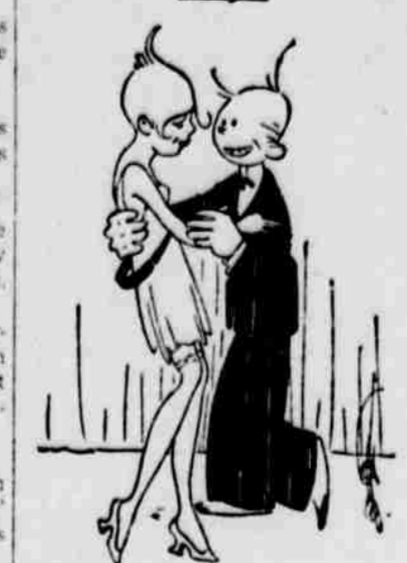
"Election is a method devised in America to put people to death," wrote an English schoolboy. He's not so dumb at that.

A Tennessee farmer asked for government aid after the third set of twins had been born in his family in five years. And the poor fellow surely needs it.

From the number of times some women get married, matrimony must be a hobby with them.

Senator Dill favors broadcasting the debates on the tariff. We can't agree. There's too much static in the air already.

**EXPERIENCE NEEDED**



She—You say, Tom, who has just returned from Africa, is going to open a beauty parlor? Why?  
 He—Well, the tales he tells of his experiences make their hair curl naturally.

**Farm Loans**  
**5 1/2 %**  
**V. W. Meadors**  
 Haskell, Texas

**Informed motorists say, "Buy an EIGHT"**

The informed demand today is unmistakably for the Eight. Nobody can predict what chance a Six will have in next year's used car market.  
 Consider the facts: During the first seven months of this year, in 43 states,\* registrations of new cars over \$1000 showed a 94 per cent increase in Eights—an 18 per cent decrease in Sixes.  
 And Studebaker, enjoying its seventy-seventh successful year in business, sells more Eights than any other manufacturer in the world.  
 So why pay as much or more for a Six when you can have a champion Eight by Studebaker—holder of 11 world records and more American stock car records for speed and endurance than all other makes combined? A Studebaker Eight, brilliant with the power, the smoothness, the flexibility that only an Eight can deliver. An Eight as economical as the thriftest Six. And styled with a notable smartness all the way through.  
 Now that it costs no more to own and drive one—get an Eight—a champion Studebaker Eight!

**STUDEBAKER**  
**Eights** { Dictator Eight Sedan . . \$1239  
 Commander Eight Sedan \$1475  
 President Eight Sedan . . \$1739  
*Four-Door Sedan Models. Prices at the factory.*

Tune in Each Tuesday and Friday Evening at 8:30 O'clock on KFYO for the Studebaker Hour.  
**Ed S. Hughes Motor Co.**  
 STUDEBAKER-ERSKINE DISTRIBUTORS  
 GENE TONN'S GARAGE; HASKELL, TEXAS

**Money To Loan**  
 On Farms and Ranches by the JOHN HANCOCK LOAN COMPANY, the best Loan Company doing business in West Texas. We give you a low rate of interest, payable annually, any month you want to pay interest, no operation or attorney fee, and no stock to take, with option to pay \$100.00 or any multiple of \$100 at end of any year, up to one fifth, without notice. You get all the money you borrow.  
 We write only one deed of trust and one note, no commission notes that you have to pay in full for the entire life of the loan no matter how much you pay before maturity on the principal note. When you pay \$100 or more on our loan it stops ALL INTEREST on the amount paid.  
 Come in and see us and let us explain the John Hancock Loan to you, and the loan where they write two deeds of trust and two sets of notes. Few farmers understand the difference between these loans. I have been in the loan business for 44 years. If you are considering making a loan I would advise you to get it before the end of the year. Conditions are not good, and interest may get higher.

**R. D. Bell**  
 SECOND DOOR NORTH OF OAT ES DRUG STORE

**FIRE!**  
 When it comes WILL YOU BE FULLY COVERED?  
 When lurid flames are already licking at your valuables—then it will be too late to insure. Now is the time to take out your policy. We can offer you most attractive terms—suitable to your individual needs. May we tell you all about them?  
**F. L. Daugherty**  
 THE INSURANCE MAN  
 Office Phone: 335. Residence Phone: 361.

**The Old Established, Reliable Market for Your Poultry, Eggs, and Cream**  
**Western Produce Co.**  
 Always Pay the Top Market Prices

**Money to Loan on Farms; Ranches**  
 I can get you a loan on your farm at a low rate of interest, payable annually; the loan to become due at the end of ten years, and give you the privilege of paying as much as one fifth of the principal each year if you desire to do so. The cost to you will be the abstract fees and recording fees. If you want a new loan or want to renew an old loan write me or come and see me and let me explain to you, and I will get you the best loan to be had, in a company that you will be pleased with and save you money, so you will be satisfied in the future. You get all the money you borrow.  
**P. D. Sanders; Haskell, Texas**

**INSURE WITH**  
**T. C. Cahill**  
 The Oldest, Largest and Strongest Insurance Agency in Haskell.  
 Phone 51

**West Texas Utilities Company**

... put an end to Drudgery gain freedom on Washday

with the **FEDELCO Speed-Washer**

YOU'LL forget that washday is a hard day, for your entire washing can be done silently, swiftly and efficiently with this new Fedelco "Speed Washer." You'll have time to do the things you like to do when you own this time and labor-saver.

The ironing too can be done while you are comfortably seated—Just guide each piece through the Fedelco Electric Ironer and it is finished without a wrinkle!

This complete home laundry equipment, the Fedelco Washer, Ironer and Dixie Twin-Tubs can be had for only \$174.50. (Convenient terms if desired.) Won't you call for a Free Demonstration?

# Rural Community News

**Gauntt**  
 Mrs. Herbert Foster who has been at the Knox City Sanitarium was brought to the home of her husband's parents, Mr. and Mrs. Tom Foster last Sunday afternoon. We are glad to say she is getting along nicely at this writing.  
 Mr. George Turnbow and Mr. Clifford Anderson returned Monday night from Wheeler county.  
 Mr. and Mrs. Alford Fowler of Toward spent Thursday night with the former's parents Mr. and Mrs. W. S. Fowler.  
 The party last Saturday night at the home of Mr. Deay Phipps was enjoyed by a large crowd.  
 Miss Lottie Throat and Mr. Ray Throat left Sunday morning for the Plains.  
 Mr. and Mrs. Alfred Carrigan of the Post community visited Mr. and Mrs. W. E. Cowser Sunday afternoon.  
 Mrs. Joe Smith of Rule visited her mother Mrs. Bob Spurlin Friday afternoon.

**COOK SPRINGS**  
 The well has been dug, the coal is being worked and work will soon start in the new school house.  
 Mr. Claude Livestock made a business trip to the Plains last week.  
 Melvin Gonsler has returned home from Los Angeles, California where he visited relatives.  
 Mr. F. Golden and son Joneal, Mrs. W. A. Taylor and daughter Oma and Miss Ruth Davis motored over to Rochester Wednesday night and voted for Miss Edith Bittick in a contest there.  
 Edd Chagall and family have returned from Uvalde, Texas.  
 Clarence Yarbrough and Bruce Weaver of Rule called on Leir Davis Sunday night.  
 Those from the community who attended the musical entertainment at the home of Edith O'Prie of Rule Friday night were, Misses Ruth and Libbie Davis and their mother, Mrs. Edith Davis, Sidney Westwood, Coy O'Prie and Mr. and Mrs. A. O'Prie and son Gordon.  
 Mrs. George Smith of Rule spent Thursday with her father P. Golden. Most every one from here went to be show at Rule Thursday night.  
 Mrs. McKenize of Mexia has been visiting in the O'Prie home.  
 Mrs. B. O. Westbrooks and sons Earl and Elmer have returned from Putman.  
 Trevis Caffey who has been sick for the past two months with typhoid fever is better.  
 The little baby of Mr. and Mrs. Ezra Johnson has been sick.  
 Everyone is busy picking cotton.  
 J. A. O'Prie and son Gordon made a trip to Knox City Tuesday. Misses Ruth and Libbie Davis and Irene Painter were in Rochester Sunday afternoon.

**Center Point**  
 Mr. Warren Deagan happened to a painful accident while at work on the school building at Sagerton last Saturday. One of the men accidentally dropped a cement bucket on his head and cutting a place.  
 Mrs. Miller is spending a few days this week with Mrs. L. E. Hland at Rule.  
 Mr. Island and Misses Lela and Lucile Manning of Rule visited here Sunday.

**PAINFUL INDIGESTION**

"I suffered from indigestion; everything I ate gave me heartburn," says Mrs. Mattie Mullins, of Pound, Va. "For months, I did not see a well day. I worried along, but never felt well."

"I got a package of Theodor's Black-Draught at the store and began taking it—a dose every night before going to bed. I had been having an awful pain. After I had taken Black-Draught, this pain entirely stopped. I began to gain in weight, and rested well at night. In a few months I was feeling fine. My health was better than it had been in years."

"I keep Black-Draught in our home, and we all take it for constipation and upset stomach."

Printed on Theodor's

**Black-Draught**

FOR CONSTIPATION, INDIGESTION, BILIOUSNESS

here Sunday.  
 Mr. and Mrs. Omar Jeter are at the home of Mr. Will Jeter.  
 Mrs. McKinney of Breckenridge was a business visitor here last week.  
 Mr. and Mrs. Vick of Oklahoma are visiting relatives here.  
 Mr. and Mrs. Gilbert Carothers of Rochester visited Mr. and Mrs. Joe Davis Thursday night.  
 Messrs. Clarence and Milton Bland and Mrs. Letha Grundenburg of Olla are visiting Mr. John Bland.  
 The H. D. Club met with Mrs. H. P. Harwell last Friday. Miss Gunn was present and demonstrated dyeing to five members. After the demonstration a social hour was enjoyed and Miss Willie Harwell served lemonade and cake as refreshments. The next meeting will be Oct. 25th at the home of Mrs. Stone and we will elect officers for the coming year.  
 The B. Y. P. U. was entertained at the church last Wednesday night. The losers in the contest, group 2 entertained the winners and a few visitors. Punch and cake was served to about 75 people. Rev. and Mrs. Parks and daughter were visitors from Haskell.

**Smith Chapel**  
 Bro. Claude Stovall filled his regular appointment here Sunday and Sunday night. The service on Saturday night was rained out.  
 Florence Lewis visited Vera and Kate McGuire Sunday.  
 Mr. and Mrs. Jim Alexander and family, Mr. and Mrs. Roy Fisher and Gladys Kennedy visited in the home of Mr. and Mrs. Robert Young of Weimert Sunday.  
 Nettie Mills visited Lassie Hand Sunday.  
 Robert and Edna Moore of Avoca called on Vera and Kate McGuire Sunday afternoon.  
 Mr. and Mrs. Jimmie Abbot of Trent, Texas, spent last week-end here visiting friends.  
 Mr. J. V. Lewis and daughter Florence and Gladys Kennedy were shopping in Haskell Saturday.  
 Mr. and Mrs. D. H. Craddock and Mr. and Mrs. Cornelius Stephens visited in the home of Mr. and Mrs. Ezra McBeth Saturday night.

**Sagerton**  
 Mr. and Mrs. J. W. Martin of Haskell visited their daughter and husband, Mr. and Mrs. E. D. Engleman at here last Thursday afternoon.  
 Messrs. J. E. Kittly and G. A. Lambert of Sagerton served as jurymen at court the past week. Mr. E. D. Engleman served as jurymen last Friday.  
 Mr. and Mrs. Roy Neil and family of Goldsmith, Texas have moved to Sagerton to make their home. Mr. and Mrs. Neil have lived here before and their many friends are glad to have them back here again.

**Tanner Paint**  
 We are glad to report that Ross Richards who has been on the sick list for some time is able to be out again.  
 Mrs. Annie Yarbrough was shopping in Rule Saturday afternoon.  
 Mr. and Mrs. Kelley and family were shopping in Stamford Saturday afternoon.  
 Mr. and Mrs. Will Karr were shopping in Rule Saturday afternoon.  
 A large crowd of friends and relatives attended the burial of Melvin Kieck Sunday.  
 Mr. and Mrs. I. P. Alicorn spent Sunday afternoon with her aunt Mrs. Annie Yarbrough.  
 Miss Thelma and Velma Yarbrough spent Sunday with Miss Lorene Hunt.

**Hutto**  
 Cotton picking has been progressing nicely in this community. Pickers are plentiful and the weather has been ideal.  
 A singing was given at the home of Mr. and Mrs. George Williams Sunday night.  
 Mr. and Mrs. J. C. Seaton and Jacob McReynolds visited near Rule Sunday.  
 Mr. and Mrs. Johnny Casey are the proud parents of a big son born October 9th.  
 Mrs. J. C. Seaton and Mrs. Jewell Day called on Mrs. Lucy Day Saturday.  
 Roy Day made business trip to Benjamin Wednesday.  
 Mrs. J. W. McReynolds returned home to her husband last Monday. She has been visiting relatives in Ottawa Canada.  
 Mrs. G. W. Carter met with the Hutto Canning Club at Mrs. Jewell Day's last Wednesday.  
 Mrs. L. D. Hicks gave a shower last Wednesday evening honoring Mrs. Thelma Nance, who was recently married to Mr. Earl Nance.

**Chapel Program Deals With Mountain Peoples and Their Feuds.**  
 The Wednesday chapel program at the High School dealt with the hill and mountain country peoples, their customs, legends, and languages. Rev. G. R. Forrester presided.

There will be singing at Tanner Paint next Sunday at 3:00 o'clock. Every body is invited to come.

**Mountain and Hill Country Peoples—Rev. G. R. Forrester.**  
 Education—Wallace Sanders.  
 Nothin' To Say My Daughter—J. E. Walling.  
 (a) Specially Jim, (b) My Hand—Virginia Sills.  
 (a) Jane Jones Keeps A Talkin' To Me All The Time; (b) I Don't Want Nothin' But You—Herman Pittman.  
 The Chariot Race by Ben Hurr—R. H. Moser.  
 One Act Play—Mountain Laurel, Catherine Wingo, Herman Pittman and Joe Thomas.

**Ratliff & Ratliff**  
 ATTORNEYS AT LAW  
 Office in Pierson Building

**J. G. FOSTER**  
 ATTORNEY AT LAW  
 Office in Haskell Natl. Bank Bldg.

**P. D. SANDERS**  
 LAND LAWYER  
 Perfects land titles. Loans money on farms and ranches and handles Real Estate.

**DAWSON AND OAKDALE**  
**COAL**  
 And All Kinds of  
**MILL FEEDS**  
 Bran, Shorts, Corn, Corn Chops, Ruco, Cotton Seed Meal and Wheat and Oats.  
**PORTER, WHITE & TRICE**  
 Haskell, Texas  
 Across from H. H. Hardin. Phone 48  
 W. P. TRICE, Mgr.

Mr. and Mrs. Abdon Holt of Lubbock were in the city the first of the week visiting friends and relatives.  
 Mr. Holt was formerly connected with the West Texas Utilities Company here, but moved to Lubbock several years ago. Courtesy Hunt made a trip to Munday Monday.

**THE HASKELL NATIONAL BANK**  
 The Old Reliable Since 1890  
 Capital and Surplus \$100,000.00

**DIRECTORS**  
 Mrs. M. S. Pierson, Hardy Grissom, J. U. Fields, J. W. Pace, L. P. Taylor, G. W. Waldrop, J. W. Ghoson.

**OFFICERS**  
 Mrs. M. S. Pierson, President  
 Hardy Grissom, Vice-Pres.  
 O. E. Patterson, Active V.P.  
 A. C. Pierson, Cashier.  
 Miss Nettie McCollum, Assistant Cashier

for Economical Transportation

**CHEVROLET**

**CHEVROLET SIX**  
 —the Car of Universal Appeal!

SINCE January 1st, over a million one hundred and thirty-five thousand six-cylinder Chevrolets have been produced. Naturally, this is an outstanding industrial achievement. But it is more than that. It is a great public endorsement of Chevrolet's policy of progress: to build a quality automobile whose design incorporates every possible feature of progressive engineering . . . whose beauty is distinctive, smart and satisfying . . . whose reliability is assured by fine materials and precision manufacture . . . and whose price is so low as to be within reach of the great majority of the people. We want you to know what this policy has meant in the development of the Chevrolet Six—the modern car of universal appeal. We want you to know that Chevrolet has brought within the reach of everybody, everywhere, all the advantages of smooth, six-cylinder performance. Come in today!

The ROADSTER . . . . .	\$525	The SEDAN . . . . .	\$675
The PIANTON . . . . .	\$525	The IMPERIAL . . . . .	\$695
The COACH . . . . .	\$595	The SEDAN . . . . .	\$595
The COUPE . . . . .	\$595	LIGHT DELIVERY . . . . .	\$400
The SPORT COUPE . . . . .	\$645	(Chevrolet only)	
		1 1/2 TON TRUCK (Chassis with Cab) . . . . .	\$545
		1 1/2 TON TRUCK (Chassis with Cab) . . . . .	\$650

Check Price for Price Value for Value

Consider the delivered price as well as the list (f. o. b.) price when comparing automobile values. Our dealers' delivered prices include only authorized charges for freight and delivery, and no charge for any additional accessories or financing desired.

**THIS IS CHEVROLET NATIONAL DEMONSTRATION WEEK**

**BETTIS CHEVROLET COMPANY**  
 Huddleston Chevrolet Bettis Chevrolet Co.  
 ROCHESTER, TEXAS RULÉ, TEXAS

**COME IN—TAKE A RIDE IN THIS SENSATIONAL CAR**

**THE greatest advance in power application since the first automobile appeared.**

**1 MULTI-RANGE GEAR SHIFT** gives unbelievably faster and snappier pickup over a much wider speed range.

**2 MULTI-RANGE GEAR SHIFT** gives you choice of three complete speed ranges, each adequate in itself.

**3 MULTI-RANGE GEAR SHIFT** permits easy gear-shifting back and forth between driving speeds at will.

**4 MULTI-RANGE GEAR SHIFT** reduces hill-climbing time one-half—without any unpleasant gear noise.

**5 MULTI-RANGE GEAR SHIFT** simplifies gear-shifting and increases efficiency of car control at all speeds.

**6 MULTI-RANGE GEAR SHIFT** enables you to shift gears as always in ordinary driving—no complications.

**7 MULTI-RANGE GEAR SHIFT** provides a special Heavy-Duty Gear for driving through deep sand and mire.

**8 MULTI-RANGE GEAR SHIFT** cuts engine speed 15%, increasing economy of operation and motor life.

**9 MULTI-RANGE GEAR SHIFT** is the greatest advancement in motor car control in all automobile history.

Ask for a demonstration. It will prove a revelation.

**CHRYSLER**  
 CHRYSLER MOTOR PRODUCT  
**ROBERT ST. JOHN MOTOR CO.**  
 At Bert Welsh Garage  
 O. W. MALOV, Manager. Haskell, Texas

# Courtney Hunt & Company's Profit-Sharing Sale

### BLEACHED OR BROWN DOMESTIC

and Bleached Domestic, 8 ounce, wide, good grade, per

**10c**

### 8-OZ. COTTON DUCK

Pick Duck, 8 ounce, clear grade, yard—

**15c**

Pick Duck, 58 inches, full 8 ounce, yard—

**35c**

### MEN'S WORK CLOTHES

Men's Work Shirts, Pow-Blue Khaki and Chambray, skirts and coat style, \$1.50

**95c**

Khaki Work Pants, all colors, \$1.95 and values—

**\$1.45**

and Boys' Lace Leg, all sizes and well made, to \$3.50 values—

**\$1.95**

Boys' Hats and Caps, values—

**75c**

### MEN'S AND BOYS' WORK JACKETS

Boys' Heavy Fleece Lined, \$1.50 value—

**95c**

Men's Heavy Fleece Lined Jackets, all sizes and \$3.00 value—

**\$1.95**

Men's All Wool Coat, extra well made, val.

**\$3.95**

### OVERALLS FOR MEN AND BOYS

Tuf Nut Brand, extra grade, all sizes, \$1.95

**\$1.39**

Men's and Boys' grade, \$1.75 value—

**\$1.19**

### MEN'S AND BOYS' CAPS

and Boys' Dress Caps, and styles, \$1.50 to values—

**\$1.19**

Our Store was literally jammed Friday and Saturday, the Opening Days of Our Sale—they came from far and near and from near by towns. They know that when Courtney Hunt & Co. advertise a Sale it means something more than an ordinary sale, it means real bargains on high class merchandise. They know we never stage a side show to lure you to our store to sell you cheap, inferior merchandise at a fictitious reduction from an inflated price.

This is more than a Profit Sharing Sale, we are giving our customers the bigger end of our profits. We can afford to do this. We are an organization of 26 live stores, we pay cash, we buy cheaper and we sell for less. We keep up our volume through the Summer months by extending accommodations to our worthy customers. So now it is not necessary that we make years profit during three remaining fall months. We are glad to share our profits with you.

**Make Out Your List--Come To This Sale And Save!**

**THERE WILL BE A BIG EVENT AT OUR STORE SATURDAY AT 4 P. M. BE ON TIME THE CROWD WILL BE THERE—DON'T MISS IT!**



**ASK FOR FREE SILVERWARE COUPONS—WE GIVE WITH ALL CASH PURCHASES AND BE AT OUR STORE SATURDAY AT 4 P. M.**

## Low Prices on Ready-to-Wear and Millinery

Our entire Stock of New Fall Dresses Coats and Hats to be included in this Great Sale at Special Profit Sharing Sale Prices. Just a few of the many bargains mentioned in this ad.

1 lot Nelly Don and Marcy Lee Frocks, all good styles, colors and materials, guaranteed fast colors, regular \$1.95 values—

**\$1.49**

1 lot Nelly Don and Marcy Lee Frocks, all leading styles, colors and materials. Each Dress a beautiful style, \$2.95 value—

**\$1.95**

1 lot Ladies Newest Style Fall Dresses in all the leading styles, materials and colors. Beautiful assortment to select from, regular \$19.75 value—

**\$14.75**

1 lot Children's Wash Dresses, all sizes and beautiful materials, values \$1.25 to \$1.95—

**95c**

One lot Ladies Fall and Winter Coats, all beautiful styles and materials in Plain, Tailored and Fur Trimmed. Models \$29.75 value—

**\$24.75**

1 lot Ladies Fall and Winter Coats, Plain Tailored and Fancy Models, beautiful fur trimmed collars and cuffs, \$19.75 value—

**\$14.75**

Ladies Newest Style Fall Dresses in all new and wanted styles, colors and materials, regular \$12.50 value—

**\$9.75**

1 lot Ladies' House Dresses, all good styles and materials, values to \$1.50—

**89c**

1 lot Ladies Silk Rayon Bloomers, all sizes and colors, worth \$1.25—

**79c**

### Millinery

Ladies, Misses and Childrens Hats, all leading styles, colors and materials. Priced for this sale at—

**95c \$2.45 \$3.45 \$4.95**

Children's Tams, all leading colors, styles and materials, special during this sale at—

**69c 89c**

### Mens, Ladies & Childrens SHOES

The Greatest Values ever offered will be found at this Sale.

1 lot Children's Shoes, all good styles and mostly all sizes, this sale—

**95c**

1 lot Children's Shoes, all styles, sizes and extra good grades, values to \$3.50—

**\$1.95**

1 lot Ladies and Misses Dress Shoes, all styles in pumps, straps, ties and Oxfords, values to \$6.00—

**\$2.95**

1 lot Ladies Felt House Slippers, all sizes and colors—

**45c**

1 lot Men's All Leather Work Shoes, all sizes and extra good grade, this sale—

**\$1.95**

1 lot Men's Extra Heavy Work Shoes, guaranteed all leather and to give satisfaction, values to \$6.00—

**\$4.95**

1 lot Men's and Young Men's Dress Oxfords in black and tan, \$5.00 values—

**\$3.95**

Men's Florsheim Dress Shoes or Oxfords, all sizes, styles and lasts, \$10.00 values—

**\$8.85**

### GINGHAMS AND CHEVIOTS

Gingham and Cheviots, extra good grade, all good patterns, 20c and 25c values, per yard—

**10c**

### OIL CLOTH, HEAVY GRADE

Oil Cloth, all good colors, heavy grade, 35c and 40c values, per yard—

**25c**

### LADIES' SILK HOSE

Silk Hose, all leading colors, silk from top to toe. This sale 2 pairs—

**\$1.00**

### SILK CHIFFON HOSE

1 lot Ladies Pure Thread Silk Chiffon Hose, all colors and sizes, this sale—

**95c**

### CADET SILK HOSE

Cadet Hose, all leading shades, \$1.95 and \$2.50 value, to close out at—

**\$1.69**

### NEW FALL DRAPERIES

Draperies, beautiful patterns and materials values to \$1.50 per yard—

**69c**

Draperies, beautiful new patterns, light and dark colors, 75c values, per yard—

**34c**

### MEN'S AND BOYS' BLUE SHIRTS

Men's and Boys' Blue Shirts, all sizes, 75c values, 2 shirts—

**95c**

### MEN'S SILK UNDERWEAR

Men's 2 Piece Silk Underwear all sizes and colors, \$1.00 val. per garment—

**69c**

### MEN'S AND BOYS' UNIONS

Men's and Boy's Unions, medium weight, \$1.50 grade—

**95c**

### BOYS' KHAKI PANTS

Boy's Pants, Khaki and Cow Boy Styles, all sizes, values to \$1.75—

**\$1.00**

# COURTNEY HUNT & CO.

*"A House Full of Real Bargains"*

Haskell, Texas

Haskell, Texas

The Haskell Free Press  
**ESTABLISHED IN 1898**  
 Sam A. Roberts, Editor-Publisher  
 Second-Class Mail Matter  
 at the Haskell Postoffice,  
 Haskell, Texas.

Subscription Rates  
 Copy, Four Months..... 50  
 Copy, Six Months..... 75  
 Copy, One Year..... \$1.50



**A GOOD IDEA**

There is a wide-awake chamber of commerce in Paris, Ill., a small city of about 10,000 inhabitants, which is making a determined effort to extend its trading area, with good prospects of success.

As a means toward the end sought a series of 37 half-page advertisements, one to run each week, will be placed in the Paris Beacon-News, setting forth the advantages of the town as a trading center.

The chamber of commerce, after trying various methods for building good will in the territory served by Paris merchants, has concluded that newspaper advertising is the most effective means of getting the message to the public.

Other towns have adopted this plan for trade expansion with highly beneficial results, and Haskell might profit by their example.

**A PLEA FROM CANADA**

The roads department of the Province of Quebec, in conducting a campaign to reduce automobile accidents, has made the following plea: "If you would help hold down automobile fatalities, have yourselves and your machines under control, be more eager to respect the rights of others than to insist upon full exercise of your own, do unto others as you would that they should do unto you, and always and ever be careful."

The truth in this message is un-

saillable. Care, competence, good judgment—these are the three graces of accident prevention. A really unavoidable accident is almost non-existent. Behind every mishap, whether its result is a bent fender or a number dead, is the figure of the inconsiderate, careless or incompetent driver.

The accident toll can never be reduced without public realization of the facts and willing co-operation. Every driver should understand that his own life is in constant danger so long as the reckless and incompetent crowd the highways. This message from Canada has a personal application to every American tourist.

**POOR SPORTSMANSHIP**

It is reported that after this year no more radio broadcasts of world's series baseball games will be permitted, through the fear of the magnates that it might keep a few people from attending the games in person.

Few persons so situated as to make it possible to see a world's series game would stay at home even for the radio report simply to save the price of admission. Yet millions in distant parts of the country would enjoy the radio broadcasts, which would create a greater desire to actually witness the games at a future time.

As Wm. C. Gruno, a leading radio manufacturer, recently pointed out, "the stay-at-homes of today are the first to line at the box-office tomorrow." And this is as true of boxing and other sporting events as it is of baseball.

The public has been very generous in its support of professional sports, and the promoters should have business judgment enough to see that depriving the public of these radio reports will cause indignation and resentment which are likely to be reflected in the attendance records of the future.

The proposed action of the magnates is petty and narrow-minded, an evidence of poor sportsmanship on their part. It is to be hoped that those who control the situation may have intelligence enough to see the point and reverse their decision.

**Official Statement of Financial Condition of The Weinert State Bank**

at Weinert, State of Texas, at the close of business on the 4th day of October, 1929, published in the Haskell Free Press, a newspaper printed and published at Haskell State of Texas, on the 17th day of October, 1929.

RESOURCES	
Loans and discounts, on personal or collateral security	\$ 62,757.13
Loans secured by real estate	1,081.98
Overdrafts	46.16
Securities of U. S., any State or political subdivision thereof	1,259.00
Customers' bonds held for safekeeping	550.00
Banking House \$5000.00 Furniture & Fixtures \$2,727.40	7,727.40
Real Estate owned, other than banking house	880.00
Cash in bank	12,190.19
Due from approved reserve agents	5,070.96
Interest on Depositors' Guaranty Fund	610.93
Other Resources, Acceptances (total)	33,161.99
<b>TOTAL</b>	<b>\$125,335.77</b>
LIABILITIES	
Capital Stock	\$ 15,000.00
Surplus Fund	7,500.00
Undivided profits, net	5,148.20
Dividends unpaid	100.00
Due to banks and bankers subject to check	2,690.18
Individual Deposits subject to check, including time deposits due in 30 days	83,895.69
Cashier's Checks Outstanding	451.70
Bills Payable	10,000.00
Customers' Bonds deposited for safekeeping	550.00
<b>TOTAL</b>	<b>\$125,335.77</b>

State of Texas, County of Haskell. We, G. R. Couch, as President, and Alvy R. Couch, as Cashier of said bank, each of us, do solemnly swear that the above statement is true to the best of our knowledge and belief.

G. R. Couch, President.  
 Alvy R. Couch, Cashier.

Subscribed and sworn to before me this 15th day of October, A. D. 1929.

(Seal) Fred Reid, Notary Public, Haskell County, Tex.

Correct—Attest:  
 P. R. Bettis,  
 C. T. Jones,  
 W. O. Sargent,  
 —Directors.

**Sayles News**

Miss Juanita Howeth spent Sunday with Miss Louise Strickland. Mr. David Strickland came home Friday from the wheat fields, where he has been employed during the harvest.

Mrs. Anne Mercer has returned to her home in Stamford, after a visit with Mrs. T. D. Strickland.

Mr. and Mrs. L. Kirby spent a few days with Mrs. Kirby's parents, Mr. and Mrs. W. H. Wiseman.

Vernon Hannes and Lesley Jeter were in Sayles Sunday.

The farmers in this section say that wheat is needing rain badly.

**Charter No. 4474, Reserve Dist. 11 Report of Condition of the Haskell National Bank**

of Haskell in the state of Texas, at the close of business on October 4, 1929.

RESOURCES	
Loans and discounts	\$399,622.31
Overdrafts	526.00
United States Government securities owned	25,000.00
Other bonds, stocks and securities owned	6,698.51
Banking house \$24,200.00 Furniture and fixtures \$12,000.00	36,200.00
Real estate owned other than banking house	50.00
Reserve with Federal Reserve Bank	19,265.44
Cash and due from banks	24,894.42
Outside checks and other cash items	4,439.08
Redemption fund with U. S. Treasurer and due from U. S. Treasurer	1,250.00
<b>TOTAL</b>	<b>\$517,946.66</b>
LIABILITIES	
Capital stock paid in	\$ 60,000.00
Surplus	40,000.00
Undivided profits, net	12,406.59
Circulating notes outstanding	25,000.00
Due to banks, including certified and cashiers' checks outstanding	2,143.89
Demand deposits	279,704.32
Bills payable and rediscounts	98,691.86
<b>TOTAL</b>	<b>\$517,946.66</b>

State of Texas, County of Haskell, ss: I, A. C. Pierson, Cashier of the above-named bank, do solemnly swear that the above statement is true to the best of my knowledge and belief.

A. C. Pierson, Cashier.

Subscribed and sworn to before me this 16th day of October, 1929.

(Seal) Alonzo Pate, Notary Public.

Correct—Attest:  
 J. U. Fields,  
 Jno. W. Pace,  
 J. W. Ghoson, Director.

**Official Statement of Financial Condition of The Farmers State Bank**

at Haskell, State of Texas, at the close of business on the 4th day of Oct. 1929, published in the Haskell Free Press, a newspaper printed and published at Haskell, State of Texas, on the 17th day of Oct. 1929.

RESOURCES	
Loans and discounts, on personal or collateral security	\$284,346.49
Loans secured by real estate	13,843.00
Overdrafts	1,639.75
Banking House \$10,000 Furniture — Fixtures \$5,000.00	15,000.00
Real Estate owned, other than banking house	5,430.00
Cash in bank	15,655.82
Due from approved reserve agents	33,603.49
Due from other banks and bankers, subject to check on demand	60.43
Bills of Exchange	15,522.43
Collections in Transit	62.34
<b>TOTAL</b>	<b>\$388,163.74</b>
LIABILITIES	
Capital Stock	\$ 50,000.00
Surplus Fund	20,000.00
Undivided profits, net	1,196.50
Due to banks and bankers, subject to check	10,446.42
Individual Deposits subject to check, including time deposits due in 30 days	289,520.82
Bills Payable	17,000.00
<b>TOTAL</b>	<b>\$388,163.74</b>

State of Texas, County of Haskell. We, R. C. Montgomery, as President, and J. B. Post, as Cashier of said bank, each of us, do solemnly swear that the above statement is true to the best of our knowledge and belief.

R. C. Montgomery, President.  
 J. B. Post, Cashier.

Subscribed and sworn to before me this 11th day of Oct. A. D. 1929.

(Seal) T. A. Williams, Notary Public, Haskell County, Tex.

Correct—Attest:  
 R. C. Couch,  
 T. E. Ballard,  
 R. J. Reynolds,  
 —Directors.

**LOST**

Bar Pin with Elk emblem and diamond inset. Liberal reward for return to Mrs. Chas. M. Conner, Itc.

**COUGHS YIELD TO LENNEX**  
**COUGH SYRUP**  
 AN ORIGINAL PRESCRIPTION TRIED AND PROVEN  
 JENOL COMPANY - CHICAGO

For Sale By  
**Payne Drug Co.**  
 "The Rexall Store"

**The Exterior Decorator**



**The Town Band**  
 By Joe Meacham

For the past fifty years or better the town band has been the pinch hitting organization of every small town. It functioned only at short intervals when it was needed. When time came for memorial day, independence day and labor day the town band with probably only two or three rehearsals would be on hand at the head of the parade. But within the last ten years the town band has changed. It has passed from the class regarded as liabilities and now stands at the head of the list of community assets.

It has shaken off the name of the Silver Cornet Band and the Star Concert Band and is now the Municipal or Community Band etc. It has taken a new hold on life and is carrying to the farms, shops, and factory where we work, a deeper sense and appreciation of good music. It is taking from our lives a little of the sordidness and commercialism that has held us down. It is making communities musical all over the country.

The town band of today functions on a year around bases. There are concerts during the summer in the parks or city squares and in the winter programs at socials and home talent plays. In some cases

**FOR SALE Truck Farm**

On account of health am forced to sell splendid 44 acre Poultry, Fruit and truck farm, one mile of Clyde. Some improvements, 35 acres in cultivation, 300 young fruit trees should bear next year, good sandy land, shallow water. Fruit, vegetables and melons from early spring till frost. Trucks come for miles after your produce. Market right at your door. See or write S. D. Jobe, R 2, Clyde, Texas.

There may be some penalties for being rich, but have you ever found anyone who wasn't willing to pay them?

A biologist declares that American women are becoming ugly. Maybe his studies on the subject have been made in the early morning.

It's a toss up between the quitter and the fellow who doesn't have enough sense to know when he's licked.

Don't Miss the Radio Show—Something new and different. A laugh a minute! Texas Theatre, Oct. 21 Benefit Christian Ladies Aid. Itc.

Eugene Tom made a business trip to Knox City Monday of this week.

**There Is a Satisfying Element of PERMANENCE**

The funds placed with this Association by its shareholders are invested in first mortgages secured by a part of the earth and the improvements thereon.

Your investment in Building and Loan carries with it a satisfying element of permanence. Industries come and go, Nations rise and fall, but for 98 years Building and Loan has served faithfully and safely—withstanding the storms of adversity—never becoming entangled in the meshes of speculation.

For safety, permanence and dividends—there is Building and Loan.

**Haskell Building & Loan Association**  
 R. C. Montgomery, Pres. V. W. Meadors, Secy.

**Special Offering Ladies New Silk Dresses**

An assortment of beautiful Dresses, in a variety of materials and all new styles. Good range of sizes, and arranged in three price groups.

ONE LOT <b>\$895</b>	ONE LOT <b>\$1195</b>	ONE LOT <b>\$1495</b>
-------------------------	--------------------------	--------------------------

**Coats** One assortment of Ladies Coats in good styles. Regular \$12.50 values at **\$6.95**

Attractive prices on every item in our store during our Cash Raising Sale.

**Mays Dry Goods Co.**

**Celebrates 98th Birthday.**  
 On last Friday afternoon, from 3 until 6 o'clock, a number of ladies met in the home of Mrs. L. T. Newsum to celebrate Grandmother Maloney's 98th birthday. Although the honoree, who now resides at Barth, Texas, could not be present, each of the ladies remembered her with a gift.

The hostess, assisted by Mrs. A. J. Sego, served tea and sandwiches to the guests before departing.

Those present were: Mesdames Edna Mae Burson, Nerva Oates, W. C. Brite, C. F. Graham, J. W. Tid-

well, A. J. Sego, W. F. Dumas, Pierson, R. C. Ware, E. H. Paul Frierson, J. B. Smith, Burson, W. G. Pope, J. E. Pease, the hostess, Mrs. L. T. Newsum.

Mr. and Mrs. Sam A. Roberts children left Thursday for where they will visit relatives attend the State Fair.

Who is the young attorney will try his first case at the High School Tuesday night 8:22nd? Be on hand and get seat and see.

**Let Us Kelp You Save**

Have your old Hat cleaned and blocked by an expert. It will look like new and give you another season of usefulness.

**WE SPECIALIZE IN**  
 Cleaning, Pressing, Dyeing, Pleating.

Special equipment for cleaning, pressing, dyeing and pleating ladies work, offering you a service as good as the larger cities.

All Work Guaranteed

**HENDERSON'S SERVICE CLEANERS**

**TEXAS PROGRAM FOR WEEK, OCT. 21-26**

Monday and Tuesday, Oct. 21-22  
**"THE FLYING FOOL"**  
 Wild Bill Boyd—Big Bill Boyd—Lovable Bill Boyd—Pathe's famous star is all of these, and more, in possibly his most fascinating and dashing characterization, the title role of "The Flying Fool." In it he is a devil-may-care, adventure-loving, woman-attracting ex-war "Ace"—and now a commercial aviator. It's a strong story, full of laughs, full of pathos, not a few tears—a compelling brother-love story, interspersed with pretty girls and the girl—Marie Prevost—and has more than its share of thrills in the air.

Wednesday & Thursday, Oct. 23-24  
 Another Mackaill-Mulhall Hit  
**"CHILDREN OF THE RITZ"**

Friday, October 25  
**"GIRL OVERBOARD"**  
 A Picture Full of Thrills

Saturday, October 26  
 KEN MAYNARD in  
**"THE ROYAL RIDER"**  
 Rider! Fighter! Lover! King of them all. Most unusual outdoor adventure drama you've ever seen. Gorgeous sets! Striking costumes! A complete rodeo. Daring action! Ken Maynard's crowning achievement!

**SEE AND HEAR EDDIE DOWLING**  
 in

**"The Rainbow Man"**  
 A Paramount ALL-TALKING and SINGING Production.  
 Showing  
 Monday and Tuesday, Oct. 21-22  
 Admission 25c and 50c  
 Midnight Matinee Sunday Night  
**Rochester Theatre**

**NEW and AMAZING Majestic RADIO**  
 Exclusively Offers POWER DETECTION with the NEW-45 TUBES  
 Selectivity and Sensitivity Without Parallel in the History of Radio

Model 92 \$167.29 (less tubes)

Power Detection and the new 45 tubes plus four tuned stages of radio frequency enable Majestic to produce the most powerful and sensitive radio set ever built. Absolutely no hum and no oscillation at any wave length. Automatic sensitivity control gives uniform sensitivity and amplification in both high and low ranges. Improved Majestic Super-Magnetic Beam-Tube, Extra heavy, sturdy Majestic Power-Pack, with positive voltage-balancing means long life and safety. Jacobson cabinet of American Walnut. Doors of hand built without with overlays on doors. Superior quality of genuine imported Australian Lacquer. Eucalyptus plate, knobs and feet polished in genuine olive.

There are more than 25 of these sets in Haskell—one of these is near you. Ask the owner what he thinks of his Majestic.

**C. P. WOODSON**  
 BATTERY AND RADIO SHOP  
 Bettis Chevrolet Bldg. Phone 1

Get a Free Home Demonstration



**WAPLES PLATTER COMPANY HAS BEGINNING AS SMALL INDIAN TRADING POST**

Back in the covered wagon days of the great Southwest, some fifty years ago, when shootin' irons were a part of the regular equipment of every he-man, there was started in Indian Territory, (now Oklahoma), a small trading post from which to supply foodstuffs and coffee, to the hardy pioneers.

Homeed in a tent on the banks of the Red River, and operated under the partnership name of Waples and Platter, this trading post early became the center of trading activities for hundreds of miles around. History records that it was a success from the beginning, so successful, in fact, that the business was moved shortly to Denison, Texas, then terminal of the Katy Railroad. That early beginning was the nucleus of the present Waples Platter Company, manufacturers and distributors of foods and coffees, an organization which has for many years been a dominant factor in the business and industrial leadership of the great Southwest.

Due to the sound principles upon which this early business was founded, and to the keen, far-seeing business judgment of the forebears of present owners of the business, from this humble tent on the banks of the Red River has grown an institution whose modern manufacturing plants occupy twenty-five acres of land. Headquarters of the company are located at Fort Worth. Twenty-two branch houses located in as many progressive cities of Texas, New Mexico and Oklahoma, constitute the supply bases for over 10,000 dealers who sell Waples Platter food products throughout the Southwest.

In many respects this institution is self-contained in that it manufactures a majority of the widely known food products which it distributes. Daily a fleet of powerful, company-owned motor trucks piles between its manufacturing plants and the twenty-two strategically located branch houses of the company, carrying new merchandise so that the thousands of dealers have access daily to fresh goods.

Today, under the able leadership of Lloyd McKee, president of the Waples Platter Company is recognized as one of the largest manufacturers and distributors of food products in the United States. Today Lloyd McKee is regarded as one of the most able merchandisers in the country. His strict adherence to the policy of manufacturing and selling goods of the highest quality and his deals of super-service to dealers and consumers have won for him an enviable reputation throughout Texas, Oklahoma and New Mexico, where he is widely known and often referred to as a leading business magnate and citizen of the Southwest.

J. G. Mukey made a trip to Plainview Saturday to accompany Mrs. Mulkey and son and daughter home Sunday. Mrs. Mulkey and children spent the past two weeks with her parents, Mr. and Mrs. A. F. Neal of that city.

Mr. and Mrs. J. W. Roberts and daughter Miss Marayn of O'Donnell spent the week-end with relatives here.

Any bachelor girl who wants to get on the jury in the "Womanhood Divorce Case," send in your name. Bribes are being paid with kisses, by both of the attorneys and the judge.

**SOCIETY and Club**

**Out of Town Guests In Honor Party Thursday Evening.**

Miss Marguerite McCollum was at home last Thursday evening to five tables of bridge as a special honor to Miss Helen Norman of Lamesa, her house guest of the week. Roses and golden rods shed a rosy, festive air to the occasion. The hostess gave novelty vases as prizes to the one making highest score. Mrs. Roy Killingsworth; second high, Miss Madeline Hunt and to the honor guest, Miss Helen Norman. Miss McCollum served her guests a salad plate and punch. They were the honoree, Miss Helen Norman of Lamesa; Beatrice Weinert of Weirter; and Misses Mary Kimbrough, Ella D. Koonce, Louise Kaigler, Mildred Jones, Ermine Daugherty, Mattie Letha Phippen, Lewis Manly, Madalin Hunt, Lois Earnest, Marjorie Whiteker, Ruby Martin, Mildred Shook, Lillian Paxton, Mary Sherrill, Helen Harbison, Nettie McCollum, Mrs. Roy Killingsworth and Mrs. John V. Davis.

**Miss Alma Sprowls and Pupils Present School With Picture.**

As this is National Picture week, Miss Alma Sprowls and her room in the South Ward School, decided that no other way could be more impressive than to buy a good picture. This they did one day this week and hung it in the down stairs corridor of the school where every one coming in could enjoy it. It is a large color picture of, "A Rabbit" by Rabburn. Indelibly

etched on the back is the date of the class, 1929-30 and their names: Velma Davis, Virginia Pittman, Cletus McLain, Addie Mae Fry, Bennie Merryman, Margret Herrington, Florene Cook, Doyle Easterling, Freddie Lee, Wilma Whatley, Edwin Cass, Claudia Fae Maxwell, Marvin Howeth, Howard Howeth, Edward Wilfong, Jimmy Crawford, W. E. Green Jr., Olive Sloan, Jewel Dean Lewallen, Frances Kaigler, Herbert McClellan, Billy Pogue, Grady Brown, Labry Ballard, Geneva Thompson, Ray Buford, Martelle Clifton, Marjory Ratliff and the teacher, Miss Sprowls.

**How Do You Know You Are A Christian?**

The above is the very pertinent subject of the Epworth League worship service Sunday evening October 20th. The department of Social Service is in charge with Continence Guest as leader. League starts promptly at 6:45. The Automobile Race is going some. The Studebaker is nearly to Dallas. Members of the Department are: Bessie Bee Kaigler, Buford Cass, Continence Guest, Charlene Baughman, Eulon Goodwin, Rob Pittman, Eleanor Foote, Agnes Grissom, and Raymond Morgan.

A three act Musical Comedy, "That Hoodooed Coon" will be given by the Epworth Leaguers Nov 8th. Remember the Date.

Mrs. R. J. Reynolds has returned from Waco where she visited her son Virgil at Baylor University.

Mrs. H. B. Conner has returned to her home in Paducah after visiting her son and family Mr. and Mrs. C. M. Conner.

Mr. and Mrs. J. E. Waling and family visited relatives in Rule last Sunday.

Miss Mattie Letha Phippen, teacher in the Pleasant Valley school spent last week end with home folk, Mr. and Mrs. W. C. Phippen.

Miss Maidee Watson, who is teaching in the Munday schools spent last Saturday and Sunday with her parents Mr. and Mrs. M. B. Watson.

Out of town club ladies who were guest of the Magazine Club for the President's Day Program last Friday afternoon were: Mrs. J. E. Grissom, Abilene; Mrs. W. M. Rogers, Rule; Mrs. Speck, Rochester; Mrs. Date Anderson, Midway.

Mr. and Mrs. W. A. Diffey of Dallas spent last week end with her sister and family, Judge and Mrs. J. G. Foster and was accompanied home early in the week by her mother, Mrs. W. E. Loe.

Don't Miss the Radio Show—Something new and different. A laugh a minute! Texas Theatre, Oct. 24. Benefit Christian Ladies Aid. Itc.

J. S. Abernatha of Cliff, former Commissioner of Precinct 1, was in town Monday on business.

Will Kittley of Rule was transacting business in Haskell Monday.

City Marshal Henry Townsend of Rule was here Monday on business.

Mr. and Mrs. Oscar Vanderworth of Old Glory were transacting business in Haskell Monday.

C. O. Davis of Rule, owner and proprietor of the Sunset Poultry farm in that city, was here Monday. He brought over several crates of eggs to be sent by express to merchants in Albany. Mr. Davis is known as one of the foremost poultry breeders of this section and has a good demand for products of his flock.

Mr. Higgins, a progressive poultry raiser who lives north of town was in the city Monday. He stated that he was preparing to take several hundred fryers to Dallas this week. Mr. Higgins has several hundred young Rhode Island Red birds on his yard at the present time.

United States Marshal Bailey Crawford of Abilene was in the city Thursday.

Miss Maurine Couch, who is teaching in the Stamford Schools, spent last week-end with her parents, Mr. and Mrs. Jno. A. Couch of this city.

Mesdames W. P. Trice, John P. Payne, A. C. Pierson and H. S. Wilson spent the week-end in Dallas with relatives and friends, and attended the opening of the State Fair.

Mrs. W. A. Earnest is spending the week in Fort Worth with friends and relatives.

R. C. Thomas of Stamford, formerly editor and owner of the Stamford American, was in the city Monday on business. Mr. Thomas retired from the newspaper profession several years ago and is devoting his time to other interests.

An Announcement To The



Women of HASKELL

TAKE pleasure in announcing the opening of a more convenient and up-to-date Beauty Parlor in Haskell—"The Evelyn Beauty Shoppe" in the West Side Barber Shop.

A cordial invitation is extended to my former customers and the women of Haskell to call and inspect my new Shop.

Telephone **241** For Appointment

Mrs Evelyn Nollner  
Located in West Side Barber Shop

**HASKELL COUNTY PRODUCTS**

Over **200,000 Pounds**

Sold recently to the people of Haskell county at a saving of from 50c to \$1.00 per sack. Our formulas are nationally known, and inspected by the State.

**OUR PRICES**

Hasco Laying Mash, per 100 lbs. (40,000 Pounds Sold In September)	\$3.10
Hasco Hen Scratch, 100 lbs.	\$2.50
Milk Rite Cow Feed, per 100 lbs.	\$2.25
Barley Chops, per 100 lbs.	\$2.10
Hasco Mixed Feed, per 100 lbs.	\$1.50
Flour, 48 lb. Sack	\$1.60
Corn Meal, 24 lb. sack	70c

(Every Sack Guaranteed)

Shelled Corn, Threshed Maize, Corn Chops, etc.

"Save the Difference"

**Haskell Mill & Grain Company**  
Telephone 118

"Square Shootin'" Texas rewards Square Dealin'

-- so we lay our cards on the table to the people of the Southwest



OVER A HALF CENTURY ago, when six-shooters and longhorn cattle were in vogue, the Waples Platter Company started the distribution of coffees and foods, housed in a tent on the banks of Red River in Indian Territory. Shortly thereafter the business was moved to Denison, which was then the terminal of the Katy Railroad.

Texas is a big state. Technically it is one state, but geographically she is a half dozen. To those who think a trip through seven states from Boston to St. Louis is never-ending, this same distance can be covered without leaving the borders of Texas.

The grit and courage of the people of the great Southwest is reflected in the development of its vastness, laying the foundation for the homes of great in-

dustries and enterprises which have today materialized.

During the forward march of Texas, more than 1,000,000 loyal people of the Southwest have made the Waples Platter Company one of the largest food distributors in the United States. That is important. Not just because it is now a big business—but because it presents an obligation which must be discharged in full to deserve the continuance of your patronage.

Naturally, you haven't realized the business you were building. Waples Platter Company is merely a name to many of you. But in thousands of households White Swan Coffee, Wapco Beans and many other Waples Platter products mean the finest quality that can be placed on a table.

Goodwill is the most precious asset of any company. It cannot be bought like a commodity. But can be established only by insuring the lowest price consistent with the highest quality.

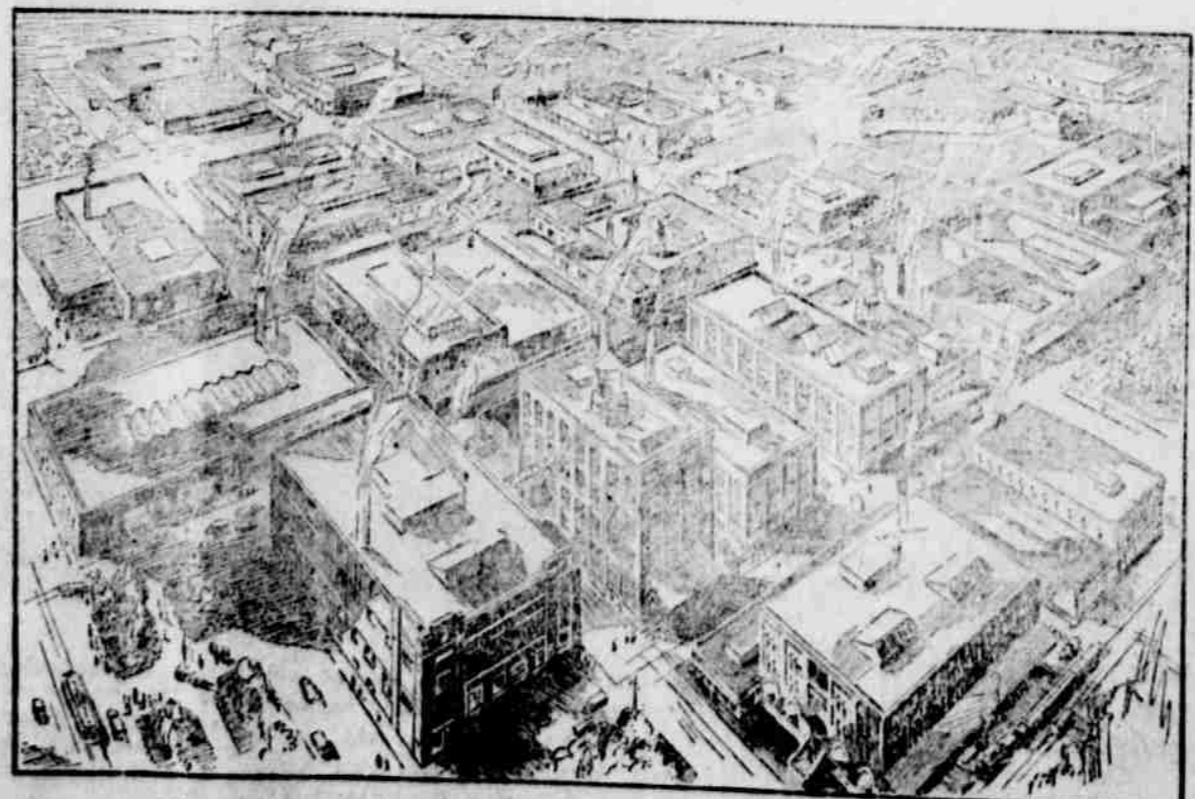
By going to the very source for its products, by controlling every step of their preparation and distribution, it makes sure that no finer foods can be brought into your home for the price you are asked to pay.

To guarantee this, the Waples Platter Company has become far more than a distributor of foods. It is importer, roaster, packer and preserver, selecting crops direct from the world's finest farms and plantations.

Every step from raw materials to the finished product is now supervised and packed under their own roofs. Twenty-five acres of land accommodate the many modern plants which our customers made possible to erect, and stand today as monuments to their patronage of this Texas institution.

This assures the permanency of a quality that has won your favor and acceptance, and at the same time bringing it to you at lower cost through more than 10,000 dealers who are freshly supplied from 22 Waples Platter Houses strategically located throughout this territory.

And now, with greater resources combined with facilities for greater economies, Waples Platter will endeavor to reward your loyalty with even higher quality and service.



Plants and houses of the Waples Platter Company situated at various points, grouped in one picture. In these plants and houses, White Swan Coffee, Wapco Beans and many other products are produced, packed and distributed.

**Waples Platter Company**  
TEXAS OKLAHOMA NEW MEXICO

- 22 HOUSES**
- maintained to assure prompt distribution and service to our thousands of dealers and millions of customers
- |                  |                   |
|------------------|-------------------|
| Fort Worth, Tex. | Gainesville, Tex. |
| Dallas, Tex.     | Graham, Tex.      |
| Denison, Tex.    | Greenville, Tex.  |
| Ada, Okla.       | Lamesa, Tex.      |
| Amarillo, Tex.   | Labbock, Tex.     |
| Bowie, Tex.      | Marshall, Tex.    |
| Brownwood, Tex.  | Memphis, Tex.     |
| Clarendon, Tex.  | Ranger, Tex.      |
| Clermont, N. M.  | San Angelo, Tex.  |
| Dallas, Tex.     | Stamford, Tex.    |
|                  | Yamock, Tex.      |

**Whoopee!**

Bargain Rate Now in Effect on the

**Abilene Morning News**  
"West Texas' Own Newspaper"

Regular price \$7.00 per year. Subscribe NOW and save ONE THIRD. New and renewal subscriptions accepted at the BARGAIN RATE of \$4.70 for one year, including Sundays. A page of Comics every day, Eight pages of Sunday comics and Twelve page Sunday Magazine section.

**\$4.70** By Mail Only In West Texas

Give Your Subscription to Your Home Town Agent or Leave at Local Newspaper Office

Less Than One Cent and a Half Per Day!

**Abilene Morning News**  
NEXT YEAR IS ELECTION YEAR—YOU NEED THIS BIG NEWSPAPER



# SOCIETY and Club

## Ward P. T. A. Meeting

President, Mrs. F. T. ... was in the chair last Thursday evening at the high school when the North Ward P. T. A. met in a meeting. The minutes were read and approved. Mrs. E. Martin secretary, Mrs. E. Martin approved. The resignation of ... and second vice presidents, M. Whiteaker and Mrs. W. A. ... was accepted and Mrs. ... was elected 1st. vice president and Mrs. J. B. Post 2nd. ... is very urgent ... members pay their dues the month of October, if they are not accepted until some ... of next year. This is ... So let every ... keep this in mind and pay ... Sponsors were appointed ... for each of the ... in the high school. These ... to exhaust every effort ... of the mothers in her room ... to help to promote a closer ... between the teachers ... of the room that she ... and keep in touch with

## Weinert Matron's Club Entertained

Thursday, Oct. 10, the Weinert Matrons Club was entertained by Mrs. A. L. Marr. The president, Mrs. O. E. Howard held a short business session, and Mrs. P. F. Weinert led a Columbus day program with Mesdames Robert Caddell, H. F. Monke, G. C. Newson and Earnest Griffith taking part. A reading by little Mary Ellen Marr was enjoyed by all. A delicious ice course consisting of fruit sherbet, cake and nuts was served to the members and Mesdames Roundtree of Garand, Texas, and W. A. Marr, Weinert. Plate favors were lovely sprays of candied berries.

## Baptist Girls Auxiliary In Business Meeting

The Intermediate Girls Auxiliary of the Baptist Church met in the home of Mrs. R. L. Burton on Saturday afternoon in a business meeting. The following officers were elected: Frances Walling, president; Kate Darnell, vice president; Norma Gilstrap, secretary-treasurer; Annie Maude Taylor and Maxine Simmons, personal service committee; Sue Couch, pianist. Gifts were brought to be sent to a girl in Buckner Orphan Home who is ill. Punch and sandwiches was served to Lois Fouts, Lilly Fay Stoker, Hortense and Francis Walling, Kate Darnell, Annie Maude Taylor, Norma Gilstrap and Maxine Simmons.

## Harmony Club In Fall Luncheon

Harmony Club is the first organization to introduce Halloween luncheon this season and this was held Wednesday at noon when they held their annual fall luncheon. The entrance hall and large club were aglow with many baskets of cosmas and sun glow the same bright cheery color used in the table spreads. The luncheon was replete with fried yams, pickles, olives, fish pie, fruit salad, hot rolls and coffee. The incoming president, E. L. Lewis presided and extended greetings. The roll call was read by recounting summer vacations. Mrs. O. E. Patterson read two piano numbers. Members present were: Mesdames C. L. H. R. Whitley, E. Gaston, M. L. Baker, O. E. Patterson, Fields, Eugene Hunter, W. C. Demmitt Hughes, Elmer Vaughn Bailey, T. A. Pinkerton, Bailey, D. Scott, Wayne, R. J. Reynolds, J. F. Morrison, G. H. Morrison, Andrew and J. L. Southern.

## Department Winner

... months ago a contest was ... among all of the depart-

## FRAMED PRINTS

MAKE ACCEPTABLE GIFTS  
A large assortment of pictures faithfully portraying the works of Old and Modern Masters.

All popular numbers in furnished frames at moderate prices.

Payne Drug Co.  
HASKELL, TEXAS  
Phone 500

## Magazine Club Observes Annual President's Day

Words are inadequate to express the beauty, charm and spectacular pageantry of the presentation of all available past presidents of the Magazine Club at the Library last Friday afternoon. The present president, Mrs. Clayborn Payne put forth every effort to make this annual occasion the success that it was. Many baskets of golden gloves were held up in holding up the club colors which is yellow. A large picture frame was used for the living presence of the past presidents and they were each gowned in the costume of the day of her reign as president of the club. The Magazine Club was organized in 1902-1903 and the first president was Mrs. Leonard. In her absence last Friday, Mrs. S. R. Rike, the only charter member of the club, substituted for Mrs. Leonard in the picture frame. Mrs. Elsie Malone McCollum was the second president and served for the 1903-1904 term. Mrs. McCollum could not be present but sent one of her beautiful poems and it was read by Mrs. Ethel Irby. Mrs. McCollum's also presented the club with one of her books of poems. It was during Mrs. McCollum's administration that the club was federated. Lack of space forbids the attributing to each past president the many worth while accomplishments but a few will be chronicled and as a unit working together a great deal of credit and glory is shed upon the members of this organization. Mrs. S. W. Scott now living in San Antonio was president in 1914-1915. Mrs. Scott could not be present and wrote the club a letter. Mrs. H. R. Jones 1905-1906. Mrs. R. C. Montgomery, 1906-1907; Mrs. Marshall Pierson, 1907-1908; Mrs. S. W. Scott, 1908-1909; Mrs. W. O. McGregor, 1909-1910; Mrs. Henry Alexander, 1910-1911; Mrs. C. J. Graham, 1911-1912; Mrs. Scott W. Key, 1912-1913; Mrs. H. S. Wilson, 1913-1914; Mrs. J. U. Fields, 1914-1915; Mrs. W. H. Marchison, 1915-1916; Mrs. F. T. Sanders, 1916-1917; Mrs. C. D. Long 1917-1918; Mrs. R. J. Reynolds, 1918-1919; Mrs. H. S. Post, 1919-1920; Mrs. J. F. Posey, 1920-1921; Mrs. Earnest Grissom, 1921-1922; Mrs. Lewis, 1923; Mrs. R. C. Montgomery 1923-1924; Mrs. O. E. Patterson, 1924-1925; Mrs. F. T. Sanders, 1925-1926; it was during this administration that a great honor came to the Club, Mrs. J. U. Fields was elected to the presidency of the State Federation of Women's Clubs; Mrs. Courtney Hunt, 1926-1927; Mrs. H. M. Smith, 1927-1928; Mrs. R. C. Couch, 1928-1929; it is credited to this retiring president that during

her administration all club debts were paid. And while it is meat that the members feel justly proud of the single and united accomplishments of the club, the new president, Mrs. Payne and her executive board can meet new problems and new needs and foster a great program, freed from the obligations of past indebtedness. Mrs. J. E. Grissom of Abilene was the only past president from out of town who was present in Friday's meeting. At the close of the above program ladies from other towns who are presidents of clubs in their home towns were presented by Mrs. Payne and brought greetings to the Magazine Club from their clubs. Mrs. W. M. Rogers of the Philadelphia Club, Rule; Mrs. Speck, Woman's Study Club, Rochester; Mrs. Date Anderson, Haskell County Demonstration Club; Mrs. F. T. Sanders, North Ward P. T. A.

Mrs. O. E. Patterson rendered a beautiful piano solo. In frozen ice cream molds, the club flower the daisy was served with lady fingers to guests and club members present. That "Hoodooed Coon" is the best, cleanest, funniest musical comedy you ever saw. It will be presented by the Epworth League Nov. 8th.

## Library Hours Changed

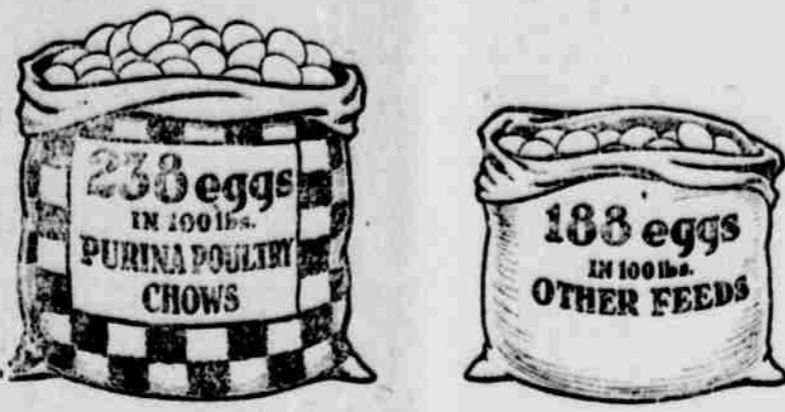
The Magazine Club Public Library will be open on Saturdays from three until five o'clock instead of from four until six as heretofore. All persons wishing to secure or return books should remember this change.

## R2 Hobo Club

Last Thursday evening the R2 Hobo Club enjoyed a hike, out a piece from town and there a delicious lunch was spread. After enjoying a good time, they returned to town and the following went to the show: Nancy Guest, Madelyn Maples, Virginia Sills, Elizabeth Gilbert, Wilda Phippen, Lucile Gilstrap, Vannie Lee Marrs, Lena Bell Kemp, Aliene Mitchell, Bertha Car-

man. Monday evening the club enjoyed a theatre party. Each of the Hobo boys had a date and they were: Marra, Garman, Guest, Gilstrap, Sills, Marrs, Walling, Girls, Maples, Kemp Phippen, Mitchell, Gilbert, Hamilton. After the show a good time was enjoyed on the lawn at the home of Mr. and Mrs. P. A. Womble.

Mrs. N. I. McCollum and daughter Misses Nettie and Marguerite and Mrs. Roy Killingsworth visited the Dallas Fair last week. Mrs. McCollum remained in Dallas until Monday of this week when her brother Mr. John Woods of Dallas accompanied her home for a short visit.



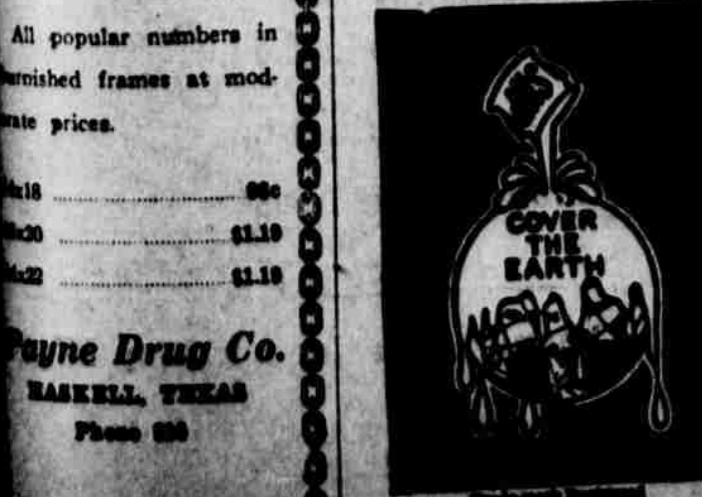
## 50 Extra Eggs in a Bag of Purina Says 1,492,876 Hens

A SEVEN months' survey covering 1,492,876 hens in all leading poultry sections shows: 238 eggs in 100 pounds of Purina Poultry Chows 188 eggs average in 100 pounds of other feeds. Fifty extra eggs in a bag of Purina! \$1.50 extra value in every bag of Purina Poultry Chows! Not a few hens here and there, but thousands of them from everywhere say, "Purina will make you more money." That's why we've become the local authorized Purina dealer. That's why we urge that you, too, get some of those profits from feeding Purina to your poultry and live stock. Come in and let us show you the Purina line—or phone us for a supply.

PORTER, WHITE & TRICE  
W. P. TRICE, Mgr.  
Haskell, Texas. Phone 48.  
The Store with the Checkerboard Sign

## Save by painting NOW with SWP

If your house is even slightly weather-beaten, paint now for economy. Give your house an armor-like coating of SWP—protect it against ruinous winter's rain and snow—and save costly repair bills. Fewer gallons of SWP are needed because its wonderful "body" thoroughly covers more square feet of surface per gallon. Therefore it costs you less per job. Call us for an estimate—positive proof of the economy of SWP. Come and consult our beautiful new color schemes. This aid is yours merely for the asking.



Builder's Hardware  
Quality Lumber

We have a limited quantity of 14-inch heavy stock Floor Brushes, good quality, specially priced at 95c. New designs of Wallpaper in our large stock offers you a selection that will please. Prices very reasonable.

## SPECIAL

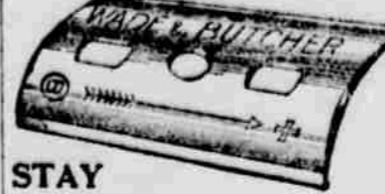
R. B. Spencer & Co.  
Jno. A. Couch, Mgr.  
Haskell

## Haskell Baptists

Members of the Baptist Orchestra  
Marvin Gholson and Maxine Simmons Violin.  
Floyd Taylor and Sue Couch Saxophone.  
Raymond Lusk and Elzie Whitley Baritone.  
Roy Baughman and Vernon Lusk Trumbone.  
Therman Lusk and Woodrow Bushell Bass.  
Floyd Lusk Alto.  
Mrs. A. C. Pierson Piano.  
Joe Meacham, Director Trumpet.

These thirteen musicians are doing their part in attracting large crowds to the Baptist Church. There are many ways to serve God. Every person should discover his talent and use it to the glory of God. The God of the Old Testament was a lover of music and commanded the people to praise Him with all kinds of instruments. He is the same God yesterday, today and forever. We feel that these young people are playing for the glory of God. Several others are in training and will soon become members of the Baptist orchestra. You can forget about the preaching and know that you will be well rewarded for your coming by the attractive and soul-stirring music. 9:45 a. m. Sunday School. Suppose you turn over a new leaf and start to Sunday School next Sunday, and see what it will do for you and your family. 11:00 a. m. Preaching Service, subject: "THE FIRST BAPTIST IN PRISON, A. D. 31" 6:30 p. m. The most attractive B. Y. P. U. is ever attended. 7:30 p. m. "HOW CHRIST PROVED HIS LOVE FOR THE FATHER." A Warm Welcome Awaits You

## Last Longer



STAY SHARPER  
WADE & BUTCHER  
SPECIAL Curved Blades  
Try one in your razor  
10c ea. Package of 5-50c 12 for \$1.00  
A Product of WADE & BUTCHER  
Makers of Fine Sheffield Cutlery, Carvers and Razors for over 200 years

Payne Drug Co.  
720 Retail Store

M

SYSTEM

"Saves for the Nation"

### Haskell's

LEADING FOOD STORE—Quality Foods at a Lower Price.

Suggestions for Friday & Saturday

Mayonnaise	3 1-2 Oz.	10c
Relish	1-2 Pint	20c
1000 Island	1 Pint	40c
<b>Potatoes</b>	No 1 Idaho Peck	<b>48c</b>
<b>Sugar</b>	Cane Imperial Brand 5 lbs	<b>33c</b>
<b>Flour</b>	GOLD MEDAL, 48 lbs.	\$1.88
	Eventually Why Not Now 24 lbs.	.98
	Best We Can Buy, 12 lbs.	.58
<b>Potatoes</b>	East Texas Yams bu	<b>\$1.38</b>
<b>Rutabagas</b>	lb.	<b>3c</b>
<b>Cocoanut</b>	WHITE SWAN, Regular 15c Size, 2 for	<b>19c</b>
<b>Tomatoes</b>	NO. 2 SIZE 3 For	<b>33c</b>
<b>Pickles</b>	Sour or Dill Per Quart	<b>23c</b>
<b>Peas or Corn</b>	2 for	<b>25c</b>
<b>Hominy</b>	Small 2 for	15c
	Large 2 for	19c
<b>Syrup</b>	LOG CABIN, Small	20c
	LOG CABIN, Medium	54c
	LOG CABIN, Large	88c

Tune in on W. B. A. P. Fort Worth at 9:30 every Tuesday and Thursday mornings—Gold Medal Program conducted by Betty Crocker.

Home Owned Chain Store Advantages

# The Haskell Free Press

If you have a message for the people of Haskell County let the Haskell Free Press carry it to them for you.

Country's wealth will increase with the production of more dairy products and live stock.

WEDNESDAY JANUARY 1, 1924.

HASKELL, HASKELL COUNTY TEXAS, THURSDAY, OCT. 17, 1923, 10-PAGES.

FORTY-THIRD YEAR

## SAGERTON YOUTH MEETS TRAGIC DEATH

### KIEKE, 18, INSTANTLY KILLED AND SEVERAL OTHERS INJURED IN AUTOMOBILE ACCIDENT FRIDAY NIGHT

Kieke, 18, of Sagerton, was killed Friday night when his car, driven by himself and four other occupants, was traveling toward a Buick coupe driven by Owsley, manager of the Utilities Company at

Sagerton, when it overturned and was crushed. Kieke was killed and his skull being crushed and arm severed. Of the youths in the Ford, Leonard, 17, received head injury, Oscar Mense, 16, a fracture. He was taken to the sanitarium. Oswald Kieke, Louis Mense, 18, escaped

with minor injuries. The car overturned and was crushed. Kieke was killed and his skull being crushed and arm severed. Of the youths in the Ford, Leonard, 17, received head injury, Oscar Mense, 16, a fracture. He was taken to the sanitarium. Oswald Kieke, Louis Mense, 18, escaped

with minor injuries. The car overturned and was crushed. Kieke was killed and his skull being crushed and arm severed. Of the youths in the Ford, Leonard, 17, received head injury, Oscar Mense, 16, a fracture. He was taken to the sanitarium. Oswald Kieke, Louis Mense, 18, escaped

with minor injuries. The car overturned and was crushed. Kieke was killed and his skull being crushed and arm severed. Of the youths in the Ford, Leonard, 17, received head injury, Oscar Mense, 16, a fracture. He was taken to the sanitarium. Oswald Kieke, Louis Mense, 18, escaped

with minor injuries. The car overturned and was crushed. Kieke was killed and his skull being crushed and arm severed. Of the youths in the Ford, Leonard, 17, received head injury, Oscar Mense, 16, a fracture. He was taken to the sanitarium. Oswald Kieke, Louis Mense, 18, escaped

with minor injuries. The car overturned and was crushed. Kieke was killed and his skull being crushed and arm severed. Of the youths in the Ford, Leonard, 17, received head injury, Oscar Mense, 16, a fracture. He was taken to the sanitarium. Oswald Kieke, Louis Mense, 18, escaped

with minor injuries. The car overturned and was crushed. Kieke was killed and his skull being crushed and arm severed. Of the youths in the Ford, Leonard, 17, received head injury, Oscar Mense, 16, a fracture. He was taken to the sanitarium. Oswald Kieke, Louis Mense, 18, escaped

with minor injuries. The car overturned and was crushed. Kieke was killed and his skull being crushed and arm severed. Of the youths in the Ford, Leonard, 17, received head injury, Oscar Mense, 16, a fracture. He was taken to the sanitarium. Oswald Kieke, Louis Mense, 18, escaped

with minor injuries. The car overturned and was crushed. Kieke was killed and his skull being crushed and arm severed. Of the youths in the Ford, Leonard, 17, received head injury, Oscar Mense, 16, a fracture. He was taken to the sanitarium. Oswald Kieke, Louis Mense, 18, escaped

with minor injuries. The car overturned and was crushed. Kieke was killed and his skull being crushed and arm severed. Of the youths in the Ford, Leonard, 17, received head injury, Oscar Mense, 16, a fracture. He was taken to the sanitarium. Oswald Kieke, Louis Mense, 18, escaped

with minor injuries. The car overturned and was crushed. Kieke was killed and his skull being crushed and arm severed. Of the youths in the Ford, Leonard, 17, received head injury, Oscar Mense, 16, a fracture. He was taken to the sanitarium. Oswald Kieke, Louis Mense, 18, escaped

with minor injuries. The car overturned and was crushed. Kieke was killed and his skull being crushed and arm severed. Of the youths in the Ford, Leonard, 17, received head injury, Oscar Mense, 16, a fracture. He was taken to the sanitarium. Oswald Kieke, Louis Mense, 18, escaped

with minor injuries. The car overturned and was crushed. Kieke was killed and his skull being crushed and arm severed. Of the youths in the Ford, Leonard, 17, received head injury, Oscar Mense, 16, a fracture. He was taken to the sanitarium. Oswald Kieke, Louis Mense, 18, escaped

## INDIANS JOURNEY TO MERKEL FOR GAME FRIDAY

### FIRST GAME AWAY FROM HOME PROMISES TO BE TOUGHEST OF SEASON

### RESIGNATION OF COUNTY H. D. AGENT IS ANNOUNCED

Miss Matilda Gunn, Home Demonstration Agent for Haskell county for the past two years, will tender her resignation from this office Friday of this week, when Miss Myrtle Murray, Supervisor of the Extension Service, A. & M. College, will be in Haskell. We are informed that her resignation will become effective Nov. 1st.

Miss Gunn's resignation will come as a surprise and bring regret to the many club women of the county, with whom she has worked diligently since coming here as Haskell county's first Home Demonstration Agent. During the two years since this agency was established, Miss Gunn has been highly successful in organizing and promoting the club work throughout the county.

It is understood that a successor for Miss Gunn will be named at a conference between Miss Murray and the Commissioners Court Friday, when this body will be in session.

### Former Stamford Business Man Found Hanging

The body of Walter L. Orr, 53, well-known citizen and former business man of Stamford, was found early Friday afternoon hanging in the garage of his home on north Swenson avenue, Stamford.

The discovery was made by Mrs. Orr, after she had become anxious when her husband did not appear for lunch, and started a search, finding him hanging from a rafter, his feet 18 inches from the ground and a half-inch rope knotted about his neck and fastened to the rafter. A box two feet in height was nearby.

Mr. Orr had been a resident of Stamford since 1901. He had been cashier of the First National Bank of Stamford, afterwards was in the clothing business, and until a few months ago was bookkeeper for the Yates Drug Company.

Mr. Orr is survived by his wife, formerly Miss Mayme Yates, his mother and two brothers, Lorains and Everett, who live at Anson. Funeral services were conducted by Rev. Percy W. Jones at the family residence Saturday afternoon at 2 o'clock. The Stamford lodge, Knights of Pythias, conducted the burial services at Highland Cemetery.

### Texas Purchases Mexican Branch Orient Rail Line

The Orient lines in Mexico have been purchased by Charles M. Newman, El Paso, and Benjamin F. Johnson, sugar manufacturer of Rye, N. H., according to press dispatches in Saturday's daily newspapers.

The property was purchased from the Atchison, Topeka and Santa Fe railroad, which acquired the road with the purchase of the capital stock of the Kansas City, Mexico and Orient railroad.

The consideration involved in the deal was not made public. The Santa Fe agreed as part of the consideration to connect the Orient line in Mexico with the Orient line in the United States, closing the 80-mile gap between Alpine and Presidio.

### COUNTY COUNCIL OF H. D. CLUBS TO MEET FRIDAY

A called meeting of the County Council of Home Demonstration Clubs will be held in this city Friday afternoon Oct. 19th, at 2:30 o'clock. Miss Myrtle Murray, Supervisor of Extension Service, A. & M. College, will be present and will discuss the next year's program of the clubs during this meeting.

All council and club members are urged to attend and be present.

Tomorrow the Haskell Indians will play the leading football team of this section, Merkel, which is undefeated while Haskell has one loss. This means a hard pull for our men. This game will be doubly hard for our men because it is away from home and because we have lost three first team men, Bob Mitchell, Elzie Whately and Con Henshaw, two linemen and a back, were found ineligible because of failing in certain last years work. These were valuable men but we have some men who may be as good, to take their places.

Everyone who can is asked to go with this team to Merkel. Whether we win or lose depends somewhat on the crowd that goes. Get on the sidelines at Merkel, Friday, Oct. 18.

### UNSUCCESSFUL ATTEMPT MADE ON LIFE OF E. C. COUCH, WESLACO BANKER

#### SECOND ATTEMPT OF YEAR BY UNKNOWN PARTIES THREATENS BROTHER OF HASKELL MEN

The city of Weslaco, in the Rio Grande Valley, was the scene last Thursday night of what many of their citizens consider the second attempt within a year to murder Ed C. Couch, well-known banker of that city, and unsuccessful candidate for County Judge of Hidalgo county last year.

Last spring, Couch's son-in-law, C. E. Kelley, was shot down in Couch's home, and died without revealing the name of his assailant. A great many friends of the family thought the attack had been aimed at Couch and that Kelley's wounds were the result of mistaken identity.

Early Thursday morning, according to press dispatches, J. G. Dailey, a minister living a block from the Couch home, was awakened by three armed men, who drove up in an automobile and demanded to know where Couch was. They refused to believe they had come to the wrong

house, and warned the minister by mentioning what had happened to Kelley. Finally they drove away cursing Dailey. The only one of the men who alighted from the automobile was masked. Police were unable to find tangible clues to their identity. They drove away without going to the Couch home.

The Weslaco banker is well-known here, and is the brother of R. C. Couch and John A. Couch of this city, and Dan Couch of Lubbock. He is one of the most prominent bankers of the Rio Grande Valley, and is president of banks at Weslaco, Donna and Edcouch. In last year's county election, Mr. Couch was the nominee of the Citizens Party for County Judge, and received a majority of 3500 votes for this office, but lost the office when the election was contested and the ballots in the Weslaco voting box were declared illegal.

Investigations Saturday, eleven felony indictments were returned by the body, bringing the total felony indictments for the term to twenty-one.

The final report of the body is given in full below:

"In the District Court of Haskell county, Texas: September Term A. D. 1923.

To Hon. Bruce W. Bryant, Judge of said Court:

"We, your Grand Jury, impaneled for said term of Court, respectfully report that we have been in session 7 days, and have diligently inquired into all violations of the law known to us, and have returned indictments where the facts and the law warranted the same.

"We have heretofore returned 10 indictments for felonies and herewith present 11 indictments for felonies.

"Having completed our work we now request permission of the Court to finally adjourn.

Felix Frierson, Foreman."

Applications for License to Wed Filed This Week

Three applications for license to wed have been filed in the County Clerk's office this week, in accordance with the law which requires that a notice of intention to wed must be filed with the Clerk three days before a license can be issued. Applications filed this week are:

Oct. 10, Ted Holloway of Stamford and Miss Ruth Christopher of Hamlin.

Oct. 12, Bird Owen and Miss Colia Lourance of Munday.

Oct. 12, George Yancy and Miss Thelma Dinmore, of Haskell.

### COTTON GINNED HERE TOTALS 3,050 BALES FOR SEASON

A total of 3,050 bales of cotton from the crop of 1923 had been ginned up to Wednesday night in Haskell, according to the reports of the eight local gins. On the local market cotton was bringing from 10c to 16 1/2c Wednesday, with \$32.00 per ton being paid for seed.

### GRAND JURY MAKES FINAL REPORT FOR TERM

Indictments returned with the final report of the Grand Jury in which arrests have been made are:

Jack O'Dell, charged by indictment with theft of \$50.00.

Jack O'Dell, charged by indictment with burglary.

Tom Hardy, charged by indictment with receiving and concealing stolen property.

Eight other felony indictments were returned in which the names of the principals could not be divulged.

Investigations Saturday, eleven felony indictments were returned by the body, bringing the total felony indictments for the term to twenty-one.

The final report of the body is given in full below:

"In the District Court of Haskell county, Texas: September Term A. D. 1923.

To Hon. Bruce W. Bryant, Judge of said Court:

"We, your Grand Jury, impaneled for said term of Court, respectfully report that we have been in session 7 days, and have diligently inquired into all violations of the law known to us, and have returned indictments where the facts and the law warranted the same.

"We have heretofore returned 10 indictments for felonies and herewith present 11 indictments for felonies.

"Having completed our work we now request permission of the Court to finally adjourn.

Felix Frierson, Foreman."

Applications for License to Wed Filed This Week

Three applications for license to wed have been filed in the County Clerk's office this week, in accordance with the law which requires that a notice of intention to wed must be filed with the Clerk three days before a license can be issued. Applications filed this week are:

Oct. 10, Ted Holloway of Stamford and Miss Ruth Christopher of Hamlin.

Oct. 12, Bird Owen and Miss Colia Lourance of Munday.

Oct. 12, George Yancy and Miss Thelma Dinmore, of Haskell.

West Side Singers To Meet Sunday

The West Side Singing Convention will meet in O'Brien Sunday, Oct. 20th, and all singers and lovers of music are urged to attend and take part in the day's program.

H. C. King and Jack Chamberlain, manager and commercial salesman of the West Texas Utilities Co. were in Stamford on business Wednesday.

BAND CONCERT SUNDAY DRAWS LARGE CROWDS

The concert by the Haskell Municipal Band, given last Sunday afternoon drew a large number of people not only from our town, but the rural communities nearby as well. Prof. Joe Meacham, director, has developed an organization which is a credit to our town, and one that will compare favorably with similar organizations of much larger cities.

Those who attended Sunday afternoon's concert will look forward to the next opportunity of hearing Haskell's band.

## ONE JURY CASE TRIED IN DISTRICT COURT

### WORK OF SEPTEMBER TERM OF DISTRICT COURT TO BE CONCLUDED THIS WEEK WITH DOCKET IN GOOD SHAPE

### Commissioners Court to Meet Again Friday

The regular meeting of the Commissioners Court was held Monday of this week, at which time only routine business matters were transacted.

The Court will be in session again Friday, and at this meeting it is expected that the supervisors of both the Agricultural Agent and Home Demonstration Agents Work will be present and discuss the program for the ensuing year's work of these two agencies.

It will be remembered that the appropriations for this work in Haskell county was continued by the Commissioners Court several weeks ago, but that no success has been named by the Extension Service for the vacancy in the office of County Agent caused by the resignation of W. P. Trice October 1st.

The jury in this case is composed of: S. S. Weaver, J. W. Roberts, J. W. Cowen, Floyd Gilliam, Ino. R. Watson, John Bray, Roy Killingsworth, L. C. Vance, B. F. Scruggs, C. E. Conder, Ray Lancaster and O. Cole.

This case will probably conclude the work of the September term of court, as Judge Bryant has been called to Dallas to preside in 26th District Court in that city next week.

Judge Bryant states that with the conclusion of this term of Court for Haskell county, the docket has been cleared of practically all cases on file.

A special train carrying F. E. Williamson, president of the Chicago, Burlington and Quincy Railroad, accompanied by a party of a half a dozen other high railway officials, passed through Haskell early Monday morning on a tour of inspection of the Fort Worth and Denver and subsidiary lines preliminary to recommending improvements to be incorporated in the 1924 budget of the system. The special was routed through Stamford to Spur, and the train passed through Haskell again Monday afternoon en route to Fort Worth.

A special train carrying F. E. Williamson, president of the Chicago, Burlington and Quincy Railroad, accompanied by a party of a half a dozen other high railway officials, passed through Haskell early Monday morning on a tour of inspection of the Fort Worth and Denver and subsidiary lines preliminary to recommending improvements to be incorporated in the 1924 budget of the system. The special was routed through Stamford to Spur, and the train passed through Haskell again Monday afternoon en route to Fort Worth.

A special train carrying F. E. Williamson, president of the Chicago, Burlington and Quincy Railroad, accompanied by a party of a half a dozen other high railway officials, passed through Haskell early Monday morning on a tour of inspection of the Fort Worth and Denver and subsidiary lines preliminary to recommending improvements to be incorporated in the 1924 budget of the system. The special was routed through Stamford to Spur, and the train passed through Haskell again Monday afternoon en route to Fort Worth.

A special train carrying F. E. Williamson, president of the Chicago, Burlington and Quincy Railroad, accompanied by a party of a half a dozen other high railway officials, passed through Haskell early Monday morning on a tour of inspection of the Fort Worth and Denver and subsidiary lines preliminary to recommending improvements to be incorporated in the 1924 budget of the system. The special was routed through Stamford to Spur, and the train passed through Haskell again Monday afternoon en route to Fort Worth.

A special train carrying F. E. Williamson, president of the Chicago, Burlington and Quincy Railroad, accompanied by a party of a half a dozen other high railway officials, passed through Haskell early Monday morning on a tour of inspection of the Fort Worth and Denver and subsidiary lines preliminary to recommending improvements to be incorporated in the 1924 budget of the system. The special was routed through Stamford to Spur, and the train passed through Haskell again Monday afternoon en route to Fort Worth.

A special train carrying F. E. Williamson, president of the Chicago, Burlington and Quincy Railroad, accompanied by a party of a half a dozen other high railway officials, passed through Haskell early Monday morning on a tour of inspection of the Fort Worth and Denver and subsidiary lines preliminary to recommending improvements to be incorporated in the 1924 budget of the system. The special was routed through Stamford to Spur, and the train passed through Haskell again Monday afternoon en route to Fort Worth.

A special train carrying F. E. Williamson, president of the Chicago, Burlington and Quincy Railroad, accompanied by a party of a half a dozen other high railway officials, passed through Haskell early Monday morning on a tour of inspection of the Fort Worth and Denver and subsidiary lines preliminary to recommending improvements to be incorporated in the 1924 budget of the system. The special was routed through Stamford to Spur, and the train passed through Haskell again Monday afternoon en route to Fort Worth.

A special train carrying F. E. Williamson, president of the Chicago, Burlington and Quincy Railroad, accompanied by a party of a half a dozen other high railway officials, passed through Haskell early Monday morning on a tour of inspection of the Fort Worth and Denver and subsidiary lines preliminary to recommending improvements to be incorporated in the 1924 budget of the system. The special was routed through Stamford to Spur, and the train passed through Haskell again Monday afternoon en route to Fort Worth.

A special train carrying F. E. Williamson, president of the Chicago, Burlington and Quincy Railroad, accompanied by a party of a half a dozen other high railway officials, passed through Haskell early Monday morning on a tour of inspection of the Fort Worth and Denver and subsidiary lines preliminary to recommending improvements to be incorporated in the 1924 budget of the system. The special was routed through Stamford to Spur, and the train passed through Haskell again Monday afternoon en route to Fort Worth.

A special train carrying F. E. Williamson, president of the Chicago, Burlington and Quincy Railroad, accompanied by a party of a half a dozen other high railway officials, passed through Haskell early Monday morning on a tour of inspection of the Fort Worth and Denver and subsidiary lines preliminary to recommending improvements to be incorporated in the 1924 budget of the system. The special was routed through Stamford to Spur, and the train passed through Haskell again Monday afternoon en route to Fort Worth.

A special train carrying F. E. Williamson, president of the Chicago, Burlington and Quincy Railroad, accompanied by a party of a half a dozen other high railway officials, passed through Haskell early Monday morning on a tour of inspection of the Fort Worth and Denver and subsidiary lines preliminary to recommending improvements to be incorporated in the 1924 budget of the system. The special was routed through Stamford to Spur, and the train passed through Haskell again Monday afternoon en route to Fort Worth.

A special train carrying F. E. Williamson, president of the Chicago, Burlington and Quincy Railroad, accompanied by a party of a half a dozen other high railway officials, passed through Haskell early Monday morning on a tour of inspection of the Fort Worth and Denver and subsidiary lines preliminary to recommending improvements to be incorporated in the 1924 budget of the system. The special was routed through Stamford to Spur, and the train passed through Haskell again Monday afternoon en route to Fort Worth.

A special train carrying F. E. Williamson, president of the Chicago, Burlington and Quincy Railroad, accompanied by a party of a half a dozen other high railway officials, passed through Haskell early Monday morning on a tour of inspection of the Fort Worth and Denver and subsidiary lines preliminary to recommending improvements to be incorporated in the 1924 budget of the system. The special was routed through Stamford to Spur, and the train passed through Haskell again Monday afternoon en route to Fort Worth.

A special train carrying F. E. Williamson, president of the Chicago, Burlington and Quincy Railroad, accompanied by a party of a half a dozen other high railway officials, passed through Haskell early Monday morning on a tour of inspection of the Fort Worth and Denver and subsidiary lines preliminary to recommending improvements to be incorporated in the 1924 budget of the system. The special was routed through Stamford to Spur, and the train passed through Haskell again Monday afternoon en route to Fort Worth.

A special train carrying F. E. Williamson, president of the Chicago, Burlington and Quincy Railroad, accompanied by a party of a half a dozen other high railway officials, passed through Haskell early Monday morning on a tour of inspection of the Fort Worth and Denver and subsidiary lines preliminary to recommending improvements to be incorporated in the 1924 budget of the system. The special was routed through Stamford to Spur, and the train passed through Haskell again Monday afternoon en route to Fort Worth.

A special train carrying F. E. Williamson, president of the Chicago, Burlington and Quincy Railroad, accompanied by a party of a half a dozen other high railway officials, passed through Haskell early Monday morning on a tour of inspection of the Fort Worth and Denver and subsidiary lines preliminary to recommending improvements to be incorporated in the 1924 budget of the system. The special was routed through Stamford to Spur, and the train passed through Haskell again Monday afternoon en route to Fort Worth.

A special train carrying F. E. Williamson, president of the Chicago, Burlington and Quincy Railroad, accompanied by a party of a half a dozen other high railway officials, passed through Haskell early Monday morning on a tour of inspection of the Fort Worth and Denver and subsidiary lines preliminary to recommending improvements to be incorporated in the 1924 budget of the system. The special was routed through Stamford to Spur, and the train passed through Haskell again Monday afternoon en route to Fort Worth.

A special train carrying F. E. Williamson, president of the Chicago, Burlington and Quincy Railroad, accompanied by a party of a half a dozen other high railway officials, passed through Haskell early Monday morning on a tour of inspection of the Fort Worth and Denver and subsidiary lines preliminary to recommending improvements to be incorporated in the 1924 budget of the system. The special was routed through Stamford to Spur, and the train passed through Haskell again Monday afternoon en route to Fort Worth.

## ONE JURY CASE TRIED IN DISTRICT COURT

### WORK OF SEPTEMBER TERM OF DISTRICT COURT TO BE CONCLUDED THIS WEEK WITH DOCKET IN GOOD SHAPE

### Commissioners Court to Meet Again Friday

The regular meeting of the Commissioners Court was held Monday of this week, at which time only routine business matters were transacted.

The Court will be in session again Friday, and at this meeting it is expected that the supervisors of both the Agricultural Agent and Home Demonstration Agents Work will be present and discuss the program for the ensuing year's work of these two agencies.

It will be remembered that the appropriations for this work in Haskell county was continued by the Commissioners Court several weeks ago, but that no success has been named by the Extension Service for the vacancy in the office of County Agent caused by the resignation of W. P. Trice October 1st.

The jury in this case is composed of: S. S. Weaver, J. W. Roberts, J. W. Cowen, Floyd Gilliam, Ino. R. Watson, John Bray, Roy Killingsworth, L. C. Vance, B. F. Scruggs, C. E. Conder, Ray Lancaster and O. Cole.

This case will probably conclude the work of the September term of court, as Judge Bryant has been called to Dallas to preside in 26th District Court in that city next week.

Judge Bryant states that with the conclusion of this term of Court for Haskell county, the docket has been cleared of practically all cases on file.

A special train carrying F. E. Williamson, president of the Chicago, Burlington and Quincy Railroad, accompanied by a party of a half a dozen other high railway officials, passed through Haskell early Monday morning on a tour of inspection of the Fort Worth and Denver and subsidiary lines preliminary to recommending improvements to be incorporated in the 1924 budget of the system. The special was routed through Stamford to Spur, and the train passed through Haskell again Monday afternoon en route to Fort Worth.

A special train carrying F. E. Williamson, president of the Chicago, Burlington and Quincy Railroad, accompanied by a party of a half a dozen other high railway officials, passed through Haskell early Monday morning on a tour of inspection of the Fort Worth and Denver and subsidiary lines preliminary to recommending improvements to be incorporated in the 1924 budget of the system. The special was routed through Stamford to Spur, and the train passed through Haskell again Monday afternoon en route to Fort Worth.

A special train carrying F. E. Williamson, president of the Chicago, Burlington and Quincy Railroad, accompanied by a party of a half a dozen other high railway officials, passed through Haskell early Monday morning on a tour of inspection of the Fort Worth and Denver and subsidiary lines preliminary to recommending improvements to be incorporated in the 1924 budget of the system. The special was routed through Stamford to Spur, and the train passed through Haskell again Monday afternoon en route to Fort Worth.

A special train carrying F. E. Williamson, president of the Chicago, Burlington and Quincy Railroad, accompanied by a party of a half a dozen other high railway officials, passed through Haskell early Monday morning on a tour of inspection of the Fort Worth and Denver and subsidiary lines preliminary to recommending improvements to be incorporated in the 1924 budget of the system. The special was routed through Stamford to Spur, and the train passed through Haskell again Monday afternoon en route to Fort Worth.

A special train carrying F. E. Williamson, president of the Chicago, Burlington and Quincy Railroad, accompanied by a party of a half a dozen other high railway officials, passed through Haskell early Monday morning on a tour of inspection of the Fort Worth and Denver and subsidiary lines preliminary to recommending improvements to be incorporated in the 1924 budget of the system. The special was routed through Stamford to Spur, and the train passed through Haskell again Monday afternoon en route to Fort Worth.

A special train carrying F. E. Williamson, president of the Chicago, Burlington and Quincy Railroad, accompanied by a party of a half a dozen other high railway officials, passed through Haskell early Monday morning on a tour of inspection of the Fort Worth and Denver and subsidiary lines preliminary to recommending improvements to be incorporated in the 1924 budget of the system. The special was routed through Stamford to Spur, and the train passed through Haskell again Monday afternoon en route to Fort Worth.

A special train carrying F. E. Williamson, president of the Chicago, Burlington and Quincy Railroad, accompanied by a party of a half a dozen other high railway officials, passed through Haskell early Monday morning on a tour of inspection of the Fort Worth and Denver and subsidiary lines preliminary to recommending improvements to be incorporated in the 1924 budget of the system. The special was routed through Stamford to Spur, and the train passed through Haskell again Monday afternoon en route to Fort Worth.

A special train carrying F. E. Williamson, president of the Chicago, Burlington and Quincy Railroad, accompanied by a party of a half a dozen other high railway officials, passed through Haskell early Monday morning on a tour of inspection of the Fort Worth and Denver and subsidiary lines preliminary to recommending improvements to be incorporated in the 1924 budget of the system. The special was routed through Stamford to Spur, and the train passed through Haskell again Monday afternoon en route to Fort Worth.

A special train carrying F. E. Williamson, president of the Chicago, Burlington and Quincy Railroad, accompanied by a party of a half a dozen other high railway officials, passed through Haskell early Monday morning on a tour of inspection of the Fort Worth and Denver and subsidiary lines preliminary to recommending improvements to be incorporated in the 1924 budget of the system. The special was routed through Stamford to Spur, and the train passed through Haskell again Monday afternoon en route to Fort Worth.

A special train carrying F. E. Williamson, president of the Chicago, Burlington and Quincy Railroad, accompanied by a party of a half a dozen other high railway officials, passed through Haskell early Monday morning on a tour of inspection of the Fort Worth and Denver and subsidiary lines preliminary to recommending improvements to be incorporated in the 1924 budget of the system. The special was routed through Stamford to Spur, and the train passed through Haskell again Monday afternoon en route to Fort Worth.

A special train carrying F. E. Williamson, president of the Chicago, Burlington and Quincy Railroad, accompanied by a party of a half a dozen other high railway officials, passed through Haskell early Monday morning on a tour of inspection of the Fort Worth and Denver and subsidiary lines preliminary to recommending improvements to be incorporated in the 1924 budget of the system. The special was routed through Stamford to Spur, and the train passed through Haskell again Monday afternoon en route to Fort Worth.

A special train carrying F. E. Williamson, president of the Chicago, Burlington and Quincy Railroad, accompanied by a party of a half a dozen other high railway officials, passed through Haskell early Monday morning on a tour of inspection of the Fort Worth and Denver and subsidiary lines preliminary to recommending improvements to be incorporated in the 1924 budget of the system. The special was routed through Stamford to Spur, and the train passed through Haskell again Monday afternoon en route to Fort Worth.

A special train carrying F. E. Williamson, president of the Chicago, Burlington and Quincy Railroad, accompanied by a party of a half a dozen other high railway officials, passed through Haskell early Monday morning on a tour of inspection of the Fort Worth and Denver and subsidiary lines preliminary to recommending improvements to be incorporated in the 1924 budget of the system. The special was routed through Stamford to Spur, and the train passed through Haskell again Monday afternoon en route to Fort Worth.

A special train carrying F. E. Williamson, president of the Chicago, Burlington and Quincy Railroad, accompanied by a party of a half a dozen other high railway officials, passed through Haskell early Monday morning on a tour of inspection of the Fort Worth and Denver and subsidiary lines preliminary to recommending improvements to be incorporated in the 1924 budget of the system. The special was routed through Stamford to Spur, and the train passed through Haskell again Monday afternoon en route to Fort Worth.

A special train carrying F. E. Williamson, president of the Chicago, Burlington and Quincy Railroad, accompanied by a party of a half a dozen other high railway officials, passed through Haskell early Monday morning on a tour of inspection of the Fort Worth and Denver and subsidiary lines preliminary to recommending improvements to be incorporated in the 1924 budget of the system. The special was routed through Stamford to Spur, and the train passed through Haskell again Monday afternoon en route to Fort Worth.

A special train carrying F. E. Williamson, president of the Chicago, Burlington and Quincy Railroad, accompanied by a party of a half a dozen other high railway officials, passed through Haskell early Monday morning on a tour of inspection of the Fort Worth and Denver and subsidiary lines preliminary to recommending improvements to be incorporated in the 1924 budget of the system. The special was routed through Stamford to Spur, and the train passed through Haskell again Monday afternoon en route to Fort Worth.

A special train carrying F. E. Williamson, president of the Chicago, Burlington and Quincy Railroad, accompanied by a party of a half a dozen other high railway officials, passed through Haskell early Monday morning on a tour of inspection of the Fort Worth and Denver and subsidiary lines preliminary to recommending improvements to be incorporated in the 1924 budget of the system. The special was routed through Stamford to Spur, and the train passed through Haskell again Monday afternoon en route to Fort Worth.

A special train carrying F. E. Williamson, president of the Chicago, Burlington and Quincy Railroad, accompanied by a party of a half a dozen other high railway officials, passed through Haskell early Monday morning on a tour of inspection of the Fort Worth and Denver and subsidiary lines preliminary to recommending improvements to be incorporated in the 1924 budget of the system. The special was routed through Stamford to Spur, and the train passed through Haskell again Monday afternoon en route to Fort Worth.

## ONE JURY CASE TRIED IN DISTRICT COURT

### WORK OF SEPTEMBER TERM OF DISTRICT COURT TO BE CONCLUDED THIS WEEK WITH DOCKET IN GOOD SHAPE

### Commissioners Court to Meet Again Friday

The regular meeting of the Commissioners Court was held Monday of this week, at which time only routine business matters were transacted.

The Court will be in session again Friday, and at this meeting it is expected that the supervisors of both the Agricultural Agent and Home Demonstration Agents Work will be present and