

WEATHER

November 8	73	30	.00
November 9	68	27	.00
November 10	76	41	.00
November 11	76	33	.00

BAILEY COUNTY JOURNAL

The Community Of Opportunity-Where Water Makes The Difference



Vol. 27, No. 45

14 PAGES TODAY

Published Every Sunday At Muleshoe, Bailey County, Texas 79347

20¢ Sunday, November 12, 1989

Methodist To Help Get Administrator

around Muleshoe

On Tuesday evening, November 14, the Muleshoe Mules and Mullettes will travel to Slaton for the first basketball game of the 1989-90 season.

You are encouraged to support the basketball teams by attending all the games possible through the season, which will end February 9, 1990.

Bailey County commissioners will face a lengthy agenda when they meet at 10 a.m. Monday in the Bailey County courthouse.

Other than routine matters will be discuss removing Dicamba Herbicide (Banvil) from the county restricted list; discuss county insurance with TAC; discuss waiving probation period salary reduction for Jackey Wayne Burris; Jerry Hicks to discuss employee probation, jailer manning and radios; discuss jail; provide for paying election judges and clerks; canvass votes for special election; approve soil conservation work; open bids on new car for sheriff's department; and consider request to the Texas Highway Department to take over maintenance of highway connecting the south end of FM 1731 south to the intersection of Hwy 54 near Three Way school.

Due to National Education Week, the Muleshoe Elementary PTA meeting date has been moved to Thursday, Nov. 6. The executive meeting will begin at 6 p.m. followed by the regular meeting. Mrs. Johnson's music class will present the program. Open house will follow the PTA program.

Fine Arts Booster Club will meet tomorrow, November 13, at 7 p.m. (changed from 7:30 due to the time change) at 16th and Avenue D Church of Christ Fellowship Hall.

Parents of junior high and high school art, speech and band students are urged to attend.

Basketball season tickets for adults and students are now on sale in the business office of Muleshoe ISD, 514 West Avenue G, Muleshoe.

Tickets are \$7.50 for students and \$15 for adults.

These tickets will enable the holder entrance to all home basketball games for junior high and high school.

For persons planning to attend many, or all of the home games, Cont. Page 8, Col. 5

Boys' Basketball Coach Feels Very Optimistic

Leon Hagerman is fulfilling his first season as head coach of the 1989-90 Varsity Boys' basketball team, but he is definitely no newcomer to the game of basketball.

After graduating from West Texas State University, he coached at the sub-varsity level for six years at Plainview and one year at San Angelo Central.

He states that the switch from the larger 5-A schools to Muleshoe has not been a struggle because he grew up in a rural community. In fact, he considers himself to be a 'small town guy' and enjoys the relaxed and low-key atmosphere.

Hagerman feels no intimidation taking over the awesome job of taking over a practically winless team. Instead, anxiety describes his feeling at this point. The last time Muleshoe won the district championship was in 1957, the year Hagerman was born.

Coach Hagerman feels as if he



GRINDING OUT YARDAGE THE HARD WAY--Friday night, in their final game for the 1989 football season, Doug Chitwood, No. 88, grinds out yards the hard way in the Muleshoe-Littlefield game, which the Mules lost, 0-20, to close out the 1989 football season. Overall, the Mules had a record of 1-8-1 for the season. (Journal Photo)

BC Produce Nearing End Of 1989 Carrot Harvesting

(Editor's note: The following story was written exclusively for The Muleshoe/Bailey County Journals by Sherri Stovall Jones, a student in the Mass Communication Department of Texas Tech University, Lubbock. This and other feature stories from the Tech journalism students are made possible by a grant from

The Readers Digest Foundation.)

Fall means harvest time in West Texas, and BC Produce is near the end of carrot harvest.

BC Produce, owned by Steve Bell and Tim 'Buck' Campbell, is in its second season.

Bell and Campbell grow their own carrots for their business.

"Nobody was really growing carrots here, and we thought there would be an opportunity to come in here and produce," Campbell said.

Good carrots can be grown in this area, but Colorado and California are the big competition, he added.

The mechanized harvest begins in the middle of August and ends the middle of November.

"The shed digs the carrots, washes them, sizes them and packages the carrots," he said. "The carrots go across a sizer, and the jumbo carrots are placed in the 25-50 pound sacks."

Clarence Wetegrove, sales manager for BC Produce, said they they can keep the carrots at the shed no longer than four days.

The carrots are planted from mid-April to mid-July and are not an expensive crop to grow, Campbell said.

"The growing expense on carrots and corn are the same," Campbell said. "Carrots require more water early on, but after

Cont. Page 8, Col. 5

Varsity Girls Ready For '89 Basketball

Coach Bob Davis brings to the 1989-90 Varsity Girls' Basketball team, as well as Muleshoe High School, a new face, attitude and perspective to the game of basketball.

This nineteen-year veteran to the sport is very optimistic about his first year at Muleshoe. Coach Davis and his girls have set high goals and expectations. For the first time in all of his years of coaching, Davis believes a State Championship is within his reach.

Prospective starters Heather Hutton, Amy Harrison, Brenna Matthews, Wendy Green, and Monica Swint, along with the other teammates - Lori Cuevas, Tory Matthews, Amber Green, Jill Foster, Heidi Bohler, and Melissa Finch -- all realize the difficult schedule in front of them. The girls have set expectations that are to that of their coach.

The non-district agenda is anything but recreational this year. Muleshoe is scheduled to play many state-ranked teams. The Lady Mules are scheduled to play Canyon (1st in state-AAA), Slaton (4th in state-AAA), Abernathy (1st in state-A), and Plainview (14th in state-AAAAA) and the upcoming Levelland

Education Week Highlighted By Open House

The week of November 12-18 is American Education Week.

During this week, the faculty at Dillman Elementary is extending a special invitation to parents and the community to visit the school, classrooms, and the teachers anytime during this week.

On Thursday, November 16, at 6:30 p.m., parents are invited to attend the PTA music program at DeShazo then come to an Open House at Dillman from 7-9 p.m.

Students' work will be on display and a special display, "Children of Many Lands Came to Texas," will be featured.

On Friday, November 17, the lunch room will be serving a traditional Thanksgiving Dinner and the community is invited to join their children, grandchildren or friends for lunch.

Cont. Page 8, Col. 5

Tournament will also be a contest with many 5-A teams present. Coach Davis stated that these

Cont. Page 8, Col. 2



RYLA YOUTH SPEAK TO ROTARY--Tuesday at noon, the four Muleshoe youth who attended the annual Rotary RYLA camps told some of their experiences at the regular Tuesday Rotary meeting. Pictured seated, are from left, Andy Langfitt and Charles Riegel. Standing from left are Stephanie Cox, Amy Montgomery and Rotarian Clifton Finley, who was in charge of the program for the day. (Journal Photo)

remain in effect even with administrator changes.

Rita Mason, interim administrator, said 74 applications have been received for the hospital administrator position.

The board is in the process of weeding out the applicants at this time, and Mrs. Mason will continue her interim position until a permanent administrator can be hired.

Three bids were received for insuring the Muleshoe Area Hospital District complex. However, it was determined to wait for 30 days as the bids, as submitted, were not for complete Cont. Page 8, Col. 6

3-Way Eagles End Season With Victory

To wind up their 1989 football season, the Three Way Eagles came from behind in the second half of the game to take a 48-34 victory over Ropes.

Ropes got on the scoreboard first, but at 7:15 of the first, Mario Guillen came through with a 58 yard scamper to paydirt and his brother Efrain, kicked the extra points to take an 8-6 lead.

The Eagles' second TD came at 4:34 of the first, when Pete Haros made it over from the one yard line. The PAT kick failed.

In the second, Mario added six more points after a 32 yard run. Again the PAT failed.

At halftime, the Eagles were behind, 20-21.

The second half became a see-saw, back and forth game, as the teams struggled for victory.

With 7:49 on the scoreboard clock in the third, Pete Haros gained his second TD of the night on a two yard run. Mario Guillen passed to Sammy Belez for the extra point.

With 5:47 left in the third, Mario had another long TD run, this one for 55 yards. The point after failed.

In the fourth and final quarter, Mario had two TDs which cinched the victory for Three Way.

At 8:11 of the fourth, Mario made it over from the three, and then passed to Larry Robertson for the point after. He then came back at 2:49 of the fourth on a four yarder, then kicked the extra point to make it a 48-34 victory for the Eagles.

In the game, Efrain Guillen had 13 tackles and two quarterback sacks before receiving a back injury in the first quarter. His brother, Mario Guillen, had 20 tackles and four QB sacks in the game, and Jesse Haros had 10 tackles.

The Three Way Eagles ended the season with an 8-2 record.



DISTRIBUTING FOOD SACKS--B. J. Copeland was one of many Boy Scouts distributing food sacks around town Wednesday afternoon. These sacks will be picked up at a later date for distribution to the needy. (Journal Photo)

Hot Chocolate

Ultimate Winter Warmer

It's winter--bring on a steaming mug of hot chocolate made with fresh milk for rich flavor and smooth body. It's the milk that provides the protein, calcium, phosphorus, riboflavin and vitamins A and D that make this beverage a nutritious cold weather snack. And, it's a dairy-rich combination of milk and whipping cream that makes Special Hot Chocolate special.

It's extra-easy because the chocolaty dairy "batter" can be made ahead and stored in the refrigerator. For each serving, simply heat one cup of milk to scalding in the microwave oven or on the stove top, add a tablespoonful of batter and stir.

Flavored whipped cream is the final flourish. Enjoy peppermint whipped cream now. Then, after the holidays, create your own special whipped cream flavor using instant coffee crystals, unsweetened cocoa, liqueurs and or extracts.

For perfect whipped cream every time, chill beaters and a small deep bowl in the freezer. Combine cream, sugar and flavoring and whip just until stiff peaks form. To make ahead, pipe or dollop the whipped cream onto waxed paper-lined baking sheets. Freeze until firm, then wrap tightly and store in the freezer up to two weeks.

SPECIAL HOT CHOCOLATE

- 16 Servings
- HOT CHOCOLATE
- 1 package (6 ounces) semi-sweet chocolate morsels
- 1/2 cup sugar
- 1/3 cup water
- 1 teaspoon vanilla extract
- 1 cup whipping cream
- Hot milk

PEPPERMINT WHIPPED CREAM

- 1 cup whipping cream
 - 1/2 cup crushed peppermint candy
 - 2 tablespoons confectioners sugar
- For hot chocolate, combine chocolate morsels, sugar and water in a small saucepan. Heat over medium heat, stirring frequently, until chocolate is melted. Cool to lukewarm; stir in vanilla. Whip cream until stiff peaks form. Gradually whip in cooled chocolate mixture. Store in covered container in refrigerator. (Chocolate mixture keeps well in refrigerator up to 1 week.) Meanwhile, for peppermint whipped cream, combine all ingredients in chilled bowl. Whip until stiff. Pipe through pastry tube to form rosettes or spoon dollops of peppermint whipped cream. Serve immediately.

Tops Club

TOPS chapter No. 34 met Thursday, Nov. 9 at the Heritage Thrift Shop. Leader Laverne James presided over the business meeting. She called the meeting to order with the TOPS Pledge and the fellowship song. She also led the group in prayer. Orvdie Burris called the roll with 18 members present. Minutes of the previous meeting were read and approved. One visitor, Gerrie James, was welcomed.

Betty Jo Davis celebrated her birthday and received a gift from the members and they sang the birthday song.

Best loser for the week was Evelene Harris. Jewel Peeler and Charlotte Campbell tied for first place and Alma Robertson and Aurora Mata tied for second place.

"Congratulations to these ladies and all the members everyone is doing great!" said

Aurora Mata.

Laverne James read from the "Chapter Program" some tips on make-up, clothes and jewelry and ended with a quiz.

The meeting was adjourned with the goodnight song.

For a festive presentation, float a slice of carambola--a sweet, tropical fruit that resembles a twinkling star--in a glass of eggnog.

Embellish a glassful of velvety, rich eggnog with a splash of cranberry juice or peach nectar.

Here's a simple formula for a glorious drink: Float a scoop of peppermint ice cream in a tall, cool glass of chilled club soda. Garnish with a peppermint stick stirrer.

For a creamy rum-raisin sauce that's delicious over ice cream, pound cake or fruit cake, stir 1 cup packed brown sugar, 2 tablespoons corn syrup and 1/2 cup whipping cream into 1/2 cup melted butter. Bring just to boiling. Let cool and stir in 2 tablespoons rum and 2 tablespoons raisins.

Bailey County Journal USPS 040-200
 Established March 31, 1963. Published by Muleshoe Publishing Co., Inc. Every Sunday at 304 W. Second, Box 449, Muleshoe, Tx 79347. Second Class Postage paid at Muleshoe, Tx. 79347.

Member 1989
TP TEXAS PRESS ASSOCIATION

L.B. Hall, Publisher
 Sammie Hall, Vice President/Controller
 Cleta Williams, News
 Evelene Harris, Society
 Holly Millisp, Advertising
 Dora Toscano, Classified

SUBSCRIPTIONS
 Muleshoe Journal and Bailey County Journal
 Bailey and Surrounding Counties
 By Mail \$14.75
 Muleshoe Journal and Bailey County Journal
 Elsewhere By Mail \$16.50
 Muleshoe Journal and Bailey County Journal
 Yearly by Carrier \$12.50

Advertising Rate Card on Application

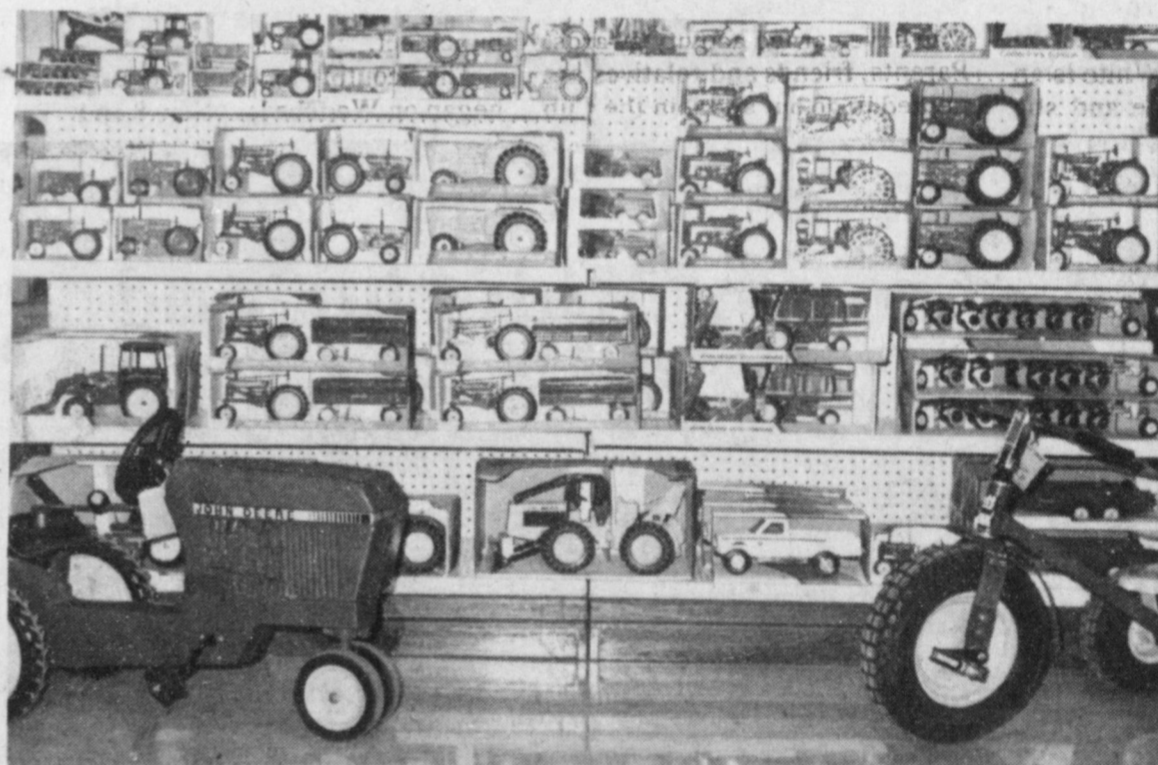
Advertisers should check their ad the first day of insertion. The Journal will not be liable for failure to publish and ad or for a typographical error or errors in publication except to the extent of the cost of the ad for the first day insertion. Adjustment for errors will be limited to the cost of that portion of the ad where the error occurred.



Belated
 Happy 30th!
 We Love you,
 Mom & Dad

Kids "Dig" TOYS from John Deere

Even John Deere toys are the best quality! Durable diecast metal scale models are replicas of big John Deere machines. Let your little ones play with the best -- John Deere toys.



Largest Selection Of Farm Toys On The South Plains
 We Will Trade For Your Used Toys



See The Toy Trading
 Specialists
 Tom Bowen
 or Lee Elder

Best Prices In The Area
 Interest Free Lay-A-Way For Christmas

DENT & CO.

"Where Customer Satisfaction Is Our Goal"



Hwy 84 West

Muleshoe

272-4296

WANTED

Tony Lama
 BUYERS!



Special 13" Top Roper
 reg. \$129.98

\$99.98

Classic Ropers \$99.98

Select Group

14" Bullhide \$99.98

Full Quill Ostrich \$399.98

All Other Tony Lamas ... 10% Off

All Boots Are First Quality!...No Seconds!

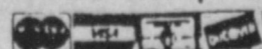
Layaway for Christmas
 Complimentary Gift Wrapping

1-800-748-2459

OPEN 8:00 a.m. -
 6:30 p.m. C.S.T.

We Accept:

Rip's
 IN TEXICO
 314 Wheeler
 482-3363



Muleshoe Boy Scouts Schedule Fund Raiser

Cub Scouts and Boy Scouts will begin taking orders for Trails End Popcorn on Thursday, Nov. 9 and will continue to take orders through Wednesday, Nov. 22. Trail's End Popcorn is produced by the family-owned Weaver Popcorn Company, the World's largest popcorn company.

"Since 1928 Weaver's quality and service have been unequalled...and Trail's End is the cream of the crop!" said a spokesperson for the scouts. "Its outstanding popping expansion, taste and tenderness make it truly gourmet."

Trail's End is sold in four popular packages, durable reusable plastic bucket, with handle containing two packages of gourmet popcorn or an attractive carton containing five convenient 3.5 oz. microwave packages of taste-tempting, butter-flavored gourmet popcorn, or family size box containing twelve 3.5 oz. microwave packages at the price of ten packages, or decorative 12 oz. box of mouth-watering caramel corn with pecans.

The Cub and Boy Scouts in Muleshoe will know they are helping scouting and their pack by earning funds for the pack, which is greatly needed. The boys will also learn selling skills and this fund raising project will also teach them responsibility.

Their self-confidence will grow from the achievements in the sale. Scouts will even have the opportunity to earn prizes by selling the popcorn including Scout Bucks, which can be used for credit on Day-Camp, Council Summer Camp, or any Council activity.

Pack 620 is asking your support by buying Trail's End Popcorn when they come to your door. If you would like the popcorn and are not contacted you are asked to contact any Cub Scout or Cub Scout leader before Wednesday, Nov. 22. Delivery of orders will begin on Dec. 16 and will continue through Feb. 6.

Cub Scout Den 2 met with their leader Michael Richards at the Art Studio of Rheata White on Monday, Nov. 6. Ms. White is an artist here in Muleshoe and she

showed the boys several different things about drawing. She explained variations of shading and showed them the difference in warm and cold colors. Also included in the lesson was how to fill in and composition.

The boys drew pictures of things of interest to them and it was reported that they did a great job. "You should have seen John Kieth's horse. It was good! They all had a very good time and learned lots of new things about art."

Those attending were Cub Scout John Kieth Turner, Den Chief Kalam Puckett, and their leader, Michael Richards. Other boys in the den are Billy Jack Lynch and Jarod Harp.

On Saturday, Nov. 11 Cub Scout Den 2 worked with the Tiger Cubs in distributing the Scouting for Food Bags in Muleshoe. They all met at the Catholic Church at 1 p.m. to do their good turn for the community.

They are also planning a trip to the Science Spectrum in Lubbock on Dec. 9. They are having a Hologram Exhibit until the 31st of December. Parents of Cub Scouts in Den 2 are asked to contact Michael Richards if you would like to attend with the Cub Scouts.

The theme for the month of November in the Cub Scout program is "Presidents." Everyone is encouraged to help the boys understand the democratic process that we Americans enjoy.

On Tuesday, Nov. 7, Cub Master, Betty Griswold held a meeting for Cub Scout leaders at the Boy Scout Hut in Muleshoe. Those present were Mrs. Griswold, Michael Richards, Linda Tosh, Maggie Rennels, Ninzio Cogliandro, Cheryl Puckett, Arnold Price, John Graves and Terie Snell. Several events were discussed and planned for the busy Cub Scout Year.

The Christmas Pack meeting will be on Nov. 28 at the First United Methodist Church fellowship hall at 7 p.m. There will be an awards ceremony for the boys who have earned activity awards. Parents, friends and relatives are invited to go out and join the Cub

Scouts and their families in the fun and fellowship. Each Cub Scout attending the Pack meeting is asked to take a gift to exchange. The gift should not cost more than \$5.00.

The Pinewood Derby will be held at the Civic Center on Saturday, Jan. 27. Registration for each boy will be \$2.00. There will be divisions for each age group including Tigers, Bears, Wolves, Bobcats, Webelos, Boy Scouts and even adults. Leaders are reminded that they had better start working on their cars now! There will be winners in each division. Awards that have been earned in December by the Cubs will be presented in an Awards Ceremony right before the race. John Graves is the chairman of the Pinewood Derby, so if you leaders or parents would like to help you are asked to contact Graves.

The Blue and Gold banquet will be held in February at the Muleshoe High School cafeteria. More details on that will be published later. Maggie Rennels is the chairman of the Blue and Gold banquet, so you parents and leaders that are interested in helping with it, please contact Mrs. Rennels.

Friday, Dec. 1 from 7 to 8:30 p.m. there will be a district Christmas party at the National Guard Armory in Levelland. This Christmas party is for Cub and Boy Scouts and their families. Those families and boys in Muleshoe who would like to attend this Christmas party need to meet at the Boy Scout Hut in Muleshoe at 5:15 and there will be a caravan of Muleshoe scouts with their families leaving the hut at 5:30 sharp! The admission charge to the party will be one toy per person. The toy should be a new toy and all toys taken from Muleshoe will come back to Muleshoe for needy children here at home. Boys also need to take a Christmas ornament to hang on the Christmas tree. Dens are responsible for taking enough refreshments for them and their families. They suggest cookies, punch ect.

The Scouting for Food program began on Wednesday, Nov. 8 and

uniform. The next leaders meeting will be on January 2 at the Boy Scout Hut at 7 p.m.

On Dec. 9 Den 2 will be going to the Science Spectrum in Lubbock. They are having a Hologram exhibit until the 31st. If you would like to attend this event with your den, contact Michael Richards.

Michael Richards, leader of Den 2, attended a roundtable in Levelland this past week and he said that he really enjoyed the program. He demonstrated a game to the leaders that can be played by the Cub Scouts at their meetings. He passed out activity booklets to the leaders. These booklets contain activities for age groups from Tigers to Webelos, with all kinds of fun activities for the boys to do. Round tables are held monthly in Levelland and they are hoping to get some

people here in Muleshoe to help with them so that they can have them here too. Richards stated that the meetings are very entertaining and he learned lots of new things to do with his den.

If anyone in Muleshoe has a little extra time on their hands and would like to help a good group of Cub Scouts and Boy Scouts, they could use a little fix up at the Boy Scout Hut. The kitchen and bathroom are in very poor shape. A heater is also needed in one of the meeting rooms. It was reported that a general fix up and clean up is desperately needed. If you do have a little extra time or materials to help the Scouts you are asked to call one of the following people: Michael Richards, Cheryl Puckett, John Graves, Maggie Rennels or Betty Griswold.

Cub Scouts and Boy Scouts in Muleshoe and all across America distributed bags in their towns to collect food for the needy. On Nov. 18 boys will pick up the bag left on your door, and it will be taken to the South Plains Food Bank in Lubbock. A truck from the National Guard Armory will pick up food collected in Muleshoe at 4 p.m. at the Scout Hut. It will be weighed and a voucher will be given to Muleshoe for the amount of food collected by the scouts. Every pound will come back to needy families in Muleshoe when needed.

On Dec. 2nd Cub Scouts will march in the Christmas parade. Boys need to be at the Boy Scout grounds at 10:30 a.m. in their



BOY SCOUT DEN 1 PACK 620--B. J. Copeland, T. J. Hutto, John McClanahan, Tyson Purdy, Greyson Rennels, Morgan Locker, Jonathan May, Joseph Anguiano, Judd Glover, Jeremy Tosh and Dusty Elliott, all members of Boy Scout Den 1 Pack 620, helped to distribute sacks for the Muleshoe residents to put canned or non-perishable food in and leave on their porch on Saturday, Nov. 18, at which time these same boys will pick them up. This food will be distributed to the less fortunate in Muleshoe. Leaders of Den One are Magann Rennels and Linda Tosh. (Journal Photo)

Amendment on burning flag relected by Senate.

Smoking ban approved on most U.S. flights.

Per capita income increases; poverty rate stays same.

Fry & Cox's Greatest Sale Ever!!!

Be Sure To Watch For Unadvertised Specials Throughout The Store!

Monday, November 13 thru Saturday, November 18
In Stock Merchandise Only!

MONOPOLY
MONOPOLY Standard Edition
\$12.99

#4 Soccerball - Red/White/Blue
Franklin
\$10.99

Steel Vehicles
The Sound Machine 18-Wheeler Features Authentic Truck Sounds That Come to Life When Kids Push and Pull, Just Crank it up. When You Stop the Air Brakes Whooosh... Back up and the warning beeper sounds... Even Air Horn Works... Trailer Detaches and Has Roll up Rear Door. Steel. Uses 4 "AA".
\$49.95

Pamela Pine Wood Quartz Wall Clock, Glass Lens
\$12.49

GE brings good things to life.
13722 F96T12/CW
74 Watt Fluorescent Lamp
\$2.99

Mag Instrument
\$9.99

THOMAS INDUSTRIES INC.
Polished Brass Outdoor Wall Lamp. Clear Beveled Glass. 14 1/2" L x 5 1/2" W. Up To 1-60W
DY6332-1
\$14.99

MODEL 1150 INTERCOM.
The Town & Country Intercom system is a wireless, frequency-modulated (FM) signal which plugged into the standard AC outlet, the unit is installed. Transmission and reception will be completed when the intercoms are used on the same internal power line. The signal is transmitted through your electrical wiring to the other stations.
343 482 81150* Intercom - Cordless
\$14.39

UNION.
Snow Shovel
Aluminum SnowShovel. 18" x 13 1/2" coated aluminum blade. Steel wear strip. 36" poly D-handle.
\$5.99

UNION DELUXE.
Snow Pusher
Steel Pusher. 24" x 12" vinyl-painted carbon steel blade. 48" handle.
\$7.50

GILBERT & BENNETT
HANDY HANGER TOOL ORGANIZER
\$8.99

Combination Pipe & Tube Cutter
\$9.99

Frost King
FROST-KING HEAVY GAUGE POLY STORM WINDOW KIT
4 pak Poly Storm Window Kit 3'x6'x2-1/4" Mill
\$99.00

SPRINGFIELD INSTRUMENT COMPANY
Lawrence Digital Alarm Clock, High Tone Alarm, Easy To Read 6 1/2" Dial 120 Beepers, Snooze/Alarm Cancel, Twenty-Four Beep Memory Alarm, Snooze Control, Battery Back-Up, "Alarm On" & "7am" Indicators, 2-1/2" x 5-7/8" x 4-1/8"
887-25WG
\$7.49

100 Lt. End Connector Midget Set
Clear Bulbs, Repl. Bulb 1165-2
\$5.99

NOMA
100 Lt. End Connector Midget Set
Multi Bulbs, Repl. Bulb 1165-1
\$5.99

GILBERT & BENNETT
HANDY HANGER TOOL ORGANIZER
\$8.99

Frost King
FROST-KING HEAVY GAUGE POLY STORM WINDOW KIT
4 pak Poly Storm Window Kit 3'x6'x2-1/4" Mill
\$99.00

BUCK KNIVES
\$14.50

ARMOR ALL PRODUCTS
\$5.49

KESON
Dual Wheel Road Runner 4 Digits w/Reset
\$30.00

LOG CARRIER
Heavy Duty CottonDuck with Closed ends
\$9.85

#100
EXCELLENT SILVER WRAP—(prevents tarnishing)
SHIPPING WRAP—(protects breakable objects, also for filling to prevent box from being soggy)
COVER FOR CLOTHES—(keeps winter or summer clothes from dust and dirt while in storage)
FURNITURE COVER—(protects from dirt & dust while away)
PAINTING COVER—(prevents damage to floors and furniture while painting)
\$39.00



ENGAGEMENT ANNOUNCED--Mr. and Mrs. Elpidio Acosta announce the engagement and approaching marriage of their daughter, Noemi Acosta, to Ramon Sanchez, Jr., son of Mr. and Mrs. Ramon Sanchez, Sr. Marriage vows will be exchanged on Saturday, Dec. 2, in the Immaculate Conception Catholic Church. A reception and dance will follow immediately following the ceremony at the La Mulita. Miss Acosta is a 1986, graduate of Muleshoe and a 1988 graduate of SPC at Levelland. Sanchez is a 1983 graduate of Muleshoe High School. (Guest Photo)

Muleshoe Young Homemakers

The Muleshoe Young Homemakers met Tuesday, October 10 at the Muleshoe Church of Christ. Dr. Lawrence Ward of the



Latest Arrivals

Tarra Shay Ellard

Scott and Jodi Ellard are the proud parents of a daughter, Tarra Shay, who was born at 12:20 a.m. Friday, Nov. 3 in Lubbock General Hospital. The young lady weighed one pound and six ounces. She is the first child for the couple. Grandparents are Leon and Carol Warren and T.W. and Terry Berryhill, all of Muleshoe. Great grandparents are Tom and Jean Burgess of Muleshoe and Robert and Rose Cruickshank of Basin, Wyoming.

Muleshoe Independent School District presented the program. He brought several references on child creativity. He told of many different ways a child is creative in his own play as well as his drawings. He brought examples of childrens drawings to show and explain a child's maturity in a class room as well as different age groups.

Friday, October 13, the MYH sponsored skating at the Civic Center. Eighty children were present to skate, which they reported it proved their skating was successful. Ricky Tosh was the floor sponsor.

Thursday, October 27, the MYH met at the Church of Christ for their monthly craft night. Cindy Magby and Terry Marricle demonstrated how to make gift bags. Various group members attended and made these out of cloth as well as wall paper.

Pam Prather won the door prize.

The next meeting for the Muleshoe Young Homemakers is Tuesday, November 14, it is the group's annual auction. Members are asked to take two homemade items as well as their sharing sister gift.

Mincemeat spiked with rum makes an undeniably delicious ice cream topper.

Rebekah Lodge News

Tuesday, November 7, acting Noble Grand, Velma Howell called the Rebekah Lodge No. 114 to order after a turkey dinner was served to 19 members.

The American flag was presented by Dorothy Browning escorted by Della Puckett. The Rebekah flag was carried by Ruby Garner escorted by Mary Franklin.

Sandi Robinson gave the opening prayer. The roll was called by Adele Tompkins and showed 15 members and four visitors from Clovis, N.M., present.

Mary Davis, Vice President of the New Mexico Rebekah Assembly was introduced and made welcome. The other visitors from Clovis were Evelyne Priddy, Evelyn Calder and Georgia Lee Bullion. They are members of Clovis Friendship No. 21 Rebekah Lodge.

It was estimated that about 300 or more people were served at the Thanksgiving dinner. "We would like to thank all those who

Muleshoe Singing Group

The Muleshoe Singers met in the fellowship hall of the Trinity Baptist Church on Saturday, Oct. 28 at 7 p.m.

J.C. Shanks, president, was in charge of the meeting and led the first hymn.

The invocation was given by Marvis Sanders. There were 25 present including seven from Earth, and six from Clovis, N.M., Mrs. Vera Haire, Mrs. Aurice Williams and Mrs. Roark all from West Camp, and Mrs. Janet Griffith from Muleshoe.

The Earth quartet sang several numbers and Mrs. Opal Blackburn and Edna Robinson sang a duet. Janie Moraw, Mrs. Opal Blackburn and Jane Albright all sang a solo.

Arvel Fleming and Jane Albright sang duets. The local quartet gave two numbers.

Piano players were Odessa Shanks, Mrs. Ann Mirinda and Opla Blackburn.

Several congregational songs were sung.

The group will remain meeting at 7 p.m. each Saturday night.

came to eat and all of those who helped."

The closing prayer was given by Sandi Robinson.

Texas Lodges benefit the Oddfellows and Rebekahs Home for the Aged and Nursing Home at Ennis, Texas, also the IOOF Childrens Home at Corsicana, Texas and World Wide Eye Bank.

Friendship Club

The Friendship Club met Thursday afternoon, Nov. 9 at the Old Corral Restaurant with Adelene Swafford and Gladys Darsey as hostesses.

The meeting was called to order by Pauline Guinn, president. The roll call was answered by eight members.

Minutes of the previous meeting were read and a treasurers report given by Gladys Darsey, secretary/treasurer.

During the business session a motion was made and passed that the traditional red dress Christmas party be held on Dec. 14 at 12:30 in the small dining room at the Old Corral.

Ms. Guinn gave a program on Thanksgiving.

Refreshments were served to the following members: Pauline Guinn, Jewell Griffiths, Ollie Watts, Rob Damron, Sannie Ethridge, Maud Young, and Gladys Darsey and Adelene Swafford, hostesses.

The meeting was closed with a prayer by Maud Young.

IN FASHION

Bat-logos continue to be popular in children's sweatshirts. A thrifty mom can create individual designs by buying plain sweatshirts and creating these and other favorites of children.

This year fake leopard furs and skirt designs are gaining in popularity. This same motif is found in tights, sheer stockings and knee-higs in black, white, navy and various other colors. Very sheer black stockings are a must with formal and evening wear.



LAZBUDDIE SCOUTS--Members of Lazbuddie Boy Scout Troop No. 172 are (from left) Jody Copp, Jonas Hernandez, Eric Williams, Troy McBroom, Clint Farris, Noah Williams and Brett Thomas.

(Guest Photo)

Impress holiday guests with this dessert fix-up. Make a creamy dessert dip from equal parts of whipped cream cheese and strawberry yogurt. Cut a frozen pound cake into cubes and serve with dip.

Transform an ordinary vegetable into a praiseworthy side dish. Simply stir some cheese spread, cold-pack cheese food or soft-style cream cheese into well-drained, cooked vegetables.

CHOLESTEROL SCREENING

Do You Know What Your Cholesterol Level Is? For A Healthy Heart...Find Out At

Damron Rexall Drug

308 Main
Muleshoe, Tx. 79347
806-272-4210
Friday, Nov. 17th 9 am - 5 pm

All Tests By Simple Finger Stick Method

Cholesterol Test
No Fasting!\$6.00

Glucose Test
No Fasting

Indicates Tendency Towards
Hypoglycemia or Diabetes...\$3.00

Both Tests done for \$8.00

A nurse will be in attendance.

"BECAUSE WE CARE ABOUT YOUR GOOD HEALTH"

FESTIVE FOODS

FREE DEMONSTRATION

Featuring 1989 Festive Foods Cookbooks and food sampling.

Tuesday, November 14
7:00 p.m.

Bailey County Coliseum

2201 W. American Blvd. - Muleshoe

Co-sponsored by Southwestern Public Service Company and Bailey County Extension Office

Electricity - Efficient use makes for a wise choice.

25 Years Festive Foods Cookbooks will be available at this demonstration or at any Southwestern Public Service Co. office.

PRESENTED BY:



E. KAY DAVIS
SPS Home Economist



SOUTHWESTERN PUBLIC SERVICE COMPANY

51181-9-89-910.1



37 Shopping Days
Till Christmas!

Come By And
Try All Of Our
Smoked Sausages



Let Us Smoke Your
Holiday Turkey.

1/2 Beef

\$1.46 lb.

Locally raised grain fed
Cut & Wrapped to your specification

Larry's Dry Cured
Bone-In
Hams

\$1.99 lb.

T-Bones
By The Loin

\$3.24 lb.

Ask Us About
Our
Gift Boxes!

Larry's
Boneless Hams

\$2.39 lb.

Larry's
Breakfast Sausage

2 lb. stick
\$2.00

Winkler's Meat Co.

401 Main

272-4703

Light Festive Foods For Office Celebrations

The buoyant air of celebration that comes with the holiday season naturally calls for gatherings of kith, kin and coworkers. It's a wonderful time and there's no better way to share in its joy than with a buffet of festive foods.

As delightful as this sounds, however, the holiday season also can be exhausting--especially given the fact that half of all women of working age clock into an eight-to-five routine. That is why for this year's office party (and for at-home entertaining, too) the American Dairy Association suggests a practical potluck strategy. The following recipes are created and kitchen-tested especially for toting to the office.

They won't fall apart, fall down, get cold, smear up or spill easily. What's more, they lend themselves to being made well in advance.

In this season of overwhelming foods that wreak havoc with our waistlines and our psyches, these recipes offer lightened versions with great taste. The secret is in some subtle substitutions. Low-Fat Rum Raisin Cheesecake is made with... (surprise!) low-fat cottage cheese and yogurt. With a mere 132 calories per serving, it is deceptively rich and smooth.

The bold seasonings in Corn Dip Ole lend a fiery counterpoint to any holiday gathering. The dip has only 31 calories per tablespoon; you may wish to complement your version by serving it with calorie-sparse bread sticks or melba toast.

A calico-coated Festive Shrimp Pasta combines spinach, tomatoes, carrots and Parmesan cheese. A tangy yogurt dressing complements the salad without masking its fresh flavors. Preparation for any of these delicious recipes is simple and especially suited to your busy lifestyle.

CORN DIP OLE
Yield: 2 cups

1 package (8 ounces) cream cheese OR light cream cheese, softened
1/2 cup mild OR hot salsa
1 can (7 ounces) vacuum packed corn, drained
3 tablespoons minced red pepper
2 tablespoons EACH: chopped jalapeno pepper, chopped cilantro, fresh lime juice
Fresh cilantro, if desired
Small fresh red peppers, if desired
Tortilla chips

Place cream cheese and salsa in work bowl of food processor or blender; cover. Process until well combined. Stir in corn, peppers, celery, cilantro and lime juice until combined. Refrigerate,

covered, 1 to 2 hours to allow flavors to blend. Garnish with additional cilantro and peppers. Serve with tortilla chips for dipping. (Will keep, covered, in refrigerator up to 3 days.)

FESTIVE SHRIMP PASTA SALAD

8 to 10 servings

SALAD:
8 ounces dried rotini pasta, uncooked
2 cups cooked medium-sized shrimp
2 cups fresh chopped spinach
1 cup cherry tomato halves
1/2 cup shredded carrot
1/2 cup sliced pitted ripe olives
1/4 cup sliced green onion

DRESSING:
1 carton (8 ounces) lemon lowfat yogurt
1/2 cup dairy sour half and half
1 tablespoon white wine vinegar
2 teaspoons Dijon-style prepared mustard
1/4 teaspoon Italian seasoning
1/4 teaspoon pepper
2 tablespoons grated parmesan cheese

For salad, cook rotini according to package directions; rinse and drain. Combine cooked pasta, shrimp, spinach, cherry tomatoes, carrot, olives and onion in large mixing bowl. For dressing, combine all ingredients except Parmesan cheese; mix well. Toss dressing with pasta mixture. Refrigerate covered 3 to 4 hours to allow flavors to blend. Just before serving, sprinkle Parmesan cheese over top of salad.

**LOW-FAT RUM RAISIN
CHEESECAKE**
Yield: one 9-inch round cake
1/4 cup golden raisins
1/4 cup rum
2 cups lowfat cottage cheese
3 eggs
1/2 cup firmly packed brown sugar
2 tablespoons cornstarch
1 carton (8 ounces) vanilla lowfat yogurt

Combine raisins and rum in small shallow bowl. Cover; let stand at room temperature 2 hours. Preheat oven to 325F. Combine cottage cheese and eggs in blender container or work bowl of food processor; cover. Process until smooth. Combine sugar and cornstarch in small bowl; mix well. Add cornstarch-sugar mixture, yogurt and rum-raisin mixture. Process until well combined. Pour into well-buttered 9-inch round springform pan. Bake 45 to 50 minutes. Remove from oven and cool completely on wire rack. Then refrigerate several hours or overnight. To serve, place springform pan on serving plate.



RECEIVES APPRECIATION AWARD--Lazbuddie Scout Master John Jones recently received an Appreciation Certificate from Troop Leader Clint Farris. (Guest Photo)

Synthetic Fibers Become Increasingly Popular

Now is the time to start thinking about dressing warm for cold days ahead, according to a clothing specialist with the Texas Agriculture Extension Service.

Dr. Ann Beard said new synthetic fibers have become increasingly popular as insulating materials for cold-weather wear.

"Down feathers, the old standby, may still be the most effective insulator against dry, bitter cold weather, but down has disadvantages that synthetics have been able to overcome," she said.

Beard said down mats and loses its insulating quality when wet, although a sufficient water resistant outer shell can help prevent this problem.

She said another concern is bulkiness. Down filling limits design potential because of the volume needed for insulation.

"Synthetic insulators can be used in sleek fashionable outerwear, gloves, socks and hats and even serve as fillings for coats of classic styling.

Beard said synthetics are considered more economical than natural ones since they can be used in a variety of weather conditions, are extremely durable and easier to clean.

"Down can be machine washed, but a long drying time is necessary to reduce chances of mildewing and to thoroughly fluff the garment so that insulating qualities are retained," she said.

Synthetic insulators are readily machine washable and require a short drying time, Beard said. But the cleaning method may vary depending on the fabric with which it is used. So be sure to check the care label for recommendations.

Beard said the dozen synthetic insulators available are all variations of polyester. They keep the wearer warm by trapping body heat with micro-filaments. Some are fluffy fibers, others are piles. Both types come in a variety of different weights, depending on the type of clothing they are used in.

Synthetic insulators may be only a fraction of an inch thick, yet as effective as thick down or wool piles, which insulate by trapping a volume of air within their fuzzy fibers," she said.

Beard said when deciding between a natural or synthetic insulator, consider where the outerwear will be worn.

"Sports fans who sit in a stadium watching a football game on a cold dry day are comfortable and warm in down," she said. "Synthetics are preferable when there is moisture, caused either by the wearer perspiring or by weather conditions."

Beard said synthetic insulators can "wick" moisture away from the skin into an outer layer of clothing, so many experts consider them ideal for clothing

worn next to the skin.

Natural fibers are the best choice for second layer clothing in cold weather. Their absorbency make them an ideal "sponge" for moisture that synthetic insulators "wick" away from the body.

"The best outerwear protects the body from wind and water. Synthetic materials specially designed for this purpose are the best choice," she said.

Beard said synthetic fabrics can be found in outerwear ranging from parkas to boots. The fabric is ideal because its pores are too small to let water penetrate from the outside.

Lazbuddie Boy

Scouts Enjoy

Cook-Out

Lazbuddie Boy Scout Troop No. 172 enjoyed a family cook-out and awards ceremony in the home of Guy and Anne Farris recently.

John Jones, Scoutmaster, recognized the following scouts for their achievements:

Clint Farris--Life Rank and three Merit Badges (Personal Management, Sports, and Citizenship in the Community)

Brett Thomas--Skill award in First Aid

Jody Copp--Tenderfoot Rank

Local Girls

Present AAUW

Program

The Muleshoe Branch members of the American Association of University Women traveled vicariously to Europe Monday night, November 6. Michelle Finney, Kelly Conklon and Monica Swint described their travels to several countries in Europe which they experienced this past summer. Johanna Wrinkle sponsored these girls and other high school students.

Maureen Hooten and Julie Cage were hostesses at the Depot for the following members and one guest: Pam Hancock, Joyeline Costen, Nancy Benham, Nan Johnson, Carolyn Ward, Margaret Gleason, Esther Marie Dillman, Ethel Allison, Lucy Faye Smith and Taleta Mabry, guest.

and two skill awards (First Aid and Citizenship)

Eric Williams--Tenderfoot Rank and two skill awards (First Aid and Citizenship)

Jonas Hernandez--Tenderfoot Rank and two skill awards (First Aid and Citizenship)

Troy McBroom--Tenderfoot Rank and two skill awards (First Aid and Citizenship)

Troop leader Clint Farris presented certificates of appreciation to Scout Master John Jones and Assistant Guy Farris. Merit badge counselors, C.W. Williams and Rick Copp, were also recognized.

Families attending included: Mr. and Mrs. Randy Thomas, Brett and Jason; Mr. and Mrs. C.W. Williams, Michael, Paul, Eric, Noah, Julie, and Mrs. Williams; Mr. and Mrs. Rick Copp, Jody and Kayla; Mrs. Darla McBroom and Troy; Mr. and Mrs. Johnny Hernandez, Janis and Jonas, John Jones and the Guy Farris family.

Mary Kay Cosmetics

Josie Flowers

Sign Up Until

December 23rd For

\$75.00

Christmas Drawing

Call 272-3865

8-12 a.m. and after 6 p.m.

Thank You

for the cards and flowers
while I was in the hospital.

Bertha Betty Griswold

Notice Of Public Hearing To Tax Personal Property

The Muleshoe Area Hospital District Governing Board will hold a public hearing on a proposal to tax the non-business personal property.

To tax the above property, the Muleshoe Area Hospital District Governing Board must approve the proposal by ordinary resolution or order and must find that the taxation of property as proposed will be in the public interest of all residents of Muleshoe Area Hospital District..

The public hearing will be held on November 15, 1989 at 7:00 p.m. at the Yellow Dining Room of the Muleshoe Area Medical Center.

All interested persons may speak at the meeting and present evidence for or against this proposal.

Thanksgiving Special

33
Treatments
for
\$148

Pat
Walker's
Figure Perfection Salons
International

2401 N. Main Suite C
769-2105

Farm Bureau Memberships Still Growing

Texas Farm Bureau achieved a membership gain of 1,422 member families, according to TFB President S.M. True.

True, a Plainview cotton and grain producer, said tabulations for fiscal year 1989 ending Oct. 31, showed that the organization now has a total of 327,589 member families in 214 organized counties.

Dick Mitchell, director of TFB Field Services, said a total of 148 county Farm Bureaus showed an increase in members.

The American Farm Bureau Federation's fiscal year ends Nov. 30, but reports from the AFBF headquarters in Park Ridge, Ill., indicate that its membership will top 3.7 million member families in fiscal year 1989.

The largest county Farm Bureaus in Texas, listed by size are: Harris, Collin, Fort Bend, McLennan, Ellis, Bell, Brazoria, Brazos, Bexar, Jefferson, Hidalgo, Houston, Tarrant, Fayette, Denton, Starr, Van Zandt, Wharton, Washington and Nacogdoches.

Farm Bureau is an independent general farm organization financed by voluntary membership dues.

Combest Hires Lubbock Man As New Aide

Consistent with keeping close ties to the interests of the people of the 19th Congressional District, U.S. Representative Larry Combest (R-Texas) has selected veteran Lubbock reporter Keith Williams as Press Secretary to serve in the Washington, D.C. office. Williams, a reporter of 13 years experience covering stories from Odessa to Hereford, began working for Combest on November 1st.

Combest hired Williams for the press position because, "I believe the people from the West Texas area understand the needs and the issues important to their neighbors. I feel comfortable with Keith's strong ties to West Texas and his grasp of what is important," Combest said. "I am delighted he has agreed to assist me in serving the people of the 19th District of Texas and I welcome him aboard."

As Senior Reporter for KAMC-TV in Lubbock, the 34 year old native Texan has covered nuclear waste disposal hearings in the Hereford area, the Permian Basin's oil industry, and the criminal justice system in the Lubbock area. Both Texas Associated Press and United Press International broadcast organizations have recognized his work for investigative reporting, documentary specials, and spot news coverage.

Potato Growers Will Cast Vote On Referendum

The U.S. Department of Agriculture today announced that Texas and New Mexico High Plains potato growers will vote on whether to continue their federal marketing order.

Daniel D. Haley, administrator of USDA's Agricultural Marketing Service, said High Plains potato growers requested USDA to conduct such a referendum.

To be eligible to vote, growers must have produced potatoes from November 1, 1988, through Oct. 31, 1989, Haley said.

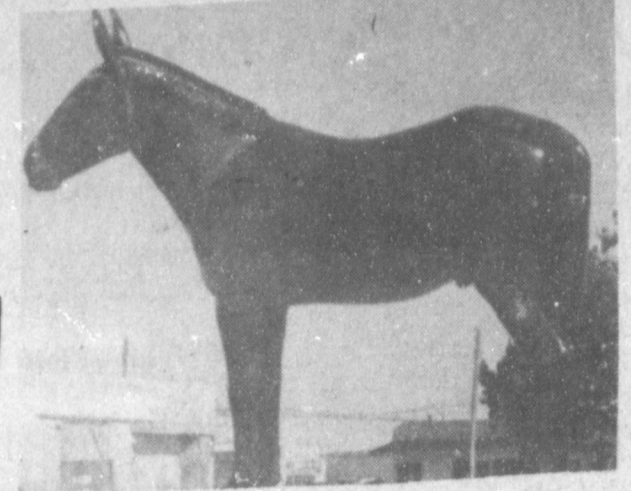
The secretary of agriculture would consider terminating the order if both of two conditions exist: if fewer than two-thirds of those voting in the referendum favor continuing it, and if growers of less than two-thirds of the volume of potatoes produced by those voting in the referendum favor continuing it.

The potato order functions under the Agricultural Marketing Agreement Act of 1937, and is monitored by AMS. Authority for the referendum rests in the act.

The slave has but one master; the man of ambition has as many as there are people useful to his fortune.

-Jean Dela Bruyere.

Thanksgiving FOOD FAVORITES



ASSORTED BATH TISSUE
WHITE CLOUD 4 ROLL PKG. **\$1.09**

White Cloud \$1.09 REFUND OFFER BY MAIL
Receive a \$1.09 refund by mail when you buy one 4-roll package of White Cloud.

Offer expires December 29, 1989. Limit one \$1.09 refund per name and address.

MAIL IN CERTIFICATE (NOT PAYABLE AT THE RETAIL STORE)

WHITE CLOUD \$1.09 REFUND OFFER
Enclosed is the Universal Product Code (UPC) symbol from one 4-roll package of White Cloud. Please mail my \$1.09 refund to:

NAME _____
ADDRESS _____
CITY _____
STATE _____ ZIP CODE _____
Place in a stamped envelope. Use sufficient postage and mail to:
White Cloud
P.O. Box 9999
Canton, LA 70728

WHITE CLOUD REFUND OFFER
PLEASE NOTE THESE ADDITIONAL TERMS:
1. Offer good in all states except AL, AK, HI, IL, IN, IA, MI, MN, MO, NY, ND, SD, TN, TX, and WI.
2. Offer good on any size of White Cloud.
3. Offer good on any quantity of White Cloud.
4. Offer good on any quantity of White Cloud.
5. Offer good on any quantity of White Cloud.
6. Offer good on any quantity of White Cloud.
7. Offer good on any quantity of White Cloud.
8. Offer good on any quantity of White Cloud.
9. Offer good on any quantity of White Cloud.
10. Offer good on any quantity of White Cloud.

Thanksgiving Specials

HUNT'S **Tomato Sauce** 8 OZ. CANS **5 FOR \$1**

HUNT'S **Tomato Paste** 6 OZ. CANS **2 FOR 89¢**

ORVILLE REDENBACHER **Gourmet Popcorn** 45 OZ. JAR **\$3.69**

ORVILLE REDENBACHER **Micro Popcorn** 3 CT. BOX **\$1.99**

Bake-Rite **SHORTENING** 42 OZ. CAN **88¢**

Gold Medal **FLOUR** 5 LB. BAG **78¢**

Baker's **REAL CHOCOLATE CHIPS** 12 OZ. PKG. **99¢**

Pillsbury **Pie Crust** 15 OZ. BOX **\$1.79**

Ocean Spray **CRANBERRY SAUCE** 16 OZ. CAN **69¢**

Shur-Fine **BROWN SUGAR** 2 LB. BAG **99¢**

PECANS 6 OZ. PKG. **98¢**

Paper Towels **BOUNTY** JUMBO ROLL **79¢**

Kraft **CREAM CHEESE** 8 OZ. PKG. **78¢**

Green Giant **ASPARAGUS** 15 OZ. CAN **\$1.99**

Del Monte **GREEN BEANS** 16 OZ. CAN **79¢**

Shur-Fine **POTATOES** 16 OZ. CAN **59¢**

Baker's **COCONUT** 14 OZ. BAG **\$1.99**

Minute Maid **ORANGE JUICE** 12 OZ. CAN **\$1.99**

CALIFORNIA CRISP **CELERY** 4 STALKS **\$1.99**

ONE FREE BUNCH OF PARSLEY WITH YOUR THANKSGIVING PURCHASE!!!

FRESH CALIFORNIA **BROCCOLI** 1 LB. **59¢**

Ocean Spray **CRANBERRIES** 1 PKG. **79¢**

WASHINGTON EXTRA FANCY **APPLES** 4 LBS. **\$1.99**

BANANAS 5 LBS. **\$1.99**

YELLOW **ONIONS** 1 LB. **19¢**

GOLDEN **SWEET POTATOES** 3 LBS. **\$1.00**

U.S. NO. ONE RUSSET **POTATOES** 10 LB. BAG **\$1.49**

Brach's **CHERRIES** 12 OZ. BOX **\$1.79**

Pepperidge **STUFFING MIX** 8 OZ. PKG. **99¢**

Lesueur **SWEET PEAS** 15 OZ. CAN **79¢**

Dromedary **DATES** 8 OZ. PKG. **\$1.99**

Kleenex **NAPKINS** 45 CT. BOX **\$1.19**

Swanson **BEEF BROTH** 14 OZ. CAN **38¢**

ASSTD. TOOTH PASTE **Crest** 4.6 OZ. PUMP **\$1.59**

ASSTD. SHAMPOO OR CONDITIONER **Silkience** 15 OZ. BTL. **\$2.99**

SILKIENCE ASSTD. AEROSOL **Hairspray** 7 OZ. CAN **\$2.99**

FROZEN

36 CT. PKG. RHODES **ROLL DOUGH** **\$1.99**

Minute Maid **ORANGE JUICE** 12 OZ. CAN **\$1.29**

COOL-WHIP 8 OZ. TUB **89¢**

SHUR-FINE BUTTER, TURKEY, THAWING, SHUR-FINE HAMB, U.S.D. GRA, BAKING, SUPER SELECT, BUY, SUNDAY, SMOKE, SHUR-FINE, PORK

Cum... Sale Price Without... Dinner Plate, Cup, Decorated, Saucer, Cereal Bowl, Salad Plate, Decorated

DOG ON



U.S.D.A. GRADE A SHURFINE
SELF-BASTING 16-24 LB. AVG.

TOM WITH TENDER
TIMER
TURKEYS LB.

49¢

BONELESS FULLY COOKED TURKEY	2-3 LB. AVG.	\$1.69
GRADE A	LB.	
WHOLE HENS	4-6 LB. AVG.	79¢
SELECT LEAN TRIM FRESH PORK	LB.	
ROAST	LB.	\$1.39
HOUSE FULLY COOKED	10-12 LB. AVG.	\$1.39
ROASTED TURKEY	LB.	
FINNISH / HOT WHOLE HOG	2 LB. ROLL	\$1.49
SAUSAGE	1 LB. ROLL	\$2.98

WILSON'S 96% FAT FREE BONELESS FULLY COOKED

HALF HAMS
\$2.49 LB. 2-4 LB. AVG.

REGULAR OR HONEY CURED

HICKORY SMOKED FULLY COOKED DRY CURE

WRIGHT'S HAMS

\$1.49 LB. SHANK PORTION

\$1.59 LB. BUTT PORTION

WHOLE HAMS 16-22 LB. AVG. **\$1.49** LB.

Stoneware by Hearthside

5-Pc. Place Setting
Dinner Plate, Cup, Saucer, Salad Plate, Cereal Bowl

Only **\$3.99**
with \$10 Purchase

DECORATED matching accessory pieces in beautiful new shapes... and at money-saving low prices

CLASSIC PITTED LARGE RIPE OLIVES	6 OZ. CAN	\$1.19
CLASSIC PLAIN QUEEN OLIVES	7 OZ. JAR	\$1.09
PLANTER'S DRY ROASTED COCKTAIL PEANUTS	12 OZ. CAN	\$2.19
ELLIS RAW SPANISH PEANUTS	16 OZ. BAG	\$1.09
NO CHOLESTEROL WESSON OIL	24 OZ. BTL.	\$1.09

SWISS MISS SUGAR FREE HOT COCOA MIX	8 CT. BOX	\$1.79
ALL TYPES POTATO CHIPS LAY'S®	\$1.49 SIZE	99¢
SUNSHINE HI-HO CRACKERS	16 OZ. BOX	\$1.99
SUNSHINE HYDROX/VIENNA FINGERS COOKIES	16 OZ. PKG.	\$1.99
SUNSHINE REG./UNSALTED KRISPY CRACKERS	16 OZ. BOX	89¢

DOUBLE COUPONS ON SATURDAYS

Case Specials

SWEET CREAM Shurfine Butter 1 LB. QUARTERS **\$1.69**

QUALITY GREEN OR FRENCH ONION Kraft Dips 14 OZ. TUB **99¢**

2 LITER ALL TYPES COCA-COLA **89¢**

SHURFINE SOUR CREAM 1/2 PINT CTN. **2.99** FOR 3

SHURFINE WHIPPING CREAM 1/2 PINT CTN. **\$1.59**

SHURFINE GRADE A LARGE EGGS ONE DOZEN **59¢**

MINUTE MAID CHILLED Orange Juice 64 OZ. CTN. **\$1.79**

SUNSHINE Cheez-It Crackers 16 OZ. BOX **\$1.89**

EVAPORATED PET MILK	12 OZ. CAN	59¢
BETTY CROCKER SUPER MOIST CAKE MIX	18 OZ. BOX	78¢
BETTY CROCKER R.T.S. FROSTING	16 OZ. CAN	\$1.19
SHURFINE LIGHT CORN SYRUP	32 OZ. BTL.	\$1.39
TENDERCRUST PARTYFLAKE BROWN 'N SERVE ROLLS	3 PKGS.	\$1.00
CAMPBELL'S CREAM OF MUSHROOM SOUP	2 10.7 OZ. CANS	\$1.00
SHURFINE MINI/REG. MARSHMALLOWS	2 10 OZ. PKGS.	\$1.00
QUAKER MASA HARINA	5 LB. BAG	\$1.99
QUAKER MASA TRIGO	4 LB. BAG	\$1.79
HORMEL CHUNK BREAST OF CHICKEN	6 1/2 OZ. CAN	\$1.79
HORMEL CHUNK HAM	6 1/2 OZ. CAN	\$1.39
HORMEL CHUNK TURKEY	6 1/2 OZ. CAN	\$1.29

ALL GRINDS VACUUM PACKED Shurfine Coffee 16 OZ. CAN **\$1.79**

TEXSUN Orange Juice 46 OZ. CAN **\$1.59**

TEXSUN PINK Grapefruit Juice 46 OZ. CAN **\$1.29**

Beauty Aids ORIGINAL Alka Seltzer 36 CT. PKG. **\$2.28**

LOTION SCENTED/UNSCENTED Eversoft 10 OZ. BTL. **\$3.29**

MINUTE PUMPKIN OR CINCE PIES	20 OZ. BOX	99¢
FRUIT PIES	20 OZ. BOX	\$1.39
VEGETABLES	16 OZ. BAG	\$1.29
MINUTE ASSORTED INNERS	11-12 OZ. BOX	\$1.29
MINUTE REGULAR FRIED CHICKEN	28 OZ. BOX	\$2.99

HOME OWNED & OPERATED

AT AFFILIATED FOODS INC. MEMBER STORE

PRICES EFFECTIVE NOVEMBER 12-18, 1989

thriftway

WE ACCEPT FOOD STAMPS...WE RESERVE THE RIGHT TO LIMIT

DPS Reminds Holidays Can Be Dangerous

A time to be thankful is once again upon us. Major V.J. Cawthon, Regional V Commander of Public Safety said, "It seems that during the Thanksgiving period, most people are trying to get home to their loved ones. This is a time when families reunite and gather together for big turkey dinners and a period of time when we give thanks for being able to get together and enjoy ourselves, once again. This also brings on an increase of traffic on our streets and highways, and we, the Texas Department of Public Safety, urge everyone to use extreme care this year, so that we can live to have another Thanksgiving."

It is true that many Texas citizens will become a statistic during this holiday period and that many planned gatherings will be ruined by these tragedies. Let us keep in mind, as we plan our trips and gatherings, this year to plan ahead and give ourselves plenty of travel time and plenty of rest stops during our trips. We must remember to be a defensive driver and to watch out for the other person at all times.

Remember, no matter how good of a driver we may be that we cannot control the person that we are meeting. We have no guarantee that that person has not dropped a cigarette, had a cord arrest, tanked up on booze or hopped up on pills. Let's drive as if each driver will always do the unexpected and in this manner we can live to enjoy another holiday. Remember, to always be a defensive driver.

This is also a time that hunters will be on the highway. This also will add to the congestion of our streets and highways. Let us take the time to be a courteous driver and to keep our minds in the right frame of mind.

Winter Pasture Management Cost-Effective

Management of winter pastures is cost-effective and can be as simple as opening a gate, said Spencer Tanksley county agent with the Texas Agricultural Extension Service.

Cold weather will limit growth of winter pastures and they need to be used efficiently, said Tanksley.

"This means some type of grazing management should be practiced to stretch pastures for more animals," Tanksley said.

A simple rotation grazing system with two or more pastures is easy to implement, the agent said.

With this system, all animals are put on one pasture while the other pasture grows more forage. When the first pasture has been fairly well grazed, the herd is moved to a second pasture for grazing, and so on.

With total rest, the grazed pastures should produce some regrowth for later grazing.

A more intensive grazing management system calls for a type of limited grazing, said Tanksley. Dry cows can be grazed for two to four hours every other day on winter pastures and will require some other forage like hay when they are off pasture. Thus, winter pasture would serve as the protein supplement for these animals.

Tanksley said cows with calves, steers or growing heifers should be allowed to graze high quality winter pasture every day for about two hours.

Using such a system, weight gains will not be great but should occur. The important feature is that grazing days per acre can be increased by limited grazing, said Tanksley.

"Livestock will become trained to the type of grazing management selected. Under rotation grazing, livestock will be more than willing to change pastures once the pasture they are on is grazed down," Tanksley said.

Where ambition ends happiness begins.
-Hungarian Proverb.

ASCS Releases More Producer Information

Danny Noble, County Executive Director of the ASCS, has released a mid-November report which includes several items local and area farmers and ranchers need to know.

CRP ANNUAL RENTAL PAYMENTS
As of November 13, all CRP annual rental payments have been made that could be made. If you should have received a payment and did not, please contact the ASCS office. All payments were made in cash.

1989 DISASTER PROGRAM
The final date to sign up for a disaster payment for crop losses on a 1989 crop as a result of drought, hail, freeze, excessive moisture, excessive wind damage or insect infestation, is April 2, 1990.

FAILED ACRES
Before you plow or make any other use of failed acres (non-harvested), you must file an application for disaster credit and the ASCS **MUST** appraise the failed acres. This applies to program crops and non-program crops, participating farms and non-participating farms, FCIC insured farms and farms without insurance.

MAINTENANCE OF ACR AND CRP
Weed control measures **MUST** be carried out in a timely manner on acreage designated as ACR through the calendar year. Weed control measures also **MUST** be carried out timely on CRP land throughout the lifespan of the CRP contract. Failure to control noxious weeds will result in total loss of the farm program benefits and/or your CRP contract.

WOOL
January 31, 1990 is the final date for filing your 1989 wool sales documents for the incentive payment.

LOAN RATE
The 1989 soybean loan rate has been established for Bailey County as \$4.39/bushel.

INTEREST RATE
The loan interest rate for November is 8.125 percent.

SODBUSTER AND SWAMPBUSTER PROVISIONS
Under no condition should any producer break out any land without first consulting with ASCS and SCS. Producers that break out highly erodible land

Boys...
Cont. From Page 1

Other team members are Rodney Reynolds, junior; Clarence Lewis, junior; Colin Tanksley, junior; and Micheal Hardwick, sophomore.

Coach Hagerman named some junior varsity players who could possibly see some varsity action: John Wall, junior; Corley Hutton, sophomore; and Jorge Jones, sophomore. Returning starter and all-district player Frank Precure and returning starter Brett Pylant are promising team leaders.

Hagerman noted that the non-district schedule will prove to be a tough battle. Slaton (15th in state AAA), Abernathy, Canyon, and Plainview are a few of the teams Muleshoe is scheduled to play.

Hagerman adds that the district race will be contested indeed. The district powerhouse, Dimmitt, along with Friona (with four returning starters) and Floydada will all be strong competition for the district crown.

The one thing Coach Hagerman wants to teach his men this year is the importance of certain fundamentals in basketball and how they are executed. He also wants the players to learn composure. He truly believes there is a bright outlook for the future of basketball at Muleshoe High School.

He also stated that the addition of a new staff brings a new attitude and the coaches are all working for the betterment of the students.

Finally, Coach Hagerman said he wishes to thank Coach Stewart for taking a chance on him and for the opportunity Stewart has offered him by naming him a first-year head coach.

Hagerman believes he has the credentials needed to do what needs to be done and he is looking forward to a great year.

are not eligible for any program benefits on that farm or any other farm in which the producers has an interest if a conservation plan has not been established.

FOREIGN INVESTMENT
Foreign investors buying land are required by law to report any purchase or sale to USDA within 90 days of the transaction. Penalties can amount to 25 percent of the fair market value of the property. Forms are available at the ASCS office in Muleshoe.

FARM CHANGES
Any changes in operators, owners, acreage, or mailing addresses should be reported to the ASCS office so records may be kept current.

Mules...

Cont. From Page 1
hospital for x-rays, which showed he did have a broken shoulder.

In the meantime, the Mules were holding the 'Cats out of the end zone, although failing to push their way through at the same time.

At the end of the third quarter, the score remained the same as the halftime score, 0-14 for the Littlefield Wildcats. The Mules defense had held.

Once again, the Mules put together a sustained drive, and scabbled their way through all the way to the Wildcats one yard line before turning the ball over to Littlefield.

This time, with 2:41 left on the clock, and a 54-yard pass-run play, the Wildcats got in scoring range and scored their final TD, although the PAT attempt was blocked.

Littlefield was again in possession of the ball when the clock ran out and the game was ended.

Head Football Coach Jim Stewart said he would like to express his appreciation to all the football fans continued to support the team all the way through in his first year as Athletic Director and Head Football Coach. He said he, the other coaches, and certainly the players, wished to thank parents, fans, and friends for their continued support.

Girls...

Cont. From Page 1
non-district games will all be very tough, but they will bring excellent experience.

The district schedule will be the true challenge with two of the teams, Tulia and Dimmitt, already ranked 5th and 6th in state.

Coach Davis believes the key to winning district is not necessarily beating Tulia or Dimmitt, but most importantly, playing as a team and not individually. He stresses that the girls should not worry about themselves, but about the team. He points out that if the girls want to win, it is more up to them than it is to the opponent. The notorious Dimmitt rivalry is "just another game" to Davis. Coach Davis believes that even through the immense pressure placed upon the girls, they will come through.

Coach Davis said that some of the team leaders will be the three year varsity starters, Heather Hutton, Wendy Green and Amy Harrison.

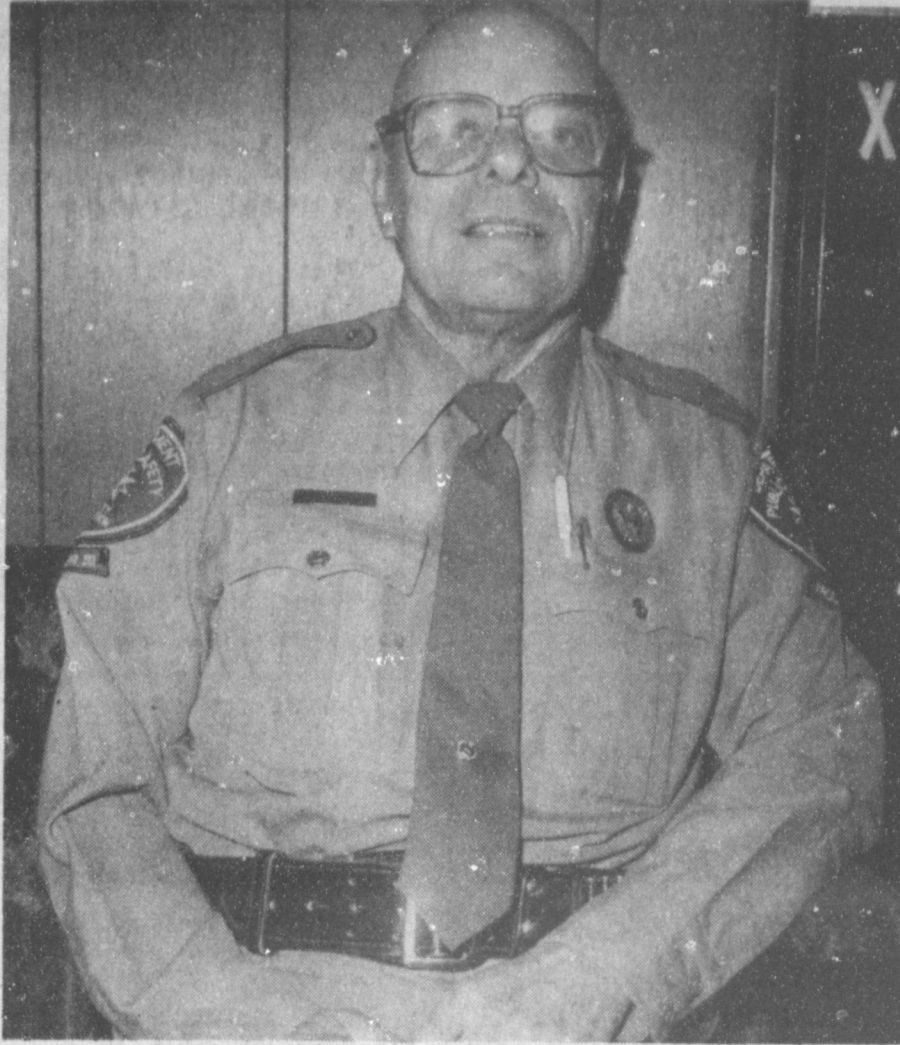
Individually, Heather 'sparks' the team, Wendy is 'one of the best posts he has ever coached' and Amy 'has not even tapped her true ability!'

The team leaders are ultimately important, along with the issue of sportsmanship. Davis believes the spectators should reveal 'good, clean sportsmanship.' He also states that the fans should support the team to the 'nth degree.'

In final comments, Davis concluded that a great year is in store for Muleshoe. He already believes that the team has 'clicked' as essentially required.

Although the girls and the coach feel strong pressure from the school and the community, Coach Davis will feel no disappointment in the girls whatsoever if their potential is fully reached, no matter what that may be.

The first varsity basketball game is scheduled for Tuesday, November 14. Everyone is encouraged to support MHS BASKETBALL, 1989-90.



DPS TROOPER RETIRING--After 25 years as a Trooper with the Texas Department of Public Safety, and the past 17 as Safety Education officer, Bert Sinclair, Trooper III, is retiring this month. For the past 17 years, he has traveled to Muleshoe and other towns in the Lubbock District, with his 'safety' news releases, and safety messages. Thursday morning, he said his visit at *The Journal* was his final visit. He will be missed. (Journal Photo)

Amy Montgomery New Kiwanis 'Sweetheart'

By R.A. Bradley
Sixteen Kiwanians, three honorary members, Lacy Morris, Jon Keith Turner and Happy Birthday boy--12 year old Chad Johnson. We were very happy to have our new Kiwanis Sweetheart, Amy Montgomery, present. Amy is the daughter of Sharon and Robert Montgomery. Amy is a senior in Muleshoe High School. She is reporter for the Senior Class. She is the treasurer for the S.C.A.C. (Student Community Action Club).

She is a member of the N.H.S. (National Honor Society) and their reporter and an Ambassador for the Chamber of

Lazbuddie ISD Sets New Record

Lazbuddie I.S.D. Superintendent, Joe Hall, reports that the school set a record for attendance during the October accounting period.

The average membership for kindergarten through grade twelve was 263.55 for the month of October. The average daily attendance was 260.50, or 98.84 percent, for the entire month.

The half-day pre-kindergarten program had excellent attendance also. The average membership for October was 4.90. The average daily attendance was 4.80, or 97.96 percent for the entire month.

The Lazbuddie administration praises parents and students for their efforts. "Many people: parents, students, and faculty worked together to achieve the high rate of attendance; all are to be commended. We, the administration, would like to thank each person involved for your splendid cooperation and support for Lazbuddie I.S.D."

Commerce. Amy's hobbies are snow skiing, basketball, tennis, swimming, going to the mountains, watching the Lakers basketball team and Amy didn't list this but I am sure she likes boy's. Amy we are very proud to have you as our club sweetheart. Welcome!

President, Jim Lutz called the meeting to order. J. Don Kube led the club in the pledge to the flag and the invocation was given by Lyndon Huckaby.

Eddie Morris had to think long and hard and finally gave the friendship coin to Moo-Moo Mickey Merriott. Mickey signed his application to the Kiwanis Club as Junior Flunky!!

Flags will go out a second time this week on Saturday for Veterans Day. Hugh Young had the program and showed a video about the "Texas Telephone Asso". It was a very good film on some of the things we use the telephone for, business, emergencies, pleasure and etc. Did you ever stop to think how much we use and depend on the telephone. Stop and think about it. It was a very good program on how the telephone system has progressed. A good film Hugh. Thanks.

Welcome aboard Amy!!

Funding for Ex-presidents
The Senate has sent President Bush legislation providing \$1.8 million for pensions, office costs and other expenses of the nation's four living former presidents and Lady Bird Johnson.

On Restricting Appeals
Concerned about the lengthy legal process, Sen. Strom Thurmond, R-SC., has introduced legislation that would impose time limits on death penalty appeals.

Around Muleshoe

Cont. From Page 1

this represents a tremendous savings.

A trust fund has been set up at both Muleshoe State Bank and First Bank to benefit Tarra Shay Ellard, infant daughter of Mr. and Mrs. Scott Ellard.

The infant was born weighing one pound, six ounces at Lubbock General Hospital last weekend.

She is expected to be in the hospital for up to four months. Until she reaches four pounds, the cost is \$11,000 per day, and is expected to be around \$3,000 per day after she reaches four pounds until she can be released to her parents.

A benefit meal for Billy Wayne Goar of the Needmore community will be held Sunday, November 19, 11:30 a.m.-2 p.m. in the Sudan school cafeteria.

Barbecue Brisket and all the trimmings, as well as homemade desserts will be served.

The group is asking a minimum donation of \$3.50 per plate, and if you are unable to attend and would like to donate, please send your check to:

Jerry Bellar, Route 1, Box 32, Sudan, TX 79371, Phone 227-2454 or Deborah Noble, 302 West Ave. J, Muleshoe, Texas 79347, phone 272-4711.

Carrots...

Cont. From Page 1
they're up, they don't require as much as corn."

He said their carrots are shipped all over Texas and the Southeastern United States. The carrots are sold to large grocery store chains, and the jumbo carrots are sold to food wholesalers.

"The carrots are not contracted," he said. "We grow them, process them and then sell them at market price, which at this time, is a fair price."

A carrot farmer will have average years and then every fourth year he'll see a good year, Campbell said. "BC Produce deals only in carrots, although if things go well for the company, the owners would like to expand into other produce."

The annual Friona Christmas Bazaar will be held on Friday and Saturday, November 17-18 at the Friona Community Center, from 10 a.m.-6 p.m. on Friday and 9 a.m.-4 p.m. on Saturday.

The Farmer County Home Economics Committee, in cooperation with the Farmer County Extension Service, is sponsoring the Bazaar.

Several demonstrations have been planned for both Friday and Saturday.

Army Reserve Pvt. Efrain C. Maldonado Jr. has completed basic training at Fort Leonard Wood, Mo.

During the training, students received instruction in drill and ceremonies, weapons, map reading, tactics, military courtesy, military justice, first aid, and Army history and traditions.

Maldonado is the son of Maria E. and Efrain C. Maldonado of Bula.

Methodist...

Cont. From Page 1
coverage of all the buildings in the complex.

The bids will be resubmitted for the regular meeting of the board in December.

A third action taken by the board was to make a slight change in the "Admission Agreement" for the Muleshoe Area Health Care Center. The change concerns what happens to a patient's room when they are away from the nursing home for an extended period of time.

Although not an agenda item, board members briefly discussed the ambulance purchased for Lazbuddie, including what it will cost to have the ambulance certified and operational.

The board will hold their regular meeting on Wednesday, November 15, at 7 p.m. in the dining room at the hospital.

Abortion Spending
President Bush vetoed legislation to liberalize abortion law by making federal funds available for poor women in cases of incest and rape.

Experience —
We consider it money in the bank.
A face lined by dry, hot summer days, harsh winter, and seven-day work weeks. But there is sparkle, too, remembering warm spring sun or gentle rains and acres of cotton.

Back when he started farming, a man's labor represented the majority of his investment in the farm. Over the years, when he's had to invest in land and equipment, he's turned to his Land Bank Association for competitive, long-term financing. At the Land Bank we not only place value on a man's farm, but his experience, too.

So, if you need help growing, talk to a neighbor you can bank on —

Federal Land Bank Association
316 S. Main Muleshoe 272-3010

INCE FINA KICKS IN FOR THE MULES.

Ince Oil Company is proud to support the Muleshoe Booster Clubs. To show our support, for every gallon of gas sold at Muleshoe Fina, Ince Fina will donate a penny to a Muleshoe Booster Club. The donation for September will go to the Football Booster Club, and October the Fine Arts Booster Club.

Show you're backing the Mules — Fill up with Fina Quality.

Your friends at Ince Fina, supporting the Mules!

MULESHOE FINA
102 W. AMERICAN BLVD. • MULESHOE • 272-5278

Pep Thanksgiving Dinner, Celebration Plans All Set

Pep's 44th annual Thanksgiving Festival is scheduled for Thanksgiving Day, November 23, at St. Philip Neri Parish Hall in Pep. Pep is located on Highway 303 and can be reached on Highways 54, 597 and 114.

Pep's famous German sausage, turkey, and all the trimmings will be served from 11 a.m.-2 p.m. Adult plates will be \$5 and plates for children under 12 will be \$3. Take out plates are priced at \$5.50 and will be available until 5 p.m.

Homemade bread, baked goods, and homemade craft

items will be for sale in the country store and a fish pond will be open during the day. The concession stand will be open through the festivities.

An auction of various donated goods will start at 2 p.m. in the dining room.

A raffle for \$200 in cash, and \$50 in cash will be held. You do not need to be present to win. Donations are \$1 per ticket. Tickets are available from any parish member, as well as on Thanksgiving Day.

A country and western dance will be held from 9 p.m.-1 a.m.

and tickets will be \$5 each. The dance will conclude the day's festivities.

For more information contact a member of the publicity committee, Ida Sinnacher at 933-4344; Anna Belle Walker at 933-4696; Alvin Walker at 894-2523; or Missy Hughes at 933-4627.

For sausage information, call Al W. Duesterhaus at 933-4343 or Gaulbert Demel at 933-4324.

On Thanksgiving Day, for take out plates, call 933-4361.

**Cash Rewards
Up To \$1,000
For Information!
Call
Bailey County
Crime Line
272-HELP**

Eight School Secretaries Go To Seminar

Secretaries from Muleshoe ISD attended the Secretarial Seminar at the Holiday Inn in Lubbock on Friday, Nov. 3. Pamela Hays was the seminar leader. She stressed the changing role of today's secretary.

"There is less emphasis on strictly clerical duties with a new emphasis on the secretary as a decider, one who accepts and implements change and who meets challenges." "Secretaries who understand their evolving organizational role, who see themselves as valued members of the management-support team and who envision them-

selves as respected and competent professionals will become just such people."

Other topics discussed were how to get things done, work with people and manage stress.

MISD secretaries attending were Jean Richardson, Lois Washington, Rea Morris, Rhonda Hugg, Mary Janice Brantley, Frankie Lunsford, Margie Alarcon and Mary Stegemoeller.

HIGH PLAINS ANTIQUE DEALERS ASSOCIATION

Antiques, Collectibles & Handcrafts

Show And Sale

Depression And Carnival Glass

Primitives, Furniture & Glassware

Biggest Show Ever

Nov. 18 10 a.m. - 6 p.m.

Nov. 19 12:00 p.m. - 5 p.m.

Roy S. Walker Community Center

316 W. Grand (Where First Street & Hwy 60 merge into West Grand Ave.) Clovis, N.M.

Admission \$1.50 Donation

For information contact Jerry Radcliff, [505] 762-2562

Lazbuddie Honor Students Recognized

Lazbuddie Elementary School honored the following students as Citizens of Month of October. These students exemplified characteristics of outstanding leadership, citizenship, and pride in their school.

The honored students are: Justin St.Clair, son of Tommy and Jana St.Clair, fifth grade; Don Burch, son of Kirby and Vicki Burch, fourth grade; Seth Black, son of Ricky and Sarah

Black, third grade-Mrs. Spencer; Josh Morris, son of Melvin and Vicki Morris, third grade-Mrs. McAdams; Gabriel Reyes, son of Jose and Maria Reyes, second grade; Valerie Everett, daughter of Noe and Fidela Everett, first grade; and Candice Randolph, daughter of LynEldon and Pat Randolph, kindergarten.

Mrs. Anne Farris, principal, presented each of the students a ribbon and congratulations.



LAZBUDDIE ELEMENTARY CITIZENS OF THE MONTH--Named Citizens of the Month at the Lazbuddie Elementary School are from left, back row: Josh Morris, Justin St. Clair, Seth Black and Don Burch. Front row, from left, Candice Randolph, Gabriel Reyes and Valerie Everett. (Guest Photo)

DIVORCE

- * LONELINESS
- * ANGER
- * REJECTION
- * FAILURE
- * SOCIALLY STEREOTYPED

Anyone who has suffered the pain of divorce understands these feelings.

Charter Counseling Center is pleased to announce our new Divorced Adult Support Group. Together with a group of adults who are experiencing the same feelings and a professional group counselor, you can share, explore and learn to understand your feelings, emotions, and experiences.

For more information, call Mike A. Melton, M.S. or join us for our first meeting, November 15th at 7:00 p.m. There is no charge for this first session.

CHARTER COUNSELING CENTER

2000 West 21st
Suite E-3
762-0212

NOTICE OF PUBLIC HEARING TO TAX PERSONAL PROPERTY

The City Of Muleshoe will hold a public hearing on a proposal to tax the following non-business personal property: tangible personal property.

To tax the above property, the City Of Muleshoe must approve the proposal by ordinary resolution or order and must find that the taxation of property as proposed will be in the public interest of all residents of City of Muleshoe.

The public hearing will be held on December 14, 1989 at 7:30 p.m. at City Hall, 215 S. First St., Muleshoe, Texas.

All interested persons may speak at the meeting and present evidence for or against this proposal.

Claude Rose, Sr. Funeral Services Held Saturday

Funeral services for Claude H. Rose, Sr., 80, of Clovis, N.M. were held at 2 p.m. (C.S.T.) Saturday, Nov. 11 in the First Baptist Church with Dr. Herbert E. Bergstrom, associate pastor of Sandia Baptist Church of Clovis, the Rev. J.L. Bass, retired Baptist minister from Brownfield, and the Rev. Rick Sullivan, pastor of the First Baptist Church, officiating.

Masonic graveside services were conducted in Sunset Terrace Cemetery in Farwell. Burial was under the direction of Ellis Funeral Home of Muleshoe. Rose died at 1:35 p.m. (M.S.T.) Wednesday in Clovis High Plains Hospital following a lengthy illness.

Born Oct. 21, 1909, in Plainview, he later moved to Farwell. He married Alice Myrl Miller on Dec. 17, 1969 in Ruidoso, N.M. He was a charter member of the First Baptist Church in Farwell where he was ordained a deacon in 1975. He was a member of the Farwell Masonic Lodge and was a 32nd degree Mason, he served on the Farwell School Board for 15 years, was a retired pharmacist and former owner of Rose Drug in Farwell, and was a veteran of the U.S. Army serving in World War II.

Survivors include his wife, Myrl; a son, Claude H. Rose, Jr. (Pudge) of Farwell; a step-son, Charles Wade of Clovis, N.M.; a step-daughter, Laverne Smith of Roswell, N.M.; three grandchildren; and one great grandchild.

Loyal

Jones had an occasion to reprimand his wife. "I think, dear," he said soothingly, "that you fib a little occasionally." "Well I think it's a wife's duty to speak well of her husband occasionally."

Open Letter To The Public

I have been asked by several friends in Muleshoe if I would make some comments about recent events concerning the EMS service here. Since I feel that this problem has possibly been resolved, and that it's none of my business since I don't live here I decided to write a history of EMS in Bailey County as I understand it and my past and present involvement with it.

EMS is a fairly new "animal", coming into the West Texas area about 1974 or 1975, EMS was one of the few good things to come out of the Viet Nam era. It was found that if some of the same pre-hospital care given to wounded and injured servicemen was

Graveside Services Held For Veda Joplin Peugh

Graveside services for Veda Joplin Peugh, 67, of Muleshoe were held at 4 p.m. Wednesday, Nov. 8 in the City of Levelland Cemetery with the Rev. Wayne R. Williams, interim pastor of Whitharral Baptist Church, officiating.

Burial was under the direction of George C. Price Funeral Directors. Mrs. Pugh died at 9 a.m. Tuesday in St. Mary's of the Plains Hospital in Lubbock following a lengthy illness.

Born in Denton County, she married L.B. Peugh on Oct. 28, 1940, in Lubbock. She was a member of the Parkway Drive Baptist Church in Lubbock.

Survivors include her husband, L.B. Peugh; two sisters, Hallie Roberts and Freda Bishop, both of Lubbock; and two brothers, Archie Joplin of Lubbock and Floyd Henry Joplin of Kenedale.

given to civilians in auto accidents, shootings, and other trauma, that their chances of living was greatly increased. Thus, a nationwide effort was made to put trained people in equipped ambulances to provide some of the same type of care.

Before this time, most of the "ambulances" were run by the funeral homes, by people with very little or no medical training. At that time, Ellis Funeral Home bought and operated one of the required ambulances. Ellis continued this service until rising costs, demands for higher standards in care, and business obligations forced them to turn the ambulance over to the hospital.

The hospital ran the EMS service here for several years, until the ill-fated West World took over the hospital. When the hospital began having money problems, it did what all hospitals with ambulance services historically do, it dumped the ambulance service.

About the time the hospital closed, I received a call from Richelle King, now Watkins, that the West Plains Hospital was going to close. Richelle asked if myself and some of the paramedics in Lubbock would be able to help the EMS service, now called Bailey County EMS, by working as a paramedic here. At that time, Randy Watkins was the only paramedic at BCEMS, being on call 365 days a year.

I first met Richelle when she was a student in an EMT class I taught in Olton, and worked with her again in an EMT class I taught here in Muleshoe. I agreed to help as much as I could. Randy, Richelle and myself decided to build an EMS service that would have paid professional and volunteers on the same service. In this way, all the volunteers as well as the EMS service would be kept up on the latest updates in training and equipment as possible, getting this information from Lubbock EMS and Flight for Life paramedics. I also took over duties as Training Officer for the service.

Texas State law requires that an ambulance service, especially ones with Advanced Life Support have medical control in the form of a Medical Doctor. After the hospital closed, Dr. Purdy was approached to be the Medical Director for BCEMS. After several meetings with Dr. Purdy to set goals and protocols, he agreed to become the Medical Director. Let me say here, that Dr. Purdy is the best Medical Director I have ever worked with, and any EMS service in Texas would be lucky to have him as such. Being a Medical Director is a time consuming task, yet Dr. Prudy took on that job in addition

to his already strained schedule due to hospital closure. For the people of Muleshoe and EMS personnel, "Thanks Doc, you made it work."

The ambulance operated for a year while the hospital was closed as the ONLY emergency care facility Muleshoe had. When the hospital re-opened, it was decided to leave the EMS service to the county, where it belongs, to keep the same thing from happening to it that happened before, being shut down if the hospital closed again.

During this period of time, Bailey County EMS was used as "The Model EMS Service" for other small town EMS services statewide, and was going to be entered as one of the nominees for "Texas EMS Service of the Year" in Austin until the last problem came up.

I have not worked here for some time, so I don't know all the particulars of the problem except for what I have read in the papers here. I could comment on many of the statements made by various officials, but as I stated earlier, that's a dead horse.

However, the things I read that disturbed me the most, and I will comment on, were the letters I read from citizens running down the volunteers. First, over 90% of ambulance services in Texas are served by "volunteers". Perhaps you better remember this if you make a trip across the state and have an accident. You will most likely be taken to the medical facility by a volunteer. As for your concern about the volunteers being "paid", well-most of their money goes for uniforms, some training and other things. You seem to have the idea that being an EMT is easy. These people are on call many days a month. This means that they can't go out of town, enjoy a full week with their families, who by the way, give up a lot of time with their spouse so that hubby or wifey can be a volunteer on the EMS service.

These volunteers have gotten up from Christmas and Thanksgiving dinners, out at 3 a.m. in the rain and snow, only to go to a job the next day, and do the same thing the next night. They have had friends and family members die in their hands; small children

die from terrible auto accidents, all the while maintaining a professional attitude. I saw these same volunteers spend many hours cleaning and repairing the hospital so that it could re-open. The same volunteers were there for you when the hospital closed, where would you have been if they hadn't been there? An Ambulance call to Lubbock takes from four to five hours by the time the patient is taken to a room, the ambulance is re-fueled and cleaned for the next call. Divide 5 hours into \$25, less a meal, and you end up with about \$4 an hour for a call to Lubbock. Of course, you can always call one of the "choppers" in for about \$2000.00, get there in about half the time, which ever tickles you pink.

I also won't comment on what the firemen here get paid, as my information on that may not be correct. Muleshoe also has one of the better fire departments I have worked with.

Anyway, one last comment to your letter writers knocking the volunteers. If you will come down to the EMS building-you know where it is-I'll be more than happy to furnish you with an

application for an EMT class, and even find when and where the next class is held. Boy, I sure hope you don't get hurt in the stampede of folks on their way down here to take up my offer. One of the volunteers might have to help YOU!

I also at this time want to say thanks from the EMS EMT's to all the business people who have let employees take time off from jobs to go to classes and make calls. I realize that this has been an imposition for many of you, and did not want this to go unnoticed. Thanks to the many, many people who support your local EMS, without which there could NOT be an ambulance.

I don't intend for this letter to hurt or anger anyone. I felt that after being asked by several to write one, that I would. I have enjoyed working in Muleshoe, and hope to continue working for the service here as much as I can. These opinions are my own and should not be taken as anyone else's.

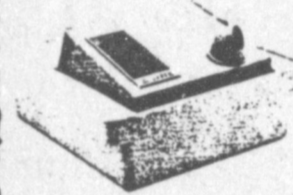
The ambulance service here is still in good form, so if you need us, call. Thank you for reading this.

Raymond Davis EMT/P

Cold & Flu Weather Is Upon Us!

Prepare your home with the
DeVilbiss Cool-Mist Humidifier
& Vaporizer!

\$29⁹⁵



- 2-gallon capacity
- 18-20 hours running time (one filling)
- Easily cleaned
- Dust-trap filters
- On-off switch
- Directional spout
- 3-prong unit available, Model 6125D

UPC Code 33413-02700

We are staying open, We are not closing!

B & B Medical Supply

(806) 272-3707

516 S. 1st ST.

MULESHOE, TX 79347

MARK BENEDICT, C.R.T.T.

(817) 663-2084

BOX 549

QUANAH, TX 79252

Where the Patient is No. 1

The American Eagle Silver Bullion Coins

1989 American Silver Eagle Coins are available now at MULESHOE STATE BANK for \$8 each while supply lasts

One Ounce Silver
0.999 Troy ounces
31.072 grams*



OBVERSE
"Walking Liberty"
by Adolph A. Weinman



REVERSE
Heraldic Eagle
by John Mercanti

As Investments or Gifts They're Always Appreciated

American Eagle Silver bullion coins make wise and thoughtful gifts. Why not consider rewarding someone, or marking a special occasion by presenting one of the most precious substances ever discovered. As a gift or an investment you can hold, American Eagle Silver Bullion Coins --- convenient, affordable and liquid. Call or visit the MULESHOE STATE BANK today to start your investment

MULESHOE STATE BANK

MEMBER FDIC

101 West American Blvd.

Phone 806/272-4561

MULESHOE, TEXAS 79347



QUALITY

Hello, I'm James Byers, a Communication Equipment Technician at GTE. Most of you already know who I am, but I wanted to make sure you knew who your GTE representative is in Muleshoe, Texas.

"Regardless of your need with GTE, I'll be here to make sure your telecommunications are taken care of promptly and efficiently." "I'm here to personally ensure your telephone service is the best there is." "You can feel confident that you are receiving the quality service that GTE stands for. At GTE, The Power Is On."



GTE

THE POWER IS ON

MHS Teacher Has Workshop On Computers

The 10th annual conference of the Texas Computer Education Association was held on November 4 at Abernathy High School. Colleen Tollett, Muleshoe High School computer science teacher, presented a workshop at the conference titled "Preparing for the High School Programming Contest."

Muleshoe programming teams placed first and third at regional contest last year under Mrs. Tollett's sponsorship. The first place team then traveled to San Antonio to the state competition. The information acquired at these contests and at the 1989 TCEA state conference were the basis of the presentation.

The Area I conference consisted of four sessions with a choice of six subjects for each session. Areas covered were of interest to administrators, elementary and

New Senior Citizens

Van Purchased For Local Use

Glen Williams, of the Area Office on Aging, said the new senior citizen van, recently obtained here, was purchased from Muleshoe Motor Co. He said it is a 12-passenger to be used for transporting senior citizens (those 60 years of age or over) on needed errands in and around Muleshoe and Bailey County.

Williams said \$14,000 of the purchase price, above the trade-in, was paid by the TDOA and the remainder paid by Bailey County. The title is vested in Bailey County, but the van actually belongs to the Department on Aging, added Williams. A part of operating expenses are paid through SPAG, with the balance paid by Bailey County.

He said all persons 60 years of age or older are eligible to ride the van at no cost. But, added Williams, contributions are invited and are needed. Generous contributions show good community support and are looked on with favor by the TDOA, he said.

For scheduling, call Edd Harp at 272-4693 or the Office on Aging in the courthouse at 272-3647.

Combest Gets Award At Texas Tech

In recognition of his public service work in agriculture, Texas Tech University's College of Agriculture Sciences presented U.S. Representative Larry Combest (R-Texas) with the Gerald W. Thomas Outstanding Agriculturalist Award. The award presentation was made at a dinner in the University Center Ballroom on campus at 6:30 p.m. Thursday, November 9th.

Past recipients, faculty, chairmen, and deans in the College of Agricultural Sciences nominate and select three individuals to be honored each year. One Outstanding Agriculturalist is selected from each of the categories of producer, agribusiness, and public service. Congressman Combest will be recognized with producer E.C. Crofoot and agribusinessman Wesley Masters for their significant contributions to the agriculture industry.

This is the twentieth year of the awards named in honor of Gerald W. Thomas, internationally recognized rangeland scientist and ecologist, who is the former Dean of the College of Agricultural Sciences at Texas Tech. Dr. Thomas is retired as the President Emeritus of New Mexico State University.

Combest serves on the House Agriculture Committee and on the following subcommittees: Conservation Credit and Rural Development; Cotton, Rice and Sugar; Tobacco and Peanuts. A fourth generation West Texan, the Lubbock congressman spent the first 25 years of his life on a farm. In addition to farming, he has worked on agricultural issues as an employee of the Agriculture Stabilization and Conservation Service (ASCS Office) and served as the agricultural advisor to former U.S. Senator John Tower (R-Texas).

secondary educators, and general users. Demonstrations of the newest technological developments in hardware and software were presented by IBM and Apple Corporations throughout the day.

Afternoon workshops covered such topics as multimedia, math units and writing labs. Mrs. Tollett presented information that had been compiled on 1987, 1988, and 1989 TCEA state programming contests.

Statistics on difficulty level and discrimination indices were discussed and how these facts affect programming strategy.

The merits of different programming languages were pointed out and supplementary textbooks suggested. JoEllen Stansifer from Levelland High School assisted with the workshop and discussed different methods of organizing and practicing teams.

Cult Awareness Forum Scheduled

How do you recognize a cult? What effect does it have on you or your children's lives? What relationship is there between crime and cults?

These questions, and others, will be answered Saturday, November 18 at the Cult Awareness Forum in Littlefield. The forum will begin at 7 p.m. at the Ag Center in Littlefield.

Marilyn May, CEA-CHE said all adults are urged to attend and learn the facts about the increase of cult activity in our area and its effect on children and families.

Persons under 15 years of age will not be admitted to the forum because of the nature of information presented, she pointed out. High school youth, age 15 and older, are encouraged to have a responsible adult come with them in order to provide an information base for further discussion.

The extension agent said this forum is designed to help parents and adults become aware of cult influence on youth in our area. Topics such as recognition of cult symbols and activities, involve-

ment of youth in cults, techniques used to interest youth in these activities, profile of youth most vulnerable to cult influence, and prevention of youth involvement will all be discussed by Ben Kennedy of Andrews.

Kennedy is considered an

authority on this subject and has presented numerous programs to increase awareness of cult activities and its influence.

Cults have been in the news with increasing frequency, said the county agent.

SPECIALIZING IN CROP,
LIFE & HEALTH INSURANCE

Ronnie Holt

P.O. Box 304
Western 66 Office Building
Muleshoe, Texas 79347
Office: (806) 272-3614
Residence: (806) 965-2842

The Lazbuddie EMS would like to thank everyone who helped with our Chili Supper last Friday, preceding the Lazbuddie-Bovina game.

A Special Thanks to Gail Morris at Bovina Feeders and Bob Donaldson at Pay-n-Save for donating the Chili.

The supper was a great success.

Lazbuddie EMS

Immaculate Conception Catholic Church

Father Patrick Maher
Northeast of City

First Baptist Church

220 West Ave. E.
Barry Bradley, Pastor

Emmanuel Baptist Church

Iglesia Bautista Emmanuel
107 East Third
Isaias Cardenas, Pastor

Trinity Baptist Church

314 E. Ave. B.
Rev. Dale Berry

Circle Back Baptist Church

Intersection FM 3397 & FM
FM 298
Pastor, Glen Price
946-3676

Calvary Baptist Church

1733 W. Ave. C.
Rev. Rick Michael

Muleshoe Baptist Church

8th and Ave. G.
Bob Dodd, Pastor

Progress Baptist Church

Charles Fisk, Pastor
Progress, Texas

Richland Hills Baptist Church

17th and West Ave. D.
Allen Petersen, Pastor

St. Matthews Baptist Church

Corner of West Boston
& West Birch
M.S. Brown, Pastor

Progress Second Baptist Church

1st and 3rd Sunday
Rev. Arthur Hayes

The Community Church

Morton Hwy
Mort Cross, Pastor
272-5992

Church Of The Nazarene

9th and Ave. C.
Dennis Hayes, Pastor

"YOU TOOK MY PICTURE... AND I WASN'T READY!"

How concerned we are with the image we present to others! And it is right that we should be. How mightily we influence others. It is so important that the self we present is one that will influence others for good.

With guidance from God we will be ready to present ourselves to the world in such a manner as to sway others toward God and all that is worthwhile and good.

"That ye might walk worthy of the Lord unto all pleasing, being fruitful in every good work, and increasing in the knowledge of God," come to His Church



The Church is God's appointed agency in this world for spreading the knowledge of His love for man and of His demand for man to respond to that love by loving his neighbor. Without this grounding in the love of God, no government or society or way of life will long persevere and the freedoms which we hold so dear will inevitably perish. Therefore, even from a selfish point of view, one should support the Church for the sake of the welfare of himself and his family. Beyond that, however, every person should uphold and participate in the Church because it tells the truth about man's life, death and destiny; the truth which alone will set him free to live as a child of God.



Coleman Adv. Ser.

Longview Baptist Church

965-3413
B.C. Stonecipher, Pastor

Primera Iglesia Bautista

223 E. Ave. B.
Roy Martinez, Pastor

Lariat Church

Of Christ
Sunday School 10:00 a.m.
Worship 11:00 & 6:00 p.m.
Wednesday Services 7:00 p.m.
Sam Billingsley, Minister

Muleshoe Church Of Christ

Clovis Hwy.
Bret McCasland, Minister

16th & Ave. D. Church Of Christ

Sunday 10:30 a.m.
Evening 6:00 p.m.
Wednesday 8:00 p.m.

First Assembly Of God

Rev. G. Dean Reid, Pastor
9:45 Sunday School
11:00 Morning Worship
6:30 Evening Services
7:30 Mid-Week Services
272-3984

Spanish Assembly Of God

East 6th and Ave. F.
Mike Doyle, Pastor

First United Methodist Church

507 W. 2nd Street
Richard Edwards, Pastor

1st Baptist Church

Lazbuddie, Tx. 965-2126
Gary Wilcox, Pastor

Primitive Baptist Church

621 South First
Elder Cleveland Bass, Pastor

Lazbuddie Church Of Christ

202 W. Ave. B.

New Covenant Church

Plainview Hwy.
Sunday 10:00 a.m.
Wednesday 7:00 p.m.
Jimmy Lowe, Pastor

Lazbuddie Methodist Church

965-2121
Larry Reid Farris, Pastor

St. John Lutheran

Sunday School and Bible
Classes 9:30 a.m.
Church Services 10:30 a.m.
Rev. Mac Bearss, Pastor

Templo Calvario

507 South Main
Sunday 10:00 a.m.
Sunday Evening 7:00 p.m.
Evangelistic Services
J.L. Soto, Pastor

El Divino Salvador Methodist Church

5th and Ave. D.
Jose M. Fernandez, Pastor
965-2932

Truth Tabernacle Pentecostal Church

200 E. Ithaca & Fir
Pastor: Les James
272-3391

Jehovah Witness

Friena Hwy.
Boyd Lowery, Pastor

United Pentacostal Lighthouse Church

207 East Ave. G.
Rev. J.A. Torres

<p>Western Drug</p> <p>114 Main 272-3106</p>	<p>Ana's House of Beauty</p> <p>Clovis Hwy. 272-4397</p>	<p>American Valley, Inc.</p> <p>Hwy. 84 W. 272-4266</p>	<p>Dairy Queen</p> <p>1204 W. Amer. Blvd. 272-3412</p>
<p>Fry & Cox, Inc.</p> <p>401 S. First 272-4511</p>	<p>Bob Stovall Printing</p> <p>221 E. Ave. B. 272-3373</p>	<p>James Roy Meat Market</p> <p>506 W. Amer. Blvd. 272-4361</p>	<p>Robert D. Green, Inc.</p> <p>2400 W. Amer. Blvd. 272-4588</p>
<p>Main Street Beauty Salon</p> <p>115 Main 272-3448</p>	<p>1st Bank Member F.D.I.C.</p> <p>202 South First 272-4515</p>	<p>Bratcher Motor Supply</p> <p>107 E. Ave. B. 272-4288</p>	<p>5-Area Telephone Co-Op</p> <p>302 Uvalde 272-5533</p>
<p>Irrigation Pumps & Power</p> <p>W. Hwy. 84 272-4483</p>	<p>Farmers Co-Op Elevators</p> <p>113 N. 1st 272-4335</p>	<p>Wes Tex Futures</p> <p>114 E. Ave. c. 272-5585</p>	<p>Richland Hills Texaco</p> <p>1914 W. Ave. B. 272-4875</p>

18. Legals

**NOTICE OF SHERIFFS SALE
THE STATE OF TEXAS
COUNTY OF BAILEY**

By virtue of an Order of Sale issued out of the Honorable 287th Judicial District Court of BAILEY County, on the 3rd day of November, 1989 by the Clerk thereof, in the case of BAILEY COUNTY APPRAISAL DISTRICT V. GUADALUPE QUIROZ DBA THE MUSIC BOX ET AL Cause #5615 and to me as Sheriff, directed and delivered, I will proceed to sell, at 3:00 O'CLOCK P.M. on the 5TH DAY OF DECEMBER, 1989 which is the first Tuesday of said month, as the EAST door of the Courthouse of said Bailey County, in the City of MULESHOE Texas, the following described property to wit:

TRACT 1: LOT 6, BLOCK 24, COUNTRY CLUB ADDITION TO THE CITY OF MULESHOE, BAILEY COUNTY, TEXAS.

TRACT 2: LOT 19, (N45' OF S80' OF LOTS 18-22), BLOCK 36, ORIGINAL TOWN ADDITION TO THE CITY OF MULESHOE, BAILEY COUNTY, TEXAS.

TRACT 3: LOT 2, (S50' OF LOTS 1-5), BLOCK 36, ORIGINAL TOWN ADDITION TO THE CITY OF MULESHOE, BAILEY COUNTY, TEXAS.

TRACT 4: LOT 6, (LOTS 6-7), BLOCK 34, ORIGINAL TOWN ADDITION TO THE CITY OF MULESHOE, BAILEY COUNTY, TEXAS.

TRACT 5: LOT 1, (NE90' OF LOT 1-2, E24' OF N90' OF LOT 3), BLOCK 36, ORIGINAL TOWN ADDITION TO THE CITY OF MULESHOE, BAILEY COUNTY, TEXAS.

BUSINESS PERSONAL PROPERTY CONSISTING OF FURNITURE, FIXTURES, INVENTORY, EQUIPMENT, AND MOTOR VEHICLES ASSESSED IN THE NAME OF GUADALUPE QUIROZ.

Levied on the 3rd day of November, 1989 as the property of GUADALUPE QUIROZ ET UX JANIE QUIROZ AKA JUANITA QUIROZ to satisfy a judgment amounting to \$4,037.37 with interest from the 4TH DAY OF MARCH, 1987 at 10 percent, per annum, and all costs of suit in favor of BAILEY COUNTY APPRAISAL DISTRICT

GIVEN UNDER MY HAND THIS 3rd day of November, 1989.

Jerry N. Hicks
SHERIFF
BAILEY COUNTY, TEXAS

S46s-3tsc

**Millions of Turkeys
Will Be Killed
This Thanksgiving**



How Many Motorists?

A message from this newspaper and the Troopers of the Texas Department of Public Safety

18. Legals

**NOTICE OF SHERIFFS SALE
THE STATE OF TEXAS
COUNTY OF BAILEY**

By virtue of an Order of Sale issued out of the Honorable 287th Judicial District Court of BAILEY County, on the 3rd. day of November, 1989 by the Clerk thereof, in the case of BAILEY COUNTY APPRAISAL DISTRICT ET AL V. DOMINGO VASQUEZ ET AL Cause #5616 and to me, as Sheriff, directed and delivered, I will proceed to sell, at 3:00 o'clock P.M. on the 5TH DAY OF DECEMBER, 1989 which is the first Tuesday of said month, at the EAST door of the Courthouse of said Bailey County, in the City of MULESHOE Texas, the following described property, to wit:

TRACT 1: NORTH 50' of LOT 2, BLOCK 3, WAGNON ADDITION TO THE CITY OF MULESHOE, BAILEY COUNTY, TEXAS.

Levied on the 3rd day of November, 1989 as the property of DOMINGO VASQUEZ ET UX CRUZ VASQUEZ

to satisfy a judgment amounting to \$2,223.53 with interest from the 4TH DAY OF MARCH, 1987 at 10 percent, per annum, and all costs of suit in favor of BAILEY COUNTY APPRAISAL DISTRICT

GIVEN UNDER MY HAND THIS 3rd day of November, 1989.

Jerry N. Hicks
SHERIFF
BAILEY COUNTY, TEXAS

S18-46s-3tsc

**NOTICE OF SHERIFFS SALE
THE STATE OF TEXAS
COUNTY OF BAILEY**

By virtue of an Order of Sale issued out of the Honorable 287th Judicial District Court of BAILEY County, on the 3rd day of November, 1989 by the Clerk thereof, in the case of BAILEY COUNTY APPRAISAL DISTRICT V. MANUEL FLORES JR. ET AL Cause #5638 and to me, as Sheriff, directed and delivered, I will proceed to sell, at 3:00 o'clock P.M. on the 5TH DAY OF DECEMBER, 1989 which is the first Tuesday of said month, at the EAST door of the Courthouse of said Bailey County, in the City of MULESHOE Texas, the following described property, to wit:

TRACT 1: LOT 35, BLOCK 10, LENAU ADDITION TO THE CITY OF MULESHOE, BAILEY COUNTY, TEXAS.

Levied on the 3rd day of November, 1989 as the property of MANUEL FLORES JR. ET AL to satisfy a judgment amounting to \$696.47 with interest from the 4TH DAY OF MARCH, 1987 at 10 percent, per annum, and all costs of suit in favor of BAILEY COUNTY APPRAISAL DISTRICT

GIVEN UNDER MY HAND THIS 3rd day of November, 1989.

Jerry N. Hicks
SHERIFF
BAILEY COUNTY, TEXAS

S18-46s-3tsc

18. Legals

**NOTICE OF SHERIFFS SALE
THE STATE OF TEXAS
COUNTY OF BAILEY**

By virtue of an Order of Sale issued out of the Honorable 287th Judicial District Court of BAILEY County, on the 3rd day of Nov., 1989 by the Clerk thereof, in the case of BAILEY COUNTY APPRAISAL DISTRICT V. RAFAEL FRANCO Cause #5793 and to me, as Sheriff, directed and delivered, I will proceed to sell, at 3:00 o'clock P.M. on the 5TH DAY OF DECEMBER, 1989 which is the first Tuesday of said month, at the EAST door of the Courthouse of said Bailey County, in the City of MULESHOE Texas, the following described property, to wit:

TRACT 1: SOUTHEAST ONE HUNDRED FIFTEEN FEET (115') OF LOTS ONE AND TWO (1 & 2), BLOCK FORTY (40), ORIGINAL TOWN OF MULESHOE, BAILEY COUNTY, TEXAS.

PERSONAL PROPERTY CONSISTING OF A 1972 FORD PICKUP 1/2 TON, LIC #682-ODU, AND A 1975 CHEVROLET 2-DOOR, LIC #AUY996, LOCATED IN BAILEY COUNTY, TEXAS.

Levied on the 3rd day of November, 1989 as the property of RAFAEL FRANCO EX UX MARIA FRANCO

to satisfy a judgment amounting to \$4,857.67 with interest from the 23RD DAY OF AUGUST, 1989 at 10 percent, per annum, and all costs of suit in favor of BAILEY COUNTY APPRAISAL DISTRICT

GIVEN UNDER MY HAND THIS 3rd day of November, 1989.

Jerry N. Hicks
SHERIFF
BAILEY COUNTY, TEXAS

S18-46s-3tsc

**Young 'Horns
Unbeaten
For Season**

A triumphant Lazbuddie Junior High School football team has just closed out their football season, and were undefeated for 1989.

Coach Mark Scisson effectively coached his team to a 10-0 season with the defeat of Cotton Center, at Lazbuddie, on Thursday night. Coach Scisson said the game was called in the third quarter when the score soared to 51-6.

Scoring for Lazbuddie were Chris Cozby, who had six of the 'Horns' TDs for the game.

He scored on runs of 28 yards; 20 yards; one yard; and 15 yards; and passes of 22 yards.

Chris also kicked extra points twice for the team.

Jonas Hernandez scored on a one yard run; and passed a 32 yarder to Jerry Martinez; a 22 yarder to Chris Cozby and one for 36 yards to Jody Copp. All meant extra points for the junior high school football team from Lazbuddie.

Jonas also passed to Jon Colby

Miller for an extra point. Lazbuddie had 240 yards offense and held Cotton Center to 114 total yards offense in the game. For the year, the junior high

team from Lazbuddie scored a total of 375 points, which averaged 41.6 points per game. They held their opponents to 145 points, or an average of 15 points per game.

In the three years he has been coaching at Lazbuddie, Coach Scisson's junior high school teams have accumulated a record of 24-1-1.

Only Once!
"Were you ever bothered by athlete's foot?"
"Once—when a football player caught me out with his girl."

Likely Once!
Boy Friend: "Guess who it is and if you can't guess in three guesses, I have a right to kiss you."
Helen: "Jack Frost, Father Time, Santa Claus."

Truth
Teacher (brightly): "As we walk outside on a cold winter's morning and look about us, what do we see on every hand?"
Class (as a man): "Gloves."

**Cash Rewards
Up To \$1,000
For Information!**

**Call
Bailey County
Crime Line
272-HELP**

A Special Thanks

To all the media for the special attention paid to the P.T.A. Halloween Carnival. Also to the merchants and people of Muleshoe for pulling together once again for a successful project. All the proceeds from this go back into the Muleshoe Schools to benefit our greatest assets "the kids" "We appreciate you!!"

Muleshoe P.T.A.

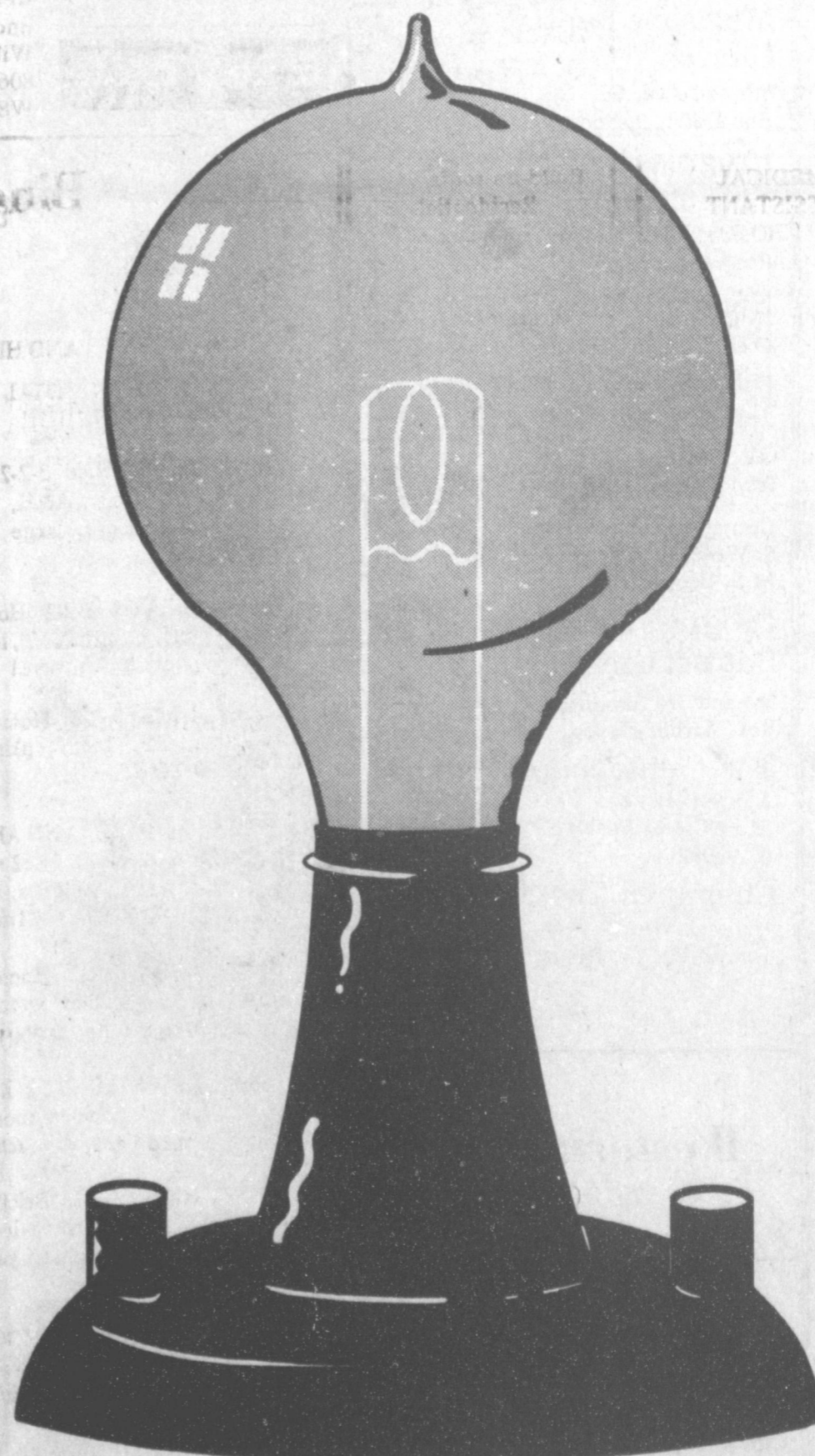
**Courthouse
News**

MARRIAGE LICENSE

Edwin Gayle Holloway, Lubbock and Donna Sue Parker, Tahoka

Arcadio Quantanilla and Rosalinda Amelia Rangel, Muleshoe

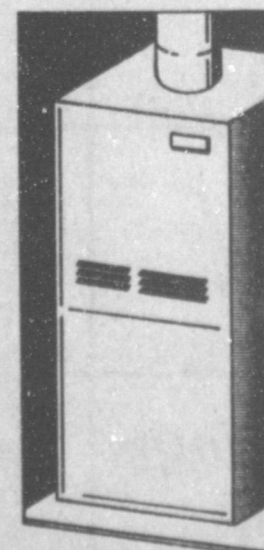
DISTRICT COURT
A&M Farm and Ranch Supply, Inc. VS Bobby Grumbles, Individually, and D/B/A B&B Feed Supply, Judgment
Jerrell R. Otwell VS Scott J. Denney, Judgment



Two of Mankind's Greatest Inventions.

Thomas Edison had a bright idea. And his simple invention is so marvelous that the world has yet to come up with a better way to illuminate our lives.

Like all the great inventions, a gas furnace is simple, reliable, and has stood the test of time. It does its job so well that no one has invented a better way to keep your home snug and warm year after comfortable year.



Electricity is great for lights and other small appliances. But an electric heat pump just can't do the job your gas furnace was designed to do. Never has. Never will.

Enlightened folks know that for comfort and efficient home heating, the most effective invention ever made is a natural gas furnace. Period.

ENERGAS

**Now
Offering
Home
Baked**

Sugar Cookies, Cup Cakes & Custom Decorated Cakes.

Stop by during business hours & see our many selections!

Check Out Our Daily Lunch Special

Open 5 a.m. - 2 p.m.

Let Us Do Your Holiday Baking!

Spudnuts

328 S. Main

272-3542

CLASSIFIEDS 272-4536

CLASSIFIED RATES
 15 Words & Under Minimum Charge \$2.30
 Thereafter \$2.00
 16 Words & Over: 1st Insertion 15 cents per word; 2nd Insertion 13 cents per word
CLASSIFIED DISPLAY RATES
 \$1.75 Per Column Inch
DEADLINES
 12 noon Tues. For Thursday Paper
 12 noon Friday For Sunday Paper
 To receive the reduce rate after the first insertion ad must run continuously.
 We reserve the right to classify, revise, or reject any ad. We are not responsible for any error after ad has run once.

1. Personals

Call your local used cow dealer for 7 day a week dead stock removal. 965-2903 or 1-800-692-4043. 1-37t-tfc

CONCERNED
 About Someone's Drinking? HELP IS AVAILABLE through Al-Anon
 Call 272-2350 or 965-2870 or come to visit Tuesday nights, 8:00 p.m. or Saturday mornings at 10:30 a.m. and through AA call 965-2870 or come visit Tuesday nights, 8:00 at 620 W. Second, Muleshoe.

3. Help Wanted

ATTENTION: EARN
 Money Reading Books! \$32,000/year income potential. Details. (1) 602-838-8885. Ext. Bk 10191. 3-45s-4tp

ATTENTION HIRING!
 Government jobs-your area. Many immediate openings without waiting list or test. \$17,840 \$69,485. Call 1-602-838-8885. Ext R10191. 3-45s-4tp

TOWN & COUNTRY FOOD STORES
 We are seeking career minded individuals for part time and full time employment. Must be dependable, have good customer relations, work, learn, and contribute. Applications available at both stores. Drug test required. G3-42t-tfc

Need Caring and Responsible LVN or RN for part time or full time charge nurse. 7 to 3, 3 to 11, 11 to 7 shifts. Benefits available. Superior nursing facility. Call Jo Blackwell, Administrator or John Ehrhart, RN/DON. Prairie Acres Nursing Home, 201 E. 15th, Friona, Texas 79035. (806) 247-3922. P3-45-4tc

3. Help Wanted

NEEDED: Assistant Manager. 45-50 hrs. weekly. Start at \$4.00 per hour. Neat in appearance. Must be mature and responsible. Good personality. Apply in person to Stacy Davis at Pizza Hut in Muleshoe. P3-45t-3tc

LICENSED VOCATIONAL NURSE
 South Plains Health Provider, Organization, Inc., a private, non profit medical organization in Muleshoe, Texas, is seeking an LVN to work as a nutritionist assistant in the WIC "women, infants and childrens supplemental food program" Department. Applicant must be a graduate of accredited school of nursing, licensed "eligible to receive license" to practice in the State of Texas. Nutritional related experience helpful but not required. Hours 8 to 5, Monday through Friday. Excellent fringe benefit package. For more information call Personnel Department at (806) 293-8561. An Equal Opportunity Employer S3-46s-2tc (ts)

MEDICAL RN-LVN MEDICAL ASSISTANT OR PHLEBOTOMIST
 Need Examiner to do Mobile insurance physicals in Muleshoe, Sudan, Earth, and Farwell. Part-time, flexible hours. Must be a proficient blood drawer. Call 1-800-548-3193. Ext. 265.

4. Houses For Rent

FOR RENT: 2 bedroom house, mile west of town. Deposit required. Call 272-3767. B4-46s-tfc

FOR RENT OR SALE: 3 bedroom with den on 10 acres. Call 965-2996 nights. 4-45t-3tp

FOR RENT: 3 bedroom house in the country. Call 946-3417. K4-45s-Stfc

5. Apts. For Rent

APARTMENTS FOR RENT: 1 & 2 bedroom. Furnished or unfurnished. Some bills paid. 272-7575. P5-42t-tfc

9. Automobiles For Sale

FOR SALE: 78 Ford LTD. 35,000 actual miles. One owner. Clean Michelin tires. 257-3376, Earth. 19-46s-4tc

FOR SALE 1988 Chevrolet Cavalier, 13,100 miles, light blue, automatic, air conditioning. Great Price! Call after 5:30 p.m. 272-5894. C9-45t-tfc

9. Automobiles For Sale

FOR SALE 1986 Plymouth Horizon 38,000 miles, clean Phone 946-3472. 9-44t-4tp

1987 NISSAN Pick-Up 26,000 miles. Fuel Injected. AM/FM Cassette Equalizer. Below book. Call (806) 272-5932. 19-44t-4tc

11. For Sale Or Trade

FOR SALE: To be moved 12X22 Morgan Building. Four windows, double doors and one walk door. Wired for electricity. 257-3376, Earth. L11-46s-4tc

FOR LEASE or Sale: Two 3 bedroom houses on 2.5 Acres. Call 272-5462. R4-46s-4tps

FOR SALE: All steel cotton trailer, 8X8X24. Call 272-3767. B11-46s-tfc

15. Misc.

Ernie's Roofing
 Specializing in flat roofs, shingles and Build-up roofs. Residential-Commercial Free estimates, References, work guaranteed. L1s-33s-tfc Bus. 505-762-6510

18. Legals

LEGAL NOTICE
 THE CITY OF MULESHOE WILL ACCEPT BIDS ON A NEW DUMP BED INCLUDING HOIST AND A NEW TILT BED TRAILER. THE BIDS WILL BE OPENED AND CONSIDERED AT THE CITY HALL AT 8:30 A.M. ON TUESDAY, NOVEMBER 21, 1989. SPECIFICATIONS MAY BE OBTAINED IN THE OFFICE OF THE CITY SECRETARY DURING NORMAL BUSINESS HOURS. THE CITY RESERVES THE RIGHT TO ACCEPT OR REJECT ANY OR ALL BIDS. C18-45t-2tfc

18. Legals

LEGAL NOTICE
 Muleshoe ISD is accepting bids for the replacement of the Watson Junior High Gymnasium Roof, approximately 151 squares. Bid specifications may be obtained from Dr. Thomas Alvis, 514 W Ave. G, Muleshoe, Texas 79347. M18-45t-4tc

Muleshoe I.S.D. is accepting bids for food products and cafeteria supplies including paper products. Bids, price lists, or catalogues should be sent to Muleshoe I.S.D., 514 W Ave G, Muleshoe, Texas 79347, attention of Dr. Tom Alvis, by Monday, December 11, 1989. M8-46s-4tc

18. Legals

The Muleshoe ISD is accepting bids for custodial / janitorial and maintenance supplies including toilet tissue and paper towels. Bids, price lists, or catalogues should be sent to Muleshoe ISD, 514 W Ave. G, Muleshoe, Texas 79347, to the attention of Dr. Tom Alvis by Monday, December 11, 1989. M8-46s-4tc

The Muleshoe I.S.D. is accepting bids for all school supplies and materials, including photo-copy paper. Bids, price lists or catalogues should be sent to Muleshoe I.S.D., 514 W Ave. G, Muleshoe, Texas 79347, attention of Dr. Tom Alvis, by Monday, December 11, 1989. M18-46s-4tc

Cash Rewards Up To \$1,000 For Information! Call Bailey County Crime Line 272-HELP

8. Real Estate

8. Real Estate

FOR SALE
 GOVERNMENT INVENTORY
 TWO BEDROOM, ONE BATH HOUSE
 \$6,600.00
 SUBJECT TO DEED RESTRICTIONS TO BE SOLD AS IS
 INQUIRE AT 115 E Ave D Muleshoe, Tx 79347 272-5549
 DEPARTMENT OF AGRICULTURE FARMERS HOME ADMINISTRATION
 EQUAL HOUSING OPPORTUNITY

IRWIN REALTORS

806-792-6373 806-879-2348
FOR SALE-160 acres West of Muleshoe. Lays perfect, good water, 2 wells, with lovely home. 3 bedroom, 3 baths, 3 car garage, large game room, formal dining and living. Almost new equipment barn and automatic lawn sprinkler and more.

FOR SALE: 25 acres on Hwy. Half mile from town, with good well and high pressure underground pipe. Will sell all or part. 806-272-4975. W8-42s-tfc

Bingham & Nieman Realty

116 E. Ave. C 272-5285 or 272-5286

RICHLAND HILLS
 4 NICE RESIDENTIAL LOTS PRICED FROM \$5,000.00!!!!

JUST LISTED-Nice 3-2-2 Brick on large corner lot, Cent A&H, built-ins, storm windows & doors, large basement, much more!!!!

IMMACULATE 3-2-2 Home, corner lot, Cent. A&H, built-ins, FP, loads of storage & closet space, much more!

VERY NICE 3-2-3 Home, Cent. A&H, built-ins, FP, fans, spktr. sys., fenced. PRICED TO SELL!!!!

HIGHLAND AREA
 NICE 3-2-2 Brick home (2 story), on corner lot, Cent. A&H, built-ins, and much more. LET'S LOOK TODAY!!!!

NICE 3-2-1 Brick Home. Cent A&H, built-ins, large den w/fireplace. Fenced yard, storage bldg. \$40's!!!!

PRICE REDUCED 2-2-2 Brick, corner lot, Cent. A&H, spacious rooms, utility, cov. patio, fenced yard, & much more. 40's!!!!

VERY NICE 3-2-1 Brick, Cent. A&H, built-ins, FP, storm windows & doors, covered patio, fenced yard, corner lot. 50's!!!!

HIGH SCHOOL
 JUST LISTED-COZY 2-1 Home, nicely remodeled, fenced yard, & More \$17,000!!!!

2-1 1/2-1 Brick, fl. furnace, CA, fenced yard & more. \$20's!!!!

NICE 2-1 1/2-1 Home, corner lot, built-ins, nice carpet, heat pump, fenced yard, storage bldg. & more!!!!

IMMACULATE 3-2-1 Brick, Heat Pump, built-ins, nice basement, FP, spktr. sys., much more. \$50's!!!!

PRICED REDUCED FOR QUICK SALE! Nice 2-1-1 Home, Cent. Heat, carpets, workstorage area, and much more. \$18,000.00!!!!

GEORGE NIEMAN, BROKER
 DIANNE NIEMAN, BROKER

8. Real Estate

Smallwood Real Estate
 272-4838
 232 Main Muleshoe
 LENUA ADDITION-3 Bedroom, 1 Bath, Living room, Den with wood stove, 1 car Garage. Nice. Priced less than tax appraisal.
 3 Bedroom, 1 Bath, Living room, Dining area, Cooktop, Oven, Dishwasher, Central heat, Evaporative cooling, 1 car garage. Large garage and Storage building.
 8th STREET-3 Bedroom, 1 Bath, Living room, Microwave, Gin air Cook top, oven, New carpet. Small apartment and workroom in detached garage. 150' x 140' lot, Water well, Geo-Thermal heat and cooling.
 LONGVIEW AREA-1 Labor of red, sandy dry land. Deep soil. This is productive land.

BIBLE VERSE

"By this is my Father glorified, that you bear much fruit, and so prove to be my disciples."
 1. Who is the author of this statement?
 2. To whom was he speaking?
 3. What was the occasion of this statement?
 4. Where may this verse be found?
Answers:
 1. Jesus.
 2. To the eleven disciples.
 3. After the Last Supper, while Jesus and the eleven were enroute to the Garden of Gethsemane.
 4. John 15:8.

8. Real Estate

PRICE REDUCED-IMMACULATE 3-2-2 Home, Cent. A&H, earthtone carpets, loads of closet & storage space, covered patio, beautiful fenced yard with large trees. Don't miss this one \$40's!!!!

PRICE REDUCED- 3-1-1 Home earthtone carpets, fenced yard, storm cellar & workshop!!!!

NICE 3-2-1 Brick, Cent. A&H, built-ins, fenced yard, covered patio, earthtone carpets, & much more. \$30's!!!!

LENUA ADD.
 2-1 home, floor furnace, fireplace, fenced yard, & more. \$15,000!!!!

Very nice 3-1-1 Home, WB stove enclosed patio, storm windows & doors, well insulated, beautifully landscaped. LET'S LOOK TODAY!!!!

PRICE REDUCED - 3-1-1 Home, nicely remodeled, fenced yd. & more. \$28,500!!!!

COUNTRY HOMES
JUST LISTED-NICE 3-3-2 Brick Home on one acre tract at edge of town, Cent. A&H, built-ins, FP, sunroom, office, sauna, wet bar; auto. spktr., fenced yd., xxxxxxxxplus other amenities!!!!

JUST LISTED-3-2-2 Brick on 25 acres, close to town, Cent. A&H, built-ins, shop, barn, new 4 wire fence all around, much more!!!!

VERY NICE 3-2-1 Home on 1 acre, close to town. Cent. Heat, Evap. air, nice carpets, nicely remodeled. \$30's!!!!

2-1 home, 20 acres, sub. pump, sprinkler, barns & corrals. \$40's!!!!

EXCELLENT COMMERCIAL TRACT 175' x 100', Hwy. 70 & 84, railroad spur access at rar, approx. 1200 sq. ft. bldg. PRICED TO SELL!!!!

NICE 3,500 sq. ft. office bldg. across from Courthouse. PRICED TO SELL!!!!

JUST LISTED-NICE COMMERCIAL BLDG. ON MAIN HIGHWAY, Approx. 2800 feet of area, suitable for various types of business. Possible Owner Financing to qualified Buyer. \$20's!!!!

James F. Hayes & Co.

Agricultural Real Estate Sales & Appraisals
 Vic Coker Agent
 320 ACRES on Farmer County, Castro County Line. 2 electric sprinklers. Good water. Good bases and yields. 60 Acres of grass. Seller Motivated.
 159 ACRES-Valley Electric Sprinkler, Allotted in corn, wheat, and cotton, lays perfect, on pavement, 2 wells, Priced Right.

810 ACRES-Of Dryland in 3 tracts. 80 Acres of grass, balance is allotted. Some Water and underground pipe on one tract.
 Office 272-3100 Home 965-2468
 310 Main Street Suite 103

Nursing Home News

by: Joy Stancell

Welcome November, the month of pumpkin pie, autumn leaves, cotton fields, white as snow and families setting around the table counting their blessings.
 Our family Thanksgiving pot luck supper will be Monday, Nov. 20 at 6 p.m.
 The monthly birthday party hosted by the Needmore Community Club will be Thursday, Nov. 16 at 3 p.m. We invite our families and friends to come help us celebrate.

Ernest Kerr, L.H. Lewis and Lynn Bratcher also Una Mae Finney are in the local hospital. Please remember them in your prayers.

We wish to express our sympathy to the family and friends of Vivian Lee.

Julia Hawkins was visited over the weekend by her son and daughter-in-law. Mr. and Mrs. Delbert Hawkins. Mr. and Mrs. Delbert Hawkins as well as Alma Crim gave her a new perm Tuesday.

Muleshoe Menu

NOV. 13-17
MONDAY
BREAKFAST
Milk, Cheese Toast and Fruit
LUNCH
Milk, Pizza, Mixed Vegetables, Pickles and Fruit
COMBO
Milk, Pigs in a Blanket, Cheese Stick, Corn, Green Beans and Fruit
TUESDAY
BREAKFAST
Milk, Oatmeal, Cinnamon Toast and Fruit
LUNCH
Milk, Hamburgers, Lettuce & Tomato, Pickles & Onions, Tater Tots and cookies
COMBO
Milk, Hamburgers, Lettuce & Tomato, Pickles & Onions, Tater Tots and Cookies
WEDNESDAY
BREAKFAST
Milk, Breakfast Burritos and Fruit
LUNCH
Milk, Burritos, Cheese Stick, Corn, Crackers and Fruit
COMBO
Milk, Lasagna, Corn, Cole Slaw, Hot Rolls and Fruit
THURSDAY
BREAKFAST
Milk, Biscuits, Gravy, Sausage and Fruit
LUNCH
Milk, Cheese Nacho's, Beans, Salad, Crackers, Peanut Butter Confection
COMBO
Milk, Taco's, Beans, Salad, Cheese, Crackers, Peanut Butter Confection
FRIDAY
BREAKFAST
Milk, Honey Buns, Sausage and Fruit
LUNCH
Milk, Turkey & Dressing, Giblet Gravy, Creamed Potatoes, Green Beans, Hot Rolls and Fruit
COMBO
Milk, Turkey & Dressing, Giblet Gravy, Creamed Potatoes, Green Beans, Hot Rolls and Fruit

Lazbuddie Menu

NOV. 13-17
MONDAY
BREAKFAST
Toast, Sausage, Juice and Milk
LUNCH
Nachos, Pinto Beans, Green Salad, Pudding and Milk
TUESDAY
BREAKFAST
Jelly Donuts, Juice and Milk
LUNCH
Chicken Strips, Potatoes & Gravy, Green Beans, Hot Rolls, Fruit and Milk
WEDNESDAY
BREAKFAST
Toast, Oatmeal and Milk
LUNCH
Pizza, Corn, Green Salad, Fruit and Milk
THURSDAY
BREAKFAST
Cinnamon Rolls, Fruit and Milk
LUNCH
Hamburgers, French Fries, Fixings, Cake and Milk
FRIDAY
BREAKFAST
Cereal, Juice and Milk
LUNCH
Turkey & Dressing, Potatoes & Gravy, Green Peas, Cranberry Sauce, Hot Rolls, Pumpkin Pie and Milk
SALAD BAR ON
MONDAY, TUESDAY, & WEDNESDAY

Three Way Menu

NOV. 13-17
MONDAY
BREAKFAST
Pancakes, Milk and Juice
LUNCH
Veal Parmajon, Green Beans, Mashed Potatoes, Hot Rolls, Milk and Brownies
TUESDAY
BREAKFAST
Cereal/Raisins, Milk and Juice
LUNCH
Pepperoni & Ham Pizza, Corn, Tossed Salad, Milk and Applesauce
WEDNESDAY
BREAKFAST
Biscuits/Gravy, Milk and Juice
LUNCH
Beef Stew w/Cheese, Tossed Salad, Crackers, Milk and Cookies
THURSDAY
BREAKFAST
Waffles & Sausage, Milk and Juice
LUNCH
Enchiladas, Refried Beans, Tossed Salad, Milk and Cake
FRIDAY
BREAKFAST
Hash Brown/Eggs, Milk and Juice
LUNCH
Hamburgers w/Cheese, French Fries, Tossed Salad, Hot Bun, Milk and Jello w/Whipped Cream
Ambition and suspicion always go together.
-G.C. Lichtenberg.
Ambition, having reached the summit, longs to descend.
-Pierre Corneille.

Patients in Muleshoe Area Medical Center

NOV. 7-9
TUESDAY
Tucker Crawford, Lynn Bratcher, L.H. Lewis, Una Mae Finney, Edith Temple, Curtis Welborn, Carol Kennemer, Tori Galaviz Thomas Mason, A.J. Lenderson and Connie Bruns
WEDNESDAY
Lynn Bratcher, L.H. Lewis, Stephanie Morales, Una Mae Finney, Carol Kennemer, Tori Galaviz, Ernest Kerr, Jean Harlin, Connie Bruns and Bonnie Carpenter
THURSDAY
Lynn Bratcher, L.H. Lewis, Ruby Stickney, Una Mae Finney, Marlee Hall, Thomasita Yruegas, Elodia Reyna, Ernest Kerr, Jean Harlan, Beatriz Mata, Connie Bruns and Ray Edwards

Robert D. Green, Inc. IS ON A MISSION TO SAVE YOUR TRANSMISSION!

Our 11-Point Transmission Service Will Cost You A Lot Less Than Replacing Your Transmission

Here's what we do:

- Drain the transmission fluid
- Adjust the throttle linkage
- Replace the pan gasket
- Clean the pan
- Replace/refill transmission fluid
- Adjust the linkage
- Check the vacuum system
- Conduct a thorough road test.

ALL FOR ONLY:

\$59⁹⁵

*Parts extra if required

Offer Good Until 11-1-89

GMC Model Cars & Pickups Only

Some Models Higher

Robert D. Green, Inc.

2400 W. Amer. Blvd.
272-4588

Mr. Goodwrench



ShIPLEY'S

FALL Harvest SALE

7-PIECE FORMAL DINING ROOM SUITES STARTING AT \$119800

5-PIECE DARK PINE BEDROOM SUITE REG. \$1439.00 \$109800

OVER 100 LAMPS FROM 25% OFF ODD LAMPS 50% OFF

SOUTHWEST DECOR PICTURES MIRRORS ACCESSORIES 20% OFF

DISCONTINUED YOUTH BEDROOM GROUP ODD PIECES 50% OFF

ALL SOFAS & LOVESEATS 20% TO 40% OFF

6-PIECE SOLID CHERRY BEDROOM SUITE REG. \$4337.00 \$339800

SWIVEL ROCKERS GLIDERS WINGBACK CHAIRS ALL ON SALE MATTRESSES

LIMITED SOFAS/ LOVESEATS 1/2 PRICE

LAY-A-WAY FOR CHRISTMAS

LA-Z-BOY SLEEPERS-INNERSPRING MATTRESS STARTING AT \$54900

ENTERTAINMENT CENTERS ALL SIZES-STARTING AT \$15900 BEAN BAGS

CURIOS STARTING AT \$19900 Ideal For Christmas

SECTIONAL WITH SLEEPER & INCLINER DON'T MISS THE BARGAIN

ODD END TABLES 1/2 PRICE OTHER OCCASIONAL TABLES SALE PRICED

NEW! YOUTH BEDROOM SUITES OPEN STOCK/BOYS & GIRLS NOW ON SALE

3-PIECE WALL UNITS SOLID CHERRY WOOD \$119900

LA-Z-BOY RECLINERS STARTING AT \$34900

DINETTES MANY STYLES TO CHOOSE FROM STARTING AT \$49900

Quality American Made Furniture At Affordable Prices!

ShIPLEY Furniture

1305 Main Clovis 763-7534

INSTANT CREDIT AVAILABLE

