

## \$13,418 Matching Federal Grant

# COUNTY AGREES TO BUY AMBULANCE

During a special meeting of the Fisher County Commissioners Court last Thursday Fisher County commissioners obligated themselves to purchase a van type ambulance to be used by the Fisher County Hospital District. Fisher County Judge Dwight Lovett indicated that Fisher County was to match \$13,418.00 in federal grant money for the ambulance.

Jim McCalley, Fisher County Hospital Administrator, and Mac Weathersbee with Weathersbee Funeral Home were present for the meeting.

McCalley indicated to the commissioners that the hospital district would be agreeable to keeping the ambulance in their custody and furnishing operators, providing that the district could get some financial assistance from Fisher County, the

City of Rotan and the City of Roby. Lovett explained that the hospital district would absorb the largest percent of the deficit, but Rotan, Roby and the county would be assessed a percent because the ambulance service would be a losing proposition.

Weathersbee explained to the commissioners the need for an emergency ambulance in Fisher County by citing the 166 emergency calls made by Weathersbee Funeral Home in 1974-75. In addition to the emergency calls, Weathersbee made 50 non-emergency calls.

If the grant is finally approved as anticipated, it will be July of 1976 before the ambulance arrives in Fisher County.

The \$13,418.00 put up by the county and matched by the Federal Government covers the

cost of the ambulance, radio equipment and a base station to be installed in the hospital. emergency medical equipment for the ambulance and emergency medical supplies for the ambulance.

In other business at the special meeting, commissioners accepted a bid by Temple Electric Inc. in Lubbock for \$4,700.00 for electrical equipment at the new Fisher County Airport. The lighting for the runway, and beacon should be installed in approximately 4 months. Lovett felt that by the time the lighting was installed that the airport would be completely finished.

In final action the county passed a resolution to turn over 5.1 miles of county road to the state to become a paved FM road. This is providing the right of way can be obtained.

The road goes from Highway 92, 2.1 miles west of FM Road 540, southeast to FM Road 2142, in Commissioner Kiker's precinct.

## Roby Baptist Youth To Carol On Horseback

The youth of First Baptist Church in Roby will be holding their annual caroling service through town this year...only this year the youth will be on horse back.

The group, under the leadership of Mrs. Glen Upshaw, will begin their annual carol service at approximately 8:00 p.m., Sunday night, Dec. 21. They have invited the youth of the First United Methodist Church to take part in the horse-back carol service with them.

Mrs. Upshaw expects between 25-35 youth to participate in the hour long carol service. They will visit the nursing home, jail and the homes of many of the elderly Roby residents.

Anyone desiring to have the group to appear at the home of an elderly resident or friend can call Mrs. Upshaw at 776-2601.

After the service the youth will join with adult members of the church in the fellowship hall for refreshments of hot chocolate and snacks.

## Underhill's Purchase Village Flower Shop

Ruby White, owner of the Village Flower and Gift Shop, sold the business last week to Mr. and Mrs. Dwayn Underhill of Abilene.

The Underhill's are expected to take over operation of their new business on December 27. Mrs. White will operate the business through Christmas.

Dwayn Underhill is currently the assistant manager of TG&Y in Abilene and his wife Sandra is the bookkeeper at Thornton's.

Both were born in Rotan. Dwayn is a 1963 graduate of Rotan High School and attended Howard County Junior College and Southwestern at San Marcus. Sandra is a native of Big Spring.

The business was officially purchased by the Underhills on December 15th.

Dwayn is the son of Mrs. Trudy McSpadden and the late Ted Underhill.

## Rotan Firemen Needing Help

The Rotan Fire Department continues to ask the assistance of the Rotan area residents in making old or new toys available for the needy and seeks contributions to their Christmas Fund to help the less fortunate.

Those desiring to make a financial contribution can mail their checks to Fire Chief, Rotan Volunteer Fire Department, Christmas Fund, Rotan, Tex. 79546, or can drop their contribution in the Firemen's jars at any one of the several participating stores in Rotan.

Old or new toys that area residents would like to give to needy children can be left at the Rotan Police Station or given to any fire department member.

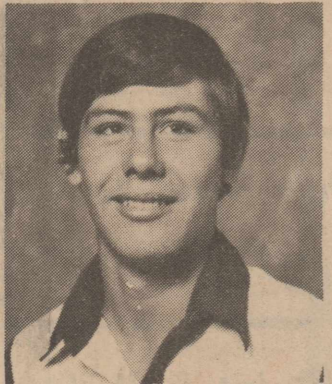
## Santa Claus To Visit Roby Kids Dec 24th

Santa Claus sent word to this newspaper late last Tuesday afternoon that he plans to make an early visit to Roby on Christmas Eve.

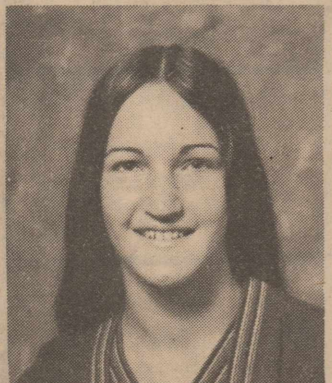
Santa will appear at the Court House Square at 3:00 p.m., December 24, to visit with the Roby area children and will arrive riding the fire truck.

## Hobbs Boys Win Trophy In Hermleigh Tourney

The Hobbs High School boys won consolation last week end at



Randy Etheredge All Tournament



Tammy Gober All Tournament

the Hermleigh Tournament. The Panthers lost their first game to Loraine 51-47. Randy Etheredge scored 23 points.

In their second game Hobbs defeated Paint Creek 53-38. Randy Etheredge scored 20 points in this game.

In the consolation game Hobbs defeated Trent 49-47 with Randy Etheredge scoring 21 points. Randy was named to the All Tournament Team. He scored 64 points in 3 games.

Charlie Wright was second leading scorer for Hobbs with 45 points in 3 games.

## Roby To Talk Telephone On January 5th

Roby Mayor Cecil King indicated that the City of Roby would again discuss the proposed telephone rate increase with Southwestern Bell Telephone officials at their January council meeting on January 5th.

"The service is not to a satisfactory point where we can grant an increase at this time", said King.

## Roby Ag. Mechanics Team Wins First Place Awards

The Roby Ag. Mechanics team composed of Richard Gaona who was high boy in tool identification,

## Mary Lynn Crawford Gets Regional Chair

Mary Lynn Crawford was the only one of three Rotan high school students that successfully auditioned for a chair on the regional band last weekend.

She was one of 47 students in the clarinet section trying for one of the 24 places. She was awarded 19 position.

She has been in the Rotan band program for the past seven years.

## Two Apprehended In Rotan For Forged Checks

Two men cashed checks at three stores in Rotan last week that were forged. Fisher County Deputy Sheriff Mickey Counts indicated last Tuesday that the

department has a suspect identified and is attempting to locate and arrest the individual.

The Rotan Police Department, Sheriff's Department of Fisher County and Texas Rangers investigated the incident.

In connection with the forged checks the Hamlin Police Department, Rotan Police Department, and Fisher County Sheriff's Department took two Rotan youths into custody for passing a forged instrument at a grocery store in Rotan about 14 days ago.

## Rotan City To Have Christmas Party Dec 22nd

The employees of the City of Rotan and their families will have their annual Christmas Dinner and Party on December 22 in the High School Cafeteria, according to Kenneth Vann, City Manager.

The employees and their families, plus members of the Rotan City Council will make up the more than 50 people expected to attend the event. Turkey and dressing will be served.

and electricity, and scored 4965 points out of 5200 to win the contest by more than 500 points over second place Haskell. Others placing were Hawley, 3rd; Rotan, 4th; Anson 5th; Stamford, 6th and Hamlin 7th.

## Rotan School Board To Vote On Four Contracts

Rotan School Board members currently has a contract through the 1976-77 school term.

The board is expected to act on the contract renewals of the above personnel at the January meeting.

School principals will interview teachers during January, make recommendations to the board during February meeting, and the board will act on hiring teachers in March.

Rotan City Councilmen discussed a possible increase in the water, sewer and garbage rates at their meeting earlier this month. Rotan City Manager, Kenneth Vann, indicated last Tuesday that the council could act on the proposed increase at their first meeting of 1976. The meeting is set for January 6.

Vann said, "The minimum bill will not be over \$8.50".

Rotan residents are currently paying a minimum bill of \$6.50. This bill includes the minimum 2,000 gallons of water at \$3.35; the one bathroom sewer charge of 1.50; and the garbage collection fee of 1.65.

Rates discussed by the council at the December meeting included a \$4.00 minimum water bill, \$2.00 sewer charge for a one-bathroom home, and a \$2.25 garbage collection fee. If the above is passed by the council, the minimum bill for all services will rise from the current \$6.50 to \$8.25 a month.

The City of Snyder sells treated water to the Rotan Municipal Water Authority. According to Snyder, the cost for the treated water will increase 25 percent on January 1, 1976. Rotan purchased the water from the Rotan Municipal Water Authority for re-sale to the general public.

The increase in the garbage collection fee is needed, according to Vann, because the department is currently operating at a break-even level. Up-keep on equipment and the replacement of equipment within the department is not currently planned in the budget. An increase from the current \$1.65 to the anticipated \$2.25 would

## Rotan Council Plans To Up Water, Sewer Charge

Rotan City Councilmen discussed a possible increase in the water, sewer and garbage rates at their meeting earlier this month. Rotan City Manager, Kenneth Vann, indicated last Tuesday that the council could act on the proposed increase at their first meeting of 1976. The meeting is set for January 6.

Vann said, "The minimum bill will not be over \$8.50".

Rotan residents are currently paying a minimum bill of \$6.50. This bill includes the minimum 2,000 gallons of water at \$3.35; the one bathroom sewer charge of 1.50; and the garbage collection fee of 1.65.

Rates discussed by the council at the December meeting included a \$4.00 minimum water bill, \$2.00 sewer charge for a one-bathroom home, and a \$2.25 garbage collection fee. If the above is passed by the council, the minimum bill for all services will rise from the current \$6.50 to \$8.25 a month.

The City of Snyder sells treated water to the Rotan Municipal Water Authority. According to Snyder, the cost for the treated water will increase 25 percent on January 1, 1976. Rotan purchased the water from the Rotan Municipal Water Authority for re-sale to the general public.

The increase in the garbage collection fee is needed, according to Vann, because the department is currently operating at a break-even level. Up-keep on equipment and the replacement of equipment within the department is not currently planned in the budget. An increase from the current \$1.65 to the anticipated \$2.25 would

give the City of Rotan the needed equipment replacement margin. The increase in the sewer rate, which is co-mingled with the water department, for auditing purposes, was last adjusted in 1950. The boost that will be

taken in the sewer department will help overcome the deficiency in the water fund operation, according to Vann.

Chances are good that Rotan City Councilmen will act on this increase on January 6th.

## Rotan Gets \$13,860 In Compensatory Funding

Rotan Superintendent Tom Harkey indicated at a meeting last Tuesday that Rotan had received approval for \$13,860.00 in state funds for compensatory education.

Under the new program more individual type instruction can be given to those children that are deficient in their regular education program.

The funds granted by the state are to be used in the payment of salaries for personnel involved in this program. According to Harkey, the school plans to hire a additional aide in the early part of January that will fill the needs under the compensatory education program.

## 19,725 Bales Ginned By Seven County Gins

A total of 19,725 bales of cotton have been ginned by the seven Fisher County Gins through last Tuesday.

The seven gins also reported a back-log of about 2,995 bales on their yards waiting to be ginned.

The largest bale producer in Fisher County was the Farmers Union Coop Gin at Roby with 5,409 bales and 545 bales on the yard.

The Rotan Gin was second in total production with 3,999 bales. They have over 1,000 bales on the yard waiting to be ginned.

The Hobbs Gin was third in total production with 3,034. Over 450 bales were in trailers at the

Hobbs Gin waiting for gin time. The Longworth Gin had a total production of 2,066; Terry Inc. had 2,025 with 250 bales on the yard; Farmers Gin at Rotan had 1,740 with 250 on the yard, and Sylvester Coop Gin had 1,452 bales with only 200 waiting to be ginned.

## Rotan School To Dismiss

The students in the Rotan schools will begin their Christmas vacation on December 19 at 2:45.

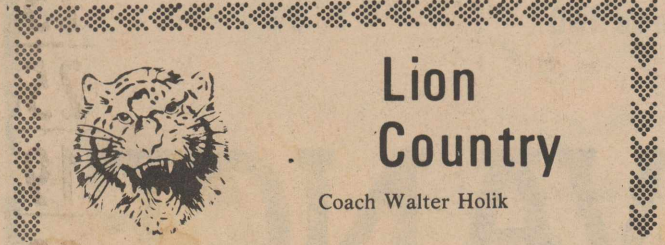
School will dismiss at the above time and students will be on vacation until January 5th.



Part of crowd attending Rotan Drawing last Saturday afternoon (staff photo)



**AWARD WINNERS:** Five Roby players took high honors at the Hermleigh Tournament. Left to right, Cheryl Terry, All Tournament; Jay Jennings, Outstanding Boy Player; Cindy King, All Tournament; Jessie Castor, All Tournament; and Kim Faight, All Tournament.



## Lion Country

Coach Walter Holik

The Lionesses are now 2-0 in district, 12-4 on the season and have a tournament championship to add to their accomplishments. The girls have defeated Hermleigh and Fluvanna in district action and have won the championship at the Hermleigh Invitational Tournament.

This is one of the most balanced teams I have ever been around. Our three forwards, Cindy King, Cheryl Terry and Penny Anderson, are all capable of scoring whenever needed. Cheryl Terry is averaging 18.9 points per game, with a total of 298 points. Cheryl is currently leading in least turnovers per game and she handles the ball with a lot of determination. Penny Anderson is averaging 17.5 points per game and a total of 270 points. Penny is leading in offensive rebounds and she does a fine job getting position under the bucket. Cindy King is averaging 14.1 points per game and has a total of 221 points. Cindy is an excellent passer and this is why she leads in assists. Penny, Cheryl and Cindy are really working hard together and they have shown improvement each and every game.

On the defensive end of the court we have four guards who

continue to impress everyone. Judy Wright continues to be a strong defender with undying energy. Judy is very strong at sagging to the ball and helping her teammates out of jams. Judy has pulled down 85 rebounds and has 43 steals to her credit. Rhonda Welch, in her first season as a guard, continues to impress everyone with her hustle and determination. Rhonda leads in rebounds with 101 for the season and she also leads in steals with 47. Kim Faight is one of our most poised players on the court. Kim currently had 80 rebounds and 45 steals to her credit. Tina Horton is probably the quickest guard we have. For this reason, Tina usually comes up with some very outstanding defensive moves such as the defense of the 5 ft 11 inch forward for Loraine. Tina did a fine job of keeping the Loraine girl from getting the ball. The guards are really coming along. They are only allowing 38.0 points per game and are averaging 10 steals per game.

I am very proud of these girls for their continued enthusiasm and strong effort. They really proved their champion form last Saturday night as they defeated Loraine for the championship of the Hermleigh Tournament.

## Roby Board Approves Textbook Committee

The Roby I.S.D. Board met on Monday, December 8, at 7:00 p.m. in the homemaking room of the high school building.

The Board appointed the following members to serve on the Textbook Committee for selecting spelling and math books in grades 1-6, for the 1976-77 school year: Shirley McHaney, Janeyl Beck, J.H. McHaney, Merle Lovett, Annyc Brown, Lovelle Stuart and Kay Moore.

The State Vocational Agriculture Reimbursement program for shop equipment was approved. The total amount of purchase will be \$3,796.45. The State will reimburse the school in the amount of \$2,506.00.

Insurance for the new school building was discussed with no decision being made by the Board.

The Board was instructed by Caffey Welch, superintendent, that all bus drivers would be required to take a certified bus driver training course before they could drive in the 1976-77 year. This course for the Roby and Hobbs drivers will be offered, starting Monday, Jan. 12. The schedule will be:

Monday, Jan. 12, Roby School, 7-10 p.m.  
 Thursday, Jan. 15, Roby School, 7-10 p.m.  
 Saturday, Jan. 17, Roby School, 8-12 a.m.  
 Monday, Jan. 19, Roby School, 7-10 p.m.  
 Thursday, Jan. 22, Roby School, 7-10 p.m.

Saturday, Jan. 24, Roby School, 8-12 a.m.

Rotan and McCaulley schedule is:

Tuesday, Feb. 10, Rotan School, 7-10 p.m.  
 Thursday, Feb. 12, Rotan School, 7-10 p.m.  
 Saturday, Feb. 14, Rotan School, 8-12 a.m.  
 Tuesday, Feb. 17, Rotan School, 7-10 p.m.  
 Thursday, Feb. 19, Rotan School, 7-10 p.m.  
 Saturday, Feb. 21, Rotan School, 8-12 a.m.

Each driver will have to take and complete the twenty (20) hours course.

## Rotan Junior Varsity Beat Jim Ned Squad

The Rotan junior varsity boys defeated the Jim Ned Indians by the score of 55-29 Tuesday night, Dec. 9. Buddy Hooper led the team with 20 points. Others scoring were Paul Hinson 14, Ken Holt 7, John Cox 6, Robert Morales 4, Freddie Acorn and Cle Don Coffman 2 each. At half time Rotan led 27-12.

Other team members Ruben Castillo, Mike Acorn, Blake Hale and Joe Medrano.



SANTA

EATS

AT

THE

HATAHOE

## Hatahoe Drive Inn

735-3161  
 301 S. Cleveland Rotan, Texas



**CHURCH OF CHRIST**  
 Rotan, Texas  
 Joe Barina, Minister  
 Bible Study-9:45 a.m.  
 Worship-10:30 a.m.

**FIRST UNITED METHODIST CHURCH**  
 Rotan, Texas  
 Rev. Cecil M. Tune, Pastor  
 Sunday School-9:30 a.m.  
 Worship-10:30 a.m.

**CHURCH OF NAZARENE**  
 Rotan, Texas  
 F. W. Rogers, Pastor  
 Bible Class-9:45 a.m.  
 Worship-10:50 a.m.  
 Evening Service-7:00 p.m.

**SYLVESTER BAPTIST CHURCH**  
 Michael Robinson, Pastor  
 Sunday School-10:00 a.m.  
 Worship-11:00 a.m.  
 Sunday Night-7:00 p.m.

**SARDIS BAPTIST CHURCH**  
 9 Miles SW of Rotan  
 Bro. Henry Dickson, Hawley  
 Sunday School-10:00 a.m.  
 Worship-11:00 a.m.

**FIRST ASSEMBLY OF GOD**  
 Rotan, Texas  
 Sunday School-10:00 a.m.  
 Church-11:00 a.m.  
 Night Services-7:30 p.m.

**CHURCH OF CHRIST**  
 Rotan Latin American  
 Bible Class-10:00 a.m.  
 Worship-11:00 a.m.

**FIRST UNITED METHODIST CHURCH**  
 Sylvester, Texas  
 David Binkley, Minister  
 Morning Worship-9:45 a.m.  
 Sunday School-10:30 a.m.

**CALVARY BAPTIST CHURCH**  
 Rotan, Texas  
 Steven Sweet, Pastor  
 Sunday School-10:00 a.m.  
 Worship-11:00 a.m.

**ST. JOSEPH'S CATHOLIC**  
 Rotan, Texas  
 John Hoorman, Pastor  
 Mass-Saturday Eve.-7:30 p.m.  
 Mass-Sunday-9:00 a.m.

**LITTLE ZION BAPTIST**  
 Rotan, Texas  
 James Carrington, Pastor  
 Sunday School-9:45 a.m.  
 Worship-11:00 a.m.

**CHURCH OF CHRIST**  
 Roby, Texas  
 Wardell Halliburton, Minister  
 Bible Class-10:00 a.m.  
 Worship-11:00 a.m.

# Worship Together



**EMMANUEL BAPTIST CHURCH**  
 Rotan, Texas  
 Sunday School-10:00 a.m.  
 Worship-11:00 a.m.

**CROSS ROADS BAPTIST**  
 6 Miles SW of Rotan  
 Michale H. Hicks, Pastor  
 Sunday School-10:00 a.m.  
 Worship-11:00 a.m.

**FIRST UNITED METHODIST CHURCH**  
 Roby, Texas  
 Rev. Kenneth James, Pastor  
 Sunday School-10:00 a.m.  
 Worship-11:00 a.m.

**HOBBS BAPTIST CHURCH**  
 Hobbs Community  
 J. H. Skiles, Pastor  
 Sunday School-10:00 a.m.  
 Worship-11:00 a.m.

**FIRST BAPTIST CHURCH**  
 Roby, Texas  
 Rev. Allen Cartrite, Pastor  
 Sunday School-10:00 a.m.  
 Worship-11:00 a.m.

**FOURSQUARE CHURCH**  
 Rotan, Texas  
 Eighth and Genevieve  
 Rev. Richard L. Dickerson  
 Sunday School-10:00 a.m.  
 Worship-11:00 a.m.

**EL PASO BAPTIST CHURCH**  
 South of Roby  
 F. E. Healer, Pastor  
 Sunday School-10:00 a.m.  
 Worship-11:00

**FIRST BAPTIST CHURCH**  
 Rotan, Texas  
 Rev. Fred Thomas, Pastor  
 Sunday School-9:45 a.m.  
 Worship-10:55 a.m.

**METHODIST CHURCH**  
 Longworth, Texas  
 Ivan Allen, Minister  
 Sunday School-10:00 a.m.  
 Worship-11:00 a.m.

**LONGWORTH BAPTIST**  
 Longworth, Texas  
 Rev. Billy Oliver, Pastor  
 Sunday School-10:00 a.m.  
 Worship-11:00 a.m.

**McCAULLEY BAPTIST**  
 McCaulley, Texas  
 Rev. George Caffey, Pastor  
 Sunday School-10:00 a.m.  
 Worship-11:00 a.m.

**PRIMITIVE BAPTIST CHURCH**  
 Roby, Texas  
 Elder J. R. Knight  
 Song Serv. 10 a.m.-4th Sun.  
 Worship-11 a.m.-4th Sun.

**FIRST UNITED METHODIST CHURCH**  
 McCaulley, Texas  
 David Binkley, Minister  
 Sunday School-10:00 a.m.  
 Worship-11:00 a.m.

## MAKING PLANS



Do you like to build things . . . a bird house or a skyscraper? If you are such a person, you know that plans are involved, often difficult ones. Usually we use the drawing board before we start building.

Making plans may be called foresight or looking ahead — and we all know that this is necessary whether building an object or building your life.

As you make plans for the future, don't overlook one of the most effective and time-honored aids in building a strong character — your church! Like millions before you, you may find just what you need to make your plans succeed.

Achieve Success? This is what we all want and what we plan for. Start your planning now by going to church next Sunday.

Copyright 1975 Keister Advertising Service, Inc., Strasburg, Virginia

Scriptures Selected By The American Bible Society

| Sunday Job | Monday Job | Tuesday Job     | Wednesday James | Thursday Hebrews | Friday Mark Luke | Saturday Luke |
|------------|------------|-----------------|-----------------|------------------|------------------|---------------|
| 38:3-7     | 40:1-5     | 1 Timothy 3:2-5 | 1:19-21         | 4:12-16          | 10:19-22         | 17:7-10       |



This Church Page is Published in Hope That More People Will Attend Church. It is Paid For By Firms And Individuals 100% Interested In This County. Let Them Know That You Appreciate Them Supporting This Page. Each Week We Feature One Supporter In Hope That You Will Make A Special Effort To Let Your Appreciation Be Known To This Church Page Supporter.

THIS WEEK'S FEATURE SUPPORTER

## Atwell Cleaners

|   |   |   |  |
|---|---|---|--|
| <b>Sweetwater Prod. Credit</b><br>Dwalyn Parker - Manager<br>776-2311 - Roby, Texas       | <b>Trail's End</b><br>735-3575<br>Rotan, Texas                      | <b>Atwell Cleaners</b><br>Mr. and Mrs. Charles Atwell<br>Rotan, Texas           | <b>Citizens State Bank</b><br>Roby, Texas<br>Member D.D.I.C.                 |
| <b>Central Lumber &amp; Supply</b><br>Mr. and Mrs. Carl Mathies<br>776-2371 - Roby, Texas | <b>Fisher County Farm Bureau</b><br>215 West Snyder<br>Rotan, Texas | <b>Tom Collins</b><br>Small Engine Repair<br>735-3232                           | <b>Weathersbee Funeral Home</b><br>735-2255<br>Rotan, Texas                  |
| <b>M.E. Doyle Gulf</b><br>776 9910  | <b>Roby Insurance Agency</b><br>776-2361<br>Roby, Texas             | <b>First National Bank Of Rotan</b><br>Accounts Insured to \$40,000<br>735-2224 | <b>Fisher County Nursing</b><br>735-3291<br>Rotan, Texas                     |
| <b>Crestview Lodge</b><br>711 East 5th<br>Rotan, Texas                                    |   | <b>Roby Hydro Inc.</b><br>Mr. and Mrs. Ralph Ammons<br>Roby, Texas              |  |
| <b>Martinez Dairy</b><br>Rudy, Joe B. and Emilio Martinez<br>Hobbs, Texas                 | <b>Clinic Pharmacy</b><br>George McDonald, R. PH.<br>735-2500       | <b>Rotan Insurance Agency</b><br>Joe Burk, Agent<br>Rotan, Texas                | <b>Hatahoe Drive Inn</b><br>Mr. and Mrs. Ernest Ragan<br>Rotan, Texas        |
| <b>Rockwell Bros. &amp; Co.</b><br>"LUMBERMEN"  | <b>Farmers Union Co-Op Gin</b><br>Foy Mitchell, Mgr.<br>Roby, Texas | <b>Hinds Department Store</b><br>Gold Bond Stamps<br>Rotan, Texas               | <b>Rotan Paint &amp; Body</b><br>Mr. and Mrs. Carlton Burrow<br>Rotan, Texas |
| <b>Bart Strayhorn</b><br>735-2231<br>Rotan, Texas   | <b>H. L. Davis &amp; Co.</b><br>Bill and Elaine Day<br>Rotan, Texas | <b>Midwest Electric Roby</b><br>776-2244<br>Roby, Texas                         |  |
| <b>Landes Furniture</b><br>Loys Landes - Larry Landes<br>Rotan, Texas                     |   | <b>Home Lumber Co.</b><br>Mr. and Mrs. H. Thompson<br>Rotan, Texas              | <b>Noles Drug Store</b><br>Roby, Texas                                       |



**COLONIAL DAYS:** The above members of Mrs. Harris' fifth grade class at Hobbs took part in Colonial Class Days last week. They churned butter, popped corn and poured homemade candles. Pictured, left to right, Kathy Clopton, Robert Hazelwood, Lisa Martinez, Jimmy Harbin, Natalie McFaul, and Mary Davis. [staff photo]



**DECORATING TREE:** The above class members of Mrs. Harris' class helped decorate their tree with homemade ornaments. Left to right, sitting, Billie Martin, Kristi Price. Standing, Ricky Gordon, Steve Solis, Danny Allen, and Teresa Garcia. [staff photo]

## Funeral Service

Edger Patton

Edgar Roy Patton, 61, of Houston, formerly of Rotan, died Dec. 10 after apparently suffering a heart attack in Houston. Services were held at 2 p.m. Monday at Weathersbee Funeral Home Chapel. The Rev. Roy Davis officiated.

Burial was in Rotan Cemetery. Survivors include two daughters, Mrs. Joyce Moore of Big Spring and Mrs. Mona Cook of Hobbs, N.M.; a son, Duane of Iran; two sisters, Mrs. Elizabeth Nicholas of Houston and Mrs. Hulah Owen of Houston; and four grandchildren.

## Mrs Margaret Price

Mrs. Margaret Price, 68, of Roby died at her home at 1:45 p.m. Dec. 6, after a sudden illness. Services were held at 3:30 p.m. Thursday, Dec. 11, at St. John's Baptist Church.

She was a member of St. John's Baptist Church, where she was president of the choir and president of the Women's Missionary Society.

The Rev. James Carrington, pastor, officiated, assisted by Freddie Nelson. Burial was in Roby Cemetery, directed by Weathersbee Funeral Home.

Survivors include her husband; two stepdaughters, Mrs. Adell Drayton of Riverside, Calif. and Mrs. Lucille Parker of Rapid City, S.D.; a stepson, Herman Bell of Oakland, Calif.; two sisters, Mrs. Jeannie Hodges and Mrs. Modesto Smith, both of Roby; 13 grandchildren, including Jackie Gilbert of Corsica, La.; and a great-grandchild.

Born Dec. 12, 1906, in Somerville, she moved to Roby in 1922 from Navasota. She married Frank Price Dec. 10, 1951 in Lovington, N.M.

## Roby Wins Championship Trophy In Hermleigh

The Roby Lions defeated the Hermleigh Cardinals 61-29 in district competition Dec. 9 at Roby. The Lions were led by Brad Stuart and Ricky Morton

with 14 points each. Morton led all rebounding stats with 18. Jay Jennings had 12 points, Jessie Castor and Steve Evers had 7 each, Ricky King 4, Monty Pope 2 and Mrk Daniel 1.

## Cotton Classing Office Reports Higher Prices

Cotton prices increased during the week ending December 11, according to B.B. Manly, in charge of the Abilene Classing Office. The higher grade, 3.5-4.9 micronaire cotton advanced by 50 to 275 points during the week and sold from 1500 to 2000 points over CCC loan rates. Thus, premium micronaire grade 42 with staple 32 ranged in price from 46 to 51.50 cents per pound. The same grade cotton with micronaire readings within the 3.0-3.2 range sold for 44.00 to 46.50 cents per pound. Most cotton continued to sell in mixed lots at 42 to 51 cents per pound. Trading continued slow to moderate.

The Lions were in foul trouble at the half as all five starters had 3 fouls. The bench did a good job while the starters were sitting on the bench.

## Sgt R. Masters Earns Awards

Technical Richard W. Masters, son of Mr. and Mrs. Roy Masters of Rotan, is a member of a Germany-based squadron which has earned the Air Force Outstanding Unit Award.

Sgt. Masters is a construction equipment technician at Wiesbaden Air Base with the 1836th Electronics Installation Squadron which received the award for exceptionally meritorious service for the period Jan. 1, 1973 to Dec. 31, 1974.

The 1836th supports Air Force and Army commands throughout the European Theater by installing and repairing a vast inventory of communications, electronics and meteorological equipment.

The sergeant will wear a distinctive service ribbon to mark his affiliation with the 1836th, a part of the global Air Force Communications Service.

Sergeant Masters is a 1957 graduate of Hobbs High School. His wife, Joan, is the daughter of Mrs. Beverly Larson of West Palm Beach, Fla.

Parents of small children should beware of mistletoe--its berries are poisonous.

Mr. and Mrs. Andrew Williams went to Post Monday night to see the Post-Frenship Basketball games. Mrs. Ricky Williams is coaching the Frenship girls.

Visiting with Mr. and Mrs. J.D. Kincaid Sunday night were Mr. and Mrs. Andrew Williams, and Mr. and Mrs. Josh Phillips visited with the Kincaids Monday night.

Mr. and Mrs. Lester Hardin have gone to Corpus Christi for a weeks vacation and are visiting Mr. and Mrs. Ralph Hardin and family.

Bro. and Mrs. J.H. Skiles of Stamford ate Sunday dinner in the home of Mrs. Vida Boyer. Mr. and Mrs. Walter Wall and Mrs. Hall from Snyder visited Sunday afternoon with Mrs. Boyer and the Skiles.

Mr. and Mrs. J.C. Cave visited with Mr. and Mrs. Jesse Garrett of Cisco on Saturday and again on Monday. They really had an enjoyable visit.

Mr. and Mrs. Jerry Stephenson and girls from Abilene visited with Mr. and Mrs. Dale Cave for a short time on Sunday.

Mrs. J.W. Etheredge and Todd visited with LaTishia Kiker on Sunday. LaTeshia is in Simmons Memorial Hospital at Sweetwater and has been pretty sick. We hope to hear that she is feeling much better.

Mr. and Mrs. Josh Phillips went to Post Saturday and spent the weekend with Mr. and Mrs. Glenn Phillips.

Mr. and Mrs. Dee Walker of Camp Springs and Mr. and Mrs. Odell Walker of Lafayette, La. visited with the Jimmy Walkers Friday afternoon. Odell and his wife are her visiting with their parents for a few days.

Monday I went to Abilene with Mrs. Wilber Gruben and the stores were so crowded, it was almost impossible to get any gifts wrapped without having to wait in line. We saw Mr. and Mrs. Halie Gee of Jim Ned while we were in Abilene and got to visit with them for a short time. Not very long though as their little boy was sure wanting to look at everything, and they were trying to keep up with him.

Well not very much news this week, as everyone is sure busy getting ready for Christmas. See you next week.

All of America's dental schools are dependent to some extent on advanced facilities in Veterans Administration hospitals.

## Leisure Lodge News

BY Ima Berry

Everyone here is getting excited about Christmas. Would like to remind everyone that our Christmas party is next Tuesday, December 23, at 2:30 p.m. Everyone is invited to come and join us for a happy time.

Happy to report that Mrs. Hull is back with us. Sorry to report Mrs. Gladys is back in the hospital. Hope she will soon be able to come back.

Have had several visitors the past week from out of town. They were Mrs. J.W. Patterson and friend of Peacock visiting Helen Warner. Miller Coppedge had a happy surprise when his daughter and son in law, Mr. and Mrs. Henry Holoway of Bloomville, N.M. came by for Miller. They visited Mr. and Mrs. William Coppedge in Abilene over night. The Holoways brought Miller back home on Monday and returned to their home. Visiting Miss Pearl Vernon was Mrs. Ethel Sturdivant of Snyder. Visiting the Harmon Meadors was Bro. and Mrs. Kinsler, Oleta Stanley, Docia Myers, Flo Chaney and Mr. and Mrs. Grady Jones all of Jayton and Mrs. Joe Favors. Also visiting the Meadors were Lizzie Vanderver and Lou Corder of Fort Worth.

One of our residents, Francis Frazier wrote and sent a letter to a magazine in a letter writing contest. The magazine, Caring, concerns all rest homes. We were notified last week that our Francis had won 3rd place in the contest. He will receive prize money. Needless to say, Francis and all of us are quite excited about this.

Guess this is about all the news for this week. We would like to wish everyone a very Merry Christmas and a Happy New Year. Come to see us, residents of Leisure Lodge.

\*\*\*\*

The number of living veterans who served during World War I—originally over 4.7 million—has fallen below the one million mark, the Veterans Administration reported.

## Party Planning TIPS

By Jerry Temple, Former Holiday Inn "Innkeeper of the Year"

Check out your house no later than the day before your party. Make sure you have enough coasters, cocktail napkins, ashtrays, cigarettes, matches, candles, bathroom tissue, fresh soap and guest towels.

## Hustlin' Round Hobbs

By Mrs Jimmy Walker  
Hobbs, Texas 735-2840

## TAX DISCOUNT NOTICE

EARLY PAYMENT OF COUNTY & STATE TAXES WILL ALLOW YOU THE FOLLOWING DISCOUNTS.

1% DECEMBER 1 TO DECEMBER 31

**Robert Buck**  
Tax Assessor-Collector

## Dec. 20th Through Dec. 31st Only 2nd Year End Cash Sale

### Chisel Sweeps

6''-\$3.00  
8''-\$3.10  
10''-\$3.45  
12''-\$3.80  
14''-\$4.10  
16''-\$5.00  
18''-\$5.65  
20''-\$6.60  
22''-\$7.45  
24''-\$8.75

### Cultivator Sweeps

6''-\$1.75  
8''-\$1.85  
10''-\$2.10  
12''-\$2.35  
14''-\$3.25  
16''-\$5.25  
18''-\$5.80  
20''-\$7.60  
22''-\$8.15  
24''-\$9.25

### Planter Sweeps

18''-\$12.00  
20''-\$14.00  
22''-\$15.00

Gauge Wheels \$150<sup>00</sup> Pr.

1X3 Shanks \$30<sup>00</sup>

Rolling Fenders \$80<sup>00</sup> Pr

3X8 Cross Hydraulic Cylinders \$50<sup>00</sup>

### Stripper Bats & Brushes

JOHN DEERE-\$115.00

INTERNATIONAL-\$120.00

HESSTON-\$115.00

7/16 x 2 PLOW BOLTS 25c EA.

5/8 x 23/4 CULTIVATOR BOLTS 70c EA. W/FLAT WASHER

Assorted Wrenches & Sockets 1/2 PRICE

Zerex Anti-Freeze \$4.00 Gal.

Unconditionally Guaranteed Thorsen Tools Make The Perfect Christmas Gift And They Will Last A Life Time.

IS THE MAN OF THE FAMILY A WELDER? DOES HE NEED SOME NEW WELDING EQUIPMENT? WE HAVE A GOOD STOCK OF FORNEY WELDERS AND WELDING SUPPLIES.

## NOWLIN FARM SUPPLY

JIM NOWLIN, MANAGER

735-2371

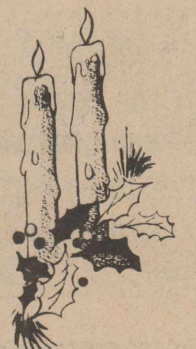
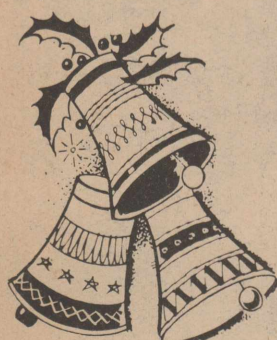
211 N. CLEVELAND

## Rotan Branch Of Sweetwater Savings Association

wishes each of you a Very Merry Christmas and best wishes for a

Happy New Year

THE ROTAN BRANCH WILL BE CLOSED DECEMBER 25 AND 26





**ROBY FANS:** Mr. and Mrs. Glen Upshaw, front, were just two of the fans that watched the Lions roar to victory last week. [staff photo by Jim Markham]

### Roby Girls Beat Fluvanna

The Roby High School girls picked up their first district win Dec. 9 by defeating Fluvanna 83-15. Leading the scoring for Roby was Cheryl Terry with 22 points, followed by Cindy King with 18 points, Penny Anderson 15 points, Pam Browning 12 points, Penny Coker 10 points and Cindy Posey 6 points.

Defensive standouts for Roby were Rhonda Welch, Kim Faught, Judy Wright, Tina Horton, Susan Matthies, Donna Hataway, and Lois Ann Cagle.

The Roby girls are now 1-0 in district and 8-4 on the season.

Eddie, Andi, Helen and Lowell Thornburg went to the National Rodeo Finals in Oklahoma City last weekend.

### Golden Haven Home News

This week we have all been very busy with Christmas decorating and wrapping presents, getting ready for the resident's Christmas Party. It will be Sunday, December 21, at 2:00 p.m., and everyone is invited to attend.

There have been many visitors in and out visiting the residents.

Also the girls from the church came Monday to sing Christmas Carols. Everyone was really in the Christmas spirit by the time they left. We enjoyed them so much!

Well, I guess that's all the news and don't forget, Sunday, September 21, at 2:00 p.m. is the Christmas Party. So be sure and attend. See you then.



**WINS MONEY:** Mrs. Buck Ash was the winner of the \$100 cash given by the Rotan Chamber of Commerce last Saturday.



**HANDMADE ITEMS**

- Original Paintings
- Macrame
- Ceramics
- Shadow box art
- Needlecraft

Special Orders Taken

Share the warmth of a handmade gift with someone you love today

Located On Hiway 180 just W. of red light, Roby, Texas

Before You Purchase A New Car Or Pick-up...Give Us A Chance To Show You How Much You'll Save At

**F & M Chevrolet-Buick**

Complete Sales & Service  
735-2244  
Murl McKinney-Yoke Fleming  
105 S Cleveland Rotan, Texas

READ BOTH  
★ YOUR HOMETOWN NEWSPAPER  
★ THE DALLAS MORNING NEWS

COMPLETE NEWS COVERAGE

▶ LOCAL • NATIONAL  
STATE • WORLDWIDE

SUBSCRIBE TO TEXAS' FIRST METROPOLITAN NEWSPAPER  
ONLY \$3.50 A MONTH

**The Dallas Morning News**  
Contact Your Local Dallas News Distributor  
Or Fill Out And Mail This Handy Coupon

---

CIRCULATION DEPARTMENT  
THE DALLAS MORNING NEWS  
COMMUNICATIONS CENTER  
DALLAS, TEXAS 75222

Please start my subscription to The Dallas Morning News at once. I understand that the price is \$3.50 a month.

NAME \_\_\_\_\_

ADDRESS \_\_\_\_\_ PHONE \_\_\_\_\_

CITY/STATE/ZIP \_\_\_\_\_

## DEAR EDITOR

**EDITOR'S NOTE:** The opinions expressed here are those of the writer, and do not necessarily reflect the views of this newspaper.

All letters must be signed and are subject to be edited for libelous material. Letters are accepted on that basis.

Names can be withheld upon request, however, initials will be used on all letters. Signed original letters will remain in the possession of this newspaper.

Dear Sir:

God is asking this question today (94th Psalms, 16h Verse) Who will rise up for me against the evil doers, Or who will stand up for me against the workers of iniquity? I will, will you?

Luke 14, Verses 28, 29, and 30 says for which of you, intending to build a tower sitteth not down first, and counteth the cost, whether he have sufficient to finish it. Lest hapily, after he hath laid the foundation, and is not able to finish it all that behold it begin to mock him. Saying, This man begin to build, and was not able to finish.

So this is what has happened to lots of our country. Now where is God? 33rd Psalm, Verses 12-15, Blessed is the Nation

whose God is the Lord. And the people whom he has chosen for his own inheritance. The Lord looketh from Heaven, He beholdeth all the sons of Men. From the place of His habitation he looketh upon all the inhabitants of all their works. Now what do you think he thinks of you and me? Are we doing a good job for him?

Now we have built and how are we going to pay for all we have built. Here are some ideas I think we can save some money and pay off these big debts for all these buildings.

Elect one main commissioner for the County, this will save several thousand dollars per year. Cut the County employees at least 10 per cent. Let our school teachers volunteer to cut their wages some to help pay off these debts. Cut out any overhead that won't cause any hazard. I am for any kind of improvement that will make Fisher County a better place to live. But I hope we will use good judgement and not get ourselves in financial bad shape. I helped pay off one big debt that Fisher County had the bad luck to get in so most of you know what that was.

So lets all be friends and figure a good way to pay off these big debts that we owe.

Yours for a better Fisher County, and I hope I can live to see all these debts paid off.

W.F. Arp

### Cotton Letters From WTRC To 12 Thousand

More than 12,000 letters have gone out to cotton producers throughout Texas from the West Texas Rehabilitation Center as a reminder of the first annual cotton Round-Up for Crippled Children.

According to co-chairmen Elmer Martin (Colorado City) and Herman A. Propst (Anson), cotton producers are being asked to share a bale or bales of this year's cotton production with the handicapped of the Southwest.

With cotton prospects good in most areas this year, the Center is hoping for a good response from cotton producers.

Shelley V. Smith, Executive Director of the Center, stated, "This is the last major fund raising event for 1975 and its success is vital to the end of the year funding." Smith added, "We're awfully short of money right now, and are looking to the Cotton Round-Up to help the Center finish the year on a sound financial footing."

Cotton producers are asked to mail in their cotton classification card along with their pledge as soon as possible.

Mr. Lewis Gardner from Stockton, Calif., brother of Laura Smith, came for the Christmas Holidays and a visit with the Worth Smiths.

Dropped waistlines, most often belted at the natural waist, are a garment design detail rapidly increasing in popularity. The long-waisted look was a fashion favorite of the mid-1960's.

\*\*\*\*

A discarded curtain rod, attached to the inside of a closet door, makes a handy shoe rack.

# GIVE A GIFT THAT KEEPS ON GIVING 51 WEEKS A YEAR

# \$4.99

A Year  
For A  
Non  
Subscriber

SUBSCRIBE FOR A FRIEND OR RELATIVE AS A CHRISTMAS GIFT FROM YOU

LET THEM ENJOY THE FISHER COUNTY NEWS AND PICTURES.

## \$4.99

A YEAR

SPECIAL NON SUBSCRIBER CHRISTMAS SPECIAL

YES, I WANT TO SEND THE PAPER AS A GIFT TO:

NAME \_\_\_\_\_

ADDRESS \_\_\_\_\_

STATE \_\_\_\_\_ ZIP \_\_\_\_\_

FROM \_\_\_\_\_

WE WILL EVEN SEND THEM A CARD INFORMING THEM OF YOUR GIFT.....

Offer Ends  
Dec. 23,  
1975



**Act  
Now**

**NOTICE**

**THE CITY OF ROTAN AND THE ROTAN MUNICIPAL WATER AUTHORITY WILL ALLOW THE FOLLOWING DISCOUNTS FOR EARLY TAX PAYMENTS:**

1% DECEMBER 1 TO DECEMBER 31  
First And Last Days Inclusive

**CITY OF ROTAN**

## Hammers Moving Ahead After Jim Ned Lot Loss

The Rotan Yellowhammers played Jim Ned on December 9 and were defeated 35-30 in an unusually low scoring contest. The Hammers were shut down in the final period when Jim Ned held them to only 2 points.

High man for Rotan was Frank Lopez with 15 points. He was followed by Kim Gray with 9 and James Stanberry with 6.

Last weekend the Hammers played in the Aspermont tournament, defeating Paducah in the first game, lost to Hamlin on Saturday then beat Jim Ned in the final game of the tournament.

members are Burt Weathersbee, Dwain Roberts, John Arnett and Vic Wilkerson.

The second period of action was the margin of difference for Rotan in the Hamlin loss. The Hammers, down only one point at the end of the first period, fell 10 points behind at the half. They cut the 10 point halftime deficit to a 9 point deficit at the end of the game. High scorer was Kim Gray with 22 points. Wilkerson and Lopez had 8 points each, Cave 5, Tim Allena and Stanberry 4 each.

Against Paducah, Stanberry and Gray had 19 and 17 points respectively. They were followed by Lopez with 9; Tim Allen with 8; Bryan Cave with 4 and James Goodwin with 2. Other team

The Hammers beat Jim Ned by a score of 50-35 in the final Aspermont tournament game. The Hammers led at halftime 28-18. Gray was high with 17, Wilkerson had 12, Stanberry 9, Cave 6, Allen 4 and Goodwin 2.



**HANDS HIGH:** Rotan varsity players held their hands high in their first district game against Jim Ned. Left to right (white shirts) Tim Allen, James Stanberry, Kim Gray, and James Goodwin. [staff photo]

### McCaulley News

By Mrs. Fred Kemp

Most every day and night this week is filled up with shopping, parties, choir practice and ball games. Sure is going to be hard to attend all these things and keep up with my favorite soap opera.

Mr. and Mrs. Charles Ferguson spent a few days vacationing in Muleshoe, Tex. with Mr. and Mrs. Kenneth and Chris last week. Charles and Kenneth were successful at pheasant hunting.

Mrs. Vada Potts visited Mr. and Mrs. Russell McClure and family of Midland recently. Mrs. McClure is the former Shirley Potts. Mr. and Mrs. Larry Potts and family of Colorado Springs, Colorado also visited the McClures and brought Vada back to McCaulley where they spent the night before returning to Colorado Springs.

Mrs. Fred Kemp visited in the home of Mr. and Mrs. W.J. Kemp of Hamlin last week. Mrs. W. J. Kemp has just returned from John Sealy Hospital, Galveston where she had surgery and treatment, but is showing marked improvement.

Mrs. Myrna Davis and a choir consisting of Mrs. Bobby Brown, Luke Davis, Debbie and Dennisa Decker, Max Kemp, Vivian and Annita Dixon, will present a Contata, "The Road to Bethlehem", December 21 at 6:00 p.m. at the Baptist Church. After the program sandwiches and goodies will be served in Fellowship Hall. Everyone is invited.

McCaulley 4-H members and sponsors are having a Christmas Party Wednesday evening in the McCaulley Gym.

The McCaulley basketball tournament will begin at 1:30 Thursday and continue through Saturday, Dec. 20. This is the first basketball tournament held here in 20 years. We invite everyone to attend and help make this tournament successful.

Luther Maberry is still in Rotan Hospital but is improved and hopes to be released soon.

Participating in the DAR Essay contest are Deborah Story, Donnie Jokel and Todd Jeffrey. Mrs. O.F. Hill reported these students have worked very hard and are to be commended highly for their efforts.

## C.A. Schaeffer Named Bi-County Entomologist

The appointment of Curtis Allen Schaeffer as County Entomologist in Fisher and Jones Counties for the Texas Agricultural Extension Service has been announced by Dr. Ed Garnett, District Extension Agent for Extension District 3.

Beginning January 1, Schaeffer will be responsible for working with Richard Spencer, Fisher County Agent, and Kirby Clayton, Jones County Extension Agent, in developing a pest management program for this two-county area. Mrs. Schaeffer will work closely with Emory Boring, Area Extension Entomologist from Vernon. The pest management program will involve the development and training of a team of ten field scouts. These scouts will survey insect populations throughout the year on a contractual basis with producers in Jones and Fisher Counties. Mr. Schaeffer will coordinate the bi-county program from his office in Roby.

A 1965 graduate of Olton High School, Schaeffer earned awards as Lone Star Farmer, Area FFA Livestock Farmer, and the Olton High School Citizenship Award. Schaeffer received his B.S. Degree from Texas Tech Univer-

sity where he was on the Dean's Honor Roll and vice president of the Regional Texas Tech FFA Chapter and received his M.S. Degree in Entomology from Texas A&M University. A member of the Entomological Society of America and Southwestern Entomological Discussion Groups, Schaeffer has previously served as Research Technician II for the Texas A&M University Agricultural Experiment Station in Lubbock for three and one-half years. Schaeffer was raised on a family farm at Olton, where cotton and grain sorghum were the principle crops grown. He is a member of the Lutheran Church.

## Three From County On WTC Who's Who Listing

Thirty students at Western Texas College have been named to Who's Who lists, Dr. Duane Hood, Dean of Student Services and Registrar, has announced.

Eighteen of the students will be included in Who's Who Among Students in American Junior Colleges. Twelve have been selected to appear in Who's Who Among Students in American Vocational and Technical Schools.

Students are nominated for Who's Who by committees of faculty members and students. The selection of students is made on the basis of campus and community involvement, academic standing and promise of future accomplishment.

Appearing in Who's Who Among Students in American Junior Colleges will be Ed Balderas of Stafford, Jeff Box of San Angelo, Richard Daves of Ira, Barbara Davis of Stamford, Cindy Hanson of Fort Worth, Deana Hardegree of Colorado City, Julie Jones of Abilene, Marilyn Payton of Lubbock, Loy Ann Pyburn of Sweetwater, James Garry Wester of Rotan, and Jan Bellamy, Jimmy Browning, Jill Chenoweth, Michele Graves, Lynn Leavell, Jan McPherson, Kenneth Patrick and Debra Stephens, all of Snyder.

Named to Who's Who Among Students in American Vocational and Technical Schools are Theresa Beal of Coahoma, Thomas Murphy of Ira, Hector Hinojosa and Ricky Price of Roby, Robert Carpenter, Harold Ludecke, Steven C. Medford and Donald Van Zandt of Stamford, and Bob Clark, Steve Mackey, Jerrell Row and Carol Warton of Snyder.

Wester, a physical education major at WTC, served as intramural sports chairman for the Baptist Student Union this year and has been active in intramural sports. A graduate of

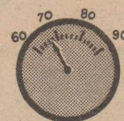
Rotan High School he is the son of Mr. and Mrs. Pat Wester. Hinojosa serves as vice president of Phi Theta Kappa, national honor society for students in two-year colleges, and is secretary-treasurer for Eta Mu Theta, campus organization for students in Electromechanical Technology (EMT). Hinojosa is majoring in EMT. He was graduated from Roby High School and is the son of Mr. and Mrs. Alvaro Hinojosa.

Price is also an EMT major and is president of Eta Mu Theta. He is a member of Phi Theta Kappa and Explorer Post 117. He was named to the Dean's List last spring and to the President's List in the fall semester of 1974. Price, a Roby High School

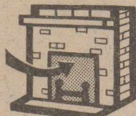
graduate, is the son of Mr. and Mrs. Jimmy C. Price.

**CALVIN CROW**  
REPRESENTING  
THE  
**Reliable**  
**Insurance Co.**  
Life & Fire  
735-2995  
ROTAN, TEXAS

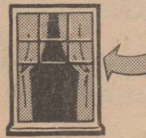
Tips  
To help  
**YOU**  
to Conserve  
and Save  
Energy  
on  
Winter  
Heating



For savings on energy, set the thermostat on the temperature setting that provides adequate comfort. Don't continually switch it up and down. Remember, the lower you set the thermostat in the winter the more money you save on energy.



A wood burning fireplace should be equipped with an efficient damper. Be sure to keep the damper closed when not in use. A chimney with the damper open carries warm air out the house, wasting heat.



To decrease heat loss and reduce energy cost in rooms that are not in use at night or in extremely cold weather, draw the draperies and lower the shades over the windows, glass panels and doors. If the sun is shining on glass areas, open the draperies. The sun shining through the glass will supply additional heat at no cost.

Pick up your FREE copy of  
"ENERGY CONSERVATION"  
Booklet from  
**Frigidaire**  
Home Environment Division of General Motors.

**West Texas Utilities**  
Company  
An Equal Opportunity Employer

Remember REDDY Supplies the energy—  
but only YOU can use it wisely!

## HOLIDAY Food Values AT KASH FOODS

**WE ACCEPT FOOD STAMPS**

Double Stamps, Mon., Tues. & Wed.  
Dec. 22-23-24 With A \$5.00 Purchase-No Tobacco

GANDY'S  
**Buttermilk**  
1/2 GALLON **69¢**

GANDY'S  
**Egg Nog**  
**69¢**

GANDY'S PURE  
**Ice Cream**  
**99¢**  
WITH A \$5.00 PURCHASE

GANDY'S  
**Sour Cream**  
**Half & Half**  
**Whipping Cream**  
**3 FOR \$1**

1#  
**Solid Oleo**  
**49¢**

4 1/2 OZ  
**Cool Whip**  
**39¢**

FLAV-R-PACK FROZEN  
**Orange Juice**  
**4 CANS \$1**

MRS BAIRDS  
**Dinner Rolls**  
**2 FOR 79¢**

MRS BAIRDS  
**Angel Food Cakes**  
**85¢**

TASTIT IMITATION 8 OZ  
**Vanilla Extract**  
**41¢**

FOREMOST  
**Whipping Cream**  
**Sour Cream**  
**Half & Half**  
**3 FOR \$1**

### WHITE SWAN SALE

- New Potatoes 3 For \$1.00
- Golden Hominy 5 For \$1.00
- Blackeyed Peas 4 For \$1.00
- Asparagus 2 For 89¢
- Mixed Vegetables 4 For \$1.00
- Whole Beets 4 For \$1.00
- Cut Beans 4 For \$1.00
- Canned Milk 3 For 87¢
- Tomato Sauce 6 For \$1.00
- 303 Pears 2 For 89¢
- Instant Tea 99¢  
With A \$5.00 Purchase
- Coffee Lb 99¢  
With A \$5.00 Purchase
- Black Pepper 4 OZ 49¢

**Butterball**  
**Turkeys**

**Chuck**  
**Roast**  
**89¢ LB**

SLICED SLAB  
**Bacon**  
**\$1.49 LB**

Merry Christmas & Happy New Year  
DELIVERY SERVICE WITH A MINIMUM PURCHASE OF \$3.00  
MORNING DELIVERY AT 10:00-AFTERNOON 2:00 TILL 4:00



**KASH FOODS**  
PHONE 735-2266 ROTAN-TEXAS

**Close Out Sale**  
**FINAL MARK DOWN**  
**BEGINNING THURS. DEC. 18**

**ALL WATCHES & JEWELRY** **1/3 OFF**

**SOME ITEMS AT** **1/2 PRICE**

**Champion Jewelry**  
Rotan, Texas



**ATTEND POSSE DINNER:** The above ladies were honored last Friday night at the Fisher County Sheriff Posse Christmas dinner. Left to right, front row, Mrs. Roy Kingsfield, Mrs. Parker Kennedy, Mrs. Lon Weems, Mrs. Ray Smith. Back row, Mrs. R.T. Williams, Mrs. Mark Strickland, Mrs. R.D. Sartor. [staff photo]

### County Savings Bond Sales Down

United States Savings Bond sales in Fisher County totaled \$2,163 during the month of October. Sales for the ten-month period were \$34,558 which represents 58% of the 1975 sales goal for the county, according to County Bond Chairman, R. L. Springer.

October sales in Texas totaled \$20,266,476 compared to sales of \$21,154,479 during the same period of 1974. Total sales for the January-October 1975 period were \$201,801,647, representing 86% of the \$236.8 million goal for the year.

### Calvary Baptist 25th Anniversary Sunday

This Sunday, December 21, 1975, the Calvary Baptist Church will celebrate its twenty-fifth anniversary. The Calvary church is an outgrowth of the First Baptist Church. In 1950 Calvary Baptist was established as the South Side Mission. Two years later, in 1952, it became an autonomous independent church. In those beginning days of Calvary Baptist, Rev. Carl Underhill was the first pastor. Rev. Underhill is now retired and lives in Mize, Mississippi. For these special services Rev. Underhill is returning to Rotan.

The day's activities will be worship service at 11:00 a.m. followed by a covered dish dinner at 12:00. That evening services will be held at 7:00 p.m. Many former members of Calvary are expected to return for the celebration. Two former members will be combining their talents with Rev. Underhill's preaching in leading services on the 21st. Mr. Floyd Garcia will be playing the piano and Mr. James Carter will be leading the song service for the day.

The pastor of Calvary Church, Steven Sweet, invites all to the day's total activities. The invitation is an open invitation to

the community to attend the services and the noon meal.

### Golden Haven Home Sets Christmas Party

The Christmas Party at Golden Haven Home, Roby, is scheduled for Sunday, December 21, at 2 p.m.

All friends and relatives of the residents are cordially invited.



**We represent you first.**

ROTAN INSURANCE AGENCY  
Joe D. Burk

## Fifty-Eight Win In 1st Appreciation Give-Away

There were 58 winners in the first annual Rotan "Appreciation Give-Away" sponsored by the Rotan Chamber of Commerce.

Mrs. Buck Ash was the winner of the \$100.00 in cash given by the Chamber of Commerce.

An unusual incident made the awarding of prizes by the 25 participating merchants even more unusual. Rotan Chamber of Commerce President, Pat Wester, has arranged to use the public address system on the fire truck to announce the winners. Mid-way through the drawing the fire whistle went off and Fire Chief Archie Neeley hurried off to fight the fire, leaving the crowd in suspense.

Other winners included: Hinds Dept. Store, Odell Rains, \$20 gift certificate, Ruben Garza, \$10 gift certificate, J.B. Smith, \$5 gift certificate; F&M Chev., Jan Sparks, tune up, points, plugs, condenser; Fairy Drug, Yves Macias, Mexico Flower Bowl; City Auto, Ollie Shipp, 1/4 in. socket set; Rockwell, Mary L. Yanez, 5 ft. step ladder; Hataoe, Ben Reaid, \$20 work of food; Newspaper Office, one year subscription, Jack Aaron, one year subscription, Edward Marks; Farm Tractor Service, Inc., Mrs. Ben Martinez, set adjustable wrenches, Sena Wood; Rotan Gin, trailer tire, Blanche Gentry; Smith & Cyphers, \$10 gift certificate, Ema Soliz, \$5 gift certificate Art Monday, \$15 gift certificate Oral Sparks; Landes

Furniture, hanging lamp, John Poteet; Winns, automatic blanket, Loucille Wright; Marie's Art Studio, 5 free art lessons, Billie Joe McCombs; H.L. Davis & Co., \$25 gift certificate Epifanio Gaspar, \$15 gift certificate Arlon Cross, \$10 gift certificate Jay Hendon; Western Auto, beginners cycle, Wanda Murphree; White's, electric fry pan, H.G. Swaringen; Kash Foods, \$7.50 gift certificate Edna Medrano, \$7.50 gift certificate Aggie Burrow; Rotan Motor, \$25 gift certificate Vera Jones; Glen's Thriftway, bed spread Jackie Hardin, carving set Dorothy Burrow, mens garment bag, Pat Hamric, mens garment bag Floyd Garcia, ladies garment bag Chest Schick, ladies garment bag, Terri Smith, stadium blanket Ben Martinez, utility stool Felipe N. Vina Jr., stadium blanket Mary Lou Goodwin; utility stool Mrs. R.L. Harrison; Trails End Restaurant, one T-Bone steak dinner Bill Hudnall, T-Bone steak dinner, E.W. Mize,

den; Bennetts, ham, Mrs. Windle Kincaid, turkey, Beck McDonald; Darden's Dept. Store blanket, Effie Dennis, girls blouse Lelia Nash, ladies house coat Don Overby, Mexico picture Jim Peel, mens flanel shirt, Lillie Herron, ladies slacks Mrs. J.E. Counts, ladies blouse Herbert Kennedy.

### Our Declaration Of Independent



**Deaton Insurance Agency**

P.O. Box 186 Roby, Texas 79543

Post Office Building  
776-2228

### Hobbs Junior High Girls Win

The Hobbs Junior High girls played the Westbrook junior high girls Tuesday night, Dec. 9, winning 28-26. Scoring for Hobbs was Irma Miranda 14, Kayla Tibbles 12.

The game was a district game and was a very well played game, especially in the last half with the Hobbs team out scoring the Westbrook team 18-11.

### Veteran WTC Students To Register Early

Veterans planning to use their educational benefits during the spring semester at Western Texas College are urged to make applications during December. Dan Dever, Veterans Outreach Coordinator, said,

Veterans who will be enrolling at extension centers are also eligible for educational benefits and should begin completing forms as soon as possible. Veterans who did not complete high school may enroll at WTC on an individual approval basis.

Dever is available to help veterans fill out the necessary forms and may be contacted at his office in the WTC Administration Building. The office is open during evening hours while classes are in regular session at the college. Evening hours for the fall semester will end on Dec. 18 when final examinations are concluded.

The office will be open during regular daytime hours starting Dec. 29 following the Christmas break but no evening hours are scheduled until classes begin again on Jan. 14. Enrollment will be held Jan. 12-13 for day and evening students on the main campus.

## DO IT NOW!



**December 31 is the last day to deduct \$1500 tax-free from your 1975 income!**

If you are NOT enrolled in a retirement plan (other than Social Security), you have until December 31 to start your own Individual Retirement Account (IRA) at Sweetwater Savings . . . AND DEDUCT \$1500 TAX-FREE FROM YOUR 1975 INCOME!

With a Sweetwater Savings IRA account, you can deposit up to \$1500 a year tax-free toward your retirement. A husband and wife, both working, can deposit up to \$3000 a year into a tax-free IRA account. At Sweetwater Savings your IRA account will earn up to 7.75% annually. So, why take less? Come in . . . we'll help you tailor a Sweetwater Savings IRA plan to fit your income.

Please contact me. I would like to know how to open an Individual Retirement Account at Sweetwater Savings

Name \_\_\_\_\_

Address \_\_\_\_\_

City \_\_\_\_\_ State \_\_\_\_\_ Zip \_\_\_\_\_

Telephone \_\_\_\_\_ AC \_\_\_\_\_

Fill out and mail to: Attn: Watson Moore  
Sweetwater Savings, P.O. Box 1399, Sweetwater, Texas 79556

**CURRENT ANNUAL EARNINGS**

7 3/4% 6 YR. CERT.—\$1000 MIN.    6 1/2% 1 YR. CERT.—\$1000 MIN.

7 1/2% 4 YR. CERT.—\$1000 MIN.    5 3/4% 90 DAY ACCT.—\$1000 MIN.

6 3/4% 30 MO. CERT.—\$1000 MIN.    5 1/4% NO PENALTY PASSBOOK

A substantial interest penalty is required for early withdrawal of certificate accounts



**SWEETWATER SAVINGS ASSOCIATION**

ROTAN    ROSCOE    HAMLIN

**NO ONE BUT**

# Winn's

VARIETY STORES

**GIVES THEIR CUSTOMERS VALUES LIKE THESE BEFORE CHRISTMAS**

**BIG SELECTION**



UP TO

# 50% OFF!

|  |  |  |
|--|--|--|
| MARX<br>Pistol Polo<br><b>\$5<sup>49</sup></b><br>Reg. 10.99     | MARX<br>Electro Shot<br><b>\$9<sup>95</sup></b><br>Reg. 19.98                | Big Mouth Singers<br><b>\$4<sup>49</sup></b><br>Reg. 8.98            |
| WONDER HORSE<br>Coasters<br><b>\$3<sup>33</sup></b><br>Reg. 4.99 | WONDER HORSE<br>Circus Rocker<br><b>\$5<sup>29</sup></b><br>Reg. 7.99        | Peachy & Her Puppets<br><b>\$7<sup>39</sup></b><br>Reg. 13.88        |
| LAINIE<br>Dancing Doll<br><b>\$6<sup>33</sup></b><br>Reg. 14.88  | BARBIE<br>Country Living Home<br><b>\$6<sup>33</sup></b><br>Reg. 9.98        | BARBIE<br>Friend Ship<br><b>\$8<sup>88</sup></b><br>Reg. 12.88       |
| DAVID CASSIDY<br>Guitar<br><b>\$5<sup>49</sup></b><br>Reg. 8.98  | CROWN<br>Badminton & Volleyball Set<br><b>\$6<sup>39</sup></b><br>Reg. 10.98 | SEE ACTION<br>Football Game<br><b>\$6<sup>33</sup></b><br>Reg. 9.98  |
| ROMPER ROOM<br>Inchworm<br><b>\$8<sup>89</sup></b><br>Reg. 12.99 | MARX<br>The Little Wheel<br><b>\$6<sup>49</sup></b><br>Reg. 10.88            | KOOKEY<br>Kritters by Slinky<br><b>\$1<sup>89</sup></b><br>Reg. 2.99 |

BIG SELECTION FISHER PRICE AND TONKA TOYS





**The REAL variety store.**





**THE CHRISTMAS RUSH:** Mrs. Luther Maberry, front, chats with Mrs. Rosemary Minshew, McCaulley Postmaster. Mrs. Minshew has been the McCaulley Postmaster for the past six years, and even during the busy Christmas season finds time to pass a friendly word to many McCaulley residents. (staff photo)

## Roby Girls Win Top Tournament Position

The Roby High School girls basketball team defeated Loraine last Saturday night to win the championship at the Hermleigh Tournament. Making the All Tournament team from Roby were Cheryl Terry and Cindy King at forwards and Kim Faught as a guard.

## Hobbs Class Falls Back In History For Answers

What would it have been like to celebrate Christmas in America 200 years ago? The fifth grade students at Hobbs decided to find out by trying to re-create a day in history.

## Hobbs School Library Club Reads For MS

The Hobbs Library Club has as its first project participation in the National Read-A-thon for MS. The students will be asking for pledges of money for each book they read for this program or for a donation for the reading project as a whole. Those participating will have a Read-A-thon book list provided by the MS Society with them when collecting and will have registered for the program.

The club members will be generously giving their time to read and then collect the money. They hope their efforts will benefit the many suffering from MS. The project is designed to show young people that reading is an enjoyable activity and can, through its project, be of service to a worthy cause.

The program began October 15 and will continue through December 10. Readers for MS are Paula Martin, Julie Martin, Delores Teel, Delinda Teel, Elva Alaniz, Kayla Tibbels, and Judy Cave.

barrage was Cheryl Terry with 49 points, followed by Penny Anderson with 36, Cindy King with 20 and Cindy Posey with 10 points.

In second round action Roby met up with Trent and defeated the Gorillas 34-24. Scoring for Roby were Cheryl Terry 16 points, Cindy King 16 points, and Penny Anderson 2 points. Strong defense was turned in by Judy Wright, Rhonda Welch and Kim Faught.

In the championship game, Roby met Loraine, a strong district contender, and went on to victory by the score of 55-46. Leading the scoring for Roby was Cheryl Terry with 20 points, Penny Anderson 19 and Cindy King 16 points.

Rhonda Welch, Judy Wright, Tina Horton and Kim Faught all turned in outstanding defensive efforts as the Lionesses scored their 11th victory of the season.

## Roby Boys B Team Gets Second Win

The Roby boys B team won its second game without a loss Tuesday by defeating the Hermleigh B team 41-31. Roby trailed 8-0 early in the game but bounced back with Danny Terry and Ricky King leading the way.

King scored 18 points and pulled down 10 rebounds. Terry scored 12 points and had 11 rebounds. Also, scoring for Roby were Jay Hilliard 5, David Posey 4, and John Rivas 2.

Through fiscal year 1975, the federal government had spent a total of \$239 billion on benefits programs for veterans of all wars.

The Rotan junior varsity girls lost to Jim Ned last Tuesday night by the score of 50-38. Ginger Duke was high point girl with 21. Charre Smith had 8, Carol Byrd 5, and Cheryl Jones 4 points. The guards were Melody Walker, Ode Garcia, Carman Sparks, Adriana Forest, Tammy Whitfield, Tina McCombs, Renee Underwood and Patti Williams.

Other team members are Jo Ann Martinez, Lynda Cleveland, Myra Adams, Lisa Acker, Patricia Posey, Terri Mullins and Blanche Gentry.

The Veterans Administration reports that 73 of the 100 senators and 306 of the 435 members of the House are veterans of military service.

You can make your hosiery last longer by wearing rubber or light gloves when you put on your nylons if your hands are callused or your nails split.

## Hobbs HDC Has Snyder Party

The Hobbs Home Demonstration Club held their annual Christmas Party in a room reserved at the Phillips 66 in Snyder, December 11.

The group had lunch and exchanged gifts and revealed secret pals. They then went to Western Texas College to see the Christmas Story in the Planetarium. Mrs. Tutt's daughter, Heleen, joined the group for the show.

They also visited the art room and museum. Members present were Mmes. Lester Hardin, Connie Tutt, Turner Houghton, Dale Cave, James Lay, Gary Nettleton and daughter Criste, Fred Martinez, Clarence Anderson, James Nettleton, J.P. Phillips, Walter Byrd, Bill Hardy.

## Longworth HDC Has Meeting

Longworth Home Demonstration Club met in the home of Mrs. H.F. Guelker, Monday, December 5.

Mrs. Guelker called the house to order. Handy Andy was won by Mrs. Bill Lee.

Roll was called and answered by a kind deed I plan to do during Christmas.

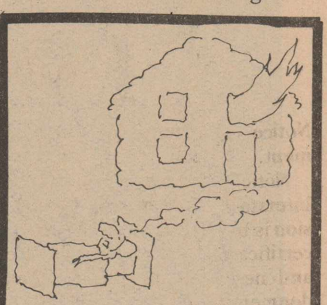
Mrs. Lee read the minutes, treasurer's report and the last council report. Motion was made and seconded for unpaid bills.

Mrs. Guelker presented the Christmas Story and led the group singing Christmas Carols.

Gifts were exchanged from a miniature lighted honeysuckle tree.

Refreshments of coffee and Christmas goodies were served to Mmes. Lee, J.W. Landers, W.P. Schubert and the hostess.

Next meeting will be in the home of Mrs. W.P. Schubert. The program will be on recreation, given by THDA delegate.



Insurance troubles? Independent insurance agents are experts on trouble.

Independent of any one company, we work to find the best policies for you. And we work to get fast, fair settlement of your claims.

Many leading companies selling home and car insurance sell only through independent agents.

**If we can't help you, nobody can.**



**Rotan Insurance Agency**  
Joe D. Burk  
Peggy Morrow  
C.D.(Monk) Herron  
Janie Phillips

## COUNTY AGENT NEWS

BY RICHARD SPENCER

Lice can weaken cattle, stunt their growth and make them more susceptible to other diseases. That's why it's important to check cattle periodically for the tiny pests.

It's especially important to check cattle in the fall, winter and spring months because lice are attracted to the cooler skin temperatures of animals.

Both bloodsucking and biting lice are parasites of cattle. Biting lice feed on pieces of hair, scabs and skin excretions on the animal and can cause cattle to scratch and rub off pieces of skin. The loss of blood caused by bloodsucking lice can keep young animals from gaining and can affect meat and milk production in older animals.

Lice are most numerous on the neck and shoulders of an animal and are more common on poorly fed cattle.

Lice can be controlled by spraying, dipping, dusting or a self-treatment rubbing device. The insecticide used depends on the application method and whether it is for dairy or beef cattle.

The most effective way to apply an insecticide is to wet the animal to the skin. This usually takes from one to two gallons of spray for mature animals with heavy hair coats.

The application should be repeated in two or three weeks and cattle should be inspected periodically after that.

About 85 percent of the grain shipped overseas is used for livestock feeding. The remainder is used for human consumption. So even those in the developing countries like animal products along with their grain. Moreover, not all grain shipped overseas is used directly for human consumption as some people think.

Agricultural production requires only 2.2 percent of the total energy used in the U.S. So those who advocate that agriculture really cut down in energy usage are not aware that it would have only a slight effect on the energy problem.

Statements have been made that the world has only a 27-day reserve food supply. But they overlooked the animals as a reserve source of food. If they

were slaughtered and used for food the world could live on them for many months.

Henry Ford once said, "Coming together is a beginning.

## Hobbs Girls Win First Consolation Trophy

The Hobbs High School girls participated in the Hermleigh tournament Dec. 11, 12 and 13 and won the consolation trophy. In their first game Hobbs was defeated by Loraine 87-72. It was a well played game with 6 of the Hobbs forwards getting in on the scoring. Tammy Gober had 31, Sandra Clawson 13, Cindy Clawson 12, Debra Teel 10, Cathy Hull 4, and Judy Medrano 2.

Good defense was turned in by Lisa Gober, Tammy Trout, Kim Ratliff, Mary Grace Martinez, Cindy Clawson, Irma Alaniz and Bertha Miranda.

In their second game, with Hermleigh, Hobbs won 47-42 with Tammy Gober scoring 29 points. Other scoring were Sandra Clawson 12, Debra Teel 4, Cindy Clawson 2. Outstanding on defense were Tammy Trout, Lisa Gober, Cindy Clawson, Judy Medrano, Kim Ratliff, Bertha Miranda and Tonya Porter.

The Hobbs girls won the consolation game by defeating Divide 54-47. Scoring for Hobbs

Keeping together is progress. Working together is success. Many thorny problems would be solved if this philosophy could be followed.

## Fisher County Nursing Home

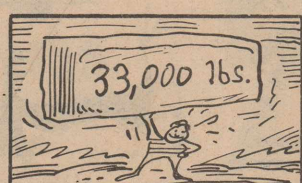
Well, Christmas is nearly here and everyone has been busy decorating and getting ready for the resident's Christmas Party to be held on Saturday, December 20 at 2:00 p.m. Everyone is invited to attend.

There have been many visitors this week. Among them were Mr. and Mrs. Gordon King from Abilene visited Mr. Bill House; Mr. John Jackson visited Mrs. P.V. Hale.

That's most of the news for this week and be sure to come to the Christmas party Saturday at 2:00 p.m. We'll be looking for you.

## Roby Schools Dismiss Early

The Roby Schools will dismiss for the holidays on Friday, December 19, at 2:30 p.m. and will resume classes on Monday, January 5, 1976.



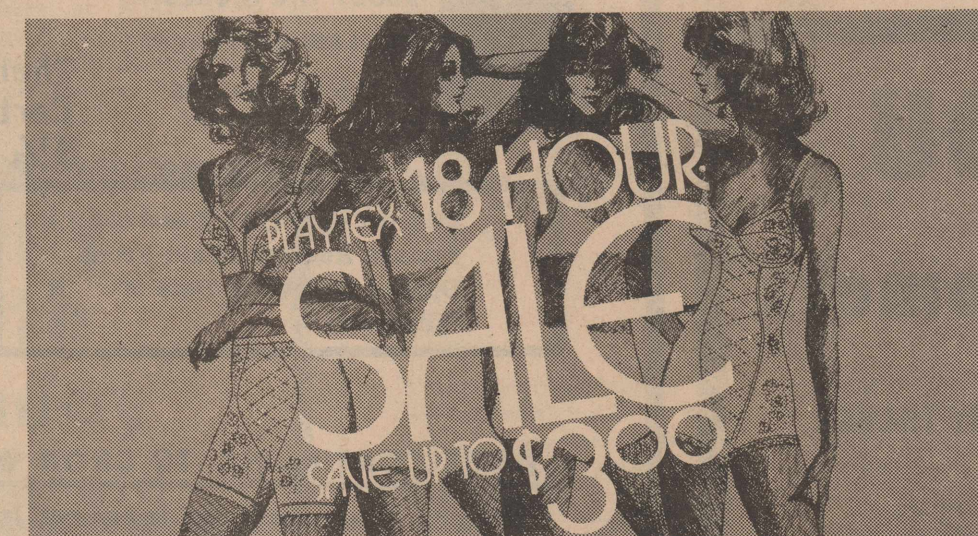
One horsepower is equal to the raising of 33,000 pounds one foot in one minute.

**INSURANCE FOR YOUR HOME RANCH FARM AUTO CROPS LIFE**

If a guest injured his ankle in my backyard will my Homeowners policy pay his medical expenses?

For help with insurance questions and needs call...

**Ben Reaid**  
TEXAS FARM BUREAU INSURANCE COMPANIES  
735-3491-Rotan, Texas



The famous support bras, firm control girdles and All-in-Ones that are comfortable for hours.

- SAVE \$1.00 ON 18 HOUR BRAS**
- #20—Stretch Straps—Reg. \$6.95 NOW ONLY \$5.95†
  - #21—Tricot Straps—Reg. \$6.95 NOW ONLY \$5.95†
  - #23—Fiberfill Cups Stretch Straps—Reg. \$7.50 NOW ONLY \$6.50
  - #24—Underwire Tricot Straps—Reg. \$8.95 NOW ONLY \$7.95†
  - #201—Front Closure Longline, Tricot Straps—Reg. \$10.95 NOW ONLY \$9.95†
  - #220—Longline, Stretch Straps—Reg. \$9.95 NOW ONLY \$8.95†

- SAVE \$3.00 ON 18 HOUR ALL-IN-ONE**
- #2608—All-in-One Brief—Reg. \$20.95 NOW ONLY \$17.95\*

**New from 18 HOUR ON SALE FOR THE FIRST TIME EVER!**

- #651—Front Closure Tricot Straps—Reg. \$8.50 NOW ONLY \$7.50

- SAVE \$2.00 ON 18 HOUR GIRDLES (\$1.00 on Briefs)**
- #2690—Brief—Reg. \$9.95 NOW ONLY \$8.95\*
  - #2692—Shortie—Reg. \$12.95 NOW ONLY \$10.95\*
  - #2695—Average Leg—Reg. \$13.95 NOW ONLY \$11.95\*
  - #2693—Long Leg—Reg. \$14.95 NOW ONLY \$12.95†

- #2672—High Waist Average Leg—Reg. \$16.95 NOW ONLY \$14.95†
- #2673—High Waist Long Leg—Reg. \$17.95 NOW ONLY \$15.95†

**\$2.00 REFUND OFFER ON NEW HIGH WAIST BRIEF AND PANTY LEG ALL-IN-ONE**

SALE ENDS JANUARY 10, 1976

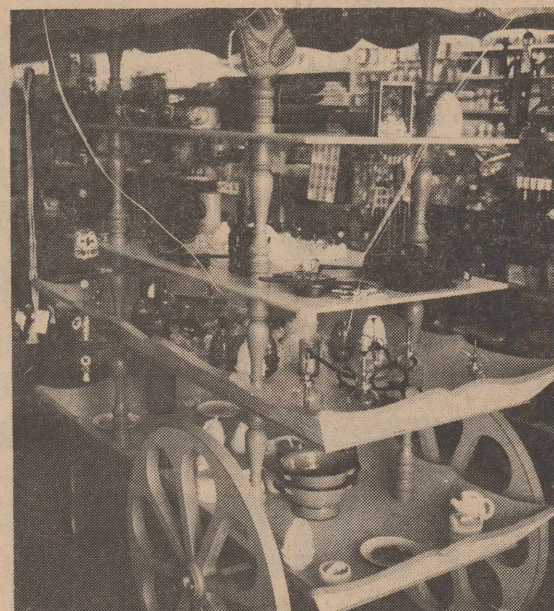
## Hinds Department Store

210 W. SNYDER 735-2581 ROTAN, TEXAS

Bras: \*D, DD-Cups \$1.00 More; \*\*DD-Cups \$1.50 More; \*\*\*DD-Cups \$1.50 More; \*\*\*\*DD-Cups \$1.50 More; \*\*\*\*\*DD-Cups \$1.50 More; Girdles: \*All XL and XXL \$1.50 More; \*\*All XXXL and XXXXL \$3.00 More

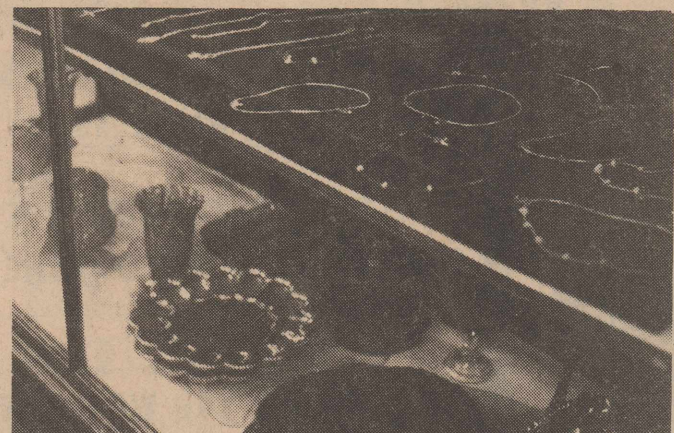
## Noles Drug

We Can Fill Most Items On Your Christmas Shopping List. Visit Our Unique Gift Dept. NEW MERCHANDISE ARRIVING DAILY

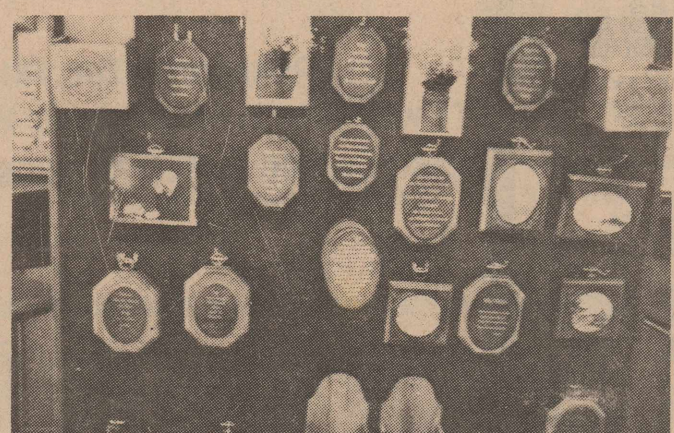


Large Selection Gifts

Appliances, Corningware, American Greeting Cards & Wrapping Supplies



Large Selection Of Authentic Indian Jewelry



Friendship Plaques - Wall Hanging Plaques

**Jack Perkins R.P.H.** NIGHT PHONE 776-2174  
Noles Drug-Roby, Texas Store Hours  
Box 248-Phone 776-2431 8:30 To 6:00



**RED TO YELLOW AND GREEN TO BLUE:** Southwestern Bell serviceman, Lawrence Bredemeyer connects one of the more than 400 pairs of wires severed by construction crew laying water line to new hospital. It was 11:00 P.M. when the above photograph was taken and Bredemeyer had been connecting wires since 4:30 p.m. to assure Rotan residents of un-interrupted telephone service. [staff photo]

### Hobbs Girls Win First District Game

The Hobbs High School girls basketball team started district play on the right foot Tuesday night, Dec. 9, by defeating the Westbrook girls 65-59. It was a good team effort with four Hobbs girls doing the scoring and good defensive play by the guards.

Scoring for Hobbs were Tammy Gober with 40, Sandra Clawson had 13, Cathy Hull 6, Debra Teel 6.

Outstanding defense play by Cindy Clawson, Tammy Trout, Lisa Gober, Mary Grace Martinez, Judy Medrano, Irma Alaniz, Kim Ratliff and Tonya Porter resulted in a very well played game. This gave the girls a 1-0 district record.

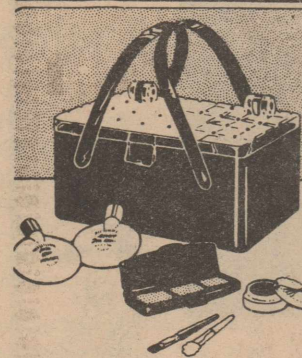
### Rotan JV Boys Lose To JVs At Sweetwater

On Thursday, December 11, the Rotan Junior Varsity team played Sweetwater at Colorado City and lost 39-58.

R. Morales was high for Rotan with 11 points, he was followed by Ken Holt with 9, Paul Hinson and Buddy Hooper had 8 each, and John Cox had 3.

Other team members were M. Acorn, CleDon Coffman, Brad Hale and J. Medrano.

The junior varsity Hammers lost on December 12 to Stanton at Colorado City 44-55.



### More Christmas for Your Money

**OUR BIGGEST EVER FREE GIFT-WITH-PURCHASE**

With this coupon and any \$20 purchase of Merle Norman cosmetics\* you get our FREE gift of a smart mock tortoise shell and crystal look purse.

Inside, a Holiday Collection of six Merle Norman beauty-makers including: Intense Body Moisturizer, Candescence Face Makeup, Taupe Creamy Eye Shadow, a Trio Compact with Satin Sienna Lipstick, Tawny Cheek Color Creme and Russett Moist Lip Glass.

Only at your **MERLE NORMAN COSMETIC STUDIO**

242 South Central Hamlin, Texas

\*Offer good through Dec. 25, 1975 or while supplies last at participating studios. Redeemable only at time of purchase.

### Yates Family Holds Reunion

Attending the 1975 Yates Reunion recently in the Agriculture Building in Roby were the following:

Curtis, Elsie and Mark Hatcher of Odessa; James, Sallie and Blake Hughes, Ft. Worth; Jewel Wiley and Ralph Hardin, Levelland; David, Lynn, Megg and Julie, Jacksonville; James, Lillian and Ches Yates, Mineral Wells; Eva Williams and Ben Key of Whipple, Ariz.; Jim and Mellie Noles, Marble Falls; Wanda, Melvin, Roy, Triana and Eugene Sparks, Lawton, Okla.; Alton, Susan and Travis Hatcher of Odessa; Bart, Pat, Kim and Travis Foreman, Wichita, Kans.; Paul and Inez Foreman, Roby.

Also, Jimmy, Barbara and Dana Jones, Andrews; Corky, Jane and Lee Foreman, Bethany, Okla.; Snooks and Madelle Yates McDanile, Carrizo, New Mex.; Gladys Adams, Odessa; Finley and Zula Eaton, Magazine, Ariz.; Kirby, Valerie, Michael, Maryanne Adams, Los Alamos, N.M.; Larry and Lavon Tharton, Amarillo; Laura and Michelle Bregance, Booneville, Ark.; Ralph, Francine, Malynnda, Lisa, Earl, Dallas and Angelia Harden, Portland; Glenn, Anita, Cindy and Jim Noles, Midland; Will Trimble, Rotan; Bubba, Pricilla and Jennifer Smith, Portland; John I. and Carolyn Adams, Lewisville; Bea and Lester Hardin, Rotan; Larwence, Betty Jane, Janey and Carter Forbes, Ft. Worth; Tony, Patti and Brent Foreman, Grand Saline; Mr. and Mrs. Douglas Eaton and Louis Earl Eaton, Roy Allen Eaton, Leota Edwards, Carl Martin, Kathy Martin, Rotan.

Plans were made to meet at the same place and time next year. Visitors are welcome.

### Thirty One Take ACT Test

On Saturday, December 13, the American College Test (ACT) was administered to 31 high school seniors from Aspermont, Hamlin, Jayton, Sweetwater, Roby, Rotan and Hobbs who had registered for this test date.

Mrs. Rudy V. Hamric, Fisher Counselor and Mrs. Sue Codington, Hamlin and Anson School Counselor, administered the test.

The ACT is required by many colleges for admission and/or counselling purposes and is given internationally at designated test centers on five specified test dates. Anyone needing to take the ACT or SAT should contact the nearest school counselor as soon as possible.

### Center Home Demo Holds Meeting

The annual Christmas Party for Center Home Demonstration Club was held Thursday, Dec. 11, in the home of Eilene Cave. The president, Lou Ella Waddell, was in charge. Willie Newhouse led the recreation. The group sang Christmas Carols. As a project, the members decided to do something nice for the residents of the Golden Haven Home of Roby.

The beautiful Christmas tree was surrounded by all shapes and sizes of lovely gifts. After the packages were opened, everyone was treated to sandwiches, several kinds of cookies, punch and coffee.

In addition to those mentioned above those enjoying the festivities were Audie Burk, Fila Campbell, Willie Lake, Aurora Martinez, Joyce Noles, Faye Anderson, Bernice Randolph, Mamie Kemp, Maudie Ballenger, Helen Thornburg, and Mrs. Forrest Price as a guest, who became a member before the party was over.

### County Schools Lunch Menu



Rotan lunchroom, January 5-9, 1976.

**Monday:** Barbecued Weiners, Mashed Potatoes, Black eyed Peas, Carrots, Celery Sticks, Hot Rolls, Butter, Glazed Cake, Milk.

**Tuesday:** Country Fried Steak, Gravy, Buttered Corn, New Potatoes, Vegetable Salad, Hot Rolls, Butter, Peaches, Milk.

**Wednesday:** Chicken Spaghetti, Buttered Green Peas, Sliced Tomatoes, Bread, Butter, Fruit Jello, Milk.

**Thursday:** Hamburgers, Pork & Beans, Potato Chips, Orange Juice, Banana Pudding, Milk.

**Friday:** Fish Sticks W/Tartar Sauce, Buttered Potatoes, Seasoned Green Beans, Sliced Tomatoes-Onions, Corn Bread, Butter, Fruit Cobbler, Milk.

### Rotan Varsity Girls Take Jim Ned Loss

The Rotan varsity girls lost to a tough Jim Ned team by the score of 57-30 last Tuesday night. Donna Smith led the team with 18 points, Susie McKinney had 14 - 12 in the first half. Cindy Springer and Kim Copeland also played as forwards.

Guards are Jill Hill, Lisa Summers, Sonya Leverton, Peggy Upshaw, Patti Weathersbee and Dee Ann Weathersbee.

### Thelma Cowan Named To High Honor Roll

Thelma L. Cowan of Rotan has been named to the President's Honor Roll from the Rolling Plains Campus of Texas State Technical Institute in Sweetwater.

State Tech, the state's first technical school, offers several programs in technical-vocational education to provide short-term study and certification for the industrial job market.

**Happy 50th Anniversary**  
Skinny And Dude

## THANK YOU Rotan Area Customers

I TAKE THIS MEANS TO EXPRESS MY THANKS TO EACH OF YOU.

I RECENTLY SOLD THE VILLAGE FLOWER & GIFT SHOP TO MR & MRS DWAYNE UNDERHILL.

I HOPE YOU WILL GIVE THE SAME LOYAL SUPPORT THAT YOU FAVORED ME WITH.

I APPRECIATE THE FRIENDS AND LOYAL CUSTOMERS THAT PATRONIZED MY BUSINESS AND I WISH EACH OF YOU A MERRY CHRISTMAS & HAPPY NEW YEAR.

LOVE ALWAYS,  
RUBY WHITE

### Village Flower & Gift Shop

ROTAN, TEXAS



## Extend Season's Greetings

with a Christmas greeting in The Advance-Star.

With all the busy days ahead, let us help by taking away the chore of mailing Christmas cards this year. We have many greeting from which to choose and your handwritten signature will add the personal touch.

The Christmas edition of the paper will be in the Post Office early Christmas Eve morning. Come in today and select your greeting.

### Newspaper Office

ROTAN 735-2562

ROBY 776-2292

## ON THE GROW To Better Serve You

**DO YOU REQUIRE SECURITY AND RELIABILITY IN YOUR SAVINGS PLAN?**

Savings Accounts Insured to \$40,000.00

Why Settle for Less Than The Best?

Then See Us For A Passbook Savings Certificate Of Deposit and Earn from 5 1/4 percent to 7 3/4 percent

Interest on 5 1/4% Passbook Savings Accounts Paid From Date of Deposit to Date of Withdrawal.

Savings Certificates In by the 10th Earn from the First of the Month.

WE'RE CONTINUING TO GROW WITH—

**\$36,000,000.00**

Plus in Assets

Where Your Savings Interest Is Compounded Daily—Paid Quarterly

|   | Annual Rate | Annual Yield |
|---|-------------|--------------|
| PASSBOOK  | 5.25%       | 5.39%        |
| 90-DAY NOTICE CERTIFICATE \$500.00 MINIMUM  | 5.75%       | 5.92%        |
| 12-Mo. CERTIFICATE \$1,000.00 MINIMUM   | 6.50%       | 6.72%        |
| 30-Mo. CERTIFICATE \$1,000.00 MINIMUM   | 6.75%       | 6.98%        |
| 48-Mo. CERTIFICATE \$1,000.00 MINIMUM   | 7.50%       | 7.79%        |
| 72-Mo. INVESTMENT CERTIFICATE \$1,000.00 MINIMUM DEPOSIT; Automatically Renewable; Compounded Daily and Paid Quarterly. | 7.75%       | 8.06%        |

A substantial interest penalty is required for early withdrawal.



## FIRST FEDERAL SAVINGS AND LOAN ASSOCIATION



Home Office:  
122 W. McHarg,  
P.O. Box 511  
Stamford, Texas 79553

Branch Office:  
#3 Avenue D  
P.O. Box 444  
Haskell, Texas 79521  
Phone 864-3179

Division Office:  
Quannah Federal Savings and Loan  
313 South Main St.  
Quannah, Texas 79252  
J. S. Gilliland, Manager





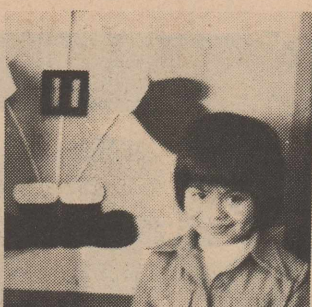
## This Week's Question

### What Is The Real Meaning Of Christmas

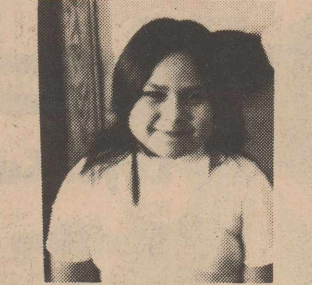
What is the real meaning of Christmas? (Answers from students of Mrs. Robert Witherpoon. The consensus of opinions is that "Christmas is sharing".)



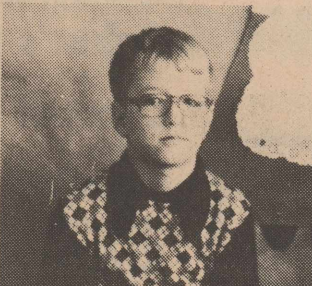
**Brad Long:** Christmas is the way that we celebrate the birthday of Jesus.



**Johnnie Almanza:** Christmas is pretty sights. It is decorating for the enjoyment of everybody, and for all to have fun.



**Penny Yanez:** It is having Christmas parties.



**John Pease:** Christmas is giving presents to people to show that we love them. It is making others happy.

## Spring Classes At WTC Begin January 13th

Registration for spring semester classes at the Rotan extension center of Western Texas College has been scheduled from 6:30-8:30 p.m. on Jan. 13 at Rotan High School. Classes are to begin on January 19.

WTC personnel will be at the high school for registration only on January 13. Late registrants will be required to register on the WTC campus in Snyder.

Students may purchase textbooks from the extension center coordinator, Mrs. Pat Hamric, during the first week of classes. Textbooks not purchased during that week are to be purchased at the campus bookstore.

Veterans benefits, Basic Educational Opportunity Grants (BEOG) and LEEP monies will be available to the extension students during the spring semester. There will be no short term monies for the semester.

Academic courses tentatively scheduled in Rotan are History 132 (U.S. History since 1865), Sociology 231 and Spanish 132 (Conversational Spanish). History is scheduled on Thursday night, Sociology on Wednesday night and Spanish on Tuesday night. All classes meet from 6:30-9:30 p.m.

Registration for other WTC extension courses will follow this schedule: Colorado City, Jan. 13; Post and Haskell, Jan. 14, and Sweetwater, Jan. 15.

Persons wanting further information about extension courses may contact Mrs. Hamric at her office, 735-3041 or at her home, 735-3370, or the office of the registrar at WTC.

Education loans from the Veterans Administration of up to \$600 per academic year are available to GI Bill students who qualify for assistance.

## Roby Board Asks People For Tax Cooperation

The Roby School Board and the Board of Equalization of the Roby I.S.D. reminds property owners and tax payers of the district, that all property is to be

re-evaluated by a local committee of about thirty men. This is being done by a local committee instead of some outside firm, which would cost

tax payers a great deal of money. An outside firm would not know the local property and could not do as good a job as local people.

Roby is entering into this program at this time since they have had several complaints of one piece of property being higher than a comparable piece of property. They are also doing this because some property was not found on the tax roll at all.

## Roby Girls Win Second District Game Of Year

The Roby girls blasted their way to another district win as they crushed Hermleigh by the score of 56-29. Leading the scoring for Roby was Cindy King with 18 points, followed by Cheryl Terry with 14, Penny Anderson 8, Kathy King 6, Penny Coker 5, Cindy Posey 3 and Pam Browning 2 points.

Kim Faught, Tina Horton, Judy Wright and Rhonda Welch

all turned in fine defensive efforts. Other Lionesses seeing action were Lois Ann Cauble, Susan Matthies, Donna Hataway, Silvia Gaona, Kathy Deaton, Vickie Shipp, Belynda Stuart, Linda Williamson and Vivian Dixon.

The Lions are now 2-0 in district play and 12-4 on the season.

The local men doing this job ask your cooperation when they come by your place. The committee will measure your house from the outside, your barns or other outside storehouses. They would like to talk to you about your property so that they may state it correctly on the tax roll.

This committee will begin work in January.

## Inside The Lion's Den

—By Paul Mitchell

We now have an 11 and 1 season record and stand 2 and 0 in district play. We won the Hermleigh Tournament and will play in the Hawley Tournament during the holidays. Thus far we have a 47 percent field goal average as a team and are averaging 70 points per game. We have held our opponents to a 34 points per game average. We are pulling down 48 rebounds a game and averaging 14.2 turnovers a game.

We are led by Jay Jennings in the scoring department as he is averaging 20 points per game. He is followed by Jessie Castor's 16 point average. Castor is the leading field goal shooter with his 56 percent and is followed by Jennings with 55 percent. Jennings is the leading rebounder with 106. Brad Stuart leads us in steals with 18. Steve Evers is our top assist man with 35. Ricky Morton is the top free

throw shooter and is tied with Jessie Castor for the second spot in rebounds.

Thus far we have played good defense and controlled the boards well. We are fighting for position on the boards better this year and giving the opponent the one shot and clearing the boards. We have played most teams with our full court press. Our press is a zone match up man to man pressure type defense. We are causing the opponent to turn the ball over to the tune of 30 per game. The boys are learning and have improved considerably. Our first five players are Jay Jennings, Jessie Castor, Brad Stuart, Ricky Morton and Steve Evers. Ricky King is the sixth man. Monte Pope and Mark Daniel have proven to be good bench strength.

We beat the host team in the finals at the Hermleigh tourney, with a final score of 67-47. Jennings led all scorers with 25 points and was named the most valuable player of the tournament. Jessie Castor was also named to the all tournament

team as he scored 17 points in the final. Brad Stuart averaged 12 points per game in the tourney. Steve Evers averaged 1, and Ricky Morton had a tournament average of 12. We beat Fluvanna 80-34 in the semi-final game.

## Roby Junior High Defeats Hermleigh

The Roby Junior High girls defeated Hermleigh Dec. 15 18-11. Leading the scoring was Jackie Shipp with 8 points, Jill Wright had 6 points and Darlene Herron 4 points.

Strong defensive efforts were turned in by Debbie Stuart, Jan Wright, and Linda Hoodenpye as they held Hermleigh to only 2 points in the second half.

The Cubs are now 2-0 in district action on 5-3 for the season.

## Roby Defeats Hermleigh In District Cage Tilt

The Roby Lions won the championship trophy at the Hermleigh, defeating the Herm-

leigh Cardinals 67-47 to win the championship. Jay Jennings paced the Lions with 25 points

and was followed by Jessie Castor with 17. Jennings was named the most valuable player of the tournament. Jessie Castor was selected as All Tournament also.

Other players scoring for Roby were Brad Stuart 11, Steve Evers 6, Ricky Morton 4, and Ricky King 4.

The Lions defeated Fluvanna 80-34 and Divide 87-19 to gain the finals. The Lion's record now stands at 10 and 1.

People on low sodium diets should read the nutrition information on labels of meats to insure that the products contain no sodium. Cured meat is treated with primarily salt or sugar and then heat processed so these meats should not be eaten on low sodium diets.

## Orange Streaks

By Sid McCown

This past weekend was a little tough on the Hammers, Frank Lopez injured his knee in the Hamlin game and will be out for an indefinite period. Vic Wilkinson added a sprained ankle to go along with his previously injured knee. Tim Allen and Bryan Cave still have swollen ankles. We are trying to survive this week so that we can get some people well over the holidays.

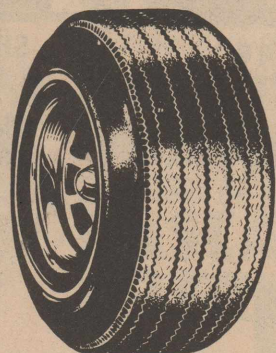
The district loss to Jim Ned was a tough one to take. We did not move the ball well offensively and shot poorly when we did get a shot. Our percentage from the floor for that game was 23. We shot better in the Aspermont tournament, averaging 40 percent for the 3 games.

The team showed a lot of poise and determination in the closing minutes in the first game of the Aspermont tournament against Paducah. The Hammers were down 58-48 with about one and a half minutes to play. Kim Gray scored a bucket just as the buzzer sounded to give the Hammers a 59-58 victory. That was a game that will long be remembered by the boys, myself and the handful of Hammer fans

More than 55 percent of all money spent by the Veterans Administration on procurement in fiscal year 1975 went to small business firms.

### Enroll Now Painting Lessons

Beginners To Advanced Artist  
3 Hour Lessons Begin At  
9:00 A.M.:1:00 P.M. & 4:00 P.M.  
Thursday Night Lesson-5:30 to 8:30  
School Student Lessons From 4:00 to 7:00  
**Marie's Art Studio**  
735-2316 ROTAN, TEXAS



## Need Tires?

Think Of White's Auto

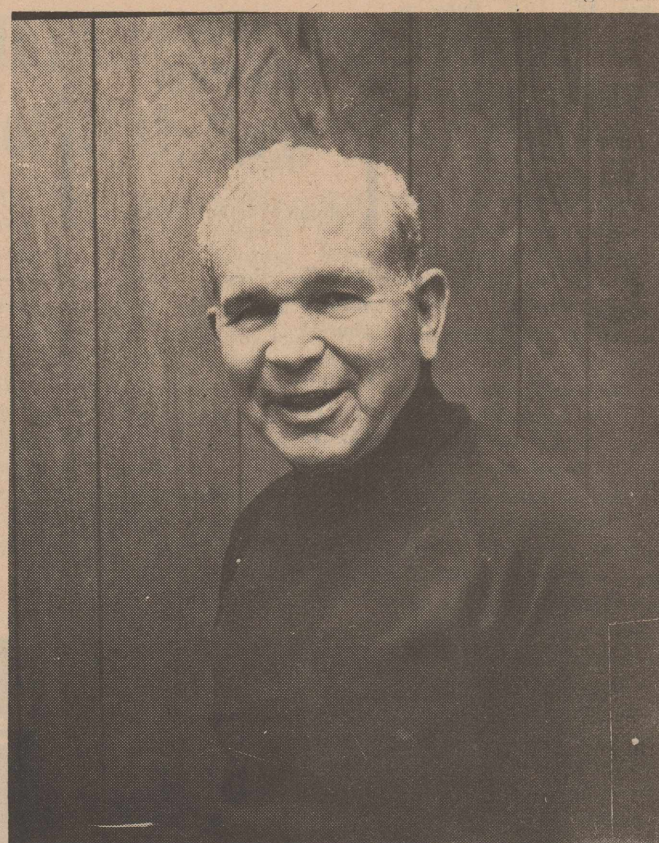
Make Us Your Headquarters For.....  
WASHING MACHINES-DRYERS-SPACE  
HEATERS-TELEVISIONS SPORTING GOODS-  
TOYS-SHOTGUNS-FURNITURE-HOUSEHOLD

ITEMS-CALCULATORS-RADIOS-C.B. RADIOS-AUTOMOBILE ACCESSORIES.

## White's

735-2501

MR & MRS ARVIN WHITE ROTAN, TEXAS  
FERRY DYCUS AND EPIFANIO GASPAR



**LIONS CLUB SPEAKER:** Curley Hays, West Texas Utility Farm and Ranch Advisor, spoke to the Rotan Lions Club last Tuesday. He spent 25 years in the Southwest Conference Football Official's Association and relayed several amusing stories concerning his experiences. He graduated from the University of Tulsa in 1938 and has been with West Texas Utilities since.

**JUST ARRIVED**  
**NEW SHIPMENT OF**  
**Double Knit**  
**Fabric**  
**\$2.50 PER YD.**  
FALL, SPRING OR TRANSITIONAL  
First Quality

**Roby Flower, Fabric & Gift Shop**

P.O. Box A 776-2292  
Roby, Texas 776-2613 Night

## Presenting The MOST SENSATIONAL TIGER IN CAPTIVITY



**PAPER TIGER CHECKING**  
The most ferocious way of paying bills known to man today. An exclusive at the Best of All Possible Banks. And that's no circus talk, folks.

A good bank has more Answers than Questions!

**THE BEST OF ALL POSSIBLE BANKS**

## 1ST NATIONAL BANK OF ROTAN

Member F.D.I.C.-Accounts Insured To \$40,000.00

About one million hospitalized patients and more than 12 million outpatients and more than 12 million outpatients were treated at Veterans Administration facilities last year.



If we can't help you, nobody can.

ROTAN INSURANCE AGENCY  
Peggy Morrow

### Unsafe Toys

No one would purposely buy a toy which could injure the child for whom they play happiness, but thousands of Texans this Christmas may be doing this unknowingly.

If the wrong toy falls into the hands of a child, this toy could produce a serious injury, says the Texas Department of Health Resources. When buying toys this year, think toy safety, advises Dr. Fratis L. Duff, director of the Texas Department of Health Resources.

A few months, or a year or two, in a child's development can make quite a difference in that child's ability to cope with toys. "That's the reason manufacturers are required to place precautionary labeling on toys," says Harold Ray, director of the Department's Division of Product Safety.

"Consumers should look for the warning label on a toy which states that the toy isn't recommended for a child under a certain age," Ray said. "If such a label warns that the toy is too advanced for the child in mind, the purchaser should heed the warning and find one to fit the child."

Ray noted that a testing process has been used in determining the right toy for the right child. During the past year the United States Consumer Product Safety Commission issued final regulations for use and abuse testing of toys. While not banning toys, the regulations provide tests for impact, bite, flexure, torque, tension and compression—all of which simulate normal and reasonably foreseeable use, damage and abuse of toys, games and other articles by children at play. These testing levels were used reflecting the ages of children for whom the toys are intended. These age levels are 18 months and less, over 18 months but not over 36 months, and over 36 months but not over eight years of age.

What can you as an individual do to prevent this mis-match of toy and child?

First, be aware of how the toy is built, says Ray. Toy buyers in the family should reject those with obvious hazards—sharp points, rough or unfinished surfaces; small, detachable parts that may be swallowed; brittle plastic or glass that breaks easily and leaves sharp edges that may cut; poorly constructed toys with sharp spikes or pins that are exposed when the toy is pulled apart by a curious child; toys with triggers, gears, or other parts activated by a spring or motor that may pinch fingers or catch hair.

Most of these types of toys have been eliminated through Consumer Product Safety Commission standards. But, some 5,000 new toys enter the marketplace each year. The holiday season will find more than 150,000 different kinds of toys for sale in an estimated one million retail outlets. Despite the efforts of toy manufacturers, retailers, state and federal inspectors and different governmental agencies, it is impossible to inspect every toy.

It is possible, however, for parents, relatives, friends and older sisters and brothers to check every new toy they buy and every old toy around the house for possible hazards.

There are some specific things you can do in thinking toy safety. These suggestions include:

\*Buy toys that suit the skills and abilities of the child. Avoid toys that are too complex for young people. No small child should be subjected to electrical toys or those which can produce burning temperatures.

\*Look for labels that give age recommendations or safety information such as "Not Recommended for Children Under Three" or "Non-Toxic" on toys likely to end up in little mouths.

\*Watch out for toys that have sharp edges, small parts or sharp points.

\*Avoid toys that produce extremely loud noises that can damage hearing, as well as propelled objects that can injure eyes.

\*Explain to the child how to use toys properly and safely.

\*Always try to supervise young children while they play.

\*Insist that children put their toys away so they do not get broken, and so that no one trips or falls on them.

\*Examine toys periodically. Repair broken toys and discard toys that cannot be fixed.

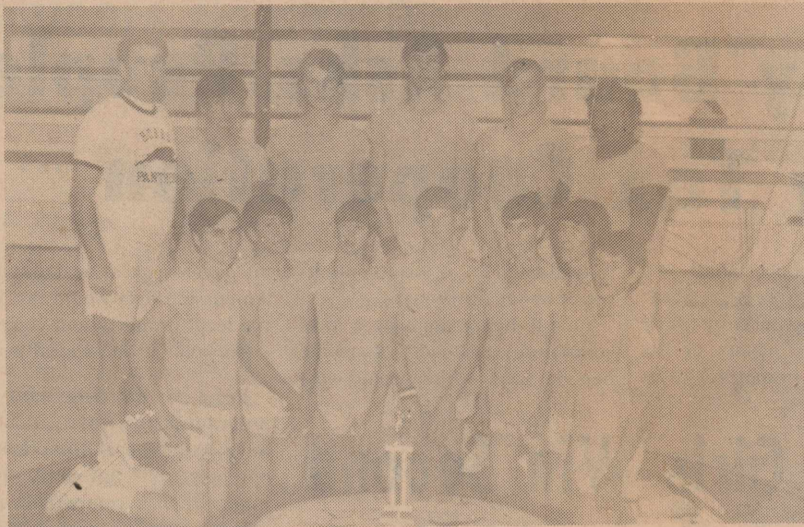
Keep these toy tips in mind before, during and after purchase of toys, says the Department of Health Resources, and you'll feel more confident that the toys you buy will bring nothing but pleasure to their young owners.

### Weather

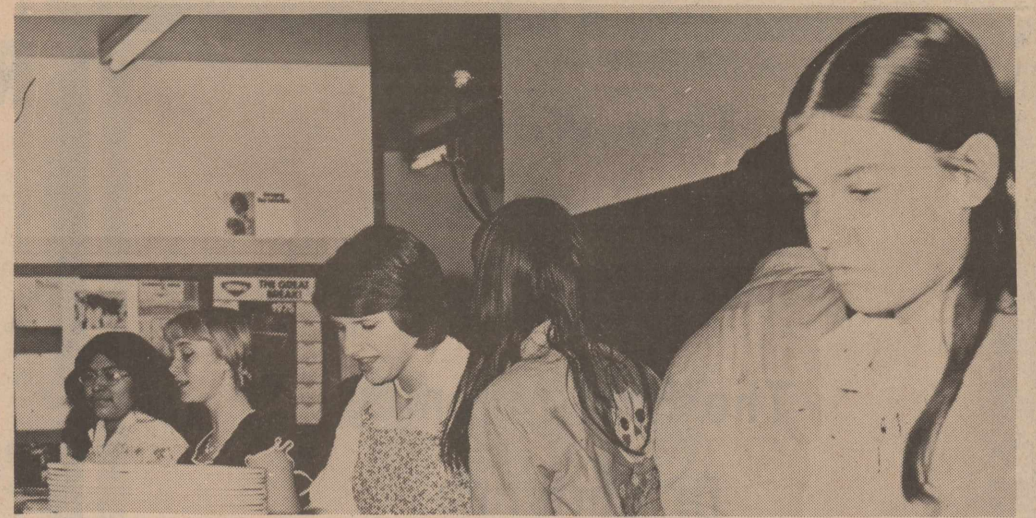
From The Records Of  
FRED BYERLY

Rotan Weather Observer

| Dec. 75                      | Prec. | Hi    | Lo |
|------------------------------|-------|-------|----|
| Wed.10                       |       | 78    | 37 |
| Thur.11                      |       | 76    | 50 |
| Fri.12                       |       | 55    | 35 |
| Sat.13                       |       | 72    | 41 |
| Sun.14                       |       | 78    | 61 |
| Mon.15                       | 47    |       | 26 |
| Tues.16                      |       | 62    | 27 |
| Total precipitation to date: |       |       |    |
| 1974                         |       | 24.62 |    |
| 1975                         |       | 24.14 |    |



HOBBS BOYS BASKETBALL TEAM



MEXICAN FEISTA: Serving left to right, Anita Yanez, Renee Underwood, Myra Adams, Carol Byrd, Floyd Garcia, Carmen Sparks.

# Holiday Fixin's

#### DAIRY & FROZEN FOOD VALUES

|                                |             |        |
|--------------------------------|-------------|--------|
| PHILADELPHIA Cream Cheese      | 8 OZ. PKG.  | 45¢    |
| JOHNSTON'S FROZEN Pumpkin Pies | 32 OZ. CTN. | \$1.19 |
| JOHNSTON'S FROZEN Pie Shells   | 2 PAK PKG.  | 49¢    |

#### HEALTH AND BEAUTY AIDS

|                                 |            |     |
|---------------------------------|------------|-----|
| GILLETTE TRAC II BLADES         | 5 CT. PKG. | 99¢ |
| GILLETTE SUPER STAINLESS BLADES | 5 CT. PKG. | 79¢ |

WE WILL BE  
CLOSED  
DEC. 25-26

#### HOLIDAY BAKING NEEDS

|                                 |                 |     |
|---------------------------------|-----------------|-----|
| BETTY CROCKER Layer Cake Mixes  | 18 OZ. BOX      | 59¢ |
| BOND Stuffing Mix               | 8 OZ. PKG.      | 45¢ |
| VIKTOR HEAVY DUTY Aluminum Foil | 18" X 25' ROLL  | 69¢ |
| CHOCOLATE FLAVOR Baker's Chips  | 12 OZ. PKG.     | 69¢ |
| BAKERS Coconut                  | 1               | 99¢ |
| LIBBY'S Pumpkin                 | 303 CAN         | 29¢ |
| KRAFT MARSHMALLOW Creme         | 7 OZ. JAR       | 39¢ |
| KRAFT MINIATURE Marshmallows    | 10 1/2 OZ. PKG. | 33¢ |
| NONE SUCH Mince Meat            | 9 OZ. JAR       | 59¢ |



SALAD DRESSING  
**MIRACLE WHIP**  
99¢  
QUART JAR



FOLGER'S MOUNTAIN GROWN  
**COFFEE**  
\$1.19  
1 LB. CAN



GELATIN DESSERT  
**JELL-O**  
5 \$1  
3 OZ. BOXES



GANDY'S  
**ICE CREAM**  
89¢  
HALF GALLON CTN.

|                           |           |                               |           |                               |           |                         |           |
|---------------------------|-----------|-------------------------------|-----------|-------------------------------|-----------|-------------------------|-----------|
| FOLGERS 3# CAN Coffee     | \$3.89    | SHURFINE Mandarin Oranges     | 39¢       | SHURFINE 303 CAN New Potatoes | 3 FOR 79¢ | SHURFINE 303 Apricots   | 2 FOR 89¢ |
| SHURFRESH Oleo            | 2 FOR 89¢ | DEL MONTE Whole Beans         | 2 FOR 77¢ | SHURFINE 303 CAN Applesauce   | 3 FOR \$1 | SHURFINE 303 CAN Corn   | 3 FOR \$1 |
| HEINZ 24 OZ Sweet Pickles | 79¢       | SHURFINE 10 OZ Instant Coffee | \$1.99    | ROASTER RACK Aluminum Pans    | \$1.39    | BAMA 2# PEACH Preserves | 98¢       |

5# BAG  
LIMIT ONE  
WITH \$7.50 OR MORE PURCHASE  
**SUGAR 99¢**

Double Gold Bond Stamps  
Mon-Tues-Wed  
December 22-23-24

32 OZ RETURNABLE BOTTLES  
**COCA-COLA SEVEN UP MR PIBB**  
6 FOR \$1.29  
PLUS DEPOSIT

3 OZ  
**Nestea**  
\$1.29

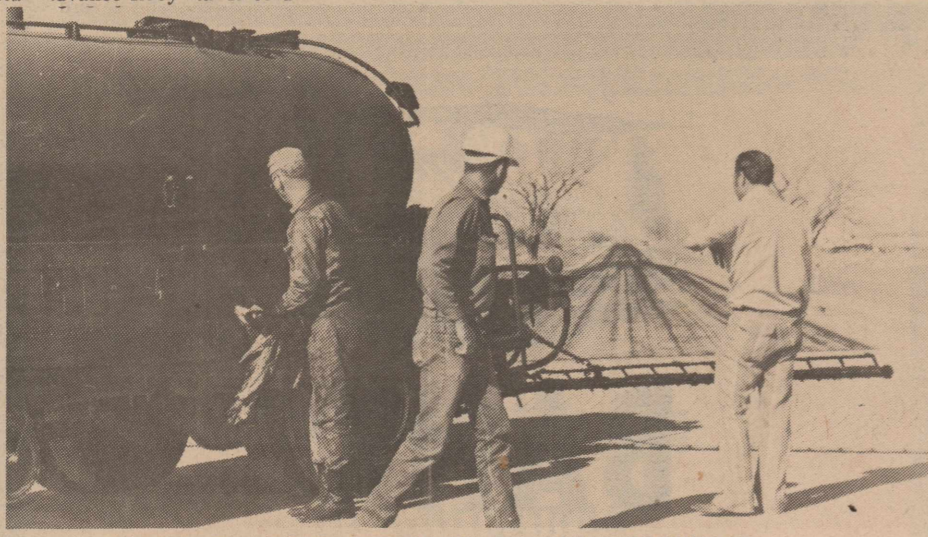
32 OZ RETURNABLE  
**Dr Pepper**  
6 BOTTLE CARTON \$1.29  
PLUS DEPOSIT

FOOD KING 1 1/2#  
**Bread**  
3 FOR \$1

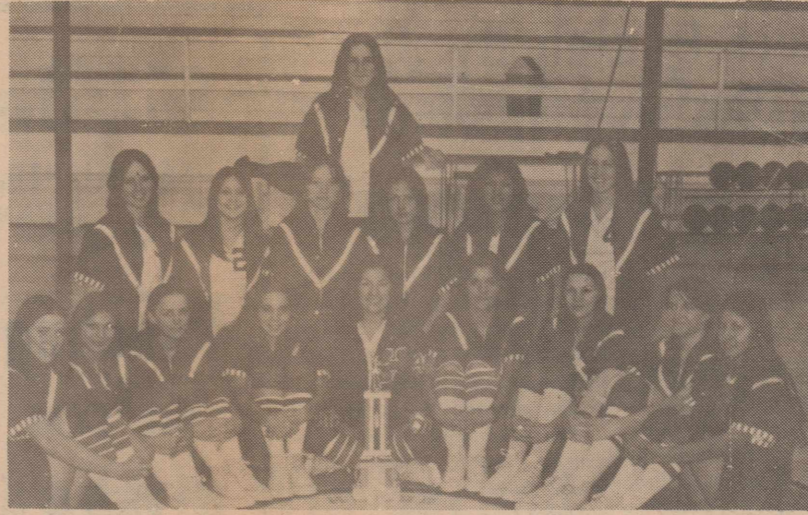
SHURFRESH 1/2 GALLON  
**Buttermilk**  
69¢

BLUE HERITAGE CLEAN UP-ALL PIECES OF THE WEEK ON SALE FOR 49¢. COMPLETE PIECES ARE REG. PRICE. CLEAN UP ON FAMILY CIRCLE DO-IT YOURSELF ENCYCLOPEDIA \$1.79 EACH

A BETTER WAY TO SAVE



ROADHANDS SHOOT ASPHALT ON NEW ROTAN ROBY ROAD



HOBBS GIRLS BASKETBALL TEAM

## Democratic Committee Set Out New Guidelines

The State Democratic Executive Committee has adopted several rules changes governing the delegate selection process for the Presidential year of 1976. A key change was also made in scheduling two day weekend State Conventions, rather than one day, Tuesday Conventions, as has been in the past. These reforms were praised by Mrs. Marguerite Snyder of Baird and Charles Stenholm of Stamford, both members of the State

Democratic Executive Committee from the 30th Senatorial District. "The new Convention schedule," Stenholm explained, "Calls for convening at 6:00 p.m. Friday, transacting opening business, including the electing of a Permanent Convention Chairman; Senatorial District Caucuses would then convene and transact the business that they need to. The District Caucuses will be the final Friday night business."

"Saturday morning, Committee Meetings are to be held, beginning at 8:00 a.m. and lasting until 11:00 a.m. or until they complete their business. At 11:00 a.m. the Full Convention is to re-convene."

In the past, Conventions would start at 11:00 a.m. and break for District Caucuses and Committee Meetings. "Some Senatorial District Delegates would wrangle for 4 or 5 hours," Stenholm said, "Causing all delegates to wait on the Convention floor without being able to accomplish any meaningful business."

Other action taken at the Fort Worth meeting, was the scheduling of Presidential Delegate Selection Committee Meetings, for Saturday, February 14, at 2:00 p.m.

Mrs. Snyder outlined the sequence of action needed to place a person's name on the May Primary Ballot, as a Candidate for Delegate to the Democratic National Convention.

You must request a petition for the office of Secretary of State in Austin to gather enough signatures at the Senatorial District Level to qualify a slate, (three delegates in the 30th Senatorial District,) of delegates for the Primary. The number of signatures needed is 1% of the number of voters who voted in the last Texas Gubernatorial Election.

Ten persons make up a Selection Committee to name the Delegate Candidates from a given Senatorial District. If the slate of delegates is to be committed to a particular Presidential Candidate, that Candidate selects the Committee of ten, which in turn, picks the Delegate Candidate. In the case of an uncommitted slate, persons backing the uncommitted slate, choose their own Selection Committees.

Selection Committees meet at 2:00 p.m. on February 14 to choose the three or four persons whom they will back for delegates. Delegate Candidate's name must be filed with the Secretary of State's office by February 10.

Voters in the Texas Democratic Primary on the first Saturday in May elect 98 of the 130 Delegates the State is allotted to the National Convention. Delegate Candidates need to receive only a plurality to be elected. Mrs. Snyder said anyone desiring to be a Delegate for a given Candidate should write to the members of the Delegate Selection Committee, for that District, when they become known.

Backers of Texas Senator Lloyd Bentsen, who wish to be considered for National Delegates may write to Texas Agricultural Commissioner, John C. White, who is managing Bentsen's Texas Campaign, she said.

Other important action taken by the SDEC included the approval of the Statewide Affirmative action and Voter Participation Program. Purpose of this facet of the Texas Democratic Party is to do all humanly possible to insure fair representation for all Democrats, which particular concern for minorities, native Americans, women and youth. A Voter Familiarization Workshop is tentatively scheduled January 24, 1976, in Graham, for the Statewide Region, which includes Districts 22, 24, and the 30th Senatorial District. Any and all interested persons will be invited to this and other informational meetings which will be scheduled throughout the 30th District to thoroughly encourage the participation of all the people of the District in the political process of our country.

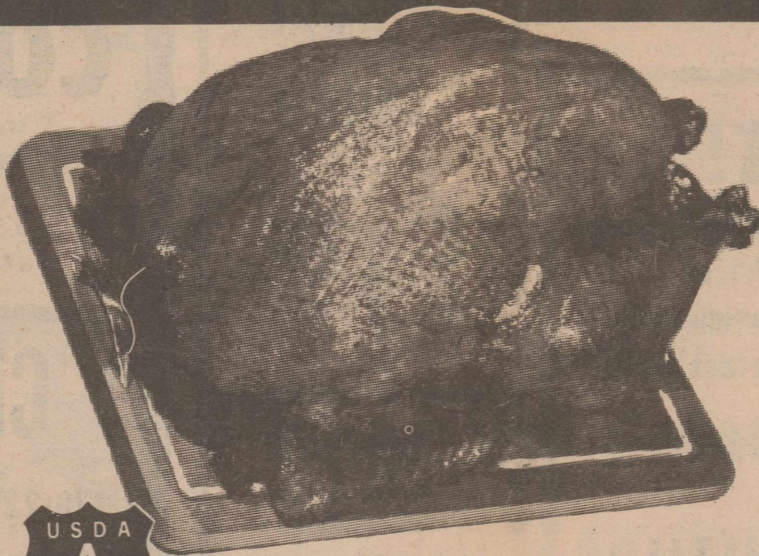
"It is most fitting that this major effort, to get people involved in their government, should take place in 1976, the Bicentennial year of our great country," said Stenholm.

For any information concerning the 1976 Election Process, contact the District 30 Democratic Headquarters in Stamford, Texas, Box 888.

# SHURFRESH TURKEYS

14 LB AND UP  
SELF-BASTING  
BROAD BREASTED  
WITH POP-UP  
TIMER

LB. **59¢**



KAHN-FULLY COOKED-WATER ADDED  
**BONELESS HAM**  
HALF OR WHOLE  
LB. **\$1.89**

PRIME-GRAIN FED BEEF  
**RIB ROAST**  
LB. **\$1.49**

- FULL CUT **Sirloin Steak** ..... LB. **\$1.39**
- CANNED **Shurfresh Ham** ..... 3 LB. CAN **\$5.89**
- SLICED **Slab Bacon** ..... LB. **\$1.39**
- OSCAR MAYER-REG. OR BEEF **Wieners** ..... LB. **\$1.29**
- OSCAR MAYER-REG. BEEF, SQUARE, GARLIC **Bologna** ..... 8 OZ. PKG. **79¢**
- NOT LESS THAN 80% LEAN **Ground Beef** ..... LB. **\$1.09**
- CORNISH **Game Hens** ..... 18 OZ. EACH **\$1.19**

## "December Specials"

**"Special" Steam & Dry Iron**  
DUREVER Cordless is heat resistant, will not fray, crack, or peel in normal use, and has little tendency to tangle or kink. Switches from steam to dry at a push of a button. 25 steam vents for overall steam distribution-better ironing results. Easy Selector Dial-gives selective heat settings for a wide variety of fabrics including Pure-Press. High Cord Lift for right or left hand use-keeps cord out of the way for easy ironing.

**Portable Mixer**  
3 speed motor features fingertip control. Ideal for whipping, stirring, and mixing. Beater ejector for easy beater detachment. "Spin-Clean" handle for comfortable use. Beater clips for ease of storage. Balanced head rest. Available in white only.

**Deluxe Can Opener**  
"Hands Free" operation-positions can press lever, let go-it opens automatically. "Easy Clean" removable cutting assembly. Handy cord storage. Curable Lenses from housing. Magna handle fits from falling in foot. Available in white only.

**\$9.99**  
EACH ONLY

SHURFRESH SELF-BASTING  
**HEN TURKEYS**  
WITH TIMER  
10-14 LB. AVG.  
LB. **69¢**

SHURFRESH QUALITY  
**WHIPPING CREAM**  
HALF PINT **29¢**

IN QUARTERS  
**IMPERIAL MARGARINE**  
1-LB. PKG. **59¢**

GLADIOLA  
**FLOUR**  
5 LB. BAG **69¢**

PURE VEGETABLE SHORTENING  
**CRISCO**  
3 LB. CAN **\$1.49**

TENDER CRUST BROWN 'N SERVE  
**ROLLS**  
3 12 CT. PKGS. **\$1.00**

ONE SIZE FITS ALL  
**PANTY HOSE**  
3 PAIRS FOR **\$1.00**

DEL CERRO  
**PECANS**  
NEW CROP  
8 OZ. PKG. **\$1.19**

SHURFRESH  
**EGG NOG**  
QUART CARTON **69¢**

**THRIFTWAY ALWAYS FRESH PRODUCE**

- 1-LB. CELLO BAG **Ocean Spray Cranberries** **39¢**
- CALIFORNIA NAVELS **Sunkist ORANGES** 5 LBS. **\$1.19**
- CALIFORNIA GREEN **PASCAL CELERY** LB. **25¢**
- FANCY RED DELICIOUS **Apples** 4 LB. **\$1.00**
- CALIFORNIA RED **Emperor Grapes** LB. **39¢**
- HONDURAS **Coconuts** EACH **49¢**
- SWEET **Yellow Onions** LB. **19¢**

**HOLIDAY SAVINGS**

- TINY SWEET **Shurfine Peas** 2 17 OZ. CANS **89¢**
- SUGARY SAM **Cut Yams** NO. 3 SQUAT CAN **49¢**
- SCHILLING'S **Nutmeg** 1 3/8 OZ. CAN **75¢**
- RED MARASCHINO **Shurfine Cherries** 4 OZ. JAR **35¢**
- HOLSUM THROWN MANZ. **Stuffed Olives** 5 OZ. JAR **65¢**
- SHURFINE 40 OZ. **Grape Juice** ..... **98¢**
- FISHER VAC PAK **Mixed Nuts** 13 OZ. CAN **\$1.09**
- YELLOW CLING SLICED OR HALVES **Shurfine Peaches** 29 OZ. CAN **59¢**
- AUNT JEMIMA WHITE OR YELLOW **Corn Meal** 2 LB. PKG. **49¢**
- BLUE PLATE **Whole Oysters** 8 OZ. CAN **69¢**
- KLEENEX **Dinner Napkins** 50 CT. PKG. **39¢**
- SUNSHINE **Hi Ho Crackers** 16 OZ. BOX **59¢**
- KEEBLER **Snack Crackers** 10 OZ. BOX **59¢**

**MORE HOLIDAY SAVINGS**

- CAMPBELLS CREAM OR MUSHROOM **Soup** 4 NO. 1 CANS **89¢**
- MR. COFFEE **Coffee Filters** 50 CT. PKG. **49¢**
- SHURFINE 303 CAN **Red Cherries** For **89¢**
- SHURFINE STEMS AND PIECES **Mushrooms** 4 OZ. CAN **44¢**

OCEAN SPRAY WHOLE OR JELLIED  
**Cranberry Sauce**  
3 300 CANS **\$1.00**

GANDY'S QT  
**Egg Nog** **79¢**

# THRIFTWAY

SPECIALS GOOD  
DECEMBER  
18-24  
1975

PEARS FOR HEALTH  
Galen, the celebrated Greek physician, was convinced that pears had therapeutic value.

**Public Notice**

Notice of Proposed Abandonment.

Notice is hereby given that the Interstate Commerce Commission is being requested to issue a certificate of public convenience and necessity permitting abandonment of the line of railroad by the Fort Worth and Denver Railway Company between milepost 2.25 west of Stamford, Texas to milepost 42.43 near Rotan, Texas, a distance of 40.18 miles, located in Fisher and Jones Counties, Texas.

The interest of the employees will be protected by "Burlington Conditions" (Chicago, B&Q R. Co. Abandonment, 247, I.C.C. 7700).

Reasons For Proposed Abandonment. The Fort Worth and Denver Railway Company is seeking abandonment of its line between Stamford and Rotan, Texas, because existing rail traffic on the segment of line can no longer support continued operations and maintenance requirements.

The name and address of applicant's representative to whom inquiries may be made is Richard M. Gleason, Attorney, 176 East Fifth Street, St. Paul, Minnesota 55101.

The Interstate Commerce Commission will rule on this application without hearing unless protests are received which contain information indicating a need for such hearing. In accordance with the Commission's regulations (49 C.F.R. 1100.250) in Ex Parte No. 55 (Sub-No. 4), Implementation-National Environmental Policy Act, 1969, 340 I.C.C. 431 (1972), and protests may include a statement indicating the presence or

absence of any effect of the requested Commission action on the quality of the human environment. If any such effect is alleged to be present, the statement shall include information relating to the relevant factors set forth in Ex Parte No. 55 (Sub-No. 4), Supra, Part B (1)-(5), 340 I.C.C. 431, 461.

In the opinion of the applicant, granting the authority sought in this application will not constitute a major Federal action having a significant effect upon the quality of the human environment.

Any protests referring to this notice (AB-119) shall be filed with the Interstate Commerce Commission, Washington, D.C., 20423, not later than January 27, 1976.

The Fort Worth and Denver Railway Company. 45-3tc

**NOTICE TO BIDDERS**

Fisher County Commissioner's Court will accept bids on a car for the Fisher County Sheriff's Dept. on January 12, 1976 at 10:00 a.m. A 1974 Ford Galaxie 4 dr. trade-in. Contact the Sheriff's Dept. for information on trade-in. Ford LTD, Impala Chev., 4 dr. Sed., factory air conditioner, power steering and brakes, tinted glass, white sidewall tires, fresh air heater, automatic transmission, radio, remove mirror, 8 cylinder motor at least 351 cu. in., custom seat belts, color keyed floor mats, body side mldg., wheel opening mldg., wheel covers, electric clock, bumper guards, two tone paint, map light.

Please submit bids on or before this date and time. Any and all bids may be accepted or rejected. 44-2tc

**Hammers Beaten By Jim Ned In District Opener**

The Rotan boys basketball team lost their district opener Dec. 9 by the score of 35-30. The

**ROBY JR. HIGH TAKES VICTORY**

The Roby Junior High girls rolled up another victory Dec. 9 as they defeated the Fluvanna girls 26-6. Scoring for Roby were Jill Wright with 6 points, Paige Farrar 6, Leslie Carey 6, Darlene Herron 4, Kim Sweden 2, and Mary Helen Garcia 2 points.

Tammy Stephens, Connie Williamson, Mary Barrington, Cindy Morgeson and Sue Toole all turned in fine defensive efforts. The Jr. High girls are now 1-0 in district and 4-3 on the season.

Hammers were ahead at halftime 19-16 but fell behind by the start of the fourth quarter by 30-28. Frank Lopez led the team with 15 points, Kim Gray had 9 and James Stanberry had 6. Tim Allen, James Goodwin and Vic Wilkerson also played at the forward position.

Other team members are John Arnett, Bryan Cave, Burt Weathersbee and Dwain Roberts.

\*\*\*\* To prevent candles from smoking and to make them last longer, coat with soapsuds by rilling them between well-lathered hands—but don't touch the wicks. Let them dry before lighting.

**CARPET!**  
We Have A Good Supply Of Fine Quality Carpet At Reasonable Prices  
Professional Carpet Installers  
Offer Guaranteed Satisfaction

SEE US FOR ALL YOUR CARPET NEEDS

**LANDES FURNITURE**  
ROTAN, TEXAS

**MEDIUM MAHOGONY PRE-FINISHED 4'x8'**

**Paneling REG. \$4.85 \$3<sup>85</sup>**

**Binder Twine \$4<sup>25</sup> ROLL**

**Rockwell Bros. & Co. "Lumbermen"**  
735-2431  
Rotan, Texas



**BANK THE CONVENIENT WAY FROM YOUR CAR**

**Citizens State Bank**  
MEMBER F.D.I.C.  
776-2261  
ROBY, TEXAS  
ACCOUNTS INSURED TO \$40,000

**For Quick Results... CLASSIFIED ADS**

Classified Advertising cost is 5¢ per word, \$1.00 minimum. Cards of Thanks are \$1.00 minimum up to 40 words, 5¢ word thereafter. Name, not phone number, must be given on all charge classified advertising and full payment is due upon publication of advertising.

**Farm & Ranch Loans**

Through The FEDERAL LAND BANK ASSOCIATION OF ROBY

E.J. Richardson, Jr. Manager  
915-776-2321

**Litronix Calculators**

Three Models In Stock From \$29.95

Unconditionally Guaranteed For One Full Year

**Newspaper Office**  
735-2562

**FOR SALE:** 1968 Olds Cutlass, clean and good. Phone 735-2808. Rotan. 37-tfc

**HANDMADE SADDLES:** saddle repair, belts, other leather work. Gary West, 235-5583 Sweetwater, after 4 p.m. 41-8tp

**FOR SALE:** 3 bedroom house, paneled, carport, dishwasher, utility room, chain link fence. See at 923 E. 5th St., 735-3340, James Carter, Rotan. 36-tfc

**SEWING MACHINE:** Sales and service. Also Electrolux Vacuum Cleaners. See or call H. Stevens, 1101 James Street, Sweetwater, call 235-2889. 12-tfc

**FOR SALE:** 4x7 ft. pool table. Call 735-3563 or 735-3034. 45-tfc

**GARAGE SALE:** of junk, antiques and jewels. Friday and Saturday, 509 Garfield. 45-1tp

**FOR SALE:** 26 inch 10 speed bicycle with speedometer, excellent condition, \$60.00. Also, 9 H.P. Cushman Eagle motor scooter, make offer. Call 735-2912. 45-2tc

**FOR SALE:** 3 bedroom carpeted house in Roby. Call collect 817-639-2239. 11-tfc

**YARD SALE:** 705 E. McArthur all day Friday. 45-1tc

**FOR SALE:** Alfalfa hay. Carl Singley 735-2992. 14-tfc

**NOTICE:** Rely/On Caulking Compound now at Rockwell Bros.

**FOR SALE:** Wheat seed, call 735-2042. 32-tfc

**HAND MADE GIFTS:** Vera's Gift Shop. Open 9 to 11 a.m. and 1 to 5 p.m. 908 E. 8th St. Rotan. 49-tfc

**CHRISTMAS GIFT:** If you're looking for a special gift for someone special, think of a Cross Pen, personally engraved with initials at no-charge. Available from the Newspaper Office, 776-2292 or 735-2562. 43-3tp

**MATTRESSES:** New and renovated. Choice color, firmness and size. Save on renovating. Guaranteed. Made by Western Mattress Co. Call 735-3421, J&J Supply, Rotan. In Roby call 776-9211, leave name. 41-tfc

**Drs. Blum AND Nesbitt OPTOMETRISTS**

1825 25th Street, Snyder, Texas  
Phone 573-3992

OFFICE CLOSURE  
NOON WED. & SAT.

**Gary's Automotive**

Now An Official State Inspection Station

776-2655  
Hwy 180 West  
Gary Terry-Owner  
Roby, Texas

**ATTENTION HUNTERS AND TRAPPERS**

Fur buyer will be in Rotan at the Trails End Restaurant each Sunday from 8:15 a.m. till 8:45 a.m. beginning December 7. We buy green and dry furs of all kinds. Skin case all furs, (like opossums), not open up the middle. We also buy deer hides. Well handled furs bring top prices.

Northwestern Fur Co. Colorado City, Texas

**HOUSE FOR SALE:** in the country, 5 miles east of Rotan. 2 bedroom, carpet, paneled, utility room, good water well, one acre land. Call Loretta Daniel, 735-3219. 44-tfc

**NEED PUBLICITY?** Get your message on the Rotan Jaycee Community Bulletin Board, call 735-2242 or 735-3218. 14-tfc

**HELP WANTED:** at Blue Haven Motel in Roby. Prefer woman or high school girl living in or near Roby. Apply in person at Blue Haven Motel. 45-tfc

**THE ROTAN ADVANCE-ROBY STAR RECORD** published each Thursday except last Thursday in the year by Kim Pease, Editor and Publisher; Janece Pease, Associate Editor, 113 E. Snyder Avenue, Rotan, Texas 79546.

Second class postage paid at Rotan, Texas 79546. Subscription rates by mail: In Fisher County, \$6.50; in Jones, Scurry, Kent, Stonewall and Nolan Counties, \$6.50; in other Texas Counties, \$7.50; Continental United States \$8.50; Outside Continental U.S., APO-FPO \$9.50 yearly.

**FOR SALE:** Old desk in good condition. Call 735-2487. 40-tfc

**FOR SALE:** 1972 Buick LeSaber sedan. Call Jo Tankersley, 735-2471 or 735-3382. 43-tfc

**HOUSE AND FARM TO RENT:** 3 miles east and 4 miles north of Rotan. Mrs. P.R. Eaton, 509 N. Garfield, Rotan, Texas. 45-3tp

**FOR SALE:** Baby bed and chest, good condition, \$50.00. Call 735-3301 after 5 p.m. 45-1tc

**FOR SALE:** 3 bedroom house, call 735-2984. 45-tfc

**ATTENTION:** Backhoe, ditch digging, installation of PVC pipe. We have the equipment and knowhow. Call Ivin Martin 776-2723 nights only. 25-tfc

**EXPERT TV Service** available on Tuesday and Friday. No mileage charge, just call Home Lumber in Rotan or Roby Hardware in Roby for appointment. 40-tfc

**FOR SALE:** 3 geese, \$15.00 for all three. Also, Rat Terrier puppy to give away. Contact Jack Terry or call R.D. Terry 776-2645, Roby. 45-1tc

**SINGER-BROTHER:** New home sewing machines. Approved Singer Dealer, 1912 East Broadway, Sweetwater, 235-9791 Paul Stevens. 45-tfc

**FOR SALE:** 3 bedroom home at 910 E. 5th St. Call 735-2026 or 735-2843. 38-tfc

**MONUMENTS AND CEMETERY CURBING:** J.B. Smith, 308 E. 4th St. Rotan, call 735-3290. 22-tfc

**WANTED:** Your Butane and Propane Business. Phone 735-3378. Ned's Fuel Service, Rotan. 17-tfc

**FOR SALE HONDA 350 C.L.**

Adult Rider Only

4000 Miles - New Condition \$725.00

JOHN GRAY  
915-735-2381

**Pictures Available**

Any Photo Taken By Kim Pease

Copies Can Be Ordered

5 x 7.....\$1.50  
8 x 10.....\$2.50

**Newspaper Office**  
735-2562/776-2292  
Rotan - Roby

The O.E.S. meets each **Second Tuesday**

**At 7:30 In The Hall**

Jane Phillips - W.M.  
Gene Wallace - W.P.  
Bettie Hargrove - Secretary  
Visitors Welcome

**Wedding Invitations**

Large Selection MANY STYLES

Also

- Wedding Books
- Printed Napkins
- Cake Knives
- Photo Books
- Brides Books

735-2562/776-2292  
Rotan - Roby

**Job Printing**

ENVELOPES TICKETS  
FORMS TIME CARDS  
LETTERHEADS NOTICES  
CIRCULARS INVITATIONS

**Newspaper Office**  
735-2562/776-2292  
Rotan - Roby

**FOR SALE**

Located at 6th and Tyler, six room house, asbestos siding, completely re-finished. Call Juston Morrow 735-3254. 51tfc

**PORTABLE WELDING**

CALL 776-9215  
DAY OR NIGHT  
C.A. BRADFORD

**Office Supplies**

- Ledger Sheets
- Filing Cabinets
- Calculators
- Cross Pens
- Bibles
- Address Labels
- File Baskets

AND MUCH MORE

**Newspaper Office**  
735-2562/776-2292  
Rotan - Roby

**FOR THOSE DEPENDABLE Hoover Vacuums**

IT BEATS AS IT SWEEPS AS IT CLEANS. Full Line at reasonable prices. Also vacuum bags for all brand and models.

**LANDES FURNITURE**  
113 N. Garfield Rotan

**Picture Frames**

We'll help you select just the right color and style frame for your favorite picture. We have a large selection of frames. We also have non-glare glass to accent your favorite photo. Your satisfaction is guaranteed when you visit

**Landes Furniture**  
for Picture Frames, 735-3171

**BUSINESS OPPORTUNITY**

**FOR SALE:** 3 Lots, 150x83 ft. on highway 180 and College in Roby. One block from city square, commercial property, has house and several old buildings on lot. Call 915-694-0430, or write Dave R. Weeks, 4603 Leisure, Mildand, Texas 79701. 9-tfc

**Job Printing**

ENVELOPES TICKETS  
FORMS TIME CARDS  
LETTERHEADS NOTICES  
CIRCULARS INVITATIONS

**Newspaper Office**  
735-2562/776-2292  
Rotan - Roby

**Rubber Stamps**

MADE TO ORDER  
72 Hour Delivery  
735-2562

**City Auto Supply**

Full Line Of Auto Parts & Accessories  
8 Track Tapes, Tools, Batteries, Oil.

735-2242  
Rodney Tankersley, Owner  
W Snyder Rotan

**Texas Farmers Union**

"FARMER POWER" With Farmers Union  
SUPPORT THE Farmers Union

Get Into The Fight For Parity