

Rotan Motor Co. To Show New Fords Friday

The 1966 Fords will be on display at the local dealer, Rotan Motor Co., Friday.

Dramatic fresh styling—including a new 2-door hardtop roof-line—a new "7 Litre" series with 428 cubic inch V8 engine, and front-wheel power disc brakes, and even higher standards of quietness, luxury and performance stand out among 1966 Ford features.

"The Ford was all new just a year ago," said M. S. McLaughlin, Ford Division assistant general manager. "It represented the greatest tooling investment in Division history and was superior in ride and quietness to some of the world's finest cars."

"In every sense we had a sound competitive base for 1966 but we chose not to stand still. On that solid foundation we have built still more safety, convenience, quietness and performance into all 1966 Fords."

Important revisions have been made in the revolutionary Ford suspension design introduced in 1965 to provide an even quieter ride and better handling in 1966. Front spring and shock absorber rates have been modified, and the rear suspension track bar has been lowered to achieve a better "balanced" ride. This fine tuning of the 1966 Ford suspension provides a better handling feel with reduced pitch and improved straight-line stability.

The number of engines available to Ford buyers has been increased to nine in 1966 from six in 1965.

Heading the list of new engine choices is a 428 cubic inch V8 with hydraulic valve lifters. This engine is standard on the new 7 Litre series, and is optional on all other Ford models. It is unique in offering the best of two worlds—outstanding performance combined with smoothness, quietness and low-speed tractability.

Another advantage is that the new 428 can be ordered with automatic transmission, power steering, power brakes, air conditioning and limited-slip differential — options not available with the extra high-performance 427 engine.

A special handling package similar to that standard with the 427 engine—including heavy duty shock absorbers, springs and stabilizer bar—is optional for 428 powered cars.

Front wheel power disc brakes are another standard feature of the 7 Litre series. They may be ordered on all other Fords for 1966. Disc brakes were pioneered on the Thunderbird and Mustang in 1965.

Advantages include optimum fade resistance, quieter operation, easier serviceability, self-adjustment, and lining life equal to or better than regular brakes.

A Stereosonic tape player that provides up to 80 minutes of selected stereo music is another option new for Ford buyers in 1966. The tape player mounts underneath the dash.

Ford pioneering in station wagon design also continues in 1966.

The dual center facing rear seat and built in rear window air deflector introduced last year has been added to new standard equipment dual action tailgate. The dual tailgate may be opened either as a conventional tailgate for cranking loads, or as a door to permit easy access to the cargo area or the dual center facing rear seat.

Introduction of the all new Ford Galaxie 500 7 Litre series with convertible and 2 door hardtop models expands the 1966 Ford lineup to models in nine series from 17 models in eight series.

New safety features standard on all 1966 Fords include outside rear view mirror, backup lights, padded dash and visors, rear seat belt windshield washers and emergency flashers. New Fords also feature a thicker laminate windshield which has been shown to provide additional protection in the event of a collision.

The skillful blending of crisp and soft surfaces gives the 1966 Ford a look that is new but still clean Ford.

The new silhouette includes subtle, graceful hop-up in the rear quarter area—complemented by divergent sculptured line in the lower rear quarter, reminiscent of 1965 Thunderbird. A sculptured windsplit runs from the front fender to the rear quarter.

Wheelcovers with deep sections lend emphasis to the lower portion of the car. Upper-series Fords draw even more attention to this area through use of wheel lip moldings and ribbed moldings on the rocker panels and lower quarter panels.

A unique die cast grille for the XL, LTD, 7 Litre and Country Squire models brings a new look

The Rotan Advance

Thursday, Sept. 30, 1965 No. 35

of quality to the popular-priced car market.

The grille consists of dual horizontal banks of deep sectioned blades, well recessed behind the bright frames that separately encase the upper and lower grille sections. The outboard ends of each grille section incorporate parking-turn indicator lamps, stacked to coordinate with the vertical headlamp treatment.

The 7 Litre model is further distinguished by special paint stripes, performance-oriented steel wheelcovers and 7 Litre ornamentation on the grille, deck lid and front fenders. The paint stripes follow the sculpturing of the bodysides, enhancing the look of movement.

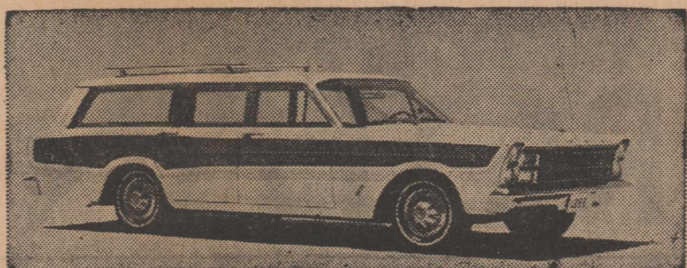
Massive rectangular taillights create a strong new rear end identification. The car has a broader-looking stance, with the fender tops pulled down slightly to match the top of the broad deck lid. Series differentiation is accomplished with deck lid appliques and model insignia.

Door and seat trim designs are new for all series. Among other significant interior changes is the embossed strap application in the all-vinyl Galaxie 500 trim option.

Heading the list of new engine choices is a 428-CID four-barrel V8 with hydraulic valve lifters. A second new engine optional on all 1966 Fords except the 7 Litre is the regular-fuel 390-CID two-barrel V-8. Other optional engines include

the 352-CID four-barrel V8, the 289 two-barrel V8 with three-speed 390-CID four-barrel V8, the 427 Cruise-O-Matic transmission is retained as standard on the Ford Galaxie 500-XL and Ford LTD series interceptor.

The seven main bearing 240 CID Mr. and Mrs. Ed Darden visit Six introduced new in 1965 is retained in Fort Worth over the weekend with their daughter, Jo Darden, a Custom, Custom 500, Galaxie 500 son, Mr. and Mrs. Cecil Darden and all station wagon models. The family.

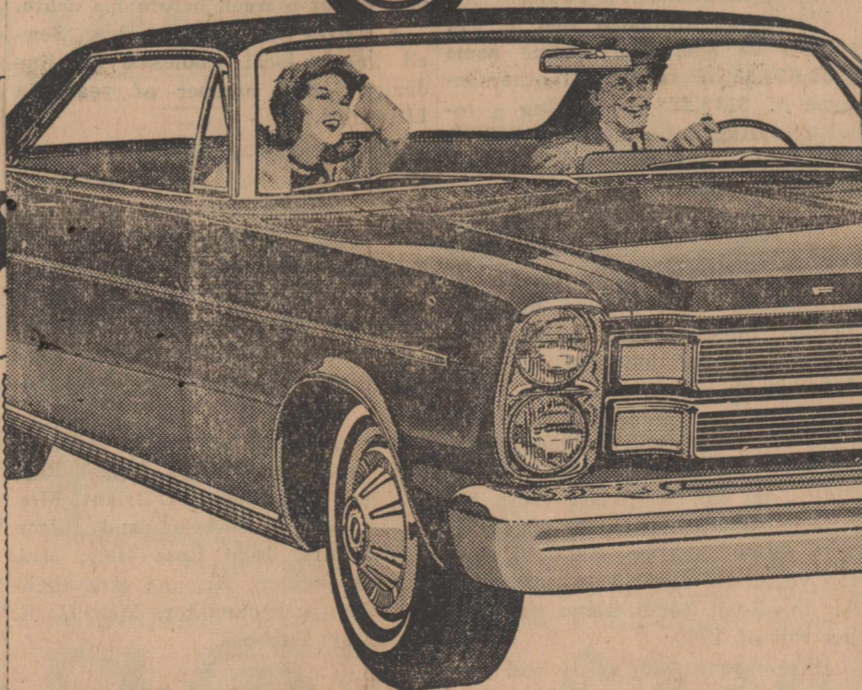
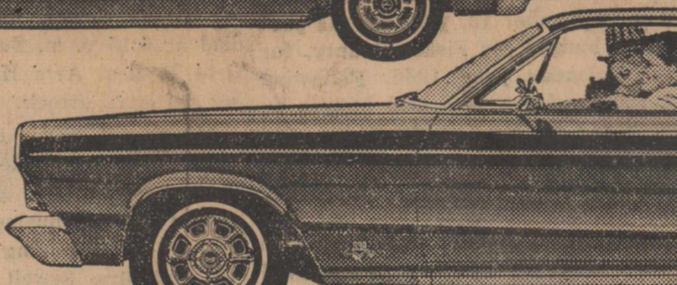


There are two ways to get into the rear of every 1966 Ford station wagon — over the tailgate or through the door. Ford's latest station wagon innovation is a dual-action tailgate. Open it with the center latch, left, and it's a tailgate. Open it with the handle, right, and it's a door. Illustrated on the 1966 Ford Country Squire Wagon, top, the new feature is standard on all Ford and Fairlane station wagons and is optional on Falcon wagons. The door feature permits easy passenger entry and provides ready access to a lockable storage compartment, while the tailgate is available for hauling or loading cargo. Earlier innovations which pushed Ford to station wagon sales leadership in 1965 — dual center-facing rear seats and built-in rear window air deflectors — are retained for 1966. All 1966 Fords will be in Ford dealer showrooms October 1.

ANNOUNCING THE '66 FORDS: new quiet, ultra-luxurious LTD's 7-Litre models with 428-cu.in. V-8. FAIRLANES: new GT's, convertibles. FALCONS: new flair. MUSTANGS: more fun-filled than ever. stereo tape player option...to a new Mac (swings out for people and down for cargo)



7 New Falcons



enex

ality EATS

POUND

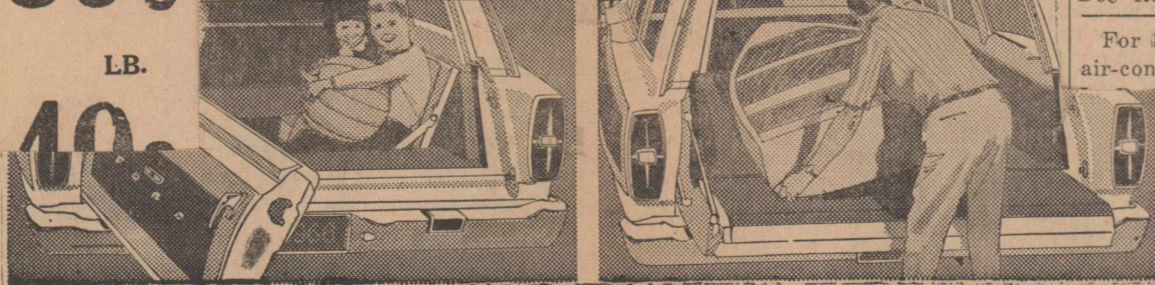
79c

POUND

hops 59c

LB.

7c



Drive them! The '66s Ford Dealer's: 19 new one of the world's quietest rides. Tape Player option—provides of music. New station wagon swings out for people and down for 8 power up to 428 cu. in. New performance series. Seven new Magic Doorgate swings out for people and down for cargo. Standard on Ford, Fairlane; low-cost option on Mustang.

Standard Safety Package features (on cars from Ford) including emergency system. 13 new Fairlanes—new look, luxury. New convertibles, wagon GT's and GT/A's. GT/A's have new "Sport" Cruise-O-Matic—it's automatic or manual. Falcons—now America's Economy Car.

TAKE YOUR CHOICE OF THESE FAMOUS ROBT. WOOD PAINTINGS

on actual canvas for only \$100



Just for looking at GOLD BOND® FASHION GRAIN Luxurious Wall Paneling

The lustrous beauty of these big 4-foot-wide panels is the match of luxurious wood paneling—even to their indented, random-spaced grooving. Yet so inexpensive, you can panel a room for less than 12¢ per sq. ft.

HICKS LUMBER COMPANY

For Sale Our home at 312 East Burnside, phone WI 7-2540, W. B. Tillotson. 29-tf

For Sale, 1 Case tractor, tool bar, planter and cultivator, 3-disc breaking plow, 11 ft. tandem, Case Stripper, all in good condition, J. D. Gartman, Premier Station, WI 7-8017. 34-tf

Worms and Sure Catch -- Joe Ogle. 28-tf

For Sale, 12 or 1300 red clay tile and doors and used lumber, see A. H. Hudnall, phone 7-2305, 33-4t

For Sale, our equity in '64 Rambler free, Bill Bacot, phone 7-2426. 31-3t

Lose weight safely with Dex-A-Tablets. Only 98¢ at Ragsdale Drug. 16-tf

For Sale, or Rent, 2 bedroom house, car port, on paved corner lot, C. A. Daniel, phone WI 7-3288. 16-tf

For Sale, table and chairs, Frigidaire electric cook stove, Early American couch and chair, Snow Breeze Air Conditioner, this is practically new, only used 6 weeks, bargain. Also used refrigerator. George Moore. 35-tf

Monuments and cemetery curbing, 308 4th, phone WI 7-3290, J. B. Smith. 41-tf

Quarter Horses for sale, broke and unbroke, reasonably priced. Six miles northwest Camp Springs, phone HI 3-7807, Snyder, Truett Simmons. 29-3t

For Sale 6 room house on paved street, Ladye Grindstaff, Administrator of H. F. Grindstaff Estate. 33-tf

For Sale, house and acreage, 3 bedrooms, living room, dining room, kitchen, den with fireplace and 2 bathrooms, utility room, basement, car garage and two acres land, contact Jo Rowland, home WI 7-3382, office WI 7-2471 or Jim O'Brian, WI 7-2920. 28-tf

For Sale, Good Camp Trailer just right for hunters, bargain, Dee Reese. 35-tf

For Sale or trade, quarter section of land, 18 miles SW Rotan, Phone WI 7-2305. 20 4t

Get your Hunting and Fishing License at White Auto Store. 52-tf

YOU are invited to listen to the Primitive Baptist Program each Sunday Morning, 7:30 to 8:00 over KDWT, Stamford, 1400 on your dial. 17-tf

For Sale. Used Refrigerator Ranges and Washing Machines Home Lumber Company.

House of Lamps, 3542 No. 6th, Abilene has large stock decorative Lamps and Shades. Bring old lamps for repairs and select shade. 13-4t

For Sale, Seed Oats, \$1.35 bush, Dee Reese. 35-tf

For Sale, '62 Ford Galaxie, 6 cyl, air-conditioner, low mileage. Con-

FORD!
Performance
XL's,
champ.
a new
wagons

Mustangs

13 New Fairlanes

New Fords

PRODUCTS OF



most spacious Falcon
ix. 3 new Mustangs—
America's Favorite Fun
er option, new 5-dial
u. in. Six, bucket seats,
ng—all standard. Come

ic's
Performance Cars

FORD

MUSTANG • FALCON • FAIRLANE • FORD • THUNDERBIRD

ROTAN MOTOR COMPANY

ROTAN, TEXAS

--The Glicker--

Sharon Puryear, Rebekah Crawford, Mike Thornton, Raford Hargrove, Eddie Edwards, Don Sexton, John Burnes, Randy Hughes.

Three Kathys Chosen As Jr. Hi Twirlers

Two twirlers and a drum major have been selected to lead the Junior High Band this year. The twirlers are Kathy Cave, an eighth grader, and Kathy Sencil, a seventh grader. The drum major, from the seventh grade, is Kathy Murphree. The try-outs were Thursday, September 23.

Eleven girls tried for majorette, and two girls tried for drum major. All had to do fundamental twirls, and the drum majors had to give whistle commands and direct 2-4 time.

The judge, Roark Barnes, said that the decision was difficult.

—Sharron Puryear.

McCasland Wins Sr. High Art Contest

Rotan was represented in the annual West Texas Fair by Chris McCasland in the art department. His painting, "Cathedral in Quebec," won first place in the Senior High Division. The painting was done in an "under painting technique," and its colors were yellow and green.

The "Cathedral in Quebec" was the last painting Chris had done in his art class in Abilene, and this was the first year this painting had been entered in the Fair.

The painting was enclosed in a brown wooden frame, which was handmade by Chris.

—Mike Thornton.

Three New Teachers In Rotan Primary

Rotan Primary faculty has three new teachers this year. They are Miss Verna Mae Pittman, Mrs. Faith Absher, and Mr. Walter Miers. Miss Pittman made her home in Mae, Texas, before moving to Rotan. She got her B. S. degree from Howard Payne College. This is her first teaching experience and she teaches second grade.

Mrs. Absher came to Rotan from Hamlin, Texas. She obtained her B. S. degree from Hardin-Simmons University. This is her first teaching experience and she teaches special group first grade.

Mr. Miers is a resident of the Hobbs community. He got his degree from Texas A&M University. Mr. Miers took special work at Hardin-Simmons during the past summer and is taking it at this time. He teaches third grade and boys P. E.

—Rebekah Crawford.

Yellowhammer Band Placed in New Region

The Rotan Yellowhammer Band has been placed in a new region this year. This region contains such cities as Wichita Falls and Ft. Worth.

Regional band contest will be held on December 11 in Jacksboro. Those that qualify for regional band will go to Hurst on January seventh and eighth where they will work under some well known men in the field of band. A regional band concert will be presented after the band clinic at Hurst.

—Rebekah Crawford.

65-66 School Schedule

Sept. 30—Freshmen vs. Munday, there.
Oct. 1—High School vs. Merkel.
Oct. 5—Junior High vs. Roby, here.
Oct. 8—High School vs. Roby, there.
Oct. 12—Aspermont vs. Junior High, here.
Oct. 14—Freshmen vs. Munday, here at 7:00 p. m.
Oct. 15—Aspermont vs. High School, here.
Oct. 19—Roscoe vs. Junior High, there.
Oct. 21—Spur vs. Freshmen, here.
Oct. 22—Wylie vs. High School, here.
Oct. 28—P. T. A. meeting, 7:30 p. m.
Oct. 29—Coahoma vs. High School, there.
Nov. 5—High School vs. Roscoe, there.
Nov. 11—Freshmen vs. Anson, there at 5:30.
Nov. 12—High School vs. Jim Ned, there.
Nov. 25-28—Thanksgiving Holidays.
Dec. 9, 10, 11—Basketball Tournament, at Roby.
Dec. 14—High School vs. Roby, Basketball.
Dec. 20-Jan. 3—Christmas Holidays.

—Don Sexton.

Junior High Receives New Books For Library

Junior high has bought 200 new books to add to its library. The library now has 2,800 books. Principal Marshall Hill said, "Our library is one of the best in the area."

—Eddie Edwards.

RJH Cheerleaders For Year of 1965

Every year in April, tension builds up in the Junior High building. Cheerleaders are to be elected. Two cheerleaders have been selected the previous year as seventh graders and will keep their place on the squad as eighth graders. There are openings for three girls. One spot is open for eighth graders and two spots are open for seventh graders. The girls will try out in front of the Junior High student body. The student body votes on the girl of their choice. The cheerleaders elect a head cheerleader from the eighth grade group.

This year the cheerleaders are: Kaye McKimney, Mara Beth Hammit, Jeanie Tidwell, Sandy Burnes, and Becky SoRelle. Head cheerleader is Kaye McKimney.

—Eddie Edwards.

Beginning Band and Stage Band Started

The beginning, or fifth grade, band and the high school stage band have been organized by band director Mrs. Bartlett Strayhorn.

The deadline for students to join the beginning band was Monday, September 20. Twenty-six fifth graders joined.

The high school stage band held its first practice Tuesday, September 14, at 7:30 P. M. The stage band has new music books, which contain popular music selections including "Goldfinger," "Wipe Out," and "Tequila."

The members of the stage band are Kay Kennedy, Cyndy Berry, Rebekah Crawford, Cheribeth Crawford, Sharron Puryear, Paula Heathington, Arlin Collins, Larry Masters, Lara Crow, Mike Thornton, Debby Day, Jeanie Tidwell, Frances Baugh, Gerald Ashbrook, Jim Kelley, Robert Carter, Monte McKinney, Leon McCombs, Pam Hardin, Brenda Head, David Smith, and John Witherspoon.

Other students who may join, according to instrumentation are Starnie Partin, Jodie Thompson, Jodie Helms, Mary McDonald.

—Sharron Puryear.

Caution Urged In Approaching School Buses

Rotan High School has seven buses which travel a total of 2,260 miles each week. Many students ride these buses and their safety is of the utmost importance. Each motorist has a responsible part to play.

The motorist traveling Texas highways is reminded, upon meeting or overtaking from either direction any school bus which is stopped for receiving or discharging children, he shall stop his vehicle. He may then proceed past the bus at a prudent speed not to exceed 10 miles per hour.

Drivers of motor vehicles are urged to exercise due caution each time they approach one of the well-marked buses painted the familiar "school bus yellow." Cooperation of motorists with bus drivers and local school officials may help save the lives of one of the 450,000 pupils that will likely be riding Texas school buses during 1965-66.

—Rafor Hargrove.

Yellowhammers Play Merkel Tomorrow Night

The Yellowhammer football team will face Merkel here tomorrow night at 7:30 p. m. This game is the first of seven District 6-A tilts this year.

According to Coach Fred Schkade, Merkel has changed its offensive formation from a "Wing-T" to an "I" formation. This offensive is geared to a passing game, rather than to the power football Merkel has relied upon in recent years. Schkade says this should provide a wide-open football game that everyone will enjoy. He urges all fans to come out and show their support of the Hammers.

—Rafor Hargrove.

Annual Staff Begins Hammer Yearbook

The 1965-66 Yellowhammer yearbook is in the making. The members of the annual staff are selling advertisement space to various businesses and have begun typing the ad pages.

Yearbooks paid for before October first will cost \$4.25. Through the month of October the price will be \$5, thereafter the price will be \$6.

—Randy Hughes.

Buy, Rent, Sell with Classified

School Counselor Talks To Seniors

Mrs. Pat Hamrick, the school counselor, spoke to the seniors Friday, September 17, first period in civics class.

She explained the procedure of applying for college entrance examinations. Mrs. Hamrick also told of information related to careers available to students not planning education beyond high school.

She explained that different colleges and universities require different admission tests. The tests may be taken at Hardin-Simmons University, McMurry College, Abilene High School, Cooper High School, or Snyder High School.

Mrs. Hamrick brought Science Research Association booklets which deal with teenage problems. They may be checked out from the library.

Mrs. Hamrick plans to meet with each college-bound senior to help him fill out his test application and learn which test, or tests, he will have to take.

—Sharron Puryear.

The Rotan Advance

Thursday, Sept. 30, 1965 No. 35

School Cafeteria Progresses Favorably

Though hampered by recent rains, progress on the new school cafeteria appears favorable, according to H. Thompson, building contractor.

The architect who planned the new structure inspected it Tuesday and was very pleased.

Unlike most buildings, this one is being built from the roof down. Floors in the cafeteria will be yellow concrete, with carpet in the offices. The floors are scheduled to be poured this week, and masonry work on walls started also.

Mr. Thompson plans to complete the building by Nov. 20, if possible.

—Don Sexton.

Seniors Select Proofs For Pictures

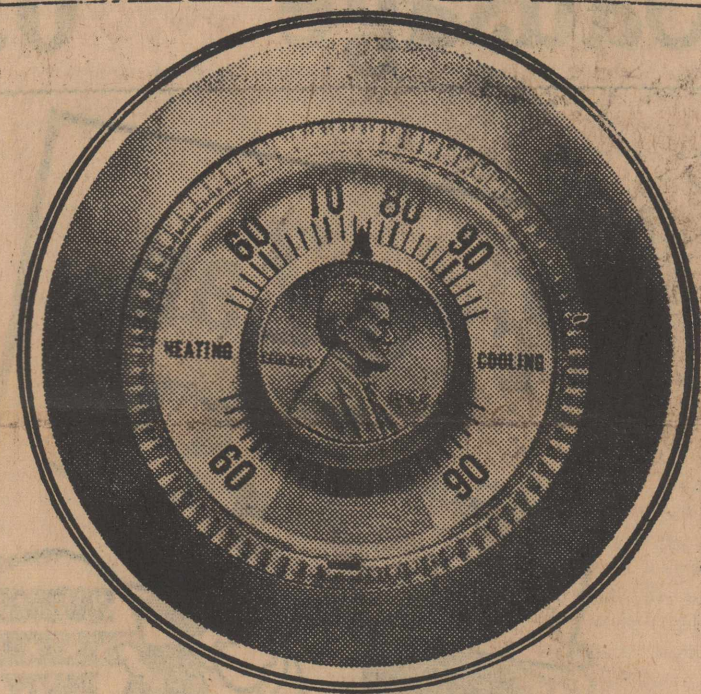
Proofs of the individual senior pictures were received Monday, September 20. Selections of a proof were made and they were returned to Marquise Studio in Enid, Oklahoma, which will try to have the pictures back by early December.

In the spring Marquise Studio will present Rotan High with a plaque that has pictures of all seniors.

—Randy Hughes.

RUBE WADDELL
PIANO TUNING
& REPAIRING
25 Years Experience
ALL WORK
GUARANTEED
Call Roby 4546
or write Box 354, Roby

Dr. Jack Lewis
OPTOMETRIST
Phone BE 4-2624
1408 Hailey St.
Sweetwater, Texas



Dial Real Wintertime Comfort for only 1¢ per kilowatt hour*!

You can discover the luxury of flameless electric heating and today's biggest bargain simultaneously!

- ▶ **Heat Electrically**
(Only non-combustion fuel for home heating)
- ▶ **Take Advantage**
of WTU's special 1¢ Winter Heating Rate*

Ask Your Heating Contractor or a WTU Representative

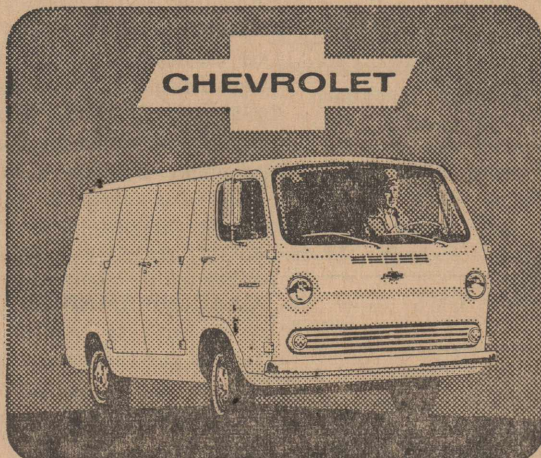
*Plus fuel cost adjustment and sales tax.



CHEVY'S BUILT FOR BIGGER THINGS IN '66!



NEW CHEVROLET WORKPOWER IS HERE!



Here's low-cost Chevy-Van—economy champ of Chevrolet's long, strong covered delivery truck line.

Telephone your Chevrolet dealer about any type of truck.

NEW HEAVYWEIGHTS UP TO 65,000 LBS. GCW!

The all-new Series 70000 and 80000 models are here—the biggest Chevies ever built, out to do the biggest jobs any Chevrolet trucks have ever done! They're ready to cut costs with new V6 gasoline engines, new V6 and V8 diesels. They offer, also, a new 92" cab that's the best yet for working efficiency, new higher capacity frames and axles and a high 65,000-lb. GCW rating.

NEW LIGHT-DUTY WORKPOWER!

The most widely used of all truck engines—the famous Chevy light-duty Six is built for bigger things in '66 with a big new 250-cubic-inch design. It's the standard power plant in most light-duty models. Also, users of 1/2-ton models can now specify a big 327-cubic-inch V8—the most powerful engine ever offered in a 1/2-ton Chevy truck. See the new Chevies now, at your Chevrolet dealer's.

HOGSETT CHEVROLET COMPANY

111-117 S. Cleveland St.

ROTAN

SHOP
**KELLY'S
PAY & TAKE
FOOD STORE**

For EVERYDAY LOW FOOD PRICES
Plus DOUBLE GOLD BOND STAMPS
ON WEDNESDAY

The Stamp You Can Redeem in Rotan
EVERYDAY PLUS

**Fresh Fruits &
Vegetables**

DEL MONTE LIGHT MEAT 3 FOR
Tuna 79¢

DOTTIE Butter Milk - Sweet Milk 3 FOR
Biscuits 25¢

SWIFT PREMIUM VIENNA 3 CANS
Sausage 69¢

Fro-Zan
1/2 Gallon **29c**
SAVINGS PARTY

**DOUBLE GOLD BOND
STAMPS**
EVERY WEDNESDAY
With \$2.00 Purchase or More

PINK LIQUID 12 OZ. 2 FOR
Trend 49c

FOREMOST
ORANGE-ADE
LEMON-ADE
Per Gallon **29c**

SEPTEMBER 30 OCTOBER 1 and 2

HUNTS 14 OZ. 2 FOR
CATSUP 29c

9 OZ. WHITE SWAN 6 CANS
**PORK &
BEANS 69c**

FRUITS - VEGETABLES
FRESH GREEN POUND **CABBAGE 5c**
FANCY-FLAME TOKAY POUND **GRAPES 15c**
MRS. BUTTERWORTHS 24 OZ. Fine for Hot Cakes **SYRUP 69c**
PYREX SPECIAL SALE - EACH **Utility Dish 88c**

Kleenex 400 COUNT PACKAGE 2 FOR **49c**

**Top Quality
MEATS**

CHOICE ROUND POUND **STEAK 79¢**

LEAN POUND **Pork Chops 59c**

BLUE RIBBON - ALL MEAT LB. **FRANKS 49c**

GOOCH GERMAN STYLE 12 OZ PKG. **Sausage 65c**

FRESH MEDIUM DOZEN **Eggs 39c**

25 LB. LIGHT CRUST With Big FREE Cannon Towel **FLOUR \$2.10**

1/2 GALLON **PUREX 39c**

HERSHEYS CHOCOLATE 16 OZ. CAN **SYRUP 21c**

HERSHEY'S CHOCOLATE 12 OZ. **Danties 39c**

CLASSIFIED ADS

2c per word first insertion; 1c per word subsequent insertions. Minimum first insertion, 50c. Minimum subsequent insertions 35c. Card of thanks take classified rate. Name (not telephone No.) must be payment due on publication. given on all charge classified, and

For Sale

For Sale, Home-made Quilt, from all new material, contact a member of Homebuilders Class of First Methodist Church.

For Sale, my place here in Rotan, two big lots and 3 bedrooms, den and kitchen and living room, carpet on part of the house, flowers and pretty grass and a water well you can't pump down a bit and a good garden spot. On 5 rows I made 24 1-2 bushels of tomatoes this year. Good outside buildings. If interested see or call by, we will be home at night, working out of town. E. L. Redden, box 207, ph. WI 7-2535. 33-3tp

For Sale, bargain, small equity in 3 bedroom home 914 E. 5th st. in Rotan—Buddy Wade, Hamlin, SP 4-1900. 31-2tc

For Sale Our home at 312 East Burnside, phone WI 7-2540, W. B. Tillotson. 29-tfc

For Sale, 1 Case tractor, tool bar planter and cultivator, 3-disc breaking plow, 11 ft. tanden, Case Stripper, all in good condition, J. D. Gartman, Premier Station, WI 7-8017. 34-tfc

Worms and Sure Catch -- Joe Ogle. 28-tfc

For Sale, 12 or 1300 red clay tile and doors and used lumber, see A. H. Hudnall, phone 7-2305. 33-4tp

For Sale, our equity in '64 Rambler free, Bill Bacot, phone 7-2426. 31-3tc

Lose weight safely with Dex-A-Tablets. Only 99c at Ragsdale Drug.

For Sale, or Rent, 2 bedroom house, car port, on paved corner lot, C. A. Daniel, phone WI 7-3288. 16-tfc

For Sale, table and chairs, Frigidaire electric cook stove, Early American couch and chair, Snow Breeze Air Conditioner, this is practically new, only used 6 weeks, bargain. Also used refrigerator. George Moore. 35-tfc

Monuments and cemetery curbing, 308 4th, phone WI 7-3290, J. B. Smith. 41-tfc

Quarter Horses for sale, broke and unbroke, reasonably priced. Six miles northwest Camp Springs, phone HI 3-7807, Snyder, Truett Simmons. 29-3tp

For Sale 6 room house on paved street, Ladye Grindstaff, Administratrix of H. F. Grindstaff Estate. 33-tf

For Sale, house and acreage, 3 bedrooms, living room, dining room kitchen, den with fireplace and 3 bathrooms, utility room, basement, 2 car garage and two acres land, contact Jo Rowland, home WI 7-3382; office WI 7-2471 or Jim O'Briant, WI 7-2920. 28-tfc

For Sale, Good Camp Trailer, just right for hunters, bargain, Dee Reese. 35-tfc

For Sale or trade, quarter section of land, 18 miles SW Rotan, Phone WI 7-2305. 20 4tc

Get your Hunting and Fishing License at White Auto Store. 52-tfc

YOU are invited to listen to the Primitive Baptist Program each Sunday Morning, 7:30 to 8:00 over KDWT, Stamford, 1400 on your dial. 17-tfc

For Sale, Used Refrigerators, Ranges and Washing Machines -- Home Lumber Company.

House of Lamps, 3542 No. 6th, Abilene has large stock decorative Lamps and Shades. Bring old lamp for repairs and select shade. 13-4tc

For Sale, Seed Oats, \$1.35 bu. Dee Reese. 35-tfc

For Sale, '62 Ford Galaxie, 6 cyl., air-conditioner, low mileage. Con-L. B. Berry 7-2449. 35-tfc.

For Sale, Used Refrigerators, Ranges and Washing Machines -- Home Lumber Company.

For Sale or Rent, 2 bedroom house in Roby, Jim Rowland, phone 2311, Roby. 24-tfc

For Sale, Hay, Carl Singley, WI 7-2992. 32-tfc

See me for Monuments and Markers, J. W. Crow, phone 7-3170 or Mrs. Crow at hospital. 34-4tp.

For Sale, 3 bedroom house, 1109 N. McKinley, phone 7-3366, K. R. Vann. 28-tfc

For Sale large 2 wheel trailer, Whirlpool washer and dryer and various other household items, Troy Studer, ph. WI 7-3451. 30-tfc

For sale or trade for pickup, corner lot with fruit trees and good water well, E. H. Turnbow, 308 Sherman.

For Sale, bundles, L. A. Sparks, phone WI 7-3068. 34-tfc

For Sale, will have irrigated roasting ears, Monday, Sept. 27. 50 dozen; 40c, 10 dozen or more. Pickup at farm south of town or I will deliver phone orders in town. Jim O'Briant, WI 7-2920. 34-2tc

FOR RENT

For Rent 5 room furnished house inquire Price Grocery. 33-tfc

For Rent, nice large home, carpet, central heating, cooling, 1 1/2 baths, phone WI 7-2526, M. F. Garland. 33-tfc

For Rent, 2 bedroom house, large living room, hardwood floors, 905 E. 8th St., call WI 7-2889, Mrs. Halcomb. 35-tfc

For Rent, 5 room furnished house at 207 Lee St., Carpeted, and floor furnace. Juston Morrow. 35-tfc

For Rent, 3 bedroom house across street from school. Located 302 E. Snyder. See W. L. Bickerstaff, 402 Lee Street, or telephone Mrs. Loyce Smith, RA 8-2038, Colorado City, Texas. 31-4tp

For Rent 2 bedroom house on McKinley ave. phone M. D. Ivey, 7-2314. 31-tfc

For Rent, one and two room furnished apts., TV, Air Conditioner, \$10.00 week up. Basement Storage. Rotan Hotel, phone 7-8011. 23-tfc

For Rent, 4 room house and bath, car port, wired for washer and dryer, call or see Vernon Frazier at Frazier Drug Store, NI 7-2272. 44-tfc

For Rent, Large Apartment, call 7-2823 or 7-2211. 51-tfc

Will machine mend your rips and tears in clothing, linens, curtains. Eloise Smith, 202 East Johnston, phone WI 7-3064. 21-tfc

WE SPECIALIZE IN FINISHED LAUNDRY WORK AND ALWAYS HAVE FOR PICK UP AND DELIVERY CALL WI7-2457, ROTAN STEAM LAUNDRY, 112 S. MCKINLEY. 23-tfc

For Rent 3 bedroom, furnished house, A. W. Thomas, phone WI 7-2439. 30-4tp

Will be glad to do your alterations and make dresses for school children Mrs. Joe Taggart, across street from Thriftway, WI 7-2590. 30-tfc

About 2 year old gelding has been at my place for about 6 weeks. Will be glad to get horse back to owner, Buster Donham. 31-tfc

For baby sitting at my home see Mrs. Homer Stanford, 807 Sheridan. 33-2tp

I would like for someone to do my ironing, please call WI 7-2024. 34-2tp

Will do ironing in my home, Mrs. Bill Bacot, 912 McKinley, phone WI 7-2426. 34-2tc

Notice, several dishes without names on them are at my home. If owners will let me know we will return them, or they may be called for. Mrs. A. K. Matthies. 31-tfc

Those bringing food to the home of Mrs. John Head, recently, may pick up the dishes there.

SPARE TIME INCOME
Refilling and collecting money from New Type high quality coin operated dispensers in this area. No selling. To qualify you must have car, references, \$600 to \$1900 cash. Seven to twelve hours weekly can net excellent monthly income. More full time. For personal interview write P. O. Box 10573, Dallas, Texas, 75207. Include phone number.

CARD OF THANKS
We wish to express our sincere thanks for the kindness and thoughtfulness in the passing of our beloved Mother, Mrs. Carrie Bell Waddell.

Our special thanks to everyone who brought in food, so carefully prepared and to Mr. and Mrs. Raymond Corrells and family who opened their home to us in our hours of need.

For the wonderful words of comfort spoken by Brother Bowen and to the people who sang the beautiful songs. They sounded to us like Angels from Heaven. May the Lord bless you all is our prayer. The Waddell family.

1966 Plymouth At Kennedy Motors Today

Plymouth Fury cars, the volume leaders of the Plymouth line, have appealing appearance changes and engineering innovations for 1966. They are available for the first time with a high performance 440-

cubic inch V-8 engine equipped with dual exhausts and a low restriction air cleaner.

Other new options include a telescoping and tilting steering wheel, six-way power seat adjusters for both bench type and bucket front seats and power front wheel disc brakes.

The Fury series consists of 15 cars, go on sale today, September 30.

All 1966 Plymouth Fury cars are new interior appearance. They have a new grille, new wheel covers and new rear bumpers. There are attractive appearance changes in the rear quarter panels, deck lid and upper and lower deck panels. Among the new standard features are safety inside door latches, increased drum brake linings, new engine mounts and greater odometer-speedometer accuracy.

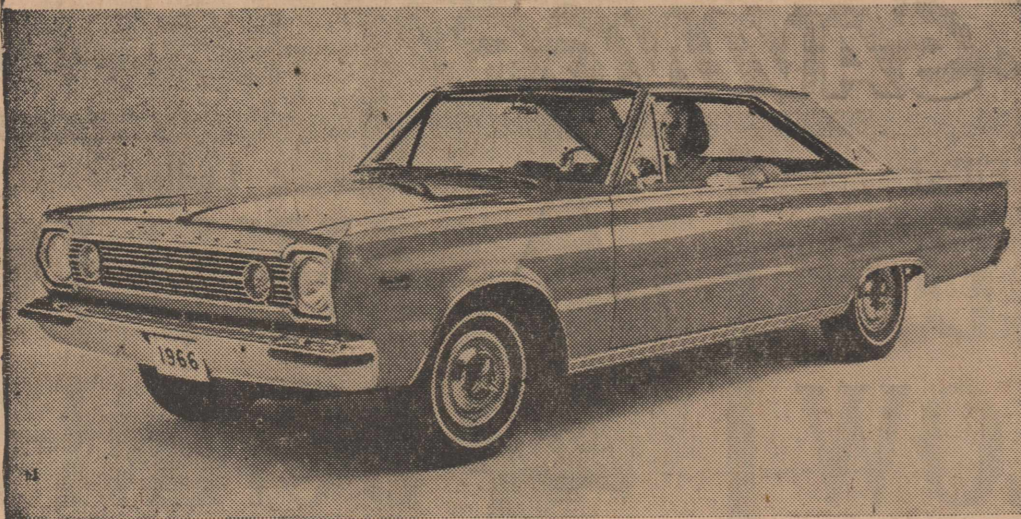
The new 440-cubic inch V8 has a compression ratio of 10.1:1 and uses premium fuel. There are two other engine options for Fury V-8 models. One is a 383-cubic inch, two-barrel carburetor V-8, with 9:1 compression, using regular fuel. The other is a 383-cubic inch, four-barrel carburetor V-8, with 10:1 compression, using premium fuel.

The standard engines are a 225-cubic inch six and a 318-cubic inch V-8, both using regular fuel. Plymouth Fury cars are available in seven body types and in four groups—Fury I, Fury II, Fury III and Sport Fury.

Six cylinder models include two-door sedans, a two-door hardtop, four-door sedans and a two-seat station wagon. The same body types are available as V-8s. In addition, there are V-8 four door hardtops, convertibles and three-seat station wagons.

Mrs. Ray Ashton has visited for the past ten days in Houston with Mr. and Mrs. Doyle Brinegar, Cherynn and Karen. Mrs. Ashton returned home Sunday and visited in

Belvedere Is Completely New For 1966



The intermediate size Plymouth Belvedere for 1966 has a wholly new appearance, major chassis improvements and a wide range of optional equipment. A production version of the famous 426-cubic inch hemispherical head V-8 engine will be offered in 1966. There are six Belvedere body types and 18 models. Shown here is the Satellite two-door hardtop. Sedans, hardtops and convertibles will have a 116-inch wheelbase, and station wagons a 117-inch wheelbase. Fully unitized bodies with

curved glass windows and fresh body lines make the new Belvedere look longer and lower than its 1965 counterpart. The standard V-8 engine in the Belvedere series has 273 cubic inch displacement with a two-barrel carburetor. Other engine options besides the 426 "hemi" are the 318 and 361-cubic inch V-8s using regular fuel, and a high performance version of the 383-cubic inch V-8. Safety features include a new type of inside door handle, and new power brake boosters.

We may now offer you membership in our **NATIONWIDE MOTOR CLUB** . . . the finest motor club membership available anywhere in the world.



As a Member You Enjoy 22 Money-Saving Services . . .

- Towing Service
- Emergency Road Service
- Tire Changing Service
- Service Directory
- Public Relations Bureau
- \$5000 Bail Bond
- License Service
- Approved Lodging
- Touring Department
- Routing Department
- Travel Bureau

- Transportation Service
- Accident Insurance
- Safe Driver Award
- Mechanical Information
- Notary Service
- Club Emblem
- Hargrave Secret Service
- \$200 Theft Award
- Communication Service
- Crime Prevention Emblem
- Club Magazine

MASTER MEMBER
\$12.50 per year plus \$5.00 registration fee the 1st yr. only

ASSOCIATE MEMBER
(any other member of your family)
\$7.50 per year
No registration fee

FOR FURTHER INFORMATION CALL . . .



ROTAN INS. AGENCY

Joe D. Burk

Phone WI 7-2571

Rhone with Mr. and Mrs. Jim Weathers and Breck.

The Rotan Advance
Thursday, Sept. 30, 1965 No. 35

Kennedy Mtrs. To Show Plymouth Barracuda

The Plymouth Barracuda, the sporty fastback entry in the compact car market with new styling features and a wide range of performance equipment for 1966, goes on sale today, September 30 at Kennedy Motors, in Rotan.

It continues to be exclusively a two-door hardtop fastback. It has a new, bold grille design and a new instrument panel cluster with features that have a special appeal to performance-minded motorists.

New medallions depict the aggressive salt water fish for which it was named.

There are new fender-mounted turn indicators and new shell-type bucket seats. The interior trim style is exclusive to the Plymouth Barracuda.

Plymouth Barracuda's performance equipment includes some options made available during the course of the 1965 model year in limited quantities. They are in full production for 1966.

They include front wheel disc brakes, with or without a power booster; fast ratio manual steering and the Formula S package consisting of the Commando 273 V-8 engine with a four-barrel carburetor, a heavy duty suspension system, tachometer and heavy gauge wide rim 14-inch wheels with Blue Streak competition tires.

A tachometer is optional with V-8 engines. An oil pressure gauge replaces the warning light in 1965 models. There is a vacuum gauge in cars that do not have the optional tachometer. A trip odometer and a glove box lock are other features of the new instrument panel.

The new console—available with four-speed manual or automatic transmission—is much longer than last year. It extends from the back of the front seat to the instrument panel. It flares out to a slightly greater width just in front of the bucket seats.

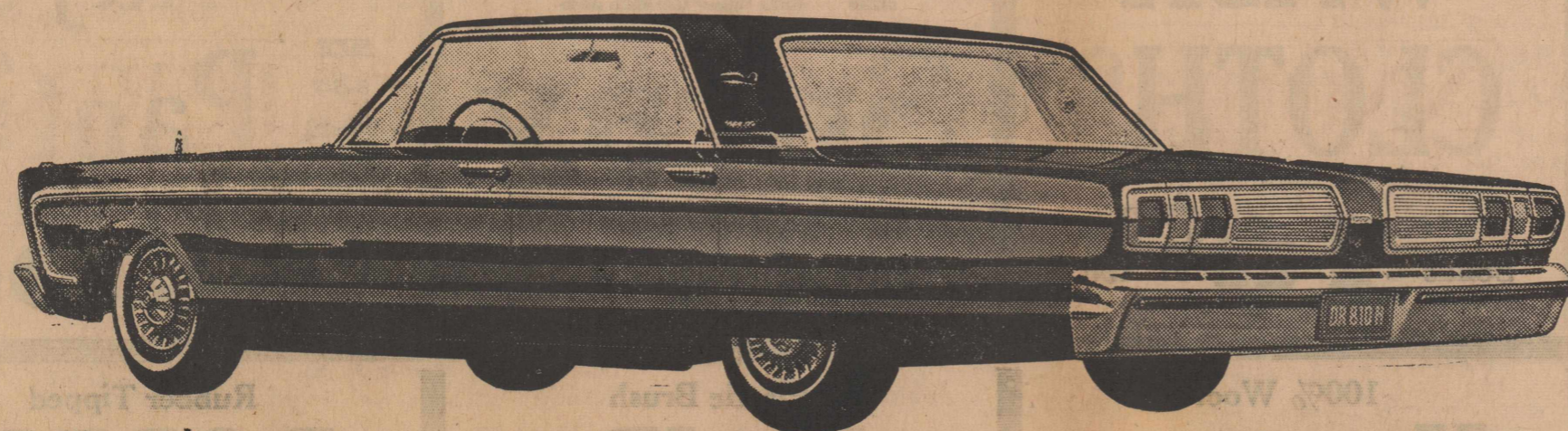
Selector levers for either the four speed or automatic transmission are mounted in the console. The console also has an ash receiver and storage compartment. Stability and stiffness are given to the side opening storage compartment door by a full-length, piano-type hinge.

The 273-cubic inch Plymouth Barracuda V-8 engine now is equipped with a non-silenced air cleaner.

Cars equipped with the four-speed manual transmission have a new shift lever mechanism which provides rapid, easy shifting into all forward speeds with a positive reverse lock-out feature to guard against inadvertent shifting into reverse.

To shift into reverse, the driver operates a trigger-like control below the shift lever knob. The action raises a plunger which allows the shift lever to move sideways into reverse position.

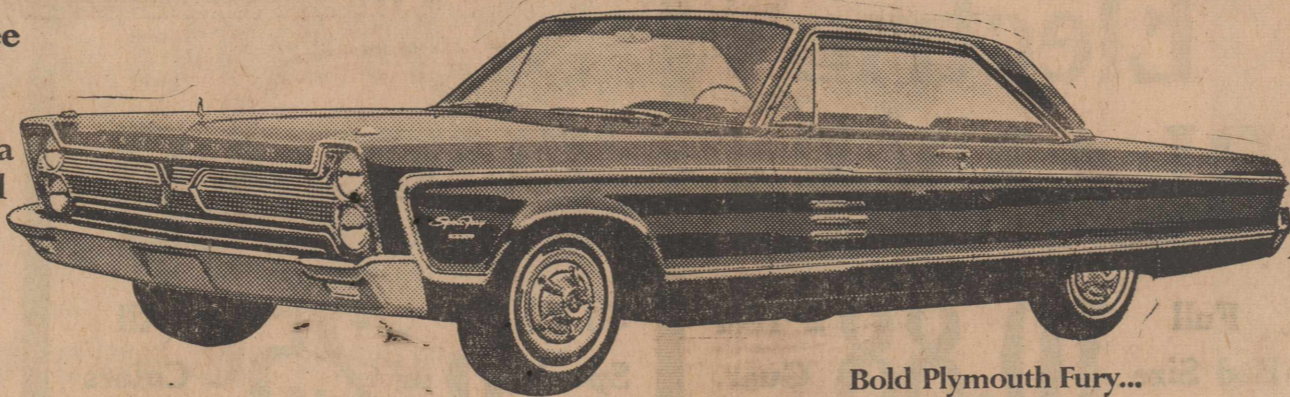
Visiting Sunday in the home of J. M. Cobb were Mr. and Mrs. James Cobb of Robstown and Mrs. Larry Weatherman, Judy, Lawrence, and Jimmy.



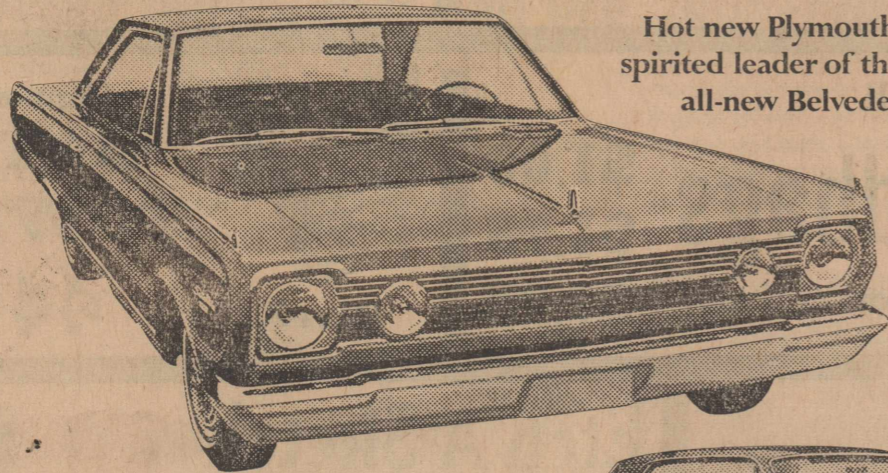
Totally new Plymouth VIP.
A new high in luxury...well within your reach.

Let yourself Go Plymouth '66

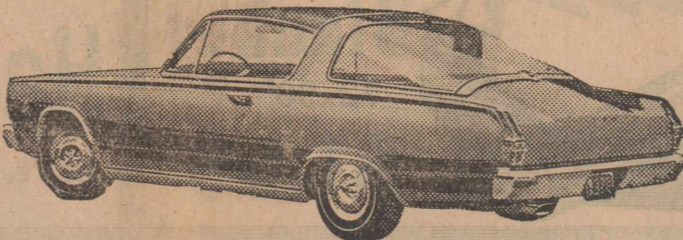
They're here now! Come see all the new '66 Plymouths including the totally new, elegant Plymouth VIP. And a brand-new line of beautiful Plymouth Belvederes featuring the sleek, high-performance Satellite. Something for everyone... at your Plymouth Dealer's!



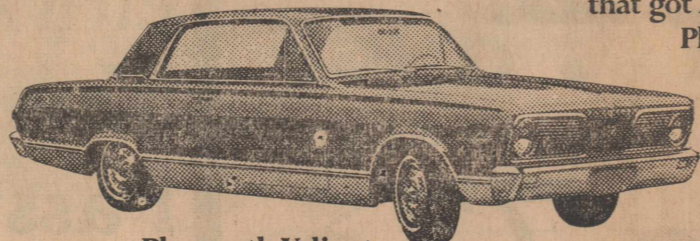
Bold Plymouth Fury... a great big beauty in a great big hurry.



Hot new Plymouth Satellite... spirited leader of the all-new Belvedere line.



Fast new version of the car that got America thinking fastback... Plymouth Barracuda.



Plymouth Valiant. The car that really lets you live... within your budget.

See Plymouth in action on the World Series, NCAA Football, AFL Football and The Bob Hope Show, NBC-TV.

PLYMOUTH DIVISION CHRYSLER MOTORS CORPORATION

Let yourself go... **Plymouth**
VIP FURY BELVEDERE VALIANT BARRACUDA

KENNEDY MOTORS

112 NORTH CLEVELAND AVE.

ROTAN

TRY ADVANCE CLASSIFIED

Winn's

HARVEST VALUES

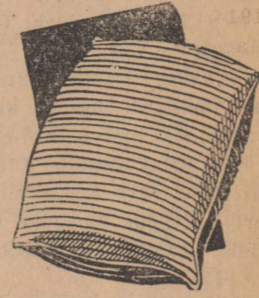


Start Fall Right!
with These **SAVINGS!**

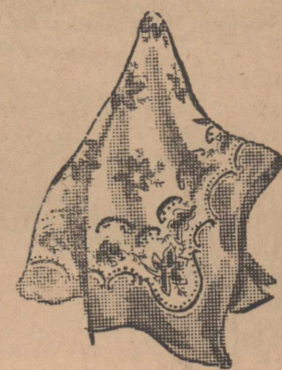
WEEK LONG SALE



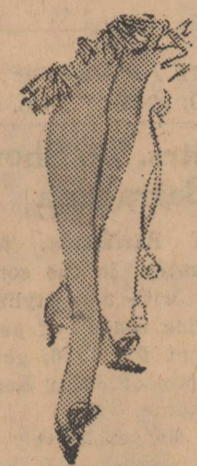
Fall Shipment
**Dress
Material**
29¢ Yard
Huge New Shipment
Just Received
Val. to 79c



Foam Filled
**BED
PILLOW**
Big 18x25'
Size
Reg.
\$1 Value
66¢



Ladies
**HEAD
SCARFS**
Solids - Prints
Rayons - Nylons
33c



Seamless
NYLONS
37c
Fall Shades 8 1-2 - 11

Cannon
**WASH
CLOTHS**
Stripes
Solids
10¢ Reg.
19c

Sudden Beauty
**Hair
Spray**
Large
13 oz.
47¢ Reg.
77c



Ladies
**Rayon
Panties**
SIZE
5-6-7
8-9-10
WHITE
and
COLORS
25c

Silicone
IRONING BOARD
Pad-Cover
Fits All
Boards
51c 98c
Reg.

100% Wool
**Knitting
Yarn**
4 Oz.
Skeins
88¢ Reg.
\$1.19

Plastic Brush
**HAIR
ROLLERS**
Pkg.
of 48
57¢ Reg.
1.00

Rubber Tipped
**BOBBY
PINS**
Black
Bronze
9¢ 60 Pins
25c Value

Childs
**RAYON
PANTIES**
Many
Colors
19¢ Sizes
2-14

Single Control
**Electric
BLANKET**
Full
Bed Size
10.88 2 Year
Guar.

Mercerized
**SEWING
THREAD**
40 Yd.
Spools
6-25c All
Colors

5 Qt. Plastic
**Paint
Pails**
Wire
Handle
19c Asst.
Colors

Men's
**STRETCH
SOX**
Reg 39c
25c

Cannon
Blanket
72x90'
\$1.99

Ladies Fall
Handbags
Ass't. Colors & Styles
\$1.00
\$1.98
\$2.98

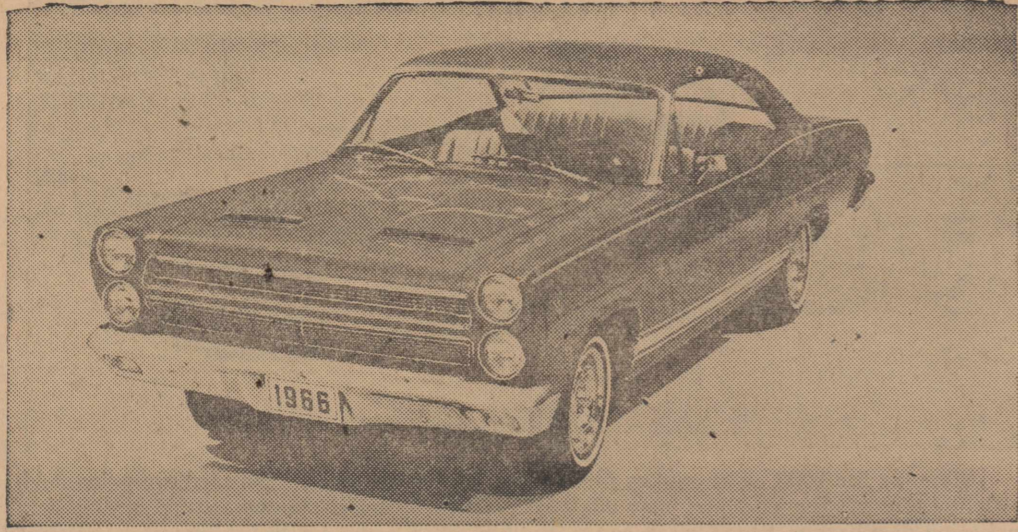
Cannon
**BATH
TOWELS**
22x44'
44c

Colgate Toothpaste KING SIZE **57c**
Jergens Lotion \$1.00 SIZE **67c**
Bayer Aspirin 100 TABLETS **63c**
Prell Shampoo ECON. SIZE **67c**

Filler Paper
300 Sheets **47c** 525 Sheets **77c**

Etch A Sketch **\$2.67**
Monopoly **\$3.44**
Password **\$1.57**
Wahoo **99c**

Winn's Use Our Free Lay-A-Way Winn's



Completely restyled for 1966, Comet features a new larger body, a host of luxury appointments and a wider choice of engines. Overall length has been increased by eight inches and wheelbase is two inches greater at 116 inches. Two Mercury 390-cubic-inch engines are added to the power offerings. Sportiest of the new Comets is the Cyclone GT model (above) which offers a high performance 335-horsepower V-8 engine and a unique fiberglass hood with simulated air scoops. The 1966 Comet goes on sale October 1.

Rotan Motor Co. To Show New Comets

Mercury Comet, world's durability champion, for 1966 is the most completely changed car since its initial introduction six years ago. The new Comet goes on sale Friday at Rotan Motor Company.

The 1966 Comet features a new, larger body with an entirely different sleek appearance inside and out. The wheelbase is lengthened for the first time and a wide selection of new big car options are introduced, including two 390-cubic inch Mercury V-8 engines.

A new Capri series and a Voyager station wagon join the Comet line, while the sporty Cyclone series adds a convertible model and a special high performance "GT" option.

"The larger, more elegant 1966 Comet is a response to the public demand for premium automobiles in every segment of the market," said Paul L. Lorenz, Ford Motor Company vice president and general manager of Lincoln-Mercury Division.

"While moving this beautiful new Comet upwards on the product ladder, we are retaining one series at

traditional Comet length for our customers who want a premium car value at no appreciable size increase."

The 1966 Comet offers customers a choice of two lengths, 196 inches for the "202" series and 203 inches --an increase of almost eight inches over 1965--for the upper series Capri, Caliente and Cyclone. Wheelbase is 116 inches, up two inches.

The new Comets are more spacious, with curved side glass and three-inch wider bodies significantly increasing roominess. Shoulder room is increased up to three inches and hip room more than two and a half inches. Front and rear head room and leg room are greater, also. Front and rear tread are 58 inches, an increase of three inches in the front and two inches in the rear. Overall width of the car, including bumpers, is increased less than one inch, to 74 inches.

Comet luggage capacity is increased in all models. Upper series sedans gain one-fourth more room at 17 cubic feet while the shorter "202" sedans offer 15 cubic feet of space. Station wagon cargo volume is raised to 85 cubic feet.

Styling of the new Comets is highlighted by a skillful combina-

tion of crisp and soft lines for a fleet and powerful appearance. The front end is marked by vertical headlamps and a two-port horizontal grille separated by a panel in the body color. Rooflines blend smoothly into the body.

Comet's fresh new styling theme is complemented by even livelier performance from a new optional regular fuel 390 cubic inch V-8 engine rated at 265 horsepower with the manual transmissions or 275 horsepower with the new dual range automatic transmission. Also offered as an option is the regular fuel 289 cubic inch 200 horsepower V-8, the same basic engine which powered Comets on the 100,000 mile Daytona Durability Run and the Cape Horn to Alaska Run.

New big car features for the 1966 Comet include foot operated parking brake, suspended accelerator pedal, reversing keys and glass rear window for convertibles.

Options offered by Comet for the first time include power windows, power seat and nine-inch television set.

Buy, Rent, Sell with Classified

The Rotan Advance

Thursday, Sept. 30, 1965 No. 35

Draft Hits Highest Peak Since Korea

The military draft soared Friday, Sept. 17 to its highest peak since the Korean War, and the Marine Corps for the first time in 13 years called for draftees to help fill its ranks.

The Defense Department asked Selective Service System to furnish 36,450 men for the Army, Navy, and Marines in November. November draft call assigns 28,400 men to the Army, 4,000 to Navy and 4,050 to Marines. The draft fell as low as 3,300 men about a year ago.

Ronald Green Assigned To 1st Armored Div.

Fort Hood, Tex. (AHTNC) -- Army Specialist Four Ronald B. Green, 21, whose wife, Sharon, and parents, Mr. and Mrs. Fred B. Green, live in Roby, Tex., was assigned to the 1st Armored Division at Fort Hood, Aug. 28.

Specialist Green, last stationed in Germany, is now a mechanic in Headquarters and Company A of the division's 123d Maintenance Battalion.

He entered the Army in February 1963 and completed basic training at Fort Polk, La.

Green attended Roby High School.

Buy, Rent, Sell with Classified

Are You Receiving Full Benefit of Your Cooling and Heating System?

If Not Call

Carter's Insulation Co.

FREE ESTIMATES

Phone: 8241 Night 2894

BILLY HOLCOMB

Roby, Texas

Phone OR 3-8426

T. L. CARTER

Abilene, Texas



Big Meaning ... small Word

IF you had insurance, that accident, that fire, that theft would not have cost you so much, for insurance protects you against loss from such events.



Why not play safe and avail yourself of the protection afforded by insurance coverage? It costs so little . . . yet it saves you so much. Call us today and let us help you set up a rounded program.

INSURANCE TO MEET YOUR NEEDS

R. L. Young Ins.

NOTICE

"Notice is hereby given that LeClair Operating Co., Inc., has filed an application for a permit to drill a well for Oil, Gas or other Petroleum Products situated in Block 206, located within an area shown as Drilling Block Number 21, upon exhibit A of the ordinance regulating the drilling for oil or gas within the City of Rotan, Texas, acting under and pursuant to the terms and provisions of an ordinance making it unlawful for any person to drill for, mine, or in any manner engage in operations for the purpose of extracting oil, gas, or other petroleum products from the soil within the territorial limits of The City of Rotan, Texas:

A hearing upon such application will be held at the City Hall in the City of Rotan, Texas, on the 10th Day of September, A.D., 1965 at 10:00 a. m. at which time and place all persons interested may appear and contest said application."

B. John Catlett, Vice President
LeClair Operating Co., Inc. 30-3t

Test Holes - Domestic and Irrigation Wells - Turbine and Submersible Pumps - Clean Outs - Pumps and Pipes

FREE ESTIMATES

Rodgers Drilling Company

Ph. 8133 405 E. Lee St.

Rotan, Texas



Introducing the lively new driving machines: the big, new-generation Comets.

Listen to the roar of the '66 Comets. They're bigger, wider, up to 8 inches longer than any Comet before. They make driving other cars seem like walking. Comet's new fire and spirited luxury come in 11 roomier models.

For a sample of Comet's style, take the Caliente. Notice the smart upholstery . . . the handsome, simulated wood-grain panels. For spine-tingling action try Comet's new Cyclone GT. Its new 390 4-barrel V-8 delivers

the kind of go that can shove you right back in your bucket seat. Whatever you want -- action cars with pure excitement, 3-speed or 4-speed manual transmissions or automatics, inviting interiors -- Comet's got it.

Plus a long, tempting list of options that includes built-in air conditioning . . . power windows, power brakes, and power everything. All this in the most exciting parade of Comets ever. Drive a real driving machine at your Mercury dealer's today.




4-DOOR VILLAGER WAGON WITH DUAL-ACTION TAILGATE THAT SWINGS DOWN TO LOAD-SPACE LEVEL, OR SWINGS OPEN LIKE A DOOR, AS SHOWN.

Mercury COMET

ROTAN MOTOR COMPANY

ROTAN, TEXAS

LINCOLN-MERCURY DIVISION OF 



There was a time when I could feel safe until November. But the member-owned Midwest Electric Cooperative has changed all that. With food freezers in so many homes, poultry processing plants, electric brooders and all that modern electric wizardry, they are processing turkeys all year long. I'm lucky I've lasted this long. In case I wind up in your giblet gravy, just remember this . . . the Midwest Electric Cooperative may be fine for rural people, it may be helping Texas grow and it may be the greatest example of rural people working together to brighten their lives. But it has played havoc with my life expectancy.

Midwest Electric Co-Operative Inc.

Winn's



HARVEST VALUES

Start Fall Right
with These **SAVINGS!**

WEEK LONG SALE

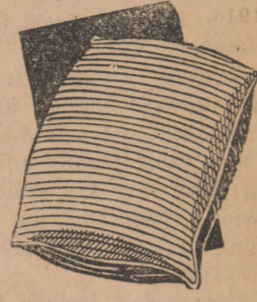


Fall Shipment

Dress Material

Huge New Shipment
Just Received
Val. to 79c

29¢ Yard



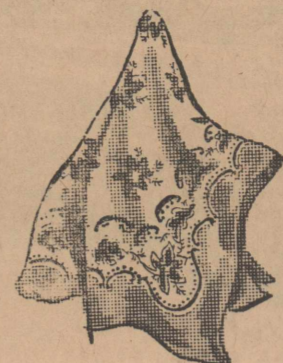
Foam Filled

BED PILLOW

Big 18x25'
Size

Reg.
\$1 Value

66¢



Ladies

HEAD SCARFS

Solids - Prints
Rayons - Nylons

33c



Seamless

NYLONS

37c

Fall Shades 8 1-2 - 11

Cannon

WASH CLOTHS

Stripes
Solids **10¢** Reg. 19c

Sudden Beauty

Hair Spray

Large
13 oz. **47¢** Reg. 77c

Ladies



SIZE
5-6-7
8-9-10
WHITE
and
COLORS

Rayon Panties

25c

Silicone

IRONING BOARD

Pad-Cover

Fits All
Boards **51c** 98c Reg.

100% Wool

Knitting Yarn

4 Oz.
Skeins **88¢** Reg. \$1.19

Plastic Brush

HAIR ROLLERS

Pkg.
of 48 **57¢** Reg. 1.00

Rubber Tipped

BOBBY PINS

Black
Bronze **9¢** 60 Pins
25c Value

Childs

RAYON PANTIES

Many
Colors **19¢** Sizes 2-14

Single Control

Electric BLANKET

Full
Bed Size **10.88** 2 Year Guar.

Mercerized

SEWING THREAD

40 Yd.
Spools **6-25c** All Colors

5 Qt. Plastic

Paint Pails

Wire
Handle **19c** Asst. Colors



Men's
**STRETCH
SOX**
25c

Reg 39c



Cannon

Blanket

72x90'
\$1.99

Ladies Fall

Handbags

Ass't. Colors & Styles **\$1.00**
\$1.98
\$2.98



Cannon
**BATH
TOWELS**
44c

22x44'

Colgate Toothpaste KING SIZE **57c**

Jergens Lotion \$1.00 SIZE **67c**

Bayer Aspirin 100 TABLETS **63c**

Prell Shampoo ECON. SIZE **67c**

Filler Paper

300 Sheets

525 Sheets

47c 77c

Etch A Sketch **\$2.67**

Monopoly **\$3.44**

Password **\$1.57**

Wahoo **99c**

Winn's Use Our Free Lay-A-Way Winn's

Hobbs School Classes Are Organized

Hobbs classes organize for 1965-66.

Senior class: President, Tommy Lay; Vice-President, Shirley Campbell; Secretary-Treasurer, Jerry Hodges; Reporter, Esther Medrano; Sponsor, Mrs. A. O. Dennington.

Junior Class: President, Gary Nettleton; Vice-President, Karin Martin; Secretary-Treasurer, Gloria Martinez; Reporter, Margaret Casey; Historian, Melva Pearce; Sponsor, Mr. Gerow Roberts.

Sophomore Class: President, Tochi Martinez; Vice-President, Windle Cave; Secretary, Lydia Cantu; Treasurer, Turo Martinez; Reporter, Juanel Brown; Sponsor, Mrs. L. C. Brown.

Freshman class: President, Lynda Burnett; Vice-President, Ronald Kincaid; Secretary, Doris Medrano; Treasurer, Maurice Clement; Reporter, Linda Martin; Sponsor, Mrs. Irene Brown.

Eighth Grade Class: President, Brad Maule; Vice-President, Loria Pearce; Secretary-Treasurer, Monica Martinez; Sponsor, Mr. Bernard Weems.

Seventh Grade Class: President, Sherrie Nettleton; Vice-President, Madeline Walton; Secretary, Janis Kincaid; Treasurer, Isarelle Martinez; Reporter, Eloisa Cantu; Sponsor, Mrs. Beatrice Lawler.

I. W. B. Hopson, having been appointed Commissioner by the Commissioners' Court of Fisher County, Texas, as provided in Article 1577, to sell an oil, gas and mineral lease on an acre of land out of the Southwest corner of Section

Christian Science Service Sunday

1001 Crane St. Sweetwater
"Teach me, O Lord, the way of thy statutes; . . . turn away mine eyes from beholding vanity."

These verses from Psalm 119 form the Golden Text for a Bible Lesson on "Unreality" to be read in Christian Science churches this Sunday. Passages from the Bible and the Christian Science textbook will bring out some of the different ways in which men discover the supremacy and power of spiritual reality.

Included will be these lines from "Science and Health with Key to the Scriptures" by Mary Baker Eddy: "Evil is not supreme; good is not helpless; nor are the so-called laws of matter primary, and the law of Spirit secondary . . . The Psalmist said: 'The Lord on high is mightier than the noise of many waters, yea, than the mighty waves of the sea'" (pp. 207, 505).

Buy, Rent, Sell with Classified

184, Block 2, H&TC Ry. Co. Survey, Fisher County, Texas, being the same land described in a deed recorded in Volume 7, 189 of the Deed Records of Fisher County, Texas, will offer for sale at public auction to the highest bidder, November 2, 1965, at the Court House Door of Fisher County, in City of Roby, Texas, an oil, gas and mineral lease with a primary term of five (5) years with a pooling agreement, on Producers 88 Revised form, the purchaser to pay the cost of advertising and my fee.

W. B. Hopson.

35-3tc

Nursing Conference Lubbock Oct. 4-5

The second in a series of mental health conferences will be held at the KoKo Palace in Lubbock on October 4 and 5. The subject for this second conference will be "Patients are Interesting People." The conference is open to professional nurses, professional nursing students, counselors, psychologists, physicians, teachers, hospital administrators, and sociologists.

Dr. Esther Lucile Brown, social anthropologist for the Russell Sage Foundation, will be one of the featured speakers. Dr. Brown, author of the "Nursing as a Profession," "Nursing for the Future," "Newer Dimensions of Patient Care," and several other books will speak on the topic "Patients as People."

Another featured speaker is Miss Grace Gould, supervisor of psychiatric nursing for the Washington State Department of Institutions and Clinical Assistant Professor at the University of Washington School of Nursing. Miss Gould, author of many articles in hospital and nursing magazines, will speak on "Methods through which the Patient Communicates."

Registration is \$10.00 for both days or \$7.50 for one day to Texas Nurses' Association members. Fees to non-members will be \$15.00 for both days and 10.00 for one day. Fees for all students will be \$2.00 for both days and \$1.00 for one day. All professional persons will be admitted for the same fee as Texas Nurses' Association members upon presentation of their professional organization membership card.

All interested persons are invited

OFFICIAL MEMORANDUM

by John Connally,
Governor of Texas, Austin, Texas

GREETINGS:

The development of responsible citizens and leaders for America is a high purpose in 4-H Club work.

The 4-H program stresses the four-fold development of youth: their head, heart, hands and health. Members of 4-H Clubs learn by conducting projects and participating in 4-H activities. By putting into action what they learn, club members improve their homes and communities.

Since the 4-H program was inaugurated by the United States government in 1914, the 4-H movement has spread across our nation and to 76 foreign countries.

More than 18,000 voluntary adult leaders work with club members in Texas and contribute to the success of 4-H. Parents and friends of 4-H give support and encouragement to club members. The 4-H Club program is directed by the staff of the Agricultural Extension Service of Texas A&M University.

The opportunities offered to 4-H Club members to grow in citizenship, leadership and practical skills

are especially valuable to them, the State of Texas and the nation. The 4-H Clubs are a proving ground for future leaders.

Therefore, I, as Governor of Texas, do hereby designate the period of September 25-October 2, 1965, as 4-H CLUB WEEK, in Texas. In official recognition whereof, I hereby affix my signature this 7th day of Sept., 1965.

Spillway Problem Is Discussed By SCS

Water under the bridge is seldom a problem but water over or through a spillway almost always causes damage, stated Milburn Cook, of the local Soil Conservation Service Office located in Rotan. He continued, spillways are primarily emergency structures designed to protect dams against floods of prolonged duration of extreme intensity - both types of storms are common in the Upper Clear Fork Soil Conservation District. As such, spillways are designed to carry the expected maximum runoff from the watershed that will normally occur, only once in 50 years. Abnormally hard, short showers or a prolonged series of light showers will produce flow through a spillway but usually much less than the maximum designed capacity. It is desirable, however, to select pond site and watershed combinations which do not produce frequent flows through the spillway, thereby avoiding many of the maintenance jobs that usually are needed from such flows.

Since farmpond spillways are principally of the vegetated type and usually on very steep slopes they require special attention both in

and especially valuable to them, the State of Texas and the nation. The 4-H Clubs are a proving ground for future leaders.

Therefore, I, as Governor of Texas, do hereby designate the period of September 25-October 2, 1965, as 4-H CLUB WEEK, in Texas.

In official recognition whereof, I hereby affix my signature this 7th day of Sept., 1965.

John Connally, Governor of Texas

The Rotan Advance

Thursday, Sept. 30, 1965 No. 35

establishing and maintaining an adequate cover of grass. It is seldom possible to select a naturally vegetated spillway site that will not require maintenance. When it is not necessary to shape a spillway, adequate vegetation can usually be obtained by fencing the spillway area in order to control grazing. Fencing is also necessary in many cases to increase the stand and vigor of existing grass cover since increased grazing usually results near watering places.

Fencing also keeps cattle from trailing up the spillway, thus causing gulleying and eventually a major repair job. Also, reeds should never cross spillways except at the top or entrance to the spillway. In many cases it is necessary to cut and shape a spillway. Usually spillway construction can be done at the same time the dam is constructed. In all cases topsoil should be placed on all cut areas and seeded or sodded to secure cover as soon as possible. Spillways for ponds on large watersheds must be established to vegetation prior to pond construction.

Repairs to vegetated spillways should be made immediately after rains, if possible, and preferably while the surface of the soil is still wet. Holes or overfalls developing in the spillway should be repaired by filling holes with compacted soil and sodding, or re-shaping the overfall to stabilize grade and covering with new sod. Net wire staked flat over newly placed sod has proven a valuable aid in retaining sod in the event of additional rains which produce flow through the spillway. A "trickle tube" placed through the dam below spillway level and emptying into the watercourse below the dam will prevent most of the scour damage to spillways, reduce maintenance costs, and eliminate the need for fencing in some cases.

Rotan Lodge No. 956 A. F. & A. M.

Meets Third Thursday Night of each month
visitors invited
M. E. Wallace, W. M.
Dick Young, Secretary

The O. E. S.

meets each second Tuesday at 7:30 in the Hall
Visitors welcome
Joyce Noles, W. M.
Josephine Martin, Sec.

V. F. W.

Meeting Nights
Second and Fourth Thursday
8:00 p. m. at the VFW Hall
J. M. Whitfill, Commander
Austin McKinney, Quartermaster.

AIR CONDITIONER

INSTALLATION and REPAIR WORK
also have Pumps, Motors, Tubing Pads, Etc.
ELECTRICAL APPLIANCE REPAIRING
Electrical Outlets and Light Fixtures
REPAIR & REPLACE LEAKY FAUCETS
Champ Clark
702 E. 7th
Phone WI 7-3463 Rotan

MATTRESSES

New or renovated and box springs quality made. Save up to 50% renovated. Choice size or firmness. Guaranteed by Western Mattress Co., San Angelo, phone Hughes Furniture, Rotan, Phone WI 7-2401 and leave address.

Buy, Rent, Sell Classified

CONOCO

GRAND OPENING

Free Gifts for All-

SATURDAY, OCT. 2

FREE 5 lbs. SUGAR

WITH 8 GALLONS OR MORE GASOLINE

FREE BALLOONS, SUCKERS, & BUBLE GUM FOR THE KIDDIES!

After serving you for the past 16 years in the Service Station business, I now welcome you to my Station. Please come to see me!

FLOYD GARCIA CONOCO STATION

1 Block South Traffic Light

SHOP D. J. SMITH

We Will Give **DOUBLE S.M. GREEN STAMPS EACH TUESDAY & WEDNESDAY** FOR YOUR SHOPPING CONVENIENCE

SWIFT
PREM
12 oz. Can
49c

Liquid 12 oz. Bottle
Trend Save 10c 2 For **49c**
Hershey SYRUP 16 oz. Can **21c**
Hershey DANTIES 12 oz. Pack **39c**

SALAD BOWL
SALAD DRESSING
Quart **39c**

Wesson 24 oz. Bot.
OIL **43c**
All Sweet 2 Lbs.
OLEO **49c**

Dottie Biscuits 3 Cans **25c**
Giant Size Dash Save 10c **69c**

Gladiola 5 Lb. Sack
Flour **49c**
Peter Pan 25 Lb. Sack
Flour **\$1.99**
Cannon Towel FREE

Gandy's
FROZAN 1/2 Gal. **29c**

Chuck Wagon 10 Lb. Bag
Charcoal **65**

KEEP HIM HAPPY
CHOICE STEAKS
meats
ONLY THE FINEST

No. 1 Fresh Dressed Pound
Fryers **29c**

Fresh Ground Meat **4 Lbs. \$1**
Gooches Franks Lb. **49c**

Choice Chuck Pound
Roast **49c**

Choice Round and Loin Pound
STEAK **89c**

Campfire 2 Lb. Box
Bacon **\$1.39**

PRODUCE

Choice Russet 10 Lb. Sack
Potatoes **39c**

Firm Green CABBAGE Lb. **5c**
No. 1 Sweet POTATOES Lb. **10c**

Seedless GRAPES Lb. **19c**
Rutabaga TURNIPS Lb. **8c**

Van Camp Tuna Lb. **69c**
3 Cans **59**
2 Lbs. **\$1.38**



Low-Rent Housing Project Educational Programs Held

The second of a series of educational programs for families living in the local Low-Rent Housing Project has been completed.

The programs were conducted by Fisher County Home Demonstration Agent, Mrs. Alice K. Ballenger, and Assistant Fisher County Home Demonstration Agent, Miss Nancy Brown, and furnished special instruction in the use and care of the twenty six apartments now in operation in the local project, including care of all surfaces and equipment in the apartments, as well as care of the lawns and shrubbery. The programs are planned jointly with the Agricultural Extension Service of Texas A&M University, the local Housing Authority, and requests for special instruction from the families living in the housing project.

The first of the second series of these programs was conducted in the Archie J. Shaw's apartment on Wednesday, September 8. Miss Nancy Brown, Assistant Fisher County Home Demonstration Agent, presented this program, with the assistance of Mrs. Alice K. Ballenger, the subject being "Care of Floors" and included detailed information regarding day-to-day care, weekly care and monthly care of floors type floors installed in the local units. Attending this meeting were Mrs. Calvin Helms, Mrs. A. D. Thomas, Mrs. W. D. Berry, Mrs. C. R. Kerns, Mrs. Bettie Hariman, Mrs. Archie J. Shaw, Mrs. Jo Rowland, Executive Director for the local Housing Authority, and Mrs. Alice K. Ballenger and Miss Nancy Brown.

The second of the second series of these programs was conducted in the William Franklin's apartment on Wednesday, September 15. Mrs. Alice K. Ballenger presented this program, the subject being "Care of the Kitchen Range," and included information ranging from selection, use and care of cooking utensils, top-of-range cooking and care, oven cooking and care, and a general outline of care of the range. Attending this meeting were Mrs. Tommy Lee Jones, Mrs. John Allen, Mr. and Mrs. Ray Jefferson, Mrs. William Franklin, Mrs. Jo Rowland, Mrs. Alice K. Ballenger and Miss Nancy Brown.

The third of the second series of these programs was conducted in Mrs. Carlota Medrano's apartment on Tuesday, September 21. Mrs. Alice K. Ballenger presented a program on "Care of the Kitchen Range," covering the same subjects as in the meeting held on September 15. Attending this meeting were Mrs. Lino Yanez, Mrs. Lucia Martinez, Miss Susie Soliz, Mrs. Nicolas Saucedo, Mrs. Frank Medrano, Mrs. John Trejo, Mrs. Alfred Medrano, Jr., and Mrs. Carlota Medrano. Also attending were Mrs. Jo Rowland, Mrs. Alice K. Ballenger and Miss Nancy Brown. Mrs. Alfred Medrano, Jr., assisted Mrs. Ballenger in conducting this program.

The third series of programs will be conducted in about three months and will furnish special instruction in planning and preparation of family meals. Future programs will be furnished on nutrition, clothing, budgeting, and other subjects relating to family and home care.

Mr. and Mrs. Mike Carter, Lorie and Michael of Abilene visited their grandparents, Mr. and Mrs. C. C. Carter Monday.

GENERAL UPHOLSTERY

Specializing in Seat Covers and Repairing for Cars, Pick-ups and Trucks.
Tailor-made Seat Covers for Cars, Pickups and Trucks
Also all types Furniture Upholstery and Repairing

Jay Hendon Upholstry
Phone WI 7-8114
306 W. Snyder Av.

Brand New

1965 GMC Pickup
\$1749.00
Clark's Tractor & Implement Co.
Ph. WI 7-2511, Rotan

Mrs. John Head visited in Abilene last weekend with her daughter and family, Mr. and Mrs. Roy Bridges. Mrs. Ina Harris returned Sunday from a visit with her mother and sister in Headley.



V-Taper

the sure sign of
QUALITY

"417" V-Taper fashions are timeless. They take the conjecture out of shopping for men's wear. Gentlemen desirous of combining the slim, trim and traditional in their attire, need look no further than the Van Heusen "417" V-Taper sign at

H.L. Davis & Co.

New Location

We have moved to 306 W. Snyder Ave., and have much more room for our Upholstry Shop

Our Car Lot is being arranged to handle a large stock of vehicles and we can save you money on anything you may need in our line.

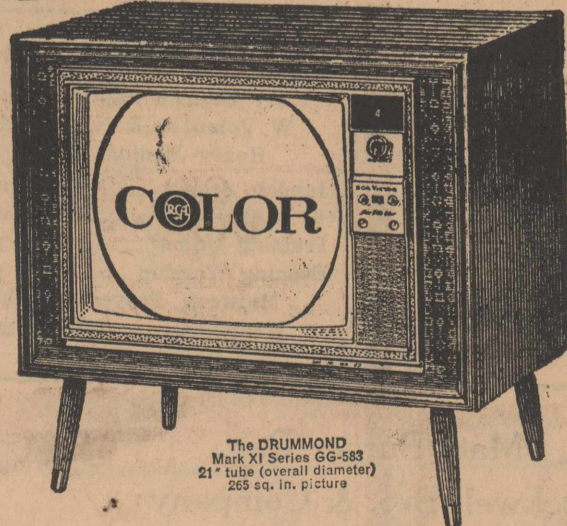
See Us before you Trade.

Hendon Motor Sales

Phone WI 7-3281

306 W. Snyder

BIG COLOR TV VALUE



The DRUMMOND Mark XI Series GG-583 21" tube (overall diameter) 205 sq. in. picture

RCA VICTOR *New Vista* COLOR TV

- RCA Solid Copper Circuits
- Glare-proof RCA Hi-LITE TUBE
- Super-powerful 25,000-volt chassis
- RCA Automatic Color Purifier
- Ultra-sensitive VHF/UHF tuners

OUR PRICE **\$498.00**
with operating trade in

Home Lumber Co.
TV Center in Rotan

The Rotan Advance

Thursday, Sept. 30, 1965 No. 35

Girl Scouts Need Adult Assistants

At a meeting held Tuesday, Sept. 28, at the Fire Hall, we got a leader for each troop, but we must have at least one assistant and it would be better if we could have two assistants for each troop. We also need a troop committee (adults to help the leaders) for each of the following troops.

Brownie troop - 3rd grade, Mrs. Dwight Nowlin, phone WI 7-2871.
Junior troop - 4th grade, Mrs. C. J. Helms, phone WI 7-2945.
Junior troop - 5th and 6th grade, Mrs. Marvin Kersh, WI 7-3055.

Cadet troop - 7th and 8th grades, Mrs. Eugene Allen, WI 7-3210.

If one of these is your daughter's troop of if you are interested in helping, please call the leader. We need your help.

The Girl Scout organization is good for girls, it offers good training and teaches our girls to enjoy the wonders of God's world about us. It also teaches girls management, budgeting, purchasing, sharing, planning for individuals and in groups.

Remember to call the leader if you can help because one woman cannot have a troop alone. Lets not disappoint the 85 girls who want to be scouts.

Mrs. G. D. Coan, Rotan Neighborhood Chairman.

Mr. and Mrs. Wayne Poer, Lou, and Dana of Ralls, visited here this weekend with relatives.

Mr. and Mrs. Cecil Darden brought Mr. and Mrs. Ed Darden home Monday.

Mr. and Mrs. J. O. Cooper visited the past ten days in Uvalde with Mr. and Mrs. Elton Loden and other relatives. Mrs. Loden and Mrs. Cooper are sisters.

Mr. and Doc Hardin and family of Hobbs, N. M., and Mr. and Mrs. Morris Hardin and family of Lubbock visited over the weekend with Mr. and Mrs. L. E. Hardin.

Mrs. Della Wallace of Cleburne visited Sunday with Mr. and Mrs. Walter Hartsfield.

Mr. and Mrs. Odell Eaton of Fort Worth are announcing the arrival of their little adopted baby girl. She was born September 21, 1965, and weighed 6 lbs. and 5 oz. The couple named her Janey Ellen Eaton.

Miss Ollene Knight of Dallas visited her aunt, Mrs. Nealy Morton and Mr. Morton last weekend. She is employed in the City Tax Assessor-Collector office of Dallas.

Mr. and Mrs. Jack Allen were in Lubbock on business Monday.

Mrs. L. C. Vittitow returned home Monday from an Abilene hospital.

Mrs. Carrie Turner of Welch visited relatives here Monday and Tuesday.

Mrs. Odell McQueen and Mr. and Mrs. C. C. Carter visited Mr. and Mrs. P. A. Smith, Mr. and Mrs. Alvin Smith and Mr. and Mrs. A. A. Smith in Lubbock Friday.

Miss Emily Garrett visited her niece and family, Mr. and Mrs. O. J. Cox in Lubbock Friday.

Thurman Miller of Forest Grove, Oregon visited in the C. C. Carter home Monday.

For Any and All

PLUMBING

CALL

Bennett Plumbing Co

Phone 284

WE APPRECIATE YOUR BUSINESS--DAY OR NITE



PAY & TAKE FOOD STORE
YOUNG'S FOOD MARKET
PRICE GROCERY

Landscape Meeting To Be At Roby Oct. 7

A county-wide Educational meeting on home landscaping will be held Thursday afternoon, October 7 at 2:00 P. M., in the Agricultural Building on the fair grounds in Roby, according to Alice K. Ballenger and James S. Norman, Fisher County Extension Agents.

Everett E. Janne, Landscape Horticulturist, with the Texas Agricultural Extension Service, College Station, will present the program. Janne will discuss: general home landscape planning, designing and selection of plants and trees desirable for our area. Plans also on how to improve old established landscapes. And information on cultural and maintenance requirements.

This is a joint meeting for both men and women and all persons interested in home landscaping are urged to attend, according to the county extension agents.

Statement of ownership, management and circulation.

Date of filing Sept. 27, 1965. Title of publication, Rotan Advance. Frequency of issue, weekly. Location of known office of publication, 112 E. Snyder ave., Rotan, Texas. Editor, E. H. Shelton, Rotan, Texas. Owner E. H. Shelton, Rotan, Texas. Known bondholders, mortgagees etc. None. Average no. copies each issue during preceding 12 months; single issue nearest to filing date: Total no. copies printer (net press run) 1663. Paid circulation thru dealers etc. 175; mail subscriptions, 1300; total paid circulation 1475. Free distribution, samples etc., 78. Total distribution 1553. Office use etc. 100. Total 1663. I hereby certify that the statements made by above are correct and complete. E. H. Shelton.

Oak & Mahogany

WASHSTANDS

OAK SAFE

OAK BUTLER'S CHEST

Secretary

OAK TABLE

ICE CREAM TABLE

Wrought Iron

FIRESIDE BENCH

WALNUT TABLE, NIGHT STAND & BEDSIDE CHEST

SILVER FOOD WARMER & PEWTER PIECES

Antiques, Relics &

Gift Shop

Roby, Texas

CARPET

See us for your Carpet Needs.

We have Carpets in Stock and other samples to choose from.

We have professional personnel to install all our carpets with your satisfaction guaranteed.

Landes' Furniture

Phone WI 7-3171 Rotan

PROPANE

BUTANE

DAY OR NITE

Martin Butane Co.

Phone Rotan WI 7-2010 or WI 7-2853 -- Roby 4513

NOTICE

24 Hour Service

WINCH TRUCK WORK

Welding and Blacksmith

Work of all Kinds

Septic Tank Cleaning

Call Lee Mauldin

8841 Roby, for Oil Field

Welding

Kike Beauchamp

BLACKSMITH

3 1/2 Blks. East on Anson Hwy

ROBY, TEXAS

Luncroom Menu

Menu for October 5 - 9.

Monday: Fried chicken, gravy, whipped potatoes, black-eyed peas, lettuce and tomato salad, hot rolls, butter, honey, milk.

Tuesday: Barbecued weiners, mixed vegetable salad, buttered corn, hot rolls, butter, apple sauce cake, milk.

Wednesday: Chicken spaghetti, frozen English peas, blushing pear salad, celery sticks, hot rolls, butter, lemon pudding, milk.

Thursday: Hamburgers, pork and beans, sliced cheese, fritos, brownies, 1/2 orange, milk.

Friday: Pinto beans, oven fried potatoes, mixed greens, spoon tomato salad, crispy cornbread, butter, milk, cherry cobbler.

Mr. and Mrs. John C. Simmons of Abilene visited over the weekend with Mrs. Perry Eaton.

Mr. and Mrs. Jimmy Driver and Craig and Mr. and Mrs. A. A. Polk visited Sunday in Snyder with Mr. and Mrs. C. E. Rutledge and Cheryl.

VFW Auxiliary

Holds Business Meeting

Fisher County Memorial Auxiliary to VFW met Tuesday night with president, Jean McKinney in charge. Chaplain Mae Goolsby gave the opening and closing prayer. Two new members, Johnnie Tunnell and Polly Martinez were given the obligations.

A review on by-laws of the organization and duties of each member accepting office in the Auxiliary were studied. Each member holding office was urged to review their by-laws so that they might be better informed on her duties as an officer. Instructions on Honor Roll Requirements were read. Opal Hull was appointed Honor Roll chairman. Also all officers who hold district or state offices were read and recognized an Auxiliary floor.

The meeting closed with prayer, to convene Tuesday, October 5. All members are urged to attend the meetings.

Gerald Jones, Bobby Jones and two sons, cousins of Mrs. John Head, visited with her Sunday.

Get Your Footwear Ready

Bad, cold winter weather is just ahead, why not get your Shoes and Boots ready before it hits. It will save you in the long run.

New Merchandise of all types arriving daily.

Dee's Shoe Shop & Western Store

Where Leather Work is an Art

YOUNG'S FOOD VALUES

SANDY SAVER SAYS:

Save as you Spend with

GOLD BOND STAMPS!

FRO-ZAN 1/2 Gal. 39c

EGGS doz. 39c

Bananas lb. 12 1/2c

Carrots bag 10c

Spuds 10 lbs. 49c

Instant Folgers 6 zo. Jar

COFFEE 79c

Folgers 1 Lb. Can

COFFEE 73c

Libby's No. 2 1/2 Can 3 For

PEACHES 89c

Deckers

OLEO 1b. 19c

Sliced

BACON 1b. 59c

Pork Steak lb. 56c

YOUNG'S MARKET

CALVARY BAPTIST CHURCH

R. D. Harris, Pastor

Phone WI 2525

Corner Genevieve and Stonewall

Sunday School ---- 10:00 A. M.
Morning Worship -- 11:00 a. m.
Training Union ---- 6:00 p. m.
Evening Worship -- 7:00 p. m.
Midweek Prayer Service
Wednesday - 7:30 p. m.

CROSS ROADS BAPTIST CHURCH

(6 Miles SW of Rotan)

D. S. (Bud) Moore, Pastor

Phone WI 7-2097 Rotan

Sunday School ---- 10:00 a. m.
Morning Worship -- 11:00 a. m.
Training Union ---- 6:00 p. m.
Evening Worship -- 7:00 p. m.
Midweek Prayer Service
Wednesday ---- 7:30 p. m.

FIRST ASSEMBLY OF GOD CHURCH

F. W. Akers, Pastor

J. Edgar Hoover says, "The Sunday School can become our guarantee for tomorrow. There is no substitute for religion and the Sunday School."

I was not disobedient unto the heavenly vision. Acts 26:19 The vision of God's work and the desire to help others should always characterize the Christian.

Sunday School ---- 9:45 a. m.
Morning Worship -- 11:00 a. m.
Evening Worship -- 7:30 p. m.
Prayer Meeting ---- 7:00 p. m.
Wednesday Night

FIRST BAPTIST CHURCH

201 N. McKinley Ph. WI 7-3471

Rev. Billy Hudnall, Pastor

Wade Burroughs - Music and Youth Director

Sunday School ---- 9:45 a. m.
Morning Worship -- 11:00 a. m.
Training Union ---- 6:00 p. m.
Wednesday ---- 7:30 p. m.
Midweek Prayer Service
A Complete Program for All
Fully Air Conditioned
Nursery Open

FIRST METHODIST CHURCH

209 N. McKinley Ph. WI 7-2334

Parsonage 405 Johnston

Phone WI 7-2352

Marvin Fisher, Pastor

Sunday School ---- 9:30 a. m.
Morning Worship -- 10:30 a. m.
MYF ---- 6:00 p. m.
Evening Service ---- 7:00 p. m.
Monday Circle ---- 3:00 p. m.
Joy Circle 1st & 3rd Tuesday
9:30 a. m.
Wed. Prayer Circle -- 9:30 a. m.
Choir Practice Wed. 7:30 p. m.
Official Board Meeting 1st
Wednesday of Month

HIGHLAND HOME BAPTIST CHURCH

Harold Churchill - Pastor

Sunday School ---- 10:00 a. m.
Morning Worship -- 11:00 a. m.
Training Union ---- 6:00 p. m.
Evening Worship -- 7:00 p. m.
Wednesday Evening Prayer
Service - 8:00 p. m.

Worship with us and you will feel at home - Welcome

FOURSQUARE CHURCH

EIGHTH AND GENEVIEVE

Rev. Lillian M. Cornwell,
Pastor

Sunday School ---- 10:00 a. m.
Morning Worship -- 11:00 a. m.
Evening Worship -- 7:00 p. m.
Midweek Service Wednesday Nite
Singspiration and Fellowship

HOBBS BAPTIST CHURCH

Chester Mayo, Pastor

Sunday School ---- 10:00 a. m.
Morning Worship -- 11:00 a. m.
Training Union ---- 6:00 p. m.
Evening Worship -- 7:00 p. m.
Midweek Prayer Service
Wednesday -- 7:00 p. m.

LITTLE ZOIN BAPTIST CHURCH

Rev. R. M. Castle, Pastor

Sunday School ---- 9:45 a. m.
Morning Service -- 11:00 a. m.
B.T.U. ---- 5:00 p. m.
Evening Service ---- 6:00 p. m.
Mission Monday ---- 4:00 p. m.
Wednesday Night
Prayer Meeting ---- 7:00 p. m.
Thursday
Jr. Mission, 3:30 to 4:30 p. m.

LATIN AMERICAN CHURCH OF CHRIST

Lincoln and Sherman Ave.

SUNDAY

Bible Classes for all ages

10 to 11 a. m.

Worship Service, 11 to 12 a. m.

Evening Service 7:00 to 8:00

Wednesday: 7:30 to 8:30 p. m.

Epifanio Ortiz, Minister

NAZARENE CHURCH

Lee and McKinley St.

Rev. Wm. A. Morris, Pastor

Parsonage Phone WI 7-3256

Church Phone WI 7-3094

Sunday School ---- 9:45 a. m.

Morning Worship -- 10:40 a. m.

NYPS ---- 6:30 p. m.

Evening ---- 7:30 p. m.

Midweek Prayer Service
Wednesday -- 7:30 p. m.

ROTAN CHURCH OF CHRIST

Scott Mitchell, Minister

SUNDAY

Bible Study, 9:45 a. m. & 6 p. m.

Worship, 10:30 a. m. & 7:00 p. m.

WEDNESDAY

Bible Study for all age 7:30 p. m.

THURSDAY

Worship at Nursing Home 6 p. m.

SERMON TOPICS:

Morning: "Jesus Upon The Cross"

Evening: "Older People and The Church"

SAINT JOSEPH'S CHURCH

305 E. Lee St. -- Ph. WI 7-3285

Rev. Benedict J. Zientek, Pastor

Holy Mass: Sun., 7 to 9 a. m.

Weekdays ---- 7:00 a. m.

Wednesday ---- 7:30 p. m.

Confessions: Sat. 9 to 10 a. m.

Saturday ---- 7:00 p. m.

Mission Church: Sacred Heart

(Near Hamlin)

Holy Mass every Friday, 6 p. m.

SARDIS BAPTIST CHURCH

(8 1/2 Miles SW of Rotan)

Pat Anderson, Pastor

Sunday School ---- 10:00 a. m.

Morning Worship -- 11:00 a. m.

Training Union ---- 6:00 p. m.

Evening Worship -- 7:00 p. m.

IGLESIA BAUTSTA

First Mexican Baptist Church

W. Johnston & N. Garfield

Henry Medina, Pastor

Sunday School ---- 10:00 a. m.

Morning Worship -- 11:00 a. m.

Training Union ---- 7:00 p. m.

Evening Worship ---- 7:45 p. m.

Midweek Prayer Service
Wednesday -- 7:30 p. m.

for a Better Tomorrow

Working, learning to sew... Now, something simple is being prepared and soon her own dresses, and in the future, clothing for her own family. Training is important in the lives of our children.

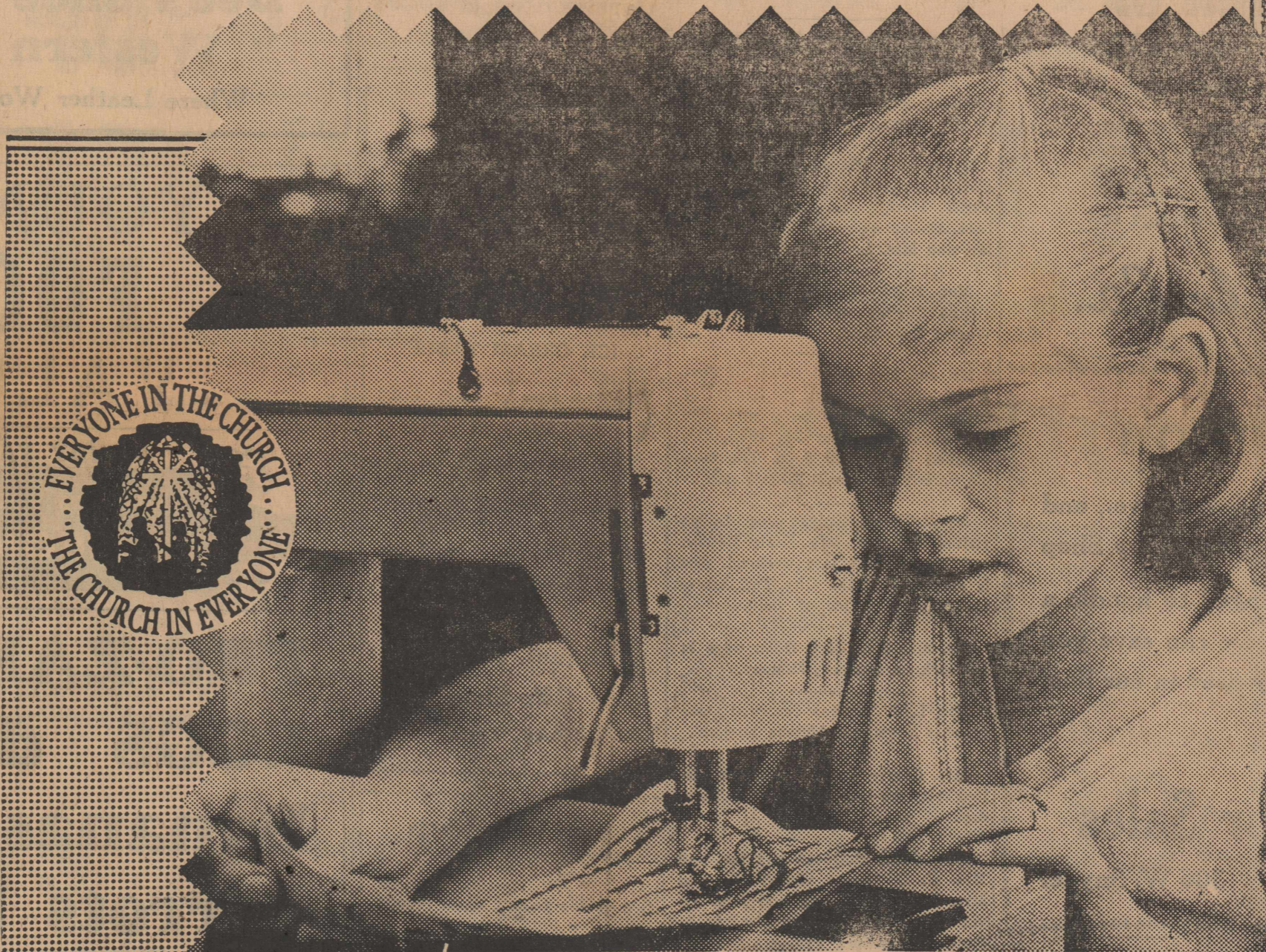
Spiritual training is a must in the lives of our young ones.

"Train up a child in the way he should go: and when he is old, he will not depart from it."

Take your children to church Sunday.

The Church is God's appointed agency in this world for spreading the knowledge of His love for man and of His demand for man to respond to that love by loving his neighbor. Without this grounding in the love of God, no government or society or way of life will long persevere and the freedoms which we hold so dear will inevitably perish. Therefore, even from a selfish point of view, one should support the Church for the sake of the welfare of himself and his family. Beyond that, however, every person should uphold and participate in the Church because it tells the truth about man's life, death and destiny; the truth which alone will set him free to live as a child of God.

© Coleman Adv. Serv.



- First National Bank
- Campbell Department Store
- Fisher County Farm Bureau
- Landes' Furniture
- Home Lumber Co.
- Bill Simmons Texaco Station
- Rotana Inn
- Farmers Gin
- Rotan Seed Delinting Co., Inc.
- Price Grocery
- Rotan Paint & Body Shop

- Winn's Variety Store
- Rotan Cotton Oil Mill
- Weathersbee Funeral Home
- Rotan Gin
- Clark's Tractor - Clark's Beauty Shop
- Thriftway Super Market
- H. R. Puryear--Contractor
- Rotan Motor Company
- Smith & Cyphers Gulf Station
- R. L. Young Insurance
- Gandy's--Bill Henderson

- Mac' Burger Bar
- Rockwell Bro. & Company
- D. J. Smith & Company
- Heleman & Neeley Garage
- 8 til Late Grocery
- Farm Tractor & Service, Inc.
- Hughes Furniture
- Scales Motor Company
- Martin Butane Company
- H. L. Davis & Company
- Rotan Insurance Agency