

Georgia "Peaches". Runs Interference In Practice



Three of Georgia U's ace backs get some help from Jack Sallust and Gloria Harpe on the beach at Miami Beach, Fla. Left to right are Cliff Kimsey, quarterback; Jane, Frank Sinkwich, right half; Gloria and tailback Lamar Davis. Georgia meets Texas Christian University in the Orange Bowl, New Year's Day.

Car Production Depends On Big Guns In Pacific

DETROIT—(UP)—On America's booming war guns in the Pacific hinges the automobile industry's ability to "keep 'em rolling."

Neither military nor civilian vehicles can be produced without rubber for tires and tubes.

Japan's attack has tightened the pinch on the strategic defense material and dramatized the need of keeping vital sea lanes open to the Far East, from which flows 97 per cent of the world's supply of crude rubber.

Outbreak of war in the Pacific has touched off a series of government orders affecting the automobile industry, all designed primarily to conserve rubber for military uses. They included:

Slashing passenger car production for the months of December and January from 60 to 75 per cent respectively, of the industry's output a year ago. This permits manufacture of 153,636 cars during December, 102,424 in January.

To Develop Rationing Plan
Elimination of the spare tire on all new cars hereafter produced by the industry.

Three weeks' suspension of new tire sales to permit the government and tire manufacturers to develop a plan for rationing tires. Revocation of preciously-announced February passenger car production quotas, presumably to permit even more drastic reduction of output.

Although the government has approximately a year's supply of crude rubber on hand, most of it has been earmarked for military requirements. The tire situation is less encouraging. It has been estimated that there are about 10,000,000 tires in the hands of manufacturers, jobbers, retailers and wholesalers. Until recently civilians had been using tires at the rate of about 4,000,000 to 4,500,000 per month. This would indicate that present supplies would last two to three months.

Winter Is Bad Season For Those Too-Dry Skins

By Alicia Hart
NEA Service Staff Writer

Winter is a real bane to dry skins. Dry heat indoors does as much damage as cold flashes outdoors. So what's to do?

First, wash your face and neck with soap and water at night only. Use creams for mornings and cleansing during the day.

Next, apply night cream regularly. A really dry skin needs this even in summer, and when winter comes it's imperative.

And that's the long and short of specific remedies.

But there are other measures which will show equally important results.

The girl or woman whose health habits are perfect isn't likely to have a severe skin problem, short of a sudden ailment which requires a doctor's attention. So if your skin is very dry, look to your eating, sleeping and exercise.

WALK DAILY—AND WATCH DIET

Take a brisk walk daily and be sure you get plenty of fruit juices, milk, salads and fresh vegetables.

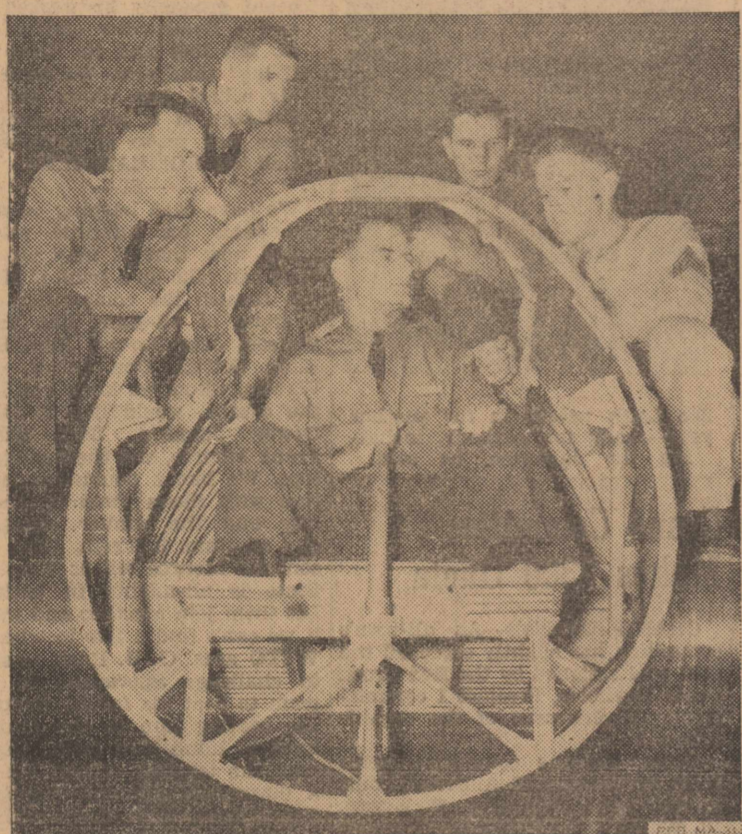
Then, too, inventory your cosmetic habits. Maybe you can improve your appearance considerably by more satisfactory toilet aids. Cream rouge undoubtedly would help, if you now use powder. Select a color that matches your cheeks after violent exercise. Apply it fairly high and be sure there are no rough edges, no white space between rouge and your ear. If blending edges is difficult, try a bit of cleansing cream on each cheek before you start patting and blending.

"LUBRICATION" IS THE WATCHWORD

Probably your hands, arms and elbows need lubrication as much as do your face and throat. Massage hand lotion into them several times a day and cover them once a week with your very richest night cream, leaving it on as long as possible.

For all dry skin there's just one cosmetic watchword—lubrication.

Air Cadets Take the "Stick"



Learning by doing is one reason why Aviation Cadets of the United States Army Air Corps become the best trained pilots in the world. This photograph shows a sergeant-instructor giving pointers on the manipulation of controls to students at Randolph Field, Texas, the "West Point of the Air." Cutaway airplanes such as the one being used here for demonstration purposes play an important part in ground training of U. S. Army Aviation Cadets.

MIND Your MANNERS

P. M. Dan. U. S. Pat. Off.

Test your knowledge of correct social usage by answering the following questions, then checking against the authoritative answers below:

1. Should a hostess see that there are extra blankets in the guest room?

2. If a woman guest forgets some cosmetic she needs should she tell her hostess or use her hostess' without asking?

3. Is it a good idea for a hostess to have several books and current magazines in a guest room?

4. Should a hostess try to hurry her house guests off to bed when they are still in a conversational or bridge-playing mood?

5. Should a house guest make it clear to his hostess soon after he arrives just when he intends to leave, or is it all right for him to feel that he can decide to go at any time?

What would you do if—
A book which you have not read is being discussed and someone asks what you thought of it—

(a) Say you haven't read it?

(b) Say that you never get time to read?

(c) Pretend that you have read it?

Answers

1. Yes.

2. She should tell her hostess, not just help herself to her hostess' supply.

3. Yes.

4. No.

5. He should let her know when he intends to leave.

Best "What Would You Do" solution—(a), (b) is trite.

Army Believes Tank Offensive Can Be Stopped

ATLANTA, Ga.—(UP)—Stop the tanks. That has been the battle cry since Germany launched its blitzkrieg style of warfare on Europe. The U. S. Army is convinced that they can be stopped by recently developed "tank attacker" units.

Lieut. Gen. Hugh A. Drum, First Army Commander, must be credited with this latest innovation. He put them into action for the first time in the recent maneuvers of the First Army in the Carolinas. Lieut. Gen. Lesley J. McNair, director of Army General Headquarters, thinks that if Drum's tank attackers can be coupled with the new GHQ anti-tank groups and welded into a highly mobile, hard-smashing unit, the tank can be fought on even terms.

First Successful Defense

As late as October when First Army maneuvers began there had been no system by which the army could stop roaring tank monsters. Army officials knew that something had to be done soon but they did not realize that only a few days following close of the field maneuvers, America would be at war.

During the earlier maneuvers held throughout the United States this year, new systems were tried as tank stoppers but none of them proved successful. Only in the Louisiana maneuvers did officers find a ray of hope with the newly organized GHQ anti-tank groups.

Warfare--

(Continued From Page One)

Japanese struck by sea and air at Pearl Harbor.

Nimitz declared that Japanese submarines, operating off the West Coast of the United States, might try shelling coastal cities.

"It's relatively safe and simple for a submarine to rise to the surface near a port and throw a few shells into a city.

"It is not beyond the bounds of possibility that Japanese submarines operating off the West Coast of the United States may attempt

to lay their shells into cities before they leave."

Hopes that Philippine forces might stave off the Japanese drive toward Manila dwindled by the hour as the nation awaited new word from the hard-pressed defenders. The latest official report from Manila, through Washington, pictured the situation as of 8:30 a. m., CST, Wednesday.

That communique said:

"The enemy continues to exert heavy pressure on all fronts with extensive use of dive bombers and armored units. In spite of these difficulties, a further readjustment of our lines has been completed in an orderly manner. American and Philippine troops continue to offer

strong resistance, inflicting heavy losses on the enemy."

The Dutch East Indies command announced an American freighter was set afire Wednesday by Japanese planes in northern waters of the archipelago, and abandoned by its crew with only one man missing. Forty-eight men were picked up by a Dutch flying boat answering the freighter's distress signals.

A Tokyo communique said that Japanese army bombers, since Dec. 28, had sunk a submarine, destroyed two steamers of 8,090 tons each and scored a direct hit on a destroyer in waters about Malaya and the Philippines.

AUSTRALIAN LABORER GIVES ALL SAVINGS TO WAR FUND

ST. LOUIS—(UP)—The United States is in a much better position to produce explosives for military use than it was in 1918, according to Dr. Jules Bebie, professor of chemical technology at Washington University. He told an engineering club that shortly the United States plants would produce about 3,600,000 pounds of explosives per day.

He was shown a shipment of sheepskins, medical and other goods being packed, and he then handed in 150 one-pound notes, refusing to give his name and address. He asked for the receipt to be made to "D.R.A.Y."

EXPLOSIVE PRODUCTION UP

would reach Russia, he handed over \$1,400 in 5-pound notes. "This is the last of my savings," he said in a Scotch accent. "I was planning to have a good time with it when retired, but the Russians need it more than I do."

A healthier, happier New Year depends largely upon good food in a balanced diet . . . and a more prosperous New Year begins with a visit to Wes-Tex! Get started on the right food by coming in for everything you'll need for the Holiday dinner and party. The big savings will show that you'll have extra cash for fun, frolic and feasting in '42 if you will buy all your food needs here where every price is a low price every day.

- Banner Butter Pound 38c
- Folgers Coffee Pound 31c
- Lifebuoy Soap 4 Bars 23c
- DREFT large box 24c

- Del Monte PEARS 16 oz. can 21c
- Del Monte PUMPKIN No. 2 Can 11c
- Del Monte TOMATO JUICE 47 oz. Can 24c
- Del Monte Tomato CATSUP 14 oz. Bottle 18c
- Saltine CRACKERS Pound Box 18c
- Pillsbury PANCAKE FLOUR 3 1/2 lb. box 30c
- Log Cabin SYRUP 16 oz. can 21c
- No. 2 Can Primrose CORN 2 For 29c
- Brown's MARSHMALLOWS 1/2 lb. Cello Pkg. 9c
- Hershey's COCOA Lb. Can 18c
- Grapefruit JUICE 47 oz. Can 23c
- Mission PEAS No. 2 Can 16c
- Sioux Bee HONEY COMB 16 oz. jar 22c
- SCOT TISSUE 3 Rolls 25c



Winesap
APPLES
Dozen 27c

Large Bleached
CELERY
2 Stalks 25c

- Fresh Green SPINACH 2 lbs. 15c
- Black Valentine GREEN BEANS 2 lbs. 21c
- White or Yellow SQUASH 2 lbs. 15c
- Texas Seedless ORANGES Dozen 21c
- Marsh Seedless GRAPEFRUIT 3 for 11c
- 220 Size Calif. ORANGES Dozen 25c
- Paper Shell PECANS lb. 23c

NOTICE! Effective today we will discontinue giving Cherry Vouchers, however, we will give Cherry Vouchers on all December accounts paid on or before January 10th.

WES-TEX FOOD STORE

Midland's Bread

Tillman's Bakery

McKENNEY ON BRIDGE

By William E. McKenney
America's Card Authority

The fourth member of the team winning the national women's team-four championship at Richmond was Mrs. Randolph Scott of Memphis, a little woman whom you would not suspect of knowing the tricks of end plays and squeeze

♠ QJ103
♥ J
♦ 9854
♣ K863

Mrs. Scott
♠ 92
♥ A986
♦ KJ107
♣ 3

♠ A5
♥ N
♦ S
♣ Dealer

♠ AK64
♥ KQ3
♦ AQ2
♣ J97

Duplicate—None vul.

South	West	North	East
1 ♠	2 ♠	2 ♠	Pass
2 N.T.	Pass	3 ♠	Pass
4 ♠	Pass	Pass	Pass

Opening—♠ 9.

plays. But she is dynamite when it comes to bridge. Her husband is president of the Tennessee Bridge Association and they both enjoy tournament competition.

During the course of the team match, one of the contestants thought she could sneak a trick through Mrs. Scott—and failed. Mrs. Scott jumped in and saved the day, winning the board for her team.

Declarer won the opening lead in his own hand and immediately led the three of hearts. At other tables, with the same play, the West player ducked this lead, hoping that East could get in to lead a diamond, and four spades was made several times.

But Mrs. Scott, sitting West, took no chances. She put up the ace of hearts and exited with the other trump.

South still found a good try for the contract. She took the third trump round, cashed the two hearts, discarding two diamonds from dummy, then led a club.

Mrs. Scott put up the ace and led the five of clubs. Declarer could not avoid the loss of two clubs and a diamond, besides the heart ace.

WIFE VS. HORSE
LOUISVILLE, Ky.—(UP)—Mrs. Theo. G. Wells Frank was granted a divorce from her husband Samuel Frank on the grounds of cruelty. She testified that Frank forced her to ride a horse which she feared.

Agency Describes Raid Precautions

WASHINGTON—(UP)—If you have ever "sensed" your way about your bedroom at night with only the luminous dial of a clock or the outline of a window to guide you, then you have some idea of what it would be like to walk the streets in a blackout.

The Office of Civilian Defense has released a 60-page booklet prepared by the War Department, in which the necessity of individual training for blackouts is stressed and blackout procedures are described in detail.

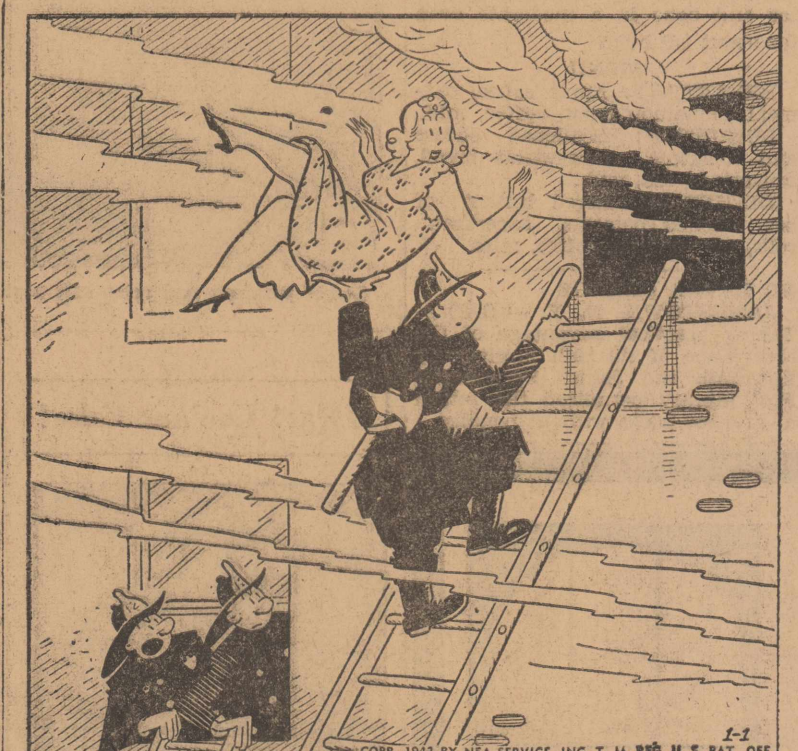
It is pointed out that "the effective-

ness of a blackout system depends upon the knowledge and the cooperative spirit of the people at large."

Among the minor discomforts that individuals will have to observe if blackouts become a reality here are the prohibition of smoking out of doors, compulsory wearing of reflectors and white belts for pedestrians, careful shading of windows in private homes, and enforcement of a rule prohibiting persons in the streets from looking upward during an air raid.

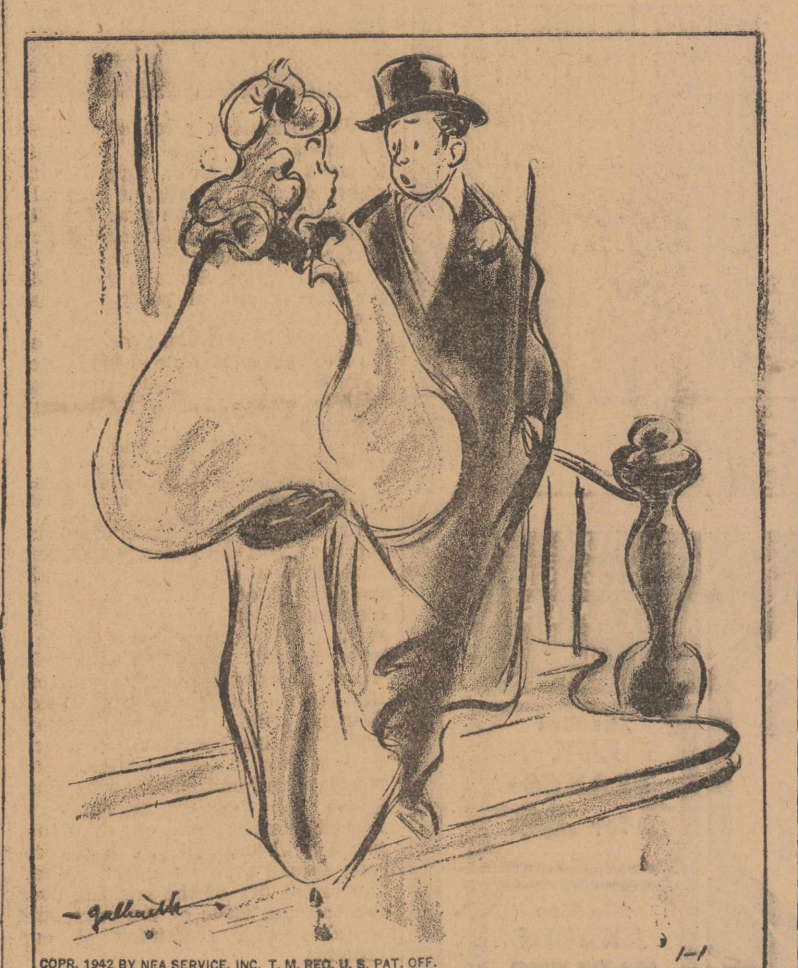
This latter precaution is taken, according to the survey, because the upturned faces of a crowd are conspicuous, especially if streets are lighted by flares or burning buildings.

FUNNY BUSINESS



"I knew we shouldn't have let that waiter join the fire department!"

SIDE GLANCES



"Let's walk about six blocks before we take a taxi—then it'll cost us only 20 cents to arrive in style!"

THIS CURIOUS WORLD

By William Ferguson

THE METEOR
THAT CAUSED THE GREAT 18-SQUARE MILE CRATER IN COCONINO COUNTY, ARIZONA, WOULD HAVE DEMOLISHED COMPLETELY THE CITIES OF WINSLOW AND FLAGSTAFF HAD THEY BEEN IN EXISTENCE AT THE TIME!

WILSON KROGER
THE LARGEST COUNTRY IN THE WESTERN HEMISPHERE IS CANADA UNITED STATES BRAZIL

ANSWER: Canada.

NEXT: A new discovery about Old Sol!

LUNCHEON SAUSAGES

Sausages are in season—and they need to be just a breakfast dish. Try them this way—grilled with tomato halves and bananas—for luncheon. Broil the tomato halves, seasoned with salt and pepper, and sausages on one side. Turn when brown, and arrange peeled bananas, brushed with butter and salted, on the broiler with the sausage and tomatoes and cook until all are tender and browned.

SEEKS CITIZENSHIP AT 90

BELLEVILLE, Ill.—(UP)—William Becker, Sr., 90, New Athens, Ill., farmer, has filed a declaration of intention to become a citizen in circuit court here. Becker came to this country shortly after his birth. He said that until recently he believed he was an American citizen. He must wait two years before final citizenship papers can be issued.

BAY RUM AS EVIDENCE TRAPS INDIAN DEFENDANTS

SALT LAKE CITY, Utah.—(UP)—Tom and Susie Graymountain, Utah Indians from the Fort Duchesne reservation, were brought into federal court here to answer charges of stealing a harness from Susie's aunt, Mary Pennyjack. When Susie descended from the witness stand, a bottle tumbled

from beneath her Indian blanket. It was bay rum. She hastily explained to U. S. marshals that the "tonic" had been purchased for my "husband's whiskers."

But when Tom took the stand, his attorney found a good deal of the bay rum had got past his whiskers. It showed in his testimony—and Tom and Susie were convicted.

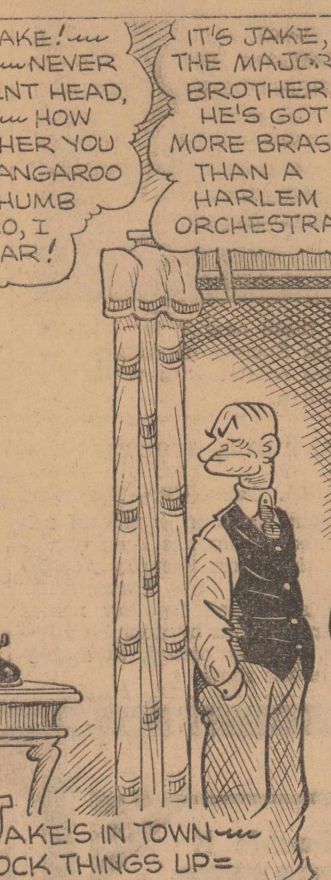
NYLON NOW SUBSTITUTED FOR VITAL CORE METALS

WILMINGTON, Del.—(UP)—Fans, vacuum cleaners, refrigerators, food mixers and other appliances using small motors can wear nylon now, and in doing so save vital core metals for defense production. As an insulator nylon is said to be as efficient as the conventional magnet wire and requires 10 to 15 per cent less space in construction of the motors.

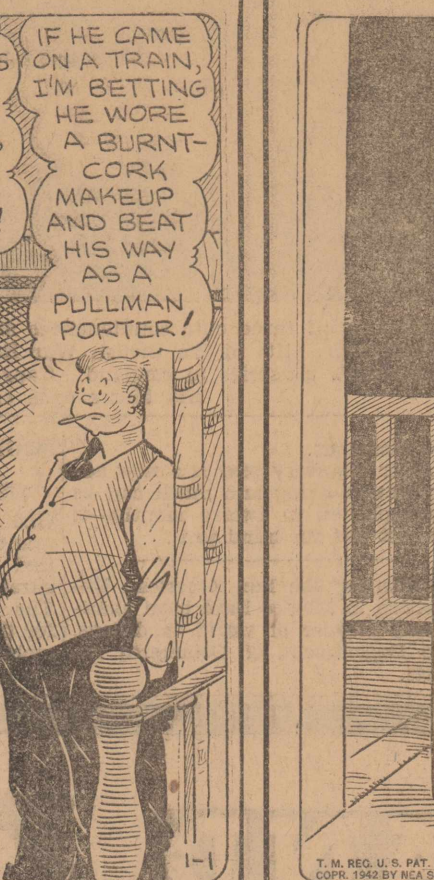
Our Boarding House



Major Hoople

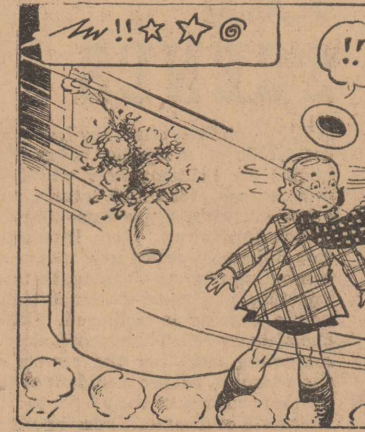


Out Our Way



By J. R. Williams

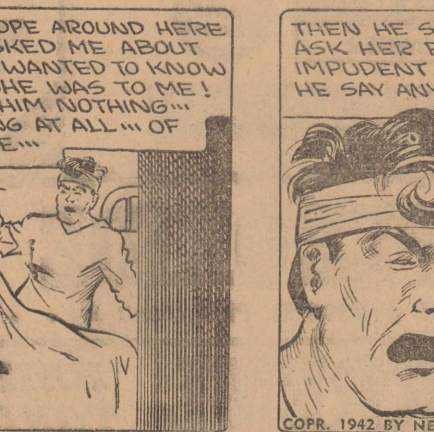
Boots And Her Buddies



Wash Tubbs



Alley Oop



Red Ryder

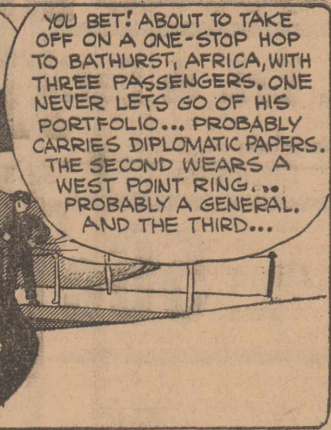


By Edgar Martin

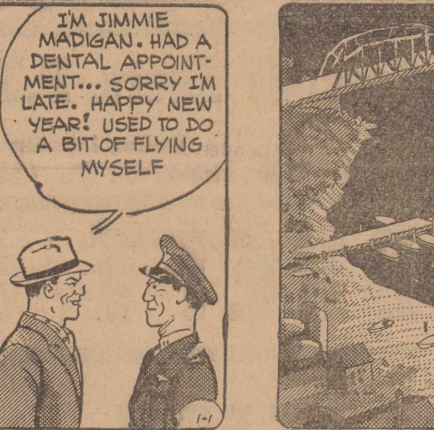
Freckles And His Friends



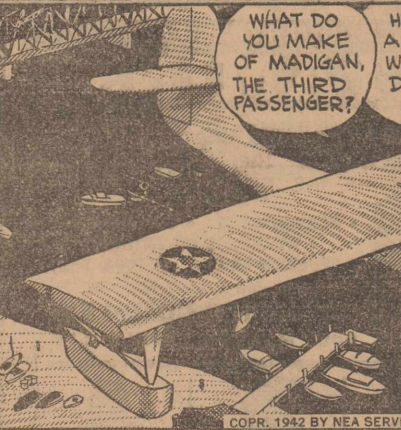
By Roy Crane



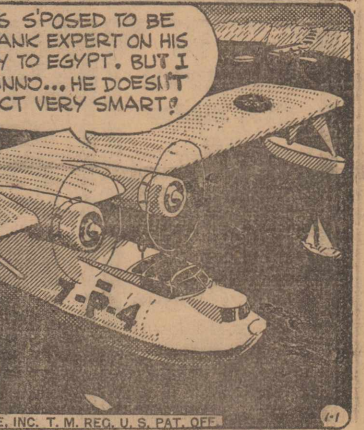
By V. T. Hamlin



By Fred Harman



By Merrill Blosser



Panel Front



Here is a frock to work in—a frock you'll enjoy wearing, too, for it has easy comfort as well as pleasing style. First of all, it slips on in a jiffy—and coat style, buttons up the front. The panel down the front provides the long unbroken line which slenderizes, the low square neckline is always youthful. The side sashes tying in back mean you can adjust the fit to your own figure without any trouble. And it has two grand pockets—which add much to the usefulness of this trim work dress.

Pattern No. 8064 is in sizes 34 to 50. Size 36 takes 5 1/8 yards 39-inch material, 2 yards ric rac trim.

For this attractive pattern, send 15c in coin, your name, address, pattern number and size to The Reporter-Telegram Today's Pattern Service, 211 W Wacker Drive, Chicago.

Styles for all ages and all sizes are shown in the Fashion Book, a preview of designs available in easy-to-sew patterns. Send for your copy today.

Pattern 15c; Pattern Book 15c; One pattern and Pattern Book, ordered together 25c.



I will buy Quality Foods at everyday low prices at PIGGLY WIGGLY

Start the New Year with the best economy resolution of them all—buy PIGGLY WIGGLY'S finest foods at savings you cannot afford to miss. Come in today and begin a happy New Year as a satisfied PIGGLY WIGGLY shopper!

SUGAR

10 Lbs. Cloth Bag

59c

SUGAR CURE

Figaro or Morton's 10 Lb. Can

89c

BUTTER

Banner Pound

38c



Sea Food Sauce 14 oz. Bottle 23c

Monarch BEANS Asparagus Style No. 2 Can 22c

PEAS

Tiny Sifted No. 1 can 15c No. 2 can 21c

SPAGHETTI

(With Cheese)

15 oz. Can 10c

Peanut Butter

Krumbled 1 Lb. Kernels Jar 23c

WHEAT HEARTS

1 Lb. Pkg. 9c

Fruit Of Wheat

1 Lb. 12 oz. Pkg. 16c



Chili Sauce 14 oz. Bottle 23c

PRUNE JUICE

12 oz. Can

3 For 25c

PICKLES

Sweet or sour Gherkins Sour-chow Sweet Mixed

6 1/4 oz. Bottle 10c



Monarch Long Shred Rice 1 Lb. Can 15c

BEANS

Cut Green No. 2 Can

2 For 27c



Specials For Fri. & Sat.

THE RICHEST FLAVOR IN COFFEE ONE LB. VACUUM CAN

Admiration Coffee 1 Lb. Can 29c

BRIGHT and EARLY Coffee A MAN'S COFFEE

1 Lb. Can 24c

MONARCH COFFEE Lb. 27c

Vacuum Packed

3 lbs. 77c Drip or Regular

BAKE-RITE

The PERFECT SHORTENING For... Fine Baking Cooking Frying

3 Lbs. 59c

Chocolate Covered Cherries 1 Lb. Box 19c

14 Oz. Can Gold Bar TOMATO JUICE 3 For 22c

Ratloff TAMALES 12 to Can 2 For 29c

Paper NAPKINS 80 Count 2 For 19c

500 Count Park Lane Cleansing Tissue 2 For 35c

PET MILK

The Standard of Quality for 50 Years

3 Large or 6 Small 27c

The safe, easy way to get clothes clean

OXYDOL Large Size 24c

Marvelous New Suds

Odreft Large Size 24c

PERK Large Size 2 Pkgs. 35c Med. Size 3 Pkgs. 25c

SAVE YOUR S & H GREEN STAMPS Balloon Soap Flakes Large Size 4 lb. 10 Oz. Pkg. 35c

FRESHEST PRODUCE

APPLES	Extra Fancy Winesap	Size 125 Doz.	29c
APPLES	Extra Fancy Roman Beauty	Size 125 Doz.	29c
APPLES	Extra Fancy Red Delicious	Size 163 Doz.	29c
CALAVOS SQUASH	White or Yellow	2 For	29c
G'FRUIT	Marsh Seedless Size 64	3 For	17c
POTATOES	Colorado Cobblers	10 Lbs.	23c
ONIONS	Spanish-Sweet Yellow	2 Lb.	9c
BELL PEPPERS	Nice Fresh	Lb.	12c
PEAS	English Full Pod	2 Lbs.	25c

CRANBERRIES Lb. 25c

NEW POTATOES 2 Lbs. 15c

MEATS of QUALITY

Fine For Baking or Boiling

Cured Ham Ends LB. 23c

Choice Baby Beef Chuck Roast LB. 23c

Armours Star Bacon LB. 35c

Nice & Lean Pork Chops LB. 27c

DRESSED HENS Dressed While You Wait Lb. 25c

LAMB SHOULDER ROAST Bonerolled and Tied Lb. 25c

Short Ribs of Beef LB. 18c Salt Pork LB. 17c

Daily Double Grape Fruit Juice 12 Cans Cans 39c Case of 6 Dozen \$2.29

O.G. 4 Cans 25c WON-UP 46 oz. Can 18c

American Beauty MACARONI SHELLED, RING, SALAD ALPHABET, ELBOW, RIGID 12 oz. Pkg. 2 Pkgs. 21c

American Beauty EGG NOODLES 5 oz. Pkg. 3 For 25c 1 Lb. Pkg. 15c

American Beauty Salad-Roni-Long or Cut Spaghetti 7 oz. Box 3 For 19c

Piggly Wiggly