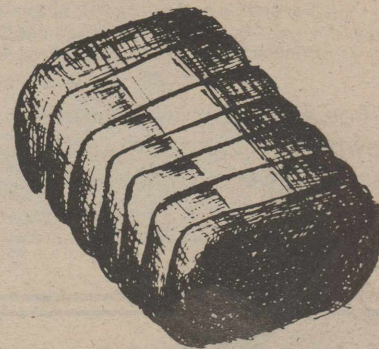
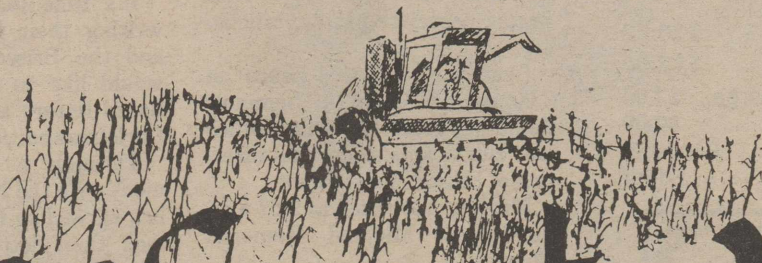


Baze Bookbinding XX  
514 W. 7th Street  
Amarillo, Texas 79101



# Briscoe County News

THURSDAY, DECEMBER 15, 1988

VOLUME 80 NUMBER 50



At the conclusion of his last Commissioners' Court meeting, Shafe Weaver, who has served as Commissioner of Precinct 1 for the past sixteen years, was presented a plaque in recognition of his service to Briscoe County by County Clerk Bess McWilliams. Witnessing the presentation were (left to right) Commissioner Bryant Eddleman, Commissioner Jack Chandler, Judge Jimmy Ross and Commissioner L. B. Garvin. A party followed, with county employees bringing cakes, cider and other goodies to add to the festivities.

Briscoe County News Photo

## Commissioners' Court Meeting Concludes With Party

Monday's meeting of the Briscoe County Commissioners' Court concluded with the presentation of a plaque in recognition of sixteen years of service as Commissioner of Precinct 1 to Shafe Weaver, who chose not to run for re-election this year. The presentation was made by County Clerk Bess McWilliams.

The ceremony was witnessed by Mrs. Weaver and courthouse employees, who brought in an array of cakes, cider and other goodies for the party that followed the presentation. Also present were Aaron Younger, Precinct 1 Commissioner-elect; Commissioners Bryant Eddleman, Jack Chandler and L. B. Garvin, and County Judge Jimmy Ross.

In a recent special meeting, Commissioners approved the donation of \$500 to Panhandle Transit and the hiring of Boyce Hart as sheriff's deputy to replace the late Oliver Clark.

In Monday's regular meeting, the request of District Judge David Cave for health insurance

for the court reporter was discussed. Commissioners mentioned the fact that Briscoe County employees have no health insurance program and weren't receptive to the idea of funding a program for the court reporter when they had none themselves. No motion was made on the question.

Bonds were approved for Briscoe County officials.

Alton Riddell appeared before the court to request that the lighting of the shelter be hooked up to the county's utility meter, and the Commissioners voted unanimously to do this.

Annual reports were given by Extension Agents Lynda Fogerson and Curtis Preston, and Mrs. Fogerson presented a certificate to Judge Ross for attending the Judges' and Commissioners' Conference October 12-14. It was noted that a program Mrs. Fogerson wrote on Nutritional Needs of Athletes had placed first in state competition and second in the nation during the past year. In her report, she

highlighted activities for which she has been responsible during the past year. Preston recapped the agriculture projects, tours and demonstrations he has worked with during the past year, and expressed appreciation for the Court's support of Extension activities.

Treasurer Janice Hill reported on the need for a transfer of funds from the General Fund into the Courthouse and Jail Fund, and the Commissioners unanimously approved this.

Mrs. Hill also reported on contacts she has made with auditors in regard to the upcoming county audit. Gary Lancaster of Matador was unanimously approved as the county's auditor, and it was decided to pay him \$500 extra to audit the individual county offices. Commissioners stated that they were well satisfied with Lancaster's work on the previous audit.

The Commissioners voted to pay line items and all the bills presented at the meeting.

## High Honors Won at District Food Show

Several Briscoe County 4-H members received high honors at the District 4-H Food Show on the Texas Tech University campus in Lubbock Saturday.

Josh Brooks was awarded second place in the senior nutritious snacks and desserts division, and Patrick O'Neal placed second in the Junior II nutritious snacks and desserts division.

Ashleigh Wyatt received third place honors in the Junior II breads and cereals.

Other county participants were Molly Brooks, Marshall

McCammon, Trey Wyatt, Jarrett Pigg, Mac Chestnut and Cecilia Castillo.

Over 190 county winners from the 20-county South Plains District entered this competition.

Accompanying the group to Lubbock were Janinne Brooks, Joanie Pigg, Darrah McCammon, Gail Wyatt, Lee O'Neal, and County Extension Agent Lynda Fogerson. Lee O'Neal was a judge at the contest.

## News Office Closed Thursday

The office of the Briscoe County News will be closed today (Thursday) because of eye appointments in Lubbock.

Please arrange your business so you won't be inconvenienced by this closing.

## School to Dismiss For The Holidays

Silvertown Schools will dismiss at 1:30 p.m. Wednesday, December 21, for the Christmas holidays.

Classes will resume on January 2, 1989.

## Church To Have Living Nativity Scene

First United Methodist Church in Silvertown will present an outdoor live nativity scene Sunday, December 18.

The program will be from 7:00 until 7:30 p.m. in the yard west of the church.

Everyone is invited.

## Senior Boosters Taking Orders For Christmas

Senior Boosters are taking orders for Christmas baking.

If you want to order any baked good, call 823-2082, 823-2210, 823-2284 or see any parent of a senior.

## Senior Citizens to Have Luncheon

Silvertown Senior Citizens will have their monthly luncheon and business meeting Friday, December 16, at noon at the center.

Hostesses for the luncheon will be the Baptist ladies.

A program will be presented by the Fourth Grade.



Lance Holt, a member of Boy Scout Troop 262, was pictured with one of the fresh greenery wreaths the Scouts are selling. The wreath is accented with pine cones and a red velvet bow and sells for \$12.00. The wreaths are 22 inches in diameter, and may be ordered by calling 823-2297 or contacting a Scout. Briscoe County News Photo

**BRISCOE COUNTY NEWS**  
(SECD-065280)  
Published Every Thursday at Silverton, Texas 79257  
By Charles and Mary Ann Sarchet  
Second Class Postage Paid at Silverton, Texas 79257  
Postmaster: Send Address Changes to  
Briscoe County News, Box 130, Silverton, Texas 79257

**SUBSCRIPTION RATES PER YEAR**  
Briscoe and Adjoining Counties..... \$10.50  
Elsewhere..... \$12.50  
Classified Advertising, 10c per word, minimum charge.. \$2.00  
Cards of Thanks..... \$2.00  
Charles R. Sarchet..... Publisher  
Mary Ann Sarchet..... Editor

**OBITUARIES**

**ROY BARTON JARNAGIN, SR.**

Funeral services for Roy Barton Jarnagin, sr., 76, were conducted at 10:00 a.m. Monday at Franklin-Bartley Funeral Home in Lubbock. Burial was in Arlington National Cemetery at 3:00 p.m. Wednesday.  
Mr. Jarnagin died Friday, December 9.  
Born in 1912 in Belton, he had

lived in Lubbock for 16 years, moving there from Severna Park, Maryland. He was a graduate of Silverton High School in 1931 and of the University of Maryland. He married India Chaney at Arnold, Maryland in 1947. He was a retired naval commander. He served in World War II. He was a member of the Masons and Elks Club.

Survivors include his wife; two sons, Roy Barton Jarnagin, jr. of Amarillo and John Arthur Jarnagin of Bedford; two brothers, Glenn Jarnagin of Floydada and Floyd Jarnagin of Midland; two sisters, Mamie Lou Hartman of South Plains and Gail Horn of Lubbock; five grandchildren, and several nieces and nephews, including Steve Jarnagin of Silverton.

**JACK FOGERSON**

Funeral services for Jack Fogerson, 71, of Midland were conducted at 9:30 a.m. Monday at First Presbyterian Church in Midland with the Rev. Dick Braun, associate pastor, officiating.

Graveside services were at 2:00 p.m. Monday in Seminole Cemetery with the same officiant. Burial was under the direction of Ellis Funeral Home.

Mr. Fogerson died at 9:37 a.m. Sunday at Midland Memorial Hospital.

He was born in Silverton and lived in Slaton and Lubbock before moving to Midland in 1977. He married Elizabeth Stark on September 9, 1945. He was a U. S. Army veteran of World War II and had been a prisoner of war. He worked for Hamilton Brothers Oil Company from 1946 until retiring in 1982.

Survivors include his wife and a son, Zeph, of Midland. He was a cousin of Stan Fogerson of Silverton.



For thickening gravy, sauce or stew, sprinkle instant mashed potatoes into the mix and stir. Lumps dissolve immediately.

The Egyptians, about 3000 B. C., used a checkmark as the letter T.

**Santa Letters Needed For Christmas Paper**

It's time for the kids to be writing their letters to Santa, and the Briscoe County News would like to publish as many Santa letters as possible in the Christmas edition this year.

Through a special arrangement with the North Pole, Santa has agreed to have the children mail their letters to Box 130, Silverton, Texas 79257, and the letters will be forwarded to Santa in plenty of time for him to fill all the Christmas orders. The letters must be received by the Briscoe County News not later than Monday, December 19.

**A Merrier Meow**

Tabby Cat is going to have a merrier Christmas this year. The folks at Tabby's house are going to:

1. Keep the electrical wires concealed and off the floor so Tabby won't chew on them.
2. Put the poisonous plants of poinsettias and mistletoe out of reach.
3. Place the candy high on a shelf.
4. Replace the cheap ornaments that were broken by the young cats last year with unbreakable ones.

**A Remembered Gift**

"Well, if you want to get a Christmas gift someone will always remember—get a CHEAP one!

**NO MARGIN FOR ERROR**

**Be Sure**

Trust the knowledge and skill of our competent pharmacists when in doubt about your prescription.

*We Can Mail Your Prescriptions to You!*

**995-3525**  
**CITY DRUG STORE**  
Hwy. 86 & Maxwell  
Tulia, Texas

If you need work done on your vehicle, just call **995-3565** during the day, or call **823-2039 (Joe)** or **823-2498 (Dale)** after 7:00 p.m.

They will pick up your vehicle in the morning, drive it to Tulia, make the repairs needed, and return it to you in the evening.

Remember, we're just a phone call away!  
**GRABBE-SIMPSON**  
Motors, Inc.

**NEIL A. BRYSON, DDS, Inc.**

**General Dentistry**

Briscoe County Medical Clinic  
Silverton, Texas

Hours by Appointment

**806-995-4191**

**The Congregation of the CHURCH OF CHRIST**

**Meeting at Rock Creek**

Extends a Gracious Welcome to All To Attend Any and All of Our Services.  
**SUNDAY**

Morning Worship..... 10:30 a.m.  
Evening Worship..... 6:00 p.m.

**WEDNESDAY**

Evening..... 7:00 p.m.

**CARPORTS & PATIO COVERS**

Protect Your Auto, Van or RV From Hail & Sun Damage  
*Financing Available!*

**EB-TX** 7105 Olton Rd., Drawer 369, Plainview, TX  
Call Now: 1-806-293-9526

**You can make a difference in someone's life and it won't cost you a cent.**

Every time you choose MasterCard to make a purchase, you can benefit an important cause—without spending an extra penny! Because a donation\* will be set aside for a special fund, every time you use your MasterCard® Card, Gold MasterCard®, MasterCard BusinessCard™, or purchase MasterCard Travelers Cheques®. The fund will be divided among six worthy causes listed below, based on cardholder votes.

Last year, thanks to your help, the **Choose To Make A Difference** fund reached \$2.8 million. Won't you help us make this year's program even more successful?

Vote for the cause you wish to support on the ballot below.

Thank you!

\*MasterCard International will contribute .7¢ for each MasterCard transaction between 10/1/88 and 12/31/88.

**Yes! I Choose To Make A Difference** to the following cause:  
please check one only

- Alzheimer's Association
- American Heart Association
- The Just Say No Foundation
- National Committee for Prevention of Child Abuse
- American Red Cross
- American Cancer Society

Name (please print) \_\_\_\_\_

Zip Code  MasterCard Account No.   
first seven digits only

Ballot must be received by December 31, 1988.

MAIL TO: MasterCard International Inc.,  
P.O. Box 5292, Clifton, NJ 07015-9892

Complete, correct information required for ballot to be valid.

**Choose To Make A Difference.**



**MAKE A DIFFERENCE...**

**Use your MasterCard through December 31... and cast your ballot for the American Cancer Society.**

# Looking Back

through the files of the  
Briscoe County News

**December 14, 1978**—M. G. Moreland to retire as Briscoe County Judge on December 31 . . . Diana Wood selected as one of the Outstanding Young Women of America . . . Christmas alone won't drive you into bankruptcy, but if you're already on the brink, that might be the push that puts you over . . . Janice Hill and Frances Davis are operating the Slop Shop . . . Kenneth D. Cook promoted to District Extension Agent . . . Mrs. Arnold Brown was a patient in the Concho County Hospital at Eden last week . . . Mrs. Oford King underwent surgery on her leg two weeks ago at St. Anthony's Hospital in Amarillo . . . Snooks Baird recently underwent surgery at St. Anthony's Hospital in Amarillo . . .

**December 12, 1968**—Mr. and Mrs. Freddy Dunham are parents of a son . . . Airman Freddie L. Stafford has recently received promotion to sergeant at Fire Island, Alaska, off the coast near Anchorage, where he is serving as a radar operator for the U. S. Air Force . . . Mr. and Mrs. C. O. Allard and Mr. and Mrs. Gilbert Elms visited Sunday afternoon with Mr. and Mrs. K. C. Jackson and Mr. and Mrs. Reed House in Lubbock . . . Mrs. Ruth Baker, Elbert Dickerson marry . . . Carol Ann Montague is Miss FHA for November . . .

**December 11, 1958**—Freeland J. Bingham killed in automobile accident Thursday . . . At the District FFA meeting in Plainview, Silverton's FFA quiz team, composed of Robert Rhode, Robert Hughes, Bobby Kitchens, won second; the Radio Broadcast team, made up of Bob Crass, Fred Dunham, Dewey Estes, placed third; the Junior Farm Skill team, Joe Kellum, Fred Edwards, Kenny Thornton, placed fourth . . . Margaret Whitfill weds Ronald Dale Kitchens in double-ring ceremony . . . Cotton harvest almost finished . . . Mr. and Mrs. Donnie Perkins spent Sunday in Hereford with his uncle and family, Mr. and Mrs. Walt Perkins and daughters . . . Mike Mercer spent Wednesday and Thursday at Northwest Texas Hospital in Amarillo where the cast was removed from the leg he had broken in a football scrimmage six weeks earlier . . . D. T. Northcutt, True Burson and R. L. Hill attended a Producers Grain Convention in Amarillo last week . . . Mr. and Mrs. H. Roy Brown visited his sister and family, Mr. and Mrs. Bob Smith, in Lockney Sunday afternoon . . . Mrs. P. D. Jasper and Dawn and Mrs. Sam Hunt were in Tulia last Friday . . .

**December 16, 1948**—Dear Santa, I've been good and I love all my little girl friends, so will you please bring me a bottle of that "come hither" perfume? Don't forget to bring my wittle girl friends some also. I don't know, but I think that they like that "go younder" brand. Thank you, sincerely, Wittle Ukey . . . Mrs. C. L. Cowart injured her shoulder in a fall at her home . . . Milton Dudley resigns as City Councilman . . . Mrs. Lee Davenport home from the hospital . . .

Funeral services conducted for John Blackwell . . . Dear Santa Claus, We have been good this year. I am a little boy four years old, and my little sister is nearly three. I want you to bring me two guns. My little sister wants a doll. We both want a jeep to ride in. Don't forget us. Merry Christmas, Bobby and Sandra Kitchens . . . Dear Santa, Please bring me a Donald Duck wrist watch and a basketball, set of two guns, holster set and a cowboy hat, nuts, fruit and candy, and don't forget my friend, Frankie Bingham, and the other boys and girls. Your friend, Donnie Leon Perkins. P. S. Santa, please don't forget my uncle Henry, he works on the

railroad and he has his toe broke now . . . Dear Santa, I want a bride doll and molding clay set, and a set of dishes. Love, Diane Fogerson . . . Beckie Cowart honored on fourth birthday . . . Mrs. Dee McWilliams is hostess to Rainbow Assembly . . .

**December 15, 1938**—Dear Santa Claus, I wish you would bring me a little piano, a Shirley Temple doll, a set of dishes, a doctor and nurse kit and bring some fruit and candy. Your little friend, Hazel Chitty . . . Mrs. Lela Minyard, long-time resident of Silverton, died at her home December 9, at the age of 64 years, after an illness of several months . . . Miss Catherine Cline marries Cecil Boggs . . . Miss

Modean Houston, J. L. Stroud marry in Quitaque . . . Football players who will receive sweaters are Captains Hank Brown and A. J. Rowell, Minyard Long, Carlton Gardner, Grady Martin, Thomas Olive, Jack O'Neal, Charles Francis, Conrad Henderson, W. L. Perry, Fred Brannon, O. C. Rampley, Bob Brooks, Alton Walker, Charles Quillin, Bruce Bureson and Hubert Tillery . . . Rowell selected on All-District team . . . Mr. and Mrs. Roy Mayfield's baby has been seriously ill with pneumonia, but is much better now . . . Mrs. Billie McDaniel and baby are visiting relatives in Tulia . . . Joe McWaters left last week for Abilene where he has work . . .

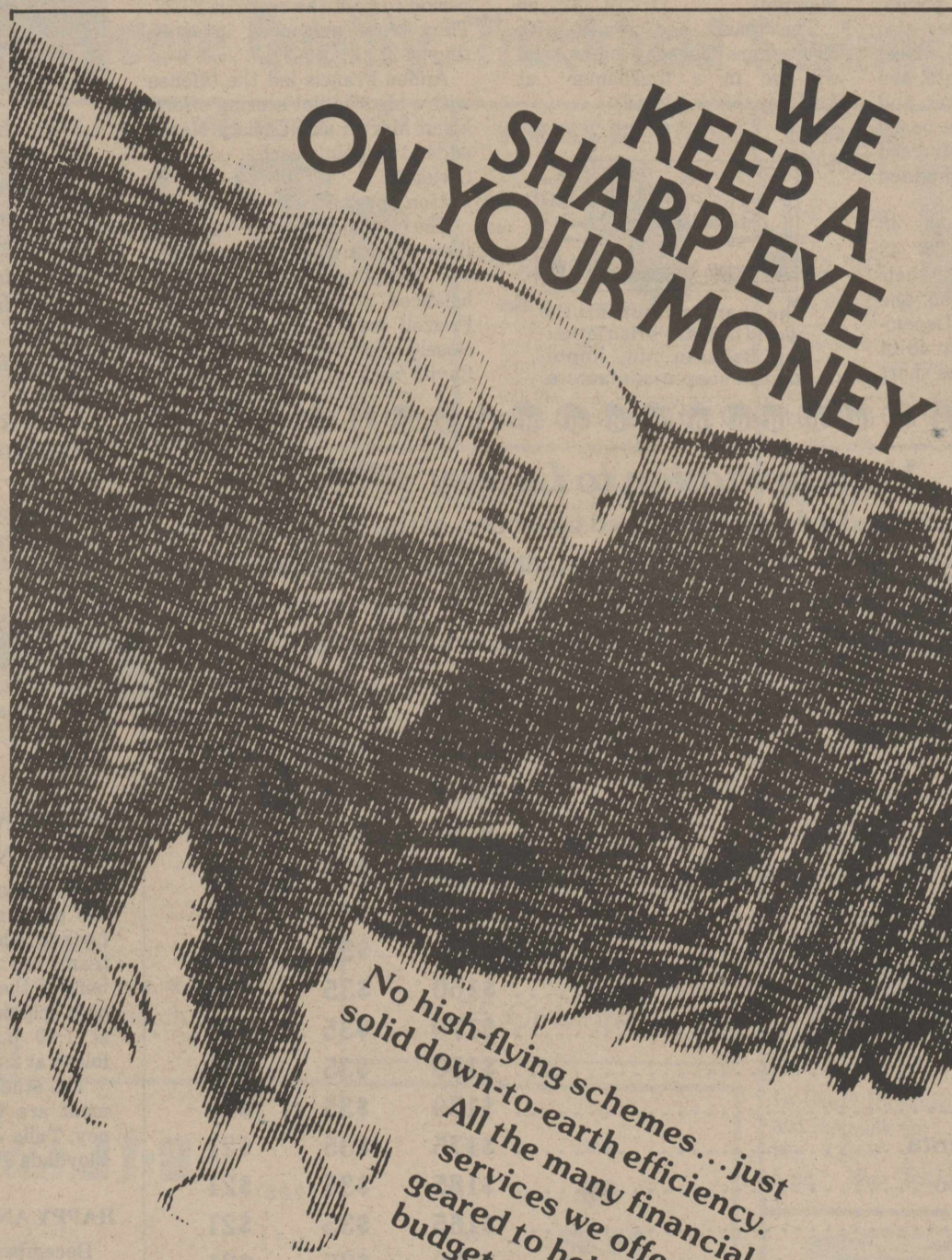
Mr. and Mrs. D. G. Shelton are parents of a baby daughter . . .



Only three percent of the earth's water is fresh.



Batting helmets were introduced in major league baseball by the Brooklyn Dodgers in 1941.

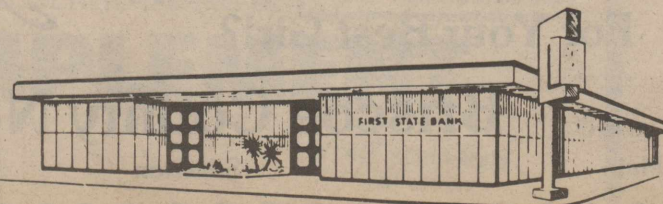


WE  
KEEP A  
SHARP EYE  
ON YOUR MONEY

No high-flying schemes... just  
solid down-to-earth efficiency.  
All the many financial  
services we offer are  
geared to helping you  
budget and save your  
money to your best  
advantage... always.

First State Bank

FDIC



# Owls, Owlettes Split Pair of Games

Silverton's varsity Owls and Owlettes split a pair of games at Petersburg December 6, with the Owls taking a 48-42 victory and the Owlettes dropping their match 46-29.

Keeley Burson led the scoring for the Owlettes with 12 points. Adding points to the score were Tara Nance, four; Tracy Miller and Tracy Tomlin, three points each; Penni Fogerson and Carrie Ann Grabbe, two points each. Julie Graham was injured in the game and required stitches.

Owlettes 7 11 15 29  
Petersburg 13 21 35 46

Bradley Brunson led the scoring for the Owls with 15 points, and two of his teammates also were in double figures. Neal Edwards tossed in 14 points, one of which was a three-pointer, and Jamie Frizzell lighted the board with 10 points. Kendal Minyard caged five and Denny Hill added four to the score.

Owls 17 29 44 48  
Petersburg 5 20 33 42

Both teams dropped their games to Memphis when the Cyclone came to call on December 9. The Owlettes lost 48-14 while the Owls were on the short

end of the 56-44 score.

Leading the scoring for the Owlettes was Julie Graham, with six points. Keeley Burson and Tracy Tomlin caged three points each, and Tracy Miller added a pair of points.

Owlettes 3 7 10 14  
Memphis 12 21 33 48

Edwards led the scoring for the Owls with 14 points. Minyard rang up 11 points, two of which were three-pointers, and Frizzell was also in double figures with 10. Denny Hill caged six, Brunson got two and Frank Lowrey tossed in one point from the line.

Owls 6 24 35 44  
Memphis 11 19 32 56

The teams had games with Kress here Tuesday night, and will be in a tournament at Lockney this weekend.



The hardest nut in the world is Brazil's rich lathering Babassu nut, important in soap manufacture.

## Three Made Tournament Team at S-E

Three Silverton basketball players were named to All-Tournament teams at the Springlake-Earth Tournament.

Julie Graham represented the Owlettes on the elite team, and Kendal Minyard and Neal Edwards were chosen from the Owl team.

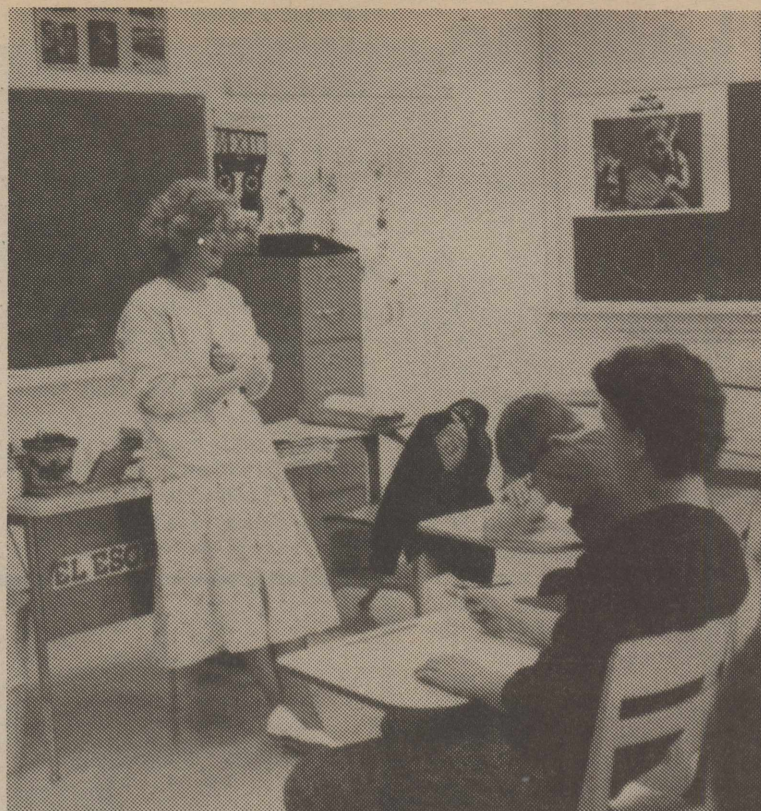
## Owlettes Lose Overtime Game

The Junior High Owlettes dropped a close game in overtime to Patton Springs here Monday night. The Owlettes had trailed at the end of each quarter, but closed the gap in the fourth period to knot the score at 27-27. They were outscored in overtime, 4-2.

Aimee Francis led the offense with a big 25-point scoring effort. Kami Martin and Christy Nease added two points each.

Owlettes 1 8 14 27 29  
Patton Sprgs. 3 12 23 27 31

The Owls managed to keep their record clean by defeating the Rangers 37-24 behind a balanced scoring effort. Casey Frizzell led the team with 11, closely followed by Stephen Cavitt with 10. Frank Ramirez,



Joan Hodge, health education specialist with the Region XVI Education Service Center, was pictured as she presented a program on self esteem for the Freshman class recently. She presented programs for the third through the twelfth grades in the Silverton Schools. The service center is funded with a special grant from the Texas Cancer Council through the Texas Education Agency. The health-related educational programs disseminate materials from health agencies such as American Cancer Society, American Heart Association, American Lung Association, etc.

jr. added eight points; Lance Bradford rang up four, and Wil T Bomar and Lance Smith caged two points each.

Owls 18 24 30 37  
Patton Sprgs. 5 15 21 24

The Junior High teams don't have another game scheduled until January 5 when they host the Owls and Owlettes from Hedley.

### OWLS, OWLETTES

#### IN TOURNAMENT

Silverton's Owls and Owlettes are playing in a tournament at Lockney this weekend. Both the teams are matched with Petersburg in the first round, with the girls scheduled to play Thursday at 1:00 p.m. and the boys to follow at 2:30 p.m.

The other teams in the tournament are Cotton Center, Lockney, Tulia JV, Springlake-Earth, Floydada JV and Smyer.

#### HAPPY ANNIVERSARY TO ...

December 17—Mr. and Mrs. Cecil Seaney, Mr. and Mrs. Van Breedlove

December 18—Mr. and Mrs. Richard Jarnagin

December 19—Mr. and Mrs. Greg Hill

## Attend Performance At Clarendon College

Patti and Magan Whittington, Becky and Danny Dunn, Kristi Smith and Sandy Perkins attended the Sunday afternoon performance of "Beauty and the Beast" at Clarendon College.

They were guests of Miss Leslie Schnauffer, head of the Speech and Drama Department at Clarendon College.

They enjoyed the performance of the Clarendon College Choir, of which Jeannita Stephens is a member, before the play.

Missy Pelfrey of Amarillo, daughter of former Silverton resident, Cheryl Cowart Pelfrey, was a member of the cast.

The play was especially adapted from the childrens story by Miss Schnauffer.

Mr. and Mrs. Warren Hardin, parents of Paula Garvin, were recognized. Mrs. Hardin assists in costuming each production.

Magan and Kristi loved the costumes, especially Beauty's gown. Danny liked the Beast's cave.

## Tree Moving Day

Sometimes moving the Christmas tree outside at the end of the holidays isn't so easy, since the dried-out needles keep scattering on the floor and sticking to the carpet. If you've had this problem you know what a messy job it can be! Here's a suggestion you might find helpful: Place a sheet around the base of the tree. Fasten the ends together with safety pins. Now pull the sheet up over your tree and fasten it as the top with safety pins. Your tree is now all covered and ready for moving!

## Christmas In Italy

In Italy, instead of Santa Claus coming down the chimney, according to a legend, a kind, aged fairy queen, called La Befana, comes down the chimney with gifts for the children. Instead of listening for the reindeer patter, the children listen for the bell the queen is supposed to ring. Small wafers, called Magi Cakes, are eaten by Italians, with fried eels, pork and chicken at Christmastime.

## Your Invitation to Luxury

ScentSations has created a designer inspired collection of the most luxurious perfume fragrances in the world and made them affordable for you. We invite you to compare the one ounce, suggested department store prices of the expensive perfumes (listed below) to ScentSations recommended prices.

Perfume Type	Dept. Store		ScentSations	
	1 oz.	1/4 oz.	1 oz.	1/4 oz.
*Beautiful .....	\$160	\$35	\$35	\$21
*Coco Chanel .....	\$200	\$35	\$35	\$21
*Eternity .....	\$185	\$35	\$35	\$21
*Giorgio .....	\$165	\$35	\$35	\$21
*Joy .....	\$200	\$35	\$35	\$21
*Knowing .....	\$300	\$35	\$35	\$21
*Lauren .....	\$160	\$35	\$35	\$21
*Obsession .....	\$170	\$35	\$35	\$21
*Ombre Rose .....	\$150	\$35	\$35	\$21
*Opium .....	\$170	\$35	\$35	\$21
*Oscar de la Renta .....	\$175	\$35	\$35	\$21
*Paloma Picasso .....	\$185	\$35	\$35	\$21
*Passion .....	\$165	\$35	\$35	\$21
*Poison .....	\$150	\$35	\$35	\$21
*Shalimar .....	\$170	\$35	\$35	\$21
*White Shoulders .....	\$140	\$35	\$35	\$21

\*Registered Trademark not associated in any manner with ScentSations Perfumes International, Inc.

A Wonderful Stocking Stuffer!  
Which One Shall We Wrap  
For Your Best Girl?



## Briscoe County News

508 S. Main

Silverton

823-2333



County Judge Jimmy Ross presents Jeff Smith with the 1988 Quality Unit Award for Troop 262, in recognition of its being an outstanding Boy Scout Troop.

Briscoe County News Photo

### Medicare Changes Outlined In Special Videotape

The State Board of Insurance has produced an 8½-minute videotape explaining the changes in Medicare. These changes were initiated by the Medicare Catastrophic Coverage Act of 1988. When this bill becomes effective on January 1, 1989, it will expand current Medicare benefits to cover catastrophic health care costs.

Organizations that would like to borrow a copy of this videotape, should send a written request, including their names and addresses, the number of people who will see the tape, and the date it will be shown. The State Board of Insurance will mail the videotape along with a brochure called, "Medicare Supplement Insurance—A Guide for Texas Consumers."

Send your request to: The State Board of Insurance, Market Conduct - 0430, 1110 San Jacinto, Austin, Texas 78701-1998. Please allow 10 days to process your request.

### In Hospitals

Mrs. George (Agnes) Seaney has been a patient at Central Plains Hospital in Plainview since becoming ill while shopping Saturday. She was transported to the hospital by the Silverton Volunteer Ambulance Service.

Mrs. Bill (Irene) Williamson suffered a hip injury in a fall at her home Sunday afternoon, and was transported to High Plains Baptist Hospital in Amarillo by Silverton Volunteer Ambulance Service.

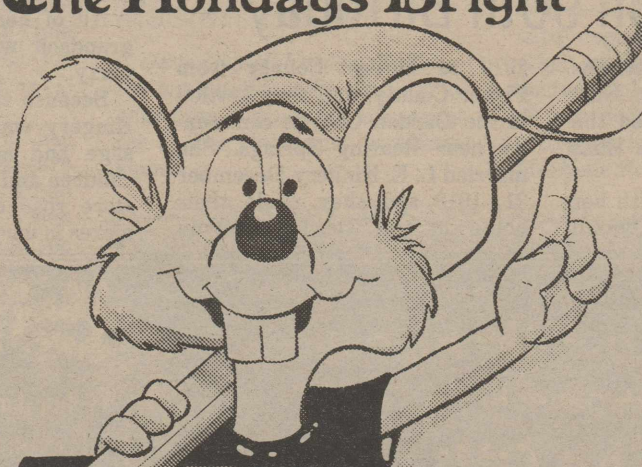
Mrs. Leo (Neva) Comer became ill at her home Tuesday afternoon and was transported to Central Plains Hospital in Plainview by the Silverton Volunteer Ambulance Service.

Stephanie Ramirez recently has been a patient at Lockney General Hospital.

Kelsie Estes recently was a patient at Lockney General Hospital after drinking a small amount of furniture polish. She is at home and doing well now.

The flag of Denmark is the oldest unchanged national flag in existence, dating back to the 13th century.

## Check Safety To Make The Holidays Bright



- Before hanging strings of lights, spread them on the floor and check for frayed or bare wires, cracked insulation, loose connections, and damaged plugs or light sockets.
- Check extension cords for wear or damage and don't run them across walking areas.
- Test lights before putting them on the tree. Unplug them before making repairs or replacing bulbs.
- Overloading circuits with too many lights can cause fire. Follow manufacturer's instructions about the number of lights allowed on one circuit.
- Choose a fresh, green tree, trim its base and keep it in plenty of water. If the needles are brown and break off easily, it could be a fire risk.
- If you buy an artificial tree, make sure it has been tested for flammability by Underwriters Laboratories (UL).
- Place your tree away from the fireplace or other heat sources and out of the traffic pattern.
- Never string lights on a metallic tree. Light strings with damaged insulation can electrically charge a metallic tree. Instead, shine unattached colored floodlights or spotlights on the tree.
- Always turn off lights before leaving home or going to bed. You'll save money and be safer, too.
- Never use lighted candles on a tree or near evergreens. And don't burn evergreens in the fireplace.
- Do not use inside lights on the outside. All outside lighting equipment, including lights, cords and plugs, should be waterproof and made for outdoor use. Also, hang sockets downward and don't leave a socket empty.
- When hanging lights on the rooftop or in tall trees outdoors, stay clear of electrical lines. Make sure you or your decorations don't come in contact with them.
- Should you receive a CB radio or television this Christmas, let a qualified serviceman install the CB base unit or television antenna for you. This delicate job is best left to the professionals.
- Be sure electrical toys are tested for safety. Look for the UL mark.

Wishing You A Safe, Happy Holiday



M & M  
Country Crafts



RABBITS: Cloth and Ceramic Styles  
Bows  
Miscellaneous Items

Handmade by

Madeline Stone  
(806) 823-2204

Melissa Estes  
(806) 823-2221

## Mrs. Eliza Kingery Honored With Party on 90th Birthday

A party at the Senior Citizens Center in Roaring Springs Sunday, December 11, honored the ninetieth birthday of Mrs. Eliza Kingery.

Mrs. Kingery moved with her parents, Jim and Beulah Dye, in

1910 to Motley County from Fisher County, and they settled in the Darden Canyon community near Roaring Springs. She married L. E. Kingery December 21, 1913 and they made their home in the Darden Canyon

community for 54 years. After the death of Mr. Kingery, she moved to Roaring Springs where she continues to reside.

All of her family except one grandson was present for the party.

Because she loves roses, Mrs. Kingery was given a rose corsage and her children, grandchildren and great-grandchildren wore rose corsages or boutonnieres in varying shades.

Her birthday cake was decorated with roses and was served with punch and coffee. The guest registration book was made to resemble a bonnet, since Mrs. Kingery is well known as a bonnet wearer. She was presented a memory book which contained a collection of cards and letters that had been sent to her.

Among those attending the party were Anthony, Kathy, Kara and Shauna Kingery, Ted and Lavern Kingery, all of Silverton; Merle, Annette, Shalana and Nathan Roehr, Cedar Hill; Leon and Juanita Kingery, Vickie and Leann Carroll, all of Lubbock; R. E. and Dorothy Kingery, Corpus Christi; Bevis and Newt Dickson, Amarillo; Gell and Betty Kingery and daughters, Andrea, Jacqueline and Jennifer, Waco; Carl and Fran Brown, Chickasha, Oklahoma. Other relatives and friends attended from Midland, Odessa, Plainview, Roaring Springs and other Texas cities.

## March of Time Study Club Presents School Program

March of Time Study Club sponsored a speaker for the assembly program in Silverton High School on Wednesday, December 7, 1988. Mrs. Iris Burson made arrangements for the program.

The speaker was a foreign exchange student, Norman Langhoff, from West Berlin, Germany. He is residing in Floydada with his host family, Mr. and Mrs. Bobby Ranier.

In Floydada High School, Norman is a senior and is in the Whirlwind Band. He takes Typing, Algebra II, U. S. Government, English, Speech and Homemaking, and is studying U. S. History at home. He was introduced to the assembly by Tara Nance, Silverton High School Student Council President.

The speaker used slides of scenes from his homeland, and also used map transparencies on an overhead projector to show where he lives in Germany and to explain the divisions of the country. He gave a brief history of the German nation and some of its problems. Norman was accompanied to Silverton by Mrs. Carol Reese, librarian in Floydada High School. Mrs. Reese and Norman stayed for lunch in the Silverton School cafeteria, as did some of the study club members. Mrs. Jackie Mercer served cinnamon rolls, coffee and cold drinks before the program.

**For Your Holiday Pleasure**

Register For

# The Gift of the Year



Filled With the Holiday Sparkle of Diamonds, Gold, Silver and Unique Gifts

## Value Over \$500.00

Come In and Register As Often As You Like.

Treasure Chest To Be Given Away December 24, 1988

**Hutsell Jewelry**

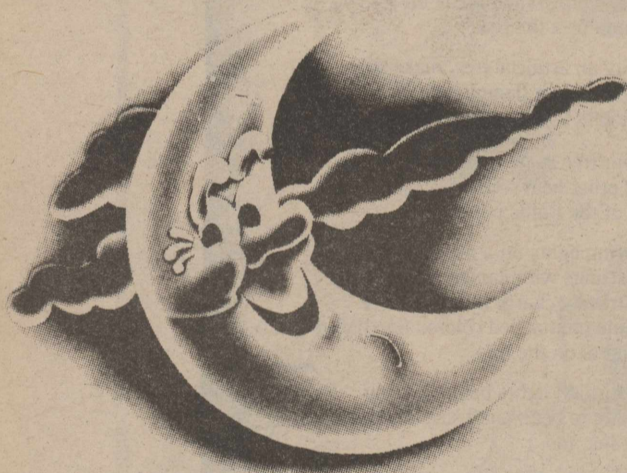
513 Commerce  
Silverton, Texas

Hours Until Christmas  
9-6, Mon.-Sat.  
806-823-2277



### Christmas Manger

Cut a round box (such as an oatmeal box) in half, length-wise. Cover the box with a pretty wrapping paper or fabric. Attach cardboard rockers underneath. Glue on green garlands and baubles. Place a baby doll in the box. Cover the doll with a blanket; crisscross green garland over the blanket. Place gold doilies as a halo around the head.



# MOONLIGHT MADNESS

One Night Only

**Thursday, December 22 in Silverton 7:00 p.m. - 10:00 p.m.**

If all the running around has you crazy, do your last minute shopping in Silverton, where there are specials just for you!

Participating Businesses and Sponsors are:

Tiffin's Dept. Store  
Mary John's Flowers & Gifts  
Briscoe County News

Hutsell Jewelry  
Brown Hardware  
First State Bank





Winners of the Smokeout poster contest sponsored recently by the Briscoe County unit of the American Cancer Society and directed by Margie Pinkerton were (back row, left to right) Dewayne Juarez, Michael Hill and Lloyd Rodriguez, sixth graders; (front row) Charlie Bomar and Ana Pena, first graders.

### Medicare Changes Do Not Require New Policies

Medicare supplement policyholders do NOT need to buy new policies because of the changes in Medicare that take effect on January 1, 1989.

State Board of Insurance rules require insurers to revise each policy automatically to avoid duplicating the new benefits provided by Medicare after that date.

The Medicare Catastrophic Coverage Act of 1988 eliminated the requirements that patients with long-term hospitalizations pay part of their daily Medicare-eligible expenses from their own pockets or with supplemental insurance.

Starting January 1, 1989, Medicare will pay for as many as 365 days a year of Medicare-eligible hospitalization after the patient has paid a one-time deductible of \$564.

Before the new law, Medicare required patients to pay substantial daily "co-payments" when they were hospitalized longer than 60 days.

These co-payments are among the major "gaps" in Medicare that—until January 1, 1989—are covered by Medicare supplement insurance policies.

Since co-payments for hospital care will not be required after January 1, Medicare supplement

insurance policies no longer may provide benefits to fill those gaps.

Insurance companies are required by State Board of Insurance rules to notify each Medicare supplement policyholder in December of changes made in their policies to conform to the new law.

The notice also must tell policyholders when premium adjustments resulting from the change in Medicare benefits will be made.

Because policies will be adjusted automatically, it is not necessary to buy a new Medicare supplement policy because of the change in the law.

Policies providing Medicare Part B benefits will continue to cover a patient's 20 percent share of Medicare-eligible expenses for physicians' services, home health care and out-patient hospital treatment.

Dropping an existing policy to buy a new one could be particularly harmful. This is because a newly purchased policy usually does not cover the policyholder's pre-existing medical problems for six months after its effective date.

An agent who tells a senior citizen that he or she needs a new Medicare supplement policy because of the changes in Medicare could be subject to disciplinary action by the State Board of Insurance.

Seniors should always exercise caution in purchasing Medicare

supplement policies either from agents or in response to advertisements received in the mail.

The State Board of Insurance has a toll-free telephone line which consumers may call for information. The number is 1-800-252-3439.

In addition, the Board has published a brochure, "Medicare Supplement Insurance: A Guide for Texas Consumers," which may be ordered over the toll-free line or by writing to: State Board of Insurance, ATTN: Information Services, 1110 San Jacinto, Austin, Texas 78701-1998.

The Board's Market Conduct Division also has prepared an 8½-minute videotape on the changes in Medicare. Copies of the videotape may be borrowed by writing the Division at the above address.

#### HAPPY BIRTHDAY TO . . .

December 15—Scott Davis, Heather Kitchens, Gloria Wood, Aaron Younger

December 16—Joe Castillo, Jim Ellis

December 17—Daniel Castillo, Clint Ivory, Carol Davis, Guinn Fitzgerald, Ruth Ann Scrivner

December 18—Kelsie Baker, sr.

December 19—Teresa Sutton, Karen Kay Martin, Harvey McJimsey, Helen Strickland

December 21—Nathan Perry, Billy Perry, Ester Ramirez, Thurman May

Riley Harris of Lubbock is doing well following surgery for removal of a calcified blood tumor near his brain. He returned to Rochester, Minnesota this week for a checkup and regulation of his medication.

### Francis Is Candidate For Masters Degree

Dave Russell Francis of Silverton is a candidate for a master of education degree this fall semester at The University of Mississippi.

There are 456 candidates for degrees including 348 undergraduate degrees, 56 master's and other graduate-level degrees, 23 doctor of philosophy degrees and 29 juris doctor degrees.

Francis is the son of John and Maebelle Francis of Silverton.

For Your Shopping Convenience

## HUTSELL JEWELRY

Will Be Open

Sunday Afternoon, December 18

1:00 - 5:00 p.m.

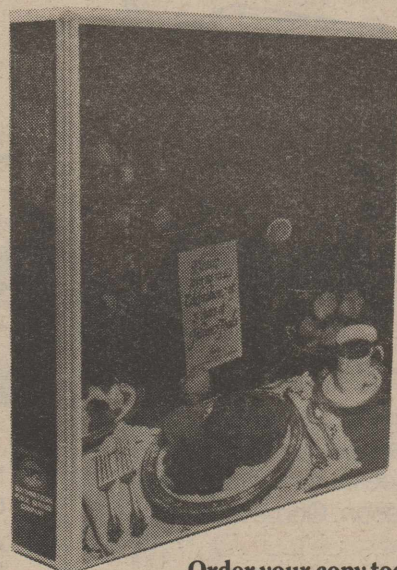
Fresh Holly Christmas Greenery Poinsettias

Lean in Tree Boxed Western Art Christmas Cards

## Mary John's

Flowers & Gifts

### The Perfect Gift



# 25 YEARS of FESTIVE FOODS COOKBOOK

Give the gift that keeps on giving, meal after meal . . . 25 Years of Festive Foods Cookbook from SPS. This anniversary cookbook compiles over 2,000 taste-tested recipes which SPS home economists have shared in demonstrations with our customers over the past 25 years. You'll find everything from "appetizers" to "odds 'n ends" in this colorfully illustrated, three-ring, hard-bound book. The perfect gift for those hard-to-buy-for people on your Christmas list . . . yourself, included!

Order your copy today! Quantities limited.

ONLY \$12.75 plus tax.

Available at any SPS office or order by mail:

NAME \_\_\_\_\_

ADDRESS \_\_\_\_\_

CITY \_\_\_\_\_ STATE \_\_\_\_\_ ZIP \_\_\_\_\_

NO. of COOKBOOKS \_\_\_\_\_ TOTAL\* \_\_\_\_\_

\*For each cookbook, please include \$12.75 plus \$3.00 shipping and handling and applicable sales tax: TX - \$1.10; NM - \$.93; OK - \$.95; KS - \$.71.

Make check or money order payable to Southwestern Public Service Company. Mail to:

**SPS** Southwestern Public Service Company  
P. O. Box 9422 • Amarillo, TX 79105-9422  
Attn. Diane Bim

©SPS 1988

## Nielsen Electronics & Repair

(Formerly Mize TV)  
Lockney, Texas

We Repair

- TVs
- CBs

- VCRs

- Stereos
- Antennas

• SERVICE CALLS  
In or Out of Town  
**652-2435**

# Social Security In Briscoe County

by Terry J. Clements

Perhaps no recent social security issue stirs as intense feelings as does the "notch". And yet, it is one of the least understood issues. Even those who feel that they've been adversely affected by the "notch" don't understand it.

The "notch" generally affects people who were born from 1917 to 1921. Under the 1977 Social Security amendments, which corrected a defect in the old method of computing benefits established by the 1972 amendments, members of this group have a lower benefit rate than those born immediately before them. If the defect had not been correct-

ed, future beneficiaries could have received benefits that would have been higher than their pre-retirement earnings.

At recent hearings on the "notch" issue before the House Committee on Ways and Means, Subcommittee on Social Security, the General Accounting Office (GAO) reported that its investigation showed that the 1977 amendments had stabilized benefit rates as Congress intended. Moreover, most "notch" people end up with a higher benefit rate than that of many retirees historically, and of those who were born after them.

The 1977 law was designed to protect the Social Security system by ending the unexpected drain caused by the rapid rise in benefits. That rationale still holds true. At the hearings, both GAO and Social Security officials testified that any effort to change the "notch" would be

costly and difficult to implement. It would tend to extend the unintended windfall benefits to more groups of beneficiaries and would cost from \$24 to \$375 billion over the next 10 years.

Finally, it must be remembered that the problem lies with the old computation method, not the new one. People who get benefits under the new method are not getting benefits that are too low. Rather, people getting benefits under the old method are receiving benefits that are too high.

For more information about the "notch" or to file a claim call 1-800-2345-SSA.

## SOCIAL SECURITY IN BRISCOE COUNTY

by Terry J. Clements

Aged, blind, or disabled people receiving supplemental security income (SSI) may be institutional-

ized for many reasons and for varying periods of time, and they should know how a stay in an institution will affect their SSI payments.

Generally, a stay in an institution of less than a month will have no effect on SSI payments. A stay of a full calendar month or longer may affect the payment and, therefore, should be reported to Social Security as soon as possible.

In most cases, someone who enters a city or county rest home, halfway house, prison, or other public institution becomes ineligible for SSI. But there are some exceptions. For example, SSI recipients may continue to be eligible for payments when they enter:

\*a publicly operated community residence which serves no more than 16 residents;

\*a public institution primarily to receive educational or vocational training; or

\*a public emergency shelter. (Payments are limited to six months during any 9-month period)

Also, an SSI recipient who was working before entering a public institution may be able to receive payments for the first two full months after entering it.

SSI recipients entering certain medical treatment facilities may continue to receive full SSI payments for up to three months. The facility entered must be a public medical institution or a private medical facility where Medicaid is paying more than half the cost of their care. SSI recipients can qualify for these payments if a doctor certifies they are expected to be in the facility 90 days or less and they need to maintain and pay expenses associated with their permanent residence. They also must give Social Security evidence that they meet these requirements within 10 days after the close of the month they entered the facility.

Sometimes, recipients who do not meet the requirements to continue receiving a full payment may be able to receive a "personal needs allowance" of no more than \$30. A personal needs allowance is payable only to recipients residing in medical facilities where Medicaid pays more than half the cost of their care.

Recipients in private institutions may receive SSI payments, but the care received could be considered income for SSI purposes. This income might affect the payment since eligibility for SSI and the amount of the payment are tied to income levels.

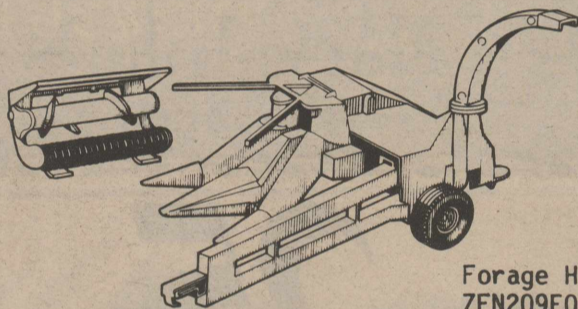
As you can see, the rules on how institutionalization affects SSI payments are somewhat complicated. Therefore, it's important for SSI recipients to tell us right away whenever they enter an institution. We can then determine what the effect will be and explain the effect to the recipient.

For more information or to file a claim call 1-800-2345-SSA.



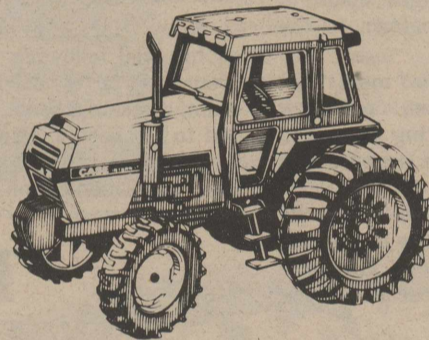
The first known sewing needles were made of bone and they are over 30 thousand years old.

# Make it a Special Holiday with sturdy toys from your CASE IH dealer



Forage Harvester ZFN209E0 1/16 scale

**\$10.99**

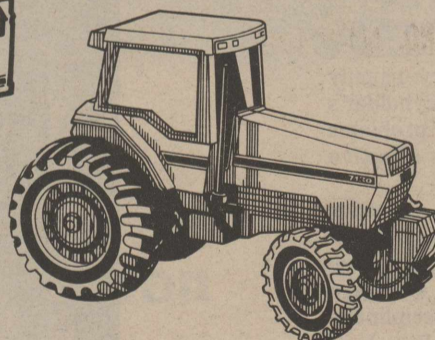
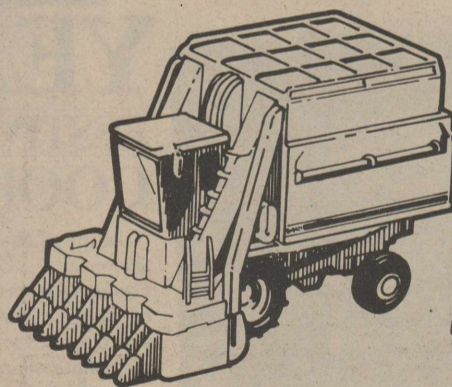


NOW ONLY **\$25.75**

Authentic 1/16-scale Case International 3294 Tractor

Cotton Picker ZFN211E0 1/64 scale

**\$4.39**



NOW ONLY **\$25.75**

Authentic 1/16-scale Case International 7130 Tractor

Put a smile under the tree with these scale-model toys of real equipment. They're die-cast for durability and finished with tough enamel. See us for these and other special values of the season. Come in today!

## BROWN—McMURTRY IMPLEMENT

823-2441

Silverton



### WATKINS BLACK PEPPER

Cracked and granulated (rather than crushed) to retail vital oil cells. Granulating eliminates pepper dust and the result is a superior sneeze-proof pepper. It's the best you can buy!

12 oz. \$9.99  
6 oz. \$5.99

BRISCOE COUNTY NEWS  
Silverton, Texas



**LINES FROM  
Y  
N  
D  
A**

Lynda Fogerson  
Briscoe County Extension Agent  
**FAMILY STRESS DURING  
THE HOLIDAYS**

Christmas is traditionally a family time to be shared with those we love. This makes the holidays very stressful for those who lack special family members or those whose family will not be able to be with them at this season.

The holidays also bring painful memories for those who have lost loved ones or who have experienced a marital breakup during the

past year.

Step families or blended families and single parents have special problems to deal with. Rivalry among children in blended families over "who is getting the most" or whose parent is the most "loving" can cause loyalty issues in these families.

Blending different family holiday traditions may cause resentments for those who feel they must accept "new" ways of celebrating. Recognizing that these problems are normal in this circumstance and attempting to make everyone feel special will help make the holiday go more smoothly for all family members.

For those who feel lonely at Christmas time, you probably cannot avoid loneliness but you can avoid being overwhelmed by the feeling. Plan special activities

that are meaningful to you rather than allowing yourself to be alone and dwell on your loneliness. Arrange to be with others who also may have no family for the holidays. Do something for someone else less fortunate. Make a phone call, visit, bake some "goodies" for those who have less time than you have.

Some people look back on the year with feelings of disappointment or unhappiness or a sense of failure for a lack of accomplishment. Depression is common during this time of the year.

Look realistically at the past year. You may have set unrealistic goals for yourself. Determine to set goals for the next year which will be challenging but attainable. Count your blessings. Think of all the good things of your life during the past months

rather than focusing on the things you wish had been different.

In the midst of the joy of the holiday season, let us all remember those who are less fortunate or have special burdens to bear at this time and try to make their holiday more enjoyable. We will

lessen our own stress by helping others.

A manned rocket reaches the moon today in less time than it took to travel the length of England in a stagecoach.

**LEGAL NOTICE**

**LOCAL INVITATION TO BID  
ON HIGHWAY MOWING**

Sealed proposals for nine separate Mowing Contracts located in the following sections: Shamrock, Wellington, Clarendon, Childress, Quanah, Matador, Dickens, Paducah, and Munday, will be received at the State Department of Highways and Public Transportation District Office at 1700 Ave. F, NW, Childress, Texas 79201, January 5, 1989 at the times indicated below for each Contract.

Contract No. 259XXM1009: Wheeler county will be received until 10:00 a.m., January 5, 1989.

Contract No. 259XXM1008: Collingsworth/Childress/Donley counties will be received until 10:45 a.m., January 5, 1989.

Contract No. 259XXM1002: Donley/Briscoe/Hall counties will be received until 11:30 a.m., January 5, 1989.

Contract No. 259XXM1001: Childress/Hall counties will be received until 12:30 p.m., January 5, 1989.

Contract No. 259XXM1007: Hardeman/Foard counties will be received until 1:30 p.m., January 5, 1989.

Contract No. 259XXM1004: Motley/Hall counties will be received until 2:15 p.m., January 5, 1989.

Contract No. 259XXM1003: Dickens County will be received until 3:00 p.m., January 5, 1989.

Contract No. 259XXM1006: Cottle/King counties will be received until 3:45 p.m., January 5, 1989.

Contract No. 259XXM1005: Knox County will be received until 4:30 p.m., January 5, 1989.

A Pre-bid Conference will be held with Mr. Vance L. Castleberry, PE, District Engineer, at the District Office in Childress, Texas at 10:00 a.m., December 29, 1988. Persons interested in bidding on the above contracts should attend the Pre-bid Conference.

The State Department of Highways and Public Transportation, in accordance with the provisions of Title VI of the Civil Rights Act of 1964 (78 Stat. 252) and the regulations of the U. S. Department of Transportation (15 C.F.R., Part 8), issued pursuant to such act, hereby notifies all bidders that it will affirmatively insure that the contract entered into pursuant to this advertisement will be awarded to the lowest responsible bidder without discrimination on the ground of race, color, or national origin.

50-2tc

**DIAMOND INDUSTRIAL SUPPLY CO.**  
Phone Days 296-7418 • Nights 293-1200 or 296-7828  
1014 Broadway  
Plainview, Texas  
SKF BCA TIMKEN BOWER  
"We appreciate Your Business More"  
Chain U-Joints  
Sprockets Oil Seats  
V-Belts O-Rings  
Sheaves Wisconsin

**John Deere Quality, Truckload Savings**

<p><b>OIL FILTERS</b> Reg. \$7.40 Sale <b>\$6.66</b> PART NO. AR43634 Matched to the engines they protect, John Deere oil filters meet tough engineering specifications for paper quality, efficiency, number of folds, angle of bends, and bonding between filter paper and end cap.</p>	<p><b>FUEL FILTER</b> Reg. \$7.36 Sale <b>\$6.62</b> PART NO. AR50041 John Deere fuel filters provide superior protection from fuel contaminants. Rated for heavy-duty applications up to 150 hp (122kW), these John Deere originals give 500 hours average life.</p>	<p><b>HYDRAULIC OIL FILTERS</b> Reg. \$3.99 Sale <b>\$3.59</b> PART NO. AR75603 Protect your hydraulic systems with top quality John Deere hydraulic filters. High capacity, fiberglass media, strengthened with wire mesh, efficiently filters out dirt, even in cold weather.</p>	<p><b>ULTRA-GARD™ AIR FILTERS</b> Reg. \$27.00 Sale <b>\$24.30</b> PART NO. AR79679 Super-Lock™ pleated media makes Ultra-Gard filters outperform the competition, with up to 21 percent more dust-loading capacity and 67 percent longer life.</p>
---	---	---	---

**SWEEPS FOR ALL MAKES**



Reg. \$9.80

Sale  
**\$8.87**

**PART NO. N130178**

Tough, tempered steel for durability. Sweeps cut weeds off at the roots, leave mulch to protect topsoil.

	Reg.	Sale
N130178 18" Hard Surfaced	\$15.75	<b>\$14.17</b>
N130177 16" Sweep Plain	\$8.21	<b>\$7.39</b>
N130177 Hard Surfaced	\$13.60	<b>\$12.24</b>

Sweeps Discounted  
On Sets  
25 Or More

	Reg.	Sale
<b>Mystik JT-B.</b> Quart	.98	<b>.89</b>
2 Gal.	7.80	<b>\$6.95</b>
55 Gal. Drum	175.00	<b>\$159.00</b>
<b>JOHN DEERE</b> AR63218 Qt. TORQ-GARD	1.15	<b>1.03</b>
AR63222 55-Gal. TORQ-GARD	220.97	<b>\$198.87</b>
TY6354 1-Gal. HY-GARD	4.86	<b>\$4.39</b>
AR69445 55-Gal. HY-GARD	225.42	<b>202.88</b>

SALES ENDS DECEMBER 31, 1988 SIMILAR DISCOUNT ON ALL OIL FILTERS & SWEEPS

**BOLT SETS** Reg. \$13.44  
Sale  
**\$12.10**  
PART NO. An181520  
Save time and money with 50-piece bolt sets matched to the metallurgy and dimensions of your sweeps and shovels.



Hy-Gard® Transmission and Hydraulic Oil  
Reg. \$23.27  
5-gal. Now **\$20.94**



Torq-Gard Supreme® Engine Oil  
Reg. \$22.70  
5-gal. Now **\$20.43**

**BRISCOE IMPLEMENT**

201 West Broadway  
Tulia  
995-4065



507 South Main  
Silverton  
823-2486

**FIRST ASSEMBLY OF GOD**

Royce Combs, Pastor

**SUNDAY:**

Sunday School . . . . . 9:45 a.m.  
Morning Worship . . . . . 11:00 a.m.  
Evening Worship . . . . . 5:00 p.m.

**WEDNESDAY:**

Bible Study . . . . . 7:00 p.m.

**SILVERTON**

**CHURCH OF CHRIST**

Ted Kingery, Minister

**SUNDAY:**

Sunday School . . . . . 9:00 a.m.  
Morning Worship . . . . . 10:00 a.m.  
Evening Worship . . . . . 6:00 p.m.

**WEDNESDAY:**

Bible Study . . . . . 7:30 p.m.

**FIRST BAPTIST CHURCH**

Jim Browning, Pastor

**SUNDAY:**

Library Opens . . . . . 9:15 a.m.  
Bible Study/S.S. . . . . 9:30 a.m.  
Morning Worship . . . . . 10:30 a.m.  
Evening Worship . . . . . 6:00 p.m.

**SECOND & FOURTH TUESDAYS:**

Baptist Women . . . . . 9:30 a.m.

**WEDNESDAY:**

Bible Study/Prayer . . . . . 7:00 p.m.  
Acteens, G.A.s, Mission  
Friends, R.A.s . . . . . 7:00 p.m.

**SECOND SATURDAYS:**

Baptist Men . . . . . 7:00 a.m.

**FIRST UNITED METHODIST**

**CHURCH**

Duane Knowlton, Pastor

**SUNDAY:**

Sunday School . . . . . 9:45 a.m.  
Worship Service . . . . . 11:00 a.m.  
Evening Service . . . . . 6:00 p.m.

**TUESDAY:**

United Meth. Women . . . . . 9:30 a.m.

**WEDNESDAY:**

Choir Practice . . . . . 6:00 p.m.

**NEW FELLOWSHIP BAPTIST**

**MISSION**

**SUNDAY:**

Sunday School . . . . . 9:45 a.m.  
Worship Service . . . . . 11:00 a.m.  
Training Union . . . . . 5:00 p.m.  
Evening Service . . . . . 6:00 p.m.

**WEDNESDAY:**

Choir Rehearsal . . . . . 7:00 p.m.  
Prayer Service . . . . . 8:00 p.m.

**OUR LADY OF LORETO**

**CATHOLIC CHURCH**

**SUNDAY:**

Mass . . . . . 12:30 p.m.

**TUESDAY:**

Escuela . . . . . 8:00 p.m.  
Bible Study . . . . . 9:30 a.m.

**WEDNESDAY:**

Elementary Doctrina  
Class . . . . . 4:30 - 5:45 p.m.

**THURSDAY:**

Mass or Communion . . . . . 8:00 p.m.  
Ultreya . . . . . After Mass

**ROCK CREEK**

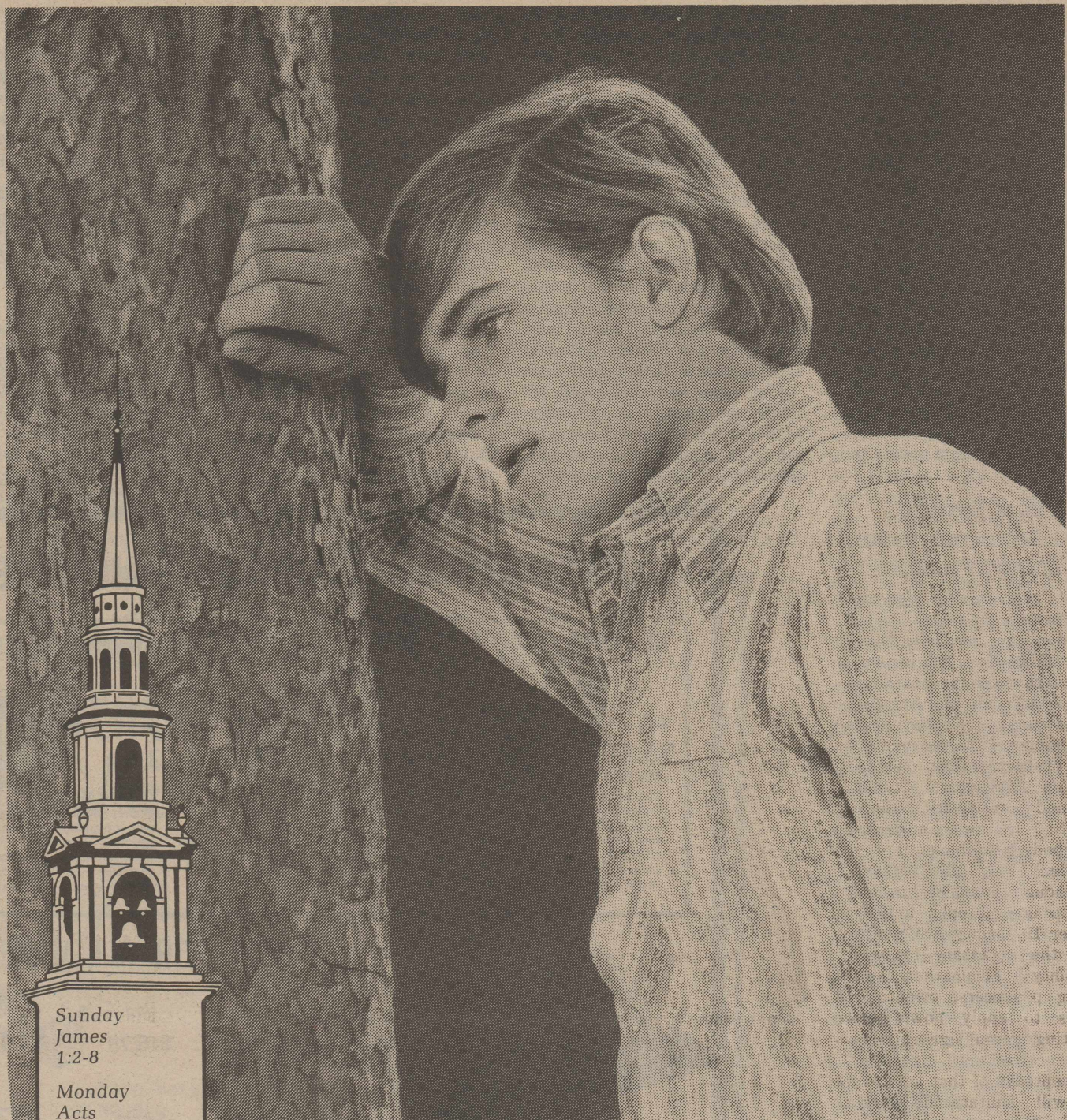
**CHURCH OF CHRIST**

**SUNDAY:**

Worship Service . . . . . 10:30 a.m.  
Evening Worship . . . . . 6:00 p.m.

**WEDNESDAY:**

Worship Service . . . . . 7:00 p.m.



Sunday  
James  
1:2-8

Monday  
Acts  
6:3-15

Tuesday  
Acts  
14:19-27

Wednesday  
Acts  
26:1-19

Thursday  
Romans  
1:13-17

Friday  
Romans  
3:22-31

Saturday  
Romans  
11:11-25

# Life's roughest years

Being a teen-ager can be torture . . . a lot of the time. And the early twenties don't flatten out that smoothly. There's a desperate loneliness about having problems your kid-brother hasn't encountered and your parents must have forgotten.

The loneliness is worst if your folks gave you nothing to believe in — or if they turned you off when they tried to share their convictions with you.

No one has to stay away from God. Many a young searcher has found his faith, found himself, and found his family in his quest for spiritual certainties.

Sunday morning there's more to do than lean on a tree.



## ATTEND THE CHURCH OF YOUR CHOICE THIS SUNDAY

Verlin B. Towe Agency, Inc.  
Schooler-Gordon Funeral Directors  
Garvin Oil Company  
Brown-McMurtry Implement  
Silverton Well Service  
Silverton Oil Company  
Tulia Wheat Growers

First State Bank  
Nance's Food Store  
Briscoe Implement  
Johnson's Gin  
Briscoe County News  
Jerry's Malt Shop  
Grabbe-Simpson Motors, Inc.



Snow December 8 put High Plains cotton strippers in "Park" only 10 percent or less short of the finish line. However the final turnout, guessed in various quarters at from 2.7 to 3.1 million bales, isn't apt to be greatly affected, says Donald Johnson, Executive Vice President of Lubbock-based Plains Cotton Growers, Inc.

Meanwhile, many producers will be using the time-out from field operations to consider 1989 farm program options. And, for all but the rare individual not interested in program participation, the first order of business is to establish eligibility for program payments.

Under the new legislation every farm operator, owner or other farm-connected entity, regardless of status in prior years, must secure a new determination of eligibility for payments in 1989. In short, as Johnson puts it, USDA's Agricultural Stabilization and Conservation Service (ASCS) "by law has declared everybody ineligible until proven eligible."

Although the general program sign-up doesn't open until December 19, county ASCS offices have the necessary forms for eligibility determinations and are urging producers, owners and others to apply now, before initiating normal sign-up procedures.

Acceptance of that advice not only will facilitate the work of ASCS personnel and county committees, but will be to the advantage of producers as well, Johnson says. County ASCS committees have 60 days to make determinations, he explains, and if the determination is unfavorable the producer or other entity will be given an opportunity to make whatever organizational adjustments may be needed to reverse that decision. "So the earlier an eligibility determination is made, the more time the producer will have to make necessary changes before the end of the program sign-up

period April 14."

Essentially, the burden on entities seeking payment eligibility is to furnish proof that they are "actively engaged in farming," which entails making a significant contribution of land, equipment or capital in addition to active personal labor and/or active personal management. Active personal management is defined as management critical to the profitability of the operation. Active personal labor is defined as the smaller of 1000 hours a year or 50 percent of the total physical activity necessary for the farming operation.

There's much more, of course. Too much to detail in this space. Suffice it to say that the process is complicated enough that all eligibility applicants should begin at an early date.

The 1989 cotton program per se calls for a 25 percent unpaid acreage reduction with the option to plant at least 50 percent of permitted acreage and receive 92 percent of deficiency payments. And, from December 19 through February 3, producers may (1) sign up to plant from 10 to 25 percent of each program crop's permitted acreage to soybeans or sunflowers or (2) exchange for oats any portion of the farm's program crop acreage base. Under each of these choices, the farm acreage base will be protected.

Other cotton features include a 50-cent base loan, a 73-4-cent target price and the availability of a 6.4-cent per-pound advance deficiency payment at sign-up.



The narwhal is a large aquatic mammal that develops a tusk that is sometimes half as long as its body. During the middle ages, this tusk was highly prized as the horn of the fabled unicorn.

**BETA CAROTENE**



Helps protect and fight against all cell and tissue damage. Actually converts to Vitamin A in your body in a safe, natural way. This essential vitamin enhances skin, hair, vision, bones, teeth and membrane tissue. Unless you eat high amounts of sweet potatoes, collards, turnip greens, kale, beet greens, cantaloupe, papaya or carrots daily, you aren't getting enough Vitamin A. All natural. Contains no sugar, starch, artificial colors, flavors, chemicals or solvents. Sodium free.

60 Capsules Reg. \$8.49  
Introductory Special **\$7.59**

Available Now at

**BRISCOE COUNTY NEWS**  
823-2333 • Silverton



FFA Junior Chapter Conducting Team won second at the District contest and fourth in Area competition. Team members are (left to right) Jeff Smith, Brian Martin, Jeffrey Grimland, Brian Breedlove, Josh Brooks, Langdon Reagan and Carrie Ann Grabbe. They received their banner at the Greenbelt District Banquet.

Briscoe County News Photo

**Greenbelt District FFA Banquet Held**

The Greenbelt District FFA Banquet was held Monday, December 5, at Clarendon College. Silverton FFA members attending were Tracy Miller, Langdon Reagan, Josh Brooks, Carrie Ann Grabbe, Jeffrey Grimland and Brian Martin.

The Junior Chapter Conduct-

ing team composed of Langdon Reagan, Josh Brooks, Carrie Ann Grabbe, Jeffrey Grimland, Brian Martin and Brian Breedlove placed second at the District Contest and fourth at the Area Contest held at Clarendon College November 19. They received their District Banner at the banquet.

Some say dreaming of eggs means riches.



About 35,000 people work in the twin towers of the World Trade Center in New York City. Another 80,000 visit on business each day.

**Come In and Talk With G. W. About CATTLE FEEDER LEASE - OPTION**

- Fencing Supplies
- Veterinary Supplies
- Oils
- Batteries
- Chemicals
- Feed
- Tires
- Stock Tanks

*If we don't have it, we'll get it!*

**Tulia Wheat Growers FARM STORE**



Open Weekdays 7:30 a.m. to 6:00 p.m.

Saturdays 7:30 a.m. to noon



823-2080

Silverton

# PLAY IT SMART... GET INTO THE CLASSIFIEDS

## For Sale

**WILL SACRIFICE:** 1975 Chevrolet Suburban; 14x65 Mobile Home, 1 1/2 baths; 1-10" Delta Radial Arm Saw; 1-10" Delta Table Saw; 1-6" Craftsman Jointer; 1 China Cabinet. Fern Holt, 823-2113. 50-1tc

### Hutsell Jewelry

May your Christmas Dream Come True! Come in and register for the Treasure Chest of jewelry to be given away on December 24. Value is over \$500.00. Register as often as you like; no purchase necessary. You need not be present to win. 823-2277. Christmas hours, 9-6 Mondays through Saturdays. 50-1tc

**SENIOR BOOSTERS ARE TAKING** orders for Christmas baking. To order, call 823-2082, 823-2210, 823-2284 or see any parent of a senior. 49-2tc

**FOR YOUR ELECTRIC FENCING** needs, see Brown-McMurtry. We have battery, hi line or solar powered fences. We also carry insulators, gate handles and wire. 46-tfc

**ALL KINDS OF CATTLE FEED.** Call 847-2654 or 823-2106 or 823-2020 for appointment. 41-tfc

**ALFALFA HAY FOR SALE:** Fresh cutting in barn. Call Max Weaver, 823-2038, at night. 24-tfc

**NEW 1988-89 TEXAS ALMANACS,** \$8.95 in paperback. Briscoe County News. 10-tfc

**RENTALS**  
Video Home Movies  
and Players  
VCR and Beta  
Overnight or Weekends  
**BROWN HARDWARE**

**LOCKNEY MEAT CO.**  
Kill Days Monday  
through Friday  
**CUSTOM PROCESSING**  
Half and Quarter Cut,  
Wrapped, Frozen and Fully  
Guaranteed  
**SAM & KELLY  
FORTENBERRY**  
652-3305  
Corner of U. S. 70 and  
Farm Road 378 South  
11-tfc

## Johnson's Gin Co.

**For Your '88 Cotton**

- New and Improved Drying System
- Another Stage of Cleaning
- Satellite Marketing System
- Tarps for Modules

Rex and Dorothy Johnson  
Buy USA Grown & Made — It Matters!  
Office 823-2224 Home 823-2223  
Your Business & Friendship Appreciated

## Hutsell Jewelry

Dear Santa Claus, Come by and see what Mrs. Santa has at the top of her Christmas list! Relax and have refreshments while we wrap up your shopping for you. 823-2277. 50-1tc

**FENCE PANELS AND BALE FEEDERS** For Sale at Brown-McMurtry Implement. 45-tfc

### Tiffin Talk

Open late Thursday night! Extra Specials from 6-9:00 only: Knit Fabric and Fleece; Liquid Leather, Reg. \$9.00, Sale \$6.00. Melissa Dresses, 35% off. Children's Clothes, 30% off. Beaver Hats, 30% off. This week's gift certificate winner was Christine King. Two more weeks to win! 50-1tc

**TRASH BARRELS FOR SALE:** Silverton Fire Department. Ask at City Hall. 31-tfc

**FOR SALE: ROOD COTTON HARVESTER**—Picked up 30 bales since completely overhauled and painted. Price \$1,500.00. Call 806-995-3475. 50-2tc

**STILL HAVE WOOD TOYS** and other wood items left at reduced prices. Come by 301 Loretta. Leslie Meier, 823-2244, Silverton. 50-2tp

**WATKINS PRODUCTS FOR SALE** in Silverton. Briscoe County News, 508 South Main Street, or call 823-2333. 41-tfc

## Services

**SINGER SEWING MACHINES,** Vacuum Cleaners, Smith Corona Typewriters, Adding Machines, Kirby Sales and Service. Buy here, service here. Call in Silverton, 823-2333. Office located at 620 Noel in Memphis, 259-2716. Here every two weeks on Thursdays. 21-tfr

**BEFORE YOU RENEW,** please check our rates. Lee's Insurance, Phone 806-469-5370, Flomot, Texas. 12-tfc

**M & M LAUNDRY IS NOW** Open 8:00 a.m. to 7:00 p.m. seven days a week. 49-4tc

**Terry Grimland Welding**  
Shop - Portable - Aluminum  
Welding - Small Engine  
Repair - Dealer for Nichols  
Sweeps & Tillage Tools  
823-2214

## Real Estate

**FOR SALE: THREE-BEDROOM** Home, two baths, full basement. 202 Loretta. 823-2474. 50-tfc

**FOR SALE: TWO-BEDROOM** Home with attached garage, new carpet and fireplace. Also two-bedroom rent house for sale. Price for both, \$12,500.00. Ross Estes, 823-2221. 50-tfc

## Cards of Thanks

Thank you for the cards, memorials and plants that we have received since the loss of our sister. We appreciate very much every expression of your friendship and sympathy.  
Charles and Mary Ann

## THE LITTLE FARM

### Pecans



New Crop

### SHELLED PECANS

Sylvia Fogerson  
823-2145

## IN SILVERTON...

Tired of living in the mud? Have a great 4-bedroom, 2-bath, brick barbecue, covered patio, basement, large yard. Call for details and opportunities.

### MORGAN-EAVES REAL ESTATE

296-5514  
BILL WHITFILL  
652-3185 46-tfc

**For health insurance with old-fashioned personal attention, see me.**



Call:  
**Nick Long**  
Agent  
201 W. California  
Floydada, Texas  
983-3441 (bus.)  
983-3161 (res.)

**Personal Health Insurance**  
The State Farmway!



Like a good neighbor,  
State Farm is there.

State Farm Mutual Automobile Insurance Company  
Home Office: Bloomington, Illinois

Spray, wipe with a paper towel or lint free cloth and presto! Sparkling clean windows and mirrors with no streaks.



## WINDOW CLEANER WITH AMMONIA

32 fl. oz.

Only \$2.69

## BRISCOE COUNTY NEWS

823-2333 • Silverton

## SOMEONE HAS TO SET THE STANDARDS.

They're a cut above... a different breed of car dealer. They're your local neighbors... your High Country Chevy Dealers. And we want you to know what makes us different.

We don't have to tell you what a great value every Chevrolet car and truck is. More people in the High Country area have bought Chevys over the years than any other make.

But more than that... a Chevy dealership in our part of the country is a badge of integrity. It's a

commitment to customer service and satisfaction that you simply won't find anywhere else.

In any field, someone has to set the standards. And here, the standards are set by our dealership. Fair prices, trouble-free service, a great selection... you get it all!

The exciting new 1989 Chevrolets are now on display, and there's more new than ever before. Stop in soon and see the great line-up for '89.

Someone has to set the standards.

## Grabbe-Simpson Motor Inc.

124 Southeast Second 995-3565 Tulia



## TURNER WELDING

Shop, Portable, Aluminum, & Wire Welding  
Fabrication and General Repair

Billy Turner 823-2228 Gary Turner

P. O. Box 771 806-823-2074

## ZIEGLER PUMP

Silverton, Texas 79257

Domestic, Irrigation and Windmill Work

RILEY ZIEGLER 806-847-2627 JERRY MILLER 806-823-2167 BRAD ZIEGLER 806-823-2242