

# WHEELER MUSTANGS, 2019 BI-DISTRICT CHAMPIONS!



**THE WHEELER TIMES**  
 (USPS-681-960)  
 VOLUME 86, NUMBER 48 THURSDAY, NOVEMBER 21, 2019 SINCE 1933 50c  
 "Wheeler; town of friendship and pride"

**Play-Off Game**  
 Wheeler vs. Eldorado  
 Lovell High School  
 Lobo Stadium  
 7:00 P.M. Friday, Nov. 22, 2019  
 We are visitors.  
 Adults: \$6 Students \$4



—Photo by Kara Richardson

## MUSTANGS WIN SHOOTOUT VS WILDCATS

The Wheeler Mustangs opened their 2019 playoff campaign against the Archer City Wildcats last week. It was a rematch of last season's first-round playoff game, with the Mustangs decisively winning that contest in Quanah. This year, the venue would be different, with the game tak-

ing place at Vernon, a familiar locale for the Mustangs. The postseason brings a sense of excitement and potential because in any given game, anything can happen. The Mustangs won the coin toss

and chose to receive the opening kickoff, looking to set the tone early. The Mustangs began at their own 41 yard line and did just that, when Hesston Marshall took the snap and ran 59 yards to

the end zone for a Mustang touchdown. The Mustangs converted their 2-point try and with only 16 seconds gone, led 8-0. The short kickoff that followed the score left Archer City the ball at their own 44

yard line at their own 41 yard line, and the Wildcats used their spread offense to pick up a few first downs on their way to the end zone, which they reached on a 6-yard pass to make the score 8-6. The

Mustangs' kickoff return unit would strike next and issue a quick response to the Wildcats' touchdown, when senior Ian Finsterwald fielded the kickoff at the 27 yard line and

(Continued Page 2)



Mustangs, we are on the way to state. Keep up the good work!

—cwe—

Congratulations to our band students for their accomplishments at the 5-State Honor Band competition, Tristan Salas, Edwin Mendoza, Skylar Smith, Matt Dale, Valeria Garcia, Samantha Ramirez, Alberto Monarrez, (Continued Page 5)

### STORM REPORT



As Reported by...  
**Stormie Meriwether**,  
 Tenth Grade Student

Dear Friends, I ran and walked the 5K on the day of our big celebration for CAPT Alan L Bean. It was a beautiful morning and the Moon was in the early morning sky.

After the run we watched the movie about the men that sent the rockets to the Moon. I loved that movie! Three of

(Continued Page 5)

### Wheeler Girls Play Borger, Canadian

On November 12, the Wheeler Varsity Girls took on the Borger Varsity.

Score by Qtr: Wheeler (Continued Page 4)



## Students Named To 5-State Honor Band

**HONOR BAND:** Hundreds of students from across the Texas and Oklahoma Panhandle, as well as New Mexico, Colorado and Kansas auditioned on Saturday, November 16 for the Five State Honor Band in Guymon, Oklahoma. Sixteen students from Wheeler, 11 High School and 5 Junior High students, were selected for the band. High School students attending and their placing are as follows: Rosy Gonzalez, alternate flute; Manny Jurado, 1st chair trumpet; Aldo Jaime, 12th chair trumpet; Emely Garcia, 2nd chair French horn; Houston Hardcastle, 4th chair French horn; Emmanuel Almanza, 6th chair trombone; Jesse Sierra, 9th chair trombone; David Uribe, 1st chair baritone; Alburto Monazze, 4th chair baritone; Nic Sparks, 1st chair tuba and Samantha Ramirez, 6th chair percussion. **Junior High** students participating in the event were Skylar Smith, 1st chair flute; Valeria Garcia, alternate flute; Tristan Salas, 3rd chair trumpet; Edwin Mendoza, 1st chair French horn and Matt Dale, 2nd chair trombone. Pictured are (front, l. to r.) Tristan Salas, Edwin Mendoza, Skylar Smith, Matt Dale, Valeria Garcia, Samantha Ramirez, Alberto Monarrez, David Uribe, (back) Nicholas Sparks, Rosy Gonzalez, Emmanuel Almanza, Jesse Sierra, Houston Hardcastle, Manny Jurado, Emely Garcia and Aldo Jaime.

### Wheeler Chamber To Host

## 8th Annual Small Business Saturday

The Wheeler Chamber of Commerce will host the 6th Annual Small Business Saturday on Saturday, Nov. 30th in Wheeler.

Many of our local stores will be open normal business hours and offering in-store specials for customers. There (Continued Page 3)

### Apollo 12 50th Anniversary Celebration A Success

The Apollo 12 Fiftieth Anniversary Celebration held in

Wheeler this past Saturday, November 16, 2019, was very well attended.

Activities kicked off with the Fun Run and 5K. The medals ordered for the event did not arrive as promised. John Hankins created a custom designed coin for the participants to receive at the finish line; the medals will be mailed, when they arrive.

Post Master, Teri Jackson, was at the Wheeler Historical Museum with the Special Pictorial Stamp Cancellation and postage on envelopes in commemoration of the event. Museum had printed special envelopes featuring artwork by Tim Gagnon. Those who missed the cancellation may contact WHM or the Post Office in Wheeler for the next (Continued Page 4)

### Commissioners' Court

## Barn Purchased For \$8,500.00

The Commissioners' Court of Wheeler County,

Texas, met in regular session on Tuesday, November 12, 2019, at 9:00 a.m. in the Commissioners' Courtroom of the Wheeler County Courthouse at 401 Main Street, Wheeler, Texas to consider prior bills and discuss matters of mutual concern.

At 9:00 a.m. court convened to address the Election Canvass.

Margaret Dorman, County Clerk, presented the Canvass Report for the November 15, 2019 Constitutional Amendment Election. The report was approved.

At 10:00 a.m. court was (Continued Page 4)



**Kelton FFA Competes at Top O' Texas District LDE:** Picture (l. to r.) Lesley Alvarado, Marlen Alvarado, Emily Cook, Kaleb Kimbro, Zen Lister, Abby Tolbert, Pavan Patel and Kash Long. Eight members of the Kelton FFA Chapter recently competed at the Top O' Texas District LDE held at Frank Phillips College in Borger. Kash Long and Pavan Patel competed in Greenhand Creed Speaking. Kash placed 7th and Pavan placed 2nd. (Continued Page 3)

## Twenty-third Annual "Toys For Tots" Drive For North Wheeler County

The program is designed for needy children in our communities of North Wheeler County, who would not have

a Christmas without help.

All children must be full time residents of Northern Wheel- (Continued Page 3)

## Wheeler County Farm Bureau Set Open House With Cook Out Thurs.

Farm Bureau members, their families and the general public is invited to visit Wheeler County Farm Bureau at their new location at the south edge of Wheeler, Texas. The business has

moved from the square in downtown Wheeler.

Hamburgers and hot dogs with the trimmings will also be available for your enjoyment. The address is 1501 S. Alan L. Bean Blvd.

THESE PICTURES SPONSORED BY:

# FIRST STATE BANK

**Mobeetie Office:**  
First & Wheeler St.  
Mobeetie, Texas  
845-2311



**Wheeler Office:**  
1408 S. Alan Bean Blvd.  
Wheeler, Texas  
826-5546

Wheeler 1st grade enjoyed the Amarillo Art Museum 11/12/19. They painted a copy of Vincent Van Gogh! Students learned about mixing colors and painting light and dark in their artwork.



Students' paintings



Breeley Harris stops the drive.



Wendy Lopez causes a turnover.



Free Throws help get the lead over the Borger Lady Bull Dogs.



Perla Almanza blocks the shot.

## Stangs (from Page 1)

ran it all 73 yards to the Wildcat end zone. Gustavo Olivas' extra point try was good and the Mustangs led 15-6. The Mustang defense put a stop to the next Archer City drive, giving the Mustang offense another chance. The Mustangs moved down the field and into the end zone with a 9-yard pass from Marshall to Gustavo Andrade to make the score 21-6.

Archer City responded with a touchdown of their own to shrink the lead to 21-12, and the Mustangs answered right back when Marshall broke loose on another touchdown run on the following drive. Again Olivas' PAT was good and the score was 28-12 with 3:26 remaining in the first quarter. Archer City would not relent, though, and scored on their next possession to make the score 28-18 in favor of the Mustangs at the end of the first quarter. The Mustangs had the ball when the 2nd quarter began and methodically moved it down the field before Marshall got into the end zone yet again to make it 34-18. After this score, the Mustang defense put a stop to the Wildcats, when Baldeemar Gallardo stripped the football from the ball carrier on the Wildcats' first play and Marshall made the recovery for the Mustangs at the Wildcat 41-yard line. The Mustangs would move the ball downfield and Marshall would connect with Finsterwald for an 18-yard touchdown pass to make the score 40-18. The teams would then trade possessions without scoring, though Archer City threatened shortly before halftime, but Andrade intercepted a Wildcat pass in the end zone, saving a touchdown, and the teams went to the locker rooms with the Mustangs on top, 40-18.

The second half saw the Mustangs kick off to the Wildcats, who drove 65 yards to the end zone and score to shrink the lead to 40-25. The Mustangs answered right back when Marshall scored on an 8-yard run. The two-point try was good and the score was 48-25. However, Archer City's offense found the end zone again to shrink the Mustang lead to sixteen: 48-32. On the next drive, the Mustang offense was stopped for the only time that night, when the Mustangs failed to convert a 4th & 4 and turned the ball over on downs. It was a momentum booster for the Wildcats, who were able to drive the short field they began with and score a touchdown and two-point conversion to further erode the Mustangs' lead, 48-40, with 1:15 remaining in the 3rd quarter. With the momentum on the Wildcats' side, the Mustangs were in need of a score and their offense delivered in just the right way: a long, time-consuming drive that spanned 81 yards and culminated in a 3-yard touchdown run by Marshall, the recipient of an option pitch. The Mustangs cushioned their lead, 54-40, and perhaps as important, eroded the Wildcats' momentum along with the remaining time in the game- there was only 5:33 remaining in the game at the conclusion of the Mustangs' drive. Still, the Wildcat offense was able to move the ball down the field and score with 1:10 left in the game, making the score 54-47 in favor of Wheeler. The Wildcats unsuccessfully attempted an onside kick, and the Mustangs had the ball and only needed to hold on to the ball and run out the clock, which they did, to win the ballgame 54-47.

The game with Archer City was unique in that neither team punted the entire game. Both teams scored a lot of



## THE WHEELER TIMES

Page 2 - Thursday, November 21, 2019

"Wheeler: town of friendship and pride"

points but the Mustangs were able to hold off the Wildcats, especially at the crucial moments when the Wildcats had

momentum on their side. The Mustangs will now prepare for their round 2 matchup, which will be against the Eldorado Eagles on Friday, November 22, in Levelland.

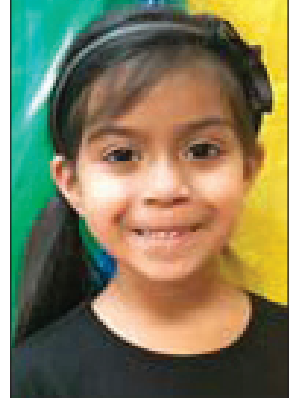
## Wheeler County COURT RECORDS

List of instruments filed in the Wheeler County Clerk's office from November 7, 2019 to November 14, 2019.  
**NOVEMBER 7, 2019**  
 MODIFICATION DT-Clifford Oldham to AimBank, 6-19-19, SE/4 Sec. 38, Blk. 17, H&GN Ry. Company Survey.  
**NOVEMBER 8, 2019**  
 TRUSTEE DISTRIBUTION MD-Evan Watts Trust to Evan Watts, 11-9-19, Min. Interest in Sec. 2, J. Poitevent Survey; Plus Any Other Mineral/Royalty in Wheeler County.  
 HEIRSHIP AFF.-Charles Iniguez to Vonita I. Sbisá, 11-1-19, Sec. 48, Blk. 24, H&GN Ry. Company Survey.  
 RDT-AimBank to Mickey Von Chapman, et ux, 11-4-19, Pt. W/2 Sec. 4, T&NO Ry. Company Survey.  
 ABSTRACT OF JUDGMENT-Cavalry SPV I LLC to Tricia Clothier, 11-1-19.  
 RDT-AgFirst Farm Credit Bank, et al to Richard Darrell Gaines, et ux, 11-1-19, See Instrument.  
**NOVEMBER 11, 2019**  
 Veteran's Day  
**NOVEMBER 12, 2019**  
 RATIFICATION OL-Troy Kendall to FourPoint Energy LLC, 10-15-19, NW/4 Sec. 39, Blk. A-4, H&GN Ry. Company  
*(Continued Page 4)*

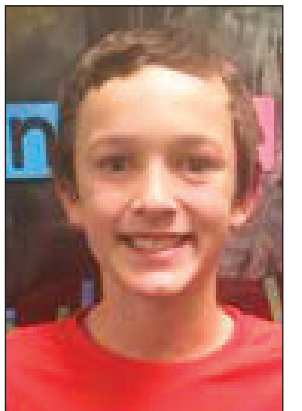
## Old Time Gospel Music KPDR-FM, 90.3

... In Wheeler  
 Sun.: 6:00 a.m. to 8:00 a.m.

Fort Elliott Elementary Cougars of the Week  
 Nov. 11 thru Nov. 15



Kindergarten, Ragen Antuna



Fifth Grade, Kelton Sims

For all your . . . Insurance Needs, See **Eastern Panhandle Insur. Agency, Inc.**  
 206 N. Madden Shamrock  
**806/256-5401**  
 •Auto •Home •Life •Health •Commercial •Bonds

## Canadian Redi-Mix, Inc.

... for all your Concrete Needs!



**806-323-5379**

## DOUG BOYD MOTOR CO.

Buy Here / Pay Here  
 No Credit Check • Areas Largest Selection  
 Pampa • Corner of Hwy 60 @ Hwy 70  
 806-669-6062 • www.dougboydmotors.com

## Hyland's Pharmacy

Downtown Wheeler - 826-5561

Wedding Shower

Payton Leffew & Tyler Thiessen

Date: December 07, 2019  
 Shower Location: 207 S. Reynolds Street (Home of Claudine Finsterwald)

VISIT

US ON SHOP SMALL SATURDAY NOVEMBER 30

The store for all your needs: Prescriptions, Gifts for your loved ones.

## COLDWELL BANKER

FIRST EQUITY REALTORS  
 5701 Time Square Blvd. Suite 190, Amarillo, TX 79119

**New Listing**—New to Market: 640+/- acres 3 miles south of Wheeler. Live year round creek, ponds, trees, brush, rolling grassland, hills, excellent stand of grass. Topography changes. Well cared for. Abundant wildlife: Deer, Turkey, Hogs, Quail and Dove.

**New Listing**—320+/- acres NW of Shamrock. West side of property on Pakan Road. The best recreational, hunting, grazing combinations on the market in a long time. Heavy brush, Big trees, enchanted forest, Well, ponds. Superabundant amount of wildlife: Deer, Turkey, Hogs, Quail and Dove.

**640+/- acres SW of Wheeler.** 160 acres of triticale goes to new owner. Excellent steel working pens near center of place. Water piped under pressure to two (2) 30 ft. + steel troughs with concrete floors, less than 5 years old. Extra good perimeter fences and cross fences. Small pond, trees and brush provide cover for substantial numbers of wildlife (Deer, Turkey, Hog, Quail and Dove) 2 RV setups with water and electricity to use as a hunting camp. Possible to develop for irrigation.

**YOUNG RANCH EAST:** 1600 +/- acres with 2 miles of highway frontage on the south side of I-40, 8 miles east of Shamrock. One mile of Elm Creek crosses the ranch and feeds a centralized pond. Other parts of the ranch are watered with 2 wells, Cliffs, ravines, big trees and brush provided cover for deer, dove, hogs, quail and turkey. Some of the Ranch could be farmed.

**3BR/2BA Brick Home** with 2 car garage located on 4.8 acres east of Shamrock on I-40. House is 100% electric w/basement. New double pane windows and new tile throughout. New entrance doors, new septic system. Water well with barbed wire and woven wire fencing. *Priced right!*

**NEW LISTING:** 300 acres 5 miles west of Shamrock on the northside of I-40, plains bluestem grass, city water, good fences, deer, quail and dove.

**NEW LISTING:** 160 acres 5 miles northwest of Shamrock, native grass, windmill, good fences, quail and dove.

**Sold**  
 Coldwell Banker First Equity, Realtors. Richard Hefley AIC, Licensed in Texas and Oklahoma. 806-898-1786.  
 landsoftexas.com, cbcamarillo.com or Richard Hefley.com

## News, Views & Commentary

## KPDR-FM, 90.3

WHEELER, TEXAS  
 Weekdays: 6:00 a.m. to 7:00 a.m.

# Wheeler School Board Minutes

*Minutes of Regular Meeting  
The Board of Trustees  
Wheeler ISD*

A Regular Meeting of the Board of Trustees of Wheeler ISD was held Wednesday, October 23, 2019, beginning at 6:30 PM in the board conference room located at #1 Mustang Drive, Wheeler, Texas, 79096.

Those present were: Dr. Lee Ann Hillhouse, Billy Richardson, Ike Finsterwald, Beau Means, Machille Henson, Chad Helton, Mark Marshall, Bryan Markham, Superintendent; Stacey Horton, Business Manager; Mike Bailey, Secondary Principal; David Dale, Elementary Principal, and Mark Kile, CPA

Members Absent: None  
I. ESTABLISH A QUORUM  
a. Pledge—Beau Means led the pledge.

b. Invocation—Machille Henson offered the invocation.

## II. OPEN FORUM

a. Hearing of Any Person/Group Wishing to Address the Board: None

## III. READING OF MINUTES

a. Regular Meeting of September 18, 2019—Billy Richardson motioned to approve the minutes. Chad Helton seconded the motion. Seven members voted to accept the motion, no votes against.

## IV. FINANCIAL REPORT

a. Review of Bills—Mr. Markham reviewed the bills.  
b. Financial Statement(s)—

## Toys (from Page 1)

er County to be eligible. If children are signed up that do not qualify, all children at that address will be removed from Toys for Tots.

If you do not apply or did not qualify for Free or Reduced Lunches, you will not qualify for the Toys for Tots Program. This form must be returned to the Wheeler Vet Clinic by December 1st to be considered.

## Coleccionar Juguetes

Este programa es para los niños (North Wheeler County) que no tuviera Navidad sin ayuda. Todos los niños deben ser residentes de tiempo completo del condado del Northe de Wheeler Para ser eligibles. Y si los niños se inscribieron que no califican, todos los niños en esa dirección seran eliminados de Toys for Tots.

Si usted no splice a califico para Comidas Gratis O Reducidas De La LaEscuela, usted no calificara para el programa de Toys forTots. Esta forma debe ser entregada a la Clinica Veterinaria para el dia primero de Diciembre para ser considerada.

Mrs. Horton reviewed the financial statements.

c. Financial Assumptions—Mr. Markham reviewed the financial assumptions.

## V. REPORTS/DISCUSSION ITEMS

a. District Financial Audit for 2018-2019—Mark Kile, CPA provided the WISD financial audit for 2018-2019.

b. Principals' Reports—Mr. Dale reported on enrollment numbers, upcoming WOWW programs and the upcoming Veteran's Program.

Mr. Bailey reported on enrollment numbers, band marching contest results, cross country regional qualifiers, the start of basketball season and ASVAB results for juniors.

## VI. ACTION ITEMS

a. Unfinished Business  
1. No Unfinished Business  
b. New Business

1. Consider/Approve District Financial Audit for 2018-2019

Mark Marshall made a motion to approve the district financial audit for 2019-2020 as presented. Machille Henson seconded the motion. Seven members voted to approve the motion, no votes against.

## VII. SUPERINTENDENT'S REPORT

a. Emergency Operations Plan/School Safety Audit—Mr. Markham provided the board with information regarding requirements in conjunction with HB3. Updates to be provided as the plan is developed.

b. Early Literacy Plan—Mr. Markham reviewed the Early Literacy Plan and its requirements.

c. Targeted-Support Improvement Plan—Mr. Markham reviewed the areas of target-support and provided an update to the plan.

d. Review All-State Honor Criteria—Mr. Markham reviewed the criteria for the Wall of Honor.

## Kelton (from Page 1)

Pavan Patel, Zen Lister and Marlen Alvarado participated in Greenhand Quiz placing 6th. Kaleb Kimbro participated in Job Interview and placed 4th. Emily Cook competed in Sr Creed Speaking and ranked 5th. Kaleb Kimbro, Emily Cook, Lesley Alvarado and Abby Tolbert competed in Sr Quiz and placed 2nd. Pavan Patel and the Sr Quiz qualified to advance to the Area 1 FFA LDE which will be held at WTAMU in Canyon.

e. Review November Meeting Date

The Regular November Meeting will be held Wednesday, November 13, 2019.

## VIII. EXECUTIVE SESSION

a. If Needed, According to Texas Government Code

## Small (from Page 1)

will be a wide selection of gifts for everyone. There will be a variety of vendors set up at the Wheeler AgriLife Building (7939 US Highway 83).

Vendors interested in setting up a booth, need to contact the Wheeler Chamber at chamber@wheelertexas.org or stop by Wheeler City Hall (under the water tower) for a vendor form.

Be sure to shop all our local stores and vendors, as there is sure to be something for everyone on your list!! And be sure to tag us #wheelerchamber #shopsmall as you are shopping, you will be entered in a drawing for chamber cash!!

Follow the Wheeler Chamber on Facebook for promotional giveaways and chance to win local gift cards.

If you would like to sponsor, donate or volunteer to help - please contact Kristen Moudy at 806.826.3408 or chamber@wheelertexas.org.

Listen To . . .  
**KPDR-FM, 90.3**  
WHEELER, TEXAS

Section 551.001, et seq. No Executive Session Required

## IX. ADJOURNMENT

Mark Marshall motioned to adjourn at 7:35 pm. Chad Helton seconded the motion. Seven members voted to accept the motion, no votes against.

Support the local economy where you live, work and play because your big, box stores are not constant supporters of our community.

## Christmas Child Shoebox Project

As Thanksgiving Day approaches, Wheeler families are expressing their gratitude by giving back. Residents are filling shoeboxes with fun toys, school supplies and hygiene items to send to children in need around the world. For many of these children, it will be the first gift they have ever received.

During Operation Christmas Child's National Collection Week Nov. 18 - 25, local residents will collect shoebox gifts at drop-off locations in the area. The Samaritan's Purse project, partnering with churches worldwide, will deliver these gifts to children in need. Area volunteers hope to collect more than 16242 gifts during the week.

"I love seeing the local community rally together for a global impact," said Regional Director Matt McClelland. "We see all ages getting involved—and more and more

(Continued Page 4)



THE WHEELER TIMES  
Page 3 — Thursday, November 21, 2019  
"Wheeler: town of friendship and pride"

**Office/Shop — 321 S. Sweetwater St**  
Fenced Yard For Rent  
**806-669-5341**

**Panhandle Plains Realty**  
*Making Dreams Come True*

— Let us list your Real Estate —  
**Linda Laycock**  
Broker, ABR,  
GREEN, SRES, E-PRO  
**806.662.1312**

Pampa MLS www.panhandleplainsrealty.com Amarillo MLS

**V. L. CONCRETE**  
Wheeler, Texas  
*Experienced — Free Estimate  
Your idea or mine!*  
Victor Loera **806.216.2826**

**OPEN HOUSE**

**FARM BUREAU®**  
WHEELER COUNTY

**YOU ARE INVITED TO A VERY SPECIAL EVENT**

**Come tour our new office building from 11 a.m.-2 p.m. Thursday, November 21**

**WE'RE COOKING HAMBURGERS & HOT DOGS**

**NEW ADDRESS**  
**WHEELER COUNTY FARM BUREAU**  
**1501 S. ALAN BEAN BLVD.**  
**WHEELER, TEXAS • 79096**

**FOR SALE: 320 acres of beautiful crop and grassland with one mile of frontage on Hwy 83 located 8 miles south of Wheeler. Creek and tank that fills with ground water. Deer, turkey and quail hunting opportunity. 972-989-8019**

**SOLD!: Hunters Paradise in Wheeler County! 320 Acres located two miles off I-40 near Lela. Native pastureland, stately trees, deep draws draining into a fresh water pond. Deer, quail, turkey and the occasional wild hog and cat. 806-334-0123**

**FOR SALE: 902 S. Main St in Wheeler. Major renovation in 1990's with updated kitchen and new appliances. 3 bed, 2.5 bath, 2978 sf with energy efficient windows throughout the home as well as energy efficient AC. Back yard with terrace and shade trees. 806-334-0123**

**FOR SALE: 408 E. 2nd in Shamrock. Recently renovated 4 bed, 1.75 bath with 2688 sf. Wood floors in living and dining. Wood burning fireplace, new deck and double carport with storage room. 806-334-0123**

**FOR SALE/LEASE: 6400 sf insulated warehouse with extensive rack system on 8.46 fenced acres. Gravel parking for heavy duty equipment and trucks. 972-989-8019**

**FOR LEASE: 3 bedroom Townhome, 2.5 bath, 1 car garage. 972-989-8019.**

Ken Baxter - 806-334-0123  
landdaddy47@gmail.com  
Chip & Pam Hill  
972-989-8019 or 469-323-9625  
pamhill@rivercresthomes.net

**NOTICE TO THE PUBLIC**

Any erroneous reflection upon the character, standing or reputation of any person, firm or corporation, which may appear in the columns of this paper will be gladly corrected upon due notice being given to the editor personally at the office at Wheeler, Texas.

**Oil & Gas NEWS**

Week of November 4-10, 2019

Intents to Drill  
MOORE (PANHANDLE, WEST) Scout Energy Management LLC, #25B Sneed (6466 acres) 1385' FNL & 725' FEL, Sec 25, Blk 6T, T. & N. O. RR Surv, A-333, 11.1 mi NE from Fritch TD 4000', (sgd. Tonya Blanchard 972-782-4267) Vertical

MOORE (PANHANDLE, WEST) Scout Energy Management LLC, #29D Sneed (6466 acres) 1243' FSL & 1342' FEL, Sec 25, Blk 6T, T. & N. O. RR Surv, A-333, 11 mi NE from Fritch TD 4000', (sgd. Tonya Blanchard 972-782-4267) Vertical

Gas Completions  
LIPSCOMB (BRADFORD, Tonkawa) Unit Petroleum Company, #1 Miles, 9 mi NNW from Lipscomb, Sec 593, Blk 43, H&TC RR Surv, A- spud 7-28-1988, compl 8-26-1988, tested 11-1-2019, potential 20 mcf, 0 bbls cond, 0 bbls wtr, 33# ftp, 63# SI-WHP, TVD 6670', PBD 6647' API 42-295-31799, Vertical Recompletion Reclass Oil to Gas

Oil Completions  
POTTER (PANHANDLE, Red Cave) Beren Corporation, #98 Masterson Estate, 2 mi SE from Masterson, Sec 73, Blk O18, D&P RR Surv, A-1024 spud 8-20-2019, compl 10-9-2019, tested 11-6-2019, potential 38 bbls-oil, 14 mcf, 16 bbls wtr, 2.50# ftp, 2.50# CP, TVD 2432', PBD 2382' API 42-375-31908, Vertical

**WANT ADS/ LEGAL NOTICES**

Sell it through a Classified in THE WHEELER TIMES! \$6 for the first 20 words; 35c for each additional word. Legal Notices: 35c per word.

New 3 bedroom 2.5 bath townhomes for lease in Wheeler, TX. Call 972-989-8019. 8-24trn

**Court** (from Page 2)

Survey.  
RATIFICATION OL-Steven R. Diamond to FourPoint Energy LLC, 3-20-19, NW/4 Sec. 39, Blk. A-4, H&GN Ry. Company Survey.  
RATIFICATION OL-Deborah A. Diamond to FourPoint Energy LLC, 7-22-19, NW/4 Sec. 39, Blk. A-4, H&GN Ry. Company Survey.  
RATIFICATION OL-Steven M. Diamond to FourPoint Energy LLC, 7-25-19, NW/4 Sec. 39, Blk. A-4, H&GN Ry. Company Survey.  
RATIFICATION OL-Jennifer Kendall to FourPoint Energy LLC, 8-3-19, NW/4 Sec. 39, Blk. A-4, H&GN Ry. Company Survey.  
ASSUMPTION DVL-David G. Oldham, et ux to Clinton W. Oldham, et ux to Clinton W. Oldham, et ux, 11-7-19, Undivided Interest in Pts. of Sec. 27 & S/2 Sec. 28, Blk. 13, H&GN Ry. Company Survey.  
DEED-Lakeview Loan Servicing LLC to Flagstar Bank FSB, 9-11-19, Pts. Lots 6-8, Blk. 8, Pendleton-Baxter Addition, Shamrock.  
DVL-Flagstar Bank FSB to Donald Legowsky, 9-18-19, Pts. Lots 6-8, Blk. 8, Pendleton-Baxter Addition, Shamrock.

**Wheeler I.S.D. Book Fair, Nov. 15-22**

The Wheeler ISD Library will be hosting a Book Fair Friday, November 15th – Friday, November 22nd. The Book Fair will be open each day from 7:00-3:30. Wednesday, November 20th will be Family Night and the Fair will be open until 6 p.m. Special drawings will be held on Family Night! Featured in the Book Fair will be best-selling books, educational toys, pencils, posters, cook books, and lots of miscellaneous items. Come visit the Book Fair! Proceeds from the Fair will help purchase new items for the Library.

FOR RENT: 2 bdr, 2 bath house for rent near hospital 806-676-0711. 4/4trn

For Rent: 2 bedroom, 1 bath house. \$400 per month, \$400 deposit. 806-216-2862. 4tp

**LAND FOR SALE:** Two sections of native grassland located in southwest Hemphill County. Surface only. (806)217-2140". 9-1trn

DVL-Donald Legowsky to Interling Mortgage Services LLC, 10-4-19, Pts. Lots 6-8, Blk. 8, Pendleton-Baxter Addition, Shamrock.  
NOVEMBER 13, 2019  
TAX LIEN CONTRACT-Dannie Lee Mills, et ux to FGMS Holdings LLC, 10-22-19, Lots 10-12, Blk. 50, Woodley's Southside Addition, Shamrock.  
TRANSFER OF LIEN-GS Tax Loan Fund 1 LLC to FGMS Holdings LLC, 10-7-19, W 10 acs of N 20 acs SE/4 SW/4 Sec. 6, Blk. A-4, H&GN Ry. Company Survey; Lots 10-12, Blk. 50, Woodley's Southside Addition, Shamrock  
COLL. ASSIGN. of LIEN-FGMS Holdings LLC to Capital One National Association, 10-12-19, W 10 acs of N 20 acs SE/4 SW/4 Sec. 6, Blk. A-4, H&GN Ry. Company Survey; Lots 10-12, Blk. 50, Woodley's Southside Addition, Shamrock.  
NOVEMBER 14, 2019  
MODIFICATION EXT. DT-Cecil Gaither Sr., et ux to Dexter Haws, et ux, 11-12-19, 42.32 acs. NE/4 Sec. 50, Blk. 17, H&GN Ry. Company Survey.  
PARTIAL RDT-Dexter Haws, et ux to Cecil Gaither Sr., 11-1-19, 4.66 acs. out of 42.32 acs. Sec. 50, Blk. 17, H&GN Ry. Company Survey.  
DEED-Dexter L. Haws, et ux to County of Wheeler, 11-1-19, Lots 9 & 10, Blk. 6, Original Town, Lela.  
DEED-Cecil Gaither Sr., et ux to County of Wheeler, 11-8-19, 4.66 acs. out of 42.32 acs. Sec. 50, Blk. 17, H&GN Ry. Company Survey.  
RDT-Happy State Bank to Todd Moore Insurance Agency Inc.,

Now Hiring: Graves Family Dentistry in Wheeler (formerly Parkview Dental) now accepting applications for a dental assistant. Experience preferred but not required. Call 806.323.9324 to apply.

**LEGAL NOTICE**

The Panhandle Regional Planning Commission is in the process of electing a minority representative to fill a position on its Board of Directors. The meeting is to be held on Tuesday, December 3, 2019, at 6:00 p.m. at Pampa City Hall, 200 W. Foster, Pampa, Texas. All minority citizens in Childress, Collingsworth, Donley, Gray, Hall, and Wheeler Counties are invited to attend this meeting. Information regarding this election may be obtained from Rebecca Rusk at PRPC, (806) 372-3381.

**Sunday Nite Live KPDR-FM, 90.3**  
... Live from Canadian  
9:00 p.m. to 11:00 p.m.

7-26-19, Lot 1, Blk. 2, Original Town, Shamrock.  
MD-Susan M. Contreras to Panchev LP, et al, 10-23-19, Undivided Interest in S/2 NE/4 Sec. 48, Blk. 24, H&GN Ry. Company Survey.  
MD-Danielle E. Wagner to Panchev LP, et al, 10-29-19, Undivided Interest in NW/4 & S/2 NE/4 Sec. 48, Blk. 24, H&GN Ry. Company Survey.

**BB.** (from Page 1)

19/25/31/42; Borger 4/7/10/18  
Final: Wheeler 42; Borger 18  
Top Scorers: Wheeler: Perla Almanza 9, Hope Adkins 8; Borger: Maggie Buttemore 6, Essence Glover 4  
Records: Wheeler Record: 2-0; Borger Record: 0-2  
On Nov. 16, Wheeler Varsity Girls met the Canadian Varsity.  
Score by Qtr: Wheeler 5/10/18/24; Canadian 17/30/42/61  
Final: Wheeler 24; Canadian 61  
Top Scorers: Wheeler: Wendy Lopez 5, Perla Almanza 5; Canadian: Mattie Boyd 21, Briley Merket 11  
Records: Wheeler 2-1; Canadian 2-0



Hopefully, we still have readers out there in Wheeler land after the fierce winds and cold that visited us this last week! The library was warm and relaxing and believe it or not we did have a few brave souls come in and visit and get their Reads.

I'm going to play with your minds Reader's and see just how much you know about our authors and books. Some of them are new some old but they are all on our library shelves. We will start off with titles in the Fiction section and see if you can name the author.  
The A List; Book Of Signs; Cemetery Road; You're Still The One; Lost and Found; Unsolved; The Line Between; and last but not least The Bit-terroots.

Now lets do a few Christian Fictional books:  
Softly and Tenderly; Water Walker; The Amber Room; Trusting Grace; Smoke Screen; The Healing Jar; A Cup of Dust and just one more, Silenced.

All you have to do is match the author with the books and to help you out i will list the authors here, they will be mixed up.  
Dani Pettrey; Ted Dekker; David Jeremiah; J.A. Jance; James Patterson; Tosca Lee; Sara Evans; Susie Finkbeiner; C.J. Box; Danielle Steel; Davis Dunn; Greg Iles; Wanda Brunsetter; and Terri Blackstock

Enjoy the Quiz and we will be interested to see what you come up with.  
Grab A Read!  
Vicki Ferguson/Librarian  
Cindy Hartsfield/Assistant  
Marley/Mascot

**MEMBER 2019 TEXAS PRESS ASSOCIATION**

**City of Wheeler Turns 100**  
Aug. 6, '05 Celebration Planned

**P.O. Box 1080  
Wheeler, Texas 79096  
Phone: 806/826-3123**

Entered as second-class matter December 18, 1933, at the Post Office at Wheeler, Texas 79096, under the act March 3, 1879.  
Postmaster: Send Address changes to *The Wheeler Times*, P.O. Box 1080, Wheeler, TX 79096-1080 — wtimes@windstream.net

**Louis C. Stas, Owner & Publisher**  
SUBSCRIPTION RATES:  
Within Wheeler Co: \$22.00 Elsewhere: \$25.00

**THE BUSINESS DIRECTORY**

**CROSS COUNTRY BARN**

★ 24 Hr. Gas & Diesel ★ Convenience Store  
★ Hunt Bros. Pizza  
301 E. Oklahoma St.  
Wheeler, TX  
Phone: 806-826-2276  
Dale & Monica Kidd

It pays to Advertise in THE WHEELER TIMES

Phone & Fax: 806/826-3125  
wtimes@windstream.net

Classified Rate  
Cash—\$6.00 for 1st 20 wds.  
Chg.—\$6.50 for 1st 20 wds.  
35c for each additional word  
Display Classified: \$6.50/pc  
Card of Thanks: \$7.00

**Comm** (from Page 1)

reconvened to address the eleven items on the agenda.  
• The minutes of the previous meetings were approved.  
• The court accepted the Monthly Fee Reports: Justice of the Peace, Pct. 1; Justice of the Peace, Pct. 2; County Clerk, District Clerk and Treasurer for the period of October 29, 2019 through November 7, 2019, totaled \$189,052.35.  
• There were no budget amendments.  
• There were no budget transfers.  
• There were no line item transfers.  
• The court voted to sell a 1.5 acre tract of land out of Section 56, Block 17, to the City of Shamrock for \$1,500.  
• The court approved Judge Hefley's motion to amend the acreage amount from the land description that was

approved on June 10, 2019, from 3.73 acres to 4.66 acres of land and add Lots 9, 10, 11, 12, Block 6, Lela to the purchase with a purchase price of \$5,682.00. Motion carried un animously.  
• The purchase of a barn from Cecil Gaither, Jr., for \$8,500 was approved by the court.  
• Cindy Brown, Place 1, and Keith Horn, Place 5, were approved to the Wheeler Central Appraisal District Board of Directors Election, 2020-2021,  
• The court approved a contract with Inmate Psychiatry Services with Forefront Rush Medical Services PA for psychiatric and mental health services for inmates of the Wheeler County Jail.  
• The payment of bills was approved.

**Crossword PUZZLE**

|    |    |    |    |    |    |    |    |    |    |    |    |
|----|----|----|----|----|----|----|----|----|----|----|----|
| 1  | 2  | 3  | 4  | 5  | 6  | 7  | 8  | 9  | 10 | 11 | 12 |
| 13 |    |    |    |    |    |    |    |    | 15 |    |    |
| 16 |    |    |    | 17 |    |    |    |    | 18 |    |    |
| 19 |    |    |    | 20 |    |    |    |    |    |    |    |
| 21 |    |    | 22 |    |    |    |    | 23 | 24 | 25 | 26 |
| 27 |    | 28 |    |    |    | 29 | 30 |    |    |    |    |
| 31 |    |    |    |    | 32 |    |    |    | 33 |    |    |
|    |    |    | 34 |    | 35 | 36 |    |    | 37 | 38 |    |
| 39 | 40 | 41 |    | 42 |    |    |    | 43 | 44 | 45 | 46 |
| 47 |    | 48 | 49 |    |    |    |    | 50 |    |    |    |
| 51 |    |    |    |    | 52 | 53 | 54 |    |    | 55 |    |
|    |    |    | 56 |    | 57 |    |    |    | 58 |    |    |
| 59 | 60 | 61 |    |    |    |    |    |    | 62 |    |    |
| 63 |    |    |    |    | 64 |    |    |    | 65 |    |    |
| 66 |    |    |    |    | 67 |    |    |    | 68 |    |    |

- symbol  
8. Dogs that don't bark  
9. "Yay!"  
10. Biological eggs  
11. The "p" in r.p.m.  
12. Finished  
13. Light benders  
14. Titanic problem  
22. "Things that go \_\_\_ in the night"  
24. Au \_\_\_ (roast beef order)  
25. "Raiders of the Lost \_\_\_"  
26. Mudhole  
28. "\_\_\_ Doubtfire"  
30. Six-time home run champ  
32. Physics unit  
35. Rainbow's shape  
36. Canine trained to lead  
37. Nicholas II, for one  
38. B & B  
39. Strike caller  
40. Red \_\_\_  
41. Additionally  
44. Tonsil's neighbor  
45. Heads to bed  
46. Straw-coloured, as hair  
48. Six-time NBA All-Star Kyrie  
49. Come across as  
50. "No kidding!"  
53. Wipe clean  
54. "Fast Times at Ridgmont High" actress Pheobe  
57. Scrabble piece  
58. Jamaican tangelo  
59. The "I" of T.G.I.F.  
60. After expenses  
61. Green or Oolong

Across  
1. Domino spot  
4. Joltless joe  
9. Aspiration  
13. Glass rectangle  
14. Sheep like  
15. Pizzeria fixture  
16. Invitation request  
17. Paper-towel tube  
32. \_\_\_-out clause  
33. It's over your head  
34. Meatball's partner  
39. Can. neighbour  
42. Piña colada  
58. System for servers  
59. Strike fear into  
62. Horror film staple  
63. High-schooler  
64. Gets licked  
65. Mortgage  
66. Doe's mate  
67. Get rid of  
68. Driver's lic. and others

Down  
1. Faint  
2. Kind of fertilization  
3. Enlivens, with "up"  
4. More silly  
5. Olympic swimmer Janet  
6. "The \_\_\_ Kid"  
7. Forshadowed by a

**H&HTIRE**  
Chad Helton, Owner  
806-826-5759  
714 W. Okla. Ave.  
Wheeler, TX 79096

**Wellington State Bank**  
Bowie • Canadian • Childress • Dalhart • Littlefield • Otton  
Memphis • Wheeler • Wellington

**USB**  
Your Partners in Progress

material  
19. Egyptian fertility goddess  
20. Rabble-rouser  
21. Boozehound  
22. Inebriate  
23. Indian princes  
27. Cooing sound  
29. Health-food dairy favourite  
31. Tempest  
ingredient  
43. Eat alot quickly  
47. Curves at the top of a glass  
50. "Water Music" composer  
51. San Diego baseballer  
52. Home style  
55. Hellenic vowel  
56. Experienced

**CASE XX**

Great Prices on Case Knives  
www.CaseXX.com  
Call for a FREE CATALOG  
1.800.727.4643  
FREE SHIPPING on orders \$49.99+  
SHEPHERD HILLS CUTLERY  
Exit 127 on I-44 Lebanon, MO

**TEXAS STATEWIDE CLASSIFIED ADVERTISING NETWORK**  
**TexSCAN**

LEGAL ASSISTANCE  
18-Wheeler Wrecks - It's easy to blame the driver when a big rig is involved in a wreck, but the truth is usually much more complex. When trucking company management cuts corners in training, equipment and maintenance, the rest of us pay the price. If you or someone you love has been killed or injured in a truck wreck, call 800-460-0606 for professional insight or visit www.YourCarWreck.com.

HOLIDAY SHOPPING  
Case XX Knives - Great prices on Case Knives, Shepherd Hills Cutlery. Call for a free catalog, 800-727-4643. Free shipping on orders \$49.99+.  
www.CaseXX.com

MEDICAL  
Portable Oxygen Concentrator May Be Covered by Medicare! Reclaim independence and mobility with the compact design and long-lasting battery of Inogen One. Free information kit! Call 866-747-9983.

SATELLITE TV  
Get NFL Sunday Ticket FREE w/ DIRECTV Choice All-Included Package. \$59.99/month for 12 months. 185 Channels PLUS Thousands of Shows/Movies on Demand. FREE Genie HD DVR Upgrade. Call 1-855-710-4824 or satellitedealnow.com/tx.

STEAKS  
ENJOY 100% guaranteed, delivered-to-the-door Omaha Steaks! SAVE 68% PLUS get 4 FREE Burgers Order The Favorite Gift - ONLY \$69.99

TEXAS PRESS STATEWIDE CLASSIFIED NETWORK  
273 Participating Texas Newspapers • Regional Ads  
Start At \$250 • Email ads@texaspress.com

NOTICE: While most advertisers are reputable, we cannot guarantee products or services advertised. We urge readers to use caution and when in doubt, contact the Texas Attorney General at 800-621-0508 or the Federal Trade Commission at 877-FTC-HELP. The FTC web site is www.ftc.gov/bizop.

**WE BUY OIL, GAS, & MINERAL RIGHTS**

Both non-producing and producing including Non-Participating Royalty Interest (NPRI)  
Provide us your desired price for an offer evaluation.

CALL TODAY: 806.620.1422

**LOBO MINERALS, LLC**  
PO Box 1800 • Lubbock, TX 79408-1800  
LoboMineralsLLC@gmail.com

**Donate A Boat or Car Today!**  
BoatAngel

"2-Night Free Vacation!"  
**800-700-BOAT**  
(2628)

www.boatangel.com  
sponsored by boat angel outreach centers STOP CRIMES AGAINST CHILDREN

**Apollo** (from Page 1)  
thirty days.

At 10:00 a.m., approximately one hundred guests gathered at the old Rogue Theater to hear Amy Bean, daughter of CAPT Alan L Bean. Amy related personal memories of her dad's Apollo 12 mission. At six years old, details were vague, but she recalls the great feeling of pride felt by the entire family. This is Amy's second visit to Wheeler.

Next on the program was Tim Gagnon, Internationally acclaimed Space Artist. Tim, known as "The Patch Guy," designs mission patches for Kennedy Space Center. His work orbits Earth on the International Space Station. Wheeler Historical Museum commissioned Gagnon to create a unique design to represent CAPT Bean and his careers. On Saturday the work was unveiled. The WHM Alan L Bean Commemorative Patch, Challenge Coin, and 16" x 20" signed/numbered print will be available exclusively through the museum.

Rick Houston, author of the book GO FLIGHT! Talked about his book and how it became the basis for the documentary, MISSION CONTROL: The Unsung Heroes of Apollo. Prior to the showing of the movie, Houston introduced three of the NASA Heroes to the audience; John Aaron - EECOM, Jim Kelly - SSR Backup for John, and Jerry Bostick - FIDO - Flight Director. The two free showings were at 11:00 a.m. and 1:00 p.m.

Packin' Pistols Chuck Waggon set up at in front of the Old Jail and served a delicious meal.

Activities moved to the Agri-Life Building for attendees to meet, visit with special guests, get books signed and photo ops. Pamela Ramirez was on hand to photograph throughout the day. John Hankins also captured the race via drone; images will be available soon on Facebook at MPR Photography.

At 5:00 in the evening a large crowd gathered for the spaghetti supper. Alan Bean was the first man to eat spaghetti on the moon; it is planned for the spaghetti supper to be an annual fundraising event for the museum. Prior to the serving of the meal, Alan's wife, Leslie, greeted those in attendance. Alan loved spaghetti and always tucked a napkin at the neck of his shirt, even when he dined at the White House. Placed at each table setting was a navy blue cloth napkin imprinted with a quarter moon and "Captain Alan Bean - First Man to Eat Spaghetti on the Moon - 1969, Bean's autograph and Apollo 12 (a gift from Leslie).

Following a delicious meal of spaghetti prepared by Debbie Finsterwald with a Moon Pie for dessert, a panel discussion was offered; the panel was made up of Rick Houston, John Aaron, Jerry Bostick and Jim Kelly. Weston Marshall, Texas Tech Southwest Collection, served as the moderator for the discussion. It was a great honor to have these Heroes of Mission Control share their personal experiences and insights.

The Wheeler Historical Museum board extends "Thanks" to all those attending and helping with the preparations. VIP Sponsors for the historical event were; Towne Square Inn, Wellington State Bank, Space Hipsters, Chip and Pam Hill and The Meriwether Family. Thanks to Paul Hathaway for an excellent job auctioneering and to the winning bidders who support WHM.

The museum appreciates your support of events like this.

The irony of life is that, by the time you're old enough to know your way around, you're not going any where.



A large crowd was in attendance at the Apollo 12 Fiftieth Anniversary Celebration.



Heroes of Mission Control share insight and experiences.

**Chat**

(from Page 1)

David Uribe, Nicholas Sparks, Rosy Gonzalez, Emmanuel Almanza, Jesse Sierra, Houston Hardcastle, Manny Jurado, Emely Garcia and Aldo Jaime.

— cwe —

Our Kelton students continue to achieve. Lesley Alvarado, Marlen Alvarado, Emily Cook, Kaleb Kimbro, Zen Lister, Abby Tolbert, Pavan Patel and Kash Long did quite well at the Top O' Texas District LDE.

— cwe —

I enjoyed the Apollo 12 50th Anniversary Celebration. A tip of the hat to Rhonda Meriwether, Kathleen Cross and Pam Hill for their endless hours of preparation.

— cwe —

Preparations for an event like this gives one an opportunity to work with individuals who they have not had close

contact.

— cwe —

Ronal Wayne, Juanita, Jennifer, Seth and William came for the weekend.

— cwe —

Juanita, Jennifer and William accompanied me to the Spaghetti supper. Jennifer had a good time talking shop with Randy McCurley and Bill Howard.

— cwe —

I was in the old Rogue Theatre for the first time since it was remodeled. Cornerstone now owns the building and it is used at different times for movies. It is really nice. Thanks, Cornerstone for the use of the building.

— cwe —

Thanks also to Towne Square Inn for the enjoyable meal and fellowship at the Friday evening meal for the museum board members and their special event guests.

| Mustang Varsity Basketball Schedule |                      |                  |                       |
|-------------------------------------|----------------------|------------------|-----------------------|
| Nov. 2                              | Scrimmage            | McLean           | @ McLean              |
| Nov. 4or5?                          | Scrimmage            | Claude/Stratford | @ Claude              |
| Nov. 8                              | Follett              | T                | JVG/VG 5:00/6:30      |
| Nov. 12                             | Borger               | H                | JVG/ VG 5:00/6:30     |
| Nov. 16                             | Canadian             | H                | JVG/VG 5:00/6:30      |
| Nov. 19                             | Fort Elliott         | T                | JVG/VG 5:00/6:30      |
| Nov. 22                             | Booker               | T                | JVG/VG/JVB/VB 4:00    |
| Nov. 26                             | Open                 |                  | JG, VJB 6:00/7:30     |
| Dec. 3                              | Fritch               | H                | All 4:00              |
| Dec. 5,6,7                          | Miami Tourney        |                  | VG/VB TBA             |
| Dec. 10                             | Shamrock             | H                | All 4:00              |
| Dec. 12,13,14                       | Fort Elliott Tourney |                  | JVG/VG TBA            |
| Dec. 12,13,14                       | WT Tourney           |                  | VB TBA                |
| Dec. 17                             | West Texas           | T                | All 4:00              |
| Dec.19-21                           | Wheeler JV Tourney   |                  | JVG/JVB TBA           |
| Dec. 20                             | Erick                | H                | All 4:00              |
| Dec. 22-26                          |                      | Gym              | Closed                |
| Dec.27-28                           | Canadian Tourney     |                  | VB TBA                |
| Dec. 31                             | Dumas                | H                | VB                    |
| Dec. 31                             | Miami                | H                | JVB/VG 1:00           |
| Jan. 3                              | Fort Elliott         | H                | VG, JVB TBA           |
| Jan. 3                              | McLean               | T                | VB                    |
| Jan. 7                              | Pampa                | T                | JVG/VG/JVB/VB. TBA    |
| Jan. 10                             | *Highland Park       | H                | JVG, VG 4:00/6:30     |
| Jan. 10                             | *Gruver              | T                | JVB, VB 5:00/6:30     |
| Jan. 14                             | *Paducah             | T                | JVB, VB 5:00/6:30     |
| Jan. 14                             | *Wellington          | T                | JVG, VG 5:00/6:30     |
| Jan. 17                             | *Clarendon           | H                | JVG, JVB, VG, VB 4:00 |
| Jan. 21                             | *Memphis             | H                | JVG, JVB, VG, VB 4:00 |
| Jan. 24                             | *Panhandle           | T                | JVG, JVB, VG, VB 4:00 |
| Jan. 28                             | *Highland Park       | T                | JVG, JVB, VG, VB 4:00 |
| Jan. 31                             | *Wellington          | H                | JVG, JVB, VG, VB 4:00 |
| Feb. 4                              | *Clarendon           | T                | JVG, JVB, VG, VB 4:00 |
| Feb. 7                              | *Memphis             | T                | JVG, JVB, VG, VB 4:00 |
| Feb. 11                             | *Panhandle           | H                | JVB, JVB, VG, VB 4:00 |
| Feb. 14                             | *Highland Park       | H                | JVG, JVB 5:00/6:30    |
| Feb. 18                             | *Wellington          | T                | JVB, VB 5:00/6:30     |

| Wheeler JH Basketball Schedule |               |       |           |
|--------------------------------|---------------|-------|-----------|
| Nov. 11                        | Highland Park | Boys  | Away 5:00 |
| Nov. 11                        | Highland Park | Girls | Home 5:00 |
| Nov. 18                        | Wellington    | Boys  | Home 5:00 |
| Nov. 18                        | Wellington    | Girls | Away 5:00 |
| Nov. 25                        | Clarendon     | Boys  | Away 5:00 |
| Nov. 25                        | Clarendon     | Girls | Home 5:00 |
| Dec. 2                         | Memphis       | Boys  | Away 5:00 |
| Dec. 2                         | Memphis       | Girls | Home 5:00 |
| Dec. 9                         | Panhandle     | Boys  | Home 5:00 |
| Dec. 9                         | Panhandle     | Girls | Away 5:00 |
| Dec. 16                        | Highland Park | Boys  | Home 5:00 |
| Dec. 16                        | Highland Park | Girls | Away 5:00 |
| Jan. 9                         | Wellington    | Boys  | Away 5:00 |
| Jan. 9                         | Wellington    | Girls | Home 5:00 |
| Jan. 13                        | Clarendon     | Boys  | Home 5:00 |
| Jan. 13                        | Clarendon     | Girls | Away 5:00 |
| Jan. 20                        | Memphis       | Boys  | Home 5:00 |
| Jan. 20                        | Memphis       | Girls | Away 5:00 |
| Jan. 27                        | Panhandle     | Boys  | Away 5:00 |
| Jan. 27                        | Panhandle     | Girls | Home 5:00 |

\*7th grade will play first followed by the 8th grade

\*\* Tournaments TBA  
All games start at 5:00

**THE WHEELER TIMES**  
Page 5 — Thursday, November 21, 2019  
"Wheeler: town of friendship and pride"



— Photos by Matt Gary

Hesston Marshall cruises to 4th TD of 1st Qtr.

**Storm**

(from Page 1)

the heroes of the movie were here. I already knew John and Cheryl Aaron, but it was my first time to see the other

two (Jim Kelly and Jerry Bostick). I got to see a lot of people that I have never met before.

Leslie and Amy Bean were here! I was so happy to see them! I did not have time to

talk to them that much, but I am so glad I got to see them. Amy talked in the morning and Leslie talked at the spaghetti dinner. Leslie gave everyone a big napkin with Captain Alan Bean, First Man to Eat Spaghetti on the Moon on it. That was so much fun! I will keep it forever!

It was a great time and I am very happy that all the people came to Wheeler.

The MUSTANGS won the game last Friday! Now we go to Levelland to play on this Friday. GO MUSTANGS! That's it!

Blessed are those who can give without remembering and take without forgetting.



— Photos by Matt Gary

Wheeler's defense was strong against the run.



— Photos by Matt Gary

Hesston Marshall deflects defender to gain 20 more yards to end 2nd quarter.



— Photos by Matt Gary

Ian Finsterwald returns opening kick off about 10 yds. to the 40.

WHEELER MUSTANG FOOTBALL  
live on...  
**Legends 98.9**  
The Legends of Rock & Roll - KXNZ-FM  
Legends 92.9 - KSNZ (The Legends of Country)  
Shamrock — Wheeler County, TX  
207 North Main Street — P.O. Box 83  
Shamrock, TX 79097  
Phone: 806-256 2277  
Online: www.legends989.com

**Larry & Carol Porton**



—Photo by Kara Richardson  
Ian Finsterwald rushes the QB.

**CAPITAL FARM CREDIT**

**WARE Chevrolet Buick Inc.**  
South Hwy. 83  
Wheeler, Texas  
Phone: 806.826.5521  
www.warecbp.com

**Robertson FUNERAL DIRECTORS**  
www.RobertsonFuneral.com  
Clarendon—Claude—Memphis—McLean—Shamrock—Wheeler

**Towne Square Inn**  
806-486-1572—400 S. Main—Wheeler, Texas  
Warren & Becky Shirley

**Novedades Saharay** 410 S. Main  
Wheeler, Texas

**Wheeler JV & JH Football Schedule**

| Date  | Opponent          | Site            | Time |
|-------|-------------------|-----------------|------|
| 8-29  | Vega              | W-6 V-8         | 5:00 |
| 9-5   | Perryton Freshmen | Here (JV Only)  | 6:30 |
| 9-12  | Clarendon         | There           | 5:00 |
| 9-19  | Highland Park     | Here            | 5:00 |
| 9-26  | Booker            | Here (JH Only)  | 5:00 |
| 10-3  | Gruver            | There (JV Only) | 5:00 |
| 10-10 | Munday            | Here            | 5:00 |
| 10-17 | Shamrock          | There           | 5:00 |
| 10-24 | Memphis           | Here            | 5:00 |
| 10-31 | Quanah            | Here            | 5:00 |
| 11-6  | Wellington        | There           | 5:00 |

**LOTT RANCHE**  
Hereford Breeders  
T.C. & Agnes Lott Family, Owners  
Est. March, 1945

**H&H TIRE**  
Chad Helton  
Owner  
806-826-5769  
714 W. Okla. Ave  
Wheeler, TX 79096



—Photo by Kara Richardson  
Baldemar Galladro breaks up a pass.

**Ed & Patricia Forrester**

**Finsterwald Ranch**

**HYLAND'S Pharmacy**  
109 West Texas Street • 826-5561 • Wheeler, TX  
Randy & Crystal McEntire, Owners

**STILES RANCH**  
Bob & Sue Stiles  
Bill & Kay Stiles

**TEXAS STREET**  
FLORAL CO.  
806-826-5943 121 W. Texas Street Wheeler, Texas

**Kim's Kitchen Lunch Buffet Everyday**  
Intersection Hwys 83 & 152 • Wheeler, TX • 806-826-5102

Your Partners in Progress  
**Wellington State Bank**  
Bowie • Canadian • Childress • Dalhart • Littlefield • Lubbock • Olton • Memphis • Wheeler • Wellington  
www.wellingtonsb.com

Sharon Helton, Owner  
Register with us for your shower!  
**LaRue's Raqs**  
406 S. Main — P.O. Box 1080  
Wheeler, TX, 79096  
806-826-0666

**LYNDON AUCTIONEERS**  
Cole Wilson Auctioneers (Lic. #17319)  
Lyndon & Noveline Loyd Cole Wilson  
P.O. Box 1279  
Wheeler, Texas 79096 (Lic. #7119)

**M Maxey's STEAKHOUSE**  
S. Hwy. 83 — Wheeler, TX — 806.826.3441  
Call for Catering, Private Parties & Daily Specials

**Christner Cattle, L.P.**  
Sandra Christner

**Graham Creek Ranch**  
Tom & Kay Christner

**Mel's Diner**  
West Hwy. 152 — Wheeler  
Where Friends Meet To Eat?  
WE CATER — 826-3756

**WILD Seasons**  
503 Canadian St.  
Wheeler, Texas  
806.863.1553  
Tracy Tignor



—Photo by Kara Richardson  
Alex Davis sacks the QB.

Specializing in...  
• Permanent Makeup  
• Eyelash Extensions  
• Color • Waxing  
• Hair Extensions  
Call today for an appointment  
Donna Childress  
806-676-5223  
Caitlynn Walker  
806-334-1415

**WHEELER NURSING AND REHABILITATION**  
A Daybreak Community  
Nita Massey, Administrator  
1000 South Kiowa/P.O. Box 525  
Wheeler, TX 79096  
Office: 806-826-3505  
Fax: 806-826-3195  
adm.wheeler@daybreakventure.com

# WHEELER MUSTANGS

## WHEELER MUSTANGS

| No.   | Name              | Off | Def | Class | Ht.   | Wt. |
|-------|-------------------|-----|-----|-------|-------|-----|
| 4     | Baldemar Gallardo | WR  | SEC | Sr    | 6'0"  | 200 |
| 5     | Gustavo Andrade   | QB  | SEC | Sr    | 5'11" | 175 |
| 7     | Jovany Gallardo   | WR  | SEC | So    | 6'1"  | 165 |
| 8     | Hesston Marshall  | RB  | LB  | Jr    | 5'11" | 170 |
| 10    | Brady Bailey      | WR  | SEC | Sr    | 6'2"  | 175 |
| 11    | Ian Finsterwald   | WR  | LB  | Sr    | 6'2"  | 185 |
| 12    | Nathan Rowley     | QB  | SEC | So    | 5'11" | 160 |
| 14    | Blake Meraz       | QB  | SEC | Fr    | 5'7"  | 140 |
| 23    | David Rascon      | RB  | LB  | Jr    | 5'9"  | 170 |
| 24    | Brett Brittain    | RB  | LB  | Fr    | 6'0"  | 175 |
| 27    | Zackary Beard     | RB  | LB  | So    | 5'10" | 155 |
| 28    | Eli Dominguez     | WR  | SEC | Fr    | 5'6"  | 130 |
| 30    | Ryan Childress    | WR  | SEC | Fr    | 5'6"  | 130 |
| 33    | Keegan Sullivan   | RB  | LB  | Fr    | 5'7"  | 140 |
| 34    | Zack Butler       | RB  | LB  | Sr    | 5'8"  | 170 |
| 35    | KaMonte Martin    | RB  | LB  | So.   | 5'9"  | 155 |
| 40    | Luis Jaquez       | WR  | SEC | Fr    | 5'6"  | 130 |
| 42    | Elliot Lozano     | WR  | SEC | Fr    | 5'6"  | 130 |
| 50    | Dylan Marshall    | OL  | DL  | Fr    | 5'9"  | 160 |
| 51    | Gustavo Olivas    | OL  | DL  | Jr    | 5'11" | 175 |
| 52    | Daniel Rascon     | OL  | DL  | Jr    | 5'9"  | 185 |
| 54    | Bryce Richardson  | OL  | LB  | So    | 5'7"  | 165 |
| 55/60 | Marco Herrera     | OL  | LB  | Jr    | 5'8"  | 180 |
| 58    | Paden Markham     | OL  | DL  | Sr    | 6'0"  | 240 |
| 65    | Alex Davis        | OL  | DL  | Sr    | 6'1"  | 215 |
| 68    | Hunter Koelzer    | OL  | DL  | So    | 5'10" | 250 |
| 77    | Diego Pichardo    | WR  | DL  | Jr    | 6'0"  | 205 |
| 78    | Jesse Sierra      | OL  | DL  | Jr    | 6'2"  | 275 |
| 79    | Travis Reeves     | OL  | DL  | So    | 6'2"  | 200 |
| 80    | Jayton Couch      | WR  | SEC | Sr    | 5'9"  | 155 |
| 81    | Joey Couch        | WR  | SEC | Jr    | 5'8"  | 150 |
| 85    | Hayden Holwick    | WR  | SEC | So    | 5'7"  | 135 |
| 88    | Edgar Valles      | WR  | SEC | Jr    | 6'2"  | 180 |

**NEED A MATTRESS?**  
Mattress Warehouse — 580-821-0386  
4719 West 3rd Elk City, OK.

**RiverCrest REALTY**  
Ken Baxter — 806-334-0123  
landdaddy47@gmail.com  
Chip & Pam Hill — 469-323-9625  
pamhill@rivercresthomes.net

## ARROW WATER WELL, INC.

**Wheeler Varsity Football Schedule**

| Date  | Site                   | Location               | Time |
|-------|------------------------|------------------------|------|
| 8-16  | Sunray@                | River Road (Scrimmage) | 6:00 |
| 8-22  | Bovina@                | River Rd. (Scrimmage)  | TBA  |
| 8-30  | Lub. Trinity Christian | W-42 TC-15             | 7:00 |
| 9-6   | Hamlin                 | W-15 H-44              | 7:00 |
| 9-13  | **Clarendon            | W-33 C-8               | 7:00 |
| 9-20  | Highland Park          | W-49 HP-8              | 7:00 |
| 9-27  | Open                   |                        |      |
| 10-4  | Gruver                 | W-37 G-30              |      |
| 10-11 | Munday*                | W-74 M-6               |      |
| 10-18 | Shamrock*              | W-68 S-2               | 7:00 |
| 10-25 | Memphis*               | W-50 M-0               | 7:00 |
| 11-1  | Quanah*                | W-48 Q-6               | 7:00 |
| 11-8  | Wellington*            | W-18 We-38             | 7:00 |
| 11-15 | Archer City            | W-54 A-47              |      |

\*\* Homecoming \* District Games

**WALLACE CONSTRUCTION**  
Changing the looks of Wheeler—one building at a time!  
305 Main — Wheeler, TX — 826-3503  
**WALLACE TAX SERVICE**  
For all your accounting needs — 826-3503



—Photo by Kara Richardson  
David Rascon runs to the outside..

**Danny, Ravonda, Josh & Nick Hardcastle**

**EASTERN PANHANDLE Insurance Agency, Inc.**  
206 N. Madden — Shamrock  
Phone: 806/256-5401



Gustavo Andrade scores a TD.



Gustavo Olivas kicks the extra point.

Jay & Karen Lewis and Family

Gail & Sally Ledbetter

**BRITT RANCH**  
↑

**Go Stangs!**  
**GREENBELT ELECTRIC COOPERATIVE, INC.**  
708 10th — Wellington, TX — 447-2536  
Serving the Rural Area of Armstrong, Childress, Wheeler, Collingsworth, Donley, Gray, Hemphill, Randall & Roberts

**BAYMONT INN & SUITES**  
1410 S. Alan L. Bean Blvd, Wheeler, TX — 806.826.1012

**FARM BUREAU INSURANCE**  
**HEMPHILL COUNTY FARM BUREAU**  
806-323-5752  
David & Rita Pearson

**FIRST STATE BANK**  
Mobeetie & Wheeler  
Established 1905 Member F.D.I.C.



Hesston Marshall runs in untouched.

**WHEELER VETERINARY CLINIC**  
Drs. LeeAnn & Ben Ed Hillhouse

Dr. Mike and Jenny Smith

**Speedi Mart**  
Est. 1982  
500 S. Alan L. Bean Wheeler, Texas  
Owners: Brock & Jenny Kauk & Girls  
806-826-3414

**The Tippy Bird**  
Beer • Wine • Spirits  
• Burgers • Snacks  
• Fountain Drinks  
508 S. Main • Wheeler • 826-0299

**GREEN COUNTRY EQUIPMENT**  
JOHN DEERE  
WWW.GREENCOUNTRYEQUIP.COM  
12098 E FREDERIC PAMPA, TX | 806-665-1888

**PARADISE SPA**  
BY APPOINTMENT ONLY!  
114 E. Texas Ave. — Wheeler, TX  
806-826-0296

Betty Hennard

Leo & Sylvia Shuler

**Center spas**  
710 E. Oklahoma St. — Wheeler, TX  
806-826-5222

*Momma Nanny's*  
*Food for the Soul*  
Leon, Marianne and Jeff Smith Catering & Event Planning—806-216-2175  
In memory of Viola Small ("Momma Nanny") 1901-1995

# vs ELDORADO EAGLES

## Friday, November 22, 2019

### Levelland (Lobo Stadium) — 7 P.M.

**CARNIGERIA AGUILAR**  
(806)826-1027  
7 Days a Week — 10:00 A.M.-9:00 P.M.

#### Eldorado Eagles

| Number | Name               | Ht.   | Wt. | Class |
|--------|--------------------|-------|-----|-------|
| 2      | Kayden Rodriguez   | 5'11" | 142 | Jr.   |
| 3      | Cooper Meador      | 5'10" | 151 | Soph. |
| 4      | Korbin Covarrubiaz | 5'11" | 149 | Soph. |
| 5      | Mario Arispe       | 5'4"  | 116 | Fr.   |
| 6      | Kaden Gonzalez     | 5'8"  | 142 | Soph. |
| 7      | Jaakan Jurecek     | 6'3"  | 173 | Sr.   |
| 8      | Jose Contreras     | 5'6"  | 125 | Fr.   |
| 9      | David Barajas      | 6'    | 211 | Jr.   |
| 10     | Santiago Hernandez | 5'8"  | 138 | Soph. |
| 11     | Cesar Garcia       | 6'    | 200 | Sr.   |
| 14     | Reese Faull        | 5'9"  | 145 | Soph. |
| 15     | Damian Romo        | 5'10" | 153 | Soph. |
| 17     | Nino Tambunga      | 5'5"  | 111 | Fr.   |
| 18     | Ismael Segura      | 5'7"  | 126 | Fr.   |
| 20     | Elias Luna         | 5'8"  | 177 | Sr.   |
| 21     | Eric Reyes         | 5'11" | 206 | Sr.   |
| 23     | James Kimble       | 5'10" | 139 | Soph. |
| 24     | Marco Martinez     | 5'7"  | 169 | Sr.   |
| 28     | Eloy Trevino       | 5'6"  | 121 | Sr.   |
| 30     | Daniel Guerra      | 5'2"  | 106 | Fr.   |
| 33     | Kevan Covarrubiaz  | 5'11" | 185 | Sr.   |
| 34     | Edgar Muniz II     | 5'8"  | 165 | Sr.   |
| 35     | Robert Saldana     | 5'1"  | 100 | Fr.   |
| 44     | Sam Griffin        | 6'    | 141 | Fr.   |
| 50     | Zach Luna          | 5'10" | 178 | Fr.   |
| 51     | Garrett Porter     | 5'11" | 165 | Fr.   |
| 52     | Frankie Villanueva | 5'9"  | 180 | Sr.   |
| 54     | Vinny Pina         | 5'11" | 184 | Fr.   |
| 55     | Mason Hutto        | 5'8"  | 240 | Jr.   |
| 61     | Braxton Elias      | 6'    | 208 | Fr.   |
| 62     | Phillip Garcia     | 5'10" | 249 | Jr.   |
| 63     | Tyner Cheek        | 6'1"  | 233 | Jr.   |
| 66     | Ryllan Martinez    | 5'11" | 303 | Soph. |
| 70     | Seth Parker        | 5'11" | 245 | Fr.   |
| 72     | Malachai Vasquez   | 5'6"  | 209 | Sr.   |
| 75     | Emiliano Hernandez | 6'5"  | 297 | Sr.   |
| 78     | Isa Vasquez        | 5'8"  | 277 | Jr.   |
| 79     | Garrett Hariman    | 5'9"  | 212 | Sr.   |
| 81     | Seth Clifton       | 5'1"  | 126 | Fr.   |
| 88     | Jonathan McGee     | 6'    | 129 | Soph. |

**BOB'S BAIL BONDS**  
806-826-0654 Cell 806-334-0452  
P.O. Box 264 Wheeler, TX 79096 Pat Childress

**CROSS COUNTRY BARN**  
24-Hr Gas & Diesel Convenience Store  
Hunt Bros. Pizza & Wings  
Hamburgers/Sandwiches  
Beer & Wine  
301 E. Oklahoma St — Wheeler, Texas — 806-826-2276  
Dale & Monica Kidd, Owners

HOME - AUTO - FARM - LIFE  
**Todd Moore Insurance Agency, Inc.**  
Representing the Germania Companies  
315 N. Main — P.O. Box 168 — Shamrock, TX 79079  
Todd Moore - Owner/Agent  
**Germania INSURANCE**  
INSURANCE AGENCY INC. 807.256.8911 806.334.0330 800-687.3730

**WEST TEXAS GAS**  
WTS  
Wheeler Division—500 S. Mobeetie—Wheeler, TX 79096

**LeRoy & Rhonda Meriwether & Stormie**



Hesston Marshall hurdles the defense to get into the endzone.

Robert, Marla, Spencer, Hallie & Mitchell

**Bob Wills**

**The Rusty Barb**  
401 S. Mobeetie St. Wheeler, Texas  
806-203-1442 Fax: 806-203-3309

**Gary & Becky Hardcastle** Todd, Mindy, Bailey, Reagan & Presley Brashears  
Marcus, Heather, Justin, Houston & Sierra Hardcastle

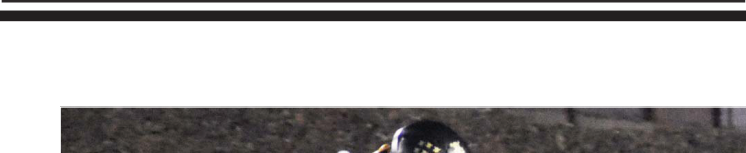
**Marshall Discount Auto**  
**PARTS 4 PLUS**  
Daryl & Maggie Marshall  
Mack, Crystal, Mariah, Trevor, MaKali & Kanin  
Mark, Joanna, Urrick & Hesston  
Steve, Krista, Dylan & Kynsie  
Mechelle, Hope, Austin & Wyatt

**THE WHEELER TIMES**  
50c  
"Wheeler: town of friendship and pride"  
— Reporting Mustang Football Since 1933 —

**WHEELER LAND & LIVESTOCK**  
15495 Hwy 152 • Wheeler, TX 79096 • Ph: 806-826-5591  
Fax: 806-826-3476 • Website: www.wlanet

**Shelton & Shelton**  
Attorneys at Law  
806/826-0069  
**Wheeler Title & Abstract Co.**  
... a Shelton Title Company  
806/826-3526

**Weldon & Dolores Simmons**  
Jotana Henson, Kayleigh & A'Dyn



Chamber of Commerce

# Holiday Tour Of Homes Sunday, Dec. 15

The Wheeler Chamber of Commerce will host a Holiday Tour of Homes on Sunday, December 15th.

The Christmas on the Square featuring Santa's Workshop will not happen this year. We appreciate all the hours poured into the Santa's Workshop and will eagerly await it's return once his elves recover...

However, you have a chance to get pictures with Santa on Small Business Saturday, November 30th. He will be located next to Hyland's Pharmacy from 11am - 3pm.

The Holiday Tour of Homes will feature 6 houses located in Wheeler. We will have refreshments, maps and tickets for participants that you can pick up at the Wheeler Historical Museum on Sunday, December 15th starting at 3pm. This will be the only time and location tickets are sold. The cost per ticket is \$10. We will be doing LIVE promotions and giveaways leading up and on the day of, so be sure to be following The Wheeler Chamber on Facebook.

We would love to encourage Wheeler residents to light up their yards for the 15th, as the Tour of Homes will kick off at 4:30 pm and will last until 7:30 pm. It should be a fun time for all and something new for our community.

### Financial Reporting

Texas Comptroller Glenn Hegar today announced his agency has received the Certificate of Achievement for Excellence in Financial Reporting from the Government Finance Officers Association of the United States and Canada (GFOA) for its fiscal 2018 Comprehensive Annual Financial Report (CAFR). The agency has received this honor for 29 consecutive years.

The certificate is GFOA's highest form of recognition in the area of governmental accounting.

"I want to express my gratitude to all the hardworking employees of my office and the hundreds of financial reporting professionals at state agencies and universities across Texas who've worked together to produce a CAFR that exemplifies transparency and accountability,"

WHEELER CHAMBER PRESENTS:

# HOLIDAY TOUR

Sunday  
**15**  
december

# of HOMES

featuring:  
**6 HOMES**

*Drawing for prizes*

**TICKETS AVAILABLE AT 3:00 PM (DAY OF ONLY)**  
**@ WHEELER MUSEUM - 105 N. ALAN L. BEAN**

MORE INFO:  
CITY HALL  
806.826.3222

**\$10**

SNOW VILLAGE DISPLAY  
FINGER FOOD & DRINKS

Made with PosterMyWall.com

**SHOP LOCAL.  
EAT LOCAL.  
SPEND LOCAL.  
ENJOY LOCAL.**

**IT TAKES YOU  
TO START THE TREND.**

**SUPPORT THE LOCAL BUSINESSES  
WHO SUPPORT THE LOCAL AREA  
WHERE YOU LIVE, WORK AND PLAY.**

**Saturday, Nov. 30th - Wheeler, TX**

Made with PosterMyWall.com



# CONGRATULATIONS

on being named to the

# 5-STATE HONOR BAND



Pictured are (front, l. to r.) Tristan Salas, Edwin Mendoza, Skylar Smith, Matt Dale, Valeria Garcia, Samantha Ramirez, Alberto Monarrez, David Uribe, (back) Nicholas Sparks, Rosy Gonzalez, Emmanuel Almanza, Jesse Sierra, Houston Hardcastle, Manny Jurado, Emely Garcia and Aldo Jaime.

#### **This Ad Sponsored By ...**

|  |   |
|--|---|
| Arrow Water Well                                 | Lyndon Loyd Auctioneers                               |
| Baymont Inn & Suites                             | LaRue's Rags, 406 S. Main                             |
| Britt Ranch                                      | Gail & Sally Ledbetter                                |
| Bob's Bail Bonds 806-826-0654                    | Weldon & Dolores Simmons                              |
| Charles Kuntz, C.P.A.                            | Marshall Discount Auto                                |
| Capital Farm Credit                              | Maxey's Steakhouse—Catering A Specialty               |
| Todd Moore Insurance Agency, Inc.                | Steve, Joyce & Caitlynn Walker                        |
| Carmicera Aquilar                                | Towne Square Inn                                      |
| Chip & Pam Hill                                  | Larry & Carol Porton                                  |
| Cross Country Barn                               | Paradise Spa  |
| Dr. Mike & Jenny Smith                           | Leo & Sylvia Shuler                                   |
| Eastern Panhandle Insurance Agency               | Speedi-Mart   |
| Ed & Patricia Forrester                          | Robert, Marla, Spencer & Mitchell Ford                |
| Greenbelt Electric Cooperative Inc.              | Texas Street Floral                                   |
| H&H Tire   | Texas Hair Slingers—Donna Childress & Caitlynn Walker |
| Danny & Yvonda Hardcastle                        | Wallace Construction & Tax Service                    |
| Hefley Hardware, Lumber & Feed                   | West Texas Gas  |
| Hemphill Co. Farm Bureau, Rita Pearson           | Wellington State Bank                                 |
| Betty Hennard                                    | Wheeler Nursing & Rehab                               |
| Hyland's Pharmacy                                | Wheeler Vet Clinic                                    |
| First State Bank of Mobeetie, Wheeler & Mobeetie | Ware Chevrolet & Buick                                |
| Kim's Kitchen, Lunch & Buffet Every Day          | The Topsy Bird  |
| LeRoy, Rhonda & Stormie Meriwether               | Momma Nanny's Food for the Soul                       |
| Jay & Karen Lewis                                | The Wheeler Times                                     |

TEXAS  
 • SHAMROCK  
 • WELLINGTON • WHEELER

OKLAHOMA  
 • CHEYENNE • HINTON

COME SEE US FOR ALL YOUR GIFT CARD NEEDS



PRICES EFFECTIVE: WED. NOV. 20 THRU WED. NOV. 27, 2019  
 THIS IS AN 8 DAY AD - WE WILL BE CLOSED THANKSGIVING DAY



Market Square  
 SUPERMARKETS

AF AFFILIATED  
 FOODS, INC.  
 MEMBER STORES

www.marketsquareonline.com

NOT LIABLE FOR TYPOGRAPHICAL OR PICTORIAL ERRORS. WE RESERVE THE RIGHT TO LIMIT QUANTITIES. SOME ITEMS NOT AVAILABLE IN ALL STORES.

Thanksgiving  
**SAVINGS**



First one priced @  
**69¢** LB.  
 thereafter each turkey  
 is priced @99¢ lb.

**Honeysuckle White Young Turkey**  
 grade A, extra tender & juicy  
 with pop-up timer



Owens Sausage \$2.99  
 asst'd. 1 lb. roll or  
 12 oz links or patties

Owens Sausage  
 regular or hot  
 2 lb. roll

**\$3.99**



Hormel Spiral Sliced  
 Ham  
 bone in

**\$1.99** LB.



Bottom Round Roast  
 choice boneless beef

**\$2.99** LB.



**HOLIDAY  
 Madness!**

Crisp  
 Celery

**2 \$1**  
 FOR



Del Monte  
 Bananas

**39¢** LB.



Sweet Potatoes  
 3 lb. bag

**99¢**



Brown & Serve  
 Rolls  
 Ozark Hearth  
 12 ct.

**2 \$3**  
 FOR



Pillsbury  
 Crescents  
 assorted  
 8 oz.

**\$1.98**



Shurfine Butter  
 Quarters  
 salted or unsalted  
 8 oz.

**\$2.99**



Shurfine  
 Vegetables  
 select varieties  
 14-15.25 oz.

**39¢**



Crisco  
 Vegetable Oil  
 48 oz.

**2 \$5**  
 FOR



Fudge Brownie  
 or Cake Mixes  
 Betty Crocker assorted  
 15.25-18.3 oz.

**98¢**



Edward's  
 Pies  
 select varieties  
 25.5-36 oz.

**\$5.99**



Morrison's  
 Cornbread Kits  
 6 oz.

**3 \$1**  
 FOR



Granulated  
 Sugar  
 Shurfine  
 4 lb bag

**\$1.68**



Whipped  
 Topping  
 Shurfine assorted  
 8 oz.

**99¢**



Shurfine  
 Cranberry Sauce  
 jellied or whole berry  
 14 oz.

**88¢**