

# CHRISTMAS ON THE SQUARE

Christmas on the Square is planned for December 8th starting at 6pm along the West side of Courthouse Square.

We will kick off the Christmas on the Square with our Chamber

Ticket Drawing for Wheeler Chamber Bucks. Names will be entered in the raffle spinner from tickets participants receive from our participating local stores, with every receipt purchase from 11/24/18 - 12/8/18, you will receive a ticket. You can bring all your tickets to the front of the courthouse steps on the WEST side. You must be present to win.

Cornerstone's Winter Wonderland and LIVE Nativity Scene will be in full effect, along with exciting new touches. Santa will be set up in the Winter Wonderland for kids to drop off their Santa's Letters and take a picture with Santa. We will have Maegan Hunt with Hunt Photography taking

(Continued Page 2)



## THE WHEELER TIMES

(USPS-680-960)  
VOLUME 85, NUMBER 51

THURSDAY, DECEMBER 6, 2018

SINGLE COPY **50c**

"Wheeler: town of friendship and pride"

# Lady Cougars Named To All-District



Emily Coulter . . .  
1st Team All-District  
Academic All-District



Kamryn Chesher . . .  
1st Team All-District



Kaylye Coffman . . .  
Honorable Mention  
All-District

## Twenty-Second Annual "Toys For Tots" Drive For North Wheeler County

The program is designed for needy children in our communities of North Wheeler County, who would not have a Christmas without help.

All children must be full time residents of Northern Wheeler County to be eligible. If children are signed up that do not qualify, all children at that address will be removed from Toys for Tots.

Este [prgra, a es desogmadp] [ara momps mecesotadps de miestra cp., imodad (North

Wheeler County) que no tuviera Navidad sin ayuda. Todos los niños deben ser residentes de tiempo completo del condado del Norte de Wheeler Para ser eligibles. Y si los niños se inscribieron que no califican, todos los niños en esa dirección serán eliminados de Toys for Tots.

If you do not apply or did not qualify for Free or Reduced Lunches, you will not qualify for the Toys for Tots Program. This form must be returned to the Wheeler Vet Clinic by December 1st to be considered.

Si usted no aplica a calificar para Comidas Gratis O Reducidas De La Escuela, usted no calificará para el programa de Toys for Tots. Esta forma debe ser entregada a la Clínica Veterinaria para el día primero de Diciembre para ser considerada.

## Betty Jo Zybach Dies November 30

Betty Jo Zybach was born January 14, 1931 at home in Hemphill County, Texas, to Neta Inet (Hall) and Joseph Doyle Standlee. She passed away at her home November 30, 2018, at Sayre, Oklahoma at the age of 87 years, 10 months and 16 days.

Betty was raised in Hemphill County, Texas and attended school at Briscoe, Texas. She graduated in 1949 and was married shortly thereafter to Truman Eugene Zybach in Wheeler, Texas on August 7, 1949. After their marriage they moved to Briscoe, Texas, and Warner, Oklahoma, before making their home in Sayre, Oklahoma, in January of 1967. Betty worked at a few places, but taking care of her husband, children and family was always her main priority. Betty enjoyed traveling the world with her husband, shopping, talking to anyone, going to the theater, reading and spending time with family and especially her grandchildren.

She is preceded in death by her parents and 2 sisters, Martha Helton and Inez Erwin.

She is survived by her husband, Truman, of the home; 4 children, Mark Zybach and wife, Janet, Yukon, OK, Eric Zybach and wife, Pauline, Briscoe, TX, Stephanie Doolittle and husband, Jimmy, Edmond, OK and Trudy Steed and husband, David, Oklahoma City, OK; 11 grandchildren, 25 great grandchildren; devoted caregivers, Carol Varnell and Pam Hagerman and a host of nieces, nephews, other relatives and friends.

Services were held Monday, December 3, 2018, 1:00 PM at Rose Chapel officiated by

(Continued Page 5)

# Wheeler Elementary Christmas Program & 4th-5th-6th Band Concert Are Tonite



Wheeler's 1st, 2nd and 3rd grade students will present their Christmas musical at 6:00 tonight, Thursday, Dec. 6th. Directly following, at 7:00, will be our band concert which will feature our 4th, 5th and

6th graders. Hope to see you there.

## Recordatorio

Nuestros estudiantes de 1º, 2º y 3º grado presentarán su musical navideño a las

6:00 este próximo jueves 6. Siguiendo directamente, a las 7:00, estará nuestro concierto de la banda que contará con nuestros alumnos de 4º, 5º y 6º grado. Los esperamos allí.

Congratulations, Zack Hibler! He was recently named PRCA Bareback Rookie of the Year.

— cwe —

We are proud of you, Wheeler Mustangs; it was a great season. They lost the Region II-2A Division II Semifinals, 48-27.

— cwe —

The weather does not sound too good for Saturday, hopefully it will be nice Saturday.

— cwe —

Wheeler was dusted with a light snow during the night Sunday. More is promised for

(Continued Page 5)

## STORM REPORT



As Reported by . . .  
**Stormie Meriwether**,  
Ninth Grade Student

Dear Friends, I was very sad that we didn't win the football game, but I am proud of all of the Mustangs! You did a great job and I enjoyed playing in the band for all the games.

December 4th was my Birthday! I am sixteen! I had a fun time in OKC. Shopping was the best!

Last week Mrs Lohberger's students went to Canadian to play piano and sing at The Edward Abraham Nursing Home. I played the piano and sang with the group. My "Uncle" RJ Smith was happy to see me. I was happy to see him too! Baba and Pop went with us. Thanks for supporting your "grandchild".

I did not know that I earned a letter jacket for band! That is

(Continued Page 5)

## Santa Letters To Be Published

Santa came to Wheeler to visit with the local youngsters on November 24 to see what each of you want for Christmas. Send your letters to the Times and we will make copies to remind Santa what you want. We will send them to the North Pole and we can publish them in the Dec. 20 edition. Letters must be in the office by Friday, December 7; send them to The Wheeler Times, Box 1080, Wheeler, TX 79096 or [wtimes@windstream.net](mailto:wtimes@windstream.net)



**S-A-N-T-A ! ! ! !** Bristol Rose, daughter of Tristan and Sarah Rose, runs to greet Santa upon his arrival by fire truck for his first of two visits this year. Santa greeted a large number of local youngsters Saturday, November 24 and is returning Saturday, December 8, to Santa's Winter Wonderland, 410 Main Street, to visit with those he missed on his first visit. Pictures will be made and pictures will be published in the Times.

## Wheeler Girls Varsity Basketball

Wheeler Varsity Girls vs. Sanford Fritch Varsity Girls:  
Score by Qtr: Wheeler- 11/20/28/42; Fritch- 7/17/21/30  
Top Scorers: Wheeler-Julia Andrade 10, Katya Baylon 12, Perla Almanza 9, Keila Rocha 9, Wendy Lopez 2.

**Miami Tournament:**  
Wheeler Varsity Girls played Canadian JV Girls/Gruver Varsity Girls/WT High Varsity Girls.  
Wheeler Varsity Girls vs.

Canadian JV Girls:  
Score by Qtr: Wheeler- 13/18/25/38; Canadian- 8/19/26/35  
Top Scorers: Wheeler- Perla Almanza 14, Katya Baylon 11, Julia Andrade 5, Hope Adkins 4, Wendy Lopez 2, Keila Rocha 1.

Wheeler Varsity Girls vs. Gruver Varsity Girls:  
Score by Qtr: Wheeler- 5/10/16/20; Gruver- 14/30/37/51

Top Scores: Wheeler- Wendy Lopez 8, Katya Baylon 7, Perla Almanza 5

Wheeler Varsity Girls vs. WT High Varsity Girls:  
Score by Qtr: Wheeler- 13/20/37/43; WT High- 4/12/19/25

Top Scores: Wheeler- Perla Almanza 16, Wendy Lopez 12, Julia Andrade 6, Katya Baylon 3, Valeria Tintori 4, Keila Rocha 2.

Wheeler Varsity Girls Overall Record: 5-4



Norma Ann Lowery

## Service Thurs. For Norma Ann Lowery

Norma Ann Lowery, 91, of Corn, Oklahoma, formerly of Wheeler, died Sunday, November 25, 2018, in Corn, Oklahoma.

Services were held at 2:00 PM Thursday, November 29, 2018 in the First Baptist Church in Wheeler with Russell Duck, officiating. Burial followed in Wheeler Cemetery in Wheeler.

Arrangements were by Robertson Funeral Directors of Wheeler.

Norma was born November 13, 1927 in Mt. Vernon, Illinois to Hugh and Rhodie Ellis. She married Herman Lowery on June 26, 1947 in Carmi, Illinois. She had been a resident of Corn, Oklahoma the past 4 years. She was a magnificent homemaker where she loved to cook, sew, and could do anything.

She was preceded in death by her parents; her daughter, Donna Rex Lowery; a grandson, Kevin Zimmell; and her brothers, James Ellis and Charles Ellis.

Survivors include her husband, Herman Lowery of Corn,

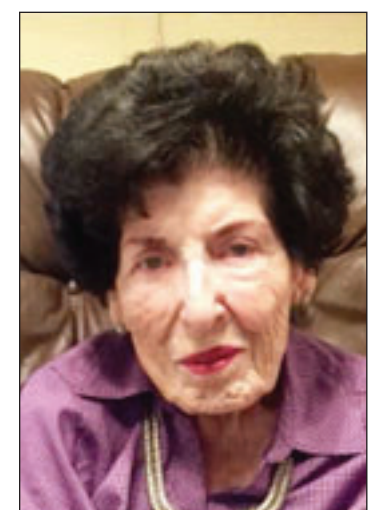
(Continued Page 2)



Caden Nelson

## Caden Nelson Gets FFA Weld-Off Award

Caden Nelson recently participated in the West Texas Weld-Off held at Hereford High School. "The West Texas Weld-Committee" selected Caden for the Leadership Award for his donation and time to make a difference in a student to attend Diabetic Summer Camp. The Selection Committee felt, based upon Caden's desire to help others and attending this competition, showed team skills and character.



Betty Jo Zybach



WE WANT  
TO EXPRESS OUR  
APPRECIATION TO OUR  
CUSTOMERS AND FRIENDS

Everyone is invited to our . . .

# OPEN HOUSE

## TUESDAY, DECEMBER 11

for Holiday Treats.

Register for Door Prizes!

We will be closed Tuesday, December 25 and Tuesday January 1.

Your Partners in Progress

Wellington State Bank **WSB**

Bowie • Canadian • Childress • Dalhart • Littlefield • Lubbock • Olton • Memphis • Wheeler • Wellington



www.wellingtonsb.com



Kaden Sullivan

Keegan Sullivan

Kennedee Sullivan



Tristan McCaskill

Phoenix McCaskill



Briggs Jahnel



Clancy Jahnel



Koehn Gaines

### Wheeler County COURT RECORDS

List of instruments filed in the Wheeler County Clerk's office from November 26, 2018 to November 30, 2018.

NOVEMBER 26, 2018

MD-Shirley Marie Edwards to Shirley Marie Edwards Revocable Trust, 11-9-18, Royalty Interest in Sec. 31, Blk. A-7, H&GN Ry. Company Survey; Plus Any Other Interest in Wheeler County.

DEED-Jerry T. Litchfield, et al to Jerry Thomas and Deborah Sue Litchfield Joint Living Trust, et al, 10-29-18, See Instrument.

TRUSTEES MD ASSIGN. of MEMO TRUST-Robert A. Howard (Trust A) to R M and C D Howard Trust, et al, 11-17-18, Secs. 29, 30, 31 & 32, Blk. OS-2.

EXECUTORS MIN. DIST. DEED-Arlene Cline (Estate), et al to Gerald Don Hawkins Trust, et al, 11-14-18, See Instrument.

REVOCATION RELEASE of



**WEEKEND AT THE STOCK SHOW:** A'Dyn Garza showed his pigs this past weekend. He made two shows, Childress and Pampa. At Childress on Friday evening he won Breed Champion Chester, Breed Champion Cross, Reserve Grand with the Cross and Cross Class Winner. At Pampa Saturday he won Champion Chester, Reserve Champion Hamp and 5th Over all in Grand Drive. Sunday he placed Reserve Champion Chester, Champion Cross Bred and 3rd over all in the Grand Drive.

FEDERAL TAX LIEN-United States of America to Michael Gallagher, et ux, 11-15-18.

TRUSTEES DIST. DEED-J

Adeline Ludwig Irrevocable Trust, et al to Jerry Wayne Hill Trust, et al, 11-6-18, Sec. 33, Blk. R.E., Roberts & Eddleman Survey; Plus All Other Interest in Wheeler County.

ASSIGN. OVERRID. ROYALTY-Michael S. Braun to Ward N. Adkins Jr., et al, 10-4-18, E/2 Sec. 10, Camp County School Land.

DEED-Harrison Smith, et ux to Paula McMenemy, 8-16-18,

**Lowery** (from Page 1)

Oklahoma; and a grandson, Chris Bradstreet and wife, April, of Lookaba, Oklahoma; and her sister-in-law, Mary Alice Pollard of Illinois.

In lieu of flowers, please send donations to a favorite charity of choice.

Sign our guest book at www.RobertsonFuneral.com.

SIGN OUR ONLINE GUEST BOOK AT www.RobertsonFuneral.com

Hear the "Abundant Living Broadcast" **KPDR-FM, 90.3** WHEELER, TEXAS Saturdays: 9:00 a.m. to Noon

70 acs. NW part of Sec. 34, Blk. 23, H&GN Ry. Company Survey (Sand Spur Lake) NOVEMBER 27, 2018

POA-Demetrio Badillo to Juan Badillo, 11-15-18.

HEIRSHIP AFF.-Peter Dodge, et ux to Thomas Alvin Murphy, 6-18-18, See Instrument.

HEIRSHIP AFF.-Catherine Henahan, et al to Geoffrey Charles Dunbar, 6-27-18, See Instrument.

HEIRSHIP AFF.-Thomas William Laughlin, et al to Sidney Phelps Dodge, 6-27-18, See Instrument.

AFF. of IDENTITY-Peter Dodge to Virginia M. Morgan, et al, 7-11-18.

ASSIGN.-Peter P. Dodge to Sand Creek Oil and Gas LLC, 7-11-18, See Instrument.

MD-Peter P. Dodge to Sand Creek Oil and Gas LLC, 5-1-18, See Instrument.

ASSIGN.-Katherine Dunbar Morss to Sand Creek Oil and Gas LLC, 7-14-18, See Instrument.

MD-Katherine Dunbar Morss to Sand Creek Oil and Gas LLC, 5-1-18, See Instrument.

ASSIGN.-Gregory B. Dunbar



### Christmas from Page 1)

pictures this year and the pictures will be available on Hunt Photography and the Chamber Facebook Pages.

The Ft. Elliott FFA will be providing concession again this year with profits going back to Toys for Tots.

We also will have horse drawn carriage rides provided by the Waters Family and donations going to our Local Toys for Tots. And our Toys for Tots Train will be providing rides for our kiddos (if interested in driving the Toys for Tots Train - Please contact Kristen Moudy at 806.826.3408). We will have a Toys for Tots drop off, so bring any unwrapped toys, clothes or monetary donation.

We are also looking for groups, organizations or volunteers that would like to be a part of this Celebration. If you are interested in singing/caroling, hosting a

game booth, helping with a cookie or ornament decorating booth, or being a volunteer we would love to have you. Please contact Marianne Smith at 806.216.2175 or Kristen Moudy at 806.826.3408.

We are also accepting donations for lights that will be used to decorate the courthouse trees, poles and main street square. The chamber is hosting a "Let's Light Up the Square", \$10 donation buys a strand of lights or \$100 will sponsor a tree/wreath. We will display a plaque with the name of business/organization or loved one on the trees/wreaths. Forms available at Wheeler City Office (under the water tower) or you can mail checks to "Wheeler Chamber" PO BOX 221, Wheeler TX 79096.

For more information on this event, please contact the Wheeler Chamber at 806.826.3408 or chamber@wheelertexas.org.

to Sand Creek Oil and Gas LLC, 7-5-18, See Instrument.

MD-Gregory B. Dunbar to Sand Creek Oil and Gas LLC, 5-1-18, See Instrument.

ASSIGN.-Shelley P. Dodge to Sand Creek Oil and Gas LLC, 7-3-18, See Instrument.

MD-Shelley P. Dodge to Sand Creek Oil and Gas LLC, 5-1-18, See Instrument.

ASSIGN.-Deborah D. Brooks to Sand Creek Oil and Gas LLC, 7-2-18, See Instrument.

MD-Deborah D. Brooks to Sand Creek Oil and Gas LLC, 5-1-18, See Instrument.

ASSIGN.-Colleen A. Dunbar to Sand Creek Oil and Gas LLC, 7-2-18, See Instrument.

MD-Colleen A. Dunbar to Sand Creek Oil and Gas LLC, 5-1-18, See Instrument.

ASSIGN.-Catherine Henahan to Sand Creek Oil and Gas LLC, 7-10-18, See Instrument.

MD-Catherine Henahan to Sand Creek Oil and Gas LLC, 7-10-18, See Instrument.

(Continued Page 4)

**River Crest REALTY**

**FOR SALE: 3 bedroom, 2 bath, 2 car garage. Large open kitchen, living and dining room with huge granite island. Master bath has separate garden tub and shower. 972-989-8019**

**FOR LEASE: Luxury Townhomes - 3 bedroom, 2.5 bath, 1 car garage. 972-989-8019**

**SOLD!:**  
80 acres on I-40, Shamrock, TX

**FOR SALE/LEASE:**  
6400 sf insulated warehouse with extensive rack system on 8.46 fenced acres. Gravel parking for heavy duty equipment and trucks. 972-989-8019

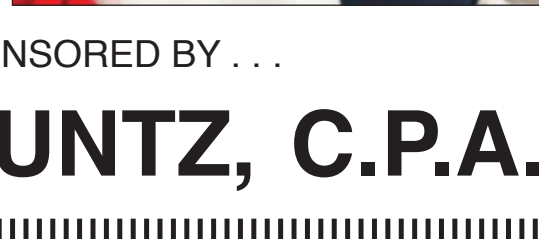
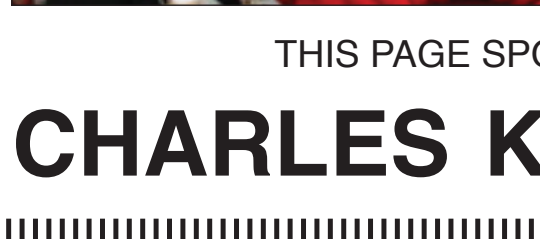
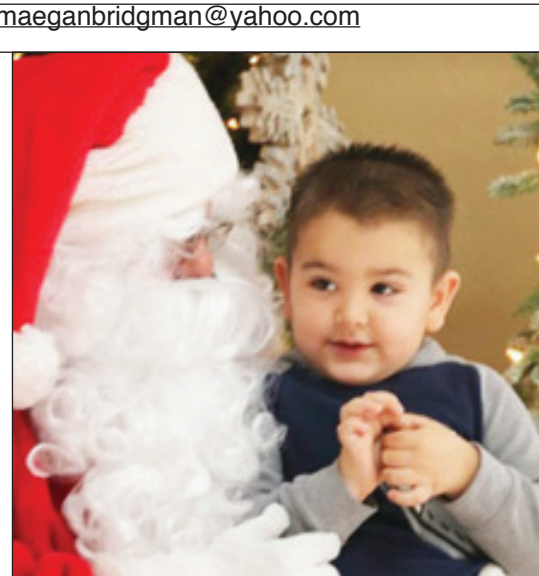
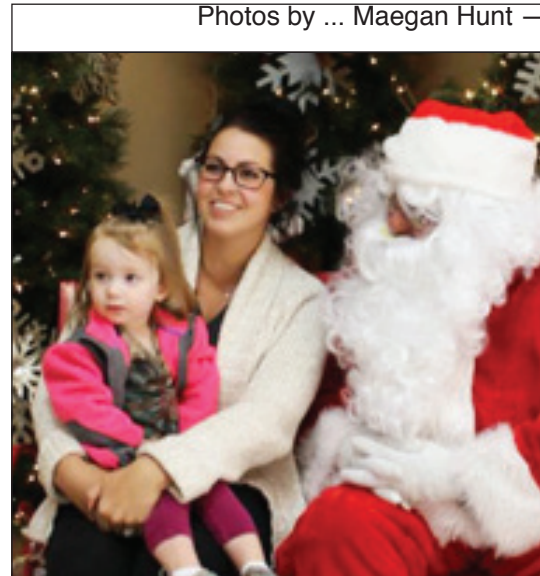
**Ken Baxter - 806-334-0123**  
landdaddy47@gmail.com  
Chip & Pam Hill  
469-323-9625

**Panhandle Plains Realty**  
Making Dreams Come True

— Let us list your Real Estate —  
**Linda Laycock**  
Broker, ABR,  
GREEN, SRES, E-PRO  
**806.662.1312**

Pampa MLS www.panhandleplainsrealty.com Amarillo MLS

Santa visited Wheeler, Sat., Nov. 24



Photos by ... Maegan Hunt — maeganbridgman@yahoo.com

THIS PAGE SPONSORED BY . . .

**CHARLES KUNTZ, C.P.A.**

THE BUSINESS DIRECTORY

CROSS COUNTRY BARN 24 Hr. Gas & Diesel Convenience Store Hunt Bros. Pizza 301 E. Oklahoma St. Wheeler, TX

It pays to Advertise in THE WHEELER TIMES Classified Rate Cash—\$6.00 for 1st 20 wds. Chg.—\$6.50 for 1st 20 wds. 35c for each additional word Display Classified: \$6.50 per card of Thanks: \$7.00

Be Your Own Boss Choose Your Own Routes!

Looking for CDL drivers to deliver new trucks all over the country, starting in Laredo, TX. Experience preferred. Must have DOT physical and be willing to keep logs. No DUIs in last 10 years, clean MVR.

Quality Drive-Away Apply Online at www.qualitydriveaway.com or call 574-642-2023

Non-Hodgkin's Lymphoma

Roundup®, a common weed and grass killer, may be linked to the development of Non-Hodgkin's Lymphoma in farm workers and employees in garden centers, nurseries, and landscapers. CAPPOLINO, DODD, & KREBS TOUGH • EXPERIENCED • TRUSTWORTHY 1-800-460-0606

HughesNet Gen5 Satellite Internet 59 per month 25 Mbps America's #1 Choice for Satellite Internet UNLIMITED DATA, NO HARD DATA LIMITS FREE Standard Installation (limited time offer) 1-855-294-6235

TYPE-2 DIABETES WARNING! FOURNIER'S GANGRENE ATTENTION! This is an important warning for Type 2 Diabetics taking Invokana, Farxiga and Jardiance. CALL 24/7 1-800-800-9815

WE BUY OIL, GAS, & MINERAL RIGHTS Both non-producing and producing including Non-Participating Royalty Interest (NPRI) CALL TODAY: 806.620.1422 LOBO MINERALS, LLC

TEXAS STATEWIDE CLASSIFIED ADVERTISING NETWORK TexSCAN

TexSCAN Week of December 2, 2018 ACREAGE 15 acres east of Eldorado. County road frontage. Gently rolling with beautiful oak tree cover.

CAREER TRAINING Airline Mechanic Training - Get FAA certification. Approved for military benefits. Financial aid if qualified. Job placement assistance. Call Aviation Institute of Maintenance, 800-475-4102.

INTERNET SERVICE HughesNet Satellite Internet - 25Mbps starting at \$49.99/mo! Get More Data FREE Off-Peak Data. FAST download speeds. WiFi built in! FREE Standard Installation for lease customers! Limited Time, Call 855-294-6235

LEGAL ASSISTANCE TYPE-2 DIABETICS - Gangrene of the genitals has been associated with the use of SGLT2 Inhibitors, like Invokana, Farxiga, Jardiance. Call Pulaski 800-9815 - you may be entitled to compensation!

LEGAL ASSISTANCE Roundup®, a common weed and grass killer, may be linked to the development of Non-Hodgkin's Lymphoma in farm workers and employees in garden centers, nurseries, and landscapers. Call Pulaski 800-9815 - you may be entitled to compensation!

LEGAL ASSISTANCE Roundup®, a common weed and grass killer, may be linked to the development of Non-Hodgkin's Lymphoma in farm workers and employees in garden centers, nurseries, and landscapers. Call Pulaski 800-9815 - you may be entitled to compensation!

LEGAL ASSISTANCE Roundup®, a common weed and grass killer, may be linked to the development of Non-Hodgkin's Lymphoma in farm workers and employees in garden centers, nurseries, and landscapers. Call Pulaski 800-9815 - you may be entitled to compensation!

LEGAL ASSISTANCE Roundup®, a common weed and grass killer, may be linked to the development of Non-Hodgkin's Lymphoma in farm workers and employees in garden centers, nurseries, and landscapers. Call Pulaski 800-9815 - you may be entitled to compensation!

LEGAL ASSISTANCE Roundup®, a common weed and grass killer, may be linked to the development of Non-Hodgkin's Lymphoma in farm workers and employees in garden centers, nurseries, and landscapers. Call Pulaski 800-9815 - you may be entitled to compensation!

WANT ADS/LEGAL NOTICES Sell it through a Classified in THE WHEELER TIMES! \$6 for the first 20 words; 35c for each additional word. Legal Notices: 35c per word.

Oil & Gas NEWS

Week of November 19-25, 2018 Intents to Drill LIPSCOMB (FOLLETT, Tonka- wia) RKK Production Company, #1080 Wiley -B-, (40 acres) 660' FSL & 660' FEL, Sec 80, Blk 10, HT&B Surv, A-1055, 2.5 mi NW from Follett TD 9000', (sgd. Rebecca Dunn 806-665-0338) Vertical Recombination LIPSCOMB (LIPSCOMB, Cleveland) 4P Energy Texas, LLC, #1H Price Trust 76X13B, (1293.1 acres) 1777' FWL & 215' FSL, Sec 101, Blk 43, H&TC RR Surv, A-79, 12 mi SW from Higgins TD 9000', (BHL: 1825' FWL & 10' FSL Sec 13, Blk 43, H&TC, A-324) (sgd. James Clark 512-415-4191) Horizontal LIPSCOMB (LIPSCOMB, Cleveland) 4P Energy Texas, LLC, #1H Price Trust 76X13C, (1293.1 acres) 1791' FWL & 228' FSL, Sec 101, Blk 43, H&TC RR Surv, A-79, 12 mi SW from Higgins TD 9000', (BHL: 2215' FEL & 10' FSL Sec 13, Blk 43, H&TC, A-324) (sgd. James Clark 512-415-4191) Horizontal LIPSCOMB (LIPSCOMB, Cleveland) 4P Energy Texas, LLC, #1H Price Trust 101X164B, (1299.1 acres) 1420' FEL & 400' FNL, Sec 76, Blk 43, H&TC RR Surv, A-1148, 12 mi SW from Hig-

Court (from Page 2) Sand Creek Oil and Gas LLC, 5-1-18, See Instrument. ASSIGN.-Patrick Francis Dunbar to Sand Creek Oil and Gas LLC, 10-8-18, See Instrument. MD-Patrick Francis Dunbar to Sand Creek Oil and Gas LLC, 5-1-18, See Instrument. ASSIGN.-Thomas William Laughlin to Sand Creek Oil and Gas LLC, 7-5-18, See Instrument. MD-Thomas William Laughlin to Sand Creek Oil and Gas LLC, 5-1-18, See Instrument. ASSIGN.-Booker Thomas Laughlin to Sand Creek Oil and Gas LLC, 8-21-18, See Instrument. MD-Booker Thomas Laughlin to Sand Creek Oil and Gas LLC, 5-1-18, See Instrument. ASSIGN.-Brooks Owen Laughlin to Sand Creek Oil and Gas LLC, 7-5-18, See Instrument. MD-Brooks Owen Laughlin to Sand Creek Oil and Gas LLC, 5-1-18, See Instrument. DEED-Dudley Dabery, et ux to Lynn Ramsey, et ux, 11-26-18, NW/4 Sec. 34, Blk. 13, H&GN Ry. Company Survey. POA-Patsy Henry to Lisa Renee Warren, et al, 11-27-18, NOVEMBER 28, 2018 MIN./ROY. DEED-Springbok Energy Partners II LLC to Tecolte Royalty LP, 11-26-18, See Instrument. ASSIGN. OVERRID. ROY.-Springbok Energy Partners II LLC to Tecolte Royalty LP, 11-26-18, See Instrument. REL. LIS PENDENS-Wheeler Independent School District to Sharon Sitter Fuller, 11-20-18, See Instrument. MD-Leon Moore to Arcena Minerals and Investments, 11-1-18, Sec. 21, Blk. A-4, H&GN Ry. Company Survey. NOVEMBER 29, 2018 RDT-AimBank to Cole Creek Ranch Services Inc., 11-27-18, Lots 2-4, Blk. A, Original Town, Shamrock. NOVEMBER 30, 2018 AFF. Of POSSESSION-Kay Bradford to Marilyn K. Kennedy Family Trust, 9-14-18, S 100 acs. NW/4 & S/2 NE/4 Sec. 5, AB&M Ry. Company Survey.

gins TD 9000', (BHL: 1820' FWL & 10' FNL Sec 164, Blk 43, H&TC, A-1145) (sgd. James Clark 512-415-4191) Horizontal LIPSCOMB (LIPSCOMB, Cleveland) 4P Energy Texas, LLC, #2H Price Trust 101X164C, (1299.1 acres) 1400' FEL & 400' FNL, Sec 76, Blk 43, H&TC RR Surv, A-1148, 12 mi SW from Higgins TD 9000', (BHL: 2065' FEL & 10' FNL Sec 164, Blk 43, H&TC, A-1145) (sgd. James Clark 512-415-4191) Horizontal OCHILTREE (ALLEN-PARK- ER, Marmaton, WILDCAT) Quannah Panhandle, LLC, #104 Harley Quinn 54, (80 acres) 235' FSL & 875' FEL, Sec 54, Blk 4, GH&H RR Surv, A-1043, 2.5 mi NE from Waka TD 7000', (sgd. Peggy Nezakati 214-245-3708) Vertical Amended OCHILTREE (PAN PETRO, Cleveland) Mewbourne Oil Company, #C001ND Tarbox 106, (640 acres) 230' FNL & 1420' FWL, Sec 119, Blk 13, T&NO RR Surv, A-417, 21 mi SW from Perryton TD 7200', (BHL: 330' FNL & 1320' FWL Sec 106, Blk 13, T&NO, A-878) (sgd. Rebecca Dunn 806-665-0338) Horizontal OCHILTREE (ALLEN-PARK- ER, Marmaton) Mewbourne Oil Company, #M001PA Courson Eldon 747, (747 acres) 210' FNL & 1320' FEL, Sec 662, Blk 43, H&TC RR Surv, A-608, 7 mi S from Perryton TD 7300', (BHL: 100' FNL & 1320' FEL Sec 747, Blk 43, H&TC, A-245) (sgd. Rebecca Dunn 806-665-0338) Horizontal Gas Completions HEMPHILL (HEMPHILL, Granite Wash) Tecolte Energy Operating, LLC, #1H Young 51-66 MG EX, 15 mi S from Canadian, Sec 51, Blk A2, H&GN RR Surv, A-111, spud 11-9-2017, compl 7-3-2018, tested 8-31-2018, potential 3363 mcf, 75 bbls cond, 4078 bbls wtr, # ftp, 2064# SIWHP, TVD 11279', MD 21190' API 42-211-35595, Horizontal Oil Completions None

New 3 bedroom 2.5 bath townhomes for lease in Wheeler, TX. Call 972-989-8019. 8-24rtn

Econo Lodge and Route 66 Motel in Shamrock is looking for housekeeping staff, full time or parttime. Please apply in person at Econo Lodge in Shamrock, 1006 E. 12th.

COLDWELL BANKER FIRST EQUITY REALTORS 5701 Time Square Blvd. Suite 190, Amarillo, TX 79119

WHEELER COUNTY: Just Listed 325 +/- acres 9 miles east of Shamrock on the north side of I-40. Ten year old 1800 square foot home with a wrap around porch. 2 steel buildings with concrete floors. Well. 80 acres CRP. Native grass, Good fences, Big trees, Brush, Cliffs, Spring fed pond, ravines. Elk, Deer, Dove, Hogs, Quail, Turkey. Wildlife management has been practiced on this ranch for 10 years. All blinds and feeders are included. WHEELER COUNTY: 150 +/- acres east of Shamrock on I-40. Currently being grazed. Irrigation well, livestock well, 2 ponds providing cover for wildlife. Excellent location for new home. Deer, turkey, quail, dove. YOUNG RANCH WEST: 288 +/- acres with 1 mile of frontage on the north side of I-40. Located east of Shamrock. It has a metal barn, large catch pens, good fences and an excellent stand of native grass. Some of the ranch can be farmed. YOUNG RANCH EAST: 1600 +/- acres with 2 miles of highway frontage on the south side of I-40, 8 miles north of Shamrock. One mile of Elm Creek crosses the property and feeds a centralized pond. Other parts of the ranch are watered with 2 wells, Cliffs, ravines, big trees and brush provided cover for deer, dove, hogs, quail and turkey. Some of the Ranch could be farmed. COUNTRY LIVING only six miles from Shamrock. like new, 3 bdr/2 bath brick home on five acres with city water. Completely updated with new appliances, fresh paint and new landscaping with fenced backyard. Easy access to I-40. 30x40 steel building with concrete floor and 1/2 bath. Full length patio on east side. 18x9 livestock barn with corral and water tank. New 5 wire fence around entire property. WHEELER COUNTY: 601 acres 1 mile East of Shamrock on North side of I-40. Excellent fences, city water. 1 new windmill, 4 ponds, 50x50 Steel barn with concrete floor and steel working pen. Solid stand of grass ready for cattle. Ravines, cliffs, big trees and brush. 320 Acres: 9 miles NW of Shamrock, Nearly new fences & cross fences, 16, earth tanks, Bluestem grass, good set of corals. Ravines with big trees and brush making an excellent wildlife habitat for deer. COLLINGSWORTH COUNTY: 640 acres, 2 miles south of Shamrock on U.S. Highway 83. Some of the best recreational land on the market. Good fence; new cross fences, well, creek, ravines, cliffs, big trees, brush, blueberry, slimmery; white tail deer, mule deer, hogs, turkey, quail, and dove. Good grass will run cattle for additional income. Will consider subdividing. 56 Acre Track in Allison, Excellent home site. Great Hobby Farm for retirees. Starting location for young family with 4-H/FFA project and horses. Close to school. Well cared for. Now used for haying and grazing. NEW LISTING: 3BR/2BA Brick home with 2 car garage located on 4.8 acres east of Shamrock on I-40. House is 100% electric w/basement. New double pane windows and new tile throughout. New entrance doors, new septic system. Water well with barbwire and woven wire fencing. Priced right! Coldwell Banker First Equity, Realtors. Richard Hefley AIC, Licensed in Texas and Oklahoma. 806-898-1786. landsoftexas.com, cbcamarillo.com or thelandconnections.com

THE WHEELER TIMES Page 4 - Thursday, December 6, 2018 "Wheeler: town of friendship and pride"

MEMBER 2018 TEXAS PRESS ASSOCIATION

City of Wheeler Turns 100 Aug. 5, 1935 Celebration Planned THE WHEELER TIMES P.O. Box 1080 Wheeler, Texas 79096 Phone: 806/826-3123 Entered as second-class matter December 18, 1933, at the Post Office at Wheeler, Texas 79096, under the act March 3, 1879. Postmaster: Send Address changes to The Wheeler Times, P.O. Box 1080, Wheeler, TX 79096-1080 - www.wtimes@windstream.net Louis C. Stas, Owner & Publisher SUBSCRIPTION RATES: Within Wheeler Co: \$22.00 Elsewhere: \$25.00

Crossword PUZZLE

Crossword puzzle grid with clues for 1 through 35.

- Across 1. Panoramic view 6. "Concentration" puzzle 11. Citrus drink 13. Clearly show 15. Trellis 17. Long-armed ape 18. Scheduled to arrive 19. Like the ring in an eclipse 21. Dry \_\_\_\_ 22. Jets or Sharks, e.g. 24. Rope fiber 25. Written reminder 26. Respected villager 28. Hilo garland 29. Bluffer's game 30. Disney dog 32. Crop raiser 34. Partner of rank and serial number 35. Butcher's offering

Wellington State Bank USB Your Partners in Progress 36. It contains rods and cones 38. \_\_\_\_ reflection 39. Motherless calf in a range herd 40. '50s car embellishment 42. Gemstone surface 46. Horse of a certain color 47. Implied 49. Handed-down history 50. Frequently, in verse 51. Type of spray can 53. 50 Cent piece 54. Suppress 56. Lumpy 58. Old Russian council 59. Name on a ballot 60. Birdcage feature 61. Primitive fishing tool 62. Down 1. Optical 2. Threaten 3. Baltic or Bering 4. Baby powder ingredient

- 5. "See ya!" 6. Magnificent 7. The dark side 8. Chest protector 9. Like a wild horse 10. Vespa, for one 11. Pigeon's perch 12. In a spooky manner 14. Door sign 16. Kennedy mom 20. Babe in the woods 23. Gummy bear ingredient 25. Like some fees 27. Fiber used for fishing nets 29. Whisky info 31. Trophy locale 33. Austrian peak 34. Opposite of affirmative 36. Like the last Beatles concert, 1969 37. Many miles off 38. In harmony 39. Smeltery waste 41. Clickable image 43. Long cigar 44. Blackboard implement 45. Flap-door home 47. Choppers, so to speak 48. Minor errands 51. One of the Baldwins 52. Gravy flaw 55. Cone bearer 57. Golf ball position

SMOG DEMO ACRID LACE ELAN SHARE OTHERWISE BATON PER ODDS RESENT EYESORE PAST UFO WRITEROFF SLOE PSEUDO BEE AORTA MAD SPORE SPA BREVEY REND SELFRULE WHO LOST FEEDBAG DAMAGE BILE ERE OPERA HALFDOZEN TENET ABET DEAR EXUDE MYTH ELSE

Sunday Nite Live KPDR-FM, 90.3 Live from Canadian 9:00 p.m. to 11:00 p.m.

TEXAS PRESS STATEWIDE CLASSIFIED NETWORK 283 Participating Texas Newspapers • Regional Ads Start At \$250 • Email ads@texaspress.com

## Wheeler County Sheriff's Dispatch

CALLS FOR SERVICE  
 11/14/2018@072—Vehicle Unlock  
 11/14/2018@2045—General Complaint  
 11/14/2018@2130—Concerned Citizen  
 11/14/2018@2230—Loud Music  
 11/15/2018@0232—Suspicious Person/Activity  
 11/15/2018@0235—Medical  
 11/15/2018@1037—911  
 11/15/2018@1537—Medical  
 11/15/2018@1631—Agency Assist  
 11/15/2018@1800—Fire  
 11/16/2018@1759—Concerned Citizen  
 11/17/2018@0816—Medical

11/17/2018@0823—Animal Complaint  
 11/17/2018@1839—Vehicle Unlock  
 11/18/2018@1547—911  
 11/18/2018@1808—Vehicle Unlock  
 11/18/2018@2300—Other  
 11/19/2018@0003—Accident  
 11/19/2018@1307—Accident  
 11/20/2018@1918—General Complaint  
 11/20/2018@2006—Theft Report  
 11/20/2018@2150—Concerned Citizen  
 11/21/2018@0224—Medical  
 11/21/2018@0812—Animal Complaint  
 11/21/2018@0925—Medical  
 11/21/2018@1003—Animal Complaint  
 11/21/2018@1221—Reckless Driver  
 11/21/2018@1318—Break-In  
 11/21/2018@1548—Animal Complaint  
 11/21/2018@1856—General Complaint  
 11/22/2018@0009—Prowler  
 11/23/2018@2219—911  
 11/24/2018@1337—Vehicle Unlock  
 11/24/2018@1426—Vehicle Unlock  
 11/24/2018@1822—911  
 11/24/2018@1847—Vehicle Unlock  
 11/24/2018@1854—Accident  
 11/24/2018@1932—General Complaint  
 11/25/2018@1350—Agency Assist  
 11/25/2018@1600—Concerned Citizen  
 11/25/2018@1727—911  
 11/25/2018@2204—Disabled Vehicle  
 11/26/2018@1702—911  
 11/26/2018@2120—General Complaint  
 11/27/2018@0012—Medical  
 11/27/2018@1859—911  
 11/27/2018@2005—Other  
 11/27/2018@2013—911  
 11/28/2018@0714—Reckless Driver  
 11/28/2018@0910—General Complaint  
 11/28/2018@1358—Fire  
 11/28/2018@1427—Reckless Driver  
 11/28/2018@1741—Accident  
 11/28/2018@1754—Traffic Control  
 11/29/2018@1333—Reckless Driver  
 11/29/2018@1621—Medical  
 11/29/2018@1715—Concerned Citizen  
 11/30/2018@1244—Vehicle Unlock  
 11/30/2018@1417—Animal Control  
 11/30/2018@1607—Vehicle Unlock  
 11/30/2018@1630—Reckless Driver



**"ROOKIE OF THE YEAR"**: Zack Hibler was named "P.R.C.A. Bareback Rookie of the Year" in Las Vegas. Zack competed in over 100 rodeo this past year; winnings of 100 of these rodeos are added together to determine "Rookie of the Year". Hibler won more money than any of his fellow bareback riders in P.R.C.A. His winnings for the top 100 rides last year totaled \$42,877.

P.O. BOX 582  
 WHEELER, TX 79098  
**806-334-1522**

PAUL TOPPER, JR.  
 OWNER

**BIGTOP ENTERPRISE, LLC**  
 TBA TOPPER HEAT & AIR SERVICE  
 TX LICENSED HEAT & AIR SEPTIC SYSTEM INSTALLER

806-334-1522

Tx License #TACLB40833E DS0029695

### Hyland's Pharmacy

Downtown Wheeler — 826-5561

**Wedding Shower**  
 Name: **Abby Bond & Isaac Lenz**  
 Date: **1/20/2019**  
 Place: Beverly Bryant's Home  
 Hosted By: Christian Hefley  
 Color: Blush & Grey

The store for all your needs:  
 Prescriptions, Gifts for your loved ones.

### DOUG BOYD MOTOR CO.

Buy Here / Pay Here

No Credit Check • Areas Largest Selection

Pampa • Corner of Hwy 60 @ Hwy 70  
 806-669-6062 • www.dougboydmotors.com

**Southerners**  
 A Southerner knows that "fixin'" can be used as a noun, a verb, or an adverb.

News, Views & Commentary  
**KPDR-FM, 90.3**  
 WHEELER, TEXAS  
 Weekdays: 6:00 a.m. to 7:00 a.m.

### Xcel Energy Warns of Scam

Xcel Energy has received calls from customers reporting attempted scams in the Amarillo area today. The details vary, but in almost all attempts, the scammer is impersonating an Xcel Energy agent and is telling customers that a serviceman is on his way to disconnect their electrical service for nonpayment. The scammer demands payment over the phone in order to prevent the disconnection, and almost always demands payment with a prepaid debit card. The scam attempts today follow a rash of scam attempts reported almost a month ago across the area, both in Texas and New Mexico. Xcel Energy is reminding customers that they will receive a printed disconnect notice in the mail if they are behind on their bills, and that we have multiple options for

THE WHEELER TIMES  
 Page 5 — Thursday, December 6, 2018  
 "Wheeler: town of friendship and pride"

making payment. If customers receive calls demanding payment under threat of imminent loss of service, they should hang up and contact Xcel Energy to verify account status. Residential customers should call 1-800-895-4999. Business customers should call 1-800-481-4700. Xcel Energy also offers a free customer app that allows customers to check and work account.

### Canadian Redi-Mix, Inc.

... for all your Concrete Needs!

**806-323-5379**

### Chat (from Page 1)

this coming weekend.  
 — cwe —  
 Santa letters need to be in the office. Youngsters not in school can have their letters emailed to the Times — wtimes@windstream.net  
 — cwe —  
 I am working on the Christmas Edition, which will be Thursday, December 20. Copy will need to be in the office by Friday, December 14.  
 — cwe —  
 We had a quiet weekend in OKC; just the usual.

### Stormie (from Page 1)

exciting! I am getting my name on the back with "clarinet" on a banner. I want a band patch and an FFA patch. It's going to be the coolest jacket in school! Hahaha, just kidding. All the jackets will be cool! That's it

### Zybach (from Page 1)

David Zybach. Burial was in the Zybach Cemetery, Allison, TX under the direction of Rose Chapel Funeral Service. Condolences can be made online at www.whineryfs.com

### Thoughts

The location of your mailbox shows you how far away from your house you can be in a robe before you start looking like a mental patient

Fort Elliott Elementary  
 Cougar of the Week  
 Nov. 26-30

First Grade,  
 Wynter Zybach

Fourth Grade,  
 Colton Hefley

For all your . . .  
 Insurance Needs, See  
**Eastern Panhandle Insur. Agency, Inc.**  
 206 N. Madden  
 Shamrock  
**806/256-5401**  
 •Auto •Home •Life •Health  
 •Commercial •Bonds

# ENROLL NOW



## SWOSU

Spring 2019 Classes Begin January 7<sup>th</sup>

GIVE US A CALL AT:  
 (580) 928-5533 SAYRE  
 (580) 772-6611 WEATHERFORD

OR VISIT US ON THE WEB AT:  
 WWW.SWOSU.EDU/SAYRE

THESE PICTURES SPONSORED BY:

**BOB'S**  
**BAIL BONDS**  
 806-826-0654 Cell 806-334-0452  
 P.O. Box 264 Wheeler, TX 79096 Pat Childress

## Wheeler vs. Albany



Gustavo Andrade warming up.  
 Hagen Weatherly stops the run.



Ian Finsterwald and David Rascon sack the QB for a loss.



PJ Shultz and Austin Calhoun containing the defensive line.



Hesston Marshall receives the opening.



Logan Harris makes the diving catching in the end zone.



Hesston Marshall in for the touchdown!

## Heart Failure . . . and Success

By Philip B. Adamson

Heart failure is becoming more and more common. Nearly 6 million Americans are suffering from it today. That figure will grow to more than 8 million by 2030.

The condition exerts an enormous toll on patients, their families, and the economy. Fortunately, medical research has yielded new technology that can help people with heart failure live healthier, fuller lives -- and reduce overall health-care costs. It's time to fully deploy that technology.

Heart failure occurs when a person's heart struggles to pump blood. This deprives the body of oxygen and nutrients, which can make performing even basic daily activities -- like walking or climbing the stairs -- difficult.

Heart failure hospitalizes more than 1 million Americans annually. About half are back in the hospital within six months of diagnosis; the average stay lasts five days. That's a huge burden for patients -- and for caregivers, who may not live nearby and thus may have to miss work. In total, the condition costs the U.S. more than \$30 billion every year.

The standard treatment regimen for heart failure -- take medication, reduce salt intake, and stay active -- has been in place for years. But it has never been truly effective, largely because it's complicated and difficult for patients to follow.

Consider medication. Some drugs do help patients. But three-quarters of patients don't consistently take their medications as instructed. More than one in four never fill a new prescription. And doctors sometimes don't prescribe all the medication that's recommended.

Advising patients to eat less sodium is ineffective, too. Do you know how much sodium you consume? Neither do patients. Ninety-seven percent of



THE WHEELER TIMES

Page 6 -- Thursday, December 6, 2018

"Wheeler: town of friendship and pride"

Americans underestimate -- or don't feel confident estimating -- the amount of sodium they eat each day.

As for exercise, many patients don't have the time, resources, or social support to get in recommended workouts.

In other words, the status quo for treatment of heart failure isn't working. But medical researchers are changing that by developing technologies that can help physicians more effectively monitor and treat heart failure -- and improve patients' quality of life.

Consider one device that measures the heart activity of cardiac patients during rehabilitation training. The smartphone-sized unit helps ensure that workouts are at a safe intensity level and duration. Clinicians can immediately determine if a patient's heart rate is becoming too fast or irregular. The device is demonstrated to improve the health and recovery of heart failure patients.

Researchers at Harvard University are toying with a wearable device that can monitor ankle swelling -- a common symptom of worsening heart failure. That could help ensure patients seek medical attention before a major problem occurs.

Or consider an innovation I helped develop at Abbott. The CardioMEMS HF system enables doctors to proactively monitor patients' pulmonary artery pressure and heart rate remotely. So clinicians can detect worsening heart failure before a patient even feels symptoms and adjust medications accordingly. That helps keep patients out of the hospital.

Indeed, research published in the Journal of the American College of Cardiology last year showed that hospitalizations for heart failure declined

46 percent in patients six months after receiving the device. Based on Medicare claims data, average health-care costs per patient were \$10,500 lower than in the six months before the implant.

Traditional treatment for heart failure is, itself, failing. We can achieve far greater success by embracing new technology that can better monitor and treat heart failure.

Philip B. Adamson, M.D., is a cardiologist, heart failure specialist and medical director at Abbott ([www.abbott.com](http://www.abbott.com)).

### Signs

In a Veterinarian's waiting room:  
 "Be back in 5 minutes. Sit! Stay!"

At the Electric Company:  
 "We would be delighted if you send in your payment on time.

However, if you don't, YOU will be de-lighted."

In a Restaurant window:  
 "Don't stand there and be hungry; come on in and get fed up."

In the front yard of a Funeral Home:  
 "Drive carefully. We'll wait."

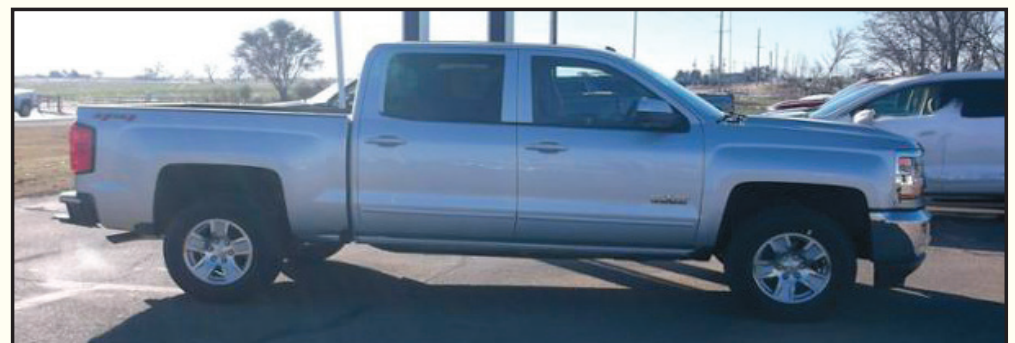
At a Propane Filling Station:  
 "Thank Heaven for little grills."

In a Chicago Radiator Shop:  
 "Best place in town to take a leak."

The reason Mayberry was so peaceful and quiet was because nobody was married: Andy, Aunt Bea, Barney, Floyd, Howard, Goober, Gomer, Sam, Earnest T Bass, Helen, Thelma Lou, Clara and of course, Opie. The only married person was Otis and he stayed drunk.

# WARE

CHEVROLET • BUICK



### NEW 2018 CHEVROLET SILVERADO 1500

Total MSRP Before Offers	\$47,515
Factory Reduction Below MSRP	-\$4,478
Employee Discount for Everyone	\$43,037
Package Cash Allowance	-\$3,000
Customer Cash	-\$2,000
Purchase Bonus Cash	-\$1,250
<b>Sale Price</b>	<b>\$36,787</b>
<b>SAVINGS</b>	<b>\$10,728</b>
Additional savings if financed through GM Financial	-\$1,500



**Sale Price \$35,287!**



New 2019 Chevrolet Spark Hatch 1LT (Automatic)

**JUST \$13,676!**



South Hwy. 83

Wheeler • 806•826•5521

1•800•890•WARE (9273)

[www.warecbp.com](http://www.warecbp.com)

We can't be  
everywhere or know  
everything!  
If you have an event,  
let us know.  
If you need to inform  
Wheeler, let us know.  
Someone you know  
deserves to be  
recognized, let us know.  
Pictures are also  
appreciated

**[wtimes@windstream.net](mailto:wtimes@windstream.net)**

We respond to emails to let the sender know they were received.



**THE WHEELER TIMES**

(USPS-680-960)

SINGLE COPY **50c**

**"Wheeler: town of friendship and pride"**

TEXAS  
 • SHAMROCK  
 • WELLINGTON • WHEELER

OKLAHOMA  
 • CHEYENNE • HINTON

HOLIDAY GIFT CARDS! COME SEE US!

PRICES EFFECTIVE: WEDNESDAY DEC. 5 THRU TUESDAY DEC. 11, 2018

211.214.217.220.192



Market Square  
 SUPERMARKETS

AFFILIATED  
 FOODS INC.  
 MEMBER STORES

www.marketsquareonline.com

NOT LIABLE FOR TYPOGRAPHICAL OR PICTORIAL ERRORS. WE RESERVE THE RIGHT TO LIMIT QUANTITIES. SOME ITEMS NOT AVAILABLE IN ALL STORES.

**THE BEST BUYS OF FALL**



Fryer Leg Quarters  
 sold in a 10 lb bag

**39¢**  
 LB.



single pack  
 ..... \$1.99 LB.

Boneless Pork  
 Sirloin Roast  
 family pack

**\$1.49**  
 LB.



Halos  
 Mandarins  
 2 lb. bag

**\$2.99**



single pack  
 ..... \$3.49 LB.

Beef Arm Roast  
 preferred trim boneless  
 family pack

**\$2.99**  
 LB.



Seedless  
 Grapes  
 black, red or green

**2 \$3**  
 LBS.



Mexican  
 Grey Squash

**79¢**  
 LB.



Shurfine CheeseQuik Loaf  
 pre price \$5.99  
 32 oz.

**\$3.99**



Pillsbury Grands!  
 Biscuits  
 select varieties  
 16.3 oz.

**2 \$3**  
 FOR



Nabisco Snack  
 Crackers  
 select varieties  
 3.75-13.7 oz.

**\$1.98**



Shurfine  
 American Singles  
 16 oz.  
 pre price \$3.79

**\$1.99**



Blue Bonnet  
 Spread  
 45 oz.

**\$2.49**



Classico  
 Pasta Sauce  
 select varieties  
 15-24 oz.

**\$1.68**



Charmin Essentials  
 Bath Tissue  
 soft or strong  
 12 giant rolls

**\$4.98**



Florida's Natural  
 Juices  
 ruby red grapefruit or  
 assorted orange  
 52 oz.

**\$2.78**



Post Honey  
 Bunches of Oats  
 reg. or with almonds  
 18 oz.

**\$2.78**



Bounty Essentials  
 Paper Towels  
 select-a-size  
 6 big rolls

**\$4.98**