



# THE WHEELER TIMES

(USPS-680-960)  
VOLUME 85, NUMBER 36

THURSDAY, AUGUST 23, 2018

SINGLE COPY **50c**

“Wheeler: town of friendship and pride”

## Mobeetie, The Place To Be This Weekend

### Activities For The Entire Family

Labor Day Weekend at Mobeetie scheduled to be quite busy. There will be entertainment for young and old this year, beginning at 1:00 p.m. Thursday, August 30, 2018. Kicking the holiday weekend will be the Quilt Show and Kenneth Wyatt Display at the Mobeetie Visitor Center.

Local and area quilters will be displaying their work from 1-5 p.m. at the Old School. Also on display will be various artifacts.

The Quilt Show and Kenneth Wyatt Display will continue into

Friday with the addition of the Talent Show at 7 p.m. at the Arbor; Mobeetie's famous Homemade Ice Cream will be available for the enjoyment of those in attendance. Entry forms were in last week's Times or also available on the Internet.

Saturday, September 1, kicks off at 6 a.m. with the Hidetown 5k run, starting at the Visitors' Center. Breakfast Burritos will be available, serving to continue until after the run.

The Parade at First State Bank will get underway at 10:00 a.m. Parade Awards will

be presented at Mobeetie City Hall, immediately following the parade.

The Quilt Show and Kenneth Wyatt Display are still open for enjoyment by visitors.

The Festival at the Old Jail gets underway at 10 a.m. and continues until 8 p.m. Bring the youngsters and plan on spending the afternoon. For everyone's enjoyment will be Bounce House; \$10 makes sure the kids are entertained all afternoon.

Homemade Ice Cream will be sold as well as a wide variety of foods by several food booths. There will be a Jail Booth, Car Show and Craft Show open all afternoon.

Former Mobeetie School Students will register at 11 a.m. at the elementary school with visiting planned until 2 p.m. Meet and visit with your old classmates.

For those wishing to participate, Corn Hole and Horse-shoe Tournaments will get underway at the old jail at 2 p.m.; finals will be Sunday at the old jail.

Spend the evening under the arbor at the old jail dancing and/or listening to music by The Pearl Snaps from 9 p.m. until 1 a.m.

Church at the Old Jail at 11 a.m. will start the day filled with activities; Hamburgers and Hotdogs will be available from 12 noon until 2 p.m.

Homemade Ice Cream, drinks and bounce Houses will remain open until 8 p.m. The Quilt Show and Kenneth Wyatt Display will close at 5 p.m. The Craft Show and Clothing Booth will close at 6 p.m.

A Steak Cook-Off Dinner will be served at 6 p.m. at the Old Jail. Tickets will be \$25 and are being sold ahead of time; additional information can be found in last week's paper or online.

Cowboy poetry will also be read, beginning at 6 p.m.

From 10 until 2 on Monday, Labor Day the Old Settlers' Reunion will once again be held. (Continued Page 3)



Peggy Chandler

### Peggy Chandler Rites Sat., Aug. 25

Peggy Evelyn Gilmer Chandler went to walk on streets of gold in heaven with our Lord, Tuesday, August 21, 2018. Funeral arrangements by Robertson Funeral Directors of Wheeler, TX. Visitation was Friday, August 24 from 5:00-7:00 at Robertson Funeral Home, 311 N Wall St, Shamrock, TX. Graveside service were at the Zybach Cemetery Saturday, August 25, 2018 at 10:30 a.m. with Rodney Weatherly officiating.

Peggy was born to Jesse Thomas and Bobbie Mae McDaniel Gilmer April 25, 1934. She was a resident of the Allison and Briscoe, Texas area most of her life. Peggy married Marvin Kenneth Chandler on August 26, 1951. Peggy loved God all of her life, and was a member of the United Pentecostal Church of Allison, TX. She enjoyed painting craft items and wood burning. Peggy's passion was cooking and she loved hosting Christmas Eve gatherings with family and friends. Peggy loved animals. She would not let a stray go hungry.

Peggy was preceded in death by her parents, her husband; 4 brothers, Grady, John, David Sr., and Ed Gilmer; 5 sisters, Josephine Giddens, Dorothy McNutt, Jennie Walker, Betty Sue Stinnett, and Bertie Cornell; and child by choice Leon Eugene Boydston.

Those left behind to lovingly remember her include her daughters Valerie Young and husband, Bob, of Lubbock, Texas, Cindy Burrus and husband, Tony, of Canyon, Texas, her son, Brad Chandler and wife, Sue, of Wheeler, TX, her daughter Marki Stringer and husband, Ronnie, of Ardmore, OK; five children by choice, Linda Dobbs and husband, Larry, of Starkville, MS, Verline Curry of Big Springs, TX, Joyce Hurst of Sanford, FL, Kenny Boydston and wife, Sherry, of London, TN, and Keith Boydston and wife Margaret Ann of Beaumont, TX; grandchildren Angel Young Lambright, Tiffany Robinson, Bret Burrus, Jana Bartholomew, Bridget Weatherly, Chandler, Kinin & Jordan Stringer; great-grandchildren Hunter Young, Chevy Cawfield, Cavett & River Robinson, Jagger, Scout, Arissa, Aubrey & Addie Burrus, Audra & Hagen Weatherly, Janessa & Austin Bartholomew; one brother, J.W. Pete Gilmer.

The family request memorials be sent to St. Jude's Children's Hospital, you may donate at [www.stjude.org](http://www.stjude.org)

Sign our online guestbook at [www.ROBERTSONFUNERAL.COM](http://www.ROBERTSONFUNERAL.COM).

### Wheeler County Commissioners' Court Meets

## Commissioners, Elected Officials, Co. Employees Get Pay Increase

The Commissioners' Court of Wheeler County, Texas, met in regular session on Monday, August 27, 2018, a.m. in the Commissioners' Courtroom of the Wheeler County Courthouse, 401 Main Street, Wheeler, Texas, to consider prior bills and discuss matters of mutual concern.

At 9:00 a.m. a Budget Hearing was held with no public input.

At 10:00 a.m. the court was reconvened to consider and take action on twenty-four items on the agenda.

• There were no minutes of previous meeting to be approved.

• No budget amendments were presented for approval.

• No budget transfers were presented for approval.

• Numerous line item transfers were presented and approved.

• No action was taken on the Burn Ban. Stage One Burn Ban is in effect.

• No changes in the Wheeler County Policy Manual were presented.

• The Treasurer's Report was \$111,679.97 for the period 8-14 thru 8-23.

• The court approved a wage increase for all county elected officials and employees in the amount of \$300 per month.

• The court voted to approve the proposed budget for 2018-2019.

• The court approved a proposed tax rate increase of \$0.00081 over the past year. The proposed 2018-2019 rate is \$0.0487200 per \$100.

• The court voted to contribute \$50,000 to the county retirement plan.

• Nicole Mock, Auditor, was given permission to pay \$1,059 for software to help with collection on indigent prisoners medical bills. This saved the county \$30,000 in health care last year.

• The contract with Windstream for service to the Texas A&M Agri-Life Extension Service was approved at a cost of \$328 per month.

• The Windstream contract with the Wheeler County Sheriff's Office at a cost of \$1,114.23 per month was approved.

• The court approved the monthly supplements to the local fire departments was approved. Allison, Briscoe and Mobeetie receive \$1,450; Wheeler and Shamrock receive \$2,300 per month.

• The court approved the 2018-2019 TCDRS matching rate at 9%.

• The County Sick Pool committee was appointed. They are John Walker, Bob Hink, Carol Porton, Carrie Gaines and Cindy Brown

• Sherri Jones, District Clerk sought and received permission to renew her contract with Tascosa Office Machines at a cost of \$34.00 per month.

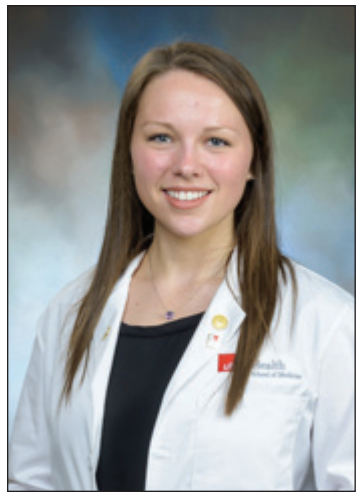
• Sherri Jones, District Clerk received permission to renew

her contract with Pitney Bowes for her printer.

• A Registrant Agreement and Domain Name Contact Form from CIRA for county email was approved. (Continued Page 3)

## Top O' Texas CattleWomen's Style Show Set For September 8 At Pampa

It's that time of year again Top of Texas CattleWomen are having their annual style show Saturday, Sept. 8, 2018



**WHITE COAT CEREMONY:** Dorcie Gillette received her "white coat" in a ceremony on August 19, at The University of Texas Medical Branch in Galveston, where she has begun working toward her M.D. Degree.

## Wheeler City Council Meets

AUGUST 20, 2018

6:00 P.M. IN CITY HALL

Council present: Mayor McCain, Kendall Hefley, Britt McCarter, Carol Porton, Stacy McQueen, and Tammy Moore

Also present: Scott Porter, Charles Kuntz, Kristen Moudy, and Kristi Petit

Guests: Cameron and Rebecca Reed with two daughters

At 6:00 p.m., Mayor McCain called the meeting to order.

Kendall made a motion, seconded by Carol, to approve

## Farmers' Market Will Close Sept. 15

Wheeler County farmers' market will continue through Sept. 15th. Wednesday markets will be held on Aug. 29, Sept. 5, and Sept. 12 on the east side of the courthouse from 3-6 pm, and Saturday markets will be held Sept. 1, Sept. 8, and Sept. 15 on the west side of the courthouse from 9 am - noon.

We have averaged 4 vendors per market with the maximum being 5 or 6; we haven't grown much over the past 15 years but we have managed to offer fresh produce, canned goods, baked goods, and all kinds of agricultural items at a reasonable price to our loyal customers. The vendors should have a selection of okra, peas, cucumbers, squash, peppers, tomatoes, potatoes, watermelons, cantaloupes, apples, grapes, sweet potatoes, Armenian cucumbers, Chinese okra, eggs, jellies and jams, preserves, (Continued Page 3)

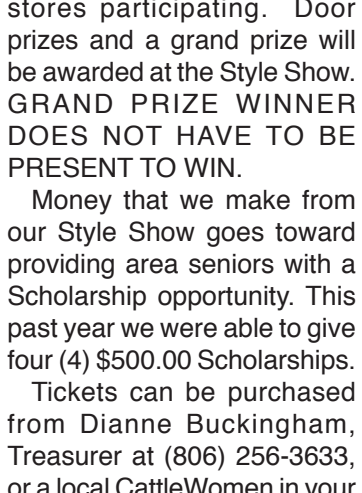
Friday with the addition of the Talent Show at 7 p.m. at the Arbor; Mobeetie's famous Homemade Ice Cream will be available for the enjoyment of those in attendance. Entry forms were in last week's Times or also available on the Internet.

Saturday, September 1, kicks off at 6 a.m. with the Hidetown 5k run, starting at the Visitors' Center. Breakfast Burritos will be available, serving to continue until after the run.

The Parade at First State Bank will get underway at 10:00 a.m. Parade Awards will

## Top O' Texas CattleWomen's Style Show Set For September 8 At Pampa

It's that time of year again Top of Texas CattleWomen are having their annual style show Saturday, Sept. 8, 2018



**WHITE COAT CEREMONY:** Dorcie Gillette received her "white coat" in a ceremony on August 19, at The University of Texas Medical Branch in Galveston, where she has begun working toward her M.D. Degree.

## Wheeler City Council Meets

AUGUST 20, 2018

6:00 P.M. IN CITY HALL

Council present: Mayor McCain, Kendall Hefley, Britt McCarter, Carol Porton, Stacy McQueen, and Tammy Moore

Also present: Scott Porter, Charles Kuntz, Kristen Moudy, and Kristi Petit

Guests: Cameron and Rebecca Reed with two daughters

At 6:00 p.m., Mayor McCain called the meeting to order.

Kendall made a motion, seconded by Carol, to approve

## Farmers' Market Will Close Sept. 15

Wheeler County farmers' market will continue through Sept. 15th. Wednesday markets will be held on Aug. 29, Sept. 5, and Sept. 12 on the east side of the courthouse from 3-6 pm, and Saturday markets will be held Sept. 1, Sept. 8, and Sept. 15 on the west side of the courthouse from 9 am - noon.

We have averaged 4 vendors per market with the maximum being 5 or 6; we haven't grown much over the past 15 years but we have managed to offer fresh produce, canned goods, baked goods, and all kinds of agricultural items at a reasonable price to our loyal customers. The vendors should have a selection of okra, peas, cucumbers, squash, peppers, tomatoes, potatoes, watermelons, cantaloupes, apples, grapes, sweet potatoes, Armenian cucumbers, Chinese okra, eggs, jellies and jams, preserves, (Continued Page 3)

be presented at Mobeetie City Hall, immediately following the parade.

The Quilt Show and Kenneth Wyatt Display are still open for enjoyment by visitors.

The Festival at the Old Jail gets underway at 10 a.m. and continues until 8 p.m. Bring the youngsters and plan on spending the afternoon. For everyone's enjoyment will be Bounce House; \$10 makes sure the kids are entertained all afternoon.

Homemade Ice Cream will be sold as well as a wide variety of foods by several food booths. There will be a Jail Booth, Car Show and Craft Show open all afternoon.

Former Mobeetie School Students will register at 11 a.m. at the elementary school with visiting planned until 2 p.m. Meet and visit with your old classmates.

For those wishing to participate, Corn Hole and Horse-shoe Tournaments will get underway at the old jail at 2 p.m.; finals will be Sunday at the old jail.

Spend the evening under the arbor at the old jail dancing and/or listening to music by The Pearl Snaps from 9 p.m. until 1 a.m.

Church at the Old Jail at 11 a.m. will start the day filled with activities; Hamburgers and Hotdogs will be available from 12 noon until 2 p.m.

Homemade Ice Cream, drinks and bounce Houses will remain open until 8 p.m. The Quilt Show and Kenneth Wyatt Display will close at 5 p.m. The Craft Show and Clothing Booth will close at 6 p.m.

A Steak Cook-Off Dinner will be served at 6 p.m. at the Old Jail. Tickets will be \$25 and are being sold ahead of time; additional information can be found in last week's paper or online.

Cowboy poetry will also be read, beginning at 6 p.m.

From 10 until 2 on Monday, Labor Day the Old Settlers' Reunion will once again be held. (Continued Page 3)

## Wheeler Livestock Boosters To Meet

Wheeler Livestock Boosters will meet on Sept 10, at 6:30 in the Wheeler school cafeteria. Please invite and welcome new families to attend if interested in raising a Livestock Project through FFA or 4-H for the upcoming show season.



**Mustang Scrimmage:** Mustangs have the ball and defense does their job. (right) Mustang receiver jumps up to grab the pass in the Bovina scrimmage. Coach Evans comments: : I felt like our defense has shined through the 2 scrimmages. Our offensive line has had a good fall camp as well. We need to continue improving week in and week out. I expect Lubbock Trinity to be a good test for us.



The place to be this weekend is Mobeetie for their celebration. Fun for all ages Friday through Monday.

— cwe —

The Wheeler Mustangs play their first game of the season when they play Sayre there. **GO MUSTANGS!**

— cwe —

We have some more notices in the paper this week. Take notice. Here is your chance to protest.

— cwe —

Some rain was reported again this weekend. I measured 0.14" Tues. morning.

— cwe —

There was a good turnout Tuesday evening for "Meet The Mustangs". We have quite

(Continued Page 2)

## STORM REPORT



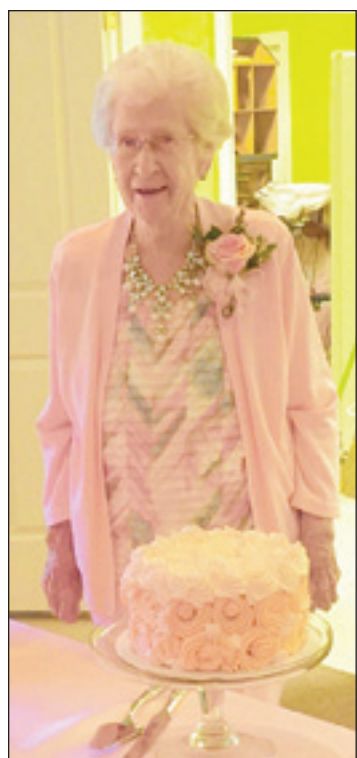
As Reported by...  
**Stormie Meriwether,**  
Ninth Grade Student

Dear Friends, One of my family traditions is The Hinton Fair. It is always a great time to see friends and family. This is my fifteenth fair. I don't really remember all of them, but I have pictures when I was a little girl having fun at the fair. Now I get to help Clark and Adalyn have fun. I like to ride the big rides. I rode three of my favorites. Please remember, don't ever eat before getting on a ride! That can be bad!

It was a beautiful night with a full moon and a band playing. It was fun to ride the merry-go-round with Addy, even if it was a little too small for me. She loved it, so I did too.

Clark is four. He helped his mother at the Ring Toss. He

(Continued Page 2)



**99 YEARS YOUNG:** The family and friends of Mary Margaret Dodd recently gathered in Graham, TX to celebrate her 99th birthday. There were over 40 in attendance that included her children, grandchildren, great-grandchildren and spouses. Also in attendance were 3 great-great-grandchildren making it a five-generation event.

**Council** (from Page 1)  
to approve payment of Hefley

Hardware bill. The motion carried with all 4 in favor, 0 against, 0 absent, and Kendall

abstaining. Carol made a motion to approve payment of all other monthly bills. Stacy seconded the motion. The motion carried with all 5 in favor, 0 against, 0 absent, and 0 abstaining.

Cameron Reed approached the Council with his request to connect to City water and sewer at his property located on Hefley Rd. After reviewing property information, the Council approved his request to connect to city utilities. The motion was made by Stacy, seconded by Carol, to approve Mr. Reed connecting to the

city lines at his own expense. The motion carried with all 5 in favor, 0 against, 0 absent, and 0 abstaining.

Kristen Moudy reported on her Leadership Development Training classes that will be on a monthly basis in Amarillo. She will continue to share with the Council about each meeting. She also visited about the ACCELERATION Action Plan, and provided each Council member with an information packet for their review. Also Kristen and Kristi informed the Council that the City Auditors suggested her EDC job title be corrected to EDC Executive Director according to State Labor Laws on salaried positions. Tammy Moore motioned, seconded by Stacy McQueen, to correct the title from EDC Coordinator to EDC Executive Director on a permanent basis for the position currently held by Kristen Moudy. The motion carried with all 5 in favor, 0 against, 0 absent, and 0 abstaining.

Paul Arganbright was absent. Charles Kuntz presented the financial statements.

Kristi presented the past due report for utility customers. A motion was made by Stacy, and seconded by Britt, to write-off balances on all accounts that are 90 days and over past due. The motion carried with all 5 in favor, 0 against, 0 absent, and 0 abstaining.

A motion was made by Britt to add Kendall Hefley as a signer on all accounts of the City of Wheeler at Wheeler Banking Center. The motion also included an additional rule on the current two signatures required to remain two signatures on all checks written, with one being an office secretary and one being an

elected official. The motion was seconded by Tammy. The motion carried with all 5 in favor, 0 against, 0 absent, and 0 abstaining.

At 6:55 p.m., a motion to adjourn was made by Carol, seconded by Kendall. The meeting adjourned with all in favor.

P.O. BOX 582  
WHEELER, TX 79096  
**806-334-1522**

PAUL TOPPER, JR.  
OWNER

**BIGTOP ENTERPRISE, LLC**  
TBA TOPPER HEAT & AIR SERVICE  
TXLICENSED HEAT & AIR SEPTIC SYSTEM INSTALLER  
Tx License #TACLB40893E OSO029695

806-334-1522



**THE WHEELER TIMES**  
Page 2 — Thursday, August 30, 2018  
"Wheeler: town of friendship and pride"

**Wheeler County COURT RECORDS**

List of instruments filed in the Wheeler County Clerk's office from August 20, 2018 to August 24, 2018.  
AUGUST 20, 2018  
ABSTRACT of JUDGMENT-Midland Funding LLC to Michele Brown, 7-5-18.  
BILL of SALE-Benjamin Rangel, et ux to Noemi Sifuentes Galavic, 8-18-18, All Secs. 16 & 17 & Pt. Sec. 1, 15, 18-22, Blk. 205, Addison Addition, Shamrock.  
MIN./ROY./CONVEY.-Oak Tree Minerals LLC to Woodhaven Resources LLC, Sec. 48, Blk. A-3, H&GN Ry. Company Survey; Sec. 2, Blk. 5, Brooks & Burleson Survey.  
RDT-Independent Bank to Westco Family Limited Partnership, 6-19-18, See Instrument.  
DT-Richard Rodzemny to Happy State Bank, 4-13-18, Lot 14 & S 15' Lot 15, Blk. 70, Woodley's Southside Addition, Shamrock.  
ABSTRACT of JUDGMENT-Midland Funding LLC to Michele Brown, 7-5-18.  
ABSTRACT of JUDGMENT-Midland Funding LLC to Lynna Koelzer, 7-5-18.  
PARTIAL RDT-Key Star Capi-

tal Fund LP to William Johnson Mayer, 8-2-18, All Sec. 66, Blk. A-7, H&GN Ry. Company Survey.  
PARTIAL RDT-Bank of Oklahoma to Sanguine Gas Exploration LLC, 8-2-18, See Instrument.  
ASSIGNMENT CONVEY. BILL of SALE-Sanguine Gas Exploration LLC to FourPoint Energy LLC, 8-2-18, Sec. 66, Blk. A-7, H&GN Ry. Company Survey; Sec. 6, AB&M Survey.  
ASSIGNMENT CONVEY. BILL of SALE-Buffalo Creek LLC, et

(Continued Page 3)



Looking like the school year is off to a great start! Lots of families read during the summer and so we feel like we have been a part of the educational system in preparing them for the school year. Thank you to all the parents, grandparents and greats that brought in the young ones this summer. It was truly amazing and so enjoyable have a wonderful school year.

Remember the Wheeler Public Library is open for studying needs or help with reading subjects. Remember to turn in your books that you borrowed this summer too.

Adults, it is awfully quiet in our library and we have had lots of traffic but none as busy as the summer (young voices). We have a great assortment of new books and more coming in so keep on checking with us on the reads.

We are in the process of changing the way we keep up with books, due date and fines, etc.. Our system is going to catch up with the library world and be automated so our new equipment should be in the next couple of weeks. It will take some time to get it up and running because when you have a scanner, a new checkout system that includes hands on with every book and putting them in the system, it takes time. Believe it or not we do have a pretty huge selection of books and most folks that come in for the first time are blown away at the size of our collections. Makes us pretty proud when we hear that so bear with us as we change everything over in the next couple of months I can't express the gratitude we at the library feel for the folks that have donated funds toward this, we thank you from the bottom of our hearts. We will publish a list of donors later on. We will continue to except donations as time goes on to replace some of our floor computers that have been around many years. We have one that is available to the public right now and it's holding its own! So please come in and visit us!

Our hours of operation are: Monday - Friday—11:30 - 5:00; Closed on all major Holidays  
Doodle Classes: Thursdays @ 4:30 till? In the WorkRoom at WPL  
Quilting in WorkRoom: Every day you bring your own stuff and machine to work on  
Tuesdays 0 to 4 years old come from 10:00 a.m. till ? (No slated art just gathering, playing time)  
Thursdays 0 to 4 years old come from 3:00 till ? (No slated art just gathering, playing time)  
Monday - Friday: 3:30 till 5:00 p.m. Student Studying time  
Vicki Ferguson/Librarian  
Cindy Hartsfield/Assistant  
Marley/Support

Hear the "Abundant Living Broadcast" **KPDR-FM, 90.3** WHEELER, TEXAS Saturdays: 9:00 a.m. to Noon

8/27/2018 10:39 AM

Property Tax Form 50-198

## NOTICE OF TAX REVENUE INCREASE

The CITY OF WHEELER (name of taxing unit)

conducted public hearings on 8/20/2018 and 8/24/2018 on a proposal to (date of first hearing) (date of second hearing)

increase the total tax revenues of the CITY OF WHEELER from properties (name of taxing unit)

on the tax roll in the preceding year by 8 percent. (percentage by which proposed tax rate exceeds lower of rollback rate or effective tax rate calculated under this chapter)

The total tax revenue proposed to be raised last year at last year's tax rate of 0.58401 (insert tax rate for the preceding year)

for each \$100 of taxable value was \$362,112.00 (insert total amount of taxes imposed in the preceding year)

The total tax revenue proposed to be raised this year at the proposed tax rate of 0.63073 (insert proposed tax rate)

for each \$100 of taxable value, excluding tax revenue to be raised from new property added to the tax roll this year, is \$2,388.00 (insert amount computed by multiplying proposed tax rate by the difference between current total value and new property value.)

The total tax revenue proposed to be raised this year at the proposed tax rate of 0.63073 (insert proposed tax rate)

for each \$100 of taxable value, including tax revenue to be raised from new property added to the tax roll this year, is \$391,080.00 (insert amount computed by multiplying proposed tax rate by current total value.)

The WHEELER CITY COUNCIL is scheduled to vote on the (governing body of the taxing unit)

tax rate that will result in that tax increase at a public meeting to be held on August 31, 2018 (date of meeting)

at WHEELER CITY HALL (location of meeting including mailing address)

at 8AM (time of meeting)

The WHEELER CITY COUNCIL proposes to use the increase in the total tax revenue for the purpose of (governing body of the taxing unit)

MAINTAINANCE AND OPERATIONS (description of purpose of increase)

The Property Tax Assistance Division at the Texas Comptroller of Public Accounts provides property tax information and resources for taxpayers, local taxing entities, appraisal districts and appraisal review boards.

For more information, visit our website:  
comptroller.texas.gov/taxes/property-tax  
50-198 • 03-17-11

Listen To . . .  
**KPDR-FM, 90.3**  
WHEELER, TEXAS

**DOUG BOYD MOTOR CO.**  
Buy Here / Pay Here  
No Credit Check • Areas Largest Selection  
Pampa • Corner of Hwy 60 @ Hwy 70  
806-669-6062 • www.dougboydmotors.com

**Hyland's Pharmacy**  
Downtown Wheeler — 826-5561

**WEDDING SHOWER**      **BABY SHOWER**

**Tisha McLaughlin & Ronnie Lawlins**      **Candace Huffman & Cody Watkins**  
Wedding Date:      Baby Girl Shower Date:  
September 1, 2018      To be announced

**The store for all your needs:**  
**Prescriptions, Gifts for your loved ones.**

SUNDAY	MONDAY	TUESDAY	WEDNESDAY	THURSDAY	FRIDAY	SATURDAY
<b>FIRST STATE BANK of Mobeetie</b> Mobeetie & Wheeler Member F.D.I.C.				<b>CROSS COUNTRY BARN</b> Hunt Bros. Pizza Beer & Wine Pumps Open 24/7/365 301 E. Okla. St.—Wheeler Phone: 806-826-2276 Dale & Monica Kidd		<b>1</b> Jr. Hi & H.S. Cross Country @ Wolf Creek . . . 9:00 A.M.
<b>2</b> Church . . . Wheeler Nursing & Rehab W. Baptist . . . . . 3:00 PM	<b>3</b> Labor Day Wheeler School Holiday	<b>4</b> W.I.S.D. Open House 6:00 - 7:00 P.M.	<b>5</b>	<b>6</b> Wheeler Fire Dept. 7:00 P.M	<b>7</b> Wheeler Mustangs vs. Sayre There	<b>8</b> Jr. Hi & H.S. Cross Country @ Canadian. . . . . 9:00 A.M.
<b>9</b> Church . . . Wheeler Nursing & Rehab Allison . . . . . 3:00 PM	<b>10</b> Wheeler E.D.C. . . 7:00 P.M. City Office, Wheeler Comm. Court 10:00 A.M.	<b>11</b> Our Country Band Care Center	<b>12</b> Greenland Camp	<b>13</b> Wheeler Lions Club Sotos Rest. . . . . 6:30 A.M. J.H. Pep Rally 3:00 P.M.-3:30 P.M. J. H. Football 5:00 P.M.	<b>14</b> Wheeler Mustangs vs. Clarendon There	<b>15</b> Jr. Hi & H.S. Cross Country @ Wheeler . . . . . 9:00 A.M.
<b>16</b> Church . . . Wheeler Nursing & Rehab Mob. Baptist. . . . . 3:00 PM	<b>17</b> W. City Council . . 7:00 P.M.	<b>18</b>	<b>19</b>	<b>20</b> W. Fire Dept. . . . . 7:00 P.M. Chamber of Commerce Maxey's . . . . . 12 Noon Wheeler I.S.D. Staff Development	<b>21</b> Wheeler Mustangs vs. Highland Park Homecoming	<b>22</b>
<b>23</b> Church . . .Wheeler Nursing & Rehab Gary & Jana Snider . . . . . Reydon Comm. 3:00 PM	<b>24</b> Comm. Court 10:00 A.M.	<b>25</b> Our Country Band Care Center	<b>26</b>	<b>27</b> Wheeler Lions Club Sotos Rest. . . . . 6:30 A.M.	<b>28</b> W.I.S.D. 1st 6- Weeks Ends Wheeler Mustangs vs. Amarillo J.V. Here	<b>29</b>
<b>30</b> Church . . .Wheeler Nursing & Rehab Cornerstone. . . . . 3:00 PM						



2018 W.H.S. Freshman Athletes



2018 W.H.S. Sophomore Athletes

**BOB'S  
BAIL BONDS**  
806-826-0654 Cell 806-334-0452  
P.O. Box 264 Wheeler, TX 79096 Pat Childress



2018 W.H.S. Junior Athletes



2018 W.H.S. Senior Athletes

**Court** (from Page 2)

al to FourPoint Energy LLC, 7-30-18, Sec. 66, Blk. A-7, H&GN Ry. Company Survey; Sec. 6, AB&M Survey. RATIFICATION AMEND. OL-Kimberly Bowersock Miller to FourPoint Energy LLC, 7-7-18, Pt. Sec. 4, Blk. L, J. M. Lindsey Survey. EXECUTORS MD-Mary Gething Jones (Estate) to Tristan Lee James Trust, et al, 8-7-18, See Instrument. CERTIFICATE OF TRUST-William Edward Gething to William Edward Gething Revocable Living Trust, 8-7-18.

AUGUST 21, 2018 RDT-Bank of Oklahoma to Crystal BGF LP, 8-16-18, See Instrument. RELEASE UCC DT-Bank of Oklahoma to Crystal BGF LP, --- --, See Instrument. WELLBORE ASSIGN. OL-Zirreb Energy LP to Fifth Resiew LP, 6-1-18, Pt. SW/4 Sec. 59, Blk. A-7, H&GN Ry. Company Survey.

Survey. WELLBORE ASSIGN. OL-Zirreb Energy LP to Fifth Resiew LP, 6-1-18, Pt. Sec. 59, Blk. A-7, H&GN Ry. Company Survey. WELLBORE ASSIGN. OL-Zirreb Energy LP to Fifth Resiew LP, 6-1-18, Pt. SW/4 Sec. 59, Blk. A-7, H&GN Ry. Company Survey.

WELLBORE ASSIGN. OL-Zirreb Energy LP to Fifth Resiew LP, 6-1-18, Pt. Sec. 59, Blk. A-7, H&GN Ry. Company Survey. WELLBORE ASSIGN. OL-Zirreb Energy LP to Fifth Resiew LP, 6-1-18, Pt. E/2 & E/2 NE/4 Sec. 59, Blk. A-7, H&GN Ry. Company Survey.



**THE WHEELER TIMES**

Page 3— Thursday, August 30, 2018

"Whether: news of friendship and pride"

WELLBORE ASSIGN. OL-Zirreb Energy LP to Fifth Resiew LP, 6-1-18, Pt. W/2 & W/2 NE/4 Sec. 59, Blk. A-7, H&GN Ry. Company Survey. WELLBORE ASSIGN. OL-Zirreb Energy LP to Fifth Resiew LP, 6-1-18, Pt. Sec. 5, Blk. L, J. M. Lindsey Survey.

WELLBORE ASSIGN. OL-Zirreb Energy LP to Fifth Resiew LP, 6-1-18, Pt. SE/4 Sec. 5, Blk. L, J. M. Lindsey Survey. WELLBORE ASSIGN. OL-Zirreb Energy LP to Fifth Resiew LP, 6-1-18, Pt. NW/4 Sec. 6,

(Continued Page 4)

**Market** (from Page 1) pickles and relishes, cakes and breads, etc. for these last 3 weeks of market. So stock up for the winter with your favorite goodies while they last.

To quote one of the old-time members of the Wheeler Chamber of Commerce: "The farmers market will help the economy of the entire town of Wheeler; customers will come to the market then spend time in town eating in the local restaurants, filling their tanks at the local gas stations, buying groceries at the local retail spots, shopping the antique and consignment shops, etc.

So it is a mutual benefit to all." So with that in mind why do so many in our little town never support the local farmers market? Your guess is as good as mine.

I have coordinated this market now for 15 years and will be stepping down after this season. I will pass the torch to someone else for next year. I do plan to continue raising my truck garden and hope to continue working with the public in a retail way; I enjoy both. If you have any questions, comments, or concerns contact me, Chester Jones, at 806-438-5095.

**Comm.** (from Page 1)

The Commissioners' Court Precinct Redistricting Contract for Professional Services with Allison, Bass and Magee, LLP was approved at \$5,000. A census redistricting is required every 10 years.

The Wheeler County Judge's contract with Tascosa Office Machines for renewal of maintenance was approved for the copy machine in the county courtroom.

A Bureau Credit Card Account was setup for the county at no cost.

The court voted to approve the payment of the bills.

**Mob.** (from Page 1)

main attraction for the area. Craft Show, Clothing Booths and Bounce House will be open Monday, beginning at 10 and closing at 2. Homemade Ice Cream will also be available at the concession stand.

If you have not made it over to the Visitors' Center yet, the Quilt Show and Kenneth Wyatt Display will be open until 2 p.m.

The Lee Family will be playing music for the enjoyment of

those in attendance, beginning at 11 a.m.

The Annual Old Settlers' BBQ will begin at 12 noon and continue until everyone is served that delicious barbecue with trimmings, which has been enjoyed for the past 67 years.

The Labor Day Weekend of activities is being sponsored by the Old Mobeetie Jail Association. Mark your calendars; it is a weekend you will not want to miss.

**Canadian Redi-Mix, Inc.**

...for all your Concrete Needs!



806-323-5379

# Elk City RODEO

## of Champions

AUG. 31, SEPT. 1&2, 2018

Rodeo Nightly at 8pm

Ticket Info. 580.225.3005  
405.317.7161

Free Concerts

Sponsored by Elk City Convention & Visitors Bureau

10:00 PM • ACKLEY PARK

FRIDAY & SATURDAY NIGHT • Stage next to Rodeo Arena

Friday Night

READ SOUTHALL BAND

Saturday Night

JASON YOUNG BAND

Parade of Champions

Sponsored by Elk City Chamber Commerce and Great Plains Analytical Services

DOWNTOWN ELK CITY

SATURDAY, SEPT. 1 • 2PM

Bring your Lawn chairs!

Join the Fun at our Park & Museums!

Ackley Park

Centennial Carousel, Putt-Putt Golf, & Miniature Train Rides

National ROUTE 66 Museum COMPLEX

Summer Rates  
Call 225-6266

Thank You for joining us!

Rodeo then Stay for the Concerts!

For More Information call 580.225.0906 or Visit [www.visitelkcity.com](http://www.visitelkcity.com)



8/27/2018 8:39 AM

Property Tax Form 50-212

### NOTICE OF EFFECTIVE TAX RATE

2018 Property Tax Rates in wheeler co general  
(insert year) (insert taxing unit name)  
This notice concerns 2018 property tax rates for wheeler co general  
(insert year) (insert taxing unit name)

It presents information about three tax rates. Last year's tax rate is the actual rate the taxing unit used to determine property taxes last year. This year's effective tax rate would impose the same total taxes as last year if you compare properties taxed in both years. This year's rollback tax rate is the highest tax rate the taxing unit can set before taxpayers can start tax rollback procedures. In each case these rates are found by dividing the total amount of taxes by the tax base (the total value of taxable property) with adjustments as required by state law. The rates are given per \$100 of property value.

<b>Last year's tax rate:</b>	
Last year's operating taxes	\$6,556,596
Last year's debt taxes	\$0
Last year's total taxes	\$6,556,596
Last year's tax base	\$1,830,224,687
Last year's total tax rate	\$0.3582400 /\$100
<b>This year's effective tax rate:</b>	
Last year's adjusted taxes (after subtracting taxes on lost property)	\$6,556,596.0000000
+ This year's adjusted tax base (after subtracting value of new property)	\$1,827,123,220.0000000
= This year's effective tax rate (Maximum rate unless taxing unit publishes notices and holds hearings.)	\$0.3588400 /\$100

In the first year a hospital district collects the additional sales tax to reduce property taxes, it must insert the following lines unless its first adjustment was made last year:

- Sales tax adjustment rate	\$0.0000000 /\$100
= Effective tax rate	\$0.3588400 /\$100

**This year's rollback tax rate:**

Last year's adjusted operating taxes (after subtracting taxes on lost property and adjusting for any transferred function, tax increment financing, state criminal justice mandate, and/or enhanced indigent health care expenditures)	
	\$6,556,596.0000000
/ This year's adjusted tax base	\$1,827,123,220.0000000
= This year's effective operating rate	\$0.3588400 /\$100
X 1.08 = this year's maximum operating rate	\$0.3875500 /\$100
+ This year's debt rate	\$0.0000000 /\$100
= This year's total rollback rate	\$0.3875500 /\$100

A hospital district that collects the additional sales tax to reduce property taxes, including one that collects the tax for the first time this year, must insert the following lines:

- Sales tax adjustment rate	\$0.0000000 /\$100
= Rollback tax rate	\$0.3875500 /\$100

For a taxing unit with additional rollback rate for pollution control, insert the following lines:

+ Additional rollback rate for pollution control	\$0.0000000 /\$100
= Rollback tax rate	\$0.3875500 /\$100

The Property Tax Assistance Division at the Texas Comptroller of Public Accounts provides property tax information and resources for taxpayers, local taxing entities, appraisal districts and appraisal review boards. For more information, visit our website: [comptroller.texas.gov/taxinfo/proptax](http://comptroller.texas.gov/taxinfo/proptax)

8/24/2018 11:41 AM

Form 50-818 05-14/2

## NOTICE OF 2018 TAX YEAR PROPOSED PROPERTY TAX RATE FOR WHEELER COUNTY

A tax rate of \$ \$0.4872800 per \$100 valuation has been proposed for adoption by the governing body of WHEELER COUNTY

PROPOSED TAX RATE	\$ <u>\$0.4872800</u> per \$100
PRECEDING YEAR'S TAX RATE	\$ <u>\$0.4864700</u> per \$100
EFFECTIVE TAX RATE	\$ <u>\$0.4872800</u> per \$100

The effective tax rate is the total tax rate needed to raise the same amount of property tax revenue for WHEELER COUNTY from the same properties in both the 2017 tax year and the 2018 tax year.

**YOUR TAXES OWED UNDER ANY OF THE ABOVE RATES CAN BE CALCULATED AS FOLLOWS:**  
property tax amount = ( rate ) x ( taxable value of your property ) / 100

For assistance or detailed information about tax calculations, please contact:

LEWIS SCOTT PORTER  
WHEELER COUNTY tax assessor-collector  
401 main wheeler tx 79079  
806/826/3131  
lewis.porter@co.wheeler.tx.us  
0

8/27/2018 8:36 AM

Property Tax Form 50-212

### NOTICE OF EFFECTIVE TAX RATE

2018 Property Tax Rates in WHEELER CO LAT/RD  
(insert year) (insert taxing unit name)  
This notice concerns 2018 property tax rates for WHEELER CO LAT/RD  
(insert year) (insert taxing unit name)

It presents information about three tax rates. Last year's tax rate is the actual rate the taxing unit used to determine property taxes last year. This year's effective tax rate would impose the same total taxes as last year if you compare properties taxed in both years. This year's rollback tax rate is the highest tax rate the taxing unit can set before taxpayers can start tax rollback procedures. In each case these rates are found by dividing the total amount of taxes by the tax base (the total value of taxable property) with adjustments as required by state law. The rates are given per \$100 of property value.

<b>Last year's tax rate:</b>	
Last year's operating taxes	\$1,165,293
Last year's debt taxes	\$0
Last year's total taxes	\$1,165,293
Last year's tax base	\$1,826,479,046
Last year's total tax rate	\$0.0638000 /\$100
<b>This year's effective tax rate:</b>	
Last year's adjusted taxes (after subtracting taxes on lost property)	\$1,165,293.0000000
+ This year's adjusted tax base (after subtracting value of new property)	\$1,823,508,000.0000000
= This year's effective tax rate (Maximum rate unless taxing unit publishes notices and holds hearings.)	\$0.0639000 /\$100

In the first year a hospital district collects the additional sales tax to reduce property taxes, it must insert the following lines unless its first adjustment was made last year:

- Sales tax adjustment rate	\$0.0000000 /\$100
= Effective tax rate	\$0.0639000 /\$100

**This year's rollback tax rate:**

Last year's adjusted operating taxes (after subtracting taxes on lost property and adjusting for any transferred function, tax increment financing, state criminal justice mandate, and/or enhanced indigent health care expenditures)	
	\$1,165,293.0000000
/ This year's adjusted tax base	\$1,823,508,000.0000000
= This year's effective operating rate	\$0.0639000 /\$100
X 1.08 = this year's maximum operating rate	\$0.0690100 /\$100
+ This year's debt rate	\$0.0000000 /\$100
= This year's total rollback rate	\$0.0690100 /\$100

A hospital district that collects the additional sales tax to reduce property taxes, including one that collects the tax for the first time this year, must insert the following lines:

- Sales tax adjustment rate	\$0.0000000 /\$100
= Rollback tax rate	\$0.0690100 /\$100

For a taxing unit with additional rollback rate for pollution control, insert the following lines:

+ Additional rollback rate for pollution control	\$0.0000000 /\$100
= Rollback tax rate	\$0.0690100 /\$100

The Property Tax Assistance Division at the Texas Comptroller of Public Accounts provides property tax information and resources for taxpayers, local taxing entities, appraisal districts and appraisal review boards. For more information, visit our website: [comptroller.texas.gov/taxinfo/proptax](http://comptroller.texas.gov/taxinfo/proptax)

8/28/2018 8:13 AM

Property Tax Form 50-212

### NOTICE OF EFFECTIVE TAX RATE

2018 Property Tax Rates in WHEELER CO RD & BDG  
(insert year) (insert taxing unit name)  
This notice concerns 2018 property tax rates for WHEELER CO RD & BDG  
(insert year) (insert taxing unit name)

It presents information about three tax rates. Last year's tax rate is the actual rate the taxing unit used to determine property taxes last year. This year's effective tax rate would impose the same total taxes as last year if you compare properties taxed in both years. This year's rollback tax rate is the highest tax rate the taxing unit can set before taxpayers can start tax rollback procedures. In each case these rates are found by dividing the total amount of taxes by the tax base (the total value of taxable property) with adjustments as required by state law. The rates are given per \$100 of property value.

<b>Last year's tax rate:</b>	
Last year's operating taxes	\$1,179,295
Last year's debt taxes	\$0
Last year's total taxes	\$1,179,295
Last year's tax base	\$1,830,350,876
Last year's total tax rate	\$0.0644300 /\$100
<b>This year's effective tax rate:</b>	
Last year's adjusted taxes (after subtracting taxes on lost property)	\$1,179,295.0000000
+ This year's adjusted tax base (after subtracting value of new property)	\$1,827,123,220.0000000
= This year's effective tax rate (Maximum rate unless taxing unit publishes notices and holds hearings.)	\$0.0645400 /\$100

In the first year a hospital district collects the additional sales tax to reduce property taxes, it must insert the following lines unless its first adjustment was made last year:

- Sales tax adjustment rate	\$0.0000000 /\$100
= Effective tax rate	\$0.0645400 /\$100

**This year's rollback tax rate:**

Last year's adjusted operating taxes (after subtracting taxes on lost property and adjusting for any transferred function, tax increment financing, state criminal justice mandate, and/or enhanced indigent health care expenditures)	
	\$1,179,295.0000000
/ This year's adjusted tax base	\$1,827,123,220.0000000
= This year's effective operating rate	\$0.0645400 /\$100
X 1.08 = this year's maximum operating rate	\$0.0697000 /\$100
+ This year's debt rate	\$0.0000000 /\$100
= This year's total rollback rate	\$0.0697000 /\$100

A hospital district that collects the additional sales tax to reduce property taxes, including one that collects the tax for the first time this year, must insert the following lines:

- Sales tax adjustment rate	\$0.0000000 /\$100
= Rollback tax rate	\$0.0697000 /\$100

For a taxing unit with additional rollback rate for pollution control, insert the following lines:

+ Additional rollback rate for pollution control	\$0.0000000 /\$100
= Rollback tax rate	\$0.0697000 /\$100

The Property Tax Assistance Division at the Texas Comptroller of Public Accounts provides property tax information and resources for taxpayers, local taxing entities, appraisal districts and appraisal review boards. For more information, visit our website: [comptroller.texas.gov/taxinfo/proptax](http://comptroller.texas.gov/taxinfo/proptax)

WHEELER MUSTANG FOOTBALL  
live on...



# Legends 98.9

The Legends of Rock & Roll - KXNZ-FM

Legends 92.9 - KSNZ (The Legends of Country)  
Shamrock — Wheeler County, TX  
207 North Main Street — P.O. Box 83  
Shamrock, TX 79097  
Phone: 806-256 2277  
Online: www.legends989.com

## Larry & Carol Porton




**MEET THE MUSTANGS**

**WHEELER**  
Hagen Weatherly  
Sr. — 3/54 — OL/RB

**WHEELER**  
Angel Ontiveros  
Sr. — 14 — WR/SEC

## CAPITAL FARM CREDIT

# WARE Chevrolet Buick Inc.



South Hwy. 83  
Wheeler, Texas  
Phone: 806.826.5521  
www.warecbp.com

# Robertson FUNERAL DIRECTORS

www.RobertsonFuneral.com  
Clarendon—Claude—Memphis—McLean—Shamrock—Wheeler

# Kim's Barber Shop

7788 U.S. Hwy 83 — Wheeler, TX 79096  
Tuesday thru Friday — 8 a.m. - 2 p.m.  
806.334.0261 Kim Angeley

# Dr. Mike Smith — Mike and Jenny Smith

# Novedades Saharay

410 S. Main Wheeler, Texas

# Wheeler JV & JH Football Schedule

Date	Opponent	Site	Time
9-13	Clarendon	Here	5:00
9-20	Highland Park	There	5:00
9-27	TBA		5:00
10-11	Munday	There	5:00
10-18	Shamrock	Here	5:00
10-25	Memphis	There	5:00
11-1	Quanah	There	5:00
11-8	Wellington	Here	5:00

# LOTT RANCHE

Hereford Breeders  
T.C. & Agnes Lott Family, Owners  
Est. March, 1945

# H&H TIRE

Chad Helton  
Owner  
806-826-5769  
714 W. Okla. Ave  
Wheeler, TX 79096




**MEET THE MUSTANGS**

**WHEELER**  
Ian Finsterwald  
Jr. — 11 — WR/LB

**WHEELER**  
Hunter Smith  
Jr. — 24 — WR/LB

Max, Stacy, Creede, Gavin, Jennifer,  
& Annabel Lea McQueen

# Finsterwald Ranch

# HYLAND'S Pharmacy

109 West Texas Street • 826-5561 • Wheeler, TX  
Randy & Crystal McEntire, Owners

# STILES RANCH

Bob & Sue Stiles  
Bill & Kay Stiles



# TEXAS STREET

FLORAL CO.  
806-826-5943 121 W. Texas Street Wheeler, Texas

# Kim's Kitchen Lunch Buffet Everyday

Intersection Hwys 83 & 152 • Wheeler, TX • 806-826-5102

Your Partners in Progress

# Wellington State Bank

Bowie • Canadian • Childress • Dalhart • Littlefield • Lubbock • Olton • Memphis • Wheeler • Wellington  
www.wellingtonsb.com

Sharon Helton, Owner

Register with us for your shower!

# LaRue's Rags

406 S. Main — P.O. Box 1080  
Wheeler, TX 79096  
806-826-0666

# LYNDON AUCTIONEERS

Lyndon & Noveline Loyd  
P.O. Box 1279  
Wheeler, Texas 79096  
(Lic. # 7119)

## Ed & Patricia Forrester

# M Maxey's STEAKHOUSE

S. Hwy. 83 — Wheeler, TX — 806.826.3441  
Call for Catering, Private Parties & Daily Specials

# Christner Cattle, L.P.

Tom & Kay Christner

# Sandra Christner




# Mel's Diner

West Hwy. 152 — Wheeler  
Where Friends Meet To Eat!  
WE CATER — 826-3756

# WILD Seasons

503 Canadian St.  
Wheeler, Texas  
806.663.1553  
Tracy Tignor

**MEET THE MUSTANGS**

**WHEELER**  
Logan Harris  
Sr. — 21 — WR/SEC

**WHEELER**  
Andres Garcia  
Sr. — 77 — OL/DL

In Memory Of...

# Dr. Louie Mendiola, M.D., P.A.

Gina, Vincent, Melissa, Hunter, Ashley Marie, Chloe Taylor, Rocky, Rosemary & Magnolia Noelle and Josephine Rose Mendiola

P.O. BOX 582  
WHEELER, TX 79096  
806-331-1522

PAUL TOPPER, JR.  
OWNER

# BIGTOP ENTERPRISE, LLC

TBA TOPPER HEAT & AIR SERVICE  
TX LICENSED HEAT & AIR SEPTIC SYSTEM INSTALLER  
Tx License #TACL540883E 08/002986

806-334-1522

# WHEELER MUSTANGS

## WHEELER MUSTANGS

#	Name	Off.	Def.	Wt.	Cl.
3/54	Hagen Weatherly	OL/RB	LB	161	Sr.
4	Baldemar Gallardo	WR	LB	186	Jr.
5	Gustavo Andrade	QB	SEC	157	Jr.
7	Jovany Gallardo	WR	SEC		Fr.
8	Hesston Marshall	RB	LB	157	So.
11	Ian Finsterwald	WR	LB	165	Jr.
12	Nathan Rowley	QB	SEC		Fr.
14	Angel Ontiveros	WR	SEC	170	Sr.
21	Logan Harris	WR	SEC	167	Sr.
23	David Rascon	RB	LB	155	So.
24	Hunter Smith	WR	LB	154	Jr.
27	Zachary Beard	WR	LB		Fr.
28	Mauricio Soto	WR	SEC		Fr.
30	Marcos Herrera	OL	LB	151	So.
33	Jaden Conner	WR	LB		Fr.
34	Jesus Anchondo	WR	LB		Fr.
35	KaMonte Martin	RB	LB		Fr.
40	Manuel Jurado	RB	LB		Fr.
50	Josue Sigala	OL	DL		Jr.
51	Austin Calhoun	OL	LB	180	Jr.
52	Daniel Rascon	OL	DL	221	So.
55	Nathanael Darnell	WR	SEC		Fr.
58	Paden Markham	OL	DL	210	Jr.
60	Jeremiah Rodriguez	OL	DL		Fr.
61	Jacob Ramirez	OL	DL		Jr.
64	Hunter Koelzer	OL	DL		Fr.
65	Alex Davis	OL	DL	196	Jr.
68	Travis Reeves	OL	DL		Fr.
70	Brayan Contreras	OL	DL		Fr.
74	Bryce Richardson	OL	LB		Fr.
77	Andres Garcia	OL	DL	260	Sr.
78	Jesse Sierra	OL	DL	296	Fr.
79	Dakota Westbrook	OL	LB		Fr.
80	Jayton Couch	WR	SEC	129	Jr.
81	Diego Pichardo	RB	SEC		So.
85	Hayden Holwich	WR	SEC		Fr.

# Wheeler Ink & Threads

Owner: Ashley Koepke 806.570.0645 wheelerinkandthreads@hotmail.com

# RiverCrest REALTY

Ken Baxter — 806-334-0123  
landdaddy47@gmail.com  
Chip & Pam Hill — 469-323-9625  
pamhill@rivercresthomes.net

## Steve, Joyce & Caitlynn Walker

## ARROW WATER WELL, INC.

# Wheeler Varsity Football Schedule

Date	Site	Location	Time
8-17	Hollis	Here (Scrimmage)	6:00
8-24	Bovina	TBA (Scrimmage)	TBA
8-31	Sayre	There	7:00
9-7	TBA	Here	7:00
9-14	Clarendon	There	7:00
9-21	Highland Park	Here	7:00
9-28	Amarillo High JV	Here	7:00
10-5	Open		
10-12	Munday	Here	7:00
10-19	Shamrock*	There	7:00
10-26	Memphis*	Here	7:00
11-2	Quanah*	Here	7:00
11-9	Wellington*	There	7:00

# WALLACE CONSTRUCTION

Changing the looks of Wheeler—one building at a time!  
305 Main — Wheeler, TX — 826-3503

# WALLACE TAX SERVICE

For all your accounting needs — 826-3503




**MEET THE MUSTANGS**

**WHEELER**  
Josue Sigala  
Jr. — 50 — OL/DL

**WHEELER**  
Austin Calhoun  
Jr. — 51 — OL/LB

## Danny, Ravonda, Josh & Nick Hardcastle

# EASTERN PANHANDLE Insurance Agency, Inc.

206 N. Madden — Shamrock  
Phone: 806/256-5401



**BRITT RANCH**

806-826-3414  
  
 500 S. Alan L. Bean  
 Wheeler, Texas

HOME - AUTO - FARM - LIFE  
**Todd Moore Insurance Agency, Inc.**  
 Representing the Germania Companies  
 315 N. Main — P.O. Box 168 — Shamrock, TX 79079  
 Todd Moore - Owner/Agent  
  
 806.256.8911 806.334.0330 800.687.3730

**Go Mustangs!**  
  
 Spearman, TX  
 Dalhart, TX  
 Pampa, TX  
 Dumas, TX  
 Peryton, TX  
 Boise, City, OK  
 Guyman, OK  
  
**GREEN COUNTRY EQUIPMENT, LLC**  
 Pampa, Texas  
 806-665-1888  
 WWW.GREENCOUNTRYEQUIP.COM

**Junction Country Store**  
 Daily Lunch Specials  
 Plenty of Seating  
 Truck Parking  
 FM 8794 & US Hwy 83

Jay & Karen Lewis and Family

CHARLES R. BROWN

**FIRST STATE BANK**  
 Mobeetie & Wheeler  
 Established 1906 Member F.D.I.C.

**FARM BUREAU INSURANCE**  
**HEMPHILL COUNTY FARM BUREAU**  
 806-323-5752  
 David & Rita Pearson

Gail & Sally Ledbetter

Betty Hennard

**WHEELER VETERINARY CLINIC**  
 Drs. LeeAnn & Ben Ed Hillhouse

**PARADISE SPA** BY APPOINTMENT ONLY!  
 114 E. Texas Ave. — Wheeler, TX  
 806-826-0296

**CenterGas**  
 710 E. Oklahoma St. — Wheeler, TX  
 806-826-5222

**BAYMONT**  
 INN & SUITES  
 1410 S. Alan L. Bean Blvd, Wheeler, TX — 806.826.1012

**MEET THE STANGS**

Baldemar Gallardo Jr. — 4 — WR/LB

Ian Finsterwald Jr. — 11 — WR/LB

**WHEELER NURSING AND REHABILITATION**  
 A Daybreak Community  
 Clarissa Williams-Joseph  
 Administrator  
 1000 South Kiowa/P O Box 525  
 Wheeler, TX 79096  
 adm.wheeler@daybreakventure.com  
 Office 806-826-3505  
 Fax 806-826-3195

# vs SAYRE ROCKETS

## FRIDAY, AUGUST 31, 2018

### Sayre Stadium — 7 P.M.

**CARNIGERIA AGUILAR**  
 (806)826-1027  
 7 Days a Week — 10:00 A.M.—9:00 P.M.

LeRoy & Rhonda Meriwether & Stormie

**Go Stangs!**  
**GREENBELT ELECTRIC COOPERATIVE, INC.**  
 708 10th — Wellington, TX — 447-2536  
 Serving the Rural Area of Armstrong, Childress, Wheeler, Collingsworth, Donley, Gray, Hemphill, Randall & Roberts

**MEET THE STANGS**

Paden Markham  
 Jr. — 58 — OL/DL

Hesston Marshall  
 So. — 8 — RB/LB

**SAYRE ROCKETS**

#	Name	Pos.	Yr.	Ht.	Wt.
8	Kaden Merrell	QB, OLB	Jr.	6-1	220
21	Daniel Salas	RB, WR	Jr.	6-0	170
21	Robbie Niavez	FB, MLB	Sr.		
25	Caleb Moore	WR, CB	Jr.		
28	Ricky Ramirez	RB, MLB	Sr.		
30	Powell RJ	RB, SB	Sr.	6-2	
32	Daymon Carlisle	FB, MLB	Jr.	5-4	145
33	Brody Piercy	CB, RB	Jr.		
34	Jeremiah Cothron	RB, MLB	Sr.		
35	Ken Cargal	MLB, RB	Sr.		
50	William Robinson	T, DT	Sr.		
53	Daytin Blackshear	T, DT	Jr.		
55	Logan Sawyer	C, OLB	Sr.	5-11	205
58	Andrew Werner	G, DE	Sr.		
60	Hunter Dodson	NG, G	Sr.	5-10	180
61	Nathan Ferry	T, DT	Jr.		
71	Cameron Yake	G, DE	Jr.	5-9	170
72	Landen Welch	OLB	Jr.	6-0	160
72	Landen Welch	G, DE	Jr.		
74	Jon Dicus	G, DT	Sr.	5-10	155
74	Jake Simmons	T	8th	5-1	132
80	Sammy Grinder	WR, CB	Jr.		
82	Spencer Robinson	TE, DE	Sr.		
	Devin Lasater				
	Hunter Flanagan		Jr.	6-0	240

**BOB'S BAIL BONDS**  
 806-826-0654 Cell 806-334-0452  
 P.O. Box 264 Wheeler, TX 79096 Pat Childress

**WEST TEXAS GAS**  
 Wheeler Division—500 S. Mobeetie—Wheeler, TX 79096

**CROSS COUNTRY BARN**  
 24-Hr Gas & Diesel  
 Convenience Store  
 Hunt Bros. Pizza & Wings  
 Hamburgers/Sandwiches  
 Beer & Wine  
 301 E. Oklahoma St — Wheeler, Texas — 806-826-2276  
 Dale & Monica Kidd, Owners

**MEET THE STANGS**

Alex Davis  
 Jr. — 65 — OL/DL

Jayton Couch  
 Jr. — 80 — WR/SEC

**The Rusty Barb**  
 401 S. Mobeetie St. Wheeler, Texas  
 806-203-1442 Fax: 806-203-3309

Gary & Becky Hardcastle Todd, Mindy, Bailey, Reagan & Presley Brashears  
 Marcus, Heather, Justin, Houston & Sierra Hardcastle

Robert, Marla, Spencer & Mitchell

Leo & Sylvia Shuler

Bob Wills

**Marshall Discount Auto**  
 PARTS 4 PLUS  
 Daryl & Maggie Marshall  
 Mack, Crystal, Mariah, Trevor, MaKalli & Kanin  
 Mark, Joanna, Urrick & Hesston  
 Steve, Krista, Dylan & Kynstee  
 Mechelle, William, Hope, Austin & Wyatt

**Soto Family Restaurant**  
 708 E. OKLAHOMA — WHEELER — 806/826-3129

**WHEELER LAND & LIVESTOCK**  
 15495 Hwy 152 • Wheeler, TX 79096 • Ph: 806-826-5591  
 Fax: 806-826-3476 • Website: www.wlwl.net

**THE WHEELER TIMES**  
 Serving Wheeler Since 1933  
 "Wheeler: town of friendship and pride"  
 — Reporting Mustang Football Since 1934 —

**Shelton & Shelton**  
 Attorneys at Law  
 806/826-0069  
**Wheeler Title & Abstract Co.**  
 ... a Shelton Title Company  
 806/826-3526

**Weldon & Dolores Simmons**  
 Jimmy & Jotana Henson

## New Teachers At Wheeler I.S.D.

### Court

(from Page 4)

siew LP, 6-1-18, Pt. Sec. 16, Blk. A-7, H&GN Ry. Company Survey.

WELLBORE ASSIGN. OL-Zirreb Energy LP to Fifth Resiew LP, 6-1-18, Pt. Sec. 16, Blk. A-7, H&GN Ry. Company Survey.

WELLBORE ASSIGN. OL-Zirreb Energy LP to Fifth Resiew LP, 6-1-18, Pt. Sec. 16, Blk. A-7, H&GN Ry. Company Survey.

WELLBORE ASSIGN. OL-Zirreb Energy LP to Fifth Resiew LP, 6-1-18, Pt. Sec. 16, Blk. A-7, H&GN Ry. Company Survey.

WELLBORE ASSIGN. OL-Zirreb Energy LP to Fifth Resiew LP, 6-1-18, Pt. Secs. 16 & 16-A, Blk. OS-2.

WELLBORE ASSIGN. OL-Zirreb Energy LP to Fifth Resiew LP, 6-1-18, Pt. Sec. 5, Blk. L, J. M. Lindsey Survey.

WELLBORE ASSIGN. OL-Zirreb Energy LP to Fifth Resiew LP, 6-1-18, Pt. Sec. 5, Blk. L, J. M. Lindsey Survey.

WELLBORE ASSIGN. OL-Zirreb Energy LP to Fifth Resiew LP, 6-1-18, Pt. W/4 SE/4 Sec. 5, Blk. L, J. M. Lindsey Survey.

WELLBORE ASSIGN. OL-Zirreb Energy LP to Fifth Resiew LP, 6-1-18, Pt. Sec. 34, Blk. A-7, H&GN Ry. Company Survey.

WELLBORE ASSIGN. OL-Zirreb Energy LP to Fifth Resiew LP, 6-1-18, Pt. Sec. 37, Blk. A-7, H&GN Ry. Company Survey.

WELLBORE ASSIGN. OL-Zirreb Energy LP to Fifth Resiew LP, 6-1-18, Pt. Sec. 37, Blk. A-7, H&GN Ry. Company Survey.

WELLBORE ASSIGN. OL-Zirreb Energy LP to Fifth Resiew LP, 6-1-18, Pt. Sec. 37, Blk. A-7, H&GN Ry. Company Survey.

WELLBORE ASSIGN. OL-Zirreb Energy LP to Fifth Resiew LP, 6-1-18, Not Wheeler County Land.

WELLBORE ASSIGN. OL-Zirreb Energy LP to Fifth Resiew LP, 6-1-18, Not Wheeler County Land.

WELLBORE ASSIGN. OL-Zirreb Energy LP to Fifth Resiew LP, 6-1-18, Not Wheeler County Land.

WELLBORE ASSIGN. OL-Zirreb Energy LP to Fifth Resiew LP, 6-1-18, Not Wheeler County Land.

WELLBORE ASSIGN. OL-Zirreb Energy LP to Fifth Resiew LP, 6-1-18, Not Wheeler County Land.

WELLBORE ASSIGN. OL-Zirreb Energy LP to Fifth Resiew LP, 6-1-18, Not Wheeler County Land.

WELLBORE ASSIGN. OL-Zirreb Energy LP to Fifth Resiew LP, 6-1-18, Pt. Sec. 77, Blk. A-5, H&GN Ry. Company Survey.

WELLBORE ASSIGN. OL-Zirreb Energy LP to Fifth Resiew



Kelcie Kuehler will be the Special Ed teacher's aid this year at Wheeler. She is currently enrolled at Amarillo College. Her fiancé is Jordon Garcia.

LP, 6-1-18, Pt. Sec. 2, AB&M Survey.

WELLBORE ASSIGN. OL-Zirreb Energy LP to Fifth Resiew LP, 6-1-18, Pt. SE/4 Sec. 4, AB&M Survey.

WELLBORE ASSIGN. OL-Zirreb Energy LP to Fifth Resiew LP, 6-1-18, Pt. Sec. 9, Blk. L, J. M. Lindsey Survey.

WELLBORE ASSIGN. OL-Zirreb Energy LP to Fifth Resiew LP, 6-1-18, Pt. W/2 Sec. 21, Blk. L, J. M. Lindsey Survey.

WELLBORE ASSIGN. OL-Zirreb Energy LP to Fifth Resiew LP, 6-1-18, Pt. E/2 E/2 Sec. 6, Blk. L, J. M. Lindsey Survey.

WELLBORE ASSIGN. OL-Zirreb Energy LP to Fifth Resiew LP, 6-1-18, Pt. E/2 E/2 Sec. 6, Blk. L, J. M. Lindsey Survey.

WELLBORE ASSIGN. OL-Zirreb Energy LP to Fifth Resiew LP, 6-1-18, Pt. Sec. 20, Blk. L, J. M. Lindsey Survey.

AUGUST 22, 2018 MD-Bobby Lee Bailey (Estate) to Mark E. Bailey, et al, 8-10-18, 30.795 acs. Mineral in Sec 72, Blk. A-5, H&GN Ry. Company Survey.

ROY. DEED-David M. Dawson to Ex Industria LLC, 8-6-18, N/2 & SE/4 Sec. 26, Blk. A-8, H&GN Ry. Company Survey.

TDT-JPMorgan Chase Bank National Association to Lakeview Loan Servicing LLC, 8-8-18, See Instrument.

RDT-Arvest Bank to Earlsboro Energies Corporation, 8-15-18, See Instrument.

C/C PROBATE-Don Montgomery Harwell to Ex Parte, 8-16-18.

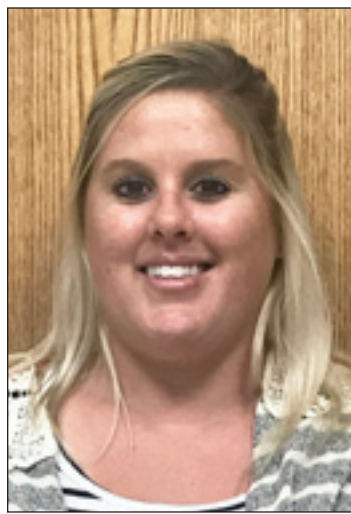
BILL of SALE/VL-Hall-Mac Corporation to R2N LLC, 8-20-18, Lots 1, 2, 21 & 22, Blk. 203, Vaughn's Hilltop Addition, Shamrock.

DVL-Hall-Mac Corporation to R2N LLC, 8-20-18, Lots 1, 2, 21 & 22, Blk. 203, Vaughn's Hilltop Addition, Shamrock.

DT-R2N LLC to Herring Bank, 8-20-18, Lots 1, 2, 21 & 22, Blk. 203, Vaughn's Hilltop Addition, Shamrock.

C/C PROBATE-Jerry D. Scott to Ex Parte, 6-11-18.

DEED-Jerry Dennis Scott



Kezi Cadenhead will be teaching first grade math, science and social studies this year at Wheeler. She is a graduate of West Texas A&M. She previously taught at Morningside-Dumas, TX. She is married to Ricky Salas and has a daughter, Hallie Ventura, age 8.

(Estate) to Steeden Preferred Properties LLC, 8-20-18, Pt. S/2 SE/4 Sec. 6, Blk. A-4, H&GN Ry. Company Survey.

DEED-Rebecca D. Foreman, et al to Skyler Mitchell, et ux, 4-25-18, 2 acs. SE/4 Sec. 31, Blk. A-3, H&GN Ry. Company Survey.

AUGUST 23, 2018 DEED-Ada Lou Lester to



Stacie Robison will be teaching Elementary Music this year. She graduated from Frank Phillips Community College with a license in cosmetology. She has been a substitute teacher in Pampa, Fort Elliott and Wheeler Schools in the past. She is married to Curtis Robison with five children: Jordon, Colton, Kaymi, Kristin, Kyler and Brynlee.

James Allen Lester, 8-22-18, W 130' Lots 4-6, Blk. 3, Blasdel Addition, Mobeetie.

C/C PROBATE-James Kenneth Collinsworth to Ex Parte, 8-2-18, See Instrument.

C/C PROBATE-Carla Gay



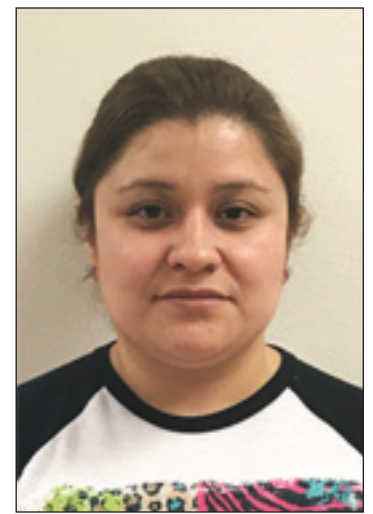
Virginia Perez is the custodian at Wheeler I.S.D. She is married to Gustavo Olivas; the couple has three youngsters: Lizbeth Hermosillo, Anayssa Arzabala and Gustavo A. Olivas.



THE WHEELER TIMES

Page 8 — Thursday, August 2, 2018

"Wheeler: towns of friendship and pride"



Edith Guzman will be a custodian at Wheeler I.S.D. this year. She is married to Armando Duron and has three children, Jacky Duron, Kayla Duron and Matthew Duron.

Lots 13-15, Blk. 23, Original Town, Shamrock.

AUGUST 24, 2018 ABSTRACT of JUDGMENT-Kelton Fuel Inc. to Danny Miller & Danny's Transports, 8-23-18.

## Hidetown Labor Day Festival & Reunion

### August 31st - September 3rd 2018

### Mobeetie Jail Museum Old Mobeetie, Texas

<p><b>Friday</b></p> <p>1pm - 5pm 7pm 7pm</p> <p><b>Saturday</b></p> <p>6am 10am 10am - 5pm 10am - 8pm</p> <p>11am - 3pm 12 pm - 2pm 2pm 9pm - 1am</p> <p>11am - 12pm 12pm - 1:30pm 12pm - 8pm 12pm - 8pm 12pm - 6:pm 2pm 6pm 6pm 8pm</p> <p>10am - 2pm 10am - 2pm 10am - 2pm 11am 12pm - 1pm</p>	<p>Quilt Show &amp; Kenneth Wyatt Display at the Visitor's Center</p> <p>Talent Show at the Old Jail</p> <p>Homemade Ice Cream &amp; Drinks</p> <p>Hidetown 5k run starts at the Visitors Center</p> <p>Breakfast burritos and drinks at the Visitors Center</p> <p>Parade (start at the bank awards at City Hall)</p> <p>Kenneth Wyatt Display &amp; Quilt Show at the Visitors Center</p> <p>Festival at the Old Jail</p> <p>Bounce Houses, \$10 wrist band</p> <p>Kids Games &amp; Events</p> <p>Homemade Ice Cream &amp; Drinks</p> <p>Food Booths</p> <p>Craft Show &amp; Clothing Booths</p> <p>Jail Booth \$2 lock up &amp; donation to get out</p> <p>Car Show at the Visitors Center</p> <p>Class Reunion at the elementary school</p> <p>Corn Hole &amp; Horseshoe Tournament (finals on Sunday)</p> <p>Dance - Texas Pearl Snaps \$10 Tickets</p> <p>Church @ the Old Jail</p> <p>Hamburgers &amp; Hotdogs</p> <p>Homemade Ice Cream &amp; Drinks</p> <p>Bounce House's</p> <p>Craft show &amp; clothing booth</p> <p>Horse Shoe &amp; Corn Hole tournament finals</p> <p>Steak Cook Off Dinner \$25 tickets (sold ahead of time)</p> <p>Cowboy Poetry</p> <p>Campfire &amp; S'mores</p> <p>Craft Show, Clothing Booths &amp; Bunce Houses</p> <p>Homemade Ice Cream &amp; Drinks</p> <p>Quilt Show &amp; Kenneth Wyatt Display at the Visitors Center</p> <p>Live Music - Lee Family</p> <p>Old Settlers BBQ</p>
---	--

# FIRST STATE BANK

**Mobeetie Office:**  
First & Wheeler St.  
Mobeetie, Texas  
845-2311

**Wheeler Office:**  
1408 S. Alan Bean Blvd.  
Wheeler, Texas  
826-5546

### Storm

(from Page 1)

is a good helper. Addy won first place in The Ruth Fisher Reading Review. She did a picture to tell about a book. It was adorable.

School is going great. I love my classes and my teachers. Band, of course is awesome! We are going to read Romeo and Juliet in Mrs. Jahnel's class. That will be fun. Mr. James is teaching us about guns, bow and arrow, and hunting. I am going to show pigs again this year. I am ready to get them.

The boys are playing football, but the band can't go. I think it will be fantastic when we get to play at the football games! Go Mustangs! That's it.

### Chat

(from Page 1)

a large number of youngsters involved in sports.

— cwe —

When school is out Friday, there are only 34 more weeks of school this school year.

— cwe —

We had a quiet weekend at OKC. Gene, Melba and Neil Arnold came Thursday evening for a short visit.

**Send Us Your  
Child's  
Picture**

**w/Name,  
Age, Parents  
& Grandparents**

**No Charge!**  
wtimes@windstream.net

For all your . . .  
Insurance Needs, See  
**Eastern Panhandle  
Insur. Agency, Inc.**  
206 N. Madden  
Shamrock  
**806/256-5401**  
•Auto •Home •Life •Health  
•Commercial •Bonds

**Panhandle Plains Realty**  
*Making Dreams Come True*

— Let us list your Real Estate —

<b>Linda Laycock</b> Broker, ABR, GREEN, SRES, E-PRO 806.662.1312	<b>Larry Hadley</b> Assoc. 806.662.2779	<b>Tisha Calhoun</b> Assoc. 806.440.4153
--	---	--

Pampa MLS    www.panhandleplainsrealty.com    Amarillo MLS





TEXAS  
 • SHAMROCK  
 • WELLINGTON • WHEELER  
 OKLAHOMA  
 • CHEYENNE • EUFAULA  
 • HINTON



PRICES EFFECTIVE: WEDNESDAY AUG. 29 THRU TUESDAY SEPT. 4, 2018

www.marketsquareonline.com

NOT LIABLE FOR TYPOGRAPHICAL OR PICTORIAL ERRORS. WE RESERVE THE RIGHT TO LIMIT QUANTITIES. SOME ITEMS NOT AVAILABLE IN ALL STORES.

# LABOR DAY

Small Pack \$1.49 lb.

**99¢** LB.

Family Pack meaty shoulder  
**Country Style Pork Ribs**

**\$3.99** EA.

seedless large  
**Watermelon**

Small Pack \$6.49 lb.

**\$5.99** LB.

family pack preferred trim boneless  
**New York Strip Steak**

**39¢** LB.

Fryer Leg Quarters  
 (sold in 10 lb. bag)

**\$1.49** LB.

Fresh Ground Beef  
 73% lean, (sold in 10 lb. tube)  
 family pack . . . \$1.99 lb.

**99¢** EA.

Cantaloupe  
 sweet & juicy

**2 \$1** LBS.

Jalapeño Peppers

## Labor Day SALE!

**\$5.99**

Hamburger Patties  
 Radney's 100% pure beef  
 2 lb. box

**2\$4** FOR

Oscar Mayer Meat Wieners  
 select varieties, 16 oz.

**\$2.59** LB.

Radney's BBQ Seasoned Chicken Breast

**\$2.59** LB.

Radney's Chicken Thighs for Fajitas

**\$4.99**

Oscar Mayer Quality Sliced Bacon  
 select varieties, 12-16 oz.

**2\$3** FOR

Large Avocados  
 MPK 1 oz. Guacamole mix . . . 79¢

**3\$1** FOR

Large Green Bell Peppers

**99¢** LB.

Offshore Navel Oranges

## SMORE SAVINGS

**\$3.99**

Hershey's Milk Chocolate  
 6 pack

**\$1.29**

Jet-Puffed Marshmallows  
 12 oz.

**\$1.98**

Shurfine Graham Crackers  
 honey or cinnamon  
 14.4 oz.

**88¢**

Hot Dog or Hamburger Buns  
 Tender Crust  
 8 ct.

**2 \$5** FOR

Cow Belle Ice Cream  
 select varieties  
 48 oz.

**4 \$10** FOR

Shurfine Soft Drinks  
 select varieties  
 12 pk. cans

**\$2.68**

Kraft Mayo or Mirade Whip  
 select varieties  
 30 oz.

**\$1.98**

XXL Lays or Wavy Lays  
 select varieties  
 9.5-10 oz.  
 pre price \$4.29

**\$4.78**

Gatorade Drinks  
 select varieties  
 8 pk. 20 oz. btt.

**88¢**

Ranch Style Beans  
 select varieties  
 15 oz.

**77¢**

Shurfine Mustard  
 14 oz.

**\$1.98**

Red Diamond Tea  
 select varieties  
 gallon

**\$1.99**

Shurfine Charcoal  
 reg. or mesquite  
 7.7 lb.