



"Pride of Wheeler" Band Practices.



THE WHEELER TIMES

(USPS-680-960)
VOLUME 85, NUMBER 4

THURSDAY, AUGUST 16, 2018

SINGLE COPY **50c**

"Wheeler: town of friendship and pride"

Wheeler County Commissioners' Court Meets

\$247,379 Equipment, \$3,825 Pay Raise



Such a surprise returning Sunday afternoon to measure 1.19" rain.

— cwe —

It was a really nice day Monday with partly cloudy skies, a shower in the morning and no wind with temperatures in the low 80's.

— cwe —

The Wheeler Pool will close for the summer Sunday.

— cwe —

Talent is being sought for the Mobeetie Talent Show. Join the fun.

— cwe —

(Continued Page 3)

STORM REPORT



As Reported by...
Stormie Meriwether,
Ninth Grade Student

Dear Friends, First of all I want to thank Mr. Peterson in California for sending me a letter. I appreciate you reading The Wheeler Times and my column. Thank you for encouraging me in my life. I will not forget your kind words.

Football boys are working hard and doing great. So watch out other teams. The Mustangs are coming and you are going down! GO MUSTANGS! Cross Country team is running and getting

(Continued Page 3)

The Commissioners' Court of Wheeler County, Texas, met in regular session on Monday, August 13, 2018, at 9:00 a.m., in the Commissioners' Courtroom of the Wheeler County Courthouse at 402 Main Street, Wheeler, Texas, to consider prior bills and discuss matters of mutual concern.

At 9:00 a.m. the payroll and related payroll expenses for the time period of August 1, 2018 through August 15, 2018 were approved.

At 10:00 a.m. the court addressed the 17 items on the agenda.

The minutes of previous meetings were approved as presented.

The following reports were received and approved: JP #1, \$10,842.00; JP #2, \$26,558.25; County Clerk, \$10,549.45; District Clerk, \$4,777.82; Tax Collector, \$23,686.57, and treasurers' Disbursements for the period 7-24-18 thru 8-8-18, \$173,765.93.

There were no budget amendments to be made.

Several line item transfers were approved by the court.

No action was taken on revisions to Wheeler County Policy Manual.

The court voted to reinstate the Stage 1 Burn Ban, effective August 13, 2018:

Renee Warren, Wheeler County Treasurer, received approval for the removal of Rebecca L. Brown from the payroll as a full time employee,

effective July 31, 2018.

The court removed Rebecca L. Brown as a signatory on accounts at Wellington State Bank and investment pool accounts at TexPool/TexPool Prime, TexStar/Logic and Texas Class, effective 7/31/2018.

Britt McCarter was added to the payroll as a full time employee for courthouse maintenance; his salary will be \$2,984.46 per month.

The court approved a resolution, presented by Nichole Mock, Auditor, to declare all inmates indigent for medical treatment purposes.

The court voted to write off insurance receivables for deceased retiree in the amount of \$2,822.52.

The court approved a Memorandum of Understanding between Texas A&M AgriLife Extension Service and Wheeler County Pertaining to Information Technology Services.

David Simpson, Commissioner Pct. 3, was given permission to purchase a 2018 Caterpillar Model: 140K ARO Motor Grader for \$272,764.00, less trade in for 2006 120H Caterpillar for \$42,000.00. Cost to the County is \$230,764.00.

John Walker, Commis-

sioner Pct. 4, was given permission to purchase a 16' Hibilt Mongoose XL Dump Bed at a cost of \$16,615.00.

An Interlocal Cooperation Agreement for Jail Services between Wheeler County and Potter County was approved by the commissioners.

Sherri Jones, District Clerk, presented a District Judge's Order setting Auditor's Salary. The court approved the annual pay increase of \$3,825.00; the auditor's salary is now \$80,325.00. The order reads:

ORDER SETTING COUNTY AUDITOR'S SALARY THE STATE OF TEXAS

COUNTY OF WHEELER

31ST JUDICIAL

DISTRICT OF TEXAS

WHEREAS, the County Auditor has heretofore been appointed in and for Wheeler County, Texas,

and WHEREAS, a public hearing was held on August 9, 2018, in accordance with Chapter 152 of the Local Government Code of Texas, and

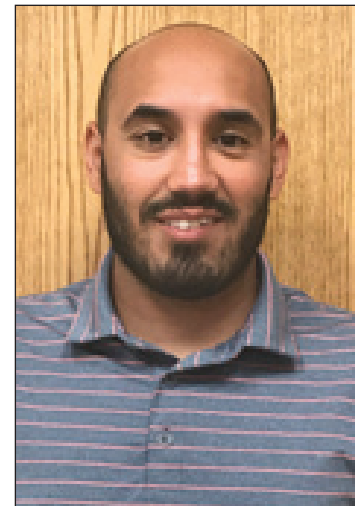
NOW, THEREFORE, I, Steven R. Emmert, 31st District Judge, of Wheeler County, Texas, as provided and authorized by §152.031, Texas Local Government Code, set the following annual salary to

(Continued Page 3)

MEET THE MUSTANGS

Tues. Aug. 21 . . . 6:00 p.m. at Nicholson Field

New Teachers At Wheeler I.S.D.



Jordon Garcia

... will be teaching High School Social Studies and is a Coach. He is a graduate of West Texas A&M University and taught at Westover Park in Canyon ISD. His fiancée is Kelcie Kuehler.

North Mesquite High School in Mesquite, TX, Irion County High School in Mertzon, TX and Angelo State University.



Shannon Miller

... is the PK thru 12 Counselor. She graduated from Texas A&M University with an Elementary Education Degree and Angelo State University with a Counseling Degrees. She has taught in several districts including Chillicothe ISD, Denton ISD, Cy-Fair ISD, Katy ISD and Knox County ISD in Tennessee. Her husband, Clint Miller, is a coach and a teacher. They have 7 children together ages 16-26, 5 boys and 2 girls.



Anissa Smith

... is the Assistant Band Director for Junior High and High School Bands. She is a graduate of Texas A&M University with a Bachelors of Music Education Instrumental EC-12. Her husband, Justice Smith, teaches Band at Petersburg. She has family in Canadian and Wheeler.

Alice Lister Rites Read On Aug. 11

Alice Lister, 89, of Shamrock passed away Wednesday, August 8, 2018 in Wheeler.

Services were Saturday, August 11, 2018 at 3:00 PM in the First Baptist Church in Shamrock, Rev. Mark Howard, Cottie Tarbet and James Conner officiated.

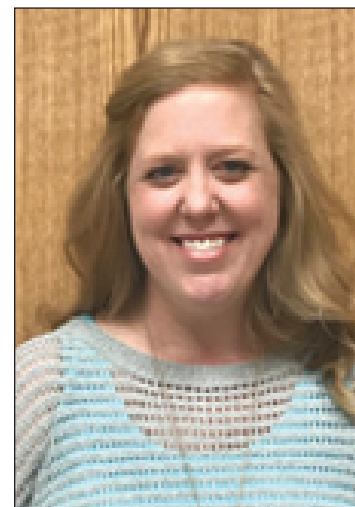
Interment was in Kelton Cemetery, Kelton, TX

Arrangements were by Robertson Funeral Directors of Shamrock.

Visitation was from 5:00-7:00 PM Friday at the funeral home.

Alice Lister was born 9 years after women gained the right to vote to T J Austin and Emma

(Continued Page 5)



Allison Evans

... will teach English III, English IV and Dual Credit College English. She has a BA from Angelo State with a major in English and a minor in Communications and a MA from Angelo State in English. Before coming to Wheeler she taught at Angelo Christian School in San Angelo, TX,



Alice Lister,

Mobeetie Celebration Aug. 30 thru Sept. 3

There's Still Time To Enter Events

Labor Day Weekend at Mobeetie scheduled to be quite busy. There will be entertainment for young and old this year, beginning at 1:00 p.m. Thursday, August 30, 2018. Kicking the holiday weekend will be the Quilt Show and Kenneth Wyatt Display at the Mobeetie Visitor Center.

Local and area quilters will be displaying their work from 1-5 p.m. at the Old School. Also on display will be various artifacts.

The Quilt Show and Kenneth Wyatt Display will continue into Friday with the addition of the Talent Show at 7 p.m. at the Arbor; Mobeetie's famous Homemade Ice Cream will be available for the enjoyment of those in attendance. Entry forms were in last week's

Times or also available on the Internet.

Saturday, September 1, kicks off at 6 a.m. with the Hidetown 5k run, starting at the Visitors' Center. Breakfast Burritos will be available, serving to continue until after the run.

The Parade at First State Bank will get underway at 10:00 a.m. Parade Awards will be presented at Mobeetie City Hall, immediately following the parade.

The Quilt Show and Kenneth Wyatt Display are still open for enjoyment by visitors.

The Festival at the Old Jail gets underway at 10 a.m. and continues until 8 p.m. Bring the youngsters and plan on spending the afternoon. For everyone's enjoyment will be

Bounce House; \$10 makes sure the kids are entertained all afternoon.

Homemade Ice Cream will be sold as well as a wide variety of foods by several food booths. There will be a Jail Booth, Car Show and Craft Show open all afternoon.

Former Mobeetie School Students will register at 11 a.m. at the elementary school with visiting planned until 2 p.m. Meet and visit with your old classmates.

Pokey the Clown will make an appearance at 2 p.m.

For those wishing to participate, Corn Hole and Horseshoe Tournaments will get underway at the old jail at 2 p.m.; finals will be Sunday at the old jail.

Spend the evening under the arbor at the old jail dancing and/or listening to music by

The Pearl Snaps from 9 p.m. until 1 a.m.

Church at the Old Jail at 11 a.m. will start the day filled with activities; Hamburgers and Hotdogs will be available from 12 noon until 2 p.m.

Homemade Ice Cream, drinks and bounce Houses will remain open until 8 p.m. The Quilt Show and Kenneth Wyatt Display will close at 5 p.m.

(Continued Page 3)

Local Talent Is Needed For Show

Calling all singers, poets, dancers, comedians, pickers and grinners, and actors!

Come share your talents with us on Friday, August 31st to help kick off our Labor Day Festivities.

If you or someone you know is interested, please contact Gina Seitz @ 806-669-5615



Have you ever been in a rut? I mean the kind where you want to change something, try something new but somehow you just don't manage to do it! That's the way I am with books. Our Patrons will come in and ask me if I've read so and so and I have to tell them no but I have heard....that really isn't very professional. There are just some books that do not interest me and never will because of language, plot or maybe the cover of the book. Sad to say I pretty much stay in a rut about the stuff I like to read. You know I don't think being in a rut sometimes is all that bad, I mean you know what to expect with a certain author, the plots are enriching and clean...REALLY! Lately there have been folks come in and tell me they will never read their favorite author again because all the sudden the story line has turned into outer limits stuff and the language is really extraordinary! So they are forced to seek something along their comfort zone. Well, let me tell you that isn't being in a rut it is called good taste and higher standards from the authors you read! It is getting harder and harder to find books and authors that stick to those standards but we do

have them. So if you feel you need to move on ask us and we can help you find something you would enjoy reading. Attention: We have new Book Fair Books on display thru this month ready for you to buy. They are priced reasonably for you to buy for Christmas presents or birthdays or just because! Some

have already left the shelf so please next time you come in look at the display at the left of the main desk and you will find them there. Summer Reading Group kids be sure to return all your books so others can enjoy them also. Speaking of books we still have quite a few folks that have late books and we

need them returned as soon as possible. We also have library cards that belong to some folks so if you have lost yours we have them at the front desk for you to pick up. I have mentioned that we are taking donations for the library. We are in the process of updating our check out system using a scanner. We need help with funds to order our scanner with program to set up, new laptop for library book use only. I am in the process

of checking out a couple of systems that will fit our library size. If you should choose to donate to this you can give funds to The City Office and designate the use or come by the library and we can

give you a receipt for funds donated to the new scanner equipment. Read, Read, Read! Vicki I. Ferguson/Librarian Cindy Hartsfield/Assistant Marley/Mascot



THE WHEELER TIMES

Page 2 — Thursday, August 16, 2018

"Wheeler: town of friendship and pride"

Wheeler School Cafeteria

Free and Reduced-Price Meals Info

Media Release for Free and Reduced-Price Meals Sample Wheeler Independent School District announced its policy today for providing free and reduced-price meals for children served under the attached current income eligibility guidelines. Each school/site or the central office has a copy of the policy, which may be reviewed by anyone on request.

Starting on July 2, 2018, Wheeler ISD will begin distributing letters to the households of the children in the district for service area) about eligibility benefits and any actions households need to take to apply for these benefits. Applications also are available Administration Office, #1 Mustang Drive.

Criteria for Free and Reduced-Price Meal Benefits The following criteria will be used to determine a child's eligibility for free or reduced-price meal benefits:

- Income
- Household income that is at

or below the income eligibility levels Categorical or Antoinatic Eligibility

Household receiving Supplemental Nutrition Assistance Program (SNAP), Temporary Assistance for Needy Families (TANF); or Food Distribution Program on Indian Reservations (FDPIR)

Program Participant Child's status as a foster child, homeless, runaway, migrant, or displaced by a declared disaster

Child's enrollment in Head Start or Even Start

Income Eligibility For those households that qualify for free or reduced-price meals based on income, an adult in the household must fill out free and reduced-price meal application and return it to (insert name, title, and contact information). Those individuals filling out the application will need to provide the following information:

Names of all household members Amount, frequency, and source of current income for each household member

Last 4 digits of the Social Security number of the adult household member who signs the application or, if the adult does not have a social security number, check the box for "No Social Security number"

Signature of an adult household member attesting that the information provided is correct Categorical or Program Eligibility

Wheeler Independent School District is working with local agencies to identify all children who are categorically and program eligible. Wheeler Independent School District will notify the households of these children that they do not need to complete an application. Any household that does not receive a letter and feels it should have should contact Randi Barr, 1-806-826-5241, #1 Mustang Drive.

Any household that wishes to decline benefits should contact Randi Barr, 1-806-826-5241, #1 Mustang Drive.

Applications may be submitted anytime during the school year. The information households provide on the application will be used for the purpose of determining eligibility. Applications may also be verified by the school officials at any time during the school year.

Determining Eligibility Under the provisions of the free and reduced-price meal policy Randi Barr will review applications and determine eligibility. Households or guardians dissatisfied with the Reviewing Official's eligibility determination may wish to discuss the decision with the Reviewing Official on an informal basis. Households wishing to make a formal appeal for a hearing on the decision may make a request either orally or in writing to Stacey Horton, Business Office, 806-826-5241, PO Box 1010 Wheeler Tx, 79096

Unexpected Circumstances If a household member becomes unemployed or if the household size increases, the household should contact the school. Such changes may make the children of the household eligible for benefits if the household's income falls at or below the attached current income eligibility guidelines.

Hyland's Pharmacy
Downtown Wheeler — 826-5561

BABY GIRL SHOWER: Name: Candace Huffman & Cody Watkins Date: TBA Place: TBA	Name: Shyla (Calcote) Boyd & Shane Boyd Date: 8/18/18 Place: Texetta Tarbet Home in Shamrock
WEDDING SHOWERS Name: Fatima Almanza & James Freeman Date: 8/25/2018 Place: Wheeler Area Church of Christ	Name: Taylor Sparks & James Chapman Date: 8/25/18 Place: Monica Kidd's House In Wheeler
The store for all your needs: Prescriptions, Gifts for your loved ones.	Name: Stormy Moore & Zach Hibler Date: 9/15/18 Place: Church of Christ Hosted By: Tamme Pike

DOUG BOYD MOTOR CO.
Buy Here / Pay Here
No Credit Check • Areas Largest Selection
Pampa • Corner of Hwy 60 @ Hwy 70
806-669-6062 • www.dougboydmotors.com

Wheeler County COURT RECORDS

List of instruments filed in the Wheeler County Clerk's office from August 6, 2018 to August 9, 2018.
AUGUST 6, 2018
RDT-Commerce Bank to Acceptor Limited Liability Company, et al, 7-13-18, See Instrument.
MIN./ROY./CONVEY.-John C. Sterquell to Oak Tree Minerals LLC, 7-31-18, See Instrument.
AFF. Of POSSESSION-Loyd Kent Bratcher to Loyd Kent Bratcher Children's Trust, 7-27-18, Pt. W 100 acs of W 200 acs. of S/2 Sec. 5, Blk. L, J. M. Lindsey Survey.
DEED-Mabel Tabor to Cindy Lou Tabor Bailey, et al, 8-2-18, See Instrument.
RDT-Bank of Oklahoma to Crystal BGF LP, 7-31-18, See Instrument.
UNIVERSAL ASSIGN. CONVEY. MIN. INTEREST-Harry B. Heutel Trust to James J. (Continued Page 5)

Wheeler County JP #1 Weekly Docket

Magistrations/ Arraignments:
22- Felony Magstration
11 - Class A/B Misd. Magstration

Citations:
5 -Wheeler County Sheriff Office Traffic Citations Issued
1- Wheeler County Sheriff Office Class C Misd. Citations Issued
1- TXDPS Traffic Citations Issued
7- Commercial Motor Enforcement Citations Issued

P.O. BOX 582
WHEELER, TX 79096
806-334-1522

PAUL TOPPER, JR.
OWNER

BIGTOP ENTERPRISE, LLC
TBA TOPPER HEAT & AIR SERVICE
TXLICENSED HEAT & AIR SEPTIC SYSTEM INSTALLER
TX License #TACLB40893E OSOO29695

806-334-1522

ENROLL NOW

SWOSU

Fall Classes Begin August 20th

GIVE US A CALL AT:
(580) 928-5533 SAYRE
(580) 772-6611 WEATHERFORD

OR VISIT US ON THE WEB AT:
WWW.SWOSU.EDU/SAYRE

Hear the "Abundant Living Broadcast"

KPDR-FM, 90.3
WHEELER, TEXAS
Saturdays: 9:00 a.m. to Noon

WANT ADS/ LEGAL NOTICES

Sell it through a Classified in
THE WHEELER TIMES!
\$6 for the first 20 words; 35c
for each additional word.
Legal Notices: 35c per word.

Historic 7 bedroom, 7 full
bathrooms, 2 half bathrooms,
fully furnished Bed & Breakfast
in Wheeler, TX. Birthplace of
4th man to walk on the moon!
Call 972-989-8019. 8-24trnc

New 3 bedroom 2.5 bath
townhomes for lease in
Wheeler, TX. Call 972-989-
8019. 8-24trn

FOR RENT: 2-bdrm house,
partially furnished. 812 S.
Sweetwater (across from
hospital) 806/676-0711 11/30trn

Sweetwater Creek Dairy in
Mobeetie Texas will be looking
for milkers. This job requires
a physically fit person who can
stand long hours. Starting
pay is \$12.00 per hour, no
overtime. Drug test and
background check required.
Apply at Red River Dairy in
Pampa Texas on Tuesdays
and Thursdays 6:30 AM until
7:30 AM. (806) 665-5225. 2c

PUBLIC NOTICE

As per Local Government
Code 152.013, the public is
hereby notified that all ap-
proved county employees
and elected officials are pro-
posed to receive a maximum
potential salary increase of
\$300.00 per month effective
October 1, 2018. The vote
on this proposal will be held
at the Regular Session of the
Wheeler County Commis-
sioners Court at 10:00 a.m.,
August 27, 2018.

NOTICE OF PUBLIC HEARING TO ADOPT BUDGET

**AND SET TAX RATE FOR
FISCAL YEAR 2018-2019
FOR WHEELER COUNTY,
TEXAS**

The Wheeler County Com-
missioners' Court will meet in
Regular Session on Monday,
August 27, 2018, at 9:00 a.m.
in the Commissioners' Court-
room of the Wheeler County
Courthouse, 401 Main Street,
Wheeler, Texas. At this meet-
ing the Commissioners Court
will adopt the Budget for the
2018-2019 fiscal year and will
set the Tax Rate for the 2018-
2019 fiscal year.

CITATION BY PUBLICATION

★★★★ \$1,000 SIGN ON BONUS ★★★★★
Be Your Own Boss, Choose Your Own Routes!

Looking for CDL drivers to deliver new trucks all
over the country, starting in Laredo, TX.

Experience preferred. Must have DOT physical and be
willing to keep logs. No DUIs in last 10 years, clean MVR.

Quality
Drive-Away

Apply Online at
www.qualitydriveaway.com
or call 574-642-2023

TEXAS STATEWIDE CLASSIFIED ADVERTISING NETWORK

TexSCAN

TexSCAN Week of
August 12, 2018

ACREAGE

West Texas Trans Pecos area, near Lake Amstad.
40-65 acres. Mesquite, cedar, brush cover. Whitetail,
javelina, blue quail, turkey, dove. 5% down,
30-year fixed rate owner financing. 866-286-0199,
www.ranchenterprisesllc.com.

AUCTION

Huge Public & Real Estate Auction, Sat., Aug. 25,
starts at 8:47 a.m., 1610 S. Main St., Sapulpa, OK.
Commercial property with 14,300+ sq. ft., 4 store
fronts + warehouse, currently used as machine shop.
Open houses: Aug. 13 & 20, 4-6 p.m. (real estate
only). Milling & lathe machines, mic & specialty tools,
machine vises & accessories, tig welders, lifts, shop
tools and more. Chupps Auction Co., 918-638-1157,
918-639-8555, www.chuppsauction.com.

CHARITY

Donate a boat or car today to Boat Angel. 2-Night Free
Vacation. Sponsored by Boat Angel Outreach Centers
to stop crimes against children. 800-700-BOAT,
www.boatangel.com.

COUNTRY MUSIC

Outlaws and Armadillos - Country's Roaring '70s.
Experience the exhibit at the Country Music Hall of
Fame and Museum, Nashville, TN. Album and book
also available. The exhibit explores the Outlaw phe-
nomenon that produced powerful music and everlasting
bonds between Nashville and Texas. 615-416-2001,
countrymusicoflame.org.

CAREER TRAINING

Airline Mechanic Training - Get FAA certification.
Approved for military benefits. Financial aid if quali-
fied. Job placement assistance. Call Aviation Institute
of Maintenance, 800-475-4102.

Texas Press Statewide Classified Network
283 Participating Texas Newspapers • Regional Ads
Start At \$250 • Email ads@texaspress.com

NOTICE: While most advertisers are reputable, we cannot guarantee products or services advertised. We
urge readers to use caution and when in doubt, contact the Texas Attorney General at 800-621-0508 or the
Federal Trade Commission at 877-FTC-HELP. The FTC web site is www.ftc.gov/bizop.

NO. 3864

THE STATE OF TEXAS
COUNTY OF WHEELER
TO: THE UNKNOWN HEIRS
OF JAMES PAUL HUTTON,
DECEASED
GREETINGS:

You are hereby commanded
to appear before the COUNTY
COURT of WHEELER
COUNTY, TEXAS at the
Courthouse of said County in
the City of Wheeler, WHEELER
COUNTY, TEXAS at or before
10:00 o'clock A.M. of the first
Monday after the expiration
of ten (10) days from the date
of publication of this citation
by filing a written answer to a
petition filed in said court on
AUGUST 8, 2018 in Cause
No. 3864, styled, In the Interest
of the estate of **JAMES PAUL
HUTTON, DECEASED**.

A brief statement of the nature
of the petition is as follows,
to-wit: THAT LORRAINE
THIELE BE APPOINTED
ADMINISTRATOR OF
THIS ESTATE, THAT
NO APPRAISERS BE
APPOINTED, THAT UPON
A HEARING HEREOF, THIS
COURT DETERMINE WHO
ARE THE HEIRS AND ONLY
HEIRS OF DECEDENT
AND EACH'S RESPECTIVE
SHARES AND INTEREST IN
THIS ESTATE, as is more fully
shown by the petition on file in
this cause.

The officer executing this
process shall promptly execute
the same according to law,
and make due return as the
law directs. If this citation is
not served within ninety (90)
days after the day of issuance,
it shall be returned unserved.
ISSUED AND GIVEN UNDER
MY HAND AND SEAL OF
SAID COURT at office in
Wheeler, Texas, this the 8th
day of August, 2018.

(Signed)
MARGARET DORMAN,
COUNTY CLERK
WHEELER COUNTY, TEXAS

Wheeler County Stage One Burn Ban

Order Prohibiting or Restrict-
ing Outdoor Burning
WHEREAS, the Commis-
sioners' Court finds that circum-
stances present in all or part of
the unincorporated area of the
county create a public safety
hazard that would be exacer-
bated by outdoor burning;
IT IS HEREBY ORDERED
by the Commissioners Court
of Wheeler County that all
outdoor burning is prohibited
in the unincorporated area of

the county for 90 days from the
date of adoption of this Order,
unless the restrictions are
terminated earlier based on a
determination made by the
Texas Forest Service or this
Court. This Order is adopted
pursuant to Local Government
Code Sec. 352.081, and other
applicable statutes. This Or-
der does not prohibit outdoor
burning activities related to
public health and safety that
are authorized by the Texas
Commission on Environmental
Quality for:

- (1) Firefighter Training;
 - (2) Planting or harvesting of
agricultural crops;
 - (3) Burns that are conducted
by a prescribed burn manager
certified under Sec. 153.048,
Natural Resources Code, and
meet the standards of Sec.
153.047, Natural Resources
Code;
 - (4) Public utility, natural gas
pipeline or mining operations;
- Welding is allowed by com-
mercial/professional welders
under the following guidelines
only:

- (a) A spotter is required for
each welder, each cutter, each
grinder or for any activity that
causes or may cause a spark.
- (b) A diameter across the weld-
ing area shall be a minimum
of 25 feet and clear of vegeta-
tion, if possible, and kept wet.
The welding diameter must be
three times the height of the
actual welding. Example: if
welding is occurring ten (10)
feet off the ground, a diam-
eter of thirty (30) feet must be
protected.
- (c) A minimum of 200 gallons
of pressured water must be
available on site.

(d) Each welding vehicle must
have at least one (1) fully
charged 10 lb. Class ABC
chemical fire extinguisher on
site.

(e) If the work area cannot be
cleared of vegetation, proper
precautionary measures must
be taken (example: protecting
brush, etc., by utilizing fire
resistant tarps).

(f) Each site will have cellular
telephone communications for
emergency response.

(g) Welding in an enclosed
area is acceptable.

In accordance with Lo-
cal Government Code Sec.
352.081(h), a violation of this
Order is a Class C misde-
meanor, punishable by a fine
not to exceed \$500.00.

ADOPTED this 13th day of
August, by a vote of 4ayes and
0 nays and effective this day.

(Signed) Margaret Dorman,
Wheeler County Clerk
(Signed) Jerry Dan Hefley,

NOTICE TO PUBLIC

Any erroneous reflection upon
the character, standing or reputa-
tion of any person, firm or cor-
poration, which may appear in the
columns of this paper will be gladly
corrected upon due notice being
given to the editor personally at
the office at 110 East Texas St.,
Wheeler, Texas.

The Wheeler Times does not
knowingly accept false or fraudu-
lent advertising or other advertising
of an objectionable nature, is printed
in full confidence in the presenta-
tion made. Readers will confer a
favor if they will promptly report any
failure on the part of the advertiser
to make good any misrepresenta-
tion in our advertisements.

News, Views & Commentary
KPDR-FM, 90.3
WHEELER, TEXAS
Weekdays: 6:00 a.m. to 7:00 a.m.

THE BUSINESS DIRECTORY

★ 24 Hr. Gas & Diesel ★ Convenience Store
★ Hunt Bros. Pizza
CROSS COUNTRY BARN
301 E. Oklahoma St.
Wheeler, TX
Phone: 806-826-2276
Dale & Monica Kidd

It pays to Advertise in
THE WHEELER TIMES
Phone & Fax: 806/826-3125
wtimes@windstream.net

Classified Rate
Cash—\$6.00 for 1st 20 wds.
Chg.—\$6.50 for 1st 20 wds.
35c for each additional word
Display Classified: \$6.50/pc
Card of Thanks: \$7.00

Oil & Gas NEWS

Week of July 30-August 5,
2018

Intents to Drill
LIPSCOMB (LIPSCOMB,
Cleveland) Jones Energy,
LLC, #5H Price Trust 'C' 604,
(680 acres) 450' FNL & 1320'
FEL, Sec 604, Blk 43, H&T
RR Surv, A-868, 2.5 mi E from
Lipscomb TD 9000', (BHL:
100' FSL & 1320' FEL) (sgd.
Brenda Ramirez 512-328-
2953) Horizontal

LIPSCOMB (LIPSCOMB,
Cleveland) Jones Energy,
LLC, #6H Price Trust 'C' 604,
(680 acres) 340' FNL & 330'
FEL, Sec 604, Blk 43, H&T
RR Surv, A-868, 2.5 mi E from
Lipscomb TD 9000', (BHL:
100' FSL & 330' FEL) (sgd.
Brenda Ramirez 512-328-
2953) Horizontal

MOORE (PANHANDLE, Red
Cave) Adams Affiliates, Inc.,
#2067 Thompson, (337 acres)
1750' FNL & 67' FEL, Sec 2,
Blk B10, EL&RR RR Surv,
A-576, 4 mi E from Master-
son TD 2600', (sgd. Jennifer
Sexton 918-629-3365) Vertical

MOORE (PANHANDLE, Red
Cave) Adams Affiliates, Inc.,
#7345 TG Thompson, (486.05
acres) 453' FSL & 5649' FEL,
Sec 73, Blk GM3, G&M Surv,
A-442, 4.3 mi E from Master-
son TD 2600', (sgd. Jennifer
Sexton 918-629-3365) Vertical

MOORE (PANHANDLE, Red
Cave) Adams Affiliates, Inc.,
#7345 TG Thompson, (486.05
acres) 453' FSL & 5649' FEL,
Sec 73, Blk GM3, G&M Surv,
A-442, 4.3 mi E from Master-
son TD 2600', (sgd. Jennifer
Sexton 918-629-3365) Vertical

MOORE (PANHANDLE, Red
Cave) Adams Affiliates, Inc.,
#7345 TG Thompson, (486.05
acres) 453' FSL & 5649' FEL,
Sec 73, Blk GM3, G&M Surv,
A-442, 4.3 mi E from Master-
son TD 2600', (sgd. Jennifer
Sexton 918-629-3365) Vertical

MOORE (PANHANDLE, Red
Cave) Adams Affiliates, Inc.,
#7345 TG Thompson, (486.05
acres) 453' FSL & 5649' FEL,
Sec 73, Blk GM3, G&M Surv,
A-442, 4.3 mi E from Master-
son TD 2600', (sgd. Jennifer
Sexton 918-629-3365) Vertical

MOORE (PANHANDLE, Red
Cave) Adams Affiliates, Inc.,
#7345 TG Thompson, (486.05
acres) 453' FSL & 5649' FEL,
Sec 73, Blk GM3, G&M Surv,
A-442, 4.3 mi E from Master-
son TD 2600', (sgd. Jennifer
Sexton 918-629-3365) Vertical

MOORE (PANHANDLE, Red
Cave) Adams Affiliates, Inc.,
#7345 TG Thompson, (486.05
acres) 453' FSL & 5649' FEL,
Sec 73, Blk GM3, G&M Surv,
A-442, 4.3 mi E from Master-
son TD 2600', (sgd. Jennifer
Sexton 918-629-3365) Vertical

MOORE (PANHANDLE, Red
Cave) Adams Affiliates, Inc.,
#7345 TG Thompson, (486.05
acres) 453' FSL & 5649' FEL,
Sec 73, Blk GM3, G&M Surv,
A-442, 4.3 mi E from Master-
son TD 2600', (sgd. Jennifer
Sexton 918-629-3365) Vertical

OCHILTREE (PAN PETRO,
Marmaton) Jones Energy,
LLC, #1H Malinda 745, (640
acres) 1439' FWL & 475' FSL,
Sec 745, Blk 43, H&T RR
Surv, A-244, 9 mi SE from Per-
nyton TD 8000', (BHL: 1850'
FWL & 100' FNL) (sgd. Brenda
(Continued Page 5)

Hear the
"Abundant Living Broadcast"
KPDR-FM, 90.3
WHEELER, TEXAS
Saturdays: 9:00 a.m. to Noon

Crossword PUZZLE

1	2	3	4	5	6	7	8	9	10	11	12	13
14					15				16			
17					18				19			
20				21	22				23			
24			25	26			27	28				
29	30								31	32	33	
34	35	36					37				38	
39				40	41		42				43	
44				45			46				47	
48				49					50	51		
52									53	54	55	56
57	58	59							60		61	62
63									64	65		
66									66	67		
68									69			
71									72			
									73			

Across

1. Curl one's lip
6. Washer cycle
10. Off one's trolley
14. A type of joint
15. Tortoise racer
16. French bread
17. Whittish
18. From the start

H&HTIRE Chad Helton, Owner
806-826-5759
714 W. Okla. Ave.
Wheeler, TX 79096

Wellington State Bank
Bowie • Canadian • Childress • Dalhart • Littlefield • Otton
Memphis • Wheeler • Wellington

19. Metric weight unit
20. Filmmaker Spike
21. Conflicted
23. Orange container
24. Old Italian coin
26. Publish again, as
a novel
29. Now, in English
class
34. Within walking
distance

37. Racetrack fence
38. Helping hand
39. Crescent moon
42. Rubbing the
wrong way
62. Ballpoint, e.g.
63. Corn covering
64. Swear words
66. Protected bird
68. Waiting
69. "Guilty," e.g.
70. Liquorice-
flavoured seeds
71. Squint
72. Arctic seabird
73. Measuring stick

- Down
1. Like some talk
 2. Children of issei
 3. Number that's no
longer used
 4. Before, to bards
 5. It may be due on a
duplex

FIRST EQUITY REALTORS
5701 Time Square Blvd.
Suite 190,
Amarillo, TX 79119



WHEELER COUNTY: Just Listed 325 +/- acres 9 miles
east of Shamrock on the north side of I-40. Ten year old
1800 square foot home with a wrap around porch. 2 steel
buildings with concrete floors. Well. 80 acres CRP. Na-
tive grass, Good fences, Big trees, Brush, Cliffs, Spring
fed pond, ravines. Elk, Deer, Dove, Hogs, Quail, Turkey.
Wildlife management has been practiced on this ranch for
10 years. All blinds and feeders are included.

WHEELER COUNTY: 150 +/- acres east of Shamrock on
I-40. Currently being grazed. Irrigated well, excellent location for
new home. Deer, turkey, quail, dove.

YOUNG RANCH WEST: 288 +/- acres with 1 mile of frontage on
the north side of I-40. Located 3 miles west of Shamrock. It has
a metal barn, loafing shed, catch pens, good fences and an
excellent stand of native grass. Some of the ranch can be farmed.

YOUNG RANCH EAST: 1600 +/- acres with 2 miles of highway
frontage on the south side of I-40, 8 miles east of Shamrock. One
mile of Elm Creek crosses the ranch and feeds a centralized pond.
Other parts of the ranch are watered with 2 wells, Cliffs, ravines,
big trees and brush provided cover for deer, dove, hogs, quail and
turkey. Some of the Ranch could be farmed.

COUNTRY LIVING only six miles from Shamrock. like new, 3
bdr/2 bath brick home on five acres with city water. Completely
updated with new appliances, fresh paint and new landscaping
with fenced backyard. Easy access to I-40. 30x40 steel building
with concrete floor and 1/2 bath. Full length patio on east side.
18x9 livestock barn with corral and water tank. New 5 wire fence
around entire property.

WHEELER COUNTY: 601 acres 1 mile East of Shamrock on North
side of I-40. Excellent fences, city water. 1 new windmill, 4 ponds,
50x50 Steel barn with concrete floor and steel working pen. Solid
stand of grass ready for cattle. Ravines, cliffs, big trees and brush.
320 Acres: 9 miles NW of Shamrock, Nearly new fences & cross
fences, 16, earth tanks, Bluestem grass, good set of corals.
Ravines with big trees and brush making an excellent wildlife
habitas for deer.

COLLINGSWORTH COUNTY: 640 acres, 2 miles south of Sham-
rock on U.S. Highway 83. Some of the best recreational land on the
market. Good fence; new cross fences, solar well, creek, ravines,
cliffs, big trees, brush, mesquite, shinnery; white tail deer, mule
deer, hogs, turkey, quail, and dove. Good grass will run cattle for
additional income. Will consider subdividing.

56 Acre Track in Allison, Excellent home site. Great Hobby Farm
for retirees. Starting location for young family with 4-H/FFA project
and horses. Close to school. Well cared for. Now used for haying
and grazing.

NEW LISTING: 3BR/2BA Brick home with 2 car garage located
on 4.8 acres east of Shamrock on I-40. House is 100% electric
w/basement. New double pane windows and new tile throughout.
New entrance doors, new septic system. Water well with barbwire
and woven wire fencing. Priced right!

*Coldwell Banker First Equity, Realtors. Richard Hefley AIC,
Licensed in Texas and Oklahoma. 806-898-1786.*

landsoftexas.com, cbcamarillo.com or thelandconnections.com

**MEMBER
2015
TEXAS PRESS ASSOCIATION**

City of Wheeler Turns 100
Aug. 6, '05 Celebration Planned
Wheeler to Observe Founding With
Bartook, Shaw, Brack, Kidd, Niles

**P.O. Box 1080
Wheeler, Texas 79096
Phone: 806/826-3123**

Entered as second-class matter December 18, 1933, at the Post
Office at Wheeler, Texas 79096, under the act March 3, 1879.
Postmaster: Send Address changes to The Wheeler Times,
P.O. Box 1080, Wheeler, TX 79096-1080 —
wtimes@windstream.net

Louis C. Stas, Owner & Publisher
SUBSCRIPTION RATES:
Within Wheeler Co: \$22.00 Elsewhere: \$25.00

**THE
BUSINESS DIRECTORY**

6. Round lot's 100
7. Donkey's basket
8. Ill temper
9. Green, in a way
10. University award
11. A movie star may carry one
12. Campus house
13. Heavy reading?
22. Rush attraction
23. Pirate's sword
25. Cathedral recess
27. Glitch
28. Pother
30. Consider again
31. Hit hard
32. Swim's alternative
33. Nervous
34. Smacker
35. Fishing item
36. Erstwhile
40. Take care of
41. "Cogito ___ sum"
43. Seating section
46. Marksman
49. Heart
50. Jane Eyre, e.g.
51. Purpose
54. Tax-filing month
55. Fliers in V's
56. Submit
57. China problem
58. Boorish
59. Man, for one
61. At hand
64. Go (for)
65. Porter
67. Serengeti grazer

S	N	E	E	R	S	P	I	N	D	A	F	T
M	I	T	R	E	H	A	R	E	E	U	R	O
A	S	H	E	N	A	N	E	W	G	R	A	M
L	E	E	T	O	R	N	C	R	A	T	E	
L	I	R	A	R	E	T	T	I				

Court (from Page 2)

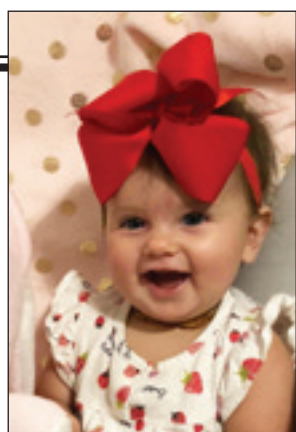
Heutel, et al, 6-29-18, All my Interest in Wheeler County. C/C WILL-Rondell Orland Childress to Ex Parte, 7-19-18. C/C ORDER PROBATE-Rondell Orland Childress to Ex Parte, 7-19-18. C/C PROBATE-Kenneth Moss Laycock to Ex Parte, 4-16-18. DEED-George Mettler Bollinger Jr., et ux to George Mettler Bollinger Family Trust, et al, 6-28-18, All our Interest in Secs. 67 & 68, Blk. A-5, H&GN Ry. Company Survey. AFF. of POSSESSION-Billy Buckingham to BC Buckingham Properties LP, 7-27-18, S/2 Sec. 5, AB&M Survey. CEMETERY DEED-Wheeler Cemetery Association to Phyllis J. Riley, 8-6-18, Spaces 1 & 2, SE/4 Lot 2, Blk. F-6, 1st Addition, Wheeler Cemetery. MIN./ROY. DEED-Roger E. Herring to Ruple Family Trust, 7-27-18, Undivided Interest in W/2 NE/4 Sec. 49, Blk. 24, H&GN Ry. Company Survey. ABSTRACT JUDGMENT-Bank of America NA to Brandi K. Luttrell Cochran Simmons, 8-2-18. ABSTRACT JUDGMENT-CitiBank NA to Gracie G. Rangel Payne, 8-2-18. MD-David H. Loeffler Testamentary Trust to Opportune Investments Limited LLC, 7-22-18, See Instrument. DEED-Randy Scott Taylor, et ux to Sam Hale, 7-23-18, An

Undivided 1/720 interest in 70 acs. NW/4 Sec. 34, Blk. 23, H&GN Ry. Company Survey. (Sand Spur Lake) MD-David H. Loeffler Testamentary Trust to Pauli D. Loeffler, 7-22-18, See Instrument. LIFE ESTATE-Armeda Jones to Tony Jones, et al, 7-30-18, Pt. NE/4 Sec. 6, Blk. R.E., Roberts & Eddleman Survey, Except Minerals. HEIRSHIP AFF.-Thomas Edward Brooks Jr. to Lavada Jeanette Helton, 5-15-18. HEIRSHIP AFF.-James T. Huffman to Lavada Jeanette Helton, 5-21-18. AUGUST 7, 2018 AFF. Of IDENTITY-Kathryn A. V. Christner, et al to The Public, 7-28-18. MIN./ROY. CONVEY.-Carla Dawson to White River Oil & Gas, 7-12-18, Sec. 4, Blk. L, J. M. Lindsey Survey. MIN./ROY. CONVEY.-Rhonda Rodney to White River Oil & Gas, 7-12-18, Sec. 4, Blk. L, J. M. Lindsey Survey.

MIN./ROY. CONVEY.-White River Oil & Gas to Divide Energy LLC, et al, 7-31-18, Sec. 4, Blk. L, J. M. Lindsey Survey. CORR. QUIT-CLAIM ASSIGN. OVERRIDING ROY.-Donald L. Hansen Sr. Royalty Co. LLC to Vicki Ann Karney, et al, 7-31-18, Sec. 3, AB&M SURVEY. (Instrument states Blk. 7, no blk. In AB&M SURVEY. PARTIAL RDT-JPMorgan Chase Bank National Association to FourPoint Energy LLC, 6-28-18, See Instrument. RENT TO OWN AGREE.-Melissa Maxwell, et al to Robby Holmes, et al, 10-23-15, Lots 1, 2 & N 35' Lot 3, Blk. 51, Woodley's Southside Addition, Shamrock. RDT-Wells Fargo Bank National Association to Haymaker Properties LP, 7-11-18, See Instrument. DT-Haymaker Properties LP to Frost Bank, 7-12-18, See Instrument. BILL OF SALE.-Jesus Sierra to Efrain Herrera, 8-7-18. AUGUST 8, 2018 DEED-Carol Clydene Hall to Wheeler Ag LLC, 8-7-18, 3.02 acs. Sec. 6, Blk. R.E. Roberts & Eddleman Survey. AMEND. DT-Breitburn Operating LP to Wells Fargo Bank, National Association, 7-27-18, Secs. 23 & 38, Blk. A-7, H&GN Ry. Company Survey. AUGUST 9, 2018 DEED-Gary L. Hutchens, et ux to GK Hutchens Ranch LLC, 7-27-18, 660' x 5280' out of E/2 of W/2 & E/2 Sec. 84 & SE/4 Sec. 99, Blk. 23, H&GN Ry. Company Survey. TRUST AGREEMENT-Deanne Marie Aguirre, et al to Corcoran Revocable Family Trust 2018, 7-31-18. AUGUST 10, 2018 POA-James T. Atkins to Douglas Gene Atkins, 8-9-18. MIN./ROY. CONVEY.-Oak Tree Minerals LLC to Catherine K. Kenny, et vir, 6-25-18, See Instrument. PARTIAL RDT-JPMorgan Chase Bank, National Association to FourPoint Energy LLC, 8-1-18, See Instrument. AFF. of POSSESSION-Gwen-



GIRL SCOUT LEADERS: These are the Girl Scout leaders for 2019-2020!!! They are (l. to r.) Joyce Walker (806-669-4695) Abe and Kimberly Teran (580-471-5554) Shai and Juan Lira (806-334-2445) and Carolan Schaefer (806-382-5629) We are currently collecting school supplies for anyone in need feel free to contact us! We also will be in the Labor Day parade in mobeetie on Saturday September 1st. We will have a lemonade stand which half the proceeds will go to mobeetie and half will cover the cost of our training books! Thank you for your support and looking forward to a great new year!



Blakely Mary Moore, born Jan. 16, 2018, is the daughter of Braden and Paige Moore of Wheeler. Grandparents are Ronny and Sherri Jones and Brett and Tammy Moore of Wheeler. Great-grandparents are Lonnie and Beth Shelton, Ann and Robert Jones, Sue Gallagher and Charles Moore, all of Wheeler

For all your . . . Insurance Needs, See **Eastern Panhandle Insur. Agency, Inc.** 206 N. Madden Shamrock **806/256-5401** •Auto •Home •Life •Health •Commercial •Bonds

Canadian Redi-Mix, Inc.
... for all your Concrete Needs!

806-323-5379

Sunday Nite Live KPDR-FM, 90.3
... Live from Canadian
9:00 p.m. to 11:00 p.m.

RiverCrest REALTY
Ken Baxter
806-334-0123
landdaddy47@gmail.com
Chip & Pam Hill
469-323-9625
pamhill@rivercresthomes.net
www.rivercrestproperty.com

Panhandle Plains Realty
Making Dreams Come True
— Let us list your Real Estate —
Linda Laycock Broker, ABR, GREEN, SRES, E-PRO **806.662.1312**
Larry Hadley Assoc. **806.662.2779**
Tisha Calhoun Assoc. **806.440.4153**
Pampa MLS www.panhandleplainsrealty.com **Amarillo MLS**

WE BUY OIL, GAS, & MINERAL RIGHTS
Both non-producing and producing including Non-Participating Royalty Interest (NPRI)
Provide us your desired price for an offer evaluation.
CALL TODAY: **806.620.1422**
LOBO MINERALS, LLC
PO Box 1800 • Lubbock, TX 79408-1800
LoboMineralsLLC@gmail.com

THE ARMADILLOS HAVE EMERGED IN NASHVILLE
The Outlaw phenomenon produced powerful music and everlasting bonds between Nashville and Texas. Willie and Waylon, Bobby Bare, and Kris Kristofferson demanded and got greater creative freedom and the movement was real—not just a marketing term, but a creative flowering, a confluence of art and revelry, whiskey and poetry.
OUTLAWS & ARMADILLOS: COUNTRY'S ROARING '70s

EXPERIENCE THE EXHIBIT ALBUM & BOOK AVAILABLE NOW

ESTATE SALE - LOG HOMES PAY THE BALANCE OWED ONLY!!!
AMERICAN LOG HOMES IS ASSISTING FINAL RELEASE OF ESTATE & ACCOUNT SETTLEMENT ON HOUSES.
3 Log Home kits selling for BALANCE OWED, FREE DELIVERY
1) Model # 305 Biloxi \$36,825...BALANCE OWED \$15,000
2) Model # 403 Augusta \$42,450...BALANCE OWED \$16,500
3) Model # 502 Santa Fe \$44,950...BALANCE OWED \$17,500
BEFORE CALLING: VIEW at www.loghomedream.com
Click on House Plans
NEW - HOMES HAVE NOT BEEN MANUFACTURED
• Make any plan design changes you desire!
• Comes with Complete Building Blueprints & Construction Manual
• Windows, Doors, and Roofing not included
• NO TIME LIMIT FOR DELIVERY! BBB A+ Rating
SERIOUS ONLY REPLY. Call (704) 602-3035 ask for Accounting Dept.

Property Tax Form 50-197

NOTICE OF PUBLIC HEARING ON TAX INCREASE

The CITY OF WHEELER will hold two public hearings on a proposal to increase total tax revenues from properties on the tax roll in the preceding tax year by 8 percent (percentage by which proposed tax rate exceeds lower of rollback tax rate or effective tax calculated under Tax Code, Chapter 26). Your individual taxes may increase at a greater or lesser rate, or even decrease, depending on the change in the taxable value of your property in relation to the change in taxable value of all other property and the tax rate that is adopted.

The first public hearing will be held on 8/20/2018 at 5:00PM
The second public hearing will be held on 8/24/2018 at 5:00PM
The members of the governing body voted on the proposal to consider the tax increase as follows:

FOR: BRITT MCCARTER, CAROL PORTON, STACY MCQUEEN, TAMMY MOORE
AGAINST: KENDALL HEFLEY
PRESENT and not voting: NA
ABSENT: NA

The average taxable value of a residence homestead in 2017 last year was \$55,352
Based on last year's tax rate of: \$0.5981500
per \$100 of taxable value, the amount of taxes imposed last year on the average home was \$331

The average taxable value of a residence homestead in 2018 this year is \$54,729
If the governing body adopts the effective tax rate for this year of \$0.5840100
per \$100 of taxable value, the amount of taxes imposed this year on the average home would be \$319

If the governing body adopts the proposed tax rate of \$0.6307300 per \$100 of taxable value, the amount of taxes imposed this year on the average home would be \$345

Members of the public are encouraged to attend the hearings and express their views.
Special Provision*

Enhanced Indigent Health Care Expenditures:
The NA Spent \$ NA from NA to NA on enhanced indigent health care at the increased minimum eligibility standards, less the amount of state assistance.
For the current tax year, the amount of increase above last year's enhanced indigent health care expenditures is NA

* Print only if applicable.
The Property Tax Assistance Division at the Texas Comptroller of Public Accounts provides property tax information and resources for taxpayers, local taxing entities, appraisal districts and appraisal review boards.
For more information, visit our website:
comptroller.texas.gov/taxes/property-tax
50-197 • 03-17/19



Exciting Times
at Wheeler
Public Library
By: Vicki Ferguson,
Librarian

So sad today! The last Summer Reading Program class was this morning for the 6 to 10 year olds! We had a blast which is a normal thing every Monday! Hopefully, I have wetted their appetites for books and visiting the library often. Our theme today was Dinosaurs and with the help of Ms. Rhonda from the Texas Street Floral we had plenty of balloons and helium to create the most unusual Dinosaurs known to mankind, a big Thank You to her! Then we had snacks and they played and checked out books for the week. I'm gonna miss those little faces every week, the questions, answers, imaginations, and ideas about how things in life should really be! I will be very honest with all you folks out there, these were the best behaved kids I've had in a long time, mannerly and kind to other kids. What a refreshing summer it has been!

Tomorrow will be another sad day with the 'Little's' coming in for the last of their Summer Reading Program! You talk about active and the fun they have had is just inspiring. They have been so attentive and willing to listen and learn. Their Mommies have been diligent in checking out books for them to enjoy at home and you can tell they have been read to because they tell you about their books. We have made water balloons, shot paint at paper with our initials in tape and pulled the tape off to see our initial, and oh my

the list goes on and on! This is why we do a summer long reading program and yes it does cost money to provide for the kids but they are worth every penny and the time it takes to prepare. If at any time you would wish to donate to the Children's Program you can take your donation to the City Office or drop it by the library and it will go in that fund.

So now, all you big people we have books that are new, books that are old, books that are donated and books just for you! Things are gonna be so quiet around here without the

children running in and out all the time now is the time for you to step up to the plate and come see us and Read, Read, Read! The Doodle Class is going strong and has all summer so come be involved in that, the time is Thursdays at 4:30 in the Work Room at Wheeler Public Library! You can come and start at any time it is relaxing and the group of ladies and men is very fun!

New books are constantly coming in and all of the 2017's will be headed off the easy access case to the shelves soon to make room for the

new 2019's. We've had lots of positive comments about the easy access shelf as you come in the door, gives everyone a chance to see if they've missed out something from their favorite authors. So better come and check it out before it hits the big floor.

Our Book Fair for children's books is up and will be up until we sell all the books. The funds will go to the Children's Program Literature to ensure

we have up to date reading for them so take a gander and come see what we have. The prices are very reasonable and the kids will really enjoy them. They would make neat Christmas Presents for those of you who love to give the gift that keeps giving! Come in and look this week before they are all gone.

Vicki L. Ferguson/Librarian
Cindy Hartsfield/Assistant
Marley/Mascot



THE WHEELER TIMES

Page 3— Thursday, August 9, 2018

"Wheeler: town of friendship and pride"

Back (from Page 1)

High School Band attained the Sweepstakes Trophy for the second time in three years. A number of students advanced to regionals and one earned the right to compete at the state level in literary UIL. In athletics, Wheeler High won a bi-district championship in football, had regional qualifiers in both tennis and track, as well as our first ever boy advancing to the state tennis tournament. Thomas Helton Elementary students participated successfully in their first robotics competition and look to expand the program with each passing year. All the while, our student accountability with regards to state testing has continued to improve with scores in most areas well above regional and state averages.

I would like to recognize our summer staff that has been busy in making preparations for the upcoming year. As with most summers, the new coats of paint, refinishing of floors, deep cleaning and other preparations along the grounds are seldom recognized but most assuredly appreciated.

Next, I would like to invite everyone to check out our updated school website, www.wheelerschools.net or follow us on Facebook. We want to keep the community updated on the happenings at WISD, and as always, keep an open

line of communication with parents and the community.

We are excited to be implementing our own "From Good...to Great!" program in the school and our teachers and staff will be promoting not only college from as early as pre-k, but also other careers that could provide our students opportunities that they haven't even dreamed of before. We want to work to grow our own professionals and keep them in our area whether it be via college or trade.

Finally, I would like to welcome our new teachers and staff. I believe we have a great group in place, and they all share a love of children and a vested interest in providing the best possible education to every child. I believe each new employee will complement our current staff, and I am excited to see what is accomplished this year. As always, we welcome all parents to take an active role in their child's education and truly believe that student success is directly related to parental involvement. Wheeler ISD will hold an Open House on Tuesday, September 4th and further details will follow. This is a great way to meet the teachers and make that initial connection.

Welcome Back! We look forward to a GREAT 2018-2019!
Sincerely,
Bryan Markham
Superintendent

Wheeler County JP #1 Weekly Docket

Magistrations/ Arraignments:

- 3- Felony Magstration
- 3- Class A/B Misd. Magstration

Citations:

- 3 - Wheeler County Sheriff Office Traffic Citations Issued
- 2 - Wheeler County Sheriff Office Class C Misd. Citations Issued
- 2- TXDPS Traffic Citations Issued
- 4- Commercial Motor Enforcement Citations Issued

NOTICE OF EFFECTIVE TAX RATE

Property Tax Form 50-212

2018 Property Tax Rates in CITY OF MOBEETIE
(insert year) (insert taxing unit name)
This notice concerns 2018 property tax rates for CITY OF MOBEETIE
(insert year) (insert taxing unit name)

It presents information about three tax rates. Last year's tax rate is the actual rate the taxing unit used to determine property taxes last year. This year's effective tax rate would impose the same total taxes as last year if you compare properties taxed in both years. This year's rollback tax rate is the highest tax rate the taxing unit can set before taxpayers can start tax rollback procedures. In each case these rates are found by dividing the total amount of taxes by the tax base (the total value of taxable property) with adjustments as required by state law. The rates are given per \$100 of property value.

Last year's tax rate:

Last year's operating taxes	\$11,576
Last year's debt taxes	\$0
Last year's total taxes	\$11,576
Last year's tax base	\$4,384,110
Last year's total tax rate	\$0.2640600 /\$100

This year's effective tax rate:

Last year's adjusted taxes (after subtracting taxes on lost property) ..	\$11,576.0000000
+ This year's adjusted tax base (after subtracting value of new property) ..	\$4,220,700.0000000
= This year's effective tax rate (Maximum rate unless taxing unit publishes notices and holds hearings.)	\$0.2742800 /\$100

In the first year a hospital district collects the additional sales tax to reduce property taxes, it must insert the following lines unless its first adjustment was made last year:

- Sales tax adjustment rate	\$0.0000000 /\$100
= Effective tax rate	\$0.0000000 /\$100

This year's rollback tax rate:

Last year's adjusted operating taxes (after subtracting taxes on lost property and adjusting for any transferred function, tax increment financing, state criminal justice mandate, and/or enhanced indigent health care expenditures)	\$11,576.0000000
/ This year's adjusted tax base	\$4,220,700.0000000
= This year's effective operating rate	\$0.2742800 /\$100
X 1.08 = this year's maximum operating rate	\$0.2962200 /\$100
+ This year's debt rate	\$0.0000000 /\$100
= This year's total rollback rate	\$0.2962200 /\$100

A hospital district that collects the additional sales tax to reduce property taxes, including one that collects the tax for the first time this year, must insert the following lines:

- Sales tax adjustment rate	\$0.0000000 /\$100
= Rollback tax rate	\$0.0000000 /\$100

For a taxing unit with additional rollback rate for pollution control, insert the following lines:

+ Additional rollback rate for pollution control	\$0.0000000 /\$100
= Rollback tax rate	\$0.0000000 /\$100

The Property Tax Assistance Division at the Texas Comptroller of Public Accounts provides property tax information and resources for taxpayers, local taxing entities, appraisal districts and appraisal review boards.

For more information, visit our website:
comptroller.texas.gov/taxinfo/proptax

NOTICE OF EFFECTIVE TAX RATE

Property Tax Form 50-212

2018 Property Tax Rates in NORTH HOSPITAL DIST.#1
(insert year) (insert taxing unit name)
This notice concerns 2018 property tax rates for NORTH HOSPITAL DIST.#1
(insert year) (insert taxing unit name)

It presents information about three tax rates. Last year's tax rate is the actual rate the taxing unit used to determine property taxes last year. This year's effective tax rate would impose the same total taxes as last year if you compare properties taxed in both years. This year's rollback tax rate is the highest tax rate the taxing unit can set before taxpayers can start tax rollback procedures. In each case these rates are found by dividing the total amount of taxes by the tax base (the total value of taxable property) with adjustments as required by state law. The rates are given per \$100 of property value.

Last year's tax rate:

Last year's operating taxes	\$4,538,894
Last year's debt taxes	\$0
Last year's total taxes	\$4,538,894
Last year's tax base	\$1,473,475,759
Last year's total tax rate	\$0.3080400 /\$100

This year's effective tax rate:

Last year's adjusted taxes (after subtracting taxes on lost property) ..	\$4,538,894.0000000
+ This year's adjusted tax base (after subtracting value of new property) ..	\$1,525,390,030.0000000
= This year's effective tax rate (Maximum rate unless taxing unit publishes notices and holds hearings.)	\$0.2975500 /\$100

In the first year a hospital district collects the additional sales tax to reduce property taxes, it must insert the following lines unless its first adjustment was made last year:

- Sales tax adjustment rate	\$0.0000000 /\$100
= Effective tax rate	\$0.2975500 /\$100

This year's rollback tax rate:

Last year's adjusted operating taxes (after subtracting taxes on lost property and adjusting for any transferred function, tax increment financing, state criminal justice mandate, and/or enhanced indigent health care expenditures)	\$4,538,894.0000000
/ This year's adjusted tax base	\$1,525,390,030.0000000
= This year's effective operating rate	\$0.2975500 /\$100
X 1.08 = this year's maximum operating rate	\$0.3213600 /\$100
+ This year's debt rate	\$0.0000000 /\$100
= This year's total rollback rate	\$0.3213600 /\$100

A hospital district that collects the additional sales tax to reduce property taxes, including one that collects the tax for the first time this year, must insert the following lines:

- Sales tax adjustment rate	\$0.0000000 /\$100
= Rollback tax rate	\$0.3213600 /\$100

For a taxing unit with additional rollback rate for pollution control, insert the following lines:

+ Additional rollback rate for pollution control	\$0.0000000 /\$100
= Rollback tax rate	\$0.3213600 /\$100

The Property Tax Assistance Division at the Texas Comptroller of Public Accounts provides property tax information and resources for taxpayers, local taxing entities, appraisal districts and appraisal review boards.

For more information, visit our website:
comptroller.texas.gov/taxinfo/proptax

Labor (from Page 1)

Labor Day the Old Settlers' Reunion will once again be the main attraction for the area.

Craft Show, Clothing Booths and Bounce House will be open Monday, beginning at 10 and closing at 2. Homemade Ice Cream will also be available at the concession stand.

If you have not made it over to the Visitors' Center yet, the Quilt Show and Kenneth Wyatt Display will be open until 2 p.m.

The Lee Family will be play-

ing music for the enjoyment of those in attendance, beginning at 11 a.m.

The Annual Old Settlers' BBQ will begin at 12 noon and continue until everyone is served that delicious barbecue with trimmings, which has been enjoyed for the past 67 years.

The Labor Day Weekend of activities is being sponsored by the Old Mobeetie Jail Association. Mark your calendars; it is a weekend you will not want to miss.

Drought (from Page 3)

to sustain the lands natural resources during drought or assist during recovery.

"Farmers and ranchers in Texas are no stranger to drought which is once again slowly creeping across the state," said Salvador Salinas, NRCS state conservationist. "Across the entire state drought conditions range from abnormally dry to pockets of extreme drought. In an effort to assist landowners during these difficult conditions, we are offering additional funding opportunities through EQIP. I encourage producers in impacted counties to reach out to their local NRCS field office."

The sign up deadline for agricultural producers in the 128 counties is August 30, 2018. Funding decisions will be made by September 6, 2018.

Eligible counties are: Archer, Armstrong, Bailey, Bandera, Baylor, Bell, Blanco, Borden, Bosque, Bowie, Briscoe, Brown, Carson, Cass, Castro, Childress, Cochran, Coleman, Collin, Collingsworth, Comanche, Concho, Cooke, Coryell, Cottle, Dallas, Dawson, Deaf, Delta, Denton, Dickens, Dimmit, Donley, Eastland, Edwards, Ellis, Erath, Falls, Floyd, Foard, Franklin, Gaines, Garza, Gillespie, Glasscock, Gray, Gregg, Hale, Hall, Hamilton, Hardeman, Harrison, Hemphill, Hill, Hockley, Hood, Hopkins, Howard,

Jack, Johnson, Kendall, Kent, Kerr, Kimble, King, Kinney, Knox, Lamar, Lamb, Lampasas, LaSalle, Leon, Limestone, Lipscomb, Llano, Lubbock, Lynn, McCulloch, McLennan, Marion, Martin, Mason, Maverick, Menard, Midland, Mills, Mitchell, Montague, Morris Motley, Oldham, Palo Pinto, Panola, Parker, Parmer Potter, Randall, Real, Red River, Robertson, Runnels, Rusk, San Saba, Schleicher, Scurry, Somervell, Stephens, Sterling, Sutton, Swisher, Tarrant, Terrell, Terry, Titus, Tom Green, Upshur, Uvalde, Val Verde, Webb, Wheeler, Wichita, Wilbarger, Wise, Yoakum, Zapata and Zavala.

To learn more about NRCS and available financial and technical assistance visit www.tx.nrcs.usda.gov or visit your local USDA Service Center.

Canadian Redi-Mix, Inc.
... for all your Concrete Needs!



806-323-5379

Sunday Nite Live KPDR-FM, 90.3
... Live from Canadian 9:00 p.m. to 11:00 p.m.



SCOUT TRIP: Well, 58 hours after we left, Boy Scout Troop 472 and friends are home from the NRA Whittington Center at Raton, New Mexico! Thanks to all who went and helped these kids and thanks to those who didn't get to go but trusted us with their kids!! Dr. Lee Ann Hillhouse



Bexleigh Ann Tignor, born May 1, 2017, is the daughter of Kyle and Tracy Tignor of Wheeler. Grandparents are Ronny and Sherri Jones of Wheeler and Dickie and Sharon Tignor of Cheyenne, OK. Great-grandparents are Lonnie and Beth Shelton and Ann and Robert Jones of Wheeler and Pat Tignor of Elk City, OK.

For all your . . . Insurance Needs, See **Eastern Panhandle Insur. Agency, Inc.**
206 N. Madden Shamrock
806/256-5401
•Auto •Home •Life •Health •Commercial •Bonds

Chat (from Page 1)

Mobeetie have posted their proposed budgets for this coming year. Check them over; this is your opportunity to complain.

— cwe —

We had a few days of cooler weather, but we are back in the 90's. The few drops Tuesday morning did not help much.

— cwe —

A reminder, Farmers' Market is on the square Wednesday afternoon and Saturday morning. Nothing like fresh Wheeler County produce.

— cwe —

Riley (from Page 1)

Gigi Jennings, Garrett Redden, Riley Webster and Alexis Webster; his brothers, Kenneth Riley and wife, Sharon, of Azle, and Perry Riley and wife, Betty, of Georgia; his sister, Brenda Riley of San Francisco, California; numerous nieces, nephews and a host of friends.



Ken Baxter
806-334-0123
landdaddy47@gmail.com

Chip & Pam Hill
469-323-9625
pamhill@rivercresthomes.net

www.rivercrestproperty.com

Panhandle Plains Realty
Making Dreams Come True

— Let us list your Real Estate —

Linda Laycock Broker, ABR, GREEN, SRES. E-PRO 806.662.1312	Larry Hadley Assoc. 806.662.2779	Tisha Calhoun Assoc. 806.440.4153
---	--	---

Pampa MLS www.panhandleplainsrealty.com **Amarillo MLS**

Property Tax Form 50-212

NOTICE OF EFFECTIVE TAX RATE

2018 Property Tax Rates in CITY OF WHEELER
(insert year) (insert taxing unit name)

This notice concerns 2018 property tax rates for CITY OF WHEELER
(insert year) (insert taxing unit name)

It presents information about three tax rates. Last year's tax rate is the actual rate the taxing unit used to determine property taxes last year. This year's effective tax rate would impose the same total taxes as last year if you compare properties taxed in both years. This year's rollback tax rate is the highest tax rate the taxing unit can set before taxpayers can start tax rollback procedures. In each case these rates are found by dividing the total amount of taxes by the tax base (the total value of taxable property) with adjustments as required by state law. The rates are given per \$100 of property value.

Last year's tax rate:	
Last year's operating taxes	\$362,112
Last year's debt taxes	\$0
Last year's total taxes	
Last year's tax base	\$60,538,800
Last year's total tax rate	\$0.5981500 /\$100
This year's effective tax rate:	
Last year's adjusted taxes (after subtracting taxes on lost property)	\$362,112.0000000
+ This year's adjusted tax base (after subtracting value of new property)	\$62,004,340.0000000
= This year's effective tax rate (Maximum rate unless taxing unit publishes notices and holds hearings.)	\$0.5840100 /\$100

In the first year a hospital district collects the additional sales tax to reduce property taxes, it must insert the following lines unless its first adjustment was made last year:

- Sales tax adjustment rate	\$0.0000000 /\$100
= Effective tax rate	\$0.0000000 /\$100

This year's rollback tax rate:

Last year's adjusted operating taxes (after subtracting taxes on lost property and adjusting for any transferred function, tax increment financing, state criminal justice mandate, and/or enhanced indigent health care expenditures)	\$362,112.0000000
/ This year's adjusted tax base	\$62,004,340.0000000
= This year's effective operating rate	\$0.5840100 /\$100
X 1.08 = this year's maximum operating rate	\$0.6307300 /\$100
+ This year's debt rate	\$0.0000000 /\$100
= This year's total rollback rate	\$0.6307300 /\$100

A hospital district that collects the additional sales tax to reduce property taxes, including one that collects the tax for the first time this year, must insert the following lines:

- Sales tax adjustment rate	\$0.0000000 /\$100
= Rollback tax rate	\$0.0000000 /\$100

For a taxing unit with additional rollback rate for pollution control, insert the following lines:

+ Additional rollback rate for pollution control	\$0.0000000 /\$100
= Rollback tax rate	\$0.6307300 /\$100

The Property Tax Assistance Division at the Texas Comptroller of Public Accounts provides property tax information and resources for taxpayers, local taxing entities, appraisal districts and appraisal review boards.

For more information, visit our website:
comptroller.texas.gov/taxinfo/proptax

KELTON VOLUNTEER FIRE DEPARTMENT
ASST. CHIEF PAUL CALCOTE BENEFIT

TO ASSIST IN HIS FIGHT AGAINST CANCER
SATURDAY, AUGUST 25, 2018

DINNER, SILENT AUCTION AND LIVE AUCTION
WILL BEGIN AT 6 P.M.

TEXAS PEARL SNAPS
WILL START AT 8 P.M.

LOCATION:
KELTON VOLUNTEER FIRE DEPARTMENT
9 MILES EAST OF WHEELER ON 152, 3 MILES SOUTH ON 592,
1/4 MILE EAST ON 2697

PLEASE COME OUT AND JOIN US IN SHOWING A LITTLE LOVE AND SUPPORT FOR OUR FRIEND!

BE SURE TO LIKE AND FOLLOW OUR KELTON VOLUNTEER FIRE DEPARTMENT FACEBOOK PAGE FOR SILENT AUCTION AND LIVE AUCTION UPDATES

FOR MORE INFORMATION OR IF YOU WOULD LIKE TO DONATE A SILENT AUCTION ITEM PLEASE CONTACT ANY DEPT MEMBER OR CALL 806-334-1557

BYOB AND A LAWN CHAIR

TEXAS
 • SHAMROCK
 • WELLINGTON • WHEELER
 OKLAHOMA
 • CHEYENNE • EUFAULA
 • HINTON

PRICES EFFECTIVE: WEDNESDAY AUG. 15 THRU TUESDAY AUG. 21, 2018



Market Square
SUPERMARKETS

AF AFFILIATED
 FOODS INC.
 MEMBER STORES

www.marketsquareonline.com

NOT LIABLE FOR TYPOGRAPHICAL OR PICTORIAL ERRORS. WE RESERVE THE RIGHT TO LIMIT QUANTITIES. SOME ITEMS NOT AVAILABLE IN ALL STORES.



savings to note

New York Strip Steaks
 select bone in family pack

\$5.99
 LB.



single pack
 \$6.49 LB.



Pork Half Loin
 boneless

\$1.99
 LB.



Russet Potatoes
 U.S. No. 1
 10 lb. bag

\$1.99



Tyson Chicken Thighs
 bone in IQF
 (sold in 2.5 lb. bag)

59¢
 LB.



Large Mangos

99¢
 EA.



Large Roma Tomatoes

99¢
 LB.



ShurSaving or Shurfine Milk
 premium quality whole or lowfat varieties
 gallon

2 \$5
 FOR



Hot Pockets
 assorted 2 pack

\$1.88



Capri-Sun Fruit Drinks
 assorted 10 pack

\$1.88



Crystal Farms Chunk Cheese
 assorted, 8 oz.

\$1.88



Shurfine Ketchup
 38 oz.

\$1.88



Cottonelle Bathroom Tissue
 comfort or clean care 12 dbl. rolls

\$6.99



Blue Ribbon Classics Ice Cream
 assorted 4 quart pail

\$4.98



Kellogg's Cereal
 Corn Pops, Apple Jacks, Froot Loops, or assorted Frosted Flakes
 12.2-15 oz.

2 \$5
 FOR



Viva Paper Towels
 full or choose a sheet, 6 big rolls

\$6.99