



# THE WHEELER TIMES

(USPS-680-960)

VOLUME 83, NUMBER 44

THURSDAY, NOVEMBER 16, 2017

SINGLE COPY **50c**

“Wheeler: town of friendship and pride”



## Plans Underway for “Christmas on the Square”

### List of Items Needed By Chamber

**CONGRATULATIONS, Mustangs!** Let's get wins in the playoffs.

— cwe —

**CONGRATULATIONS, Pride of Wheeler Band!** on their success at the 5-State Honor Band. We should have pictures and results for next week.

— cwe —

We went to the Junior High Girls' Basketball game Tuesday evening to watch Stormie play. She is on the team, but spent the time on the bench. Good game girls.

— cwe —

Make it a point to be in (Continued Page 2)

### STORM REPORT



As Reported by... **Stormie Meriwether**, Eighth Grade Student

Dear Friends, I thought my pig died! When I went into the barn Edward was not moving. I couldn't even see him breathing. I quietly and careful walked to him and touched him very gently. He looked dead. His eyes were just open a little bit and he was not moving. That was sad. I didn't panic. I went to the car and told my mom, "It's Edward. I think he is dead." Mom went with me to see him. She couldn't see (Continued Page 3)

### Small Business Saturday Offers Fun And Bargains For Shoppers

The Wheeler Chamber of Commerce will host the 4th Annual Small Business Saturday/Christmas around the Square on Saturday, Nov. 25th in Wheeler. Nanna's Sweet Treats, 114 E. Texas Street, will be open for the early morning shoppers.

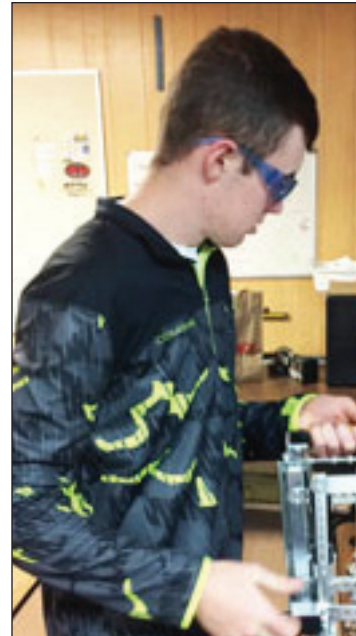
There will be a large variety of vendors set up in empty

We have so much planned for Christmas on the Square on December 2nd starting at 6pm along the Courthouse Square. We are updating our Facebook page as we go, so be sure to follow it. Here is the link:

<https://www.facebook.com/events/496649737372984/>

We are asking if anyone has any Christmas trees (all shapes, sizes and kinds) or ficus trees that they are willing to either donate or loan. They can be dropped off at the old Buck and Beyond building (420 S. Main Street) or with Kristen at the Wheeler City Office (under the water tower). Some things we are needing: christmas trees and garland, lights, white batting/sheets, christmas wrapping paper/bows/ribbon, extension cords and power strips, weathered wood, (15) beams for framing the stable/barn.

We are also accepting donations for lights that will be used to decorate the courthouse trees, poles and main street square. The chamber is hosting a "Let's Light Up the Square", \$10 donation buys a strand of lights or \$100 will



Brock Buckingham working on the robot.

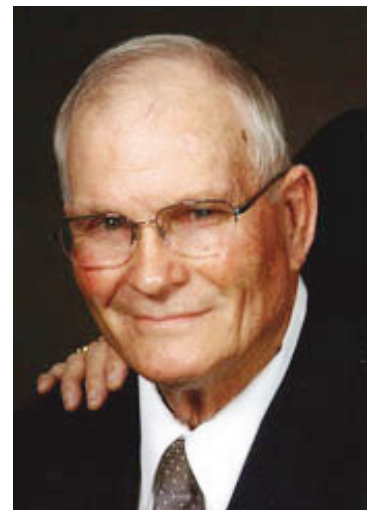


Kabir Bhakta working on the programming to improve robot.

### Kelton Robotics Team Will Compete

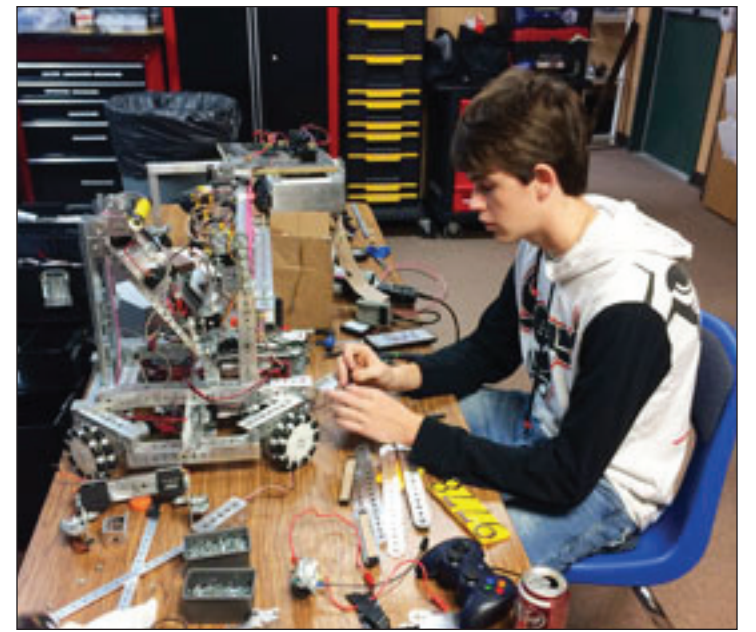
Robotic Chinchillas team 9778 from Kelton, Tx will be Competing for the FTC 2nd league match on Saturday, November 18 in Dimmit, Tx. Kelton has been preparing for the competition and hopes that all their hard work will inspire others. All the points that we acquired from the first league match will be added to the second league match. All the points since the first league match will be added to the FTC league championship in Lubbock, Tx in February. The team has been working on improving the robot to perform all the challenges the competition has given.

We will kick off the Christmas on the Square at 6pm by lighting the square and will do a Chamber Drawing for chamber bucks. Names will be (Continued Page 6)



Thomas Roy Helton Services Today For Thomas Roy Helton

Thomas Roy Helton Jr. passed Monday, November 13, 2017. Services will be Thursday, November 16, (Continued Page 6)



Mark Herndon working on the robot.

### Parkview Hospital Board Minutes

A regular called meeting of the North Wheeler County Hospital District Board was held on September 18, 2017.

**MEMBERS PRESENT:** Tommy Puryear, Chairman; Pam Hibler, Vice-Chairman; Janie VanZandt, Secretary; Roy Laughlin, Member

**MEMBER ABSENT:** Roger Brown, Member

**OTHERS PRESENT:** Monica Kidd, CEO; Jace Henderson, CFO; Cecil Gaither, Nurse Manager

**CALL TO ORDER AND PRAYER:** Tommy Puryear, Chairman, called the meeting to order at 6:02 p.m. with a prayer given by Roy Laughlin.

**OPEN FORUM:** No action.

**MINUTES OF PREVIOUS MEETINGS, SEPTEMBER 5TH AND 8TH, 2017:** Pam Hibler made a motion to approve the minutes of the September 5th and 7th, 2017, meetings. Janie VanZandt seconded, vote was unanimous.

**CNO REPORT:** Cecil Gaither reported that Kimberly Gaither has been hired as the Infection Control Nurse. It is a part-time position.

Dr. Lavelle is behind on 10 charts.

**PAYMENT OF BILLS:** Janie VanZandt made a motion to (Continued Page 3)

### Twenty-first Annual “Toys For Tots” Drive Now Underway In Wheeler

The Twenty-first Annual 1st Lt. Ben Britt & Nathaniel Hillhouse “Toys for Tots” drive is underway in Wheeler. Sponsors are the Wheeler Vet Clinic, Wheeler County Sheriff's Department, Wheeler Banking Center and First State Bank of Mobeetie and Wheeler.

New or good serviceable used toys are needed. Items are being collected for youths from 0-15 years of age. If you wrap a gift, please include sex and age on each gift.

These gifts may be the

only Christmas some children may receive. Your gifts will be greatly appreciated.

If someone is aware of needy families, please contact Wheeler Sheriff's Department or Lee Ann Hillhouse with families' names, ages and sex. Your help and contributions are appreciated.

Monetary donations may be left at the Sheriff's office and Wheeler Vet Clinic. Monies will be used for toys, clothing or food as the donor wishes.

Toys for Tots recipient forms (Continued Page 4)

### Commissioners' Court Meets Mon.

The Commissioners' Court of Wheeler County, Texas, met in regular session on Monday, November 13, 2017 at 9:00 a.m. in the Commissioners' Courtroom of the Wheeler County Courthouse at 401 Main Street, Wheeler, Texas to consider prior bills and discuss matters of mutual concern.

### MaKalli Marshall Account Set Up

An account has been set up at Wheeler Banking Center to help with medical expenses for MaKalli Jo Marshall.

MaKalli has been diagnosed with Hypotrophic Cardiomyopathy, a condition that causes the walls of the heart to thicken. MaKalli's heart is functioning at only 35%. The doctors' plan is to install an ICD because there isn't a medication that will help at this point.

The account is: Maggie or MaKalli Marshall, %Wheeler Banking Center, Box 1040, Wheeler, TX 79096.

For information, call Gina Seitz, 806-669-5615

At 9:00 a.m. court approved the payroll and related expenses for the time period of November 1, 2017 through November 15, 2017. Payroll amounted to \$122,233.69.

At 10:00 a.m. action was taken on the 19 items on the agenda.

• The court approved the minutes of the previous meetings.

• The reports of the county offices were received and approved.

• There were no budget amendments requiring action.

• The line item transfers presented by the auditor were approved.

• No action was taken on the Wheeler County Policy Manual. (Continued Page 4)



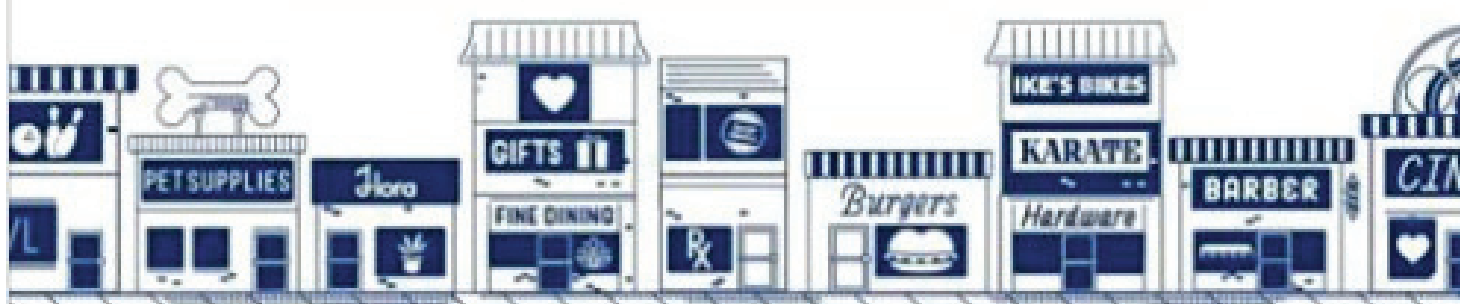
**QUILT OF VALOR:** Doyle Pond received a “Quilt of Valor” at the annual W.I.S.D. Veteran's Day celebration. The quilt was pieced by Joy Wilson and presented by Doyle's grandsons, Mitchell and Spencer Ford. Pictured (l. to r.) Joy Wilson, Mitchell Ford, Doyle Pond and Spencer Ford.

### Shoebox Drop-Off Locations Listed

On Nov. 13, drop-off locations around the multi-county Amarillo Texas Area Team will be open to receive gift-filled shoeboxes for Operation Christmas Child.

During the project's National Collection Week (Nov. 13-20), these sites will collect shoebox donations filled with school supplies, hygiene items and fun toys for children living in poverty overseas. This year, (Continued Page 5)

### SMALL BUSINESS SATURDAY | NOV 25



NOV 25

Small Business Saturday #wheelertx Public · Hosted by Wheeler Chamber of Commerce



Van Baize Baize Promoted, Real Estate Assoc.

United Country-Buford Resources Real Estate & Auction is pleased to announce longtime community banker, rancher, and civic leader, Van Baize, of Nocona, Texas has joined the company as a real estate sales associate and (Continued Page 5)

Good Autumn Morning! This time of the year brings to mind many things I love, poetry being one of those and there are some really wonderful pieces that I remembered as a child

through school then some I've picked up through the years. Brings back memories of sitting in my grade school coloring turkeys, singing about Pilgrims and Indians in our programs and feasts where parents came and ate Thanksgiving Dinner with the class, we even prayed together at our own school table where the teacher sat at the head.

I'm sure this weather brings up memories for you also that take you back to a time when all things seemed so simple. Getting off the school bus walking home and the smell of gingerbread cookies meets

### THANK YOU

... does not begin to describe how much we appreciate everything that everyone has done for us during Mark's time off for his surgery and cancer treatment. Thank you to Joy Wilson for putting the benefit together. Bill Wilson, Bobby McNeil, Ron Rives, and James Umsted for cooking for the delicious meat and to the numerous other people that volunteered their time and resources for the benefit: donated items for the auctions, Texas Street Floral for the decorations, Lyndon Lloyd for his great auction skills and The Traveling Show for providing great entertainment. Thank you Laura Thomas for setting up the fundraiser for the Team Burrell shirts, Mechelle Adkins for setting up the meals to be delivered to us on chemo days, Parkview Hospital for the great care Mark received with all his shots, and Wheeler ISD and students for their love and support for our kids.

Special Thanks to our employers at Parkview Home-Health and Bennett Construction for their support and understanding during our time off. To the enormous amount of people that have stayed in touch with us during all of this, we are extremely grateful. It is a great feeling knowing we are not alone in this fight. Mark and Aimee Burrell Bryan, Bentley and Kylee

you before you walk in the door. Family visiting from near and far playing with cousins you haven't seen in forever! Those were the days and they are slowly edging closer to us this year. Here are a few quotes and poems for your Thanksgiving preparation.

"Come ye thankful people, come,  
Raise the song of Harvest-home!"

—Henry Alford  
"Heap high the board with plenteous cheer, and gather the feast,  
And toast the sturdy Pilgrim band whose courage never ceased.

Give praise to that All-Gracious One by whom their steps were led,  
And thanks unto the harvest's Lord who sends our 'daily bread.'

—Alice Williams Brotherton  
And last but not least:  
"Over the river and through the wood,  
Now grandmother's cap I spy!

Hurrah for then!  
Is the pudding done?  
Hurrah for the pumpkin pie!"

—Lydia Maria Child  
Enjoy this time of the year and be Blessed!  
Vicki Ferguson/Librarian  
Cindy Hartsfield/Assistant



## Wheeler County COURT RECORDS

List of instruments filed in the Wheeler County Clerk's office from November 6, 2017 to November 10, 2017.

NOVEMBER 6, 2017

EXECUTOR'S DEED-Benjamin Franklin Westmoreland III (Estate) to Tye Sims, et ux, 10-25-17, 490.11 acs. out of Sec. 2, J. Poitevent Survey.

BLANKET MIN./ROY. OVERRIDING ROYALTY CONVEY-Iris Gerber Danson & Associates LLC, et al to Crownrock Minerals LP, 10-5-17, Sec. 48, Blk. 24, H&GN Ry. Company Survey.

HEIRSHIP AFF.-Clyde Edwin Prince Jr., et al to Carol Lee Hinman, 2-1-17.

MIN./ROY. DEED-Shirley Carol Isenbarger to Brian Smasal, 4-10-17, See Instrument.

MIN./ROY. DEED-Clyde Edwin Prince Jr. to Rex James Prince, 4-10-17, See Instrument.

DEED-Joe G. Jernigan, et ux to Markus W. Burrell, et al, 5-12-17, Pt. of Outlot 26, Shamrock.

DEED-Charles L. Hagerman and Naomi Faye Hagerman Revocable Living Trust to Janet Hanson, 10-18-17, Pt. 154.4 acs. Sec. 21, Blk. OS-2.

ORDER ALLOWING FINAL ACCOUNT-Naomi Hagerman to Ex Parte, 10-14-15, See Instrument.

ORDER ALLOWING FINAL ACCOUNT-Charles Leonard Hagerman to Ex Parte, 10-14-15, See Instrument.

DEED-Charles L. Hagerman and Naomi Faye Hagerman Revocable Living Trust to Atherton Family Limited Partnership, 10-30-17, 390.17 acs. out of Sec. 70, Blk. A-7, H&GN Ry. Company Survey & Sec. 21, Blk. OS-2.

NOVEMBER 7, 2017

RVL/RDT-Cletus D. Oelze, et ux to Garrison Food Mart Inc., 10-23-17, Lots 5 & 6, Blk. 3, High School Addition, Shamrock.

RELEASE OF LIEN-Texas Capital Bank NA to Richard F. Walsh, et al, 9-22-17, See Instrument.

POWER OF ATTORNEY-Deutsche Bank National Trust Company to Ocwen Loan Servicing LLC, 12-6-11.

TRUSTEE DEED-Deutsche Bank National Bank Company (Trustee) to Tamme Pike, 10-19-17, 7.909 acs SW pt. NW/4 Sec. 80, Blk. 23, H&GN Ry. Company Survey.

C/C PROBATE-Helen Lucille Herd to Ex Parte, 10-31-17.

EXECUTOR TRUSTEE MD/ROYALTY DEED-Edward Gerber (Estate), et al to Crownrock Minerals LP, 10-12-17, Sec. 48, Blk. 24, H&GN Ry. Company Survey.

DEED-Garrison Food Mart Inc. to Stagg Creek Land LLC, 11-7-17, Lots 5 & 6, Blk. 3, High School Addition, Shamrock.

STATEMENT OF OWNER-2Hoppers LLC to Margarita Hernandez, 7-12-17, Personal

Property Only.

NOVEMBER 8, 2017

MIN./ROYALTY CONVEYANCE-Petro-America LLC to Jerome A. Anderson, 11-2-17, Sec. 25, Blk. M-1, H&GN Ry. Company Survey.

NOVEMBER 9, 2017

MODIFICATION AGREEMENT-Sharon Evonne Wood to Amarillo National Bank, 11-1-17, Lots 1-24, Blk. XLVIII, Romans Addition, Shamrock.

EXECUTORS DEED-Dora Mae Bailey (Estate) to Jonathan Bailey, et al, 11-9-17, SW/4 Sec. 121, Blk. 23, H&GN Ry. Company Survey.

EXECUTORS MD-Dora Mae Bailey (Estate) to Jonathan Bailey, et al, 11-9-17, All My Mineral Interest in Wheeler County.

NOVEMBER 10, 2017

Holiday

**Chat** (from Page 1)

Wheeler Saturday for 'Small Business Saturday'. Sounds like lots of fun; should be a shoppers' delight.

— cwe —  
Sorry to hear of the loss of Thomas Roy Helton.

— cwe —  
Our weekend activities included an outdoor wedding of a grand-nephew, Colby Overton, Leroy's and Rhonda's grandson.

— cwe —  
The wedding was Saturday afternoon at 3:00 at an Oklahoma City venue. It was a bit chilly, but it was not raining. The property backed against Interstate 40 and there was traffic noise.

— cwe —  
I went prepared with a heavy coat and blanket and I was glad I had them.

— cwe —  
At the same time the bride and bridesmaids were clad in off the shoulder gown and dresses.

— cwe —  
A reception at the same location followed the wedding.

— cwe —  
Thanks, Rhonda for the pictures of the Veterans' Day activities at the school.

— cwe —  
"It takes a community to raise a child" and it takes a community and relatives to get this paper out each week.

— cwe —

— cwe —

— cwe —

— cwe —

— cwe —

Listen To . . .

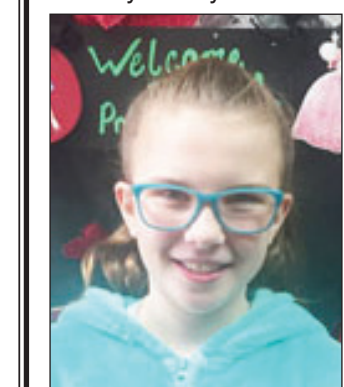
**KPDR-FM, 90.3**

WHEELER, TEXAS

### Fort Elliott Elementary COUGARS of the WEEK



Kindergarten  
Wynter Zybach



4th Grade,  
Rylee Rose

For all your . . .

Insurance Needs, See

**Eastern Panhandle Insur. Agency, Inc.**

206 N. Madden  
Shamrock

**806/256-5401**

•Auto •Home •Life •Health  
•Commercial •Bonds

**DOUG BOYD MOTOR CO.**  
Buy Here / Pay Here  
No Credit Check • Areas Largest Selection  
Pampa • Corner of Hwy 60 @ Hwy 70  
806-669-6062 • www.dougboydmotors.com

P.O. BOX 582  
WHEELER, TX 79096  
806-331-1522

PAUL TOPPER, JR.  
OWNER

**BIGTOP ENTERPRISE, LLC**  
TBA TOPPER HEAT & AIR SERVICE  
TX LICENSED HEAT & AIR SEPTIC SYSTEM INSTALLER  
TX License #TACLB40893E OSOO29695

806-334-1522

**Panhandle Plains Realty**  
Making Dreams Come True

— Let us list your Real Estate —

**Linda Laycock**  
Broker, ABR,  
GREEN, SRES, E-PRO  
806.662.1312

**Larry Hadley**  
Assoc.  
806.662.2779

**Tisha Calhoun**  
Assoc.  
806.440.4153

Pampa MLS www.panhandleplainsrealty.com Amarillo MLS

## ROBERTS COUNTY RANCH FOR SALE

12,160 Acres

This Roberts County ranch represents one of the very best the Texas Panhandle has to offer. The ranch is found in the heart of Roberts County, where ranches of this size very seldom are offered for sale. The ranch is well located approximately 6 miles north of Miami.

The topography varies from rolling and sloping open prairie lands to ridges, side slopes and breaks that descend to wide fertile creek bottoms. The ranch supports an excellent turf of palatable native grasses with scattered sand sage throughout the bottoms and cedar along the breaks. The ranch is well suited for a yearling or cow/calf operation. In addition, the ranch has quality mule deer and pronghorn antelope.

The headquarter improvements are very well maintained, as are the fences and livestock pens. All of the ranch fencing was replaced in 2006. The ranch is extremely well watered by wells, tanks and live spring water. Water quality is excellent and very abundant, all being in the prolific Ogallala Formation. Like most other Roberts County ranches, the commercial water rights are not available; however, future livestock and domestic water supplies are protected.

This fine Texas Panhandle ranch is offered on a surface only basis. However, the elevated plains country, of this ranch, offers excellent future wind farm development opportunities. All wind rights will be conveyed. Offerings such as this, and opportunities to acquire a large Roberts County ranch, rarely occur. This fine ranch is very reasonably priced at \$1,075 per acre. Contact Chad Dugger for additional details or to schedule a showing.

Offered exclusively by:

**Chas. S. Middleton and Son**

www.chasmiddleton.com

1507 13th Street  
Lubbock, Texas 79401  
(806) 763-5331

11/16/30c

**NO Trenching**

**Rick's**

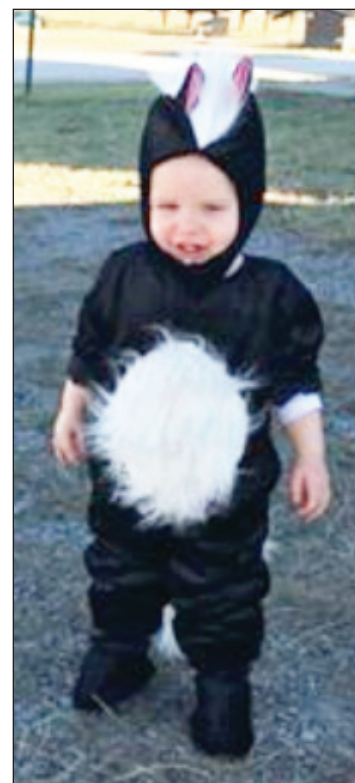
**Lawn Sprinklers**

**NO Mess**

\* Sales - Service - Installation \* We trade for almost anything  
\* Over 30 years experience \* In-house financing

FREE ESTIMATES 1.800.466.0915

Altus, OK **RAIN BIRD.** TX LI 4823 • TX LI 19097  
TX BP 13774



We missed this one when we ran the Halloween pictures.

**Small** (from Page 1)

contact the Wheeler Chamber at 806-826-3408 or email chamber@wheeler-texas.org. Local shoppers participating in the "Cash" Drawing held

on Dec. 2nd "Christmas on the Square") will be given a ticket for every receipt purchase starting November 25th - Dec. 2nd. Participants can bring their tickets to the Courthouse steps, where the

ticket hopper is located, on the west side, at 6:00 p.m. Bounce Houses, crafts and painting opportunities are planned for anyone interested in participating on Saturday.

Ora Belinda Schoolhouse will be open to the public from 1 p.m. - 6 p.m. (\$25 per child). Please reserve your spot now, as space is limited! Call Jessi Ware at 806-826-1111.

Shop Local T-shirts are available for \$10 each. If you are interested in order one or ordering for you employees send size and quantity information to chamber@wheeler-texas.org or call 806.826.3408. Orders will be placed on Monday, November 13th.

Be sure to shop all our local stores and vendors, as there is sure to be something for everyone on your list!!

If you would like to sponsor, donate or volunteer to help - please contact Kristen Moudy at 806.826.3408 or chamber@wheeler-texas.org. Support the local economy where you live, work and play!

**CARD OF THANKS**

To the great people in Wheeler County & surrounding area please forgive us for the tardiness in thanking you for your thoughts, prayers, cards, flowers, and donations to the Mona Jennings Freeman Scholarship Fund.

If you knew Mona she was an original, one of a kind. Her joy was contagious. Her laughter was infectious. She never traveled anywhere that she didn't know someone who was an acquaintance. Mona touched so many lives in her 52+ years and thru the scholarship in her name, we truly hope this will continue. Thanks again for your kindness and generosity.

One never realizes how precious ones memories are until they are all you have. Try not to take those memories of loved ones for granted. Mona loved each and every one of her friends and family and she will forever be in our hearts.

Love,  
Larry & Bobby Jennings  
Rhonda & Dwayne Myers  
Dani & Tyler Jernigan, J'Leigh & Jasper  
Codi & Charlie Myers  
Johnny, Skylar, & Payton Freeman  
Amanda & Phillip Saffel, Olivia & Everett



On November 9th, 2017. The Kelton yearbook staff went to read All The Pets You Can Get by Doctor Sues, and Chika Chika 123 by Bill Martin Jr. with the Kindergarten and Pre-K students! The yearbook staff and students are very honored to be apart of the Story time Club!

**PARKVIEW HOSPITAL HOME HEALTH AGENCY**

901 S. SWEETWATER ST.

P. O. Box 1030

WHEELER, TX

806-826-1370 OFFICE

806-826-1396 FAX

SKILLED NURSES, PHYSICAL THERAPY, WOUND CARE/WOUND VAC, IV THERAPY, VITAL SIGN MONITORING, MEDICATION MONITORING, HOME CARE AIDES

A NURSE IS AVAILABLE 24 HOURS A DAY 7 DAYS A WEEK

Currently serving WHEELER, ROBERTS, HEMPHILL, COLLINGSWORTH and GRAY counties



COMPASSIONATE PROFESSIONAL HOME CARE

**Parkview** (from Page 1)

pay the bills, Roy Laughlin seconded, vote was unanimous.

**FINANCIAL STATEMENTS AND STATISTICS:** Financial statements were reviewed and discussed by the board and Jace.

**INVESTMENTS:** Currently, there are three CD's at the First State Bank of Mobeetie totaling \$1,049,808.59.

**APPROVE BAD DEBT AND CHARITY WRITE-OFFS:** No bad debt or charity write offs.

**QAPI REPORT:** The board discussed the report and asked questions for further clarification.

**OLD BUSINESS:** Monica reported that the Maintenance department has been working on the exterior of the Laundry and Maintenance Building and Home Health Building. They have spent \$96.03 on the Laundry and Maintenance Building and \$102.20 on the Home Health Building, for a total of \$298.23. The current metal awning over the ramp where the ambulance unloads patients at the hospital will eventually be taken down, and it will be reused to construct a new awning at the Home Health building.

Also, Glikas roofing is currently here working on the roof of the existing hospital building.

**Wheeler Varsity Girls Play Follett**

The Wheeler Varsity girls defeated Follett 46-31 in their first game of the season.

Earning points for Wheeler were: Julia Andrade, 6 pts.; Jaci Guest, 6 pts.; Valeria Tintori, 4 pts.; Daisy Duenez, 5 pts.; Katya Babylon, 6 pts.; Keila Rocha, 7 pts.; Shelby Jones, 12 Points.

Korte still has not given us a Gross Maximum Price so construction can begin. Pricing is not firm yet. They are still \$200,000 over budget and are considering changes in mechanical to save money.

Monica reported that the roof is leaking in areas and that she took pictures and has reported it to Korte.

Monica received a letter from the hospital's attorney in Austin stating that the Tax Assessor's actions were inappropriate and that he has an ethical obligation to be truthful. By law, he will be collecting our taxes.

Monica stated that the 85th Texas Legislature did not pass on the rollback tax rate.

Monica has requested a copy of the Tax Assessor's budget.

Dr. Miranda's contract is up on October 11 (probationary period). Monica has complaints in writing. Pam Hibler made a motion not to renew his contract with Roy Laughlin seconding the motion. Vote was unanimous.

The parking lot behind Dr. Galutia's office is not yet finished. He wants a new key for the building and paint to be touched up. When it was painted, the paint color wasn't written down.

**NEW BUSINESS:** Monica reported that a reverse osmosis system is being put in by Wheeler County due to water quality. Discharge is going into Silver Creek, Sweetwater Creek, Red River basin, and an unnamed tributary.

Monica is securing bids from Elevate Healthcare and CI Health Group on recruitment of new doctors.

There were two complaints in the suggestion box related to employees coming in late to work, smoke breaks being abused, and nails, hair, and makeup being done at work. The board discussed the issues.

**EXECUTIVE SESSION** (Pursuant to Texas Government Code, section 551.074): No executive session.

**ADJOURNMENT:** The meeting adjourned at 8:21 p.m. The next regular board meeting will be on Monday, October 16, 2017 at 5 p.m.

**Storm** (from Page 1)

him breathing either. She reached through the pen and patted him. He didn't move. She called his name. Nothing.

Then she kicked the metal panel that was right by his head. If anything was going to wake him up that would! Boing! That poor pig jumped straight up and landed on all four feet. He was shaking his head and walking crooked. I thought, "Oh, no! You made him go blind!" He walked funny for a little bit. Then he went to eat. We were so happy that he was ok. Mom felt bad that she made that loud noise and it hurt his ears, but at least he wasn't dead. The next day Edward was still mad at my mom. He dumped his food when she put it in his pan...two times. She told me to try it one time. He just started eating when I fed him. We laughed at that pig! I couldn't believe he was still mad at Mom!

Colby and Joanna had their wedding. It was at a beautiful place in Oklahoma City. It was outside in a garden with big ponds and fountains. It was a little cold. The wedding was very beautiful. After the wedding we had a big dinner. The food was delicious! I am so happy for Colby and he will have a happy life with the woman that he loves.

The Lady Colts played basketball on Monday. The seventh grade played hard but couldn't get the points. The eighth grade was great! We WON! I didn't get to play, but that is ok. They were too fast for me. I really wanted to play because Baba and Pop came to see me, and we have to do what is best for the team. Maybe next time. Our team was awesome. Saidy made a three pointer! I am so proud of the team! Thanks for coming to my game Baba and Pop! That's it!

**WHEELER INDEPENDENT SCHOOL DISTRICT  
BALANCE SHEET  
GOVERNMENTAL FUNDS  
JUNE 30, 2017**

Data Control Codes	10 General Fund	Other Funds	Total Governmental Funds
<b>ASSETS</b>			
1110 Cash and Cash Equivalents	\$ 4,737,754	\$ 367,274	\$ 5,105,028
1220 Property Taxes - Delinquent	361,538	40,691	402,229
1230 Allowance for Uncollectible Taxes (Credit)	(21,000)	(2,100)	(23,100)
1240 Receivables from Other Governments	178,023	2,590	180,613
1000 Total Assets	\$ 5,256,315	\$ 408,455	\$ 5,664,770
<b>LIABILITIES</b>			
2160 Accrued Wages Payable	\$ 123,133	\$ -	\$ 123,133
2000 Total Liabilities	123,133	-	123,133
<b>DEFERRED INFLOWS OF RESOURCES</b>			
2601 Unavailable Revenue - Property Taxes	340,538	38,591	379,129
2600 Total Deferred Inflows of Resources	340,538	38,591	379,129
<b>FUND BALANCES</b>			
Restricted Fund Balance:			
3480 Retirement of Long-Term Debt	-	369,864	369,864
3600 Unassigned Fund Balance	4,792,644	-	4,792,644
3000 Total Fund Balances	4,792,644	369,864	5,162,508
4000 Total Liabilities, Deferred Inflows & Fund Balances	\$ 5,256,315	\$ 408,455	\$ 5,664,770

HE SAW THE TRAIN  
AND TRIED TO DUCK IT  
HE KICKED THE GAS  
AND THEN THE BUCKET!  
Burma Shave

**Sunday Nite Live**  
**KPDR-FM, 90.3**  
... Live from Canadian  
9:00 p.m. to 11:00 p.m.

**Hyland's Pharmacy**

Downtown Wheeler — 826-5561

It's time for your 2018 Medicare

Check-up.

October 15th - December 7th  
Medicare Part D Open Enrollment  
WE CAN HELP!

The store for all your needs: Prescriptions,  
Gifts for your loved ones.



## Wheeler School Program Honors County Veterans



From  
All  
Of us ...

# THANK YOU!

Veterans Signing the Register:  
Adams, Doug  
Atwood, Riley  
Boody, Ed  
Brickey, Robert  
Brown, Charles  
Brown, Mark  
Brown, Robert  
Brown, Roger  
Butler, Ken  
Clymer, Frank  
Cook, Terry  
Cox, Brian  
Foreman, Jason  
Foreman, Lon  
Fullbright, Debra  
Hall, Curtis  
Hamner, Daniel  
Heinsohn, Darrell  
Hershman, Ed  
Horn, Denver  
Hubble, James  
Jolly, Earl  
Krug, HB  
Lowery, Herman  
McCain, Bob  
McMenamy, Don  
Meadows, Brady  
Orr, Steve  
Pond, Doyle  
Rives, Doug  
Rose, Tristan  
Sabbe, Joe  
Sanchez, Timothy  
Shackelford, Tommy  
Shuler, Leo  
Steen, Wesley  
Taylor, Kermit  
Steve Walker



Wheeler first Graders



WWII Veteran, Wesley Steen

### Your Partners in Progress



Member: F.D.I.C.

Bowie • Canadian • Childress • Littlefield • Lubbock • Olton • Memphis • Wheeler

### Baize (from Page 1)

farm and ranch specialist. Van is very well known throughout the banking, ranching, feedlot, and association circles throughout the United States. He recently retired from Wellington State Bank in Bowie. He and his wife Rene' reside on their ranch north of Bowie, Texas. In addition to real estate and ranching, Van is still working actively with numerous financial institu-

tions providing consulting and inspection services for their agricultural portfolios.

For those of you who already have the privilege of knowing Van, we know you will continue to enjoy working with him and for those of you who haven't had the privilege of meeting him, we're excited for you to meet him in the future.

Van can be reached at (940) 366-3407 or at [vbaize@bufordresources.com](mailto:vbaize@bufordresources.com)

United Country-Buford Resources Real Estate & Auction is a nationally recognized real estate brokerage company operating throughout Texas and Oklahoma. The auction method of marketing is used for unique and high-end homes, trophy properties, farms, ranches and commercial properties.



Kelton Robotic chinchillas team 9778 was mentoring the younger children in elementary by showing them how science is used in Halloween.



### THE WHEELER TIMES

Page 5 - Thursday, November 16, 2017

"Wheeler: town of friendship and pride"



**REGISTRATION:** Wheeler Girl Scouts recently held registration at the Wheeler School cafeteria. Pictured here are recent recruits.

### DEEP THOUGHT

John Glenn: As I hurtled through space, one thought kept crossing my mind - every part of this rocket was supplied by the lowest bidder

Desmond Tutu: When the white missionaries came to Africa they had the Bible and we had the land. They said "Let us pray." We closed our eyes. When we opened them, we had the Bible and they had the land.

### Shoebbox (from Page 1)

The Amarillo Texas Area Team volunteers hope to contribute 19,419 shoebbox gifts to reach children in need. Would you be interested in sharing this local news with your audience?

Interview Opportunities: Please let me know if you would like to speak with a site coordinator or Wheeler project leaders about this effort.

Additional Information: A full release is below my signature. For a complete list of participating drop-off locations, searchable by ZIP code, visit [samaritanspurse.org/occ](http://samaritanspurse.org/occ).



**MOBEETIE BIKE-A-THON RIDERS:** Back Row: Roper Pigg, Tatum Pigg, Addison Hefley, Makayla Bowman. Front row: Tanner Horn, Hunter Horn. Not sure who the little blond girl is, Reagan Gaines, Aidn Session, Kace Campbell, Hunter Higgins, Kelton Sims, Rylee Zybach and Maverick Barr.



Aidn Session

THESE PICTURES SPONSORED BY:

**BOB'S**  
**BAIL BONDS**  
806-826-0654 Cell 806-334-0452  
P.O. Box 264 Wheeler, TX 79096 Pat Childress

Wheeler Seventh Grade visited KVII in Amarillo.



On Thursday night, November 9, the Fort Elliott Theater Arts put on the play, *The Attempted Murder of Peggy Sweetwater*. Pictured are (l. to r., back) Mrs. Horn, Kenya Shabazz, Kyrrah Kelley, Jarique Mitchell, Journey Sorrell, Hailey Meadows, Braley Long, Christian Camorlinga, (middle) Logan Hefley, Kamryn Chesher, Shaylee Cochran, Saralyn Richardson, Rebecca Longley, (front) Kyla Lewis and Audra Reeder.



Good luck to the people from Sarah Harless's Art class on the upcoming American Quarter Horse contest!



Kelton students and staff dressed up in red on October, 27 2017 to support being drug free. Kelton STEAM Academy hopes to spread awareness of the importance of being drug free.



The Fort Elliott Bike-A-Thon was held on Friday, September 22nd at the Mobeetie City Hall on a very windy day. 13 students participated and collected a total of \$1,929 in donations for St. Jude Children's Research Hospital. Those who raised at least \$50 and received a t-shirt were MaKayla Bowman, Aidn Session, Jalynn Pinion, Hunter Horn, Tanner Horn and Kelton Sims. Students who collected at least \$125 and received a t-shirt and bronze medal are Addison Hefley, Colton Tipps, Rylee Zybach and Tatum Pigg. Students who raised at least \$250 and received a t-shirt and silver medal are Hunter Higgins, Reagan Gaines and Case Campbell. Thanks to Thriftway in Wheeler for donating hot dogs and many parents, who brought snacks. Thank you to the Mobeetie Volunteer Fire Department for providing the fire trucks for safety.

## Plans (from Page 1)

entered into the drawing from tickets received for every local receipt purchase from 11/25-12/2. Must be present to win, you can bring all your tickets to the front of the courthouse steps on the WEST side.

Santa's Workshop will be in the old Buck and Beyond building. There will be all kinds of picture opportunities and kids can drop off their Santa Letters or tell Santa what they would like.

We also plan on having a LIVE Nativity scene, to the south of the Buck and Beyond building.

Hot cocoa and cider will be provided by the gals at Charles Kuntz, CPA and the Ft. Elliott FFA will be providing concession.

There will be Christmas Caroling provided by the Mason Jars and John Bratton is working on having an ensemble and we hope to have some kid's music classes or choir singing. This will more than likely take place on the steps of the courthouse.

We will more than likely have either cookie or ornament decorating going on

We also will have horse drawn carriage rides provided by the Waters Family and a live TOYS for TOTS train. We will have a Toys for Tots drop off, so bring any unwrapped toys, clothes or monetary donation.

For more information on this event, please contact the Wheeler Chamber at 806.826.3408 or chamber@wheeler-texas.org.



THE WHEELER TIMES  
Page 6 — Thursday, November 16, 2017  
"Wheeler: town of friendship and pride"

Wheeler County

## SWCD 2018 Tree Sales

The Wheeler County Soil and Water Conservation District will be taking tree orders from now through February 22, 2018. Seedlings are sold in quantities listed. Lots will not be broken to facilitate the sale of individual seedlings.

Bare root species available are, American Plum, Bur Oak, Chinkapin Oak, Pecan and Shumard Oak. They are sold in multiples of 25 and priced at \$45.

Containerized species available are Afghanistan Pine, Baldcypress, Catalpa, Cedar Elm, Fourwing Saltbush, Green Ash, Italian Stone Pine and Oriental Arborvitae. They

are sold in multiples of 25 and priced at \$65.

Payment must accompany order; no trees will be reserved until payment is received and all sales will be final; no cancellations or refunds.

If you would like to place an order, please come by the Wheeler County SWCD office at 1410 S. Alan Bean Blvd., Wheeler, TX. Trees will be available for pick up in March of 2018. Our office will take orders on Tuesdays, Wednesdays and Thursdays from 8:00 a.m. to 3:30 p.m. If you have any questions, please call the Wheeler County SWCD at 806-826-3565 ext. 101.

## Helton (from Page 1)

2017, at 1 PM, at the Wheeler High School Gymnasium. Burial will follow at the Gageby Cemetery in Gageby, Texas. Arrangements are made by Robertson Funeral Directors, Wheeler.

Thomas was born January 11, 1933, in Hemphill County, to Alice and Thomas Helton Sr. He attended Briscoe schools and graduated in 1952. He married Martha Ann Standlee on March 12, 1955, in New Mexico. He then went on to graduate from West Texas

State University in 1956. Carroll Killingsworth contacted him about coaching and teaching in the Wheeler school system in 1957 and that is when he moved his family to Wheeler to start working. Thomas worked in the Wheeler schools for 33 years before retiring in 1991. He continued farming and loving sports until his time of death. He was a member of the First United Methodist Church and served on many boards in the Wheeler community and church.

He is preceded in death by his wife, Martha; grandson, Christopher Wells; great-grandson, Hayden Helton; parents, Tom and Alice Bell Helton; and a brother, Bill Helton.

He is survived by a daughter, Gayle Helton Lewallen and husband Terry, of Wheeler, TX; a son, Dale Helton and wife Beth, of Roanoke, TX; a son, Danny Helton and wife Toni, of Memphis, TX; a daughter, Sharon Helton Zamora and husband Larry, of Gageby, TX; a daughter, Karen Helton Little and husband Jeff, of

## Texas Drivers Urged To "End The Streak" of Daily Deaths

At least one person has died on Texas roadways every day since Nov. 7, 2000. In an effort to end this grim and deadly 17-year milestone, the Texas Department of Transportation, through its #EndTheStreakTX campaign, reminds drivers to stay alert, obey traffic laws and take personal responsibility behind the wheel.

"It's heartbreaking to know somebody has lost a spouse, child, friend or neighbor every day for the past 17 years on Texas roadways," said TxDOT Executive Director James Bass. "According to the National Highway Traffic Safety Administration, 94 percent of these deadly crashes are due to driver error -- things like distracted driving, speeding and drunk driving. We can stop this deadly streak if every driver makes it a priority to be safe, focused and responsible. Let's end the streak."

To help raise awareness of this tragic, daily statistic, TxDOT is asking people to change their social media profile pictures to the image available for download here. Throughout November, TxDOT's social media pages will share facts and informa-

tion about the last 17 years of roadway fatalities and invite Texans to publicly show their commitment to ending the streak of deadly days by sharing these posts with the hashtag #EndTheStreakTX. TxDOT also will invite the public to share personal stories of loved ones lost in car crashes on its social media pages using photo and video testimonials with the hashtag #EndTheStreakTX.

Since Nov. 7, 2000, fatalities resulting from motor vehicle crashes on Texas roadways have numbered 59,388. The leading causes of fatalities continue to be failure to stay in one lane, alcohol and speed. To decrease the chances of roadway crashes and fatalities, TxDOT reminds drivers to:

Buckle seatbelts – all passengers need to be buckled  
Pay attention – put phone away and avoid distractions

Never drink and drive – drunk driving kills; get a sober ride home

Drive the speed limit – obey speed limits and drive slower when weather conditions warrant

## I'M GLAD YOU ASKED

- If a turtle loses its shell, is it naked or homeless?
- What's another word for synonym?
- How fast would lightning travel if it didn't zigzag?
- We can be overwhelmed and underwhelmed, but are we ever just whelmed?
- Why isn't there mouse-flavored cat food?
- If you are asked, "A penny for your thoughts?" and you put in your "two-cents worth," what happens to that other penny?
- If the number 21 is pronounced twenty-one, why isn't the number 11 pronounced onety-one?
- Would a winning team ever say, "It's only a game," or is that expression used exclusively by those who've lost?

SMALL BUSINESS SATURDAY®

GET READY FOR THE DAY



FOUNDING PARTNER AMERICAN EXPRESS



Jr. High Spirit Week Candidates (back row) Zach Beard (Spirit Week King), Nicholas Sparks, Jovany Gallardo, Bryce Richardson (front row) Hadlee Gomez, Reese Foreman (Spirit Week Queen), Selena Lopez, and Saily Hernandez



Pre-K and Kindergarten perform for the veterans!



Travis Cook runs up the middle

**Early Deadline For The Wheeler Times Next Week:  
 Friday, Nov. 17 Preferred  
 Monday, Nov. 20 at 9:00 Latest**

WHEELER MUSTANG FOOTBALL  
live on...  
**Legends 98.9**  
The Legends of Rock & Roll - KXNZ-FM  
Legends 82.9 - KSNZ (The Legends of Country)  
Shamrock — Wheeler County, TX  
207 North Main Street — P.O. Box 83  
Shamrock, TX 79097  
Phone: 806-256 2277  
Online: www.legends989.com

**Larry & Carol Porton**



—Photo by Kara Richardson

Gustavo Andrade knocks the ball carrier off his feet.

**Shelton & Shelton**  
Attorneys at Law  
806/826-0069  
Wheeler Title & Abstract Co.  
a Shelton Title Company  
806/826-3526

**Randy and Machille Henson**  
Rowdy, Lacey, Justin & Stratton

**Judy Woollard**

**Wheeler JV & JH Football Schedule**

Date	Opponent	Site	Time
9-14	Clarendon Jr. Hi.	W - 12	H - 4:2
9-21	Highland Park	Home	TBA
9-28	Open		
10-5	Panhandle	Home	TBA
10-12	*Claude	Away	TBA
10-19	*Booker	Home	TBA
10-26	*Vega	Away	TBA
11-2	*Shamrock	Away	TBA
11-9	*Gruver	Home	TBA

**H&H TIRE**  
Chad Helton  
Owner  
806-826-5769  
714 W. Okla. Ave  
Wheeler, TX 79096



Kamonte' Martin stops the Greyhound drive in the Jr. Hi. Game.

**Finsterwald Ranch**

**HYLAND'S Pharmacy**  
Phone: 826-5561  
109 West Texas Street  
Wheeler, Texas  
Randy & Crystal McEntire, Owners

**STILES RANCH**  
Bob & Sue Stiles  
Bill & Kay Stiles

**TEXAS STREET**  
Floral Co.  
Ron & Donna Rives,  
Owners - Managers  
806-826-5943 121 W. Texas Street Wheeler, Texas

**Kim's Kitchen Lunch Buffet Everyday**  
Intersection Hwys 83 & 152 • Wheeler, TX • 806-826-5102

Your Partners in Progress  
**Wellington State Bank**  
Member FDIC. Bowie • Canadian • Childress • Littlefield • Lubbock • Odessa • Memphis • Wheeler

Sharon Helton, Owner  
Register with us for your shower!  
**LaRue's Raqs**  
406 S. Main — P.O. Box 1080  
Wheeler, TX, 79096  
806-826-0666

**LYNDON AUCTIONEERS**  
Lyndon & Novelline Loyd  
P.O. Box 1279  
Wheeler, Texas 79096  
(Lic. # 7119)

**Ed & Patricia Forrester**

**M Maxey's STEAKHOUSE**  
S. Hwy. 83 — Wheeler, TX — 806.826.3441  
Call for Catering, Private Parties & Daily Specials

**Christner Cattle, L.P.**  
Sandra Christner

**Graham Creek Ranch**  
Tom & Kay Christner

**Mel's Diner**  
West Hwy. 152 — Wheeler  
Where Friends Meet To Eat!  
WE CATER — 826-3756

**DEVON & KENNA HOWARD**

**LOTT RANCH**  
Hereford Breeders  
T.C. & Agnes Lott Family, Owners  
Est. March, 1945

**Weldon & Dolores Simmons**  
Jotana Henson, Kayleigh & A'Dyn

**WALLACE CONSTRUCTION**  
Changing the looks of Wheeler—one building at a time!  
305 Main — Wheeler, TX — 826-3503  
**WALLACE TAX SERVICE**  
For all your accounting needs — 826-3503

In Memory Of...  
**Dr. Louie Mendiola, M.D., P.A.**  
Gina, Vincent, Melissa, Hunter, Ashley Marie, Chloe Taylor, Rocky, Rosemary & Magnolia Noelle and Josephine Rose Mendiola

P.O. BOX 582  
WHEELER, TX 79096  
**806-331-1522**  
PAUL TOPPER, JR.  
OWNER  
**BIGTOP ENTERPRISE, LLC**  
TBA TOPPER HEAT & AIR SERVICE  
TX LICENSED HEAT & AIR SEPTIC SYSTEM INSTALLER  
Tx License #TACLE40888E 03-0023886  
806-334-1522

# WHEELER MUSTANGS

**WHEELER MUSTANGS**

#	Name	Pos.	Ht.	Wt	Cl
3	HAGEN WEATHERLY	RB/LB	5'4	150	JR
4	BALDEMAR GALLARDO	TE/DE	6'0	175	SO
5	GUSTAVO ANDRADE	QB/DB	5'10	160	SO
7	SERVANDO RASCON	WR/DB	6'0	170	SR
8	HESSTON MARSHALL	RB/LB	5'10	155	FR
10	BRADY BAILEY	WR/S	6'1	150	SO
11	IAN FINSTERWALD	RB/LB	5'11	150	SO
12	EDUARDO PORRAS	RB/LB	5'8	150	SR
14	ANGEL ONTIVEROS	WR/DB	5'7	145	JR
21	LOGAN HARRIS	WR/DB	6'1	165	JR
23	DAVID RASCON	RB/LB	5'8	150	FR
24	TRAVIS COOK	RB/LB	5'8	155	SR
27	LUIS GUTIERREZ	RB/DB	5'7	160	SR
35	ZACHARY BUTLER	RB/LB	5'7"	150	SO
40	BRADLEY MCGHEE	TE/OLB	6'0	155	JR
42	EDSGAR VARELA	OL/LB	5'10	160	SO
50	SIGALA, JOSUE				
51	AUSTIN CALHOUN	OL/DL	5'9	175	SO
54	MARCOS HERRERA	OL/LB	5'7	150	FR
55	DANIEL RASCON	OL/LB	5'10	210	FR
58	PADEN MARKHAM	OL/DL	5'11	200	SO
65	ALEX DAVIS	OL/DL	6'1	175	SO
68	KADE KEMP	OL/DL	5'11	245	JR
74	JASPER, TRENTON				
77	ANDRES GARCIA	OL/DL	5'10	210	JR
78	JESSE SIERRA	OL/DL	6'0	250	FR
79	KORBIN AUSTIN	OL/DL	6'1	245	SR
80	JAYTON COUCH	WR/DB	5'7"	130	SO
81	EDGAR VALLES	WR/LB	6'2	145	

Managers: Bryce Richardson, Noel Gutierrez, Jovany Gallando, Nathan Rowley, Yonathan Mendoza and Manuel Jurado  
Head Coach: Chris Evans  
Assistant Coaches: Jim Verden, Sonny Calhoun, Josh Britt and Alex Garcia  
Ball Boy: Hesston Marshall

**Mustang Fans**  
**Chip & Pam Hill**

**Steve, Joyce & Caitlynn Walker**

**ARROW WATER WELL, INC.**

**Wheeler Varsity Football Schedule**

Date	Opponent	Site	Time
9-1	#Booker	W-32	B-22
9-8	Memphis	W-8	M-28
9-15	Clarendon	W-12	C-15
9-22	Highland Park	W-35	HP-6
9-29	Open		
10-6	Panhandle	W-27	P-28
10-13	*Claude	W-21	C-40
10-20	*Booker	Away	
10-27	*Vega	W-14	V-8
11-3	*Shamrock	W-14	S-0
11-10	*Gruver	Away	7:00

\*District — #Homecoming

**WILD Scissors**  
503 Canadian St. • Wheeler • 806.663.1553 • Tracy Tignor  
Shelby Jones



Logan Harris dives to make the tackle.

**Danny, Ravonda, Josh & Nick Hardcastle**

**EASTERN PANHANDLE**  
Insurance Agency, Inc.  
117 W. Texas — Wheeler, TX  
Phone: 826-3573



**BRITT RANCH**  
↑

806-826-3414  
**Speedi Mart**  
Est. 1982  
500 S. Alan L. Bean  
Wheeler, Texas

**CHARLES R. BROWN**

**WVTC WHEELER VETERINARY CLINIC**  
Drs. LeeAnn & Ben Ed Hillhouse

**Gary & Becky Hardcastle** Todd, Mindy, Bailey, Reagan & Presley Brashears  
Marcus, Heather, Justin, Houston & Sierra Hardcastle

**Leo & Sylvia Shuler**

Jay & Karen Lewis and Family

**WEST TEXAS GAS**  
Wheeler Division—500 S. Mobeetie—Wheeler, TX 79096

**LeRoy & Rhonda Meriwether & Stormie**

Call today for an appointment  
Specializing in . . .  
• Permanent Makeup  
• Eyelash Extensions  
• Color • Waxing  
• Hair Extensions  
Donna Childress  
806-676-5223  
Wheeler, Texas

**Go Mustangs!**  
JOHN DEERE  
Spearman, TX  
Dalhart, TX  
Pampa, TX  
Dumas, TX  
Perryton, TX  
Boise City, OK  
Guyton, OK  
**GREEN COUNTRY EQUIPMENT, LLC**  
Pampa, Texas  
806-665-1888  
email: hschwope@gcejd.com  
WWW.GREENCOUNTRYEQUIP.COM

**Junction Country Store** Daily Lunch Specials  
Plenty of Seating  
Truck Parking  
FM 8794 & US Hwy 83

**CROSS COUNTRY BARN**  
24-Hr Gas & Diesel  
Convenience Store  
Hunt Bros. Pizza & Wings  
Hamburgers/Sandwiches  
Beer & Wine  
301 E. Oklahoma St — Wheeler, Texas — 806-826-2276  
Dale & Monica Kidd, Owners

HOME - AUTO - FARM - LIFE  
**Todd Moore Insurance Agency, Inc.**  
Representing the Germania Companies  
315 N. Main — P.O. Box 168 — Shamrock, TX 79079  
Todd Moore - Owner/Agent  
**Germania INSURANCE**  
INSURANCE AGENCY INC. 806.256.8911 806.334.0330 800.687.3730

**Go Stangs!**  
**GREENBELT ELECTRIC COOPERATIVE, INC.**  
708 10th — Wellington, TX — 447-2536  
Serving the Rural Area of Armstrong, Childress, Wheeler, Collingsworth, Donley, Gray, Hemphill, Randall & Roberts

**Stiles Hair Boutique @ The Stylish**  
Makenzi Stiles, Owner  
• Hair Styling • Waxing • Pedicures  
• Manicures • Laser Hair Removal  
103 E. Texas  
Wheeler, Texas  
806-334-1944

**Robertson FUNERAL DIRECTORS**  
www.RobertsonFuneral.com  
Cleveland — Grand — Memphis — Midland — Shamrock — Wheeler

**Dr. Mike Smith — Mike and Jenny Smith**

**FIRST STATE BANK**  
Mobeetie & Wheeler  
Established 1906 Member F.D.I.C.

**PARADISE SPA** BY APPOINTMENT ONLY!  
114 E. Texas Ave. — Wheeler, TX  
806-826-0296

**Centergas**  
710 E. Oklahoma St. — Wheeler, TX  
806-826-5222

**BAYMONT INN & SUITES**  
1410 S. Alan L. Bean Blvd, Wheeler, TX — 806.826.1012



Angel Ontiveros attempts to block the extra point.

**The Tipsy Bird**  
Beer • Wine • Spirits  
• Burgers • Snacks  
• Fountain Drinks  
508 S. Main • Wheeler • 26-0299

**FARM BUREAU INSURANCE**  
**HEMPHILL COUNTY FARM BUREAU**  
806-323-5752  
David & Rita Pearson

**Gail & Sally Ledbetter**

**Betty Hennard**

**WHEELER NURSING AND REHABILITATION**  
A Daybreak Community  
Clarissa Williams-Joseph  
Administrator  
1000 South Kiowa/P O Box 525  
Wheeler, TX 79096  
Office 806-826-3505  
Fax 806-826-3195  
adm.wheeler@daybreakventure.com

# vs MEMPHIS CYCLONES

## FRIDAY, NOVEMBER 17, 2017

### Childress Stadium — 7 P.M.

**CARNIGERIA AGUILAR**  
(806)826-1027  
7 Days a Week — 10:00 A.M.-9:00 P.M.

**Marshall Discount Auto PARTS PLUS**  
Daryl & Maggie Marshall  
Mack, Crystal, Mariah, Trevor, MaKalli & Kanin  
Mark, Joanna, Urrick & Hesston  
Steve, Krista, Dylan & Kynslee  
Mechelle, William, Hope, Austin & Wyatt

**Soto Family Restaurant**  
708 E. OKLAHOMA — WHEELER — 806/826-3129

Robert, Marla, Spencer & Mitchell

**Bob Wills**

**THE WHEELER TIMES**  
50c  
— Reporting Mustang Football Since 1933 —

**BOB'S BAIL BONDS**  
806-826-0654 Cell 806-334-0452  
P.O. Box 264 Wheeler, TX 79096 Pat Childress

**Memphis Cyclones**

#	Name	Ht	Wt	Class	Pos
2	Miguel Zuniga	5'8	180	9	WRLB
3	Clifford Byrd	6'0	165	12	QBDB
5	Jax Ferrel	5'10	165	9	RBLB
7	Victor Garcia	5'7	165	12	WR/DB
8	Cruz Torres	5'4	125	11	WRDB
9	Genaro Cenicerros	6'0	160	9	QB/LB
11	Christian Lockhart	5'9	150	9	RBDB
18	DaRay Odhams	6'2	178	12	DB/WR
20	DeOtis Richardson	6'0	170	12	WR/DB
22	Tim Anderson	5'8	180	10	RB/DB
24	Randy Cox	6'2	220	11	RBLB
44	Andrew Alexander	6'0	195	11	RB/LB
51	Matthew Haase	5'11	225	12	OL/LB
52	Ben Gonzalez	6'0	180	11	OL/LB
54	Wesley Pate	6'3	190	10	OL/LB
58	Broadrick Logan	5'11	275	11	OL/D
60	Jace Bristol	5'11	220	9	OL/DL
64	Ernie Arras	5'8	240	10	OL/DL
70	Steven Miller	6'0	225	12	OL/DL
72	Ben Koepke	5'10	245	11	OL/DL
78	Javan Valle	5'8	245	9	OL/DL
80	Casen Morris	6'2	180	9	TE/LB
99	Ronnie Martinez	5'9	180	9	OL/DL



—Photo by Kara Richardson

After running up the middle Travis Cook has an open field and gets to the end zone.

**CAPITAL FARM CREDIT**

**WARE Chevrolet Buick Inc.**  
South Hwy. 83  
Wheeler, Texas  
Phone: 806.826.5521  
www.warecbp.com

**WHEELER LAND & LIVESTOCK**  
15495 Hwy 152 • Wheeler, TX 79096 • Ph: 806-826-5591  
Fax: 806-826-3476 • Website: www.wlaln.net

TEXAS  
 • SHAMROCK  
 • WELLINGTON • WHEELER

OKLAHOMA  
 • CHEYENNE • EUFAULA  
 • HINTON

8 DAY AD  
 CLOSED THANKSGIVING DAY

PRICES EFFECTIVE: WEDNESDAY NOV. 15 THRU WEDNESDAY NOV. 22, 2017

21124,217,220,1822,1840



www.marketsquareonline.com  
 AFFILIATED FOODS INC. MEMBER STORES

NOT LIABLE FOR TYPOGRAPHICAL OR PICTORIAL ERRORS. WE RESERVE THE RIGHT TO LIMIT QUANTITIES. SOME ITEMS NOT AVAILABLE IN ALL STORES.



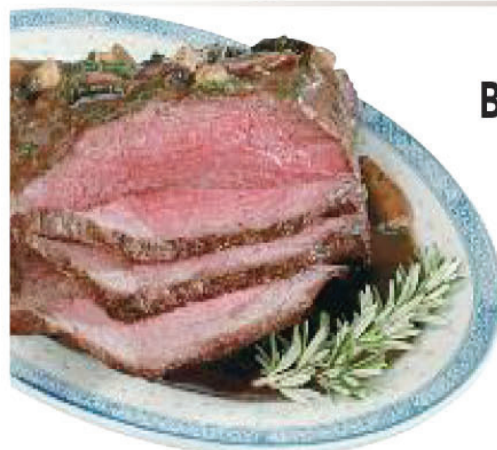
**Honeysuckle White Young Turkey**  
 tender & juicy

**\$5.00 OFF**  
 when you spend \$100 or more!

Example: 12 LB. Turkey  
 Reg. price of \$1.17 lb. = \$14.05 total price  
 = \$5.00  
 Your turkey costs ..... \$9.05 or 75c lb.



**Hormel Spiral Sliced Ham**  
 bone in  
**\$1.88** LB.



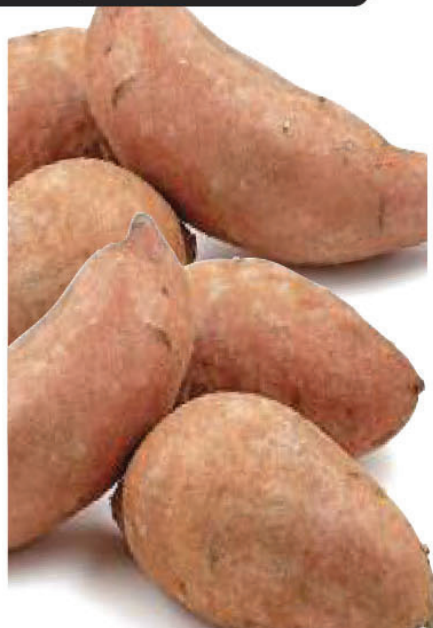
**Bottom Round Roast**  
 preferred trim boneless beef  
**\$2.99** LB.



**Cook's Bone In Ham**  
 shank portion

**\$1.29** LB.

butt portion  
 .... \$1.49 lb.



**Sweet Potatoes**  
 garden fresh

**4 \$1** LBS.



**Crisp Celery**

**2 \$1** FOR



**Golden Ripe Bananas**

**3 \$1** LBS.



**Jiffy Foil Roasters**  
 2 ct. oblong pan with lid,  
 1 ct. deep or oval roaster

**99¢**



**Plains Egg Nog**  
 quart  
**\$2.29**



**King's Hawaiian Dinner Rolls**  
 select varieties  
 12 ct.

**\$2.49**



**Gladiola Cornbread Mix**  
 select varieties  
 6-7 oz.

**2 \$1** FOR



**Shurfine Easy Sides Stuffing Mix**  
 select varieties  
 6 oz.

**88¢**



**Shurfine French Fried Onions**  
 6 oz.

**2 \$4** FOR



**Shurfine Cooking Oil**  
 corn, canola or blended  
 48 oz.

**2 \$5** for



**Shurfine Sugar**  
 brown or powdered  
 2 lb.

**\$1.29**



**Shurfine Marshmallow**  
 7 oz. creme,  
 10-10.5 oz. regular or  
 mini marshmallows

**99¢**



**Shurfine Large Eggs**  
 grade A, dozen

**99¢**



**Shurfine Cheese**  
 assorted chunk or shredded  
 8 oz.

**\$1.48**



**Philadelphia Cream Cheese**  
 Kraft reg. or 1/3 less fat  
 2 pk. 16 oz.

**\$2.99**



**Land'O Lakes Butter Quarters**  
 salted or unsalted  
 16 oz.

**\$2.98**



**Cool Whip Topping**  
 assorted  
 8 oz.

**98¢**



**Shurfine Vegetable Oil**  
 48 oz.

**\$1.78**



**Shurfine Evaporated Milk**  
 reg. or fat free  
 12 oz.

**89¢**



**Eagle Brand Milk**  
 reg. or low fat,  
 sweetened condensed  
 14 oz.

**\$1.98**



**All Purpose Flour**  
 Gold Medal bleached or unbleached  
 5 lb. \*

**99¢**

\*with mfr. coupon on package



**Granulated Sugar**  
 Valu Time  
 4 lb.

**\$1.38**



**Kraft Mayo**  
 assorted  
 30 oz.

**\$1.98**



**Folgers Coffee**  
 classic roast  
 30.5 oz.

**\$5.99**



**Del Monte Vegetables**  
 asstd. corn, green beans,  
 sweet peas or mixed  
 11-15.2 oz.

**2 \$1** FOR



**Shurfine Broth**  
 beef, reg. or low salt chicken  
 32 oz.

**99¢**



**Baked Fruit or Pumpkin Pies**  
 Jessie Lord assorted  
 24 oz.

**\$3.88**

23 oz. Jessie Lord Pecan Pie ..... \$4.88



**Shurfine Pie Filling**  
 select varieties  
 20-21 oz.

**\$1.89**



**Karo Corn Syrup**  
 dark or light  
 16 oz.

**\$2.49**