



THE WHEELER TIMES

USPS-680-960
VOLUME 83, NUMBER 9

THURSDAY, FEBRUARY 9, 2017

SAMPLE COPY **50c**

“Wheeler: town of friendship and pride”

Filing Deadline for Local Elections



Our great-nephew, Layne Meriwether, 23, (Rhonda and Leroy's grandson) was killed in a one vehicle accident Sunday morning returning from OKC to Stillwater.

— cwe —

We were returning from a weekend with the Sherman families when we received the notice.

— cwe —

I need to issue this warning; I do not know if it has to do with age or not:

I sleep on my back and decided a pillow under one knee would make me more comfortable. So on Tuesday night, I folded a towel; that worked fine.

— cwe —

On Wednesday night I dou- (Continued Page 2)

STORM REPORT



As Reported by...
Stormie Meriwether,
Seventh Grade Student

Dear Friends, Sunday was a very sad day because I lost a family member, Layne Meriwether. He died that foggy day because he went off the road and hit a tree. He was always kind and sweet to me. We had fun riding four wheelers, fishing, playing games and just laughing. I loved Fourth of July, and all the great times I have had with Layne. He was so strong and good. I will always remember and love you, Layne. I know you are in a better place, but I will miss you so, until I see you again. Love you always! That's it.

WTAMU President To Visit Fort Elliott

West Texas A&M University and President Dr. Walter V. Wendler are embarking on a new outreach initiative to spread a message about higher education and community partnerships in the (Continued Page 5)

On May 6, 2017, voters will go to the polls to elect members to area school boards, city councils and Parkview Hospital Board. Filing for names to be placed on the ballot for these positions opened Wednesday, January 18.

Parkview Hospital

Three places on the Parkview Hospital Board are to be filled with the upcoming election. Positions are Precinct 1, Precinct 9, and At Large. These places are presently held by Janie VanZandt, Roy Laughlin and Pam Hibler, respectively.

Filing for the hospital board opened January 18, 2017 and the last date for filing is Febru-

ary 17, 2017.

Qualifications: A resident of the voting precinct, owns property in the district subject to taxation and is more than 18 years of age at the time of election.

Individuals wishing to file by mail may do so; the address is Parkview Hospital, P.O. Box 1030, Wheeler, Texas 79096.

City of Wheeler

Three places on the Wheeler City Council are to be filled in the May 6 election. Place one on the Council is presently held by Carol Porton. Britt McCarter's term expires as representative for Place 3. Place 5 is also expiring; Kendall Hefley presently holds that position.

The deadline for filing for a placing on the ballot is February 17, 2017.

Applications to file may be obtained at the City office located at 505 Alan L. Bean Blvd. between the hours of 8:00 a.m. and 5:00 p.m.

Wheeler I.S.D.

Qualified persons (including current board members) interested in filing for candidacy for a place on the Wheeler I.S.D. Board of Trustees may do so at the Wheeler I.S.D. Administration Office, located in Wheeler High School at #1 Mustang Drive.

Dates for filing are from 1-18-17 through 2-17-17. Office hours are 8:00 a.m. -3:30

p.m. Monday through Friday.

Qualifications are: Must have been a resident of the State of Texas for one year AND have lived in the Wheeler I.S.D. District for six months prior to the filing deadline; must be 18 years of age or older; must be a registered voter at the time of the election.

Mobeetie Council

Mobeetie citizens will be electing a complete council on May 6. The mayor and five city council places are to be filled by the election.

The council decided a few years ago to hold one election for the full council and mayor.

(Continued Page 5)



Layne Meriwether
**Layne Meriwether
Celebration of Life**

Layne Michael Meriwether, beloved son, brother and fiancée, tragically passed away on February 5, 2017 in Stillwater, Oklahoma at the age of 23. He was born August 8, 1993 in Oklahoma City, Oklahoma to Michael and Kelly Meriwether.

Layne truly lived life to the fullest and had a contagious, ornery grin that was sure to make you smile. He was genuine, determined, independent, godly and had a positive impact on all those who knew him. Layne graduated from Waynoka High School in 2012 where he was active in FFA, weightlifting, football, basketball, FCA and FCCLA. He also met his high school sweetheart and fiancée, Hannah Darr, while attending school in Waynoka. They both attended college together at Oklahoma State University. Layne was going to graduate this May with a degree in agricultural economics. Layne had a passion for agriculture and especially the cattle industry. He showed cattle during elementary and high school with his brother Logan. He even raised his own cattle with his father. Layne recently purchased cattle with his fiancée, Hannah, to further his passion in the beef industry. Layne loved reading, learning, shooting guns, fishing, trying new recipes and spending time with family and friends. Layne's legacy will forever live on in his family and all those who he had an impact (Continued Page 5)



OPEN HOUSE: On Wednesday, February 1, 2017, A ribbon cutting was conducted at Wheeler Title & Abstract Co. and Shelton & Shelton, Attorneys at Law. Wheeler Title and Abstract was recently purchased by Shelton & Shelton of Clarendon. New to Wheeler will be Shelton & Shelton, Attorneys at Law; Chalone Hefley, a certified paralegal for the past 10 years, will be on site to help you with your legal needs. Shonda Rose will continue her duties at Wheeler Title & Abstract. Shown here at the ribbon cutting are (left to right) Shonda Rose, Kristen Moudy, Shelly Cook, Josh Britt, Chalone Hefley, James T. Shelton, Bob McCain, Taylor Shelton, Dale and Monica Kidd. Chalone is the wife of Darren Hefley; the couple moved to Wheeler from the Briscoe community.

TxDot Celebrates 100 Years of Service To Texans

To honor the past while anticipating the future, the Texas Department of Transportation celebrates a century of service this year with a traveling exhibit and other events to highlight the agency's ongoing mission of connecting Texans to what matters most – the people

they love and the places they need to be.

“Through 100 years of collaboration and leadership, TxDOT has helped connect communities to commerce and people to opportunity by building and maintaining the backbone of our healthy

economy — now the tenth-largest in the world,” said Gov. Greg Abbott. “That robust transportation system paves the way to prosperity for more families and more businesses each and every day. On behalf of the people of Texas, I congratulate TxDOT on their first

100 years and look forward to continuing our work to accelerate economic opportunity and fuel Texans' freedom to aspire.”

As the state's economy and population continue to grow, TxDOT remains committed to (Continued Page 5)



SECOND PLACE: Chase Helton, a freshman at Wheeler, placed second with his Duroc at the Ft. Worth Stock show this past Thursday and Friday.



SIXTH PLACE: Karsyn Malone, a sixth grader at Wheeler, placed sixth with her pig at the Ft. Worth Stock show this past Thursday and Friday.



SEVENTH PLACE: Paden Markham, a freshman at Wheeler, placed seventh with his pig at the Ft. Worth Stock show this past Thursday and Friday.

Wheeler County COURT RECORDS

List of instruments filed in the Wheeler County Clerk's office from January 30, 2017 to February 3, 2017.
JANUARY 30, 2017

PARTIAL AOL-Modano Oil & Gas LP to Roy E. Guinnup, 1-13-17, See Instrument.
EXT. DT-Sonic Oil & Gas LP to InterBank, 1-23-17, Sec. 43, Blk. A-3, H&GN Ry. Company Survey.
AFF. REMOVAL APPOINTMENT SUBSTITUTE TRUST-EE-John V. Hanney Trust No. 1 to JPMorgan Chase Bank

NA, et al, 12-21-16, S/2 Sec. 48 Blk. 24, H&GN Ry. Company Survey.
AFF. REMOVAL APPOINTMENT SUBSTITUTE TRUST-EE-John V. Hanney Trust No. 1 to JPMorgan Chase Bank
PARTIAL AOL-Modano Oil & Gas LP to RCWI LP, 1-17-17, See Instrument.

PARTIAL RELEASE CHILD SUPPORT LIEN-Rebecca Gregory, et al to Donnie Ray Pope, 1-13-17, W/2 E/2 Sec. 10, Blk. A-8, H&GN Ry. Company Survey.

JANUARY 31, 2017
POA-Rowdy Clark to Mary Penny Clark, 1-25-17.

DVL-Rowdy Dwain Clark, et ux to Adam L. Scott, et ux, 1-27-17, 2.0 acs. out of 11.73 acs. Sec. 6, Blk. A-4, H&GN Ry. Company Survey.

DT-Adam L. Scott, et ux to Churchill Mortgage Corporation, 1-27-17, 2.0 acs. out of 11.73 acs. Sec. 6, Blk. A-4, H&GN Ry. Company Survey.
RDT-Capital Farm Credit FLCA to Seven R. Emmert, et ux, 1-12-17, See Instrument.
RDT-First State Bank of Mobeetie to Evan Reed, et ux, 1-20-17, Pt. NW/4 Sec. 60, Blk. A-8, H&GN Ry. Company Survey.

ASSIGN. AND OVERRIDING ROYALTY-James C. Oliver Trust to Fred L. Oliver, 12-31-16, See Instrument.

DEED-William Spradling Trust to William Spradling Trust, 1-25-17, All Interest In Wheeler County.

FEBRUARY 1, 2017
RDT-Mortgage Electronic Registration Systems Inc., et



al to Randolph Lee Tallent, et ux, 1-26-16, See Instrument.
DVL-Anson Kinikin, et ux to Tommye D. Cole II, 1-27-17, N/2 Lot 1, Blk. 40, Original Town, Shamrock.
DT-Tommye D. Cole II to American Southwest Mortgage Funding Corp., 1-27-17, N/2 Lot 1, Blk. 40, Original

100 DAYS: Last week, Wheeler Second Graders celebrated 100 days of School. Pictured are: (l. to r) Marely Suarez, Ahston Salas, Jennifer Rocha, Diego Soto, Ryan Gonzalez, John Helton, Jaxx Allen, Chris Gallardo, Teagan Allplewhite, Nickolas Shipley, Stormi Waters, & Codi Waters.



THE WHEELER TIMES

Page 9, — Thursday, February 9, 2017
"Wheeler: town of friendship and pride"

Town, Shamrock.
FEBRUARY 9, 2017
MML-Allen Building to Stephen Marshall, et ux, 2-1-17, 2.21 acs. Sec. 5, Blk. A-4, H&GN Ry. Company Survey.
HEIRSHIP AFF.-Bobby R. Kinnaman to Debbie Kinnaman, 2-23-17.
RELEASE UCC-Atlanta Postal Credit Union to Nationwide Real Estate Inc., -- --, Lots 19-23, Blk. 29, Wheeler.
DEED-Post Office Equities LLC to Post Office Ventures

LLC, 1-27-17, Lots 19-23, Blk. 29, Wheeler.
DT-Post Office Ventures LLC to First Oklahoma Bank, 1-27-17, Lots 19-23, Blk. 29, Wheeler.
ASSIGN. Of RENT-Post Office Ventures LLC to First Oklahoma Bank, 1-27-17, Lots 19-23, Blk. 29, Wheeler
FEBRUARY 3, 2017
RDT-AimBank to Tony Gonzales, et ux, 1-27-17, Lots 18 & 19, Blk. E, Potts Addition, Shamrock.

Chat

(from Page 1)
bled the towel before rolling. Thursday morning I got out of bed and could hardly walk, because of the pain.

— cwe —

The discomfort continued as we traveled to Sherman Friday evening with Jennifer and Seth and William Thomas.

— cwe —

Saturday morning Juanita, Jennifer, William and I met Liz and Jaden Jackson in Dallas to visit the John F. Kennedy Memorial at the Book Depository. The plans were to ride the trolley to a location near the museum.

— cwe —

We finally found a parking garage and Liz and Jaden arrived.

— cwe —

We got on the trolley, exiting a few blocks to the north. We began walking (I was hobbling) only to discover we were going the wrong way. Circling back, we went through the old courthouse.

— cwe —

The Kennedy Memorial is very interesting and the time required is a little over 90 minutes.

— cwe —

As I was hobbling back to the trolley, I stepped on an uneven area and twisted my knee to the point I could hardly walk; we were a long way from the trolley. My family informed me: "Had you been a horse, we would have put you down." They did consider setting me on the curb with a sign to see how much money I could col-
(Continued Page 3)

Old Time Gospel Music
KPDR-FM, 90.3
... In Wheeler
Sun.: 6:00 a.m. to 8:00 a.m.

Canadian Redi-Mix, Inc.

... for all your Concrete Needs!



806-323-5379



Phoenix McCaskill, 6, is the daughter of Zack and Stacy McCaskill of Canyon. Grandparents are Delbert and Brenda McWhorter and Mary Jones (great-grandmother), all of Wheeler.

For all your ...
Insurance Needs, See
Eastern Panhandle Insur. Agency, Inc.
117 W. Texas St.
Wheeler
806/826-3573
•Auto •Home •Life •Health
•Commercial •Bonds

Hyland's Pharmacy

Downtown Wheeler — 826-5561

SHOP LOCALLY FOR VALENTINES DAY!

The store for all your needs:
Prescriptions, Gifts for your loved ones.

Wheeler County JP #1 Weekly Docket

Arraignments and Magistrations:

Ricardo Castillo Diaz
Jairo Alonso Herrera
Brian Coate
Ruben Nevarez
Shavannah Delgado
Shavannah Delgado
Shavannah Delgado
Bradley Rutledge
Toby James Smith
Toby James Smith
Soyla Lynda Caballos
Christopher Johnson
Christopher Johnson

County Citations Issued:

Ricardo Castillo Diaz
Jairo Alonso Herrera
Toby James Smith
Herman D Chastain
Adan Palomino Silva
Joan Lopez
Monty Clay Donaldson
Jeannette Vaughn Taylor
Hayden W. Hartsfield
Shelton T. Hagerman
Juan B. Poindexter
Wheeler Sheriff Office Citation
Wheeler Sheriff Office Citation
Wheeler Sheriff Office Citation
Commercial Enforcement Citation
Commercial Enforcement Citation
Wheeler Sheriff Office Citation
Wheeler Sheriff Office Citation
Wheeler Sheriff Office Citation
TXDPS Citation
Commercial Enforcement Citation
Commercial Enforcement Citation

Civil: None

Selling 90 Spring Two-Year-Olds that have been 'Bred to be Tough' and Developed to Last!

Quartermaster Creek Annual Bull Sale

February 22, 2017 • At the Ranch • Leedey, OK



Sire groups selling!

**Koupals B&B Identity • Connealy Black Granite
JMB Traction 292 • Connealy Final Product • Sandpoint Butkus
Connealy Final Solution • VAR Reserve 111
Hoover Dam • PA Safeguard • Apex Windy**

Bulls selling have been parent-verified and have genomically-enhanced EPDs using the i50K test.

Also selling 70 open yearling commercial heifers by QC Sires.



**Quartermaster Creek Angus
Mike & Annie Switzer
19564 E 840 Rd. • Leedey, OK 73654
Hm: 580-488-3889 • Cell: 580-445-8275
mike@quartermastercreek.com
www.quartermastercreek.com**

H & H SPRAYING

TDA LIC. #9733449
Jim & Michelle Hobbs
7370 CR 25, Shamrock, TX 79079
www.hobbs778@yahoo.com
806-334-1872 or 806-420-0511
TURF & ORANAMENTAL WEED & INSECT CONTROL
Residence or Business Weed Control or Tree Spraying needs.
12 years experience.

plm44

Xcel Energy, customer groups, reach rate agreement

Xcel Energy has reached a settlement with Texas customer groups to increase annual revenues to support close to \$1 billion in capital improvements and recognize the impact of reductions in wholesale sales in 2015.

Xcel Energy, the Public Utility Commission of Texas Staff, industry groups and an alliance of the 80 towns Xcel Energy serves in Texas, have agreed to a \$35 million, or 6.9 percent, annual revenue

increase. Under the settlement rates filed today, the typical 1,000 kilowatt-hour residential bill will rise on Dec. 10 by approximately 4 percent, or \$3.97 per month.

The agreement also provides for the assured recovery of \$12.6 million of annual power factor revenues, including \$11 million of additional power factor revenues, to protect Xcel Energy against the risk of revenue loss from potential unrealized power factor bill-

ings for a two-year period after new rates become effective. Power factor billings are only applicable to business classes with a demand charge and are a means of compensation for the supplying of extra electrical current for customers who have low power factors, or are inefficient users of electrical power.

"Our customer groups understand that the service Xcel Energy provides and the investments we're making are

critical to the economic success of both Xcel Energy and the region, and we value their input throughout this process," said David Hudson, president - Xcel Energy Texas.

The increase is needed to support close to \$1 billion of investments Xcel Energy made through December 2015 to maintain and improve reliability and to import lower-cost power.

(Continued Page 5)

Chat (from Page 2)

lect, while they went after the vehicle.

— cwe —

With help, I made it back to the vehicle. Our tour amounted to 15,000 steps.

— cwe —

The pain began to ease Sunday. I purchased a knee brace Sunday evening and will wear it a while.

— cwe —

We returned to Wheeler Monday around noon with the temperature reading 77°. Beautiful sun shiny day with a bit of wind.



THE WHEELER TIMES
Page 3 — Thursday, February 9, 2017
"Wheeler: town of friendship and pride"



Kamie Beck, a freshman at Wheeler, showed her duroc at the Ft. Worth Stock Show this past Thursday and Friday.



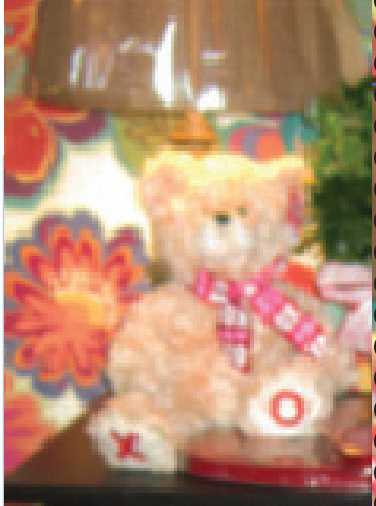
- Roses • Stuffed Animals
- Bouquets • Home Decor
- Candles • Picture Frames



TEXAS
— STREET —

FLORAL CO.

121 W. Texas • P.O. Box 362 • Wheeler, Tx 79096
Bon & Donna Hives, Owners
806.826.5945
texasstreetfloralco@gmail.com



DO YOU HAVE concerns about falling?



A MATTER OF
BALANCE
MANAGING CONCERNS ABOUT FALLS

Many older adults experience concerns about falling and restrict their activities. A MATTER OF BALANCE is an award-winning program designed to manage falls and increase activity levels.

This program emphasizes practical strategies to manage falls.

YOU WILL LEARN TO:

- view falls as controllable
- set goals for increasing activity
- make changes to reduce fall risks at home
- exercise to increase strength and balance

WHO SHOULD ATTEND?

- anyone concerned about falls
- anyone interested in improving balance, flexibility and strength
- anyone who has fallen in the past
- anyone who has restricted activities because of falling concerns



Funded by the Texas Department of Aging and Disability Services
Classes are held at Parkview Hospital's cafeteria on Thursdays at 10am for 8 weeks (from Feb 2nd until March 23rd) Classes will last approximately 1 hour.

Is not too late to join us!

Program is FREE

For more information, please call

Carissa McCarter, RN BSN or
Katty Shipley, RN BSN
At Parkview Hospital 806-8265581
You may also contact:
Laurie McAfee, LBSW

A Matter of Balance: Managing Concerns About Falls Volunteer Lay Leader Model ©2006
This program is based on Fear of Falling: A Matter of Balance. Copyright ©1995 Trustees of Boston University. All rights reserved. Used and adapted by permission of Boston University.

A Matter of Balance Lay Leader Model
Recognized for Innovation and Quality in Healthcare and Aging, 2006, American Society on Aging.
A Matter of Balance Lay Leader Model was developed by a grant from the Administration on Aging (#90AM2780).

February 1, 2017 Updated Property Tax Information Now Available for Texas Taxpayers

(Wheeler Co) — New and updated property tax information has just been compiled by the Wheeler Central Appraisal District and is available now to assist taxpayers. This property tax information is current and covers a wide range of topics, such as taxpayer remedies, exemptions and appraisals, and has information for select groups, such as disabled veterans and persons age 65 or older.

"Whether you are a homeowner, business owner, disabled veteran or taxpayer, it's important you know your rights concerning the property tax laws," said Kimberly Morgan, Chief Appraiser of the Wheeler Central Appraisal District. "You can contact us about any property tax issues with full confidence that we will provide you the most complete, accurate and up-to-date available information to assist you."

This includes information about the following programs.

Property Tax Exemptions for Disabled Veterans - The law provides partial exemptions for any property owned by veterans who are disabled, surviving spouses and surviving children of deceased disabled veterans. This includes homesteads donated to disabled veterans by charitable organizations at no cost to the disabled veterans and their surviving spouses. The exemption amount is determined according to percentage of service-connected disability. The law also provides a 100 percent homestead exemption for 100 percent disabled veterans and their surviving spouses and for surviving spouses of U.S. armed service members killed in action.

Property Tax Exemptions - Non-profit organizations that meet statutory requirements may seek property tax exemptions and must apply to their county appraisal district by a specific date. Businesses that receive tax abatements granted by taxing units; ship inventory out of Texas that may be eligible for the freeport exemption; store certain goods in transit in warehouses that are moved within 175 days; construct, install or acquire pollution control property; own and operate energy storage systems; convert landfill-generated gas; or store offshore drilling equipment while not in use may also be eligible for statutory exemptions.

Rendering Taxable Property - If a business owns tangible personal property that is used to produce income, the business must file a rendition with its local county appraisal district by a specified date. Personal property includes inventory and equipment used by a business. Owners do not have to render exempt property such as church property or an agriculture producer's equipment used for farming.

Appraisal Notices - Normally, taxpayers receive a notice of appraised value from the appropriate local county appraisal district. The city, county, school districts and other local taxing units will use the appraisal district's value to set property taxes for the coming year.

Property Taxpayer Remedies - This Comptroller publication explains in detail how to protest a property appraisal, what issues the county appraisal review board (ARB) can consider and what to expect during a protest hearing. The publication also discusses the options of taking a taxpayer's case to district court, the State Office of Administrative Hearings or binding arbitration if the taxpayer is dissatisfied with the outcome of the ARB hearing.

Homestead Exemptions - A homestead is generally defined as the home and land used as the owner's principal residence on Jan. 1 of the tax year. A homestead exemption reduces the appraised value of the home and, as a result, lowers property taxes. Applications are submitted to the appropriate local county appraisal district.

Productivity Appraisal - Property owners who use land for timber land production, agricultural purposes or wildlife management can be granted property tax relief on their land. They may apply to their local county appraisal district for an agricultural appraisal which may result in a lower appraisal of the land based on how much the taxpayer produces, versus what the land would sell for on the open market.

Residence Homestead Tax Deferral - Texas homeowners may postpone paying the currently delinquent property taxes due on the appreciating value of their homes by filing a tax deferral affidavit at their local county appraisal district. This tax relief allows homeowners to pay the property taxes on 105 percent of the preceding year's appraised value of their homestead, plus the taxes on any new improvements to the homestead. The remaining taxes are postponed, but not cancelled, with interest accruing at 8 percent per year.

Property Tax Deferral for Persons Age 65 or Older or Disabled Homeowners - Texans who are age 65 or older or disabled, as defined by law, may postpone paying current and delinquent property taxes on their homes by signing a tax deferral affidavit. Once the affidavit is on file, taxes are deferred, but not cancelled, as long as the owner continues to own and live in the home. Interest continues to accrue on unpaid taxes. You may obtain a deferral affidavit at the appraisal district.

Notice of Availability of Electronic Communication - In appraisal districts located in counties with a population of more than 200,000 or that have authorized electronic communications, and that have implemented a system that allows such communications, chief appraisers and ARBs may communicate electronically through email or other media with property owners or their designated representatives. Written agreements are required for notices and other documents to be delivered electronically instead of mailing.

Protesting Property Appraisal Values - Property owners who disagree with the appraisal district's appraisal of their property for local taxes or for any other action that adversely affects them may protest their property value to the appraisal district's ARB.

For more information about these programs, contact Kimberly Morgan, Chief Appraiser, Wheeler Central Appraisal District at (806) 826-5900 or wheelercad@windstream.net. Information is also available on the Comptroller's Property Tax Assistance Division's website at comptroller.texas.gov/taxes/property-tax/.

WANT ADS/LEGAL NOTICES

Sell it through a Classified in THE WHEELER TIMES!
\$6 for the first 20 words; 35c for each additional word.
Legal Notices: 35c per word

Two Bedroom furnished house **FOR RENT. Jerry Lester** First Month **FREE!** 806-676-0711 **WANTED:** Someone with

ESTATE SALE - LOG HOMES
PAY THE BALANCE OWED ONLY!!!

AMERICAN LOG HOMES IS ASSISTING FINAL RELEASE
OF ESTATE & ACCOUNT SETTLEMENT ON HOUSES.

3 Log Home kits selling for **BALANCE OWED, FREE DELIVERY**

- 1) Model # 101 Carolina \$40,840...**BALANCE OWED \$17,000**
- 2) Model # 303 Little Rock \$38,525...**BALANCE OWED \$15,000**
- 3) Model # 403 Augusta \$42,450...**BALANCE OWED \$16,500**

BEFORE CALLING: VIEW at www.loghomedream.com
Click on House Plans

NEW - HOMES HAVE NOT BEEN MANUFACTURED

- Make any plan design changes you desire!
- Comes with Complete Building Blueprints & Construction Manual
- Windows, Doors, and Roofing not included
- **NO TIME LIMIT FOR DELIVERY!**

BBB
A+ Rating

SERIOUS ONLY REPLY. Call (704) 602-3035 ask for Accounting Dept.

Fatal Swelling

EXPERIENCE COUNTS
Lawyers with more than 100 years combined expertise.

Invokana is a treatment for Type 2 Diabetes. Lawsuits allege that Invokana may be linked to heart attacks, kidney failure and ketoacidosis, which is a diabetic coma that can lead to fatal swelling in the brain. The FDA has warned about possible kidney injury and ketoacidosis. If you have taken Invokana and have one of these conditions, call us today for professional insight.

Ryan A. Krebs, M.D., J.D.
Doctor-Lawyer in Full-time Law Practice
Richard A. Dodd, L.C.
Timothy R. Cappolino, P.C.
Board Certified Personal Injury Trial Law and Civil Trial Law by the Texas Board of Legal Specialization
NO FEE FOR FIRST VISIT
OFFICES IN HOUSTON, CONROE, TEMPLE AND AUSTIN, PRINCIPAL OFFICE IN CAMERON

1-800-460-0606
www.DefectiveDrugsLaw.com

tractor and brush beater to mow 25 acres of CRP. For more information call 375-2577. 2tp.

The City of Wheeler is accepting applications for the position of City Secretary. Brief job description: Serves as administrative secretary to the Mayor and City Council, organizes, manages and processes all official records of City, supervises municipal elections, coordinates

Oil & Gas NEWS

Week of January 23-29, 2017
Intents to Drill
HANSFORD (PAN PETRO, Marmaton) Le Norman Operating LLC, #1H Archer 38, (640 acres) 220' FSL & 500' FWL, Sec 38, Blk 4T, T&NO Surv, A-748, 9, mi NE from Spearman TD 9000', (BHL: 100' FNL & 500' FWL) (sgd. Greg Bilbro 512-476-1245) Horizontal
MOORE (PANHANDLE, Red Cave) Adams Affiliates, Inc., #2070 Thompson, (337 acres) 50' FNL & 2978' FEL, Sec 9, Blk B10, EL&RR Surv, A-576, 4 mi E from Masterson TD 2550', (sgd. Jennifer Sexton 918-629-3365) Vertical
MOORE (PANHANDLE, Red Cave) Adams Affiliates, Inc., #2071 Thompson, (337 acres) 50' FNL & 3587' FEL, Sec 9, Blk B10, EL&RR Surv, A-576,

public meetings of staff, the City Council, and boards and Commissions, primary telephone contact with public and performs related work as required. Applications are available at the City Office, 505 S Alan Bean Blvd., Wheeler, Texas 79096. 1tc

Deborah's Dog Grooming

Experienced Groomer
Located in Wheeler Texas
Call or Text **(806) 898-0920**

4 mi E from Masterson TD 2550', (sgd. Jennifer Sexton 918-629-3365) Vertical
POTTER (AMARILLO, NORTH, Canyon Lime, WILDCAT) Le Norman Operating LLC, #1H Bivins 15-34 East, (640 acres) 2665' FSL & 1550' FEL, Sec 15, Blk 1, BS&F Surv, A-92, 10 mi NE from Amarillo TD 9000', (BHL: 1' FNL & 1550' FEL Sec 34, Blk 1, BS&F, A-1111) (sgd. Greg Bilbro 512-476-1245) Horizontal
Gas Completions
LIPSCOMB (LIPSCOMB, Cleveland) Mewbourne Oil Company, #1 Gilson "710", 9 mi NE from Lipscomb, Sec 710, Blk 43, H&TC Surv, A-764, spud 9-19-2007, compl 10-11-2007, tested 10-24-2007, potential 184 mcf, 55 bbls cond, 10 bbls wtr, 80# ftp, 3138# SIWHP, TVD 7990', PBD 7940' API 42-295-33222, Vertical Reclamation Reclaim Oil to Gas
LIPSCOMB (LIPSCOMB, Cleveland) Jones Energy, LLC, #7529H Daisy Graves, 6.5 mi N from Higgins, Sec 529, Blk 43, H&TC Surv, A-223, spud 7-25-2016, compl 9-13-2016, tested 10-10-2016, potential 801 mcf, 129 bbls cond, 72 bbls wtr, 230# ftp, 949# SIWHP, TVD 8050', MD 12790' API 42-295-34284, Horizontal
LIPSCOMB (LIPSCOMB, Cleveland) Mewbourne Oil Company, #7971H Jim Ray Trenfield -B-, 8 mi SE from Follett, Sec 797, Blk 43, H&TC Surv, A-315, spud 5-7-2012, compl 6-20-2012, tested 6-28-2012, potential 1710 mcf, 366 bbls cond, 24 bbls wtr, 0# ftp, 1866# SIWHP, TVD 7723', MD 12090' API 42-295-33838, Horizontal Reclamation Reclaim Oil to Gas
Oil Completions
ROBERTS (PAN PETRO, Cleveland) Latigo Petroleum, LLC, #3H Courson Ranch 158, 28 mi NW from Miami, Sec 157, Blk C, G&M Surv, A-634, spud 8-22-2016, compl 11-23-2016, tested 12-25-2016, potential 774 bbls-oil, 1383 mcf, 173 bbls wtr, 450# ftp, 840# CP, TVD 6698', MD 11753' API 42-393-32691, Horizontal

COLDWELL BANKER

FIRST EQUITY REALTORS
5701 Time Square Blvd.
Suite 190,
Amarillo, TX 79119

GRAY COUNTY: 111 acres, 1 mile east of McLean on North side of I-40. Excellent fences, solar well, 2-30' tanks. Improved, lovegrass, good soil. 1/2 acre of breaks. Deer, quail & Dove.
WHEELER COUNTY: 601 acres 1 mile East of Shamrock on North side of I-40. Excellent fences, city water. 1 new windmill, 4 ponds, 50x50 Steel barn with concrete floor and steel working pen. Solid stand of grass ready for cattle. Ravines, cliffs, big trees and brush. 320 Acres: 9 miles NW of Shamrock, Nearly new fences & cross fences, 9, earth, good soil, good soil, good soil, good soil. Ravines with big trees and brush making an excellent wildlife habitat for deer.
Collingsworth County - 133 acres, Superb Recreational Property. "Mountain Place": Hills, Ravines, Extreme Topography Changes. Truly one of a kind. Big Trees, Brush, Native Grass, Deer, Turkey, Quail, Dove, Waterwell, New 5-wire steel T-post fencing. Ready for Hunters, ready for cattle.
200 Acres farm and ranch land 1 mile north of Wheeler with U.S. Highway 83 frontage. Run creek, big trees, brush, rolling topography. Deer, Dove and Quail.
160 acres SW of Shamrock with 1/2 mile of frontage on FM 1547. Good fences, water well, excellent location for home. Abundance of wildlife.
Steady Income, 240 acres of land, 11 miles NW of Wheeler. Excellent stand of grass.
56 Acre Track in Allison, Excellent home site. Great Hobby Farm for retirees. Starting location for young family with 4-H/FFA project and horses. Close to school. Well cared for. Now used for haying and grazing.
Secluded 320 Acres: Irrigation well, T & L Pivot, 120x120 Steel Barn Arena and Horse Stalls, Big trees, brush, abundance of wildlife. 10 Miles Northeast of McLean
485 Acres good grassland. 3 miles South of Wheeler that fronts U.S. Highway 83. Spring fed pond, live year around running water, windmills, good fences, cross fenced. Excellent home site, big trees, brush, deer, turkey, dove, quail.
Coldwell Banker First Equity, Realtors Agricultural Division, Richard Heffley ALC, Associate Broker, Licensed in Texas and Oklahoma. 806-898-1786.
landsoftexas.com or thelandconnection.co

THE WHEELER TIMES
Page 4 - Thursday, February 9, 2017
"Wheeler: town of friendship and pride."

THESE PICTURES SPONSORED BY:

BOB'S BAIL BONDS
806-826-0654 Cell 806-334-0452
P.O. Box 264 Wheeler, TX 79096 Pat Childress



MEMBER 2015 TEXAS PRESS ASSOCIATION

City of Wheeler Turns 100
Aug. 6, '05 Celebration Planned

P.O. Box 1080
Wheeler, Texas 79096
Phone: 806/826-3123

Entered as second-class matter December 18, 1933, at the Post Office at Wheeler, Texas 79096, under the act March 3, 1879.
Postmaster: Send Address changes to *The Wheeler Times*, P.O. Box 1080, Wheeler, TX 79096-1080 - wtimes@windstream.net

Louis C. Stas, Owner & Publisher
SUBSCRIPTION RATES:
Within Wheeler Co: \$22.00 Elsewhere: \$25.00

THE BUSINESS DIRECTORY

CROSS COUNTRY BARN
★ 24 Hr. Gas & Diesel ★ Convenience Store
★ Hunt Bros. Pizza
301 E. Oklahoma St.
Wheeler, TX
Phone: 806-826-2276
Dale & Monica Kidd

It pays to Advertise in
THE WHEELER TIMES
Phone & Fax: 806/826-3125
wtimes@windstream.net

Classified Rate
Cash - \$6.00 for 1st 20 wds.
Chg. - \$6.50 for 1st 20 wds.
35c for each additional word
Display Classified: \$6.50pci
Card of Thanks: \$7.00

Crossword PUZZLE

1	2	3	4	5	6	7	8	9	10	11	12	13
14			15					16				
17								18				
19			20					21				
22			23		24			25		26	27	28
	29		30		31			32		33		
		34		35				36		37		38
39	40	41						42		43		
44			45		46			47				
48		49		50		51		52		53	54	
55			56		57			58		59		60
			61		62			63		64		
65	66	67						68		69		
70								71				
72								73		74		

Across

- School yard sound
- Pep
- Play station
- Drive off
- Subsidized grad student
- Not plural
- Talk back to
- Prefix with night or day
- Cleo's undoing
- Abductor
- Tank filler London
- Get situated
- Put off
- Violate a trust
- ___ out a living
- Garden intruder
- Down
- Aromatic herb
- Draw out
- One-dimensional
- Pants part
- Hotel employee

Down

- Just
- Over yonder
- Make good on
- Decisive point of a drama
- Oktoberfest drink
- Med school grad
- Ram's ma'am
- Cashew, e.g.
- A type of rock
- Insurer's calculation
- Mountain goat's perch
- Dish of leftovers
- Proof goof
- ___ in full
- Close by, in poetry
- Use scissors
- Sword fight, e.g.
- Soak in the glory
- Fertilizer component
- "Don't go!"
- Broadway brightener
- Star followers
- Riot cop's gear
- Second of two
- Soft, thin silk cloth
- Tranquil
- Pang
- Swedish money
- Waste maker
- Go over the limit?
- Creative
- Hide-hair link
- Corn holder
- "Who ___ we kidding?"
- Barbecue site
- Order's partner

Wellington State Bank **USB** Your Partners in Progress
Bowie • Canadian • Childress • Dalhart • Littlefield • Olton • Memphis • Wheeler • Wellington

H&HTIRE Chad Helton, Owner
896-826-5759
714 W. Okla. Ave.
Wheeler, TX 79096

BELL	VIM	ARCADE	
ALIENATE	FELLOW		
SINGULAR	APIECE		
ICE	TELEGRAM		
LIAR	TILL	YACHT	
TRIP	CYAN	XRAY	
	SASS	MID	ASP
BUSKIN	GUNGHO		
ART	DIM	GHEE	
SEAL	PAPA	LOST	
KAYAK	GOSH	NEWS	
	TRAIN	MAN	RIP
CAPTOR	GASOLINE		
ORIENT	ESTRANGE		
BETRAY	EKE	WEED	

Elections (from Page 1)
Each place will be for a two year term.

Presently serving on the council are Patricia Kephart, mayor pro-tem; Bobbie Walker, Virginia Ridgeway and Bobby Briggs. Mayor Gordon Estes turned in his resignation in December.

Individuals interested in serving on the Mobeetie council have until February 17 to have their names placed on the ballot. Forms for filing for council may be picked up at the First State Bank of

Mobeetie at the Mobeetie location. Trustees to be filled with the May 6 election.

Fort Elliott C.I.S.D

There are four places on the Fort Elliott C.I.S.D. Board of

Chairs to be filled are Place 1, Place 9, Place 3, Place 7. These places are presently held by Shawn Zybach, Keith

Horn, Bret Begert and Ben Pigg.

Any qualified individual in the district interested in placing their name on the ballot may sign up at the school business office at the Briscoe Campus at 502 E. Wilson, Briscoe, TX thru February 17, 2017.

Layne (from Page 1)

on. If you knew Layne, you could bet that he is in Heaven talking to our Heavenly Father about some scientific or historical fact about the beautiful streets of gold or the pearly gates or asking Him where the best fishing hole is located.

He was preceded in death by his grandmother, Lavila Meriwether.

Layne is survived by his parents, Michael and Kelly Meriwether of Waynoka, OK; two brothers, Travis Meriwether of Tuttle, OK, Logan Meriwether of Waynoka, OK; fiancé, Hannah Darr of Stillwater, OK; grandparents, Leroy and Rhonda Meriwether of Wheeler, TX, and Jack and Evelyn Young of Binger, OK; and many aunts, uncles, cousins, other relatives and friends.

A scholarship fund has been set up in Layne's name at the Oklahoma Cattlemen's Foundation, PO BOX 82395, Oklahoma City, OK 73148 (okcattlemen.org/foundation-donation.aspx)

Viewing will be at the Marshall Funeral Home in Waynoka Tuesday, from 11:00 am to 8:00 pm

Services: Waynoka High School Multi-Purpose Bldg, Wednesday, 10:30 AM, February 8, 2017, Waynoka, OK

Officiating: Rev. Marlin Hiett under the direction of Turner Funeral Home, Hinton, Oklahoma, condolences may be sent to the family at turnerfuneralhomes@gmail.com, or you can find us on facebook.com (Turner Funeral Homes).

WTAMU (from Page 1)

Texas Panhandle. The hope is that this initiative will bridge the gap between the high school students of the Texas Panhandle and their journey to higher education.

Wendler will stop for a 6 p.m. presentation at Fort Elliott High School on Thursday, Feb. 16.

"No matter if there are 800 students or five, I plan to visit each high school in the Texas Panhandle and encourage students and parents to consider the importance of higher education and community partnership," Wendler said.

This outreach initiative has been a top priority for both the president and his staff since he began at WTAMU in September 2016. For Wendler, reaching out to the communities of the Texas Panhandle will not only provide future success for higher education but also will provide future successes for the youth and communities of the Texas Panhandle.

100 (from Page 1)

meeting Texas' ongoing and ever-changing transportation needs. In the early 1900s, the goal was connecting farms and ranches to market; today, it's safely moving goods and a population of more than 27 million across a nation-leading 80,000 miles of state-maintained roadways – even in the midst of historic growth in our population and trade.

"A century ago, Texas' state highway system was established to get Texans out of the mud," said Texas Transportation Commission Chairman Tryon Lewis. "Now, under the leadership of Gov. Abbott, and with the support of the Legislature, the Transportation Commission is dedicated to getting Texans out of traffic jams and moving them as safely and efficiently as possible to their destinations, and then back to their loved ones."

News, Views & Commentary
KPDR-FM, 90.3
WHEELER, TEXAS
Weekdays: 6:00 a.m. to 7:00 a.m.



THE WHEELER TIMES
Page 5 — Thursday, February 9, 2017
"Wheeler: town of friendship and pride"



Jr. High—Mauricio Soto tries to tie up the ball.



Jr. High—Diego Pichardo over the top for two..

Listen To . . .
KPDR-FM, 90.3
WHEELER, TEXAS

ALL TYPES OF AERIAL SPRAYING CHEMICAL & SEED SALES

GRAY AG AIR

Serving Hollis and Wellington

P.O. Box 306
Hollis, OK 73550
(580) 688-2548 OR
(580) 688-2558

LYNN GRAY
Mobile: (580) 381-0306

REID ROBINSON
Mobile: (580) 318-2604

A Much Needed Service for Land and Mineral Owners

SALEM ABRAHAM and his team at Salem Oil & Gas, LP are now buying land and minerals in the Northeast Texas Panhandle. Salem began buying and selling ranchland and minerals along with his grandfather and brothers in 1986. His team today consists of Lee Haygood and Colby Waters who have extensive ties to the area and years of experience working on land and mineral deals with Salem. Additionally, our petroleum engineer, John Walker, and our geologist, Stephen Yokubaitis, have many years of experience valuing minerals in our area.

HERE IS THE DEAL: If you have land or minerals to sell at a realistic price, give us a call. We will be in touch with you within two business days and make a cash bid within 72 hours, and be ready to pay off as soon as the title is clear. This will save you thousands of dollars in advertising and commissions and days of showing your place to people who aren't serious buyers.

THIS IS A UNIQUE local business. You know who you're dealing with and no deal is too big or too small.

Salem Oil & Gas, LP

2nd and Main in the Moody Building Canadian, TX 806.323.8000

YOUR ★ COMMUNITY

YOUR UNIVERSITY

Making a Connection with the Panhandle.



West Texas A&M University's
PRESIDENT WALTER WENDLER

is eager to get on the road with a tour of the Texas Panhandle.

The meetings are open to the public, and Dr. Wendler is excited to meet **TEACHERS ★ BUSINESS and COMMUNITY LEADERS PARENTS ★ STUDENTS and WTAMU ALUMNI** at each stop.

PLEASE → **JOIN**

Dr. Wendler and his wife, Mary, as they

VISIT your town

6 P.M. | FEB. 16 | FORT ELLIOTT HIGH SCHOOL

To view a full schedule : wtamu.edu/wendlertour

Wheeler United Methodist Church
Eighth at Main St. — P.O. Box 89
Wheeler, TX 79096
806-826-3114 Fax 806-826-3780
wheelerumc@windstream.net

Sunday Schedule
Coffee & Donut Fellowship—9:30 a.m.
Sunday School—9:45 a.m.
Sunday Worship—11:00 a.m.

Wednesday Schedule
Youth Fellowship—6:00 p.m.
Choir Rehearsal—7:00 p.m.

PO BOX 582
WHEELER, TX 79096
806-331-1522

PAUL TOPPER, JR.
OWNER

BIGTOP ENTERPRISE, LLC
TBA TOPPER HEAT & AIR SERVICE
TXLICENSED HEAT & AIR SEPTIC SYSTEM INSTALLER
Tx License #TACL840893E OSO028695

806-334-1522

WE BUY OIL, GAS, & MINERAL RIGHTS

Both non-producing and producing including Non-Participating Royalty Interest (NPRI)
Provide us your desired price for an offer evaluation.

CALL TODAY: **806.620.1422**

LOBO MINERALS, LLC
PO Box 1800 • Lubbock, TX 79408-1800
LoboMineralsLLC@gmail.com

Ag Brokers, Ltd.

Contact us! Visit our website for more detailed information.
www.agbrokersLtd.com (806) 679-2645

LAND AND AG BUSINESS CONSULTANTS WITH OVER 100 YEARS EXPERIENCE:

- Ag businesses
- Land brokerage
- Brokerage
- Oil & gas exploration and development
- Mineral leasing and title examination
- Ranch leasing
- Estate auction
- Ranch, livestock and wildlife management.
- Livestock risk management
- Wind and solar project, leasing and development.

Please consider us for your land purchase, sale, management or consulting needs.

Steve Sykes, Agent www.agbrokersLtd.com

PRICES EFFECTIVE
WEDNESDAY FEB. 8 THRU TUESDAY FEB. 14, 2017

TEXAS
• SHAMROCK • SUNRAY
• WELLINGTON • WHEELER
OKLAHOMA
• CHEYENNE • EUFAULA
• HINTON • STIGLER
• STILWELL



www.marketsquareonline.com
AFFILIATED FOODS INC. MEMBER STORES
NOT LIABLE FOR TYPOGRAPHICAL OR PICTORIAL ERRORS. WE RESERVE THE RIGHT TO LIMIT QUANTITIES. SOME ITEMS NOT AVAILABLE IN ALL STORES.

Lobster Tail
with butter
4 oz.
\$7.99



Sweet Savings

family pack
preferred trim boneless
New York
Strip Steak

\$5.99
LB.

Small Pack \$6.49 lb.



(where available)
assorted colors
Dozen Roses **\$16.99**



(previously frozen)
boneless skinless
Chicken Breasts
or Tenderloins

\$1.69
LB.



1 lb. pkg.
Red Ripe
Strawberries

\$1.99



premium
Pink Lady
Apples

99¢
LB.

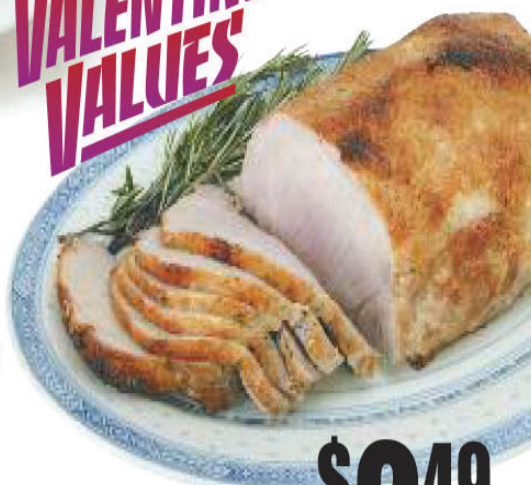
Small Pack \$3.29 lb.



offshore
Peaches or Nectarines

2\$3
lbs.

VALENTINE
VALUES



Boneless
Pork Half Loin

\$2.49
LB.

family pack
preferred trim boneless
Beef Bottom
Round Roast

\$2.99
LB.



Yogurt
Yoplait
select varieties
4-6 oz.

2\$1
FOR



Gelato or
Sorbet
Gusto Bello Cafe
select varieties
30 oz.

\$2.99



Cooking Oil
Mazola select varieties
40 oz.

\$2.88



Valentine
M&M Minis
mega tube
1.77 oz.

2\$3
FOR



Cake Mix or
Brownie Mix
Betty Crocker
select varieties
15.25-18.3 oz.

5\$5
FOR



Shurfine Flour
Self Rising or
All Purpose
5 lb.

\$1.38



Sugar
Shurfine
Granulated
4 lb.

\$1.68



Jumex Nectars
select varieties
11.3 oz.

3\$1
FOR



Bath Tissue
Charmin Essentials
Soft or Strong
12 dbl roll.

\$4.99



Honey Bunches
of Oats
Post, With Almonds or
Honey Roasted
27 oz.

2\$7
FOR



Conversation
Valentine Hearts
small, large or tart
7-8 oz.

2\$3
FOR



Hershey's
Valentine
Candies
assorted
10-14.8 oz.



\$3.99



Dove Valentine
Chocolates
assorted
7.94-8.87 oz.

\$3.99



Charms
Valentine
or Blow Pops
11.5 oz.

\$1.99