



THE WHEELER TIMES

(USPS 681-1009)

VOLUME 84, NUMBER 44

THURSDAY, OCTOBER 13, 2016

SINGLE COPY **50c**

"Wheeler: town of friendship and pride"



PRIDE OF WHEELER: Members of the Pride of Wheeler Mustang Band line up as they await their performance at the Panhandle Pre-UIL Marching Festival. The performance was observed by three judges who then spent the next 45 minutes fine-tuning parts of the marching show which they felt needed to most attention. The Pride will compete in the High Plains Marching Contest this Saturday, October 15th at 9:30am at Dick Bivens Stadium in Amarillo. Director John Bratton's comments: There is really not much to report. We didn't receive any scores or ratings as this was just a preparatory event to get us ready for the next two weeks of real competitions. The judges remarks were very favorable and they noticed a marked improvement between last year and this year. They enjoyed our music and our marching as well as our aggressive sound. They did; however, encourage us to back off a little bit volume-wise to get a nicer, cleaner sound. They all really liked the look of the uniforms and were very impressed with the discipline of the group.

Sponsors Needed For Fall Festival Activities

Visit Local Indian Camp Locations

The West Texas Trails Association will hold their annual meeting at the Wheeler Ag Life and Family Center in Wheeler, October 15, 2016.

A tour of historical sites is planned for October 14, Friday afternoon, leaving from Maxey's parking lot at 12:30 p.m. For those wishing to eat

a "Dutch treat" lunch before leaving for the tour we will gather at 11:30 A.M. at the restaurant. Vans for transportation are being provided by the First Baptist Church of Mobeetie. The high point of

the tour is visiting the 1868 campsite of Custer's Seventh Cavalry Troop on Sweetwater creek, where he negotiated the return of 2 captive women from Kansas.

(Continued Page 2)

District Opener

Mustangs Smash Claude

By Kelly Aderholt

The Wheeler Mustangs began their playoff push in roaring fashion last Friday night in Claude, rolling up almost 500 yards of total yardage, and pummeling the Claude Mustangs by a final score of 52-12. The Wheeler defense, substituting freely well before halftime, held Claude to below 200 yards of total offense, forced two turnovers and five punts and played their most complete game of the season.

Wheeler received the opening kickoff and set up at their own 34. QB Holden Guest threw to WR Traylen Drake for 11 yards, TE Levi Ware ran for 24 yards to the Claude 31, RB Eduardo Porras ran for 16 yards to the 15, a false start penalty pushed them back to the 20, but Guest got it back and more, finishing the drive with a 20 yard TD run and WR Ivan Lopez ran in the two point conversion to give Wheeler an 8-0 lead only 52 seconds into the game.

Claude returned the ensuing kickoff to their 25 and looked to respond quickly. Three plays netted 30 yards to the Wheeler 45 but the Wheeler defense tightened up and forced Claude into a fourth and ten. Punter Mason Smith dropped back to punt, but the snap sailed over his head and he was forced to fall on it at the Claude 34, giving Wheeler outstanding field position.

Wheeler took immediate advantage and covered the 34 yards in four plays: two runs by RB Rudy Almanza got seven

yards, Guest ran for eight and closed out the drive with a 14 yard strike to Drake. Lopez ran in another two pointer and

(Continued Page 2)

Thomas R. Helton Elementary

First Six-Weeks Honor Roll

1st grade

ALL A: Gonzalo Andrade, Sofia Badillo, Aaron Barron, Maritzah Felix, Gabriela Garcia, Austyn Hill, Jesus Loera, Mack Marshall, Randy Rivera, Keaton Salas, Kennedee Sullivan and Daniel Uribe

A/B: Jerman Almeraz, Karely Cervantes, Jazmyn Estrada, Tessa Fullbright, A'dyn Garza, Emma Gonzales, Eli Haley, Kyleigh House, Alexa Mendoza, Isabella Teran, David Valles and Sophie Witten

2nd grade

ALL A: Jaxxn Allen, Monserrat Gonzalez, John Helton, Eleanor Kreitner, Isai Lira, Jaime Lopez-Mendoza, Heath Poage, Jennifer Rocha, Ashton Salas, Codi Waters, and Stormi Waters

A/B: Teagan Applewhite, Juan Carlos Del Rio, Saul Gallardo, Christopher Gallardo, Ryan Gonzalez, Natali Guereca, Daniel Hernandez, Brayden Kuntz, Brylee McElroy, Noah Remy, Nickolas Shipley, Diego Soto, Marely Suarez and Jake Ruff

3rd grade

ALL A: Garrett Ashurst, Aron Atherton, Heidy Aviles, Tazlan Brown, Ryan Fullbright, Mackrina Herrera, Hennesy Holwick, Jake Houska, Kynslee Marshall, Orlando Montanez, Creed Newkirk, Janet Rodriguez, Abraham Sigala and Faith Toland

A/B: Isaac Almanza, Katherine Cervantes, Levi Darnell, Jesus Duenez, Henry Enriquez, Crystal Hernandez, Mason Lee, Sawyer Schlabs, Karolyne Sierra, Thomas Taylor and Joaquin Tintori

4th grade

Wheeler Area Aquatics Committee Needs Your Help

The Wheeler Area Aquatics Committee is excitedly looking forward to another wildly successful Fall Festival this year. We would like to share with you a number of ways you, your family and your business can be involved.

We need volunteers to set up a prize/game activity booth that the kids can play and win prizes. There are a ton of ideas out there and we are more than willing to help with ideas, if you need some ideas. If you are interested in an activity booth, you will need to provide the activity, anything needed

to participate in the activity; along with any prizes the kids can win (candy, etc). You can also use your booth space to



Honorable Mention, "High School Football Player of the Week": Wheeler quarterback Holden Guest had 174 all-purpose yards with two scores in a convincing win against Claude.

Wheeler Junior High & High School

First Six-Weeks Honor Roll

Wheeler Junior High and High School Honor Roll – First Six Weeks

Seventh Grade: All A: Gus Braddock, Jayden Price; A/B: Rhalee Adams, Vanessa Avila, Jaden Conner, Hannah Davis, Reese, Foreman, Jovanny Gallardo, Lizzy Garza, Hadlee Gomez, Viridiana Gonzalez, Siady Hernandez, Hayden Holwick, Hunter Koelzer, Alejandra Loera, Selina,

decorate and hang company banners/logos, etc. The space is usually 10' x 10' but we will work with you to accommodate. The booths will be open for play from 1pm – 4pm. You can set up on Friday, October 28th or Saturday morning before 11 am.

We also will be having a Trunk or Treat from 4pm – 5pm in the NORTH parking lot (North of the Ag Barn and East of the AgriLife Building). You can have your vehicles decorated and pass out candy and goodies to the little ones. We will be judging the Trunk or Treats participants and will have prizes for "The Most Festive", "Best Treats" and "Kid's Choice". So get your creative juices flowing!! Please expect to hand out enough prizes/

(Continued Page 8)



The "Pride of Wheeler" Band did an excellent performance at Panhandle over the weekend. They travel to Amarillo next Saturday for concert competition and the following

(Continued Page 9)

STORM REPORT



As Reported by...
Stormie Meriwether,
Seventh Grade Student

Old Cemeteries
A truly Happy Person is one who can enjoy the scenery on a detour. And, one who can enjoy browsing old cemeteries.

Some fascinating things on old tombstones!

• A lawyer's epitaph in England : Sir John Strange: Here lies an honest lawyer, and that is Strange.

• John Penny's epitaph in the Wimborne, England, cemetery: Reader, if cash thou art in want of any, Dig 6 feet deep and thou wilt find a Penny.

• In a cemetery in Hartscombe, England: On the 22nd of June, Jonathan Fiddle went out of tune.

• Anna Hopewell's grave in Enosburg Falls, Vermont : Here lies the body of our Anna, Done to death by a banana. It wasn't the fruit that laid her low, But the skin of the thing that made her go.

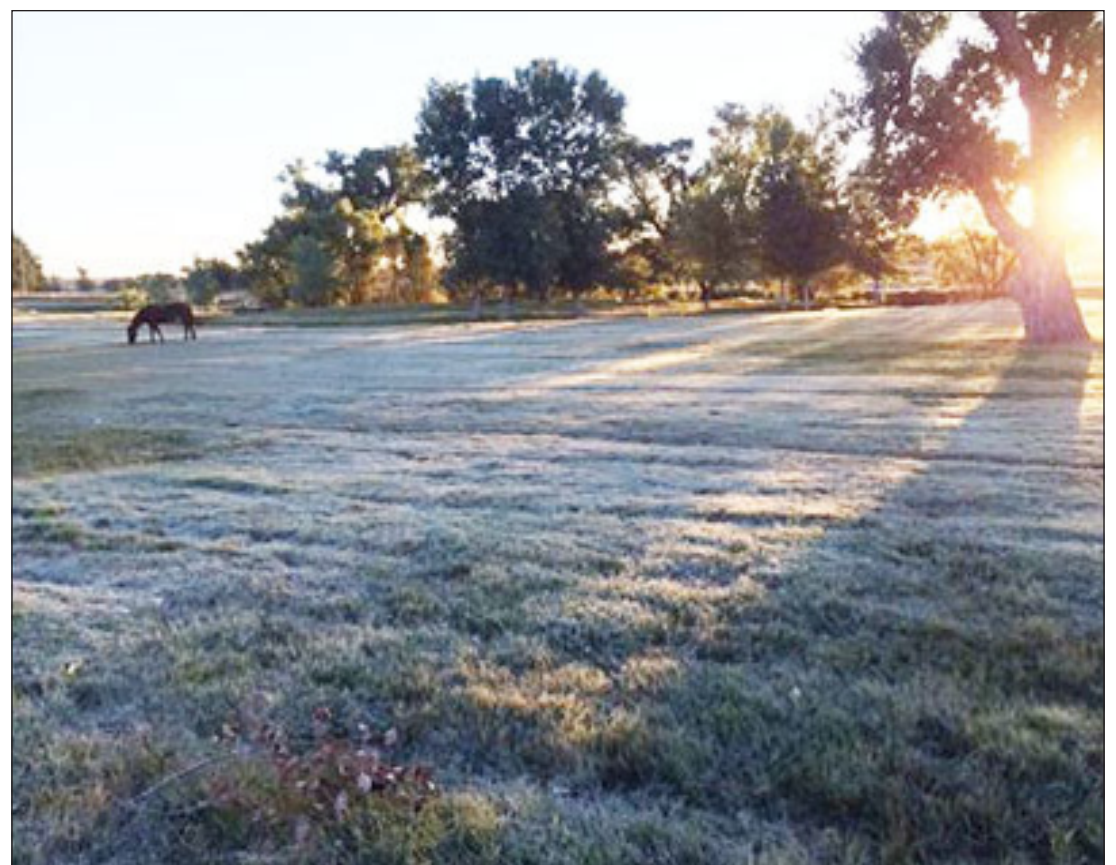
• On a grave from the 1880s

Wheeler Banking Center To Honor County's First Responders Oct. 19

Wednesday, October 19, Wheeler Banking Center is hosting a hamburger lunch in honor of our Wheeler County First Responders. All fire departments, EMT's, Law Enforcement, DPS, our Game Warden and County Road

Hands, please come by and let us show our appreciation for all the hard work you do.

Please come join us from 11:30 to 1:30 at the east parking lot of Wheeler Banking Center.



FIRST FROST OF 2016: Jack Helton posted this picture showing the first frost of the season on Tuesday, October 4 with the temperature of 32° at his place two miles northeast of Wheeler.

OLD TIMES NOT FORGOTTEN

By Roland Miles

It's A Rat Race

About three years ago, some good-hearted soul, dumped out a couple of pregnant cats on the road near our house. As luck would have it, one decided to take up residence at our house, and the other one went to our son's place. It wasn't long, before we were in the kitten business. Our cat had four and theirs about the same. Young cats just don't seem to understand that it's a bad idea to crawl up in front of the pickup engine, next to the fan and go to sleep. So, between the pickup, hawks and owls, we only had one survivor from that first litter, to reach adulthood. The next year, she had four again, with almost the exact results, one survivor.

We named this guy, "Boots." He's gray, long-haired, and has white on both back legs, from the knees down; sort-of reminds you of a Spanish Cavalier. He's really big, but about as laid-back as they come. A few nights ago, we were getting ready to go to bed. As usual, I go to the garage door, to see if the cats want to come in. As I opened the door, he dashed in like something was after him. I took a quick look outside, but didn't see anything. Much to my surprise, he was standing there with a big rat in his mouth. I was just about to compliment him on what a good cat he was, when he dropped the rat and walked over for me to pet him. The rat was not only still alive, but it took off running and hiding. As you might expect, I sure wasn't about to go to bed, with a live rat in the garage. Finally, Boots saw it and chased it down, then came back growling. "Good boy!" He flopped down on the floor and dropped the rat again. "My gosh Boots, what'd you do that for?" It became apparent, that if the rat was going to get killed, I was going to be the one to do it. The first thing I came across to hit the rat with, was an arrow, that was next to a bow my brother had given me years ago. As the rat ran around the garage floor, I whacked at it over and over, but missed every time. Boots, seemed to enjoy watching me run around the garage, whacking at the rat, which finally hid in the corner, behind our water softener tank. This isn't good! Now I can't reach it at all; can't even see it. That's when I noticed the bow, hanging on the wall. It has curved ends, so it might reach around the water softener tank. Sure enough, when I poked around the back side, the rat moved to where I could hit it. When I opened the door to throw the rat outside,

Boots dashed out, too. I'd had enough excitement for one night, so I didn't ask him to come back in. Now, I always check him out, before I let him in. Don't want to go through that again!

Answer to last week's history trivia question: Abraham Lincoln and Jefferson Davis

had more in common, than being Presidents of the U.S. and Confederacy. They were both born in Kentucky.

This week's question: (a toughie.) When, did the first train cross the Mississippi? The new bridge ran between what two towns? Answer next week.

Wheeler County COURT RECORDS

List of instruments filed in the Wheeler County Clerk's Office from October 3, 2016 to October 5, 2016.

OCTOBER 3, 2016

CEMETERY DEED-City of Shamrock to Rick Walden, et ux, 9-30-16, Spaces 6 & 7, Lot 36, Blk. J2, Lisle Addition, Shamrock.

SPECIAL MINERAL/ROYALTY DEED-Sheryl Lynne Springer to Springer Family Trust, 9-27-16, See Instrument.

ASSIGN. ROY./OVERRIDE. ROYALTY-Sheryl Lynne Springer to Springer Family Trust, 9-27-16, See Instrument. QCMD-Mary Ada Reed Erwin to Mary A Erwin Revocable Trust, 9-13-16, Pt. Sec. 21, Blk. R.E., Roberts & Eddleman Survey.

HEIRSHIP AFF.-Bette Schlanger Wozobski, et al to Gertrude Blend Weisman, 4-29-16, Sec. 81, Blk. A-4, H&GN Ry. Company Survey. MD-Ann Elisabeth Weisman, et al to Aaron Solomon Weisman, 8-1-16, Sec. 81, Blk. A-4, H&GN Ry. Company Survey.

WELL-BORE ASSIGN.-Modano Oil & Gas LP to RCWI LP, 8-24-16, See Instrument.

OCTOBER 4, 2016

DEED-Javier Lopez, et ux to Billy Majors, et ux, 10-4-16, S 50' of N 10' of E 66 1/3 of Lot 4, Blk. 38, Original town, Shamrock.

DVL-Benjamin Franklin Westmoreland III (Estate) to Cecil Berry, et ux, 9-28-16, 30.98 acs. NE/4 Sec. 2, J. Poitevent Survey.

DT-Cecil Berry, et ux to Prosperity Bank, 9-28-16, 30.98 acs. NE/4 Sec. 2, J. Poitevent Survey.

OCTOBER 5, 2016

EXECUTORS CONVEY. ASSIGN.-Billie Merle Smith Stark (Estate) to Mary Jo Stark, et al, 9-12-16, Interest in Secs. 50 & 51, Blk. A-8, H&GN Ry. Company Survey.

CONVEY.AND ASSIGN.-Mary Jo Stark, et al to Stark Sisters LLC, 9-12-16, Interest in Secs. 50 & 51, Blk. A-8, H&GN Ry. Company Survey.

TDT-Steed Charity Ltd. to Alpha 1947 Trust, 9-30-16, N 100' W/2 Blk. 53, Stanley Addition, Wheeler.

C/C PROBATE-Harry Hebel to Ex Parte, 9-7-16, No Land Listed.

MINERAL/ROYALTY CONVEY.-Timothy Alan Hebel to Enerlex Inc., 7-23-16, Interest in Wheeler County.



Tour (from Page 1)

The group will return to Wheeler about 6 p.m., where a reception will be held at the Sandy Basin Inn, honoring professor Linda Pelon, the keynote speaker for Saturday's program.

Professor Pelon of McLennon County Community College and Professor Alex Hunt of WTAMU, Canyon, will be talking about their recently published books and will have them on hand for purchase and signing at the reception.

Professor Pelon co-authored a book titled "Comanche Marker Trees in Texas" and Professor Alex Hunt co-edited a journal titled "Our Indian Summer In the Far West" by S. Nugent Townshend, from England, that was originally published in the late 1800's. This book has several photos of Ft. Elliott, which were taken during his visit to now Wheeler County and tells of the 15,000 miles he traveled during his visit to Kansas, Texas, New Mexico, Colorado and the Indian Territory, during his 1879 visit to the U.S.

Saturday, starting at 9:30 a.m., is packed full of presentations on trails and trail tracking in our area. To mention a winter months. Excessive weight loss can also decrease conception rates and effect overall herd health.

Information sheets and guidelines for collecting forage samples and interpreting analyses are available at the Wheeler Texas A&M AgriLife Extension Office at the Wheeler Co Ag and Family Life Center. So take a few minutes now to collect a hay sample and get it tested. It could make a big difference in your livestock feeding program this winter. If you have any questions or need further clarification, call Dale Dunlap, County Extension Agent-AG/NR, at 806-826-5243.

few, route 66, Western Cattle Trails, Jones-Plummer Trail, The Old Military Road, Marcy's Red River Trail and Trail with a Drone.

For more information on this great event, coming to Wheeler County, please contact Ada Lester, Wheeler County Historical Commission Chair at 806-845-3311 or email: WestTexasTrails@gmail.com. Deadline to register is October 13, 2016.

Stangs (from Page 1) Wheeler lead 16-0 with 6:37 left in the opening quarter.

Claude ran three plays and shanked a fourth down punt that gave Wheeler possession at the Claude 33. Wheeler cashed in six plays later on a Drake eight year run and Wheeler led 24-0 after Guest's two point run with 3:34 left in the first.

Another Claude three and out gave Wheeler possession at their 29. Wheeler mounted an impressive ten play drive, highlighted by a 27 yard scamper from Guest on a fourth and four from the Wheeler 47. Two plays later, Guest hit WR Lopez on a sharp slant pass to the five. A Claude penalty pushed the ball to the two and Porras finished off the drive with a run on the next play. The PAT failed and Wheeler held a 30-0 lead with 10:18 left in the first half.

Information sheets and guidelines for collecting forage samples and interpreting analyses are available at the Wheeler Texas A&M AgriLife Extension Office at the Wheeler Co Ag and Family Life Center. So take a few minutes now to collect a hay sample and get it tested. It could make a big difference in your livestock feeding program this winter. If you have any questions or need further clarification, call Dale Dunlap, County Extension Agent-AG/NR, at 806-826-5243.

(Continued Page 5)

Old Time Gospel Music

KPDR-FM, 90.3

... In Wheeler
Sun.: 6:00 a.m. to 8:00 a.m.

NEW HOURS:

Wheeler's Eastern Panhandle office will begin new business hours effective Nov. 1,

New Hours:
Monday thru Thursday
8:30-12/1:00-5

Friday, Saturday & Sunday we will be closed.

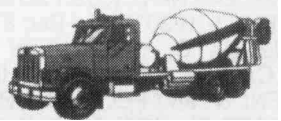
Should you need anything on Friday, contact our Shamrock Office at 206 N. Madden St., Shamrock or Phone: 806-256-5401

For all your . . . Insurance Needs, See Eastern Panhandle Insur. Agency, Inc.

117 W. Texas St. Wheeler
806/826-3573
•Auto •Home •Life •Health
•Commercial •Bonds

Canadian Redi-Mix, Inc.

... for all your Concrete Needs!



806-323-5379

Listen To . . .

KPDR-FM, 90.3

WHEELER, TEXAS

Wheeler United Methodist Church

Eighth at Main St. — P.O. Box 89
Wheeler, TX 79096
806-826-3114 Fax 806-826-3780
wheelerumc@windstream.net

Sunday Schedule

Coffee & Donut Fellowship—9:30 a.m.
Sunday School—9:45 a.m.
Sunday Worship—11:00 a.m.

Wednesday Schedule

Youth Fellowship—6:00 p.m.
Choir Rehearsal—7:00 p.m.

October 3rd, 2016

Wheeler County JP #1 Weekly Docket

Magistrations/ Arraignments:

Ioan Rostas	1795 - Money Laundering - Bond \$20,000.00
Visan Angel	1796 - Money Laundering - Bond \$20,000.00
Adam Smothers	1797 - Possession of C.S. - Bond \$12,500.00
Tim Thacker	1798 - Possession of C.S. - Bond \$15,000.00
Tim Thacker	1799 - Money Laundering - Bond \$12,500.00
John McAllister	Bond Surrender - Bond \$30,000.00
Terry Lynn Sterling	Wheeler County Warrant - Bond \$12,500.00
Anthony Edward Luna	1801 - Deadly Conduct - Bond \$2,500.00
Anthony Edward Luna	1802 - Aggravated Assault with a Deadly Weapon - Bond \$50,000.00
Anthony Edward Luna	1803 - Aggravated Assault with a Deadly Weapon - Bond \$50,000.00
Anthony Edward Luna	1804 - Burglary of a Habitat/ with intent - Bond \$80,000.00
Anthony Edward Luna	1805 - Abandon/Endanger a child - Bond \$12,500.00
Jacob Seymour	Violate Bond Conditions Wheeler County Warrant - \$3,000.00
Jacob Seymour	Violate Bond Conditions Wheeler County Warrant - \$3,000.00
Adam Thornton	Bond Surrender - Bond \$Denied

County Citations Issued:

Municipal Citations Issued -City of Wheeler -City Ordinances

None

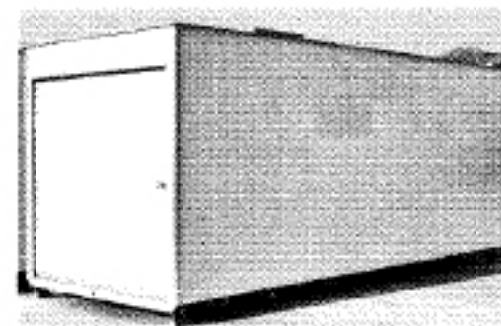
Civil Cases Filed:

Inquests: None

Administrative Hearing: None

Storage Building Spring Clearance Sale 28-45-48-53 Foot

Delivery Service Available



Banker says SELL Make Us an Offer

\$750 and UP

Come Look - Take Your Pick Over 100 To Choose From We Will Load For You or Deliver

Wellington Tractor Parts Inc.

1-800-992-5346

WELLINGTON, TEXAS

GOOD LUCK, CROSS COUNTRY TEAMS ... at the District Meet



GIRLS:

Sofia Kohut, Xochitl Herrera, Abree Finsterwald, Ruby Gavirio, Jaci Guest, Makalli Marshall, Leann Spence, Daisy Duenez, Keila Rocha, Valeria Tintori, Esmey Herrea and Julia Andrade

BOYS:

Josue Rincon, Eloy Uribe, Mac Means, Cooper Foreman, Cristian Contreras, Tony Castillo, Bryce Rowley

We are Proud of You!

- | | | |
|--|--|---|
| Arrow Water Well | Danny & Yvonda Hardcastle | Steve, Joyce & Caitlynn Walker |
| Baymont Inn & Suites | Hefley Hardware, Lumber & Feed | Larry & Carol Porton |
| Bill Robertson | Hemphill Co. Farm Bureau <small>Rita Pearson</small> | Paradise Spa |
| Charles R. Brown | Betty Hennard | Peppers Family Funeral Home |
| Britt Ranch | Honey Inn | RiverCrest Concrete |
| Bob's Bail Bonds <small>806-826-0654</small> | Hyland's Pharmacy | Leo & Sylvia Shuler |
| Buck & Beyond | First State Bank of Mobeetie, Wheeler & Mobeetie | Speedi-Mart |
| Charles Kuntz, C.P.A. | Kim's Kitchen <small>Lunch & Buffet Every Day</small> | Robert, Marla, Spencer & Mitchell |
| Capital Farm Credit | LeRoy, Rhonda & Stormie Meriwether | The General Store |
| Todd Moore Insurance Agency, Inc. | Jay & Karen Lewis | Texas Street Floral |
| Carmicera Aquilar | Lyndon Loyd Auctioneers | Texas Hair Slingers <small>Donna Childress & Kaycee Swift</small> |
| Sandy Basin Inn | LaRue's Rags <small>406 S. Main</small> | Wallace Construction & Tax Service |
| Cross Country Barn | Bigtop Enterprise, LLC <small>Heat-Air-Plumbing— P.D. Topper</small> | West Texas Gas |
| Dr. Mike Smith | Gail & Sally Ledbetter | Wheeler Banking Center |
| Eastern Panhandle Insurance Agency | Weldon & Deloris Simmons | Wheeler Nursing & Rehab |
| Ed & Patricia Forrester | In Memory of Dr. Louie L. Mendiola | Wheeler Vet Clinic |
| Greenbelt Electric Cooperative Inc. | Marshall Discount Auto | Ware Chevrolet & Buick |
| H&H Tire | Maxey's Steakhouse—Catering A Specialty | The Wheeler Times |
| | McCain Auto Body | |

LET'S GO TO STATE!

WANT ADS/LEGAL NOTICES

Sell it through a Classified in THE WHEELER TIMES! \$6 for the first 20 words; 35c for each additional word. Legal Notices: 35c per word.

Grass Hay for Sale: \$30 a bail. 806-898-1786. 10/6-30c

CITATION OF PUBLICATION THE STATE OF TEXAS

TO: Any Sheriff or Constable Within the State of Texas You are commanded to cause to be published once each week for four (4) consecutive weeks, the first publication to be at least twenty-eight (28) days before the return date, in a newspaper printed in Wheeler County, Texas, the accompanying citation of which the following is a true copy:

To: Chase Andrew Reams, Address Unknown, Notice To Defendant(s): "You have been sued. You may employ an attorney. If you or your attorney do not file a written answer with the clerk, who issued this citation by 10:00 A.M. on the Monday next following the expiration of 42 days after the date of issuance of this citation and petition, a default judgment may be taken against you."

You are hereby commanded to appear by filing a written answer to the Plaintiff's Original Petition at or before ten o'clock A.M. of the Monday next after the expiration of forty-two days after the date of issuance of this citation the same being Monday the 14th day of November, 2016, before the Honorable 31st District Court of Wheeler County, Texas. Said Plaintiff's Petition was filed in said court on the 10th day of April, 2015, in this case numbered 13,166 on the docket of said court, and styled.

ERIC REAMES, INDIVIDUALLY AND ERIC REAMES, AS ADMINISTRATOR OF THOM-

AS GEORGE REAMES-Plaintiffs.

VS. JON PAUL STEFFEY, CHASE ANDREW REAMES & PAMELA ACKER-Defendants

A brief statement of the nature of this suit is as follows, to wit:

SUIT IN PARTITION FOR THE SALE

ALL OF LOTS 2 AND 3, THE SOUTH 10 FEET OF LOT 1, BLOCK 2, VISE ADDITION TOWN OF WHEELER, COMMONLY KNOWN AS 212 FRANKLIN STREET, WHEELER, TEXAS as is more fully shown by Plaintiffs Petition on file in the suit.

The Plaintiff is represented by TODD ALVEY, Attorney, 106 N. CUYLER, PAMPA, TX 79065.

The officer executing this writ shall promptly serve the same according to requirements of law and the mandates thereof, and make due return as the law directs.

ISSUED AND GIVEN UNDER MY HAND AND THE SEAL OF THIS COURT, on this the 30th day of SEPTEMBER, 2016, at Wheeler, Wheeler County, Texas.

ATTEST: (Signed) SHERRI JONES, CLERK 31ST DISTRICT COURT WHEELER, COUNTY, TEXAS P.O. BOX 528 WHEELER, TEXAS 79096 By (Signed) JEFF BAKER, DEPUTY 10/6-27

Sunday Nite Live KPDR-FM, 90.3 ... Live from Canadian 9:00 p.m. to 11:00 p.m.



FIRST EQUITY REALTORS 5701 Time Square Blvd. Suite 190, Amarillo, TX 79119

New Listing: Collingsworth County—133 acres, Superb Recreational Property. "Mountain Place": Hills, Ravines, Extreme Topography Changes. Truly one of a kind. Big Trees, Brush, Native Grass, Deer, Turkey, Quail, Dove, Waterwell, New 5-wire steel T-post fencing. Ready for Hunters, ready for cattle.

New Listing: 200 Acres farm and ranch land 1 mile north of Wheeler with U.S. Highway 83 frontage. Running creek, big trees, brush, rolling topography. Deer, Dove and Quail.

New Listing: 8 1/4 miles NE of Wheeler. Excellent homesite. Close to school. Good fences. Windmill, pond.

160 acres SW of Shamrock with 1/2 mile of frontage on FM 1547. Good fences, water well, big trees, brush, excellent location for home. Abundance of wildlife.

New Listing: Steady Income, 240 acres CRP with Well. 11 miles NW of Wheeler. Excellent stand of grass.

New Listing: 56 Acre Track in Allison, Excellent home site. Great Hobby Farm for retirees. Starting location for young family with 4-H/FFA project and horses. Close to school. Well cared for. Now used for haying and grazing.

Emmert Home Place: 5 bdrm, 3.5 bath, Brick Home w/3 car garage on 220 acres. City water, well water, sprinkler system. Over 6,000 sq. ft. of barns and buildings. Excellent set of steel working/gathering and patio — perfect for entertainment and large gatherings. Big trees, brush and wildlife. Rolling topography. Farm & Ranch setting right outside of town. Mile north of Wheeler on US 83.

Secluded 320 Acres: Irrigation well, T & L Pivot, 120x120 Steel Barn Arena and Horse Stalls, Big trees, brush, abundance of wildlife. 10 Miles Northeast of McLean

Large 4 BR, 2 bath Brick home with fireplace on approximately 32 acres of Grassland. Three miles South of Wheeler on U.S. Highway 83. Two car garage and two car carport. A railroad boxcar serves as storage. \$1,500,000 SOLD! on North Property line with Pine trees and Pecan trees surrounding house. The orchard has 20 Peach trees. Ideal location for young couples with children with 4-H/FFA projects. Close to town with access to all area schools.

485 Acres good grassland. 3 miles South of Wheeler that fronts U.S. Highway 83. Spring fed pond, live year around running water, windmills, good fences, cross fenced. Excellent home site, big trees, brush, deer, turkey, dove, quail.

Income Producer— 264 acres 8 miles SE of Wheeler, 212 acres CRP, recreation hunting and grazing land. Live creek, big trees, brush, topography, secluded. Heavy wildlife population (hog, deer, turkey, quail, dove).

landsoftexas.com or thelandconnection.co



Week of September 19-25, 2016

Intents to Drill

LIPSCOMB (LIPSCOMB, Cleveland) Duncan Oil Properties, Inc., #2440H Lena, (693.3 acres) 450' FEL & 500' FNL, Sec 353, Blk 43, H&TC Surv, A-163, 5 mi NE from Higgins TD 8600', (BHL: 450' FEL & 125' FNL Sec 440, Blk 43, H&TC, A-835) (sgd. Don Rhodes 512-458-6351) Horizontal

LIPSCOMB (LIPSCOMB, Cleveland) Jones Energy, LLC, #20H Reba N Miller, (1924.2 acres) 231' FNL & 2447' FEL, Sec 713, Blk 43, H&TC Surv, A-287, 7 mi NE from Lipscomb TD 9000', (BHL: 100' FSL & 2640' FEL) (sgd. Brenda Ramirez 512-328-2953) Horizontal

MOORE (PANHANDLE, Red Cave) Adams Affiliates, Inc., #7303 TG Thompson, (486.05 acres) 125' FSL & 1322' FEL, Sec 73, GM3, G&M Surv, A-442, 4.3 mi E from Masterson TD 2500', (sgd. Jennifer Sexton 918-629-3365) Vertical

MOORE (PANHANDLE, Red Cave) Adams Affiliates, Inc., #7304 TG Thompson, (486.05 acres) 125' FSL & 1980' FEL, Sec 73, GM3, G&M Surv, A-442, 4.3 mi E from Masterson TD 2500', (sgd. Jennifer Sexton 918-629-3365) Vertical

OCHILTREE (PAN PETRO, Cleveland) Jones Energy, LLC, #2H Buzzard 60, (642.8 acres) 225' FSL & 1980' FWL, Sec 60, Blk 13, T&NO Surv, A-956, 8.5 mi SE from Farnsworth TD 9000', (BHL: 330' FNL & 1600' FWL Sec 60, Blk 13, T&NO, A-821) (sgd. Brenda Ramirez 512-328-2953) Horizontal

WHEELER (PANHANDLE, Wheeler County Field) J-Brex Company, #4052 Sheets,

(80 acres) 2105' FWL & 500' FSL, Sec 52, Blk 24, H&GN Surv, A-838, 5 mi W from Kellerville TD 3000', (sgd. Sherri Sanders 806-358-2446, x12) Vertical

(Continued Page 8)

News, Views & Commentary KPDR-FM, 90.3 WHEELER, TEXAS Weekdays: 6:00 a.m. to 7:00 a.m.



TEXAS STATEWIDE CLASSIFIED ADVERTISING NETWORK TexSCAN

TexSCAN Week of October 9, 2016 HOME BUSINESS

OPPORTUNITY TO GET PAID DAILY, Great Home Business. Please call 1-832-225-5005 first. Ask about \$100 cash referral! Fred 1-469-909-6624, fredcornell@legalsieldassociate.com, LegalShield, Independent Associate

LEGALS SOCIAL SECURITY DISABILITY BENEFITS. Unable to work? Denied benefits? We Can Help! WIN or Pay Nothing! Contact Bill Gordon & Associates at 1-800-755-0168 to start your application today!

RV PARK FOR SALE Mountain RV Park For Sale Approximately 100 RV Sites partially complete. 1 Mile west of HWY 48 on Ski Run Road. Ruidoso, NM 88355 Call 1-575-258-5050.

SAWMILL FOR SALE SAWMILLS from only \$4397.00 MAKE & SAVE MONEY with your own bandmill! Cut lumber any dimension. In stock ready to ship! FREE Info/DVD: www.NorwoodSawmills.com 1-800-578-1363 Ext.300N

MEDICARE DEVICE GOT KNEE PAIN? Back Pain? Shoulder Pain? Get a pain-relieving brace - little or NO cost to you. Medicare Patients Call Health Hotline Now! 1-800-518-0173

MEMBER 2015 TEXAS PRESS ASSOCIATION

City of Wheeler Turns 100 Aug. 6, '05 Celebration Planned THE WHEELER TIMES P.O. Box 1080 Wheeler, Texas 79096 Phone: 806/826-3123 Entered as second-class matter December 18, 1933, at the Post Office at Wheeler, Texas 79096, under the act March 3, 1879. Postmaster: Send Address changes to The Wheeler Times, P.O. Box 1080, Wheeler, TX 79096-1080 — wtimes@windstream.net Louis C. Stas, Owner & Publisher SUBSCRIPTION RATES: Within Wheeler Co: \$22.00 Elsewhere: \$25.00

THE BUSINESS DIRECTORY

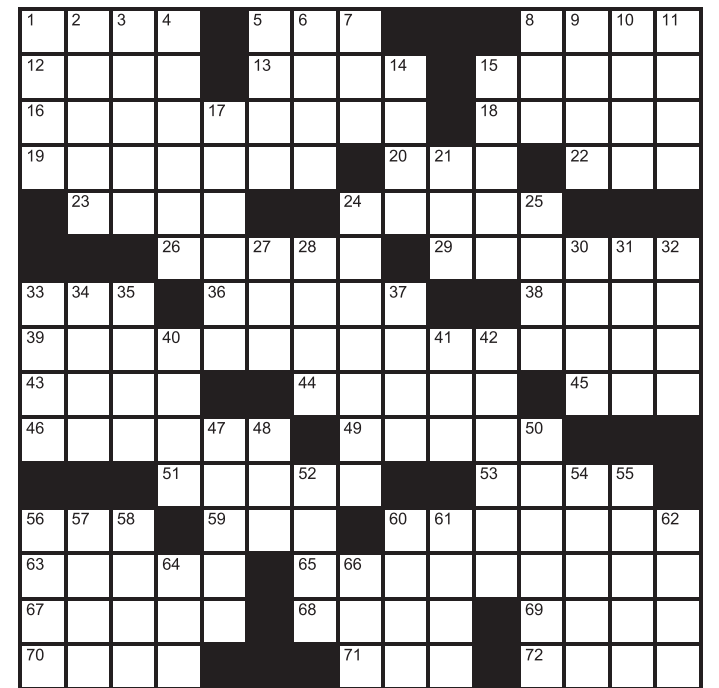
CROSS COUNTRY BARN 24 Hr. Gas & Diesel Convenience Store Hunt Bros. Pizza 301 E. Oklahoma St. Wheeler, TX Phone: 806-826-2276 Dale & Monica Kidd

It pays to Advertise in THE WHEELER TIMES Phone & Fax: 806/826-3125 wtimes@windstream.net Classified Rate Cash—\$6.00 for 1st 20 wds. Chg.—\$6.50 for 1st 20 wds. 35c for each additional word Display Classified: \$6.50/pci Card of Thanks: \$7.00

Ovarian Cancer EXPERIENCE COUNTS Lawyers with more than 100 years combined expertise. OVARIAN CANCER has been linked to the regular use of TALC. Shower to Shower® and Johnson's Baby Powder® include talc. Call us for professional insight if you or a loved one has been diagnosed. Ryan A. Krebs, M.D., J.D. Doctor-Lawyer in Full-time Law Practice Richard A. Dodd, L.C. Timothy R. Cappolino, P.C. Board Certified Personal Injury Trial Law and Civil Trial Law by the Texas Board of Legal Specialization NO FEE FOR FIRST VISIT OFFICES IN HOUSTON, CONROE, TEMPLE AND AUSTIN. PRINCIPAL OFFICE IN CAMERON. 1-800-460-0606 www.RespectForYou.com

WE BUY OIL, GAS, & MINERAL RIGHTS Both non-producing and producing including Non-Participating Royalty Interest (NPRI) Provide us your desired price for an offer evaluation. CALL TODAY: 806.620.1422 LOBO MINERALS, LLC PO Box 1800 • Lubbock, TX 79408-1800 LoboMineralsLLC@gmail.com

Crossword PUZZLE



Across 1. Fibber 5. Flit (about) 8. Bakery product 12. Egg on 13. Awfully long time 15. Clean energy 16. Plump 18. Pause indicator 19. Contact sport leg protector 20. City map abbr. 22. Mole 23. "Uh-huh" 24. Contending 26. Leg bone 29. Antenna 33. Goon

68. Hindu dress 69. Broken mirror, to some 70. Not bold 71. Witty remark 72. Confined, with "up"

33. Many a homecoming attendee 34. Mexican moolah 35. Square 37. Slight advantage 40. Therefore 41. Electric

Chad Helton, Owner 896-826-5759 714 W. Okla. Ave. Wheeler, TX 79096

Down 1. Fickle lady 2. The fire station burned down, e.g. 3. See eye to eye 4. Echo 42. Excavating machine 47. At attention 48. Dust remover 50. Circus tent 52. The best 54. Snail trail 55. Macho types 56. Split bit 57. Gad about 58. Toddler's perch 60. Famous Italian bike race 61. Strike 62. E-mailed 64. Ruffie 66. St. Louis pro

Wheeler Banking Center USB Bowie • Canadian • Childress • Littlefield • Lubbock • Otton • Memphis • Wheeler • Wellington

36. Stock holder? 38. Like some hands 39. Good judgment 43. Tech support caller 44. A deadly sin 45. Boozer 46. Dealer in fish or gossip 49. People person 51. Hold the floor 53. Serve up 56. Biblical floating zoo 59. Something that's bruisable 60. Skiers need 63. Gin's partner 65. TV evenings 67. Blatant

5. Big do 6. Ripened 7. Animal house 8. "___ bad!" 9. Charity 10. Turnpike turnoff 11. Cafeteria carrier 14. Hang in there 15. Public spat 17. Like Jack and Jill's path 21. By means of 24. Short drapery 25. Smile 27. Dickensian epithet 28. Flash 30. Days of old 31. In addition 32. In case

ESTATE SALE - LOG HOMES PAY THE BALANCE OWED ONLY!!!

AMERICAN LOG HOMES IS ASSISTING FINAL RELEASE OF ESTATE & ACCOUNT SETTLEMENT ON HOUSES.

3 Log Home kits selling for BALANCE OWED, FREE DELIVERY

- 1) Model # 101 Carolina \$40,840...BALANCE OWED \$17,000
2) Model # 303 Little Rock \$38,525...BALANCE OWED \$15,000
3) Model # 403 Augusta \$42,450...BALANCE OWED \$16,500

BEFORE CALLING: VIEW at www.loghomedream.com Click on House Plans

- NEW - HOMES HAVE NOT BEEN MANUFACTURED
• Make any plan design changes you desire!
• Comes with Complete Building Blueprints & Construction Manual
• Windows, Doors, and Roofing not included
• NO TIME LIMIT FOR DELIVERY! BBB A+ Rating

SERIOUS ONLY REPLY. Call (704) 602-3035 ask for Accounting Dept.

KARNES CITY AUCTION, INC. "LONG LIVE COWBOYS"

BI-ANNUAL Female Replacement SALE

Saturday, October 15 12 pm 300+

- Open/Exposed/Bred Tiger Stripe Heifers
• Bred Heifers/Cows
• Cow/Calf Pairs
• Young Gentle Cows
• South TX Crossbreds & Purebred Stock

Call Josh 830-623-2855 1918 Hwy 80, Karnes City, TX

THESE PICTURES SPONSORED BY:

BOB'S
BAIL BONDS
 806-826-0654 Cell 806-334-0452
 P.O. Box 264 Wheeler, TX 79096 Pat Childress



Ft. Elliott defeated Olten in three sets.
 #24 Kamryn Chesher (left)
 #5 Emily Coulter (center)



Colt stops Claude Colt.



Nathan Rowley picks up a Colt first down.



Diego Richardo forcefully keeps Claude from gaining a first down.



Jeryn Owens makes a first down in 1st & 2nd Flag Football.



Israel Andrade makes a long run for a TD in 1st & 2nd Flag Football.



Fierce blocking from the Cougars and Stangs.



Claude Colt getting chased by three Wheeler Colts.

Stangs (from Page 2)

in the opening half. Claude mounted something of a drive on their next possession, picking up three first downs to the Wheeler 41. But their second and ten pass attempt was snagged by Wheeler DB Porras and Wheeler ran out the remainder of the first half.

An inspired Claude received the second half kickoff and set up at their 25. Running five times and completing two passes, they ran 3:57 off the clock and got on the board with a 33 yard run by RB Kenan Staine. A failed two point pass attempt made the score 36-6.

Undeterred, Wheeler responded on the following kickoff. A short kick was held by Wheeler up man Gustavo Andrade at the Wheeler 32. Andrade reversed field about five yards then proceeded to adroitly dance and weave down the left sideline to the end zone. K Servando Rascon added the PAT and Wheeler led 43-6.

Claude would manage another TD on the opening play of the fourth quarter when QB Ty Ivey connected with WR Mason Smith on a 37 yard pass, but the two point pass failed and Wheeler still held a commanding 43-12 lead.

Wheeler responded quickly. A failed Claude onside kick attempt was smothered by Wheeler's Rascon and gave them a short field at their 47. Wheeler ran five times from there, with Guest carrying four times for 45 yards, and topping off the drive from 34 yards out. The Pat missed and Wheeler led 49-12 with 9:43 left.

Wheeler's stout defense forced another Claude punt after three plays and the Wheeler offense, featuring mostly reserve players, ran the ball down to the Claude 10 for a first and goal. Claude's defense stiffened up and forced Wheeler into a fourth down from there. K Rascon came in and nailed a 27 yard FG, his first of the season and scoring ended for the night at 52-12.

Claude tried valiantly for another score, but their final drive ended when reserve Wheeler DB Logan Harris intercepted a Claude pass at the Wheeler 17. Wheeler ran out the clock to end the game.

It was a dominant performance for Wheeler and exactly what they needed to open district play. The running game returned to high gear as seven Mustangs combined to rush for 331 yards on 45 attempts (7.4 yards per attempt) with QB Guest leading the way with 109 yards and two TDs on 12 rushes. RB Porras added 78 yards on 10 attempts and a TD. Guest completed six of his 13 pass attempts for 80 yards and two TDs. WR Drake caught three passes for 30 yards and a score and ran three times for 34 yards and another score. WR Lopez brought down three passes for 50 yards and a TD. The Wheeler defense was formidable, allowing only 189 yards on 46 plays, snagged two picks, and forced five punts



THE WHEELER TIMES

Page 5 — Thursday, October 13, 2016

"Wheeler: town of friendship and pride"

on the night.	W-Guest 34 run (kick failed)
The Mustangs stand at 3-3 on the season, but most importantly, are an emphatic 1-0 in District 1-2A Division II. They hope to continue their momentum this Friday night as they host the Booker Kiowas (2-4, 0-1) at Nicholson Field at 7 pm. Hope to see a large turnout as the Mustangs continue their drive to a district title.	W-Rascon 27 FG
WHS 24 12 7 952	WHS CHS
CHS 0 0 12 012	First Downs 24 12
W-Holden Guest 20 run (Ivan Lopez run)	Rushing Yds 331 27.97
W-Traylen Drake 14 pass from Guest (Lopez run)	Passing Yds 80 92
W-Drake 15 run (Guest run)	Total Yds 411 189
W-Eduardo Porras 2 run (kick failed)	Comp-Att-Int 6-13-0 10-19-2
W-Lopez 17 pass from Guest (kick failed)	Punts Avg 0-0 5-254
C-Kenan Staine 33 run (pass failed)	Fumbles Lost 2-0 1-0
W-Gustavo Andrade 68 kick-off return (Servardo Rascon kick)	Penalties Yds 7-42 2-12
C-Mason Smith 37 pass from Ty Ivey (pass failed)	Individual Stats
	Rushing-WHS: Guest 12-109; Porras 10-78; Rudy Almanza 11-51; Traylen Drake 3-34; Hagen Weatherly 7-33; Levi Ware 1-24; Gustavo Andrade 1-2; CHS: Kenan Staine 10-67; Zack Owens 7-35; Nash Stapp 5-18; Brody Gabel 1-0; Ty Ivey 3-(-)21
	Passing-WHS: Guest 6-13-0-80; CHS: Ivey 10-19-2-92
	Receiving-WHS: Lopez 3-50; Drake 3-30; CHS: Smith 3-42; Staine 4-17; Gabel 1-16; Charlie Strawn 1-11; Stapp 1-6

P.O. BOX 582
 WHEELER, TX 79096
806-331-1522

PAUL TOPPER, JR.
 OWNER

BIGTOP ENTERPRISE, LLC
 TBA TOPPER HEAT & AIR SERVICE
 TX LICENSED HEAT & AIR SEPTIC SYSTEM INSTALLER
 Tx License #TACLB40893E OSO029695

806-334-1522

Hyland's Pharmacy
 Downtown Wheeler — 826-5561

Corky's Shoe Sale!
Flip Flops
Buy 1, Get 1 50% Off

The store for all your needs:
 Prescriptions, Gifts for your loved ones.

First Baptist Church
 Wheeler, Texas

Come Worship our Lord and Savior Jesus Christ for no one cometh to God unless thru His Son, Jesus Christ.

11:00 A.M. Sunday

ALL TYPES OF AERIAL SPRAYING CHEMICAL & SEED SALES

GRAY AG AIR

Serving Hollis and Wellington

P.O. Box 306
 Hollis, OK 73550
 (580) 688-2548 OR
 (580) 688-2558

LYNN GRAY
 Mobile: (580) 381-0306
 REID ROBINSON
 Mobile: (580) 318-2604

NO TRENCHING NO MESS

Rick's Lawn Sprinklers

RAIN BIRD SPRINKLERS

33 YEARS EXPERIENCE

Dirt Work & Turf

FREE ESTIMATES

LIC. #19097 & 4823

580.477.0915 800.466.0915



WHEELER MUSTANG FOOTBALL
live . . .

Aug 26 Wheeler vs. Texoma
Sept. 9 Wheeler vs. Clarendon
Sept. 30 Wheeler vs. Panhandle
Oct. 7 Wheeler vs. Claude
Oct. 21 Wheeler vs. Vega
Oct. 28 Wheeler vs. Shamrock
PLUS: Playoff Games

Larry & Carol Porton

FREE ESTIMATES 24 HR. WRECKER SERVICE

McGAIN'S AUTO BODY

117 W. Okla. — Wheeler
806/826-3433
INSURANCE CLAIMS OWNER: BOB MCGAIN

BRITT RANCH

↑

HYLAND'S Pharmacy

108 West Oklahoma Ave. Wheeler, Texas
Rancy & Crystal McEntire, Owners
806.826.5561

WARE Chevrolet Buick Inc.



South Hwy. 83
Wheeler, Texas
Phone: 806.826.5521
www.warecbp.com

#5 Levi Ware




Baldemar Gallardo
Freshman — Trombone

Eloy Uribe
Sophomore — Trumpet

GO! NO. 78 ROWDY HENSON

Randy, Machille, Lacey, Justin and Stratton

2016 Wheeler JH & JV Football Schedule

Date	Opponent	Team	Site	Time
9-1	Memphis	JV	Away	TBA
9-8	Clarendon	JH & JV	Home	5:00
9-15	Highland Park	JH & JV	Away	5:00
9-19	Texhoma	JV	Home	5:00
9-29	Panhandle	JH & JV	Away	5:00
10-6	*Claude	JH & JV	Home	5:00
10-13	*Booker	JH & JV	Away	5:00
10-20	*Vega	JH & JV	Home	5:00
10-27	*Shamrock	JH & JV	Home	5:00
11-3	*Gruver	JH & JV	Away	5:00



Chad Helton
Owner

806-826-5769
714 W. Okla. Ave
Wheeler, TX 79096




Makalli Marshall
Sophomore — Percussion

Saray Jacquez
Freshman — Clarinet

Go Mustangs!

JOHN DEERE
Spearman, TX
Dalhart, TX
Pampa, TX
Dumas, TX
Perryton, TX
Boise City, OK
Guyton, OK

GREEN COUNTRY EQUIPMENT, LLC
Pampa, Texas
806-665-1888
email: hschwoepe@gcejd.com
WWW.GREENCOUNTRYEQUIP.COM

Danny, Ravonda, Josh & Nick Hardcastle

AV STILES RANCH

Bob & Sue Stiles
Bill & Kay Stiles



Ron & Donna Rives,
Owners - Managers

806-826-5943 121 W. Texas Street Wheeler, Texas

Kim's Kitchen Lunch Buffet Everyday
Intersection Hwys 83 & 152 • Wheeler, TX • 806-826-5102

Max, Stacy, Creede, Gavin, Jennifer, & Annabel Lea McQueen

Wellington State Bank

Bowie • Canadian • Childress • Littlefield • Lubbock
Olton • Memphis • Wheeler • Wellington

Sharon Helton, Owner

Register with us for your shower!

LaRue's Rags

406 S. Main — P.O. Box 1080
Wheeler, TX, 79096
806-826-0666

LYNDON AUCTIONEERS

Lyndon & Noveline Loyd
P.O. Box 1279
Wheeler, Texas 79096
(Lic. # 7119)

Ed & Patricia Forrester

M Maxey's STEAKHOUSE

S. Hwy. 83 — Wheeler, TX — 806.826.3441
Call for Catering, Private Parties & Daily Specials

Graham Creek Ranch Cattle, L.P.

Sandra Christner Tom & Kay Christner



Anytime you are in . . .
WHEELER, TEXAS
we invite you to spend the night at . . .
SANDY BASIN INN
400 South Main Street
806-826-3790

DEVON & KENNA HOWARD

Weldon & Dolores Simmons Jimmy & Jotana Henson

LOTT RANCH

Hereford Breeders
T.C. & Agnes Lott Family, Owners
Est. March, 1945

WALLACE CONSTRUCTION
Changing the looks of Wheeler—one building at a time!
305 Main — Wheeler, TX — 826-3503

WALLACE TAX SERVICE
For all your accounting needs — 826-3503

In Memory Of . . .
Dr. Louie Mendiola, M.D., P.A.

Gina, Vincent, Melissa, Hunter, Ashley Marie, Chloe Taylor, Rocky, Rosemary & Magnolia Noelle and Josephine Rose Mendiola

P.O. BOX 582
WHEELER, TX 79096
806-331-1522

PAUL TOPPER, JR.
OWNER

BIGTOP ENTERPRISE, LLC
TBA TOPPER HEAT & AIR SERVICE
TX LICENSED HEAT & AIR SEPTIC SYSTEM INSTALLER
Tx License #TACLB42883E 03002986

806-334-1522

WHEELER MUSTANGS

WHEELER MUSTANGS

Name	#	Pos.	Ht.	Wt.	Class
Hagen Weatherly	3	RB/LB	5'5	140	SO
Baldemar Gallardo	4	TE/DE	6'1	170	FR
Levi Ware	5	TE/DE	6'0	190	SR
Servando Rascon	7	WR/DB	5'11	165	JR
Traylen Drake	8	WR/S	6'2	180	SR
Brady Bailey	10	QB/S	6'0	145	FR
Ian Finsterwald	11	RB/DB	5'9	150	FR
Eduardo Porras	12	RB/DB	5'8	155	JR
Angel Ontiveros	14	WR/DB	5'5	135	SO
Logan Harris	21	WR/DB	6'1	160	SO
Chase Helton	23	WR/DB	5'6	120	FR
Travis Cook	24	RB/LB	5'8	155	JR
Luis Gutierrez	27	WR/DB	5'7	150	JR
Gustavo Andrade	28	RB/DB	5'10	160	FR
Rudy Almanza	34	RB/LB	5'9	180	SR
Holden Guest	35	QB/LB	5'9	165	SR
Brayan Alvarado	50	OL/LB	5'9	175	SR
Austin Calhoun	51	OL/DL	5'8	155	FR
Paden Markham	52	OL/DL	5'10	185	FR
Edsgar Valera	54	OL/LB	5'9	150	FR
Mauricio Lopez	55	OL/LB	5'10	205	SR
Korbin Austin	58	OL/DL	6'1	245	JR
Jordan Venzor	60	OL/DE	6'0	200	SR
Jacob Ramirez	61	OL/DL	5'8	160	FR
Rene Gutierrez	64	OL/DL	5'9	230	SR
Alex Davis	65	OL/DL	6'0	170	FR
Kade Kemp	68	OL/DL	5'10	235	SO
Joel Contreras	70	OL/DL	6'0	215	JR
Edgar Herrera	74	OL/DL	5'9	170	SO
Andres Garcia	77	OL/DL	5'9	210	SO
Rowdy Henson	78	OL/DL	6'0	210	SR
Ivan Lopez	81	WR/LB	6'2	200	SR

Head Coach/Athletic Director: Aaron Witten
Coaches: Sonny Calhoun, Matt Nix, Mark Earhart, Brodie Klink

Finsterwald Ranch

RiverCrest Construction

Chip Hill
806-334-2108
P.O. Box 1320
Wheeler, TX 79096
chip@rivercrestproperty.com

Steve, Joyce & Caitlynn Walker

ARROW WATER WELL, INC.

HONEY INN "A place to stay while you're away"
Corner Hwys 83 & 152

2016 Wheeler Varsity Football Schedule

Date	Opponent	Site	Time
8-12	Boys Ranch	Away	TBA
8-19	Sayre, OK	Home	7:00
8-26	Texhoma, OK	W-49 — Tx-13	
9-2	Memphis	W-8 — M-44	
9-9	Clarendon	W-19 — C-26	
9-16	#Highland Park	W-26 — HP-21	
9-23	Open		
9-30	Panhandle	W-20 — P-37	
10-7	*Claude	W-52 — C-12	7:00
10-14	*Booker	Home	7:00
10-21	*Vega	Away	7:00
10-28	*Shamrock	Away	7:00
11-4	*Gruver	Home	7:00

*District — #Homecoming

WILD Scissors

503 Canadian St. • Wheeler • 806.663.1553 • Tracy Tignor



Traylen Drake wraps up the ball carrier for no gain on the play.

EASTERN PANHANDLE Insurance Agency, Inc.

117 W. Texas — Wheeler, TX
Phone: 826-3573

WHEELER GENERAL STORE
 Wheeler General Store, LLC
 15868 Hwy. 152 — Wheeler, TX — (806) 826-5531
 HI-PRO FEEDS

Purveyor Ranch

BAYMONT INN & SUITES
 1410 S. Alan L. Bean Blvd, Wheeler, TX — 806.826.1012

Football Photos By: Kara Richardson

Dr. Mike Smith — Mike and Jenny Smith

Go Stangs!
GREENBELT ELECTRIC COOPERATIVE, INC.
 708 10th — Wellington, TX — 447-2536
 Serving the Rural Area of Armstrong, Childress, Wheeler, Collingsworth, Donley, Gray, Hemphill, Randall & Roberts

Junction Country Store Daily Lunch Specials
 Diesel Regular Premium
 FM 8794 & US Hwy 83
 Plenty of Seating Truck Parking

Jay & Karen Lewis and Family

WEST TEXAS GAS
 Wheeler Division—500 S. Mobeettie—Wheeler, TX 79096

LeRoy & Rhonda Meriwether & Stormie

HAIR SALON
 Call today for an appointment
 Specializing in...
 • Permanent Makeup
 • Eyelash Extensions
 • Color • Waxing
 • Hair Extensions
 Donna Childress
 806-676-5223
 Wheeler, Texas

GO MUSTANGS!
SHEAR DELIGHT
 Tina Lee — Stephanie Sullivan
 709 East Third St. • Wheeler • 806-826-3168
 Ashton, Mason, Keegan
 Kennedee, Stratten

HOME - AUTO - FARM - LIFE
Todd Moore Insurance Agency, Inc.
 Representing the Germania Companies
 315 N. Main — P.O. Box 168 — Shamrock, TX 79079
 Todd Moore - Owner/Agent
Germania INSURANCE
 INSURANCE AGENCY INC. 806.256.8911 806.334.0330 800.687.3730



Claude being chased down by three Colts.

PEPPERS
 FAMILY FUNERAL HOME

FIRST STATE BANK
 Mobeettie & Wheeler
 Established 1906 Member F.D.I.C.

PARADISE SPA BY APPOINTMENT ONLY!
 114 E. Texas Ave. — Wheeler, TX
 806-826-0296

CenterGas
 710 E. Oklahoma St. — Wheeler, TX
 806-826-5222



Holden Guest with Quarterback Keep.

Leo & Sylvia Shuler

WHEELER
 LAND & LIVESTOCK
 15495 Hwy 152 • Wheeler, TX 79096 • Ph: 806-826-5591
 Fax: 806-826-3476 • Website: www.wlal.net

FARM BUREAU INSURANCE
HEMPHILL COUNTY FARM BUREAU
 806-323-5752
 David & Rita Pearson

Gail & Sally Ledbetter

Betty Hennard

WHEELER
 NURSING AND REHABILITATION
 A Daybreak Community
 Clarissa Williams-Joseph
 Administrator
 1000 South Kiowa/P O Box 525
 Wheeler, TX 79096
 adm.wheeler@daybreakventure.com
 Office 806-826-3505
 Fax 806-826-3195

vs Booker Kiowas
FRIDAY, OCTOBER 14, 2016
Nicholson Field — 7 P.M.

Bill Robertson

CAPITAL FARM CREDIT



Ivan Lopez is in for the Mustang TD.

BOOKER KIOWAS

#	Name	Position	Gr.	Ht	Wt
2	Diego Flores	WR, CB	Jr.	5-8	125
5	Keaton Burt	G, DE	So.	5-9	153
7	Eduardo Meza	WR, OLB	Fr.	5-9	157
9	Collin Dalton	WR, CB	So.	6-1	131
10	Edgar Avila	QB, MLB	Fr.	5-9	157
12	Nolan Mendoza	DE, QB	Fr.	6-3	175
13	Marco Munoz	WR, FS	Jr.	5-11	150
15	Valentine Ramirez	WR, OLB	Jr.	6-1	191
20	Ian Guzman	WR, FS	Fr.	5-4	125
24	Sergio Valdivia	WR, MLB	Fr.	5-4	125
28	Cesar Rosales	WR	So.	5-6	186
30	Abraham Banuelos	WR, DE	Fr.	6-3	149
33	Manny Camacho	WR, CB, OLB	Jr.		
50	Pedro Garcia	C, MLB	Jr.	5-10	172
53	Angel Arroyo	G, DT	So.	5-10	
54	Dylan Hoover	T	Sr.	5-10	198
55	Dylan Gaytan	T, DE	So.	5-10	188
57	Kreed Goldsmith	G, DT	Fr.	5-10	159
58	Kenny Gallegos	OLB, G	Fr.	5-4	129
60	Daniel Banuelos	T, DT	Jr.	5-9	190
61	Diego Dominguez	G, DT	Fr.	5-8	196
62	Donovan Ramirez	G, DT	Sr.	6-2	277
63	Lance Boston	C, DE	Jr.	5-11	229
69	Benjamin Holt	T, DE	Fr.	5-9	142
74	William Deprince	G, DT	Sr.	6-0	168
76	Colby Dalton	G, DT	So.	6-0	227
84	David Dominguez	WR, OLB	Fr.		

BOB'S BAIL BONDS
 806-826-0654 Cell 806-334-0452
 P.O. Box 264 Wheeler, TX 79096 Pat Childress

WHEELER SPEED TEAM
 Keila Rocha
 Daisy Duenez

Judy Woollard

Soto Family Restaurant
 708 E. OKLAHOMA — WHEELER — 806/826-3129

WHEELER SPEED TEAM
 Julia Andrade
 Valeria Tintori

Gary & Becky Hardcastle Todd, Mindy, Bailey, Reagan & Presley Brashears
 Marcus, Heather, Justin, Houston & Sierra Hardcastle

CARNICERIA AGUILAR
 119 W. Texas St.
 Wheeler, TX 79096
 (806) 826-1027 — 7 Days a Week — 10 A.M.-9 P.M.

Marshall Discount Auto
 PARTS 4 PLUS
 Daryl & Maggie Marshall
 Mack, Crystal, Mariah, Trevor, MaKalli & Kanin
 Mark, Joanna, Urrick & Hesston
 Steve, Krista, Dylan & Kynslee
 Mechelle, William, Hope, Austin & Wyatt

CROSS COUNTRY BARN
 24-Hr Gas & Diesel
 Convenience Store
 Hunt Bros. Pizza & Wings
 Hamburgers/Sandwiches
 Beer & Wine
 301 E. Oklahoma St — Wheeler, Texas — 806-826-2276
 Dale & Monica Kidd, Owners

CHARLES R. BROWN

WHEELER VETERINARY CLINIC
 Drs. LeeAnn & Ben Ed Hillhouse

Speedi Mart
 Est. 1982
 500 S. Alan L. Bean
 Wheeler, Texas

Oil (from Page 4)

Gas Completions
HEMPHILL (HEMPHILL, Douglas) Le Norman Operating LLC, #5303H Flowers 'B', 16 mi SE from Canadian, Sec 28, Blk A1, H&GN Surv, A-905, spud 1-30-2016, compl 4-18-2016, tested 7-19-2016, potential 1056 mcf, 289 bbls cond, 180 bbls wtr, 33# ftp, 1013# SIWHP, TVD 7934', MD 13141' API 42-211-35533, Horizontal
HEMPHILL (HEMPHILL, Douglas) Le Norman Operating LLC, #5301H Flowers 'B', 18 mi SE from Canadian, Sec 28, Blk A1, H&GN Surv, A-905, spud 1-20-2015, compl 3-30-2015, tested 7-19-2016, potential 563 mcf, 105 bbls cond, 75 bbls wtr, 693# ftp, 1113# SIWHP, TVD 7979', MD 12909' API 42-211-35424, Horizontal
Reclassification
Reclass Oil to Gas
Oil Completions
None

Week of September 9 to October 2, 2016
Intents to Drill
HANSFORD (HANSFORD, NORTH, Cherokee, COLDWATER CREEK, E. Oswego, WILDCAT) J-Brex Company, #2203 Double D-E, (325.59 acres) 440' FNL & 2306' FEL, Sec 203, Blk 3, GH&H Surv, A-125, 8 mi NW from Gruver TD 7800', (sgd. Sherri Sanders 806-358-2446, x12) Vertical Amended
HANSFORD (PAN PETRO, Marmaton) Mewbourne Oil Company, #M001MD Blad 54, (640 acres) 200' FSL & 880' FWL, Sec 54, Blk 4T, T&NO Surv, A-1199, 3 mi NE from Spearman TD 8000', (BHL: 200' FNL & 880' FWL) (sgd. Rebecca Dunn 806-665-0338) Horizontal
HARTLEY (WILDCAT, COTTONWOOD DRAW, Granite Wash) DDD Exploration, Inc., #1 Finch 6, (400 acres) 2050' FNL & 467' FWL, Sec 6, Blk 1TO, T&NO Surv, A-1148, 12.6 mi NW from Hartley TD 9000', (sgd. Rebecca Dunn 806-665-0338) Vertical
HEMPHILL (HEMPHILL, Douglas) Le Norman Operating LLC, #2H Madeline 55-26, (921.7 acres) 2172' FWL & 2429' FSL, Sec 55, Blk A1, H&GN Surv, A-87, 12 mi SE from Canadian TD 9000', (BHL: 200' FSL & 2172' FWL Sec 26, Blk A1, H&GN, A-850) (sgd. Greg Bilbro 512-476-1245) Horizontal
HEMPHILL (WILDCAT) Apache Corporation, #1H David Crockett 4-13 Unit, (556.23 acres) 3431' FNL & 1520' FWL, D Crockett Surv, A-27, 2 mi NE from Canadian TD 16000', (BHL: 600' FSL & 1120' FWL) (sgd. Belinda Wolf 210-678-3960) Horizontal
LIPSCOMB (LIPSCOMB, Cleveland) Jones Energy, LLC, #28HX Willis D Price, (3249.6 acres) 225' FNL & 1400' FWL, Sec 611, Blk

43, H&TC Surv, A-250, 8 mi NW from Higgins TD 9000', (BHL: 100' FSL & 1400' FWL Sec 534, Blk 43, H&TC, A-959) (sgd. Brenda Ramirez 512-328-2953) Horizontal Amended
MOORE (PANHANDLE, Red Cave) Adams Affiliates, Inc., #7310 TG Thompson, (486.05 acres) 450' FSL & 1688' FEL, Sec 73, GM3, G&M Surv, A-442, 4.3 mi E from Masterson TD 2500', (sgd. Jennifer Sexton 918-629-3365) Vertical
MOORE (PANHANDLE, Red Cave) Adams Affiliates, Inc., #7309 TG Thompson, (486.05 acres) 455' FSL & 1033' FEL, Sec 73, GM3, G&M Surv, A-442, 4.3 mi E from Masterson TD 2500', (sgd. Jennifer Sexton 918-629-3365) Vertical
POTTER (BIVINS LIT, Canyon Lime) Apache Corporation, #9801H Bivins East, (40033.4 acres) 554' FNL & 1185' FEL, Sec 98, Blk 47, H&TC Surv, A-1312, 12.4 mi SW from Masterson TD 10000', (BHL: 5689' FSL & 1199' FEL) (sgd. Bill Spencer 512-918-1062) Horizontal
ROBERTS (LARD RANCH, Granite Wash -C-) BP Operating Company, LLC, #201H Boone Pickens A-998, (625 acres) 467' FSL & 467' FWL, Sec 2, Blk C, H&GN Surv, A-998, 20.5 mi NW from Miami TD 8450', (BHL: 100' FNL & 467' FWL) (sgd. Rebecca Dunn 806-665-0338) Horizontal Amended
WHEELER (PANHANDLE, Wheeler County Field) J-Brex Company, #3052 Sheets, (80 acres) 1679' FWL & 1994' FSL, Sec 52, Blk 24, H&GN Surv, A-838, 5 mi W from Kellerville TD 3000', (sgd. Sherri Sanders 806-358-2446, x12) Vertical
WHEELER (STILES RANCH, Granite Wash Cons) 4P Energy Texas, LLC, #2008HA Armstrong, (665 acres) 1066' FWL & 205' FNL, Sec 20, Blk A3, H&GN Surv, A-8380, 7 mi NE from Kelton TD 13500', (BHL: 705' FSL & 10' FSL) (sgd. James Clark 512-415-4191) Horizontal
Gas Completions
OCHILTREE (PERRYTON, WEST, Morrow) Courson Oil & Gas, Inc., #1014 Wright, 7.5 mi SW from Perryton, Sec 14, Blk 13, T&NO Surv, A-1323, spud 11-22-2003, compl 9-8-2004, tested 9-22-2016, potential 9 mcf, 0 bbls cond, 1 bbls wtr, 101# ftp, 613# SIWHP, TVD 9156', PBD 8818' API 42-357-32421, Vertical
Reclassification
Reclass Oil to Gas
Oil Completions
ROBERTS (CANADIAN, S.E., Douglas) Unit Petroleum Company, #4 Vollmert 'C', 12 mi NE from Miami, Sec 10, Blk , BS&F Surv, A-1197, spud 6-19-2006, compl 9-13-2016, tested 9-26-2016, potential 35 bbls-oil, 81 mcf, 37 bbls wtr, 30# ftp, 475# CP, TVD 11250', PBD 7700' API 42-393-31851, Vertical
Reclassification



The weeks are flying by and so are all the new books on the shelves. Seems like the cool weather is enticing readers to come and get it. All the new authors we are trying out have been a big success and that is great news for us and you. October 29th @ 10:00 a.m. is the Read/Craft project we will be doing for Halloween. Make sure when you come to be there on time we will start at 10:00 sharp. Parents you are very welcome to come we enjoy having you come and participate with us.

JH/HS (from Page 1)

Herrera, Ashton Lee, Wendy Lopez, Yonathan Mendoza, JD Miles, Amy Rocha, Mackenzie Rowell, Jesse Sierra, Yesenia Soto, Daniel Torres, Natalie Varela
Ninth Grade: All A: Brady Bailey, Kaylee Garza, Paden Markham; A/B: Julia Andrade, Gustavo Andrade, Kamie Beck, Austin Calhoun, Javier Casillas, Alex Davis, Ian Finsterwald, Baldemar Gallardo, Sebastian Gonzalez, Chase Helton, Saray Jaquez, Hope Mata, Sandra Monarrez, Edgar Varela
Tenth Grade: All A: Logan Harris, Melody McGruder, Mac Means; A/B: Cooper Adams, Sinthia Almanza, Brycelyn Caballero, Tony Castillo, Cristian Contreras, Cooper Foreman, Aneline Gallardo, Kade Kemp, Maria Lira, Allen Lumpkin, Makalli Marshall, Braley McGhee, Genesis Meza, Jennifer Molina, Jennifer Morales, Angel Ontiveros, Josue Rincon, Keila Rocha, Katherine Rowell, Bryce Rowley, Will Stiles, Eloy Uribe
Eleventh Grade: All A: Jaci Guest, Cambri Moore, Nichole Robinson; A/B: Aston Chisum, Travis Cook, Luis Enriquez, Ale Espinosa, Ruby Gaviro, Jacob Helton, Jordan Herrera, Rachel Huff, Nallely Jacquez, Shelby Jones, Lizeth Monarrez, Eduardo Rodriguez, Naomi Tabor, Levi Ware, Audra Weatherly; A/B: Sarah Alexander, Fatima Almanza, Rudy Almanza, Cassidy Andis, Brooke Ashurst, Keyliegh Coomer, Trylen Drake, Rene Gutierrez, Rowdy Henson, Esmey Herrera, Xochitl Herrera, Carmen Jurado, Mauricio Lopez, Lurissa Meadows, Omar Pichardo, Ryan Porter, Meranda Varela, Jordan Venzor

Don't forget to bring back the books you have enjoyed on time so others may enjoy them also. I encourage you to bring your children in to pick out books to read and adults we do have Large Print in some books to make reading a little more comfortable for you. That is a problem we have been working on because there seems to be a large amount

of people having trouble with the smaller print. There are also other ways to combat this problem and Bausch & Lomb has a full page magnifier, 8.35" x 10.75" you can order from Office Supply.com for a

very good price. Check it out if you're having problems. So for this week, enjoy the wonderful weather and hope to see you in the Library! READ>READ>READ Vicki Ferguson/Librarian



THE WHEELER TIMES

Page 8 — Thursday, October 13, 2016

"Wheeler: town of friendship and pride"

Program to Reduce Rural Poverty Nationwide

USDA Launches Relending Program to Reduce Rural Poverty Nationwide
TEMPLE, TEXAS, October 7, 2016—Agriculture Secretary Tom Vilsack today unveiled an innovative partnership with community development organizations from across the country, providing \$401 million of Community Facilities program funds to recipients with a track record of successful programs to help reduce poverty in some of the nation's poorest and most isolated rural communities. Twenty-six community development organizations have been approved to draw upon the funding to provide long-term, low-interest financing to be "re-lent" to local entities to build, acquire, maintain or renovate essential community facilities. The funds also can be used for capacity building and to finance essential community services, such as education, health care and infrastructure.

and national partners, private-sector financial institutions and philanthropic organizations, USDA will inject a game-changing level of investment capital to reduce poverty in targeted rural areas where the capacity for growth has not been realized. As we have seen with the Obama Administration's Promise Zone initiative and USDA's StrikeForce effort, targeted, place-based investments can have a real impact on reducing poverty. This funding adds another

important tool in that fight." The financing has two unique features. First, private financial institutions, including Bank of America and others, will be providing guarantees for a portion of the loans. Second, the recipient community development organizations, or "re-lenders," may also have an opportunity to secure grants provided by seven of the nation's premier philanthropic organizations through a \$22 million fund to assist in man-

(Continued Page 9)



STOPPING THE BALL: Wheeler Colt, Diego Picardo forcefully keeps Claude from gaining a first down.

Dale, Andrea Guereca, Ashley Monarrez, Macy Robinson and Tristan Salas

Elem. (from Page 1)

A/B: Noemi Almanza, Levi Ashurst, Jared Calhoun, Kenna Childress, Evelyn Contreras, Tessa Dougherty, Jose Enriquez, Valeria Garcia, Keira Garza, Joaquin Gaviro, Jazmin Gonzalez, Emmanuel Hernandez, Anjel Herrera, Jose Herrera, Holden Holwick, Jose Lira, Jerry Luna, Rodrigo Magadan, Karsyn Malone, Edwin Mendoza, Marcus Rowley, Abraham Teran and Alex Wilson
6th grade
ALL A: Ximena Badillo, Breeley Harris and Katherine Woolard
A/B: Emily Badillo, Kylee Burrell, Daniela Casillas, Noe Delgado, Diamond Engles, Kiersten Furuya, Maria Garcia, Isaac Gonzalez, Rosario Gonzalez, Noel Gutierrez, Jenna Helton, Luis Jaquez, Zayra Magadan, Dylan Marshall, Alexa Martinez, Leslie Mendoza, Blake Meraz, Natalie Rincon, Leah Rodriguez and Emalee Scales



High School Cheerleaders get the crowd involved at pep rally.

October 11th, 2016

Wheeler County JP #1 Weekly Docket

Magistrations/ Arraignments:

Jairo Herrera
 Jairo Herrera
 Sammy Santoyo
 Robert Susman
 Robert Susman
 Robert Susman
 Robert Susman
 Michael Garcia
 Michael Garcia
 Micki Acosta
 Jose Luis Huante
 Michael Benavidez
 Michael Benavidez
 Brande Dawn Perez
 Brande Dawn Perez
 Brande Dawn Perez

1807 - Obstruction/Retaliation - Bond \$20,000.00
 1806 - Aggravated Assault Causing Bodily Injury - Bond \$40,000.00
 1808 - Possession Controlled Substance - Bond \$15,000.00
 Class C Arraignment
 1809 - Possession Controlled Substance - Bond \$15,000.00
 1810 - Tamper With Physical Evidence - Bond \$15,000.00
 1811 - Possession Marijuana - Bond \$1,500.00
 1812 - Possession of Controlled Substance - Bond \$15,000.00
 1813 - Possession of Prohibited Weapon - Bond \$15,000.00
 1814 - Possession of Controlled Substance - Bond \$12,500.00
 Bond Surrender - Bond \$1,500.00
 1817 - Possession of Controlled Substance - Bond \$12,500.00
 Class C Arraignment
 1818 - Possession of Controlled Substance - Bond \$2,500.00
 1819 - Possession of Controlled Substance - Bond \$2,500.00
 1818 - Bond Surrender - Bond \$30,000.00

County Citations Issued:

Taylor O'Brien Shaw
 Joel Dutchover Carrasco
 Stephen Christopher Stults

No Medical Certificate - CMV Citation
 Over Weight Violation - CMV Citation
 Speeding - WCSO Citation

Municipal Citations Issued -City of Wheeler -City Ordinances

None

Civil Cases Filed:

Inquests:

None

Administrative Hearing:

None



Wheeler's Colt Cheerleaders



Rural (from Page 8)

aging and capacity building. The Mary Reynolds Babcock Foundation will manage this grant fund.

CEN-TEX Certified Development Corporation received a \$5 million Community Facilities loan to re-lend the funds for eligible community facility projects primarily in persistent poverty counties and high poverty areas in rural Texas.

"USDA is pleased to provide Community Facilities funding to CEN-TEX Certified Development Corporation to help communities in rural Texas create jobs, stimulate local economies and provide improved public services to their

residents," said Paco Valentin, USDA Texas State Director. "This funding will help rural areas keep pace with the needs of their rising populations."

To read more about USDA's investments in rural America and its successful turnaround, visit USDA's entry on Medium.com, Rural America Is Back in Business

Since 2009, USDA Rural Development (@USDARD) has funded nearly 9,200 community facilities such as schools, public safety and health care facilities; invested nearly \$13 billion to start or expand nearly 112,000 rural businesses; helped 1.1 million rural residents buy homes; and helped bring high-speed Internet access to nearly 6 million rural residents and

businesses. USDA also has invested \$31.3 billion in 963 electric projects that have financed more than 185,000 miles of transmission and distribution lines serving 4.6 million rural residents. For more information, visit www.usda.gov/results.

Fall (from Page 1)

candy/goodies for 500+ kids.

We are looking for Sponsors for the Fall Festival and we know we can't do it without generous support and donations from our Sponsors. We have different Sponsorship Levels available. We can also provide receipts as your sponsorship is a tax write-off. We appreciate your consideration and look forward to working with you on this great event.

We hope that you are able to be a part of a fantastic day that brings the community together and also raises money for our local swimming pool! We appreciate your consideration and generous contribution to our community!

Chat (from Page

Saturday for the marching competition.

— cwe —

Keep up the good work, Band.

— cwe —

The Wheeler Mustangs entertained their fans with great plays last Friday against Claude. That's how it's done; keep it up.

— cwe —

Don't forget, the potatoe supper will be in the cafeteria before the game.

— cwe —

The Musae's hosted a Texas/OU party Saturday. Jennifer and Rhonda were loyal to Texas, but Texas lost.

— cwe —

Have you contacted Kristen with you plans for the Harvest Festival? This will be Saturday, October 29 and that date will be here in two weeks.

— cwe —

Parkview had a good turnout for the Health Fair this past Thursday.

— cwe —

Monday found us without descent internet. I am not sure what the problem was, but we had limited access.

— cwe —

Old Cemeteries

- John Penny's epitaph in the Wimborne, England, cemetery: Reader, if cash thou art in want of any, Dig 6 feet deep and thou wilt find a Penny.

- In a cemetery in Hartscombe, England: On the 22nd of June, Jonathan Fiddle went out of tune.

- Anna Hopewell's grave in Enosburg Falls, Vermont: Here lies the body of our Anna, Done to death by a banana. It wasn't the fruit that laid her low, But the skin of the thing that made her go.

- On a grave from the 1880s in Nantucket, Massachusetts: Under the sod and under the trees, Lies the body of Jonathan Pease. He is not here, there's only the pod, Pease shelled out and went to God.



**SATURDAY, OCT. 29TH
ACTIVITIES IN WHEELER, TX**

9 AM - 9 PM

**ZOMBIE Co-Ed Softball Tournament
@Tom Britt Memorial Field**

10 AM - 11 AM

**CONTESTS: Baked Goods & Pumpkin
(Pick up Entry Forms at City Hall)**

1 PM - 4 PM

**ACTIVITY BOOTHS & FOOD:
Tickets are \$1 (\$5 minimum)**

4 PM - 5 PM

**COSTUME CONTEST &
TRUNK OR TREAT
(Parking lot North of Ag Barn)**

6 PM - 12 AM

**HAUNTED HOUSE
Hosted by the Senior Class
Basement of Wheeler ISD**

Trick or Treat



To register - stop by the City Office (under the water tower) or call 806.826.3408

TEXAS
 • SHAMROCK • SUNRAY
 • WELLINGTON • WHEELER
 OKLAHOMA
 • CHEYENNE • HINTON
 PRICES EFFECTIVE
 WEDNESDAY OCT. 12 THRU TUESDAY OCT. 18, 2016



Market Square

THRIFTWAY

AF AFFILIATED
 FOODS INC.
 MEMBER STORES

www.marketsquareonline.com

211.214.207.200, 1393.1522 NOT LIABLE FOR TYPOGRAPHICAL OR PICTORIAL ERRORS. WE RESERVE THE RIGHT TO LIMIT QUANTITIES. SOME ITEMS NOT AVAILABLE IN ALL STORES.



Single Pack \$7.29 lb.



We Support
 Breast Cancer Research

family pack
 preferred trim select

T-Bone Steak

\$6.99

LB.



Small Pack \$1.49 lb.

bone in
 family pack
**Sirloin Cut
 Pork Chops**

\$1.19

LB.

US No. 1
Russet Potatoes

\$1.28

10 LB.
 BAG



whole center cut
**Boneless
 Pork Loin**

\$1.88

LB.



braeburn, fuji
 or gala
**Premium
 Apples**

99¢

LB.

3 lb. bag
**Yellow
 Onions**

88¢

EA.

Small
Avocados

3\$1

FOR



**King's Hawaiian
 Dinner Rolls**
 assorted
 12 ct.

\$2.48



**Chunk or Shredded
 Cheese**
 Shurfine
 assorted
 8 oz.

\$1.48



**Shurfine Butter
 Quarters**
 salted or unsalted
 16 oz.

\$2.98



**Cow Belle
 Ice Cream**
 assorted
 48 oz.

2 \$5

FOR



**Kraft Salad
 Dressing**
 assorted
 14-16 oz.

\$1.98



**Ragu Pasta
 Sauce**
 assorted
 16-24 oz.

\$1.88

**Shurfine
 Pastas**
 select group
 16 oz.

88¢



**Gravy Train
 Dog Food**
 assorted
 14-15.4 lb.

\$6.98



**Bathroom
 Tissue**
 Western Family
 BIG roll
 18 ct.

\$6.88



**Sun Laundry
 Detergent**
 tropical or clean
 250 oz.

\$4.88